



Perspectives and ambitions of interdisciplinary connectivity researchers

Eva Nora Paton¹, Anna Smetanová¹, Tobias Krueger², Anthony Parsons³

¹Chair of Ecohydrology, Institute of Ecology, TU Berlin, 10587 Berlin, Germany

5 ²IRI THESys, Humboldt-Universität zu Berlin, 10099 Berlin, Germany

³Department of Geography, University of Sheffield, S10 2TN, Sheffield, UK

Correspondence to: Eva Nora Paton (eva.paton@tu-berlin.de)

Abstract. The article reviews research perspectives and ambitions of connectivity scientists in order to facilitate and improve joint connectivity research efforts across disciplinary boundaries. The assessment of four very different viewpoints (pragmatic, conceptual, epistemological and ontological) on connectivity signifies the diversity of thought and practice in the connectivity community and calls for a structured way to ensure mutual understanding in collaborative settings. The shared mental model approach is introduced with an exploratory case study as a way to overcome persistent barriers in understanding by identifying gaps and overlaps of individual researchers' perspectives and knowledge that should help improve collaboration in this interdisciplinary environment.

15 1 Introduction

Connectivity research has received increasing attention in recent research agendas and discussions involving scientists from across the entire realm of disciplines, such as ecology, geomorphology, neurosciences, social network science, system biology, and engineering (e.g. Manjunath and Mohan, 2007; Bracken et al., 2013, Parsons et al., 2015; Stam et al, 2016; Poeppl and Parsons, 2017; Turnbull et al., 2018). In the context of hydrological research, connectivity may be defined as the degree to which a system facilitates the movement of matter and energy through itself; it is an emergent property of the system's state (Connecteur WG 1, 2018). For this study, we use the term connectivity with regard to research in water, land, and vegetation systems where 'movement of matter' refers to fluxes of water, sediment, contaminants or animals.

The intrinsically interdisciplinary (interactions among academic disciplines) and transdisciplinary (interactions between academia and non-academia) aspects of connectivity research create a stimulating but demanding arena. At the same time, communication barriers may severely limit the success of integrated projects (Thompson Klein, 2005). Communication barriers already start with the definition of basic connectivity terminology, since concepts and their application evolved largely within disciplinary boundaries (Turnbull et al., 2018). Separate development of many connectivity methodologies and definitions can be observed even among natural-science disciplines (e.g. hydrological connectivity by Bracken and Croke; 2006, Wainwright et al., 2011; Bracken et al., 2013; geomorphological or landscape connectivity by Brierley et al., 2006;



Fryirs et al., 2007; or ecological connectivity by Brooks, 2003; Baguette et al., 2013). Through interdisciplinary exchange of methods and approaches, there is now a pull towards cross-fertilization among different disciplines (e.g. EU-COST Action ES1306 with > 230 members from 36 countries; Connecteur, 2018). However, moving from a plethora of case studies and a multiplicity of definitions and methodological approaches to more generic, comparable research and coordinated, theory-guided experiments might be severely hindered if participating scientists are not aware how disciplinary-embedded viewpoints might influence thinking about and researching connectivity phenomena.

To illustrate these different mind sets, let us consider a simple example that might emerge when scientists interested in connectivity discuss ‘the effect of vegetation type on water flow’: what snap-shot image (or mind set) do you see in front of your inner eye when you start discussing it?

Figure 1 depicts images of four very different mental snap-shots of scientists involved in this hypothetical discussion (which is informed by a real encounter between two such scientists): (a) the one of a plant ecologist who visualises connectivity as the root network and water bridges connecting the root to soil grains (e.g. Neumann and Cardon, 2012; Prieto et al., 2012); (b) the one of a hydrologist who thinks about the type and spatial layout of vegetation in floodplains which influence water pathways and damages during a flood event; (c) the one of an erosion scientist referring to vegetation patches and rill networks that enhance or inhibit water flow and erosion and associated degradation processes on the land surface (Mueller et al., 2007); and (d) the one of a geomorphologist whose mental snap-shot depicts the effects of vegetation on thresholds for channel initiation, drainage density and landform evolution (e.g., Istanbuloglu and Bras, 2005).

When talking about process descriptions, model set-up, related fieldwork, time scales and uncertainty, it might take the four scientists a while to notice that the conceptual ideas of their systems are very dissimilar. Although in dialogue such a misunderstanding might be overcome, our experience suggests that in large interdisciplinary groups this process might take considerable time and potentially cause frustration thereby restraining future work.

Godemann (2011), among others, illustrated that scientists are frequently unaware of the knowledge and expertise lying in neighbouring disciplines or might be unable to relate it to their own knowledge. This is due to the historically disparate origins and developments of the philosophies, concepts and methods of disciplines. Yet, successful communication, integration of interdisciplinary knowledge, and cross-fertilization among different disciplines, which is demanded by the complexity of the connectivity research agenda, arguably depends on the willingness and ability of the scientists to share their knowledge efficiently and to listen to others. In organisational science, the concept of shared mental models was developed (Smith-Jentsch et al., 2008, Jones et al., 2011) in order to develop a shared vision for how to proceed on joint tasks, to anticipate one another’s needs and actions by understanding different conceptualisations of how a system works, to engage in more efficient searches for information and solutions and to jointly interpret cues in the environment. In management, it has been found to be an effective way to explore the link between how people think about and how they interact with their world (Lynam and Brown, 2012; Lynam et al., 2012). It has been applied widely to compare perceptions among stakeholders (Hare and Pahl-Wostl, 2002;



Kolkman et al., 2005; Douglas et al., 2016; Gibson et al, 2016; Prager and Curfs, 2016). We believe; that working towards a shared mental model of connectivity can considerably improve interdisciplinary communication, joint efforts, and may even advance novel research directions (Cilliers et al., 2013). However, we should not expect these innovations to be simply a matter of smooth integration of mental models. Conflicts between research philosophies, concepts and methods can be productive for a research field even if (or indeed because!) they are not resolved (Krueger et al., 2016). In any case, differences and conflicts in mental models require explication.

Hitherto, no study on research perspectives of active connectivity scientists has been undertaken. Therefore, in this study we aim to review differences in common research perspectives on connectivity, and to elucidate individual ambitions of connectivity scientists, which (as demonstrated in Figure 1) can together considerably influence interdisciplinary communication and joint efforts in interdisciplinary research. The findings of this article comprise the outcome of a think-tank meeting of Working Group 5 (Connectivity & Society) of the EU-COST Action 1306 Connecteur: Connecting European Connectivity Research in Berlin, April 2015 (Connecteur WG 5, 2106) and are intended to improve future research on water and land management issues.

2 Research perspectives on connectivity

Different scientists have different aspirations - the challenge arises when they assume a shared understanding of their research perspective, which often results in confusion and unintentional miscommunication (Bracken and Oughton, 2006). This is especially so in an interdisciplinary environment such as the connectivity community where cross-fertilisation carries a large potential for scientists to improve their research practices using knowledge from beyond their own discipline. However, very different motivations exist to do the latter, and it is often not clear what a scientist intends to achieve by applying the knowledge of connectivity methods such as indices, modelling approaches or field designs from neighbouring disciplines.

Öberg (2011) identified four different perspectives that are common in environments where people deal with the interactions of human and natural systems while working across disciplinary boundaries: the pragmatic, conceptual, epistemological and ontological perspectives. While we acknowledge that other terminologies and classifications are possible, in the following we review Öberg's (2011) four perspectives in regard to their interdisciplinary applicability to connectivity research.

1. Pragmatic perspective: to solve a practical academic problem

Hydrologists see the similarity between a rainfall-runoff equation for catchments and the waiting time equation for a single server queue and subsequently used a model from queuing theory, developed in operational research for telecommunications, to study connectivity features of rainfall-runoff processes along hillslopes (see for example Harel and Mouche, 2014). Although these researchers were perhaps initially motivated by curiosity in exploring the parallels of the two applications, this example illustrates how disciplines may borrow methods, theories and models from neighbouring disciplines to enhance their



toolbox in proceeding with a certain research objective (Öberg, 2011). The pragmatic approach is probably the most common one in current connectivity research and strives towards the cross-fertilization of methods from different environmental disciplines as established by the EU-COST Action Connecteur (2015). Yet, one has to be aware that this approach holds the danger of severe misjudgement when using methodologies without understanding the underlying theories, assumptions, boundary conditions and resulting consequences.

2. Conceptual perspective: to contribute to a new or emerging field

Connectivity research can be viewed as forming a new, emerging science field, which goes beyond traditional disciplinary boundaries of environmental science. The establishment of new theories with novel concepts for any connected systems is at the heart of this perspective, which includes for example the study of brain network organisation and function connectivity in neuroscience (Stam et al., 2016), social networks for opinion formation in social science (Grabowski, 2009), interacting, adaptive or self-organisational sensor or power networks in electrical engineering (Manjunath and Mohan, 2007) or connectivity index tools for big data analysis. The setting up of overarching theories requires a deep understanding of the core of existing connectivity methods and concepts. The conceptual perspective, therefore, has the great potential to identify much more innovative applications of knowledge than just borrowing single methods as described above, but this will only be possible if deep communication and exchange of information between disciplines is ensured.

Scientists adopting the conceptual perspective are likely to belong to a specific speech community associated with their discipline. In this context, Bracken and Oughton (2006) called for a critical, reflexive awareness of how scientists use language in their interdisciplinary work as a crucial step towards establishing a shared language (see their work for a full review on the importance of language).


3. Epistemological perspective: to analyse in what way disciplinary structures cause problems

With an epistemological approach, the focus of study is knowledge generation itself, e.g. through analysing the implications of studying, understanding and describing a problem from particular disciplinary viewpoints (Öberg, 2011). Incidentally, connectivity research opens an interesting arena for interdisciplinary scholars to study the practices of interdisciplinary environmental projects and analyse how and to what extent the involved disciplines connect their knowledge with each other and with society. Essentially, this article attempts to use an epistemological perspective on connectivity research to understand how multiple mental models of connectivity scientists differ and which measures might be necessary for a shared understanding to be gained.

4. Ontological perspective: to analyse the consequences of societal perceptions of an environmental issue

The way environmental issues are described guides our understanding and perception of the environment (Öberg, 2011), thereby reinforcing how environmental issues ‘are’ (in an ontological sense) through particular management responses. ‘Connectivity’ is a term that is currently widely used in the hydrological and ecological sciences, but we actually have very



limited knowledge on the  perceived relevance of connectivity for water and land managers outside academia. We claim that if the concepts of connectivity methods (both theoretical and practical aspects regarding monitoring design, model and index implementation) have not yet entered the mind set of water and land managers, they cannot understand how to monitor, model and subsequently manage environmental problems. But how relevant is connectivity to them? This question can only be answered by studying the perceived relevance of connectivity issues by stakeholders across the environmental sector (e.g. Smetanová et al., 2018). The results of such a study may radically alter (in an ontological sense) the nature of connectivity as a research problem.

The four very different viewpoints applied to connectivity research signify the diversity of thinking in the connectivity community and call for a structured way for scientists from different viewpoints to communicate with each other. It suggests, for example, that scientists with a pragmatic and an ontological perspective might develop serious communication and understanding problems if they start working together on connectivity issues. The next section will present the results of our mental model elicitation as a way forward.

15 **3 Mental models in current connectivity research**

3.1 Principles of mental models

The first step to enhance mutual understanding in a group gathered around a specific research concept such as connectivity is to be aware of the different individual mental models that exist in that group. Mental models are closely linked to different research philosophies, concepts and methods as they represent how people understand the world around them; they are the internal, cognitive representations of the external system, or in other words: mental models are specific mental representations of information about reality (Pahl-Wostl and Hare, 2004). Our mental models are shaped by our previous experience and, in turn, shape our behaviour and approaches for reasoning, solving problems and carrying out tasks (Lynam and Brown, 2012). Mental models allow human beings to survive and act in a complex world (Pahl-Wostl and Hare, 2004), though for the most part they are incomplete representations of reality and are often inconsistent among people – which arguably is one of the key reasons for understanding and communication problems in interdisciplinary research groups.

As we cannot directly access other people's thinking, a process of elicitation is used to encourage a person to externalise her/his mental model (van der Bossche et al., 2011, Jones et al., 2014). Mental models can be elicited to explore the similarities and differences in understanding of a specific concept, e.g. regarding connectivity, in order to improve understanding and communication among scientists from different disciplines. The majority of elicitation techniques are based on the assumption that an individual's mental model can be represented as a network of concepts and relations (Jones et al., 2011). Methods for eliciting mental models comprise oral methods, such as textual analysis and inference from interview data or questionnaires (see e.g. Carley, 1997), and visual methods using diagrammatic interview techniques that let a person externalise their mental



model through graphical representation of concepts and interactions, e.g. as a mind map (e.g. Kearney and Kaplan, 1997, also see Mohammed et al., 2000, for an excellent review on elicitation methods).

4 Mental models of connectivity researchers: a case study

5 4.1 Methods

There are surely as many mental models of connectivity research in academia as there are scientists working on connectivity issues, but some will be more similar than others. To begin to explore the range of existing mental models and to pilot the elicitation approach, we elicited the mental models of a small sample of 13 connectivity scientists from across the environmental, natural and geo-sciences during a think-tank meeting of Working Group 5 of the EU-COST Action 1306

10 Connecteur: Connecting European Connectivity Research in Berlin, April 2015 (Connecteur WG 5, 2016). The participants' expertise covered a broad range of environmental sub-disciplines including (landscape) ecology (3 scientists), hydrology and terrestrial ecophysiology (3), geomorphology and soil science (4), geography, sustainability science, environmental management and social science (4, summarised as interdisciplinary scientists) from six EU countries, five of them were females, eight males.

15 We used a mixture of visual methods in group discussions and a textual approach in the form of paired, semi-structured interviews to elicit the mental models. The semi-structured interviews were carried out over an average duration of half an hour (Table 1). The group discussion was moderated by the leading author and a protocol was noted by an assistant with scientific background. Written statements were coded by the lead author according to ten attributes of connectivity research (Table 2).

20 The results of the elicitation process are presented here as an explorative case study to illustrate how a mixed group can identify overlaps and differences in mental models, and thus illustrate the path towards developing a shared mental model in order to enhance the performance of an interdisciplinary research project in general, and for connectivity projects specifically.

4.2 Results

A graphical interpretation of the elicited mental model attributes of the 13 connectivity scientists is depicted in Figure 3. Colour

25 contours for the four research perspectives (section 3.1) were used as a baseline to structure differences and similarities of the mental models : the yellow contour comprises research with a single thematic emphasis and setting, no inter- and transdisciplinarity and reflectivity and one specific flux as a basic unit for modelling and field studies; the orange contour signifies several thematic emphases and study locations, a mixed basic unit of matter and energy which is employed in both conceptual modelling and field work approaches and a fair degree of inter- and transdisciplinarity (without it being the main

30 focus) and reflectivity; and the red contour represents multiple emphases, but no specific setting, where inter- and transdisciplinarity becomes the main focus and where the basic unit is not known when dealing with large-scale modelling or



national monitoring networks. The green contour is somewhat disconnected and identifies an emphasis on general societal aspects of connectivity research within any setting, with very strong inter- and transdisciplinary and reflective attitudes, in which a basic connectivity unit does not play a role.

- The tangle of profiles apparent in Figure 3 signifies high diversity and thus a high degree of difference in the mental models of the 13 scientists. Four of the 13 profiles follow one of the four stylised colour contours (as explained above), the remaining nine profiles exhibit attribute combinations from two, in two cases from three neighbouring contour types. The number of interviewees is too small for generalisation, but even with only 13 participants, the diagram shows that there are not four ‘standard connectivity researchers’. At the same time the diagram shows that the groupings of the profiles are not completely random either, as overlapping or complementary individual profiles existed in the group.
- 10 The elicitation process of this case study has demonstrated the apparent similarities and dissimilarities in approaching connectivity research. This will now be discussed in terms of a shared understanding or a shared mental model.

5 Discussion: Towards shared mental models in connectivity research - knowledge gaps and overlaps

Shared mental models refer to the overlapping mental representations by members of a group or, in other words, the meta-knowledge that goes beyond the various research and personal perspectives of individual team members (van der Bossche et al. 2011; Godeman 2011). Our study demonstrates similarities and differences in mental models of connectivity researchers, which was apparent even in a small group. Carley (1997) suggested three major areas of contention in shared knowledge production, (i) uniformity of sharing - whether knowledge must be uniformly shared by group members; (ii) degree of sharing - how widely the knowledge must be shared; and (iii) awareness of sharing - whether the individual group members must be aware that the group’s mental model is shared. According to group discussions during the workshop, we consider the latter one as most important for a truly interdisciplinary research field such as connectivity science.

How then can we achieve a shared understanding or a shared mental model in interdisciplinary connectivity research? According to van der Bossche et al. (2011), it appears insufficient to attempt knowledge convergence solely based on conversation or simply paying attention and acknowledging a contribution as we usually do in keynote lectures and workshop presentations during scientific meetings. Instead, van der Bossche et al. (2011) call for active interactions; three of such efforts documented in this study, will be discussed here in turn.

First, co-construction of specific or general connectivity terminology is required, even if parts of the group might consider it a waste of time. On this basis, co-construction of knowledge can be understood as the group members’ attitude towards knowledge which allows them to query it. Challenging each other’s views, definitions and divergences with respect to a specific aspect of their joint work might become essential – especially given that no coherent definition for connectivity itself has been agreed upon (see list of references with possible definitions in the introduction section). For example, in our group discussion we began to co-constructed knowledge regarding the concept of a basic unit of connectivity – a concept that some



scientists had a very clear opinion on (e.g. discharge of water in m³/day), whereas others were not aware that there was a basic unit and others rejected the idea of a basic unit of connectivity altogether as in their research the focus lay on the linkages of multiple human-environment aspects where a basic unit concept would only constrict their perspectives (see Turnbull et al., 2018, for a review of basic units of connectivity).

5

Second, constructive conflicts may help to improve group communication, e.g. by unravelling different points of view (De Dreu & Weingart, 2003; Krueger et al., 2016) that affect how ~~an~~-interdisciplinary group approaches open questions in connectivity science. Although the colour contours of Figure 3, representing Öberg's (2011) four research perspectives (pragmatic-yellow, conceptual-orange, epistemological-red, ontological-violet), were only to some extent reproduced by the individual profiles of the scientists' mental models (lines in Figure 3), it was possible to identify certain groupings of profiles around one of the four perspectives. For a constructive conflict, scientists need to be aware of the mere existence of other research perspectives – based on our group discussion we claim that this awareness normally does not exist among connectivity researchers. Non-existing awareness about other research perspectives might be an inherent trait of the natural sciences as their education does not emphasise different research positions as the interpretative social sciences do. The process of constructive conflict will expose, among other things, what the intentions of scientists are to use techniques from neighbouring disciplines. When one research tradition opposes the methods of another, a window of opportunity for reflection and improvement of own research tradition opens. Though, when cross-fertilisation in connectivity research is attempted without a clarification of existing (parallel, convergent or divergent) research perspectives, any further discourse might quickly become both patronising and frustrating.

10
15
20

Third, the process of building a shared mental model can be supported by a detailed interpretation of overlaps of individual profiles, and lacks thereof, on the basis of Figure 3. In our case study, 13 profiles could be grouped in five types (represented by colour shading of the bars (A-E) in Figure 4, and paired up to show the overlaps of attributes (grey bars, in Figure 4). Colour shading of the bars (A-E) contains information as to whether a profile exhibits attributes which were associated with only one of the four stylised research perspectives (pragmatic-yellow, conceptual-orange, epistemological-red, ontological-violet, A-B in Figure 4), or with mixed perspectives (C-E in Figure 4). For the yellow (“pragmatic”, A) and red-violet profiles (“epistemological-ontological”, D) paired in Figure 4 literally no overlaps exist in their mental models of connectivity research. For the other two paired profiles (A and B, D and E), several overlaps exist, though for very different attributes. We suggest that the graphical profile chart as depicted in Figure 4 can be used as a tool to identify gaps and overlaps of mental models for all participants of an interdisciplinary research group as a way of speeding up the building of the group's meta-knowledge (van der Bossche et al. 2011) and the awareness of the group members' eventual sharing of a mental model (Carley 1997).

25
30

With this article, our main intention was not to maximise the group performance of scientists as is the goal of business and military managers, or team scientist, using similar methods, nor further develop the theory of connectivity, mental models, or



models of perception in environmental science (e.g. Öberg, 2011). Rather, we intended to encourage natural scientists active in connectivity research to become more familiar with literature on interdisciplinarity and to become aware of the existence of collaboration techniques, such as shared mental model building. Previous studies demonstrated that different or even diverging perspectives do not negatively influence the knowledge creation processes when interactions between the actors are repeated, positively perceived and **sufficiently aligned** (e.g. Dewulf et al., 2007). The approaches and results of our study have been presented to connectivity scientist in EU COST Action ES1306 and closely discussed with the leaders of the action's working groups in order to facilitate effective communication within the working groups and the network. The principles of mental model analysis were in different form applied within collaborative work of EU COST Action ES1306, and led to interdisciplinary studies within (e.g. Connecteur WG3 Think-Tank Team, 2018; Heckmann et al., under review) and without (e.g., Turnbull et al., 2018) research of connectivity, or with actors outside academia (Smetanová et al., 2018).

6 Conclusion

The review of current research perspectives and the elicitation of ten attributes linked to the mental models of scientists active in research on connectivity demonstrated a wide diversity of research philosophies, concepts and methods in the connectivity community. Based on these results, we suggest a group of interdisciplinary connectivity scientists who has not carried out a mental model elicitation or similar exercise at the beginning of their work is i) likely to have severe problems of understanding (even if these are not immediately realised), ii) unlikely to have useful discussions on the interdisciplinary aspects of connectivity research, and iii) group members will likely waste a lot of time talking past each other. A graphical scheme for shared mental model analysis was introduced to overcome persistent understanding barriers by identifying gaps and overlaps of group perspectives and knowledge. We showed that despite diversity of perspectives and ambitions existing, overlapping and complementary approaches offer potential for knowledge exchange and knowledge co-production. Though many scholars in the environmental, natural and geo- sciences have in-depth knowledge of, and much experience with, interdisciplinary work, our results suggest that many colleagues might benefit from a shared mental model approach.

25 *Competing interests.* The authors declare that they have no conflict of interest.

Acknowledgements. The think-tank meeting in April 2015, Berlin was financed by the EU COST Action ES1306 'Connecting European Connectivity Research'. The article processing charges for this open-access publication were covered by Technical University Berlin. Tobias Krueger is funded through IRI THESys, by the German Excellence Initiative.



References

- Baguette, M., Blanchet, S., Legrand, D., Stevens, V. M., and Turlure, C.: Individual dispersal, landscape connectivity and ecological networks, *Biological Reviews*, 88, 310-326, <https://doi.org/10.1111/brv.12000>, 2013.
- Bracken, L. J., and Oughton, E. A.: 'What do you mean?' The importance of language in developing interdisciplinary research, *Transactions of the Institute of British Geographers*, 31, 371-382, <https://doi.org/10.1111/j.1475-5661.2006.00218.x>, 2006.
- 5 Bracken, L. J., Turnbull, L., Wainwright, J., and Bogaart, P.: Sediment connectivity: a framework for understanding sediment transfer at multiple scales, *Earth Surface Processes and Landforms*, 40, 177-188, <https://doi.org/10.1002/esp.3635>, 2015.
- Bracken, L. J., Wainwright, J., Ali, G., A., Tetzlaff, D., Smith, M. W., Reaney, S. M., and Roy, A. G.: Concepts of hydrological connectivity: Research approaches, pathways and future agendas, *Earth-Science Reviews*, 119, 17-34, <https://doi.org/10.1016/j.earscirev.2013.02.001>, 2013.
- 10 Bracken, L. J. and Croke, J. The concept of hydrological connectivity and its contribution to understanding runoff-dominated geomorphic systems, *Hydrological Processes*, 21, 1749-1763, <https://doi.org/10.1002/hyp.6313>, 2007.
- Brierley, G. Fryirs, K., and Jain, V.: Landscape connectivity: the geographic basis of geomorphic applications, *Area*, 38, 165-174, <https://doi.org/10.1111/j.1475-4762.2006.00671.x>, 2006.
- 15 Brooks, C. P.: A scalar analysis of landscape connectivity, *Oikos*, 102, 433-439, 2003.
- Carley, K. M.: Extracting team mental models through textual analysis, *J. Organiz. Behav.*, 18, 533-558, 1997.
- Connecteur.: Cost Action ES 1306: Connecting Connectivity Research. <http://connecteur.info>, accessed: 12.06. 2018, 2018.
- Connecteur WG 1.: Cost Action ES 1306: Connecting European Connectivity Research: WG Theory development, <http://connecteur.info/wiki/connectivity-wiki/>; accessed: 14.4.2018, 2018.
- 20 Connecteur WG 3 Think-Tank Team, Nunes, J. P., Wainwright, J., Bielders, C. L., Darboux, F., Fiener, P., Finger, D., Turnbull, L.: Better models are more effectively connected models, *Earth Surf. Process. Landforms*, <https://doi.org/10.1002/esp.4323>, 2018,
- Connecteur WG 5.: Cost Action ES 1306: Connecting European Connectivity Research: WG Transitions of connectivity research towards sustainable land and water management. <http://connecteur.info/groups/working-group-5/>; accessed: 17.10.2016, 2016.
- 25 Cilliers, P., Biggs, H. C., Blignaut, S., Choles, A. G., Hofmeyr, J.-H. S., Jewitt, G. P. W., and Roux, D. J.: Complexity, modeling, and natural resource management, *Ecology and Society*, 18, 1, <http://dx.doi.org/10.5751/ES-05382-180301>, 2013.
- De Dreu, C. K. W. and Weingart, L. R.: Task versus relationship conflict, team performance, and team member satisfaction: A meta-analysis, *Journal of Applied Psychology*, 88, 741-749, 2003.
- 30 Dewulf, A., François, G., Pahl-Wostl, C., Taillieu, T: A framing approach to cross-disciplinary research collaboration: experiences from a large-scale research project on adaptive water management, *Ecology and Society*, 12, 14, <http://www.ecologyandsociety.org/vol12/iss2/art14/>, 2007.



- Douglas, E. M., Wheeler, S. A., Smith, D. J., Overton, I. C., Gray, S. A., Doody, T. M., and Crossman, N. D.: Using mental-modelling to explore how irrigators in the Murray–Darling Basin make water-use decisions, *Journal of Hydrology: Regional Studies*, 6, 1-12., <https://doi.org/10.1016/j.ejrh.2016.01.035>, 2016.
- Fryirs, K. A., Brierley, G. J., Preston, N. J., and Kasai, M.: Buffers, barriers and blankets: The (dis)connectivity of catchment-scale sediment cascades, *Catena* 70, 49-67, <https://doi.org/10.1016/j.catena.2006.07.007>, 2007.
- Gibson, H., Stewart, I. S., Pahl, S., and Stokes, A.: A “mental models” approach to the communication of subsurface hydrology and hazards. *Hydrol. Earth Syst. Sci.*, 20, <https://doi.org/10.5194/hess-20-1737-2016>, 1737–1749, 2016.
- Godeman, J.: Sustainable Communication as an Inter- and Transdisciplinary Discipline, In: Godemann, J. and Michelsen, G. (eds.), *Sustainability Communication: Interdisciplinary Perspectives and Theoretical Foundations*, Springer Science+Business Media, <https://doi.org/10.1007/978-94-007-1697-1>, 2011.
- Grabowski, A.: Opinion formation in a social network: The role of human activity. *Physica A: Statistical Mechanics and Its Applications*, 388, 961-966, <https://doi.org/10.1016/j.physa.2008.11.036>, 2009.
- Hare, M. and Pahl-Wostl, C.: Stakeholder categorisation in participatory integrated assessment processes, *Integrated Assessment*, 3, 50-62, <https://doi.org/10.1076/iaij.3.1.50.7408>, 2002.
- Harel, M. A. and Mouche, E.: Is the connectivity function a good indicator of soil infiltrability distribution and runoff flow dimension?, *Earth Surface Processes and Landforms*, 39, 1514-1525, <https://doi.org/10.1002/esp.3604>, 2014.
- Heckmann, T., Brardinoni, F., Cavalli, M., Cerdan, O., Foerster, S., Hilger, L., Javaux, M., Lode, E., Smetanová, A., Vericat, D.: Indices of sediment connectivity, *Earth Sciences Reviews*, under review.
- Istanbulluoglu, E. and Bras, R. L.: Vegetation-modulated landscape evolution: Effects of vegetation on landscape processes, drainage density, and topography, *Journal of Geophysical Research-Earth Surface* 110, F02012, <https://doi.org/10.1029/2004JF000249>, 2005.
- Jones, N. A., Ross, H., Lynam, T., and Perez, P.: Eliciting mental models: a comparison of interview procedures in the context of natural resource management, *Ecology and Society* 19,13, <http://dx.doi.org/10.5751/ES-06248-190113>, 2014.
- Jones, N. A., Ross, H., Lynam, T., Perez, P., and Leitch, A.: Mental Models: An Interdisciplinary Synthesis of Theory and Methods. *Ecology and Society*, 16,46, <http://www.ecologyandsociety.org/vol16/iss1/art46/>, 2011.
- Jones, N. T., Germain, R. M., Grainger, T. N., Hall, A.M., Baldwin, L., and Gilbert, B.: Dispersal mode mediates the effect of patch size and patch connectivity on metacommunity diversity, *Journal of Ecology*, 103, 935-944, <https://doi.org/10.1111/1365-2745.12405>, 2015.
- Kearney, A. and Kaplan, S.: Toward a Methodology for the Measurement of Knowledge Structures of Ordinary People, *Environment and Behavior*, 29, 579-617, 1997.
- Kolkman, M. J., Kok, M., and van der Veen, A.: Mental model mapping as a new tool to analyse the use of information in decision-making in integrated water management, *Phys. Chem. Earth*, 30, 317-332, <https://doi.org/10.1016/j.pce.2005.01.002>, 2005.



- Krueger, T., Maynard, C., Carr, G., Bruns, A., Mueller, E.N., Lane, S.: A transdisciplinary account of water research, *Wiley Interdisciplinary Reviews: Water*, 3, 369-389, <https://doi.org/10.1002/wat2.1132>, 2016.
- Lynam, T. and Brown, K.: Mental Models in Human-Environment Interactions: Theory, Policy Implications, and Methodological Explorations, *Ecology and Society*, 17, 3, <https://dx.doi.org/10.5751/ES-04257-170324>, 2012.
- 5 Lynam, T., Mathevet, R., Etienne, M., Stone-Jovicich, S., Leitch, A., Jones, N., Ross, H., Du Toit, D., Pollard, S., Biggs, H., and Perez, P.: Waypoints on a Journey of Discovery: Mental Models in Human-Environment Interactions, *Ecology and Society*, 17, 3, <http://dx.doi.org/10.5751/ES-05118-170323>, 2012
- Manjunath, K. and Mohan, M. R.: A new hybrid multi-objective quick service restoration technique for electric power distribution systems, *International Journal of Electrical Power & Energy Systems*, 29, 51-64, <https://doi.org/10.1016/j.ijepes.2005.12.012>, 2007.
- 10 Mattar, M. G., Cole, M. W., Thompson-Schill, S.L., and Bassett, D.S.: A Functional Cartography of Cognitive Systems, *Plos Computational Biology*, 11, 26, <https://doi.org/10.1371/journal.pcbi.1004533>, 2015.
- Merkin, R., Taras, V., and Steel, P.: State of the art themes in cross-cultural communication research: A systematic and meta-analytic review, *International Journal of Intercultural Relations*, 38, 1-23, <https://doi.org/10.1016/j.ijintrel.2013.10.004>, 2014.
- 15 Mohammed, S., Klimoski, R., Rentsch, J.R.: The Measurement of Team Mental Models: We Have No Shared Schema, *Organizational Research Methods*, 3, 123-165, <https://doi.org/10.1177/109442810032001>, 2000.
- Mueller, E. N., Wainwright, J., Parsons, A. J.: The stability of vegetation boundaries and the propagation of desertification in the American Southwest: A modelling approach, *Ecological Modelling* 208, 91-101, <https://doi.org/10.1016/j.ecolmodel.2007.04.010>, 2007.
- 20 Mykura, N. ST4120: Somerset Levels : Lower Burrow and flooding on West Moor, <http://www.geograph.org.uk/photo/1136561>, accessed: 22.08.2018, 2018.
- Neumann, R. B. and Cardon, Z. G.: The magnitude of hydraulic redistribution by plant roots: a review and synthesis of empirical and modelling studies, *New Phytologist*, 194, 337-352, <https://doi.org/10.1111/j.1469-8137.2012.04088.x>, 2012.
- Öberg, G.: *Interdisciplinary Environmental Studies: A Primer*. Wiley-Blackwell, 184 p, 2011.
- 25 Pahl-Wostl, C. and Hare, M.: Processes of social learning in integrated resources management, *Journal of Community & Applied Social Psychology*, 14, 193-206, <https://doi.org/10.1002/casp.774>, 2004.
- Prager, K. and Curfs, M.: Using mental models to understand soil management, *Soil Use and Management*, 32, 36-44, <https://doi.org/10.1111/sum.12244>, 2016.
- Parsons, A. J., Bracken, L., Poepl, R. E., Wainwright, J., and Keesstra S. D.: Introduction to special issue on connectivity in water and sediment dynamics, *Earth Surf. Process. Landforms*, 40, 1275–1277, <https://doi.org/10.1002/esp.371>, 2015.
- 30 Poepl, R. E. and Parsons, A. J.: The geomorphic cell: a basis for studying connectivity, *Earth Surf. Process. Landforms*, <https://doi.org/10.1002/esp.4300>, 2017.
- Prieto, I., Armas, C., and Pugnaire, F. I.: Water release through plant roots: new insights into its consequences at the plant and ecosystem level, *New Phytologist*, 193, 830-841, <https://doi.org/10.1111/j.1469-8137.2011.04039.x>, 2012.



- Smetanová, A., Paton E., Maynard, C., Tindale, S., Fernández-Getino, S.P., Marqués Pérez, M.J., Bracken, L., Le Bissonnais, Y., and Keesstra, S.D.: Stakeholders' perception of the relevance of water and sediment connectivity in water and land management, *Land Degradation and Development*, <https://doi.org/10.1002/ldr.2934>, 2018.
- Smith-Jentsch, K. A., Cannon-Bowers, J. A., Tannenbaum, S. I., and Salas, E. Guided team self-correction - Impacts on team mental models, processes, and effectiveness, *Small Group Research*, 39, 303-327, <https://doi.org/10.1177/1046496408317794>, 2008.
- Stam, C. J., van Straaten, E. C. W., Van Dellen, E., Tewarie, P., Gong, G., Hillebrand, A., Meier, J., and Van Mieghem, P.: The relation between structural and functional connectivity patterns in complex brain networks, *International Journal of Psychophysiology*, 103, 149-160, <https://doi.org/10.1016/j.ijpsycho.2015.02.011>, 2016.
- Stock, P. and Burton, R. J. F.: Defining Terms for Integrated (Multi-Inter-Trans-Disciplinary) Sustainability Research, *Sustainability*, 3, 1090-1111, <https://doi.org/10.3390/su3081090>, 2011.
- Tarquis, A. M., de Lima, J., Krajewski, W. F., Cheng, Q., and Gaonac'h, H.: Nonlinear and Scaling Processes in Hydrology and Soil Science, *Nonlinear Processes in Geophysics*, 18, 899-902, doi:10.5194/npg-18-899-2011, 2011
- Thomson Klein, J. T.: Interdisciplinary teamwork: The Dynamics of collaboration and integration. In Derry, S., Schunn, C. D., and Gernsbacher, M.A. (eds.), *Interdisciplinary collaboration: An emerging cognitive science*, Mahwah: Erlbaum, 23-50, 2005.
- Turnbull, L., Hütt, M.-T., Ioannides, A. A., Kininmonth, S., Poeppl, R., Tockner, K., Bracken, L. J., Keesstra, S., Liu, L., Masselink, R., and Parsons, A. J.: Connectivity and complex systems: learning from a multi-disciplinary perspective. *Applied Network Science*, 3, 11, <https://doi.org/10.1007/s41109-018-0067-2>, 2018.
- van den Bossche, P., Gijsselaers, W., and Segers, M.: Team learning: building shared mental models, *Instructional Science*, 39, 283, <https://doi.org/10.1007/s11251-010-9128-3>, 2011.
- Wainwright, J., Turnbull, L., Ibrahim, T. G., Lexartza-Artza, I., Thomson, S. F., and Brazier, R. E.: Linking Environmental Régimes, Space and Time: Interpretations of Structural and Functional Connectivity, *Geomorphology*, 126, 387-404, <https://doi.org/10.1016/j.geomorph.2010.07.027>, 2011.
- Vericat, D.: Disconnecting sediment and water fluxes, <http://connecteur.info/connecteur-image-archive/>, 2015, accessed: 22.08.2018.



Table 1: Questions of the paired, semi-structured interviews

1. What interests you in connectivity research?	
	a) Why in general?
	b) Theory, field studies, indices, modelling, transdisciplinarity
	c) Other categories
	d) Why are you specifically interested in [connectivity modelling] and not [connectivity indices] (replace [] accordingly)?
2. Why do you think communicating connectivity is important?	
	a) Do you mainly think about communicating within disciplines, across disciplines or outside academia?
	b) Do you have experience in science communication?
3. Why do you interact with other disciplines and/or outside academia?	
4. Which kind of regions/compartments do you carry out your connectivity research for and why are they important?	
5. What can you show to illustrate your connectivity research?	
	e.g., computer or conceptual models, field data sets, GIS applications, observational evidence in resource management, please make a screen shot, if possible
6. Discipline, stage of research, gender	

5

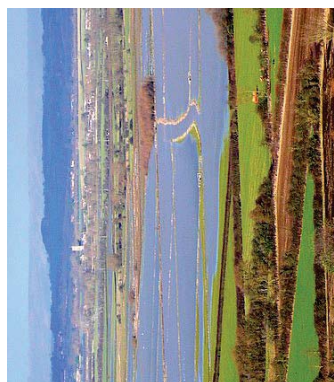
10

15



Table 2: Elicited attributes of connectivity research

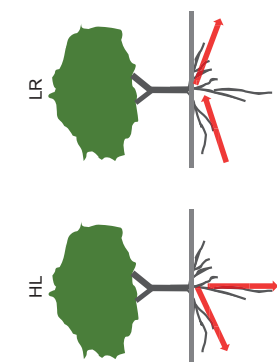
Attribute	Description
Discipline	geosciences; hydrology; ecology; geography; environmental sciences; social sciences
Research perspective	pragmatic; conceptual; epistemological; ontological (see section 2)
Reflectivity	regarding research ambitions and perspectives, evaluated with a diagrammatic scale examining the extent to which the scientist was previously aware of her/his own research perspective
Number of thematic emphases	e.g., dryland hydrology; sediment transport; landscape evaluation; plant-soil-interactions
Type of geographical locations	e.g., one geographical setting; more than one; no specific setting; any or no setting
Type of modelling	no modelling; pattern (e.g. of soil moisture or vegetation pattern) or flux (e.g. water, sediment discharge) modelling; simultaneous pattern-flux modelling; large-scale modelling such as producing risk maps for flooding or drought; modelling of human-environment interactions
Type of field studies	none; measurement of either patterns or fluxes; both simultaneously; in combination with tracer methods; large-scale monitoring of land, water and river attributes; conducting of interviews to assess the perceptions of stakeholders on a specific water or land management issue
Extend of interdisciplinarity	mono- to interdisciplinary
Extend of transdisciplinarity	purely academic to transdisciplinary
Basic unit of connectivity	extent to which scientists were able to specify what exactly they would measure, model or analyse: e.g., a specific flux such as water (in l/s) or matter (kg/s); a combined unit describing the degree to which a system facilitates the movement of matter and energy. Some participants answered that they were not aware of a unit, or their conceptual framework did not include the concept of a basic unit for connectivity



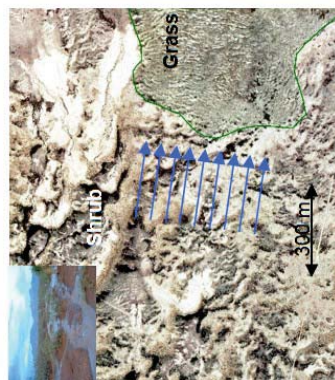
B



D



A



C



Figure 1: Example of connectivity snap-shot images of scientists discussing the effects of vegetation type on water flow:

(a) plant-ecological snap-shot: different types of hydraulic redistribution (HR): hydraulic lift (HL), the most commonly observed type of HR, takes place when shallow soil layers are drier than deep layers, lateral redistribution (LR) is the horizontal redistribution of soil water between soil layers at the same depth but with different water potentials (after: Prieto et al., 2012);

- 5 (b) hydrological snap-shot: flooding on West Moor, Somerset (Mykura, 2018, creative commons licence); (c) erosion snap-shot: water and erosion modelling across a vegetation boundary from a shrub land (top right, marked shrub in the picture) with high hydrological connectivity to a grassland (bottom left) with low hydrological connectivity (Mueller et al., 2007), arrows indicating the direction of water flow; (d) geomorphological snap-shot: effects of vegetation (and anthropogenic structures) on channel initiation, drainage density and landform evolution (Vericat, 2015, with permission).

10

15

20

25

30

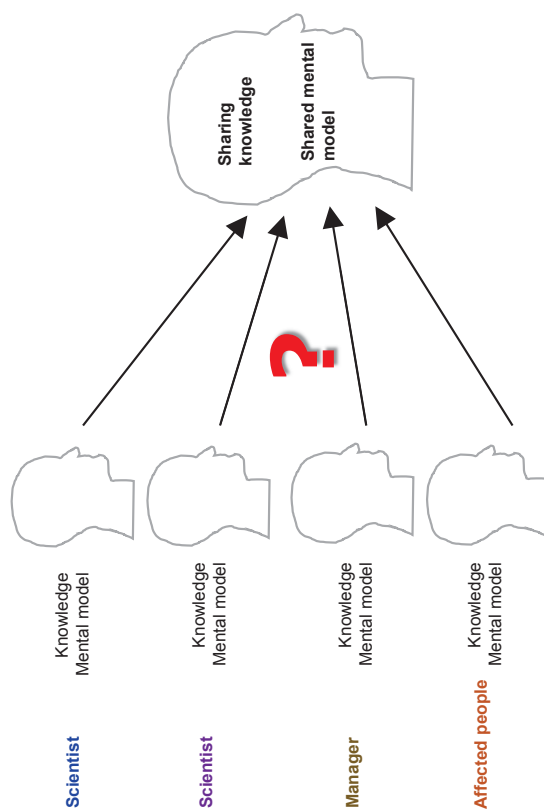




Figure 2: Sharing knowledge through shared mental models.

5

10

15

20

25

30

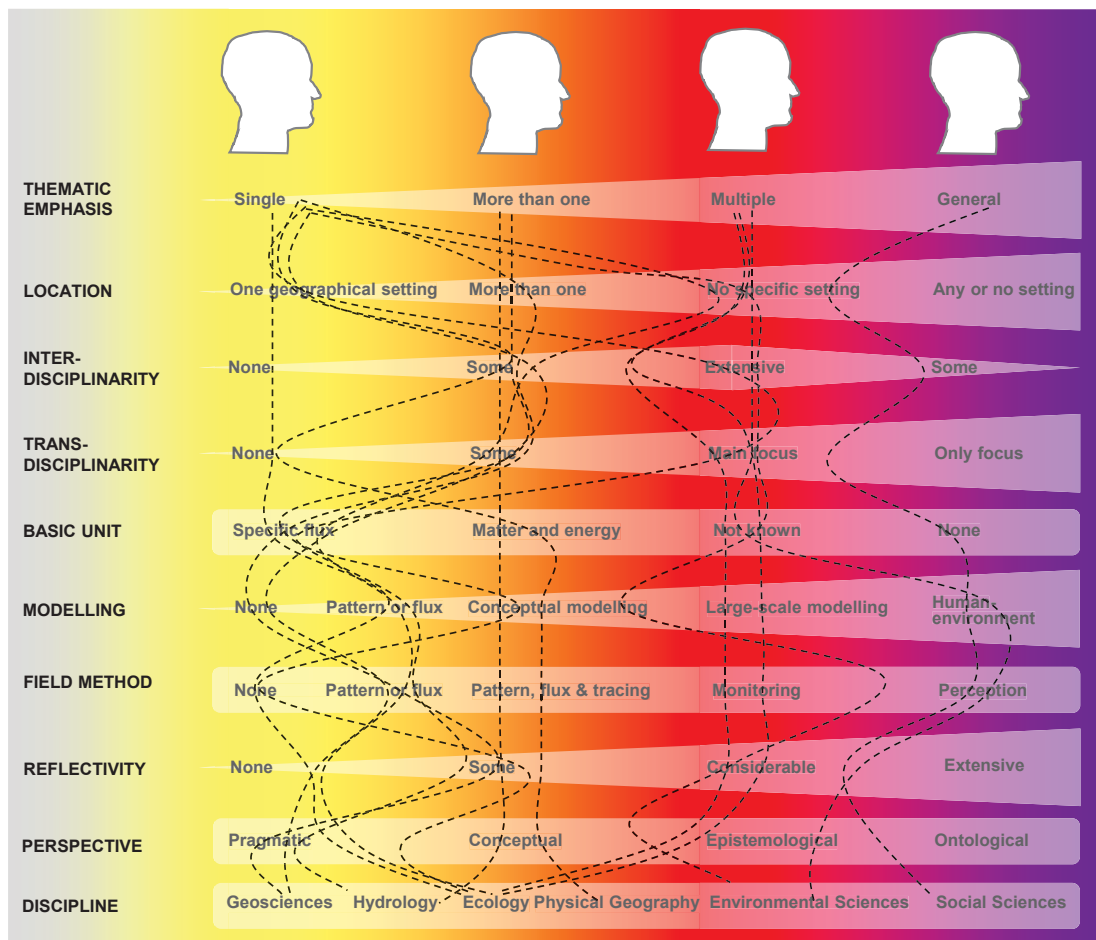




Figure 3: Individual mental model profiles of 13 scientists active in connectivity research.

Individual mental model profiles (lines) plotted against elicited attributes of four stylised research perspectives (pragmatic-yellow, conceptual-orange, epistemological-red, ontological-violet) after Öberg's (2011). The representation of interdisciplinarity is two-sided by referring to small-to-extensive interactions between different natural science disciplines on the left side of the graphic ("None" to "Some") and between natural and social sciences in the middle and on the right side of the graphic ("Extensive" to "Some").

10

15

20

25

30

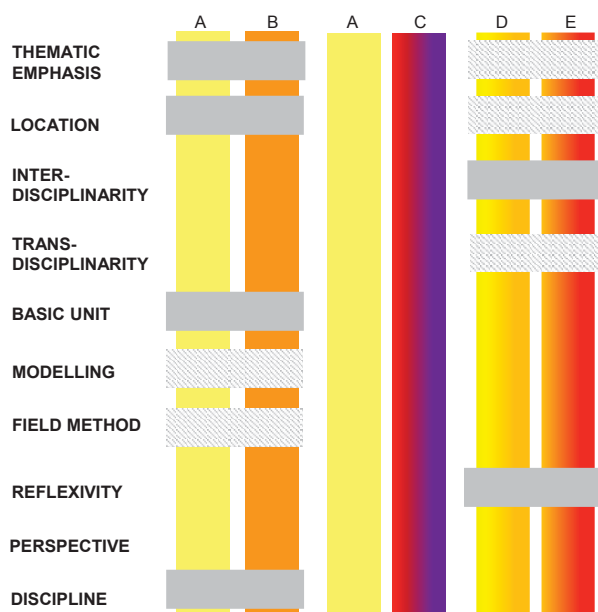




Figure 4: Graphical representation of potential mental models overlaps between pairs of stylised types of connectivity scientists:

Stylised types of connectivity scientists (Figure 3) after Öberg's (2011) are represented here by "pragmatic" (yellow, A) and "conceptual" (orange, B). Remaining mental models (from group of 13 scientists) were classified as mixed types according to perspective: (C) between "epistemological" (red) and "ontological" (violet), (D) "pragmatic" and "conceptual", and (E) "conceptual" and "epistemological". Grey bars show overlap, shaded grey bars show partial overlap. There can be considerable overlap between the "pragmatic" (A) and the "conceptual" (B) perspectives. No potential overlap between the "pragmatic" and the "ontological" perspectives. Several overlaps occurred between mixed types (D and E), but those differed from A-B overlaps. We elicited some overlap between the "epistemological" and the "ontological" perspectives, but the number of individuals consulted here was too small to draw any conclusions.

10