

Response to Referee 1

We would like to thank the referee for their comments.

SPECIFIC COMMENTS

1. The authors propose four possible mechanisms for the observed cooling. The first—near surface evaporative cooling of raindrops—is noted as a purely atmospheric phenomenon, and thus excluded from further discussion as the primary interest seems to be lake model parameterizations (Pg. 3, lines 18–19). This exclusion seems a bit hasty: there is no indication in the title emphasizing lake modelling, and the abstract explicitly states the importance for atmospheric models (Pg. 1, lines 10–12). A little more discussion of this mechanism is warranted or the target audience should be identified as lake modelers in order to remove this slight inconsistency.

We have added discussion of the evaporative cooling process as the new Section 3.1 (Cooling of near-surface air). In addition, the end of the abstract has been changed to:

“...and suggests that further efforts are needed to quantify this effect in other regions and to include this process in **land-surface models used for atmospheric prediction.**”

2. The scaling analysis for mechanical mixing is interesting, but there is an underlying assumption that all of the incoming mechanical energy (i.e. the kinetic energy of the falling rain drops) is converted into TKE available for mixing. Is this process really 100% efficient? I expect some of the energy must go nearly instantaneously into heat through viscosity. A slightly more sophisticated scaling argument might be able to show that this fraction of energy is very small. At least the possibility should be mentioned.

Section 3.3 (Mechanical and convective mixing) has been extended to discuss the likely processes and mixing associated with raindrops, along with additional references. We have also revised the analysis in Section 3.3 to incorporate the effect of <100% efficiency in the conversion process. This has been incorporated using the efficiency fraction ϕ . It may be seen that the main scaling calculation remains the same to the accuracy shown, for efficiencies in the range $0.5 \leq \phi \leq 1$. This result has been added to the text

(§ 3.3, penultimate paragraph).

3. Radiometers have been used for measuring lake surface temperatures for many years, but there may be slightly different systematic errors under different conditions (i.e. heavy rain vs dull day). Since the temperature effect is relatively small, this might be important and worth a mention. There may be literature on this subject. Any comparison of the radiometric temperatures measured at this site with actual in situ instruments would be helpful — but I gather there are no in situ data? Note that the authors have addressed random measurement errors but not the possibility of different systematic errors.

The possibility of weather-related systematic errors has been added to the discussion as a new paragraph at the end of Section 4.4 (Further partitioning by rainfall and net radiation). We have also briefly discussed there what can be inferred about these errors in the present case, given the different rain rates at different times of day.

4. Fig. 9 shows that during daytime the net radiation from WET exceeds VMET by quite a lot, presumably due to more SW radiation reaching the surface. This is the justification for introducing the DWET category. Fig. 9 also shows that during the night (16–5 UTC) the net radiation (i.e. net LW) for VWET exceeds both that for WET and DWET (by 7 or 8 W/m²)—implying either a colder surface or increased downward LW for VWET. This period largely coincides with the period of greatest rainrates for VWET shown in Fig. 5. It seems to me this strengthens the authors’ argument that heavy rainfall cools the surface, but they don’t point this out. This may be worth mentioning. Fig. 11 also shows the strongest signal is during 16–24 UTC.

As indicated previously in our response to this point, we have added the following text at the end of the first paragraph of Section 4.4 (Further partitioning by rainfall and net radiation):

“It is worth emphasising that the radiation threshold for DWET days was deliberately chosen to allow a small margin, so that VWET days absorbed 1–2% more radiation in the mean than DWET days. Thus any extra LWST cooling in VWET days compared to DWET days would be against a background of a slight excess of absorbed radiative energy on VWET days, in the

mean.”

MINOR COMMENTS AND FIGURES

5. Page 3, line 31: This claim needs a reference.

We have added the following text to the end of Section 3.2 (Direct heat flux):

“On land, this process has been widely studied (Seneviratne et al., 2010; Taylor et al., 2012; Guillod et al., 2015; Lorenz et al., 2016). The rain effect in water bodies is more uncertain, although recently there have been some interesting observational studies e.g. Reverdin et al. (2012).”

6. Page 8, lines 16-18: Not clear why you have ruled out mechanism 1 (evaporative cooling)

As indicated previously, we did not intend ruling our evaporative cooling, and so the sentence in question in Section 5 has been changed to clarify this, as follows:

“However, through our indirect analysis of the processes it seems likely that cooling by rain combined with mechanical and convective mixing from droplet impact may have an effect on LWST, in addition to the effect from the more widely studied pathway of evaporative cooling.”

7. Fig. 1: would benefit from a context map inset showing location of the lake within Africa

This has been added.

8. Fig. 2: what are the large boxes in the upper left-hand image?

These are metal containers housing a lab and technical equipment. Information on this has been added to the figure caption, and also in the main text in section 4.1.

9. Fig. 10: there seems to be a large jump between 23 UTC and 0 UTC. This does not seem physically possible, especially where the curves are changing smoothly. Is there a processing error?

The reason for this is that the different categories of day are interspersed throughout the dataset. Thus, there are no jumps for the category ALL, but other days may be preceded and followed by days of different categories in different proportions. We have added information on this aspect of the data in a new table, Table 2. The new table is referenced in the text in Section 4.4 (Further partitioning by rainfall and net radiation).

Response to Referee 2

We would like to thank the referee for their comments.

1. Section 3, ln 15: The authors point 4 processes in which rainfall can affect lake surface temperature. Since the authors mention the evaporative cooling, the solar radiation shading during daytime associated with clouds could be also mentioned as a process which should be, in principle properly represented by the atmospheric model.

As indicated previously in our response to this point, we would see cloud cover as a related atmospheric process, in the context of the present rainfall-based study.

In the first paragraph of Section 3 (Physical effects of Rainfall) we have extended the relevant sentence referring to the first process mentioned, evaporative cooling, so that it now reads:

“The first of these ought to be parametrised by atmospheric models, as with related atmospheric effects like the reduction of insolation by cloud cover.”

2. Figure 4: Power spectrum of wind: There are several peaks on the sub-daily frequencies. Could the authors provide the frequencies of these and comment on their source (breeze effects?)

We have added this information, and some more discussion on the origin of these peaks, as a new paragraph at the end of Section 4.2 (Weather and climate).

3. The authors filtered the effect of radiation by defining the DWET days as days with net radiation below 1.5×10^{7} J m⁻². The average different between DWET net radiation and VWET is about -2.3 W m⁻². Visual inspection of T and LSWT mean diurnal cycles for VWET suggests a temperature difference between air and LSWT of about 22.5 (air) - 25 (LSWT) -2.5 (maximum difference), which would give an cooling heat flux of about -3 W m⁻² (using the formula in section 3.1). Therefore, even on the mean, the radiation effect might still be relevant and comparable in this case with the direct heat flux.**

As indicated previously, we believe there may be some slight confusion here. The radiation threshold has been chosen with a deliberate slight element of caution, so that VWET days absorb 1–2% *more* net radiation on average

than DWET days.

To emphasise that the chosen threshold makes it slightly more difficult for VWET days to display the extra cooling observed, we have added the following text at the end of the first paragraph of Section 4.4 (Further partitioning by rainfall and net radiation):

“It is worth emphasising that the radiation threshold for DWET days was deliberately chosen to allow a small margin, so that VWET days absorbed 1–2% more radiation in the mean than DWET days. Thus any extra LWST cooling in VWET days compared to DWET days would be against a background of a slight excess of absorbed radiative energy on VWET days, in the mean.”

4. Furthermore, it is not shown the partition between SW and LW. While LW radiation affects only the surface water temperature, SW penetrates the water column. I believe it is important to further detail the potential radiation effects. Figure 10 could be extended with two extra panels including SWnet and LWnet complementing the information in figure 9 to clarify potential impact of radiation, in particular solar in the differences between DWET and VWET. We have extended figure 10 with extra panels showing the net LW and SW.

5. The authors suggest that rainfall temperature and rain-induced turbulence could be implemented into lake models as a way to represent the effects of rainfall in LSWT. However, they do not show if a lake model (or several) are not able to represent the LSWT differences seen in the observations. Considering the high quality and length of the observations, simulations with a lake model in stand-alone model would prove fundamental to support the authors suggestions. For example: does the model when forced with the observations also gives lake surface temperature differences comparable with the observations? This would strong support the efforts to represent missing processes. Another conclusion could be that other errors in the model have a higher impact and role of rainfall on LSWT is of secondary. I understand that this would require an extra and significant amount of work, and leave this decision to the editor in case the authors do not have the time and/or capacity to perform those simulations in a reasonable time window. If this is the case, I would encourage the authors to at least extend a

bit more the conclusions suggesting model protocols to access this problem,

As indicated previously, unfortunately we do not have the available resource to perform a modelling study to go alongside this observational analysis.

To take up the referee's alternative suggestion, we have added new text, comprising the penultimate paragraph of Section 5. Here we discuss ways in which lake model output may possibly be examined or reprocessed, in order to highlight any correlations between model error and rainfall.

Manuscript changes as shown in the marked-up manuscript

Abstract:

Wording changed at the end (Ref.1 comment 1)

p3:

Lines 4-5 have new references added to recently published papers in the special addition.

Lines 19-21 are changed to mention another, related process (Ref.2 comment 1)

New Section 3.1 added (Ref.1 comment 1)

p4:

Lines 12-14 add more discussion and references (Ref.1 comment 5)

Lines 18-32 extend the discussion of rain processes (Ref.1 comment 2)

p5:

Lines 1-22 include changes to text and analysis (Ref.1 comment 2)

p6:

Lines 3-6 describe the metal containers and instrument mounting (Ref.1 comment 8)

p7:

Lines 4-8 discuss the sub-daily peaks in the wind power spectra (Ref.2 comment 2)

p8:

Lines 6-9 emphasise the conservative nature of the radiation threshold (Ref.1 comment 4, Ref.2 comment 3)

Lines 10-12 introduce new Table 2, which adds information on how the categories precede and follow one another (Ref.1 comment 9)

p9:

Lines 4-11 discuss the possibility of systematic error (Ref.1 comment 3)

p10:

Table 2 has been added (Ref.1 comment 9)

Line 3 has been extended to include another process (Ref.1 comment 6)

Lines 4 – p11 line 6 have been added to discuss in more detail how future or other work could examine rainfall processes and assess their effects (Ref.2 comment 5)

p11:

Lines 11-13 have had text moved earlier to facilitate the extended future-work discussion.

Line 14 adds a statement on data availability.

Figure 1 has a small map added to provide context at the African scale (Ref.1 comment 7)

Figure 2 has reference to the metal containeres added (Ref.1 comment 8)

Figure 10 has new panels (e) and (f) added to show the net LW and SW mean evolution (Ref.2 comment 4)

Estimating the effect of rainfall on the surface temperature of a tropical lake

Gabriel Gerard Rooney¹, Nicole van Lipzig², and Wim Thiery^{3,4}

¹Met Office, FitzRoy Road, Exeter, EX1 3PB, UK

²KU Leuven, Department of Earth and Environmental Sciences, Celestijnenlaan 200E, 3001 Leuven, Belgium.

³ETH Zurich, Institute for Atmospheric and Climate Science, Universitaetstrasse 16, 8092 Zurich, Switzerland

⁴Vrije Universiteit Brussel, Department of Hydrology and Hydraulic Engineering, Pleinlaan 2, 1050 Brussels, Belgium

Correspondence: G. G. Rooney (gabriel.rooney@metoffice.gov.uk)

Abstract. We make use of a unique high-quality, long-term observational dataset on a tropical lake to assess the effect of rainfall on lake surface temperature. The lake in question is Lake Kivu, one of the African Great Lakes, and was selected for its remarkably uniform climate and availability of multi-year, over-lake meteorological observations. Rain may have a cooling effect on the lake surface by lowering the near-surface air temperature, by the direct rain heat flux into the lake, by mixing the lake surface layer through the flux of kinetic energy, and by convective mixing of the lake surface layer. The potential importance of the rainfall effect is discussed in terms of both heat flux and kinetic-energy flux. To estimate the rainfall effect on the mean diurnal cycle of lake surface temperature, the data are binned into categories of daily rainfall amount. They are further filtered based on comparable values of daily mean net radiation, which reduces the influence of radiative-flux differences. Our results indicate that days with heavy rainfall may experience a reduction in lake surface temperature of approximately 0.3 K by the end of the day compared to days with light-to-moderate rainfall. Overall this study highlights a new potential control on lake surface temperature, and suggests that further efforts are needed to quantify this effect in other regions and to include this process in [atmospheric models](#) [land-surface models used for atmospheric prediction](#).

Copyright statement. The works published in this journal are distributed under the Creative Commons Attribution 4.0 License. This licence does not affect the Crown copyright work, which is re-usable under the Open Government Licence (OGL). The Creative Commons Attribution 4.0 License and the OGL are interoperable and do not conflict with, reduce or limit each other.

© Crown copyright 2018

1 Introduction

Lakes are important features of the terrestrial environment for physical, ecological, economic and recreational reasons. Physically, lake-atmosphere interactions can influence the local weather and climate. Thus their representation in earth-system modelling has increased in complexity in recent years. Lake water surface temperature (LWST) is of particular relevance to

atmospheric modelling due to the contrast in temperature, and hence in boundary-layer fluxes, that often exists between lakes and their surroundings (Mironov et al., 2010).

At high latitudes, correct prediction of freezing temperatures, and thus ice-cover periods, is important to obtain accurate boundary-layer fluxes. In the tropics, varying temperature contrasts between lakes and the surrounding land may be associated with cycles of severe weather. For instance, remote sensing data highlight an important impact of the African Great Lakes on the diurnal precipitation and thunderstorm cycle, especially over Lake Victoria and Lake Tanganyika (Camberlin et al., 2017; Thiery et al., 2017). During the afternoon, the typical tropical convective precipitation falls over land, but hardly any rainfall is observed over the lakes. At night, in contrast, very little precipitation is produced over land, while strong convection develops over the lakes, leading to high precipitation amounts. This phenomenon is caused by the diurnal cycle of the lake-land temperature difference, which leads to land breezes converging over the lake surface during the night. When these air masses, moistened by the lake, lift up into the atmosphere, they generate convective precipitation and often thunderstorms (Docquier et al., 2016; Thiery et al., 2015, 2016). The African Great Lakes are thus important regulators of the East African climate, which continues to present a challenge to modellers (James et al., 2018; Woodhams et al., 2018).

Adequately observing and modelling tropical lake-atmosphere interactions often remains a challenge, even though efforts have been made to quantify these exchanges (Verburg and Hecky, 2003; Verburg and Antenucci, 2010; Thiery et al., 2014a, b; Delandmeter et al., 2018; Weyhenmeyer et al., 2017). Moreover, important uncertainties remain present in several of the reference products, notably regarding precipitation (Dinku et al., 2008; Sylla et al., 2013; Awange et al., 2015; Kimani et al., 2017), hence the need for high-quality, in-situ meteorological measurements over the African Great Lakes (Anyah and Semazzi, 2004; Anyah et al., 2006; Anyah and Semazzi, 2009). To help address this need, a state-of-the-art automatic weather station was installed in 2012 on Lake Kivu (AWS Kivu).

Lakes interact with the atmosphere via a variety of processes. Physical lake models developed for use in a meteorological context have thus far concentrated on lake-atmosphere interaction through turbulent and radiative fluxes. The effects of rain on LWST, both directly from thermal perturbation, and indirectly from changing the lake stratification, are little understood or represented to date. Evidence of the significance of rain effects, particularly in the tropics, is beginning to emerge however (Wei et al., 2014). Here, we combine theoretical considerations with analysis of the unique multi-annual dataset from AWS Kivu to estimate the significance of the rainfall effect on LWST in the tropics. As will be shown, the uniformity of the Lake Kivu climate increases its appeal as a location at which to assess this effect.

To summarise the structure of the following sections, in section 2 the study area is described; section 3 discusses the mechanisms of rain effect on LWST; the Kivu data are presented and analysed in section 4; and finally the results are discussed.

2 Description of Lake Kivu

The African Great Lakes are of utmost importance for regional economies, as well as being essential to the survival of the local population. As the largest reservoir of freshwater in the tropics, they provide numerous ecosystem services to local communities, such as fishing grounds, drinking water and electricity. Lake Victoria alone directly supports 200 000 fishermen operating

from its shores and sustains the livelihood of more than 30 million people living at its coasts (East African Community, 2011). During the last decades, however, the African Great Lakes experienced fast changes in ecosystem structure and functioning, and their future evolution is a major concern (O'Reilly et al., 2003; Verburg et al., 2003; Verburg and Hecky, 2009; Borges et al., 2015). Moreover, outflow dam management, along with climate variability and change, exert a large influence on the water levels of the largest African Great Lake, Lake Victoria (Vanderkelen et al., 2018a, b).

Lake Kivu ($01^{\circ} 35' \text{S} - 02^{\circ} 30' \text{S}$; $028^{\circ} 50' \text{E} - 029^{\circ} 23' \text{E}$) is situated along the border of Rwanda and the Democratic Republic of Congo, and is one of the seven African Great Lakes (figure 1). The lake has a surface area of 2370 km², lies 1463 m above sea level and is up to 485 m deep. The outflow is located at the lake's southern tip and forms the Ruzizi river, which flows southwards into Lake Tanganyika. Although the lake is meromictic, the oxic mixolimnion deepens to 60-70 m during the dry season. Below that, the monimolimnion is found rich in nutrients and dissolved gases, in particular carbon dioxide and methane (Degens et al., 1973; Borges et al., 2011; Descy et al., 2012; Morana et al., 2015b, a, 2016). Interestingly, temperature and salinity within the monimolimnion increase with depth due to the input of heat and salts from deep geothermal springs (Degens et al., 1973; Spigel and Coulter, 1996; Schmid et al., 2005). Given its high altitude and location close to the equator, surface water temperatures over Lake Kivu are relatively constant throughout the year.

3 Physical effects of rainfall

Rain may have an effect on the lake surface in four ways: (i) evaporative cooling of the near-surface air during precipitation, which induces an additional upward sensible heat flux from the lake towards the atmosphere, (ii) by the direct rain heat flux into the lake, (iii) by mixing the lake surface layer through the flux of kinetic energy, and finally (iv) by convective mixing of the lake surface layer. The first of these ought to be parametrised by atmospheric models, as with related atmospheric effects like the reduction of insolation by cloud cover. The others lie mainly in the lake-modelling domain. Hereafter, we discuss ~~the quantification of these latter effects~~ points (i)–(iv) above in some more detail.

3.1 Cooling of near-surface air

Raindrops falling into unsaturated air will cool through evaporation. Their passage through the air leads to heat transfer from the air, hence cooling the air. As the rainfall continues, the air will tend to saturation, and both rain and air will approach the air's original wet-bulb temperature. Thermodynamically, further quantification and parametrisation of this process requires consideration of various factors such as the atmospheric moisture and temperature profile, drop-size distribution, drop concentration etc. (Schlesinger and Oh, 1988; Feingold, 1993).

At the extreme end of intense convection, atmospheric cooling and momentum transfer from rain may produce cold convective downdraughts, which transport cold air to the surface from higher levels (Kamburova and Ludlam, 1968; Knupp and Cotton, 1985; Srivastava et al., 2017). These additional dynamic effects are potentially less well represented or resolved in atmospheric models, but are of importance in terms of gust hazard, as well as for their relevance to modelling of the convective cycle (Rooney, 2015; Thiery et al., 2017).

3.2 Direct heat flux

The specific heat capacity of water is approximately $4.2 \times 10^3 \text{ J kg}^{-1} \text{ K}^{-1}$. A rainfall rate of 1 mm hr^{-1} is thus equivalent to a heat flux of approximately $1.2 \Delta T \text{ W m}^{-2}$, where ΔT is the temperature difference between the rain and the surface which absorbs it. Rain temperature variation relative to air or surface temperature is not well-known. According to Byers et al. (1949),
5 rain may be much colder than the ambient air at the start of a thunderstorm, but possibly comparable at later stages. This is presumably due to evaporative cooling reducing the air temperature to nearer that of the rain over time, and is consistent with the approximation of the rain temperature to the wet-bulb temperature (Wei et al., 2014, see also references therein).

On seasonal to decadal timescales, the sensible heat contribution by rainfall is deemed small (Verburg et al., 2011). Wei et al. (2014) have estimated that this flux is largest in the tropics, with seasonal mean values of the order of -2 W m^{-2} , and
10 they also state that neglect of this contribution may partly explain some air temperature biases in climate reanalyses. Van Beek et al. (2012) have noted its significance for correctly estimating the surface temperature of tropical rivers. On much shorter timescales, surface cooling due to rain may affect weather patterns. On land, this process has been widely studied (Seneviratne et al., 2010; Taylor et al., 2012; Guillod et al., 2015; Lorenz et al., 2016). The rain effect in water bodies is more uncertain, although recently there have been some interesting observational studies e.g. Reverdin et al. (2012).

15 3.3 Mechanical and convective mixing

As well as the direct effects of an additional heat flux, rainfall may produce a perturbation of LWST by the mechanical and convective mixing of the near-surface portion of the lake.

An early study by Katsaros and Buettner (1969) indicated that large drops (3 mm diameter) produce mixing to depths of 10 cm and smaller drops ($<1.2 \text{ mm}$) mixed to perhaps one third of this depth. Similarly, Green and Houk (1979) found that the
20 presence of some large drops is very important in producing significant subsurface mixing.

Several subsequent studies of artificial rainfall have examined rainfall-generated turbulence in slightly more detail. Artificial, heavy rainfall has been ~~shown to produce additional~~ observed to produce turbulent mixing over depths of 10–20 cm, ~~even in a salt-water body (Lange et al., 2000; Zappa et al., 2009). The entrained air bubbles associated with rainfall are also known to be a significant source of underwater noise energy (Prosperetti et al., 1989)~~ in the study of Lange et al. (2000), with a drop
25 size approximately 3 mm, and that of Zappa et al. (2009) with a distribution of drop sizes in the range 0.3–5.3 mm which was modelled on the measured natural-rain distributions of Marshall and Palmer (1948). By contrast, Harrison and Veron (2017), with drop sizes of approximately 1.3 mm, found turbulent kinetic energy (TKE) to be independent of artificial rainfall intensity, at even higher intensities, and suggested that a significant fraction of the energy went into producing small-lengthscale or capillary motions within 1–2 cm of the surface. Again, these results would seem to indicate that drop size is an important factor.
30 While the effects of drop impact in a deep liquid reservoir are quite complex, even for a single drop (Prosperetti et al., 1989; Rein, 1996), it may be reasonable as a first hypothesis to assume that a significant fraction of the kinetic energy of natural heavy rain goes into subsurface TKE production.

The kinetic energy flux of ~~rainfall has~~ real rainfall has also been estimated in the context of soil erosion studies (Salles et al., 2002; van Dijk et al., 2002; Yu et al., 2012). A rain rate of 5 mm h^{-1} may give rise to a kinetic energy flux F_K of around 0.02 W m^{-2} , for example. The rate of ~~turbulent kinetic energy (TKE)~~ TKE production in the surface boundary layer of a lake may then be assumed to scale as $F_K/(\rho_w \ell) \phi F_K/(\rho_w \ell)$ where ℓ is the depth to which the rain penetrates ~~and~~ ρ_w is the water density and ϕF_K is some fraction of F_K where $\phi \leq 1$ (see for example Townsend (1976, Ch.2) for a discussion of TKE evolution). The significance of this rain-driven production of TKE may be gauged by comparison with the kinetic energy input from wind shear.

Mechanical surface forcing by wind upon lakes is usually modelled through matching of stress, so that the aqueous friction velocity at the lake surface u_{*l} is

$$u_{*l} = \left(\frac{\rho_a}{\rho_w} \right)^{1/2} u_* \quad (1)$$

where u_* is the friction velocity in the atmospheric surface layer, and ρ_a is the air density. A typical atmospheric friction velocity of order 1 m s^{-1} then implies an aqueous value of $u_{*l} \approx 0.03 \text{ m s}^{-1}$ (Ancil and Donelan, 1996; Csanady, 2001). The lake surface TKE production from wind-driven shear scales as $u_{*l}^3/(\kappa z)$ where z is the depth and $\kappa = 0.4$ is von Karman's constant (e.g. Skillingstad and Denbo, 1995).

Thus, setting $z = \ell$, the turbulent mixing from rain may be compared to that from wind shear by comparing $u_{*l}^3/(\kappa \ell)$ with $F_K/(\rho_w \ell) \phi F_K/(\rho_w \ell)$, or equivalently by comparing u_{*l} with $(\kappa F_K/\rho_w)^{1/3} (\kappa \phi F_K/\rho_w)^{1/3}$. This last term is evaluated as of order 0.02 m s^{-1} for heavy rain, using the value of F_K given above and ϕ in the range 0.5–1, and is the same order of magnitude as the friction velocity for a moderate-to-strong wind. Hence, the turbulent mixing rates due to wind-shear and rain may at times be comparable in the top few centimetres of a lake.

For cold rain falling onto a relatively warm lake, convective effects will presumably add to the mixing strength and depth. While Green and Houk (1979) concentrated mainly on the case of warm rain falling onto cold water, their experiments with the opposite temperature contrast showed cooling throughout the depth of their reservoir i.e. to at least 0.4 m. The LWST perturbation caused by mixing effects will depend on the stratification of the lake near-surface region.

4 Data analysis

4.1 Instrumentation and measurements

AWS Kivu is installed on the research platform of the Rwanda Energy Company, approximately 3 km offshore of the cities of Gisenyi (Rwanda) and Goma (D.R. Congo, see figure 2). Since 9 October 2012, AWS Kivu has provided continuous, high-quality observations of near-surface meteorology and four-component radiation. The continuous time series obtained so far from AWS Kivu is, to our knowledge, unique of its kind in the tropics.

AWS Kivu consists of sensors for air temperature (T_a , C), relative humidity (RH , %), air pressure (p , Pa), precipitation (P , mm), wind speed (U , m s^{-1}) and direction (WD , $^\circ$) and the four radiation components (SW_{in} , SW_{out} , LW_{in} , LW_{out} , all in W m^{-2}). Details of the sensors are given in table ~~??-1~~. LWST is calculated from the upwelling longwave irradiance using

Table 1. AWS Kivu sensor specifications.

Data	Sensor	Range	Accuracy
Air pressure	Cambell Scientific CS100	600 – 1100 hPa	0.5 hPa
Air temperature	Cambell Scientific CS215	-40 – +70 C	0.3 K
Relative humidity	Cambell Scientific CS215	0 – 100 %	2 – 4 %
Wind speed	Young 05103	0 – 100 m s ⁻¹	0.3 m s ⁻¹
Wind direction	Young 05103	0 – 360°	3°
Precipitation	Tipping Bucket ARG100	0.2 – 500 mm hr ⁻¹	95 – 98 %
SW components	Kipp and Zonen CNR4	305 – 2800 nm	<5 %
LW components	Kipp and Zonen CNR4	4500 – 42000 nm	<10 %

the Stefan-Boltzmann law and assuming an emissivity of 0.99 (Wan, 2008). The station is powered by a solar panel, and all sensors are placed at a height of 4.40 m above the water surface (a in figure 2), except for wind speed and direction which are measured at 7.20 m above the lake (b in figure 2). While the station is mounted on a metal container (c in figure 2), efforts were made to minimise its effect on the meteorological measurements. Notably, temperature, humidity and radiation sensors were mounted 6 m horizontally away from the container edge, making sure that recorded conditions are representative for the water surface.

Variables are sampled every 15 seconds, from which 30 minute averages are calculated and stored. In the case of precipitation, accumulated values are stored, and for wind speed both mean and maximum values are recorded. Moreover, short periods of high-frequency radiation measurements enable an assessment of the potential effect of platform movements. Through a General Packet Radio Service (GPRS), the KU Leuven Regional Climate Studies group receives the observations directly from the station, allowing for remote problem detection.

The time span of measurements used here was between 13 September 2012 and 14 August 2017, however most of the analysis is based on four calendar years of data from 1 January 2013 to 30 December 2016.

4.2 Weather and climate

The data indicate that there is a remarkable uniformity of the lake climate. The annual air temperature range is around 14 K. The daily rainfall totals for 4 calendar years show a generally uniform spread, but with a slightly drier period around July (figure 3). There seem to be two prevailing wind directions which do not vary greatly with the weather, inasmuch as this is represented by rainfall (see section 4.3). This uniformity is beneficial for the following analysis, since there are consequently fewer sources of variation upon which the lake behaviour may potentially depend.

The temporal variations in weather may be examined further using power spectra of rainfall and wind speed (figure 4). These show that a large part of the variation is on the diurnal scale. This provides justification for the use of average diurnal cycles to explore the behaviour of the system.

5 We also note the presence of some sub-daily peaks in the wind speed spectrum, the most dominant at a frequency corresponding to a period of approximately 8 hours, and the next two corresponding to periods of approximately 6 hours and 12 hours. (As will be shown later, the sub-daily wind fluctuations giving rise to these peaks are evident on plots of mean daily wind speed. These fluctuations are probably due to local circulations caused by lake or land breezes, and the largely bi-modal distribution of the wind direction, also shown later, appears to support this interpretation.)

4.3 Partitioning by rainfall

10 To examine the effect of heavy rain, four years of data will be analysed (1 January 2013 to 30 December 2016). This amounts to 1457 days, as three days are omitted due to missing data. These data are referred to as ALL data in the following analysis. Based on daily rainfall totals, they may be divided into DRY, WET and VWET days. DRY days are days with no rainfall. The remaining days are partitioned into WET or VWET depending on whether the rainfall total is respectively less or greater than a threshold of 8 mm (figure 3). The number of days of each type is DRY: 690, WET: 585, VWET: 182.

15 Regarding the distribution of hourly rainfall over the four years, 2.4% of hours had a rainfall total greater than 1 mm, and 0.6% of hours had a rainfall total greater than 5 mm. Figure 5 shows the average hourly rainfall on WET and VWET days. Both show a minimum in rainfall around 06 UTC (08 LT, LT = UTC + 2 h), and a peak around the middle of the day. There is also a later precipitation maximum in VWET, which may indicate the development of nighttime heavy storms.

20 The effect of daily weather on LWST is summarised in figure 6. It can be seen that the average diurnal cycles of air temperature and relative humidity are quite smooth, with a spread related to the rainfall category. Thus DRY days are the warmest and least humid, VWET days are the coldest and most humid, and WET and ALL days lie between these extremes. Both the air temperature and LWST start close together for the WET and VWET categories, but by the end of the day there is a difference in the mean, with VWET being colder than WET. Specifically, the average temperature difference over the last 6 hours of the day is 0.42 K.

25 Atmospheric forcing of LWST is usually characterised in terms of turbulent or radiative fluxes, with turbulent fluxes depending on mean wind speed, lake-air temperature difference and near-surface humidity. For the categories described here, the choice of partitioning threshold between WET and VWET days coincidentally produces extremely similar graphs of mean wind speed. This has the effect of removing an important potential source of variation between these categories. The distributions of wind directions and speeds are also quite uniform, see figures 7 and 8.

30 Figure 9 shows the difference between the WET and VWET cases in terms of mean net radiation, on average over the course of a day. The lake has absorbed approximately $1.7 \times 10^6 \text{ J m}^{-2}$ more in the WET case. This is due presumably to WET days having less (or less thick) cloud cover than VWET days on average. This source of difference may be eliminated by adding a further constraint to the total absorbed radiation on WET days. This is described in the next subsection.

4.4 Further partitioning by rainfall and net radiation

WET days have a higher mean net radiation than VWET days (figure 9). To separate the effects of rainfall and radiation, the WET days may be further filtered for those with integrated net radiation below a specified amount, so that the mean value is reduced to equal to, or less than, that on VWET days. This subset of “dull” WET days is labelled DWET. With a threshold
5 total radiation of $1.5 \times 10^7 \text{ J m}^{-2}$, the average total radiation of DWET days is approximately $1.03 \times 10^7 \text{ J m}^{-2}$, compared to an average total radiation of $1.05 \times 10^7 \text{ J m}^{-2}$ on VWET days. It is worth emphasising that the radiation threshold for DWET days was deliberately chosen to allow a small margin, so that VWET days absorbed 1–2% more radiation in the mean than DWET days. Thus any extra LWST cooling in VWET days compared to DWET days would be against a background of a slight excess of absorbed radiative energy on VWET days, in the mean.

10 Using this additional constraint, the number of DWET days in the 4-year period is 425, or 73% of the WET days. Table 2 summarises the number of days of each type in each year, along with data on which type of day came immediately before and after. The distributions of wind directions and speeds for the DWET category are also plotted in figures 7 and 8. The diurnal cycle of the mean net radiation difference between DWET and VWET cases is shown in figure 9.

The average daily rainfall on DWET days is 2.31 mm, compared to 2.33 mm on WET days and 17.99 mm on VWET days.
15 Thus, the contrast in rainfall amount is largely preserved by this resampling. The diurnal evolution is also plotted in figure 5, again showing that DWET is similar to WET.

The average diurnal evolution for the categories of ALL, DRY, DWET and VWET is shown in figure 10. It can be seen that the evolution of diurnal wind speed is reasonably unchanged for DWET days compared to that of WET days (figure 6), but the evolution of LWST on DWET days is closer to that of VWET days. However, most of the difference in surface temperature
20 between these categories in the last few hours of the day remains, with an average temperature difference over the last 6 hours of 0.29 K.

Considering the reliability of this difference, it may be noted that a difference of 0.3 K against a background at approximately 300 K is equivalent to a difference in upwelling longwave of approximately 1.8 W m^{-2} . However, since this is a difference between mean values taken over a minimum of 182 observations at each time of day, it should be compared with the standard
25 error of the mean. That is, it only requires instrumental accuracy of $1.8 \times \sqrt{182} \approx 24 \text{ W m}^{-2}$, which is within the instrument specification (table ??).

In terms of significance, the standard error of the difference between the mean DWET and VWET values is given by

$$SED = \sqrt{\frac{\sigma_{DWET}^2}{N_{DWET}} + \frac{\sigma_{VWET}^2}{N_{VWET}}} \quad (2)$$

where σ_{DWET}^2 and σ_{VWET}^2 are the variances of LWST in the DWET and VWET cases respectively, and the number of observations
30 at any particular time of day are $N_{DWET} = 425$ and $N_{VWET} = 182$, as stated earlier. SED takes values in the range 0.05–0.07 K during the first and last few hours of the day, climbing to over 0.14 K during daylight hours. The hypothesis that the means are equal may be tested using the difference in mean values divided by SED (e.g. Frank and Althoen, 1994, chapter 10). This is plotted in figure 11. It can be seen that, before 16 UTC, this statistic takes values in the approximate range $[-2, 2]$, indicating

that the hypothesis of equal means may be accepted at approximately the 5% level of significance at these times. However, after 17 UTC, this statistic climbs to values well above 2, indicating that the hypothesis may reasonably be rejected at later times. It is therefore concluded that the difference in the means during the last few hours of the day is statistically significant.

5 Finally, the effect of rain on the sensing of LWST should also be considered as a possible cause of observed LWST differences. From an atmospheric modelling viewpoint, the sensed surface temperature is the important quantity in many cases, as has been recently discussed in the context of the introduction of a “skin” temperature into the FLake lake model (Le Moigne et al., 2016). In this particular case, it may be remarked that while the rain rate during VWET days is highest during the final few hours of the day, figure 5 shows that the average VWET rain rate is also appreciably higher than that of the DWET category at some earlier times. However the LWST differences, and their significance, at these earlier times are
10 both much less than during the final few hours of the day, as shown in figures 10 and 11. This provides some evidence that a systematic effect of rain on the sensor is not the main cause of LWST differences.

5 Discussion and Conclusion

Lake Kivu has a remarkably stable tropical lake climate, and AWS Kivu has yielded a high-quality, multi-year, over-lake observational record which is rare and perhaps unique in the tropics, and well-suited to the present research question. This
15 study is the first such use of these data.

Data over four years from AWS Kivu have been categorised by daily rainfall amount and net radiation, to investigate the possible effects of rainfall on lake water surface temperature (LWST), which may be particularly significant in the tropics (Wei et al., 2014). The choice of division between days with heavy or light-to-moderate rain (respectively greater or less than 8 mm total) has helped minimise the sources of difference between the categories other than that due to rainfall. Spectral analyses
20 have shown that, in this uniform climate, one of the dominant variations is the diurnal cycle, and hence the different categories are compared via their mean diurnal evolution. In the mean data examined here, heavy rain on a tropical lake would seem to have the capability to produce a reduction of a few tenths of one Kelvin in LWST over the course of several hours at the end of the day, compared to light-to-moderate rain; and this reduction is statistically significant.

The possible pathways by which this effect may arise are: (i) cooling of the air due to contact with evaporatively-cooled
25 raindrops, and a subsequent increase in atmospheric sensible heat flux from the lake, (ii) negative heat flux directly to the lake from rain impingement, (iii) mechanical mixing of the lake surface layer by the kinetic energy of rain impact, and (iv) convective mixing of the lake surface layer due to the negative heat flux from rain. Of these, the first is the most likely to be a parametrised process in a General Circulation Model of the atmosphere, although it could be considered the most indirect of the four. The rain heat flux is likely to be proportional to the difference between the air wet-bulb temperature and LWST.
30 We have indicated with scaling arguments that the mechanical mixing due to heavy rain may be comparable to that of a strong wind. The convective mixing will depend on the near-surface temperature structure of the lake, and hence on its recent history.

Unfortunately, the available data do not cover several other process-related quantities that would be useful to have, such as turbulent heat fluxes, rain temperature, fine-scale lake temperature profiles or lake turbulence measurements. Thus, the

Table 2. Percentages of the types of day which came immediately before and after each type, broken down by observation year. N denotes the number of days of each type in each year. OTH denotes days classified as WET but not DWET, so that the OTH and DWET categories combine to make up the WET category. The data from each year are presented separately to give an indication of inter-annual variation. To give an example from the last line of the table, in 2016 there were 45 VWET days, and 27% of the days in 2016 directly preceding VWET days were DRY, compared to 18% of the days directly following VWET days.

	% preceding days				N	% following days			
	DRY	OTH	DWET	VWET		DRY	OTH	DWET	VWET
2013									
DRY	66.	5.	21.	7.	183	66.	7.	16.	11.
OTH	44.	22.	26.	7.	27	37.	22.	22.	19.
DWET	28.	6.	46.	20.	109	36.	6.	46.	12.
VWET	43.	11.	28.	17.	46	29.	4.	49.	18.
2014									
DRY	68.	7.	20.	6.	167	68.	8.	18.	6.
OTH	31.	17.	40.	12.	42	26.	17.	33.	24.
DWET	29.	13.	37.	21.	106	31.	16.	37.	16.
VWET	20.	20.	34.	26.	50	20.	10.	44.	26.
2015									
DRY	66.	6.	23.	5.	158	66.	5.	20.	9.
OTH	19.	21.	48.	12.	42	24.	21.	38.	17.
DWET	26.	13.	44.	18.	124	29.	16.	44.	11.
VWET	34.	17.	34.	15.	41	20.	12.	54.	15.
2016									
DRY	68.	12.	16.	4.	182	68.	9.	17.	7.
OTH	33.	14.	27.	27.	49	43.	14.	22.	20.
DWET	35.	13.	35.	16.	86	35.	15.	35.	15.
VWET	27.	22.	29.	22.	45	18.	29.	31.	22.

Note that calculating percentages to the nearest percent occasionally produces sets that do not sum to 100 exactly.

processes producing this effect are not directly measured. However, through our indirect analysis of the processes it seems likely that cooling by rain combined with mechanical and convective mixing from droplet impact may have an effect on LWST, in addition to the effect from the more widely studied pathway of evaporative cooling.

5 Potential avenues of future work would be to examine these processes more closely in a targeted campaign of observations, including the quantities listed above, and to consider how lake models may be modified to include their representation. An intermediate step in the latter might be to re-examine previous modelling studies to explore correlations between lake-model errors and rainfall records. Since, as discussed earlier, rainfall may affect not only the surface temperature but potentially

also the temperature or depth of any upper mixed layer, some or all these quantities could be susceptible to rainfall effects. For models that predict vertical fluxes through the water column, comparison of these with any available flux or TKE measurements would be a possible way to estimate rain penetration in real lakes. There is an indication in the data of Reverdin et al. (2012) that rainfall effects may have a sudden onset but a subsequent slower decay, so that some filtering method such as an exponential moving average applied to the rainfall data may be required when considering correlations. The decay timescales of any such filtering could also have a depth dependence.

In large tropical lakes, it is possible that a surface temperature difference of order half a Kelvin may suppress or enhance the strength of local air circulations, such as lake breezes, and hence have some effect (or even feedback) on the evolution of the local weather (Thiery et al., 2015, 2016). For example, the length of time between severe storms may be partly affected by the recovery timescale of LWST. ~~In the short term it~~ would seem possible to incorporate, perhaps semi-empirically, the effect of rain temperature and rain-induced turbulence into simple lake models as used for weather and climate modelling. ~~Potential avenues of future work would be to examine these processes more closely in a targeted campaign of observations, including the quantities listed above, and to consider how lake models may be modified to include their representation~~

Data availability: The data are available on request from the dataset owners, Wim Thiery and Nicole van Lipzig.

Acknowledgements. WT was supported by an ETH Zurich postdoctoral fellowship (Fel-45 15-1). The Uniscientia Foundation and the ETH Zurich Foundation are thanked for their support to this research. The Belgian Science Policy Office (BELSPO) is acknowledged for the support through the research project EAGLES (CD/AR/02A). We thank Stijn Bruggen, who analysed the AWS data in his Master's thesis, and thereby supported the design of this study and the analysis presented here. GGR thanks John M. Edwards for a helpful discussion of TKE budgets.

References

- F. Anctil and M. Donelan. Air–water momentum flux observations over shoaling waves. *Journal of Physical Oceanography*, 26(7):1344–1353, 1996.
- R. O. Anyah and F. Semazzi. Idealized simulation of hydrodynamic characteristics of Lake Victoria that potentially modulate regional climate. *International Journal of Climatology*, 29:971–981, 2009.
- R. O. Anyah and F. H. M. Semazzi. Simulation of the sensitivity of Lake Victoria basin climate to lake surface temperatures. *Theoretical and Applied Climatology*, 79(1-2):55–69, 2004.
- R. O. Anyah, F. H. M. Semazzi, and L. Xie. Simulated Physical Mechanisms Associated with Climate Variability over Lake Victoria Basin in East Africa. *Monthly Weather Review*, 134:3588–3609, 2006.
- 10 J. Awange, V. Ferreira, E. Forootan, Khandu, S. Andam-Akorful, N. Agutu, and X. He. Uncertainties in remotely sensed precipitation data over Africa. *International Journal of Climatology*, 2015.
- A. V. Borges, G. Abril, B. Delille, J.-P. Descy, and F. Darchambeau. Diffusive methane emissions to the atmosphere from Lake Kivu (Eastern Africa). *Journal of Geophysical Research*, 116:G03032, 2011.
- A. V. Borges, F. Darchambeau, C. R. Teodoru, T. R. Marwick, F. Tamoooh, N. Geeraert, F. O. Omengo, F. Guérin, T. Lambert, C. Morana, 15 E. Okuku, and S. Bouillon. Globally significant greenhouse-gas emissions from African inland waters. *Nature Geoscience*, 8, 2015.
- H. R. Byers, H. Moses, and P. J. Harney. Measurement of rain temperature. *J. Met.*, 6:51–55, 1949.
- P. Camberlin, W. Gitau, O. Planchon, V. Dubreuil, B. M. Funatsu, and N. Philippon. Major role of water bodies on diurnal precipitation regimes in Eastern Africa. *International Journal of Climatology*, 2017.
- G. T. Csanady. *Air-sea interaction: laws and mechanisms*. Cambridge University Press, 2001.
- 20 E. Degens, R. Von Herzen, H.-K. Wong, W. Deuser, and H. Jannash. Lake Kivu: Structure, chemistry and biology of an East African rift lake. *Geologische Rundschau*, 62:245–277, 1973.
- P. Delandmeter, J. Lambrechts, V. Legat, V. Vallaeyts, J. Naithani, W. Thiery, J.-F. Remacle, and E. Deleersnijder. A fully consistent and conservative vertically adaptive coordinate system for SLIM 3D v0.4 with an application to the thermocline oscillations of Lake Tanganyika. *Geoscientific Model Development*, 11(3):1161–1179, 2018.
- 25 J.-P. Descy, F. Darchambeau, and M. Schmid. Lake Kivu: Past and Present. In J.-P. Descy, F. Darchambeau, and M. Schmid, editors, *Lake Kivu: Limnology and Biogeochemistry of a Tropical Great Lake*, pages 1–11. Springer, Dordrecht, Netherlands, 2012.
- T. Dinku, S. Chidzambwa, P. Ceccato, S. J. Connor, and C. F. Ropelewski. Validation of high-resolution satellite rainfall products over complex terrain. *International Journal of Remote Sensing*, 29(14):4097–4110, 2008.
- D. Docquier, W. Thiery, S. Lhermitte, and N. van Lipzig. Multi-year wind dynamics around Lake Tanganyika. *Climate Dynamics*, 47(9): 3191–3202, 2016.
- 30 East African Community. Enhancing Safety of Navigation and Efficient Exploitation of Natural Resources over Lake Victoria and its Basin by Strengthening Meteorological Services on the Lake. Technical Report October, Approved by the East African Community Council of Ministers, 2011.
- G. Feingold. Parametrization of the evaporation of rainfall for use in General Circulation Models. *Journal of the Atmospheric Sciences*, 50: 3454–3467, 1993.
- 35 H. Frank and S. C. Althoen. *Statistics: concepts and applications*. Cambridge University Press, 1994.
- T. Green and D. F. Houk. The mixing of rain with near-surface water. *Journal of Fluid Mechanics*, 90:569–588, 1979.

- B. P. Guillod, B. Orlowsky, D. G. Miralles, A. J. Teuling, and S. I. Seneviratne. Reconciling spatial and temporal soil moisture effects on afternoon rainfall. *Nature Communications*, 6:6443, 2015.
- E. L. Harrison and F. Veron. Near-surface turbulence and buoyancy induced by heavy rainfall. *Journal of Fluid Mechanics*, 830:602–630, 2017.
- 5 R. James, R. Washington, B. Abiodun, G. Kay, J. Mutemi, W. Pokam, N. Hart, G. Artan, and C. Senior. Evaluating climate models with an African lens. *Bulletin of the American Meteorological Society*, 99(2):313–336, 2018.
- P. L. Kamburova and F. H. Ludlam. Rainfall evaporation in thunderstorm downdraughts. *Quarterly Journal of the Royal Meteorological Society*, 94(400):510–518, 1968.
- K. Katsaros and K. J. K. Buettner. Influence of rainfall on temperature and salinity of the ocean surface. *Journal of Applied Meteorology*, 8:
15–18, 1969.
- M. W. Kimani, J. C. B. Hoedjes, and Z. Su. An assessment of satellite-derived rainfall products relative to ground observations over East Africa. *Remote Sensing*, 9(5):430, 2017.
- K. R. Knupp and W. R. Cotton. Convective cloud downdraft structure: an interpretive survey. *Reviews of Geophysics*, 23(2):183–215, 1985.
- P. A. Lange, G. v.d. Graaf, and M. Gade. Rain-induced subsurface turbulence measured using image processing methods. In *Proc. IGARSS*,
15 volume 7, pages 3175–3177, 2000.
- P. Le Moigne, J. Colin, and B. Decharme. Impact of lake surface temperatures simulated by the FLake scheme in the CNRM-CM5 climate model. *Tellus A: Dynamic Meteorology and Oceanography*, 68(1):31274, 2016.
- R. Lorenz, D. Argüeso, M. G. Donat, A. J. Pitman, B. Hurk, A. Berg, D. M. Lawrence, F. Chéruy, A. Ducharne, S. Hagemann, et al. Influence of land-atmosphere feedbacks on temperature and precipitation extremes in the GLACE-CMIP5 ensemble. *Journal of Geophysical
20 Research: Atmospheres*, 121(2):607–623, 2016.
- J. S. Marshall and W. M. Palmer. The distribution of raindrops with size. *Journal of Meteorology*, 5:165–166, 1948.
- D. V. Mironov, E. Heise, E. Kourzeneva, B. Ritter, N. Schneider, and A. Terzhevik. Implementation of the lake parameterisation scheme FLake into the numerical weather prediction model COSMO. *Boreal Environment Research*, 15:218–230, 2010.
- C. Morana, A. V. Borges, F. A. E. Roland, F. Darchambeau, J.-P. Descy, and S. Bouillon. Methanotrophy within the water column of a large
25 meromictic tropical lake (Lake Kivu, East Africa). *Biogeosciences*, 12(7):2077–2088, 2015a.
- C. Morana, F. Darchambeau, F. A. E. Roland, A. V. Borges, F. Muvundja, Z. Kelemen, P. Masilya, J.-P. Descy, and S. Bouillon. Bio-geochemistry of a large and deep tropical lake (Lake Kivu, East Africa): insights from a stable isotope study covering an annual cycle. *Biogeosciences*, 12(16):4953–4963, 2015b.
- C. Morana, F. A. E. Roland, S. A. Crowe, M. Llíros, A. V. Borges, F. Darchambeau, and S. Bouillon. Chemoautotrophy and anoxygenic
30 photosynthesis within the water column of a large meromictic tropical lake (Lake Kivu, East Africa). *Limnology and Oceanography*, 61
(4):1424–1437, 2016.
- C. M. O’Reilly, S. R. Alin, P.-D. Plisnier, A. S. Cohen, and B. a. McKee. Climate change decreases aquatic ecosystem productivity of Lake Tanganyika, Africa. *Nature*, 424(6950):766–768, 2003.
- A. Prosperetti, L. A. Crum, and H. C. Pumphrey. The underwater noise of rain. *Journal of Geophysical Research: Oceans*, 94(C3):3255–
35 3259, 1989.
- M. Rein. The transitional regime between coalescing and splashing drops. *Journal of Fluid Mechanics*, 306:145–165, 1996.
- G. Reverdin, S. Morisset, J. Boutin, and N. Martin. Rain-induced variability of near sea-surface T and S from drifter data. *Journal of Geophysical Research*, 117:C02032, 2012.

- G. G. Rooney. Descent and spread of negatively buoyant thermals. *Journal of Fluid Mechanics*, 780:457–479, 2015.
- C. Salles, J. Poesen, and D. Sempere-Torres. Kinetic energy of rain and its functional relationship with intensity. *Journal of Hydrology*, 257:256–270, 2002.
- M. E. Schlesinger and J.-H. Oh. A parametrization of the evaporation of rainfall. *Monthly Weather Review*, 116:1887–1895, 1988.
- 5 M. Schmid, M. Halbwachs, B. Wehrl, and A. Wüest. Weak mixing in Lake Kivu: New insights indicate increasing risk of uncontrolled gas eruption. *Geochemistry, Geophysics, Geosystems*, 6:Q07009, 2005.
- S. I. Seneviratne, T. Corti, E. L. Davin, M. Hirschi, E. B. Jaeger, I. Lehner, B. Orlowsky, and A. J. Teuling. Investigating soil moisture-climate interactions in a changing climate: A review. *Earth-Science Reviews*, 99(3-4):125–161, 2010.
- E. D. Skillingstad and D. W. Denbo. An ocean large-eddy simulation of Langmuir circulations and convection in the surface mixed layer. *Journal of Geophysical Research: Oceans*, 100(C5):8501–8522, 1995.
- 10 R. Spigel and G. Coulter. Comparison of Hydrology and physical limnology of the East African Great Lakes: Tanganyika, Malawi, Victoria, Kivu and Turkana (with references to some North American Great Lakes). In T. Johnson and E. Odada, editors, *The Limnology, Climatology and Paleoclimatology of the East African lakes*, pages 103–140. Gordon and Breach Publishers, Amsterdam, The Netherlands, 1996.
- 15 R. C. Srivastava. A model of intense downdrafts driven by the melting and evaporation of precipitation. *Journal of the Atmospheric Sciences*, 44:1752–1773, 1987.
- M. B. Sylla, F. Giorgi, E. Coppola, and L. Mariotti. Uncertainties in daily rainfall over Africa: assessment of gridded observation products and evaluation of a regional climate model simulation. *International Journal of Climatology*, 33(7):1805–1817, 2013.
- C. M. Taylor, R. A. M. de Jeu, F. Guichard, P. P. Harris, and W. A. Dorigo. Afternoon rain more likely over drier soils. *Nature*, 489:423–426, 2012.
- 20 W. Thiery, A. Martynov, F. Darchambeau, J.-P. Descy, P.-D. Plisnier, L. Sushama, and N. P. M. van Lipzig. Understanding the performance of the FLake model over two African Great Lakes. *Geoscientific Model Development*, 7(1):317–337, 2014a.
- W. Thiery, V. M. Stepanenko, X. Fang, K. D. Jöhnk, Z. Li, A. Martynov, M. Perroud, Z. M. Subin, F. Darchambeau, D. Mironov, and N. P. M. van Lipzig. LakeMIP Kivu: Evaluating the representation of a large, deep tropical lake by a set of 1-dimensional lake models. *Tellus A*, 25 66:21390, 2014b.
- W. Thiery, E. L. Davin, H.-J. Panitz, M. Demuzere, S. Lhermitte, and N. P. M. van Lipzig. The Impact of the African Great Lakes on the Regional Climate. *Journal of Climate*, 28(10):4061–4085, 2015.
- W. Thiery, E. L. Davin, S. I. Seneviratne, K. Bedka, S. Lhermitte, and N. P. M. van Lipzig. Hazardous thunderstorm intensification over Lake Victoria. *Nature Communications*, 7:12786, 2016.
- 30 W. Thiery, L. Gudmundsson, K. Bedka, F. H. M. Semazzi, S. Lhermitte, P. Willems, N. P. M. van Lipzig, and S. I. Seneviratne. Early warnings of hazardous thunderstorms over Lake Victoria. *Environmental Research Letters*, 12(7):074012, 2017.
- A. A. Townsend. *The structure of turbulent shear flow*. Cambridge University Press, 1976.
- L. P. H. van Beek, T. Eikelboom, M. T. H. van Vliet, and M. F. P. Bierkens. A physically based model of global freshwater surface temperature. *Water Resources Research*, 48(9), 2012. W09530.
- 35 A. van Dijk, L. Bruijnzeel, and C. Rosewell. Rainfall intensity-kinetic energy relationships: A critical literature appraisal. *Journal of Hydrology*, 261:1–23, 2002.
- I. Vanderkelen, N. van Lipzig, and W. Thiery. Modelling the water balance of Lake Victoria (East Africa)—Part 1: Observational analysis. *Hydrology and Earth System Sciences*, 22:5509–5525, 2018a.

- I. Vanderkelen, N. van Lipzig, and W. Thiery. Modelling the water balance of Lake Victoria (East Africa)—Part 2: Future projections. *Hydrology and Earth System Sciences*, 22:5527–5549, 2018b.
- P. Verburg and J. P. Antenucci. Persistent unstable atmospheric boundary layer enhances sensible and latent heat loss in a tropical great lake: Lake tanganyika. *Journal of Geophysical Research: Atmospheres*, 115(D11), 2010. D11109.
- 5 P. Verburg and R. Hecky. Wind patterns, evaporation, and related physical variables in Lake Tanganyika, East Africa. *Journal of Great Lakes Research*, 29:48–61, 2003.
- P. Verburg and R. Hecky. The physics of the warming of Lake Tanganyika by climate change. *Limnology and Oceanography*, 54:2418–2430, 2009.
- P. Verburg, R. E. Hecky, and H. Kling. Ecological consequences of a century of warming in Lake Tanganyika. *Science*, 301(5632):505–507,
10 2003.
- P. Verburg, J. P. Antenucci, and R. E. Hecky. Differential cooling drives large-scale convective circulation in Lake Tanganyika. *Limnology and Oceanography*, 56(3):910–926, 2011.
- Z. Wan. New refinements and validation of the MODIS land-surface temperature/emissivity products. *Remote Sensing of Environment*, 112 (1):59–74, 2008.
- 15 N. Wei, Y. Dai, M. Zhang, L. Zhou, D. Ji, S. Zhu, and L. Wang. Impact of precipitation-induced sensible heat on the simulation of land-surface air temperature. *Journal of Advances in Modeling Earth Systems*, 6(4):1311–1320, 2014.
- G. Weyhenmeyer, M. Mackay, J. Stockwell, W. Thiery, H.-P. Grossart, P. Augusto-Silva, H. Baulch, E. de Eyto, J. Hejzlar, K. Kangur, G. Kirillin, D. Pierson, J. Rusak, S. Sadro, and I. Woolway. Citizen science shows systematic changes in the temperature difference between air and inland waters with global warming. *Scientific reports*, 7:43890, 2017.
- 20 B. J. Woodhams, C. E. Birch, J. H. Marsham, C. L. Bain, N. M. Roberts, and D. F. A. Boyd. What is the added value of a convection-permitting model for forecasting extreme rainfall over tropical East Africa? *Monthly Weather Review*, 146(9):2757–2780, 2018.
- N. Yu, B. Boudevillain, G. Delrieu, and R. Uijlenhoet. Estimation of rain kinetic energy from radar reflectivity and/or rain rate based on a scaling formulation of the raindrop size distribution. *Water Resources Research*, 48(4), 2012. W04505.
- C. J. Zappa, D. T. Ho, W. R. McGillis, M. L. Banner, J. W. H. Dacey, L. F. Bliven, B. Ma, and J. Nystuen. Rain-induced turbulence and
25 air-sea gas transfer. *Journal of Geophysical Research: Oceans*, 114(C7), 2009. C07009.



Figure 1. [Map-Maps](#) of Lake Kivu [geography and situation](#). The lower left corner of the [large](#) map is at 2.6 S, 28.7 E, and the upper right corner is at 1.5 S, 29.5 E. The lake is approximately 90 km long and 50 km wide. The magenta line along the lake indicates the boundary between D.R.Congo to the west and Rwanda to the east. The weather station is situated approximately 3 km offshore, near Goma at the northern end of the lake. Its position is marked with a red square. [The location of Lake Kivu within Africa is marked on the small map by a blue square.](#) (©OpenStreetMap contributors. Mapping data are available under the Open Database License.)

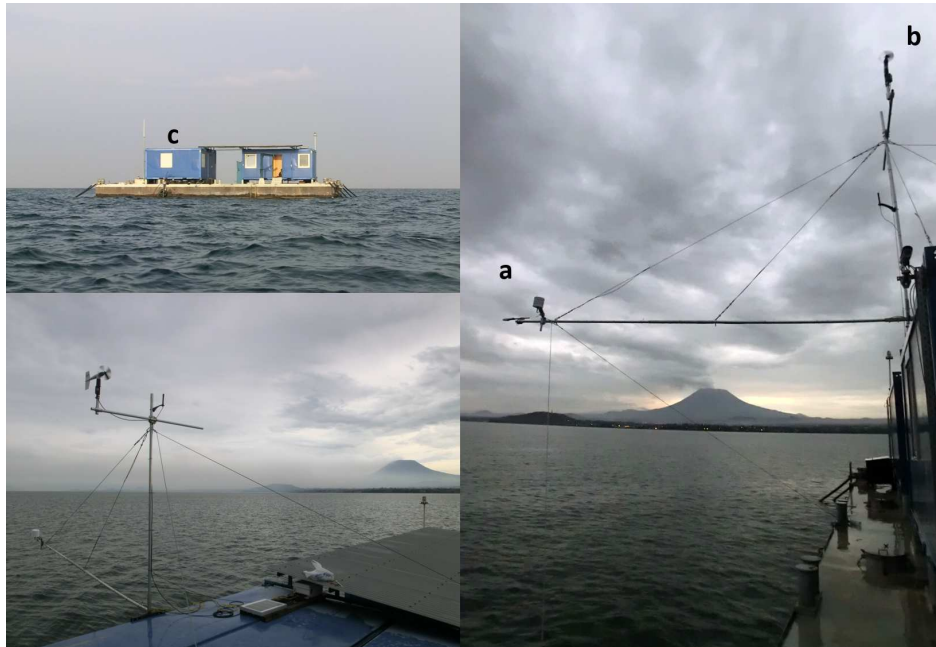


Figure 2. Automatic weather station on Lake Kivu after its installation, 8 October 2012 (©Wim Thiery). **Letter-a** indicates the location of the temperature, relative humidity and radiation sensors at 4.40m above the lake surface, **while** **b** shows the location of the wind vane at 7.20 m above the lake surface. **c** indicates the container on which the station was mounted.

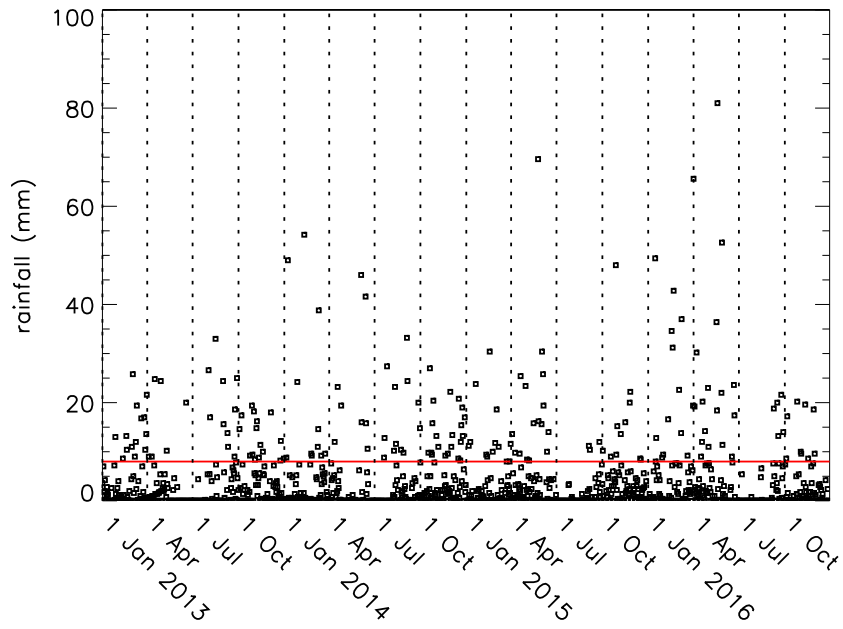


Figure 3. Daily rainfall totals for four years of the observational record, beginning on 1 January 2013. The red line marks the 8 mm point, which is used to partition rain days between WET (≤ 8 mm) and VWET (> 8 mm).

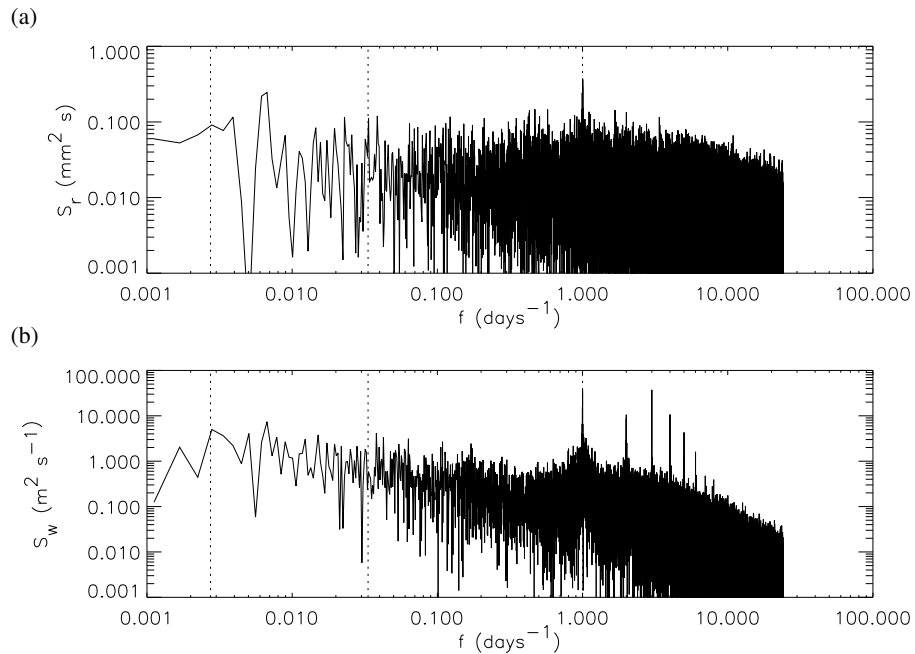


Figure 4. (a) Power spectrum of half-hourly rainfall amount (S_r , $\text{mm}^2 \text{s}$), and (b) power spectrum of half-hourly mean wind speed (S_w , $\text{m}^2 \text{s}^{-1}$), both for the period 13 September 2012 to 14 August 2017. The vertical dotted lines mark frequencies (f , days^{-1}) corresponding to 1 day, 30 days and 365 days. Both plots show a distinct peak at the daily frequency, with the wind speed also exhibiting several sub-daily peaks.

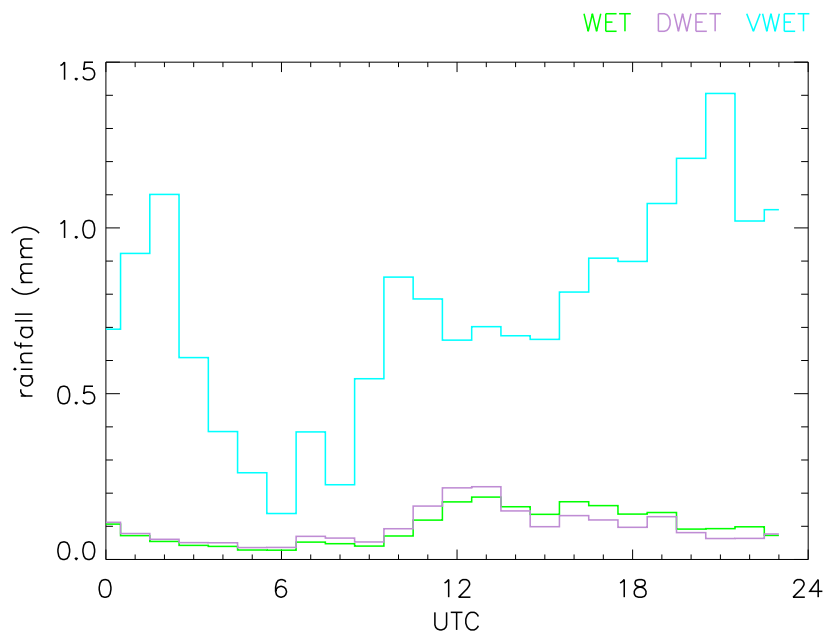


Figure 5. The average rainfall for each hour of the day, for VWET days (cyan) WET days (green) and DWET days (magenta). On this and later plots, time is shown as UTC (Universal Time Coordinate), which is 2 hours behind LT (Local Time) i.e. $LT = UTC + 2$ h.

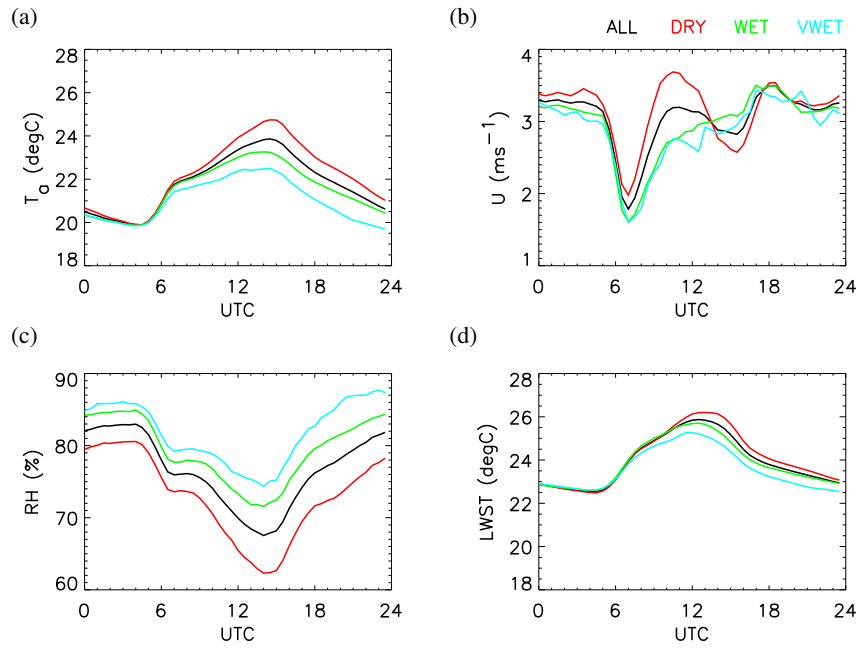


Figure 6. Mean diurnal cycles of (a) air temperature (T_a , C), (b) wind speed (U , m s^{-1}), (c) relative humidity (RH , %), (d) lake surface temperature ($LWST$, C) from the upwelling longwave irradiance, assuming an emissivity of 0.99. The input data are those from the four years 2013-2016 of the campaign, to represent all seasons equally. The colours correspond to diurnal cycles averaged over ALL days (black), DRY days (red), WET days (green) and VWET days (cyan).

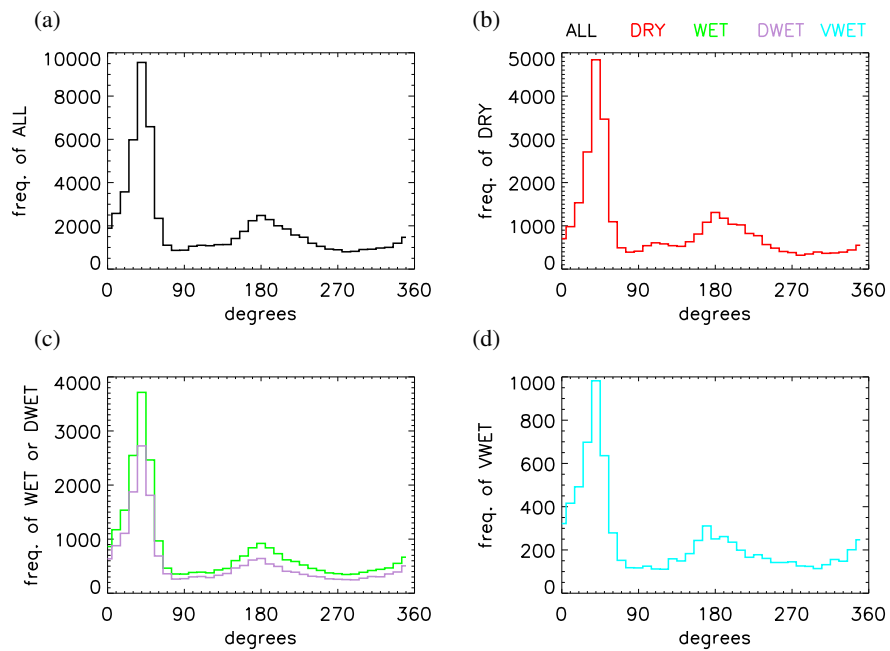


Figure 7. Histograms of half-hourly mean wind direction for 2013–2016. The colours are the same as in figures 5 and 6.

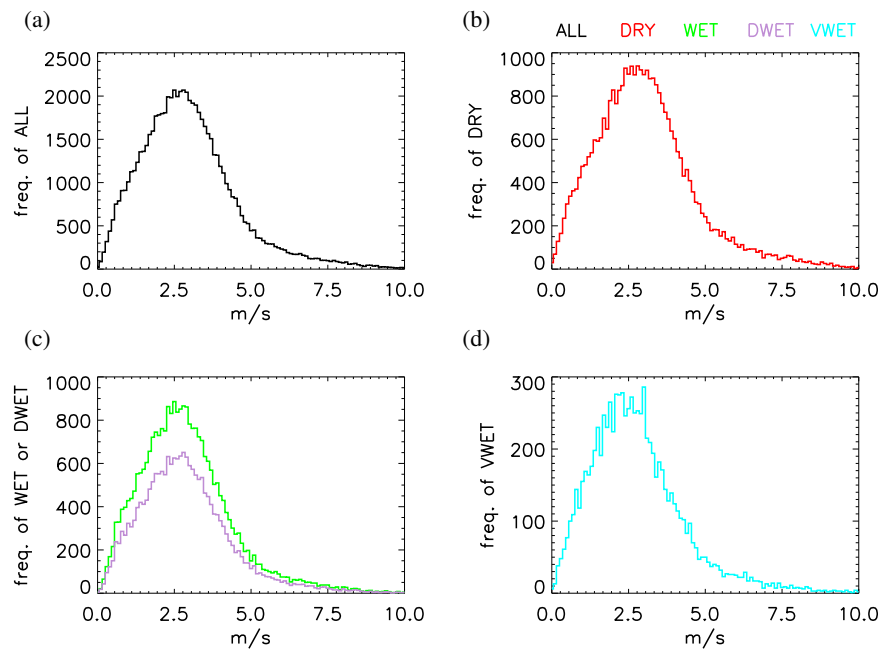


Figure 8. Histograms of half-hourly mean wind speed for 2013–2016. The colours are the same as in figures 5 and 6.

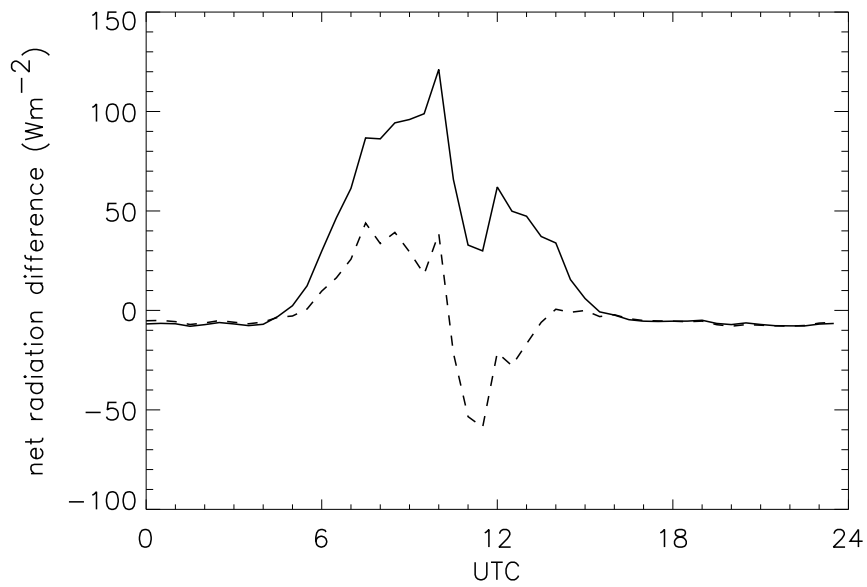


Figure 9. Comparison of the differences in net radiation. WET minus VWET net radiation is the solid line, and DWET minus VWET net radiation is the dashed line.

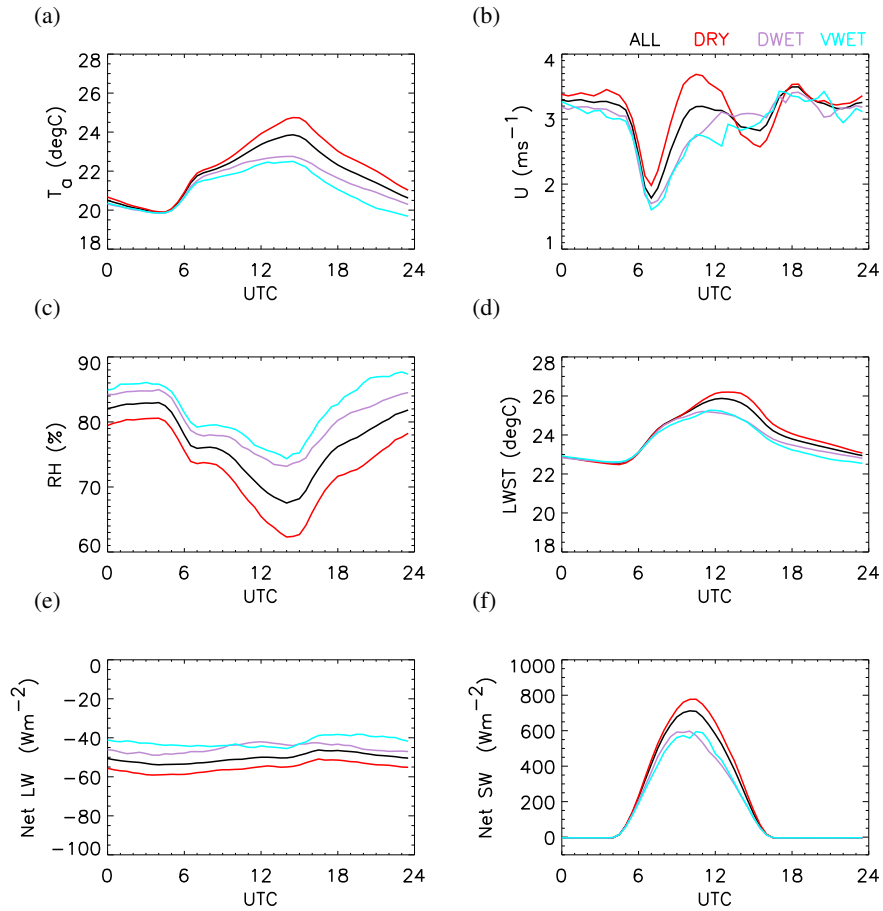


Figure 10. Mean diurnal cycles of (a) air temperature (T_a , C), (b) wind speed (U , m s^{-1}), (c) relative humidity (RH , %), (d) lake surface temperature (LWST, C) from the upwelling longwave irradiance, assuming an emissivity of 0.99, (e) net longwave irradiance (Net LW, Wm^{-2}), (f) net shortwave irradiance (Net SW, Wm^{-2}). The input data are those from the four years 2013-2016 of the campaign, to represent all seasons equally. The colours correspond to diurnal cycles averaged over ALL days (black), DRY days (red), DWET days (magenta) and VWET days (cyan).

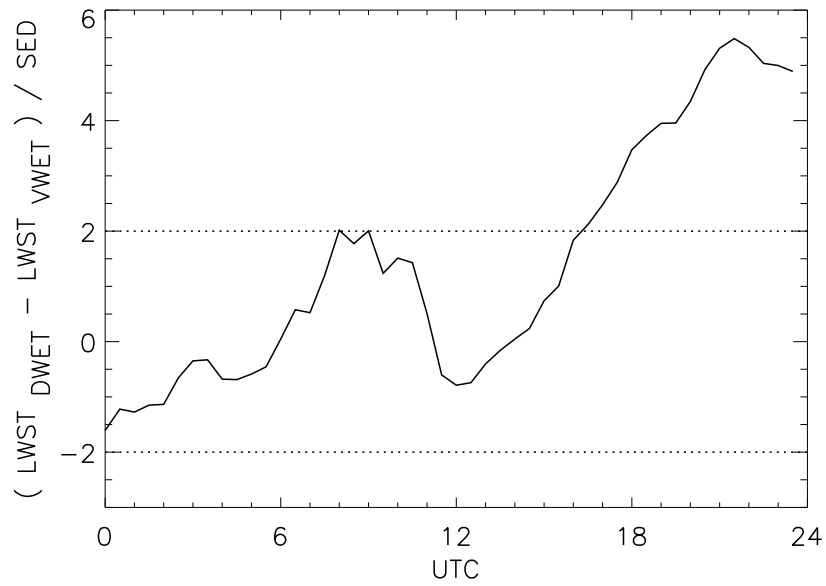


Figure 11. Diurnal behaviour of the difference in mean values of LWST in the DWET and VWET cases, normalised by the standard error of the difference, *SED*, see (2). The dotted lines show ± 2 standard deviations for this statistic. It may be seen that the value climbs above 2 at later times, indicating the significance of the difference in the means then.