

Supplementary Material

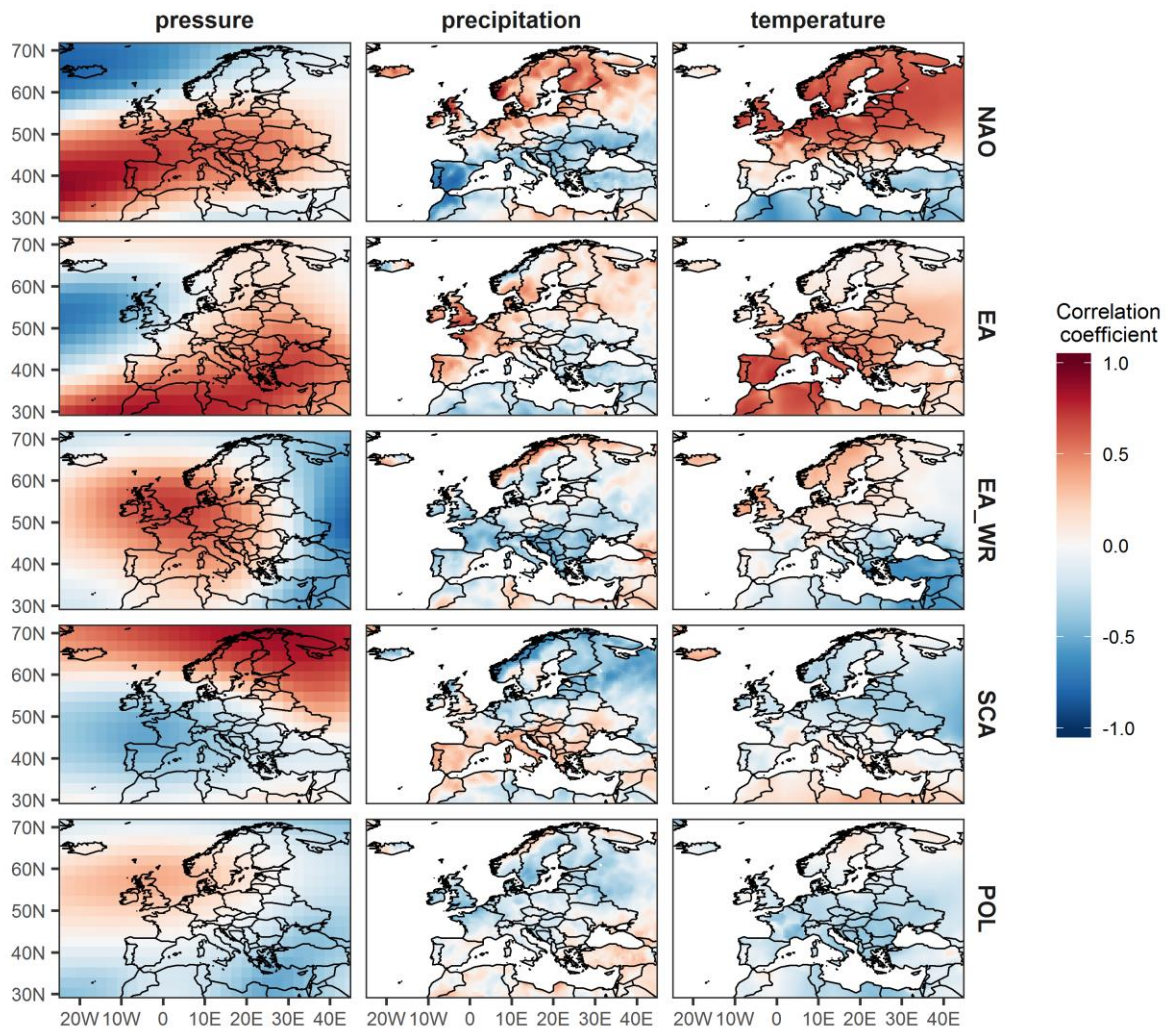


Figure S1: Linear correlations between the five circulation indices examined and mean seasonal gridded pressure (left), precipitation (middle) and temperature (right). All variables are averaged over the winter season for the period 1952-2015 (year attributed to respective January). Gridded pressure data were retrieved from the NCEP/NCAR Reanalysis dataset (Kalnay et al., 1996) and provided by the NOAA/OAR/ESRL PSD, Boulder, Colorado, USA, from their Web site at <http://www.esrl.noaa.gov/psd/>. Temperature and precipitation data were extracted from the gridded data set CRU TS3.24 from the climatic research unit (CRU, <https://crudata.uea.ac.uk/cru/data/hrg/>) of the University of East Anglia (Harris et al., 2014). Details about the circulation indices are given in chapter 2.1. The figure was modified after Steirou et al. (2017).

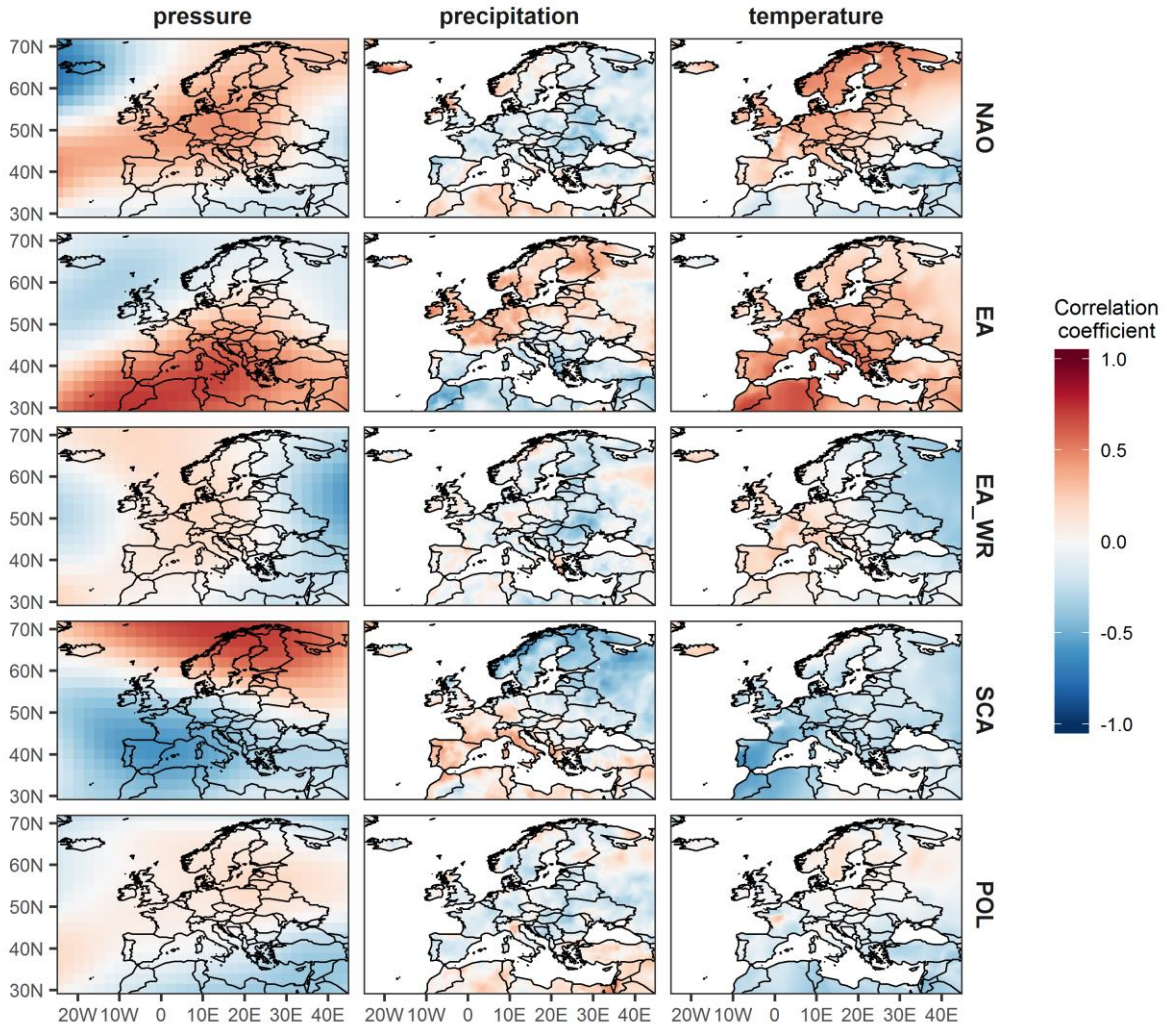


Figure S2: Same as Fig. 1 but for the spring season and the period 1951-2015.

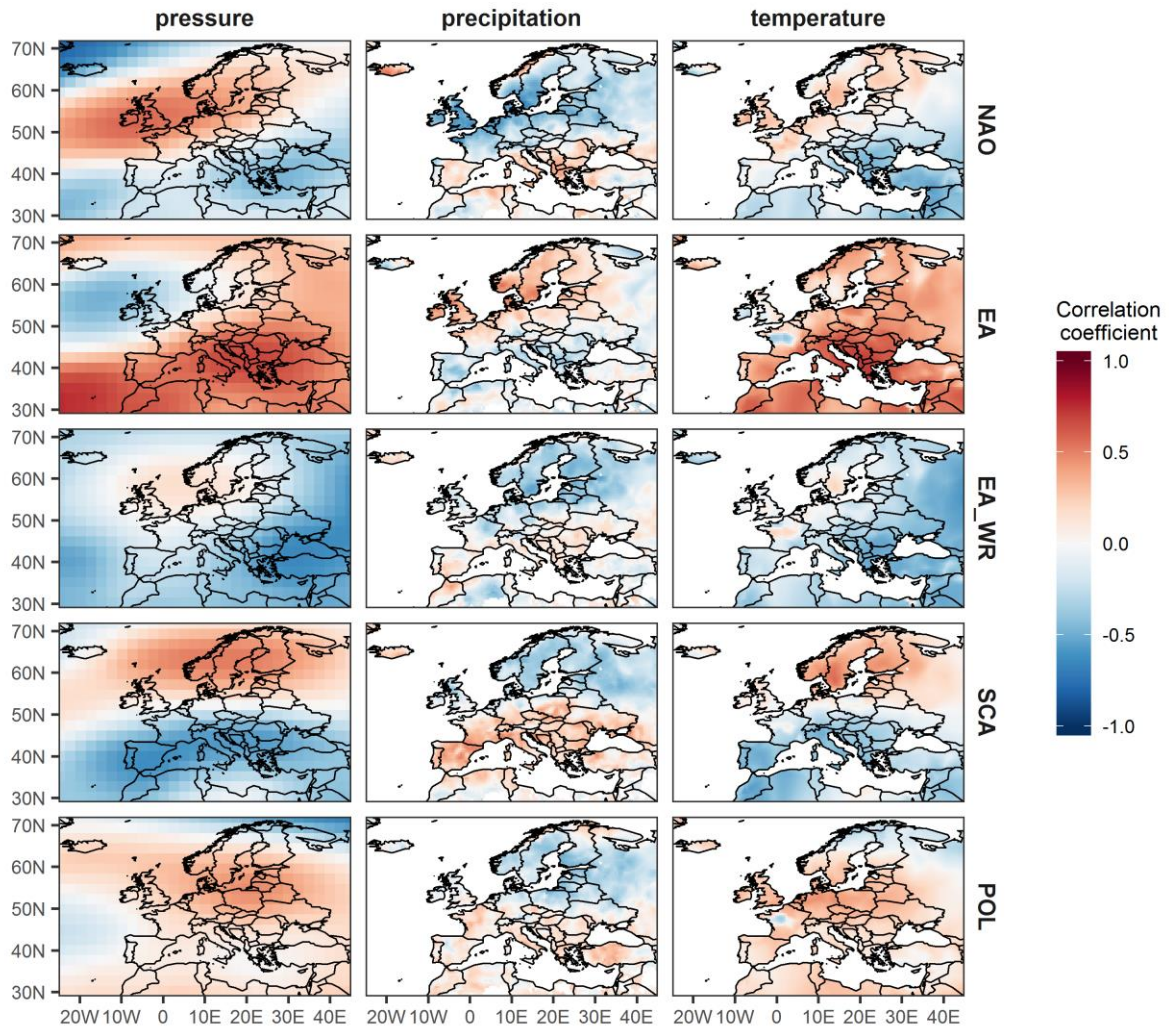


Figure S3: Same as Fig. 1 but for the summer season and the period 1951-2015.

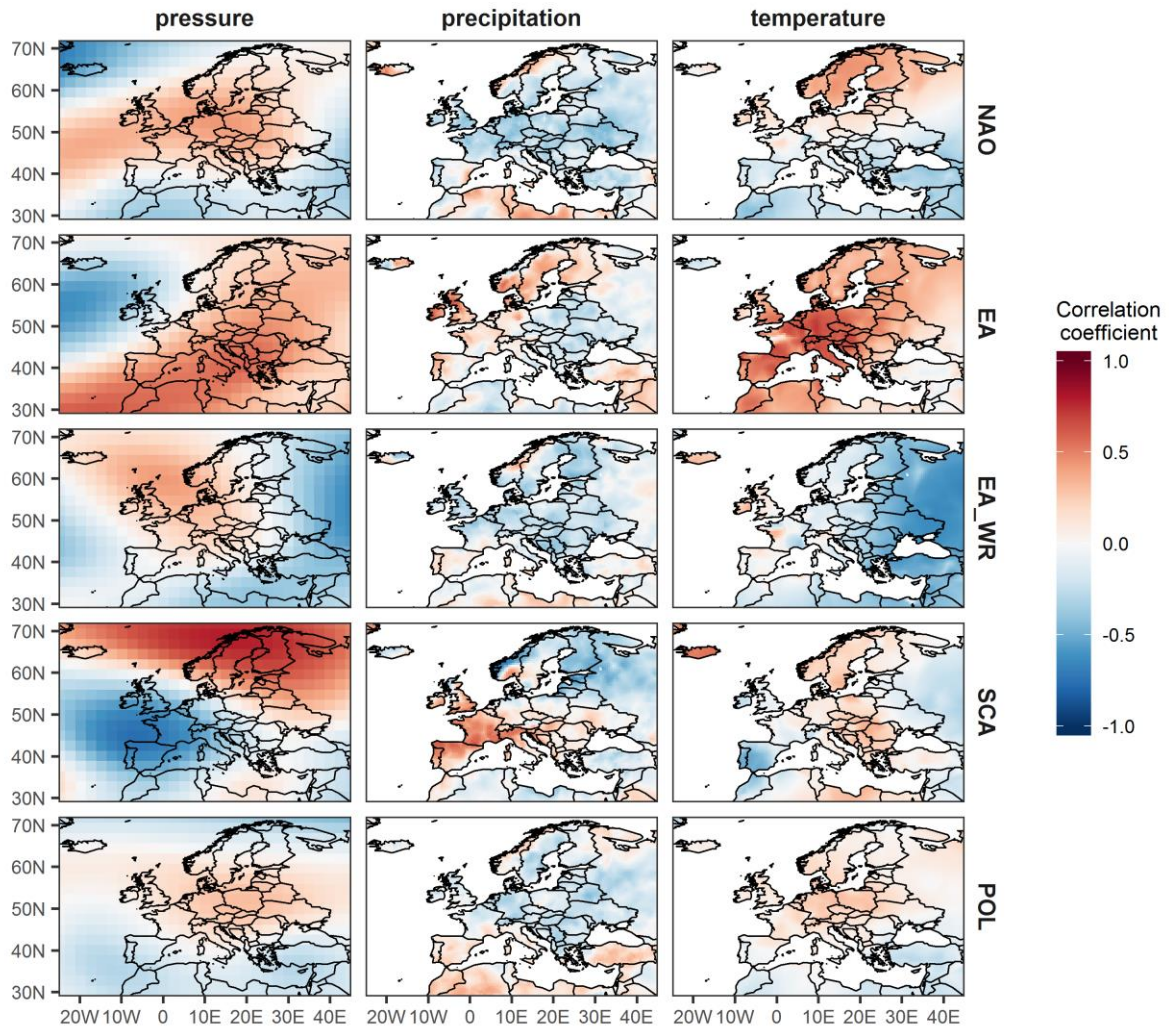


Figure S4: Same as Fig. 1 but for the autumn season and the period 1951-2015.

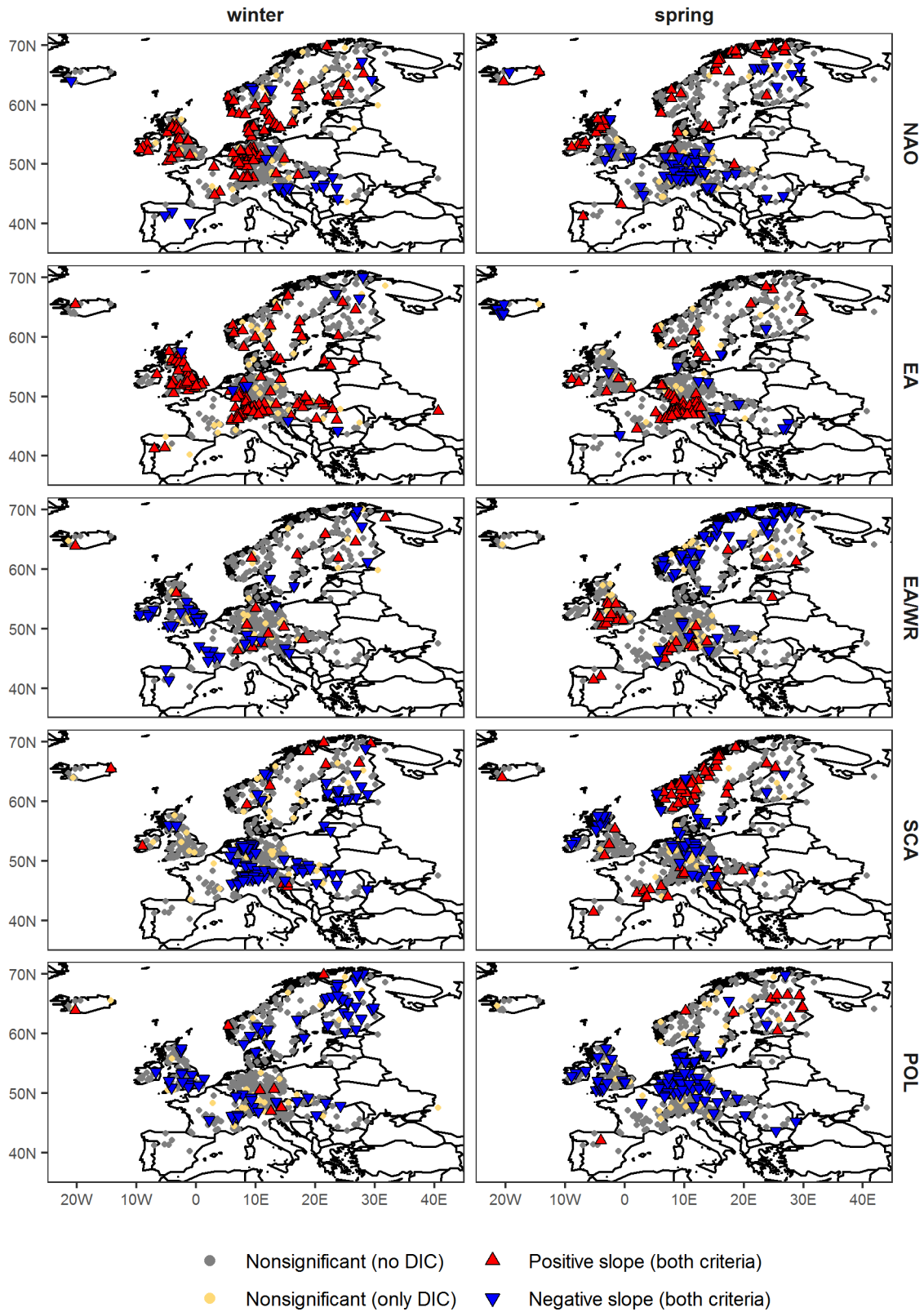


Figure S5: Same as Fig. 1 but for the monthly indices at the month of the season maximum streamflow.

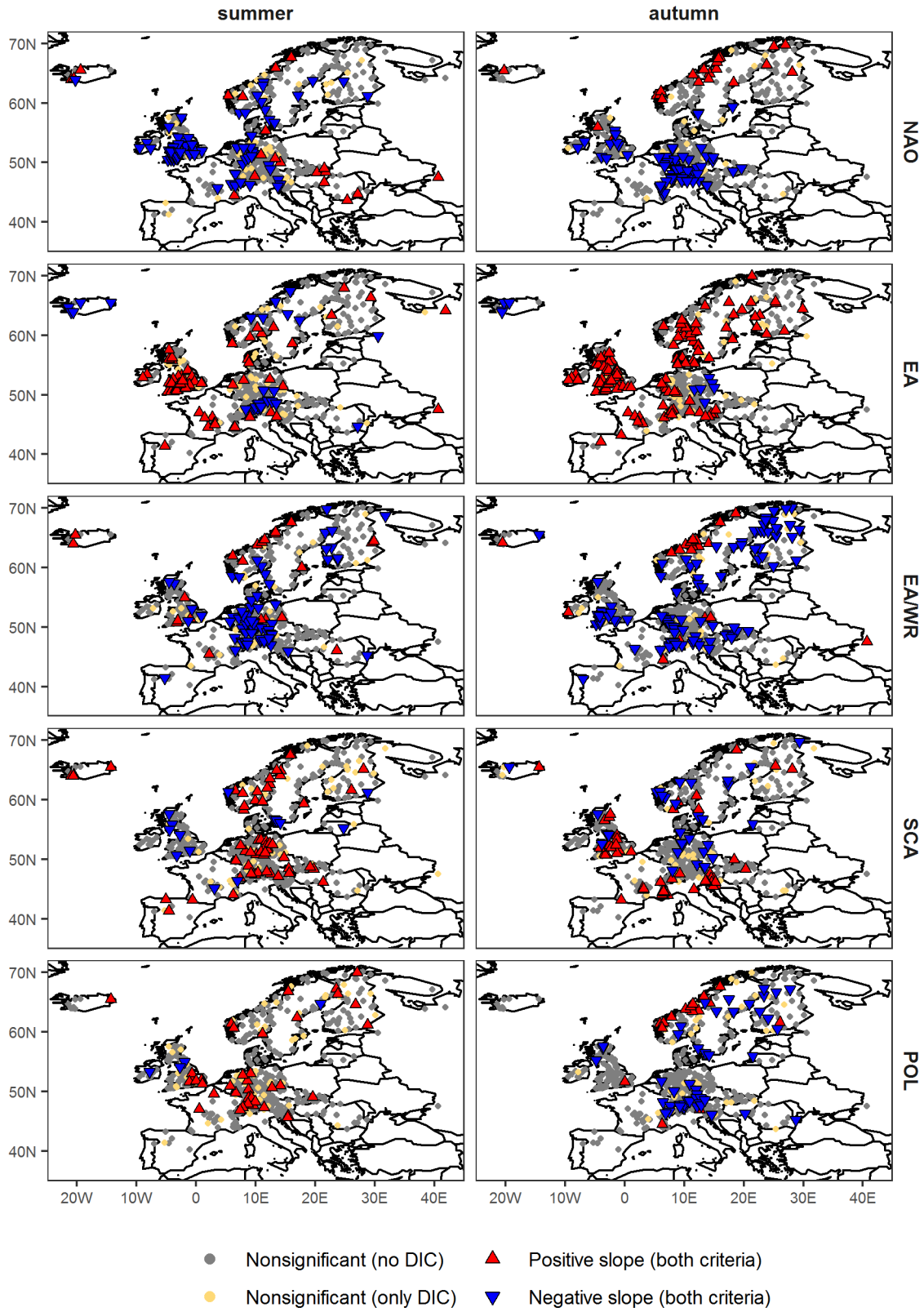


Figure S6: Same as Fig. S5 but for the summer and autumn season.

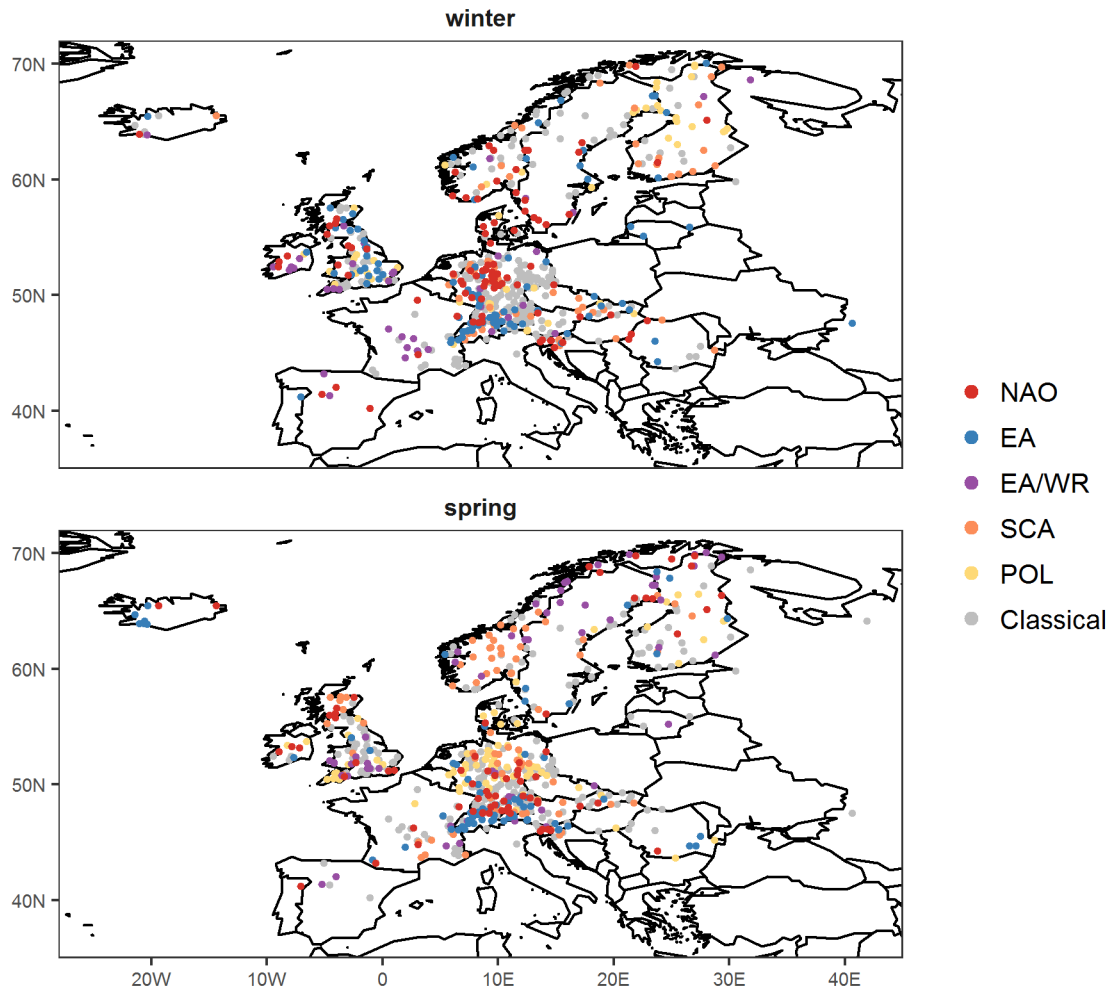


Figure S7: Same as Fig. 3 but for the monthly indices at the month of the season maximum streamflow.

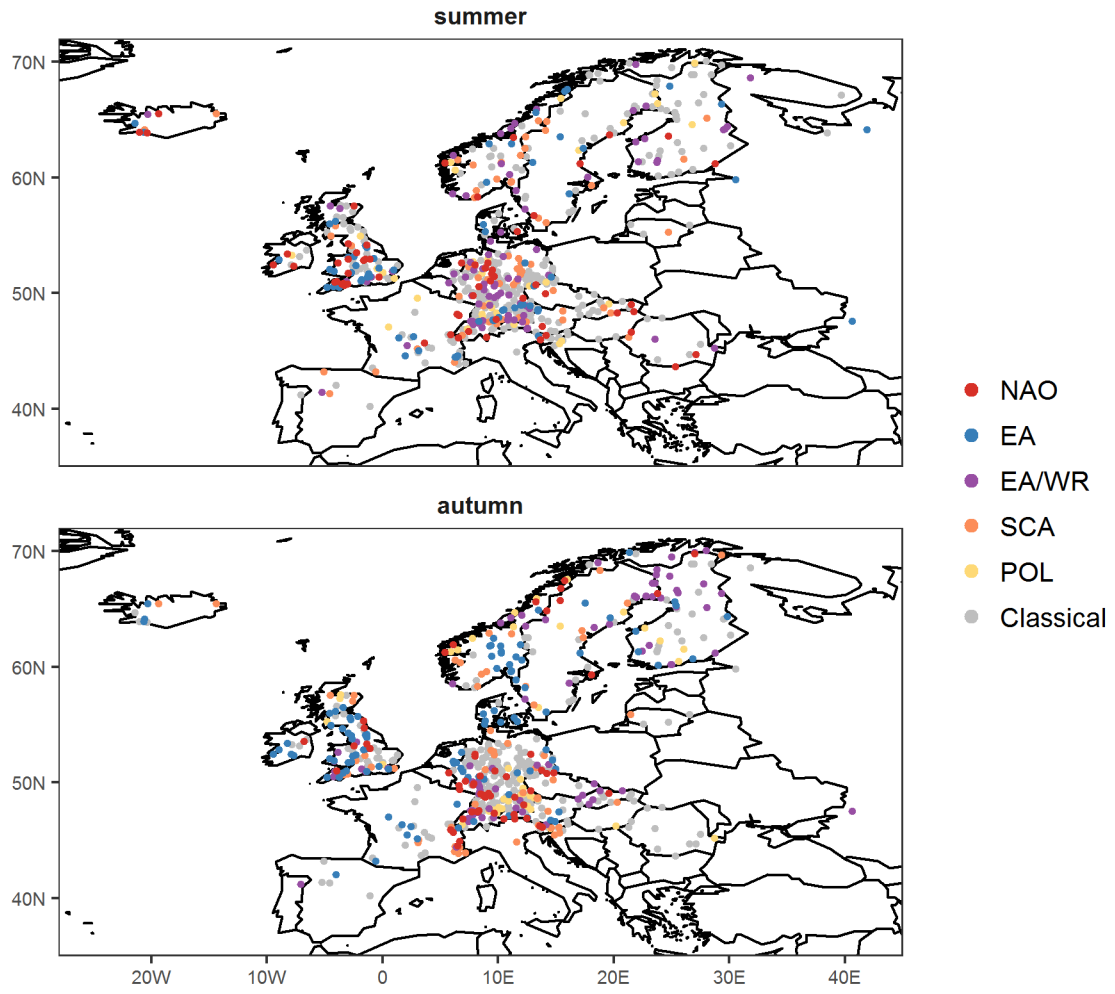


Figure S8: Same as Fig. 4 but for the monthly indices at the month of the season maximum streamflow.

References for Supplementary Material

Harris, I., Jones, P. D., Osborn, T. J. and Lister, D. H.: Updated high-resolution grids of monthly climatic observations - the CRU TS3.10 Dataset, *Int. J. Climatol.*, 34(3), 623–642, doi:10.1002/joc.3711, 2014.

Kalnay, E., Kanamitsu, M., Kistler, R., Collins, W., Deaven, D., Gandin, L., Iredell, M., Saha, S., White, G., Woollen, J., Zhu, Y., Leetmaa, A., Reynolds, R., Chelliah, M., Ebisuzaki, W., Higgins, W., Janowiak, J., Mo, K. C., Ropelewski, C., Wang, J., Jenne, R. and Joseph, D.: The NCEP/NCAR 40-Year Reanalysis Project, *Bull. Am. Meteorol. Soc.*, 77(3), 437–471, doi:10.1175/1520-0477(1996)077<0437:TNYRP>2.0.CO;2, 1996.

Steirou, E., Gerlitz, L., Apel, H. and Merz, B.: Links between large-scale circulation patterns and streamflow in Central Europe: A review, *J. Hydrol.*, 549, doi:10.1016/j.jhydrol.2017.04.003, 2017.