



Hydrological trade-offs due to different land covers and land uses in the Brazilian Cerrado

Jamil A.A. Anache¹, Edson Wendland¹, Livia M.P. Rosalem¹, Cristian Youlton¹, Paulo T.S. Oliveira²

¹Department of Hydraulics and Sanitation, São Carlos School of Engineering (EESC), University of São Paulo (USP), CxP. 359, São Carlos, SP, 13566-590, Brazil.

²Federal University of Mato Grosso do Sul, CxP. 549, Campo Grande, MS, 79070-900, Brazil.

Correspondence to: Jamil A.A. Anache (jamil.anache@usp.br)

Abstract. Farmland expansion in the Brazilian Cerrado, considered one of the largest agricultural frontiers in the world, has the potential to alter water fluxes on different spatial scales. Despite some large-scale studies being developed, there are still few investigations in experimental sites in this region. Here, we investigate the water balance components in experimental plots and the groundwater table fluctuation in different land covers: wooded Cerrado, sugarcane, pasture and bare soil. Furthermore, we identify possible water balance trade-offs due to the different land covers. This study was developed between 2012 and 2016 in the central region of the state of São Paulo, Southern Brazil. Hydrometeorological variables, groundwater table, surface runoff and other water balance components were monitored inside experimental plots containing different land covers; the datasets were analyzed using statistical parameters; and the water balance components uncertainties were computed. Replacing wooded Cerrado by pastureland and sugarcane shifts the overland flow (up to 42 mm yr⁻¹), and soil water storage (up to 504 mm yr⁻¹). This fact suggests significant changes in the water partitioning in a transient land cover and land use (LCLU) system, as the evapotranspiration is lower (up to 719 mm yr⁻¹) in agricultural land covers than in the undisturbed Cerrado. We recommend long-term observations to continue the evaluations initiated in this study, mainly because tropical environments have few basic studies at the hillslope scale and more assessments are needed for a better understanding of the real field conditions. Such efforts should be made to reduce uncertainties, validate the water balance hypothesis and catch the variability of hydrological processes.

Keywords: Water balance, hillslope hydrology, sugarcane, pasture, Brazilian Cerrado.

1 Introduction

Brazil has significant areas used for extensive grazing over pasture, farmland (mainly soybeans and sugarcane), and part of these areas were mostly occupied by the native Cerrado, which decreased significantly in the last century (Marris, 2005). It is estimated that 52.2% of the original Cerrado area is now occupied by pasturelands and croplands, 0.8% by other land uses and 47% remains undisturbed (Beuchle et al., 2015). The conversion from native Cerrado to pastureland, and afterwards, to sugarcane, can be considered a potential land cover and land use change (LCLUC) in southeastern Brazil



(Alkimim et al., 2015). However, few studies investigate the effects of the LCLUC dynamics (Bonan, 2008;Loarie et al., 2011;Grecchi et al., 2014).

In the State of São Paulo, the minimum area required by the Brazilian forest code to maintain native forests in the Cerrado biome (20% of the total area of an estate) is not reached in much of the state (Soares-Filho et al., 2014). These areas were primary resources for expansion of the agricultural frontier in the tropics (Gibbs et al., 2010;Lapola et al., 2013), and these changes may cause significant disturbances in the hydrological processes (Loarie et al., 2011;Oliveira et al., 2014;Oliveira et al., 2015;Nobrega et al., 2017). These processes in tropical and subtropical zones are different from other regions across the world due to the increased solar energy availability and rainfall, calling for the need of basic field studies, long-term data acquisition and availability, and the development and application of mathematical models (Wohl et al., 2012;Burt and McDonnell, 2015).

Native forests help to maintain the water cycle (Krishnaswamy et al., 2013;Ghimire et al., 2014). The evapotranspiration appears as a key component in the aquifer recharge control in the Guarani Aquifer System (GAS) outcrop zone (Wendland et al., 2007;Lucas and Wendland, 2015). Thus, water partitioning in these areas should be well understood in order to have the responses from different land covers and land uses (LCLU), allowing the evaluation of possible water balance trade-offs due to the LCLUC (Krishnaswamy et al., 2013;Ghimire et al., 2014;Frank et al., 2014) caused by environmental and economic needs (Barretto et al., 2013).

In Brazil, many large-scale studies on water balance were developed in some hydrographic regions in the country (Paiva et al., 2013;da Paz et al., 2014;Oliveira et al., 2014;Melo et al., 2016). Nevertheless, experimental scale studies are still rare due to the local heterogeneities and uncertainties from hydrological measurements and estimates (Beven, 2006;Graham et al., 2010). Basic field-hydrology studies are important to improve the agricultural production efficiency while promoting sustainable development. Therefore, these studies are important to promote new solutions and techniques to maintain the water balance in spite of the rapid LCLUC (Dotterweich, 2013;Nobrega et al., 2017). Research of this kind can be done using experimental plots, which are delimited hillslopes (control volume) where the overland flow is directed to one outlet (Sadeghi et al., 2013;Oliveira et al., 2015;Mwango et al., 2016;Oliveira et al., 2016;Strohmeier et al., 2016;Youlton et al., 2016b;Anache et al., 2017;Zhao et al., 2017;Anache et al., 2018).

The objective of this study is to evaluate the water fluxes in different LCLU: wooded Cerrado (also known as Cerrado *sensu stricto*), sugarcane, pasture and bare soil. In addition, we identify possible water balance trade-offs due to the different LCLU, compute the uncertainties for each water balance component and propagate the error separately for each LCLU.

2 Material and methods

2.1. Study sites and regional setting

The study sites are located in the Arruda Botelho Institute (IAB) in Itirapina, SP, Brazil (latitude 22° 11' 5" S, longitude 47° 51' 11" W, elevation 790 m a.m.s.l.) (Fig. 1). The area is inside two major hydrological hotspots in the country: the



Guarani Aquifer System (GAS) (Wendland et al., 2007;Oliveira et al., 2017) outcrop zone and the Cerrado Biome. Site 1 is located under agricultural land covers (pasture, sugarcane and bare soil); while site 2 is located under the wooded Cerrado. The climate in the region is humid subtropical (Cwa, Köppen), with a hot and wet summer and a dry winter (Alvares et al., 2014). The average annual rainfall and temperature are 1486 mm yr⁻¹ and 21.5 °C, respectively (Cabrera et al., 2016).
5 Additionally, the soil is sandy and it is classified as an Entisol (Oliveira et al., 2016).

Insert Fig. 1

2.2 Experimental setting and instrumentation

The experiment began in October, 2011 (Oliveira et al., 2015;Oliveira et al., 2016;Youlton et al., 2016b;Youlton et al., 2016a) and it is still in operation. This study considered the data collected during five years (2012-2016). It contains manual
10 and automatic instruments, as well as permanent structures, all assembled in the two sites (Fig. 2). Two monitoring wells, meteorological stations (tripod and tower), and twelve steel-made bounded plots are the permanent structure. The instruments are described according to their positioning and function (Table 1).

Insert Fig. 2

Insert Table 1

15 The plots were designed to adequately represent the process heterogeneities (Sadeghi et al., 2013): 3 replicates for each LCLU, 5 m width, 20 m length, and 9% slope gradient. The plots located at site 1 contain three different LCLU: (i) Pasture (*Brachiaria decumbens*) established 20 years ago, used for grazing and plant heights varying between 5 and 30 cm. The animals' (cattle) rotation period is 30 days (10 animals per hectare) and each one weighs approximately 420 kg. The animals remain in the area for 5 days in each rotation; (ii) contoured planted sugarcane (*Saccharum officinarum*) on beds spaced 1.5
20 m apart. The plantation was established in October 2011, the canopy reaches at least 2 m high, and it was harvested every November; (iii) bare soil plots were maintained without plant cover by manual tillage and glyphosate application. The plots located at site 2 have the same experimental design as site 1 and contain (iv) wooded Cerrado as vegetation. The Cerrado comprises tropical vegetation in which the trees do not form a continuous canopy, however, it presents woody components of six to seven meters high (Alberton et al., 2014). The Cerrado vegetation is fire-resistant, it is considered a biodiversity
25 hotspot and supports long dry periods (Brannstrom et al., 2008).

2.3 Water balance components

The water balance components (Eq. 1) were monitored over 5 years (2012-2016) in a control volume defined by the bounded plots placed within the experimental sites. We considered different techniques to monitor these components according to the LCLU conditions. The soil water storage was calculated as the water balance residual (dS/dt) and includes
30 deep percolation and subsurface flow.



$$\frac{dS}{dt} = P - Q - ET \quad (1)$$

Where: P is the rainfall (mm); Q is the surface runoff (mm); ET is the evapotranspiration (mm); and dS/dt is the soil water storage, subsurface flow and deep percolation (mm) during time t (day, month or year).

5 The rainfall was monitored using a tipping bucket (Model TB4-L, Hydrological Services) with a gauging resolution of 0.254 mm (Table 1). The rainfall data was registered every 10 minutes, in order to obtain rainfall intensity and duration.

Rectangular experimental plots directed the overland flow to tanks at the end of the slope, where the volume was measured at times after rainfall events. We also calculated the runoff coefficient for each LCLU using a genetic algorithm to minimize the squared errors between observed and estimated runoff values using the rational method (Wang, 1991).

10 The reference evapotranspiration (ET_o) was calculated on a daily-basis using the Penman-Monteith equation parameterized by FAO 56 methodology (Allen et al., 1998). Afterwards, the evapotranspiration (ET) values were obtained for pasture and sugarcane land uses using Eq. 2.

$$ET = K_s \cdot ET_c = K_s \cdot (K_c \cdot ET_o) \quad (2)$$

15

Where: ET is the real evapotranspiration (mm d^{-1}); K_s is the water stress coefficient (dimensionless); ET_c is the crop evapotranspiration (mm d^{-1}); K_c is the crop coefficient (dimensionless); and ET_o is the reference evapotranspiration (mm d^{-1}) (Eq. 3):

$$20 \quad ET_o = \frac{0.408 \cdot (R_n - G) + \frac{\gamma \cdot 900}{(T_{avg} + 273)} \cdot U_2 (e_s - e_a)}{s + \gamma \cdot (1 + 0.34)U_2} \quad (3)$$

Where: s is the slope vapor pressure ($\text{kPa } ^\circ\text{C}^{-1}$); R_n is the net radiation ($\text{MJ m}^{-2} \text{d}^{-1}$); G is the soil heat flux ($\text{MJ m}^{-2} \text{d}^{-1}$); γ is the psychrometric constant ($\text{kPa } ^\circ\text{C}^{-1}$); U_2 is the wind velocity at 2 m height (m s^{-1}); 900 is the approximate value of all the equations' constants ($\text{kJ}^{-1} \text{kg K d}^{-2}$); T_{avg} is the average daily temperature ($^\circ\text{C}$); e_s is the saturated vapor pressure (kPa); and
 25 e_a is the actual vapor pressure (kPa).

The water stress coefficient (Eq. 4) was calculated for each day i throughout the monitoring period. It uses the soil moisture monitored by the Frequency Domain Ratio (FDR) probes as the main input. When there is no or limited water available for the plants' transpiration, $K_s < 1$. Whenever the soil has water readily available for plant consumption, $K_s = 1$.

30



$$K_{S_i} = \frac{TAW - Dr_i}{(1 - p) \cdot TAW} \quad (4)$$

Where: TAW is the total available water in the soil root zone (mm) (Eq. 5); Dr_i is the water depletion in the soil root zone (mm) (Eq. 6) on day i ; and p is the TAW fraction that the crop roots can extract from the soil without suffering from water stress (dimensionless).

$$TAW = 1000 \cdot (\theta_{fc} - \theta_{wp}) \cdot Z_f \quad (5)$$

Where: θ_{fc} is the soil field capacity (dimensionless); θ_{wp} is the soil wilting point; and Z_f is the root zone depth.

$$Dr_i = 1000 \cdot (\theta_{fc} - \theta) \cdot Z_f \quad (6)$$

Where: θ_{fc} is the soil field capacity (dimensionless); θ_i is the average soil moisture along the root zone (measured by FDR probes); and Z_f is the root zone depth.

All the necessary data and coefficients to calculate the water stress coefficient (K_s) and the adjusted evapotranspiration rate (ET) are given in Table 2.

Insert Table 2

The wooded Cerrado evapotranspiration (ET) rates were estimated using the Priestley and Taylor (1972) method (Eq. 7). This method was chosen due to its simplicity to calculate the energy balance for the study area and the fact that is suitable for the instrumentation available. The Priestley and Taylor coefficients (α) used to calculate the evapotranspiration were based on Cabral et al. (2015) measurements for a similar wooded Cerrado fragment located approximately 60 km away from the study site (Table 3).

$$ET = \alpha \cdot \left(\frac{1}{\lambda} \right) \cdot \left[\frac{s \cdot (R_n - G)}{s + \gamma} \right] \quad (7)$$

Where: α is the Priestly and Taylor coefficient (dimensionless), λ is the latent heat of vaporization ($\text{MJ m}^{-2} \text{d}^{-1}$); s is the slope vapor pressure ($\text{kPa } ^\circ\text{C}^{-1}$); R_n is the net radiation ($\text{MJ m}^{-2} \text{d}^{-1}$); G is the soil heat flux ($\text{MJ m}^{-2} \text{d}^{-1}$); and γ is the psychrometric constant ($\text{kPa } ^\circ\text{C}^{-1}$).

Insert Table 3



The bare soil condition has no vegetation and, consequently, there is no transpiration. Thus, we applied the method developed by Ritchie (1972). This method has two phases: firstly, the soil evaporation is equal to the potential soil evaporation estimated using the Priestley and Taylor (1972) method adapted to free surfaces. During this phase, there is no water restriction (precipitation higher than evaporation) and the evaporation is governed by the available energy; secondly, the accumulated soil evaporation exceeds the precipitation and the soil evaporation is currently given as a function of the dry days that followed the last wet day. The evaporation cycle is interrupted and returns to the first phase whenever the precipitation exceeds the accumulated evaporation during the second phase.

2.4 Groundwater table fluctuation

The water table was registered twice a day (at 6 am and 6 pm) using pressure transducers (Diver, Schlumberger) placed inside two monitoring wells (well 1 located in the pasture area; and well 2 located inside the wooded Cerrado area). In the study site, both wells presented similar hydraulic conductivity according to the slug test (Bouwer and Rice, 1976) previously performed.

2.5 Data analysis

The normality assumption was tested using the Shapiro-Wilk test using a 95% confidence interval for rainfall, evapotranspiration, surface runoff and soil water storage datasets. The one-way analysis of variance (ANOVA) was applied to test the null and alternative hypothesis, that is, equality of surface runoff, evapotranspiration and soil water storage distribution functions between the four treatments (LCLU) versus the difference in distribution functions between at least two treatments. Additionally, the multiple comparisons between treatments were performed using the Tukey test (Montgomery, 2008).

2.6 Data uncertainties

Data uncertainties are flaws found in the available information used to represent the reality and basically depend on the knowledge of the observed data (Refsgaard et al., 2007). The water balance uncertainty can be given by the standard error propagated from its components. Thus, the soil water storage (dS/dt) standard error was propagated (Eq. 8).

$$\sigma_{dS/dt} = \left[\sigma_P^2 + \sigma_Q^2 + \sigma_{ET}^2 \right]^{0.5} \quad (8)$$

Where: σ is the standard error (mm yr^{-1}); dS/dt is the soil water storage; P is rainfall; Q is surface runoff; ET is evapotranspiration.

The absolute error of the rainfall estimations was calculated using Eq. 9 based on the instrument accuracy informed by the manufacturer. Considering the used tipping bucket rain gauge (TB4), the error may reach up to $\pm 3\%$.



$$\sigma_p = \bar{P} \cdot \varepsilon_p \quad (9)$$

Where: σ_p is the standard error for rainfall (mm yr^{-1}); \bar{P} is the annual average rainfall (mm yr^{-1}); ε_p is the relative error from the tipping bucket rain gauge informed by the manufacturer.

The surface runoff may vary due to the heterogeneities found between plots' replicates (Wendt et al., 1986; Nearing et al., 1999; Gómez et al., 2001; Sadeghi et al., 2013). Thus, the standard error for surface runoff is given by the standard deviation of the replicated plots (Eq. 10).

$$\sigma_Q = \left[\frac{1}{N-1} \sum_{i=1}^N (Q_i - \bar{Q})^2 \right]^{0.5} \quad (10)$$

Where: σ_Q is the standard error for surface runoff (mm yr^{-1}); N is the number of observations; Q_i is the surface runoff observed in plot i (mm yr^{-1}); \bar{Q} is the average surface runoff between plots (mm yr^{-1}).

As previously mentioned, the evapotranspiration was estimated using the FAO 56 methodology (Allen et al., 1998) for pasture and sugarcane, and Priestley and Taylor (1972) for wooded Cerrado and bare soil. However, this study does not have evapotranspiration observations to evaluate how well this variable was estimated in the study sites. Consequently, the uncertainties for evapotranspiration estimates were calculated by combining all input variable uncertainties (Eq. 11) which were measured in the field for the FAO 56 method (temperature, relative humidity, solar radiation, barometric pressure and soil moisture) and the Priestley and Taylor method (temperature, net radiation and soil heat flux).

$$\sigma_{ET} = \left[\sum_{i=1}^N \left(\frac{\partial \text{var } i}{\partial ET} \cdot u_{\text{vari}} \right)^2 \right]^{0.5} \quad (11)$$

Where: σ_{ET} is the standard error for evapotranspiration (mm d^{-1}); $\text{var } i$ is the measured input variable i ; u is the uncertainty of variable i .



3 Results and discussion

3.1 Water balance

The water balance components show different patterns according to the LCLU (Table 4 and Fig. 3). We verified this using a multiple comparison test (Tukey) in which the soil water storage variation (dS/dt) in the wooded Cerrado was statistically different from the other LCLU (pasture, sugarcane and bare soil), which presented similar means. The annual evapotranspiration in the wooded Cerrado was the highest among the analyzed LCLU. The pasture presented similar annual evapotranspiration values to those found in the sugarcane and bare soil. However, sugarcane and bare soil had different means for evapotranspiration among them. Concerning the surface runoff, bare soil and pasture presented significant differences from the other LCLU. Hence, the results agree with previous studies, where the land use presented regulatory functions in the water balance (Krishnaswamy et al., 2013; Nobrega et al., 2017). Daily data of the water balance components from all analyzed LCLU are available as supplement (S1).

Insert Table 4

Insert Fig. 3

The average annual rainfall in the study site was 1388 mm yr^{-1} between 2012 and 2016 (Fig. 3A). It was approximately 100 mm yr^{-1} lower than the average observed during the last 37 years (Cabrera et al., 2016) due to a drought in 2014 (Getirana, 2015; Melo et al., 2016). Additionally, precipitation (P) and soil water storage (dS/dt) were the water balance components that had the largest variations throughout the monitoring period. We observed that sugarcane and pasture were similar considering the water balance components' patterns and orders of magnitude. However, wooded Cerrado and bare soil presented different characteristics from the other LCLU.

The evapotranspiration estimates (Fig. 3B) were different between the considered land covers (Table 4). We observed that the wooded Cerrado evapotranspiration presented the highest rates among all analyzed LCLU and also the smallest variability throughout the year. However, there is no agreement between the measurements and estimates performed in wooded Cerrado areas and the present study (Table 5). Thus, this study shows evidence of the need for reference values of evapotranspiration in undisturbed areas for a better understanding of their role in the water cycle. In addition, the rainfall is different for the studies compared in Table 5.

Insert Table 5

The sugarcane evapotranspiration rates were higher than pasture due to the higher crop water demand during the initial phase of its annual cycle, and both evapotranspiration estimates agree with measurements performed by previous studies (Sakai et al., 2004; Cabral et al., 2012; Nobrega et al., 2017). Both sugarcane and pastureland ceased the evapotranspiration during the dry season due to the decoupling condition, when the radiation is the only contributor to the evapotranspiration process (water stress condition) (Pereira, 2004). This happens due to the lack of water readily available for the plants along the root zone. This condition does not repeat in the wooded Cerrado as its root system is deeper (Canadell et al., 1996), and the plants may reach water in depths where sugarcane and pasture cannot do this.



The surface runoff (Fig. 3C) presented the lowest values among all water balance components and it was the most influenced variable by the land use. There was no surface runoff generation during August due to the non-occurrence of rainfall events. The bare soil was the most sensitive to the runoff generation throughout the dry season, when the occurrence of rainfall events was lower. The months of January, February and March registered the highest averages for rainfall due to the wet season. The runoff coefficients for wooded Cerrado, sugarcane, pasture, and bare soil were 0.001, 0.007, 0.029 and 0.063, respectively. These values are in compliance with a previous study performed by Oliveira et al. (2016) for similar conditions. Although a higher runoff coefficient for sugarcane in comparison with the pasture was expected, sugarcane presented runoff values significantly lower than pasture as the soil tillage increased water infiltration and, consequently, reduced the surface runoff. Additionally, there is an apparent inverse linear relationship between culture size and runoff coefficient.

The surface runoff in sugarcane plantations is not well understood by the scientific community despite the economic importance to the country. The monitored values agreed with previous studies in the same study area (Oliveira et al., 2016; Youlton et al., 2016b). The highest runoff rates were registered after planting and harvesting events, when the soil is more exposed to the rainfall.

In addition, the surface runoff in the pasture presented significantly higher rates in comparison with sugarcane and wooded Cerrado, due to the top soil compaction caused by grazing. The order of magnitude of the measured runoff in the pasture plots are similar to those previously published (Saraiva et al., 1981; Silva et al., 2011; Dedecek, 1989). The high runoff variability observed in this land use was due to the variable presence of animals, which were managed in an extensive approach and, consequently, heterogeneities may happen in soil compaction and vegetation conditions (Nacinovic et al., 2014).

The wooded Cerrado presented the lowest runoff rates among all LCLU due to the higher soil protection, which avoided the overland flow generation. The order of magnitude of the surface runoff in the wooded Cerrado was similar to those found in shrublands and forested areas (Dedecek, 1989; Silva et al., 2011; Oliveira, 2012; Nacinovic et al., 2014; Oliveira et al., 2015). Additionally, the organic matter layer above the soil (wooded Cerrado's forest floor litter) reduces the overland flow. In some cases, the litter removal may increase the surface runoff up to 50% (Gomyo and Kuraji, 2017).

The water balance residuals, which represent the soil water storage (Fig. 3D) showed the water surplus (positive values) and deficits (negative values), showing evidence of the consumption of soil water storage. Only the wooded Cerrado condition had negative values during the dry season, as the other land uses (sugarcane and pasture) had no conditions to remove water from deeper regions due to the shallow root system and their physiological characteristics. Thus, wooded Cerrado vegetation adapted to dry weather conditions, due to the plant water demand for evapotranspiration, which reduced gradually as long as the soil water storage accumulated during the wet season was consumed (Oishi et al., 2010; Christoffersen et al., 2014; Cabral et al., 2015; Oliveira et al., 2015).



3.2 Groundwater table fluctuation

The groundwater table fluctuation inside the wooded Cerrado area was lower compared to the pasture area considering the observations of the monitoring wells (Fig. 3E and Fig. 4). This variation in the wooded Cerrado was less than 1 meter per year due to the water deficit periods during the dry season. The water scarcity periods that occurred in the wooded Cerrado area were due to the higher vegetation demand, as it is denser than the pasture and it has a deep root system. It is important to remember that both monitoring wells (pasture and wooded Cerrado) have the same non-saturated zone thickness (40 m) and similar hydraulic conductivities (approximately 10^{-3} m d^{-1}). The evapotranspiration and root zone depth controlled the soil water storage and, consequently, the water percolation throughout the non-saturated zone and aquifer recharge (Finch, 1998; Gouvêa and Wendland, 2011; Krishnaswamy et al., 2013; Lucas and Wendland, 2015; Domínguez et al., 2016; Manzione et al., 2017). Furthermore, the aquifer recharge decreases as the vegetation density increases in undisturbed Cerrado areas (Oliveira et al., 2017), following the principle that the increased canopy cover of the wooded Cerrado found in the study area may occur due to the deep groundwater level (Leite et al., 2018). Groundwater depth monthly datasets of the monitoring wells (wooded Cerrado and pasture) are available as supplement (S2).

Insert Fig. 4

3.3 Data uncertainties

The water balance components (P, Q, ET, and dS/dt) uncertainties were calculated for each land cover (Table 6) and the relative errors agreed with previous water balance studies in different scales (Graham et al., 2010; Oliveira et al., 2014). Concerning rainfall (P), which is the only water input, the same measured values were used for all LCLU. The surface runoff presented higher relative uncertainties in the pasture plots, followed by bare soil, wooded Cerrado, and later by sugarcane. Evapotranspiration (ET) can be a potential source of uncertainties in a water balance (da Paz et al., 2014), it was estimated adopting methods that use ground measured variables (e.g. temperature, relative humidity, solar radiation and soil moisture) and the relative uncertainties may reach up to 41%. The pasture presented the higher relative error for ET due to the reduced average evapotranspiration compared to the other LCLU (sugarcane and wooded Cerrado). Nevertheless, the water balance hypothesis mainly relies on minimizing uncertainties in the evapotranspiration estimates or measurements (Beven, 2006). The surface runoff (Q) did not contribute significantly in the water balance error propagation due to its reduced order of magnitude compared to the other water balance components (ET and P). However, runoff measurements produced relative errors that reached up to 51% (pasture).

The soil water storage (dS/dt) presented the accumulated uncertainties from rainfall, surface runoff and evapotranspiration (Fig. 5). All LCLU presented a relative error for dS/dt lower than 50%. The wooded Cerrado accumulated an error of 40% for the water balance mainly due to its highest component: evapotranspiration. This suggests that efforts to minimize the uncertainties in measuring or estimating the evapotranspiration in the wooded Cerrado may significantly



improve its water balance. Additionally, other land uses (pasture and sugarcane) also presented a high dS/dt uncertainty due to the standard error accumulated from the evapotranspiration estimates.

3.4 Water balance trade-offs due to the LCLUC

5 The Brazilian Cerrado is very important economically, as it is responsible for most of the agricultural production that supplies both external and internal markets (Klink and Machado, 2005). A better understanding of the trade-offs between the ecosystem and economical needs that govern the land cover and land use dynamics in the Cerrado biome is necessary (Marris, 2005). The undisturbed Cerrado area was reduced to 50% of its original extension due to intense land use (Lapola et al., 2013; Alkimim et al., 2015). The undisturbed vegetation helps to maintain the water cycle, with low surface runoff and high evapotranspiration rates.

10 This study shows evidence that the suppression of the wooded Cerrado by agricultural land uses, such as sugarcane and pasture, increased the surface runoff and decreased evapotranspiration, even considering measurements and estimation method uncertainties. Consequently, the soil water storage (dS/dt), which was defined by the water balance residual, increased significantly, suggesting that the infiltration also rose. However, the soil water was not available to the plants' roots in the agricultural land uses during the dry season (April – September), likewise the wooded Cerrado. Thus, the percolation and aquifer recharge increased in the agricultural area (site 1) and this fact was explained by the water table fluctuations observed in the monitoring well located in the pasture that were not observed in the monitoring well located inside the wooded Cerrado area (site 2).

15 Previous studies show that native forests help to maintain aquifer recharge by the high infiltration rates, similarly to observations performed in tropical forests in south India and in mountainous areas in the Himalayas (Krishnaswamy et al., 2013; Ghimire et al., 2014). Nevertheless, evapotranspiration appears as a key component in the aquifer recharge control in the study site condition, which is located in a Guarani Aquifer System outcrop zone (Lucas et al., 2015; Lucas and Wendland, 2015). Therefore, the aquifer recharge rates may be reduced in undisturbed forested areas due to the atmospheric and vegetation water demands. This fact suggests that the ecosystem services of native forests, such as the wooded Cerrado, is not the aquifer recharge maintenance, but rather the constant return of water to the atmosphere throughout the year.

25 Significant and non-significant changes in the water partitioning may be observed in the case of substituting the wooded Cerrado by bare soil, pasture or sugarcane (Fig. 6). We highlight the ET reduction (more than 400 mm yr^{-1}). The worst case scenario (bare soil condition) is generally the transition between the LCLU (fallow condition), increasing significantly surface runoff rates and impacting soil and water conservation (Pimentel et al., 1995).

Insert Fig. 6

30 Sugarcane and pasture presented trade-offs that were equal, as non-significant changes occurred among each other's water balance components. However, the sugarcane plantation presented a higher potential to maintain the evapotranspiration rates closer to the undisturbed Cerrado conditions than the pasture, agreeing with previous estimates (Loarie et al., 2011).



Insert Table 6

Insert Fig. 5

4 Conclusions

This paper presented an experimental approach at the hillslope scale concerning the possible water partitioning trade-offs due to the LCLUC dynamics. We monitored the water balance components over 5-years in different land covers: wooded Cerrado, pasture, sugarcane and bare soil. These land covers are subjected to the current LCLUC dynamics in southeastern Brazil. The water partitioning observations in different LCLU confirm that changes in the land surface conditions may significantly change the soil water storage (up to 584 mm yr⁻¹), which is the water balance residual. The decrease in evapotranspiration and increase in surface runoff are common patterns when the wooded Cerrado is replaced by agricultural land uses.

Higher water consumption by dense and native vegetation, such as the wooded Cerrado, happens due to the higher infiltration rates, increasing the plant water availability. In general, the root systems are deeper than pasturelands and sugarcane plantations, and have the capacity of reaching water for transpiration deeper in the soil profile. This maintains evapotranspiration throughout the year, even during the dry season. Hence, less water becomes available for the aquifer recharge in areas where the canopy layer is higher and denser. However, reference values for evapotranspiration in undisturbed land covers, such as the wooded Cerrado, are still needed in order to reduce uncertainties from the current approximations and validate the water balance hypothesis. Particularly the wooded Cerrado should be investigated concerning its potential to maintain the aquifer recharge and groundwater availability.

Author contribution

JAAA, PTSO and CY designed the experiments and JAAA, LMPR, PTSO and CY carried them out. JAAA, LMPR and EW analysed the experiments' outcomes and discussed the results. JAAA and EW prepared the manuscript with contributions from all co-authors.

Competing interests

The authors declare that they have no conflict of interest.

25 Acknowledgements

This study was supported by grants from the Ministry of Science, Technology, Innovation and Communication – MCTIC and the National Council for Scientific and Technological Development – CNPq (grant numbers 201109/2015-8,



142393/2015-0, 150057/2018-0, 441289/2017-7 and 306830/2017-5) and the São Paulo Research Foundation — FAPESP (grant number 2015/03806-1). The authors acknowledge the Graduate Program in Hydraulics and Sanitary Engineering – PPGSHS (USP-EESC) for the scientific support, and the Arruda Botelho Institute – IAB for allowing the development of this study inside its private land.

5 References

- Alberton, B., Almeida, J., Helm, R., da S. Torres, R., Menzel, A., and Morellato, L. P. C.: Using phenological cameras to track the green up in a cerrado savanna and its on-the-ground validation, *Ecol Inform*, 19, 62-70, 10.1016/j.ecoinf.2013.12.011, 2014.
- Alkimim, A., Sparovek, G., and Clarke, K. C.: Converting Brazil's pastures to cropland: An alternative way to meet sugarcane demand and to spare forestlands, *Appl Geogr*, 62, 75-84, 10.1016/j.apgeog.2015.04.008, 2015.
- 10 Allen, R. G., Pereira, L. S., Raes, D., and Smith, M.: Crop evapotranspiration - Guidelines for computing crop water requirements - FAO Irrigation and drainage paper 56, FAO - Food and Agriculture Organization of the United Nations, Rome, 1998.
- Alvares, C. A., Stape, J. L., Sentelhas, P. C., Gonçalves, J. L. M., and Sparovek, G.: Koppen's climate classification map for Brazil, *Meteorol Z*, 22, 10.1127/0941-2948/2013/0507, 2014.
- 15 Anache, J. A. A., Wendland, E. C., Oliveira, P. T. S., Flanagan, D. C., and Nearing, M. A.: Runoff and soil erosion plot-scale studies under natural rainfall: A meta-analysis of the Brazilian experience, *Catena*, 152, 29-39, 10.1016/j.catena.2017.01.003, 2017.
- Anache, J. A. A., Flanagan, D. C., Srivastava, A., and Wendland, E. C.: Land use and climate change impacts on runoff and soil erosion at the hillslope scale in the Brazilian Cerrado, *Sci Total Environ*, 622-623, 140-151, 10.1016/j.scitotenv.2017.11.257, 2018.
- Barretto, A. G., Berndes, G., Sparovek, G., and Wirsenius, S.: Agricultural intensification in Brazil and its effects on land-use patterns: an analysis of the 1975-2006 period, *Glob Change Biol*, 19, 1804-1815, 10.1111/gcb.12174, 2013.
- 20 Beuchle, R., Grecchi, R. C., Shimabukuro, Y. E., Seliger, R., Eva, H. D., Sano, E., and Achard, F.: Land cover changes in the Brazilian Cerrado and Caatinga biomes from 1990 to 2010 based on a systematic remote sensing sampling approach, *Appl Geogr*, 58, 116-127, 10.1016/j.apgeog.2015.01.017, 2015.
- Beven, K.: On undermining the science?, *Hydrol Process*, 20, 3141-3146, 10.1002/hyp.6396, 2006.
- 25 Bonan, G. B.: Forests and climate change: forcings, feedbacks, and the climate benefits of forests, *Science*, 320, 1444-1449, 10.1126/science.1155121, 2008.
- Bouwer, H., and Rice, R. C.: A slug test for determining hydraulic conductivity of unconfined aquifers with completely or partially penetrating wells, *Water Resour Res*, 12, 423-428, 10.1029/WR012i003p00423, 1976.
- Brannstrom, C., Jepson, W., Filippi, A. M., Redo, D., Xu, Z., and Ganesh, S.: Land change in the Brazilian Savanna (Cerrado), 1986–2002: Comparative analysis and implications for land-use policy, *Land Use Policy*, 25, 579-595, 10.1016/j.landusepol.2007.11.008, 2008.
- 30 Burt, T. P., and McDonnell, J. J.: Whither field hydrology? The need for discovery science and outrageous hydrological hypotheses, *Water Resour Res*, 51, 5919-5928, 10.1002/2014WR016839, 2015.
- Cabral, O. M. R., Rocha, H. R., Gash, J. H., Ligo, M. A. V., Tatsch, J. D., Freitas, H. C., and Brasílio, E.: Water use in a sugarcane plantation, *GCB Bioenergy*, 4, 555-565, 10.1111/j.1757-1707.2011.01155.x, 2012.



- Cabral, O. M. R., da Rocha, H. R., Gash, J. H., Freitas, H. C., and Ligo, M. A. V.: Water and energy fluxes from a woodland savanna (cerrado) in southeast Brazil, *J Hydrol: Regional Studies*, 4, 22-40, 10.1016/j.ejrh.2015.04.010, 2015.
- Cabrera, M. C. M., Anache, J. A. A., Youlton, C., and Wendland, E.: Performance of evaporation estimation methods compared with standard 20 m² tank, *Rev Bras Eng Agr Amb*, 20, 874-879, 10.1590/1807-1929/agriambi.v20n10p874-879, 2016.
- 5 Canadell, J., Jackson, R. B., Ehleringer, J. B., Mooney, H. A., Sala, O. E., and Schulze, E.-D.: Maximum rooting depth of vegetation types at the global scale, *Oecologia*, 108, 583-595, 10.1007/bf00329030, 1996.
- Christoffersen, B. O., Restrepo-Coupe, N., Arain, M. A., Baker, I. T., Cestaro, B. P., Ciais, P., Fisher, J. B., Galbraith, D., Guan, X., Gulden, L., van den Hurk, B., Ichii, K., Imbuzeiro, H., Jain, A., Levine, N., Miguez-Macho, G., Poulter, B., Roberti, D. R., Sakaguchi, K., Sahoo, A., Schaefer, K., Shi, M., Verbeeck, H., Yang, Z.-L., Araújo, A. C., Kruijt, B., Manzi, A. O., da Rocha, H. R., von Randow, C.,
10 Muza, M. N., Borak, J., Costa, M. H., Gonçalves de Gonçalves, L. G., Zeng, X., and Saleska, S. R.: Mechanisms of water supply and vegetation demand govern the seasonality and magnitude of evapotranspiration in Amazonia and Cerrado, *Agr Forest Meteorol*, 191, 33-50, 10.1016/j.agrformet.2014.02.008, 2014.
- da Paz, A. R., Collischonn, W., Bravo, J. M., Bates, P. D., and Baugh, C.: The influence of vertical water balance on modelling Pantanal (Brazil) spatio-temporal inundation dynamics, *Hydrol Process*, 28, 3539-3553, 10.1002/hyp.9897, 2014.
- 15 da Rocha, H. R., Manzi, A. O., Cabral, O. M., Miller, S. D., Goulden, M. L., Saleska, S. R., R.-Coupe, N., Wofsy, S. C., Borma, L. S., Artaxo, P., Vourlitis, G., Nogueira, J. S., Cardoso, F. L., Nobre, A. D., Kruijt, B., Freitas, H. C., von Randow, C., Aguiar, R. G., and Maia, J. F.: Patterns of water and heat flux across a biome gradient from tropical forest to savanna in Brazil, *J Geophys Res*, 114, 10.1029/2007jg000640, 2009.
- Dedecek, R. A.: Coberturas permanentes do solo na erosão sob condições de cerrados, *Pesqui Agropecu Bras*, 24, 483-488, 1989.
- 20 Domínguez, C. G., Pryet, A., García Vera, M., Gonzalez, A., Chaumont, C., Tournebize, J., Villacis, M., d'Ozouville, N., and Violette, S.: Comparison of deep percolation rates below contrasting land covers with a joint canopy and soil model, *J Hydrol*, 532, 65-79, 10.1016/j.jhydrol.2015.11.022, 2016.
- Doorenbos, J., Pruitt, W. O., Aboukhaled, A., Food, and Nations, A. O. o. t. U.: Guidelines for Predicting Crop Water Requirements, Food and Agriculture Organization of the United Nations, 1975.
- 25 Doorenbos, J., Kassam, A. H., and Bentvelsen, C. I. M.: Yield response to water, Food and Agriculture Organization of the United Nations, 1979.
- Dotterweich, M.: The history of human-induced soil erosion: Geomorphic legacies, early descriptions and research, and the development of soil conservation—A global synopsis, *Geomorphology*, 201, 1-34, 10.1016/j.geomorph.2013.07.021, 2013.
- 30 Finch, J. W.: Estimating direct groundwater recharge using a simple water balance model – sensitivity to land surface parameters, *J Hydrol*, 211, 112-125, 10.1016/S0022-1694(98)00225-X, 1998.
- Frank, S., Fürst, C., Witt, A., Koschke, L., and Makeschin, F.: Making use of the ecosystem services concept in regional planning—trade-offs from reducing water erosion, *Landscape Ecol*, 29, 1377-1391, 10.1007/s10980-014-9992-3, 2014.
- Getirana, A. C. V.: Extreme water deficit in Brazil detected from space, *J Hydrometeorol*, 17, 591-599, 10.1175/JHM-D-15-0096.1, 2015.
- 35 Ghimire, C. P., Bruijnzeel, L. A., Lubczynski, M. W., and Bonell, M.: Negative trade-off between changes in vegetation water use and infiltration recovery after reforestation degraded pasture land in the Nepalese Lesser Himalaya, *Hydrol Earth Syst Sc*, 18, 4933-4949, 10.5194/hess-18-4933-2014, 2014.
- Giambelluca, T. W., Scholz, F. G., Bucci, S. J., Meinzer, F. C., Goldstein, G., Hoffmann, W. A., Franco, A. C., and Buchert, M. P.: Evapotranspiration and energy balance of Brazilian savannas with contrasting tree density, *Agr Forest Meteorol*, 149, 1365-1376, 10.1016/j.agrformet.2009.03.006, 2009.



- Gibbs, H. K., Ruesch, A. S., Achard, F., Clayton, M. K., Holmgren, P., Ramankutty, N., and Foley, J. A.: Tropical forests were the primary sources of new agricultural land in the 1980s and 1990s, *P Natl Acad Sci USA*, 107, 16732-16737, 10.1073/pnas.0910275107, 2010.
- Gómez, J. A., Nearing, M. A., Giráldez, J. V., and Alberts, E. E.: Analysis of sources of variability of runoff volume in a 40 plot experiment using a numerical model, *J Hydrol*, 248, 183-197, 10.1016/S0022-1694(01)00402-4, 2001.
- Gomyo, M., and Kuraji, K.: Effect of the litter layer on runoff and evapotranspiration using the paired watershed method, *J Forest Res-Jpn*, 21, 306-313, 10.1007/s10310-016-0542-5, 2017.
- Gouvêa, T. H., and Wendland, E. C.: Influência de características do solo na variação do nível d água em região de recarga do Aquífero Guarani, *Revista Brasileira de Recursos Hídricos*, 16, 55-65, 2011.
- 10 Graham, C. B., van Verseveld, W., Barnard, H. R., and McDonnell, J. J.: Estimating the deep seepage component of the hillslope and catchment water balance within a measurement uncertainty framework, *Hydrol Process*, 24, 3631-3647, 10.1002/hyp.7788, 2010.
- Grecchi, R. C., Gwyn, Q. H. J., Bénié, G. B., Formaggio, A. R., and Fahl, F. C.: Land use and land cover changes in the Brazilian Cerrado: A multidisciplinary approach to assess the impacts of agricultural expansion, *Appl Geogr*, 55, 300-312, 10.1016/j.apgeog.2014.09.014, 2014.
- 15 Klink, C. A., and Machado, R. B.: Conservation of the Brazilian Cerrado, *Conserv Biol*, 19, 707-713, 10.1111/j.1523-1739.2005.00702.x, 2005.
- Krishnaswamy, J., Bonell, M., Venkatesh, B., Purandara, B. K., Rakesh, K. N., Lele, S., Kiran, M. C., Reddy, V., and Badiger, S.: The groundwater recharge response and hydrologic services of tropical humid forest ecosystems to use and reforestation: Support for the “infiltration-evapotranspiration trade-off hypothesis”, *J Hydrol*, 498, 191-209, 10.1016/j.jhydrol.2013.06.034, 2013.
- 20 Lapola, D. M., Martinelli, L. A., Peres, C. A., Ometto, J. P. H. B., Ferreira, M. E., Nobre, C. A., Aguiar, A. P. D., Bustamante, M. M. C., Cardoso, M. F., Costa, M. H., Joly, C. A., Leite, C. C., Moutinho, P., Sampaio, G., Strassburg, B. B. N., and Vieira, I. C. G.: Pervasive transition of the Brazilian land-use system, *Nat Clim Change*, 4, 27-35, 10.1038/nclimate2056, 2013.
- Leite, M. B., Xavier, R. O., Oliveira, P. T. S., Silva, F. K. G., and Silva Matos, D. M.: Groundwater depth as a constraint on the woody cover in a Neotropical Savanna, *Plant Soil*, 426, 1-15, 10.1007/s11104-018-3599-4, 2018.
- 25 Loarie, S. R., Lobell, D. B., Asner, G. P., Mu, Q., and Field, C. B.: Direct impacts on local climate of sugar-cane expansion in Brazil, *Nat Clim Change*, 1, 105-109, 10.1038/nclimate1067, 2011.
- Lucas, M., Oliveira, P. T. S., Melo, D. C. D., and Wendland, E.: Evaluation of remotely sensed data for estimating recharge to an outcrop zone of the Guarani Aquifer System (South America), *Hydrogeol J*, 23, 961-969, 10.1007/s10040-015-1246-1, 2015.
- Lucas, M., and Wendland, E.: Recharge estimates for various land uses in the Guarani Aquifer System outcrop area, *Hydrolog Sci J*, 61, 1253-1262, 10.1080/02626667.2015.1031760, 2015.
- Manziona, R. L., Soldera, B. C., and Wendland, E. C.: Groundwater system response at sites with different agricultural land uses: case of the Guarani Aquifer outcrop area, Brotas/SP-Brazil, *Hydrolog Sci J*, 62, 28-35, 10.1080/02626667.2016.1154148, 2017.
- Marris, E.: Conservation in Brazil: The forgotten ecosystem, *Nature*, 437, 944-945, 2005.
- Melo, D. d. C. D., Scanlon, B. R., Zhang, Z., Wendland, E., and Yin, L.: Reservoir storage and hydrologic responses to droughts in the Paraná River basin, south-eastern Brazil, *Hydrol Earth Syst Sc*, 20, 4673-4688, 10.5194/hess-20-4673-2016, 2016.
- 35 Montgomery, D. C.: Design and Analysis of Experiments, John Wiley & Sons, 752 pp., 2008.



- Mwango, S. B., Msanya, B. M., Mtakwa, P. W., Kimaro, D. N., Deckers, J., and Poesen, J.: Effectiveness OF Mulching UnderMirabain Controlling Soil Erosion, Fertility Restoration and Crop Yield in the Usambara Mountains, Tanzania, *Land Degrad Dev*, 27, 1266-1275, 10.1002/ldr.2332, 2016.
- 5 Nacinovic, M. G. G., Mahler, C. F., and Avelar, A. d. S.: Soil erosion as a function of different agricultural land use in Rio de Janeiro, *Soil and Tillage Research*, 144, 164-173, 10.1016/j.still.2014.07.002, 2014.
- Nearing, M. A., Govers, G., and Norton, L. D.: Variability in Soil Erosion Data from Replicated Plots, *Soil Sci Soc Am J*, 63, 1829-1835, 10.2136/sssaj1999.6361829x, 1999.
- 10 Nobrega, R. L. B., Guzha, A. C., Torres, G. N., Kovacs, K., Lamparter, G., Amorim, R. S. S., Couto, E., and Gerold, G.: Effects of conversion of native cerrado vegetation to pasture on soil hydro-physical properties, evapotranspiration and streamflow on the Amazonian agricultural frontier, *PLoS One*, 12, e0179414, 10.1371/journal.pone.0179414, 2017.
- Oishi, A. C., Oren, R., Novick, K. A., Palmroth, S., and Katul, G. G.: Interannual Invariability of Forest Evapotranspiration and Its Consequence to Water Flow Downstream, *Ecosystems*, 13, 421-436, 10.1007/s10021-010-9328-3, 2010.
- Oliveira, L. C.: Erosão hídrica e alguns processos hidrológicos em plantios de pinus, mata e campo nativos e estrada florestal, PhD, Ciências Agrárias, Universidade do Estado de Santa Catarina, Lages, SC, 2012.
- 15 Oliveira, P. T. S.: Balanço hídrico e erosão do solo em mata nativa do bioma Cerrado, PhD, Departamento de Hidráulica e Saneamento - Escola de Engenharia de São Carlos, Universidade de São Paulo, São Carlos, SP, 2014.
- Oliveira, P. T. S., Nearing, M. A., Moran, M. S., Goodrich, D. C., Wendland, E., and Gupta, H. V.: Trends in water balance components across the Brazilian Cerrado, *Water Resour Res*, 50, 7100-7114, 10.1002/2013WR015202, 2014.
- 20 Oliveira, P. T. S., Wendland, E., Nearing, M. A., Scott, R. L., Rosolem, R., and da Rocha, H. R.: The water balance components of undisturbed tropical woodlands in the Brazilian cerrado, *Hydrol Earth Syst Sc*, 19, 2899-2910, 10.5194/hess-19-2899-2015, 2015.
- Oliveira, P. T. S., Nearing, M. A., Hawkins, R. H., Stone, J. J., Rodrigues, D. B. B., Panachuki, E., and Wendland, E.: Curve number estimation from Brazilian Cerrado rainfall and runoff data, *J Soil Water Conserv*, 71, 420-429, 10.2489/jswc.71.5.420, 2016.
- 25 Oliveira, P. T. S., Leite, M. B., Mattos, T., Nearing, M. A., Scott, R. L., de Oliveira Xavier, R., da Silva Matos, D. M., and Wendland, E.: Groundwater recharge decrease with increased vegetation density in the Brazilian cerrado, *Ecohydrology*, 10, e1759, 10.1002/eco.1759, 2017.
- Paiva, R. C. D., Collischonn, W., and Buarque, D. C.: Validation of a full hydrodynamic model for large-scale hydrologic modelling in the Amazon, *Hydrol Process*, 27, 333-346, 10.1002/hyp.8425, 2013.
- Pereira, A. R.: The Priestley–Taylor parameter and the decoupling factor for estimating reference evapotranspiration, *Agr Forest Meteorol*, 125, 305-313, 10.1016/j.agrformet.2004.04.002, 2004.
- 30 Pimentel, D., Harvey, C., Resosudarmo, P., Sinclair, K., Kurz, D., McNair, M., Crist, S., Shpritz, L., Fitton, L., and Saffouri, R.: Environmental and economic costs of soil erosion and conservation benefits, *Science-AAAS-Weekly Paper Edition*, 267, 1117-1122, 1995.
- Priestley, C. H. B., and Taylor, R. J.: On the Assessment of Surface Heat Flux and Evaporation Using Large-Scale Parameters, *Mon Weather Rev*, 100, 81-92, 10.1175/1520-0493(1972)100<0081:OTAOSH>2.3.CO;2, 1972.
- 35 Refsgaard, J. C., van der Sluijs, J. P., Højberg, A. L., and Vanrolleghem, P. A.: Uncertainty in the environmental modelling process – A framework and guidance, *Environ Modell Softw*, 22, 1543-1556, 10.1016/j.envsoft.2007.02.004, 2007.



- Ritchie, J. T.: Model for predicting evaporation from a row crop with incomplete cover, *Water Resour Res*, 8, 1204-1213, 10.1029/WR008i005p01204, 1972.
- Sadeghi, S. H. R., Seghaleh, M. B., and Rangavar, A. S.: Plot sizes dependency of runoff and sediment yield estimates from a small watershed, *Catena*, 102, 55-61, 10.1016/j.catena.2011.01.003, 2013.
- 5 Sakai, R. K., Fitzjarrald, D. R., Moraes, O. L. L., Staebler, R. M., Acevedo, O. C., Czikowsky, M. J., Silva, R. d., Brait, E., and Miranda, V.: Land-use change effects on local energy, water, and carbon balances in an Amazonian agricultural field, *Glob Change Biol*, 10, 895-907, 10.1111/j.1529-8817.2003.00773.x, 2004.
- Saraiva, O. F., Cogo, N. P., and Mielniczuk, J.: Erosividade das chuvas e perdas por erosão em diferentes manejos de solo e coberturas vegetais, *Pesqui Agropecu Bras*, 16, 121-128, 1981.
- 10 Silva, M. A., Silva, M. L. N., Curi, N., Avanzi, J. C., and Leite, F. P.: Sistemas de manejo em plantios florestais de eucalipto e perdas de solo e água na região do Vale do Rio Doce, MG, *Cienc Florest*, 21, 765-776, 2011.
- Soares-Filho, B., Rajão, R., Macedo, M., Carneiro, A., Costa, W., Coe, M., Rodrigues, H., and Alencar, A.: Cracking Brazil's Forest Code, *Science*, 344, 363-364, 10.1126/science.1246663, 2014.
- Strohmeier, S., Laaha, G., Holzmann, H., and Klik, A.: Magnitude and Occurrence Probability of Soil Loss: A Risk Analytical Approach for the Plot Scale For Two Sites in Lower Austria, *Land Degrad Dev*, 27, 43-51, 10.1002/ldr.2354, 2016.
- 15 Vourlitis, G. L., Filho, N. P., Hayashi, M. M. S., de S. Nogueira, J., Caseiro, F. T., and Campelo, J. H.: Seasonal variations in the evapotranspiration of a transitional tropical forest of Mato Grosso, Brazil, *Water Resour Res*, 38, 30-31-30-11, 10.1029/2000wr000122, 2002.
- Wang, Q. J.: The Genetic Algorithm and Its Application to Calibrating Conceptual Rainfall-Runoff Models, *Water Resour Res*, 27, 2467-2471, doi:10.1029/91WR01305, 1991.
- 20 Wendland, E., Barreto, C., and Gomes, L. H.: Water balance in the Guarani Aquifer outcrop zone based on hydrogeologic monitoring, *J Hydrol*, 342, 261-269, 10.1016/j.jhydrol.2007.05.033, 2007.
- Wendt, R., Alberts, E., and Hjelmfelt, A.: Variability of runoff and soil loss from fallow experimental plots, *Soil Sci Soc Am J*, 50, 730-736, 1986.
- 25 Wohl, E., Barros, A., Brunzell, N., Chappell, N. A., Coe, M., Giambelluca, T., Goldsmith, S., Harmon, R., Hendrickx, J. M. H., Juvik, J., McDonnell, J., and Ogden, F.: The hydrology of the humid tropics, *Nat Clim Change*, 2, 655-662, 10.1038/nclimate1556, 2012.
- Youlton, C., Bragion, A. P., and Wendland, E.: Experimental evaluation of sediment yield in the first year after replacement of pastures by sugarcane, *Cienc Investig Agrar*, 43, 374-383, 10.4067/S0718-16202016000300005., 2016a.
- 30 Youlton, C., Wendland, E., Anache, J. A. A., Poblete-Echeverría, C., and Dabney, S.: Changes in erosion and runoff due to replacement of pasture land with sugarcane crops, *Sustainability-Basel*, 8, 10.3390/su8070685, 2016b.
- Zhao, C., Gao, J. e., Huang, Y., Wang, G., and Xu, Z.: The Contribution of *Astragalus adsurgens* Roots and Canopy to Water Erosion Control in the Water-Wind Crisscrossed Erosion Region of the Loess Plateau, China, *Land Degrad Dev*, 28, 265-273, 10.1002/ldr.2508, 2017.



Tables

Table 1: Monitoring site instrumentation.

Variable	Sensor	Height or depth (m)	Site no.
Temperature (°C) and relative humidity (%)	HMP45C	2.0	1
	HC2S3	9.5 and 11.0	2
Rainfall (mm)	Hydrological Services TB4	1.5 and 11.0	1 and 2
	Vaisala CS106	1.0	1
Atmospheric pressure (mbar)	Young 05103	2.0 and 11.0	1 and 2
Wind direction (°) and velocity (m.s ⁻¹)	Kipp & Zonen CMP3	2.0	1
Solar radiation (MJ.m ⁻²)	FDR Environscan	-0.3; -0.6 and -0.9	1*
Soil moisture (%)	Sentek	-0.1; -0.5; -0.7; -1.0 and -1.5	2
	Kipp & Zonen NR- LITE2	11.0	2
Net solar radiation (W.m ⁻²)	Hukseflux HFP01	-0.1	2
Soil heat flux (W.m ⁻²)	Diver Schlumberger	-40.0 and -39.2	1 and 2
Water table (groundwater) (m)			

*At site 1, the bare soil did not have soil moisture probes.

**Table 2: Variables used to calculate evapotranspiration for sugarcane and pasture.**

Variable	Sugarcane	Pasture	Source
Z_f (m)	1.2 – 2.0	0.5 – 1.5	Allen et al. (1998)
p	0.65	0.60	
θ_{fc}	0.14	0.14	Values obtained from laboratory essays (Oliveira, 2014)
θ_{wp}	0.09	0.09	
K_c	Plant (1): 0.50; 0.80; 0.95; 1.10; 1.18; 0.92; 0.68	0.75 (3)	(1) Doorenbos et al. (1975)
	Ratoon (2):		(2) Doorenbos et al. (1979)
	0.55; 0.80; 0.90; 1.00; 1.05; 0.80; 0.60		(3) Allen et al. (1998)



Table 3: Priestley and Taylor coefficients (α) calculated for a wooded Cerrado area.

Season	Priestley and Taylor coefficients (α)
Summer (December – March)	1.09
Fall (March – June)	1.00
Winter (June – September)	0.77
Spring (September – December)	0.98

**Table 4: Mean and standard deviation of the annual water balance components for 2012-2016 period.**

Land use	Water balance components (mm yr ⁻¹)			
	P	dS/dt	ET	Q
Wooded Cerrado		185±182b	1201±49a	2±2c
Pasture	1388±188	689±135a	654±137bc	45±26b
Sugarcane		571±100a	801±212b	16±18c
Bare soil		769±96a	482±40c	137±62a
Data source	observations	residuals	estimations	observations

dS/dt: soil water storage; P: precipitation; ET: evapotranspiration; Q: surface runoff; identical lower case letters indicate no significant difference between means in the same column by the Tukey means comparison test (P value > 0.05).

**Table 5: Evapotranspiration and rainfall from studies developed in Brazil under similar LCLU of the present study.**

Land use	Lat	Long	Method	ET (mm yr ⁻¹)	P	References
Sugarcane ¹	-21.63	-47.78	EC	892	1194	Cabral et al. (2012)
Sugarcane ²	-21.63	-47.78	EC	685	1353	Cabral et al. (2012)
Sugarcane ¹	-22.18	-47.85	FAO 56	930	1535	Present study
Sugarcane ²	-22.18	-47.85	FAO 56	715	1290	Present study
Wooded Cerrado	-21.62	-47.65	EC	811	1498	da Rocha et al. (2009)
Wooded Cerrado	-21.62	-47.65	EC	1228	1448	Cabral et al. (2015)
Wooded Cerrado	-15.93	-47.88	EC	821	1440	Giambelluca et al. (2009)
Wooded Cerrado	-15.80	-55.33	PM RS	1004	1696	Nobrega et al. (2017)
Wooded Cerrado	-22.18	-47.85	PM RS	823	1194	Oliveira et al. (2015)
Wooded Cerrado	-22.18	-47.85	PT	1201	1388	Present study
Pasture	-3.01	-54.53	EC	647	1597	Sakai et al. (2004)
Pasture	-15.81	-55.34	PM RS	639	1780	Nobrega et al. (2017)
Pasture	-22.18	-47.85	FAO 56	654	1388	Present study
Cerrado and Amazon transition	-11.41	-55.33	EC	1005	2000	Vourlitis et al. (2002)

Lat: Latitude; Long: Longitude; ET: Evapotranspiration; P: Rainfall; EC: Eddy covariance; PM RS: Penman-Monteith and remote sensing; FAO 56: Allen et al. (1998); PT: Priestley and Taylor (1972); 1: Plant; 2: Ratoon.

**Table 6: Water balance uncertainties.**

Variables		LCU			
		Wooded Cerrado	Pasture	Sugarcane	Bare soil
P (observed)	Average (mm yr ⁻¹)	1388			
	Standard error (σ) (mm yr ⁻¹)	42			
	Relative error (ϵ) (%)	3%			
Q (observed)	Average (mm yr ⁻¹)	2	45	16	137
	Standard error (σ) (mm yr ⁻¹)	0.2	12	1	27
	Relative error (ϵ) (%)	10%	26%	5%	19%
ET (estimated)	Average (mm yr ⁻¹)	1201	654	801	482
	Standard error (σ) (mm yr ⁻¹)	60	268	273	24
	Relative error (ϵ) (%)	5%	41%	34%	5%
dS/dt (residual)	Average (mm yr ⁻¹)	185	689	571	769
	Standard error (σ) (mm yr ⁻¹)	73	271	276	55
	Relative error (ϵ) (%)	40%	39%	48%	7%



Figures

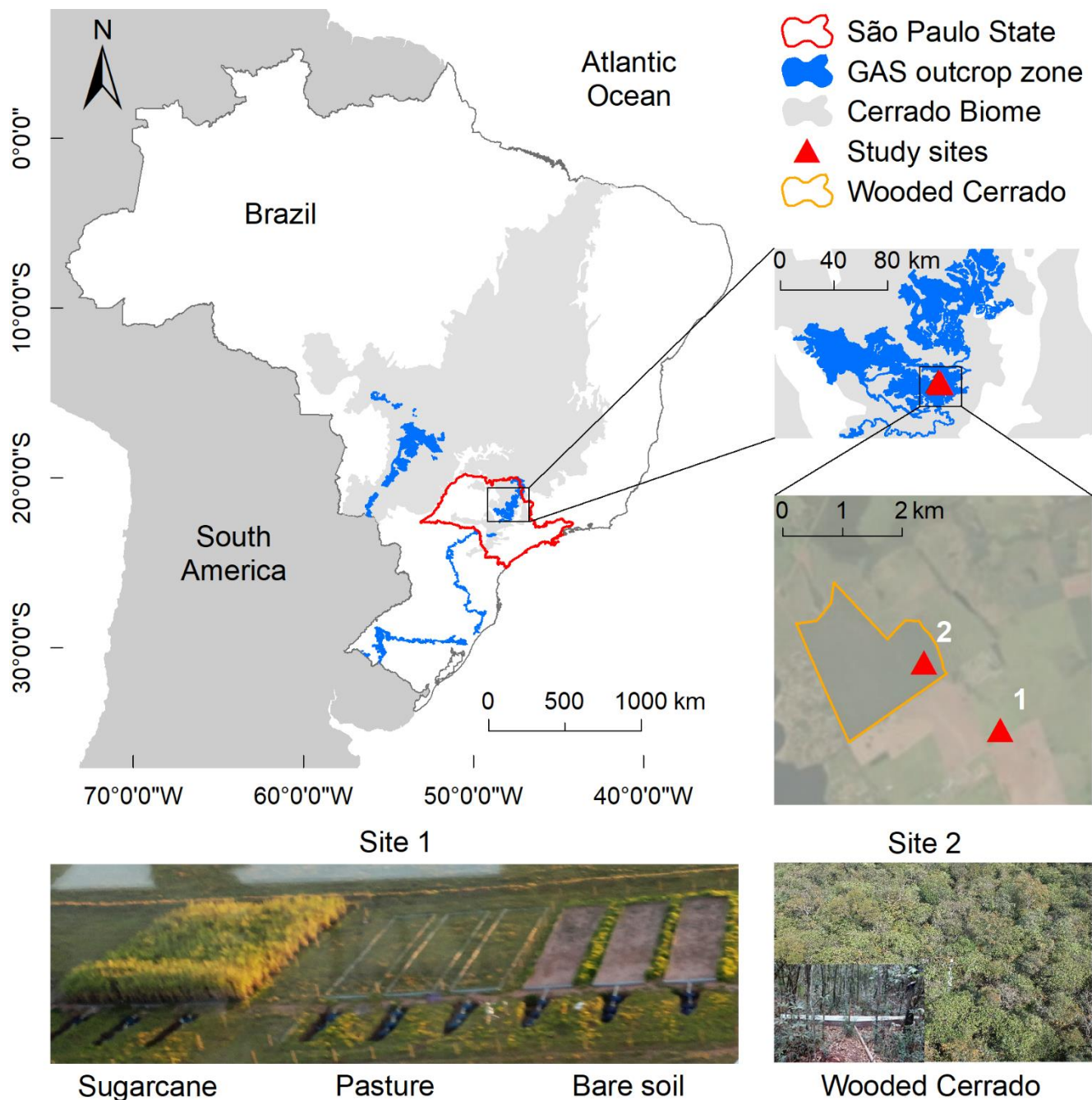
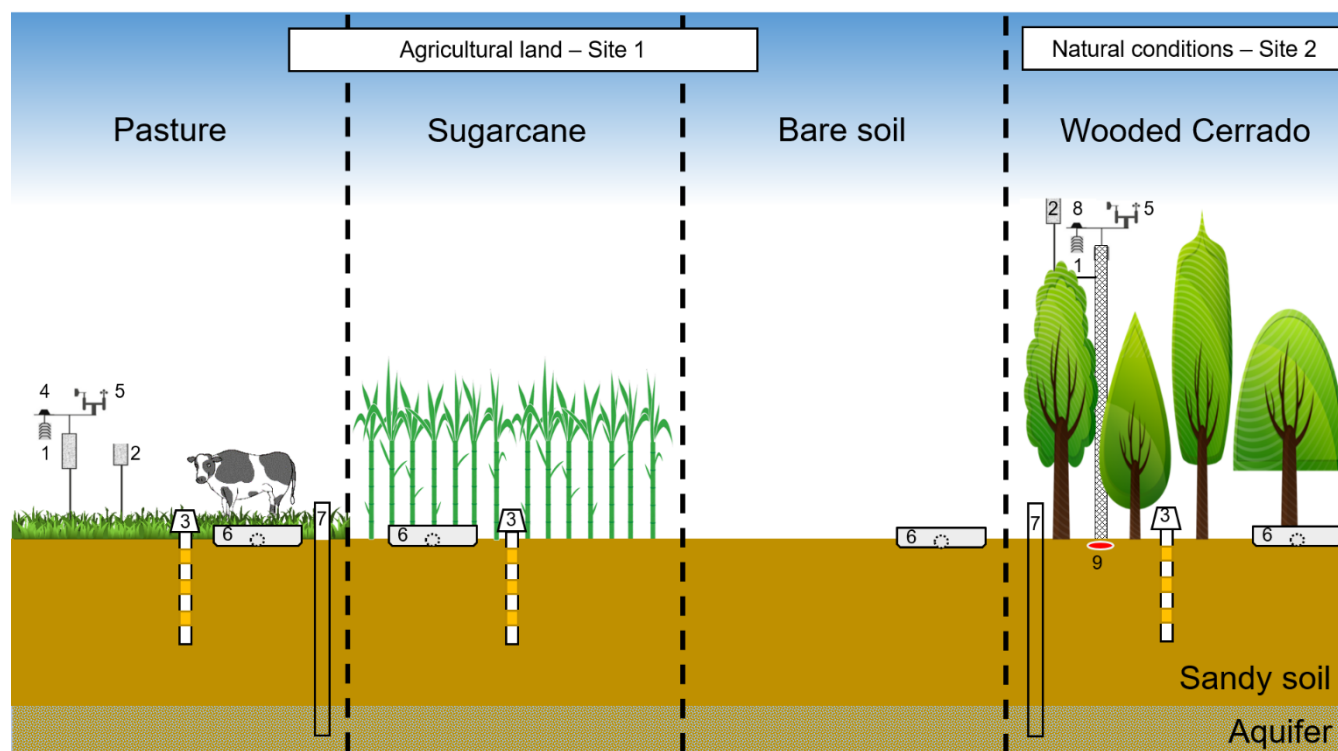


Figure 1: Location of study sites, Cerrado biome borders, Guarani Aquifer System (GAS) outcrop zone distribution in Brazil, and experimental design, where site 1 contains the plots with agricultural land uses (pasture, sugarcane and bare soil) and site 2 contains the plots with wooded Cerrado.

5



5 **Figure 2: Hydrological monitoring performed on the four treatments: (1) relative humidity and air temperature probes at 2 m (site 1) and 11 m (site 2); (2) rainfall gauges; (3) soil moisture sensors; (4) solar radiation sensor; (5) wind speed and direction (anemometers) at 2 m (site 1) and at 11 m (site 2); (6) surface runoff collectors; (7) monitoring wells equipped with water table pressure transducers; (8) net radiation sensor; (9) soil heat flux plate.**

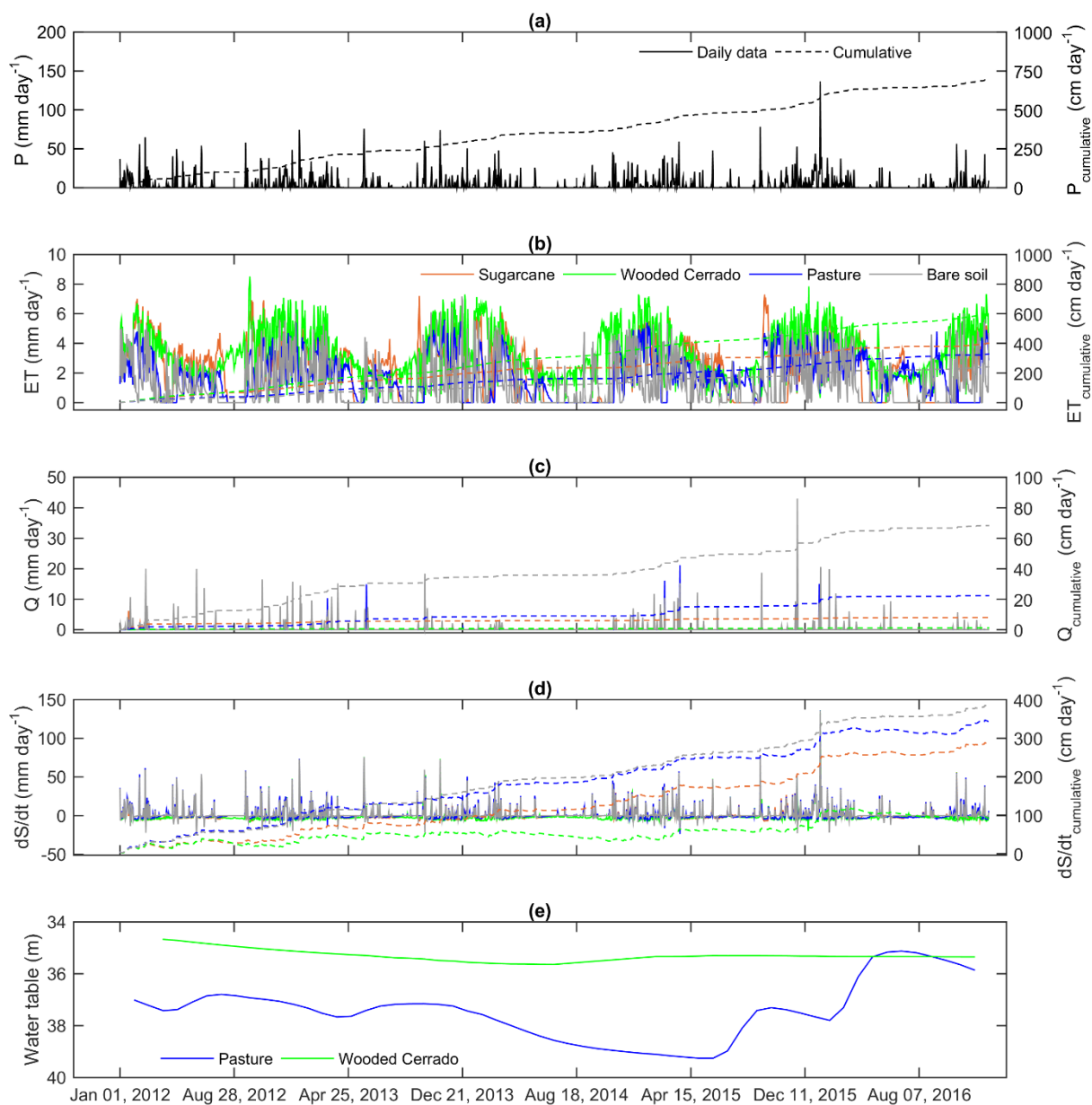


Figure 3: Water balance components for different LCLU rainfall, P (a); evapotranspiration, ET (b); surface runoff, Q (c); soil water storage, dS/dt (d); Right axes present the cumulative sum of the variables represented by graphs (a), (b), (c) and (d). The water table (e) depth of the monitoring wells located in site 1 (pasture) and site 2 (wooded Cerrado).

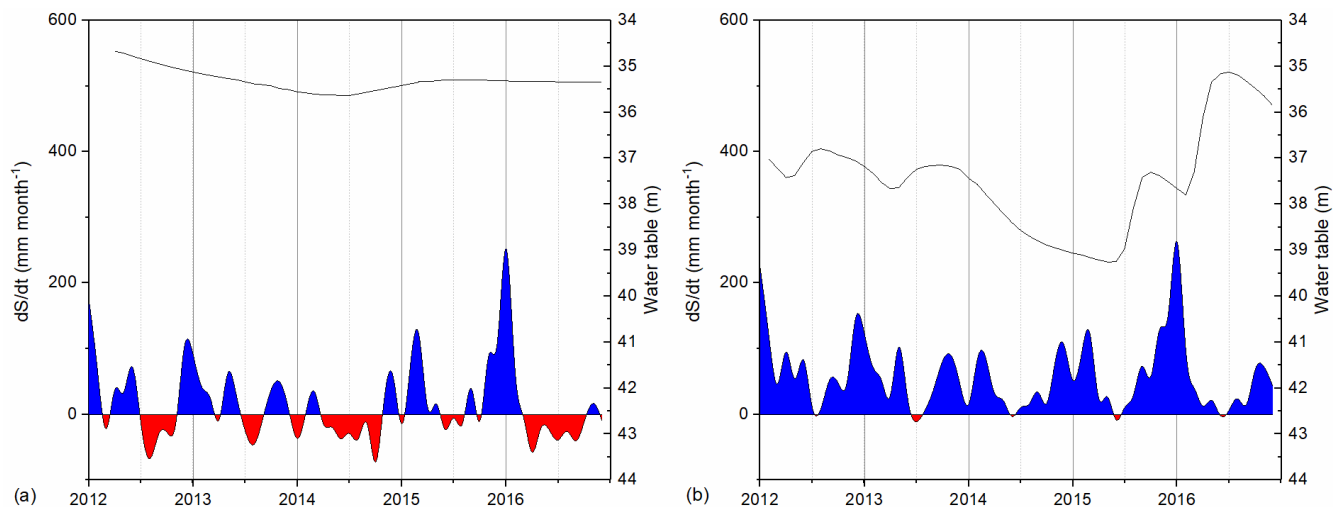


Figure 4: Water balance residual in the wooded Cerrado (a) and in the pasture (b), where the blue areas represent water surplus and red areas represent water deficit; the solid black lines represent the aquifer water table fluctuation.

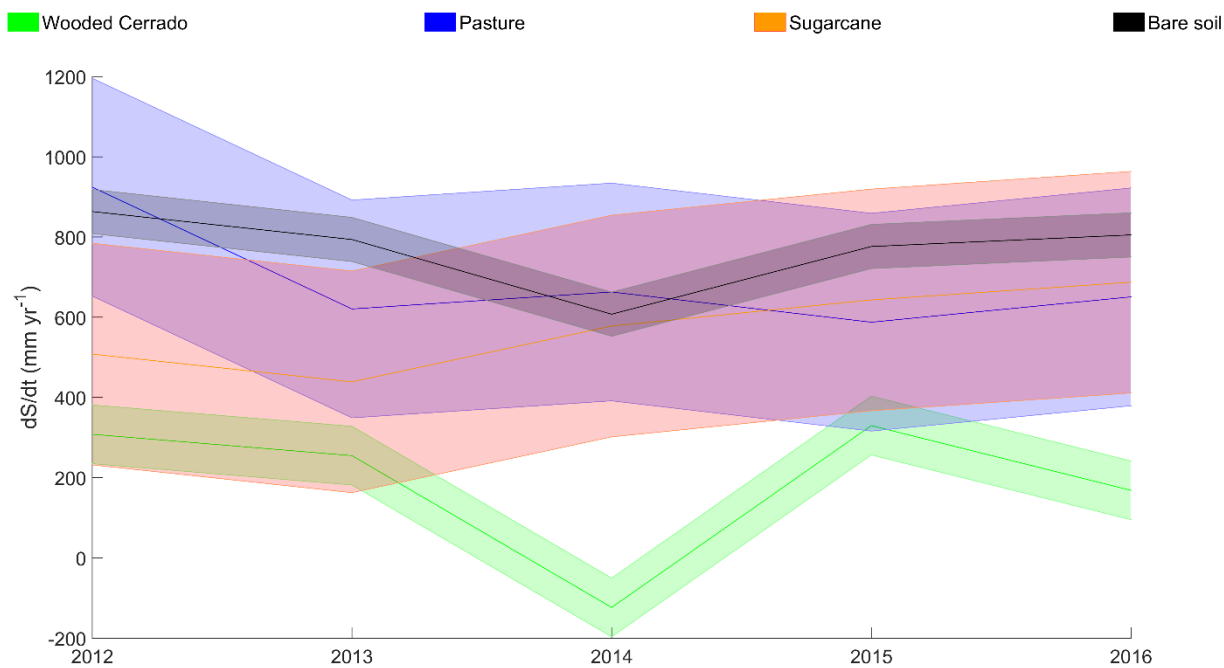


Figure 5: Annual soil water storage (dS/dt) for different LCLU during 2012-2016 period; shaded areas indicate the standard error (uncertainties) of dS/dt estimates.

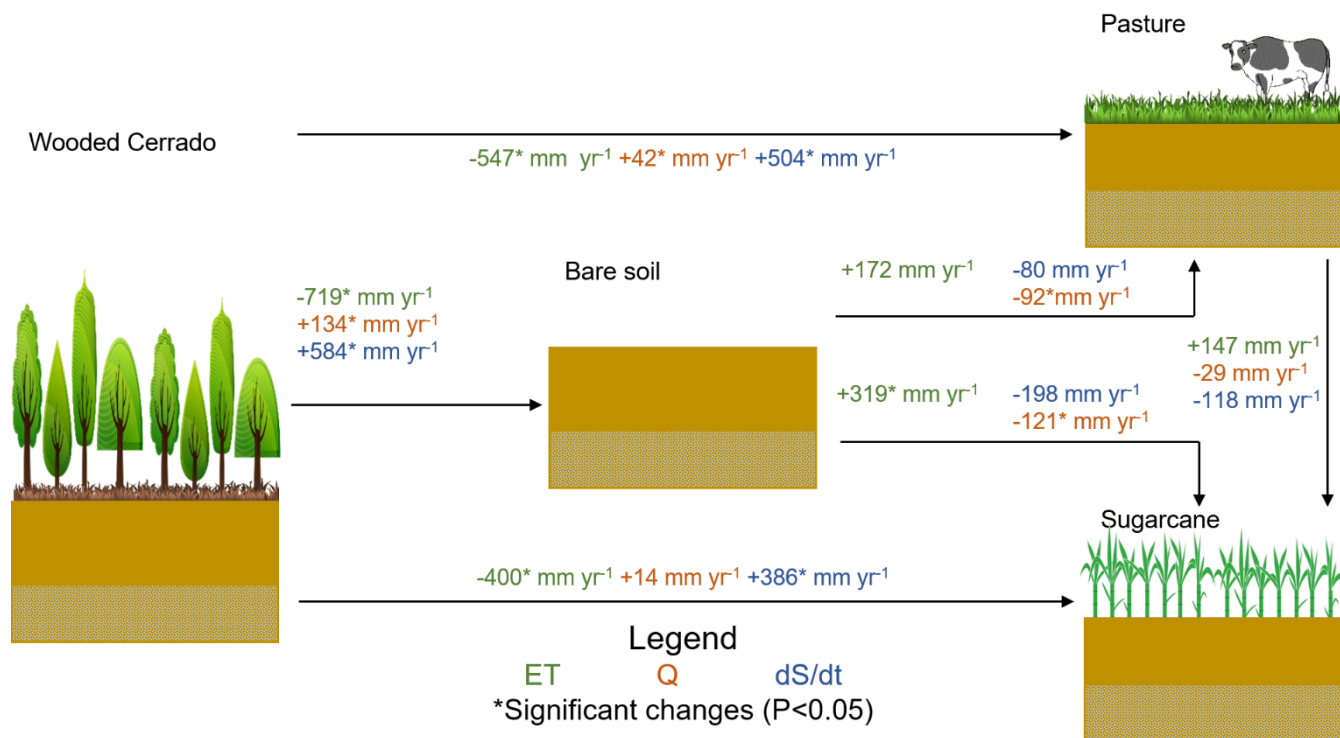


Figure 6: Annual observed means (2012-2016) of hydrological trade-offs related to evapotranspiration (ET), surface runoff (Q), soil water storage (dS/dt) due to potential LCLUC found in southeastern Brazil.