

# Seasonal drought prediction for semiarid northeast Brazil: What is the added value of a process-based hydrological model?

Tobias Pilz<sup>1</sup>, José Miguel Delgado<sup>1</sup>, Sebastian Voss<sup>1</sup>, Klaus Vormoor<sup>1</sup>, Till Francke<sup>1</sup>, Alexandre Cunha Costa<sup>2</sup>, Eduardo Martins<sup>3</sup>, and Axel Bronstert<sup>1</sup>

<sup>1</sup>Institute of Earth and Environmental Science, University of Potsdam, Potsdam, Germany

<sup>2</sup>Institute of Engineering and Sustainable Development, University of International Integration of the Afro-Brazilian Lusophony (UNILAB), Acarape, Ceará, Brazil

<sup>3</sup>Research Institute for Meteorology and Water Resources – FUNCEME, Fortaleza, Ceará, Brazil

**Correspondence:** Tobias Pilz (tpilz@uni-potsdam.de)

**Abstract.** The semiarid northeast of Brazil is one of the most densely populated dryland regions in the world and recurrently affected by severe droughts. Thus, reliable seasonal forecasts of streamflow and reservoir storage are of high value for water managers. Such forecasts can be generated by applying either hydrological models representing underlying processes or statistical relationships exploiting correlations among meteorological and hydrological variables. This work evaluates and compares the performances of seasonal reservoir storage forecasts derived by a process-based hydrological model and a statistical approach.

Driven by observations, both models achieve similar simulation accuracies. In a hindcast experiment, however, the accuracy of estimating regional reservoir storages was considerably lower using the process-based hydrological model, whereas the resolution and reliability of drought event predictions were similar by both approaches. Further investigations regarding the deficiencies of the process-based model revealed a significant influence of antecedent wetness conditions and a higher sensitivity of model prediction performance to rainfall forecast quality.

Within the scope of this study, the statistical model proved to be the more straightforward approach for predictions of reservoir level and drought events at regionally and monthly aggregated scales. However, for forecasts at finer scales of space and time or for the investigation of underlying processes, the costly initialisation and application of a process-based model can be worthwhile. Furthermore, the application of innovative data products, such as remote sensing data, and operational model correction methods, like data assimilation, may allow for an enhanced exploitation of the advanced capabilities of process-based hydrological models.

*Copyright statement.* TEXT

## 1 Introduction

Drought is a type of natural hazard characterised by meteorological, hydrological, and water management conditions, affecting many regions around the globe. Generally, it arises due to a shortage of water availability. A general valid or comprehensive definition, however, is hardly achievable due to many different possible causes, complex relationships and feedbacks among its determining factors and, consequently, different impacts on nature, society, and economy. As such, different categories can be distinguished ranging from meteorological (lack of rainfall) and hydrological (shortage of consumable water resources) to agricultural (water deficit for crops or husbandry) and socio-economic droughts (not enough of income to pay water price). For the characterisation of droughts, different statistics can be computed describing duration, frequency, and severity based on various predictors and thresholds (Mishra and Singh, 2010).

The semiarid northeast of Brazil (NEB) is one of the world's most densely populated dryland regions (Marengo et al., 2017). Its climate is characterised by a short rainy season with high interannual variability. As a consequence, already since the colonisation in the 16th century, regularly occurring severe droughts causing famine and mass exodus have been reported. Drought occurrence is primarily driven by Sea Surface Temperature (SST) anomalies in the eastern Pacific, i.e. the El Niño Southern Oscillation (ENSO), and the northern tropical Atlantic region (i.e. the Tropical Atlantic SST Dipole) influencing the location of the Inner Tropical Convergence Zone (ITCZ), which is the main source of rain during the rainy season in the NEB area (Hastenrath, 2012). Profound governmental actions for drought mitigation since the late 19th century resulted, among others, in the construction of thousands of small reservoirs and several large dams for water storage and provision within the dry season and during dry spells. Still, severe drought events might endanger water supply, such as happening in the current series of drought years since 2012. Even the regular years (in terms of rainfall amount) of 2017 and 2018 were not able to eliminate or significantly alleviate water scarcity, still resulting in filling states of the largest reservoirs of less than 10 % (for the current state of water provision and statistics of the state of Ceará see <http://www.hidro.ce.gov.br> and the drought monitor <http://msne.funceme.br>). In addition, climate change is likely to aggravate water scarcity, calling for efficient strategies in the management of water storages (de Araújo et al., 2004; Krol et al., 2006; Braga et al., 2013).

Reliable seasonal forecasting, i.e. forecasts of streamflow and reservoir storages for the upcoming rainy season, can be of significant value for water managers (Sankarasubramanian et al., 2009). Accurate precipitation forecasts over several months are still a challenge for dynamical climate models. However, many dryland regions are located in areas with distinct dry and rainy seasons, the latter often connected to large-scale atmospheric circulation patterns. Therefore, statistical models relating meteorological or SST indices with streamflow or a combination of statistical and process-based models are applied in many dryland regions in the world to provide seasonal forecasts (e.g. Schepen and Wang, 2015; Seibert et al., 2017; Sittichok et al., 2018).

For the northern NEB region, the high correlation of rainfall and droughts with SST anomalies in the eastern Pacific and tropical Atlantic, together with correlation of pre-season rainfall offers a favourable setting for seasonal prediction (Souza Filho and Lall, 2003; Sun et al., 2006; Hastenrath, 2012). Several studies exist for the area, typically employing one or several (realisations of) General Circulation Models (GCMs) driven by SST predictions, downscaled to a finer scale by statistical

or dynamical downscaling approaches, whose meteorological (especially rainfall) outputs are eventually used as forcing in a hydrological model producing streamflow and/or reservoir level forecasts. For instance, Galvão et al. (2005), Block et al. (2009), and Alves et al. (2012) employed different hydrological models of varying complexity to generate streamflow and/or reservoir level predictions. While model performance over daily timescales was generally reported to be low, over longer aggregation periods, such as at a monthly or seasonal scale, acceptable results could be achieved.

In a recent study, Delgado et al. (2018b) investigated the use of a statistical relationship to provide seasonal reservoir level predictions. They used the two GCMs ECHAM4.6 and ECMWF, the meteorological output of each downscaled by three different statistical approaches, generating ensembles of wet-season (i.e. January to June) hindcasts for each year in the period 1981 to 2014. Based on these meteorological hindcasts, they calculated a number of meteorological drought indices which are compared with observations to evaluate the skill of the predictions. Using reservoir storage as a target variable, they further computed hydrological drought indices and fitted a multivariate linear regression to predict these indices using the meteorological indices as predictors. Even though there was variation among the GCM and downscaling combinations, the occurrence of meteorological drought could mostly be predicted with skill. Furthermore, their relatively simple statistical model was able to predict also hydrological droughts with skill. However, the absolute hindcast error was often not appreciably better than climatology, i.e. the observed long term average of a variable.

While being straightforward to apply and computationally advantageous, such statistical relationships, in contrast to process-based hydrological models, do not represent underlying processes and are less flexible in terms of the output variable and their spatial and temporal resolution. However, what remains is the question how to balance accuracy, operability, and usability from the perspective of water managers and stakeholders. As such, this study complements the work of Delgado et al. (2018b), employing a process-based hydrological instead of a statistical model. Thus, the aim is to present and evaluate a forecasting system, predicting seasonal reservoir levels and the occurrence of hydrological droughts for the Jaguaribe river basin, located within the NEB region. Three different objectives are put to focus: First, the process-based hydrological model and the statistical model of Delgado et al. (2018b) shall be evaluated and compared in terms of reservoir level simulation performance. Second, the process-based hydrological model as an operational forecasting tool is to be verified in a hindcast experiment. Third, major sources of prediction and simulation errors in the modelling system are to be investigated. Thereby, the question whether the costly initialisation and use of a complex hydrological model is worthwhile in comparison to a much simpler statistical relationship is to be answered and guidelines for further research and the improvement of the forecasting system shall be given.

This study touches issues of Atmospheric Sciences, Hydrology and Water Resources Management. As terminology partially differs, a clarification on certain terms used throughout the paper can be consulted in appendix, Sect. A.

## 2 Study site

The study area comprises the Jaguaribe river basin in the state of Ceará, northeast Brazil (see Fig. 1). The catchment is of crucial importance in terms of water supply for the whole state and has been intensively investigated in numerous studies (e.g.

Bronstert et al., 2000; Gaiser et al., 2003; de Araújo et al., 2004; Krol et al., 2006; Mamede et al., 2012; van Oel et al., 2012; de Figueiredo et al., 2016). It covers an area of about 70,000 km<sup>2</sup> with a rural population of 2.7 million. Additionally, it is the source of water for the metropolitan area of Fortaleza with further 2.6 million people (IPECE, 2016). Annual precipitation sums up to, on average, 755 mm per year whereas 90 % of rainfall occurs within the rainy season between January and June. Potential evapotranspiration is high with more than 2000 mm per year. The mean annual temperature is about 25 °C with little variation. Rainfall, however, is mostly convective with only a few events of high intensity per year and a strong inter-annual variation caused by SST anomalies resulting in a northward shift of the ITCZ inducing recurrent droughts that can last over several years (see also Sect. 1; Hastenrath, 2012; Marengo et al., 2017). As the geology is characterised by a primarily crystalline basement with low-density fractures, water supply needs to be secured by surface water resources. Accordingly, thousands of small and several large reservoirs were constructed. The small reservoirs are typically bordered by uncontrolled earth dams, mainly serving for water provision of rural population and livestock. Conversely, large so-called *strategic reservoirs* contain a barrage with intake devices for active regulation, are sometimes also used for hydropower production, and serve as water resources for larger towns and cities and industrial farming. These settings cause meteorological droughts (lack of precipitation) and hydrological droughts (lack of surface water) to be often out of phase (de Araújo and Bronstert, 2016; van Oel et al., 2018).

For the present study, the Jaguaribe catchment was subdivided into five sub-regions, named after the main tributary river or the major reservoir at its outlet: Banabuiú, Orós, Salgado, Castanhão, and Lower Jaguaribe (see Fig. 1 for their location).

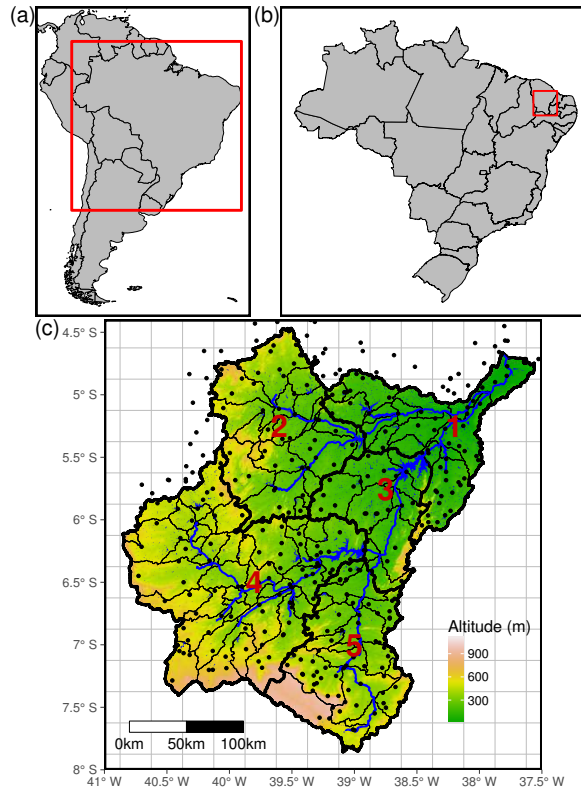
### 3 Data and Methods

#### 3.1 General workflow

The aim of this study is to elucidate the application potential of a process-based hydrological model for water resources and drought prediction. Consequently, hindcasts of reservoir volumes and hydrological drought indices shall be produced, driving the model by meteorological hindcasts. The general workflow is illustrated in Fig. 2.

A process-based hydrological model was first calibrated to observations and an initial model run conducted for the period of 1980 until 30 June 2014. This initialisation run was driven by observed meteorology and at each 1 January the storage volume of each strategic reservoir was replaced by the observed value. Furthermore, if available, measured reservoir releases through a dam's intake devices were fed into the model in order to make use of as much information as available to produce simulations as realistic as possible. The first year of the run was used as a warm-up to bring the model states into equilibrium. At each end of year, the model's state variables, including soil moisture, groundwater, river, and small (i.e. non-strategic) reservoir storages, were stored. This entire procedure is intended to mimic the conditions in a real forecast situation.

In a specific hindcast run, the model was then re-initialised with the saved model states and driven by hindcast meteorology. These runs were conducted successively for the wet seasons (1 January to 30 June) of 1981 to 2014. The resulting strategic reservoir volumes were used to infer drought indices which were evaluated employing verification metrics. To distinguish uncertainties from the meteorological hindcasts and in order to investigate mere model performance, the model runs were performed in two ways: driven by observations (*simulation mode*) and meteorological hindcasts (*hindcast mode*).



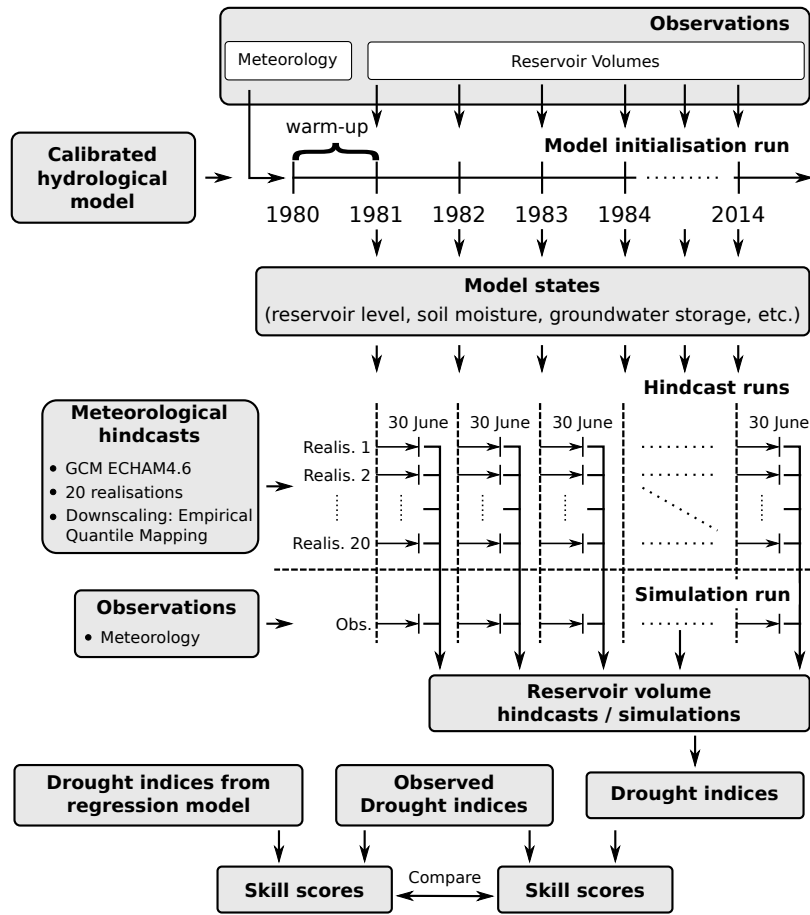
**Figure 1.** Overview over the Jaguaribe watershed (c) and location within Brazil (b) and South America (a). The five regions of interest (red numbers) are: 1) Lower Jaguaribe, 2) Banabuiú, 3) Castanhão, 4) Orós, and 5) Salgado. Thin black lines in c) outline subbasins, computational units within the model. Black dots are rainfall stations considered within the study. Background grid lines refer to the gridded meteorological dataset of Xavier et al. (2016).

The runs were conducted for both the *process-based* model initialised and calibrated within this study and a *statistical* model, which is a regression approach derived by Delgado et al. (2018b) for the same study area. Consequently, verification metrics were calculated and analysed for both model approaches and both forcing modes.

In order to identify the strengths and weaknesses of the process-based model, the results of the simulation runs were further analysed. In this context, the model output (reservoir storage) was stratified. The details of the individual processing steps are described in the following.

### 3.2 Data

To parametrise the hydrological model, various spatial data were obtained including a 90 m x 90 m SRTM digital elevation model (DEM), a soil map provided by the research institute for meteorology and water resources of the state of Ceará (FUNCEME) along with soil parameters from a local database (Jacomine et al., 1973) from which the necessary model parameters were calculated employing pedo-transfer functions, a landcover map from the Brazilian Ministry for the environment with



**Figure 2.** Workflow for the generation and evaluation of hindcasts of hydrological drought indices.

parametrisations assembled by Güntner (2002), and a map of small and strategic reservoirs provided by FUNCEME. Reservoir parameters were made available by the Company for Water Resources Management of Ceará (COGERH) and FUNCEME and include the year of dam construction, storage capacity, and water level–lake area–storage volume relationships along with daily resolution time series of water levels and artificial water release. A time series of daily precipitation for 380 stations within and in close vicinity around the study area were provided by FUNCEME. Other daily meteorological time series needed by the model (relative humidity, air temperature, and incoming shortwave radiation) were derived from the gridded dataset ( $0.25^\circ \times 0.25^\circ$  resolution) of Xavier et al. (2016).

### 3.3 Meteorological hindcasts

Daily meteorological hindcast data for the period 1981 to 2014 used as input into the hydrological model stem from an ensemble (20 members) of ECHAM4.6 GCM runs (Roeckner et al., 1996) which were bias corrected by Empirical Quantile Mapping

(EQM) (Boé et al., 2007; Gudmundsson et al., 2012). Although Delgado et al. (2018b) identified some deficiencies regarding this product, there was no clear better performing alternative. In addition, ECHAM4.6 is already employed operationally by the local water authority FUNCEME (Sun et al., 2006), and, in contrast to other seasonal forecast systems like those by ECMWF, it comes without further costs for operational use, making it the candidate for future operational application. The 20 member ensemble runs of ECHAM4.6 were conducted and results provided by FUNCEME. More information are given in Delgado et al. (2018b).

### **3.4 The process-based model**

#### **3.4.1 Introduction to WASA-SED**

The hydrological model WASA-SED, version rev\_257, was employed for the process-based hindcasts of reservoir volumes. WASA-SED is a deterministic, process-based, semi-distributed, time-continuous hydrological model. The representation of hydrological processes focuses on dryland environments. A complex but efficient hierarchical spatial disaggregation scheme allows for application over large scales up to an order of magnitude of 100,000 km<sup>2</sup> (Güntner and Bronstert, 2004; Mueller et al., 2010). Reservoirs can be simulated by treating large strategic reservoirs in an explicit manner while representing smaller ones as lumped water bodies of different size classes to efficiently account for water retention of many small reservoirs in a study region (Güntner et al., 2004). The model was developed for and successfully applied in the semiarid areas of northeastern Brazil (Medeiros et al., 2010; Krol et al., 2011; de Araújo and Medeiros, 2013; Medeiros et al., 2014) and used for other dryland regions, such as in India (Jackisch et al., 2014) and Spain (Mueller et al., 2009, 2010; Bronstert et al., 2014).

#### **3.4.2 Model parametrisation and calibration**

The model was parametrised using the lumpR package for the statistical environment R (Pilz et al., 2017). This included the delineation of catchment and model units, assembly, calculation, and checking of parameters, and the generation of the model's input files. Meteorological data were interpolated to the respective spatial units (sub-basins). For rainfall, this step used the Thiessen Polygon method as implemented in the Information System for Water Management and Allocation (SIGA) (Barros et al., 2013). For the other meteorological variables, Inverse Distance Weighting (IDW) from the R package geostat (Kneis, 2012) was used. Reservoir data were processed and prepared for the model. A total of 36 strategic reservoirs within the study area was selected for explicit treatment in the model according to their size and importance for water management.

The model was calibrated independently for each of the five regions in the study area (see Fig. 1). Calibrated output of upstream regions was used as boundary condition for downstream regions. Due to lack of data for Lower Jaguaribe, the calibrated parameters of Castanhão were transferred. However, sufficient data were available for further analyses. The calibration period spanned 2003 to 2010, which includes both wet (2004 and 2009) and dry (2005, 2007, and 2010) years.

Daily reservoir volume increase of the strategic outlet reservoir of a specific region was used as target variable as reservoir level measurements were assumed to be more reliable than streamflow observations. Streamflow in the area is highly variable and rivers, especially in the downstream part of the catchment, are characterised by broad and dynamic cross sections and dense

riparian vegetation inducing large uncertainties in streamflow measurements derived from rating curves. However, reservoir management has a strong impact on reservoir dynamics and only a limited amount of data on artificial releases were available, while there was even no information on overspill (which does not often occur at the large strategic reservoirs) and only rough estimates of withdrawals. To minimize the impact on calibration, only positive volume variations (i.e. net reservoir volume gain), which are effectively caused by runoff draining into the reservoirs, were considered for calibration. Therefore, daily net losses of volume, which are largely determined by such management influences, were set to zero and therefore effectively excluded from the calibration. However, for region Salgado, streamflow measurements had to be used as this specific region does not contain a strategic reservoir at its outlet.

In total, 15 parameters were chosen for calibration. As objective function, a modified version of the Nash–Sutcliffe Efficiency (NSE) called Benchmark Efficiency (BE) following Schaeffli and Gupta (2007) was employed. It is calculated as

$$BE = 1 - \frac{\sum_{t=1}^N (q_{obs}(t) - q_{sim}(t))^2}{\sum_{t=1}^N (q_{obs}(t) - q_{bench}(t))^2} \quad (1)$$

with  $t$  being the index of time containing  $N$  time steps within the calibration period,  $q_{obs}$  are the observations,  $q_{sim}$  the simulations, and  $q_{bench}$ , instead of being the average of the observations as in the traditional NSE, represents the mean of the observations for every Julian day over all years within  $N$  (i.e. the mean annual cycle). In this way, a value of  $BE > 0$  means the model is able to reproduce the average yearly dynamics better than simply using statistics. Consequently, a value of  $BE = 1$  signifies perfect agreement of simulations with measurements. Eventually, BE as performance measure employs a much stricter criterion on simulated hydrological dynamics compared to using the NSE measure.

For calibration, the Dynamically Dimensioned Search (DDS) algorithm (Tolson and Shoemaker, 2007) implemented in the R package ppso (Francke, 2017) was used. Since DDS was developed for computationally demanding hydrological models it is able to obtain satisfying results within the order of 1,000 to 10,000 model calls. For this study, the number of calls was limited to 5,000 for every region which resulted in about 10,000 hours of CPU core processing time on a high performance cluster.

### 3.4.3 Analysis of simulation performance and influencing factors

An objective of this study is to analyse the simulation performance of the process-based model in more detail and to identify possible influencing factors. Instead of using a single goodness of fit measure, as for automated calibration, different aspects of model performance should be investigated. Therefore, the Kling–Gupta Efficiency (KGE) was chosen as performance measure along with its three components correlation, bias, and deviation of standard deviations of simulations and observations, see upper part of Table 1. Like NSE and BE, KGE scales from minus infinity to one where one is the optimum value achieved for maximum correlation (i.e.  $COR = 1$ ) and no deviation of means and standard deviations. To assess which factors influence the model performance, several candidate descriptors were selected which are presented in the lower section of Table 1. These descriptors were tested for their capability to explain model performance in time and space in a regression approach by using these descriptors as predictors and the performance metrics as the response variable.

For the analysis, the calibration period 2003 to 2010 was used. Each response variable (i.e. performance metric) was calculated for each of the 36 strategic reservoirs located in the study area. Furthermore, each year was divided into a falling period,



where the difference of reservoir levels for two consecutive days was negative, and a rising period where the difference was greater than or equal to zero. For each reservoir, year, and period, the respective performance was computed and analysed separately. This resulted in a total of 32 reservoirs *times* 8 years *times* two periods *minus* some missing observations, i.e. 484 values to be aggregated for each response variable. The predictors were either static and unique for each reservoir (upstream catchment area  $A_{up}$ , reservoir capacity  $V_{cap}$ , number of upstream reservoirs  $n_{resup}$ ), region specific and dynamic as aggregation over a certain amount of time (maximum daily precipitation  $P_{max}$ , regional precipitation sum  $P_{reg}$ , regional precipitation over the last 12 months  $P_{12}$  and over the last 36 months  $P_{36}$ ) or a grouping variable by itself (reservoir level is currently rising or falling  $\Delta_{vol}$ ) (see also Table 1 for more information).

To identify predictor importances and their specific influence on the performance measures, a random forest analysis was conducted using the R package party (version 1.3-1). In general, random forests consist of an ensemble of regression trees, where each tree is fitted using a bootstrap sample of the training dataset and only a sub-sample of all available predictors. This eliminates typical problems of traditional regression tree approaches, such as a high sensitivity to small changes in the data and the likelihood of overfitting (Breiman, 2001). For this study, a refined random forest algorithm was employed, which is better suited for predictors of different types (e.g. mixed categorical and continuous) and produces more robust measures of predictor importance in case of correlated predictor variables (Hothorn et al., 2006; Strobl et al., 2007, 2008).

For each response variable, an individual random forest was built. Except for  $\Delta_{vol}$  (categorical), each predictor and response variable was treated as numerical. To generate robust estimates of predictor importance, 1,000 regression trees were built per forest (otherwise standard parameter values of the algorithm were used). The most influential predictors for a certain response were then distinguished by an importance measure, which in this study was derived by permuting the values of each predictor and measuring the difference in prediction accuracy of the random forest before and after permutation (also termed *permutation importance* in contrast to the often used *Gini importance* or *mean decrease in impurity*). In addition, the permutation of predictor values was done by accounting for potential correlation among predictor variables (hence termed *conditional permutation importance*) as suggested by Strobl et al. (2008).

In order to get an impression of the concrete effect of each predictor instead of the mere variable importance, the two leaf nodes with the highest and lowest median response values for each tree were identified. For these two nodes, the ranges of each numerical predictor (except  $\Delta_{vol}$ ) were classified into four groups ranging from small to large to facilitate visual investigation.

### 3.5 The statistical model: a regression approach

A goal of this study is to answer the question whether the application of a complex process-based simulation model is worthwhile in comparison to a much more convenient statistical approach to generate seasonal forecasts of reservoir storage and drought indices. To achieve this, the regression model of Delgado et al. (2018b), which was developed for the same study area, was employed. They fit a multivariate linear regression (MLR) model individually for each of the sub-regions also defined in this study. As response variable, regional volume changes were used (approach M2 in Delgado et al., 2018b). As possible predictors, meteorological drought indices (standardised precipitation index (SPI) and standardised precipitation–evapotranspiration index (SPEI)) aggregated over time periods of 1, 12, and 36 months, respectively, were considered in their

**Table 1.** Response and predictor variables used for the analyses of the process-based model performance.

Abbrev.	Explanation
<b>Responses</b>	
KGE	Kling–Gupta Efficiency (Gupta et al., 2009): $1 - \sqrt{(\text{COR} - 1)^2 + \text{BIAS}^2 + \text{VAR}^2}$
COR	Pearson correlation of simulations $y$ and observations $o$ : $\frac{\text{cov}(y,o)}{\sigma_y \sigma_o}$ with $\text{cov}$ being their covariance and $\sigma$ their standard deviations
BIAS	Deviation of means $\mu$ : $\frac{\mu_y}{\mu_o} - 1 \in [-1, \infty)$
VAR	Deviation of variability: $\frac{\sigma_y}{\sigma_o} - 1 \in [-1, \infty)$
<b>Predictors</b>	
$A_{up}$	Upstream catchment area of the reservoir ( $km^2$ )
$V_{cap}$	Reservoir volume capacity ( $hm^3$ )
$n_{resup}$	Number of upstream reservoirs (-)
$\Delta_{vol}$	Rising or falling period of reservoir volume (-)
$P_{max}$	Maximum regional daily precipitation sum over rising / falling period of a year ( $mm$ )
$P_{reg}$	Regional precipitation sum over rising / falling period of a year ( $mm$ )
$P_{12}$	Regional precipitation sum over the entire previous year ( $mm$ )
$P_{36}$	Regional precipitation sum over 36 months of the preceding years ( $mm$ )

study. To account for correlation among predictors, ratios of predictors exhibiting significant correlation to each other were used. Genetic optimisation with respect to the Akaike information criterion (AIC) was employed to determine the specific predictors for each sub-region. To enforce model parsimony, not more than five predictors should be used in the regression equation. For the model fit, all available observations within the analysis period were used (monthly values from 1986 to 2014, less a few missing values). The resulting equations are presented in Table 2.

To generate hindcasts, the predictors of the equations (the SPI and SPEI values over different time horizons) were calculated on a monthly scale to obtain monthly forecasts of regional reservoir volume changes for each rainy season of the hindcast period. Regional storage volume values could then be obtained by successively adding predicted volume changes to the measured value of December of the previous year, which served as a base value for each rainy season. Even though the shown model fits for monthly volume changes were rather poor (low  $R^2$  values in Table 2), the derived absolute reservoir level values were in good agreement with measurements (Delgado et al., 2018b).

To compare the mere simulation performances, both the process-based and the statistical model were first driven by observed meteorology to exclude the effect of the downscaled GCM runs. In a second step, the two approaches were evaluated for real hindcasts.

**Table 2.** Regional equations used for the calculation of monthly volume changes with the statistical approach. Table extracted and extended from Delgado et al. (2018b) (Table A1). Details and abbreviations see text.

Region	Formula	$R^2$
Lower Jaguaribe	$0.689 + 2.222 \text{SPI}_1 + 0.035 \frac{\text{SPI}_{36}}{\text{SPI}_{12}} + 2.116 \text{SPI}_1 \text{SPI}_{12} + 1.075 \text{SPI}_{12} \frac{\text{SPI}_{12}}{\text{SPI}_{12}} + 0.286 \text{SPI}_1 \frac{\text{SPI}_{12}}{\text{SPI}_{36}}$	0.38
Orós	$0.416 + 2.428 \text{SPEI}_1 \text{SPI}_1 + 2.233 \text{SPI}_1 \text{SPI}_{12} - 0.173 \text{SPI}_{36} \frac{\text{SPEI}_{36}}{\text{SPEI}_{12}} + 4.197 \text{SPEI}_1 \frac{\text{SPI}_{12}}{\text{SPEI}_{12}} - 0.003 \frac{\text{SPEI}_{36}}{\text{SPEI}_{12}} \frac{\text{SPI}_{36}}{\text{SPI}_{12}}$	0.36
Salgado	$-0.377 + 2.002 \frac{\text{SPI}_{12}}{\text{SPEI}_{12}} + 2.454 \text{SPEI}_1 \text{SPI}_1 + 2.600 \text{SPEI}_1 \text{SPI}_{36} + 4.203 \frac{\text{SPI}_{12}}{\text{SPEI}_{12}} \text{SPEI}_1 + 0.314 \text{SPI}_1 \frac{\text{SPI}_{36}}{\text{SPEI}_{12}}$	0.45
Castanhão	$2.947 + 3.468 \text{SPI}_1 - 1.147 \frac{\text{SPI}_1}{\text{SPEI}_1} - 1.270 \frac{\text{SPI}_1}{\text{SPEI}_1} \text{SPEI}_{36} - 0.791 \text{SPI}_1 \frac{\text{SPI}_{36}}{\text{SPEI}_{12}} + 1.412 \text{SPEI}_{12} \frac{\text{SPI}_{36}}{\text{SPEI}_{36}}$	0.21
Banabuiú	$4.812 + 4.638 \text{SPI}_1 - 13.853 \text{SPI}_{12} - 2.293 \text{SPI}_{12} \text{SPEI}_{36} + 15.317 \text{SPEI}_{12} \frac{\text{SPI}_{36}}{\text{SPEI}_{36}} - 0.341 \frac{\text{SPI}_{36}}{\text{SPEI}_{36}} \frac{\text{SPI}_{12}}{\text{SPEI}_{36}}$	0.23

### 3.6 Drought hindcasting

#### 3.6.1 Hydrological drought quantification

As water stored in surface reservoirs is of primary importance to water supply, hydrological drought indices based on surface reservoir filling level appear to be the most adequate choices to identify and characterise hydrological droughts in the study area. Thus, in line with Delgado et al. (2018b), for the quantification of hydrological droughts the regionally and monthly aggregated reservoir storage was defined as drought indicator:

$$I_t = \frac{\sum_{i=1}^{R_j} V_t^i}{\sum_{i=1}^{R_j} V_{cap}^i} \quad (2)$$

with  $t$  being the time index,  $V_t^i$  the volume stored in reservoir  $i$  of a certain region  $R_j$  (i.e. one of the five sub-regions of interest illustrated in Fig. 1), and  $V_{cap}^i$  the storage capacity of that reservoir. This metric was calculated for each of the five regions of interest ( $R$ ) and each month of the hindcast period (wet seasons, January to June, of 1981 to 2014). For each month the last daily value was taken.

A drought was then defined as

$$D_t = \begin{cases} 1 & \text{if } I_t < q_{0.3} \\ 0 & \text{if } I_t \geq q_{0.3} \end{cases} \quad (3)$$

where  $D = 1$  denotes drought,  $D = 0$  indicates no drought, and  $q_{0.3}$  is the 0.3 quantile of  $I$  over the hindcast period. The definition of  $q_{0.3}$  is based on the choice of local decision makers who defined this value as warning threshold for reservoir scarcity. In Sect. 5.1 the impact of this decision will be discussed. The threshold was applied to each region individually and, thus, resulted in regionally different drought thresholds. As such, the results of this study will be comparable to the work of Delgado et al. (2018b).

### 3.6.2 Verification of drought hindcasts

Hindcasts of reservoir volumes ( $V_t^i$ ) and, consequently, the hydrological drought index ( $I_t$ ) were verified employing the Root Mean Square Error (RMSE), the Relative Operating Characteristic Skill Score (ROCSS), and the Brier Skill Score (BSS). Definitions and discussions of the various forecast verification metrics can be found in textbooks such as Wilks (2005). In the

5 following, short explanations for each selected measure shall be given.

The RMSE is a deterministic measure and was derived by calculating the root of squared differences of hindcasts and observations averaged over all values of the hindcast period:

$$\text{RMSE} = \sqrt{\frac{1}{N} \sum_{t=1}^N (I_t^f - I_t^o)^2} \quad (4)$$

where  $N$  is the number of forecasted time steps and the superscripts  $f$  and  $o$  denote forecast and observation, respectively.

10 It was calculated multiple times by using as  $I_t^f$  each GCM member individually and, in addition, the median of members as deterministic value. The metric quantifies the average magnitude of hindcast errors in units of the target variable, i.e. in this case regional reservoir storage in percent points, and is therefore useful for the interpretation of suitability of the model for water managers who rely on accurate forecasts of volumes to coordinate reservoir operation. As such, the RMSE refers to the attribute of accuracy. The lower the RMSE, the lower the forecast error and the higher the accuracy.

15 The Relative Operating Characteristic Skill Score (ROCSS) quantifies the ability of a model to correctly discriminate between events and non-events. In this context, an event is defined as a hydrological drought which, in turn, is distinguished by the drought index falling below the 0.3 quantile ( $q_{0.3}$ ) as explained above. The ROCSS is based on the ROC curve which plots the probability of event detection against the false alarm rate for different thresholds of forecast probability defining an event. Taking the Area Under the Curve (AUC) of this graph, the skill score can be calculated as

$$20 \quad \text{ROCSS} = 2 \cdot \text{AUC} - 1 \quad (5)$$

The value ranges between  $-1$  and  $1$  with values lower than or equal to zero indicating the false alarm rate being greater than or equal to the probability of event detection and, thus, the model having no skill. A value of one represents the highest score, i.e. the model is able to predict every event and non-event correctly. As such, the ROCSS is a measure for event resolution of probabilistic forecasts.

25 The Brier Score (BS) measures the mean squared error of probabilistic forecasts and indirectly contains information about reliability, resolution, and the variability of observations (the latter being commonly referred to as uncertainty). As such it can be calculated as

$$\text{BS} = \frac{1}{N} \sum_{t=1}^N (D_t^f - D_t^o)^2. \quad (6)$$

30 The corresponding skill score (BSS) compares the BS of a forecast model with that of a simple reference forecast, in our case climatology:

$$\text{BSS} = 1 - \frac{\text{BS}}{\text{BS}_{\text{reference}}} \quad (7)$$

with  $BS_{\text{reference}} = 0.3$ , corresponding to  $q_{0.3}$ , the initially defined long-term average probability of drought occurrence (as described above). It follows that  $BSS \in (-\infty, 1]$  and a forecast model having skill relative to the reference model if  $BSS > 0$ .

## 4 Results

### 4.1 Comparison of model performance in simulation mode

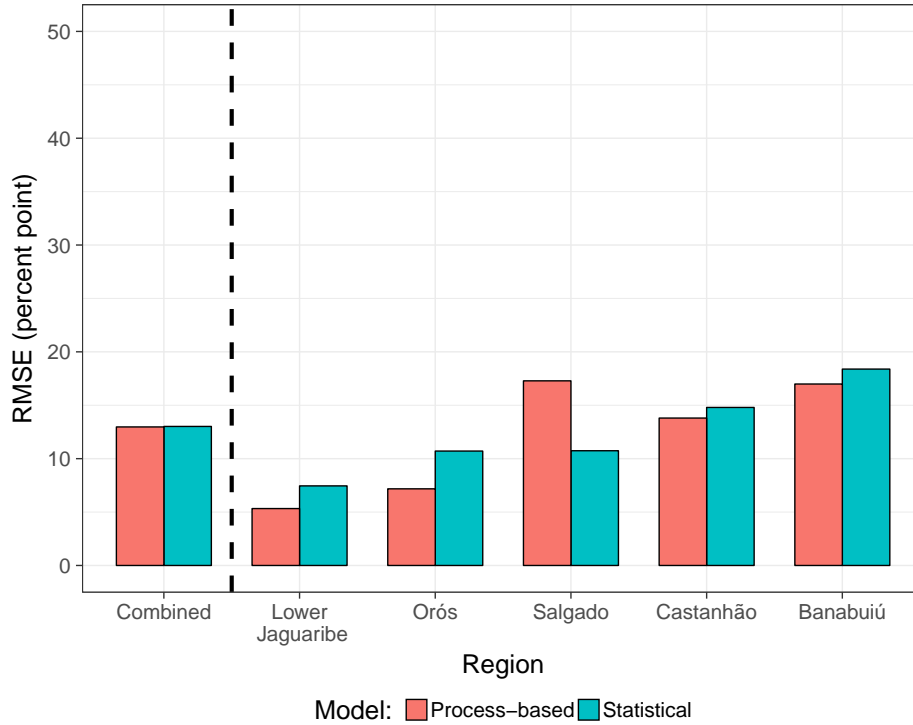
- 5 Figure 3 compares the performances of the process-based and statistical model in simulating relative regional reservoir storage driven by observed meteorology. The regional RMSE varies between 5 and 18 percent points whereas for the whole catchment both modelling approaches achieve a result of about 13 percent points. Overall, the performance differences between the two models are small for all regions. Only for Salgado the statistical model shows a lower RMSE compared to the process-based model and the difference among the two approaches is largest (6 percent points). For all other regions, the process-based model exhibits a slightly higher accuracy, and the inter-regional ranking is equal for both approaches. Generally speaking, both models show a comparable performance, suggesting they are equally suitable for their application in hindcast mode.

### 4.2 Comparison of model performance in hindcast mode

- The uppermost panel of Fig. 4 shows that in hindcast mode, the accuracy in terms of RMSE considerably decreases when compared to simulation mode for both types of models. However, in contrast to the situation in simulation mode, the statistical approach outperforms the process-based model for all regions. While for the statistical model, deterioration in terms of RMSE is generally less than 10 percent points, the process-based model achieves significantly lower accuracy with increasing RMSE by up to almost 30 percent points. This degradation of model performance in hindcast mode for the process-based model is especially pronounced for the Banabuiú region.

- The lower two panels of Fig. 4, however, demonstrate that both approaches are able to generate drought hindcasts with skill. The resolution of event hindcasting of the two models (i.e. the ROCSS) is very similar combined over the whole catchment. Regional differences are more pronounced but still negligible. For some regions the process-based, for other regions the statistical model performs slightly better. The BSS, while also indicating skill, shows lower performance values which can be attributed to lacks in accuracy (as already indicated by RMSE) and reliability.

- An attribute plot, as the one presented in Fig. 5, can reveal more details on that issue. Therein, the predicted probability of drought occurrence (obtained from the outcomes of individual ensemble members) is plotted against the relative frequency of observed drought occurrences (solid lines) together with the relative prediction frequency of a certain forecast probability interval (dotted lines). It demonstrates several verification attributes including resolution (the flatter the solid lines, the less resolution), reliability (agreement with the gray diagonal line), sharpness (dotted coloured lines), and skill (values within the gray region contribute positively to BSS; for unclear terms see appendix Sect. A or consult textbooks such as Wilks (2005)). Apparently, predictions from both models contain skill except for low forecast probabilities where both models contribute negatively to BSS. Furthermore it can be seen that both approaches exhibit problems in terms of reliability. Specifically,



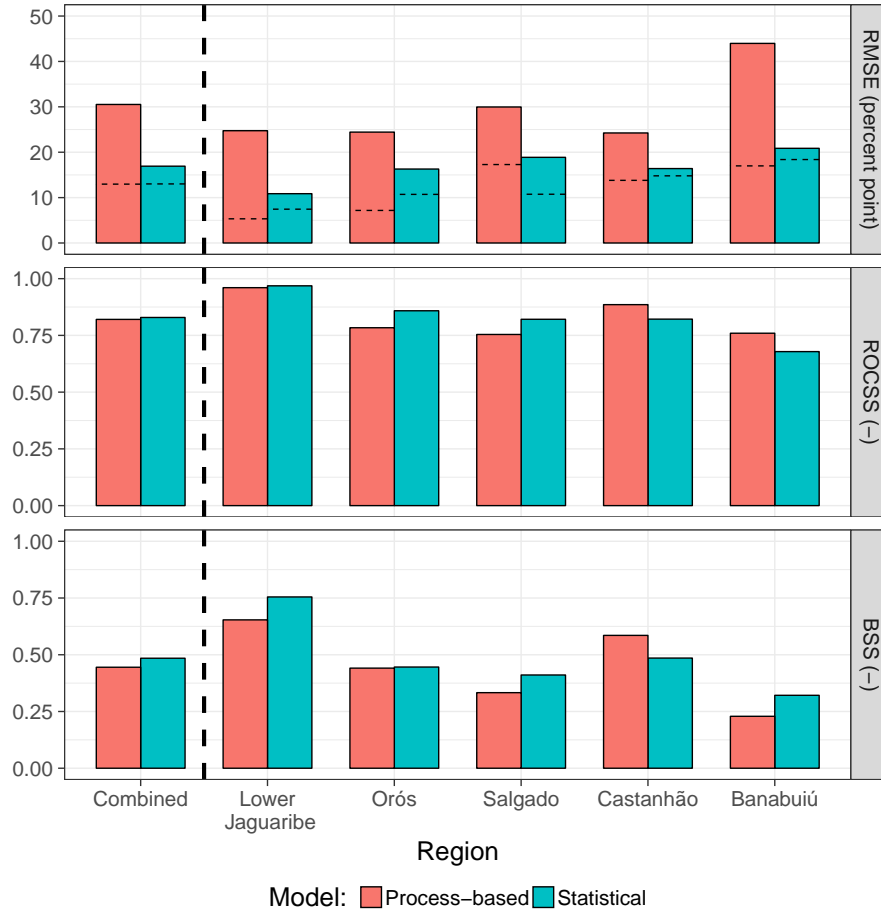
**Figure 3.** Comparison of accuracy in predicting relative reservoir storage for the process-based and statistical model in simulation mode (i.e. run with observed forcing). The underlying analysis period comprises monthly values of the rainy season (January to June) over the hindcast period (observations available since 1986 until 2014 with some data gaps in between, resulting in a maximum of 174 values for each sub-region).

forecast probabilities are too low compared to observed occurrences, which is generally denoted as underforecasting. This observation appears to be a bit more pronounced for the process-based than for the statistical model. That also holds true for sharpness, as the statistical approach shows slightly more confidence for higher forecast probabilities, i.e. the relative frequency of maximum forecast probability is higher.

## 5 4.3 Model performance attribution

### 4.3.1 Hindcasts

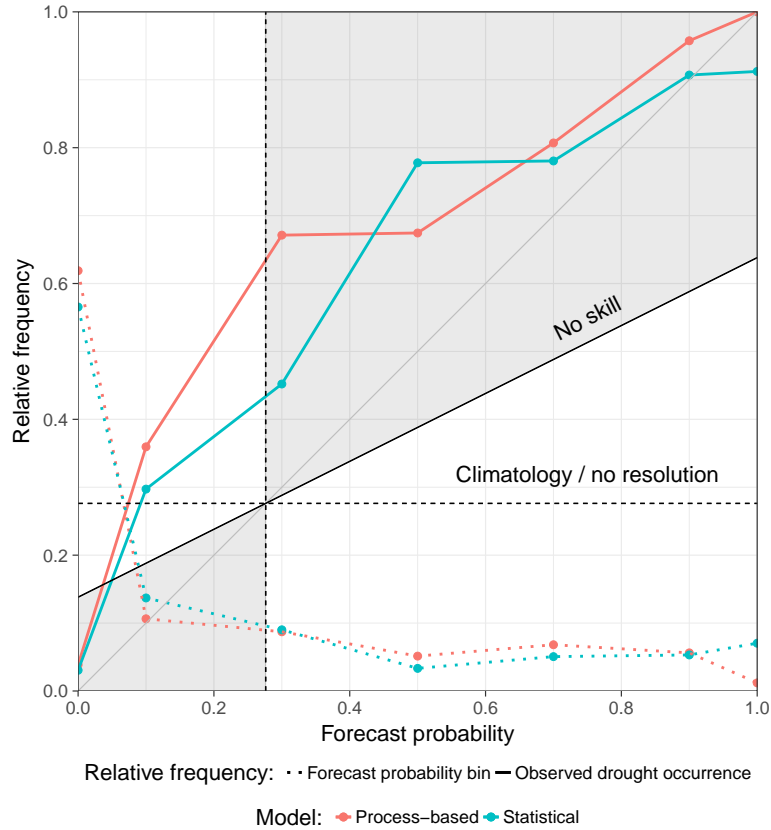
The monthly aggregated accuracy of the hindcasts, i.e. performance with increasing lead time, is shown in Fig. 6. Overall, the hindcast error (i.e. RMSE) increases with lead time (i.e. progression of the wet season), even when using observed forcing. The statistical approach generally produces better hindcasts. Its RMSEs differ only little from runs with observed forcing. Also the increase of RMSE with lead time is very similar. For the process-based model, hindcasts deviate clearly from observation based results (as was already shown in Fig. 4). The error increases much stronger over the hindcast horizon. However, its



**Figure 4.** Model performance in hindcast mode for the two model approaches. In the top panel, horizontal dashed lines in the bars mark the results obtained with observed forcing (simulation mode, as in Fig. 3). Note that for RMSE low values indicate a better performance while for ROCSS and BSS higher values are favoured.

RMSE values reach a plateau at about 40 percent points in March. Generally, it can be seen that aggregating the ensemble members by using the median of reservoir storage hindcasts (solid lines) is usually a better choice than most of the single ensemble members (distributions shown as boxplots). The spread of ensemble member results differ for the two approaches. These ranges are clearly larger for the process-based model in January and February, but comparable for the other months.

- 5 In Fig. 7 prediction accuracy is assessed for different wetness conditions (i.e. dry, normal, wet) over different accumulation time periods for rainfall. Again, when driven by meteorological hindcasts, the statistical approach performs best with relatively small differences to results obtained using observed forcing. Under wet conditions, irrespective of the rainfall accumulation period, the error is highest for most settings. The only exception from this pattern shows the process-based model driven by



**Figure 5.** Attribute plot of drought hindcasts aggregated over the whole study area. Values within the gray region contribute positively to the Brier Skill Score (BSS). For details on the interpretation of the plot see text.

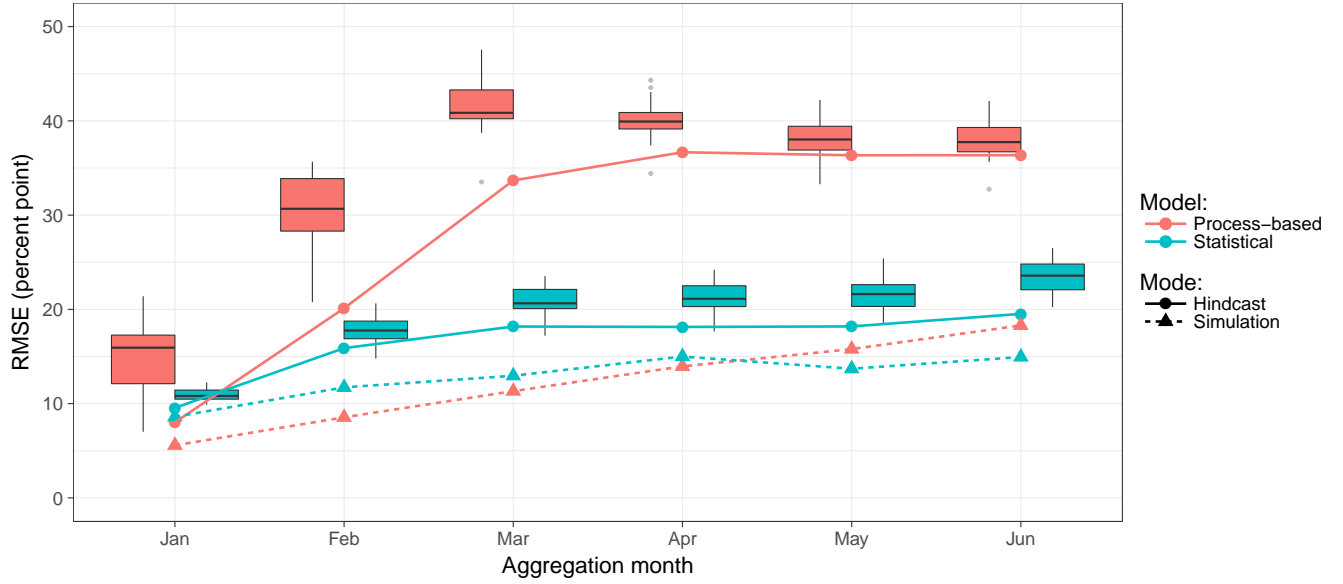
hindcasts. Here, the error under dry preconditions increases with increasing rainfall accumulation length while the performance under wet preconditions improves with longer accumulation length.

#### 4.3.2 Process-based simulation performance

In the preceding subsections it was shown that the process-based model does not outperform the statistical approach. Moreover, in hindcast mode, the process-based model often achieved worse performance measures, especially in terms of accuracy. This subsection therefore aims at the identification of deficit causes by analysing the results of process-based model calibration and potential influencing factors of simulation performance in more detail.

Regional calibration performance of the process-based model is summarised in Table 3. A good overall agreement of simulated and observed reservoir dynamics in terms of BE values could be achieved during calibration. However, PBIAS as a performance metric not used in the calibration shows, on the one hand, acceptable values of no more than 12 % but, on the



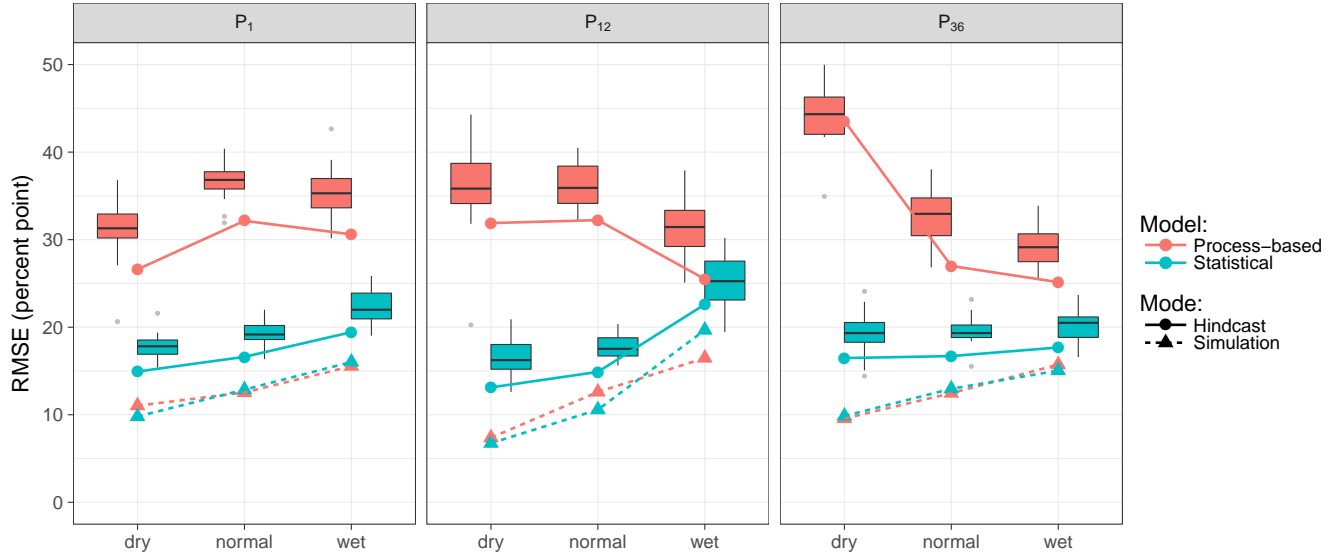


**Figure 6.** RMSE of regional reservoir storage hindcasts with increasing forecast horizon / lead time. Monthly values are obtained by aggregation over the full analysis period (1986 to 2014) for a specific month. Each box reflects the distribution of the 20 ensemble members. Coloured solid lines refer to the ensemble median taken as deterministic forecast and analysed individually.

other hand, a consistent slight overestimation of reservoir level dynamics. It can be further observed that a good BE value does not correlate with a low PBIAS.

The random forest analysis brought more insight into process-based model performance and its influencing factors. Figure 8 illustrates the importance of each potential predictor for different performance metrics. Apparently, overall model performance (here measured via KGE) primarily depends on the wetness preconditions ( $P_{36}$ ). While reservoir size ( $V_{cap}$ ) plays only a minor role for the overall performance metric KGE, it clearly affects correlation and bias. (Mis-)match of standard deviation (VAR), however, is mainly determined by both wetness conditions and reservoir size. Overall, long reaching antecedent wetness condition ( $P_{36}$ ) is more important than the conditions of the preceding 12 months ( $P_{12}$ ), and reservoir capacity ( $V_{cap}$ ) is dominant over upstream catchment area ( $A_{up}$ ), although the latter is not negligible. The current rainfall conditions, in terms of intensity ( $P_{max}$ ) and sum over a rising / falling period ( $P_{reg}$ ), whether it is a reservoir level increase or decrease period ( $\Delta_{vol}$ ), and the number of upstream reservoirs ( $n_{resup}$ ) show little or no explanatory value for any of the performance measures.

To analyse the specific influence of predictors on the response variables, Fig. 9 relates the values of the most influential predictors to the corresponding performance measures. This is done by plotting the occurrences of predictor categories in the highest and smallest valued leaf nodes of all regression trees within the random forest. It shows that under dry preconditions ( $P_{36} = \min$ ) there is a tendency for underestimation of standard deviations ( $VAR = \min$ ), i.e. a less variable reservoir storage series than observed, but a better overall performance ( $KGE = \max$ ). On the other hand, under wet conditions, especially for larger upstream catchments ( $A_{up} = \text{high}$ ), results tend to show an overestimation of variability ( $VAR = \max$ ),

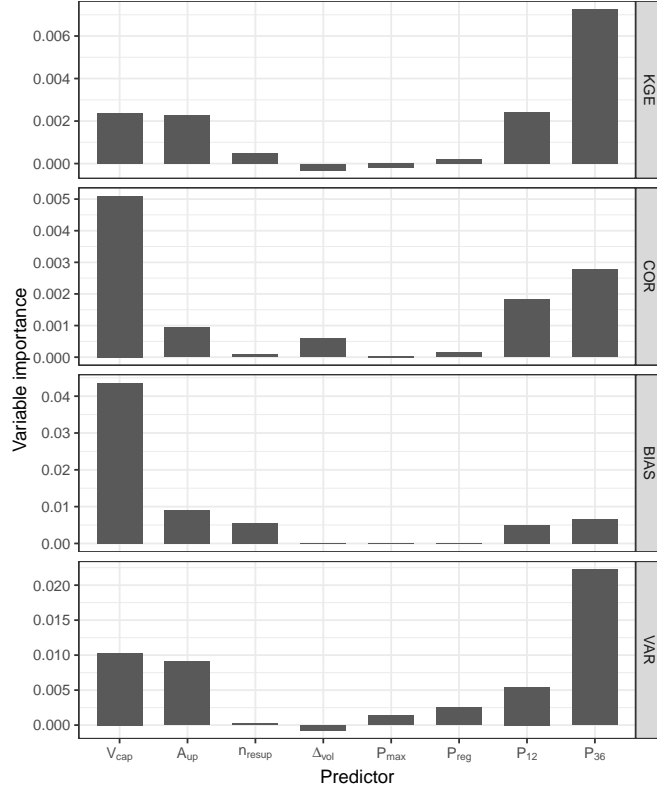


**Figure 7.** RMSE of regional reservoir level hindcasts for different antecedent wetness conditions. Wetness is expressed by three different accumulation horizons of rainfall (1, 12, and 36 months; left, centre, right). Each box reflects the distribution of the 20 ensemble members. Coloured solid lines refer to the ensemble median taken as deterministic forecast and analysed individually.

**Table 3.** Results of regional calibration of the process-based model. BE refers to *Benchmark Efficiency* (Eq. 1) and was used for calibration; PBIAS is *percent bias*, i.e. the average tendency for over- or underestimation of simulations in comparison to observations. For Lower Jaguaribe, no observations at the catchment outlet were available.

Region	BE	PBIAS (%)
Banabuiú	0.84	11.78
Orós	0.76	0.92
Salgado	0.79	7.37
Castanhão	0.76	6.93
Lower Jaguaribe	[no obs.]	[no obs.]

whereas under dry conditions in small catchments, variability is more often underestimated. For small reservoirs correlation is mostly low. It should be noted, however, that relationships cannot always be clearly distinguished. For instance, a low precipitation sum over the preceding year ( $P_{12}$ ) may result in both a high and a low KGE value whereas very low precipitation over the preceding 3 years ( $P_{36}$ ) only led to a high KGE. Furthermore, there is no relationship between reservoir capacity and KGE.

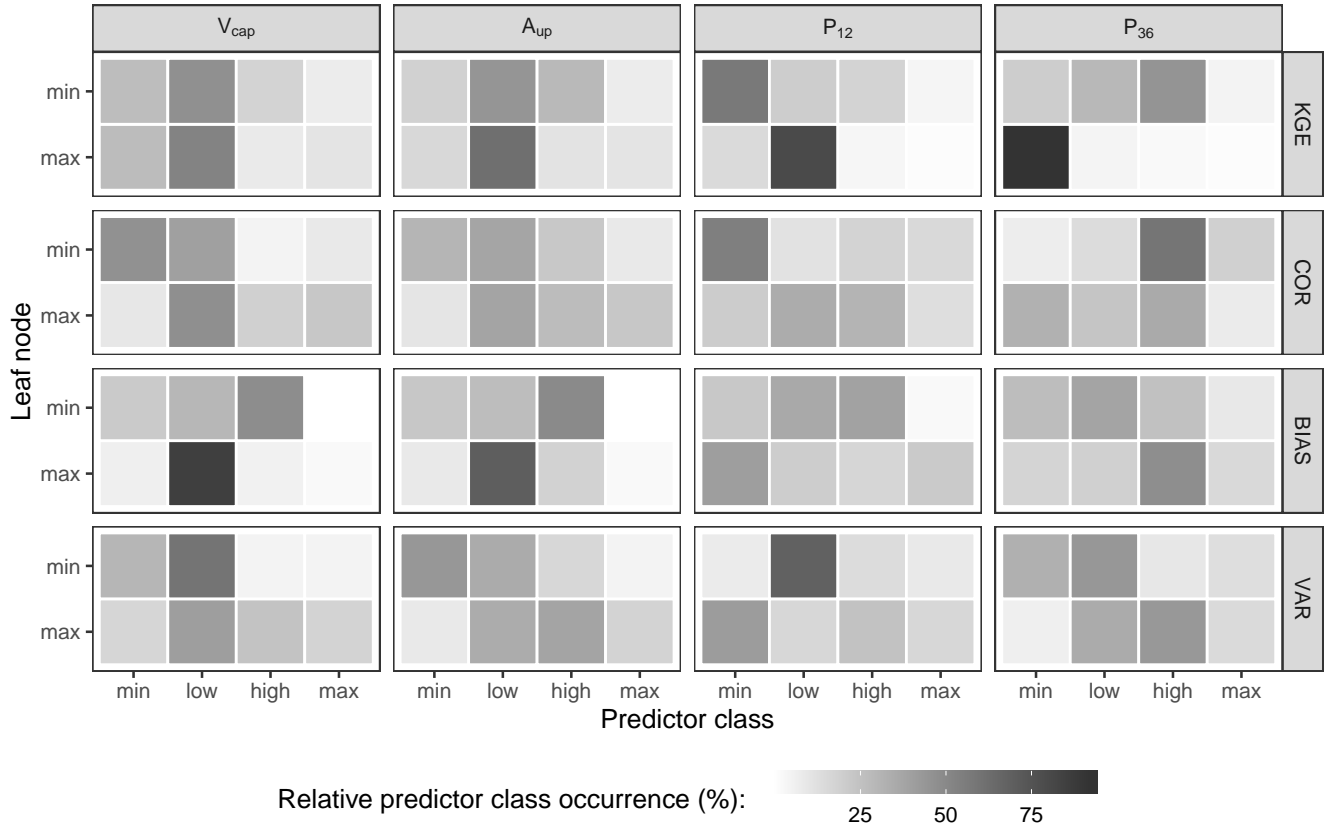


**Figure 8.** Predictor importances for each response variable determined by the random forest approach. In this case conditional permutation importance was used, see Sect. 3.4.3.

## 5 Discussion

### 5.1 Robustness of performance metrics

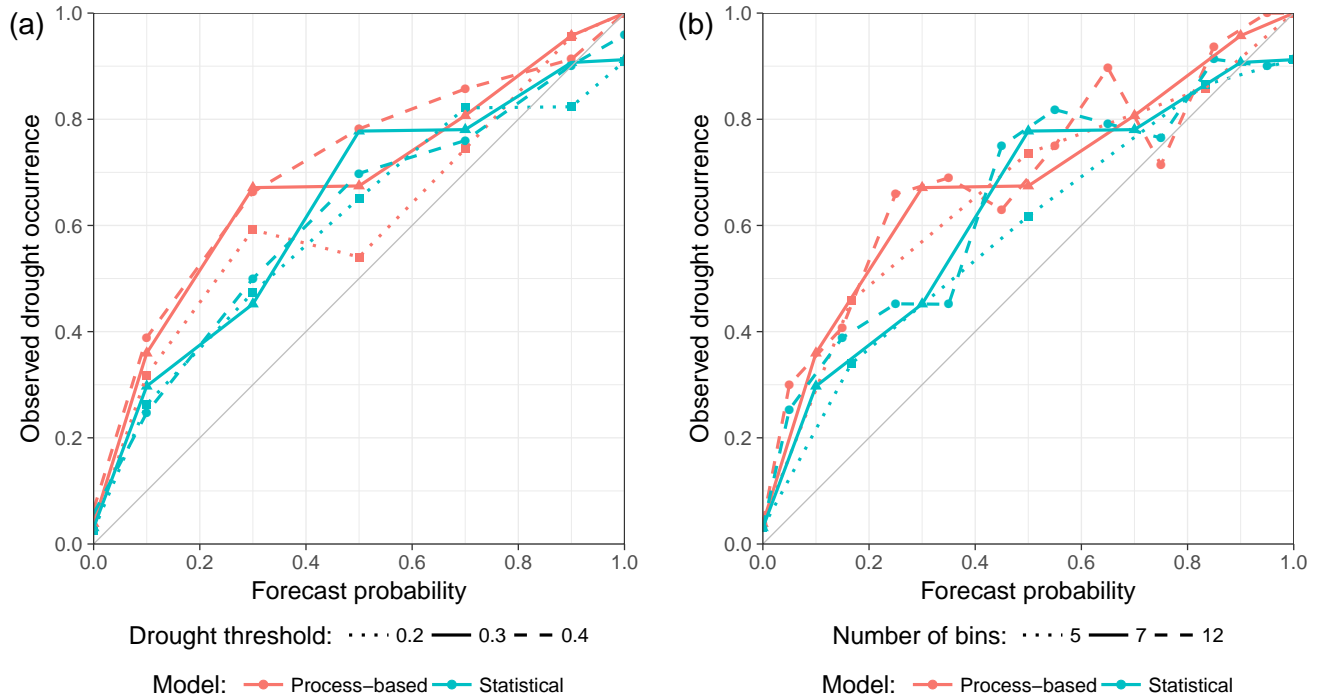
There are two important algorithmic parameters affecting drought predictions of this study. One is the threshold of drought definition, i.e. the quantile of drought index observations specifying a drought, which was set to 0.3 as commonly used in the study area among water managers. This choice affects the performance values of BSS and ROCSS. The other is the number of probability bins into which hindcasts are grouped for further analysis, affecting ROCSS but not BSS as BS was herein calculated without probability binning (see Eq. 6). Figure 10 illustrates the sensitivity of verification attributes to the two parameters. It shows that a higher drought threshold results in a more evenly running curve while a smaller threshold of 0.2 tends to be better oriented towards the reliability line and appears more variable (Fig. 10 a). This might result from the necessarily lower number of values of smaller thresholds. However, altogether general conclusions remain untouched, namely underforecasting and the statistical being superior to the process-based model. Regarding the number of probability bins (Fig. 10 b), a larger value leads to a more variable curve. This effect can be attributed to the decreasing number of values per bin



**Figure 9.** Relative distribution of predictor class occurrences within the largest and smallest valued leaf nodes aggregated over all regression trees of the random forest for each response variable. Shown are only the most important predictors.

with increasing number of bins. For this study, it was decided to use a value of seven as it appears to be the best compromise between sufficient data availability per bin and an adequate number of bins for further calculations (namely ROCSS). Even so affecting the values of ROCSS and partly BSS (not shown), it can be concluded that the somewhat arbitrary decision on a certain drought threshold and the number of bins, as long as reasonable values are chosen, does not affect the general results of the analysis.

The RMSE as accuracy measure is free of such decision parameters but is admittedly influenced in a different way. With the target variable (relative regional reservoir filling) ranging from 0 to 100 percent, the actual maximum value of the metric tends to be smaller during wet periods: the observed value (which is usually greater than zero) effectively causes the RMSE to be limited to about 40 to 50 percent points. This effect is reflected as the apparent performance plateau for the process-based model in Fig. 6 and is also likely to affect the results presented in Fig. 7. The effect that, when driven by hindcasts, the process-based model exhibits larger errors under dry than under wet conditions, can be at least partially attributed to this issue. In contrast, when models are driven by observations, it seems reasonable that model simulation performance is generally better under dry



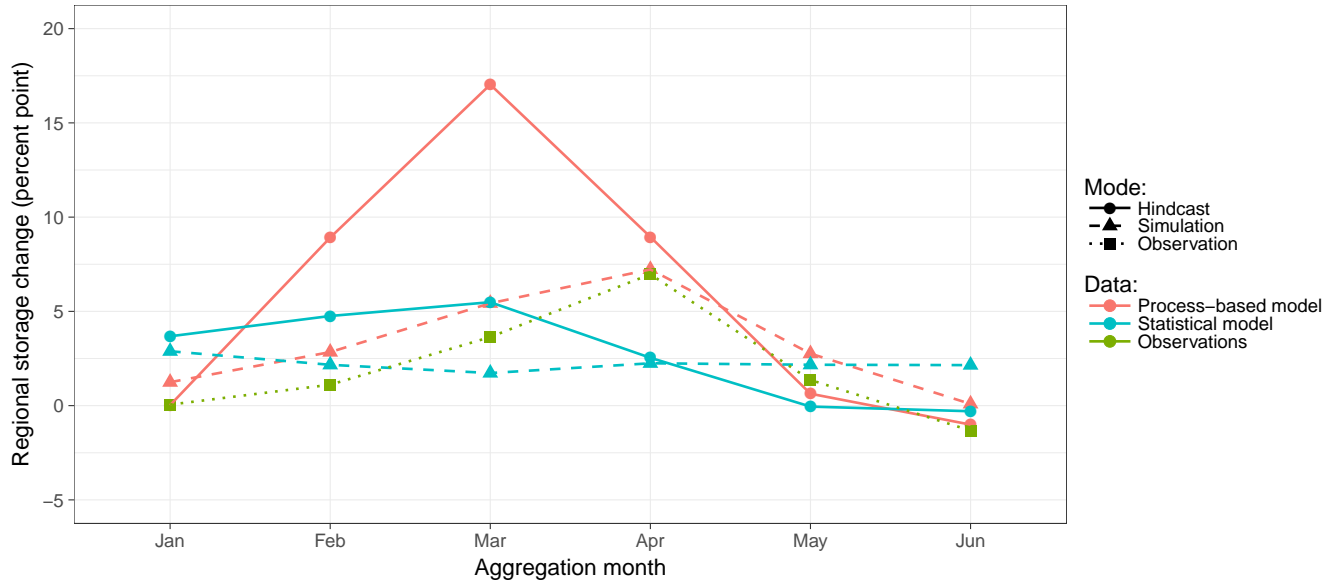
**Figure 10.** Reliability plots for different settings of (a) drought thresholds and (b) number of probability bins. Solid lines refer to the values used in this study. The gray 1:1 lines in each plot illustrate perfect reliability for comparison.

conditions (Fig. 7). However, as no threshold effects can be observed and the RMSE values are always considerably lower for the statistical model, this effect should not influence general conclusions of the model comparison.

### 5.2 Model comparison

In terms of simulation accuracy when driven by observations and for drought event prediction in the hindcast mode, both models perform equally well. Hindcast accuracy, however, is substantially lower for the process-based approach. This result is well in line with findings of other studies that simple statistical model approaches often perform equally well or even better than complex process-based prediction systems, especially in tropical regions due to well exploitable correlations among meteorological and hydrological variables (Block and Rajagopalan, 2009; Hastenrath, 2012; Sittichok et al., 2018). It has to be noted, however, that the process-based approach with the WASA-SED model achieved acceptable results on monthly (hindcasts) and even daily (calibration metrics) time scales whereas former studies in NEB reported passable results only aggregated over seasonal scales (Galvão et al., 2005; Block et al., 2009; Alves et al., 2012).

The reason for the discrepancy of model ranking between simulation and hindcast mode can be attributed to the different model structures. To illustrate this, Fig. 11 shows the average monthly changes of regional reservoir storage for the different models and modes in comparison to observations. For the simulation mode (dashed lines) it can be seen that the process-based



**Figure 11.** Monthly changes of regional reservoir storage averaged over all regions, years, and hindcast members for the two models and application modes in comparison to observations.

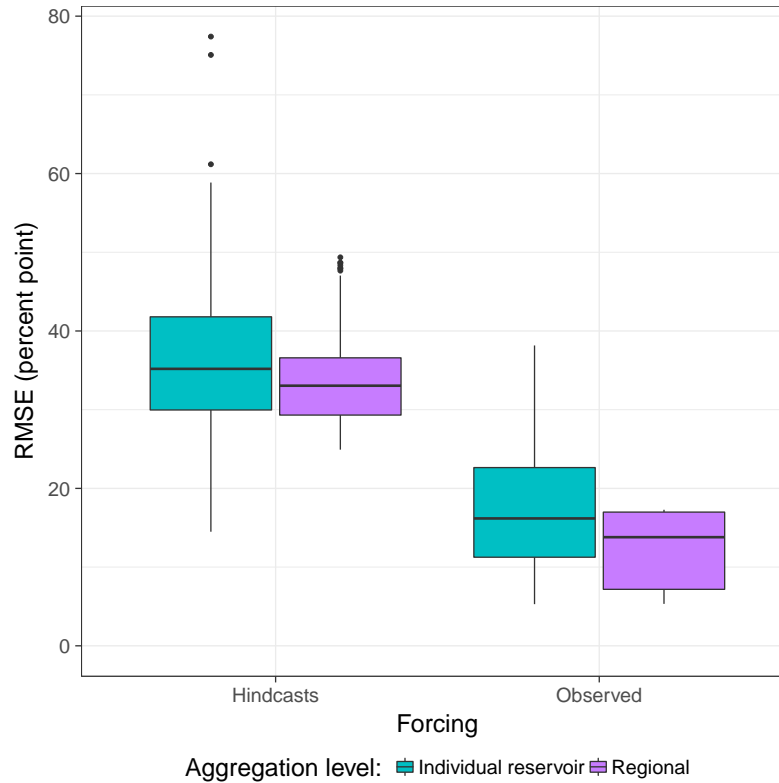
model, though exhibiting a constant overestimation, all in all is well in line with observations. The statistical model, however, shows a more or less constant storage change over the whole simulation horizon, resulting in over- and underestimations and, eventually, a good overall simulation performance (see Fig. 3). In hindcast mode (solid lines), for the process-based model the overestimation of storage change is much more pronounced and the peak shifted from April to March. Although the statistical

5 model now more realistically exhibits seasonal dynamics, the general pattern still appears too smooth, which effectively results in less deviation from observations than the output of the process-based model (Fig. 4). This indicates a strong influence of precipitation forcing on the process-based model while the statistical approach generally reacts more damped on rainfall input. Consequently, deficiencies in this forcing affect the process-based model much more. This, in addition to the plateau effect discussed in Sect. 5.1, explains the more diverse RMSE values among the hindcast realisations for the process-based model at

10 the beginning of the rainy season when reservoirs are filling up (Fig. 6) and the higher RMSE under antecedent dry conditions (Fig. 7 middle and right panels). In contrast, for the statistical model, the general patterns of RMSE over different lead times or under different antecedent moisture conditions do not change in hindcast mode when compared to simulation mode. The issue of uncertainties arising from defective precipitation forcing will be later on discussed in more detail.

Despite the lower prediction performance, the process-based approach still provides benefits over the statistical model. This

15 includes the potential access and investigation of multiple spatially distributed hydrological variables with daily resolution, such as evapotranspiration, runoff generation, or streamflow, which were generated during the model runs. This clearly excels over the statistical model, which only yielded predictions of a single target variable. Another advantage is that model output is not only provided in a regionally and monthly aggregated manner, as for the statistical approach, but for all individual strategic



**Figure 12.** Comparison of accuracies of the process-based model for different spatial aggregation levels on a monthly time scale.

reservoirs in the area as daily time series. Figure 12 illustrates that accuracies of individual reservoirs exhibit a slightly larger variation, but the RMSEs of individual reservoirs are at a similar level as when regionally aggregated. This suggests that most of the single reservoirs can be modelled with a comparable performance as the regionally aggregated values.

A further advantage of a model such as WASA-SED is that underlying processes are directly represented. As such it can be of higher value to water managers interested not only in streamflow or reservoir level forecasts but also in the investigation of process behaviour or assessments under changing boundary conditions. Therein the model could be used in scenario analyses, such as climate change impact assessment, or sensitivity analyses of, for instance, uncertain meteorological input to detect critical streamflow or reservoir stages. Furthermore, the model is transferable and can be easily applied in different regions and over different spatial and temporal scales, only limited by computational resources and available input data.

### 5.3 Deficiencies of the process-based simulation approach

To improve the performance of the process-based model it is first necessary to identify sources for simulation inaccuracies. It was shown that the process-based model achieved regionally different performances. A comparison of Fig. 3 and Table 3 reveals that regional bias during the calibration period is in compliance with the ranking of regional simulation errors.

Moreover, although exhibiting the highest BE value, region Banabuiú is characterised by the largest bias during calibration and highest simulation and hindcast errors. As the latter is observed for both the process-based and statistical approaches, the reason is suspected to originate from uncertainties in observations, i.e. precipitation measurements within the region, or defective reservoir level acquisition. The reason for Salgado region being out of the general pattern for the process-based model certainly originates from the different calibration procedure applied here, namely the use of streamflow measurements in contrast to reservoir dynamics as for the other regions. In addition, the region is distinct from other parts of the catchment in terms of environmental settings such as larger groundwater influence and sedimentary plateaus in the headwater area. Conversely, the transfer of the calibrated parameters from Castanhão to the Lower Jaguaribe region seems justifiable as the simulation error was small. Overall, reservoir size largely influences both simulated storage time series and bias. Model performance, however, appears to be not superior for large reservoirs. Moreover, wetness condition in terms of antecedent rainfall sums over the last 36 months is of major importance, i.e. dry conditions lead to the best model performance in terms of KGE. The latter is not surprising as rainfall in the study area is extremely heterogeneous both in space and time, usually characterised by convective heavy precipitation events with short durations. Thus, prolonged periods without rain constitute a spatially more homogenous input. Conversely, the aggregation of rainfall to daily sums and interpolation over subbasin units, on average covering an area of about  $700 \text{ km}^2$ , must necessarily induce uncertainties. The assimilation of observed reservoir filling states at the beginning of each hindcast season is therefore a reasonable approach to improve predictions and compensate for preceding rainfall input uncertainties during the initialisation run.

#### 5.4 Potential improvements

There are several options to make use of the findings of this study and improve the forecast system in upcoming applications. In the presented study, observed reservoir level data were assimilated into the process-based model to correct the initial conditions for the hindcast runs by simply replacing model states by measurements. For assimilation, more formal approaches already exist such as the rich families of Kalman and particle filtering approaches (e.g. Liu and Gupta, 2007; Komma et al., 2008; Vrugt et al., 2013; Sun et al., 2016; Yan et al., 2017). These, however, require a profound quantification of both simulation and observation uncertainties and, thus, many additional information and, moreover, significantly higher expenses in terms of data preparation, processing, and model application. Nevertheless, they hold the potential to better account for uncertainties in the observations, which were disregarded in this study, despite being considerable.

Pre-processing schemes in the context of hydrological forecasting usually focus on the improvement of rainfall predictions used as main drivers for hydrological models (e.g. Kelly and Krzysztofowicz, 2000; Reggiani and Weerts, 2008; Verkade et al., 2013). This is partly already included in the downscaling scheme applied to GCM products but may as well be further extended. The importance of rainfall forcing on model results, especially for the process-based approach, was already addressed above. A further comparison of the statistical properties (distribution of daily sums, dry/wet spell lengths) of rainfall hindcasts used in this study with observations revealed large discrepancies. Some preliminary tests suggested these to be responsible for the decreased accuracy of the process-based model hindcasts (not shown). In comparison to observations, the hindcasts contain (i) a general shift of rainfall seasonality towards the first months of the rainy season; (ii) a much lower frequency of both



wet and dry periods for spell lengths up to 4 days; (iii) a lower frequency of low daily rainfall values while the number of large precipitation events is overestimated and daily extreme values are much higher; (iv) a much higher probability that a dry day follows a dry day and the probability that a wet day follows a wet day is often underestimated. These findings indicate a high potential for improvement in future applications in the study area. As a first starting point, monthly bias of hindcasts per region was corrected and both models were re-run. Figure 13 shows that this relatively simple procedure already results in a considerable decrease of RMSE for the process-based model, even though it is still higher than for the statistical approach. The improvement of drought forecast performance in terms of BSS and ROCSS is thereby less pronounced than the increase of accuracy. For the statistical model, performance metrics hardly change, which can be attributed to the smoothing effects of its model structure on regional reservoir storage identified in a previous subsection (Fig. 11).

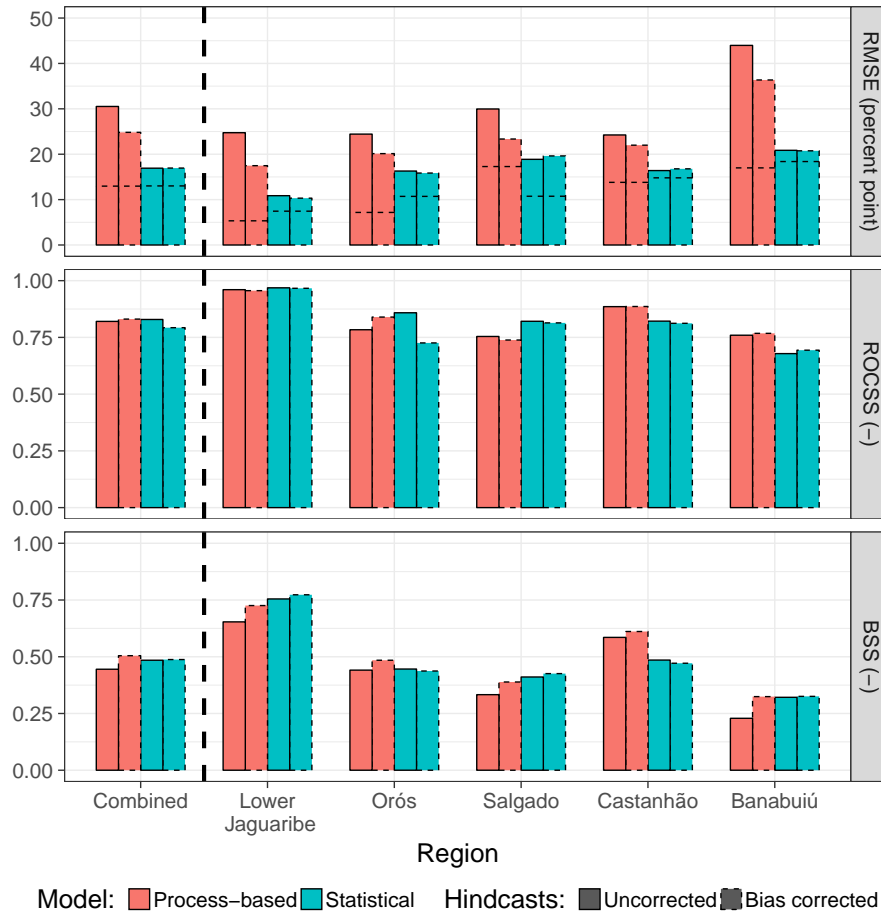
In addition to pre-processing, post-processing approaches directly tackle the correction of streamflow forecasts by statistical means including bias correction or the estimation of an error model applied to predictions (e.g. Krzysztofowicz and Kelly, 2000; Todini, 2008; Bourdin et al., 2014; Roulin and Vannitsem, 2014). Especially when focussing on extreme events, such as floods or droughts, the adequate characterisation of model residuals exhibits a large potential when incorporated into the correction of simulations and predictions (Farmer and Vogel, 2016). While being still an active field of research, such means are routinely applied in operational streamflow forecasting and, in addition to rainfall correction, could further improve model performance.

The parametrisation of the process-based model could be further improved by the use of more and different data sources. This includes, for instance, the use of satellite data to infer spatially distributed reservoir information with greater detail and more accuracy as currently available. The study area has already been of interest in ongoing research (Delgado et al., 2018a) and past studies (Heine et al., 2014) addressing that issue. In addition, management plans as well as data on water abstraction and reallocation from the larger reservoir should be included in the model but were not available for the present study. Another opportunity is to increase rainfall input resolution in the model to better account for sub-daily and spatially heterogeneous precipitation. This could be done by improving the current spatial scaling of rainfall in the model to account for heterogeneous patterns and to make use of RADAR rainfall data recently made available in the area.

The combination of multiple models may provide further benefits in cases where different models show strengths in different aspects of performance (e.g. Block and Rajagopalan, 2009; Schepen and Wang, 2015). However, within this work the two employed model approaches, with respect to simulation performance achieved almost equal results and did not diverge in aspects such as lead time and antecedent moisture conditions. Thus, the combination of the two models analysed in this study is not expected to provide benefits.

## **5.5 Generally valid features and broader implications of results**

The possibilities to generalize and transfer insights gained for one particular environment and a specific hydro-climatological setting will always be limited to questions of transferability of model approaches and the applicability of particular methods. In other word, one cannot expect that the actual numbers of model performance, be it statistical or process-based, have similar values under differing conditions. Adapting the two forecast setups presented here to other regions will presumably not lead



**Figure 13.** As Fig. 4 but driving hindcasts with additional bias-correction of precipitation on the monthly scale (dotted boxes).

to the same ranking of the statistical vs. the process-based model approach. In order to achieve an optimal forecast score, it is obvious that the forecast design, e.g. selection of target variables, models, and input data, needs to be tailored to the region of interest and to the purpose of the forecast including the designated forecast lead time. The design of the statistical forecast approach presented here is particularly tailored to the rather specific hydro-climatological and landscape conditions of this semi-arid region. In our case, the statistical model relies on antecedent wetness conditions of the basin, quantified by precipitation indices (SPI and SPEI) aggregated over several months (see regression equations in Table 2). This satisfactorily describes the attenuated hydrological behaviour of this particular semi-arid region, which is further influenced by many large and small reservoirs, in order to obtain forecasts over several months. This adaptation to the regional peculiarities does not per se allow a spatial transfer of the derived statistical model. However, the application of the underlying statistical model principles to other regions are generally possible, given that appropriate regional information and forcing data are available.

The transfer of a process-based hydrological model to another region is, generally speaking, more straight forward, because one can rely that the underlying physical assumptions and process descriptions of the model are valid for different environments and hydro-climatological conditions. In other words, the hydrological model implicitly contains the representation of general hydrological processes and, therefore, represents an adequate working hypothesis of the hydrological system at other target  
5 locations. Still, also process-based models require a sufficient data availability and quality at the region of interest while forecast performance for both model types primarily depend on the quality of rainfall forecasts.

The question, which modelling approach will finally yield a better performance score, cannot universally be answered. On the one hand, this is dependent on the predictive power (i.e. the strength of correlation between predictors and target variable) of the statistical model and, on the other hand, on the validity on the physical assumptions and governing equations of the process-  
10 based model. Both model strategies benefit from good data conditions, while the required type of data is rather different. The advantage of a statistical model approach as presented here is that less distributed data of the catchment are required and the model is easier to establish and needs much less computational power. On the other hand, process-based model allow to simulate a rather large variety of hydrological variables in a spatially distributed manner. This enables independent verification of process-based models and leads further to a high explanatory power of this model type, which are important advantages, even  
15 for cases where the overall performance of a process-based model might be lower compared to a statistical model approach.

## 6 Conclusions

The aim of this work was to explore options for a seasonal forecasting system of regional reservoir volume and drought occurrence with lead times up to 6 months for the semiarid northeast of Brazil. In this context, the performance of a complex process-based hydrological model was evaluated against a much simpler statistical model developed by Delgado et al. (2018b)  
20 given the same meteorological forcing. The study pursued three objectives:

First, the two modelling approaches were to be investigated in terms of mere simulation performance, i.e. when driven by meteorological observations. It turned out that both models performed almost equally well. However, regional differences exist where the process-based model achieved slightly better results in four out of five sub-regions. Furthermore, regional performance ranking of both models was equal in four regions. This suggests that data uncertainty of meteorological input or  
25 reservoir level observations exceeds model structural uncertainties and dictates simulation performance in the study area.

Second, the process-based model was to be verified as prediction tool in a hindcast experiment and evaluated against the statistical approach. In comparison to simulation runs with observed forcing, hindcast performance of the process-based model dropped significantly while the performance of the statistical approach decreased only to a small degree. This can be explained by the structure of the statistical approach which generally reacts more damped on precipitation inputs. Although this exhibits  
30 less realistic intra-seasonal dynamics than for the process-based model, performance metrics were eventually superior as uncertainties from precipitation hindcasts could not propagate as much to the model output. However, apart from reservoir level predictions, forecasting of mere drought occurrence works almost equally well for both approaches. The two models exhibit

satisfying event resolution while slight deficiencies in terms of underforecasting were detected regarding the reliability of the hindcasts.

The third and last objective was to identify the major sources for simulation and hindcast deficiencies and provide guidelines for further improvement. In general, both models achieve better results under dry than under wet (pre-)conditions. An attempt to identify potential predictors of model performance for the process-based model revealed that reservoir size and antecedent rainfall conditions explain most of the variance of the performance metrics while variables such as current precipitation amount and daily precipitation intensity are of surprisingly low importance. However, hardly any clear patterns could be identified in which way predictors influence performance measures and, as such, no direct means could be derived, in which way the structure of the process-based model could be improved to achieve better simulation results. Also regarding the hindcasts, precipitation was identified as the most significant source of uncertainty. It was found that rainfall hindcasts from the downscaled GCM show statistical properties significantly distinct from observations. Therefore, simple approaches, such as the tested monthly regional bias correction, already result in improved hindcast accuracies. Future studies should also consider the use of more sophisticated means of pre-processing as well as post-processing approaches, such as forecast error modelling, or innovative data assimilation and data fusion approaches to correct erroneous model states.

So, what is the added value of a process-based hydrological model? In our case, when it comes to reservoir level or mere drought event prediction on regionally and monthly aggregated scales, a statistical model proved to be the better option, as computational effort is much lower and the model is easier to apply. Nevertheless, we advocate the application of an appropriate process-based hydrological model in case predictions on finer spatial (e.g. for individual reservoirs) and temporal scales are desirable. In cases for which information on more hydrological processes or variables, such as evapotranspiration or various runoff generation and concentration variables, are required, a process-based model is the right choice. As such, due to the explanatory power of process-based hydrological models, decision makers and stakeholders can be supported to detect and understand hydrological changes in their catchments in order to derive reasonable and sustainable decisions.

These conclusions are likely to differ among study sites, primarily depending on the characteristics and the degree of stochasticity of the hydro-meteorological system and available data. In regions, where hydrological variables can be described by covariates, which in turn can be forecast with high reliability, statistical models might be advantageous. This would more likely be the case in climatic regions that are characterized by a high degree of seasonality, such as in many semi-arid regions around the globe. In contrast, process-based models are independent of such correlation patterns and are more generically applicable due to the underlying process representations. They can be applied under any environmental and hydro-climatological conditions, for which the incorporated process formulations constitute valid working hypotheses, and thereby primarily depend on rainfall input. Consequently, they can also be used in regions characterized by more chaotic weather and low predictability over seasonal scales, such as in temperate climatic zones, provided adequate rainfall forecasts can be delivered.

Therefore, further research is needed to increase the accuracy of important model drivers, i.e., for many regions as well as in our case of dry northeastern Brazil, first and foremost precipitation. We expect that the use of new data products, such as rainfall RADAR and satellite data along with conventional data from rainfall stations with sub-daily resolution, in combination with innovative methods of data assimilation and data fusion may provide opportunities to improve forecast accuracy, in particular

for process-based hydrological models. In that respect, the time and effort of their application can be justified and allow for the exploitation of their advanced capabilities.

*Code and data availability.* Meteorological observations (except precipitation) are available from <http://careyking.com/data-downloads/>. Precipitation as well as raw data of meteorological hindcasts need to be requested from FUNCEME. DEM raw data can be obtained via <http://srtm.csi.cgiar.org/SELECTION/inputCoord.asp> (tiles [horizontal/vertical]: 28/13, 28/14, 29/13, and 29/14). Reservoir data can be accessed at <http://www.hidro.ce.gov.br> or requested from FUNCEME. Land cover and soil maps are not publicly available.

The WASA-SED model is available at <https://github.com/TillF/WASA-SED>. Scripts to investigate or reproduce experiments, analyses, and compilation of plots can be accessed at [https://github.com/tpilz/paper\\_drought\\_prediction\\_brazil](https://github.com/tpilz/paper_drought_prediction_brazil).

## Appendix A: Terminology

- 10 The word *forecast* generally refers to model based estimations of future meteorological or hydrological variables such as precipitation, streamflow, or reservoir level. The term *prediction*, in this article like in many others, can be used synonymously to forecast. With *hindcast* we specifically denote retrospective forecasts, i.e. predictions issued for a period in the past building only on data available up to the time of start of the model run. The results are then compared with observations. In some occasions, the terms forecast and hindcast might be used interchangeably. In contrast to predictions or hindcasts, we denote
- 15 *model simulations* as model runs driven by observations instead of forecasts of model forcing.

- Many of the notions discussed in this article refer to the field of forecast verification. While being standard in Atmospheric Sciences, some terms are less common for the hydrological community and thus will be briefly explained in the following. For more information, the reader is generally referred to textbooks such as Wilks (2005). The analysis of drought hindcasts will focus on their *quality*, i.e. the correspondence of such hindcasts with observations. This quality as defined by Murphy (1993)
- 20 can be described in terms of nine different aspects of which five will be addressed explicitly in this study: *accuracy* as the average agreement of forecast–observation pairs which is as such inversely proportional to the *error*; *reliability* which, in the case of probabilistic drought forecasts, quantifies the average correspondence of forecast probabilities and observed drought occurrences; *resolution* evaluating the ability of a model to correctly predict an event; *sharpness* describing the variability of forecasts of a model; and *skill* comparing the ability of a model with a much simpler reference model, such as climatology
- 25 (which is the observed long term average of a specific variable) or persistence (i.e., no change of a variable or the pattern of a quantity over the forecast period).

- Furthermore, we distinguish *process-based* from *statistical* models. The former are rather complex computer programmes combining a set of mathematical equations (simple, linear up to complex differential equations), which can be derived from first order principles, e.g. conservation of mass and energy. The aim here is to represent, up to a certain degree of abstraction,
- 30 the governing sub-processes of the hydrological cycle and their interactions. They compute estimates of the unknown variables (e.g. river discharge, soil moisture, reservoir storage) as a reaction to a set of input or *driving* variables (e.g. precipitation, solar radiation, water abstraction). In this paper, the underlying process-based hydrological model refers to the WASA-SED model

which is described in Sect. 3.4.1. The latter, on the other hand, rely on purely empirical relationships between one or more predictors and the target variable, often consisting of only a single equation, typically obtained by regression. Consequently, the regression model of Delgado et al. (2018b), which is used for model intercomparison in this study, is referred to as statistical model or statistical approach throughout this work.

- 5 *Author contributions.* All authors contributed to the experiment design. Meteorological hindcasts were pre-processed by KV and JD. Experiments with the statistical model were conducted by SV and JD. All other experiments and analyses were conducted, figures generated, and the manuscript written by TP with support by the co-authors.

*Competing interests.* All authors declare that no competing interests are present.

*Acknowledgements.* Authors thank Gerd Bürger for his comments and discussions. TP acknowledges funding by Helmholtz graduate school

- 10 GeoSim. We acknowledge the support of Deutsche Forschungsgemeinschaft (German Research Foundation) and Open Access Publication Fund of Potsdam University.

## References

- Alves, J. M. B., Campos, J. N. B., and Servain, J.: Reservoir Management Using Coupled Atmospheric and Hydrological Models: The Brazilian Semi-Arid Case, *Water Resour. Manage.*, 26, 1365–1385, <https://doi.org/10.1007/s11269-011-9963-2>, 2012.
- Barros, F. V. F., de Maria Alves, C., Martins, E. S. P. R., and Reis Jr., D. S.: The Development and Application of Information System for Water Management and Allocation (SIGA) to a Negotiable Water Allocation Process in Brazil, in: *World Environmental and Water Resources Congress*, <https://doi.org/10.1061/9780784412947.128>, 2013.
- Block, P. and Rajagopalan, B.: Statistical–Dynamical Approach for Streamflow Modeling at Malakal, Sudan, on the White Nile River, *J. Hydrol. Eng.*, 14, 185–196, [https://doi.org/10.1061/\(ASCE\)1084-0699\(2009\)14:2\(185\)](https://doi.org/10.1061/(ASCE)1084-0699(2009)14:2(185)), 2009.
- Block, P. J., Souza Filho, F. A., Sun, L., and Kwon, H.-H.: A Streamflow Forecasting Framework using Multiple Climate and Hydrological Models, *J. Am. Water Resour. As.*, 45, 828–843, <https://doi.org/10.1111/j.1752-1688.2009.00327.x>, 2009.
- Bourdin, D. R., Nipen, T. N., and Stull, R. B.: Reliable probabilistic forecasts from an ensemble reservoir inflow forecasting system, *Water Resour. Res.*, 50, 3108–3130, <https://doi.org/10.1002/2014wr015462>, 2014.
- Boé, J., Terray, L., Habets, F., and Martin, E.: Statistical and dynamical downscaling of the Seine basin climate for hydro-meteorological studies, *Int. J. Climatol.*, 27, 1643–1655, <https://doi.org/10.1002/joc.1602>, 2007.
- Braga, C., De Nys, E., Frazao, C., Martins, P., and Martins, E. S. P. R.: Impacto das mudanças do clima e projeções de Demanda sobre o processo de alocação de água em Duas bacias do nordeste semiárido (Portuguese), *Agua Brasil series 8*, World Bank Group, Washington, DC, USA, <http://documents.worldbank.org/curated/en/984911468224972725/Impacto-das-mudanças-do-clima-e-projeç~oes-de-Demanda-sobre-o-processo-de-alocaç~ao-de-água-em-Duas-bacias-do-nordeste-semiárido>, 2013.
- Breiman, L.: Random Forests, *Mach. Learn.*, 45, 5–32, <https://doi.org/10.1023/A:1010933404324>, 2001.
- Bronstert, A., Jaeger, A., Güntner, A., Hauschild, N., Doll, P., and Krol, M.: Integrated modelling of water availability and water use in the semi-arid Northeast of Brazil, *Phys. Chem. Earth Pt. B*, 25, 227–232, [https://doi.org/10.1016/S1464-1909\(00\)00008-3](https://doi.org/10.1016/S1464-1909(00)00008-3), 2000.
- Bronstert, A., de Araújo, J.-C., Batalla, R. J., Costa, A. C., Delgado, J. M., Francke, T., Foerster, S., Guentner, A., López-Tarazón, J. A., Mamede, G. L., Medeiros, P. H., Mueller, E., and Vericat, D.: Process-based modelling of erosion, sediment transport and reservoir siltation in mesoscale semi-arid catchments, *J. Soils Sediments*, 14, 2001–2018, <https://doi.org/10.1007/s11368-014-0994-1>, 2014.
- de Araújo, J. C. and Bronstert, A.: A method to assess hydrological drought in semi-arid environments and its application to the Jaguaribe River basin, Brazil, *Water Int.*, 41, 213–230, <https://doi.org/10.1080/02508060.2015.1113077>, 2016.
- de Araújo, J. C. and Medeiros, P. H. A.: Impact of Dense Reservoir Networks on Water Resources in Semiarid Environments, *Aust. J. Water Resour.*, 17, 87–100, <https://doi.org/10.7158/13241583.2013.11465422>, 2013.
- de Araújo, J. C., Doll, P., Güntner, A., Krol, M., Abreu, C. B. R., Hauschild, M., and Mendiondo, E. M.: Water scarcity under scenarios for global climate change and regional development in semiarid northeastern Brazil, *Water Int.*, 29, 209–220, 2004.
- de Figueiredo, J. V., de Araújo, J. C., Medeiros, P. H. A., and Costa, A. C.: Runoff initiation in a preserved semiarid Caatinga small watershed, Northeastern Brazil, *Hydrol. Process.*, 30, 2390–2400, <https://doi.org/10.1002/hyp.10801>, 2016.
- Delgado, J., Zhang, S., Schuettig, M., and Foerster, S.: Quantifying Distributed Water Availability in Small Dams in the State of Ceará, Brazil, in: *2nd Mapping Water Bodies from Space Conference*, ESA-ESRIN, Frascati, Italy, poster presentation, 2018a.

- Delgado, J. M., Voss, S., Bürger, G., Vormoor, K., Murawski, A., Rodrigues, M., Martins, E., Vasconcelos Júnior, F., and Francke, T.: Seasonal Drought Prediction for Semiarid Northeast Brazil: Verification of Six Hydro-Meteorological Forecast Products, *Hydrol. Earth Syst. Sci.*, 22, 5041–5056, <https://doi.org/10.5194/hess-22-5041-2018>, 2018b.
- Farmer, W. H. and Vogel, R. M.: On the deterministic and stochastic use of hydrologic models, *Water Resour. Res.*, 52, 5619–5633, <https://doi.org/10.1002/2016WR019129>, 2016.
- 5 Francke, T.: ppso: Particle Swarm Optimization and Dynamically Dimensioned Search, optionally using parallel computing based on Rmpi, R package version 0.9-9994, <https://github.com/TillF/ppso>, 2017.
- Gaiser, T., Krol, M., Frischkorn, H., and de Araújo, J. C., eds.: Global Change and Regional Impacts – Water Availability and Vulnerability of Ecosystems and Society in the Semiarid Northeast of Brazil, Springer-Verlag Berlin Heidelberg, <http://www.springer.com/de/book/9783540438243>, 2003.
- 10 Galvão, C. d. O., Nobre, P., Braga, A. C. F. M., de Oliveira, K. F., da Silva, R., Silva, S., Gomes Filho, M. F., Santos, C., Lacerda, F. F., and Moncunill, D. F.: Climatic predictability, hydrology and water resources over Nordeste Brazil, in: Regional Hydrological Impacts of Climatic Change: Impact assessment and decision making, edited by Wagener, T., Franks, S., Gupta, H., Bogh, E., Bastidas, L., Nobre, C., and Galvão, C. d. O., vol. 295 of *IAHS Publications*, pp. 211–220, 2005.
- 15 Gudmundsson, L., Bremnes, J. B., Haugen, J. E., and Engen-Skaugen, T.: Technical Note: Downscaling RCM precipitation to the station scale using statistical transformations – a comparison of methods, *Hydrol. Earth Syst. Sci.*, 16, 3383–3390, <https://doi.org/10.5194/hess-16-3383-2012>, 2012.
- Güntner, A.: Large-scale hydrological modelling in the semi-arid North-East of Brazil, PIK Report 77, Potsdam Institute for Climate Impact Research, Potsdam, Germany, 2002.
- 20 Güntner, A. and Bronstert, A.: Representation of landscape variability and lateral redistribution processes for large-scale hydrological modelling in semi-arid areas, *J. Hydrol.*, 297, 136–161, <https://doi.org/10.1016/j.jhydrol.2004.04.008>, 2004.
- Güntner, A., Krol, M. S., De Araújo, J. C., and Bronstert, A.: Simple water balance modelling of surface reservoir systems in a large data-scarce semiarid region, *Hydrolog. Sci. J.*, 49, 901–918, <https://doi.org/10.1623/hysj.49.5.901.55139>, 2004.
- Gupta, H. V., Kling, H., Yilmaz, K. K., and Martinez, G. F.: Decomposition of the mean squared error and NSE performance criteria: Implications for improving hydrological modelling, *J. Hydrol.*, 377, 80–91, <https://doi.org/10.1016/j.jhydrol.2009.08.003>, 2009.
- 25 Hastenrath, S.: Exploring the climate problems of Brazil’s Nordeste: a review, *Climatic Change*, 112, 243–251, <https://doi.org/10.1007/s10584-011-0227-1>, 2012.
- Heine, I., Francke, T., Rogass, C., Medeiros, P. H. A., Bronstert, A., and Foerster, S.: Monitoring Seasonal Changes in the Water Surface Areas of Reservoirs Using TerraSAR-X Time Series Data in Semiarid Northeastern Brazil, *IEEE J. Sel. Top. Appl. Earth Obs. Remote Sens.*, 7, 3190–3199, <https://doi.org/10.1109/JSTARS.2014.2323819>, 2014.
- 30 Hothorn, T., Buehlmann, P., Dudoit, S., Molinaro, A., and Van Der Laan, M.: Survival Ensembles, *Biostatistics*, 7, 355–373, <https://doi.org/10.1093/biostatistics/kxj011>, 2006.
- IPECE: Anuário Estatístico do Ceará, published online: <http://www.ipece.ce.gov.br/index.php/anuario-estatistico-do-ceara>, 2016.
- Jackisch, C., Zehe, E., Samaniego, L., and Singh, A. K.: An experiment to gauge an ungauged catchment: rapid data assessment and eco-hydrological modelling in a data-scarce rural catchment, *Hydrolog. Sci. J.*, 59, 2103–2125, <https://doi.org/10.1080/02626667.2013.870662>, 2014.
- Jacomine, P. K. T., Almeida, J. C., and Medeiros, L. A. R.: Levantamento exploratorio – Reconhecimento de solos do Estado do Ceará, vol. 1, DNPEA, DRN-SUDENE, Recife, Brazil, 1973.



- Kelly, K. S. and Krzysztofowicz, R.: Precipitation uncertainty processor for probabilistic river stage forecasting, *Water Resour. Res.*, 36, 2643–2653, <https://doi.org/10.1029/2000WR900061>, 2000.
- Kneis, D.: geostat: Utilities for spatial interpolation, R package version 0.1, [https://github.com/echse/echse\\_tools/tree/master/R/packages/geostat](https://github.com/echse/echse_tools/tree/master/R/packages/geostat), 2012.
- 5 Komma, J., Blöschl, G., and Reszler, C.: Soil moisture updating by Ensemble Kalman Filtering in real-time flood forecasting, *J. Hydrol.*, 357, 228–242, <https://doi.org/10.1016/j.jhydrol.2008.05.020>, 2008.
- Krol, M., Jaeger, A., Bronstert, A., and Güntner, A.: Integrated modelling of climate, water, soil, agricultural and socio-economic processes: A general introduction of the methodology and some exemplary results from the semi-arid north-east of Brazil, *J. Hydrol.*, 328, 417–431, <https://doi.org/10.1016/j.jhydrol.2005.12.021>, 2006.
- 10 Krol, M. S., de Vries, M. J., Oel, P. R., and de Araújo, J. C.: Sustainability of Small Reservoirs and Large Scale Water Availability Under Current Conditions and Climate Change, *Water Resour. Manage.*, 25, 3017 – 3026, <https://doi.org/10.1007/s11269-011-9787-0>, 2011.
- Krzysztofowicz, R. and Kelly, K. S.: Hydrologic uncertainty processor for probabilistic river stage forecasting, *Water Resour. Res.*, 36, 3265–3277, <https://doi.org/10.1029/2000wr900108>, 2000.
- Liu, Y. and Gupta, H. V.: Uncertainty in hydrologic modeling: Toward an integrated data assimilation framework, *Water Resour. Res.*, 43, <https://doi.org/10.1029/2006wr005756>, 2007.
- 15 Mamede, G. L., Araújo, N. A. M., Schneider, C. M., de Araújo, J. C., and Herrmann, H. J.: Overspill avalanching in a dense reservoir network, *Proc. Natl. Acad. Sci. U.S.A.*, 109, 7191–7195, <https://doi.org/10.1073/pnas.1200398109>, 2012.
- Marengo, J. A., Torres, R. R., and Alves, L. M.: Drought in Northeast Brazil—past, present, and future, *Theor. Appl. Climatol.*, 129, 1189–1200, <https://doi.org/10.1007/s00704-016-1840-8>, 2017.
- 20 Medeiros, P. H. A., Güntner, A., Francke, T., Mamede, G. L., and de Araújo, J. C.: Modelling spatio-temporal patterns of sediment yield and connectivity in a semi-arid catchment with the WASA-SED model, *Hydrolog. Sci. J.*, 55, 636–648, <https://doi.org/10.1080/02626661003780409>, 2010.
- Medeiros, P. H. A., de Araújo, J. C., Mamede, G. L., Creutzfeldt, B., Güntner, A., and Bronstert, A.: Connectivity of sediment transport in a semiarid environment: a synthesis for the Upper Jaguaribe Basin, Brazil, *J. Soils Sediments*, 14, 1938–1948, <https://doi.org/10.1007/s11368-014-0988-z>, 2014.
- 25 Mueller, E. N., Francke, T., Batalla, R. J., and Bronstert, A.: Modelling the effects of land-use change on runoff and sediment yield for a meso-scale catchment in the Southern Pyrenees, *CATENA*, 79, 288–296, <https://doi.org/10.1016/j.catena.2009.06.007>, 2009.
- Mueller, E. N., Güntner, A., Francke, T., and Mamede, G.: Modelling sediment export, retention and reservoir sedimentation in drylands with the WASA-SED model, *Geosci. Model Dev.*, 3, 275–291, <https://doi.org/10.5194/gmd-3-275-2010>, 2010.
- 30 Murphy, A. H.: What Is a Good Forecast? An Essay on the Nature of Goodness in Weather Forecasting, *Weather Forecast.*, 8, 281–293, [https://doi.org/10.1175/1520-0434\(1993\)008<0281:WIAGFA>2.0.CO;2](https://doi.org/10.1175/1520-0434(1993)008<0281:WIAGFA>2.0.CO;2), 1993.
- Pilz, T., Francke, T., and Bronstert, A.: lumpR 2.0.0: an R package facilitating landscape discretisation for hillslope-based hydrological models, *Geosci. Model Dev.*, 10, 3001–3023, <https://doi.org/10.5194/gmd-10-3001-2017>, 2017.
- Reggiani, P. and Weerts, A. H.: Probabilistic Quantitative Precipitation Forecast for Flood Prediction: An Application, *J. Hydrometeorol.*, 9, 76–95, <https://doi.org/10.1175/2007JHM858.1>, 2008.
- 35 Roeckner, E., Arpe, K., Bengtsson, L., Christoph, M., Claussen, M., Dümenil, L., Esch, M., Giorgetta, M., Schlese, U., and Schulzweida, U.: The atmospheric general circulation model ECHAM-4: Model description and simulation of present-day climate, *MPI-Report 218*, Max-Planck-Institut für Meteorologie, Hamburg, Germany, 1996.

- Roulin, E. and Vannitsem, S.: Post-processing of medium-range probabilistic hydrological forecasting: impact of forcing, initial conditions and model errors, *Hydrol. Process.*, 29, 1434–1449, <https://doi.org/10.1002/hyp.10259>, 2014.
- Sankarasubramanian, A., Lall, U., Souza Filho, F. A., and Sharma, A.: Improved water allocation utilizing probabilistic climate forecasts: Short-term water contracts in a risk management framework, *Water Resour. Res.*, 45, <https://doi.org/10.1029/2009wr007821>, 2009.
- 5 Schaeffli, B. and Gupta, H. V.: Do Nash values have value?, *Hydrol. Process.*, 21, 2075–2080, <https://doi.org/10.1002/hyp.6825>, 2007.
- Schepen, A. and Wang, Q.: Model averaging methods to merge operational statistical and dynamic seasonal streamflow forecasts in Australia, *Water Resour. Res.*, 51, <https://doi.org/10.1002/2014WR016163>, 2015.
- Seibert, M., Merz, B., and Apel, H.: Seasonal forecasting of hydrological drought in the Limpopo Basin: a comparison of statistical methods, *Hydrol. Earth Syst. Sc.*, 21, 1611–1629, <https://doi.org/10.5194/hess-21-1611-2017>, 2017.
- 10 Sittichok, K., Seidou, O., Djibo, A. G., and Rakangthong, N. K.: Estimation of the added value of using rainfall–runoff transformation and statistical models for seasonal streamflow forecasting, *Hydrolog. Sci. J.*, <https://doi.org/10.1080/02626667.2018.1445854>, 2018.
- Souza Filho, F. A. and Lall, U.: Seasonal to interannual ensemble streamflow forecasts for Ceara, Brazil: Applications of a multivariate, semiparametric algorithm, *Water Resour. Res.*, 39, 1307, <https://doi.org/10.1029/2002wr001373>, 2003.
- Strobl, C., Boulesteix, A.-L., Zeileis, A., and Hothorn, T.: Bias in Random Forest Variable Importance Measures: Illustrations, Sources and  
15 a Solution, *BMC Bioinf.*, 8, <https://doi.org/10.1186/1471-2105-8-25>, 2007.
- Strobl, C., Boulesteix, A.-L., Kneib, T., Augustin, T., and Zeileis, A.: Conditional Variable Importance for Random Forests, *BMC Bioinf.*, 9, <https://doi.org/10.1186/1471-2105-9-307>, 2008.
- Sun, L., Moncunill, D. F., Li, H., Moura, A. D., Filho, F. D. A. D. S., and Zebiak, S. E.: An Operational Dynamical Down-scaling Prediction System for Nordeste Brazil and the 2002–04 Real-Time Forecast Evaluation, *J. Climate*, 19, 1990–2007,  
20 <https://doi.org/10.1175/jcli3715.1>, 2006.
- Sun, L., Seidou, O., Nistor, I., and Liu, K.: Review of the Kalman-type hydrological data assimilation, *Hydrolog. Sci. J.*, 61, 2348–2366, <https://doi.org/10.1080/02626667.2015.1127376>, 2016.
- Todini, E.: A model conditional processor to assess predictive uncertainty in flood forecasting, *Int. J. River Basin Management*, 6, 123–137, <https://doi.org/10.1080/15715124.2008.9635342>, 2008.
- 25 Tolson, B. A. and Shoemaker, C. A.: Dynamically dimensioned search algorithm for computationally efficient watershed model calibration, *Water Resour. Res.*, 43, <https://doi.org/10.1029/2005wr004723>, 2007.
- van Oel, P. R., Krol, M. S., and Hoekstra, A. Y.: Application of multi-agent simulation to evaluate the influence of reservoir operation strategies on the distribution of water availability in the semi-arid Jaguaribe basin, Brazil, *Phys. Chem. Earth.*, 47–48, 173–181, <https://doi.org/10.1016/j.pce.2011.07.051>, 2012.
- 30 van Oel, P. R., Martins, E. S. P. R., Costa, A. C., Wanders, N., and van Lanen, H. A. J.: Diagnosing drought using the downstreamness concept: the effect of reservoir networks on drought evolution, *Hydrolog. Sci. J.*, 63, 979–990, <https://doi.org/10.1080/02626667.2018.1470632>, 2018.
- Verkade, J., Brown, J., Reggiani, P., and Weerts, A.: Post-processing ECMWF precipitation and temperature ensemble reforecasts for operational hydrologic forecasting at various spatial scales, *J. Hydrol.*, 501, 73–91, <https://doi.org/10.1016/j.jhydrol.2013.07.039>, 2013.
- 35 Vrugt, J. A., ter Braak, C. J., Diks, C. G., and Schoups, G.: Hydrologic data assimilation using particle Markov chain Monte Carlo simulation: Theory, concepts and applications, *Adv. Water Resour.*, 51, 457–478, <https://doi.org/10.1016/j.advwatres.2012.04.002>, 2013.
- Wilks, D. S.: *Statistical Methods in the Atmospheric Sciences*, Volume 100, Second Edition (International Geophysics), Academic Press, 2005.

- Xavier, A. C., King, C. W., and Scanlon, B. R.: Daily gridded meteorological variables in Brazil (1980–2013), *Int. J. Climatol.*, 36, 2644–2659, <https://doi.org/10.1002/joc.4518>, 2016.
- Yan, H., Moradkhani, H., and Zarekarizi, M.: A probabilistic drought forecasting framework: A combined dynamical and statistical approach, *J. Hydrol.*, 548, 291–304, <https://doi.org/10.1016/j.jhydrol.2017.03.004>, 2017.