

Final authors response to '**Attributing the 2017 Bangladesh floods from meteorological and hydrological perspectives**' by Sjoukje Philip et al., 2019.

We would like to thank the editor and all reviewers for their careful reading.

This document contains the replies to all reviewers, including the interactive discussion, and a marked-up version including
5 all changes between the first version of the discussion paper to the current final version.

Dear Editor,

We will answer your questions below and we attached the replies to the reviewers that are also online in the open discussion to this explanation. Finally, this document contains a marked-up manuscript version.

Referee 2 is quite critical in the review so I would prefer that you give more thoughts on the substantial issues and try to see if they can be addressed. The current explanation is fine for the open discussion part.

In addition to the reply to reviewer 2 we made some extra changes to more clearly state the purpose of the paper. For instance in the abstract we add that

1. we do an attribution of this precipitation-induced flooding '**to anthropogenic climate change**'
2. we estimate changes in extreme 10-day precipitation event frequency over the Brahmaputra basin '**up to the present**' to avoid confusion with future projections.

And in the introduction we explain the word 'perspectives' by adding: Thus we explore the drought in two different ways - first from a meteorological perspective (using precipitation data) and then from a hydrological perspective (using discharge data).

Furthermore, we put more emphasis on the fact that we for the first time do a multi-model multi-method attribution study in this paper. We emphasized this by adding in the introduction:

Schaller et al. (2016) already studied a flooding case in an attribution study using one hydrological model. In this paper we for the first time do an attribution study using observational precipitation and discharge data and a combination of GCMs and hydrological models.

Finally we moved most of the details on the models to the supplement.

If you prefer you may keep the title as is.

Thank you, based on your opinion and the additions we made as explained above we indeed decide to keep the title as is.

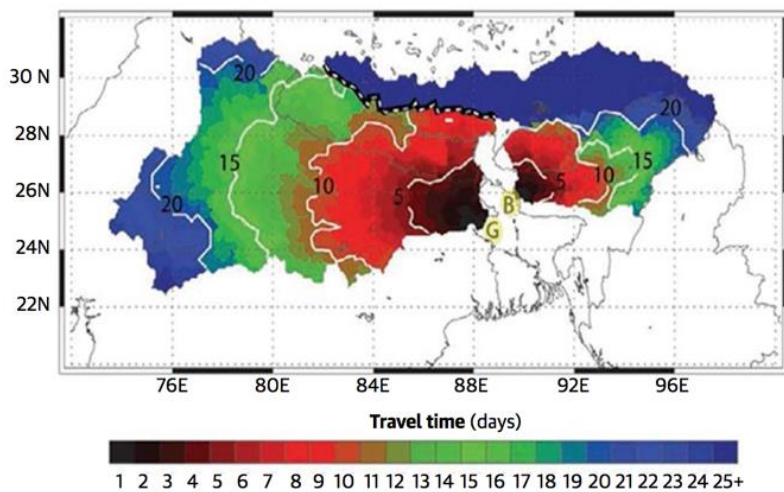
Personally I appreciate your work very much but also realize that is rather a daunting task to sort out all the related issues both in the atmospheric and the surface part that caused the floods. An initial thought was if you could construct some joint probability distributions for the events and evaluate the likelihood of future events under certain plausible conditions. Some certain types of IDF (intensity-duration-frequency) may be helpful to link the probabilities of the precipitation and the floods.

As you remark, we already had to deal with a daunting array of variables. Our decision to use 10-day averaged precipitation for the Brahmaputra basin was based on Fig. 5 from a paper by Webster et. al. (2010), which we already refer to in our the paper. We attached this figure to our reply and now also added the reference to this figure in our paper as well. Taking longer time averages (e.g. 15 days) would not only include precipitation from far away in the basin from 15 days ago, but also from 15 days ago near the flooded area. Similarly, taking shorter averages (e.g. 5 days) would exclude the rainfall from far away in the basin that travels more than 5 days to the flooded area. The choice to use a 10-day average is a compromise that seems to fit the purpose of our analysis quite well. Limiting the analysis to the 10-day precipitation scale, which corresponds well with the observed discharge (other time scales

gave lower correspondences) and from the hydrological model, was one way to limit the study to a manageable size. Computing full IDF diagrams would introduce even more variables without shedding much additional light on the central questions: is there a discernible climate change signal in the Bangladesh floods and how much value do hydrological models add.

We hope for a positive decision.

kind regards,
Sjoukje Philip



Interactive comment on “Attributing the 2017 Bangladesh floods from meteorological and hydrological perspectives” by S. Philip et al.

Anonymous Referee #1

Received and published: 28 August 2018

Dear Editor, The submitted manuscript entitled "Attributing the 2017 Bangladesh floods from meteorological and hydrological perspectives" is a well written and structured paper. They have analyzed 10-day precipitation index for extreme events in August as well as river discharge over Brahmaputra basin. I have a few comments for improving the paper:

It is unclear why 10-day average precipitation is considered where the 1-day or 5-day maximum precipitation are well known as flood index.

The Brahmaputra basin feeds the rivers in Bangladesh. The basin is so large that using only 1-day or 5-day precipitation would not take the precipitation into account that falls further upstream in the basin. We take a 10-day average to represent the area that collected water that arrives at Bahadurabad and contributed to the flooding. Using 1-day or 5-days over the whole basin would exclude the additional water from region of the Brahmaputra basin in the Northeast of India that reaches Bahadurabad at the same time as precipitation that falls later in the region closer to Bahadurabad.

We know that averaging over such a large basin and time scale is not the most ideal situation. This is why we compared the results to the analysis results from discharge.

Please explain the role of temperature in precipitation change. Based on the ground observations, can you explore a relationship between them over the study area? I have a concern about the validity of scaling the GEV parameters (location and scale) similar to Clausius-Clapeyron (CC) relationship in the context of urban climate. The observed global mean surface temperature (GMST) is a feature confined to the boundary layer, whereas, precipitation is formed in clouds that develop in the free atmosphere up to a height of several kilometres, so it is unlikely that the surface temperature has some effects on precipitation in terms of the CC relationship. I would therefore recommend making the physical meaning of this scaling clearer.

The scaling is taken to be an exponential function of the smoothed global mean temperature, This exponential dependence can clearly be seen in the scaling of daily precipitation extremes with local daily temperature in regions with enough moisture availability (Allen and Ingram 2002; Lenderink and van Meijgaard 2008). It is also expected on theoretical grounds through the first-order dependence of the maximum moisture content on temperature in the Clausius-Clapeyron relations of about 7%/K, which gives rise to an exponential form. Note that we fit the strength of the connection, which is often different from CC scaling. As it is not clear what the relevant local temperature is, but local temperature usually scales linearly with the global mean temperature, we chose the latter.

We will add this as a paragraph in the manuscript.

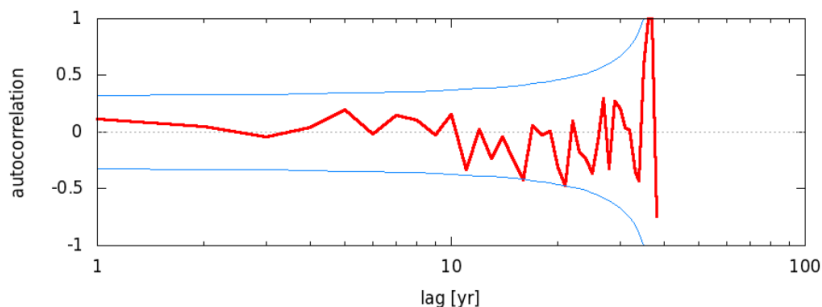
Moreover, it is not clear the CC relationship exhibited by 10-daily extremes in your study area linked with convective nature of precipitation.

As we state above, we fit the data using a GEV with scaling to GMST. Comparing the observations to the fit line, we see no evidence that our assumptions are incorrect.

Add some details into the Statistical methods for trend detection. Time series of parameters are may be autocorrelated (temporal dependency over times scales of several years). I am wondering whether the authors took these autocorrelations into account or not.

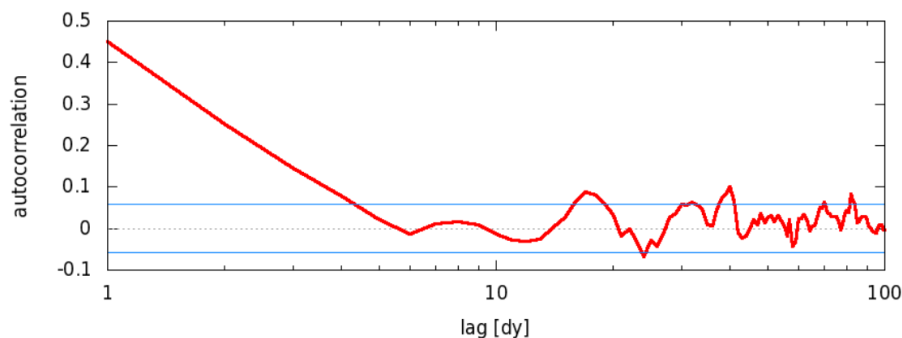
We checked the autocorrelation and found that there is no autocorrelation of the July-September maximum of 10-day mean precipitation, which is the measure we use in this study. (And for single days the autocorrelation becomes negligible within 4 days.) Therefore, we will add in the Statistical methods section for trend detection: We checked that year-on-year autocorrelations of RX10day are negligible, so serial autocorrelations are not a problem in this analysis.

Autocorrelation of annual 10-day mean pr CPC Brahmaputra (iprcp cpc daily mask0 su max1 10v anom) 1979:2017 ([eps](#), [pdf](#), [raw data](#))
correlation of annual 10-day mean pr CPC Brahmaputra (iprcp cpc daily mask0 su max1 10v anom) 1979:2017



Autocorrelation of Jul-Sep precipitation pr CPC Brahmaputra (iprcp cpc daily mask0 su) 1979:2017 ([eps](#), [pdf](#), [raw data](#))

Autocorrelation of Jul-Sep precipitation pr CPC Brahmaputra (iprcp cpc daily mask0 su) 1979:2017



Interactive comment on Hydrol. Earth Syst. Sci. Discuss., <https://doi.org/10.5194/hess-2018-379>, 2018.

Interactive comment on “Attributing the 2017 Bangladesh floods from meteorological and hydrological perspectives” By S. Philip et al.

Anonymous referee #2

RC2:

Cause of the severe floods and their occurrence tendency in relation to climate change are very important topic in Asia, and quantitative assessments within-situ data analysis with model verifications are expected. This study focused in the severe flood in 2017, and counterbalances of precipitation and discharge for the long-term return periods of floods are discussed based on observation data and multiple model output. I admire the author's challenges with many works, however, I could not capture (understand) the fundamental objectives and clear results from the paper. As presented in the title, “attribution” and “perspective” mislead the readers to know the target of the paper. I would like to suggest fundamental revisions of the paper.

AC2:

In this paper we perform an attribution analysis starting with precipitation as well as discharge. We think the reviewer interpreted the word 'perspectives' in a different way than we meant it to be. We changed this to 'standpoints', assuming that the title is now more clearly related to the content of the paper.

--

RC2:

Major comments 1) Ambiguous objectives and results Major objectives may be indicated in paragraphs at P4L25 (or P26L14), such as not only the precipitation variability but ability of discharge needs to be considered for estimating return period of floods. However, there are no explanations about the physical mechanism (perspective?) of extreme precipitation/discharge variability to cause flood events in Bangladesh based on hydro-climatological point of view with references. Regarding to the long term changes of the ability of discharge in such a large scale watershed, they would be strongly related to changing of river sediments, micro-topography affected by previous floods, artificial settlements such as bridges or bank, or expansion of residences due to population increase. I could not understand how the long-term trends or probability for return periods of precipitation/discharge could link to an extreme event without assessments to cause flood in 2017 as a case study. Many considerations are discussed, however, clear results are not show, such as “trends are not significant (P1, L7;P26L19)”, “values are less uncertain,(P1L12;L26L28)”, “cancelation between A&B (P26L21)”, etc.

AC2:

As stated above, the title may be misinterpreted, and we changed it now.

We understand the concern of the reviewer about river sediment etc. and the inability of the climate models to represent this. In the discussion we do mention that water level is not one-to-one related to either precipitation or discharge. Besides, ongoing morphological changes will influence the flooding. We note this and emphasize that an attribution of the flood in terms of flooded area or affected people is not (yet) possible, however, the use of multiple methods and multiple variables in the attribution of extreme events allows for a robust estimate of changing flood hazards under climate change.

In the current work we differentiate between climate change influencing floodings, which we can study with the models used in this paper, and other factors like morphological changes that we cannot attribute to climate change. An attribution study including these additional changes is not (yet) possible.

In this paper we performed an attribution analysis for the flooding in Bangladesh in 2017 using methods currently available. The reviewer is concerned about the (lack of) clarity in our conclusions. There are several possible answers to the attribution question in general, all of which give useful information. These possible answers include i) the event was made more likely due to anthropogenic climate change, ii) the event was made less likely due to anthropogenic climate change, iii) anthropogenic climate change did not alter the frequency of occurrence of the event and iv) with our current understanding and tools we cannot assess whether and how the event was influenced by anthropogenic climate change. Our conclusions, including information about significance and uncertainties, do therefore give a useful answer to the attribution question. Besides, we compare two ways to look at the attribution question on the flooding event; starting with precipitation and starting with discharge.

--

RC2:

2) Descriptions of chapters are like reports, not as in article. This study prepared several kinds of observation or model based data, and analyzed long-term probability. Do you want to compare something or ensemble to produce better predictions? Forecast map of Aug. 2017 was already shown in Fig. 1, but what is the problem for this prediction? In the Section 3, observation of water level was additionally analyzed, but why the analysis of discharge is not enough? Usually, discharge is calculated based on water level, and there is not discussion of water level in the section of "Model analysis". In many parts, the authors described all the matter of what they did as reports, but reader can not capture reasons and corresponding results based on logical explanation.

AC2:

We are not trying improve the forecast of the 2017 event or increase predictability. Instead we are looking to quantify (1) how the risk of this event occurring has been altered by climate change (by comparing to pre-industrial) and (2) how the risk of this sort of event is likely to change in future (by comparing to 1.5 and 2 degree future ensembles).

--

RC2:

3) Many careless parts for reader. Explanations are insufficient and cannot understand the explanations in many parts. I would like to ask brush up the paper again, such as;
> Where is a green circle, Brahmaputra, too small words in Fig.1

AC2:

As stated clearly in the figure caption both of these panels are reproductions of figures produced by a 3rd party and as such we are unable to edit these. The links to the original documents are provided where the reader can enlarge the figure reproduced. The green circle is clearly visible along the Brahmaputra river at the NW of the map shown. We added that the green circle is in the northwest of the map.

--

RC2:

What is the "attribution methods" at P4L30?

AC2:

we will change the sentence to:

To compare the differences between the attribution results for the two variables...

--

RC2:

What the scale of "past, present future" stand for ? (P4L33).

AC2:

We have qualified in the text the scale of past,present and future here.

--

RC2:

You use CPC data "for what?", P5L17.

AC2:

We added a sentence at the beginning of section 2, emphasizing that the use of the data is explained below:

The explanation of how the datasets are used is detailed in Sect.2.3.

--

RC2:

What is the "same analysis" at P6L8?

RC2:

As stated the same analysis was performed on the model results as was performed on the observations. We will add that this analysis will be explained in Section 2.3.

--

RC2:

Confusion of the study order exists, such as in 2.2.1, such that Use 3 experiments Transient experiment Two time slice experiments Large ensembles are created First set of experiments,, ,A second climatology,,A third ensample,, ,The second set of experiments A third set of experiments,,,

AC2:

We agree that this is confusing and have amended the text for clarity.

--

RC2:

"several river discharge simulations" at P8L28, corresponds to five different model experiments or several different setting in the same model? Or, simulations at several rivers?

AC2: we explain the simulations in the sentences that follow this statement. We will add 'as explained hereafter'.

--

RC2:

Several figures are shown without explanation, such as Fig.3b, Fig.5a, etc.

AC2:

Fig3b is described, we apologize for mixing up the order of description in the caption and corrected that. We checked that Fig.5a already has an explanation. We could not find any other panels without explanation.

--

RC2:

"Large uncertainty in the accuracy of data " at L6P13, how you detect them and why you used them? > Etc..

AC2:

We discuss this in the discussion section. It is known that observational datasets do have uncertainties. We have to use the best data we have.

In general, we think that we explain the uncertainties from using different observations, different variables, different models, different methods etc. well enough. We emphasize that despite these uncertainties and differences, our analysis, in which we combine a multi-method attribution analysis of the meteorological drivers with a multi-model approach in hydrological modelling, allows for a robust estimate of changing flood hazards under climate change.

Dear Editor,

We would like to thank reviewer #3 for his fresh look. We have taken his suggestions into consideration. Please find our reply to Anonymous Referee #3 below, followed by a marked-up manuscript. Small changes have only been made to the abstract and the introduction, which includes an additional reference. No changes have been made to the supplement and this supplementary document is uploaded again without changes.

Kind regards,
Sjoukje Philip

Author reply to Anonymous Referee #3

To my understanding, this is a revised version for an attribution study. I do carefully read the responses as well as the manuscript, and find previous comments are addressed appropriately. The authors combined climate models and hydrological models to analyze a pluvial flooding event, and found the anthropogenic fingerprint was not detectable both for the 10-day precipitation and basin discharge. The attribution method is very comprehensive, and the uncertainty analysis is rigorously conducted. I would like to recommend for the publication besides addressing a few minor comments below, basically for clarifications.

We thank the referee for carefully reading our manuscript.

1. The major focus is to detect anthropogenic climate change signal for the flooding event, but the abstract also mentioned the responses of the extremes to 2-degree warming. The authors found that the anthropogenic climate change is not detectable, but there is a clear response to the 2-degree warming. This makes the conclusions confused. I would suggest focusing on the attribution part, rather than the responses to future warming.

We understand your concern. However we noticed that there is a lot of interest in statements on the future as well. Besides, the fact that there is no anthropogenic climate change detectable up to now, does not mean that there is no change, only that it is not (yet) detectable. A statement on the future thus adds to the conclusion about the past. We therefore prefer to keep the information on a 2-degree warming in the paper. In the abstract we added a few words to clarify that the 2-deg analysis is an extension to the future:

Extending the analysis to the future, all models project an increase in probability of extreme events at 2-degree C global heating since pre-industrial times

2. Abstract. "One climate model shows a significant positive influence of anthropogenic climate change, whereas the other simulates a cancellation between the increase due to greenhouse gases and a decrease due to sulphate aerosols." I would be better to mention this conclusion is based on large ensemble simulations, not just from two model realizations.

Thank you for pointing to this. We changed the text into:

One climate model **ensemble** shows a significant positive influence of anthropogenic climate change, whereas the other **large ensemble model** simulates a cancellation between the increase

due to greenhouse gases and a decrease due to sulphate aerosols.

3. Introduction. "In this paper we for the first time do an attribution study using observational precipitation and discharge data and a combination of GCMs and hydrological models." A few published literatures (e.g., Yuan et al., 2018) could be mentioned when reviewing the combination of GCM and hydrological models for attribution of extreme events.

We were not aware of this study and are happy to use the reference in this manuscript and future studies on floodings or droughts. We added the reference to the paragraph as suggested:

Yuan et al. (2018) use observations, GCMs and one land surface model with and without land cover change to split the changes in observed streamflow and its extremes into anthropogenic and natural climate change, land cover change and human water withdrawal components.

4. Is there any oceanic background (e.g., anomaly in the Indian Ocean) for this extreme flooding? In fact, there was also a severe flooding over the middle and lower reaches of the Yangtze River basin in July 2017, which was associated with the decay phase of an El Nino and warming over the Indian Ocean.

We investigated whether extreme rainfall in the Brahmaputra basin was linearly related to SST over 1979--2017 and did not find any connection, in fact the field significance was lower than expected by chance. The same holds for JJA-averaged precipitation averaged over Bangladesh 1891--2016. Canonical ENSO teleconnection maps also show no linear teleconnection in this season.

We did not add this in the paper, as it may distract from the main message which is on trends related to anthropogenic climate change.

5. P5L2, "drought" or "flood"?

Thank you for reading so carefully. This indeed needs to be 'flood', we changed this in the text.

Reference

Yuan, X., Y. Jiao, D. Yang, and H. Lei, 2018: Reconciling the attribution of changes in streamflow extremes from a hydroclimate perspective. Water Resources Research, 54, 3886–3895, doi:10.1029/2018WR022714

We added this reference in the introduction.

Attributing the 2017 Bangladesh floods from meteorological and hydrological perspectives

Sjoukje Philip¹, Sarah Sparrow², Sarah F. Kew¹, Karin van der Wiel¹, Niko Wanders^{3,4}, Roop Singh⁵, Ahmadul Hassan⁵, Khaled Mohammed², Hammad Javid^{2,6}, Karsten Haustein⁶, Friederike E. L. Otto⁶, Feyera Hirpa⁷, Ruksana H. Rimi⁶, AKM Saiful Islam⁸, David C. H. Wallom², and Geert Jan van Oldenborgh¹

¹Royal Netherlands Meteorological Institute (KNMI), De Bilt, The Netherlands

²Oxford e-Research Centre, Department of Engineering Science, University of Oxford, United Kingdom

³Department of Physical Geography, Utrecht University, Utrecht, The Netherlands

⁴Department of Civil and Environmental engineering, Princeton University, Princeton, NJ, U.S.A.

⁵Red Cross Red Crescent Climate Centre, The Hague, the Netherlands

⁶Environmental Change Institute, Oxford University Centre for the Environment, Oxford, United Kingdom

⁷School of Geography and the Environment, University of Oxford, United Kingdom

⁸Bangladesh University of Engineering and Technology, Dhaka, Bangladesh

Correspondence: Sjoukje Philip (sjoukje.knmi@gmail.com) and Geert Jan van Oldenborgh (oldenbor@knmi.nl)

Abstract. In August 2017 Bangladesh faced one of its worst river flooding events in recent history. This paper presents for the first time an attribution of this precipitation-induced flooding [to anthropogenic climate change](#) from a combined meteorological and hydrological perspective. Experiments were conducted with three observational data sets and two climate models to estimate changes in extreme 10-day precipitation event frequency over the Brahmaputra basin [up to the present with an outlook](#) [to two degrees warming](#). The precipitation fields were then used as meteorological input for four different hydrological models to estimate the corresponding changes in river discharge, allowing for comparison between approaches and for the robustness of the attribution results to be assessed.

In all three observational precipitation data sets the climate change trends for extreme precipitation similar to observed in August 2017 are not significant, however in two out of three series, the sign of this insignificant trend is positive. One climate model [ensemble](#) shows a significant positive influence of anthropogenic climate change, whereas the other [large ensemble model](#) simulates a cancellation between the increase due to greenhouse gases and a decrease due to sulphate aerosols. Considering discharge rather than precipitation, the hydrological models show that attribution of the change in discharge towards higher values is somewhat less uncertain than for precipitation, but the 95% confidence ~~interval still encompasses intervals~~ [still encompass](#) no change in risk. ~~For the~~ [Extending the analysis to the](#) future, all models project an increase in probability of extreme events at 2° C global heating since pre-industrial times, becoming more than 1.7 times more likely for high 10-day precipitation, and about a factor 1.5 more likely for discharge. Our best estimate on the trend in flooding events similar to the Brahmaputra event of August 2017 is derived by synthesizing the observational and model results: We find the change in risk to be greater than one and of similar order of magnitude (between 1 and 2) for both the meteorological and hydrological approach. This study shows that, for precipitation-induced flooding events, investigating changes in precipitation is useful, either as an

alternative when hydrological models are not available, or as an additional measure to confirm qualitative conclusions. Besides, it highlights the importance of using multiple models in attribution studies, particularly where the climate change signal is not strong relative to natural variability or is confounded by other factors such as aerosols.

Copyright statement. TEXT

5 1 Introduction

In August 2017 Bangladesh faced one of the worst river flooding events in recent history, with record high water levels, and the Ministry of Disaster Management and Relief reporting that the floods were the worst in at least forty years. Due to heavy local rainfall, as well as water flow from the upstream hills in India, the water levels in the various rivers in northern Bangladesh burst their banks. This led to the inundation of river basin areas in the northern parts of Bangladesh, starting on 12 August and
10 affecting over 30 districts. The National Disaster Response Coordination Centre (NDRCC) reported around 6.9 million people affected, with 114 people reported dead and at least 297,250 people displaced. Approximately 593,250 houses were destroyed, leaving families displaced in temporary shelters.

Bangladesh is a highly flood-prone country, with flat topography and many rivers that regularly flood and are used to irrigate crops and for fishing. The August 2017 floods were particularly impactful as they followed two earlier flooding episodes in
15 late March and July that year, increasing people's vulnerability. Nearly 85% of the rural population in Bangladesh works directly or indirectly with agriculture and rice is the main staple food contributing 95% to total food production. As is typical after such a flooding, farmers started to plant *aman*, the monsoon rice that is almost entirely rain-dependent. However, the August flood was worse than that of July, and areas such as Dinajpur and Rangpur that normally do not flood were also flooded, see Fig. 1. These are areas that contain significant rice production. As a result, 650,000 hectares of cropland were
20 severely damaged during the August monsoon flooding in the year. *Aman* rice is historically the most variable and yields tend to drop dramatically during major flood years (Yu et al., 2010). The flood-induced crop losses in 2017 resulted in the record price of rice, negatively affecting livelihood and food security. Beyond impacts to agriculture, the floods destroyed transport infrastructure such as railways lines, bridges, and roads, leaving some areas inaccessible for disaster relief efforts. The rise in water and strong current breached roads and embankments and swept away livestock, houses, and assets that may have
25 otherwise been protected. At least 2,292 schools were damaged affecting education for weeks, and 13,035 cases of waterborne illnesses were reported in the aftermath of the floods.

The 2017 flood was markedly different from previous major flood events in 1988 and 1998, when both the Ganges and Brahmaputra flooded simultaneously (Webster et al., 2010). Based on forecasts it was feared that a similar event would occur in 2017, but in this case, swelling of the Brahmaputra, its tributary the Atrai, and the Meghna caused flooding. The worst
30 impacts were along the main reach of the Brahmaputra river (Fig. 1b).

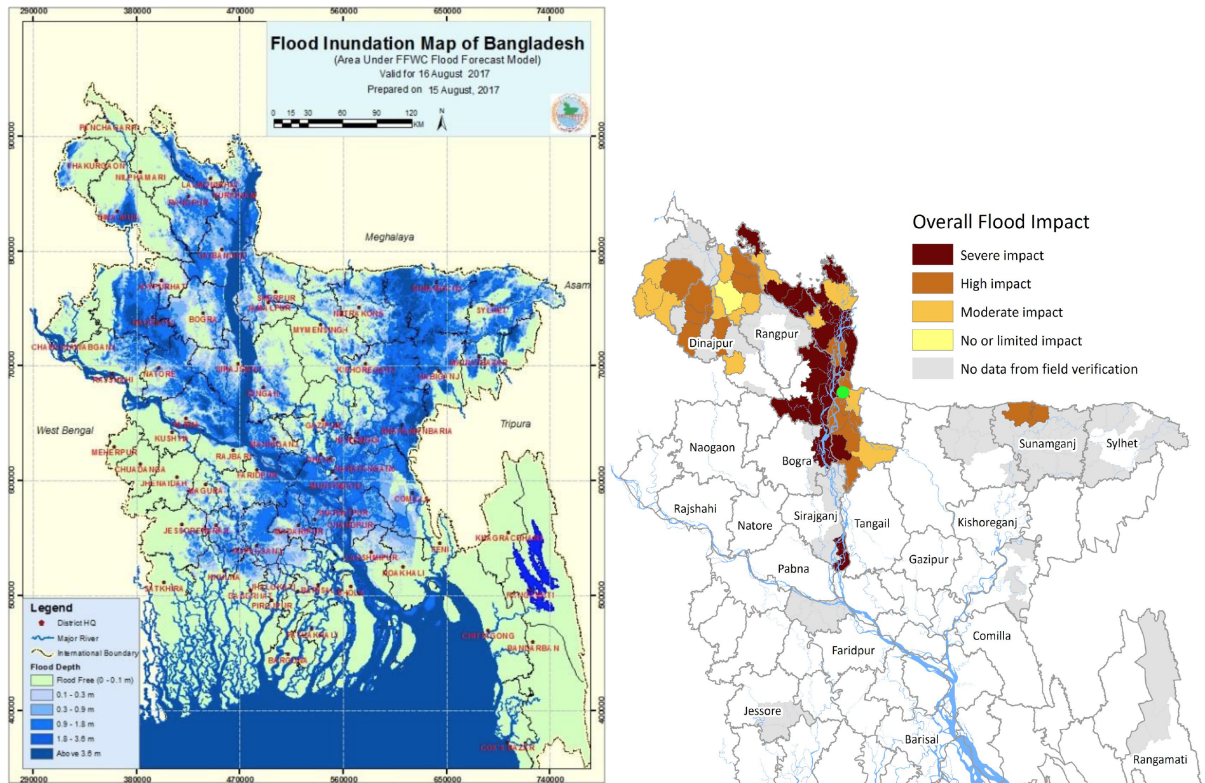


Figure 1. Left: inundation forecast map of Bangladesh for 16 August 2017. Right: Overall flood impact of the August 2017 flooding as stated on August 21. The green circle in the northwest of the map denotes the location of Bahadurabad. The Brahmaputra basin is outlined in Fig. 3. See the original documents¹ for more details on the maps and legends.

The first estimates of the return period provided by the Bangladesh Water Development Board (BWDB) for the 2017 flood event range from a once in 30 year event to a once in 100 year event, depending on the data source: water level and discharge data at Bahadurabad (the main station for discharge representing the Brahmaputra in Bangladesh) and the flooding forecast system GloFAS. These estimates however, were implicitly based on the assumption of a stationary climate and did not account for the possibility that the frequency of such flooding events may be changing.

Extreme rainfall events that subsequently lead to widespread flooding, such as the 2017 event in Bangladesh, are one of the main types of extreme weather events we are expecting to see more of in a warming climate. But with rainfall not only driven by thermodynamic processes but also affected by changing atmospheric processes it is not a priori clear if such events at a particular location will increase in likelihood or if the dynamic changes will mean that the overall chance of extreme rainfall decreases there (Otto et al., 2016). Furthermore, in the current climate, drivers other than greenhouse gases often play a role that is currently difficult to quantify but likely to mask or exacerbate the effect of greenhouse gas emissions so far on the

¹https://reliefweb.int/sites/reliefweb.int/files/resources/SitRep_2_Bangladesh%20Flood_16%20August%202017.pdf and https://reliefweb.int/sites/reliefweb.int/files/resources/72%20hrs-Bangladesh_Flood_Version1_Final%2008212017.pdf

occurrence likelihood of extreme rainfall events (e.g., aerosols, van Oldenborgh et al., 2016). Hence regional attribution studies are necessary to identify whether and to what extent extreme rainfall events are changing and to provide insight into which drivers have been contributing to those changes and if the trend is likely to continue into the future. Attribution studies require both observational data and models to fully estimate the impact of changes in the climate system. The reported advances in
5 model development for the Brahmaputra region and their success in forecasting gives good confidence in the models' ability to accurately represent the region.

Hydrological models are increasingly used for studies on flooding in Bangladesh. As upstream flow data is absent for Bangladesh, a lot of effort has been made to develop flood forecasting systems based on satellite data and weather predictions. Webster et al. (2010) for instance developed a system that forecasts the Ganges and Brahmaputra discharge into Bangladesh
10 in real time on 1- to 10-day time horizons. In a recent study Priya et al. (2017) show that, using a new long lead flood forecasting scheme for the Ganges-Brahmaputra-Meghna basin, skillful forecasts are provided that inherently express not only a prediction of future water levels but also supply information on the levels of confidence with each forecast. Hirpa et al. (2016) used reforecasts to improve the flood detection skill of forecasts.

Previous scientific studies generally show an increasing trend in climate projections of extreme rainfall and high discharge
15 in the region. For example, Gain et al. (2011) use the PCR-GLOBWB model with input from 12 global circulation models (GCMs, 1961-2100) from the CMIP3 ensemble (Meehl et al., 2007) in a weighted ensemble analysis. They show that in this ensemble, there is a positive trend in peak flow at Bahadurabad: in this model configuration and under the SRES B2 scenario, a peak flow that currently occurs every 10 years will occur at least once every two years during the time period 2080–2099. Dastagir (2015) gives an overview of the change in flooding according to the IPCC 5th Assessment Report and using 16 GCMs
20 from the CMIP5 ensemble (Taylor et al., 2011). They state that the warmer and wetter climate predicted for the Ganges-Brahmaputra-Meghna basins by most climate-related research in this region indicates that vulnerability to severe monsoon floods will increase with climate change in the flood prone areas of Bangladesh. The same conclusion is reached by CEGIS (2013), who use GCM projections and a hydrological model to show that in the wet season an increase in precipitation and annual flow is projected. In line with this, Mohammed et al. (2017) find that in a 2.0 °C warmer world floods will be both more
25 frequent and of greater magnitude than in a 1.5 °C warmer world in Bangladesh, using the hydrological model SWAT with input from the CORDEX regional model ensemble. Zaman et al. (2017) use two sets of climate models with RCP8.5 climate change runs as input in a basin model that simulates flows in major rivers of Bangladesh, including the Brahmaputra. Using the two climate model runs as input they find agreement in the basin model runs for Brahmaputra flow in a 2.0 °C warmer world –
30 of approximately 15% and 10% in the dry season.

Attribution studies on flooding, using both observational data and models, have often been done with precipitation only. In such studies, (e.g., Schaller et al., 2014; van der Wiel et al., 2017; Philip et al., 2018; van Oldenborgh et al., 2017; Risser and Wehner, 2017) it is assumed that precipitation is the main cause of the flooding. For shorter time scales and the relatively small basins involved, this is a reasonable assumption. The major basins in Bangladesh, however, are substantially larger
35 and have longer water travel times than the basins considered in the above studies. Therefore using precipitation alone as a

proxy for flooding might not be appropriate. In this paper we explicitly test this assumption by performing an attribution of both precipitation and discharge as a flooding-related measure to climate change. ~~We use~~ Thus we explore the flood in two different ways - first from a meteorological perspective (using precipitation data) and then from a hydrological perspective (using discharge data). Schaller et al. (2016) already studied a flooding case in an attribution study using one hydrological model. Yuan et al. (2018) use observations, GCMs and one land surface model with and without land cover change to split the changes in observed streamflow and its extremes into anthropogenic and natural climate change, land cover change and human water withdrawal components. In this paper we for the first time do an attribution study using observational precipitation and discharge data and a combination of GCMs and several hydrological models. To compare the differences between ~~both attribution methods~~ the attribution results for the two variables we calculate the return periods and risk ratios for the August 2017 flooding event in Bangladesh for both precipitation and discharge in observations and models, for past (pre-industrial), present and future (2 degree warmer than pre-industrial).

Bangladesh is influenced by three large river basins: the Ganges basin in the northwest, the Brahmaputra basin in the northeast and the Meghna basin in the east. During the monsoon season the rainfall moves northwest across the country, starting in May-June-July in the Meghna basin. Usually two to three weeks after peak rainfall in July, the rivers in the Brahmaputra basin reach their peak discharge. Finally, in August and September the Ganges basin river discharge peaks. The largest impact of flooding in August 2017 was felt in the northern parts of Bangladesh (Fig. 1). As this was mainly caused by precipitation in the Brahmaputra basin, the focus in this paper will be on this basin. In the Brahmaputra basin little water originates from precipitation on the northern side of the Himalaya (China/Tibet), with most of the water coming from precipitation in the upstream Assam region in India. Precipitation in Bhutan also contributes to the river water in Bangladesh.

In this paper we use two event definitions: one based on precipitation and one based on discharge. Both observational data and model data can be used for these two event definitions. For precipitation we average over the whole Brahmaputra basin and take a 10-day average, as the largest precipitation volume in the Brahmaputra basin travels to Bangladesh within 10 days, ~~see Fig. 5 in Webster et al. (2010).~~ Only precipitation in July-August-September (JAS) is analysed as it is only in these months that precipitation is considered the major cause of flooding. For discharge we simply use the daily maximum discharge at Bahadurabad, a station situated to the north of the confluence point of the Ganges with the Brahmaputra, in JAS.

The data and methods used are described in Section 2. Sections 3 and 4 describe the analysis for observations and models respectively. The results are synthesized in Section 5. A discussion follows in Section 6 and the paper ends with some conclusions.

2 Data and methods

Observational data are described in Sect. 2.1, the models and experiments are described in Sect. 2.2. The explanation of how these data are used in the analysis is detailed in Sect. 2.3.

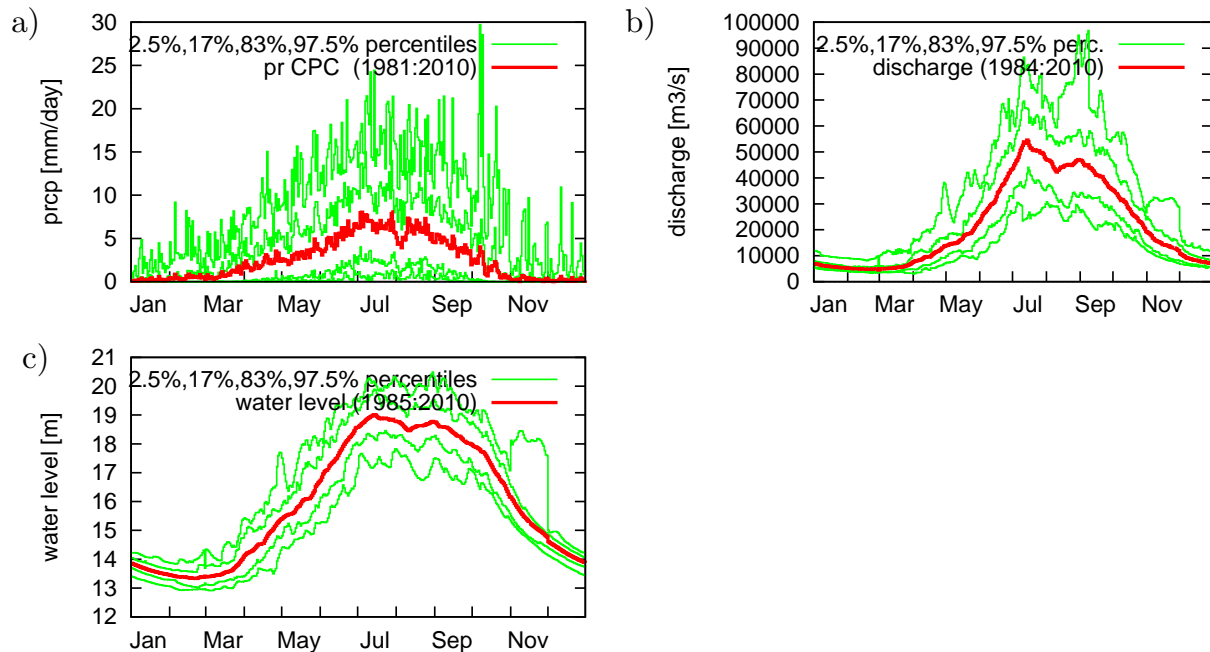


Figure 2. Seasonal cycle of (a) precipitation in the Brahmaputra basin for CPC, (b) discharge at Bahadurabad and (c) water level at Bahadurabad. The red line shows the mean value, green lines show the 2.5, 17, 83 and 97.5 percentiles.

2.1 Observational data

The first observational dataset we use is the 0.5° gauge-based CPC analysis 1979-now (www.cpc.ncep.noaa.gov/products/Global_Monsoons/gl_obs.shtml). This is the longest gauge-based daily gridded dataset available that is still being updated. The seasonal cycle of precipitation in the Brahmaputra basin is shown in Fig. 2a. Monsoon rains start rising slowly with a maximum in July and August, and become less from September onwards. As precipitation will not, in general, cause flooding before July, we will use the months JAS for the precipitation analysis.

The second gauge-based dataset we use for comparison is the [combined Full Data and First Guess Daily](https://doi.org/10.5676/DWD_GPCC/FD_D_V1_100) 1.0° GPCC dataset (1988-now) ([doi:10.5676/DWD_GPCC/FD_D_V1_100](https://doi.org/10.5676/DWD_GPCC/FD_D_V1_100) and [doi:10.5676/DWD_GPCC/FG_D_100](https://doi.org/10.5676/DWD_GPCC/FG_D_100)). As this is a much shorter dataset we expect the signal to noise ratio in the trend to be smaller. We only use this dataset to additionally check the observations. The seasonal cycle can be found in Fig. S1.

The third dataset is the reanalysis dataset ERA-interim (ERA-int, 1979-now) ([Dee et al., 2011](https://doi.org/10.1016/j.jhydrol.2011.08.029)). Precipitation of this dataset is analysed directly. As well as precipitation, temperature and potential evapotranspiration (calculated, Penman-Monteith) are used to drive one of the hydrological models see Section 2.2.2. The seasonal cycle of ERA-int can be found in Fig. S1.

We use discharge and water level data from Bahadurabad. Discharge data are available for the years 1984-2017 and water level for the years 1985-2017 (source: BWDB). For both datasets the seasonal cycle is shown in Fig. 2b,c. Additionally, we have a discharge dataset for the years 1956-2006 (source: BWDB). As the rating between water level, velocity and discharge

is not exactly the same in the two discharge datasets, we consider a simple merge of the datasets not to be appropriate. The 1984-2017 dataset is used in the analyses, but results are compared to calculations with the 1956-2006 dataset and merged datasets.

2.2 Model descriptions

5 ~~Both~~ First the global circulation model and regional model that are used for the analysis of precipitation are ~~described in Section 2.2.1. Details on the hydrological listed, including a short description of the model runs. Next a list of hydrological models used in this study is given. Further details of the models can be found in Section 2.2.2 with further details on the hydrological models,~~ including validation and calibration ~~, of the hydrological models, are~~ described in the Supplement.

2.2.1 Precipitation

10 ~~First, we performed the same analysis as in the observations with ensemble experiments from the EC-Earth-2.3 We use three different ensembles of the~~ coupled atmosphere-ocean general circulation model EC-Earth-2.3 (Hazeleger et al., 2012). ~~The resolution of the model is EC-Earth-2.3 (Hazeleger et al., 2012) at T159 , which is about 125 km.~~

~~We use three different experiments. (~ 150 km).~~ The first one is a transient model experiment, consisting of 16 ensemble members covering 1861–2100 (here we use up to 2017), which are based on the historical CMIP5 protocol until 2005 and 15 the RCP8.5 scenario (Taylor et al., 2012) from 2006 onwards. ~~To compare these runs with observations, we use model years in which the difference in smoothed observed global mean surface temperature (GMST) between 2017 and a year in the past (1984, 1979, and 1900) agrees with the difference in ensemble averaged model GMST between 2017 and that year in the past. These are the model years 1985 and 1979 (corresponding to 1984 and 1979 in observations) and 1934 (corresponding to 1900 in observations).~~

20 The other two EC-Earth-2.3 experiments are two time slice experiments, based on the above 16-member transient model experiment. Two experimental periods are selected in which the model-GMST is as observed in 2011-2015 (‘present-day’ experiment, ~~model years 2035-2039~~) and as pre-industrial (1851-1899) + 2 °C warming (‘2°C-warming’ experiment, ~~model years 2062-2066~~). For each time slice, 25 members are generated from each of the 16 transient ensemble members and these are integrated for 5 years, resulting in $16 \times 25 \times 5 = 2000$ years of data for each time slice. ~~The difference in model GMST between the two time slice experiments is such that it is the same as the difference between the observed present-day GMST and a 2 °C warmer world.~~

Second weather@home

In addition to the EC-Earth-2.3 experiments, large ensembles of climate model simulations are created using the distributed computing weather@home modelling framework (Guillod et al., 2017; Massey et al., 2014) ~~.The weather@home setup consists of the Met Office Hadley Centre Atmosphere-only model, HadAM3P running globally at a resolution of $1.25^\circ \times 1.875^\circ$ to drive the Met Office Hadley Centre Regional Model, HadRM3P running at a resolution of 50 km over South Asia. The model is driven with prescribed sea surface temperatures (SSTs) and sea ice (SIC).~~ based on Hadley Centre models. Table 1 describes 30

Table 1. Experiments with the weather@home ensemble, including ensemble size and short description.

<u>Category</u>	Experiment	Ensemble size Description
<u>Climatology</u>	Historical	5222 1986-2015 SSTs and sea ice as observed, other forcings from CMIP5 historical+RCP4.5
	Natural	6659 1986-2015, SSTs reconstructed for pre-industrial, all other forcings pre-industrial
	GHG-only	4931 1986-2015, SSTs reconstructed for GHG emissions only, CMIP5 historical+RCP4.5 GHG emissions, all other forcings preindustrial
<u>2017-Specific</u>	Actual 2017	2996 2017 SSTs and sea ice as observed, other forcings as RCP4.5
	Natural 2017	6126 2017, SSTs reconstructed for pre-industrial, all other forcing pre-industrial
	GHG-only 2017	5386 2017, SSTs reconstructed for GHG emissions only, RCP4.5 GHG emissions, all other forcings preindustrial
<u>Future</u>	Current	2781 2004-2016, SSTs and sea ice as observed, all other forcings from CMIP5 RCP4.5 as per HAPPI experiment design
	1.5 Degree	1848 Representative decade with 1.5° C of additional warming as per HAPPI experiment design
	2.0 Degree	1892 Representative decade with 2° C of additional warming as per HAPPI experiment design

the experiments used in this study, which are grouped into three sets: (i) ensembles for the historical period 1986-2015 (white), (ii) ensembles for 2017 (light gray), (iii) ensembles for assessing possible changes in the future (dark gray).

The first set of experiments captures the years 1986-2015. To derive the value of the observed threshold within the weather@home model a climatology (with each year run independently) from 1986-2015 is run using observed OSTIA SSTs and SIC (Donlon et al., 2012) and CMIP5 historical+RCP4.5 estimates of other forcings (hereafter, Historical). A second climatology representing pre-industrial conditions is run from 1986-2015 using observed OSTIA SSTs and SIC naturalised as above with CMIP5 estimates and pre-industrial CMIP5 forcing conditions (hereafter, Natural). The Natural ensemble is constructed following Schaller et al. (2016), where the anthropogenic signal in the SST is derived from the difference between historical and historicalNat CMIP5 simulations from 13 different models and removed from the observed SSTs. A third ensemble (hereafter, GHG-only) is also included for the years 1986-2015, where GHG emissions follow the same protocol as for the Historical ensemble, but all other forcing components are kept at pre-industrial levels as for the Natural ensemble. As with the Natural component, the signature of GHG emissions in the SST is removed by comparing the relevant CMIP5 simulations to obtain a set of plausible SST patterns. The SSTs are specifically reconstructed to respond to changes in GHG emissions only, without the influence of the historical changes in other anthropogenic forcings. [See the Supplement for a more detailed description of these runs.](#)

The second set of experiments simulates the year 2017 for three different ensembles. One ensemble simulates the world as observed for 2017 (hereafter Actual 2017) taking observed OSTIA SST and SIC to drive the model and with sulphate emissions, well-mixed greenhouse gas, solar variability and volcanic emissions taken from CMIP5 values. A counterfactual ensemble (hereafter Natural 2017) is run for 2017 and uses pre-industrial forcing estimates as Natural above. A third ensemble for GHG only in 2017 also generated as above (hereafter GHG-only 2017). The difference between the GHG-only 2017 simulations and the Actual 2017 experiments is the inclusion of the anthropogenic sulphate emissions, so by comparing the two simulations it is possible to derive an estimate of the anthropogenic aerosol influence. We have successfully tested the assumption of linearly additive forcing responses using a small subset of CMIP5 Aerosol only experiments.

A third set of experiments are performed with weather@home 'South Asia' following the HAPPI experimental design (Mitchell et al., 2017) where a decade of simulations are performed representing a world as currently observed (hereafter Current), and with global mean surface temperature increase limited to 1.5 C and 2 C above pre-industrial levels (hereafter 1.5 Degree and 2 Degree respectively). Although the simulation period is only 10 years (adding future SST pattern onto OSTIA SSTs for 2006-2015), the HAPPI model setup is comparable with the climatological and 2017 experiments.

2.2.2 Discharge

In this study we used the PCR-GLOBWB 2 The global hydrological model PCR-GLOBWB 2 (Sutanudjaja et al., 2017) .This model was selected because of its ability to simulate the hydrological cycle, including reservoir operations and human water interactions at continental and global scales. The model simulates the global water balance at daily temporal resolution and at either 10 km or 50 km spatial resolution. It resolves the water balance at the surface, by using precipitation, temperature and potential evaporation inputs from meteorological observations or climate models.

We used PCR-GLOBWB to conduct several river discharge simulations. ~~Firstly we checked,~~ First we used observational data as input to check the performance of the model ~~by comparing the output to observations of (i) the 2017 event, (ii) other historical flooding events and (iii) river discharge over a historical period, using two observational precipitation datasets as forcing.~~ Secondly, we generated large ensembles of discharge for calculating risk ratio statistics using the, Next we used the EC-Earth climate model experiments as input. The simulations based on observational data were done at 10 km spatial resolution and provide simulated daily discharge for the Brahmaputra river basin. We used CPC and ERA interim precipitation estimates for the period 1979-2017 to generate daily fields of soil moisture, groundwater and discharge. The simulations also require temperature and evapotranspiration input, which were taken from ERA interim for both the CPC and ERA interim runs. The EC-Earth experiments, i.e. both the 16 transient ensemble members (years 1920-2066 available for 12 members, years 1880-2066 for the other 4 members) and the two time slice experiments ('present-day' and '2°C-warming'), were used as forcing for PCR-GLOBWB at the coarser resolution of 50 km transient and and two time-slice experiments as input to generate a large ensemble.

SWAT

Second, we use the Soil and Water Assessment Tool (SWAT), which is a commonly used hydrological model for investigating

climate change impacts on water resources at regional scales (Gassman et al., 2014). This model has already been used to simulate impacts of climate change on the flows of the Brahmaputra River (Mohammed et al., 2017, accepted). The water balance equation used in SWAT consists of daily precipitation, runoff, evapotranspiration, percolation and return flow.

The SWAT model was used in this study to simulate flows by taking inputs from both the transient and time-slice EC-EARTH experiments and weather@home experiments, using daily maximum and minimum temperatures and precipitation. ~~The parameters of the SWAT model were calibrated twice using climatological data (1986-2015) of each of the two climate models before applying data from the corresponding climate models to simulate flows.~~

Lisflood

The third hydrological model we use is Lisflood. This is a fully distributed and semi-physically based model initially developed by the Joint Research Centre (JRC) of the European Commission in 1997. It was subsequently updated to forecast floods and analyse impacts of climate and land-use change (Burek et al., 2013). It has been used for operational flood forecasts as part of the European Flood Awareness System (EFAS) since 2012 (<https://www.efas.eu/about-efas.html>). ~~Lisflood uses a 1-dimensional channel routing algorithm and solves kinematic wave equations in an implicit manner using four point finite difference solutions to route runoff through the channel network (Knijff et al., 2010). In this study we only used the routing scheme of the model to simulate horizontal water fluxes while the vertical fluxes, surface and subsurface runoff were simulated with the MOSES land surface scheme. The model was run at a spatial resolution of $0.1^\circ \times 0.1^\circ$ and a temporal resolution of a day. It was calibrated with the Parallel version of the Dynamically Dimensioned Search Algorithm (PDDS) (Tolson and Shoemaker, 2007) using an auto-calibration software, Ostrich (Matott, 2017). The~~ Lisflood model was used in this study to simulate the river flow of the Brahmaputra river at Bahadurabad gauging station with input data from the Weather@home model.

River Flow Model

The fourth and final hydrological model used in the analysis is a fully distributed River Flow Model (RFM) that estimates the streamflow by discrete approximation of the one-dimensional kinematic wave equation (Dadson et al., 2011). ~~RFM is designed to route the gridded runoff simulated by climate models, land surface schemes (MOSES in our case) or rainfall scenarios to generate river flow at daily or hourly temporal resolution. It has a simple fully distributed spatial structure which makes it possible for it to be coupled with other models. RFM routes the overland flow and stream flow in 2 dimensions and can have different wave speeds for surface and subsurface runoffs. RFM was also calibrated with PDDS and Ostrich.~~

The RFM model was used in this study to simulate the river flow of the Brahmaputra river at Bahadurabad gauging station with input data from the Weather@home model.

30 **2.3 Statistical methods**

We use a class-based event definition, i.e., we consider all events that are as extreme or more than the observed event on a one-dimensional scale, in this case 10-day averaged precipitation averaged over the Brahmaputra basin or daily runoff at Bahadurabad.

The first step in an attribution analysis is trend detection: fitting the observations to a non-stationary statistical model to look for a trend outside the range of deviations expected by natural variability. In this case we study the trends of extreme high precipitation and river discharge values. In extreme value analysis, the Generalised Extreme Value (GEV) Distribution (Coles, 2001) is often used to fit and model the tail of the empirical distribution for this type of event, the maximum daily or 10-daily value over the monsoon season. The shape parameter ξ determines the tail behavior; negative indicates light tail while positive indicates heavy tail behavior. When $\xi = 0$, the distribution simplifies to the Gumbel distribution. Global warming is factored in by allowing the GEV fit to be a function of the (low-pass filtered) global mean surface temperature. In the case of precipitation and discharge extremes, it is assumed that the scale parameter σ (the standard deviation) scales with the position parameter μ (the mean) of the GEV fit. This assumption is also known as the index flood assumption (Hanel et al., 2009) and is commonly applied in hydrology to restrain the number of fit parameters. It can be checked in the model experiments where there is enough data to fit both μ and σ independently. These parameters are scaled up or down with the GMST using an exponential dependency similar to Clausius-Clapeyron scaling: $\mu = \mu_0 \exp(\alpha T / \mu_0)$, $\sigma = \sigma_0 \exp(\alpha T / \mu_0)$, with T the smoothed global mean temperature and α the trend that is fitted together with μ_0 and σ_0 . The shape parameter ξ is assumed constant. 95% confidence intervals are estimated using a 1000-member non-parametric bootstrap. This approach has been used in several previous attribution studies (e.g. van Oldenborgh et al., 2016; van der Wiel et al., 2017; Otto et al., 2018). This fit also gives the return periods of the observed event.

The scaling is taken to be an exponential function of the smoothed global mean temperature. This exponential dependence can clearly be seen in the scaling of daily precipitation extremes with local daily temperature in regions with enough moisture availability (Allen and Ingram, 2002; Lenderink and van Meijgaard, 2008). It is also expected on theoretical grounds through the first-order dependence of the maximum moisture content on temperature in the Clausius-Clapeyron relations of about 7%/K, which gives rise to an exponential form. Note that we fit the strength of the connection, which is often different from CC scaling. As it is not clear what the relevant local temperature is, but local temperature usually scales linearly with the global mean temperature, we chose the latter.

The second step in an attribution analysis is the attribution of the detected trend to global warming, natural variability or other factors, such as changes in aerosol concentration or ENSO, and requires comparing model simulations with and without anthropogenic forcing. There are two approaches. The first is to run two ensembles: one with current conditions, and one with conditions as they would have been without anthropogenic emissions. The number of events above the threshold is compared between the two ensembles. In the second approach, we approximate the counterfactual climate by the climate of the late 19th century and fit the same non-stationary GEV that was described above to the model data. The distribution is evaluated for a GMST in the past and the current GMST. These two approaches have been used before for studies of extreme precipitation, (e.g., Schaller et al., 2014; van Oldenborgh et al., 2016; van der Wiel et al., 2017; van Oldenborgh et al., 2017). We checked that year-on-year autocorrelations of RX10day are negligible, so serial autocorrelations are not a problem in this analysis.

As a third step, we calculate the risk ratio (RR) or change in probability for different time intervals. These include for instance the difference between present day and 1979, or between present day and pre-industrial times. For observations we calculate risk ratios with respect to the beginning of the dataset. If possible, we additionally transform these into risk ratios with

respect to pre-industrial, in this case set to be the year 1900, such that we can compare this with model runs for pre-industrial settings. For this transformation we assume that the RR depends exponentially on the covariate, in this case the global mean temperature change. For instance if we would find that the probability doubles for 0.5° C warming, we assume that to first order it would double again for 1° C warming. With future model runs we can also calculate risk ratios between 2° C climate and the climate of now.

A last step in the analysis is the synthesis of the results into a single attribution statement. Though the method for evaluating risk ratios using a transient model or observations is different from that using ensemble time-slice experiments that are explicitly designed to simulate a +2.0 °C world, we are able to give an average value for all observations and models combined, and assume this gives a good first order estimate of the overall risk ratio.

The differences among the RRs of these ensembles and the observations are due to natural variability, different framings and to model spread. The relative contribution of random natural variability can be estimated from a comparison of the uncertainty derived from each fit with the spread of the different estimates of the RR from observations and models. We do this by computing a χ^2/dof , with the number of degrees of freedom, *dof*, one less than the number of fits. If this is roughly equal to one, the variability is compatible with only the natural variability that determines the uncertainty on each separate model estimate of the RR. If it is much larger than one, the systematic differences between the framings and models contribute significantly.

We choose to use a weighted average, with the weights being the inverse uncertainty squared for each RR (models and observations). The uncertainties are approximated by symmetric errors on $\log(RR)$ and added in quadrature ($\epsilon^2 = \sqrt{\epsilon_1^2 + \epsilon_2^2 + \dots + \epsilon_N^2}/N$). If there is a significant contribution of χ^2 due to model spread, this has to be propagated to the final result and the final uncertainty is larger than the spread due to natural variability. In this case we choose to give all models equal weight. The method described here was also used in Eden et al. (2016) and Philip et al. (2018).

3 Observational analysis

3.1 Precipitation

Fig. 3a shows the time series of CPC precipitation averaged over the Brahmaputra basin for 90 days ending at 2 September 2017. The 10-day average at the beginning of July is slightly higher than the 10-day average beginning of August, 14.38 versus 14.20 mm. As we are interested in the August flooding event, we take the precipitation value from the August event, which has a maximum over 5–14 August, see Fig. 3c. The 10-day average annual maximum precipitation is fitted to a GEV distribution. The return period plots show that the distribution can be described by a GEV by overlaying the data points and fit for the present and a past climate (Fig. 3d). The return period calculated from this fit is 11 years (95% CI (Confidence Interval) 4–200 years) for the current climate. There is a positive trend with a risk ratio with respect to 1979 of a factor 6 (> 0.3), although the trend is not significant at $p < 0.05$ two-sided (the uncertainty range includes 1).

A similar approach to the one used for CPC data is applied to ERA-int data. In this dataset the July 2017 10-day average was also just slightly higher than the August 2017 10-day average. The return period for the August event with a value of 17.9

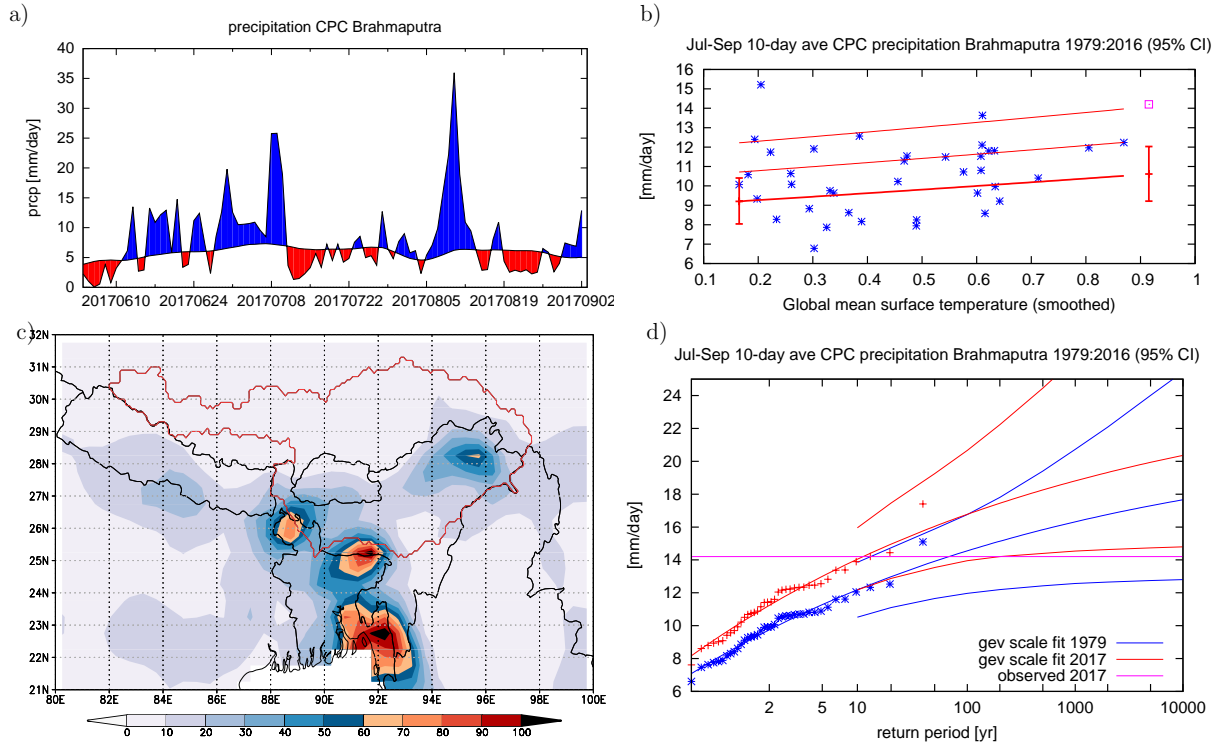


Figure 3. CPC data (a and c) and analysis of the highest observed 10-day mean rainfall in the Brahmaputra basin in July–September (b and d). a) time series of precipitation averaged over the Brahmaputra basin: blue is more than average, red less than average. **e) 10-day averaged precipitation over the Brahmaputra basin. Dark red means heavy precipitation. In red the contours of the Brahmaputra basin.** b) the location parameter μ (thick line), $\mu + \sigma$ and $\mu + 2\sigma$ (thin lines) of the GEV fit of the 10-day averaged data. The vertical bars indicate the 95% confidence interval on the location parameter μ at the two reference years 2017 and 1950. The purple square denotes the value of 2017 (not included in the fit). **c) 10-day averaged precipitation over the Brahmaputra basin. Dark red means heavy precipitation. In red the contours of the Brahmaputra basin.** d) the GEV fit of the 10-day averaged data in 2017 (red lines) and 1950 (blue lines). The observations are drawn twice, scaled up with the trend (smoothed global mean temperature) to 2017 and scaled down to 1950. The purple line shows the observed value in 2017.

Table 2. Return periods and risk ratios for observations of precipitation, discharge and water level. The column RR1 gives results wrt 1979 (precipitation), wrt 1984 (discharge), and 1985 (water level). The column RR (wrt 1900) scales the results to the pre-industrial period.

variable	dataset (august 2017 value [mm/day])	RT	95% CI	RR1	95% CI	RR (wrt 1900)	95% CI
precipitation	CPC (14.20)	11.2	4.1 ... 200	6.0	>0.30	18	>0.2
	ERA-int (17.89)	2.4	1.4 ... 6.2	1.9	0.64 ... 7.2	2.8	0.5 ... 24
	GPCC 1988-2017 (16.79)	21	4.2 ... 800	0.65	0.009 ... 30	0.5	0.004 ... 800
discharge	1984-2017(78.262)	4	3 ... 6	1.3	0.1 ? 9	0.8	0.02 ... 8
water level	1985-2017 (20.83)	12	3 ... 350	170	>0.6		

mm/day was 2 years (95% CI 1 to 6 years) in the current climate. This dataset also shows a non-significant positive trend with a risk ratio of 1.9 (0.6 to 7), i.e., a doubling of the probability of an event like this or higher.

Finally, the shorter GPCC dataset gives similar results as well. Risk ratios are given with respect to 1979 in order to compare this with the other datasets. The August 2017 10-day average is slightly higher than the July 10-day average. The return period is about 20 years (95% CI 4-800 years). The risk ratio is not significantly different from one.

The results of return periods and risk ratios based on observations can be found in Table 2. For analyses with models we use the return period from the CPC dataset of 11 years for this event, as based on local experience we think that this is the best estimate. Due to the shape parameter being close to zero the risk ratio will not have a strong dependence on this choice: for a Gumbel distribution it is independent of the return time.

10 3.2 Discharge

The highest discharge in 2017 was reached on the 16th of August, with a value of about 78,000 m³/s. This was clearly higher than any value in July in the same year, as opposed to the precipitation values discussed above. There have been several years in which the discharge was higher than in 2017, including the years 1998 and 1988, which are the two maximum values in the discharge record. The return period is calculated from the discharge dataset since this is our best observational estimate.

15 However it is worth noting that there is a large uncertainty in the accuracy of the discharge measurements from 2012 onwards. We check if the results are robust by comparing the outcomes from the different datasets.

We fitted the discharge time series of Bahadurabad to a GEV distribution. In this distribution we see no trend (95% CI wrt 1900 is 0.1 to 40), see Fig. 4. Therefore we calculate the return period assuming no trend. This results in a return period of the August 2017 event of 4 years (95% CI 3 to 6 years). A cross-check with the 1956–2006 dataset or a merge of the two discharge
20 datasets gives similar results.

3.3 Water level

Although we only have water level available in observations and not for models, we still analyze the observational water level time series from Bahadurabad. The highest value in 2017 was on the 16th of August, with a value of 20.83m. This is 1.33m

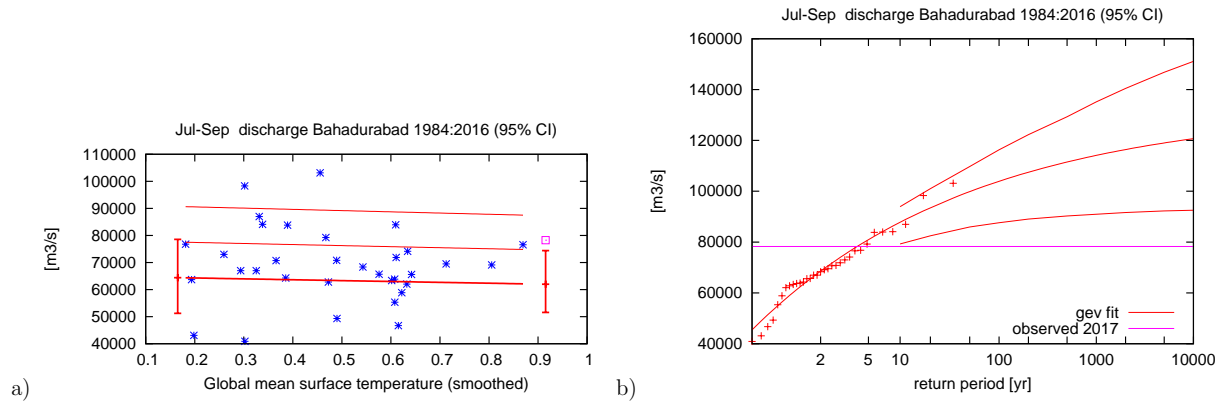


Figure 4. Analysis of the highest observed daily discharge at Bahadurabad in July–September. a) the location parameter μ (thick line), $\mu + \sigma$ and $\mu + 2\sigma$ (thin lines) of the GEV fit of the discharge data. The vertical bars indicate the 95% confidence interval on the location parameter μ at the two reference years 2017 and 1984. The purple square denotes the value of 2017 (not included in the fit). b) the GEV fit of the discharge data assuming no trend. The purple line shows the observed value in 2017.

higher than the danger level of 19.50. In contrast to the discharge this was a record level since the beginning of the dataset (1985). It should be noted that the water level is also influenced by factors other than climate change, for instance a raising of the river bed by sedimentation and obstruction of the river channel by man-made constructions. [See Sect. 6 for a more detailed discussion on the disentangling of geomorphological changes and climate change.](#)

- 5 Under the same assumption as for precipitation and discharge, that water level scales with GMST, the return period in the current climate is estimated to be 12 years (95% CI 3-350 years), see Fig. 5b. However, although the risk ratio between 2017 and 1985 is as large as 170, this is just non-significant with a lower bound of 0.6. This is probably due to the relatively short length of the dataset. In addition, we calculate a return period assuming no trend, see Fig. 5c. This gives a return period of about 80 years (> 25 years, 95% CI). This agrees with the estimates from BWDB.

10 4 Model analysis

4.1 Precipitation

In this section we present model validation and analysis results for the precipitation experiments, first for EC-Earth and then for weather@home.

- 15 For validation of the EC-Earth 2.3 model we use the years in the transient runs that correspond to the observational years 1979-2017. In the model as expected most precipitation falls in the months JJA, with a peak in July, like in observations, though the increase in precipitation is slightly stronger in June than it is in observations. See Figure S1 in the Supplement. As it is assumed that the scale parameter σ scales with the position parameter μ of the GEV fit, we check whether the dispersion parameter σ/μ and the shape parameter in this model are similar to those calculated from observations. The parameters of the

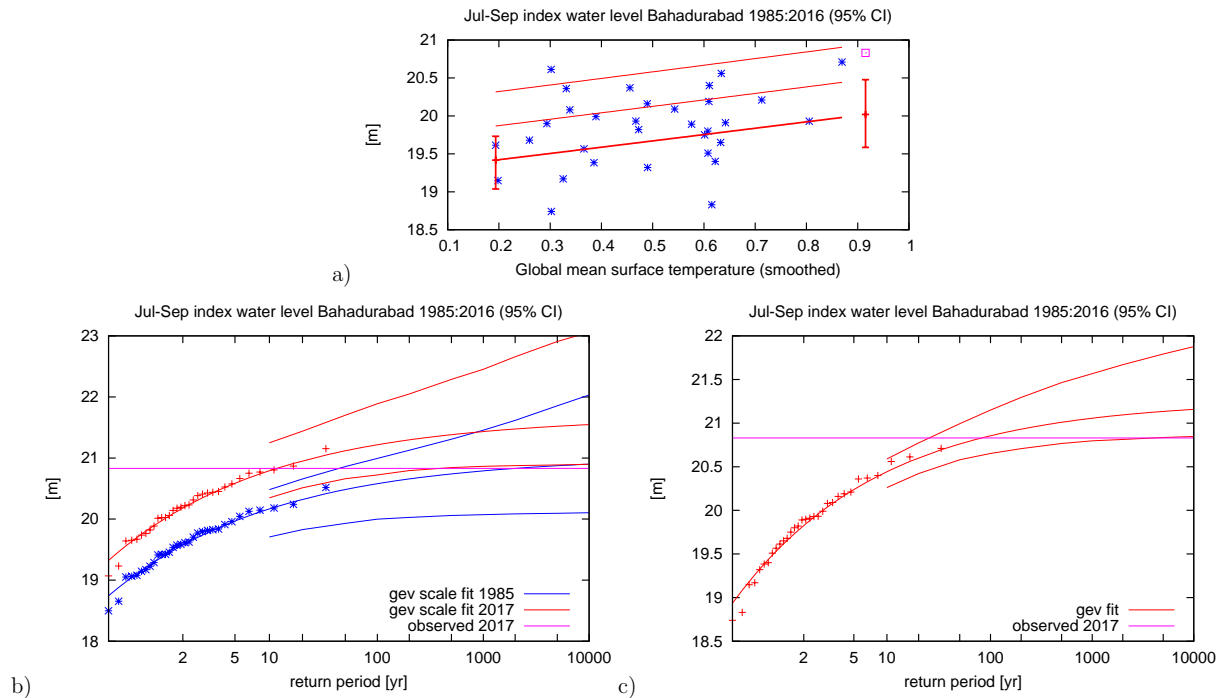


Figure 5. Analysis of the highest observed daily water level at Bahadurabad in July–September. a) the location parameter μ (thick line), $\mu + \sigma$ and $\mu + 2\sigma$ (thin lines) of the GEV fit of the discharge data. The vertical bars indicate the 95% confidence interval on the location parameter μ at the two reference years 2017 and 1985. The purple square denotes the value of 2017 (not included in the fit). b) the GEV fit of the water level data in 2017 (red lines) and 1985 (blue lines), assuming a trend. The observations are drawn twice, scaled up with the trend (smoothed global mean temperature) to 2017 and scaled down to 1985. c) the GEV fit of the same discharge data assuming no trend. The purple line in b) and c) shows the observed value in 2017.

GEV distribution that is fitted from the precipitation of these model years correspond well to the same parameters for CPC data.

The risk ratio of precipitation is calculated in the same way as for observations, using the data period 1880–2017 such that we can use the same years for the EC-Earth runs and the PCR-GLOBWB and SWAT runs with EC-Earth input, see Fig. 6. The threshold is chosen such that the return period in the current climate is similar to the observed return period when using the same years. The risk ratio between 2017 and pre-industrial is 3.3 (95% CI 2.7 to 4.2) in these transient runs. This corresponds to an increase of intensity for the same return period of 10% (95% CI 9% to 11%). For the future (figures not shown) we calculate return periods from the present and future distributions separately, again following the same statistical method as for observations but with two separate GEV fits that do not depend on GMST. The risk ratio between a 2 °C climate and the present follows from this, with a value of 1.8 (95% CI 1.7 ... 2.1). We thus conclude that in the EC-Earth 2.3 model there is a significant positive trend in the magnitude of precipitation events such as the one in August 2017, both in the past (pre-industrial up to now) and in the future.

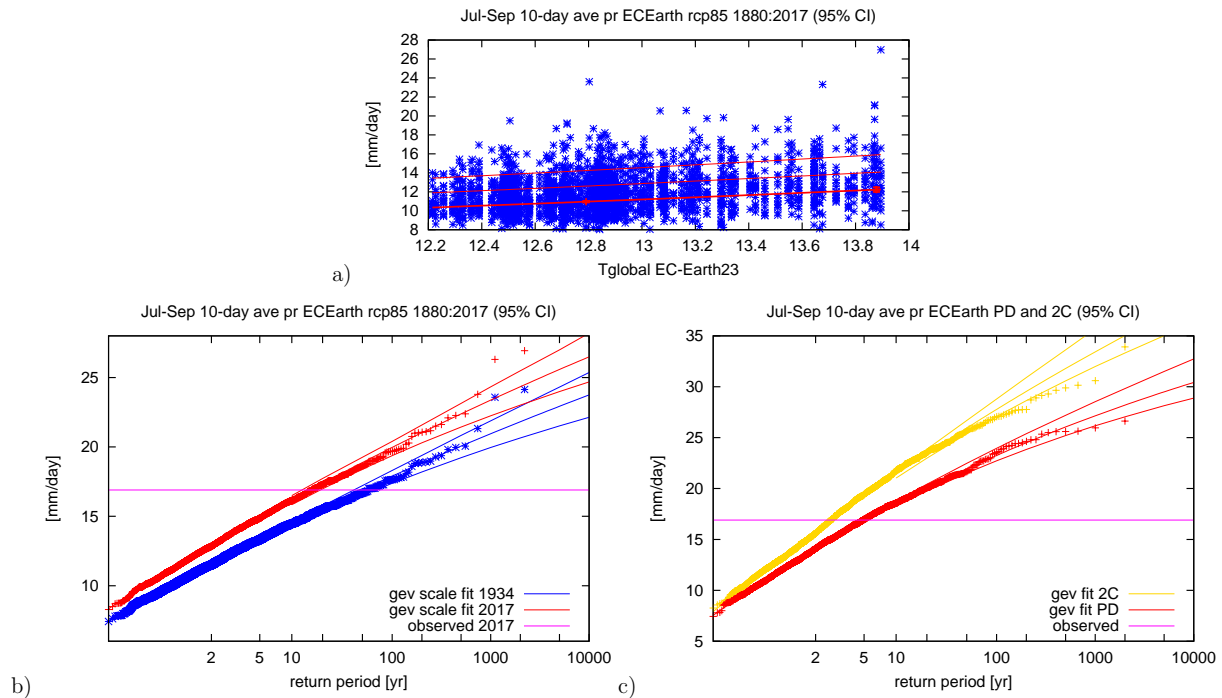


Figure 6. Analysis of the highest 10-day average precipitation in July–September in the EC-Earth model over the years 1880-2017. a) the location parameter μ (thick line), $\mu + \sigma$ and $\mu + 2\sigma$ (thin lines) of the GEV fit of the discharge data. The vertical bars indicate the 95% confidence interval on the location parameter μ at the two reference years 2017 and 1934. b) the GEV fit of the precipitation data in 2017 (red lines) and 1934 (blue lines), assuming a trend. The data is drawn twice, scaled up with the trend (smoothed global mean model temperature) to 2017 and scaled down to 1934. c) GEV fits for the present day (PD, red) and $+2^\circ\text{C}$ world (2C, yellow) simulations. The purple lines in b) and c) shows the threshold value for which the risk ratio is calculated.

For weather@home, we compare the annual cycle of 10-day running mean precipitation (see Fig. S2) and its spatial pattern in the Brahmaputra basin from Historical simulations with CPC and GPCC observational records. As has also been seen within other regions of Bangladesh (Rimi et al., 2018a), weather@home rainfall is too intense in the pre-monsoon season but lies within observational uncertainty during the monsoon season itself. Also the variability of 10-day model precipitation is underrepresented by the model for the monsoon season. During the monsoon season the spatial pattern and magnitude of weather@home output agrees well with GPCC and CPC observations (not shown).

Fig. 7 shows the return periods of the maximum 10-day precipitation during JAS from the weather@home simulations. The threshold used in this analysis is defined by taking the magnitude from the Historical simulation corresponding to the return period derived from the CPC observational dataset.

Fig. 7a shows the results for the Historical and 2017-specific experiments, which we use to analyse how probabilities may have changed in the period from pre-industrial times up to now. There is no statistically significant difference between the Historical and Natural simulations, with a risk ratio of 0.92 (0.84...1.02).

The difference in return periods between the Historical and Actual 2017 experiments gives an indication of the influence of the natural variability of the SST pattern on the precipitation in this region. The Historical ensemble is driven with 30 years of differing SST patterns containing different patterns of natural variability such as the El Niño – Southern Oscillation, whereas Actual 2017 uses only the observed 2017 OSTIA SSTs. The SST pattern in 2017 (Actual 2017) made extreme precipitation events less likely than the climatological mean (Historical) with a risk ratio of 0.25 (95% CI 0.2...0.31). Within the set of simulations conditioned on 2017 SSTs, the negligible anthropogenic influence found in the full range SST set is confirmed: the Actual 2017 and Natural 2017 ensembles also do not show a statistically significant difference and have a risk ratio of 0.97 (95% CI 0.76...1.23), indicating that, if anything, high precipitation events similar to the amplitude observed are more prevalent in our model in the Natural ensemble, whether or not conditioned on 2017 SST conditions.

To understand this result more fully it is useful to look at the ‘GHG only’ simulations in Fig. 7a (compare GHG-only with Historical, and GHG-only 2017 with Actual 2017). The GHG-only simulations show that increased GHG emissions have increased the likelihood of this kind of event (relative to the Natural simulations) but that when the sulphate aerosol emissions are taken into account (in the Historical and Actual 2017 simulations), we find a counterbalancing effect that acts to reduce rainfall and hence the risk for severe flooding. This effect has also been noted by van Oldenborgh et al. (2016); Rimi et al. (2018b). Within the weather@home model sulphate emissions are included, although emissions due to other important aerosols such as black carbon, which can counteract sulphate effects, are not represented. The aerosol effect in HadRM3P is therefore potentially overestimated. The results do highlight the non-linear change in risk over time as a function of anthropogenic aerosol emissions. EC-Earth follows the historical+RCP8.5 protocol for aerosols, and includes both sulphate emissions, black and organic carbon. It does not include any indirect aerosol effects. The differences in aerosol representation and model handling of aerosols, as well as the influence of the experimental configuration on aerosol concentration, between EC-Earth and weather@home may account for the difference in risk ratios for the past climate period (pre-industrial up to now) between the two models, whereas the change in risk of future climate scenarios show good agreement.

Fig. 7b shows return periods from the Historical, Current, Natural, 1.5 Degree and 2.0 Degree simulations, which we use to analyse how probabilities may change in the future with respect to now. The Current and Historical ensembles are very similar as expected as both are all forcings simulations of differing (but overlapping) lengths. Under 1.5 and 2° C of additional warming, high precipitation within the region is set to increase with risk ratios (compared to Current) derived using the CPC observational threshold of 1.46 (95% CI 1.27 to 1.69) and 1.74 (95% CI 1.52 to 1.99) respectively. In both cases the ERA-int (GPCC) threshold risk ratio is smaller (larger) than the CPC threshold risk ratio (not shown), but with overlapping uncertainty bounds with CPC. For 2° C of warming these risk ratios show good agreement with the EC-Earth values.

30 4.2 Discharge

In this section we present model validation and results of the discharge simulations, first for the model PCR-GLOBWB, and then for SWAT, Lisflood and RFM.

The runs with the PCR-GLOBWB model are treated in the same way as the EC-Earth runs. The experiment in which the PCR-GLOBWB model is driven by CPC precipitation and ERA temperature and evapotranspiration shows a strong trend

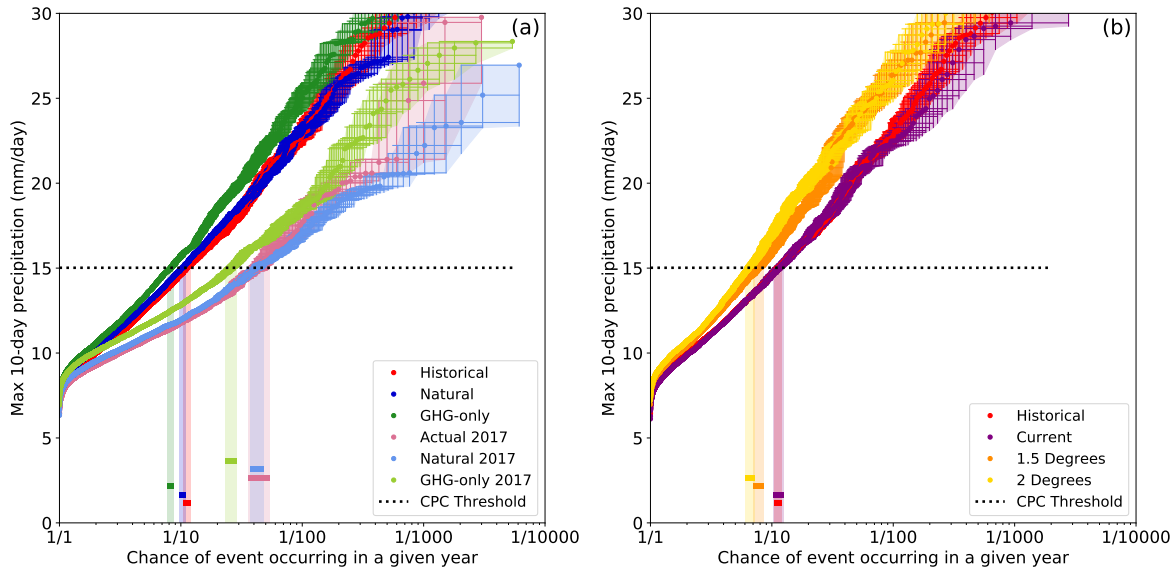


Figure 7. Return times of the maximum 10-day precipitation from weather@home simulations. (a) shows results from the Historical, Natural, GHG-only and Actual 2017, Natural 2017 and GHG-only 2017 simulations and (b) the Historical, Current, 1.5 and 2 Degree simulations. Black horizontal lines represent the threshold values derived from the CPC observations. Shaded coloured vertical boxes with solid horizontal lines represent the uncertainty in the return period for the CPC threshold.

in discharge, which was not seen in the discharge observations. The GEV fit parameters encompass the best estimate from observations when fitted with a trend. However the large discharge events of 1988 and 1998 are not captured in this run (not shown).

The experiment with ERA input, on the other hand, shows no trend but does clearly show the strong discharge events of 1988 and 1998 (not shown). The best estimate of the GEV fit parameter is outside the error margins of the GEV fit parameters of observations, however, the error margins do overlap.

These two model runs show that the PCR-GLOBWB model is able to capture historical flood events but the magnitude of these event is dependent on the meteorological input data. Furthermore, we find that the statistical properties are a fair representation of the statistical properties of observed discharge.

We perform an additional validation for the transient PCR-GLOBWB run with EC-Earth 2.3 input over the years corresponding to years with observed discharge. With this input the modelled discharge peaks in August, but is also high in July and September. We thus use the same months JAS as in observations for further analysis. Different from the observed distribution, the shape parameter ξ is positive, showing higher discharge values in the tail. This is not a problem for this analysis, as the return period of about 4 years that we are interested in is not in the tail of the distribution. When comparing the error margins of the ratio σ/μ with observed statistics we note that the model variability is too large compared to the model mean. This is not the ideal situation and we note in the discussion how this model bias affects the analysis.

Table 3. Risk ratios for precipitation and discharge, for models and observations for both present against pre-industrial or 1900 and a 2° C climate against present. 95% confidence intervals are given as well.

	dataset	RR (present- pre-industrial or 1900)	95% CI	RR (2° C- present)	95% CI
precipitation	CPC	18.2	>0.20		
	EC-Earth2.3	3.27	2.65 ... 4.24	1.81	1.75 ... 2.14
	w@h (Historical/Natural)	0.92	0.84 ... 1.02	1.74	1.52 ... 1.99
	w@h (GHG-only/Natural)	1.73	1.34 ... 2.25		
	w@h (GHG-only/Historical)	1.35	1.23 ... 1.49		
	w@h (Actual 2017/Natural 2017)	0.97	0.76 ... 1.23		
	w@h (GHG-only 2017/Natural 2017)	1.65	1.38 ... 1.96		
	w@h (GHG-only/Actual 2017)	1.69	1.35 ... 2.13		
discharge	observations	1.43	0.05 ... 42.5		
	PCR-GLOBWB (EC-Earth)	2.34	1.74 ... 2.37	1.34	1.23 ... 1.41
	SWAT - EC-Earth (transient)	1.49	1.30 ... 1.57	1.56	1.45 ... 1.7
	SWAT - w@h (Actual 2017/Natural 2017)	0.88	0.72 ... 1.09		
	Lisflood - w@h (Actual 2017/Natural 2017)	1.35	1.20 ... 1.51		
	Lisflood - w@h (GHG-only 2017/Actual 2017)	1.29	1.10 ... 1.45		
	Lisflood - w@h (GHG-only 2017/Natural 2017)	1.74	1.52 ... 2.01		
	RFM - w@h (Actual 2017/Natural 2017)	1.13	1.11 ... 1.14		
	RFM - w@h (GHG-only 2017/Actual 2017)	1.53	1.50 ... 1.56		
	RFM - w@h (GHG-only 2017 /Natural 2017)	1.73	1.71 ... 1.74		

Using the transient model runs, the risk ratio of discharge is calculated in the same way as for observations, using all data between 1880-2017. The risk ratio between 2017 and pre-industrial is 2.3 (95% CI 1.7 ... 2.4), see Fig. 8. For the future we calculate return periods from the present and future distributions separately, following the same statistical method as for precipitation in the EC-Earth 2.3 present and future experiments. The risk ratio between a 2° C climate and the present follows from this, with a value of 1.3 (95% CI 1.2 ... 1.4). We thus conclude that in the PCR-GLOBWB model driven by EC-Earth output there is a positive trend in discharge events like the one in August 2017 in both the historical period (pre-industrial to 2017) and the future period (from current conditions to a +2° C world).

The SWAT model calibrated with EC-EARTH meteorological data tends to underestimate flows in almost all months of the year, see Fig. S3 in the Supplement. The SWAT model calibrated with weather@home meteorological data, on the other hand, tends to underestimate flows in the monsoon months while overestimating flows in the remaining months. Therefore in both cases, flows in our months of interest (JAS) are always slightly underestimated, but the magnitudes of error appear limited enough for the models to be useful in conducting attribution studies. When comparing the error margins of the ratio σ/μ with

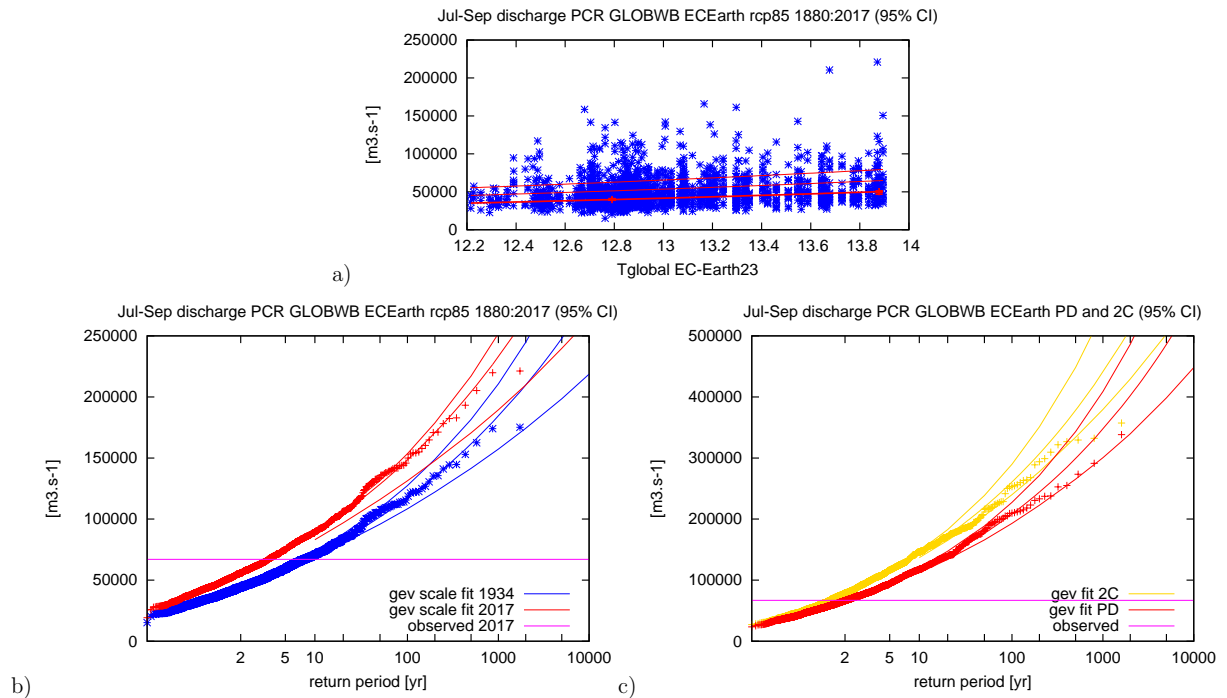


Figure 8. Analysis of the highest discharge at Bahadurabad in July–September in the PCR-GLOBWB model over the years 1920–2017. a) the location parameter μ (thick line), $\mu + \sigma$ and $\mu + 2\sigma$ (thin lines) of the GEV fit of the discharge data. The vertical bars indicate the 95% confidence interval on the location parameter μ at the two reference years 2017 and 1934. b) the GEV fit of the discharge data in 2017 (red lines) and 1934 (blue lines), assuming a trend. The observations are drawn twice, scaled up with the trend (smoothed global mean model temperature) to 2017 and scaled down to 1934. c) GEV fits for the present day (PD, red) and $+2^\circ\text{C}$ world (2C, yellow) simulations. The purple horizontal lines in b) and c) show the threshold value for which the risk ratio is calculated.

observed statistics we note that the model variability is too small compared to the model mean, opposite to what was found for the PCR-GLOBWB model. The shape parameter ξ is of the same order as the one in the observed discharge dataset.

The risk ratios are calculated from return period plots for both the EC-Earth-runs (see Fig. 9) and the weather@home-runs (see Fig. 10). Using the SWAT model runs with EC-Earth transient data, we see that the discharge shows some decadal variability. The trend in the data therefore depends more strongly on the years used. For consistency we use the same years as in the analyses of EC-Earth and PCR-GLOBWB data (1880–2017), and we note that the error margins do not capture this variability and are underestimated. The risk ratio of discharge between 2017 and pre-industrial is found to be 1.5 (95% CI 1.3 ... 1.6). The risk ratio between a 2°C climate and the current climate is 1.56 (95% CI 1.45 ... 1.70). Using the SWAT model runs with weather@home Actual 2017 and Natural 2017 data, the risk ratio between the Actual 2017 and Natural 2017 scenario is 0.88 (95% CI 0.72 ... 1.09).

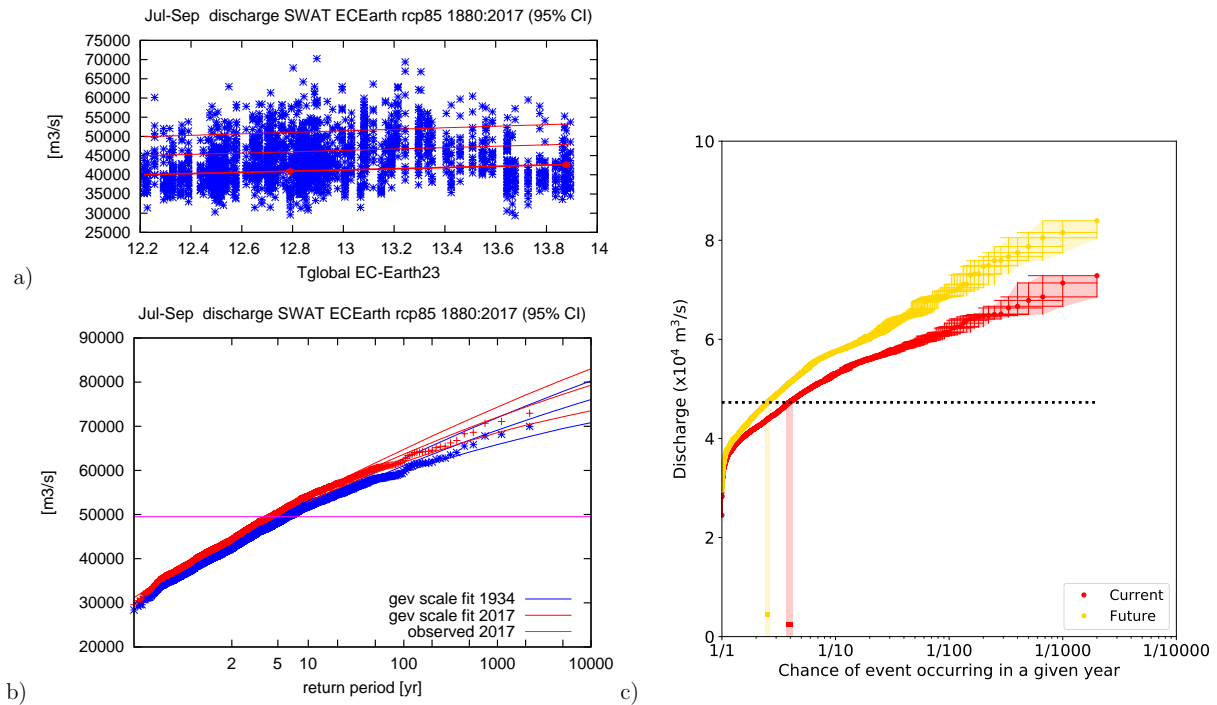


Figure 9. Analysis of the highest discharge at Bahadurabad in July–September in the SWAT flows for EC-Earth. a) the location parameter μ (thick line), $\mu + \sigma$ and $\mu + 2\sigma$ (thin lines) of the GEV fit of the discharge data. The vertical bars indicate the 95% confidence interval on the location parameter μ at the two reference years 2017 and 1934. b) the GEV fit of the discharge data in 2017 (red lines) and 1934 (blue lines), assuming a trend. The observations are drawn twice, scaled up with the trend (smoothed global mean model temperature) to 2017 and scaled down to 1934. c) Current and future simulations. The purple horizontal line in b) and dotted line in c) show the threshold value for which the risk ratio is calculated.

Calibration and validation graphs for Lisflood and RFM are shown in the Supplement. They show that both Lisflood and RFM models are able to simulate the seasonality of rise in spring and summer flows correctly. Both models underestimate the river discharge in summer with an underestimation in the simulated discharge by Lisflood.

The return period and risk ratio for the Lisflood model and RFM estimated from the weather@home Actual 2017 and Natural 2017 datasets are shown in Fig. 11, as well as the results for the GHG-only 2017 runs.

The Lisflood model shows that a discharge value with a return period of 4 years in the actual scenario would increase to 5.4 years in the natural climate scenario (risk ratio of 1.35 (95% CI 1.20... 1.51)), while it would reduce to 3.1 years in the GHG-only scenario.

The trend is similar in the results simulated by the RFM, however, the discharge value with a return period of 4 years is slightly greater than the value simulated by Lisflood. The return period would increase to 4.5 years under natural climate conditions (risk ratio of 1.13 (95% CI 1.11... 1.14)), while it would reduce to 2.6 years in the GHG-only scenario. Note however

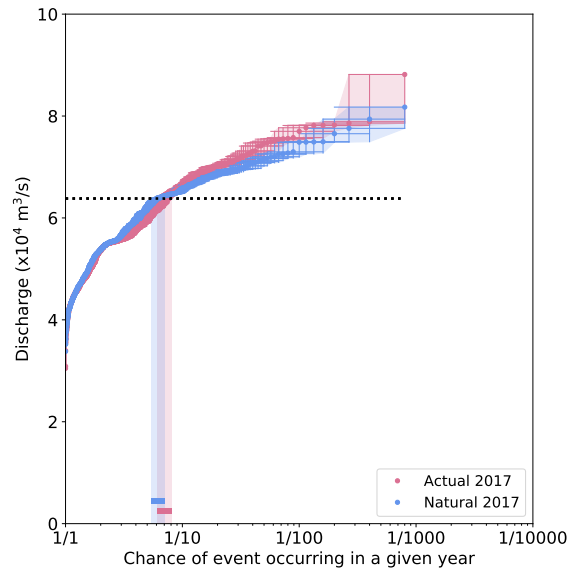


Figure 10. Return period plots for SWAT flows with weather@home data for the Actual 2017 and Natural 2017 ensembles

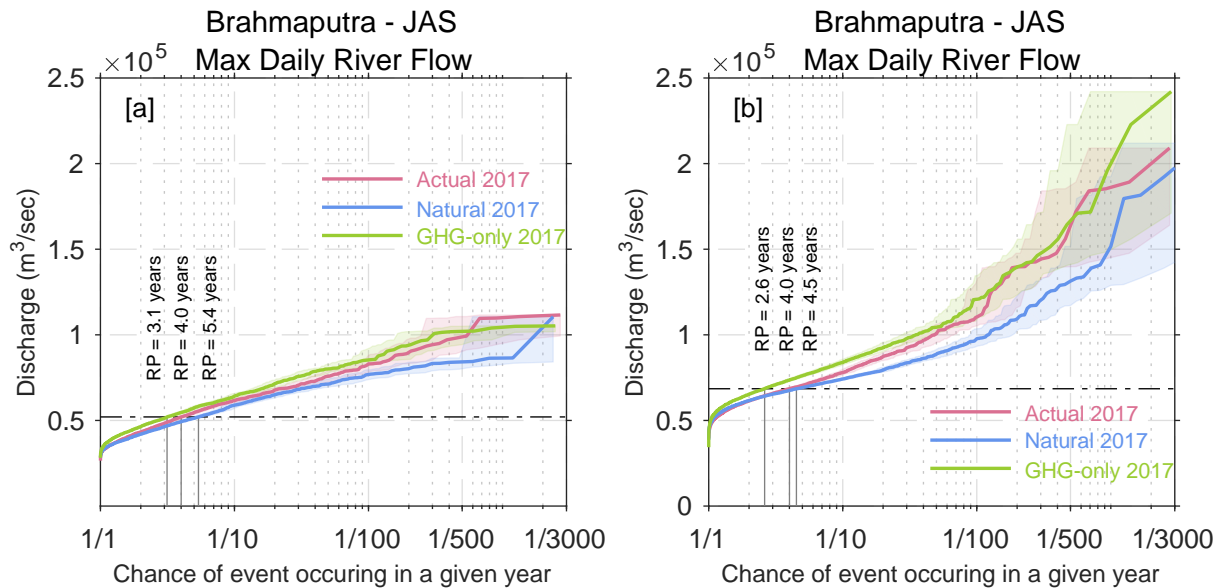


Figure 11. River flow return periods simulated by (a) Lisflood and (b) RFM model using the Actual 2017, Natural 2017 and GHG-only 2017 scenarios.

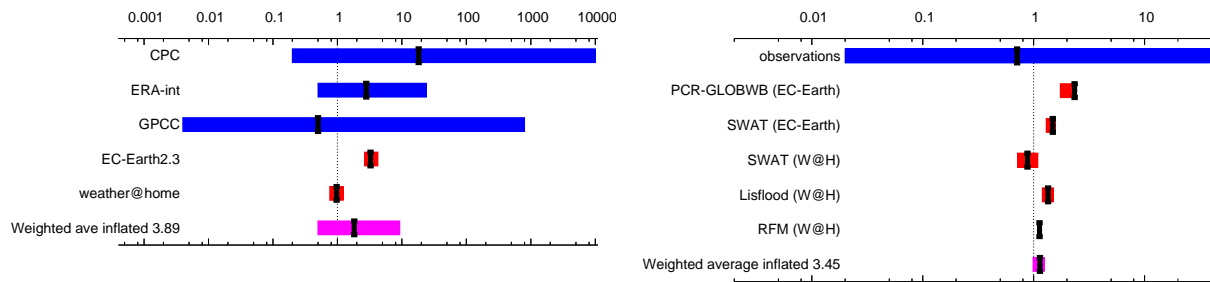


Figure 12. Synthesis of the precipitation (left) and discharge (right) results. Dark blue is observations, red is climate model ensembles and the weighted average is shown in purple. The ranges of the models are not compatible with each other, pointing to model uncertainty playing a role over the natural variability. The weighted average has been inflated by a factor 3.89 and 3.45 for precipitation and discharge respectively to account for the model spread.

that from Fig. 11b we see that the risk ratio between the different scenarios for RFM becomes larger for larger return periods (e.g., 10 years) than studied in this analysis.

The shorter return period in the GHG-only 2017 scenario shows that if sulphate aerosols are removed from the atmosphere (which results in increased precipitation), flooding becomes more frequent. This implies that floods can become more frequent in the region if the air pollution levels are reduced in the future.

The risk ratios for the observed threshold from both Lisflood and RFM of 1.35 (95% CI 1.20... 1.51) and 1.13 (95% CI 1.11...1.14) respectively are in good agreement even though the simulated river flows by the models are different. The mitigation effect due to the aerosols is also comparable between these two different hydrological models.

5 Synthesis

In observations the uncertainties in return periods and risk ratios are quite large. This is mainly due to the shorter lengths of the time series, and natural variability dominates. In the models, the signal to noise ratio is much larger, resulting in smaller uncertainties in the risk ratios. Here, the model spread dominates the signal. As both natural variability and model spread play a role, we use a weighted average with inflated uncertainty range. We do not synthesize the risk ratios for the future, as we only have two model estimates per variable.

In the synthesis we use all available observational datasets that are analysed in this paper and one experiment per model. For weather@home and all hydrological models that use input from weather@home experiments we use the risk ratios calculated from the Actual 2017 and Natural 2017 experiments. This gives a fair opportunity to compare the synthesis of precipitation with the synthesis of discharge.

The synthesis results are shown in Fig. 12. The synthesis of the precipitation analysis results in a risk ratio between 2017 and pre-industrial of 1.8 (95% CI 0.5 ... 9.3). Although the best estimate is above one, the trend is not significant due to the relatively large error margins. The synthesis of the discharge analysis results in a risk ratio between 2017 and pre-industrial of

1.1 (95% CI 1.0 ... 1.3). So for discharge the best estimate is only slightly higher than one, and due to the smaller error margins in the average, this trend is just significant under the assumptions made in this analysis.

6 Discussion

In any event-attribution study, tasks to be carried out include;

- 5 (i) determining what happened using available observations and defining the event to be studied,
- (ii) determining how rare the event is in current and pre-industrial conditions,
- (iii) using models to attribute any changes in likelihood of similar classes of events.

Here we discuss some of the issues encountered in these steps and the interpretation of our results in the light of uncertainties.

10 First of all, determining the amount of precipitation falling into the Brahmaputra basin from observations (and thus the appropriate precipitation threshold to define this event) is not trivial. As is common in regions with strong topographic gradients, estimating area-averaged rainfall based on observed rainfall is challenging, as rainfall differences between neighbouring locations can be very large in reality, and the orography, which is only partly resolved by a sparse observational network (or model grid), drives these differences. A large part of the Brahmaputra basin has an elevation of over 2000 m hence unsurprisingly different precipitation datasets show very different spatial and temporal characteristics. They are all likely to underestimate the precipitation at higher elevation, where few weather stations record data (Immerzeel et al., 2015).

15 For this analysis we used the CPC dataset to provide a single estimate of the event magnitude (i.e. determine what happened) and to define the return period (i.e. determine the rarity of the event) for use in the other data sets and models. Applying this return period, we used three observational data sets to convey the uncertainty related to observations in the resulting risk ratios. However, for the GPCC dataset, the very limited temporal length of the record leads to an uncertainty estimate that is too high for meaningful inference on the change in risk to be made. The longer records do show an increase in the chance of extreme rainfall but again uncertainties affect a clear signal detection. The intended future availability of high-resolution reanalyses such as ERA5 that will cover the years 1950 onwards at 30 km resolution will potentially improve trend analyses in high-mountain regions in Asia.

25 From the hydrological perspective, we defined the event as the maximum daily discharge at Bahadurabad in July–September. In contrast to precipitation data, there is only one official discharge observation series, which does not allow for intercomparison. The determination of flood risk, however, appears sensitive to the hydrological variable under study. To obtain an impression of this sensitivity, we checked how discharge compares to water level, as a second measure for the likelihood of flooding. The return period of the measured 2017 discharge peak is indeed lower than the return period of the measured 2017 water level peak. Several factors could have influenced this. First of all, the Brahmaputra is a highly braided river and during severe flood events water enters the floodplain, making it more difficult to accurately relate water level measurements to discharges estimates. Therefore though the water level records are very accurate, the discharge records are unlikely to be of the same

accuracy. Based on the observation of the massive spatial extent of the 2017 floods both in Bangladesh and India, we opine that the observed discharges are likely higher than those recorded.

This opinion is supported by the change in correlation between discharge and water level. The correlation between water level and discharge is 0.88 over the whole time series. However, after 2011 this correlation changes to almost one, with a tendency toward discharges values that are lower for similar water levels than before this change. This change could be due to recalibration of the relationship between discharge and water level. We therefore expect that the true return period is between the return period calculated from discharge given above and the return period calculated from water level. As we do not know the exact influence of the change in measurement method of discharge on the discharge values, we cannot give more precise values.

However it should be noted that ongoing morphological changes can introduce additional variability along the river. For instance, higher water levels with lower discharges may be caused by silting and narrowing of the river. McLean and O'Connor (2013) already showed that, for the years 2006-2011, the relation between discharge and water level changes over time; in 2011 similar discharge values lead to higher water levels. This leads to a non-climatic trend in the water level observations.

The disentangling of the influence of climate change and geomorphological changes was beyond the scope of this analysis. On top of qualitatively good observations of water level, it would require observational data on geomorphological changes, more detailed local hydrological models that can incorporate these and calculate water levels with substantial accuracy and an additional set of model experiments. In the current analysis we mainly used discharge data and climate model experiments, from these results it is not possible to conclude whether neglecting geomorphological changes in the models leads to any disagreement with observations given the large uncertainties in the observational analysis.

Climate models, while far from perfect in their representation of reality, are essential to interpret the results from observations and thereby attribute any observed changes in event frequency to anthropogenic climate change or other factors. Taken at face value, the two climate model simulations of 10-day precipitation maxima in the Brahmaputra basin provide somewhat contradictory results. However, for the weather@home simulations when comparing the natural simulations with GHG-only runs instead of historical simulations, the change in extreme precipitation is significantly positive as well and therefore better comparable in magnitude to the increase in the two longer observational datasets and EC-Earth simulations. Comparing the GHG-only runs to the historical simulations gives an indication of the impact of aerosol within the weather@home model which might be slightly overestimated given that black carbon is not included in the models aerosol treatment. Nonetheless, HadRM3P clearly indicates that the increased risk in extreme rainfall due to GHG induced warming has been effectively counterbalanced by aerosol emissions. The EC-Earth model is interpreted to have less aerosol effects and hence to show more of the greenhouse gas-driven increase. Both results are in agreement with the observations due to the large uncertainties in the limited-length observational records.

The counterbalance between the greenhouse gas and aerosol effects may also be important for clean air policy decisions: as the air is cleaned the already committed increase in extreme precipitation due to greenhouse gases will be revealed. These results also suggest that the overall signal from long term climate change, i.e., mainly greenhouse gas forcing, in the datasets where we cannot separate out the impact of aerosol forcing might be underestimated. The best estimate of the change in risk

in extreme rainfall as observed in the Brahmaputra basin in 2017 is therefore likely a rather conservative estimate and hence of limited use to inform decision making. In fact, simulations of the near future of both models show a clear increase in the risk of high-precipitation events that lead to flooding on the Brahmapura.

In extending our multi-method attribution approach to include hydrological modeling, we consequently introduced more degrees of freedom in possible combinations of inputs and models to construct the hydrological response. Time and computational restraints put a limit on the number of combinations that could be explored. We conducted experiments using (i) the same hydrological model (PCR-GLOBWB) run at different resolutions with different input observational/modelled meteorological input data, (ii) the same input climate model (weather@home) with different hydrological models and (iii) the same hydrological model (SWAT) with two different input climate models. Changing the resolution of the PCR-GLOBWB runs with CPC and ERA-int input compared to runs with EC-Earth 2.3 input, impacts the dynamics in the hydrological model. In general coarser resolution simulations respond faster due to the decrease in storage and the shorter connectivity between gridcells. High resolution models are better able to capture the subsurface and riverine water storage due to their increased heterogeneity (Sutanudjaja et al., 2017). It is therefore more difficult to simulate extreme hydrological events in coarser models (Samaniego et al., 2018). It was beyond the scope of this paper to analyse the differences in detail, however, we use the differences to show the range of possible output within one hydrological model. None of the models or observational datasets are perfect. For instance, in the PCR-GLOBWB model the variability is too high compared to the mean, while RFM and Lisflood underestimate the magnitude considerably. This is not the ideal situation however, there is no reason to believe that the order of magnitude of the risk ratios between the current and past climate or between the future and current climate will depend on this very strongly. This is corroborated by the fact that the risk ratios are comparable despite the very different biases.

Despite these strong differences in variables, resolution, simulated processes as well as input data, the simulated changes in the likelihood of the observed event occurring because of anthropogenic climate change are very comparable. Even when the hydrological models are driven by precipitation from the weather@home simulations the simulated discharge shows a significant increase in likelihood apart from SWAT where the change is not significant.

7 Conclusions

In August 2017, following heavy rains, Bangladesh faced one of their worst river flooding events in recent history, with record high water levels leading to inundation of river basin areas in the northern parts of the country, impacting millions of people who are highly exposed and vulnerable to unusual flooding.

This paper presents an attribution of this precipitation-induced flooding event and, for the first time, extends the multi-method approach of extreme event attribution from a purely meteorological perspective to the more impact-relevant hydrological perspective, by employing an ensemble of hydrological models. Firstly, experiments were conducted with three observational data sets and two climate models to estimate changes in extreme precipitation event frequency, in the 10-day Brahmaputra basin average, that have occurred since pre-industrial times. In addition, climate projection experiments were used to indicate if the trends found up to now are likely to continue or become more extreme in the future. The precipitation series were then used in

turn as meteorological input for four different hydrological models to estimate the corresponding changes in river discharge. In doing so, a range of possible answers to the attribution question were produced, allowing for comparison between approaches and for the robustness of the attribution results to be assessed.

Specifically, our aims were to (i) determine if precipitation can be used as a measure of the extremity of flooding in the large Brahmaputra basin, or if it is necessary to instead use a hydrological measure such as discharge, for the purpose of attributing the flood of August 2017 in Bangladesh, (ii) conclude on the attribution of this event, expressed as the change in likelihood, of similar or more extreme events, that has occurred since pre-industrial times and which is projected to occur in the future.

From the precipitation perspective, we find that two out of three of the observed series show an increased probability for extreme precipitation like observed in August 2017, but in all three observational data sets the trends are not significant due to the short records. One climate model shows a significant positive influence of anthropogenic climate change, whereas the other simulates a cancellation between the increase due to greenhouse gases and a decrease due to sulphate aerosols. The change in risk of high precipitation that has occurred since pre-industrial times is therefore uncertain. However, both climate models agree that the risk will increase significantly in the future, by more than 1.7 with 2° C of global heating since pre-industrial times.

Considering discharge rather than precipitation, which corresponds more closely with the hydrological impacts, shows only a slightly different result, in that the increase in risk since pre-industrial times to current day of high discharge synthesized from both observations and models is just significant, whilst the risk of high precipitation is not. The attribution of the change in discharge is therefore somewhat less uncertain than for precipitation, but the 95% CI still encompasses no change in risk. For the future, these models project a slightly smaller increase in probability of high discharge than of high 10-day precipitation, being about a factor 1.5 more likely in 2° C warmer world.

For large basins in orographically diverse regions with complex hydrology, such as the Brahmaputra, we hypothesized that rainfall, river flow and inundation would not be linearly connected and that precipitation would not be an adequate measure of flood intensity. The initial hydrological conditions play an important role in combination with the occurrence of high intensity precipitation events. We therefore anticipated that small changes in the risk of precipitation would lead to disproportionate changes in flood risk, evidenced in differences in the risk ratios of the event calculated from the two perspectives.

Our synthesis, however, produces a best estimate for the past climate that is greater than one and of similar order of magnitude (between 1 and 2) for both methods, and a lower bound on the uncertainty range that is less than or about equal to one, leading to the conclusion that we cannot confidently confirm a significant anthropogenic influence in changes up till now. Projected changes between current conditions and for a 2° C warmer-than-preindustrial world were also a similar order of magnitude (between 1 and 2) for 10-day precipitation and discharge, with significant changes found. Thus, in this particular case, studying precipitation alone would have led to the same qualitative conclusion.

Inspecting the individual model outcomes shows that in the study of this particular event, there is an impact of the choice of circulation model used as input for the hydrological model on the amplitude of discharge RR's. Where the EC-Earth model was used, we find a larger positive change in precipitation compared to discharge, but where the weather@home model was

used, we find a similar or smaller positive change in precipitation compared to discharge. This highlights the importance of using multiple models in attribution studies, particularly where the climate change signal is not strong.

The use of multiple methods in the attribution of extreme events is the only way to estimate confidence in attribution results and hence reliability. As hydrological models are used to simulate impact-relevant variables (such as flood depth) and are in fact used much more for decision making, it is essential to extend the attribution approach in general to include hydrological models when possible, for analysis of precipitation-induced flood events. Hydrological models offer further insight into the partitioning of precipitation reaching the ground, and thus come closer to the drivers of the impacts observed on people and livelihoods. Climate models on the other hand allow us to disentangle the potential effects of different atmospheric drivers.

This highlights that only a combination of doing a multi-method attribution analysis of the meteorological drivers with a multi-model approach in hydrological modelling allows for a robust estimate of changing flood hazards under climate change. Therefore we recommend the use of a hydrological variable, such as discharge, for estimating changing flood risk in large basins such as the Brahmaputra, although based on this study, investigating changes in precipitation is also useful, either as an alternative when hydrological models are not available, or as an additional measure to confirm qualitative conclusions.

Data availability. Almost all data are available under https://climexp.knmi.nl/selectfield_att.cgi

Acknowledgements. SS, HJ, KM, DW, FO and SI were funded as part of the EPSRC GCRF Institutional Sponsorship REBuILD project. KvdW was funded as part of the HiWAVES3 project. NW acknowledges the funding from NWO 016.Veni.181.049. This work was partially supported by the EUPHEME project, which is part of ERA4CS, an ERA-NET initiated by JPI Climate and co-funded by the European Union (Grant 690462). We would like to thank the Met Office Hadley Centre PRECIS team for their technical and scientific support for the development and application of weather@Home. We are grateful to Dr. Simon Dadson and Homero Paltan Lopez for sharing the RFM model code and for their help in setting it up for the study area. Finally, we would like to thank all of the volunteers who have donated their computing time to climateprediction.net and weather@home.

References

- Allen, M. R. and Ingram, W. J.: Constraints on future changes in climate and the hydrologic cycle, *Nature*, 419, 224–232, <https://doi.org/10.1038/nature01092>, 2002.
- Burek, P., Knijff van der, J., and Roo de, A.: LISFLOOD, distributed water balance and flood simulation model revised user manual 2013, 2013.
- CEGIS: Assessing the economic impact of climate change on agriculture, water resources and food security and adaptation measures using seasonal and medium range of forecasts, 2013.
- Coles, S.: *An Introduction to Statistical Modeling of Extreme Values*, Springer Series in Statistics, London, UK, 2001.
- Dadson, S., Bell, V., and Jones, R.: Evaluation of a grid-based river flow model configured for use in a regional climate model, *Journal of Hydrology*, 411, 238 – 250, <https://doi.org/https://doi.org/10.1016/j.jhydrol.2011.10.002>, <http://www.sciencedirect.com/science/article/pii/S0022169411006949>, 2011.
- Dastagir, M. R.: Modeling recent climate change induced extreme events in Bangladesh: A review, *Weather and Climate Extremes*, 7, 49 – 60, <https://doi.org/https://doi.org/10.1016/j.wace.2014.10.003>, <http://www.sciencedirect.com/science/article/pii/S2212094714000826>, sI: IGBP APN, 2015.
- Dee, D. P., Uppala, S. M., Simmons, A. J., Berrisford, P., Poli, P., Kobayashi, S., Andrae, U., Balmaseda, M. A., Balsamo, G., Bauer, P., Bechtold, P., Beljaars, A. C. M., van de Berg, L., Bidlot, J., Bormann, N., Delsol, C., Dragani, R., Fuentes, M., Geer, A. J., Haimberger, L., Healy, S. B., Hersbach, H., Hólm, E. V., Isaksen, I., Kållberg, P., Köhler, M., Matricardi, M., McNally, A. P., Monge-Sanz, B. M., Morcrette, J.-J., Park, B.-K., Peubey, C., de Rosnay, P., Tavolato, C., Thépaut, J.-N., and Vitart, F.: The ERA-Interim reanalysis: Configuration and performance of the data assimilation system, *Quart. J. Roy. Meteor. Soc.*, 137, 553–597, <https://doi.org/10.1002/qj.828>, 2011.
- Donlon, C. J., Martin, M., Stark, J., Roberts-Jones, J., Fiedler, E., and Wimmer, W.: The Operational Sea Surface Temperature and Sea Ice Analysis (OSTIA) system., *Remote Sensing of the Environment*, 116, 140–158, <https://doi.org/10.1016/j.rse.2010.10.017>, 2012.
- Eden, J. M., Wolter, K., Otto, F. E. L., and van Oldenborgh, G. J.: Multi-method attribution analysis of extreme precipitation in Boulder, Colorado, *Environ. Res. Lett.*, 11, 124 009, <https://doi.org/10.1088/1748-9326/11/12/124009>, 2016.
- Gain, A. K., Immerzeel, W. W., Sperna Weiland, F. C., and Bierkens, M. F. P.: Impact of climate change on the stream flow of the lower Brahmaputra: trends in high and low flows based on discharge-weighted ensemble modelling, *Hydrology and Earth System Sciences*, 15, 1537–1545, <https://doi.org/10.5194/hess-15-1537-2011>, <https://www.hydrol-earth-syst-sci.net/15/1537/2011/>, 2011.
- Gassman, P. W., Sadeghi, A. M., and Srinivasan, R.: Applications of the SWAT Model Special Section: Overview and Insights, *Journal of Environmental Quality*, 43, 1–8, <https://doi.org/10.2134/jeq2013.11.0466>, <http://dx.doi.org/10.2134/jeq2013.11.0466>, 2014.
- Guilod, B. P., Jones, R. G., Bowery, A., Haustein, K., Massey, N. R., Mitchell, D. M., Otto, F. E. L., Sparrow, S. N., Uhe, P., Wallom, D. C. H., Wilson, S., and Allen, M. R.: weather@home 2: validation of an improved global–regional climate modelling system, *Geoscientific Model Development*, 10, 1849–1872, <https://doi.org/10.5194/gmd-10-1849-2017>, <https://www.geosci-model-dev.net/10/1849/2017/>, 2017.
- Hanel, M., Buishand, T. A., and Ferro, C. A. T.: A nonstationary index flood model for precipitation extremes in transient regional climate model simulations, *Journal of Geophysical Research: Atmospheres*, 114, <https://doi.org/10.1029/2009JD011712>, <https://agupubs.onlinelibrary.wiley.com/doi/abs/10.1029/2009JD011712>, 2009.
- Hazeleger, W., Wang, X., Severijns, C., Ștefănescu, S., Bintanja, R., Sterl, A., Wyser, K., Semmler, T., Yang, S., Van den Hurk, B., et al.: EC-Earth V2. 2: description and validation of a new seamless earth system prediction model, *Climate dynamics*, 39, 2611–2629, 2012.

- Hirpa, F. A., Salamon, P., Alfieri, L., del Pozo, J. T., Zsoter, E., and Pappenberger, F.: The Effect of Reference Climatology on Global Flood Forecasting, *Journal of Hydrometeorology*, 17, 1131–1145, <https://doi.org/10.1175/JHM-D-15-0044.1>, <https://doi.org/10.1175/JHM-D-15-0044.1>, 2016.
- Immerzeel, W. W., Wanders, N., Lutz, A. F., Shea, J. M., and Bierkens, M. F. P.: Reconciling high-altitude precipitation in the upper Indus basin with glacier mass balances and runoff, *Hydrology and Earth System Sciences*, 19, 4673–4687, <https://doi.org/10.5194/hess-19-4673-2015>, <https://www.hydrol-earth-syst-sci.net/19/4673/2015/>, 2015.
- Knijff, J. M. V. D., Younis, J., and Roo, A. P. J. D.: LISFLOOD: a GIS-based distributed model for river basin scale water balance and flood simulation, *International Journal of Geographical Information Science*, 24, 189–212, <https://doi.org/10.1080/13658810802549154>, <https://doi.org/10.1080/13658810802549154>, 2010.
- 10 Lenderink, G. and van Meijgaard, E.: Increase in hourly precipitation extremes beyond expectations from temperature changes, *Nature Geoscience*, 1, <https://doi.org/10.1038/ngeo262>, 2008.
- Massey, N., Jones, R., Otto, F. E. L., Aina, T., Wilson, S., Murphy, J. M., Hassell, D., Yamazaki, Y. H., and Allen, M. R.: weather@home—development and validation of a very large ensemble modelling system for probabilistic event attribution, *Quarterly Journal of the Royal Meteorological Society*, 141, 1528–1545, <https://doi.org/10.1002/qj.2455>, <https://rmets.onlinelibrary.wiley.com/doi/abs/10.1002/qj.2455>, 2014.
- 15 Matott, L.: OSTRICH: an Optimization Software Tool, Documentation and User’s Guide, www.eng.buffalo.edu/~lsmatott/Ostrich/OstrichMain.html, version 17.12.19, 2017.
- McLean, D. and O’Connor, V.: Main River Flood and Bank Erosion Risk Management Program Final Report, Annex D Hydrology and Flood Modelling, <https://www.adb.org/sites/default/files/project-document/81556/44167-012-tacr-05.pdf>, 2013.
- 20 Meehl, G. A., Covey, C., Delworth, T. L., Latif, M., McAvaney, B., Mitchell, J. F. B., Stouffer, R. J., and Taylor, K. E.: The WCRP CMIP3 Multimodel Dataset: A New Era in Climate Change Research, *Bull. Amer. Met. Soc.*, 88, 1383–1394, <https://doi.org/10.1175/BAMS-88-9-1383>, 2007.
- Mitchell, D., AchutaRao, K., Allen, M., Bethke, I., Beyerle, U., Ciavarella, A., Forster, P. M., Fuglestedt, J., Gillett, N., Hausteine, K., Ingram, W., Iversen, T., Kharin, V., Klingaman, N., Massey, N., Fischer, E., Schleussner, C.-F., Scinocca, J., Seland, Ø., Shioyama, H., Shuckburgh, E., Sparrow, S., Stone, D., Uhe, P., Wallom, D., Wehner, M., and Zaaboul, R.: Half a degree additional warming, prognosis and projected impacts (HAPPI): background and experimental design, *Geoscientific Model Development*, 10, 571–583, <https://doi.org/10.5194/gmd-10-571-2017>, <https://www.geosci-model-dev.net/10/571/2017/>, 2017.
- 25 Mohammed, K., Islam, A. S., Islam, G. T., Alfieri, L., Bala, S. K., and Khan, M. J. U.: Extreme flows and water availability of the Brahmaputra River under 1.5 and 2 °C global warming scenarios, *Climatic Change*, 145, 159–175, <https://doi.org/10.1007/s10584-017-2073-2>, <https://doi.org/10.1007/s10584-017-2073-2>, 2017.
- 30 Mohammed, K., A.S., I., Islam, G., Alfieri, L., S.K., B., and Khan, M.: Future floods in Bangladesh under 1.5°C, 2°C and 4°C global warming scenarios, *Journal of Hydrological Engineering*, accepted.
- Otto, F. E. L., van Oldenborgh, G. J., Eden, J. M., Stott, P. A., Karoly, D. J., and Allen, M. R.: The attribution question, *Nature Clim. Change*, 6, 813–816, 2016.
- 35 Otto, F. E. L., van der Wiel, K., van Oldenborgh, G. J., Philip, S. Y., Kew, S. F., Uhe, P., and Cullen, H.: Climate change increases the probability of heavy rains in North East England/Southern Scotland like those of storm Desmond—a real-time event attribution revisited, *Environ. Res. Lett.*, 13, 024006, <https://doi.org/10.1088/1748-9326/aa9663>, <http://stacks.iop.org/1748-9326/13/i=2/a=024006>, 2018.

- Philip, S., van Oldenborgh, G. J., Kew, S., Aalbers, E., Vautard, R., Otto, F., Hausteine, K., Habets, F., Singh, R., and Cullen, H.: Validation of a rapid attribution of the May/June 2016 flood-inducing precipitation in France to climate change, submitted to *Journal of Hydrometeorology*, 2018.
- Priya, S., Young, W., Hopson, T., and Avasthi, A.: Flood Risk Assessment and Forecasting for the Ganges-Brahmaputra-Meghna River Basins, 2017.
- Rimi, R. H., Hausteine, K., Barbour, E. J., Allen, M. R., Jones, R. G., and Sparrow, S. N.: Evaluation of a large ensemble regional climate modelling system for extreme weather events analysis over Bangladesh, under review for *Int. J. Climatol.*, 2018a.
- Rimi, R. H., Hausteine, K., Barbour, E. J., Allen, M. R., Sparrow, S. N., Li, S., and Wallom, D. C. H.: Risks of seasonal extreme rainfall events in Bangladesh under 1.5 and 2.0 degrees' warmer worlds - How anthropogenic aerosols change the story, submitted to *Hydrol. Earth Syst. Sci.*, 2018b.
- Risser, M. D. and Wehner, M. F.: Attributable Human-Induced Changes in the Likelihood and Magnitude of the Observed Extreme Precipitation during Hurricane Harvey, *Geophysical Research Letters*, 44, 2017.
- Samaniego, L., Thober, S., Kumar, R., Wanders, N., Rakovec, O., Pan, M., Zink, M., Sheffield, J., Wood, E. F., and Marx, A.: Anthropogenic warming exacerbates European soil moisture droughts, *Nature Climate Change*, 8, 421–426, <https://doi.org/10.1038/s41558-018-0138-5>, 2018.
- Schaller, N., Otto, F. E. L., van Oldenborgh, G. J., Massey, N. R., Sparrow, S., and Allen, M. R.: The heavy precipitation event of May–June 2013 in the upper Danube and Elbe basins, *Bull. Amer. Met. Soc.*, 95, S69–S72, 2014.
- Schaller, N., Kay, A. L., Lamb, R., Massey, N. R., van Oldenborgh, G. J., Otto, F. E. L., Sparrow, S. N., Vautard, R., Yiou, P., Bowery, A., Crooks, S. M., Huntingford, C., Ingram, W. J., Jones, R. G., Legg, T., Miller, J., Skeggs, J., Wallom, D., Weisheimer, A., Wilson, S., and Allen, M. R.: The human influence on climate in the winter 2013/2014 floods in southern England., *Nature Climate Change*, <https://doi.org/10.1038/nclimate2927>, 2016.
- Sutanudjaja, E. H., van Beek, R., Wanders, N., Wada, Y., Bosmans, J. H. C., Drost, N., van der Ent, R. J., de Graaf, I. E. M., Hoch, J. M., de Jong, K., Karssenber, D., López López, P., Peßenteiner, S., Schmitz, O., Straatsma, M. W., Vannamettee, E., Wissler, D., and Bierkens, M. F. P.: PCR-GLOBWB 2: a 5 arc-minute global hydrological and water resources model, *Geoscientific Model Development Discussions*, 2017, 1–41, <https://doi.org/10.5194/gmd-2017-288>, <https://www.geosci-model-dev-discuss.net/gmd-2017-288/>, 2017.
- Taylor, K. E., Stouffer, R. J., and Meehl, G. A.: An Overview of CMIP5 and the Experiment Design, *Bull. Amer. Met. Soc.*, 93, 485–498, <https://doi.org/10.1175/BAMS-D-11-00094.1>, 2011.
- Taylor, K. E., Stouffer, R. J., and Meehl, G. A.: An Overview of CMIP5 and the Experiment Design, *Bull. Amer. Met. Soc.*, 93, 485–498, <https://doi.org/10.1175/BAMS-D-11-00094.1>, 2012.
- Tolson, B. A. and Shoemaker, C. A.: Dynamically dimensioned search algorithm for computationally efficient watershed model calibration, *Water Resources Research*, 43, <https://doi.org/10.1029/2005WR004723>, <https://agupubs.onlinelibrary.wiley.com/doi/abs/10.1029/2005WR004723>, 2007.
- van der Wiel, K., Kapnick, S. B., van Oldenborgh, G. J., Whan, K., Philip, S., Vecchi, G. A., Singh, R. K., Arrighi, J., and Cullen, H.: Rapid attribution of the August 2016 flood-inducing extreme precipitation in south Louisiana to climate change, *Hydrol. Earth Syst. Sci.*, 21, 897–921, <https://doi.org/10.5194/hess-21-897-2017>, 2017.
- van Oldenborgh, G. J., Otto, F. E. L., Hausteine, K., and Achuta Rao, K.: The heavy precipitation event of December 2015 in Chennai, India, *Bull. Amer. Met. Soc.*, 97, S87–S91, <https://doi.org/10.1175/BAMS-D-16-0129.1>, 2016.

- van Oldenborgh, G. J., van der Wiel, K., Sebastian, A. and Singh, R., Arrighi, J., Otto, F. E. L., Haustein, K., Li, S., Vecchi, G. A., and Cullen, H.: Attribution of extreme rainfall from Hurricane Harvey, August 2017, *Environ. Res. Lett.*, 12, 124009, <https://doi.org/10.1088/1748-9326/aa9ef2>, <http://stacks.iop.org/1748-9326/12/i=12/a=124009>, 2017.
- Webster, P. J., Jian, J., Hopson, T. M., Hoyos, C. D., Agudelo, P. A., Chang, H.-R., Curry, J. A., Grossman, R. L., Palmer, T. N., and Subbiah, A. R.: Extended-Range Probabilistic Forecasts of Ganges and Brahmaputra Floods in Bangladesh, *Bulletin of the American Meteorological Society*, 91, 1493–1514, <https://doi.org/10.1175/2010BAMS2911.1>, <https://doi.org/10.1175/2010BAMS2911.1>, 2010.
- Yu, W., Alam, M., Hassan, A., Saleh Khan, A., Ruane, A., Rosenzweig, C., Major, D. C., and Thurlow, J.: Climate Change Risks and Food Security in Bangladesh, <http://documents.worldbank.org/curated/en/419531467998254867/Bangladesh-Climate-change-risks-and-food-security-in-Bangladesh>, 2010.
- 10 Yuan, X., Y., J., D., Y., and H., L.: Reconciling the Attribution of Changes in Streamflow Extremes From a Hydroclimate Perspective, *Water Resources Research*, pp. 3886–3895, <https://doi.org/10.1029/2018WR022714>, 2018.
- Zaman, A., Molla, M., Pervin, I., Rahman, S. M., Haider, A., Ludwig, F., and Franssen, W.: Impacts on river systems under 2°C warming: Bangladesh Case Study, *Climate Services*, 7, 96 – 114, <https://doi.org/https://doi.org/10.1016/j.cliser.2016.10.002>, <http://www.sciencedirect.com/science/article/pii/S2405880716300024>, iMPACT2C - Quantifying projected impacts under 2°C warming, 2017.