

# Land cover effects on hydrologic services under a precipitation gradient

Ane Zabaleta<sup>1</sup>, Eneko Garmendia<sup>2,3</sup>, Petr Mariel<sup>4</sup>, Ibon Tamayo<sup>5</sup>, Iñaki Antigüedad<sup>1</sup>

<sup>1</sup>Hydro-Environmental Processes Group, Science and Technology Faculty, University of the Basque Country UPV/EHU, Leioa, 48940, Basque Country, Spain

<sup>2</sup>Department of Applied Economics I, University of the Basque Country UPV/EHU, Vitoria-Gasteiz, 01006, Spain

<sup>3</sup>Basque Centre for Climate Change (BC3), Parque Científico de UPV/EHU, Leioa, 48940, Spain

<sup>4</sup>Department of Applied Economics III (Econometrics and Statistics), University of the Basque Country UPV/EHU, Bilbao, 48015, Spain

<sup>5</sup>Department of Statistics, Harvard University, Cambridge, 02140, US

*Correspondence to:* Ane Zabaleta (ane.zabaleta@ehu.eus)

**Abstract.** Climate change impacts on the hydrological cycle are altering the quantity, quality, and temporal distribution of riverine discharge, necessitating a more rigorous consideration of changes in land cover and land use. This study establishes relationships between different land cover combinations (e.g., percentages of forest – both native and exotic – and pastureland) and hydrological services, using hydrological indices estimated at annual and seasonal time scales in an area with a steep precipitation gradient (900–2600 mm y<sup>-1</sup>). Using discharge data from 20 catchments in the Bay of Biscay, a climate transition zone, the study applied multiple regression models to better understand how the interaction between precipitation and land cover combinations influence hydrological services. Findings showed the relationship between land cover combinations and hydrological services is highly dependent on the amount of precipitation, even in a climatically homogeneous and relatively small area. In general, in the Bay of Biscay area, the greater presence of any type of forests is associated with lower annual water resources, especially with greater percentages of exotic plantations and high annual precipitation. Where precipitation is low, forests show more potential to reduce annual and winter high flows than pasturelands, but this potential decreases as annual or seasonal precipitation increases. As annual precipitation increases, low flows increase as the percentage of exotic plantations decreases and pasturelands increase. Results obtained in this study improve understanding of the multiple effects of land cover on hydrological services, and illustrate the relevance of land planning to the management of water resources, especially under a climate change scenario.

## 1 Introduction

The potential impacts of land cover on the hydrological cycle should be considered during land use policy-making (Fidelis and Roebeling, 2014; Ellison et al., 2017), including by integrating mitigation and adaptation strategies (Locatelli et al., 2016). Climate change impacts on the hydrological cycle are altering the quantity, quality, and temporal distribution of discharge in

rivers (Bates et al., 2008); however, climate change alone is insufficient to explain observed trends in streamflow (Schilling and Libra, 2003; Gallart and Llorens, 2003; Tomer and Schilling, 2009; López-Moreno et al., 2011). To fully understand these trends, changes in land cover and land use must be also considered (Garmendia et al., 2012, Liu et al., 2013; Brogna et al., 2017). Bauman et al. (2007) noted that vegetation is often the main driving force in ecosystem effects that influence hydrological service provision. For example, in areas such as the Pyrenean region, observed decreases in streamflow have been related primarily to changes in land cover, rather than to climate change (Gallart and Llorens, 2004; López-Moreno et al., 2011; Morán-Tejeda et al., 2012).

Worldwide, deforestation rates outstrip afforestation by several million hectares per year. Overall global forest cover declined by 3.25% (129 million ha) between 1990 and 2015 (FAO, 2016). During this same period, plantations increased globally by over 105 million hectares; by 2015, about 31 % of the world's forests were designated primarily as production forests. This expansion is actively supported by governments (Enters and Durst, 2004; Schirmer and Bull, 2014), which assume that plantation forests can provide a range of economic, social, and environmental benefits. However, the impact of afforestation on water-related ecological services is not usually considered (Ellison et al., 2017).

Research suggests that forests play important roles in regulating fresh water flows (van Dijk and Keenan, 2007). Trees may enhance soil infiltration and, under suitable conditions, improve groundwater recharge, delivering purified ground and surface water (Calder, 2005; Neary et al., 2009). Yet, the interpretation of the relationship between forests and hydrological services remains controversial (Bosch and Hewlett, 1982; Calder et al., 1997; Iroumé and Huber, 2002; Brown et al., 2005; Little et al., 2009; Keestra et al., 2018). Results vary among geographical latitudes and can be influenced by factors such as forest characteristics, changes in the seasonal structure, bio-geographical characteristics of catchments, soil types, and spatial scales. Typically, however, streamflow decreases substantially following afforestation and reforestation, and increases after deforestation or forest clearing (Bosch and Hewlett, 1982; Andréassian, 2004; Farley et al., 2005, Li et al., 2017).

Streamflow changes are influenced by characteristics such as forest tree species, age, and density. A change from coniferous to deciduous forest cover can improve catchment water yield (Hirsch et al., 2011), presumably due to the longer rotation times. Young, fast-growing forests typically consume more water than old-growth forests (Kuczera, 1987; Vertessy et al., 2001; Delzon and Loustau, 2005). Hence, though the impact of tree cover on water provision service tends to be negative in the short term, it may become neutral over the long term (Scott and Prinsloo, 2008). In the appropriate spatial settings, afforestation can improve water availability; however, plantation forests and the use of exotic species can disturb the hydrological balance with possible negative impacts (Trabucco et al., 2008 Huber et al., 2008; Lara et al., 2009, Little et al., 2009). Additionally, recent studies show that land management practices on tree plantations may promote rather than prevent soil erosion (Banfield et al., 2018). This effect has been observed in the Bay of Biscay region (Zabaleta et al., 2016).

In the context of rising temperatures associated with climate change, afforestation may lead to additional decreases in available water resources (Rind et al., 1990; Liu et al., 2016). Thus, climate change mitigation policies focused on carbon sequestration could negatively affect water provision service (Jackson et al., 2005). These observations highlight the importance of placing water-related ecosystem services at the centre of reforestation and forest-based mitigation strategies, while considering carbon

storage and timber/non-timber forest products as co-benefits of strategies designed to protect the hydrological cycle (Locatelli et al. 2015; Ellison et al., 2017).

Efforts to prioritise hydrological services in mitigation and adaptation strategies, and, hence, in land use policy, should be supported by a solid understanding of how trees, forest characteristics, and forest management strategies influence water flows in areas with different climatic, geographical, geological, and biological characteristics. Toward this end, this study analysed the effect of alternative land cover types (i.e., pastureland, native forests, and exotic plantations) on hydrological services in the Bay of Biscay using hydrological indicators obtained from the discharge series of 20 catchments during the periods 2000–2004 and 2007–2011. The specific objectives of this research were: i) to analyse the relationship between precipitation and several hydrological indicators at annual and seasonal time scales in an area with a steep precipitation gradient (Bay of Biscay); (ii) to assess the relationships between different alternative land covers in use and hydrological indicators considering the existing precipitation gradient; and (iii) to detect patterns in the study area that should be considered in devising adaptation strategies and land use management policies.

## 2 Study area

The studied catchments are located in Gipuzkoa Province (1980 km<sup>2</sup>), in the Basque Country of southwestern Europe (average latitude 43 °N and average longitude 1 °W; Fig. 1). The latitude of the province and its geographical situation near the Bay of Biscay favour high mean annual precipitation (1500 mm with no dry season) and a mild climate (mean annual temperature of 13 °C) that varies little between winter (8–10 °C, on average) and summer (18–20 °C, on average). A spatial gradient is observed in annual precipitation, with maximum values in the eastern part of the province (up to 2500 mm) and decreasing precipitation towards the west and south (to about 1000 mm). The altitude ranges from sea level to a maximum of 1554 m; steep slopes, exceed 25 % throughout most of the province with mean values between 40 % and 50 % for most of the catchments.

The drainage network in the area is dense and can be described as dendritic and rectangular. The main rivers flow generally south to north, perpendicular to the coast line. Tributaries are frequently perpendicular to main rivers, influenced by the geological structure of the region, resulting in very narrow water courses that are typically short and steep. Gipuzkoa is located at the western end of the Pyrenees; the region is structurally complex and lithologically diverse, with materials from Palaeozoic plutonic rocks to Quaternary sediments (EVE, 1990). Most of the materials in this region (>70 %) are of low or very low permeability. Sandstones, shales, limestones, and marls are dominant in most of the region, except in the east, where slates prevail (Zabaleta et al., 2016).

The mean soil depth in the study area is about 1 m, but highly variable. Cambisol is the prevailing soil type (FAO, 1977), generally characterised by a loam texture. Forests are the main land use (63 % in 2011) (MAGRAMA, 2013). The original broad-leaved forests (oak–*Quercus robur*, and beech–*Fagus sylvatica*), presently reduced to 15 % of their original area, account for 28 % of the province and share space with tree plantations of rapid-growth exotic species such as *Pinus radiata*.

These exotic species were introduced in the second half of the twentieth century as a result of government support for afforestation policies. The abandonment of traditional cattle and sheep farming practices has also contributed to the conversion of pastureland and rangelands, most of them previously converted from broad-leaved forests, to fast-growth exotic plantations (Ruiz Urrestarazu, 1999). As a result, those exotic species currently cover 39–48 % of the potential oak forests (Garmendia et al., 2012).

*Pinus radiata* stands in Gipuzkoa are well adapted to the environment and provide good support for the rapid development of forest communities (Carrascal, 1986; Ainz, 2008). Nevertheless, the expansion of these plantations results in substantial changes not only in the landscape, but also in forest management that affects the hydrological cycle (Garmendia et al., 2012) and sediment delivery (Zabaleta et al., 2016).

The catchments studied in this area exhibit a diverse mix of land cover types within a small geographical area that has similar climatic, geological, and topographical characteristics. This provides a good empirical basis for analysing how different land cover types affect median, low, and high flows. More precisely, the 20 selected catchments (some of which are nested catchments; see Fig. 1 and Table 1) include pasturelands (herbaceous vegetation), native forests (oak and beech), and exotic plantations (*Pinus radiata* plantations), as well as small areas of other cover types (e.g., urban land, roads, bare rock, water bodies, etc.). Discharge and precipitation are routinely measured for all the catchments as they are part of the hydro-meteorological monitoring network of Gipuzkoa Provincial Council (<http://www.gipuzkoahidraulikoak.eus/es/>).

### 3 Methodology

The methodology employed to assess the impacts of alternative combinations of different land cover types on selected hydrological indicators can be summarised in four steps: 1) extraction of hydrological indicators from discharge data series; 2) measurement of alternative land covers for each catchment; 3) assessment of the extent to which annual and seasonal precipitation control the hydrological indicators; and 4) analysis of the relationship between hydrological indicators, precipitation, and alternative land covers.

#### 3.1 Hydrological data

Gauging stations included in the hydro-meteorological network of the Basque Country are located at each outlet of the 20 studied catchments (Fig. 1, Table 1). Water depth (m) is measured every 10 minutes and discharge ( $\text{m}^3 \text{s}^{-1}$ ) is estimated through calibration conducted by the water services of the province (Environment and Hydraulic Works Department of Gipuzkoa Provincial Council) (Zabaleta et al., 2016).

To maintain coherence with land cover data obtained from forest inventories carried out during 2002 and 2009, discharge data was considered for two five-hydrological-year periods. Data from the first period, from 2000–2001 to 2004–2005, was compared with land cover data obtained during 2002 (IFN3, 2005). Data from the second period, from 2007–2008 to 2011–2012, was compared with land cover data from 2009 (IFN4, 2011). In this way, hydrological data accounting for 10

hydrological-years were considered for each gauging station. To facilitate comparison among catchment responses, all discharge data, including those for hydrological indicators, are referred to as specific discharges ( $L s^{-1} km^{-2}$ ).

A comparison of the daily hydrographs obtained for the outlets of the 20 catchments shows the homogeneity in the timing of the discharge (Appendix A) and its relationship to the prevalence of Atlantic storms approaching from the northwest (Nadal-Romero et al., 2015). These storms influence the entire study area and are the main sources of precipitation. For this reason, even if there are important differences in total amounts of precipitation from east (higher) to west (lower), the distribution of precipitation over time is very similar in all the catchments analysed, which translates to similar patterns in the annual hydrographs.

Hydrological indicators related to different hydrological services were calculated considering fundamental characteristics of streamflow: magnitude, frequency, variability, and timing (Ritcher et al., 1996; Olden and Poff, 2003). As a first step, seven hydrological indicators were calculated from the discharge series for each hydrological year. At annual and seasonal time scales, the 10th (10m), 50th (50m), and 90th (90m) percentiles ( $L s^{-1} km^{-2}$ ) were analysed as indicators of discharge magnitude (Appendix A). The coefficient of variation (CV) was used as a measure of the variability of the discharge series analysed. At the annual scale, the following were also calculated: runoff (R, mm), timing of low flows expressed as the first Julian day of the low flow period (J10), and skewness (skn), as a measure of the asymmetry of the hydrograph related to the frequency of discharge data, of each of the series. As a result, the annual value (Y) and the values for autumn (A), winter (W), spring (Sp) and summer (Su) were obtained for each hydrological year for the different indicators. All calculated indicators are listed in Table 2.

### 3.2 Land cover data

In 2005 and 2011, the Basque Government published detailed forest inventories. These forestry maps of the Basque Country were created by on-screen photo-interpretation, based on colour orthophotos generated by the SIGPAC project (<http://www.mapama.gob.es/es/agricultura/temas/sistema-de-informacion-geografica-de-parcelas-agricolas-sigpac/>), with a minimum pixel size of 25 cm. For this study, geographic information systems were used to reclassify the land cover types into four main types: native forest, exotic plantations, pasturelands, and others. The areas corresponding to each type in each of the catchments were estimated using Environmental Systems Research Institute (ESRI) software (ArcGIS 10.1). The resulting data are listed in Table 1, which shows the percentage of each land cover type in the 20 catchments for both 5-year periods. Note that variations in land cover between the two periods are small.

### 3.3 Precipitation data

Annual precipitation (YP, mm) estimates for each of the 20 catchments were provided by the Environment and Hydraulic Works Department of the Gipuzkoa Provincial Council. These estimates were calculated by interpolation, based on a universal isotropic kriging method, using data obtained from the rain gauge network. Seasonal precipitation amounts for autumn (AP, mm), winter (WP, mm), spring (SpP, mm) and summer (SuP, mm) were computed based on the annual precipitation amounts

for each catchment and the seasonal distribution of precipitation in the hydro-meteorological station listed in Table 1 for each catchment. These values were used to describe the overall precipitation regime for the 10 hydrological years under study and to assess the extent to which precipitation controlled the hydrological variables considered.

The annual and seasonal distribution of precipitation across catchments over the period studied is shown in Appendix B. In the catchments studied, annual precipitation varied from minimums of 958 mm for the 2001/2002 hydrological year in the C1Z2 catchment and 1581 mm for 2008/2009 in the C1P3 catchment to maximums that range from 1664 mm in D2W1 for 2001/2002 to 2611 mm in F1W1 for 2008/2009 (Appendix B a)). On a seasonal basis (Appendix B b)), autumn is usually the rainiest season with a mean precipitation of 551 mm, followed by winter and spring with means of 425 mm and 343 mm respectively; summer is the season with the least precipitation (mean of 216 mm).

### 10 3.4 Statistical analysis

As a first step, the influence of precipitation on different hydrological indices was analysed using the following simple linear regression that included the 20 catchment, Eq. (1):

$$H_{it} = \gamma_1 + (\gamma_2 \times P_{it}) + \varepsilon_{it} \quad (1)$$

where  $H_{it}$  represents one of the hydrological indices in Table 2;  $\gamma_1$  and  $\gamma_2$  are parameters to be estimated;  $P_{it}$  is the total precipitation amount considered; and  $\varepsilon_{it}$  is a regression error satisfying the standard basic assumptions for each of the  $i = 1, \dots, 20$  catchments and  $t = 1, \dots, 10$  hydrological years.

Equation (1) was extended to include different land covers to study their possible influence on the hydrological indices, taking into account their interactions with precipitation. Thus, Eq. (1) was extended to Eq. (2):

$$H_{it} = \beta_1 + (\beta_2 \times P_{it}) + (\beta_3 \times Nat_{it}) + (\beta_4 \times Exo_{it}) + (\beta_5 \times Past_{it}) + (\beta_6 \times Nat_{it} \times P_{it}) + (\beta_7 \times Exo_{it} \times P_{it}) + (\beta_8 \times Past_{it} \times P_{it}) + \mu_{it} \quad (2)$$

where  $\beta_1$  to  $\beta_8$  are parameters to be estimated;  $Nat_{it}$ ,  $Exo_{it}$ , and  $Past_{it}$  are the percentages of native forest, exotic forest, and pastureland, respectively; and  $\mu_{it}$  is a regression error satisfying the standard basic assumptions for each of the  $i = 1, \dots, 20$  catchments and  $t = 1, \dots, 10$  hydrological years.

Because Eq. (2) includes interactions of explanatory variables, the interpretation of results can be difficult. For this reason, different representative combinations were defined based on real values of explanatory variables and the corresponding predictions of hydrological indices were computed. This allowed for a simple and direct interpretation of the influence of all variables (precipitation and land cover types). All the statistical analysis were programmed and performed using the free software R in its version 3.1.2 in the R studio interface.

The objective of this study was to compare predicted hydrological indices for various land cover combinations under different precipitation amounts. To avoid biased results affected by considering extreme values, the 1st and 3rd quartiles of the precipitation data series were calculated for the selected period (annual or seasonal) and defined as the low and high precipitation conditions. For annual scale data, annual precipitation was considered, while for seasonal scale, precipitation of

the season studied plus that of the previous season (6 months total) were considered. The statistical analysis was also carried out considering precipitation of the studied season (3 months), however, no statistically significant results were found.

The different land cover combinations shown in Table 3 were explored for the catchments, under low and high precipitation conditions, and compared to a “base” land cover combination (combination EXO) of 76 % exotic, 18 % pastureland, and 6 % native. Land cover combination EXO was defined as a combination with a maximum area of exotic plantations, minimum area of native forests, and a low percentage of pasturelands (calculated as the remaining percentage to cover 100 % of the area). Other 5 combinations were defined as realistic alternative patterns to combination EXO as they were calculated considering real data (e.g., maximum, minimum, or mean percentages of native forests (NAT), exotic plantations (EXO), and pasturelands (PAST) (see Table 2)) and considering the sum of the three as 100 %. Following this approach combination EXO + PAST represents high percentages of exotic plantations and pastureland, combination EXO + NAT high percentage of forest, combination NAT high percentage of native forest, combination NAT + PAST is mostly native forests and pasturelands and combination EXO + NAT + PAST a mixture of average percentages of exotic plantations, native forests and pasturelands. Differences between these patterns and combination EXO were calculated for each hydrological index under low and high precipitation conditions (Table 4). Defined in this way, each combination was used to examine interactions between realistic data; results for combinations that might be very different from the existing ones were not extrapolated.

## 4 Results and discussion

### 4.1 Effect of precipitation on hydrological indicators

Precipitation is generally agreed to be the main driver of large-scale variability in monthly, seasonal, and annual streamflows (Ward and Trimble, 2004). In the study area a certain spatial homogeneity in the precipitation-runoff ratio at an annual scale can be deduced from the high value of the coefficient of determination ( $R^2 = 0.8$ ;  $p$  value  $< 0.001$ ) obtained in the linear regression (Eq. (1)) between annual precipitation (YP, mm) and annual runoff (YR, mm) (Appendix C a)). The regression includes all data collected during the study period (from 2000–2001 to 2004–2005 and from 2007–2008 to 2011–2012) in the 20 catchments listed in Table 1, which constitutes 182 pairs of data (some pairs are not included in the analysis due to missing data) and has a high level of significance. Thus, precipitation explains a high percentage of the variability in water provisioning (80 %). There is also a significant correlation between annual precipitation and magnitude indices of streamflow as median, high, and low flows, with coefficients of determination of 0.75, 0.62 and 0.54 ( $p$  values  $< 0.001$ ), respectively.

Conversely, the relationships between precipitation and hydrological indicators related to variability (CV, at all time-scales), timing (JY of the beginning of low flows, JY10m), and frequency (skn) show very low coefficients of determination ( $< 0.25$ ) at an annual scale, and less than 0.1 at the seasonal scale in the case of the coefficient of variation. The significance of the relationship between seasonal precipitation and seasonal median, high, and low flows is lower than that at the annual scale: the coefficient of determination is greater than 0.5 ( $p$  values  $< 0.001$ ) for median flows in spring and summer (Sp50m and Su50m;  $R^2 = 0.58$  and  $0.56$ , respectively), high flows in autumn and winter (A90m and W90m;  $R^2 = 0.50$  and  $0.55$ ,

respectively), and low flows in spring and summer (Sp10m and Su10m;  $R^2 = 0.5$  and  $0.51$ , respectively) (Appendix C b), c), d)).

#### 4.2 Effect of land cover on median discharge

Figure 2a shows results from the multiple regression analyses, defined in Eq. (2), between alternative land covers, annual precipitation amounts, and median annual discharge as a hydrological index. The three land cover types are significant ( $p$  values  $< 0.05$ ) and precipitation is significant in interactions with all land covers ( $p$  values  $< 0.1$ ). This indicates that the degree of influence of precipitation is contingent on the specific land cover. The coefficient of determination is  $0.78$ , indicating that the model fits the data well.

The results shown in Table 4 are expressed as the percentage change in the hydrological index with respect to the results obtained for the base land cover (combination EXO) for low and high precipitation amounts. The variations are highly conditioned by annual precipitation, both in terms of the percentage change and whether the change was positive or negative. Median annual discharge (Y50m) increases when a decrease in exotic plantations is accompanied by an increase in pasturelands (combinations EXO+PAST and NAT+PAST), by as much as  $44\%$  and  $67\%$  for low and high annual precipitation amounts, respectively. Conversely, replacing exotic plantations with native forests (combinations EXO+NAT and NAT) has a slightly negative impact on median discharge (up to  $18\%$ ) for low precipitation amounts ( $1279$  mm) while for higher precipitation amounts ( $1719$  mm) median discharge increases (up to  $24\%$ ). Further, increases in median discharge are higher with higher annual precipitation amounts. The magnitude of the observed change is similar to that reported by Farley et al. (2005) for catchments located in northern Europe and higher than those obtained from hydrological modelling by Carvalho-Santos et al. (2016) and Morán-Tejeda et al. (2014) for catchments in the Iberian Peninsula.

Hence, in the study area, greater forest cover may result in lower water provision capability of catchments. Similarly, numerous studies have shown that replacement of forest by grasslands leads to increased annual water yields, while afforestation processes can decrease annual yields (e.g., Bosch and Hewlett, 1982; Brown et al., 2005; Brogna et al, 2017). Additionally, as annual precipitation amounts increase, this effect becomes clearer in the case of exotic plantations (Fig. 2). Forest plantation species have been selected for rapid early growth, which has high associated water consumption (Farley et al., 2005); maximizing timber production generally involves harvesting trees before their growth slows, that is, before their water consumption starts to decrease. Current forest management of cultivated plantations in the study area involves clearcutting with rotations of around 30 years. Conversely, native forests, established for other purposes, may be left to mature and hence will tend to exhibit lower water consumption (van Dijk and Keenan, 2007) and have reduced interception losses during the leafless period (autumn-winter).

Alternative land covers seem to have little significant effect on median discharge during autumn, winter, and summer, as the coefficients for land covers obtained in the multiple regressions are not significant (not shown). Nevertheless, the inclusion of land cover is important for median spring discharge (Table 4), with effects similar to those observed for median annual discharge (Y50m). Regression in Fig. 2b show significant effect of native forests, pasturelands, and precipitation in interactions



with both types of land cover ( $p$  values  $<0.05$ ) on Sp50m. The percentage of exotic plantations in the catchment significantly influences the median discharge in the spring. The coefficient of determination for this graph is 0.63, indicating a good fit.

Decreasing the percentage of exotic plantations (by increasing pasturelands or native forests) increases spring average discharge (Sp50m), up to a 76 %, under high precipitation amounts (852 mm) (Table 4). The magnitude of this increase is larger when the extension of pasturelands is larger (combinations EXO and NAT+PAST). At low precipitation rates (646 mm), the positive effect of pasturelands on Sp50m remains, while increasing native forest (combinations EXO+NAT and NAT) has a negative effect on median discharge.

The base land cover combination used in Table 3 (with the highest percentage of exotic plantations) is associated with the least change in median discharge indices across the precipitation gradient (combination EXO), Fig. 2): Y50m and Sp50m vary from about 2–3  $L s^{-1} km^{-2}$  for annual and seasonal precipitation amounts around 1000 and 400 mm, respectively, to about 20  $L s^{-1} km^{-2}$  for precipitations around 2000 and 1000 mm, respectively. Conversely, land cover combinations NAT and NAT+PAST (with the highest percentage of native forests and pasturelands, respectively, and lowest percentage of exotic plantations) show the highest variation in Y50m and Sp50m in the precipitation gradient existing in the study area. Consequently, the land cover combination that gives the highest or lowest median discharge values changes with annual and seasonal precipitation amounts. This fact must be kept in mind from the water provision perspective in an area with a steep precipitation gradient, under current and future climate change scenarios.

#### 4.3 Effect of land cover on high flows

As shown in Table 4, an increase in high flows (Y90m) can be observed at low precipitation amounts, as the percentage of exotic plantations decreases and native forests (combination NAT) or pasturelands (mainly, combination NAT+PAST) increases. The increase in Y90m seems to be similar to the increase in native forest or in pastureland. For higher precipitation amounts, Y90m changes little with land cover, with the observed changes being negative in all cases. Considering changes in Y90m across the precipitation gradient for different land cover combinations (Fig. 3a), the base land cover combination (EXO) exhibits the lowest Y90m for low annual precipitation, but it is also the one with the steepest slope; hence, it is the combination that yields the highest Y90m results for higher precipitation. Conversely, combination NAT+PAST, with the lowest percentage of exotic plantations considered (10 %), a moderate percentage of native forest (31 %), and high percentage of pastureland (59 %) exhibits the highest Y90m for low precipitation amounts and the lowest Y90m for higher ones. This indicates that the potential of forests to reduce high flows decreases as annual precipitation increases (Fig 3a), and therefore, in the area studied, when high annual precipitation is considered, this potential is quite low. Robinson et al., 2003 found that, under realistic forest management procedures, the potential for forests to reduce peak flows in North Western Europe was lower than usually claimed.

Similar conclusions can be reached from seasonal data analysis. Land cover coefficients are significant only for the winter period; during autumn, spring, and summer, land cover does not appear as a significant variable influencing the magnitude of high flows. For winter (W90m), results differ depending on precipitation (in this case considered as the sum of winter and

previous autumn precipitation). Under low precipitation amounts, W90m increases (up to 31 %) in combinations (e.g., cases NAT and EXO+NAT) where the decrease in exotic plantations is compensated for mainly by an increase in native forests (Table 4). This implies that high flows are attenuated under land cover combinations with high percentages of exotic plantations, which is favourable for flood regulation (Carvalho-Santos et al., 2016). Under high precipitation amounts, the situation remains practically unchanged for all land cover combinations. In this sense Carrick et al., (2017) after a met-analysis of 156 papers, concluded that a weak direct evidence of the effects of tree cover on flood risk, due to the high uncertainty found in results.

#### 4.4 Effect of land cover on low flows

With regard to satisfying aquatic ecosystem or socio-economic water demands, and, in turn, the ecological status of water bodies (European Commission, 2000), it is important to consider low flow values. For annual low flows, a small variation in Y10m (Table 4) was observed when the percentage of pasturelands increases at the expense of exotic plantations (combination EXO+PAST), and a decrease in Y10m (up to 50 %) in combination NAT with 66 % of native forests under the lowest annual precipitation amount. In contrast, for higher YP values, the land cover combination with the higher percentage of exotic plantations (EXO) is one of the combinations with the lowest Y10m. Under high precipitation amounts (Table 4), low flows exhibit least change when decreases in exotics are compensated for by increases in native forests (combinations EXO+NAT, NAT, EXO+NAT+PAST) and Y10m increases when exotic plantations decrease and pasturelands increase (combinations EXO+PAST, NAT+PAST). Therefore, in line with the findings of Brogna et al., (2017), this study shows exotic plantations have a slightly positive effect on low flows under low annual precipitation amounts; with annual precipitation of less than 700 mm, other land covers provide smaller values of Y10m than the base combination (EXO). These positive effects disappear, however, under higher annual precipitation regimes. The positive effects of forests on base flow, strongly related to annual low flows, have been associated with better infiltration of forested soils (Price, 2011), while negative effects have been linked to higher evapotranspiration rates (Hicks et al., 1991).

During winter, low flows (W10m) increase as exotic forests decrease in all land cover combinations and as native forests (combination NAT) or pasturelands (combination NAT+PAST) increase; the increase for W10m is greater with higher precipitation amounts (Table 4). During spring, native forests (combinations EXO+NAT, NAT) seem to have a negative effect (up to 87 %) on Sp10m when precipitation is low, but this negative effect disappears in areas with higher precipitation (Table 4). Greater pastureland (combinations EXO+PAST and NAT+PAST) positively affects springtime low flows under low and high precipitation rates by as much as 90 %. Land cover combination NAT, which has the highest percentage of native forests (66 %) shows the greatest change in Y10m across the precipitation gradient of the study area (Table 4, Fig. 3b), while catchments with high percentages of exotic plantations (EXO), show the least change in low flows across the precipitation gradient.

No statistically significant influences were observed on median, high, or low autumn and summer flows or on other hydrological indices related to the timing of low flows or other changes to the hydrograph; however, this does not rule out the

possibility of relationships between land cover and the hydrological indices. As shown in Appendix C, precipitation (volume and distribution) is the main driver of the system, and thus the influence of other drivers, such as land cover, may fail to emerge as statistically significant. Additionally, there may be other environmental factors, such as soil depth, as Hawtree et al., (2015) found in a catchment of north-central Portugal.

#### 5 4.5 Land cover effects on hydrological services. Implications.

Clear conclusions about the effect of each land cover combination on hydrological services cannot be drawn without considering the amount of precipitation. However, results show that in the Bay of Biscay area, the presence of any kind of forest decreases water provisioning service (Y50m), and this effect is more evident with exotic plantations as the annual precipitation increases. Additionally, similar to other studies (Robinson et al., 2003; Carrick et al., 2017), this study indicates that the potential for forests to reduce flooding risk is low; however, the effect of land cover on high flows also changes with precipitation. For low precipitation amounts, forests, especially exotic plantations, show greater potential to reduce annual and wintertime high flows than pasturelands, but this potential decreases as annual or seasonal precipitation increases. Moreover, when high annual precipitation is considered, the potential of exotic plantations to reduce flood magnitude is lower than that of native forests or pasturelands. Further, the results also show that exotic plantations have a slight positive effect on annual low flows under low annual precipitation conditions; however, low flows increase as annual precipitation increases and when exotic forests are replaced by pasturelands. This effect is most evident in winter and spring, and when the combination of pasturelands and native forests account for most of the catchment area.

As Ellison et al. (2017) stated, the impact of land management politics on hydrological services is not usually considered, however, taking into account local findings on the relationship between land cover and water-related ecosystem services is necessary for an adequate integrated catchment management. Results observed in Table 4 and Figures 2 and 3, are in this sense useful to be considered when planning land management, in order to have some knowledge on different trends on hydrologic services that can be derived from different decisions under areas with different precipitation amounts. There is no unique “best combination” for all locations and all services, water provision, flood risk protection, ecological status conservation. However, the effect of different land cover combinations, apart from those analysed in this paper, and always inside the limits those included in the multiple regression models proposed, on different hydrological services may be applied. Results obtained, should be in the range of those shown in figures 2 and 3, and could be used to compare the benefits and disadvantages in each of the commented services.

Further study is needed in the Bay of Biscay area to determine how the characteristics of specific tree species (e.g., their phenology and physiology) affect various components of the hydrological cycle. Analyses are also needed to establish the relationship between forest types, land management issues and soil development. For instance, clearcutting of exotic species in the study area is usually accompanied by harvesting with chainsaws, skidding, and mechanical site preparation (prior to replanting) such as scarification and ripping (Gartzia-Bengoetxea et al., 2009). These logging operations alter the physical properties of soil, affecting processes such as infiltration, evapotranspiration, percolation, and lateral flow, and in turn,

catchment water balance and temporal distribution river discharge. A deepened understanding of those relationships will help achieve a solid understanding of how trees characteristics, forest types and management strategies, and soil properties influence water flows.

## 5 Conclusions

5 This study identifies the relationships among different land cover combinations (forests–native and exotic–and pasturelands) and hydrological services in an area with a steep precipitation gradient (900–2600 mm yr<sup>-1</sup>). Annual and seasonal hydrological indices were estimated using discharge data from 20 catchments in the Bay of Biscay area. Results indicate that precipitation has a significant positive impact on median, high, and low flows and is the main driver of annual and seasonal discharge. That strong influence may obscure the relationship between land cover and the hydrological responses of catchments in high  
10 precipitation gradient areas. From a policy-making perspective, it is important to assess how land cover changes affect streamflows, as these changes are strongly influenced by human intervention (e.g., through land use planning or public policies to enhance certain land uses and constrain damaging practices, etc.).

Unravelling the effects of land cover on hydrological services is especially important in a climatic transition zone like the Bay of Biscay (Meaurio et al., 2017), which is characterised by a steep precipitation gradient and is subject to the uncertain effects  
15 of climate change in terms of magnitude and temporal distribution of precipitation projections. In this regard, the methodology developed in this study to deal with the interactions between the two drivers (i.e., precipitation and land cover) increases the understanding of how various land cover combinations affect hydrological services across an entire precipitation gradient. Results from this study show that a trade-off among the different hydrological services may emerge as a result of changes in land cover, and that such services are highly dependent on the amount of precipitation. Hence, to design appropriate water  
20 management policies (e.g., to ensure the provision of water resources or to avoid the impact of extreme events), policy-makers need to focus on catchment-scale measures that consider the effect of land cover on hydrological services across a precipitation gradient. There is no unique “best combination” for all locations and all services. This is especially relevant under a climate change scenario, as precipitation projections remain largely uncertain both in magnitude and direction (e.g., positive or negative changes). It is time for land planning and forest policies to place water at the centre of the decision-making agenda.

25

## ACKNOWLEDGEMENTS

This research was supported by the Basque Government (Consolidated Groups IT1029/16, IT-642-13) and the Spanish Ministry of Economy and Competitiveness (ECO2017-82111-R). Eneko Garmendia acknowledges financial support from  
30 SOSTEPASTOS project (MIMECO AGL2013-48361-C2-1-R). The authors would like to thank Iñaki Aizpuru for his help with land cover data and the Environment and Hydraulic Work Department of the Gipuzkoa Provincial Council for providing hydrologic data series.

## References

- Ainz Ibarrondo, M. J.: The monoculture of radiata pine in the Basque Country: origin and keys of the survival of a system of exploitation in opposite with sustainable development, *Estudios Geográficos*, 265, 335–356, doi:10.3989/estgeogr.0426, 2008.
- Andréassian, V.: Waters and forests: from historical controversy to scientific debate, *J. Hydrol.*, 291, 1–27, doi:10.1016/j.jhydrol.2003.12.015, 2004.
- Banfield, C. C., Braun, A. C., Barra, R., Castillo, A., and Vogt, J.: Erosion proxies in an exotic tree plantation question the appropriate land use in Central Chile, *Catena*, 161, 77–84. doi:10.1016/j.catena.2017.10.017, 2018
- Bates, B. C., Kundzewicz, Z. W., Wu, S., and Palutikof, J. P. Eds.: *Climate Change and Water*. Technical Paper of the Intergovernmental Panel on Climate Change, IPCC Secretariat, Geneva, 210 pp, 2008.
- Bauman, K. A., Gretchen, C. D., Duarte, T. K., and Mooney, H. A.: The nature and value of ecosystem services: an overview highlighting hydrologic services, *Annu. Rev. Environ. Resour.*, 32, 6.1–6.32, doi:10.1146/annurev.energy.32.031306.102758, 2007.
- Bosch, J. M., and Hewlett, J. D.: A review of catchment experiment to determine the effect of vegetation changes on water yield and evapotranspiration, *J. Hydrol.*, 55, 3–23, doi:10.1016/0022-1694(82)90117-2, 1982.
- Brogna, D., Vincke, C., Brostaux, Y., Soyeurt, H., Dufrière, M., and Dendoncker, N.: How does forest cover impact water flows and ecosystem services? Insights from “real-life” catchments in Wallonia (Belgium), *Ecol. Indic.*, 72, 675–685, doi:10.1016/j.ecolind.2016.08.011, 2017.
- Brown, A. E., Zhang, L., McMahon, T. A., Western, A. W., and Vertessy, R. A.: A review of paired catchment studies for determining changes in water yield resulting from alterations in vegetation, *J. Hydrol.*, 310, 28–61, doi:10.1016/j.jhydrol.2004.12.010, 2005.
- Calder, I. R.: *Blue Revolution: Integrated Land and Water Resource Management*, 2nd edition Earthscan, London, 382 pp., 2005.
- Calder, I. R., Rosier, P. T. W., Prasanna, K. T., and Parameswarappa, S.: Eucalyptus water use greater than rainfall input a possible explanation from southern India, *Hydrol. Earth Syst. Sci.*, 1, 249–256, doi:10.5194/hess-1-249-1997, 1997.
- Carrascal, M.: Estructura de las comunidades de aves de las repoblaciones de *Pinus radiata* del País Vasco, *Munibe (Ciencias Naturales)*, 38, 3–8, 1986.
- Carrick, J., Bin Abdul Rahim, M. S. A., Adjei, C., Ashraa Kalee, H. H. H., Banks, S. J., Bolam, F. C., Campos Luna, I. M., Clark, B., Cowton, J., Domingos, I. F. N., Golicha, D. D., Gupta, G., Grainger, M., Hasanaliyeva, G., Hodgson, D.J., Lopez-Capel, E., Magistrali, A. J., Merrell, I. G., Oikeh, I., Othman, M. S., Ranathunga Mudiyansele, T. K. R., Samuel, C. W. C., Sufar, E. K., Watson, P. A., Zakaria, N. N. A. B., Stewart, G.: Is Planting Trees the Solution to Reducing Flood Risks? *J. Flood Risk Manag.* 1–10, <https://doi.org/10.1111/jfr3.12484>, 2018.

- Carvalho-Santos, C., Nunes, J. P., Monteiro, A. T., Hein, L., and Honrado, J. P.: Assessing the effects of land cover and future climate conditions on the provision of hydrological services in a medium-sized watershed of Portugal, *Hydrol. Process.*, 30, 720–738, doi:10.1002/hyp.10621, 2016.
- Delzon, S., and Loustau, D.: Age-related decline in stand water use: sap flow and transpiration in a pine forest chronosequence, *Agric. For. Meteorol.*, 129, 105–119, doi:10.1016/j.agrformet.2005.01.002, 2005.
- 5 Ellison, D., Morris, C. E., Locatelli, B., Sheil, D., Cohen, J., Murdiyarto, D., Gutierrez, V., van Noordwijk, M., Creed, I. F., Pokorny, J., Gaveau, D., Spracklen, D. V., Bargaés Tobella, A., Ilstedt, U., Teuling, A. J., Gebreyohannis Gebrehiwot, S., Sands, D. C., Muys, B., Verbist, B., Springgay, E., Sugandi, Y., and Sullivan, C. A.: Trees, forests and water: Cool insights for a hot world, *Global Environ. Change.*, 43, 51–61, doi:10.1016/j.gloenvcha.2017.01.002, 2017.
- 10 Enters, T., and Durst, P.(Eds.): *What Does It Take? The Role of Incentives in Forest Plantation Development in the Asia-Pacific Region*. FAO RAP Publication 2004/27, FAO Regional Office for Asia and the Pacific, Bangkok, Thailand, 2004.
- European Commission: Directive 2000/60/EC of the European Parliament and of the Council of 23 October 2000 establishing a framework for community action in the field of water policy, *Off. J. Eur. Communities*, 2000.
- EVE (Ente Vasco de la Energía) [BasqueEnergy Agency]. 1990. Mapa geológico simplificado del País Vasco. Escala 1:40000.
- 15 EVE: Bilbao.
- FAO: *Guidelines for Soil Profile Description*. Food and Agriculture Organization of the United Nations, Rome, Italy, 1977.
- FAO: *Global Forest Resources Assessment 2015: How Are the World's Forests Changing?* 2<sup>nd</sup> Ed., Food and Agriculture Organization of the United Nations, Rome, Italy, 2016.
- Farley, K. A., Jobbágy, E. G., and Jackson, R. B.: Effect of afforestation on water yield: a global synthesis with implications for policy, *Global Change Biol.*, 11, 1565–1576, doi:10.1111/j.1365-2486.2005.01011.x, 2005.
- 20 Fidelis, T., and Roebeling, P.: Water resources and land use planning systems in Portugal—Exploring better synergies through Ria de Aveiro, *Land Use Policy*, 39, 84–95, doi:10.1016/j.landusepol.2014.03.010, 2014.
- Gallart, F., and Llorens, P.: Catchment management under environmental change: Impact of land cover change on water resources, *Water Int.*, 28 (3), 334–340, doi:10.1080/02508060308691707, 2003.
- 25 Gallart, F., and Llorens, P.: Observations on land cover changes and water resources in the headwaters of the Ebro catchment, Iberian Peninsula, *Phys. Chem. Earth*, 29, 769–773, doi:10.1016/j.pce.2004.05.004, 2004.
- Garmendia, E., Mariel, P., Tamayo, I., Aizpuru, I., and Zabaleta, A.: Assessing the effect of alternative land uses in the provision of water resources: evidence and policy implications from southern Europe, *Land Use Policy*, 29(4), 761–770, doi:10.1016/j.landusepol.2011.12.001, 2012.
- 30 Gartzia-Bengoetxea, N., Gonzalez-Arias, A., Kandeler, E., and Martínez de Arano, I.: Potential indicators of soil quality in temperate forest ecosystems: a case study in the Basque Country, *Ann. For. Sci.*, 66, 303, doi:10.1051/forest/2009008, 2009.
- Hawtree, D., Nunes, J. P., Keizer, J. J., Jacinto, R., Santos, J., Rial-Rivas, M. E., Boulet, A.-K., Tavares-Wahren, F., and Feger, K.-H.: Time series analysis of the long-term hydrologic impacts of afforestation in the Águeda watershed of north-central Portugal, *Hydrol. Earth Syst. Sci.*, 19, 3033–3045, <https://doi.org/10.5194/hess-19-3033-2015>, 2015.

- Hicks, B.J., Beschta, R.L., and Harr, R.D.: Long-term changes in streamflow following logging in western Oregon and associated fisheries implications, *J. Am. Water Resour. Assoc.*, 27, 217–226, doi:10.1111/j.1752-1688.1991.tb03126.x, 1991.
- Hirsch, F., Clark, D., and Vihervaara, P.: Payments for Forest related Ecosystem Services: What Role for a Green Economy? Background Paper for the Workshop on Payments for Ecosystem Services, UNECE/FAO Forestry and Timber Section, Geneva, 2011.
- 5 <http://www.mapama.gob.es/es/agricultura/temas/sistema-de-informacion-geografica-de-parcelas-agricolas-sigpac/>, last access: 18 January 2018.
- Huber, A., Iroumé, A., and Bathurst, J.: Effect of *Pinus radiata* plantation on water balance in Chile, *Hydrol. Process.*, 22, 142–148, doi:10.1002/hyp.6582, 2008.
- 10 IFN3, 2005. [www.euskadi.eus/inventario-forestal-cae-2005/web01-a3estbin/es/](http://www.euskadi.eus/inventario-forestal-cae-2005/web01-a3estbin/es/), last access: 29 November 2017.
- IFN4, 2011. <http://www.euskadi.eus/inventario-forestal-2011/web01-a3estbin/es/>, last access: 29 November 2017.
- Iroumé, A., and Huber, A.: Comparison of interception losses in a broadleaved native forest and a *Pseudotsuga menziesii* (Douglas fir) plantation in the Andes mountains of southern Chile, *Hydrol. Process.*, 16 (12), 2347–2361, doi:10.1002/hyp.1007, 2002.
- 15 Jackson, R. B., Jobbágy, E. G., Avissar, R., Roy, S. B., Barrett, D. J., Cook, C. W., Farley, K. A., Maitre, B. A., le McCarl, D. C., Murray, B. A., and Murray, B. C.: Trading water for carbon with biological carbon sequestration, *Science*, 310, 1944–1947, doi:10.1126/science.1119282, 2005.
- Keestra, S., Nunes, J., Novara, A., Finger, D., Avelar, D., Kalantari, Z., and Cerdà, A.: The superior effect of nature based solutions in land management for enhancing ecosystem services, *Sci. Total Environ.*, 610–611, 997–1009, doi:10.1016/j.scitotenv.2017.08.077, 2018.
- 20 Kuczera, G.: Prediction of water yield reductions following a bushfire in ash mixed species eucalypt forest, *J. Hydrol.*, 94, 215–236, doi:10.1016/0022-1694(87)90054-0, 1987.
- Lara, A., Little, C., Urrutia, R., McPhee, J., Álvarez-Garretón, C., Oyarzún, C., Soto, D., Donoso, P., Nahuelhual, L., Pino, M., and Arismendi, I.: Assessment of ecosystem services as an opportunity for the conservation and management of native forest in Chile, *For. Ecol. Manage.*, 258, 415–424, doi:10.1016/j.foreco.2009.01.004, 2009.
- 25 Little, C., Lara, A., McPhee, J., and Urrutia, R.: Revealing the impact of forest exotic plantations on water yield in large scale watersheds in South-Central Chile, *J. Hydrol.*, 374, 162–170, doi:10.1016/j.jhydrol.2009.06.011, 2009.
- Li, Q., Wei, X., Zhang, M., Liu, W., Fan, H., Zhou, G., Giles-Hansen, K., Liu, S., and Wang, Y.: Forest cover change and water yield in large forested watersheds: A global synthetic assessment, *Ecohydrology*. doi:10.1002/eco.1838, 2017.
- 30 Liu, H. L., Bao, A. M., Pan, X. L., and Chen, X.: Effect of land-use change and artificial recharge on the groundwater in an arid inland river basin, *Water Resour. Manage.*, 27, 3775–3790. doi:10.1007/s11269-013-0380-6, 2013.
- Liu, Y., Xiao, J., Ju, W., Xu, K., Zhou, Y., and Zhao, Y.: Recent trends in vegetation greenness in China significantly altered annual evapotranspiration and water yield, *Environ. Res. Lett.*, 11, 094010, doi:10.1088/1748-9326/11/9/094010, 2016.

- Locatelli, B., Catterall, C. P., Imbach, P., Kumar, C., Lasco, R., Marín-Spiotta, E., Mercer, B., Powers, J. S., Schwartz, N., and Uriarte, M.: Tropical reforestation and climate change: beyond carbon., *Restor. Ecol.*, 23, 337–343, doi:10.1111/rec.12209, 2015.
- Locatelli, B., Fedele, G., Fayolle, V., and Baglee, A.: Synergies between adaptation and mitigation in climate change finance, *Int. J. Clim. Change Strategies Manage.*, 8, 112–128, doi:10.1108/IJCCSM-07-2014-0088, 2016.
- 5 López-Moreno, J. I., Vicente-Serrano, S. M., Morán-Tejeda, E., Zabalza, J., Lorenzo-Lacruz, J., and García-Ruíz, J. M.: Impact of climate evolution and land-use changes on water yield in the Ebro basin, *Hydrol. Earth Syst. Sci.*, 15, 311–322, doi:10.5194/hess-15-311-2011, 2011.
- MAGRAMA: Cuarto Inventario Forestal Nacional. Comunidad Autónoma del País Vasco / Euskadi. Ed.: Ministerio de  
10 Agricultura, Alimentación y Medio Ambiente, Secretaría General Técnica, Centro de Publicaciones, Madrid. 59 pp. ISBN: 978-84-491-1293-5, 2013.
- Meaurio, M., Zabaleta, A., Boithias, L., Epelde, A. M., Sauvage, S., Sanchez-Perez, J. M., Srinivasan, R., and Antigüedad, I.: Assessing the hydrological response from an ensemble of CMIP5 climate projections in the transition zone of the Atlantic region (Bay of Biscay), *J. Hydrol.*, 548, 46–62, doi:10.1016/j.jhydrol.2017.02.029, 2017.
- 15 Morán-Tejeda, E., Ceballos-Barbancho, A., Llorente-Pinto, J.M., and López-Moreno, J.I.: Land-cover changes and recent hydrological evolution in the Duero Basin (Spain), *Reg. Environ. Change*, 12, 17–33, 2012.
- Morán-Tejeda, E., Zabalza, J., Rahman, K., Gago-Silva, A., Ignacio López-Moreno, J., Vicente-Serrano, S., Lehmann, A., Tague, C. L., and Beniston, M.: Hydrological impacts of climate and land use changes in a mountain watershed: uncertainty estimation based on model comparison, *Ecohydrology*, doi:10.1002/eco1590, 2014.
- 20 Nadal-Romero, E., González-Hidalgo, J. C., Cortesi, N., Desir, G., Gómez, J. A., Lasanta, T., Lucía, A., Marín, C., Martínez-Murillo, J. F., Pacheco, E., Rodríguez-Blanco, M. L., Romero Díaz, A., Ruiz-Sinoga, J. D., Taguas, E. V., Taboada-Castro, M. M., Taboada-Castro, M. T., Úbeda, X., and Zabaleta, A.: Relationship of runoff, erosion and sediment yield to weather types in the Iberian Peninsula. *Geomorphology*, 228, 372–381, doi:10.1016/j.geomorph.2014.09.011, 2015.
- Neary, D. G., Ice, G. G., and Jackson, C. R.: Linkages between forest soils and water quality and quantity, *For. Ecol. Manage.*,  
25 258, 2269–2281, doi:10.1016/j.foreco.2009.05.027, 2009.
- Olden, J. D., and Poff, N. L.: Redundancy and the choice of hydrologic indices for characterizing streamflow regimes. *River Res. Appl.*, 19 (2), 1535–1467, doi:10.1002/rra.700, 2003.
- Price, K.: Effects of watershed topography, soils, land use, and climate on baseflow hydrology in humid regions: a review, *Prog. Phys. Geogr.* 35, 465–492, doi:10.1177/0309133311402714, 2011.
- 30 Rind, D., Goldberg, R., Hansen, J., Rosenzweig, C., and Ruedy, R.: Potential evapotranspiration and the likelihood of future drought., *J. Geophys. Res. Atmos.*, 95, 9983–10004, doi:10.1029/JD095iD07p09983, 1990.
- Ritcher, B. D., Baumgartner, J. V., Powell, J., and Braun, D. P.: A method for assessing hydrologic alteration within ecosystem, *Conserv. Biol.*, 10, 1163–1174, doi.org/10.1046/j.1523-1739.1996.10041163.x, 1996.



- Robinson, M., Cognard-Plancq, A. -L., Cosandey, C., David, J., Durand, P., Führer, H. -W., Hall, R., Hendriques, M. O., Marc, V., McCarthy, R., McDonnell, M., Martin, C., Nisbet, T., O’Dea, P., Rodgers, M., and Zollner, A.: Studies of the impact of forests on peak flows and baseflows: a European perspective, *Forest Ecol. Manage.*, 186 (1–3), 85–97, doi:10.1016/S0378-1127(03)00238-X, 2003.
- 5 Ruiz Urrestarazu, E.: Adaptación y gestión de las medidas agroambientales y de forestación en el País Vasco in Corbera, M. (Ed.) *Cambios en los espacios rurales cantábricos tras la integración de España en la UE*, Santander, Universidad de Cantabria, 1999.
- Schilling, K. E., and Libra, R. D.: Increased baseflow in Iowa over the second half of the 20th century, *J. Am. Water Resour. Assoc.*, 39, 851–860, doi:10.1111/j.1752-1688.2003.tb04410.x, 2003.
- 10 Schirmer, J., and Bull, L.: Assessing the likelihood of widespread landholder adoption of afforestation and reforestation projects, *Global Environ. Change.*, 24, 306–320, doi:10.1016/j.gloenvcha.2013.11.009, 2014.
- Scott, D. F., and Prinsloo, F. W.: Longer-term effects of pine and eucalypt plantations on streamflow, *Water Resour. Res.*, 44, W00A08, doi:10.1029/2007wr006781, 2008.
- Tomer, M. D., and Schilling, K. E.: A simple approach to distinguish land-use and climate change effects on watershed hydrology, *J. Hydrol.*, 376, 24–33, doi:10.1016/j.jhydrol.2009.07.029, 2009.
- 15 Trabucco, A., Zomer, R. J., Bossio, D. A., van Straaten, O., and Verchot, L. V.: Climate change mitigation through afforestation/reforestation: a global analysis of hydrologic impacts with four case studies, *Int. Agric. Ecosyst. Environ.*, 126, 81–97, doi:10.1016/j.agee.2008.01.015, 2008.
- van Dijk, A. I. J. M., and Keenan, R. J.: Planted forests and water in perspective, *Forest Ecol. Manage.*, 251 (1–2), 1–9, doi:10.1016/j.foreco.2007.06.010, 2007.
- 20 Vertessy, R. A., Watson, F.G.R., and O’Sullivan, S. K.: Factors determining relations between stand age and catchment water balance in mountain ash forests. *Forest Ecol. Manage.*, 143, 13–26, doi:10.1016/S0378-1127(00)00501-6, 2001.
- Ward, A. D., and Trimble, S. W.: *Environmental Hydrology*, 2<sup>nd</sup> ed., Lewis Publishers/CRC Press Company, London/New York, p. 472, 2004.
- 25 Zabaleta, A., Antiguada, I., Barrio, I., and Probst, J. -L.: Suspended sediment delivery from small catchments to the Bay of Biscay. What are the controlling factors?, *Earth Surf. Process. Landforms*, 41, 1894–1910, doi: 10.1002/esp.3957, 2016.

## Tables

**Table 1.** Catchment descriptions. Code of the gauging station, catchment name, catchment area, primary land cover types percentages for 2002 (IFN3, 2005) and 2009 (IFN4, 2011) at the 1:25000 scale.

| Code   | Catchment    | Catchment<br>area<br>(km <sup>2</sup> ) | Primary Cover Types (%) |        |           |                  |              |    |           |                  |
|--------|--------------|---|-------------------------|--------|-----------|------------------|--------------|----|-----------|------------------|
|        |              |   | 2002                    |        |           |                  | 2009         |    |           |                  |
|        |              |   | Forest Cover            |        |           | Pasture<br>Cover | Forest Cover |    |           | Pasture<br>Cover |
| Native | Exotic       | <b>Total</b>                            |                         | Native | Exotic    | <b>Total</b>     |              |    |           |                  |
|        | San          |   |                         |        |           |                  |              |    |           |                  |
| A1Z1   | Prudentzio   | 121.78                                  | 21                      | 49     | <b>70</b> | 24               | 21           | 46 | <b>67</b> | 26               |
| A1Z2   | Oñati        | 105.78                                  | 27                      | 46     | <b>73</b> | 25               | 27           | 45 | <b>72</b> | 26               |
| A1Z3   | Urkulu       | 9                                       | 43                      | 14     | <b>57</b> | 42               | 47           | 10 | <b>57</b> | 42               |
| A2Z1   | Aixola       | 5.03                                    | 6                       | 76     | <b>82</b> | 12               | 7            | 73 | <b>80</b> | 15               |
| A3Z1   | Altzola      | 464.25                                  | 19                      | 52     | <b>71</b> | 23               | 20           | 50 | <b>70</b> | 24               |
| B1T1   | Barrendiola  | 3.8                                     | 48                      | 18     | <b>66</b> | 0                | 48           | 18 | <b>66</b> | 0                |
| B1Z1   | Aitzu        | 56.13                                   | 19                      | 56     | <b>75</b> | 18               | 19           | 55 | <b>74</b> | 19               |
| B1Z2   | Ibai-Eder    | 62.73                                   | 25                      | 53     | <b>78</b> | 20               | 25           | 53 | <b>78</b> | 20               |
| B2Z1   | Aizarnazabal | 269.77                                  | 19                      | 50     | <b>69</b> | 26               | 20           | 49 | <b>69</b> | 26               |
| C1P3   | Arriaran     | 2.77                                    | 24                      | 62     | <b>86</b> | 12               | 24           | 62 | <b>86</b> | 12               |
| C1Z2   | Estanda      | 55.02                                   | 16                      | 54     | <b>70</b> | 23               | 17           | 52 | <b>69</b> | 24               |
| C2Z1   | Agauntza     | 69.64                                   | 57                      | 24     | <b>81</b> | 18               | 57           | 23 | <b>80</b> | 18               |
| C5Z1   | Alegia       | 333.34                                  | 30                      | 39     | <b>69</b> | 27               | 30           | 36 | <b>66</b> | 29               |
| C7Z1   | Berastegi    | 33.34                                   | 25                      | 35     | <b>60</b> | 38               | 25           | 34 | <b>59</b> | 37               |
| C8Z1   | Leizaran     | 110.01                                  | 39                      | 39     | <b>78</b> | 20               | 46           | 33 | <b>79</b> | 20               |
| C9Z1   | Lasarte      | 796.5                                   | 32                      | 34     | <b>66</b> | 30               | 33           | 31 | <b>64</b> | 31               |
| D1W1   | Añarbe       | 47.69                                   | 66                      | 19     | <b>85</b> | 15               | 66           | 19 | <b>85</b> | 15               |
| D2W1   | Ereñozu      | 218.42                                  | 48                      | 30     | <b>78</b> | 21               | 50           | 27 | <b>77</b> | 21               |
| E1W1   | Oiartzun     | 56.6                                    | 26                      | 33     | <b>59</b> | 35               | 31           | 28 | <b>59</b> | 35               |
| F1W1   | Endara       | 6.19                                    | 15                      | 53     | <b>68</b> | 32               | 15           | 53 | <b>68</b> | 32               |

Note: Only forest (native and exotic) or pasture land covers are shown. Other types of land cover are not shown as they are

5 usually less than 10 %, except for Barrendiola catchment where about 30 % of the catchment is bare rock.

**Table 2.** Statistics of hydrological indices, land cover types, and precipitation amounts used in this study. ). Statistics of hydrological indices and precipitation amounts were calculated for the entire study period (from 2000–2001 to 2004–2005 and from 2007–2008 to 2011–2012)

|                    | Index                                     | Mean  | s.d.  | Min   | Max    |
|--------------------|---|-------|-------|-------|--------|
| Hydrologic indices | YR, mm                                    | 839   | 320   | 246   | 1873   |
|                    | Y10m, L s <sup>-1</sup> km <sup>-2</sup>  | 4.93  | 4.40  | 0.14  | 28.22  |
|                    | A10m, L s <sup>-1</sup> km <sup>-2</sup>  | 6.90  | 7.75  | 0.28  | 67.48  |
|                    | W10m, L s <sup>-1</sup> km <sup>-2</sup>  | 13.55 | 10.31 | 1.91  | 90.89  |
|                    | Sp10m, L s <sup>-1</sup> km <sup>-2</sup> | 8.42  | 6.63  | 0.34  | 36.18  |
|                    | Su10m, L s <sup>-1</sup> km <sup>-2</sup> | 4.41  | 4.42  | 0.02  | 36.22  |
|                    | Y50m, L s <sup>-1</sup> km <sup>-2</sup>  | 14.68 | 9.72  | 2.71  | 58.98  |
|                    | A50m, L s <sup>-1</sup> km <sup>-2</sup>  | 18.94 | 16.63 | 2.18  | 118.74 |
|                    | W50m, L s <sup>-1</sup> km <sup>-2</sup>  | 27.22 | 15.63 | 5.59  | 125.77 |
|                    | Sp50m, L s <sup>-1</sup> km <sup>-2</sup> | 17.50 | 12.29 | 2.85  | 66.43  |
|                    | Su50m, L s <sup>-1</sup> km <sup>-2</sup> | 6.22  | 6.26  | 0.21  | 49.69  |
|                    | Y90m, L s <sup>-1</sup> km <sup>-2</sup>  | 59.81 | 24.62 | 15.27 | 153.27 |
|                    | A90m, L s <sup>-1</sup> km <sup>-2</sup>  | 74.40 | 45.14 | 7.22  | 217.21 |
|                    | W90m, L s <sup>-1</sup> km <sup>-2</sup>  | 87.18 | 34.28 | 17.38 | 190.39 |
|                    | Sp90m, L s <sup>-1</sup> km <sup>-2</sup> | 49.17 | 24.24 | 7.61  | 113.48 |
|                    | Su90m, L s <sup>-1</sup> km <sup>-2</sup> | 12.54 | 16.09 | 0.8   | 120.83 |
|                    | CVY                                       | 1.54  | 0.42  | 0.63  | 3.02   |
|                    | CVA                                       | 1.40  | 0.59  | 0.17  | 3.08   |
|                    | CVW                                       | 1.11  | 0.41  | 0.15  | 2.44   |
|                    | CVSp                                      | 1.17  | 0.53  | 0.36  | 3.54   |
| CVSu               | 0.79                                      | 0.60  | 0.1   | 3.95  |        |
| skn                | 4.57                                      | 2.00  | 0.92  | 12.43 |        |
| JY10m              | 251                                       | 46    | 52    | 343   |        |
| Land cover         | Forest, %                                 | 72    | 8     | 56    | 85     |
|                    | Native (NAT), %                           | 31    | 15    | 6     | 66     |
|                    | Exotic (EXO), %                           | 41    | 16    | 10    | 76     |
|                    | Pasturelands (PAST), %                    | 23    | 9     | 0     | 42     |
|                    | Others, %                                 | 5     | 7     | 0     | 34     |
| Precipitation      | YP, mm                                    | 1538  | 345   | 958   | 2611   |
|                    | AP + SuP, mm                              | 776   | 228   | 323   | 1681   |
|                    | WP + AP, mm                               | 975   | 253   | 441   | 1874   |
|                    | SpP + WP, mm                              | 767   | 171   | 402   | 1406   |

|               |     |     |     |      |
|---------------|-----|-----|-----|------|
| SuP + SpP, mm | 560 | 179 | 285 | 1146 |
|---------------|-----|-----|-----|------|

\* YR: annual runoff; Y10m, A10m, W10m, Sp10m and Su10m: 10<sup>th</sup> percentile for annual, autumn, winter, spring and summer discharge series; Y50m, A50m, W50m, Sp50m and Su50m: 50<sup>th</sup> percentile for annual, autumn, winter, spring and summer discharge series; Y90m, A90m, W90m, Sp90m and Su90m: 90<sup>th</sup> percentile for annual, autumn, winter, spring and summer discharge series; CVY, CVA, CVW, CVSp and CVSu: coefficient of variation for annual, autumn, winter, spring and summer discharge series; skn: skewnwss of the annual discharge series; JY10m: Julian day of the beginning of the low flow period. YP: annual precipitation amount for the catchment; AP + SuP: summer plus previous autumn precipitation amount for the catchment; WP + AP: winter plus previous autumn precipitation amount for the catchment; SpP + WP: spring plus previous winter precipitation amount for the catchment; SuP + SpP: summer plus previous spring precipitation amount for the catchment. See the text for more information.

**Table 3.** Percentage of different land cover types for each land cover combination. Note that base land cover combination in the text refers to combination (0). The name given to each combination refers to the main land use types considered. EXO = exotic plantation; NAT = native forests; PAST = pasturelands.

| Land use combination | 0<br>EXO | 1<br>EXO+<br>PAST | 2<br>EXO+<br>NAT | 3<br>NAT | 4<br>NAT+<br>PAST | 5<br>EXO+<br>NAT+PAST |
|----------------------|----------|-------------------|------------------|----------|-------------------|-----------------------|
| Exotic (%)           | 76       | 40.8              | 40.8             | 10       | 10                | 40.8                  |
| Native (%)           | 6        | 6                 | 41.2             | 66       | 30.84             | 30.84                 |
| Pasturelands (%)     | 18       | 53.2              | 18               | 24       | 59.16             | 28.36                 |

**Table 4.** Results obtained, from multiple regression models, for alternative land cover combinations in the variation in percentage with respect to the base land cover combination (EXO) in the annual median, high and low flows for low (1<sup>st</sup> quartile) and high (3<sup>rd</sup> quartile) precipitation amounts (see Fig. 2 and Fig. 3).

|                        |        | Low Precipitation (1st quartile)                                 |                                      |           |          |       | High Precipitation (3rd quartile) |  |                                      |       |           |          |       |           |
|------------------------|--------|--|--------------------------------------|-----------|----------|-------|-----------------------------------|--|--------------------------------------|-------|-----------|----------|-------|-----------|
|                        |        | Result for base land cover (L s <sup>-1</sup> km <sup>-2</sup> ) | Differences from base land cover (%) |           |          |       |                                   | Result for base land cover (L s <sup>-1</sup> km <sup>-2</sup> ) | Differences from base land cover (%) |       |           |          |       |           |
| Combination            |        |  | EXO                                  | EXO+ PAST | EXO+ NAT | NAT   | NAT+ PAST                         |  | EXO+ NAT+PAST                        | EXO   | EXO+ PAST | EXO+ NAT | NAT   | NAT+ PAST |
| Hydrologic differences | Annual | Y50m   | 7.81                                 | 44 %      | -15 %    | -18 % | 41 %                              | 2 %  | 14.59                                | 52 %  | 9 %       | 24 %     | 67 %  | 22 %      |
|                        |        | Y90m   | 39.1                                 | 23 %      | 17 %     | 33 %  | 39 %                              | 19 %   | 70.87                                | -11 % | -2 %      | -5 %     | -10 % | -3 %      |
|                        |        | Y10m   | 2.93                                 | -4 %      | -31 %    | -53 % | -27 %                             | -22 %  | 6.25                                 | 45 %  | -9 %      | -8 %     | 46 %  | 7 %       |
|                        | Winter | W90m   | 67.7                                 | -5 %      | 18 %     | 31 %  | 8 %                               | 12 %   | 106.34                               | -7 %  | 2 %       | 3 %      | -6 %  | -0.4 %    |
|                        |        | W10m   | 8.5                                  | 19 %      | 21 %     | 39 %  | 37 %                              | 21 %   | 10.94                                | 42 %  | 40 %      | 75 %     | 77 %  | 41 %      |
|                        | Spring | Sp50m  | 9.95                                 | 55 %      | -32 %    | -45 % | 42 %                              | -6 %   | 15.6                                 | 56 %  | 15 %      | 35 %     | 76 %  | 27 %      |
| Sp10m                  |        | 4.98   | 69 %                                 | -58 %     | -87 %    | 40 %  | -20 %                             | 8.12   | 77 %                                 | 0 %   | 13 %      | 90 %     | 22 %  |           |

5 Note: Only results for regression with statistically significant coefficients for land cover variables and determination coefficient higher than 0.5 are included. Precipitations considered in each case are: 1279 and 1719 for annual low and high precipitations, respectively; 814 and 1147 for winter low and high precipitations, respectively; 646 and 852 for winter low and high precipitations, respectively.

## Figure Captions

**Figure 1.** a) Location and digital terrain model (5x5 m of resolution) of the study area with the main drainage network, location of gauging stations, catchments, and average precipitation values. b) Land cover map of the study area in 2002 (IFN3, 2005) and 2009 (IFN4, 2011) at the 1:25000 scale.

5

**Figure 2.** Expected values of a) annual average flows (Y50m,  $L s^{-1} km^{-2}$ ) and b) average discharge for spring (Sp50m,  $L s^{-1} km^{-2}$ ) for the land cover combinations described in Table 3 and a gradient of precipitation, as a result of the multiple regression models shown in Appendix D (a) and b), respectively). Statistics of the regression model are included. Significance of variables in the model are shown: \*\*\* means significant at the 0.001 level, \*\* at the 0.01, \* at the 0.05 and `` at the 0.1 level.

10

**Figure 3.** Expected values of a) annual high flows (Y90m,  $L s^{-1} km^{-2}$ ) and b) low flows for spring (Sp10m,  $L s^{-1} km^{-2}$ ) for the land cover combinations described in Table 3 and a gradient of precipitation, as a result of the multiple regression models shown in Appendix D (c) and d), respectively). Statistics of the regression model are included. Significance of variables in the model are shown: \*\*\* means significant at the 0.001 level, \*\* at the 0.01, \* at the 0.05 and `` at the 0.1 level.

15

## Appendix

**Appendix A:** Hydrographs for the 20 catchments in Table 1 for the hydrological year 2000–2001. The meaning of some of the calculated hydrological indicators is also indicated in the figure.

5 **Appendix B:** Boxplots representing the statistics of a) annual and b) seasonal precipitation for the 20 studied catchments during the hydrological years considered. A = Autumn, W = Winter, Sp = Spring and Sm = Summer.

**Appendix C:** Linear regressions obtained between a) annual precipitation (YP, mm) and runoff (YR, mm) b) precipitation from spring and winter (SpP + WP) and average discharge in spring (Sp50m) c) precipitation from winter and autumn (WP + AP) and wintertime high flows (W90m) and d) precipitation from spring and winter (SpP + WP) and low flows in spring (Sp10m).

**Appendix D:** Multiple regression models. a) Multiple regression model for annual average flows (Y50m) considering alternative land cover and its interaction with annual precipitation (YP). b) Multiple regression model for average discharge for spring (Sp50m) considering alternative land cover and its interaction with seasonal precipitation (spring + winter precipitation, SpPt). c) Multiple regression model for annual high flows (Y90m) considering alternative land cover and its interaction with annual precipitation (YP). d) Multiple regression model for low flows for spring (Sp10m) considering alternative land cover and its interaction with seasonal precipitation (spring + winter precipitation, SpPt).



Figure 1.

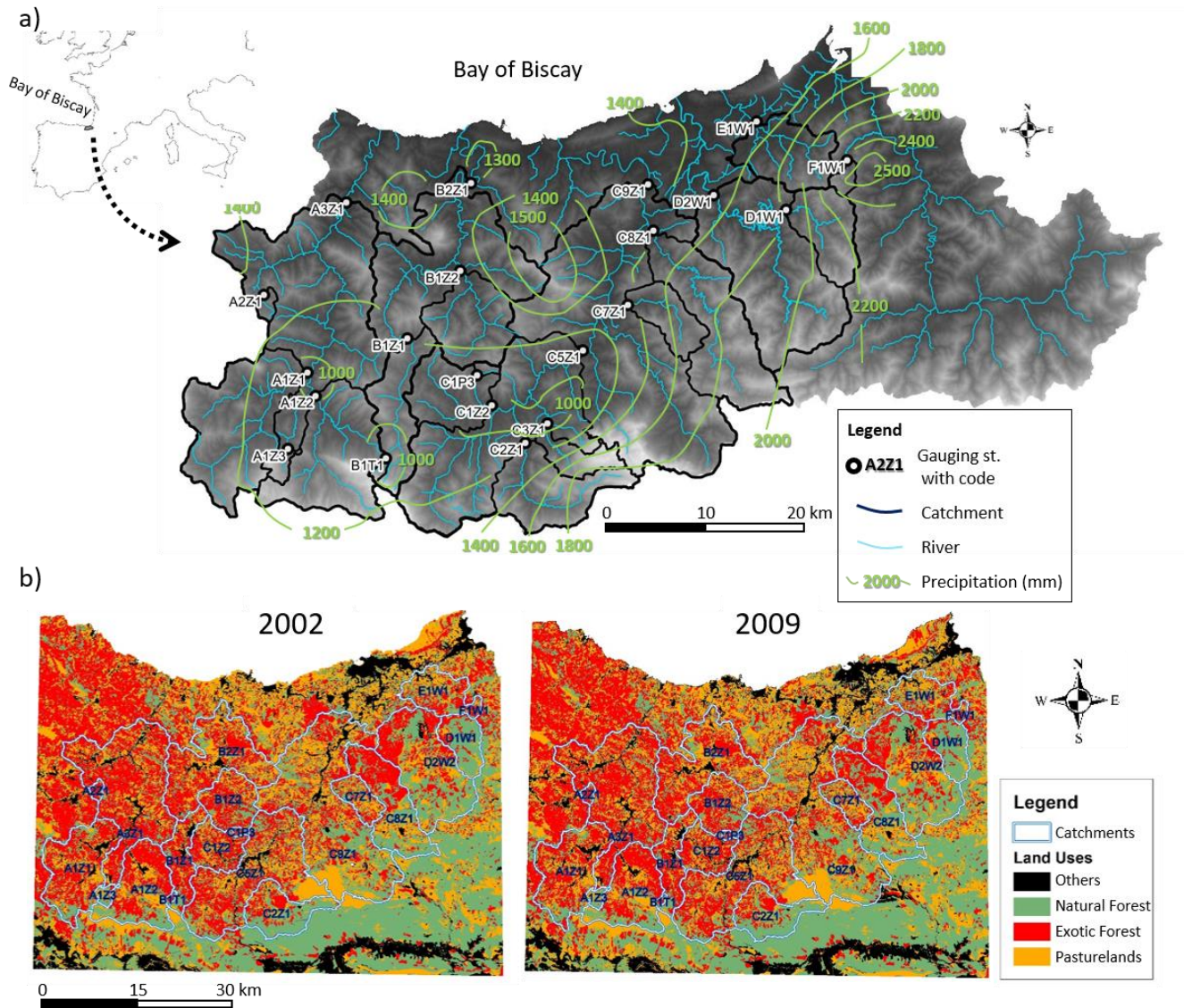


Figure 2.

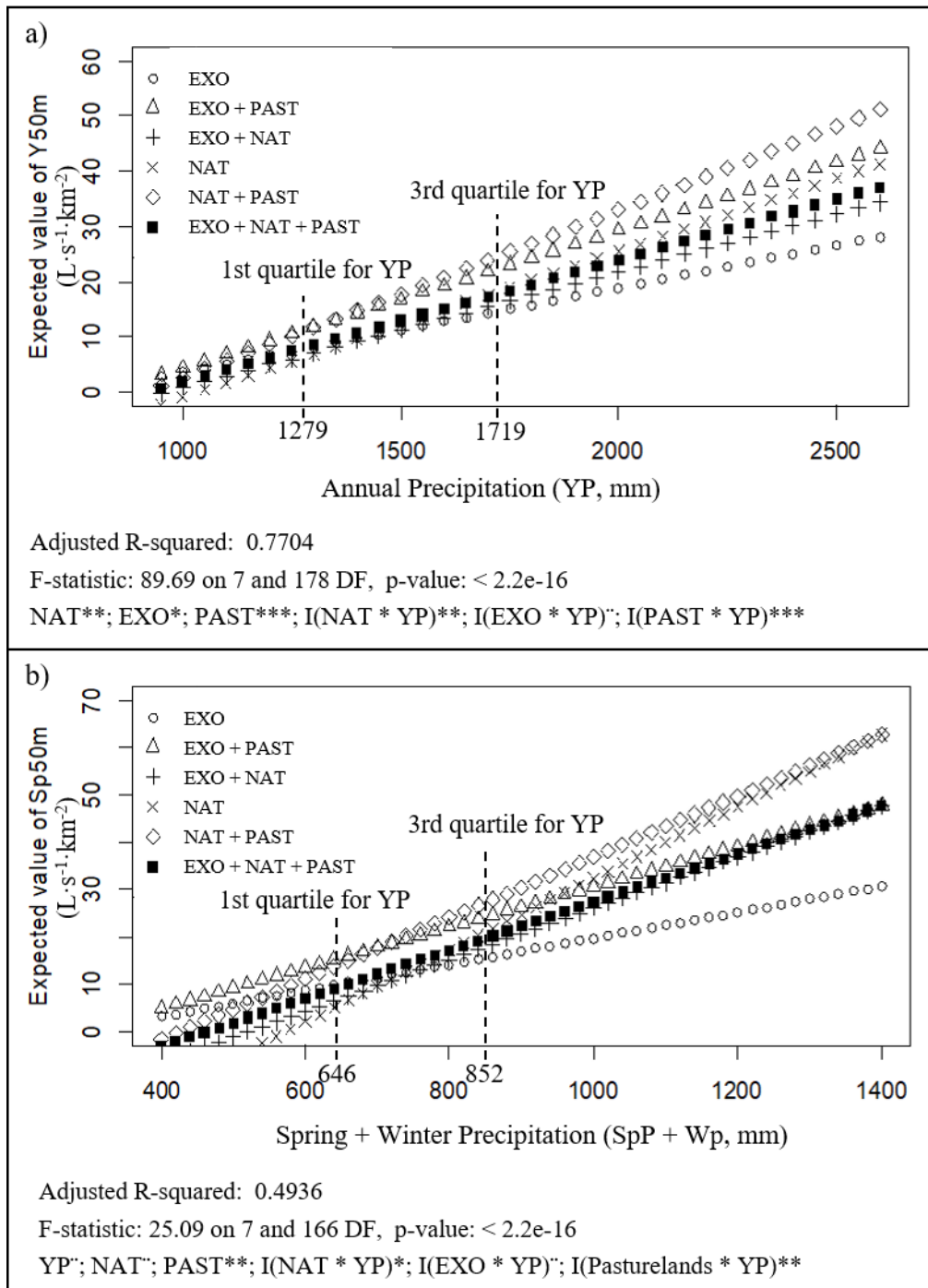
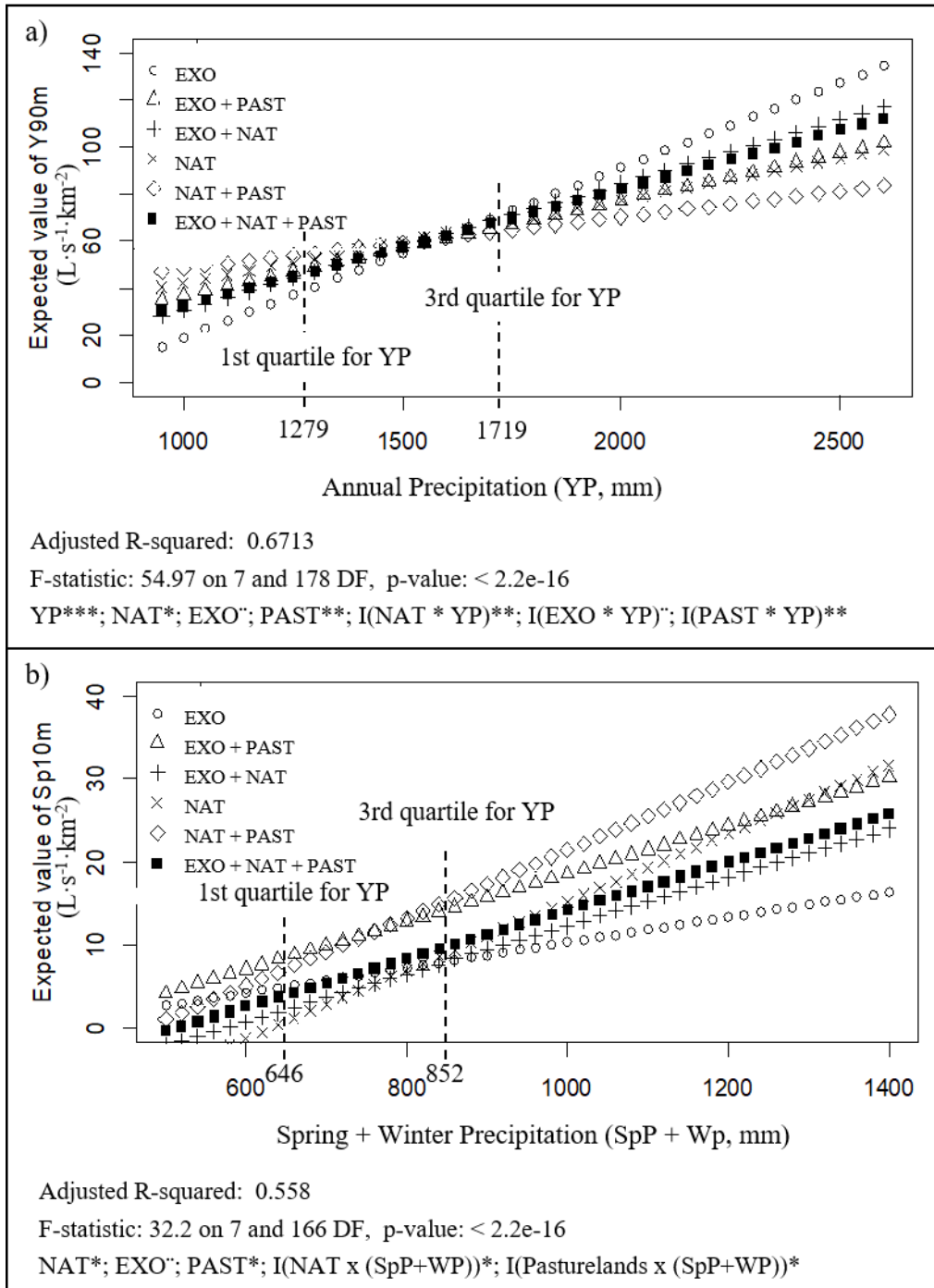
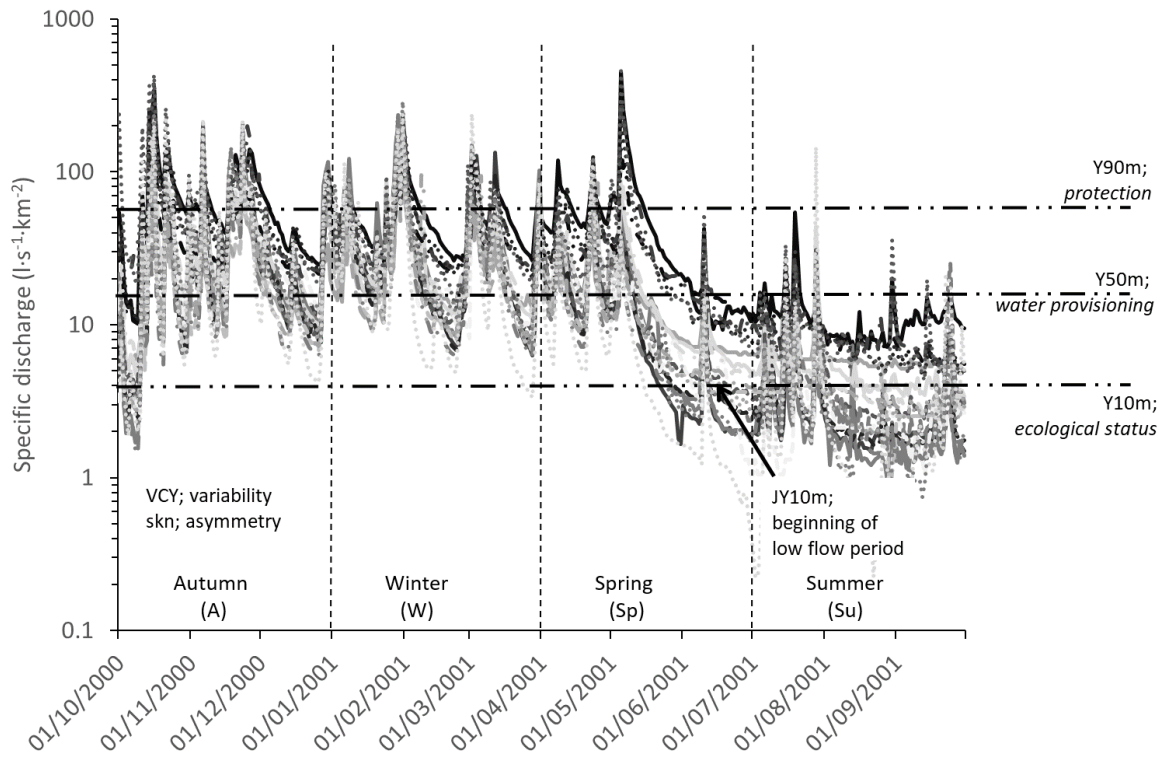


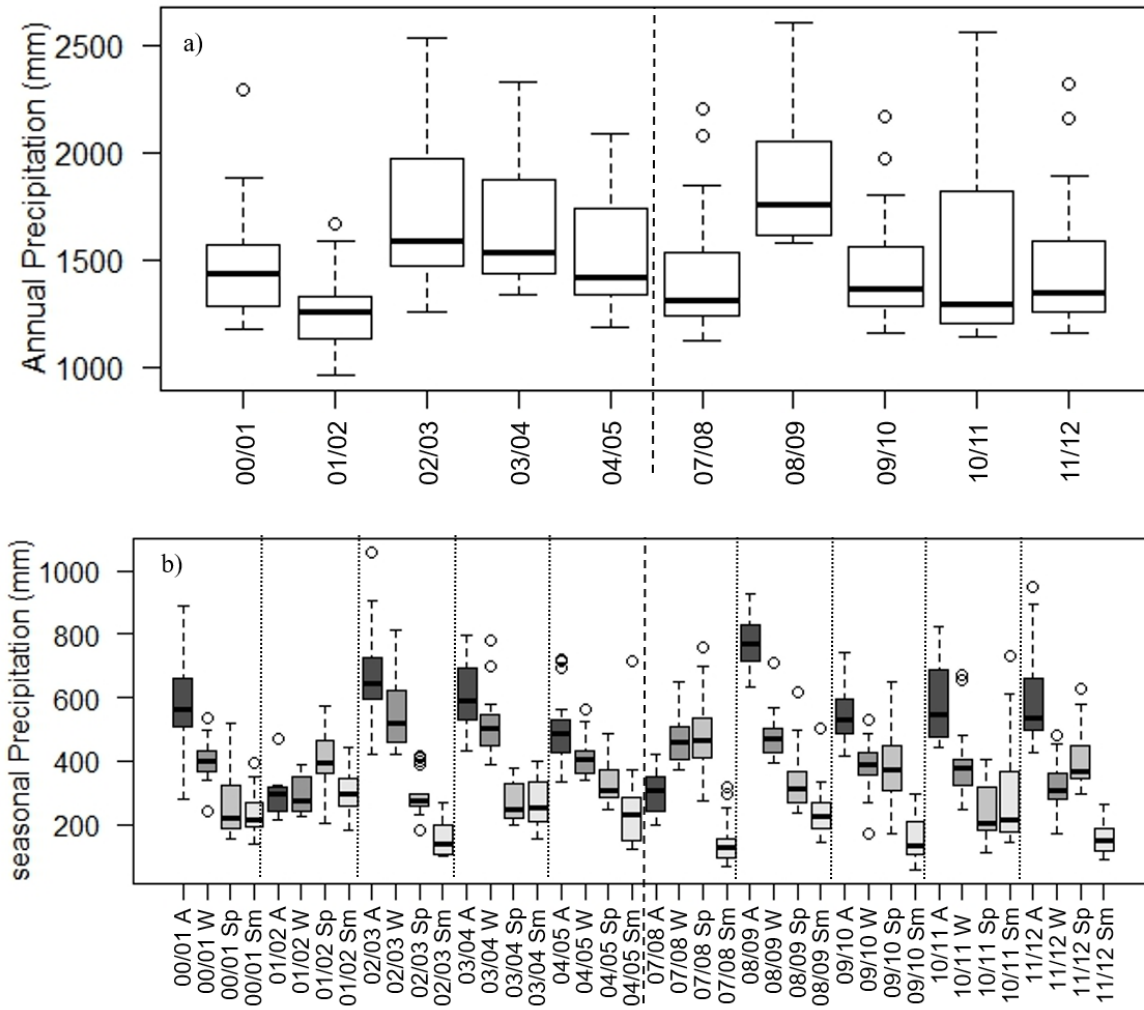
Figure 3.



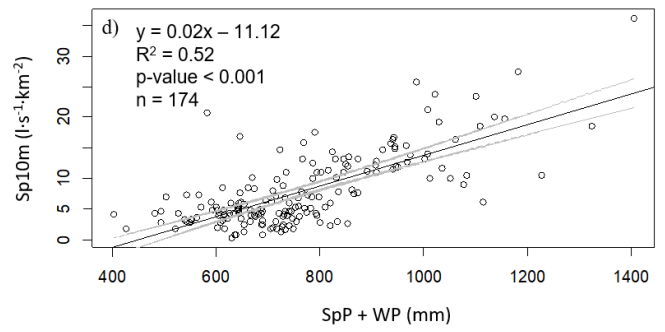
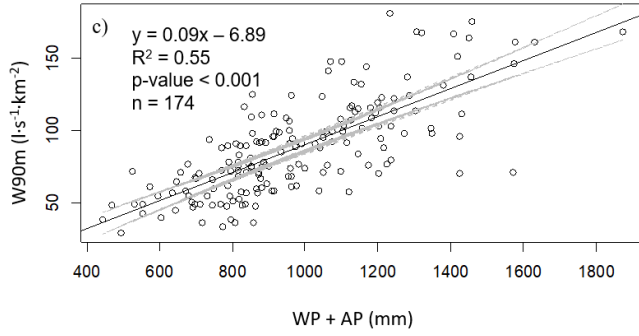
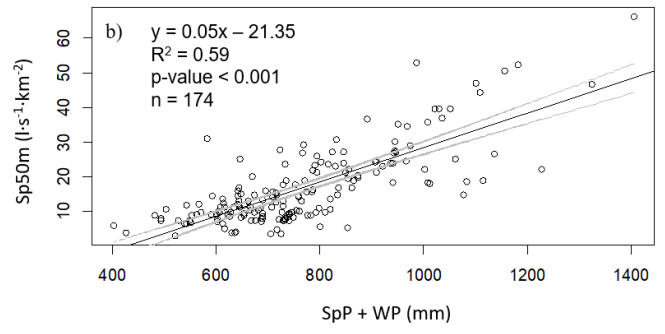
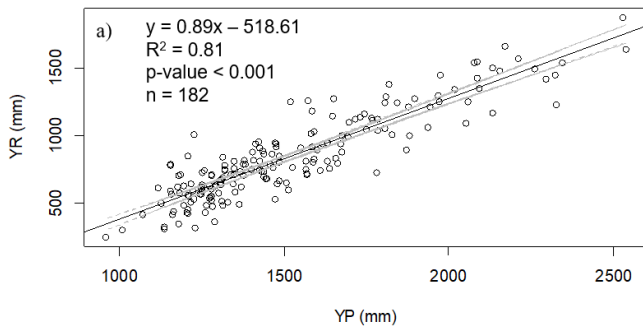
Appendix A:



Appendix B:



### Appendix C:



**Appendix D.**

a) Multiple regression model for annual average flows (Y50m) considering alternative land cover and its interaction with annual precipitation (YP).

| D1                   | Estimate | Std. Error | t value | p value | Significance |
|----------------------|----------|------------|---------|---------|--------------|
| (Intercept)          | 50.67649 | 21.3388    | 2.3749  | 0.01862 | *            |
| YP                   | -0.02049 | 0.0150     | -1.3635 | 0.17446 |              |
| Native               | -0.80268 | 0.2677     | -2.9985 | 0.00310 | **           |
| Exotic               | -0.56718 | 0.2329     | -2.4354 | 0.01586 | *            |
| Pasturelands         | -0.81356 | 0.2181     | -3.7296 | 0.00026 | ***          |
| I(Native * YP)       | 0.00046  | 0.0002     | 2.6403  | 0.00902 | **           |
| I(Exotic *YP)        | 0.00030  | 0.0002     | 1.8558  | 0.06513 | .            |
| I(Pasturelands * YP) | 0.00057  | 0.0002     | 3.4285  | 0.00075 | ***          |

Significance codes: 0 '\*\*\*' 0.001 '\*\*' 0.01 '\*' 0.05 '.' 0.1 ' ' 1

Residual standard error: 3.96 on 178 degrees of freedom  
 Multiple R-squared: 0.7791, Adjusted R-squared: 0.7704  
 F-statistic: 89.69 on 7 and 178 DF, p-value: < 2.2e-16

5

b) Multiple regression model for average discharge for spring (Sp50m) considering alternative land cover and its interaction with seasonal precipitation (spring + winter precipitation, SpPt).

|                        | Estimate | Std. Error | t value | p value | Significance |
|------------------------|----------|------------|---------|---------|--------------|
| (Intercept)            | 84.01452 | 43.1914    | 1.9452  | 0.05345 | .            |
| SpPt (SpP+WP)          | -0.06791 | 0.0586     | -1.1585 | 0.24833 |              |
| Native                 | -1.44268 | 0.5367     | -2.6879 | 0.00792 | **           |
| Exotic                 | -0.86076 | 0.5230     | -1.6457 | 0.10172 |              |
| Pasturelands           | -0.98659 | 0.3952     | -2.4965 | 0.01352 | *            |
| I(Native * SpPt)       | 0.00159  | 0.0007     | 2.3249  | 0.02129 | *            |
| I(Exotic *SpPt)        | 0.00083  | 0.0007     | 1.1590  | 0.24811 |              |
| I(Pasturelands * SpPt) | 0.00127  | 0.0006     | 2.2893  | 0.02332 | *            |

Significance codes: 0 '\*\*\*' 0.001 '\*\*' 0.01 '\*' 0.05 '.' 0.1 ' ' 1

Residual standard error: 6.784 on 166 degrees of freedom  
 Multiple R-squared: 0.6407, Adjusted R-squared: 0.6256  
 F-statistic: 42.29 on 7 and 166 DF, p-value: < 2.2e-16

c) Multiple regression model for annual high flows (Y90m) considering alternative land cover and its interaction with annual precipitation (YP).

10

|                      | Estimate  | Std. Error | t value | p value  | Significance |
|----------------------|-----------|------------|---------|----------|--------------|
| (Intercept)          | -2.86E+02 | 1.06E+02   | -2.707  | 0.007451 | **           |
| YP                   | 2.46E-01  | 7.31E-02   | 3.364   | 0.000941 | ***          |
| Native               | 2.88E+00  | 1.14E+00   | 2.5281  | 0.01234  | *            |
| Exotic               | 2.02E+00  | 1.14E+00   | 1.766   | 0.079105 | .            |
| Pasturelands         | 3.44E+00  | 1.19E+00   | 2.8874  | 0.004367 | **           |
| I(Native * YP)       | -2.07E-03 | 7.54E-04   | -2.7403 | 0.006764 | **           |
| I(Exotic *YP)        | -1.54E-03 | 7.85E-04   | -1.9637 | 0.051117 | .            |
| I(Pasturelands * YP) | -2.45E-03 | 8.50E-04   | -2.8772 | 0.004503 | **           |

Significance codes: 0 '\*\*\*' 0.001 '\*\*' 0.01 '\*' 0.05 '.' 0.1 ' ' 1

Residual standard error: 13.5 on 178 degrees of freedom

Multiple R-squared: 0.6837, Adjusted R-squared: 0.6713

F-statistic: 54.97 on 7 and 178 DF, p-value: < 2.2e-16

d) Multiple regression model for low flows for spring (Sp10m) considering alternative land cover and its interaction with seasonal precipitation (spring + winter precipitation, SpPt).

|                        | Estimate | Std. Error | t value | p value | Significance |
|------------------------|----------|------------|---------|---------|--------------|
| (Intercept)            | 65.57420 | 33.1084    | 1.9806  | 0.04929 | *            |
| SpPt (SpP+WP)          | -0.06361 | 0.0458     | -1.3876 | 0.16712 |              |
| Native                 | -0.99263 | 0.3915     | -2.5358 | 0.01214 | *            |
| Exotic                 | -0.65681 | 0.3678     | -1.7858 | 0.07596 | .            |
| Pasturelands           | -0.80725 | 0.3327     | -2.4266 | 0.01631 | *            |
| I(Native * SpPt)       | 0.00109  | 0.0005     | 2.1315  | 0.03452 | *            |
| I(Exotic *SpPt)        | 0.00070  | 0.0005     | 1.3761  | 0.17065 |              |
| I(Pasturelands * SpPt) | 0.00108  | 0.0005     | 2.2733  | 0.02429 | *            |

Significance codes: 0 '\*\*\*' 0.001 '\*\*' 0.01 '\*' 0.05 '.' 0.1 ' ' 1

Residual standard error: 3.955 on 166 degrees of freedom

Multiple R-squared: 0.5759, Adjusted R-squared: 0.558

F-statistic: 32.2 on 7 and 166 DF, p-value: < 2.2e-16