

Combining continuous spatial and temporal scales for SGD investigations using UAV-based thermal infrared measurements

Ulf Mallast¹, Christian Siebert¹

¹ Helmholtz Centre for Environmental Research -UFZ, T. Lieser Str. 4, Halle 06120, Germany

5 *Correspondence to:* Ulf Mallast (ulf.mallast@ufz.de)

Hereafter included are the requested point-by-point response to the reviewer after the 2nd round (pgs. 2-5) and the marked-up manuscript version (pgs. 6-37).

10 Ulf Mallast

Halle, 20.01.2019

Reply to Reviewer 2:

We want to thank Reviewer 2 again for his careful reading and commenting, which even identifies the last unclear aspects or even format problems or inconsistent use of decimals. The manuscript certainly improved based on your suggestions. In the following we will comment on a point-by-point basis on the given comments (reviewers comments are given in bold and answers are given in italic).

INTRODUCTION:

10 **Authors could add some 2017 and 2018 thermal literature to update the section (there have been several recently published SGD thermal papers)**

We agree and added more recent literature.

15 **Page 2 line 10: i.a. is better as i.e**

If we are not mistaken, it already was i.a.

20 **Page 2 line 14: watch spacing between Boltzman and Law**

It may appear odd, but there was exactly one space between the two words.

STUDY AREA:

25 **Add a reference for the water level drop of the Dead Sea?**

We added a suitable reference.

30 **Table 2 reference appears before Table 1 reference**

We switched the naming of both tables to have a correct sequence

35 **MATERIALS AND METHODS:**

Can refer to Fig. 1b in line 3

We agree and added the reference.

40 **Why reference section 2.3 in line 16?**

Thank you, the reference was wrong due to the renumbering of sections in the previous and now corrected to 3.1.

What is the size of the aluminum reflectors?

5

Although given in Fig. 1 we added the size again in the text.

What would happen if you increase or decrease your subjectively chosen threshold of <0.0109 in line 31? This is something that should be addressed in section 5.4.

10

We did not add a paragraph in section 5.4 but added a footnote to raise awareness that the threshold won't be the same in other settings and must be adapted. Yet, changing the threshold (depending on how much it is changed-we assume only small and reasonable changes of e.g. 0.001) is not too decisive as it just outlines the variance area with low values which match focused SGD spots. Based on these outlines, the transect locations and lengths are defined (in our case automatically) and the following spatiotemporal analyses are performed. If the chosen threshold is higher, the derived area would include further pixels that may not belong to the SGD induced low variance areas and consequently lead to other transects and positions. The same is true if the threshold value is lower the area is reduced and likewise would lead to other transect locations and lengths, but the spatiotemporal pattern would be similar. If the threshold would be a changed in the order of >0.1 the outline would be totally wrong.

15

20

Line 18: is the finally plotted product shown in the middle panels of Figures 5 and 6?

25

It is the middle and right panels. This is why we always refer to time series (middle panel) or temporal autocorrelation (right panel) throughout the text as both refer to the respective panel headings.

RESULTS:

30

Page 9 Lines 19-20: The first focused SGD spot is labeled as 11/101 in Table 1 and Figure 4 but is advertised as 11/103 in the sentence.

We agree. It is a typo in the sentence and changed now to 11/101.

35

Universal change throughout remaining sections: Spatial variations are reported to 1 decimal place in Table 1 but are usually given as whole numbers in the text. Please be consistent with your precision.

40

Precision is changed and consistent now, between all tables and the text.

Line 26: Spot 10/30 has now appeared in the manuscript with no mention in Figure 1 also follow 10/30 with a comma to separate from 11/121.

True, for the geochemical modelling we used data from springs in close proximity of the study area to increase the modelling accuracy. These springs are not shown in Fig. 1. We added a sentence in caption of table 1.

- 5 **Lines 26-28: You have mentioned the low and high values, what is the implication for karst maturity of the intermediate values presented in Table 2 and not mentioned in the text here?**

10 *If we take the extreme values as reference, then the remaining intermediate values indicate in which direction the karstification maturity tends to and thus shows whether or not the karst channel dimension is equivalent to the extremes and what to expect regarding the discharge volumes (larger dimension = higher discharge volumes).*

DISCUSSION:

15

Page 13 Lines 8-10: The authors make a good case for how elliptical spots form, but isn't an alternate explanation an elliptical spring opening. This alternate explanation is supported by the statement on page 14 lines 31-32 that says there is a random conduit/network geometry.

20 *The reviewer's explanation is valid in general; an elliptical form could also be caused by a stretched opening. In this case however, whether it is only one spring or several in line, the lowest variance values would not be at one end of the elliptical surface expression, but in the centre. Thus, we tend to maintain with our previous assumption, that the shape is a reflection of a crossflow influence.*

- 25 **Page 14 Line 1: off should be of**

We disagree, meant is the area that develops due to the discharge off the discharge spot.

- 30 **Page 14 Lines 16-19: I am having a difficult time following this sentence. Please rephrase for clarity.**

We rephrased the admittedly long sentence to add clarity.

Figure 5:

- 35 *Add 20 second significant period to 2nd spot right panel to match other panels of Figures 5 and 6 If I understand coorrectly the reviewer is referring to the one peak that is just at the confidence interval. If so, and speaking based on the value exceeding the threshold we should do it. However, it is only one value instead of several continuous ones, why we refrain of pointing at it. This one value can still be totally random. We marked only those where several continuous values exceed the confidence interval*

40

FIGURES/TABLES:

- 45 **Figure 6: Where are the locations of the diffuse SGD spots relative to Figure 1? I didn't find this information in the text or the caption.**

We agree it is difficult and we did not outline it in any figure directly. We added a sentence in the caption of Fig. 6 stating: Spot locations are outlined in Fig. 1 and Fig.3 indicated by the location of the counter rotating vortex pairs (CVP).

5

Focused SGD 10/30 is in the table but not listed in Figure 1.added a sentence in the caption. Focused SGD 12/381 is in Figure 1 but not listed in the table.

10 *As mentioned before, at the time of the diving campaigns between 2010 and 2012, the intention was to map the occurrence of SGD and sample some of the springs, since there are more than a dozen and we did not have the possibility to sample all. The here presented study covers only a part of this previous investigation and thus only some of the springs. To increase the modelling accuracy we included data of nearby SGD but did not show their location in Fig. 1 or elsewhere. In case of focused SGD 12/381, we mapped the location but did not sample the water. This is why it is included as*

15 *reference but not contained in table 1 nor in the modelling exercise.*

Combining continuous spatial and temporal scales for SGD investigations using UAV-based thermal infrared measurements

Ulf Mallast¹, Christian Siebert¹

5 ¹ Helmholtz Centre for Environmental Research -UFZ, T. Lieser Str. 4, Halle 06120, Germany

Correspondence to: Ulf Mallast (ulf.mallast@ufz.de)

Abstract. Submarine groundwater discharge (SGD) is highly variable in spatial and temporal terms due to the interplay of several terrestrial and marine processes. While discrete in-situ measurements may provide a continuous temporal scale to investigate underlying processes and thus account for temporal heterogeneity, remotely sensed thermal infrared radiation sheds light on the spatial heterogeneity as it provides a continuous spatial scale.

Here we report results of the combination of both the continuous spatial and temporal scales, using the ability of an Unmanned Aerial Vehicle (UAV) to hover above a predefined location, and the continuous recording of thermal radiation of a coastal area at the Dead Sea (Israel). With a flight altitude of 65 m above the water surface resulting in a spatial resolution of 13 cm and a thermal camera (FLIR Tau2) that measures the upwelling long-wave infrared radiation at 4 Hz resolution, we are able to generate a time series of thermal radiation images that allows us to analyse spatiotemporal SGD dynamics.

In turn, focused SGD spots, otherwise being camouflaged by strong lateral flow dynamics, are revealed that may not be observed on single thermal radiation images. The spatiotemporal behaviour of an SGD induced thermal radiation pattern varies in size and over time by up to 155% for focused SGDs and by up to 600% for diffuse SGDs due to different underlying flow dynamics. These flow dynamics even display a short-term periodicity in the order of 20 to 78 sec for diffuse SGD, which we attribute to an interplay between conduit maturity/geometry and wave setup.

1 Introduction

25 Submarine groundwater discharge (SGD) is defined as “any and all flow of water on continental margins from the seabed to the coastal ocean” (Burnett et al., 2003). The definition already implies several proportions of water with different origins contributing to SGD. Apart from recirculated seawater, it is also fresh groundwater of meteoric origin. The relative share of each water contribution depends on terrestrial and marine controls. Recharge amounts, aquifer permeability and hydraulic gradients define the terrestrial groundwater contribution, which may be the major SGD share in areas with high permeability, such as karstic environments. In areas with low hydraulic gradients and low aquifer permeability, recirculated seawater as a

share of SGD predominates. The recirculation is induced by the highly variable hydraulic gradients caused by tidal or lunar cycles, storms, or wave setup. In-situ measurements such as seepage meters, multilevel piezometers, tracers, etc., possess the ability to discriminate between the SGD shares and allow a linkage to the underlying processes, since the investigated temporal scale is continuous and ranges between daily to seasonal cycles (Taniguchi et al., 2003a; Michael et al., 2011). Yet, all of this cannot account for the spatial variability, as the entity and interaction of terrestrial and marine controls lead to a highly variable SGD appearance in terms of discharge type (diffuse vs. focused), temporal discharge behaviour, flow rates, spatial abundance (even over small spatial scales), and mixing (Michael et al., 2003; Taniguchi et al., 2003b; Burnett et al., 2006).

In contrast, remote sensing technology allows identification and quantification of SGD over larger spatial scales without neglecting its spatial and temporal variance, or the need to extrapolate from in-situ measurements. Depending on the intended spatial scale, utilized platforms differ between satellite (spatial coverage >10,000 km²), airplane (spatial coverage >100 km²), and unmanned aerial vehicle (hereafter UAV) systems (spatial coverage >0.1 km²). From these systems the majority of all approaches measure thermal infrared radiation (hereafter thermal radiation/radiances) (i.a. Mejías et al., 2012; Kelly et al., ~~2013~~2018; Mallast et al., 2013b; ~~Schubert et al., 2014~~; Lee et al., 2016).

The principle of using thermal radiation for SGD detection is based on temperature contrasts between SGD water and ambient water at the sea surface. Since the surface temperatures are directly proportional to emitted thermal radiation (see Stefan-Boltzman Law) and assume a rather similar emissivity for water, sea surface temperature contrasts evoke distinguishable thermal radiation patterns or thermal radiation anomalies, which are indicative of SGD. This qualitative approach has been expanded by a few studies that use thermal anomalies to quantify SGD through a relation of anomaly (plume) size to measured or modelled SGD rates (Kelly et al., ~~2013~~2018; Tamborski et al., 2015; Lee et al., 2016). Given a positive buoyancy of less saline groundwater in marine environments, the intriguing simplicity of these approaches is based on the momentum of discharging groundwater (Mallast et al., 2013a) and a potential deflection in the water body due to currents / wave action (Lee et al., 2016) or external forces (e.g. wind) (Lewandowski et al., 2013), and Newton's law of cooling (Vollmer, 2009). While the latter leads to a convective heat transfer between the discharging and the ambient water with exponential adaption behaviour at the fringe of the plume, the momentum and deflections are the forces defining the size and shape of the plume. In turn, the momentum leads to a positive relationship between plume size and discharge rate (Johnson et al., 2008; Mallast et al., 2013a; Lee et al., 2016) for parts of the plume not being deflected and demonstrates the practicability and numerous advantages in terms of spatial continuity. The possible quantification approach however, relies on thermal radiation snapshots recorded at a certain instantaneous time (Kelly et al., ~~2013~~2018; Tamborski et al., 2015).

Thus, in terms of scale, the advantage of remote sensing for SGD investigations is the continuous spatial scale, which allows the derivation of a general picture in regard to SGD abundance and quantity independent of its appearance and spatial

variability. On the other hand, the advantage of in-situ measurements is explicitly the continuous temporal scale permitting a process understanding and elaboration on the drivers.

However, with the advent and the ability of multi-copters as a type of UAV to hover over a predefined location, it becomes possible to combine the continuous spatial and temporal scales in an unrivalled resolution and to investigate the spatiotemporal behaviour of SGD in one context. Here we report the results of such a study that uses a thermal camera system mounted beneath a multi-copter. The multi-copter hovers above a predefined location to i) investigate the spatiotemporal variability of focused and diffuse SGD and ii) to outline additional values of the presented approach. The study is conducted at a site on the hypersaline Dead Sea, at which previously investigated submarine and terrestrial springs emerge. Existing hydraulic gradients in the discharging aquifers and high density differences between ground- and lake water qualify the terminology SGD, which is usually bound to marine environments only.

2 Study area

The study was conducted at a known and pre-investigated SGD site (see section 2.2) at the eastern slope of the sedimentary fan of Wadi Darga, located at the western coast of the Dead Sea (Fig. 1a, 1d and 1e).

2.1 Hydrogeological setting

Discharging groundwater at the study area is replenished in the Judean Mountains either through precipitation or flash floods that infiltrate into the Upper Cretaceous lime- and dolostones of the Judea Group Aquifers (JGA) and flow east towards the Dead Sea Rift (DSR). After passing the transition to the DSR, which is marked by normal faults and block tectonics, fresh groundwater enters the Quaternary fluvio-lacustrine Dead Sea Group (DSG) that is deposited in front of the Cretaceous rocks (Yechieli et al., 2010). The DSG consists of stratified fine-grained lacustrine sediments (clay minerals, aragonite, gypsum, halite), which are intercalated with coarser clastic layers. At wadi outlets, the lacustrine strata are displaced with fluvial fine- to coarse clastic sediments (Yechieli et al., 1995).

Due to the alternations of coarse and fine strata, groundwater flow occurs through separated subaquifers that possess different groundwater ~~level~~levels (Yechieli et al., 2010). In addition, preferential flow paths in the form of dissolution tubes and cavities develop due to dissolution of the evaporitic minerals (Magal et al., 2010; Ionescu et al., 2012). The dissolution process accelerates with the continuous and fast drop of the Dead Sea water level of ~ 1 m per year (Yechieli et al. 2010), which forces the formation of new groundwater flow paths. The resulting, partially karstic flow system in the DSG is highly transient, resulting in immensely variable discharge rates, discharge locations and chemical composition of springs along the lakeshore (Burg et al., 2016). Besides admixing of interstitial brines to the groundwater, the degree of water/rock interaction in the DSG controls the groundwater's composition. Hence, observable large differences in the composition of discharging groundwater, which occur even within the range of a few metres, are an expression of the heterogeneous maturity of the

karst system. The less mature the conduits are the larger is the ratio between wetted soluble surfaces and volume. Consequently, diffuse SGD exhibits a high load of dissolved solids and thus is saline (less mature karst system), while focused SGD is less loaded and exhibits a lower salinity (mature karst system).

2.2 Submarine groundwater discharge and onshore spring characteristics

5 At the investigation site, focused SGD occurrences were mapped in 2011 and 2012 by SCUBA divers and hydrochemically investigated. Based on their findings groundwater emerges from mature karst-like cavities down to depths of 30 m below [the](#) sea surface (Ionescu et al., 2012; Mallast et al., 2014).

From these cavities groundwater emerges as focused SGD. Subsequently, density differences between SGD water (1.00–1.19 g·cm⁻³) and Dead Sea brine (1.234 g·cm⁻³) trigger a continuous positive buoyancy (buoyant jet) of the emerging groundwater towards the lake's surface. Within the water column and alongside the buoyant jet, considerable turbulences develop, entraining ambient Dead Sea brine. Thus, the ascending water represents a mixture of fresh to brackish groundwater and lake brine. Once the ascending mixture reaches the lake's surface, it develops a radially orientated flow away from its jet centre causing a circular-like pattern. These patterns are partially visually observable as shown in Mallast et al. (2014) at the Dead Sea and in various other cases (Swarzenski et al., 2001).

15 Apart from focused SGD, diffuse SGD occurs at the investigation site as well, either in various depths below [the](#) water surface (Ionescu et al., 2012) or at the shoreline. At the study area one diffuse SGD site exists directly at the shoreline (Fig. 1e). The discharge seems to occur over a length of approximately 20-25 m alongshore and was only detectable visually through the occurrence of schlieren in the lake brine. However, low discharge rates in combination with the immediate mixing with the lake brine impede any attempt to sample that water.

20 In order to still be able to compare groundwater characteristics, we sampled five onshore springs (Fig. 1d). All are in close proximity to previously mentioned SGD and to the shoreline, but emerge as focused flow in different elevations of 0.5-10 m above the Dead Sea water level. The water characteristics are shown in Table [21](#).

2.3 Hydrologic and atmospheric setting

According to on-site measurements, SGD water temperatures at the orifices are 21-31.5°C. During the time of investigation the Dead Sea had a skin temperature of ~21°C providing a temperature maximum difference of 10.5°C between groundwater and ambient Dead Sea brine. Wind speeds amounted to 0.87 m·s⁻¹ (±0.16) approaching from SE to E (80°-128°). Occurring waves, which may influence SGD size and shape, had a frequency of 3-7 sec with estimated wave heights <15 cm. During the flight, cloud free conditions and thus homogeneous solar radiation existed, equally reflected at the sea surface throughout the entire covered area.

3. Materials and Methods

The general approach to investigate the spatiotemporal thermal radiation variability induced by SGD consists of hovering with an UAV (multi-copter - model: geo-X8000) (Fig. 1b) above a pre-defined SGD spot (Fig. 1c) over a time period of several minutes. The flight was conducted on 10 Feb 2016 between 12:43 and 12:50pm, with activated image recording between 12:45 to 12:48pm. During that flight the UAV was equipped with a thermal system comprising i) a long-wave infrared camera core (FlirTau2), which is an uncooled VOx Microbolometer with a 19 mm lens and a 640x512 focal plane array (FLIR® Systems (2016)) and ii) a ThermalCapture radiometry module and image grabber (TeAx Technology, 2016). The system senses long-wavelength infrared radiation in the spectral range of 7.5-13.5 μm with a sensitivity of <50 mK. Subsequently, sensed radiation is captured as 14-bit images at a frame rate of 9 Hz, from which only every fifth frame is exportable (approx. 4-5 Hz), deduced after our own tests. The core was calibrated prior to the flight using an internal flat-field-corrector.

The hovering position was at 31.576516N/35.415775E with a flight altitude of 65 m above Dead Sea level. Due to the GPS controlled nature of the UAV, the hovering position displays a certain spatial variability which is according to the flight log ± 1.5 m in horizontal dimension and ± 1.75 m in vertical dimension. Position and altitude were chosen i) according to Israeli regulatory framework and ii) to cover land and water in equal shares. The latter was important for the image registration of each recorded image to a selected reference image (see section 2.3.1) in order to correct the spatial variability of the UAV and the sensor during hovering, and to determine the position accuracy of the image registration, which was based on two aluminium reflectors (35 cm x 70 cm) placed directly on the shore (Fig. 1b and 1c).

3.1 Data processing

Thermal radiance image recording with 4-5 Hz results in a total of 670 images recorded within a time span of 167 sec. Each image displays thermal radiances emitted by the surface. According to the Stefan-Boltzman Law these radiances are directly proportional to the existing surface temperatures and thus are the basis for the present study. Yet, due to the UAV position variability while hovering above the pre-defined flight position, the mapped image footprint is not congruent for each image but varies spatially at the same magnitude as the position variability, which is also described in Holman et al. (2011).

To overcome the varying footprint, we define the first image of the set as reference image and all remaining ones as input images (Fig. 2). Subsequently all input images are automatically co-registered onto the reference image using an intensity based image registration within a Matlab 2016 environment¹. The applied image registration uses a similarity transformation that considers translation, rotation and scaling as possible factors induced by the UAV position variability and thus the non-congruent image footprints. [#This type of registration](#)

¹ The Matlab code used for the present study can be distributed upon request.

was chosen due to the fact that the short-time differences between images would not cause i) nonlinear geometric differences nor ii) a change of intensities, which in the present case, are radiances. Instead, the land and placed reflectors especially represent those rigid parts with similar intensities needed for intensity based image registration (Kim and Fessler, 2004).

- 5 The core of the intensity based image registration consists of comparing an input matrix (reference image) with a transformation matrix (each input image). During an iterative regular step gradient descent optimization, the transformation matrix is transformed incorporating scaling, rotation and translation. The intensities of both, the input and transformation matrices, are compared using a similarity measure (e.g. a mean square metric as in the presented study) with the aim to maximize the similarity between both matrices (Viana et al., 2015). The
10 iterative optimization process continues until the maximum iteration criterion reaches 1000 iterations, or the optimization criterion reaches a Maximum Step Length of $1.0e^{-2}$. This just described image registration process is repeated for all input images.

- To provide a further independent accuracy measure, we use the two previously described aluminium reflectors. Similar to the automatic approach described in Holman et al. (2017) to find GPS targets, we define search
15 windows in the registered input images, looking for the lowest radiance values (=reflector plates). Since the plates represent an area of several connected pixels, we then extract the mass centre of both plates and each image. Comparing the positions of the mass centres of both reflectors in the reference image with each input image yields an independent spatial accuracy measure. The so obtained spatial accuracy of the image registration results in an RMSE of 0.58 pixel (1 pixel = 13 cm), a mean of 0.5 pixel, and a standard deviation of
20 0.3 pixel (see attachment Fig. S 1).

- As a consequence of the image registration process and the transformation of the input matrices, the footprint (covered area) varies. In order to be able to analyse the same covered area, we reduce the image sizes to a common footprint extent represented by all images. The so obtained image size amounts to 561x376 pixels. Onto all co-registered images, we then apply a manually derived land mask, masking out any radiances from
25 land parts. Subsequently, radiance values of the remaining water area is normalized using a z-score normalization to account for potential global solar radiation differences that may occur over the time of investigation and would affect the result. The so-obtained processed image set consists of a 3D data cube (x, y, t) of 670 images (hereafter frames) resembling a total time period of 167 sec, and showing normalized sea surface radiances in x, y dimensions.

30

3.2 Delineation of diffuse and focused SGD spots

Since SGD at the investigated site consists of focused SGD occurring offshore and diffuse SGD occurring at the land-water interface, we use different approaches to extract relevant discharge spots separately to finally pursue the intended temporal investigations. Given the assumption of a thermally stabilized area over time

induced by focused SGD (Mallast et al., 2013b; Siebert et al., 2014) we calculate the thermal variance per pixel of the data cube's temporal dimension t using Matlab 2016. The resulting low variance areas represent focused SGD sites with constant and intense discharge. To extract focused SGD sites, we apply a subjective variance threshold of $<0.019^2$ and eliminate extraction artefacts, using a morphological closing and deletion of objects smaller than 150 pixel to obtain the low variance area representing focused SGD sites only.

In contrast, the observed diffuse SGD site along the shoreline discharges less water with lower discharge rates and thus, has a smaller momentum, which inevitably leads to a smaller, thermally stabilized alongshore area ($\sim 10^1$ - 10^2 cm perpendicular to the coastline). While thermally stabilized, several direct forces such as breaking waves and currents influence the same area and thus the resulting thermal radiation pattern on the sea surface. These factors lead to rather high variances compared to focused SGD flow. Unfortunately, a similar variance can be expected from ambient areas influenced by highly dynamic flow field induced by waves, currents and discharge. As a consequence, we delineate diffuse SGD from a single frame (frame 210 – not shown) in which thermal radiation patterns and maximum spatial extents induced by high discharge rates are unequivocally detectable (a comparable single image is shown in Fig. 3-upper left image). Analogous to the focused SGD sites, we apply a subjective threshold of >2.5 (normalized radiation) to extract discharge induced thermal patterns and eliminate extraction artefacts using a morphological closing to clean extracted pattern objects, followed by the deletion of objects smaller than 150 pixel to focus on larger patterns only.

3.3 Spatiotemporal analyses

We conduct two forms of (spatio)temporal analyses: (i) a spatiotemporal analysis to identify spatial variability of both thermal radiance patterns induced by diffuse and focused SGD and (ii) a periodicity analysis to reveal possible reoccurring temporal discharge patterns. To explore the spatiotemporal behaviour, and within a Matlab 2016 environment, we construct transects across the maximum extent of each extracted SGD spot, as we expect the most pristine patterns there. Along each transect, normalized thermal radiances per frame are extracted, filtered using a 1D 9th-order median filter to reduce the white noise portion, and finally plotted, highlighting the spatiotemporal behaviour for each spot.

For the periodicity analysis we use an autocorrelation function, which measures the self-similarity of a signal (Tzanetakis and Cook, 2002). If discharge occurs regularly, it causes a periodic signal, which is expressed as significant peak (above or below 95% confidence interval) in the autocorrelation function. As we expect the most pristine discharge induced thermal pattern signals for both SGD types at the midpoint of each transect, we pursue the periodicity analysis at the specific transect midpoint pixel for each of the transects.

² Note that the subjective variance threshold is optimal for the present case and will certainly change in other environments. Thus, in order to investigate any spatiotemporal SGD analysis, this threshold needs to be adapted otherwise it would create an erroneous focused SGD outline and hence a wrong focus area.

3.4 Water chemistry and inverse geochemical modelling

To draw conclusions about the karst maturity of the flow net that feeds on- and offshore springs, we investigate the type and intensity of groundwater/rock interaction at each spring based on their on-site and chemical parameters. Physicochemical on-site parameters (temperature, density, pH, electrical conductivity) of all the above mentioned focused SGD as well as onshore springs (see Fig. 1d and 1e) are measured in the field using WTW 350i and Mettler Toledo density meter. The sampling procedure for groundwater samples to analyse the major element concentrations follows the procedure described in detail in Ionescu et al. (2012). Generally, samples for anion and cation analyses are filtered (0.22 μm CA filters), separately filled in HDPE bottles and stored cool. Cation samples are immediately acidified and later analysed applying ICP-AES. Anions are analysed using ion chromatography and bicarbonate by Gran titration (see Table 21).

The individual water/rock interactions, which lead to the chemical composition of the respective groundwaters in the springs, are inversely modelled applying Phreeqc and Pitzer thermodynamic database. We apply the latter due to the high activities in the modelled environment, consisting of a sedimentary saline aquifer body, soaked with interstitial brine, which admixes to the fresh groundwater. On the basis of the abundant easily soluble minerals (halite, aragonite and gypsum), we select reactive solid phases in the sedimentary succession, enable ion exchange on clay minerals, and evaluated modelling results based on the probability and lowest sum of residuals.

4 Results

It is a proven fact that SGD influences the sea surface temperature and thus the thermal radiances, and that it is thoroughly detectable given a sufficient temperature contrast between groundwater and sea/lake water and a certain minimum discharge volume/ and -momentum (Johnson et al., 2008; Lee et al., 2016, Tamborski et al., 2015). Our results confirm this fact as diffuse SGD induces thermal radiance patterns with values >1 (higher temperatures) that are visible in the upper left panel of Fig. 3 and spatially coincide with our field observations. Yet, the single thermal radiance image suggests the diffuse discharge occurs in two distinguishable patterns.

The first pattern is a coastal fringe of 35 m length and of 10 pixel (1.3 m) width, showing elevated normalized thermal radiance (NTR) values >1 . This alongshore distribution exceeds the visual results of ca 20 m by a factor of 1.5 and suggests a homogeneously distributed, low velocity and low rate discharge of warmer groundwater that emerges partially onshore and partially directly at the water/land interface (upper left panel in Fig. 3).

The second, seemingly dominant pattern is characterized by NTR values >1 , but in contrast to the first, it consists of distinctive counter-rotating vortex pair (CVP) flow structures (Cortelezzi and Karagozian, 2001), discernible based on the mushroom shape, with length axes between 20 to 46 pixel (2.6 m-6.0 m). The cause appears to be a focused and lateral jet-like discharge at four locations (upper left panel in Fig. 3). Plumes, caused by both discharge forms, are subsequently deviated towards N-NE.

5 Focused SGD with an expected circular to elliptical shape as observed by Mallast et al. (2014) and Swarzenski et al. (2001), are not unequivocally visible from the single frame (one thermal radiance image) only. At the upper and left ends of the single frame (first frame in Fig. 3), three half-circular patterns with NTR values between -0.6 and 0 foreshadow focused SGD spots, which coincide with in-situ observed and sampled focused SGD spots 11/120, 11/121 and 12/382. However, from the thermal radiation perspective, spatial indications for more than these three SGD-sites are missing.

Given the assumption of SGD to thermally stabilize thermal radiance variation at the sea surface over time, as shown for satellite images (Schubert et al., 2014; Oehler et al., 2017), we integrate several frames (thermal radiance images) to enhance the abovementioned focused SGD spots and to reveal further ones.

10 The thermal radiation variance of 10, 50 and 100 frames (integration of 2.5, 12.5 and 25 sec respectively) already indicates thermally stable (variance values <0.2) and thermally labile areas (variance values ≥ 0.2). However, with larger integration times of 300 and 670 frames (integration of 75 and 176 sec respectively), the three abovementioned focused SGD spots appear, as well as two additional SGD spots in the upper part of the resulting variance image (lower right panel in Fig. 3), which spatially coincide with in-situ observed focused SGD sites 11/101, and 11/102. In the following sections, we focus on the three largely complete focused SGD spots 1 to 3 (Fig. 3). These three focused SGD spots exhibit variance values <0.019 and elliptical (first spot) to circular (second and third spot) shapes at the sea surface underlined by the individual length/width ratios (Fig. 4). The lowest variance values, and therefore the thermally most stable areas are located at the southern end of the first and second SGD spot and on the northern end of the third SGD spot. Thermally indicated surface areas vary 20 between 4.1 and 28.7 m² despite similar spring depths of 13-20 m.

4.1 Spatiotemporal behaviour of discharge induced thermal radiance patterns

While the previous variance analysis highlights thermally stable and labile areas useful for identifying SGD spots, time-specific information on spatiotemporal discharge behaviour cannot be derived. We obtain this information through the introduction of transects (see left column in Figs. 5 and 6) along which we extract 25 radiation values of each frame. The transects are constructed across the maximum spatial extent of each extracted, focused and diffuse SGD spot, as we expect the most pristine temporal patterns representative for each spot to occur here.

4.1.1 Spatiotemporal behaviour of focused SGD spots

30 The middle column of Fig. 5 shows the time series of NTR values along each SGD transect. Furthermore, SGD spot boundaries are indicated (white lines = maximum gradients of each transect profile), which provide an orientation for the spatiotemporal behaviour of each spot. The focus is set on the area in between the boundaries representing the area in which SGD governs the thermal radiation distribution. In the case of the first focused SGD spot that corresponds to sampled spring 11/~~103~~101, the location is rather stable with its centre between transect pixel 18 and 23 (spatial shift of <0.65 m). In contrast, its boundaries are highly dynamic

resulting in a varying distance between 20 and 31 pixels (2.6 to 4.0 m respectively; for 90% of the data) and thus a change of 155% (Table 42). This dynamic partially follows a certain trend during which both boundaries (white lines) show a synchronous directional change over a certain period (e.g. frame 150-400). Within the SGD spot, NTR values peak around the transect centre and decrease towards both boundaries. This peak is higher during the first 300 frames with NTR values of 0.24 and decreases slightly between frames 300 to 500 to values of 0.08 before it increases to values around 0.18 for the remaining frames.

The centre of the second focused SGD spot, which corresponds to sampled spring 12/382, shifts between transect pixel 40 to 45 (<0.65 m), indicating similar stable conditions. The boundary behaviour differs slightly from the first focused SGD spot. The lower boundary is rather stable, fluctuating around transect pixel 70, whereas the upper boundary describes on average a wave-like change between frames 1 and 300 before displaying a stable fluctuation around transect pixel 20. The resulting diameter of the second focused SGD spot is therefore between 43 and 60 pixels (5.59 to 7.8 m; for 90% of the data) and thus shows a change of 139% (Table 42). Compared to the first focused SGD spot, the absolute peak values of the second focused SGD spot of -0.26 and their general trend over time are lower. They display a rather random behaviour over all frames with the exception of frames 485 to 520 during which the peak values (around -0.17) are higher.

The location of the third focused SGD spot, which corresponds to sampled spring 11/102, centres between transect pixel 15 to 20. The spot's boundaries are stable during the first 200 frames, where they display a synchronous directional change similar to the first focused SGD spot. For the remaining frames, the lower boundary is highly dynamic and totally random while the upper is rather stable with less fluctuation until frame 350. The resulting boundary distance within the first 200 frames is between 18 to 21 pixels (2.34 to 2.73 m respectively; for 90% of the data) and thus resembles a change of 116% (Table 42). The peak values of -0.08 to 0.06 resemble those of the first and to a lesser extent those of the second focused SGD spot. Over time, they exhibit a similar random behaviour over all frames with the exception of frames 485 to 520 during which the peak values are higher at 0.06.

4.1.2 Spatiotemporal behaviour of diffuse SGD spots

Analogous to the focused SGD spots, the middle column of Fig. 6 shows time series of the NTR values along the transects of each diffuse SGD spot to illuminate the spatiotemporal discharge behaviour. Apparent for the first, second, and third diffuse SGD spots are higher NTR values > 4 for a constant transect length of 5-8 pixel (0.65-1.02 m) starting at the shoreline. Only the fourth diffuse SGD spot exhibits no constantly elevated NTR values over the entire observation time close to the shoreline. All spots show outburst-like events during which NTR values > 3 occur. Among all, the onsets and influence lengths of these outburst events vary. While for the first spot the average influence length reaches 20 pixels (=2.60 m) for NTR values >3, the average lengths of the second is 33 pixels (=4.29 m). The third has a length of 20 pixels (2.60 m) and the fourth only 7 pixels (0.91 m). Consequently, the percentage change of the influence length axis is between 150% for the first and third diffuse SGD spot, but amounts to 266% for the second spot, and reaches up to 600% for the fourth spot.

4.2 Periodicity analysis

The previous spatiotemporal behaviour already pointed at a certain recurrence pattern of the observed thermal radiation but lacked a distinct statement on whether or not it contains a significant periodicity and thus a dominating force inducing it. In order to provide an unequivocally and temporally pristine discharge signal, we analyse its temporal pattern based on a single pixel of each transect (midpoint of the transect) using a temporal autocorrelation analysis (right column in Figs. 5 and 6 respectively).

4.2.1 Periodicity of focused SGD spots

Temporal autocorrelation of the first focused SGD spot distinctively differs from the second and third focused SGD spots. The first spot shows a small but significant negative autocorrelation of -0.25 between lags (frames) 268 and 367 (64-92 sec) indicating a recurring pattern and hence a certain periodicity (Fig. 5). This observation matches the aforementioned peak value shift from 0.24 to 0.08 at the same frame region. The second focused SGD spot shows a small positive autocorrelation of 0.21 at lag (frame) 80, while remaining peaks vary in both directions, but below the confidence intervals. Both facts are distinctively different from the autocorrelation of the first focused SGD spot, but resemble the autocorrelation function of the third SGD spot, whose peaks are exclusively insignificant and reflect no periodicity indication.

4.2.2 Periodicity of diffuse SGD spots

Time series plots (middle column in Fig. 6) indicate a regular recurrence of thermal radiation values. This behaviour is underlined by the temporal autocorrelation of all diffuse SGD spots, which show a significant temporal autocorrelation that occurs at different lags and with mostly different intensities. While the first diffuse SGD spot exhibits only one significant period at lag 81 (20 sec), the second spot shows two, one at lag 81 and a second one at lag 247 (62 sec). Despite the spatial proximity of ca. 5 m to the first two diffuse SGD spots, the third diffuse SGD spot shows a different temporal autocorrelation with one significant peak at lag 143 (36 sec). Also different is the fourth spot, which exhibits two peaks at lag 198 (50 sec) and lag 314 (78 sec). All plots in the right column contain a reference autocorrelation function of a pixel close to the source point at the shoreline (transect pixel three). This reference shows high-frequency behaviour unlike the temporal, diffuse SGD, induced thermal radiation behaviour described before (except for the last diffuse SGD spot).

4.3 Water chemistry and inverse geochemical modelling

The ~~sampled~~ ~~samples~~ focused on SGD and onshore springs discharge with a temperature between 21 to 31.5°C. Though the groundwater of both focused SGD and onshore springs originates from the freshwater JGA, the springs discharge brackish water with salinities (TDS) ranging between 4.87 g/l and 26.0 g/l with the tendency to be on average less saline onshore (TDS=12.8 g/l) compared to the focused SGD (TDS=20.1 g/l). The inverse

5 geochemical modelling results indicate halite, aragonite and gypsum to be the most important minerals in solution, though ion exchange on clay minerals plays a significant role. Although discharge locations are very close, the amount of dissolved halite (0-0.01 mol/kg H₂O), aragonite (0-0.004 mol/kg H₂O) and gypsum (0-0.02 mol/kg H₂O) vary significantly between the different springs (Table 21). Translated into cavitation rates, emerging groundwater dissolves and relocates about 59.0–1.552.4 cm³ of halite, aragonite and gypsum per cubic metre from the passed branches of the groundwater flow net into the Dead Sea. Following the abovementioned approach, those springs with the lowest water/rock interactions, which consequently emerge from the most mature karst pipes, are springs 09/857, 10/30, 11/121, which all have values <79.8 cm³ of halite, aragonite and gypsum per cubic metre of water. In contrast, springs 09/855, 09/856 or 11/102 possess values >714.7 cm³ of halite, aragonite and gypsum per cubic metre water which proves a higher water/rock interaction and thus intense dissolution activity that can only occur in less mature karst pipes (Table 21). Focused SGD spots reflect values of -696.5 and 749.7 cm³ (first and third spot respectively) and thus a less mature karst system, while the second focused SGD spot has the lowest value of 414.0 cm³ of halite, aragonite and gypsum per cubic meter water and thus emerges from a more mature karst system.

15 5. Discussion

The high spatial and temporal resolutions of the thermal radiation data show a highly dynamic setting with various discharge locations, patterns, and forces. Analysing the spatiotemporal behaviour of each SGD spot independent of its type reveals striking details: i) it enhances focused SGD patterns otherwise being camouflaged by strong lateral flow dynamics and sheds light on crossflow influences, ii) the spatiotemporal behaviour shows a thermal SGD pattern size variation over time of up to 155% for focused SGDs and 600% for diffuse SGDs due to different flow dynamics, and iii) it reveals a periodicity for diffuse SGD. We discuss these aspects in the following sections and outline possible driving forces or causes, and conclude with potentials for and limitations of the presented approach including possible transferability to other locations.

5.1 Enhancing focused SGD

25 Deriving unequivocal SGD indications from single frames such as in Fig. 3 is not trivial, especially in a highly dynamic system as the one presented. For the present case, we suggest the following causes to be relevant:

- (i) lateral flow dynamics induced by diffuse discharge with higher temperatures (see point (ii)) govern the investigated area and superimpose thermal radiance signals from vertical flow of focused SGD as mentioned in Mallast et al. (2013a), and
- 30 (ii) entrainment of ambient water during the turbulent ascent (buoyant jet) of groundwater to the sea surface (Jirka, 2004) leads to a consequential adaption of temperature and thus the emitted thermal radiance,

- (iii) potential groundwater discharge fluctuation with possibly very small to stagnant discharge rates, as described in Ionescu et al. (2012) for the presented site at the moment of recording, which lead to no traceable thermal radiance signal from SGD at the sea surface.

5 However, the abovementioned possible relevant causes are all dynamic in spatial and temporal terms. Thus, accounting for the fact of a thermal stabilization at the sea surface as a consequence of a continuous discharge of equally tempered groundwater (Siebert et al., 2014) reveals thermally stable ~~area~~ areas induced by SGD that might otherwise be undetectable. The thermal stabilization is accompanied by the interplay of fluid movements (lateral vs. vertical flow kinetics) and thus results in developing water surface geometries (wave structures), e.g. at the interface of opposing water flows. Surface geometries have an effect on the recorded thermal radiances due to the directional dependence of the surface emissivity (Norman and Becker, 1995; Cheng and Liang, 2014).
10 Wave fronts, for example, with surfaces being orthogonal to the sensor (0°), would have the highest thermal radiance values. As the angle to the sensor increases, recorded thermal radiances decrease, although the sea surface temperature is the same (Cheng and Liang, 2014). Thus, the temporal effects through thermal stabilization and changing surface geometries as a consequence of flow dynamics are the two governing drivers,
15 which allow easy detection of focused SGD through the integration of thermal radiation over longer time periods. According to our findings, the thermal radiance variance over a period of 25 sec (100 frames) already provides a sufficient basis to outline SGD areas (Fig. 2). Integrating over longer time periods emphasizes SGD areas, which consequently confirms the thermal radiance stabilization over time at the sea surface of a SGD-affected area (Siebert et al., 2014).

20 Apart from enhancing focused SGD occurrences, the shape of the focused SGD variance pattern at the sea surface along with the location of the lowest variance values (area most thermally stable) gives an indication of SGD emergence locations and the deflection of the resulting vertical plume until it reaches the sea surface. None of the three are perfectly circular which would refer to an uninfluenced positive buoyancy of discharging water and a SGD emergence directly beneath the centre of the variance pattern (Jirka, 2004). Instead, they all
25 are more or less elliptical with lowest variance values at the southern ends (first and second focused SGD spot) and at the northern ends (third focused SGD spot). The remarkable elliptical shape of the first focussed SGD spot implies a crossflow from the south causing a northward deflection of the vertical SGD plume and an elliptic shape of the horizontal plume pattern at the sea surface (Akar and Jirka, 1995). Less pronounced elliptical shapes but with the same northward deflection trend exhibit the second and third focused SGD spot. The
30 northward deflection is most likely induced by flow dynamics as a consequence of diffuse SGD. Since the location of the diffuse SGD spots, especially those with distinctively periodic events with higher discharge rates (Fig. 3), is directly SSW and shows the same northward horizontal plume orientation, we suggest this discharge is the driving force for the deflection.

5.2 Spatiotemporal behaviour of SGD patterns

The variance image provides an average representation of all SGD spots, which are especially useful for reliable size/discharge comparison purposes between SGD spots and likewise allow outlining SGD spots. However, as the previous section points out, all are subject to external forces such as currents, waves, and the influence of internal discharge dynamics on resulting pattern shape and size characteristics of the thermal radiance pattern over time.

For focused SGD, the observed thermal radiance pattern sizes (distance between boundaries) over time show a spatial variation between 116% (=2.3 m for the first focused SGD spot) and 155% (=4.0 m for the third focused SGD spot) as shown in Fig. 5. The variance is a result of occurring lateral flow dynamics constantly influencing the pattern on the sea surface. Yet, the influence is anisotropic in space and time as the lateral flow dynamics are dominated by waves coming from the east, the interaction of horizontal SGD plumes on the sea surface (e.g. second and third focused SGD) as described in Teamah and Khairat (2015), but moreover the strong lateral flow dynamics (crossflow) induced by the discharge impulses of diffuse SGD that in the following is deflected to the NE. The interplay and constant temporal changes lead to an asynchronous boundary movement for most of the observed SGD induced thermal radiance patterns that it is only partly changing to a synchronous movement as for the first and third focused SGD spot during the first 200 frames. During this time only one force seems to dominate the dynamic, causing the synchronous behaviour.

The SGD induced thermal radiation pattern size variation is different for the observed diffuse SGD spots. While three out of four spots constantly influence a longshore area of 5-8 pixels (0.65-1.04 m), outburst-like events change the cross-shore influence length between 150-600% and 0.60-4.29 m (Fig. 6). The constant influence reflects a continuous diffuse discharge with lower discharge rates. The latter however shows a focused flow with intermittent higher discharge rates. Higher discharge rates induce a higher momentum and consequentially increase the influenced area off the discharge spot. In turn it reveals that karst conduits exist close to the shoreline and next to diffuse SGD. The intermittency with a seemingly recurring temporal pattern, however, points to a steady interplay of different forces that is the subject of the next section.

5.3 Periodicity of diffuse SGD

For focused SGD spots, we could not reveal a significant periodicity, either because of the limited observation length or because no periodicity exists. For diffuse SGD spots, the temporal autocorrelation analysis reveals significant periodicities. The periodicity of discharge rate events varies significantly among given spots between 20 to 78 sec (right column in Fig. 6). It primarily provides a further example of the high temporal discharge variability over small spatial scales which, normally, is due to tides or wave-setup that change hydrostatic pressure conditions (Taniguchi et al., 2003b; Burnett et al., 2006). For the present case, tidal influences are irrelevant as the tidal cycles do not exist at the study site. Wave influence on the other hand cannot be excluded, per se. However, most likely it is not the main cause since observed wave frequency of 3 to 7 sec

would cause high-frequency discharge intermittency of the same magnitude. Precisely this high frequency is observable in the autocorrelation graphs of Fig. 6 close to the shoreline (transect pixel 3). Thus, the frequency proves the minor wave influence on the main discharge events with an observed frequency that is up to 10 magnitudes larger. Along with the focused discharge nature, it rather points to an interplay between wave-setup and a geometry effect within conduits of groundwater flow as the underlying mechanism as described for karst areas in Smart and Ford (1986). Discharge behaviour in this case depends on the maturity and geometric formation of the conduit network, ~~is therefore~~. Following Surić et al. (2015) the discharge behaviour is highly anisotropic and heterogeneous, and features a rapid flow ~~(Surić et al., 2015)~~. The anisotropic and heterogeneous discharge behaviour is furthermore underlined by the discharge onset and the periodicity that is unequal among the individual spots, even though their spatial location is within 10 m distance (Fig. 3).

According to the modelling results, groundwater passes the DSG through several subaquifers as described in Yechieli et al. (2010), and most probably via conduits, which develop through the fuzzy dissolution of easily soluble minerals that make up large percentages of the sedimentary body. It is further assumed, due to the impregnation of the sediment by Dead Sea brine, that cavitation activity is lower closer and below the fresh/saltwater interface, although it exists and leads to abundant submarine springs. However, groundwater may also reach the Dead Sea through open faults, which may deeply fracture the sedimentary body as a result of active rift tectonics. Further preferential groundwater pathways may also be created through shallow cracks that develop through the relaxation of the sediment due to the gravitational release of interstitial brine.

However, for whatever reason fresh groundwater is allowed to invade the DSG due to the omnipresent abundance of easily soluble minerals, dissolution activities will immediately start and will enlarge hydraulic apertures of the initial pathways through the sedimentary body. Cavitation rates may be dependent on boundary conditions (e.g. supply of fresh water, hydraulic gradient and microbial activity) leading to different degrees of conduit maturity and random conduit/network geometry.

Consequently, it is thoroughly possible that an initial anisotropic flow system is about to develop close to the observed shoreline. In interaction with the wave setup, we suggest that such a randomly developed initial flow system is the cause for the different onsets and influence areas for the observed outburst-like events.

5.4 Potentials, limitations and potential errors

The hovering of the UAV over a predefined location and the sensing of thermal radiation at a rate of 4-5 Hz allows a combination of the continuous temporal with the continuous spatial scale for SGD research. In this context it bears an enormous potential as it is possible to provide detailed and high resolution information on SGD dynamics but also on external forces influencing it. The potential includes the high temporal resolution (sampling intervals) which differs by the order of one magnitude to classical in-situ measurement intervals of 10^1 - 10^2 minutes (Cable et al., 1997; Mulligan and Charette, 2006; Michael et al., 2011), allowing the illumination of short-term discharge dynamics that could not be reflected with classical methods. The potential furthermore

concerns the spatiotemporal continuous characteristic of the presented approach. With the unequivocal indication regarding where diffuse or focused SGD occurs, and where exactly the transition between SGD and ambient fluids is, the indication is that proper sampling sites for each of them could not have been done with a subjective selection of sampling sites. Thus, applying the presented approach before pursuing in-situ sampling (which includes the selection of proper sampling sites and sampling intervals) is undoubtedly advantageous.

The third potential concerns SGD monitoring and especially SGD quantification purposes. Recalling from the introduction, the basis for SGD quantification is the size of thermal radiance patterns (plumes) in most studies (Kelly et al., ~~2013~~2018; Mallast et al., 2013a; Tamborski et al., 2015; Lee et al., 2016). The presented results show a spatial variation of 150-600% which indicates the possible uncertainty that underlies a quantification based on single thermal infrared images. With the presented approach these uncertainties could be specified, which, in turn, increases the explanatory power of the quantification.

Apart from these potentials, the approach bears limitations and potential errors that need to be accounted for, if the presented approach is to transfer to different locations. The first limitation concerns the need for rigid image parts, such as land, to be able to pursue a proper image registration. Equal share of land and water parts, as in the present case, increases the accuracy and thus reduces the potential error due to an erroneous intensity-based image registration, but reduces the investigable area spatially and limits it to areas close to the shoreline. The shoreline-bond could be overcome by using rigidly fixed buoys and mounted aluminium plates on top as ground control points anchored offshore. While the investigable area is maximized, the image registration needs to be changed to a procedure based on control points to determine the image transformation and thus the registration as described, for example, in Holman et al. (2017), since the intensity of an image cannot be taken as the basis.

However, independent of the selected approach and the land/water share, flight altitude and camera lens define the size of the footprint and thus the spatial coverage. Due to regulatory framework, flight altitudes are usually restricted which consequently limits the maximum possible footprint. Thus the restricted flight altitudes represent another spatial limitation of the approach.

The aforementioned spatial limitations are furthermore accompanied by temporal limitations and errors. These temporal limitations are given by the flight times of present-day UAVs that reach up to tens of minutes (Floreano and Wood, 2015). Continuous investigations for several hours, days, or beyond are, to date, impossible. This sort of long-term and continuous investigation for monitoring purposes, for example, could be possible using a thermal camera system fixed to a mast making flight times irrelevant. Despite other factors coming into play with fixed cameras, such as the viewing angle dependency on emissivity (Norman and Becker, 1995) and the addition of a changing solar reflection component to thermal emission during the day vs. solely thermal emission during the night, the potential lies in the generation of a thermal radiation time series and

trend analyses, for example. Similar approaches using fixed video and camera systems, operating in the visible spectrum (RGB), are operational for near-shore monitoring and management purposes (Holman et al., 2003; Taborda and Silva, 2012). Adapting these operational approaches to fixed thermal camera systems would mean overcoming temporal limitations on the presented UAV approach and generating unforeseen potential in SGD research.

Further limitations are sensor-concerned. A geometric error can be introduced by lens characteristics which distort the thermal image. Especially a wide-angle lens produces geometric distortions (Meier et al., 2011; Vidas et al., 2012) that can be corrected in order to achieve an image projection that matches the true projection surface. A further sensor limitation is a possible radiometric error. All uncooled microbolometers, as the one applied, have the disadvantage that a thermal drift could occur (Mesas-Carrascosa et al., 2018). Caused by effects of the ambient temperature on the microbolometer detector housing and the consequential energy dissipation from the housing onto the detector array, the thermal drift leads to a non-uniform influence on the thermal image, which manifests in a vignetting effect with radiance reduction towards the borders of a recorded image relative to its projection centre (Meier et al., 2011). Since it additionally changes with time (Wolf et al., 2016), this drift, especially for long term investigations, needs to be accounted for, otherwise Mesas-Carrascosa et al. (2018) estimate the temperature error to increase by 0.7°C per minute.

The aforementioned limitations are all of technical nature. However, we need to emphasize that natural limitations may also exist that may affect the result. The most prominent factor is the temperature difference between groundwater and ambient water. With a difference approaching 0°C, an unequivocal differentiation is almost impossible, especially if we include entrainment of ambient water and thus the temperature adaption. The higher the difference is, the more likely is the possibility of identifying SGD induced thermal anomalies in single images, but also of using a time-series of thermal radiance images – as in the presented approach. The advantage of time-series data is that the temporal dimension includes dynamics which may enhance subtle temperature differences. These dynamics may be due to waves in which the surface geometries provide the direct indication rather than the surface temperature (recall the directional dependence of the surface emissivity on recorded radiances - see section 5.1). Hence, time series data, whether from an UAV platform or from a mast is thoroughly recommendable.

Further limitations may exist due to parallel existing strong lateral flow dynamics as in the present case. On single thermal radiation images, these dynamics may camouflage further focused SGD sites, especially at sites with low groundwater-ambient water temperature differences. Strong lateral dynamics may also, as in the present case, camouflage any bathymetry effect on thermal radiation images as it is described in Xie et al. (2002). If bathymetry has affected the sea surface temperature, we could detect a gradual decrease in temperature from the shoreline towards the sea centre. The reason that we cannot detect any gradual decrease, apart from the camouflaging lateral flow dynamics, may be the bathymetry itself. While the

bathymetry decreases gradually during the first 30 m until about 10 m, SGD is found at the bottom of steep walls in depths of up to 30 m (Ionescu et al., 2012) in distances of 50 m to the coastline, which is also visible in Fig. 1a. This sudden morphological step may additionally cause the disappearance of the gradual temperature decrease usually triggered by bathymetry. However, we cannot exclude this effect occurring in other places and different settings where, for example, the bathymetry consists of uniform slopes $<5^\circ$. In these occasions, the bathymetry would cause higher sea surface temperatures in summer and lower sea surface temperatures in winter that may be accounted for in the case of SGD detection.

As pointed out, for most technical limitations, solutions and corrections exist to improve and adopt the presented approach independent of the study sites' characteristics. Thus, we propose that the approach is applicable to other areas with diffuse or focused SGD, since the general requirements consist of an UAV with a mounted thermal camera system and rigid areas or fixed points within the covered footprint to allow a proper co-registration of all thermal images. The applicability of the presented approach concerning natural limitations needs to be investigated in the future. However, given a certain discharge rate and sufficient temperature differences between groundwater and ambient water, the suggestion is that time series data of thermal radiance images could prove to be a promising tool for SGD investigations.

6. Conclusion

Hovering with an UAV over a predefined location recording thermal radiances at a temporal resolution of 4-5 Hz is a novel application technique combining continuous spatial and temporal scales. Based on the combination, we enhance focused SGD patterns that are otherwise camouflaged by strong lateral flow dynamics that may not be observed on single thermal radiation images. We furthermore show the spatiotemporal behaviour of a SGD induced thermal radiation pattern to vary in size and over time by up to 155% for focused SGDs and by up to 600% for diffuse SGDs due to different underlying flow dynamics. We want to emphasise this aspect as it is important for SGD monitoring and especially SGD quantification purposes, which rely on single thermal radiation images and thus temporal snapshots that may not provide the entire picture. And lastly, we are able to reveal a short-term periodicity in the order of 20 to 78 sec for diffuse SGD, which we attribute to an interplay between conduit maturity/geometry and wave setup. The observed periodicity differs in the order of a magnitude to classical in-situ measurement intervals, which would not be able to detect the temporal behaviour we observe.

Since SGD, independent of its type, is highly heterogeneous in space and time, as we have also shown in our study, we suggest, where possible, inclusion of the presented approach before any in-situ sampling to identify proper sampling locations and intervals. In this way, SGD investigations, especially in systems with complex flow, will be able to optimize their sampling strategies and possibly improve their results.

Acknowledgements: This work was financed by the DESERVE Virtual Institute, funded by the Helmholtz Association of German Research Centers (VH-VI-527) and a scholarship from the German Federal Ministry of Education and Research (YSEP97). Personal thanks are addressed to Yossi Yeichieli and Gideon Baer (both Geological Survey of Israel) for the kind support, warm welcome, and unconditional assistance before and during the exchange of UM, including the logistical help. Meteorological Data were provided by KIT (Jutta Metzger). This manuscript has benefited from the efforts, insightful comments and additions of two anonymous reviewers to whom we are eternally grateful.

References

- 10 Akar, P. J., and Jirka, G. H.: Buoyant spreading processes in pollutant transport and mixing part 2: Upstream spreading in weak ambient current, *Journal of Hydraulic Research*, 33, 87-100, 1995.
- Burg, A., Yeichieli, Y., and Galili, U.: Response of a coastal hydrogeological system to a rapid decline in sea level; the case of Zuqim springs – The largest discharge area along the Dead Sea coast, *Journal of Hydrology*, 536, 222-235, <https://doi.org/10.1016/j.jhydrol.2016.02.039>, 2016.
- 15 Burnett, W. C., Aggarwal, P. K., Aureli, A., Bokuniewicz, H., Cable, J. E., Charette, M. A., Kontar, E., Krupa, S., Kulkarni, K. M., Loveless, A., Moore, W. S., Oberdorfer, J. A., Oliveira, J., Ozyurt, N., Povinec, P., Privitera, A. M. G., Rajar, R., Ramessur, R. T., Scholten, J., Stieglitz, T., Taniguchi, M., and Turner, J. V.: Quantifying submarine groundwater discharge in the coastal zone via multiple methods, *Science of The Total Environment*, 367, 498-543, [10.1016/j.scitotenv.2006.05.009](https://doi.org/10.1016/j.scitotenv.2006.05.009), 2006.
- 20 Cable, J., Burnett, W., Chanton, J., Corbett, D., and Cable, P.: Field evaluation of seepage meters in the coastal marine environment, *Estuarine, Coastal and Shelf Science*, 45, 367-375, 1997.
- Cheng, J., and Liang, S.: Effects of Thermal-Infrared Emissivity Directionality on Surface Broadband Emissivity and Longwave Net Radiation Estimation, *IEEE Geoscience and Remote Sensing Letters*, 11, 499-503, [10.1109/LGRS.2013.2270293](https://doi.org/10.1109/LGRS.2013.2270293), 2014.
- 25 Cortelezzi, L., and Karagozian, A. R.: On the formation of the counter-rotating vortex pair in transverse jets, *Journal of Fluid Mechanics*, 446, 347-373, 2001.
- Floreano, D., and Wood, R. J.: Science, technology and the future of small autonomous drones, *Nature*, 521, 460, [10.1038/nature14542](https://doi.org/10.1038/nature14542), 2015.
- Holman, R., Stanley, J., and Ozkan-Haller, T.: Applying video sensor networks to nearshore environment monitoring, *IEEE Pervasive Computing*, 2, 14-21, 2003.
- 30

- FLIR® Systems: Tau® 2 Uncooled Cores: <http://www.flir.com/cores/display/?id=54717>, access: 16.12.2016, 2016.
- Ionescu, D., Siebert, C., Polerecky, L., Munwes, Y. Y., Lott, C., Häusler, S., Bižić-Ionescu, M., Quast, C., Peplies, J., Glöckner, F. O., Ramette, A., Rödiger, T., Dittmar, T., Oren, A., Geyer, S., Stärk, H.-J., Sauter, M., Licha, T.,
5 Laronne, J. B., and de Beer, D.: Microbial and Chemical Characterization of Underwater Fresh Water Springs in the Dead Sea, PLoS ONE, 7, e38319, 10.1371/journal.pone.0038319, 2012.
- Holman, R. A., Holland, K. T., Lalejini, D. M., and Spansel, S. D.: Surf zone characterization from Unmanned Aerial Vehicle imagery, Ocean Dynamics, 61, 1927-1935, 10.1007/s10236-011-0447-y, 2011.
- Holman, R. A., Brodie, K. L., and Spore, N. J.: Surf Zone Characterization Using a Small Quadcopter: Technical
10 Issues and Procedures, IEEE Transactions on Geoscience and Remote Sensing, 55, 2017-2027, 10.1109/TGRS.2016.2635120, 2017.
- Jirka, G. H.: Integral model for turbulent buoyant jets in unbounded stratified flows. Part I: Single round jet, Environmental Fluid Mechanics, 4, 1-56, 2004.
- Johnson, A. G., Glenn, C. R., Burnett, W. C., Peterson, R. N., and Lucey, P. G.: Aerial infrared imaging reveals
15 large nutrient-rich groundwater inputs to the ocean, Geophysical Research Letters, 35, L15606 15601-15606, 10.1029/2008gl034574, 2008.
- Kelly, J. L., Dulai, H., Glenn, C. R., and Lucey, P. G.: High-resolution Integration of aerial infrared mapping of thermography and in situ radon-222 to investigate submarine groundwater discharge to the coastal ocean Pearl Harbor, Hawaii, USA, Limnology and Oceanography: Methods, 11, 262-277, 10.4319/lom.2013.11.262, 2013, 2018.
20
- Kim, J., and Fessler, J. A.: Intensity-based image registration using robust correlation coefficients, IEEE transactions on medical imaging, 23, 1430-1444, 2004.
- Lee, E., Yoon, H., Hyun, S. P., Burnett, W. C., Koh, D. C., Ha, K., Kim, D. j., Kim, Y., and Kang, K. m.: Unmanned
25 aerial vehicles (UAVs)-based thermal infrared (TIR) mapping, a novel approach to assess groundwater discharge into the coastal zone, Limnology and Oceanography: Methods, 14, 725-735, 10.1002/lom3.10132, 2016.
- Lewandowski, J., Meinikmann, K., Ruhtz, T., Pöschke, F., and Kirillin, G.: Localization of lacustrine groundwater discharge (LGD) by airborne measurement of thermal infrared radiation, Remote Sensing of Environment, 138, 119-125, 2013.
- Magal, E., Weisbrod, N., Yakirevich, A., Kurtzman, D., and Yechieli, Y.: Line-Source Multi-Tracer Test for
30 Assessing High Groundwater Velocity, Ground Water, 48, 892-897, 10.1111/j.1745-6584.2010.00707.x, 2010.

- Mallast, U., Schwonke, F., Gloaguen, R., Geyer, S., Sauter, M., and Siebert, C.: Airborne Thermal Data Identifies Groundwater Discharge at the North-Western Coast of the Dead Sea, *Remote Sensing*, 5, 6361, 2013a.
- Mallast, U., Siebert, C., Wagner, B., Sauter, M., Gloaguen, R., Geyer, S., and Merz, R.: Localisation and temporal variability of groundwater discharge into the Dead Sea using thermal satellite data, *Environmental Earth Sciences*, 1-17, 10.1007/s12665-013-2371-6, 2013b.
- Mallast, U., Gloaguen, R., Friesen, J., Rödiger, T., Geyer, S., Merz, R., and Siebert, C.: How to identify groundwater-caused thermal anomalies in lakes based on multi-temporal satellite data in semi-arid regions, *Hydrol. Earth Syst. Sci.*, 18, 2773-2787, 10.5194/hess-18-2773-2014, 2014.
- Meier, F., Scherer, D., Richters, J., and Christen, A.: Atmospheric correction of thermal-infrared imagery of the 3-D urban environment acquired in oblique viewing geometry, *Atmos. Meas. Tech.*, 4, 909-922, 10.5194/amt-4-909-2011, 2011.
- Mejías, M., Ballesteros, B. J., Antón-Pacheco, C., Domínguez, J. A., Garcia-Orellana, J., Garcia-Solsona, E., and Masqué, P.: Methodological study of submarine groundwater discharge from a karstic aquifer in the Western Mediterranean Sea, *Journal of Hydrology*, 464-465, 27-40, 10.1016/j.jhydrol.2012.06.020, 2012.
- Mesas-Carrascosa, F.-J., Pérez-Porras, F., Meroño de Larriva, J., Mena Frau, C., Agüera-Vega, F., Carvajal-Ramírez, F., Martínez-Carricondo, P., and García-Ferrer, A.: Drift Correction of Lightweight Microbolometer Thermal Sensors On-Board Unmanned Aerial Vehicles, *Remote Sensing*, 10, 615, 2018.
- Michael, H. A., Lubetsky, J. S., and Harvey, C. F.: Characterizing submarine groundwater discharge: a seepage meter study in Waquoit Bay, Massachusetts, *Geophysical Research Letters*, 30, 2003.
- Michael, H. A., Charette, M. A., and Harvey, C. F.: Patterns and variability of groundwater flow and radium activity at the coast: A case study from Waquoit Bay, Massachusetts, *Marine Chemistry*, 127, 100-114, <http://dx.doi.org/10.1016/j.marchem.2011.08.001>, 2011.
- Mulligan, A. E., and Charette, M. A.: Intercomparison of submarine groundwater discharge estimates from a sandy unconfined aquifer, *Journal of Hydrology*, 327, 411-425, 2006.
- Norman, J. M., and Becker, F.: Terminology in thermal infrared remote sensing of natural surfaces, *Remote Sensing Reviews*, 12, 159-173, 10.1080/02757259509532284, 1995.
- Oehler, T., Eiche, E., Putra, D., Adyasari, D., Hennig, H., Mallast, U., and Moosdorf, N.: Timing of land-ocean groundwater nutrient fluxes from a tropical karstic region (southern Java, Indonesia), *Hydrol. Earth Syst. Sci. Discuss.*, 2017, 1-18, 10.5194/hess-2017-621, 2017.

- Schubert, M., Scholten, J., Schmidt, A., Comanducci, J. F., Pham, M. K., Mallast, U., and Knoeller, K.: Submarine Groundwater Discharge at a Single Spot Location: Evaluation of Different Detection Approaches, *Water*, 6, 584-601, 2014.
- 5 Siebert, C., Rödiger, T., Mallast, U., Gräbe, A., Guttman, J., Laronne, J. B., Storz-Peretz, Y., Greenman, A., Salameh, E., and Al-Raggad, M.: Challenges to estimate surface-and groundwater flow in arid regions: The Dead Sea catchment, *Science of the Total Environment*, 485, 828-841, 2014.
- Smart, C., and Ford, D.: Structure and function of a conduit aquifer, *Canadian Journal of Earth Sciences*, 23, 919-929, 1986.
- 10 Surić, M., Lončarić, R., Buzjak, N., Schultz, S. T., Šangulin, J., Maldini, K., and Tomas, D.: Influence of submarine groundwater discharge on seawater properties in Rovanjaska-Modrič karst region (Croatia), *Environmental Earth Sciences*, 74, 5625-5638, 10.1007/s12665-015-4577-2, 2015.
- Swarzenski, P. W., Reich, C. D., Spechler, R. M., Kindinger, J. L., and Moore, W. S.: Using multiple geochemical tracers to characterize the hydrogeology of the submarine spring off Crescent Beach, Florida, *Chemical Geology*, 179, 187-202, [https://doi.org/10.1016/S0009-2541\(01\)00322-9](https://doi.org/10.1016/S0009-2541(01)00322-9), 2001.
- 15 Taborda, R., and Silva, A.: COSMOS: A lightweight coastal video monitoring system, *Computers & geosciences*, 49, 248-255, 2012.
- Tamborski, J. J., Rogers, A. D., Bokuniewicz, H. J., Cochran, J. K., and Young, C. R.: Identification and quantification of diffuse fresh submarine groundwater discharge via airborne thermal infrared remote sensing, *Remote Sensing of Environment*, 171, 202-217, <http://dx.doi.org/10.1016/j.rse.2015.10.010>, 2015.
- 20 Taniguchi, M., Burnett, W. C., Cable, J. E., and Turner, J. V.: Assessment methodologies for submarine groundwater discharge, in: *Land and Marine Hydrogeology*, edited by: Taniguchi, M., Wang, K., and Gamo, T., Elsevier, Amsterdam, 1-23, 2003a.
- 25 Taniguchi, M., Burnett, W. C., Smith, C. F., Paulsen, R. J., O'Rourke, D., Krupa, S. L., and Christoff, J. L.: Spatial and temporal distributions of submarine groundwater discharge rates obtained from various types of seepage meters at a site in the Northeastern Gulf of Mexico, *Biogeochemistry*, 66, 35-53, 10.1023/B:BIOG.0000006090.25949.8d, 2003b.
- TeAx Technology: Thermal Capture <http://thermalcapture.com/category/products/recordingsolutions/>, access: 16.12.2016, 2016.
- 30 Tzanetakis, G., and Cook, P.: Musical genre classification of audio signals, *IEEE Transactions on speech and audio processing*, 10, 293-302, 2002.

Vollmer, M.: Newton's law of cooling revisited, *European Journal of Physics*, 30, 1063, 2009.

Viana, I., Orteu, J.-J., Cornille, N., and Bugarin, F.: Inspection of aeronautical mechanical parts with a pan-tilt-zoom camera: an approach guided by the computer-aided design model, *Journal of Electronic Imaging*, 24, 061118, 2015.

- 5 Vidas, S., Lakemond, R., Denman, S., Fookes, C., Sridharan, S., and Wark, T.: A mask-based approach for the geometric calibration of thermal-infrared cameras, *IEEE Transactions on Instrumentation and Measurement*, 61, 1625-1635, 2012.

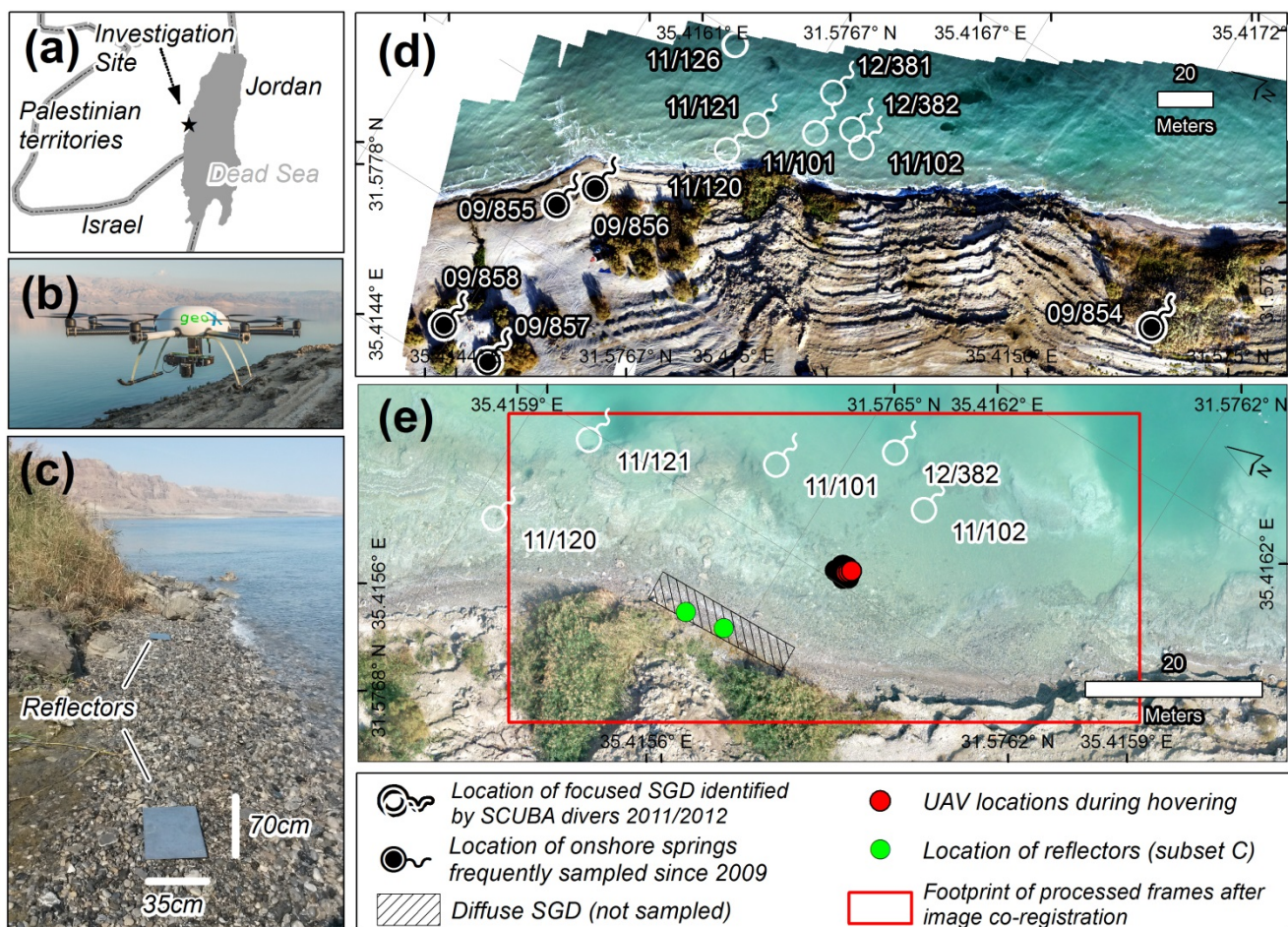
Wolf, A., Pezoa, J. E., and Figueroa, M.: Modeling and Compensating Temperature-Dependent Non-Uniformity Noise in IR Microbolometer Cameras, *Sensors (Basel, Switzerland)*, 16, 1121, 10.3390/s16071121, 2016.

- 10 Xie, S.-P., Hafner, J., Tanimoto, Y., Liu, W. T., Tokinaga, H., and Xu, H.: Bathymetric effect on the winter sea surface temperature and climate of the Yellow and East China Seas, *Geophysical Research Letters*, 29, 81-81-81-84, doi:10.1029/2002GL015884, 2002.

Yecheili, Y., Ronen, D., Berkowitz, B., Dershowitz, W. S., and Hadad, A.: Aquifer Characteristics Derived From the Interaction Between Water Levels of a Terminal Lake (Dead Sea) and an Adjacent Aquifer, *Water Resources*

- 15 *Research*, 31, 893-902, 10.1029/94wr03154, 1995.

Yecheili, Y., Shalev, E., Wollman, S., Kiro, Y., and Kafri, U.: Response of the Mediterranean and Dead Sea coastal aquifers to sea level variations, *Water Resources Research*, 46, W12550 12551-12511, 10.1029/2009wr008708, 2010.



5 Figure 1: Location of the study area in at the Dead Sea (A), photo of the UAV used during the study (B), photo of both reflectors at the covered coastline section (C), distribution of focused SGD spots identified and sampled by divers in the years 2011 and 2012, and onshore springs which have been sampled frequently since 2009 (D), and aerial photograph from 10 February 2016 at 12:11pm local time of the covered area along with UAV positions during hovering, location of reflectors, the footprint of the processed frames after co-registration described in section 2.3 and locations of ~~observe~~observed diffuse SGD (E).

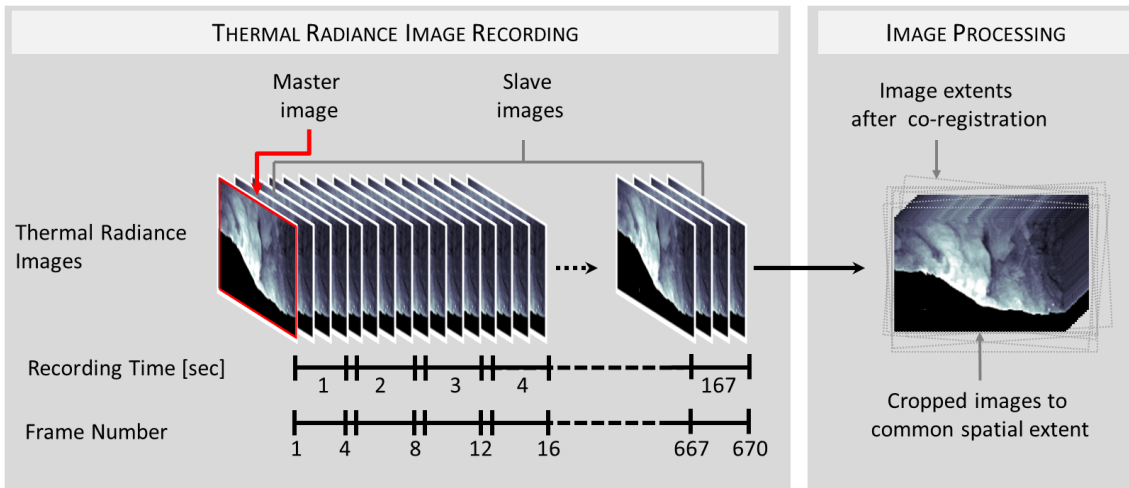
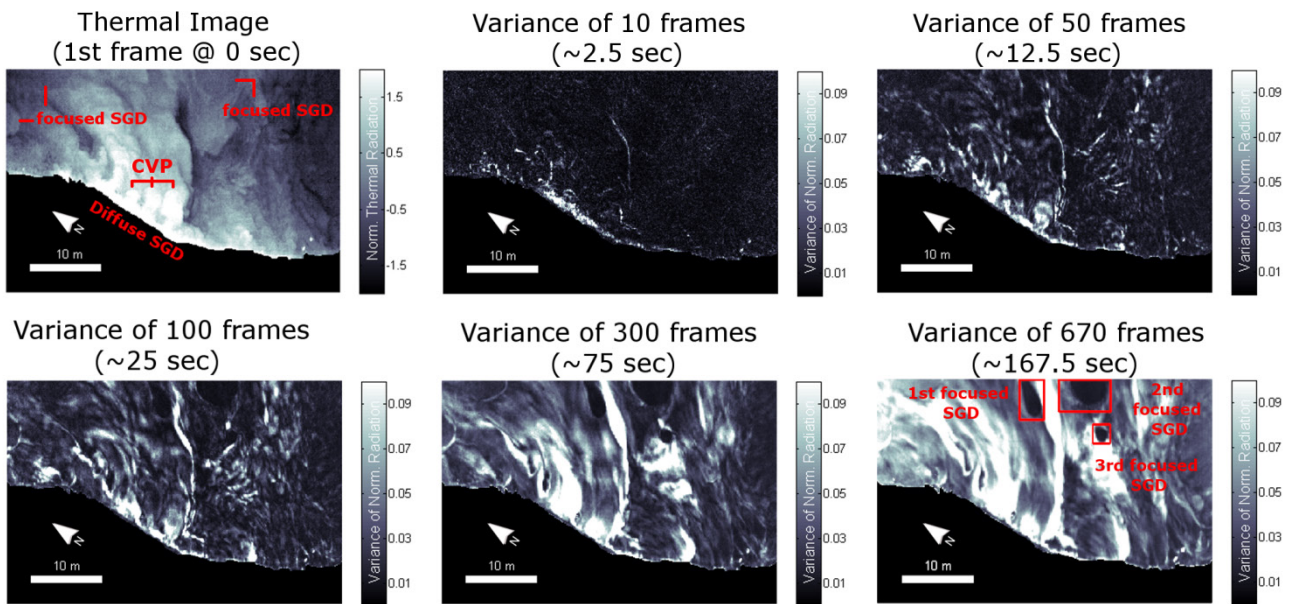


Figure 2: Graphic illustration of image recording and image pre-processing applied during the presented approach.



5 Figure 3: Variance of normalized thermal radiances over time starting with a normalized thermal radiance image (first frame) showing ambiguous evidence of focused SGD spots, but distinct evidence of diffuse SGD and counter rotating vortex pairs (CVP). The latter serves as an indication of a focused flow within the diffuse SGD area (upper left panel). The following panels show the integration of 10, 50, 100, 300, and 670 frames as variance per pixel. The final image (lower right panel) shows three delineated focused SGD spots (red boxes) indicated through variance values <0.019 .

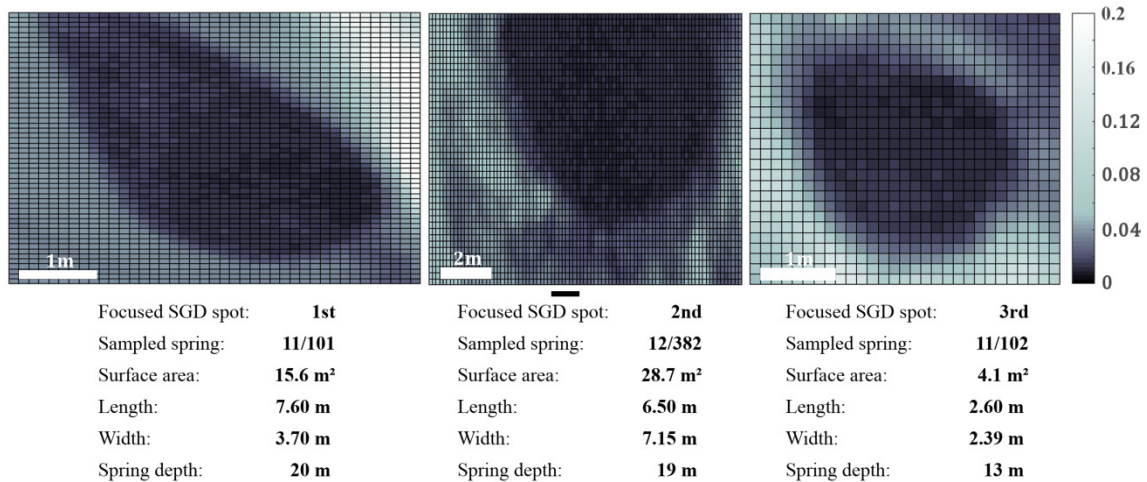
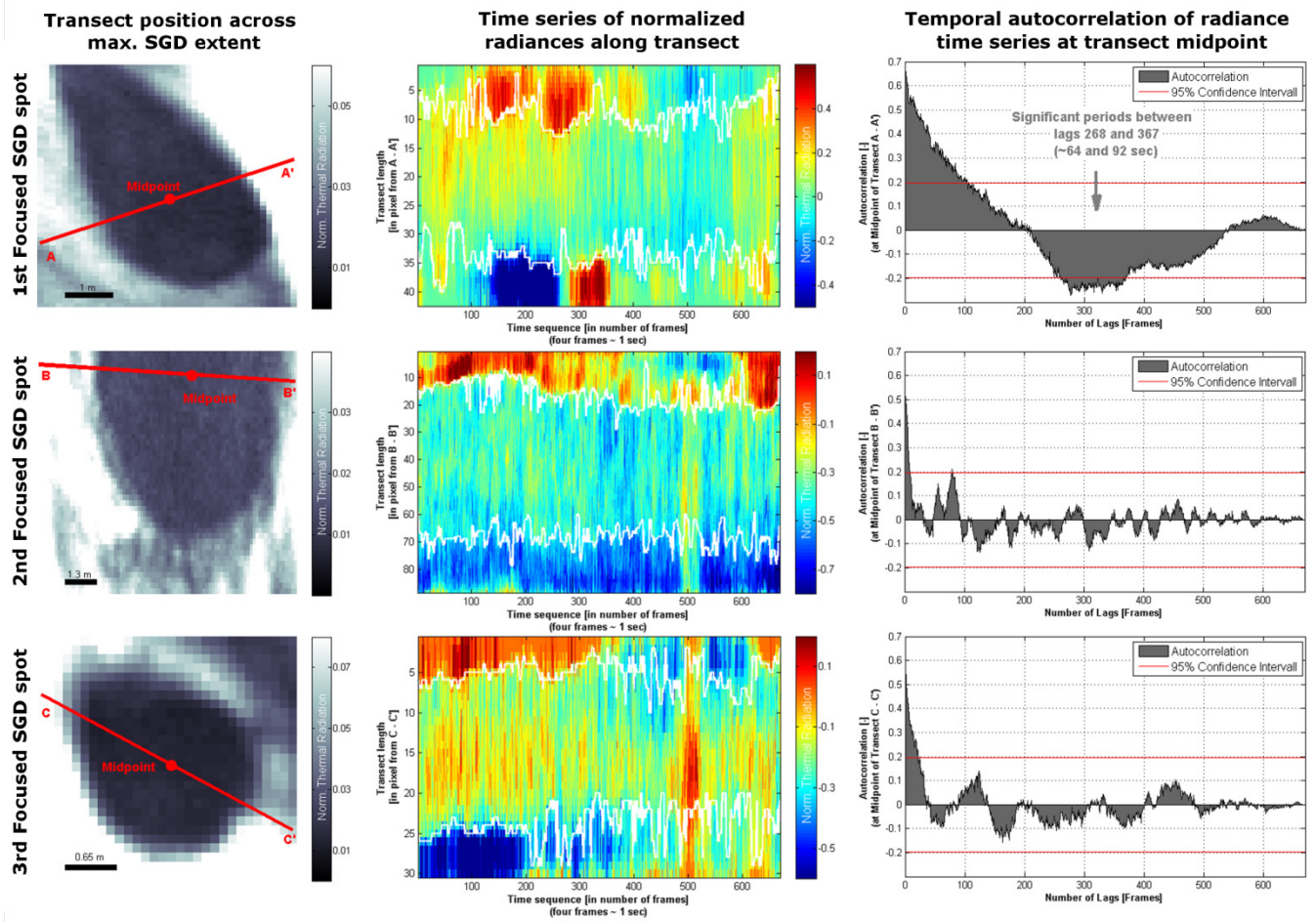
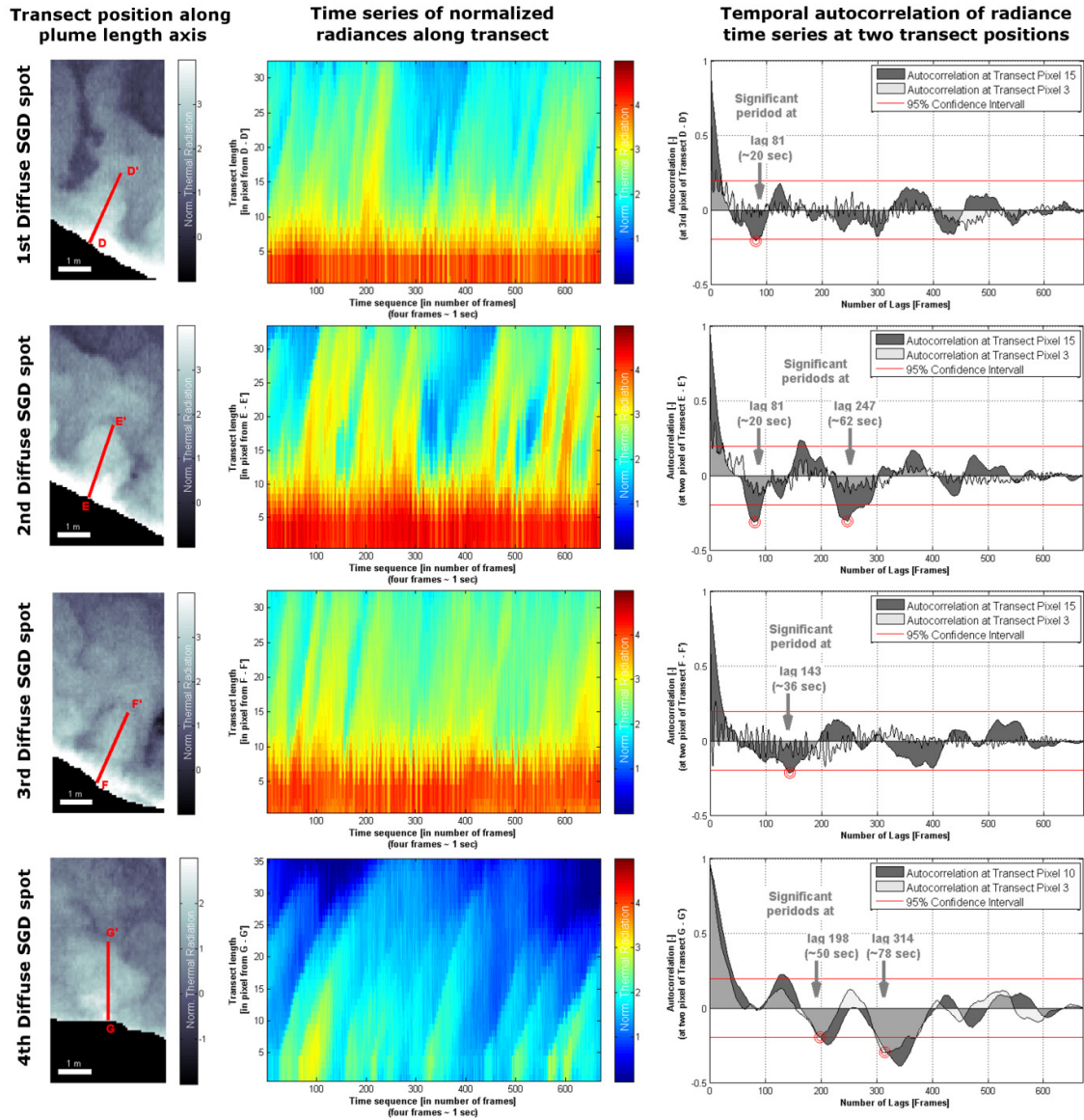


Figure 4: Spatial characteristics of the presented focused SGD spots and their spatial correspondence of sampled submarine springs during previous campaigns.



5 Figure 5: Analyses of spatiotemporal behavior and potential periodicity of SGD spots are presented. The first column shows transects across the maximum extent and midpoint position of SGD spot (subsets correspond to the red boxes shown in Fig. 3; note that the spatial scale varies between each spot indicated through the scale bar at the lower left of each subset). The middle column shows the normalized thermal radiances (NTR) values along transects over time. The white lines indicate the boundary of the focused SGD spots. The third column shows the temporal autocorrelation of the NTR values along the entire time series obtained at the midpoint of transect as described in section 2 to detect possible periodicities.



5 **Figure 6: Analyses of spatiotemporal behavior and potential periodicity of diffuse SGD spots are presented. Spot locations are outlined in Fig. 1 and Fig.3 indicated by the location of the counter rotating vortex pairs (CVP).** The first column shows transects across the maximum extent and midpoint position of diffuse SGD spots (note that the spatial scale varies between each spot indicated through the scale bar at the lower left of each subset). The middle column shows the normalized thermal radiance (NTR) values along transects over time. The third column shows the temporal autocorrelation of NTR values along the entire time series obtained at the midpoint of the transect. Those points reflect the most unaltered discharge signals (the larger value). As reference, we show the third transect pixel (close to the shoreline) as well in order to outline the wave influence on the periodicity.

Table 1: ~~Summary of values characterizing the spatiotemporal behaviour of each focused and diffuse SGD spot~~

	SGD spot	Corresponds to sampled spring	Spatial variation* [in %]	Peak Values** (standard deviation)	Significant Periodicity	Significant Period [in sec]
focused	1st	11/101	155.0	0.08—0.24 (0.11)***	Yes	64-92
	2nd	12/382	139.5	-0.17—0.26 (0.09)***	Yes	20
	3rd	11/102	116.7	-0.08—0.06 (0.07)***	No	-
diffuse	1	-	150.0	2.99—4.52 (0.22)***	Yes	20
	2	-	266.0	3.54-4.71 (0.17)***	Yes	20, 62
	3	-	150.0	3.31-4.36 (0.17)***	Yes	36
	4	-	600.0	1.37-3.17 (0.39)***	Yes	50, 78

~~* For 90% of the data~~

~~** Mean of the maximum values per frame over time~~

~~*** P value of <0.001 according to a Wilcoxon rank sum test, testing the significance of the peak values against non peak values~~

5 **Table 2:** Water chemistry of all sampled focused SGD and onshore springs, (some springs are located next to the study area and not shown in Fig.1), along with the ~~result~~ **results** from the inverse geochemical modelling and the volumetric calculation. Note that the volumetric calculation is based on the molar volume of halite (29.24 cm³/mol), aragonite (34.17 cm³/mol) and gypsum (74.29 cm³/mol). Also note that the information given here represents a summary of the most important information. Full details are given in Tables S2 in the supplementary material.

	Analytical Results				Modelling Results				Volumetric Calculation			
	T [°C]	pH [-]	TDS [g/l]	Density [g/cm ³]	Interstitial Brine [kg]	Halite [mol/kgw]	Aragonite [mol/kgw]	Gypsum [mol/kg w]	Halite [cm ³ /m ³ H ₂ O]	Aragonite [cm ³ /m ³ H ₂ O]	Gypsum [cm ³ /m ³ H ₂ O]	Sum
Interstitial Brine												
	35.6	5.38	345	1.23								
Onshore Springs												
09/854	27.9	7.20	7.3	1.00	0.012	0.0123	0.0017	0.0017	359.5	59.5	125.7	544.7
09/855	28.5	7.12	26.0	1.00	0.049	0	0.0017	0.0201	0	59.4	1493.0	1552.4
09/856	28.1	7.16	15.6	1.00	0.028	0	0.0019	0.0087	0	65.3	649.4	714.7
09/857	27.6	7.11	21.2	1.00	0.039	0	0.0017	0	0	59.0	0.0	59.0
09/858	27.6	7.48	6.4	1.00	0.011	0.0071	0.0020	0.0016	208.3	69.5	119.8	397.6

Focused SGD

11/120	29. 6	7.2 5	15. 8	1.00	0.030	0	0.0025	0.0071	0	85.5	527.1	612.6
10/30	28. 0	6.7 5	9.5	1.00	0.201	0	0	0.0011	0	0	79.8	79.8
12/382	31. 5	7.2 7	8.7	1.00	0.015	0.0056	0.0021	0.0024	163.4	73.3	177.3	414.0
11/126	30. 0	7.3 7	4.9	1.00	0.008	0.0051	0.0021	0.0012	150.0	71.6	88.0	309.6
11/101	24. 0	7.1 6	12. 8	1.00	0.022	0.0109	0.0036	0.0034	319.3	122.3	254.8	696.5
11/102	26. 6	7.2 4	13. 9	1.00	0.025	0.0125	0.0032	0.0037	365.6	110.3	273.8	749.7
11/121	21. 0	7.0 8	24. 8	1.00	0.048	0	0.0018	0	0	62.4	0	62.4

Table 2: Summary of values characterizing the spatiotemporal behaviour of each focused and diffuse SGD spot

	<u>SGD spot</u>	<u>Corresponds to sampled spring</u>	<u>Spatial variation* [in %]</u>	<u>Peak Values** (standard deviation)</u>	<u>Significant Periodicity</u>	<u>Significant Period [in sec]</u>
<u>focused</u>	<u>1st</u>	<u>11/101</u>	<u>155</u>	<u>0.08 - 0.24 (0.11)***</u>	<u>Yes</u>	<u>64-92</u>
	<u>2nd</u>	<u>12/382</u>	<u>139</u>	<u>-0.17- -0.26 (0.09)***</u>	<u>Yes</u>	<u>20</u>
	<u>3rd</u>	<u>11/102</u>	<u>116</u>	<u>-0.08 - 0.06 (0.07)***</u>	<u>No</u>	<u>-</u>
<u>diffuse</u>	<u>1</u>	<u>-</u>	<u>150</u>	<u>2.99 – 4.52 (0.22)***</u>	<u>Yes</u>	<u>20</u>
	<u>2</u>	<u>-</u>	<u>266</u>	<u>3.54-4.71 (0.17)***</u>	<u>Yes</u>	<u>20, 62</u>
	<u>3</u>	<u>-</u>	<u>150</u>	<u>3.31-4.36 (0.17)***</u>	<u>Yes</u>	<u>36</u>
	<u>4</u>	<u>-</u>	<u>600</u>	<u>1.37-3.17 (0.39)***</u>	<u>Yes</u>	<u>50, 78</u>

* For 90% of the data

** Mean of the maximum values per frame over time

*** P-value of <0.001 according to a Wilcoxon rank sum test, testing the significance of the peak values against non-peak values