

# Developing a GIS-based water poverty and rainwater harvesting suitability maps for domestic use in the Dead Sea region (West Bank, Palestine)

Sameer M. Shadeed<sup>1</sup>, Tariq G. Judeh<sup>1</sup>, Mohammad N. Almasri<sup>2</sup>

<sup>1</sup>Water and Environmental Studies Institute, An-Najah National University, Nablus, West Bank, Palestine

<sup>2</sup>Civil Engineering Department, An-Najah National University, Nablus, West Bank, Palestine

Correspondence to: Sameer M. Shadeed ([sshadeed@najah.edu](mailto:sshadeed@najah.edu))

**Abstract.** In the arid region of Dead Sea, water shortage and the inability to satisfy the increasing domestic water demand threatens the sustainable development. In such situations, domestic rainwater harvesting is considered an efficient way to combat water poverty. This paper aims to develop domestic water poverty (DWP) and domestic rainwater harvesting suitability (DRWHS) maps for the West Bank, Palestine. The Analytical Hierarchy Process (AHP) together with the GIS-based weighted overly summation process (WOSP) were utilized in the development of these maps. Results of the DWP map indicate that 57 % of the West Bank is under high poverty of domestic water. The DRWHS map shows that 60 % of the West Bank is highly suitable for domestic rainwater harvesting. Spatial intersection (combined mapping) between DWP and DRWHS maps indicates that around 31 % of the total West Bank areas could be classified as high potential locations (hotspot areas) for adopting rainwater harvesting techniques for domestic purposes. The developed maps are valuable to the stakeholders to better identify the best areas of rainwater harvesting in the West Bank.

**Keywords:** Water poverty mapping, rainwater harvesting suitability mapping, domestic water supply, water resources management, AHP, GIS, Dead Sea, West Bank (Palestine).

## 1 Introduction

Water is a key factor for sustainable development. In the 21<sup>st</sup> century, the main challenge for millions of people worldwide is the lack of access to safe and clean water for domestic purposes (Worm and Hattum, 2006). In the West Bank (Palestine), water shortage is a problem that jeopardizes the sustainability of water availability for different uses (PWA, 2011). This situation became further worst due to the population growth and climate change that imposed a tremendous stress on the conventional water supplies (PWA, 2011). The existing political situation limits the Palestinian accessibility to their water resources and this further deepens the water problems (Judeh et al., 2017). In 2015, the estimated annual water supply-demand gap for domestic purposes for the entire West Bank was 32 million cubic meters (MCM) (PCBS, 2015).

DWP is a term that describes the competency of water service providers to constantly provide customers with clean, sustainable and affordable domestic water (Feitelson and Chenoweth, 2002). It is measured by using an index called domestic water poverty index (DWPI) (Sullivan et al., 2003). DWPI can be attributed to several factors associated with water availability, socio economic conditions, environmental implications and political situation (Coppin and Richards, 1990; Sullivan et al., 2003). DWP mapping is a simple and efficient approach to identify the spatial extent of water poor/rich areas at different levels of jurisdiction areas (Thakur et al., 2017). This approach has been applied in the analysis of water stresses in many countries all over the world such as the US (James et al., 2007), Nepal (Thakur et al., 2017) and West Bank (Palestine) (Isaac et al., 2008).

36 A DWP map has several pros as it demonstrates the relationship between the physical availability of water, its quality and  
37 suitability for domestic use and its accessibility. It also forms a tool for monitoring programs in the water sector and it helps  
38 in improving the situation of communities that suffer from water poverty (van der Vyver and Jordaan, 2011).

39 Generally, water poor areas should look for new, safe, sustainable and unconventional sources of water. For instance,  
40 rainwater harvesting (RWH) is considered as a viable alternative to secure water (Abdulrazzak, 2003). In arid and semi-arid  
41 regions, adopting RWH will potentially enhance the economic, environmental and social development under uncertainty of  
42 water supply (UNEP, 2009). In Palestine, and given the uncertain groundwater supply, RWH is considered as a sustainable  
43 option to bridge the increasing domestic water supply-demand gap (Shadeed, 2011).

44 RWH is the process of collecting and storing rainwater in order to be used afterwards for different uses among which the  
45 domestic one (Gould and Nissen-Petersen, 1999). It is considered an ancient technology dated back to biblical times and was  
46 practiced in Palestine and Greece 4000 years ago (Critchley et al., 1991).

47 The use of RWH for domestic purposes entails that water quality is sufficiently good and within the permissible limits of  
48 drinking water quality standards. Mostly, the quality of harvested water can be controlled by proper practices (e.g. cleaning  
49 of collecting surface (roofs) and the flush away of the first storm) and simple disinfections techniques when needed (African  
50 Development Bank, 2010; Meera and Ahammed, 2018).

51 In arid and semi-arid regions, domestic water productivity was enhanced by adopting RWH for many years (Boers et al.,  
52 1986; Bruins et al., 1986; Critchley et al., 1991; Abu-Awwad and Shatanawi, 1997; van Wesemael et al., 1998; Oweis et al.,  
53 1999; Li et al., 2000; Li and Gong, 2002; Rosegrant et al., 2002; Ngigi et al., 2005; Ngigi, 2006; Oweis and Hachum, 2006;  
54 Rockström and Barron, 2007; Mwenge Kahinda et al., 2007; Campisano et al., 2017; Singh and Turkiya, 2017; Tamaddun  
55 et al., 2018). In the West Bank, RWH is widely used at household level in rural areas (Shadeed, 2011). About 50% of the  
56 entire West Bank area is classified as suitable to highly suitable for RWH for different uses (e.g. domestic and agricultural)  
57 (Shadeed, 2011). RWH is being practiced in the Faria catchment located in the north-eastern part of the West Bank and this  
58 helps in bridging domestic water supply-demand gap (Shadeed and Lange, 2010).

59 This research aims at mapping the DWP and DRWHS maps for the entire West Bank. An integrated approach using GIS-  
60 based multi criteria decision analysis (MCDA) was adopted. MCDA approach is widely used in DWP (van der Vyver and  
61 Jordaan, 2011; Thakur et al., 2017; Sullivan et al., 2003; Isaac et al., 2008) and RWH suitability studies (Shadeed, 2011;  
62 Galarza-Molina et al., 2015; Hussein and Shariff, 2015; Singh et al., 2016; Singhai et al., 2017; Jha et al., 2014).

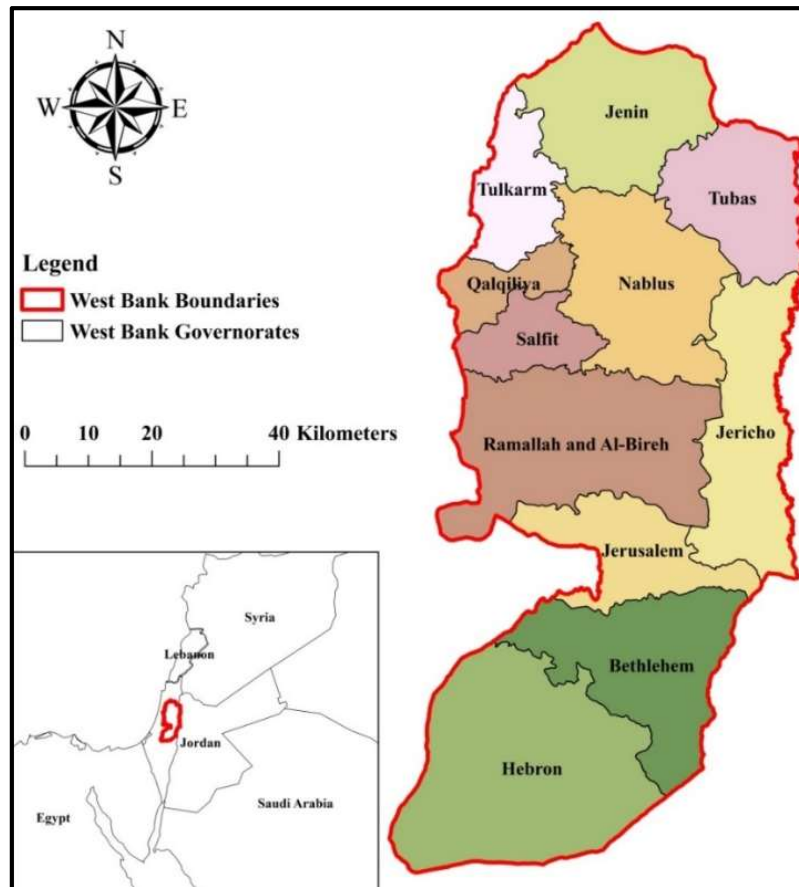
63 The MCDA approach entails that the choice is built on a predetermined and limited number of decision variables (criteria)  
64 described by their attributes. Hence, the most influential criteria (layers) that affect both DWP and DRWHS mapping were  
65 identified, weighted and scored using AHP. The AHP approach was adopted by constructing a pairwise comparison matrix  
66 to assign relative importance (weight) for each criterion based on a preference scoring scale (Saaty, 1980). GIS-based  
67 weighted overly summation process (WOSP) was then used to develop both the DWP and DRWHS maps.

68 A key output in this research is the creation of spatial intersection between DWP and DRWHS maps for the entire West  
69 Bank. The developed map identifies the spatial distribution of water needs (water poor areas) and spatial distribution of the  
70 potential of RWH techniques for domestic water use. This in turn, can provide the key decision makers with a tool to identify  
71 potential locations where the implementation of RWH techniques could be most successful for domestic uses in Palestine.

72 **2 Materials and Methods**

73 **2.1 Study Area**

74 West Bank (Palestine) is located to the west of the Dead Sea. It has an area of about 5,860 km<sup>2</sup>. Administratively, it is divided  
75 into 11 governorates with a total population of approximately 2.9 million (PCBS, 2017) (see Figure 1).



76  
77 **Figure 1: Regional Setting of the West Bank**

78 The ground surface elevations range between 1,022 m above mean sea level in the south (in Hebron) and 410 m below mean  
79 sea level in the proximity of the Dead Sea (in Jericho) (UNEP, 2003). The West Bank climate can be generally described as  
80 a Mediterranean one which experiences extreme seasonal variations. The climate varies between hot dry in summer to wet  
81 cold in winter with short transitional seasons (Shadeed, 2008). Rainfall shows high spatial and temporal variation, with long-  
82 term annual average of 450 mm, which is equivalent to rainfall volume of about 2500 MCM (PWA, 2013). Most of the  
83 annual rainfall (about 80 %) occurs in winter (Shadeed, 2012).

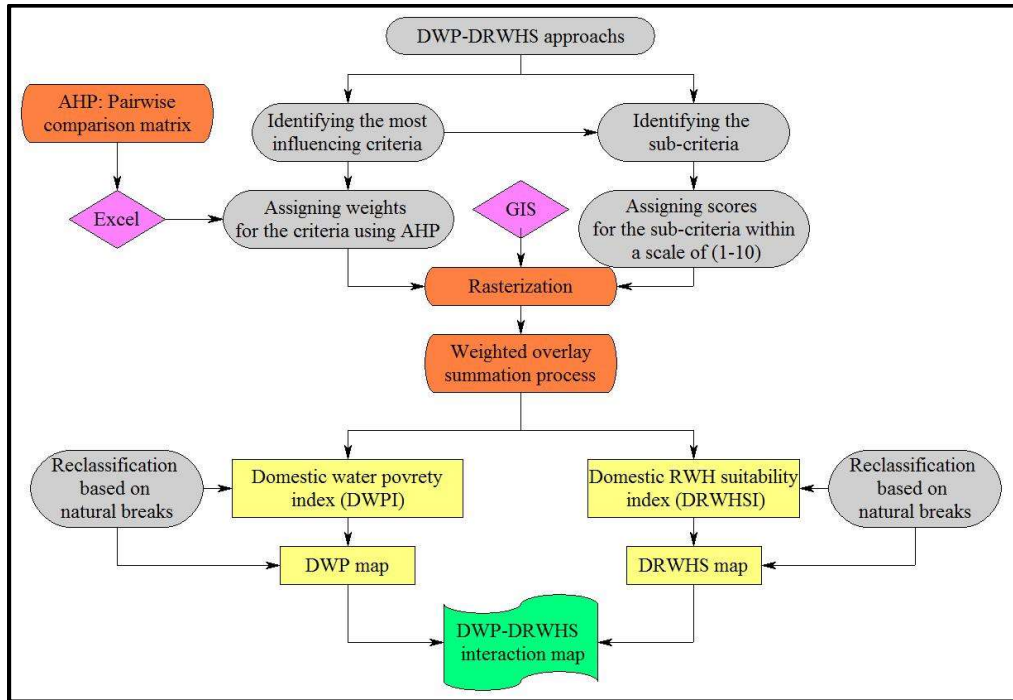
84 Water supply for different uses in the West Bank is very limited and does not suffice to satisfy the increasing water demand.  
85 The existing political situation adds another constraint on the availability and accessibility of water resources for Palestinians.  
86 Water supply is available either from local groundwater wells and springs or purchased from Israeli Water Company  
87 (Mekorot). In 2015, the domestic water supply-demand gap in the West Bank was 65 MCM (PCBS, 2015). Existing DRWH  
88 techniques (e.g. rooftops) contributed to about 4 MCM for the domestic use in the West Bank (PWA, 2016).

89 Under average conditions, West Bank has high runoff curve numbers with an average value of about 70 (Shadeed and  
90 Almasri, 2010). Needless to mention that a high curve number value implies a high runoff generation and this suits the  
91 implementation of the RWH techniques.

92 The land use map of the West Bank is classified into four main classes; rough grazing (62 %), agricultural practices (32 %),  
 93 built-up areas (5 %) and Israeli settlements (1 %) (MoLG, 2017). The West Bank is characterized by different soil textures  
 94 such as; clay, clay loam, loamy, sandy loam and bare rock covering 47, 31, 9, 8 and 5 % of the study area respectively  
 95 (MoLG, 2017). The elevations in the study area ranges from 375 meter below mean sea level in the vicinity of the Dead Sea  
 96 in Jericho to 1000 meter above mean sea level in the mountains of Hebron (MoLG, 2017).

97 **2.2 Methodology**

98 The overall methodological framework used in this research for developing both DWP and DRWHS maps is illustrated in  
 99 Figure 2.



100 **Figure 2: Methodological framework**

101

102 WPI gives the water poverty considering five key components; access, capacity, environment, resource and use (Gould and  
 103 Nissen-Petersen, 1999). The five key components were represented by twelve influencing criteria (see Table 1). For these  
 104 criteria, data were collected from different sources which include; Palestinian Water Authority (PWA), Palestinian Central  
 105 Bureau of Statistics (PCBS) and water service providers (e.g. municipalities).

106 In the West Bank, rainwater is being harvested for domestic water supply using different techniques among which rooftops  
 107 is the most important. Cisterns (pear shaped) and reservoirs are commonly used in the West Bank for storing the harvested  
 108 rainwater (PWA, 2013). In general, the most influencing criteria for DRWH suitability mapping in the West Bank were  
 109 identified. These criteria are: rainfall depth (RD), curve number (CN), surface slope (SS) and land use (LU). The spatial  
 110 extent of the long term average annual RD was obtained from the records of the existing rain-gauges using the inverse  
 111 distance weighting method (IDW). The CN map was developed for the entire West Bank (Shadeed and Almasri, 2010). A  
 112 25×25 m digital elevation model (DEM) was processed to determine the SS layer. The LU map available at the Ministry of  
 113 Local Government (MoLG) database was used.

114 Different weights were assigned for the different criteria used in each map by conducting the AHP pairwise comparison  
115 matrix. The matrices were filled using a scoring system (preference values) from (1 to 9) in order to reflect the preference  
116 and importance of the criteria (Saaty, 1980) (see Table 2 and Table 3).

117 Once the pairwise comparison matrices were completed, the AHP provides researchers the opportunity to check and enhance  
118 the matrices consistency. However, matrices consistency was measured by estimating the consistency ratio using the  
119 following formulas (Saaty, 1980):

$$120 \quad CR = \frac{CI}{RI}$$

$$121 \quad CI = \frac{\lambda - n}{n - 1}$$

122 Where:

123 CR is the consistency ratio

124 CI is the consistency index

125 RI is a random consistency index

126  $\lambda$  is a normalized principal eigenvector

127 n is a number of constraints (criteria)

128 The matrix is consistent if the CR value is smaller or equal to 0.1, otherwise, it is considered inconsistent and needs to be  
129 revised (Saaty, 2000). According to the different preference values used in the pairwise comparison matrices shown in Table  
130 2 and Table 3, the CR values for DWP and DRWHS matrices are 0.04 and 0.01 respectively. So, both of them are consistent.

131 Each of the criteria used in DWP and DRWHS maps were divided into five sub-criteria, each of them were subjectively  
132 assigned a score from 1 to 10 (see Table 4 and Table 5). For instance, values which are close to 10 have the highest DWP  
133 and DRWHS. Thereafter, rasterization (cell size of 100 m by 100 m) of the different criteria based on their sub-criteria scores  
134 were processed by GIS (see Figure 3 and Figure 4).

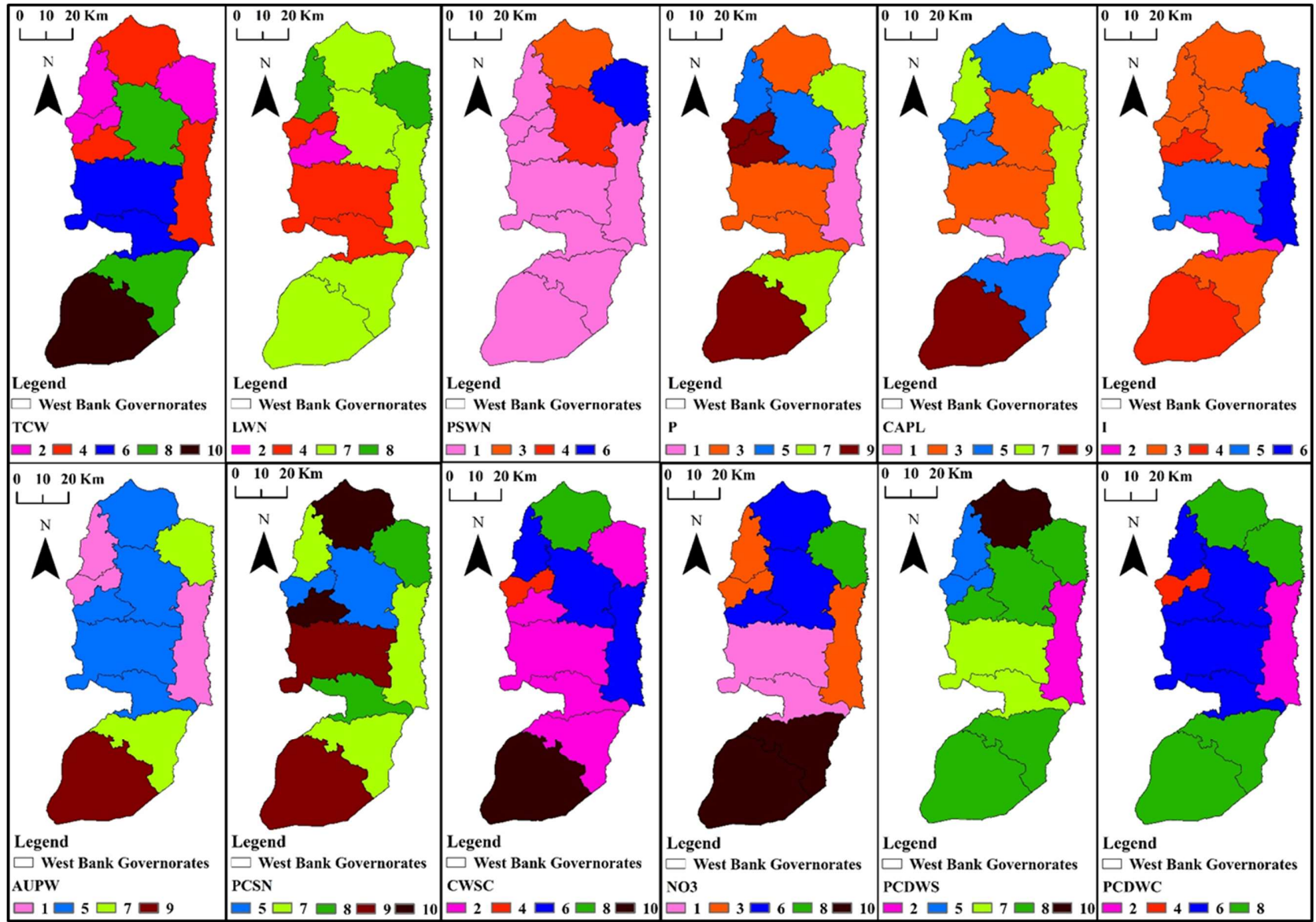


Figure 3: The score rasters of the 12 DWP criteria for the West Bank



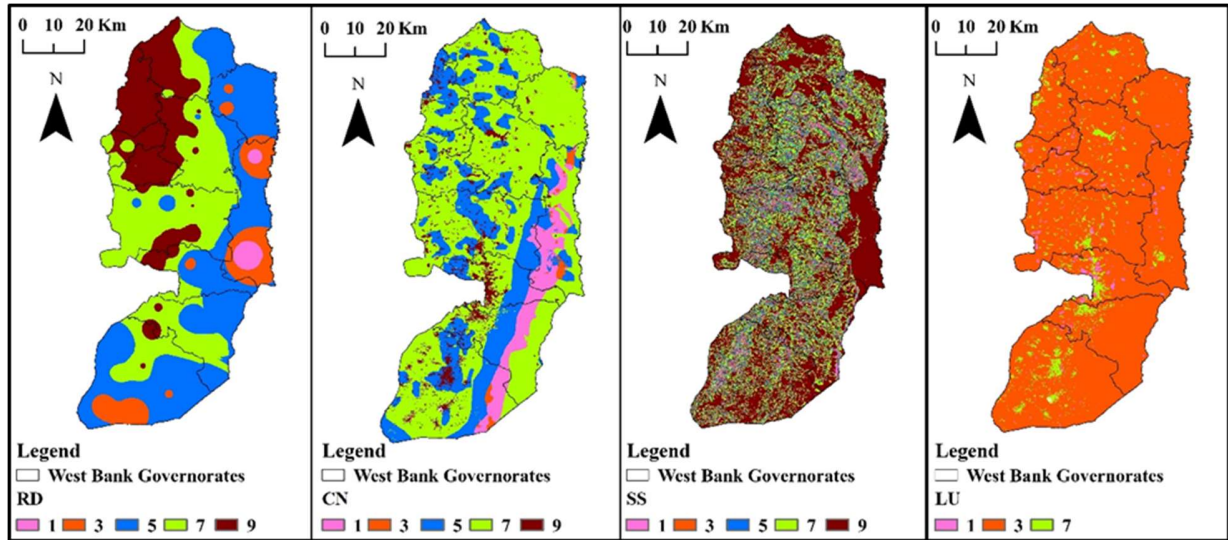


Figure 4: The score rasters of the four DRWHS criteria for the West Bank

138  
139

140 GIS is used to estimate DWPI and DRWHSI through the application of WOSP for the different layers (criteria) used. WOSP  
 141 method applies a weighted linear formula in decision-making analysis (Store and Jokimäki, 2003). This method allows the  
 142 manipulation of various spatial input layers by aggregating the weighted cell values together. Each input layer is multiplied  
 143 by its assigned weight and the results are summed as  $(DWPI \text{ or } DRWHSI)_j = \sum_{i=1}^n W_i * S_{ij}$ , where  $(DWPI \text{ or } DRWHSI)_j$  is  
 144 the final cell index,  $W_i$  is a normalized weight ( $\sum W_i = 1$ ),  $S_{ij}$  is the score of the  $i$ th cell with respect to the  $j$ th layer and  $n$  is  
 145 the number of cells in each  $j$ th layer (Malczewski, 1999).

146 **3 Results and Discussion**

147 **3.1 DWP Map**

148 Figure 5 depicts the DWP map for the West Bank. Using the natural breaks approach, the map was classified into five water  
 149 poverty categories; very low, low, moderate, high, and very high.

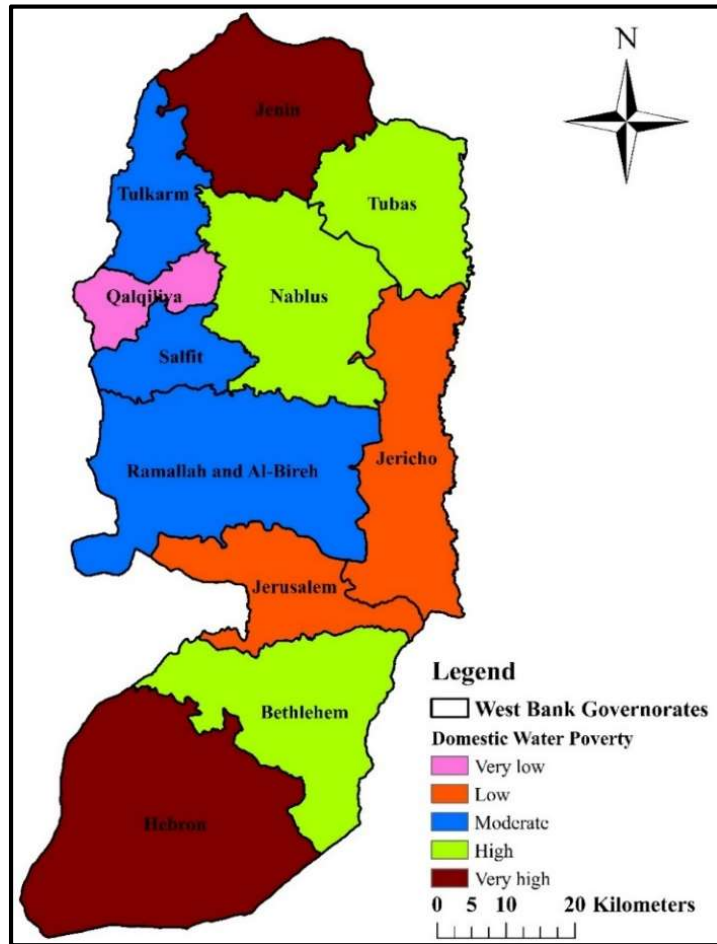


Figure 5: DWP map for the West Bank

150  
151

152 Figure 5 shows that the governorates characterized by very high DWP are in the southern (Hebron) and northern parts  
 153 (Jenin) of the West Bank which have 36 % of the total West Bank population (PCBS, 2017). Bethlehem, Nablus and Tubas  
 154 governorates suffers from high DWP conditions. In contrast, the results indicate that Qalqilya governorate has the lowest  
 155 DWP. Whereas low to medium DWP are prevailing in the other governorates. However, the area percentages of the different  
 156 DWP classes in the West Bank are presented in Figure 6.

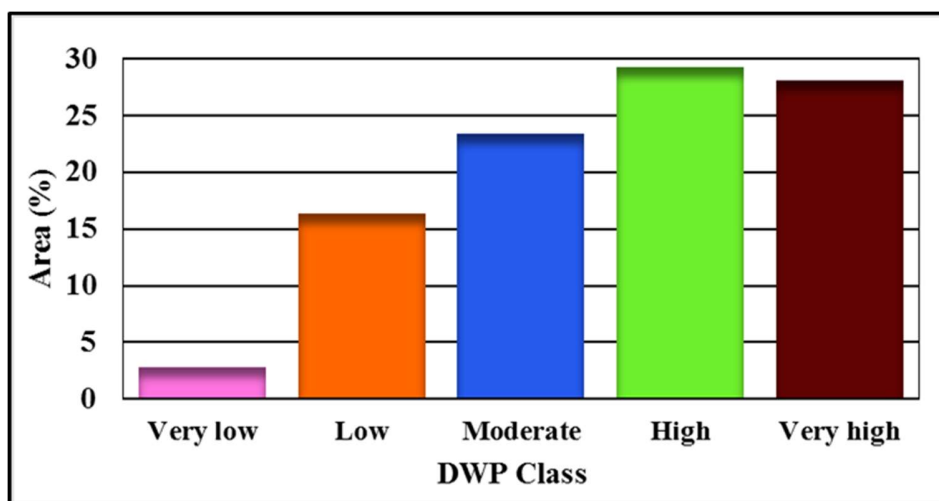


Figure 6: Area percentages of the different DWP classes in the West Bank

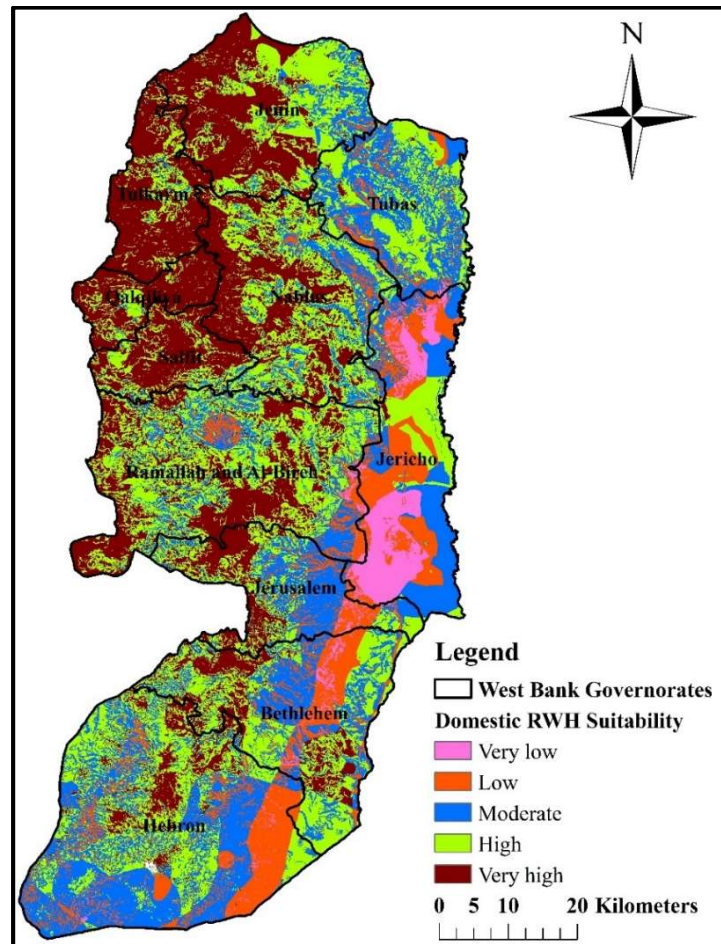
157  
158



159 Generally, the results presented in the previous figure show the domestic water poor areas in the West Bank. High to very  
160 high DWP conditions cover 57% of the total West Bank area where 60% of Palestinians live. Moreover, the areas  
161 characterized by moderate, low to very low DWP conditions occupy 43% of the total West Bank area, and includes 40% of  
162 the total West Bank population. Hence, there is a dire need to look into adaptive and sustainable domestic water alternatives  
163 among which RWH would be a successful one to alleviate domestic water shortage in the highly water poor areas.

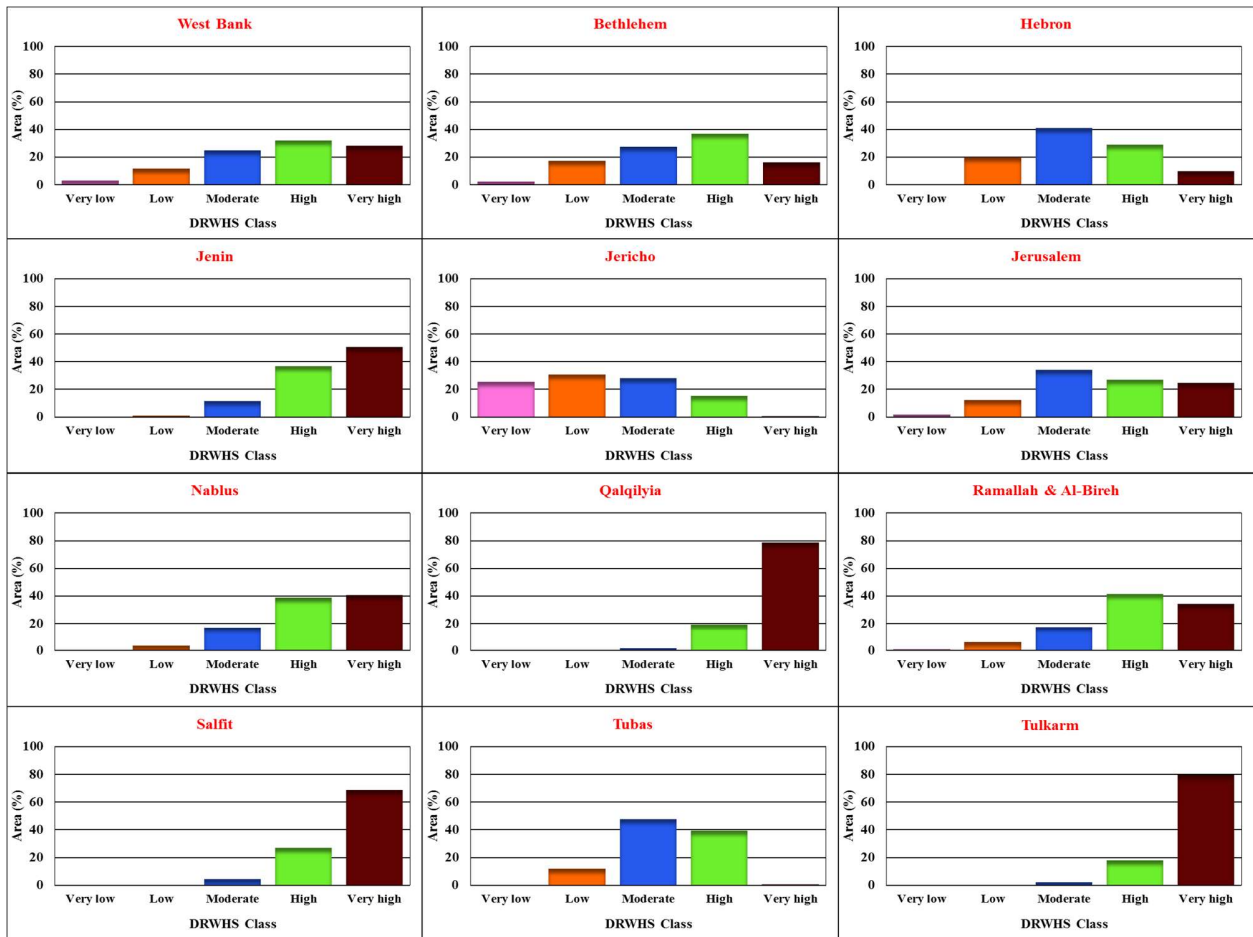
### 164 3.2 DRWHS Map

165 Figure 7 shows the DRWHS map for the West Bank. As we did before, the map was classified into five suitability categories;  
166 very low, low, moderate, high, and very high.



167  
168 **Figure 7: DRWHS map for the West Bank**

169 The developed DRWHS map indicates that the area characterized as very high are distributed across the north-western part  
170 of the West Bank, except for small portions that are located in the middle and southern mountains. In contrast, the eastern  
171 part of the West Bank is classified as very low to low areas. It is clear that the developed DRWHS map is highly influenced  
172 by both RD and CN criteria. This is because the trend for rainfall and runoff potential increases north-west and decreases  
173 south-east. The area percentages of the different DRWHS classes in the different West Bank governorates are illustrated in  
174 Figure 8.



**Figure 8: Area percentages of the different DRWHS classes in the different West Bank governorates**

175  
176

177 In general, about 60 % of the total West Bank area is classified as high to very high for different DRWH techniques.  
 178 Additionally, it is obvious that the high to very high DRWHS areas are dominant (70 %-95 %) in 6 out of 11 governorates.  
 179 This indicates the high potential of adopting different DRWH techniques (e.g. rooftop) in trying to bridge the increasing  
 180 domestic water supply-demand gap in the West Bank.

181 **3.3 DWPM-DRWHSM Intersection**

182 The developed DWP and DRWHS maps urged the need to identify zones of high to very high DWP and DRWHS (hotspot  
 183 areas). Accordingly, spatial intersection (combined mapping) between both maps were accomplished under the GIS  
 184 environment for four intersection zones. These are: very high poverty-very high suitability, very high poverty-high suitability,  
 185 high poverty-very high suitability, and high poverty-high suitability (see Figure 9). Results indicate that hotspot areas are  
 186 located mostly in the northern (Jenin, Tubas and Nablus) and southern (Bethlehem and Hebron) governorates of the West  
 187 Bank. The area percentages of the four intersection zones are shown in Figure 10. It is noticed that the four zones equal 31%  
 188 of the total West Bank area. Such results can help decision makers to develop sustainable water management options among  
 189 which proper DRWH techniques is the most important to satisfy domestic water needs predominantly in the identified hotspot  
 190 areas.

191

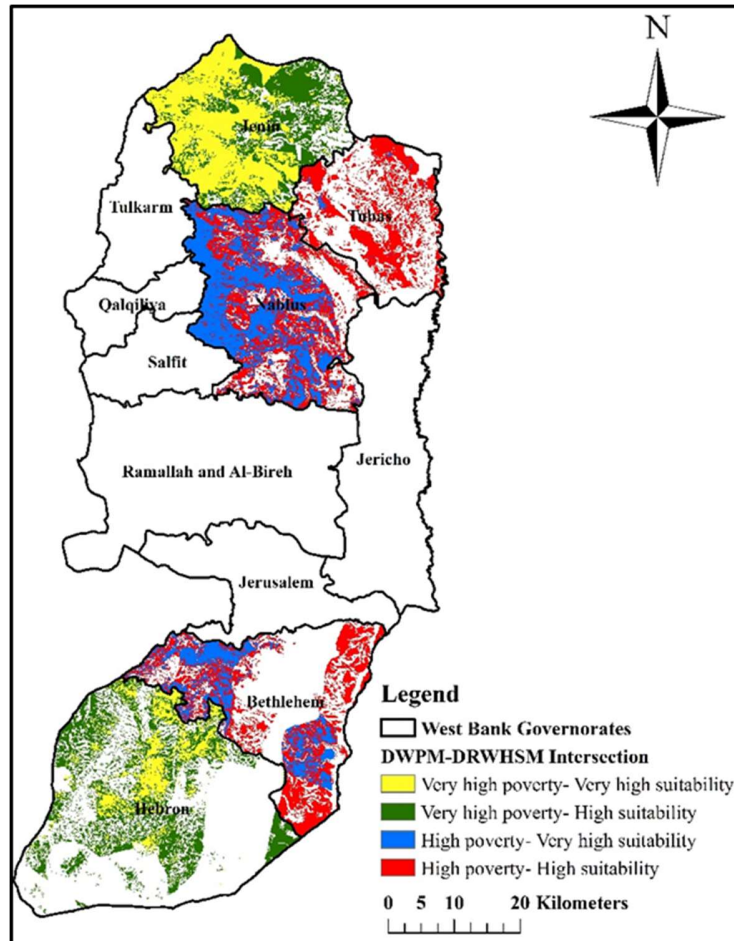


Figure 9: DWP-DRWHS maps intersection for the entire West Bank

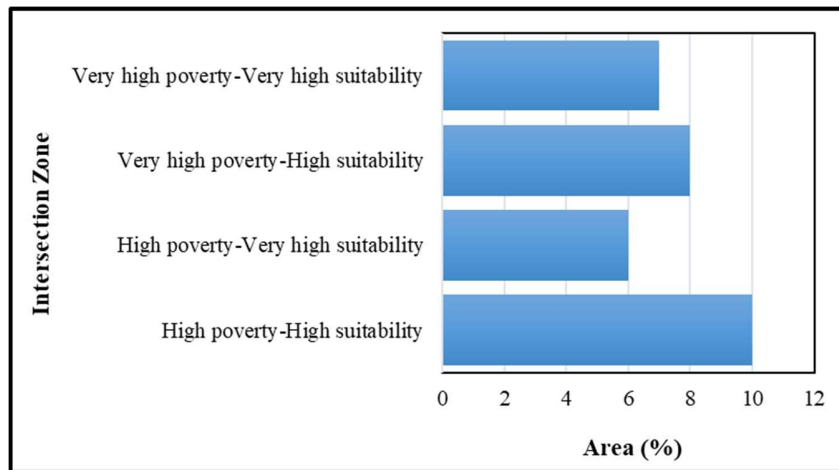


Figure 10: Area percentages of the four intersection zones

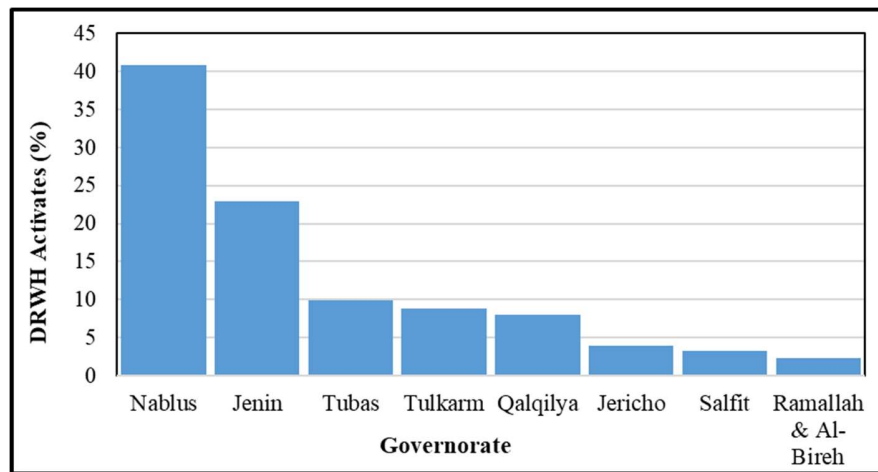
192  
193

194  
195

196 The obtained results were verified using the available data of DRWH activates (digging of cisterns and building of  
 197 reservoirs) in the middle and northern parts of the West Bank governorates for the period from 1994 to 2017 (PHG, 2018).  
 198 Results are illustrated in Figure 11. It is clear that DRWH activates in the last 22 years were concentrated (about 74%) in  
 199 the identified hotspot areas in Nablus, Jenin and Tubas governorates. Thus, adopting DRWH techniques (e.g. rooftop) in  
 200 these areas are of high importance to alleviate water shortage for domestic uses.

201

202



203  
204 **Figure 11: Percentages of DRWH activates in the northern governorates of the West Bank**

#### 205 **4 Conclusions**

206 In this paper, maps of DWP and DRWHS were developed and utilized to identify the suitable locations for the  
207 implementation of water harvesting in order to reduce water poverty. The MCDA was employed to account for the  
208 influencing criteria according to their importance in the mapping of the DWP and DRWHS. The AHP pairwise comparison  
209 matrix approach was adopted to assign the criteria weights. Results show that 57% of the West Bank is under high to very  
210 high DWP. The DRWHS map indicates that high to very high suitable areas are concentrated in the north-western parts of  
211 the West Bank. The high to very high DWP and DRWHS areas account for more than 30% of the total West Bank area which  
212 are mostly located in the northern and southern parts. Since the MCDA entails subjectivity in assigning the weights and the  
213 scores, it will be important to conduct a sensitivity analysis. This can be done by altering the weights and scores and thereafter  
214 examining the impacts on the DWP and DRWHS maps. Although the available data are limited, this research managed to  
215 provides a novel insight towards the identification of high domestic water poor areas. This facilitates the implementation of  
216 different DRWH techniques could be successful. This implies the applicability of this research in situations where data is  
217 limited. The work furnished herein assists the decision makers to derive proper water management strategies to bridge the  
218 gap between the supply and the demand in the West Bank. The obtained results are promising to be regionalized for the  
219 entire Dead Sea region that undergoes serious water shortage challenges. It is good to consider other spatial analysis levels  
220 for the development of the maps like the watershed outlines. Finally, further research is recommended to validate the  
221 combined map over different West Bank areas.

#### 222 **Acknowledgements**

223 This work was performed within the framework of the Palestinian Dutch Academic Cooperation Program on Water  
224 (PADUCO 2), funded by the Netherlands Representative Office (NRO) in Ramallah, Palestine. The financial support is  
225 gratefully acknowledged.

226 **References**

- 227 Abdulrazzak, M.: Water harvesting practices in selected countries of the Arabian Peninsula, in: Proceeding of the Conference  
228 on Water Harvesting and the Future Development, Khartoum, Sudan, 19-20 August 2003, 14, 2003.
- 229 Abu-Awwad, A. M., and Shatanawi, M. R.: Water harvesting and infiltration in arid areas affected by surface crust:  
230 Examples from Jordan, *J. Arid. Environ.*, 37, 443-452, <https://doi.org/10.1006/jare.1997.0301>, 1997.
- 231 African Development Bank.: Assessment of best practices and experience in water harvesting: Rainwater harvesting  
232 handbook, ADB., Cote d'Ivoire, Open File Rep. 75pp., 2010.
- 233 Boers, T. M., Zondervan, K., and Ben-Asher, J.: Micro-catchment-water-harvesting (MCWH) for arid zone development,  
234 *Agric. Water Manage.*, 12, 21-39, [https://doi.org/10.1016/0378-3774\(86\)90003-X](https://doi.org/10.1016/0378-3774(86)90003-X), 1986.
- 235 Bruins, H. J., Evenari, M., and Nessler, U.: Rainwater-harvesting agriculture for food production in arid zones: The  
236 challenge of the African famine, *Appl. Geogr.*, 6, 13-32, [doi:10.1016/0143-6228(86)90026-3], 1986.
- 237 Campisano, A., D'Amico, G., and Modica, C.: Water saving and cost analysis of large-scale implementation of domestic  
238 rain water harvesting in Minor Mediterranean Islands, *Water*, 9, 12, <https://doi.org/10.3390/w9120916>, 2017.
- 239 Coppin, N.J., and Richards, I.G.: Use of Vegetation in Civil Engineering, Construction Industry Research and Information  
240 Association, London, 1990.
- 241 Critchley, W., Siegert, K., Chapman, C., and Finkel, M.: Water harvesting: a manual for the design and construction of  
242 water harvesting schemes for plant production, Food and Agriculture Organization of the United Nations, Rome,  
243 Open File Rep. 154 pp., 1991.
- 244 Feitelson, E., and Chenoweth, J.: Water poverty: Towards a meaningful indicator, *Water Policy*, 4, 263-281,  
245 [doi: 10.1016/s1366-7017(02)00029-6], 2002.
- 246 Galarza-Molina, S., Torres, A., Moura, P., and Lara-Borrero, J.: CRIDE: a case study in multi-criteria analysis for decision-  
247 making support in rainwater harvesting, *International Journal of Information Technology and Decision Making*, 14,  
248 43-67, <https://doi.org/10.1142/S0219622014500862>, 2015.
- 249 Gould, J., and Nissen-Petersen, E.: Rainwater Catchment Systems for Domestic Supply: Design, Construction and  
250 Implementation, Intermediate Technology Publications, London, 1999.
- 251 Hussein, F., and Shariff, R.: Selection of rainwater harvesting sites by using remote sensing and GIS techniques: A case  
252 study of Kirkuk, Iraq, *Jurnal Teknologi.*, 76, 15, [doi: 10.11113/jt.v76.5955], 2015.
- 253 Isaac, J., Giglioli, I., and Hilal, J.: Domestic water vulnerability mapping in the West Bank /Occupied Palestinian Territory,  
254 Applied Research Institute, Jerusalem, Open File Rep. 24 pp., 2008.
- 255 James, W., Lisa, H., and Rebecca, T.: Water and poverty in the United States, *Geoforum.*, 38, 801-814, [doi:  
256 10.1016/j.geoforum.2006.08.007], 2007.
- 257 Jha, M., Chowdary, V., Kulkarni, Y., and Mal, B.: Rainwater harvesting planning using geospatial techniques and  
258 multicriteria decision analysis, *Resour. Conserv. Recycl.*, 83, 96-111, [doi: 10.1016/j.resconrec.2013.12.003], 2014.
- 259 Judeh, T., Haddad, M., and Özerol, G.: Assessment of water governance in the West Bank, Palestine, *Int. J. Global  
260 Environmental Issues*, 16, 119-134, [doi: 10.1504/IJGENVI.2017.083426], 2017.
- 261 Li, F. R., Cook, S., Geballe, G. T., and Burch, W. R.: Rainwater harvesting agriculture: An integrated system for water  
262 management on rainfed land in China's semiarid areas, *AMBIO.*, 29, 477-483, [https://doi.org/10.1579/0044-7447-  
263 29.8.477](https://doi.org/10.1579/0044-7447-29.8.477), 2000.
- 264 Li, X. Y., and Gong, J. D.: Compacted microcatchments with local earth materials for rainwater harvesting in the semiarid  
265 region of China, *J. Hydrol.*, 257, 134-144, [doi:10.1016/S0022-1694(01)00550-9], 2002.

266 Malczewski, J.: GIS and Multicriteria Decision Analysis, John Wiley & Sons Inc., New York, 1999.

267 Meera, V., and Ahammed, M.: Factors affecting the quality of roof-harvested Rainwater, in: Water Quality and Climate  
 268 Change, Urban Ecology, edited by: Sarma, A., Singh, V., Bhattacharjya, R., and Kartha S., Springer, Berlin,  
 269 Heidelberg, Germany, 195-202, [https://doi.org/10.1007/978-3-319-74494-0\\_15](https://doi.org/10.1007/978-3-319-74494-0_15), 2018.

270 MoLG.: Geomolg: Data set, Ministry of Local Government, <https://data-molg.opendata.arcgis.com/datasets>, 2017.

271 Mwenge Kahinda, J., Taigbenu, A.E., and Boroto, R.J.: Domestic rainwater harvesting to improve water supply in rural  
 272 South Africa, *J. Phys. Chem. Earth.*, 32, 1050-1057, [doi: 10.1016/j.pce.2007.07.007], 2007.

273 Ngigi, S. N., Savenije, H. H. G., Rockström, J., and Gachene, C. K.: Hydro-economic evaluation of rainwater harvesting  
 274 and management technologies: Farmers' investment options and risks in semi-arid Laikipia district of Kenya, *J. Phys.*  
 275 *Chem. Earth.*, 30, 772-782, [doi: 10.1016/j.pce.2005.08.020], 2005.

276 Ngigi, S.N.: Hydrological impacts of land use changes on water resources management and socio-economic development  
 277 of upper Ewaso Ng'iro river basin in Kenya, Ph.D. thesis, UNESCO-IHE/Technical University of Delft, Netherlands,  
 278 148 pp., 2006.

279 Oweis, T., and Hachum, A.: Water harvesting and supplemental irrigation for improved water productivity of dry farming  
 280 systems in West Asia and North Africa, *Agr. Water Manage.*, 80, 57-73,  
 281 <https://doi.org/10.1016/j.agwat.2005.07.004>, 2006.

282 Oweis, T., Hachum, A., and Kijne, J.: Water harvesting and supplemental irrigation for improved water use efficiency in  
 283 dry areas, International Water Management Institute, Colombo, Open File Rep. 41 pp., 1999.

284 PCBS.: Preliminary census results 2017, Palestinian Central Bureau of Statistics, Ramallah, Open File Rep. 82 pp., 2017.

285 PCBS.: Water Supply-Demand Statistics, Palestinian Central Bureau of Statistics, <https://tinyurl.com/y9vww487>, 2015.

286 PHG.: Domestic rainwater harvesting techniques in the meddle and northern parts of the West Bank, Palestinian Hydrology  
 287 Group, Ramallah, Open File Rep. 4 pp., 2018.

288 PWA.: Annual status report on water resources, water supply, and wastewater in the Occupied State of Palestine, Palestinian  
 289 Water Authority, Ramallah, Open File Rep. 97 pp., 2011.

290 PWA.: Palestinian water sector: Status report of water resources in the occupied state of Palestine, Palestinian Water  
 291 Authority, Ramallah, Open File Rep. 22 pp., 2013.

292 PWA.: Water authority strategic plan 2016-2018, Palestinian Water Authority, Ramallah, Open File Rep. 25 pp., 2016.

293 Rockström, J., and Barron, J.: Water productivity in rainfed systems: Overview of challenges and analysis of opportunities  
 294 in water scarcity prone savannahs, *Irrigation Sci.*, 25, 299-311, <https://doi.org/10.1007/s00271-007-0062-3>, 2007.

295 Rosegrant, M.W., Cai, X., and Cline, S.A.: World water and food to 2025: Dealing with scarcity, International Food Policy  
 296 Research Institute, Washington DC., Open File Rep. 338 pp., 2002.

297 Saaty, T.L.: Fundamentals of decision making with the analytic hierarchy process, in: *The Analytic Hierarchy Process in*  
 298 *Natural Resource and Environmental Decision Making*, edited by: Schmoldt D.L., Kangas J., Mendoza G.A.,  
 299 Pesonen M., Springer, Dordrecht, 15-35, [https://doi.org/10.1007/978-94-015-9799-9\\_2](https://doi.org/10.1007/978-94-015-9799-9_2), 2000.

300 Saaty, T.L.: *The Analytic Hierarchy Process: Planning, Priority Setting, Resource Allocation*, McGraw-Hill International  
 301 Book Co., New York, 1980.

302 Shadeed, S., and Almasri, M.: Application of GIS-based SCS-CN method in West Bank catchments, Palestine, *Water Sci.*  
 303 *Eng.*, 3, 1-13, <https://doi.org/10.3882/j.issn.1674-2370.2010.01.001>, 2010.



304 Shadeed, S., and Lange, J.: Rainwater harvesting to alleviate water scarcity under dry conditions: A case study in Faria  
305 catchment, Palestine, *Water Sci. Eng.*, 3, 132-143, <https://doi.org/10.3882/j.issn.1674-2370.2010.02.002>, 2010.

306 Shadeed, S.: Developing a GIS-based suitability map for rainwater harvesting in the West Bank, Palestine, *The International*  
307 *Conference on Environmental Education for Sustainable Development: Plugging the Hole*, Birzeit University,  
308 Palestine, 16-17 November 2011, 13, 2011.

309 Shadeed, S.: Spatio-temporal drought analysis in arid and semi-arid regions: A case study from Palestine, *The Arabian*  
310 *Journal for Science and Engineering*, 38, 2303-2313, <https://doi.org/10.1007/s13369-012-0504-y>, 2012.

311 Shadeed, S.: Up to Date Hydrological Modeling in Arid and Semi-arid Catchment, the Case of Faria Catchment, West Bank,  
312 Palestine, Ph.D. thesis, Faculty of Forest and Environmental Sciences, Albert-Ludwigs-Universität, Freiburg  
313 imBreisgau, Germany, 216 pp., 2008.

314 Singh, L., Jha, M., and Chowdary, V.: Multi-criteria analysis and GIS modelling for identifying prospective water harvesting  
315 and artificial recharge sites for sustainable water supply, *J. Cleaner Prod.*, 142, 1436-1456,  
316 <https://doi.org/10.1016/j.jclepro.2016.11.163>, 2016.

317 Singh, O., and Turkiya, S.: Assessing potential for rooftop rainwater harvesting: An option for sustainable rural domestic  
318 water supply in arid region of Haryana, *Journal of Rural Development*, 36, 49-60,  
319 <http://dx.doi.org/10.25175/jrd%2F2017%2Fv36%2Fi1%2F112701>, 2017.

320 Singhai, A., Das, S., Kadam, A., Shukla, J., Bundela, D., and Kalashetty, M.: GIS-based multi-criteria approach for  
321 identification of rainwater harvesting zones in upper Betwa sub-basin of Madhya Pradesh, India, *Environ Dev*  
322 *Sustain.*, 17, 1–21, <https://doi.org/10.1007/s10668-017-0060-4>, 2017.

323 Store, R., and Jokimäki, J.: A GIS-based multi-scale approach to habitat suitability modeling, *Ecol. Modell.*, 169, 1-15,  
324 [https://doi.org/10.1016/S0304-3800\(03\)00203-5](https://doi.org/10.1016/S0304-3800(03)00203-5), 2003.

325 Sullivan, C., Meigh, J., Giacomello, A., Fediw, T., Lawrence, P., Samad, M., Mlote, S., Hutton, C., Allan, J., Schulze, R.,  
326 Dlamini, D., Cosgrove, W., Prisco, J., Gleick, J., Smout, I., Cobbing, J., Calow, R., Hunt, C., Hussain, A., Acreman,  
327 M., King, J., Malomo, S., Tate, E., O'Regan, D., Milner, S., and Steyl, I.: The water poverty index: Development and  
328 application at the community scale, *United Nations Sustainable Development Journal*, 27, 189-199,  
329 <https://doi.org/10.1111/1477-8947.00054>, 2003.

330 Tamaddun, K., Kalra, A., and Ahmad, S.: Potential of rooftop rainwater harvesting to meet outdoor water demand in arid  
331 regions, *Journal of Arid Land*, 10, 68-83, <https://doi.org/10.1007/s40333-017-0110-7>, 2018.

332 Thakur, J., Mahesh, N., and Mohanan, A.: Water poverty in upper Bagmati River Basin in Nepal, *Water Sci.*, 31, 93-108,  
333 <https://doi.org/10.1016/j.wsj.2016.12.001>, 2017.

334 UNEP.: Desk study on the environment in the Occupied Palestinian Territories, United Nations Environment Programme,  
335 Nairobi, Open File Rep. 194 pp., 2003.

336 UNEP.: Rainwater harvesting: A lifeline for human well-being, United Nations Environment Programme, Stockholm, Open  
337 File Rep. pp 80., 2009.

338 van der Vyver, C., and Jordaan, D.: Water poverty mapping and its role in assisting water management, *Communications*  
339 *of the IBIMA.*, 2011, 13, [DOI: 10.5171/2011.941217], 2011.

340 van Wesemael, B., Poesen, J., Benet, A. S., Barrionuevo, L. C., and Puigdefábregas, J.: Collection and storage of runoff from  
341 hillslopes in a semi-arid environment: Geomorphic and hydrologic aspects of the aljibe system in Almeria Province,  
342 Spain, *Journal of Arid Environments*, 40, 1-14, <https://doi.org/10.1006/jare.1998.0429>, 1998.

343 Worm, J., and Hattum, V.: Rainwater harvesting for domestic use, Agromisa Foundation and CTA., Wageningen, Open File  
344 Rep. 85 pp., 2006.

345

**Table 1: WPI components and the associated influencing factors**

<b>WPI key components</b>	<b>Influencing factors</b>
Access	<ul style="list-style-type: none"> <li>• Time to collect water (TCW)</li> <li>• Losses in water networks (LWN)</li> <li>• Population served by water networks (PSWN)</li> </ul>
Capacity	<ul style="list-style-type: none"> <li>• Productivity (P)</li> <li>• Citizens above poverty line (CAPL)</li> <li>• Illiteracy (I)</li> <li>• Average unit price of water (AUPW)</li> </ul>
Environment	<ul style="list-style-type: none"> <li>• Population connected to sewer networks (PCSN)</li> <li>• Contaminated water samples by coliform (CWSC)</li> <li>• NO<sub>3</sub> concentrations in groundwater (NO<sub>3</sub>)</li> </ul>
Resources	<ul style="list-style-type: none"> <li>• Per capita domestic water supply (PCDWS)</li> </ul>
Use	<ul style="list-style-type: none"> <li>• Per capita domestic water consumption (PCDWC)</li> </ul>

346

**Table 2: AHP pairwise comparison matrix for domestic water poverty index**

Criteria	TCW	LWN	PSWN	P	CAPL	I	AUPW	PCSN	CWSC	NO <sub>3</sub>	PCDWS	PCDWC	Weight
TCW	1.00	3.00	2.00	5.00	5.00	7.00	2.00	3.00	0.50	2.00	4.00	0.50	0.12
LWN	0.33	1.00	0.50	3.00	4.00	5.00	0.50	2.00	0.20	0.50	2.00	0.17	0.07
PSWN	0.50	2.00	1.00	4.00	5.00	5.00	2.00	3.00	0.50	2.00	4.00	0.33	0.10
P	0.20	0.33	0.25	1.00	2.00	3.00	0.25	0.50	0.14	0.33	0.50	0.13	0.03
CAPL	0.20	0.25	0.20	0.50	1.00	2.00	0.25	0.33	0.14	0.25	0.50	0.13	0.02
I	0.14	0.20	0.20	0.33	0.50	1.00	0.20	0.25	0.13	0.20	0.33	0.11	0.01
AUPW	0.50	2.00	0.50	4.00	4.00	5.00	1.00	3.00	0.33	2.00	3.00	0.25	0.09
PCSN	0.33	0.50	0.33	2.00	3.00	4.00	0.33	1.00	0.20	0.50	2.00	0.17	0.05
CWSC	2.00	5.00	2.00	7.00	7.00	8.00	3.00	5.00	1.00	4.00	6.00	0.50	0.18
NO <sub>3</sub>	0.50	2.00	0.50	3.00	4.00	5.00	0.50	2.00	0.25	1.00	3.00	0.20	0.08
PCDWS	0.25	0.50	0.25	2.00	2.00	3.00	0.33	0.50	0.17	0.33	1.00	0.14	0.04
PCDWC	2.00	6.00	3.00	8.00	8.00	9.00	4.00	6.00	2.00	5.00	7.00	1.00	0.21

349 **Table 3: The AHP pairwise comparison matrix for domestic rainwater harvesting suitability index**

Criteria	RD	CN	SS	LU	Weight
RD	1.00	1.50	1.50	2.50	0.35
CN	0.67	1.00	1.50	2.50	0.31
SS	0.67	0.67	1.00	1.50	0.21
LU	0.40	0.40	0.67	1.00	0.13

350

Table 4: DWP scoring assigned for the sub-criteria

#	Criteria	Sub-criteria	Score	#	Criteria	Sub-criteria	Score
1	TCW	<6 (days/month)	10	7	AUPW	>5.2 (NIS/m <sup>3</sup> )	9
		6-12	8			4.6-5.2	7
		13-19	6			3.9-4.5	5
		20-26	4			3.2-3.8	3
		>26	2			<3.2	1
2	LWN	≥36 (%)	8	8	PCSN	≤20 (%)	10
		31-35.9	7			21-30	9
		26-30.9	5			31-40	8
		21-25.9	4			41-50	7
		<21	2			>50	5
3	PSWN	76-80 (%)	6	9	CWSC	26-30 (%)	10
		81-85	5			21-25	8
		86-90	4			16-20	6
		91-95	3			11-15	4
		96-100	1			6-10	2
4	P	<1 (Emp/1000 c)	9	10	NO <sub>3</sub>	≥80 (mg/l)	10
		1.0-1.4	7			60-79	8
		1.5-1.9	5			40-59	6
		2.0-2.4	3			20-39	3
		≥2.5	1			<20	1
5	CAPL	65.1-72 (%)	9	11	PCDWS	<80	10
		72.1-79	7			80-119	8
		79.1-86	5			120-159	7
		86.1-93	3			160-199	5
		93.1-100	1			≥200	2
6	I	4.5-5.0 (%)	6	12	PCDWC	<40	10
		3.9-4.4	5			40-79	8
		3.3-3.8	4			80-119	6
		2.7-3.2	3			120-159	4
		2.1-2.6	2			≥160	2



353

**Table 5: The domestic rainwater harvesting suitability scoring assigned for the sub-criteria**

#	Criteria	Sub-criteria	Score	#	Criteria	Sub-criteria	Score
1	RD	153.0-262.1 (mm)	1	3	SS	≥24.0	1
		262.2-371.3	3			18-23.9	3
		371.4-480.5	5			12-17.9	5
		480.6-589.7	7			6-11.9	7
		589.8-699.0	9			≤5.9	9
2	CN	≤50	1	4	LU	Israeli settlements	1
		51-60	3			Forest and rough grazing	3
		61-70	5			Permanent crops and irrigated farming	3
		71-80	7			Arable land	3
		>80	9			Built-up areas	7

354