

Long-term groundwater recharge rates across India by in situ measurements

Soumendra N. Bhanja^{1,2}, Abhijit Mukherjee^{1,3,4}, Rangarajan Ramaswamy⁵, Bridget R. Scanlon⁶, Pragnaditya Malakar¹, Shubha Verma⁷

5 ¹Department of Geology and Geophysics, Indian Institute of Technology Kharagpur, West Bengal 721302, India

²Presently at Faculty of Science and Technology, Athabasca University, Alberta T9S3A3, Canada

³School of Environmental Science and Engineering, Indian Institute of Technology Kharagpur, West Bengal 721302, India

⁴Hydroscience and Policy Advisory Group, Indian Institute of Technology Kharagpur, West Bengal 721302, India

⁵National Geophysical Research Institute, Uppal Road, Hyderabad 500 007, India

10 ⁶Bureau of Economic Geology, Jackson School of Geosciences, The University of Texas at Austin, Texas 78713, USA

⁷Department of Civil Engineering, Indian Institute of Technology Kharagpur, West Bengal 721302, India

*Corresponding authors: (soumendrabhanja@gmail.com) and Abhijit Mukherjee

Correspondence to: Soumendra N. Bhanja (soumendrabhanja@gmail.com) and Abhijit Mukherjee (amukh2@gmail.com, abhijit@gg.iitkgp.ernet.in)

15 **Abstract.** Groundwater recharge sustains groundwater discharge, including natural discharge through springs and base flow to surface water as well as anthropogenic discharge through pumping wells. Here, for the first time, we compute long-term (1996-2015) groundwater recharge rates using data retrieved from several groundwater level monitoring locations across India (3.3 million km² area), the most groundwater-stressed region globally. Spatial variations in groundwater recharge rates (basin-wide mean: 17 to 960 mm/yr) were estimated in the 22 major river basins across India. The extensive plains of the

20 Indus-Ganges-Brahmaputra (IGB) river basins are subjected to prevalence of comparatively higher recharge. This is mainly attributed to occurrence of coarse sediments, higher rainfall, and intensive irrigation-linked groundwater abstraction inducing recharge by increasing available groundwater storage and return flows. Lower recharge rates (<200 mm/yr) in most of the central and southern study areas occur in cratonic, crystalline fractured aquifers. Estimated recharge rates have been compared favorably with field-scale recharge estimates (n= 52) based on tracer (tritium) injection tests. Results show

25 precipitation rates are not significantly influencing groundwater recharge in most of the river basins across India, indicating human influence in prevailing recharge rates. The spatial variability in recharge rates could provide critical input to policy makers to develop more sustainable groundwater management in India.

1 Introduction

India represents ~18% of the global population but occupies <3% of the global land area (FAO, 2013). Agricultural activity

30 is intensive and parts of India supports the highest rate of irrigated arable land globally (Siebert et al., 2013). The Ministry of Water Resources, Government of India and the World Bank (1998), estimate that groundwater contributes ~9% to India's GDP. However, few studies have reported groundwater recharge at a limited number of locations (Goel et al., 1975;

Bhandari et al., 1982; Athavale et al., 1992; Rangarajan et al., 1995; Rangarajan et al., 1997; Athavale et al., 1998; Rangarajan et al., 1998; Rangarajan and Athavale, 2000; Scanlon et al., 2010) (Figure 1). Out of the total irrigation-linked freshwater withdrawal, more than 50% is attributed to groundwater in India (CGWB, 2009).

Groundwater recharge can be defined as "the downward movement of water" that reaches the water table (Healy, 2010).

5 Recharge can occur directly from the infiltration of rainfall, as well as indirectly via irrigation return flows, leakage from surface water bodies, or a combination of the two (Scanlon et al., 2006). In India, large-scale, anthropogenic redistribution of water impacting recharge have occurred through both canal-driven and groundwater-fed irrigation (Mukherjee et al., 2007; MacDonald et al., 2016). In addition, dry-season groundwater-fed irrigation can increase available groundwater storage, enabling increased recharge during the subsequent monsoons (Revelle and Lakshminarayana, 1975; Shamsudduha et al.,
10 2011).

In India, groundwater recharge (Figure 1) is believed to be derived primarily from a continuous spell of rainfall during the monsoon season (extending from June to September); majority of the total annual precipitation (>74%) across this region has been occurring during monsoon (Guhathakurta and Rajeevan, 2008). Precipitation varies substantially across India; southern India also receives a moderate amount of precipitation during the pre-winter months (October-November). Figure 2 showing
15 annual precipitation patterns between 1996 and 2015. Droughts occurred in 2002, 2004, 2009 and 2014 in India (Figure 2). Precipitation data also reveal distinct spatial variations that range from humid to arid climates. 22 major river basins have been characterized in India (Figure 1; Bhanja et al., 2017a). The largest river basin in the region is the Ganges Basin in terms of area, followed by Indus Basin and Godavari Basin (Figure 1; Bhanja et al., 2017a). Brahmaputra (Basin 2a) and Barak (Basin 2c) basins have the highest annual rainfall occurrence (> 2000 mm/yr; Table 1) while the Indus basin (Basin 1)
20 receives the minimum amount of rainfall (Table 1). India includes a range of hydrogeological settings (Figure 3) that vary between highly fertile alluvial formations within Indus-Ganges-Brahmaputra (IGB) basin aquifers and less permeable, fractured rock aquifers in parts of central and southern India. Thus, IGB basin is intensively cultivated leading to comparatively higher rates of groundwater withdrawal.

Recharge data are critical for developing sustainable groundwater management policies in India. Understanding the controls
25 on groundwater recharge is also valuable for managing recharge. Currently there are almost no restrictions on groundwater development in India. Electricity policies in India actually promote over development of groundwater. Groundwater has played a large role in agricultural production, supported in large part by intensive irrigation and resulting in poverty reduction (Zaveri et al., 2016). However, low recharge rates relative to rates of pumping has resulted in large groundwater level declines, particularly in northwest India (Bhanja et al., 2017b). The region would face groundwater drought if not
30 managed properly. Bhanja et al. (2017b) showed replenishment of groundwater storage as a function of implementation of sustainable management policies in parts of the study area.

The objective of this study was to estimate spatial variability in groundwater recharge across India and compare with hydrogeologic environments, precipitation, and irrigation intensities to better understand controls on recharge variability. Unique aspects of this study includes the availability of a network of ~19,000 groundwater level monitoring locations with

~2 decades of data (1996 to 2015), the range of hydroclimatic (arid to humid) and hydrogeologic settings (sedimentary to cratonic) sampled, and the varying intensity of irrigation. Recharge estimates were compared with independent field-scale recharge estimates from 52 locations distributed across India to assess the reliability of the regional-scale estimates. Controls on spatial variability of recharge were also assessed, including precipitation and irrigation intensity across the 22 major river basins (Figure 1). The river basins provide natural subdivisions of the country that reflect varying hydroclimatic, hydrogeologic, and anthropogenic activity (Figure 1, Table 1).

2 Data and Methods

2.1 Groundwater level monitoring

Seasonal (i.e. quarterly, four times a year) ground-based monitoring data ($n > 15000$) for 20 years (from 1996 to 2015), were a part of the Central Ground Water Board's (CGWB, Government of India) groundwater monitoring mission. Most (~85%) of the studied wells represent shallow, unconfined aquifers (CGWB, 2014); however, these aquifers have not been characterized in CGWB reports/products. Initially, groundwater-level data were filtered for attaining a temporally continuous dataset in the study area for each year. The data were collected once during the months of January, May, August and November in individual years (GREM, 1997). Outliers were removed following Tukey's fence approach (Tukey, 1977) reducing the usable number of monitoring data points to 3468. The annual change in groundwater levels has determined using the highest and lowest groundwater head elevation (highest and lowest groundwater level generally occur in post-monsoon and pre-monsoon times, respectively) for each year. Finally, gridded ($0.1^0 \times 0.1^0$) Δh data were obtained following the ordinary kriging technique.

2.2 Groundwater recharge estimation using the Water Table Fluctuation (WTF) method

One of the major challenge is the ~~in the~~ absence of high-resolution, observed data of climatic parameters and other controlling factors that could be used in

~~Several challenges associated with~~ groundwater recharge measurement, ~~and h~~High spatiotemporal variability of groundwater recharge is ~~another are the two main~~ concerns for the regional-scale recharge estimates (Healy, 2010). In absence of field-scale data to estimate recharge, simpler methods, such as the water table fluctuation (WTF) technique, are more widely used to estimate recharge (R_g) (Healy and Cook, 2002). R_g may be defined as,

$$R_g = \Delta h \times S_y \quad (1)$$

~~where~~Where, Δh represents seasonal changes in groundwater levels.

Specific yield (S_y) of the aquifer material, are one of the important component for the recharge estimation. S_y information were retrieved following CGWB (2012) and Bhanja et al. (2016). Mean S_y values are varying between 0.02 and 0.13, varying with identified aquifers (Figure 3, 4a). The IGB basins are heavily irrigated with intensive groundwater withdrawals (Figure 4b) (Supplementary Figure 1) relative to other parts of the country.

2.3 Field-scale recharge estimation using tritium injection approach

Tracer in the form of ions, isotope or gases move with water, can be tracked to estimate water infiltration through unsaturated zone (Healy, 2010). Here, tritium injection method have been used to estimate recharge rates in 52 locations across India (Figure 1). The equivalent depth of water of the peak movement can be represented as the total infiltrated water flux (Healy, 2010). The piston-flow method, which has been a major assumption in tracer movement technique, is linked with the vertically downward movement of water and dissolved solutes without mixing and change in velocity (Healy, 2010). Tritium injection is performed during the pre-monsoon season and the soil core is collected after the monsoon in order to estimate the monsoon recharge rate (Rangarajan et al., 2000). More details on the tritium injection method can be found in Supplementary Information and in Rangarajan et al. (2000).

2.4 Non-linear trend analysis

Non-linearity in the [recharge and precipitation](#) data can be represented through Hodrick-Prescott (HP) trend analysis (Hodrick and Prescott, 1997), which separates cyclical components present (c_t) in the data (y_t) from the trend (T_t) after solving the following equations:

$$y_t = T_t + c_t \quad (2)$$

$$\text{Min}(T) \sum_{t=1}^T ((y_t - T_t)^2 + \lambda((T_{t+1} - T_t) - (T_t - T_{t-1}))^2) \quad (3)$$

where λ is a constant (Hodrick and Prescott, 1997; Ravn and Uhlig, 2002).

3 Results and Discussions

3.1 Recharge estimates from the Water Table Fluctuation method

Calculation of R_g based on water level data from 1996 to 2015 exhibits both spatial and temporal variability over the years (Figure 5). In general, the years of lowest groundwater recharge, i.e. 2002, 2004, 2009 and 2014 correspond to years of lowest precipitation (Figure 2, 5). R_g exceeding 300 mm/yr is found over most regions of the IGB basin (Figure 5, [56](#)). The central and southern India have been subjected to comparatively lower recharge rates (<200 mm/yr). Basin-wide data show highest recharge rates in basins 1, 2a, 2b, 2c, 10, 11, 14 and 20 (Figure 6, Table 1); parts of the basins are composed of alluvial sediments that are also intensively irrigated linked to groundwater withdrawal. The highest annual recharge rate was calculated for 2010 in most basins. High recharge rates in 2010 are attributed to increased space for recharge related to lower precipitation in 2009 (Figure 2) with 22 out of 26 meteorological subdivisions declared as rainfall deficit in India (NCC, 2013). Linear regression analysis of recharge rates between 1996 and 2015 show simultaneous occurrence of increased and decreased trend in recharge rates in different parts of India (Figure 7). Parts of Ganges basin (basin 2a) have been experiencing rapid declines in recharge rates while parts of western and north-western India are experiencing increase in recharge in the study period (Figure 7). Non-linear trend analysis shows high temporal variation in recharge in all of the

studied basins (Figure 8); maximum recharge amplitudes are found in basins, 2b, 2c, 11 and 14 (Figure 8). The basins are located in comparatively higher precipitation zones of north-east and west-coastal India, respectively.

3.2 Groundwater recharge estimates as a function of climate, hydrogeology and irrigation

Comparatively higher rates of precipitation partly explain the high recharge rates in IGB basin. Precipitation data show high annual variability in all of the basins (Figure 9). Highly fertile sedimentary formations of IGB basin facilitate both direct and indirect recharge. Higher agricultural groundwater withdrawal in the IGB basin (Figure 4b) leads to decreases in water storage, which can result in increased recharge by generating more recharge space. Subsequently, recharge rates are not homogenous through the IGB basins (Figure 5, 6). The unconsolidated formations of the IGB basin are highly transmissive for water flow (transmissivity values varies from 250 to 4000 m²/day; Figure 3). Horizontal hydraulic conductivity values are found to be higher in the IGB basin (hydraulic conductivity varies from 10 to 800 m/day; Figure 3). As a result, intense groundwater withdrawal at a region within IGB basin would have profound impact on the groundwater storage on the surrounding regions (particularly the areas within the periphery of the pumping influence). This would facilitate the creation of the additional recharge space within the entire region. On the other hand, comparatively lower transmissivity and hydraulic conductivity values in aquifers of the western, central and southern India, restrict water to flow in the horizontal direction (Figure 3). This inhibits horizontal flow of water after a pumping event in those region. Basin-wide mean recharge rates are found to be variable over the years (Figure 9). Highest inter-annual variability has been obtained in basins 2b, 2c and 14 (Figure 9); the basins are also experiencing highest precipitation rates (Table 1, Figure 9). On the other hand, basins located in Indian craton, i.e. basins 3, 4, 5 and 19, exhibit lowest inter-annual variability (Figure 9). Lower recharge rates are found in central and southern parts of India (Figure 5, 56). The crystalline aquifers in these regions (Mukherjee *et al.*, 2015) are not conducive enough for precipitation-based infiltration through subsurface. The observation is consistent with Sukhija *et al.* (1996), who also found lower recharge rate in fractured regions. Deeply weathered, lateritic soils that have developed on cratons often have low matrix permeabilities due to concentration of kaolinite and development of ferricretes/alucetes (laterites) (Taylor and Howard, 1999). These low matrix permeabilities promote infiltration via discontinuities. Soil permeabilities are substantially less than those of the sorted alluvial soils in the IGB basin.

3.3 Comparison with field-scale recharge estimates

We present field-scale recharge rates (R_n , Figure 1) derived from tritium injection approach (Rangarajan *et al.*, 2000) in Table 2. The recharge rates were estimated in four different land use types, i.e., granite, basalt, sediment and alluvium. R_n varies within a range of 22 to 179 mm in locations within granite setting and the values reach 46 to 171 mm in basalt regions (Table 2 and Figure 10). Recharge rates are found to be comparatively higher in sediment and alluvial region with rates of 29-181 and 20-198 mm, respectively (Table 2 and Figure 10). Similarly, R_g also exhibit higher recharge in sediment and alluvium regions (Figure 10). ~~Precipitation rates provide mixed response i.e. alternate high and low values in all of the land use types;~~

Comment [SB1]: Deleting this sentence

Values of R_g from this study compare favorably with site-scale determinations in 42 out of the total 52 locations (Figure 10). However, R_g was found to be larger than the recharge rates in location IDs 44, 45, 49, and 50 in Figure 1; Figure 10). Three locations out of four are located in IGB basin, which is experiencing intensive groundwater abstraction for irrigation (Figure 4b). This discrepancy may be coming from the assumption of direct recharge only through the unsaturated zone traced by radioisotopes (Healy, 2010). Also, R_n includes monsoon recharge only, while R_g includes both monsoon and pre-monsoon recharge that is dominated by irrigation return flow. Hence, contributions from indirect recharge via irrigation return flows and recharge amplified by dry-season abstraction for irrigation are ignored in R_n estimates. R_g was found to be lower than R_n in some of the locations (location numbers 10, 11, 25, 28, 40, 46 in Figure 1; Figure 10). All of the six locations are subjected to comparatively lower rates of irrigation-linked groundwater withdrawal (Figure 4b). Therefore, irrigation return flow and creation of additional recharge space are almost negligible in these locations. Further, the locations are also experiencing comparatively higher rates of precipitation (Table 2). As R_g will not consider a fraction of recharge particularly during aquifer full condition (Healy and Cook, 2002), it is likely the major reason for the observation of lower R_g values than R_n values in these six locations.

3.4 Groundwater recharge as a function of precipitation

Recharge rates are significantly (p value <0.01) correlated with precipitation in 10 out of the 22 basins. Non-linear trend analysis between basin-wide recharge rates and precipitation show good match in basins 2a, 3, 4, 12 and 20 (Figure 8). In contrast, recharge and precipitation trends are negatively correlated in basins 2b, 2c, 7, 16 and 18 (Figure 8). In order to study the relationship in more detail, we used the Granger causality analysis (Granger, 1988). Results show precipitation significantly (p value <0.01) causes R_g in 6 basins, i.e. 8, 11, 12, 13, 15 and 16. Most of these basins are not intensively irrigated; groundwater withdrawal rates are found to be lower in these regions, irrigation groundwater withdrawal found to be less than 75 mm in all of the basins (Figure 4b). Therefore, natural processes i.e. precipitation still influence recharge rates in those basins. Alternatively, the relationship between recharge and precipitation is statistically insignificant in other basins, which are more intensively irrigated (50 mm to more than 300 mm; Figure 4b). As a result, precipitation influence is found to be less dominant on recharge in these regions.

3.5 Assumptions and limitations

Minimal reliance on assumptions in measurement is an advantages of using the WTF method (Healy and Cook, 2002). Furthermore, the method can be followed to estimate recharge for a large region, simultaneously (Healy and Cook, 2002). Uncertainty in groundwater storage co-efficients (e.g., S_y) influences the magnitude of computed recharge. In WTF method, recharge rates exhibits minimum recharge-values in groundwater discharge regions. The antecedent recession during peak groundwater level (Healy and Cook, 2002), which is a component of base-flow and discharge, is difficult to measure accurately and hence results in underestimation of recharge during that time.

4 Conclusions

Groundwater recharge is computed from in situ observations between 1996 to 2015 in 22 major river basins across India. Differential spatial patterns of climate, geology and withdrawal linked to irrigation, are the major reasons for spatial heterogeneity in groundwater recharge in India. Higher values (>300 mm/yr) of groundwater recharge rates are observed in alluvial plains of northern and eastern India. Comparatively higher rates of precipitation, high permeability and intense groundwater abstraction, either alone or in combination, are the major reasons. On the other hand, in central and southern India, comparatively lower recharge occurrence is attributed to lower permeability fractured-crystalline cratonic rocks. Comparatively lower precipitation and lower irrigation rates are also influencing recharge rates in those regions. Recharge rates based on WTF compare favorably with independent recharge estimates from tracer data in 42 out of 52 locations. [Pre-monsoon time recharge and recharge from the irrigation return flow are the reasons for this mismatch in the four locations within alluvium formation.](#) Controls on recharge include precipitation in less intensively irrigated basins. Results from this study should provide valuable input to policy makers developing more sustainable groundwater management plans.

Acknowledgments and Data

SNB acknowledges CSIR (Government of India) for their support for providing the SPM fellowship. SNB also acknowledges U.S. Department of State for the Fulbright fellowship. We acknowledge CGWB, India and IMD, India, for the water level data and precipitation data, respectively. We thank Robert C. Reedy, UT Austin, for his help in improvement of the figures. We thank Charudutta M. Nirmale for his help in data retrieval.

References

- Athavale, R. N., Rangarajan, R., and Muralidharan, D.: Measurement of natural recharge in India. *J. Geol. Soc. India*, 39, 235–244, 1992.
- Athavale, R. N., Rangarajan, R., and Muralidharan, D.: Influx and efflux of moisture in a desert soil during a one year period. *Water Resour. Res.*, 34, 2871–2877, 1998.
- Bhandari, N. *et al.*: Hydrogeological investigations in Sabarmati basin and coastal Saurashtra using radioisotope methods. Final scientific report, PRL, Ahmedabad, India, 220 pp, 1982.
- Bhanja, S., Mukherjee, A., Rodell, M., Velicogna, I., Pangaluru, K., Famiglietti, J.: Regional groundwater storage changes in the Indian Sub-Continent: the role of anthropogenic activities. In: American Geophysical Union, Fall Meeting, GC21B-0533, 2014.
- Bhanja, S. N., Mukherjee, A., Saha, D., Velicogna, I., and Famiglietti, J. S.: Validation of GRACE based groundwater storage anomaly using in-situ groundwater level measurements in India. *Journal of Hydrology*, <http://dx.doi.org/10.1016/j.jhydrol.2016.10.042>, 2016.

- Bhanja, S. N., Rodell, M., Li, B., Saha, D., and Mukherjee, A.: Spatio-temporal variability of groundwater storage in India. *Journal of Hydrology*, <http://dx.doi.org/10.1016/j.jhydrol.2016.11.052>, 2017a.
- Bhanja, S.N., Mukherjee, A., Rodell, M., Wada, Y., Chattopadhyay, S., Velicogna, I., Pangaluru, K. and Famiglietti, J.S.: Groundwater rejuvenation in parts of India influenced by water-policy change implementation. *Scientific reports*, 7(1), 7453, 2017b.
- Central Ground Water Board, CGWB: G. o. I., Ministry of Water Resources. *Dynamic groundwater resources*, p. 225pp, 2009.
- Central Ground Water Board, CGWB: G. o. I. Ministry of Water Resources. *Aquifer systems of India*, p. 92pp, 2012.
- Central Ground Water Board, CGWB: G. o. I. Ministry of Water Resources. *Ground Water Year Book – India 2013-14*, p. 76pp, 2014.
- Food and Agriculture Organization of the United Nations (FAO): *FAO Statistical Yearbook 2013: World Food and Agriculture*, 289 pp, 2013.
- Groundwater Resource Estimation Methodology (GREM): Report of the groundwater resource estimation committee. *Ministry of Water Resources, Government of India, New Delhi*, 1997.
- Gleeson, T., Wada, Y., Bierkens, M. F., and van Beek, L. P.: Water balance of global aquifers revealed by groundwater footprint, *Nature*, 488(7410) 197-200, 2012.
- Gleeson, T., Befus, K. M., Jasechko, S., Luijendijk, E., and Cardenas, M. B.: The global volume and distribution of modern groundwater. *Nat. Geosci.*, 9(2), 161-167, 2015.
- Goel, P. S. *et al.*: Tritium tracer studies on ground water recharge in the alluvial deposits of Indo-Gangetic plains of western U.P., Punjab and Haryana, In: R.N. Athavale, Ed.. *Proceedings of Indo-German Workshop on Approaches and Methodologies for Development of Ground Water Resources*, NGRI, Hyderabad, pp. 309–322, 1975.
- Granger, C. W.: Causality, cointegration, and control. *Journal of Economic Dynamics and Control*, 12(2-3), 551-559, 1988.
- Guhathakurta, P. and Rajeevan, M.: Trends in the rainfall pattern over India. *Int. J. Climatol.*, 28, 1453–1469, 2008.
- Healy, R. W. and Cook, P. G.: Using groundwater levels to estimate recharge. *Hydrogeol. J.*, 10, 91–109, 2002.
- Healy, R. W.: *Estimating groundwater recharge*. Cambridge University Press, 245 pp.
- Hodrick, R. J. and Prescott, E. C., 1997. Postwar US business cycles: an empirical investigation. *Journal of Money, credit, and Banking*, 1-16, 2010.
- MacDonald, A.M., Bonsor, H.C., Ahmed, K.M., Burgess, W.G., Basharat, M., Calow, R.C., Dixit, A., Foster, S.S.D., Gopal, K., Lapworth, D.J. and Lark, R.M.: Groundwater quality and depletion in the Indo-Gangetic Basin mapped from in situ observations. *Nature Geoscience*, 9, 762-766, 2016.
- Mukherjee, A., Fryar, A. E., and Howell, P. D.: Regional hydrostratigraphy and groundwater flow modeling in the arsenic-affected areas of the western Bengal basin, West Bengal, India. *Hydrogeol. J.*, 15, 1397-1418, 2007.
- Mukherjee, A., Saha, D., Harvey, C. F., Taylor, R. G., Ahmed, K. M., and Bhanja, S. N.: Groundwater systems of the Indian Sub-Continent. *J. Hydrol. Regional Studies*, 4, 1-14, 2015.

- National Climate Centre (NCC): India Meteorological Department. Monsoon report 2012, 193pp, 2013.
- Rangarajan, R. *et al.*: Natural recharge measurements in Shahdol district, Madhya Pradesh using injected tritium method. Tech. Report No.NGRI-95-GW-174, 26 pp, 1995.
- Rangarajan, R. *et al.*: Natural recharge studies using injected tritium technique in Bankura, North 24 Paraganas and South 24 Paraganas districts of West Bengal, Tech. Report No.NGRI-97-GW-214 45 pp, 1997.
- Rangarajan, R. *et al.*: Natural recharge measurements in GAETEC watershed near Hyderabad city, Andhra Pradesh, Tech. Report No. NGRI-98-GW-223, 25 pp, 1998.
- Rangarajan, R. and Athavale, R. N.: Annual replenishable ground water potential of India—an estimate based on injected tritium studies. *J. Hydrol.*, 234, 38-53, 2000.
- 10 Ravn, M. O., and Uhlig, H.: On adjusting the Hodrick-Prescott filter for the frequency of observations. *Review of economics and statistics*, 84(2), 371-376, 2002.
- Revelle, R. and Lakshminarayana, V.: The Ganges Water Machine. *Science*, 188, 611-616, 1975.
- Richey, A. S., Thomas, B. F., Lo, M. -H., Famiglietti, J. S., Reager, J. T., Voss, K., Swenson, S., and Rodell, M.: Quantifying renewable groundwater stress with GRACE. *Wat. Resour. Res.*, 51, 5217–5238, doi:10.1002/2015WR017349,
- 15 2015.
- Rodell, M., Velicogna, I., and Famiglietti J. S.: Satellite-based estimates of groundwater depletion in India. *Nature*, 460, 999–1002, 2009.
- Scanlon, B. R., Keese, K. E., Flint, A. L., Flint, L. E., Gaye, C. B., Edmunds, W. M., and Simmers, I.: Global synthesis of groundwater recharge in semiarid and arid regions. *Hydrological processes*, 20(15), 3335-3370, 2006.
- 20 Scanlon, B.R., Mukherjee, A., Gates, J., Reedy, R.C. and Sinha, A.K.: Groundwater recharge in natural dune systems and agricultural ecosystems in the Thar Desert region, Rajasthan, India. *Hydrogeology journal*, 18(4), 959-972, 2010.
- Shamsudduha, M., Taylor, R. G., Ahmed, K. M. and Zahid A.: The impact of intensive groundwater abstraction on recharge to a shallow regional aquifer system: evidence from Bangladesh, *Hydrogeol. J.*, 19, 901-916, 2011.
- Siebert, S., Henrich, V., Frenken, K. and Burke, J.: Update of the global map of irrigation areas to version 5. University of Bonn/FAO, Bonn, Germany/Rome, Italy, 178pp.,doi, 10(2.1), 2660-6728, 2013.
- 25 Sukhija, B. S., Nagabhushanam, P., and Reddy, D. V.: Groundwater recharge in semi-arid regions of India: an overview of results obtained using tracers. *Hydrogeol. J.*, 4, 50-71, 1996.
- Taylor, R. G. and Howard, K. W. F.: Lithological evidence for the evolution of weathered mantles in Uganda by tectonically controlled cycles of deep weathering and stripping. *Catena*, 35, 65-94, 1999.
- 30 Tukey, J. W.: *Exploratory Data Analysis*, Addison-Wesley, 1977.
- World Bank and Government of India: India-water resources management sector review: groundwater regulation and management report. Washington D.C. New Delhi, World Bank Government of India, 1998.

Zaveri, E., Grogan, D.S., Fisher-Vanden, K., Frolking, S., Lammers, R.B., Wrenn, D.H., Prusevich, A. and Nicholas, R.E.: Invisible water, visible impact: groundwater use and Indian agriculture under climate change. *Environmental Research Letters*, 11(8), p.084005, 2016.

5

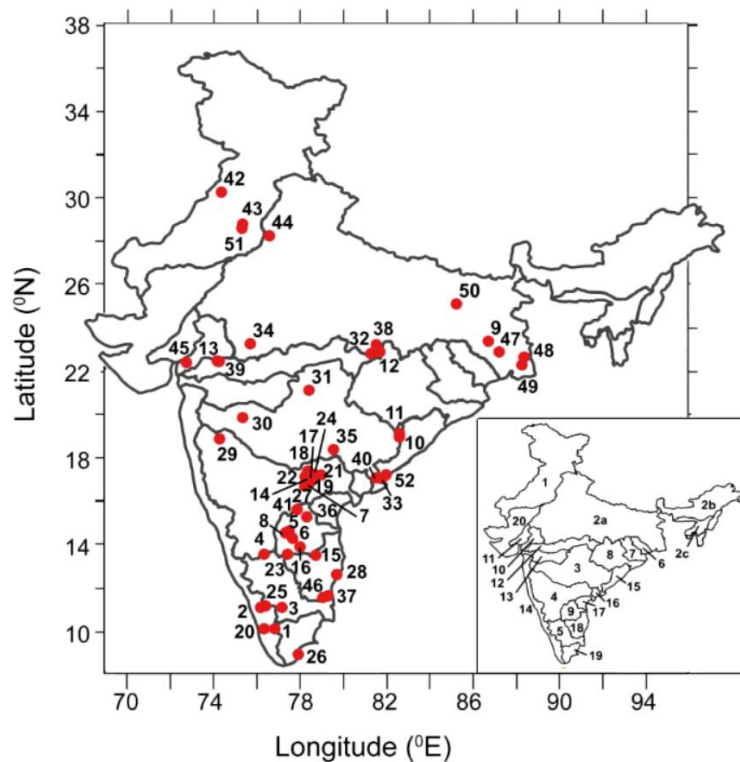


Figure 1: Map of India showing the 22 major river basins and locations (circles) of 52 field-scale recharge measurements used in this study derived from the tritium injection; numbers beside these locations correspond to sites reported in Table 1. River basin numbers are shown in inset. Field-scale recharge data are taken from the following studies and unpublished estimates: Goel *et al.*, 1975; Athavale *et al.*, 1998; Rangarajan and Athavale, 2000; Bhandari *et al.*, 1982; Rangarajan *et al.*, 1997; Rangarajan *et al.*, 1995; Athavale *et al.*, 1992; Rangarajan *et al.*, 1998; Rangarajan *et al.*, 2000.

10

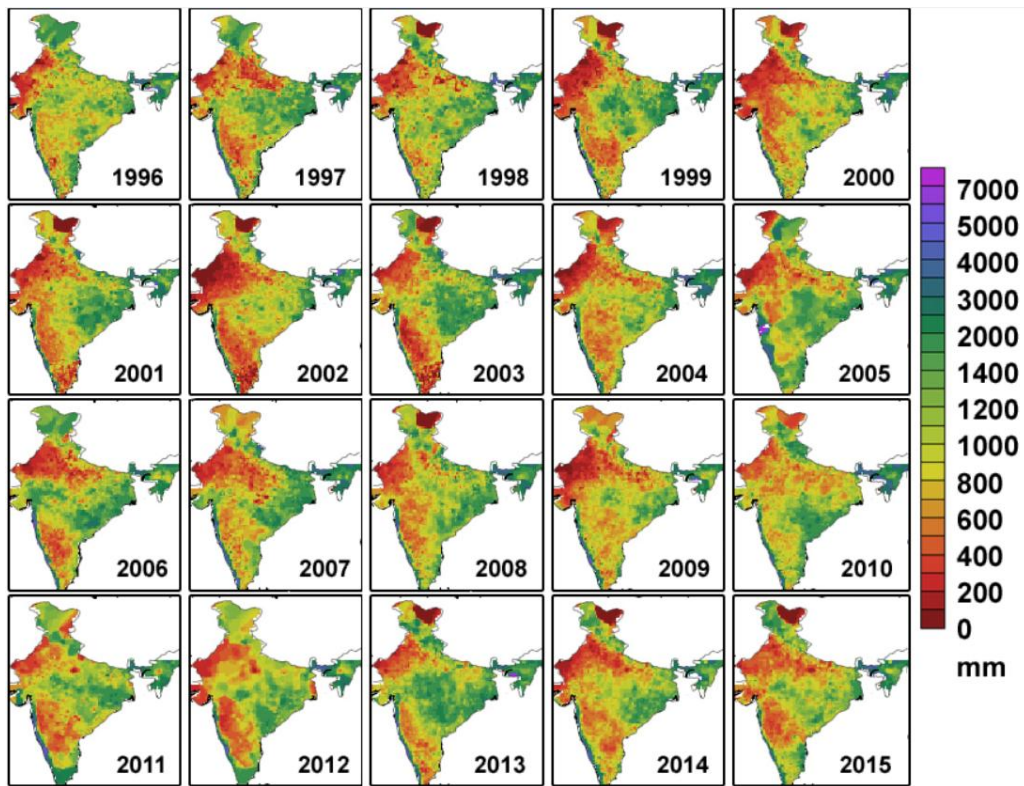
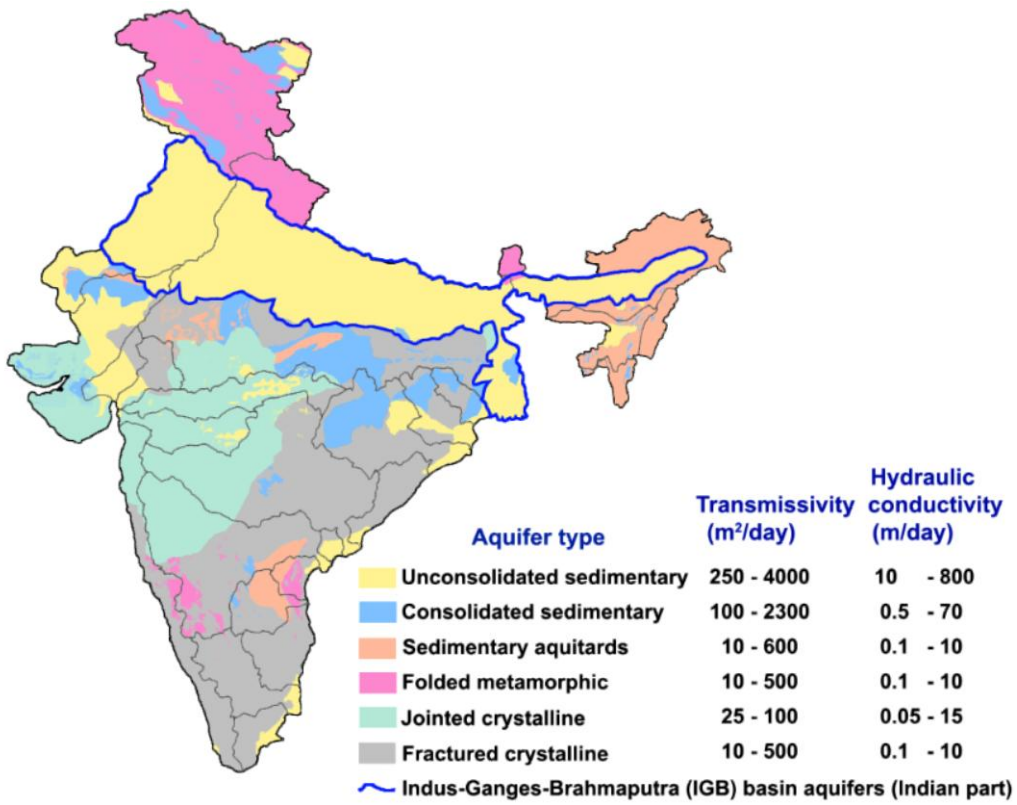


Figure 2: Maps showing total annual precipitation (mm) over the study area in 1996 to 2015.



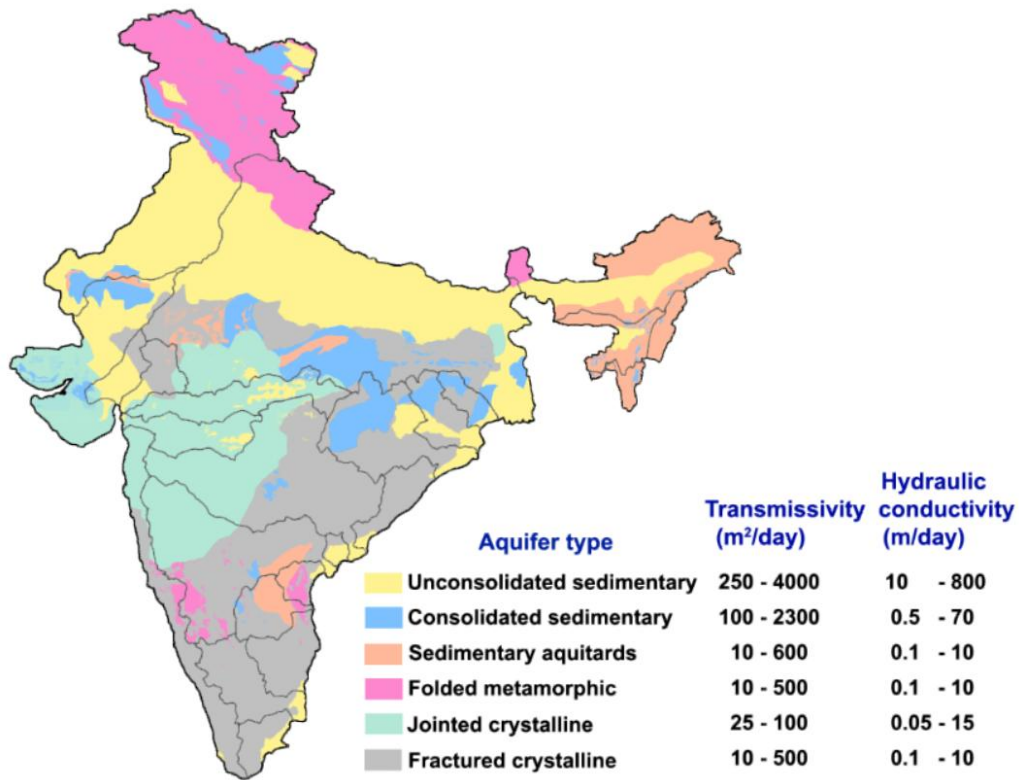


Figure 3: Aquifer types, transmissivity (m²/day) and horizontal hydraulic conductivity values (m/day). Transmissivity and horizontal hydraulic conductivity values are obtained from CGWB (2012) and GREM (1997). IGB basin aquifers are shown using blue line.

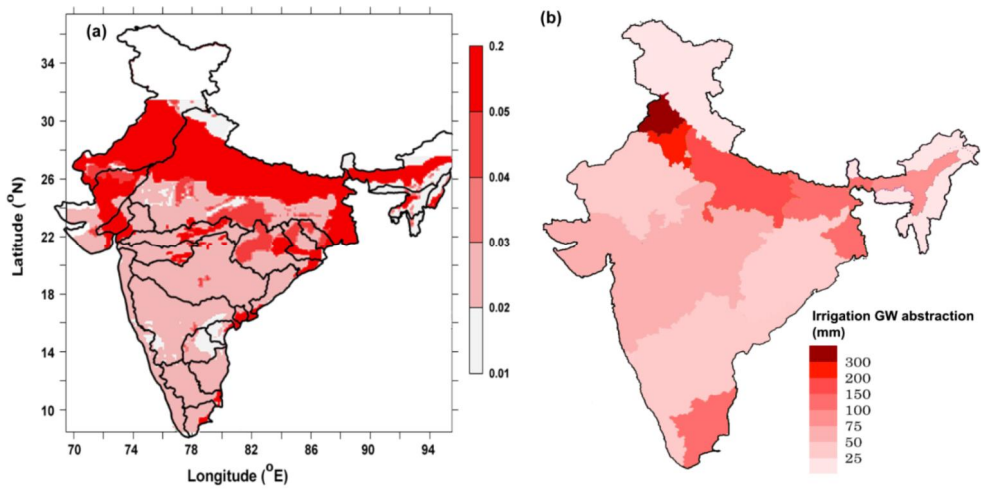


Figure 4: Maps of (a) specific yield data (modified from Bhanja *et al.*, 2016). Blank area represent areas of no data availability; (b) state-wise groundwater abstraction for irrigation (mm, estimates are for the year 2009) (CGWB, 2012).

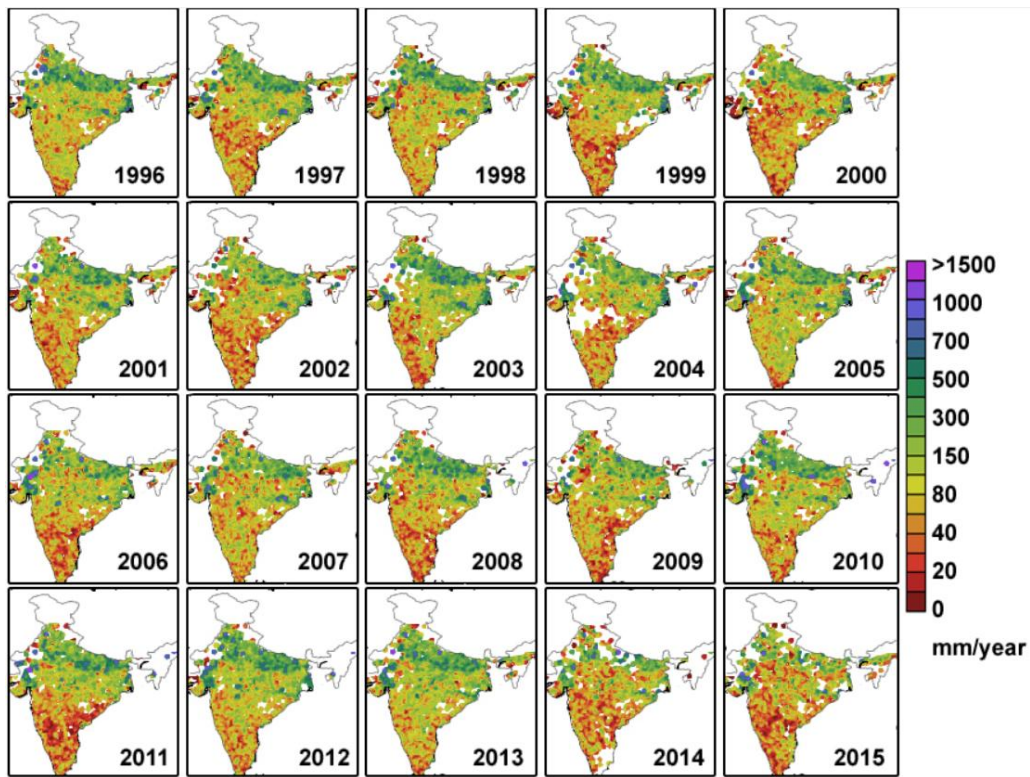


Figure 5: Maps showing gridded ($0.1^{\circ} \times 0.1^{\circ}$) groundwater recharge (mm/yr) calculated using WTF method. Blank area represent areas of no data availability.

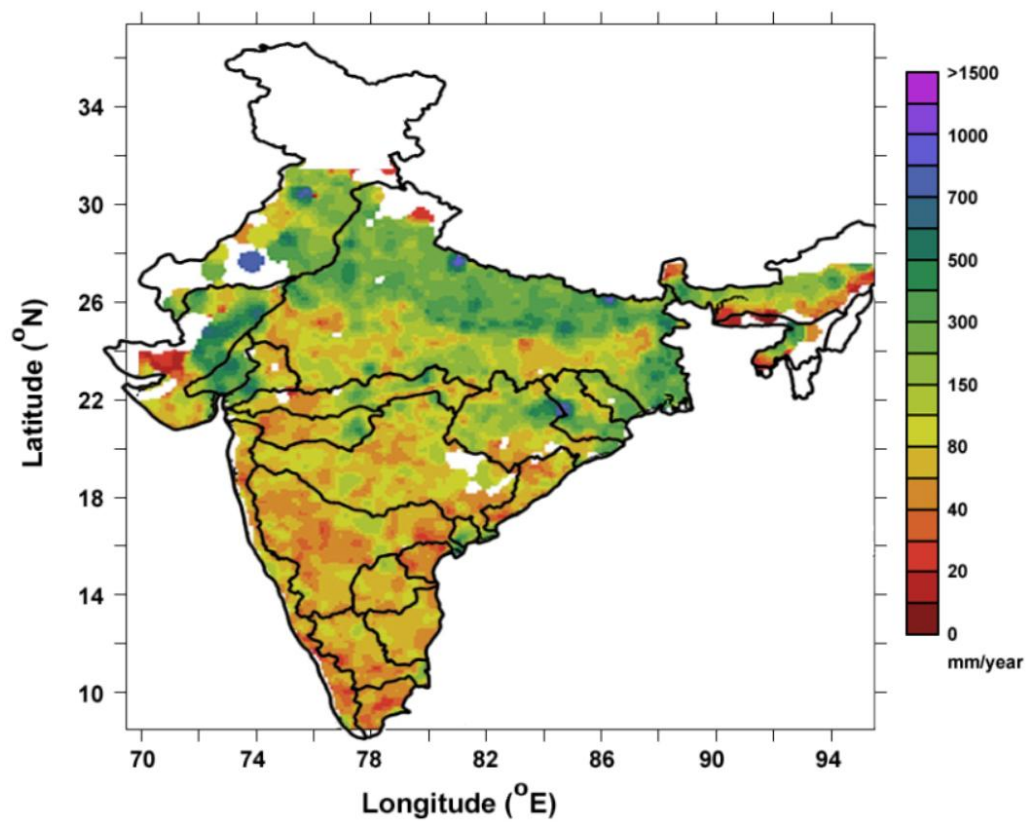


Figure 6: Map of mean recharge in the study period (1996-2015). Blank area represent areas of no data availability.

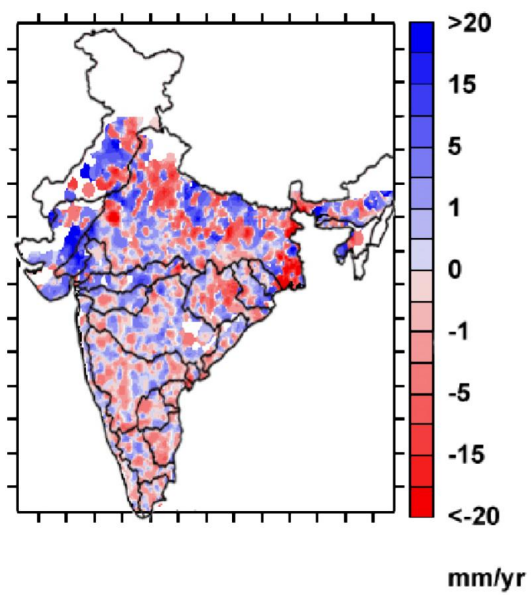
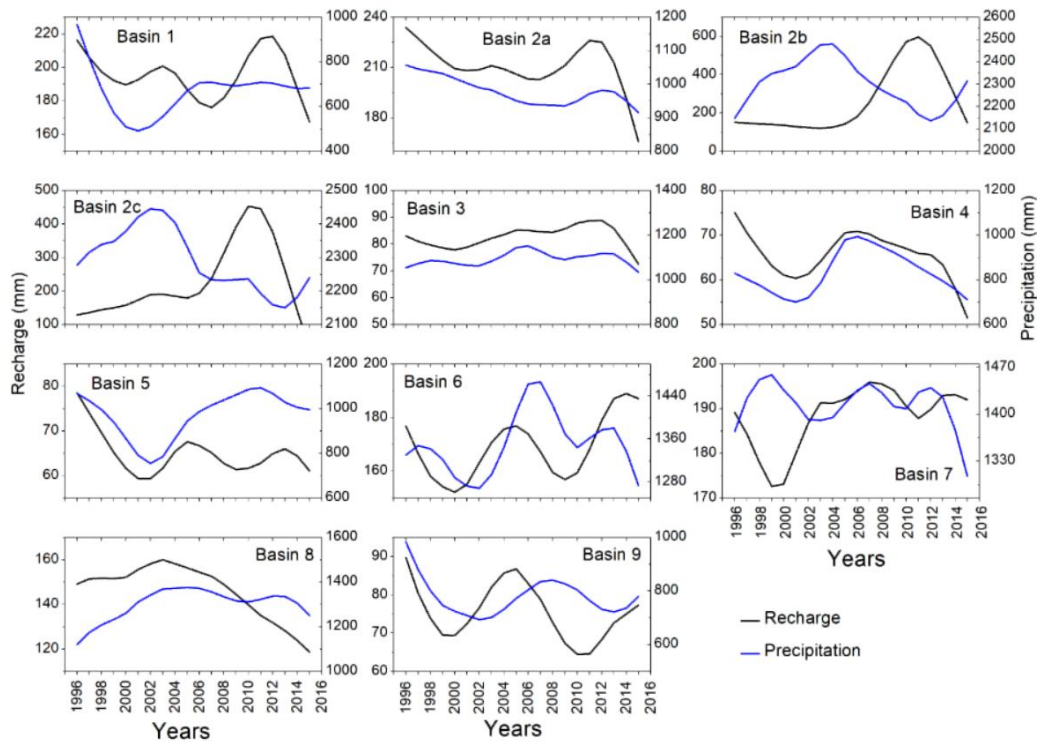


Figure 7: Maps of positive and negative trends of groundwater recharge in 1996-2015. Basin boundaries are overlaid. Blank area represent areas of no data availability.



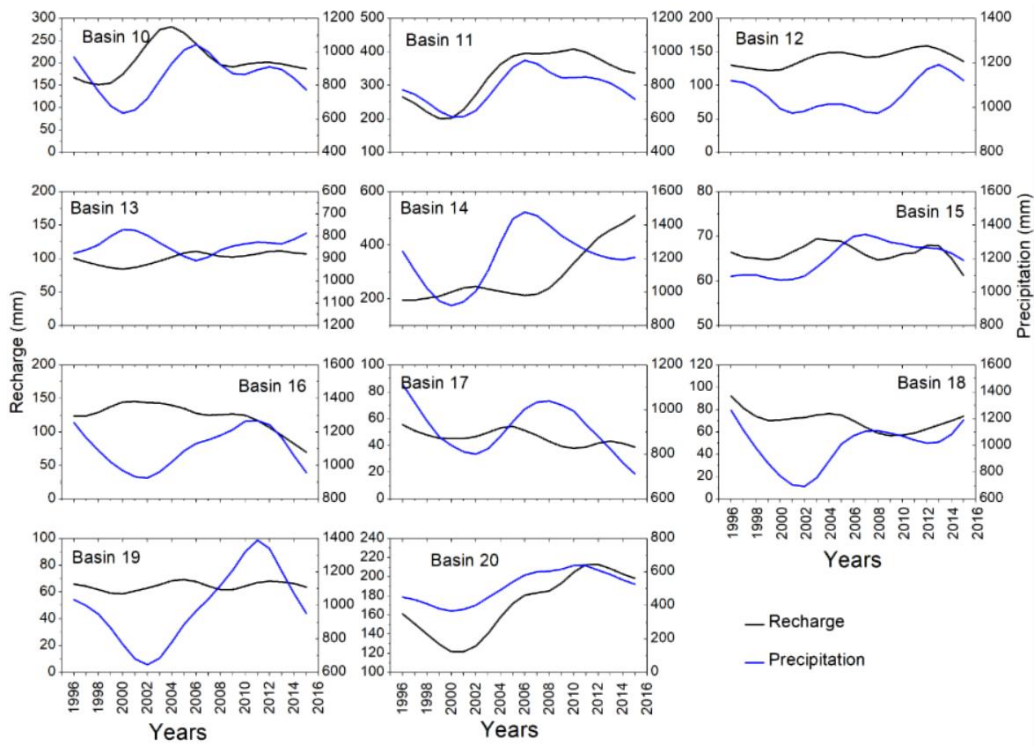


Figure 8: Basin-wide estimates of Hodrick-Presscott trend analysis of R_g (mm/yr) and precipitation (mm/yr). For basin locations, see Figure 1.

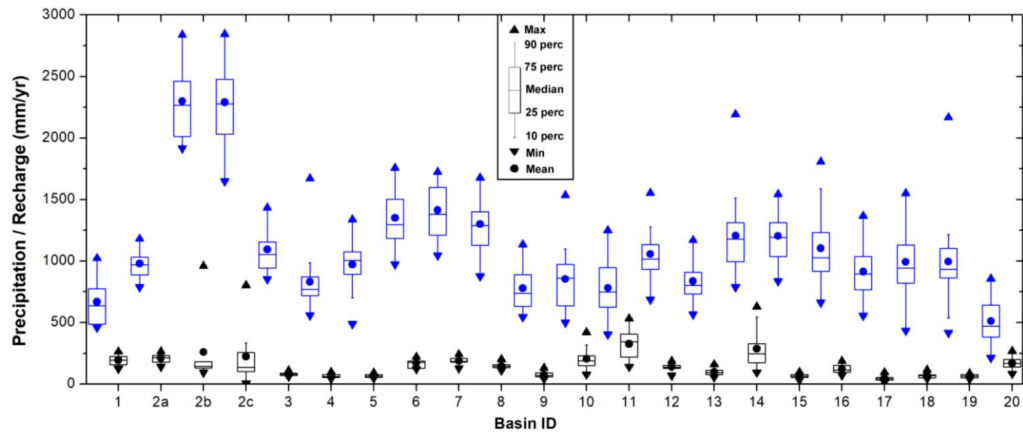


Figure 9: Basin-wide box-whisker plot of precipitation (blue) and recharge rates (black). Symbols representing mean, median, maximum value (Max), minimum value (Min), 10th percentile, 25th percentile, 75th percentile and 90th percentile are shown in inset of the bottom figure. ~~Recharge estimates exceeded 700 mm/yr data were indicated on the top of the column.~~

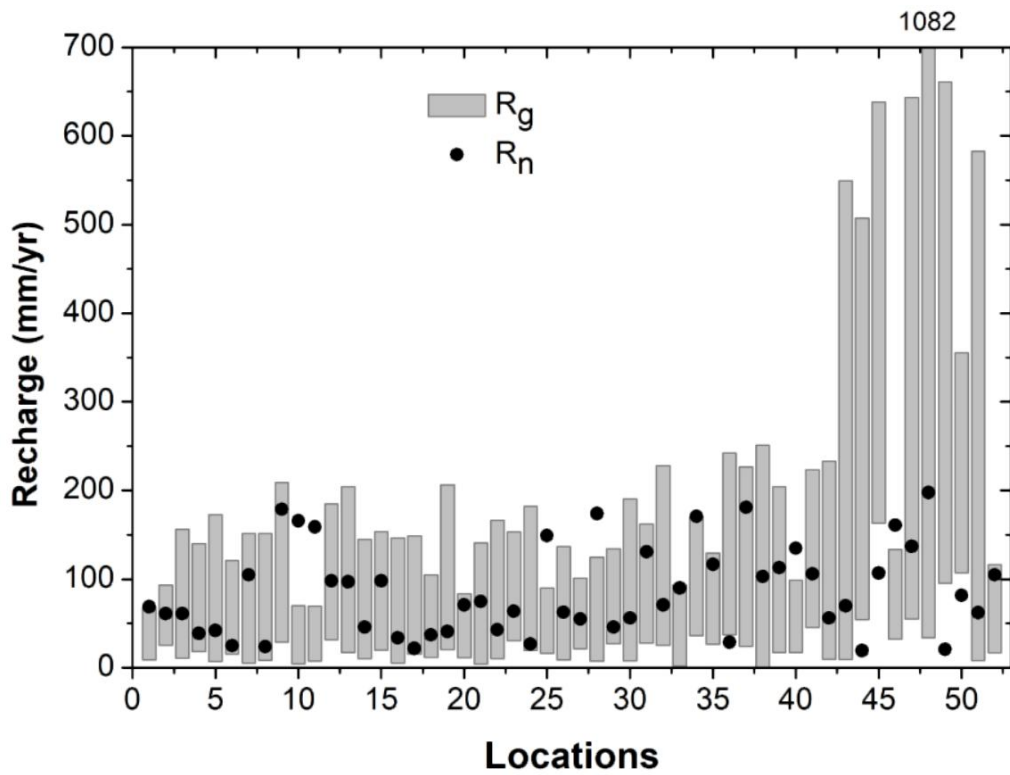


Figure 10: Comparison of groundwater recharge rates obtained from the present study (annual range) and some of the earlier studies conducted over the point locations shown in Figure 1. Recharge estimates exceeded 700 mm/yr data were indicated on the top of the column.

Table 1: Basin-wide annual mean recharge rates (mm/yr), average precipitation rates in 1996-2015.

ID	Basins	No. of wells	R_g (mm/yr)	Precipitation (mm/yr)
1	Indus Basin (Indian part)	233	126-263	668
2a	Ganges Basin	1048	143-264	979
2b	Brahmaputra Basin	113	94-960	2300
2c	Barak and others Basin	12	77-802	2291
3	Godavari Basin	384	60-111	1094
4	Krishna Basin	377	42-98	831

Formatted: Font: Bold, Complex Script Font: Not Bold

Formatted: Complex Script Font: 12 pt, Not Bold

Formatted: Font: Bold, Complex Script Font: Not Bold

Formatted: Complex Script Font: 12 pt, Not Bold

Formatted: Font: Bold, Complex Script Font: Not Bold

Formatted: Font: Bold, Complex Script Font: Not Bold

Formatted: Complex Script Font: 12 pt, Not Bold

Formatted: Font: Bold, Complex Script Font: Not Bold

Formatted: Complex Script Font: 12 pt, Not Bold

Formatted: Complex Script Font: 12 pt, Not Bold

5	<u>Cauvery Basin</u>	<u>162</u>	<u>48-92</u>	<u>971</u>
6	<u>Subarnarekha Basin</u>	<u>24</u>	<u>121-221</u>	<u>1351</u>
7	<u>Brahmani and Baitarni Basin</u>	<u>56</u>	<u>128-242</u>	<u>1414</u>
8	<u>Mahanadi Basin</u>	<u>173</u>	<u>111-200</u>	<u>1300</u>
9	<u>Pennar Basin</u>	<u>46</u>	<u>42-131</u>	<u>779</u>
10	<u>Mahi Basin</u>	<u>30</u>	<u>49-420</u>	<u>853</u>
11	<u>Sabarmati Basin</u>	<u>47</u>	<u>140-532</u>	<u>782</u>
12	<u>Narmada Basin</u>	<u>94</u>	<u>69-186</u>	<u>1057</u>
13	<u>Tapi Basin</u>	<u>71</u>	<u>56-159</u>	<u>836</u>
14	<u>West flowing rivers South of Tapi Basin</u>	<u>261</u>	<u>95-628</u>	<u>1205</u>
15	<u>East flowing rivers between Mahanadi and Godavari Basin</u>	<u>51</u>	<u>33-97</u>	<u>1204</u>
16	<u>East flowing rivers between Godavari and Krishna Basin</u>	<u>18</u>	<u>71-188</u>	<u>1104</u>
17	<u>East flowing rivers between Krishna and Pennar Basin</u>	<u>27</u>	<u>17-95</u>	<u>914</u>
18	<u>East flowing rivers between Pennar and Cauvery Basin</u>	<u>84</u>	<u>44-116</u>	<u>993</u>
19	<u>East flowing rivers South of Cauvery Basin</u>	<u>71</u>	<u>41-85</u>	<u>995</u>
20	<u>West flowing rivers of Kutch and Saurashtra including Luni Basin</u>	<u>86</u>	<u>84-267</u>	<u>512</u>

Table 2: Field-scale recharge (R_p) estimates across 52 locations (Figure 1), river basin ID, hydrogeology and prevailing precipitation rates (mm/yr).

Location ID	Location Name	River basin ID	Hydrogeologic setting	R_p mm	Precipitation mm/yr
1	<u>Noyil</u>	<u>14</u>	<u>Granite</u>	<u>69</u>	<u>1768-3776</u>
2	<u>Ponnani</u>	<u>14</u>	<u>Granite</u>	<u>61</u>	<u>1305-3781</u>
3	<u>Vattamalaikarai</u>	<u>5</u>	<u>Granite</u>	<u>61</u>	<u>83-1796</u>
4	<u>West Suvarnamukhi</u>	<u>4</u>	<u>Granite</u>	<u>39</u>	<u>264-979</u>
5	<u>Marvanka</u>	<u>9</u>	<u>Granite</u>	<u>42</u>	<u>343-1017</u>
6	<u>Chitravathi</u>	<u>9</u>	<u>Granite</u>	<u>25</u>	<u>307-1149</u>
7	<u>Aurepalle</u>	<u>4</u>	<u>Granite</u>	<u>105</u>	<u>322-1201</u>
8	<u>Mannila</u>	<u>9</u>	<u>Granite</u>	<u>24</u>	<u>376-1035</u>

Formatted: Font: Bold, Complex Script Font: Not Bold

9	<u>Gandeshwari</u>	<u>2a</u>	<u>Granite</u>	<u>179</u>	<u>728-1909</u>
10	<u>Putra</u>	<u>3</u>	<u>Granite</u>	<u>166</u>	<u>868-2621</u>
11	<u>Parlijori</u>	<u>3</u>	<u>Granite</u>	<u>159</u>	<u>1045-2687</u>
12	<u>Jaitari, Shahdol</u>	<u>2a</u>	<u>Granite</u>	<u>98</u>	<u>879-1802</u>
13	<u>Upper Hatni</u>	<u>12</u>	<u>Granite</u>	<u>97</u>	<u>513-1574</u>
14	<u>Gaetec</u>	<u>4</u>	<u>Granite</u>	<u>46</u>	<u>368-1147</u>
15	<u>Gurukanipalle</u>	<u>18</u>	<u>Granite</u>	<u>98</u>	<u>589-1686</u>
16	<u>Mc Thanda</u>	<u>9</u>	<u>Granite</u>	<u>34</u>	<u>468-1213</u>
17	<u>Maheswaram</u>	<u>4</u>	<u>Granite</u>	<u>22</u>	<u>368-1147</u>
18	<u>Hyderabad</u>	<u>4</u>	<u>Granite</u>	<u>37</u>	<u>535-1168</u>
19	<u>Gummalabavigudem</u>	<u>4</u>	<u>Granite</u>	<u>41</u>	<u>532-1190</u>
20	<u>Pazhayanur, Tirusur</u>	<u>14</u>	<u>Granite</u>	<u>71</u>	<u>1753-4409</u>
21	<u>Wailepalle</u>	<u>4</u>	<u>Granite</u>	<u>75</u>	<u>318-1541</u>
22	<u>Jangaon</u>	<u>4</u>	<u>Granite</u>	<u>43</u>	<u>318-1541</u>
23	<u>Baisagara, Kamat</u>	<u>18</u>	<u>Granite</u>	<u>64</u>	<u>463-1086</u>
24	<u>Kongal, Telangana</u>	<u>4</u>	<u>Granite</u>	<u>27</u>	<u>441-1057</u>
25	<u>Agali, Palakad</u>	<u>14</u>	<u>Granite</u>	<u>149</u>	<u>706-2520</u>
26	<u>Siil, Tuticorin</u>	<u>19</u>	<u>Granite</u>	<u>63</u>	<u>354-1749</u>
27	<u>Madharam</u>	<u>4</u>	<u>Granite</u>	<u>55</u>	<u>488-1097</u>
28	<u>Kalpakkam, Chennai</u>	<u>18</u>	<u>Granite</u>	<u>174</u>	<u>167-1043</u>
29	<u>Kakudi</u>	<u>4</u>	<u>Basalt</u>	<u>46</u>	<u>211-922</u>
30	<u>Godavari purna</u>	<u>3</u>	<u>Basalt</u>	<u>56</u>	<u>340-932</u>
31	<u>Jam</u>	<u>3</u>	<u>Basalt</u>	<u>131</u>	<u>554-1353</u>
32	<u>Shadol</u>	<u>2a</u>	<u>Basalt</u>	<u>71</u>	<u>767-1673</u>
33	<u>East Godavari</u>	<u>3</u>	<u>Basalt</u>	<u>90</u>	<u>609-1884</u>
34	<u>Ghatiya</u>	<u>2a</u>	<u>Basalt</u>	<u>171</u>	<u>473-1715</u>
35	<u>Lower maner basin</u>	<u>3</u>	<u>Sediment</u>	<u>117</u>	<u>585-1808</u>
36	<u>Kunderu</u>	<u>9</u>	<u>Sediment</u>	<u>29</u>	<u>491-1443</u>
37	<u>Neyveli</u>	<u>18</u>	<u>Sediment</u>	<u>181</u>	<u>277-2337</u>
38	<u>Shadol</u>	<u>2a</u>	<u>Sediment</u>	<u>103</u>	<u>829-1742</u>
39	<u>Upper Hatni</u>	<u>12</u>	<u>Sediment</u>	<u>113</u>	<u>384-1440</u>
40	<u>East Godavari</u>	<u>15</u>	<u>Sediment</u>	<u>135</u>	<u>644-1660</u>

<u>41</u>	<u>Kallugotla</u>	<u>9</u>	<u>Sediment</u>	<u>106</u>	<u>479-1272</u>
<u>42</u>	<u>Punjab</u>	<u>1</u>	<u>Alluvium</u>	<u>56</u>	<u>197-828</u>
<u>43</u>	<u>Haryana</u>	<u>1</u>	<u>Alluvium</u>	<u>70</u>	<u>112-738</u>
<u>44</u>	<u>West Uttar Pradesh</u>	<u>2a</u>	<u>Alluvium</u>	<u>20</u>	<u>195-874</u>
<u>45</u>	<u>Sabarmati</u>	<u>10</u>	<u>Alluvium</u>	<u>107</u>	<u>418-1485</u>
<u>46</u>	<u>Neyveli</u>	<u>18</u>	<u>Alluvium</u>	<u>161</u>	<u>51-1850</u>
<u>47</u>	<u>Gandeshwari</u>	<u>2a</u>	<u>Alluvium</u>	<u>137</u>	<u>1041-1744</u>
<u>48</u>	<u>North 24 Parganas</u>	<u>2a</u>	<u>Alluvium</u>	<u>198</u>	<u>385-2260</u>
<u>49</u>	<u>South 24 Parganas</u>	<u>2a</u>	<u>Alluvium</u>	<u>21</u>	<u>386-2251</u>
<u>50</u>	<u>Nalanda</u>	<u>2a</u>	<u>Alluvium</u>	<u>82</u>	<u>500-1973</u>
<u>51</u>	<u>Churu</u>	<u>1</u>	<u>Alluvium</u>	<u>62</u>	<u>152-676</u>
<u>52</u>	<u>Sudagadda</u>	<u>15</u>	<u>Alluvium</u>	<u>105</u>	<u>197-828</u>

Formatted: English (United States)

Formatted: Normal

Formatted: Normal