

A new method for determining the single threshold temperature of precipitation phase separation

A new method to separate precipitation phases

带格式的: 字体: (默认) Arial

Yulian Liu^{a,b} Guoyu Ren^{a,c} Xiubao Sun^{a,c} Xiufen Li^{d,e} [Hengyuan Kang^f](#)

^a Department of Atmospheric Science, School of Environmental Science, China University of Geosciences, Wuhan 430074, China;

^b Heilongjiang Climate Center, Harbin 150030, China;

^c Laboratory for Climate Studies, National Climate Center, CMA, Beijing 100081, China;

^d Innovation and Opening laboratory of Regional Eco-Meteorology in Northeast, China Meteorological Administration

^e Heilongjiang Provincial Institute of Meteorological Sciences, Harbin 150030, China.

^f [Harbin Meteorological Bureau, Harbin 150028, China.](#)

Corresponding author: G. Ren (guoyoo@cma.gov.cn)

域代码已更改

Submitted to *hydrology and earth system sciences* for possible publication

Abstract

Separating the solid precipitation from liquid precipitation in ~~an~~-existing historical precipitation observation data-~~series~~ is a key problem in the monitoring and study of climate anomaly and long-term change of extreme precipitation events in difference phases. ~~—In this study, b~~Based on the comprehensive analysis of the historical daily air temperature, precipitation data, and visual observations of precipitation phase~~weather phenomenon records~~ in the northern areas of Mainland China (north of 30°N), this paper proposes a e-snowday-direct-definition-method~~is proposed to determine~~ the threshold temperature of rainfall and snowfall~~in historical precipitation data~~ for a complex and diverse geographical and climatic region~~were determined~~. A statistical model of separating solid precipitation from liquid precipitation was established~~—, and a method of separating solid precipitation from liquid precipitation was proposed—~~. The main conclusions include: (1) in northern China, the ~~actual threshold~~threshold temperature range of the daily mean temperature of rain and snow determined based on weather phenomenon records was between from -1.2°C to -6.3°C, with a difference of 7.5°C among areas, and a mean threshold value of 2.8¹°C for the whole region. The ~~actual~~

~~threshold~~ temperature in the northern Tibetan Plateau was the highest (generally higher than 4°C). The low threshold temperature values appeared in eastern Northeast China, North China, and northern Xinjiang Autonomous Region, which were less than 2°C. (2) The ~~actual~~ threshold temperature decreased with increase in longitude east of ~~105~~100°E; ~~but meanwhile~~, it was more dispersed in the areas west of ~~105~~100°E. The ~~actual threshold~~threshold temperature was generally higher and more variable in the low-latitude ~~areas~~, ~~and while it was~~ lower and more concentrated in the high-latitude; ~~The~~ threshold temperature ~~was lower in the low-altitude areas and higher in the high-altitude areas, and it~~ generally increased with altitude. (3) There was a negative correlation between the ~~actual~~ threshold temperature and the annual precipitation. ~~The actual threshold temperature was higher in the areas with less precipitation, and lower in the areas with more precipitation. The actual threshold~~threshold temperature ~~it~~ was also negatively correlated with the annual average relative humidity, ~~and was generally low in humid areas with relatively large humidity and vice versa~~. (4) The multivariate regression fitting model developed ~~in this paper~~ based on latitude, altitude, and annual precipitation was able to simulate the ~~actual threshold~~threshold temperature of the precipitation phase in northern China well. ~~According to~~ the calculated threshold temperature based on the model has a smaller, ~~the~~ relative ~~error~~deviation ~~for~~ snow days and snowfall ~~are smaller~~, and the stations with less than 10% of relative error~~deviation~~ reached 95.1% and 90.7%,

respectively. The results of this study can ~~therefore~~ be ~~applied~~~~used~~ for the separation of solid and liquid precipitation events in the areas without sufficient weather phenomenon records ~~or metadata~~.

Key words: Northern China; Precipitation; Phase; ~~Snowfall~~; ~~Rainfall~~; Separation; Statistical model; ~~Simulation~~; Regional differences

带格式的: 字体: (默认) Arial

带格式的: 字体: (默认) Arial, 非加粗

带格式的: 字体: (默认) Arial

1. Introduction

Precipitation is an important parameter used to characterize climate characteristics and climate change, and it is one of the key components of the Earth's water and energy cycles (Loth et al., 1993). The influence of different phases of precipitation on the surface water and energy cycles is enormous (Vavrus, 2007; Wu et al., 2009), as more than 50% of the global meteorological disasters are closely related to ~~different phases of abnormal~~ precipitation, ~~including extreme intense rainfall, heavy snowfall or blizzards, freezing rain and droughts~~ (WMO, 2013; Wang et al., 2005). Under the ~~similar same~~ precipitation ~~amount~~~~condition~~, the effect of different phases of precipitation on the Earth's surface system and the social and

带格式的: 字体: 非加粗

带格式的: 字体: 非加粗

带格式的: 字体: 小四

带格式的: 字体: 小四

带格式的: 字体: 非加粗

带格式的: 字体: 非加粗

带格式的: 字体: 非加粗

economic system is clearly different, thus it is important to distinguish and understand the characteristics and anomalies of snowfall or sleetmixed-phase events and their causes. In addition, in when-monitoring and studying the long-term changes in extreme precipitation events on sub-continental to global scales, it is also necessary to distinguish rainfall and snowfall events from historical precipitation data.

带格式的: 字体: 非加粗

To date, many studies have been published on the characteristics and multi-decadal variation of snowfall in China (e.g. Jiang et al., 2003; Yang et al., 2005; Qin et al., 2006; Liu et al., 2012, 2013; Zhang et al., 2015). Also, many studies on both the global and Asian regional total precipitation and extreme precipitation events and their long-term change have been reported (Becker et al., 2012; Noake et al., 2012; Polson et al., 2013; Blanchet et al., 2009; O'Hara et al., 2009; Kunkel et al., 2009; Ren, 2007, ~~2015a~~, 2015b, 2016; Liu et al., 2011; Fang et al., 2011; ~~Yu et al., 2014~~; Zhong et al., 2013; Wan et al., 2013; Yu et al., 2014; Xiao et al., 2015; Dang et al., 2015). The analyses of precipitation change generally showed a detectable trend toward more precipitation amount and more frequent extreme rainfall events over the last decades. All of these studies have greatly enriched the understanding of global precipitation and snowfall climatology and the climate change and variability in different regions and varied scales.

带格式的: 字体: 非加粗

带格式的: 缩进: 首行缩进: 2 字符

带格式的: 字体: 非加粗

带格式的: 字体: 非加粗

There are few direct observations of precipitation phase at the global scale. Researchers can partition precipitation phase, but there are difficulties in doing so at air temperatures near freezing (Ding et al., 2014; Jennings et al., 2018; Stewart et al., 2015). ~~However, less research has been done on global and Asian regional solid~~

带格式的: 字体: (默认) Times New Roman, 小四, 非加粗, 字体颜色: 自动设置

带格式的: 缩进: 首行缩进: 2 字符

带格式的: 字体: 非加粗

precipitation; this is mainly because there is solid precipitation observation in the domestic surface observation network, while the current global datasets only contain the total precipitation amount without type of precipitation phase, and researchers usually cannot separate liquid and solid precipitation (snowfall). Even in the case of relatively abundant meteorological observational data in China, some works often need to use certain methods to separate the different phases of precipitation in historical precipitation data.

~~Previous~~ Many works scholars have discussed the phase identification of precipitations ~~(Harder, 2013, 2014)~~. Bourgouin (2000) introduced the area-method in separating different precipitation phases, which is based on the vertical thermal structure of the atmosphere, the distribution of condensation nuclei of water vapor, and the descent velocity to predict the precipitation phase (liquid or solid). Dai (2008) analysed the temperature range of precipitation phase change on the continent and the ocean, and discussed the relationship between the phase change temperature and the pressure. Stefan-Kienzle et al. (2008) proposed to use two input variables (threshold temperature and range) to estimate daily snowfall from precipitation data. Ye et al. (2013) suggested ~~the that application of~~ site-specific ~~threshold~~ critical values of air temperature and dewpoint to discriminate between solid and liquid precipitation ~~is needed for to improve~~ snow and hydrological modeling ~~at local and regional scales~~. Froidurot et al. (2014) pointed out that surface air temperature and relative humidity show the greatest explanatory power. Sims and Liu (2015) ~~proposed point out~~ that atmospheric moisture impacts precipitation phase and that wet-bulb

带格式的：字体：非加粗

带格式的：字体：非加粗

带格式的：字体：非加粗

带格式的：字体：非加粗

带格式的：字体：非加粗

带格式的：字体：非加粗

带格式的：字体：非加粗

带格式的：字体：非加粗

带格式的：字体：非加粗

带格式的：字体：非加粗

带格式的：字体：非加粗

带格式的：字体：非加粗

temperature, rather than ambient air temperature, ~~should~~ be used to separate solid and liquid precipitation. Harpold et al. (2017) and Jennings et al. (2018) pointed out that a humidity phase prediction method had similar or more effective accuracy compared to temperature phase prediction method in separating snowfall from precipitation data. This was also shown by other authors (e.g., Ding et al., 2014; Harder and Pomeroy, 2013, 2014; Marks et al., 2013). Harpold et al. (2017) and Keith et al. (2018) all point out that a humidity phase prediction method had similar accuracy to temperature phase prediction method in separating snowfall from precipitation data.

After the large scale freezing rain and snow disaster in Central and South China in winter of 2008, domestic scholars paid more attention to the studies of the discrimination and identification of the precipitation phase, in order to meet the challenge of the disastrous weather forecast (Liu et al., 2013). The discriminant basis is generally the temperature of the surface and upper air layers. Zhang et al. (2013) studied the identification criteria of winter precipitation phase in Beijing, and pointed out that the phase transition in Beijing mainly occurred in March and November. They found six physical quantities closely related to the conversion of snow and rain (850 hPa temperature, 925 hPa temperature, 1000 hPa temperature, thickness between 1000 hPa and 700 hPa, thickness between 1000 hPa and 850 hPa, and the combination of surface air temperature and relative humidity). According to these physical quantities, the objective forecast index of the Beijing winter precipitation phrases was established, and its accuracy reached 77%. You et al. (2013) also analyzed the discriminant index of precipitation phases in Beijing, pointing out that precipitation is

带格式的：字体：非加粗

带格式的：字体：非加粗，字体颜色：自动设置

带格式的：字体：非加粗，字体颜色：自动设置

带格式的：字体：非加粗，字体颜色：自动设置

带格式的：字体：非加粗，字体颜色：自动设置

带格式的：字体：（默认）Times New Roman，小四，非加粗，字体颜色：自动设置

带格式的：字体：（默认）Times New Roman，小四，非加粗，字体颜色：自动设置

带格式的：字体：非加粗

带格式的：字体：非加粗

带格式的：缩进：首行缩进：2 字符

considered as rainfall when the surface air temperature is greater than 2 °C and the dew temperature is greater than or equal to 0 °C, and precipitation is considered as snowfall when the surface air temperature is less than 1 °C and the dew temperature is less than 0 °C. It is sleet, or rain and snow, when the surface air temperature is between 1 °C and 3 °C. The surface air temperature, dew temperature, upper air temperature, and relative humidity are frequently used in developing methods to discriminate precipitation phases.

However, in a larger scale study, it is usually difficult to obtain the observational records in the global dataset. To study the separation methods of precipitation phrase on the continental and global scales, only the surface air temperature data are more easily available. Dew point temperature and relative humidity data, for example, can be used only in regional scale investigation, despite their good suitability as indicators of precipitation phrase separation can be used (Harpold et al., 2017; Jennings et al., 2018). Bourgouin (2000) introduced the area method in separating different precipitation phases, which is based on the vertical thermal structure of the atmosphere, the distribution of condensation nuclei of water vapor, and the descent velocity to predict the precipitation phase (liquid or solid). The method, however, also needs data of multiple observational variables in surface and upper atmosphere, which is difficult to obtain.

Rainfall induced runoff and snowmelt runoff are completely different hydrological processes. Therefore, in In some hydrological models, the solid-liquid precipitation separation useds the double threshold temperature method (Wigmosta et

带格式的：字体：非加粗

带格式的：字体：非加粗

带格式的：字体：非加粗

带格式的：字体：非加粗

带格式的：字体：非加粗

带格式的：字体：非加粗

带格式的：字体：非加粗

带格式的：字体：非加粗

al., 1994; Kang et al., 1999, 2001; Chen et al., 2008) and the single threshold temperature method (Arnold et al., 1998; ~~Refsgaard et al., 1998;~~ Wang et al., 2004); ~~or relies on precipitation radar monitoring data (Terry et al., 2012; Edwin et al., 2006).~~

The customized threshold temperature method has a larger ~~error~~~~deviation~~ (Marks et al., 2013; Han et al., 2010). Han et al. (2010) ~~developed an~~ ~~used the insurance~~ ~~probability~~ ~~guarantee rate~~ method to determine the ~~discussed the difficulty of~~ ~~applying the double single~~ threshold temperature ~~and~~ ~~build~~ a fitted model in ~~China~~ method. They used the data of the national stations of the China Meteorological Administration (CMA) during 1961–1979 to draw a single threshold temperature contour map, and combined it with the monthly snowfall ratio method to separate the precipitation phases by determining occurrence of snowfall and the amount of snowfall in the watershed. Chen et al. (2013) improved the solid-liquid precipitation separation procedure for mainland China by supplementing the threshold of daily mean dew temperature. The data used for the previous studies were observed prior to 1979, and they used the monthly snowfall ratio method as an auxiliary indicator. When the rainfall and snowfall condition in different regions outside mainland China is not known, and at the same time there is no dew temperature data in the current international datasets, the method cannot be applied to the larger scale analysis.

~~Although humidity phase separating method has a similar suitability with~~ ~~temperature-based method (HaArpold et al., 2017; Keith Jennings et al., 2018), it is at~~ ~~the same time difficult to be used in large scale due to the unavailability of humidity~~ ~~data. Research on the global scales can be only based on the temperature phase~~

带格式的：字体：非加粗

带格式的：字体：非加粗

带格式的：字体：非加粗

带格式的：字体：非加粗

带格式的：字体：非加粗

带格式的：字体：非加粗

带格式的：字体：非加粗

带格式的：字体：Times New Roman，小四，非加粗

带格式的：字体：Times New Roman，小四

带格式的：字体：非加粗

带格式的：缩进：首行缩进：2 字符

~~separating method.~~

~~China has sub continental scale characteristics of lands and natural conditions, and has a diversity of climates and topographic types, and the phase separating methods developed in mainland China should have a better universality in continents and the world.~~

~~In this work, the precipitation phase separation method was developed by using the daily observational data of the national stations for years 1961–2013 in mainland China, and the threshold temperature values of rainfall and snowfall in northern China (north of 30°N) was analyzed and tested. A statistical model of the threshold temperature was established to provide a method for use in studies of large scale snowfall climatology and climate change, weather forecasting, and hydrological model parameterization.~~

~~In this work, we used the daily observational data of the national stations for years 1961–2013 in mainland China, including the long-term records of air temperature, precipitation, relative humidity and visual observations of precipitation phase. Based on the single threshold temperature method of precipitation phase separation, we applied use the Snowday Direct Definition Method (SDDM) to determine the single threshold temperature values of rainfall and snowfall in northern China (north of 30°N). A statistical model of the threshold temperature was established to provide a tool method for use in studies of large-scale snowfall climatology and climate change, weather forecasting, and hydrological model parameterization. It is believed that China has sub-continental scale characteristics of~~

带格式的：字体：非加粗

带格式的：字体：非加粗

带格式的：字体：非加粗

带格式的：字体：非加粗

带格式的：字体：非加粗

带格式的：字体：非加粗

带格式的：字体：非加粗

带格式的：字体：（默认）Times New Roman, 小四, 非加粗

带格式的：字体：非加粗

带格式的：字体：非加粗

带格式的：字体：非加粗

带格式的：字体：非加粗

带格式的：字体：非加粗

lands and natural conditions, and ~~has a~~ diversity of climates and topographic types, and the phase separating methods developed in mainland China should have a better universality in continents and the world.

2. Data and methods

2.1 Data

The main purpose of this study was to develop an ~~easy and convenient way~~ method for separating solid and liquid precipitation, so that the objective separation of solid and liquid parts of precipitation can be achieved without exhaustive reference of observational data. International exchange data generally only contain the daily temperature and precipitation, with no other reference data, so we have only used the indicators related to temperature and precipitation to develop a method of separation.

The data ~~used~~ was obtained from the National Meteorological Information Center of China Meteorological Administration (CMA). The air temperature, precipitation and relative humidity data were derived from the “China Land Daily Climatic Dataset (V3.0)”. The precipitation ~~phase observation, weather phenomenon~~ was derived from “China Land Climatic Data Daily Weather Phenomena Dataset”. All the data have been quality controlled. Collected since January 1951, the “China Land Daily Climatic Dataset (V3.0)” contains the ~~daily data of air pressure, surface air temperature (daily mean, daily maximum and daily minimum), precipitation, pan-evaporation, relative humidity, wind speed, sunshine hours, and 0-cm ground~~

带格式的: 字体: (默认) Times New Roman, 小四, 非加粗

带格式的: 字体: 非加粗

带格式的: 缩进: 首行缩进: 0 厘米

带格式的: 字体: 非加粗

带格式的: 字体: 非加粗

带格式的: 字体: 非加粗

带格式的: 缩进: 首行缩进: 2 字符

带格式的: 字体: 非加粗

带格式的: 字体: Times New Roman, 小四, 非加粗, 字体颜色: 自动设置

带格式的: 字体: Times New Roman, 小四, 非加粗, 字体颜色: 自动设置

~~temperature from 839 stations, daily data of 839 national stations' air pressure, surface air temperature (daily mean, daily maximum and daily minimum), precipitation, evaporation, relative humidity, wind speed, sunshine hours, and 0 cm ground temperature.~~ The “China Land Climatic Data Daily Weather Phenomena Dataset” is

带格式的: 字体: 非加粗

the daily records encoded by the 752 national stations in mainland China since 1951.

Cross comparison of the two datasets and the examination of station information was performed, and any incomplete temperature, precipitation, relative humidity and weather phenomena data were removed. ~~At the same time, the data of the latitude and~~

~~longitude of the station were corrected.~~ There are total 623 stations selected for use in

带格式的: 字体: 非加粗

the study, all of which meet the demand to have information integrity, sequential continuity, and records of more than 20 years in climate reference period (1981–2010).

The data may contain inhomogeneities caused by the relocation and other factors, but they would exert little influence on the analysis results, so the data are not adjusted for homogeneity.

First, the precipitation caused by fog, dew, and frost as well as the trace

带格式的: 字体: 非加粗

precipitation was removed, and daily precipitation greater than or equal to 1 mm was

taken as the effective precipitation. In this regard, the main consideration is that the

international exchange precipitation ~~observation~~ data only contains no less than 1

带格式的: 字体: Times New Roman, 小四, 非加粗, 字体颜色: 自动设置

mm greater than or equal to 1 mm of daily precipitation. ~~The rain and snow separation~~

带格式的: 字体: 非加粗

~~procedures developed in China thus can be compared with the corresponding works of~~

~~other regions, and the method developed in this paper will be able to be applied to~~

~~larger scale research.~~

In the separation of daily rainfall (pure rain), ~~mixed-phase events~~, ~~sleet~~, and snow (pure snow) events, 'pure rain' was ~~registered~~ recorded when the weather phenomenon data indicate that only rain occurred on that day without snow and ~~sleet~~ mixed-phase events; it was registered as 'pure snow' when only snowfall occurred without rain and ~~sleet~~ mixed-phase events, and '~~sleet~~ mixed-phase events' when there is rain and snow in the same day, in the records of weather phenomenon data. The daily maximum and minimum temperature during an occurrence of ~~sleet~~ mixed-phase events at each station were recorded as the reference thresholds for the snow and rain temperature threshold values.

带格式的: 字体: 非加粗

带格式的: 字体: (默认) Times New Roman, 小四, 非加粗, 字体颜色: 自动设置

带格式的: 字体: 非加粗

When there is less snowfall at the station in lower latitude zone or more arid regions, there may be ~~arbitrary, random~~ cases of snowfall. An example is from Lijiang station, Yunnan, located in 26°N, at which pure snow occurred only six times in the 30 years from 1981 to 2010. The representation of the threshold temperature would be poor in these cases. In order to ensure that the snowfall frequency is great enough and the threshold temperature is representative, we took 324 stations (Fig. 1) in northern China for use in this study. They are generally located north of the Yangtze River, approximately consistent with the January mean temperature isotherm of ~~10~~ 3 °C or the 30°N parallel. The days with the snowfall records during 1981-2010 were greater than or equal to 100d ~~for each of the stations~~. In order to avoid the influence of extreme values on the determination of threshold temperature, the maximum and minimum daily mean temperature in each of the precipitation phases were not counted.

带格式的: 字体: 非加粗

带格式的: 字体: 非加粗

带格式的: 字体: 非加粗

带格式的: 字体: 非加粗

带格式的: 字体: 非加粗

带格式的: 字体: 非加粗

For the cases of extreme large rain and snow records at the stations, comparison was made to ensure that the minimum and maximum temperature was correct by examining the weather phenomena, surface air temperature and precipitation on the same day. When sleetmixed-phase events occurred, the range of daily mean temperature was generally larger. Threshold temperature was determined only for pure rain and pure snow; The daily mean temperature on a sleetmixed-phase events day was only taken as the reference temperature threshold value.

2.2 Methods

According to the method of China's physical geographical regionalization, mainland China is divided into three natural geographical regionsdivisions: Eastern Monsoon Region (I, 231 stations), Northwest Arid Region (II, 67 stations), and Qinghai-Tibetan Plateau Region (III, 26 stations) (Fig. 1). More stations are distributed in Eastern Monsoon Region, and there air only 26 stations in Qinghai-Tibetan Plateau Region. A vast region of western part of the Qinghai-Tibetan Plateau is the well-known no-man land without climatic observations, and this would affect the analysis in some extents. The representative station of the Eastern Monsoon Region is Zhaozhou station (Zhaozhou-I hereafter) in Heilongjiang province, which has the lowest threshold temperature of snowfall and rainfall in the country. The representative station of the Qinghai-Tibet Plateau Region is Shiquanhe station (Shiquanhe-II hereafter) in Tibet Autonomous Region, which has the highest threshold temperature of snowfall and rainfall in the country. There are relatively fewer precipitation events in the Northwest Arid Region, and Balikun station

带格式的: 字体: 非加粗

带格式的: 字体: 非加粗

带格式的: 字体: 非加粗

带格式的: 字体: 非加粗

带格式的: 字体: 非加粗

带格式的: 字体: 非加粗

带格式的: 字体: 非加粗

带格式的: 字体: 非加粗

带格式的: 字体: 非加粗

带格式的: 字体: 非加粗

带格式的: 字体: 小四

带格式的: 字体: 非加粗

带格式的: 字体: 小四

带格式的: 字体: 非加粗

(Balikun-III hereafter) in Xinjiang Autonomous Region was selected as the representative station because it observed relatively more precipitation events, and the rain, sleetmixed-phase events, and snow events were evenly distributed. The station is also far from the two other regions (Table 1).

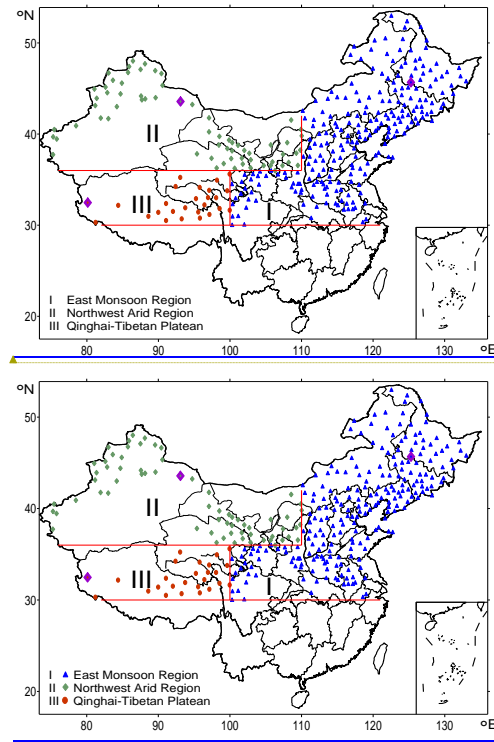


FIG.1. Regionalization and distribution of 324 national stations north of 30 °N in mainland China (I: East Monsoon Region; II: Northwest Arid Region; III: Qinghai-Tibetan Plateau; Blue triangle: stations in the East Monsoon Region; Green diamond: stations in the Northwest Arid Region; Red circle: stations in the Qinghai-Tibetan Plateau. The purple diamond denotes the representative stations in different regions: Zhaozhou of Region I; Balikun of Region II; Shiquanhe of Region III)

Table 1 Information of representative stations in the three regions

Station name	Zha ozho u
--------------	------------------

带格式的: 字体: 小四

带格式的: 字体: 非加粗

带格式的: 字体: (默认) Arial

带格式的: 字体: (默认) Arial, 非加粗

带格式的: 字体: (默认) Arial

带格式的: 字体: (默认) Arial

带格式的: 字体: (默认) Arial, 非加粗

带格式的: 字体: (默认) Arial, 非加粗

	Heilongjiang	Xinjiang	Tibet
Region	I	II	III
Elevation(m)	148.7	1679.4	4278.6
Latitude(N)	45° 42′	43° 36′	32° 30′
Longitude(E)	125° 15′	93° 03′	80° 05′

The relative or percent error deviation of snow days (snowfall) was defined as the percentage (%) of the difference between simulated snow days (snowfall) and observational (true) actual snow days (snowfall) to the observational (true) actual snow days (snowfall), which could be used to indicate the effectiveness of simulated results.

The establishment of model was realized using the stepwise regression analysis method included with the SPSS Statistics 17.0. The basic idea of stepwise regression is that the variables are introduced one by one, the condition of introducing the variable is the square of the partial regression, and the test is significant; at the same time, after the introduction of each variable, the selected variables are checked individually and the insignificant variables are eliminated to ensure that all the

带格式的: 字体: (默认) Arial

带格式的: 字体: (默认) Arial

带格式的: 字体: (默认) Arial, 非加粗

带格式的: 字体: (默认) Arial, 非加粗

带格式的 ...

带格式的: 字体: (默认) Arial

带格式的 ...

带格式的: 字体: (默认) Arial

带格式的: 字体: (默认) Arial

带格式的: 字体: (默认) Arial

带格式的 ...

带格式的: 字体: (默认) Arial

带格式的 ...

带格式的: 字体: (默认) Arial

带格式的 ...

带格式的: 字体: (默认) Arial

带格式的 ...

带格式的: 字体: (默认) Arial

带格式的 ...

带格式的: 字体: (默认) Arial

带格式的 ...

带格式的: 字体: (默认) Arial

带格式的 ...

带格式的: 字体: (默认) Arial

带格式的 ...

带格式的: 字体: (默认) Arial

带格式的 ...

带格式的: 字体: (默认) Arial

带格式的 ...

带格式的: 字体: (默认) Arial

带格式的 ...

带格式的: 字体: (默认) Arial

带格式的 ...

带格式的: 字体: (默认) Arial

带格式的 ...

带格式的: 字体: (默认) Arial

带格式的 ...

带格式的: 字体: (默认) Arial

带格式的 ...

带格式的: 字体: (默认) Arial

带格式的: 字体: (默认) Arial

带格式的: 字体: (默认) Arial

带格式的: 字体: 非加粗

带格式的: 字体: 非加粗

带格式的: 字体: 非加粗

带格式的: 字体: 非加粗

带格式的: 字体: 非加粗

variables in the final variable subset are significant. Thus, after a number of steps, we obtain the “Optimal” variable subset. The advantage of stepwise regression is that the number of the arguments contained in the regression equation is fewer, it is easy to apply, the root mean squared error (RMSE) is small, and the model created is more stable. All the arguments in the equation are guaranteed to be significant because each step has been tested.

带格式的: 字体: 非加粗

带格式的: 字体: 非加粗

The maximum daily ~~mean~~average temperature at the occurrence of snowfall at the weather station is T_{sm} , the minimum daily ~~mean~~average temperature at the time of rainfall is T_{rn} ; the number of snowfall days between T_{rn} and T_{sm} is S_n , the number of rain days is R_n , and the total number of rain and snow days between T_{rn} and T_{sm} is $N_{sr} = S_n + R_n$; the single critical temperature of rain and snow days is T_{t-d} , that is, the precipitation event that occurs when the ~~average~~daily ~~mean~~ temperature is lower than T_{t-d} is considered to be a snowfall event, otherwise it is considered as a rainfall event; the single critical temperature estimated by the statistical model is T_{t-p} .

带格式的: 字体: 非加粗

带格式的: 缩进: 首行缩进: 1.5 字符

带格式的: 字体: 非加粗

带格式的: 字体: 非加粗

Using the ~~S~~snowday-~~D~~direct-~~D~~definition-~~M~~method (SDDM) to define the threshold temperature of precipitation phase, the calculation steps ~~were~~are as follows:

带格式的: 字体: 非加粗

First, find the T_{rn} and T_{sm} in the dataset of the 623 stations, and count S_n , R_n , and N_{sr} . Second, calculate the daily average temperature of N_{sr} and sort it in ascending order. Last, the average of daily mean temperature of the S_n^{th} day and the $(S_n+1)^{th}$ day ~~was~~is calculated, and it ~~was~~is taken as the threshold temperature (T_{t-d}) of the rain and snow days. For the area where pure rain and snow events ~~did~~o not overlap ($T_{sm} < T_{rn}$, that is, the snowfall and rainfall events ~~did~~o not intersect in the

带格式的: 字体: 非加粗

带格式的: 字体: 非加粗

带格式的: 字体: 非加粗

带格式的: 字体: 非加粗

带格式的: 字体: 非加粗

带格式的: 字体: 非加粗

带格式的: 字体: 非加粗

带格式的: 字体: 非加粗

带格式的: 字体: 非加粗

带格式的: 字体: 非加粗

带格式的: 字体: 非加粗

带格式的: 字体: 非加粗

带格式的: 字体: 非加粗

带格式的: 字体: 非加粗

带格式的: 字体: 非加粗

带格式的: 字体: 非加粗

带格式的: 字体: 非加粗

带格式的: 字体: 非加粗

带格式的: 字体: 非加粗

sorted daily average temperature series), the average of Tsm and Trn ~~was~~^{is} taken as the Tt-d. The average of Tt-d and the daily mean temperature of mixed-phase events day ~~was~~^{is} taken as the Tt-d when Tt-d ~~was~~^{is} not in the range of mixed-phase events day daily mean temperature. The Tt-ds values in this study ~~were~~^{are} all within the daily mean temperature of mixed-phase events day, however, and this operation ~~was~~^{is} not required.

~~Figure 2 shows a flow diagram of the analysis of this paper. Firstly, the daily mean temperature of different precipitation phases in northern China was calculated, the threshold temperature of each station was determined by the method of ‘snow day mean temperature’, and the relationships between threshold temperature and geographical and climatic factors were analyzed. Then, by using the stepwise regression analysis method in a module of the SPSS software, the main factors affecting the threshold temperature were determined, and the threshold temperature model was established. Finally, the difference of the simulated threshold temperature and the actual threshold temperature was analyzed. The spatial distribution of the relative deviation was examined, and the applicability of the model was tested and evaluated, in the last step.~~

带格式的：字体：非加粗

带格式的：字体：非加粗

带格式的：字体：非加粗

带格式的：字体：非加粗

带格式的：字体：非加粗

带格式的：字体：非加粗

带格式的：字体：Times New Roman，小四，非加粗

带格式的：缩进：首行缩进： 0.74 厘米

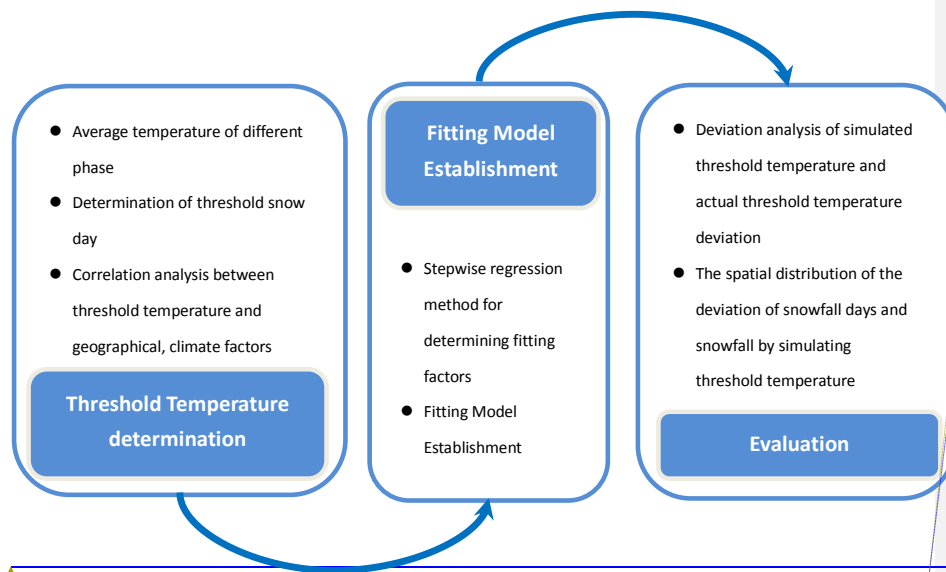


FIG.2. Technical roadmap

3. Threshold temperature

3.1 Daily mean temperature corresponding to precipitation in different phases

There are three types of precipitation phases in northern China: snowfall, rainfall and sleet. Most of the time, snowfall occurs in winter, rainfall occurs in summer, and

带格式的: 字体: Times New Roman, 小四

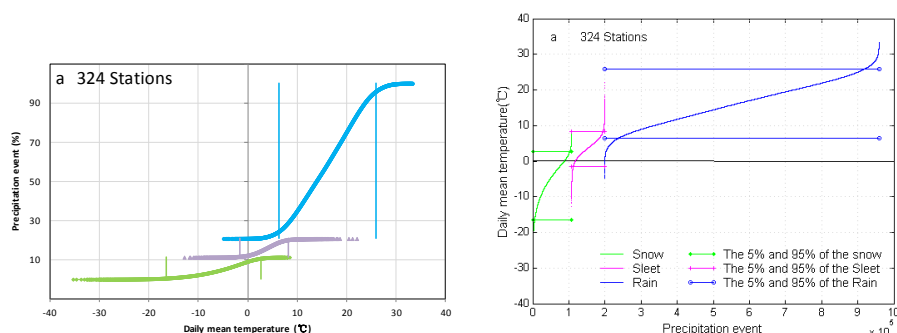
带格式的: 字体: Times New Roman, 小四, 非加粗

带格式的: 字体: 非加粗

带格式的: 字体: 非加粗

snow, rain, and sleet can occur during the autumn and spring. Figure 3-2 and Table 2 show phase temperature distribution of precipitation events at the stations. The total precipitation events at 324 stations were included in the statistical calculations, and their corresponding daily mean temperature values (Fig. 3a2a) were examined: only snowfall occurred when the daily mean temperature was below -12.9 °C; only rainfall occurred when the daily mean temperature was higher than 22.1 °C; and the three phases of snow, rain, and ~~sleet~~mixed-phase events occurred when the temperature was between -12.9 °C and 22.1 °C.

In northern China, ~~(Fig. 3a2a)~~ pure snow (snowfall) events occurred when the daily mean temperature was below 8.5 °C, and 95% of the snowfall events occurred when the daily mean temperature was ~~less-lower~~ than 2.7 °C and higher than -16.6 °C (Fig. 2a). All pure rain events (rainfall) occurred when the daily mean temperature was higher than -4.9 °C, and 95% occurred when the temperature was lower than 26.0 °C and higher than 6.4 °C. All ~~sleet~~mixed-phase events appeared in the temperature range of -12.9–22.1 °C, with 95% occurring when the daily mean temperature was lower than 8.3 °C and higher than -1.6 °C.



带格式的：字体：非加粗

带格式的：字体：非加粗

带格式的：字体：非加粗

带格式的：字体：非加粗，非突出显示

带格式的：字体：非加粗

带格式的：字体：(默认) Arial

带格式的：字体：(默认) Arial，非加粗

带格式的：居中

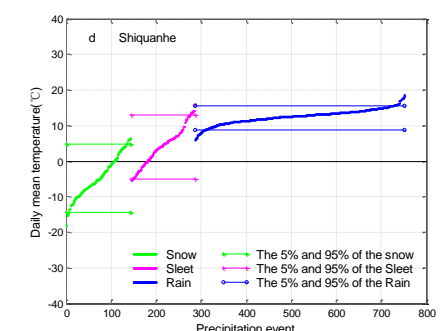
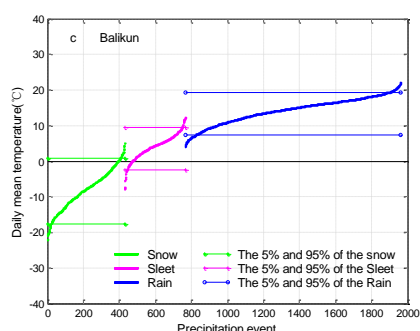
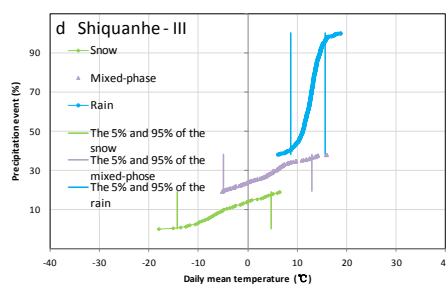
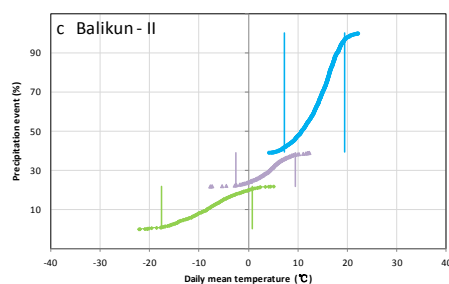
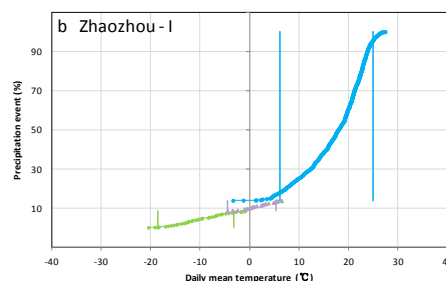
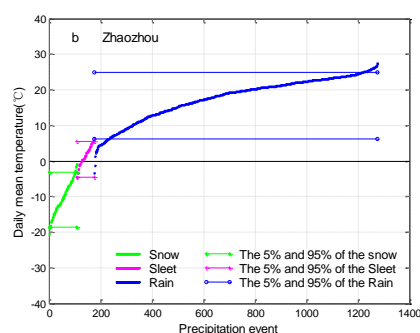


FIG.32. Precipitation phase temperature distribution of regional average and representative stations (a-324 stations; b-Zhaozhou-I; c-Balikun-II; d-Shiquanhe-III)

At ZhaozhouZhaozhou-I station (Fig. 3b2b), the pure snow events all occurred when the daily mean temperature was lower than -0.9°C , pure rainfall occurred when the daily mean temperature was higher than -3.4°C , and sleetmixed-phase events occurred in case of $-4.5-6.5^{\circ}\text{C}$. ZhaozhouZhaozhou-I station had the lowest threshold temperature (-1.2°C) of snowfall and rainfall in the study region. At BalikunBalikun-II station (Fig. 3e2c), the pure snow events all occurred when the

带格式的: 字体: (默认) Arial

带格式的: 字体: (默认) Arial

带格式的: 字体: (默认) Arial

带格式的: 字体: Times New Roman, 非加粗

带格式的: 字体: Times New Roman

带格式的: 字体: (默认) Arial

带格式的: 字体: 非加粗

带格式的: 字体: 非加粗

daily mean temperature was lower than -5.1°C , pure rain events occurred when the daily mean temperature was higher than 4.1°C , and sleetmixed-phase events occurred within a temperature range of -7.8 – 12.3°C . At ShiquanheShiquanhe-III station (Fig. 3d2d), the pure snow events all occurred when the daily meanaverage temperature was lower than 6.4°C , pure rainfall occurred when the daily mean temperature was higher than 6.1°C , and sleetmixed-phase events occurred when the temperature was from -35.3°C to 16.0°C . ShiquanheShiquanhe-III station had the highest threshold temperature (6.3°C) of snowfall and rainfall in the whole region.

带格式的: 字体: 非加粗

带格式的: 字体: 非加粗

带格式的: 字体: (默认) Arial, 非加粗

~~Pure snowfall occurred when the daily mean temperature was above 0°C , and pure rainfall occurred when it was below 0°C . This may be because the daily mean temperature is higher/lower than instantaneous air temperature when snowfall/rainfall occurs, or the instantaneous air temperature is below/above 0°C with warming/cooling after snow/rain. It could also be because the snowflakes are formed in the upper atmosphere with the lower temperature, the temperature near the surface cools faster due to the intrusion of extremely cold air, and they are not fully melted when they fall and still exist in the form of snow. In the lower atmosphere layer (below 3000 m), there is a lot of super-cooling water, and the air temperature is in the range of 0 – 15°C . With a rich condensation nucleus, an abundance of moisture, and a lack of a freezing nucleus (the ice nucleation), raindrops can form below 0°C , producing glaze or rime on the ground surface.~~

464 Table 2 The distribution range of daily mean temperature under different phases of precipitation
465 at stations
466

Station		All	Zhao zhou	Balikun	Shiquanhe
	Maxi mum	8.5	-0.9	5.1	6.4
	Mini mum	-35.4	-20.5	-22.2	-18.1
	Aver age	-5.2	-10.2	-8.2	-4.4
	5%-value	-16.6	-18.6	-17.6	-14.3
		2.7			
	95%-value		-3.3	0.8	4.8
Sleet day-temperature (°C)	Maxi mum	22.1	6.5	12.3	16.0
	Mini mum	-12.9	-4.5	-7.8	-5.3
	Aver age	3.6	1.6	4.1	4.3
	5%-value	-1.6	-4.5	-2.5	-5.0
	95%-value	8.3	5.5	9.5	13.1
	Rain-day-temperature	33.3	27.5	22.1	18.7
	Mini mum	-4.9	-3.4	4.1	6.1

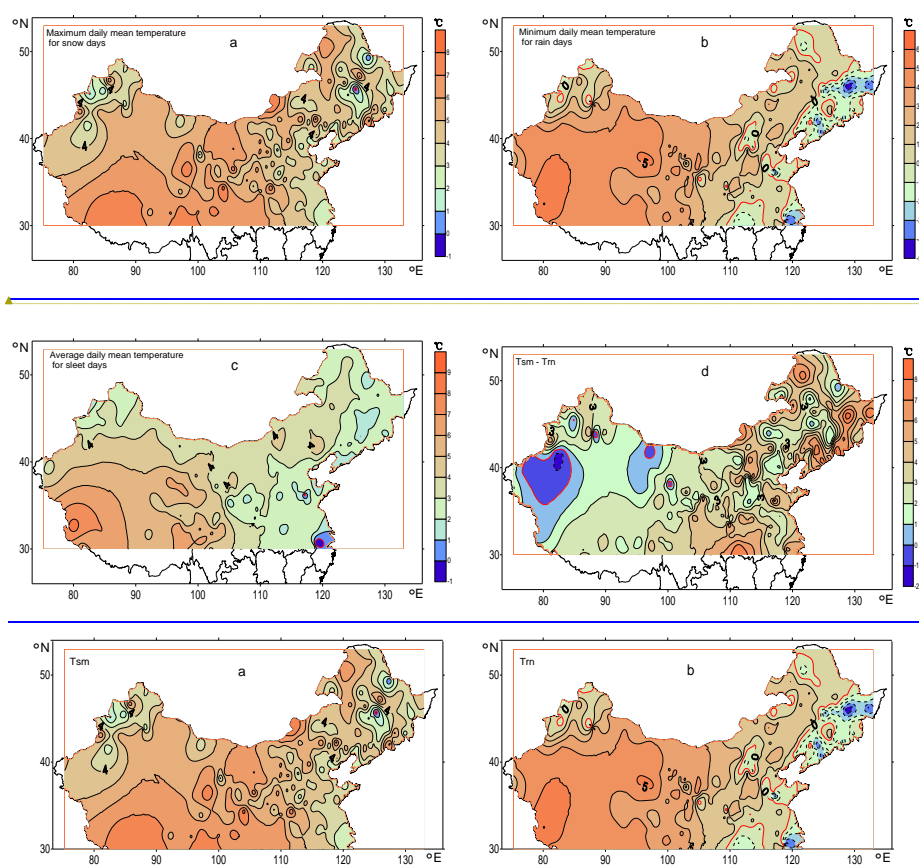
average daily mean temperature of ~~sleet~~mixed-phase events ~~day~~-in northern China, with the high values generally in the Tibetan Plateau and southern Xinjiang, while the low values mostly in eastern and northern Xinjiang. ~~At~~the the stations analyzed, most have a relationship of $T_{rn} < T_{sm}$, that is, the minimum daily mean temperature at the time of a rain event is lower than the maximum daily mean temperature at the time of a snowfall event. Only in a few of places in Northwest Arid Region, is the maximum daily mean temperature of a snow day lower than the minimum daily mean temperature of a rain day, indicating that ~~the is,~~ pure rain and snow events do not overlap.

带格式的: 字体: 非加粗

带格式的: 字体: 非加粗

带格式的: 字体: 非加粗

带格式的: 字体: (默认) Arial, 小五, 非加粗



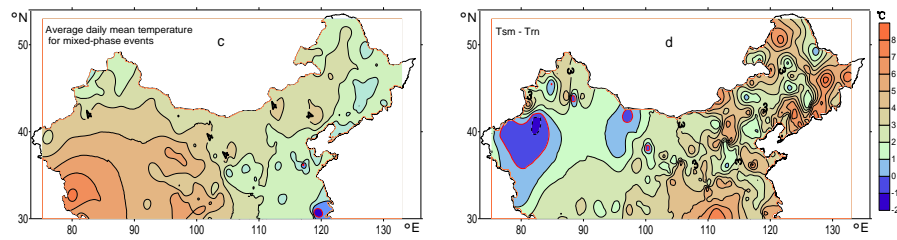


FIG.43. The distribution of daily mean temperatures when precipitation occurs (a. Tsmmaximum-daily-mean-temperature-of-snow-day; b. Trnminimum-daily-mean-temperature-of-rain-day; c. average daily mean temperature of sleetmixed-phase events-day; and d. difference between Tsm and Trnsnow-day maximum-daily-mean-temperature-and-rain-day minimum-daily-mean-temperature) (Red thick line represents 0°C isotherms)

3.2 Threshold temperature determination

The threshold temperature is determined directly by daily mean temperature of various precipitation days, and the calculation steps are as follows: First, the number of snow days (S_n) and the number of rain days (R_n) between Tr_n and Tsm is calculated, and the total number of the rain and snow days ($N_{sr} = S_n + R_n$) between Tr_n and Tsm is also calculated. Second, the daily mean temperature of N_{sr} is calculated and ranked in ascending order. Last, the average of daily mean temperature of the S_n^{th} -day and the $(S_n+1)^{th}$ -day is calculated, and it is taken as the threshold temperature (T_{t-d}) of the rain and snow days. For the area where pure rain and snow events do not overlap, the average of the maximum daily mean temperature of snow day and the minimum daily mean temperature of rain day is taken as the threshold temperature (T_{t-d}). The average of T_{t-d} and the daily mean temperature of sleet day is taken as the T_{t-d} when T_{t-d} is not in the range of sleet day daily mean temperature. The T_{t-d} s values in this study are all within the daily mean temperature of sleet day, however, and this operation is not required.

带格式的: 字体: (默认) Arial

带格式的: 字体: 非加粗

带格式的: 字体: 非加粗

Figure 5-4 shows the distribution of the ~~relative deviation~~relative error of the snow days and snowfall in northern China, determined by the threshold temperature as mentioned in section Data and Methodsabove, to the actual snow days and snowfall counted by using weather phenomenon records. The ~~relative deviation~~relative error of snow day was smaller. This is due to the definition of threshold temperature being directly determined by snow-day mean temperature. Since the daily mean temperature of the S_n^{th} day and the $(S_n+1)^{\text{th}}$ (or more) day is the same under this definition, however, there will be a slight positive bias in the threshold temperature of the same temperature day, with a range of ~~relative deviation~~relative errors (0, 2.3%).

The spatial distribution of the ~~relative deviation~~relative error of the snowfall was mainly positive, which is due to the systematic deviation of the method. Larger deviation appeared in ~~eastern part of~~ the Qinghai-Tibetan Plateau and the Yangtze-Huaihe River Basins. These areas have more precipitation and sufficient water vapor. Under the same water vapor condition, the observed rainfall was greater than the observed snowfall, and the amount of snowfall determined by the threshold temperature was slightly large, with the certain sites even larger. Small values occurred in the southeastern Northeast China, the border zone between Inner Mongolia and Xinjiang, and western Xinjiang, with the main reason related to the less precipitation and insufficient water vapor. Overall, the ~~relative deviation~~relative error of snowfall is between -5% and 20%. There were 312 stations (more than 96%) ~~withhose~~ deviation ~~was~~ less than or equal to 10%, and the absolute value of the ~~relative deviation~~relative error was less than 5% in most areas.

带格式的: 字体: 非加粗

带格式的: 字体: 非加粗

带格式的: 字体: 非加粗

带格式的: 字体: 非加粗

带格式的: 字体: 非加粗

带格式的: 字体: 非加粗

带格式的: 字体: 非加粗

带格式的: 字体: 非加粗

带格式的: 字体: 非加粗

带格式的: 字体: 非加粗

带格式的: 字体: 非加粗

带格式的: 字体: 非加粗

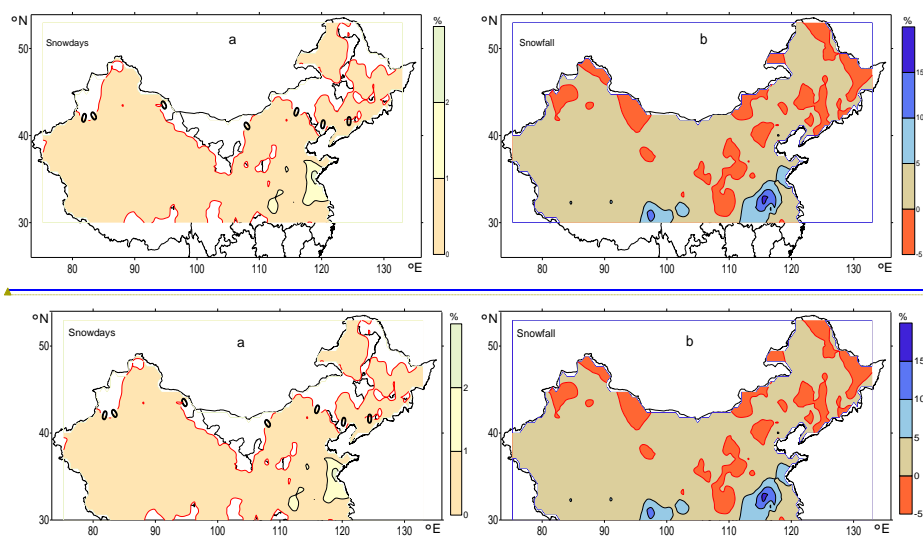


FIG.64. The spatial distribution of the ~~relative-deviation~~~~relative error~~ of the days (a) and amount (b) of snowfall determined by the threshold temperature (Tt-d) in northern China

The spatial distribution of the threshold temperature (Tt-d) of rain and snow at the stations north of 30°N are shown in Fig. 65. The average Tt-d is 2.3 °C for Eastern Monsoon Region, 3.4 °C for Northwest Arid Region, and 5.2 °C for the Qinghai-Tibetan Plateau. The highest threshold temperature of the study region is 6.3 °C (Shiquanhe-Shiquanhe-III, Fig. 3d2d), the lowest is -1.2 °C (Zhaozhou-Zhaozhou-I, Fig. 3b2b), the threshold temperature range was 7.5 °C, and the average threshold temperature for the whole region was 2.84 °C. The high-values ~~area-were~~ in the northern Qinghai-Tibetan Plateau, with a threshold temperature of more than 4 °C, and the low-value-~~areas~~ were generally in eastern Northeast China, North China, and northern Xinjiang with the threshold temperature mostly less than 2 °C. The threshold temperature ~~east of 90°E decreased from west to east, and it decreased from east to west in areas west of 90°E. On the whole, the west of~~

带格式的: 字体: (默认) Arial, 小五

带格式的: 字体: (默认) Arial

带格式的: 字体: (默认) Arial

带格式的: 字体: 非加粗

带格式的: 字体: 非加粗

带格式的: 字体: 非加粗

带格式的: 字体: 非加粗

带格式的: 字体: 非加粗

405100 E showed an approximately zonal distribution, and ~~it the threshold~~
~~temperature~~ decreased with the increase of latitude; the east of 405100 E had a
meridional distribution, and the threshold temperature decreased with increasing
longitude. There are some uncertainties on the distribution of the threshold
temperature in the Qinghai-Tibetan Plateau and northwestern deserts mainly due to
the interpolation in the regions with sparser observations.

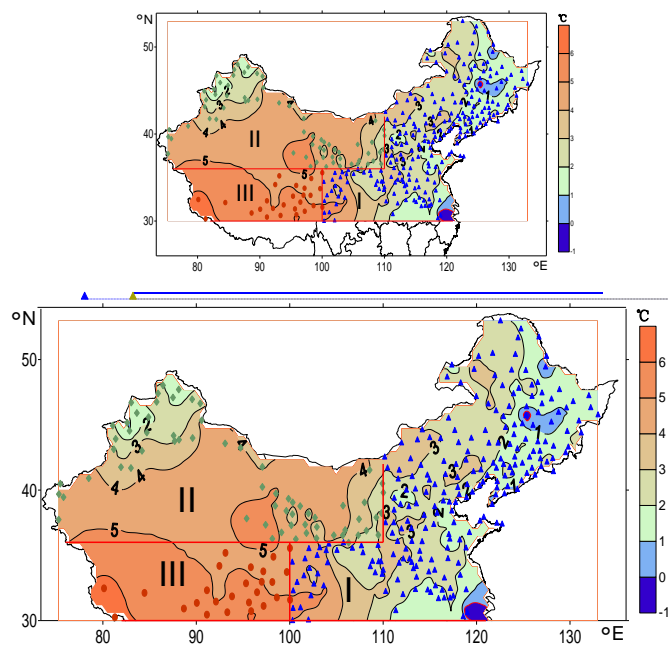
带格式的: 字体: 非加粗

带格式的: 字体: 小四

带格式的: 字体: 小四

带格式的: 字体: (默认) Arial, 非加粗

带格式的: 字体: (默认) Arial, 非加粗



带格式的: 字体: (默认) Arial

FIG.65. Spatial distribution of threshold temperature of precipitation phases in northern China (I: East Monsoon Region; II: Northwest Arid Region; III: Qinghai-Tibetan Plateau. Unit: °C)

带格式的: 字体: (默认) Arial

~~This distribution feature was well consistent with the spatial pattern of the~~
~~maximum daily mean temperature of snow days (Fig. 4a), the minimum daily mean~~
~~temperature of rain days (Fig. 4b), and the average daily mean temperature of sleet~~
~~days (Fig. 4c) previously counted in northern China. It can therefore be considered to~~
~~have reflected the actual observations.~~

带格式的: 字体: 非加粗

3.3 Correlation between threshold temperature and geographical/climatic factors

~~Because the precipitation records of the major international datasets do not indicate the precipitation phases, it is necessary to distinguish them outside China by establishing a statistical model of threshold temperature applicable in the sub-continental or larger scales.~~

~~The spatial distribution of threshold temperature of solid and liquid precipitation in northern China may be affected by various geographical and climatic factors. Our analysis found that~~ The threshold temperature (Tt-d) is related to the longitude, latitude, altitude, annual precipitation, annual mean air temperature, and annual relative humidity of the observational sites, with a positive correlation with altitude and a negative correlation with the other factors. All the correlations passed the significant test ($p=0.05$) at 0.05 level (Fig 6).

~~Figure 7 shows the changes of the threshold temperature in northern China with latitude, altitude, annual precipitation, and annual mean relative humidity. In the lower latitude area, the threshold temperature was generally higher and more dispersevariable, while in the higher latitude-area, it was generally slightly lower and relatively centralizedless variable. The threshold temperature had a clear decreasing trend with increase of latitude (Fig. 6a). In lower altitude area, the threshold temperature was lower, while it was higher in mountains and plateaus, and a highly significant increasing trend of threshold temperature with altitude can be seen (Fig. 6b). There was a negative correlation between the threshold temperature and the annual precipitation, and a more significant negative correlation with the annual~~

带格式的: 字体: 非加粗

带格式的: 字体: 非加粗

带格式的: 字体: 非加粗

带格式的: 字体: 倾斜

带格式的: 字体: 非加粗

带格式的: 字体: 非加粗

带格式的: 字体: 非加粗

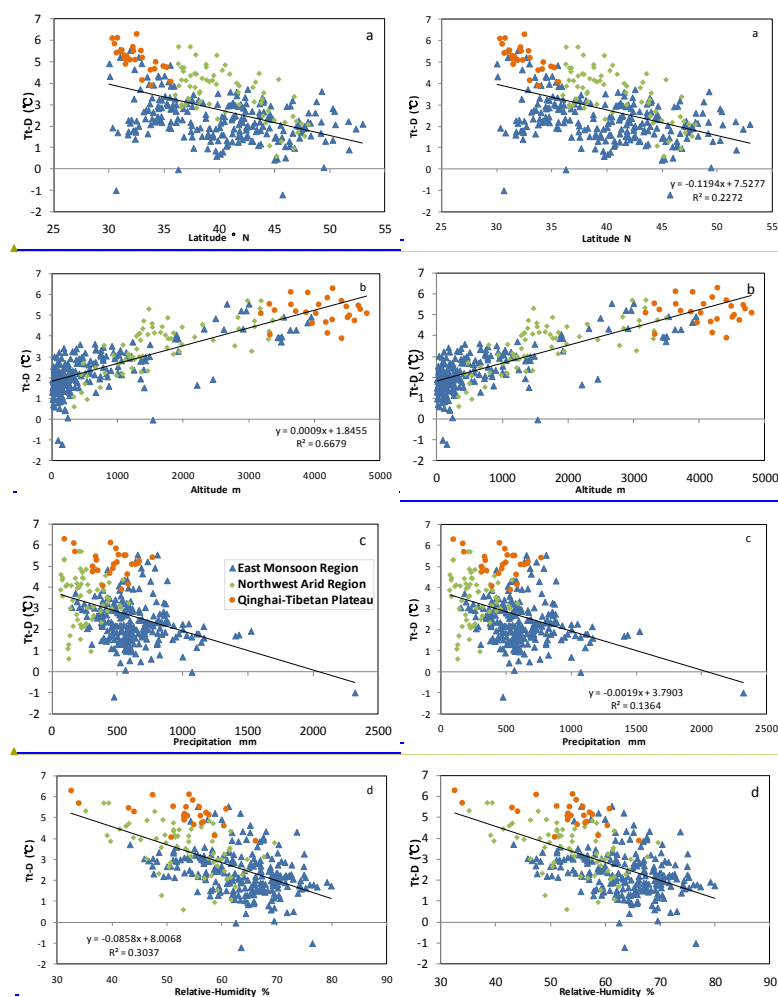
带格式的: 缩进: 首行缩进: 0.74 厘米, 行距: 2 倍行距

带格式的: 字体: 非加粗

带格式的: 字体: 非加粗

relative humidity (Fig. 6c, d).

带格式的: 字体: 非加粗



带格式的: 字体: (默认) Arial, 非加粗

带格式的: 字体: (默认) Arial

带格式的: 字体: (默认) Arial, 非加粗

带格式的: 字体: (默认) Arial

FIG.76. Relationship of the threshold temperature (T_{t-d}) with latitude (a), altitude (b), annual precipitation (c) and annual mean relative humidity (d) in northern China (Blue triangle: East Monsoon Region; Green diamond: Northwest Arid Region; Red circle: Qinghai-Tibetan Plateau)

带格式的: 缩进: 首行缩进: 0 厘米, 行距: 单倍行距

It is possible that the relationship of the threshold temperature with longitude and latitude is also related to the variations of altitude and relative humidity in the study region. The altitude and relative humidity generally decrease from west to east and

607 from south to north, and the altitude and relative humidity have better correlations
608 with the threshold temperature, which may be the reason why threshold temperature
609 decreases with the increase of the longitude and latitude. Therefore, altitude and
610 relative humidity may be the more important factors in determining the threshold
611 temperature.

612 The threshold temperature was positively correlated with altitude, which may
613 mainly be because the ground surface receives stronger solar radiation, causing the
614 boundary-layer atmosphere to heat rapidly in the high altitude areas during daytime.
615 However, the upper air temperature is low, the temperature lapse rate is larger, the
616 cloud bottom-height is low, and the path of snowflakes is short, so the snowfall
617 phenomenon can also be more frequently observed when the daytime surface air
618 temperature is high.

619 The threshold temperature was negatively correlated with annual precipitation in
620 particular with relative humidity, which may be related to the low latent heat flux and
621 high sensible heat flux in arid area. When the sensible heat flux is high, the ground
622 surface air temperature is high, and the temperature lapse rate is large. In the case of
623 the same condensation height or cloud bottom-height, snowfall is more likely to occur
624 under the condition of higher surface air temperature. It is also possible that the higher
625 the threshold temperature in arid area than in humid area is caused by a difference of
626 the more complicated microphysical processes around the snowflakes between the
627 two climatic conditions.

628 3.4 Establishment of the threshold temperature model

带格式的：字体：非加粗

带格式的：字体：非加粗

带格式的：字体：非加粗

带格式的：字体：非加粗

带格式的：字体：非加粗

带格式的: 字体: 非加粗

Considering that the relative humidity data of some areas is difficult to obtain, the precipitation factor was selected as the independent variable. Using the SPSS software stepwise regression analysis method, a statistical model of threshold temperature was established with latitude, altitude, and annual precipitation as influential factors. The model, which passed the significant test at the 0.05 level, can be expressed as follow:

$$Tt_p = 6.81576376 + (-.09305) * N + (.000567) * H + (-0.00182) * R \quad (1)$$

带格式的: 字体: 小四, 非加粗

带格式的: 字体: 非加粗

where Tt_p is the simulated threshold temperature ($^{\circ}\text{C}$), N is the latitude of the station, H is the altitude of the station (m), and R is the annual precipitation of the station (mm).

带格式的: 字体: 非加粗

带格式的: 缩进: 首行缩进: 1.77 字符

The correlation coefficient between Tt_p and Tt_d (threshold temperature determined by using the synoptic phenomena) is 0.87. The median and standard deviation of the simulated threshold temperature (Tt_p) were 2.53 and 1.16, which were close to the median (2.64) and standard deviation (1.33) of the Tt_d . The maximum simulated threshold temperature was 6.05°C , minimum was 0.22°C , temperature range was $6.26 - 7^{\circ}\text{C}$, and average simulated threshold temperature was 2.81°C for the whole region. The maximum positive deviation of the Tt_p to the Tt_d was 3.0°C , and the minimum negative deviation was -1.7°C . The stations, at which relative deviation of snow day and snowfall were less than 10%, reached 95% and 91% of the total, respectively.

带格式的: 字体: 非加粗

In the East Monsoon Region (Region I) and the Northwest Arid Region (Region II), the simulated threshold temperature was generally lower than the Tt_d (0.005°C lower in Region I on average, and 0.02°C lower in Region II on average). However, it

was higher in the Qinghai-Tibetan Plateau Region (0.097 °C higher on average) (Fig. 87). Considering that the relative humidity data of some areas is difficult to obtain, the precipitation factor was selected as the independent variable. Using the SPSS software stepwise regression analysis method, a statistical model of threshold temperature was established with annual mean air temperature, altitude, and annual precipitation as influential factors. The model, which passed the significant test ($p=0.05$), can be expressed as follow:

$$Tt-p = 1.69147 + (.09585) * T + (.001311) * H + (-0.00172) * R \quad (1)$$

where $Tt-p$ is the simulated threshold temperature (°C), T is the annual mean air temperature(°C) of the station, H is the altitude of the station (m), and R is the annual precipitation of the station (mm).

The correlation coefficient between $Tt-p$ and $Tt-d$ (threshold temperature determined by using the synoptic phenomena) is 0.88. The median and standard deviation of the simulated threshold temperature ($Tt-p$) were 2.54°C and 1.17°C, which were close to the median (2.64°C) and standard deviation (1.33°C) of the $Tt-d$. The maximum simulated threshold temperature was 5.9 °C, minimum was -0.4 °C, temperature range was 5.5 °C, and average simulated threshold temperature was 2.8 °C for the whole region. The maximum positive deviation of the $Tt-p$ to the $Tt-d$ was 2.9 °C, and the minimum negative deviation was -1.8 °C. The numbers of stations with relative error less than 10% for snow day and snowfall reached 97% and 92% respectively.

In the East Monsoon Region (Region I), the simulated threshold temperature was

generally lower than the Tt-d (0.026 °C in Region I on average). However, it was higher in the Northwest Arid Region (Region II) and the Qinghai-Tibetan Plateau Region (0.063 °C lower in Region II on average, and 0.065 °C higher on average) (Fig. 7).

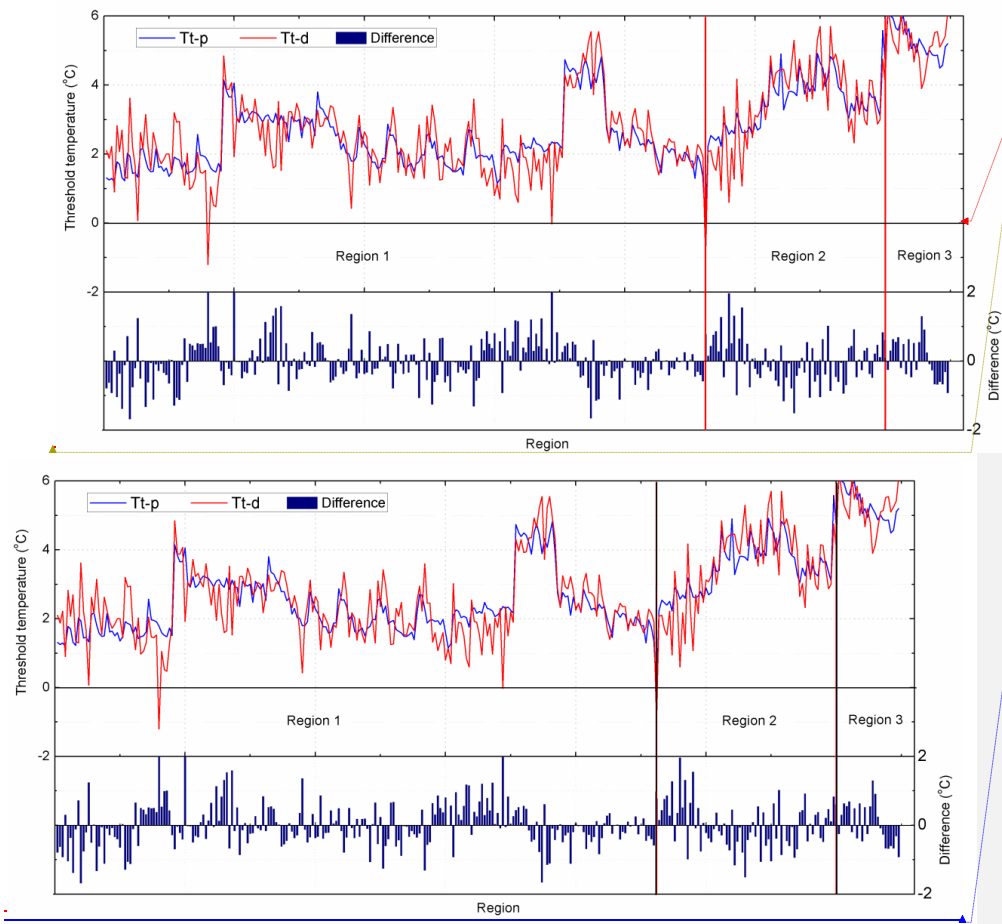


FIG.87. Simulated threshold temperature (Tt-p), actual threshold temperature (Tt-d) and their difference for observational stations in different regions of northern China (1: East Monsoon Region; 2: Northwest Arid Region; 3: Qinghai-Tibetan Plateau Region)

带格式的: 字体: (默认) Arial, 非加粗

带格式的: 两端对齐, 缩进: 左 0 字符, 首行缩进: 0 字符, 行距: 2 倍行距

带格式的: 字体: (默认) Arial

带格式的: 两端对齐, 缩进: 首行缩进: 0.74 厘米, 行距: 2 倍行距

The correlation coefficients of the standard deviation and median of the snowfall days (simulated snowfall days) with those of actual snowfall days at all the stations were 0.92 and 0.94, respectively. The differences of the standard deviation and median of the simulated snowfall days and actual snowfall days are smaller overall, and the differences of the median is slightly larger in the Qinghai Tibet Plateau where there was more snowfall. Fig. 9-8 shows spatial distribution of the relative deviation of the simulated snow days (Fig. 9a8a) and snowfall (Fig. 9b8b) relative to the actual snow days and snowfall at the stations. The relative deviation range of snowfall days in northern China was between 21.17% and 18.38%, with an average of 0.12%; the relative deviation was smaller in mid southern parts of the study region, and larger in the coastal areas and the northern Qinghai Tibetan PlateauQinghai Xizang Plateau. In the Qinghai Tibetan PlateauQinghai Tibet Plateau Region, the medians of the simulated snow days were smaller than those of the actual snow days, and the relative deviations were larger. This may be related to the fact that the snowfall days in northern Tibetan Plateau fluctuated greatly, and there are some years with larger numbers of snowfall days. The relative deviation range of snowfall in the whole region was between 17.3% and 30.38% with an average of 1.09%, and the spatial distribution was basically the same as that of the relative deviations of snow days.

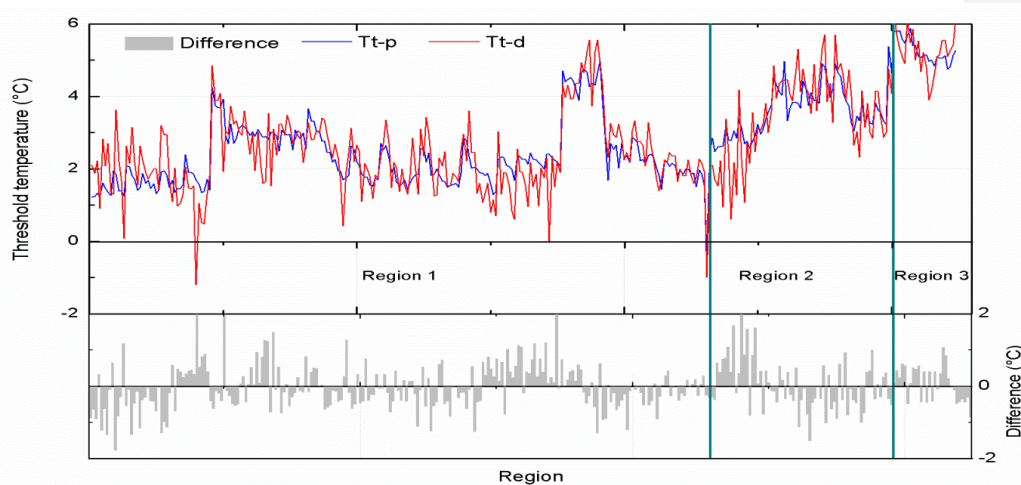
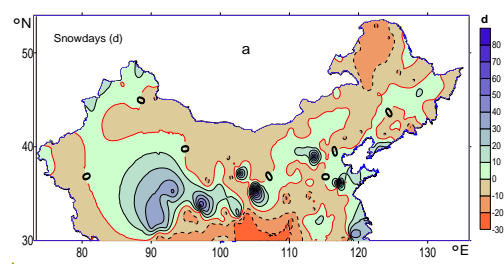


FIG.7. Simulated threshold temperature (Tt-p), threshold temperature (Tt-d) and their difference for observational stations in different regions of northern China (Region 1: East Monsoon Region; Region 2: Northwest Arid Region; Region 3: Qinghai-Tibetan Plateau Region)

The mean absolute errors of threshold temperature of the simulated snowfall are 0.476°C for East Monsoon Region, 0.560°C for Northwest Arid Region, and 0.435°C for Qinghai-Tibetan Plateau Region. Fig. 8 (and also Table 3, Mean errors of threshold temperature of simulated snowfall and snow days for the study area and the three regions) shows the spatial distribution of the absolute errors of threshold temperature of the simulated snowfall and snow days. Larger errors can be seen in the Northwest Arid Region.



带格式的: 字体: 小五

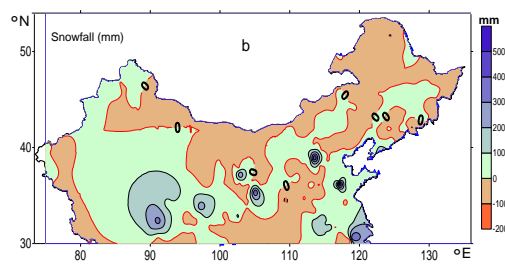


FIG. 8. Absolute error distribution of snowfall days (a) and snowfall (b) for the simulated threshold temperature

Fig. 9 shows spatial distribution of the relative error of the simulated snow days (Fig. 8a) and snowfall (Fig. 8b) relative to the actual snow days and snowfall at the stations. The relative error range of snowfall days in northern China was between -16.8% and 17.0%, with an average of -0.1%; the relative error was smaller in mid-southern parts of the study region, and larger in the coastal areas and the northern Qinghai-Tibetan Plateau. In the Qinghai-Tibetan Plateau Region, the medians of the simulated snow days were smaller than those of the actual snow days, and the relative errors were larger. This may be related to the fact that the snowfall days in northern Tibetan Plateau fluctuated greatly, with some years with larger numbers of snowfall days. The relative error range of snowfall in the whole region was between -15.5% and 29.0% with an average of 1.1%, and the spatial distribution was basically the same as that of the relative errors of snow days.

带格式的: 字体: 非加粗

带格式的: 字体: (默认) Times New Roman

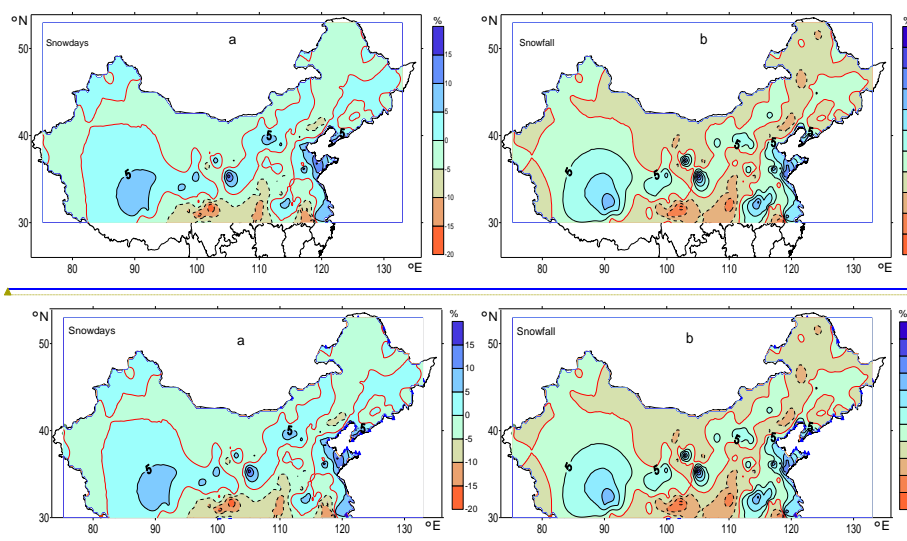


FIG.998. Relative error Deviation distribution of snowfall days (a) and snowfall (b) defined by the simulated threshold temperature

Affected by the extremely low air temperature and the abnormally deficient water vapor due to the East Asian winter monsoon, the ~~pure~~-snow days (snowfall) with only snowfall weather ~~phenomenon~~ were relatively less frequent (low) in northern China, as compared to other regions of the same latitude; therefore, it is more likely that the ~~relative deviation~~relative error is large in the study region. However, the ~~relative deviation~~relative error range shown here is acceptable, and the fitting effect is generally good.

The ~~RMSE MSRE~~ of the ~~relative deviation~~relative error of snow days was 3.9, and the ~~RMSE MSRE~~ of the ~~relative deviation~~relative error of snowfall was 5.3. The annual snow days and the amount of snowfall were less in the mid-southern parts of the study region which had negative ~~relative deviation~~relative errors of the simulated snow events; however, snow days and snowfall were slightly more numerous in the

带格式的: 字体: (默认) Arial, 非加粗

带格式的: 字体: (默认) Arial

带格式的: 字体: (默认) Arial

带格式的: 字体: (默认) Arial

带格式的: 字体: 非加粗

带格式的: 字体: 非加粗

带格式的: 字体: 非加粗

带格式的: 字体: 非加粗

带格式的: 字体: 非加粗

带格式的: 字体: 非加粗

带格式的: 字体: 非加粗

带格式的: 字体: 非加粗

带格式的: 字体: 非加粗

带格式的: 字体: 非加粗

northern part of the Sichuan Basin. The number of snow days and snowfall was less in the coastal area which had positive ~~relative deviation~~relative errors of the simulated snow events, while there were more snow days and snowfall in the northern Qinghai-Tibetan ~~Xizang~~ Plateau. The ~~relative deviation~~relative error of snow days (snowfall) and the threshold temperature had a correlation coefficient of -0.38 (-0.31); both passed the significant test ($p=0.05$)~~at 0.05 level~~. It can be seen that the ~~relative deviation~~relative error in the area with low threshold temperature tends to be positive, and that ~~the relative deviation~~relative error in ~~the~~ area with high threshold temperature is generally negative.

带格式的: 字体: 非加粗

带格式的: 字体: 非加粗

带格式的: 字体: 非加粗

带格式的: 字体: 非加粗

带格式的: 字体: 非加粗

带格式的: 字体: 非加粗

带格式的: 字体: 非加粗

带格式的: 字体: 非加粗

4. Comparison with previous works

~~Previous researches used the insurance probability to obtain the threshold geophysical parameters of the snow rain separation (e.g. Han et al., 2010; Sims and Liu, 2015). Sims and Liu (2015) found that the wet bulb temperature and low layer temperature lapse rate had the most significant influence on the precipitation phase, with a lapse rate of 6seica^{-1} resulting in an 86% insurance probability of solid~~

带格式的: 字体: 非加粗

precipitation if the near-surface wet-bulb temperature was around 0as. Surface air pressure also exerted an influence on precipitation phase in some cases. However, the climatic parameters are once again less available in the major international historical climate datasets, though the finding and the method recommended are valuable in investigating into local and regional precipitation phrases.

Han et al.(2010) used the insurance probability method to determine the single threshold temperature of rain and snow,takeing the daily average temperature of the 98.5% guarantee tate of rainfall and snowfall, 50% guarantee rate of mixed-phase event as the threshold temperature.For comparison of SDDMsnow-day mean temperature method and the insurance probability method insurance probability method as reported in Han et al. (2010), the number of snow days (S_n) and rain days (R_n) between T_{rn} and T_{sm} was calculated, respectively. The corresponding daily mean temperature at the insurance probability of the snow and rain days between $[T_{rn}, T_{sm}]$, X ($x \in (0-99\%)$) (at 1% intervals), was estimated. For example, the number of rain days and snow days between T_{rn} and T_{SM} is 100d respectively; when $x = 90\%$ is taken, the rain-day temperature Tr_{90} corresponds to the insurance probability of 90%; that is, to ensure the minimum daily mean temperature in the event of 90% rain days between T_{rn} and T_{SM} , while Ts_{90} is to guarantee that the maximum daily mean temperature in the event of 90% snowfall days is between T_{rn} and T_{SM} . The arithmetic mean of each station's Tr_x and Ts_x is defined as the threshold temperature Tt_x at the station's insurance probability x .

The threshold temperature (Tt_x) was calculated according to the insurance

带格式的：字体：Times New Roman，非加粗

带格式的：字体：非加粗

带格式的：字体：非加粗

带格式的：字体：Times New Roman，非加粗

带格式的：字体：非加粗

带格式的：字体：非加粗

probability method, and the threshold temperature (T_{t-d}) was obtained based on the definition in this paper; the relative deviation/relative error comparison is presented in Table 3. For simplicity, the insurance probability interval in the table was taken as 10%. The maximum, minimum, and range of the threshold temperature (T_{t-x}) under different insurance probability, and of the (T_{t-d}), in northern China, are given in the table; at the same time, the maximum, minimum, and range of the relative deviation/relative error of the snow days and snowfall, as well as the number of stations with a relative deviation/relative error less than or equal to 10%, are also given.

Table 3 Comparison of statistics and the relative deviation/relative errors resulting from threshold temperature T_{t-x} and T_{t-d}

带格式的：字体：非加粗

带格式的：字体：非加粗

带格式的：字体：非加粗

带格式的：字体：（默认）Arial

带格式的：字体：（默认）Arial

带格式的：字体：（默认）Arial，非加粗

带格式的：字体：（默认）Arial，非加粗

带格式的：字体：（默认）Arial，非加粗

带格式的：字体：（默认）Arial，非加粗

带格式的：字体：（默认）Arial

max min max-min max

6.4 2.3 8.7 30.2 11.1 41.3 34.1 36.6 15.3 54.9

带格式的

带格式的

带格式的

带格式的

带格式的

带格式的

带格式的

带格式的

带格式的

带格式的

带格式的

带格式的

带格式的

带格式的

带格式的

带格式的：字体：（默认）Arial，非加粗

带格式的

带格式的

带格式的

带格式的

带格式的

带格式的

带格式的

带格式的

带格式的

带格式的

带格式的

	<u>Correlation</u>	<u>0.999</u>	<u>0.998</u>	<u>0.999</u>	<u>0.999</u>
<u>Snowday</u>	<u>MAE (d)</u>	<u>7.77</u>	<u>7.52</u>	<u>5.21</u>	<u>16.69</u>
	<u>MRE (%)</u>	<u>2.71</u>	<u>2.98</u>	<u>1.68</u>	<u>2.98</u>
	<u>RMSE (d)</u>	<u>3.9</u>	<u>4.3</u>	<u>2.3</u>	<u>3.6</u>
	<u>Correlation</u>	<u>0.997</u>	<u>0.996</u>	<u>0.999</u>	<u>0.998</u>
<u>Snowfall</u>	<u>MAE (mm)</u>	<u>37.18</u>	<u>37.7</u>	<u>19.67</u>	<u>77.6</u>
	<u>MRE (%)</u>	<u>3.71</u>	<u>4.09</u>	<u>2.1</u>	<u>4.44</u>
	<u>RMSE (mm)</u>	<u>73.78</u>	<u>76.13</u>	<u>43.81</u>	<u>95.24</u>

825
826
827
828
829
830
831
832
833
834
835
836
837
838

4.5. Discussion

China has a vast territory. The study region across the latitude range 30–54°N, and a longitude range of 73–136°E, with various climate types of temperate monsoon zone, continental arid zone and alpine including the highest mountainous system of the Qinghai-Tibetan Plateau. The complex and diverse geophysical and climatic condition makes the region ideal for understanding the transition of precipitation phases and developing a method to separate the different precipitation phases.

We made an attempt to develop such a method to separate the precipitation phases by using a high-quality daily observational dataset in this paper. Our study not only determined the threshold temperature with more reliable results, but also tested the statistical model of threshold temperature, provided the results of the model and the ~~relative deviation~~relative error range for different regions, and confirmed the applicability of the method in the complex geographic area with diverse climate types.

With the method of determining threshold temperature developed in this paper, the ~~relative deviation~~relative error of snow days and snowfall calculated for most of the stations was very small, and the stations with less than 10% ~~relative deviation~~relative errors accounted for 95.1% and 90.7%, respectively. This method could be used to better determine the snow days than the snowfall, with the ~~relative deviation~~relative error of snowfall was slightly larger in the Huaihe River basin. This is mainly because, when using the threshold temperature to calculate the amount of snowfall, rain days with a daily mean temperature below the threshold temperature

带格式的: 字体: 非加粗

带格式的: 字体: 非加粗

带格式的: 字体: 非加粗

带格式的: 字体: 非加粗

带格式的: 字体: 非加粗

带格式的: 字体: 非加粗

带格式的: 字体: 非加粗

could be identified as the snow day, and also some snow days with a daily mean temperature above the threshold temperature could be classified as rain days. In the frequent transformation of the precipitation phases (early spring and early winter), precipitation on a rain day is often greater than that on a snow day, so the priority to ensure the determination of a snow day, the estimated ~~relative deviation~~relative error of snowfall would be a little larger.

带格式的: 字体: 非加粗

带格式的: 字体: (默认) Times New Roman, 小四, 非加粗

Han et al. (2010) used the insurance probability method to determine the single threshold temperature of rain and snow, taking the daily mean temperature of the 98.5% insurance probability of rainfall and snowfall, 50% insurance probability of mixed-phase events as the threshold temperature. For comparison of SDDM and the insurance probability method, the number of snow days (S_n) and rain days (R_n) between T_{rn} and T_{sm} was calculated, respectively, using the two methods. The corresponding daily mean temperature at the insurance probability of the snow and rain days between $[T_{rn}, T_{sm}]$, X ($x \in (0-99\%)$) (at 1% intervals), was estimated. For example, the number of rain days and snow days between T_{rn} and T_{SM} is 100d respectively; when $x = 90\%$ is taken, the rain day temperature Tr_{90} corresponds to the insurance probability of 90%, that is, to ensure the minimum daily mean temperature in the event of 90% rain days between T_{rn} and T_{SM} , while Ts_{90} is to guarantee that the maximum daily mean temperature in the event of 90% snowfall days is between T_{rn} and T_{SM} . The arithmetic mean of each station's Tr_x and Ts_x is defined as the threshold temperature T_{t-x} at the station's insurance probability x .

The threshold temperature (T_{t-x}) was calculated according to the insurance

probability method, and the threshold temperature (Tt-d) was obtained based on the definition in this paper; the relative error comparison is presented in Table 3. For simplicity, the insurance probability interval in the table was taken as 10%. The maximum, minimum, and range of the threshold temperature (Tt-x) under different insurance probability, and of the (Tt-d), in northern China, are given in the table; at the same time, the maximum, minimum, and range of the relative error of the snow days and snowfall, as well as the number of stations with a relative error less than or equal to 10%, are also given.

Table 4 Comparison of statistics and the relative errors resulting from threshold temperature Tt-x and Tt-d

	Threshold temperature (°C)					Relative error of snow days (%)		Relative error of snowfall (%)			
	max	min	max-min	max	min	max-min %	Stations ≤10%	max	min	max-min %	Stations ≤10%
Tt-0	6.4	-2.3	8.7	30.2	-11.1	41.3	311	36.6	-15.3	51.9	280
Tt-10	6.4	-2.3	8.7	25.1	-11.1	36.3	313	29	-11.8	40.8	284
Tt-20	6.5	-2.3	8.8	25.1	-9.5	34.6	316	29	-9.7	38.7	287
Tt-30	6.5	-2.2	8.7	23.6	-7.1	30.7	314	31.5	-15.3	46.8	287
Tt-40	6.4	-2.2	8.6	23.6	-5.8	29.4	316	31.5	-8.4	39.9	289
Tt-50	6.5	-2	8.5	21.1	-5.7	26.8	312	32.2	-9.7	41.9	286
Tt-60	6.4	-1.5	7.9	19.1	-6.5	25.6	313	32.2	-9.7	41.9	289
Tt-70	6.4	-1.4	7.8	15.6	-6.5	22.1	314	30.2	-6.2	36.4	283
Tt-80	6.7	-1.4	8.1	18.3	-5.8	24	307	45.2	-8.4	53.6	282
Tt-90	6.5	-1.2	7.7	23	-7	29.9	306	33.4	-9.7	43.1	276
Tt-d	6.3	-1.2	7.5	2.6	0	2.6	323	20.2	-4.3	24.5	312

Table 3 shows that, using the insurance probability method, the test results of the threshold temperature (Tt-70), obtained when the insurance probability $x = 70\%$ was taken, represented the best values, as the difference between the minimum and maximum values of the threshold temperature was small, and the relative errors were small, with the relative error of the snow days at 314 stations $\leq 10\%$, and that of the

snowfall at 283 stations $\leq 10\%$.

The range of threshold temperature Tt-d of snow days determined in this paper was less than that of the Tt-70. The relative error of snow days was obviously small, and the relative error of snowfall was much less than that of the Tt-70, with more stations having the relative errors $\leq 10\%$ for both snow days and snowfall. Therefore, the method developed in this paper has an advantage over the insurance probability method developed in the previously works.

Ding(2014) used a parameterization scheme to determine the precipitation type with wet-bulb temperature ,relative-humidity,and surface elevation. In the work of Ding, each precipitation event is assigned a number, determined phase with Ding's parameterization scheme and other nine scheme in the literature. The accuracies over the air temperature range $[0^{\circ}\text{C},4^{\circ}\text{C}]$ show that Ding's method is better than other.

In order to compare with Ding's work, the accuracy of Tt-d is tested over the same air temperature range. The results are shown in Table 5, the accuracy of Ding is from Ding (2014). The Tp-CH is the Tt-p of all stations in the study area. The Tp-R1 is the Tt-p of stations independent sample modeling in East Monsoon Region . The Tp-R2 is the Tt-p of Northwest Arid Region. The Tp-R3 is the Tt-p of Qinghai-Tibetan Plateau.

Table 5 Accuracies of Ding's and SDDM over the air temperature range $[0^{\circ}\text{C},4^{\circ}\text{C}]$

	Ding	Tp-CH	Tp-R1	Tp-R2	Tp-R3
China	59.3	87	87	84	84
R1	53.1	83	83	78	80
R2	60.1	89	89	90	88
R3	66.1	99	99	99	99

Ding separated rain, snow, and sleet. The work of this paper only separates rain and snow, so the accuracy should be higher. However, the test result of Tt-p of each region is relatively stable. The SDDM is stable and reliable for the separation of rain and snow. Liu and Ren et al.(2018) tested the possibility of extrapolating the statistical model of separating solid precipitation from liquid precipitation. Considering less snowfall in the lower latitudes and less rainfall in the higher latitudes, the proposed area for use of the method is between 30°N to 60°N in the latitude range, and areas outside this range may have large deviation.

In this paper, only the two phases of pure snowfall and pure rainfall were determined, however, and the ~~sleet~~mixed-phase events ~~were~~as not analyzed. In the case of ~~sleet~~mixed-phase events, the surface air temperature changed greatly during a day; there was probably ~~sleet~~mixed-phase events, pure rain and pure snow in the same day, the ~~actual threshold~~threshold temperature fluctuations were large, and it would be difficult to accurately determine and simulate. Because the method used in this paper did not quantify the ~~sleet~~mixed-phase events, when precipitation was separated into solid and liquid state, the mixed-phase events~~sleets~~ will be classified as snow when the daily mean temperature is lower than the threshold temperature, and as rain when the daily mean temperature is higher than the threshold temperature, causing a certain error. However, for the study of large-scale snowfall climatology, especially for studies of the larger than subcontinental scale snowfall climate change, the snow and rain separation method presented in this paper could well meet the needs.

Liu and Ren et al.(2018) tested the possibility of extrapolating the statistical

带格式的: 字体: 非加粗

带格式的: 字体: 非加粗

带格式的: 字体: 非加粗

model of separating solid precipitation from liquid precipitation. Considering less snowfall in the lower latitudes and less rainfall in the higher latitudes, the proposed area for use of the method is between 30°N to 60°N in the latitude range, and areas outside this range may have large deviation.

带格式的: 字体: 非加粗

带格式的: 字体: 非加粗

带格式的: 字体: 非加粗

5.6. Conclusions

带格式的: 字体: 非加粗

Based on the analysis of the historical daily temperature, precipitation, and weather phenomenon observation data in northern China, the threshold temperature model for determining the phase of rain and snow was established and tested. The main conclusions are as follows:

带格式的: 字体: 非加粗

(1) The threshold temperature value of rain and snow determined based on weather phenomenon data is between -1.2–6.3 °C, with a temperature range of 7.5 °C and an average value of 2.81 °C. The high values were in the northern Qinghai-Tibetan Plateau, reaching more than 4 °C, and the low values were found in Northeast China, North China, and northern Xinjiang Autonomous Region, generally less than 2 °C. The west of 100°E showed an approximately zonal distribution,

带格式的: 字体: 非加粗

and the threshold temperature decreased with latitude; the east of ~~105~~¹⁰⁰°E had a meridional distribution, and the threshold temperature decreased with increasing longitude.

(2) The threshold temperature was more variable in the low latitude areas, while it was slightly lower and relatively centralized in the high latitudes, with a clear decreasing trend with increase of latitude. The threshold temperature was lower at low altitudes, higher in the high altitude areas, and ~~had a trend to~~ increase with altitude. There was a ~~good~~^{statistically significant} negative correlation between the threshold temperature and annual total precipitation and annual mean relative humidity, with the negative correlation with relative humidity especially significant.

(3) A statistical model based on latitude, elevation, and annual precipitation can be used to simulate the threshold temperature of the precipitation phase in northern China, with less ~~relative deviation~~^{relative error} in simulated snow days and snowfall. The stations with ~~relative deviation~~^{relative error} less than 10% reached 95.1% and 90.7% for the snow days and snowfall respectively.

带格式的: 字体: 非加粗

带格式的: 字体: 非加粗

带格式的: 字体: 非加粗

带格式的: 字体: 非加粗

带格式的: 字体: 非加粗

带格式的: 字体: (默认) Times New Roman, 小四

带格式的: 字体: (默认) Arial

992
993
994
995
996
997
998
999
1000
1001
1002
1003
1004
1005
1006
1007
1008
1009
1010
1011
1012
1013
1014
1015
1016
1017
1018
1019
1020
1021
1022
1023
1024
1025
1026
1027
1028
1029
1030
1031
1032
1033

Acknowledgements: This study is financed by the Ministry of Science and Technology of China (Fund No: 2018YFA0605603) and the China Natural Science Foundation of China (NSFC) (Fund No: 41575003 and 41771067) and the Ministry of Science and Technology of China (Fund No: GYHY201206012).

- 带格式的: 字体: 非加粗
- 带格式的: 字体: (默认) Times New Roman
- 带格式的: 字体: Times New Roman, 小四
- 带格式的: 字体: (默认) Times New Roman
- 带格式的: 字体: 非加粗
- 带格式的: 字体: (默认) Times New Roman
- 带格式的: 字体: 非加粗
- 带格式的: 字体: (默认) Times New Roman
- 带格式的: 字体: 非加粗
- 带格式的: 字体: 非加粗
- 带格式的: 字体: 非加粗
- 带格式的: 字体: Times New Roman, 小四, 非加粗
- 带格式的: 字体: 非加粗
- 带格式的: 字体: (默认) Arial

References

- Arnold JG, Srinivasan R, Muttiah RS, et al. 1998: Large area hydrologic modeling and assessment; part I: model development. Journal of the American Water Resources Association, 34(1): 73-89. DOI: 10.1111/j.1752-1688.1998.tb05961.x
- Becker A, Finger P, Meyer-Christoffer A, et al. 2012: A description of the global land-surface precipitation data products of the Global Precipitation Climatology Centre with sample applications including centennial (trend) analysis from 1901-present, Earth Syst. Sci. Data Discuss., 5, 921–998.
- Blanchet J, Marty C, Lehning M. 2009: Extreme value statistics of snowfall in the Swiss Alpine region. Water Resour. Res., 45. doi:10.1029/2009WR007916
- Bourgouin P. 2000: A method to determine precipitation types. Weather and Forecasting, 15(10): 583-592.
- Chen RS, Kang ES, Lu SH, et al. 2008: A distributed water-heat coupled model for mountainous watershed of an inland river basin in Northwest China (I) model structure and equations. Environmental Geology, 53: 1299- 1309.
- Dai AG. 2008. Temperature and pressure dependence of the rain-snow phase transition over land and ocean. Geophysical Research Letters, 2008, 35: 62-77.
- Dang HF, Zhao LN, Gong YF. 2015: Temporal and Spatial Distributions of Summer Precipitation Analysis in China, Journal of Chengdu University of Information Technology, 30(6): 609-615.
- Ding B, Yang K, Qin J, et al. 2014. The dependence of precipitation types on surface elevation and meteorological conditions and its parameterization. J. Hydrol. 513, 154–163.
- Edwin PM, Clifford M. 2006: Using radar data to partition precipitation into rain and snow in a hydrologic model. Hydrologic Engrg., 11: 214–221.
- Fang XQ, Liu CH, Hou GL. 2011: Reconstruction of Precipitation Pattern of China in the Holocene Megathermal, Scientia Geographica Sinica, 31(11): 1287-1292.
- Feiccabrino, J., Graff, W., Lundberg, A., Sandström, N., Gustafsson, D., 2015. Meteorological Knowledge Useful for the Improvement of Snow Rain Separation in Surface Based Models. Hydrology 2, 266–288. [https:// doi.org/10.3390/hydrology2040266](https://doi.org/10.3390/hydrology2040266)
- Froidurot S, Zin I, Hingray B, et al. 2014: Sensitivity of precipitation phase over the Swiss Alps to different meteorological variables. Journal of Hydrometeorology, 15: 685-696
- Han CT, Chen RS, Liu JF, et al. 2010: A Discuss of the Separating Solid and Liquid Precipitations, Journal of Glaciology and Geocryology, 32(2):249-256.
- Harder P, Pomeroy J W. 2013: Estimating Precipitation Phase Using a Psychrometric Energy Balance Method. Hydrological Processes. DOI: 10.1002/hyp.9799.
- Harder P, Pomeroy J. 2014: Hydrological model uncertainty due to precipitation-phase partitioning methods. Hydrological Processes. DOI: 10.1002/hyp.10214.
- Harpold AA, Rajagopal S, Crews JB, et al. 2017: Relative humidity has uneven effects on shifts from snow to rain over the western U.S. American Geophysical Union. DOI: 10.1002/2017/GL075046.
- Harpold, A.A., Kaplan, M., Klos, P.Z., Link, T., McNamara, J.P., Rajagopal, S., Schumer, R., Steele, C.M., 2017a. Rain or snow: hydrologic processes, observations, prediction, and research needs. Hydrol Earth Syst Sci 21, 1–22.
- Jennings KS, Winchell TS, Livneh B, et al. 2018. Spatial variation of the rainsnow temperature threshold across the Northern Hemisphere. Nat. Commun. 9. DOI:10.1038/s41467-018- 03629-7.
- Jiang Y, Qian WH. 2003: Regional characteristics of Heavy Snowfall or Snowstorm in Inner Mongolia.

带格式的：字体：（默认）Arial，非加粗

带格式的：缩进：左侧： 0 厘米，悬挂缩进： 2.36 字符

带格式的：字体：（默认）Arial

带格式的

带格式的：字体：（默认）Arial，非加粗

带格式的：字体：（默认）Arial

带格式的

带格式的：字体：（默认）Arial，非加粗

带格式的：字体：（默认）Arial

带格式的

带格式的

带格式的：字体：（默认）Arial，非加粗

带格式的：缩进：左侧： 0 厘米，悬挂缩进： 2.86 字符

带格式的：字体：（默认）Arial

带格式的：字体：（默认）Arial，非加粗

带格式的：缩进：左侧： 0 厘米，悬挂缩进： 2.36 字符

带格式的：字体：（默认）Arial

带格式的：字体：（默认）Arial，非加粗

带格式的：字体：（默认）Arial

带格式的

带格式的：字体：（默认）Arial，小五，倾斜

带格式的：字体：（默认）Arial，非加粗

带格式的：缩进：左侧： 0 厘米，悬挂缩进： 2.36 字符

带格式的

带格式的

带格式的

带格式的

带格式的：字体：（默认）Arial，非加粗

带格式的：字体：（默认）Arial，小五，倾斜

带格式的：首行缩进： 0 字符

带格式的：字体：（默认）Arial，倾斜

带格式的：字体：（默认）Arial，非加粗

带格式的：缩进：左侧： 0 厘米，悬挂缩进： 2.36 字符

带格式的：字体：（默认）Arial，无下划线，字体颜色：自动设置

带格式的

带格式的

1078 ACTA GEOGRAPHICA SINICA. 58 (Suppl.): 38-48.

1079 [Jones PD, Hulme M. 1996: Calculating regional climatic time series for temperature and precipitation: methods and illustrations. Int J Climatology, 16: 361-377.](#)

1080

1081 [Kang ES, Cheng GD, Lan YC, et al. 2001: Alpine-runoff simulation of the Yalong River for the South-North Water Diversion. Journal of Glaciology and Geocryology, 23\(2\) : 139- 148.](#)

1082

1083 [Kang ES, Cheng GD, Lan YC, et al. 1999: A model for simulating the response of run off from the mountainous watershed of inland river basins in the arid area of northwest China to climatic changes. Science in China, Series D, 42 \(Suppl.\): 52- 63.](#)

1084

1085

1086 [Keith SJ, Taylor SW, Ben L, et al. 2018: Spatial variation of the rain-snow temperature threshold across the Northern Hemisphere. Nature communications. DOI: 10.1038/s41467-018-03629-7.](#)

1087

1088

1089 Kienzie S, 2008: A new temperature based method to separate rain and snow. Hydrol. Processes, **22**,

1090 5067-5085. [DOI: 10.1002/hyp.7131.](#)

1091 Kunkel KE, Palecki MA, Ensor L, et al. 2009: Trends in twentieth-century U.S. extreme snowfall seasons. Journal of Climate, 22(23): 6204-6216.

1092

1093 Loth B, Graf H, Oberhuber JM. 1993: Snow cover model for global climate simulations. Journal of Geophysical Research: Atmospheres. (1984–2012) 98(D6): 10451-10464.

1094

1095 Liu JH, Zhang PZ, Meng CH, et al. 2011: A Comprehensive Study on Precipitation Change Over Monsoon Marginal Areas During Last Five Centuries. SCIENTIA GEOGRAPHICA SINICA, 31(4):401-411.

1096

1097

1098 Liu YL, Ren GY, Yu HM. 2012: Climatology of Snow in China, Scientia Geographica Sinica, 32(10):1176-1185.

1099

1100 Liu YL, Ren GY, Yu HM, et al. 2013: Climatic Characteristics of Intense Snowfall in China with Its Variation. Journal of Applied Meteorological Science, 24(3):304-313.

1101

1102 [Liu YL, Ren GY, Sun XB. 2018. Establishment and Verification of Single Threshold Temperature Model for Partition Precipitation Phase Separation. Journal of Applied Meteorological Science. 29\(4\):449-459.](#)

1103

1104 [Liu YF, Zhu GF, Zhao J, et al. 2016: Spatial and Temporal Variation of Different Precipitation Type in the Loess Plateau Area. Scientia Geographica Sinica, 36 \(8\): 1227-1233.](#)

1105

1106 [Marks D, Winstral A, Reba M, et al. 2013. An evaluation of methods for determining during-storm precipitation phase and the rain/snow transition elevation at the surface in a mountain basin. Advanced in Water Resources, 55:98-110. DOI: 10.1016/j.advwatres.2012.11.012.](#)

1107

1108

1109 Noake K, Polson D, Hegerl G, et al. 2012: Changes in seasonal land precipitation during the latter twentieth-century, Geophysical Research Letters, 39 (3): 136-141. [doi:10.1029/2011GL050405.](#)

1110

1111 O'Hara BF, Kaplan ML, Underwood SJ. 2009: Synoptic climatological analyses of extreme snowfalls in the Sierra Nevada. Weather & Forecasting, 24(6): 1610-1624.

1112

1113 Polson D, Hegerl GC, Zhang X, et al. 2013: Causes of robust seasonal land precipitation changes. Journal of Climate, 26 (17): 6679-6697.

1114

1115 [Refsgaard JC, Seth SM, Bathurst JC, et al. 1992: Application of the SHE to catchments in India. Part 1: General results \[J\]. Journal of Hydrology, 140\(1-4\): 1-23.](#)

1116

1117 Qin D, Liu S, Li P. 2006: Snow cover distribution, variability and response to climate change in western China. J. Clim., 19, (9): 1820–1833.

1118

1119 Ren GY. 2007. Climate change and China water resources. Beijing: Meteorological press. 2007: 314.

1120 ~~[Ren GY, Zhan YJ, Ren YY, et al. 2015: Spatial and temporal patterns of precipitation variability over mainland China: I. Climatology. Advances in Water Science, 26\(3\): 299-310.](#)~~

1121

带格式的: 字体: (默认) Arial

带格式的: 字体: (默认) Arial, 无下划线, 字体颜色: 自动设置

带格式的: 字体: (默认) Arial

带格式的: 字体: (默认) Arial, 无下划线, 字体颜色: 自动设置

带格式的: 字体: (默认) Arial

带格式的: 字体: (默认) Arial, 无下划线, 字体颜色: 自动设置

带格式的: 字体: (默认) Arial

带格式的: 字体: (默认) Arial, 无下划线, 字体颜色: 自动设置

带格式的: 字体: (默认) Arial

带格式的: 字体: (默认) Arial, 小五

带格式的: 缩进: 左侧: 0 厘米, 悬挂缩进: 2.36 字符

带格式的: 字体: (默认) Arial

带格式的: 字体: (默认) Arial

带格式的: 字体: (默认) Arial

- Ren GY, Ren YY, Zhan YJ, et al. 2015: Spatial and temporal patterns of precipitation variability over mainland China: II: Recent trends. *Advances in Water Science*, 26(4): 451-465.
- Ren GY, Liu YJ, SUN XB, et al. 2016: Spatial and temporal patterns of precipitation variability over mainland China: III: causes for recent trends. *Advances in Water Science*, 27(3): 327-348.
- Sims EM, Liu G. 2015. A parameterization of the probability of snow-rain transition. *Journal of Hydrometeorology*, 16: 1466-1477.
- Stewart RE, Thériault JM, Henson W, 2015. On the Characteristics of and Processes Producing Winter Precipitation Types near 0°C. *Bull. Am. Meteorol. Soc.* 96, 623–639. DOI:10.1175/BAMS-D-14-00032.1
- Wan H, Zhang XB, Francis WZ, et al. 2013: Effect of data coverage on the estimation of mean and variability of precipitation at global and regional scales. *Journal of Geophysical Research: Atmospheres*, 118:534-546. doiDOI:10.1002/jgrd.50118
- Wang SG, Kand ES, Li X. 2004: Progress and Perspective of Distributed Hydrological Models. *Journal of Glaciology & Geocryology*, 26 (1) :61-65.
- Wang CY, Wang SL, Huo ZG, et al. 2005: Progress in research of agro-meteorological disasters in China in recent decade. *Acta Meteorologica Sinica*, 5:659-671.
- Wigmosta MS, Vail LW, Lettenmaier DP. 1994: A distributed hydrology-vegetation model for complex terrain [J] . *Water Resources Research*, 30(6): 1665- 1679.
- WMO. 2013: Reducing and managing risks of disasters in a changing climate. *WMO Bulletin*, 62(Special Issue): 23-31.
- Wu BY, Yang K, Zhang RH. 2009: Eurasian snow cover variability and its association with summer rainfall in China. *Advances in Atmospheric Sciences*, 26:31-44.
- Vavrus S. 2007: The role of terrestrial snow cover in the climate system. *Climate Dynamics*, 29(1):73-88.
- Xiao C, Yu RC, Yuan WH, et al. 2015: Spatial and temporal differences characteristics of the rainy season of Mainland China. *Acta Meteorologica Sinica*, 73 (1): 84-92.
- Yang LM, Yang T, Jia LH, et al. 2005: Analyses of the Climate Characteristics and Water Vapor of Heavy Snow in Xinjiang Region, *Journal of Glaciology and Geocryology*, 27 (3): 389-396.
- Ye H, Cohen J, Rawlins M. 2013: Discrimination of solid from liquid precipitation over northern Eurasia using surface atmospheric conditions. *Journal of Hydrometeorology*, 14 (4): 1345-1355.
- ~~You FC, Guo LX, Shi YS, et al. 2013: Discrimination index of precipitation phase state and its verification in Beijing. *Journal of Meteorology and Environment*, 29 (5): 49-54.~~
- Yu RC, Li J, Chen HM, et al. 2014: Progress in studies of the precipitation diurnal variation over contiguous China. *Acta Meteorologica Sinica*, 72 (5): 948-968.
- ~~Zhang LN, Guo R, Zeng J, et al. 2013: Research on Discrimination Criterion of Precipitation Types in Beijing in Winter. *Plateau meteorology*, 32(6): 1780-1786.~~
- Zhang ZF, Xi S, Liu N, et al. 2015: Snowfall change characteristics in China from 1961 to 2012, *Resources Science*, 37(9): 1765-1773.
- Zhong J, Su BD, Zhai JQ, et al. 2013: Distribution Characteristics and Future Trends of Daily Precipitation in China, *Progressus Inquisitiones De Mutatione Climatis*, 9 (2): 89-95.

帶格式的： 字体：（默认） Arial

带格式的：字体：（默认）Arial

帶格式的： 字体：（默认） Arial

帶格式的： 字体：（默认） Arial

帶格式的： 字体：（默认）Arial

帶格式的： 字体：（默认）Arial

帶格式的： 字体：（默认）Arial

带格式的：字体：(默认) Arial,
无下划线, 字体颜色：自动设置

带格式的： 字体：(默认) Arial,
无下划线, 字体颜色：自动设置

帶格式的： 字体：（默认） Arial

带格式的： 字体：(默认) Arial,
无下划线, 字体颜色：自动设置

帶格式的： 字体：（默认） Arial

带格式的： 字体：(默认) Arial,
无下划线, 字体颜色：自动设置

帶格式的： 字体：（默认） Arial

带格式的： 字体：(默认) Arial,
无下划线, 字体颜色：自动设置

帶格式的： 字体：（默认） Arial

带格式的： 字体：(默认) Arial,
无下划线, 字体颜色：自动设置

帶格式的： 字体：（默认） Arial

带格式的： 字体：(默认) Arial,
无下划线, 字体颜色：自动设置

帶格式的： 字体：（默认） Arial

带格式的： 字体：（默认）Arial，
无下划线， 字体颜色：自动设置

帶格式的：字体：（默认）Arial

带格式的： 字体：(默认) Arial,
无下划线, 字体颜色：自动设置

帶格式的： 字体：（默认） Arial

帶格式的

帶格式的： 字体：（默认） Arial

帶格式的

带格式的：字体：（默认）Arial

帶格式的

带格式的：字体：（默认）Arial

帶格式的： 字体：（默认）Arial

帶格式的： 字体：（默认） Arial

带格式的：字体：（默认）Arial

带格式的：字体：（默认）Arial

带格式的：字体：（默认）Arial

带格式的： 字体：（默认）Arial

带格式的：字体：（默认）Arial

带格式的：字体：(默认) Arial

带格式的：字体：(默认) Arial

带格式的： 字体：（默认）Arial

带格式的：字体：(默认) Arial

帶格式的： 字体：（默认）Arial

1166 |
1167 |