

Responses to Editor and Reviewers

We are grateful to the editor and anonymous reviewers whose constructive comments helped to improve the manuscript. We have now thoroughly revised the manuscript, taking up all the suggestions from the reviewers. We provide an integrated response regarding the novelty of our study, which has been observed by both reviewers (see section 1: *general comment of the authors*). Then we respond to the general and specific comments of each reviewer (see *section 2: detailed responses to reviewers*). The response to the reviewers is structured: (1) comments from reviewers (shaded), (2) author's response immediately below, (3) author's changes in manuscript. The responses refer to the lines of the manuscript with marked changes that is presented below.

1. General comment of the authors

This study offers a joint view of the main hydroclimatic variables at different time scales in northeastern Argentina. To our knowledge, there are no previous studies providing accurate and integrated information of several hydroclimate variables that can be useful for decision making in different sectors. As both reviewers correctly noted, some results regarding hydroclimate variability that we have obtained here had been reported in previous studies for individual variables (e.g., precipitation or streamflow). These results have been compared with those previous studies and they have been carefully referenced. However, this paper also provides novel knowledge that complement the state of the art of regional hydroclimate variability. Some of the novel findings regarding hydroclimate variability and its links with SSTs patterns are now particularly highlighted to reinforce the originality of our paper, including:

- *The increase in the amplitude of 2.5-to-4 year periods in precipitation that favored extreme events after 2000 (P. 10, L. 21-27):* We found that interannual precipitation variability with frequencies between 2.5 and 4 years contribute to exacerbate extreme events as of the 2000s, even during moderate extreme phases of the ENSO. This difference could be explained by an increase in heavy rainfall resulting from greater atmospheric instability and water vapour content (see e.g. Re and Barros, 2009; Penalba and Robledo, 2010).
- *The contribution of NEA precipitation rates to the Low Paraná river streamflow with periodicities of near 2 years (P. 12, L. 1-3):* We reported that a near biannual oscillation is noted in Timbúes gauging station (representative of the Lower Paraná Basin) but not in Corrientes gauging station

(representative of the Mid-Upper Paraná Basin). Although precipitation rates over NEA contribute with a small percentage to the total Paraná River flow, this finding can provide valuable information for early warning systems in periods of low flow contribution in the middle and upper reaches of the river.

- Regarding *temperature*, this study reported two interesting links between regional temperature and global SST patterns. *Maximum temperature time series correlates well with SSTs variability over the Southern Atlantic, Indian and Pacific Oceans with a 9-year frequency (P.13, L. 8-11). Minimum temperature relates with ENSO with a main frequency close to 3 years (P.13, L. 11-15)* [note that it was known that the region experiences warmer minimum temperature during El Niño years and cooler minimum temperature during La Niña events (Müller et al., 2000 and Rusticucci et al., 2017) but not the frequency of this relationship].
- On decadal-to-multidecadal time scales, in addition to the known incidence of the Interdecadal Pacific Oscillation and the Atlantic Multidecadal Oscillation that favour long-period anomalies over NEA (Seager et al., 2010; Barreiro et al., 2014), this study found that *the Paraná River streamflow is influenced by North and South Atlantic SSTs with bi-decadal periodicities (P. 16, L. 12-15)*.

These novel findings, now emphasized in the results sections, are also highlighted in the abstract and in section 5 “Final remarks”.

Furthermore, this research provides valuable information on the sectoral impacts at different time scales of variability that can support actions and policies seeking to increase the resilience of the regional population to cope with extreme events. The discussion related to sectoral impacts include the following topics:

- Interannual hydrological variability induced frequent floods that affected agricultural and livestock productivity, as well as trade, transportation and infrastructure on urban and rural populations. Conversely, droughts disrupted crop seeding and water supply for cattle and population.
- On decadal-to-multidecadal time scales, the study region experienced a transition from dry and cooler to wet and warmer decades since the 1970s favouring agriculture expansion. It derived in changes in the soil water budget that lead to extraordinary floods. Increases in minimum

temperature reduced wheat yields and altered maize life-cycles. Changes in maximum and minimum temperatures exacerbated the effects of urban heat islands and affected energy demand in several cities of the region.

- Since the mid-2000s, northeastern Argentina has been showing signs of a reversal in the wetting period on multidecadal time scales. If these conditions continue into the coming decades, more severe droughts and weaker floods might be expected.

Although the information related to sectoral impacts include some results reported by other authors, this paper provides an integrated and comprehensive discussion relating the hydroclimate variability at different time-scales that affect different sectors (including indicators such as the affected area, the number of people affected, economic losses, among others). The main objective of this part of the work is to improve the understanding of these sectors about how extreme events of hydroclimate variability alter their normal conditions and how do they impact population.

Cited References:

Barreiro, M., Diaz, N. and Renom, M.: Role of the global oceans and land–atmosphere interaction on summertime interdecadal variability over northern Argentina, *Climate Dyn.*, 42, 1733-1753, doi:10.1007/s00382-014-2088-6, 2014.

Müller, G., Nuñez, M. and Seluchi, M.: Relationship between ENSO cycles and frost events within the Pampa Húmeda region, *Int. J. Climatol.*, 20, 1619–1637, doi:10.1002/1097-0088(20001115)20:13<1619::AID-JOC552>3.0.CO;2-F, 2000.

Penalba, O. C. and Robledo, F. A.: Spatial and temporal variability of the frequency of extreme daily rainfall regime in the La Plata Basin during the 20th century, *Climatic Change*, 98, 531-550, doi:10.1007/s10584-009-9744-6, 2010.

Re, M. and Barros, V. R.: Extreme rainfalls in SE South America, *Climatic Change*, 96, 119-136, doi:10.1007/s10584-009-9619-x, 2009.

Rusticucci, M., Barrucand, M. and Collazo, S.: Temperature extremes in the Argentina central region and their monthly relationship with the mean circulation and ENSO phases. *Int. J. Climatol.*, 37: 3003–3017, doi:10.1002/joc.4895, 2017.

Seager, R., Naik, N., Baethgen, W., Robertson, A., Kushnir, Y., Nakamura, J. and Jurburg, S.: Tropical Oceanic Causes of Interannual to Multidecadal Precipitation Variability in Southeast South America over the Past Century, *J. Climate*, 23, 5517–5539, doi: 10.1175/2010JCLI3578.1, 2010.

2. Detailed responses to reviewers

Reviewer 1

General comments:

The manuscript examines the interannual and multidecadal scales of global SSTs and its relation to precipitation, river flow and maximum and minimum temperature over Northeast Argentina. The authors analyzed and correlated these hydroclimate variables by applying low-pass Lanczos filter, EOFs and SSAs. To conclude their study, the authors analyzed the impacts of hydroclimate variability and trends on the water, agriculture, and human sectors.

The manuscript is well-written and contributes substantially to the scientific progress within the scope of Hydrology and Earth System Sciences by utilizing a different filtering method compared to the usual running-mean method in analyzing the climatic variables. The authors used observational and reanalysis datasets including river gauge station datasets. However, the authors were not able to put forward what is something new in their study. I would recommend the authors to highlight the novelty of their work. For example, is the transition from dry and cooler climate to wet and warmer decades in northeastern Argentina novel? Also, the Pearson correlation coefficient method was also used to correlate SST anomalies with precipitation, stream flows and temperature. But, there is no significant tests employed. How significant are these correlations? In addition, some specific comments are mentioned below for consideration.

I recommend the manuscript as accepted with minor revision.

We have highlighted the novel findings of our study, as clarified in the “general comment of the authors” above (see section 1). Regarding the question, the transition from dry and cooler climate to wet and warmer decades is not novel at all, as it was partially reported by other authors (e.g., Seager et al., 2010; Barreiro et al., 2014, Jaques-Coper and Garreaud, 2015). However, our results reinforce the state of knowledge and evaluate the sectoral impacts of the hydroclimatic trends. For example, our results show jointly that warm phases of the Interdecadal Pacific Oscillation and cold phases of the Atlantic Multidecadal Oscillation favour long-period wet anomalies in decadal time scales over NEA and exacerbate the Paraná River floods.

As suggested by the reviewer, we have incorporated a significance test for Pearson correlations (r). Significance levels for r are estimated by combining 2000 Monte Carlo iterations considering autocorrelation by resampling in the frequency domain (Macias-Fauria et al., 2012). Significance level are now provided with the correlation values in each figure. The method employed to test significance is mentioned in the figure captions.

Cited references:

Barreiro, M., Diaz, N. and Renom, M.: Role of the global oceans and land–atmosphere interaction on summertime interdecadal variability over northern Argentina, *Climate Dyn.*, 42, 1733-1753, doi: 10.1007/s00382-014-2088-6, 2014.

Jacques-Coper, M. and Garreaud, R. D.: Characterization of the 1970s climate shift in South America, *Int. J. Climatol.*, 35, 2164–2179, doi:10.1002/joc.4120, 2015.

Macias-Fauria, M., Grinsted, A., Helama, S., and Holopainen, J.: Persistence matters: Estimation of the statistical significance of paleoclimatic reconstruction statistics from autocorrelated time series, *Dendrochronologia*, 30, 179–187, doi:10.1016/j.dendro.2011.08.003, 2012.

Seager, R., Naik, N., Baethgen, W., Robertson, A., Kushnir, Y., Nakamura, J. and Jurburg, S.: Tropical Oceanic Causes of Interannual to Multidecadal Precipitation Variability in Southeast South America over the Past Century, *J. Climate*, 23, 5517–5539, doi: 10.1175/2010JCLI3578.1, 2010.

Specific comments:

Comment 1: Abstract L.15: transition from what climate to wetter and warmer climate?

The statement has been rewritten.

Change in the manuscript:

The statement in the abstract now states (P. 1, L. 18-19): “Interdecadal variability is characterized by low frequency trends and multidecadal oscillations that have induced a transition from dry and cooler climate to wet and warmer decades starting in the mid-twentieth century”

Comment 2: P.3 Figure 1a. bold black contours and blue polygon Figure 1b. sub-basins are black contours, rivers and tributaries in blue contours

The caption of Figure 1 has been rewritten as suggested by the reviewer

Change in the manuscript:

The caption of Figure 1 now states “Figure 1: (a) South America and the domains of the La Plata Basin (bold black contour) and southeastern South America (blue polygon). (b) Topography map of La Plata Basin and its principal sub-basins (black contours), Paraguay (PAY), Mid-Upper Paraná (MUP), Lower Paraná (LOP) and Uruguay (URU). The rivers and their tributaries are plotted in blue contours. Gauging stations of the Parana River streamflow in Corrientes (Qco) and Timbúes (Qti) are highlighted. The study area in northeastern Argentina is highlighted with a red rectangle.”

Comment 3: P.4 L. 25. Lanczos filter, how many weights used? Is the use of Lanczos filter more useful compared to the running-mean method?

We have used 36 weights in the low-pass Lanczos filters. This point is now clarified in the manuscript. The Lanczos filter has advantages compared to the running-mean method that are now briefly discussed.

Change in the manuscript:

The first paragraph of section 2.3 “Statistical approach” now explains (P. 5, L. 9-17): “The present analysis focuses on precipitation, streamflow and temperature (minimum and maximum) of the NEA, considering SSTs as the main external forcing. For these four variables, monthly mean anomalies are computed by removing the corresponding mean annual cycle. The variables are also filtered applying low-pass Lanczos filters (Duchon, 1979) with 36 weights and cut-off periods at 18 and 120 months to emphasize the interannual and low frequency behaviour respectively. Lanczos filter is quite simple and yields better response than other filters such as running-mean filter (Duchon and Hale, 2012); for example, Lanczos filter reduces the amplitude of the Gibbs oscillation and allows controlling the cut-off frequencies independently of the number of weights (Duchon, 1979; Navarra, 1999).”

Cited references:

Duchon, C. E.: Lanczos filtering in one and two dimensions, *J. Appl. Meteor.*, 18, 1016-1022, doi: 10.1175/1520-0450(1979)018<1016:LFOAT>2.0.CO;2, 1979.

Duchon, C., Hare, R.: Chapter 3: Filtering Data, in: *Time Series Analysis in Meteorology and Climatology: An Introduction*, John Wiley & Sons, New York, United States, 143-182, 2012.

Navarra, A.: *Beyond El Niño: decadal and interdecadal climate variability*. Springer-Verlag, Berlin, Germany, 374 pp, 1999.

Comment 4: P.6 Figure 2. missing SST in 120-month low-pass filtered SST label and wrong label for Panel j. What do you mean with partial reconstructions?

Figure 2 has been corrected. The original time series are partially reconstructed using the significant components detected with SSA. Now it is explained in the caption of Figure 2.

Change in the manuscript:

The caption of Figure 2 now states “Figure 2: First three leading global pattern of 18- and 120-month low-pass filtered monthly mean SST between jan-1901 and sep-2012. Patterns are described by the spatial loadings (EOFs) and their associated PCs. The percentage of variance explained by each pattern is given in brackets. The original time series are partially reconstructed using the significant components detected with SSA. Partial reconstructions at interannual time scales are plotted in PCs of the left column (IA Reconstruction). Partial reconstructions at low-frequency time scales (LF Reconstruction) are plotted in PCs (lf) of the right column. The partial reconstructions include all variability modes at each time scale shown in Table 1. Panels (j) and (l) also show the multidecadal oscillations”.

Comment 5: P.18 Table 5. Higher concentrations of air pollution.

Agreed. This change has been made in Table 5.

Reviewer 2

General comments:

The manuscript assesses the joint interannual to multidecadal variability of precipitation, river flow and maximum and minimum temperatures over northeastern Argentina representing a contribution to scientific progress within the scope of Hydrology and Earth System Sciences. Overall, the manuscript is well written and presented in a clear and well structured way. The authors perform an exhaustive review of literature addressing the sectoral impacts of hydroclimate variability and trends including a comprehensive discussion of these impacts at different timescales of interest. Nevertheless I consider the results are not able to show robustly what is the novelty of the present study. In my opinion the results presented in this research are not well balanced compared to the review the authors perform based on the previous studies in the topic of interest. Some examples of results which are not novel are detailed in the specific comments. Authors should definitely put a major emphasis on what they consider to be new in their study which has not been performed or updated in the existing literature.

I recommend to reconsider the manuscript after major revision.

As suggested by the reviewer, we have highlighted the novel findings of our study, as clarified in the “general comment of the authors” above. The results sections have been rewritten emphasizing the new results of this study and summarizing those that are less novel. We have incorporated the novel results in the abstract and in section 5 “Final remarks”. Major changes to the manuscript have been made based on the specific comments that are detailed below.

Specific comments:

Comment 1: P.2, L.3-5. Authors should try to update references in relation to studies in the region. What has been done since 2010 regarding the understanding of regional hydroclimate and its sectoral impacts to increase the resilience of the affected populations in Argentina and SESA?

As suggested by the reviewer, the paragraph regarding impacts of hydroclimate variability has been partially rewritten and the references have been updated.

Change in the manuscript:

The second paragraph of the introduction (P. 2, L. 8-19) now states: “The impacts of hydroclimate variability are more evident in regions where population and the productive sectors are vulnerable to climate hazards. Southeastern South America (SESA) is one such region as documented by Magrin et al. (2014). Frequent flooding impacted large populated areas over SESA (Andrade and Scarpatti, 2007; Barros et al., 2008a; Latrubesse and Brea, 2011). The extraordinary flood along the Paraná River in 1983 produced economic losses of more than \$1 billion and forced the evacuation of at least 100,000 people (Krepper and Zucarelli, 2010). The extended and persistent drought of 2008/2009 caused losses of about 40% of grain production in Argentina and greatly affected the hydroelectric sector over SESA (Bidegain, 2009). The severe drought in 2011/2012 caused economic losses of \$2.5 billion in crop production of soybean and corn in Argentina (Webber, 2012). In this context, studies in recent years have been focusing on understanding the impacts of the regional climate (e.g., Magrin et al., 2014 and references therein; Barros et al., 2015 and references therein). Another group of studies analysed strategies to increase the resilience of the affected populations (Hernández et al., 2015; Mussetta et al., 2016). Notwithstanding, it is necessary a joint view of the main hydroclimatic variables and their sectoral impacts at different time scales to provide accurate and integrated information that will facilitate decision-making processes.

New references

Barros, V. R., Boninsegna, J. A., Camilloni, I. A., Chidiak, M., Magrín, G. O. and Rusticucci, M.: Climate change in Argentina: trends, projections, impacts and adaptation, *WIREs Clim Change*, 6: 151–169. doi:10.1002/wcc.316, 2015.

Hernandez, V., Moron, V., Riglos, F.F. and Muzi, E.: Confronting Farmers’ Perceptions of Climatic Vulnerability with Observed Relationships between Yields and Climate Variability in Central Argentina. *Wea. Climate Soc.*, 7, 39–59, <https://doi.org/10.1175/WCAS-D-13-00062.1>, 2015.

Magrin, G. O., Marengo, J. A., Boulanger, J.-P., Buckeridge, M. S., Castellanos, E., Poveda, G., Scarano, F. R. and Vicuña, S.: Central and South America, in: *Climate Change 2014: Impacts, Adaptation, and Vulnerability. Part B: Regional Aspects. Contribution of Working Group II to the Fifth Assessment Report of the Intergovernmental Panel on Climate Change*, Barros, V. et al eds., Cambridge University Press, Cambridge, United Kingdom and New York, NY, USA, pp. 1499-1566, 2014.

Mussetta P., Turbay S., Fletcher A.J.: Adaptive Strategies Building Resilience to Climate Variability in Argentina, Canada and Colombia. In: Leal Filho W., Musa H., Cavan G., O'Hare P., Seixas J. (eds) Climate Change Adaptation, Resilience and Hazards. Climate Change Management. Springer, Cham, 2016.

Webber, J. (Financial Times): Argentina's drought: counting the costs, available at: <https://www.ft.com/content/f7fd1da9-9848-39bc-9e15-168d0bd14dd7>, last access 27 March 2018.

Comment 2: P.2, L.32-33. Authors state they will “assess the impacts of hydroclimate variability and trends on water resources, agriculture and human settlements”. Based on Section 5, I consider this is more a review of the existing literature in relation with sectoral impacts (with a comprehensive and appropriate discussion of them at the different timescales) rather than a concrete “assessment” of the results.

Thanks for making this important point. Effectively, “assess” is not appropriate for this objective. Based on the evidence regarding hydroclimate variability at different time scales provided in section 4 and the scientific literature available, we provide an integrated and comprehensive discussion of the sectoral impacts of this regional variability. The discussion is supported by some key cases of extremes of climate variability. We analyse how these extremes affected a given region and how do they impacted population (including indicators such as the affected area, the number of people affected, economic losses, among others). Thus, the statement of the third purpose of the study has been rewritten.

Change in the manuscript:

The sentence now states (P.3, L. 14): “Lastly, to discuss the impacts of trends and the different time scales of hydroclimate variability on water resources, agriculture and human settlements”.

Comment 3: P. 9, L.6-7. “Our results show that all the main frequencies of the ENSO are also replicated in the regional precipitation”. I suggest to check for references since these kind of research have been well explored in previous studies and it is not novel.

The statement has been rewritten and referenced as suggested by the reviewer.

Change in the manuscript:

The statement now indicates (P.6, L. 6-7): “Fig. 3c shows that all the main frequencies of ENSO are also replicated in the regional precipitation, in agreement with Penalba and Vargas (2004) and Garreaud et al. (2009)”

Garreaud, R. D., Vuille, M., Compagnucci, R. and Marengo, J.: Present-day South American climate, *Paleog. Paleoclim. Paleoecol.*, 281, 180–195, doi:10.1016/j.palaeo.2007.10.032, 2009.

Penalba, O. C. and Vargas, W. M.: Interdecadal and interannual variations of annual and extreme precipitation over central-northeastern Argentina. *Int. J. Climatol.*, 24: 1565-1580. doi:10.1002/joc.1069, 2004.

Comment 4: P.9, L. 11-25. I found the description of results based on Fig 3b and Fig 3c not new. I suggest to highlight the novelty in these results which has not been discussed by other studies.

As suggested by the reviewer, we have highlighted the novel findings based on Fig. 3. The novelty from Fig. 3b and 3c is that the shorter periods of interannual precipitation variability between 2.5 and 4 years contribute to exacerbate extreme events as of the 2000s even during moderate extreme phases of the ENSO. This result is now better explained and discussed.

Change in the manuscript:

The paragraph that discusses Figs. 3b and 3c now states (P. 10, L. 12-27) “Interannual variability of precipitation has a close relation with extreme events (see the dots in Fig. 3b). In agreement with Grimm et al. (2000) and Grimm and Tedeschi (2009), Figs. 3b and 3c show that some of the largest extreme precipitation events occurred during extreme ENSO years, including wet extreme events in 1914, 1972-1973 and 1997-1998 and severe droughts in 1916-1917 and 1988-1989. During those events, SST and precipitation cycles were mostly in phase and with high amplitudes (Fig. 3c). However, the ENSO phenomenon by itself is not enough to explain the intensity of the droughts and wet events. First, extreme precipitation anomalies were recorded during the 2002-2003 moderate El Niño event, and conversely, the 2008-2009 intense drought occurred under moderate La Niña conditions. Studies have shown that other ocean forcing, as the SST over the North Tropical Atlantic Ocean or the South Atlantic Convergence Zone can combine with ENSO to intensify the wet or dry signals in precipitation, leading to

extreme events (Robertson and Mechoso, 2000; Seager et al., 2010; Mo and Berbery, 2011). Second, the precipitation for the 2.5- to 4-yr periods exhibits a large increase in amplitude after 2000 as noted in mid-panels in Fig. 3c. Yet, ENSO-like SST cycles were weakened for the same period. Thus, our results suggest that interannual precipitation variability with periodicities between 2.5 and 4 years contribute to exacerbate extreme events as of the 2000s, even during moderate extreme phases of the ENSO. This difference could be explained by an increase in heavy rainfall resulting from greater atmospheric instability and water vapour content (see e.g. Re and Barros, 2009; Penalba and Robledo, 2010). Moreover, these intense precipitation events are strongly influenced by cycles between 2 and 4 years (Lovino et al., 2018).”

Comment 5: P.11, L.10-17. “These results suggest that all extraordinary floods of Paraná River occurred during strong or very strong El Niño events”. Same as above comment but with Figure 4.

Agreed. Our novel findings include: (a) the ENSO-related 6-years cycle is the largest contributor to the formation of extraordinary floods, and (b) the local contribution of the NEA with a periodicity of 2.5 years intensified the highest floods during the studied period. The paragraph that discuss Paraná River floods has been rewritten highlighting our novel findings.

Change in the manuscript:

(P. 12 L. 12 to P. 13 L. 4) “Floods in the Paraná River are highly influenced by the interannual variability (see dots in Figs. 4a). In agreement with Antico et al. (2016), the largest floods that occurred in 1966, 1983, 1992 and 1998 (dots in Fig. 4a) are echoed with peaks for the different interannual modes of streamflow and ENSO-like SSTs (Fig. 4b). Thus, consistent with Camilloni and Barros (2003) and Antico et al. (2014), Fig. 4 shows that all the extraordinary floods of the Paraná River have occurred during strong or very strong El Niño events. Remarkably, the top panel of Fig. 4b indicate that 6-years cycle is the largest contributor to the formation of extraordinary floods. As state above, the upper Paraná basin provides the largest amount of water to the Paraná River flow. Precipitation rates over NEA account for about 5% of the total Paraná River flow (Giacosa et al., 2000). Thus, the lower Paraná floods are a direct consequence of excess precipitation in the Upper Paraná Basin that has a closely link with extreme El Niño events (e.g., Camilloni and Barros, 2003; Krepper et al., 2008). However, the bottom panel of Fig. 4b suggests that the local contribution of the NEA with a periodicity of 2.5 years intensified the highest floods during the studied period.”

Technical Corrections

Table 2. Include units of the leading frequencies in the table caption. In the text authors refer to period (units: years). Please check to be consistent

Done.

Change in the manuscript:

The caption of Table 2 now states: Table 2. Leading frequencies (in years) of regional precipitation patterns, monthly mean streamflow of the Paraná River, and area-averaged maximum and minimum temperature (Tmx and Tmn). Precipitation is represented by the two leading patterns of the PCA for both 18- and 120-month filtered fields. All streamflow modes were noted in Corrientes and Timbúes gauging stations, except the near biannual cycle (*) that is only shown in Timbúes. The percentage of variance explained by each mode is given in parenthesis.

P.12, L.2. Please revise the exhibited Tmx frequencies which you mention in the text to be close to 3, but results indicate to be 2.4.

Done.

Change in the manuscript:

The statement has been rewritten (P. 13, L. 5-7) "Table 2 shows that Tmx exhibit frequencies between 2.4 and 3.5 years and of roughly 9 years while Tmn presents cycles between 3 and 6.5 years within the higher interannual band".

Interannual-to-multidecadal Hydroclimate Variability and its Sectoral Impacts in northeastern Argentina

Miguel A. Lovino^{1,2}, Omar V. Müller^{1,2}, Gabriela V. Müller^{1,2}, Leandro C. Sgroi², Walter E. Baethgen³

¹ Consejo Nacional de Investigaciones Científicas y Técnicas (CONICET), Argentina

5 ² Centro de Estudios de Variabilidad y Cambio Climático (CEVARCAM), Facultad de Ingeniería y Ciencias Hídricas, Universidad Nacional del Litoral, Santa Fe, Argentina

³ International Research Institute for Climate and Society, Columbia University, Palisades, United States

Correspondence to: Miguel A. Lovino (mlovino@unl.edu.ar)

Abstract. This study examines the relation between hydroclimate variability (precipitation, river discharge, temperature) and
10 water resources, agriculture and human settlements at different time scales in northeastern Argentina. It also discusses the
impacts on these productive and socio-economic sectors. The leading patterns of variability, their nonlinear trends, and cycles
are identified by means of a Principal Component Analysis (PCA) complemented with a Singular Spectrum Analysis (SSA).
Interannual hydroclimatic variability centres on two broad frequency bands: one of 2.5-6.5 years corresponding to El Niño
Southern Oscillation (ENSO) periodicities and the second of about 9 years. The higher frequencies of the precipitation
15 variability (2.5-4 years) (a) favoured extreme events after 2000, even during moderate extreme phases of the ENSO, and (b)
contributed to the Low Paraná river streamflow. Minimum temperature relates with ENSO with a main frequency close to 3
years. Maximum temperature time series correlates well with SSTs variability over the Southern Atlantic, Indian and Pacific
Oceans with a 9-year frequency. Interdecadal variability is characterized by low-frequency trends and multidecadal oscillations
that have induced a transition from dry and cooler climate to wet and warmer decades starting in the mid-twentieth century.
20 Our results also suggest that North and South Atlantic SSTs influence the Paraná River streamflow with bi-decadal
periodicities.

The hydroclimate variability at all time scales had significant sectoral impacts. Frequent wet events between 1970 and 2005
favoured floods that affected agricultural and livestock productivity and forced population displacements. On the other hand,
agricultural droughts produced soil moisture deficits affecting crops at critical growth periods. Hydrological droughts affected
25 surface water resources causing water and food scarcity and stressed the capacity for hydropower generation. Lastly, increases
in minimum temperature reduced wheat and barley yields.

Eliminado: ter

Eliminado: climate

1 Introduction

Hydroclimate variability affects natural and human systems worldwide. Climate-related extremes such as droughts, floods, and heat waves alter ecosystems, disrupt food production and water supply, damage human settlements and cause morbidity and mortality (Field et al., 2014). Examples around the world include annual losses of about \$6–8 billion to the U.S. economy due to drought (Carter et al., 2008), and the extraordinarily severe heat wave over western and central Europe in the summer of 2003 that produced excess deaths of about 35,000 (Kosatsky, 2005) with estimated economic losses for the agriculture sector in the European Union at € 13 billion (Sénat, 2004).

The impacts of hydroclimate variability are more evident in regions where population and the productive sectors are vulnerable to climate hazards. Southeastern South America (SESA) is one such region as documented by Magrin et al. (2014). Frequent flooding impacted large populated areas over SESA (Andrade and Scarpatti, 2007; Barros et al., 2008a; [Latrubesse and Brea, 2011](#)). The extraordinary flood along the Paraná River in 1983 produced economic losses of more than \$1 billion and forced the evacuation of at least 100,000 people (Krepper and Zucarelli, 2010). The extended and persistent drought of 2008/2009 caused losses of about 40% of grain production in Argentina and greatly affected the hydroelectric sector over SESA (Bidegain, 2009). [The severe drought in 2011/2012 caused economic losses of \\$2.5 billion in crop production of soybean and corn in Argentina \(Webber, 2012\). In this context, studies in recent years have been focusing on understanding the impacts of the regional climate \(e.g., Magrin et al., 2014 and references therein; Barros et al., 2015 and references therein\). Another group of studies analysed strategies to increase the resilience of the affected populations \(Hernández et al., 2015; Mussetta et al., 2016\). Notwithstanding, it is necessary a joint view of the main hydroclimatic variables and their sectoral impacts at different time scales to provide accurate and integrated information that will facilitate decision-making processes.](#)

Hydroclimate in SESA varies on interannual to multidecadal time scales. On interannual time scales, El Niño Southern Oscillation (ENSO) is the major source of hydroclimate variability (Garreaud et al., 2009). El Niño conditions can cause increased severe precipitation and streamflow while La Niña events may favour droughts (Grimm et al., 2000; Camilloni and Barros, 2003; Penalba and Rivera, 2016). Precipitation and Paraná River flow present oscillations of 3 to 6 years linked to the ENSO and a near-decadal cycle related with the North Atlantic Oscillation (NAO) (Robertson and Mechoso, 1998; Krepper and García, 2004; Antico et al., 2014). Regarding temperature, the interannual variability modes of extreme temperature frequencies concentrated on a 2-4 years band and an 8-years signal mostly associated with the Southern Annular Mode (Barrucand et al., 2008; Loikith et al., 2017)

On decadal-to-multidecadal time scales, the Pacific decadal variability (PDV) also modulates SESA hydroclimate in the same way as ENSO, i.e., positive SST anomalies might favour wetter conditions while negative SST anomalies might favour drier conditions (Andreoli and Kayano, 2005). Further, there are other sources of hydroclimate variability such as the Atlantic Ocean and the South Atlantic Convergence Zone (SACZ) (Seager et al., 2010; Mo and Berbery, 2011; Grimm and Saboia, 2015; Grimm et al., 2016). For example, the Paraná streamflow is dominated by a near bi-decadal oscillation related to the SACZ and a multidecadal cycle forced by PDV (Antico et al., 2014).

Eliminado: In this context, it is necessary a better understanding regional hydroclimate and its sectoral impacts to increase the resilience of the affected populations by providing adequate information that will facilitate decision-making processes.

Hydroclimate trends have been observed over SESA. Precipitation and temperature extreme events registered long-term increases since the 1960s as well as Paraná River flow after mid-1970 (Haylock et al., 2006; Seneviratne et al., 2012; Cavalcanti et al., 2015; Carril et al., 2016; Scardilli et al., 2017). Huang et al. (2005) and Jaques-Coper and Garreaud (2015) have suggested that those changes were influenced by interdecadal variability in tropical Pacific SSTs. However, the wet trend in precipitation could also be favoured by a multidecadal cooling in the tropical Atlantic Ocean (Seager et al., 2010; Barreiro et al., 2014).

Summarizing, SESA hydroclimate is driven by several modes of variability forced by SST patterns at different time scales. The interannual modes mainly associated with the ENSO and the NAO prove to be the most significant as they explain almost 60% of the total precipitation variance over the 20th century (Baethgen and Goddard, 2013). The multidecadal modes including long-term trends are mainly driven by the Pacific and the Atlantic SSTs.

This study has three main purposes: first, to reassess the joint variability from interannual to multidecadal scales of precipitation, river flow and maximum and minimum temperatures over northeastern Argentina. Second, to review and discuss the links between those regional hydroclimatic variables and global SSTs forcing. Lastly, to discuss the impacts of trends and the different time scales of hydroclimate variability on water resources, agriculture and human settlements. The structure of the article follows: section 2 introduces the study region, dataset and methods. Section 3 describes the leading pattern of global SST variability. Section 4 discusses hydroclimatic variability at interannual-to-multidecadal time scales and its potential links with global SST leading modes. Section 5 addresses the main sectoral impacts of regional hydroclimatic variability and section 6 offers the final remarks.

2 Methodology

2.1 Study region

The study region is located on southeastern South America covering La Plata Basin (Fig. 1a), which has four major sub-basins: Uruguay, Paraguay, Mid-Upper and Lower Paraná (see Fig. 1b). The Paraguay and Mid-Upper Paraná sub-basins contribute with a high percentage of the Paraná River flow. The Lower Paraná River extends over a flat plain, where high discharges easily cause severe floods (Coronel and Menéndez, 2006). A large portion of the Lower Paraná sub-basin is covered by the study region in northeastern Argentina (NEA), delimited by 36°-26°S and 65°-58°W (red box in Fig. 1b). This region is key for the socio-economic development of the country and the continent. It concentrates most of the country's population, has a complex system of water resources management and assembles eighty percent of the cereal production in Argentina (Ministry of Agroindustry, 2017).

Eliminado: assess

Eliminado: and trends

Eliminado: °

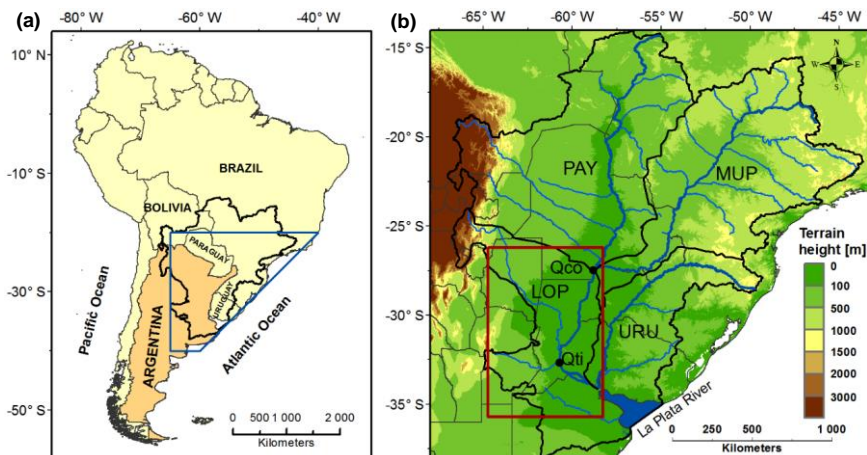


Figure 1: (a) South America and the domains of the La Plata Basin (**bold black contour**) and southeastern South America (**blue polygon**). (b) Topography map of La Plata Basin and its sub-basins (**black contours**), Paraguay (PAY), Mid-Upper Paraná (MUP), Lower Paraná (LOP) and Uruguay (URU). **The rivers and their tributaries are plotted in blue contours**. Gauging stations of the Parana River streamflow in Corrientes (Qco) and Timbúes (Qti) are highlighted. The study area in northeastern Argentina is highlighted with a red rectangle.

Eliminado: contour

2.1 Datasets

Regional hydroclimate variables are available from the beginning of the 20th century to about the first decade of the 21st century. The observed precipitation dataset used is the Global Precipitation Climatology Centre dataset version 7 (GPCC v7, Schneider et al., 2015). GPCC v7 consist of monthly gridded precipitation dataset with a $0.5^\circ \times 0.5^\circ$ degree spacing extending from January 1901 to December 2013. According to Lovino (2015), GPCC v7 has lower biases and fits extreme fluctuations better than other precipitation datasets over the study region. While there are areas in SESA with poor rain gauge coverage, northeastern Argentina has a reasonable station distribution for the whole period (Barreiro et al., 2014).

Monthly streamflow along the Paraná River is measured at two locations: the Corrientes and Timbúes gauging stations (Fig. 1b). These observed streamflow data might include variations due to anthropogenic influence, particularly damming. The Corrientes station represents most of the Parana basin discharge since the main tributaries are upstream (Camilloni and Barros, 2000; Berbery and Barros, 2002). Corrientes station data covers from January 1904 to August 2014 with no missing values. Timbúes is further downstream and reflects precipitation variability in the Lower Paraná basin. Timbúes station data extends from September 1905 to August 2014 with only 4 missing values that were linearly interpolated to have a continuous series. All data were obtained from the Integrated Hydrological Data Base of the National Water Information System of Argentina (NWIS, 2016).

Monthly time series of daily maximum and minimum temperatures used are obtained from the Climatic Research Unit (CRU TS 3.23, Harris et al., 2014). The CRU dataset has a resolution of $0.5^\circ \times 0.5^\circ$ degrees and covers the period 1901-2014. CRU TS 3.23 also fits well observed mean and extremes temperatures throughout NEA (see Lovino, 2015). Lastly, monthly SST data are those from the Extended Reconstructed Sea Surface Temperature Version 4 (ERSSTv4, Huang et al., 2015; Liu et al., 2015). ERSSTv4 dataset is available on a global $2^\circ \times 2^\circ$ grid since January 1854.

Historical journalistic information was collected to document the impacts of the key cases of extreme events related to hydroclimatic variability. We also compile and analyse the scientific literature regarding the potential impacts of droughts, floods and heat waves over southeast South America. The changes and variability of the regional precipitation, flows and temperature are identified and then used as input variables to determine their joint sectoral impacts.

10 2.3 Statistical approach

The present analysis focuses on precipitation, streamflow and temperature (minimum and maximum) of the NEA, considering SSTs as the main external forcing. For these four variables, monthly mean anomalies are computed by removing the corresponding mean annual cycle. The variables are also filtered applying low-pass Lanczos filters (Duchon, 1979) with [36 weights and](#) cut-off periods at 18 and 120 months to emphasize the interannual and low frequency behaviour respectively.

15 [Lanczos filter is quite simple and yields better response than other filters such as running-mean filter \(Duchon and Hale, 2012\); for example, Lanczos filter reduces the amplitude of the Gibbs oscillation and allows controlling the cut-off frequencies independently of the number of weights \(Duchon, 1979; Navarra, 1999\).](#)

The Principal Component Analysis (PCA, Von Storch and Zwiers, 1999; Wilks, 2006) is applied to extract the leading global SST patterns and to evaluate the spatiotemporal variability of the precipitation fields. PCA is used in S-mode, therefore, the principal components (PCs) are time series and the eigenvectors or empirical orthogonal functions (EOFs) are spatial patterns that vary in time according PCs. Although rotation of the EOFs has advantages, like avoiding the influences of different processes in a single PCA pattern, we opted not to do it because in our case it led to patterns overly localized in space, i.e., several EOFs concentrate information of the spatial patterns in small regions hindering their interpretation (not shown; see Deser et al., 2010).

25 A Singular Spectrum Analysis (SSA, Ghil et al., 2001) is then used to study the temporal variability of (1) leading PCs of precipitation and SST, (2) streamflow time series and (3) temperature anomalies time series. SSA determines the structures of deterministic signals as nonlinear trends and quasi-oscillatory modes. In the SSA method, the window length M should not exceed $M = N / 3$, where N is the length of the time series, to adequately represent quasi-cycles between $M/5$ and M (Von Storch and Navarra, 1995). For decadal-to-multidecadal variability, we considered a window length that retains variability of the 120-month low pass filtered series between 10 and 30 years ($M=360$ months or 30 years; $M/5 < 120$ months or 10 years of the low-pass filter). For Interannual variability, we considered a windows length that retain variability of the 18-month low pass filtered series between 2 and 10 years ($M = 120$ months or 10 years and $M/5 = 24$ months or 2 years).

Sectoral impacts of hydroclimatic variability are evaluated at different time scales. First, we identify the key characteristic of the regional hydroclimate variability on interannual-to-multidecadal time scales and the influence of global SSTs forcing. Changes in precipitation, streamflow and temperature are studied by nonlinear trends. Then, we address how the main properties of the variability (including extreme events) and changes affect water resources, agriculture, and human settlements.

5 Finally, we discuss the sectoral impacts attributed to hydroclimate variability analysing some key cases and reviewing the information available in the scientific literature.

3 Leading patterns of global SST variability

The patterns of global SSTs have been widely studied and evaluated in different time scales and periods (e.g., Schubert et al., 2009; Deser et al., 2010; Messié and Chavez, 2011). Other studies have discussed the mechanisms by which the SST patterns affect SESA hydroclimate (e.g., Grimm et al., 2000 and Seager et al., 2010 among many others). Our main interest is to discuss

10 the leading modes of global SST variability and examine their links to significant modes of hydroclimatic variables in NEA as a necessary step to understand their sectoral impacts. Figure 2 presents the three leading EOFs and their corresponding PCs of 18- and 120-month low-pass filtered monthly mean global SST fields. The three main patterns explain more than 50% and 70% of the total variance of global 18- and 120-month filtered SSTs fields, respectively. The global SST patterns are very

15 similar to those obtained by Schubert et al. (2009) using annual mean SSTs. Slight differences result from using monthly data instead of yearly data, and because the rotation was not done. Table 1 presents the dominant modes of interannual and low-frequency SST variability for each PC.

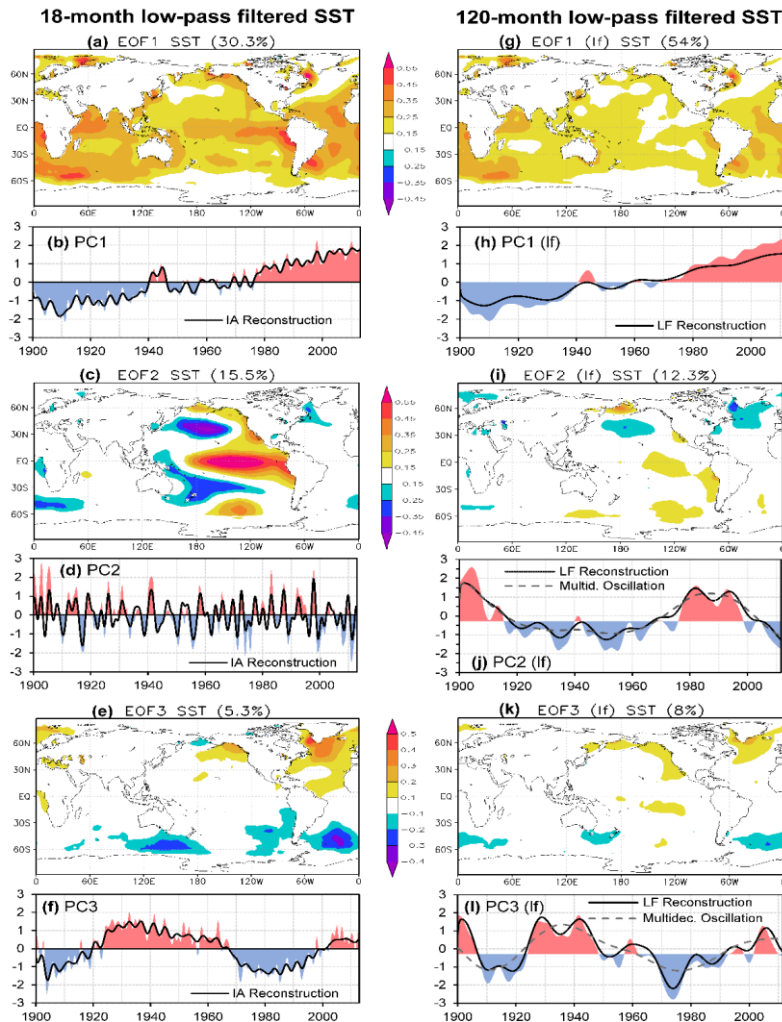


Figure 2: First three leading global pattern of 18- and 120-month low-pass filtered monthly mean SST between jan-1901 and sep-2012. Patterns are described by the spatial loadings (EOFs) and their associated PCs. The percentage of variance explained by each pattern is given in brackets. **The original time series are partially reconstructed using the significant components detected with SSA.** Partial reconstructions at interannual time scales are plotted in PCs of the left column (IA Reconstruction). Partial reconstructions at low-frequency time scales (LF Reconstruction) are plotted in PCs (lf) of the right column. The partial reconstructions include all variability modes **at each time scale** shown in Table 1. Panels (j) and (l) also show the multidecadal oscillations.

Time Scale	Sea Surface Temperature		
Interannual (18-month low-pass filtered time series)	PC1 (Var)	PC2 (Var)	PC3 (Var)
	3.5 (3)	2.8 (10) 3.5 (17) 5.7 (32)	4.3 (3)
	9.3 (6)		
Decadal-to-multidecadal (120-month low-pass filtered time series)	PC1 (lf) (Var)	PC2 (lf) (Var)	PC3 (lf) (Var)
	20-26 (5)	13-15 (10)	14 (8) 20-27 (20)
	Trend (87)	Multidecadal oscillation (75)	Multidecadal oscillation (67)

Table 1. Trends and dominant periodicities obtained from applying SSA to the first three PCs and PCs (lf) of the 18- and 120-month low-pass filtered SST global patterns, respectively. The analysis is performed on interannual timescales (between 2 and 10 years) and lower frequency or decadal-to-multidecadal timescales (higher than 10 years). The percentage of variance explained by each mode is given in brackets.

The first pattern of 18-month low-pass filtered global SST (Fig. 2a) displays positive loadings in most of the world ocean. The first EOF presents the highest positive loadings in the South Atlantic and the Indian Ocean, congruent with the results of Schubert et al. (2009). Also, high positive loadings are shown in the central Pacific Ocean. The first PC (Fig. 2b) is driven by a low-frequency nonlinear trend, but interannual time scales also influence PC1 with periodicities of roughly 9 and 3 years that explain 9% of its variance (see Table 1 and the interannual reconstruction in Fig. 2b).

The second pattern (Fig. 2c) reveals a pan-Pacific pattern resembling features of the ENSO. The EOF2 displays positive loadings from the central to the eastern Pacific and negative values in the North and South Pacific. The spectral decomposition of the corresponding PC2 presented in Table 1 shows dominant modes at interannual time scales between 2.8 and 5.7 years. The PC2 shown in Fig. 2d has correlations of about 0.9 with indices of ENSO evolution.

The third pattern (Fig. 2e) presents positive loadings in the North Atlantic Ocean and negative loadings south of 40°-50°S, with centres in the South Atlantic and Indian Oceans. The PC3 (Fig. 4f) is mostly driven by a multidecadal oscillation. The interannual variability exerts a slight effect through a cycle of approximately 4 years that represents only 3% of the PC1 variance (see Table 1 and the interannual reconstruction in Fig. 4f).

Decadal-to-multidecadal SST variability is characterized by the 120-month low-pass filtered SST patterns (right column Fig. 2). The first pattern (Fig. 2g) displays the highest positive loading in the south Atlantic and Indian Ocean but not in the central Pacific Ocean as the EOF1 in Fig. 2a. The PC1 (lf) (Fig. 2h) exhibits a nonlinear trend that explains more than 85% of its variance. The trend denotes an increase in global SSTs over the whole period, reaching positive anomalies since the 1960s.

The second pattern (Fig. 2i) resembles features of the Pacific Decadal Oscillation. Also weakly positive loadings are shown in the central and southwest Pacific Ocean and negative loadings towards the North Atlantic Ocean. PC2 (lf) presents two cycles,

one close to 15 years and a multidecadal oscillation of very low frequency (Table 1). Although the multidecadal oscillation present periodicities out of the range that can be estimated by SSA, the spectral analysis allow us inferring periodicities of around 70 years. These decadal-to-multidecadal periodicities exhibit in Fig. 2j are positively correlated to the ones of the Decadal and Interdecadal Pacific Oscillations (as identified by Mantua and Hare, 2002 and Henley et al., 2015 respectively).

5 The third pattern (Fig. 2k) presents positive loadings in the North Atlantic Ocean that resemble the Atlantic Multidecadal Oscillation pattern (Enfield et al., 2001). The PC3 (lf) (Fig. 4l) shows a multidecadal oscillation that account for near 70% of the PC (lf) variance (Table 1). The dominant frequency of the multidecadal oscillation is out of range but it seems to be about 70 years. Schlesinger and Ramankutty (1994) among others have reported a similar oscillation with the same frequency in the North Atlantic. On the other hand, variability in the 10-30 years range represents about 30% of the total PC3 (lf) variance.

10 Different authors have found similar frequencies in the South and North Atlantic Oceans (Venegas et al., 1998; Moron et al., 1998).

Eliminado: 2000

4 Regional hydroclimate variability and its links to global SSTs forcing

The precipitation, streamflow, and temperature over NEA exhibit spectral peaks on interannual and decadal-to-multidecadal time scales that are summarized in Table 2. On interannual time scales, hydroclimate variability centres on two bands: one with frequencies between 2.5 and 6.5 years and the other with periodicities close to 9 years. For each variable, interannual modes represent more than 50% of their temporal variability; except for minimum temperature, which modes explain 30% of its variance. On decadal-to-multidecadal time scales, nonlinear trends and multidecadal oscillations account for most of the variability, while the interdecadal modes (about 11-25 years) have a lesser effect.

Time scale	PC1 Pr (Var)	PC2 Pr (Var)	Streamflow (Var)	Tmx (Var)	Tmn (Var)
Interannual (18-m low-pass filtered time series)	2.4 (17)	2.5 (15)	2.4*(7)	2.4 (13)	
	4 (14)	3.4 (16)	3.7 (18)	3.5 (17)	3.5 (17)
	6.5 (24)		5.8 (15)		6.5 (14)
		9 (19)	8.8 (27)	8.8 (26)	
Decadal-to-multidecadal (120-m low-pass filtered time series)	15 (4)	11.5 (25)			
	20 (9)		18-24 (20)	24 (34)	19 (24)
	Trend (60)	Multidecadal oscillation (58)	Multidecadal oscillation (62)	Trend (21)	Trend (55)

20 Table 2. Leading frequencies (in years) of regional precipitation patterns, monthly mean streamflow of the Paraná River, and area-averaged maximum and minimum temperature (Tmx and Tmn). Precipitation is represented by the two leading patterns of the PCA for both 18- and 120-month filtered fields. All streamflow modes were noted in Corrientes and Timbúes gauging stations, except the near-biannual cycle (*) that is only shown in Timbúes. The percentage of variance explained by each mode is given in parenthesis.

4.1 Interannual modes

Figures 3a and 3b show the spatial pattern and temporal evolution of the first principal component of precipitation. The pattern is mainly located towards the centre-east of NEA with variability within the higher interannual band (2.5-6.5 years). Fig. 3c shows that the bands of variability of the precipitation correspond to the frequencies of the ENSO-like SST pattern. This relationship is well known and has been studied by several previous works (e.g., Grimm et al., 2000; Paegle and Mo, 2002; Garreaud et al., 2009). Fig. 3c shows that all the main frequencies of the ENSO (i.e., 6, 4, and 2.5 years) are also replicated in the regional precipitation, in agreement with Penalba and Vargas (2004) and Garreaud et al. (2009). The 6-year frequencies present the highest correlation values ($r \sim 0.61$, significant at the 99.9% confidence level) between ENSO and regional precipitation, while the other frequencies have correlations of about 0.3. The second leading pattern of precipitation (not shown, 11 % of the total variance) is located toward the northwest of NEA. The PC2 presents cycles with periodicities of near 3 years and within the lower interannual band of 9 years (see Table 2).

Interannual variability of precipitation has a close relation with extreme events (see the dots in Fig. 3b). In agreement with Grimm et al. (2000) and Grimm and Tedeschi (2009), Figs. 3b and 3c show that some of the largest extreme precipitation events occurred during extreme ENSO years, including wet extreme events in 1914, 1972-1973 and 1997-1998 and severe droughts in 1916-1917 and 1988-1989. During those events, SST and precipitation cycles were mostly in phase and with high amplitudes (Fig. 3c). However, the ENSO phenomenon by itself is not enough to explain the intensity of the droughts and wet events. First, extreme precipitation anomalies were recorded during the 2002-2003 moderate El Niño event, and conversely, the 2008-2009 intense drought occurred under moderate La Niña conditions. Studies have shown that other ocean forcing, as the SST over the North Tropical Atlantic Ocean or the South Atlantic Convergence Zone can combine with ENSO to intensify the wet or dry signals in precipitation, leading to extreme events (Robertson and Mechoso, 2000; Seager et al., 2010; Mo and Berbery, 2011). Second, the precipitation for the 2.5- to 4-yr periods exhibits a large increase in amplitude after 2000 as noted in mid-panels in Fig. 3c. Yet, ENSO-like SST cycles were weakened for the same period. Thus, our results suggest that interannual precipitation variability with periodicities between 2.5 and 4 years contribute to exacerbate extreme events as of the 2000s, even during moderate extreme phases of the ENSO. This difference could be explained by an increase in heavy rainfall resulting from greater atmospheric instability and water vapour content (see e.g. Re and Barros, 2009; Penalba and Robledo, 2010). Moreover, these intense precipitation events are strongly influenced by cycles between 2 and 4 years (Lovino et al., 2018).

Eliminado: Our results show that

Eliminado:

Eliminado: .

Eliminado: Strong El Niño events favoured wet extreme events such as those in 1914, 1972-1973 and 1997-1998, when SSTs and precipitation cycles were mostly in phase and with high amplitudes. Also, severe droughts were favoured by strong La Niña events, such as those in 1916-1917 and 1988-1989. Again, during those years precipitation and ENSO cycles were in-phase with large negative anomalies.

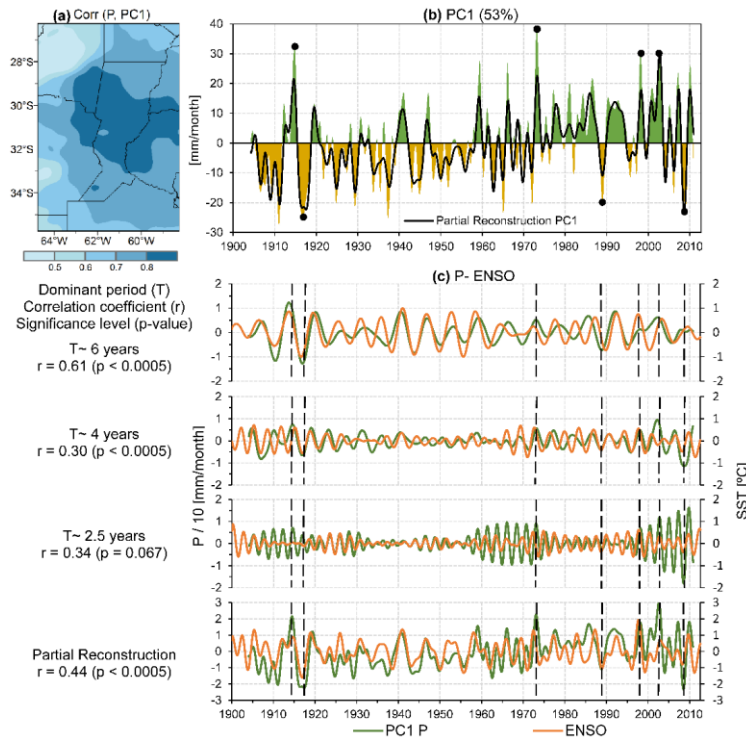
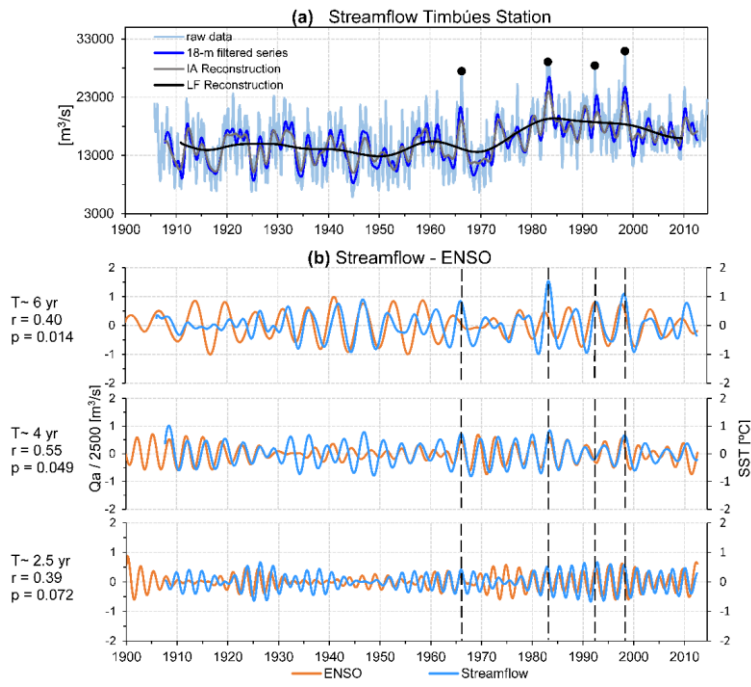


Figure 3: First leading pattern of the 18-m low-pass filtered precipitation anomalies. Panel (a) shows the spatial distribution of the correlation between PC1 (in panel b) and each precipitation time series at a single grid point. The percentage of explained variance is given in brackets. Panel (c) compares the time series of the dominant cycles of the PC1 of SSTs related to the ENSO pattern and regional precipitation at interannual time scales. Precipitation modes have been scaled to facilitate their interpretation. Vertical dashed lines coincide with months of maximum wet anomalies and the severest droughts (dots in Panel b). Significance levels (p-values) for the Pearson correlation coefficients (r) are estimated by combining 2000 Monte Carlo iterations considering autocorrelation by resampling in the frequency domain (Macias-Fauria et al., 2012).

The streamflow of the Low Paraná River flow is characterized by the flow at the Timbúes station (Fig. 4a). More than 65% of the 18-m filtered series variance is explained by the modes in the 2.5-9 year scales (see Table 2, represented by the IA reconstruction in Fig. 4a). These periodicities are consistent with those reported by García and Mechoso (2005), Krepper et al. (2008) and Antico et al. (2014). As in precipitation, streamflow modes between 2.5 and near 6 years correspond to the ENSO-range SST periodicities (Fig. 4b), in agreement with Robertson and Mechoso (1998) and Antico et al. (2014). We find that the 4-year cycles of ENSO and streamflow reach the largest correlation ($r \sim 0.55$, significant at the 95% confidence level), as they are in-phase for almost the entire period (mid panel Fig. 4b). Cycles of roughly 2.5 years do not exhibit a strong correlation

for the earlier period but become in-phase mainly starting around 1980 (bottom panel Fig. 4b). Interestingly, the 2.5-year mode is noted in Timbúes station time series but not in Corrientes station (not shown), suggesting a local contribution of NEA precipitation rates to the Low Paraná river streamflow.



5 **Figure 4:** (a) Monthly mean streamflow time series for the Paraná River at Timbúes station and its partial reconstruction using all significant modes of interannual (IA Reconstruction) and decadal-to-multidecadal variability (LF Reconstruction) presented in Table 2. (b) Time series of the dominant modes of Paraná River streamflow anomalies and the ENSO pattern on interannual time scales. Streamflow modes have been scaled to facilitate their interpretation. Dominant periods (T) of the leading modes and Pearson correlation coefficients (r) **together with their significance levels (p)** are given to the left of the figure. **Significance levels (p-values) for r are estimated by combining 2000 Monte Carlo iterations considering autocorrelation by resampling in the frequency domain (Macías-Fauria et al., 2012).** Vertical dashed lines coincide with extreme flood events in 1966, 1983, 1992 and 1998.

Floods in the Paraná River are highly influenced by the interannual variability (see dots in Figs. 4a). In agreement with Antico et al. (2016), the largest floods that occurred in 1966, 1983, 1992 and 1998 (dots in Fig. 4a) are echoed with peaks for the different interannual modes of streamflow and ENSO-like SSTs (Fig. 4b). **Thus, consistent with Camilloni and Barros (2003) and Antico et al. (2014), Fig. 4 shows that all the extraordinary floods of the Paraná River occurred during strong or very strong El Niño events.** Remarkably, the top panel of Fig. 4b indicates that the 6-year cycle is the largest contributor to the formation of extraordinary floods. As state above, the upper Paraná basin provides the largest amount of water to the Paraná

Eliminado: These results suggest that

Eliminado: (see also Camilloni and Barros, 2003)

River flow. Precipitation rates over NEA account for about 5% of the total Paraná River flow (Giacosa et al., 2000). Thus, the lower Paraná floods are a direct consequence of excess precipitation in the Upper Paraná Basin that has a closely link with extreme El Niño events (e.g., Camilloni and Barros, 2003; Krepper et al., 2008). However, the bottom panel of Fig. 4b suggests that the local contribution of the NEA with a periodicity of 2.5 years intensified the highest floods during the studied period.

- 5 Figures 5a and 5c present the interannual variability of maximum and minimum temperature, respectively. Table 2 shows that Tmx exhibit frequencies between 2.4 and 3.5 years and of roughly 9 years while Tmn presents cycles between 3 and 6.5 years within the higher interannual band. The interannual modes strongly influence maximum temperature, explaining almost 60% of its variability (see table 2 and the IA reconstruction signal, the grey line in Fig. 5a). Interestingly, Fig. 5b shows that the near 9-year cycle in Tmx correlates well ($r = 0.54$; significant at the 99.8% confidence level) with the main mode of the first global SST pattern (Fig. 2a), with signals over the Southern Atlantic, Indian and Pacific Oceans. The interannual modes exhibit
- 10 a weak effect on the minimum temperature (Fig. 5c) as they account for just 30% of Tmn's variability. Yet, Fig. 5d shows that the minimum temperature is related to the ENSO mode with a periodicity close to 3 years, with warmer Tmn during El Niño years and cooler Tmn during La Niña events. These results are consistent with Müller et al. (2000) and Rusticucci et al. (2017) who reported that El Niño events intensify warm spells and reduce the number of climatological freezing days while La Niña
- 15 events increase cold events.

Eliminado: close to 3

Eliminado: (Fig. 5d)

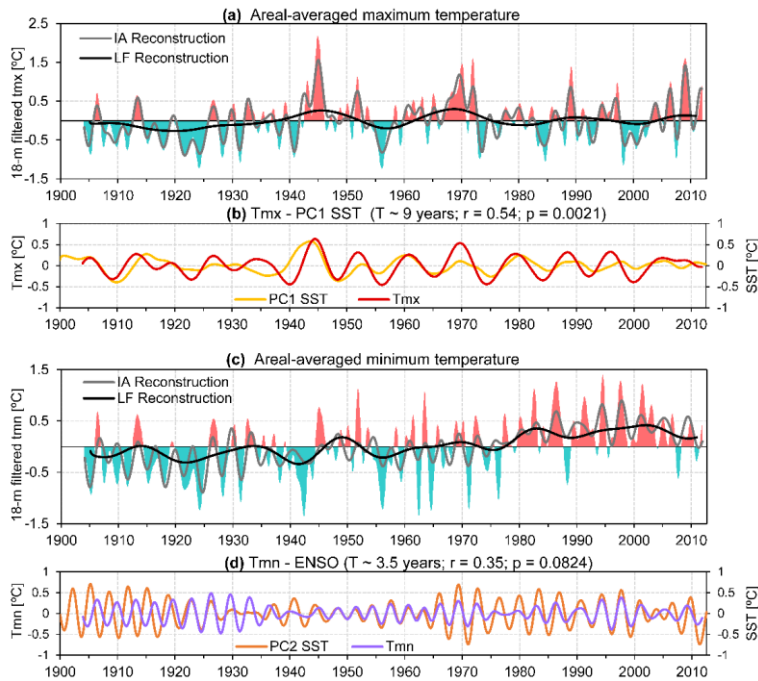


Figure 5: Panels (a) and (c) present the 18-m low-pass filtered monthly time series of areal-averaged daily maximum and minimum temperature anomalies (in shades) and their partial reconstructions (in lines) using all interannual and low-frequency variability modes described in Table 2. Panels (b) and (d) depict the temporal evolution of the dominant modes of regional temperature and the first two leading patterns of global SST variability. T denotes the dominant period of the leading modes. r indicates the Pearson correlation coefficients between time series. Significance levels (p-values) for r are estimated by combining 2000 Monte Carlo iterations considering autocorrelation by resampling in the frequency domain (Macias-Fauria et al., 2012).

4.2 Trends and decadal-to-multidecadal oscillations

Figures 6a and 6b show the leading pattern of decadal-to-multidecadal precipitation variability. This pattern presents correlation values mostly larger than 0.7 and maximum values towards the central-western portion of NEA. A noticeable nonlinear trend in the PC1 explains 60% of its variance. The PC1 nonlinear trend shows two distinct periods of the precipitation: a dry one before 1970 and a wet one between 1970 and 2005. The wetting trend has stabilized and reversed starting in the 2000s (in agreement with Seager et al., 2010; Lovino et al., 2014; Saurral et al., 2017). The PC1 also exhibits interdecadal cycles of about 15-20 years (see Table 2). The second leading pattern of precipitation (Figs. 6c and 6d) displays negative correlations on the central-eastern portion of the domain and mostly weak positive correlations to the north and southwest. The PC2 has a near-decadal cycle and a multidecadal oscillation (Table 2) that explain 25% and 58% of the PC2

variance respectively. As reported by Seager et al. (2010), Figs. 6b and 6d show that there was a multiyear period of droughts in the 1930s and 1940s coincident with negative anomalies in the low-frequency trend of PC1 and a dry episode of the multidecadal oscillation of PC2. This multiyear drought was called Pampas Dust Bowl (Viglizzo and Franck, 2006) and was caused by a hemispherical symmetric pattern of precipitation anomalies with drought in both North and South America (Seager et al., 2010).

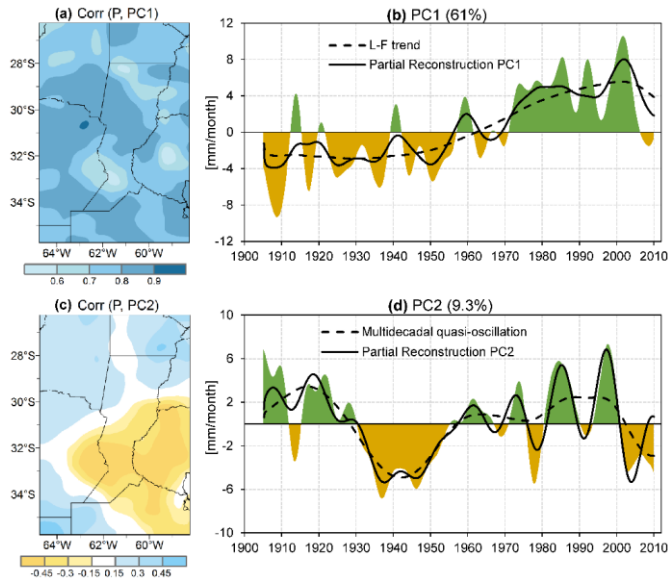


Figure 6: First two leading patterns of decadal-to-multidecadal precipitation variability characterized by the 120-m low-pass filtered monthly mean precipitation anomalies. Panels (a) and (c) show the spatial distribution of the correlation between PCs (in b and d) and each precipitation time series at a single grid point. Percentage of explained variance are given in brackets. Black lines depict the leading modes of variability (dashed) and the partial reconstruction of each PC using all modes described in Table 2 (continuous).

Figure 7a shows that the multidecadal oscillation of precipitation (green line) has positive correlations with the PC2 (1f) SST (Interdecadal Pacific Oscillation, section 3), and negative correlation with the PC3 (1f) SST (Atlantic Multidecadal Oscillation, section 3). Thus, consistent with Seager et al. (2010), Mo and Berbery (2011) and Barreiro et al. (2014), warm phases of the Interdecadal Pacific Oscillation and cold phases of the Atlantic Multidecadal Oscillation favour long-period wet anomalies in decadal time scales over NEA. It could be the case of the wet period from the 1970s to 2000s in regional precipitation as seen in Fig. 7a. Conversely, the reversal in the wetting period since the mid-2000s can be explained as a transition to a cold phase of the Pacific Ocean and a warm period of the Atlantic Ocean.

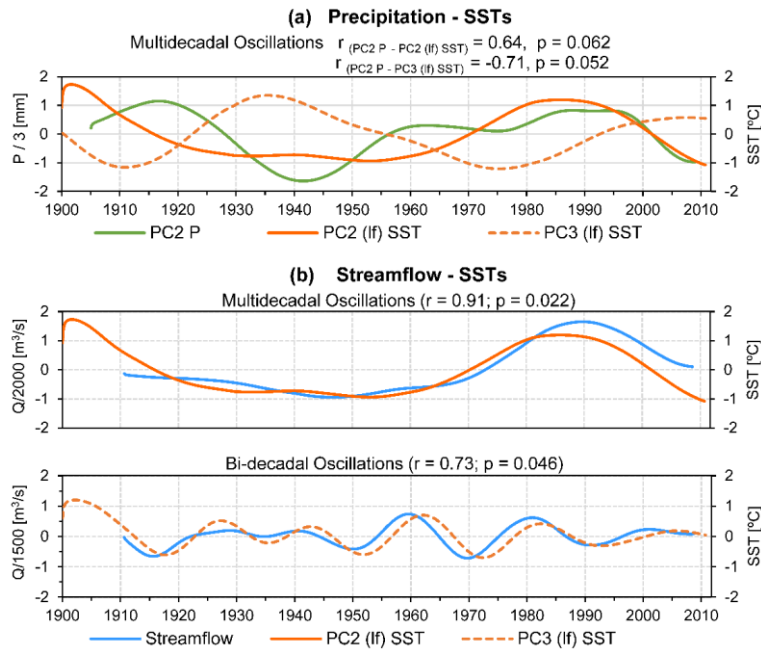


Figure 7: Time series of the dominant modes of regional hydroclimates variables and the leading patterns of global SSTs at decadal-to-multidecadal time scales. The description of the modes is given in Tables 1 and 2: (a) Multidecadal oscillations in PC2 SST, PC3 SST and PC2 P. (b) Multidecadal Oscillations in streamflow and PC2 (top panel); bi-decadal oscillation in streamflow and PC3 SSTs (bottom panel). r is the Pearson correlation coefficient between series. Significance levels (p-values) for r are estimated by combining 2000 Monte Carlo iterations considering autocorrelation by resampling in the frequency domain (Macias-Fauria et al., 2012).

The low-frequency variability of the Paraná River streamflow exhibits a near bi-decadal and a multidecadal oscillation that represent 20% and 60% of the total variance respectively (Table 2). First, in agreement with Labat et al. (2005), Antico et al. (2014), and Antico et al. (2016), the top panel of Fig. 7b shows that the multidecadal oscillation of streamflow strongly correlates ($r=0.91$, significant at the 98% confidence level) with the low frequency oscillation of the global SST (lf) PC2 related to the interdecadal Pacific variability. Thus, the warmest phase of the Interdecadal Pacific Oscillation favoured the extraordinary floods between 1980 and 2000 (see dots in Fig. 4a). Second, the bottom panel of Fig. 7b shows that the near bi-decadal mode of streamflow correlates ($r=0.73$; significant at the 95% confidence level) with a similar mode in PC3 (lf) SST corresponding mainly to the North and South Atlantic (Fig. 2k). Thus, our results suggest that North and South Atlantic SSTs influence the Paraná River streamflow with bi-decadal periodicities. In addition, Robertson and Mechoso (2000) and Antico et al. (2014) reported that the South Atlantic Convergence Zone also drives the Paraná River flow with 18-yr periodicities.

Maximum and minimum near surface temperatures also present a near bi-decadal oscillation and a nonlinear trend (Table 2). The maximum temperature mostly varies with a bi-decadal frequency (Fig. 5a) that induced larger values around the 1940s, the 1960s, and 2000s. The minimum temperature is mostly dominated by a nonlinear trend (Fig. 5c) that favoured a notable increase since the 1970s.

5 Sectoral impacts of hydroclimatic variability

Hydroclimatic variability at different time scales led to severe sectoral impacts in northeastern Argentina (Barros et al., 2015). As stated by Magrin et al. (2014), southeastern South America presents high vulnerability to extreme events mainly related to intense rainfall events and interannual time scales of hydroclimatic variability (largely influenced by the ENSO). Trends and decadal-to-multidecadal oscillations have exacerbated some of these extremes, particularly in the wet-period between 1970 and 2005 when the most catastrophic floods occurred. Based on the evidence presented on section 4 and the scientific literature available for southeast South America, the main impacts of hydroclimate variability on regional water resources, agriculture and human settlements are discussed on this section.

5.1 Water Resources

Water resources in northeastern Argentina are highly sensitive to hydroclimate variability and its extremes. Intense precipitation events of shorter duration (days to weeks) originated in mesoscale and convective systems are common in NEA (Rasmussen et al., 2016). These events produce localized sudden floods in plain areas that affect water resources management systems, i.e., cause severe complications in urban and rural drainage systems (Bertoni et al., 2004). Persistent events (from seasons to years) affect water supply management since groundwater, streamflow, and reservoir storage reflect the longer-term precipitation anomalies (Latrubesse and Brea, 2011; Penalba and Rivera, 2016). These events, as discussed above, are mainly driven by extreme ENSO conditions that induce floods or droughts (row 1 of Table 3).

For instance, during the 2008/2009 and 2012 droughts the Salto Grande hydropower plant on the Uruguay River generated only 10% of its energy capacity impacting on the energetic security of Uruguay and Argentina (El Día, 2012). These droughts affected navigability of the Paraná River leading to complications to export grains and transport fuel (La Nación, 2009). The very low levels of the Paraná and Uruguay rivers hindered water extraction for supply leading to shortages of drinking water and pollution problems (La Nación, 2009).

Time scale	Key impacts in water resources	Key references
Interannual	Flooding mostly during El Niño years and droughts generally associated with La Niña events affect water management. Difficulties in water supply, hydroelectric power generation and river navigability.	Grimm et al. (2000) Grimm and Tedeschi (2009) Garreaud et al. (2009) Latrubesse and Brea (2011) Barros et al. (2015) Penalba and Rivera (2016)
Interannual to multidecadal	Severe hydrological droughts, mainly in 1901-1960.	Viglizzo and Frank (2006) Tasso et al. (2011) Lovino et al. (2014)
Decadal to Multidecadal	Increased precipitation caused increased flows. Frequent regional flooding between 1970 and 2005. Increased groundwater levels favored surface runoff. Extraordinary fluvial floods.	Venencio and García (2011) Latrubesse and Brea (2011) Cavalcanti (2012) Magrin et al. (2014) Barros et al. (2015)

Table 3: Impacts of hydroclimate variability and its extremes in water resources. The first column shows the main time scale of variability affecting the study sector.

Our results show that northeastern Argentina suffered severe droughts that were more frequent before 1960, i.e., during the early 20th century (row 2 on Table 3). During those years, the droughts severely affected regional economies with similar impacts to those discussed above but exacerbated by the scarce technological development at that time (Tasso, 2011).

Decadal-to-multidecadal time scales (including trends) affect the precipitation and streamflow variability (row 3 of Table 3), including increases in precipitation and streamflow after the 1970s as well as frequent wet extreme events between 1970 and 2005. These phenomena raised regional groundwater table levels and favoured increased surface runoff (e.g., Venencio and García, 2011; Latrubesse and Brea, 2011). All these changes combined with the significant hydrological variability on interannual time scales favoured extraordinary floods in the main rivers in last decades.

In 1983 and 1998, the extraordinary floods of the Parana and Uruguay River forced the evacuation of hundreds of thousands of people and an estimated cost of over a billion dollars (Barros et al., 2015). During those years, the Paraná River floods affected approximately 40,000 km² for 8 months (Fritschy, 2010; Barros et al., 2015). Moreover, the Salado river—a tributary of the Paraná river—experienced the most catastrophic flood in 2003, causing economic losses of approximately US\$ 1000 million and dozens of dead in the city of Santa Fe (ECLAC, 2003).

In the coming decades, it is expected that flooding in the Paraná River occur frequently due to the influence of interannual variability. As noted in section 4b, the “positive” phase of the multidecadal hydrological variability that exacerbated the magnitude of floods during the 1980-2005 period was weakened in the last decade and could even reverse in the coming years.

Our results suggest that the change of phase in multidecadal streamflow variability was induced by a reversal in the precipitation-wetting trend and in the multidecadal modes of streamflow. Seager et al. (2010) argued that the reversal of the precipitation trend is influenced by a shifting toward a positive phase of the Atlantic Multidecadal Oscillation (Ting et al.,

Eliminado: , reduced the soil infiltration capacity

2009), which may drive a precipitation decrease in the coming years. Thus, if these conditions remain, the influence of multidecadal variability could attenuate the magnitudes and devastating impacts of the floods compared to those that occurred during the 1980-2005 period.

5.2 Agriculture

- 5 Agricultural activities were favoured by the long-term wet period since 1970, improved technology and increased planted area: a significant increase in annual crops of around 60% occurred in the whole region (Viglizzo et al., 2011). Wetter conditions also led to increases in crop yields (maize and soybean yields increased 9 and 58% respectively; Magrin et al., 2007). The wet period since 1970 as well as economic, social and technological drivers contributed to the expansion of agriculture over regions previously relegated like the Chaco dry forest, toward northwest of the study region (Paruelo, 2005). It leads to a strong process
- 10 of land use changes: about 80% of the natural forest has been converted to pastures, scrub or cropland (Zak et al., 2008; Viglizzo et al., 2011). According to Nosetto et al. (2008) and Magrin et al. (2014) those land use changes have disrupted natural water and biogeochemical cycles, affecting surface runoff and salinizing the soil.

Time Scale	Key impacts in agriculture	Key references
Decadal to multidecadal	Wet period 1970-2005 favored an extension of agricultural lands to marginal areas but also land use changes.	Paruelo (2005) Zak et al. (2008) Barros et al. (2008b) Nosetto et al. (2008) Viglizzo et al. (2011) Magrin et al. (2014)
Interannual to multidecadal	Extensive and frequent flooding since 1970 reduced agricultural and livestock productivity. Large and severe droughts affect agricultural and livestock activities and favor wind erosion.	Herzel et al. (2004) Minetti et al. (2010) Magrin et al. (2014) Cavalcanti et al. (2015) Anderson et al. (2017)
Decadal to multidecadal	Increased minimum temperature cause wheat and barley yield decreases and possible modification of the maize crop cycle.	Magrin et al. (2009) Maddonni (2012) Fernandez Long et al. (2013) Verón et al. (2015) Müller et al. (2015) García et al. (2015)

Table 4: Impacts of hydroclimate variability and its extremes in agriculture. The first column shows the main time scale of variability affecting the study sector.

- 15 The combination of interannual and multidecadal hydrological variability led to extreme events (floods and droughts) that affected agricultural and livestock productivity (row 2 of Table 4). According to Magrin et al. (2014), river floods and extensive pluvial flooding, more frequent after 1970, affected riverine and rural areas causing losses or damages in pastures and crops and forcing displacement of cattle. For instance, the Paraná flood in 1998 affected 3.5 million of productive hectares and

caused losses of 750 million U.S. dollars in the agricultural sector of Argentina (Herzel et al., 2004). The extensive pluvial floods of 2016 affected 6 millions of productive hectares in the core crop region of Argentina causing losses for 2750 million dollars including crop damages, animal mortality, pasture and inputs, and the destruction of dairy farm equipment (La Nación, 2016).

5 Within the dry period (1901-1960), a multiyear drought between 1925 and 1940 extended the “Pampas Dust Bowl” to all of northeastern Argentina (Lovino et al., 2014). Extremely dry conditions produced cattle mortality, crop failure, farmer bankruptcy and rural migration (Viglizzo and Frank, 2006). Even during the wet period (after the 1970s), extended agricultural droughts altered sowing or critical crop growth periods decreasing yields (Minetti et al., 2007; 2010). For instance, the last two severe droughts in 2008/2009 and 2011/2012 caused losses of 8,765 million dollars to the agricultural sector of the core
10 crop region in Argentina (El Economista, 2016). In this region, the severe drought in 2008 reduced crop yields by 40% and caused the mortality of 700,000 cattle (La Nación, 2008).

The variability and changes in temperature also affect the agricultural and livestock sector (row 3 of Table 4). The increase of minimum temperature results in increased wheat and barley respiration rates and shorter grain filling period diminishing their yields (Magrin et al., 2009; Verón et al., 2015). According to García et al. (2015), wheat and barley yields were reduced under
15 increased minimum temperatures by 7% without considering technological improvements. The life cycle of maize has been affected by fewer frost events that allow early planting dates (Maddoni, 2012).

5.3 Human Settlements

Frequent pluvial and river floods affected urban and rural populations in the Lower Paraná basin (rows 1 and 2 of Table 5). River floods affect mostly vulnerable social sectors such as unplanned urban settlements, usually located in river floodplain
20 areas, while pluvial floods affect established rural and urban populations spread over large areas of the Pampas.

Time scale	Key impacts in human settlements	Key references
Interannual to multidecadal	River floods impacted riverside populations. Alteration of settlements, commerce, transport and pressure on urban infrastructure.	ECLAC (2003) Paoli et al. (2004) Barros et al. (2015)
Interannual to multidecadal	Extensive pluvial floods affected urban and rural settlements. Isolation of rural populations.	Bertoni et al. (2004) Giacosa et al. (2004) Latrubesse and Brea (2011)
Interannual to multidecadal	Severe droughts can cause scarcity of water and food and less potential for hydropower.	Rivera and Penalba (2013) Magrin et al. (2014)
Decadal to multidecadal	Increased effects of heat waves. Higher concentrations of air pollution. Increased energy demand for cooling in summer and decreased energy demand for heating in winter.	Rusticucci (2012) Magrin et al. (2014) Rusticucci et al. (2015) Santágata et al. (2017)

Eliminado: 4

Table 5: Impacts of hydroclimate variability and its extremes in human settlements. The first column shows the main time scale of variability affecting the study sector.

There are many severe cases of reported damage to cities due to river floods. For instance, the Paraná River flood in 1982/1983 inundated 70% of the city of Resistencia (located on the opposite margin of the river from the city of Corrientes) and forced the evacuation of 91,500 people (Herzel et al., 2004). The sewer system, urban drainage, and the power system collapsed and the communication lines disrupted resulting in economic losses of 150 million dollars (Caputo et al., 1985). According to

5 ECLAC (2003), the Salado River flood in the city of Santa Fe in 2003 forced the evacuation of 120,000 people and affected 20,000 houses. This disaster resulted in severe damage to urban infrastructure estimated at 450 million dollars including drinking water and sanitation, energy and transportation and telecommunications networks. Moreover, the extraordinary river floods also affected rural settlements. For instance, the Paraná River flood of 1998 affected 53,000 families of small farmers, rural workers and indigenous communities (Herzel et al., 2004).

10 Pluvial floods have frequently affected small settlements in the NEA, but have also led to major disasters in densely populated cities. In 2013, an unprecedented intense rainfall that reached 400 mm in less than 12 hours flooded the city of La Plata, the capital city of the province of Buenos Aires. In the urban area, 3,500 hectares were flooded, more than 80 people died and more than 190,000 people were affected and substantial material damage was produced (UNLP, 2013). The city of Santa Fe suffered a pluvial flood in 2007 that affected a great part of the urban area causing three deaths and forcing the evacuation of

15 26,000 people (La Nación, 2007).

On the other hand, severe droughts altered food security and water availability in populations located towards the northwest of the region where the access to water is hindered (row 3 of Table 5). For instance, the 2008/2009 drought affected water supply and favoured outbreaks of waterborne diseases in several cities in the northwest of the region (La Nación, 2009). Also, the lack of water forced the migration of rural families to the cities of the region (Infocampo, 2009).

20 Increased temperature has exacerbated heat waves and elevated the air pollution in several cities of the region (Row 4 of Table 5). According to Magrin et al. (2014), changes in temperature affect energy demand. Warmer conditions altered the energy supply, with decreases in energy consumption for heating during winter, and increases for cooling during summers (Santágata et al., 2017). For instance, Argentina suffered an intense heat wave that killed seven people in December 2013 (BBC news, 2013). The intense heat was exacerbated by power cuts and water shortages, leading to hundreds of cases of heat strokes in

25 Buenos Aires (Independent, 2013).

5 Final remarks

Hydroclimate variability (here described by precipitation, streamflow and near surface temperature) impacts water resources, agriculture, and human settlements in northeastern Argentina, exacerbating social, political, economic, and environmental risks already existing in the region. This study (a) investigated the regional hydroclimate variability on interannual-to-

30 multidecadal time scales, (b) reviewed and advanced the understanding of its links with global SSTs forcing and (c) discussed the impacts of hydroclimate variability and its extremes on the main productive and socio-economic regional sectors.

The region is affected by hydroclimate variability modes in different time scales, from interannual to multidecadal and likely into trends. Our results suggest that short-period cycles of the ENSO-related interannual precipitation variability over NEA (a) favoured extreme events after 2000, even during moderate extreme phases of the ENSO (periodicities of 2-4 years) and, (b) contributed to the Low Paraná river streamflow with periodicities of near 2 years. Although precipitation rates over NEA

5 account for a small percentage of the total Paraná River flow, the latter finding can provide valuable information to improve flood early warning systems in periods of low flow contribution in the middle and upper reaches of the river. Regarding temperature, minimum temperature relates with ENSO with a main frequency close to 3 years. Maximum temperature time series correlates well with SSTs variability over the Southern Atlantic, Indian and Pacific Oceans with a 9-year frequency. On decadal-to-multidecadal time scales, in addition to the known incidence of the Interdecadal Pacific Oscillation and the Atlantic

10 Multidecadal Oscillation that favour long-period anomalies over NEA (Seager et al., 2010; Barreiro et al., 2014), this study reports that the Paraná River streamflow is influenced by North and South Atlantic SSTs with bi-decadal periodicities.

Interannual hydrological variability induced frequent floods and droughts that are mainly related to extreme ENSO conditions, often combined with SST forcing in the North Tropical Atlantic Ocean and the South Atlantic Convergence Zone. These extreme events altered the management of surface and groundwater resources. Frequent floods affected agricultural and

15 livestock productivity in riverine and rural areas of the Pampas causing damages to pastures and crops and forcing displacement of cattle. Human settlements were also affected, including impacts on trade, transportation, and infrastructure of urban and rural populations. Conversely, agricultural droughts disrupted seeding or critical periods of crops and hydrological droughts impacted water supply for cattle while favouring soil erosion. The most severe hydrological droughts affected directly the population causing water and food scarcity and reducing the potential for hydropower generation.

20 On decadal-to-multidecadal time scales, northeastern Argentina experienced a transition from dry and cooler to wet and warmer decades since the 1970s. The wet period (after 1970) favoured agriculture over regions previously relegated and also led to land use changes. The combined effect of increased precipitation and land use changes resulted in raised groundwater table levels, reduced the soil infiltration capacity and increased surface runoff leading to extraordinary floods. Temperature variability and changes on low-frequency time scales affected productive sectors and urban settlements. Increases in minimum

25 temperature reduced wheat yields and altered maize life-cycles. Changes in maximum and minimum temperatures exacerbated the effects of urban heat islands and affected energy demand in several cities of the region.

The combination of interannual and multidecadal hydroclimatic variability intensified extreme events in the past, leading to the most severe droughts in the early 20th century and largest floods after 1970. Since the mid-2000s, northeastern Argentina has been showing signs of a reversal in the wetting period on multidecadal time scales. If these conditions continue into the

30 coming decades, more severe droughts and weaker floods might be expected. Considering the relevance of the multidecadal variability in the formation of extreme events, this information should be monitored and incorporated into regional decision systems to improve planning by water managers and agricultural stakeholders.

Acknowledgements

This research was carried out with the support of Project [CRN3035](#) of the Inter-American Institute for Global Change Research (IAI), which is supported by the US National Science Foundation. UNL Project C.A.I. + D. 2011 35/180 are also acknowledged. We greatly appreciate the support of Ernesto H. Berbery in the preparation of this manuscript. [We are grateful to the anonymous reviewers whose constructive comments and recommendations helped to improve the manuscript.](#)

Eliminado: s

References

- Anderson, W., Seager, R., Baethgen, W. and Cane, M.: Life cycles of agriculturally relevant ENSO teleconnections in North and South America. *Int. J. Climatol.*, 37: 3297–3318. doi:10.1002/joc.4916, 2017.
- Andrade, M. I. and Scarpati, O. E.: Recent changes in flood risk in the Gran La Plata, Buenos Aires Province, Argentina: causes and management strategy, *GeoJournal*, 70, 245–250, doi:10.1007/s10708-008-9137-9, 2007.
- Andreoli, R. V. and Kayano, M. T.: ENSO-related rainfall anomalies in South America and associated circulation features during warm and cold Pacific Decadal Oscillation regimes, *Int. J. Climatol.*, 25, 2017–2030, doi:10.1002/joc.1222, 2005.
- Antico, A., Schlotthauer, G. and Torres, M. E.: Analysis of hydroclimatic variability and trends using a novel empirical mode decomposition: Application to the Paraná River Basin, *J. Geophys. Res. Atmos.*, 119, 1218–1233, doi:10.1002/2013JD020420, 2014.
- Antico, A., Torres, M. E. and Diaz, H.: Contributions of different time scales to extreme Paraná floods, *Climate Dyn.*, 46, 3785–3792, doi: 10.1007/s00382-015-2804-x, 2016.
- Baethgen, W. E. and Goddard, L.: Latin American Perspectives on Adaptation of Agricultural Systems to Climate Variability and Change, in: *Handbook of Climate Change and Agroecosystems: Global and Regional Aspects and Implications*, D. Hillel and C. Rosenzweig, Eds., Imperial College Press, 57–72, doi: 10.1142/9781848169845_0004., 2013.
- Barreiro, M., Diaz, N. and Renom, M.: Role of the global oceans and land–atmosphere interaction on summertime interdecadal variability over northern Argentina, *Climate Dyn.*, 42, 1733–1753, doi: 10.1007/s00382-014-2088-6, 2014.
- Barros, V., Menendez, A., Natenzon, C., Kotot, R., Codignotto, J. Re, M., Bronstein, P., Camillon, I., Ludueña, S., Rios and Gonzalez, S.G.: Storm surges, rising seas and flood risks in metropolitan Buenos Aires. *Climate Change and Vulnerability*, Leary, N., C. Conde, J. Kulkarni, A. Nyong, and J. Pulhin Eds., Earthscan, 117–133, 2008a.
- Barros, V., Doyle, M., Camilloni, I.: Precipitation trends in southeastern South America: Relationship with ENSO phases and with low-level circulation, *Theor. Appl. Climatol.*, 93, 19–33, doi: 0.1007/s00704-007-0329-x, 2008b.
- Barros, V. R., Boninsegna, J. A., Camilloni, I. A., Chidiak, M., Magrín, G. O. and Rusticucci, M.: Climate change in Argentina: trends, projections, impacts and adaptation, *WIREs Clim Change*, 6: 151–169. doi:10.1002/wcc.316, 2015.
- Barrucand, M., Rusticucci, M. and Vargas, W.: Temperature extremes in the south of South America in relation to Atlantic Ocean surface temperature and Southern Hemisphere circulation, *J. Geophys. Res.*, 113, D20111, doi: 10.1029/2007JD009026, 2008.

- BBC News: Heatwave kills seven in Argentina, Available at: <http://www.bbc.com/news/world-latin-america-25564633>, last access: 7 August 7 2017.
- Berberly, E. H. and Barros, V.: The hydrologic cycle of the La Plata basin in South America, *J. Hydrometeor.*, 3, 630-645, doi: 10.1175/1525-7541(2002)003<0630:THCOTL>2.0.CO;2, 2002.
- 5 Bertoni, J.C. Chapter 3: Urbanization and urban drainage in Argentina (In Spanish), In: urban floods in Argentina, Bertoni J.C. Ed., Córdoba, Argentina, 43-74, 2004.
- Bidegain, M.: Severe drought in central Argentina and Uruguay, in: State of the Climate in 2008, *Bull. Amer. Meteor. Soc.*, 90 (8), S138, 2009.
- Camilloni, I. and Barros, V.: The Paraná River response to El Niño 1982–83 and 1997–98 events, *J. Hydrometeor.*, 1, 412–430, doi: 10.1175/1525-7541(2000)001<0412:TPRTE>2.0.CO;2, 2000.
- 10 Camilloni, I. and Barros, V.: Extreme discharge events in Paraná River and their climate forcing, *J. Hydrol.*, 278, 94–106, doi:10.1016/S0022-1694(03)00133-1, 2003.
- Caputo, G., Hardoy, J. and Herzer, H.: La inundación en el Gran Resistencia. Evaluación de las respuestas frente a la emergencia (In Spanish), in: *Inundaciones y Sociedad en el Gran Resistencia Chaco 1982-83*, Ediciones Boletín de Medio Ambiente y Urbanización de la Comisión de Desarrollo Urbano y Regional. Buenos Aires, CLACSO/GEL, 1985.
- 15 Carril, A.F., Cavalcanti, I. F. A., Menéndez, C. G., Sörensson, A., López-Franca, N., Rivera, J., Robledo, F., Zaninelli, P., Ambrizzi, T., Penalba, O., da Rocha, R., Sánchez, E., Bettolli, M., Pessacq, N., Renom, M., Ruscica, R., Solman, S., Tencer, B., Grimm, A., Rusticucci, M., Cherchi, A., Tedeschi, R. and Zamboni, L.: Extreme events in the La Plata basin: a retrospective analysis of what we have learned during CLARIS-LPB project, *Climate Research* 68: 95-116, doi: 10.3354/cr01374, 2016.
- 20 Carter, L. M., Cohen, S. J., Grimm, N.B. and Hatfield, J. L.: Weather and Climate Extremes in a Changing Climate, Regions of Focus: North America, Hawaii, Caribbean and U.S. Pacific Islands, Synthesis and Assessment Product 3.3, Report by the U.S. Climate Change Science Program and the Subcommittee on Global Change, Washington, DC, 162 pp, 2008.
- Cavalcanti, I. F. A.: Large scale and synoptic features associated with extreme precipitation over South America: a review and case studies for the first decade of the 21st century, *Atmos. Res.*, 118, 27–40. doi:10.1016/j.atmosres.2012.06.012, 2012.
- 25 Cavalcanti, I. F. A., Carril, A.F., Penalba, O.C., Grimm, A.M., Menéndez, C.G., Sanchez, E., Chechi, A., Sörensson, A., Robledo, F., Rivera, J., Pántano, V., Betolli, L.M., Zaninelli, P., Zamboni, L., Tedeschi, R.G., Dominguez, M., Ruscica, R., Flach, R.: Precipitation extremes over La Plata Basin—review and new results from observations and climate simulations, *Journal of Hydrology*, 523, 211–230. doi: 10.1016/j.jhydrol.2015.01.028, 2015.
- 30 Coronel, G. and Menéndez, G.: Physiography and hydrology, in: *Climatic Change in the La Plata Basin*, Barros, V., R., Clarke, P. Diaz, Eds., National Scientific and Technical Research Council (CONICET), Argentina, 44–59, 2006.
- Deser, C., Alexander, M. A., Xie, S-P. and Phillips A. S.: Sea Surface Temperature Variability: Patterns and Mechanisms, *Annual Review of Marine Science*, 2, 115-143, doi: 10.1146/annurev-marine-120408-151453, 2011.

Duchon, C. E.: Lanczos filtering in one and two dimensions, *J. Appl. Meteor.*, 18, 1016-1022, doi: 10.1175/1520-0450(1979)018<1016:LFIOAT>2.0.CO;2, 1979.

Duchon, C., Hare, R.: Chapter 3: Filtering Data, in: Time Series Analysis in Meteorology and Climatology: An Introduction. John Wiley & Sons, New York, United States, 143-182, 2012.

- 5 ECLAC (United Nations Economic Commission for Latin America and the Caribbean): Evaluación del impacto de las inundaciones y el desbordamiento del Río Salado en la provincia de Santa Fe, República Argentina, 2003 (In spanish), Available at: <http://www.cepal.org/es/publicaciones/28461-evaluacion-impacto-inundaciones-desbordamiento-rio-salado-la-provincia-santa-fe>, last access 5 August 2017, 2003.

El Día: La represa de Salto Grande genera un 10% de energía debido a la escasez de lluvias (in Spanish), available at: <http://www.eldiaonline.com/la-represa-de-salto-grande-genera-un-10-de-energia-debido-a-la-escasez-de-lluvias/>, last access 2 August 2017, 2012.

El Economista: Las últimas dos sequías costaron Us\$ 8.675 millones (in Spanish), available at: <http://www.economista.com.ar/2016-10-las-ultimas-dos-sequias-costaron-us-8-675-millones/>, last access 7 August 2017, 2016.

- 15 Enfield, D., Mestas-Nuñez, A. and Trimble, P.: The Atlantic Multidecadal Oscillation and its relation to rainfall and river flows in the continental U.S., *Geophys. Res. Lett.*, 28, 2077–2080, doi: 10.1029/2000GL012745, 2001.

Fernandez Long, M.E., Müller, G.V., Beltrán-Przekurat, A. and Scarpati, O.: Long- and short- term changes in temperature-based agroclimatic indices in argentina. *Int. J. Climatol.*, 33, 7, 1673-1686, doi/10.1002/joc.3541, 2013.

- 20 Field, C.B., V.R. Barros, K.J. Mach, M.D. Mastrandrea, M. van Aalst, W.N. Adger, D.J. Arent, J. Barnett, R. Betts, T.E. Bilir, J. Birkmann, J. Carmin, D.D. Chadee, A.J. Challinor, M. Chatterjee, W. Cramer, D.J. Davidson, Y.O. Estrada, J.-P. Gattuso, Y. Hijjoka, O. Hoegh-Guldberg, H.Q. Huang, G.E. Insarov, R.N. Jones, R.S. Kovats, P. Romero-Lankao, J.N. Larsen, I.J. Losada, J.A. Marengo, R.F. McLean, L.O. Mearns, R. Mechler, J.F. Morton, I. Niang, T. Oki, J.M. Olwoch, M. Opondo, E.S. Poloczanska, H.-O. Pörtner, M.H. Redsteer, A. Reisinger, A. Revi, D.N. Schmidt, M.R. Shaw, W. Solecki, D.A. Stone, J.M.R. Stone, K.M. Strzepek, A.G. Suarez, P. Tschakert, R. Valentini, S. Vicuña, A. Villamizar, K.E. Vincent, R. Warren, L.L. White, T.J. Wilbanks, P.P. Wong, and G.W. Yohe: Technical summary. In: *Climate Change 2014: Impacts, Adaptation, and Vulnerability. Part A: Global and Sectoral Aspects. Contribution of Working Group II to the Fifth Assessment Report of the Intergovernmental Panel on Climate Change* [Field, C.B., V.R. Barros, D.J. Dokken, K.J. Mach, M.D. Mastrandrea, T.E. Bilir, M. Chatterjee, K.L. Ebi, Y.O. Estrada, R.C. Genova, B. Girma, E.S. Kissel, A.N. Levy, S. MacCracken, P.R. Mastrandrea, and L.L. White (eds.)]. Cambridge University Press, Cambridge, United Kingdom and New York, NY, USA, pp. 35-94, 2014.

30 Fritschy, B. A.: Impacto de las inundaciones extraordinarias. Santa Fe, Argentina (in Spanish), Tercer Simposio Internacional de Investigación-SII, San Salvador de Jujuy, Jujuy, Argentina, available at: http://www.siagua.org/sites/default/files/documentos/documentos/inundaciones_extraordinarias.pdf, 2010.

Eliminado: .

- García N.O., and Mechoso, C. R.: Variability in the discharge of South American rivers and in Climate, *Hydrological Sciences Journal*, 50:3, 459-478, doi: 10.1623/hysj.50.3.459.65030, 2005.
- García, G.A., Dreccer, M. F., Miralles, D.J. and Serrago, R. A.: High night temperatures during grain number determination reduce wheat and barley grain yield: a field study, *Glob Chang Biol.*, 21(11): 4153–4164. doi: 10.1111/gcb.13009, 2015.
- 5 Garreaud, R. D., Vuille, M., Compagnucci, R. and Marengo, J.: Present-day South American climate, *Paleog. Paleoclim. Paleocol.*, 281, 180–195, doi:10.1016/j.palaeo.2007.10.032, 2009.
- Ghil, M., Allen, M., Dettinger, M. D., Ide, K., Kondrashov, D., Mann, M., Robertson, A., Saunders, A., Tian, Y., Varadi, F., Yiou, P.: Advanced Spectral Method for Climatic Time Series, *Rev. of Geophys.*, 40, 1-41, doi: 10.1029/2000RG000092, 2001.
- 10 Giacosa, R. H.: Knowing the hydrological regime, in: *The Parana River in its middle section: a contribution to knowledge and engineering practices in a large lowland river* (In Spanish), C. Paoli, M. Schreider, Eds., UNL publications, 69-103, 2000.
- Grimm, A. M., Barros, V. R. and Doyle, M. E.: Climate variability in southern South America associated with El Niño and La Niña events, *J. Climate*, 13, 35–58, doi: 10.1175/1520-0442(2000)013<0035:CVISSA>2.0.CO;2, 2000.
- Grimm, A.M. and Tedeschi, R.G.: ENSO and Extreme Rainfall Events in South America. *J. Climate*, 22, 1589–1609, doi: 15 10.1175/2008JCLI2429.1, 2009.
- Grimm, A. M. and Saboja, J. P. J.: Interdecadal variability of the South American precipitation in the monsoon season, *Journal of Climate*, 28, 755-775, doi: 10.1175/JCLI-D-14-00046.1, 2015.
- Grimm, A. M., Laureanti, N. C., Rodakoviski, R. B. and Gama, C. B.: Interdecadal variability and extreme precipitation events in South America during the monsoon season, *Climate Research*, 68, 277-294, doi: 10.3354/cr01375, 2016.
- 20 Harris, I., Jones, P. D., Osborn, T. J. and Lister, D. H.: Updated high-resolution grids of monthly climatic observations – the CRU TS3.10 Dataset, *Int. J. Climatol.*, 34, 623–642, doi: 10.1002/joc.3711, 2014.
- Haylock, M. R., Peterson, T. C., Alves, L. M., Ambrizzi, T., Anunciação, Y. M. T., Baez, J., Barros, V. R., Berlato, M. A., Bidegain, M., Coronel, G., Corradi, V., Garcia, V. J., Grimm, A. M., Karoly, D., Marengo, J. A., Marino, M. B., Moncunill, D. F., Nechet, D., Quintana, J., Rebello, E., Rusticucci, M., Santos, J. L., Trebejo, I., Vincent, L. A.: Trends in total and 25 extreme South American rainfall in 1960–2000 and links with sea surface temperature. *J. Climate*, 19, 1490–1512, doi: 10.1175/JCLI3695.1, 2006.
- Henley, B. J., Gergis, J., Karoly, D. J., Power, S. B., Kennedy, J. and Folland, C. K.: A Tripole Index for the Interdecadal Pacific Oscillation, *Climate Dyn.*, 45, 3077-3090, doi: 10.1007/s00382-015-2525-1, 2015.
- Hernandez, V., Moron, V., Riglos, F.F. and Muzi, E.: Confronting Farmers' Perceptions of Climatic Vulnerability with 30 Observed Relationships between Yields and Climate Variability in Central Argentina, *Wea. Climate Soc.*, 7, 39–59, doi: 10.1175/WCAS-D-13-00062.1, 2015.
- Herzel, H., Caputo, M. G., and Celis, A.: Capítulo III: Análisis regional: cuenca del río Paraná (in Spanish). In: *Gestión de riesgos de desastre ENSO en América Latina* (in Spanish). Informe Final IAI. Centro de estudios sociales y ambientales. Available at:

Con formato: Inglés (Estados Unidos)

Con formato: Inglés (Estados Unidos)

- <http://www.cambioglobal.org/enso/informes/anho4/Argentina/Cap%203%20CUENCA%20DEL%20PARANA.pdf>. Last accessed 7 August 2017, 2004.
- Huang, H., Seager, R. and Kushnir, Y.: The 1976/77 transition in precipitation over the Americas and the influence of tropical SST, *Climate Dyn.*, 24, 721–740, doi: 10.1007/s00382-005-0015-6, 2005.
- 5 Huang, B., Banzon, V.F., Freeman, E., Lawrimore, J., Liu, W., Peterson, T.C., Smith, T.M., Thorne, P.W., Woodruff, S.D. and Zhang, H.: Extended Reconstructed Sea Surface Temperature Version 4 (ERSST.v4). Part I: Upgrades and Intercomparisons, *J. Climate*, 28, 911–930, doi: 10.1175/JCLI-D-14-00006.1, 2015.
- Independent: Seven people die in the worst heat wave ever recorded in Argentina, available at: <http://www.independent.co.uk/news/world/americas/seven-people-die-in-the-worst-heat-wave-ever-recorded-in-argentina-9032202.html>, last access 7 August 2017, 2013.
- 10 Infocampo: Una catástrofe climática se extiende por más de la mitad del área agrícola argentina, available at: <http://www.infocampo.com.ar/crea-una-catastrofe-climatica-se-extiende-por-mas-de-la-mitad-del-area-agricola-argentina/>, last accessed 7 August 2017, 2009
- Jacques-Coper, M. and Garreaud, R. D.: Characterization of the 1970s climate shift in South America, *Int. J. Climatol.*, 35, 2164–2179, doi:10.1002/joc.4120, 2015.
- 15 Kosatsky, T.: The 2003 European heatwaves. *Euro Surveillance*, 10, 148–149, doi: 10.2807/esm.10.07.00552-en, 2005.
- Krepper, C. M. and García, N. O.: Spatial and temporal structure of trends and interannual variability of precipitation over La Plata Basin, *Quatern. Int.*, 114, 11–21, doi: 10.1016/S1040-6182(03)00038-7, 2004.
- Krepper, C. M., García, N. O. and Jones, P. D.: Low-frequency response of the upper Paraná basin, *Int. J. Climatol.*, 28, 351–360, doi: 10.1002/joc.1535, 2008.
- 20 Krepper C. M and Zucarelli, G. V.: Climatology of water excesses and shortages in the La Plata Basin, *Theor Appl Climatol.*, 102, 13–27, doi: 10.1007/s00704-009-0234-6, 2010.
- Labat, D., Ronchail, J. and Guyot, J. L.: Recent advances in wavelet analyses: Part 2-Amazon, Parana, Orinoco and Congo discharges time scale variability, *J. Hydrol.*, 314, 289–311, doi:10.1016/j.jhydrol.2005.04.004, 2005.
- 25 La Nación: Lluvias récord en Santa Fe: 3 muertos y 26.000 evacuados (in Spanish), available at: <http://www.lanacion.com.ar/896183-lluvias-record-en-santa-fe-3-muertos-y-26000-evacuados>, last access 7 August 2017, 2007.
- La Nación: El campo padece la sequía más grave en dos décadas (in Spanish), available at: <http://www.lanacion.com.ar/1044833-el-campo-padece-la-sequia-mas-grave-en-dos-decadas>, last access 7 August 2017, 2008.
- 30 La Nación: Preocupa la histórica bajante en los ríos Uruguay y Paraná (In Spanish), available at: <http://www.lanacion.com.ar/1130139-preocupa-la-historica-bajante-en-los-rios-uruguay-y-parana>, last access 2 August 2017, 2009

Código de campo cambiado

La Nación: Inundaciones: crecen las pérdidas productivas y económicas, available at: <http://www.lanacion.com.ar/1893914-inundaciones-crecen-las-perdidas-productivas-y-economicas>, 7 access August, 2017, 2016.

Latrubesse, E. and Brea, D.: Floods in Argentina, in: Natural Hazard and human-exacerbated disaster in Latin America, Latrubesse E., Ed., Elsevier, 333-349, 2011.

5 Liu, W., Huang, B., Thorne, P.W., Banzon, V.F., Zhang, H., Freeman, E., Lawrimore, J., Peterson, T.C., Smith, T.M. and Woodruff S.D.: Extended Reconstructed Sea Surface Temperature Version 4 (ERSST.v4): Part II. Parametric and Structural Uncertainty Estimations, *J. Climate*, 28, 931–951. doi:10.1175/JCLI-D-14-00007.1, 2015.

Loikith, P. C., Detzer, J., Mechoso, C. R., Lee, H., & Barkhordarian, A.: The influence of recurrent modes of climate variability on the occurrence of monthly temperature extremes over South America. *Journal of Geophysical Research: Atmospheres*, 122, 10,297–10,311. <https://doi.org/10.1002/2017JD027561>, 2017.

Lovino, M. A., García, N. O. and Baethgen, W.: Spatiotemporal analysis of extreme precipitation events in the Northeast region of Argentina (NEA), *J. Hydrol.: Reg. Stud.*, 2, 140-158, doi:10.1016/j.ejrh.2014.09.001, 2014.

Lovino, M. A.: Environmental impact of climate variability and extreme events in the province of Santa Fe (Argentina), within the climate change context (In Spanish). PhD thesis, Universidad Nacional del Litoral, Argentina, 238 pp., <http://bibliotecavirtual.unl.edu.ar:8080/tesis/handle/11185/707>, 2015.

15 Lovino, M. A., Müller, O., Berbery, E.H. and Müller, G.V.: How have daily climate extremes changed in the recent past over northeastern Argentina?, *Global and Planetary Change*, Under Review.

Maddonni, G. A.: Analysis of the climatic constraints to maize production in the current agricultural region of Argentina—a probabilistic approach, *Theor Appl Climatol.*, 107, 325-345, doi: 10.1007/s00704-011-0478-9, 2012.

20 Magrin, G. O., Travasso, M. I., Baethgen, W. E., Grondona, M. O., Giménez, A., Cunha, G., Castaño, J. P. and Rodriguez, G. R.: Past and future changes in climate and their impacts on annual crops yield in South East South America. In: IPCC Task Group on Data Scenario Support for Impact and Climate Analysis (TGICA) Expert Meeting: Integrating Analysis of Regional Climate Change and Response Options. Meeting Report, Intergovernmental Panel on Climate Change (IPCC), Nadi, Fiji, pp. 121-124, 2007

25 Magrin, G. O., Travasso, M. I., Rodríguez, G. R., Solman, S. and Núñez, M.: Climate change and wheat production in Argentina, *Int. J. Global Warm.*, 1, 214-226, doi:10.1504/IJGW.2009.027090, 2009.

Magrin, G. O., Marengo, J. A., Boulanger, J.-P., Buckeridge, M. S., Castellanos, E., Poveda, G., Scarano, F. R. and Vicuña, S.: Central and South America, in: *Climate Change 2014: Impacts, Adaptation, and Vulnerability. Part B: Regional Aspects. Contribution of Working Group II to the Fifth Assessment Report of the Intergovernmental Panel on Climate Change*, Barros, V. et al eds., Cambridge University Press, Cambridge, United Kingdom and New York, NY, USA, pp. 1499-1566, 2014.

30 Mantua, N. J., and Hare S. R.: The Pacific Decadal Oscillation, *J. Oceanogr.*, 58, 35-44, doi:10.1023/A:1015820616384, 2002.

Messié, M. and Chavez, F.: Global modes of sea surface temperature variability in relation to regional climate indices, *J. Climate*, 24, 4314–4331, doi:10.1175/2011JCLI3941.1, 2011.

Eliminado: 0

- Minetti, J. L., Vargas, W. M., Vega, B. and Costa, M. C.: Droughts in the Pampa Húmeda – Impact in the productivity of corn, *Revista Brasileira de Meteorologia*, 22(2), 218-232, 2007.
- Minetti, J. L., Vargas, W. M., Poblete, A. G., De la Zerda, L. R. and Acuña, L. R.: Regional droughts in southern South America, *Theoretical and applied climatology*, 102(3-4), 403-415, 2010.
- 5 Ministry of Agroindustry: Open Data of Agroindustry (In Spanish), available at: <https://datos.magyp.gov.ar/reportes.php?reporte=Estimaciones>, last access June 2017.
- Mo, K. C and Berbery, E. H.: Drought and Persistent Wet Spells over South America Based on Observations and the U.S. CLIVAR Drought Experiments, *J. Climate*, 24, 1801–1820, doi: 10.1175/2010JCLI3874.1, 2011.
- Moron, V., Vautard, R. and Ghil, M.: Trends, interdecadal and interannual oscillations in global sea-surface temperatures, *Climate Dyn.*, 14, 545-569, doi: 10.1007/s003820050241, 1998.
- 10 Müller, G., Nuñez, M. and Seluchi, M.: Relationship between ENSO cycles and frost events within the Pampa Húmeda region, *Int. J. Climatol.*, 20, 1619–1637, doi:10.1002/1097-0088(20001115)20:13<1619::AID-JOC552>3.0.CO;2-F, 2000.
- Müller, G.V., Fernandez Long M.E. and Bosch E.: Relationship between the sea surface temperature of different oceans and the maize yields in the argentine Pampa Region (in Spanish). *Revista Meteorológica*, 40, 1, 5-16, 2015.
- 15 [Mussetta P., Turbay S., Fletcher A.J.: Adaptive Strategies Building Resilience to Climate Variability in Argentina, Canada and Colombia. In: Leal Filho W., Musa H., Cavan G., O'Hare P., Seixas J. \(eds\) Climate Change Adaptation, Resilience and Hazards. Climate Change Management, Springer, Cham, 2016.](#)
- [Navarra, A.: Beyond El Niño: decadal and interdecadal climate variability. Springer-Verlag, Berlin, Germany, 374 pp. 1999.](#)
- Nosetto, M. D., Jobbágy, E. G., Tóth, T. and Jackson, R. B.: Regional patterns and controls of ecosystem salinization with grassland afforestation along a rainfall gradient, *Global Biogeochem. Cy.*, 22, GB2015, doi:10.1029/2007GB003000, 2008.
- 20 NWIS (National Water Information System): Integrated Hydrological Data Base, available online at http://www.hidricosargentina.gov.ar/acceso_bd.php, last access March 2016, 2016.
- [Paegle, J. N., and Mo, K. C.: Linkages between Summer Rainfall Variability over South America and Sea Surface Temperature Anomalies, J. Climate, 15, 1389–1407, doi: 10.1175/1520-0442\(2002\)015<1389:LBSRVO>2.0.CO;2, 2002.](#)
- 25 Paoli, C. U. Chapter 4: River flooding in the middle section of the Paraná River (In Spanish), In: urban floods in Argentina, Bertoni J.C. Ed., Córdoba, Argentina, 43-74, 2004.
- Paruelo, J. M, Guerschman, J. P. and Verón, S. R.: Agricultural expansion and changes in land use (In Spanish), *Ciencia Hoy*, 15, 14–23, 2005.
- [Penalba, O. C. and Vargas, W. M.: Interdecadal and interannual variations of annual and extreme precipitation over central-northeastern Argentina, Int. J. Climatol., 24: 1565-1580, doi:10.1002/joc.1069, 2004.](#)
- 30 Penalba, O. C. and Robledo, F. A.: Spatial and temporal variability of the frequency of extreme daily rainfall regime in the La Plata Basin during the 20th century, *Climatic Change*, 98, 531-550, doi:10.1007/s10584-009-9744-6, 2010.
- Penalba, O. C. and Rivera, J. A.: Precipitation response to El Niño/La Niña events in Southern South America – emphasis in regional drought occurrences, *Adv. Geosci.*, 42, 1-14, <https://doi.org/10.5194/adgeo-42-1-2016>, 2016.

Con formato: Inglés (Estados Unidos)

Con formato: Inglés (Estados Unidos)

- Rasmussen, K.L., Chaplin, M.M., Zuluaga, M.D. and Houze, R.A.: Contribution of Extreme Convective Storms to Rainfall in South America, *J. Hydrometeor.*, 17,353–367, doi: 10.1175/JHM-D-15-0067.1, 2016.
- Re, M. and Barros, V. R.: Extreme rainfalls in SE South America, *Climatic Change*, 96, 119-136, doi:10.1007/s10584-009-9619-x, 2009.
- 5 Rivera, J. A., Penalba, O. C. and Betolli, M. L.: Inter-annual and inter-decadal variability of dry days in Argentina. *Int. J. Climatol.*, 33: 834–842, doi:10.1002/joc.3472, 2013.
- Robertson, A. W. and Mechoso, C.: Interannual and decadal cycles in river flows of southeastern South America, *J. of Climate*, 11, 2570-2581, doi: 10.1175/1520-0442(1998)011<2570:IADCIR>2.0.CO;2, 1998.
- Robertson, A. W. and Mechoso, C.: Interannual and interdecadal variability of the South Atlantic Convergence Zone, *Mon. Wea. Rev.*, 128, 2947-2957, doi:10.1175/1520-0493(2000)128<2947:IAIVOT>2.0.CO;2, 2000.
- 10 Rusticucci, M.: Observed and simulated variability of extreme temperature events over South America. *Atmospheric Research*, 106, 1–17. DOI: 10.1016/j.atmosres.2011.11.001, 2012.
- Rusticucci, M., Kysely, J., Almeida, G. and Lhotka, O.: Long-term variability of heat waves in Argentina and recurrence probability of the severe 2008 heat wave in Buenos Aires, *Theor Appl Climatol.*, doi: 10.1007/s00704-015-1445-7, 2015.
- 15 Rusticucci, M., Barrucand, M. and Collazo, S.: Temperature extremes in the Argentina central region and their monthly relationship with the mean circulation and ENSO phases. *Int. J. Climatol.*, 37: 3003–3017, doi:10.1002/joc.4895, 2017.
- Santágata, D. M., Castesana, P., Rössler, C. E., and Gómez, D. R.: Extreme temperature events affecting the electricity distribution system of the metropolitan area of Buenos Aires (1971–2013). *Energy Policy*, 106, 404-414, doi: 10.1016/j.enpol.2017.04.006, 2017.
- 20 Saurral, R. I., Camilloni, I. A. and Barros, V. R.: Low-frequency variability and trends in centennial precipitation stations in southern South America, *Int. J. Climatol.*, 37: 1774–1793. doi:10.1002/joc.4810, 2017.
- Scardilli, A.S., Llano, M.P. and Vargas, W.M.: Temporal analysis of precipitation and rain spells in Argentinian centenary reference stations. *Theor Appl Climatol*, 127: 339, doi: 10.1007/s00704-015-1631-7, 2017.
- Schlesinger, M. E.w and Ramankutty, N.: An oscillation in the global climate system of period 65-70 years, *Nature*, 367, 723–726, doi:10.1038/367723a0, 1994.
- 25 Schneider, U., Becker, A., Finger, P., Meyer-Christoffer, A., Rudolf, B. and Ziese, M.: GPCC Full Data Reanalysis Version 7.0 at 0.5°: Monthly Land-Surface Precipitation from Rain Gauges built on GTS-based and Historic Data, doi: [10.5676/DWD_GPCC/FD_M_V7_050](https://doi.org/10.5676/DWD_GPCC/FD_M_V7_050), 2015.
- Schubert, S., Gutzler, D., Wang, H., Dai, A., Delworth, T., Deser, C., Findell, K., Fu, R., Higgins, W., Hoerling, M., Kirtman, B., Koster, R., Kumar, A., Legler, D., Lettenmaier, D., Lyon, B., Magana, V., Mo, K., Nigam, S., Pegion, P., Phillips, A., Pulwarty, R., Rind, D., Ruiz-Barradas, A., Schemm, J., Seager, R., Stewart, R., Suarez, M., Syktus, J., Ting, M., Wang, C., Weaver, S. and Zeng, N.: A U.S. CLIVAR project to assess and compare the responses of global climate models to drought-related SST forcing patterns: Overview and results, *J. Climate*, 22, 5251–5272, doi:10.1175/2009JCLI3060.1, 2009.

Eliminado: 10.5676/DWD_GPCC/FD_M_V6_050

Eliminado: 1

- Seager, R., Naik, N., Baethgen, W., Robertson, A., Kushnir, Y., Nakamura, J. and Jurburg, S.: Tropical Oceanic Causes of Interannual to Multidecadal Precipitation Variability in Southeast South America over the Past Century, *J. Climate*, 23, 5517–5539, doi: 10.1175/2010JCLI3578.1, 2010.
- Sénat: France and the French face the canicule: The lessons of a crisis. Information Report 195, Sénat, Paris, France, 59-62 (in French), available online at www.senat.fr/rap/r03-195/r03-19510.html, 2004.
- Seneviratne, S. I. and coauthors, 2012: Changes in climate extremes and their impacts on the natural physical environment. *Managing the Risks of Extreme Events and Disasters to Advance Climate Change Adaptation*. Field, C. et al. Eds., Cambridge University Press, 109–230.
- Tasso, A.: The drought of 1937 in Santiago del Estero. Antecedents and consequences of an environmental event (In Spanish). *Trabajo y sociedad*, 17, 17-39, 2011.
- Ting, M., Kushnir, Y., Seager, R. and Li, C.: Forced and internal twentieth-century trends in the North Atlantic, *J. Climate*, 22, 1469–1481, doi:10.1175/2008JCLI2561.1, 2009.
- UNLP (Universidad Nacional de La Plata): Estudio sobre la inundación ocurrida los días 2 y 3 de abril de 2013 en las ciudades de La Plata, Berisso y Ensenada (in Spanish), Universidad Nacional De La Plata, Facultad De Ingeniería, Departamento De Hidráulica, available at: <http://hdl.handle.net/10915/27334>, last access 7 August 2017.
- Venegas, S. A., Mysak, L. A. and Straub, D. N.: An interdecadal climate cycle in the South Atlantic and its links to other ocean basins, *J. Geophys. Res.*, 103, 723–736, doi:10.1029/98JC02443, 1998.
- Venencio, M. V. and García, N. O.: Interannual variability and predictability of water table levels at Santa Fe Province (Argentina) within the climatic change context, *J. Hydrol.*, 409, 62–70, doi:10.1016/j.jhydrol.2011.07.039, 2011.
- Verón, S. R., de Abelleira, D. and Lobell, D.: Impacts of precipitation and temperature on crop yields in the Pampas, *Climatic Change*, 130, 235–245, doi:10.1007/s10584-015-1350-1, 2015.
- Viglizzo, E. and Frank, F. C.: Ecological interactions, feedbacks, thresholds and collapses in the Argentine Pampas in response to climate and farming during the last century, *Q. Int.*, 158, 122–126, doi:10.1016/j.quaint.2006.05.022, 2006.
- Viglizzo, E. F., Frank, F. C., Carreño, L. V., Jobbágy, E. G., Pereyra, H., Clatt, J., Pincén, D. and Ricard, M. F.: Ecological and environmental footprint of 50 years of agricultural expansion in Argentina, *Global Change Biology*, 17: 959–973. doi:10.1111/j.1365-2486.2010.02293.x, 2011.
- Von Storch, H. and Navarra, A. (Eds): *Analysis of Climate Variability*. Springer-Verlag Berlin Heidelberg, Germany, 334 pp, 1995.
- Von Storch, H., and Zwiers, W.: *Statistical Analysis in Climate Research*, Cambridge University Press, 484 pp, 1999.
- Webber, J. (Financial Times): *Argentina's drought: counting the costs*, available at: <https://www.ft.com/content/f7fd1da9-9848-39bc-9e15-168d0bd14dd7>, last access 27 March 2018.
- Wilks D. S.: *Statistical Methods in the Atmospheric Sciences*, Second Edition, International Geophysics Series, Volume 91, Elsevier Inc, 627 pp, 2006.

Zak, M.R., Cabido, M., Caceras, D. and Diaz, S.: What drives accelerated land cover change in central Argentina? Synergistic consequences of climatic, socioeconomic, and technological factors, *Environmental Management* 42: 181-189, 2008.