

General Comments:

Summary: The global importance of GHG emissions from small ponds is not well understood due to a lack of knowledge of both their 1) GHG emission rates and 2) cumulative spatial extent. This study quantifies both for the state of Queensland, Australia, and the authors also propose two upscaling approaches. In addition, the study investigates spatial (both intra- and inter-pond), temporal variability in emissions, and the impact of variable inundation status on emissions. The study found that including small ponds in the calculation of total surface area of artificial water bodies increased the cumulative total surface area by 24%. Spatial variability within ponds was found to be much greater than temporal variability.

Overarching comments: This study is an important contribution to the literature on methane emissions from inland waters, and well executed.

My main comment is that the manuscript could benefit from some clarification and reorganization. There are several additions needed in the methods, several items stated in results that should be included in the methods, several items that belong in the results that are in the discussion (see specific comments, below), and more attention to study components 2-4 (laid out in the introduction) in the discussion.

Reply: Thank you for all these comments and suggestions and we have addressed them all which has greatly improved the manuscript. Detailed responses are provided below. Page and Line numbers refer to the attached revised manuscript which contains track changes for changes suggested by both reviewers.

Methods: Several sections in the methods could be clearer if the intention was stated in a topic sentence leading each paragraph. For example, in section 2.2 the onus is put on the reader to figure out what parts are for the purpose of determining individual water body sizes, what parts are for determining the cumulative area of small ponds, and what parts are for determining the size distribution.

Reply: We have rephrased the leading sentences of Methods sections to clarify the intention of each component. The revised text can be found in the following sections:

P4 L21-24:

“To determine the number and relative surface area of ponds across the Queensland, three State Government GIS databases of artificial water bodies were utilised. However these databases required additional processing to extract comparable pond data as there were inconsistencies in the format and nomenclature of feature types.”

P6 L14-16:

“To gain insight into the spatial and temporal uncertainty in pond emissions we compared variability in seasonal emissions from a single site to emissions from an intensive spatial survey of multiple sites across the pond (Fig. 4).”

P7 L5-6:

“This pond was selected as stock dams generally experience accelerated rates of water level change due to their relatively small size compared to other pond types (Fig. A2).”

In section 2.4, the total number of sample ponds should be stated, as should the method for choosing the subset that purportedly represents the wide spectrum of ponds

Reply: We have now stated the total number of sample ponds P6 L28:

“The variability in surface area of each of the 22 ponds monitored in the emissions surveys was analysed”

We have provided a histogram of pond size for the major pond types across the region and included the sample ponds on this histogram to support their representativeness of the regional spectrum of ponds. Appendix P30 Figure A2:

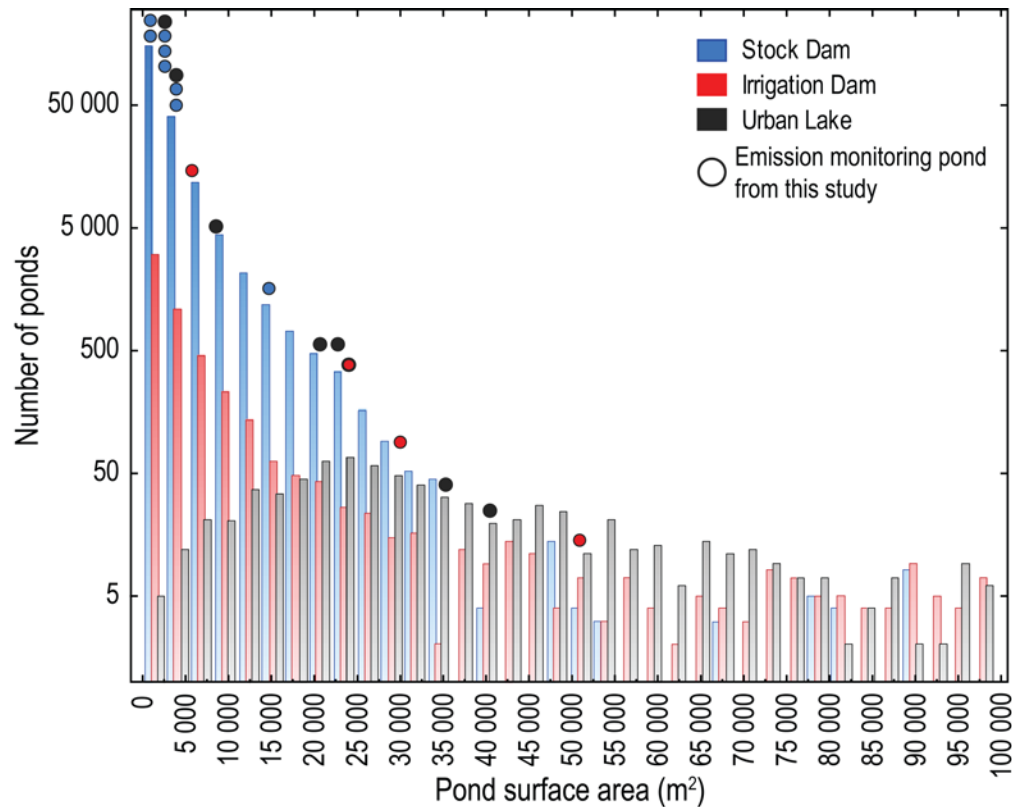


Figure A2. Pond size from emission study relative to histogram of regional pond distribution of stock dams, irrigation dams and urban lakes. The surface area of pond used emission study (Table A1). Histogram of regional distribution of ponds was developed from QLUMP, Reservoir and Water Storage Points databases and separated into pond type depending on surrounding land use: “Grazing native vegetation” for stock dams; “Production from irrigated agriculture and plantations” for irrigation dams; “Intensive uses” for urban lakes with “Mining” and “Manufacturing” landuse within “Intensive Uses” were removed to ensure only urban areas were selected. To incorporate the distribution of ponds within the Water Storage Points database, it was assumed this would match the distribution from the 100 individual ponds examined in Section 2.2 to determine their average surface area.

More detail on the chamber method should be included. Concerns about the methodology that need to be addressed include: Biases in the emission measurement due to diffusive uptake of methane from the chamber headspace to the water under conditions of high methane partial pressure in the chamber headspace

Reply: We have addressed this oversight in the methodology description and have provided a more detailed description to address these concerns. The following text and supporting references have been included in the manuscript P5 L27-33:

“There are a number of commonly used methods to assess methane emissions from water bodies depending on the pathway of interest. For the diffusive emission pathway, rates may be modelled using the thin boundary methods or directly measured using manual or automatic floating chambers (St. Louis et al., 2000). For ebullition pathways, rates can be directly measured using acoustic surveys or funnel traps (DelSontro et al., 2011). Thin boundary layer models cannot be used to quantify the ebullition pathway and acoustic surveys or funnel traps cannot be used effectively in ponds as the water depth is often too shallow (< 1 m). We chose to use floating chambers to capture both ebullition and diffusive fluxes.”

And P5 L37-39:

“The floating chambers used were designed to yield negligible bias on the gas exchange and compare well with non-invasive approaches (Cole et al., 2010;Gålfalk et al., 2013;Lorke et al., 2015).”

And P6 L2-8:

“The 24 hour deployment time was chosen to increase the likelihood to capture ebullition, which is episodic in nature, and to incorporate diel variability in diffusive emissions which can be up to a 2-fold bias (Bastviken et al., 2004;Bastviken et al., 2010;Natchimuthu et al., 2014). The use of long term deployments may underestimate diffusive fluxes, which decrease as the chamber headspace approaches equilibrium with the water. However, in contrast to CO₂, CH₄ has a long equilibration time and it has been shown that a 24 hour deployment of these types of flux chambers on lakes underestimate diffusive fluxes by less than 10% (Bastviken et al., 2010).”

Discussion: The introduction lays out four components of the study, but the discussion is heavily weighted to component 1: “Quantify the area of ponds, relative to regional assessments of larger artificial water bodies”, and to un-stated components/objectives of scaling. Either: o the introduction should be revised to reflect the structure of the discussion, e.g. state more clearly how components 2-4 support upscaling of inland water emission estimates, why determining the pathway is important or o the discussion should be revised to address components 2-4

Reply: We have now revised the objectives to clarify the links between the four components and the integration of these for the regional assessment. The new text can be found P 3 L19-28:

“The principle objective of this study was to establish the GHG status of ponds in Queensland, Australia. Given the paucity of GHG data from ponds, this study has focussed on empirical assessments of CH₄ emissions from a range of pond types rather than detailed assessments of drivers of these emissions. Our assessment comprised four components:

1. Quantify the area of ponds, relative to regional assessments of larger artificial water bodies;
2. Quantify CH₄ emission rates for a wide spectrum of pond types;
3. Determine variability in their surface area and emission rates;
4. Determine the influence of inundation level on emission rates.

When integrated together, these components provide a robust regional assessment of anthropogenic CH₄ emissions for ponds in Queensland, Australia.”

In addition we highlighted the importance of the regional upscaling relative to larger water bodies in the discussion P10 L12-14:

“Given ponds represent 33.5% of the total flooded lands surface area in Queensland and emission rates are equivalent to larger water bodies in the region (Musenze et al., 2014; Sturm et al., 2014), ponds represent one-third of total emissions from flooded lands in Queensland.”

Specific Comments:

Page 2 lines 2-3 introduce the concept of uncertainty in surface area and classes of artificial water bodies. It is unclear what the authors mean by this – differences in how water bodies are classified? Different classification schemes? This sentence cites: o Surface area: Chumchal et al., 2016 Abundance and size distribution of permanent and temporary farm ponds in the southeastern Great Plains, Inland Waters Classes: Panneer Selvam et al., 2014 Methane and carbon dioxide emissions from inland waters in India–implications for large scale greenhouse gas balances

Reply: We have revised this section of the introduction to be more explicit about these sources of uncertainty and the site description was revised to highlight issues in classifying artificial water bodies. P2 L6-7:

“Furthermore the surface area of small water bodies can be particularly difficult to quantify in national and global datasets due to their small size and large number (Chumchal et al., 2016).”

And P4 L8-15:

“However, the number and surface area of ponds in Queensland is relatively unknown as there is no legal requirement to refer ponds to the state registry due to their small size. Under current state law only dam walls in excess of 10 m and volumes above 750 ML are referable (DEWS, 2017) and the maximum reported volume for ponds in Queensland is three times less than the referable volume (< 250 ML) (SKM, 2012). This study has assumed ponds are less than 100,000 m² as this is recognised globally as the major area of uncertainty in surface area assessments (Lehner and Doll, 2004; Downing 2010) and has been identified as a threshold in global lake inventories (Downing et al., 2006; Verpoorter et al., 2014).”

Page 2 line 15: correct typo “the creation of water small artificial water bodies”

Reply: We have corrected this typo P2 L24.

Page 2 line 18: “these can be considered anthropogenic in origin” the use of “can” makes this statement sound like it is optional or up to someone’s discretion to categorize emissions from flooded lands as anthropogenic or natural. Clarify this sentence by restating as “these emissions are considered anthropogenic in origin according to [IPCC guidelines], and should therefore be. . .”

Reply: We have revised this statement as suggested P2 L27:

“these emissions are considered anthropogenic in origin according to IPCC guidelines (IPCC, 2006)”

Page 2, lines 26-28: the parenthetical statement is distracting. It seems the authors wrote it this way because the goal “to determine the factors that account for spatial and temporal variability in the flux” is a sub-goal of obtaining CH₄ flux measurements from a broader range of sites. I recommend moving the parenthetical statement to a sentence following this one: “An important part of the value of building a dataset of CH₄ flux estimates from a broad range of sites is determining factors that account for spatial and temporal variability in the flux.”

Reply: Thank you for the recommendation, we have moved the parenthetical statement as suggested P3 L3-6:

“An important part of the value of building a dataset of CH₄ flux estimates from a broad range of sites is determining factors that account for spatial and temporal variability in the flux.”

Page 3, line 6: this is the first mention of inundation level influencing emission rates. This idea should be introduced in the introduction; the intro as it is currently just deals with the difficulty of estimating total surface area due to changing surface areas

Reply: We have now introduced the effect of inundation level on emission rates in the Introduction P2 L8-12:

“In addition, the peripheral areas of small water bodies regularly experience periods of inundation and no inundation as water levels change due to their relatively shallow nature and high water use rates. The changes in their inundation status may influence emission rates as has been observed for natural ponds (Boon et al 1997).”

Page 3, line 9: change “having” to “has”

Reply: We have changed this typo P3 L37.

Page 3, line 10 – 11: stating that 80% of the land is used for agriculture could be supported by figure 2, as could the statement about rainfall gradients on lines 14-15.

Reply: We now support these statements with agricultural land use Figure 2 a (P3 L39) and rainfall gradients Figure 2 b (P4 L4).

Figure A1: where are the two ponds in panel a)? Could they be pointed to with arrows, for example?

Reply: Two white arrows have now been added to the figure to point out the ponds Appendix P29 Figure A1:



The figure legend has additional explanatory text P29 L3-4:

“1944 aerial images showing 2 ponds indicated by white arrows”

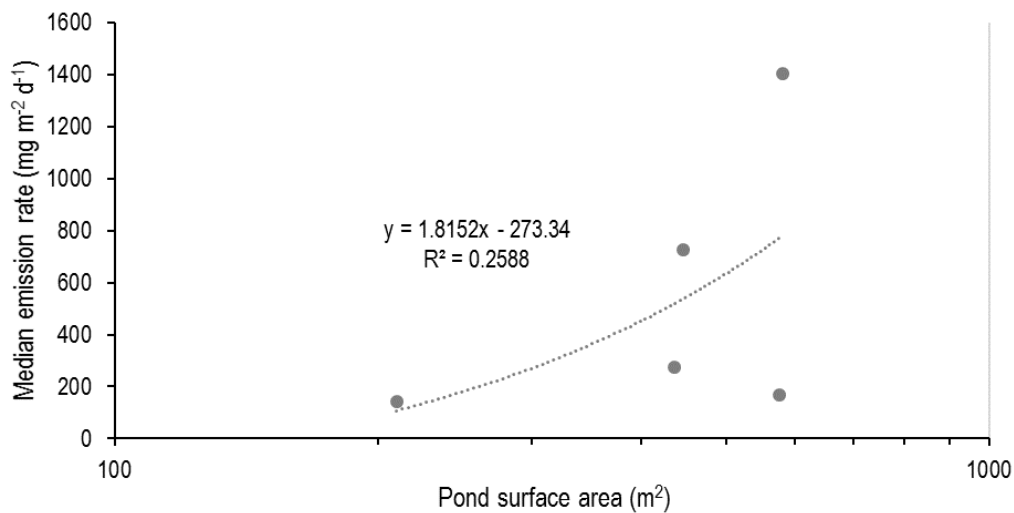
*Page 4, line 8-9: How was the mean surface area used to calculate the total surface area? Please provide an equation, or at least spell it out with more clarity. Scaled simply as mean size per pond * total number of ponds? Any size binning or other weighting? It is unclear if the sentences following are clarifications on the surface area determination methodology, or are background information for the two upscaling approaches.*

Reply: We have provided a more detailed explanation for the total surface area calculation P5 L7-13:

“...then assumed to approximate the surface area of all individual ponds within this database and the total surface area was calculated by multiplying this mean surface area by the total number of ponds.

To ensure only one water body was reported from each location, all databases were first screened to remove repeated detections of waterbodies. All remaining water bodies were then summed together to calculate total surface area of ponds and this was compared to larger reservoirs to determine their relative surface area.”

To scale the pond surface we used the mean surface area multiplied by the total number of ponds as the relationship between pond size and emission rate was too weak to support weighting the emissions within this pond size class:

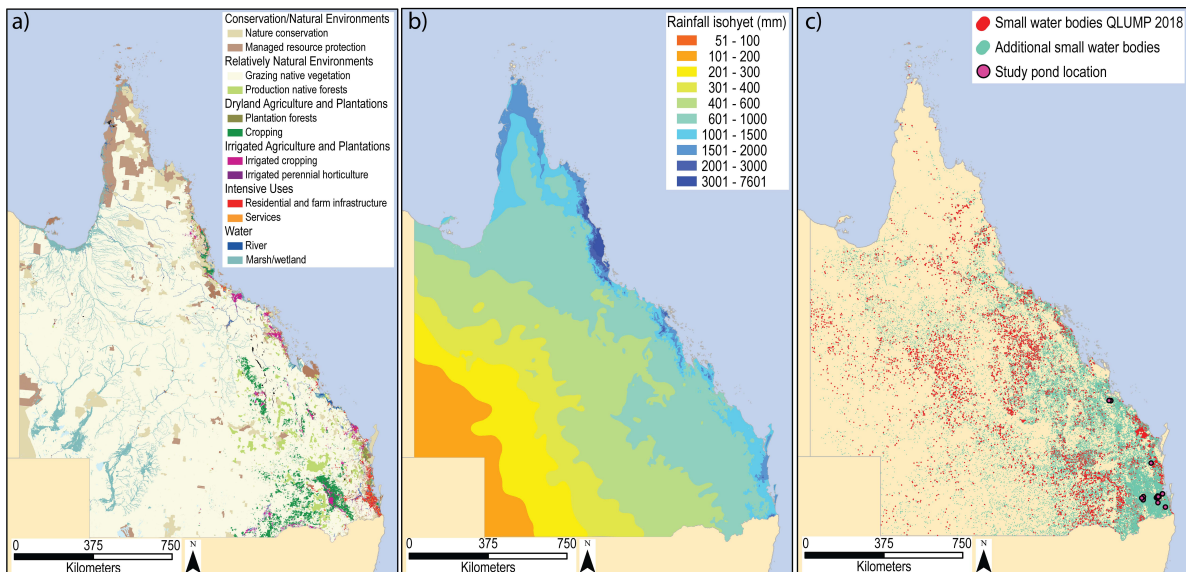


We have changed the following sentences to clarify the upscaling approach taken P5 L12-14:

“All remaining water bodies were then summed together to calculate total surface area of ponds and this was compared to larger reservoirs to determine their relative surface area. To undertake regional scaling of pond emissions, individual ponds were sorted using two different size class classifications:”

Figure 2: add the Category titles to the legend in panel a). For b) and c), increase the font size. Is it possible to indicate the location of the 22 study lakes on this map?

Reply: We have made the suggested changes to this figure and included the study site locations P20 Figure 2:



We have revised the figure legend accordingly P20 L3-11:

“Figure 2. a) 2018 state wide assessment showing the relative surface area occupied by secondary land use categories (QLUMP, 2018). Note the legend shows the two largest land uses within each category. b) Mean annual rainfall isohyets across Queensland from 30 period of 1961 to 1990 (<http://www.bom.gov.au> accessed March 2018). c) Location of study ponds and ponds identified from the land use assessment (QLUMP 2018) and two additional state wide databases (see text).”

Page 4, line 25: please clarify if several emission measurements were taken over 24-hour periods, or if the chamber incubation period was 24 hours. How many headspace gas samples were taken per emission measurement? Also, what time frame were these measurements made over?

Reply: Measurements were taken at chamber deployment and a final sample after 24 hours, this is now included in the text as well an explanation to justify this approach P6 L2-10:

“The 24 hour deployment time was chosen to increase the likelihood to capture ebullition, which is episodic in nature, and to incorporate diel variability in diffusive emissions which can be up to a 2-fold bias (Bastviken et al., 2004; Bastviken et al., 2010; Natchimuthu et al., 2014). The use of long term deployments may underestimate diffusive fluxes, which decrease as the chamber headspace approaches equilibrium with the water. However, in contrast to CO₂, CH₄ has a long equilibration time and it has been shown that a 24 hour deployment of these types of flux chambers on lakes underestimate diffusive fluxes by less than 10% (Bastviken et al., 2010). An initial gas sample was collected at chamber deployment and a final chamber headspace gas sample after 24 hours following the Exetainer method described in Sturm et al., (2015).”

Measurements were all taken from the latter half of 2017 (Aug to Dec) and this can now be found P5 L20-21:

“...from August to December 2017...”

Page 5, line 4: mention the number of ponds monitored, i.e. change to “The variability in surface area of each of the 22 ponds monitored in the emissions surveys was analyzed. . .”

Reply: We have changed this section to include the sentence P6 L28-30:

“The variability in surface area of each of the 22 ponds monitored in the emissions surveys was analysed using high resolution historical imagery across all monitored water bodies.”

Page 6, line 16: is it possible to provide more quantitative evidence than “clearly” for the lognormal fit? In the Figure caption, a p-value is mentioned, but not in the text.

Reply: We have removed “clearly” from the text and provided the p-values for the normal and log normal distributions in the manuscript text P8 L4-5:

“The emissions data from all replicate measurements fitted a log-normal ($p = 0.081$) but not a normal distribution ($p = 0.0000$)...”

Page 6, line 28: what additional datasets?

Reply: We have now referenced the Reservoirs and Water Storage Point datasets P8 L17-18:

“However, with the inclusion of the additional Reservoir and Water Storage Point datasets...”

Page 6, line 35-36: Your first research objective was to quantify the area of ponds relative to regional assessments of larger artificial waterbodies – how does the 1,000 km² compare to the total artificial water body surface area in Queensland?

Reply: Thank you for highlighting this discrepancy. Larger artificial water bodies cover a surface area of 2,161 km², giving a total surface area of 3,248 km² and ponds make up 33% of the total surface area. This has now been included in the discussion P10 L12-14:

“Given ponds represent 33.5% of the total flooded lands surface area in Queensland and emission rates are equivalent to larger water bodies in the region (Musenze et al., 2014; Sturm et al., 2014), ponds represent one-third of total emissions from flooded lands in Queensland.”

Page 7, line 3: change mg m⁻² d⁻¹ to mg CH₄ m⁻² d⁻¹ or mg CH₄-C m⁻² d⁻¹ depending on which you mean. I’m guessing the former, but the latter is also sometimes used.

Reply: This has now been corrected to mg CH₄ m⁻² d⁻¹ P8 L32.

Page 8, line 13: remove “clearly”

Reply: We have now removed “clearly” P10 L4.

Page 8, line 14-15, 19-20: these results should be moved to section 3.1; however, the discussion of their importance is appropriate to have here

Reply: We have moved these sentences to section 3.1 P8 L19-21:

“The official land use assessment of Queensland underestimates the surface area of ponds by 57%, and the total number of water bodies by more than an order of magnitude. The revised total surface area of all artificial water bodies across Queensland increased by 24% to just over 3,248 km² (Table A2).”

Page 8, like 20-22: how do these emissions compare to mean annual CH₄ emissions from larger inland waters in the state?

Reply: Given emission rates from ponds are of a similar magnitude to those reported from larger water bodies, emissions from ponds are contributing one-third of total flooded land emissions in Queensland. This has now been included in the discussion P10 L12-14:

“Given ponds represent 33.5% of the total flooded lands surface area in Queensland and emission rates are equivalent to larger water bodies in the region (Musenze et al., 2014; Sturm et al., 2014), ponds represent one-third of total emissions from flooded lands in Queensland.”

Page 9, line 36: what do you mean by “available for emissions”? This phrasing is unclear. Consider changing to “as this will greatly improve the surface area estimate of flooded lands used for upscaling greenhouse gas emissions.”

Reply: Thank you for highlighting this and the suggested change has been made P11 L34-35:

“will greatly improve the surface area estimate of flooded lands used for upscaling greenhouse gas emissions as well as their role in the global carbon cycle.”

The importance of small artificial water bodies as sources of methane emissions in Queensland, Australia.

Alistair Grinham¹, Simon Albert¹, Nathaniel Deering¹, Matthew Dunbabin², David Bastviken³, Bradford Sherman⁴, Catherine E. Lovelock⁵, Christopher D. Evans⁶

¹ School of Civil Engineering, The University of Queensland, Brisbane, 4072, Australia

² Queensland University of Technology, Institute for Future Environments, Brisbane, QLD, Australia

³ Department of Thematic Studies–Water and Environmental Studies, Linköping University, Linköping, SE-58183, Sweden.

⁴ CSIRO Land and Water, Canberra, 2601, Australia

⁵ School of Biological Sciences, The University of Queensland, Brisbane, 4072, Australia

⁶ Centre for Ecology and Hydrology, Environment Centre Wales, Bangor, LL57 2UW, UK

Correspondence to: Alistair Grinham (a.grinham@uq.edu.au)

Abstract. Emissions from flooded land represent a direct source of anthropogenic greenhouse gas emissions. Methane emissions from large, artificial water bodies have previously been considered, with numerous studies assessing emission rates and relatively simple procedures available to determine their surface area and generate upscaled emissions estimates. In contrast, the role of small artificial water bodies (ponds) is very poorly quantified, and estimation of emissions is constrained both by a lack of data on their spatial extent, and a scarcity of direct flux measurements. In this study, we quantified the total surface area of water bodies $<10^5$ m² across Queensland, Australia, and emission rates from a variety of water body types and size classes. We found that the omission of small ponds from current official land-use data has led to an under-estimate of total flooded land area by 24%, of small artificial water body surface area by 57%, and of the total number of artificial water bodies by an order of magnitude. All studied ponds were significant hotspots of methane production, dominated by ebullition (bubble) emissions. Two scaling approaches were developed with one based on pond primary use (stock watering, irrigation and urban lakes) and the other using size class. Both approaches indicated that ponds in Queensland alone emit over 1.6 Mt CO₂-eq yr⁻¹, equivalent to 10% of the state's entire Land Use, Land Use Change and Forestry sector emissions. With limited data from other regions suggesting similarly large numbers of ponds, high emissions per unit area, and under-reporting of spatial extent, we conclude that small artificial water bodies may be a globally important 'missing source' of anthropogenic greenhouse gas emissions.

1 Introduction

Over the last 20 years greenhouse gas emissions studies from large, artificial water bodies such as water supplies or hydroelectric reservoirs have clearly demonstrated these are major emissions sources of atmospheric methane (CH₄) emissions. Whilst carbon dioxide (CO₂), nitrous oxide (N₂O) and methane (CH₄) can all be emitted, the most recent global synthesis of artificial water body emissions demonstrated that when converted to CO₂ equivalents, CH₄ accounted for 80% of fluxes (Deemer et al., 2016). Increasingly sophisticated reviews have explored the magnitude of the artificial water body contribution to regional and global CH₄ budgets (St. Louis et al., 2000; Bastviken et al., 2011; Deemer et al., 2016). Much of the focus in reducing the uncertainty from this anthropogenic greenhouse gas source has focussed on the spatial and temporal variability in total emission rates

and, in particular, the relative contribution of CH₄ bubbling (ebullition) directly from the sediment (Bastviken et al., 2011). To enable large-scale emissions estimates from larger, artificial waterbodies, relationships between eutrophication status and sediment temperature (Aben et al., 2017; Harrison et al., 2017) have been developed to predict both diffusive and ebullitive emission rates. However, in regional or global scaling of emissions it is important to examine the emission rates of all types and sizes of artificial water bodies (Panneer Selvam et al., 2014). Furthermore the surface area of small water bodies can be particularly difficult to quantify in national and global datasets due to their small size and large number it is important to examine the uncertainty in surface area (Chumchal et al., 2016). In addition, the peripheral areas of small water bodies regularly experience periods of inundation and no inundation as water levels change due to their relatively shallow nature and high water use rates. The changes in their inundation status may influence emission rates as has been observed for natural ponds (Boon et al 1997). and the emission rates of all classes of artificial water bodies (Panneer Selvam et al., 2014). Given there are estimated to be 16 million artificial water bodies with a surface area less than 0.1 km² (Lehner et al., 2011), understanding the rates and variability in emissions from these flooded lands will be an important refinement to global CH₄ budgets.

The increasing urbanisation of society as well as the expansion of agriculture and commercial mining activities has resulted in a proliferation of small artificial water bodies in many parts of the globe (Renwick et al., 2005; Downing et al., 2006; Pekel et al., 2016). This is well illustrated by the example from the United States where artificial small water bodies increased from an estimated 20,000 in 1934 (Swingle, 1970) to over 9 million in 2005 (Renwick et al., 2005). These water bodies provide valuable services and are required to irrigate crops, provide water for farm stock, manage stormwater, offer visual amenity and recreational activities, and supply water for industrial processes (Fairchild et al., 2013). Small water bodies are often avian biodiversity hotspots, for example hosting an estimated 12 million water birds in a single catchment area in the Murray-Darling river system, Australia (Hamilton et al., 2017).

~~The creation~~ However, the creation of ~~water~~ small artificial water bodies also represents a transformation of the landscape, referred to in the Intergovernmental Panel on Climate Change land-use emission accounting procedures as 'Flooded Lands' (IPCC, 2006). Where the creation of small ~~water~~ bodies leads to new greenhouse gas (GHG) emissions, these emissions are considered anthropogenic in origin according to IPCC guidelines (IPCC, 2006), these can be considered anthropogenic in origin, and should therefore be included in Flooded Lands emissions inventories (Panneer Selvam et al., 2014). In addition, quantifying methane emission from ponds will improve our understanding of their role in the global carbon cycle. The potential of ponds as major organic carbon sinks has been established (Downing, 2010), although the stability and permanence of organic carbon trapped within ponds is critical to determining the magnitude of this sink. Loss pathways include active de-siltation (Verstraeten and Poesen, 2000), breaching of fully silted dams (Boardman and Foster, 2011) and methane emissions.

To date, the relatively few regional studies on small, artificial water bodies (hereafter 'ponds') have focussed on water and sediment dynamics rather than GHG emissions (Downing et al., 2008; Callow and Smettem, 2009; Verstraeten and Prosser, 2008; Habets et al., 2014). Studies of ~~CH₄ or other~~ GHG emissions from ponds have been limited (Downing, 2010; Deemer et al., 2016) but, are in agreement with assessments of larger water bodies where CH₄ is the dominant GHG relative to N₂O and CO₂ (Merbach et al., 1996; Natchimuthu et al., 2014) and many are restricted to fairly short term measurements at a small number of sites within a limited geographical area (Downing, 2010; Deemer et al., 2016). The only regional-scale study to date was undertaken in India by

Panneer Selvam et al. (2014). In order to quantify the role of artificial ponds in the global CH₄ cycle, as well as their role as a source of anthropogenic emissions, it is necessary ~~both~~ to obtain both estimates of CH₄ fluxes from a broader range of sites (~~and to determine the factors that account for spatial and temporal variability in flux~~) and also to estimate the surface area contributing to emissions. An important part of the value of building a dataset of CH₄ flux estimates from a broad range of sites is determining factors that account for spatial and temporal variability in the flux. Surface area estimates can be problematic given the range of water types (small urban lakes to large irrigation ponds) that fall within the definition of ‘ponds’, their frequently high temporal variation in surface area, the sheer number of such water bodies, and their ongoing increase in number over time.

Here, we present the first regional-scale assessment of CH₄ emissions from ponds in the Southern Hemisphere and, following the assessment of Panneer Selvam et al., (2014) only the second regional assessment globally. The assessment was undertaken in the 1.85 million km² State of Queensland, Australia. Queensland provides an effective test case for the estimation of CH₄ emissions from ponds because i) it incorporates a high degree of spatial variability in land-use and climate, from desert to humid tropics; and ii) the irregular rainfall patterns and wide spatial coverage of aerial imagery result in a large number of artificial ponds, which are relatively easy to quantify. CH₄ emissions from these ponds can be considered anthropogenic in origin, because past studies of rainforest and agricultural soils in the region have clearly shown these terrestrial landscapes were weak CH₄ sinks (ranging from -0.02 to -5 mg CH₄ m⁻² d⁻¹) prior to inundation (Allen et al., 2009; Scheer et al., 2011; Rowlings et al., 2012).

The principle objective of this study was to establish the GHG status of ponds in Queensland, Australia. Given the paucity of GHG data from ponds, this study has focussed on empirical assessments of CH₄ emissions from a range of pond types rather than detailed assessments of drivers of these emissions. Our assessment comprised four components:

1. Quantify the area of ponds, relative to regional assessments of larger artificial water bodies;
2. Quantify CH₄ emission rates for a wide spectrum of pond types;
3. Determine variability in their surface area and emission rates;
4. Determine the influence of inundation level on emission rates.

When integrated together, these components provide a robust regional assessment of anthropogenic CH₄ emissions for ponds in Queensland, Australia.

~~Our assessment comprised four components, designed to quantify the total anthropogenic CH₄ emission from ponds in Queensland, as well as their variability:~~

- ~~1. Quantify the area of ponds, relative to regional assessments of larger artificial water bodies;~~
- ~~2. Quantify CH₄ emission rates for a wide spectrum of pond types;~~
- ~~3. Determine spatial and temporal variability in their surface area and emission rates;~~
- ~~4. Determine the influence of inundation level on emission rates.~~

2 Methodology

2.1 Study area description

Queensland, the second largest state in Australia, covers a surface area of 1.85 million km² and ~~having has~~ a population of 4.75 million people. Land use across the state is dominated by agriculture with over 80% of the total surface area utilised for grazing cattle or irrigated cropping (Fig. 2 a; QLUMP, 2018). The Queensland agriculture sector contributes more than AUD\$13 billion per year to the state economy and includes 15 million cattle and

sheep as well as 4,526 km² of land under irrigation (ABS, 2018). The climate is subtropical or tropical with mean annual temperatures ranging from 27.5 °C in the state's north to 15.8 °C in the southern interior. There are large gradients in rainfall across the state ranging from a mean annual rainfall of over 3,000 mm in the coastal north east to less than 100 mm in the arid western regions (Fig. 2 b). Rainfall has a distinct annual pattern with up to 80% falling during the summer months from November to April and is subject to ~~major decadal~~ drought and flood cycles ~~at decadal cycles~~ (Klingaman et al., 2013). The economic importance of agriculture coupled with the need to provide year round water supply for these activities and the lack of predictable rainfall has resulted in the proliferation of artificial water bodies across the ~~whole~~ state (Fig. A1). However, the number and surface area of ponds in Queensland is relatively unknown as there is no legal requirement to refer ponds to the state registry due to their small size. Under current state law only dam walls in excess of 10 m and volumes above 750 ML are referable (DEWS, 2017) and the maximum reported volume for ponds in Queensland is three times less than the referable volume (< 250 ML) (SKM, 2012). This study has assumed ponds are less than 100,000 m² as this is recognised globally as the major area of uncertainty in surface area assessments (Lehner and Doll, 2004; Downing 2010) and has been identified as a threshold in global lake inventories (Downing et al., 2006; Verpoorter et al., 2014). Under current state law only dam walls in excess of 10 m and 750 ML are referable to the state registry (DEWS, 2017) with 109 dams registered (Referable dams register; <http://qldspatial.information.qld.gov.au/catalogue/>). The vast majority of artificial water bodies are less than 5 ML (Nathan and Lowe, 2012) and these ponds, therefore, represent an area of major uncertainty in the assessment of land use change assessment and associated greenhouse gas emissions.

2.2 Relative surface area of ponds across the region

To determine the number and relative surface area of ponds across the Queensland, three State Government GIS databases of artificial water bodies were utilised. However these databases required additional processing to extract comparable pond data as there were inconsistencies in the format and nomenclature of feature types. The number and relative surface area of ponds in Queensland was derived from primary database used was the most recent official assessment of land use from March 2018 (QLUMP, 2018) ~~and~~ ~~W~~ within the Primary land use classification of "Water" there is a secondary category of artificial "Reservoirs/dam" divided further into "Reservoirs, Water storage and Evaporation basin." The individual water body surface area is provided and all ~~reservoirs and water storages ponds less than 100,000 (<10⁵) m²~~ were extracted from the database. Evaporation basins were excluded, as these are commonly used for salt extraction. These ponds were then compared against two State Government databases from a high resolution assessment of artificial water bodies across the state published in 2014 and 2015. Both databases are derived from aerial (10 to 60 cm orthophotography) and satellite (0.5 to 2.5 m resolution) imagery captured between 2010 and 2014. One database contains water bodies greater than 625 m² at full supply (Reservoirs – Queensland; <http://qldspatial.information.qld.gov.au/catalogue/>) and for water bodies less than 625 m² a second database was used (Water storage points - Queensland; <http://qldspatial.information.qld.gov.au/catalogue/>).

Water bodies larger than 625 m² contained individual polygons where water body surface area was provided and all water bodies less than 10⁵ m² were extracted from the database. The database of water bodies smaller than 625 m² contained point data providing only the location of waterbodies and no information on their dimensions (Fig. A1 b and c). To estimate the surface area of these systems, 100 water bodies were randomly selected using the

Subset Features tool in the Geostatistical Analyst toolbox in ArcGIS (Version 10.3, ESRI Inc., Redlands, California, USA). The surface area of selected water bodies was then quantified using high resolution aerial imagery (Nearmap; www.nearmap.com.au). Typical pixel resolution ~~was of 7 cm, which~~ greatly improves edge detection of ponds as it can be very challenging to separate the water edge from riparian vegetation stands with coarser-scale data. Pond edges were mapped following the methodology of Albert et al., (2016) where imagery was georeferenced and the water edge was manually traced to create individual polygons for each pond. The mean surface area of all 100 polygons was then then assumed to approximate the surface area of all individual ponds within this database and the total surface area was calculated by multiplying this mean surface area by the total number of ponds used to calculate total surface area of water bodies within this database.

~~To ensure only one water body was reported from each location, all databases were first screened to ensure only one water body was reported from each location, with overlapping to remove repeated detections of waterbodies removed. The All~~ remaining water bodies were then summed together to calculate total surface area of ponds and this was compared to larger reservoirs to determine their relative surface area. To undertake regional scaling of pond emissions, individual ponds were sorted using two different size class classifications: Firstly, we categorised sites into the three smallest size classes (10^2 to 10^3 m²; 10^3 to 10^4 m²; and 10^4 to 10^5 m²) in the Global Reservoir and Dam (GRanD) assessment (Lehner et al., 2011). Secondly, we divided sites into water bodies less than 3,500 m² (primarily stock dams) and larger water bodies (primarily irrigation dams and urban lakes), following the findings of Lowe et al., (2005) and SKM, (2012).

2.3 CH₄ emissions from broad spectrum of pond types

To quantify the range of emission rates from ponds, a monitoring program was undertaken from August to December 2017 across a wide spectrum of ponds including: farm dams (irrigation and stock watering), urban lakes, small weir systems (i.e. small dams leading to widening and slowing of river flows) and rural residential water supplies (Fig. 1). Stock dams, irrigation dams and urban lakes account for the vast majority of ponds across Queensland and ponds within each category were selected to represent the regional size class distribution (Fig. A2). The majority of sites were located in coastal catchments in south east Queensland, Australia as well as one urban lake and three stock dams in Central Queensland (Fig. 2 c).

There are a number of commonly used methods to assess methane emissions from water bodies depending on the pathway of interest. For the diffusive emission pathway, rates may be modelled using the thin boundary methods or directly measured using manual or automatic floating chambers (St. Louis et al., 2000). For ebullition pathways, rates can be directly measured using acoustic surveys or funnel traps (DelSontro et al., 2011). Thin boundary layer models cannot be used to quantify the ebullition pathway and acoustic surveys or funnel traps cannot be used effectively in ponds as the water depth is often too shallow (< 1 m). We chose to use floating chambers to capture both ebullition and diffusive fluxes. CH₄ emission rates were measured by deploying between 3 and 16 floating chambers per water body, capturing covering both peripheral and central zones (Fig. A2A3). Chamber design followed the recommendations of Bastviken et al., (2015), as these lightweight chambers (diameter 40 cm, 12 L headspace volume and 0.7 kg total weight) were ideally suited to deployment in ponds where both site access and on-water deployments can be challenging (Fig. A4). The floating chambers used were designed to yield negligible bias on the gas exchange and compare well with non-invasive approaches (Cole et al., 2010; Gålfalk et al., 2013; Lorke et al., 2015).

Where possible 24 hour measurements were undertaken, however in three water bodies this was not possible, (Table A1) and here measurements lasted between 6 and 8 hours. The 24 hour deployment time was chosen to increase the likelihood to capture ebullition, which is episodic in nature, and to incorporate diel variability in diffusive emissions which can be up to a 2-fold bias (Bastviken et al., 2004; Bastviken et al., 2010; Natchimuthu et al., 2014). The use of long term deployments may underestimate diffusive fluxes, which decrease as the chamber headspace approaches equilibrium with the water. However, in contrast to CO₂, CH₄ has a long equilibration time and it has been shown that a 24 hour deployment of these types of flux chambers on lakes underestimate diffusive fluxes by less than 10% (Bastviken et al., 2010). An initial gas sample was collected at chamber deployment and a final ~~After each deployment a~~ chamber headspace gas sample ~~after 24 hours was collected~~ following the Exetainer method described in Sturm et al., (2015). CH₄ emission rates were calculated from the change in headspace concentration over time and normalised to areal units (Grinham et al., 2011).

2.4 ~~Spatial and temporal~~ Variability in surface area and emission rate

2.4.1 Spatial and seasonal variability across a single water body

To gain insight into the spatial and temporal uncertainty in pond emissions we compared variability in seasonal emissions from a single site to emissions from an intensive spatial survey of multiple sites across the pond (Fig. 4). Seasonal variability in emission rates ~~were~~ was measured at an urban lake (St Lucia 1) where monthly monitoring at a single site was undertaken across an annual cycle (Jan to Dec 2017). This pond was selected as water level remains relatively constant throughout the year and sampling would not be impacted by changes in inundation status. Emissions were monitored following the same methodology as described in the preceding section, and 4 ~~or~~ 5 floating chambers were deployed for each sampling event. Emission rates from this seasonal study were then compared to an intensive spatial survey of the same ~~lake~~ pond (Dec 2017), where 16 chambers were deployed simultaneously ~~across the lake for a 24 hour incubation~~. To better understand spatial patterns in emissions within this pond the water depth and proximity to inflow points were mapped. The bathymetric survey was conducted using a logging GPS depth sounder (Lowrance HDS7 depth sounder, Navico, Tulsa, Oklahoma, USA). Georeferenced water depth points were imported into ArcGIS and interpolated across the whole water body using the inverse distance weighting function.

2.4.2 Variability in water surface area across all monitored ponds

The variability in surface area of each of the 22 ponds monitored in the emissions surveys was analysed ~~The variability in surface area of each pond monitored in the emissions surveys was analysed~~ using high resolution historical imagery across all monitored water bodies. A time-series of high resolution aerial imagery over a 9 year period from 2009 to 2017 was screened for image quality and appropriate images were selected. The time series data are not consistent across the whole state, the number of discrete images for individual water bodies varied from 3 to 16. Images of individual ponds were georeferenced to a common permanent feature across all images and then the outer water edge was mapped and surface area calculated following Albert et al., (2016). The time series of surface area for individual water bodies was compared to their corresponding surface area at full supply level (A_{FSL}) and expressed as a percentage then grouped into three size classes based on the GRanD classification. This time period also captured the range of rainfall variability across the state with 2010 being the wettest year on record whilst 2013 to 2015 were consecutive drought years (Average rainfall; <https://data.qld.gov.au/>).

2.5 Effect of inundation status on pond emissions

~~Given the relatively shallow nature of most ponds, as well as high water use rates, peripheral areas of the water body regularly experience periods of inundation and no inundation as water levels change.~~ The effect of inundation status on emission rates was tested on a stock dam (Gatton 4) where measurements were undertaken on peripheral areas during periods of inundation and no inundation. This pond was selected as stock dams generally experience accelerated rates of water level change due to their relatively small size compared to other pond types (Fig. A2). In addition, the construction of this pond is typical for stock dams (a shallow pit is dug out and the soil used to construct the wall and spillway) and the surface area (1,893 m²) closely matched the median for all farm dams (1,586 m²; Fig. A2). Emission measurements for the inundated period followed the methodology outlined above for the water body emissions survey. Three weeks later water levels within the ponds had dropped and emission measurements were repeated at the same sites which were now exposed. For these emission measurements five chambers (90 mm diameter, 150 mm length) were carefully inserted 50 mm into the ground and care was taken to minimise disturbance to the soil surface. The headspace of each chamber was flushed with ambient air to remove headspace contamination due to chamber insertion, then the sampling port of each chamber was sealed. After the deployment period, a gas headspace sample was collected and CH₄ concentration analysed.

2.6 Statistical analyses and regional scaling of emissions

Emissions rates and surface area data were analysed using a series of one-way analyses of variance (ANOVAs) with the software program, Statistica V13 (Dell Inc., 2016). Analysis of emissions rates collected during the monthly monitoring study and the inundation study used sampling month or inundation status as the categorical predictors and chamber emission rates as the continuous variable. Emission rates from individual water bodies collected during the broad survey were first pooled into four primary use categories (irrigation, stock, urban and weirs) or three different GRanD size classes and these categories were used as the categorical predictors. The primary use of each pond was provided by pond owners or managers, in the case of urban lakes that had both aesthetic and stormwater functions these were classified as urban (Table A1). 22 ponds were included in this survey with four irrigation ponds, nine stock watering ponds, seven urban ponds and two weirs. Changes in water surface area (as a percentage of A_{FSL}) from individual water bodies were pooled into three GRanD size classes and these categories used as the categorical predictors. Where necessary, continuous variable data were log transformed to ensure normality of distribution and homogeneity of variance (Levene's test) with post hoc tests performed using Fisher's LSD (least significant difference) test (Zar, 1984). Tests for normality were conducted using Shapiro-Wilks tests as recommended by Ruxton et al., (2015). The non-parametric Kruskal-Wallis (KW) test was used for continuous data which failed to satisfy the assumptions of normality and homogeneity of variance even after transformation. Statistical results were reported as follows: Test applied (Fisher's LSD or Kruskal-Wallis test), the test statistic (F or H) value and associated degrees of freedom with p-value.

Emissions were scaled to water body size classes following two different approaches. Firstly, emissions were grouped according to their respective GRanD size class. These match the size class of water bodies used in the emissions monitoring of this study, and the GRanD database was used in the most recent global synthesis of greenhouse gas emissions from reservoirs (Deemer et al., 2016). Secondly, water bodies less than 3,500 m² in area were assumed to be primarily stock dams and larger water bodies primarily irrigation dams (Lowe et al., 2005). To extrapolate pond emission rates to regional scales, an appropriate measure of centrality should be used.

Three common measures, arithmetic mean, geometric mean and median values, were calculated for each water body category and size class. To assess the most suitable measure of centrality for water body emissions, normal probability plots of raw and log transformed emissions data were generated and tested using the Shapiro-Wilks test (Fig. A5). The emissions data from all replicate measurements fitted a log-normal ($p = 0.081$) but not a normal distribution ($p = 0.0000$)~~clearly followed a log normal distribution (Fig. A3)~~ and, therefore, the geometric mean would provide the most appropriate measure of centrality for this data (Ott, 1994; Limpert et al., 2001). Fluxes were scaled to annual rates using the cumulative surface area of water bodies and the respective emissions rate for each size class using the geometric means. The variability in geometric mean was given by the exponential of the 95% confidence interval range of log transformed data. Emissions for water bodies less than 3,500 m² were scaled using stock dam rates and larger water bodies (3,500 m² to 10⁵ m²) using rates obtained from irrigation dams and urban lakes. Total fluxes from respective size classes were then combined to provide regional estimates. Annual fluxes of CH₄ were converted to CO₂ equivalents assuming a one hundred year global warming potential of 34 (IPCC, 2013).

3 Results

3.1 Relative surface area of ponds

The state wide land use assessment identified 13,046 ponds across Queensland, occupying a total surface area of approximately 467 km² (Fig. 2 c). However, with the inclusion of the additional Reservoir and Water Storage Point datasets the number of ponds increased over 20 times to a total of 293,346, and the surface area more than doubled to 1,087 km². The official land use assessment of Queensland underestimates the surface area of ponds by 57%, and the total number of water bodies by more than an order of magnitude. The revised total surface area of all artificial water bodies across Queensland increased by 24% to just over 3,248 km² (Table A2).

Ponds were widely distributed across the state, but over 78% of ponds were located on grazing land, suggesting that stock dams represent the primary water body type (Fig. 2 a). ~~The majority~~Over two thirds of ponds were confined to regions of the state where rainfall isohyets were above 600 mm (Fig. 2 b) and heavily concentrated in cropping and residential areas in the central and south eastern parts of the state (Fig. 2 c). These findings highlight the importance of striving to incorporate all artificial water bodies into flooded land emission assessments; omitting water bodies below a size threshold can lead to a dramatic under-estimation of the total number of water bodies present, and a considerable underestimate of the available surface area for CH₄ emissions.

3.2 CH₄ emissions from ponds

All 22 water bodies monitored in this study were shown to be emitters of CH₄, and emission rates ranged from a minimum of 1 mg m⁻² d⁻¹ to a maximum of 5,425 mg m⁻² d⁻¹ (Table A1). Only one water body (Mt Larcom 3) had a maximum rate below the reported upper range (50 mg CH₄ m⁻² d⁻¹) for diffusive fluxes found in larger water bodies in this region (Grinham et al., 2011; Musenze et al., ~~2016~~2014). Mean flux rates of only four individual water bodies were below 50 mg m⁻² d⁻¹ (Table A1) suggesting ebullition to be the dominant emission pathway in these systems.

Grouping ponds according to their primary use resulted in no significant differences in emissions rates between irrigation dams, stock dams and urban lakes, however, weirs were significantly higher ($F_{(3,121)} = 6.43$, $p < 0.001$)

than all other categories (Fig. 3 a). Mean emission rates were however higher in stock water bodies ($168 \text{ mg m}^{-2} \text{ d}^{-1}$) compared with irrigation and urban bodies (84 and $129 \text{ mg m}^{-2} \text{ d}^{-1}$, respectively). Weir water bodies had mean emission rates of $730 \text{ mg m}^{-2} \text{ d}^{-1}$, more than four times higher those of any other category (Fig. 3 a). Grouping ponds according to their GRanD size classes resulted in significantly higher emissions rates (KW-H_(2,121) = 7.354, $p < 0.05$) from ponds in 10^2 to 10^3 m^2 size class compared to 10^4 to 10^5 m^2 (Fig. 3 b). Overall, mean emissions decreased with increasing size class. Note that all weir sites fell into the smallest size category.

3.3 Spatial and temporal variability in surface area and emission rate

3.3.1 Spatial and temporal variability within a single pond

10 Observed emissions rates from the high-resolution intensive spatial study, carried out in December 2017, ranged over two orders of magnitude from under $40 \text{ mg m}^{-2} \text{ d}^{-1}$ to over $3,500 \text{ mg m}^{-2} \text{ d}^{-1}$ (Fig. 4). Emissions were highest in the shallow southwest sector of the pond, adjacent a large stormwater inflow point, as well as along the western boundary where numerous overhanging riparian trees are located along with a second stormwater inflow point (Fig. 4).

15 Monthly emissions were moderately variable across the annual cycle and mean rates ranged from 176 to $332 \text{ mg m}^{-2} \text{ d}^{-1}$. No significant difference in emissions rates (KW-H_(11,50) = 3.56, $p = 0.98$) were observed between sampling events (Fig. 5). Mean rates observed during the monthly monitoring were similar to chamber rates from the intensive spatial study ($274 \text{ mg m}^{-2} \text{ d}^{-1}$).

3.3.2 Variability in water surface area across all monitored ponds

20 Variability in water surface area is strongly related to water body size class (Fig. 6). Mean surface area within the smallest size class was only 64% of A_{FSL} , this increased to 84% in the intermediate size class and ~~was~~ to 94% in the largest size class (Fig. 6). Smaller ponds had a significantly lower surface area relative to A_{FSL} (KW-H_(2,231) = 50.523, $p < 0.001$) compared to larger size classes and were more variable (Fig. 6). Regional emissions estimates therefore need to correct for the differences in water body surface area relative to predicted A_{FSL} , particularly, in
25 the smaller size classes.

3.4 Effect of inundation on stock dampond emissions

The water surface area of a single stock dam ranged from 395 to $2,808 \text{ m}^2$ over a 40 month period (Fig. 7 a) with an outer band of 580 m^2 undergoing frequent inundation cycles (May 2016 to Dec 2017 - Fig. 7 a). Emissions
30 rates from peripheral areas during an inundated period were significantly higher (more than one order of magnitude) compared with emissions when not inundated (KW-H_(1,10) = 6.818, $p < 0.001$; Fig. 7 b). In contrast emissions from central areas were over $100 \text{ mg m}^{-2} \text{ d}^{-1}$, more than double the peripheral area emission rates (Table A1). This modifier of rates will primarily impact emissions from smaller size classes which have greater variability in water surface area (Fig. 6). An additional implication is in the importance of designing monitoring studies
35 where emissions rates are quantified from both peripheral and central areas for each system. Rates monitored only in peripheral areas will likely bias towards lower emissions, particularly if these have undergone recent inundation.

4 Discussion

4.1 Relative importance of pond emissions to regional flooded land inventories

The findings of this study ~~clearly~~ demonstrate ponds are an underreported and important CH₄ emission source in Queensland, and likely also globally. ~~The official land use assessment of Queensland underestimates the surface area of ponds by 57%, and the total number of water bodies by more than an order of magnitude.~~ These findings highlight the importance of striving to incorporate all artificial water bodies into flooded land emission assessments; omitting water bodies below a size threshold can lead to a substantial under-estimation of the total number of water bodies present, and a considerable underestimate of the available surface area for CH₄ emissions. ~~The revised total surface area of artificial water bodies across Queensland increased by 24% to just over 3,248 km² (Table A2).~~ Mean annual CH₄ fluxes from ponds for the State of Queensland ranged between 1.7 and 1.9 million t CO₂ eq (Table 1) depending on the scaling approach. Given ponds represent 33.5% of the total flooded lands surface area in Queensland and emission rates are equivalent to larger water bodies in the region (Musenze et al., 2014; Sturm et al., 2014), ponds represent one-third of total emissions from flooded lands in Queensland. ~~The uncertainty in mean emissions ranged from a lower limit of 1.1 million t CO₂ eq to an upper limit of 3.2 million t CO₂ eq.~~ Remarkably, mean total emissions from ponds represent approximately 10% of Queensland's land use, land use change and forestry sector (NGERS, 2015) emissions using either scaling approach.

Future regional and global emissions estimates would be greatly improved with the inclusion of ponds, as their proliferation has been noted in five continents. In the continental United States ponds have been shown to cover 20% of total artificial water body surface area (Smith et al., 2002); in South Africa there are an estimated 500,000 ponds (Mantel et al., 2010); in Czechoslovakia ponds make up over 30% of total artificial water bodies surface area (Vacek, 1983); and in India ponds are estimated to comprise 6,238 km², or over 25% of India's artificial water body surface area (Panneer Selvam et al., 2014).

4.2 Pond emission pathways

Emissions rates from ponds observed in this study are consistent with ebullition being the dominant pathway. Diffusive emissions from studies of three larger water bodies in the region found the upper limit for diffusive emission was 50 mg m⁻² d⁻¹ (Grinham et al., 2011; Musenze et al., ~~2016~~2014) and only five ponds had emission rates below this level. Ebullition was observed at all ponds with maximum rates all in excess of 50 mg m⁻² d⁻¹ with the exception of only one stock dam (Mt Larcom 3) where the maximum rate was 19 mg m⁻² d⁻¹. This is a consistent finding with larger water bodies in the region where ebullition has been shown to dominate total emissions (Grinham et al., 2011; Sturm et al., ~~2016~~2014). The relatively higher emissions from smaller pond size classes is consistent with previous observations of increased ebullition activity in shallow zones, particularly water depths less than 5 m (Keller and Stallard, 1994; Joyce and Jewell, 2003; Sturm et al., ~~2016~~2014). Virtually all ponds within the smaller size classes would be less than 5 m deep. In addition, ponds trap large quantities of sediment and organic material (Neil and Mazari, 1993; Verstraeten and Prosser, 2008) and these deposition zones have been identified as methane ebullition hotspots in larger water bodies (Sobek et al., 2012; Maeck et al., 2013). The pattern in emissions from the intensive spatial study in an urban lake, where shallow areas adjacent stormwater inflows were shown to be ebullition hotspots, have also been observed in larger water bodies were

ebullition activity was highest adjacent to catchment inflows (DelSontro et al., 2011;Grinham et al., 2017;de Mello et al., 2017). The emissions from small weirs were clearly dominated by ebullition, which is consistent with emissions from three larger weirs where rates ranged from 1,000 to over 6,000 mg m⁻² d⁻¹ (Bednařík et al., 2017). Weirs intercept the primary streamflow pathways and will likely cause large quantities of catchment derived organic matter to deposit within the weir body which, coupled to the shallow nature, results in high rates of ebullition. Overall, the rates observed for all categories, except irrigation dams, were in the upper range of reservoir areal flux rates reported in global reviews (St. Louis et al., 2000;Bastviken et al., 2011;Deemer et al., 2016), reflecting the dominance of the ebullition pathway in ponds. An additional consideration for future studies of ebullition patterns in ponds stems from recent studies of reservoirs which found significant changes in ebullition intensity and ebullition distribution as water levels decrease (Beaulieu et al., 2018;Hilgert et al., 2019). Under decreasing water levels, deeper zones of ponds may begin bubbling or increase the intensity of bubbling, this could potentially offset the reduction in surface available for emissions and total emissions would remain relatively constant.

4.3 Challenges in scaling emissions

Efforts to develop flooded land emission inventories rely heavily on the emission rate used to scale the surface area of water bodies' within selected categories. Given the high variability in emission rates within and between individual ponds and relatively low replication, it is critical to select an appropriate measure of centrality (arithmetic mean, geometric mean or median) in order to scale regionally and globally (Downing, 2010). For rice paddies, septic tanks, peatlands and natural waters (Aselmann and Crutzen, 1989;Dise et al., 1993;Diaz-Valbuena et al., 2011;Bridgham et al., 2006) the geometric mean has been applied. Likewise, in this study the log normal distribution of emissions data indicated the geometric mean as the most appropriate measure and the total emission rates using this measure fell within the reported range from larger artificial water bodies in the region (Grinham et al., 2011;Sturm et al., 20162014). However, the geometric mean for all water body categories and size classes were less than half of their respective arithmetic mean values (Fig. A4A6). For irrigation, stock and urban water bodies, geometric mean values were actually outside of 95% confidence interval limit for the arithmetic mean (Fig. A4A6 a and b). Geometric mean and median values were similar across all water body categories and size classes and these measures, therefore, represent conservative emissions rates from ponds. This raises an important issue with scaling ebullition dominated water bodies as there is always going to be a high likelihood of detecting a small number of very high rates which will invariably give rise to log normal data distributions. Future studies will focus on determining whether the conservative estimates generated through the use of geometric means approximate the true emissions from ponds.

5 Future research

Continued efforts to quantify regional pond abundance, particularly smaller size classes, should be a research priority as this will greatly improve the surface area estimate of flooded lands used for upscaling greenhouse gas emissions as well as their role in the global carbon cycle.~~will greatly improve flooded land surface area estimates available for emissions.~~ The increased coverage, availability and resolution of satellite imagery as well as more sophisticated methods to identify water bodies (Verpoorter et al., 2014) will support these efforts. However, it is

critical to continually update regional assessments as the annual increase in farm ponds has been estimated to be as high as 60% in some parts of the globe (Downing and Duarte, 2009). Regional assessments should also correct for differences in pond surface area, particularly in the smaller size classes, as this study has demonstrated actual surface area can be significantly smaller than the surface area at full supply level; (A_{FSL}). An additional consideration is to ensure pond emission studies from different regions include all relevant ponds types. For example, the use of ponds to increase groundwater recharge is widespread across South East Asia (Giordano, 2009) and these would need to be included in regional inventories.

Increasing both the number and type of pond within each size class in emissions monitoring studies should be a research priority ~~for emissions monitoring studies~~. This will allow increased confidence in the selection of an appropriate measure of centrality as well as reducing uncertainty in the expected range of emission rates within each pond category. When designing a monitoring study it is important to ensure emissions rates are quantified from both peripheral and central areas for each pond. This study demonstrated that measurements taken only in peripheral areas will likely bias towards lower emissions particularly in ponds that experience rapid changes in water level and, therefore, inundation status of peripheral areas. However, this was limited to a single stock dam and additional pond types and size classes must be examined before more confident generalisations can be made.

The high spatial variability in emission rates within ponds noted from this study, highlights the importance of ensuring chambers cover the widest possible spatial scale during a measurement campaign. This will increase the likelihood of detecting ebullition zones which are likely the dominant emission pathway. However, this finding was from a single urban lake and additional long term temporal studies along with high resolution spatial surveys of different pond types and size classes are required to identify the drivers of pond emission pathways. Research into both pond surface area and CH₄ emission rates will allow greater understanding of their importance to flooded land emission inventories at both regional and global scales.

Data Availability

The data that support the findings of this study are available from the corresponding author upon request.

25 Author contribution

AG conceived, designed and conducted the study and co-wrote the manuscript; CE, CL, DB and BS conceived, designed the study and contributed to the manuscript; SA, ND and MD conducted the study and contributed to the manuscript.

Competing interests

30 The authors declare no competing financial interests.

Acknowledgements

We are grateful to the reviewers for their helpful comments and suggestions. We gratefully acknowledge the following for providing access to ponds: R and L Prange; J and M Gale; M Bauer; S Green; T Connolly. In

addition, we are grateful for the background information regarding the primary use of the ponds. We gratefully acknowledge M Fluggen for laboratory and logistical support.

References

- 5 Aben, R. C., Barros, N., Van Donk, E., Frenken, T., Hilt, S., Kazanjian, G., Lamers, L. P., Peeters, E. T., Roelofs, J. G., and Domis, L. N. S.: Cross continental increase in methane ebullition under climate change, *Nature Communications*, 8, 1682, 2017.
- ABS, 2018. Australian Bureau of Statistics: Queensland region. <http://stat.abs.gov.au/>. Accessed March 2018.
- Albert, S., Leon, J. X., Grinham, A. R., Church, J. A., Gibbes, B. R., and Woodroffe, C. D.: Interactions between
10 sea-level rise and wave exposure on reef island dynamics in the Solomon Islands, *Environmental Research Letters*, 11, 054011, 2016.
- Allen, D., Mendham, D., Cowie, A., Wang, W., Dalal, R., and Raison, R.: Nitrous oxide and methane emissions from soil are reduced following afforestation of pasture lands in three contrasting climatic zones, *Soil Research*, 47, 443-458, 2009.
- 15 Aselmann, I., and Crutzen, P.: Global distribution of natural freshwater wetlands and rice paddies, their net primary productivity, seasonality and possible methane emissions, *Journal of Atmospheric chemistry*, 8, 307-358, 1989.
- [Bastviken, D., Santoro, A.L., Marotta, H., Pinho, L.Q., Calheiros, D.F., Crill, P., and Enrich-Prast, A.: Methane Emissions from Pantanal, South America, during the Low Water Season: Toward More Comprehensive Sampling, *Environmental Science & Technology*, 44, 5450-5455, 2010.](#)
- 20 Bastviken, D., Tranvik, L. J., Downing, J. A., Crill, P. M., and Enrich-Prast, A.: Freshwater methane emissions offset the continental carbon sink, *Science*, 331, 50-50, 2011.
- Bastviken, D., Sundgren, I., Natchimuthu, S., Reyier, H., and Gålfalk, M.: Cost-efficient approaches to measure carbon dioxide (CO₂) fluxes and concentrations in terrestrial and aquatic environments using mini loggers,
25 *Biogeosciences*, 12, 3849-3859, 2015.
- [Beaulieu, J. J., Balz, D. A., Birchfield, M. K., Harrison, J. A., Nietch, C. T., Platz, M., Squier, W. C., Waldo, S., Walker, J. T., White, K. M., and Young, J. L.: Effects of an experimntal water-level drawdown on methane emissions from a eutrophic reservoir, *Ecosystems*, 21, 657-674, 2018.](#)
- Bednařík, A., Blaser, M., Matoušů, A., Hekera, P., and Rulík, M.: Effect of weir impoundments on methane
30 dynamics in a river, *Science of the Total Environment*, 584, 164-174, 2017.
- [Boardman, J., and Foster, I. D.: The potential significance of the breaching of small farm dams in the Sneecuberg region, South Africa, *Journal of Soils and Sediments*, 11, 1456-1465, 2011.](#)
- [Boon, P. I., Mitchell, A., and Lee, K.: Effects of wetting and drying on methane emissions from ephemeral floodplain wetlands in southeastern Australia, *Hydrobiologia*, 357, 73-87, 1997.](#)
- 35 Bridgman, S. D., Patrick Megonigal, J., Keller, J. K., Bliss, N. B., and Trettin, C.: The carbon balance of North American wetlands, *Wetlands*, 26, 889-916, 2006.
- Callow, J., and Smettem, K.: The effect of farm dams and constructed banks on hydrologic connectivity and runoff estimation in agricultural landscapes, *Environmental Modelling & Software*, 24, 959-968, 2009.

- Chumchal, M. M., Drenner, R. W., and Adams, K. J.: Abundance and size distribution of permanent and temporary farm ponds in the southeastern Great Plains, *Inland Waters*, 6, 258-264, 2016.
- [Cole, J. J., Bade, D. L., Bastviken, D., Pace, M. L., and Van de Bogert, M.: Multiple approaches to estimating air-water gas exchange in small lakes, *Limnology and Oceanography-Methods*, 8, 285-293, 2010.](#)
- 5 de Mello, N. A. S. T., Brighenti, L. S., Barbosa, F. A. R., Staehr, P. A., and Bezerra Neto, J. F.: Spatial variability of methane (CH₄) ebullition in a tropical hypereutrophic reservoir: Silted areas as a bubble hot spot, *Lake and Reservoir Management*, 1-10, 2017.
- Deemer, B. R., Harrison, J. A., Li, S., Beaulieu, J. J., DelSontro, T., Barros, N., Bezerra-Neto, J. F., Powers, S. M., dos Santos, M. A., and Vonk, J. A.: Greenhouse gas emissions from reservoir water surfaces: a new global synthesis, *BioScience*, 66, 949-964, 2016.
- 10 Dell Inc.: ~~(2016)~~. Dell Statistica (data analysis software system), version 13. software.dell.com, 2016.
- DelSontro, T., Kunz, M. J., Kempter, T., Wüest, A., Wehrli, B., and Senn, D. B.: Spatial heterogeneity of methane ebullition in a large tropical reservoir, [Environmental Science & Technology](#)~~Environmental science & technology~~, 45, 9866-9873, 2011.
- 15 DEWS.: ~~2017~~. Guidance on referable dams planning. Department of Energy and Water Supply, Queensland, Australia, 2017.
- Diaz-Valbuena, L. R., Leverenz, H. L., Cappa, C. D., Tchobanoglous, G., Horwath, W. R., and Darby, J. L.: Methane, carbon dioxide, and nitrous oxide emissions from septic tank systems, [Environmental Science & Technology](#)~~Environmental science & technology~~, 45, 2741-2747, 2011.
- 20 Dise, N. B., Gorham, E., and Verry, E. S.: Environmental factors controlling methane emissions from peatlands in northern Minnesota, *Journal of Geophysical Research: Atmospheres*, 98, 10583-10594, 1993.
- [Downing, J. A., Prairie, Y.T., Cole, J.J., Duarte, C. M., Tranvik, L. J., Striegl, R. G., McDowell, W. H., Kortelainen, P., Caraco, N. F., Melack, J. M., and Middelburg, J. J.: The global abundance and size distribution of lakes, ponds, and impoundments, *Limnology and Oceanography*, 51, 2388-2397, 2006.](#)
- 25 Downing, J., Cole, J., Middelburg, J., Striegl, R., Duarte, C., Kortelainen, P., Prairie, Y., and Laube, K.: Sediment organic carbon burial in agriculturally eutrophic impoundments over the last century, *Global Biogeochemical Cycles*, 22, 2008.
- Downing, J., and Duarte, C.: Abundance and size distribution of lakes, ponds and impoundments, 2009.
- Downing, J. A., Prairie, Y., Cole, J., Duarte, C., Tranvik, L., Striegl, R. G., McDowell, W., Kortelainen, P., Caraco, N., and Melack, J.: The global abundance and size distribution of lakes, ponds, and impoundments, *Limnology and Oceanography*, 51, 2388-2397, 2006.
- 30 Downing, J. A.: Emerging global role of small lakes and ponds, *Limnetica*, 29, 0009-0024, 2010.
- [DSITI Queensland Land Use Mapping Program \(QLUMP\) of the Department of Science, Information Technology and Innovation \(DSITI\) <https://www.qld.gov.au/environment/land/vegetation/mapping/qlump>.](#)
- 35 Fairchild, G. W., Robinson, C., Brainard, A. S., and Coutu, G. W.: Historical changes in the distribution and abundance of constructed ponds in response to changing population density and land use, *Landscape Research*, 38, 593-606, 2013.
- [Gålfalk, M., Bastviken, D., Fredriksson, S., and Arneborg, L.: Determination of the piston velocity for water-air interfaces using flux chambers, acoustic Doppler velocimetry, and IR imaging of the water surface, *Journal of Geophysical Research: Biogeosciences* 118, 770-782, 2013.](#)
- 40

- Grinham, A., Dunbabin, M., Gale, D., and Udy, J.: Quantification of ebullitive and diffusive methane release to atmosphere from a water storage, *Atmospheric Environment*, 45, 7166-7173, 2011.
- Grinham, A., Dunbabin, M., and Albert, S.: Importance of sediment organic matter to methane ebullition in a sub-tropical freshwater reservoir, *Science of The Total Environment*, [621, 1199-1207](#), 2017.
- 5 Habets, F., Philippe, E., Martin, E., David, C., and Leseur, F.: Small farm dams: impact on river flows and sustainability in a context of climate change, *Hydrology and Earth System Sciences*, 18, 4207, 2014.
- Hamilton, A. J., Conort, C., Bueno, A., Murray, C. G., and Grove, J. R.: Waterbird use of farm dams in south-eastern Australia: abundance and influence of biophysical and landscape characteristics, *Avian Research*, 8, 2, 2017.
- 10 Harrison, J. A., Deemer, B. R., Birchfield, M. K., and O'Malley, M. T.: Reservoir water-level drawdowns accelerate and amplify methane emission, [Environmental Science & Technology](#)~~Environmental science & technology~~, 51, 1267-1277, 2017.
- [Hilgert, S., Vicente Scapulatempo Fernandes, C., and Fuchs, S.: Redistribution of methane emission hot spots under drawdown conditions, Science of the Total Environment, 646, 958-971, 2019.](#)
- 15 ~~IPCC, 2006~~; 2006 IPCC Guidelines for National Greenhouse Gas Inventories, Prepared by the National Greenhouse Gas Inventories Programme, Eggleston H.S., Buendia L., Miwa K., Ngara T. and Tanabe K. (eds). Published: IGES, Japan.
- ~~IPCC, (2013)~~ AR5 WG. "Climate Change 2013: The Physical Science Basis - Anthropogenic and Natural Radiative Forcing Supplementary Material". Cambridge University Press, [2013](#)
- 20 Joyce, J., and Jewell, P. W.: Physical controls on methane ebullition from reservoirs and lakes, *Environmental & Engineering Geoscience*, 9, 167-178, 2003.
- Keller, M., and Stallard, R. F.: Methane emission by bubbling from Gatun Lake, Panama, *Journal of Geophysical Research: Atmospheres*, 99, 8307-8319, 1994.
- Klingaman, N. P., Woolnough, S., and Syktus, J.: On the drivers of inter-annual and decadal rainfall variability in Queensland, Australia, *International Journal of Climatology*, 33, 2413-2430, 2013.
- 25 Lehner, B., Liermann, C. R., Revenga, C., Vörösmarty, C., Fekete, B., Crouzet, P., Döll, P., Endejan, M., Frenken, K., and Magome, J.: High-resolution mapping of the world's reservoirs and dams for sustainable river-flow management, *Frontiers in Ecology and the Environment*, 9, 494-502, 2011.
- Limpert, E., Stahel, W. A., and Abbt, M.: Log-normal Distributions across the Sciences: Keys and Clues: On the charms of statistics, and how mechanical models resembling gambling machines offer a link to a handy way to characterize log-normal distributions, which can provide deeper insight into variability and probability—normal or log-normal: That is the question, *AIBS Bulletin*, 51, 341-352, 2001.
- 30 [Lorke, A., Bodmer, P., Noss, C., Alshboul, Z., Koschorreck, M., Somlai-Haase, C., Bastviken, D., Flury, S., McGinnis, D.F., Maeck, A., Muller, D., and Premke, K.: Technical note: drifting versus anchored flux chambers for measuring greenhouse gas emissions from running waters, Biogeosciences 12, 7013-7024, 2015.](#)
- 35 Lowe, L., Nathan, R., and Morden, R.: Assessing the impact of farm dams on streamflows, Part II: Regional characterisation, *Australasian Journal of Water Resources*, 9, 13-26, 2005.
- Maeck, A., DelSontro, T., McGinnis, D. F., Fischer, H., Flury, S., Schmidt, M., Fietzek, P., and Lorke, A.: Sediment trapping by dams creates methane emission hot spots, *Environmental ~~science~~ Science & ~~technology~~Technology*, 47, 8130-8137, 2013.
- 40

- Mantel, S. K., Hughes, D. A., and Muller, N. W.: Ecological impacts of small dams on South African rivers Part 1: drivers of change-water quantity and quality, *Water Sa*, 36, 351-360, 2010.
- Merbach, W., Augustin, J., Kalettka, T., and Jacob, H. J.: Nitrous oxide and methane emissions from riparian areas of ponded depressions of Northeast Germany, *Journal of Applied Botany and Food Quality*, 70, 134-136, 1996.
- 5 Musenze, R. S., Grinham, A., Werner, U., Gale, D., Sturm, K., Udy, J., and Yuan, Z.: Assessing the Spatial and Temporal Variability of Diffusive Methane and Nitrous Oxide Emissions from Subtropical Freshwater Reservoirs, *Environmental Science & Technology*, 48, 14499-14507, 2014.
- ~~Musenze, R. S., Fan, L., Grinham, A., Werner, U., Gale, D., Udy, J., and Yuan, Z.: Methane dynamics in subtropical freshwater reservoirs and the mediating microbial communities, *Biogeochemistry*, 128, 233-255, 2016.~~
- 10 Natchimuthu, S., Panneer Selvam, B., and Bastviken, D.: Influence of weather variables on methane and carbon dioxide flux from a shallow pond, *Biogeochemistry*, 119:403-413, 2014.
- Nathan, R., and Lowe, L.: The hydrologic impacts of farm dams, *Australasian Journal of Water Resources*, 16, 75-83, 2012.
- 15 Neil, D., and Mazari, R.: Sediment yield mapping using small dam sedimentation surveys, *Southern Tablelands, New South Wales, Catena*, 20, 13-25, 1993.
- NGERS 2015. Queensland 2015. Australia National Greenhouse Gas Inventory (NGERS). <http://ageis.climatechange.gov.au/#>. Accessed April 2018.
- Ott, W. R.: Environmental statistics and data analysis, CRC Press, 1994.
- 20 Panneer Selvam, B., Natchimuthu, S., Arunachalam, L., and Bastviken, D.: Methane and carbon dioxide emissions from inland waters in India—implications for large scale greenhouse gas balances, *Global change biology*, 20, 3397-3407, 2014.
- Pekel, J.-F., Cottam, A., Gorelick, N., and Belward, A. S.: High-resolution mapping of global surface water and its long-term changes, *Nature*, 540, 418, 2016.
- 25 QUMLP.: Queensland Land Use Mapping Program (QLUMP) of the Department of Science, Information Technology and Innovation (DSITI), <https://www.qld.gov.au/environment/land/vegetation/mapping/qlump>, 2018.
- Renwick, W., Smith, S., Bartley, J., and Buddemeier, R.: The role of impoundments in the sediment budget of the conterminous United States, *Geomorphology*, 71, 99-111, 2005.
- Rowlings, D., Grace, P., Kiese, R., and Weier, K.: Environmental factors controlling temporal and spatial variability in the soil-atmosphere exchange of CO₂, CH₄ and N₂O from an Australian subtropical rainforest, *Global Change Biology*, 18, 726-738, 2012.
- 30 Ruxton, G. D., Wilkinson, D. M., and Neuhäuser, M.: Advice on testing the null hypothesis that a sample is drawn from a normal distribution, *Animal Behaviour*, 107, 249-252, 2015.
- Scheer, C., Grace, P. R., Rowlings, D. W., Kimber, S., and Van Zwieten, L.: Effect of biochar amendment on the soil-atmosphere exchange of greenhouse gases from an intensive subtropical pasture in northern New South Wales, Australia, *Plant and soil*, 345, 47-58, 2011.
- 35 SKM.: Improved assessment of the impact of stock and domestic farm dams in Queensland. Final report to Queensland Government Department of Environment and Resource Management, Brisbane, 2012.
- Smith, S., Renwick, W., Bartley, J., and Buddemeier, R.: Distribution and significance of small, artificial water bodies across the United States landscape, *Science of the Total Environment*, 299, 21-36, 2002.
- 40

Sobek, S., DelSontro, T., Wongfun, N., and Wehrli, B.: Extreme organic carbon burial fuels intense methane bubbling in a temperate reservoir, *Geophysical Research Letters*, 39, 2012.

St. Louis, V. L., Kelly, C. A., Duchemin, É., Rudd, J. W., and Rosenberg, D. M.: Reservoir Surfaces as Sources of Greenhouse Gases to the Atmosphere: A Global Estimate: Reservoirs are sources of greenhouse gases to the atmosphere, and their surface areas have increased to the point where they should be included in global inventories of anthropogenic emissions of greenhouse gases, *AIBS Bulletin*, 50, 766-775, 2000.

Sturm, K., Keller-Lehmann, B., Werner, U., Raj Sharma, K., Grinham, A. R., and Yuan, Z.: Sampling considerations and assessment of Exetainer usage for measuring dissolved and gaseous methane and nitrous oxide in aquatic systems, *Limnology and Oceanography: Methods*, 13, 375-390, 2015.

~~Sturm, K., Yuan, Z., Gibbes, B., Werner, U., and Grinham, A.: Methane and nitrous oxide sources and emissions in a subtropical freshwater reservoir, South East Queensland, Australia, *Biogeosciences*, 11, 5245-5258, 2014.~~
~~Sturm, K., Grinham, A., Werner, U., and Yuan, Z.: Sources and sinks of methane and nitrous oxide in the subtropical Brisbane River estuary, South East Queensland, Australia, *Estuarine, Coastal and Shelf Science*, 168, 10-21, 2016.~~

Swingle, H.: History of warmwater pond culture in the United States, A century of fisheries in North America. American Fisheries Society, Special Publication, 7, 95-105, 1970.

Vacek, J.: Czechoslovakia, in: *World Fish Farming: Cultivation and Economics*, Springer, 256-271, 1983.

Verpoorter, C., Kutser, T., Seekell, D. A., and Tranvik, L. J.: A global inventory of lakes based on high-resolution satellite imagery, *Geophysical Research Letters*, 41, 6396-6402, 2014.

~~Verstraeten, G., and Poesen, J.: Estimating trap efficiency of small reservoirs and ponds: methods and implications for the assessment of sediment yield, *Progress in Physical Geography*, 24, 219-251, 2000.~~

Verstraeten, G., and Prosser, I. P.: Modelling the impact of land-use change and farm dam construction on hillslope sediment delivery to rivers at the regional scale, *Geomorphology*, 98, 199-212, 2008.

Zar, J. H.: *Biostatistical analysis*. 2nd, Prentice Hall USA, 54, 55, 1984.

Tables

Table 1. Summary of Queensland small water bodies classified using two different relative size classifications. The number of water bodies, corrected surface area of size class and total mean annual emissions. Approach 1: emissions for water bodies less than 3,500 m² were assumed to be stock dams and larger water bodies irrigation dams (Fig. 3 a), Approach 2: emissions for GRand size classes were taken from Figure 3 b, however, weir emissions were omitted as these are not relevant at the regional scale.

Approach 1					
Water body size (m ²)	Number	Surface area (km ²)	Total emissions (t CO ₂ eq yr ⁻¹)		
			Mean	Lower limit	Upper limit
< 3,500	227,397	243	507,633	278,205	926,267
3,500 to 10 ⁵	65,949	844	1,158,069	782,244	1,714,458
Total	293,346	1,087	1,665,702	1,060,448	2,640,725
Approach 2					
Water body size (m ²)	Number	Surface area (km ²)	Total emissions (t CO ₂ eq yr ⁻¹)		
			Mean	Lower limit	Upper limit
10 ² to 10 ³	108,526	50	97.302 241,262	35.436 112,316	267.177 518,243
10 ³ to 10 ⁴	163,803	400	868,201	513,740	1,467,225
10 ⁴ to 10 ⁵	21,017	637	759,247	462,561	1,246,228
Total			1,724,749 1,868,710	1,011,736 1,088,617	2,980,629 3,231,695

10

15

20

25

Figures



5 **Figure 1. Oblique drone images showing examples of ponds where CH₄ emissions were monitored during this study: a) urban lake (St Lucia 1); b) stock dams in foreground (including Gatton 4), irrigation dam in background; c) small weir showing high organic loading upstream of wall (Mt Cootha); d) rural residential dam (Greenbank).**

10

15

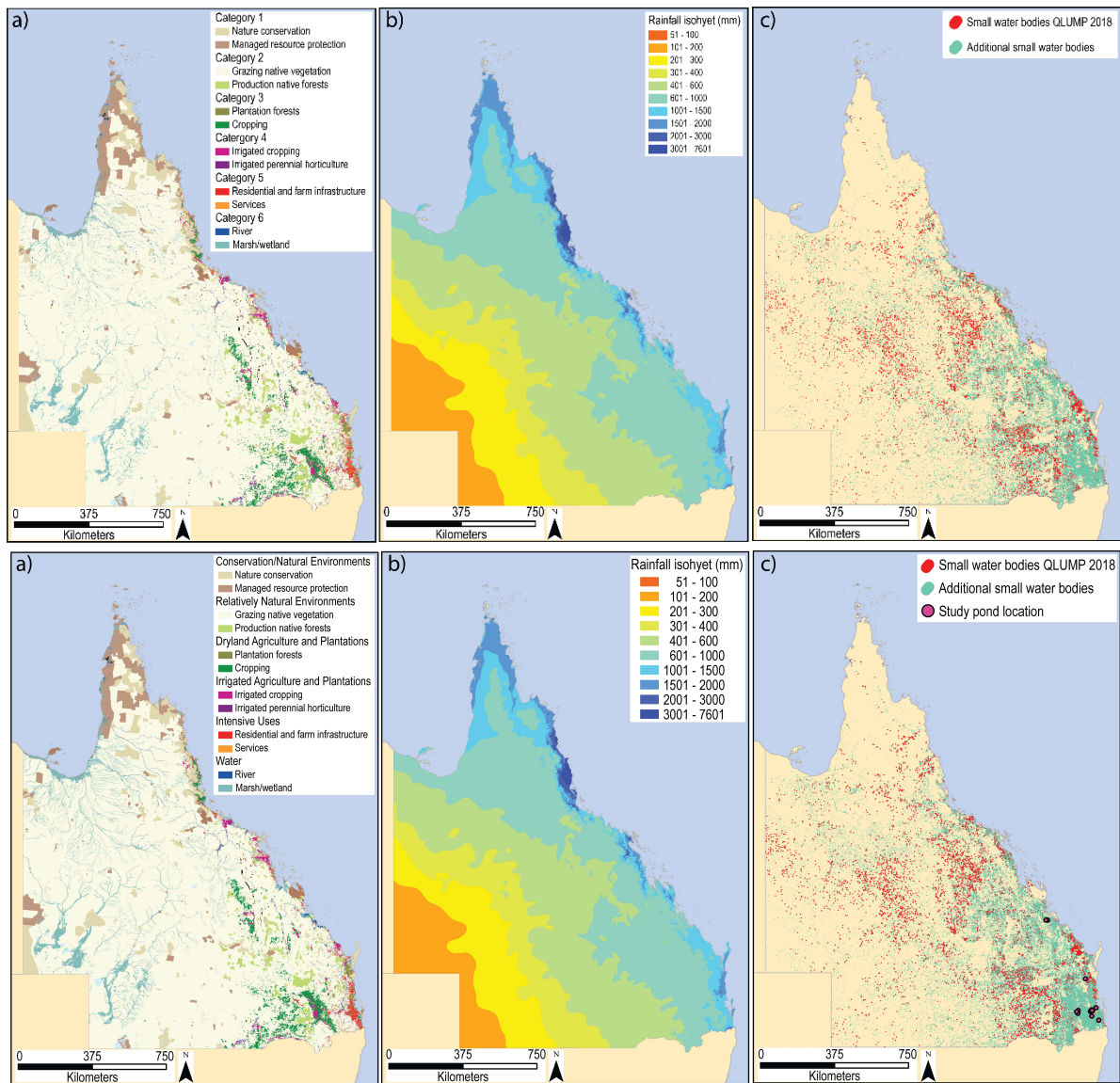
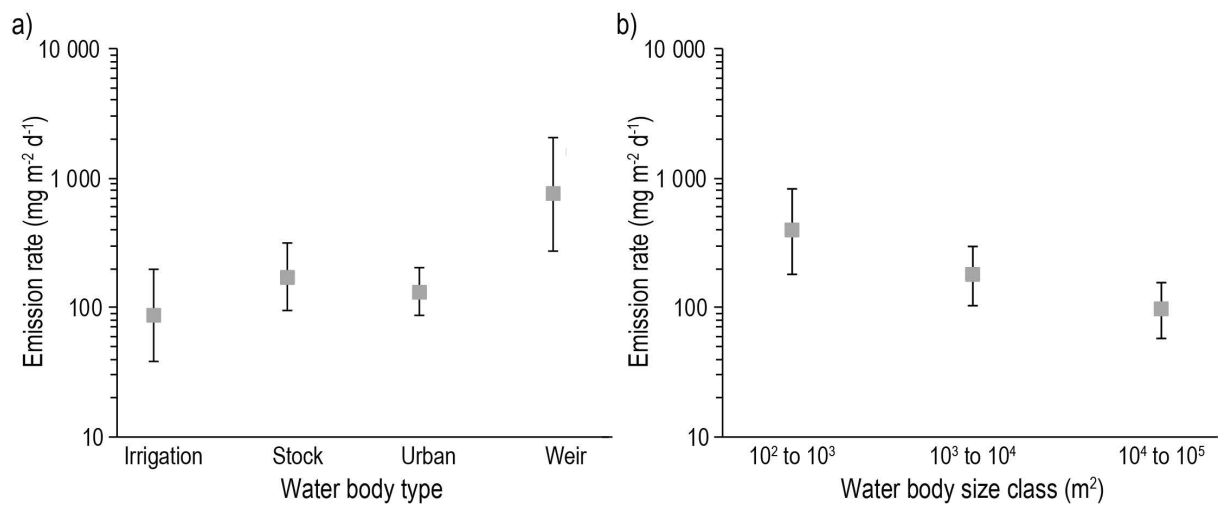


Figure 2. a) 2018 state wide assessment showing the relative surface area occupied by secondary land use categories (QLUMP, 2018). Note the legend shows the two largest land uses within each category. ~~Category 1 is Conservation and Natural Environments; Category 2 is Production from Relatively Natural Environments; Category 3 is Production from Dryland Agriculture and Plantations; Category 3 is Production from Dryland Agriculture and Plantations; Category 4 is Production from Irrigated Agriculture and Plantations; Category 5 is Intensive Uses; Category 6 is Water.~~ b) Mean annual rainfall isohyets across Queensland from 30 period of 1961 to 1990 (<http://www.bom.gov.au> accessed March 2018). c) Location of study ponds and ponds identified from the land use assessment (QLUMP 2018) and two additional state wide assessments-databases (see text).



5 **Figure 3. Mean CH₄ emissions across a) four categories of small water bodies (irrigation dams, stock dams, urban lakes and weirs) and b) three GRanD water body size classes. Values indicate geometric mean emission rates and 95% confidence intervals (\pm 95% CI).**

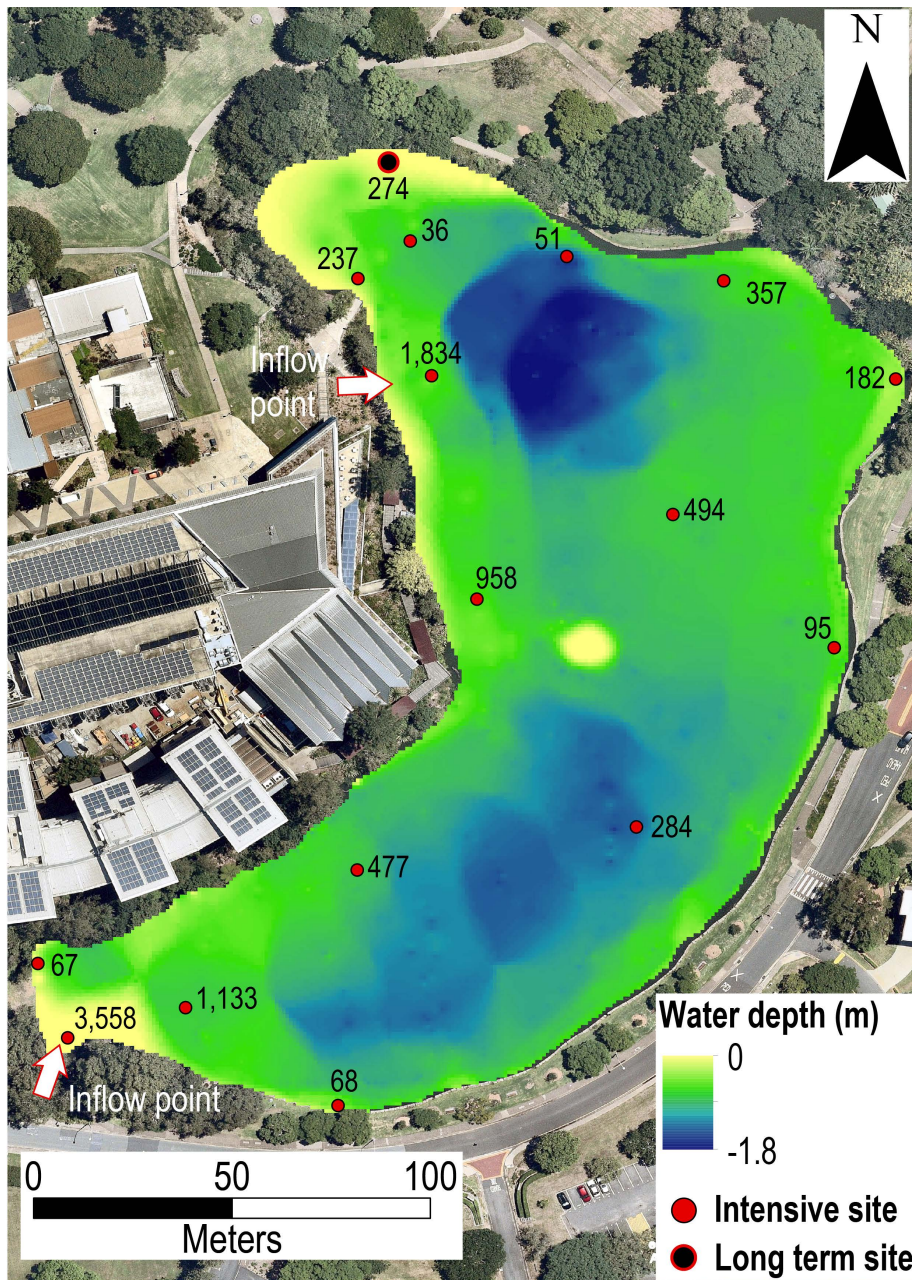


Figure 4. Sampling site location and chamber emission rates ($\text{mg m}^{-2} \text{d}^{-1}$) across an urban lake (St Lucia 1) relative to water depth and proximity to stormwater inflow points.

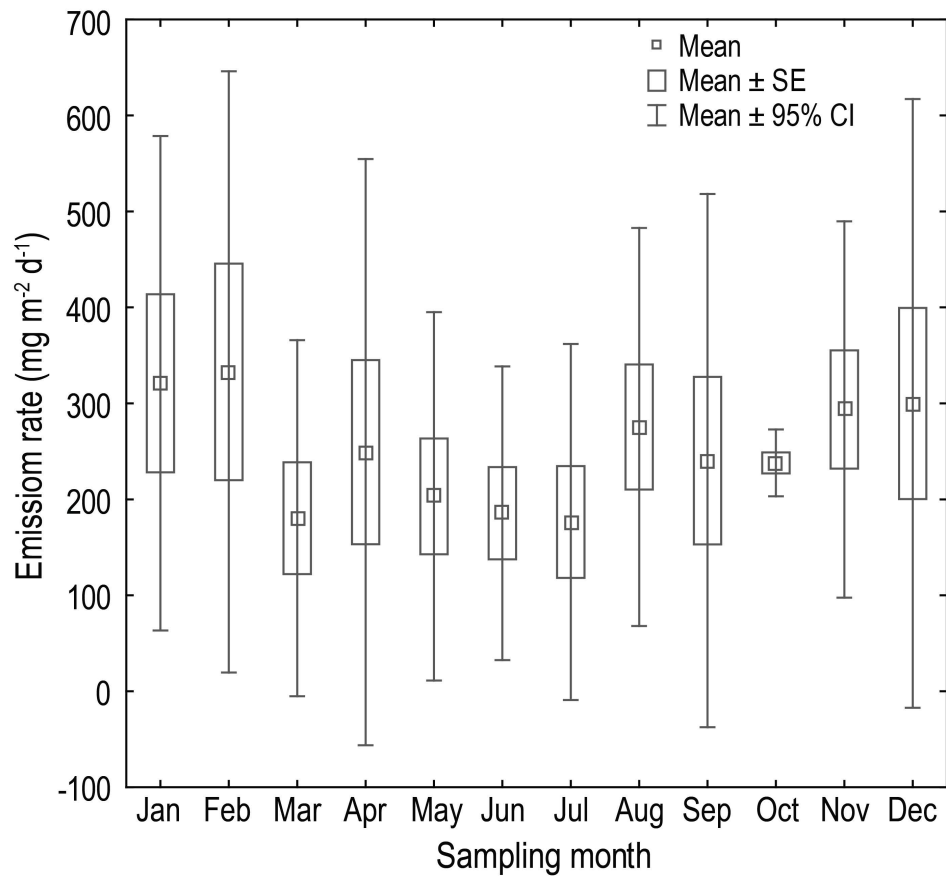


Figure 5. Monthly CH₄ emissions from a single monitoring site on an urban lake (St Lucia 1) across the annual cycle. Values indicate mean emission rates ± SE (standard error) and 95% CI (confidence intervals).

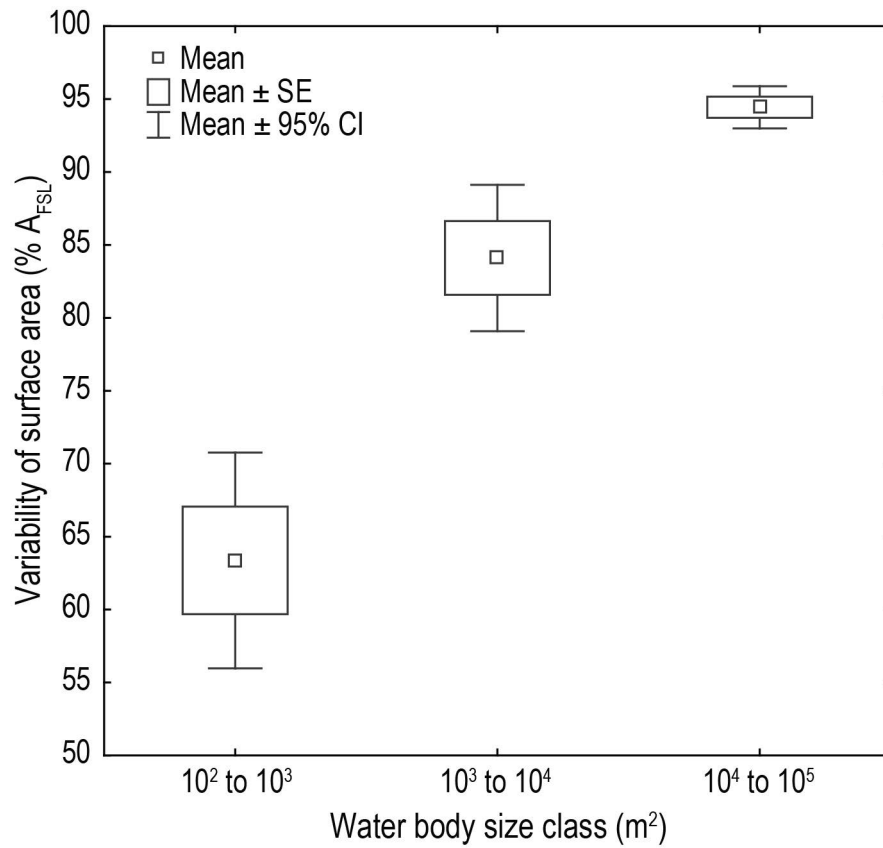


Figure 6. Variability in water surface area as a percentage of A_{FSL} between three GRanD database size classes of ponds. Values indicate mean surface area \pm SE (standard error) and 95% CI (confidence intervals).

5

10

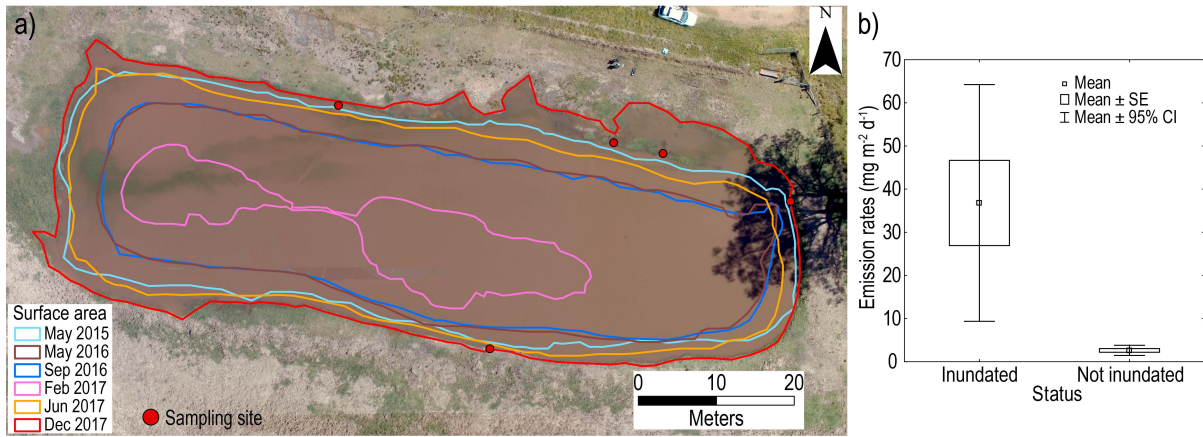


Figure 7. a) Changes in surface area of stock dam (Gatton 4) over a 40 month period. b) Emissions rates from peripheral zones during a period of inundation and no inundation. Values indicate mean emission rate ± SE (standard error) and 95% CI (confidence intervals).

5

10

15

20

25

Appendix

Table A1: Selected characteristics from individual ponds showing: primary use of each system; surrounding land-use type; location of system latitude (Lat) and longitude (Long); average surface area (SA) in m²; mean, median, minimum (Min) and maximum (Max) methane emission rates (mg m⁻² d⁻¹); number of chamber measurements on individual systems (Cham). Primary uses included the following: irrigation for cropping; stock watering for cattle and horses; urban uses included stormwater management and aesthetic purposes; weirs for water supply and stream flow monitoring. * indicates water bodies where repeat sampling was conducted; # indicates water bodies where deployments of less than 24 hours were conducted.

Area	Primary use	Land-Use	Lat	Long	SA	Arth Mean	Geo Mean	Median	Min	Max	Cham
Gatton 1*	Irrigation	Grazing	-27.5541	152.3412	25,903	785	590	527	238	1,648	6
Gatton 2*	Irrigation	Grazing	-27.5548	152.3394	3,450	581	170	140	17	2,261	6
Gatton 3*	Stock	Grazing	-27.5615	152.3434	1,041	1,149	905	980	314	2,007	12
Gatton 4*	Stock	Grazing	-27.5625	152.3447	1,893	63	55	63	20	109	6
Gatton 5	Irrigation	Cropland	-27.5537	152.3503	30,458	129	122	110	89	186	3
Gatton 6	Stock	Cropland	-27.5546	152.3488	446	1,229	724	844	93	3,635	6
Port precinct#	Urban	Settlement	-27.3917	153.1676	38,285	144	57	68	8	357	3
St Lucia 1*	Urban	Settlement	-27.4996	153.0163	22,727	632	282	279	36	3,558	16
St Lucia 2	Urban	Settlement	-27.4984	153.0173	4,291	92	83	76	51	148	3
St Lucia 3	Urban	Settlement	-27.4981	153.0167	1,755	56	49	43	27	115	5
Pinjarra 1*	Irrigation	Grazing	-27.5372	152.9139	56,782	34	15	20	2	122	10
Pinjarra 2	Stock	Grazing	-27.5294	152.9242	1,943	205	59	277	2	335	3
Pinjarra 3	Stock	Grazing	-27.5294	152.9227	210	193	143	107	67	404	3
Oxenford	Urban	Settlement	-27.8924	153.2997	36,938	97	94	81	76	133	6
Mt Larcom 1	Stock	Grazing	-23.8008	150.9558	5,025	574	37	18	1	2,051	5
Mt Larcom 2	Stock	Grazing	-23.806	150.9574	1,256	48	45	49	26	70	3
Mt Larcom 3	Stock	Grazing	-23.8015	150.9446	16,093	17	17	18	14	19	3
Fig Tree Park	Urban	Settlement	-27.5394	152.9682	8,357	709	301	289	19	1,850	5
Greenbank#	Stock	Settlement	-27.7249	152.9779	575	290	166	188	29	755	4
Lake Alford#	Urban	Settlement	-26.2152	152.6848	21,689	49	29	62	5	79	3
Mt Cootha*	Weir	Forest	-27.4763	152.9642	580	2,493	1,405	2,337	368	5,425	6
Indooroopilly	Weir	Settlement	-27.5027	152.988	436	413	274	314	77	947	4

10

15

Table A2: Surface area (SA) of Queensland artificial water bodies within each GRanD database size class showing the official land use assessment estimates (QLUMP, 2018) and the revised estimates for the smallest three size classes found in this study.

GRanD size class (m²)	QLUMP SA (km²)	Revised SA (km²)
10 ² to 10 ³	0.005	50.3
10 ³ to 10 ⁴	8.4	400
10 ⁴ to 10 ⁵	459	637
10 ⁵ to 10 ⁶	605	605
10 ⁶ to 10 ⁷	555	555
10 ⁷ to 10 ⁸	553	553
10 ⁸ to 10 ⁹	448	448
Total	2,629	3,248





Figure A1. Historical changes in pond distribution from a 2.7 km² area in **South-south East-east** Queensland, Mt Tarampa (27°27'44"S, 152°28'59"E). a) 1944 aerial images showing 2 ponds **indicated by white arrows**, b) 2017 aerial image showing 54 ponds and c) showing the relative distribution of ponds from **Reservoir (>625 m²-)** database and **Water Storage Point (<625 m²-)** database, **and** together **this** results in a density of 20 ponds km⁻².

5

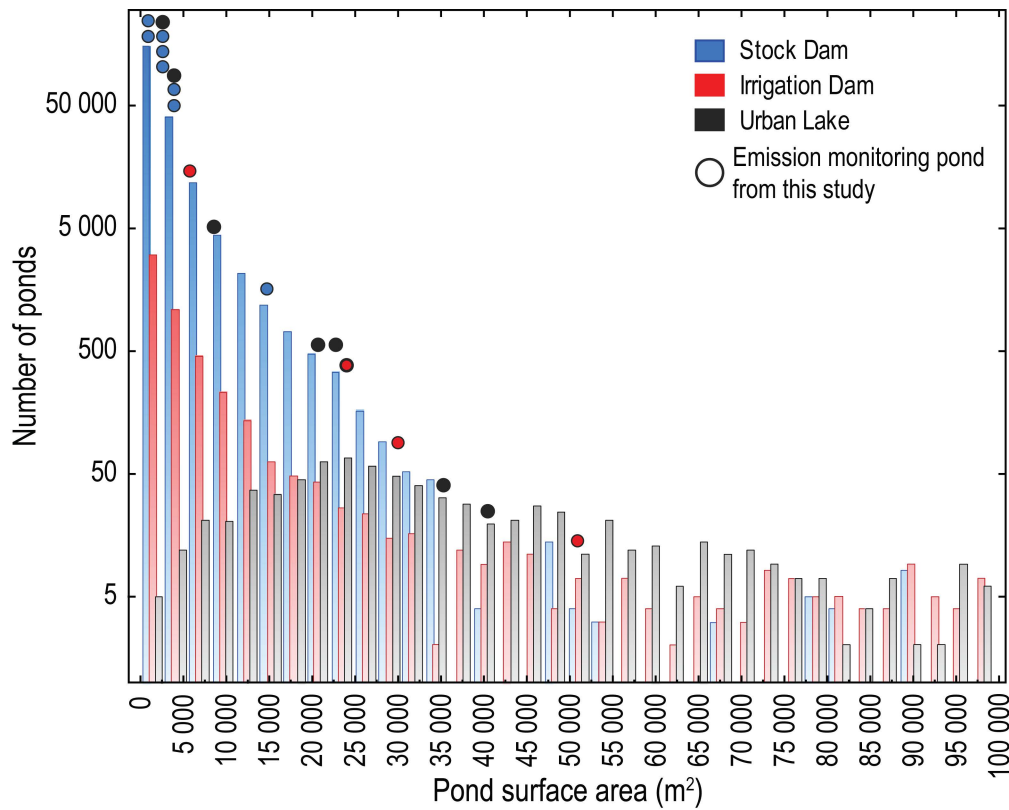
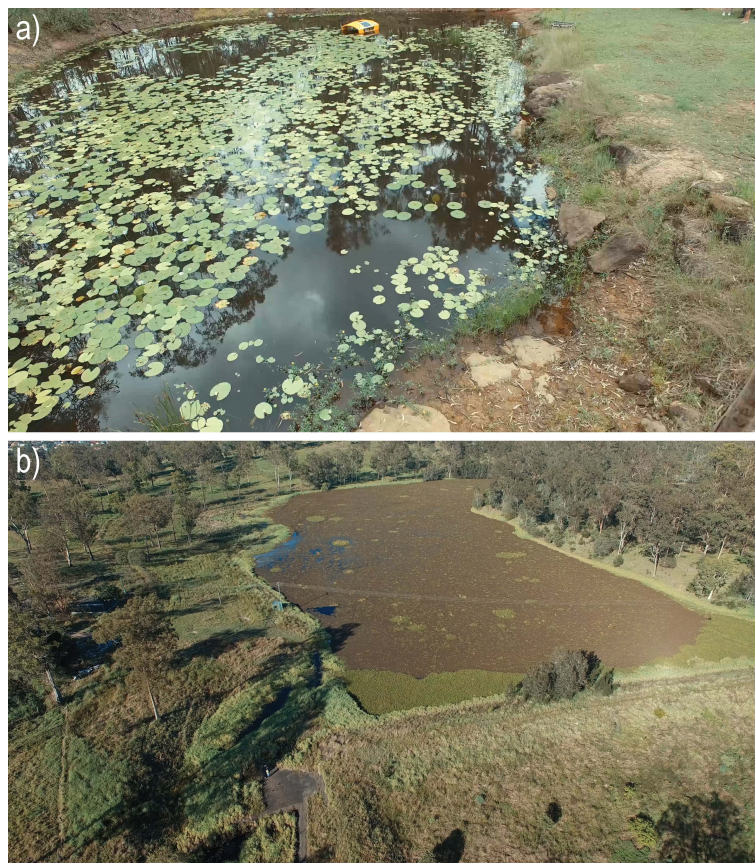


Figure A2. Pond size from emission study relative to histogram of regional pond distribution of stock dams, irrigation dams and urban lakes. The surface area of pond used emission study (Table A1). Histogram of regional distribution of ponds was developed from QLUMP, Reservoir and Water Storage Points databases and separated into pond type depending on surrounding land use: “Grazing native vegetation” for stock dams; “Production from irrigated agriculture and plantations” for irrigation dams; “Intensive uses” for urban lakes with “Mining” and “Manufacturing” landuse within “Intensive Uses” were removed to ensure only urban areas were selected. To incorporate the distribution of ponds within the Water Storage Points database, it was assumed this would match the distribution from the 100 individual ponds examined in Section 2.2 to determine their average surface area.



Figure **A2A3**. An oblique drone image showing a nine floating chamber deployment setup targeting peripheral and central zones on a stock watering dam (Gatton 3).



5 **Figure A4. Oblique drone images showing natural obstacles for pond chamber deployments from a) emergent macrophytes and b) floating aquatic weeds.**

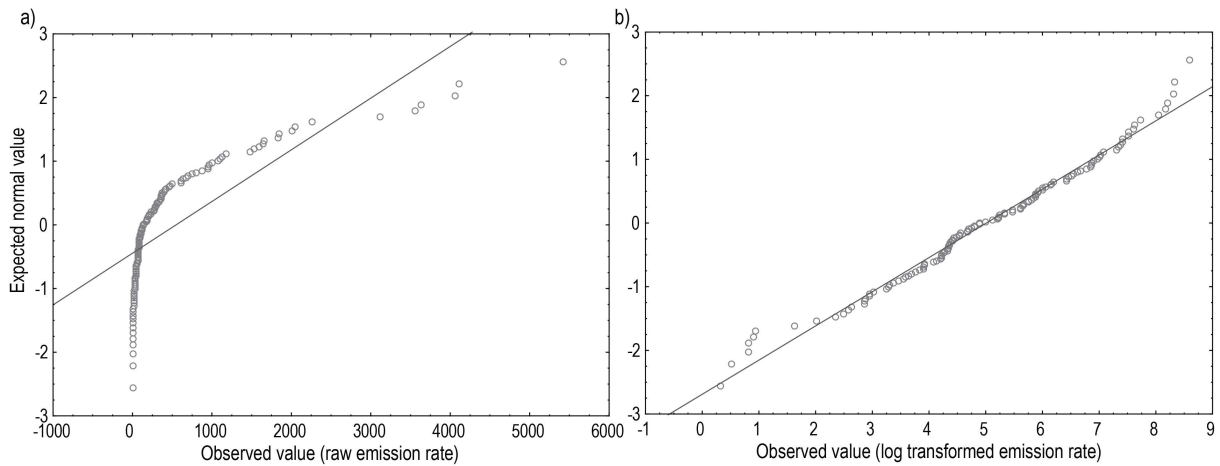


Figure A3A5. Normal probability plots for a) raw methane emissions and b) log transformed emissions data. Shapiro-Wilks tests p-value for raw emissions data was < 0.001 and failed the normality test; p-value for log transformed emissions data was 0.081 indicating data was normally distributed.

5

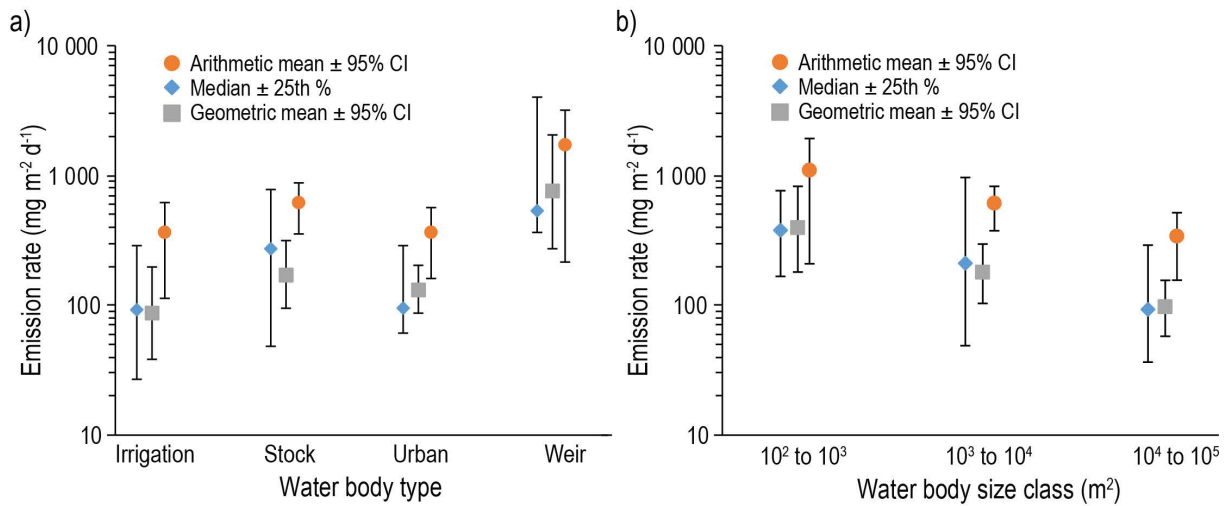


Figure A4A6. Three measures of centrality for methane emissions across a) four categories of small water bodies (irrigation dams, stock dams, urban lakes and weirs) and b) three GRAND water body size classes. Error for each measure are as follows: median emission rates and interquartile range ($\pm 25^{\text{th}}$ %), arithmetic and geometric mean emission rates and 95% confidence intervals ($\pm 95\%$ CI).

10