

Statistical approaches for identification of low flow drivers: temporal aspects

Anne Fangmann¹, Uwe Haberlandt¹

¹Institute of Hydrology and Water Resources Management, Leibniz University of Hannover, Germany

5 Correspondence to: Anne Fangmann (fangmann@iww.uni-hannover.de)

Abstract. The characteristics of low flow periods, especially regarding their low temporal dynamics, suggest that the dimensions of the metrics related to these periods may be easily related to their meteorological drivers using simplified statistical model approaches. In this study, linear statistical models based on multiple linear regressions (MLR) are proposed. Study area is the German Federal State of Lower Saxony with 28 available gauges for analysis. A number of regression approaches are evaluated. An approach using principal components of local meteorological indices as input appeared to show the best performance. In a second analysis it was assessed whether the formulated models may be eligible for application in climate change impact analysis. The models were therefore applied to a climate model ensemble based on the RCP8.5 scenario. Analyses in the baseline period revealed that some of the meteorological indices needed for model input could not be fully reproduced by the climate models. The predictions for the future show an overall increase in the lowest average 7-day flow (NM7Q), projected by the majority of ensemble members and for the majority of stations.

1 Introduction

Low flows appear ideal for the analysis of statistical dependencies with their meteorological drivers, due to their specific characteristics. As opposed to high flows, low streamflow is usually much less dynamic and its meteorological drivers, i.e. primarily a lack of rain and increased evaporation, are observable over much larger scales in both time and space. Accordingly, several studies have aimed at explaining observed peculiarities in low flows by climatic phenomena, including Mosley (2000), who analyzed the influence of El Niño and La Niña effects on monthly lowest 7-day flow in New Zealand. He determined a major deviation of low flows from the normal in La Niña years. Haslinger et al. (2014) found that correlations between streamflow anomalies and meteorological drought indices are high, especially within the low flow period. Van Loon and Laaha (2015) analyzed the dependence of streamflow drought duration and deficit volume on climatic indicators and catchment descriptors, while Liu et al. (2015) estimated the parameters of a GEV distribution fitted to the low-flow time series at their gauge in China as functions of a set of climatic indices.

Based on these findings it is hypothesized that streamflow metrics describing low flow events may be efficiently assessed based on their relationship to metrics of meteorological states. This assumption entails that simple statistical models may be formulated that allow a reproduction of low flow metrics based on meteorological input. In this study the relationship between annual low flow and a variety of meteorological indices will be analyzed with the aim of formulating simple statistical models. Such models will be set up individually for each catchment in the study area and

are supposed to be capable of predicting low flow as a simple function of several relevant meteorological indices in time. Various temporal scales will be considered for the meteorological data and the most adequate ones for each catchment will be identified. The model fitting itself will be carried out using various statistical approaches in order to account for different effects, like non-stationarity or serial dependence in the annual low flow indices. In order to assess the performance of the strictly linear statistical approaches, they will be compared to a hydrological model, which is assumed to accurately reproduce rainfall-runoff relationships by involving more complex processes, relying on continuous meteorological input. This analysis will reveal whether the statistical models fail to acknowledge important non-linear relationships.

Apart from identifying relevant low flow drivers, it is tested whether the use of the formulated statistical models may be extended to prediction of future low flows, using meteorological input from climate models. The probably most common approach in hydrological climate change impact analysis is to drive hydrological models, usually rainfall-runoff models of variable complexity, with regional climate model data input, obtained for various emission scenarios. Also for low flows this model chain has been applied for impact assessment in several studies, e.g. by de Wit et al. (2007), Schneider et al. (2013), Forzieri et al. (2014), Wanders and Van Lanen (2015), van Vliet et al. (2015), Roudier et al. (2016) or Gosling et al. (2017). The statistical models may pose an alternative simpler impact model approach that is easily set up and applied to large numbers of catchments and extensive climate model ensembles - while predicting hydrological quantities with sufficient accuracy. They may thus offer a different, yet convenient tool for comprehensive regional climate change impact analyses. According to this hypothesis, the formulated models will be applied to an ensemble of regional climate model data in order to assess the plausibility of their low flow projections in the future.

2 Study area and data

2.1 Study area

The area under investigation is the federal state of Lower Saxony situated in northwestern Germany. Its total area of 47,634 km² extends from the North Sea in the northwest to the Harz mountains in the southeast. The largest portion of Lower Saxony is part of the Northern German Plain, where the terrain is generally shallow. Highest elevations are found in the secondary mountains of the Harz with up to 971 m a.s.l.. The topography is depicted in Fig. 1.

2.2 Base data

The meteorological data used in this work comprises of daily time series of precipitation, temperature and global radiation. The data is made available continuously in space via interpolation onto a 1x1-km raster for the total area of Lower Saxony. Regionalization is based on 771 precipitation gauges and 123 climatic stations and carried out for a period from 1951 to 2010. The regionalization process is described in detail in NLWKN (2012).

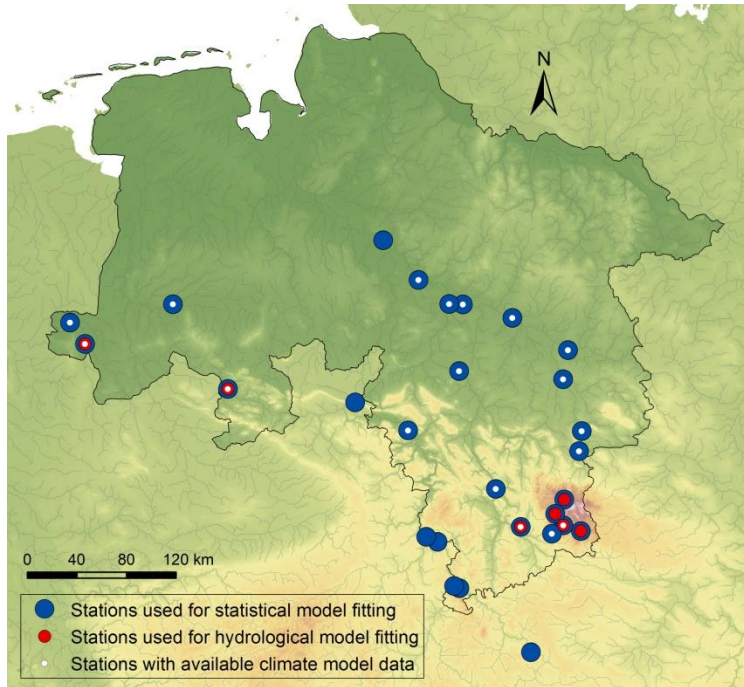


Figure 1: Study area with stations available for different analyses.

Also for streamflow daily time series are used. In total, there are 353 flow records of average daily discharge available in and around the study area. Record lengths range from 7 to 193 years. For analysis in this work, gauges have been selected that have a maximum overlap with the available climate data, i.e. available records from 1951 to 2010. After removal of heavily influenced gauges, 28 stations remain for analysis, as depicted in Fig. 1. The belonging catchment sizes range from 24 to 37,720 km². In previous work (NLWKN, 2017), a hydrological model has been set up for 7 of these stations, as indicated in Fig. 1. This selection of stations will be used for comparing statistical and hydrological model performance.

2.3 Indices

The daily time series of meteorological and streamflow data are used to compute indices, which pose the basis for all models. Target variables are a variety of annual low flow indices. They are selected in a way to represent different quantities of interest for low flow analysis (e.g. intensity, duration and timing). The low flow indices used in this study are shown in Table 1. In order to exclude winter low flows, which may be subject to different underlying processes, the indices are computed for the summer half year (May to October) only. Within the region most low flow events occur between between June and October.

Table 1: List of low flow indices.

Index	Unit	Description
Q ₉₅ Q ₈₀	m ³ /s	5- and 20-percent non-exceedance quantile of the daily average discharge
NM7Q NM30Q	m ³ /s	Lowest 7- and 30-day average flow
V _{max} V _{mean}	m ³	Maximum and mean deficit volume: sum of daily discharge below the long term 20-percent non-exceedance quantile
D _{max} D _{mean}	d	Maximum and mean low flow duration: number of days with discharge below the long term 20-percent non-exceedance quantile
timing	-	Day of the year at which smallest daily flow occurs

The selected low flow indices represent a small fraction of possible indices but cover quite a range of low flow quantities relevant for water resources management and planning. Non-exceedance quantiles represent the overall low flow situation in a year without specific relation to a certain event. The same holds for average volume and duration.

5 NMxQ, maximum volume and duration, as well as timing, on the other hand, focus on the greatest events per year in their respective terms and characterize them accordingly. The consideration of variations within the individual index types (e.g. Q₉₅ and Q₈₀) is not solely owing to different management requirements but used to investigate the various models' capability to reproduce both more and less extreme low flows.

10 Meteorological indices are used as input for the models. Like for their low flow counterparts, annual values are calculated from daily time series of precipitation sums, mean and maximum temperature and global radiation, averaged over the respective basins of the considered discharge gauges. Table 2 summarizes the applied indices and gives a short description.

Table 2: Meteorological indices based on precipitation, temperature and potential evapotranspiration.

Index	Unit	Description
P_{mean}	mm/d	Average daily precipitation
P_x	mm/d	Non-exceedance quantiles of daily precipitation sums
SPI	-	Standardized Precipitation Index: standardized deviation of accumulated precipitation sums from the long term normal (McKee et al., 1993)
DSD_{mean} DSD_{max}	d	Mean and maximum dry spell duration: number of days with precipitation <1mm/d
WSD_{mean} WSD_{max}	d	Mean and maximum wet spell duration: number of days with precipitation \geq 1mm/d
T_{min} T_{mean} T_{max}	$^{\circ}\text{C}$	Minimum, mean and maximum daily average temperature
HWD	d	Heat wave duration: Number of days above 90-percent non-exceedance quantile of maximum temperature calculated for each specific day of the year
ETP_{mean}	mm/d	Average daily potential evaporation calculated according to Turc-Wendling
$P-ETP_{\text{mean}}$	mm/d	Average climatic water balance: precipitation minus potential evapotranspiration
P/ETP_{mean}	-	Aridity index: Ratio of average precipitation and potential evapotranspiration.
SPEI	-	Standardized Precipitation Evaporation Index: standardized deviation of accumulated climatic water balance from long term normal (Vicente-Serrano et al., 2010)

5 While the low flow indices are calculated for a fixed period within the year (the summer half year), the period for computation of the meteorological quantities is varied in length and position. Figure 2 shows the scheme according to which every meteorological index has been computed. I_{NQ} represents the low flow index, calculated for its fixed period within a given year. I_M denotes the meteorological index. The first number in the index notation represents the length of the base period for calculation (eg. 3, 6 or 12 months), while the second one indicates the lead time, i.e. the number of months the period is shifted back in time relative to the low flow index. A 0-shift indicates that the calculation period ends simultaneously with the low flow period.

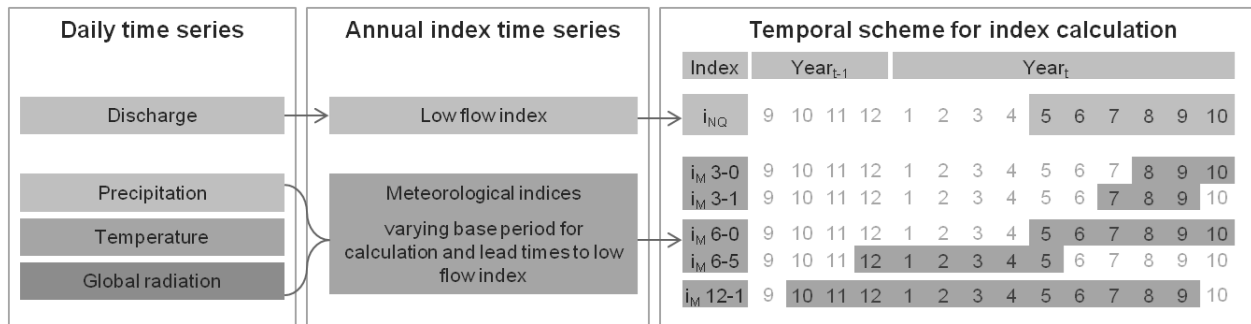


Figure 2: Calculation scheme for low flow indices with fixed base period and meteorological indices with varying base period and lead times relative to the low flow calculation period.

2.4 Climate model data

An ensemble of 15 coupled global and regional climate models is applied for climate change impact analysis. An overview is shown in Table 3. The data sets base on simulations of global climate models of CMIP5 run on an RCP8.5 scenario. The data is available on a 10x10-km grid.

- 5 The climate model data has been pre-processed in previous work (NLWKN, 2017) and is available for a smaller domain than the observed climate data. Therefore, basin averages can only be computed for 17 of the 28 stations, as shown in Fig. 1.

Table 3: List of coupled global and regional climate models used for analysis.

Global model	Regional model	Short name
CNRM-CERFACS-CNRM-CM5 run1	CLMcom-CCLM4-8-17	CNRM-CCLM
	SMHI-RCA4	CNRM-RCA4
ICHEC-EC-EARTH run12	CLMcom-CCLM4-8-17	EC-EARTH-CCLM
ICHEC-EC-EARTH run3	DMI-HIRHAM5	EC-EARTH-HIRHAM5
ICHEC-EC-EARTH run1	KNMI-RACMO22E	EC-EARTH-RACMO22E
ICHEC-EC-EARTH run12	SMHI-RCA4	EC-EARTH-RCA4
MOHC-HadGEM2-ES run1	CLMcom-CCLM4-8-17	HadGEM2-CCLM
	RACMO22E	HadGEM2-RACMO22E
	SMHI-RCA4	HadGEM2-RCA4
IPSL-INERIS-CM5A-MR run1	SMHI-RCA4	IPSL-RCA4
IPSL-CM5A-MR	WRF331F	IPSL-WRF331F
MPI-M-MPI-ESM-LR run1	CLMcom-CCLM4-8-17	MPI-ESM-CCLM
	SMHI-RCA4	MPI-ESM-RCA4
	REMO2009 run1	MPI-ESM-REMO1
	REMO2009 run2	MPI-ESM-REMO2

10 3 Methods

The aim is to model a desired low flow index on an annual basis as a function of a combination of meteorological indices observed in time. Several methods will be analyzed for this purpose in order to identify the one most suitable to model said relationship under consideration of later application for far future predictions. These methods are described in the following.

15 3.1 Multiple linear Regression

Multiple linear regression (MLR) is probably the most common method to model relationships between variables and will pose the basis for several methods in this work. It aims at reproducing a target variable y as linear combination of k explanatory variables x_1, \dots, x_k . The general shape of a multiple linear regression model is the following:

$$y = \beta_0 + \beta_1 x_1 + \dots + \beta_k x_k + \varepsilon \quad (1)$$

The regression coefficients β_1, \dots, β_k are estimated in two different ways, i.e. a) an ordinary least squares (OLS) procedure and b) a generalized least squares (GLS) fitting. The latter method involves the inclusion of the covariance matrix of the residuals, which allows for correction for both heteroscedasticity and dependence of the residuals. Since heteroscedasticity did not appear to be a relevant issue in this study, while serial correlation in the data did, autoregressive (AR) covariance structures of various orders are tested to describe the residual covariance. The elements of an AR(1) covariance structure, for example, can be described via

$$\sigma_{ij} = \sigma^2 \rho^{|i-j|}, \quad (2)$$

where ρ denotes the autocorrelation between terms with lag 1.

The need for and order of the considered AR process is case wise determined using the likelihood ratio test. This parametric test is developed to test the superiority of more complex models over their simpler forms, i.e. whether a model with a higher number of parameters performs significantly better than the same model with fewer parameters. Performance is thereby measured in terms of maximized log-likelihood function values and the $(1 - \alpha)$ quantile of the Chi^2 distribution, whose degrees of freedom are chosen as the difference in number of parameters between the compared models (Coles, 2001).

3.2 Principal component analysis

The fitting of multiple linear regression models is restricted by sample size. Fitting a model with a large number of regressors to a small data set will result in over-fitting. Additionally, the problem of multicollinearity between the regressors in a model arises. Consequently, for a small data set, only a small number of uncorrelated regressors should be selected. At the same time, leaving out important explanatory variables may drastically lower the predictive power of the model. In order to overcome the restrictions given through the limited period of observation, a principal component analysis (PCA) is applied, merging many explanatory variables into a few uncorrelated components that pose the ideal basis for model fitting on limited data with maximum exploitation of information. PCA is carried out by firstly centering the set of p explanatory variables X^* via subtraction of their respective means. Then, the $(p \times p)$ covariance matrix Σ is computed and its eigenvalues $\lambda_1, \lambda_2, \dots, \lambda_p$ and eigenvectors $\gamma_1, \gamma_2, \dots, \gamma_p$ are determined. Multiplication of the eigenvectors with X^* yields the following system of equations

$$\begin{aligned} y_1 &= \gamma_{11}x_1 + \gamma_{21}x_2 + \dots + \gamma_{p1}x_p \\ y_2 &= \gamma_{12}x_1 + \gamma_{22}x_2 + \dots + \gamma_{p2}x_p \\ &\vdots \\ y_p &= \gamma_{1p}x_1 + \gamma_{2p}x_2 + \dots + \gamma_{pp}x_p \end{aligned} \quad (3)$$

where y_1, y_2, \dots, y_p denote the principal components, sorted according to their contribution to the total variance of data at hand. The eigenvectors represent the respective loading of a variable x on a principal component y .

3.3 Hydrological modeling

In order to evaluate the performance of the statistical approaches, hydrological modeling is applied as the benchmark for prognosis of future flow. The rainfall-runoff model used here is an adaptation of the Swedish HBV by Lindstrom et al. (1997), denoted HBV-IWW. The peculiarities of the model are described in detail e.g. in Wallner et al. (2013).

5 A schematic overview over the structure of the model is presented in Fig. 3. The model is semi distributed and can be applied on the sub-catchment scale. Input is daily precipitation, temperature and potential evapotranspiration. The model comprises of 5 routines and a variety of parameters controlling the translation between the various model components. The parameters are automatically optimized using the evolutionary multimethod algorithm AMALGAM (Vrugt and Robinson, 2007).

10

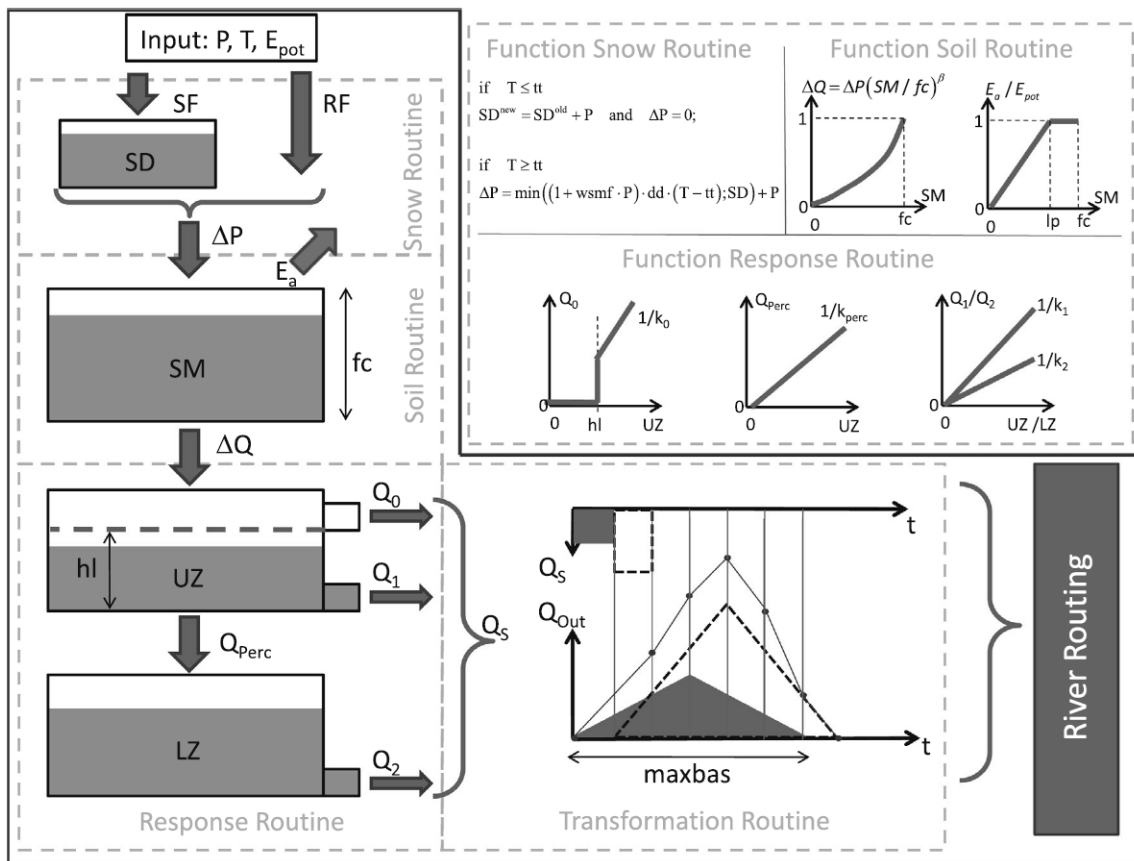


Figure 3: Vertical structure of the HBV-IWW model according to Wallner et al. (2013)

3.4 Model fitting and evaluation

Given the vast number of meteorological indices, variable selection for the statistical models becomes paramount. In order to select appropriate indices and restrict the numbers of selected regressors, a two-way stepwise approach for variable selection is chosen that aims at minimizing the Bayesian information criterion (BIC; Schwarz, 1978) of the final model. The BIC is closely related to the Aikaike information criterion (AIC; Aikaike, 1974) but penalizes variable inclusion stricter for larger sample sizes, which is the reason for its selection in this study. The smaller the BIC, the

15

better the predictive power of a model. The algorithm for variable selection randomly selects a variable and adds variables to the model that decrease the overall BIC. After each addition it is tested whether the removal of any of the existing variables in the model leads to further decrease in the BIC.

5 Since the number of potential regressors in this study is high and variables may be strongly related, a second criterion is included into the BIC-minimization procedure. In order to prevent multicollinearity, the variance inflation factor (VIF) of each variable added to the model is computed. The VIF is a measure of how much of the variance of a predictor in a model can be explained by the other predictors in the same model. Computation is done via

$$\text{VIF} = \frac{1}{1 - R^2}, \quad (4)$$

10 where R^2 denotes the coefficient of determination of a regression model that describes the variable to be added as a function of the existing variables in the model. The recommended limits for the VIF vary throughout literature. Since multicollinearity is a major issue for the analyses of this study, a low value of 5 has been chosen. Variables that show higher VIFs are not included into the existing model.

15 For the GLS models with AR-correlation structure, variable selection was carried out according to OLS model fitting, evaluating the necessity of the AR-structure for each added variable using the likelihood ratio test. For variable selection using principal components, the BIC-minimization strategy is extended, not adding each additional variable directly to the model but computing principal components first and testing them as potential regressors of the model. For the OLS, GLS and principal component model, a second variant with restricted variable selection is applied. This approach aims at filtering out variables that have a non-stationary relationship to the target variable. This filtering is
20 achieved via resampling. Randomly, 30 years of data are sampled with replacement from the calibration data set 1000 times. A simple linear regression model is fitted between target variable and all potential explanatory variables for each subsample. Testing the significance of regression slopes fitted to random samples gives an estimate of the variability of the slope coefficient over segments of the time series. If the regression is significant for more than 95% of the subsamples, the relationship is considered continuously stationary. If, on the other hand, the slope of the
25 regression line is time dependent, random samples taken from different periods will not yield a significant slope coefficient. Only the former variables are included in further variable selection. The models with restricted variable selection will be denoted OLS-R, GLS-R and PC-R.

In contrast to the statistical models the hydrological model bases on daily input and output and is therefore capable of modeling an entire years' hydrograph rather than a single low flow metric. Calibrating the hydrological model on the
30 complete hydrograph may reduce the predictability of the single low flow event and favor the statistical models (directly calibrated on the low flow value) in a comparison of model performances. Therefore, the HBV-IWW is calibrated in a strategy comparable to the statistical approaches, namely by including nothing but the desired annual low flow metric in the objective function.

35 In order to allow for a proper assessment of the models' capabilities of predicting future low flows, the available record at each station is split equally into a calibration and a validation period. Both periods are continuous in time and the calibration consistently precedes the validation period. This set-up is chosen to test the ability of models fitted to a past period of time to predict "future", i.e. the validation period's characteristics. In order to double the available periods

for validation, the time series are inversed and models are fitted to the former validation period and evaluated in the calibration period. The inversion is applied in order to preserve the continuity of the time series.

In order to compare the quality of the different model approaches, a selection of performance measures is computed. These measures include the coefficient of determination (R^2), the normalized root mean square error (NRMSE) and the percent bias (pbias). The criteria are selected to show various aspects of model quality, i.e. information about the similarity of the course of simulated and observed time series, the average fit, and systematic errors.

3.5 Climate change impact analysis

The most suitable statistical model is eventually applied using the ensemble of climate model data. The first step is the assessment of the performance of the model chains in reproducing the observed low flow. This analysis is done in a reference period from 1971-2000. The projections and changes in the low flow will be analyzed in a near (2021-2050) and far future (2071-2100) period. It should be noted that the aim of the prognosis using actual climate model data is primarily the validation of the statistical model approaches rather than a detailed regional assessment of expected changes.

In order to account for potential bias in the climate model data used for prediction of future low flow, the individual station models are recalibrated for each climate model separately. The problem that needs to be overcome for this process is the matching of the temporarily dissociated series of meteorological indices generated by the climate models with the observed low flow time series, which is handled as follows. At first, the explanatory variables identified in the observed model fitting procedure are carried over, i.e. no new variable selections are carried out. This is meaningful, since the selected variables represent observed low flow drivers. The principal components are then re-estimated for the selected variables as projected by the individual climate models. In order to relate the climate model data to the observed time series, the regression parameters are optimized in such a way, that the empirical distribution of the predicted low flow matches that of the observed sample. In order for the recalibrated model to be no more precise than the originally fitted model, which may lead to false estimates of the regression coefficients, the model fitted to the observed data is used as target during re-calibration rather than the observed low flow series itself.

4 Results and discussion

4.1 Model performance

Performance of the individual MLR model variants are compared using the aforementioned performance measures. Figure 4 shows the model performance of all tested model configurations exemplary for NM7Q prediction in the calibration (top) and validation period (bottom). For the validation period one can clearly observe an increase in performance from left to right, i.e. an increasing predictive power with increasing model complexity. The non-restricted OLS-fitted model shows poorest performance with a median R^2 of only 0.43. The removal of variables with a potential non-stationary relationship to the target variable increases model performance significantly, as seen for the OLS-R model. The R^2 increase in median to 0.48 and NRMSE drops from 78.9 to 72.7%. The restriction in the variable selection thereby leads to an alteration of 58% of the originally fitted OLS models.

Highest predictive performance has been achieved with the principal component model without restriction during variable selection (PC). The coefficient of determination for the MLR model over all stations has a median value of 0.58. The PC-model also shows smallest percent bias with a median of 1.30 %. The PC-R model, where potential non-stationary variables have been removed, shows slightly lower performance. On the other hand, the restriction significantly reduces the number of variables used for formation of the principal components and hence potentially yields more robust parameter estimates for future predictions. Either way, the inclusion of several variables in the form of principal components appears meaningful in order to avoid omittance of important regressors and potential multicollinearity, granted by the orthogonality of the components. Additionally, the principal component models are supposedly more robust against outliers in single variables

5

10

15

20

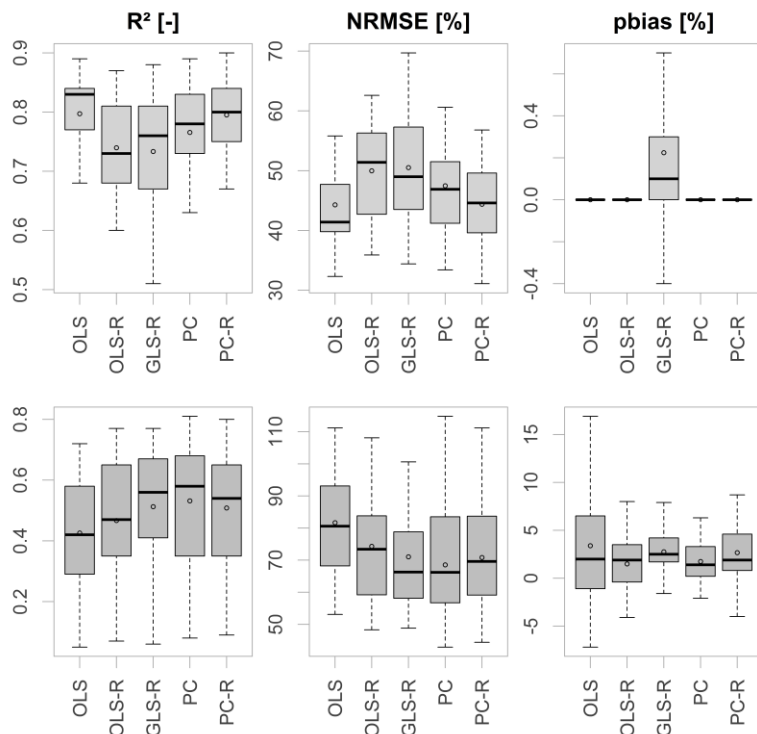


Figure 4: Performance criteria of different model approaches in the calibration period (top) and validation period (bottom) over 28 stations.

Figure 5 shows the same criteria as Fig. 4 with inclusion of the hydrological model, and thus for a total of 7 stations only. The performance of the HBV model in both calibration and validation period is substantially higher in all aspects with median validation R² of 0.50, an NRMSE of 76.1%, and a percent bias of 1.7% compared to the PC-model with median values of 0.42, 78.4%, and 5.8% respectively. This performance, however, could only be achieved using the calibration strategy of matching exclusively the annual NM7Q values at each station. Calibration using the entire hydrograph or parts of the flow duration curve did not explicitly outperform the statistical approaches. Nevertheless, HBV-IWW appears to be suitable for assessment of future low flow development when calibrated specifically on low flow indices.

The statistical models appear to be positively biased. At almost all investigated stations a positive mean error could be observed. As models are fitted in both directions to the time series, this error appears to originate in the model itself, rather than in underlying processes of the time series that cannot be captured. Overall differences in model performance between the stations could not be correlated to any specific regions or catchment features. The quality of the simulation did not depend on catchment size, position in the study area or any other distinguishable factor.

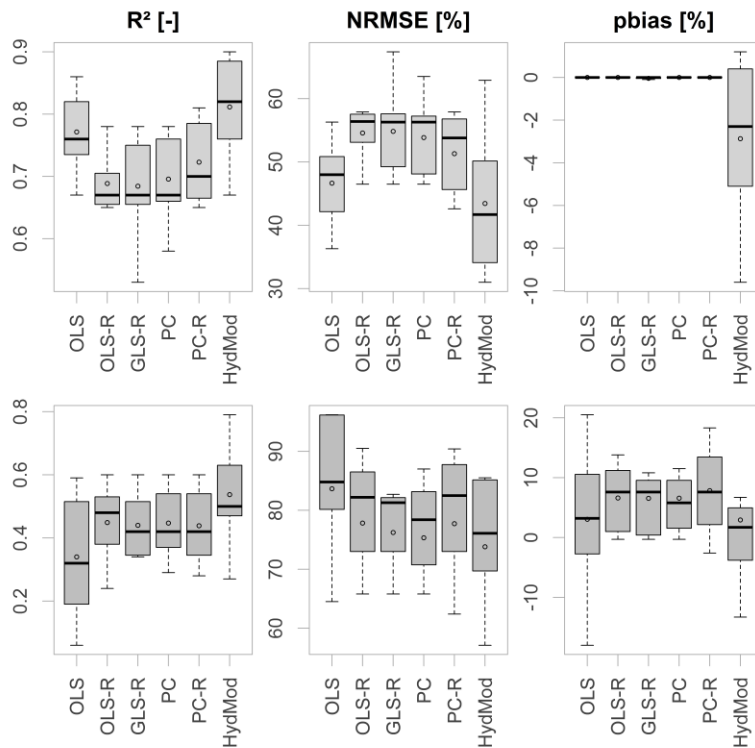


Figure 5: Criteria for goodness of fit of different model approaches in the calibration period (top) and validation period (bottom) over 7 stations.

An obvious problem is the significant difference in model performance between the calibration and validation period. All quality criteria certify a much better performance during calibration than during validation. Table 4 and Table 5 show the median differences in goodness-of-fit measures for all model variants over all stations and over the stations

at which hydrological modeling was possible. The differences are severe, even though quite a number of precautions have been taken during calibration. The R^2 for unrestricted PC, for example, differs by 0.22 between calibration and validation. For the 7 stations this difference increases to 0.23. Overfitting appears to be an issue, even though the number of regressors has been restricted. However, the differences are also observable for the hydrological model, in some cases even more drastic than for the statistical models. The median difference in R^2 over the 7 stations is 0.3 between calibration and validation period.

Table 4: Median absolute difference in quality criteria between calibration and validation period for 28 stations.

	OLS	OLS-R	GLS-R	PC	PC-R
NRMSE	37.8%	24.6%	20.3%	20.8%	26.2%
PBIAS	5.1%	3.2%	2.7%	2.7%	3.2%
R^2	0.37	0.27	0.22	0.22	0.28

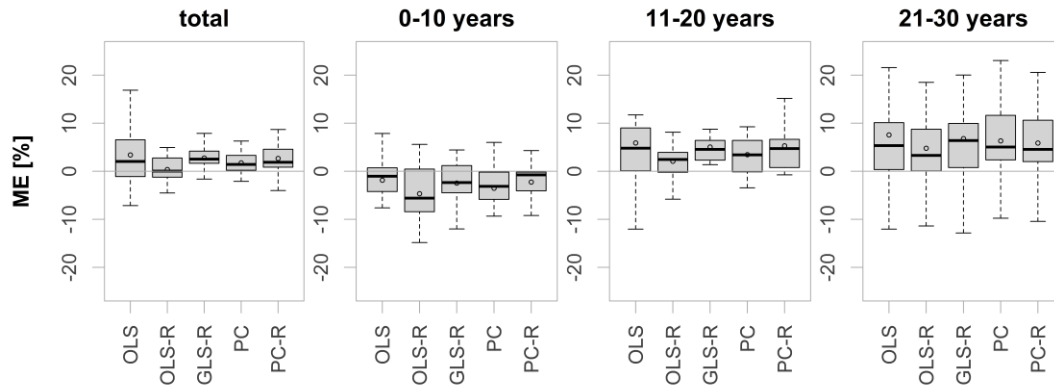
Through separation of the validation period into three parts it becomes obvious that performance decreases steadily with distance from the calibration period, as shown in Fig. 6. Compared are the estimated and the observed means for all statistical methods. The error increases also for methods that have been supposedly restricted to stationary relationships between target variable and regressors. The effect shows that non-stationary relationships between low flow and meteorological indices are of major relevance and need to be considered in statistical modeling. Logically, with a changing climate, interrelationships between individual meteorological variables and hence the ratio of the influence of individual drivers on low flow formation will change. At the same time, other forcings and feedbacks may become more or less relevant, which have not been included in the statistical model formulation in the first place. In an initial attempt at encompassing the problem by addressing a potential linear time dependence of the regression coefficients, the parameters have been re-estimated as linear functions of time using a maximum likelihood fitting. The required complexity of the models has been assessed using likelihood ratio tests. However, model fitting appeared problematic for the small calibration period and did not yield an improvement of the existing models. It should be noted that the set up for model calibration and validation allows for assessment of changes between directly adjacent periods only. Application of the models to predict low flows in a more distant future under more severe climatic change may significantly enhance the error due to non-stationarity.

Table 5: Median absolute difference in quality criteria between calibration and validation period for 7 stations.

	OLS	OLS-R	GLS-R	PC	PC-R	HydMod
NRMSE	34.4%	25.5%	21.4%	19.3%	25.5%	32.7%
PBIAS	6.9%	8.6%	8.4%	7.6%	8.6%	3.7%
R^2	0.35	0.23	0.23	0.23	0.23	0.30

Apart from non-stationary relationship between target variable and regressors, another possible explanation – especially with respect to the observations regarding the hydrological model - could be a significant difference in flow

behavior between the two periods selected for calibration and validation, potentially caused by other forcings than local climate. A previous study by Fangmann et al. (2013) has found that the time series at a majority of gauges in the study area are divided by significant break points (according to Pettitt, 1979) between the years 1987 and 1989. Since neither the hydrological nor the statistical models involve other input than local meteorology, this break cannot be accounted for by either approach. Also, anthropogenic interference poses a relevant factor. Even if indirectly considered in the statistical models, changes in the management patterns would significantly alter the prognosis; a factor that needs to be considered during model application.



10 **Figure 6: Mean deviation of estimated from observed means for the whole validation period (left), as well as the first, second and final 10 years of validation.**

Modeling of the other tested indices showed quite a differentiated picture. As shown exemplary for 7 stations and the restricted GLS approach in Fig. 7, some indices were reproduced more (top), others less successfully (bottom) than the NM7Q. Estimation of the Q_{95} appeared slightly better in terms of all quality criteria. The D_{max} was modeled effectively via GLS in terms of R^2 and NRMSE (median values of 0.54 and 80.8 %) but showed quite a large bias. V_{max} and especially the annual low flow timing could not be modeled successfully by any of the statistical approaches (median R^2 of 0.31 and 0.03, respectively).

It was noted that the overall model performance was slightly higher for the more average values, i.e. NM30Q and Q_{80} than for the more extreme indices NM7Q and Q_{95} . The median R^2 values of the NM7Q and the NM30Q compare as 0.47 and 0.52, the ones of the Q_{95} and Q_{80} as 0.49 and 0.62. Compared to the D_{max} and V_{max} , the annual average D_{mean} and V_{mean} cannot be predicted by the fitted models. The validation yields R^2 values below 0.1 for both cases.

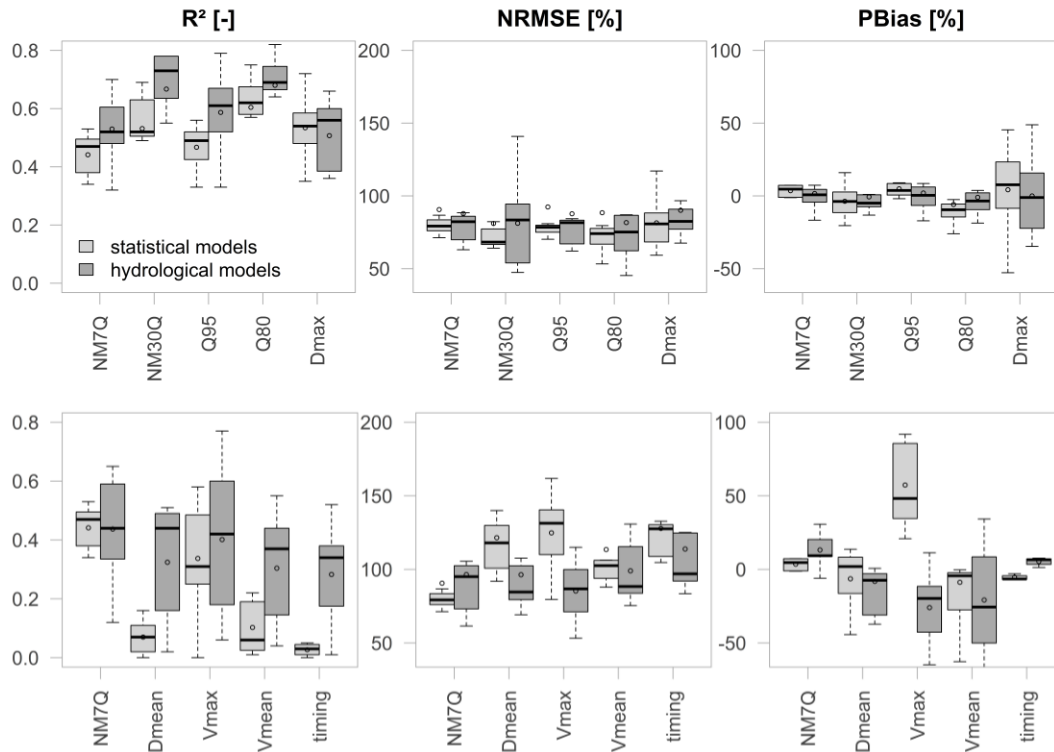


Figure 7: Validation results for the restricted GLS model and the hydrological model for various low flow indices at 7 stations performing better (top) and worse (bottom) than for the NM7Q.

5

The differences in reproducibility of the various metrics can be explained by the nature of the indices and the structure of the statistical models. The regression model uses aggregated meteorological features over a specific period of time for prediction of a desired low flow variable. The shorter the required period, the lower the degree of averaging and the greater the possibility to capture extremes that cause a subsequent low flow event. Therefore, indices related to a specific event, like the NM7Q or the D_{max} , can be modeled quite effectively based on previous meteorological states.

10 The fact that more average indices like NM30Q and Q_{80} are reproduced better than more extreme ones can be explained by the same principle. Meteorological indices computed for longer base periods are required to model more average index values. Errors that occur if extremes cannot be explained by external variables are lower. Dmean and Vmean, however, do not represent averages of single but of multiple events. These features cannot be captured by small sets

15 of regressors as used in this study.

Alongside the validation results of the statistical models those of the hydrological model are presented in Fig.7. The indices in the top panels are deduced from the simulation runs of the models that has been calibrated on the annual NM7Q. In order to better represent the indices related to duration and volume, the model used in the bottom panels has been calibrated using the annual Vmean as fitting criterion. One can see that the results for all indices improve for

20 the hydrological model as expected, due to a more detailed process representation. This is especially the case for the average duration and volume based indices. Still, the differences in performance for the individual indices is visible also for the hydrological models.

It should be noted that the selected statistical methods exclusively take linear relationships between target variable and regressors into account. It appeared that these linear dependencies were strong and major portions of the variance in

the target variables could be explained by the fitted models. At this point it cannot be precluded that non-linear relationships to some meteorological indices do exist but it is presumed that important influential quantities can be linearly related to the target variable.

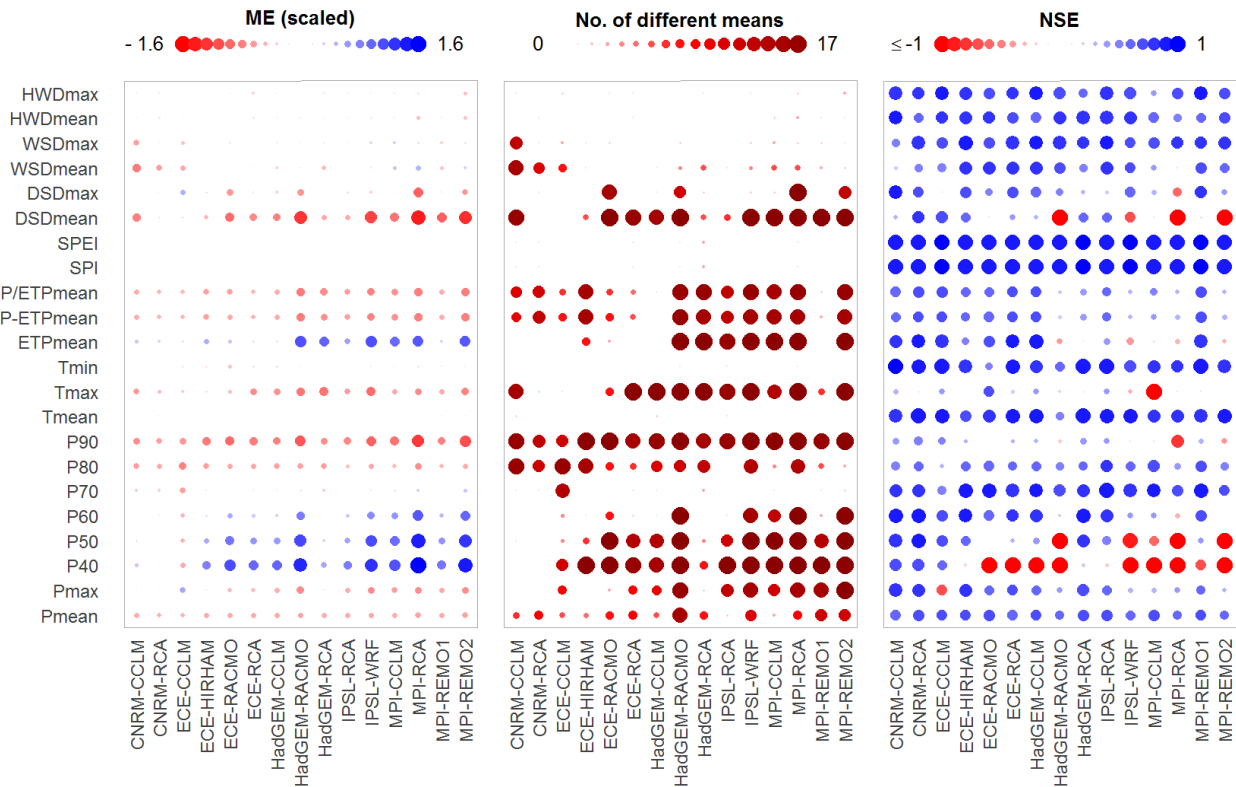
4.2 Low flow drivers

- 5 The restricted PC models are used to evaluate the selected explanatory variables over all stations. For the NM7Q the majority of models comprise of one or two principal components made up by 2-8 meteorological indices. Many of the selected variables repeat for most of the models. The most common predictors of the NM7Q appear to be the aridity index P/ETP for 3- and 6-month base periods and for 1-4 months lead times, as well as the P-ETP for the same periods. The second most frequent regressor is the SPI of various base periods and lead times (0 to 3 months). Upper
- 10 precipitation quantiles with various base periods and lead times follow in frequency. Several models also contain DSD the ratio between average DSD and WSD as predictors. Pure temperature based predictors are rare, but do occur in some cases. The selected lead times of the temperature based indices are in these cases larger than for the precipitation or water balance indices. Lead times as long as 9 months, which would represent November-January temperature, are observed. Winter temperature hence appears to be an important predictor for summer low flow magnitude.
- 15 The inclusion of indices with differing base periods and lead times at the individual stations represents the heterogeneity of transformation processes within the study area. One of the major determinants of how meteorological processes translate into flow is catchment size. Larger, rather slowly responding catchments with significant storage capacity will less likely be affected by small meteorological events and low flows will occur moderated and with significant temporal delay. Therefore, statistical models fitted for these catchments will most likely include
- 20 meteorological indices that have been computed for longer base periods and lead times. Within small, quickly responding systems, on the other hand, low flow magnitudes may be related to shorter dry periods that have occurred recently. Variable selection is thus carried out in favor of small base periods and lead times. Nevertheless, even for smaller catchments an inclusion of temporally leading meteorological indices may mimic initial storage conditions and determine the absolute magnitude of a summer low flow event.
- 25 The models fitted to the NM30Q are comparable to the ones of the NM7Q but contain on average fewer explanatory variables per model. As discussed before, the more average low flow values are more easily predicted, apparently requiring fewer external information. In contrast to the NM7Q, temperature based indices do not appear to be important predictors of the NM30Q. Considering the models of the other indices, it can be seen that the selected regressors differ between the individual types. While Q95 and Q80 are primarily predicted by water balance parameters, as are the
- 30 NM7Q and NM30Q, the models for Dmax and Vmax count a high number of indices related to durations, especially average and maximum dry spell duration. The regressors selected for the forward and inversed fitting carried out at each station are not always identical. Some of the independent variables are naturally very similar for various base periods and lead times that they are almost exchangeable, which in turn makes the fitted models very similar. Still, this observation hints again at the problem of non-stationarity and the observed breakpoint near the transition between
- 35 calibration and validation period.

4.3 Prognosis

For prognosis, the restricted principal component models are applied using the ensemble of climate model data described above. Even though the non-restricted models showed overall higher performance in the observation period, the restriction via removal of potentially non-stationary variables is considered valuable for predicting future flows, especially with respect to parameter stability (Parajka et al., 2016). However, it needs to be noted that also variables, which have been determined as acceptably stationary in a small observed period may still exhibit non-stationary behavior in a more distant future, especially in their interactions.

For reasons of conciseness only the NM7Q is selected as target variable in this example and mere changes in the means for the near and far future period are assessed. In order to firstly evaluate the climate models' capabilities of reproducing the required input variables for the impact models, the meteorological indices obtained from the models are compared to the observation in the reference period. Figure 8 summarizes the results. Three measures are used to assess the models' capability to reproduce the indices: a) the mean error, i.e. the difference in means between simulation and observation over all stations (computed for scaled data to make it comparable between indices) b) the number of stations where this difference is significant at a 5%-significance level, tested using a non-parametric Mann-Whitney test (Wilcoxon, 1945), and c) the NSE of the simulated and observed index time series, both ordered by size, as a means of assessing the similarity of the two distributions. The indices considered in the plot are calculated on a 6-months base period with 3 months shift and are representative for most base periods and lead times.



20 **Figure 8: Comparison of simulated and observed meteorological indices for each model over 17 stations: mean error (left), number of significant shifts in location (center) and Nash-Sutcliffe efficiency of ordered series (right).**

The left panel shows that deviations are observed for the climatic water balance and the aridity index, i.e. average P-ETP and P/ETP. The climate models consistently underestimate the observed values. What also becomes apparent is that upper precipitation quantiles (P70 – P90) are mostly underestimated. The amount of significant differences found for the means, especially in P90, suggest that there is a significant bias throughout the study area. Additionally, the NSE values are rather low, indicating a generally poor reproduction of these index values. Apart from the quantiles and the climatic water balance, errors are found for maximum temperature and dry spell durations. The lower precipitation quantiles show quite high errors but are rarely considered in the station models. For those variables that are considered, additional bias correction may be advisable.

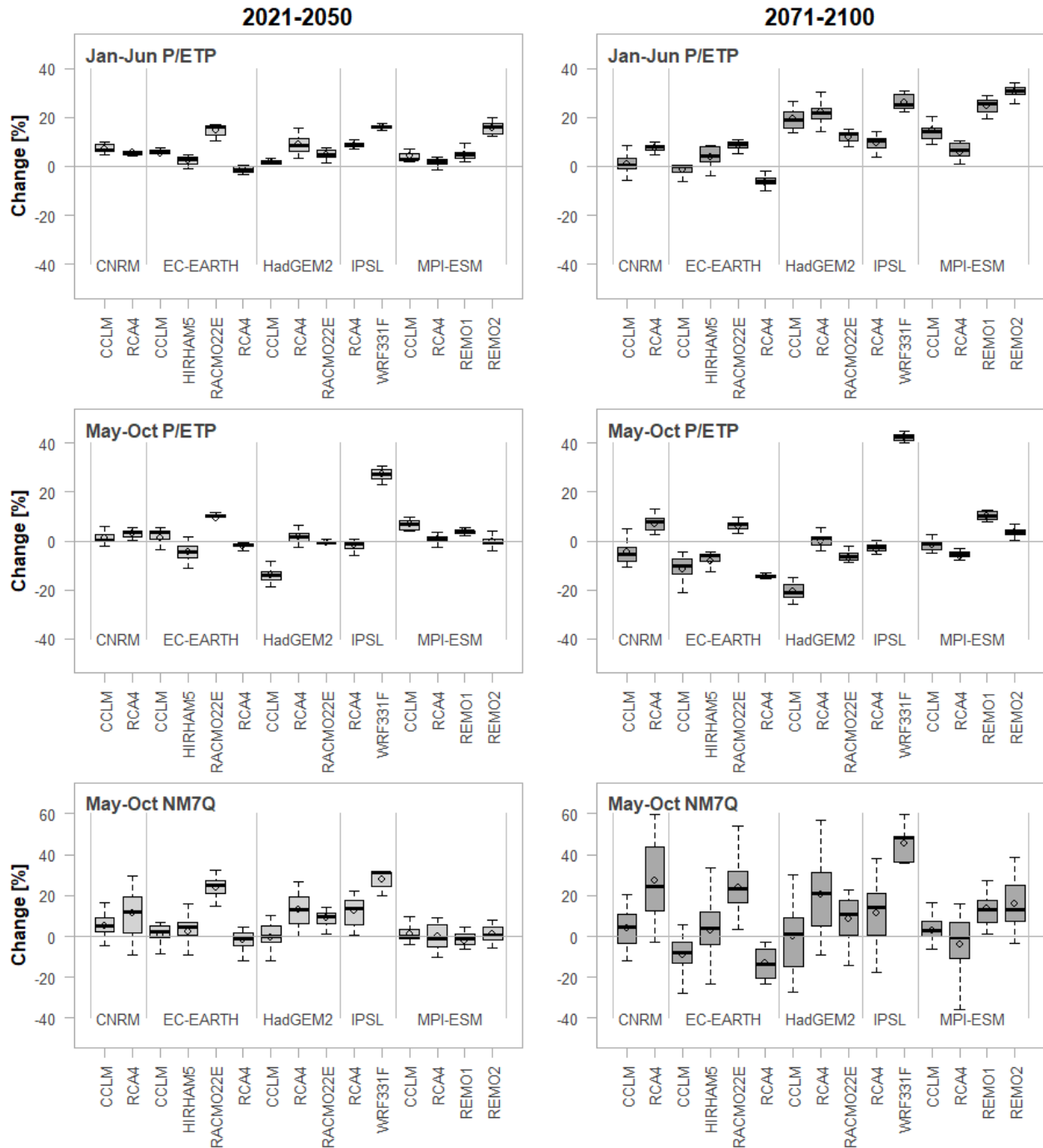
Apparently, the climate models have limited ability to reproduce some of the true meteorological indices. This effect may be due to the inability of the regional climate models to downscale the global climate data appropriately for the study area. One needs to also consider the difference in grid size of the observed, very detailed data of 1-km resolution and the simulation on a 10-km grid. Since mere averaging of the grid cells has been applied to obtain the basin averages, the smoothing effect may be recognizable, especially for small catchments and in heterogeneous terrain. The recalibration technique described in section 3.5 was chosen to address these issues related to various forms of scaling.

Figure 9 shows the prognoses of the individual climate models over all stations. Along with the summer NM7Q (bottom), projections for the aridity index are shown, as they indicate the overall climatic development. Also, the index is included in numerous stations' impact models. The index's development is shown for a 6-month base period without lead time, which equals the computation basis for the NM7Q (May - October; center) and a 4-months shift (January - June), which equals the maximum lead-time considered in the station models (top).

The changes for January-June P/ETP are predominantly positive for the majority of models and stations. Only the EC-EARTH coupled with the CCLM and the RCA4 show negative trends. The total range of projections is -13.31 to +34.10% in the far future period. The positive change in the ratios is caused by a significant increase in January-June precipitation amounts, projected for all stations by all climate models, which exceeds the simultaneously projected increase in evapotranspiration. For summer, the projections for the P/ETP are more ambiguous. 9 ensemble members clearly predict a significant decline in the far future, while 5 models project an increase at all considered stations. The spread of the projection is accordingly large, ranging from -25.75 to +48.91%. The IPSL-WRF331F thereby shows by far the highest positive development and can potentially be considered an outlier. The rather negative trend in the summer P/ETP is related to both decreasing precipitation, as projected by most models, and increasing evapotranspiration.

For the NM7Q the spread of changes over the considered stations is significantly larger and increases further from the near to the far future period. This is a logical consequence, since flow behaves much more heterogeneously throughout space and direction and magnitude of change may greatly depend on local conditions. Overall, the changes in the NM7Q appear to be a mixture of the patterns observed for P/ETP in both summer and winter. The highest increase in NM7Q is predicted by the IPSL-WRF331F model chain (median 48.18%), which also shows highest increase in precipitation amounts and strongest decrease in evapotranspiration in both summer and winter. EC-EARTH-CCLM and -RCA4 predict the strongest decrease (median -7.9 and -13.42%, respectively), which is also in accordance with declining P/ETP in both summer and winter. Apart from these models, there appears to be a general increase projected

for summer NM7Q over the majority of stations. It seems that on average the influence of spring and winter meteorological states weighs stronger on the formation of summer NM7Q than the actual summer conditions.

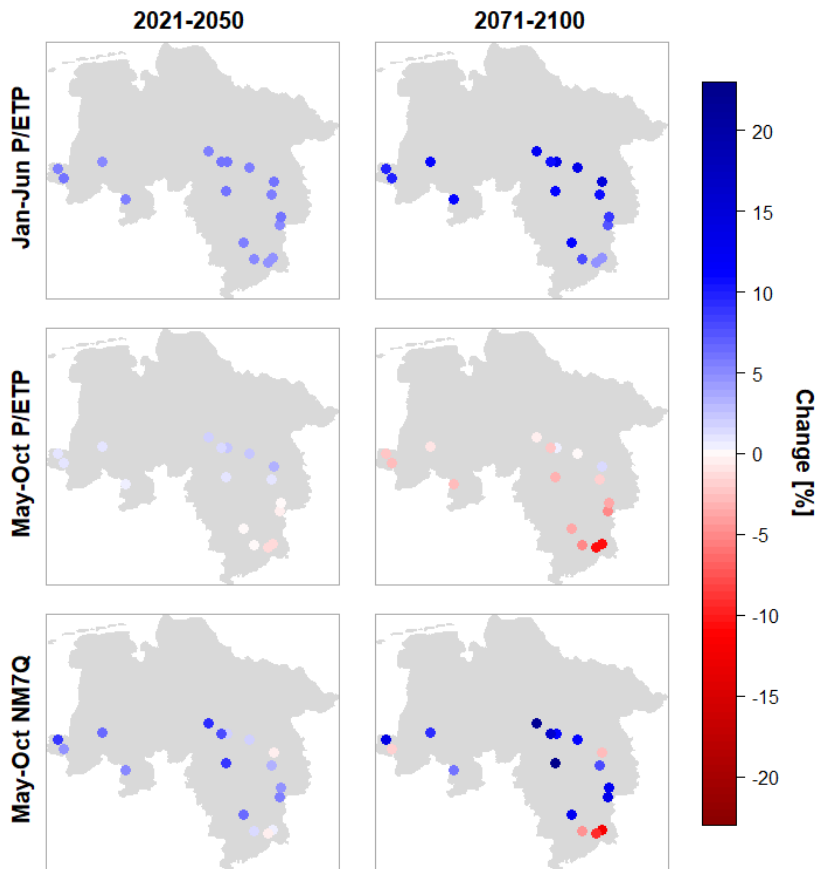


5 **Figure 9: Projected changes in winter (top) and summer (center) aridity index and NM7Q (bottom) by all models over 17 stations and two future periods.**

Figure 10 shows the spatial distribution of the projected changes for the two future periods and the variables analyzed before. Depicted are the median changes over all climate model ensemble members for the individual stations. All stations show an average increase in winter P/ETP ranging from +6.84 to +14.75% in the far future. For summer, at

the majority of stations a decrease is projected, the largest changes occurring in the Harz mountains, i.e. the most southeastern stations in the study area, with an average decrease of -4.72%. Positive changes can be found in the northern stations with up to +3.12% in the near future but decreasing to +2.76% in the latter period. The NM7Q is projected to increase by up to 22.79% at all but four stations, where a median decrease of up to -12.01% is projected.

5 Two of these stations are situated in or near the Harz Mountains, where flow forming processes and climate are quite different from the rest of the study area. Additionally, their areas are the smallest in the data set considered for impact analysis (44.5 to 363.0 km²). Apparently, the NM7Q in these areas is influenced more by summer meteorology than the rest of the study area.



10 **Figure 10: Medians of projected changes in winter (top) and summer (center) aridity index and NM7Q (bottom) by for individual stations over 15 climate models and two future periods.**

Finally, Fig. 11 shows boxplots for all stations and the projected changes in the NM7Q over all considered ensemble members. It can be seen that at most of the stations the predicted directions of change are quite unambiguous over the majority of climate models and projections are accordingly quite robust. Exceptions are stations 4819102, 4882195 and 9286162, where the median change is close to 0. What becomes also apparent in these plots is the spatial dependence between stations. Similar first digits of the station numbers indicate that stations belong to the same river basin, while increasing numbers indicate more downstream locations, i.e. larger size, as depicted in Fig. 12. The projected changes are obviously strongly related to catchment area, since continuous transitions are observable from

most negative/smallest change in NM7Q at the smallest to most positive change at the largest catchments within each basin. Summer low flow in catchments with large storage capacity will more likely be influenced by the increasing annual and winter precipitation amounts, while the flow in the smaller catchments is more drastically influenced by drier summer meteorological conditions. It remains to be analyzed, e.g. via hydrological modeling, whether this observation is an artifact created by oversimplification of the statistical approaches (through neglect of other relevant, potentially counteracting factors) or a truly observable phenomenon. Nonetheless, the coherence of the projected station means suggests that the statistical models – even though they have been fitted independently for every station - exhibit a meaningful spatial consistence within the region. Apparent outliers are not produced by any stations' statistical impact model.

5
10

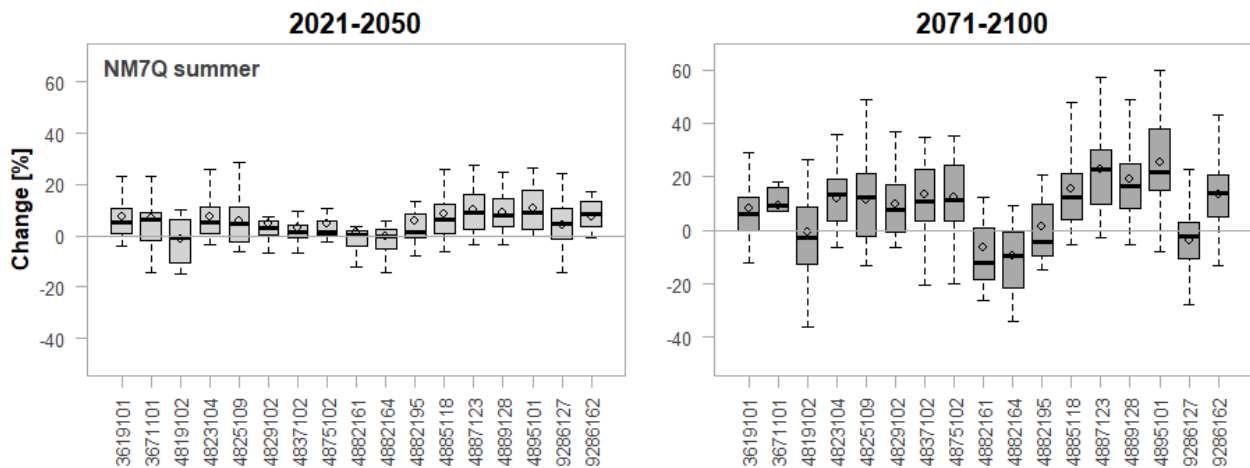


Figure 11: Projected changes in summer NM7Q for individual stations over 15 climate models and two future periods.

The significant increase in winter and partly projected decrease in summer P/ETP may suggest a temporal shift in minimum flows from summer/early fall to late fall/early winter in the study area. In order to test this hypothesis, statistical models are fitted to additionally model the winter NM7Q. Modeling of the winter values was more difficult than of the summer low flows since their causes may not be representable by the utilized indices (e.g. water retention by snow). The final projections in Fig. 13 suggest that the expected developments for winter are less conclusive than for summer. At most stations mostly positive trends are projected for both future periods with lacking robustness. A pronounced pattern of change contrasting the summer NM7Q cannot be observed. Accordingly, with overall increasing precipitation amounts the intensities of the severest events of the year are expected to decrease at most stations in the area, regardless of their time of occurrence.

15
20

Still, the findings indicate that there might be a slight delay in the onset of future low flow events. The ratio of winter to summer low flows appears to increase slightly at most stations. While for the observation 10.20% of the annual lowest low flow events occur in winter, the models predict on average 15.1% for the reference period, 20.00% for the near and 22.67% for the far future.

25

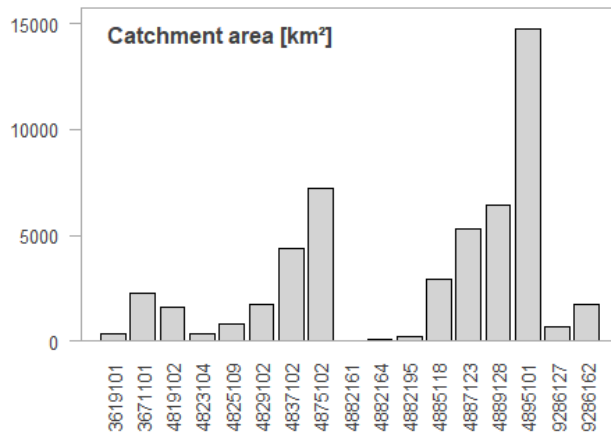


Figure 12: Catchment areas of the considered gauges.

5 A comparison of the signals projected in this work to other studies that analyze comparable regions and climate model ensembles but use hydrological models for impact assessment appears difficult, due to differences in scale, model ensemble and type of analysis (e.g. based on degree of heating rather than on fixed periods). A regional study that is comparable to this work has been carried out by Osuch et al. (2017) for Poland. They investigated climate change impacts on low flows, including the annual NM7Q, using the HBV model and, among others, an RCP 8.5 climate model ensemble. They found significant positive changes in the NM7Q for the RCP8.5 scenario with more than an average 40% increase in the study area in a period from 2071-2100. These changes are much larger than the ones found in this study but are obtained for a more continental climate. Other studies analyzing climate change effects on low flows over entire Europe (e.g. Marx et al., 2018) or global studies (e.g. Wanders and Yada, 2014) using RCP emission scenarios usually find inconclusive changes in low flow magnitude for the northwestern parts of Germany (between -10 and +10%). The average changes in the annual NM7Q over all stations and ensemble members obtained in this study are +5.62% for the near and +8.96% for the far future period and thus within the range of these findings. Van Vliet et al. (2015) show in their Europe-wide study that especially in central western and northern Europe the projected changes in streamflow drought under an RCP8.5 scenario appear to differ between the two hydrological models they applied, both in direction and magnitude. In general, it appears difficult to assess future low flow development in the region, especially in comparison to the parts of Europe, where expected changes in precipitation are more pronounced and unequivocal between climate models.

10

15

20

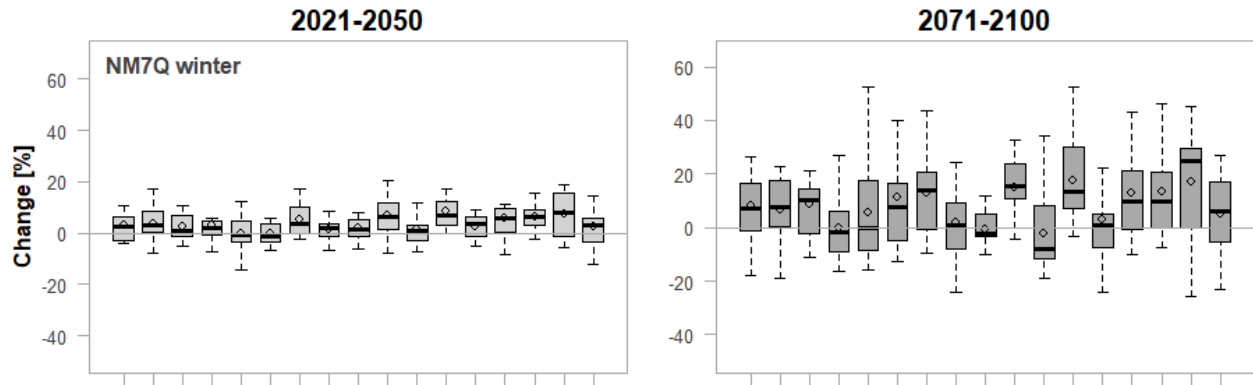


Figure 13: Projected changes in winter NM7Q for individual stations over 15 climate models and two future periods.

5 Conclusions and outlook

- 5 The aim of this work was to assess key low flow drivers using simplified statistical approaches. Several regression models with varying restrictions and assumptions have been set up and evaluated in a split-validation procedure. In order to assess potential future changes in the low flow, the models are applied to an ensemble of climate model data. The main findings are:
- 10 - Modeling of low flow values as a function of meteorological indices appears feasible. An approach using a few principal components of several variables as regressors yields the best results for the 60-year observation period. It showed to simultaneously counteract problems with multicollinearity and omission of important explanatory variables.
 - 15 - Non-stationarity within the relationship between meteorological predictors and low flow target variables appear to be an issue, resulting from the entire neglect of physical processes and changing interrelationships between explanatory metrics. This problematic needs to be considered, when applying the models to future data, especially in terms of parameter stability. Ideally the models should be revised through inclusion of methods to map potential non-stationary processes and interrelationships.
 - 20 - More average low flow indices are reproduced better by the statistical models than their more extreme counterparts, e.g. the NM30Q compared to the NM7Q. Maximum duration and deficit volume can be adequately modeled, while the onset of an event can by no means be predicted by the suggested models.
 - 25 - The main drivers for all low flow characteristics are metrics related to precipitation and evapotranspiration amounts. Temperature indices appear to be relevant at some stations for certain low flow metrics. Usually base periods for computation and lead times of the explanatory variables considered in the station models depend greatly on catchment size and response time of the catchments.
 - The hydrological model outperforms the statistical approaches, when explicitly calibrated on the low flow events. However, the major discrepancy between its performances in the calibration and the validation period shows that either non-stationary processes may not be captured or that there is significant non-homogeneity between the calibration and validation period considered for analysis.

- Applying the restricted principal component model with an ensemble of coupled global and regional models based on an RCP 8.5 scenario yields on average an increase in summer NM7Q at most stations. Only two small headwater catchments show a decrease in NM7Q in the far future. These stations appear to not be influenced by preceding winter precipitation.
- 5 - A major weakness for the proposed model type is the reproduction of meteorological indices by the climate models. However, underestimation of the climatic water balance and upper precipitation quantiles may be a likewise limiting factor within process-based impact models. A direct calibration using climate model data instead of the observation can potentially help increase the quality of the projections made by the statistical models.
- 10 There are potential advantages to applying statistical approaches that have not been discussed before. One is that the required input consists of variables that are lumped over a significant amount of time (3 – 12 months). Such averages can potentially be better reproduced by climate models than the daily variability required for other impact model types. Also, the statistical models may be easily extended to include other forcings like large-scale phenomena, which may be similarly described by indices like local meteorological conditions. Also land-use feedbacks might be includable to
- 15 some extent. What remains difficult is to statistically model feedbacks between different external variables with the simplified approaches. This problem may, however, be moderated by including non-stationary regression coefficients for individual variables. Considering issues with the coupling of global and regional climate and impact models, as identified e.g. by Dai et al. (2013) or Wilby and Harris (2006), including issues with downscaling, a direct use of large-scale teleconnections and the possibility to apply the models directly to extrapolated climate data - rather than just
- 20 climate model data – may suggest that statistical approaches can significantly increase the robustness of predictions, especially when considered in an ensemble of various model types and information sources. Such a framework has been suggested by Laaha et al. (2016) for proper assessment of climate change impacts on low flows.
- The statistical approach can also make use and benefit from inclusion of spatial information, especially with respect to regional climate change impact analysis. According to the concept of “trading space for time”, simultaneous analysis
- 25 of all information in an area instead of a single-site approach will yield more robust parameter estimates and allow for estimation of climate change signals at unobserved sites. Extensions of the existing station models using different approaches of non-stationary regional frequency analysis have been proposed in Fangmann (2017). The simultaneous consideration of space and time within the simple statistical approaches appeared beneficial at the regional level.
- All in all, the approach of modeling specific low flow indices as a function of meteorological indices appears
- 30 promising. Model set up and computation are straightforward and quick, even over large study areas with high numbers of catchments. The method appears to be able to simulate flow for any catchment from small to large and flat to steep without any consideration of physiographical characteristics. Being able to consider larger periods for calibration would assumingly lead to an increase in robustness of the models and extend the potential horizon for prognosis. Even though the projected values should not be taken as basis for dimensioning, the statistical approaches can be of
- 35 assistance for decision making. They can offer a good approximation of the future development, especially when considered in a framework of several climate-impact model ensembles and are worthy of consideration in the field of climate change impact analysis.

Acknowledgements

The results presented in this study are part of the KliBiW project (Wasserwirtschaftliche Folgenabschätzung des globalen Klimawandels für die Binnengewässer in Niedersachsen), funded by the Lower Saxon Ministry for Environment, Energy and Climate Protection (Niedersächsisches Ministerium für Umwelt, Energie und Klimaschutz), who are gratefully acknowledged. We would also like to thank the NLWKN (Niedersächsischer Landesbetrieb für Wasserwirtschaft, Küsten- und Naturschutz) for provision and pre-processing of the data used in this study.

References

- Akaike H.: New Look at Statistical-Model Identification. *Ieee T Automat Contr*, 19, 716-723, doi:10.1109/Tac.1974.1100705, 1974.
- 10 Coles S.: An introduction to statistical modeling of extreme values. Springer, London, 2001.
- Dai A.G.: Increasing drought under global warming in observations and models. *Nat Clim Change* 3, 52-58, doi:10.1038/Nclimate1633, 2013.
- de Wit M.J.M., van den Hurk B., Warmerdam P.M.M., Torfs P.J.J.F., Roulin E. and van Deursen W.P.A.: Impact of climate change on low-flows in the river Meuse. *Climatic Change*, 82, 351-372, doi:10.1007/s10584-006-9195-2, 2007.
- 15 Fangmann A., Belli A. and Haberlandt U.: Trends in beobachteten Abflusszeitreihen in Niedersachsen. *Hydrol. Wasserbewirts.*, 57, 196-205, doi:10.5675/HyWa_2013,5_1, 2013, 2013.
- Fangmann, A.: Low flow prediction in time and space: An adaptive statistical scheme for regional climate change impact assessment, *Mitteilungen, Heft 106*, Inst. of Hydrology, Leibniz University of Hannover, Hannover, 160 pp., 2017.
- 20 Forzieri G., Feyen L., Rojas R., Florke M., Wimmer F. and Bianchi A.: Ensemble projections of future streamflow droughts in Europe. *Hydrol. Earth Syst. Sci.*, 18, 85-108, doi:10.5194/hess-18-85-2014, 2014
- Gosling S.N., Zaherpour J., Mount N.J., Hattermann F.F., Dankers R., Arheimer B., Breuer L., Ding J., Haddeland I., Kumar R., Kundu D., Liu J.G., van Griensven A., Veldkamp T.I.E., Vetter T., Wang X.Y. and Zhang X.X.: A comparison of changes in river runoff from multiple global and catchment-scale hydrological models under global warming scenarios of 1 degrees C, 2 degrees C and 3 degrees C. *Climatic Change*, 141, 577-595, doi:10.1007/s10584-016-1773-3, 2017.
- 25 Haslinger K., Koffler D., Schöner W. and Laaha G.: Exploring the link between meteorological drought and streamflow, Effects of climate- catchment interaction. *Water Resour. Res.*, 50, 2468-2487, doi:10.1002/2013WR015051, 2014.
- 30 Laaha G., Parajka J., Viglione A., Koffler D., Haslinger K., Schöner W., Zehetgruber J. and Blöschl G.: A three-pillar approach to assessing climate impacts on low flows. *Hydrol. Earth Syst. Sci.*, 20, 3967-3985, doi:10.5194/hess-20-3967-2016, 2016.
- Lindstrom G., Johansson B., Persson M., Gardelin M. and Bergstrom S.: Development and test of the distributed HBV-96 hydrological model. *J. Hydrol.*, 201, 272-288, doi:10.1016/S0022-1694(97)00041-3, 1997.
- 35

- Liu D.D., Guo S.L., Lian Y.Q., Xiong L.H. and Chen X.H.: (2015) Climate-informed low-flow frequency analysis using nonstationary modelling. *Hydrol. Process.*, 29, 2112-2124, doi:10.1002/hyp.10360.
- Marx A., Kumar R., Thober S., Rakovec O., Wanders N., Zink M., Wood E.F., Pan M., Sheffield J. and Samaniego L.: Climate change alters low flows in Europe under global warming of 1.5, 2, and 3 degrees C. *Hydrol. Earth Syst. Sci.* 22, 1017-1032, doi:10.5194/hess-22-1017-2018, 2018.
- 5 Mosley M.P.: Regional differences in the effects of El Nino and La Nina on low flows and floods. *Hydrolog. Sci. J.*, 45, 249-267, doi:10.1080/02626660009492323, 2000.
- NLWKN: Globaler Klimawandel: Wasserwirtschaftliche Folgenabschätzung für das Binnenland, Oberirdische Gewässer Band 33, Niedersächsischer Landesbetrieb für Wasserwirtschaft, Küsten- und Naturschutz, Betriebsstelle Hannover-Hildesheim, 2012.
- 10 NLWKN: Globaler Klimawandel: Wasserwirtschaftliche Folgenabschätzung für das Binnenland, Oberirdische Gewässer Band 41, Niedersächsischer Landesbetrieb für Wasserwirtschaft, Küsten- und Naturschutz Betriebsstelle Hannover-Hildesheim, 2017.
- Osuch M., Romanowicz R. and Wong W.K.: Analysis of low flow indices under varying climatic conditions in Poland (in press). *Hydrol. Res.*, doi:10.2166/nh.2017.021, 2017.
- 15 Pettitt A.N.: A non-parametric approach to the change-point problem. *Appl. Stat.-J. Roy. St. C.*, 28, 126-135, doi:10.2307/2346729, 1979.
- Roudier P., Andersson J.C.M., Donnelly C., Feyen L., Greuell W. and Ludwig F.: Projections of future floods and hydrological droughts in Europe under a +2 degrees C global warming. *Climatic Change*, 135, 341-355, doi:10.1007/s10584-015-1570-4, 2016.
- 20 Parajka J., Blaschke A.P., Blöschl G., Haslinger K., Hepp G., Laaha G., Schöner W., Trautvetter H., Viglione A. and Zessner M.: Uncertainty contributions to low-flow projections in Austria, *Hydrology and Earth System Sciences*, 20(5), 2085–2101, doi:10.5194/hess-20-2085-2016, 2016.
- Schneider C., Laize C.L.R., Acreman M.C. and Florke M.: How will climate change modify river flow regimes in Europe? *Hydrol. Earth Syst. Sci.*, 17, 325-339, doi:10.5194/hess-17-325-2013, 2013.
- 25 Schwarz G.: Estimating Dimension of a Model. *Ann. Stat.*, 6, 461-464, doi:10.1214/aos/1176344136, 1978.
- Van Loon A.F. and Laaha G.: Hydrological drought severity explained by climate and catchment characteristics. *J. Hydrol.* 526, 3-14, doi:10.1016/j.jhydrol.2014.10.059, 2015.
- Vrugt J.A. and Robinson B.A.: Improved evolutionary optimization from genetically adaptive multimethod search. *P. Matl. Acad. Sci. USA*, 104, 708-711, doi:10.1073/pnas.0610471104, 2017.
- 30 Wallner M., Haberlandt U. and Dietrich J.: A one-step similarity approach for the regionalization of hydrological model parameters based on Self-Organizing Maps. *J. Hydrol.*, 494, 59-71, doi:10.1016/j.jhydrol.2013.04.022, 2013.
- Wanders N. and Van Lanen H.A.J.: Future discharge drought across climate regions around the world modelled with a synthetic hydrological modelling approach forced by three general circulation models. *Nat. Hazard. Earth Syst.*, 15, 487-504, doi:10.5194/nhess-15-487-2015, 2015.
- 35 Wanders N. and Wada Y.: Human and climate impacts on the 21st century hydrological drought. *J. Hydrol.*, 526, 208-220, doi:10.1016/j.jhydrol.2014.10.047, 2015.

Wilby R.L. and Harris I.: A framework for assessing uncertainties in climate change impacts, Low-flow scenarios for the River Thames, UK. *Water Resour. Res.*, 42, doi:10.1029/2005wr004065, 2006.

Wilcoxon F.: Individual Comparisons by Ranking Methods. *Biometrics Bull.*, 1, 80-83, doi:10.2307/3001968, 1945.