

Isotopic reconnaissance of urban water supply system dynamics

Yusuf Jameel^{1*}, Simon Brewer², Richard P Fiorella¹, Brett J Tipple^{3,4}, Shazelle Terry⁵, and Gabriel J Bowen^{1,3}

¹Geology and Geophysics, University of Utah, 115 S 1460 E, Salt Lake City, Utah 84112, USA.

5 ²Department of Geography, University of Utah, 332 S 1400 E, Salt Lake City, Utah 84112, USA.

³Global Change and Sustainability Centre, University of Utah, 115 S 1460 E, Salt Lake City, Utah 84112, USA.

⁴Department of Biology, University of Utah, 257 S 1400 E, Salt Lake City, Utah 84112, USA.

⁵Jordan Valley Water Conservancy District, 8215 S 1300 W, West Jordan, Utah 84088, USA.

*Correspondence to: yusuf.jameel@utah.edu

10 **Abstract.** Public water supply systems (PWSS) are critical infrastructure that are vulnerable to
contamination and physical disruption. Exploring susceptibility of PWSS to such perturbations
requires detailed knowledge of supply system structure and operation. The physical structure of
the distribution system (i.e., pipeline connections) and basic information on sources are
documented for most industrialized metropolises. Yet, most information on PWSS function
15 comes from hydrodynamic models that are seldom validated using observational data. In
developing regions, the issue may be exasperated as information regarding the physical structure
of the PWSS may be incorrect, incomplete, undocumented, or difficult to obtain in many cities.
Here, we present a novel application of stable isotopes in water (SIW) to quantify the
contribution of different water sources, identify “static” and “dynamic” regions (e.g., regions
20 supplied chiefly by one source vs. those experiencing active mixing between multiple sources),
and reconstruct basic flow patterns in a large and complex PWSS. Our analysis, based on a
Bayesian mixing model framework, uses basic information on the SIW and production volumes
of sources but requires no information on pipeline connections in the system. Our work
highlights the ability of stable isotopes in water to analyze PWSS and document aspects of

25 supply system structure and operation that can otherwise be challenging to observe. This method
could allow water managers to document spatiotemporal variation in flow patterns within PWSS,
validate hydrodynamic model results, track pathways of contaminant propagation, optimize
water supply operation, and help monitor and enforce water rights.

1. Introduction

30 Public water supply systems (PWSS) are an important component of the critical infrastructures
supporting human development across the globe. The complexity of PWSS can vary widely,
ranging from linear, single-source distribution systems to branched distribution networks using
multiple water sources. To understand the stability of water supplies, conduct risk evaluation, and
develop effective and efficient responses for particular threats (supply contamination,
35 infrastructure failure, etc.), it is critical to understand the physical and spatial structure of the
distribution network, connectivity within the system, and the links between the point-of-use and
environmental water sources.

The physical structure of the distribution system and basic information on water sources are
generally well documented for most first-world metropolises. In these settings, water managers
40 traditionally rely on network analyses to study different aspects of water distribution systems,
including pressure gradients, flow rates, water losses from the supply system, identification of
vulnerable sections, and tracking of disinfectants and contaminants (*Boryczko and Tchórzewska-
Cieślak, 2014; Pietrucha-Urbanik, 2015; Yoo et al., 2015*). These analyses are generally robust;
however, they are seldom validated using observational data and can suffer from shortcomings
45 including the absence of unique solutions in underdetermined systems, assumption of invariant
flow rates, uncomprehensive or non-inclusiveness of uncertainty in the analysis (*Waldrip et al.,
2016*), and outdated/incorrect information on infrastructure (*Liggett and Chen, 1994*). Beyond

statistical and computational issues, hydrodynamic modelling requires extensive and detailed information about the PWSS, including node elevation, pipe length and diameter, and pump operation data. For many communities in the developing world, where distribution networks are commonly unregulated and decentralized, even basic information on supply system structure and source contributions may be incorrect, incomplete, undocumented, or difficult to obtain. Hydrodynamic modeling of PWSS in such cases can be challenging and prone to significant errors.

With growing water security challenges due to climate change (Arnell, 1999; Vörösmarty *et al.*, 2010), expanding complexity and dynamicity of urban water systems and increasing detrimental effects of aging water infrastructure in many countries (Hanna-Attisha *et al.*, 2016; Kaushal, 2016; Larsen *et al.*, 2016; Schnoor, 2016) it is important to develop new techniques and methods to study PWSS that requires minimal information on the physical structure and connectivity within the supply system. In this regard, new techniques and methods are being developed to understand (1) failure in the water distribution system with limited, imprecise and ambiguous information on the supply structure (Najjaran *et al.*, 2005; Ismail *et al.*, 2011; Bolar *et al.*, 2013; Kabir *et al.*, 2015) and (2) analyze the water distribution system in a probabilistic framework (Waldrip *et al.*, 2016; Waldrip *et al.*, 2018).

Stable isotopes in water (SIW) can serve as an important tool to study water management within complex PWSS. SIW are naturally occurring tracers of the terrestrial hydrological cycle and significant isotopic differences between water sources can exist at catchment, regional, and global scales due to seasonal biases in recharge, differences in meteoric water composition, altitude, and meteorological factors such as temperature, humidity and wind speed (Dansgaard, 1964). Varying isotopic signatures among the water sources (precipitation, river, lakes, reservoirs, shallow and deep groundwater, etc.) makes SIW an effective tracer to understand and investigate natural and

human-natural coupled systems, for examples please refer to (*Dawson and Ehleringer, 1991; Rozanski et al., 1992; Gat, 1995; von Grafenstein et al., 1999; Kennedy et al., 2011; Klaus and McDonnell, 2013; Gabor et al., 2017; Matheny et al., 2017; Jameel et al., 2018*).

In urban settings, stable isotopes and other geochemical tracers have been used successfully to
75 understand effects of stormwater control measures on urban stream (*Jefferson et al., 2015*), detect
infiltration rates in urban sewers (*De Bénédictis et al., 2005; Kracht et al., 2007*), partition waste
water and groundwater in urban sewers (*De Bondt et al., 2018*) and determine the age of drinking
water in a PWSS (*Waples et al., 2015*). Recent studies have also shown that stable isotopes of tap
80 water in urban areas can be used to characterize active water management practices, identify
linkages between socioeconomic factors and water management practices, and quantify the effects
of climate variability on water resources (*Ehleringer et al., 2016; Jameel et al., 2016; Tipple et al.,*
2017).

Here, we collaborated with the Jordan Valley Water Conservancy District (JVD, also referred as
Jordan Valley District) to conduct an isotopic survey of waters from their service area within Salt
85 Lake Valley metropolitan area (SLV) of northern Utah, USA (Fig. 1). JVD is a multi-source public
water distribution network (Fig. 1) and we attempt to understand mixing between water sources at
various sites (subsequently referred to as distribution sites) distributed on the transmission lines
using SIW. This work extends the earlier work of *Jameel et al., (2016)* and *Tipple et al., (2017)*
beyond identifying broad water management patterns of a PWSS and explores the capacity of SIW
90 to provide quantitative, spatially- and temporally-resolved estimates of source contributions within
a well-defined and characterized PWSS.

We conducted our study during a 6-month period (May 2015 – October 2015), and using information on the production volume from the different sources, we analyze the stable isotope data at a monthly resolution within a Bayesian framework to generate quantitative estimates (with uncertainty) of the contribution of individual sources at the distribution sites. These analyses reveal basic information on supply and transport dynamics within the system, reflecting the physical structure of the supply system and the geographic distribution of sources. Finally, we combine the monthly analyses to characterize the spatial structure of the system in terms of contribution areas for the different sources across the supply network. Our results suggest that SIW-based Bayesian isotope mixing models (BIMM) could be a powerful and useful tool to interrogate PWSS, provide observational validation to hydrodynamic models, track contaminants and disinfectants within the supply system, and monitor water rights in PWSS managed by or for multiple stakeholders. This technique can be particularly useful in understanding water management practices of urban centers in the developing world which are undergoing rapid expansions and are generally decentralized, which makes conventional hydrodynamic techniques difficult to apply.

2. Methods

2.1 Site description

The Jordan Valley District is a wholesale supplier to 17 water districts in the Salt Lake Valley (USA) and retails directly to several locations in SLV located primarily on the northeastern part of the valley (known as Jordan Valley retail area, Fig. 1). As a wholesaler, Jordan Valley District sells water to these 17 districts from fixed locations on their distribution line and is not responsible for managing and distributing water in these districts beyond the transfer point.

In general, JVD relies on 3-5 sources at any given time to supply water to its service area; however, during the summer season (June – August), an additional 5-7 sources are often used to meet increased municipal water demand (personal communication, JVD operations manager). Water is sourced primarily through the Provo River system (>75% of total water supplied annually), and is supplemented with water from Wasatch creeks and groundwater wells depending on demand. The Wasatch creek sources carry runoff from snowmelt in the Wasatch Mountains (Fig. 1) and are used only in spring and early summer. There are approximately 25 active groundwater wells managed by the Jordan Valley District. Not all wells operate simultaneously, rather only 2-5 wells operate at any given time and the operating wells are rotated every few months due to contractual obligations and also to avoid overexploitation.

Jordan Valley District operates three water treatment plants (WTP). The Jordan Valley Water Treatment Plant (JVTP, also referred as Jordan Valley Treatment Plant in the text) is the largest water treatment plant and is situated at the southern end of the valley (Fig. 1). It has a maximum operational capacity of 681374 m³ per day (80 million gallons per day) and treats water from the Provo River. The South East Water Treatment Plant (SETP, also referred as South East Treatment Plant in the text) is a significantly smaller WTP with a maximum operational capacity of 75708 m³ per day (20 million gallons per day) situated on the southeastern side of the valley. It also treats water from the Provo River, but during spring and early summer (Mid-April to June) most of the water treated at SETP is from the Wasatch creeks. The South West Water Treatment Plant (SWTP) has a maximum operational capacity of 26497 m³ per day (7 million gallons per day), is located in the middle of the valley and treats water from groundwater wells located near the treatment plant. Groundwater wells supplying the SWTP (shown as dark blue squares in Fig. 1) have a high salt concentration and require extensive purification before being pumped into the distribution system.

In contrast, groundwater wells located on the eastern side of the valley (shown as light blue squares in Fig. 1) have lower concentrations of dissolved salts and do not require additional treatment before entering the distribution system (personal communication, JVD operations manager).

The Jordan Valley District water distribution system consists of one primary (Fig. 1), several
140 secondary (line 2 through 6, Fig. 1) and numerous tertiary transmission lines. Water can move in either direction in all the transmission lines, however in transmission line 1, water primarily moves from south to north. Water from Jordan Valley Treatment Plant is pumped directly into transmission line 1 and water from South East Treatment Plant is pumped into transmission lines 2 and 3 (Fig. 1). Water from South West Treatment Plant is supplied mainly to residential areas in
145 the vicinity of the WTP (these supply connections are not shown in fig. 1), though some water from SWTP is also pumped directly into transmission lines 5 and 6 (bypassing line 1). Water from wells in the eastern side of the valley is pumped directly into the transmission lines on which the respective wells are located. Most of the secondary transmission lines are interconnected via tertiary and quaternary lines (not shown in Fig. 1 except for the tertiary connections in the Jordan
150 Valley retail area).

2.2 Sample acquisition and processing

Each month from May to October 2015, we sampled water at sources contributing to the Jordan Valley District service area and at numerous locations (“distribution sites” or simply “sites”, Fig. 1) on the Jordan Valley District transmission lines. Source water samples were collected as effluent
155 from the WTPs and directly from the groundwater wells, while distribution site samples were collected from monitoring taps on the transmission lines. For source water samples obtained from water treatment plants, we measured the pre- and post-treatment (i.e. influent to the WTP and

effluent from the WTP) isotopic composition of the water. We did not observe any significant isotopic difference between pre- and post-treatment samples (differences in $\delta^2\text{H}$ and $\delta^{18}\text{O}$ less than 0.7 ‰ and 0.2 ‰ respectively). Distribution sites and surface water sources (Provo River and Wasatch creeks) were sampled 1-3 times per month. Groundwater wells were sampled 1-5 times respectively, during the entire study period (May 2015 to October 2015). When a given well was not sampled in its month of operation, the mean value observed for the same well during other month(s) of our study period was used to characterize water supplied from that well. This substitution was justified given that previous work showed little temporal variability in the isotope values of water supplied from Salt Lake Valley groundwater wells (*Jameel et al.*, 2016). The distribution sites are routinely monitored by Jordan Valley District for water quality analysis and are located across the supply network based on Jordan Valley District's monitoring program. As such, the distribution sites are more densely distributed in the Jordan Valley retail area because Jordan Valley District is responsible for water quality monitoring within this area. In other districts, where Jordan Valley District wholesales water, samples were collected only from the primary and secondary transmission lines.

South East Treatment Plant water was sourced mostly from the Wasatch creeks in May and June 2015, and from Provo River from July to October 2015. Jordan Valley Treatment Plant water was sourced from Provo River for the entire period of analysis. Therefore, we considered SETP and JVTP as separate sources in May and June and as a single source from July to October. Isotope ratios for effluent from SETP and JVTP were not statistically different between July and October (Hotelling multivariate *t*-test, $p > 0.05$, $n = 9$). Additionally, groundwater wells situated close to each other and having similar isotope values (differences in $\delta^2\text{H}$ and $\delta^{18}\text{O}$ less than 0.5 ‰ and 0.1

180 ‰ respectively) were also combined together for our analyses (such as wells 64S and 70S in June, July and August, 2015).

2.3 Isotope analysis

Samples were collected in 4-ml clean glass vials and stored in a refrigerator at 4°C prior to analysis. The samples were analyzed within few weeks of collection at the Stable Isotope Ratio Facility for Environmental Research (SIRFER) facility, University of Utah, on a cavity ring-down spectrometer (L2130-i; Picarro, Inc., Santa Clara, CA) following protocols described in (*Good et al.*, 2014), after (*van Geldern and Barth*, 2012). Values are reported in δ notation: $\delta = (R_{\text{sample}} / R_{\text{standard}} - 1)$, where R_{sample} and R_{standard} are the $^2\text{H}/^1\text{H}$ or $^{18}\text{O}/^{16}\text{O}$ ratios for the sample and standard, respectively, and the VSMOW standard is referenced (*Coplen*, 1988). Accuracy and precision were checked using a secondary laboratory reference water, and the analytical precision for these analyses were ± 0.3 ‰ for $\delta^2\text{H}$ and ± 0.03 ‰ for $\delta^{18}\text{O}$ (± 1 SD).

2.4 Bayesian mixing model and statistical analyses

We estimated the fractional contribution of the different sources at the distribution sites for each month using a Bayesian Isotope Mixing Model. The advantages of a Bayesian approach include: (1) simultaneous analysis of both isotope ratios ($\delta^2\text{H}$ and $\delta^{18}\text{O}$), (2) inclusion of prior information into the statistical analysis (such as those from previous studies, ancillary data and subjective knowledge), (3) explicit incorporation of analytical and sampling uncertainties into the model, and (4) robust estimates of uncertainty and quantification of most likely solutions in an underdetermined system (number of sources greater than number of isotopes plus one).

200 The Bayesian mixing model described here is similar to those used in other studies involving stable isotope data (*Ogle and Barber*, 2008; *Parnell et al.*, 2010; *Cable et al.*, 2011; *Mailloux et al.*,

2014). For our analysis, we first define the likelihood of the source isotope data. For this, we assumed that the different isotopic observations of each source (J) for a given month are coming from a bivariate normal distribution with a mean vector $[\mu\delta^2H_J, \mu\delta^{18}O_J]$ and a precision matrix (Ω_J , inverse of a covariance matrix) that reflects the temporal variability in the source isotope values. The bivariate normal distribution accounts for the potential correlation between δ^2H and $\delta^{18}O$. By using a joint distribution, and its associated variance-covariance matrix, we capture both the individual variability and the co-variation. Thus,

$$\begin{bmatrix} \delta^2H_{1J} & \delta^{18}O_{1J} \\ \vdots & \vdots \\ \delta^2H_{NJ} & \delta^{18}O_{NJ} \end{bmatrix} \sim Mnormal([\mu\delta^2H_J, \mu\delta^{18}O_J], \Omega_J), \quad (1)$$

210 where $\delta^2H_{1J} \dots \dots \delta^2H_{NJ}$ and $\delta^{18}O_{1J} \dots \dots \delta^{18}O_{NJ}$ are the N observations of δ^2H and $\delta^{18}O$ of source J for that month, $[\mu\delta^2H_J, \mu\delta^{18}O_J]$ is the mean vector and Ω_J is the precision matrix. Similar to the source model, we assumed that for a supply site (I), the monthly averaged isotope values $[\delta^2H_I, \delta^{18}O_I]$ follow a bivariate normal distribution with mean vector $[\mu\delta^2H_I, \mu\delta^{18}O_I]$ and a precision matrix (Ω_I). Thus, for a supply site (I):

$$215 \quad [\delta^2H_I, \delta^{18}O_I] \sim Mnormal([\mu\delta^2H_I, \mu\delta^{18}O_I], \Omega_I) \quad (2)$$

The mean stable isotope values of the supply site can also be expressed as a mixing model, where the mean value for supply site I ($\mu\delta^2H_I, \mu\delta^{18}O_I$) is the sum of the mean values of the sources weighted by their fractional contributions. Therefore, if K sources were used in a given month, ($\mu\delta^2H_I, \mu\delta^{18}O_I$) for each supply site (I) is denoted by:

$$220 \quad [\mu\delta^2H_I, \mu\delta^{18}O_I] = \sum_{J=1}^{J=K} (f_J) [\mu\delta^2H_J, \mu\delta^{18}O_J] \quad (3)$$

where f_J is the proportional contribution from a given source J at supply site I and is our parameter of interests i.e. the parameter to be estimated by the BIMM. Values of f were described using the Dirichlet distribution, a multivariate generalization of the beta distribution that follows the mass-balance constraint i.e. $0 \leq f_J \leq 1$ and $\sum_{J=1}^{J=K} (f_J) = 1$. The Dirichlet distribution is characterized by
225 parameter vector $\alpha = \{\alpha_1, \alpha_2, \alpha_3, \dots, \alpha_K\}$, such that the mean value associated with each f is $f_J = \alpha_J / \sum\{\alpha_1, \alpha_2, \alpha_3, \dots, \alpha_K\}$.

In Bayesian analysis, the parameters to be estimated are initially assigned values (or distributions) that are believed to be the best estimate of the parameters. These initial values are referred to as prior values. After observing the data, the initial (or prior) values of the parameters are updated,
230 and posterior values estimates of the parameter values are obtained. Please refer to (*Parnell et al.*, 2010) and (*Hoff*, 2009) for more detailed information on Bayesian isotope mixing model and Bayesian statistical methods, respectively. In our analysis, the parameters to be estimated were the fractional contribution of the different sources (f 's) at the distribution sites. We therefore assign prior values to f 's that were then updated using the observed isotope ratios data at the distribution
235 sites ($\mu\delta^2\text{H}_I, \delta\mu^{18}\text{O}_I$) to obtain the posterior f 's.

In general, if no information exists about the parameters, they are assigned a non-informative prior value. The default non-informative prior assigned to the Dirichlet distribution is the Jeffreys prior, where each element of the vector α is assigned a value of $1/K$ (with K being the number of sources) (*Parnell et al.*, 2010). However, if pre-existing information about the parameters exists, they are
240 assigned informed prior values. In our case, we had existing information on the volumetric contribution of each source to the water system as a whole (obtained from JVD, Table 1) as well as the distance between the sources and the distribution sites, each of which, we assert, should

affect the probability that a given source supplied water to a given site. Therefore, we assigned prior values for each supply site based on these information. First, we assumed that the probability of a source supplying a given distribution site was proportional to the volume of water that source supplies to the JVD distribution system (Table1). Thus, sources contributing more water to the JVD system have a higher probability of supplying water to any given site than do lower-volume sources. Second, we assumed that the probability of a source supplying water a given site was inversely proportional to the distance between the source (e.g., water treatment plant or well location) and the distribution site. Thus, sources closer to a distribution site have a higher probability of supplying water at that site. We combined both pieces of prior information to obtain a normalized prior estimate, as described below.

In the first step, we calculated prior weights for the Dirichlet parameters for each source (J) based upon the proportional volume of water produced (V) by that source:

$$\alpha_{J_volume} = \frac{V_J}{\sum_{J=1}^{J=K} V_J} \quad (4)$$

Second, we distance-weighted each source's prior inversely based upon its distance (D) from supply site I :

$$\alpha_{JI_distance} = \frac{1}{\sum_{J=1}^{J=K} D_{JI}} \quad (5)$$

We then combined the volume and distance weighted priors to obtain a prior estimate of the mean contribution from source J at supply site I :

$$\alpha_{JI_prior} = \frac{\alpha_{J_volume} * \alpha_{JI_distance}}{\sum_{J=1}^{J=K} \alpha_{J_volume} * \alpha_{JI_distance}} \quad (6)$$

For example, if there were three sources supplying 3000 m³, 1500 m³ and 1500 m³ of water respectively to the JVD system that were located 4 km, 1 km and 10 km away from supply site *I*, then the Dirichlet prior vector would be {0.3125, 0.625, 0.0625} for this site *I*.

265 Based upon the above-described method, the prior contributions of selected sources at the distribution sites for June 2015, in spatial and isotope space are shown in Fig. 2 and Fig. 3, respectively. The prior values were then updated using the observed isotope values at the distribution sites ($\mu\delta^2\text{H}_I, \delta\mu^{18}\text{O}_I$) to obtain the posterior values of f 's. We estimated the posterior fractional (f) contributions to each site *I* from each source *J* using the JAGS software package
270 (*Plummer*, 2003), which can be integrated in the R statistical language using different R packages (*Plummer*, 2013; *Denwood*, 2016). We ran 3 parallel Markov chain Monte Carlo (MCMC) simulations for 300000 iterations per chain, which were thinned every 50 steps. The first 40,000 iterations were discarded as burn-ins, providing us with 5200 samples for calculating the posterior statistics. We checked the convergence using the coda package (*Plummer et al.*, 2006) and Gelman
275 diagnostics (*Gelman et al.*, 2014). All statistical analysis was performed in R (*R core team*, 2018).

2.5 Model results interpretation and cross-validation

For qualitative interpretation and to identify spatiotemporal variations in the association between sources and distribution sites, we considered any distribution site that our mixing analysis suggested was receiving more than 70% (mean contribution) of its water from a single source to
280 be supplied predominantly by that source. Sites where the analysis suggested less than 70% water came from a single source were considered to receive water from multiple sources.

For each month, we compared the fractional production volume of each source with the fraction of the service area that our analysis suggested was served by the source. We calculated the areal

contribution of the different sources for each month as a cross-check of the results obtained by
285 BIMM. As a first-order approximation, we expected strong agreement between volumetric and
areal contribution of a source as the area supplied by a source should be proportional to its
volumetric supply. To calculate the areal coverage of a given source, we first calculated the area
of influence (A_I) of each site on the transmission line, defined as the area of the Thiessen polygon
associated with the site. For each source J , values of A_I were multiplied by the mean fractional
290 contribution from that source ($f_{I,J}$). The resulting values were summed across all distribution sites
($\sum A_I \times f_{I,J}$) and divided by the total area of Jordan Valley District supply region to obtain the areal
coverage (A) of that source.

3. Results and discussion

3.1 Sources and distribution sites isotope ratios

295 Source water isotope values, measured across all months ranged from -16.6 ‰ to -14.9 ‰ for $\delta^{18}\text{O}$
and -122.5 ‰ to -114.1 ‰ for $\delta^2\text{H}$. Four sources (JVTP, SETP, SWTP and well 64S) operated for
the entire sampling period, and other sources operated intermittently. For each month,
approximately 90% (or more) of the water was supplied by the three WTPs (JVTP, SETP and
SWTP), with majority being supplied by JVTP (Table 1). Groundwater wells situated on the
300 eastern side of the valley contributed approximately 10% of the total water supplied each month,
with well 64S supplying 1-3% of the total volume each month.

The isotope values of SWTP and well 64S were distinct from each other and from those of JVTP
and SETP for all months (Fig. 4). Isotope ratios of JVTP and SETP water were distinct (Hotteling
multivariate t -test, $p < 0.05$, $n = 6$) for May and June 2015, only. From July 2015 onwards, water
305 from the Provo River was used by both of these WTPs; therefore, similar isotope ratios were

310 expected. Well 64S had the lowest isotope ratios measured for any source, and exhibited highest deuterium excess values (~ 10 ‰) among all the wells, where deuterium excess is defined as $\delta^2\text{H} - 8\delta^{18}\text{O}$ (Dansgaard, 1964). Values from SWTP, in contrast, showed evidence for evaporative isotope effects, with high $\delta^{18}\text{O}$ values and relatively low deuterium excess (~ 4.2 ‰). JVTP isotope ratios increased from June to October, 2015, as did SETP isotope ratios from July to October, 2015, which can be due to evaporative enrichment of the heavy isotopes in upstream reservoirs of the Provo River system from spring to fall (mean d-excess for JVTP decreased from 5.1 ‰ in June 2015 to 3.9 ‰ in October 2015, see Table S1 for monthly deuterium excess values).

315 The most and least negative isotope values of water from distribution sites were similar to the values observed for well 64S/70S and SETP, respectively. With the exception of a few sites in the May 2015 survey, distribution site isotope ratios fell within the convex hull defined by the source waters (Fig. 4). For each month, a number of distribution sites exhibited values similar to JVTP (Fig. 4). Clustering of supply site values was also observed near well 64S and SETP source values. At no point during the study did we observe any distribution sites with isotope values similar to those of SWTP source water (Fig. 4). For all months except October, approximately 20-30% of the supply site values did not cluster near any major source, but rather were situated between sources. This pattern is consistent with expectations for mixing of water from multiple sources within this PWSS.

3.2 Source contributions at the distribution sites

325 We first illustrate the implementation of the BIMM for June 2015 (Fig. 5). Our model builds upon the work of *Jameel et al.*, (2016) and *Tipple et al.*, (2017), but goes beyond their analyses of identifying district level water management patterns by providing quantitative, spatially- and

temporally-resolved estimates of source contributions at specific locations throughout the Jordan Valley supply system.

330 According to our model, majority of the distribution sites (45 out of 65) received most (>70%) of their water from a single source. At all of these sites, the dominant source identified was either JVTP (24 sites, Fig. 3e and 5a), SETP (15 sites, Fig. 3f and 5b), or well 64S/70S (6 sites, Fig. 5d). This shows that three of the four largest sources operating at the time dominated the supplies of a large number of sites, and that the number of sites served by these sources was approximately
335 proportional to the volumetric contribution from each source. Our analysis suggests that the remaining 20 sites did not receive water predominantly from a single source, but had contributions from multiple sources.

Most of the sites receiving large proportional contributions from JVTP, SETP and well 64S/70S were located on the transmission lines known to be directly connected to these sources (Fig. 5a,
340 5b and 5d). In contrast, distribution sites distant from all sources were more likely to exhibit mixing between multiple sources. During June 2015, all but three sites in the Jordan Valley retail area showed evidence for source mixing.

Our model output, in context with known physical infrastructure (i.e., pipelines) and geographic locations of the sources, suggested patterns of source-supply connectivity within the JVD. Our
345 results suggest: 1) subtle differences in mixing proportions among distribution sites receiving water mainly from the two largest sources (JVTP and SETP), 2) limited mixing at distribution sites located on transmission lines receiving water from multiple sources, and 3) bypassing of a specific transmission line during water transport. Below, we discuss each of these observations in more detail.

350 For sites on the western portion of the Jordan Valley District, the model-inferred mean JVTP contributions were uniformly large (>90%), suggesting that JVTP was likely the dominant source supplying water to these sites (Fig. 5a). This was expected, as most of these sites have limited connectivity to other sources apart from the SWTP. In contrast, our model suggested that most distribution sites receiving water predominantly from the SETP had mean contributions of SETP
355 waters of 70-90% (Fig. 5b). This likely reflects minor contributions of water from JVTP and several smaller sources in close proximity to SETP (Fig. 5a, 5e and 5f), implying that although these sites are served chiefly by a single source, they also receive a significant fraction of water from other sources, and thus be exposed to any supply or contamination issues associated with those minor sources. According to our model, sites receiving more than 60% of water from SETP
360 had an average contribution of 12% from the minor sources with some sites receiving as much as 27% of water from the minor sources.

Our model suggested limited mixing between JVTP, SETP and other minor sources for distribution sites located on transmission lines 2 and 5 (Fig. 5a) that could receive water from all of these sources. Distribution sites on these lines mainly received water either from JVTP or SETP (more
365 than 70%), with contributions from other sources generally less than 30% (Fig. 5a and 5b). Considering that JVTP supplied more than 80% of all water in June 2015, we expected mixing and a large contribution from the JVTP at sites along these transmission lines (lines 2 and 5). One factor that may have caused limited mixing between these sources within the supply lines is the higher elevation of SETP (1532 m) and other minor sources on the eastern side of the valley
370 compared to JVTP (1424 m). We suggest that the higher gravitational potential energy of water introduced from SETP and minor sources may create a pressure differential that limits mixing between these two sources; however this remains a hypothesis to be tested.

Our model suggested negligible presence of SETP water in transmission line 3 (< 15%), whereas the mean contribution of SETP in a closely running parallel transmission line 4 was high (> 60%, Fig. 5b). This result implies that water moving northward from SETP bypassed line 3. This is most likely due to the presence of well 64S/70S on line 3, which our results suggested was the principal source to all the sites on line 3. This highlights the ability of isotope mixing model to capture small-scale interactions between sources and supply connections.

The BIMM presented here is blind to the actual physical connections in the Jordan Valley District service area. Nonetheless, our results closely match the specific linkages between sources and distribution sites along known transmission lines. The ability of BIMM to identify patterns of source-supply connectivity within this system suggests potential to use similar isotope-based methods to obtain information from less documented public water supply systems.

3.3 Assessment of uncertainties and model limitations

In addition to providing point estimates of source water contributions, the BIMM also provides estimates of uncertainty. To analyze the uncertainties, we divided the isotope values of the distribution sites measured in June 2015, into three groups. Group 1 consisted of sites with isotope values similar to one of the major sources (Fig. 6a), group 2 consisted of sites with isotope values in-between the SETP and JVTP endmembers (Fig. 6b), and group 3 consisted of distribution sites with isotope values similar to one of the minor sources but significantly different from any of the major sources (Fig. 6c).

According to our model, all sites in group 1 had large contributions (> 70%) from one of the major sources (JVTP, SETP or 64S/70S), and we observed narrow 95% credible intervals (CIs, ranging mostly from 0.6-1) for the proportional contributions from these sources (Fig. 7a and 7b). At these

395 sites the CIs for other sources were also narrow and ranged from 0.0-0.3 (Fig. 7c-h), indicating high levels of confidence that other sources were minor contributors to these sites. The effectiveness of BIMM in providing tight and robust posterior distributions for group 1 sites is due to the strong similarity between source and distribution site isotope values in this group and the distinct isotope ratios of water from these sources relative to all others.

400 For group 2 sites, the model predicted mixing primarily between water from the JVTP and the SETP (Fig. 7a and 7b), with contributions of 40% to 60% from each of these sources. According to our model, the contribution from the Solena Way well was minimal at all group 2 sites except for a single site situated very close to the well (Figure 5e). Given that the Solena Way well contributed only 1% of the total water to the system, dominance of JVTP and SETP water at most group 2 sites is reasonable. Further, most of the group 2 sites were situated in the Jordan Valley retail area, far from the Solena Way well (> 5 km, Fig. 5a, 5b and 5e). The CIs associated with different sources at these sites were larger than group 1 sites. Most of these sites had CIs ranging from 0.0-0.6 for JVTP (Figure 7a), from 0.3-0.6 for SETP (Figure 7b), and from 0.0-0.6 for the Solena Way well (Figure 7g). The tighter CIs of contributions from SETP compared to JVTP and Solena Way Well at these sites suggests that our model is more confident about the contribution from SETP (i.e. between 30% and 60%) compared to contributions from JVTP and Solena Way Well. As observed for group 1, the CIs associated with other sources were small, in general, ranging from 0.0-0.2. The advantages of including distance and volume effects in our model were reflected in this group, as our model preferred mixing between water from the JVTP and the SETP over possible mixtures between water from the Solena Way well and other minor sources.

Group 3 exhibited isotope values that were distinct from all major sources and were similar to one or more minor sources. According to the model, no source (major and minor included) contributed

more than 50% (mean) at these sites. In general, for a given supply site in this group, our model assigned the highest mean contribution to the minor source with isotope ratios most similar to those of the supply site water (for example see Fig. 5e). The CIs associated with proportional contributions from the different sources were large, however, and for some sources ranged from 0.0-0.9 (Fig. 7h). This suggests that more than one possible source or multi-source mixture was consistent with the isotopic and prior constraints for these sites, resulting in identifiability issues that are commonly observed in isotope mixing models (*Cable et al., 2011; Erhardt and Bedrick, 2013; Parnell et al., 2013*). In our case, non-unique assignments for group 3 sites arose due to the presence of multiple sources with comparable isotope values near the distribution sites and also due to several probable potential mixing solutions between SETP, 64S/70S well and these minor wells. The issue was compounded further by similar and low prior probabilities associated with the minor sources making it difficult for the model to identify one distinct source as a major contributor.

Our results highlight the robustness as well as the limitations of our model. Both the use of informative priors and the comprehensive assessment and interpretation of uncertainty are likely to improve the quality of inferences drawn from our method. A key outcome of the priors specified here is that volumetrically minor sources were not identified as a major contributor to distribution sites, even though in many cases they had similar isotope values, except in cases where proximity provided additional evidence suggesting that they were likely sources. This result was also observed in July and August 2015. Consideration of credible intervals estimated in the analysis shows substantial and interpretable variation in the confidence of source-water estimates among different sites. Even in cases where relatively high mean source contributions were assigned to a

440 given site, robustness in the model solutions can be recognized through review of credible intervals and used to more accurately interpret these results.

3.4 Spatiotemporal variations in source contributions

We extended our analysis to all months from May to October, 2015, to assess changes in the patterns of water distribution as water demand, source types, and production volumes changed
445 through the sampling period (Table 1).

Mixing between sources was high in May, with only 25% of the distribution sites receiving more than 70% of their water from a single source (Fig. 8a). For May, most of the distribution site values were intermediate to the source water values (Fig. 4), clearly indicating substantial mixing across most parts of the distribution system. A handful of supply site samples in May also fell outside of
450 the convex hull defined by the sources, suggesting that our sampling may not have captured all contributing sources, but the conclusion of pervasive mixing is not likely to be affected by this omission. In contrast, our model suggests that almost 70% of the sites were supplied chiefly by a single source in June and July, with this value increasing to more than 75% in August and September (Fig. 8b-e). By October, the supply system had transitioned to a single, major source,
455 and our results showed no significant mixing between sources for that month (Fig. 8f). Except for May 2015, where we observed large-scale mixing between different sources throughout the Jordan Valley District, distribution sites receiving water from multiple sources were limited mostly to the Jordan Valley retail area. Since this area is distant from all major sources and is surrounded by multiple transmission lines, mixing observed at the distribution sites is not surprising.

460 Perhaps the most surprising part of our analysis was our inability to detect contributions from SWTP at the distribution sites, even though this source supplied 3-5% of total water production

each month. Small contributions (10% to 20%) from this source were indicated at couple of sites on transmission line 5, situated relatively far from SWTP, during June, July and August 2015 (see Fig. 5c for June 2015). However, this source was not identified as the predominant source (i.e. >70%) at any distribution sites, including those closest to SWTP, during the study. According to the Jordan Valley District operations managers (personal communication) most of the water from SWTP is supplied to a residential area in the immediate vicinity of the treatment plant, and none of our distribution sites were located in this area. A small fraction of the SWTP water is routed to the western part of the Jordan Valley District, which is possibly reflected in our results suggesting minor contributions from this source to distribution sites along distribution line 5.

We combined our model output for different months to highlight variability and quantify the mean contribution for each source at the different distribution sites from May to October 2015 (Fig. 9). Our result suggests that most of the sites received water from multiple sources or switched sources during our analysis period with the exception of a few sites receiving Provo River and 64S/70S well water for all the six months. Our results show significant changes throughout the sampling period, highlighting the complex and dynamic operation of the distribution system. We have developed monthly (Fig. 8) and six-month averaged (Fig. 9) contribution from the different sources at the distribution sites based upon 1-3 samples collected each month; however, such maps can be developed at varying spatiotemporal scales depending upon the purpose and application of the method.

3.5 Model cross validation

To validate the results obtained by BIMM we compared the volumetric contribution of the sources (obtained from the Jordan Valley District, Table 1) with their areal contribution

(estimated using the BIMM). Volumetric and areal contributions were strongly and
485 systematically correlated across all sources (Table 2). However, our model predicted that the
Wasatch creeks supplied a larger fraction of the area than suggested by their volumetric
contribution, and that the Provo River sources supplied a smaller area than implied by volumetric
production numbers in May and June (Table 2). This discrepancy could reflect differences in
water demand across the service area, although most of the area our analysis suggests was served
490 by the Wasatch creeks source is heavily populated, the corridor served by the Provo River water
source includes more industrial development that may over-consume water per unit area.
Nonetheless, the overall similarity between the areal coverage estimated here and reported
volumetric production numbers provides an additional line of evidence supporting the robustness
of the BIMM.

495 **3.6 Model improvements and future application of BIMM in other urban water systems**

We have shown here that BIMM provides robust estimates of the contribution from different
sources to distribution sites within a PWSS. In our analysis, the isotopic compositions of major
sources were distinct, allowing our model to quantify the contribution from the major sources at
the distribution sites with robust estimates of uncertainty across the supply system. However, for
500 distribution sites with isotope values intermediate to candidate sources (group 3, Fig. 6) the
specificity of our result was limited by non-unique solutions. These challenges and limitations
could be addressed with the inclusion of other conservative tracers such as chloride, calcium, and
strontium (and its stable isotopes) that might vary significantly between the different sources, thus
providing additional constraints and improved model predictions. Additional system data, such as
505 pressure, elevation gradients and flow velocity within the system, might also be included within
the model to improve accuracy.

A key prerequisite for future successful implementation of the BIMM in other PWSSs is that all sources in the PWSS be characterized and have significantly distinct isotopic and/or geochemical signatures. In PWSSs with negligible isotopic and geochemical variability between the sources, 510 the capacity of the BIMM to characterize the system would likely be limited and it will provide results with limited practical applicability. Finally, the BIMM approach is sample-based and an appropriate sampling design would be required to accurately connect sources and distribution sites and extract meaningful information from the analysis. The sampling design should consider factors such as source compositions, system operations, water residence time, water demand, population 515 density, etc., within the PWSS to develop a robust sampling strategy for implementing the BIMM. It is essential to capture temporal variations, especially for surface water sources or other sources with rapid water transit time, to establish accurate association between the sources and distribution sites. In our analysis, our monthly sampling protocol captured the successive isotope enrichment of the Provo River source that was vital to the success of our model.

520 The framework applied here can be useful in establishing source water footprints, pathways, and interactions of water sources within PWSS. In cities across the developed world that use hydrodynamic models (such as EPANET and WaterCAD) (*Rossman, 2002*) to predict water quality and contaminant concentration across their supply systems, the accuracy of these predictions can be evaluated by comparing the observed and predicted stable isotopes in water (or 525 other conservative geochemical tracers) at several distribution sites using the hydrodynamic model. In many developing and rapidly growing cities across the world where applying hydrodynamic models are challenging and difficult, a framework similar to shown here, can be used to develop GIS products such as 1) service maps of the different sources, 2) regions within the PWSS undergoing seasonal source switching and 3) regions serviced by surface or

530 groundwater respectively. These products can be helpful in moderating water rights issues, tracking of source- and WTP-related contaminants, evaluating the susceptibility to climatic variations and investigating long- and short-term effects of source water quality on public health. Considering that stable isotope analysis of most water samples is now rapid (minutes) and inexpensive, geochemically-based BIMMs offer an attractive tool for studying and monitoring 535 PWSS in support of management and water security.

4. Conclusions

Water isotopes have been used extensively to monitor and understand the natural component of water cycle (*Gat, 1996; Aggarwal et al., 2005; Bowen and Good, 2015*), however their application in urban water systems has been limited. Recent work has shown the capacity of water isotopes to 540 record information about water management and quantify effects of climatic variability on water resources (*Jameel et al., 2016; Tipple et al., 2017*). Moving beyond the coarse resolution of these studies, our work has highlighted the ability of water isotopes to provide information about PWSS operation at a much finer scale. Here, we have shown the ability of water isotopes to provide estimates of the contributions of multiple water sources across a large metropolitan PWSS and 545 inform our understanding of the physical structure and operation of the system. The method developed here does not rely on independent information about pipe networks, flow velocities, pressure gradients or other details of the PWSS that are integral to hydrodynamic models, and thus can be used to interrogate PWSS where this information is lacking or to independently validate hydrodynamic model results. Our application used only two isotope ($\delta^2\text{H}$ and $\delta^{18}\text{O}$) measurements, 550 supplemented with information on source volumes and geographic locations. Future applications could improve upon our work by including additional geochemical tracers, flow rates, adding

additional information on distribution system structure (where available), collecting samples with higher spatiotemporal resolution and refining the statistical model.

555 **Acknowledgements**

We thank JVD for collaborating on this project and Heidi Nilsson for collecting the water samples.

This work was supported by U.S. National Science Foundation grant 1208732.

Code and data availability

Raw data sets analyzed within this study can be accessed through Waterisotopes Database
560 (<http://waterisotopes.org>, ProjectID = 00065) and are available on Hydroshare
(<https://www.hydroshare.org/>). An R code to execute equations described in section 2.4 for the
month of June 2015 is provided as supplementary material, as are the source and distribution site
dataset for June 2015.

6. References

- 565 Aggarwal, P. K., K. F. Froehlich, and J. R. Gat (2005), *Isotopes in the water cycle*, Springer.
- Bolar, A., S. Tesfamariam, and R. Sadiq (2013), Condition assessment for bridges: a hierarchical evidential reasoning (HER) framework, *Structure and Infrastructure Engineering*, 9(7), 648-666.
- 570 Boryczko, K., and B. Tchórzewska-Cieślak (2014), Analysis of risk of failure in water main pipe network and of delivering poor quality water, *Environment Protection Engineering*, 40(4).
- Bowen, G. J., and S. P. Good (2015), Incorporating water isoscapes in hydrological and water resource investigations, *Wiley Interdisciplinary Reviews: Water*, 2(2), 107-119.
- 575 Cable, J., K. Ogle, and D. Williams (2011), Contribution of glacier meltwater to streamflow in the Wind River Range, Wyoming, inferred via a Bayesian mixing model applied to isotopic measurements, *Hydrol. Processes*, 25(14), 2228-2236.
- Coplen, T. B. (1988), Normalization of oxygen and hydrogen isotope data, *Chemical Geology: Isotope Geoscience Section*, 72(4), 293-297.
- Dansgaard, W. (1964), Stable isotopes in precipitation, *Tellus A*, 16(4).
- 580 Dawson, T. E., and J. R. Ehleringer (1991), Streamside trees that do not use stream water, *Nature*, 350(6316), 335.
- De Bénédittis, J. and Bertrand-Krajewski, J. L. 2005. Measurement of infiltration rats in urban sewer systems by use of oxygen isotopes. *Water Sci. Technol.* 52, 229-237.
- 585 De Bondt, K., Seveno, F., Petrucci, G., Rodriguez, F., Joannis, C. and Claeys, P. (2018): Potential and limits of stable isotopes ($\delta^{18}\text{O}$ and δD) to detect parasitic water in sewers of oceanic climate cities. - *Journal of Hydrology: Regional Studies*, 18, 119-142.
- Denwood, M. J. (2016), runjags: An R package providing interface utilities, model templates, parallel computing methods and additional distributions for MCMC models in JAGS, *Journal of Statistical Software*, 71(9), 1-25.
- 590 Ehleringer, J.R., Barnette, J.E., Jameel, Y., Tipple, B.J., Bowen, G.J., 2016. Urban water—A new frontier in isotope hydrology. *Isotopes in Environmental and Health Studies*, 52(4-5): 477-486.
- Erhardt, E. B., and E. J. Bedrick (2013), A Bayesian framework for stable isotope mixing models, *Environmental and ecological statistics*, 1-21.
- 595 Gabor, R. S., et al. (2017), Persistent Urban Influence on Surface Water Quality via Impacted Groundwater, *Environmental Science & Technology*, 51(17), 9477-9487.

- Gat, J. (1995), Stable isotopes of fresh and saline lakes, in *Physics and chemistry of lakes*, edited, pp. 139-165, Springer.
- 600 Gat, J. (1996), Oxygen and hydrogen isotopes in the hydrologic cycle, *Annu. Rev. Earth Planet. Sci.*, 24(1), 225-262.
- Gelman, A., J. B. Carlin, H. S. Stern, D. B. Dunson, A. Vehtari, and D. B. Rubin (2014), *Bayesian data analysis*, CRC press Boca Raton, FL.
- 605 Good, S. P., D. V. Mallia, J. C. Lin, and G. J. Bowen (2014), Stable isotope analysis of precipitation samples obtained via crowdsourcing reveals the spatiotemporal evolution of superstorm sandy, *PloS one*, 9(3), e91117.
- Hanna-Attisha, M., J. LaChance, R. C. Sadler, and A. Champney Schnepf (2016), Elevated blood lead levels in children associated with the Flint drinking water crisis: a spatial analysis of risk and public health response, *American journal of public health*, 106(2), 283-290.
- 610 Hoff, P. D. (2009), A first course in Bayesian statistical methods, *Springer*, New York
- Ismail, M. A., R. Sadiq, H. R. Soleymani, and S. Tesfamariam (2011), Developing a road performance index using a Bayesian belief network model, *Journal of the Franklin Institute*, 348(9), 2539-2555.
- 615 Jameel, Y., S. Brewer, S. P. Good, B. J. Tipple, J. R. Ehleringer, and G. J. Bowen (2016), Tap water isotope ratios reflect urban water system structure and dynamics across a semiarid metropolitan area, *Water Resour. Res.*, 52(8), 5891-5910.
- Jameel, Y., S. Stein, E. Grimm, C. Roswell, A. E. Wilson, C. Troy, T. O. Höök, and G. J. Bowen (2018), Physicochemical characteristics of a southern Lake Michigan river plume, *J. Great Lake Res*, 4(22), 209-218.
- 620 Jefferson, A. J., C. D. Bell, S. M. Clinton, and S. K. McMillan (2015), Application of isotope hydrograph separation to understand contributions of stormwater control measures to urban headwater streams, *Hydrol. Processes*, 29(25), 5290-5306.
- 625 Kabir, G., S. Tesfamariam, A. Francisque, and R. Sadiq (2015), Evaluating risk of water mains failure using a Bayesian belief network model, *European Journal of Operational Research*, 240(1), 220-234.
- Kaushal, S. S. (2016), Increased salinization decreases safe drinking water, edited, ACS Publications.
- 630 Kennedy, C. D., G. J. Bowen, and J. R. Ehleringer (2011), Temporal variation of oxygen isotope ratios ($\delta^{18}\text{O}$) in drinking water: implications for specifying location of origin with human scalp hair, *Forensic science international*, 208(1), 156-166.

- Klaus, J., and J. McDonnell (2013), Hydrograph separation using stable isotopes: review and evaluation, *J. Hydrol.*, 505, 47-64.
- Kracht, O., Gresch, M. and Gujer, W. 2007. A Stable Isotope Approach for the Quantification of Sewer Infiltration. *Environ. Sci. Technol.* 41, 5839-5845.
- 635 Larsen, T. A., S. Hoffmann, C. Lüthi, B. Truffer, and M. Maurer (2016), Emerging solutions to the water challenges of an urbanizing world, *Science*, 352(6288), 928-933.
- Liggett, J. A., and L.-C. Chen (1994), Inverse transient analysis in pipe networks, *J. Hydraul. Eng.*, 120(8), 934-955.
- 640 Mailloux, J. M., K. Ogle, and C. D. Frost (2014), Application of a Bayesian model to infer the contribution of coalbed natural gas produced water to the Powder River, Wyoming and Montana, *Hydrol. Processes*, 28(4), 2361-2381.
- Matheny, A. M., R. P. Fiorella, G. Bohrer, C. J. Poulsen, T. H. Morin, A. Wunderlich, C. S. Vogel, and P. S. Curtis (2017), Contrasting strategies of hydraulic control in two codominant temperate tree species, *Ecohydrology*, 10(3).
- 645 McDonnell, J., M. Stewart, and I. Owens (1991), Effect of catchment-scale subsurface mixing on stream isotopic response, *Water Resour. Res.*, 27(12), 3065-3073.
- Najjaran, H., R. Sadiq, and B. Rajani (2005), Condition assessment of water mains using fuzzy evidential reasoning, paper presented at Systems, Man and Cybernetics, 2005 IEEE International Conference on, IEEE.
- 650 Ogle, K., and J. J. Barber (2008), Bayesian data—model integration in plant physiological and ecosystem ecology, *Progress in botany*, 281-311.
- Parnell, A. C., R. Inger, S. Bearhop, and A. L. Jackson (2010), Source partitioning using stable isotopes: coping with too much variation, *PloS one*, 5(3), e9672.
- 655 Parnell, A. C., D. L. Phillips, S. Bearhop, B. X. Semmens, E. J. Ward, J. W. Moore, A. L. Jackson, J. Grey, D. J. Kelly, and R. Inger (2013), Bayesian stable isotope mixing models, *Environmetrics*, 24(6), 387-399.
- Pietrucha-Urbanik, K. (2015), Failure analysis and assessment on the exemplary water supply network, *Engineering Failure Analysis*, 57, 137-142.
- 660 Plummer, M. (2003), JAGS: A program for analysis of Bayesian graphical models using Gibbs sampling, in *Proceedings of the 3rd international workshop on distributed statistical computing*, edited, p. 125, Vienna, Austria.
- Plummer, M. (2013), rjags: Bayesian graphical models using MCMC, *R package version*, 3.
- Plummer, M., N. Best, K. Cowles, and K. Vines (2006), CODA: convergence diagnosis and output analysis for MCMC, *R news*, 6(1), 7-11.

- 665 Rossman, L.A. (2002), EPANET 2, Users Manual, Water supply and Water Resources Division, National Risk Management Research Laboratory, Cincinnati, USA (2001).
- Rozanski, K., L. Araguas-Araguas, and R. Gonfiantini (1992), Relation between long-term trends of oxygen-18 isotope composition of precipitation and climate, *Science*, 258(5084), 981-985.
- 670 Schnoor, J. L. (2016), Recognizing Drinking Water Pipes as Community Health Hazards, edited, ACS Publications.
- Tipple, B. J., Y. Jameel, T. H. Chau, C. J. Mancuso, G. J. Bowen, A. Dufour, L. A. Chesson, and J. R. Ehleringer (2017), Stable hydrogen and oxygen isotopes of tap water reveal structure of the San Francisco Bay Area's water system and adjustments during a major
675 drought, *Water Res.*, 119, 212-224.
- van Geldern, R., and J. A. Barth (2012), Optimization of instrument setup and post-run corrections for oxygen and hydrogen stable isotope measurements of water by isotope ratio infrared spectroscopy (IRIS), *Limnology and Oceanography: Methods*, 10(12), 1024-1036.
- 680 von Grafenstein, U., H. Erlenkeuser, A. Brauer, J. Jouzel, and S. J. Johnsen (1999), A mid-European decadal isotope-climate record from 15,500 to 5000 years BP, *Science*, 284(5420), 1654-1657.
- Vörösmarty, C. J., P. McIntyre, M. O. Gessner, D. Dudgeon, A. Prusevich, P. Green, S. Glidden, S. E. Bunn, C. A. Sullivan, and C. R. Liermann (2010), Global threats to
685 human water security and river biodiversity, *Nature*, 467(7315), 555-561.
- Waldrip, S. H., R. K. Niven, M. Abel, and M. Schlegel (2016), Maximum Entropy Analysis of Hydraulic Pipe Flow Networks, *J. Hydraul. Eng.*, 0(0), 04016028.
- Waldrip, S. H., R. K. Niven, M. Abel, and M. Schlegel (2018), Reduced-Parameter Method for Maximum Entropy Analysis of Hydraulic Pipe Flow Networks, *J. Hydraul. Eng.*,
690 144(2), 04017060.
- Yoo, D. G., G. Chung, A. Sadollah, and J. H. Kim (2015), Applications of network analysis and multi-objective genetic algorithm for selecting optimal water quality sensor locations in water distribution networks, *KSCE Journal of Civil Engineering*, 19(7), 2333-2344.

695

Table 1: Volumetric contribution of each source and their proportional fractional contribution (V) for each month from May 2015 to October 2015. Monthly supply data was provided by Jordan Valley Water Conservancy District. Values rounded to 1 decimal place except for 45S well in May 2015 and 90S Quail well in October 2015.

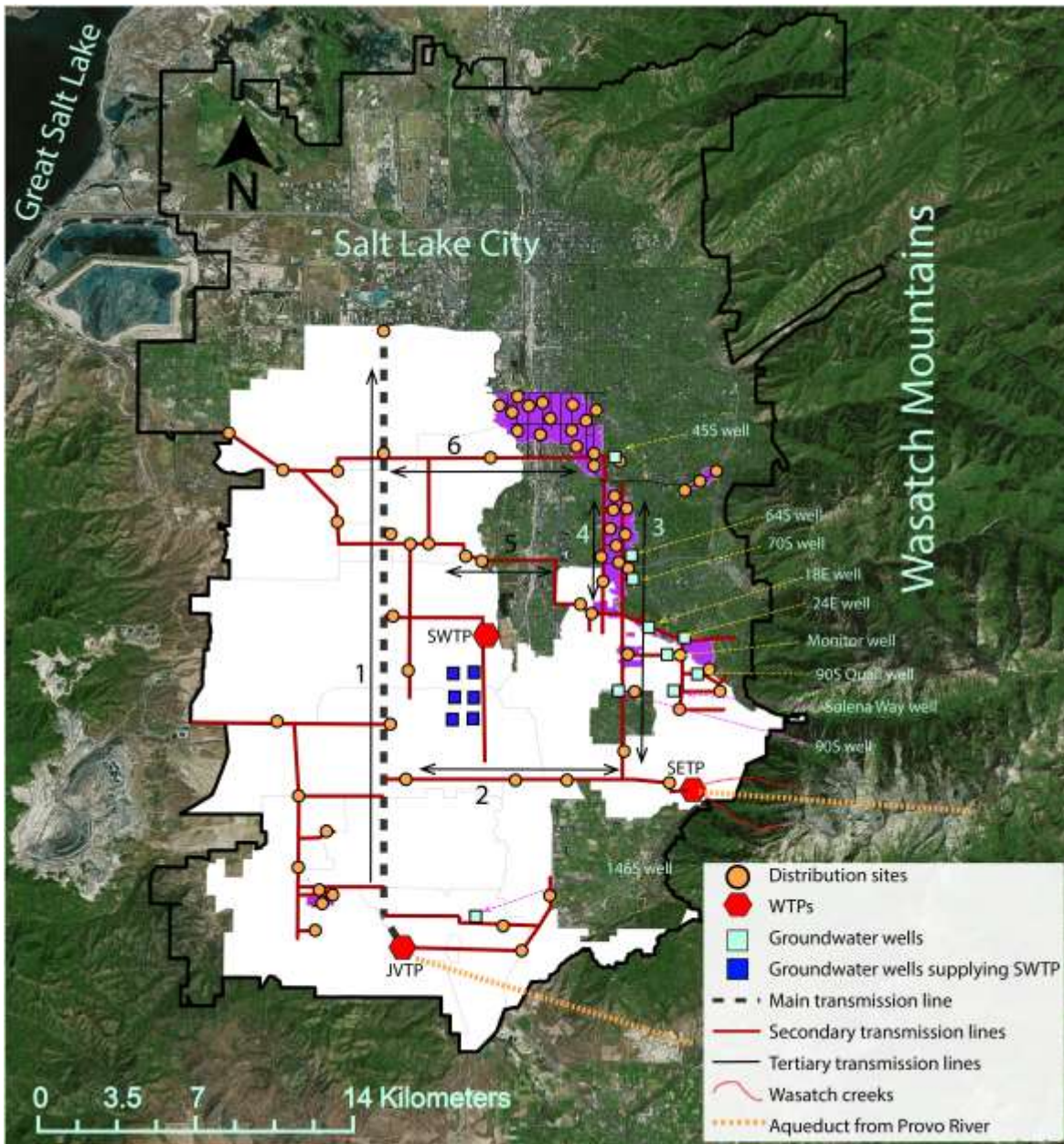
May 2015			June 2015			July 2015		
Source	Volume of water supplied (in m ³)	Per cent of total volume supplied (V)	Source	Volume of water supplied (in m ³)	Per cent of total volume supplied (V)	Source	Volume of water supplied (in m ³)	Per cent of total volume supplied (V)
Provo River (JVTP)	3.7 X 10 ⁶	60.6	Provo River (JVTP)	13 X 10 ⁶	80.5	Provo River (JVTP and SETP)	16.8 X 10 ⁶	86.2
Wasatch Creeks (SETP)	1.5 X 10 ⁶	24.3	Wasatch Creeks (SETP)	1.5 X 10 ⁶	9.2	SWTP	0.5 X 10 ⁶	2.6
SWTP	0.4 X 10 ⁶	6.5	SWTP	0.6 X 10 ⁶	3.8	64S/70S Well	0.5 X 10 ⁶	2.8
Solena Way well	0.3 X 10 ⁶	4.6	64S/70S Well	0.4 X 10 ⁶	2.4	Siesta Well	0.4 X 10 ⁶	1.9
64S Well	0.2 X 10 ⁶	3.0	Solena Way Well	0.2 X 10 ⁶	1.0	18E Well	0.3 X 10 ⁶	1.6
45S Well	0.06 X 10 ⁶	1.0	Minor sources	0.5 X 10 ⁶	3.1	Monitor Well	0.3 X 10 ⁶	1.5
						Minor sources	0.6 X 10 ⁶	3.3

August 2015			September 2015			October 2015		
Source	Volume of water supplied (in m ³)	Per cent of total volume supplied (V)	Source	Volume of water supplied (in m ³)	Per cent of total volume supplied (V)	Source	Volume of water supplied (in m ³)	Per cent of total volume supplied (V)
Provo River (JVTP and SETP)	10.6 X 10 ⁶	86.2	Provo River (JVTP and SETP)	10.6 X 10 ⁶	92.1	Provo River (JVTP and SETP)	6.4 X 10 ⁶	90.0
SWTP	0.7 X 10 ⁶	5.4	SWTP	0.3 X 10 ⁶	2.7	SWTP	0.4 X 10 ⁶	6.1
64S/70S Well	0.5 X 10 ⁶	3.9	64S/70S Well	0.3 X 10 ⁶	2.8	64S/70S Well	0.2 X 10 ⁶	3.2
90S Well	0.3 X 10 ⁶	2.3	90S Well	0.2 X 10 ⁶	1.4	90S Quail Well	0.05 X 10 ⁶	0.7
Minor Sources	0.3 X 10 ⁶	2.2	90S Quail Well	0.1 X 10 ⁶	0.9			

Table 2: Comparison between volumetric (V) and areal (A) contributions of the different sources from May 2015 to October 2015. V for each source was calculated from the monthly supply data of each source (see Table 1). A was calculated using methods described in section 2.5. JVTP and SETP are considered as separate sources in May and June 2015 and combined sources from July to October 2015. Sources contributing less than 1% of the total volume have been grouped together as “Minor sources” for June, July and August 2015. All values are in percent.

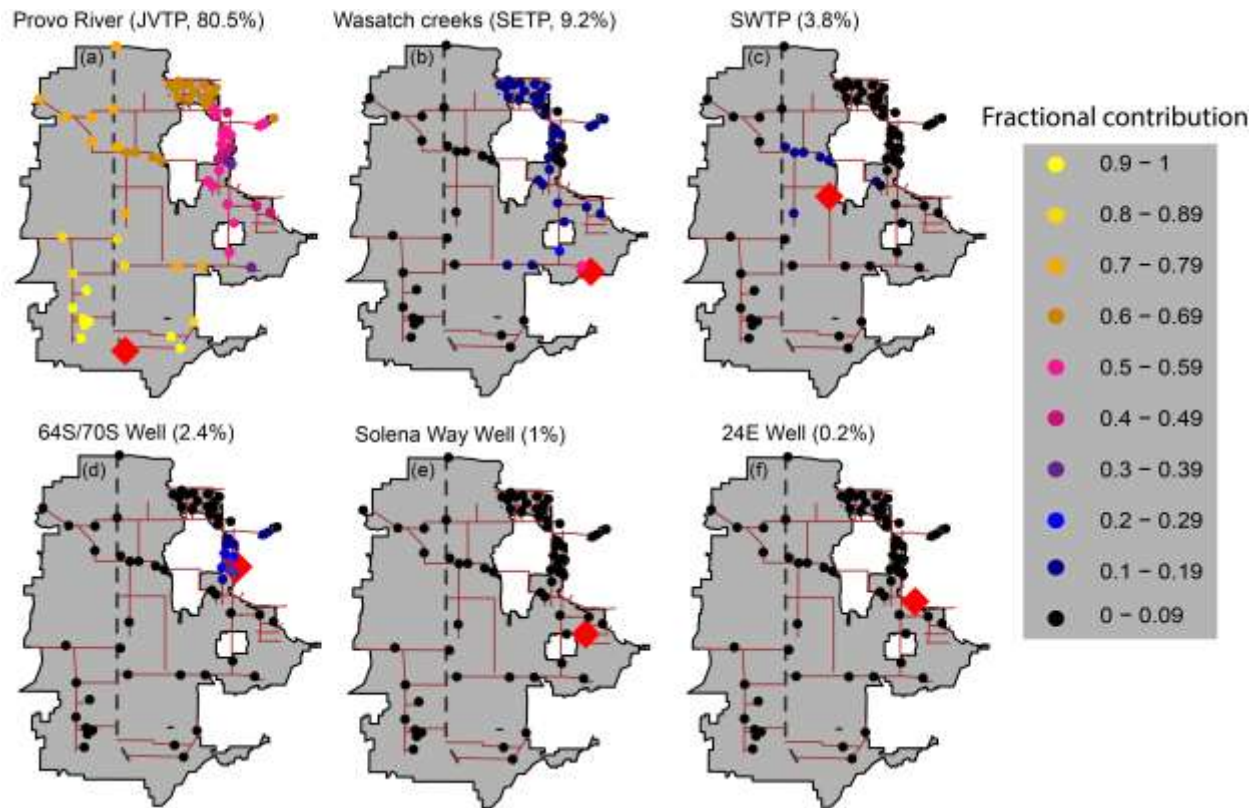
May 2015			June 2015			July 2015		
Source	V	A	Source	V	A	Source	V	A
Provo River (JVTP)	60.6	47.7	Provo River (JVTP)	80.5	63.9	Provo River (JVTP and SETP)	86.2	87.1
Wasatch Creeks (SETP)	24.3	30.2	Wasatch Creeks (SETP)	9.2	27.3	SWTP	2.6	1.7
SWTP	6.5	5.7	SWTP	3.8	2.7	64S/70S Well	2.8	2.9
Solena Way Well	4.6	6.4	64S/70S Well	2.4	2.4	Siesta Well	1.9	1.8
64S Well	3.0	7.1	Solena Way Well	1.0	0.8	18E Well	1.6	1.4
45S Well	1.0	2.8	Minor sources	3.1	2.9	Monitor Well	1.5	1.6
						Minor sources	3.3	3.2

August 2015			September 2015			October 2015		
Source	V	A	Source	V	A	Source	V	A
Provo River (JVTP and SETP)	86.2	86.9	Provo River (JVTP and SETP)	92.1	91.3	Provo River (JVTP and SETP)	90.0	94.3
SWTP	5.4	4.5	SWTP	2.7	2.3	SWTP	6.1	1.7
64S/70S Well	3.9	2.8	64S/70S Well	2.8	3.4	64S/70S Well	3.2	3.1
90S Well	2.3	2.2	90S Well	1.4	1.9	90S Quail Well	0.7	0.8
Minor Sources	2.2	3.4	90S Quail Well	0.9	1.1			



710

711 Figure 1: Jordan Valley Water Conservancy District (JVD) wholesale area (white) and Jordan
 712 Valley retail area (purple) within the Salt Lake metropolitan valley (black border). Water from
 713 wells shown in light blue color are pumped directly into the transmission lines on which they are
 714 located. The aqueducts from Provo River and the Wasatch Creeks are shown for illustrative
 715 purposes only. WTP: Water Treatment Plant, JVTP: Jordan Valley Water Treatment Plant, SETP:
 716 Southeast Water Treatment Plant, SWTP: Southwest Water Treatment Plant. Source of base map:
 717 ESRI digital media.



718

719 Figure 2: Mean prior contribution of selected sources at the distribution sites for June 2015 based

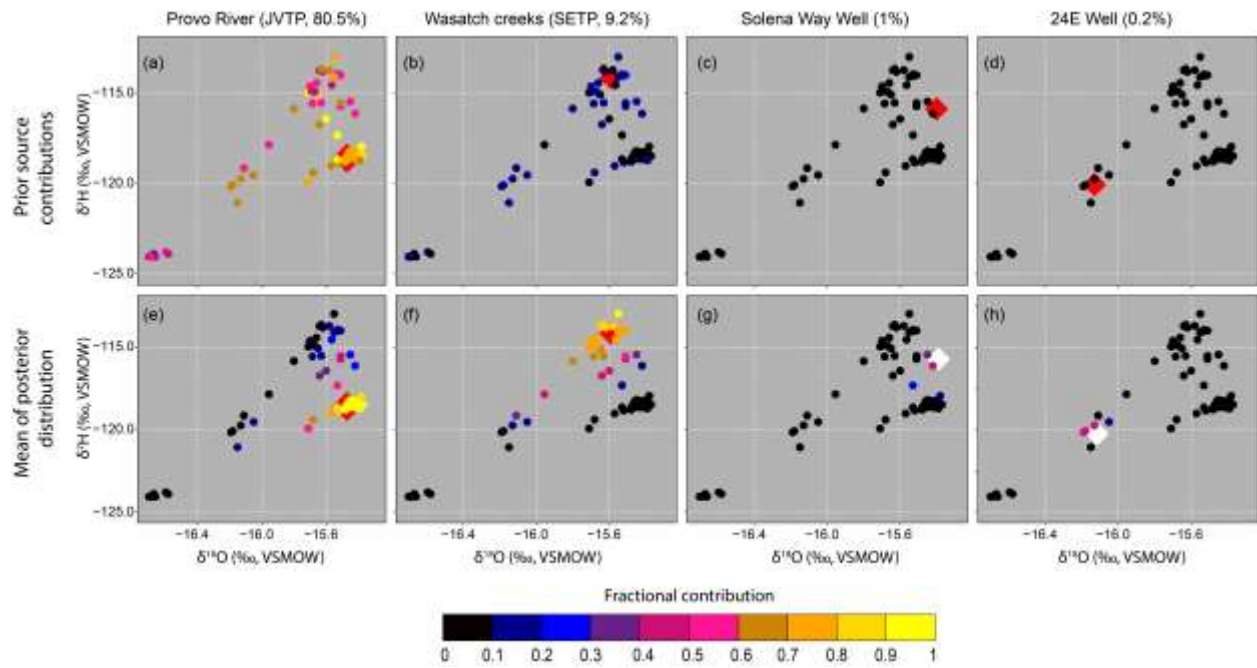
720 upon Eq.6 described in section 2.4. Distribution sites are shown as circles, and the color reflects

721 the assigned prior contribution from the different sources. The source location is shown as red

722 diamond in each panel. The name of each source and its percent volumetric contribution (V) is

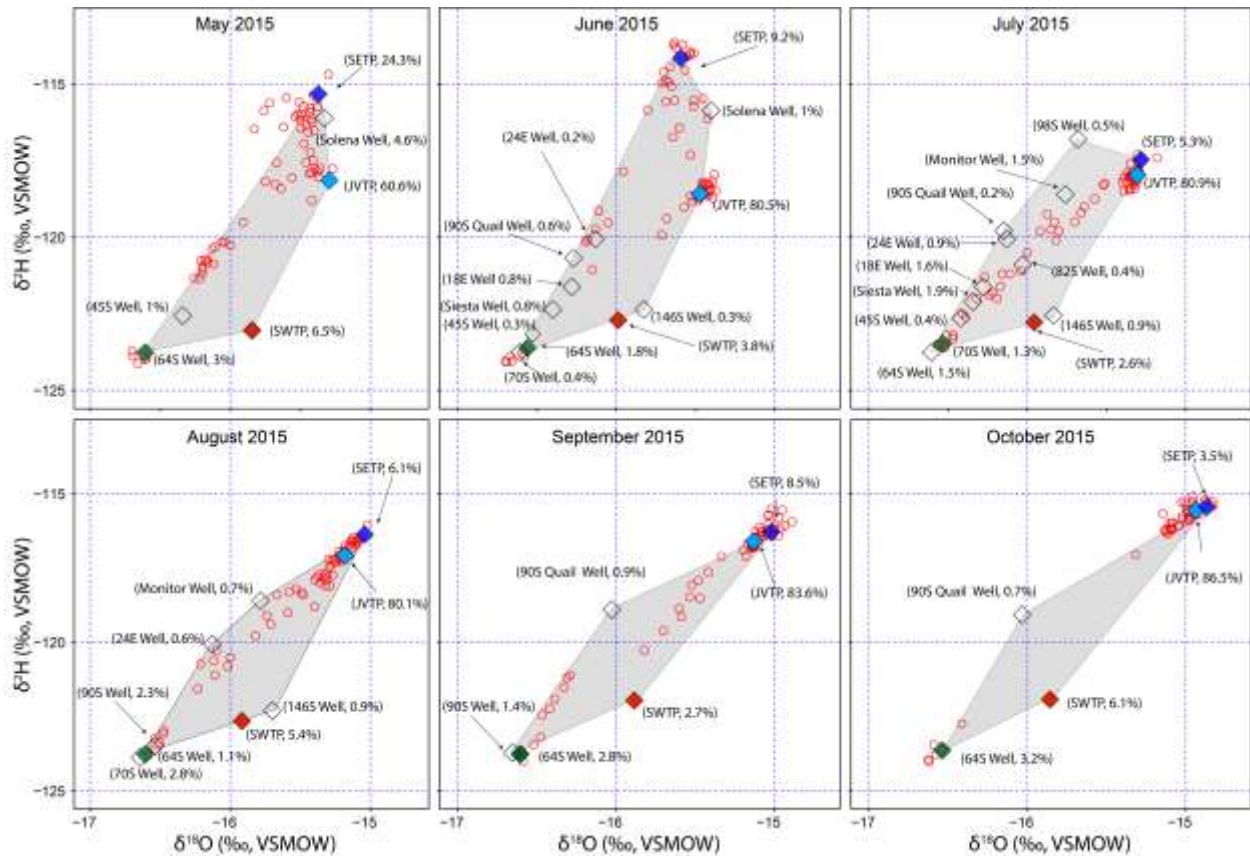
723 shown above each panel.

724



725

726 Figure 3: Prior contribution of selected sources at the distribution sites (a-d) and mean posterior
 727 contribution of selected sources at distribution sites (e-h) in isotope space for June 2015. Red
 728 diamonds represent sources and the circles represent distribution sites. For clarity, diamonds in
 729 panels (a) through (h) have been enlarged and in panel (g) and (h) are shown in white.

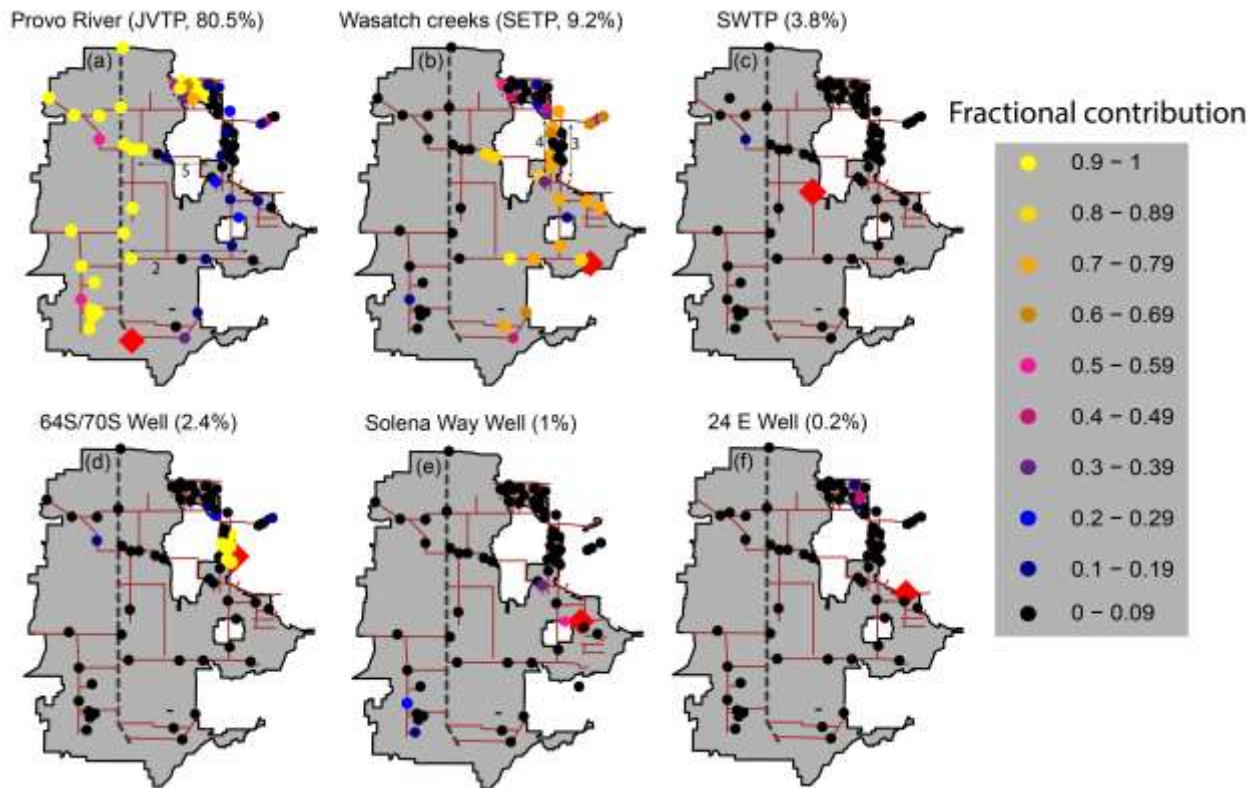


730

731 Figure 4: Sources and distribution site isotope ratios from May 2015 to October 2015. Red hollow
 732 circles and diamonds represent distribution sites and sources respectively. The four major sources
 733 (JVTP, SETP, SWTP and 64S well) have been colored light blue, dark blue, orange and green
 734 respectively. The grey region is the convex hull of the sources (defined as the minimum area
 735 enclosing all the source isotope values). The percentage value besides the name of the source
 736 represents the total volume of water supplied by the source in the given month.

737

738



740

741 Figure 5: Mean of the posterior contribution of selected sources at the distribution sites for June

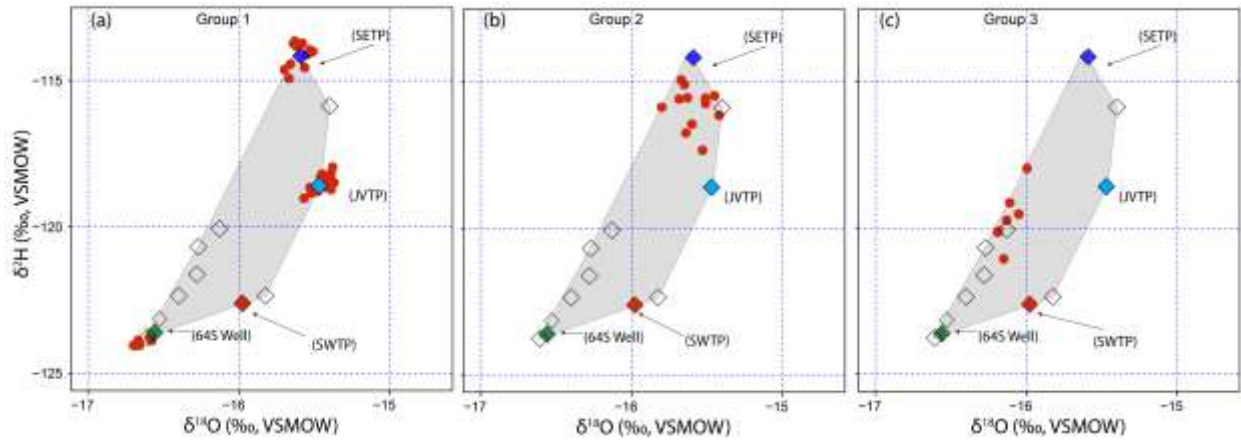
742 2015. Distribution sites are shown as circles and the color reflects the mean of the posterior

743 contribution from the respective source at that site. The source in each panel is shown as a red

744 diamond. Name of the source and its percent volumetric contribution (V) is shown above each

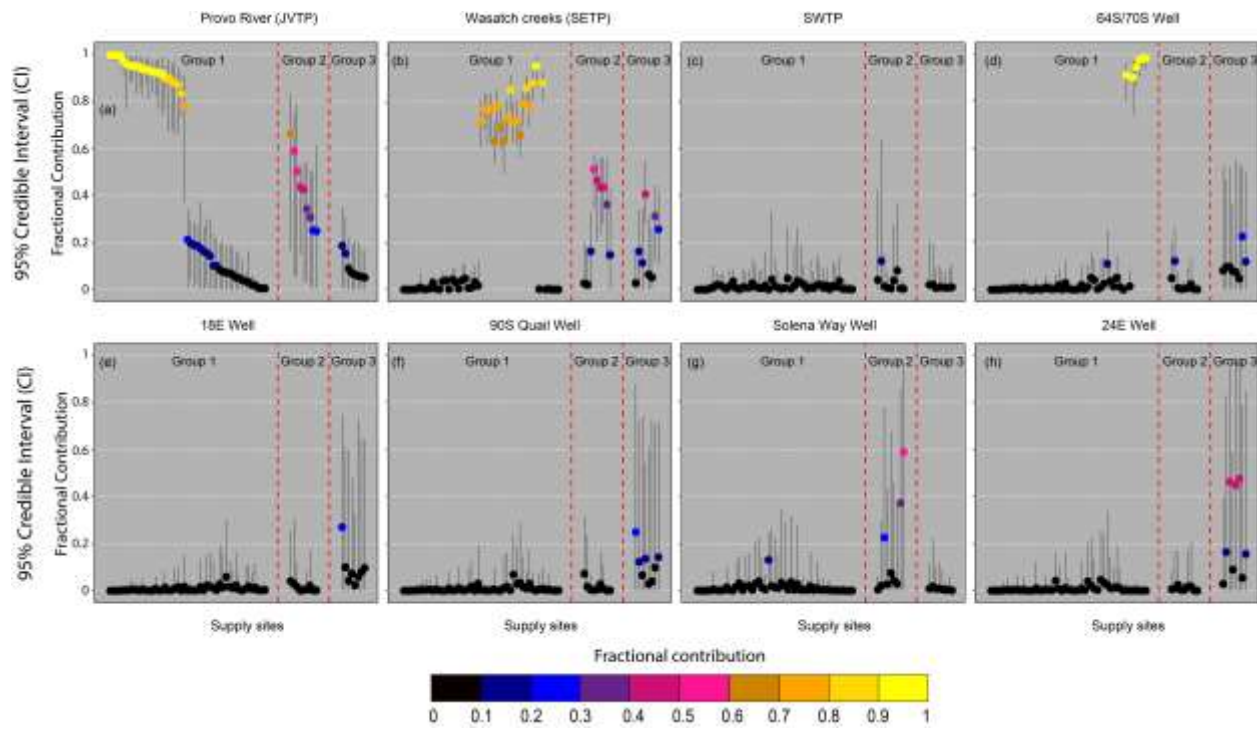
745 panel. Transmission lines 2 and 5 are shown in panel (a) and lines 3 and 4 are shown in panel (b).

746



748

749 Figure 6: Distribution sites and sources for June 2015 shown as red circles and diamonds. The four
 750 major sources (JVTP, SETP, SWTP and 64S well) have been colored light blue, dark blue, orange
 751 and green respectively and are labelled. Minor sources are shown as hollow diamonds. (a) group
 752 1, (b) group 2 and (c) group 3 distribution sites.

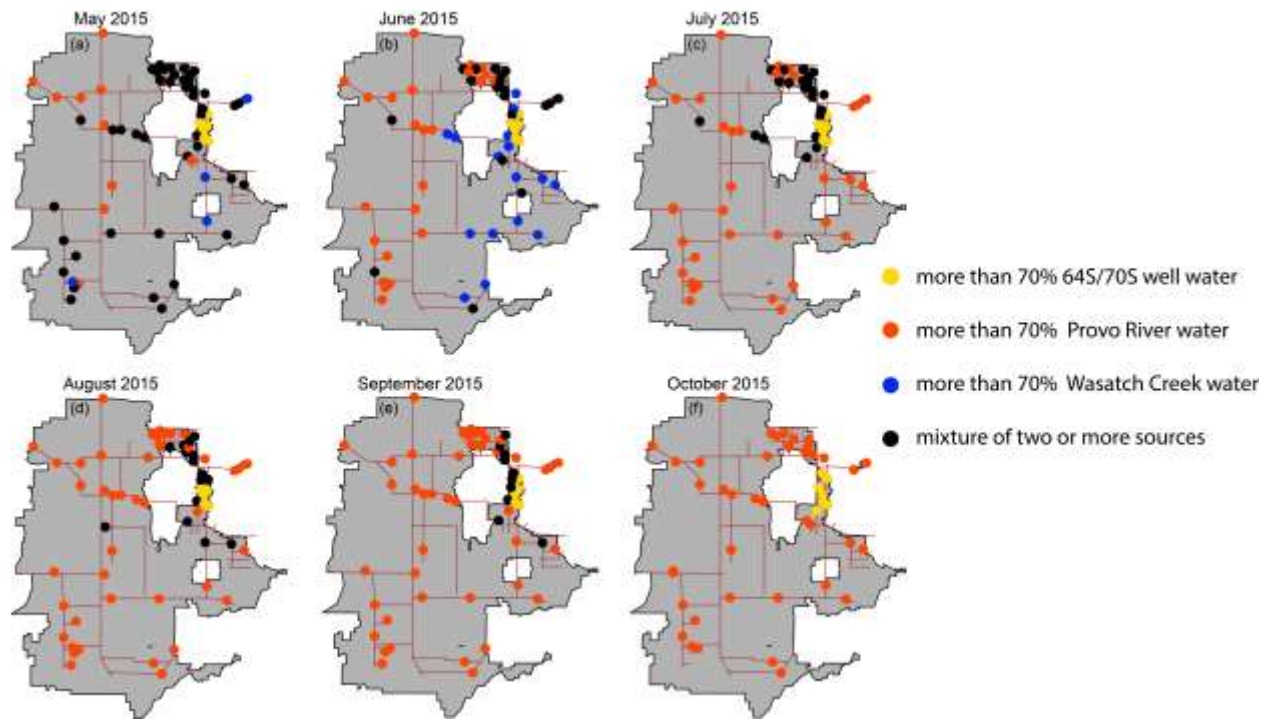


753

754 Figure 7: Mean (circle) and 95% credible interval (vertical black lines) associated with the source
 755 contributions at the distribution sites for the different groups for June 2015. Sites in panel (a) have
 756 been sorted with decreasing contribution from JVTP. The same sorting order is maintained for all
 757 the panels (b-h). Red diamonds represent source and the circle represent distribution sites.

758

759



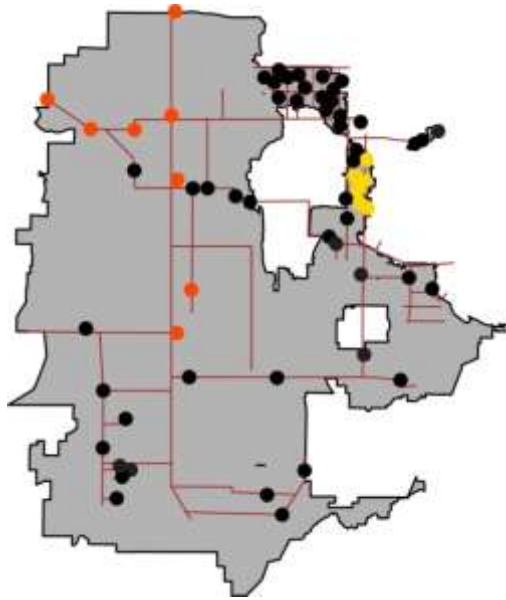
760

761 Figure 8: Spatiotemporal variation in sources and distribution sites connectivity from May 2015

762 to October 2015. Distribution sites receiving more than 70% water from a single source are shown

763 in orange, blue and yellow circles and sites receiving water from multiple sources (less than 70%

764 water from a single source) are shown in black circle.



766

767 Figure 9: Mean contribution of different sources at the distribution sites during May 2015 to
768 October 2015. Sites in orange and yellow circles received water primarily (>70%) from Provo
769 River and 64S/70S well, respectively, throughout the entire sampling period. Sites in black circles
770 received water from multiple sources or switched sources at least once during the sampling period.