

Interactive comment on “A Hybrid Stochastic Rainfall Model That Reproduces Rainfall Characteristics at Hourly through Yearly Time Scale” by Jeongha Park et al. (RC1)

Anonymous Referee #1

Received and published: 21 June 2018

Dear Anonymous Referee #1

We sincerely appreciate your constructive comments on our manuscript. All your comments tremendously helped us to improve the quality of the article. Our responses are as follow:

Comment 1. The equation for the relationship between the variance of rainfall at one time scale and another together with the covariances (Equation 1) should be clearly derived from the preceding equation.

Authors' Response. We agree with this point. In order to clarify the relationship between ther equations, we changed Equation 1 as follow:

Revised Contents:

[(old) page 4 line 15 / (new) page 3 line 24] *We can then write the variance at time-scale nh as:*

$$\begin{aligned} V_{nh} &= Var(Y^{(nh)}) \\ &= \sum_{i=1}^n \sum_{j=1}^n Cov(Y_i^{(h)}, Y_j^{(h)}) \\ &= \sum_{i=1}^n Cov(Y_i^{(h)}, Y_i^{(h)}) + \sum_{i=1}^n \sum_{j=1, j \neq i}^n Cov(Y_i^{(h)}, Y_j^{(h)}) \\ &= nVar(Y^{(h)}) + \sum_{i=1}^n \sum_{j=1, j \neq i}^n Cov(Y_i^{(h)}, Y_j^{(h)}) \\ &\text{Since } Cov(Y_i^{(h)}, Y_j^{(h)}) = Cov(Y_j^{(h)}, Y_i^{(h)}) \\ V_{nh} &= nVar(Y^{(h)}) + 2 \sum_{i=1}^n \sum_{j=1, j > i}^n Cov(Y_i^{(h)}, Y_j^{(h)}) \end{aligned} \quad (1)$$

, where V_h is the variance of rainfall depths at scale h hours and $Cov(\cdot, \cdot)$ is the covariance operator between the two random variables.

The second term of the right-hand side of Equation 1, which represents the rainfall correlation between individual records separated by $(i - j)$ time-steps of the time series of rainfall depths at scale h hours, is likely to be underestimated by the Poisson cluster rainfall model because ...

Comment 2. The comparison of extreme rainfall modeled vs observed was conducted via linear regression. First it is not clear how the "Extreme" observed rainfall points were obtained. Second it is

not clear how the modeled values were obtained. Presumably they correspond to similar probability levels obtained from a GEV? In any case the subsequent assessment of bias is reasonable. However it may be more transparent to display the tails of the probability distributions side by side to more clearly visualize how well the model reproduces the observed data. Alternatively, the parameters of the GEV distributions could be compared.

Authors' Response. Yes. We assumed that the monthly maxima follow the Generalized Extreme Value distribution. Here, we separated the analysis for each calendar month, so we have 12 sets of extreme rainfall values corresponding to each gauge station. Therefore, we produced each scatter plot of Figure 13 based on 408 points (12 months/gauge \times 34 gauges, please note that we added the result of the five additional stations according to the suggestions of another reviewer). We provided the explanation regarding this in the article as follow:

Revised Contents:

[(old/new) page 20 line 2] *The scatters in Figure 13 compare the 20, 50, 100, and 200-year rainfall estimated from the observed rainfall (x) and the synthetic rainfall (y) generated by the hybrid model (red) and the MBLRP model (blue) at hourly through daily time scale. The Generalized Extreme Value (GEV) distribution was used to model the distribution of the annual maxima, and the three parameters of the GEV distribution were determined using the method of L-moments. Here, we separated the analysis for each calendar month, so we have 12 sets of extreme rainfall distributions corresponding to each gauge station. Therefore, we produced each scatter plot of Figure 13 based on 408 points (12 months/gauge \times 34 gauges).*

We prepared additional figures (Figure RC1-1 and Figure RC1-2) according to your suggestion. The figures and the corresponding explanations are as follow:

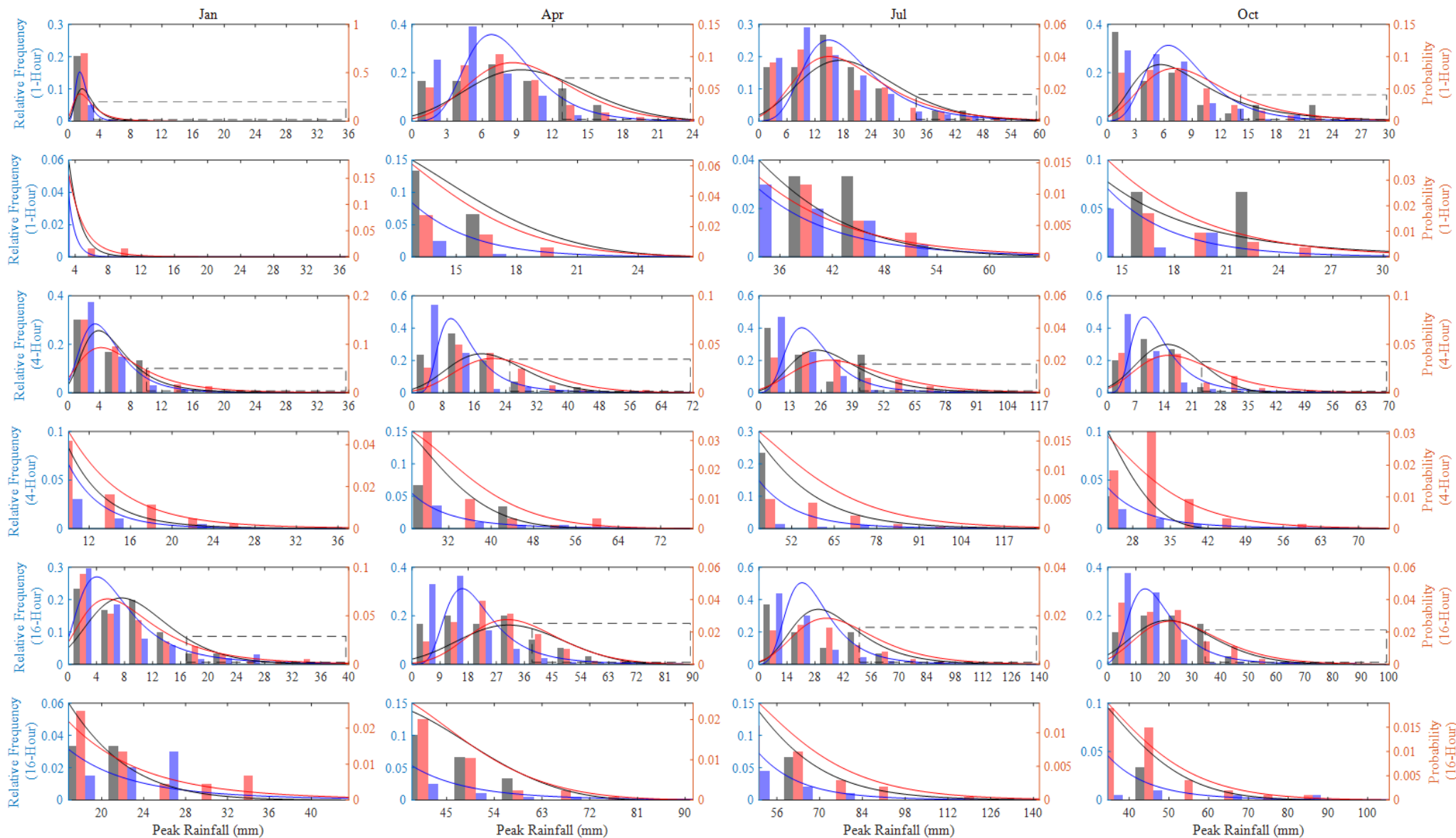


Figure RC1-1. Relative frequency and the fitted GEV distribution of the 1, 4, and 16-hour monthly maxima of January, April, July, and October rainfall at NCDC gauge 132203. Results of Observed rainfall (black), our hybrid model (red), and the traditional MBLRP model (blue) are shown. The upper 10 percentile part of the distribution (dashed box in the plots in the first, third, and fifth row) is magnified in the lower rows (plots in the second, fourth, and sixth row).

[(new) page 22 line 17] *Figure RC1-1 shows the relative frequency and the fitted GEV distribution of the monthly maxima of January, April, July, and October at NCDC gauge 132203. The black, red, and blue line correspond to the result of observed rainfall, our hybrid model, and the traditional MBLRP model, respectively. The GEV distribution of the 1, 4, and 16-hour rainfall durations are shown in the plots of the first, third, and fifth row, respectively. The plots in the second, fourth, and the sixth row magnify the upper 10th percentile part of the distribution of the upper figures that is denoted as the dashed box. For all months and durations, our hybrid model outperforms the traditional MBLRP model in reproducing the head through tail part of the distribution. The distribution of the traditional MBLRP model was skewed toward the lower values. A similar tendency was observed at most gauge locations while at some of the gauges our hybrid model showed similar or slightly degraded performance compared to the traditional MBLRP model in reproducing the distribution of extreme values.*

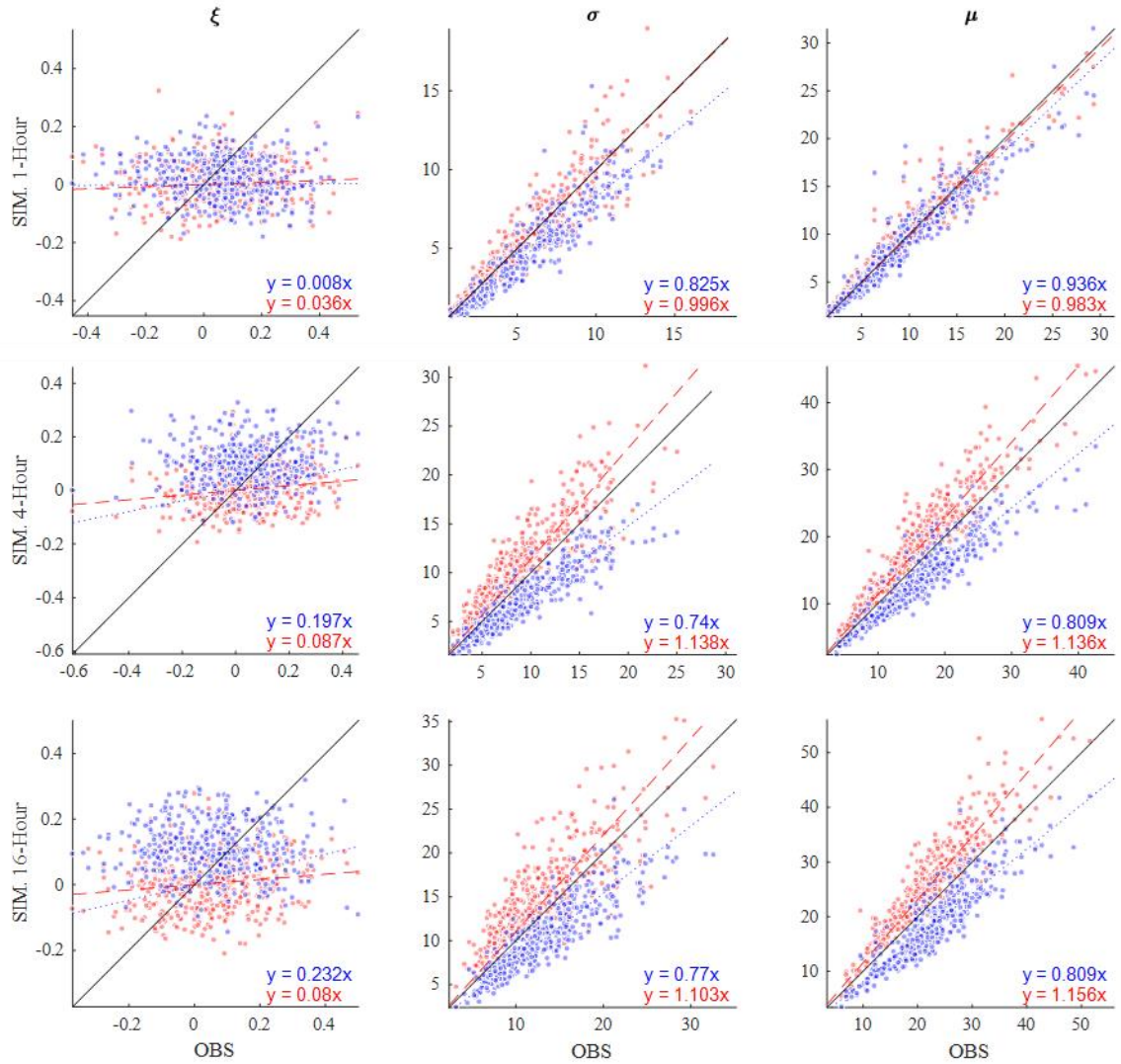


Figure RC1-2. Comparison of the shape (ξ), scale (σ), and location (μ) parameters of the fitted GEV distribution of the monthly maxima. The results based on the observed rainfall (x), our hybrid model (red), and the traditional model (blue) are shown. The results of 1, 4, and 16-hour rainfall durations are shown.

5

[(new) page 23 line 5] Figure RC1-2 compares the shape (ξ), the scale (σ), and the location (μ) parameter of the fitted GEV distribution of the monthly maxima of the observed rainfall (x) and of the synthetic rainfall generated from our hybrid model (red scatters) and from the traditional MBLRP model (blue scatters). The results for 1, 4, and 16-hour rainfall durations are shown. Each scatter point represents the result of one calendar month at one

gauge. A total of 408 scatter points (12 months/gauge \times 34 gauges) are shown for each of the plot. The traditional MBLRP model underestimates the location parameters at all rainfall durations, and the degree of underestimation increases with increased duration. Our hybrid model showed the opposite trend. The location parameters tend to be overestimated with an increase in the duration, but the degree of overestimation was not as significant as in the case of the traditional model. The traditional model compensates the underestimated location of the distribution with the overestimated scale parameters, which were observed for all three durations investigated. Our hybrid model also compensates the overestimated location of the distribution with the underestimated scale parameters, but the degree of compensation was not as significant as in the case of the traditional model. However, the shape parameter of the observed monthly maxima was not well reproduced by both models. This result shows the difficulty of precisely reproducing the rainfall extreme values. This is mainly because the rainfall extreme values are indeed extreme. For example, 1-hour 100-year rainfall of 100 years of rainfall record is theoretically the greatest value of all 72,000 hourly rainfall records (24 hours/day \times 30 days/month \times 100 years), and precisely reproducing a value with such a low probability of occurrence can be a daunting task using the models with only a limited number of parameters.

15

Technical notes 1. There are only a few minor editorial suggestions (which have been included in a scanned document)

Authors' Response. Thank you for your thorough review. The attached supplementary material has only the odd pages, so we will incorporate all your correction suggestions once we receive the complete document.

20

25

A Hybrid Stochastic Rainfall Model That Reproduces Rainfall Characteristics at Hourly through Yearly Time Scale

Jeongha Park¹, Christian Onof², and Dongkyun Kim¹

¹Department of Civil Engineering, Hongik University, Seoul, 04066, Republic of Korea

5 ²Department of Civil and Environmental Engineering, Imperial College, London, SW7 2AZ, UK

Correspondence to: Dongkyun Kim (kim.dongkyun@hongik.ac.kr)

Abstract. A novel approach to stochastic rainfall generation that can reproduce various statistical characteristics of observed rainfall at hourly through yearly time scale is presented. The model uses the Seasonal Auto-Regressive Integrated Moving Average (SARIMA) model to generate monthly rainfall. Then, it downscales the generated monthly rainfall to the hourly aggregation level using the Modified Bartlett-Lewis Rectangular Pulse (MBLRP) model, a type of Poisson cluster rainfall model. Here, the MBLRP model is carefully calibrated such that it can reproduce the sub-daily statistical properties of observed rainfall. This was achieved by first generating a set of fine scale rainfall statistics reflecting the complex correlation structure between rainfall mean, variance, auto-covariance, and proportion of dry periods, and then coupling it to the generated monthly rainfall, which were used as the basis of the MBLRP parameterization. The approach was tested on 34 gages located in the Midwest to the East Coast of the Continental United States with a variety of rainfall characteristics. The results of the test suggest that our hybrid model accurately reproduces the first through the third order statistics as well as the intermittency properties from the hourly to the annual time scale; and the statistical behaviour of monthly maxima and extreme values of the observed rainfall were reproduced well.

1 Introduction and Background

20 Most human and natural systems affected by rainfall react sensitively to temporal variability of rainfall across small (e.g. quarter-hourly) through large (e.g. monthly, yearly) time scales. Small scale rainfall temporal variability influences short-term watershed responses such as flash flood (Reed et al., 2007) and subsequent transport of sediments (Ogston et al., 2000) and contaminants (Zonta et al., 2005). Large scale rainfall temporal variability influences long-term resilience of human-flood systems (Yu et al., 2017), human health (Patz et al., 2005), food production (Shisanya et al., 2011), and evolution of human society (Warner and Afifi, 2014) and ecosystems (Borgogno et al., 2007; Fernandez-Illescas and Rodriguez-Iturbe, 2004).

25 While the risk exerted by these impacts needs to be precisely assessed for the management of such systems, the observed rainfall record is oftentimes not long enough (Koutsoyiannis and Onof, 2001). Furthermore, the rainfall records do not exist when the risks need to be assessed for the future. For this reason, stochastic rainfall generators, which can create synthetic rainfall record with infinite length, have been frequently used to provide rainfall input data to the modelling studies
30 for risk assessment.

The Poisson cluster rainfall generation model (Rodriguez-Iturbe et al, 1987; 1988) is one of the most widely applied stochastic rainfall generators. Figure 1 shows a schematic of the Modified Bartlett-Lewis Rectangular Pulse (MBLRP) model, which is a typical Poisson cluster rainfall model. The model assumes that a series of rain storms (black circles) comprising a sequence of rain cells (red circles), arrives in time according to a Poisson process. The MBLRP model has six parameters of which brief description is provided in the lower text box of Figure 1.

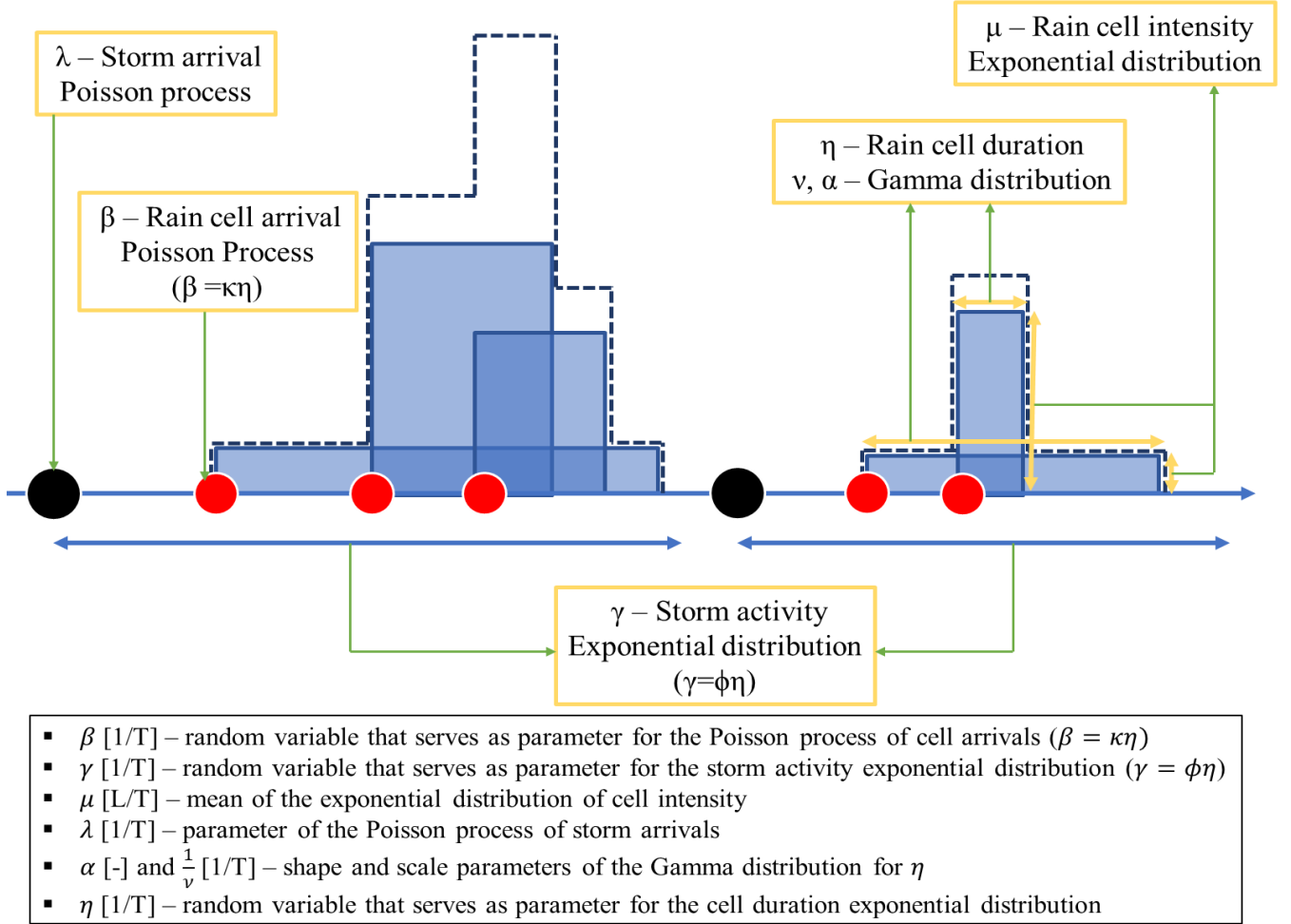


Figure 1: Schematic of the Modified Bartlett-Lewis Rectangular Pulse Model.

10

As suggested by the figure, Poisson cluster rainfall models are designed to reflect the original spatial structure of rain storms containing multiple rain cells (Austin and Houze Jr., 1972; Olsson and Burlando, 2002), so they are good at reproducing the first through the third order statistics of the observed rainfall at quarter-hourly through daily accumulation levels, as well

as other hydrologically important statistics such as proportion of non-rainy period (Olsson and Burlando, 2002). The performance of the Poisson cluster rainfall models in reproducing the statistical properties of observed rainfall has been validated for various climates at numerous locations across the globe (Bo et al., 1994; Cameron et al., 2000; Cowpertwait, 1991; Cowpertwait et al., 2007; Derzekos et al., 2005; Entekhabi et al., 1989; Glasbey et al., 1995; Gyasi-Agyei and Willgoose; 1997, Gyasi-Agyei, 1999, Islam et al.; 1990, Kaczmarek et al., 2014; Khaliq and Cunnane, 1996; Kim et al., 2016; Kim et al., 2013b; Kim et al., 2014; Kossieris et al., 2015; Kossieris et al., 2016; Onof and Wheeler, 1994a; Onof and Wheeler, 1994b; Onof and Wheeler, 1993; Rodriguez-Iturbe et al., 1988; Rodriguez-Iturbe et al., 1987; Smithers et al., 2002; Velghe et al., 1994; Verhoest et al., 1997; Wasko et al., 2015). For this reason, they have been widely applied to assess the risks exerted on human and natural systems such as floods (Paschalis et al., 2014), water availability (Faramarzi et al., 2009), contaminant transport (Solo-Gabriele, 1998), and landslides (Peres and Cancelliere, 2014; 2016). Recently, Poisson cluster rainfall models have also been used to generate future rainfall scenario under climate change (Kilsby et al., 2007; Burton et al., 2010; Fatichi et al., 2011).

In the meantime, Poisson cluster rainfall models have an intrinsic limitation derived from a fundamental model assumption. As described by Figure 1, they generate the rainfall time series assuming that the rain storms arrive according to a Poisson process, which assumes that rain storm occurrences are independent. In addition, the rain cells in different storms are independent with each other. These model assumptions deprive the model of the ability to reproduce the long-term memory of rainfall that is often observed in reality (Marani, 2003).

Let us introduce some notation. The aggregated process $Y^{(h)}$ at time-scale h hours is defined in terms of the continuous time process Y by the equation:

$$Y_i^{(h)} = \int_{(i-1)h}^{ih} Y(t) dt$$

We can then write the variance at time-scale nh as:

$$\begin{aligned} V_{nh} &= Var(Y^{(nh)}) \\ &= \sum_{i=1}^n Cov(Y_i^{(h)}, Y_i^{(h)}) + \sum_{i=1}^n \sum_{j=1, j \neq i}^n Cov(Y_i^{(h)}, Y_j^{(h)}) \\ &= nVar(Y^{(h)}) + \sum_{i=1}^n \sum_{j=1, j \neq i}^n Cov(Y_i^{(h)}, Y_j^{(h)}) \end{aligned}$$

$$\text{Since } Cov(Y_i^{(h)}, Y_j^{(h)}) = Cov(Y_j^{(h)}, Y_i^{(h)})$$

$$V_{nh} = nVar(Y^{(h)}) + 2 \sum_{i=1}^n \sum_{j=1, j > i}^n Cov(Y_i^{(h)}, Y_j^{(h)}) \quad (1)$$

, where V_h is the variance of rainfall depths at scale h hours and $Cov(\cdot, \cdot)$ is the covariance operator between the two random variables.

The second term of the right-hand side of Equation 1, which represents the rainfall correlation between individual records separated by $(i - j)$ time-steps of the time series of rainfall depths at scale h hours, is likely to be underestimated by the

Poisson cluster rainfall model because it can only reproduce short-term memory in the rainfall signal through its model structure, i.e. through the clustering of rain cells. The degree of underestimation will increase as the correlation between the individual records ($Y_i^{(h)}$) of the observed rainfall time series increases and as the aggregation level n increases. This underestimation was consistently observed in the rainfall data of the United States (Kim et al., 2013a). If $h = 1$ in Equation 1, i.e. hourly rainfall, and $n \cong 720$ (24hours/day \times 30 days = 720 hours \cong 1 month), the left-hand side of Equation 1 will represent the variance of monthly rainfall, which can be represented on the vertical axis of the box plots in Figure 2.

In Figure 2, the red box plots represent the variability of the monthly rainfall observed at the NCDC rain gage located in 85663, Florida, USA during the period between 1961 and 2010. The blue box plots represent the variability of the monthly rainfall estimated from the 50 years of hourly synthetic rainfall data generated by the Modified Bartlett-Lewis Rectangular Pulse (MBLRP) model, a type of Poisson cluster rainfall generators. Here, the MBLRP model used the parameter set that was calibrated to reproduce the observed rainfall mean, variance, lag-1 auto-covariance, and proportion of dry periods at sub-daily aggregation intervals (1, 2, 4, 8, and 16-hour), which is a typical practice of MBLRP model calibration (Rodriguez-Iturbe et al., 1987; Rodriguez-Iturbe et al., 1988; Kim et al., 2013a). Note that the vertical length of the red box plots are greater than that of the blue box plots in general, which implies that the variability of the observed rainfall is systematically greater than that of the synthetic rainfall. The discrepancy between the two are shown as the gray shading in the figure. In addition, the monthly extreme values shown as star marks are also underestimated by synthetic rainfall. This is, in particular, caused by the aforementioned limitations of the Poisson cluster rainfall models.

Considering that the management strategies of the water-prone human and natural systems may be governed by the few extreme rainfall values observed in the shaded domain of Figure 2, the risk analysis based on the rainfall data generated by Poisson cluster rainfall models may miss system behaviour that is crucial for development of the management plans. As a matter of fact, other rainfall models have similar issues: they cannot reproduce the temporal variability of observed rainfall across all time scales (Paschalis et al, 2014). For example, Markov chains, alternating renewal processes, and generalized linear models can reproduce the variability only at time scales coarser than one day. Models based on autoregressive properties of rainfall are typically good at reproducing the observed rainfall variability only for a limited range of scales, for instance from one month to a year or two (Mishra and Desai, 2005; Modarres and Ouarda, 2014; Yoo et al., 2016).

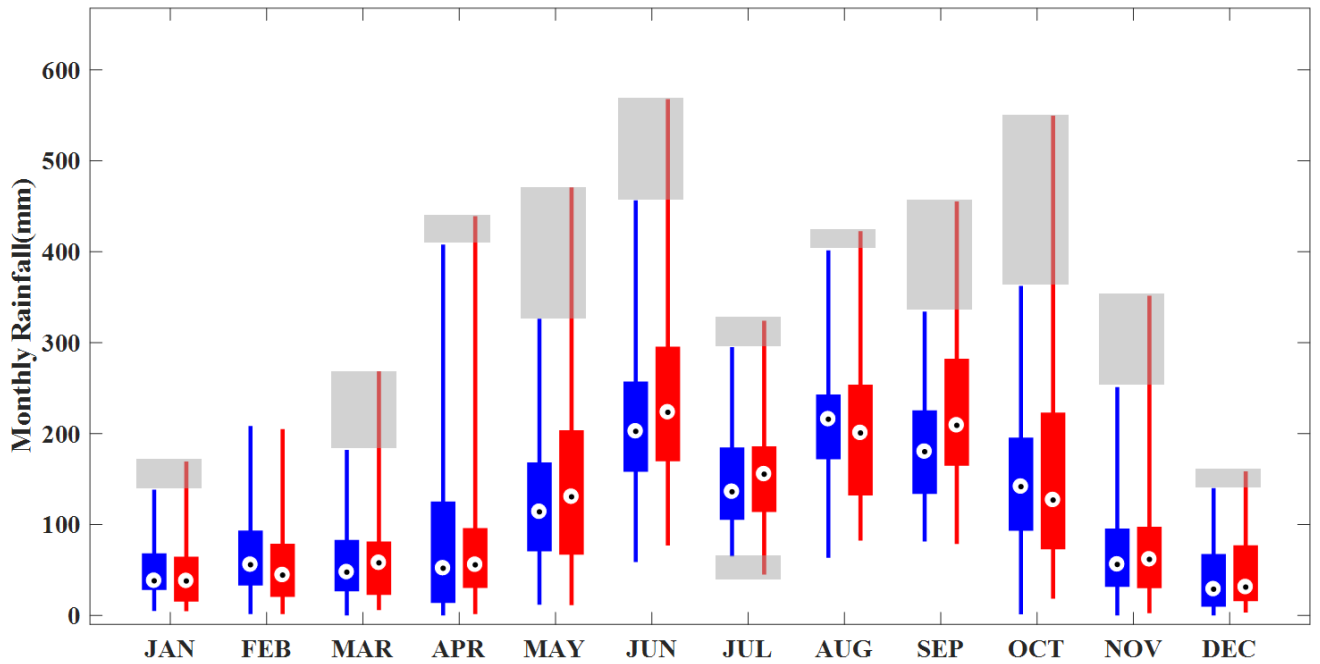


Figure 2: Box plots of the observed monthly rainfall at the NCDC gage 85663 in Florida, US. (red). The box plots of the synthetic monthly rainfall generated by the Modified Bartlett-Lewis Rectangular Pulse model at the same gage are shown for reference (blue). Gray shaded boxes represent the discrepancy of the variability of the two monthly rainfalls.

5 Several studies discussed the need to use composite rainfall models to resolve this scale problem of rainfall models. Koutsoyiannis (2001) used two seasonal autoregressive models with different temporal resolution to generate two different time series referring to the same hydrologic process. Then, they adjusted the fine scale time-series using their novel coupling algorithm so that this series becomes consistent with the coarser scale time series without affecting the second-order statistical properties. Menabde and Sivapalan (2000) combined the alternating renewal process with a multiplicative cascade model in which a multi-year rainfall time series generated by a Poisson process based model is disaggregated using a bounded random cascade model. Their model reproduced the observed scaling behaviour of extreme events very well up to 6 minutes of temporal resolution. Fatichi et al. (2011) developed a model that generates monthly rainfall using an autoregressive model and disaggregating the generated monthly rainfall using a Poisson cluster rainfall model. Their composite model showed improved performance in reproducing the rainfall interannual variability that the latter often fails to reproduce. Kim et al. (2013a) proposed a model where the Poisson cluster rainfall model is used to disaggregate the monthly rainfall that is randomly drawn from a Gamma distribution. They found that incorporating the observed rainfall interannual variability through their composite approach also helps reproduce the statistical behaviour of rainfall annual maxima and extreme values at time scales ranging from 1 to 24 hours. Paschalis et al. (2014) introduced a composite model consisting of a Poisson cluster rainfall model or Markov chain model for large time scale and a multiplicative random cascade model for small time scale, which performed better than individual models across a wide range of scales at four different sites with distinct climatological characteristics.

This study proposes a composite rainfall generation model that can reproduce various statistical properties of observed rainfall at time scales ranging between one hour and one year. First, the model generates the monthly rainfall time series using the Seasonal Auto-Regressive Integrated Moving Average (SARIMA) model. Then, it downscales the generated monthly rainfall time series to the hourly aggregation level using a Poisson cluster rainfall model. Compared to the previous studies with similar methodology (Fatichi et al., 2011; Paschalis et al., 2014), our model has a novelty in that: (i) it models the monthly rainfalls so as to generate monthly statistics that will serve to calibrate the MLBRP model; (ii) each of the generated individual monthly rainfalls are downscaled using month-specific MLBRP model parameter sets that reflect the complex correlation structure of various rainfall statistics at fine time scale such as mean, variance, covariance, and proportion of dry periods. This distinctive approach of our model enables an accurate reproduction of the first through the third order statistics as well as the proportion of dry periods from the hourly to the annual time scale; and the statistical behaviour of monthly maxima and extreme values of the observed rainfall is well reproduced.

2 Study Area

Figure 3 shows the study area, which encompasses the Midwest to the East Coast of the Continental United States. We used the National Climatic Data Centre (NCDC) hourly rainfall data observed at 34 gage locations (triangles in Figure 3) for the period between 1981 and 2010. The study area has a variety of rainfall characteristics (Kim et al., 2013b). The northern, middle, and the southern part of the study area are classified as Humid Continental (warm summer), Humid Continental (cool summer), and Humid Subtropical climate, respectively, according to the Köppen Climate Classification (Köppen, 1900; Kottek, 2006). The annual rainfall of the study area varies from 750 mm to 1500 mm.

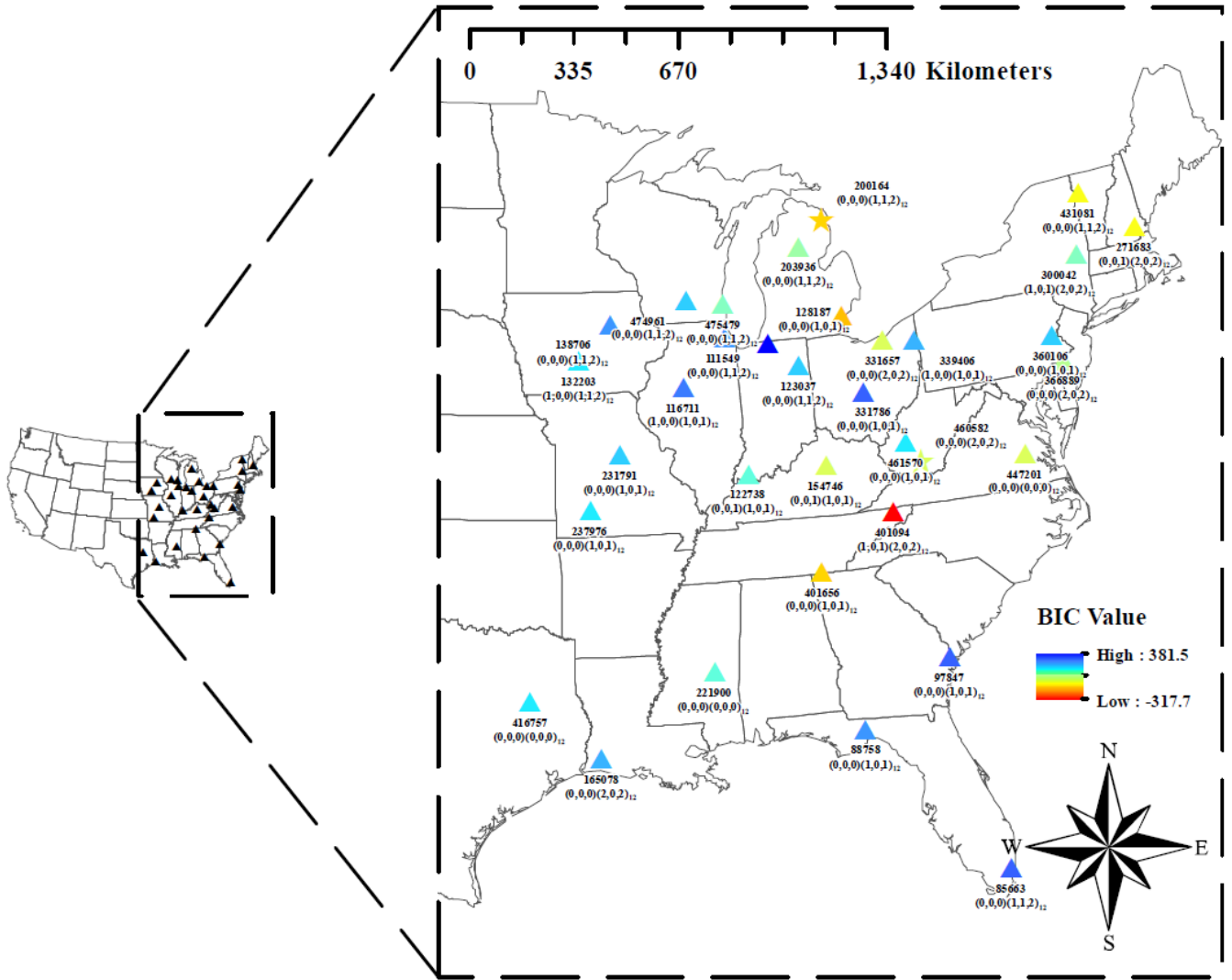


Figure 3: Study area and 34 NCDC hourly rainfall gages. The lower BIC indicates either more parsimonious parameterization, larger likelihood, or both.

3 Methodology

Figure 4 describes the model structure of this study. The model is composed of four distinct modules. The first module generates the monthly rainfall. The second module generates the fine-scale (1 hour through 16 hours) rainfall statistics corresponding to each of the generated monthly rainfall values in the first module. The third module estimates the parameters of the MBLRP model based on the fine-scale rainfall statistics generated by the second module. As a result of this process, each of the generated monthly rainfalls is coupled with the MBLRP parameter set reflecting its fine-scale statistical

characteristics. The fourth module downscales each of the monthly rainfalls using the MBLRP model based on the parameters obtained in the third module.

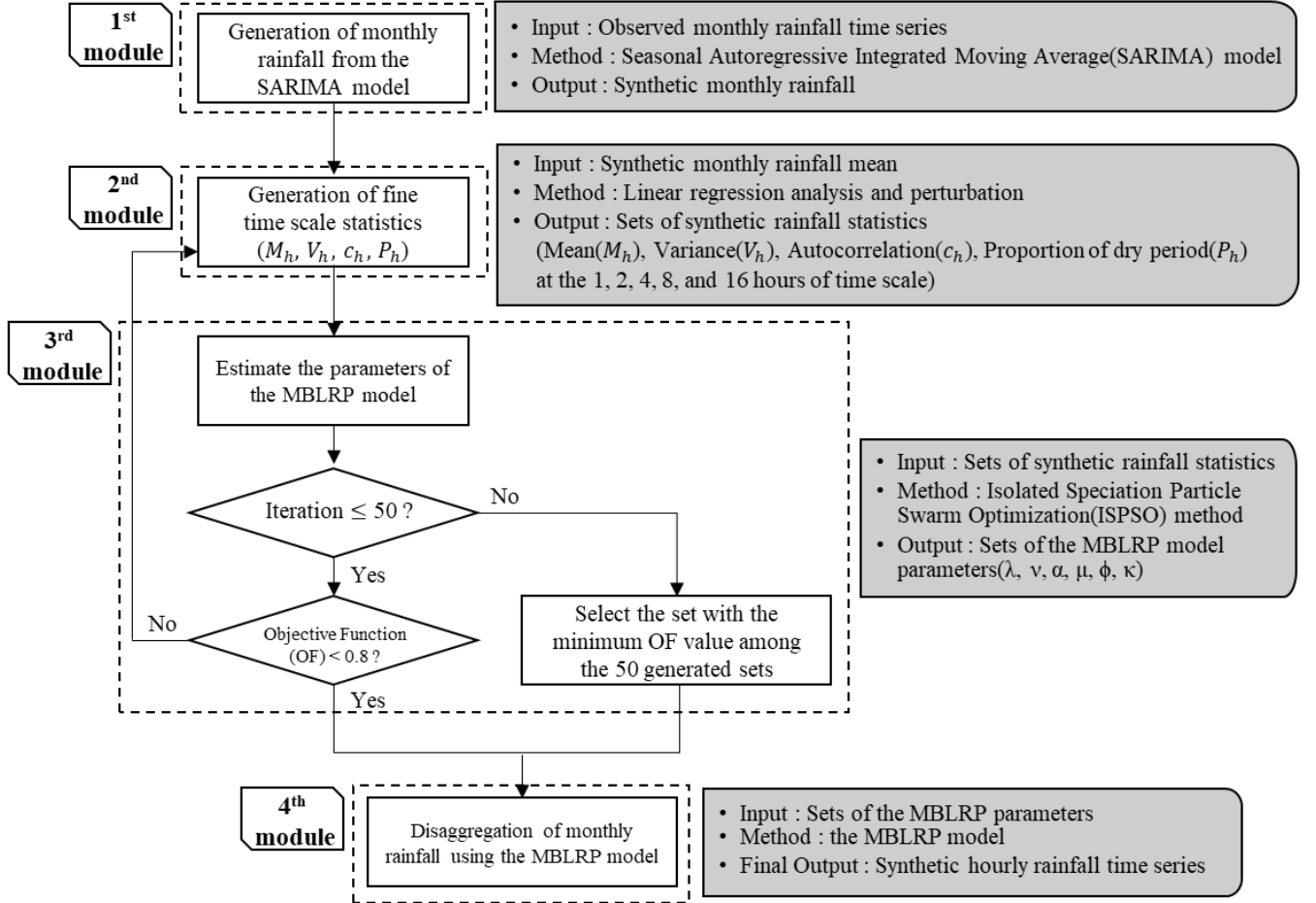


Figure 4: Four different modules of the model of this study

5 3.1 Monthly Rainfall Generation

We applied the Seasonal Auto-Regressive Integrated Moving Average (SARIMA) model to generate monthly rainfall. Generation of monthly rainfall based on Autoregressive relationship has been widely applied due to its parsimonious nature (Mishra and Desai, 2005) and was proven to successfully reproduce the first through the third-order statistics of the observed rainfall at monthly time scale (Delleur and Kavvas, 1978; Katz and Skaggs, 1981; Ünal et al., 2004; Mishra and Desai, 2005).

10 Rainfall data of different stations have different temporal persistence, so we applied the SARIMA model with different autoregressive(p), differencing(d), and moving average terms(q) to different stations. The choice of the optimal model for each station was determined through the following processes: First, a model structure of SARIMA(p, d, q)(P, D, Q)_m is assumed, where P, D, Q represent the numbers of seasonal autoregressive, differencing, and moving average terms,

respectively, and m represents the number of periods (here, months) in each season – here $m = 12$. Second, the parameters of the SARIMA model are determined through the method of maximum likelihood. Third, the Bayesian Information Criterion (BIC) are calculated for the fitted SARIMA model. Lastly, the first to third steps are repeated for a combination of different values of p ($0 \leq p \leq 2$), d ($0 \leq d \leq 2$), q ($0 \leq q \leq 2$), P ($0 \leq P \leq 2$), D ($0 \leq D \leq 2$), and Q ($0 \leq Q \leq 2$), and the model structure with the lowest BIC is selected for the station. Therefore, a total of 729 ($=3^6$) SARIMA model structures were tested to obtain the optimal model for a station. The selected model structure and the BIC values were shown in Figure 3. Through this process, we generated 200 years of monthly rainfall for the 34 gages.

3.2 Generation of fine time scale rainfall statistics

The second module generates the fine time scale (1hour through 16 hours) statistics corresponding to each monthly rainfall value generated through the SARIMA model. In so doing we are now considering the monthly rainfall, when divided by the number of days in the month times 24, as providing us with an estimate of the mean hourly rainfall for that particular month. The second module consists of univariate regressions and functional relations linking the mean hourly rainfall to the other statistics that are required to fit the MBLRP model. With these statistics MBLRP model parameters are obtained and these will be used to disaggregate the generated monthly rainfall. Figure 5 describes the process of the fine time scale rainfall generation.

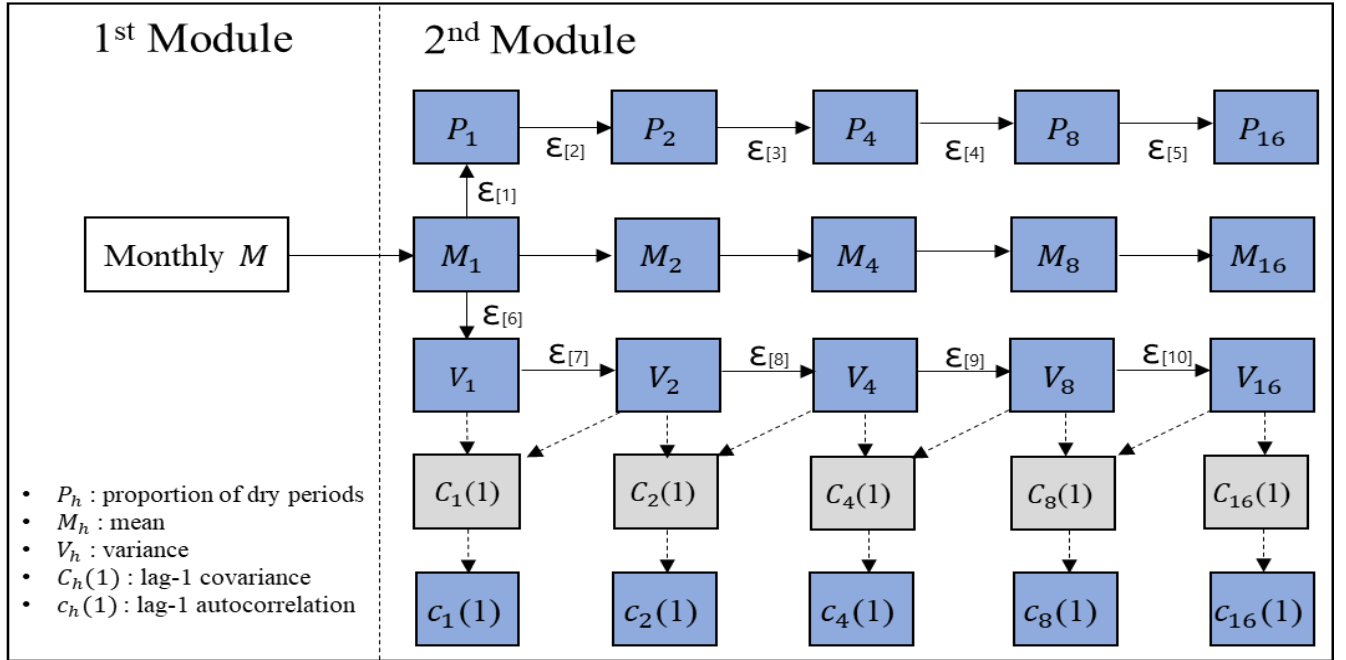


Figure 5: Schematic of the algorithm to generate fine time-scale rainfall statistics. The statistics in the blue boxes are used to calibrate the MBLRP model and the statistics in gray boxes are used to estimate the lag-1 autocorrelation.

In the figure, M_h , V_h , $c_h(1) = C_h(1)/V_h$ and P_h in each rectangle represent the rainfall mean, variance, lag-1 autocorrelation, and proportion of dry periods at time-scale h hours, respectively. The statistic connected to each solid arrow head is stochastically generated based on its linear relationship to the one connected to the tail of the same arrow. The statistic connected to the dashed arrow head is calculated based on the ones connected to the tail of the same arrow using the mathematical (deterministic) relationship connecting these variables as we explain below.

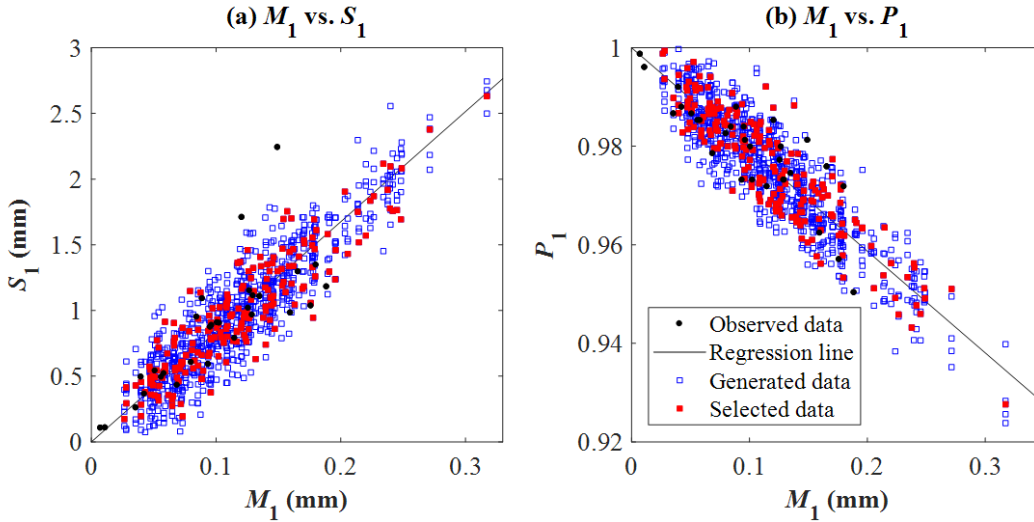
Let ε represent the residual of the linear regression between the two statistics connected by an arrow. Consider, for example, statistic M_1 which is connected to V_1 through the solid arrow in the figure, which means that the variance of one-hour rainfall ($V_1 = S_1^2$) is stochastically generated using its relationship to one-hour rainfall mean (M_1) using the following formula:

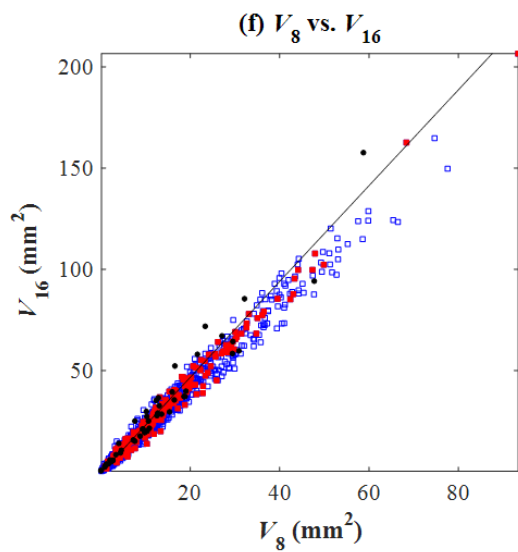
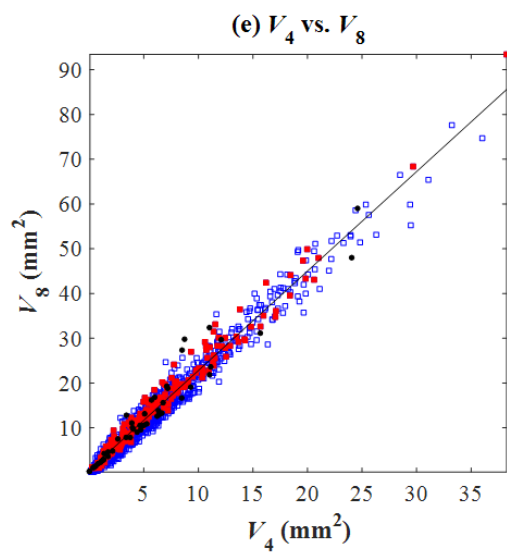
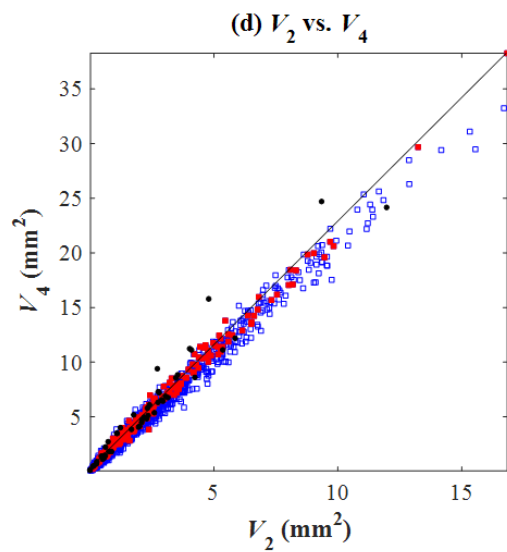
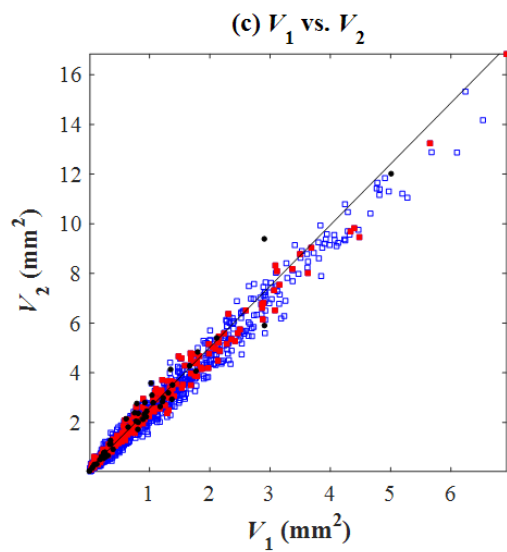
$$S_1 = a_{[6]} M_1 + \varepsilon_{[6]} \quad (2)$$

$$V_1 = S_1^2 \quad (3)$$

where subscripts with square brackets are used for the residuals so as to avoid confusion with the time-scale, and where $a_{[6]}$ is the coefficient determined from the regression analysis (note that the constant term is zero here since, trivially, $S_1 = 0$ when $M_1 = 0$), and $\varepsilon_{[6]}$ is normally distributed: $\varepsilon_{[6]} \sim N(0, \sigma_{[6]}^2)$.

Similar principles can be applied to the remaining statistics connected through solid arrows in Figure 5. Figure 6 shows the linear relationship between the rainfall statistics observed at the NCDC gage 200164 (star mark in Figure 3) during the month of July.





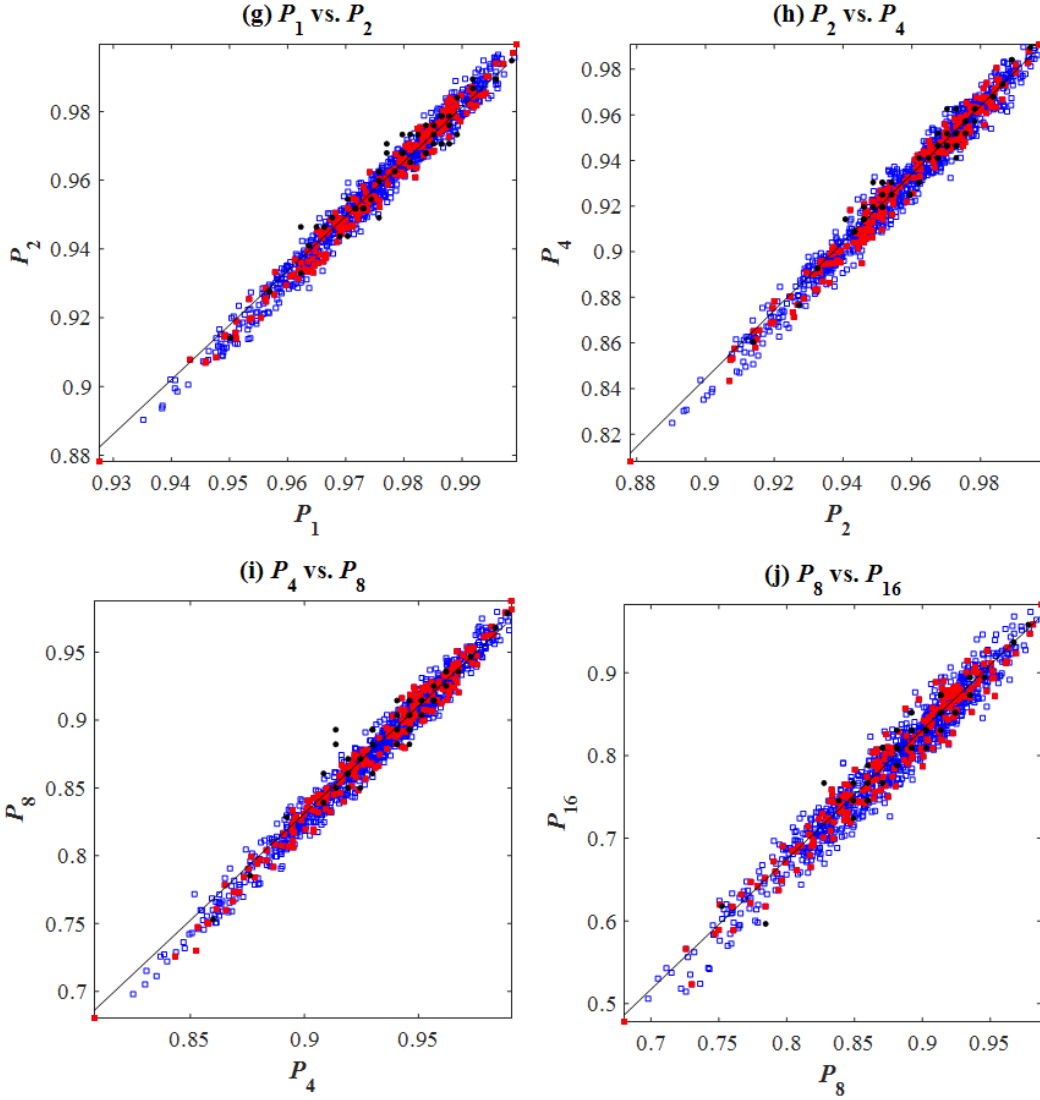


Figure 6: Linear relationship between various fine time-scale rainfall statistics of the observed rainfall (black dots) at the NCDC gage 200164. Based on this regression relationship, up to 50 sets of statistics are generated for each of the months (hollow blue squares) until the objective function of the set becomes smaller than given threshold value. Then, the set with objective function less than the threshold in the MBLRP parameter calibration process is finally chosen (red squares).

Let us look at this process in a little more detail, focusing first upon the dashed arrows: in Figure 5, V_1 and V_2 are connected to $C_1(1)$ through a dashed arrow, which means that $C_1(1)$ is derived from V_1 and V_2 . The following equations establish the relationship between the variances at time-scales h and $2h$ from which we shall obtain the relationship between V_1 and V_2 :

$$Var(Y_i^{(2h)}) = Var(Y_{2i-1}^{(h)}) + Var(Y_{2i}^{(h)}) + 2Cov(Y_{2i-1}^{(h)}, Y_{2i}^{(h)})$$

Or, in simplified notation:

$$V_{2h} = 2V_h + 2C_h(1)$$

The autocorrelation lag- k is $c_h(k) = C_h(k)/V_h$, so, for $k = 1$ and $h = 1$ hour, we obtain the relation:

$$\boxed{c(1) = \frac{V_2}{2V_1} - 1} \quad (4)$$

If we estimate the lag-one autocorrelation using standard estimators of the terms in the right-hand side of this relation, i.e. by using $\frac{\hat{V}_2}{2\hat{V}_1} - 1$, how good is the estimation likely to be? Figure 7 compares this estimator with the standard estimator $\widehat{c(1)}$ of the autocorrelation.

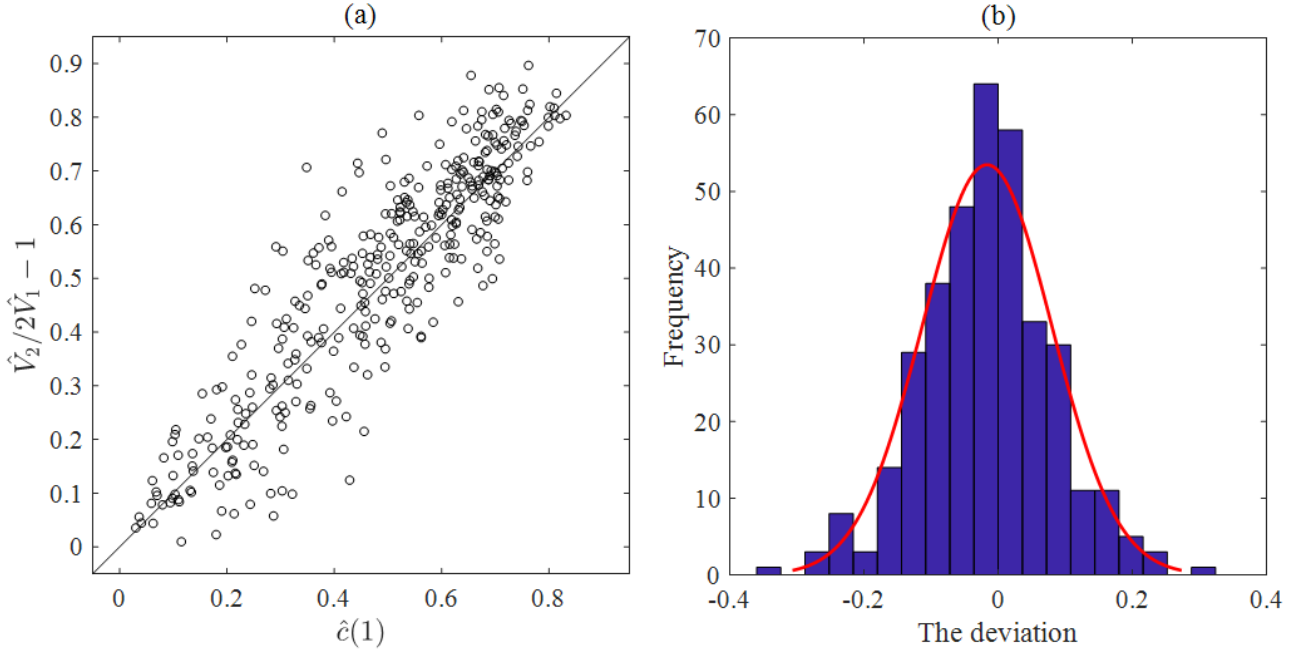


Figure 7: (a) Comparison of estimator $\widehat{c(1)}$ (horizontal axis) with estimator $\frac{\hat{V}_2}{2\hat{V}_1} - 1$ (vertical axis) of the autocorrelation lag-1 of hourly rainfall, (b) The histogram of the discrepancies between these two estimators.

Using the discrepancies ε between these two estimators which are approximately normally distributed as shown in Figure 7(b), i.e. $\varepsilon \sim N(0, \sigma^2)$ we therefore estimate the autocorrelation lag-1 of hourly rainfalls using $\frac{\hat{V}_2}{2\hat{V}_1} - 1 + \varepsilon$.

Looking now at the solid arrows in Figure 5, we see that the residual terms (denoted $\varepsilon_{[i]}$) are likely to be correlated.

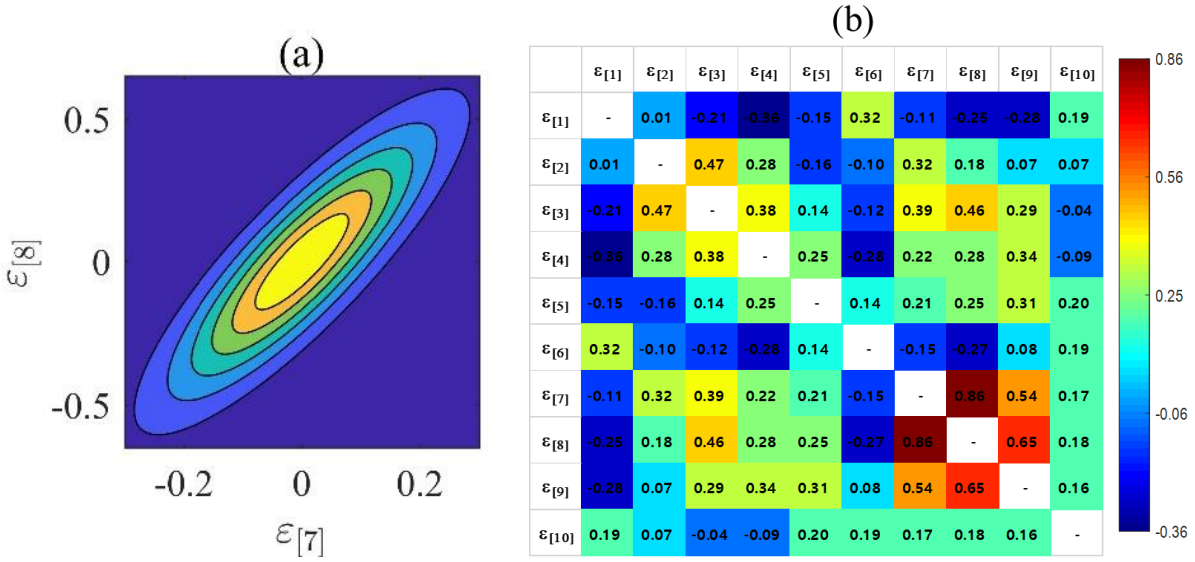
For example, consider the following equations relating V_1 to V_2 and V_2 to V_4 :

$$V_2 = a_{[7]}V_1 + \varepsilon_{[7]} \quad (5)$$

$$15 \quad V_4 = a_{[8]}V_2 + \varepsilon_{[8]} \quad (6)$$

From equation (4), it is clear that term $\varepsilon_{[7]}$ is dependent upon the hourly autocorrelation (lag-1) coefficient, and similarly therefore that $\varepsilon_{[8]}$ in equation (6) is dependent upon the two-hourly (lag-1) autocorrelation coefficient.

The autocorrelations at various time scales are known to be correlated with each other (Kim et al., 2013a, Kim et al., 2014), which means that $\varepsilon_{[7]}$ and $\varepsilon_{[8]}$ should be correlated with each other. Figure 8(a) shows the bivariate probability density function of these two variables at the NCDC gage 366889 for the month of September. Figure 8(b) shows the colour map of the correlation coefficient between different $\varepsilon_{[i]}$ s. This study developed bivariate probability density functions for consecutively numbered random variables ε , i.e. $\varepsilon_{[i]}$ and $\varepsilon_{[i+1]}$ (for i ranging from 1 to 4 and 6 to 9 respectively - see Figure 5). These were then used to sample values of $\varepsilon_{[i+1]}$ conditional upon $\varepsilon_{[i]}$. This procedure in effect assumes that a Markov structure governs the sequences $\{\varepsilon_{[i]}\}_{i=1,\dots,5}$ and $\{\varepsilon_{[i]}\}_{i=6,\dots,10}$. The bivariate probability density functions were developed using the Gaussian Copula and its parameters are determined using the maximum likelihood method.



10 **Figure 8: (a) Relationship between $\varepsilon_{[7]}$ and $\varepsilon_{[8]}$ and the fitted bivariate distribution. (b) Color map of the correlation coefficient between different $\varepsilon_{[i]}$ s.**

Residual terms ($\varepsilon_{[i+1]}$) are thus generated using the conditional distribution:

$$f_{\varepsilon_{[i+1]}}(y|\varepsilon_{[i]} = x) = \frac{f_{\varepsilon_{[i]}, \varepsilon_{[i+1]}}(x, y)}{f_{\varepsilon_{[i]}}(x)} \quad (7)$$

, where $i = 1, 2, 3, 4, 6, 7, 8$, and 9 , and $f_{\varepsilon_{[i+1]}}(y|\varepsilon_{[i]} = x)$ is the probability density function of $\varepsilon_{[i+1]}$ conditional upon $\varepsilon_{[i]} = x$,

15 and $f_{\varepsilon_{[i]}, \varepsilon_{[i+1]}}$ is the bivariate distribution function of $\varepsilon_{[i]}$ and $\varepsilon_{[i+1]}$.

As a result of this process, a total of 20 rainfall statistics at fine time scale (mean, variance, lag-1 autocorrelation, and proportion of dry period at 1, 2, 4, 8, and 16-hourly aggregation interval) are sampled using these conditional distributions and the individual monthly rainfall that is generated by the SARIMA model.

3.3 MBLRP Model Parameter Estimation

In this process, each of the monthly rainfall values generated by the SARIMA model is coupled with one set of six MBLRP model parameters that define the random nature of rain storm and rain cell arrival frequency, and the intensity and duration of rain cells (Figure 1).

- 5 In this study, the parameters of the MBLRP model were determined such that the rainfall statistics of the generated rainfall resemble the 20 fine-scale rainfall statistics that were coupled with the monthly rainfall generated by the SARIMA model. The Isolated-Speciation Particle Swarm Optimization (ISPSO, Cho et al., 2011) algorithm was employed to identify a set of parameters that minimizes the following objective function:

$$OF = \sum_{i=1}^{20} w_i \cdot \left[1 - \frac{F_i(\lambda, \nu, \alpha, \mu, \phi, \kappa)}{f_i} \right]^2 \quad (8)$$

- 10 F_i is the i^{th} statistic of the synthetic rainfall time series (e.g. mean of hourly rainfall, standard deviation of 4-hourly rainfall, etc.). The mathematical formulae for the F_i s were derived by Rodriguez-Iturbe et al. (1988) as a function of the six parameters ($\lambda, \nu, \alpha, \mu, \phi, \kappa$); f_i is the i^{th} generated statistic, and w_i the weighting factor given to the i^{th} rainfall statistic depending on the use of the synthetic rainfall time series (Kim and Olivera, 2011). Here, it should be noted that a time step with rainfall less than 0.5 mm was considered dry when the proportion of non-rainy period was calculated because small rainfall values are known to distort the “true” proportion of non-rainy period exerting an adverse effect on calibration process (Kim et al, 2016, Cross et al., 2018).

- It is noteworthy that Module 2 may fail to generate a realistic set of fine scale rainfall statistics due to the complex interdependencies between them. The unrealistic fine scale rainfall statistics cannot be represented by the MBLRP model that reflects the original spatial structure of rainfall in reality, which entails poorly calibrated model parameters with high objective function value of Equation 8. To exclude the poorly calibrated parameter sets caused by the unrealistic fine scale rainfall statistics generated by Module 2, we repeated the process of Module 2 and Module 3 until the objective function value of Equation 8 becomes lower than a given threshold value (0.8 in this study). If the algorithm fails to find the parameter set after 50 repetitions, the parameter set with the lowest objective function value is chosen. Figure 4 describes this filtering process, and the red squares in Figure 6 shows the chosen parameter sets.

25 3.4 Downscaling of Monthly Rainfall Using the MBLRP Model

The MBLRP model was used to downscale the monthly rainfall to the hourly aggregation level. First, the MBLRP model generates the hourly rainfall time series using the parameter set for the monthly rainfall being downscaled. Second, the discrepancy between the fine time scale statistics generated by the second module of the model (Figure 5) and the statistics of the synthetic hourly rainfall time series generated by the MBLRP model is calculated using the following formula:

$$30 \quad D^j = \sum_{i=1}^{20} \left[\frac{S_i^j - f_i}{R_i} \right]^2 \quad (9)$$

,where D^j is the discrepancy between the generated statistics and statistics of j^{th} synthetic hourly rainfall time series. S_i^j is the i^{th} statistic of j^{th} time series and R_i is the difference between maximum and minimum values of S_i^j about i^{th} statistic.

Third, the first and the second process are repeated 300 times. Then the synthetic hourly rainfall time series with the lowest discrepancy value is chosen. Finally, we repeated the entire process for 200 times to obtain 200 synthetic hourly rainfall time series for each of the generated monthly rainfall.

4 Result

4.1 Monthly Rainfall Statistics Reproduction

Figure 9 compares the mean, variance, lag-1 autocorrelation, and skewness of the monthly observed rainfall time series (x) and the averaged values of the statistics calculated from each monthly rainfall time series from SARIMA (y). Each scatter represents one rainfall gage. The first and the second-order moments were reproduced accurately with the coefficient of determination ranging between 0.69 and 0.95. Skewness was reproduced fairly well with the coefficient value of 0.36.

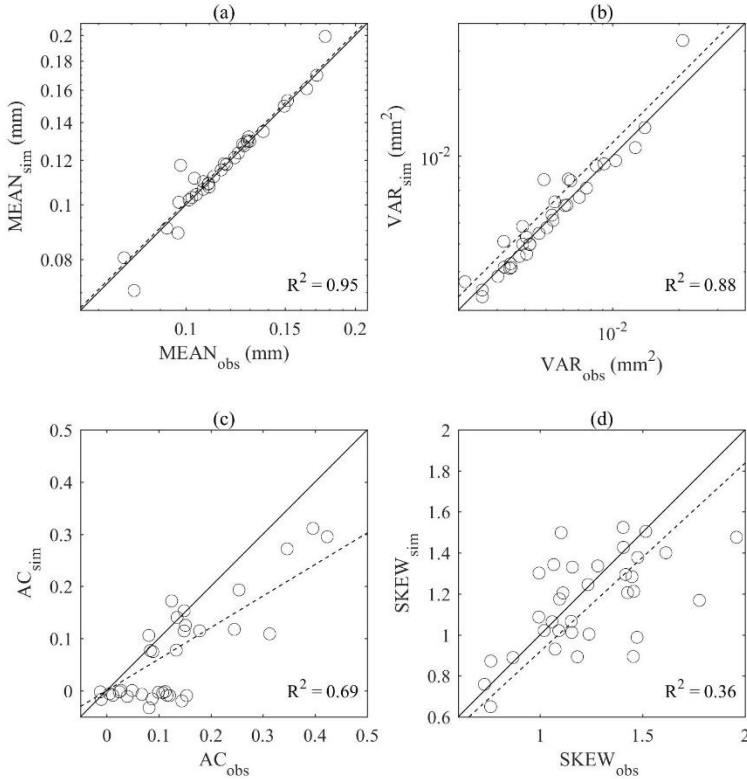


Figure 9: Comparison of (a) mean, (b) variance, (c) lag-1 autocorrelation, and (d) skewness of the observed (x) and synthetic (y) monthly rainfall.

4.2 Reproduction of Large Scale Rainfall Variability

Figure 10 shows the behaviour the rainfall variance varying with temporal aggregation interval between 1 hour and 1 year at the NCDC gage 122738. The behaviour corresponding to the observed rainfall (black) and the 200 years of synthetic rainfall generated by the MBLRP model (blue) and by our hybrid model (red) are shown together. While our model successfully reproduces the rainfall variance across the time scale, the MBLRP model is successful in reproducing the rainfall variance only at the hourly accumulation level. This reflects the fact that Poisson cluster rainfall models are not designed to preserve the rainfall persistence at the aggregation interval that is greater than the typical model storm duration, i.e. a few hours. See Figure 1 for example. Within the duration of one storm, rainfall at different time steps may be similar insofar as a portion of it is from the same rain cell. However, the rainfall within one storm is independent of the rainfall within another storm. Therefore, it is natural that Poisson cluster rainfall models tend to underestimate the observed rainfall variance (which reflects the covariance structure - see Equation 1) at time scales exceeding the rain storm duration. Kim et al. (2013b), when mapping the average model storm duration across the continental United States using Equation 10, showed that the model storm duration of the MBLRP model approximately ranges from 2 to 100 hours, so it is not only at the annual scale, but already at the scale of several hours (depending upon the location) that the variability may be underestimated by the MBLRP model.

$$15 \quad \text{Average storm duration (hr)} \cong \frac{1}{\phi \frac{\alpha}{v} \left[1 + \phi(\kappa + \phi) - \frac{1}{4}\phi(\kappa + \phi)(\kappa + 4\phi) + \frac{1}{72}\phi(\kappa + \phi)(4\kappa^2 + 27\kappa\phi + 72\phi^2) \right]} \quad (10)$$

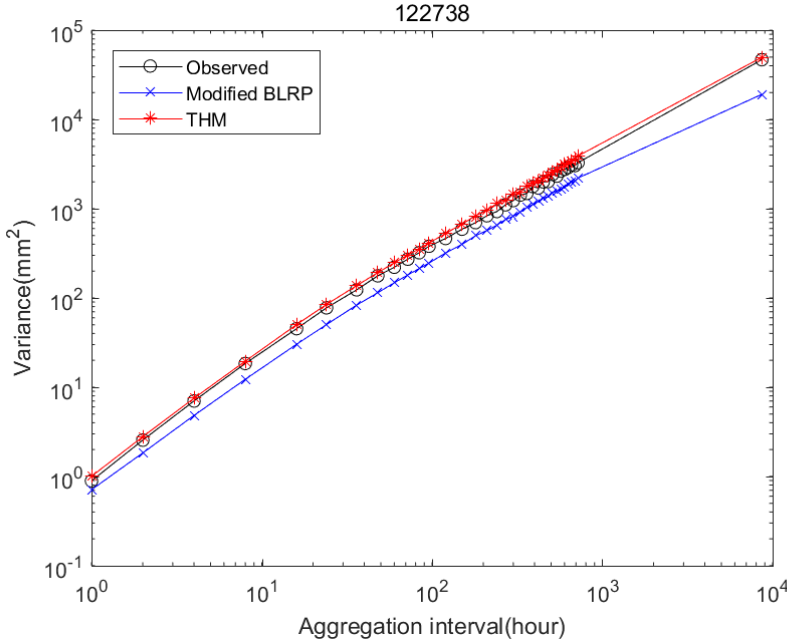


Figure 10: Behaviour of the rainfall variance with regard to aggregation interval of the observed rainfall time series (black) and the 200 years of synthetic rainfall generated by the MBLRP model (blue) and our hybrid model (red).

A similar trend as exhibited in Figure 10 was observed at all of the 34 gauges. Figure 11(a) compares the variance of the observed (x) and synthetic (y) rainfall time series at yearly (purple), monthly (red), 15-daily (yellow), weekly (blue), and 32-hourly (green) aggregation levels. The comparison of the variance at the finer time scale is carried out in the following section. Figure 11(b) compares the observed (x) and synthetic rainfall time series generated by the traditional MBLRP model (y).

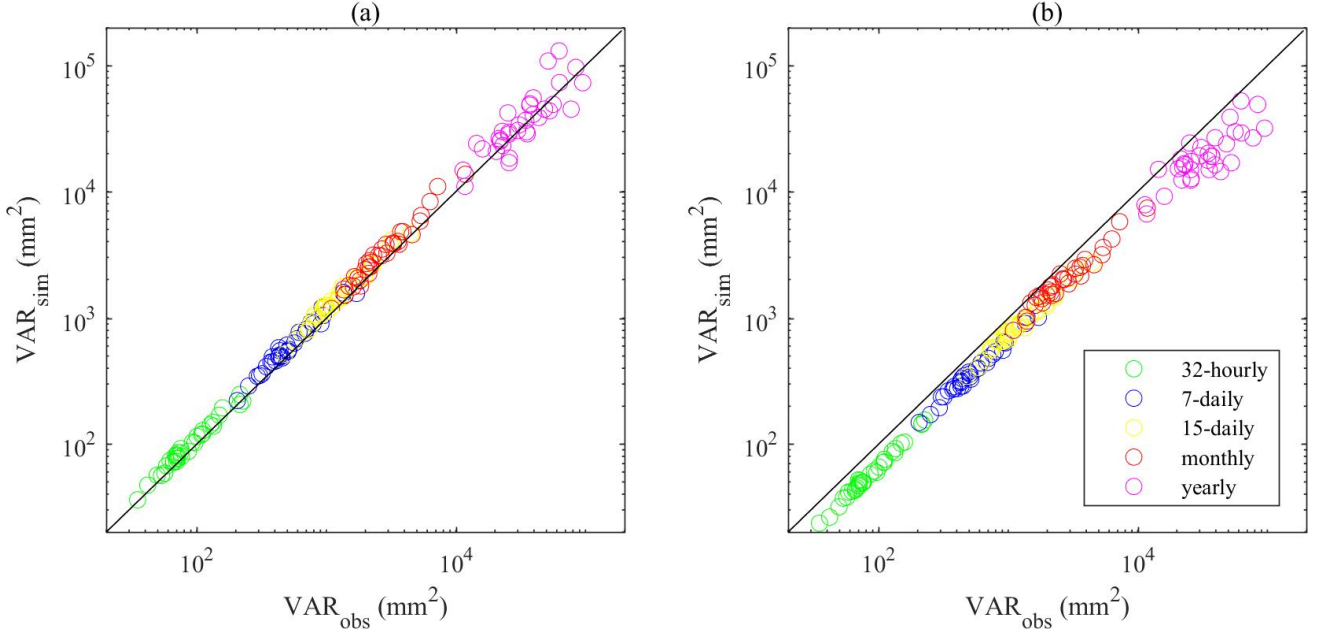


Figure 11: (a) Comparison of the large scale rainfall variance of the observed rainfall (x) and the rainfall generated by our hybrid model (y); (b) Comparison of the large scale rainfall variance of the observed rainfall (x) and the rainfall generated by the traditional MBLRP model (y). The different colours of the scatter correspond to the different aggregation interval of rainfall time series.

As indicated by the concentration of the scatters below the 1:1 line in Figure 11(b), the traditional MBLRP model systematically underestimates the variability at time scales greater than 32 hours. Our model did not show any bias in this range of large time-scales.

4.3 Reproduction of Sub-Daily Rainfall Statistics

Figure 12 compares the mean, variance, lag-1 autocorrelation, and the proportion of dry periods of the observed (x) and synthetic (y) rainfall time-series at hourly through 16 hourly aggregation levels. The colour of the scatters represents the calendar months. In each plot, the coefficient of determination (R^2) of the linear regression between the two variables is shown. All four statistics were accurately reproduced across various sub-daily time scales with R^2 equal to 0.98 (mean), and varying between the following limits for the other statistics: 0.90 and 0.93 (variance), 0.58 and 0.93 (lag-1 autocorrelation), and 0.67 and 0.85 (proportion of dry periods).

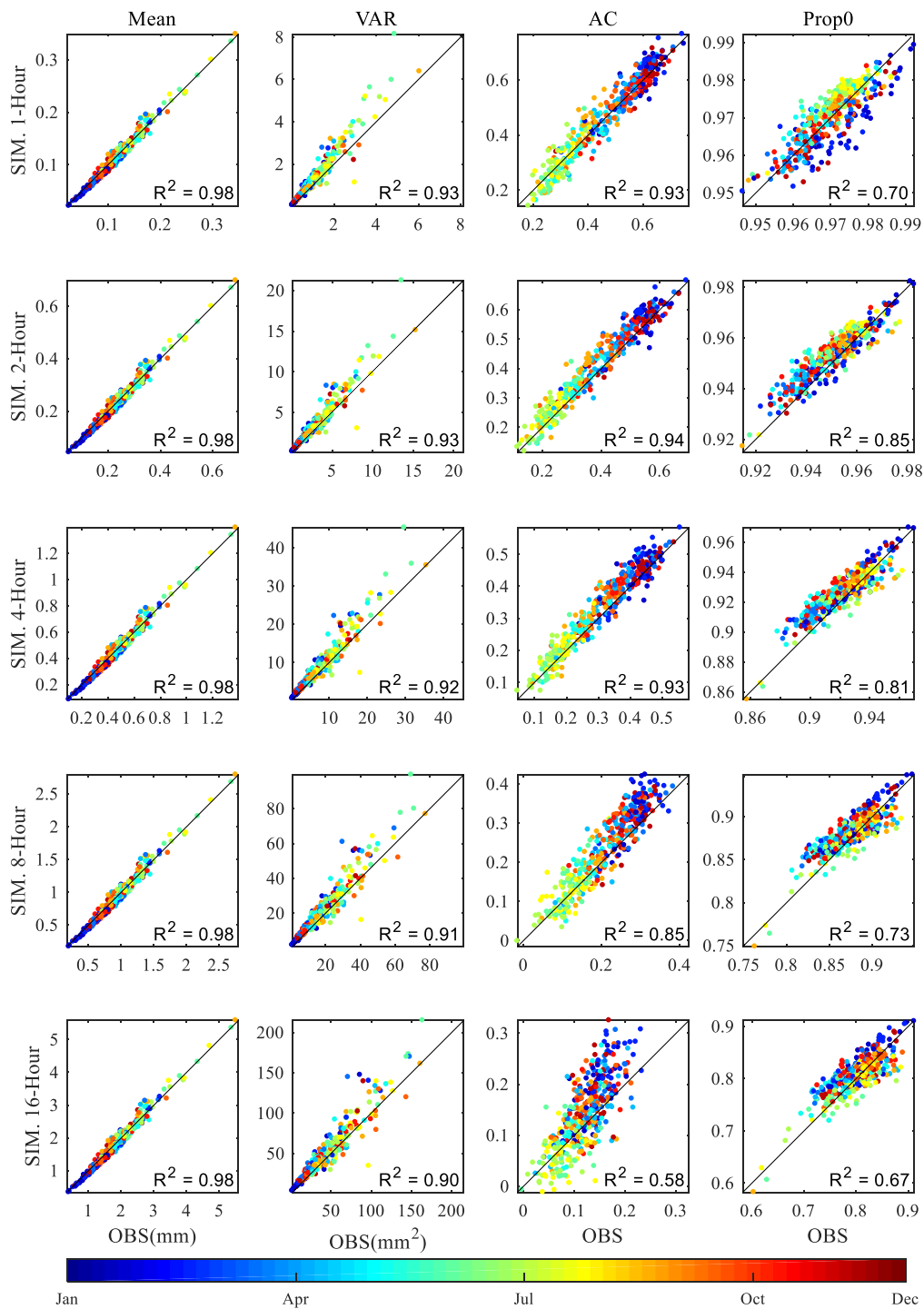


Figure 12: Comparison of the statistics of the observed (x) and synthetic (y) rainfall time series at sub-daily time scale. The colour of the dots represents the statistics of each calendar month.

4.4 Reproduction of Extreme Values and Distribution of Annual Maxima

The scatters in Figure 13 compare the 20, 50, 100, and 200-year rainfall estimated from the observed rainfall (x) and the synthetic rainfall (y) generated by the hybrid model (red) and the MBLRP model (blue) at hourly through daily time scale. The Generalized Extreme Value (GEV) distribution was used to model the distribution of the annual maxima, and the three parameters of the GEV distribution were determined using the method of L-moments. Here, we separated the analysis for each calendar month, so we have 12 sets of extreme rainfall distributions corresponding to each gage station. Therefore, we produced each scatter plot of Figure 13 based on 408 points (12 months/gage \times 34 gages).

A linear regression line passing through the origin is shown in each plot. In all cases, our hybrid model did not show the tendency of underestimating extreme values, which is one of the most widely discussed issues in Poisson cluster rainfall modelling (Cowpertwait, 1998; Cross et al., 2018; Furrer and Katz, 2008; Verhoest et al., 2010; Kim et al., 2013a; Onof et al., 2013; Kim et al., 2016). This is a somewhat surprising result: our algorithm to incorporate large scale variability of the observed rainfall not only served its original purpose but also enhanced the capability of the model to reproduce extreme rainfall values.

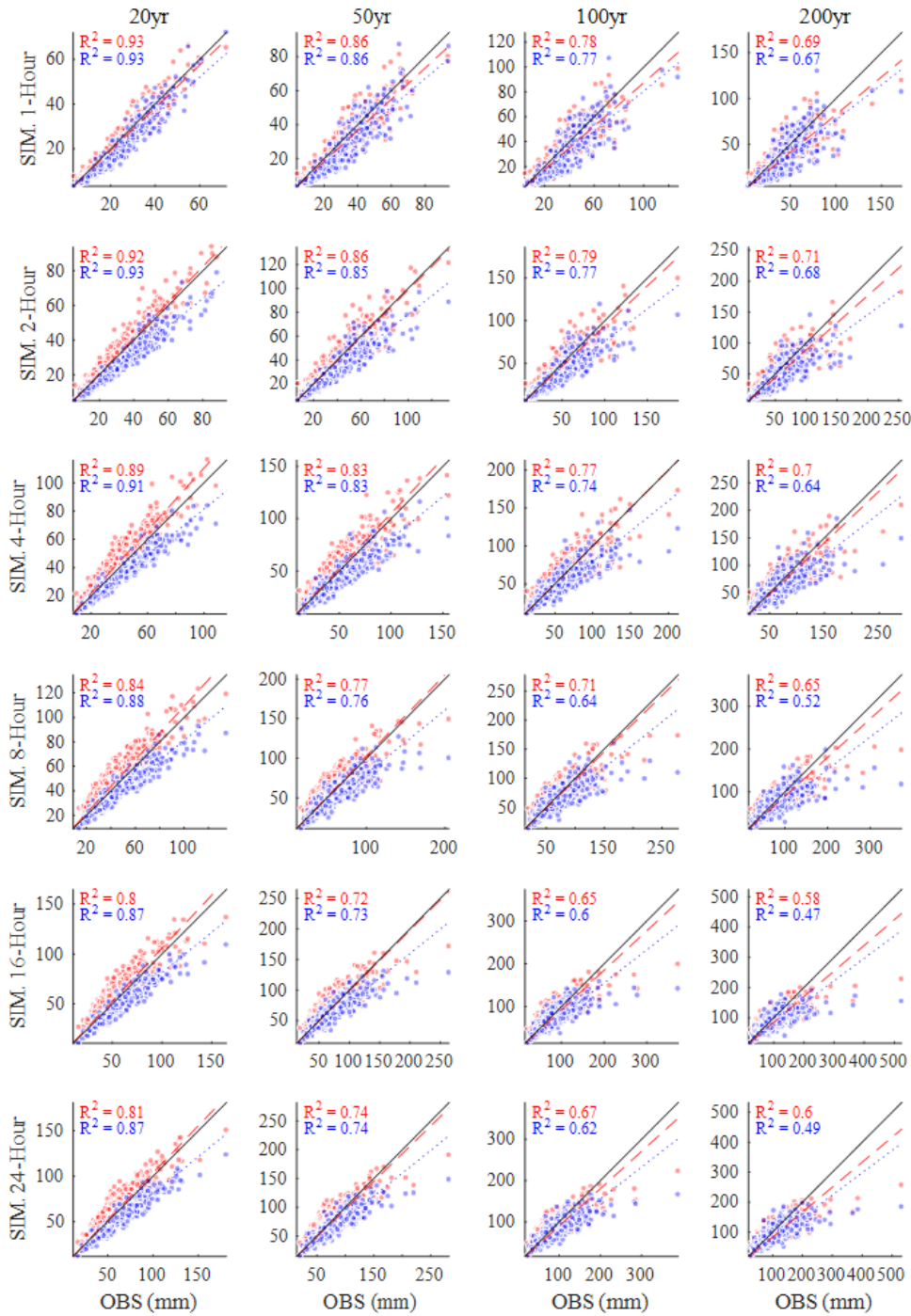


Figure 13: Comparison of the extreme rainfall values estimated from the observed rainfall (x) and synthetic rainfall (y) generated by the model of this study (red) and the MBLRP model (blue). The plots compare 20, 50, 100, and 200-year rainfall at hourly through daily aggregation levels.

Figure 14 shows the degree of bias of extreme value reproduction (slope of the regression line in Figure 13) varying with recurrence interval. The values corresponding to the traditional MBLRP model is also shown. The degree of underestimation of the traditional methods varies between 73% and 87%, and it tends to increase as the recurrence interval increases. A similar tendency was observed for our model, but the degree of underestimation was significantly reduced. For our model, the degree of underestimation is the greatest for the 1-hour extreme rainfall and tends to decrease as the duration of the rainfall increases. This tendency was not observed with the traditional MBLRP model.

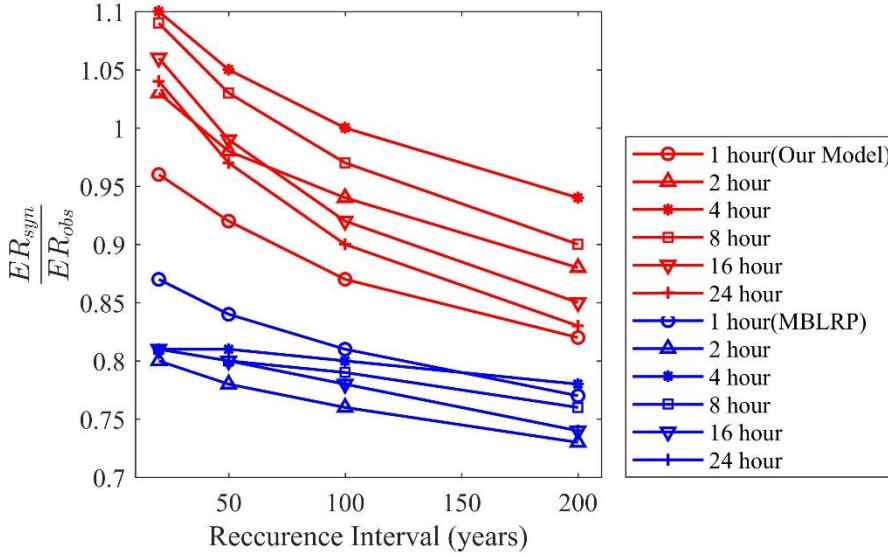


Figure 14: Degree of over/underestimation of extreme values by our model (red) and the traditional MBLRP model (blue). ER_{syn} and ER_{obs} are extreme rainfall estimated from synthetic rainfall and observed rainfall, respectively.

A good rainfall model should reproduce not only the extreme values but also the distribution of the maxima from which extreme values are derived. We performed the two-sample Kolmogorov-Smirnov (K-S) test between the monthly maxima of the synthetic rainfall and the observed rainfall. A significance level of 5% was used. Among all 408 calendar months (34 gages \times 12 months), the null hypothesis of assuming that two distributions are the same could not be rejected at 384, 368, 317, 301, 323, and 333 months for the 1, 2, 4, 8, 16, and 24-hour rainfall, respectively (83 percent of all gages). On the contrary, the traditional approach successfully reproduced the observed monthly maxima distribution only at 292, 243, 219, 200, 220, and 219 months (57 percent of all gages).

Figure 15 shows the relative frequency and the fitted GEV distribution of the monthly maxima of January, April, July, and October at NCDC gage 132203. The black, red, and blue line correspond to the result of observed rainfall, our hybrid model, and the traditional MBLRP model, respectively. The GEV distribution of the 1, 4, and 16-hour rainfall durations are shown in the plots of the first, third, and fifth row, respectively. The plots in the second, fourth, and the sixth row magnify the upper 10th percentile part of the distribution of the upper figures that is denoted as the dashed box. For all months and durations,

our hybrid model outperforms the traditional MBLRP model in reproducing the head through tail part of the distribution. The distribution of the traditional MBLRP model was skewed toward the lower values. A similar tendency was observed at most gage locations while at some of the gages our hybrid model showed similar or slightly degraded performance compared to the traditional MBLRP model in reproducing the distribution of extreme values.

5 Figure 16 compares the shape (ξ), the scale (σ), and the location (μ) parameter of the fitted GEV distribution of the monthly maxima of the observed rainfall (x) and of the synthetic rainfall generated from our hybrid model (red scatters) and from the traditional MBLRP model (blue scatters). The results for 1, 4, and 16-hour rainfall durations are shown. Each scatter point represents the result of one calendar month at one gage. A total of 408 scatter points (12 months/gage \times 34 gages) are shown for each of the plot. The traditional MBLRP model underestimates the location parameters at all rainfall durations, and
10 the degree of underestimation increases with increased duration. Our hybrid model showed the opposite trend. The location parameters tend to be overestimated with an increase in the duration, but the degree of overestimation was not as significant as in the case of the traditional model. The traditional model compensates the underestimated location of the distribution with the overestimated scale parameters, which were observed for all three durations investigated. Our hybrid model also compensates the overestimated location of the distribution with the underestimated scale parameters, but the degree of
15 compensation was not as significant as in the case of the traditional model. However, the shape parameter of the observed monthly maxima was not well reproduced by both models. This result shows the difficulty of precisely reproducing the rainfall extreme values. This is mainly because the rainfall extreme values are indeed extreme. For example, 1-hour 100-year rainfall of 100 years of rainfall record is theoretically the greatest value of all 72,000 hourly rainfall records (24 hours/day \times 30 days/month \times 100 years), and precisely reproducing a value with such a low probability of occurrence can be a daunting task
20 using the models with only a limited number of parameters.

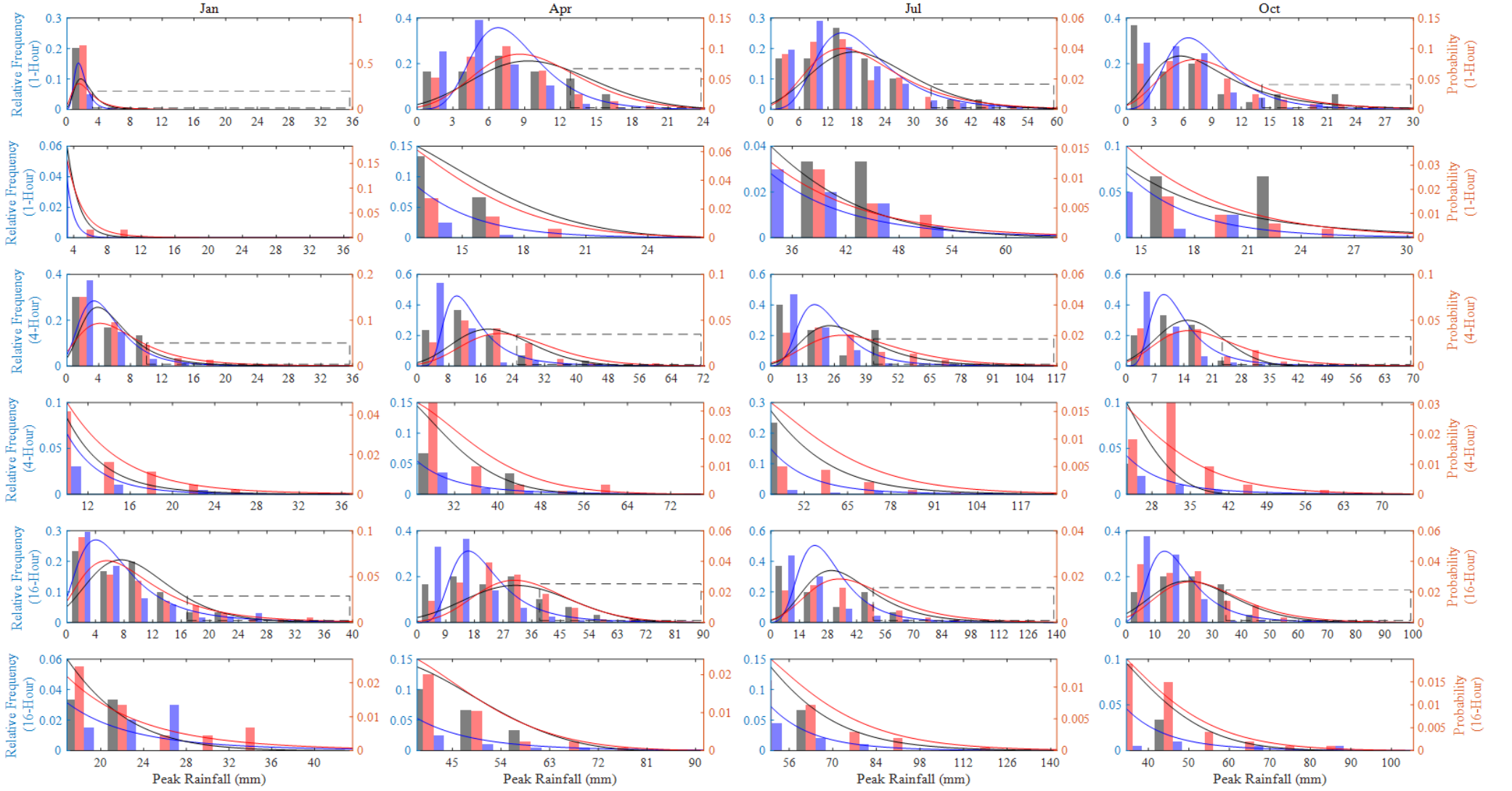


Figure 15. Relative frequency and the fitted GEV distribution of the 1, 4, and 16-hour monthly maxima of January, April, July, and October rainfall at NCDC gage 132203. Results of Observed rainfall (black), our hybrid model (red), and the traditional MBLRP model (blue) are shown. The upper 10 percentile part of the distribution (dashed box in the plots in the first, third, and fifth row) is magnified in the lower rows (plots in the second, fourth, and sixth row).

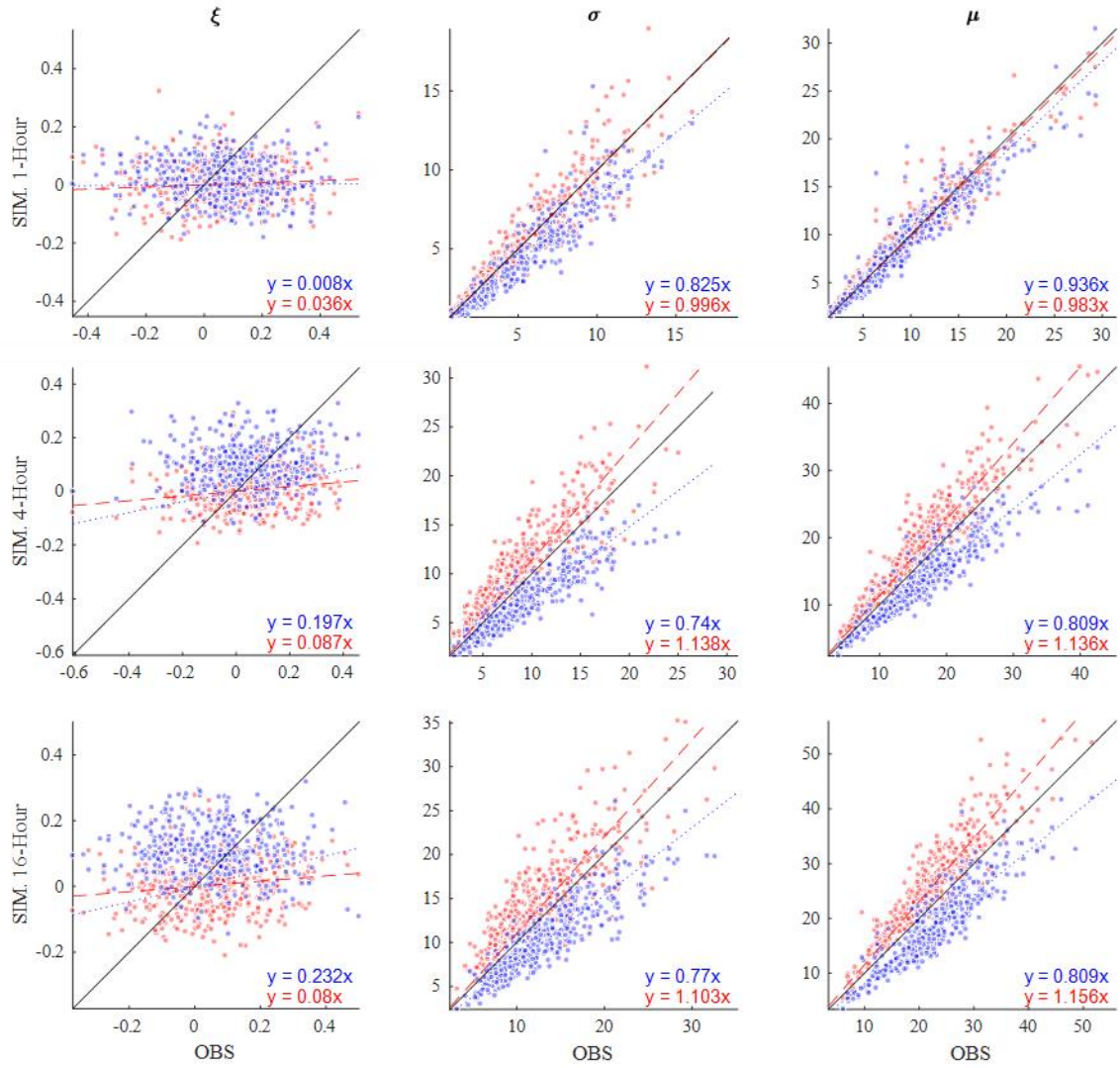


Figure 16. Comparison of the shape (ξ), scale (σ), and location (μ) parameters of the fitted GEV distribution of the monthly maxima. The results based on the observed rainfall (x), our hybrid model (red), and the traditional model (blue) are shown. The results of 1, 4, and 16-hour rainfall durations are shown.

5 Discussion

5.1 Variability of the Parameters of the MBLRP model and Extreme Values

Our model uses different parameter sets of the MBLRP model to disaggregate different monthly rainfalls. This means that one given calendar month can have many different parameter sets. By contrast, the traditional MBLRP model uses one parameter set for each calendar month. Therefore, if we look at the variability of each month's parameters, we can see how the model of this study explains the variability of rainfall unlike the MBLRP model. Figure 17 shows a box plot of the parameters for each month at the NCDC gage 460582. The parameters of the traditional MBLRP model are shown together for reference (triangles).

While significant variability is observed for all six parameters, the parameter μ , which represents the average rain cell intensity, showed the greatest variability, ranging over two orders of magnitudes. This explains why our model is good at both reproducing large scale rainfall variability and small scale extreme values: the variability of the rain cell intensity parameter has the effect of stretching out the distribution of rainfall depths at a range of levels of aggregation, thereby increasing the probability of very large values. And the variability of this cell intensity parameter is also the most important factor responsible for the increase in the large scale rainfall variance.

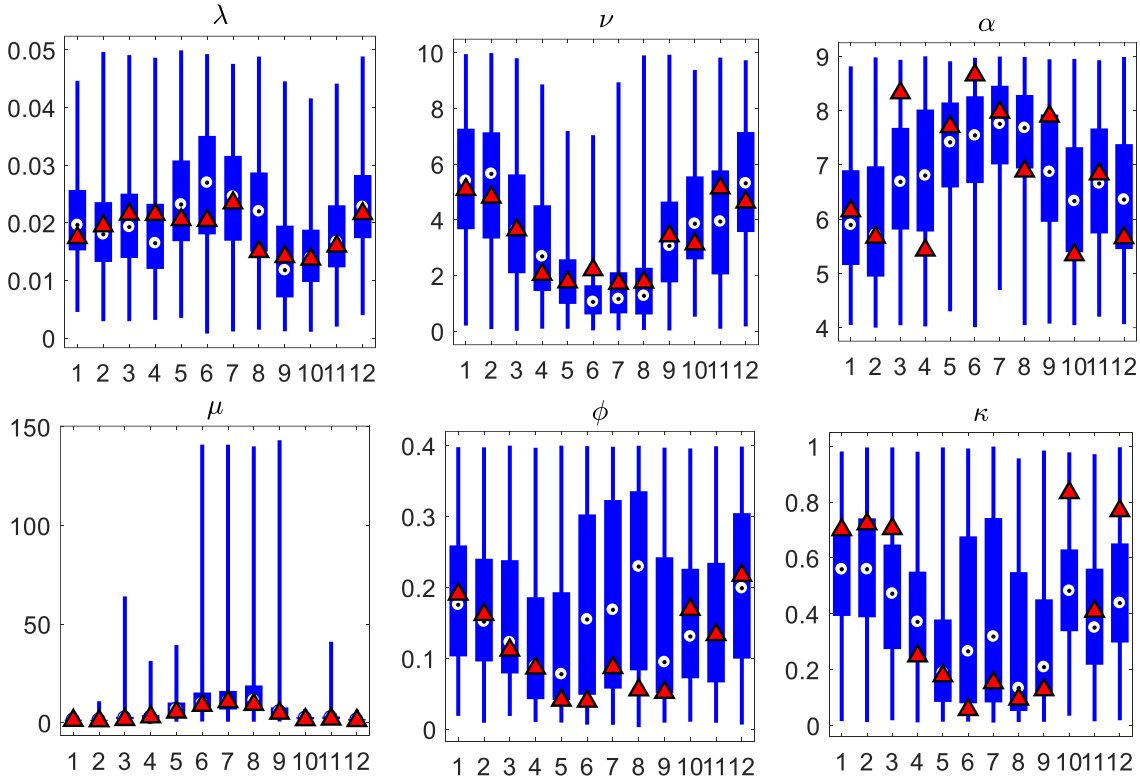


Figure 17: Variability of the six parameters of the MBLRP model of this study (box plot) at the NCDC gage 460582 (star mark in Figure 3). The parameters of the traditional MBLRP model are shown together for reference (triangle).

5

The physical characteristics of rainfall can be estimated using Equation 10 and Equation 11 through 14. We repeated the same analysis on these variables to compare the variability of the rainfall characteristics of our hybrid mode and that of the MBLRP model.

$$\text{Average rainfall depth per storm (mm)} = (1 + \frac{\kappa}{\phi})(\frac{\nu}{\alpha})\mu \quad (11)$$

$$\text{Average number of rain cells per storm} = 1 + \frac{\kappa}{\phi} \quad (12)$$

$$10 \quad \text{Average rain cell arrival rate (hr}^{-1}\text{)} = \kappa \frac{\alpha}{\nu} \quad (13)$$

$$\text{Average rain cell duration(hr)} = \frac{\nu}{\alpha} \quad (14)$$

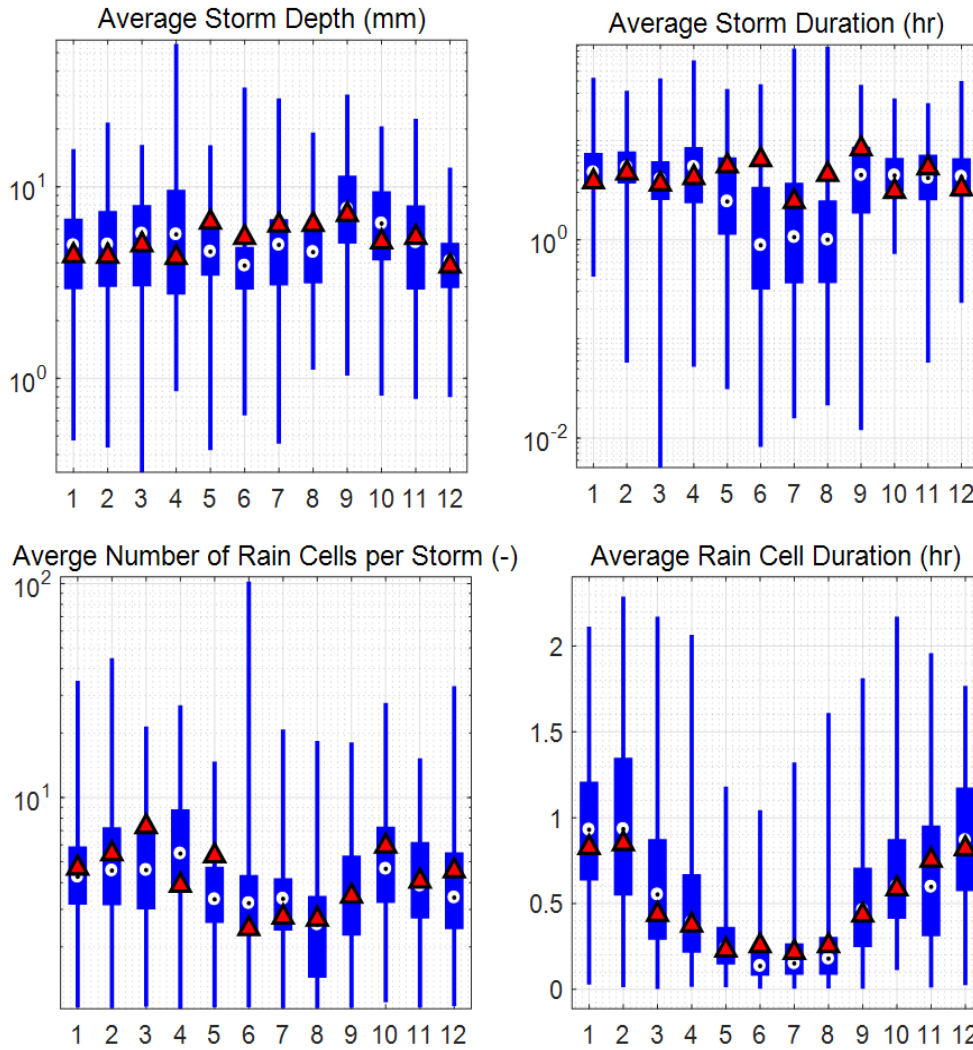


Figure 18: Variability of the rainfall characteristics of the MBLRP model of this study (box plot) at the NCDC gage 460582 (star mark in Figure 3). The rainfall characteristics of the traditional MBLRP model are shown together for reference (triangle).

Figure 18 shows box plots of the various rainfall characteristics for each month at the NCDC gage 460582. The values were calculated using Equations 10 through 14. The rainfall characteristics of the traditional MBLRP model are shown together for reference (triangles). The variability of the average storm depth, the average storm duration, and the average number of rain cells per storm was significant, so the y-axes of the box plots were drawn in log-scale. This result suggests that the parameter variability that is incorporated in our model's distinct algorithm contributes to the highly variable external (average storm depth, average storm duration) and internal (average number of rain cells per storm, average rain cell duration) properties of the generated rainfall.

5.2 An Issue with Model Parsimoniousness: six versus fifty five

Our hybrid model uses one MBLRP model parameter set per one simulation month of one year while the MBLRP model needs only 6 parameters regardless of the simulation length. However, this does not mean that our model requires 600 MBLRP model parameters (6 per month \times 100 months) to generate 100 months of rainfall. This is because parameters are estimated based on the sub-daily scale rainfall statistics that are synthetically generated through the process of the SARIMA model and the regression analysis (See Figure 5). Therefore, the parameters of the SARIMA model and the parameters of the regression analyses shown in Figure 5 should be considered as the “true” parameters of this model because once these parameters are given, our model can generate infinite length of rainfall record. The SARIMA model has 6 parameters, and a set of regression analysis shown in Figure 5 has 49 parameters (2 for each of ten solid arrows in Figure 5 = 20, 3 per 8 bivariate normal distributions relating two subsequent residual terms (ϵ_i) in Figure 5 = 24, and one for each of 5 normal distributions perturbing autocorrelation terms (c_i) = 5). Therefore, our model has a total of 55 parameters. This discrepancy of number of parameters (6 for the traditional of MBLRP model versus 55 of our hybrid model) can be considered as a cost taken to reproduce the large-scale rainfall variability that the traditional MBLRP model cannot.

We admit that this large discrepancy of model parsimoniousness is an issue to be resolved for our model to be applied in practice. Regarding this, we are planning to apply our model to additional gage locations across the world and share the result through the website (<http://www.letitrain.info>). The work has been already initiated for the rainfall data of Korean Peninsula.

6 Conclusion

The phenomena observed in hydrologic systems and the subsequent human and environmental systems are the consequences of the complex interactions between the components that are influenced by rainfall variability at various ranges of time scale. Therefore, a good or realistic rainfall model must properly reflect the rainfall variability at all hydrologically relevant time scales. Its importance will gather more attentions because of the recent trend of the hydrologic societies that started to recognize the hydrologic, human, and environmental systems from a holistic view point and interpret them based on continuous and dynamic simulation as opposed to the event-based ones (Wagener et al., 2010).

This study is one of many recent efforts in this regard (Fatichi et al., 2011; Kim et al., 2013a; Paschalis et al., 2014). First, we showed that the Poisson cluster rainfall model, which is probably the most widely applied stochastic rainfall models, cannot reproduce large-scale rainfall variability due to in-built limitations that lie in the model assumptions. Then, we showed that a combination of an autoregressive model for monthly time scale and the “well-tuned” Poisson cluster rainfall model for the finer ranges of time scale is capable of reproducing not only the first through the third order statistics of the rainfall depths, but also the intermittency properties of the observed rainfall.

An additional model could be integrated to our hybrid model to incorporate further rainfall variability. For example, an approach based on random cascades (Molnar and Burlando, 2005; Müller and Haberlandt, 2016; Pohle et al., 2018) can be integrated to our model for reproducing the rainfall variability at the time scale as fine as five minutes. In addition, the SARIMA model that was adopted in this study could be further modified to account for the coarser rainfall variability caused by El Niño-Southern Oscillation (ENSO) and North Atlantic Oscillation (NAO). Lastly, the genuine structure of our model that is composed of a large scale rainfall generation module and a downscaling module, may be integrated to existing space-time rainfall generators to enhance their ability to generate large temporal-scale rainfall variability (Burton et al., 2008, Müller and Haberlandt, 2015, Paschalis et al., 2013; Peleg and Morin, 2014; Peleg et al., 2017; Benoit et al., 2018).

7 Data Availability

Our hybrid model is not easy to implement because it requires extensive analysis of the correlation structure of the fine-scale rainfall statistics to fine-tune the MBLRP model to downscale the generated monthly rainfall. For this reason, we shall continue our work on all possible rain gage locations across the world and share the results (several hundred years of synthetic rainfall data in text format) through the following website: <http://letitrain.info>. We ask for cooperation from the international community to share their rainfall data.

Reference

- Austin, P. M. and Houze Jr, R. A.: Analysis of the structure of precipitation patterns in New England, *J. Appl. Meteorol.*, 11, 926-935, 1972.
- Benoit, L., Allard, D. and Mariethoz, G.: Stochastic Rainfall Modelling at Sub-Kilometer Scale, *Water Resour. Res.*, 2018.
- 5 Bo, Z., Islam, S. and Eltahir, E.: Aggregation-disaggregation properties of a stochastic rainfall model, *Water Resour. Res.*, 30, 3423-3435, 1994.
- Borgogno, F., D'Odorico, P., Laio, F. and Ridolfi, L.: Effect of rainfall interannual variability on the stability and resilience of dryland plant ecosystems, *Water Resour. Res.*, 43, 2007.
- Burton, A., Kilsby, C., Fowler, H., Cowpertwait, P. and O'Connell, P.: RainSim: A spatial-temporal stochastic rainfall
10 modelling system, *Environmental Modelling & Software*, 23, 1356-1369, 2008.
- Burton, A., Fowler, H., Blenkinsop, S. and Kilsby, C.: Downscaling transient climate change using a Neyman-Scott Rectangular Pulses stochastic rainfall model, *J. Hydrol.*, 381, 18-32, 2010.
- Cameron, D., Beven, K. and Naden, P.: Flood frequency estimation by continuous simulation under climate change (with uncertainty), *Hydrol. Earth Syst. Sci. Discuss.*, 4, 393-405, 2000.
- 15 Cho, H., Kim, D., Olivera, F., and Guikema, S. D.: Enhanced speciation in particle swarm optimization for multi-modal problems, *Eur. J. Oper. Res.*, 213(1), 15-23, 2011.
- Cowpertwait, P. S.: A Poisson-cluster model of rainfall: some high-order moments and extreme values, *P. Roy. Soc. A-Math. Phy.*, 1998.
- Cowpertwait, P. S.: Further developments of the Neyman-Scott clustered point process for modeling rainfall, *Water Resour.*
20 *Res.*, 27, 1431-1438, 1991.
- Cowpertwait, P., Isham, V. and Onof, C.: Point process models of rainfall: developments for fine-scale structure, *P. Roy. Soc. A-Math. Phy.*, 2007.
- Cross, D., Onof, C., Winter, H. and Bernardara, P.: Censored rainfall modelling for estimation of fine-scale extremes, *Hydrol. Earth Syst. Sc.*, 22, 727, 2018.
- 25 Delleur, J. W. and Kavvas, M. L.: Stochastic models for monthly rainfall forecasting and synthetic generation, *J. Appl. Meteorol.*, 17, 1528-1536, 1978.
- Derzekos, C., Koutsoyiannis, D. and Onof, C.: A new randomised Poisson cluster model for rainfall in time, *Enrgy. Proced.*, 2005.
- Entekhabi, D., Rodriguez-Iturbe, I. and Eagleson, P. S.: Probabilistic representation of the temporal rainfall process by a
30 modified Neyman-Scott Rectangular Pulses Model: Parameter estimation and validation, *Water Resour. Res.*, 25, 295-302, 1989.
- Faramarzi, M., Abbaspour, K. C., Schulin, R. and Yang, H.: Modelling blue and green water resources availability in Iran, *Hydrol. Process.*, 23, 486-501, 2009.

- Faticchi, S., Ivanov, V. Y. and Caporali, E.: Simulation of future climate scenarios with a weather generator, *Adv. Water Resour.*, 34, 448-467, 2011.
- Fernandez-Illescas, C. P. and Rodriguez-Iturbe, I.: The impact of interannual rainfall variability on the spatial and temporal patterns of vegetation in a water-limited ecosystem, *Adv. Water Resour.*, 27, 83-95, 2004.
- 5 Furrer, E. M. and Katz, R. W.: Improving the simulation of extreme precipitation events by stochastic weather generators, *Water Resour. Res.*, 44, 2008.
- Glasbey, C., Cooper, G. and McGechan, M.: Disaggregation of daily rainfall by conditional simulation from a point-process model, *J. Hydrol.*, 165, 1-9, 1995.
- Gyasi-Agyei, Y.: Identification of regional parameters of a stochastic model for rainfall disaggregation, *J. Hydrol.*, 223, 148-10 163, 1999.
- Gyasi-Agyei, Y. and Willgoose, G. R.: A hybrid model for point rainfall modeling, *Water Resour. Res.*, 33, 1699-1706, 1997.
- Islam, S., Entekhabi, D., Bras, R. and Rodriguez-Iturbe, I.: Parameter estimation and sensitivity analysis for the modified Bartlett-Lewis rectangular pulses model of rainfall, *J. Geophys. Res-Atmos.*, 95, 2093-2100, 1990.
- Kaczmarska, J.: Further development of Bartlett-Lewis models for fine-resolution rainfall, *Research Rep*, 312, 2011.
- 15 Kaczmarska, J. M., Isham, V. S. and Northrop, P.: Local generalised method of moments: an application to point process-based rainfall models, *Environmetrics*, 26, 312-325, 2015.
- Kaczmarska, J., Isham, V. and Onof, C.: Point process models for fine-resolution rainfall, *Hydrolog. Sci. J.*, 59, 1972-1991, 2014.
- Katz, R. W. and Skaggs, R. H.: On the use of autoregressive-moving average processes to model meteorological time series, 20 *Mon. Weather Rev.*, 109, 479-484, 1981.
- Khaliq, M. and Cunnane, C.: Modelling point rainfall occurrences with the modified Bartlett-Lewis rectangular pulses model, *J. Hydrol.*, 180, 109-138, 1996.
- Kilsby, C., Jones, P., Burton, A., Ford, A., Fowler, H., Harpham, C., James, P., Smith, A. and Wilby, R.: A daily weather generator for use in climate change studies, *Environ. Modell. Softw.*, 22, 1705-1719, 2007.
- 25 Kim, D., Cho, H., Onof, C. and Choi, M.: Let-It-Rain: a web application for stochastic point rainfall generation at ungaged basins and its applicability in runoff and flood modeling, *Stoch. Env. Res. Risk A.*, 31, 1023-1043, 2017a.
- Kim, D., Kim, J. and Cho, Y.: A poisson cluster stochastic rainfall generator that accounts for the interannual variability of rainfall statistics: validation at various geographic locations across the united states, *J. Appl. Math.*, 2014, 2014.
- Kim, D., Kwon, H., Lee, S. and Kim, S.: Regionalization of the Modified Bartlett-Lewis rectangular pulse stochastic rainfall 30 model across the Korean Peninsula, *J. Hydro-Environ. Res.*, 11, 123-137, 2016.
- Kim, D. and Olivera, F.: Relative importance of the different rainfall statistics in the calibration of stochastic rainfall generation models, *J. Hydrol. Eng.*, 17, 368-376, 2011.

- Kim, D., Olivera, F. and Cho, H.: Effect of the inter-annual variability of rainfall statistics on stochastically generated rainfall time series: part 1. Impact on peak and extreme rainfall values, *Stoch. Env. Res. Risk A.*, 27, 1601-1610, 2013a.
- Kim, D., Olivera, F., Cho, H. and Socolofsky, S. A.: Regionalization of the Modified Bartlett-Lewis Rectangular Pulse Stochastic Rainfall Model., *Terr. Atmos. Ocean. Sci.*, 24, 2013b.
- 5 Kim, J., Kwon, H. and Kim, D.: A hierarchical Bayesian approach to the modified Bartlett-Lewis rectangular pulse model for a joint estimation of model parameters across stations, *J. Hydrol.*, 544, 210-223, 2017b.
- Köppen, W.: Versuch einer Klassifikation der Klimate, vorzugsweise nach ihren Beziehungen zur Pflanzenwelt, *Geogr. Z.*, 6, 593-611, 1900.
- Kossieris, P., Efstratiadis, A., Tsoukalas, I. and Koutsoyiannis, D.: Assessing the performance of Bartlett-Lewis model on the simulation of Athens rainfall, *Enrgy. Proced.*, 2015.
- 10 Kossieris, P., Makropoulos, C., Onof, C. and Koutsoyiannis, D.: A rainfall disaggregation scheme for sub-hourly time scales: Coupling a Bartlett-Lewis based model with adjusting procedures, *J. Hydrol.*, 2016.
- Kottek, M., Grieser, J., Beck, C., Rudolf, B. and Rubel, F.: World map of the Köppen-Geiger climate classification updated, *Meteorol. Z.*, 15, 259-263, 2006.
- 15 Koutsoyiannis, D.: Coupling stochastic models of different timescales, *Water Resour. Res.*, 37, 379-391, 2001.
- Koutsoyiannis, D. and Onof, C.: Rainfall disaggregation using adjusting procedures on a Poisson cluster model, *J. Hyrdol.*, 246, 109-122, 2001.
- Marani, M.: On the correlation structure of continuous and discrete point rainfall, *Water Resour. Res.*, 39, 2003.
- Menabde, M. and Sivapalan, M.: Modeling of rainfall time series and extremes using bounded random cascades and levy-stable distributions, *Water Resour. Res.*, 36, 3293-3300, 2000.
- 20 Mishra, A. and Desai, V.: Drought forecasting using stochastic models, *Stoch. Env. Res. Risk A.*, 19, 326-339, 2005.
- Modarres, R. and Ouarda, T. B.: Modeling the relationship between climate oscillations and drought by a multivariate GARCH model, *Water Resour. Res.*, 50, 601-618, 2014.
- Molnar, P. and Burlando, P.: Preservation of rainfall properties in stochastic disaggregation by a simple random cascade model, 25 *Atmos. Res.*, 77, 137-151, 2005.
- Müller, H. and Haberlandt, U.: Temporal rainfall disaggregation with a cascade model: from single-station disaggregation to spatial rainfall, *J. Hydrol. Eng.*, 20, 04015026, 2015.
- Müller, H. and Haberlandt, U.: Temporal rainfall disaggregation using a multiplicative cascade model for spatial application in urban hydrology, *J. Hydrol.*, 2016.
- 30 Ogston, A., Cacchione, D., Sternberg, R. and Kineke, G.: Observations of storm and river flood-driven sediment transport on the northern California continental shelf, *Cont. Shelf Res.*, 20, 2141-2162, 2000.
- Olsson, J. and Burlando, P.: Reproduction of temporal scaling by a rectangular pulses rainfall model, *Hydrol. Process.*, 16, 611-630, 2002.

- Onof, C., Meca-Figueras, T., Kaczmarska, J., Chandler, R. and Hege, L.: , Modelling rainfall with a Bartlett–Lewis process: thirdorder moments, proportion dry, and a truncated random parameter version, 2013.
- Onof, C. and Wheater, H. S.: Improved fitting of the Bartlett-Lewis Rectangular Pulse Model for hourly rainfall, *Hydrolog. Sci. J.*, 39, 663-680, 1994a.
- 5 Onof, C. and Wheater, H. S.: Improvements to the modelling of British rainfall using a modified random parameter Bartlett-Lewis rectangular pulse model, *J. Hydrol.*, 157, 177-195, 1994b.
- Onof, C. and Wheater, H. S.: Modelling of British rainfall using a random parameter Bartlett-Lewis rectangular pulse model, *J. Hydrol.*, 149, 67-95, 1993.
- Paschalis, A., Molnar, P., Fatichi, S. and Burlando, P.: A stochastic model for high-resolution space-time precipitation
10 simulation, *Water Resour. Res.*, 49, 8400-8417, 2013.
- Paschalis, A., Molnar, P., Fatichi, S. and Burlando, P.: On temporal stochastic modeling of precipitation, nesting models across scales, *Adv. Water Resour.*, 63, 152-166, 2014.
- Patz, J. A., Campbell-Lendrum, D., Holloway, T. and Foley, J. A.: Impact of regional climate change on human health, *Nature*, 438, 310, 2005.
- 15 Peleg, N. and Morin, E.: Stochastic convective rain-field simulation using a high-resolution synoptically conditioned weather generator (HiReS-WG), *Water Resour. Res.*, 50, 2124-2139, 2014.
- Peleg, N., Fatichi, S., Paschalis, A., Molnar, P. and Burlando, P.: An advanced stochastic weather generator for simulating 2-D high-resolution climate variables, *Journal of Advances in Modeling Earth Systems*, 9, 1595-1627, 2017.
- Peres, D. and Cancelliere, A.: Estimating return period of landslide triggering by Monte Carlo simulation, *J. Hydrol.*, 541,
20 256-271, 2016.
- Peres, D. and Cancelliere, A.: Derivation and evaluation of landslide-triggering thresholds by a Monte Carlo approach, *Hydrol. Earth Syst. Sc.*, 18, 4913, 2014.
- Pohle, I., Niebisch, M., Müller, H., Schümberg, S., Zha, T., Maurer, T. and Hinz, C.: Coupling Poisson rectangular pulse and multiplicative microcanonical random cascade models to generate sub-daily precipitation timeseries, *J. Hydrol.*, 2018.
- 25 Reed, S., Schaake, J. and Zhang, Z.: A distributed hydrologic model and threshold frequency-based method for flash flood forecasting at ungauged locations, *J. Hydrol.*, 337, 402-420, 2007.
- Rodriguez-Iturbe, I. and Isham, V.: A point process model for rainfall: further developments, *P. Roy. Soc. A-Math. Phy.*, 417, 283-298, 1988.
- Rodriguez-Iturbe, I. and Isham, V.: Some models for rainfall based on stochastic point processes, *P. Roy. Soc. A-Math. Phy.*,
30 410, 269-288, 1987.
- Shisanya, C., Recha, C. and Anyamba, A.: Rainfall variability and its impact on normalized difference vegetation index in arid and semi-arid lands of Kenya, *International Journal of Geosciences*, 2, 36, 2011.

- Smithers, J., Pegram, G. and Schulze, R.: Design rainfall estimation in South Africa using Bartlett–Lewis rectangular pulse rainfall models, *J. Hydrol.*, 258, 83-99, 2002.
- Solo-Gabriele, H. M.: Generation of long-term record of contaminant transport, *J. Environ. Eng.*, 124, 619-627, 1998.
- Ünal, N., Aksoy, H. and Akar, T.: Annual and monthly rainfall data generation schemes, *Stoch. Env. Res. Risk A.*, 18, 245-257, 2004.
- Velghe, T., Troch, P. A., De Troch, F. and Van de Velde, J.: Evaluation of cluster-based rectangular pulses point process models for rainfall, *Water Resour. Res.*, 30, 2847-2857, 1994.
- Verhoest, N. E., Vandenberghe, S., Cabus, P., Onof, C., Meca-Figueras, T. and Jameleddine, S.: Are stochastic point rainfall models able to preserve extreme flood statistics?, *Hydrol. Process.*, 24, 3439-3445, 2010.
- Verhoest, N., Troch, P. A. and De Troch, F. P.: On the applicability of Bartlett–Lewis rectangular pulses models in the modeling of design storms at a point, *J. Hydrol.*, 202, 108-120, 1997.
- Wagener, T., Sivapalan, M., Troch, P. A., McGlynn, B. L., Harman, C. J., Gupta, H. V., Kumar, P., Rao, P. S. C., Basu, N. B. and Wilson, J. S.: The future of hydrology: An evolving science for a changing world, *Water Resour. Res.*, 46, 2010.
- Warner, K. and Afifi, T.: Where the rain falls: Evidence from 8 countries on how vulnerable households use migration to manage the risk of rainfall variability and food insecurity, *Clim. Dev.*, 6, 1-17, 2014.
- Wasko, C., Sharma, A. and Johnson, F.: Does storm duration modulate the extreme precipitation-temperature scaling relationship?, *Geophys. Res. Lett.*, 42, 8783-8790, 2015.
- Yoo, J., Kim, D., Kim, H. and Kim, T.: Application of copula functions to construct confidence intervals of bivariate drought frequency curve, *J. Hydro-Environ. Res.*, 11, 113-122, 2016.
- Yu, D. J., Sangwan, N., Sung, K., Chen, X. and Merwade, V.: Incorporating institutions and collective action into a sociohydrological model of flood resilience, *Water Resour. Res.*, 53, 1336-1353, 2017.
- Zonta, R., Collavini, F., Zaggia, L., and Zuliani, A.: The effect of floods on the transport of suspended sediments and contaminants: a case study from the estuary of the Dese River (Venice Lagoon, Italy), *Environ. Int.*, 31(7), 948-958, 2005.