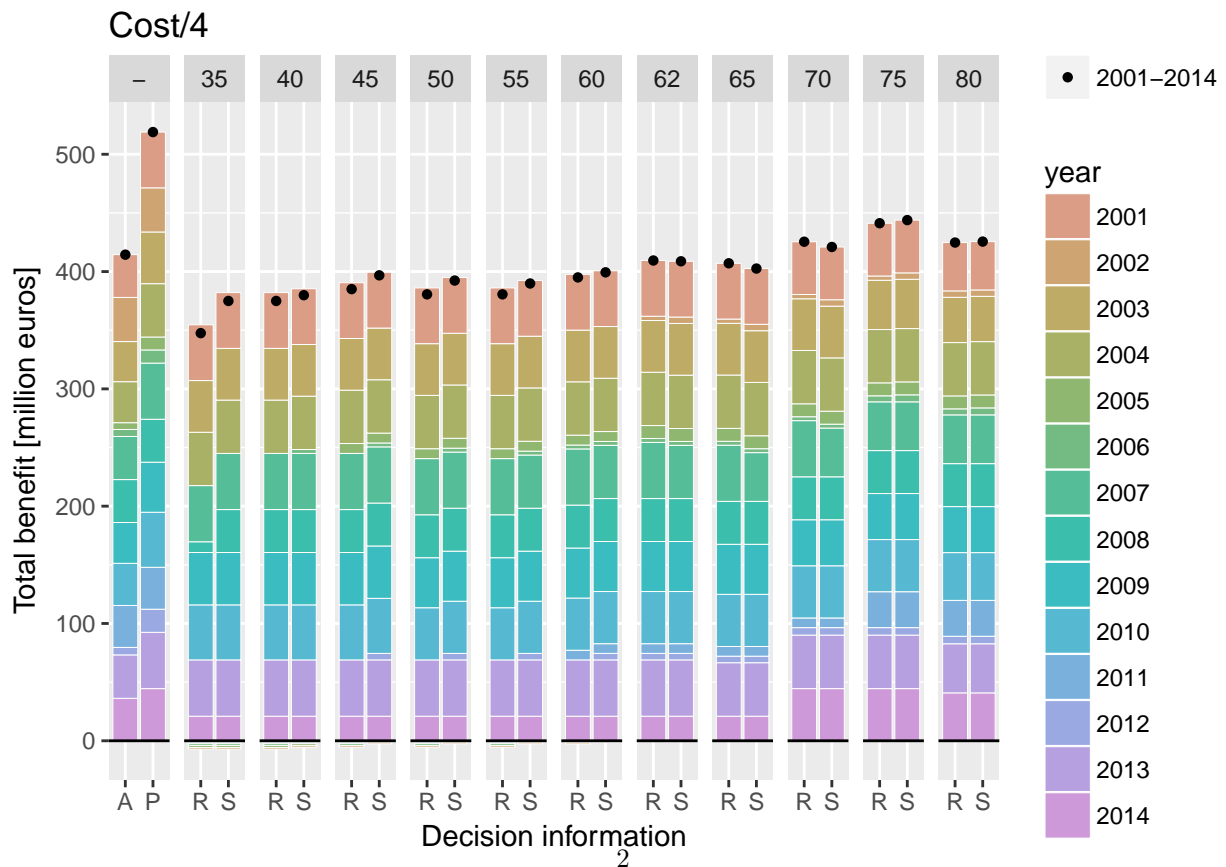
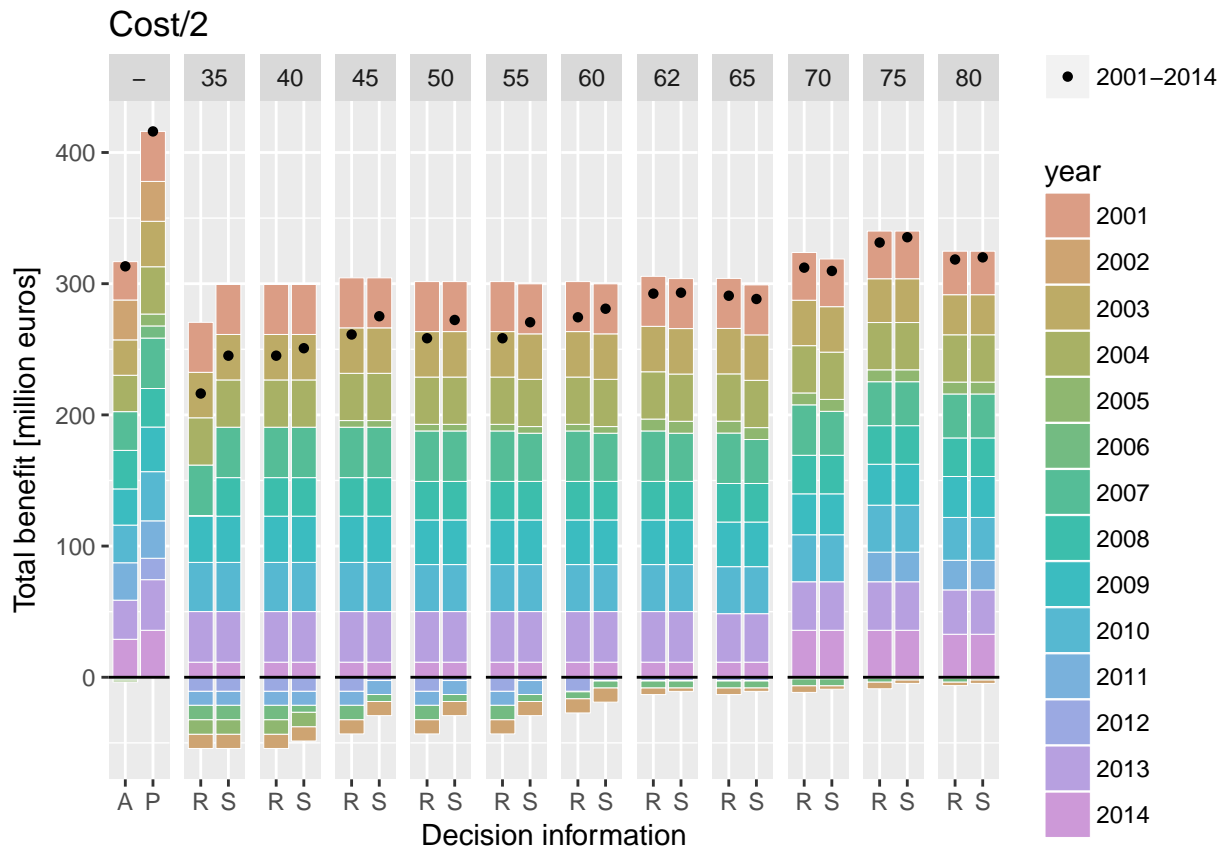
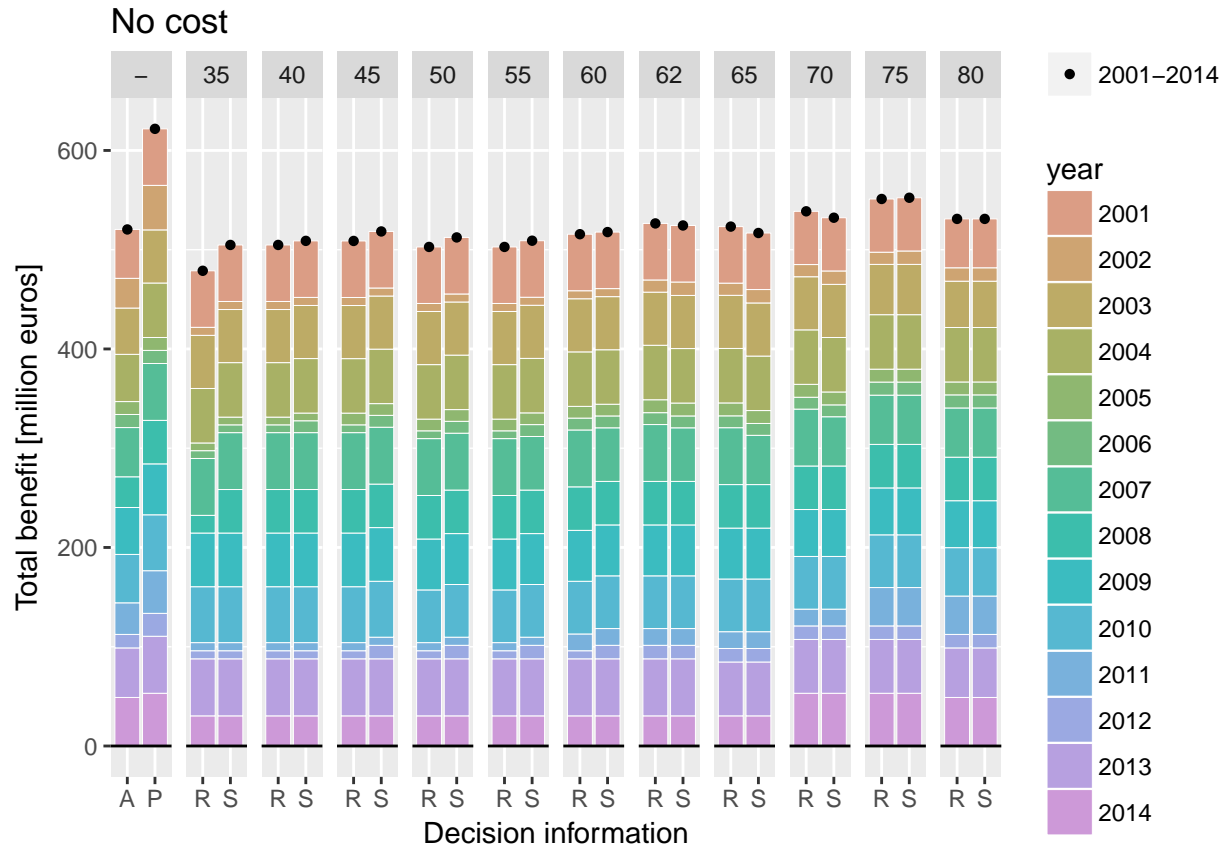


Supplementary plots

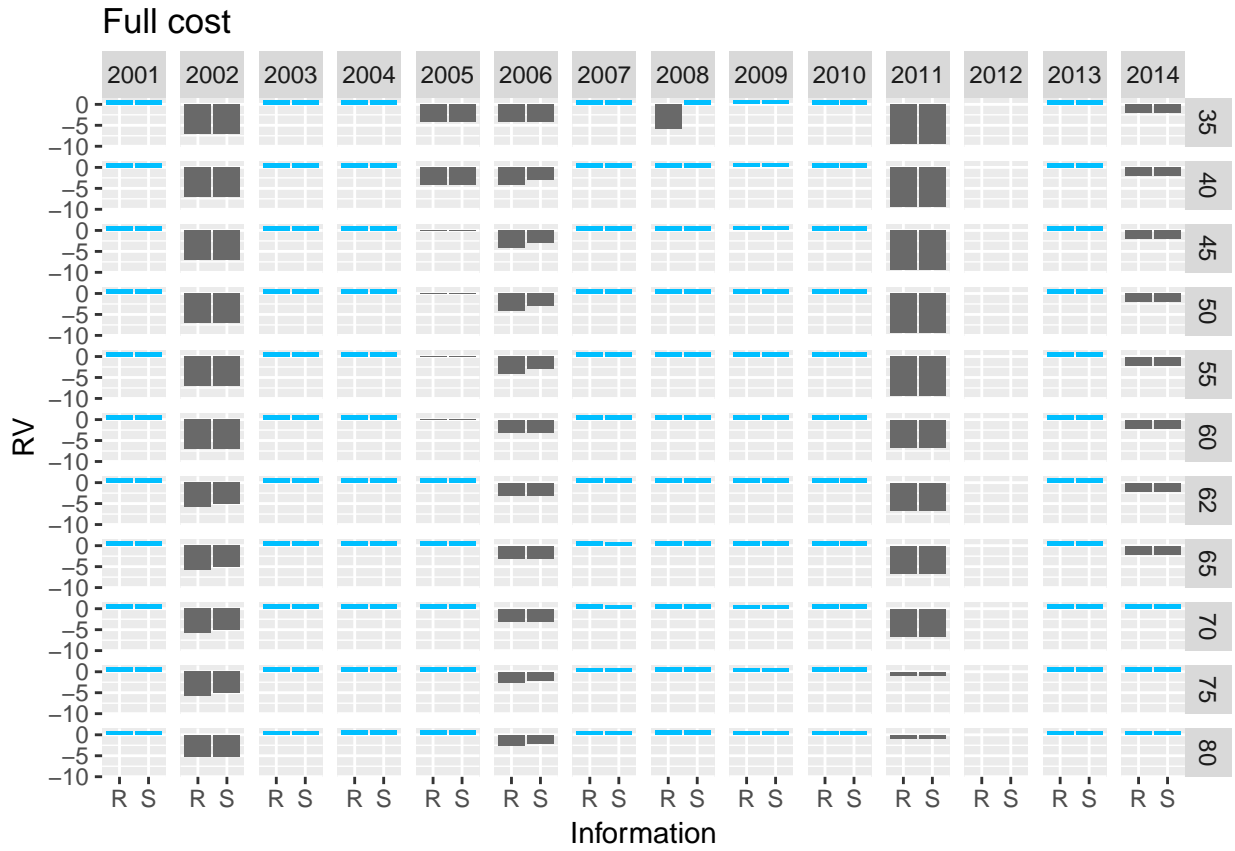
S1: Total benefit for different costs

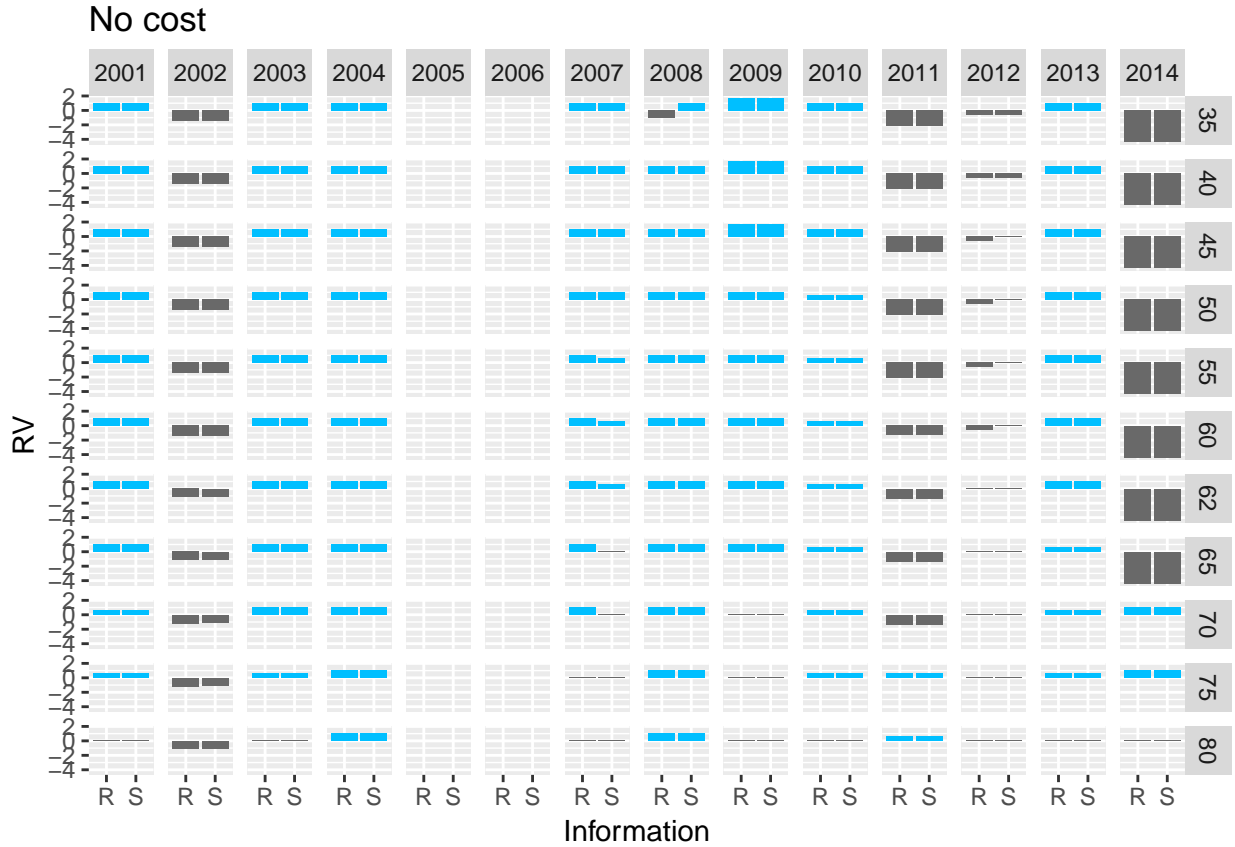




S2: Yearly relative value

Yearly Relative Value for decisions informed by reservoir level alone (R) and with the addition of snow information (S) for the 10 sets of thresholds and the optimized thresholds (labelled as 62). When the uninformed decision results in the same benefit as the perfect information the Relative Value is -Infinite and is left blank in the plot.



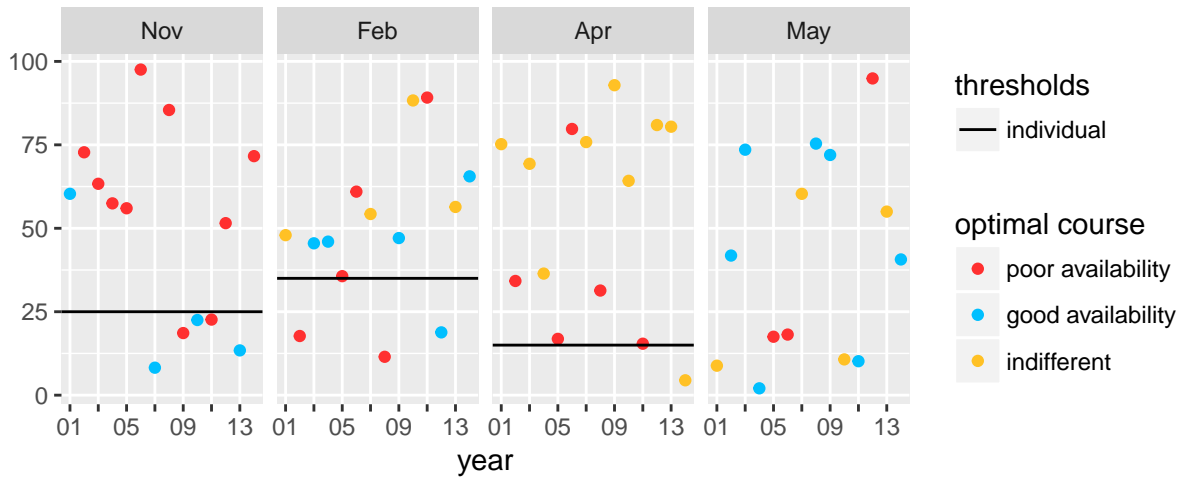
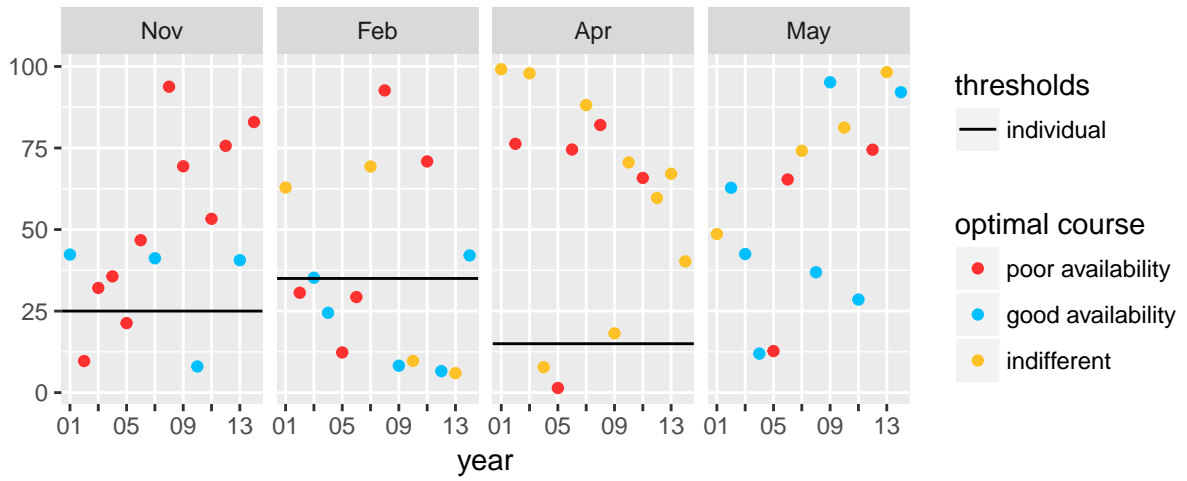
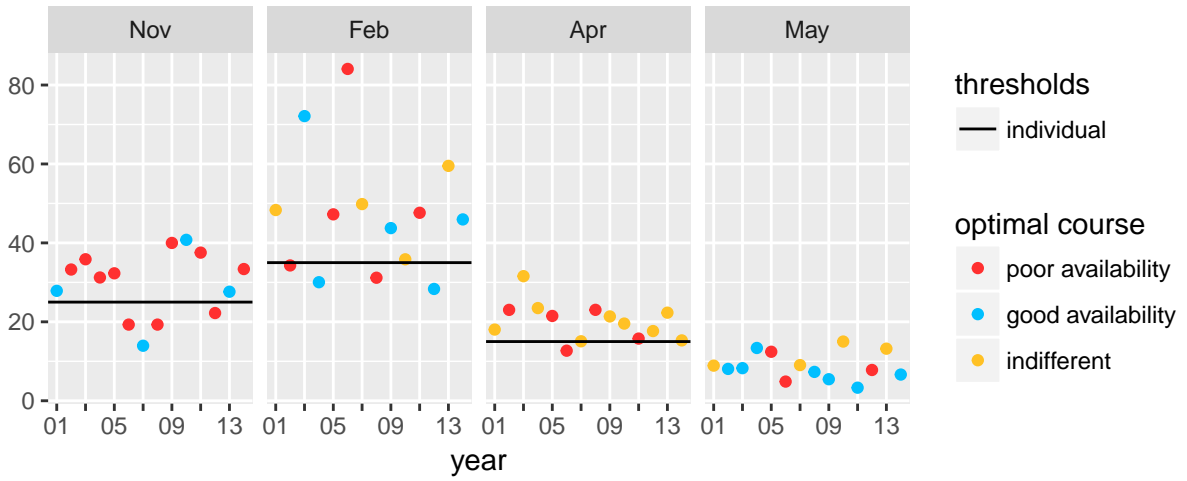


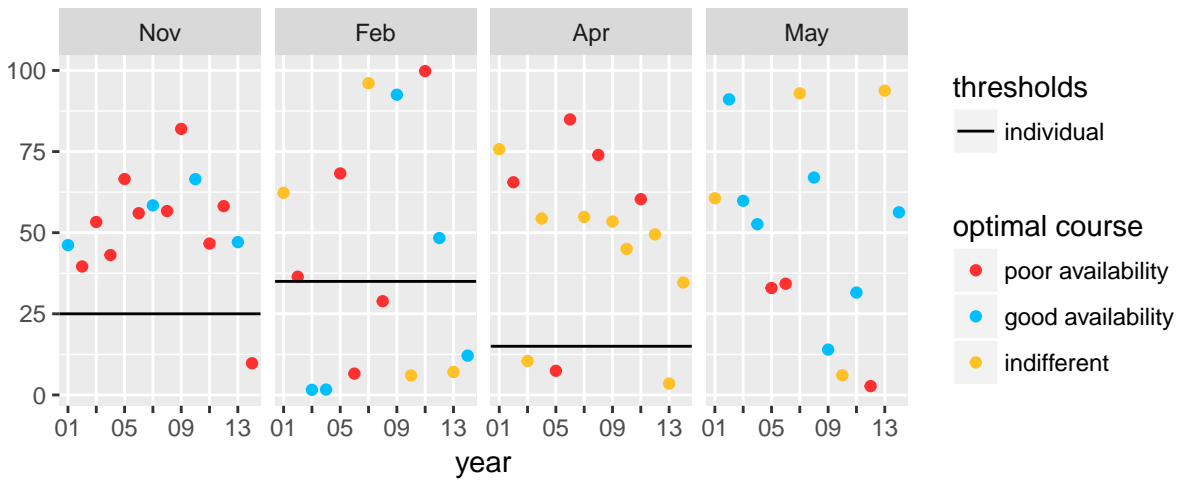
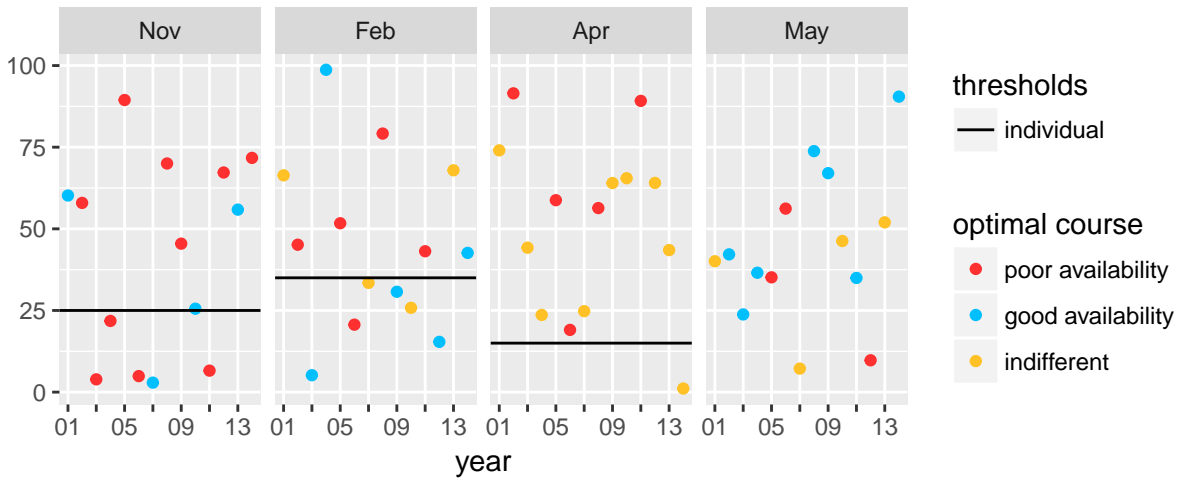
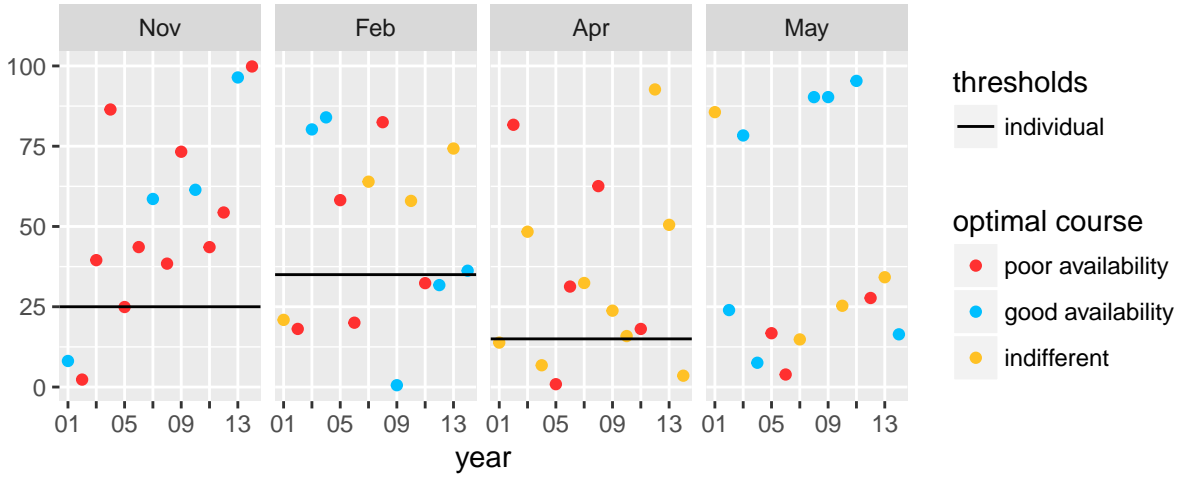
S3: Test with random snow values

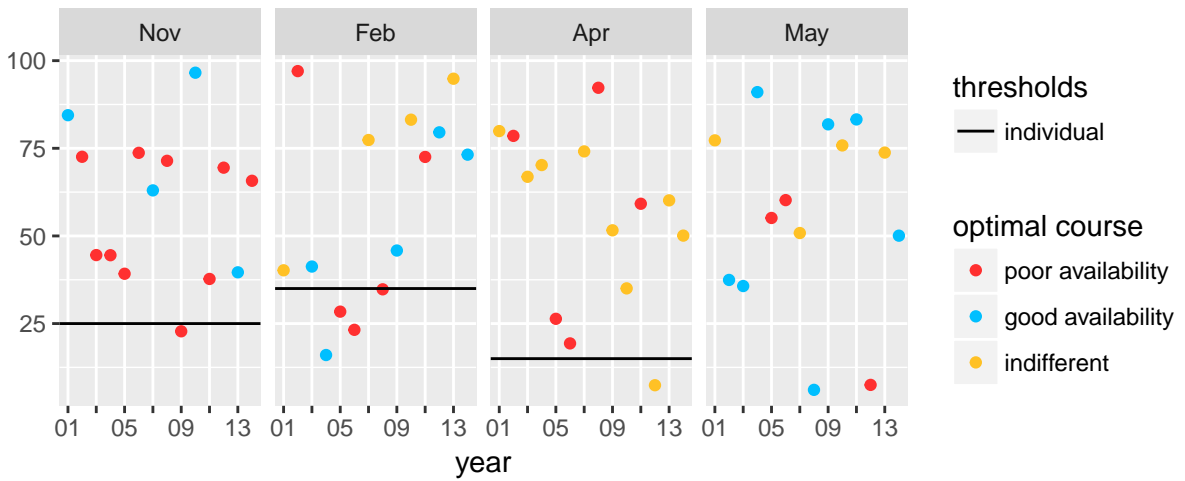
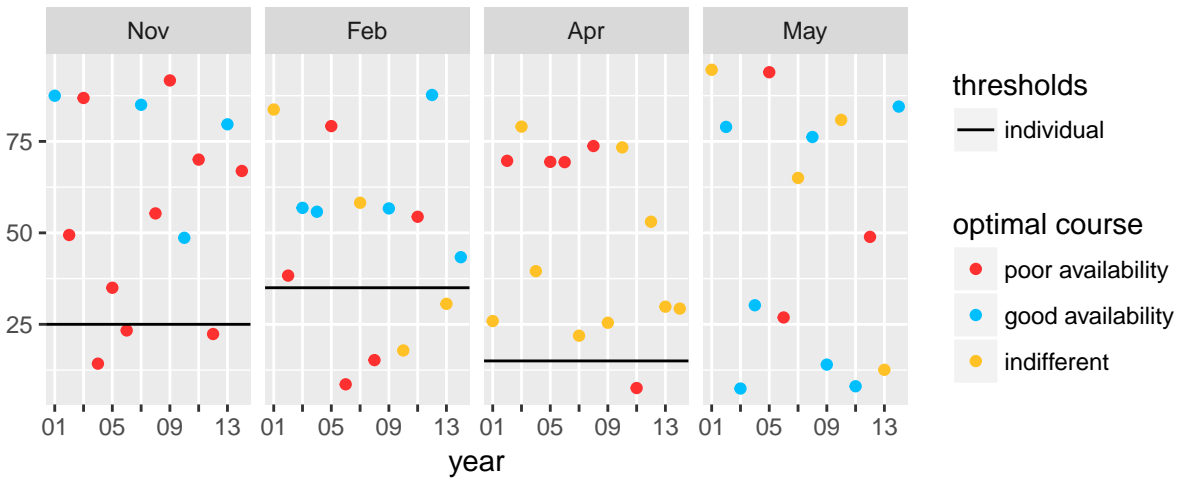
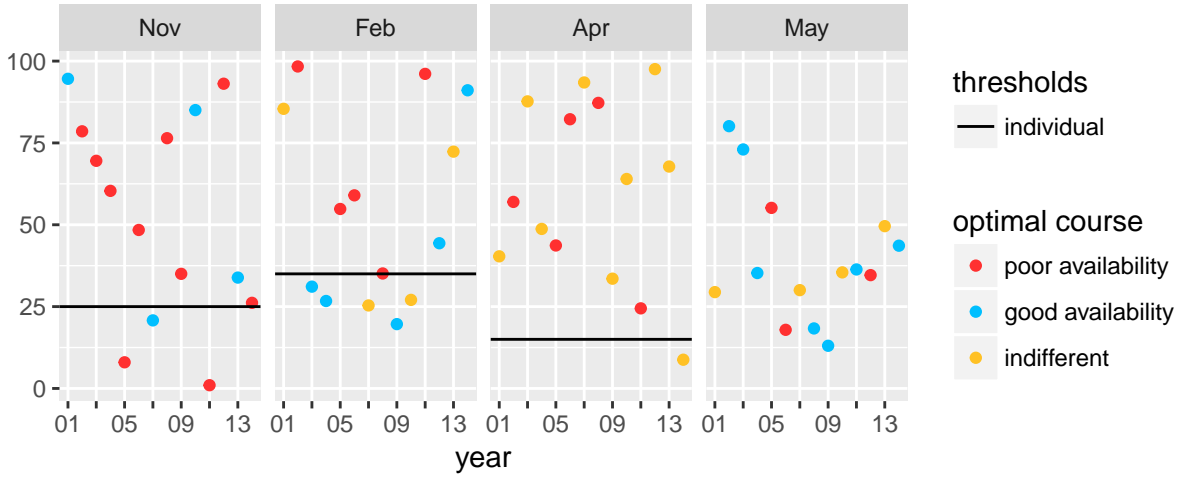
10 additional runs were performed with random snow values. The objective is to test if the improvements in the decisions observed when the model is run with additional information are indeed the result of better information and not a casual effect.

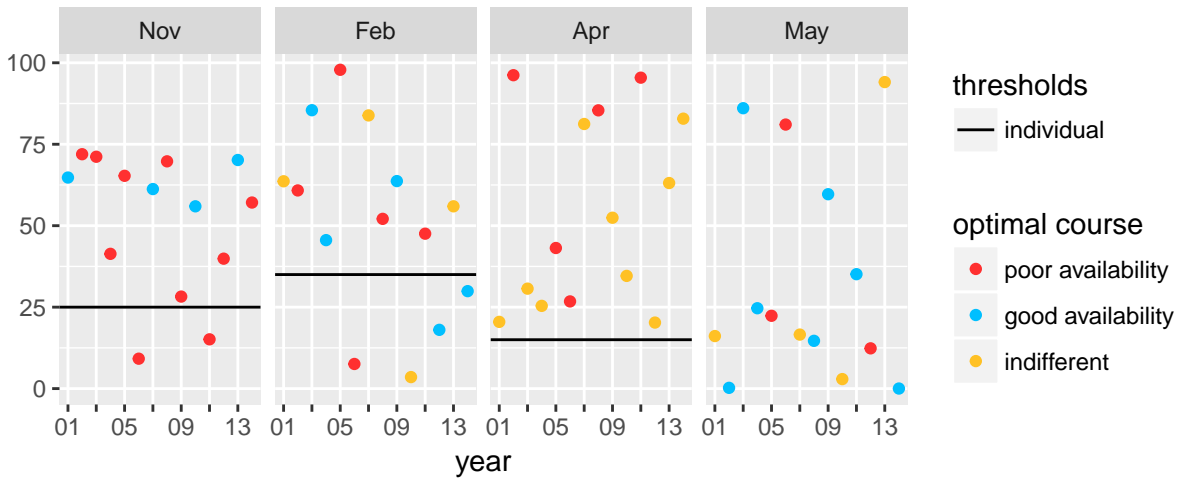
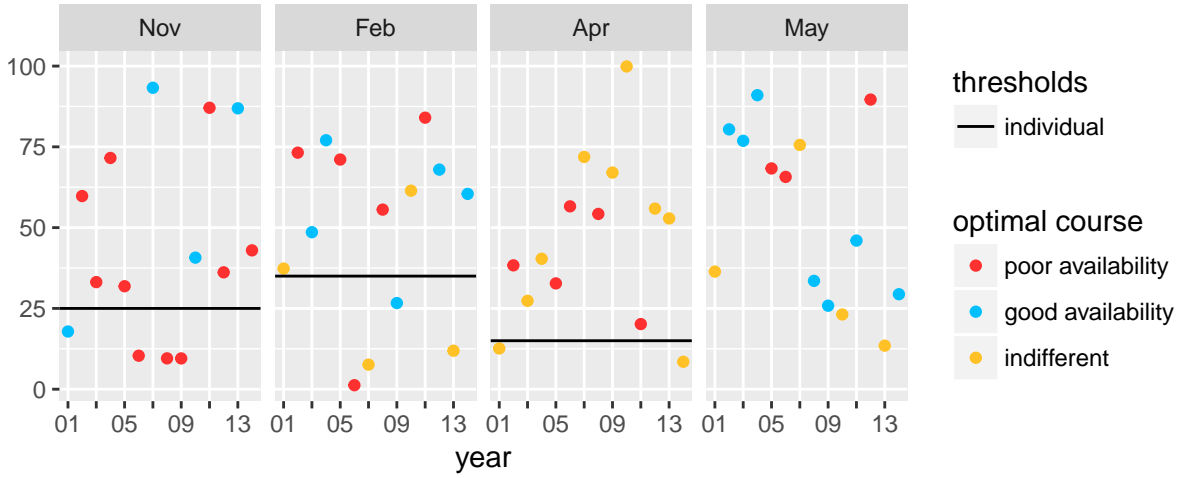
The first run (run 1) corresponds to MODIS snow data and the following runs (run 2-11) to the generated random data.

Snow values









Total benefit (stacked yearly values)

