

Dear Editor,

We appreciate the valuable and constructive comments from the Editors and the Reviewers, which helped in the improvement of the manuscript, which underwent major revisions. All comments and recommendations were addressed in great detail and incorporated in the revised manuscript. Our efforts in addressing these comments include the following:

- 1. Conduct joint state-parameter updates to account for uncertainties in model parameters:** The question of uncertainties in model parameters was raised to reduce the bias of the forward model. In order to examine the impact of parameter estimation on the overall quality of the assimilation, we performed additional joint state-parameter estimation in our data assimilation experiment to correct for possible systematic model bias by modifying parameters. In addition, we revisited our methods to generate ensembles in the previous version of the manuscript, which was modified resulting in improved open loop simulations relative to the deterministic model run as pointed out by Reviewer 2. (see for example Figure 6 and 9 in the revised manuscript compared to Figure 6 and 10 in the HESSD version).
Please see [R2.1] below for further clarification.
- 2. Increase size of ensemble members:** A point of criticism is the small ensemble size, which may have a negative impact on the result. Our selection of ensemble size is due to the large data amounts produced in the forward run of the 3km resolution model. For example, one year of model run with 20 ensemble members requires 680GB of computer storage per output variable (i.e. equivalent to 5TB of storage for 7 years of simulations per variable at daily time scale). We have increased the ensemble size to 20 in the revised manuscript and updated our results accordingly. We also added new assimilation experiments in the supplementary material to evaluate the impact of ensemble size on the performance of EnKF by increasing the number of members to 20 relative to 12 that we used in the HESSD version.
Please see our response to [R2.9] below for detailed discussions.
- 3. Replace CLM-default vegetation parameters with MODIS based data:** In the revised manuscript, we replaced the CLM default Plant Functional Types (PFTs) annual monthly leaf area index (LAI) cycles with prescribed LAI from MODIS to consider the inter-annual variability of the vegetation. This modification resulted in spatially distributed and temporally continuous LAI data within each PFT for the considered time period of 2000-2006 in the model. To account for annual variability in LAI, yearly model runs were performed where the LAI information was updated at the start of each year run.
Please see our response to [R3.4] for detailed discussions.
- 4. Conduct further evaluation of observation data rescaling to match the model resolution:** In order to evaluate whether the rescaling of the ESA CCI SM data/E-RUN runoff data to model resolution may introduce any bias in the data, we

compared the original 0.25° against 0.0275° ESA CCI soil moisture. Only small differences between the two resolutions were visible. We added a figure (Figure S5) in the supplementary material to show the effects of resolution and interpolation on the results.

Please see our response to [R1.3] for a detailed discussion.

5. **Provide justification for using gridded observation runoff data for model validation.** Point of concern was the use of non-routed gridded runoff observation (E-RUN runoff data product Gudmundsson and Seneviratne, 2016) for model validation, instead of gauge station discharge observations. In the revised manuscript, we provided further clarification to justify our preference of using this dataset for the model validation. We conducted further evaluation to compare aggregated runoff using E-RUN data for few watersheds in Europe with monthly discharge data measured at gauge stations obtained from Global Runoff Data Center. Our comparison showed a good agreement of aggregated E-RUN runoff data with observed discharge (Fig. S1). This provided further confidence of using the E-RUN runoff data for model validation. Please see our response to [R2.7] for detailed discussion.
6. **Clarifying concerns regarding the added value of high resolution data assimilation experiment.** One of the main concerns raised by the reviewers is regarding the added value of the high resolution data assimilation experiment using the coarse-resolution remotely sensed data. In our opinion, the unique contribution of this study is to demonstrate the added value of merging coarse resolution satellite observations through data assimilation with a land surface model to generate higher spatial resolution, downscaled estimates of the surface soil moisture at very high resolution with complete spatio-temporal coverage and with improved accuracy compared to open loop model estimates. To the best of our knowledge, this is the first study to implement a high resolution modeling framework to provide a long term downscaled daily soil moisture product at 3 km resolution over Europe. The soil moisture estimates with improved spatial resolution from the assimilation offer a new tool for monitoring soil water content with distinct benefits over the original CCI-SM data. In addition, using this data assimilation modeling framework allowed us to assess the potential impact of assimilating longer-term soil moisture observations on hydrologic simulations and identified model limitations to correctly represent processes controlling the hydrologic fluxes and states and their dependence on antecedent soil moisture. Please see [R2.2], [R2.6], [R2.8] and [R3.1] for detailed discussions.
7. **In addition to the major additional work performed in the revision,** a new discussions section (Sec. 4) was added in the revised manuscript and we included multiple references recommended by the reviewers, and revised the manuscript to clarify various issues identified by the reviewers.

Detailed responses are provided below. Once again, we thank the Editor and Reviewers for their time and effort that helped us to significantly improve the quality of this study.

Sincerely,

Bibi S. Naz on behalf of all Co-authors

Response to comments by Anonymous Referee #1

Received and published: 27 April 2018

General comments: The manuscript aims to demonstrate that a high resolution data-assimilation modelling framework allows improving soil moisture and runoff simulations at a continental scale. Thus, it addresses a question within the scopes of the journal. Aims of the work are overall clearly outlined and supported by references.

We would like to thank the anonymous reviewer for his/her comments and constructive suggestions, which we believe have led to an improved manuscript.

I suggest to better justify the choices of models and datasets and temporal domain (2000-2006).

[R1.1] We selected CLM3.5 because it is one of the most complete land surface model at the moment and part of a large community effort (Community Earth System Model; <http://www.cesm.ucar.edu/>). It has been widely applied at continental and global scales to understand how land processes and anthropogenic impacts affect climate (e.g. Dickinson et al., 2006). The CLM model parameterizes most of the land surface processes (such as infiltration, evaporation, surface runoff, subsurface drainage, canopy and snow processes) using the water and energy balance equations. In addition, CLM3.5 was designed for coupling with climate models and is also part of the fully coupled Terrestrial Systems Model Platform (TerrSysMP; Shrestha et al., 2014) that simulates the full terrestrial hydrologic cycle including feedbacks between atmosphere, land-surface and subsurface compartments of the water cycle. Moreover, the CLM model can efficiently run for large model domains and at high spatial resolution. Since we performed our simulations at high spatial resolution and at continental scale, we selected the TerrSysMP-PDAF modelling framework (Kurtz et al., 2016) which can run on high performance computational infrastructure and can efficiently cope with the high computational burden of ensemble-based data assimilation (Page 5, line 13).

With respect to the time span simulated and COSMOREA6 data, we preferred to use this data over other datasets, because of its high spatial resolution in comparison to other commonly used forcing datasets such as the European gridded data set (E-OBS) (Haylock et al., 2008) and Interim ECMWF Reanalysis (ERA-Interim; Dee et al., 2011) at 25 and 80 km resolution, respectively. COSMO-REA6 was produced through the assimilation of observational meteorological data using the existing nudging scheme in COSMO with boundary conditions from ERA-Interim data as discussed in Bollmeyer et al. (2015). We used data from 2000 – 2006, which were available at the beginning of this study. The COSMO-REA6 is only now publicly available for a longer time period of 1995 – 2015.

We now added additional motivation for the model selection, time period and forcings datasets in the revised manuscript (Page 8, line 10).

Data-assimilation results are compared to open-loop simulations to quantitatively assess this improvement basing on root mean square error and mean bias error estimates with respect to CCI SM data. Overall results are well supported by figures and graphs. However, I would suggest the Authors to give a more detailed explanation for differences in overestimate and underestimate between the regions and between the seasons (particularly in par. 3.1.1). It seems that this part has been deepened more for runoff than for soil moisture.

[R1.2] We included two new Tables (Table R1 and Table R2) (Table 1 and 2 in the revised manuscript) and modified Fig. R1 (Figure 3 in the revised manuscript) as shown below to explain the differences in both magnitude and spatial patterns and also an extended discussion of the soil moisture differences in different regions and between seasons (Page 13, Sec. 3.1.1).

Table R1. Difference in CLM-OL and CLM-DA simulated mean seasonal SWC (mm³/mm³) with CCI-SM data for all PRUDENCE regions and all seasons, i.e. winter (DJF), spring (MAM), summer (JJA) and autumn (SON).

Regions	CLM-OL minus CCI-SM				CLM-DA minus CCI-SM			
	Winter	Spring	Summer	Autumn	Winter	Spring	Summer	Autumn
BI	0.03	0.05	0.02	0.04	0.01	0.02	-0.02	0.00
IP	0.07	0.09	0.11	0.09	0.04	0.06	0.07	0.05
FR	0.03	0.06	0.06	0.05	0.01	0.03	0.02	0.02
ME	0.04	0.07	0.06	0.05	0.02	0.04	0.01	0.02
SC	0.07	0.08	0.02	0.03	0.04	0.05	-0.02	0.00
AL	0.03	0.05	0.04	0.02	0.01	0.02	0.00	-0.01
MD	0.05	0.07	0.08	0.06	0.03	0.04	0.04	0.03
EA	0.07	0.08	0.07	0.05	0.05	0.05	0.03	0.02
EU	0.09	0.11	0.09	0.09	0.07	0.08	0.05	0.06

Table R2. Evaluation performance criteria for comparing CLM-OL and CLM-DA with CCI-SM (spatially averaged SWC, surface layer, EU and PRUDENCE regions)

Soil Moisture (CLM-OL)									
	EU	BI	IP	FR	ME	SC	AL	MD	EA
PBIAS (%)	54.1	16.4	50.7	24.7	25.6	23.0	16.4	33.4	34.8
RMSE (mm ³ /mm ³)	0.10	0.05	0.10	0.07	0.07	0.06	0.05	0.07	0.08
MAE (mm ³ /mm ³)	0.09	0.04	0.09	0.06	0.06	0.05	0.04	0.07	0.07
R	0.48	0.41	0.75	0.60	0.51	-0.14	0.55	0.80	0.40
Soil Moisture (CLM-DA)									
	EU	BI	IP	FR	ME	SC	AL	MD	EA
PBIAS (%)	36.4	3.1	33.2	10.1	11.0	9.0	3.0	18.1	19.0

RMSE (mm³/mm³)	0.07	0.03	0.07	0.04	0.04	0.05	0.03	0.04	0.06
MAE (mm³/mm³)	0.06	0.03	0.06	0.03	0.03	0.04	0.03	0.04	0.05
R	0.51	0.40	0.76	0.61	0.54	-0.12	0.56	0.80	0.42

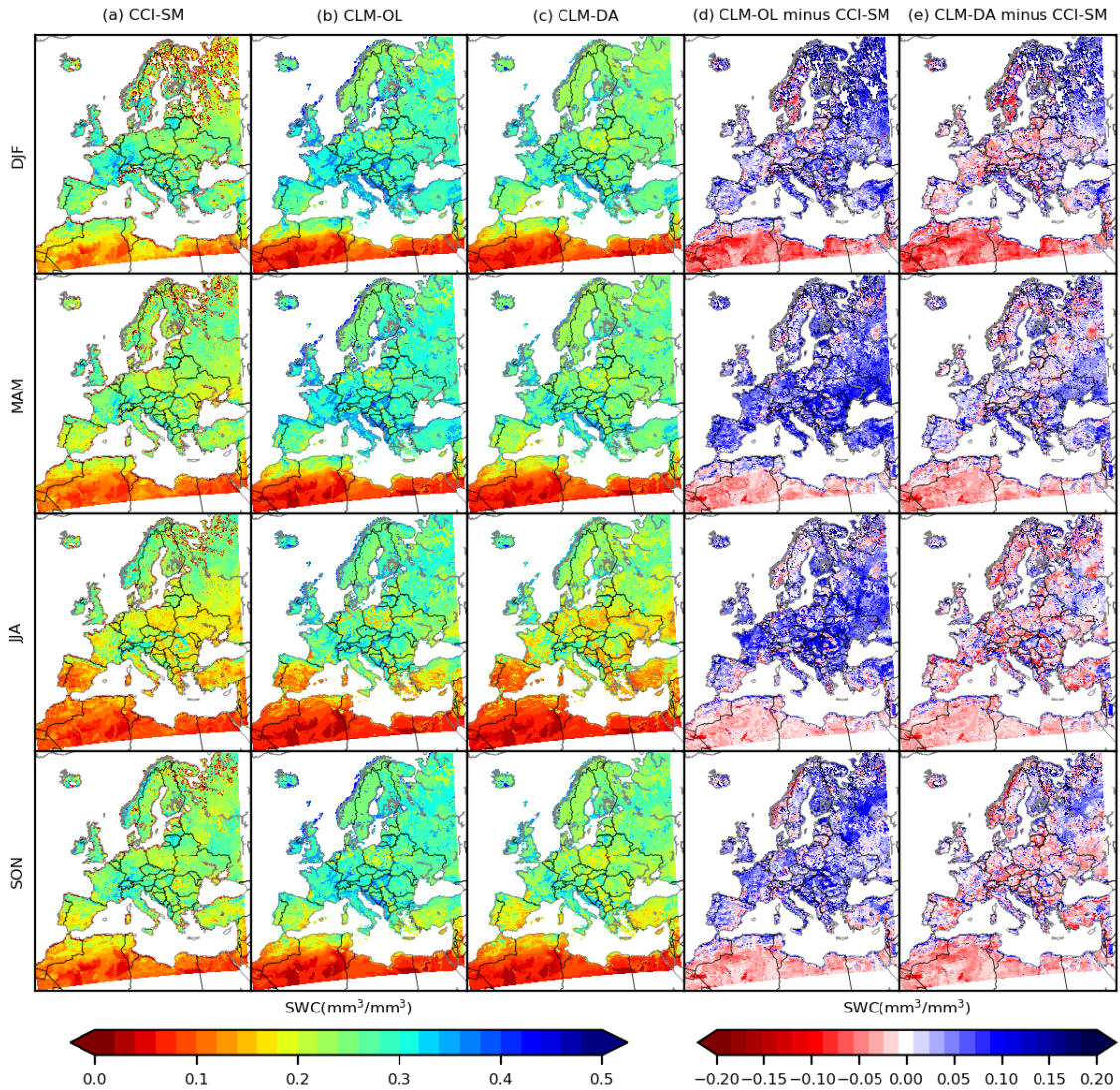


Fig. R1. Temporally averaged soil moisture (mm³/mm³) content over the 2000 – 2006 period for a) CCI-SM, b) CLM-OL c) CLM-DA, and difference between d) CLM-OL and CCI-SM and d) CLM-DA and CCI-SM for DJF (December, January and February), MAM (March, April, May), JJA (June, July and August) and SON (September, October, November) seasons.

Besides I would suggest the Authors to better explain if and how results can be affected by spatial resolution differences in the data.

[R1.3] See our response and Figure R2 (Fig. S5 in the supplementary material) below to

the specific comment 6 (R1.9) on resolution and interpolation effects (Page 17, line 6).

The advancements described in this study would benefit from a quantitative or qualitative comparison with other studies claiming the use of data assimilation for improving soil moisture and runoff simulations, to assess if the obtained results are satisfying. My recommendation is to accept the manuscript with minor review.

Specific comments

Page 2 Line 32 and Page 6 Line 2: I would suggest to add spatial resolution in km, as done in other sections of the text

[R1.4] It has been modified in the revised manuscript (Page 3, line 12).

Page 2 Lines 18-27: I think sentences here are a bit contradictory. I would suggest the Authors to better clarify what is commonly done in the state of the art and what is rarely done (and eventually why it is rarely done), in order to better highlight element of novelties of this work.

[R1.5] We appreciate the suggestion. We added several references of other assimilation/modeling studies over Europe in the introduction section of the revised manuscript. We added following text at Page 3, line 14 in the revised manuscript.

For instance, several studies have explored the role of soil moisture assimilation over Europe, in different modeling frameworks (e.g. Albergel et al., 2017; Brocca et al., 2010; De Rosnay et al., 2013; Draper et al., 2009; Ni-Meister et al., 2006). Using NASA's global Catchment Land Model (CLSM), Ni-Meister et al. (2006) improved simulated soil moisture over small Eurasia catchments through assimilation of near surface soil moisture derived from Scanning Multichannel Microwave Radiometer (SMMR). Using Extended Kalman Filter (EKF), Draper et al. (2009) demonstrated the usefulness of assimilating near-surface soil moisture observations from C-band Advanced Microwave Scanning Radiometer (AMSR-E) in the land surface model ISBA (Interactions between Soil, Biosphere and Atmosphere) at 9 km resolution over continental Europe. More recently, Albergel et al. (2017) showed the potential of using the satellite-derived soil moisture data from European Space Agency (ESA) Climate Change Initiative (CCI) over Europe and Mediterranean domain to sequentially assimilate soil moisture and leaf-area index product into the ISBA (Interactions between Soil, Biosphere and Atmosphere) land surface model at 0.5° (~50 km) resolution. They found significant improvements in the surface soil moisture but little improvements of discharge estimates when compared to the open loop (i.e. no assimilation) simulations.

In the revised manuscript, we also highlighted the added value of merging coarse resolution satellite observations through data assimilation with a land surface model to generate higher spatial resolution, downscaled estimates of the surface soil moisture profile with complete spatio-temporal coverage and with a higher accuracy than that of the open loop model estimates. To the best of our knowledge, this is the first study of its kind to provide a downscaled daily soil moisture product at 3km resolution over Europe.

We discussed the added value of our data assimilation experiment in the introduction section (Sec. 1) of the revised manuscript to clarify the objectives of the study.

Figure 1b: I would suggest to use a discretized legend as it represents different classes

[R1.6] We appreciate this comment. The Fig. 1 has been modified in the revised manuscript.

Page 4 Lines 2-3: the Authors state that “CLM3.5 was used in this study, instead of its most recent version, to keep the modelling framework consistent to Kurtz et al. (2016).” Would it be possible to hypothesize some advantages or disadvantages in using CLM most recent versions?

[R1.7] We added the following text to highlight the differences in different versions of the CLM model:

Compared to CLM3.0, Oleson et al.,(2008) showed that CLM3.5 exhibits more realistic partitioning of ET into its components (i.e. transpiration, ground evaporation, and canopy evaporation), which resulted in overall improvements in the representation of the annual cycle of total water storage. Previous studies also showed that CLM 3.5 produces too high soil moisture with too lower variability compared to root zone soil moisture modelled by later CLM versions (4.0 and 4.5) (e.g. Lawrence et al., 2011 and Niu et al., 2011). In order to reduce these biases, Li and Ma, (2015) introduced a factor to describe soil porosity and increase recharge water from the soil column to the aquifer in the newer CLM versions which offer improved solutions related to soil moisture and biogeochemical processes. However, Lawrence et al. (2011) showed that the differences between CLM3.5 and new versions of CLM with respect to soil moisture variability remain low when compared to observations.

This information is added in the revised manuscript (Page 5, line 13).

Page 5 Line 9: I would suggest to briefly explain how this conversion is done or at least provide a reference?

[R1.8] The land cover information for each PFT is based on the Moderate Resolution Imaging Spectroradiometer (MODIS) MCD12Q1 (version 5) land cover product (Friedl et al., 2002), which contains a classification of the dominant land cover. The dominant land cover information was first aggregated to the model resolution, computing the percentage of all 500m pixels per 3 km grid cell. The aggregated land cover information was then transferred to the CLM-prescribed Plant Functional Types (PFT) on the basis of WorldClim climate data (Hijmans et al., 2005). This information is added in the revised manuscript (Page 7, line 15).

Page 6 Lines 12-15: Would it be possible to perform the inverse resampling (from 0.0275° to 0.25°) and compare results with the one from 0.0275° to 0.25°? The same could be said for runoff rates (paragraph 2.3.3)

[R1.9] We compared the original 0.25° against 0.0275° ESA CCI soil moisture. Only

small differences between the two resolutions were visible particular for the time period of 2003 – 2006 (Fig. R2). We found some differences in the first two years (2000 and 2001) and in the regions where the temporal coverage of the ESA CCI data is less than 30%. However, for the time period and regions with a good coverage of ESA CCI soil moisture data, the differences in the resolution were not significant. Similarly, for the model outputs, we don't see any significant difference (e.g. R-squared value in both cases is 0.56) in our results between 0.0275° and 0.25° when compared to the original CCI data at 0.25° resolution as shown in Fig. R3 as an example for one region.

This information is discussed in the discussion section of the revised manuscript and Figure R2 is included in the supplementary material (Fig. S5) (Page 17, line 6 in the revised manuscript)

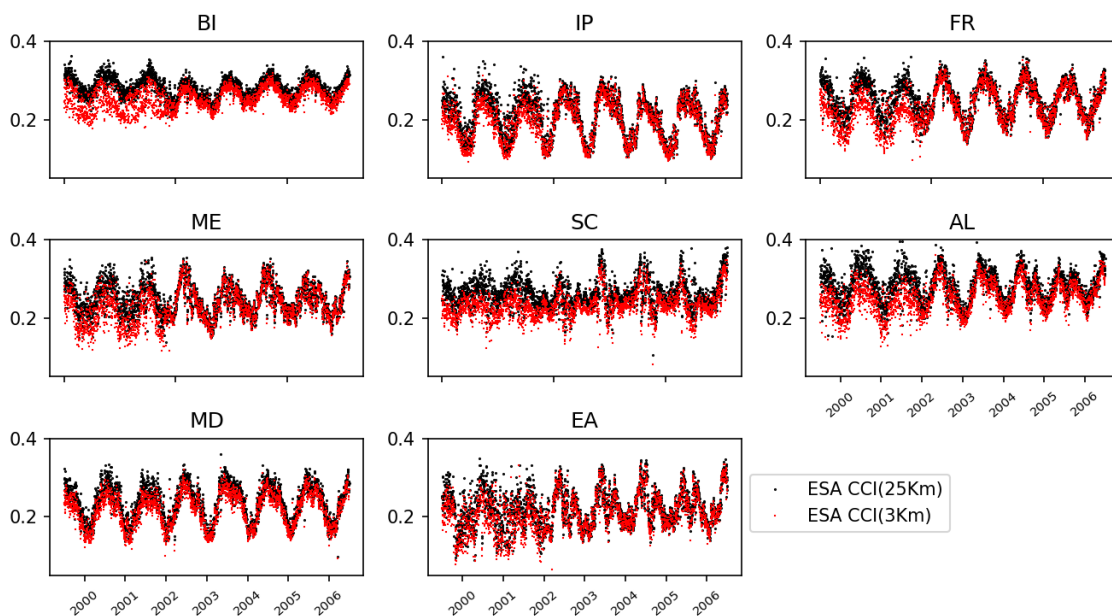


Figure R2. Comparison of spatially averaged 2000 – 2006 daily ESA CCI soil moisture data between original 0.25° (black) and interpolated 0.0275° (red) over PRUDENCE regions.

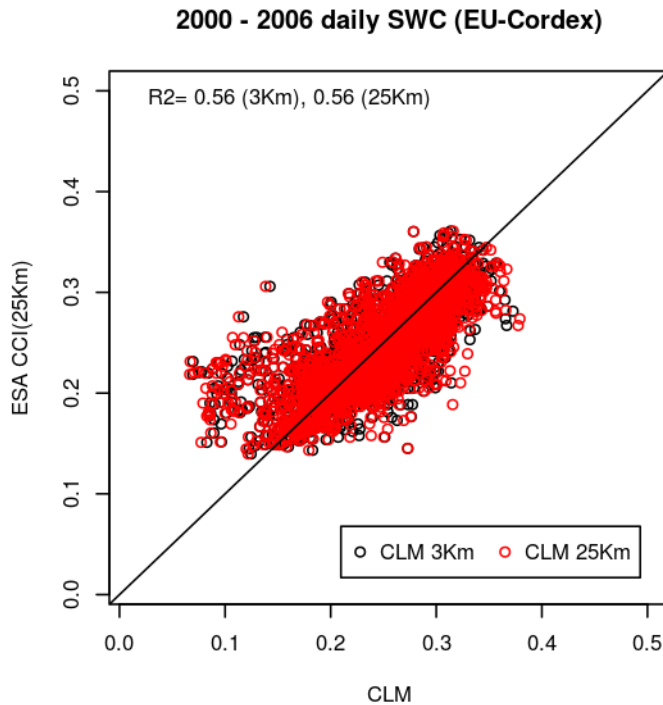


Figure R3. Scatter plot showing the comparison of spatially averaged daily soil moisture between ESA CCI (0.25°) and CLM at 0.25° and 0.0275° resolution over the PRUDENCE region France.

Page 7 Line 27: Is it possible that Authors refer to another figure?

[R1.10] This has been now corrected in the revised manuscript (Page 11, line 22).

Page 10 Line 3: “CLM-DA reduces the runoff bias compared to CLM-OL”. Evidence of this is in Figure 9, not in Figure 7. It would suggest the author to better clarify this point or remove it (as it is already stated in line 20) I suggest to add a table similar to Table 1 also for soil moisture.

[R1.11] We appreciate this comment. We removed this sentence and added a new table (Table 1 in the revised manuscript) for soil moisture (similar to Table 2 in the revised manuscript)

Technical corrections

Page 1 Line 31: Western et al., 2002 has to be changed with Western et al., 2004 according to references

[R1.12] We appreciate this comment. This has been now corrected in the revised manuscript (Page 2, line 7).

Page 2 Line 16: bracket missing after “. . .Clark et al., 2011)”

[R1.13] This has been addressed in the revised manuscript.

Page 2 Line 25: López et al., 2016 is missing in the references and there is a repetition of the name in the text

[R1.14] We appreciate this comment. This has been corrected in the revised manuscript (Page 3, line 8).

Page 2 Line 28: Rains et al., 2017 is missing in the references

[R1.15] The missing reference has been added in the revised manuscript.

Page 3 Line 28: remove comma before brackets Page 4 Line 9: remove the semicolon before bracket

[R1.16] This has been corrected in the revised manuscript (Page 6, line 11).

Page 4 Lines 12-27: I think this sentence is too long, thus I would split it into different sentences maybe one for each formula

[R1.17] This has been modified in the revised manuscript for clarity (Page 6, line 13).

Page 5 Lines 30-31: Wahl et al. 2017 is missing in the references

[R1.18] The missing reference has been added in the revised manuscript.

Page 6 Line 13: Jones, 1999 is missing in the references

[R1.19] The missing reference has been added in the revised manuscript.

Page 6 Line 19: remove full stop after brackets

[R1.20] This has been corrected in the revised manuscript (Page 9, line 14).

Page 9 Line 28: replace Decker and Zeng, 2009 with Zeng and Decker, 2009, as for references

[R1.21] This has been corrected in the revised manuscript (Page 15, line 1).

Page 11 Lines 32-33: I think that Authors mean “it is preferable to account for additional model parameter uncertainties that shows a high sensitivity towards runoff” instead of “it is preferable to account for additional model parameter uncertainties towards runoff that shows a high sensitivity”

[R1.22] We appreciate this comment. This has been modified in the revised manuscript for clarity (Page 18, line 1).

Page 12 Line 12: Remove “This study showed that”, as it is a repetition of the above line

[R1.23] This has been modified in the revised manuscript for clarity (Page 19, line 12).

Page 12 Line 30: “The improvement in peak runoff could be OF particular importance in the management of extreme events such as flooding”

[R1.24] This has been modified in the revised manuscript for clarity.

Page 14 Line 7: reference missing in the text

[R1.25] The missing reference has been corrected in the revised manuscript.

Page 15 Line 9: reference missing in the text

[R1.26] The missing reference has been corrected in the revised manuscript.

Page 17 Line 18: reference missing in the text

[R1.27] The missing reference has been corrected in the revised manuscript.

Page 19 Line 31: replace 998 with 1998

[R1.28] We appreciate this comment. This has been corrected in the revised manuscript.

Page 20 Line 34: year of publication should be after doi, as for the other references

[R1.29] This has been corrected in the revised manuscript.

Page 21 Line 8: reference missing in the text

[R1.30] The missing reference has been corrected in the revised manuscript.

Figure 2c: better if months initials are in English

[R1.31] Figure2c has been modified in the revised manuscript.

Response to comments by Anonymous Referee #2

Received and published: 12 May 2018

General:

The submitted manuscript of Naz et al. (2018) evaluates the effect of soil moisture assimilation (namely ESA-CCI product) into the CLM 3.5 over Europe during 2000-2006. The Ensemble Kalman Filter is used for the model analysis, the observations are sampled using 100 randomly located points across the entire domain, while the remaining locations are used for independent evaluation. The CLM model operates at 3km spatial resolution, while the assimilation product is available at coarser, approx. 25km (0.25degree) resolution. Additionally, the gridded (monthly) runoff product available at 0.5 degree is used for evaluation of the model runs. Results are presented for the open loop (OL) and data assimilation (DA) runs. Results are presented in terms of the RMSE and relative bias per nine PRUDENCE regions. I find this topic relevant for HESS, however, according to my opinion, the manuscript is not suitable for publication in the present form:

We would like to thank the anonymous reviewer for his/her comments and constructive suggestions, which we believe have led to an improved manuscript.

1. As correctly stated in Section 3.3, before applying any DA methods, the modeler should better parameterize and constrain the model parameters, reduce systematic biases etc. I am afraid you cannot apply DA after seeing those strong biases in the open loop estimates (Figures 6 or 10) at all. I encourage authors to pay attention to proper model calibration before DA analysis.

[R2.1] Hydrologic states and fluxes simulated by Land Surface Models (LSM) are often biased due to, e.g., systematic biases in input forcings, uncertainty of input parameters, the use of parameterizations and uncertainty related to the (bio)physical processes representation in the models (e.g Yin et al., 2014; Han et al., 2014). Traditionally, the calibration of model parameters is performed using in situ data to resolve these biases. However, such in situ data – soil moisture in particular – are often unavailable at a large scale. In this study, we have utilized the remotely sensed soil moisture for evaluating the performance of DA in reducing the model biases as previous studies have shown (e.g. Moradkhani et al., 2005; Liu and Gupta, 2007; Kumar et al., 2008; Nie et al., 2011; Chen et al., 2013; Lievens et al., 2016; Lannoy and Reichle, 2016). Another motivation of this study was not only to improve the soil moisture through data assimilation approach, but also to evaluate the assimilations impacts on other land surface variables such as runoff. Model calibration prior to assimilation, e.g., with the runoff data set of Gudmundsson and Seneviratne (2016) would violate the independency criterion of calibration and validation data for the impact assessment of the data assimilation procedure (Page 2, line 26 in the revised manuscript).

Furthermore, in land surface modeling systematic differences between the model climatology and the observation data climatology are traditionally corrected before

assimilation, to ensure that data assimilation is applied under conditions of no systematic bias. However, different procedures to correct bias are used, like the estimation of a single constant bias value, seasonal dependent bias or CDF-matching (e.g. Reichle and Koster, 2004 and Drusch et al., 2005). The procedure has some important limitations: (i) the bias is only partially corrected or over-corrected; (ii) the bias in the DA-procedure is not assigned to the model or measurement data, but after the assimilation it is implicitly assumed that the systematic bias is related to the bias in the measurements (model states are not corrected for a systematic bias). We did therefore not perform any bias correction of the soil moisture observation by rescaling of the observations to model climatology. A further argument for not following this approach was that spatial patterns could be altered and thereby some of the independent information provided by the satellite may be removed; it is desirable to retain as much of the independent satellite information as possible. This information is now discussed (Page 9, line 23 in the revised manuscript).

The alternative procedure we followed here was to neglect systematic biases, but assimilate with a sufficient ensemble spread so that observations allow correcting model predictions. This approach results in a stronger corrective effect of measurement data. A further alternative is to attribute systematic biases to erroneous model parameter values, which is one of the main sources of error and uncertainty in land surface model predictions. We explored this option now in the revised version of the manuscript using a joint state-parameter estimation approach. Although this approach has also important limitations, related to the fact that we do not know well enough the relative importance of systematic model errors and systematic errors in the measurement data, an advantage is that we correct for possible systematic model bias by modifying soil texture parameters (Page 6, line 13 in the revised manuscript).

Therefore, we evaluated now the impact of soil texture properties like the percentages of clay and sand on the CLM model performance and jointly estimated model states and parameters in the data assimilation experiment. We plotted the results as mean monthly soil moisture for the 2000 – 2006 time period for CLM-OL, CLM-DA (only state update) and CLM-DA (joint state and parameter updates) as shown in Fig. R4. We found that in both cases (state updating alone, joint state-parameter updating) the DA-runs were quite close to the observed values. However, parameter updating is expected to correct part of the systematic model bias and other fluxes like evapotranspiration and also discharge can show larger modifications as response to the different parameters.

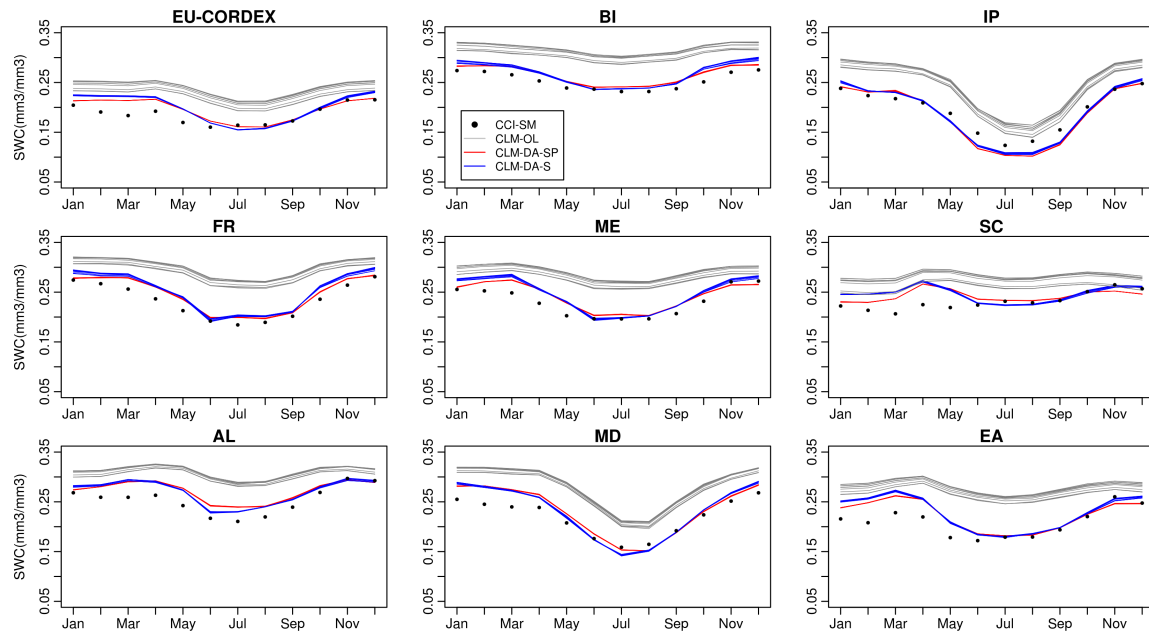


Figure R4: Multi-ensemble spatially averaged mean monthly soil water content (2000 – 2006) simulated with CLM-OL (no assimilation; gray colour) and CLM-DA (with data assimilation) and compared with CCI-SM data over the PRUDENCE regions. The blue colour indicates CLM-DA-S (state updates only) and red colour indicates CLM-DA-SP (joint state-parameter update).

In the revised manuscript, we performed additional joint state-parameter estimation in our data assimilation experiment to correct for possible systematic model bias by modifying parameters. In addition, we revisited our methods to generate ensembles in the previous version of the manuscript, which was modified resulting in improved open loop simulations relative to the deterministic model run as pointed out by Reviewer 2. (see for example Figure 6 and 9 in the revised manuscript compared to Figure 6 and 10 in the HESSD version).

2. This is not much of a surprise when soil moisture gets assimilated into a model that model simulations at the analysis step get more close to the “observation-based” product, as much as the prescribed observation errors allow (given there exists spatial correlation between the 100 assimilated locations and remaining “withheld” observations). By assimilating the ESA-CCI product, the authors claim to improve the initial conditions of the model. That’s all . . . I would welcome then the added value/implications of the improved initial model (wetness) conditions (e.g. with respect to some longer lead-times): OL vs. DA.

[R2.2] Most land data assimilation studies only aim at improving the model initial conditions. These improved model initial conditions would impact other modeled fluxes like discharge (which is a focus of this paper), but also latent and sensible heat fluxes between the land and atmosphere, which could potentially improve weather predictions. The added value of our study is to apply a data assimilation modeling framework over Europe along the complete simulation time span to derive a longer-term and high spatial

resolution land surface data assimilation product in order to increase monitoring accuracy for land surface moisture and water states and fluxes.

Beyond that, a continuous DA approach allows to monitor long-term changes of the terrestrial water cycle and enhance our understanding of the role of land surface processes on, e.g. atmospheric boundary layer dynamics. Therefore, high quality soil moisture product is needed. Since point scale measurements from in situ sensors are only available at a limited number of locations, remotely sensed soil moisture products are promising for a more large scale improvement of soil moisture variations. However, sparse data coverage in satellite observations still limits their ability to provide spatially and temporally consistent time series of water balance estimates. To overcome this limitation, in our study, we used data assimilation to merge coarse resolution satellite observations with a land surface model to generate higher horizontal resolution i.e. downscaled estimates of the full soil moisture profile with complete spatio-temporal coverage.

We now discussed the added value of our data assimilation experiment in the introduction section of the revised manuscript ([Page 3, line 31](#) and [Page 4, line 21](#) in the revised manuscript).

3. Additionally, using EnKF the authors modify the internal model states and thus introduce some numerical instability (against internal physical constraints for the model), which was not discussed at all. How do you handle this issue after the analysis step?

[R2.3] In the DA scheme we ensured that updated states (soil moisture) were kept in reasonable physical ranges (between residual soil moisture and porosity) to yield physically consistent estimates of fluxes and maintained the water budget. For the soil moisture update, the values of the updated soil moisture were restricted to values between zero and saturated soil water content. For the soil texture update, a value within 1% is assigned to sand and clay percentages in case the updated values are less than zero. In case the updated sum of the sand and clay are greater than 100%, the values were constrained to the normalized sum of updated soil and clay percentages. Other soil parameters such as the soil hydraulic and thermal parameters were adjusted after soil texture update using pedo-transfer functions.

Additionally, numerical stability is not significant compared to, e.g., groundwater models/ atmospheric models where PDE's are solved with iterative methods. In CLM (and generally in land surface models) the equations/algorithms for deriving mass/energy budgets/transfer are simpler and more robust (numerically) than for full PDE-based systems.

We now discussed these points in the revised manuscript ([Page 7, line 4](#) in the revised manuscript).

4. Hardly any discussion for (OL and DA) results is done with respect to other SM data assimilation/modeling studies over Europe ... which could be used as a benchmark(?)

[R2.4] We appreciate the suggestion. We added several references of other assimilation/modeling studies over Europe in the introduction section of the revised manuscript. For instance, several studies have explored the role of soil moisture assimilation over Europe, in different modeling frameworks (e.g. Albergel et al., 2017; Brocca et al., 2010; De Rosnay et al., 2013; Draper et al., 2009; Ni-Meister et al., 2006). Using NASA's global Catchment Land Model (CLSM), Ni-Meister et al. (2006) improved simulated soil moisture over small Eurasia catchments through assimilation of near surface soil moisture derived from Scanning Multichannel Microwave Radiometer (SMMR). Using Extended Kalman Filter (EKF), Draper et al. (2009) demonstrated the usefulness of assimilating near-surface soil moisture observations from C-band Advanced Microwave Scanning Radiometer (AMSR-E) in the land surface model ISBA (Interactions between Soil, Biosphere and Atmosphere) at 9 km resolution over continental Europe. More recently, Albergel et al. (2017) showed the potential of using the satellite-derived soil moisture data from European Space Agency (ESA) Climate Change Initiative (CCI) over Europe and Mediterranean domain to sequentially assimilate soil moisture and leaf-area index product into the ISBA land surface model at 0.5° (~50km) resolution. They found significant improvements in the surface soil moisture but little improvements of discharge estimates when compared to the open loop (i.e. no assimilation) simulations (Page 3, line 15 in the revised manuscript).

Applying CLM over EU is indeed challenging, but there are other models already able to simulate SM and the choice of CLM is not well described either.

(Below is the same response to Reviewer 1(R1.1))

[R2.5] We selected CLM3.5 because it is one of the most complete land surface model at the moment and part of a large community effort (Community Earth System Model; <http://www.cesm.ucar.edu/>). It has been widely applied at continental and global scales to understand how land processes and anthropogenic impacts affect climate (e.g. Dickinson et al., 2006). The CLM model parameterizes most of the land surface processes (such as infiltration, evaporation, surface runoff, subsurface drainage, canopy and snow processes) using the water and energy balance equations. In addition, CLM3.5 was designed for coupling with climate models and is also part of the fully coupled Terrestrial Systems Model Platform (TerrSysMP; Shrestha et al., 2014) that simulates the full terrestrial hydrologic cycle including feedbacks between atmosphere, land-surface and subsurface compartments of the water cycle. Moreover, the CLM model can efficiently run for large model domains and at high spatial resolution. Since we performed our simulations at high spatial resolution and at continental scale, we selected the TerrSysMP-PDAF modelling framework (Kurtz et al., 2016) which can run on high performance computational infrastructure and can efficiently cope with the high computational burden of ensemble-based data assimilation (Page 5, line 13 in the revised manuscript).

The authors have “high-resolution” in their title. I strongly encourage them to eliminate this from the title, especially if they use such coarse scale data to as-similate.

[R2.6] As discussed in the response to comment 2, in this study we used data assimilation approach to highlight the added value of merging coarse resolution satellite observations with a land surface model to generate higher spatial resolution, downscaled estimates of the surface soil moisture profile with complete spatio-temporal coverage and with a higher accuracy than that of the open loop model estimates. Many applications (such as drought, flood, irrigation management) require observations of the complete soil moisture profile and with finer spatial and temporal resolutions than those of remotely sensed products. To the best of our knowledge, this is the first study of its kind to provide a downscaled daily soil moisture product at 3 km resolution over Europe. In order to accommodate the reviewer comment, we replaced “high resolution” in the title with “3 km”.

5. Why the authors did not use “high-resolution” discharge data for independent model evaluation? There are thousands of gauges with daily time step over Europe, if the routing would be enabled. I am afraid that using monthly gridded runoff is not sufficient for a “high-resolution” study.

[R2.7] We agree that discharge data from many gauging stations are available and can be used for independent evaluation. However, in the current version of the CLM model, the routing scheme is based on simple linear storage outflow relationships, in which a prescribed channel velocity field without temporal variability is used. This simplified assumption can lead to an offset even in the monthly peak streamflow in large catchments (Li et al., 2011). In addition, in the CLM 3.5, the river routing module is implemented at 0.5° where the discretization of river routing elements is based on a grid method in which the grid for river routing is independent of the grid for runoff simulation. Therefore, a coarse spatial resolution, such as 0.5° can lead to unrealistic flow accumulation paths and cannot be used to evaluate discharge at small catchments. Due to the aforementioned points, adequate validation of the results is therefore not possible. However, our comparison of aggregated runoff using E-RUN data for few watersheds with monthly discharge measured at gauge stations and obtained from Global Runoff Data Center (GRDC; Global Runoff Data Center, 2011) in Europe showed a good agreement with observed discharge (Fig. S1 in the revise manuscript) as show below in Fig. R5.

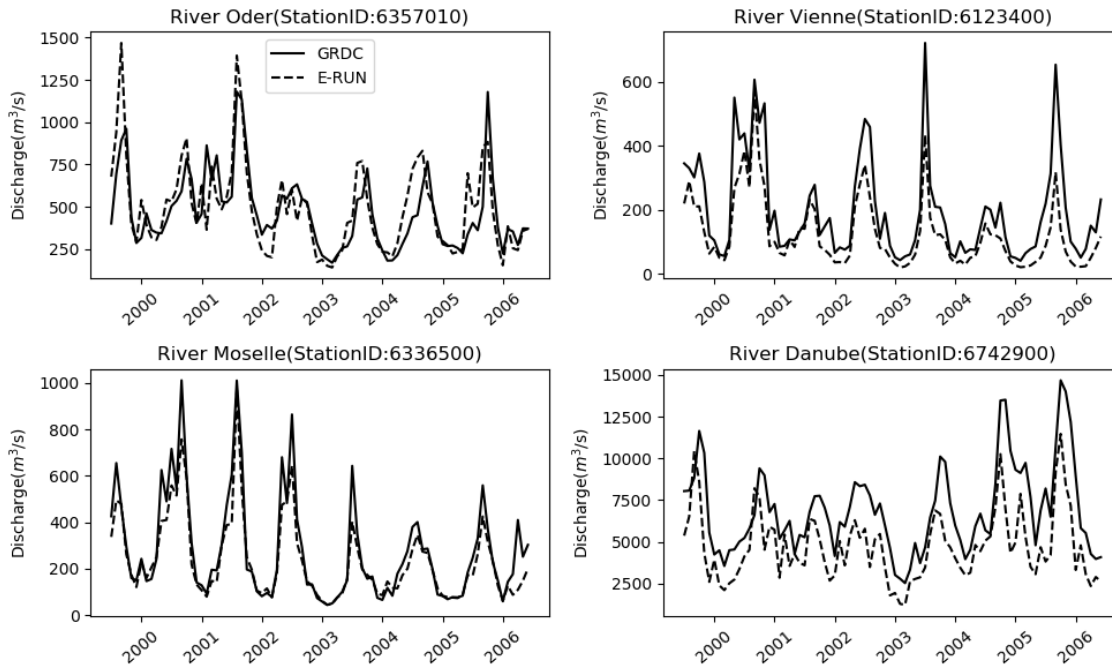


Figure R5: Comparison of monthly GRDC discharge data with E-RUN runoff product for the Oder, Vienne, Moselle and Danube river basins. The non-routed runoff rates (mm/day) from the E-RUN data were converted to flow volumes by aggregating the data for each grid cell within basin and multiplying with the drainage area.

In this study, we instead used the E-RUN runoff product which combines observed river flow with gridded estimates of precipitation and temperature using machine learning. Therefore, this gridded runoff dataset is solely derived from observations and does not rely on any modeling assumptions. We believe that using an observation-based non-routed gridded runoff product has distinct advantage to evaluate the impact of soil moisture assimilation on runoff at every grid cell within a spatial domain. Using gridded runoff is also useful to evaluate model structure errors in representation of runoff generation in the model. In the land surface models such as CLM, the representation of runoff is often simplistic and conceptual and many previous studies have shown that performance of the CLM model in simulating hydrological processes varies based on regions. This might be attributed to the fact that assumptions to estimate surface and subsurface runoff in the model might be valid in some regions but not in other regions (e.g. humid vs. dry regions). We also noted similar behavior of CLM in our study where the assimilation of soil moisture helped to improve runoff in some regions but degraded in other regions (Page 10, line 12 in the revised manuscript).

In the CLM 3.5 runoff scheme, runoff is partitioned into surface flow and subsurface flow and basic simulation element of runoff is the grid cell. In the revised version of the manuscript, the performances of the surface flow and base flow were evaluated separately in order to identify the dominant factor in total runoff generation as a result of soil moisture assimilation. To show this evaluation, a new Fig. 11 is included in the revised paper as shown below (Fig. R6) (Page 18, line 13 in the revised manuscript).

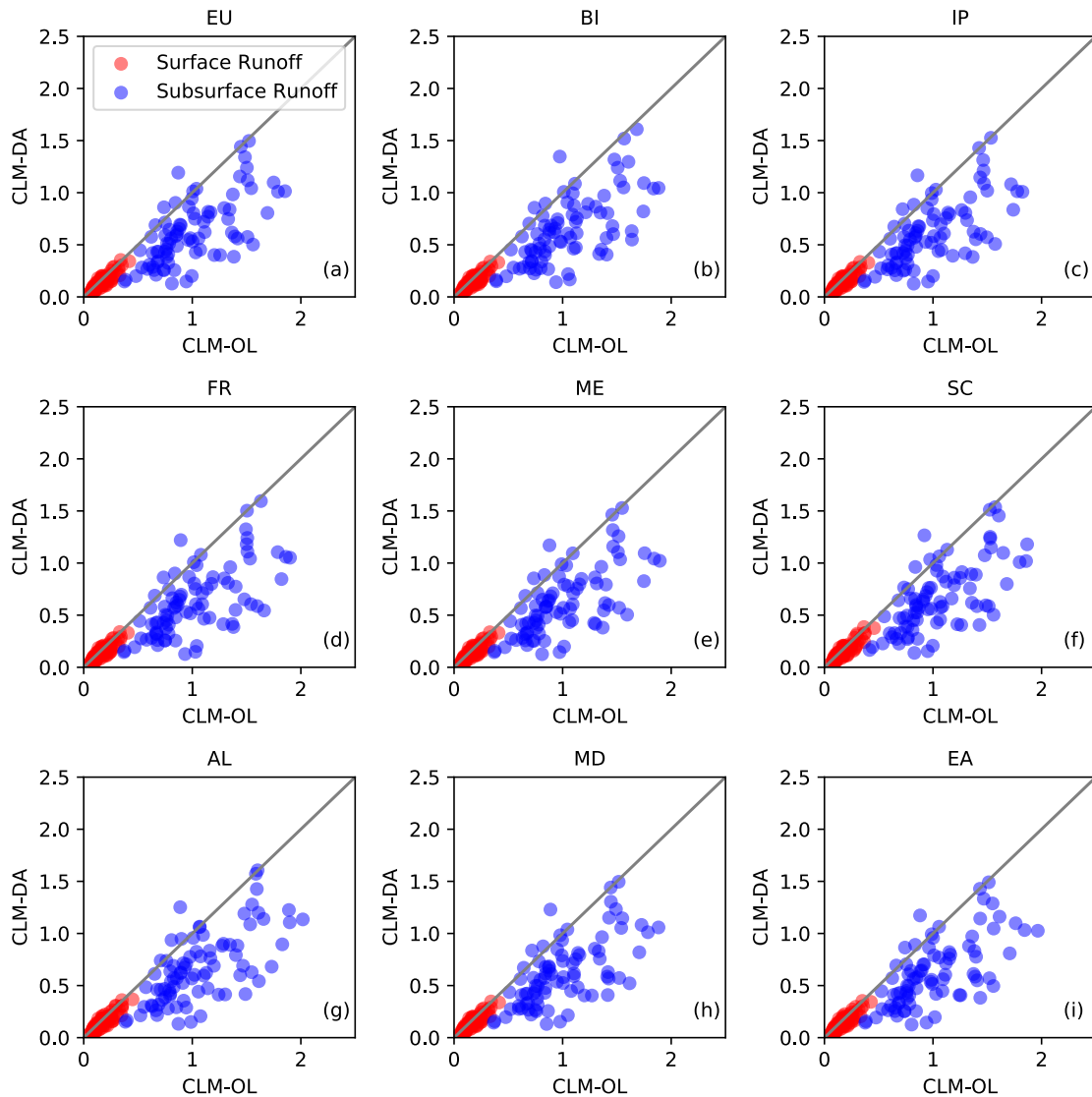


Figure R6: Comparison of spatially-averaged monthly simulated runoff components (surface and subsurface runoff) between CLM-OL and CLM-DA over Europe and PRUDENCE regions for the time period of 2000 – 2006. Gray line represents 1:1 line.

6. The authors could have easily run their model at the resolution of the data and save their larger efforts in computer resources.

[R2.8] The goal and added value of the study was to produce a high-resolution, downscaled land surface hydrology over Europe. It is true that (a large number of) 1D soil moisture DA-experiments could have been conducted at the measurement locations (where we assimilated ESA CCI soil moisture in this experiment), but an essential component of this work is that we updated soil moisture contents at other locations (at the European scale), based on spatial correlations, and investigated whether soil moisture

characterization between measurement locations could also be improved, and if this improves also runoff characterization at the European scale. As a conclusion, we respectfully disagree with this point of the reviewer.

It should also be noted that we made an extensive effort to collect and organize high resolution land surface data and atmospheric forcing datasets to implement the CLM model at 3-km resolution over Europe. Particularly, the COSMO-REA6 is available at a high 6 km spatial resolution. The organization of COSMO-REA6 hourly record for the entire Europe is not a trivial task. The applicability of COSMO-REA6 for a land surface model simulation over the EURO-CORDEX domain has never been shown previously.

In addition to forcings, this study also used high-resolution land surface information in order to better represent the effects of land surface heterogeneity and provide climate information at the scales needed for impact assessment. In the current version of the CLM model, the officially released land surface datasets are provided at 0.5° by 0.5° or coarser resolutions. For example, in our study, PFTs fractional cover data were derived using high resolution MODIS data. Such a data-intensive effort is unprecedented in the previous studies, and hence the new resource will be valuable because it will prompt future hydro-climate studies.

These points are now discussed in the revised manuscript (Page 11, line 24 in the revised manuscript)

7. Another limitation of this study is the limited ensemble size. 12 members are way too low (this number is stated on p. 7, l. 23). Also, the ad-hoc construction of the perturbations needs better reasoning and clarifications!

[R2.9] While we agree with this comment, the number of ensemble member, however, was set to 12 members in our study, due to the large number of grid cells and required computational resources. From previous literatures (e.g., Kumar et al., 2008; Pan and Wood, 2010; De Lannoy et al., 2012; Yin et al., 2015), it is clear that the performance of EnKF relies on the ensemble size. For example, (Kumar et al., 2008; Yin et al., 2015) indicated that when the ensemble size is close to 12, it may lead to efficient DA updating process, while (Pan and Wood, 2010; De Lannoy et al., 2012) suggested 20 ensemble members (Page 11, line 9 in the revised manuscript).

We now evaluated the impact of the number of ensembles numbers on the performance of EnKF by increasing the ensemble size to 20 and run the model for one test year (i.e. 2006). We plotted the results as an ensemble mean of spatially averaged daily soil moisture for the year 2006 for CLM-DA (12 vs. 20 ensemble members) and compared with the daily ESA CCI soil moisture values over PRUDENCE regions as shown in Fig. R7 and Fig. S4 in the supplementary material of the revised manuscript.

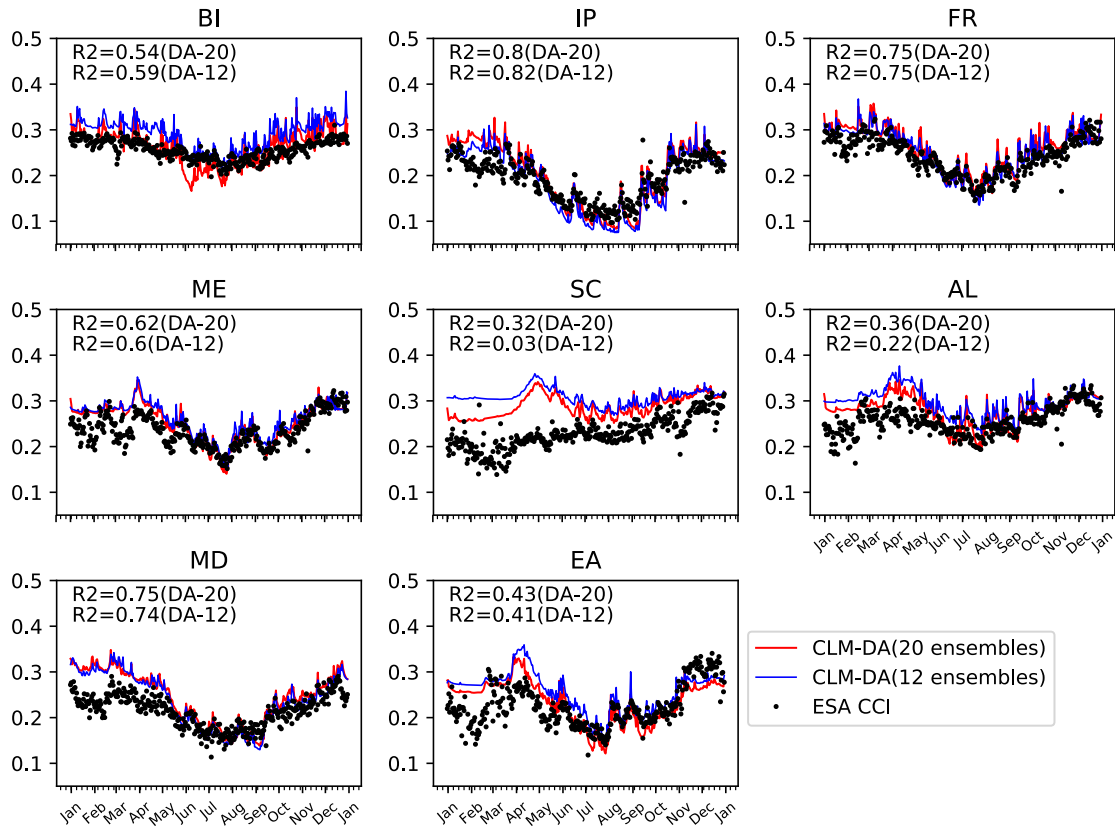


Figure R7: Spatially averaged ensemble daily soil water content (SWC) simulated with CLM-DA (ensemble mean of 12 and 20 ensemble members) and compared with CCI-SM data for year 2006 over the PRUDENCE regions. The R2 values in each panel are r-squared calculated for both CLM-DA with 12 and 20 ensemble members.

While, we see some improvements in the simulated soil moisture as results of using 20 ensemble members, particularly in the winter season and in some regions such as, SC, AI and EA when compared to observations, in both cases the simulated soil moisture from the DA-runs with 12 and 20 ensemble members are quite close to the observed values. In addition, please note that using an increased number of ensemble members is a big challenge for large-scale high-resolution model because of needed computation memory and storage, and to a lesser degree also because of the computational burden. One year of model run with 20 ensemble members requires 680GB of computer storage per output variable (i.e. equivalent to 5TB of storage for 7 years of simulations per variable at daily time scale) and has resulted in the use of 76,800 CPU core-hours (compare to 46,000 core-hours with 12 ensemble members). These points are now discussed in the discussion section (Sec. 4) (Page 17, line 24 in the revised manuscript).

In the revised manuscript, we performed our data assimilation experiment with 20 ensemble members and revised all our results accordingly.

8. The uncertainty in the time series figures is for the 12 ensemble members?

[R2.10] Correct. We included this information in the figure captions (Fig. 6 and Fig 9 in the revised manuscript).

9. Numerous papers mentioned in the text are not included in the reference list!!!

[R2.11] Thanks you for pointing this out. We added missing references in the reference list.

Technical:

Spell-out ESA-CCI in the abstract.

[R2.12] This modification has been made (Page 1, line 18 in the revised manuscript).

p.1,line 14: remove “and the . . . due to”

[R2.13] This modification has been made (Page 1, line 15 in the revised manuscript).

p.5, line 28: remove “In their study”

[R2.14] This modification has been made (Page 8, line 25 in the revised manuscript).

p. 6: “this product” => which product you refer to here?

[R2.15] We referred to gridded runoff product E-RUN version 1.1 (Gudmundsson and Seneviratne, 2016). We modified text for clarity (Page 10, line 5 in the revised manuscript).

p. 6, line 19: missing space after parenthesis

[R2.16] This has been corrected in the revised manuscript.

p.10, l. 13: “UK” => “BI”

[R2.17] This modification has been made (Page 19, line 31 in the revised manuscript).

p.12, line 9: runoff => “monthly runoff”

[R2.18] This modification has been made (Page 19, line 9 in the revised manuscript).

Figs. 5 and 9, caption: “a,c” => “a,b”

[R2.19] The figure captions has been modified for clarity (Fig 5 and Fig. 10 in the revised manuscript)

Response to comments by Anonymous Referee #3

General comments:

The objective of this work is to assimilate ESA-CCI satellite-derived soil moisture estimates in CLM over Europe, from 2000 to 2006. The content of the paper is disappointing. The data assimilation experiment boils down to a sensitivity study illustrating possible model biases. Independent validation is missing. No justification is given for the choice of the 2000-2006 time period. Most recent satellites are missing in this period. It is not clear whether or not interannual variability of the vegetation is accounted for in the model. The authors do not use the scores usually used in hydrology. The improvement of the assimilation on water discharge is not convincing at all. The paper is poorly organized (no Discussion section). This work cannot be published in the present form.

Recommendation: reject.

RESPONSE: We thank the reviewer for his/her efforts. Unfortunately, some of the statements above are not correct. The DA-experiments do not boil down to a sensitivity study, there is independent validation in our opinion and we use scores which are traditionally used in land surface DA studies (it is true that we do not use scores traditionally used in conceptual rainfall-runoff modeling studies). Other issues which are highlighted above have been corrected in the revised version of the manuscript.

The data assimilation experiment boils down to a sensitivity study illustrating possible model biases.

[R3.1] In this study we used data assimilation approach to merge coarse resolution satellite observations with a land surface model, to generate higher resolution, downscaled estimates of the surface soil moisture profile with complete spatio-temporal coverage. The added value of our study is to apply a data assimilation modeling framework over Europe to derive a longer-term and high spatial resolution land surface data product in order to increase monitoring accuracy for land surface soil moisture and water states and fluxes.

We now discussed the added value of data assimilation in the introduction section of the revised manuscript to make our objectives clearer to the readers (Page 3, line 31 and Page 4, line 21 in the revised manuscript).

Independent validation is missing.

[R3.2] We do not agree with this comment. Please note that we randomly selected 100 locations to assimilate the ESA CCI data into the CLM model, while the remaining data was used for independent validation. Additionally, another independent gridded observation-based runoff product was used to evaluate the performance of the soil moisture assimilation in the CLM model in improving indirectly additional hydrological variables such as runoff.

No justification is given for the choice of the 2000-2006 time period. Most recent satellites are missing in this period.

[R3.3] In this study, we used a high-resolution reanalysis system COSMO-REA6 from Hans-Ertel Centre for Weather Research (HERZ; Simmer et al., 2016) dataset which is a high spatial resolution in comparison to other commonly used forcing datasets such as the European gridded data set (E-OBS) (Haylock et al., 2008) and Interim ECMWF Reanalysis (ERA-Interim; Dee et al., 2011) at 25 and 80km resolution, respectively. COSMO-REA6 was produced through the assimilation of observational meteorological data using the existing nudging scheme in COSMO with boundary conditions from ERA-Interim data as discussed in Bollmeyer et al. (2015). We used data from 2000 – 2006, which were available at the beginning of this study. The COSMO-REA6 is only now publicly available for a longer time period of 1995 – 2015.

We agree that recent satellites such as the Soil Moisture and Ocean Salinity (SMOS) Mission, Soil Moisture Active Passive (SMAP) Mission could be another option, however, we selected the ESA CCI soil moisture product for assimilation because of its availability at longer time scales. This provides the opportunity to assess the potential impact of longer-term soil moisture observations on hydrologic simulations for climate change studies.

We clarified these points in the revised manuscript (Page 8, line 10 and Page 4, line 8 in the revised manuscript).

It is not clear whether or not interannual variability of the vegetation is accounted for in the model.

[R3.4] In the revised manuscript, we replaced the CLM default Plant Functional Types (PFTs) annual monthly leaf area index (LAI) cycles with prescribed LAI from MODIS to consider the inter-annual variability of the vegetation. Monthly LAI values for each PFT were computed based on the 1-km Global Land Surface Satellite (GLASS) Leaf Area Index (LAI) product (1981-2012). GLASS contains of 1 km x 1 km global maps of LAI provided every 8 days. The product is derived from time-series of MODIS (MOD09A1) and AVHRR reflectance data using general regression neural network method (Xiao et al., 2014). To derive a monthly climatology over the assimilation period (2000 – 2006), the 1 km 8-day improved GLASS LAI for each year was used to calculate a mean monthly LAI that was then aggregated to the model resolution. The monthly LAI for each PFT values were then determined by mapping the 3 km pixels to the 3 km aggregated PFT values within each grid cell. This approach provides the spatially distributed and temporally continuous LAI data within each PFT for the considered time period of 2000 - 2006. To account for annual variability in LAI, yearly model runs were performed where the LAI information was updated at the start of each year run. It should be noted that CLM3.5 only allows specifying monthly average LAI values for each FTP (Page 7, line 24 in the revised manuscript).

Comparison of new LAI parameters with the default CLM parameters showed that the new LAI parameters have significantly higher LAI for most PFTs as shown below in Fig. R8.

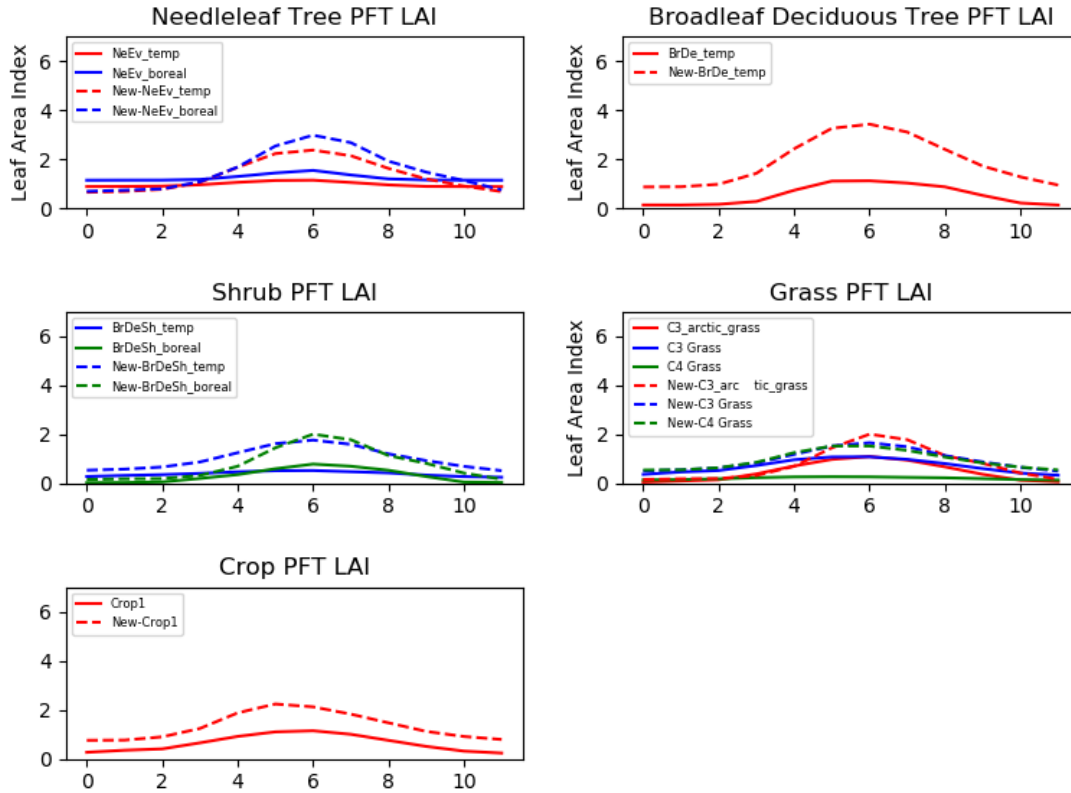


Figure R8: Comparison of new LAI parameters (dashed line) with the default CLM LAI values (solid lines) for different PFT over the time period of 2000 – 2006.

The authors do not use the scores usually used in hydrology.

[R3.5] The main objective of the study was to evaluate the performance of data assimilation of remotely sensed data into a land surface model in simulating surface soil moisture. We evaluated the performance in terms of RMSE, which is a common practice in most land surface data assimilation studies. To address the reviewer’s concern, we now evaluated the performance of the model in simulating daily soil moisture and monthly runoff for 2000 – 2006 time period over PRUDENCE regions using suggested scores (mean absolute error (MAE), the root mean square error (RMSE), percentage bias (PBIAS) and correlation coefficient (R), Nash–Sutcliffe coefficient of efficiency (NSE) and Kling–Gupta efficiency (KGE) indices) as shown below in Table R3 and Table R4 (Table 2 and Table 4 in the revised manuscript).

Table R3: Evaluation performance criteria for comparing CLM-OL and CLM-DA with CCI-SM (spatially averaged SWC, surface layer, Europe and PRUDENCE regions).

Soil Moisture (CLM-OL)									
	EU	BI	IP	FR	ME	SC	AL	MD	EA
PBIAS (%)	54.1	16.4	50.7	24.7	25.6	23.0	16.4	33.4	34.8
RMSE (mm ³ /mm ³)	0.10	0.05	0.10	0.07	0.07	0.06	0.05	0.07	0.08

MAE (mm³/mm³)	0.09	0.04	0.09	0.06	0.06	0.05	0.04	0.07	0.07
R	0.48	0.41	0.75	0.60	0.51	-0.14	0.55	0.80	0.40
Soil Moisture (CLM-DA)									
	EU	BI	IP	FR	ME	SC	AL	MD	EA
PBIAS (%)	36.4	3.1	33.2	10.1	11.0	9.0	3.0	18.1	19.0
RMSE (mm³/mm³)	0.07	0.03	0.07	0.04	0.04	0.05	0.03	0.04	0.06
MAE (mm³/mm³)	0.06	0.03	0.06	0.03	0.03	0.04	0.03	0.04	0.05
R	0.51	0.40	0.76	0.61	0.54	-0.12	0.56	0.80	0.42

Table R4: Evaluation performance criteria for comparing CLM-OL and CLM-DA with E-RUN (spatially averaged runoff, EU and PRUDENCE regions).

Total Runoff (CLM-OL)									
	EU	BI	IP	FR	ME	SC	AL	MD	EA
PBIAS	59.7	-38.6	130.8	34.2	46.1	-30.9	-37.4	87.5	130.3
RMSE (mm/day)	0.5	1.3	0.8	0.7	0.6	0.9	0.9	0.7	0.7
MAE (mm/day)	0.4	0.9	0.7	0.6	0.5	0.8	0.8	0.6	0.7
NSE	-4.0	-0.2	-1.8	0.3	-0.3	-0.4	-0.4	-1.6	-10.2
KGE	-0.1	0.1	-0.4	0.3	0.4	0.1	0.3	0.0	-0.6
R	0.9	0.5	0.6	0.7	0.6	0.3	0.7	0.5	0.6
Total Runoff (CLM-DA)									
	EU	BI	IP	FR	ME	SC	AL	MD	EA
PBIAS	4.4	-60.2	50.5	-13.3	-5.1	-54.1	-58.9	21.8	48.9
RMSE (mm/day)	0.3	1.6	0.6	0.7	0.5	1.2	1.3	0.5	0.4
MAE (mm/day)	0.2	1.2	0.5	0.5	0.4	1.0	1.2	0.5	0.3
NSE	-0.7	-0.9	-0.6	0.1	-0.1	-1.2	-1.8	-0.6	-2.6
KGE	0.2	-0.1	0.0	0.2	0.3	0.1	0.1	0.1	0.0
R	0.6	0.4	0.2	0.4	0.3	0.5	0.6	0.1	0.4

While we see the value of including more scores for evaluating model performance, we noted that including other scores does not change our conclusions. With respect to RMSE and MEA, we clearly see a significant improvement in simulated soil moisture for CLM-DA in comparison to CLM-OL over all PRUDENCE analysis regions, except for region Scandinavia. For runoff, overall we see relatively less improvements in terms of NSE and KGE. In the land surface models such as CLM, the representation of runoff is often simplistic and conceptual and many previous studies have shown that performance of CLM model in simulating hydrological processes varies based on regions. This might be attributed to the fact that assumptions to estimate surface and subsurface runoff in the model might be valid in some regions but not in other regions (e.g. humid vs. dry regions). We also noted similar behavior of CLM in our study where the assimilation of soil moisture helps to improve runoff in some regions but degraded in other regions. Our results agree well with other data assimilation studies (e.g. Albergel et al., 2017; Parajka et al., 2006; Crow et al., 2006) which showed that assimilation is more effective in modifying the surface soil moisture but found little improvements to the discharge as a

result of the remotely sensed soil moisture assimilations. This also highlights the need to jointly use soil moisture and discharge observations to improve global and continental hydrological and/or rainfall-runoff models, but this is beyond the scope of the current manuscript. We now discussed the above points in the discussion section (Page 16, line 9 and Page 18, line 11 in the revised manuscript).

The paper is poorly organized (no Discussion section).

[R3.6] A discussion section (Sec. 4) is added in the revised manuscript.

Specific comments:

- P. 1, L. 21 (independent CCI-SSM observations): do you mean observations independent from CCI-SM? They should be!

[R3.7] In this study, we randomly selected 100 locations to assimilate the ESA CCI data into the CLM model, while the remaining data was used for independent validation. This approach not only allowed us to independently cross-validate the SM values over grid cells that were not used in the data assimilation, but also to produce updated soil moisture contents at other locations (at the European scale), based on spatial correlations, and to investigate whether soil moisture characterization between measurement locations could also be improved, and its impacts on runoff characterization (Page 11, line 24 in the revised manuscript).

- P. 3, L. 3: 10**0km?

[R3.8] 10⁰km

- P. 4, L. 3 (CLM): how is vegetation represented in this version of the model?

[R3.9] In CLM, each grid cell consists of five landunits (i.e. vegetation, wetland, lakes, glaciers and urban) covering a certain percentage of the total grid cell area. The vegetation landunit is further subdivided into Plant Functional Types (PFTs) defined by fractional areas with respect to the entire grid cell (Bonan et al., 2002). In the current study, the land cover information for each PFT is based on the Moderate Resolution Imaging Spectroradiometer (MODIS) MCD12Q1 (version 5) land cover product (Friedl et al., 2002), which contains a classification of the dominant land cover (Figure 1b). The dominant land cover information from MODIS was first aggregated to the model resolution, calculating the percentage of all 500 m pixels per 3 km grid cell. The aggregated land cover information was then transferred to the CLM-prescribed PFTs on the basis of WorldClim climate data (Hijmans et al., 2005).

Monthly leaf area index (LAI) values for each PFT were computed based on the 1 km Global Land Surface Satellite (GLASS) Leaf Area Index (LAI) product (1981-2012). GLASS contains of 1 km x 1 km global maps of LAI provided every 8 days. The product is derived from time-series of MODIS (MOD09A1) and AVHRR reflectance data using general regression neural network method (Xiao et al., 2014). To derive a monthly climatology over the assimilation period (2000 – 2006), the 1 km 8-day improved GLASS LAI for each year was used to calculate a mean monthly LAI that was then aggregated to the model resolution. The monthly LAI for each PFT values were then

determined by mapping the 3 km pixels to the 3-km aggregated PFT values within each grid cell. This approach provides the spatially distributed and temporally continuous LAI data within each PFT for the considered time period of 2000-2006. To account for annual variability in LAI, yearly model runs were performed where the LAI information was updated at the start of each year run. It should be noted that CLM3.5 only allow to specify monthly average LAI values for each FTP (Page 7, line 15 in the revised manuscript).

- P. 5, L. 5 (LAI): does this mean that LAI for a given month is the same from one year to another? Given the marked impact of LAI on evapotranspiration, this might introduce marked soil moisture biases.

[R3.10] As mentioned in the previous comment, in tmanuscript, monthly leaf area index (LAI) values for each PFT were computed based on the 1-km Global Land Surface Satellite (GLASS) Leaf Area Index (LAI) product (1981-2012). GLASS contains of 1 km x 1 km global maps of LAI provided every 8 days. The product is derived from time-series of MODIS (MOD09A1) and AVHRR reflectance data using general regression neural network method (Xiao et al., 2014). To derive a monthly climatology over the assimilation period (2000 – 2006), the 1 km 8 day improved GLASS LAI for each year was used to calculate a mean monthly LAI that was then aggregated to the model resolution. The monthly LAI for each PFT values were then determined by mapping the 3 km pixels to the 3-km aggregated PFT values within each grid cell. This approach provides the spatially distributed and temporally continuous LAI data within each PFT for the considered time period of 2000-2006. To account for annual variability in LAI, yearly model runs were performed where the LAI information was updated at the start of each year run. It should be noted that CLM3.5 only allow to specify monthly average LAI values for each FTP (Page 7, line 24 in the revised manuscript).

- P. 5, L. 20 (6 km): it is written in the Abstract and in Section 2.3.2 that the assimilation was made at a spatial resolution of 3 km. Why such a mismatch with the spatial resolution of atmospheric forcing?

[R3.11] In our study, we used the high-resolution reanalysis system COSMO-REA6 from Hans-Ertel Centre for Weather Research (HErZ; Simmer et al., 2016) dataset, which is available at 6km resolution. However, we performed model simulations over the EURO-CORDEX domain at 3km resolution, which is inscribed into the official EUR-11 grid at 0.11° spatial resolution. To match the model resolution, the 6km COSMO-REA6 was interpolated to 3 km resolution.

- P. 7, L. 4: E-OBS was not defined before.

[R3.12] Thanks you for pointing this out. We now defined the E-OBS (Page 8, line 11 in the revised manuscript).

- P. 11, L. 13 (this study demonstrates): I am not convinced, there is no demonstration.

[R3.13] The original statement has been revised for clarity.

- P. 11, L. 32 (soil texture): Absolute CCI-SM values depend on pedotransfer functions and texture of the NOAH model. They are not "observed" and they should not be taken for granted. This is not a good way of doing data assimilation.

[R3.14] We can't completely agree with this comment. According to Dorigo et al., 2017, "the European Space Agency CCI soil moisture product is the first multi-decadal, global satellite-observed soil moisture (SM) dataset as part of its Climate Change Initiative (CCI) program. This product, named ESA CCI SM, combines various single-sensor active and passive microwave soil moisture products into three harmonised products: a merged ACTIVE, a merged PASSIVE, and a COMBINED active + passive microwave product." It is true that the soil moisture values in the passive microwave product is not entirely model-independent, for the combined product (i.e. active + passive microwave product), the systematic differences between ACTIVE and PASSIVE are corrected by matching the CDF of each pixel against long-term LSM-based soil moisture, which is provided by GLDAS-Noah.

Several authors (e.g. Albergel et al., 2013, 2017; Dorigo et al., 2017; McNally et al., 2016; Wagner et al., 2012) have highlighted the quality and stability of the product. For example Albergel et al., 2017 assimilated the CCI soil moisture data into the land surface model over the Euro-Mediterranean region for the time period of 2000 – 2012.

In addition, in this study we use an observation uncertainty during assimilation, as stated already in the manuscript: "In this study, we assumed a spatially uniform observational error for CCI-SM (i.e. 0.02 mm³/mm³) in the CLM-PDAF setup." Therefore, the experimental design follows a usual and adequate way of doing data assimilation.

- P. 22, Table 1: what about other key hydrological scores such as KGE or NSC? Given what can be seen in Fig. 10, I doubt these scores are improved by the assimilation.

[R3.15] See our previous response above and Table R2 and Table R3 to the comment ([R3.5]) on hydrological scores.

Improving soil moisture and runoff simulations at 3 km over Europe using land surface data-assimilation

Bibi S. Naz^{1,2}, Wolfgang Kurtz⁷, Carsten Montzka¹, Wendy Sharples^{2,3}, Klaus Goergen^{1,2}, Jessica Keune⁴, Huilin Gao⁵, Anne Springer⁶, Harrie-Jan Hendricks Franssen^{1,2}, Stefan Kollet^{1,2}

- 5 ¹Research Centre Jülich, Institute of Bio- and Geosciences: Agrosphere (IBG-3), Jülich 52425, Germany
²Centre for High-Performance Scientific Computing in Terrestrial Systems, Geoverbund ABC/J, Jülich 52425, Germany
³Research Centre Jülich, Jülich Supercomputing Centre, Jülich 52425, Germany
⁴Laboratory of Hydrology and Water Management, Ghent University, Ghent 9000, Belgium
⁵Zachry Department of Civil Engineering, Texas A&M University, College Station, TX 77843, USA
10 ⁶Institute of Geodesy and Geoinformation, Bonn University, Nussallee 17, Bonn 53115, Germany
⁷Leibniz Supercomputing Centre, Environmental Computing Group, Boltzmannstr. 1, 85748 Garching, Germany

Correspondence to: Bibi S. Naz (b.naz@fz-juelich.de)

Abstract. Accurate and reliable hydrologic simulations are important for many applications such as water resources management, future water availability projections and predictions of extreme events. However, the accuracy of water balance estimates is limited by the lack of large scale observations, model simulation uncertainties and biases related to errors in model structure and uncertain inputs (e.g. hydrologic parameters and atmospheric forcings). The availability of long-term and global remotely sensed soil moisture offers the opportunity to improve model estimates through data assimilation with complete spatio-temporal coverage. In this study, we assimilated the European Space Agency (ESA) Climate Change Initiative (CCI) derived soil moisture (SM) information to improve the estimation of continental-scale soil moisture and runoff. The assimilation experiment was conducted over a time period 2000-2006 with the Community Land Model, version 3.5 (CLM3.5) integrated with the Parallel Data Assimilation Framework (PDAF) at spatial resolution of 0.0275° (~3 km) over Europe. The model was forced with the high-resolution reanalysis COSMO-REA6 from the Hans-Ertel Centre for Weather Research (HErZ). The performance of assimilation was assessed against open-loop model simulations and cross-validated with independent ESA CCI derived soil moisture (CCI-SM) and gridded runoff observations. Our results showed improved estimates of soil moisture, particularly in the summer and autumn seasons when cross-validated with independent CCI-SM observations. The assimilation experiment results also showed overall improvements in runoff, although some regions were degraded, especially in central Europe. The results demonstrated the potential of assimilating satellite soil moisture observations to produce downscaled and improve high-resolution soil moisture and runoff simulations at the continental scale, which is useful for water resources assessment and monitoring.

15
20
25

1 Introduction

Soil moisture (SM) is a key **variable of the hydrologic cycle playing an important role** in major processes related to infiltration and runoff generation, root water uptake and plant transpiration, and evaporation (Vereecken et al., 2016). Thus, soil moisture strongly influences the partitioning of incoming radiative energy into latent and sensible heat and significantly affects the land surface energy and water budgets. Consequently, accurate estimates of large scale SM are needed for **detection of long-term trends in hydrological states and fluxes, for example in the context of a land surface reanalysis;** hydrologic predictions **such as discharge forecasts for large river basins (Western et al., 2004)** and water resource management and planning (e.g. groundwater recharge, mitigation of droughts) (Andreasen et al., 2013; Dobriyal et al., 2012; Sridhar et al., 2008); identifying regions susceptible to extreme events such as droughts and floods (Seneviratne et al., 2010); lower boundary condition for numerical weather predictions (Drusch, 2007); and irrigation management and agriculture practices (Bolten et al., 2010; Shock et al., 1998). At continental space and inter-annual time scales, SM typically exhibits large variability (Brocca et al., 2010), depending on rainfall distribution, topography, soil physical properties, vegetation characteristics, and human impacts, such as irrigation. Monitoring this variability is a major challenge due to the scarcity of *in situ* SM observations networks. Recent advancements in satellite-based sensors offer great potential to monitor SM over large scales for continental water resources assessment, particularly in areas where ground observation networks are sparse (Mohanty et al., 2013). Conventionally, satellite observations have been used in global water balance studies to provide information on the water cycle components, such as precipitation, evapotranspiration (ET), soil moisture, water storage and runoff (Kiehl and Trenberth, 1997; Running et al., 2004; Trenberth et al., 2007; Vinukollu et al., 2011). However, sparse data coverage in satellite observations limits their ability to provide spatially and temporally consistent time series of water balance estimates.

Another approach to facilitate studies at a regional to global scale is to estimate water budget components using land surface models forced with precipitation and other atmospheric data (such as the Community Land Model (CLM) (Lawrence et al., 2011), the Variable Infiltration Capacity (VIC) model (Liang et al., 1994, 1996), or the Joint UK Land Environment Simulator (JULES) (Best et al., 2011; Clark et al., 2011). Simulated soil moisture distributions from the land surface models provide spatially and temporally continuous information, yet their accuracy is limited by model deficiencies, and uncertainties in both model parameters and atmospheric forcing variables (Chen et al., 2013; Draper et al., 2009). **Therefore these uncertainties need to be characterized in hydrologic predictions, in order to provide useful hydrologic data and information for water resource management. In order to improve model predictions and simultaneously honor observation and model uncertainties, remotely sensed soil moisture has been merged with model prediction using data assimilation (DA) (Chen et al., 2013; De Lannoy and Reichle, 2016; Kumar et al., 2008; Lahoz and De Lannoy, 2014; Lievens et al., 2016; Liu and Gupta, 2007; Moradkhani et al., 2005; Nie et al., 2011). Using DA approaches, previous studies also investigated the impact of uncertainties in both parameters and state variables of a hydrologic model based on joint state-parameter estimation approach (Cammalleri and Ciraolo, 2012; DeChant and Moradkhani, 2012; Gharamti et al., 2015; Liu**

et al., 2016; Pathiraja et al., 2016; Rafieeiniasab et al., 2014; Xie and Zhang, 2010). For example, Han et al. (2014) evaluated the joint state and parameter estimation method at catchment scale for the coupled CLM and Community Microwave Emission Model (CMEM) (De Rosnay et al., 2009) through assimilation of synthetic microwave brightness temperature data. Similarly, Samuel et al. (2014) studied the ensemble based DA with dual state-parameter estimation to evaluate the streamflow forecast and variations in soil moisture. However, many of these studies mainly focused on using data assimilation approaches for improved predictions at the watershed scales. Fewer studies demonstrated the potential of assimilating satellite observations into land surface models to improve soil moisture and runoff estimates at regional and global scales (e.g. Crow and Ryu, 2009; De Lannoy and Reichle, 2016; Lievens et al., 2015; Liu and Mishra, 2017; Lopez et al., 2016; Pan et al., 2008; Rains et al., 2017; Reichle and Koster, 2005; Renzullo et al., 2014). For instance, Rains et al. (2017) assimilated SMOS data into CLM over Australia for drought monitoring purposes. Similarly, Liu and Mishra, (2017) also assimilated satellite SM data at the global scale to evaluate the performance of the community land surface model (CLM4.5) in simulating hydrologic fluxes such as SM, ET and runoff at 0.5° (~50 km) spatial resolution. They found that assimilating satellite SM data into the CLM4.5 model improved the soil moisture simulations, which also led to better representation of other hydro-meteorological variables in the model, such as ET and runoff. At the continental scale, several studies have explored the role of soil moisture assimilation over Europe, in different modeling frameworks (e.g. Albergel et al., 2017; Brocca et al., 2010; De Rosnay et al., 2013; Draper et al., 2009; Ni-Meister et al., 2006). Using NASA's global Catchment Land Model (CLSM), Ni-Meister et al. (2006) improved simulated soil moisture over small Eurasia catchments through assimilation of near surface soil moisture derived from Scanning Multichannel Microwave Radiometer (SMMR). Using Extended Kalman Filter (EKF), Draper et al. (2009) demonstrated the usefulness of assimilating near-surface soil moisture observations from C-band Advanced Microwave Scanning Radiometer (AMSR-E) in the land surface model ISBA (Interactions between Soil, Biosphere and Atmosphere) at 9 km resolution over continental Europe. More recently, Albergel et al. (2017) showed the potential of using the satellite-derived soil moisture data from European Space Agency (ESA) Climate Change Initiative (CCI) over Europe and Mediterranean domain to sequentially assimilate soil moisture and leaf-area index product into the ISBA land surface model at 0.5° (~50 km) resolution. They found significant improvements in the surface soil moisture but little improvements of discharge estimates when compared to the open loop (i.e. no assimilation) simulations.

In these global to regional scale studies, despite these important advancements, the data assimilation systems were employed at fairly coarse spatial resolution (i.e. 0.5° to 0.25°), which is too coarse to provide locally relevant information (Bierkens et al., 2015; Wood et al., 2011). For example, predicting water cycle processes for scientific and applied assessment of the terrestrial water cycle requires a high-resolution modeling framework on the order of 10^0 - 10^1 km horizontal grid spacing. While most of the global remote sensing observations are available at relatively low resolution (i.e. at 50 to 25 km scale), data assimilation systems can be used as an effective downscaling tool by merging the remote sensing information in space and time with high resolution models. In turn, data assimilation frameworks that include higher resolution meteorological, land cover, and soil texture information can be used to constrain coarse resolution remotely sensed soil moisture

observations. However, in both cases, the spatial mismatch between coarse-resolution satellite data and high-resolution hydrologic models constitutes a great challenge. To address this issue, the scale disparity between observations and modeling approaches needs to be taken into account either in the data assimilation algorithm (De Lannoy et al., 2012; Sahoo et al., 2013), or through pre-processing of satellite products to match the model resolution (Merlin et al., 2013; Verhoest et al., 5 2015). Another challenge is the availability of computational resources, because the computational burden increases (non-) linearly with increasing model resolution, the number of ensemble members in the data assimilation system as well as the complexity of simulated processes.

In this work, we assimilated the coarse resolution ESA CCI-SM data over Europe from January 2000 to December 2006 into the 3 km high-resolution CLM model using joint state and parameter estimation approach and evaluate its impacts both on 10 surface soil moisture and other hydrologic variables such as surface and subsurface runoff. A number of soil moisture retrievals from other missions such as the Soil Moisture and Ocean Salinity (SMOS, launched in 2009) (Kerr et al., 2001; Mecklenburg et al., 2016) and SMAP mission (Soil Moisture Active Passive, launched in 2015) (Entekhabi et al., 2010) have been used in assimilation studies (e.g. (Lievens et al., 2015, 2016). These recent high-resolution data products are only available for less than 10 years and cannot be used to apply soil moisture information in a land surface reanalysis for 15 extended time periods. Recently, a number of studies highlighted the quality and stability of ESA-CCI product (e.g. Dorigo et al., 2017; McNally et al., 2016; Wagner et al., 2012) and its potential use in data assimilation studies (Albergel et al., 2013, 2017; Liu et al., 2018). We selected ESA CCI-SM data because of its availability at longer time scales, which also provides a basis for evaluating the feasibility to derive a land surface reanalysis, conditioned to satellite information, for Europe over longer time scales, and allows to assess the potential impact of assimilating longer-term soil moisture 20 observations on hydrologic simulations.

The main goal of this study was to investigate the value of coarse-resolution remotely sensed soil moisture data in improving soil moisture and runoff modeling and to provide higher spatial resolution, downscaled estimates of the surface soil moisture profile and hydrological fluxes with complete spatio-temporal coverage over Europe. In this study, the analysis also focused on the performance of Community Land Model (v3.5) to simulate surface and subsurface runoff as result of assimilation 25 updates restricted to soil moisture for upper soil layers. In order to obtain the assimilated product of near surface soil moisture, we used CLM3.5 coupled to the Parallel Data Assimilation Framework library (PDAF) (Nerger and Hiller, 2013). PDAF is computationally efficient due to its parallelization of data assimilation routines and in-memory exchange of data. Therefore, PDAF is suitable for applications at large spatial scales and high-resolution over longer time periods. The coupled CLM-PDAF setup and the experimental design are described in Sec. 2. The results, including model validation and analysis 30 of simulated soil moisture and runoff are documented in Sec. 3; while the discussion and conclusions are presented in Sec. 4 and Sec. 5, respectively.

2 Methods and Data

2.1 Model Description

In this study, the Community Land Model version CLM3.5 (Oleson et al., 2004) was applied to represent land surface processes such as soil moisture evolution, evaporation from soil and vegetation, transpiration and interception of precipitation by vegetation canopy, throughfall and infiltration, surface and subsurface runoff and snow. Specifically, runoff is parameterized using a simple TOPMODEL-based scheme (SIMTOP; Niu et al., 2005). Soil water is calculated by solving the one-dimensional Richards equation (Zeng and Decker, 2009). An operation groundwater table depth and recharge to groundwater from the soil column is updated dynamically using the algorithm described in Niu et al. (2007). The snow model in CLM explicitly simulates multilayer snow depending on the total snow depth, and includes processes such as snow-melting, surface frost and sublimation, liquid water retention and thawing-freezing processes (Dai et al., 2003; Dickinson et al., 2006; Stöckli et al., 2008) Total runoff is calculated as the sum of the subsurface runoff, surface runoff and runoff generated from lakes, glaciers, and wetlands (Oleson et al., 2004).

CLM3.5 has been widely applied at continental and global scales to understand how land processes and anthropogenic impacts affect climate (e.g. Dickinson et al., 2006). The CLM model parameterizes most of the land surface processes (such as infiltration, evaporation, surface runoff, subsurface drainage, canopy and snow processes) using the water and energy balance equations. CLM3.5 offers significant improvements in estimating the components of the terrestrial water cycle compared to earlier versions (Oleson et al., 2008), including improvements in soil water availability and resistance terms to reduce the soil evaporation which was overestimated in earlier versions (Niu et al., 2005; Oleson et al., 2008; Yang and Niu, 2003). Compared to CLM3.0, Oleson et al., (2008) showed that CLM3.5 exhibits more realistic partitioning of ET into its components (i.e. transpiration, ground evaporation, and canopy evaporation), which resulted in overall improvements in the representation of the annual cycle of total water storage. Previous studies also showed that CLM 3.5 produces too high soil moisture with too low variability compared to root zone soil moisture modelled by later CLM versions (4.0 and 4.5) (e.g. Lawrence et al., 2011 and Niu et al., 2011). In order to reduce these biases, Li and Ma, (2015) introduced a factor to describe soil porosity and increase recharge water from the soil column to the aquifer in the newer CLM leading to improved estimates of soil moisture and biogeochemical processes. However, Lawrence et al. (2011) showed that the differences between CLM3.5 and new versions of CLM with respect to soil moisture variability remained small when compared to observations.

In addition, CLM3.5 was designed for coupling with climate models and is also part of the fully coupled Terrestrial Systems Model Platform (TerrSysMP; Shrestha et al., 2014) that simulates the full terrestrial hydrologic cycle including feedbacks between atmosphere, land-surface and subsurface compartments of the water cycle. Moreover, the CLM model can efficiently run for large model domains and at high spatial resolution. Since, we performed our simulations at high spatial resolution and at continental scale, we selected the TerrSysMP-PDAF modelling framework (Kurtz et al., 2016) which is design for high performance computing infrastructures and can efficiently cope with the high computational burden of

ensemble-based data assimilation. Kurtz et al. (2016) showed the efficient use of parallel computational resources by TerrSysMP-PDAF, which is needed to simulate predicted states and fluxes over large spatial domains and long simulations. In this study, we used the CLM-PDAF setup, in which PDAF is coupled with the stand-alone CLM3.5 for soil moisture assimilation. Readers are referred to Kurtz et al. (2016) for technical descriptions of coupling and model performance.

5 2.2 Data assimilation framework

The Parallel Data Assimilation Framework (PDAF) (Nerger and Hiller, 2013) was used to assimilate satellite soil moisture into CLM3.5. PDAF provides data assimilation methods such as the EnKF (Burgers et al., 1998; Evensen, 2003) and the local ensemble transform Kalman filter (LETKF) (Hunt et al., 2007). In this study, the EnKF-algorithm was used for data assimilation, which is a relatively efficient and robust technique for assimilating satellite data into land surface models (e.g. Brocca et al., 2012; Crow et al., 2017; Draper et al., 2011; Matgen et al., 2012; Mohanty et al., 2013; Pauwels et al., 2001, 2002). It uses ensembles of model simulations to approximate the model state and parameter error covariance matrix in order to optimally merge model predictions with observations.

In this study, the joint state parameter update of soil moisture and soil texture in CLM with the EnKF was used, where the

$$\theta_t^i = f_t(\theta_{t-1}^i, q_{t-1}^i, p_{t-1}^i) \quad (1)$$

where the state variable soil moisture (θ_t^i) is a vector containing soil moisture values within a soil layer for each grid cell and can be described with a non linear model (CLM in our case) operator $f_t(\cdot)$ at time step t for realization i using the forcing data q and model parameter p .

The state-parameter vector x^i for realization i was calculated using the perturbed soil texture (% sand and % clay) and perturbed precipitation as follows:

$$x^i = \begin{pmatrix} \theta^i \\ \%Sand^i \\ \%Clay^i \end{pmatrix} \quad (2)$$

The EnKF then calculates the ensemble of updated states-parameter vector x_t^a at daily timestep t of the model estimated state-parameter variable x_t for each ensemble member i , as:

$$x_t^a = x_t^i + \mathbf{K}_t[y + \epsilon_i - \mathbf{H}_t x_t^i] \quad (3)$$

where y_t is the perturbed observation vector and ϵ is a perturbation vector of the measurement error with values drawn from a normal distribution with a mean of zero and a standard deviation corresponding to the assigned measurement error of $0.02 \text{ m}^3 \text{ m}^{-3}$ for soil moisture and \mathbf{H} is the measurement operator. \mathbf{K} is the Kalman gain matrix defined as:

$$\mathbf{K}_t = \mathbf{P}_t \mathbf{H}_t^T (\mathbf{R}_t + \mathbf{H}_t \mathbf{P}_t \mathbf{H}_t^T)^{-1} \quad (4)$$

where \mathbf{H}_t^T is the transpose matrix of the measurement operator at time t , \mathbf{R}_t is the measurement error matrix, which is defined a priori based on the expected measurement error of the ESA CCI soil moisture product. \mathbf{P}_t is the state error covariance matrix of the model predictions calculated as:

$$P_t = \frac{\sum_{i=1}^N (x_i - \bar{x})(x_i - \bar{x})^T}{N-1} \quad (5)$$

where \bar{x} is the vector which contains the ensemble average soil moisture contents for the different grid cells and N is the number of ensemble members.

5 In the DA scheme, the updated states (soil moisture) were kept in reasonable physical ranges (between residual soil moisture and porosity) to yield physically meaningful estimates of soil moisture water content, energy fluxes and water budget. For the soil moisture update, the values of the updated soil moisture were restricted to values between zero and saturated soil water content. For the soil texture update, a value of 1% was assigned to sand and clay percentages in case the updated values are less than zero. In case the updated sum of the sand and clay are greater than 100%, the values were constrained to
 10 the normalized sum of updated soil and clay percentages. Other soil parameters such as the soil hydraulic and thermal parameters were adjusted after soil texture update using pedo-transfer functions.

2.3 Data

2.3.1 Land surface data and atmospheric forcing

The land surface static input data used in this study consisted of topography, soil properties, plant functional types, and
 15 physiological vegetation parameters (Fig. 1). Digital elevation model (DEM) data were acquired from the 1 km x 1 km Global Multi-resolution Terrain Elevation Data 2010 (GMTED2010) (Danielson and Gesch, 2011) as shown in Fig. 1a. In CLM, each grid cell consists of five landunits (i.e. vegetation, wetland, lakes, glaciers and urban) covering a certain percentage of the total grid cell area. The vegetation landunit is further subdivided into Plant Functional Types (PFTs) defined by fractional areas with respect to the entire grid cell (Bonan et al., 2002). In the current study, the land cover
 20 information for each PFT was based on the Moderate Resolution Imaging Spectroradiometer (MODIS) MCD12Q1 (version 5) land cover product (Friedl et al., 2002), which contains a classification of the dominant land cover (Figure 1b). The dominant land cover information from MODIS was first aggregated to the model resolution, calculating the percentage of all 500 m pixels per 3 km grid cell. The aggregated land cover information was then transferred to the CLM-prescribed PFTs on the basis of WorldClim climate data (Hijmans et al., 2005).

25 Monthly leaf area index (LAI) values for each PFT were computed based on the 1 km Global Land Surface Satellite (GLASS) Leaf Area Index (LAI) product (1981-2012). GLASS contains of 1 km x 1 km global maps of LAI provided every 8 days. The product was derived from time-series of MODIS (MOD09A1) and AVHRR reflectance data using general regression neural network method (Xiao et al., 2014). To derive a monthly climatology over the assimilation period (2000 – 2006), the 1 km 8-day improved GLASS LAI for each year was used to calculate a mean monthly LAI that was then
 30 aggregated to the model resolution. The monthly LAI values for each PFT were then determined by mapping the 3 km pixels to the 3 km aggregated PFT values within each grid cell. This approach provides spatially distributed and temporally continuous LAI data within each PFT for the considered time period of 2000-2006. To account for annual variability in LAI,

yearly model runs were performed where the LAI information was updated at the start of each year run. It should be noted that CLM3.5 only allows to specify monthly average LAI values for each PFT.

Additional properties of each of the sub-grid land fractions, such as the stem area index, and the monthly heights of each PFT, were calculated based on the global CLM3.5 surface data set (Oleson et al., 2008). To provide soil texture data in the model (Fig. 1c and 1d), sand and clay percentages were prescribed based on pedotransfer functions (Schaap and Leij (1998) for 19 soil classes derived from the FAO/UNESCO Digital Soil Map of the World (Batjes, 1997).

[Figure 1]

For the time period of 2000-2006, the high-resolution atmospheric reanalysis COSMO-REA6 dataset (Bollmeyer et al., 2015) from the Hans-Ertel Centre for Weather Research (HERZ; Simmer et al., 2016) was used as the atmospheric forcing for CLM3.5. We preferred to use this data over other datasets, because of its high spatial resolution in comparison to other commonly used forcing datasets such as the European gridded data set (E-OBS) (Haylock et al., 2008) and Interim ECMWF Reanalysis (ERA-Interim; Dee et al., 2011) at 25 and 80 km resolution, respectively. We used data from 2000 – 2006 which were available at the beginning of this study. The COSMO-REA6 is only now publicly available for a longer time period of 1995 – 2015. The essential meteorological variables applied in this study, such as barometric pressure, precipitation, wind speed, specific humidity, near surface air temperature, downward shortwave radiation and downward longwave radiation were downloaded from the German Weather Service (DWD; <ftp://ftp-cdc.dwd.de/pub/REA/>). The COSMO-REA6 reanalysis is based on the COSMO model and available at 0.055° (~6 km) covering the European CORDEX domain (Gutowski Jr et al., 2016). COSMO-REA6 was produced through the assimilation of observational meteorological data using the existing nudging scheme in COSMO with boundary conditions from ERA-Interim data. (Bollmeyer et al., 2015) compared the COSMO-REA6 precipitation data with the precipitation data from Global Precipitation Climatology Centre and showed that COSMO-REA6 performed well compared to observations with small underestimations of precipitation in mid and southern Europe and overestimation of precipitation in Scandinavia, Russia and along the Norwegian coast. Additionally, (Springer et al., 2017) assessed the closure of the water budget in the 6 km COSMO-REA6 and compared to global reanalyses (ERA-Interim, Modern-Era Retrospective Analysis for Research and Applications, Version 2 (MERRA-2) for major European river basins. Springer et al. (2017) found that the COSMO-REA6 closes the water budget within the error estimates whereas the global reanalyses underestimate the precipitation minus evapotranspiration surplus in most river basins. A more comprehensive assessment of the precipitation of the HERZ reanalysis can be found in Wahl et al. (2017) albeit based on the 2 km data product, only available for central Europe.

2.3.2 ESA CCI microwave soil moisture

The European Space Agency (ESA) Climate Change Initiative (CCI) program provides daily soil moisture (CCI-SM) at 0.25° spatial resolution for approximately the top few millimeters to centimeters of soil from 1978 to 2016. The daily CCI-SM product (v03.2) is produced at 0.25° spatial resolution from the microwave retrieved surface soil moisture data and is merged from multiple sensors (Dorigo et al., 2017; Liu et al., 2011, 2012; Wagner et al., 2012; <http://www.esa-oilmoisture->

cci.org). For the study period of 2000 to 2006, the CCI-SM data are based on passive microwave observations (i.e. DMSP SSM/I, TRMM TMI, Aqua AMSR-E and Coriolis WindSat; Owe et al., 2008), whereas the active data products are based on observations from the C-band scatterometers on board of the ERS-1 and ERS-2 (Bartalis et al., 2007; Wagner et al., 2013) satellites. In this product, the absolute soil moisture was re-scaled against the 0.25° land surface modeling soil moisture (GLDAS-NOAH, Rodell et al., 2004) using cumulative density function matching. In this study, we used the merged product of active and passive soil moisture data which showed better accuracy than either of the passive or active data alone (Liu et al., 2011). To match the spatial resolution of our CLM3.5 setup, the original SM values were re-sampled and re-gridded to 0.0275° using the first-order conservative interpolation method (Jones, 1999) which is based on the ratio of source cell area overlapped with the corresponding destination cell area. The conservative regridding scheme preserves the physical flux fields between the source and destination grid.

The CCI-SM dataset showed large data gaps over the European continent during the four seasons (December-February (DJF; Winter), March-May (MAM; Spring), June-August (JJA; Summer), and September-November (SON; Autumn); Fig. 2b). According to Fig. 2b, the temporal coverage (i.e. the ratio between the number of days and the total number of days in a season) was generally low during the winter and spring seasons, ranging from less than 30% (Scandinavian regions) to about 60% in southern Europe. SM observations showed the highest temporal coverage during the summer and autumn. Due to the sparseness of the SM data at daily temporal resolution, 100 grid cells were randomly selected covering the complete model domain (Fig. 2a). The satellite CCI-SM daily soil moisture data at these locations were assimilated. However, the number of observations for each day ranged between 2 and 75 depending on the availability of the daily CCI-SM data. As shown in Fig. 2c, there is a higher level of noise in the CCI-SM data for the first two years (2000 and 2001) probably related to the absence of data from other sensors like AMSRE-E and Windsat in those first two years. Moreover, availability of selected observations was lower during winter and spring, while summer soil moisture was well covered during years 2003 to 2006. This seasonal difference in data availability is related to the occurrence of soil freezing events and snow cover.

Furthermore, in land surface modelling systematic differences between the model climatology and the observation data climatology are commonly corrected before assimilation, to ensure that data assimilation is applied under conditions of no systematic bias. However, different procedures to correct for biases were used, such as the estimation of a single constant bias value, seasonal dependent bias or CDF-matching (e.g. (Drusch et al., 2005; Reichle and Koster, 2004). The procedure has some important limitations: (i) the polynomial fit during CDF matching cannot provide perfect agreement so that the introduced noise changes the random difference between both data sets, (ii) the bias is only partially corrected or over-corrected; (iii) the bias in the DA-procedure is not assigned to the model or measurement data, but after the assimilation it is implicitly assumed that the systematic bias is related to the bias in the measurements (model states are not corrected for a systematic bias). A further argument for not following this approach was that spatial patterns could be altered and thereby some of the independent information provided by the satellite may be removed. We, therefore, did not perform any bias correction of the ESA CCI-SM data by rescaling of the observations to model climatology to retain as much of the independent satellite information as possible.

2.3.3 Observational gridded monthly runoff

In order to evaluate the potential of improving runoff estimates by assimilating soil moisture observations, the non-routed observational gridded monthly runoff data from Gudmundsson and Seneviratne (2016) (E-RUN version 1.1) were used as independent dataset. **The E-RUN product** provides monthly pan-European runoff estimates from 1950 to 2015 at 0.5° (~50 km) resolution. The monthly runoff rates were generated using a collection of streamflow observations from small catchments combined with gridded precipitation and temperature data using a machine learning approach (Gudmundsson and Seneviratne, 2016). Monthly runoff was estimated using a regression model, which was trained with a subset of observed runoff rates and E-OBS precipitation and temperature. The fitted model was subsequently applied to all grid cells of the E-OBS data to derive pan-European estimates of monthly runoff (Gudmundsson and Seneviratne, 2016). Using this cross-validation method, Gudmundsson and Seneviratne (2016) reported higher accuracy in central and western Europe, while accuracy was lower in other regions due to low density of available stations. **For model validation, we preferred to use this dataset over the discharge observations at different gauge stations, because the non-routed gridded runoff product has distinct advantage to evaluate the impact of soil moisture assimilation on runoff at every grid cell within a spatial domain.** Using gridded runoff is also useful to evaluate model structure errors in representation of runoff generation in the model. In addition, in the CLM 3.5, the river routing module is implemented at 0.5° where the discretization of river routing elements is based on a grid method in which the grid for river routing is independent of the grid for runoff simulation. Therefore, a coarse spatial resolution river network can lead to unrealistic flow accumulation. Therefore, an adequate validation of the results is not possible. However, our comparison of aggregated runoff using E-RUN data for few watersheds with monthly discharge observed at station and obtained from Global Runoff Data Center (GRDC; Global Runoff Data Center, 2011) in Europe showed a good agreement with observed discharge (Fig. S1). In the current study, the half degree monthly runoff rates were resampled and re-gridded to 0.0275° using the first-order conservative interpolation method for comparison with the CLM3.5 simulated total runoff.

2.4 CLM-PDAF experimental design and analyses

The **joint state and parameter** assimilation experiments were performed for the time period of January 2000 to December 2006. The model spinup was performed by simulating the time period of 2000-2006 five times in order to obtain equilibrium initial state variables. **The initial state variables from the spin-up were then used as initial condition for the ensemble runs as described below.** In this study, we implemented CLM3.5 for the EURO-CORDEX domain with a spatial resolution of 0.0275° (3 km), inscribed into the official EUR-11 grid at 0.11° spatial resolution. The model was run with 1h time step and the time window for soil moisture updates was set to 1 day. In this study, we assumed a spatially uniform observational error of $0.02 \text{ mm}^3/\text{mm}^3$ for CCI-SM in the CLM-PDAF setup.

The outputs of a land surface model are sensitive to both atmospheric forcings and soil characteristics. To account for uncertainties in atmospheric forcing and soil texture, precipitation and soil texture (%sand and %clay) were perturbed in this study (Fig. S2 and Fig. S3). Log-normally distributed, spatially homogeneous and temporally uncorrelated multiplicative perturbations were added to precipitation. The mean and standard deviation of the applied perturbation factors for precipitation were equal to 0.1 and 0.15, respectively. Sand and clay content were perturbed with random noise drawn from spatially uniform distribution ($\pm 10\%$). In order to avoid unphysical values of the soil parameters, the sum of the sand and clay content were constrained to have a value not larger than 100%. The initial ensemble size was set to 20 for the precipitation and soil texture in the simulation/assimilation experiment to update the volumetric soil water content (SWC) of the top soil layer ($\sim 2\text{cm}$). Previous studies (e.g. De Lannoy et al., 2012; Kumar et al., 2008; Pan and Wood, 2010; Yin et al., 2015) showed that the performance of EnKF relies on the ensemble size. For example, Yin et al. (2015) indicated that when the ensemble size is close to 12, it may lead to efficient DA updating process, while Pan and Wood, (2010) suggested 20 ensemble members. Our initial investigation showed slightly improved correlation (R^2) between simulated and CCI-SM soil moisture for 20 ensemble members compared to 12 ensemble members (as shown in Fig. S4). In addition to ensemble size, systematic biases can also be attributed to erroneous model parameter values, which is one of the main sources of error and uncertainty in land surface model predictions. To account for biases in soil parameters, the joint state and parameter assimilation framework was used to estimate the model states and model parameters jointly by updating the soil water content and soil texture properties such as %sand and %clay. Although this approach has also significant limitations, related to the fact that we do not know well enough the relative importance of systematic model errors and systematic errors in the measurement data, an advantage is that we correct for possible systematic model bias by modifying soil texture parameters.

Our main experiment consisted of two CLM-PDAF simulations: (a) an open-loop simulation (no data assimilation, CLM-OL) and (b) an ensemble simulation with data assimilation of ESA CCI-SM data (CLM-DA) at 100 random locations (Fig. 2a). We evaluated the results of both simulations by a cross-validation with ESA CCI-SM data that were not assimilated. The soil moisture validation of the CLM-DA and CLM-OL simulations used all the available CCI-SM data in the time period of 2000 to 2006. This approach not only allowed us to independently cross-validate the SM values over grid cells that were not used in the data assimilation, but also to produce updated soil moisture contents at other locations (at the European scale), based on spatial correlations, and to investigate whether soil moisture characterization between measurement locations could also be improved, and its impacts on runoff characterization. For SM comparison, the average of simulated SWC in the top two layers (i.e. at 0.007 and 0.03 m depth) was used. Additionally, the monthly runoff dataset E-RUN as described in Sec. 2.3 was used to validate runoff as simulated by CLM-OL and CLM-DA.

To assess the skill of the assimilation experiments, statistical evaluation including mean absolute error (MAE), the root mean square error (RMSE), percentage bias (PBIAS) and correlation coefficient (R) were used as validation measures. For runoff validation, Nash–Sutcliffe coefficient of efficiency (NSE) and Kling–Gupta efficiency (KGE) indices were also used which are typically used to evaluate model performance for runoff and river flow. These measures are expressed as follows:

$$MAE = \frac{1}{n} \sum_{i=1}^n (|Y_i - Y_{obs,i}|) \quad (6)$$

$$RMSE = \sqrt{\frac{1}{n} \sum_{i=1}^n (Y_i - Y_{obs,i})^2} \quad (7)$$

$$PBIAS = 100 \times (\sum_{i=1}^n (Y_i - Y_{obs,i}) / \sum_{i=1}^n (Y_{obs,i})) \quad (8)$$

$$R = \frac{(\sum_{i=1}^n (Y_{obs,i} - \bar{Y}_{obs})(Y_i - \bar{Y}))}{(\sum_{i=1}^n (Y_{obs,i} - \bar{Y}_{obs}))(\sum_{i=1}^n (Y_i - \bar{Y}))} \quad (9)$$

$$NSE = 1 - \frac{\sum_{i=1}^n (Y_{obs,i} - Y_i)^2}{\sum_{i=1}^n (Y_{obs,i} - \bar{Y}_{obs})^2} \quad (10)$$

$$KGE = 1 - \sqrt{(cc - 1)^2 + \left(\frac{\sigma_{sim}}{\sigma_{obs}} - 1\right)^2 + \left(\frac{\mu_{sim}}{\mu_{obs}} - 1\right)^2} \quad (11)$$

where cc is Pearson correlation coefficient calculated as:

$$cc = \frac{\frac{1}{n} \sum_{i=1}^n (Y_{obs,i} \times Y_i) - \mu_{sim} \mu_{obs}}{\sigma_{sim} \times \sigma_{obs}} \quad (12)$$

where n is the total number of time steps; Y_i and $Y_{obs,i}$ represent the simulated ensemble mean and observation values at time step i , respectively. μ_{sim} and μ_{obs} represent mean values, while σ_{sim} and σ_{obs} represent standard deviation for the simulated and observed data for the whole modelled time period. For NSE and KGE in Eq. (10) and Eq. (11), a value equal to one represents perfect agreement between simulated and observed runoff, while a value less than 0 indicate that the observed mean is a better predictor than the model.

In addition to these measures, a normalized error reduction index (NER) was also used to evaluate the improvement of the data assimilation approach. NER is calculated as:

$$NER_{\%} = 100 \times \left(1 - \frac{E_{DA}}{E_{OL}}\right) \quad (13)$$

where E_{DA} and E_{OL} represent the data assimilation and open loop model runs. E in Eq. (13) represents the statistical error index for both RMSE and MAE in this study. NER values range between negative infinity and 100%. Positive NER values indicate improvement as result of data assimilation relative to open loop, while $NER < 0$ indicates a degradation in assimilation results.

15 3 Results

In this section, the impact of assimilating the ESA CCI-SM data at selected locations into CLM3.5 using the joint state-parameter estimation on the terrestrial hydrologic cycle was analyzed focusing on soil moisture and runoff. The results were presented for the complete EURO-CORDEX domain and for 8 pre-defined analysis regions from the ‘‘Prediction of Regional

scenarios and Uncertainties for Defining European Climate change risks and Effects” (PRUDENCE) project as shown in Fig. 1a. We referred to these regions as the "PRUDENCE" regions.

3.1 Impacts of assimilation on soil moisture

3.1.1 Regional and seasonal mean comparison

5 Figure 3 showed a comparison of the seasonal mean volumetric SWC (mm^3/mm^3) in the upper soil layer from the CLM3.5 experiments (CLM-OL, CLM-DA) with the satellite seasonal mean CCI-SM data. The CLM-OL simulation exhibited slightly higher SWC in all seasons over most part of Europe (Fig. 3b) compared to the CLM-DA simulations (Fig. 3c). The difference between CLM-OL and CCI-SM were larger than the difference between CLM-DA and CCI-SM, which indicates that assimilation of CCI-SM minimizes the overestimation of SWC in CLM-OL. Overall, the mean difference between measured and simulated SWC was reduced from $0.11 \text{ cm}^3/\text{cm}^3$ (CLM-OL) to $0.06 \text{ mm}^3/\text{mm}^3$ (CLM-DA) over most parts of Europe (Table 1). This illustrated the efficiency of CCI-SM assimilation to improve simulated SWC by CLM. Seasonally, the upper soil layer SWC difference between CLM-OL and CCI-SM was larger for spring season than for other seasons, and this overestimation was reduced in CLM-DA (i.e. from $0.11 \text{ mm}^3/\text{mm}^3$ to $0.08 \text{ mm}^3/\text{mm}^3$; Table 1). CCI-SM assimilation also improved SWC characterization in other seasons, with the differences between CCI-SM and CLM-OL for winter, summer and autumn seasons were around $0.09 \text{ mm}^3/\text{mm}^3$ and differences between CCI-SM and CLM-DA in these seasons were reduced to the magnitude lower than $0.05 \text{ mm}^3/\text{mm}^3$.

[Figure 3]

[Table 1]

Figure 4 showed the comparison of 2000-2006 temporally averaged SM estimated by CLM-OL and CLM-DA with the CCI-SM dataset over PRUDENCE regions. Generally, CLM-OL overestimated the SWC values for all sub-regions and in all seasons. However, using data assimilation, this overestimation was reduced consistently in all sub-regions, as can be seen from the CLM-DA results. Noticeably, assimilation also helped to reduce the spatial variability, as indicated by the narrow spread of CLM-DA estimated SWC quartiles compared to CLM-OL in Fig. 4. Validating the simulations with CCI-SM data, the improvements of the CLM-DA varied within PRUDENCE regions and seasons. Improvements were more prominent for British Island, France, and Central Europe (for all seasons), while for other regions SWC was slightly overestimated in spring (Fig. 4b) and underestimated in summer and autumn (Fig. 4c and Fig. 4d). The underestimation of SWC was particularly pronounced over the Iberian Peninsula and Scandinavia regions in the summer (Fig. 4c).

[Figure 4]

The goodness of fits, including PBIAS, RMSE MAE, and correlation coefficient (R), between simulated SWC according CLM-OL or CLM-DA and CCI-SM (for the surface layer) are provided in Table 2. These statistical measures were calculated over PRUDENCE region and for each season on the basis of cross-validation with CCI-SM data that were not used in the data assimilation in order to independently evaluate the impact of data assimilation on improving soil moisture

characterization. Note, that for calculating these statistics, model data were only used for the days when satellite data were available. CLM-OL showed higher PBIAS, RMSE and MAE values and lower R values than CLM-DA with CCI-SM assimilation over EU and all PRUDENCE regions (Table 2). However, the CLM-DA simulations compared well with the CCI-SM data based on the decreased of PBIAS, RMSE and/or MAE values combined with a slightly improved R values over these regions.

[Table 2]

In order to validate the skill of CLM-DA relative to CLM-OL, the NER index was applied to show the improvement with CCI-SM data assimilation in terms of RMSE and MAE using daily values of surface layer SWC for each PRUDENCE region and each season, as shown in Fig. 5. As described in Sec. 2.4, the positive NER signals indicate improvements while the negative NER signal presents degradations in the assimilation performance. The NER of RMSE (Fig. 5a) and MEA (Fig. 5b) were mostly positive over most regions indicating improvements in surface SWC estimates through assimilation of CCI-SM data. Negative NER-values (for both RMSE and MAE) were found over Scandinavia, reflecting a negative impact of CCI-SM data assimilation on SWC characterization. This might be because of uncertainties related to assimilated CCI-SM over this region due to limited amount of data because of longer winter with frozen or snow cover conditions or larger measurement errors as indicated by (Dorigo et al., 2017). CLM-DA showed higher positive NER-values in the summer and autumn seasons, and lower NER-values in the winter season, related to comparatively small SWC improvements (Fig. 5a and Fig. 5b).

[Figure 5]

3.1.2 Daily validation

The long-term (January 2000 to December 2006) daily SM averaged over PRUDENCE regions in Europe, as simulated by CLM-OL and CLM-DA, and observed by CCI-SM are shown in Fig. 6. The assimilated CCI-SM data improved the simulations of surface soil moisture in CLM-DA. The daily soil moisture patterns simulated by CLM-DA compared well with the CCI-SM observations, with peaks and troughs generally coinciding for all regions and over the European domain except for the years 2000 and 2001. The CCI-SM observations showed increased variability and drier soil moisture values for the years 2000 and 2001 compared to the full period. This can be explained by the strong contribution of the X-band passive microwave data of SSM/I and TRMM to the final CCI-SM product. Wang (1987) showed that X-band data have a shallow soil penetration depth of a few millimeters and are sensitive to vegetation cover. After implementing the C-band radiometer data of AMSR-E in 2002 and Windsat in 2003 into CCI-SM, noise level and bias were reduced (Dorigo et al., 2017). Regionally, the daily soil moisture values estimated by the CLM-DA showed a slightly better agreement with the CCI-SM data for Central Europe regions (i.e. Iberian Peninsula, France and Mid-Europe) than Scandinavia, the Alpine, Mediterranean and Eastern Europe regions where the winter season bias was more pronounced. The overall small improvements in surface soil moisture as result of data assimilation in these regions might be due to the limited amount of CCI-SM data in the winter season (Fig. 2b), dense vegetation, frozen soil (e.g. in the Scandinavian regions) and/or CLM3.5

model errors related to simulating soil moisture in colder regions (Oleson et al., 2008; Zeng and Decker, 2009). Additionally, the magnitudes of the bias and variance of the CCI-SM observational error could be important. As indicated by Dorigo et al. (2017), the CCI-SM error variance is low where the satellite track density increases and the error variance is high in areas with more data gaps. Note that the setup of CLM-DA in this study assumed a spatially uniform observational error for CCI-SM.

[Figure 6]

3.2 Impact of soil moisture assimilation on runoff

The non-routed gridded runoff observation data from E-RUN product were used to evaluate simulated surface and subsurface runoff estimates. In order to compare with E-RUN runoff data, the total runoff was calculated as the sum of the surface and subsurface runoff for each grid cell. Figure 7 showed the runoff estimates of the two experiments, i.e. CLM-OL and CLM-DA, compared to the E-RUN data. CLM-OL simulated higher magnitudes of runoff (on average 1.16 mm/day) over most parts of Europe compared to CLM-DA (on average 0.76 mm/day) in all seasons. Compared to CLM-OL (Fig. 7b), regional runoff patterns simulated by CLM-DA (Fig. 7c) compared better with runoff observations (Fig 7a). The increasing difference in runoff between E-RUN and CLM-OL simulations was more pronounced in spring and summer seasons (Fig. 7d). CLM-DA reduced this bias over most areas with respect to the E-RUN runoff data (Fig. 7e), but underestimated runoff in winter and spring particularly in central Europe. Overall, the difference in runoff between CLM-OL and E-RUN was, on average, 0.44 mm/day over Europe, which reduced to 0.03 mm/day (Table 3). At the seasonal scale, however, the difference in winter runoff between CLM-DA and E-RUN was -0.63 mm/day and higher than the differences between CLM-OL and E-RUN (on average -0.15 mm/day). Compared to the open loop, the deviation in other seasons runoff in CLM-DA was reduced with respect to E-RUN over most part of Europe with the exception of Scandinavia and the Alpine region where negative differences became larger in all seasons (Table 3).

[Figure 7]

[Table 3]

The temporally averaged runoff for all grid cells over all PRUDENCE regions for both CLM-OL and CLM-DA experiments and comparison with E-RUN observation data is presented in the boxplots in Fig. 8. The box plots reflect the distribution of runoff in which quartile and median are marked by solid lines. In comparison with the E-RUN data in the winter season, the CLM-DA simulations underestimated runoff over most regions, while open loop simulations showed better agreement with E-RUN runoff over most of the grid cells (Fig. 8a). However, the overestimation of runoff in CLM-OL was more obvious in the spring season over all regions (Fig. 8b), while assimilating CCI-SM data minimized this overestimation but introduced a dry bias as suggested by lower values for CLM-DA runoff with respect to CLM-OL and E-RUN observations. This underestimation of runoff as a result of soil moisture assimilation was more pronounced over British Island in all seasons and over Scandinavia in summer and autumn seasons (Fig 8c and 8d).

[Figure 8]

The time series of monthly runoff, as illustrated in Fig. 9, showed that CLM-OL compared well with runoff observations over British Island, Iberian Peninsula, France and the Mid-Europe regions, but overestimated the magnitude of runoff in the Mediterranean. Scandinavia, Alpine and Eastern Europe regions. When compared to open loop, CLM-DA performed better than CLM-OL (compared to E-RUN) in Mid-Europe, Scandinavia, Alpine and Eastern Europe in capturing peaks and low runoff, while in other regions such as the British Island, Iberian Peninsula, France and the Mediterranean, peak runoff in winter was underestimated whereas low runoff in summer was in correspondence with observed monthly runoff data. The uncertain performance of soil moisture assimilation on peak runoff simulations mainly lies in relatively weak dependence of runoff generation on antecedent soil moisture because during high flow periods, the soil moisture is nearly saturated and the runoff is largely controlled by precipitation. These results were consistent with those of previous research; the studies of Albergel et al. (2017) and Liu et al. (2018) showed, for example, that assimilate ESA CCI satellite-derived soil moisture data into the land surface models improved the surface soil moisture but found little improvements in discharge compared to the open loop simulations.

[Figure 9]

In terms of statistical measures, the runoff simulation based on CLM-OL showed higher PBIAS than CLM-DA over EU and most PRUDENCE regions, except British Island, Scandinavia and Alpine regions, where higher negative percentage biases were observed for CLM-DA with the magnitude of -60, -54 and -58% bias in runoff, respectively (Table 4). Additionally, the NSE and KGE values over these regions showed low positive to negative values for the CLM-DA scenario. This indicated poor performance of the CLM model in simulating runoff in spite of soil moisture assimilation. To better illustrate the impact of assimilating soil moisture on model estimates of runoff, the NER index of both RMSE and MAE showed positive values for most regions, indicating improvements in runoff (Fig. 10). However, negative signals in NER were observed in winter for all regions except in East Europe. Negative NER values were mainly located over British Island, Scandinavia and Alpine regions in all seasons. The negative impact of ESA CCI SM assimilation on runoff simulation over Scandinavia and Alpine regions is probably related to their large proportions of the dense forest and complex topography. Both dense forest coverage and complex topography reduce the data quality of remotely sensed SM retrievals, thus impeding its performance in DA.

[Table 4]

[Figure 10]

4 Discussion

This study demonstrated that the assimilation of coarse-scale satellite CCI soil moisture data is beneficial and improves the high-resolution CLM model simulations of soil moisture and runoff over a large spatial domain. This study also highlighted the added value of merging coarse resolution satellite observations through data assimilation with a land surface model to generate higher spatial resolution, downscaled estimates of the surface soil moisture profile with complete spatio-temporal

coverage and with a higher accuracy than that of the open loop model estimates. To the best of our knowledge, this is the first study to provide a long term downscaled daily soil moisture product at 3 km resolution over Europe. The soil moisture estimates with improved spatial resolution from the assimilation offer a new tool for monitoring soil water content with distinct benefits over the original CCI-SM data.

5 An important challenge in the assimilation was the difference in spatial resolution between CCI-SM data and model states. In this study, the coarser resolution CCI-SM data was rescaled to the model resolution (3 km). To examine whether the rescaling of the ESA CCI SM data to model resolution may introduce any bias in the data, we compared the original 0.25° against 0.0275° ESA CCI soil moisture. Only small differences between the two resolutions were visible particular for the time period of 2003 – 2006 (Fig. S5). We found some differences in the first two years (2000 and 2001) and in the regions
10 where the temporal coverage of the ESA CCI data is less than 30%. However, for the time period and regions with a good coverage of ESA CCI soil moisture data, the differences in the resolution were not significant. A further possibility is the multiscale assimilation of the CCI-SM data, which would allow to update various model grid cells covered by a satellite observation (Montzka et al., 2012) In multiscale assimilation, the average soil moisture content for the group of grid cells covered by the satellite measurement is compared with the satellite-based soil moisture content which may result in slightly
15 improved CLM simulation results, but was beyond the scope of this study. In addition to discrepancies at the spatial scale, uncertainties in soil moisture estimations may result from data gaps in satellite soil moisture retrievals, which are limited in regions of pronounced topography, standing water, areas of dense vegetation and snow covered areas and frozen soil. Additionally, CCI-SM is a merged product from a variety of sensors leading to inconsistencies due to differences in viewing angle, sensor characteristics and soil moisture retrieval algorithms (Dorigo et al., 2017). In future, more observations are
20 needed to independently validate model and assimilation experiments. In this work, the CCI-SM dataset was also used for verification over grid cells that were not used in the data assimilation. However, it would be preferable to validate with another independent dataset at the continental scale. The problem is that at the model grid scale only very limited independent (*in situ*) soil moisture data are available.

Another challenge to implement the integrated hydrologic and data assimilation framework at 3 km resolution was the high
25 computational cost associated with the EnKF which relies on an ensemble of realizations to estimate model uncertainty. We evaluated the impact of the number of ensembles members (i.e. 12 and 20) on the performance of EnKF by comparing the surface soil layer SWC simulated by CLM-DA for one test year (i.e. 2006). While, some improvements were observed in the simulated soil moisture when using 20 instead of 12 ensemble members, in general the simulated soil moisture from the DA-runs with 12 and 20 ensemble members are quite close to the observed values (Fig. S5). It should be noted that using an
30 increased number of ensemble size is a big challenge for such a large-scale high-resolution model because of the memory and storage requirements, and to a lesser degree also because of the computational burden. For example, one year of model run with 20 ensemble members required 680GB of computer storage per output variable (i.e. equivalent to 5TB of storage for 7 years of simulations per variable at daily time scale) and resulted in the use of 76,800 CPU core-hours (compare to 46,000 core-hours with 12 ensemble members).

The assimilation framework used in this study explicitly accounted for uncertainty in the model forcing data (e.g. precipitation) and soil texture properties (%sand and % clay) and used the joint state and parameter estimation to reduce parameter uncertainty. While parameter updating is expected to correct part of the systematic model bias, there is a potential that other water balance terms like evapotranspiration and also runoff may be degraded through data assimilation to compensate for model structural and/or input errors. To investigate this, we evaluated the resulting total runoff (surface and subsurface) with non-routed gridded runoff observations. While we found some degradation of runoff estimates after soil moisture assimilation (Fig. 10) for most regions, there was in fact a big improvement in percent bias with runoff observations over Europe (i.e., from 60% to 4% over Europe, Table 4) and smaller improvements over different PRUDENCE regions after the assimilation. The differences in runoff between CLM-DA and CLM-OL were small, since the fluxes were often reproduced reasonably well in CLM-OL with an average correlation of 0.9 over the EU domain (Table 3). The degradation in runoff over some regions and overall marginal improvements might be due to several factors, including a lack of analysis updates of water flux terms, model structure error (e.g., weak coupling of runoff processes with water table dynamics and soil water storage), and observations errors in the monthly data evaluation. From a comparison of individual components of total runoff between CLM-OL and CLM-DA, we found that the assimilation of soil moisture into CLM model has greater impacts on subsurface runoff than on surface runoff (Fig. 11). As shown in Fig. 11, assimilation of CCI-SM data resulted in an underestimation of subsurface runoff over all regions, but has less impact on the surface runoff. This underestimation might be related to the CLM model limitations to correctly represent processes controlling the partitioning of subsurface and surface flow in the model and/or to the exponential form of runoff parameterization. For example in the CLM model, the overall saturation status of the soil column is the controlling factor for both surface and subsurface runoff generation. Thus any changes in the surface layer soil moisture will also have more profound effects on the subsurface flow. In addition, the surface runoff generation is based on the assumption of saturation excess runoff, meaning that the water table needs to intersect the surface before the surface runoff is generated. This assumption is problematic at the large spatial scales, especially in arid and semi-arid regions. In dry regions, assimilation of soil moisture data may result in reduction of soil moisture values close to the residual water content values, which may lead to small surface runoff generation. For example, (Sheng et al., 2017) also found that CLM exhibited limitations in water-limited areas and identified that the saturation excess surface runoff assumption as the main cause of these limitations, in which surface runoff is determined by groundwater dynamics. Additionally, the assumption of topographically controlled surface runoff generation in the CLM model is problematic in areas with flat topography, thick soils, or deep groundwater (Li et al., 2011). Another reason may be uncertainties of E-RUN runoff data used in this study, which were derived from gridded atmospheric variables at coarser resolution ($0.5^\circ \times 0.5^\circ$ grid resolution) and flow observations. In the future, additional observational data need to be explored in assimilation experiments.

This study only considered uncertainty with respect to soil texture parameters, while other soil and ecosystem parameters were assumed deterministic. In data assimilation, it is preferable to account for additional model parameter uncertainties that show a high sensitivity towards runoff. Alternatively, prior model calibration can be considered to constrain model

parameters better and reduce systematic biases and uncertainties in CLM3.5 before applying the assimilation framework. For improvement of hydrologic predictions, joint assimilation of additional datasets such as river discharge and snow data may also be considered in future research.

5 Conclusions

5 A soil moisture data assimilation framework at the continental scale was applied to generate long-term daily soil moisture and runoff estimates as part of a terrestrial systems monitoring framework for Europe at 3 km resolution for the years 2000 to 2006. An ensemble was generated by perturbing precipitation and soil texture properties. These ensembles were used as input in the CLM-PDAF data assimilation framework (Kurtz et al., 2016) and used to assimilate CCI-SM soil moisture data. The impact of satellite soil moisture assimilation on daily soil moisture and monthly runoff was evaluated and cross-validated with CCI-SM data and gridded runoff from E-RUN observations at regional and seasonal scales. Using this high-resolution CLM-PDAF setup, the conclusions of this study are:

1. Assimilation of satellite SM improved the soil moisture simulations over most parts of Europe relative to open-loop simulations. Open loop simulations overestimated SM in most parts of Europe and in all seasons. For the study domain, on average, the RMSE for near surface SWC was reduced from $0.10 \text{ mm}^3/\text{mm}^3$ in the open-loop simulations to $0.07 \text{ mm}^3/\text{mm}^3$ with SM assimilation.
2. Regionally, significant improvements were achieved for soil moisture across most regions, except over Scandinavia. The low performance of CLM-DA in these regions might be due to the lack of data in space and time, as caused by satellite track changes, radio-frequency interference, dense vegetation, snow and frozen soil limiting the assimilation of soil moisture data in land surface processes simulations. Analogously, CLM-DA performed poorly for years 2000 and 2001, which appears to be related to large data gaps and higher noise levels in CCI-SM satellite data in these years. This indicates suitability of ESA CCI-SM for data assimilation studies from 2002 onwards, whereas the accuracy and noise levels of earlier data is not appropriate for this purpose.
3. At the seasonal time scale, the CLM-DA simulations performed better in the summer and autumn seasons than in the winter and spring seasons. This might be again related to large data gaps in the winter season or model limitations to correctly represent complex cold region processes such as frozen soil.
4. The assimilation of CCI-SM data into CLM3.5 led to an overall marginal improvement in the simulated total runoff over Europe. Improvements in runoff were more prominent over the Iberian Peninsula, Mediterranean and East-Europe regions, where CLM-DA, on average, minimized the difference to E-RUN from 0.65 mm/day, 0.54 mm/day and 0.66 mm/day, to 0.25 mm/day, 0.14 mm/day and 0.25 mm/day, respectively (Table 3). The improvements over other regions, such as the British Island, France, Mid-Europe, Scandinavia and Alpine, were comparatively small. These findings indicated the potential of satellite soil moisture assimilation

in CLM3.5 to improve other terrestrial components of the water cycle as a basis for more accurate water balance analyses.

The results from this study are not only useful as a standalone, high-resolution reanalysis product over Europe, but can also be used as an independent dataset for validation of other land surface models. Additionally, by selecting the ESA CCI soil moisture product for assimilation, the potential impact of the long term soil moisture observations on hydrologic simulations can be assessed for climate change studies. Moreover, CLM3.5 is also part of the fully coupled Terrestrial Systems Model Platform (TerrSysMP) (Gasper et al., 2014; Keune et al., 2016; Shrestha et al., 2014) that simulates the full terrestrial hydrologic cycle including feedbacks between atmosphere, land-surface and subsurface compartments of the water cycle. The impact of satellite soil moisture assimilation on other water cycle variables across the soil-vegetation-atmosphere system using TerrSysMP and its effects on the accuracy of model simulations at the continental scale remains to be explored.

Acknowledgements

The authors gratefully acknowledge the computing time granted by the JARA-HPC Vergabegremium on the supercomputer JURECA at Forschungszentrum Jülich. This work was supported by the Energy oriented Centre of Excellence (EoCoE), grant agreement number 676629, funded within the Horizon2020 framework of the European Union. C. Montzka was funded by BELSPO (Belgian Science Policy Office) in the framework of the STEREO III programme – HYDRAS+ (SR/00/302) and the ERA-PLANET/GEOEssential project (Horizon2020, grant agreement number 689443). W. Kurtz was supported by SFB-TR32 “Patterns in soil–vegetation–atmosphere systems: monitoring, modelling and data assimilation” funded by the German Science Foundation (DFG).

References

- Albergel, C., Dorigo, W., Balsamo, G., Muñoz-Sabater, J., de Rosnay, P., Isaksen, L., Brocca, L., de Jeu, R. and Wagner, W.: Monitoring multi-decadal satellite earth observation of soil moisture products through land surface reanalyses, *Remote Sensing of Environment*, 138, 77–89, doi:10.1016/j.rse.2013.07.009, 2013.
- Albergel, C., Munier, S., Leroux, D. J., Dewaele, H., Fairbairn, D., Barbu, A. L., Gelati, E., Dorigo, W., Faroux, S., Meurey, C. and others: Sequential assimilation of satellite-derived vegetation and soil moisture products using SURFEX_v8. 0: LDAS-Monde assessment over the Euro-Mediterranean area, *Geoscientific Model Development*, 10(10), 3889, 2017.
- Andreasen, M., Andreasen, L. A., Jensen, K. H., Sonnenborg, T. O. and Bircher, S.: Estimation of regional groundwater recharge using data from a distributed soil moisture network, *Vadose Zone Journal*, 12(3), 2013.
- Bartalis, Z., Wagner, W., Naeimi, V., Hasenauer, S., Scipal, K., Bonekamp, H., Figa, J. and Anderson, C.: Initial soil moisture retrievals from the METOP-A Advanced Scatterometer (ASCAT), *Geophysical Research Letters*, 34(20), 2007.
- Batjes, N. H.: A world dataset of derived soil properties by FAO–UNESCO soil unit for global modelling, *Soil use and management*, 13(1), 9–16, 1997.

- Best, M., Pryor, M., Clark, D., Rooney, G., Essery, R., Ménard, C., Edwards, J., Hendry, M., Porson, A., Gedney, N. and others: The Joint UK Land Environment Simulator (JULES), model description–Part 1: energy and water fluxes, *Geoscientific Model Development*, 4(3), 677–699, 2011.
- 5 Bierkens, M. F., Bell, V. A., Burek, P., Chaney, N., Condon, L. E., David, C. H., de Roo, A., Döll, P., Drost, N. and Famiglietti, J. S.: Hyper-resolution global hydrological modelling: what is next? “Everywhere and locally relevant,” *Hydrological processes*, 29(2), 310–320, 2015.
- Bollmeyer, C., Keller, J. D., Ohlwein, C., Wahl, S., Crewell, S., Friederichs, P., Hense, A., Keune, J., Kneifel, S. and Pscheidt, I.: Towards a high-resolution regional reanalysis for the European CORDEX domain, *Quarterly Journal of the Royal Meteorological Society*, 141(686), 1–15, 2015.
- 10 Bolten, J. D., Crow, W. T., Zhan, X., Jackson, T. J. and Reynolds, C. A.: Evaluating the utility of remotely sensed soil moisture retrievals for operational agricultural drought monitoring, *IEEE Journal of Selected Topics in Applied Earth Observations and Remote Sensing*, 3(1), 57–66, 2010.
- Bonan, G. B., Oleson, K. W., Vertenstein, M., Levis, S., Zeng, X., Dai, Y., Dickinson, R. E. and Yang, Z.-L.: The land surface climatology of the Community Land Model coupled to the NCAR Community Climate Model, *Journal of climate*, 15(22), 3123–3149, 2002.
- 15 Brocca, L., Melone, F., Moramarco, T. and Morbidelli, R.: Spatial-temporal variability of soil moisture and its estimation across scales, *Water Resources Research*, 46(2), 2010.
- Brocca, L., Moramarco, T., Melone, F., Wagner, W., Hasenauer, S. and Hahn, S.: Assimilation of surface-and root-zone ASCAT soil moisture products into rainfall–runoff modeling, *IEEE Transactions on Geoscience and Remote Sensing*, 50(7), 2542–2555, 2012.
- 20 Burgers, G., Jan van Leeuwen, P. and Evensen, G.: Analysis scheme in the ensemble Kalman filter, *Monthly weather review*, 126(6), 1719–1724, 1998.
- Cammalleri, C. and Ciruolo, G.: State and parameter update in a coupled energy/hydrologic balance model using ensemble Kalman filtering, *Journal of hydrology*, 416, 171–181, 2012.
- 25 Chen, H., Yang, D., Hong, Y., Gourley, J. J. and Zhang, Y.: Hydrological data assimilation with the Ensemble Square-Root-Filter: Use of streamflow observations to update model states for real-time flash flood forecasting, *Advances in Water Resources*, 59, 209–220, doi:10.1016/j.advwatres.2013.06.010, 2013.
- Clark, D., Mercado, L., Sitch, S., Jones, C., Gedney, N., Best, M., Pryor, M., Rooney, G., Essery, R., Blyth, E. and others: The Joint UK Land Environment Simulator (JULES), model description–Part 2: carbon fluxes and vegetation dynamics, *Geoscientific Model Development*, 4(3), 701–722, 2011.
- 30 Crow, W. T. and Ryu, D.: A new data assimilation approach for improving runoff prediction using remotely-sensed soil moisture retrievals, *Hydrology and Earth System Sciences*, 13(1), 1–16, 2009.
- Crow, W. T., Chen, F., Reichle, R. H. and Liu, Q.: L band microwave remote sensing and land data assimilation improve the representation of prestorm soil moisture conditions for hydrologic forecasting, *Geophysical research letters*, 44(11), 5495–5503, 2017.
- 35 Dai, Y., Zeng, X., Dickinson, R. E., Baker, I., Bonan, G. B., Bosilovich, M. G., Denning, A. S., Dirmeyer, P. A., Houser, P. R. and Niu, G.: The common land model, *Bulletin of the American Meteorological Society*, 84(8), 1013–1024, 2003.

- Danielson, J. J. and Gesch, D. B.: Global multi-resolution terrain elevation data 2010 (GMTED2010), US Geological Survey., 2011.
- De Lannoy, G. J. and Reichle, R. H.: Global assimilation of multiangle and multipolarization SMOS brightness temperature observations into the GEOS-5 catchment land surface model for soil moisture estimation, *Journal of Hydrometeorology*, 5 17(2), 669–691, 2016.
- De Lannoy, G. J., Reichle, R. H., Arsenault, K. R., Houser, P. R., Kumar, S., Verhoest, N. E. and Pauwels, V. R.: Multiscale assimilation of Advanced Microwave Scanning Radiometer–EOS snow water equivalent and Moderate Resolution Imaging Spectroradiometer snow cover fraction observations in northern Colorado, *Water Resources Research*, 48(1), 2012.
- De Rosnay, P., Drusch, M., Vasiljevic, D., Balsamo, G., Albergel, C. and Isaksen, L.: A simplified Extended Kalman Filter for the global operational soil moisture analysis at ECMWF, *Quarterly Journal of the Royal Meteorological Society*, 10 139(674), 1199–1213, 2013.
- De Rosnay, P. de, Drusch, M., Boone, A., Balsamo, G., Decharme, B., Harris, P., Kerr, Y., Pellarin, T., Polcher, J. and Wigneron, J.-P.: AMMA land surface model intercomparison experiment coupled to the community microwave emission model: ALMIP-MEM, *Journal of Geophysical Research: Atmospheres*, 114(D5), 2009.
- 15 DeChant, C. M. and Moradkhani, H.: Examining the effectiveness and robustness of sequential data assimilation methods for quantification of uncertainty in hydrologic forecasting, *Water Resources Research*, 48(4), 2012.
- Dee, D. P., Uppala, S. M., Simmons, A., Berrisford, P., Poli, P., Kobayashi, S., Andrae, U., Balmaseda, M., Balsamo, G., Bauer, d P. and others: The ERA-Interim reanalysis: Configuration and performance of the data assimilation system, *Quarterly Journal of the royal meteorological society*, 137(656), 553–597, 2011.
- 20 Dickinson, R. E., Oleson, K. W., Bonan, G., Hoffman, F., Thornton, P., Vertenstein, M., Yang, Z.-L. and Zeng, X.: The Community Land Model and its climate statistics as a component of the Community Climate System Model, *Journal of Climate*, 19(11), 2302–2324, 2006.
- Dobriyal, P., Qureshi, A., Badola, R. and Hussain, S. A.: A review of the methods available for estimating soil moisture and its implications for water resource management, *Journal of Hydrology*, 458, 110–117, 2012.
- 25 Dorigo, W., Wagner, W., Albergel, C., Albrecht, F., Balsamo, G., Brocca, L., Chung, D., Ertl, M., Forkel, M. and Gruber, A.: ESA CCI Soil Moisture for improved Earth system understanding: State-of-the art and future directions, *Remote Sensing of Environment*, 203, 185–215, 2017.
- Draper, C., Mahfouf, J.-F. and Walker, J.: An EKF assimilation of AMSR-E soil moisture into the ISBA land surface scheme, *Journal of Geophysical Research: Atmospheres*, 114(D20), 2009.
- 30 Draper, C., Mahfouf, J.-F., Calvet, J.-C., Martin, E. and Wagner, W.: Assimilation of ASCAT near-surface soil moisture into the SIM hydrological model over France, *Hydrology and Earth System Sciences*, 15(12), 3829–3841, 2011.
- Drusch, M.: Initializing numerical weather prediction models with satellite-derived surface soil moisture: Data assimilation experiments with ECMWF’s Integrated Forecast System and the TMI soil moisture data set, *Journal of Geophysical Research: Atmospheres*, 112(D3), 2007.
- 35 Drusch, M., Wood, E. and Gao, H.: Observation operators for the direct assimilation of TRMM microwave imager retrieved soil moisture, *Geophysical Research Letters*, 32(15), 2005.

- Entekhabi, D., Njoku, E. G., O'Neill, P. E., Kellogg, K. H., Crow, W. T., Edelstein, W. N., Entin, J. K., Goodman, S. D., Jackson, T. J., Johnson, J. and others: The soil moisture active passive (SMAP) mission, *Proceedings of the IEEE*, 98(5), 704–716, 2010.
- 5 Evensen, G.: The ensemble Kalman filter: Theoretical formulation and practical implementation, *Ocean dynamics*, 53(4), 343–367, 2003.
- Friedl, M. A., McIver, D. K., Hodges, J. C., Zhang, X. Y., Muchoney, D., Strahler, A. H., Woodcock, C. E., Gopal, S., Schneider, A. and Cooper, A.: Global land cover mapping from MODIS: algorithms and early results, *Remote Sensing of Environment*, 83(1–2), 287–302, 2002.
- 10 Gasper, F., Goergen, K., Shrestha, P., Sulis, M., Rihani, J., Geimer, M. and Kollet, S.: Implementation and scaling of the fully coupled Terrestrial Systems Modeling Platform (TerrSysMP v1. 0) in a massively parallel supercomputing environment—a case study on JUQUEEN (IBM Blue Gene/Q), *Geoscientific model development*, 7(5), 2531–2543, 2014.
- Gharamti, M. E., Ait-El-Fquih, B. and Hoteit, I.: An iterative ensemble Kalman filter with one-step-ahead smoothing for state-parameters estimation of contaminant transport models, *Journal of Hydrology*, 527, 442–457, 2015.
- 15 Global Runoff Data Center: Long-term mean monthly discharges and annual characteristics of GRDC stations, Technical Report., 2011.
- Gudmundsson, L. and Seneviratne, S. I.: Observation-based gridded runoff estimates for Europe (E-RUN version 1.1), *Earth System Science Data*, 8(2), 279–295, 2016.
- 20 Gutowski Jr, W. J., Giorgi, F., Timbal, B., Frigon, A., Jacob, D., Kang, H.-S., Raghavan, K., Lee, B., Lennard, C. and Nikulin, G.: WCRP coordinated regional downscaling experiment (CORDEX): a diagnostic MIP for CMIP6, *Geoscientific Model Development*, 9(11), 4087, 2016.
- Han, X., Franssen, H.-J. H., Montzka, C. and Vereecken, H.: Soil moisture and soil properties estimation in the Community Land Model with synthetic brightness temperature observations, *Water resources research*, 50(7), 6081–6105, 2014.
- 25 Haylock, M. R., Hofstra, N., Tank, A. K., Klok, E. J., Jones, P. D. and New, M.: A European daily high-resolution gridded data set of surface temperature and precipitation for 1950–2006, *Journal of Geophysical Research: Atmospheres*, 113(D20), 2008.
- Hijmans, R., Cameron, S., Parra, J., Jones, P., Jarvis, A. and Richardson, K.: *WorldClim*, version 1.3, University of California, Berkeley, 2005.
- Hunt, B. R., Kostelich, E. J. and Szunyogh, I.: Efficient data assimilation for spatiotemporal chaos: A local ensemble transform Kalman filter, *Physica D: Nonlinear Phenomena*, 230(1–2), 112–126, 2007.
- 30 Jones, P. W.: First-and second-order conservative remapping schemes for grids in spherical coordinates, *Monthly Weather Review*, 127(9), 2204–2210, 1999.
- Kerr, Y. H., Waldteufel, P., Wigneron, J.-P., Martinuzzi, J., Font, J. and Berger, M.: Soil moisture retrieval from space: The Soil Moisture and Ocean Salinity (SMOS) mission, *IEEE transactions on Geoscience and remote sensing*, 39(8), 1729–1735, 2001.

- Keune, J., Gasper, F., Goergen, K., Hense, A., Shrestha, P., Sulis, M. and Kollet, S.: Studying the influence of groundwater representations on land surface-atmosphere feedbacks during the European heat wave in 2003, *Journal of Geophysical Research: Atmospheres*, 121(22), 2016.
- 5 Kiehl, J. T. and Trenberth, K. E.: Earth's annual global mean energy budget, *Bulletin of the American Meteorological Society*, 78(2), 197–208, 1997.
- Kumar, S. V., Reichle, R. H., Peters-Lidard, C. D., Koster, R. D., Zhan, X., Crow, W. T., Eylander, J. B. and Houser, P. R.: A land surface data assimilation framework using the land information system: Description and applications, *Advances in Water Resources*, 31(11), 1419–1432, 2008.
- 10 Kurtz, W., He, G., Kollet, S. J., Maxwell, R. M., Vereecken, H. and Hendricks Franssen, H.-J.: TerrSysMP-PDAF (version 1.0): a modular high-performance data assimilation framework for an integrated land surface–subsurface model, *Geoscientific Model Development*, 9(4), 1341–1360, 2016.
- Lahoz, W. A. and De Lannoy, G. J.: Closing the gaps in our knowledge of the hydrological cycle over land: Conceptual problems, *Surveys in Geophysics*, 35(3), 623–660, 2014.
- 15 Lawrence, D. M., Oleson, K. W., Flanner, M. G., Thornton, P. E., Swenson, S. C., Lawrence, P. J., Zeng, X., Yang, Z.-L., Levis, S., Sakaguchi, K. and others: Parameterization improvements and functional and structural advances in version 4 of the Community Land Model, *Journal of Advances in Modeling Earth Systems*, 3(1), 2011.
- Li, H., Huang, M., Wigmosta, M. S., Ke, Y., Coleman, A. M., Leung, L. R., Wang, A. and Ricciuto, D. M.: Evaluating runoff simulations from the Community Land Model 4.0 using observations from flux towers and a mountainous watershed, *Journal of Geophysical Research: Atmospheres*, 116(D24), 2011.
- 20 Li, M. and Ma, Z.: Soil moisture drought detection and multi-temporal variability across China, *Science China Earth Sciences*, 58(10), 1798–1813, 2015.
- Liang, X., Lettenmaier, D. P., Wood, E. F. and Burges, S. J.: A simple hydrologically based model of land surface water and energy fluxes for general circulation models, *Journal of Geophysical Research: Atmospheres*, 99(D7), 14415–14428, 1994.
- 25 Liang, X., Wood, E. F. and Lettenmaier, D. P.: Surface soil moisture parameterization of the VIC-2L model: Evaluation and modification, *Global and Planetary Change*, 13(1–4), 195–206, 1996.
- Lievens, H., Tomer, S. K., Al Bitar, A., De Lannoy, G. J., Drusch, M., Dumedah, G., Franssen, H.-J. H., Kerr, Y. H., Martens, B. and Pan, M.: SMOS soil moisture assimilation for improved hydrologic simulation in the Murray Darling Basin, Australia, *Remote Sensing of Environment*, 168, 146–162, 2015.
- 30 Lievens, H., De Lannoy, G., Al Bitar, A., Drusch, M., Dumedah, G., Franssen, H.-J. H., Kerr, Y., Tomer, S. K., Martens, B., Merlin, O. and others: Assimilation of SMOS soil moisture and brightness temperature products into a land surface model, *Remote sensing of environment*, 180, 292–304, 2016.
- Liu, D. and Mishra, A. K.: Performance of AMSR_E soil moisture data assimilation in CLM4. 5 model for monitoring hydrologic fluxes at global scale, *Journal of hydrology*, 547, 67–79, 2017.
- 35 Liu, D., Mishra, A. K. and Yu, Z.: Evaluating uncertainties in multi-layer soil moisture estimation with support vector machines and ensemble Kalman filtering, *Journal of Hydrology*, 538, 243–255, 2016.

- Liu, Y. and Gupta, H. V.: Uncertainty in hydrologic modeling: Toward an integrated data assimilation framework, *Water Resources Research*, 43(7), 2007.
- Liu, Y., Wang, W. and Liu, Y.: ESA CCI Soil Moisture Assimilation in SWAT for Improved Hydrological Simulation in Upper Huai River Basin, *Advances in Meteorology*, 2018, 1–13, doi:10.1155/2018/7301314, 2018.
- 5 Liu, Y. Y., Parinussa, R. M., Dorigo, W. A., De Jeu, R. A., Wagner, W., Van Dijk, A., McCabe, M. F. and Evans, J. P.: Developing an improved soil moisture dataset by blending passive and active microwave satellite-based retrievals, *Hydrology and Earth System Sciences*, 15(2), 425–436, 2011.
- Liu, Y. Y., Dorigo, W. A., Parinussa, R. M., de Jeu, R. A., Wagner, W., McCabe, M. F., Evans, J. P. and Van Dijk, A.: Trend-preserving blending of passive and active microwave soil moisture retrievals, *Remote Sensing of Environment*, 123, 280–297, 2012.
- 10 Lopez, P. L., Wanders, N., Schellekens, J., Renzullo, L. J., Sutanudjaja, E. H. and Bierkens, M. F.: Improved large-scale hydrological modelling through the assimilation of streamflow and downscaled satellite soil moisture observations, *Hydrology and Earth System Sciences*, 20(7), 3059–3076, 2016.
- Matgen, P., Fenicia, F., Heitz, S., Plaza, D., de Keyser, R., Pauwels, V. R., Wagner, W. and Savenije, H.: Can ASCAT-derived soil wetness indices reduce predictive uncertainty in well-gauged areas? A comparison with in situ observed soil moisture in an assimilation application, *Advances in Water Resources*, 44, 49–65, 2012.
- 15 McNally, A., Shukla, S., Arsenault, K. R., Wang, S., Peters-Lidard, C. D. and Verdin, J. P.: Evaluating ESA CCI soil moisture in East Africa, *International journal of applied earth observation and geoinformation*, 48, 96–109, 2016.
- Mecklenburg, S., Drusch, M., Kaleschke, L., Rodriguez-Fernandez, N., Reul, N., Kerr, Y., Font, J., Martin-Neira, M., Oliva, R., Daganzo-Eusebio, E. and others: ESA's Soil Moisture and Ocean Salinity mission: From science to operational applications, *Remote sensing of environment*, 180, 3–18, 2016.
- 20 Merlin, O., Escorihuela, M. J., Mayoral, M. A., Hagolle, O., Al Bitar, A. and Kerr, Y.: Self-calibrated evaporation-based disaggregation of SMOS soil moisture: An evaluation study at 3 km and 100 m resolution in Catalunya, Spain, *Remote sensing of environment*, 130, 25–38, 2013.
- 25 Mohanty, B. P., Cosh, M., Lakshmi, V. and Montzka, C.: Remote sensing for vadose zone hydrology—a synthesis from the vantage point, *Vadose Zone Journal*, 12(3), 2013.
- Montzka, C., Pauwels, V., Franssen, H.-J. H., Han, X. and Vereecken, H.: Multivariate and multiscale data assimilation in terrestrial systems: A review, *Sensors*, 12(12), 16291–16333, 2012.
- 30 Moradkhani, H., Sorooshian, S., Gupta, H. V. and Houser, P. R.: Dual state–parameter estimation of hydrological models using ensemble Kalman filter, *Advances in water resources*, 28(2), 135–147, 2005.
- Nerger, L. and Hiller, W.: Software for ensemble-based data assimilation systems—Implementation strategies and scalability, *Computers & Geosciences*, 55, 110–118, 2013.
- Nie, S., Zhu, J. and Luo, Y.: Simultaneous estimation of land surface scheme states and parameters using the ensemble Kalman filter: identical twin experiments, *Hydrology and Earth System Sciences*, 15(8), 2437–2457, 2011.

- Ni-Meister, W., Houser, P. R. and Walker, J. P.: Soil moisture initialization for climate prediction: Assimilation of scanning multifrequency microwave radiometer soil moisture data into a land surface model, *Journal of Geophysical Research: Atmospheres*, 111(D20), 2006.
- 5 Niu, G.-Y., Yang, Z.-L., Dickinson, R. E. and Gulden, L. E.: A simple TOPMODEL-based runoff parameterization (SIMTOP) for use in global climate models, *Journal of Geophysical Research: Atmospheres*, 110(D21), 2005.
- Niu, G.-Y., Yang, Z.-L., Dickinson, R. E., Gulden, L. E. and Su, H.: Development of a simple groundwater model for use in climate models and evaluation with Gravity Recovery and Climate Experiment data, *Journal of Geophysical Research: Atmospheres*, 112(D7), 2007.
- 10 Niu, G.-Y., Yang, Z.-L., Mitchell, K. E., Chen, F., Ek, M. B., Barlage, M., Kumar, A., Manning, K., Niyogi, D., Rosero, E. and others: The community Noah land surface model with multiparameterization options (Noah-MP): 1. Model description and evaluation with local-scale measurements, *Journal of Geophysical Research: Atmospheres*, 116(D12), 2011.
- Oleson, K. W., Dai, Y., Bonan, G., Bosilovich, M., Dickinson, R., Dirmeyer, P., Hoffman, F., Houser, P., Levis, S. and Niu, G. Y.: Technical description of the community land model (CLM), NCAR Technical Note NCAR/TN-461+ STR, National Center for Atmospheric Research, Boulder, CO, 2004.
- 15 Oleson, K. W., Niu, G.-Y., Yang, Z.-L., Lawrence, D. M., Thornton, P. E., Lawrence, P. J., Stöckli, R., Dickinson, R. E., Bonan, G. B. and Levis, S.: Improvements to the Community Land Model and their impact on the hydrological cycle, *Journal of Geophysical Research: Biogeosciences*, 113(G1), 2008.
- Owe, M., de Jeu, R. and Holmes, T.: Multisensor historical climatology of satellite-derived global land surface moisture, *Journal of Geophysical Research: Earth Surface*, 113(F1), 2008.
- 20 Pan, M. and Wood, E. F.: Impact of accuracy, spatial availability, and revisit time of satellite-derived surface soil moisture in a multiscale ensemble data assimilation system, *IEEE Journal of Selected Topics in Applied Earth Observations and Remote Sensing*, 3(1), 49–56, 2010.
- Pan, M., Wood, E. F., Wójcik, R. and McCabe, M. F.: Estimation of regional terrestrial water cycle using multi-sensor remote sensing observations and data assimilation, *Remote Sensing of Environment*, 112(4), 1282–1294, 2008.
- 25 Pathiraja, S., Marshall, L., Sharma, A. and Moradkhani, H.: Detecting non-stationary hydrologic model parameters in a paired catchment system using data assimilation, *Advances in water resources*, 94, 103–119, 2016.
- Pauwels, V. R., Hoeben, R., Verhoest, N. E. and De Troch, F. P.: The importance of the spatial patterns of remotely sensed soil moisture in the improvement of discharge predictions for small-scale basins through data assimilation, *Journal of Hydrology*, 251(1–2), 88–102, 2001.
- 30 Pauwels, V. R., Hoeben, R., Verhoest, N. E., De Troch, F. P. and Troch, P. A.: Improvement of TOPLATS-based discharge predictions through assimilation of ERS-based remotely sensed soil moisture values, *Hydrological Processes*, 16(5), 995–1013, 2002.
- 35 Rafieeiniasab, A., Seo, D.-J., Lee, H. and Kim, S.: Comparative evaluation of maximum likelihood ensemble filter and ensemble Kalman filter for real-time assimilation of streamflow data into operational hydrologic models, *Journal of hydrology*, 519, 2663–2675, 2014.
- Rains, D., Han, X., Lievens, H., Montzka, C. and Verhoest, N. E. C.: SMOS brightness temperature assimilation into the Community Land Model, *Hydrology and Earth System Sciences*, 21(11), 5929–5951, doi:10.5194/hess-21-5929-2017, 2017.

- Reichle, R. H. and Koster, R. D.: Bias reduction in short records of satellite soil moisture, *Geophysical Research Letters*, 31(19), 2004.
- Reichle, R. H. and Koster, R. D.: Global assimilation of satellite surface soil moisture retrievals into the NASA Catchment land surface model, *Geophysical Research Letters*, 32(2), 2005.
- 5 Renzullo, L. J., Van Dijk, A., Perraud, J.-M., Collins, D., Henderson, B., Jin, H., Smith, A. B. and McJannet, D. L.: Continental satellite soil moisture data assimilation improves root-zone moisture analysis for water resources assessment, *Journal of hydrology*, 519, 2747–2762, 2014.
- Rodell, M., Houser, P. R., Jambor, U. E. A., Gottschalck, J., Mitchell, K., Meng, C.-J., Arsenault, K., Cosgrove, B., Radakovich, J. and Bosilovich, M.: The global land data assimilation system, *Bulletin of the American Meteorological Society*, 85(3), 381–394, 2004.
- 10 Running, S. W., Nemani, R. R., Heinsch, F. A., Zhao, M., Reeves, M. and Hashimoto, H.: A continuous satellite-derived measure of global terrestrial primary production, *AIBS Bulletin*, 54(6), 547–560, 2004.
- Sahoo, A. K., De Lannoy, G. J., Reichle, R. H. and Houser, P. R.: Assimilation and downscaling of satellite observed soil moisture over the Little River Experimental Watershed in Georgia, USA, *Advances in water resources*, 52, 19–33, 2013.
- 15 Schaap, M. G. and Leij, F. J.: Database-related accuracy and uncertainty of pedotransfer functions, *Soil Science*, 163(10), 765–779, 1998.
- Seneviratne, S. I., Corti, T., Davin, E. L., Hirschi, M., Jaeger, E. B., Lehner, I., Orlowsky, B. and Teuling, A. J.: Investigating soil moisture–climate interactions in a changing climate: A review, *Earth-Science Reviews*, 99(3–4), 125–161, 2010.
- 20 Sheng, M., Lei, H., Jiao, Y. and Yang, D.: Evaluation of the runoff and river routing schemes in the Community Land Model of the Yellow River basin, *Journal of Advances in Modeling Earth Systems*, 9(8), 2993–3018, 2017.
- Shock, C. C., Barnum, J. M. and Seddigh, M.: Calibration of W~! ermark Soil Moisture Sensors for Irrigation Management, 1998.
- Shrestha, P., Sulis, M., Masbou, M., Kollet, S. and Simmer, C.: A scale-consistent terrestrial systems modeling platform based on COSMO, CLM, and ParFlow, *Monthly weather review*, 142(9), 3466–3483, 2014.
- 25 Simmer, C., Adrian, G., Jones, S., Wirth, V., Göber, M., Hohenegger, C., Janjic, T., Keller, J., Ohlwein, C. and Seifert, A.: Herz: The german hans-ertel centre for weather research, *Bulletin of the American Meteorological Society*, 97(6), 1057–1068, 2016.
- Springer, A., Eicker, A., Bettge, A., Kusche, J. and Hense, A.: Evaluation of the Water Cycle in the European COSMO-30 REA6 Reanalysis Using GRACE, *Water*, 9(4), 289, 2017.
- Sridhar, V., Hubbard, K. G., You, J. and Hunt, E. D.: Development of the soil moisture index to quantify agricultural drought and its “user friendliness” in severity-area-duration assessment, *Journal of Hydrometeorology*, 9(4), 660–676, 2008.
- Stöckli, R., Lawrence, D. M., Niu, G.-Y., Oleson, K. W., Thornton, P. E., Yang, Z.-L., Bonan, G. B., Denning, A. S. and Running, S. W.: Use of FLUXNET in the Community Land Model development, *Journal of Geophysical Research: Biogeosciences*, 113(G1), 2008.
- 35

- Trenberth, K. E., Smith, L., Qian, T., Dai, A. and Fasullo, J.: Estimates of the global water budget and its annual cycle using observational and model data, *Journal of Hydrometeorology*, 8(4), 758–769, 2007.
- Vereecken, H., Schnepf, A., Hopmans, J. W., Javaux, M., Or, D., Roose, T., Vanderborght, J., Young, M., Amelung, W., Aitkenhead, M. and others: Modeling soil processes: Review, key challenges, and new perspectives, *Vadose Zone Journal*, 5 15(5), 2016.
- Verhoest, N. E., van den Berg, M. J., Martens, B., Lievens, H., Wood, E. F., Pan, M., Kerr, Y. H., Al Bitar, A., Tomer, S. K., Drusch, M. and others: Copula-based downscaling of coarse-scale soil moisture observations with implicit bias correction, *IEEE Transactions on Geoscience and Remote Sensing*, 53(6), 3507–3521, 2015.
- Vinukollu, R. K., Wood, E. F., Ferguson, C. R. and Fisher, J. B.: Global estimates of evapotranspiration for climate studies using multi-sensor remote sensing data: Evaluation of three process-based approaches, *Remote Sensing of Environment*, 10 115(3), 801–823, 2011.
- Wagner, W., Dorigo, W., de Jeu, R., Fernandez, D., Benveniste, J., Haas, E. and Ertl, M.: Fusion of active and passive microwave observations to create an essential climate variable data record on soil moisture, *ISPRS Annals of the Photogrammetry, Remote Sensing and Spatial Information Sciences (ISPRS Annals)*, 7, 315–321, 2012.
- 15 Wagner, W., Hahn, S., Kidd, R., Melzer, T., Bartalis, Z., Hasenauer, S., Figa-Saldaña, J., de Rosnay, P., Jann, A. and Schneider, S.: The ASCAT soil moisture product: A review of its specifications, validation results, and emerging applications, *Meteorologische Zeitschrift*, 22(1), 5–33, 2013.
- Wahl, S., Bollmeyer, C., Crewell, S., Figura, C., Friederichs, P., Hense, A., Keller, J. D. and Ohlwein, C.: A novel convective-scale regional reanalyses COSMO-REA2: Improving the representation of precipitation, *Meteorol. Z.*, 1–17, 20 2017.
- Western, A. W., Zhou, S.-L., Grayson, R. B., McMahon, T. A., Blöschl, G. and Wilson, D. J.: Spatial correlation of soil moisture in small catchments and its relationship to dominant spatial hydrological processes, *Journal of Hydrology*, 286(1–4), 113–134, 2004.
- Wood, E. F., Roundy, J. K., Troy, T. J., Van Beek, L. P. H., Bierkens, M. F., Blyth, E., de Roo, A., Döll, P., Ek, M. and Famiglietti, J.: Hyperresolution global land surface modeling: Meeting a grand challenge for monitoring Earth’s terrestrial water, *Water Resources Research*, 47(5), 2011.
- 25 Xiao, Z., Liang, S., Wang, J., Chen, P., Yin, X., Zhang, L. and Song, J.: Use of General Regression Neural Networks for Generating the GLASS Leaf Area Index Product From Time-Series MODIS Surface Reflectance, *IEEE Transactions on Geoscience and Remote Sensing*, 52(1), 209–223, doi:10.1109/TGRS.2013.2237780, 2014.
- 30 Xie, X. and Zhang, D.: Data assimilation for distributed hydrological catchment modeling via ensemble Kalman filter, *Advances in Water Resources*, 33(6), 678–690, 2010.
- Yang, Z.-L. and Niu, G.-Y.: The versatile integrator of surface and atmosphere processes: Part 1. Model description, *Global and Planetary Change*, 38(1–2), 175–189, 2003.
- 35 Yin, J., Zhan, X., Zheng, Y., Hain, C. R., Liu, J. and Fang, L.: Optimal ensemble size of ensemble Kalman filter in sequential soil moisture data assimilation, *Geophysical Research Letters*, 42(16), 6710–6715, doi:10.1002/2015GL063366, 2015.

5 **Tables and Figures**

Table 1. Difference in CLM-OL and CLM-DA simulated mean seasonal SWC (mm^3/mm^3) with CCI-SM data for all PRUDENCE regions and all seasons, i.e. winter (DJF), spring (MAM), summer (JJA) and autumn (SON).

Regions	CLM-OL minus CCI-SM				CLM-DA minus CCI-SM			
	Winter	Spring	Summer	Autumn	Winter	Spring	Summer	Autumn
BI	0.03	0.05	0.02	0.04	0.01	0.02	-0.02	0.00
IP	0.07	0.09	0.11	0.09	0.04	0.06	0.07	0.05
FR	0.03	0.06	0.06	0.05	0.01	0.03	0.02	0.02
ME	0.04	0.07	0.06	0.05	0.02	0.04	0.01	0.02
SC	0.07	0.08	0.02	0.03	0.04	0.05	-0.02	0.00
AL	0.03	0.05	0.04	0.02	0.01	0.02	0.00	-0.01
MD	0.05	0.07	0.08	0.06	0.03	0.04	0.04	0.03
EA	0.07	0.08	0.07	0.05	0.05	0.05	0.03	0.02
EU	0.09	0.11	0.09	0.09	0.07	0.08	0.05	0.06

Table 2. Evaluation performance criteria for comparing CLM-OL and CLM-DA with CCI-SM (spatially averaged SWC, surface layer, EU and PRUDENCE regions)

10

	Soil Moisture (CLM-OL)									
	EU	BI	IP	FR	ME	SC	AL	MD	EA	
PBIAS (%)	54.1	16.4	50.7	24.7	25.6	23.0	16.4	33.4	34.8	
RMSE (mm^3/mm^3)	0.10	0.05	0.10	0.07	0.07	0.06	0.05	0.07	0.08	
MAE (mm^3/mm^3)	0.09	0.04	0.09	0.06	0.06	0.05	0.04	0.07	0.07	
R	0.48	0.41	0.75	0.60	0.51	-0.14	0.55	0.80	0.40	
	Soil Moisture (CLM-DA)									
	EU	BI	IP	FR	ME	SC	AL	MD	EA	
PBIAS (%)	36.4	3.1	33.2	10.1	11.0	9.0	3.0	18.1	19.0	
RMSE (mm^3/mm^3)	0.07	0.03	0.07	0.04	0.04	0.05	0.03	0.04	0.06	
MAE (mm^3/mm^3)	0.06	0.03	0.06	0.03	0.03	0.04	0.03	0.04	0.05	
R	0.51	0.40	0.76	0.61	0.54	-0.12	0.56	0.80	0.42	

Table 3. Monthly mean bias (CLM minus E-RUN) in mean seasonal runoff (mm/day) for CLM-OL and CLM-DA for all PRUDENCE regions and all seasons, i.e. winter (DJF), spring (MAM), summer (JJA) and autumn (SON).

Regions	CLM-OL minus E-RUN				CLM-DA minus E-RUN			
	Winter	Spring	Summer	Autumn	Winter	Spring	Summer	Autumn
BI	-1.68	-0.19	0.09	-1.26	-2.19	-0.79	-0.18	-1.60
IP	0.35	0.94	0.75	0.57	-0.12	0.37	0.49	0.27
FR	-0.26	0.52	0.62	0.33	-0.77	-0.08	0.36	0.02
ME	-0.02	0.63	0.51	0.36	-0.50	0.04	0.25	0.05
SC	-0.11	-0.27	-0.98	-0.83	-0.58	-0.86	-1.25	-1.15
AL	-0.25	-0.72	-1.04	-0.96	-0.72	-1.33	-1.32	-1.29
MD	0.14	0.88	0.70	0.45	-0.33	0.29	0.44	0.14
EA	0.66	0.90	0.54	0.56	0.19	0.30	0.27	0.24
EU	0.39	0.68	0.38	0.30	-0.08	0.09	0.12	-0.01

5

Table 4. Evaluation performance criteria for comparing CLM-OL and CLM-DA with E-RUN (spatially averaged runoff, EU and PRUDENCE regions).

	Total Runoff (CLM-OL)									
	EU	BI	IP	FR	ME	SC	AL	MD	EA	
PBIAS	59.7	-38.6	130.8	34.2	46.1	-30.9	-37.4	87.5	130.3	
RMSE (mm/day)	0.5	1.3	0.8	0.7	0.6	0.9	0.9	0.7	0.7	
MAE (mm/day)	0.4	0.9	0.7	0.6	0.5	0.8	0.8	0.6	0.7	
NSE	-4.0	-0.2	-1.8	0.3	-0.3	-0.4	-0.4	-1.6	-10.2	
KGE	-0.1	0.1	-0.4	0.3	0.4	0.1	0.3	0.0	-0.6	
R	0.9	0.5	0.6	0.7	0.6	0.3	0.7	0.5	0.6	
	Total Runoff (CLM-DA)									
	EU	BI	IP	FR	ME	SC	AL	MD	EA	
PBIAS	4.4	-60.2	50.5	-13.3	-5.1	-54.1	-58.9	21.8	48.9	
RMSE (mm/day)	0.3	1.6	0.6	0.7	0.5	1.2	1.3	0.5	0.4	
MAE (mm/day)	0.2	1.2	0.5	0.5	0.4	1.0	1.2	0.5	0.3	
NSE	-0.7	-0.9	-0.6	0.1	-0.1	-1.2	-1.8	-0.6	-2.6	
KGE	0.2	-0.1	0.0	0.2	0.3	0.1	0.1	0.1	0.0	
R	0.6	0.4	0.2	0.4	0.3	0.5	0.6	0.1	0.4	

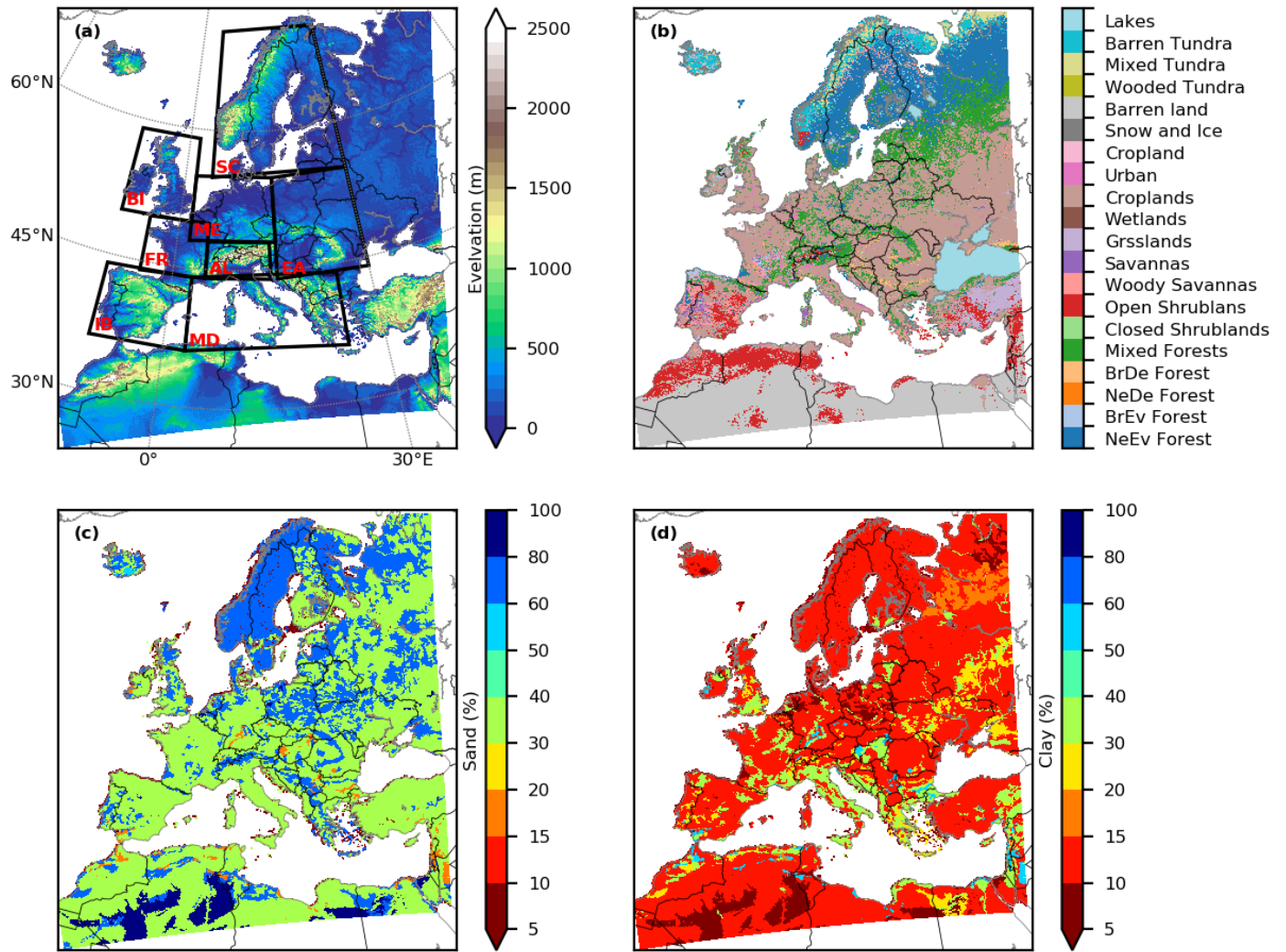


Figure 1. Model surface input data: a) USGS GMTED2010 DEM, b) dominant land use type based on MODIS data, c) percent sand content, and d) percent clay content based on global FAO soil database. The inner boxes in (a) show the boundaries of the PRUDENCE regions (FR: France, ME: mid-Europe, SC: Scandinavia, EA: Eastern Europe, MD: Mediterranean, IP: Iberian Peninsula, BI: British Islands, AL: Alpine region; Christensen et al., 2007).

5

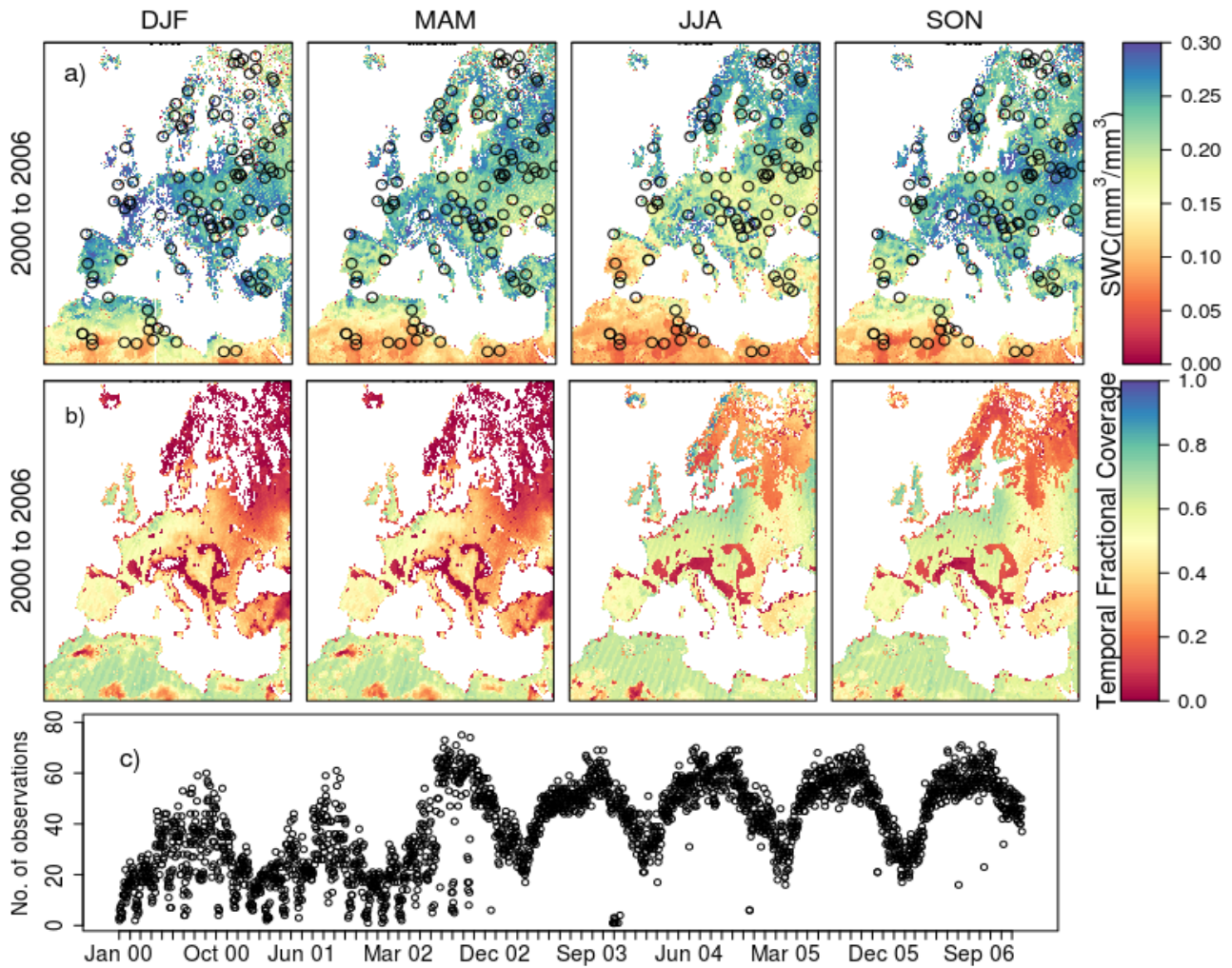


Figure 2. Satellite ESA-CCI soil moisture data resampled to 0.0275° resolution for the time period of 2000 to 2006 over EU-CORDEX. (a) Temporally averaged soil moisture content for different seasons, (b) fraction of days that soil moisture observations were reported during different seasons, and (c) number of selected observations with valid data for the respective day over the 2000-2006 period used for assimilating soil moisture in the data assimilation experiment. Black circles in (a) indicate the location of grid cells selected for data assimilation.

5

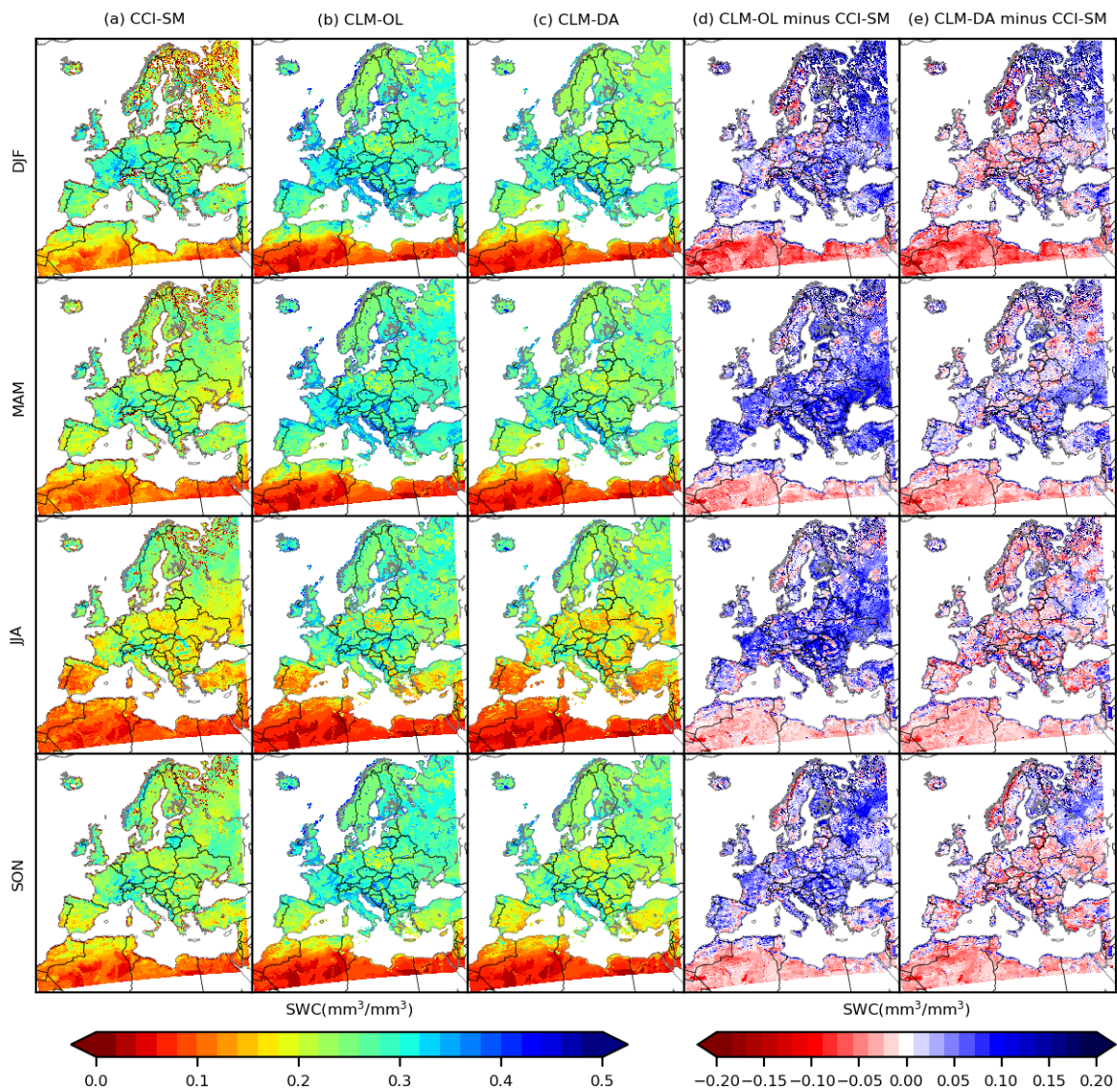


Figure 3. Temporally averaged soil moisture (mm^3/mm^3) content over the 2000 – 2006 period for a) CCI-SM, b) CLM-OL c) CLM-DA, and difference between d) CLM-OL and CCI-SM and d) CLM-DA and CCI-SM for DJF (December, January and February), MAM (March, April, May), JJA (June, July and August) and SON (September, October, November) seasons.

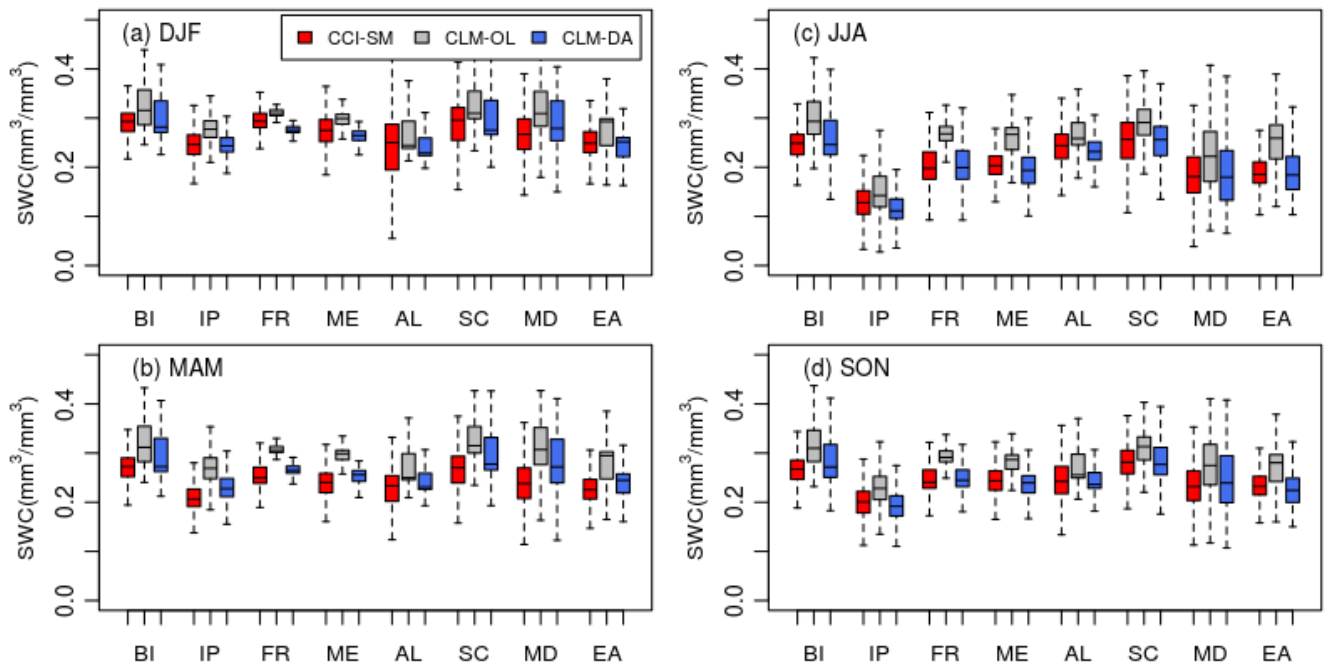


Figure 4. Box plots showing the spread of seasonally averaged soil water content (mm^3/mm^3) over the 2000 – 2006 time period and in the PRUDENCE regions for (a) DJF, (b) MAM, (c) JJA and (d) SON seasons. The boxplots illustrate the spatial distribution of SWC with quartiles, median and extreme values marked by solid lines.

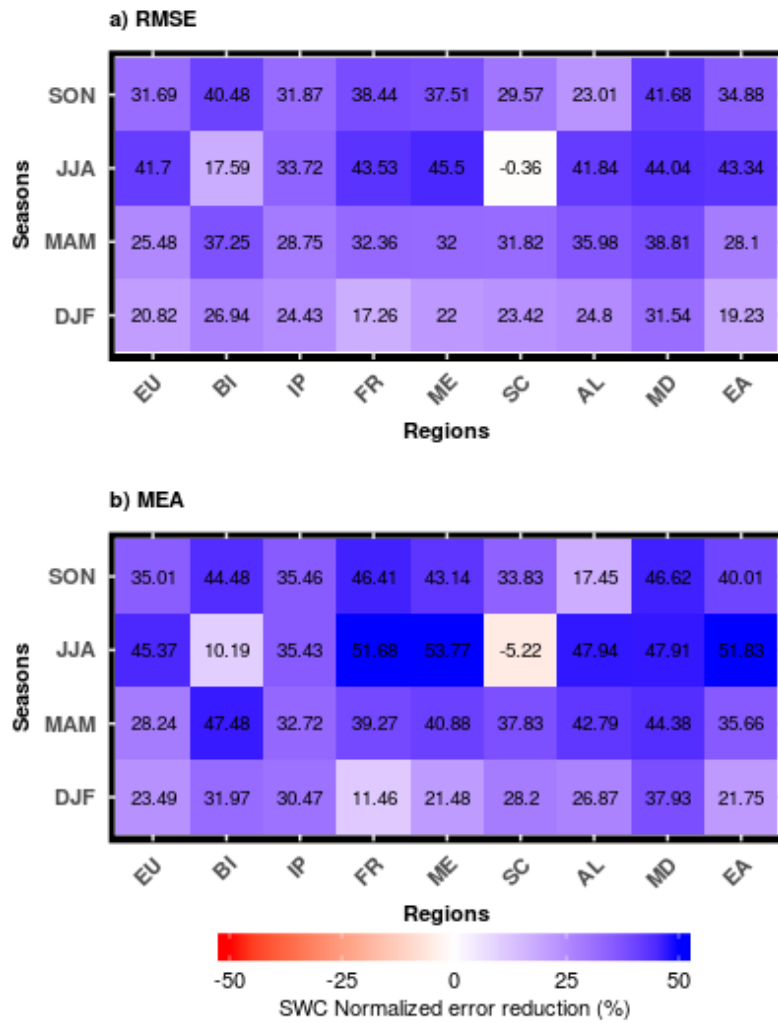


Figure 5. Normalized error reduction (NER) index of (a) RMSE and (b) MEA for daily soil water content over different seasons and PRUDENCE regions using CLM-OL and CLM-DA simulations over the years 2000-2006.

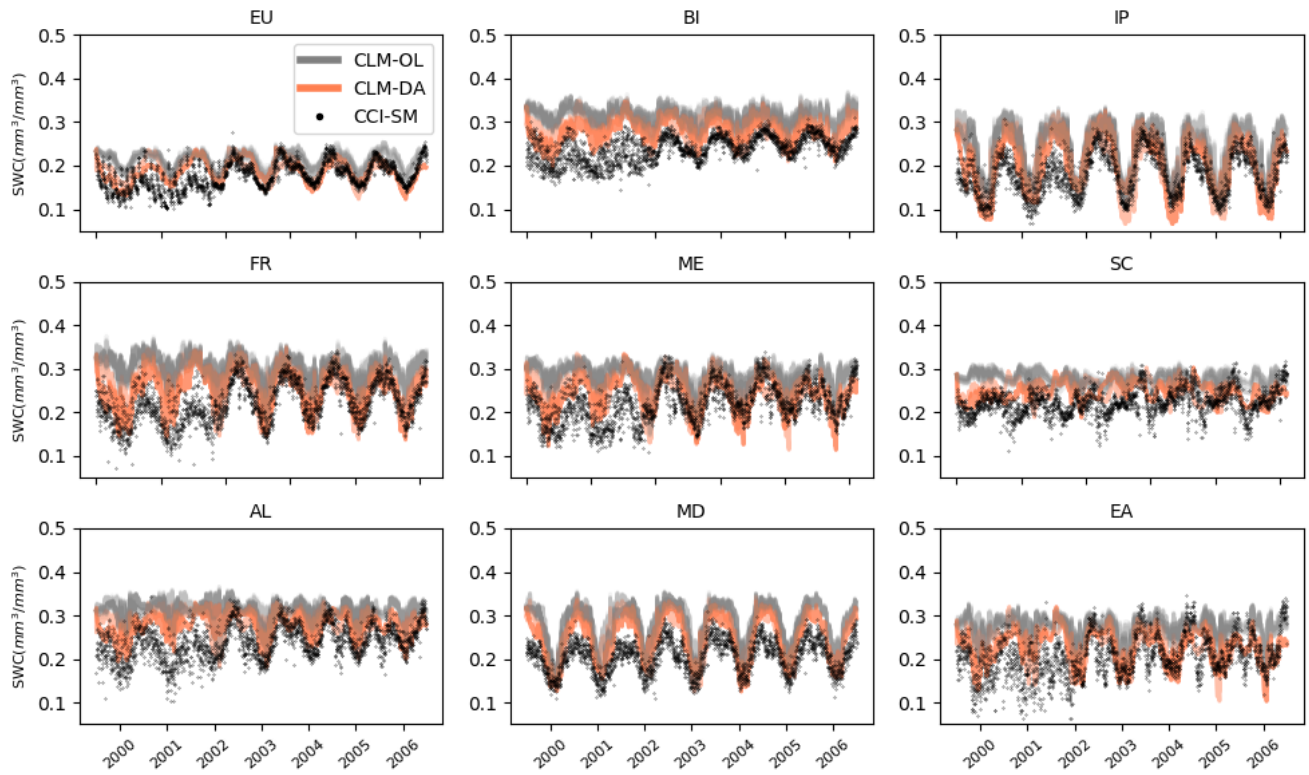


Figure 6. Spatially averaged daily soil water content (SWC) simulated with CLM-DA and CLM-OL and compared with CCI-SM data for the years 2000 – 2006 over Europe and the PRUDENCE regions. **The orange and gray lines are the CLM-DA and CLM-OL 20 ensemble members, respectively.**

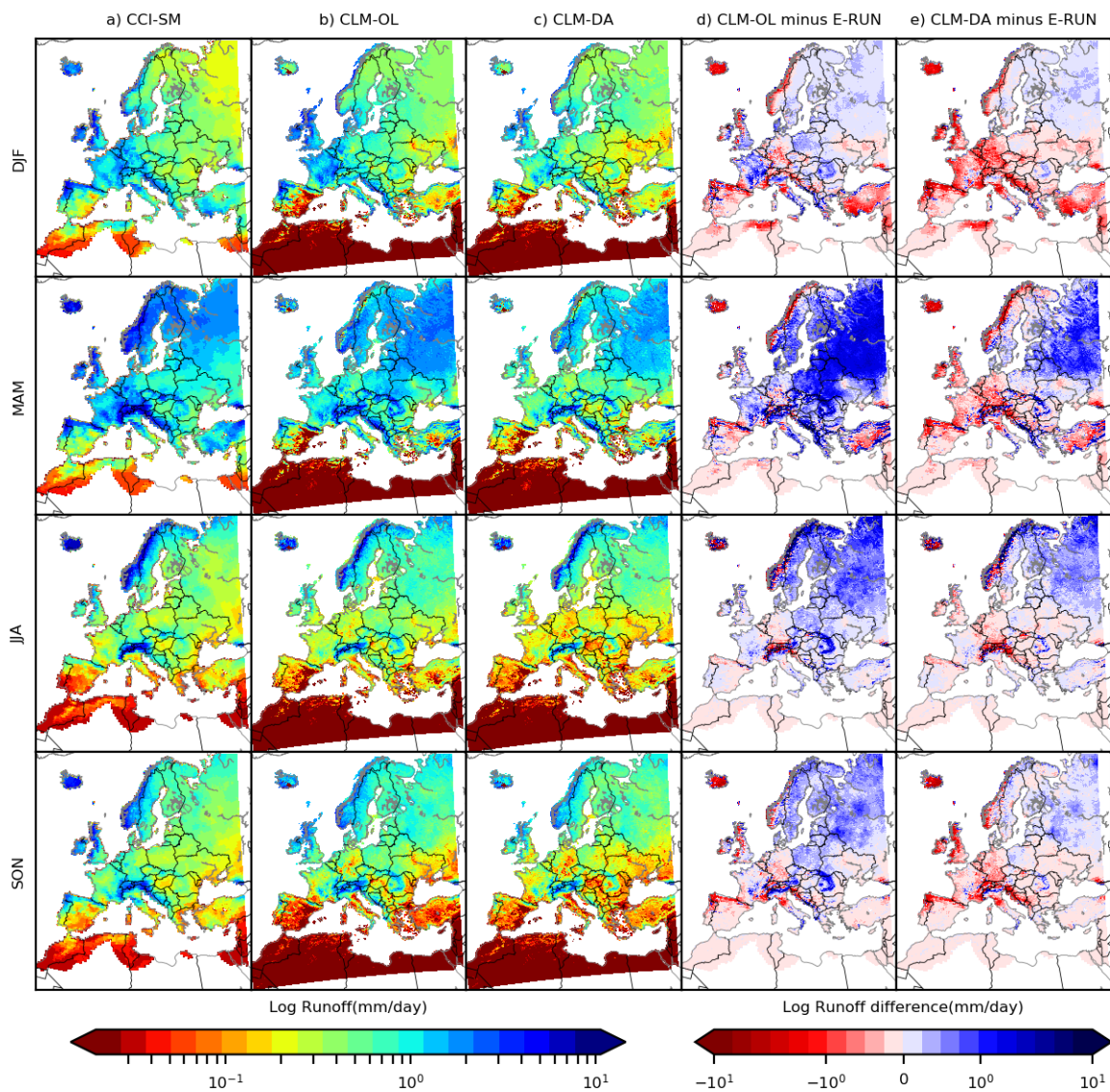


Figure 7. Temporally averaged monthly runoff (mm/day) at log scale over the 2000 – 2006 period for a) E-RUN, b) CLM-OL c) CLM-DA, and difference between d) CLM-OL and E-RUN and e) CLM-DA and E-RUN for DJF, MAM, JJA and SON seasons.

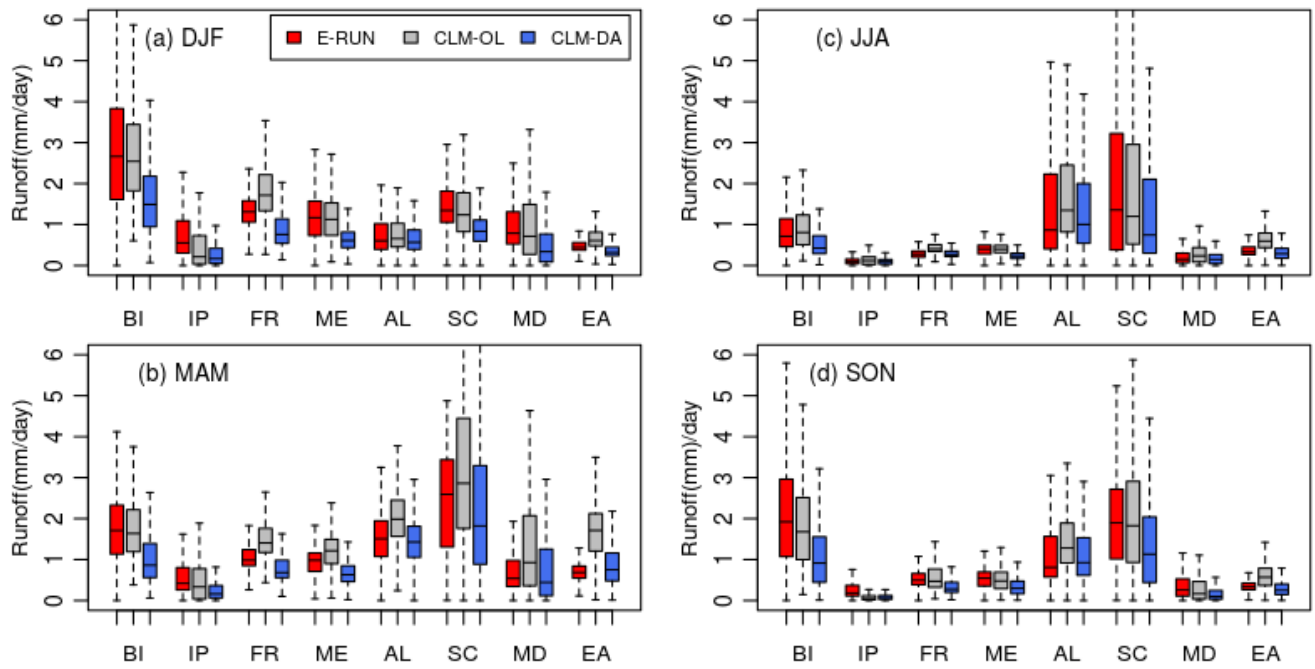


Figure 8. Boxplots of temporally averaged runoff (mm/day) over the years 2000 – 2006 for all PRUDENCE region and seasons, i.e. (a) DJF, (b) MAM, (c) JJA and (d) SON. The boxplots indicate the spatial distribution of monthly averaged runoff over each region.

5

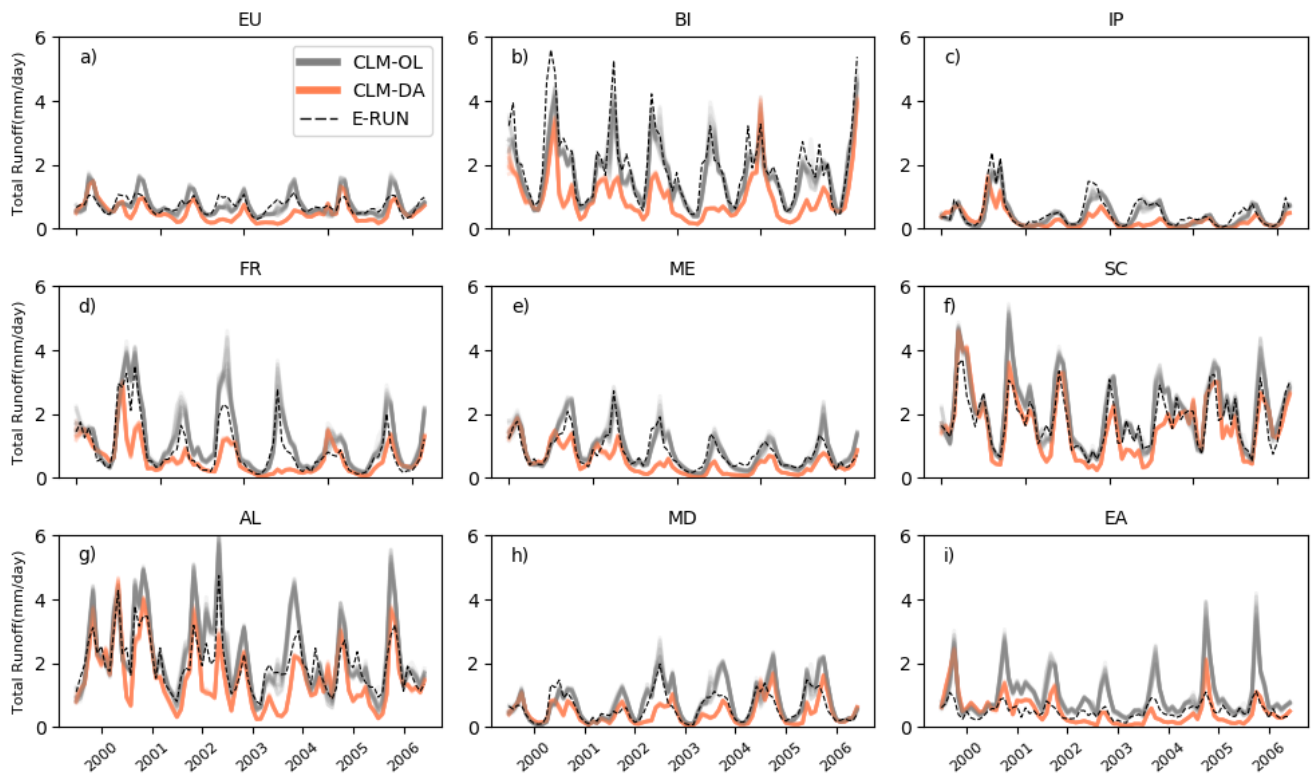


Figure 9. Monthly time series of runoff from CLM-DA and CLM-OL simulation and compared with E-RUN runoff observation data for the years 2000 – 2006 over Europe and PRUDENCE regions. The orange and gray lines are the CLM-DA and CLM-OL

5 20 ensemble members, respectively.

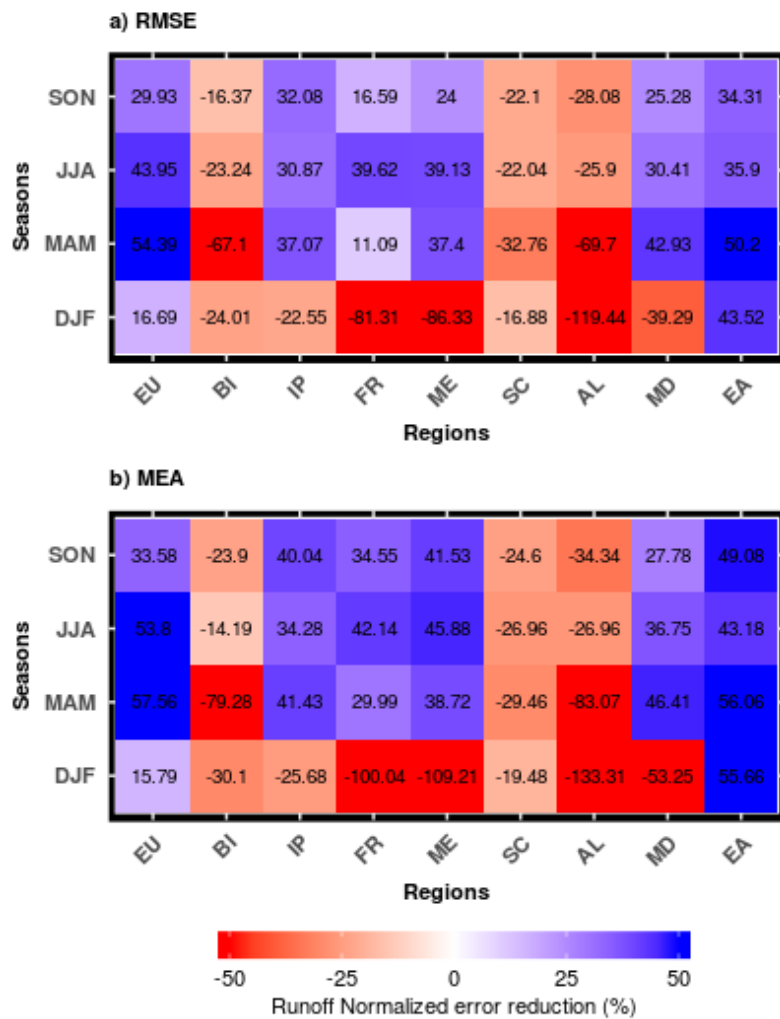


Figure 10. Normalized error reduction (NER) index of (a) RMSE and (b) MEA for runoff over different seasons and PRUDENCE regions using CLM-OL and CLM-DA simulations over the years 2000 - 2006.

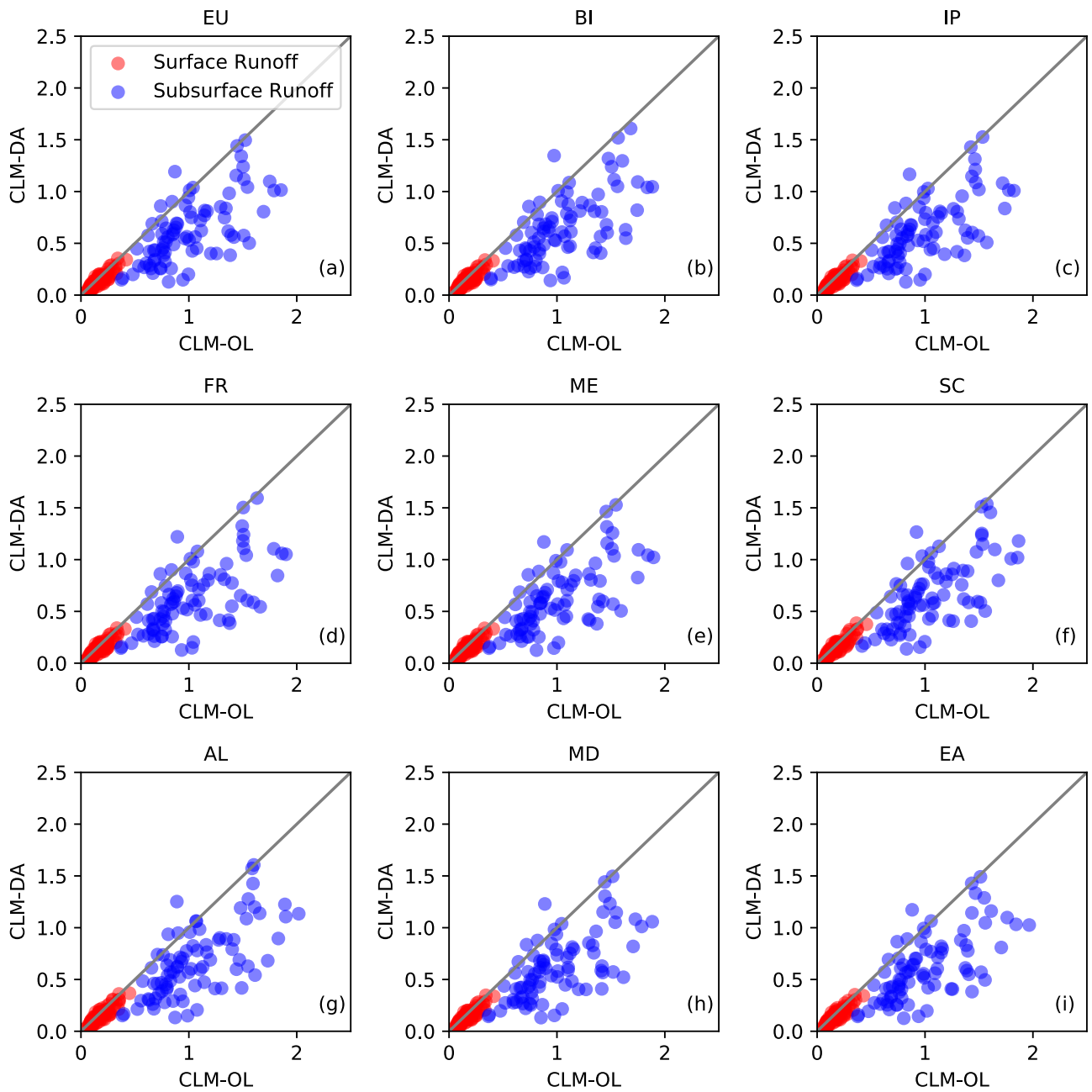


Figure 11. Comparison of spatially-averaged monthly simulated runoff components (surface and subsurface runoff) between CLM-OL and CLM-DA over Europe and PRUDENCE regions for the time period of 2000 – 2006. Gray line represents 1:1 line.