

The paper describes a detailed and data-rich study on applying conceptual tracer-aided modelling to understand the hydrological response of a karstic catchment. It does so by also considering hillslopes besides the more classical slow and fast subsurface reservoirs. It is well written, structured and presented. Although the presented methods are not novel, their application in karstic environments has novelty and value to the hydrological community. The work has been done, as far as I can tell, in great detail and profoundness.

We sincerely thank the reviewer for his comments and suggestions. We have revised our manuscript taking into account all suggestions and comments from the reviewer. Our point-to-point responses are detailed below.

I have not been involved in the first round of reviews. Reading the discussion, the authors improved their article (mainly clarification and some more detailed discussion) based on the reviews. One remark, however, I must admit I am quite disappointed by the data policy statement that the data are not made openly available. This hinders scientific progress for no obvious reason, it also obstructs verification of the data and modelling. I hope the authors can do another attempt freeing the data. Notwithstanding this annoying shortcoming, I think the article can be published after taking into consideration the minor questions and technical correction listed below.

Reply: The data can be shared after ending of our project (2019) according to the project executive policy. Anyone who likes to use the data can contact the corresponding author after signing agreement.

One point of concern relates to the mean age distribution, as already pointed out in the first round of reviews. Can the authors discuss what is the value of a mean age of the discharged water if the reservoir storages are so small: hillslope unit has $V=23$ mm (while being 0.88 of the 1.25 km² surface area) and the fast reservoir has a mean storage volume of 0.2 mm (with max of 6-7 mm).

Reply: The age in our study refers to the age of flux, which reflects the integration of the nonstationary water age distributions in the fluxes from the different sources. It can be tracked using a time stamp that tags each hourly incoming flux and outflowing flux via their movement through the storage cascade (Hrachowitz et al. 2013; Soulsby et al., 2015):

$$Age = (\sum_{n=1}^N Age_{Q_{in,n}} Q_{in,n} + Age_{res} V_{res})/V$$

where Age is the mean age of flux from conceptual store, $Q_{in,n}$ and $Age_{Q_{in,n}}$ are the incoming water volume and corresponding water age, respectively, V_{res} and Age_{res} are resident water storage volume and corresponding water age, respectively, V is the total storage volume of conceptual store at each end of time step. The water age of flux from the corresponding conceptual store is controlled by the relative proportion of water volume (incoming and resident) and their respective ages.

For the fast flow in depression, the mean age of the discharged water from fast reservoir generally

reflected the integration of the incoming water, including younger water fluxes from the hillslope and rainfall infiltration, and older fluxes from the slow flow reservoir, which mixes with the previous stored water. The smaller storage of fast reservoir reflects that it takes less regulation on the income water. During the rainfall, the age of water in fast reservoir (being the shortest of 2 days) indicates the fast-released fresh water from the rainfall infiltration and hillslope flow, which little mixes with the previous stored water due to the small storage and. In contrast, in the non-rainfall period, the age of water in fast reservoir (being the longest of 466 days) reflects slow released water mainly from slow flow reservoirs (the ages between the fast and slow flow reservoirs are close in Fig 10).

Similarly, for the hillslope flow, the mean age of the discharged water reflected the integration of the incoming water from rainfall infiltration, which mixes with the previous stored water as well as the inactive water (Fig 3). The storage of hillslope flow is larger than the storage of fast reservoir in depression due to rich fractures in epikarst zone but much less than that of slow flow reservoir. The relative smaller storage of hillslope flow takes a similar function on the age variations: fast release from rainfall during rainfall and slow release from the inactive layer in the non-rainfall period.

My second point relates to the groundwater sampling. L135: How did you sample the GW? Did you remove some pore volumes before taking the sample? What is exactly an isotope value over 13 or 35 m filter length (as screening is over entire length)? How does that influence your modelling results of the slow reservoir? Would sampling over smaller filter screens not be more informative?

Reply: We used a kind of special sampling instrument to collect the sample at a specific depth. At each well, water was sampled from multiple depths with a depth - specific sampler to give a profile of the isotopic composition of the groundwater column (refer to Chen et al., 2018). Thus, the analysis results in Table 1 refers to mean value of the samplings at the different depths.

Here, water samplings at Well 1 and 5 represent water from the slow reservoir since they are located at the less permeable aquifer (Chen et al. 2018). Our simulated isotope values of the slow flow cover the isotope variation from the samplings (see the dotted δD values at these two wells within the uncertainty bands in Fig. 7 in the manuscript). In contrast, the isotope values from the water samplings at Wells 3 and 4 represent those from the fast flow reservoir. Thus, δD values at Wells 3 and 4 were underlined the uncertainty bands in Fig. 7 (meaning younger than water at the slow reservoir).

Due to high heterogeneity of the karst critical zone, it is difficult to separate “slow” and “fast” components at any wells, which may result in the greater uncertainty in Fig 7 from the modeling results.

Technical and minor remarks:

The use of symbols in the article are not according to HESS standards. HESS promotes use of single symbol representation for parameters, variables etc. (please replace con-fei-KK-Age etc with single letter symbols
Reply: we have revised this.

L248: the all > all the

Reply: we have revised this.

Fig 4: lc-excess panel impossible to read. Maybe enlarge (or add enlarged version in supplement?)

Reply: we have revised this.

Fig 4: panel a: typo in legend. Aimulations > simulations

Reply: we have revised this.

L362: why can the storage volume of 0.2mm of the fast reservoir be explained with “because the underground river/conduit volume represents only a very small proportion of the porosity of the entire aquifer”. A huge conduit above the local groundwater level would have no storage in your model but take up quite some proportion of the subsurface, isn't it. Please explain

Reply: It is a typical karst hydrogeological feature: fast flow and small storage capacity for the conduits and underground channels (Birk, et al., 2004; Einsiedl, 2005).

In the whole catchment, the conduits and underground channels occupy a small proportion of the catchment volume. According to field surveys in other karst catchments, the mean global porosity of karst conduit networks is less than 1% of the catchments (Pardo-Iguzquiza et al., 2011; Bonacci et al., 2006).

In our conceptual model, the numerical conduits above the local groundwater level were treated as the fast flow reservoir with a small storage. The fast flow reservoir takes a function of fast recharge into the slow reservoir during the rainfall and fast release of the subsurface flow after rainfall.

Birk, S., Liedl, R. and Sauter, M.: Identification of localised recharge and conduit flow by combined analysis of hydraulic and physico-chemical spring responses (Urenbrunnen, SW-Germany), *J. Hydrol.*, doi:10.1016/j.jhydrol.2003.09.007, 2004.

Einsiedl, F.: Flow system dynamics and water storage of a fissured-porous karst aquifer characterized by artificial and environmental tracers, *J. Hydrol.*, doi:10.1016/j.jhydrol.2005.03.031, 2005.

Pardo-Iguzquiza, E., Durán-Valsero, J. J. and Rodríguez-Galiano, V.: Morphometric analysis of three-dimensional networks of karst conduits, *Geomorphology*, doi:10.1016/j.geomorph.2011.04.030, 2011.

Bonacci, O., Ljubenkovic, I. and Roje-Bonacci, T.: Karst flash floods: An example from the Dinaric karst (Croatia), *Nat. Hazards Earth Syst. Sci.*, doi:10.5194/nhess-6-195-2006, 2006.

L391 (and on some more place). Why “unique”. It is a situation we see more in e.g. large fissures/preferential flow paths in soil hydrology / subsurface hydrology, in urban area (mentioned later on in the article) etc. It is a normal situation that can be explained physically easily. Therefore, I do not see this as something “unique”, but “distinct or characteristic”

Reply: we have revised this.

Fig 9: negative sign missing in lower part plot

Reply: we have revised this.

L459: is the low connectivity due to low storage or due to low hydraulic gradients (in unsaturated subsurface)?

Reply: We changed it to be “due to the low hydraulic gradients and/or hydraulic conductivity”.

L464: here I agree, the low storage is not the driver, the hydraulic gradients are the driver and storage can be a

useful index for it in lumped conceptual modelling. I would suggest to say hydraulic gradients ((such as gradients in water levels are)

Reply: We changed the sentence to “The hydrological connectivity and exchange between the slow and fast flow reservoirs is mainly controlled by the hydraulic gradients between two mediums, rather than the storage.”

L468: also here: Unique? Replace by ‘distinct/characteristic’

Reply: we have revised this.

L472: Suggest to add preferential flow in large fissures, cracks in soil hydrology

Reply: we have added the statement of preferential flow in cracks in soil.

“In this regard, it is similar to the cracks in soil leading to high percolation via preferential flow paths under flooding condition (Zhang et al, 2014).”

L488: “release younger water”? The fast system cannot hold on to the water, so how does it release it?

Reply: we change expression, the “release” was replaced by “transit”.

L491: Typo Jasecho

Reply: we have revised this.

The list of all relevant changes in the revised manuscript

1. Some symbols which are not according to HESS standards in the article have been corrected;
2. Line 248: We have revised the word;
3. Fig.4: The original figure has been replaced by a revised plot;
4. Line 391: 'unique' has been replaced by 'characteristic'
5. Fig.9: The original figure has been replaced by a revised plot;
6. Line 459: We have revised the sentence;
7. Line 464: We have revised the sentence;
8. Line 468: 'unique' has been replaced by 'distinct';
9. Line 472: We have added the relevant descriptions;
10. Line 488: We have changed the expression;
11. Line 491: We have the typo;
12. We have changed the *Data availability*;
13. We thank Thom Bogaard for his constructive comments in *Acknowledgments*;
14. The original figures in supplementary material have been replaced by the revised plot.

Storage dynamics, hydrological connectivity and flux ages in a karst catchment: conceptual modelling using stable isotopes

Zhikai Zhang^{1,2,4}, Xi Chen³, Qinbo Cheng^{1,4}, Chris Soulsby²

¹State Key Laboratory of Hydrology-Water Resources and Hydraulic Engineering, Hohai University, Nanjing 210098, China

5 ²School of Geosciences, University of Aberdeen, Aberdeen AB24 3UF, United Kingdom

³Institute of Surface-Earth System Science, Tianjin University, Tianjin China

⁴College of Hydrology and Water Resources, Hohai University, Nanjing 210098, China

Correspondence to: Zhikai Zhang (zhangzhikai_0@hhu.edu.cn)

Abstract: We developed a new tracer-aided hydrological model that disaggregates cockpit karst terrain into the two dominant landscape units of hillslopes and depressions (with fast and slow flow systems). The new model was calibrated by using high temporal resolution hydrometric and isotope data in the outflow of the Chenqi catchment in Guizhou province of Southwest China. The model could track hourly water and isotope fluxes through each landscape unit, and estimate the associated storage and water age dynamics. From the model results we inferred that the fast flow reservoir in the depression had the smallest water storage and the slow flow reservoir the largest, with the hillslope intermediate. The estimated mean ages of water draining the hillslope unit, and the fast and slow flow reservoirs during the study period were 137, 326 and 493 days, respectively. Distinct seasonal variability in hydroclimatic conditions and associated water storage dynamics (captured by the model) were the main drivers of non-stationary hydrological connectivity between the hillslope and depression. During the dry season, slow flow in the depression contributes the largest proportion (78.4%) of flow to the underground stream draining the catchment, resulting in weak hydrological connectivity between the hillslope and depression. During the wet period, with the resulting rapid increase in storage, the hillslope unit contributes the largest proportion (57.5%) of flow to the underground stream due to the strong hydrological connectivity between the hillslope and depression. Meanwhile, the tracer-aided model can be used to identify the sources of uncertainty in the model results. Our analysis showed that the model uncertainty of the hydrological variables in the different units relies on their connectivity with the outlet when the calibration target uses only the outlet information. The model uncertainty was much lower for the “newer” water from fast flow system in the depression and flow from the hillslope unit during the wet season and higher for “older” water from the slow flow system in depression. This suggests that to constrain model parameters further, increased high resolution hydrometric and tracer data on the internal dynamics of systems (e.g. groundwater responses during low flow periods) could be used in calibration.

10
15
20
25

30

1 Introduction

Karst aquifers are characterized by complex heterogeneous and anisotropic hydrogeological conditions which are very different to most other geological formations (Bakalowicz, 2005; Ford and Williams, 2013). The hydrological function of the critical zone in cockpit karst landscapes is consequently dominated by the strong influence of this unique geomorphology and the structure of carbonate rocks. Subsurface drainage networks in karst aquifers form mixed-flow systems that integrate flow paths with markedly different velocities, ranging from low in the matrix and small fractures, to very high in large fractures and conduits (which often form subterranean channel networks), with associated transitions between states of laminar and turbulent flow (White, 2007; Worthington, 2009). Connectivity is particularly important in karst areas as the complex subsurface hydrogeology results in frequent and abrupt changes of hydrological connectivity. The system alternates through periods of varying strengths of connection and disconnection to create dynamic feedbacks, which in turn influence the systems function. Thus, understanding hydrological connectivity dynamics can provide key insights into the dominant processes governing water and solute fluxes (Lexartza-Artza and Wainwright, 2009). In the southwest karst area of China, the cockpit karst terrain encompasses flow paths sequencing in runoff generation from “hillslope to depression to stream”. The generation of hillslope runoff mostly drains into depression aquifers prior to contribution to underground streamflow. The hydrological connectivity between these units is related to not only the catchment topographic features that affect water transmission (including slope length, gradient and flow convergence e.g. Reaney et al., 2014), but also the subsurface flow connections between the fractures and conduits at any landscape units.

Due to the high spatial variability of the hydrodynamic properties of the karst critical zone, karst hydrological models are often conceptual, and are generally lumped at the catchment scale (e.g. Rimmer and Salinger, 2006; Fleury et al., 2007; Jukic and Denic-Jukic, 2009; Tritz et al., 2011, Hartmann et al., 2013; Ladouche et al., 2014). Such lumped approaches, mostly based on linear or nonlinear relationships between storage and discharge, conceptualize the physical processes at the scale of the whole catchment. In karst aquifers, the solutional conduits connect with intergranular pores and small fractures (often termed as matrix porosity), showing dual or even triple porosity zones (Worthington et al., 2017). Thus, karst aquifers are often conceptualized as dual porosity systems as residence times in the matrix are often several orders of magnitude longer than those in the conduits (Goldscheider and Drew, 2007). Accordingly, the behavior of karst spring hydrographs, is often conceptualized using a two-reservoir model to represent the dual flow system of the karst aquifer: a low permeability “slow flow” reservoir captures the function of fractured matrix blocks of the aquifer, whilst a highly permeable “fast flow” reservoir represents the larger karst conduits (Rimmer and Hartmann, 2012; Hartmann et al, 2014; Zhang et al, 2017). In addition, changing hydrological connectivity between different landscape units (e.g. hillslopes and depressions in cockpit karst areas) is often a key control on the non-linearity of the flow responses of karst systems, though this is usually not explicitly represented in most conceptual models. Consequently, developing semi-distributed lumped models is necessary to adequately

represent the hydrological function of different landscape units and the hydrological connectivity between them. For example, a conceptual model consisting of three regional phreatic aquifers (reservoirs) was proposed as the sources of three baseflow components at Mt. Hermon in Israel as the groundwater discharge patterns at three sites (the Dan, Snir and Hermon) are significantly different (Rimmer and Salingar, 2006).

The utility of tracers in karst hydrology is well-established and has given insights into advection-dispersion processes, physical exchange between conduits and smaller fractures/matrix, as well as identifying relevant contaminant transport parameters (e.g. Field and Pinsky, 2000; Goldscheider et al, 2008; Kůbeck et al, 2013; Kogovsek and Petric, 2014). More generally, integration of tracers into rainfall-runoff models is becoming more common in hydrology and shows promise as such tracer-aided models can provide useful learning tools in hypothesis testing regarding water and solute transport (Birkel and Soulsby, 2015a). Indeed, McDonnell and Beven (2014) have argued that such models provide a basis for ensuring that both the celerity (i.e. the speed) of the hydrological response, along with the velocity of individual water particles (i.e. the travel times) can be captured. Moreover, they identify this as one of the fundamental challenges for contemporary hydrological modelling.

In many studies, such tracer aided models have helped to resolve this celerity-velocity dichotomy known as the “old water paradox” (Kirchner, 2003). Such integration has helped to understand the functional influence of heterogeneity in catchment landscapes; the importance of hydrological connectivity between different landscape units and the mixing processes that regulate solute transport and control water ages, as well as generating runoff responses (Jencso et al., 2010; Tetzlaff et al., 2014; Soulsby et al., 2015). Tracer-aided models that conceptualize the transport of tracers through karst systems via advection-dispersion, mixing, flow partitioning through different conduits, and exchange of tracer with the matrix have been widely used (Morales et al, 2010; Charlier et al., 2012; Mudarra et al, 2014; Dewaide et al, 2016). Using such models to simulate storage dynamics, transit times, and water ages can provide useful metrics to characterize the karst critical zone. Additionally, incorporating isotope tracers into such models facilitates multi-objective calibration, which provides the opportunity to improve the rigor of model evaluation, constrain parameter sets and potentially reduce uncertainty (Birkel et al, 2015b; Ala-Aho et al, 2017a).

The lumped models that use rather simple model structures and focus on key karst processes deemed to be dominant at particular study sites can avoid over-parameterisation (Perrin et al., 2001; Beven, 2006). Nevertheless, they have less skill in differentiating flow paths in a catchment. Whilst tracer-aided models enhance our understanding of the hydrological connectivity between different landscape units, and the associated mixing processes, they increase model parameterisation. Consequently, the effectiveness of tracer-aided models used for flow simulation and hydrological connection of the “hillslope-to-depression-to-stream” in the cockpit karst catchment needs to be evaluated.

The aim of this study is to develop a tracer-aided model that can simulate storage dynamics, hydrological connectivity and flux ages in a karst catchment and evaluate the model uncertainty of the simulation results along the “hillslope to depression

to outlet stream” continuum. The model was applied in the 1.25km² Chenqi catchment in Guizhou province of Southwest China. This catchment has typical cockpit karst landscape and associated karst critical zone architecture (Zhang et al., 2017).

95 There are detailed observations of hydrometrics and stable isotopes in hillslope springs, depression wells and at the catchment outlet, which offers an unusually rich catchment data set to evaluate model capability in karst areas.

2 Study catchment and data

2.1 Study catchment

100 The study catchment of Chenqi, with an area of 1.25km², is located in the Puding Karst Ecohydrological Observation Station in Guizhou Province of southwest China (Fig. 1). It is a typical cockpit karst landscape, with surrounding conical hills separated by star shaped valleys (Zhang et al., 2011; Chen et al., 2018). The catchment, which is drained by a single underground channel/conduit, can be divided into two units: depression areas with low elevation (<1340m) and steeper hillslopes with high elevation ranging from 1340~1500m. The spatial extent of the depression and hillslopes is 0.37 and 0.88 km², respectively.

105 Geological strata in the basin include dolostone, thick and thin limestone, marlite and Quaternary soil profiles (see cross-sections of A-A' and B-B' in Fig 1). Limestone formations dominate the higher elevation areas with 150-200 m thickness, which lie above an impervious marlite formation. Therefore, precipitation recharging can be perched on the impervious marlite layers that discharges at the lower areas (mostly as hillslope springs). In the hillslopes, Quaternary soils are thin (less than 30cm) and irregularly developed on carbonate rocks. Outcrops of carbonate rocks cover 10-30% of the hillslope area. In the depression, soils are thick (> 2m deep). Dominant vegetation ranges from deciduous broad-leaved forest on the upper and
110 middle parts of the steep hillslopes to corn and rice paddy in the lower gentle foot slopes and depressions, where soils are also thicker. The paddy fields are often flooded for the summer during the heavy rainfall period. Additionally, there are three sinkholes outcropping in the depression where the surface and subsurface runoff can be directly drained into the underground channel during heavy rainfall events.

115 The catchment is located in a region with a subtropical wet monsoon climate with mean annual temperature of 20.1°C, highest in July and lowest in January. Annual mean precipitation is 1140 mm, almost all falling in a distinct wet season from May to September and a dry season from October to April. Average monthly humidity is high, ranging from 74% to 78%.

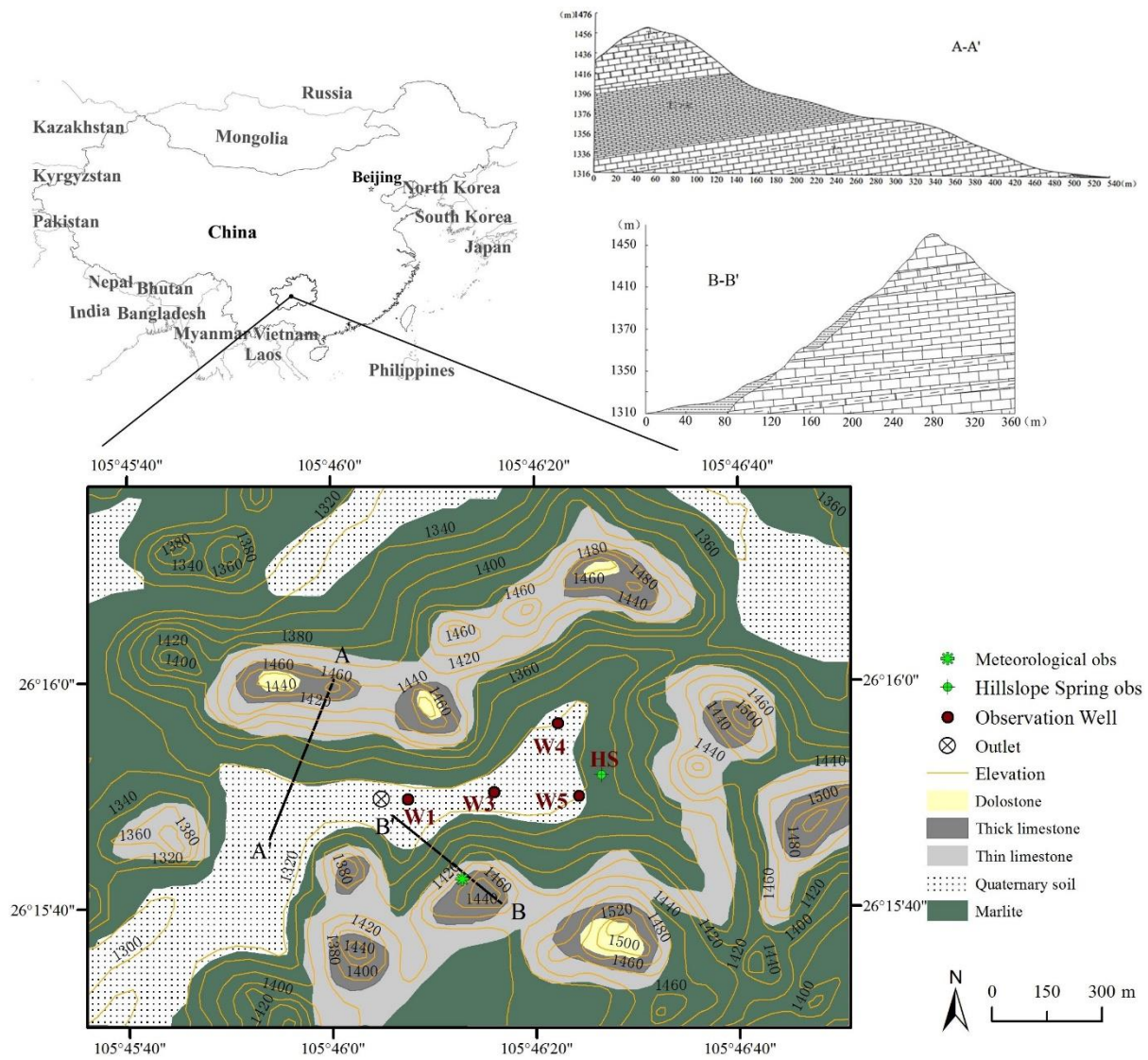


Figure 1 Map of location, geology, geomorphology and hydrological monitoring locations in the Chenqi catchment. Discharge was measured at the outlet and hillslope (HS). Water was sampled from the outlet, HS and four depression wells.

120 2.2 Hydrometric and isotopic data

In Chenqi catchment, the discharge of a hillslope spring (HS) located at the foot of the eastern steep hillslope, and the underground channel at the catchment outlet were measured with v-notch weirs (Fig.1). Their water levels were automatically recorded by HOBO U20 water level logger (Onset Corporation, USA) with a time interval of 15 minutes. Additionally, an automatic weather station was established on the upper hillslope to record precipitation, air temperature, wind, radiation, air humidity and pressure. The data collection ran from 28 July 2016 to 30 October 2017. During the drought period, there were few times that flow discharges ceased (328 and 713 hours of zero flow for outlet and HS, respectively). Although the hillslope flow discharge was much smaller than the outlet discharge, their patterns in temporal variability were similar in terms of flow duration curves (Fig.2).

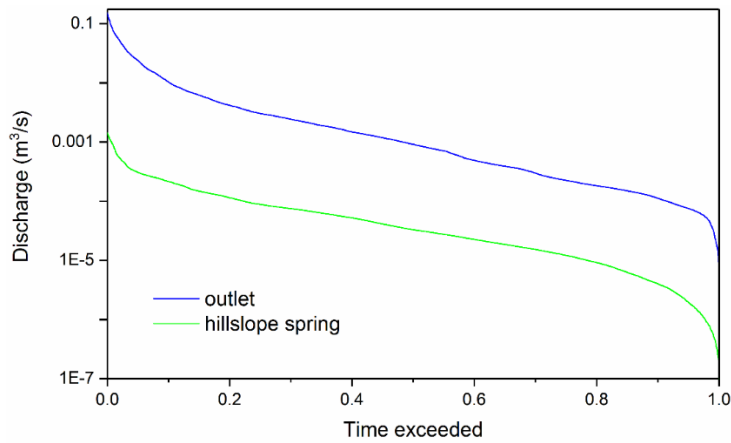


Figure 2 Flow duration curve at outlet and hillslope spring (HS) (28 July 2016 ~ 30 October 2017)

For isotope analysis, precipitation, the hillslope spring and catchment outlet flows were intensively sampled during eight rainfall events in the wet season (May ~ October) using an autosampler set to hourly intervals (from 12 June to 14 August 2017). Groundwater in the low elevation depressions was also sampled from four wells (Fig.1), with depth below the ground surface ranging from 13 to 35m, during four rainfall events. The well screening was installed over the whole depth for each of the wells to reflect local flow exchanges at various depths in the karst. In each event, groundwater samples were collected before, during and after rainfall at each well from multiple depths.

All water samples were collected in 5 ml glass vials. The stable isotope composition of $\delta^2\text{H}$ (δD) and $\delta^{18}\text{O}$ ratios were determined using a MAT 253 laser isotope analyser (the instrument precision $\pm 0.5\text{‰}$ for $\delta^2\text{H}$ and $\pm 0.1\text{‰}$ for $\delta^{18}\text{O}$). Isotope ratios are reported in the d-notation using the Vienna Standard Mean Ocean Water standards. Statistical characteristics of isotope signature are summarized in Table 1.

Table 1 Statistical summary of isotope data for rainfall, hillslope spring (HS), catchment outlet and depression wells

Obs	δD (‰)					$\delta^{18}\text{O}$ (‰)					lc-excess
	Max	Min	Range	Cv	Mean	Max	Min	Range	Cv	Mean	
Rainfall	-17.9	-120.2	102.3	0.3	-73.2	0	-16.4	16.4	0.29	-9.9	-0.59
Outlet	-46.9	-73.1	26.2	0.06	-61.9	-5.1	-10.6	5.5	0.09	-8.7	1.13
HS	-51.8	-77	25.2	0.04	-64.3	-5.9	-10.8	4.9	0.06	-9.3	2.91
W1	-50.7	-65.7	15	0.03	-60.8	-6.3	-9.6	3.3	0.05	-8.7	1.72
W3	-56.1	-73.6	17.5	0.06	-62.4	-7.4	-10	2.6	0.06	-8.7	0.66
W4	-55	-70.2	15.2	0.07	-62.5	-7.9	-10.1	2.2	0.07	-8.9	2.37
W5	-55.7	-67.5	11.8	0.03	-58.7	-7.9	-10.1	2.2	0.04	-8.5	2.39

3 Methodology

3.1 Modelling approaches

The model used in this work was based on a simpler framework developed in a previous study to simulate the catchment-scale water and solute transport (Mg and Ca) in the dual flow system of the karst critical zone at daily time-steps (Zhang et al., 2017). The original model had no basis for spatially disaggregating differences in flow and tracer dynamics from different landscape

units. Here we significantly improved the model structure by separately conceptualizing the dominant hillslope and depression landscape units (Fig. 3), and then used the high resolution discharge and isotope data to drive the modelling at hourly time-steps. In addition, the new model has the parameters to represent passive storage inferred by isotope damping and the capacity to track the ages of water fluxes from various landscape units. As shown in Fig. 3, the Chenqi catchment was therefore subdivided into two spatially distinct units to represent the hillslope and depression. The depression unit was further conceptualized into two flow systems, represented by “fast” and “slow” flow reservoirs which could exchange water. In contrast, the hillslope unit was conceptualized as a single reservoir because of the dominant influence of the thin soil/epikarst on water movement.

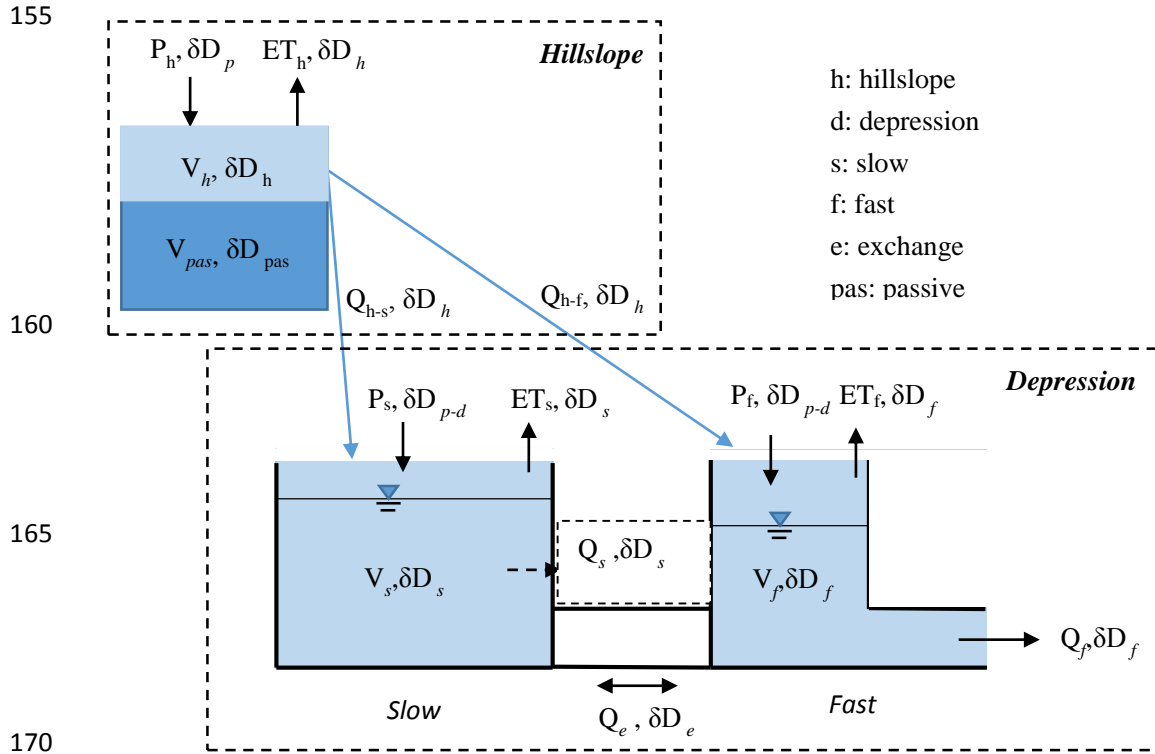


Figure 3 Structure of the coupled flow tracer model (modified from Zhang et al., 2017). Equations used to calculate state variables and storages are presented in Appendix A.

3.1.1 Hydrological simulation

The water balance for each of the three reservoirs (hillslope unit, fast flow and slow flow reservoirs in depression) in the catchment is expressed as follows:

$$\frac{dV_h}{dt} = P_h - ET_h - Q_{h-s} - Q_{h-f} \quad \text{for hillslope unit} \quad (1)$$

$$\frac{dV_s}{dt} = P_s - ET_s + Q_{h-s} - Q_e \quad \text{for slow flow in depression unit} \quad (2)$$

$$\frac{dV_f}{dt} = P_f - ET_f + Q_{h-f} + Q_e - Q_f \quad \text{for fast flow in depression unit} \quad (3)$$

180 where P is rainfall ($\text{m}^3 \text{ hour}^{-1}$), ET is evapotranspiration ($\text{m}^3 \text{ hour}^{-1}$), Q is flow discharge ($\text{m}^3 \text{ hour}^{-1}$) and V is storage (m^3);
subscripts of h , s and f represent the hillslope, slow and fast flow reservoirs, respectively, the subscripts of $h-s$ and $h-f$ represent
from hillslope reservoir to slow and fast flow reservoirs, respectively, and subscript of e represents flow exchange between
fast and slow reservoirs. The hydrological connection and flow discharge routing for the dual flow system in the depression
was derived by Zhang et al. (2017). Here, we further include the hydrological connectivity of the hillslope flow discharging
185 into the depression reservoirs (Q_{h-s} and Q_{h-f} in Eqs. (1)~(3)).

3.1.2 Simulation of isotope ratios and estimation of water ages

The model tracks and simulates the isotope ratios for each reservoir separately, in which the isotope ratios can be completely
or partially mixed. Experimental evidence suggests that the common complete mixing assumption is overly-simplistic, in
particular for systems with pronounced switches between rapid shallow subsurface flow (e.g. macropores) or overland flow
190 on the one hand and slow matrix flow on the other hand (Van Schaik et al., 2008; Legout et al., 2009). Since the depression
unit was divided into the connected fast and slow reservoirs, complete mixing of the isotope ratios is assumed for both
reservoirs. Thus, the isotope mass balance in the slow and fast flow reservoirs can be expressed as:

$$\frac{di_s(V_s)}{dt} = i_{p-d}P_s - i_sET_s + i_hQ_{h-s} - i_sQ_e \quad \text{for slow flow reservoir in depression} \quad (4)$$

$$\frac{di_f(V_f)}{dt} = i_{p-d}P_f - i_fET_f + i_hQ_{h-f} + i_sQ_e - i_fQ_f \quad \text{for fast flow reservoir in depression} \quad (5)$$

195 where i is the $\delta^2\text{H}$ signature of the storage components (‰), the subscript of $p-d$ represents rainfall infiltration in depression
unit.

Hence, partial mixing was assumed for the hillslope (e.g. the upper active storage V_h mixing with the lower passive storage
 V_{pas} in Fig. 3 since the upper rock fractures/conducts reduce exponentially along the hillslope profile (Zhang et al., 2011))
according to

$$200 \quad \frac{di_h(V_h)}{dt} = i_pV_{p-h} + i_{pas}V_{p-pas} - i_hET_h - i_hQ_{h-s} - i_hQ_{h-f} + i_{pas}V_{pas-in} - i_hV_{pas-in} \quad \text{for the upper active storage in} \\ \text{hillslope} \quad (6)$$

$$\frac{di_{pas}(V_{pas})}{dt} = i_pV_{p-pas} - i_{pas}V_{p-pas} + i_hV_{pas-in} - i_{pas}V_{pas-in} \quad \text{for the lower passive storage in hillslope} \quad (7)$$

The additional volumes V_{pas} (m^3) is the storage of passive reservoir in hillslope which is available to determine isotope storage,
mixing, and transport in a way that does not affect the dynamics of water flux volumes V_h . V_{pas-in} (m^3) is water volume from
205 the active store to the passive store. V_{p-h} and V_{p-pas} (m^3) are the volume of rainfall into active and passive stores, respectively.
To further quantify how catchment functioning affects water partitioning, storage and mixing, water ages are also tracked in
the model. For water age estimation in the fast and slow flow reservoirs in the depression unit, complete mixing of the inputs
is assumed and ages tracked according to determine the dynamic storage volumes on an hourly time step:

$$\frac{dA_s(V_s)}{dt} = A_p P_s - A_s ET_s + A_h Q_{h-s} - A_s Q_e \quad \text{for slow flow reservoir in depression} \quad (8)$$

$$210 \quad \frac{dA_f(V_f)}{dt} = A_p P_f - A_f ET_f + A_h Q_{h-f} + A_s Q_e - A_f Q_f \quad \text{for fast flow reservoir in depression} \quad (9)$$

where A is the water age.

For the age of the hillslope reservoir, the partial mixing is used:

$$\frac{dA_h(V_h)}{dt} = A_p V_{P_h} + A_{pas} V_{P_{pas}} - A_h ET_h - A_h Q_{h-s} - A_h Q_{h-f} + A_{pas} V_{pas_{in}} - A_h V_{pas_{in}} \quad \text{for the upper active storage} \quad (10)$$

$$215 \quad \frac{dA_{pas}(V_{pas})}{dt} = A_p V_{P_{pas}} - A_{pas} V_{P_{pas}} + A_h V_{pas_{in}} - A_{pas} V_{pas_{in}} \quad \text{for the lower passive storage in hillslope} \quad (11)$$

where A_{pas} is passive reservoir in hillslope. In the model implementation, each age item at the time t includes the age at the previous time step $t-1$. So, the results listed in this paper include the “aging effect”.

220 Details of the modules within the model and related equations and parameters (highlighting those calibrated) are given in Appendix A. In the equations of each module shown in Table A1, fast and slow flow reservoir storages in depression are drained by the calibrated linear rate parameters K_f and K_s (hour^{-1}), and the exchange flow between them is calculated using the parameter K_e (hour^{-1}) and f (Table A2). Hillslope storage is drained by the exponent parameter w ; precipitation recharging to the slow flow reservoir is calculated by the parameter a (and to the fast flow reservoir by $1-a$); hillslope lateral flow to the slow reservoir is calculated by the parameter b (to fast flow reservoir by $1-b$); estimation of the effects of evaporative fractionation is considered by the parameter Is ; rainfall recharge to active and passive stores in the hillslope is calculated by the parameters KK and pp ; exchange flow between active and passive stores in hillslope is calculated by the parameter con ; and the weighted isotope composition of rainfall input is calculated by the parameter τ . Therefore, the model includes 12 calibrated parameters, seven for flow routing (Ks , Kf , Ke , f , a , w and b) and five parameters (Is , α , β , φ and τ) for simulation of isotope ratios and estimation of water ages. The initial range for each of the parameters is shown in Table 2.

230 Additionally, lateral surface flow can directly recharge into the fast reservoir through sinkholes in the depression in heavy rainfall events. According to research at Chenqi by Peng and Wang (2012), the mean surface runoff coefficient from the hillslopes is about 10% when the hourly rainfall amount exceeds 30mm. Hence, ten percent of rainfall infiltration of hillslope will recharge to fast flow reservoir via sinkholes in this situation (rainfall amount >30 mm/hr).

3.2 Modelling procedure

235 The modelling period started on 23 July 2016, but calibration was initiated using available discharge data from 1 November 2016. The preceding three months were therefore used as a spin-up period (the mean of precipitation isotope signatures over

the sampling period was used for the spin-up period) to fill storages, initialise storage tracer concentrations, and minimize the effects of initial conditions on water age calculations.

The modified Kling–Gupta efficiency (*KGE*) criterion (Kling et al., 2012) was used as the objective function for calibration.

240 The *KGE* breaks the goodness of fit into three components, so is more representative of the overall simulation than the traditionally used Nash–Sutcliffe metric which focuses on flow peaks. This overcomes some limitations of the latter (Schaeffli and Gupta, 2007) and balances how well the model captures the dynamics (correlation coefficient), bias (bias ratio) and variability (variability ratio) of the actual response. Using flow and isotopic composition as calibration targets, objective functions were combined to formulate a single measure of goodness of fit: $KGE = (KGE_d + KGE_i) / 2$ (where KGE_d is discharge, 245 and KGE_i is isotopic composition).

The time series of discharge and isotope data were different in length. The high-resolution samples for stable isotope composition were collected over 8 events from 12 June to 13 August, 2017, giving a total of 589 samples. Hence, the KGE_d and KGE_i were each calculated using all the available data for the outlet discharge and isotope ratios, respectively. Additionally, available data such as the discharge and stable isotope signatures of hillslope spring and isotopes in the depression wells were 250 used as qualitative “soft” data to aid model evaluation. A Monte Carlo analysis was used to explore the parameter space during calibration (Table A2) and the modelling uncertainty. In order to derive a constrained parameter set, two iterations were carried out in the calibration. First, a total of 10^5 different parameter combinations within the initial ranges (initial range 1 in Table 2) was randomly generated as the possible parameter combinations (Soulsby et al., 2015; Xie et al., 2017). After the first calibration using $KGE > 0.3$ as a threshold, the range of each parameter was narrowed. Then, the narrowed ranges (initial range 255 2 in Table 2) were used as for the second calibration. From the total of 10^5 tested different parameter combinations, only the best (in terms of the efficiency statistics) parameter populations (500 parameter sets) were retained and used for further analysis, which included calculation of simulation bounds representing posterior parameter uncertainty (Birkel et al., 2015b).

A regional sensitivity analysis (Freer et al., 1996) was further used to identify the most important model parameters. The parameter sets were split into 10 groups and ranked according to the selected objective function. For each group the likelihoods 260 were normalized by dividing by their total, and the cumulative frequency distribution was calculated and plotted. If the model performance is sensitive to a particular parameter there will be a large difference between the cumulative frequency distributions compared to a 1:1 line.

3.3 Line-conditioned excess

The lc-excess describes the deviation of a water sample from the Local Meteoric Water Line (LMWL) in dual-isotope space, 265 which indicates evaporation-driven kinetic fractionation of precipitation inputs (Sprenger et al., 2016; McCutcheon et al., 2017). With a known LMWL of $\delta^2\text{H} = \alpha * \delta^{18}\text{O} + \beta$, it was thus proposed by Landwehr and Coplen (2004) that: lc-excess = $\delta^2\text{H} - \alpha * \delta^{18}\text{O} - \beta$. As oxygen has a higher atomic weight, non-equilibrium fractionation during the liquid-to-vapour phase

change will preferentially evaporate (in terms of statistical expectation) $^1\text{H}^2\text{H}^{16}\text{O}$ molecules. The isotopic signature of a water sample affected by evaporation thus shows negative lc-excess values, and plots under the LMWL in dual-isotope space (Landwehr et al., 2014). The LMWL of $\delta^2\text{H} = 7.77 * \delta^{18}\text{O} + 4.88$ was defined based on a daily value set of isotope signature at precipitation from August 2016 to September 2017 in Chenqi catchment. The calculated lc-excess values were shown in Table 1.

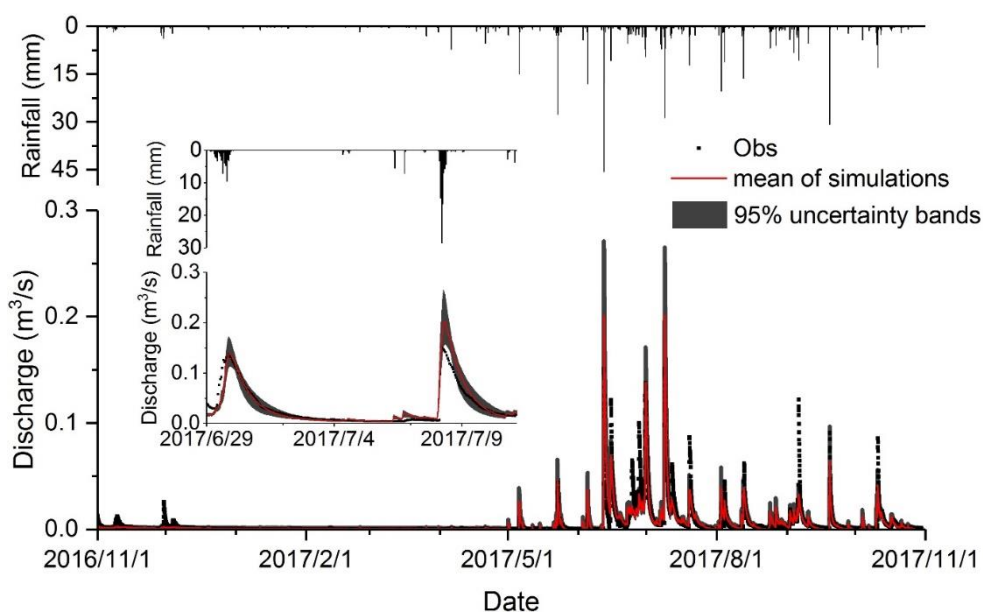
4 Results

4.1 Simulating flow and tracer dynamics

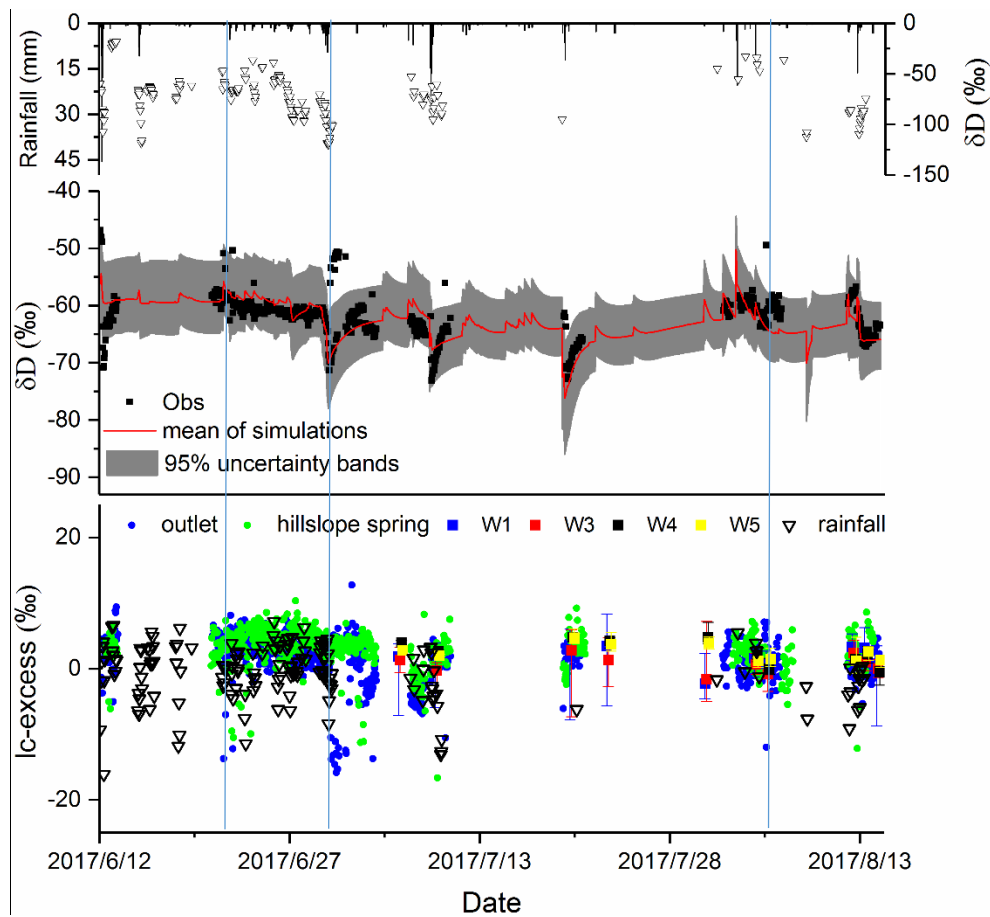
4.1.1 The simulated flow and tracer at catchment outlet

The model results show that the discharge and isotope dynamics were mostly bracketed by the simulation ranges at the outlet though some peak discharges were underestimated (Fig. 4). The objective function values of the combined KGE for flow and isotopes at the outlet were all greater than 0.65 for the best 500 parameter sets (Table 2). As is common in coupled flow-tracer models, the performance in the simulation of isotopes was less satisfactory and more uncertain than for discharge; $KEG_d \sim 0.8$ compared with ~ 0.5 for KEG_i . In general isotope values in rainfall events depleted as the event progressed and this also depressed values in the underground stream, which the model generally reproduced (Fig. 4).

The sensitivity analysis results shown in Fig. 5 indicate that the fast flow reservoir constant (K_f), the precipitation recharge coefficient for the slow flow (a) and for fast flow reservoirs ($1 - a$), the recharge coefficient of the hillslope to slow flow reservoir (b) and to the fast flow reservoir ($1 - b$), coefficient for evaporation fractionation (I_s) and weighting constant (τ) are generally most sensitive to the combined simulation of flow and isotopic composition.



(a) Observed and simulated stream discharge over the study period (inset shows higher resolution response over a 12 day period)



(b) Observed and simulated deuterium, and lc-excess values

Figure 4 Observed stream discharge and deuterium during the study period, and discharge and deuterium simulations for the best 500 parameter sets; and lc-excess values of rainfall, outlet, hillslope spring and depression wells

The results of isotope simulations showed that during events, the model generally reproduces the depletion of isotopes in the outlet stream in response to isotopically depleting rainfall inputs. However, the model sometimes fails to capture some high isotope values during event peaks where isotope values generally depleted (e.g. late June/early July 2017 in Fig.4b). In order to explore this further, the line-conditioned excess (lc-excess) of samples was calculated from samples. The results of lc-excess values are in Fig. 4b, with the mean of -0.59 and 1.13 ‰ for rainfall and the outlet, respectively (Table 1). There were a few samples which showed markedly negative lc-excess values around event peaks (e.g. 22/6, 1/7, and 5/8), indicating a strong fractionation effect. These outliers correspond to the unexpected clusters of enriched isotope values that the model fails to capture.

The lc-excess of the isotope time series of the hillslope spring and wells in the depression were also calculated (Fig. 4b). The mean lc-excess values for the hillslope spring, W1, W3, W4 and W5 for depression wells were shown in Table 1. While the mean is slightly positive, negative values are common indicating an evaporative fractionation effect on recharge water. However, the underground stream flow (mainly reflecting the response of “fast flow” reservoirs) with the unexpected “outliers” with high isotope values could not be attributed to the hillslope response or groundwater in the depression (the maximum of δD less than -50 ‰ in Table 1), because the lc-excess values of these sources were substantially less negative than the

simultaneous values of the underground stream (Fig. 4b) and the maximum of δD (-46.9 ‰) at outlet was higher than that at hillslope spring and depression wells (less than -50‰) in Table 1. The most likely explanation relates to flooded paddy fields which are extensively distributed in the depression during the growing season. Consequently, significant volumes of surface water are impounded in the paddy fields and exposed for evaporative fractionation. Therefore the markedly enriched isotope signals at the outlet around some event peaks would be consistent with fractionated water being displaced from the paddy fields and entering the fast flow system. This would explain the model's lack of skill in capturing such effects of evaporative fractionation.

310

315

Table 2 Mean parameter values and fitness derived from the best 500 parameter sets after calibration

For Flow	K_s (hour ⁻¹)	K_f (hour ⁻¹)	K_e (hour ⁻¹)	f	a	W	b
Initial range 1	40-168	1-72	800-2200	0.005-0.025	0-1	0-0.015	0-1
Initial range 2	40-150	1-40	800-2200	0.008-0.025	0.47-1	0-0.015	0.48-1
Mean	92	11	1549	0.015	0.68	0.005	0.54
Range	48-120	5-18	1000-2000	0.01-0.02	0.51-0.9	0.003-0.01	0.5-0.62
For Isotope	I_s	α ($\times 10^4$)	β	φ	τ	Index	Mean(range)
						KGE_d	0.85 (0.81-0.87)
Initial range 1	0-1	0.8-1.6	0-1	0-1	0-1	KGE_i	0.56 (0.52-0.59)
Initial range 2	0-0.8	0.8-1.6	0-1	0-1	0.5-1	KGE	0.7 (0.72-0.66)
Mean	0.24	1.26	0.49	0.56	0.82		
Range	0.002-0.6	1-1.5	0.02-0.95	0.04-0.97	0.71-0.93		

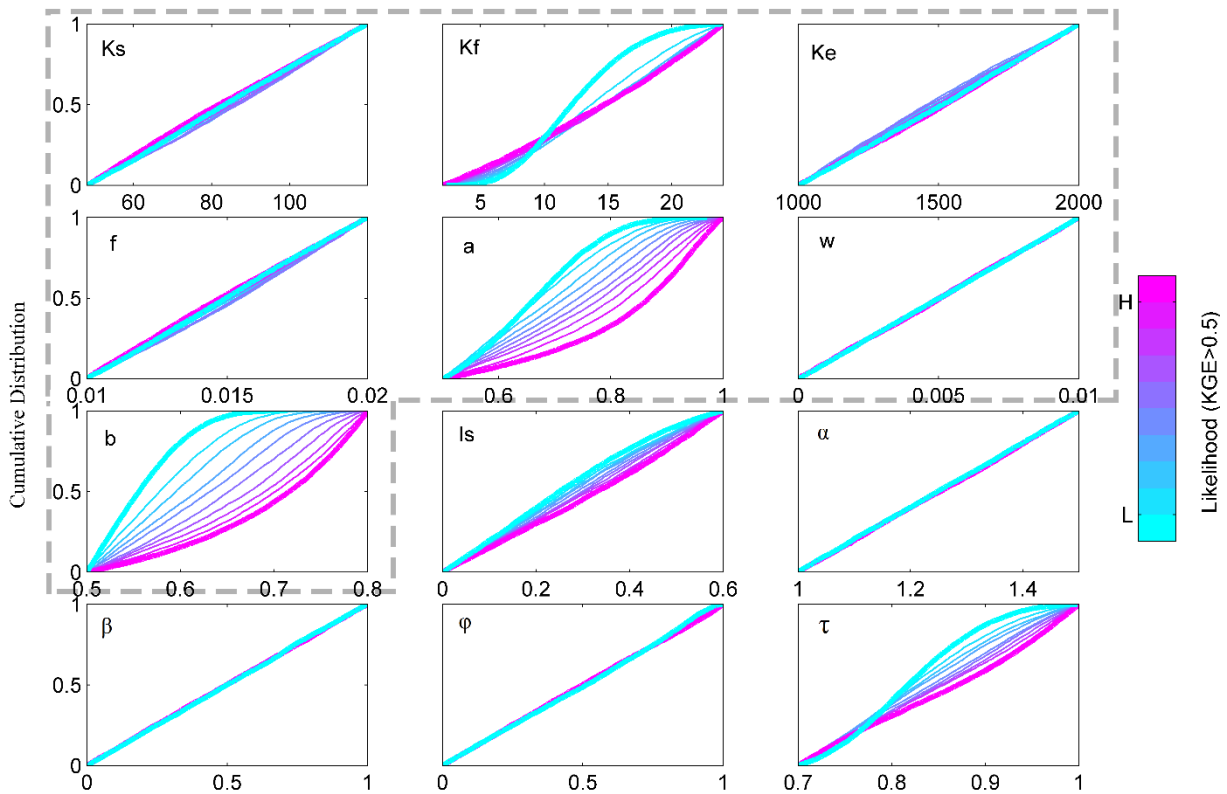


Figure 5 Sensitivity of 12 model parameters expressed as cumulative distributions in ten levels of likelihood values for the model simulations from the lowest likelihood value (blue) to the highest likelihood value (purple). Likelihood based on KEG and rejection of values <0.5 . (The parameters inside the grey dotted box are for flow routing, and the outside parameters are for isotope routing.)

320

4.1.2 The simulated flow and tracer for hillslope spring and depression wells

As a more qualitative indication of model performance, Fig.6 shows the normalized simulated discharge ($Q_n=Q_i/Q_{mean}$) of the hillslope unit had very similar seasonality and event-based dynamics to the normalized observed discharge at the hillslope spring. The magnitude of the modelled discharge fluxes is, of course, different to those observed at the specific hillslope (e.g. HS at the east hillslope in Fig.1) because the simulation results represented the lumped outputs of the whole hillslope unit. However, as a “soft” validation of the model it adds confidence that the temporal dynamics of the hillslope response are appropriately captured. Additionally, the measured flow duration curves (Fig. 2) and isotopic values (the ranges of δD and $\delta^{18}O$ values in Table 1) of the hillslope spring are broadly similar to those measured at the outlet. This, perhaps explains why the model, although using only flow and isotope data from the catchment outlet time series for calibration, is able to capture the dynamics of the hillslope, even though the hillslope drainage parameter w is insensitive.

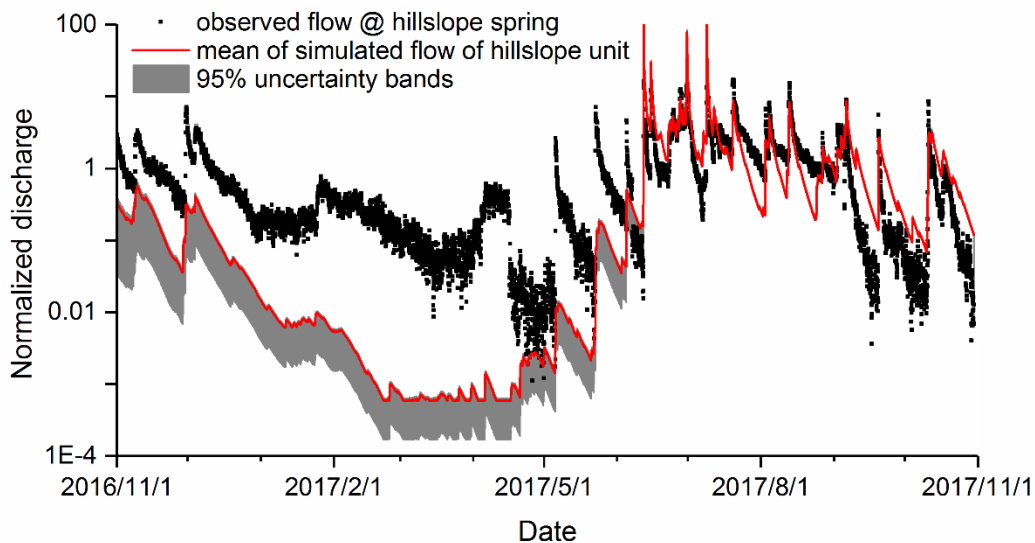


Figure 6 Observed discharge at hillslope spring (in Fig.1) against the simulated discharge of hillslope unit (mean of the simulations for the best 500 parameter sets). Note values are normalized.

This is further illustrated through an additional qualitative evaluation of the model given by comparing the internal tracking of isotope dynamics in the conceptual stores of the hillslope and slow flow reservoir with respective data available from measured isotope values collected for the hillslope spring and wells (Fig. 7). The sampling frequency of the hillslope spring was same as at the outlet; however, there were only 10 sampling occasions from the depression wells over the dry and wet season, and the water samples were collected across a range of depths of the well. Again, although these point measurements are not strictly comparable with the tracked isotope composition of conceptual stores, they do give an indication that the internal states of the model are being plausibly simulated in terms of the mixing volumes which damp the isotope inputs in precipitation. These results are again encouraging, showing that the model captures the general directions of changes in the isotope dynamics of the hillslope spring, albeit with a relatively high degree of uncertainty (Fig.7a).

The modelled isotope composition in the depression in Fig.7b shows the release of water from the slow flow reservoir, representing a relatively stable, well-mixed source. The uncertainty bands cover the limited variability of the measured values of δD at W1 and W5 (blue and yellow points in Fig.7b) where the aquifer has much lower permeability (W5) and is confined (W1) (cf. the geophysical survey reported by Chen et al, 2018). This indicates that our tracer-aided model captures the general slow flow dynamics in the depression even though the uncertainty is large. The highly negative values of δD at W3 and W4 (red and black points in Fig.7b) mostly plot below the uncertainty bands. This is reasonable as water at W3 and W4 has been shown by Chen et al. (2018) to be mostly contributed by faster flows (mixing with the young water) in high permeability areas, particularly during rainfall events (e.g. 9/7, and 20/7 in Fig.7b).

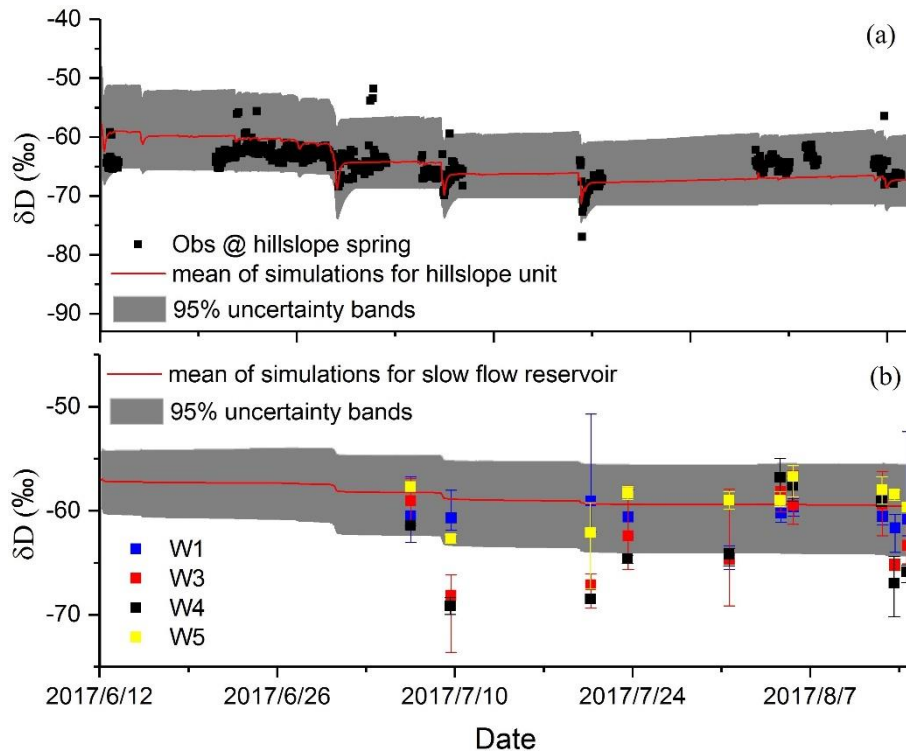


Figure 7 Modelled isotope signature at hillslope unit and slow reservoir vs observation at hillslope spring and depression wells (the red line represents mean of the simulations for the best 500 parameter sets).

4.2 Storage dynamics of different reservoirs and source contributions of underground stream flow

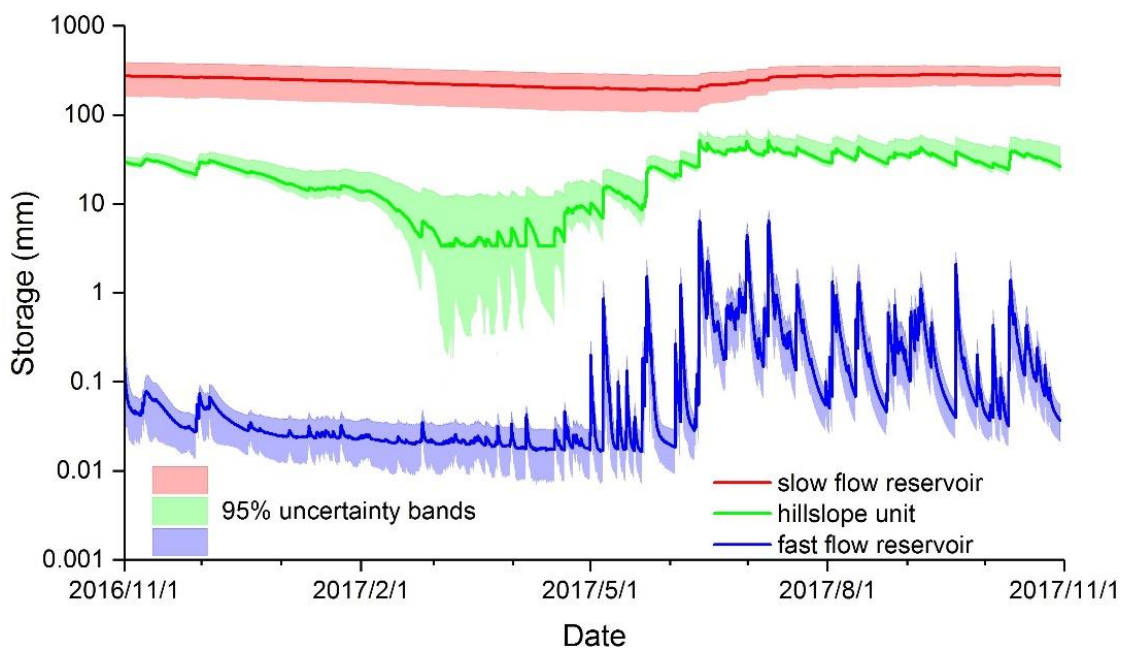
The storage dynamics of the catchment derived from the model in order to simulate the concurrent flow and tracer response can be disaggregated according to the conceptual stores (Fig. 8). The model structure dictates that the main variability in the runoff response to precipitation is driven by the storage dynamics, depending on hydrological connectivity between the hillslope (V_h), slow (V_s) and fast (V_f) flow reservoirs (Fig. 3). The modeled storage results show that slow flow reservoir was the largest store in the catchment (>100mm with mean of 245 mm), consistent with the wide distribution of small fractures and matrix pores in the karst critical zone (Zhang et al., 2011, 2017). The fast flow reservoir had the smallest storage (the mean value was only 0.2mm) because the underground river/conduit volume represents only a very small proportion of the porosity of the entire aquifer. Although the hillslopes cover a larger area than the depression, the thin soil, shallow epikarst and rapid

drainage resulted in a relatively small dynamic storage reservoir, with a calibrated mean value of 23mm. The discharge over the study period showed clear seasonality, which reflects the uneven distribution of precipitation throughout the year (Fig.4a).

365 This seasonality is mirrored somewhat differently in the storage dynamics of each reservoir (Fig.8). The storage change in fast flow reservoir was very rapid, especially in the wet season; reflecting rapid recharge and water release. The rapid response of storage to rainfall was also evident in hillslope reservoir because of the low capacity and short response time.

Using flow and isotopes at the catchment outlet as calibration targets, the uncertainty bands for the three storages increase in the order: fast flow in the depression < hillslope flow < slow flow in the depression (Fig. 8). Additionally, the uncertainty bands become narrower in the wetter period (Figs. 6 and 8). This indicates that the model structure along with the calibration targets emphasizes the rapid flow component, and the modelling uncertainty increases when flux components from storage units are less closely correlated with the outlet discharge used as the calibration target.

370



375 **Figure 8 Model-derived storage dynamics in hillslope (V_h), slow (V_s) and fast (V_f) conceptual reservoirs for the best 500 parameter sets, and the lines represent the mean of simulations**

375

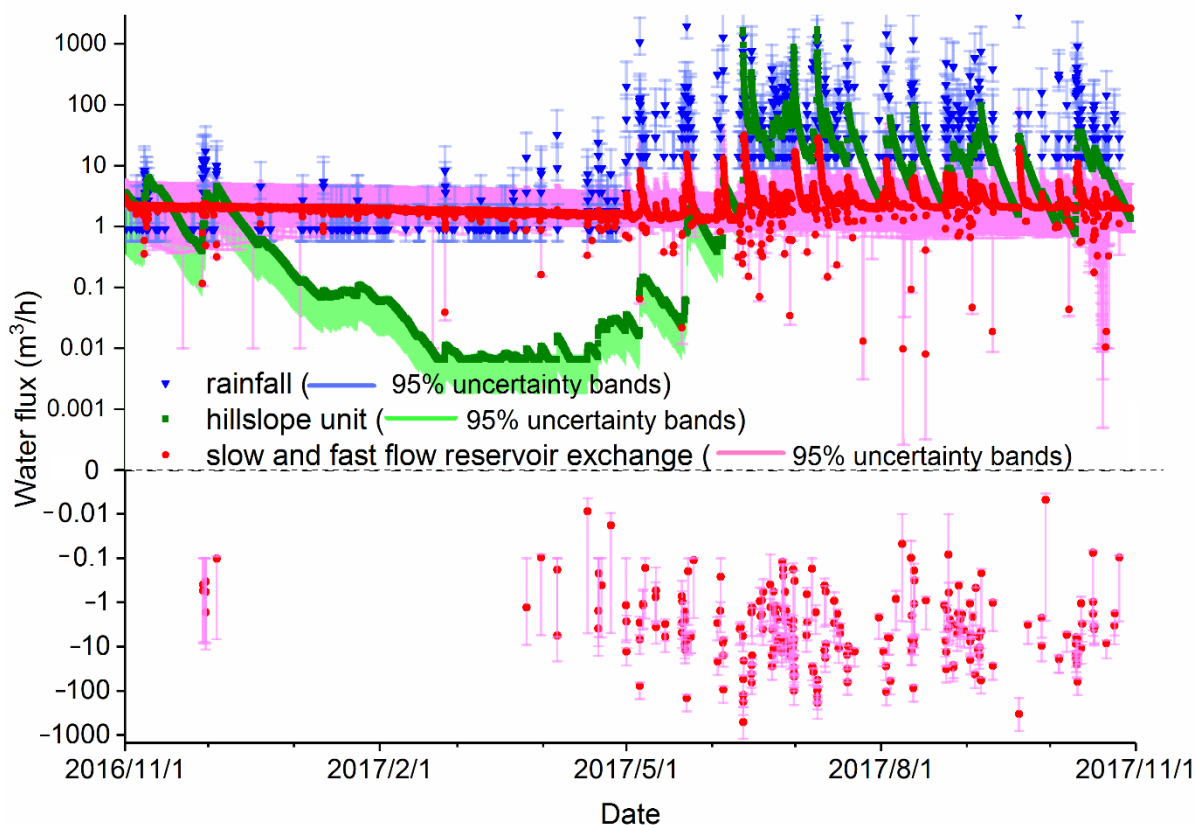
The relative contributions of the different sources to stream flow changed with hydroclimatic conditions, and this could be estimated using the calibrated model. Fig.9 shows that during the dry period (November 2016 to April 2017), underground stream flow was mainly sustained from the small fractures (conceptualized as release from the slow flow reservoir). Overall, this provided the largest proportion (78.4%) of dry season flows, followed by the hillslope unit contribution (16.8%). During this period, direct rainfall infiltration contributed only limited water to the underground stream (4.8%) due to the low rainfall and limited storage, resulting in weak hydrological connectivity between the hillslope and depression. During the wet period, with the resulting rapid increase in storage, the hillslope unit contributes much more water to the underground stream, accounting for the largest proportion (57.5%) of overall flow, due to the strong hydrological connectivity between the hillslope and depression. Meantime, the contribution of direct rainfall infiltration to the underground stream flow also increased (with

380

385 an overall wet season contribution of 35.6%). This likely reflects the increased influence of sinkholes and larger fractures as the catchment becomes wetter. In such conditions, during storm events, overland flow and epikarst water were collected by sinkholes and large fractures and recharged to underground stream directly. The relative contribution of small fractures in the slow reservoir decreased substantially (7%) although the overall magnitude of the water flux to the underground stream increased during the wet period.

390 The bi-directional exchange between the underground conduit and the surrounding porous matrix is a [characteristic](#) feature of the karst critical zone (Zhang et al, 2017). During the dry period, as water table levels in the conduits drop more rapidly than in the matrix, water stored in the matrix drains into conduits and underground channels as baseflow. In the wet season, especially during the periods of highest flow, infiltrated water quickly fills conduits where the water table is higher than the adjacent matrix. Water is temporarily stored in the conduits, and hence induces recharge in the matrix. These bi-directional exchange flows between the underground channels and the matrix were captured by the model (represented by fast and slow reservoirs, respectively) and are shown in Fig. 9, where the negative values represent the flux from conduits to the adjacent matrix. This bi-directional flow was affected by the wetness conditions, being evident in the wet season and indicating both the seasonal and short-term temporal change of hydrological connectivity between the fast and slow flow reservoirs. Despite this, as the parameter Ke that determines the exchange between the fast and slow flow reservoirs is insensitive (Fig. 5), the simulated exchange flux is more uncertain (red lines in Fig. 9) compared with the water fluxes from the direct rainfall and hillslope flow.

400



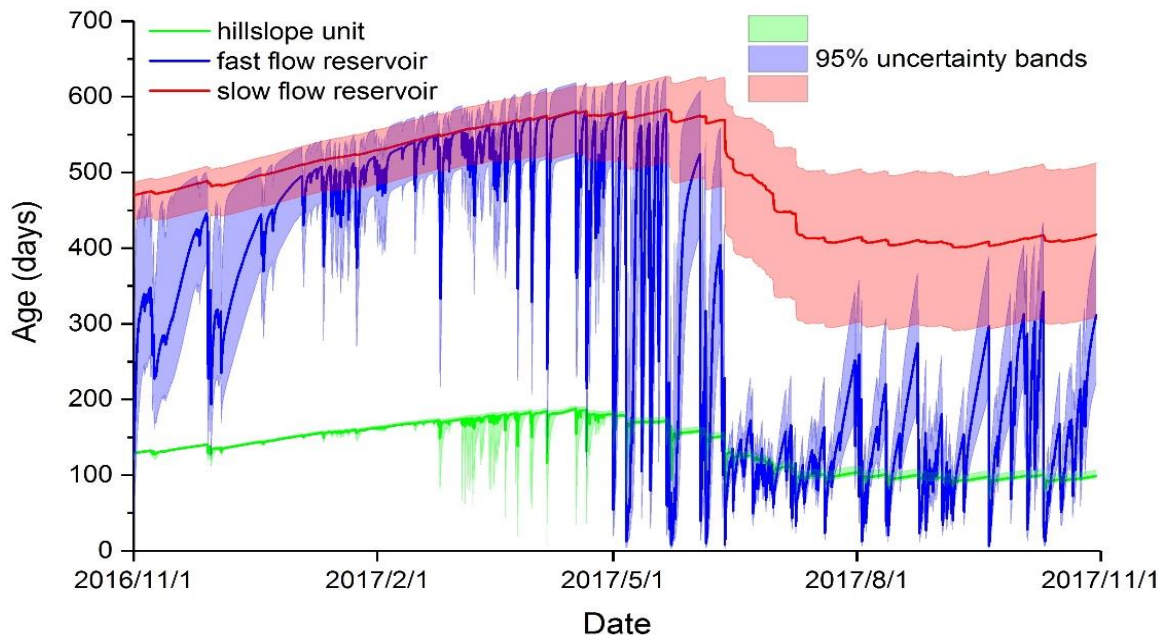
405 **Figure 9 Source contributions to the underground stream flow (fast reservoir) at the catchment outlet (mean of the simulations for the best 500 parameter sets). The red dots above and under the dotted line represent transient reverse water fluxes from the slow reservoir to fast reservoir and fast reservoir to slow reservoir, respectively.**

4.3 Simulated flux ages from different conceptual stores

The ages of water fluxes from the different landscape units were tracked using the model. The simulated ages were linked to the size of storage in each unit and the ages decreasing in the order of hillslope reservoir < fast flow reservoir < slow flow reservoir, with mean ages of 137, 326 and 493 days over the study period, respectively (Fig.10). The mean ages of water flux
410 decreased between the dry and wet seasons: ranging from 159, 466 and 528 days for the dry season to 115, 187 and 458 days for the wet season, for the hillslope, fast flow and slow flow reservoirs, respectively. The ages of fluxes from hillslope flow and fast flow reservoirs change greatly for each of the rainfall events. For short-term (event based) responses to the rainfall, the ages of water from hillslope flow and fast reservoirs can be shortest as 4 and 2 days, respectively. There were 8 and 23 events for the fast flow when the ages of water were less than 5 and 10 days, respectively (see the lowest values in Fig. 10).

415 The ages of fluxes from the fast flow reservoir in the underground stream generally reflected the integration of younger water fluxes from the hillslope and older fluxes from the slow flow reservoir, as shown in the time variant flux ages shown in Fig.10. Consequently, the water age dynamics of the fast flow reservoir were relatively close to the slow flow reservoir in the dry season and close to hillslope reservoir in wet season as connectivity changed. This is consistent with the changing storage dynamics shown above. However, a distinct feature in Fig.10 is that the water ages in the fast flow reservoir were younger
420 than which from hillslope reservoir during some events in the wet period. This again, most likely reflects the role of sinkholes in collecting water with a high proportion of new rainfall (young water) in intense wet season rain events and then recharging underground stream rapidly due to the direct, transient connectivity.

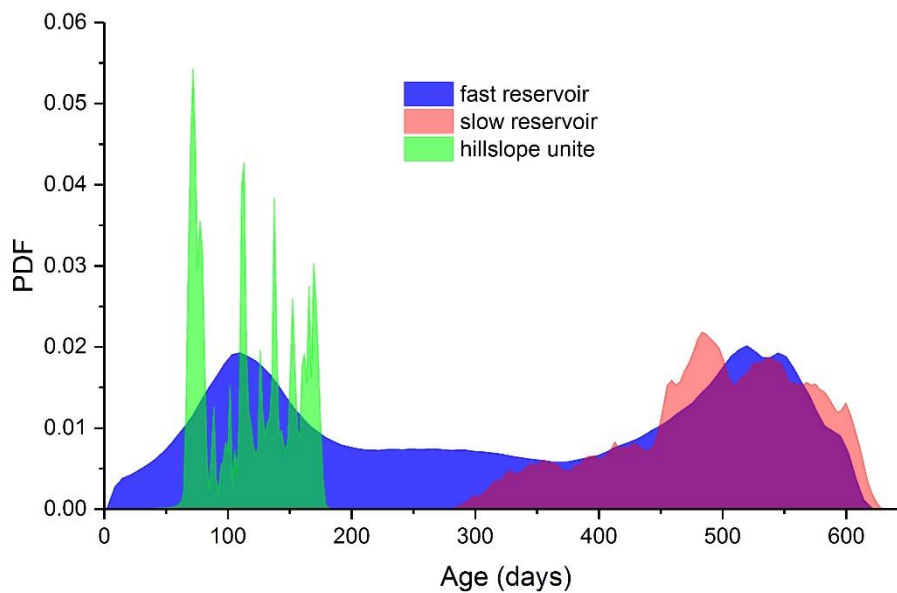
Fig. 10 also shows that uncertainty bands increase with age in the three water fluxes, i.e. narrowest for the youngest hillslope flow and widest for the oldest slow flow. However, the seasonal changes of uncertainty bands are different for the three water
425 fluxes. For the hillslope flow and the fast flow in depression, the uncertainty bands reduce in the wet period as ages decrease. In contrast, for the slow flow reservoir, uncertainty bands increase during wet period (Fig. 10). This underlines the resulting uncertainty for the slow reservoir, reflecting the structural limitations with the model for conceptualising the flow dynamics of this heterogenous zone during the rainfall season.



430 **Figure 10 Mean of water flux age of hillslope, fast and slow reservoir (for the 500 best parameter sets)**

The probability density functions (PDFs) of the simulated flux ages from the three reservoirs are shown in Fig.11 (using the best 500 parameter sets). The ages of fluxes from the fast flow reservoir varied from a few days to over 600 days, and it is clearly evident that the PDF was bimodal with peaks corresponding to water ages of ~100 and ~550 days. From the water age dynamics in Fig.10, it is equally clear that the bimodal distribution of ages of underground stream flow reflected the seasonality of different water sources contributions in the wet and dry seasons. The underground stream flow was dominated by older water from the matrix and small fractures during the dry period and by younger hillslope fluxes during wet period, respectively.

435 of different water sources contributions in the wet and dry seasons. The underground stream flow was dominated by older water from the matrix and small fractures during the dry period and by younger hillslope fluxes during wet period, respectively. The water age distributions for the hillslope also showed seasonal bimodality in flux ages, albeit less pronounced, though the model has also produced a less smooth distribution of more transient younger ages.



440 **Figure 11 Probability density functions of the simulated water ages for the best 500 runs in fluxes for all three reservoirs**

5 Discussion

In karst areas, complex subsurface flow systems, with high spatial heterogeneity in porosity and structure, and marked temporal variations in hydrological connectivity, dictates that the karst critical zone is a particular challenge to hydrological modelling. Tracer-aided conceptual modelling is helpful in understanding karst regions, because using isotope tracers as “fingerprints” means that hydrological processes can be tracked in a way that provides insights into storage dynamics and can resolve “fast” and “slow” water fluxes and estimate their ages with different units of a catchment. This supports other recent studies that water quality data can help inform and constrain modelling in karst environments (e.g. Hartmann et al., 2017).

5.1 Hydrological connectivity between different landscape units

Since the hillslope-depression is a typical landform with variable hydrological connectivity in the karst catchments in southwest of China and elsewhere, the separation of the hillslope and depression in the new model structure improved model performance and yielded more informative results showing clearly the flow and tracer dynamics within different landscape units, as well as tracking spatially distributed storages and ages of water flux. The model was successfully calibrated to the flow and tracer dynamics at the catchment outlet; the results also showed more qualitative consistency performance in terms of the dynamics of the modelled hillslope fluxes compared with spring discharge and the simulated isotopic composition of fluxes with measurements in the spring and wells. Moreover, the modelling approach is potentially transferable to other cockpit karst catchments with similar landscape organization.

The tracer-aided model supports general appropriateness of the model structure which related connectivity dynamics to storage change within different landscape units. During the dry period, there is weak hydrological connectivity between the hillslope and depression due to the low hydraulic gradients and/or hydraulic conductivity. In contrast, during the wet period, hydrological connectivity between the hillslope and depression strengthens as water storage increases. In the early recession, after heavy rain, large fractures in the hillslope fill, leading to large water fluxes into the depression. Then, as storage declines, fluxes decrease and the hydrological connectivity weakens. Moreover, in each of the units, there is hydrological connectivity and exchange between dual porosity systems that were conceptualized as the slow and fast flow reservoirs in this study. The hydrological connectivity and exchange between the slow and fast flow reservoirs is mainly controlled by the hydraulic gradients between two mediums, rather than the storage. The flow directionality will change with the hydraulic gradient between the two reservoirs. The bidirectional water flux makes it fundamental to consider the directionality of connectivity within the karst critical zone. Direct hydrological connectivity between the surface and subsurface is also important in stream flow generation in karst catchments. Besides infiltration through fractures and the matrix, concentrated infiltration from surface to underground flow systems via sinkholes is a distinct aspect of transient connectivity in karst catchments. This influence is captured by the model conceptualisation and shown in the contribution of rainfall to the underground stream in Fig. 9. Although this hydrological connection only occurs during heavy rain in the wet season, it is one of the most distinct hydrological

functions of the karst critical zone. In this regard, it is similar to the cracks in soil leading to high percolation via preferential flow paths under flooding condition (Zhang et al, 2014). In addition, flow paths in urban areas, with transient connectivity of storm drains, have been compared to karst (Bonneau et al. 2017); and whilst this gives similar short response times and a dominance of young water (Soulsby et al., 2014) urban systems are simpler and bi-directional connectivity is less significant.

5.2 Water ages of different conceptual stores

Through characterizing the variable water ages of different landscape units, we can deepen our understanding of the non-linear water storage dynamics and runoff generation processes (Soulsby et al, 2015). Water ages reflect the time variance and non-linearities of how different runoff sources are connected and the dynamics of their relative contribution to runoff generation (Birkel et al., 2012). Recent work has demonstrated the controlling effect of hydrogeological conditions on water ages in karst areas (Mueller et al, 2013). The underground stream water ages at the catchment outlet can be viewed as the time-varying integration of spatially distributed water fluxes from the hillslope unit and small fractures in the depression aquifer, which each have their own age dynamics (Fig.10). There is a distinct pattern of bimodality in the age distribution of underground stream flow (represented by the fast reservoir in Fig.11), which reflects the seasonality of the different water sources. Younger waters mainly come from surface water recharge through sinkholes after heavy rain and drainage from the hillslopes, whilst the slow flow reservoir dominates low flows. According to the water age dynamics of different conceptual stores, it can be deduced that storage-driven changes in hydrological connectivity and associated mixing processes largely determine the nonstationary water age distribution of the underground stream. In this sense, karst catchments seem to be subject to the “inverse storage effect”, where periods of high storage facilitate transit of younger water to drainage (Harman, 2014).

It should be noted that the ages derived from the modelling are based on stable isotope tracers, which whilst well-suited to characterizing the influence of younger waters, are less well-suited to constraining the age of older waters (>5 years) that may be present in deeper aquifers and fine pores that contribute to the slow flow reservoir (e.g. Jasechko et al., 2017). Thus further work is needed to assess the role of these older waters and quantify their influence on the ages of water in the underground channel (e.g. McDonnell and Beven, 2014). That said, the dominance of younger water in the outflow of responsive karst catchments is consistent with recent theoretical (Berghuijs and Kirchner 2017), larger scale (Jasechko et al., 2016) and more local studies (Ala-aho et al., 2017b) which show that deeper, oldest groundwater often makes insignificant or limited contributions to stream flow.

5.3 High temporal resolution isotope data for karst area

There is a marked shift in the isotopic composition of storm event rainfall which effects the short-term response of the catchment outlet, thus weekly or even daily isotope data would not adequately capture the variability of rainfall isotope signatures at a resolution appropriate to the response times of sub-tropical karst systems (Coplen et al., 2008). The assessment

of water ages in the critical zone is highly dependent on the temporal resolution of tracer data in rainfall and stream flow for model conceptualization (Birkel et al., 2012; McDonnell and Beven, 2014). The high-frequency measurements of tracer behaviour enhanced our understanding of catchments' hydrological function and the associated time scales of the celerity of the hydrological response to rainfall inputs and the velocity of water particles. Also, the high-resolution tracer data yielded novel insights into how the model integrates and aggregates the intrinsic complexity and heterogeneity of catchments, in order to reproduce behaviour adequately across a range of time scales (Kirchner et al., 2004). However, it should be noted that in much previous tracer-based modelling, the temporal resolution of hydrometric data (typically hourly) is at a much finer temporal resolution than tracer data, sampled more often at daily or even weekly resolution (Stets et al., 2010; Birkel et al., 2010, 2011; McMillan et al., 2012; Soulsby et al., 2015; Ala-Aho et al., 2017a). Here, due to the marked heterogeneity of flow paths in the karst critical zone, and the very rapid (i.e. sub-daily) stream flow responses to high intensity precipitation, the modelling of flow and tracer dynamics, as well as flux age estimates, need to account for the rapid flow velocities within the karst aquifer. The response time of stream/conduit flows or groundwaters level to rainfall is very short in karst catchments, e.g. typically a few hours in small catchments like Chenqi (Zhang et al., 2013; Delbart et al., 2014; Labat and Mangin, 2015; Rathay et al., 2017). Coarser resolution data would result in increased uncertainty in the short-term components of travel times (Seeger and Weiler, 2014) and a likely bias towards longer transit times (Heidbüchel et al., 2012). Thus a significant advance of the new model used in this study was that observation and model results captured the flashy (sub-daily) responses of flow and isotope signatures at hourly timescales.

5.4 Equifinality of model parameters and uncertainty of the modelled results

The tracer-aided conceptual model used here provided an opportunity to improve the basis for model evaluation and constrain parameter sets potentially reducing such uncertainty (Beven, 1993). However, high uncertainty always accompanies modelling in such complex landscapes since the tracer-aided model increases model parametersisation for the tracer modules. When we further compared the parameter sensitivities when the model was separately calibrated against the outlet discharge and/or water isotopes, using KGE_d and KGE_i respectively, the trade-offs associated with different calibration strategies became evident. The sensitivity analysis (using plots similar to those Figure 5 are shown in the Supplement) showed that increasing the two sensitive parameters in the isotope module (the coefficient for evaporation fractionation I_s and the weighted isotope composition of rainfall input by the parameter τ) results in three parameters in the flow module becoming insensitive when a combined objective function is used. These are the slow reservoir constant (K_f), the exchange constant between the two reservoirs K_e and the ratio of porosity of the quick to slow flow reservoir f). Consequently, equifinality remain for parameters in the trace-aided model, as the former two sensitive parameters in the isotopic module take functions in the outlet flow (being "old/new") similar to the latter three parameters in the flow module. The former two sensitive parameters in the isotopic module emphasize atmospheric effects on the outlet flow (being "old/new"). A higher I_s indicates more evaporative effect on the stored water,

leading to the stored and released water being older, particularly during the dry period. Increasing τ indicates newer rainfall recharge (with more negative isotopic values) into aquifer, resulting in the stored and released water being newer during rainfall period. Alternatively, the latter three parameters in the flow module emphasize effects of fast (newer) and slow (older) flows in aquifer on the outlet flow (being “old/new”). More water release from the slow reservoir (larger K_f) and greater release of the slow reservoir into the fast reservoir (larger K_e) could lead to the released water being older in the dry season; a high proportion of the fast flow storage (larger f) and a greater exchange between the fast reservoir and the slow reservoir (larger K_e) could lead to the released water being newer in the wet season. The equifinality for these parameters might only be overcome when we have additional field data to better constrain them (e.g. knowing the evaporative effect on water I_s and the weighted isotope composition of rainfall input by the parameter τ). Despite this, the using tracers in the model provide evidence on the mixing, flux and age relationships that would not be possible from flow-related calibration alone.

The modelling uncertainty of hydrological variables in different units relies on connectivity of the units with the outlet if only the flow and isotopes at the catchment outlet are used as calibration targets. For example, since hydrological connectivity between the outlet and the catchment units decreases in the order: fast flow in the depression < hillslope flow < slow flow in the depression, the uncertainty bands for the three storages increase in the same order. Also the modelling uncertainty increases with ages of water sources contributing into the catchment outlet due to the decrease in variability of the tracer signal in the larger stores. Some of the markedly enriched isotope signals at the outlet during the event peaks are most likely explained by fractionated water being displaced from the paddy fields during event peaks. Hence, the model skill in capturing the effects of evaporative fractionation need to be further investigated in the model; both in terms of process-based parameterisation of fractionation (e.g. Kuppel et al., 2018) and possibly differentiating paddy fields as a separate landscape unit. Though of course this would be a trade-off with increased parameterization and further equifinality.

6 Conclusions

We significantly enhanced a catchment-scale flow-tracer model for karst systems developed by Zhang, et al (2017) by conceptualizing two main hydrological response units: hillslope and depression each containing fast and slow flow reservoirs. With this framework, we could calibrate the model using high temporal resolution hydrometric and isotopic data to track hourly water and isotope fluxes through a 1.25 km² karst catchment in southwest China. The model captured the flow and tracer dynamics within each landscape unit quite well, and we could estimate the storage, fluxes and age of water within each. This inferred that the fast flow reservoir had the smallest storage, the hillslope unit was intermediate, and the slow flow reservoir had the largest. The estimated mean ages of the hillslope unit, fast and slow flow reservoirs were 137, 326 and 493 days, respectively. Marked seasonal variability in hydroclimate and associated water storage dynamics were the main drivers of non-stationary hydrological connectivity between the hillslope and depression. Meanwhile, the hydrological connectivity

between the slow and fast slow reservoirs had variable directionality, which was determined by the hydraulic head within each medium. Sinkholes can make an important hydrological connectivity between surface water and underground stream flow after heavy rain. New water recharges the underground stream via sinkholes, introducing younger water in the underground stream flow. Such tracer-aided models enhance our understanding of the hydrological connectivity between different landscape units and the mixing processes between various flow sources. Meanwhile, the tracer-aided model can be used to identify uncertainty sources of the modelled results, e.g., the modelling uncertainty of the hydrological variables in any units in relation to their connectivity with the outlet and ages of the flow components. Whilst the model here needs further development (e.g. the parameterization of isotopic fractionation in the paddy fields) and further assessment and testing requires longer and more detailed (e.g. better characterization of older waters) observation data, it is an encouraging step forward in tracer-aided modelling of karst catchments.

Data availability. The isotope data as well as rainfall and flow measurements used for this paper [can be shared after the ending of our project \(2019\) according to the project executive policy. Anyone who likes to use the data can contact the corresponding author after signing agreement.](#) The data were obtained through a purchasing agreement for this study. GIS data in this study are available.

Author contributions. ZZ, XC, and CS conducted the modelling work and data interpretation, ZZ and QC conducted the field and laboratory work, ZZ prepared the manuscript with contributions from co-authors.

Competing interests. The authors declare that they have no conflict of interest.

Acknowledgments. This research was supported by The UK-China Critical Zone Observatory (CZO) Programme (41571130071), the National Natural Scientific Foundation of China (41571020, 41601013), National 973 Program of China (2015CB452701), the National Key Research and development Program of China (2016YFC0502602), the Fundamental Research Funds for the Central Universities (2016B04814) and the UK Natural Environment Research Council (NE/N007468/1). In addition, we thank Sylvain Kuppel, the two anonymous reviewers, [Thom Bogaard](#) and the editor for their constructive comments which significantly improved the manuscript.

References

Ala-Aho, P., Tetzlaff, D., McNamara, J. P., Laudon, H. and Soulsby, C.: Using isotopes to constrain water flux and age estimates in snow-influenced catchments using the STARR (Spatially distributed Tracer-Aided Rainfall-Runoff) model, *Hydrol. Earth Syst. Sci.*, 21(10), 5089–5110, doi:10.5194/hess-21-5089-2017, 2017a.

- 595 Ala-aho, P., Soulsby, C., Wang, H. and Tetzlaff, D.: Integrated surface-subsurface model to investigate the role of groundwater in headwater catchment runoff generation: A minimalist approach to parameterisation, *J. Hydrol.*, 547, 664–677, doi:10.1016/j.jhydrol.2017.02.023, 2017b.
- Bakalowicz, M.: Karst groundwater: A challenge for new resources, *Hydrogeol. J.*, 13(1), 148–160, doi:10.1007/s10040-004-0402-9, 2005.
- 600 Berghuijs, W. R. and Kirchner, J. W.: The relationship between contrasting ages of groundwater and streamflow, *Geophys. Res. Lett.*, 44(17), 8925–8935, doi:10.1002/2017GL074962, 2017.
- Beven, K.: Prophecy, reality and uncertainty in distributed hydrological modelling, *Adv. Water Resour.*, 16(1), 41–51, doi:10.1016/0309-1708(93)90028-E, 1993.
- Beven, K.: A manifesto for the equifinality thesis, in *Journal of Hydrology*, vol. 320, pp. 18–36., 2006.
- 605 Birkel, C., Tetzlaff, D., Dunn, S. M. and Soulsby, C.: Towards a simple dynamic process conceptualization in rainfall-runoff models using multi-criteria calibration and tracers in temperate, upland catchments, *Hydrol. Process.*, 24(3), 260–275, doi:10.1002/hyp.7478, 2010.
- Birkel, C., Tetzlaff, D., Dunn, S. M. and Soulsby, C.: Using time domain and geographic source tracers to conceptualize streamflow generation processes in lumped rainfall-runoff models, *Water Resour. Res.*, 47(2), doi:10.1029/2010WR009547,
- 610 2011.
- Birkel, C., Soulsby, C., Tetzlaff, D., Dunn, S. and Spezia, L.: High-frequency storm event isotope sampling reveals time-variant transit time distributions and influence of diurnal cycles, *Hydrol. Process.*, 26(2), 308–316, doi:10.1002/hyp.8210, 2012.
- Birkel, C. and Soulsby, C.: Advancing tracer-aided rainfall-runoff modelling: A review of progress, problems and unrealised potential, *Hydrol. Process.*, 29(25), 5227–5240, doi:10.1002/hyp.10594, 2015a.
- 615 Birkel, C., Soulsby, C. and Tetzlaff, D.: Conceptual modelling to assess how the interplay of hydrological connectivity, catchment storage and tracer dynamics controls nonstationary water age estimates, *Hydrol. Process.*, 29(13), 2956–2969, doi:10.1002/hyp.10414, 2015b.
- Bonneau, J., Fletcher, T. D., Costelloe, J. F. and Burns, M. J.: Stormwater infiltration and the “urban karst” – A review, *J. Hydrol.*, 552, 141–150, doi:10.1016/j.jhydrol.2017.06.043, 2017.
- 620 Charlier, J. B., Bertrand, C. and Mudry, J.: Conceptual hydrogeological model of flow and transport of dissolved organic carbon in a small Jura karst system, *J. Hydrol.*, 460–461, 52–64, doi:10.1016/j.jhydrol.2012.06.043, 2012.
- Chen, X., Zhang, Z.C., Soulsby, C., Cheng, Q.B., Binley, A., Jiang, R. and Tao, M.: Characterizing the heterogeneity of karst critical zone and its hydrological function: an integrated approach, *Hydrol. Process.*, 1-15, DOI: 10.1002/hyp.13232, 2018.

- 625 Coplen, T. B., Neiman, P. J., White, A. B., Landwehr, J. M., Ralph, F. M. and Dettinger, M. D.: Extreme changes in stable hydrogen isotopes and precipitation characteristics in a landfalling Pacific storm, *Geophys. Res. Lett.*, 35(21), doi:10.1029/2008GL035481, 2008.
- Delbart, C., Valdes, D., Barbecot, F., Tognelli, A., Richon, P. and Couchoux, L.: Temporal variability of karst aquifer response time established by the sliding-windows cross-correlation method, *J. Hydrol.*, 511, 580–588, doi:10.1016/j.jhydrol.2014.02.008, 2014.
- 630 Dewaide, L., Bonniver, I., Rochez, G. and Hallet, V.: Solute transport in heterogeneous karst systems: Dimensioning and estimation of the transport parameters via multi-sampling tracer-tests modelling using the OTIS (One-dimensional Transport with Inflow and Storage) program, *J. Hydrol.*, 534, 567–578, doi:10.1016/j.jhydrol.2016.01.049, 2016.
- Field, M. S. and Pinsky, P. F.: A two-region nonequilibrium model for solute transport in solution conduits in karstic aquifers, 635 *J. Contam. Hydrol.*, 44(3–4), 329–351, doi:10.1016/S0169-7722(00)00099-1, 2000.
- Fleury, P., Plagnes, V. and Bakalowicz, M.: Modelling of the functioning of karst aquifers with a reservoir model: Application to Fontaine de Vaucluse (South of France), *J. Hydrol.*, 345(1–2), 38–49, doi:10.1016/j.jhydrol.2007.07.014, 2007.
- Ford, D. and Williams, P.: *Karst Hydrogeology and Geomorphology.*, 2013.
- Foster, S., Hirata, R. and Andreo, B.: The aquifer pollution vulnerability concept: aid or impediment in promoting groundwater protection?, *Hydrogeol. J.*, 21(7), 1389–1392, doi:10.1007/s10040-013-1019-7, 2013.
- 640 Freer, J., Beven, K. and Ambrose, B.: Bayesian estimation of uncertainty in runoff prediction and the value of data: An application of the GLUE approach, *Water Resour. Res.*, 32(7), 2161–2173, doi:10.1029/96WR03723, 1996.
- Goldscheider, N. and Drew, D.: *Methods in Karst Hydrogeology: IAH: International Contributions to Hydrogeology*, 26., 2007.
- 645 Goldscheider, N., Meiman, J., Pronk, M. and Smart, C.: Tracer tests in karst hydrogeology and speleology, *Int. J. Speleol.*, 37(1), 27–40, doi:10.5038/1827-806X.37.1.3, 2008.
- Harman, C. J.: Time-variable transit time distributions and transport: Theory and application to storage-dependent transport of chloride in a watershed, *Water Resour. Res.*, 51(1), 1–30, 2015.
- Hartmann, A., Wagener, T., Rimmer, A., Lange, J., Brielmann, H. and Weiler, M.: Testing the realism of model structures to 650 identify karst system processes using water quality and quantity signatures, *Water Resour. Res.*, 49(6), 3345–3358, doi:10.1002/wrcr.20229, 2013.
- Hartmann, A., Goldscheider, N., Wagener, T., Lange, J. and Weiler, M.: Karst water resources in a changing world: Review of hydrological modeling approaches, *Rev. Geophys.*, 52(3), 218–242, doi:10.1002/2013RG000443, 2014.
- Hartmann, A., Antonio Barber á J. and Andreo, B.: On the value of water quality data and informative flow states in karst 655 modelling, *Hydrol. Earth Syst. Sci.*, 21(12), 5971–5985, doi:10.5194/hess-21-5971-2017, 2017.

- Heidbüchel, I., Troch, P. A., Lyon, S. W. and Weiler, M.: The master transit time distribution of variable flow systems, *Water Resour. Res.*, 48(6), doi:10.1029/2011WR011293, 2012.
- Jasechko, S., Kirchner, J. W., Welker, J. M. and McDonnell, J. J.: Substantial proportion of global streamflow less than three months old, *Nat. Geosci.*, 9(2), 126–129, doi:10.1038/ngeo2636, 2016.
- 660 Jasechko, S., Perrone, D., Befus, K. M., Bayani Cardenas, M., Ferguson, G., Gleeson, T., Luijendijk, E., McDonnell, J. J., Taylor, R. G., Wada, Y. and Kirchner, J. W.: Global aquifers dominated by fossil groundwaters but wells vulnerable to modern contamination, *Nat. Geosci.*, 10(6), 425–429, doi:10.1038/ngeo2943, 2017.
- Jencso, K. G., McGlynn, B. L., Gooseff, M. N., Bencala, K. E. and Wondzell, S. M.: Hillslope hydrologic connectivity controls riparian groundwater turnover: Implications of catchment structure for riparian buffering and stream water sources, *Water*
- 665 *Resour. Res.*, 46(10), doi:10.1029/2009WR008818, 2010.
- Jukic, D. and Denić-Jukić, V.: Groundwater balance estimation in karst by using a conceptual rainfall – runoff model, *J. Hydrol.*, 373(3–4), 302–315, doi:10.1016/j.jhydrol.2009.04.035, 2009.
- Kirchner, J. W.: A double paradox in catchment hydrology and geochemistry, *Hydrol. Process.*, 17(4), 871–874, doi:10.1002/hyp.5108, 2003.
- 670 Kirchner, J. W., Feng, X., Neal, C. and Robson, A. J.: The fine structure of water-quality dynamics: The (high-frequency) wave of the future, *Hydrol. Process.*, 18(7), 1353–1359, doi:10.1002/hyp.5537, 2004.
- Kling, H., Fuchs, M. and Paulin, M.: Runoff conditions in the upper Danube basin under an ensemble of climate change scenarios, *J. Hydrol.*, 424–425, 264–277, doi:10.1016/j.jhydrol.2012.01.011, 2012.
- Kogovsek, J. and Petric, M.: Solute transport processes in a karst vadose zone characterized by long-term tracer tests (the cave
- 675 system of Postojnska Jama, Slovenia), *J. Hydrol.*, 519(PA), 1205–1213, doi:10.1016/j.jhydrol.2014.08.047, 2014.
- Kübeck, C., Maloszewski, P. J. and Benischke, R.: Determination of the conduit structure in a karst aquifer based on tracer data-Lurbach system, Austria, *Hydrol. Process.*, 27(2), 225–235, doi:10.1002/hyp.9221, 2013.
- Kuppel, S., Tetzlaff, D., Maneta, M. and Soulsby, C.: EcH2O-iso: Water isotopes and age tracking in a process-based, distributed ecohydrological model, *Geoscientific Model Development*, In review, 2018.
- 680 Labat, D. and Mangin, A.: Transfer function approach for artificial tracer test interpretation in karstic systems, *J. Hydrol.*, 529, 866–871, doi:10.1016/j.jhydrol.2015.09.011, 2015.
- Ladouche, B., Marechal, J. C. and Dorfliger, N.: Semi-distributed lumped model of a karst system under active management, *J. Hydrol.*, 509, 215–230, doi:10.1016/j.jhydrol.2013.11.017, 2014.
- Landwehr, J. and Coplen, T.: Line-conditioned excess: a new method for characterizing stable hydrogen and oxygen isotope
- 685 ratios in hydrologic systems, in *Aquatic Forum 2004: International conference on isotopes in environmental studies*, p. 132–134. [online] Available from: <http://dx.doi.org/10.8/S>, 2004.

- Landwehr, J. M., Coplen, T. B. and Stewart, D. W.: Spatial, seasonal, and source variability in the stable oxygen and hydrogen isotopic composition of tap waters throughout the USA, *Hydrol. Process.*, 28(21), 5382–5422, doi:10.1002/hyp.10004, 2014.
- 690 Legout, A., Legout, C., Nys, C. and Dambrine, E.: Preferential flow and slow convective chloride transport through the soil of a forested landscape (Fougères, France), *Geoderma*, 151(3–4), 179–190, doi:10.1016/j.geoderma.2009.04.002, 2009.
- Lexartza-Artza, I. and Wainwright, J.: Hydrological connectivity: Linking concepts with practical implications, *Catena*, 79(2), 146–152, doi:10.1016/j.catena.2009.07.001, 2009.
- McCutcheon, R. J., McNamara, J. P., Kohn, M. J. and Evans, S. L.: An evaluation of the ecohydrological separation hypothesis in a semiarid catchment, *Hydrol. Process.*, 31(4), 783–799, doi:10.1002/hyp.11052, 2017.
- 695 McDonnell, J. J. and Beven, K.: Debates - The future of hydrological sciences: A (common) path forward? A call to action aimed at understanding velocities, celerities and residence time distributions of the headwater hydrograph, *Water Resour. Res.*, 50(6), 5342–5350, doi:10.1002/2013WR015141, 2014.
- McMillan, H., Tetzlaff, D., Clark, M. and Soulsby, C.: Do time-variable tracers aid the evaluation of hydrological model structure? A multimodel approach, *Water Resour. Res.*, 48(5), doi:10.1029/2011WR011688, 2012.
- 700 Morales, T., Uriarte, J. A., Olazar, M., Antigüedad, I. and Angulo, B.: Solute transport modelling in karst conduits with slow zones during different hydrologic conditions, *J. Hydrol.*, 390(3–4), 182–189, doi:10.1016/j.jhydrol.2010.06.041, 2010.
- Mudarra, M., Andreo, B., Marín, A. I., Vadillo, I. and Barberá J. A.: Combined use of natural and artificial tracers to determine the hydrogeological functioning of a karst aquifer: the Villanueva del Rosario system (Andalusia, southern Spain), *Hydrogeol. J.*, 22(5), 1027–1039, doi:10.1007/s10040-014-1117-1, 2014.
- 705 Mueller, M. H., Weingartner, R. and Alewell, C.: Importance of vegetation, topography and flow paths for water transit times of base flow in alpine headwater catchments, *Hydrol. Earth Syst. Sci.*, 17(4), 1661–1679, doi:10.5194/hess-17-1661-2013, 2013.
- Peng, T. and Wang, S.: Effects of land use, land cover and rainfall regimes on the surface runoff and soil loss on karst slopes in southwest China, *CATENA*, 90, 53–62, doi:10.1016/j.catena.2011.11.001, 2012.
- 710 Perrin, C., Michel, C. and Andréassian, V.: Does a large number of parameters enhance model performance? Comparative assessment of common catchment model structures on 429 catchments, *J. Hydrol.*, 242(3–4), 275–301, doi:10.1016/S0022-1694(00)00393-0, 2001.
- Rathay, S. Y., Allen, D. M. and Kirste, D.: Response of a fractured bedrock aquifer to recharge from heavy rainfall events, *J. Hydrol.*, doi:10.1016/j.jhydrol.2017.07.042, 2017.
- 715 Reaney, S. M., Bracken, L. J. and Kirkby, M. J.: The importance of surface controls on overland flow connectivity in semi-arid environments: Results from a numerical experimental approach, *Hydrol. Process.*, 28(4), doi:10.1002/hyp.9769, 2014.

- Rimmer, A. and Salinger, Y.: Modelling precipitation-streamflow processes in karst basin: The case of the Jordan River sources, Israel, *J. Hydrol.*, 331(3–4), 524–542, doi:10.1016/j.jhydrol.2006.06.003, 2006.
- Rimmer, A. and Hartmann, A.: Simplified Conceptual Structures and Analytical Solutions for Groundwater Discharge Using Reservoir Equations, *Water Resour. Manag. Model.*, 2, 217–238, doi:10.5772/34803, 2012.
- Schaefli, B. and Gupta, H. V.: Do Nash values have value?, *Hydrol. Process.*, 21(15), 2075–2080, doi:10.1002/hyp.6825, 2007.
- Seeger, S. and Weiler, M.: Lumped convolution integral models revisited: on the meaningfulness of inter catchment comparisons, *Hydrol. Earth Syst. Sci. Discuss.*, 11(6), 6753–6803, doi:10.5194/hessd-11-6753-2014, 2014.
- Soulsby, C., Birkel, C. and Tetzlaff, D.: Assessing urbanization impacts on catchment transit times, *Geophys. Res. Lett.*, 41(2), 442–448, doi:10.1002/2013GL058716, 2014.
- Soulsby, C., Birkel, C., Geris, J., Dick, J., Tunaley, C. and Tetzlaff, D.: Stream water age distributions controlled by storage dynamics and nonlinear hydrologic connectivity: Modeling with high-resolution isotope data, *Water Resour. Res.*, 51(9), 7759–7776, doi:10.1002/2015WR017888, 2015.
- Sprenger, M., Leistert, H., Gimbel, K. and Weiler, M.: Illuminating hydrological processes at the soil-vegetation-atmosphere interface with water stable isotopes, *Rev. Geophys.*, 54(3), 674–704, doi:10.1002/2015RG000515, 2016.
- Stets, E. G., Winter, T. C., Rosenberry, D. O. and Striegl, R. G.: Quantification of surface water and groundwater flows to open - and closed-basin lakes in a headwaters watershed using a descriptive oxygen stable isotope model, *Water Resour. Res.*, 46(3), doi:10.1029/2009WR007793, 2010.
- Tetzlaff, D., Birkel, C., Dick, J., Geris, J. and Soulsby, C.: Storage dynamics in hydrogeological units control hillslope connectivity, runoff generation, and the evolution of catchment transit time distributions, *Water Resour. Res.*, 50(2), 969–985, doi:10.1002/2013WR014147, 2014.
- Tritz, S., Guinot, V. and Jourde, H.: Modelling the behaviour of a karst system catchment using non-linear hysteretic conceptual model, *J. Hydrol.*, 397(3–4), 250–262, doi:10.1016/j.jhydrol.2010.12.001, 2011.
- van Schaik, N. L. M. B., Schnabel, S. and Jetten, V. G.: The influence of preferential flow on hillslope hydrology in a semi-arid watershed (in the Spanish Dehesas), *Hydrol. Process.*, 22(18), 3844–3855, doi:10.1002/hyp.6998, 2008.
- White, W. B.: A brief history of karst hydrogeology: contributions of the NSS, *J. Cave Karst Stud.*, 69(1), 13–26, doi:PNR61, 2007.
- Worthington, S. R. H.: Diagnostic hydrogeologic characteristics of a karst aquifer (Kentucky, USA), *Hydrogeol. J.*, 17(7), 1665–1678, doi:10.1007/s10040-009-0489-0, 2009.
- Worthington, S. R. H., Jeannin, P.-Y., Alexander, E. C., Davies, G. J. and Schindel, G. M.: Contrasting definitions for the term “karst aquifer,” *Hydrogeol. J.*, 25(5), 1237–1240, doi:10.1007/s10040-017-1628-7, 2017.

Xie, Y., Cook, P. G., Simmons, C. T., Partington, D., Crosbie, R. and Batelaan, O.: Uncertainty of groundwater recharge estimated from a water and energy balance model, *J. Hydrol.*, doi:10.1016/j.jhydrol.2017.08.010, 2017.

750 Zhang, Z., Chen, X., Ghadouani, A. and Shi, P.: Modelling hydrological processes influenced by soil, rock and vegetation in a small karst basin of southwest China, *Hydrol. Process.*, 25(15), 2456–2470, doi:10.1002/hyp.8022, 2011.

Zhang, Z., Chen, X., Chen, X. and Shi, P.: Quantifying time lag of epikarst-spring hydrograph response to rainfall using correlation and spectral analyses, *Hydrogeol. J.*, 21(7), 1619–1631, doi:10.1007/s10040-013-1041-9, 2013.

Zhang, Z., Chen, X. and Soulsby C.: Catchment-scale conceptual modelling of water and solute transport in the dual flow system of the karst critical zone, *Hydrol. Process.*, 31 (19): 3421–3436, doi: 10.1002/hyp.11268, 2017.

755 [Zhang, Z. B., Peng, X., Zhou, H., Lin, H. and Sun, H.: Characterizing preferential flow in cracked paddy soils using computed tomography and breakthrough curve, *Soil Tillage Res.*, doi:10.1016/j.still.2014.05.016, 2015.](#)

760

765

770

775

Appendix A

Table A1 Water/isotope/age flux equations of the model.

Balance equations	Calculation and explanation for the equation items	
Flow routing		
$\frac{dV_h}{dt} = P_h - ET_h - Q_{h-s} - Q_{h-f}$	$P_h = P * Area_h / Area$	a is coefficient of rainfall recharge into slow flow reservoir;
(water balance in hillslope)	$P_s = (P - P_h) * a$	$Area_h$ and $Area$ represent the hillslope and catchment area.
	$P_f = (P - P_h) * (1 - a)$	
$\frac{dV_s}{dt} = P_s - ET_s + Q_{h-s} - Q_e$	$ET_h = ET * Area_h / Area$	$ET = \eta * ETP$, where ETP is potential evapotranspiration estimated by Penman formula, and η is a conversion factor estimated by other study in this region.
(water balance in slow flow reservoir)	$ET_s = (ET - ET_h) * a$	
	$ET_f = (ET - ET_h) * (1 - a)$	
$\frac{dV_f}{dt} = P_f - ET_f + Q_{h-f} + Q_e - Q_f$		
(water balance in fast flow reservoir)		
	$Q_{h,t} = w * exp(V_{h,t}/5000)$	w is flow routing constant for the hillslope unit; b is coefficient of hillslope lateral flow $Q_{h,t}$ to the slow reservoir Q_{h-s} ; K_s and K_f are constant for slow and fast reservoirs, respectively
	$Q_{h-f,t} = b * Q_{h,t}$	
	$Q_{h-s,t} = (1 - b) * Q_{h,t}$	
	$Q_{s,t} = K_s V_{s,t}$	
	$Q_{f,t} = K_f V_{f,t}$	
P is rainfall amount ($m^3 \text{ hour}^{-1}$), ET is evapotranspiration ($m^3 \text{ hour}^{-1}$), Q is flow discharge ($m^3 \text{ hour}^{-1}$) and V is storage (m^3); the subscripts of h , s and f represent the hillslope, slow and fast flow reservoirs, respectively; the subscripts of $h-s$ and $h-f$ represent hillslope to slow and to fast flow reservoirs, respectively, and the subscript of e represents flow exchange between fast and slow reservoirs.		
	Consecutive routings for the time series:	
	$Q_{s,t} = \Phi_{s,1}(P_{s,t} - ET_{s,t} + Q_{h-s,t}) + \Phi_{s,2}\Phi_{s,1}(P_{s,t-1} - ET_{s,t-1} + Q_{h-s,t-1}) + \Phi_{s,2}^2\Phi_{s,1}(P_{s,t-2} - ET_{s,t-2} + Q_{h-s,t-2}) + \Phi_{s,2}^2Q_{s,t-2} + \Phi_{s,3}Q_{f,t} + \Phi_{s,2}\Phi_{s,3}Q_{f,t-1} + \Phi_{s,2}^2\Phi_{s,3}Q_{f,t-2}$	
	$Q_{f,t} = \Phi_{f,1}(P_{f,t} - ET_{f,t} + Q_{h-f,t}) + \Phi_{f,2}Q_{f,t-1} + \Phi_{f,3}\{\Phi_{s,1}(P_{s,t} - ET_{s,t} + Q_{h-s,t}) + \Phi_{s,2}\Phi_{s,1}(P_{s,t-1} - ET_{s,t-1} + Q_{h-s,t-1}) + \Phi_{s,2}^2\Phi_{s,1}(P_{s,t-2} - ET_{s,t-2} + Q_{h-s,t-2}) + \Phi_{s,2}^2Q_{s,t-2} + \Phi_{s,3}Q_{f,t} + \Phi_{s,2}\Phi_{s,3}Q_{f,t-1} + \Phi_{s,2}^2\Phi_{s,3}Q_{f,t-2}\}$	
	where $\Phi_{s,1} = 1/(K_s + fK_s/K_e)$	
	$\Phi_{s,2} = K_s/(K_s + fK_s/K_e)$	
	$\Phi_{s,3} = K_f/(K_sK_e + fK_s)$	
	$\Phi_{f,1} = 1/(K_f + K_f/K_e + 1)$	
	$\Phi_{f,2} = K_f/(K_f + K_f/K_e + 1)$	
	$\Phi_{s,3} = fK_s/\{K_e(K_f + K_f/K_e + 1)\}$	
	The derivations for dual flow model in details refer to Zhang et al., 2017.	
Isotope routing	Consecutive routings for the time series:	
$\frac{di_h(V_h)}{dt} = i_p V_{p_h} + i_{pas} V_{p_{pas}} - i_h ET_h - i_h Q_{h-s} - i_h Q_{h-f} + i_{pas} V_{pas_{in}} - i_h V_{pas_{in}}$	$\delta D_{h,t} = \{(\delta D_{h,t-1} * V_{h,t-1})(1 - \varphi) + \delta D_{pas,t-1} * V_{h,t-1} * \varphi + \delta D_{p,t} * P_{h,t} * Par_t + \delta D_{pas,t} P_{h,t} (1 - Par_t) - \delta D_{h,t-1} * ET_{h,t} - \delta D_{h,t-1} (Q_{h-f,t} + Q_{h-s,t})\} / V_{h,t}$	
(isotope balance in active store in hillslope)		
	$\delta D_{pas,t} = \{\delta D_{pas,t-1} * V_{pas,t-1} + \delta D_{p,t} * P_{h,t} (1 - Par_t) + \delta D_{h,t-1} * V_{h,t-1} * \varphi - \delta D_{pas,t-1} V_{h,t-1} * \varphi - \delta D_{pas,t} P_{h,t} (1 - Par_t) - (1 + Is) * \delta D_{pas,t-1} * ET_{h,t}\} / V_{pas,t}$	
$\frac{di_{pas}(V_{pas})}{dt} = i_p V_{p_{pas}} - i_{pas} V_{p_{pas}} + i_h V_{pas_{in}} - i_{pas} V_{pas_{in}}$	φ is coefficient of mass exchange between active and passive stores, Is is coefficient of evaporation fractionation. $Par_t = \beta * exp(V_{h,t}/\alpha)$, α and β are constants for calculation of rainfall recharge into the active store in hillslope.	
(isotope balance in passive store in hillslope)		

$$\frac{di_s(V_s)}{dt} = i_p P_s - i_s ET_s + i_h Q_{h-s} - i_s Q_e$$

(isotope balance in slow flow reservoir)

$$\frac{di_f(V_f)}{dt} = i_p P_f - i_f ET_f + i_h Q_{h-f} + i_s Q_e -$$

$$i_f Q_f$$

(isotope balance in fast flow reservoir)

V_{pas} (m³) is storage of the passive reservoir in hillslope used to determine isotope storage, mixing, and transport in a way that does not affect the dynamics of water flux volumes.

$V_{pas,in}$ (m³) is water volume from the active store to the passive store. $V_{p,h}$ and $V_{p,pas}$ (m³) are the volume of rainfall recharge into the active and passive stores, respectively.

$$\begin{aligned} \delta D_{s,t} = & \{ \Phi_{s,1}(\delta D_{p-d,t}(P_{s,t} - ET_{s,t}) + \delta D_{h,t} * Q_{h-s,t}) + \Phi_{s,2} * \\ & \Phi_{s,1}(\delta D_{p-d,t-1}(P_{s,t-1} - ET_{s,t-1}) + \delta D_{h,t-1} * Q_{h-s,t-1}) + \Phi_{s,2}^2 * \\ & \Phi_{s,1}(\delta D_{p-d,t-2}(P_{s,t-2} - ET_{s,t-2}) + \delta D_{h,t-2} * Q_{h-s,t-2}) + \Phi_{s,2}^2 * \\ & \delta D_{s,t-2} * Q_{s,t-2} + \Phi_{s,3} * \delta D_{f,t} * Q_{f,t} + \Phi_{s,2} * \Phi_{s,3} * \delta D_{f,t-1} * \\ & Q_{f,t-1} + \Phi_{s,2}^2 * \Phi_{s,3} * \delta D_{f,t-2} * Q_{f,t-2} \} / Q_{s,t} \end{aligned}$$

$$\begin{aligned} \delta D_{f,t} = & \{ \Phi_{f,1}(\delta D_{p-d,t}(P_{f,t} - ET_{f,t}) + \delta D_{h,t} * Q_{h-f,t}) + \Phi_{f,2} * \\ & \delta D_{f,t-1} * Q_{f,t-1} + \Phi_{f,3}[\Phi_{s,1}(\delta D_{p-d,t}(P_{s,t} - ET_{s,t}) + \delta D_{h,t} * \\ & Q_{h-s,t}) + \Phi_{s,2} * \Phi_{s,1}(\delta D_{p-d,t-1}(P_{s,t-1} - ET_{s,t-1}) + \delta D_{h,t-1} * \\ & Q_{h-s,t-1}) + \Phi_{s,2}^2 * \Phi_{s,1}(\delta D_{p-d,t-2}(P_{s,t-2} - ET_{s,t-2}) + \delta D_{h,t-2} * \\ & Q_{h-s,t-2}) + \Phi_{s,3} * \delta D_{f,t} * Q_{f,t} + \Phi_{s,2} * \Phi_{s,3} * \delta D_{f,t-1} * Q_{f,t-1} + \\ & \Phi_{s,2}^2 * \Phi_{s,3} * \delta D_{f,t-2} * Q_{f,t-2}] - Is * \Phi_{f,1} * \delta D_{f,t-1} * ET_{f,t} \} / (Q_{f,t} - \\ & \Phi_{f,3} \Phi_{s,3} Q_{s,t-2}) \end{aligned}$$

$$\delta D_{p-d} = \tau * \delta D_p, \quad \tau \text{ is weighting constant.}$$

Flux age

$$\frac{dA_h(V_h)}{dt} = A_p V_{P,h} + A_{pas} V_{P,pas} - A_h ET_h -$$

$$A_h Q_{h-s} - A_h Q_{h-f} + A_{pas} V_{pas,in} - A_h V_{pas,in}$$

(age balance for active store in hillslope)

$$\frac{dA_{pas}(V_{pas})}{dt} = A_p V_{P,pas} - A_{pas} V_{P,pas} +$$

$$A_h V_{pas,in} - A_{pas} V_{pas,in}$$

(age balance for passive store in hillslope)

$$\frac{dA_s(V_s)}{dt} = A_p P_s - A_s ET_s + A_h Q_{h-s} - A_s Q_e$$

(age balance in slow flow reservoir)

$$\frac{dA_f(V_f)}{dt} = A_p P_f - A_f ET_f + A_h Q_{h-f} + A_s Q_e -$$

$$A_f Q_f$$

(age balance in fast flow reservoir)

Consecutive routings for the time series

$$\begin{aligned} A_{h,t} = & \{ (A_{h,t-1} + 1) * V_{h,t-1}(1 - \varphi) + (A_{pas,t-1} + 1) * V_{h,t-1} * \\ & \varphi + A_{p,t} * P_{h,t} * Par_t + (A_{pas,t-1} + 1) P_{h,t}(1 - Par_t) - (A_{h,t-1} + \\ & 1) * ET_{h,t} - (A_{h,t-1} + 1)(Q_{h-f,t} + Q_{h-s,t}) \} / V_{h,t} \end{aligned}$$

$$\begin{aligned} A_{pas,t} = & \{ (A_{pas,t-1} + 1) * V_{pas,t-1} + A_{p,t} * P_{h,t}(1 - Par_t) + \\ & (A_{h,t-1} + 1) * V_{h,t-1} * \varphi - (A_{pas,t-1} + 1) V_{h,t-1} * \varphi - \\ & (A_{pas,t-1} + 1) P_{h,t}(1 - Par_t) - (A_{pas,t-1} + 1) * ET_{h,t} \} / V_{pas,t} \end{aligned}$$

$$\begin{aligned} A_{s,t} = & \{ \Phi_{s,1}(A_{p,t}(P_{s,t} - ET_{s,t}) + A_{h,t} * Q_{h-s,t}) + \Phi_{s,2} * \\ & \Phi_{s,1}((A_{p,t-1} + 1)(P_{s,t-1} - ET_{s,t-1}) + (A_{h,t-1} + 1) * Q_{h-s,t-1}) + \\ & \Phi_{s,2}^2 * \Phi_{s,1}((A_{p,t-2} + 2)(P_{s,t-2} - ET_{s,t-2}) + (A_{h,t-2} + 2) * \\ & Q_{h-s,t-2}) + \Phi_{s,2}^2(A_{s,t-2} + 2)Q_{s,t-2} + \Phi_{s,3} * A_{f,t} * Q_{f,t} + \Phi_{s,2} * \\ & \Phi_{s,3} * (A_{f,t-1} + 1) * Q_{f,t-1} + \Phi_{s,2}^2 * \Phi_{s,3} * (A_{f,t-2} + 2) * Q_{f,t-2} \} / \\ & Q_{s,t} \end{aligned}$$

$$\begin{aligned} A_{f,t} = & \{ \Phi_{f,1}(A_{p,t}(P_{f,t} - ET_{f,t}) + A_{h,t} * Q_{h-f,t}) + \Phi_{f,2}(A_{f,t-1} + \\ & 1)Q_{f,t-1} + \Phi_{f,3}[\Phi_{s,1}(A_{p,t}(P_{s,t} - ET_{s,t}) + A_{h,t} * Q_{h-s,t}) + \Phi_{s,2} * \\ & \Phi_{s,1}((A_{p,t-1} + 1)(P_{s,t-1} - ET_{s,t-1}) + (A_{h,t-1} + 1) * Q_{h-s,t-1}) + \\ & \Phi_{s,2}^2 * \Phi_{s,1}((A_{p,t-2} + 2)(P_{s,t-2} - ET_{s,t-2}) + (A_{h,t-2} + 2) * \\ & Q_{h-s,t-2}) + \Phi_{s,3} * A_{f,t} * Q_{f,t} + \Phi_{s,2} * \Phi_{s,3} * (A_{f,t-1} + 1) * \\ & Q_{f,t-1} + \Phi_{s,2}^2 * \Phi_{s,3} * (A_{f,t-2} + 2) * Q_{f,t-2}] \} / (Q_{f,t} - \\ & \Phi_{f,3} \Phi_{s,3} Q_{s,t-2}) \end{aligned}$$

The age of rainfall, $A_{p,t}$, equals to 0.

Table A2 Description of the calibrated parameters

Coefficient	Units	Descriptions
K_s	hour	The slow flow reservoir constant
K_f	hour	The fast flow reservoir constant
K_e	hour	Exchange constant between the two reservoirs
f	-	The ratio of porosity of the quick to slow flow reservoir
a	-	Precipitation recharge coefficient for slow flow reservoir
w	-	The hillslope unit constant
b	-	Recharge coefficient of Hillslope to slow flow reservoir
I_s	-	Coefficient for evaporation fractionation
α	-	Constant for calculation of rainfall recharging the active store in
β	-	hillslope
ϕ	-	Coefficient for exchange flow between active and passive stores
		in hillslope
τ	-	Weighting constant
