

## ***Interactive comment on “Faulting patterns determining groundwater flow paths in the Lower Yarmouk Gorge” by Nimrod Inbar et al.***

**Nimrod Inbar et al.**

nimr@post.tau.ac.il

Received and published: 30 July 2018

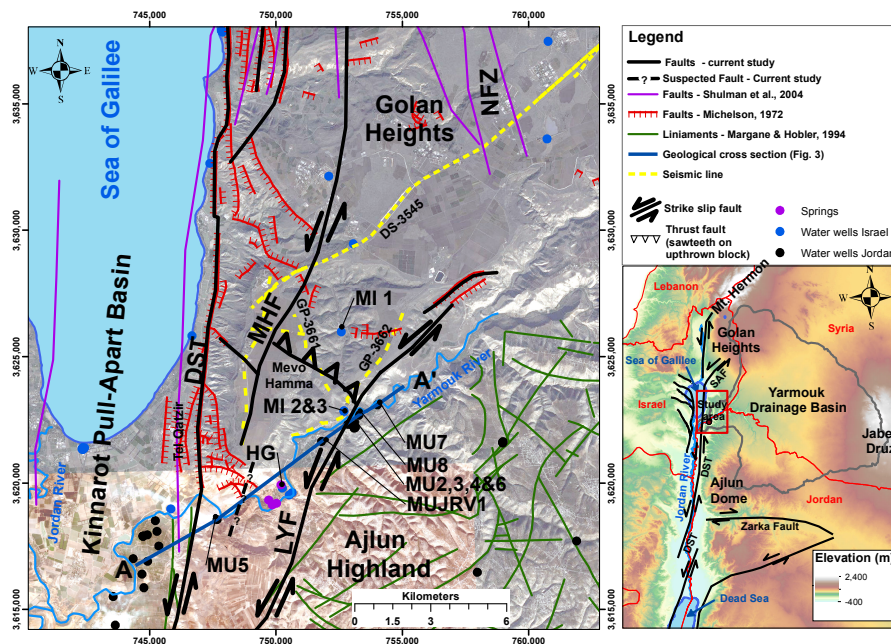
Dear Reviewer 3, We thank you a lot for these critical remarks, by which the quality of the paper was much improved! We hope to sufficiently reply to your comments in the following. Answers to comments attached as a supplement file. New figures below:

Please also note the supplement to this comment:

<https://www.hydrol-earth-syst-sci-discuss.net/hess-2018-188/hess-2018-188-AC3-supplement.pdf>

Interactive comment on Hydrol. Earth Syst. Sci. Discuss., <https://doi.org/10.5194/hess-2018-188, 2018>.

C1



**Fig. 1.**

C2

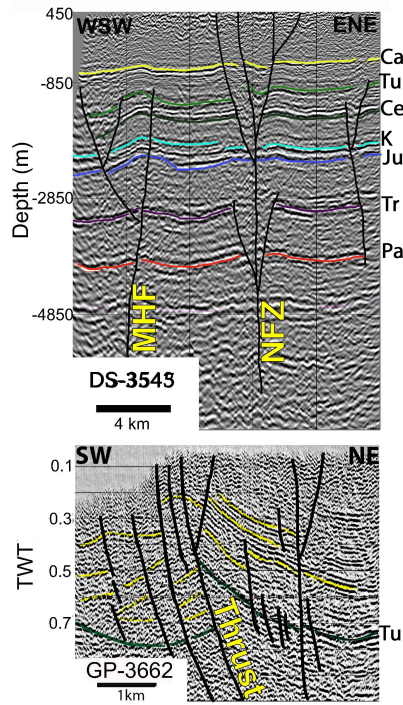


Fig. 2.

C3

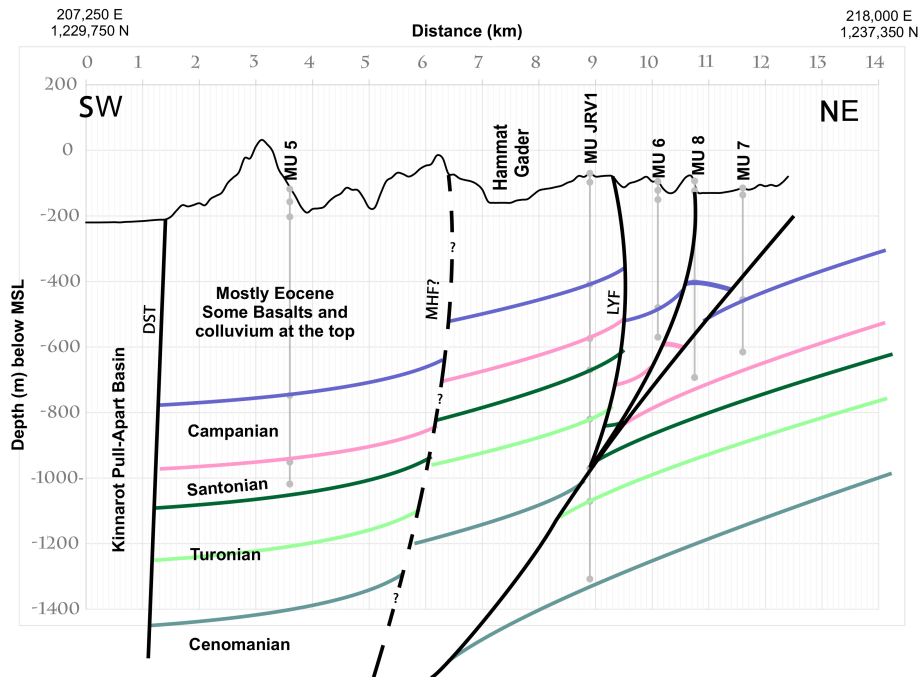


Fig. 3.

C4