

## ***Interactive comment on “Faulting patterns determining groundwater flow paths in the Lower Yarmouk Gorge” by Nimrod Inbar et al.***

**Nimrod Inbar et al.**

nimr@post.tau.ac.il

Received and published: 30 July 2018

Dear Dr. Margane, Particularly due to your long-term expertise in the area, we highly appreciated your kind words and constructive remarks on the manuscript! We hope to meet your points in the following. Answers to comments attached as a supplement file. New figures below:

Please also note the supplement to this comment:

<https://www.hydrol-earth-syst-sci-discuss.net/hess-2018-188/hess-2018-188-AC2-supplement.pdf>

Interactive comment on Hydrol. Earth Syst. Sci. Discuss., <https://doi.org/10.5194/hess-2018-188-AC2>

Printer-friendly version

Discussion paper



188, 2018.

**HESSD**

---

Interactive  
comment

Printer-friendly version

Discussion paper



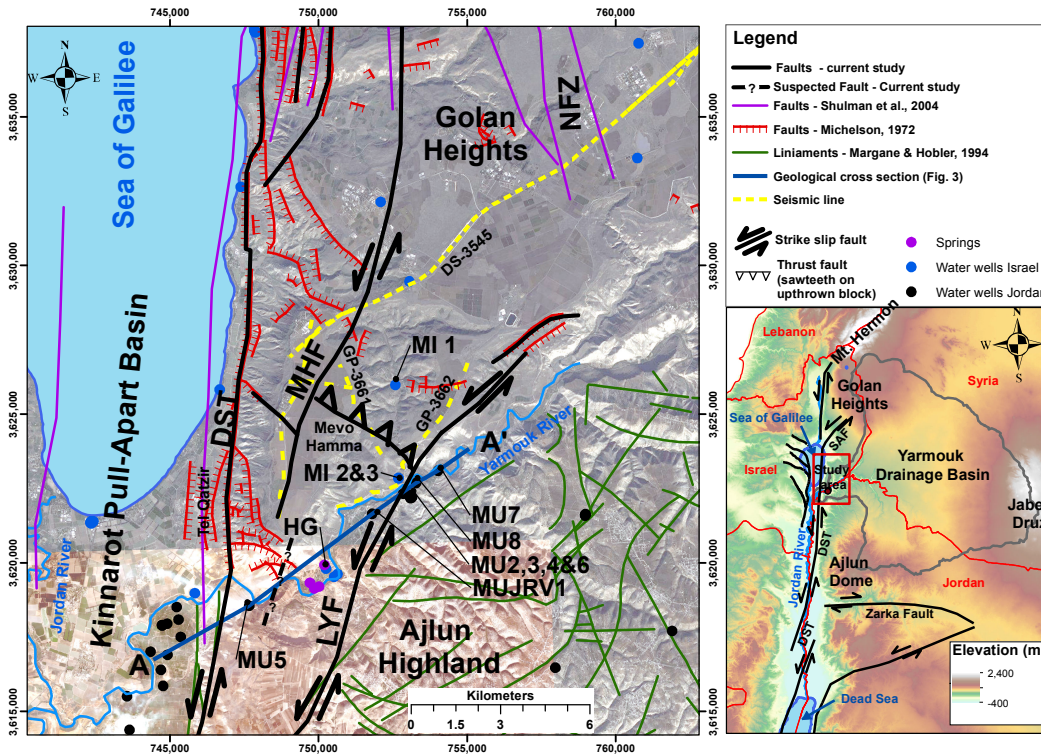


Fig. 1.

Printer-friendly version

Discussion paper



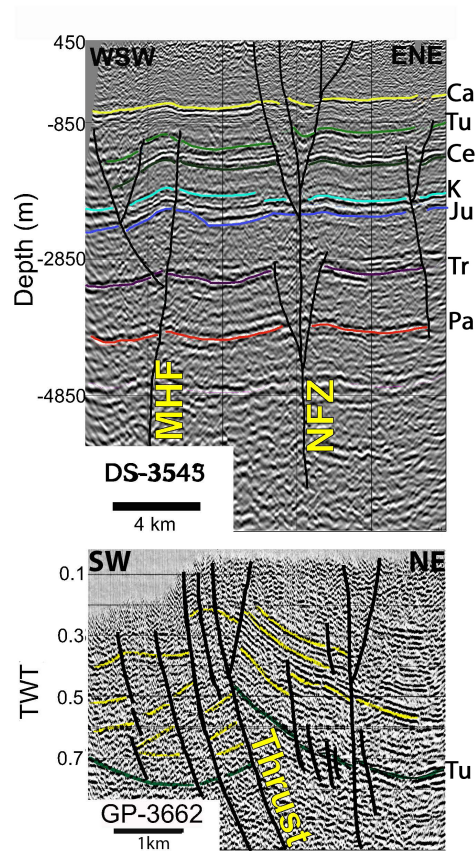


Fig. 2.

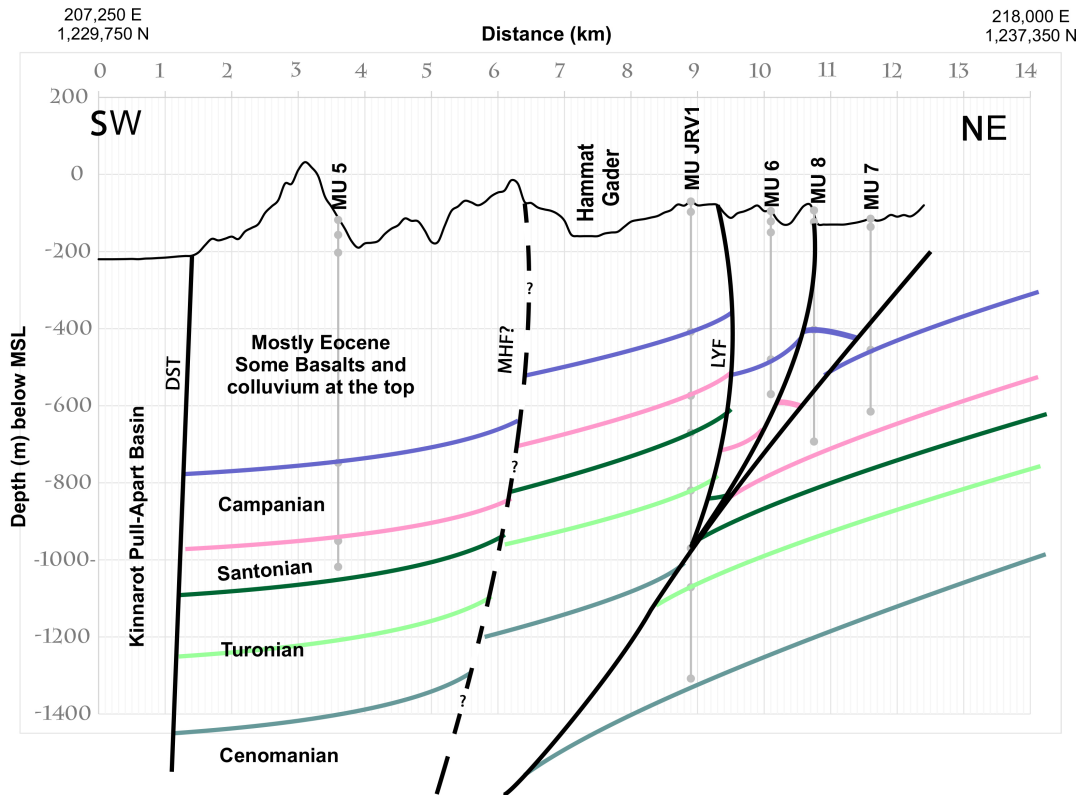


Fig. 3.

Printer-friendly version

Discussion paper

