

Author's response to referee 1's comments:

1.1

Ambiguities concerning runoff processes HOF and SOF need to be clarified.

5 Authors: Possible ambiguities concerning the runoff process HOF and SOF have been clarified (see point 4, 8, 9 in specific comments).

1.2

At least two citations mentioned within the text cannot be found in the references-list.

10 Authors agree and it will be corrected.

1.3

Perhaps it is recommended to check the article by a native speaker once more.

Authors: Our manuscript has been checked by a proficient native speaker.

15

1.4

Literature references need to be revised and should be brought to a uniform condition. E.g. (Hladný and Kašpárek, 2005; Hladný et al., 2005; Flury et al., 1995; Flury and Flühler, 1995; Hümann et al., 2011; Hümann et al., 2011. . .)

Authors agree, it will be corrected.

20

1.5

Perhaps it would be recommended to change the order of the tables 1 and 2 in the chronological appearance.

Authors agree and order of tables will be changed accordingly.

25

1.6

(Eriophorum sp. L.); (Sphagnum sp. L.)

Authors agree and it will be changed.

1.7

30 "Vertical hydrological conductivity (HCv) was measured on-site with a single-ring infiltrometer (Flow-Group Comp.). . . . A low HCv in the topsoil is supposed to generate rather surface flow – likely saturation overland flow (SOF) and possibly Hortonian overland flow (HOF) to a minor extent – or near-surface biomat flow (BMF; Sidle, 2007) during high intensity storms." This line of argument is not understandable: The very low conductivity at the surface (infiltrometer) implies inhibited infiltration and thus infiltration excess = HOF!

35 Authors: We agree, there is a contradiction in our data/field observations, however in our opinion none of the data/observations overrules the other. Vertical hydrological conductivity (HCv) was measured in situ with a single-ring infiltrometer. The measured HCv was very low, on the other hand no surface flow was observed even during heavy rainfall events (field observation and thus "soft data"). The very low HCv measured in the soil matrix suggests – but does not prove – 'Hortonian overland flow' (HOF) at the hillslope, as macropores for instance are likely not well represented in this small-scale on-site measurement (scale issue). As the scale of our HCv measurement is in the order of decimeters (10 cm x 10 cm), the focus is on measuring the hydraulic conductivity of the soil matrix. Thus, the soil matrix's vertical hydraulic conductivity properties are not the ultimate answer on the prevailing runoff formation processes at our test site – it's rather one aspect contributing to the larger picture. As a matter of fact, the contradiction between the soil matrix properties (HCv) and the field observations were the motivation to investigate the runoff formation processes at the hillslopes with dye experiments. We understand the differences between the terms 'Hortonian Overland Flow' (HOF) and 'Saturation Overland Flow' (SOF), definitions are given in subsection 8.

45

1.8

“Due to previous rainfall events, the soil moisture ranged between 0.40-0.45 VWC.” 0.40 (lowest value) due to previous rainfall events? In order to facilitate the readability of the text perhaps it would be better to change the order of fig.4 ab and 5 ab: 4a frontal, 4 b lateral; 5a lateral 5b frontal; 4a frontal, 4 b lateral; 5a frontal 5b lateral.

5 Authors: Soil moisture was measured on-site. Previous rainfall events were recorded off-site (nearby meteorological station in 400 m distance) several days before our experiment started, see Fig. 2. The Peat Bog stays in a humid climate permanently wet, thus 40% VWC is for the Rokytká test site as dry as it gets in early summer. The summer 2015 was relatively dry and the previous rainfall events were rather small and less frequent than in a normal year. Text will be reformulated accordingly.

1.9

10 Change order of Fig. 4.

Authors agree, figure will be modified accordingly.

1.10

15 “This is noteworthy since the proportion of the Peat Bog ranges from 60% at the 2nd order stream headwater to less than 30% at the 3rd order stream catchment; the remaining areas are covered by Podzol.” Table 1 gives PB 44% RH. 60% or 44%?

20 Authors: Table 1 (changed order as suggested by the referee: now Table 2) shows the coverage of the soil type ‘Histosol’ (WRB, 2006). ‘Histosols’ are the dominant soil type in Peat Bog areas, but other soil types occur as well: partly ‘histic soils’ and partly ‘Fluvisols’ (WRB, 2006) at the bottom of the valley. Therefore, the given values are correct: Rokytká Headwater (RH) = 44% and Otava River Headwater (OR) = 20%.

1.11

25 “According to the runoff formation decision scheme by Scherrer and Naef (2003), the dominant runoff formation process at the Podzol hillslope can be classified as a combination of delayed Hortonian overland flow (HOF) and delayed subsurface stormflow (SSF2).” This is a clear contradiction to the observed results. At P16 L12 it is mentioned that “. . . deep percolation into the bedrock dominated. . .”. So deep percolation DP is the primary runoff formation process at the Podzol hillslope (fig.8). This incongruity calls for an explanation.

30 Authors: We agree with the referee, that the dominant runoff formation mechanism detected by our dye experiments at the Podzol hillslope was clearly ‘deep percolation’ (DP). The experimental results do not suggest that HOF or SOF are dominant runoff formation processes for mid-range intensity storms. However, ‘surface-near flowpaths’ cannot be completely excluded concerning larger storms with higher intensities – we observed slightly detectable, short-distance initiations of surface-near flowpaths (yet not a dominant feature at our experimental settings). The point is that in the discussion we intend to confront our experimental findings at the Rokytká test site with an established runoff formation classification scheme (Scherrer and Naef, 2003) for floodcausing extreme events, which can be applied to one of our hillslopes. This scheme suggests delayed HOF and delayed SSF for the Podzol hillslope. The Scherrer scheme has been developed and applied for high-intensity storm events in Switzerland (intensities > 50mm/h). Our experimental intensities represent rather average annual storms (intensities 20- 30 mm/h). We will clarify that in the final version of the manuscript. The Scherrer’s scheme is limited to sites without shallow groundwater, thus it can be applied to the Podzol hillslope (PZ) only.

40

1.12

“Our hypothesis of HOF was confirmed for the Peat Bog hillslope. . .” see the above statements on HOF, SOF.

Authors agree and it will be clarified in the final manuscript. We will point more clearly to the observed main subsurface drainage feature.

45

1.13

Fig.1 Well designed illustration. WLPWS* What does the asterisk stand for?

Authors: The asterisk is now explained in the caption of the figure.

50

1.14

Fig.8b (saturation overland flow, SOF) see the above statements on HOF, SOF.
Authors: See above (-> points 8, 9 and 4)

1.15

- 5 Technical corrections: P8 L9 for two weeks. P11 L7 to to test P13 L6 Burt Burts
Authors agree and it will be changed as suggested.

- 10 References: IUSS Working Group WRB.: World reference base for soil resources 2006. 2nd edition. World Soil Resources Reports No. 103. FAO, Rome. ISBN 92- 5-105511-4, 2006. Scherrer, S. and Naef, F.: A decision scheme to indicate dominant hydrological flow processes on temperate grassland, Hydrol. Process., 17(2), 391 – 401, doi:10.1002/hyp.1131, 2003.

Author's response to referee 2's comments:

15

2.1

The manuscript should be shortened significantly to be more concise (beyond the suggestions in the specific comments). My overall impression is that the work deserves to be published. I recommend publication in HESS after minor revisions.
Authors agree, text will be shorten.

20

2.2

P3 L12-22: The three points mentioned are comprehensible and interesting descriptions of the two experimental sites. It is, however, not totally clear to me why they are reasons or advantages for selecting the two sites for the experiment (as stated in P3 L12).

25

Authors agree, it will be clarified.

2.3

P4 L4-13: In the first and third points you stated that you also tried to estimate/quantify infiltration, preferential flow and vertical percolation. I suggest to delete the words “estimate/quantify” here, because you do not provide numbers that really quantify these fluxes.

30

Authors agree, it will be deleted.

2.4

P5 L28 – P6 L4: The hydrological metrics MQ, MHQ, MNQ and HQ indicate flow rates and, thus, they have the dimension L3 T-1 (e.g. the unit litre per second). In the context of the manuscript it is meaningful to relate these metrics to the catchment area (Dimension: L1 T-1, unit e.g. mm per hour), but they should not be addressed as fluxes and the acronyms MQ, MHQ, MNQ and HQ should not be used. Maybe you can call it “discharge per area” or “unit discharge”.

35

Authors agree, it will be clarified.

40

2.5

P6 L12: Please add information about the concentration of tracer solution or the total mass of tracer applied.
Authors agree, information will be changed.

2.6

- 45 P6 L29 – P7 L11: I understood that you took both frontal and lateral profiles from each irrigated plot, right? For me it is difficult to imagine how the frontal profiles (Fig. 4a) could be excavated first without destroying the lateral profiles (Fig. 4b).
Authors: Profiles were excavated stepwise in 0.5 m-wide segments. The pictures were first taken in squares of 0.5 m x 0.5 m of a profile section, and later processed, analyzed, and joined in the software and finally displayed in our figures in 1.5m-wide profiles.

50

2.7

P7 L30 – P8 L3: When only an area of $1.5\text{m} \times 1.5\text{m} = 2.25\text{m}^2$ is irrigated, the experimental conditions are of course different to a real rain event where the hillslope receives much more water. Thus, we cannot expect that the flow patterns detected in the experiment are simply transferable to real rain events. I am aware that this is not a very innovative comment since we all have to deal with such issues when performing field experiments. However, I think it should be mentioned and discussed in the discussion section.

5
10
15
20
25
30
35
40
45
50

Authors: We agree to include the issue in the discussion. However, we believe that the detected preferential flow patterns give valuable insights into active preferential flowpaths during natural rain events. The flow patterns are likely intensified and additional flow processes might occur, but our experimentally detected dominant flowpaths will very likely play a crucial role. Moreover, we applied our experiments in a dimension [1.5 m-scale] which is well established in the dye experiment literature.

2.8

P8 L17: This sentence can be omitted because the content is already mentioned in the method section. I had problems to find the positions of specific profiles (mentioned in the text and shown in the Figures) in Figure 4: Please make the reader early aware of the small sketches in the lower right corners of Fig. 5-7 indicating the positions of individual profiles. They are very helpful but it was too late that I took notice of them. Figure 4: A north arrow in Fig. 4 might help to orientate when directions are mentioned in the text. Please check if the designations of single profiles do always correspond to Figure 4. For example: I cannot find the location of the profile FD1.75 (Fig 7c) in Figure 4. Taking the small sketch in Fig. 7c into account I would guess that profile FD1.25 is shown In Fig. 7c. P8
Authors agree, it will be changed.

2.9

L22-23: Please mention already here that Fig. 5b shows a profile outside (downstream) the sprinkling plot. That information can then be omitted from P8 L30. Authors agree, it will be changed.

2.10

P9 L18-20: Is 10.5 m downslope correct? Was the distance between frontal really 0.5m? From the yellow section in Fig. 4a I would expect 1.5 m downslope and distances of 0.25 m. Please check this.
Authors agree, text will be changed accordingly.

2.11

P10 L15-23: It is an important result that no FLC has been found in springs and in the stream. However, this paragraph contains much methodological information that should be shifted to the Methods section.
Authors agree, it will be changed.

2.12

P10 L25 – P11 L5: I agree with the content of the section. However, most of it is already mentioned in the Introduction section and can be omitted here.
Authors agree, text will be shortened.

2.13

P13 L32 – P14 L3: This issue is already mentioned in the previous paragraph.
Authors agree, text will be shortened.

2.14

P14 L3-6: Is the colour of Fluorescein that can be detected during daylight with the human eyes also affected by pH? If not, you could not conclude in P14 L5/6 that the dye has not been “affected by pH changes”. I have always thought before that only the fluorescence is pH dependent, but not the colour. However, I am not sure about this point.

Authors: This statement will be clarified. Background info: The pH value slightly influences the visible (= "eyeball-detectable") color of FLC solutions, as it changes from neon greenish-yellow to a dull goldish-yellow depending on pH. This is because when FLC is in its ionized (= deprotonated) form at $\text{pH} > \sim 6$, it has significantly different fluorescence behavior/characteristics than when it is at or below $\text{pH} \sim 6$ (below $\text{pH} \sim 6$ it is mostly protonated, H^+ group adds to COO^-).

5 The fluorescence of FLC is due to the photo-physical characteristics of the fluorescein anion at $\text{pH} > \sim 6$. Its color (visible absorbance) is influenced by its concentration. The most intense neon greenish-yellow color (visible absorbance) occurs at concentrations of 0.1 to 1 g L⁻¹. The most intense fluorescence occurs when the salt Sodium-Fluorescein (= Uranine) is fully dissociated, according to Käss (1998). Absorbance and fluorescence are both observed in the same spectral range (~450-550 nm).

10

2.15

P14 L8-28: Is it also possible that the tracer was very strongly diluted before it reached the stream? If yes, it would also be possible that the tracer concentration in the stream was below the detection limit of your analytical method. Could you provide a rough estimation of dilution at the slope? Maybe you are then able to remove my concerns. This comment is related to my comment on P6 L12. Authors: This point is answered together with point 14.

15

2.16

P15 L18 – P16 L18: The conclusion should be shorter and more concise: Issues that have exhaustively been discussed before should not be repeated again, e.g. the discussion about a pH effect. It would be nice to have a few clear and concise statements about what we can learn from this study. Point out a few take home messages related to the four specific points that have been defined on page 4 as the objectives of the study. Authors agree, text will be modified and shortened.

20

2.17

Table 1: What is the information about the Otava River used for in this study? Authors: This table shows a comparison of the headwaters of the upper Otava River – which consists of many small headwaters and forms one of the most prominent catchments in the Šumava Mts. region. Our experimental catchment "Rokytká Headwater" is a sub-catchment of the upper Otava River. The Otava River catchment is the reference & target area, e.g. for scaling up of runoff formation processes and for the implementation of flood protection measures etc.

30

2.18

Figure 4: In both sketches positions of horizontal images are indicated. Is that information needed for this manuscript? The horizontal images are not mentioned in the text. Authors agreed, information about horizontal images will be removed.

35

2.19

Figures 5 – 7, lateral profiles: Please insert vertical lines indicating boundaries of the sprinkling plot.

2.20

Technical corrections Table 1 & 2: Switch the positions of Table 1 and Table 2.

40

2.21

Currently Table 2 is mentioned first in the text. Authors agreed, will be changed.

45

2.22

P5 L16: The word "both" should be deleted from the sentence. Authors agree. P15 L27-28: Use past tense. Authors agree.

Identification of runoff formation with two dyes in a mid-latitude mountain headwater

L. Vlček¹, P. Schneider², and K. Falátková¹

¹Department of Physical Geography and Geocology, Charles University, Prague, Czech Republic

5 ²Department of Geography, University of Zurich, Switzerland

Correspondence to: P. Schneider (philipp.schneider@geo.uzh.ch)

Abstract. Subsurface flow in Peat Bog areas and its role in the hydrologic cycle has garnered increased attention as water scarcity and floods have increased due to a changing climate. In order to further probe the mechanisms in Peat Bog areas and contextualize them at the catchment scale, this experimental study identifies runoff formation at two opposite hillslopes in a peaty mountain headwater; a slope with organic Peat soils and a shallow phreatic zone (0.5 m below surface) and a slope with mineral Podzol soils and no detectable groundwater (>2 m below surface). Similarities and differences in infiltration, percolation, and preferential flowpaths between both hillslopes could be identified by sprinkling experiments with Brilliant Blue and Sodium-Fluorescein. To our knowledge, this is the first time these two dyes have been compared in their ability to stain preferential flowpaths in soils. Dye-stained soil profiles within and downstream of the sprinkling areas were excavated parallel (lateral profiles) and perpendicular (frontal profiles) to the slopes' gradients. That way preferential flow patterns in the soil could be clearly identified. The results show that biomat flow, shallow subsurface flow in the organic topsoil layer, occurred at both hillslopes, however at the Peat Bog hillslope it was significantly more prominent. The dye solutions infiltrated into the soil and continued either as lateral subsurface pipeflow in the case of the Peat Bog, or percolated vertically towards the bedrock in the case of the Podzol. This study provides evidence that subsurface pipeflow, lateral preferential flow along decomposed tree roots or logs in the unsaturated zone, is a major runoff formation process at the Peat Bog hillslope and in the adjacent riparian zone.

1 Introduction

Hydrologic extremes in Central Europe during recent decades have stimulated debates over sustainable solutions and suitable, cost-efficient strategies to prevent or mitigate the impacts of droughts and floods. Floods on the Vltava and Elbe River are documented back to Middle Ages (Brázdil et al., 2015; Faist, 1967) as having had devastating impacts on infrastructure and the economy. However, a system of dams and reservoirs, which was built in the Vltava catchment - the main drainage of the Šumava Mts. in the 1960s, failed to prevent major floods in 2002 (Hladný et al., 2005; Hladný, 2009) or 2013. These floods were mainly caused by heavy rainfall in summer or by rain on snow events. As the Šumava Mts. and the Vltava catchment are promising water resources, research efforts have focused on this area.

Peat Bogs (PB) are prominent in the Šumava Mts., which affects water quality and storm discharge (Ferda et al., 1971; Janský and Kocum, 2008; Vlček et al., 2016). Streamflow in peaty catchments is characterized by its quick rise and fall, and huge volatility: very low baseflows during dry periods and spiky storm hydrographs caused by heavy rainfall events (Evans et al., 1999; Holden et al., 2001; Holden, 2005). However, most of these studies have focused on pure peat areas only. In the Šumava Mts. Peat Bog covers approx. 35 % of the catchments in this region, but the larger proportion of these catchments is covered by mineral soils. Although Peat Bogs are not dominating the catchment area, their hydrology determines the runoff processes (Vlček et al., 2012). In order to establish the relative roles of Peat Bog and Podzol in this type of catchment, this study focused on a comparison of runoff formation on contrasting soil types – namely a mountain Histosol/Peat Bog (PB) and a Podzol (PZ) on opposite hillslopes of the headwater – representing organic and mineral soil properties, respectively.

Sprinkling experiments with sorptive dye tracers have been successfully applied at the plot and hillslope scale in many different environments (Bachmair et al., 2009, 2012; Hümann et al., 2011; Flury and Flühler, 1995; Schneider et al., 2014; Weiler and Flühler, 2004; Weiler, 2011; Wienhöfer et al., 2009) and are an established method to identify interactions between infiltration, preferential flow, matrix flow, and percolation. The sorptive dye Brilliant Blue FCF (BB,) is probably the most widely used dye tracer in such sprinkling experiments (Flury and Flühler, 1995). Successful experiments using BB at mineral soil test sites identified significant processes during the formation of storm runoff such as infiltration and initiation of vertical preferential flow in macropores (Weiler and Flühler, 2004), infiltration and vertical preferential flow dependence on soil structures, soil type & land use (Bachmair et al., 2009; Weiler and Flühler, 2004), lateral preferential flow in a soil pipe network (Anderson et al., 2009; Wienhöfer et al., 2009), and lateral preferential flow in organic topsoil layer/biomat flow (Schneider et al., 2014).

Almost all headwaters of the Šumava Mts., including the Rokytka catchment, have been affected by bark beetle calamity and by storm activity, e.g. the storm Kyrill in 2007 uprooted many trees. These disturbances have been shown to have long-term impact on runoff formation in headwater systems (Langhammer et al., 2015). However, it is unclear how these disturbances modify specific runoff formation processes like infiltration, lateral drainage (soil piping), or percolation in riparian soils.

However, runoff formation at hillslopes, particularly subsurface stormflow (SSF), is highly variable and complex (Bachmair and Weiler, 2012). To evaluate both vertical and lateral preferential subsurface flow in the Rokytka headwater, we conducted two separate sprinkling experiments on each soil type with two different dye tracers with different properties. The experiments in this study were conducted in the vicinity of a headwater stream where the riparian zone connects to the two hillslopes. The test site was selected for several reasons:

1. Runoff formation control – the riparian zone represents a potential buffer in hydrologic connectivity between hillslopes and a stream (Von Freyberg et al., 2014; Seibert et al., 2009).
2. Representativeness - the two slopes are covered by prevailing soil types in Šumava Mts. (Podzol, Histosol).

3. Tracer detection in a stream - hydrologic connectivity of a hillslope and a stream can be detected and potentially quantitatively described by conservative tracers such as Sodium-Fluorescein (FLC, also Uranine). Therefore, proximity of a stream is favorable in terms of time-saving and lesser dilution of a tracer.

5 The sorptive tracer BB was used mainly to detect vertical flow, and the conservative tracer FLC was used to detect vertical and lateral flow at two opposite hillslopes with different soil types (Peat Bog and Podzol). Furthermore, based on other studies in dark-colored organic soils (Markus Weiler, personal communication) we considered that BB-stained soil patterns may be difficult or impossible to identify in the Peat Bog. Thus, we adapted a successful dye tracer soil staining experiment applied in organic forest soils using FLC (Gerke et al., 2008). FLC can be used to identify preferential flow
10 patterns by staining soil particles (Gerke et al., 2015), and as a tracer detecting lateral subsurface flow and thus hydrologic connectivity and potentially tracer breakthrough into a stream or a spring equipped with automated water samplers or field fluorometers. Thus, FLC provides two functions in parallel: vertical and lateral soil staining of preferential flow structures and lateral connectivity between the sprinkling plots (lower, convex part of the hillslopes) and the stream or springs. In theory, such a combined FLC experiment could link plot and hillslope experiments and thus provide additional insights into
15 the mechanical understanding of the entire hillslope-riparian zone-stream system and thus providing an estimate where (flowpaths), when (timing, delay) and possibly how much hillslopes with different soils contribute to discharge in headwaters. Examples of applications of the dyes BB and FLC are shown in Table 1. To summarize, the objectives of this study are to identify runoff formation at both prevailing soil types (Histosol/Peat, entic Podzol) with emphasis on the following aspects:

- 20
 - Identify infiltration and vertical preferential flow in the unsaturated zone in soil profiles – as well as possible infiltration barriers causing lateral flow on the plot scale,
 - Identify soil horizons and/or structures, where vertical flow translates into lateral preferential flow, e.g. whether lateral preferential flow occurs in partially saturated parts in the *unsaturated* zone, or expanding *fully saturated* horizons promote transmissivity feedback,
- 25
 - Identify vertical percolation in the saturated zone; determine whether infiltrated water percolates deep into the bedrock and thus a “secondary” (strongly delayed) drainage system is recharged during storms – plot scale,
 - Identify lateral preferential flowpaths and possibly estimate lateral flow velocities in the soil – hillslope scale.

2 Materials and methods

2.1 Study site

- 30 The Rokytká headwater (3.8 km²) is a tributary to the Otava River, located in the central part of Šumava Mts. The 2nd order stream drains 0.6 km² of the Rokytká headwater covering an altitude range between 1100-1260 m a.s.l. The test site can be

divided into two parts – two opposite hillslopes – with different soils and vegetation cover (Fig. 1). The mineral soil hillslope consists of a Podzol (PZ hillslope) and is covered by beech stands at the upper hillslope zone PZ1 and dead spruce stands with healthy seedlings at the lower hillslope zone PZ2. The soil profiles are similar throughout the slope without a clear gradient towards the stream. The soil type has been identified as an entic Podzol with a shallow organic top layer (<5 cm) and similar soil texture (Tab.2) to a depth of 1 m. Some small parts of the mineral soil hillslope PZ are covered by haplic Podzol, but these areas are hardly identifiable without excavation. Neither there was a sharp transition between the mineral soil and the bedrock (well-weathered Gneiss or Granite) perceptible with ERT measurements, nor could a persistent groundwater level be detected. The organic soil hillslope is covered by a well-developed mountain Peat Bog (PB hillslope). The entire PB area consists of a mixture of various stages of decomposed peat, however, Acrotelm and lower Catotelm can be distinguished at depths ranging from 8-25 cm. Vegetation and soil depth vary according to the position along the hillslope forming a catena. The upper organic soil hillslope zone is covered mostly by cotton-grass (*Eriophorum sp. L.*) or moss (*Sphagnum sp. L.*) (PB1 in Fig. 1). This zone has the highest water table fluctuations and the depth of the PB is 4-5 m. The vegetation cover at the lower hillslope zone (PB2 in Fig. 1) consists of pine (*Pinus mungo*), blueberry (*Vaccinium myrtillus*) and moss. The riparian zone (PB3 in Fig. 1) forms the bottom of the valley, which is covered by a waterlogged spruce forest with blueberry and moss. The depth of the PB varies from 1 m in the riparian zone PB3 up to 5 m in the upper hillslope zone PB1 (Fig. 1).

Despite the differences between an organic and a mineral soil at the two hillslopes, the basic soil properties – which have a strong impact on infiltration and subsurface stormflow – are rather similar (Table 1). Vertical hydraulic conductivity (HC_v) was measured on-site with a single-ring infiltrometer (Flow-Group Comp.). Low values of HC_v are contrasted by the high effective porosity. This contrast is caused by relatively few macropores compared to other soils and a high percentage of small pores, which are mostly not active during the infiltration process. A low HC_v in the topsoil is supposed to generate rather surface flow – likely saturation overland flow (SOF) and possibly Hortonian overland flow (HOF) to a minor extent – or near-surface biomat flow (BMF; Sidle et al., 2007) during high intensity storms. However, at the mineral soil hillslope PZ no surface flow has been observed even during large storms with daily precipitation sums of up to 80 mm. At the organic soil hillslope PB, surface flow can be observed at times when the Peat Bog is saturated.

In general, the dominant runoff formation process in most forested mountain headwater catchments can be described as subsurface stormflow (SSF; Weiler et al., 2006). However, site-specific soil types and their properties, such as those at our test site, Peat Bog (PB3) and entic Podzol (PZ2), may result in a characteristic and possibly unique combination of runoff formation processes. Based on our field surveys and soil mapping using the *Hydrology of Soil Types* classification (HOST, Boorman et al., 1995), the Podzol at the mineral soil hillslope PZ2 was classified as hydrological soil class 4, meaning it is a “mineral soil, aquifer >2 m depths, no impermeable layer, consolidated substrate” and conceptual runoff formation model A. The latter model implies: “The dominant water movement is downwards through the vadose zone to an aquifer at least two meters below the surface. Lateral movement is largely confined to the saturated zone, with the hydrological response being controlled by the flow mechanisms of the substrate. Where the rock is more coherent but deeply weathered or fissured, the

dominant flow is via the fissures as the bulk of the rock is only slightly porous at best. Aquifers or groundwater are more rarely found in this group” (Boorman et al., 1995). The Peat Bog at the organic soil hillslope PB3 was classified as hydrological soil class 12 meaning organic soils, no significant aquifer, raw peaty topsoil, substrate raw peat, upper soil layers remain saturated for much of the year, and conceptual model K, which implies: “Where there is deep peat, the flow is dominated by surface and immediate subsurface flow, with the underlying substrate having little influence on the hydrological response” (Boorman et al., 1995).

2.2 Hydrologic conditions of the Rokytká headwater

In these catchments, the retention ability depends mainly on the shallow depth of the phreatic zone in the Peat Bog, whereas the deep phreatic zone in the Podzol plays a minor role (Vlček et al., 2012). Peat Bog areas are hypothesized to control storm runoff formation in these headwaters. Peat Bogs can significantly contribute to stormflow when the peat is fully saturated, i.e. storm events exceeding a threshold of 10-15 mm (Vlček et al., 2016). According to a geochemical study based on two years of monthly streamwater sampling (Kocum et al., 2016), Peat Bogs contribute only 10 % to baseflow at the outlet of the entire Rokytká catchment (3.8 km²). However, some zones of a Peat Bog area, such as springs or soil pipe systems connected to the stream, exhibit high fluctuations in discharge (Holden and Burt, 2002). This could explain the observed spiky storm hydrographs at the entire Rokytká catchment outlet (3.8 km²) and at the Rokytká headwater test site (0.6 km²). Pronounced discharge fluctuations from Peat areas could be caused by surface flow (field observation at the Rokytká Peat Bog), near-surface (Holden et al., 2001; Holden, 2005) or subsurface stormflow in soil pipes (Rizzuti et al., 2004; Holden, 2005; Gerke et al., 2015). Results of Holden and Burt (2003) at a blanket Peat site showed that near-surface flow (Biomat flow, BMF) up to the depth of 10 cm can contribute more than 90% to the plot’s outflow. BMF is defined as lateral stormflow in the organic litter layer with high porosity and high hydraulic conductivity in the topsoil (Gerke et al., 2015).

Storm hydrographs at the Rokytká headwater are highly volatile and are characterized by quick and steep rising and falling limbs. The hydrologic response to rainfall events is fast and the recession to antecedent baseflow occurs rather quickly (Fig. 2). The average annual mean flow Mq at the Rokytká headwater outlet is about 0.098 mm h⁻¹ (860 mm a⁻¹); yet at 330 days of the year (> 90%) the discharge is lower. Compared to the average, the hydrologic year 2015 (01.11. – 31.10.) was a rather dry year with total annual precipitation of 840 mm (long-term average 1220 mm) and total runoff of 580 mm or 0.07 mm h⁻¹ (long-term average 860 mm). Mean annual maximum flow MHq is 2.24 mm h⁻¹ and mean annual minimum flow MNq is 0.04 mm h⁻¹. The peak discharge Hq_p in 2015 reached 3.5 mm h⁻¹ (Fig. 2), thus the ratio $Hq:Mq \approx 50$ is relatively high. From June to October 2015 daily precipitation rarely exceeded 10 mm d⁻¹ and thus stormflow events were unfrequent and small. Yet, the Rokytká creek did not fall dry due to two persistent springs at the mineral soil hillslope PZ. In contrast, springs at the organic soil hillslope PB are susceptible to desiccation.

2.3 Dye tracer experiments

The dye tracer experiments were carried out at both hillslopes (mineral soil slope PZ2 and organic soil slope PB3) of the Rokytká headwater during baseflow conditions in late June 2015. At each hillslope two 1.5 m x 1.5 m plots were sprinkled with both dyes (Brilliant Blue, CAS#3844-45-9, concentration 5g L⁻¹; Sodium-Fluorescein, CAS#518-47-8, concentration 2g L⁻¹). All sprinkling plots are located at the transition between the concave, lower part of the hillslope and riparian zone in the vicinity of the stream (distance to stream ≈ 10m; Fig. 3).

First, all plots were pre-sprinkled with 45 L (≈ 20 mm) of local stream water to raise soil moisture and connect the pathways for water percolation, and then the plots were sprinkled with 45 L (≈ 20 mm) of dye solution. The overall sprinkling time at each plot was ~ two hours in order to simulate a rainfall intensity of 20 mm h⁻¹. These amounts and intensities represent a heavy rainfall storm in the Šumava Mts.. Due to previous rainfall events, the soil moisture ranged between 0.40-0.45 VWC. 40 mm rainfall usually causes significant stormflow and also represents frequently occurring amounts of daily precipitation in Central Europe low mountain ranges (Hümann et al., 2011). Storms of this magnitude occur 2-3 times in an average year in the Šumava Mts. (Fig. 2). The groundwater level in the Peat Bog was initially about 0.35 m below the terrain surface (Fig. 2), which represents average Peat Bogs summer groundwater levels at the near-riparian organic soil hillslope.

pH is an important parameter when using FLC as a soil staining dye for preferential flow identification (Gerke et al., 2008, 2013). The soils in the Šumava Mts. are characterized by low pH values ranging from extremely acidic pH 3.8 for Peat Bogs to moderately acidic pH 6.0 for Cambisols. In the Rokytká headwater soil pH is very strongly acidic pH 4.8 at the Peat Bog plot PB3 and strongly acidic pH 5.4 at the mineral soil plot PZ2. Therefore, a NaOH solution was added during the initial pre-sprinkling with dye-free water (pH 12) to raise and buffer the soil pH to reduce fluorescence suppression of FLC caused by a very strongly acidic environment.

The experiment continued with excavation of the FLC sprinkling plots. The excavation of soil profiles and the photography of FLC-stained soil structures were performed under short-time UV illumination (410 nm) at night, approx. 4 hours after sprinkling, as FLC is strongly light sensitive (Käss, 1998).

In the following we describe the soil profile excavation and photo documentation procedure performed after the sprinkling step by step. First, we visually surveyed the terrain surface and all micro-depressions downslope of the sprinkling plots along the primary topographic gradient (thalweg) towards the stream to identify potential preferential flow patterns near or at the surface. In case of visible dye patterns at the surface, exploratory frontal soil pits, perpendicular to the horizontal/lateral flow, would start at the stained surfaces nearest to the stream. Second, the systematic frontal profile excavation started 1.5 m downslope from the sprinkling plots outside of the sprinkling area along the projected flow direction along the thalweg (Fig. 4). Third, the pre-planned systematic excavation was extended along possible secondary gradients using additional exploratory frontal profiles at local terrain depressions. These were excavated up to 10 m down the slope to find potential secondary flow directions and to identify the maximum distance of dye-stained flow structures. Fourth, lateral profiles, oriented parallel to the flow, were excavated in a systematic way at all places where the dyes were detected outside of the sprinkling area. Fifth, the sprinkling area was excavated in a pre-defined systematic way (Fig. 4). The

pictures of soil profiles were taken from two sides in frontal and lateral orientation. Frontal images were taken towards the slope (perpendicular to the direction of horizontal-lateral flow), whereas lateral images were taken along the slope (parallel to the direction of horizontal-lateral flow). The size of each image (photograph) was 50 cm x 50 cm., Lateral pictures (Fig. 4a) were taken in soil pit profile lines every 0.5 m (G – L), frontal pictures in soil pit profile rows at every 0.25 m (Fig. 4b).
5 A similar system of excavation was used by Schneider et al. (2014) and Gerke et al. (2015).

Pictures of the soil profiles were taken during the excavation with a digital Micro Four Third camera with a crop factor of 2.0 (Panasonic Lumix DMC-G1 with a 12 MP MOS sensor, 13 mm x 17.3 mm sensor area, and a 14-45 mm zoom lens, mostly at a focal length of 14 mm, equivalent to 28 mm in full format/35 mm film) under daylight conditions beneath a shading tarp to avoid direct sunlight and shadow effects in case of the BB plots. White balance, white point and black point
10 reference were calibrated using a Datacolor Spider Cube, which was placed in every image. Pictures at the FLC plot were taken at night with the same camera. Each FLC soil profile was illuminated separately with two light sources:

1. A 500 W Halogen lamp (approx. light temperature 5500 K in the visible spectra with maximum 550 nm) to document the natural soil profile color with its horizons;
2. A 27 W UV LED lamp (9x 3W UV LEDs, Highlite International BV Comp.) producing UV light 410 nm with a 120°
15 beam angle to visualize fluorescent FLC stained soil structures similar to Gerke et al. (2013).

The dye-stained flow patterns for both dyes BB and FLC at all soil profiles were analyzed according to a method and with an analytical tool described by Weiler and Flühler (2004). This method was originally developed for analyzing BB. Therefore, the color space of the photographs is converted from the Red-Green-Blue (RGB) color space taken by the camera sensor into the Hue-Saturation-Value (HSV) color space and then classified and spatially analyzed with an algorithm written
20 in IDL code (Weiler and Naef, 2003). For the Rokytká experiments, this procedure was applied for both dyes, BB and FLC, thus for two different groups of photographs. To detect and analyze FLC in the soil profile photographs similarly to the BB photographs, the dye detection routine in the original IDL code was adapted for optimal FLC identification.

2.4 Headwater stream and spring sensing and sampling

All sprinkling plots were located approx. 10 m away from the headwater stream in the lower concave part of the hillslope.
25 Rainfall runoff data at the Rokytká catchment indicate that 10-15 mm of precipitation produce a noticeable response in the stream when the Peat Bog is in moist, near-saturated conditions (Vlček et al., 2016). Hence, the amount of sprinkling water (40 mm per plot) simulated a rainfall that connects the hillslopes to the riparian zone and the headwater stream. Thus, the tracer FLC could potentially appear in the stream. During early summer conditions, similar to the conditions of the experiments with comparable antecedent soil moisture and groundwater levels, 40 mm of daily rainfall (on the entire
30 catchment) rises the discharge from baseflow to peak flows on the order of 1.5 mm h⁻¹. To detect whether and when the hillslopes connect to the stream, we installed two automated water samplers (ISCO 6700) in the vicinity of the sprinkling area in the stream and one at the catchment outflow to sample stream water for future analysis (Fig. 1). Each sampler detected one hillslope. A field fluorometer (Albilia GGUN-FL30, detection limit 2 x 10⁻¹¹ g mL⁻¹) was installed in the

stream at the Rokytká headwater gauge in order to detect hydrologic connectivity, to capture the travel time of FLC from the sprinkling plots to the stream, and to possibly monitor the FLC break-through curve. The sampling interval was 15 min, allowing for continuous operation of the field fluorometer for two weeks. Moreover, water-level proportional water samplers WLPWS (Schneider et al., 2013) were installed at the same places as the ISCO samplers (two springs and at the gauge).

5 3 Results

3.1 Mineral soil hillslope, Podzol (PZ2)

3.1.1 Brilliant Blue (BB)

Visible dye-stained patterns of lateral preferential flow in the soil profiles were observed up to a distance of 0.5 m outside the BB sprinkling plot in the downslope direction (\pm along the thalweg). Additional exploratory trenches were excavated two and three m downslope from the plot to detect further dye-stained patterns of lateral subsurface flow in the soil, but no traces of BB were found. Thus, the systematic excavation started 1.5 m downslope of the BB sprinkling plot (Fig. 4).

Fig. 5a shows a selected lateral soil pit profile (IL1), which is mostly within the BB sprinkling plot at the mineral soil hillslope. BB infiltrated rather homogeneously into the upper soil horizon (O+A) and percolated rather heterogeneously deeper into the soil. Thus, BB-stained patterns are placed irregularly at lower soil horizons, some of which reached down to the B/C horizon without continuous connection to the topsoil in the excavation plain.

The frontal soil profile (Fig. 5b) located outside the sprinkling plot confirms the prominence of BB-stained lateral-horizontal flowpaths in the shallow subsurface, namely in the uppermost soil horizons (O+A, A/B). Some BB-stained patterns were observed at deeper soil horizons of the profile indicating preferential infiltration independent of specific soil horizon or depth. Stones and roots occur rarely and thus do not significantly modify lateral or vertical dye-stained flow structures. BB was transported vertically along patches in the soil matrix, typically at locations where the higher soil horizons O+A and/or A/B were stained. These vertical preferential flows were rather created by slight differences in texture and porosity of the soil matrix than by vertical macropore structures such as root networks or burrows. There were no visible vertical macropores. The root systems of the spruce stands are mostly limited to a depth of 0.2 m (O+A and A/B horizons) and traces of edaphone are very limited. The local soil at profile AC0.5 (Fig. 5b) was not pre-sprinkled and thus likely less saturated when compared with the lateral profile located within the sprinkling plot (Fig. 5a). This may explain the more pronounced dye-stained vertical flow structures in the AC0.5 frontal profile compared to the pre-sprinkled IL1 lateral profile.

3.1.2 Fluorescein (FLC)

The dye FLC was not visible at the soil surface outside of the sprinkling plot. First exploratory trenches were excavated at a distance of 2 m downslope of the sprinkling plot; none of them showed any dye-stained patterns in the soil profiles. The systematic excavation started 1.5 m downslope from the sprinkling plot similar to the BB plot at hillslope PZ2 (Fig. 1). FLC

dye-stained patterns are located without any visible link to the soil horizons, roots or stones (Fig. 6a and 6b). FLC dye was sparsely distributed in the topsoil horizons (O+A, A/B). Almost no dye-stained patterns were found in the lateral soil profiles, especially in the lower soil horizons, within the sprinkling plot area (e.g. Fig. 6a). The largest occurrence of FLC dye-stained soil patterns were found at frontal profile AC0.5 in the Bh horizon (Fig. 6b).

5 The smallest stained spots (<1 cm²) were likely caused by UV light reflected from small grains of quartz from the weathered Gneiss. The adopted version of the FLC dye classification algorithm could not distinguish these pixel-scale patches from truly FLC dye-stained features. However, this analytical bias has a negligible impact on the main findings concerning the FLC dye-staining in the mineral soil profiles (PZ2).

3.2 Organic soil hillslope, Peat Bog (PB3)

10 3.2.1 Brilliant Blue (BB)

The visual survey of the soil surface in the vicinity of the BB sprinkling plot revealed near-surface flow in the NW direction towards the stream. BB was detected in a small, water-filled depression 10.5 m downslope from the sprinkling plot. A few excavations were performed from this point uphill towards the dye sprinkling plot; systematic excavation and profile photographic documentation started 1.5 m downslope of the plot with a spacing of 0.25 m (Fig. 4a, yellow section). The BB stained flowpaths did not strictly follow the terrain gradient but went from the NW side of the sprinkling plot and followed mostly lateral preferential flow structures formed by decomposed trees or roots. This lateral preferential flowpath was later identified as the main direction of the subsurface flow. Relatively smaller and less stained flowpaths were observed downslope from the sprinkling plot (Fig. 4a, orange section), with BB disappearing two meters from the sprinkling plot. The BB excavation started the day after the sprinkling, yet dye stored in large macropore pockets started flowing down the trench walls when these soil structures were truncated.

BB followed lateral soil pipes that were formed by decomposed roots or fallen trees. Healthy trees and undecomposed timber did not create such effective lateral preferential flowpaths, therefore, they had no significant impact on dye-stained patterns (Fig. 7). BB created clearly detectable dye-stained patterns on the dark peat particles as well, so the major flowpaths of BB could be detected even several days after the dye application.

25 The excavation of BB stained soil patterns at the organic soil hillslope PB3 proceeded from two directions (NW and SW, Fig. 4a) following the stained flowpaths in the soil. Near the sprinkling plot, most of the dye was detected at the surface and in near-surface soil horizons, which correlates with Acrotelm (Fig. 7). About 2.0 m downslope from the BB sprinkling plot at hillslope PB3 (Fig. 1) the dye-stained patterns diminished in the Acrotelm and were observed mainly in and around macropores in the Catotelm. The excavation caused problems at location FD0.25/profile D 0 – 1 as dye-filled macroporous pockets in the soil drained BB when disturbed during excavation and thus secondarily stained these soil profiles. Such secondary patterns were cleaned to minimize falsely detected BB along the excavation front.

3.2.2 Fluorescein (FLC) in the soil profiles

The excavation of the FLC sprinkling plot at PB3 at the organic soil hillslope (Peat Bog) started 3 hours after sprinkling after dark. Repeated visual surveys of the terrain surface and of the excavated soil trenches downslope of the sprinkling plot using the UV-lamp (410 nm) and UV torches (385 nm) did not detect any traces of FLC at the surface or in the soil pits. Even in the soil horizons within the sprinkling plot, no FLC dye-stained flow patterns were identified. Only parts of the vegetation at the surface of the sprinkling plot itself were visibly stained with FLC. FLC was later detected in a small water-filled depression about 2.5 m downslope from the sprinkling plot PB3.

3.3 Fluorescein (FLC) in springs and in the stream

Traces of FLC were not detected in the headwater stream, neither in any water samples taken by automated water samplers (ISCO 6700) or water-level proportional water samplers WLPWS, nor with the field fluorometer during the 14-day monitoring period following the dye application.

4. Discussion

Hillslope hydrology is concerned with the partition of precipitation as it passes through the vegetation and soil between overland flow and subsurface flow (Kirkby, 1988). Runoff formation at hillslopes (zero-order basin response) and in riparian zones (1st- and 2nd-order stream response) are the main controls defining the hydrologic response of mountainous headwaters in humid climates. Vertical processes and lateral connectivities are strongly dependent on soil properties, thus soil types are a major regulator of the interplay of these processes. Soil types can be classified in hydrologically meaningful terms, e.g. according to HOST (Boorman et al., 1995).

Hillslope processes define how small catchments respond to rainfall (Anderson and Burt, 1990). Specifically, hillslope processes control how long water is stored in soil or bedrock, which determines how quickly small catchments respond to rainfall (Uhlenbrook et al., 2008). Our experiments in the Šumava Mts. showed that the Peat Bog hillslope connected much more quickly to the stream and contributed considerably more to the runoff response of the headwater than the Podzol hillslope. The larger Rokytká catchment (3.8 km², 3rd order stream) showed similar hydrologic behavior (Fig. 2) – low baseflow and flashy storm hydrographs – to the smaller Rokytká headwater (0.6 km², 2nd order stream). This is noteworthy since the proportion of the Peat Bog ranges from 60% at the 2nd order stream headwater to less than 30% at the 3rd order stream catchment; the remaining areas are covered by Podzol. This illustrates that the hydrologic response of the catchment is dominated by the runoff formation at the Peat Bog, whereas we speculate that a deep groundwater system is fed by percolation in the Podzol that is rather disconnected from the 2nd and 3rd order streams.

4.1 Mineral soil hillslope, Podzol (PZ2)

4.1.1 Brilliant Blue (BB)

Based on the properties of Podzol, surface flow (SOF or HOF) at the mineral soil hillslope PZ was not expected. This hypothesis was supported by the results of the BB staining patterns in the soil profiles at PZ2. However, the dye did not identify a hydrologic active soil horizon as clearly as with the Gleysol hillslope study (Schneider et al., 2014). The most abundantly stained soil structures (volume density of up to 85%, Fig. 5b) were found within the uppermost soil horizon O+A, up to a depth of 0.1 m below the surface. The shape of the BB depth distribution was similar at the plot, however, the volume density of max. 50% is significantly lower (Fig. 5a).

Based on the soil properties at the mineral soil hillslope PZ2, such as porosity and hydraulic conductivity, infiltration was expected to be rather stable and homogeneous. However, BB infiltrated heterogeneously. Parts of the topsoil created conditions for the occurrence of fingering (DiCarlo et al., 2013) or similar types of matrix preferential flow (Weiler and Flühler, 2004; Anderson et al., 2009; Wienhöfer et al., 2009). Similar to previous work, we attribute the heterogeneous infiltration to the corrugated transition between the dark organic topsoil horizons (O, A) and the lower mineral horizons (A/B, B). However, Weiler and Flühler (2004), Anderson et al. (2009), and Wienhöfer et al. (2009) conducted their studies at steeper slopes and on different soil types compared to the Šumava experiments.

A sharp interface between an upper organic and a lower ‘organo-mineral’ layer like in the Šumava sprinkling experiments can initiate significant biomat flow (Gerke et al., 2015) that can be attributed to water repellency (Doer et al., 2000). Water repellency of the soil surface was observed in the organic topsoils at the Rokytká headwater during dry periods. However, due to rainfall events prior to our experiments, the antecedent soils moisture conditions (0.45 – 0.5) likely did not support water repellency in the topsoil (Fig. 2).

At PZ2, BB was clearly visible at deeper soil horizons, where it created seemingly detached stained patterns. These stained patterns represent vertical preferential flowpaths (Nobles et al., 2010; Gerke et al., 2015; Uchida et al., 2005), but the excavation spacing (0.25 – 0.5 m) was probably too coarse to detect connected stained flowpaths in full detail. Horizontal-lateral preferential flowpaths dominated at the topsoil layers (O+A), whereas vertical flow directions (percolation) dominated at the lower soil horizons. These differences in the direction of stained pathways are consistent with the results of Schneider et al. (2014) or Gerke et al. (2015).

4.1.2 Fluorescein (FLC)

FLC stained significantly fewer soil structures or pathways compared to BB at both hillslopes. FLC was almost absent with few exceptions in the near-surface organic topsoil layers. This could be because of the relatively small amount of dyed water (20 mm dyed sprinkling water and 20 mm undyed pre-sprinkling water). Previous FLC soil staining experiments used simulated rainfalls of 50-100 mm (Gerke et al., 2015). The size of the irrigation plots (1.5 m x 1.5 m) does not appear to be a factor, as previous work used irrigation plots that were 1 m x 1 m, and successfully detected FLC (Gerke et al., 2015). The FLC dye solution could have bypassed the topsoil horizons via macropores and soil pipes without visibly staining these preferential flow structures due to various causes, e.g. local hydrophobicity (Doerr et al., 2000) or strong acidity. On the other hand, FLC stained patterns in the lower soil horizons at the Podzol plots are similar to the BB stained patterns. This

indicates, that the organic topsoils at the Šumava test sites may suppress the fluorescence of FLC in addition to the well-known pH induced fluorescence elimination. At the Podzol hillslope PZ2 the FLC stained soil patterns suggest rather a subsurface lateral pipeflow network as described in Uchida et al. (2005) than biomat flow as identified by Gerke et al. (2015).

5 4.2 Organic soil hillslope, Peat Bog (PB3)

4.2.1 Brilliant Blue (BB)

BB at the Peat Bog hillslope PB3 did not detect surface flow SOF or significant vertical deep percolation. BB patterns in the soil profiles supported the hypothesis of surface-near biomat flow, which can be attributed to lateral preferential flow in the Acrotelm. Differences in porosity and hydraulic conductivity between Acrotelm and Catotelm create similar stained patterns when compared to the Gleysol hillslope studied in the experiment of Schneider et al. (2014). The infiltration process at the hillslope PB3 matches fairly well the definition of lateral subsurface stormflow (Wienhöfer et al., 2009).

Lateral preferential flow was detected with BB at PB3, however it was limited mostly to few, but well-connected pipe networks with high drainage capacity. These soil pipe networks are created by decomposed dead trees or dead roots in the Acro- and Catotelm. Such lateral soil pipe networks are an important runoff formation process at peaty catchments (Jones, 1997; Holden and Burt, 2002). Holden and Burt (2003) identified the dominant lateral stormflow as shallow subsurface flow (SSF) down to the depth of 0.1 m. However, BB at the organic soil hillslope PB3 showed that lateral soil pipes were connected both in Acro- and Catotelm (depth 0.1-0.4 m) to jointly form the major preferential flowpaths through the Peat Bog. Hence, during the BB excavation soil pipes were only observed in the Catotelm. BB dye-stained flowpaths in the soil appeared prominently further downslope (outside of the dye sprinkling plot) and connected mostly laterally via soil pipes rather than vertically penetrating the Acrotelm. However, most soil profiles – both frontal and lateral – document that the BB dye-stained flowpaths are rather limited to macropore structures and rarely to matrix flow. Deep percolation at the organic soil hillslope PB3 was not detected. The assumption, that BB may be difficult to optically detected in such dark soils as Peat Bog, was not confirmed. It could be shown that BB can be successfully applied in Peat Bogs to stain vertical flow structures in soil profiles and has the potential to trace rather long-distance lateral preferential flowpaths (distances > 10 m) in waterlogged areas with shallow groundwater (~ 0.5 m below surface).

4.2.2 Fluorescein (FLC)

The critical role of pH affecting FLC's fluorescence and thus its on-site optical detection is well known (Gerke et al., 2013; Käss, 1998). Therefore, the FLC solution was buffered with NaOH to compensate for the strong acidity of the organic soil, similar to the approach successfully applied in FLC staining experiments in organic topsoils in Japan (Gerke et al., 2015).

The rarely detected FLC at the Peat Bog hillslope does not necessarily indicate that no dye infiltrated into the upper organic layer as the dye's fluorescence could not be optically detected in-situ. The FLC solution could have bypassed the

organic topsoil horizons via macropores and soil pipes at the Peat Bog plot PB3 as well as at the Podzol plot PZ2. The very low soil pH in the Peat Bog might be the reason why FLC fluorescence was not observed. Although we attempted to increase the soil water pH by pre-sprinkling the plots with NaOH-enriched water, and similarly buffered the FLC solution, these countermeasures at the sprinkling plots were probably not enough to significantly change the pH conditions in the soil at both hillslopes, but especially at PB3.

FLC was mostly visible on organic surfaces such as plants (moss, grass) on the surface but not in the peat itself. This might be attributed to the tendency of FLC to attach to organic matter, which significantly counteracts its conservative behavior in mineral soils, especially in thick organic soils such as Peat Bogs. Furthermore, the “very strong acidity” in the Peat Bog soil, the phreatic zone, and the capillary fringe together may have diluted any buffering effect of the NaOH enriched sprinkling water. However, FLC dye was visible the next day during daylight in a small, water-filled depression approximately 3.0 m downslope from the FLC sprinkling plot. This indicates that the dye had been transferred via preferential flow in lateral soil pipes in the vadose zone and had not been completely (ab)sorbed by organic soil particles.

4.3 Plots-stream hydrologic connectivity with Fluorescein (FLC)

Limitation and possible causes of failure of FLC staining and tracing experiments have been well described for organic and mineral soils by Gerke et al. (2008) and for ground- and surface water applications by Käss (1998). The most common problems were addressed for the Šumava experiments by:

- Pre-sprinkling of the plot with NaOH buffered water (pH 12);
- Addition of NaOH to the FLC solution to create a secondary pH buffer;
- Avoiding bright sunlight as FLC is light-sensitive and decays quickly, by performing the FLC sprinkling and excavation work at night with controlled short-time exposure to UV and visual spectra light.

Despite our advanced and dense FLC monitoring network in all tributaries and springs draining the hillslopes field fluorometer, automated water-samplers and water-level proportional water samplers (Schneider et al., 2013), FLC was not detected in the stream or at the springs. As a result, we could neither measure a tracer breakthrough nor could we delineate a transit time or prove hydrologic connectivity from the sprinkling plots to the drainage system. The following explanations may explain why FLC did not reach the drainage system:

- Small sprinkling water volume and limited area of the sprinkling plots (1.5 m x 1.5m) compared to the distance from the plots to the stream or springs (10 m);
- Masking of the FLC fluorescence by very low background pH values (Käss, 1998);
- Fluorescence reduction and masking of FLC by organic substances (Käss, 1998);
- Sorption of FLC to vegetation and topsoil organic matter.

As the sprinkling solution mixed with soil and shallow groundwater, its pH probably dropped back to low background pH values. Another reason for null detection of FLC might be the relatively small amount of water sprinkled at the plot

compared to the soil and groundwater volume. The influence of the capillary fringe and the soil matrix to dilute the pH enriched sprinkling water might be significant, but the presented data cannot confirm or disprove this possibility.

4.4. Dominant runoff formation

In extension to our hypothesis, which was based on the conceptual runoff formation model, HOST model A, (Boorman et al., 1995; Fig. 1 and Fig. 8) we found that additional lateral subsurface flow in deeper soil horizons occurred at the mineral hillslope PZ2 (Podzol). As predicted, a surface-near runoff formation process occurred in parallel to deep percolation (Fig. 8). Biomat flow, a shallow subsurface flow in the topmost soil horizon O+A (Sidle et al., 2007; Gerke et al., 2015) is thus a relevant runoff formation process at the mineral hillslope PZ2 (Podzol). The absence of a shallow groundwater body and percolation-restricting soil layers buffers the lateral stormflow at the hillslope PZ2, as a large portion of precipitation infiltrates into the soil and percolates into the underlying bedrock. These findings are supported by the lack of temporary or fully saturated zones, perched aquifers or a groundwater body rising into the soil (transmissivity feedback), which may connect the hillslope to the stream and thus effectively drained the Podzol (Fig. 8). According to the runoff formation decision scheme by Scherrer and Naef (2003), the dominant runoff formation process at the Podzol hillslope can be classified as a combination of delayed Hortonian overland flow (HOF) and delayed subsurface stormflow (SSF2). The sprinkling experiments with the dyes (BB and FLC) showed the existence of vertical and lateral preferential pathways in the topsoil and indicated that delayed subsurface flow SSF occurs also.

At the organic soil hillslope PB3, the hypothesized HOST model K (Boorman et al., 1995) was supported by our results. Biomat flow and lateral preferential flow in soil pipe networks formed by decaying fallen trees and roots in the Acrotelm and – in addition to our prediction also in the Catotelm – are the primary runoff formation processes at the Peat Bog hillslope (Fig. 8). Our hypothesis of HOF was confirmed for the Peat Bog hillslope PB3 by the results of the sprinkling experiments with Brilliant Blue. **It is necessary to notice that the results should be interpreted with respect to the relatively small size of the sprinkling plots (1.5 m x 1.5 m) compared to the entire hillslopes, which were not sprinkled.**

5. Conclusion

In this study runoff formation during stormflow was investigated at two opposite hillslopes with different soil types (Histosol/Peat, Podzol) in a 2nd order mountain headwater catchment in the Czech Republic. Two dye tracers with different attributes – the sorptive dye Brilliant Blue (BB), and the conservative dye Fluorescein (FLC) – were applied to stain preferential flowpaths in the soil and at its surface.

At the Peat Bog hillslope, BB staining identified a quickly activated and effective shallow lateral subsurface drainage system in the Acrotelm. Preferential flow structures connected the hillslope with the not-sprinkled riparian zone via lateral pipeflow along decayed roots and fallen trees in the Acrotelm, and the upper Catotelm. Healthy roots **did not** create similar drainage-effective, well-connected lateral preferential flow structures as decomposed roots or dead trees at the Peat Bog site.

In contrast, subsurface flow at the Podzol hillslope was created only near surface in the organic topsoil (biomat flow). The lateral subsurface transport in the unsaturated zone at the organic soil hillslope (Peat Bog) was about an order of magnitude higher (10 m lateral flow) than at the mineral soil hillslope (Podzol, 1 m lateral flow). At the mineral soil hillslope (Podzol) both dye tracers worked well in the subsoil and delivered similar results. Percolation in the soil and deep percolation into the bedrock dominated, as expected; lateral preferential drainage was rather limited. Compared to the organic soil hillslope (Peat Bog), the lateral subsurface flow distance is reduced by an order of magnitude (1 m vs 10 m). The findings at the Podzol hillslope with prevailing vertical flow agree with the facts that groundwater influenced soil horizons could not be detected in soil profiles.

We were more easily able to detect hydrologic connectivity from the hillslope to the riparian zone with BB than with FLC at the Peat Bog hillslope. This is surprising, as BB is considered to be more sorptive (less conservative) than FLC. Moreover, the dark-blue BB is often difficult to optically detect in dark organic soils like Peat. We attribute this finding to the fact that BB is less affected than FLC by the very strongly acidic soil and groundwater (pH <5) found in peaty environments such as the Šumava headwaters.

Author contribution: L. Vlček, K. Falátková, and P. Schneider participated in the experiment and contributed to the manuscript.

Competing interests. The authors declare that they have no conflict of interest.

Acknowledgements. The authors would like to thank Jan Seibert from the University of Zürich for providing equipment and tools, to Bohumír Janský from Charles University, Prague, for help and financial support and Markus Weiler from the University of Freiburg for providing his IDL code for the Brilliant Blue image analysis. We are indebted to Václav Královec, Miroslav Šobr, Michal Jeníček, Zdeněk Kliment, Luděk Šefrna, Jan Kocum, Julius Česák, Jitka Vlčková and Jiří Vlček for support and assisting with fieldwork, to Sarah Kliegman for helpful comments, suggestions and review and to the National Park Šumava for permission to conduct our research on its land. This work was supported by project GAČR 13-32133S “Headwaters retention potential with respect to hydrological extremes,” and by project COST ES1306, LD 15130 “Impact of landscape disturbance on stream and basin connectivity”.

25 **References**

Anderson, M. G. and Burt, T. P.: Process Studies in Hillslope Hydrology, Wiley, Winchester, UK, 1990.

Anderson, A. E., Weiler, M., and Alila, Y., and Hudson, R. O.: Dye staining and excavation of a lateral preferential flow network, Hydrol. Earth Syst. Sci., 13, 935-944, doi:10.5194/hess-13-935-2009, 2009.

- Bachmair, S., Weiler, M., and Nützmann, G.: Controls of land use and soil structure on water movement: Lessons for pollutant transfer through the unsaturated zone, *Journal of Hydrology*, 369 (3-4), 241-252, ISSN 0022-1694, 2009.
- Bachmair, S. and Weiler, M.: Hillslope characteristics as controls of subsurface flow variability, *Hydrol. Earth Syst. Sci.*, 16, 3699-3715, doi:10.5194/hess-16-3699-2012, 2012.
- 5 Boorman, D.B., Hollis, J.M., and Lilly, A.: Hydrology of soil types: a hydrologically-based classification of the soils of the United Kingdom, Institute of Hydrology report no. 126, 1995.
- Brázdil, R., Trnka, M., Mikšovský, J., Řezníčková, L., and Dobrovolný, P.: Spring-summer droughts in the Czech Land in 1805–2012 and their forcings, *Int. J. Climatol.*, 35: 1405-1421. doi:10.1002/joc.4065, 2015.
- Doerr, S. H., Shakesby, R. A., and Walsh, R. P. D.: Soil water repellency: Its causes, characteristics and hydro-geomorphological significance, *Earth Sci. Rev.*, 51(1-4), 33-65, doi:10.1016/S0012-8252(00)00011-8, 2000.
- 10 Evans, M. G., Burt, T. P., Holden, J., and Adamson, J. K.: Runoff generation and water table fluctuations in blanket peat: evidence from UK data spanning the dry summer of 1995, *J. Hydrol.*, 221(3-4), 141-160, doi:10.1016/S0022-1694(99)00085-2, 1999.
- Faist, H.: Die jährlichen Hochwasserabflüsse der Elbe bei Magdeburg im Zeitraum von 1870 bis 1960, Dokumentation der Wasserwirtschaftsdirektion Mittlere Elbe Sude-Elbe, 1967.
- 15 Ferda, J., Hladný, J., Bubeníčková, L., and Pešek, L., 1971. Odtokový režim a chemismus vod v povodí Horní Otavy se zaměřením na výskyt rašelinišť, *Sborník prací HMÚ*, 17, HMÚ, Praha, 22-126, 1971.
- Flury, M. and Flühler, H.: Tracer Characteristics of Brilliant Blue FCF, *Soil Sci. Soc. Am. J.*, 59(1), 22, doi:10.2136/sssaj1995.03615995005900010003x, 1995.
- 20 Gerke, K. M., Sidle, R. C., and Tokuda, Y.: Sorption of Uranine on forest soils, *Hydrological Research Letters* 2: 32-35. DOI: 10.3178/hr.l.2.32, 2008.
- Gerke, K. M., Sidle, R. C., and Mallants, D.: Criteria for selecting fluorescent dye tracers for soil hydrological applications using Uranine as an example, *J. Hydrol. Hydromechanics*, 61(4), 313-325, doi:10.2478/johh-2013-0040, 2013.
- Gerke, K. M., Sidle, R. C., and Mallants, D.: Preferential flow mechanisms identified from staining experiments in forested hillslopes, *Hydrol. Process.*, 29: 4562-4578, doi:10.1002/hyp.10468, 2015.
- 25 Hladný, J., Kašpárek, L., Krátká, M., Kněžek, M., and Martinková, M.: Katastrofální povodeň v České republice v srpnu 2002, *MŽP ČR, Praha*, 68, 2005.
- Hladný, J.: Jaké následky přineslo sucho v roce 2003? In Němec, J., Kopp, J. (Eds.): *Vodstvo a podnebí v České republice*, MZE ČR, Consult Praha, 81, 2009.
- 30 Holden, J., Burt, T. P., and Cox, N. J.: Macroporosity and infiltration in blanket peat: The implications of tension disc infiltrometer measurements, *Hydrol. Process.*, 15(2), 289-303, doi:10.1002/hyp.93, 2001.
- Holden, J. and Burt, T.P.: Piping and pipeflow in a deep peat catchment, *Catena*, 48(3), 163-199, doi:10.1016/S0341-8162(01)00189-8, 2002.
- Holden, J. and Burt, T. P.: Hydrological studies on blanket peat: The significance of the acrotelm-catotelm model, *J. Ecol.*,

- 91(1), 86-102, doi:10.1046/j.1365-2745.2003.00748.x, 2003.
- Holden, J.: Piping and woody plants in peatlands: Cause or effect?, *Water Resour. Res.*, 41(6), 1-10, doi:10.1029/2004WR003909, 2005.
- Hümann, M., Schüler, G., Müller, C., Schneider, R., Johst, M., and Caspari T.: Identification of runoff processes – The
5 impact of different forest types and soil properties on runoff formation and floods, *Journal of Hydrology*, 409, 3-4, 637-649, ISSN 0022-1694, doi: 10.1016/j.jhydrol.2011.08.067, 2011.
- IUSS Working Group WRB.: World reference base for soil resources 2006. 2nd edition. World Soil Resources Reports No. 103. FAO, Rome. ISBN 92-5-105511-4, 2006.
- Janský, B. and Kocum, J.: Peat Bogs influence on runoff process: Case study of the vydra and křemelná river basins in the
10 šumava mountains, Southwestern Czechia, *Geografie*, 113(4), 383 – 399, 2008.
- Jones, J.A.A.: Pipeflow contribution areas and runoff response, *Hydrological Processes*, 11, 35-41, 1997.
- Käss, W.: Tracing technique in geohydrology: Rotterdam, A. A. Balkema, 581, 1998.
- Kirkby, M. (1988) Hillslope runoff processes and models, *Journal of Hydrology*, 100, 315-339.
- Kocum, J., Oulehle, F., Janský, B., Bůzek, F., Hruška, J., and Vlček, L.: Geochemical evidence for Peat Bog contribution to
15 streamflow generation process: case study of Vltava River headwaters, Czech Republic, *Hydrological Sciences Journal*, 2, doi: 10.1080/02626667.2016.1140173, 2016.
- Langhammer, J., Su, Y., and Bernsteinová, J.: Runoff response to climate warming and forest disturbance in a mid-mountain basin, *Water (Switzerland)*, 7(7), 3320 – 3342, doi:10.3390/w7073320, 2015.
- Rizzuti, A. M., Cohen, A. D., and Stack, E. M.: Using hydraulic conductivity and micropetrography to assess water flow
20 through peat-containing wetlands, *Int. J. Coal Geol.*, 60(1), 1 – 16, doi:10.1016/j.coal.2004.03.003, 2004.
- Schneider, P.: Hydrologische Vernetzung und ihre Bedeutung für diffuse Nährstoffeinträge im Hotzenwald / Südschwarzwald, *Physiogeographica – Basler Beiträge zur Physiogeographie*, 177, [online] available from: edoc.unibas.ch/823/1/DissB_8420.pdf, 2007.
- Schneider, P., Lange A., and Doppler, T.: Development and evaluation of a water level proportional water sampler,
25 American Geophysical Union, Fall Meeting 2013, abstract #H43H-1579, 2013.
- Schneider, P., Pool, S., Strouhal, L., and Seibert, J.: True colors – experimental identification of hydrological processes at a hillslope prone to slide, *Hydrol. Earth Syst. Sci.*, 18, 875- 892, doi:10.5194/hess-18-875-2014, 2014.
- Scherrer, S. and Naef, F.: A decision scheme to indicate dominant hydrological flow processes on temperate grassland, *Hydrol. Process.*, 17(2), 391 – 401, doi:10.1002/hyp.1131, 2003.
- 30 Seibert, J., Grabs, T., Köhler, S., Laudon, H., Winterdahl, M., and Bishop, K.: Linking soil- and stream-water chemistry based on a riparian flow-concentration integration model, *Hydrol. Earth Syst. Sci.*, 13, 2287-2297, doi:10.5194/hess-13-2287-2009, 2009.
- Sidle, R. C., Hirano, T., Gomi, T., and Terajima, T.: Hortonian overland flow from Japanese forest plantations – an aberration, the real thing, or something in between? *Hydrol. Process.*, 21, 3237-3247, doi:10.1002/hyp.6876, 2007.

- Uchida, T., Tromp-Van Meerveld, I., and McDonnell, J. J.: The role of lateral pipe flow in hillslope runoff response: An intercomparison of non-linear hillslope response, *J. Hydrol.*, 311(1-4), 117-133, doi:10.1016/j.jhydrol.2005.01.012, 2005.
- Uhlenbrook, S., Didszun, J., and Wenninger, J.: Source areas and mixing of runoff components at the hillslope scale – a multi-technical approach, *Hydrological Sciences Journal – Journal des Sciences Hydrologiques*, 53, 4, 741-753 DOI: 10.1623/hysj.53.4.741, 2008.
- Vlček, L., Kocum, J., Janský, B., Šefrna, L., and Kučerová, A.: Retenční potenciál a hydrologická bilance horského vrchoviště: případová studie Rokytecké slatě, povodí horní Otavy, JZ Česko, *Geografie*, 4, 2012.
- Vlček, L., Kocum, J., Janský, B., Šefrna, L., and Blažková, Š.: Influence of peat soils on runoff process: case study of Vydra River headwaters, Czechia. *Geografie*, 121(2), 235-253, 2016.
- Von Freyberg, J., Radny, D., Gall, H. E., and Schirmer, M.: Implications of hydrologic connectivity between hillslopes and riparian zones on streamflow composition, *J. Contam. Hydrol.*, 169, 62-74, doi:10.1016/j.jconhyd.2014.07.005, 2014.
- Weiler, M. and Naef, F.: An experimental study of the role of macropores in infiltration in grassland soils, *Hydrological Processes*, 17 (2), 477-493, 2003.
- Weiler, M. and Flühler, H.: Inferring flow types from dye patterns in macroporous soils, *Geoderma*, 120(1-2), 137-153, doi:10.1016/j.geoderma.2003.08.014, 2004.
- Weiler, M., McDonnell, J. J., Tromp-van Meerveld, I., and Uchida, T.: Subsurface storm flow, in: *Encyclopedia of Hydrological Sciences*, edited by: Anderson, M. G. and McDonnell, J. J., John Wiley & Sons, New York, 1719-1732, 2006.
- Weiler, M.: Field-Based Observation of Hydrological Processes, In: *Treatise on Water Science Academic Press*, 339-350, 2011.
- Wienhöfer, J., Germer, K., Lindenmaier, F., Färber, A., and Zehe, E.: Applied tracers for the observation of subsurface stormflow at the hillslope scale, *Hydrol. Earth Syst. Sci.*, 13, 1145-1161, doi:10.5194/hess-13-1145-2009, 2009.

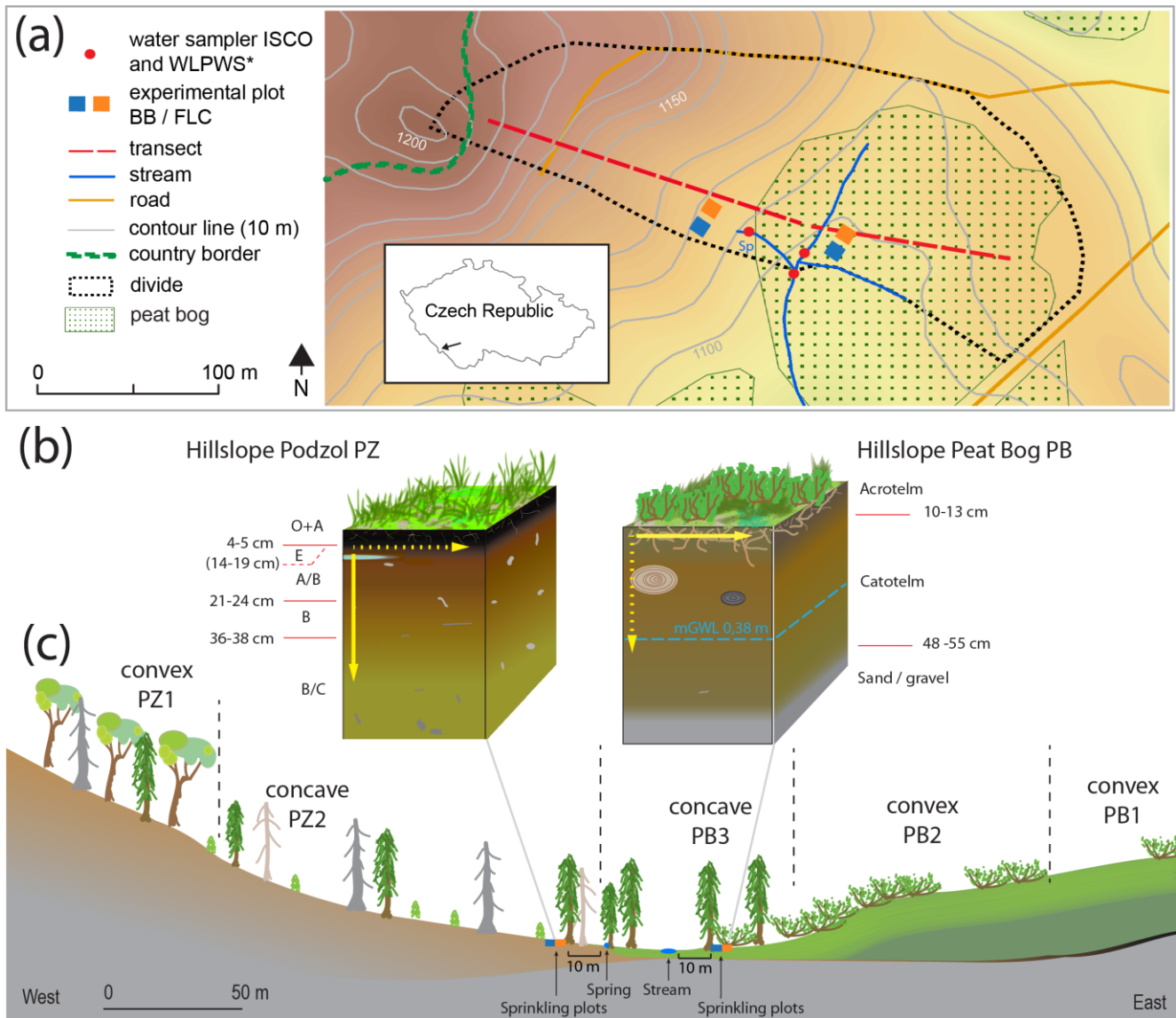


Fig. 1. (a) Overview of the Rokytká headwater test site (0.6 km²) in the Šumava Mts. in SW Czech Republic; Sp = spring; * **Water level proportional sampler** (Schneider et al., 2013). (b) The yellow arrows at the experimental Podzol plot PZ2 and the Peat Bog plot PB3 represent simplified conceptual models of assumed runoff formation during stormflow according to the *Hydrology of Soil Types* classification (HOST; Boorman et al., 1995): The soil type entic Podzol at plot PZ2 matches HOST soil class 4 with conceptual model A; the soil type Peat Bog at plot PB3 matches HOST soil class 12 with conceptual model K (Fig. 8). (c) Cross-section of the Rokytká headwater and its two opposite hillslopes. The mineral soil hillslope Podzol (PZ) consists of entic or at least haplic Podzol and is covered by beech and spruce stands. The organic soil hillslope (PB1-PB3) represents a typical Peat Bog (PB) of the Šumava Mts. The upper hillslope zone PB1 (cotton grass), the lower hillslope zone PB2 (pine), and the riparian zone PB3 (waterlogged spruce forest) represent zones of the PB catena with different vegetation cover, groundwater, and peat soil depths.

5

Table 1. Selected dye sprinkling experiments sorted by land use and scale of dye application.

	Land use	Plot studies	Hillslope studies
Brilliant Blue	Forest studies	Bachmair et al., 2009; Wienhöfer et al., 2009	Anderson et al., 2009; Wienhöfer et al., 2009
	Grassland studies	Weiler and Flühler, 2004; Bachmair et al., 2009; Schneider et al., 2014	-
Fluorescein	Forest studies	Gerke et al., 2008, 2013, 2015	Wienhöfer et al., 2009; Weiler and Naef, 2003
	Grassland studies	-	Weiler and Naef, 2003; Schneider, 2007; Schneider et al., 2014

10

15

20

25

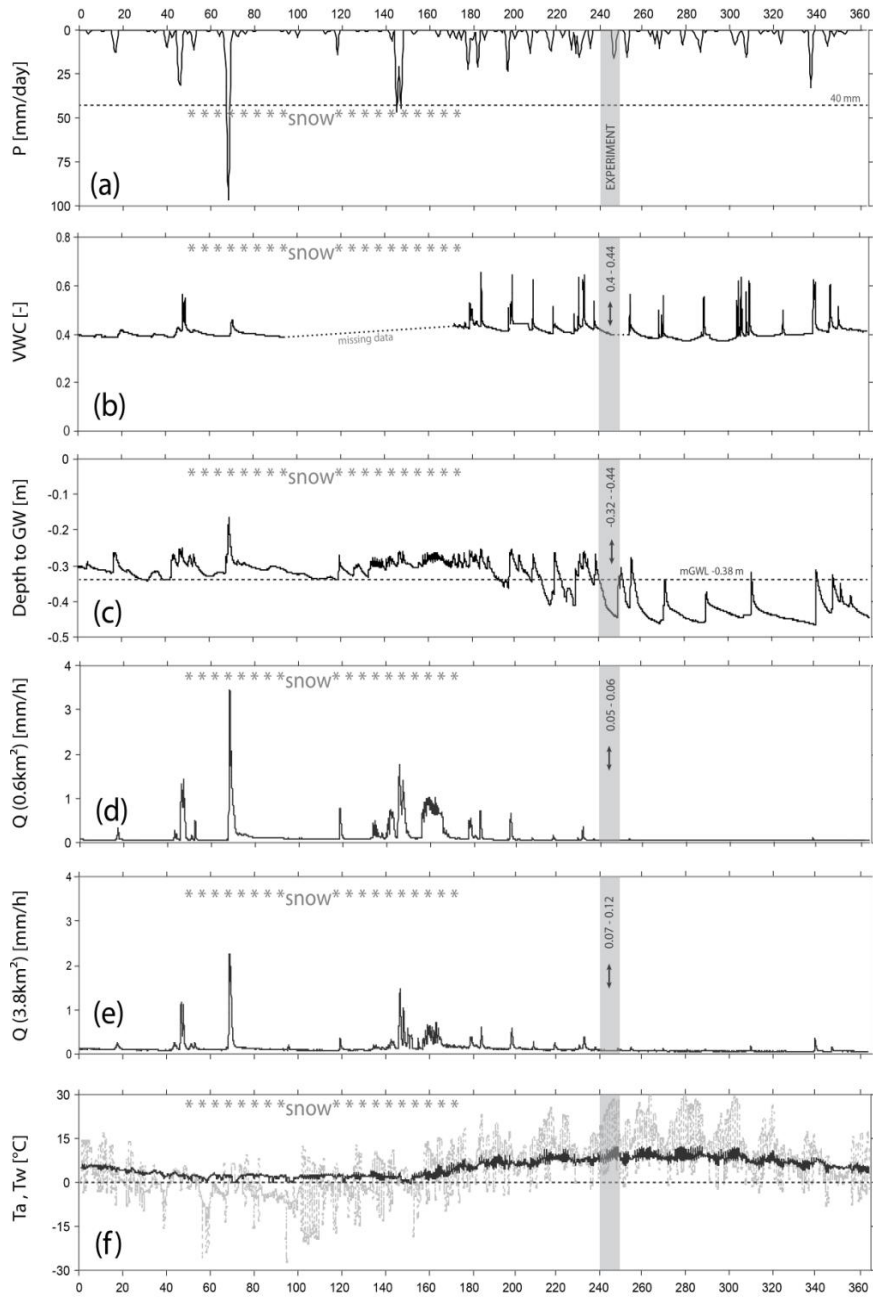


Fig. 2. Hydro-meteorological data of the water year 2015 (01.11.2014 – 31.10.2015). (a) **P**: Precipitation [mm d^{-1}]. (b) **VWC**: Volumetric water content at hillslope PZ in 0.2 m depth [-]. (c) **Depth to groundwater level** at slope PB3. (d) **Q (0.6 km²)**: Discharge [mm h^{-1}] of Rokytká headwater. (e) **Q (3.8 km²)**: Discharge [mm h^{-1}] of Rokytká catchment (3.8 km²). (f) **T_a**: Air temperature [°C] (dashed gray line), **T_w**: Stream water temperature [°C] (solid black line). The gray bars mark a 10-day period starting with dye tracer sprinkling in the evening of June 29th (day 240 of the water year) and July 8th (day 249 of the water year).



(a)



(b)

5



(c)



(d)

Fig. 3. Pictures of the application plots of the dye sprinkling experiments at the Rokytká headwater, Šumava Mts., Czech Republic. **(a and b)** Sprinkling plots at the mineral soil hillslope Podzol (PZ2). **(a)** Brilliant Blue plot (BB); **(b)** Sodium-Fluorescein plot (FLC). **(c and d)** Sprinkling plots at the organic soil hillslope Peat Bog (PB3). **(c)** Brilliant Blue plot (BB); **(d)** Sodium-Fluorescein plot (FLC).

10

15

5

Table 2. Soil characteristics at the two experimental plots PZ and PB in the Rokytká headwater. PZ = Podzol (mineral soil), PB = Peat Bog (organic soil); RH = Coverage of a selected soil type at the Rokytká Headwater; OR = Coverage of a selected soil type at the Otava River Headwater; *Peat in general = Histosol according to IUSS Working Group WRB (2006); ** Depth at hillslope PB3; SL = Sandy-Loam; L = Loam.

Slope	Soil type	Soil area RH / OR [%]	Soil depth RH / OR [m]	Depth to groundwater [m]	Slope [%]	Soil layer	Eff. porosity [%]	Hydrol. cond. [mm h ⁻¹]	Soil texture
PZ	entic Podzol	51 / 45	0.7 / 0.4-0.7	> 2.0	4-6	A/B	80.0	0.50	SL-L
						B	53.5	0.38	SL
PB	Histosol*	44 / 20	2.1 / 1.2**	0.35	3-5	T	89.2	0.30	-

15

20

25

30

5

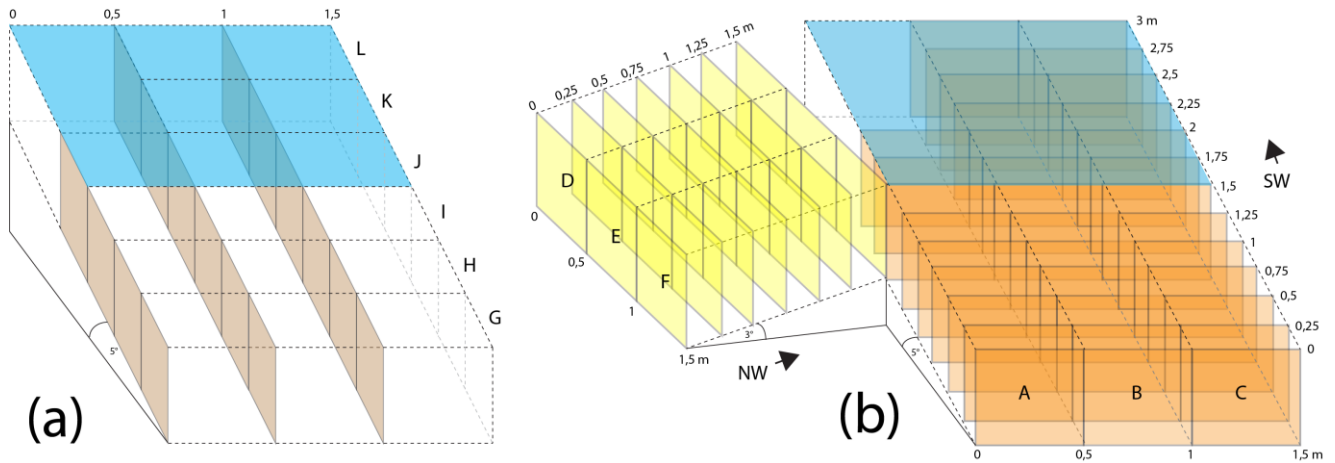
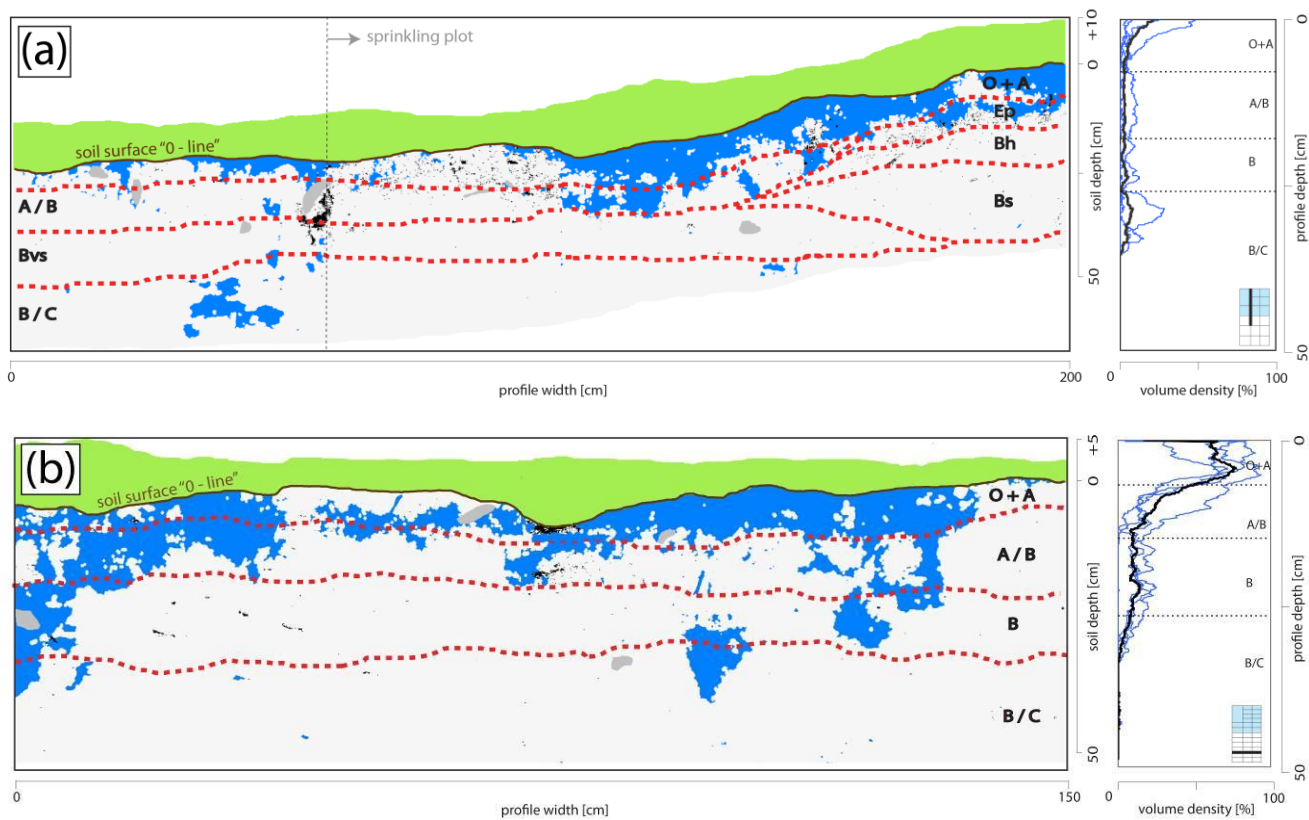


Fig. 4. Sketch of the dye tracer experiment excavation directed along the flow lines. **(a)** Scheme of excavation and photography of lateral soil profiles (gray) parallel to the lateral-horizontal preferential flowpaths (rows G – L). Blue areas show the dye sprinkling plots, where 'platform' images were taken of horizontal layers of the soil (these layers have the same orientation as the soil layer boundaries). **(b)** Scheme of excavation and photography of frontal soil profiles (orange and yellow sections) up the slope ('columns' A – F). The yellow inclined part (columns D – F) was only excavated and photographed at plot PB3 to capture the dominant lateral-horizontal preferential flowpaths.

15

20

25



5

Fig. 5. (a) Lateral profile IL1 and (b) frontal profile AC0.5 at the Brilliant Blue (BB) sprinkling plot PZ2 at the mineral soil hillslope (Podzol). The position of the profile is indicated in bottom right corner. Blue: BB dye; gray: stones, roots; green: vegetation; black: unclassified shadows, roots; red-dotted line: soil horizon divide. The charts on the right represent the distribution of the volume density of

10 BB in different soil depths.

15

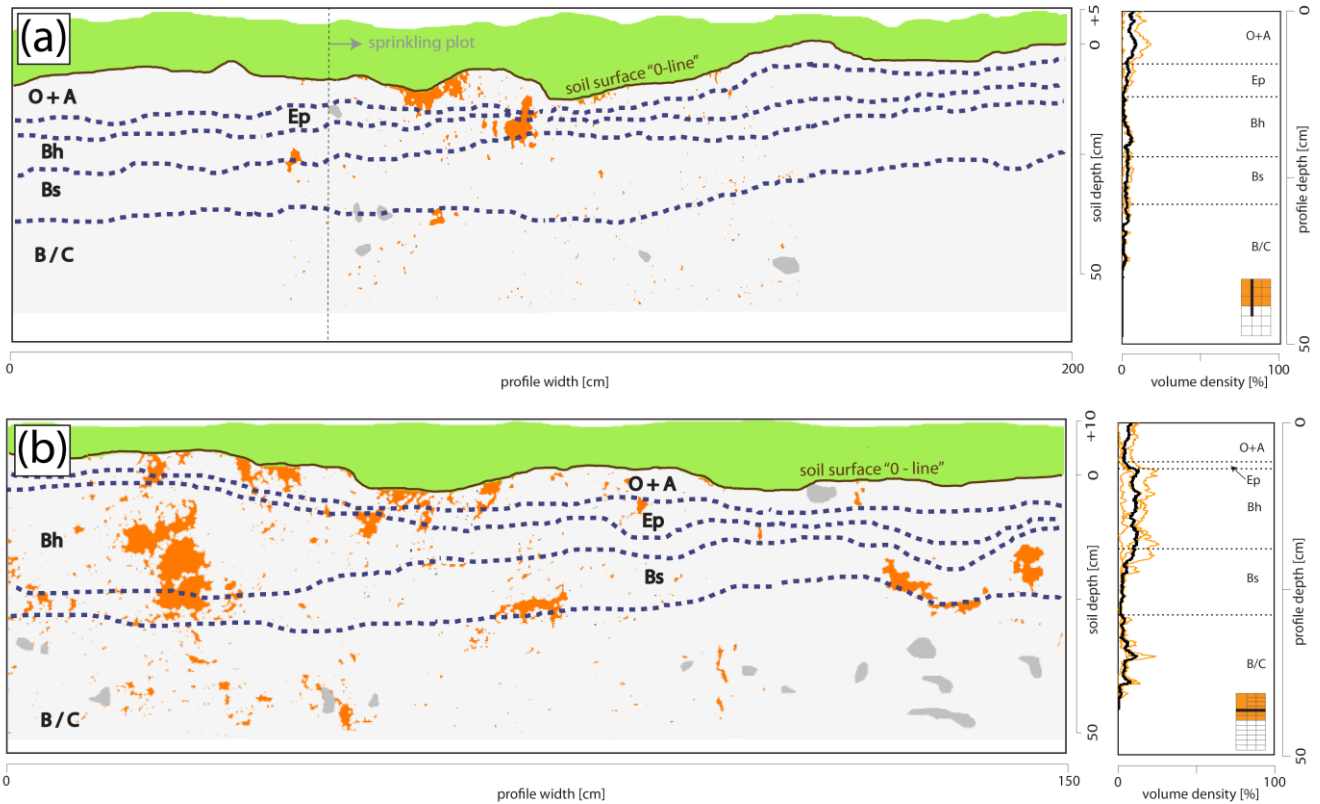
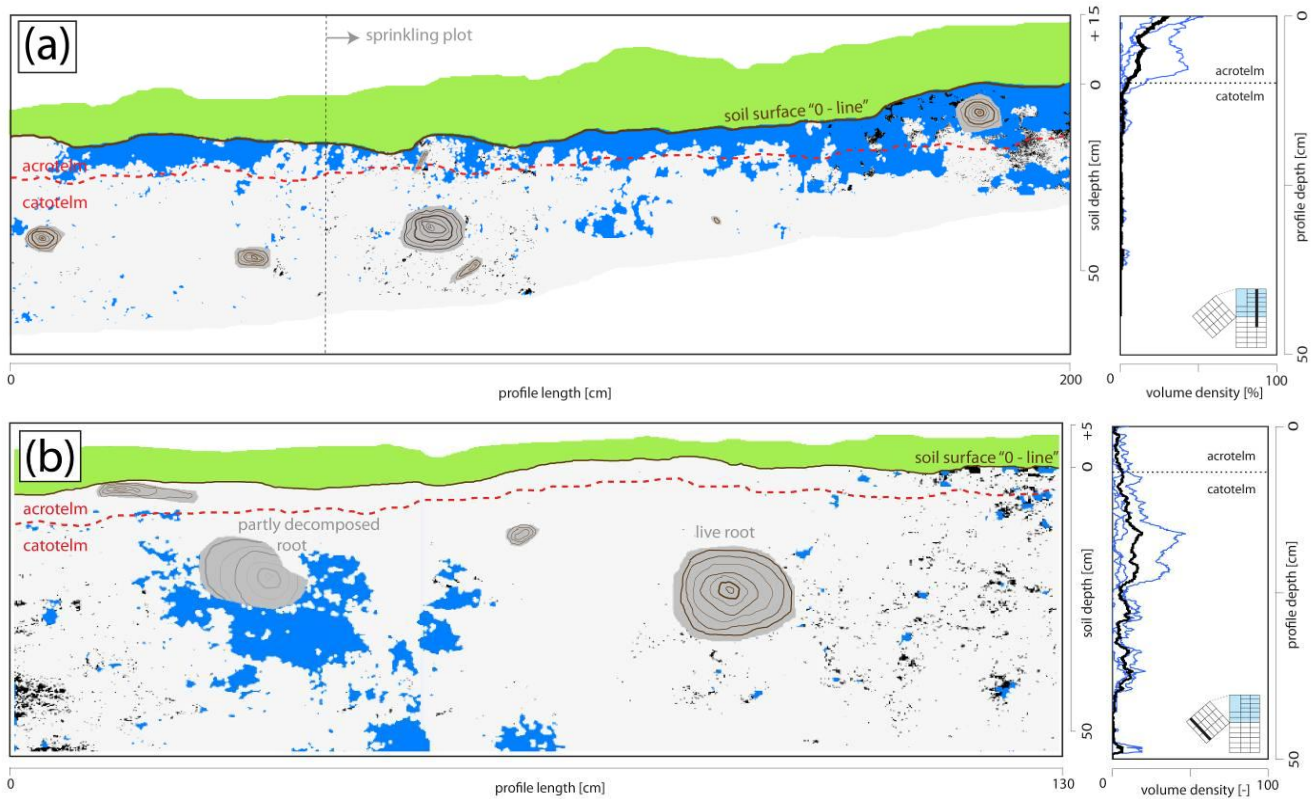


Fig 6. (a) Lateral soil profile IL1 and (b) frontal soil profile AC0.5 at the Fluorescein (FLC) sprinkling plot PZ2 at the mineral soil hillslope (Podzol). The position of the profile is indicated in bottom right corner. Orange: FLC dye; gray: stones, roots; green: vegetation; black: unclassified shadows; dark-blue dotted lines: soil horizon divide. The charts on the right represent the dye volume in different depths below the soil surface.



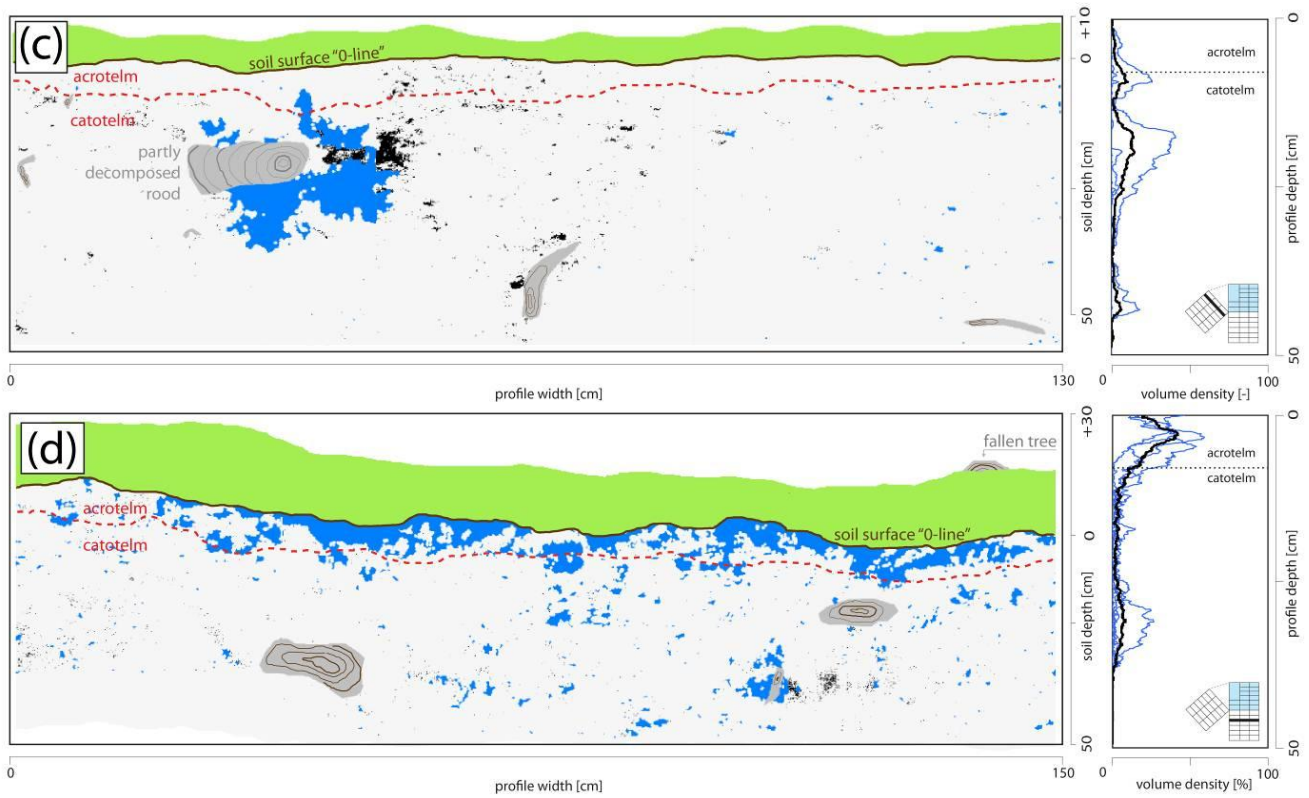
10

Fig. 7. (a) Lateral soil profile IL0.5, and **(b)** frontal soil profile FD0.25 at the Brilliant Blue (BB) sprinkling plot PB3 at the organic soil hillslope (Peat Bog). **The position of the profile is indicated in bottom right corner.** Blue: BB dye; gray: roots; green: vegetation; black: unclassified shadows; red-dotted line: soil horizon divide. The charts on the right represent the vertical distribution of the volume density of the BB. The reduced width of the soil profiles shown in Fig. 7b and 7c are due to the presence of a tree stump on the right side of these profiles.

15

20

5



10

Fig. 7. (c) Profile FD1.25 and (d) frontal profile AC1 at the Brilliant Blue (BB) sprinkling plot PB3 at the organic soil hillslope (Peat Bog). **The position of the profile is indicated in bottom right corner.** Blue: BB dye; gray: roots; green: vegetation; black: unclassified shadows; red-dotted line: soil horizon divide. The charts on the right represent the vertical distribution of the volume density of the BB. The reduced width of the soil profiles shown in Fig. 7b and 7c is due to the presence of a tree stump on the right side of these profiles.

15

20

5

10

15

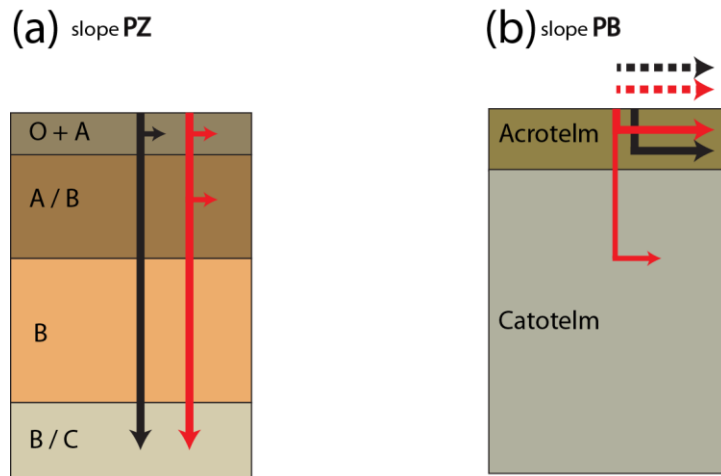


Fig. 8. Conceptual models of runoff formation and (subsurface) stormflow for the organic soil hillslope (Peat Bog PB3) and the mineral soil hillslope PZ (Podzol) derived by parallel plot sprinkling experiments with the conservative dye Sodium-Fluorescein (FLC) and the sportive dye Brilliant Blue (BB) at the Rokytká headwater. Detected subsurface flow components at the PZ hillslope (a): Biomat flow, shallow lateral subsurface flow and mostly deep percolation (vertical); and at the organic soil hillslope PB (Peat Bog) (b): Biomat flow at short distances and mostly lateral pipeflow following decayed tree-root systems with long lateral subsurface flow distances. The dashed arrows represent surface flow (saturation overland flow, SOF), which could not be detected during the experiments but has been observed on-site during natural storm events. Black arrows: Hypothesized runoff formation processes according to the *Hydrology of Soil Types* classification (HOST; Boorman et al., 1995); Red arrows: Results of the Šumava experiments.