

Interactive comment on “Climate-induced hydrologic change in the source region of the Yellow River: a new assessment including varying permafrost” by Pan Wu et al.

Pan Wu et al.

panwu@cugb.edu.cn

Received and published: 14 April 2018

(a) For water storage change: The above Fig.1 is obtained from Wang et al., 2018. This figure shows the water storage change of the SRYR calculated by different methods. We draw a dark dashed line on it to indicate the zero ΔS . As shown in this figure, ΔS change fluctuates around the zero line but increases in 21st. These results are similarly with my results shown in first round submitted supplementary Figure 3. There is a larger deviation in 21st between recalculated w' and w caused by larger water storage change. Additionally, Figure 3 shows 11-year moving average method is efficient to remove water storage change. It is different from 5-year average value used by

Printer-friendly version

Discussion paper



Wang et al. 2018. And as shown in the Fig. 1, there is a deviation between water storage obtained from GRACE and the other two datasets. DS_GLEAM and DS_GBEHM show an increase of water storage change in 21st, however, DS_GRACE shows a decrease of water storage change. Wang et al., 2018 just use one landmass dataset CRS to analysis DS, but the ensemble mean (simple arithmetic mean of JPL, CSR, GFZ fields) was most effective in reducing the noise in these datasets (Sakumura et al., 2014). Different from Wang et al., 2018, the grace data we used are ensemble mean of JPL, GFZ and CRS landmass dataset. To further exam the efficiency of 11-year moving average mothed, ABCD model and Grace data are used to simulate and analyse water storage change. The results are show in supplementary 2. (b) Watershed property parameter (w) in the Fu's equation Reply: We agree that catchment properties are related to watershed slope, vegetation, soil properties and climate change. However, watershed slope is a constant value which won't change with time. In watershed underlain by frozen ground, frozen ground degradation will alter soil properties. Accordingly, our study considered climate change and frozen ground change impacts on catchment properties. A linear stepwise regression method was used to analyse potential factors impacts. And then land cover change impacts are calculated by using total discharge change (DQ) minus climatic-induced discharge change and permafrost degradation induced discharge change. Landcover change impacts are shown in Fig. 8. Following equation is used by Wang et al., 2018: $Q=(P-ET_Budyko)+(-ET_dev-\Delta S)=Q_Budyko+Q_dev$ (1) Where Q_budyko is long-term average of the observed annual streamflow, Q_dev is the deviation of the observed annual Q from Q_budyko . As indicated by Eq.(1), $Qdev$ corresponds to discharge change caused by catchment properties change and neglected water storage change. Wang et al., 2018 directly attributes Q_dev to frozen ground degradation and landscape change. However, catchment properties change is closely related to relative infiltration capacity, relative soil and water storage, and average slope. For the same watershed, considering precipitation intensity, temperature and potential evaporation impacts on catchment properties is more reasonable. I think without considering climate change impacts on the catch-

ment properties are the main reason of Wang et. al., 2018 obtaining unreasonable results that permafrost degradation will decrease 70% streamflow in sub-basins above JM station. It has been found that the permafrost degradation could enlarge baseflow in cold regions (Walvoord and Striegl, 2007; Jacques and Sauchyn, 2009; Bense et al., 2012; Evans et al., 2015; Duan et al., 2017). Decrease in MFD because of global warming was considered as a major factor for the increase in baseflow in the Qilian mountain, China (Qin et al. 2016). Additionally, the melt ice within permafrost and increasing hydrologic connectivity following permafrost degradation will increase the runoff discharge (Connon et al. 2014; Duan et al. 2017). (C) For vegetation/landcover change impacts Landcover change impacts on discharge change are analysed by Cuo et al., (2013) through VIC model. The results indicate landcover change is negligible above Tangnaihai station which is the outlet station of my study area. And in the Introduction Section, we already emphasized the low population density in the catchment above Tangnaihai hydrological station (about 6/km², 2003 census data) and in the area above the Huangheyan station (0.34/km²) (Liang et al., 2010). From 1990 to 2000, the change in land use in the SRYR was generally less than 5% even a few of the sites exhibited 5-15% of the change (Wang et al., 2010). Accordingly, we neglected the landcover change in statistical analysis, but considered it as residual error of statistical analysis as shown in Figure 8. The results are consistent with the landcover change and low population intensity in the study area.

References Sakumura, C., Bettadpur, S., & Bruinsma, S. (2014). Ensemble prediction and intercomparison analysis of grace time-variable gravity field models. *Geophysical Research Letters*, 41(5), 1389-1397. Cuo, L., Zhang, Y., Gao, Y., Hao, Z., & Cairang, L. (2013). The impacts of climate change and land cover/use transition on the hydrology in the upper Yellow River Basin, China. *Journal of Hydrology*, 502, 37-52. doi: 10.1016/j.jhydrol.2013.08.003 Wang, S.-Y., Liu, J.-S., & Ma, T.-B. (2010). Dynamics and changes in spatial patterns of land use in Yellow River Basin, China. *Land Use Policy*, 27(2), 313-323. doi: 10.1016/j.landusepol.2009.04.002 Liang, S., Ge, S., Wan, L., & Zhang, J. (2010). Can climate change cause the Yellow River to dry

up? Water Resources Research, 46(2), n/a-n/a. doi: 10.1029/2009wr007971 Wang, T., Yang, H., Yang, D., Qin, Y., & Wang, Y. (2018). Quantifying the streamflow response to frozen ground degradation in the source region of the yellow river within the budyko framework. Journal of Hydrology, 558, 301-313. Duan, L., Man, X., Kurylyk, B. L., Cai, T., & Li, Q. (2017). Distinguishing streamflow trends caused by changes in climate, forest cover, and permafrost in a large watershed in northeastern china. Hydrological Processes, 31(10). Jacques, J. M. S., & Sauchyn, D. J. (2009). Increasing winter baseflow and mean annual streamflow from possible permafrost thawing in the northwest territories, canada. Geophysical Research Letters, 36(1), 329-342. Bense, V. F., Kooi, H., Ferguson, G., & Read, T. (2012). Permafrost degradation as a control on hydrogeological regime shifts in a warming climate. Journal of Geophysical Research Earth Surface, 117(F3), 8316. Walvoord, M. A., & Striegl, R. G. (2007). Increased groundwater to stream discharge from permafrost thawing in the Yukon River basin: potential impacts on lateral export of carbon and nitrogen. Geophysical Research Letters, 34(12), 123–134. Duan, L., Man, X., Kurylyk, B. L., & Cai, T. (2017). Increasing winter baseflow in response to permafrost thaw and precipitation regime shifts in northeastern china. Water, 9(1), 1-15. Evans, S. G., Ge, S., & Liang, S. (2015). Analysis of groundwater flow in mountainous, headwater catchments with permafrost. Water Resources Research, 51(12), n/a-n/a. Qin, Y., Lei, H., Yang, D., Gao, B., Wang, Y., & Cong, Z., et al. (2016). Long-term change in the depth of seasonally frozen ground and its ecohydrological impacts in the Qilian Mountains, northeastern Tibetan Plateau. Journal of Hydrology, doi:10.1016/j.jhydrol.2016.09.008

Please also note the supplement to this comment:

<https://www.hydrol-earth-syst-sci-discuss.net/hess-2017-744/hess-2017-744-AC1-supplement.pdf>

Interactive comment on Hydrol. Earth Syst. Sci. Discuss., <https://doi.org/10.5194/hess-2017-744>, 2018.

Printer-friendly version

Discussion paper



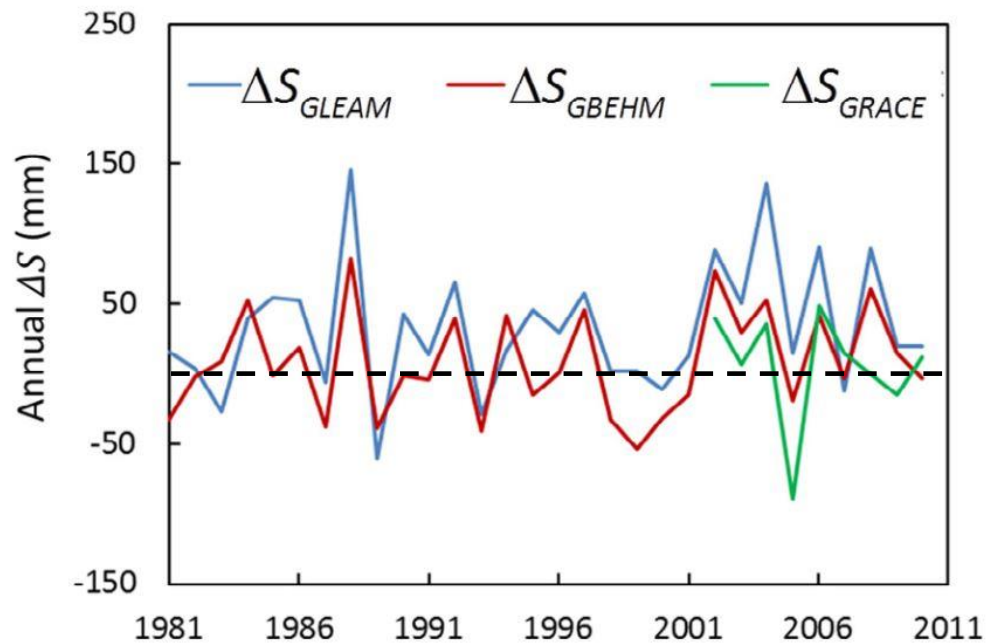


Fig. 1. Water storage change in the SRYR obtained from Wang et al.,2018

[Printer-friendly version](#)

[Discussion paper](#)

