

Figure R2a: Percentage of time (over the 20 years used for the analysis) where the regression structure selected for a given location is the same than that used for a reference location (the reference location is indicated with the blue dot in each figure). Results are shown for 16 different reference locations.

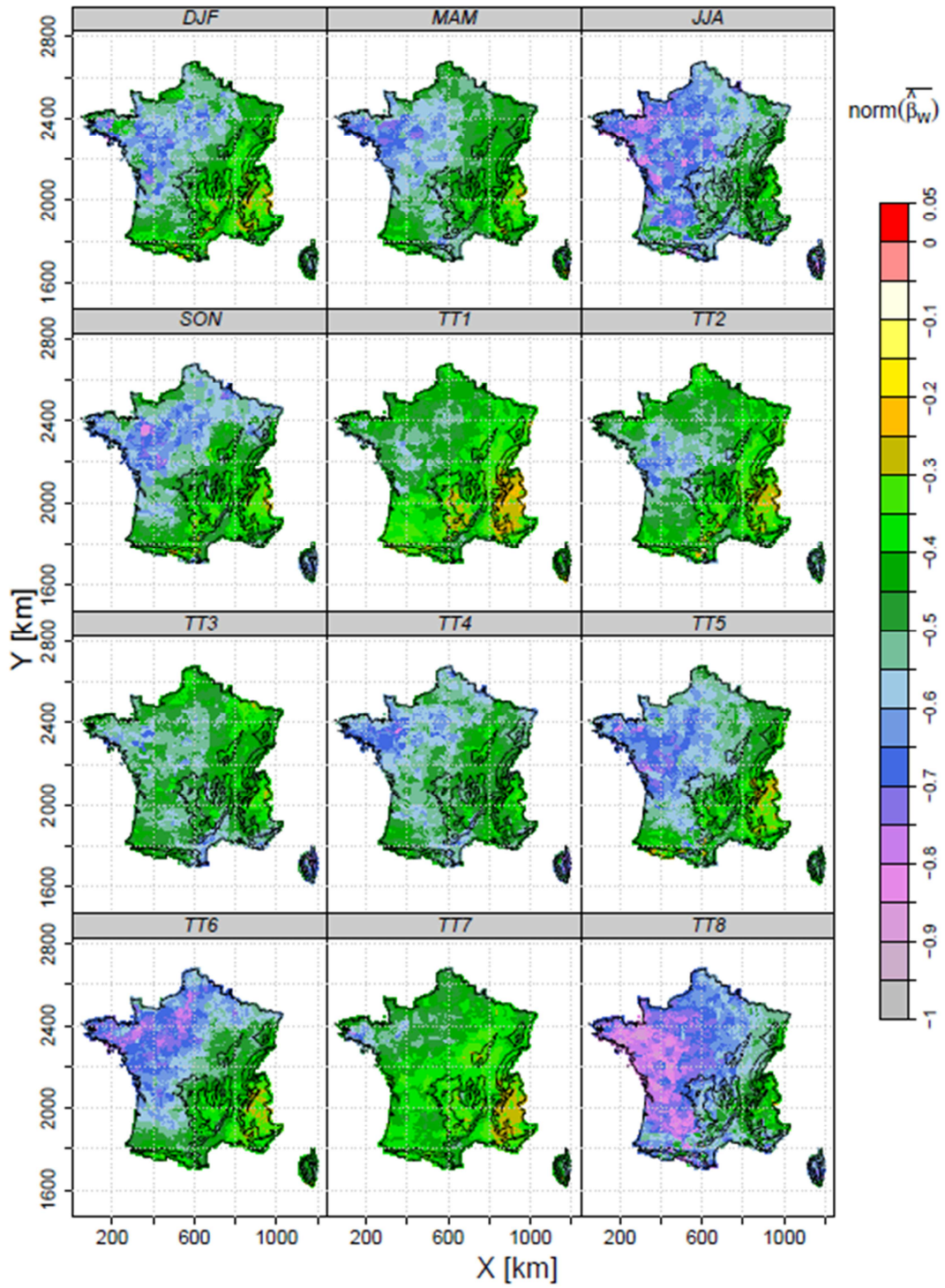


Figure R2b: Spatial distribution of the mean regression coefficients obtained for the predictor W and the regression structure n^4 . Results are presented for the different seasons and for the 8 weather types considered in this work.

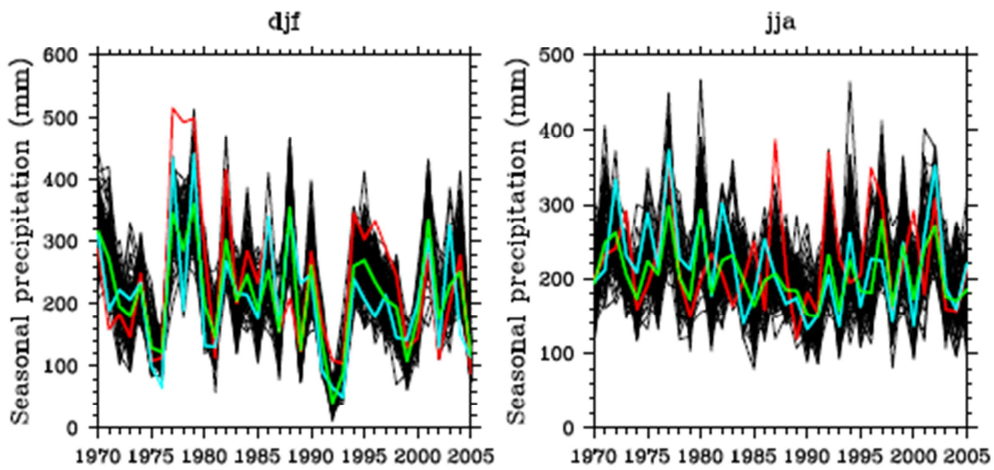


Fig10.1 extracted p122 in Lafaysse(2011). Time series of winter (DJF) and summer (JJA) precipitation obtained with an Analog Prediction model (100 scenarios) for the Upper Durance basin in South-Eastern France (red = observation, green : median scenario, blue : first analog scenario)

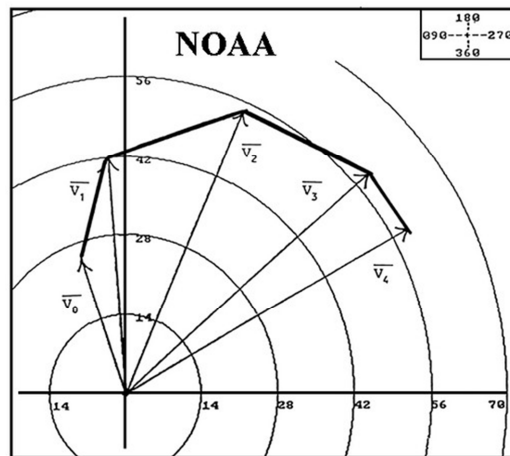


Figure R3. Scheme of the way wind helicity is estimated from wind vectors. source: NOAA