

## **Reply to editor**

The authors would like to thank the editor for his decision to consider the revised manuscript. We have uploaded the revised manuscript and give point-by-point replies to comments as well as a marked up version of the revised manuscript below.

The paper under review that we refer to, (Dittes et al., 2017), is at an advanced stage of the review process and we are confident that it it will be published soon.

Yours sincerely,

Beatrice Dittes

in the name of all co-authors

# Point-by-point replies

Note that these are identical to the author comments in the interactive review process.

## Author comment

We have read the comments of the referees with interest. It is apparent that the research is welcomed, yet its presentation needs more clarity. We have used this opportunity to make significant changes to the manuscript based on the reviewer's comments. This was done by incorporating the individual comments – as detailed in the replies to the referees – as well as by doing a 'bird's eye' revision for clarity and coherence.

In the following, we address the two main points/themes raised in both reviews, and which are central to the understanding of our work.

- 1) The context and the goals of our research were not sufficiently clear. This is evident from multiple comments made by both reviewers. Re-reading the original manuscript, this has become evident to us. Already the title was not sufficiently clear, and it is understandable that the reviewers partly expected something else than what we present. For this reason, we modify the title of manuscript to “Managing uncertainty in flood protection planning with climate projections”, to avoid the impression that the main goal of the paper is the quantification of the uncertainties, which seemed to have been the understanding of the reviewers. Instead, the paper should provide a methodology for dealing in a consistent manner with uncertainties in the context of engineering decision making on flood protection. We clarify these goals in various places of a revised manuscript, starting with an explicit statement in the abstract (*“Specifically, we devise methodology to account for uncertainty associated with the use of discharge projections, ultimately leading to planning implications.”*).
- 2) There was an unfortunate oversight on our part concerning the utilized Bayesian decision framework, which we proposed previously in (Dittes et al., 2017). That paper (which is still under review), was not available during the discussion, as was criticized by both reviewers. The paper can be downloaded here:  
[https://www.era.bgu.tum.de/fileadmin/w00bkd/www/Papers/2017\\_Dittes\\_managing\\_uncertainty.pdf](https://www.era.bgu.tum.de/fileadmin/w00bkd/www/Papers/2017_Dittes_managing_uncertainty.pdf). The reviewers also asked for a more detailed description of the decision framework within the manuscript. We comply with this request by adding an extensive paragraph on the framework in the introduction. Furthermore, we add additional explanation in the case study, and re-phrase various sentences throughout the paper.

We believe that these changes, together with the multiple modifications done in response to the reviewer's detailed comments, improve clarity and will enhance the impact of the paper.

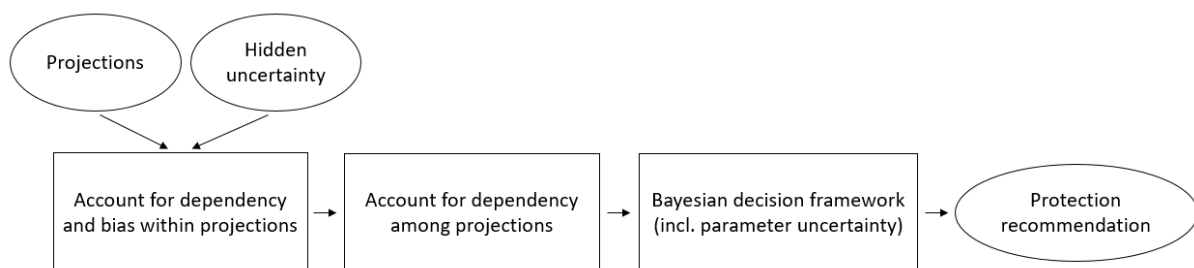
## Author comment on the comment of anonymous referee #1

The authors thank the referee for the thoughtful and detailed comments. In the following, we respond to the individual suggestions, with referee comments highlighted in *blue*.

*General: It is difficult to follow the different steps and methods applied. Including an additional figure / flow chart illustrating the whole processing chain may help to understand the methods*

We rephrased p2/122-26 such that they form a separate, longer paragraph and included a flowchart:

*“In this paper, we show how to incorporate into the flood planning process the visible uncertainty from an ensemble of climate projections as well as hidden uncertainties that can not be quantified from the ensemble itself but may be estimated from literature. When combining uncertainties, special care is taken to account for uncertainty and bias in projections as well as dependencies among different projections. We provide reasoned estimates of climatic uncertainties for a pre-alpine catchment, followed by an application of the previously proposed Bayesian decision framework, sensitivity and robustness analysis. The process is shown in Fig. 1: 1) Projections of annual maximum discharges (see Sect. 2.2) and 2) an estimate of the shares of various uncertainties that are not covered by the projection ensemble (see Sect. 2.5) form the inputs to the analysis. 3) For each projection individually, a likelihood function of annual maximum discharge is computed. This is done such that bias is integrated out and projections later on the horizon are assigned diminishing weights, making use of the hidden uncertainty shares (see Sect. 3.2). 4) The likelihoods of individual projections are combined using the method of effective projections (Pennell and Reichler, 2011; Sunyer et al., 2013) in order to account for dependencies among them (see Sect. 3.3). 5) The Bayesian decision framework of Dittes et al. (2017) is used to obtain 6) a protection recommendation based on the likelihood of extreme discharge. The qualitative basis of the framework is outlined in Sect. 3.4.”*



**Figure 1.** Process of finding the recommended planning margin from projections and hidden uncertainty estimate.

*Abstract: What is the goal of the paper? Is it introducing a new framework to model uncertainties in extreme discharges?*

We have realized that we were not sufficiently clear on our goals in the original manuscript. The main goal of the paper is to introduce a methodology that allows dealing with uncertainties in extreme discharges in practical applications, where data and model availability is limited. As part of this, we present a method to model uncertainties in such situations.

We now made multiple changes to the manuscript to clarify the goals, including a change of the title. This is discussed in our general author comment to all reviewers.

*Introduction: The authors thoroughly motivate the need for the study at hand, but they do not introduce the Bayesian decision making framework in enough detail. References and literature on quantitative Bayesian decision making should be added. Further, the choice of the method should be motivated based on a comparison with similar competing approaches.*

The corresponding passage has been revised to incorporate the comments of the referee as follows: *“We have previously proposed a fully quantitative Bayesian decision making framework for flood protection (Dittes et al., 2017). Bayesian techniques are a natural way to model discharge probabilistically (Coles et al., 2003; Tebaldi et al., 2004). They also make it easy to combine several sources of information (Viglione et al., 2013). Furthermore, Bayesian methods support updating the discharge distribution in the future, when new information becomes available (Graf et al., 2007). Our framework probabilistically updates the distribution of extreme discharge with hypothetical observations of future discharge, which are modelled probabilistically. This is an instance of a sequential (or ‘preposterior’) decision analysis (Benjamin and Cornell, 1970; Davis et al., 1972; Kochendorfer, 2015; Raiffa and Schlaifer, 1961). This enables a sequential planning process, where it is taken into consideration that the measure design may be revised in the future. Furthermore, it naturally takes into account the uncertainty in the parameters of extreme discharge. The output of the framework is a cost-optimal capacity recommendation of flood protection measures, given a fixed protection criterion (such as the 100-year flood). To protect for the 100-year flood is common European practice (Central European Flood Risk Assessment and Management in CENTROPE, 2013) and is also the requirement in the case study.”*

*Section 2: Subsection 2.1 and 2.2 should be a separate section devoted to the description of the catchment considered and the data only.*

Yes and no: On the one hand, this would increase structure. On the other hand, the description of catchment and data (Subsections 2.1 and 2.2) is closely linked to the discussion of uncertainties in the catchment and data (Subsections 2.3 to 2.6). Furthermore, a Section consisting only of Subsections 2.1 and 2.2 seems quite short.

*Section 2: Move Subsections 2.3 to 2.6 to Section 3 in order to gather all methods in a single section and hence improving readability.*

This ties in with the previous point: we intend Section 2 to be a predominantly qualitative description of uncertainties in extreme discharge, with a focus on the catchment at hand. There are no novel methods contained (other than the suggested prior transformation of Eq. (4), which we do not feel merits shifting the entire Subsection). As such, we feel that the logical structure of the paper is best served by leaving Subsections 2.3 to 2.6 together, preferably, as in the originally proposed paper, together with 2.1 and 2.2 (see previous point).

*Section 2: Subsection 2.4 is too long and does not contain any new scientific findings. Should be shortened.*

Was shortened.

*Section 2: Subsection 2.5 How are the relative contributions of the different sources of uncertainty specified? Please clarify.*

These are ball-park figures, based only on the sources and considerations already specified in Subsection 2.5. The results of the case study show that the sensitivity of the planning recommendation to variations in uncertainty is low (see Sections 4.2 and 5), thus an exact quantification is not necessary. We added a sentence to clarify this: “*Note that this is done as a rough estimate, since uncertainty quantification is not the focus of this paper. As will become clear in Sect. 4.2 and 5, an exact quantification is also not necessary for the proposed decision making process.*”

*Section 3: Subsection 3.1 contains a very general discussion comparing visible and hidden uncertainties. This should be move to the introduction Section 1.*

Since the uncertainty categorization is the starting point of the novel methodology, we would prefer to leave it as Subsection 3.1.

*p1/115: Rephrase. Maybe, a formulation like: “Therefore, planning authorities increasingly incorporate discharge projections into the assessment of future protection needs, rather. . .”*

We changed this sentence as suggested. (We assume the referee meant line 25).

*p2/112: Please put only the years into brackets, if the reference is part of the sentence. This should be corrected throughout the manuscript.*

Was changed throughout. (We assume the referee meant line 2).

*p2/117-23: Difficult to understand. Please clarify the framework in more detail.*

Yes, see the answer to the comment on the introduction.

*p2/127-31: Paragraph out of sync. Either explain it in more detail here or move it to Section 3.*

Was moved to Section 3.4.

*p4/111: What about rain on snow events?*

As per analysis of the available discharge record as well as of accounts of large historic floods, these play a minor role in Rosenheim.

*p6/15-6: Why?*

This assumption was made based on the available projections and we have re-phrased the sentence to clarify this: “*In the available projections, the absolute amount of internal variability did not change in time significantly and was thus assumed to be stationary.*” The assumption

is not necessary: the methodology presented in the paper can just as well be used with non-stationary internal variability.

*p8/11-6: How are the parameters estimated in this study? Is this source of uncertainty considered?*

They are assumed to be part of the hydrological model uncertainty and thus enter the hidden uncertainty as a ball-park figure (see Section 2.5). The results of the case study show that the sensitivity of the planning recommendation to variations of the hidden uncertainty is low (see Sections 4.2 and 5), thus an exact quantification of its components is not necessary.

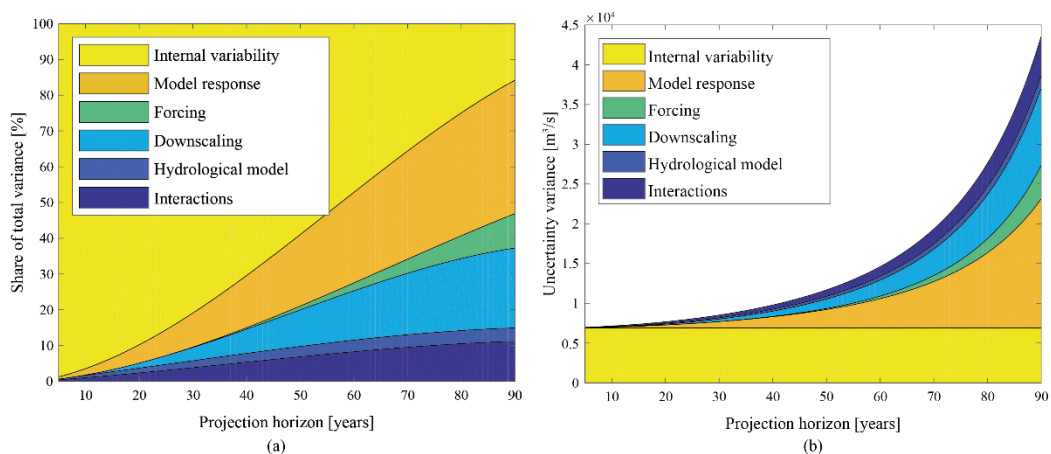
*p8/120&29: Please provide another reference that is publicly available.*

The graphs provided to us by Prof. Hawkins closely resemble those shown in Fig. 11-8 of (IPCC, 2013) and on his website

<http://climate.ncas.ac.uk/research/uncertainty/precip/plots.html>, where one can also download the papers outlining the methodology (Hawkins and Sutton, 2009, 2011). With the consent of Prof. Hawkins, it may be possible to provide the data in a supplement to this paper.

*Figure 2: Add a 2nd panel containing the same plot in absolute units in order to avoid misleading conclusions on the changes in uncertainties over time*

We produced and included the requested 2<sup>nd</sup> panel below. Note that the absolute values differ from projection to projection, we used CCLM here. The description was updated as follows: “The results of the estimation are shown in Fig. 3. Figure 3 (a) shows the resulting relative uncertainty shares and Fig. 3(b) the resulting absolute uncertainties for the projection CCLM” Note that due to adding the flow chart, Figure 2 became Figure 3.



**Figure 3.** (a) Share of different uncertainty components (variance) for extreme discharge in Rosenheim. (b) Resulting absolute uncertainties for CCLM. Uncertainties that are ‘visible’ in our case study are shaded yellow/orange, ‘hidden’ ones blue/green.

*p10/14&11: colons not needed*

This seems to be a matter of taste, we prefer to keep punctuation in sentences with equations.

*p10/116: viz. is a unusual abbreviation. Do you mean see/refer to? Please check this throughout the manuscript.*

Yes. We replaced this by the more common “see”.

*p12/19: the time index  $t=1,..,N$  is confusing. Here it denotes future time steps, in Section 2.6  $t=1,..,N$  denotes historical years.*

$t$  denotes years in both cases. We changed the  $N$  to  $N'$  in Section 3.2 to indicate that the number of years is not necessarily the same.

*p12/eq7: Do you mean  $\Delta_{i,t} \sim N(0, \sigma_{i,t}^{\text{(hidden)}})$  ?*

It is true that one could re-formulate the equation to include the normal distribution explicitly. When the notation  $N(\text{mean}, \text{standard deviation})$  is used, the equation given by the referee is correct, though one more commonly uses the notation  $N(\text{mean}, \text{variance})$ . To avoid such confusion, we would prefer to leave the equation as it is.

*p13/111: “is applied”*

Was changed.

*p16/15: “which is common practice in the literature”*

Was changed.

*p16/17-9: duplicated citations*

Was changed.

*p16/120&21: Why? The error may be larger, but just not represented by the ensemble of climatological predictions.*

The fact that the ensemble may only reflect part of the climate system is accounted for by the hidden uncertainty. One may think of more error sources, but the results of the case study show that adding further uncertainty does not significantly change the planning recommendation.

*p18/117: “Hence, we recommend that planners make use. . .”*

Was changed.

*p19/114: Why is this expected?*

Because the cited papers have found this.

*p19/116-18: Could you elaborate a bit more on this topic, since it seems to be related to an important research question.*

We appended the following sentence to the paragraph in question: “We assumed a linear trend

*in the case study for simplicity, but the proposed methodology is general. To use a different trend representation, one just has to change the definition of  $\theta$  (see Sect. 4.1) accordingly.”*

*p19/119-21: Difficult to understand, please rephrase.*

We rephrased as follows: *“Finally, we discuss the impact of varying size of uncertainty on planning. To investigate this, we evaluated the recommended planning margin when not adding any hidden uncertainty, when using the estimated amount and when using double the estimated amount of hidden uncertainty (see Sect. 4.2). The effect was small, in particular between adding the estimate vs. double the estimate of hidden uncertainty. The share of hidden uncertainty is larger in the farther future, where its effect is limited because of discounting. We conclude that hidden uncertainty should be considered in decision making, yet the sensitivity to its exact amount is low and when there is already a considerable level of uncertainty, including more has little effect.”*

*p19/124-25: Please rephrase.*

We rephrased as follows: *“We believe that the low sensitivity of the protection recommendation to the size of the hidden uncertainty in the presented case study can be explained by the considerable visible uncertainty present: the capacity to project the future extreme discharge is already extremely limited and can barely be reduced by adding more uncertainty.”*

*p20/110-18: Also a bit difficult to understand, rephrasing it a bit may help*

Rephrased as follows: *“In the proposed methodology, we quantitatively include these aspects in learning the probabilistic distribution of flood discharge. Both ‘visible’ and ‘hidden’ uncertainty are included in a time-dependent Bayesian likelihood function. Dependence between projections is accounted for by using the concept of effective projection number. The uncertainty analysis proposed in this paper was used with the optimization framework of (Dittes et al., 2017) to find protection recommendations for a pre-alpine case study catchment. The results show that when there is sizable visible uncertainty, the protection recommendation is robust to further uncertainty and moderate changes in trend. However, hidden uncertainty should not be neglected in planning as this would lead to insufficient protection recommendations.”*

## **Author comment on the comment of anonymous referee #2**

The authors would like to thank the referee for the comments. In the following, we respond to the individual suggestions, with referee comments highlighted in *blue*.

*The quantification of the different uncertainty sources, which is a central part of the methodology is only very briefly described (Section 2.5). / Section 2.5. This section needs to be elaborated. There is very little explanation of how the different error sources are estimated.*



Uncertainty quantification is not one of the main goals of the paper. As we discuss in our general author comment, we realize that we were not sufficiently clear about the goals of the paper, which causes this misunderstanding. This we have improved in a revised version of the manuscript. In fact, the numbers given in Sect. 2.5 are ball-park figures, based only on the sources and considerations presently stated there. Furthermore, the results of the case study show that the sensitivity of the planning recommendation to variations in uncertainty is low (see Sections 4.2 and 5), thus an exact quantification is not necessary. We added a sentence to clarify this: “*Note that this is done as a rough estimate, since uncertainty quantification is not the focus of this paper. As will become clear in Sect. 4.2 and 5, an exact quantification is also not necessary for the proposed decision making process.*” We also enhanced the statement of goals in the abstract (see respective comment).

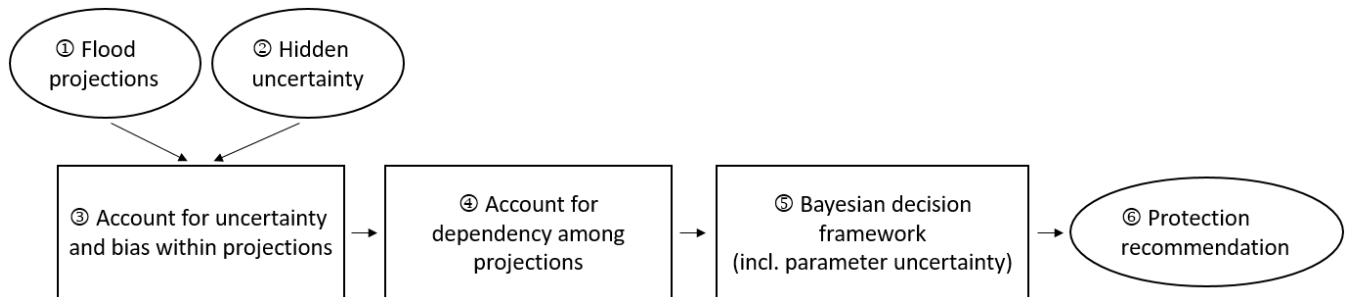
*... for the optimisation framework applied reference is made to an unpublished paper by the same authors, and it is difficult to grasp from the description given in the paper.*

We included a download link to the cited paper. Furthermore, we improved the description of the framework and the overall methodology in various places (see revised paper). In particular, the previously brief description in Sect. 1 was extended as follows:

*„We have previously proposed a fully quantitative Bayesian decision making framework for flood protection (Dittes et al., 2017). Bayesian techniques are a natural way to model discharge probabilistically (Coles et al., 2003; Tebaldi et al., 2004). They also make it easy to combine several sources of information (Viglione et al., 2013). Furthermore, Bayesian methods support updating the discharge distribution in the future, when new information becomes available (Graf et al., 2007). Our framework probabilistically updates the distribution of extreme discharge with hypothetical observations of future discharge, which are modelled probabilistically. This is an instance of a sequential (or ‘preposterior’) decision analysis (Benjamin and Cornell, 1970; Davis et al., 1972; Kochendorfer, 2015; Raiffa and Schlaifer, 1961). This enables a sequential planning process, where it is taken into consideration that the measure design may be revised in the future. Furthermore, it naturally takes into account the uncertainty in the parameters of extreme discharge. The output of the framework is a cost-optimal capacity recommendation of flood protection measures, given a fixed protection criterion (such as the 100-year flood). To protect for the 100-year flood is common European practice (Central European Flood Risk Assessment and Management in CENTROPE, 2013) and is also the requirement in the case study.*

*In this paper, we show how to incorporate into the flood planning process the visible uncertainty from an ensemble of climate projections as well as hidden uncertainties that can not be quantified from the ensemble itself but may be estimated from literature. When combining uncertainties, special care is taken to account for uncertainty and bias in projections as well as dependencies among different projections. We provide reasoned estimates of climatic uncertainties for a pre-alpine catchment, followed by an application of the previously proposed Bayesian decision framework, sensitivity and robustness analysis. The process is shown in Fig. 1: 1) Projections of annual maximum discharges (see Sect. 2.2) and 2) an estimate of the shares of various uncertainties that are not covered by the projection ensemble (see Sect. 2.5) form the inputs to the analysis. 3) For each projection individually, a likelihood function of annual maximum discharge is computed. This is done such that bias is integrated out and projections later on the horizon are assigned diminishing weights, making use of the hidden uncertainty*

shares (see Sect. 3.2). 4) The likelihoods of individual projections are combined using the method of effective projections (Pennell and Reichler, 2011; Sunyer et al., 2013) in order to account for dependencies among them (see Sect. 3.3). 5) The Bayesian decision framework of Dittes et al. (2017) is used to obtain 6) a protection recommendation based on the likelihood of extreme discharge. The qualitative basis of the framework is outlined in Sect. 3.4.



**Figure 2.** Process of finding the recommended planning margin from projections and hidden uncertainty estimate. “

*The title of the paper is not very informative.*

We agree and hence change the title to “*Managing uncertainty in flood protection planning with climate projections*”. This should highlight that the goal is not to quantify uncertainty but to manage its impact in planning.

*Main results should be summarised in the abstract.*

We added the following passage on results: „*The results show that hidden uncertainty ought to be considered in planning, but the larger the uncertainty already present, the smaller the impact of adding more. The recommended planning is robust to moderate changes in uncertainty as well as in trend. In contrast, planning without consideration of bias and dependencies in and between uncertainty components leads to strongly sub-optimal planning recommendations.*“ Note that the main goal of the paper is to present methods, not results. We clarified the goal further in the abstract: “*This paper focuses on climatic uncertainty. Specifically, we devise methodology to account for uncertainty associated with the use of discharge projections, ultimately leading to planning implications.*”

*Section 2.3. In the explanation of internal variability it is stated that “it cannot be predicted with certainty what amount of discharge will be recorded on a given day”. But is this an issue here? Internal variability should be related to the problem of estimation of a design discharge.*

It is true that it would be more helpful to refer to annual maxima – from which the design discharge is estimated – rather than days. We rephrased as „*...even with perfect knowledge, it cannot be predicted deterministically what the annual maximum discharge of a year will be, and thus how the design flood estimate will change.*“.

*It is also stated that the internal variability is the dominant source of uncertainty, but no documentation for this statement is provided.*

The citation is located at the end of the corresponding sentence: (Maraun 2013).

*Section 2.4, p. 8, l. 5-6. It is stated that “the error from the hydrological model is small, in particular for high flow indicators (Velazquez et al., 2013)”. Velazquez et al. (2013) conclude that high flow indicators are less sensitive to the choice of hydrological model. This is not to say that the uncertainty in the simulation of extreme discharge events is small. Often you see quite large uncertainties in the simulation of extremes. This can be quantified from the hydrological model simulation in the case study.*

When evaluating the hidden uncertainty, the question is „how much would the result differ, if a different model had been chosen“, hence the results of (Velazquez et al., 2013) are applicable. (It is presently stated as an example of hidden uncertainty in the introduction: „For example, if the same hydrological model has been used for all projections, then the hydrological model uncertainty is ‘hidden’, since one effectively has only a single sample of hydrological model output.“) To make this clear also in the sentence highlighted by the reviewer, we rephrase it as „the error from the choice of hydrological model...“.

*Section 4.2. The results are difficult to interpret. The relation between the estimated 100-year pdfs and the planning margins in Table 2 is not clear.*

The 100-year PDFs are the result of the methodology described in the presented paper. Using these as input to the optimization framework (the description of which was revised, see respective point) leads to the recommendations in Table 2. Sect. 3.4 aims to give an intuitive understanding of the relationship between the 100-year PDFs and the recommendations (simply speaking, more spread in the PDF = more uncertainty = higher planning margin). We added a sentence to clarify: „The PDFs shown in Fig. 5 are used as input to the optimization framework of (Dittes et al., 2017) to obtain recommendations for the planning margin. Sect. 3.4 gave an intuitive understanding of how these relate to the 100-year PDF.“

*It does not seem that the planning margins correspond to the current estimate of the 100-year design discharge of 480 m<sup>3</sup>/s.*

We assume that the reviewer wanted to write „100-year PDFs“ (referring to the Fig. 5, which was formerly Fig. 4) instead of „planning margins“. The 100-year design discharge of 480 m<sup>3</sup>/s is the official figure used by the city of Rosenheim based on a GEV-fit of historic annual maxima, without consideration of uncertainties. The accuracy of this number is not evaluated by us. However, what one can see in Fig. 5 is that it is in agreement with the historic data (with a very large uncertainty margin) while the projections overestimate the 100-year discharge. Therefore, we state in Sect. 3.4 (previously in Sect. 1): „Note that, since there is often a discrepancy between the level of observed past discharge at a specific gauge and the corresponding regional climate projections, we take the commonly used approach (Fatichi et al., 2013; Pöhler et al., 2012) of computing relative rather than absolute values from the climate projections. Here, this means that we find a planning margin  $\gamma$  based on the projection ensemble and uncertainty estimates from literature, which may then be applied to the absolute protection (100-year flood) as estimated from historic records.“

*Section 4.2, p. 18, l. 9-11. Does this trend relate to the mean discharge? I would expect this trend to be different from the trend of annual maximum discharge.*

It refers to the annual maxima. We clarified this by replacing „*projections*“ with „*projected annual maxima*“ in the mentioned lines (before and after these, it is already made explicit).

## References

- Benjamin, J. R. and Cornell, C. A.: Probability, Statistics and Decisions for Civil Engineers, Mc Graw - Hill Book Company, New York City., 1970.
- Central European Flood Risk Assessment and Management in CENTROPE: Current standards for flood protection., 2013.
- Coles, S., Pericchi, L. R. and Sisson, S.: A fully probabilistic approach to extreme rainfall modelling, *Journal of Hydrology*, 273, 35–50, doi:10.1016/S0022-1694(02)00353-0, 2003.
- Davis, D. R., Kisiel, C. C. and Duckstein, L.: Bayesian decision theory applied to design in hydrology, *Water Resources Research*, 8(1), 33–41, 1972.
- Dittes, B., Špačková, O. and Straub, D.: Managing uncertainty in design flood magnitude: Flexible protection strategies vs. safety factors, *Journal of Flood Risk Management*, submitted [online] Available from: [https://www.era.bgu.tum.de/fileadmin/w00bkd/www/Papers/2017\\_Dittes\\_managing\\_uncertainty.pdf](https://www.era.bgu.tum.de/fileadmin/w00bkd/www/Papers/2017_Dittes_managing_uncertainty.pdf), 2017.
- Fatichi, S., Rimkus, S., Burlando, P., Bordoy, R. and Molnar, P.: Elevational dependence of climate change impacts on water resources in an Alpine catchment, *Hydrology and Earth System Sciences Discussions*, 10(3), 3743–3794, doi:10.5194/hessd-10-3743-2013, 2013.
- Graf, M., Nishijima, K. and Faber, M.: Bayesian updating in natural hazard risk assessment, *Australian Journal of Structural Engineering*, 2007.
- Kochendorfer, M. J.: Decision Making Under Uncertainty, The MIT Press, Cambridge, Massachusetts., 2015.
- Maraun, D.: When will trends in European mean and heavy daily precipitation emerge?, *Environmental Research Letters*, 8(1), 14004, doi:10.1088/1748-9326/8/1/014004, 2013.
- Pennell, C. and Reichler, T.: On the effective number of climate models, *Journal of Climate*, 24(9), 2358–2367, doi:10.1175/2010JCLI3814.1, 2011.
- Pöhler, H., Schultze, B. and Scherzer, J.: KLIWA : Vergleichende Analyse der neuen globalen Klimaprojektionen aus CMIP5 für Süddeutschland. Abschlussbericht., 2012.
- Raiffa, H. and Schlaifer, R.: Applied Statistical Decision Theory, 5th ed., The Colonial Press, Boston., 1961.
- Sunyer, M. A., Madsen, H., Rosbjerg, D. and Arnbjerg-Nielsen, K.: Regional interdependency of precipitation indices across Denmark in two ensembles of high-resolution RCMs, *Journal of Climate*, 26(20), 7912–7928, doi:10.1175/JCLI-D-12-00707.1, 2013.
- Tebaldi, C., Smith, R., Nychka, D. and Mearns, L.: Quantifying uncertainty in projections of regional climate change: a Bayesian approach to the analysis of multimodel ensembles, *Journal of Climate*, 18, 1524–1540, 2004.
- Viglione, A., Merz, R., Salinas, J. L. and Blöschl, G.: Flood frequency hydrology: 3. A Bayesian analysis, *Water Resources Research*, 49(2), 675–692, doi:10.1029/2011WR010782, 2013.

# ClimateManaging uncertainty in flood protection planning with climate projections

Beatrice Dittes<sup>1</sup>, Olga Špačková<sup>1</sup>, Lukas Schoppa<sup>1</sup> and Daniel Straub<sup>1</sup>

<sup>1</sup> Engineering Risk Analysis Group, Technische Universität München, Arcisstr. 21, 80333 München, Germany

Correspondence to: Beatrice Dittes (beatrice.dittes@tum.de)

5

## Abstract

Technical flood protection is a necessary part of integrated strategies to protect riverine settlements from extreme floods. Many technical flood protection measures, such as dikes and protection walls, are costly to adapt after their initial construction. This poses a challenge to decision makers as there is large uncertainty in how the required protection level will change during the measure life time, which is typically many decades long. Flood protection requirements should account for multiple future uncertain factors: socio-economic, e.g. whether the population and with it the damage potential grows or falls; technological, e.g. possible advancements in flood protection; and climatic, e.g. whether extreme discharge will become more frequent or not. ~~We focus here on the planning implications of the uncertainty in extreme discharge. We account for the sequential nature of the decision process, in which the adequacy of the protection is regularly revised in the future based on the discharges that have been observed by that point and that reduce uncertainty.~~ This paper focuses on climatic uncertainty. Specifically, we devise methodology to account for uncertainty associated with the use of discharge projections, ultimately leading to planning implications. For planning purposes, we categorize uncertainties as either ‘visible’, if they can be quantified from available catchment data, or ‘hidden’, if they cannot be quantified from catchment data and must be estimated, e.g. from literature. It is vital to consider the hidden uncertainty, since in practical applications only a limited amount of information (e.g. ~~through projections, historic records~~ finite projection ensemble) is available. We use a Bayesian approach to quantify the visible uncertainties and combine them with an estimate of the hidden uncertainties to learn a joint probability distribution of the parameters of extreme discharge. The methodology is integrated into an optimization framework and applied to a pre-alpine case study to give a quantitative, cost-optimal recommendation on the required amount of flood protection. The results show that hidden uncertainty ought to be considered in planning, but the larger the uncertainty already present, the smaller the impact of adding more. The recommended planning is robust to moderate changes in uncertainty as well as in trend. In contrast, planning without consideration of bias and dependencies in and between uncertainty components leads to strongly sub-optimal planning recommendations.

10  
15  
20  
25

## 1 Introduction

The frequency of large fluvial flood events is expected to increase in Europe due to climate change (Alfieri et al., 2015)(Alfieri et al., 2015). ~~Planning-Therefore, planning~~ authorities ~~are therefore~~ increasingly ~~looking to incorporate~~ discharge projections ~~to assess into the assessment of~~ future flood protection needs, rather than considering past observations alone. However, projections differ widely in terms of the level and trend of extreme discharge that they forecast. ~~Thus, there is an increasing consensus that future~~Future discharge extremes therefore should be modelled probabilistically for flood protection planning (Aghakouchak et al., 2013). This raises two main questions: 1) how does one quantify a relevant uncertainty spectrum and 2) how is this then further used to identify a protection strategy?

~~Recent studies have aimed at quantifying individual uncertainties in (extreme) discharge (Bosshard et al., 2013; Hawkins and Sutton, 2011; Sunyer, 2014). (Sunyer, 2014) has pointed out the usefulness of finding a framework to combine uncertainties for flood protection planning. The derivation of a probabilistic model of extreme discharge forms the first part of this paper. We quantitatively incorporate climate uncertainty from multiple information sources as well as an estimate of the ‘hidden uncertainty’ into learning the probability distribution of parameters of extreme discharge. The term ‘hidden uncertainty’ refers to uncertainty components that cannot be quantified from the given projections and data. For example, if the same hydrological model has been used for all projections, then the hydrological model uncertainty is ‘hidden’, since one effectively has only a single sample of hydrological model output. It is vital to consider the hidden uncertainty since in practical applications, only a limited amount of information and models is available.~~

~~Once established, the question is then how to deal with the uncertainty in flood risk estimates when conducting flood protection planning. Multiple approaches have been proposed (Hallegatte, 2009; Kwakkel et al., 2010), including the addition of a planning margin to the initial design. The planning margin is the protection capacity implemented in excess of the capacity that would be selected without taking into account the uncertainties. Such reserves are used in practice; for example, in Bavaria, a planning margin of 15 % is applied to the design of new protection measures to account for climate change (Pohl, 2013; Wiedemann and Slowacek, 2013). Planning margins are typically implemented based on rule-of-thumb estimates rather than a rigorous quantitative analysis (KLIWA Klimaveränderung und Wasserwirtschaft, 2005, 2006; Kok et al., 2008).~~

~~We have previously proposed a fully quantitative Bayesian decision making framework for flood protection which takes into account the uncertainty in the parameters of extreme discharge and probabilistically models realizations of future extreme discharges for sequential protection planning (Dittes et al., 2017). The framework recommends a cost optimal capacity of flood protection measures given a fixed protection criterion (such as the 100 year flood), taking into account possible future measure adjustments. To protect for the 100 year flood is common European practice (Central European Flood Risk Assessment and Management in CENTROPE, 2013) and is also the requirement in the case study. Here, we show how to incorporate into the framework the visible uncertainty from an ensemble of climate projections as well as hidden uncertainties that can not be quantified from the ensemble itself but may be estimated from literature. We provide reasoned estimates of the~~

relevant uncertainties for a pre-alpine catchment, followed by an application of the framework, sensitivity and robustness analysis.

Since there is often a discrepancy between the level of observed past discharge at a specific gauge and the corresponding regional climate projections, we take the commonly used approach (Fatichi et al., 2013; Pöhler et al., 2012) of computing relative rather than absolute values from the climate projections. Here, this means that we find a planning margin  $\gamma$  based on the projection ensemble and uncertainty estimates from literature and then apply it to the estimated absolute protection (100-year flood) from historic records.

It is stressed that this paper focusses on the engineering aspect of planning flood protection under climate change. We aim to demonstrate how different sources of uncertainty can be combined probabilistically to make decisions, taking into account future developments. This is to aid decision making under climate uncertainty, when there are limited data and models available. Some authors advocate not using a probabilistic approach when the uncertainty is very large. This is because of the potential of surprises under large uncertainty (Hall and Solomatine, 2008; Merz et al., 2015; Paté-Cornell, 2011). Instead, they recommend an approach focussed on robustness: the ability of the protection system to work well under a wide range of scenarios. We consider our approach to be complementary: rather than representing a definite recommendation for the study site, it gives an indication of the recommended protection capacity. Expert judgement remains valuable to identify robust protection systems realizing the recommended protection, e.g. by implementing a protection system that consists of several different, possibly spatially distributed, measures. That leads to more robust protection in which floods in excess of the design flood do not quickly lead to very high damages or even failure (Blöschl et al., 2013b; Custer and Nishijima, 2013).

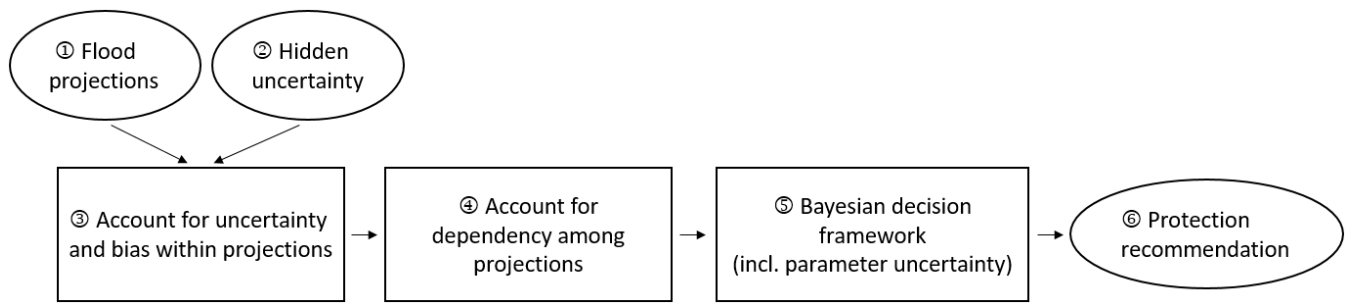
The paper is structured as follows: In Sect. 2, we introduce the pre-alpine case study catchment together with the available data and relevant uncertainties, concluding in an estimate of the hidden uncertainties. In Sect. 3, we show how to combine the different sources of uncertainty to use in the decision framework of (Dittes et al., 2017). Recent studies have aimed at quantifying individual uncertainties in (extreme) discharge (Bosshard et al., 2013; Hawkins and Sutton, 2011; Sunyer, 2014). Sunyer (2014) has pointed out the usefulness of finding a methodology to combine uncertainties for flood protection planning. In the first part of this paper we present such a methodology for deriving a probabilistic model of extreme discharge; it is a pragmatic approach to handling the limited available data in practical problems. We quantitatively incorporate climate uncertainty from multiple information sources as well as an estimate of the ‘hidden uncertainty’ into learning the probability distribution of parameters of extreme discharge. The term ‘hidden uncertainty’ refers to uncertainty components that cannot be quantified from the given projections and data. For example, if the same hydrological model has been used for all projections, then the hydrological model uncertainty is ‘hidden’, since one effectively has only a single sample of hydrological model output. It is vital to consider the hidden uncertainty since in practical applications only a limited amount of information and models is available and hidden uncertainty will always be present.

Once established, the question is then how to deal with the uncertainty in flood risk estimates when conducting flood protection planning. Multiple approaches have been proposed (Hallegatte, 2009; Kwakkel et al., 2010), including the addition of a planning margin to the initial design. The planning margin is the protection capacity implemented in excess of the capacity that would be selected without taking into account the uncertainties. Such reserves are used in practice; for example, in Bavaria, a planning margin of 15 % is applied to the design of new protection measures to account for climate change (Pohl, 2013; Wiedemann and Slowacek, 2013). Planning margins are typically implemented based on rule-of-thumb estimates rather than a rigorous quantitative analysis (KLIWA, 2005, 2006; De Kok et al., 2008).

We have previously proposed a fully quantitative Bayesian decision making framework for flood protection (Dittes et al., 2017). Bayesian techniques are a natural way to model discharge probabilistically (Coles et al., 2003; Tebaldi et al., 2004). They also make it easy to combine several sources of information (Viglione et al., 2013). Furthermore, Bayesian methods support updating the discharge distribution in the future, when new information becomes available (Graf et al., 2007). Our framework probabilistically updates the distribution of extreme discharge with hypothetical observations of future discharge, which are modelled probabilistically. This is an instance of a sequential (or ‘preposterior’) decision analysis (Benjamin and Cornell, 1970; Davis et al., 1972; Kochendorfer, 2015; Raiffa and Schlaifer, 1961). This enables a sequential planning process, where it is taken into consideration that the measure design may be revised in the future. Furthermore, it naturally takes into account the uncertainty in the parameters of extreme discharge. The output of the framework is a cost-optimal capacity recommendation of flood protection measures, given a fixed protection criterion (such as the 100-year flood). To protect for the 100-year flood is common European practice (Central European Flood Risk Assessment and Management in CENTROPE, 2013) and is also the requirement in the case study.

In this paper, we show how to incorporate into the flood planning process the visible uncertainty from an ensemble of climate projections as well as hidden uncertainties that can not be quantified from the ensemble itself but may be estimated from literature. When combining uncertainties, special care is taken to account for uncertainty and bias in projections as well as dependencies among different projections. We provide reasoned estimates of climatic uncertainties for a pre-alpine catchment, followed by an application of the previously proposed Bayesian decision framework, sensitivity and robustness analysis. The process is shown in Fig. 1: ① Projections of annual maximum discharges (see Sect. 2.2) and ② an estimate of the shares of various uncertainties that are not covered by the projection ensemble (see Sect. 2.5) form the inputs to the analysis. ③ For each projection individually, a likelihood function of annual maximum discharge is computed. This is done such that bias is integrated out and projections later on the horizon are assigned diminishing weights, making use of the hidden uncertainty shares (see Sect. 3.2). ④ The likelihoods of individual projections are combined using the method of effective projections (Pennell and Reichler, 2011; Sunyer et al., 2013b) in order to account for dependencies among them (see Sect. 3.3). ⑤ The Bayesian decision framework of Dittes et al. (2017) is used to obtain ⑥ a protection recommendation based on the likelihood of extreme discharge. The qualitative basis of the framework is outlined in Sect. 3.4.





**Figure 1.** Process of finding the recommended planning margin from projections and hidden uncertainty estimate.

It is stressed that this paper focusses on the engineering aspect of planning flood protection under climate change. We aim to demonstrate how different sources of uncertainty can be combined probabilistically to make decisions, taking into account future developments. This is to aid decision making under climate uncertainty, when there are limited data and models available. Some authors advocate not using a probabilistic approach when the uncertainty is very large. This is because of the potential of surprises under large uncertainty (Hall and Solomatine, 2008; Merz et al., 2015; Paté-Cornell, 2011). Instead, they recommend an approach focussed on robustness: the ability of the protection system to work well under a wide range of scenarios. We consider our approach to be complementary: rather than prescribing a protection system for the study site, it gives a recommendation for the optimal protection capacity. Expert judgement remains central for identifying robust protection systems to provide the recommended protection, e.g. by implementing a protection system that consists of several different, possibly spatially distributed, measures. Such an approach leads to more robust protection in which floods in excess of the design flood do not quickly lead to very high damages or even failure (Blöschl et al., 2013b; Custer and Nishijima, 2013).

The paper is structured as follows: In Sect. 2, we introduce the pre-alpine case study catchment together with the available data and relevant uncertainties, concluding in an estimate of the hidden uncertainties. In Sect. 3, we show how to combine the different sources of uncertainty to use in the decision framework of Dittes et al. (2017). The resulting recommendations are presented and discussed in Sect. 4, together with sensitivity analysis. Finally, a discussion is given in Sect. 5 and conclusions in Sect. 6.

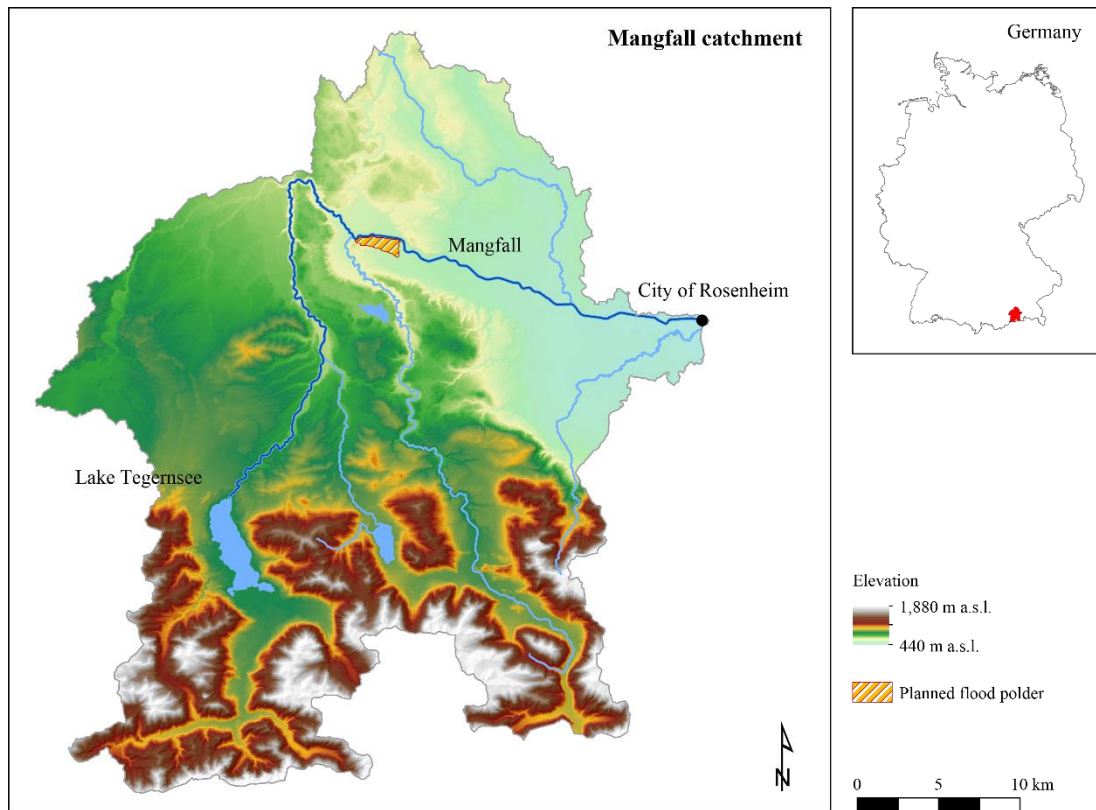
## 2 Uncertainty in extreme discharge in a pre-alpine case study catchment

In this section, we introduce individual components of uncertainty in estimates of extreme future discharge. This is done on the example of a pre-alpine catchment with a short historic record and a limited set of available climate projections, which do not exhaustively cover the spectrum of climate uncertainties. The resulting problem of planning under uncertainty is typical in practice. We introduce the case study catchment in Sect. 2.1, followed by the available discharge projections in Sect. 2.2. We then move on to describe climatic uncertainties in Sect. 2.3-2.4 and give an estimate of their magnitude for our analysis in

Sect. 2.5. We end by introducing the mathematical modelling of uncertainties and the respective uncertainty of model parametrization in Sect. 2.6.

## 2.1 The Mangfall catchment in Rosenheim

Our case study site is the river Mangfall at gauge Rosenheim, shortly before it flows into the Inn river. Rosenheim is a city in Bavaria that has suffered severe flood losses from Mangfall flooding in the past (Wasserwirtschaftsamt Rosenheim, 2014). (Wasserwirtschaftsamt Rosenheim, 2014). With an area of 1102 km<sup>2</sup>, the Mangfall is a medium-sized catchment exhibiting a highly heterogeneous topography. Elevations within the catchment range from 443 to 1988 m a.s.l. with a mean value of approximately 1000 m a.s.l., indicating the pre-alpine nature of the river basin. Southern sub-catchments in the Mangfall-mountains are steep and rocky, resulting in a rapid runoff response. On the contrary, northern regions in the Alpine foothills show a more moderate discharge behaviour due to gentle slopes. Thus, the discharge pattern of the Mangfall combines both characteristics of mountainous and lowland areas (Kunstmann and Stadler 2005; RMD Consult 2016; Magdali 2015).



**Figure 1.2.** Digital elevation model of the pre-alpine Mangfall catchment with its river network. The catchment is characterized by its highly heterogeneous topography leading to different discharge behaviour between the northern and southern regions of the river basin (Geobasisdaten © Bayerische Vermessungsverwaltung).

Precipitation in the catchment is strongly affected by the adjacent Alpine arch leading to annual mean amounts of 1800 mm in mountainous and 1000 mm in low-altitude zones. The watershed receives most precipitation in July, often in form of convective, high-intensity precipitation (Magdali 2015; Deutscher Wetterdienst 2017). Therefore, this study focusses on the uncertainty analysis for summer discharge, since it poses the greatest threat to the city of Rosenheim. Planning authorities give the 100-year design discharge at the Rosenheim gauge as  $480 \text{ m}^3 \text{ s}^{-1}$  (RMD Consult 2016). Figure 1 (Magdali 2015; Deutscher Wetterdienst 2017). Therefore, this study focusses on the uncertainty analysis for summer discharge, since it poses the greatest threat to the city of Rosenheim. Planning authorities give the 100-year design discharge at the Rosenheim gauge as  $480 \text{ m}^3 \text{ s}^{-1}$  (RMD Consult 2016). Figure 2 shows the topography of the Mangfall catchment alongside its river network. The available historic record at the Mangfall gauge in Rosenheim is reproduced in Supplement A.

## 2.2 Available ensemble of discharge projections

**Table 1**

Table 1 lists the projections available at the case study gauge. Several projections have identical modelling chains and differ only in the model run, six of the ten Regional Climate Models (RCMs) are nested in the same Global Climate Model (GCM), ECHAM5, and all GCM-RCMs are based on the same SRES scenario (A1B), coupled to the same hydrological model (WaSiM) and same downscaling technique (quantile mapping). The ensemble is limited in that it does not cover a wide range of modelling uncertainties, and it is imperfect in that the projections of the ensemble are not independent. [Such a set of available projections is quite typical of what is encountered in flood protection planning.](#) The projections are reproduced in Supplement B.

**Table 1.** RCMs used in this study, driving GCMs, source of the RCMs, downscaling and hydrological model.

Name	GCM	RCM	Source	Downscaling	Hydrological model
CLM1	ECHAM5 R1	CLM Consortial	Consortium	<a href="#">Quantile mapping (German federal institute of hydrology BfG), SCALMET (Willems and Stricker, 2011)</a>	WaSiM v8.06.02, Inn, daily, 1km <sup>2</sup>
CLM2	ECHAM5 R2	CLM Consortial	Consortium		
CCLM	HadCM3Q0	CCLM	ETH		
REMO1	ECHAM5 R1	REMO	MPI	<a href="#">Quantile mapping (Bavarian environmental agency LfU), SCALMET (Schmid et al., 2014)</a>	
REMO2	ECHAM5 R2	REMO	MPI		
REMO3	ECHAM5 R3	REMO	MPI		

RACMO	ECHAM5 R3	RACMO2	KNMI	<a href="#">mapping (Bavarian environmental agency LfU), SCALMET (Schmid et al., 2014)</a>
HadRM	HadCM3Q3	HadRM3Q3	Hadley Centre	
HadGM	HadCM3Q3	RCA3	SMHI	
BCM	BCM	RCA3	SMHI	

---

### 2.3 Internal variability

The term ‘internal variability’ describes the aleatory (alternatively: irreducible) uncertainty component in extreme discharge: even with perfect knowledge, it cannot be predicted with certainty what amount of discharge will be recorded on a given day (Kiureghian and Ditlevsen, 2009). This is because discharge realizations occur spontaneously, due to interactions of components within the climate system (IPCC, 2013). Based on the available information, it can be assumed that the absolute amount of internal variability does not change in time. In projections of future discharge however, the relative importance of internal variability decreases with time as climatic uncertainties increase with increasing projection horizon. In a small pre-alpine catchment, such as considered in our case studies, the internal variability is large and dominates the uncertainty spectrum, potentially masking existing trend signals in heavy precipitation (and thus extreme discharge) for the entire projection horizon up to the year 2100 (Maraun 2013). Alternative terms for the internal variability are ‘inherent randomness’ or ‘noise’.

### 2.4 Uncertainties in the climate modelling chain

Discharge projections are the result of a complex multi-step climate modelling process. In literature, this is often termed the climate modelling ‘chain’, which, as new uncertainties are introduced at each modelling step, leads to the ‘uncertainty cascade’ (Mitchell and Hulme 1999; Foley 2010). It is worth pointing out that the uncertainty cascade does not necessarily lead to an increase in uncertainty at each step, as the modelling steps depend on each other in a non-linear fashion. Just as uncertainties can add up, it is conceivable that they may not be relevant for future steps in the modelling chain (Refsgaard et al., 2013). The uncertainty from the interaction of consecutive steps in the modelling chain is called ‘interaction uncertainty’ (Bosshard et al. 2013).

In the following sections, we briefly introduce the individual modelling steps required to obtain projections of (extreme) discharge. We start by a very brief introduction to climate forcing, then move on to summarise the uncertainty from the global and local climate models (GCM and RCM) under ‘Model response’. Statistical downscaling is covered with a focus on quantile mapping, which is the technique applied in the case study. Up to and including statistical downscaling, the climate modelling chain produces not discharge but various other climatic variables that are translated to discharge in a specific catchment through

a hydrological model. The uncertainties in the climate modelling chain are in principle epistemic, yet it is debatable if they can and will be reduced in the foreseeable future (Hawkins and Sutton, 2009).

### **Forcing**

The forcing of the climate through greenhouse gas emissions (GHGs) is the first element in the climate modelling chain. The future socioeconomic, political and technological development determines the amount of GHGs emitted. Different development scenarios on which climate modellers could base their work were described in the IPCC's Special Report on Emissions Scenarios (SRES) (Nakićenović and Swart 2000). Recently, the SRES scenarios were substituted by representative concentration pathways (RCPs), which directly refer to the amount of GHGs emitted rather than complex scenarios (Moss et al., 2010). For our case study, only projections based on SRES scenario A1B, a widely used scenario with moderate socioeconomic and technological changes, are available. Thus, we have to take into account the uncertainty of what the projection results might have been under other forcing scenarios. However, in Europe, forcing uncertainty only becomes relevant in the far future and is of particularly low significance for local extreme precipitation (Hawkins and Sutton, 2011; Maraun, 2013; Tebaldi et al., 2015).

### **Model response**

For climate change impact studies, it is typical to use ensembles of not one but multiple GCM-RCM combinations (Huang et al., 2014; Muerth et al., 2012; Rajczak et al., 2013). The differences in GCM-RCM output when driven by the same emission forcing are termed 'model response uncertainty' or 'model spread' (IPCC, 2013). Multi-model ensembles (MMEs) such as the one available for the case study reproduce part of this spread. That they do not reproduce it completely is because they consist of a finite number of possibly biased and dependent models that typically have to be chosen based on availability rather than on statistical considerations (Knutti et al., 2013; Tebaldi and Knutti, 2007). To mitigate this problem, some researchers assign weights to individual models, but there is an ongoing debate about this: some researchers are making a general case for the benefits of weighting (Ylhäisi et al., 2015) or its drawbacks (Aghakouchak et al., 2013), some are detailing when it may make sense on the basis of model performance (Refsgaard et al., 2014; Rodwell and Palmer, 2007) or genealogy (Masson and Knutti, 2011), but all approaches are disputed. The relative importance of model response increases with projection lead time and is particularly significant for extreme summer precipitation (Bosshard et al., 2013). Since flooding in the case study catchment is dominated by extreme summer precipitation, we expect model response to form the second most important uncertainty contribution (after internal variability).

### **Statistical downscaling**

The available projections underwent statistical downscaling using quantile mapping, which is often recommended for extreme events (Bosshard et al., 2011; Dobler et al., 2012; Hall et al., 2014; Themeßl et al., 2010). Statistical downscaling is frequently used to align GCM-RCM outputs with historic records, but its use is still controversial (Chen et al., 2015; Ehret et al., 2012; Huang et al., 2014; Maurer and Pierce, 2014). This is particularly because of two key assumptions, which may not always hold

true: that the observational data represents the true state of the climate system and that the bias is stationary (Hall et al., 2014; Korek et al., 2012; Sunyer et al., 2014). The uncertainty contribution of the downscaling is likely to be large (Hundechea et al., 2016; Sunyer et al., 2015a). It would be beneficial to use not one but several downscaling techniques, similarly to how one uses an ensemble of GCM-RCMs (Arnbjerg-Nielsen et al., 2013; Sunyer et al., 2015b), as well as several calibration datasets (Sunyer et al., 2013a).

### **Hydrological model**

Hydrological models use RCM outputs such as precipitation, temperature, wind speed and soil moisture to model discharge for a specific catchment. Catchment parameters (such as surface roughness) are typically found in an elaborate calibration procedure (Labarthe et al., 2014; Li et al., 2012). The parameters are typically assumed to be stationary, but they might in fact be non-stationary (Merz et al., 2011). Furthermore, the calibration might mask model errors by tuning the catchment parameters to balance them. Thus, the parameter estimates strongly depend on the calibration period (Brigode et al., 2013). Several approaches exist to quantify the uncertainty stemming from the hydrological model (Götzinger and Bárdossy, 2008; Velázquez et al., 2013). Overall however, the error from the hydrological model is small, in particular for high flow indicators (Velázquez et al., 2013). It is likely smaller than or comparable to forcing uncertainty (Wilby, 2005).

The term ‘internal variability’ describes the aleatory (Der Kiureghian and Ditlevsen, 2009) uncertainty component in extreme discharge: even with perfect knowledge, it cannot be predicted deterministically what the annual maximum discharge of a year will be, and thus how the design flood estimate will change. This is because discharge realizations occur spontaneously, due to interactions of components within the climate system (IPCC, 2013). In the available projections, the absolute amount of internal variability did not change in time significantly and is thus modelled as stationary. In projections of future discharge however, the relative importance of internal variability decreases with time as climatic uncertainties increase with increasing projection horizon. In a small pre-alpine catchment, such as considered in our case studies, the internal variability is large and dominates the uncertainty spectrum, potentially masking existing trend signals in heavy precipitation (and thus extreme discharge) for the entire projection horizon up to the year 2100 (Maraun 2013). Alternative terms for the internal variability are ‘inherent randomness’ or ‘noise’.

### **2.4 Uncertainties in the climate modelling chain**

Discharge projections are the result of a complex multi-step climate modelling process. In literature, this is often termed the climate modelling ‘chain’, which, as new uncertainties are introduced at each modelling step, leads to the ‘uncertainty cascade’ (Mitchell and Hulme 1999; Foley 2010). It is worth pointing out that the uncertainty cascade does not necessarily lead to an increase in uncertainty at each step, as the modelling steps depend on each other in a non-linear fashion. Just as uncertainties can add up, it is conceivable that they may not be relevant for future steps in the modelling chain (Refsgaard et al., 2013). In the following, we briefly introduce the individual modelling steps required to obtain projections of (extreme) discharge. The uncertainty from the interaction of consecutive steps in the modelling chain is called ‘interaction uncertainty’ (Bosshard et al.

2013). The uncertainties in the climate modelling chain are in principle epistemic, yet it is debatable if they can and will be reduced in the foreseeable future (Hawkins and Sutton, 2009).

The forcing of the climate through greenhouse gas emissions (GHGs) is the first element in the climate modelling chain. The future socioeconomic, political and technological development determines the amount of GHGs emitted. Different development scenarios on which climate modellers could base their work were described in the IPCC's Special Report on Emissions Scenarios (SRES) (Nakićenović and Swart 2000). Recently, the SRES scenarios were substituted by representative concentration pathways (RCPs), which directly refer to the amount of GHGs emitted rather than complex scenarios (Moss et al., 2010). For our case study, only projections based on SRES scenario A1B, a widely used scenario with moderate socioeconomic and technological changes, are available. Thus, we have to take into account the uncertainty of what the projection results might have been under other forcing scenarios. However, in Europe, forcing uncertainty only becomes relevant in the far future and is of particularly low significance for local extreme precipitation (Hawkins and Sutton, 2011; Maraun, 2013; Tebaldi et al., 2015).

For climate change impact studies, it is customary to use ensembles of multiple combinations of global and regional climate models (GCMs-RCMs) (Huang et al., 2014; Muerth et al., 2012; Rajczak et al., 2013). The differences in GCM-RCM output when driven by the same emission forcing are termed 'model response uncertainty' or 'model spread' (IPCC, 2013). Multi-model ensembles (MMEs) such as the one available for the case study reproduce part of this spread. That they do not reproduce it completely is because they consist of a finite number of possibly biased and dependent models that typically have to be chosen based on availability rather than on statistical considerations (Knutti et al., 2013; Tebaldi and Knutti, 2007). To mitigate this problem, some researchers assign weights to individual models, but there is an ongoing debate about this: some researchers are making a general case for the benefits of weighting (Ylhäisi et al., 2015) or its drawbacks (Aghakouchak et al., 2013), some are detailing when it may make sense on the basis of model performance (Refsgaard et al., 2014; Rodwell and Palmer, 2007) or genealogy (Masson and Knutti, 2011), but all approaches are disputed. The relative importance of model response increases with projection lead time and is particularly significant for extreme summer precipitation (Bosshard et al., 2013). Since flooding in the case study catchment is dominated by extreme summer precipitation, we expect model response to form the second most important uncertainty contribution (after internal variability).

The available projections underwent statistical downscaling using quantile mapping, which is often recommended for extreme events (Bosshard et al., 2011; Dobler et al., 2012; Hall et al., 2014; Themeßl et al., 2010). Statistical downscaling is frequently used to align GCM-RCM outputs with historic records, but its use is still controversial (Chen et al., 2015; Ehret et al., 2012; Huang et al., 2014; Maurer and Pierce, 2014). The uncertainty contribution of the downscaling is likely to be large (Hundecha et al., 2016; Sunyer et al., 2015b). It would be beneficial to use not one but several downscaling techniques, similarly to how one uses an ensemble of GCM-RCMs (Arnbjerg-Nielsen et al., 2013; Sunyer et al., 2015a), as well as several calibration datasets (Sunyer et al., 2013a).



Up to and including statistical downscaling, the climate modelling chain produces not discharge but various other climatic variables that are translated to discharge in a specific catchment through a hydrological model. Catchment parameters (such as surface roughness) are typically found in an elaborate calibration procedure (Labarthe et al., 2014; Li et al., 2012). The parameters are usually assumed to be stationary, but they might in fact be non-stationary (Merz et al., 2011). Furthermore, the calibration might mask model errors by tuning the catchment parameters to balance them. Thus, the parameter estimates strongly depend on the calibration period (Brigode et al., 2013). Several approaches exist to quantify the uncertainty stemming from the hydrological model (Göttinger and Bárdossy, 2008; Velázquez et al., 2013). Overall however, the error from the choice of hydrological model is small, in particular for high flow indicators (Velázquez et al., 2013). It is likely smaller than or comparable to forcing uncertainty (Wilby, 2005).

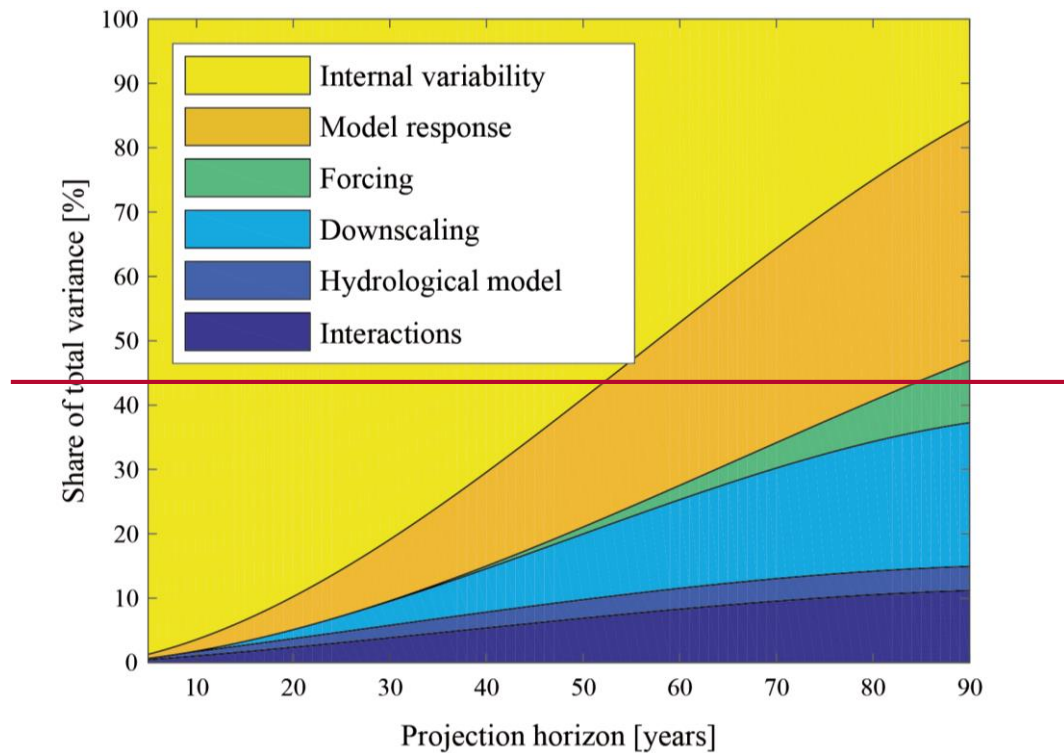
## 2.5 Estimate of climatic uncertainty shares in extreme discharge for case study

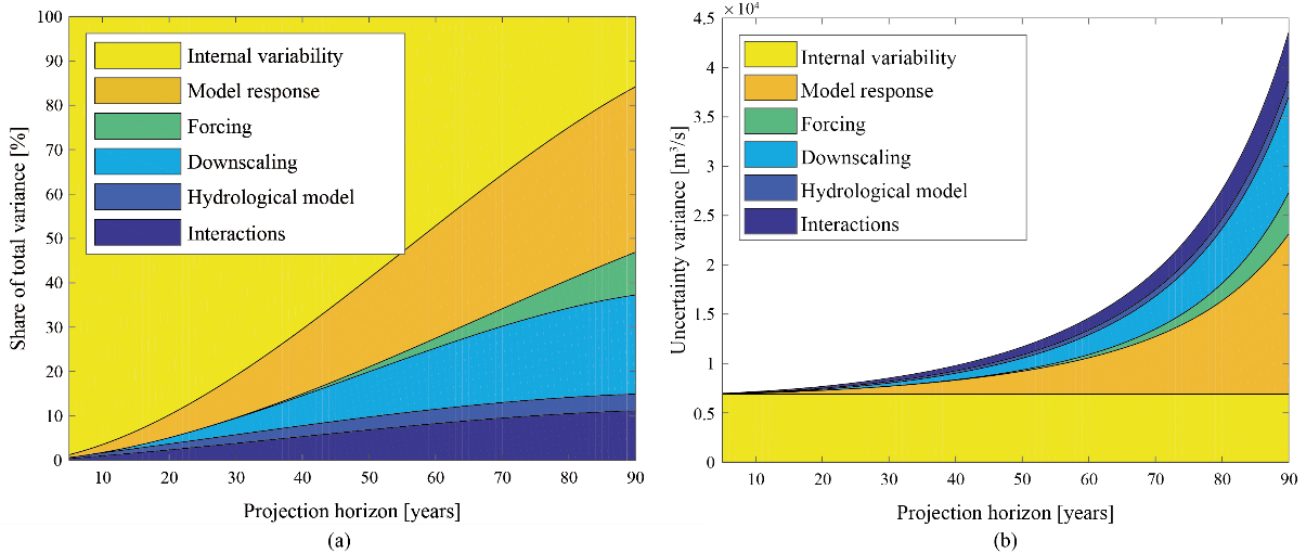
In this section, we estimate the relative contribution of climatic uncertainties, using internal variability as a reference. Note that this is done as a rough estimate, since uncertainty quantification is not the focus of this paper. As will become clear in Sect. 4.2 and 5, an exact quantification is also not necessary for the proposed decision making process. To summarise the previous two sections, the following qualitative statements can be made about the contribution of relevant sources of uncertainty in the considered mid-size pre-alpine catchments with floods driven by summer precipitation:

- internal variability is dominant throughout most of the coming century
- model response is the second largest source of uncertainty, growing with lead time
- the impact of downscaling is also considerable, again particularly later on the projection horizon
- the role of forcing uncertainty and hydrological model is minor; the former becomes relevant only very late on the projection horizon
- uncertainty from interaction of the individual components may be of some significance

A methodology to quantify the size of the internal variability, model response and forcing uncertainty in mean precipitation and corresponding results for different regions and seasons has been presented in ~~(Hawkins and Sutton, 2009, 2011)~~ Hawkins and Sutton (2009, 2011). We base our estimate of these components on equivalent results for summer precipitation in Europe obtained from ~~(Ed Hawkins, (email communication, 17.02.2017))~~. We consider precipitation results to be transferable to discharge in the given catchment since extreme summer precipitation has in the past been the dominant trigger of high discharge in the Mangfall. A comparison of uncertainty shares for mean vs. extreme discharge is available in ~~(Bosshard et al., 2013)~~ Bosshard et al. (2013) and is used to adapt the results. Quantitative estimates of the shares of model response, downscaling, hydrological model and interactions for a different pre-alpine catchment are also provided in ~~(Bosshard et al., 2013)~~ Bosshard et al. (2013). We combine the quantitative results with the catchment-specific qualitative knowledge to produce the estimate. The uncertainty spectrum is shifted towards the later projection horizon to account for the longer dominance of internal variability in a pre-alpine catchment with small scale, extreme summer precipitation as the flood

triggering process. This results in a near-term contribution of the internal variability of at least 80 % of total uncertainty, as expected. The shift also reduces the uncertainty share attributed to model response and emission forcing, which, following (Ed Hawkins, email communication, 17.02.2017), explained over 90 % of total uncertainty by the end of the century. The shares are adjusted such as to better represent the particular modelling and topography: the share of model response is set to peak at around 40 %. For downscaling, shares of up to 25 % are expected. Uncertainties stemming from interactions are anticipated to lie in the order of 10 %. Contributions attributed to hydrological modelling are set to remain below 5 % over the whole time horizon. The results of the estimation are shown in [Figure 2-Fig. 3. Figure 3 \(a\) shows the resulting relative uncertainty shares and Fig. 3\(b\) the resulting absolute uncertainties for the projection CCLM.](#) Forcing, downscaling, hydrological model and interaction components are ‘hidden uncertainties’ in the case study. As will be shown in Sect. 3, the sum of hidden uncertainties rather than individual components is used in the Bayesian learning. Thus, it does not matter if the share of any one of these uncertainties has been slightly over- or underestimated. The question of sensitivity will be discussed further in Sect. 4. The estimated variance shares of the ‘hidden’ uncertainty components and internal variability with respect to total uncertainty for Rosenheim are given in Supplement C.





**Figure 2.3.** (a) Share of different uncertainty components (variance) for extreme discharge in Rosenheim. (b) Resulting absolute uncertainties for CCLM. Uncertainties that are ‘visible’ in our case study are shaded yellow/orange, ‘hidden’ ones blue/green.

## 5 2.6 Parameter uncertainty

Statistical modelling of extreme discharge  $Q$  is commonly based on ~~by~~ fitting a suitable extreme value distribution to the available data, e.g. a Gumbel or a Generalized Extreme Value (GEV) distribution. These are described by their probability density function (PDF),  $f_{\mathbf{q}|\boldsymbol{\theta}}(q|\boldsymbol{\theta})$ , in which  $\boldsymbol{\theta}$  is the set of parameters of the distribution function that are learned from the data. Learning  $\boldsymbol{\theta}$  from finite data will result in a probability distribution over  $\boldsymbol{\theta}$ , which describes parameter uncertainty

10 ~~(Kennedy and O’Hagan, 2001)~~(Kennedy and O’Hagan, 2001).

~~For example, the~~The discharge  $q^{(T)}$  of a design flood associated with a return period  $T$  is defined as a function of  $\boldsymbol{\theta}$  as

$$1 - F_{Q(t)|\boldsymbol{\theta}}(q^{(T)}|\boldsymbol{\theta}) = \frac{1}{T} \Leftrightarrow q^{(T)} := F_{Q(t)|\boldsymbol{\theta}}^{-1}\left(1 - \frac{1}{T}|\boldsymbol{\theta}\right)\left(1 - \frac{1}{T}|\boldsymbol{\theta}\right), \quad (1)$$

where  $F_{Q(t)|\boldsymbol{\theta}}$  is the cumulative distribution function (CDF) and  $F_{Q(t)|\boldsymbol{\theta}}^{-1}$  is the inverse CDF of the annual maximum discharge  $Q(t)$ . In a Bayesian ~~framework setting~~, the posterior joint PDF of the parameters  $\boldsymbol{\theta}$  can be learned from  $N$  years of annual maximum discharges  $\mathbf{q} = [q_1, \dots, q_N]$  (from historic record or projections) as follows:

$$f_{\boldsymbol{\theta}|Q(t)}(\boldsymbol{\theta}|\mathbf{q}) \propto L(\boldsymbol{\theta}|\mathbf{q}) \times f_{\boldsymbol{\theta}}(\boldsymbol{\theta}), \quad (2)$$

where  $f_{\theta}(\theta)$  is the prior distribution of the parameters and  $L(\theta|\mathbf{q})$  is the likelihood describing the discharge data  $\mathbf{q}$ . The discharge maxima can be assumed to be independent between individual years (Coles, 2004). Neglecting measurement error, the likelihood function in Eq. (2) can hence be formulated as

$$L(\theta|\mathbf{q}) = \prod_{t=1}^N f_{Q(t)|\theta}(q_t|\theta), \quad (3)$$

With increasing number of records of annual maximum discharges  $q_t$ , the uncertainty in the parameters  $\theta$  is reduced.

- 5 The Bayesian ~~framework~~ method requires the selection of a prior distribution  $f_{\theta}(\theta)$  in Eq. (2). For the application to flood protection planning, one may wish to select a prior that is only weakly informative in  $q^{(T)}$ . We propose to use the following distribution for this purpose (dropping the time dependence ~~tt~~ for readability):

$$f_{\theta}(\theta) \propto \frac{1}{f_{Q^{(T)}}(q^{(T)}) f_{Q^{(T)}|\theta}(q^{(T)}|\theta)} = \frac{1}{f_{Q^{(T)}}\left(\frac{1}{T}\right) f_{Q^{(T)}|\theta}\left(1 - \frac{1}{T}|\theta\right)}, \quad (4)$$

where  $f_{Q^{(T)}}(q^{(T)})$  is the PDF of  $q^{(T)}$  based on a prior that is uniform in  $\theta$  and Eq. (1) has been applied in the equality.

### 10 3 Combining uncertainties for flood protection planning

In this section, we propose an approach for combining different uncertainty components when using projections to learn the parameters  $\theta$  of the time-variant distribution  $f_{Q(t)|\theta}(q|\theta)$  of annual maximum discharge  $Q(t)$  in year  $t$  (viz. ~~t~~ (see Sect. 2.6). This distribution is first learned for each projection of extreme discharges individually. For projection, we increase the distribution spread in a time-dependent manner using the estimate of hidden uncertainty from Sect. 2.5. Since the uncertainty increases with time, projections late on the horizon are naturally assigned less information value. We then combine the distributions from different projections.

In Sect. 3.1, we categorize uncertainties in such a way that it is conducive for our application. We then combine these uncertainties within a Bayesian approach. In ~~Section~~ Sect. 3.2, we show how the likelihood  $L(\theta|\mathbf{q})$  for the joint parameter PDF is learned for any individual projection, taking into account uncertainty estimates from literature. In Sect. 3.3, we show how to combine the likelihoods of the projection ensemble. Finally, we give a summary of planning and decision making under uncertainty in Sect. 3.4.

#### 3.1 Uncertainty categorization

~~Depending on the application different~~ Different categorizations of uncertainty have been proposed in literature. In Sect. 2.3 - 2.6 for example, we have presented the uncertainties in extreme discharge by source. Another common way to categorize uncertainties is the distinction between aleatory (irreducible) and epistemic (reducible) uncertainties (Kiureghian and

~~Ditlevsen, 2009; Refsgaard et al., 2013~~(Der Kiureghian and Ditlevsen, 2009; Refsgaard et al., 2013). This categorization is useful in that it underlines in which areas future research could lead to uncertainty reduction. Other authors focus their categorization e.g. on the different effects of uncertainties (~~Merz et al., 2015~~)-(Merz et al., 2015).

In the context of estimating flood extremes under climate change with limited information, we distinguish between:

- 5       ▪ ‘Visible uncertainty’, which is known and can be quantified. For an ensemble of discharge projections, this would e.g. be the internal variability, the model response uncertainty and parameter uncertainty. Parameter uncertainty is also visible in that it is straightforward to quantify, but it is not a climatic uncertainty.
- ‘Hidden uncertainty’, which is the remaining uncertainty and can, at best, be estimated. E.g., in the projection ensemble of the case study, forcing uncertainty is hidden since all projections are based on the same emission scenario.
- 10       In real planning situations, hidden uncertainty is typically significant because of limited and imperfect projections and data, it can therefore not be neglected.

In the following sections, a methodology will be presented to learn the distribution of parameters of annual maximum discharge using these uncertainties.

### 3.2 Accounting for uncertainty and bias in projections

- 15       When using discharge projections, it is important to account for uncertainty and bias within them. As discussed in Sect. 2, climatic uncertainties increase with the projection horizon and thus the information value of a projection made late on the horizon is smaller than that of an earlier one. For example, a projection for the year 2100 is associated with higher uncertainty than one that is made for the coming year and should have less weight when learning the parameters  $\theta$  of the distribution of annual maximum discharge from climate projections. In the following, we develop a methodology that accounts for this.
- 20       We introduce the standard deviation  $\sigma_{i,t}^{(u)}$ , in which the superscript (u) describes which type of uncertainty is considered (internal or hidden), the subscript i denotes the projection and the subscript t the time dependence. The internal variability in a projection,  $[\sigma_i^{(\text{internal})}]^2$ , can be quantified following (~~Hawkins and Sutton, 2009~~)-Hawkins and Sutton (2009). Note that the subscript t is excluded here since internal variability is assumed to be independent of time. Relative variance shares of the individual uncertainties, including ‘hidden’ ones can be estimated using literature (Bosshard et al., 2013; Hawkins and Sutton,
- 25       2011) and expert judgement, as was done in Sect. 2.5. The share of an individual uncertainty component in the total variance is here labelled  $\eta_t^{(u)}$ , with the indexing as for  $\sigma$ . The uncertainty shares are assumed to be general for a given location, independent of the projection. Thus, the absolute value of the hidden uncertainty can be found from the absolute internal variability and the uncertainty variance shares of Sect. 2.5 (reproduced numerically in Supplement C) as

$$\sigma_{i,t}^{(\text{hidden})} = \sigma_i^{(\text{internal})} \times \sqrt{\frac{\eta_t^{(\text{hidden})}}{\eta_t^{(\text{internal})}}}. \quad (5)$$

For learning the joint PDF of the parameters  $\theta$  of the annual maximum discharge distribution, we treat the  $i = 1, \dots, M$  discharge projections  $\mathbf{p}_i = [p_{i,t=1}, \dots, p_{i,t=N}]$  as samples of the true future discharge  $\tau_t$  with a bias  $\Delta_{i,t}$ :  $\tau_t = p_{i,t} - \Delta_{i,t}$ .

We express the likelihood  $L_{i,t}(\theta | p_{i,t}, \Delta_{i,t})$  describing the annual maximum discharge of projection  $i$  in year  $t$  as

$$L_{i,t}(\theta | p_{i,t}, \Delta_{i,t}) = f_{Q(t)|\theta}(p_{i,t} - \Delta_{i,t} | \theta), \quad (6)$$

where  $f_{Q(t)|\theta}$  is the PDF of the extreme value distribution describing  $Q(t)$ . The likelihood  $L_{i,t}(\theta | p_{i,t}, \Delta_{i,t})$  determines the learning of the PDF of parameters  $\theta$  from projections, in analogy to Eq. (2).

The bias  $\Delta_{i,t}$  is modelled as a normal random variable with zero mean and standard deviation  $\sigma_{i,t}^{(\text{hidden})}$ :

$$\Delta_{i,t} = z \times \sigma_{i,t}^{(\text{hidden})} = z \times \sigma_i^{(\text{internal})} \times \sqrt{\frac{\eta_t^{(\text{hidden})}}{\eta_t^{(\text{internal})}}}, \quad (7)$$

with  $z$  being a standard normal random variable. By modeling modelling all  $\Delta_{i,t}$  as a function of the same  $z$ , it is assumed that the  $\Delta_{i,t}$  are fully dependent within one projection  $i$ . This treatment is conservative, since it minimizes the amount of learning from projected discharges. Due to the large impact of the projection on the bias, it is a better depiction of reality than the assumption of independent  $\Delta_{i,t}$  within one projection  $i$ . From this follows the likelihood for a complete projection time series  $\mathbf{p}_i$  as

$$L_i(\theta | \mathbf{p}_i) = \int_{-\infty}^{\infty} \left[ \prod_{t=1}^N f_{Q(t)|\theta}(p_{i,t} - z \times \sigma_{i,t}^{(\text{hidden})} | \theta) \right] \int_{-\infty}^{\infty} \left[ \prod_{t=1}^N f_{Q(t)|\theta}(p_{i,t} - z \times \sigma_{i,t}^{(\text{hidden})} | \theta) \right] \times \nu(z) dz \quad (8)$$

where  $\nu$  is the standard normal distribution PDF. Internal variability is included in Eq. (8) naturally via  $p_{i,t}$ , as is parameter uncertainty, which is a function of the length of projections. The estimate of hidden uncertainty, as from Sect. 2.5, is included via  $\sigma_{i,t}^{(\text{hidden})}$ . While we are focussing on climate uncertainty here, in principle, any kind of additional uncertainty can be included incorporated via the hidden uncertainty parameter  $\sigma_{i,t}^{(\text{hidden})}$  in Eq. (8). Model response uncertainty is included in the combination of the likelihoods  $L_i(\theta | \mathbf{p}_i)$  from different projections  $i$ , as described in the following section.

### 3.3 Accounting for dependency among projections

Individual projections are not independent. Hence, one cannot combine  $L_i(\theta | \mathbf{p}_i)$  into a joint likelihood  $L(\theta | \mathbf{p})$  via a simple product over projections  $\mathbf{p}_i$ . Dependence among multiple projections is due to common model biases, be it because they e.g. share code from the same institution or because our understanding of climate processes is not perfect (Knutti et al., 2013; Tebaldi and Knutti, 2007) (Knutti et al., 2013; Tebaldi and Knutti, 2007). Consequently, confidence in the prediction variance

should not increase linearly with the number of projections in an ensemble. Instead, the ensemble should be seen as consisting of an effective number  $I$  of quasi-independent projections (adding independent pieces of knowledge) that is smaller than the ensemble size  $M$  (Pennell and Reichler, 2011; Sunyer et al., 2013b). We thus partition the ensemble into  $J$  sets of  $I$  projections, where  $J$  is the integer quotient of  $\frac{M}{I}$ . For each of these sets, the likelihood function can then be formulated as the product of the

5 likelihoods  $L_i^{(j)}(\boldsymbol{\theta}|\mathbf{p}_i)$  of the set members, since they are assumed to contain independent information:

$$L^{(j)}(\boldsymbol{\theta}|\mathbf{p}) = \prod_{i=1}^I L_i^{(j)}(\boldsymbol{\theta}|\mathbf{p}_i). \quad (9)$$

Climatological rationale is ~~be~~ applied to determine the division of the ensemble into sets: in line with the concept of effective projections, the projections in each set should be as distinct as possible, adding a maximum of additional information.

Based on their genealogy, we partition the available projections ~~(~~  
~~Table 1)~~(Table 1) as follows:

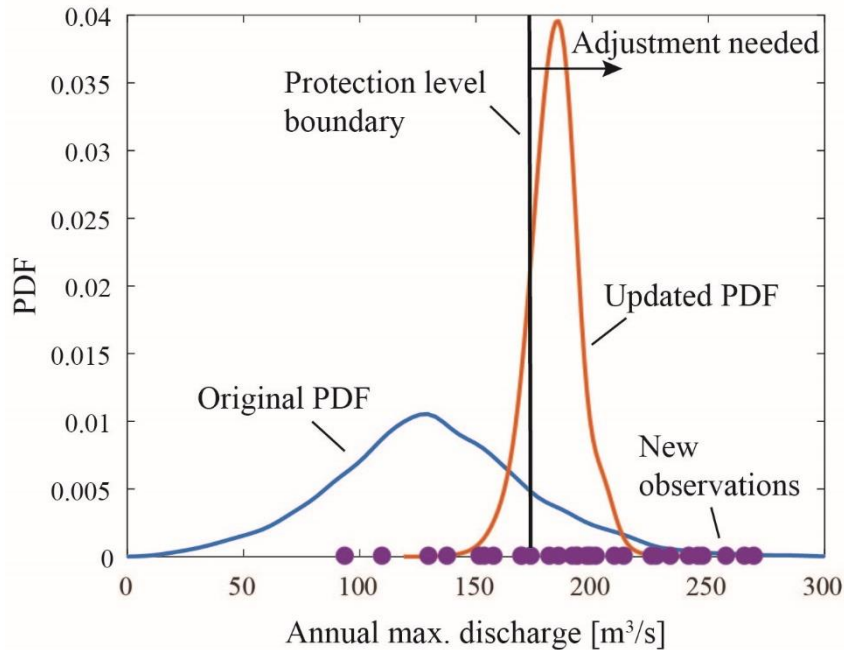
- 10
- When using two sets of five effective projections:
    - Set 1: CLM1, CCLM, REMO2, HadGM, RACMO;
    - Set 2: CLM2, REMO1, REMO3, HadRM, BCM.
  - When using three sets of three effective projections (dropping REMO3):
    - Set 1: CLM1, REMO2, HadRM;
    - 15 ○ Set 2: CLM2, REMO1, HadGM;
    - Set 3: CCLM, RACMO, BCM.

The set likelihood  $L^{(j)}(\boldsymbol{\theta}|\mathbf{p})$  from Eq. (9) is used to compute the joint set posterior of parameters,  $f_{\boldsymbol{\theta}|\mathbf{Q}^{(j)}}^{(j)}(\boldsymbol{\theta}|\mathbf{p})f_{\boldsymbol{\theta}|\mathbf{Q}^{(t)}}^{(j)}(\boldsymbol{\theta}|\mathbf{p})$ , in analogy to Eq. (2). The set posteriors are then averaged to result in an overall posterior  $f_{\boldsymbol{\theta}|\mathbf{Q}^{(t)}}(\boldsymbol{\theta}|\mathbf{p})$  of learning from projections under climate uncertainty. The averaging over posteriors expresses that we place equal trust in distributions learned  
 20 from the different sets.

### 3.4 Planning under uncertainty

Protection requirements ('criteria') are based on the  $T$ -year discharge  $q^{(T)}$  (~~viz. see Eq. (1))~~, most commonly the 100yr discharge. Since the estimate of  $q^{(T)}$  changes as new data becomes available, the capacity of the flood protection system will be re-evaluated in the future, and possibly be adjusted. The probability that adjustment becomes necessary is determined by  
 25 the level of uncertainty: The higher the uncertainty in the future extreme discharges, the more likely it is that an adjustment of the protection system will become necessary in the future. To understand why this is, consider Fig. 34: After initial planning, new discharges are observed (lilac dots). If, as pictured here, the observed discharges are higher than expected, the design flood estimate  $q^{(T)}$  will increase ~~(we show the estimate of  $q^{(1)}$  to be able to display observations on the same scale)~~. Note that the 99<sup>th</sup> percentile of the shown PDF does not correspond to  $q^{(100)}$ . If the uncertainty is large at the time of initial

planning – as is the case here, visualized with the blue, original PDF – then the additional information from the new observation has a larger weight in predicting future extreme discharges. ~~Note that the PDF displayed here shows the distribution of the flood estimate  $q^{(t)}$ , for which we use the weighted mean of the distribution of annual maximum discharges here. Thus, the 99<sup>th</sup> percentile of the shown PDF does not correspond to  $q^{(100)}$ .~~ The change in  $q^{(T)}$  is larger than if the distribution of extreme discharges had been more informative (i.e. more ‘certain’, less ‘spread out’). In practice, the protection will only be adjusted when a significant change in  $q^{(T)}$  has occurred that cannot be compensated by the freeboard and planning margin present (represented by the ‘protection level boundary’ from which onwards adjustment is needed). To avoid the need for frequent adjustments and increase robustness, the optimization framework [of Dittes et al. \(2017\)](#) thus recommends a higher planning margin when the system is constructed under higher uncertainty initially, as will become apparent in the results.



**Figure 34.** Original and updated PDF based on a period of high new observations of annual maximum discharge. Because the original PDF is so broad, the period of extreme observations results in a strongly shifted updated PDF and thus the need for adjusting the protection system.

15 ~~As has been demonstrated, Because~~ the – as yet uncertain – future discharge realizations determine future decisions ~~and therefore also, they~~ have an impact on the ~~optimal optimality of the~~ initial decision. ~~Therefore, it~~ is sensible to model protection planning as sequential, with probabilistic future discharge observations, updating of the discharge PDF and corresponding decisions on adjustment in regular time intervals. A Bayesian Network approach doing so for decisions on adapting infrastructure to a changing climate has been presented by [\(Nishijima, 2015\)](#) [Nishijima \(2015\)](#) and a POMDP



approach applied to flood protection, using climate scenarios, has been described by [\(Špačková and Straub, 2016\)](#).[Špačková and Straub \(2016\)](#). An alternative sampling-based approach, which takes the full joint parameter PDF into account, has been proposed by [\(Dittes et al., 2017\)](#)[Dittes et al. \(2017\)](#). The planning horizon is divided into a number of time periods. After each period, the current protection level is re-evaluated and possibly adjusted based on the annual maximum discharges that have been observed during that period – or more precisely, based on the  $q^{(100)}$  as resulting from the updated distribution of annual maximum discharges. To probabilistically model this future updating (before these data are actually available), future realizations of annual maximum discharge  $q$  are sampled from the discharge distribution  $f_{Q(t)|\theta}(q|\theta)$  learned initially. Optimal decisions are then identified via backwards induction optimization [\(Raiffa and Schlaifer, 1961\)](#)[\(Raiffa and Schlaifer, 1961\)](#), which works by first determining the system that should be installed at the last adjustment, conditional on the existing protection and discharges observed by then. The obtained recommendation is then used to find the system that should be installed at the second to last adjustment and so forth until arriving at a recommendation for the system that should be installed initially. We employ this optimization framework in the following case study.

Note that, since there is often a discrepancy between the level of observed past discharge at a specific gauge and the corresponding regional climate projections, we take the commonly used approach (Fatichi et al., 2013; Pöhler et al., 2012) of computing relative rather than absolute values from the climate projections. Here, this means that we find a planning margin  $\gamma$  based on the projection ensemble and uncertainty estimates from literature, which may then be applied to the absolute protection (100-year flood) as estimated from historic records.

## 4 Case study

We present the integration of the uncertainty quantification of extreme discharge in the pre-alpine Mangfall gauge at Rosenheim as shown in Sect. 2 with the uncertainty combination methodology of Sect. 3 and the decision framework of [\(Dittes et al., 2017\)](#)[Dittes et al. \(2017\)](#). Sect. 4.1 gives details of the implementation, followed by the protection recommendation and sensitivity results in Sect. 4.2.

### 4.1 Implementation

We conduct our case study for the Mangfall river in Rosenheim, which has been introduced in Sect. 2.1. We consider the designed flood protection systems to have a lifetime of 90 years and to be designed such as to protect from the 100-year flood, with design discharge  $q^{(100)}$ . The decision on the protection capacity will be revised every 30 years, taking into account the discharge records that will be available at these points in time. When learning climate parameters – especially trends – from a time step, 30 years is an often used compromise between the desire to minimize statistical uncertainty and that to capture recent climate developments [\(IPCC, 2013; Kerkhoff et al., 2015; Laprise, 2014; Pöhler et al., 2012\)](#)[\(IPCC, 2013; Kerkhoff et al., 2015; Laprise, 2014; Pöhler et al., 2012\)](#). The protection requirement corresponds to the maximal required protection during

the time step in question. As in ~~(Dittes et al., 2017), we used~~Dittes et al. (2017), a square root ~~cost~~-function ~~for~~describes the ~~cost of the~~ construction/extension of the protection system and ~~an~~ discounting rate of 2 % ~~annually is employed~~. In ~~(Dittes et al., 2017)~~Dittes et al. (2017), we considered a measure of flexibility which describes how costly it is to adapt measures later in their life time. In this contribution, we give results for the non-flexible case only, which implies that future adjustments to  
5 the system are expensive. Introducing some flexibility into the protection system would lead to lower planning margin results than those obtained here.

~~Following model plausibility testing on the projections (MacKay, 1992), a GEV distribution is chosen to model the annual maximum discharges. It is described by shape parameter  $k$ , scale parameter  $\beta > 0$  and location parameter  $\mu$ . We assume a linear trend in the scale and location parameters, which is a common practice in literature (Coles, 2004; Delgado et al., 2010; Hanel and Buishand, 2011; Maraun, 2013). The scale is expressed as  $\beta = \beta_0 + \beta_1 \times t$  and the location as  $\mu = \mu_0 + \mu_1 \times t$  (Coles, 2004; Hanel and Buishand, 2011)(Coles, 2004; Hanel and Buishand, 2011)(Coles, 2004; Hanel and Buishand, 2011)(Coles, 2004; Hanel and Buishand, 2011)(Coles, 2004; Hanel and Buishand, 2011). Thus,  $\theta = (k, \beta_0, \mu_0, \beta_1, \mu_1)$ .~~

~~The joint PDF of parameters of annual maximum discharge learned from the climate projections is used as the basis for future updating with discharge realizations. To obtain this PDF, the climate projections are learned on a prior that is weakly informative in the 100-year design discharge of the first time step (years 1-30) as by Eq. (4). Computationally, the prior is constructed by uniform sampling of parameters over a large space, computing the respective 100-year flood estimate for the first time step for each sampled parameter vector, and performing rejection sampling to obtain 576,000~~Following model plausibility testing on the projections (MacKay, 1992), a GEV distribution is chosen to model the annual maximum discharges.

~~It is described by shape parameter  $k$ , scale parameter  $\beta > 0$  and location parameter  $\mu$ . We employ a linear trend in the scale and location parameters, which is common practice in the literature (Coles, 2004; Delgado et al., 2010; Hanel and Buishand, 2011; Maraun, 2013). The scale is expressed as  $\beta = \beta_0 + \beta_1 \times t$  and the location as  $\mu = \mu_0 + \mu_1 \times t$  (Coles, 2004; Hanel and Buishand, 2011). Thus,  $\theta = (k, \beta_0, \mu_0, \beta_1, \mu_1)$ .~~

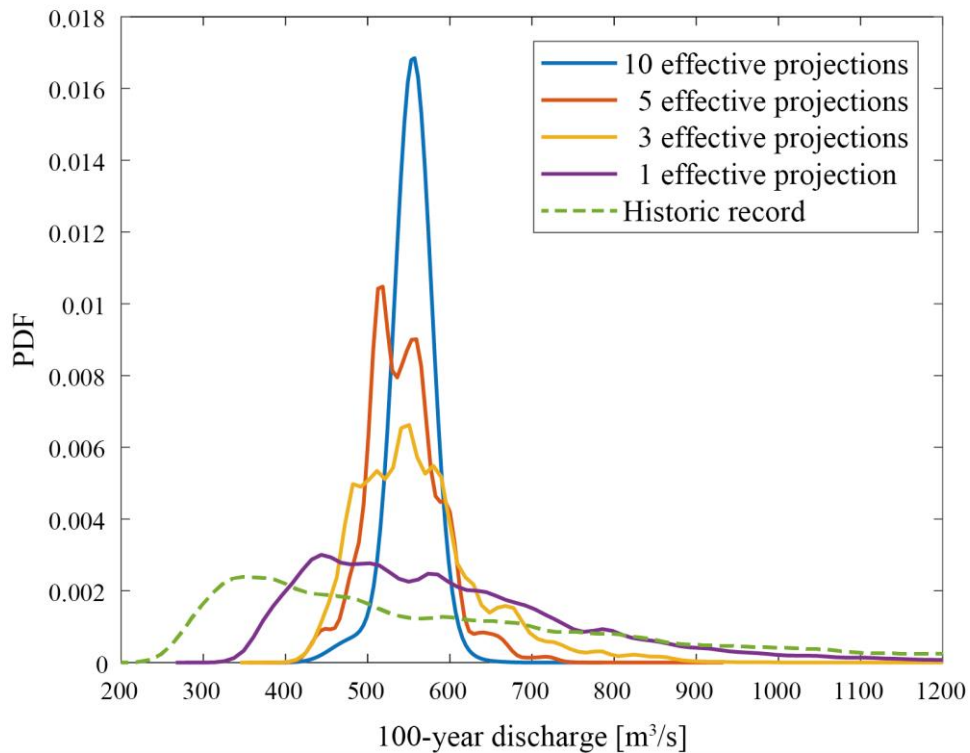
~~The joint PDF of parameters of annual maximum discharge learned from the climate projections is used as the basis for future updating with discharge realizations. To obtain this PDF, the climate projections are learned on a prior that is weakly informative in the 100-year design discharge of the first time step (years 1-30) as by Eq. (4). Computationally, the prior is constructed by uniform sampling of parameters over a large space, computing the respective 100-year flood estimate for the first time step for each sampled parameter vector, and performing rejection sampling to obtain in the order of  $6 \times 10^5$  samples following Eq. (4).~~

30 To find the optimal flood protection considering the full sequential decision process, it is necessary to simulate future discharge data, from which new flood estimates will be learned (~~viz-see~~ Sect. 3.4). For this purpose, we used 300 samples of annual maximum discharge in the period 1-30 years and 70 samples of annual maximum discharge in the period 31-60 years. Using

fewer discharge samples in later periods is computationally preferable and still comes with a high accuracy, as the absolute number of samples in the second period overall is  $300 \times 70 = 21,000$ . This choice of number of samples lead to a relative error of less than 4 % in the protection recommendation.

#### 4.2 Protection recommendation and sensitivity

- 5 Figure 45 shows the 100-year discharge PDF (weighted mean) from the initial parameter distribution for the first 30 years of planning when learned from the 39-year long historic record versus ten, five, three and one effective projections of 90-year length. Ten effective projections corresponds multiplying all posteriors and one effective projection corresponds to averaging all posteriors. For five and three effective projections, we split the projections into sets as given in Sect. 3.3.



- 10 **Figure 45.** 100-year discharge PDF from initial parameter distribution when learned from the historic record (dashed) vs. different numbers of effective projections, for years 1-30.

The PDFs shown in Fig. 5 are used as input to the optimization framework of (Dittes et al., 2017) to obtain recommendations for the planning margin. Sect. 3.4 gave an intuitive understanding of how these relate to the 100-year PDF. The planning

margin that is recommended when learning from the historic record only is 111.8 %, versus 81.9 %, 16.5 %, 12.5 % and 2.6 % for one, three, five, and ten effective projections, respectively. These results are summarized in Table 2.

**Table 2.** Recommended planning margin when using the historic record vs. differing numbers of effective projections for learning the initial parameter space.

Effective # of projections (or historic)	historic	1	3	5	10
Recommended planning margin [%]	111.8	81.9	16.5	12.5	2.6

Using a similar ensemble of climate projections over Denmark, ~~(Sunyer et al., 2013b) established that an ensemble of ten projections corresponds to five effective projections for 20-year heavy summer precipitation.~~ Sunyer et al. (2013b) established that an ensemble of ten projections corresponds to five effective projections for 20-year heavy summer precipitation. Despite some issues with transferability – as will be discussed in Chapter 5 – we thus use five effective projections and hence a planning reserve of 12.5 % as the recommended protection margin from the extreme summer precipitation floods observed at the Mangfall in Rosenheim.

To investigate the effect of hidden uncertainty on the protection recommendation, we ~~performed repeated~~ the optimization ~~again, once~~ using no hidden uncertainty ~~as well as using double~~ and once doubling the hidden uncertainty variance shares estimated in Sect. 2.5 (reproduced numerically in Supplement C), with an effective model number of five. The recommended planning margins lay in the expected order, with the ‘no uncertainty’ recommendation the smallest at 8.1 % and the ‘double uncertainty’ recommendation the largest at 13.8 %. Finally, we studied the effect of changing the trend in the projections of annual maximum discharge. Detrending the ~~projections projected annual maxima~~ lead to a recommendation of 12.2 %. We then used the ~~projections projected annual maxima~~ with doubled trend: from the observed average of 0.25 m<sup>3</sup>/s per year (corresponding to an 11 % rise in mean discharge during the 90-year life-time) to 0.5 m<sup>3</sup>/s per year. The recommended planning margin increased only very slightly, from 12.5 % to 12.7 %. The results are summarised in Table 3.

**Table 3.** Recommended planning margin [%] when using five effective projections and varying hidden uncertainty and trend.

Quantity \ <del>Direction of Applied</del> change	none	reference	double
Hidden uncertainty	8.1	12.5	13.8
Trend in annual max. discharge	12.2		12.7

## 5 Discussion

It is apparent from the results that the number of effective projections has a large impact on the recommended planning margin. Hence, we recommend that planners ~~must~~ make use of the concept of effective projections and partition ensembles accordingly, rather than just average over all members of a projection ensembles. Our assumption that five effective projections are applicable for the ten-member ensemble at Rosenheim can be questioned. The transferability of the corresponding results of ~~(Sunyer et al., 2013b)~~ Sunyer et al. (2013b) might be hindered by the difference in considered location (a southern German catchment vs. an averaging over Denmark), ensemble (some members differ) and extreme index (100-year event vs 20-year event). From other results presented in ~~(Sunyer et al., 2013b)~~ Sunyer et al. (2013b) using an alternative measure of projection dependence as well as higher extreme indices, we believe that the 12.5 % recommendation given here is conservative and a slightly lower recommendation for the planning margin (based on a slightly higher number of effective projections) may be applicable. However, the transferability remains questionable for the location and ensemble and thus the study ideally ought to be repeated for the given catchment and ensemble, in particular with respect to the large impact of the number of effective projections on the protection recommendation.

It is striking that the recommended planning margin from the historic record alone is very large. ~~This~~ A main reason is ~~partly~~ since the posterior is sensitive to the assumed extreme value distribution function: that we ~~used~~ use a GEV distribution with two trend parameters (i.e. five parameters overall) to pick up climate signals in the projections. We are using the same distribution for the historic record for comparability. In reality, one should not attempt to learn such a high number of parameters from such a small set of data: (38 annual maxima in the historic record); instead, one would assume stationarity or a fixed trend. We repeated the analysis for a stationary GEV (no trend parameters), resulting in a planning margin recommendation of 75.1 %. This is still high, confirming that it is not recommendable to plan based on a short historic record alone. Additional information should always be used—~~either, such as done here, , e.g. climate~~ projections that have been provided by the climate modelling community and which also incorporate regional information or (as in this study), tools from runoff prediction in ungauged basins, climate analogues, ~~etc.~~ (Arnbjerg-Nielsen et al., 2015; Blöschl et al., 2013a).

~~We turn now to the sensitivity analysis. First, the trend: the fact that signals that emerge late on the planning horizon are masked by noise and rendered less relevant by discounting explains why changing the trend signal leads to only insignificant changes in recommended planning margin. This is compounded by the fact that the trend signal is weak, which is to be expected from the location of the case study catchment (Madsen et al., 2014; Maraun, 2013) and is potentially amplified by projections underestimating trends in extreme precipitation (Haren et al., 2013). It should be added that not all scientists are comfortable with linear trend projections in extreme precipitation and discharge and that there is also an argument to be made for cyclical components (Gregersen et al., 2014) or ‘flood rich’ versus ‘flood poor’ periods (Hall et al., 2014; Merz et al., 2014), though this may not be applicable to floods of particularly long return periods such as studied here (Merz et al., 2016).~~

Finally, to the effect of additional uncertainty: we conclude that hidden uncertainty should be considered in decision making yet when there is already some hidden uncertainty, internal variability and model response uncertainty ('ensemble spread'), further increasing the hidden uncertainty has little effect. This is why we do not engage in detailed discussion on whether the size of the 'hidden uncertainty' has been gauged correctly and whether additional uncertainty components should be included, despite this certainly being debatable (Grundmann, 2010; Refsgaard et al., 2013; Seifert, 2012; Sunyer, 2014; Velázquez et al., 2013). This robustness to additional uncertainty indicates that in the present ensemble, the capacity to project the future extreme discharge is already extremely limited due to the uncertainty present and thus can barely be reduced by adding more. While this may appear disheartening, it can also be a wake-up call to stop waiting for (doubtful) uncertainty reductions in climate modelling and start taking (robust) decisions (Arnbjerg-Nielsen et al., 2013; Curry and Webster, 2011; Hawkins and Sutton, 2011).

## 6 Conclusions

We turn to the sensitivity analysis. First, the trend: the fact that signals that emerge late on the planning horizon are masked by noise and rendered less relevant by discounting explains why changing the trend signal leads to only insignificant changes in recommended planning margin. This is compounded by the fact that the trend signal is weak, which is to be expected from the location of the case study catchment (Madsen et al., 2014; Maraun, 2013) and is potentially amplified by projections underestimating trends in extreme precipitation (Haren et al., 2013). It should be added that not all scientists are comfortable with linear trend projections in extreme precipitation and discharge and that there is also an argument to be made for cyclical components (Gregersen et al., 2014) or 'flood-rich' versus 'flood-poor' periods (Hall et al., 2014; Merz et al., 2014), though these may not be applicable to floods of large return periods such as studied here (Merz et al., 2016). We assumed a linear trend in the case study for simplicity, but the proposed methodology is general. To use a different trend representation, one just has to change the definition of  $\theta$  (see Sect. 4.1) accordingly.

Finally, we discuss the impact of varying size of uncertainty on planning. To investigate this, we evaluated the recommended planning margin when not adding any hidden uncertainty, when using the estimated amount and when using double the estimated amount of hidden uncertainty (see Sect. 4.2). The effect was small, in particular between adding the estimate vs. double the estimate of hidden uncertainty. The share of hidden uncertainty is larger in the farther future, where its effect is limited because of discounting. We conclude that hidden uncertainty should be considered in decision making, yet the sensitivity to its exact amount is low and when there is already a considerable level of uncertainty, including more has little effect. This is why we do not engage in detailed discussion on whether the size of the 'hidden uncertainty' has been gauged correctly and whether additional uncertainty components should be included, despite this certainly being debatable (Grundmann, 2010; Refsgaard et al., 2013; Seifert, 2012; Sunyer, 2014; Velázquez et al., 2013). We believe that the low

sensitivity of the protection recommendation to the size of the hidden uncertainty in the presented case study can be explained by the considerable visible uncertainty present: the capacity to project the future extreme discharge is already extremely limited and can barely be reduced by adding more uncertainty. While this may appear disheartening, it can also be a wake-up call to stop waiting for (doubtful) uncertainty reductions in climate modelling and start taking (robust) decisions (Arnbjerg-Nielsen et al., 2013; Curry and Webster, 2011; Hawkins and Sutton, 2011).

## 6 Conclusions

Estimates of future extreme discharge are fraught with numerous large significant uncertainties which that need to be accounted for in flood protection planning. In particular, the following points must be considered when learning the probability distribution of parameters of future extreme discharge (leading to future estimates): distributions:

- 1) an estimate of the uncertainty that ~~can not~~ cannot be quantified from the available data (the ‘hidden uncertainty’); ~~must be included~~, since projections and data at hand ~~often~~ cover only a limited range of the uncertainty spectrum (the ‘visible uncertainty’)
- 2) the time development of the uncertainty, so as to give less weight to projections far on the projection horizon
- 3) dependency between projections, since projection ensembles often include several projections sharing code or assumptions

~~We presented~~In the proposed methodology ~~to, we~~ quantitatively include these aspects ~~when~~in learning the probabilistic distribution of ~~parameters of annual maximum flood discharge, e.g. for making flood protection planning decisions.~~ ‘Visible’. Both ‘visible’ and ‘hidden’ uncertainty ~~form part of~~are included in a time-dependent Bayesian likelihood function. Dependence between projections is accounted for by using the concept of effective projection number. ~~We demonstrated the estimation of uncertainties and the application of the~~The uncertainty analysis proposed in this paper was used with the optimization framework of ~~(Dittes et al., 2017) in a~~(Dittes et al., 2017) to find protection recommendations for a pre-alpine case study catchment. The results show that ~~for a given~~when there is sizable ~~internal variability~~visible uncertainty, the protection recommendation is robust to further uncertainty and moderate changes in trend. However, ~~hidden~~ uncertainty should not be neglected in planning as this would lead to insufficient protection recommendations. ~~The results also highlight the benefits of combining several sources of information, as has been done here with the different types of uncertainty from climate models and historic records.~~

## Code availability

The code is available upon request.

## Data availability

Data are available in the supplements.

## 5 Author contribution

B. Dittes developed the concepts of this paper under the guidance of O. Špačková and D. Straub. B. Dittes wrote the code and performed the simulations. The results presented in Sect. 2 were obtained by L. Schoppa. B. Dittes prepared the manuscript with contributions from all co-authors.

## 10 Competing interests

The authors declare that they have no conflict of interest.

## Acknowledgements

We would like to thank Holger Komischke of Bayerisches Landesamt für Umwelt (LfU) for fruitful discussions. The LfU also provided the discharge records and projections used in the case study. The discharge projections were modelled within the cooperation KLIWA and the Interreg IV B Project AdaptAlp. They were based either on ENSEMBLES data funded by the EU FP6 Integrated Project ENSEMBLES (contract number 505539), whose support is gratefully acknowledged, or additional available climate projections. These are REMO1 ('UBA') and REMO2 ('BfG') (Umweltbundesamt, 2017), as well as CLM1 and CLM2 (Hollweg et al., 2008). This work was supported by Deutsche Forschungsgemeinschaft (DFG) through the TUM International Graduate School of Science and Engineering (IGSSE).

## References

- Aghakouchak, A., Easterling, D., Hsu, K., Schubert, S. and Sorooshian, S., Eds.: Extremes in a ~~changing climate~~[Changing Climate](#), Springer., 2013.
- Alfieri, L., Burek, P., Feyen, L. and Forzieri, G.: Global warming increases the frequency of river floods in Europe, ~~Hydro~~[Hydrology and Earth Syst. Sci., System Sciences](#), 19(5), 2247–2260, doi:10.5194/hess-19-2247-2015, 2015.
- Arnbjerg-Nielsen, K., Willems, P., Olsson, J., Beecham, S., Pathirana, A., Bülow Gregersen, I., Madsen, H. and Nguyen, V. T. V: Impacts of climate change on rainfall extremes and urban drainage systems: A review, ~~Water~~ [Sci. Technol., Science and Technology](#), 68(1), 16–28, doi:10.2166/wst.2013.251, 2013.



- Arnbjerg-Nielsen, K., Funder, S. G. and Madsen, H.: Identifying climate analogues for precipitation extremes for Denmark based on RCM simulations from the ENSEMBLES database, *Water ~~Sci. Technol.~~, Science and Technology*, 71(3), 418–425, doi:10.2166/wst.2015.001, 2015.
- 5 [Benjamin, J. R. and Cornell, C. A.: Probability, Statistics and Decisions for Civil Engineers, Mc Graw - Hill Book Company, New York City., 1970.](#)
- Blöschl, G., Sivapalan, M., Wagener, T., Viglione, A. and Savenije, H.: Runoff Prediction in Ungauged Basins: Synthesis Across Processes, Places and Scales., 2013a.
- Blöschl, G., Nester, T., Komma, J., Parajka, J. and Perdigão, R. ~~aA.~~ P.: The June 2013 flood in the Upper Danube basin, and comparisons with the 2002, 1954 and 1899 floods, *~~Hydro.~~Hydrology and Earth ~~Syst. Sci. Discuss.~~, System Sciences*  
10 [Discussions](#), 10(7), 9533–9573, doi:10.5194/hessd-10-9533-2013, 2013b.
- Bosshard, T., Kotlarski, S., Ewen, T. and Sch, C.: Spectral representation of the annual cycle in the climate change signal, *~~Hydro.~~Hydrology and Earth ~~Syst. Sci.~~, System Sciences*, 2777–2788, doi:10.5194/hess-15-2777-2011, 2011.
- Bosshard, T., Carambia, M., Goergen, K., Kotlarski, S., Krahe, P., Zappa, M. and Schär, C.: Quantifying uncertainty sources in an ensemble of hydrological climate-impact projections, *Water ~~Resour. Res.~~, Resources Research*, 49(3), 1523–1536,  
15 doi:10.1029/2011WR011533, 2013.
- Brigode, P., Oudin, L. and Perrin, C.: Hydrological model parameter instability: A source of additional uncertainty in estimating the hydrological impacts of climate change?, *~~J. Hydro.~~, Journal of Hydrology*, 476, 410–425, doi:10.1016/j.jhydrol.2012.11.012, 2013.
- Central European Flood Risk Assessment and Management in CENTROPE: Current ~~Standards for Flood Protection. [online]~~  
20 [Available from: http://www.central2013.eu/fileadmin/user\\_upload/Downloads/outputlib/CEframe\\_363\\_Current\\_standards\\_for\\_flood\\_protection.pdf, standards for flood protection.](#), 2013.
- Chen, J., Brissette, F. P. and Lucas-picher, P.: Assessing the limits of bias-correcting climate model outputs for climate change impact studies, *~~J. Geophys. Res. Atmos.~~, Journal of Geophysical Research: Atmospheres*, 120, 1123–1136,  
25 doi:10.1002/2014JD022635, 2015.
- Coles, S.: An Introduction to Statistical Modeling of Extreme Values, Springer-~~Verlag~~, London., 2004.
- [Coles, S., Pericchi, L. R. and Sisson, S.: A fully probabilistic approach to extreme rainfall modelling, Journal of Hydrology, 273, 35–50, doi:10.1016/S0022-1694\(02\)00353-0, 2003.](#)
- Curry, J. A. and Webster, P. J.: Climate science and the uncertainty monster, *~~Bull. Am. Meteorol. Soc.~~, Bulletin of the American*  
30 [Meteorological Society](#), 92(12), 1667–1682, doi:10.1175/2011BAMS3139.1, 2011.

Custer, R. and Nishijima, K.: Hierarchical decision making for flood risk reduction, in 11th International Conference on Structural Safety & Reliability, ICOSSAR, New York, pp. 4865–4872., 2013.

Davis, D. R., Kisiel, C. C. and Duckstein, L.: Bayesian decision theory applied to design in hydrology, Water Resources Research, 8(1), 33–41, 1972.

- 5 Delgado, J. M., Apel, H. and Merz, B.: Flood trends and variability in the Mekong river, Hydrology and Earth System Sciences, 14(3), 407–418, doi:10.5194/hess-14-407-2010, 2010.

Deutscher Wetterdienst: Deutscher Klimaatlas, 2017.

Dittes, B., Špačková, O. and Straub, D.: Managing uncertainty in design flood predictions magnitude: Flexible protection strategies vs. safety factors, Journal of Flood Risk Management, submitted [online] Available from:

- 10 [https://www.era.bgu.tum.de/fileadmin/w00bkd/www/Papers/2017\\_Dittes\\_managing\\_uncertainty.pdf](https://www.era.bgu.tum.de/fileadmin/w00bkd/www/Papers/2017_Dittes_managing_uncertainty.pdf), 2017.

Dobler, C., Hagemann, S., Wilby, R. L. and ~~Stätter~~ Stätter, J.: Quantifying different sources of uncertainty in hydrological projections in an Alpine watershed, Hydrology and Earth System Sciences, 16(11), 4343–4360, doi:10.5194/hess-16-4343-2012, 2012.

- 15 Ehret, U., Zehe, E., Wulfmeyer, V., Warrach-Sagi, K. and Liebert, J.: Should we apply bias correction to global and regional climate model data?, Hydrology and Earth System Sciences, 16(9), 3391–3404, doi:10.5194/hess-16-3391-2012, 2012.

Fatichi, S., Rimkus, S., Burlando, P., Bordoy, R. and Molnar, P.: Elevational dependence of climate change impacts on water resources in an Alpine catchment, Hydrology and Earth System Sciences Discussions, 10(3), 3743–3794, doi:10.5194/hessd-10-3743-2013, 2013.

- 20 Foley, ~~a~~ A. M.: Uncertainty in regional climate modelling: A review, Progress in Physical Geography, 34(5), 647–670, doi:10.1177/0309133310375654, 2010.

Götzinger, J. and Bárdossy, A.: Generic error model for calibration and uncertainty estimation of hydrological models, Water Resources Research, 44(12), ~~n/a n/a~~, doi:10.1029/2007WR006691, 2008.

- 25 Graf, M., Nishijima, K. and Faber, M.: Bayesian updating in natural hazard risk assessment, Australian Journal of Structural Engineering, 2007.

Gregersen, I. B., Madsen, H., Rosbjerg, D. and Arnbjerg-Nielsen, K.: Long term variations of extreme rainfall in Denmark and southern Sweden, Climate Dynamics, 3155–3169, doi:10.1007/s00382-014-2276-4, 2014.

Grundmann, J.: Analyse Und Simulation Von Unsicherheiten in Der Flächendifferenzierten Niederschlags-Abfluss-Modellierung, Dresdner Schriften zur Hydrologie, (8), 165, 2010.

- Hall, J. and Solomatine, D.: A framework for uncertainty analysis in flood risk management decisions, [Int. J. International Journal of River Basin Manag., Management](#), 6(2), 85–98, doi:10.1080/15715124.2008.9635339, 2008.
- Hall, J., Arheimer, B., Borga, M., Brázdil, R., Claps, P., Kiss, A., Kjeldsen, T. R., Kriaučiuniene, J., Kundzewicz, Z. W., Lang, M., Llasat, M. C., Macdonald, N., McIntyre, N., Mediero, L., Merz, B., Merz, R., Molnar, P., Montanari, A., Neuhold, C.,  
5 Parajka, J., Perdigão, R. A. P., Plavcová, L., Rogger, M., Salinas, J. L., Sauquet, E., Schär, C., Szolgay, J., Viglione, A. and Blöschl, G.: Understanding flood regime changes in Europe: A state-of-the-art assessment, [Hydro. Hydrology and Earth Syst. Sci., System Sciences](#), 18(7), 2735–2772, doi:10.5194/hess-18-2735-2014, 2014.
- Hallegatte, S.: Strategies to adapt to an uncertain climate change, [Glob. Environ. Chang., Global Environmental Change](#), 19(2), 240–247, doi:10.1016/j.gloenvcha.2008.12.003, 2009.
- 10 Hanel, M. and Buishand, T. A.: Analysis of precipitation extremes in an ensemble of transient regional climate model simulations for the Rhine basin, [Clim. Dyn., Climate Dynamics](#), 36(5–6), 1135–1153, doi:10.1007/s00382-010-0822-2, 2011.
- Haren, R. Van, Oldenborgh, G. J. Van, Lenderink, G. and Hazeleger, W.: Evaluation of modeled changes in extreme precipitation in Europe and the Rhine basin, [Environ. Res. Lett., Environmental Research Letters](#), 8(1), 14053, doi:10.1088/1748-9326/8/1/014053, 2013.
- 15 Hawkins, E. and Sutton, R.: The ~~Potential~~potential to ~~Narrow Uncertainty~~narrow uncertainty in ~~Regional Climate Predictions~~, [Bull. Am. Meteorol. Soc., regional climate predictions, Bulletin of the American Meteorological Society](#), 90(8), 1095–1107, doi:10.1175/2009BAMS2607.1, 2009.
- Hawkins, E. and Sutton, R.: The potential to narrow uncertainty in projections of regional precipitation change, [Clim. Dyn., Climate Dynamics](#), (37), 407–418, 2011.
- 20 Huang, S., Krysanova, V. and Hattermann, F.: Projections of climate change impacts on floods and droughts in Germany using an ensemble of climate change scenarios, [Reg. Environ. Chang., Regional Environmental Change](#), 15(3), 461–473, doi:10.1007/s10113-014-0606-z, 2014.
- Hundecha, Y., Sunyer, M. A., Lawrence, D., Madsen, H., Willems, P., Martinkova, M., Vormoor, K., Bürger, G., Hanel, M., Kriaučiuniene, J., Loukas, A., Osuch, M. and Yücel, I.: Inter-comparison of statistical downscaling methods for projection of  
25 extreme flow indices across Europe, [Hydro. Hydrology and Earth Syst. Sci., System Sciences](#), 19(4), 1827–1847, doi:10.5194/hess-19-1827-2015, 2016.
- IPCC: IPCC Special Report - Emission Scenarios, edited by N. Nakicenovic and R. Swart, Cambridge University Press, Cambridge, England., 2000.
- IPCC: Climate Change 2013: The Physical Science Basis., 2013.
- 30 Kennedy, M. C. and O’Hagan, A.: Bayesian [Calibration calibration](#) of [Computer Models, J. R. Stat. Soc. Ser. computer models](#),

- [Journal of the Royal Statistical Society: Series B](#), 63(3), 425–464, doi:1369-7412/01/63425, 2001.
- Kerkhoff, C., Künsch, H. R. and Schär, C.: A Bayesian hierarchical model for heterogeneous RCM-GCM multimodel ensembles, ~~J. Clim.~~, [Journal of Climate](#), 28(15), 6249–6266, doi:10.1175/JCLI-D-14-00606.1, 2015.
- ~~Der~~ Kiureghian, A. ~~Der~~ and Ditlevsen, O.: Aleatory or epistemic? Does it matter?, ~~Struct. Saf.~~, [Structural Safety](#), 31(2), 105–112, doi:10.1016/j.strusafe.2008.06.020, 2009.
- 5
- KLIWA ~~Klimaveränderung und Wasserwirtschaft~~: Der Klimawandel in Bayern für den Zeitraum 2021-2050., 2005.
- ~~KLIWA Klimaveränderung und Wasserwirtschaft~~ [KLIWA](#): Heft 9 - Regionale Klimaszenarien für Süddeutschland., 2006.
- Knutti, R., Masson, D. and Gettelman, A.: Climate model genealogy: Generation CMIP5 and how we got there, ~~Geophys. Res. Lett.~~, [Geophysical Research Letters](#), 40(6), 1194–1199, doi:10.1002/grl.50256, 2013.
- 10 [Kochendorfer, M. J.: Decision Making Under Uncertainty, The MIT Press, Cambridge, Massachusetts., 2015.](#)
- ~~De~~ Kok, J. L. ~~De~~, Hoekstra, A. Y., Defence, F. and Change, C.: Living ~~With Peak Discharge Uncertainty: The Self~~ [with peak discharge uncertainty: The self-learning Dikedike](#), in 4th Biennial Meeting of the International Congress on Environmental Modelling and Software, iEMSs, [Barcelona](#), pp. 1542–1549., 2008.
- ~~Korek, J., Danneberg, J. and Willems, W.: Impacts of climate change on the water regime of the Inn River basin — extracting adaptation relevant information from climate model ensembles and impact modelling, Adv. Geosci., 10, 1–9, doi:10.5194/adgeo-10-1-2012, 2012.~~
- 15
- Kunstmann, H. and Stadler, C.: High resolution distributed atmospheric-hydrological modelling for Alpine catchments, ~~J. Hydrol.~~, [Journal of Hydrology](#), 314(1–4), 105–124, doi:10.1016/j.jhydrol.2005.03.033, 2005.
- Kwakkel, J., Walker, W. and Marchau, V.: Grappling with uncertainty in the long-term development of infrastructure systems, 20 in ~~Third~~ [3rd International Conference on Infrastructure Systems and Services: Next Generation Infrastructure Systems for Eco-Cities](#) (~~INFRA~~), ~~IEEE~~, Shenzhen., 2010.
- Labarthe, B., Abasq, L., ~~De~~ Fouquet, C. ~~De~~ and Flipo, N.: Stepwise calibration procedure for regional coupled hydrological-hydrogeological models, in Geophysical Research Abstracts of the EGU General Assembly, ~~vol. 16, p. 11672.~~, 2014.
- Laprise, R.: Comment on “The added value to global model projections of climate change by dynamical downscaling: A case study over the continental U.S. using the GISS-ModelE2 nad WRF models” by Racherla et al., ~~J. Geophys. Res. Atmos., 1–5~~ [Journal of Geophysical Research: Atmospheres](#), doi:10.1002/2013JD019945. Received, 2014.
- 25
- Li, M., Yang, D., Chen, J. and Hubbard, S. S.: Calibration of a distributed flood forecasting model with input uncertainty using a Bayesian framework, ~~Water Resour. Res.~~, [Resources Research](#), 48(8), W08510, doi:10.1029/2010WR010062, 2012.
- MacKay, D. J. C.: Bayesian ~~Interpolation~~ [interpolation](#), ~~Neural Comput.~~, [Computation](#), 4(3), 415–447,

doi:10.1162/neco.1992.4.3.415, 1992.

Madsen, H., Lawrence, D., Lang, M., Martinkova, M. and Kjeldsen, T. R.: Review of trend analysis and climate change projections of extreme precipitation and floods in Europe, ~~J. Hydrol.~~Journal of Hydrology, 519(PD), 3634–3650, doi:10.1016/j.jhydrol.2014.11.003, 2014.

5 Magdali, M.: Calibration of the hydrological model WaSiM for the Mangfall, Master Thesis, Technical University of Munich., 2015.

Maraun, D.: When will trends in European mean and heavy daily precipitation emerge?, ~~Environ. Res. Lett.~~Environmental Research Letters, 8(1), 14004, doi:10.1088/1748-9326/8/1/014004, 2013.

Masson, D. and Knutti, R.: Climate model genealogy, ~~Geophys. Res. Lett.~~Geophysical Research Letters, 38(8), ~~1–4~~,  
10 doi:10.1029/2011GL046864, 2011.

Maurer, E. P. and Pierce, D. W.: Bias correction can modify climate model simulated precipitation changes without adverse effect on the ensemble mean, ~~Hydrol.~~Hydrology and Earth Syst. Sci.System Sciences, 18(3), 915–925, doi:10.5194/hess-18-915-2014, 2014.

15 Merz, B., Aerts, J., Arnbjerg-Nielsen, K., Baldi, M., Becker, A., Bichet, A., Blöschl, G., Bouwer, L. M., Brauer, A., Cioffi, F., Delgado, J. M., Gocht, M., Guzzetti, F., Harrigan, S., Hirschboeck, K., Kilsby, C., Kron, W., Kwon, H. H., Lall, U., Merz, R., Nissen, K., Salvatti, P., Swierczynski, T., Ulbrich, U., Viglione, A., Ward, P. J., Weiler, M., Wilhelm, B. and Nied, M.: Floods and climate: Emerging perspectives for flood risk assessment and management, ~~Nat.~~Natural Hazards and Earth Syst. Sci.System Sciences, 14(7), 1921–1942, doi:10.5194/nhess-14-1921-2014, 2014.

20 Merz, B., Vorogushyn, S., Lall, U., Viglione, A. and Blöschl, G.: Charting unknown water - on the role of surprise in flood risk assessment and management, ~~Water Resour. Res.~~Resources Research, 51, 6399–6416, doi:10.1002/2014WR016259, 2015.

Merz, B., Dung, N. V. and Vorogushyn, S.: Temporal clustering of floods in Germany: Do flood-rich and flood-poor periods exist?, ~~J. Hydrol.~~Journal of Hydrology, 541, 824–838, doi:10.1016/j.jhydrol.2016.07.041, 2016.

25 Merz, R., Parajka, J. and Blöschl, G.: Time stability of catchment model parameters: Implications for climate impact analyses, ~~Water Resour. Res.~~Resources Research, 47(2), 6119, doi:10.1029/2010WR009505, 2011.

Mitchell, T. D. and Hulme, M.: Predicting regional climate change: living with uncertainty, ~~Prog. Phys. Geogr.~~Progress in Physical Geography, 23, 57–78, doi:10.1191/030913399672023346, 1999.

30 Moss, R. H., Edmonds, J. a, Hibbard, K. a, Manning, M. R., Rose, S. K., van Vuuren, D. P., Carter, T. R., Emori, S., Kainuma, M., Kram, T., Meehl, G. a, Mitchell, J. F. B., Nakicenovic, N., Riahi, K., Smith, S. J., Stouffer, R. J., Thomson, A. M., Weyant, J. P. and Wilbanks, T. J.: The next generation of scenarios for climate change research and assessment., *Nature*, 463(7282),

747–56, doi:10.1038/nature08823, 2010.

- Muerth, M., St-Denis, B. G., Ludwig, R. and Caya, D.: Evaluation of different sources of uncertainty in climate change impact research using a hydro-climatic model ensemble, in [6th Biennial Meeting of the International Congress on Environmental Modelling and Software](#) ~~Managing of the International Environmental Modelling and Software Society (iEMSs)~~, [Leipzig](#), 2012.
- Nishijima, K.: Concept of decision graphical framework for optimising adaptation of civil infrastructure to a changing climate, [Struct. Infrastruct. Eng., Structure and Infrastructure Engineering](#), 12(4), 477–483, doi:10.1080/15732479.2015.1020496, 2015.
- Paté-Cornell, E.: On “Black swans” and “Perfect storms”: Risk analysis and management when statistics are not enough, [Risk Anal., Analysis](#), 32(11), 1823–1833, 2011.
- Pennell, C. and Reichler, T.: On the effective number of climate models, [J. Clim., Journal of Climate](#), 24(9), 2358–2367, doi:10.1175/2010JCLI3814.1, 2011.
- Pohl, R.: Freibordbemessung an Hochwasserschutzanlagen, 36. Dresdner Wasserbaukolloquium “Technischer und [Organ-organisatorischer](#) Hochwasserschutz,” 2013.
- 15 Pöhler, H., Schultze, B. and Scherzer, J.: KLIWA : Vergleichende Analyse der neuen globalen Klimaprojektionen aus CMIP5 für Süddeutschland. Abschlussbericht., 2012.
- Raiffa, H. and Schlaifer, R.: Applied Statistical Decision Theory, 5th ed., The Colonial Press, Boston., 1961.
- Rajczak, J., Pall, P. and Schär, C.: Projections of extreme precipitation events in regional climate simulations for Europe and the Alpine Region, [J. Geophys. Res. Atmos., Journal of Geophysical Research Atmospheres](#), 118(9), 3610–3626, 20 doi:10.1002/jgrd.502972013, 2013.
- Refsgaard, J. C., Arnbjerg-Nielsen, K., Drews, M., Halsnæs, K., Jeppesen, E., Madsen, H., Markandya, A., Olesen, J. E., Porter, J. R. and Christensen, J. H.: The role of uncertainty in climate change adaptation strategies-A Danish water management example, [Mitig. Adapt. Strateg. Glob. Chang., Mitigation and Adaptation Strategies for Global Change](#), 18(3), 337–359, doi:10.1007/s11027-012-9366-6, 2013.
- 25 Refsgaard, J. C., Madsen, H., Andréassian, V., Arnbjerg-Nielsen, K., Davidson, T. A., Drews, M., Hamilton, D. P., Jeppesen, E., Kjellström, E., Olesen, J. E., Sonnenborg, T. O., Trolle, D., Willems, P. and Christensen, J. H.: A framework for testing the ability of models to project climate change and its impacts, [Clim. Climatic Change](#), 122(1–2), 271–282, doi:10.1007/s10584-013-0990-2, 2014.
- RMD Consult: Erläuterungsbericht - Hochwasserrückhaltebecken Feldolling, Munich, Germany., 2016.
- 30 Rodwell, M. J. and Palmer, T. N.: Using numerical weather prediction to assess climate models, [Q. J. R. Meteorol. Soc., Quarterly Journal](#)

- [of the Royal Meteorological Society](#), 133, 937–948, doi:10.1002/qj, 2007.
- Schmid, F. J., Willkofer, F. and Ludwig, R.: Endbericht Einfluss der Biaskorrektur dynamischer regionaler Klimamodelldaten auf die Wasserhaushaltsmodellierung und Klimafolgeabschätzung in Bayerischen Flussgebieten - Erstellung eines Klimamodell-Audits und ergänzende Untersuchungen (BI-KLIM-2014), München., 2014.
- 5 Seifert, P.: Mit Sicherheit wächst der Schaden. Überlegungen zum Umgang mit Hochwasser in der räumlichen Planung, 2012.
- Špačková, O. and Straub, D.: Long-term adaption decisions via fully and partially observable Markov decision processes, [Sustain.Sustainable and Resilient Infrastruct., to be published, 2016](#)[Infrastructure](#), 2(1), 37–58, 2017.
- ~~Sunyer, M. a., Sunyer, M. A.: Uncertainties in extreme precipitation under climate change conditions, Technical University of Denmark. [online] Available from: <http://www.orbit.dtu.dk>, 2014.~~
- 10 [Sunyer, M. A., Sørup, H. J. D., Christensen, O. B., Madsen, H., Rosbjerg, D., Mikkelsen, P. S. and Arnbjerg-Nielsen, K.:](#) On the importance of observational data properties when assessing regional climate model performance of extreme precipitation, [Hydrology and Earth Syst. Sci., System Sciences](#), 17(11), 4323–4337, doi:10.5194/hess-17-4323-2013, 2013a.
- ~~Sunyer, M. a., Hundecha, Y., Lawrence, D., Madsen, H., Willems, P., Martinkova, M., Vormoor, K., Bürger, G., Hanel, M., Kriaučiūnienė, J., Loukas, A., Osuch, M., Yücel, I., Kriaučiūniene, J., Loukas, A., Osuch, M., Yücel, I., Kriaučiūnienė, J.,~~
- 15 ~~Loukas, A., Osuch, M. and Yücel, I.:~~ Inter-comparison of statistical downscaling methods for projection of extreme precipitation in Europe, [Hydrology and Earth Syst. Sci.](#), 19(4), 1827–1847, doi:10.5194/hess-19-1827-2015, 2015a.
- ~~Sunyer, M. A., Sunyer, M. A.: Uncertainties in extreme precipitation under climate change conditions, Technical University of Denmark. [online] Available from: <http://www.orbit.dtu.dk>, 2014.~~
- ~~Sunyer, M. A., Madsen, H., Rosbjerg, D. and Arnbjerg-Nielsen, K.:~~ Regional interdependency of precipitation indices across
- 20 Denmark in two ensembles of high-resolution RCMs, [J. Clim., Journal of Climate](#), 26(20), 7912–7928, doi:10.1175/JCLI-D-12-00707.1, 2013b.
- ~~Sunyer, M. A., Madsen, H., Rosbjerg, D. and Arnbjerg-Nielsen, K.:~~ A Bayesian approach for uncertainty quantification of extreme precipitation projections including climate model interdependency and nonstationary bias, [J. Clim.](#), 27(18), 7113–7132, doi:10.1175/JCLI-D-13-00589.1, 2014.
- 25 Sunyer, M. A., Gregersen, I. B., Rosbjerg, D., Madsen, H., Luchner, J. and Arnbjerg-Nielsen, K.: Comparison of different statistical downscaling methods to estimate changes in hourly extreme precipitation using RCM projections from ENSEMBLES, [Int. J. Climatol., International Journal of Climatology](#), 35, 2528–2539, doi:10.1002/joc.4138, 2015a.
- ~~Sunyer, M. A., Hundecha, Y., Lawrence, D., Madsen, H., Willems, P., Martinkova, M., Vormoor, K., Bürger, G., Hanel, M., Kriaučiūnienė, J., Loukas, A., Osuch, M., Yücel, I., Kriaučiūniene, J., Loukas, A., Osuch, M., Yücel, I., Kriaučiūnienė, J.,~~
- 30 ~~Loukas, A., Osuch, M. and Yücel, I.:~~ Inter-comparison of statistical downscaling methods for projection of extreme

- [precipitation in Europe. Hydrology and Earth System Sciences, 19\(4\), 1827–1847, doi:10.5194/hess-19-1827-2015, 2015b.](#)
- Tebaldi, C. and Knutti, R.: The use of the multi-model ensemble in probabilistic climate projections, [Philos. Trans. A. Math. Phys. Eng. Sci., Philosophical transactions Series A, Mathematical, physical, and engineering sciences, 365\(1857\), 2053–75, doi:10.1098/rsta.2007.2076, 2007.](#)
- 5 [Tebaldi, C., Smith, R., Nychka, D. and Mearns, L.: Quantifying uncertainty in projections of regional climate change: a Bayesian approach to the analysis of multimodel ensembles, Journal of Climate, 18, 1524–1540, 2004.](#)
- Tebaldi, C., O’Neill, B. and Lamarque, J.-F.: Sensitivity of regional climate to global temperature and forcing, [Environ. Res. Lett., Environmental Research Letters, 10\(7\), 74001, doi:10.1088/1748-9326/10/7/074001, 2015.](#)
- 10 Themeßl, J., Gobiet, A. and Leuprecht, A.: Empirical-statistical downscaling and error correction of daily precipitation from regional climate models, [Int. J. Climatol., International Journal of Climatology, 31\(10\), 1530–1544, doi:10.1002/joc.2168, 2010.](#)
- Velázquez, J. ~~a~~, Schmid, J., Ricard, S., Muerth, M. J., Gauvin St-Denis, B., Minville, M., Chaumont, D., Caya, D., Ludwig, R. and Turcotte, R.: An ensemble approach to assess hydrological models’ contribution to uncertainties in the analysis of climate change impact on water resources, [Hydrol. Hydrology and Earth Syst. Sci., System Sciences, 17\(2\), 565–578, doi:10.5194/hess-17-565-2013, 2013.](#)
- 15 [Viglione, A., Merz, R., Salinas, J. L. and Blöschl, G.: Flood frequency hydrology: 3. A Bayesian analysis, Water Resources Research, 49\(2\), 675–692, doi:10.1029/2011WR010782, 2013.](#)
- Wasserwirtschaftsamt Rosenheim: Das Hochwasser vom Juni 2013., 2014.
- Wiedemann, C. and Slowacek, W.: Hochwasserrückhaltebecken Feldolling: Zweck , Betrieb Bemessung und Funktionsweise, 20 Wasserwirtschaftsamt Rosenheim, Rosenheim. [online] Available from: [http://www.wwa-ro.bayern.de/hochwasser/hochwasserschutzprojekte/mangfalltal/doc/hrb\\_feldolling/funktion\\_hrb\\_feldolling.pdf](http://www.wwa-ro.bayern.de/hochwasser/hochwasserschutzprojekte/mangfalltal/doc/hrb_feldolling/funktion_hrb_feldolling.pdf), 2013.
- Wilby, R. L.: Uncertainty in water resource model parameters used for climate change impact assessment, [Hydrol. Process., Hydrological processes, 19\(16\), 3201–3219, 2005.](#)
- Willems, W. and Stricker, K.: Klimawandel und Wasserhaushalt: AdaptAlp - Untersuchung zum Einfluss des Klimawandels 25 auf Wasserbilanzen und Abflüsse für das Inneinzugsgebiet mittels verschiedener Klimaszenarien. Endbericht., ~~(September),~~ 2011.
- Ylhäisi, J. S., Räisänen, J., Masson, D., Rätty, O. and Järvinen, H.: How does model development affect climate projections?, [Atmos. Sci. Lett., \(April\), Atmospheric Science Letters, doi:10.1002/asl2.577, 2015.](#)