

Satellite-derived products of solar and longwave irradiances used for snowpack modelling in mountainous terrain

Louis Quéno^{1,2}, Fatima Karbou¹, Vincent Vionnet^{1,3}, and
Ingrid Dombrowski-Etchevers⁴

¹Univ. Grenoble Alpes, Université de Toulouse, Météo-France, CNRS, CNRM, Centre d'Etudes de la Neige, Grenoble, France

²WSL Institute for Snow and Avalanche Research SLF, Davos, Switzerland

³Environmental Numerical Research Prediction, Environment and Climate Change Canada, Dorval, QC, Canada

⁴CNRM, Université de Toulouse, Météo-France, CNRS, Toulouse, France

Correspondence to: Louis Quéno (louis.ueno@gmail.com)

Abstract. In mountainous terrain, the snowpack is strongly affected by incoming shortwave and longwave radiation. In this study, a thorough evaluation of the solar and longwave downwelling irradiance products (DSSF and DSLF) derived from the Meteosat Second Generation satellite was undertaken in the French Alps and the Pyrenees. The satellite-derived products were compared with
5 forecast fields from the meteorological model AROME and with analyses fields from the SAFRAN system. A new satellite-derived product (DSLfnw) was developed by combining satellite observations and AROME forecasts. An evaluation against in situ measurements showed lower errors for DSSF than AROME and SAFRAN in terms of solar irradiances. For longwave irradiances, contrasted results falling in the range of uncertainty of sensors did not enable us to select the best
10 product. Spatial comparisons of the different datasets over the Alpine and Pyrenean domains highlighted a better representation of the spatial variability of solar fluxes by DSSF and AROME than SAFRAN. We also showed that the altitudinal gradient of longwave irradiance is too strong for DSLfnw and too weak for SAFRAN. These datasets were then used as radiative forcing together with AROME near-surface forecasts to drive distributed snowpack simulations by the model Crocus
15 in the French Alps and the Pyrenees. An evaluation against in-situ snow depth measurements showed higher biases when using satellite-derived products, despite their quality. This effect is attributed to some error compensations in the atmospheric forcing and the snowpack model. However, satellite-derived irradiance products are judged beneficial for snowpack modelling in mountains, when the error compensations are solved.

20 1 Introduction

Seasonal snowpacks are a key component of mountain hydrological systems. Snow accumulation and ablation processes set up the temporal evolution of the snow cover and its spatial distribution, controlling the snow melt variability and timing, which govern the run-off in high-altitude catchments (e.g. Anderton et al., 2002; DeBeer and Pomeroy, 2017). The evolution and spatial distribution of the snowpack in mountainous terrain depends on its energy budget, affected by the surface radiative budget, the sensible and latent heat fluxes and the ground heat flux (e.g. Armstrong and Brun, 2008). The meteorological conditions are the main factors controlling the snow surface energy budget, with a key contribution of the radiative components (Male and Granger, 1981). For example, Cline (1997) reported a contribution of 75% of net radiative fluxes in the energy for snowmelt over the entire season at a continental midlatitude alpine site of the Colorado Front Range (3517 m), while Marks and Dozier (1992) found a contribution between 66% and 90% at two alpine sites of the Sierra Nevada (2800 m and 3416 m). Therefore, incoming shortwave ($SW\downarrow$) and longwave ($LW\downarrow$) radiative fluxes are amongst the most significant atmospheric factors of the energy and mass budget of the snowpack, particularly during snowmelt periods. It is crucial to accurately represent them in numerical snowpack simulations, as recent works underlined the strong sensitivity of snowpack simulations to the radiative forcing (Raleigh et al., 2015; Lapo et al., 2015b; Sauter and Obleitner, 2015), together with crucial input variables like precipitation and air temperature (Raleigh et al., 2015; Günther et al., 2019).

Several studies highlighted the benefits of distributed snowpack simulations at the scale of mountain ranges, particularly in areas with scarce snow cover observations. Simulations of detailed snowpack models driven by Numerical Weather Prediction (NWP) forecasts at kilometeric resolution proved to describe satisfactorily the snowpack variability within a mountain range (Quéno et al., 2016; Vionnet et al., 2016), the snow accumulation quantitative distribution (Schirmer and Jamieson, 2015), and to provide relevant high-resolution information for snowpack stability concerns (Bellaire et al., 2014; Horton et al., 2015). The radiative forcing of these simulations relies on NWP forecasts of the $SW\downarrow$ and $LW\downarrow$ irradiances with no use of observations (in situ or from satellites). Vionnet et al. (2016) made a preliminary evaluation of $SW\downarrow$ and $LW\downarrow$ irradiance forecasts by the NWP system AROME operating at 2.5 km resolution over France. Through comparisons to ground-based measurements at two mountainous sites in the French Alps, they showed an overestimation of $SW\downarrow$ and an underestimation of $LW\downarrow$, linked to an underestimation of the cloud cover.

Satellite-derived estimates of $SW\downarrow$ and $LW\downarrow$ irradiances are an alternative to NWP-based irradiance datasets in mountainous terrain. They are mostly based on satellite products of cloud mask, which highly controls the incoming radiation in mountains (e.g. Sicart et al., 2016), and top-of-atmosphere reflectances. These satellite-based products could have a potential added value for snowpack modelling since they are available continuously and at a relatively high resolution in mountains, where in situ observations are rather scarce. This approach has already been explored with the solar

and longwave surface irradiance data from NASA's Clouds and the Earth's Radiant Energy System synoptic (CERES SYN; Rutan et al., 2015), which are satellite-derived estimates at 3 h temporal resolution and 1° grid spacing (i.e. approximately 110 km at midlatitudes). The quality of CERES SYN irradiances was found to be poorer at mountain stations than in plains (Hinkelman et al., 2015). The CERES SYN solar irradiance product was also evaluated by Lapo et al. (2017) who found large biases over complex terrain. Hinkelman et al. (2015) used CERES SYN irradiance products to drive snowmelt simulations in complex terrain and found performances in the range of empirical methods and observations. In this study, we used the SW↓ and LW↓ irradiances from the Satellite Application Facility on Land Surface Analysis (LSA SAF; Trigo et al., 2011), derived from Meteosat Second Generation (MSG) satellite data. These products have a higher temporal frequency (30 min) and a higher spatial resolution (3 km at nadir), and thus may be more adapted than CERES SYN products to complex terrains, where the subgrid variability of incoming radiation within a 1° grid cell is the highest (Hakuba et al., 2013). In a perspective of distributed snowpack simulations at kilometric resolution, they are also consistent with the horizontal resolution of the other atmospheric variables from NWP systems. LSA SAF irradiance products were proved to be valuable in plains (e.g. Geiger et al., 2008b; Ineichen et al., 2009; Trigo et al., 2010; Carrer et al., 2012; Moreno et al., 2013; Cristóbal and Anderson, 2013), with a significant positive impact when used for simulations of the surface and soil temperatures, and soil water content (Carrer et al., 2012) or evapotranspiration modelling (Ghilain et al., 2011; Sun et al., 2011). MSG satellite data has already been used to derive incoming solar irradiance over complex terrain in the Heliomont method (Stöckli, 2013; Castelli et al., 2014), but at a much finer scale (100 m) than the scope of this study.

The aim of the present study is to assess LSA SAF products of SW↓ and LW↓ irradiances in the French Alps and the Pyrenees, and to compare them with kilometric-resolution NWP forecasts and with a meteorological analysis system dedicated to mountainous terrain. We also test and discuss the potential of LSA SAF irradiance products to drive distributed snowpack simulations in mountains. With regard to the existing literature on the subject, this article makes three original contributions: (i) in-depth evaluation of LSA SAF irradiance products in mountains, (ii) development and assessment of a new LW↓ irradiance product to better capture the spatial variability of LW↓ irradiance in complex terrain, (iii) use of satellite-derived irradiance products at higher spatial and temporal resolution than previous studies to drive distributed snowpack simulations over large mountain areas.

2 Data and models

2.1 Study domain and period

The study focuses on two domains covering the French Alps (Fig. 1a) and the French and Spanish Pyrenees (Fig. 1b). The French Alps domain ranges from 43.125°N to 46.875°N latitudes and from 4.5°E to 8.5°E longitudes. This domain also includes a part of the mid-altitude mountain range of

Jura. The Pyrenees domain covers the latitudes from 41.6°N to 43.6°N and the longitudes from -2.5°E to 3.5°E. Hourly data, from 1 August 2010 to 31 July 2014, including in situ measurements, satellite-derived irradiance products, meteorological models and snowpack simulations were used.

95 2.2 Irradiance datasets

Several irradiance datasets were used in this study: forecasts from the NWP model AROME, reanalyses from the SAFRAN analysis system, LSA SAF irradiance products derived from remotely-sensed observations and a hybrid LW↓ irradiance product based on a combination of LSA SAF algorithms with AROME forecasts. An in situ observation dataset was built up for validation in mountains.

100 2.2.1 NWP system: AROME

AROME (Application of Research to Operations at MEso-scale) is the meso-scale NWP system of Météo-France (Seity et al., 2011), operating over France since December 2008 at 2.5 km grid spacing (1.3 km since 2015; Brousseau et al., 2016). It is a spectral and non-hydrostatic model. The physics and data assimilation schemes are detailed in Seity et al. (2011). In particular, AROME
105 uses the radiation parameterisations from the European Centre for Medium-Range Weather Forecasts (ECMWF), with the SW scheme from Fouquart and Bonnel (1980) and the LW scheme from Mlawer et al. (1997).

In this study, we built a continuous atmospheric forcing dataset to drive snowpack simulations using hourly AROME forecasts issued from the 0 UTC analysis time, from + 6 h to + 29 h, extracted
110 on a regular latitude/longitude grid with a 0.025° resolution over the period and domains of study (Sect. 2.1, Fig. 1), similarly to Quéno et al. (2016) and Vionnet et al. (2016). Besides incoming shortwave and longwave irradiances, 2 m temperature and humidity, as well as 10 m wind speed and ground-level precipitation (amount of rainfall and snowfall) are part of the AROME forcing. The variable heights correspond to the heights of the diagnostic variables provided by AROME.

115 2.2.2 Analysis system: SAFRAN

SAFRAN (Système d'Analyse Fournissant des Renseignements Atmosphériques à la Neige; Analysis System Providing Atmospheric Information to Snow; Durand et al., 1993, 2009a, b) is a meteorological analysis system developed to provide hourly estimation of meteorological parameters required to drive land surface models. SAFRAN outputs are available per 300 m altitude steps within
120 mountainous regions called "massifs". There are 23 massifs in the French Alps and 23 massifs in the French and Spanish Pyrenees (Fig. 1), defined for their climatological homogeneity. SAFRAN reanalyses take a preliminary guess from the global NWP model ARPEGE (from Météo-France, 15 km grid spacing projected on a 40 km grid; Courtier et al., 1991) combined by optimal interpolation with available observations from automatic weather stations, manual observations carried out in the
125 climatological network and in ski resorts, remotely-sensed cloudiness and atmospheric upper-level

soundings. In particular, the incoming shortwave and longwave fluxes are computed with the radiation scheme from Ritter and Geleyn (1992), using as first guess vertical profiles of temperature and humidity from ARPEGE forecasts, atmospheric soundings, a guess of cloudiness based on the analysed vertical humidity profile and a cloud mask detected by satellite (Derrien et al., 1993).

In this study, we used SAFRAN reanalyses from 1 August 2010 to 31 July 2014. For comparisons to in situ irradiance observations, the reanalyses were interpolated at the exact elevation of the stations, through a weighted mean of SAFRAN reanalyses at the two closest elevation levels in the considered massif. For La Pesse station in Jura (Fig. 1a), the extension of SAFRAN to mid-altitude French massifs (Lafaysse et al., 2013) was used. For Carpentras station in plains (Fig. 1a), the SAFRAN-France extension (Quintana-Seguí et al., 2008) was considered. For distributed comparisons and for the atmospheric forcing of distributed snowpack simulations, the reanalyses at massif-scale in the French Alps and in the Pyrenees were interpolated over the 0.025° grid of the AROME forcing, within SAFRAN massifs, similarly to Quéno et al. (2016) and Vionnet et al. (2016), following the method described in Vionnet et al. (2012).

2.2.3 LSA SAF products

The LSA SAF is a project supported by the European Organisation for the Exploitation of Meteorological Satellites (EUMETSAT) and a consortium of European National Meteorological Services, with the purpose to use remotely-sensed data to determine land surface variables (Trigo et al., 2011). In particular, it provides estimates of the Downward Surface Shortwave Flux (DSSF) and the Downward Surface Longwave Flux (DSLW), derived from the Spinning Enhanced Visible and Infrared Imager (SEVIRI) radiometer on board the MSG geostationary satellite (Schmetz et al., 2002). They are generated every 30 min, covering the MSG full disk with a 3 km resolution at nadir. They have been operationally disseminated since September 2005 (<http://landsaf.ipma.pt>). DSSF and DSLW are fully consistent as they are based on the same satellite observations.

- SW↓ irradiance: DSSF

The algorithm to estimate the DSSF is described in details by Geiger et al. (2008b). The MSG/SEVIRI cloud mask (Derrien and Le Gléau, 2005) identifies clear-sky and cloudy-sky situations. Two separate algorithms are then applied. In the clear-sky method, derived from Frouin et al. (1989), the effective transmittance of the atmosphere is parameterized using the total column water vapour content (TCWV) forecast by the European Centre for Medium-Range Weather Forecasts (ECMWF) Integrated Forecasting System (IFS), the ozone amount from the Total Ozone Mapping Spectrometer climatology, a constant visibility and the surface albedo taken from the LSA SAF albedo product (Geiger et al., 2008a). In the cloudy-sky method, derived from Gautier et al. (1980) and Brisson et al. (1999), the top-of-atmosphere reflectance observed by MSG/SEVIRI is used in addition to the former set of variables to apply a simple physical model of radiative transfer. Contrary to the Helimont solar irradiance

product also derived from MSG data (Stöckli, 2013; Castelli et al., 2014), the DSSF is not down-scaled over complex terrain, and thus not corrected for local topography effects. The target accuracy of the DSSF is 10% or 20 W m^{-2} for values lower than 200 W m^{-2} (Trigo and Viterbo, 2009).

- LW↓ irradiance: DSLF

The algorithm to estimate the DSLF is described in details by Trigo et al. (2010). It consists in a modified version of the bulk parameterisation of Prata (1996), initially developed for clear skies only. It relies on a formulation of the effective emissivity and temperature of the atmospheric layer above the surface, using the TCWV, 2 m temperature (T_{2m}) and 2 m dew point (Td_{2m}) forecast by the ECMWF IFS. The formulation parameters are calibrated for clear-sky and overcast conditions independently. The MSG/SEVIRI cloud mask (Derrien and Le Gléau, 2005) is thus the only observation used, to distinguish clear-sky and cloudy-sky situations. In case of partly cloudy situations, the average of both terms is taken. The DSLF can therefore be described more accurately as a longwave irradiance parameterisation using satellite observations of the cloud mask rather than a satellite product. The DSLF is not down-scaled over complex terrain, and thus not corrected for local topography effects. The target accuracy of the DSLF is 10% (Trigo and Viterbo, 2009).

2.2.4 New DSLF product using AROME forecasts

The DSLF relies on the ECMWF IFS forecasts of TCWV, T_{2m} and Td_{2m} . These atmospheric variables have a strong dependence on altitude and a strong spatial variability in mountainous terrain. The 16-km horizontal resolution of the ECMWF IFS hardly represents this spatial variability in the Alps and the Pyrenees, despite a constant lapse rate applied for grid elevation correction. Consequently, we developed a new DSLF product using the same algorithm (Trigo et al., 2010) depending on the cloud mask (Derrien and Le Gléau, 2005), but replacing ECMWF forecasts by AROME forecasts at 2.5 km resolution, which provides a finer representation of the topography. Air temperature and dew point were taken at 20 m above ground in the archive of the AROME operational forecast. This height corresponds approximately to the height of the first prognostic level in the operation version of AROME over the period 2010–2014 (Seity et al., 2011). The use of AROME also implies a better agreement of the atmospheric forecast resolution (2.5 km) with the cloud mask and final product resolution (3 km).

The new product was generated on the exact same grid as DSLF, in order to enable direct comparisons, so AROME forecasts were interpolated over the LSA SAF grid through a closest-neighbour method (similar grid spacing). The possible altitude difference between AROME grid points and LSA SAF grid points was mitigated thanks to a vertical temperature gradient of -6.5 K km^{-1} according to the International Standard Atmosphere, similarly to the method applied to ECMWF IFS

forecasts. The algorithm was applied to the new DSLF on the LSA SAF grid over the domains of study (Fig. 1), from 1 August 2010 to 31 July 2014. Hereafter, this product is referred to as DSLFnew.

2.2.5 In situ irradiance observations

To assess the distributed irradiance datasets, ground measurements of $SW\downarrow$ and $LW\downarrow$ were extracted from Météo-France station network and additional Automatic Weather Stations (AWS). Stations with altitude higher than 1000 m were selected. As elevation influences incoming radiation (Oliphant et al., 2003), stations were not used for evaluation if the difference between the station elevation and the elevation of the four closest AROME and LSA SAF grid points was higher than 300 m. As elevation differences up to 300 m may have an influence on the comparisons, the altitudes of the grid points associated with each station are listed in Table 1 and should be kept in mind when analyzing the evaluation statistics. The resulting observation database, represented in Fig. 1, includes 14 mountain $SW\downarrow$ stations (8 in the French Alps, 1 in Jura and 5 in the Pyrenees), 4 mountain $LW\downarrow$ stations (3 in the French Alps and 1 in the Pyrenees). An additional station located in plains at Carpentras (Fig. 1) has been included in the database since it is the reference station for $SW\downarrow$ and $LW\downarrow$ measurements in France. These stations and their characteristics are listed in Table 1.

Irradiance measurements are scarce in mountainous terrain and their quality is often lower than plain measurements, due to the difficulty to maintain these stations and the possible occurrence of frost or snow on the sensors in winter (Lapo et al., 2015a). The pyranometers from Météo-France network (Kipp&Zonen CM5, CM6B and CM11) meet the good quality standards of the World Meteorological Organization (WMO, 2014), hence an uncertainty of hourly total $SW\downarrow$ irradiance of $\pm 10\%$ (Leroy and Leches, 2014). Due to their location in altitude, the maintenance may not be systematically weekly so that uncertainties of $\pm 10\%$ are probably too optimistic. The station of Carpentras in plains is equipped with the pyranometer Kipp&Zonen CM21 and the pyrgeometer Kipp&Zonen CG4. This station is a reference station for radiation measurements, as it is part of the Baseline Surface Radiation Network (BSRN; Ohmura et al., 1998): the uncertainties are $\pm 3\%$ for $SW\downarrow$ and $\pm 5\%$ for $LW\downarrow$. At Col de Porte where the pyranometer Kipp&Zonen CM14 and the pyrgeometer Kipp&Zonen CG4 undergo a regular maintenance, Morin et al. (2012) reported a total uncertainty on the order of $\pm 10\%$ (including site-dependent uncertainties). The AWS of Bassières (Szczypta et al., 2015), Argentière glacier and St-Sorlin glacier (data from GLACIOCLIM program, <https://glacioclim.osug.fr>) have Kipp&Zonen CM3 pyranometers and CG3 pyrgeometers, classified as moderate quality after WMO's standards (WMO, 2014), for which the manufacturer reports a daily total accuracy of $\pm 10\%$. The uncertainties have not been estimated at these stations. They are possibly higher than 10% because of the difficulty to maintain AWS in complex environment, particularly in winter. WMO (2014) indicates uncertainties up to $\pm 20\%$ for hourly totals for this kind of instruments. The results at these stations are indicative for high altitudes but shall be considered carefully. Table 1 summarizes the measurement uncertainties at each station.

SW↓ and LW↓ irradiances from LSA SAF products, AROME forecasts and SAFRAN reanalyses were evaluated using these in situ measurements. The altitude of the grid points associated to each station is reported in Table 1. Biases and Root Mean Square Errors (RMSE) were computed in absolute and relative values (with the mean of observations as reference). To account for topographic shading on irradiance in situ measurements, a topographic mask was computed with a 5° interval size after a 25 m resolution digital elevation model (DEM) of IGN (French National Institute of Geographical and Forest Information), and applied to the SW↓ irradiance products at all stations except Andorre and Envalira, because the DEM of IGN was only available on the French territory. The SW↓ irradiance products were only evaluated when the sun was above the horizon, or when the observed value was higher than 20 W m^{-2} at Andorre and Envalira stations (to discard periods when the sun is masked by the terrain). The LW↓ irradiance products were evaluated by day and night.

2.3 Snowpack datasets

The impact of the different irradiance datasets on distributed snowpack simulations is assessed using the snowpack model Crocus with different atmospheric forcings. These simulations are compared to in situ measurements of snow depth.

2.3.1 Snowpack model: Crocus

Snowpack simulations driven by different irradiance datasets were performed with the detailed snow cover model Crocus (Brun et al., 1992; Vionnet et al., 2012) coupled with the ISBA land surface model within the SURFEX simulation platform (Masson et al., 2013), to fully simulate the interactions between snowpack and soil. SURFEX/ISBA-Crocus (called Crocus hereafter) simulates the evolution of the snowpack physical properties along its stratigraphy, under given atmospheric forcing data (temperature and specific humidity at a given height above the surface, wind speed at a given height above the surface, SW↓ and LW↓ irradiance, solid and liquid precipitation).

The simulations were carried out over the French Alps and Pyrenees domains (Fig. 1), on the AROME regular latitude/longitude grid at 0.025° resolution (Sect. 2.2.1) from 1 August 2010 to 31 July 2014. The effects of aspect and slope on incoming solar irradiance were not taken into account, because the snowpack is simulated over flat terrain, and the interactions with the vegetation and the parameterisation of fractional snow cover were not activated, because the evaluation observations are located in flat and open fields. This configuration has already been used in Vionnet et al. (2016) and Quéno et al. (2016).

Except incoming radiative fluxes, the atmospheric forcing of the snowpack simulations was built with AROME forecasts (Sect. 2.2.1). The radiative components of the forcings were extracted from the different irradiance datasets: a) AROME irradiance forecasts (simulations named A-Cro hereafter), b) SAFRAN irradiance reanalyses (simulations named AS-Cro hereafter), c) DSSF and DSLFnew (simulations named AL-Cro hereafter), d) DSSF and AROME LW↓ irradiance (simula-

tions named AL_{SW} -Cro hereafter), e) DSLFnew and AROME $SW\downarrow$ irradiance (simulations named AL_{LW} -Cro hereafter). In order to include DSSF and DSLFnew products in AROME forcing, the interpolation on AROME grid was made to minimize the effect of elevation difference on the incoming radiative fluxes. Among the four nearest LSA SAF grid points, the grid point with the minimum altitude difference with AROME grid point was chosen. Similarly to Hinkelman et al. (2015), $SW\downarrow$ irradiances were not modified, whereas a vertical gradient of $-29 \text{ W m}^{-2} \text{ km}^{-1}$ (Marty et al., 2002) was applied to $LW\downarrow$ irradiances to mitigate the remaining differences in altitude. The different simulations are summarized in Table 2.

2.3.2 In situ snowpack observations

To assess the quality of Crocus simulations, an observational dataset of snow depth measurements was constituted in the French Alps and the Pyrenees, within SAFRAN massifs. Only stations with less than 150 m elevation difference to the model topography were selected, in order to use the same dataset as Quéno et al. (2016) and Vionnet et al. (2016). This dataset contains a total of 172 stations (89 in the French Alps and 83 in the Pyrenees) with daily manual measurements at ski resorts (at 6 UTC) and daily automatic measurements by ultra-sonic sensors at high altitude sensors, as described in details in Vionnet et al. (2016) for the French Alps and in Quéno et al. (2016) for the French and Spanish Pyrenees.

3 Evaluation of irradiance products over the Alps and the Pyrenees

3.1 Comparisons with in situ measurements

The $SW\downarrow$ error statistics for all stations are listed in Table 1. For most stations, DSSF shows the lowest biases with an underestimation of $SW\downarrow$. Biases are also mostly negative for SAFRAN, while AROME exhibits strong positive biases at most of the stations. DSSF exhibits the lowest RMSE at almost all stations. For all products, the lowest RMSE are reached at Carpentras in plains. These metrics are summarized in Fig. 2. The distinction by domain (French Alps and Pyrenees) shows that the three products have very similar RMSE over both domains, which highlights the consistency of these error statistics. The distinction by range of altitude (1000 m - 1500 m, 1500 m - 2000 m, > 2000 m) shows increasing RMSE with altitude for DSSF, while RMSE are higher but more constant for AROME and SAFRAN. The increasing RMSE of DSSF is mainly due to stronger negative biases at high altitudes (-39 W m^{-2} above 2000 m against -8 W m^{-2} between 1000 m and 1500 m). SAFRAN biases are negative at all altitudes while AROME biases are positive at all altitudes. Overall, DSSF exhibits the best performance with a relative bias of -4% and a relative RMSE of 33% . SAFRAN has a relative bias of -7% and a relative RMSE of 40% . Finally, AROME exhibits the strongest relative bias ($+12\%$) and the highest relative RMSE (43%).

Fig. 3 shows biases and RMSE of the different datasets of incoming $LW\downarrow$ (DSL F , DSL F new, AROME and SAFRAN) at the five $LW\downarrow$ stations and the overall error statistics. In this figure, stations are ordered by altitude. In mountains, DSL F , DSL F new and AROME have a negative bias, while SAFRAN bias tends to increase with altitude. At low elevation (Carpentras), the best performance is in favour of DSL F new with a bias of $+4 \text{ W m}^{-2}$ ($+1\%$) and a RMSE of 16 W m^{-2} (5%), which falls within the range of uncertainties of the sensor. At three mountain stations (Col de Porte, Bassiès and Argentière glacier), the lowest bias and RMSE are reached by SAFRAN, while AROME has the lowest RMSE at St-Sorlin glacier. Overall, AROME exhibits the strongest negative relative bias (-6%) and the highest relative RMSE (12%). DSL F and DSL F new have equivalent error statistics with a relative bias of -3% and a relative RMSE of 11% . Finally, SAFRAN has a relative bias of $+1\%$ and a relative RMSE of 11% . These global error statistics are close to the sensor uncertainties in mountains, which does not enable to choose the "best product". However, some trends are identified such as an underestimation of $LW\downarrow$ by DSL F , DSL F new and AROME. The performance of LSA SAF products and models is also clearly better in terms of $LW\downarrow$ than $SW\downarrow$, because of lower biases and RMSE.

The yearly cycles of $SW\downarrow$ irradiances are illustrated at Carpentras for reference (Fig. 4a) and at Péone mountain station (Fig. 4b). They show higher RMSE in Spring and Summer for each dataset, lowest RMSE for DSSF and highest RMSE for AROME during the whole year, except in December and January where the three products have equivalent RMSE. This trend was found similar at all stations. No specific trend was observed for the bias. The $SW\downarrow$ daily cycles (Fig. 4c for Carpentras and Fig. 4d for Péone) show a lower RMSE for DSSF in the middle of the day. SAFRAN cycle is not marked enough (positive biases in the morning and evening, negative biases in the middle of the day). AROME overestimates $SW\downarrow$ all the time. DSSF represents well the diurnal cycle, with an underestimation in the afternoon. These trends were also highlighted at the other mountain stations. The study of the daily and yearly cycles of $LW\downarrow$ irradiances did not indicate any particular trend for metrics following the month or the hour (not shown).

3.2 Spatial comparisons of the distributed products

Spatial comparisons of the different irradiance products were carried out over the two domains. DSSF and DSL F were taken as references. The spatial distributions of their annual mean computed using data from 1 August 2010 to 31 July 2014 and the differences with the other irradiance products are shown in Fig. 5 for the French Alps and in Fig. 6 for the Pyrenees.

The DSL F exhibits a strong correlation with the altitude, with a decreasing LW irradiance towards the highest elevations, i.e. the East of the French Alps (Fig. 5a) and the central range of the Pyrenees (Fig. 6a). AROME presents a moderate negative bias as compared to the DSL F , both in the Alps (Fig. 5b) and in the Pyrenees (Fig. 6b), while SAFRAN presents a strong positive bias, particularly in the highest areas of the Alps (Fig. 5c) and the Pyrenees (Fig. 6c). DSL F new presents a slight

positive bias over most of the domains, except over the highest peaks where the bias is slightly negative (Fig. 5d and Fig. 6d).

The DSSF exhibits a lower correlation with the topography (Fig. 5e and Fig. 6e). For given sky conditions, the SW irradiance increases with the elevation as the atmospheric transmissivity increases. But the annual mean of the DSSF follows more regional patterns of cloud cover than elevation patterns. For example, in the French Alps, Fig. 5e shows a North-West – South-East gradient of increasing DSSF: South-Eastern massifs are often shielded by North-Western massifs in the most frequent case of West and North-West disturbed flows. A similar gradient of precipitation was shown in Durand et al. (2009b). The heterogeneity of DSSF is even more marked in the Pyrenees (Fig. 6e) where the West-East chain acts as an orographic barrier to the prevailing northwesterlies coming from the Atlantic Ocean (Quéno et al., 2016). A clear discontinuity appears between the French Pyrenees, where the clouds are often blocked, and the Spanish Pyrenees, often affected by Foehn wind and resulting clear sky conditions. The lowest DSSF are found in the Western part of the French Pyrenees, while the Eastern part is more sunny due to the abating Atlantic influence and a Mediterranean climate. AROME presents a strong positive bias (Fig. 5f and Fig. 6f), locally higher than 30% over the highest peaks, and still higher than 15% in many plain areas. SAFRAN bias is very variable from one massif to another (Fig. 5g and Fig. 6g). A strong negative bias for SAFRAN can be noticed in the South-Western massifs of the Spanish Pyrenees (Fig. 6g), highlighting a poor representation of the orographic blocking as already noticed in Quéno et al. (2016).

The dependence of the different irradiance products with the altitude was further explored with the study of altitudinal gradients. Figure 7 represents the vertical evolution of the $LW\downarrow$ and $SW\downarrow$ averaged over the SAFRAN massifs of the French Alps and the Pyrenees by steps of 100 m of elevation over the whole study period, together with the associated standard deviations.

The strong dependency of $LW\downarrow$ irradiance with altitude is confirmed in Fig. 7a for the French Alps and Fig. 7b for the Pyrenees. As a reference, the altitudinal gradient for annual $LW\downarrow$ means of $-29 \text{ W m}^{-2} \text{ km}^{-1}$ found by Marty et al. (2002) in the Swiss Alps is plotted in dashed line, while Table 3 lists the mean altitudinal gradient for each dataset in both domains. All datasets present a steady decrease of $LW\downarrow$ with altitude, and are close to each other below 1200 m approximately. For higher elevations, SAFRAN annual mean value is significantly stronger than AROME, DSLF and DSLFnew, due to a lower vertical gradient (Table 3). We showed in Sect 3.1 that AROME, DSLF and DSLFnew had a negative bias at the four mountain stations. This effect may come from a too strong vertical gradient (Table 3). DSLFnew is larger than AROME and DSLF at all altitudes below 2900 m in the French Alps (Fig. 7a) and 2200 m in the Pyrenees (Fig. 7b) approximately. It gets lower at the highest altitudes due to a stronger vertical gradient. The stronger vertical gradient of DSLFnew compared to DSLF is the confirmation that the use of forecasts of higher resolution for the algorithm takes more into account the topography. The excessive vertical gradient may originate

from the cold bias of AROME near-surface temperatures, enhanced with the altitude (Vionnet et al., 2016), leading to a strong underestimation of the fluxes by DSLFnew at the highest altitudes.

In terms of SW↓ irradiance, Fig. 7c and Fig. 7d highlight that AROME fluxes are significantly stronger than SAFRAN and DSSF at all altitudes. SAFRAN is marked by an increase of incoming SW↓ fluxes with altitude, while AROME and DSSF present a more variable evolution, and particularly a decrease of the fluxes at the highest altitudes in the Alps (Fig. 7c). This decrease may reflect the more frequent presence of clouds blocked by the highest peaks. Furthermore, these figures underline a weaker dependency of SW↓ irradiance with altitude than LW↓ irradiance. Indeed, the standard deviation of LW↓ at a given altitude is small compared to the total variation of the mean LW↓ with altitude for all products (Fig. 7a and Fig. 7b), whereas they can reach similar values for SW↓ (Fig. 7c and Fig. 7d). This spatial variability at a given altitude is particularly marked at low- and mid-altitudes (< 1800 m) in the Pyrenees for AROME and DSSF, reflecting a good representation of the strong climate heterogeneity between French and Spanish foothills. SAFRAN, which gives homogeneous analyses per massif, does not account for the spatial variability within the massif as is the case for AROME and DSSF.

4 Impact of the irradiance products on snowpack simulations

Snowpack simulations were performed over four winters from 2010 to 2014 to assess the impact of the different irradiance datasets as radiative forcing. Table 4 summarizes the bias and RMSE for the three simulations (A-Cro, AL-Cro and AS-Cro) compared at 172 stations of the French Alps and the Pyrenees over the period. The error statistics are aggregated by domain and elevation range. As shown by Vionnet et al. (2016) and Quéno et al. (2016), A-Cro overestimates the snow depth, with marked RMSE. It is due to several different reasons, further discussed in Sect. 5.3. The use of DSSF and DSLFnew as radiative forcing (AL-Cro) increases the bias and the RMSE in the French Alps and the Pyrenees. On the contrary, the use of SAFRAN radiative forcing (AS-Cro) gives a lower bias and RMSE in both massifs. The highest biases and RMSE are reached at high altitude (≥ 2200 m) by AL-Cro, because of the marked underestimation of DSSF and DSLFnew at these elevations. The use of SAFRAN irradiances (AS-Cro) tends to reduce the biases of A-Cro, particularly at the lowest elevations where the higher LW↓ increases the melting during the whole season. Above 1800 m, the RMSE is not reduced by the use of SAFRAN irradiances (except above 2200 m in the Alps), because the higher LW↓ enhances the melting in winter and the lower SW↓ reduces the melting in spring, which increases the dispersion around the annual bias.

Figure 8 provides an example of snow depth evolution at Albeille station in the French Pyrenees (2195 m, located in Fig. 9) during one year (2010/2011), as observed and simulated in the three configurations. The behaviour of the models at this station is typical of most of the stations. The three simulations overestimate the snow depth. AL-Cro presents the strongest positive bias during

the whole season, because of lower values of $LW\downarrow$ and $SW\downarrow$. On the contrary, AS-Cro exhibits a lower overestimation than the other simulations during all the accumulation period (until mid-March approximately). It can be explained by the values of SAFRAN $LW\downarrow$ irradiance, which are higher than the other datasets. In winter, $SW\downarrow$ irradiances are low and the snow albedo is high: their contribution to the surface energy budget is much lower than in spring. Thus, $LW\downarrow$ irradiances have a higher relative contribution during the accumulation period. However, during the melting period (from mid-March to mid-May here), the contribution of $SW\downarrow$ irradiances is the highest, due to higher extra-terrestrial solar fluxes, longer days and lower snow albedo: because of their higher $SW\downarrow$, A-Cro simulations melt faster than AS-Cro, which reduces their bias.

These trends can also be observed when looking at maps of spatially distributed snowpack simulations. Figure 9 represents the SWE (snow water equivalent) simulated by A-Cro taken as a reference on 1 February 2013 during the accumulation period and on 1 May 2013 during the melting period, and the differences between AL-Cro, AS-Cro and this reference at the same dates. The differences with AL-Cro are generally between - 50 mm and + 50 mm on 1 February 2013. AS-Cro exhibits lower SWE values at this date, due to its higher $LW\downarrow$ irradiance. However, on 1 May 2013, both simulations exhibit higher SWE values than A-Cro almost everywhere, with differences mostly higher than 200 mm, locally reaching 400 mm, due to lower $SW\downarrow$ irradiances.

The impact of the radiative forcing on SWE simulations was further studied at two grid points in the French Pyrenees: one at low altitude (point A, 1359 m) and one at high altitude (point B, 2459 m), both located in Fig. 9. Contrary to snow depth, comparing SWE simulations enables to study the impact of the different radiative forcing datasets on the snowpack mass balance with no additional uncertainty on snow compaction. Figure 10 represents the simulated SWE and cumulated melting at point A during the winter season 2010/2011, together with the difference in irradiance with AROME as reference. The same evolutions at point B are represented in Fig. 11. The relative impact of DSSF and DSLFnew is represented in dashed lines (simulations AL_{SW} -Cro and AL_{LW} -Cro, as defined in Table 2). At point A, melting occurs during the winter. Consequently, AS-Cro and AL_{LW} -Cro simulations lead to lower values of SWE than A-Cro, since they both exhibit higher $LW\downarrow$ than AROME (+ 8 $W\ m^{-2}$ for DSLFnew and + 9 $W\ m^{-2}$ for SAFRAN). Thus, on 15 February 2011, the cumulated melting is more than doubled for AL-Cro (104 mm, and 154 mm for AL_{LW} -Cro) compared to A-Cro (42 mm). The lower $SW\downarrow$ of DSSF compared to AROME (- 15 $W\ m^{-2}$) implies very limited SWE differences with A-Cro in the heart of the winter (same cumulated melting for A-Cro and AL_{SW} -Cro on 15 February 2011). Similarly, the lower $SW\downarrow$ of SAFRAN (- 3 $W\ m^{-2}$) cannot compensate the higher $LW\downarrow$ during the winter. The simulation using both DSSF and DSLFnew irradiances (AL-Cro) is intermediate between both curves (AL_{LW} -Cro and AL_{SW} -Cro). At high altitude (Fig. 11), the melting period starts at the beginning of April. Thus, there are no differences between all simulations until then, despite strong differences in the radiative forcing. Snow melts slightly more slowly with SAFRAN radiative forcing, the lower $SW\downarrow$ being counterbalanced

445 by the higher $LW\downarrow$. A marked difference in the melt timing can be noted for AL-Cro: the lower $SW\downarrow$ is not counterbalanced by the slightly higher $LW\downarrow$. The peak SWE is shifted by almost one month compared to A-Cro. Therefore, it leads to marked differences in terms of cumulated melting: on 1 June 2011, the cumulated melting for A-Cro reaches 1149 mm, i.e. almost the double of AL-Cro (613 mm, and 433 mm for AL_{SW} -Cro). The simulation mixing DSSF and DSLFnew irradiances
 450 (AL-Cro) is very close to the DSSF-only simulation (AL_{SW} -Cro). Overall, the effect of DSSF prevails at high altitude leading to a later end of the snow cover, while the effect of DSLFnew prevails at low altitude leading to an earlier end of the snow cover.

5 Discussion

5.1 Quality of irradiance datasets in mountainous terrain

455 We presented an overview of the quality of several irradiance datasets through an in-depth assessment of the irradiance fields in mountainous terrain. In terms of $SW\downarrow$ irradiances, DSSF exhibits best metrics in mountains, particularly below 2000 m. Above 2000 m, its RMSE is similar to SAFRAN and AROME, due to a strong negative bias. AROME presents systematic and large overestimations of $SW\downarrow$ irradiances, contrarily to SAFRAN tendency to underestimate them. The spatial variations
 460 of $SW\downarrow$ irradiances are better represented in DSSF and AROME than in SAFRAN. In terms of $LW\downarrow$ irradiances, the obtained errors are comparable and it is difficult to identify the best product. The use of forecasts at higher spatial resolution to compute DSLFnew enhances the topographic dependence, which limits the underestimation of $LW\downarrow$ irradiance at low and mid-altitudes found with DSLF, but strengthens the negative bias at high altitude. The resulting altitudinal gradient is probably too strong.
 465 It may originate from the cold bias of AROME near-surface temperatures, enhanced with the altitude (Vionnet et al., 2016), which leads to a strong underestimation of the fluxes by DSLFnew at the highest altitudes.

Several studies evaluated LSA SAF irradiance products at hourly time step (when the sun is above the horizon for $SW\downarrow$) at plain stations. For DSSF, we showed in this study a bias of -14 W m^{-2}
 470 and a RMSE of 117 W m^{-2} (Fig. 2), while in plains, Geiger et al. (2008b), Ineichen et al. (2009) and Cristóbal and Anderson (2013) reported biases of $+2 \text{ W m}^{-2}$, $+5 \text{ W m}^{-2}$ and -5 W m^{-2} respectively, and RMSE of 87 W m^{-2} , 103 W m^{-2} and 65 W m^{-2} respectively. The higher RMSE in mountains may partly be explained by higher mean values. For DSLF, we showed in this study a bias of -8 W m^{-2} and a RMSE of 32 W m^{-2} (Fig. 3), while in plains, Trigo et al. (2010) and
 475 Ineichen et al. (2009) reported biases of $+3 \text{ W m}^{-2}$ and -11 W m^{-2} respectively, and RMSE of 25 W m^{-2} and 29 W m^{-2} respectively. The error statistics in mountains are close to those in plains, and lie within the range of uncertainty of $LW\downarrow$ sensors in mountains (Table 1). Thus, the performance of LSA SAF irradiance products remains satisfactory compared to previous evaluations of these

products in plains, even though they generally do not reach the target accuracy (Sect. 2.2.3), derived
480 from reference plain stations.

Hinkelman et al. (2015) similarly evaluated the CERES SYN products at mountain stations for 3 hours averages. In terms of SW↓ irradiance, they showed biases between - 13 W m⁻² and + 51 W m⁻² and RMSE between 93 W m⁻² and 162 W m⁻². In terms of LW↓ irradiance, they showed biases between - 17 W m⁻² and + 31 W m⁻² and RMSE between 24 W m⁻² and 40 W m⁻². Despite
485 a coarser spatial resolution, the obtained irradiance errors are similar to those of LSA SAF products, but they are reduced by the 3 hours average. Reaching similar performance at hourly time step can then be considered as an improvement. The shorter time step of LSA SAF products also enables a finer representation of the SW↓ diurnal cycle.

These results suggest that LSA SAF satellite-derived estimates of SW↓ and LW↓ irradiances are
490 suitable to drive distributed snowpack simulations in mountainous terrain. DSLF can be replaced by DSLFnew up to mid-altitudes (2200 m approximately), where the performance is improved. These products constitute beneficial alternatives to NWP and analysis systems in complex terrain.

5.2 Limitations due to the topographical influence on radiation

Limitations to the use of kilometric-resolution irradiance products in complex terrain arise from the
495 high topographical influence on incoming radiation. These limitations are tackled here following three axes: (i) limitations of satellite-derived irradiance products in mountainous terrain, (ii) local topographical effects on radiation in the radiative forcing of snowpack simulations, and (iii) influence of local topography on the evaluation of the irradiance products and snowpack simulations.

First, satellite data sometimes require corrections when applied over mountains. For instance,
500 the HelioMont solar irradiance product (Stöckli, 2013; Castelli et al., 2014) is calculated using the MSG SEVIRI High Resolution Visible (HRV; 0.45-1.1 µm) channel and five other near-infrared and infrared channels (0.6, 0.8, 1.6, 10.8, 12.0 µm). In this method, the satellite data depending on the HRV channel (at 1 km resolution) requires an orthorectification to avoid artificial geometric shifts in terrain due to its high resolution compared to the terrain elevation (Stöckli, 2013), while
505 the satellite data from the other channels (at MSG pixel resolution, i.e. more than 3 km) are not orthorectified. The DSSF and the DSLF only use data from the 0.6, 0.8 and 1.6 µm channels, which do not require orthorectification, similarly to the HelioMont method. Corrections may also be applied to the meteorological inputs. The DSSF does not rely as much as the DSLF on meteorological forecasts but it still uses the total column water vapour content (TCWV) forecast from ECMWF IFS
510 at 16 km resolution. Since the TCWV is dependent on the elevation, the DSSF could be improved with AROME forecasts of TCWV at kilometric resolution, similarly to DSLFnew. Despite that, the DSSF still exhibits a better performance than AROME and SAFRAN in mountains.

At sub-kilometric scale, the local topography strongly influences the solar and longwave irradiance variability. Oliphant et al. (2003) identified the following surface characteristics as causes of

radiative flux variability, by order of importance: slope aspect, slope angle, elevation, albedo, shading, sky view factor, and leaf area index. These local factors are not taken into account in AROME, SAFRAN and LSA SAF irradiance products. This study aims at assessing the practical benefits of different irradiance datasets to be used as radiative forcing for distributed snowpack simulations at 2.5 km resolution in mountains. In the context of representing the mean state of the snowpack over a considered flat pixel, at a given altitude and a given location in the mountain range, the terrain influence on the radiation does not need to be taken into account in the radiative forcing. However, to capture the sub-kilometric variability of the snowpack, it will be necessary to consider sub-grid effects of the surrounding terrain on the radiation, and thus a topographical correction of irradiance products (e.g. Helbig and Löwe, 2012) as done for MSG satellite-derived solar fluxes by the HelioMont method (Stöckli, 2013; Castelli et al., 2014).

The main limitation implied by local topography effects regards the evaluation of the irradiance products and the snowpack simulations through in situ comparisons. Indeed, in situ irradiance and snow depth measurements are affected by these effects. The location of stations in flat and open fields reduces the impacts of slope, aspect and vegetation. The evaluation of solar irradiances at periods when the sun is not masked by the surrounding topography enables to discard the terrain shadowing effect on direct solar radiation. However, this effect is not considered for snow depth comparisons. Additionally, the limited sky view and the reflection effects on diffuse solar radiation are not taken into account, as well as the limited sky view and terrain thermal radiation effects on longwave irradiance. According to the incoming radiation budget accounting for topography effects on a flat surface (e.g. Müller and Scherer, 2005), the bias for not taking into account the sky view factor (SVF) in the shortwave irradiance is $(1 - SVF) * (SW_{dif} - SW_{ref})$, where SW_{dif} is the diffuse shortwave irradiance and SW_{ref} is the terrain-reflected shortwave radiation. This bias is small in clear-sky conditions, because the SVF contribution is then significantly lower than topographic shading (e.g. Olson et al., 2019), but it increases in cloudy conditions with a stronger relative contribution of SW_{dif} . The bias for not taking into account the SVF in the longwave irradiance is $(1 - SVF) * (LW_{atm} - LW_{ter})$, where LW_{atm} is the atmospheric longwave irradiance and LW_{ter} is the terrain thermal radiation. This bias is more significant when LW_{atm} is low (Sicart et al., 2006), but is usually small compared to LW_{atm} on horizontal surfaces (Plüss and Ohmura, 1997), which is the case of the measurement locations.

5.3 Sensitivity of snowpack simulations to the radiative forcing

DSSF and DSLFnew irradiance datasets were used to replace AROME irradiance forecasts as radiative forcing of Crocus simulations. The rest of the atmospheric forcing was taken from AROME forecasts. A similar experiment was done with SAFRAN irradiances. The performance of the snowpack simulations was degraded when using DSSF and DSLFnew products, with an increased positive snow depth bias. On the contrary, the use of SAFRAN irradiances was found to decrease the

positive bias obtained with AROME-Crocus. Vionnet et al. (2016) and Quéno et al. (2016) already showed an overestimation of snow depth by AROME-Crocus in the French Alps and the Pyrenees respectively. In addition, Quéno et al. (2016) partly attributed this overestimation to an underestimation of strong melting. Thus, replacing AROME irradiance forecasts by lower or equivalent values (DSSF and DSLFnew) logically enhances the overestimation, despite the better quality of the new irradiance products. In this case, improving the radiative forcing leads to degraded snowpack simulations, which is consistent with the strong interaction effect in snowpack simulations highlighted by Günther et al. (2019). This effect may be attributed to error compensations within the atmospheric forcing and/or within the snowpack model:

- Quéno et al. (2016) showed that the positive snow depth bias is not due to an overestimation of daily snowfall by AROME-Crocus. The strong overestimation of $SW\downarrow$ by AROME shown in this study would also tend to increase the melting and reduce the snow depth bias. We showed here it is not counterbalanced by the underestimation of $LW\downarrow$. However, the underestimated melting may be linked to an underestimation of the turbulent fluxes. It may have several causes that need to be further explored, e.g. a possible influence of the T_{2m} cold bias, particularly marked at the highest altitudes (~ 2.8 K above 2500 m ; Vionnet et al., 2016).
- Within the snowpack model Crocus, Quéno et al. (2016) showed an underestimation of snow settling, with a direct effect on snow depth bias. The snow compaction scheme used in Crocus depends on the weight of overlying snow, temperature and density of snow, liquid water content and snow grain size (Vionnet et al., 2012). The parameterisation of the albedo evolution also needs to be questioned: Lafaysse et al. (2017) underlined a positive bias of Crocus-simulated albedo at Col de Porte (Fig. 1a), which they partly attributed to the parameterisation of albedo decrease in the visible range as a function of the age of the snow layer and the altitude of the site. An overestimation of the albedo indeed decreases the absorption of solar energy, hence enhancing the positive snow depth bias.

These results endorse the idea that snowpack ensemble simulations are necessary to mitigate error compensations, as recently developed for Crocus with the multiphysical ensemble system ESCROC (Ensemble System Crocus; Lafaysse et al., 2017).

The sensitivity of Crocus snowpack simulations to the radiative forcing can be interpreted in the light of several works quantifying the impact of atmospheric forcing errors on snowpack simulations (Raleigh et al., 2015; Lapo et al., 2015b; Sauter and Obleitner, 2015). First, Sauter and Obleitner (2015) studied the influence of uncertainties on atmospheric forcing variables on simulations of glacier mass-balance using Crocus in the Svalbard islands (European Arctic). They identified $LW\downarrow$ uncertainty as the main source of variance (50%) of the surface energy balance throughout the year. However, the prevailing effect of $LW\downarrow$ compared to $SW\downarrow$ is more marked at high latitudes, because of the lack of solar insolation in winter. In our study, we showed that the new $LW\downarrow$ forcing from

DSLFFnew (with a positive bias compared to AROME) had a significant impact on the mass budget during the whole winter at low altitudes (Fig. 10), while the impact was more limited at high altitudes (Fig. 11). It can be explained by decreasing LW↓ irradiances with altitude together with increasing SW↓ irradiances, leading to a more significant impact of SW↓ at high altitudes. It is also due to the earlier snowmelt at low altitudes, which limits the crucial role played by SW↓ in spring.

Furthermore, the differences between the different radiative forcing datasets mainly consist of biases rather than random errors: a typical example is the difference of SW↓ at high altitudes between AROME and DSSF shown in Fig. 11. Their effect is then cumulated during the whole season, rather than counterbalanced, which increases their impact. It is consistent with the outcomes of Raleigh et al. (2015) who showed that snowpack models are more sensitive to biases than random errors in the forcings. It was particularly highlighted for incoming radiative fluxes by Lapo et al. (2015b). Finally, although the SWE is not impacted by the differences in incoming radiative fluxes at high altitude during the accumulation period (Fig. 11), impacts are to be expected in terms of snow surface temperatures, with possible consequences on the snow metamorphism processes. Lapo et al. (2015b) indeed showed more sensitivity of the snowpack simulations to irradiance errors at the coldest sites when evaluated in terms of snow surface temperature rather than SWE. Future works could thus focus on the impact of the different incoming radiative flux datasets on the surface energy budget and the resulting effects on the snowpack stratigraphy.

6 Conclusions

In this paper, we assessed the quality of satellite-derived incoming radiative flux products (DSSF for solar irradiance and DSLF for longwave irradiance) in mountainous terrain, by conducting a thorough inter-comparison study involving kilometric resolution forecasts from the NWP system AROME and fields from the SAFRAN analysis system. A new satellite-derived product for LW↓ irradiance (DSLFFnew) was developed using the DSLF algorithm fed by AROME forecasts. An evaluation of all available products was performed against in situ measurements using four years of data in the French Alps and the Pyrenees. The result analysis showed that DSSF products are best for solar irradiance, despite an underestimation at the highest altitudes, while AROME is associated with a strong positive bias and SAFRAN with a negative bias. In terms of longwave irradiance, contrasted results were obtained at the mountain stations, all falling within the range of uncertainty of sensors. A systematic underestimation by AROME, DSLF and DSLFFnew was highlighted. The negative bias of DSLF was reduced by DSLFFnew up to mid-altitudes but enhanced at high altitudes due to a too strong altitudinal gradient associated with the cold bias in AROME near-surface air temperature at high altitudes. A spatial comparison of the datasets showed that AROME and DSSF better represent the spatial variability of SW↓ fluxes in mountains by comparison with SAFRAN. These results are encouraging and highlight the potential benefits of using DSSF, DSLF and DSLFFnew as radiative

forcing for snowpack modelling in mountainous terrain. Their relatively good quality in mountains as compared to lower altitudes also supports the use of these data as climatological inputs and/or validation datasets for NWP models over complex domains such as mountains, where incoming radiative flux measurements are scarce.

An evaluation of distributed snowpack simulations by Crocus driven by AROME and the different irradiance datasets was then conducted in the French Alps and the Pyrenees. We showed that replacing AROME irradiances by DSSF and DSLFnew increased the positive bias of snow depth, despite an overall better performance of these datasets in terms of incoming radiative fluxes. Therefore, an improved meteorological forcing does not ensure more accurate snowpack simulations. This is mostly due to error compensations within the atmospheric forcing and the snowpack model. Complementary studies are sorely needed to identify the cause of the underestimated melting, which cannot be attributed to radiative fluxes. They should tackle factors such as the turbulent fluxes simulated by AROME-Crocus and the albedo parametrisation in Crocus. Multiphysical ensemble snowpack modelling would also enable to account for simulation errors (Lafaysse et al., 2017). Until such improvements are performed in the AROME-Crocus modelling context, the LSA SAF products of incoming radiative fluxes can be used to improve understanding of snowpack models as well as in other snowpack-related studies, because they provide irradiance data of reasonable quality in mountainous areas.

Author contributions. FK, VV and LQ designed the study. LQ was responsible for the modelling strategy and the preparation of the manuscript. FK, VV and IDE helped to analyse the results. All authors contributed to the writing of the manuscript.

Acknowledgements. DSSF and DSLF were provided by the EUMETSAT Satellite Application Facility on Land Surface Analysis (LSA SAF; Trigo et al., 2011). The authors are grateful to S. Gascoin (CESBIO) for providing irradiance measurements from Bassiès AWS, and to D. Six (IGE) for providing irradiance measurements from St-Sorlin glacier and Argentièrè glacier AWS (data from GLACIOCLIM program, <https://glacioclim.osug.fr>). We also thank D. Carrer, J.-L. Roujean and C. Meurey (CNRM) for help with the LSA SAF data, and I. Trigo (IPMA) for information about the DSLF algorithm. CNRM/CEN is part of LabEx OSUG@2020 (ANR10 LABX56). We are also grateful to the anonymous reviewers for their detailed comments which helped improving the manuscript.

References

- Anderton, S. P., White, S. M., and Alvera, B.: Micro-scale spatial variability and the timing of snow melt runoff in a high mountain catchment, *J. Hydrol.*, 268, 158–176, doi:10.1016/S0022-1694(02)00179-8, 2002.
- Armstrong, R. and Brun, E.: Snow and climate: physical processes, surface energy exchange and modeling, Cambridge Univ. Pr., <http://www.cambridge.org/gb/academic/subjects/earth-and-environmental-science/climatology-and-climate-change/snow-and-climate-physical-processes-surface-energy-exchange-and-modeling>, 2008.
- Bellaire, S., Katurji, M., Schulmann, T., and Hobman, A.: Towards a High-Resolution Operational Forecasting Tool for the Southern Alps - New Zealand, in: Proceedings of the International Snow Science Workshop, Banff, Canada, pp. 388–393, doi:10.13140/2.1.3376.8640, 2014.
- Brisson, A., Borgne, P. L., and Marsouin, A.: Development of Algorithms for Surface Solar Irradiance Retrieval at O&SI SAF Low and Mid Latitudes, Tech. rep., Météo-France/CMS, Lannion, 1999.
- Brousseau, P., Seity, Y., Ricard, D., and Léger, J.: Improvement of the forecast of convective activity from the AROME-France system, *Q.J.R. Meteorol. Soc.*, 142, 2231–2243, doi:10.1002/qj.2822, 2016.
- Brun, E., David, P., Sudul, M., and Brunot, G.: A numerical model to simulate snow-cover stratigraphy for operational avalanche forecasting, *J. Glaciol.*, 38, 13–22, doi:10.1017/S0022143000009552, 1992.
- Carrer, D., Lafont, S., Roujean, J.-L., Calvet, J.-C., Meurey, C., Moigne, P. L., and Trigo, I. F.: Incoming Solar and Infrared Radiation Derived from METEOSAT: Impact on the Modeled Land Water and Energy Budget over France, *J. Hydrometeorol.*, 13, 504–520, doi:10.1175/JHM-D-11-059.1, 2012.
- Castelli, M., Stöckli, R., Zardi, D., Tetzlaff, A., Wagner, J., Belluardo, G., Zebisch, M., and Petitta, M.: The HelioMont method for assessing solar irradiance over complex terrain: Validation and improvements, *Remote Sens. Environ.*, 152, 603–613, doi:10.1016/j.rse.2014.07.018, 2014.
- Cline, D. W.: Snow surface energy exchanges and snowmelt at a continental, midlatitude Alpine site, *Water Resour. Res.*, 33, 689–701, doi:10.1029/97WR00026, 1997.
- Courtier, P., Freydisier, C., Geleyn, J.-F., Rabier, F., and Rochas, M.: The ARPEGE project at Météo-France, in: Proceedings of the 1991 ECMWF Seminar, pp. 193–231, Reading, U.-K., 1991.
- Cristóbal, J. and Anderson, M. C.: Validation of a Meteosat Second Generation solar radiation dataset over the northeastern Iberian Peninsula, *Hydrol. Earth Syst. Sci.*, 17, 163–175, doi:10.5194/hess-17-163-2013, 2013.
- DeBeer, C. M. and Pomeroy, J. W.: Influence of snowpack and melt energy heterogeneity on snow cover depletion and snowmelt runoff simulation in a cold mountain environment, *J. Hydrol.*, 553, 199–213, doi:10.1016/j.jhydrol.2017.07.051, 2017.
- Derrien, M. and Le Gléau, H.: MSG/SEVIRI cloud mask and type from SAFNWC, *Int. J. Remote Sens.*, 26, 4707–4732, doi:10.1080/01431160500166128, 2005.
- Derrien, M., Farki, B., Harang, L., Le Gléau, H., Noyalet, A., Pochic, D., and Sairouni, A.: Automatic cloud detection applied to NOAA-11/AVHRR imagery, *Remote Sens. Environ.*, 46, 246–267, doi:10.1016/0034-4257(93)90046-Z, 1993.
- Durand, Y., Brun, E., Mérindol, L., Guyomarc'h, G., Lesaffre, B., and Martin, E.: A meteorological estimation of relevant parameters for snow models, *Ann. Glaciol.*, 18, 65–71, doi:10.1017/S0260305500011277, 1993.

- 690 Durand, Y., Giraud, G., Laternser, M., Etchevers, P., Mérindol, L., and Lesaffre, B.: Reanalysis of 47 Years of
Climate in the French Alps (1958–2005): Climatology and Trends for Snow Cover, *J. Appl. Meteor. Climat.*,
48, 2487–2512, doi:10.1175/2009JAMC1810.1, 2009a.
- Durand, Y., Giraud, G., Laternser, M., Etchevers, P., Mérindol, L., and Lesaffre, B.: Reanalysis of 44 Yr of
Climate in the French Alps (1958–2002): Methodology, Model Validation, Climatology, and Trends for
Air Temperature and Precipitation., *J. Appl. Meteor. Climat.*, 48, 429–449, doi:10.1175/2008JAMC1808.1,
695 2009b.
- Fouquart, Y. and Bonnel, B.: Computations of solar heating of the Earth’s atmosphere: A new parametrization,
Beitr. Phys. Atmosph., 53, 35–62, 1980.
- Frouin, R., Lingner, D. W., Gautier, C., Baker, K. S., and Smith, R. C.: A simple analytical formula to compute
clear sky total and photosynthetically available solar irradiance at the ocean surface, *J. Geophys. Res.*, 94,
700 9731–9742, doi:10.1029/JC094iC07p09731, 1989.
- Gautier, C., Diak, G., and Masse, S.: A Simple Physical Model to Estimate Incident Solar Radia-
tion at the Surface from GOES Satellite Data, *J. Appl. Meteor.*, 19, 1005–1012, doi:10.1175/1520-
0450(1980)019<1005:ASPMTE>2.0.CO;2, 1980.
- Geiger, B., Carrer, D., Franchistéguy, L., Roujean, J. L., and Meurey, C.: Land Surface Albedo Derived on a
705 Daily Basis From Meteosat Second Generation Observations, *IEEE Trans. Geosci. Remote Sens.*, 46, 3841–
3856, doi:10.1109/TGRS.2008.2001798, 2008a.
- Geiger, B., Meurey, C., Lajas, D., Franchistéguy, L., Carrer, D., and Roujean, J.-L.: Near real-time provision of
downwelling shortwave radiation estimates derived from satellite observations, *Meteor. Appl.*, 15, 411–420,
doi:10.1002/met.84, 2008b.
- 710 Ghilain, N., Arboleda, A., and Gellens-Meulenberghs, F.: Evapotranspiration modelling at large scale using
near-real time MSG SEVIRI derived data, *Hydrol. Earth Syst. Sci.*, 15, 771–786, doi:10.5194/hess-15-771-
2011, 2011.
- Günther, D., Marke, T., Essery, R., and Strasser, U.: Uncertainties in Snowpack Simulations—Assessing the
Impact of Model Structure, Parameter Choice, and Forcing Data Error on Point-Scale Energy Balance Snow
715 Model Performance, *Water Resour. Res.*, 55, 2779–2800, doi:10.1029/2018WR023403, 2019.
- Hakuba, M. Z., Folini, D., Sanchez-Lorenzo, A., and Wild, M.: Spatial representativeness of ground-based solar
radiation measurements, *J. Geophys. Res. Atmos.*, 118, 8585–8597, doi:10.1002/jgrd.50673, 2013.
- Helbig, N. and Löwe, H.: Shortwave radiation parameterization scheme for subgrid topography, *J. Geophys.*
Res. Atmos., 117, doi:10.1029/2011JD016465, 2012.
- 720 Hinkelman, L. M., Lapo, K. E., Cristea, N. C., and Lundquist, J. D.: Using CERES SYN Surface Irra-
diance Data as Forcing for Snowmelt Simulation in Complex Terrain, *J. Hydrometeor.*, 16, 2133–2152,
doi:10.1175/JHM-D-14-0179.1, 2015.
- Horton, S., Schirmer, M., and Jamieson, B.: Meteorological, elevation, and slope effects on surface hoar forma-
tion, *The Cryosphere*, 9, 1523–1533, doi:10.5194/tc-9-1523-2015, 2015.
- 725 Ineichen, P., Barroso, C. S., Geiger, B., Hollmann, R., Marsouin, A., and Mueller, R.: Satellite Application
Facilities irradiance products: hourly time step comparison and validation over Europe, *Int. J. Remote Sens.*,
30, 5549–5571, doi:10.1080/01431160802680560, 2009.

- Lafaysse, M., Morin, S., Coleou, C., Vernay, M., Serca, D., Besson, F., Willemet, J.-M., Giraud, G., and Durand, Y.: Towards a new chain of models for avalanche hazard forecasting in French mountain ranges, including low altitude mountains, in: *Proceedings of International Snow Science Workshop Grenoble–Chamonix Mont-Blanc*, pp. 162–166, http://arc.lib.montana.edu/snow-science/objects/ISSW13_paper_O1-02.pdf, 2013.
- Lafaysse, M., Cluzet, B., Dumont, M., Lejeune, Y., Vionnet, V., and Morin, S.: A multiphysical ensemble system of numerical snow modelling, *The Cryosphere*, 11, 1173–1198, doi:10.5194/tc-11-1173-2017, 2017.
- Lapo, K. E., Hinkelman, L. M., Landry, C. C., Massmann, A. K., and Lundquist, J. D.: A simple algorithm for identifying periods of snow accumulation on a radiometer, *Water Resour. Res.*, 51, 7820–7828, doi:10.1002/2015WR017590, 2015a.
- Lapo, K. E., Hinkelman, L. M., Raleigh, M. S., and Lundquist, J. D.: Impact of errors in the downwelling irradiances on simulations of snow water equivalent, snow surface temperature, and the snow energy balance, *Water Resour. Res.*, 51, 1649–1670, doi:10.1002/2014WR016259, 2015b.
- Lapo, K. E., Hinkelman, L. M., Sumargo, E., Hughes, M., and Lundquist, J. D.: A critical evaluation of modeled solar irradiance over California for hydrologic and land surface modeling, *J. Geophys. Res. Atmos.*, 122, 299–317, doi:10.1002/2016JD025527, 2017.
- Leroy, M. and Leches, G.: Classification d'un site, Tech. Rep. 35B, Météo-France, http://ccrom.meteo.fr/ccrom/IMG/pdf/NT035B_V_Nov_2014-3.pdf, 2014.
- Male, D. H. and Granger, R. J.: Snow surface energy exchange, *Water Resour. Res.*, 17, 609–627, doi:10.1029/WR017i003p00609, 1981.
- Marks, D. and Dozier, J.: Climate and energy exchange at the snow surface in the Alpine Region of the Sierra Nevada: 2. Snow cover energy balance, *Water Resour. Res.*, 28, 3043–3054, doi:10.1029/92WR01483, 1992.
- Marty, C., Philipona, R., Fröhlich, C., and Ohmura, A.: Altitude dependence of surface radiation fluxes and cloud forcing in the Alps: results from the alpine surface radiation budget network, *Theor. Appl. Climatol.*, 72, 137–155, doi:10.1007/s007040200019, 2002.
- Masson, V., Le Moigne, P., Martin, E., Faroux, S., Alias, A., Alkama, R., Belamari, S., Barbu, A., Boone, A., Bouysse, F., Brousseau, P., Brun, E., Calvet, J.-C., Carrer, D., Decharme, B., Delire, C., Donier, S., Essaouini, K., Gibelin, A.-L., Giordani, H., Habets, F., Jidane, M., Kerdraon, G., Kourzeneva, E., Lafaysse, M., Lafont, S., Lebeaupin Brossier, C., Lemonsu, A., Mahfouf, J.-F., Marguinaud, P., Mokhtari, M., Morin, S., Pigeon, G., Salgado, R., Seity, Y., Taillefer, F., Tanguy, G., Tulet, P., Vincendon, B., Vionnet, V., and Voldoire, A.: The SURFEXv7.2 land and ocean surface platform for coupled or offline simulation of Earth surface variables and fluxes, *Geosci. Model Dev.*, 6, 929–960, doi:10.5194/gmd-6-929-2013, 2013.
- Mlawer, E. J., Taubman, S. J., Brown, P. D., Iacono, M. J., and Clough, S. A.: Radiative transfer for inhomogeneous atmospheres: RRTM, a validated correlated-k model for the longwave, *J. Geophys. Res.*, 102, 16 663–16 682, doi:10.1029/97JD00237, 1997.
- Moreno, A., Gilabert, M., Camacho, F., and Martínez, B.: Validation of daily global solar irradiation images from MSG over Spain, *Renewable Energy*, 60, 332–342, doi:10.1016/j.renene.2013.05.019, 2013.
- Morin, S., Lejeune, Y., Lesaffre, B., Panel, J.-M., Poncet, D., David, P., and Sudul, M.: An 18-yr long (1993–2011) snow and meteorological dataset from a mid-altitude mountain site (Col de Porte, France), 1325

m alt.) for driving and evaluating snowpack models, *Earth Syst. Sci. Data*, 4, 13–21, doi:10.5194/essd-4-13-2012, 2012.

Müller, M. D. and Scherer, D.: A Grid- and Subgrid-Scale Radiation Parameterization of Topographic Effects for Mesoscale Weather Forecast Models, *Mon. Wea. Rev.*, 133, 1431–1442, doi:10.1175/MWR2927.1, 2005.

Ohmura, A., Gilgen, H., Hegner, H., Müller, G., Wild, M., Dutton, E. G., Forgan, B., Fröhlich, C., Philipona, R., Heimo, A., König-Langlo, G., McArthur, B., Pinker, R., Whitlock, C. H., and Dehne, K.: Baseline Surface Radiation Network (BSRN/WCRP): New Precision Radiometry for Climate Research, *Bull. Amer. Meteor. Soc.*, 79, 2115–2136, doi:10.1175/1520-0477(1998)079<2115:BSRNBW>2.0.CO;2, 1998.

Oliphant, A. J., Spronken-Smith, R. A., Sturman, A. P., and Owens, I. F.: Spatial Variability of Surface Radiation Fluxes in Mountainous Terrain, *J. Appl. Meteorol.*, 42, 113–128, doi:10.1175/1520-0450(2003)042<0113:SVOSRF>2.0.CO;2, 2003.

Olson, M., Rupper, S., and Shean, D. E.: Terrain Induced Biases in Clear-Sky Shortwave Radiation Due to Digital Elevation Model Resolution for Glaciers in Complex Terrain, *Front. Earth Sci.*, 7, 216, doi:10.3389/feart.2019.00216, 2019.

Plüss, C. and Ohmura, A.: Longwave Radiation on Snow-Covered Mountainous Surfaces, *J. Appl. Meteor.*, 36, 818–824, doi:10.1175/1520-0450-36.6.818, 1997.

Prata, A. J.: A new long-wave formula for estimating downward clear-sky radiation at the surface, *Q. J. R. Meteorol. Soc.*, 122, 1127–1151, doi:10.1002/qj.49712253306, 1996.

Quéno, L., Vionnet, V., Dombrowski-Etchevers, I., Lafaysse, M., Dumont, M., and Karbou, F.: Snowpack modelling in the Pyrenees driven by kilometric-resolution meteorological forecasts, *The Cryosphere*, 10, 1571–1589, doi:10.5194/tc-10-1571-2016, 2016.

Quintana-Seguí, P., Moigne, P. L., Durand, Y., Martin, E., Habets, F., Baillon, M., Canellas, C., Franchisteguy, L., and Morel, S.: Analysis of Near-Surface Atmospheric Variables: Validation of the SAFRAN Analysis over France, *J. Appl. Meteor. Climatol.*, 47, 92–107, doi:10.1175/2007JAMC1636.1, 2008.

Raleigh, M. S., Lundquist, J. D., and Clark, M. P.: Exploring the impact of forcing error characteristics on physically based snow simulations within a global sensitivity analysis framework, *Hydrol. Earth Syst. Sci.*, 19, 3153–3179, doi:10.5194/hess-19-3153-2015, 2015.

Ritter, B. and Geleyn, J.-F.: A Comprehensive Radiation Scheme for Numerical Weather Prediction Models with Potential Applications in Climate Simulations, *Mon. Wea. Rev.*, 120, 303–325, doi:10.1175/1520-0493(1992)120<0303:ACRSFN>2.0.CO;2, 1992.

Rutan, D. A., Kato, S., Doelling, D. R., Rose, F. G., Nguyen, L. T., Caldwell, T. E., and Loeb, N. G.: CERES Synoptic Product: Methodology and Validation of Surface Radiant Flux, *J. Atmos. Oceanic Technol.*, 32, 1121–1143, doi:10.1175/JTECH-D-14-00165.1, 2015.

Sauter, T. and Obleitner, F.: Assessing the uncertainty of glacier mass-balance simulations in the European Arctic based on variance decomposition, *Geosci. Model Dev.*, 8, 3911–3928, doi:10.5194/gmd-8-3911-2015, 2015.

Schirmer, M. and Jamieson, B.: Verification of analysed and forecasted winter precipitation in complex terrain, *The Cryosphere*, 9, 587–601, doi:10.5194/tc-9-587-2015, 2015.

- Schmetz, J., Pili, P., Tjemkes, S., Just, D., Kerkmann, J., Rota, S., and Ratier, A.: An Introduction to Meteosat Second Generation (MSG), *Bull. Amer. Meteor. Soc.*, 83, 977–992, doi:10.1175/1520-0477(2002)083<0977:AITMSG>2.3.CO;2, 2002.
- Seity, Y., Brousseau, P., Malardel, S., Hello, G., Bénard, P., Bouttier, F., Lac, C., and Masson, V.: The AROME-France convective scale operational model, *Mon. Weather Rev.*, 129, 976–991, doi:10.1175/2010MWR3425.1, 2011.
- Sicart, J. E., Pomeroy, J. W., Essery, R. L. H., and Bewley, D.: Incoming longwave radiation to melting snow: observations, sensitivity and estimation in Northern environments, *Hydrol. Process.*, 20, 3697–3708, doi:10.1002/hyp.6383, 2006.
- Sicart, J. E., Espinoza, J. C., Quéno, L., and Medina, M.: Radiative properties of clouds over a tropical Bolivian glacier: seasonal variations and relationship with regional atmospheric circulation, *Int. J. Climatol.*, 36, 3116–3128, doi:10.1002/joc.4540, 2016.
- Stöckli, R.: The HelioMont Surface Solar Radiation Processing, Tech. Rep. 93, MeteoSwiss, <https://www.meteoswiss.admin.ch/content/dam/meteoswiss/de/service-und-publikationen/Publikationen/doc/sr93stoeckli.pdf>, 2013.
- Sun, Z., Gebremichael, M., Ardö, J., and de Bruin, H. A. R.: Mapping daily evapotranspiration and dryness index in the East African highlands using MODIS and SEVIRI data, *Hydrol. Earth Syst. Sci.*, 15, 163–170, doi:10.5194/hess-15-163-2011, 2011.
- Szczypta, C., Gascoin, S., Houet, T., Hagolle, O., Dejoux, J.-F., Vigneau, C., and Fanise, P.: Impact of climate and land cover changes on snow cover in a small Pyrenean catchment, *J. Hydrol.*, 521, 84–99, doi:10.1016/j.jhydrol.2014.11.060, 2015.
- Trigo, I. and Viterbo, P.: Product Requirement Document, Tech. Rep. 1.11, The EUMETSAT Satellite Application Facility on Land Surface Analysis (LSA SAF), <https://landsaf.ipma.pt/GetDocument.do?id=281>, 2009.
- Trigo, I. F., Barroso, C., Viterbo, P., Freitas, S. C., and Monteiro, I. T.: Estimation of downward long-wave radiation at the surface combining remotely sensed data and NWP data, *J. Geophys. Res.*, 115, doi:10.1029/2010JD013888, 2010.
- Trigo, I. F., Dacamara, C. C., Viterbo, P., Roujean, J.-L., Olesen, F., Barroso, C., de Coca, F. C., Carrer, D., Freitas, S. C., García-Haro, J., Geiger, B., Gellens-Meulenberghs, F., Ghilain, N., Meliá, J., Pessanha, L., Siljamo, N., and Arboleda, A.: The Satellite Application Facility for Land Surface Analysis, *Int. J. Remote Sens.*, 32, 2725–2744, doi:10.1080/01431161003743199, 2011.
- Vionnet, V., Brun, E., Morin, S., Boone, A., Martin, E., Faroux, S., Moigne, P. L., and Willemet, J.-M.: The detailed snowpack scheme Crocus and its implementation in SURFEX v7.2, *Geosci. Model. Dev.*, 5, 773–791, doi:10.5194/gmd-5-773-2012, 2012.
- Vionnet, V., Dombrowski-Etchevers, I., Lafaysse, M., Quéno, L., Seity, Y., and Bazile, E.: Numerical weather forecasts at kilometer scale in the French Alps: evaluation and applications for snowpack modelling, *J. Hydrometeorol.*, 17, 2591–2614, doi:10.1175/JHM-D-15-0241.1, 2016.
- WMO: Guide to Meteorological Instruments and Methods of Observation, WMO-No. 8, World Meteorological Organization, Geneva, Switzerland, 2014.

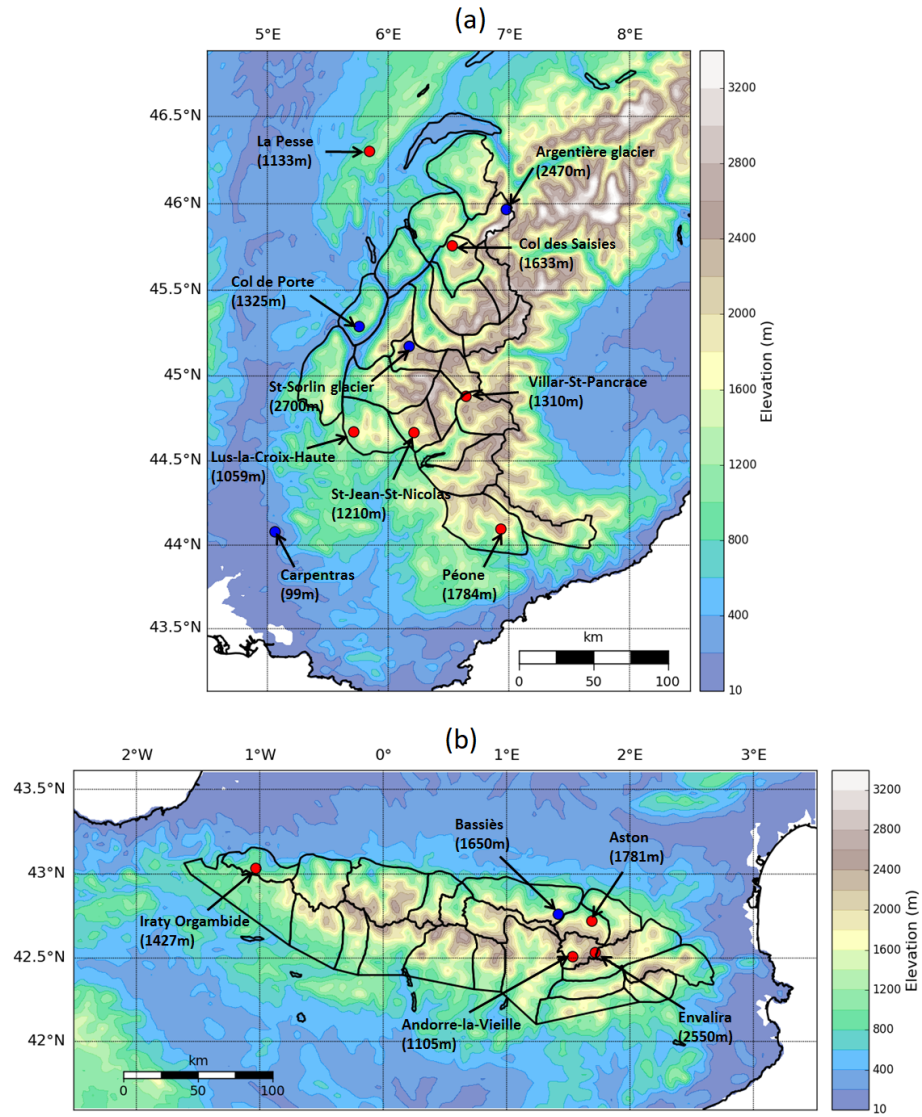


Figure 1. Domains of study: (a) the French Alps, (b) the Pyrenees, with AROME topography at 2.5 km resolution. Red dots: SW↓ stations; blue dots: SW↓ and LW↓ stations; black lines: SAFRAN massifs.

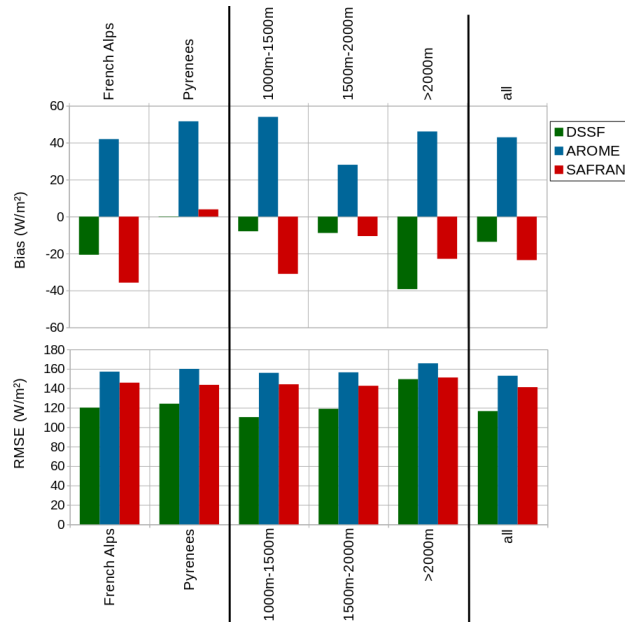


Figure 2. Bias and RMSE of SW↓ irradiance products (DSSF in green, AROME in blue, SAFRAN in red) compared to stations gathered by domain (left), range of altitude (center) and all stations (right).

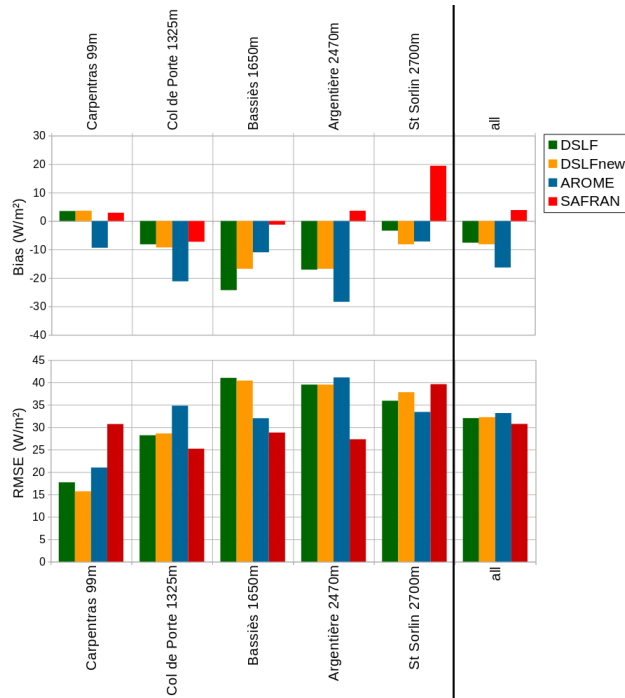


Figure 3. Bias and RMSE of LW↓ irradiance products (DSLF in green, DSLFnew in orange, AROME in blue, SAFRAN in red) compared to each station (left) and all stations (right).

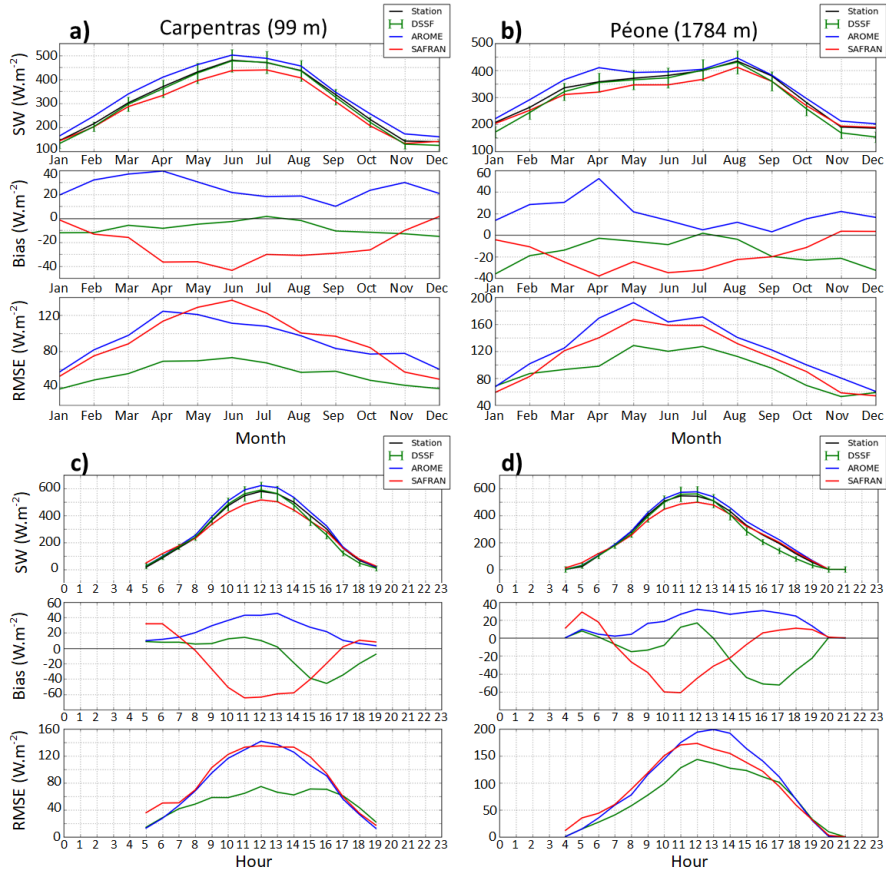


Figure 4. Mean yearly cycles of SW_{\downarrow} irradiance products (DSSF in green, AROME in blue, SAFRAN in red) and ground measurements (in black), bias and RMSE over the 2010-2014 period at: a) Carpentras, b) Péone. Mean daily cycles of the same products, bias and RMSE over the 2010-2014 period at: c) Carpentras, d) Péone.

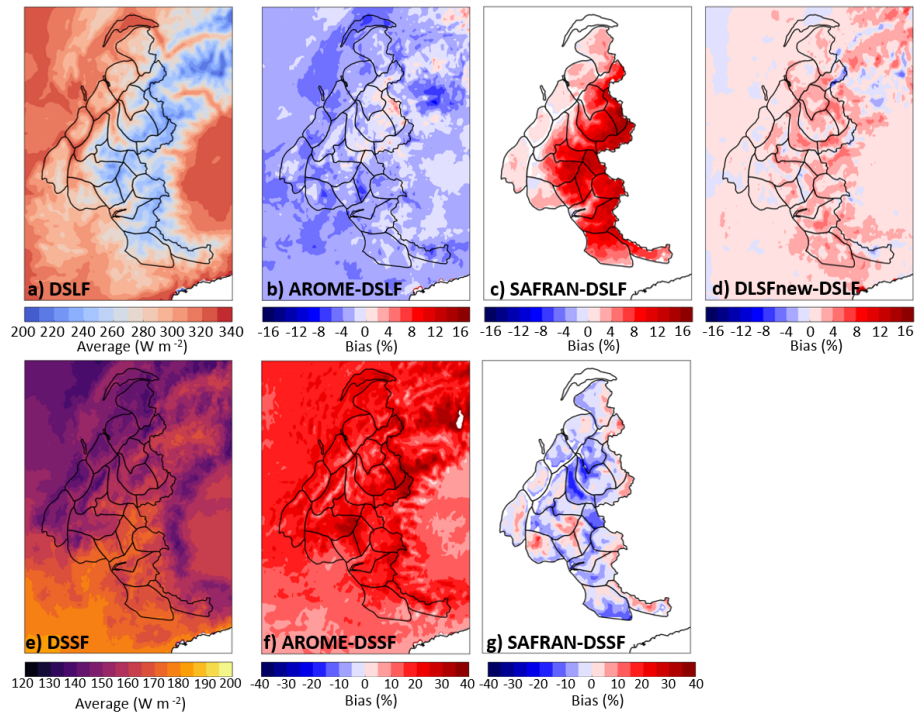


Figure 5. a) Average of the DSLF from 1 August 2010 to 31 July 2014 in the French Alps, and relative difference with the DSLF for: b) AROME, c) SAFRAN and d) DLSFnew. e) Average of the DSSF, and relative difference with the DSSF for: f) AROME, g) SAFRAN.

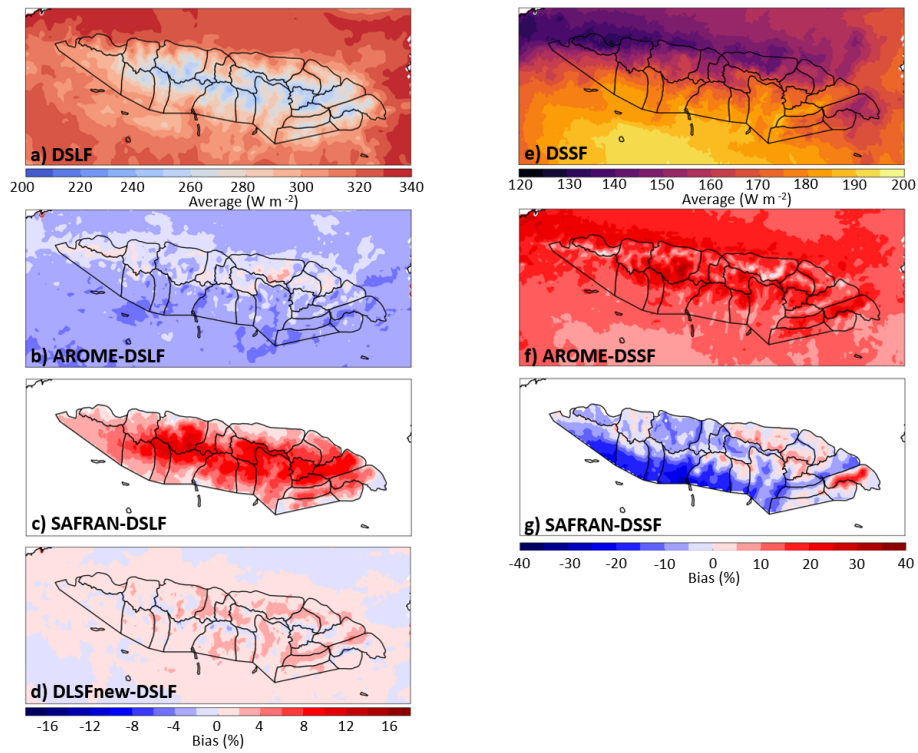


Figure 6. a) Average of the DSLF from 1 August 2010 to 31 July 2014 in the Pyrenees, and relative difference with the DSLF for: b) AROME, c) SAFRAN and d) DSLFnew. e) Average of the DSSF, and relative difference with the DSSF for: f) AROME, g) SAFRAN.

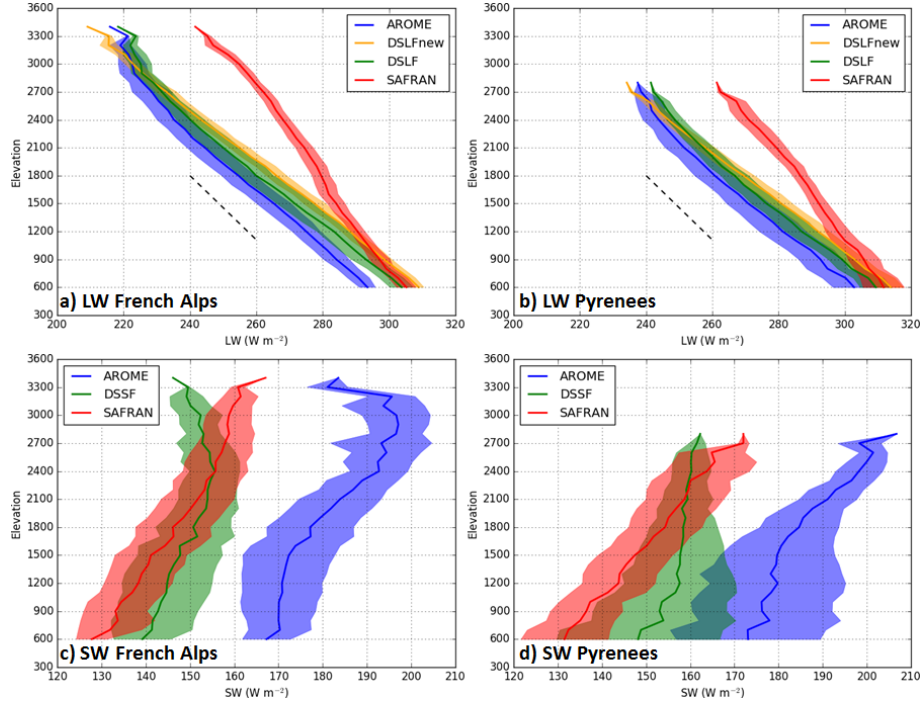


Figure 7. Vertical evolution of $LW\downarrow$ products by steps of 100 m: a) in the French Alps, b) in the Pyrenees, and $SW\downarrow$ products c) in the Alps, d) in the Pyrenees, averaged over SAFRAN massifs from 1 August 2010 to 31 July 2014, with LSA SAF in green, AROME in blue, SAFRAN in red, DSLFnew in orange. The envelopes represent the mean \pm the standard deviation. The dashed black line represents the climatological $LW\downarrow$ vertical gradient of $-29 \text{ W m}^{-2} \text{ km}^{-1}$ from Marty et al. (2002).

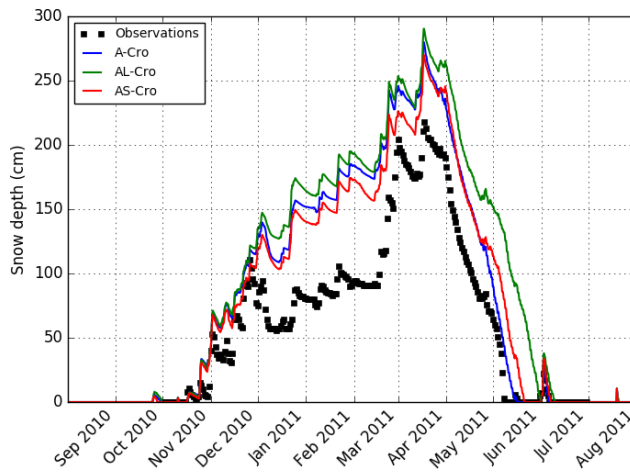


Figure 8. Snow depth evolution at Albeille station (2195 m, French Pyrenees) during winter 2010/2011: observations in black, A-Cro simulation in blue, AL-Cro in green, AS-Cro in red.

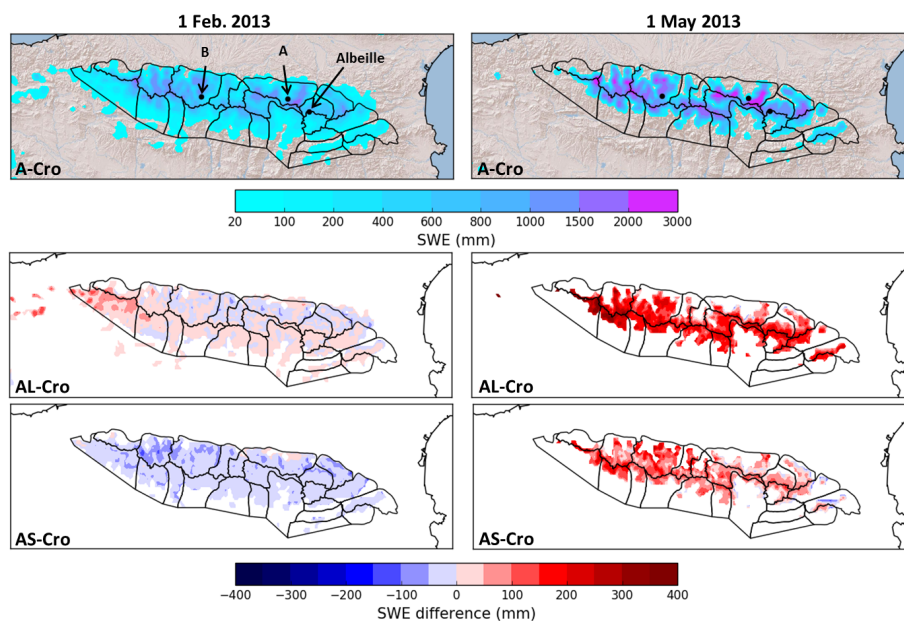


Figure 9. Snow Water Equivalent simulated by A-Cro (top) on 1 February 2013 (left) and 1 May 2013 (right) over the Pyrenees. Differences between the SWE simulated by AL-Cro (middle) and AS-Cro (bottom) with A-Cro at the same dates. Points A and B and Albeille station are indicated by black dots.

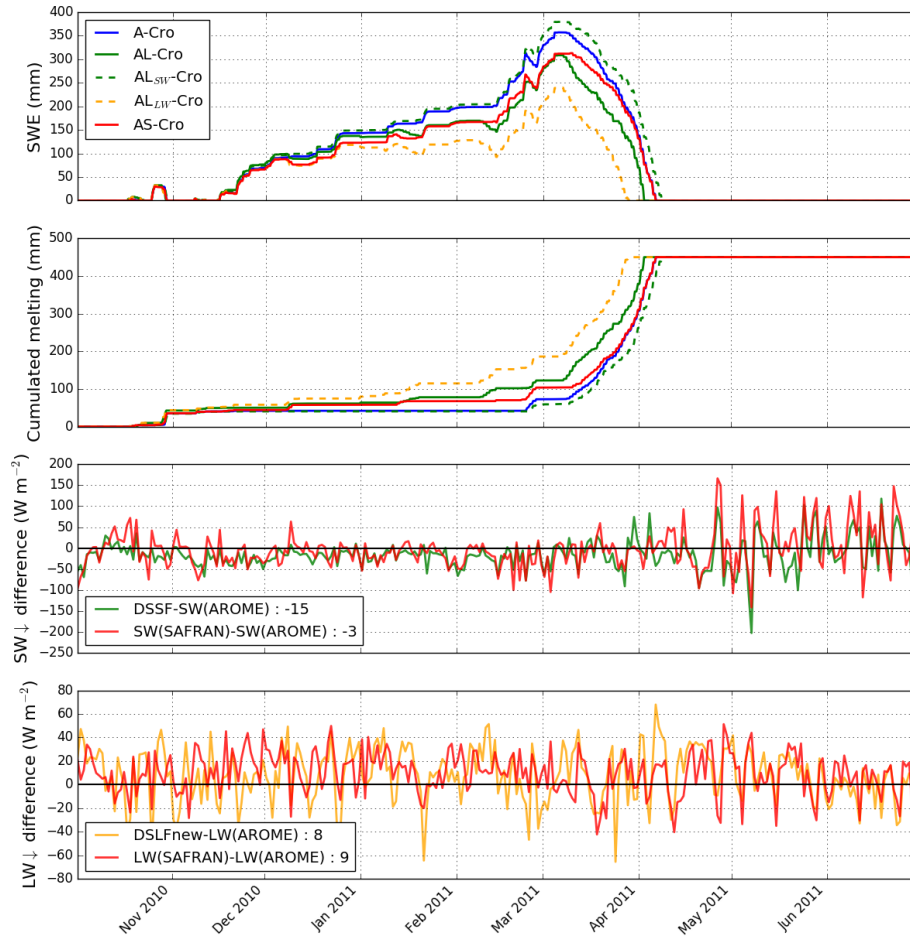


Figure 10. Top: Snow Water Equivalent simulated by A-Cro (blue), AL-Cro (green), AL_{SW} (dashed green), AL_{LW} (dashed orange), AS-Cro (red) from 1 October 2010 to 30 June 2011 at point A in the Pyrenees (1359 m, Fig. 9). Middle: Cumulated melting represented with the same colours. Bottom: Mean daily irradiance differences with AROME for DSSF (green), DSLFnew (orange) and SAFRAN irradiances (red).

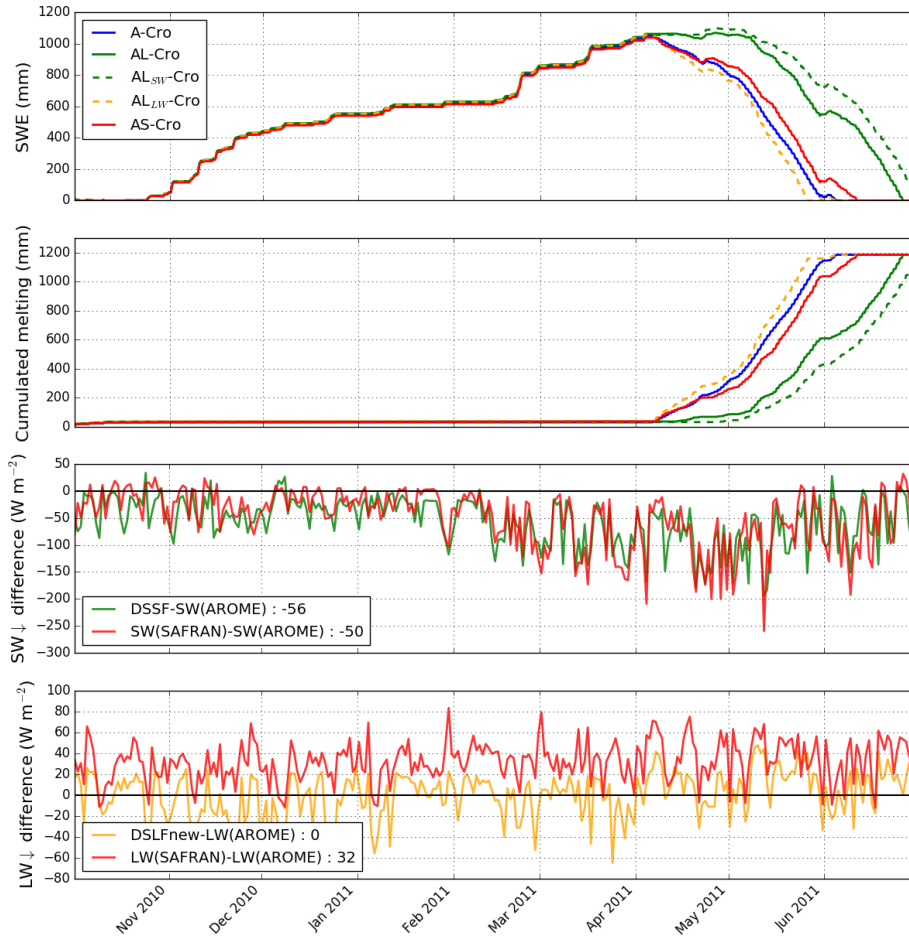


Figure 11. Top: Snow Water Equivalent simulated by A-Cro (blue), AL-Cro (green), AL_{SW} (dashed green), AL_{LW} (dashed orange), AS-Cro (red) from 1 October 2010 to 30 June 2011 at point B in the Pyrenees (2459 m, Fig. 9). Middle: Cumulated melting represented with the same colours. Bottom: Mean daily irradiance differences with AROME for DSSF (green), DSLFnew (orange) and SAFRAN irradiances (red).

Table 1. List of ground stations, associated mountain range, altitude of the observation, altitude of the associated LSA SAF and AROME grid points, measurement uncertainties, number of hourly $SW\downarrow$ observations (N), mean observation and bias/RMSE for DSSF, AROME and SAFRAN computed when the sun is not masked, from 1 August 2010 to 31 July 2014. The best metrics are given in bold. The mountain range of each station is indicated by A (Alps), J (Jura) or P (Pyrenees). Asterisks indicate official uncertainties which seem too optimistic.

station (mountain range)	uncertainties		altitude		N	mean $SW\downarrow$ ($W\ m^{-2}$)		$SW\downarrow$ bias ($W\ m^{-2}$)			$SW\downarrow$ RMSE ($W\ m^{-2}$)		
	$SW\downarrow$	LW \downarrow	obs.	LSA SAF		ARO.	ARO.	DSSF	ARO.	SAFR.	DSSF	ARO.	SAFR.
Carpentras (plains)	$\pm 3\%$	$\pm 5\%$	99 m	88 m	18 239	99 m	322	-8 (-2%)	25 (8%)	-24 (-7%)	58 (18%)	96 (30%)	99 (31%)
Lus-la-Croix-Haute (A)	$\pm 10\%^*$	X	1059 m	1040 m	13 616	1081 m	360	8 (2%)	78 (22%)	-6 (-2%)	116 (32%)	174 (48%)	140 (39%)
Andorre (P)	$\pm 10\%^*$	X	1105 m	1073 m	6 020	1385 m	378	-8 (-2%)	79 (21%)	-42 (-11%)	117 (31%)	169 (45%)	155 (41%)
La Pesse (J)	$\pm 10\%^*$	X	1133 m	1131 m	15 576	1119 m	297	-18 (-6%)	38 (13%)	3 (1%)	85 (29%)	129 (44%)	130 (44%)
St-Jean-St-Nicolas (A)	$\pm 10\%^*$	X	1210 m	1197 m	13 293	1315 m	408	-13 (-3%)	36 (9%)	-61 (-15%)	99 (24%)	140 (34%)	146 (36%)
Villar-St-Pancrace (A)	$\pm 10\%^*$	X	1310 m	1412 m	12 011	1521 m	445	-33 (-7%)	61 (14%)	-112 (-25%)	125 (28%)	167 (38%)	191 (43%)
Col de Porte (A)	$\pm 10\%$	$\pm 10\%$	1325 m	1310 m	7 499	1284 m	392	18 (4%)	96 (24%)	-8 (-2%)	134 (34%)	202 (52%)	128 (33%)
Iraty Orgambide (P)	$\pm 10\%^*$	X	1427 m	1354 m	16 149	1246 m	273	0 (0%)	29 (11%)	-7 (-2%)	110 (40%)	136 (50%)	121 (44%)
Col des Saisies (A)	$\pm 10\%^*$	X	1633 m	1595 m	11 850	1643 m	355	-28 (-8%)	15 (4%)	-47 (-13%)	107 (30%)	146 (41%)	132 (37%)
Bassières (P)	$\pm 20\%$	$\pm 20\%$	1650 m	1785 m	4 740	1714 m	378	-17 (-4%)	-3 (-1%)	-13 (-3%)	138 (37%)	179 (47%)	163 (43%)
Aston (P)	$\pm 10\%^*$	X	1781 m	1660 m	13 859	1753 m	325	16 (5%)	61 (19%)	34 (10%)	140 (43%)	176 (54%)	163 (50%)
Péone (A)	$\pm 10\%^*$	X	1784 m	1754 m	16 873	1704 m	330	-13 (-4%)	19 (6%)	-21 (-6%)	100 (30%)	139 (42%)	125 (38%)
Argentière glacier (A)	$\pm 20\%$	$\pm 20\%$	2470 m	2511 m	11 565	2694 m	394	-60 (-15%)	33 (8%)	-36 (-9%)	173 (44%)	177 (45%)	165 (42%)
Envalira (P)	$\pm 10\%^*$	X	2550 m	2577 m	9 755	2394 m	370	-10 (-3%)	85 (23%)	16 (4%)	120 (32%)	157 (42%)	132 (36%)
St-Sorlin glacier (A)	$\pm 20\%$	$\pm 20\%$	2700 m	2611 m	10 637	2581 m	430	-43 (-10%)	24 (6%)	-44 (-10%)	146 (34%)	161 (37%)	153 (35%)

Table 2. Characteristics of the snowpack simulations.

Simulation names	A-Cro	AS-Cro	AL-Cro	AL _{SW} -Cro	AL _{LW} -Cro
Atmospheric forcing (except irradiance)	AROME				
SW↓ forcing	AROME	SAFRAN	DSSF	DSSF	AROME
LW↓ forcing	AROME	SAFRAN	DSLFFnew	AROME	DSLFFnew

Table 3. Mean altitudinal LW↓ gradient for AROME, SAFRAN, DSLF and DSLFnew in the French Alps and the Pyrenees.

	AROME	SAFRAN	DSLF	DSLFFnew
French Alps	-29	-21	-31	-36
Pyrenees	-31	-23	-32	-37

Table 4. Bias and root mean square error (RMSE) of snow depth at 172 stations of the French Alps and the Pyrenees over the period 2010-2014 for simulations A-Cro, AL-Cro and AS-Cro. The best metrics are given in bold.

Domain and elevation range	Bias (cm)			RMSE (cm)		
	A-Cro	AL-Cro	AS-Cro	A-Cro	AL-Cro	AS-Cro
French Alps	38	43	29	62	72	59
< 1800 m	31	29	24	52	53	49
[1800 m, 2200 m[26	26	12	58	66	59
≥ 2200 m	61	80	53	79	99	72
Pyrenees	55	70	51	89	106	88
< 1800 m	66	72	59	97	105	91
[1800 m, 2200 m[46	63	43	85	105	86
≥ 2200 m	57	78	56	87	109	89