

Reply to comments by the editor on “Evaluation of Multiple Climate Data Sources for Managing Environmental Resources in East Africa”

Comments to the Author:

Dear Authors,

Thank you for revising the manuscript and providing response to the reviewer #1. I think the manuscript is improved however I think a few more changes (moderate in nature) are needed. Please see my comments below. They mainly intend to improve upon the presentation of the results.

Authors' response:

Dear Dr. Shukla,

Thank you very much for the valuable feedback and your support to improve the manuscript. We have addressed all of your comments and discussed them in the following.

- Please consider converting table 3, 5 and 6 into graphs. There are just too many numbers to keep track of there. It would be much easier to keep track of the relative performance of each of the datasets if these results were presented in a graphical format.

Authors' response:

- Thanks for the recommendation. Tables (3, 5, and 6) are now converted into graphs (bar-plots) as follows for rainfall, T-max, and T-min.

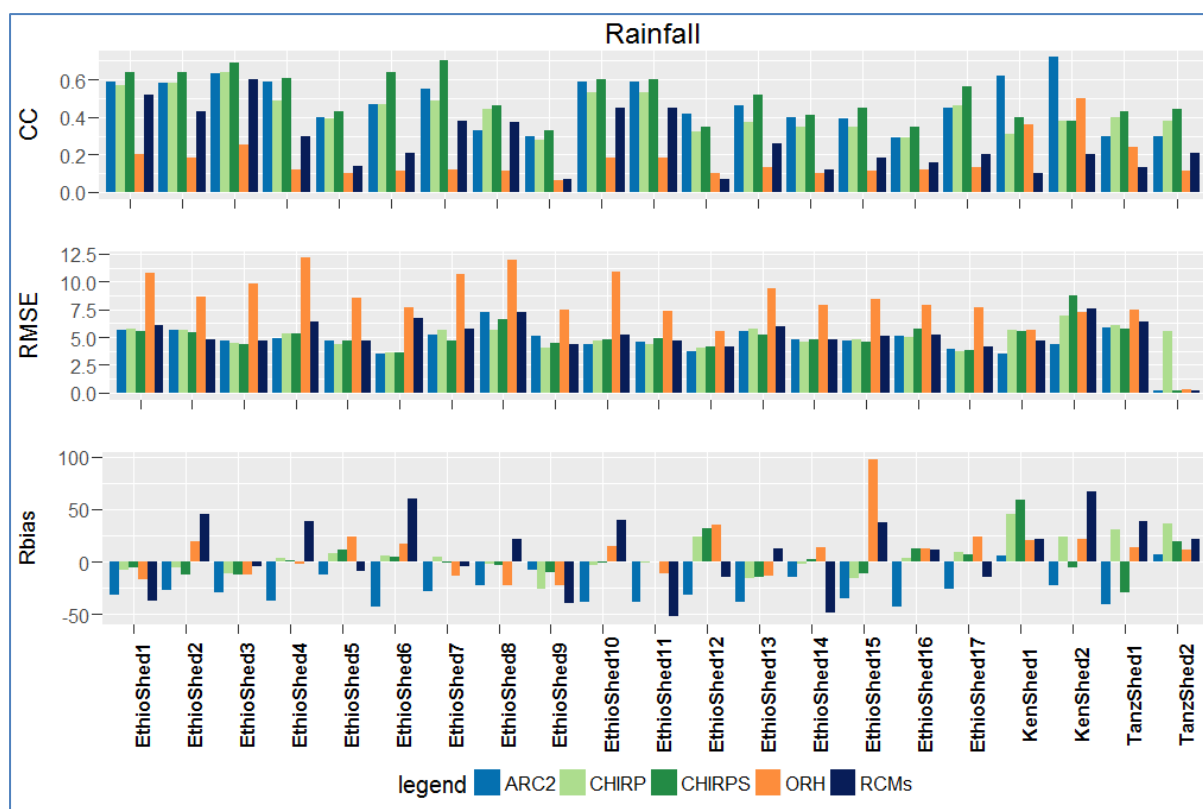


Fig. 3. Statistical evaluation of daily rainfall retrieved from ARC2, CHIRP, CHIRPS, ORH, and RCMs against ground observations: CC (top panel), RMSE (middle panel), and Rbias (lower panel) during the period of 1983–2005 for 21 validation areas of East Africa (see Table 1).

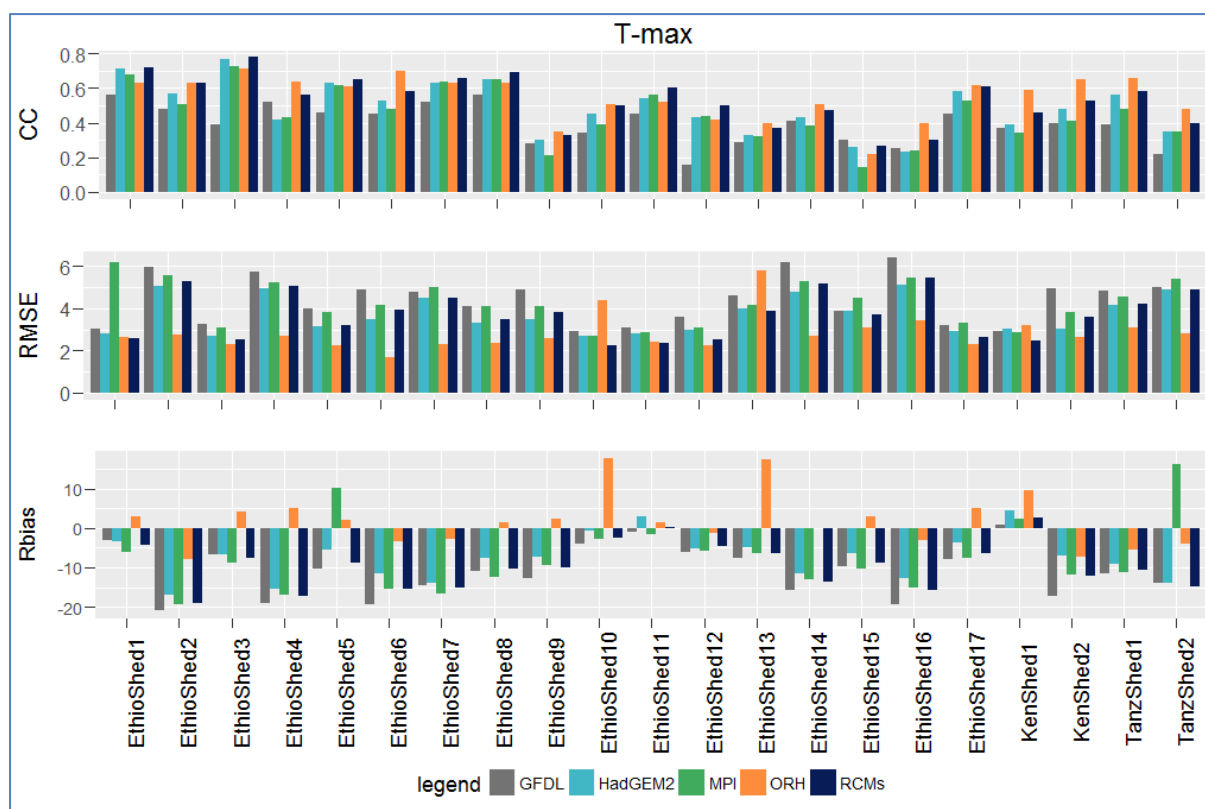


Fig. 4. Statistical evaluation of daily T_{\max} retrieved from GFDL, HadGEM2, MPI, ORH, and RCMs against ground observations: CC (top panel), RMSE (middle panel), and Rbias (lower panel) over the period of 1983–2005 for 21 validation areas of East Africa (see Table 1).

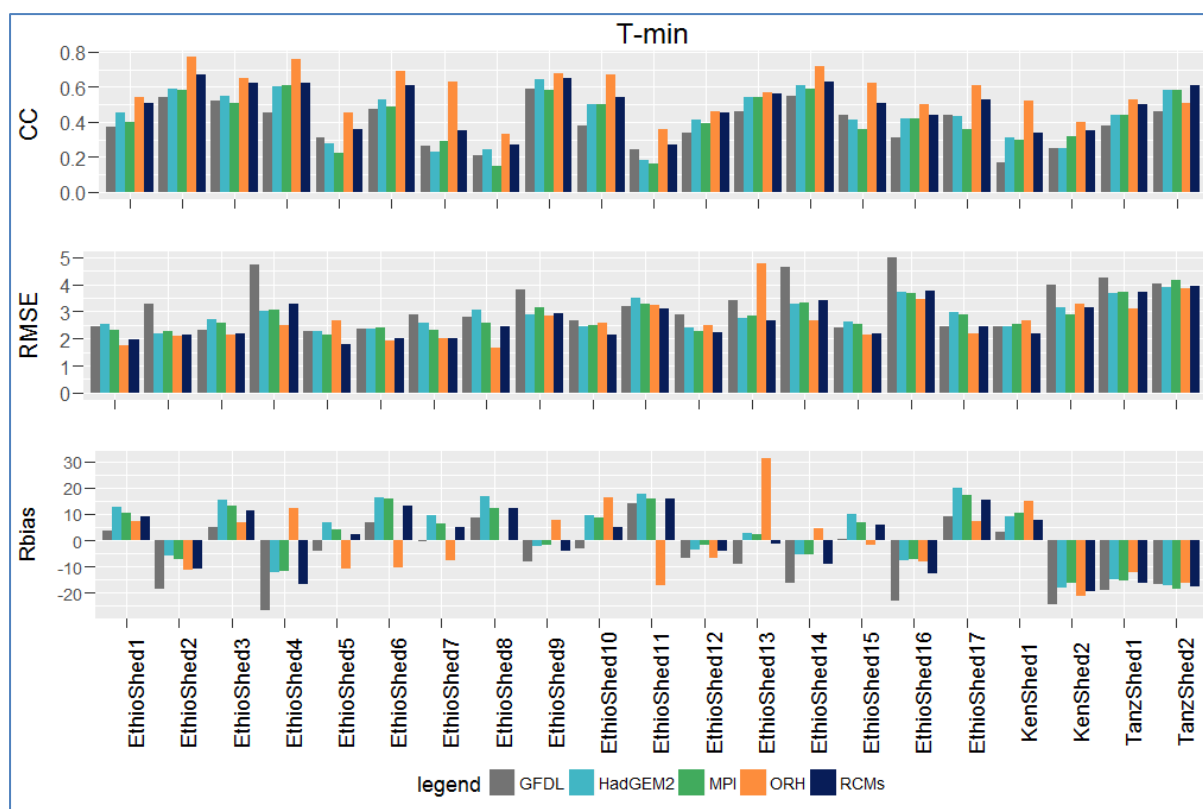


Fig. 5. Statistical evaluation of daily T_{\min} from retrieved GFDL, HadGEM2, MPI, ORH, and RCMs against ground observations: CC (top panel), RMSE (middle panel), and Rbias (lower panel) over the period of 1983–2005 for 21 validation areas of East Africa (see Table 1).

- (2) Please use a different color bar for Figure 2. Please limit the range from 0 to 12 (why is there below 0 in a precipitation color scale?). Perhaps choose a color scale that is sequential going from a light color to a darker color. Also in this figure and in fig 3, it may be best to show absolute value of rainfall or temperature using one of the reference dataset and show only difference between other datasets and that reference dataset.

Authors' response:

- Thanks for the recommendation. The figures, colours and colour bars, are changed as recommended. To show the absolute values of rainfall and temperature datasets, CHIRPS and ORH, respectively, are used as a reference dataset and [section 4.1](#) is modified by presenting few results to select CHIRPS and ORH as a reference dataset. While selecting the colours we consider for colour-blind readers.

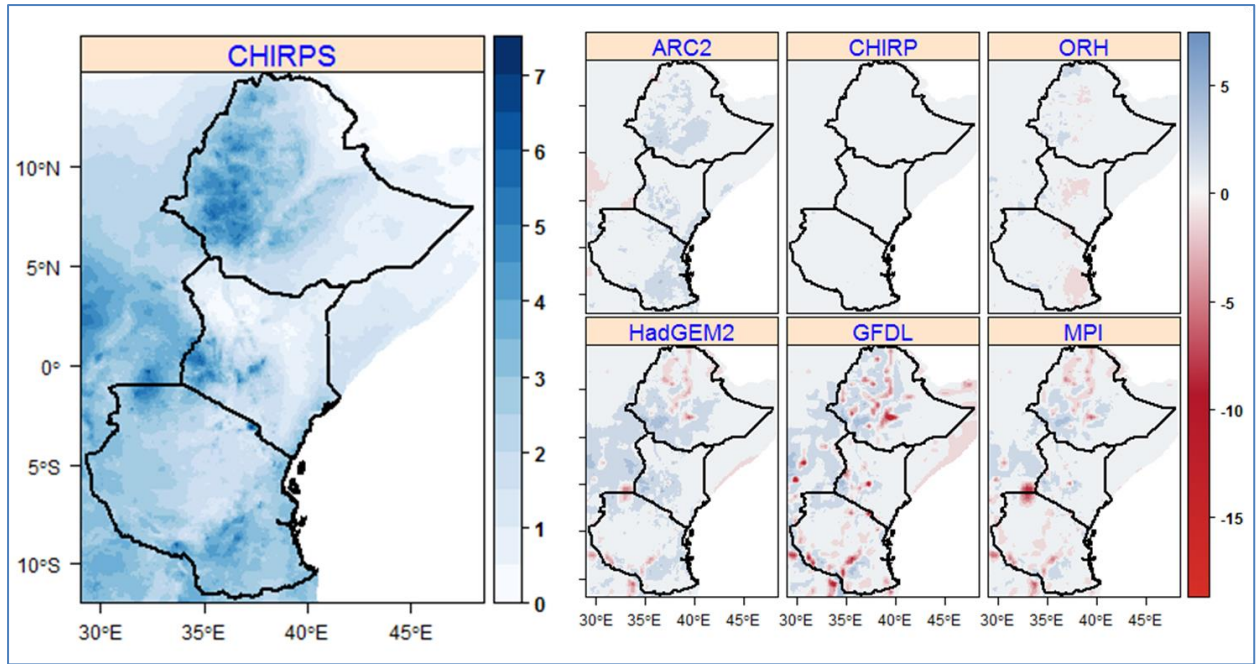


Fig. 6: Average daily rainfall (mm day⁻¹) map of East Africa retrieved from CHIRPS (left panel) for the study period 1983–2005. For rainfall data from ARC2, CHIRP, ORH, and RCM (right panels) the absolute difference (mm day⁻¹) from CHIRPS is displayed. All the maps are given in a 0.05° spatial resolution.

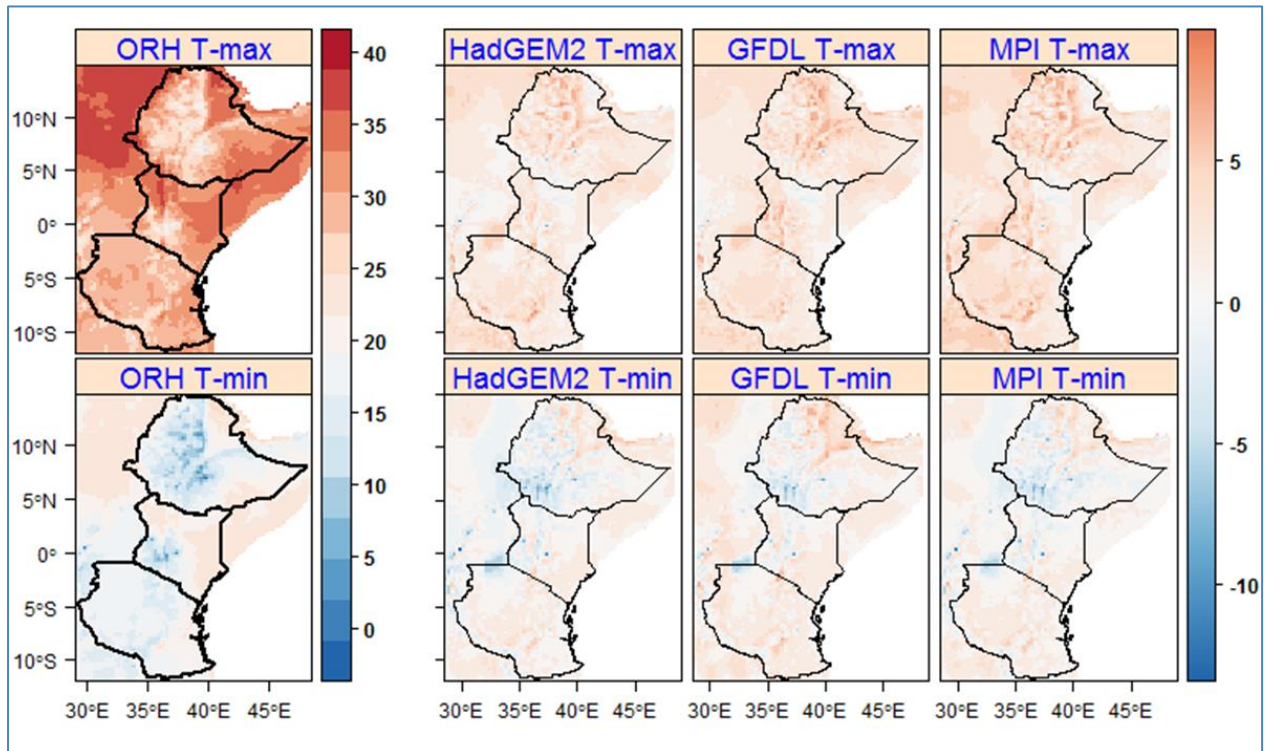


Fig. 7: Map of average daily T-max and T-min (°C) for East Africa generated from ORH (left panels) for the study period 1983–2005. For temperature data from HadGEM2, GFDL, and MPI (right panels) the absolute difference (°C) from ORH is displayed. All the maps are given in a 0.1° spatial resolution.

- (3) Table 4: I like this analysis but it would be useful to see how each of these the spatial variability of daily rainfall characteristics as indicated by different datasets. The datasets probably don't compare as well over the high altitude and rainfall regions than low altitude and low rainfall regions. It would be good see the spatial variability in those characteristics and how each of the dataset performs relative to observations.

Authors' response:

- As shown in Table 4, most of the rainfall characteristics are well produced from CHIRPS. Looking into the individual validation areas, CHIRPS comes first followed by ARC2. For few rainfall characteristics ORH and RCMs showed a lower deviation but in some areas show very high deviations. Hence, taking the individual areas CHIRPS and ARC2 are the products with an overall lower deviation from the observed values.
- We added a table (given below) in the supplementary material (ST. 2) and a line explaining this issue is added on **page 17 lines 1-2** as: “Moreover, the observed daily rainfall characteristics are well represented by CHIRPS and ARC2 in most of the validation areas (ST. 2).”

ST. 2: The performance of individual rainfall products in representing the observed daily rainfall characteristics in the 21 validation areas. The values for CHIRP, ARC2, CHIRPS, Had, MPI, GFDL, and RCMs is given as a percentage of deviation from the observed values. Lowest deviations are marked in bold. Rainfall characteristics (RC) 1, 2,3,4,5 and 6 represent (1) Number of wet days (days/year), (2) Average duration of wet periods (days), (3) Total amount of precipitation (mm/year), (4) Average amount of wet periods (mm), (5) Average duration of dry periods (days), and (6) Average daily precipitation (mm/day), respectively.

Validation area	RC	Observed	CHIRP	ARC2	CHIRPS	ORH	Had	MPI	GFDL	RCMs
EthioShde1	1	268.3	-24.6	14.9	12.9	26.5	16.2	6.7	32.2	-4.7
	2	10.2	-91.4	26.3	17.3	244.5	-46.1	-36.8	-14.9	-44.8
	3	1824.4	9.2	43.0	15.6	24.6	76.2	57.6	61.9	64.8
	4	69.2	-87.6	57.2	20.1	239.2	-18.3	-6.6	4.2	-4.6
	5	3.7	154.9	-9.0	-21.0	72.0	-65.1	-49.5	-61.5	-32.8
	6	6.8	44.8	24.5	2.4	-1.5	51.6	47.7	22.4	72.9
EthioShde2	1	242.8	-32.1	28.2	23.5	20.2	10.2	1.8	11.8	-20.1
	2	8.4	-96.4	12.2	20.4	204.9	-23.9	-26.8	-3.7	-46.8
	3	985.0	-3.9	40.7	8.1	-13.5	-24.2	-24.4	-36.5	-28.9
	4	34.2	-94.9	23.0	5.4	119.6	-47.7	-45.6	-45.3	-52.7
	5	4.2	183.2	-33.6	-29.3	90.1	-39.4	-30.6	-28.7	32.5
	6	4.1	41.5	9.7	-12.5	-28.0	-31.3	-25.7	-43.2	-11.1
EthioShde3	1	215.2	-40.1	14.9	-8.3	15.3	-9.0	-12.6	19.9	-24.6
	2	9.4	-98.6	8.1	18.8	241.1	-35.6	-35.3	21.0	-44.6
	3	1299.8	12.7	41.3	16.8	10.5	-7.4	-15.8	57.7	3.3
	4	57.1	-97.4	32.9	51.4	227.1	-36.6	-37.6	59.2	-24.1

	5	6.4	369.2	-15.8	58.1	141.8	-24.0	-9.1	-20.5	34.5
	6	6.0	88.2	23.0	27.4	-4.1	-1.6	-3.7	31.5	37.0
EthioShde4	1	166.9	-53.0	34.0	-3.6	4.9	-27.5	-31.0	-23.3	-47.4
	2	5.1	-95.3	41.9	30.5	139.1	-55.5	-53.5	-35.3	-72.1
	3	944.0	-3.2	60.5	0.2	-1.1	-30.7	-33.0	-25.4	-30.0
	4	29.0	-90.3	69.9	35.7	125.5	-57.4	-54.8	-37.0	-62.9
	5	6.1	296.5	-7.5	47.5	118.1	-6.5	7.7	13.0	117.9
	6	5.7	105.8	19.8	4.0	-5.7	-4.5	-2.9	-2.7	33.1
EthioShde5	1	275.4	-22.7	32.4	20.7	48.3	26.7	12.6	40.6	-1.4
	2	8.4	-94.7	60.9	52.5	230.6	-38.7	-40.2	-20.7	-47.0
	3	1046.8	-6.9	29.0	1.8	-11.3	49.1	22.1	3.3	21.8
	4	31.8	-93.6	56.7	28.6	97.8	-28.9	-35.2	-41.7	-34.5
	5	2.7	73.8	-23.4	-10.1	11.4	-69.5	-60.4	-70.0	-43.8
	6	3.8	20.5	-2.6	-15.7	-40.2	17.6	8.5	-26.5	23.6
EthioShde6	1	244.0	-31.8	19.5	0.0	20.1	0.0	-9.6	-4.9	-24.8
	2	7.3	-96.9	43.1	17.4	156.8	-48.2	-51.4	-51.2	-68.2
	3	914.8	-4.0	80.6	-1.8	-14.4	-40.2	-45.5	-68.6	-55.3
	4	27.5	-95.6	116.2	15.3	83.1	-69.0	-70.7	-83.9	-81.1
	5	3.6	131.8	-0.9	29.0	59.9	-45.8	-31.8	-42.5	24.6
	6	3.7	40.7	51.1	-1.8	-28.7	-40.2	-39.7	-67.0	-40.5
EthioShde7	1	267.5	-24.8	14.6	7.5	56.2	11.4	8.4	22.4	-11.1
	2	9.5	-92.4	43.2	32.3	344.8	-42.8	-32.1	-17.5	-50.6
	3	1662.5	-3.3	42.1	4.8	15.8	20.2	7.6	-10.5	4.1
	4	59.1	-90.3	77.4	28.9	229.6	-38.3	-29	-39.7	-42.1
	5	3.5	130.1	4.1	13.9	43.2	-58.1	-37.6	-55.0	-15.2
	6	6.2	28.5	23.9	-2.5	-25.9	7.9	5.1	-26.8	17.2
EthioShde8	1	289.3	-19.2	16.3	4.9	45.1	10.7	5.2	24.6	-9.2
	2	10.6	-95.4	53.3	18.9	330.6	-50.2	-44.9	-15.8	-59.6
	3	1778.8	3.5	26.7	2.4	23.5	2.5	-18.8	-37.6	-21.3
	4	65.0	-94.1	67.0	16.1	266.3	-53.9	-55.3	-57.8	-65.0
	5	2.8	110.9	-1.9	9.7	35.5	-65.3	-45.3	-61.4	-27.5
	6	6.1	28.0	8.9	-2.3	-14.9	-7.4	-18.9	-49.9	-13.4
EthioShde9	1	244.3	-31.0	80.7	51.4	92.5	54.8	42.7	63.6	-45.0
	2	5.8	-93.2	64.3	67.0	239.9	6.4	16.8	36.4	-34.8
	3	813.1	36.6	33.2	30.0	50.4	182.5	100.8	45.3	93.2
	4	19.3	-86.5	18.4	46.7	165.6	94.3	64.4	21.2	32.5
	5	2.9	98.7	-48.9	-30.8	-10.4	-58.8	-49.0	-53.2	-23.5
	6	3.3	97.9	-28.0	-12.1	-21.9	82.5	40.7	-11.2	103.3
EthioShde10	1	199.0	-44.4	63.5	-0.3	20.3	-10.8	-15.9	-7.5	-34.7
	2	6.8	-97.8	73.9	34.7	214.5	-38.5	-41.0	-26.1	-61.1
	3	992.7	3.3	66.5	4.9	-12.9	-25.7	-27.1	-31.1	-28.3
	4	33.9	-95.9	77.1	41.8	127.7	-48.8	-48.9	-44.9	-57.2
	5	5.7	242.5	-22.7	45.2	117.3	-16.1	-9.4	-11.2	64.0
	6	5.0	85.8	1.8	5.2	-27.6	-16.7	-13.4	-25.5	9.9

EthioShde1 1	1	241.6	-32.2	42.6	5.6	0.5	12.2	-5.5	24.5	-19.6
	2	6.0	-96.1	59.7	15.6	76.4	-36.7	-49.8	-22.2	-68.2
	3	1001.4	2.4	68.6	3.3	12.2	257. 3	83.1	63.1	107.7
	4	25.1	-94.1	88.7	13.1	96.9	101. 8	-2.8	1.9	-17.9
	5	3.1	114.3	-23.6	7.9	73.6	-51.7	-40.1	-54.8	-24.7
	6	4.1	51.1	18.2	-2.2	11.6	218. 5	93.8	31.0	158.3
EthioShde1 2	1	32.0	-90.3	-18.8	-59.5	-69.1	-61.7	-72.0	-62.0	-82.2
	2	1.8	-90.2	-27.1	-15.3	7.0	-40.7	-50.5	-43.4	-68.3
	3	246.3	-18.9	47.9	-21.8	-26.1	103. 3	20.3	-18.7	17.1
	4	14.2	-17.7	32.7	63.7	156.2	214. 3	112. 9	21.0	108.7
	5	18.6	1117.4	-3.9	153.1	342.9	86.6	136. 2	76.9	225.3
	6	7.7	738.1	82.1	93.2	139.5	430. 4	330. 2	113.8	557.7
EthioShde1 3	1	112.0	-61.9	10.4	-35.5	-22.8	-50.3	-51.7	-41.2	-64.0
	2	3.7	-98.0	24.8	0.7	88.4	-64.2	-64.3	-37.5	-77.3
	3	661.3	23.5	48.5	10.2	5.0	-19.0	-31.4	-13.9	-22.3
	4	22.0	-93.4	67.9	72.1	156.4	-41.7	-49.3	-8.6	-51.1
	5	6.6	323.9	-9.4	72.6	121.1	9.8	10.6	21.4	130.2
	6	5.9	224.0	34.6	70.9	36.1	62.8	42.2	46.3	115.6
EthioShde1 4	1	145.5	-59.7	0.6	-24.9	-10.2	-21.4	-29.4	-15.3	-48.3
	2	3.2	-97.9	-14.5	-24.9	50.0	-54.7	-57.7	-37.6	-72.2
	3	709.4	2.3	21.6	0.4	-12.0	114. 5	73.1	106.1	95.0
	4	15.8	-94.7	3.3	0.4	47.0	23.5	3.7	51.9	4.7
	5	4.9	171.2	-9.3	36.9	80.6	-27.6	-17.4	-16.3	40.2
	6	4.9	154.0	20.9	33.7	-2.0	172. 8	145. 1	143.3	277.1
EthioShde1 5	1	80.9	-76.9	-34.2	-53.6	-62.2	-62.5	-66.9	-60.8	-71.7
	2	3.1	-95.3	-14.0	-15.9	3.4	-76.1	-77.5	-68.9	-79.3
	3	501.4	5.3	42.4	6.1	-55.8	-26.3	-36.5	-43.2	-36.2
	4	19.2	-78.5	86.1	92.5	20.7	-53.0	-56.9	-54.9	-53.4
	5	9.1	438.4	36.8	140.3	330.1	5.5	33.5	19.4	119.3
	6	6.2	356.8	116.3	128.9	16.8	96.5	91.5	44.8	125.5
EthioShde1 6	1	164.3	-53.9	14.6	-21.9	-11.6	-19.8	-29.5	-23.4	-44.7
	2	3.7	-97.3	-0.1	-19.6	40.3	-59.5	-67.5	-54.9	-73.8
	3	822.5	-8.2	68.6	-12.2	-17.0	4.2	-8.7	-31.9	-15.1
	4	18.5	-94.7	47.0	-9.6	31.8	-47.4	-58.0	-59.9	-59.7
	5	4.1	182.6	-22.8	31.2	62.3	-40.2	-36.2	-28.2	27.2
	6	5.0	98.9	47.1	12.4	-6.0	29.8	29.4	-11.0	53.5
EthioShde1 7	1	251.6	-29.8	20.8	1.9	17.6	16.6	3.1	21.9	-12.0
	2	8.5	-97.3	50.4	24.0	183.8	-34.3	-38.2	-14.6	-42.4

	3	917.6	-7.6	38.5	-3.4	-19.2	34.9	16.2	3.9	16.8
	4	30.9	-96.5	72.5	17.6	95.0	-24.0	-30.3	-27.2	-23.6
	5	3.8	151.8	-0.6	28.8	81.1	-55.6	-43.8	-49.7	-6.5
	6	3.6	31.5	14.7	-5.2	-31.3	15.6	12.7	-14.8	32.7
KenShed1	1	146.5	-58.6	-25.7	16.2	-47.0	-33.3	-39.8	-37.6	-53.7
	2	3.2	-96.5	-19.1	-1.7	-48.6	-51.1	-57.5	-62.4	-80.1
	3	554.6	-30.7	21.7	-14.3	-42.6	58.1	0.8	-13.7	6.5
	4	12.3	-94.2	32.5	-27.5	-44.4	16.0	-28.9	-48.0	-54.3
	5	4.8	215.7	56.1	-22.8	143.9	15.5	27.9	2.2	103.1
	6	3.8	67.7	63.7	-26.2	8.2	137. 1	67.5	38.3	130.0
KenShed2	1	180.5	-48.1	-4.9	84.2	-38.6	-34.7	-41.9	-36.3	-47.8
	2	3.4	-92.9	-9.4	22.2	-54.3	-76.9	-83.9	-80.5	-91.8
	3	1018.0	-20.2	37.8	3.3	-24.7	2.0	-34.7	-61.7	-42.0
	4	18.9	-89.1	31.2	-31.5	-43.9	-63.9	-81.9	-88.3	-90.9
	5	3.2	91.5	3.3	-56.7	83.2	-26.1	-11.6	-34.5	41.3
	6	5.6	53.6	44.9	-44.0	22.7	56.2	12.4	-39.9	11.2
TanzShed1	1	139.3	-59.7	5.7	2.7	-40.6	198. 1	-51.5	-52.9	-61.0
	2	2.6	-89.6	-17.6	-16.6	-42.3	-78.8	-77.5	-80.5	-96.6
	3	705.5	-23.5	85.6	40.3	-12.0	579. 8	-19.9	-48.5	-27.7
	4	13.3	-80.2	44.7	14.0	-14.4	-51.7	-62.8	-78.7	-93.7
	5	4.2	193.6	-11.7	-20.3	68.4	56.5	34.2	33.9	148.4
	6	5.1	89.9	75.6	36.7	48.3	128. 1	65.3	9.4	85.8
TanzShed2	1	74.4	-78.8	-16.2	-31.0	-51.4	-54.9	-74.7	-70.6	-78.9
	2	2.2	-94.3	-51.7	-45.2	-52.6	-74.6	-79.3	-70.9	-94.0
	3	626.3	-23.1	-2.2	-8.1	-36.3	39.6	-44.3	-49.8	-41.8
	4	17.8	-80.4	-46.2	-30.3	-3.1	-24.9	-56.4	-52.7	-84.2
	5	8.7	449.7	-29.7	-10.3	118.3	294. 0	230. 9	155.0	555.4
	6	8.0	246.8	11.4	27.1	25.2	195. 4	110. 0	62.8	163.7

- (4) Please also consider reducing the number of sub-figures in Figure 4 by simply showing the correlation value for each of the sub-regions for a given dataset in one sub-figure hence you'll have a 5 columns single row figure. Not sure if it's necessary to show all the scatter diagrams. You could also just show correlation values for one reference dataset (such as CHIRPS) and show the difference in the correlation of other datasets and the correlation of the reference dataset.

Authors' response:

- Thanks for the recommendation. Following your recommendation, we presented only the correlation (CC) for all the datasets in all the validation areas (1-21) explained in [section 4.1 \(page 14\)](#). As we explained above, we use this result to select the reference datasets (CHIRPS and ORH for rainfall and temperature). We use numbers to represent the validation areas for improving the figure resolution instead of the text (e.g., EthioShed1 as 1). We moved the scatterplots to the supplementary material ([SF. 1](#)) for providing further information such as biases.

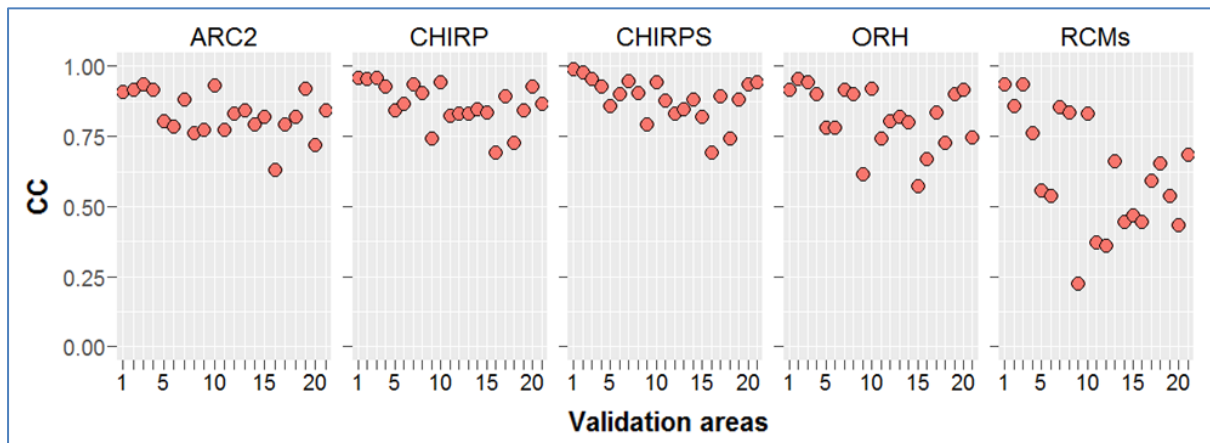


Fig. 2. The correlation (CC) between the observed monthly rainfall and data from ARC2, CHIRP, CHIRPS, ORH, and RCMs for the 21 validation areas (1-17 for Ethioshed1-17, 18-19 for KenShed1-2, and 20-21 for TanShed1-2, see Table 1) covering the period of 1983–2005.

Evaluation of Multiple Climate Data Sources for Managing Environmental Resources in East Africa

Solomon H. Gebrechorkos^{1,2}, Stephan Hülsmann¹, Christian Bernhofer²

¹United Nations University Institute for Integrated Management of Material Fluxes and of Resources (UNU-FLORES), 01067 Dresden, Germany

²Faculty of Environmental Sciences, Institute of Hydrology and Meteorology, Technische Universität Dresden, 01062 Dresden, Germany

Correspondence to: Solomon H. Gebrechorkos (gebrechorkos@unu.edu)

Abstract. Managing environmental resources under conditions of climate change and extreme climate events remains among the most challenging research tasks in the field of sustainable development. A particular challenge in many regions such as East Africa is often the lack of sufficiently long-term and spatially representative observed climate data. To overcome this data challenge we used a combination of accessible data sources based on station data, earth observation by remote sensing, and regional climate models. The accuracy of the Africa Rainfall Climatology version 2 (ARC2), Climate Hazards Group InfraRed Precipitation (CHIRP), CHIRP with Station data (CHIRPS), Observational-Reanalysis hybrid (ORH), and Regional Climate Models (RCMs) are evaluated against station data obtained from the respective national weather services and international databases. We did so by relating point to pixel, point to area grid cell average, and stations average to area grid cell average over 21 regions of East Africa: 17 in Ethiopia, two in Kenya and two in Tanzania. We found that the latter method provides better correlation and significantly reduces biases and errors. The correlations were analyzed at daily, dekadal (10 days), and monthly resolution for rainfall and maximum and minimum temperature (T-max and T-min) covering the period of 1983–2005. At daily time scale, CHIRPS, followed by ARC2 and CHIRP are the best performing rainfall products compared to ORH, RCM, and RCMS. CHIRPS captures well the daily rainfall characteristics such as average daily rainfall, amount of wet periods, and total rainfall. Compared to CHIRPS, ARC2 showed higher underestimation of the total (-30 %) and daily (-14 %) rainfall. CHIRP on the other hand, showed higher underestimation of the average daily

rainfall (-53 %) and duration of dry periods (-29 %). Overall, the evaluation revealed that in terms of multiple statistical measures used on daily, dekadal, and monthly time scale, CHIRPS, CHIRP, and ARC2 are the best performing rainfall products while ORH, individual RCM, and RCMs are the least performing products.

- 5 For T-max and T-min, ORH was identified as the most suitable product compared to RCM and RCMs. Our results indicate that CHIRPS (rainfall) and ORH (T-max and T-min), with higher spatial resolution, should be the preferential data sources to be used for climate change and hydrological studies in areas of East Africa where station data are not accessible.

1. Introduction

In Sub Saharan Africa (SSA) about 80 % of people living in poverty will continue to depend on the agriculture sector as their major income sources under the continuing global change (Dixon et al., 2001; IFPRI, 2009). Unlike in other regions of the world, agricultural activities in SSA are marked by low production mainly due to poor natural resource management, rainfall amount and variability, economy, and technologies. According to IFPRI (2009), reducing poverty in SSA is becoming more challenging due to rapid population growth and associated decline in the quality and availability of environmental resources (e.g. water and soil). Additionally, food security and livelihoods of people are threatened by the direct impacts of change in climate such as increasing frequency of extreme events and weather variability impacts on the production and productivity of agricultural lands (Malo et al., 2012). In general, the impact of climate change in Africa ranges from social and economic to health, water, and food security, which is a threat to the lives of Africans (Urama and Ozor, 2010; Gan et al., 2016).

These outlined challenges hold in particular for the eastern parts of SSA, including Ethiopia, Kenya, and Tanzania. The population (>80 %) mainly depend on agriculture for their livelihood in this region and agriculture-based income contributes 40 % to the country's Gross Domestic Product (GDP) (FAO, 2014). Extreme climate events such as recurring droughts and floods have a tremendous impact on the socio-economy of the region. Devastating droughts in SSA linked to the high variability (seasonal and inter-annual) of rainfall (Sheffield et al., 2013) are projected to increase in frequency (IPCC, 2007, 2014; Niang et al., 2014). In addition to the projected impact, the region is already facing significant food security issues and natural resource-based clashes (UNEP, 2011; World Bank, 2012).

The impacts of future climate change in East Africa vary from region to region. In order to understand the impacts of future climate at the regional and local scale, ground station data with high spatial and temporal resolution is crucial. Regions with poor ground observation are highly vulnerable to climate threats (Wilby and Yu, 2013), which holds particularly for developing countries. In Africa, high quality climate data from meteorological field stations are scarce (Dinku et al., 2013) and inconsistencies exist between other data products largely due to a limited number of ground stations, merging and

interpolation methods (Huffman et al., 2009; Nikulin et al., 2012; Sylla et al., 2013), limited time resolution, and limited documentation quality. In addition, climate data with high temporal and spatial resolution, even if collected by the national meteorological agencies, are often not available due to data sharing policies. With advancements of technologies and research activities, a number of climate data products from different sources (remote sensing, climate model, and reanalysis) have been produced over the last decades that can fill the data gap particularly for drought-prone regions (Gan et al., 2016) and can be used for hydrological and climate change studies.

Several satellite-based rainfall estimates have been developed over the last decades (Sapiano and Arkin, 2009; Zambrano-Bigiarini et al., 2016). In Africa, a list of rainfall and temperature products are available that can be used for climate change studies such as the African Rainfall Climatology Version 2.0 (ARC2) from the Climate Prediction Center (CPC) of the National Oceanic and Atmospheric Administration (NOAA) with a spatial resolution of 0.1° (Novella et al., 2013) and Climate Hazards Group InfraRed Precipitation (CHIRP) and CHIRP with Station data (CHIRPS) from the Climate Hazard Group (CHG) with a spatial resolution of 0.05° (Funk et al., 2015). In addition, the Multi-Source Weighted-Ensemble Precipitation (MSWEP) (Beck et al., 2016), Tropical Applications of Meteorology using Satellite and ground-based observations (TAMSAT) (Tarnavsky et al., 2014), TAMSAT African Rainfall Climatology And Time series (TARCAT) (Maidment et al., 2014), and data from the Enhancing National Climate Services (ENACTS) initiative (Dinku et al., 2014) are available at varying spatial and temporal resolutions and for longer periods.

As another source of climate information, climate model-derived data are suitable tools for assessing climate variability and change. Globally, reanalysis based climate products such as the Observational Reanalysis Hybrid (Sheffield et al., 2006), Modern-Era Retrospective analysis for Research and Applications version 2 (MERRA-2) (Gelaro et al., 2017), and Climate Forecast System Reanalysis (CFSR) (Saha et al., 2010) are widely used for climate and hydrological studies. Moreover, dynamically downscaled data from Global Climate Models (GCMs) is widely used in regional and local scale climate studies. Regional Climate Models (RCMs) produced from dynamically downscaled GCMs provide spatial resolutions that suit end-users (Sun et al., 2006). However, downscaling of climate

information from GCMs to assess the impact of climate change on environmental resources at regional or smaller scale has only recently been performed, e.g. as dynamical downscaling within the CORDEX community (CORDEX-Africa, see e.g. Abiodun et al. (2016)). In Africa (CORDEX-Africa domain) the spatial resolution of RCMs is available at about 0.44° (~50 km) and at varying temporal resolutions. In East Africa, a number of studies have been done with the applications of RCMs for climate studies (Anyah and Semazzi, 2006, 2007; Diro et al., 2011; Endris et al., 2013; Segele et al., 2009).

Before being used as input to different climate or hydrological models, climate data products need to be evaluated against field-based meteorological stations. For studying climate change and climate extremes data with high accuracy and from long periods (> 30 years) are required. In addition, current hydrological (e.g. Soil-Water Assessment Tool, SWAT (Neitsch et al., 2002)) and climate models (e.g. Statistical Downscaling Model (e.g., SDSM, Wilby and Dawson, 2004)) require daily time series of rainfall and temperature covering long periods. Considering these requirements, concerning lengths of time series and temporal resolution on the one hand and the limited availability of station data on the other hand, it is not surprising that comprehensive evaluations of climate data products, particularly on daily time scale, are not available for East Africa to the best of our knowledge. However, few studies are available based on monthly gridded data (e.g., Cattani et al., 2016; Kimani et al., 2017), for limited time periods. Moreover, Kimani et al. (2017) only considered CHIRPS, while a more comprehensive evaluation and comparison of different data sources would be highly desirable. Based on the data requirements of impact models, the climate data products to be included in such an evaluation should be selected/excluded based on high spatial and temporal (e.i., daily) resolution, quality (missing values), and temporal coverage (length of time series), while also taking the results from previous studies (e.g., Cattani et al., 2016; Bayissa et al., 2017; Kimani et al., 2017) in to account.

Therefore, this study aims at comparing and evaluating the available climate data products for Ethiopia, Kenya, and Tanzania at the highest possible spatial and temporal (i.e., daily, for reasons of comparability extended also to dekadal and monthly) resolution against station data using the most widely applied and accepted statistical and graphical evaluation methods. Results of our study will help overcome the data scarcity in the study area, in terms of spatial coverage and temporal resolution gaps

of daily, dekadal, and monthly climate data products that can be used for hydrological and climate change and impact studies at a watershed or regional scale. In addition, the data sets can be used for local and regional climate projections using climate models such as Statistical DownScaling Model (SDSM) (Wilby and Dawson, 2004).

Field Code Changed

5 **2. Study area and Data**

2.1 Study region

The study focuses on the evaluation of daily, dekadal, and monthly climate data sources for regions of East Africa, particularly Ethiopia, Kenya, and Tanzania (Fig. 1). The region is divided by the Great Rift Valley and is topographically one of the most diverse and complex parts of Africa, characterized by multiple rainfall regimes. Generally, the rainfall cycle (climatological annual cycle) in East Africa is linked to the position changes of the Inter-Tropical Convergence Zone (ITCZ) (Endris et al., 2013). Variability in the rainfall patterns in this region is partly induced by local factors such as heterogeneity of land surface and complex topography and their interaction with global climate forcing systems. Countries of the region face similar weather and climate variabilities (spatial and temporal variabilities) and increasing temperature and decreasing precipitation trends (Pricope et al., 2013). In addition, all East African countries face similar issues such as frequent droughts, floods, poverty, and lack of clean and adequate water supply. The conditions can worsen in the near future due to climate change; therefore, sustainable adaptation and mitigation strategies are required, which rely on advanced climate and hydrological models and the respective data inputs.

20 **2.2 Data sets**

The reference data sets used for evaluation of multiple data products in this study are based on daily rainfall, maximum temperature (T-max), and minimum temperature (T-min) derived from 332 rain gauges and synoptic stations. Station data for Ethiopia was provided by the National Meteorological Agency (NMA) of Ethiopia for the period 1954–2016. The daily data provided by NMA were carefully and extensively checked for its quality and some missing data were infilled from hardcopies. For Kenya

and Tanzania, the global summary of the day available at the National Climate Data Center (NCDC) (<https://www.ncdc.noaa.gov/>) is used. For evaluation, based on the criteria outlined above, we considered satellite-based rainfall estimates, Observational-Reanalysis Hybrid (ORH), and historical period of Regional Climate Models (RCMs) driven by Global Climate Models (GCMs) to be compared against field-based meteorological stations. The three satellite-based rainfall estimates fulfilling all criteria are the African Rainfall Climatology Version 2.0 (ARC2) (Novella et al., 2013), the Climate Hazards Group InfraRed Precipitation (CHIRP) and CHIRP with Station data version 2 (CHIRPS) (Funk et al., 2015). Not included was, for example, TAMSAT, which is available at higher spatial and temporal resolution and for a longer time period but contains considerable data gaps (Maidment et al., 2017, <https://icdc.cen.uni-hamburg.de/1/daten/atmosphere/tamsat-rainfall-africa/>) during the evaluation period. ENACTS and TARCAT are available only from dekadal (10 days) time scales. In addition, MERRA-2 and CFS-R are not included in this study due to their coarse spatial resolution compared to the other reanalysis products (i.e., ORH).

ARC2 is the second version of the ARC and is compatible with the algorithm of the Rainfall Estimation Version 2 (RFE 2.0) (Novella et al., 2013). The product is a composite of three hourly geostationary Infrared (IR) data, which makes it different from RFE, centered over Africa provided by the European Organization for the Exploitation of Meteorological Satellites (EUMETSAT) and quality controlled daily rainfall records acquired from the Global Telecommunication System (GTS) gauges. ARC2 is consistent with the historical data sets of the Climate Prediction Center Merged Analysis of Precipitation (CMAP) (Xie and Arkin, 1997) and Global Precipitation Climatology Project (GPCP) (Novella et al., 2013). The data set is updated regularly and it is available at a spatial resolution of 0.1° covering the period from 1983–present.

CHIRPS is a semi-global rainfall product designed for drought monitoring and global environmental changes (Funk et al., 2015). The product provides daily, pentadal, dekadal, and monthly data at a 0.05° spatial resolution available at Climate Hazards Group (CHG <ftp://ftp.chg.ucsb.edu/pub/org/chg/products>). CHIRPS combines a 0.05° resolution of satellite images and data from ground stations to form a gridded rainfall time series. Station data (see also below) are

used to produce a preliminary two day rainfall product by blending data from sparsely located GTS gauges with rainfall estimates retrieved from the Cold Cloud Duration (CCD) at every pentad. In addition, the final product is developed by blending the best available monthly and pentadal station data with the monthly and pentadal rainfall estimates retrieved from the CCD, respectively, to produce gridded rainfall product (Funk et al., 2015). The development process of CHIRPS includes the 0.05° monthly precipitation climatology (CHPclim), satellite only Climate Hazards Group InfraRed Precipitation (CHIRP), and station blending techniques. The second version of CHIRPS, which is updated regularly, provides an improved daily rainfall time series (1981–present) with a spatial resolution of 0.05° ranging from 50°S to 50°N (and all longitudes) (Funk et al., 2015). The development process of CHIRPS and its application in drought monitoring in Africa (e.g. Ethiopia) is explained in detail by Funk et al. (2015). CHIRPS is not only used for drought monitoring, but also for other global environmental applications (Zambrano-Bigiarini et al., 2016), water resource management, and climate dynamics (Ceccherini et al., 2015; Deblauwe et al., 2016). ORH is a global (Sheffield et al., 2006) and regional (Northern/West/East Africa) (Chaney et al., 2014) three-hourly, daily, and monthly meteorological data set covering the period between 1901–2012. ORH is developed by a spatial downscaling of the NCEP–NCAR reanalysis (Kalnay et al., 1996) up to a spatial resolution of 0.1° using a bilinear interpolation. ORH merges multiple data products such as the NASA Langley Surface Radiation Budget (SRB), the monthly temperature data from the University of East Anglia Climate Research Unit (CRU), Tropical Rainfall Measuring Mission Multi-satellite Precipitation Analysis (TMPA) (Huffman et al., 2007) and other observational based rainfall products (Chaney et al., 2014). The spatial downscaling of ORH is done with the inclusion of changes in elevation and it is evaluated against ground stations (global summary of the day) available at the US National Climatic Data Center (NCDC). ORH is corrected for temporal inhomogeneity and biases and random errors are omitted through assimilation with quality controlled and gap filled ground station data available at NCDC (https://www.ncdc.noaa.gov/) as a global summary of the day (Chaney et al., 2014). This data is freely available from the Terrestrial Hydrology Research Group, University of Princeton (http://hydrology.princeton.edu). Even though ORH is not updated regularly, it has been widely used in

Field Code Changed

climate and hydrological studies (e.g., Troy et al., 2011; Wang et al., 2011; Demaria et al., 2012; Sheffield et al., 2014)

Compared to the other rainfall products, monthly ground station data from Ethiopia, Kenya, and Tanzania are included in CHIRPS. Evaluating CHIRPS based on ground station data might thus raise concerns about the independence of data. However, not all stations used in this study are included in CHIRPS and in general the stations are not consistently used in the development process of CHIRPS. In addition, the station data used in CHIRPS is mainly a monthly total from a limited number of stations. For example, in Ethiopia, where all station data originate from NMA, during 01/1983–02/1983 and 08/2005–12/2005 the monthly stations used in CHIRPS declined from 139 to 132 and from 175 to 169, respectively. In 2015, the number of station included in CHIRPS even declined to below 10. Moreover, in Kenya and Tanzania, during the period of 01/1983–12/2005 the number of station used in CHIRPS declined from 142 to 62 and from 171 to 55, respectively (<ftp://chg-ftpout.geog.ucsb.edu/pub/org/chg/products/CHIRPS-2.0/diagnostics/>). Besides the difference in temporal resolution (monthly vs. daily) and the number of stations between station data included in CHIRPS and the validation data set, the latter deviated from the former since we used original data provided by NMA (Ethiopia) which were quality-controlled and extended by adding data from hard copies. Overall, while not fully independent, the relation between CHIRPS and the validation data set should be weak, besides the fact that there is no other (fully independent) validation data set available.

Historical data (control model runs) of the CORDEX RCMs are also used as a potential source for rainfall, T-max, and T-min data. RCMs are climate models with a higher spatial resolution compared to GCMs. The driving data of RCMs are derived from GCMs or reanalysis data and can include greenhouse gases (GHG) and aerosol forcing. Compared to GCMs, RCMs considers local factors such as complex topography and land cover inhomogeneity in a physically based manner (IPCC, 2007). In Africa, dynamical downscaling was performed in a large effort within the CORDEX community (CORDEX-Africa). Within CORDEX-Africa the continent's climate was dynamically modelled by an international consortium, providing a spatial resolution of about 50 km. According to the IPCC report (2007), RCMs can be used for wide range applications such as climate change studies. Following the

recommendation of Endris et al. (2015), the historical data derived from two CORDEX RCMs, RCA (Samuelsson et al., 2011), and COSMO-CLM or CCLM (Baldauf et al., 2011), driven by HadGEM2-ES (MOHC, United Kingdom), MPI-ESM-LR (MPI, Germany), and GFDL-ESM2M (NOAA/GFDL, United States) are used. Rainfall, T-max, and T-min products of both RCMs are retrieved from the Earth System Grid Federation (ESGF) data portal.

3. Methodology

3.1 Selection of validation areas and ground stations

The evaluation of multiple daily, dekadal (10 days), and monthly rainfall, T-max, and T-min products were conducted on selected basins of Ethiopia (EthioShed1 - EthioShed17), Kenya (KenShed1 and KenShed2), and Tanzania (TanzShed1 and TanzShed2) (Fig. 1). The polygons in Fig. 1 are river basins retrieved from the global river basins available at the WaterBase hosted by the United Nations University (UNU-INWEH: <http://www.waterbase.org/>). In most regions of Africa not only are the density and availability of field-based meteorological stations limited, but their accessibility is very restricted for many reasons. For this study, it was only possible to get daily station data from the National Meteorological Agency (NMA) of Ethiopia with a reasonable spatial and temporal coverage. Therefore, the selection of validation areas is based on the availability, quality, and density of field-based meteorological stations during the period of 1983–2005. It was almost impossible to find multiple stations in one satellite grid cell. For Kenya and Tanzania, therefore, stations with more than 10 years (>50 % of the study period), were included for evaluation (Table 1).

The quality of selected stations was checked and extremely high rainfall records during dry seasons, such as daily rainfall of > 480 mm preceding and following by dry days, were excluded. Finally, a total of 132 stations were found suitable for comparison, 2 to 12 stations located in the validation areas. In addition to these stations in the validation areas, 78 stations, randomly distributed over the region, are used to compare on an individual basis with the rainfall and temperature products. Compared to Kenya and Tanzania, the quality, continuity, and spatial and temporal coverage of stations were better in Ethiopia and only stations with missing values of less than 20 % were considered. The availability of

multiple stations in a validation area helps to check the quality of individual stations by using methods such as double mass curve (Vernimmen et al., 2012) and allows for replacement of missing values of one station from a nearby station.

3.2 Comparing ground data with satellite, observational reanalysis, and climate model-based data

The most commonly used method to compare ground observations with other data products such as satellite based rainfall estimates and climate model outputs is point (station) to pixel comparison. When comparing daily rainfall, particularly in very complex topography, on point to pixel basis it can be challenging to acquire reasonable agreements. Therefore, in this study we used point to pixel, point to area grid cell average, and stations average to area grid cell average to evaluate the accuracy of each product. Area grid cell average is the average of numbers of pixels covering the basin or the validation area. Similarly, station average is used to indicate the average value of the stations inside the validation area. Therefore, during the comparison process, individual or the stations average is compared to the area grid cell average of the product. The most commonly used statistical methods such as the Pearson correlation coefficient (CC), bias, relative bias (Rbias), Mean Absolute Error (MAE), Root Mean Square Error (RMSE), and Index of Agreement (IA) (Cohen Liechti et al., 2012; Daren Harmel and Smith, 2007; Moazami et al., 2013) are used. CC (Eq. 1) is applied to evaluate the agreement of individual products (P) to station data (O). A value of CC close to one shows a perfect positive fit between the products and station data.

$$CC = \frac{\sum_{i=1}^N (P_i - \bar{P}) \cdot (O_i - \bar{O})}{\sqrt{\sum_{i=1}^N (P_i - \bar{P})^2} \cdot \sqrt{\sum_{i=1}^N (O_i - \bar{O})^2}} \quad (1)$$

The average differences and systematic bias of each product are given as bias (Eq. 2) and Rbias (Eq. 3). Bias can be positive (overestimation) or negative (underestimation) according to the accuracy of each product.

$$\text{Bias} = \frac{\sum (P_i - O_i)}{N} \quad (2)$$

$$\text{Rbias} = \frac{\sum_{i=1}^N (P_i - O_i)}{\sum_{i=1}^N O_i} \times 100 \quad (3)$$

The MAE and RMSE (Eq. 4 and 5), are well-known and accepted indicators of goodness of fit that shows the differences between ground observation and model or other product outputs (Legates and McCabe, 1999).

$$\text{MAE} = \frac{\sum_{i=1}^N |O_i - P_i|}{N} \quad (4)$$

$$\text{RMSE} = \sqrt{\frac{\sum_{i=1}^N (O_i - P_i)^2}{N}} \quad (5)$$

The IA (Willmott, 1981) is another widely used indicator of goodness of fit between observed and model output. IA (Eq. 6) describes how much of the model or product output (rainfall, T-max, and T-min products) are error-free compared to the ground observations.

$$\text{IA} = \frac{\sum (P_i - O_i)^2}{\sum (|P - \bar{O}| + |O - \bar{O}|)} \quad (6)$$

In addition to the above statistical methods, the Taylor diagram (Taylor, 2001) is used to summarize the statistical relationship between ground station data and the products for rainfall, T-max, and T-min. In this diagram, the relationships between the two fields are explained by the correlation coefficient (R), centered mean square (RMS) difference (E'), and standard deviation (σ). The diagram is useful for evaluating the accuracy of multiple data sources or model output against a reference or observational data (IPCC, 2001). A single point on the diagram displays three statistical values (R, E', and σ) and their relationship is given by Eq. (7).

$$E'^2 = \sigma_f^2 + \sigma_r^2 - 2\sigma_f\sigma_r R \quad (7)$$

Where σ_f^2 and σ_r^2 are the variance of the model and observation fields and R is the correlation coefficient between the two fields (Eq. 8).

$$R = \frac{\frac{1}{N} \sum_{n=1}^N (f_n - \bar{f})(r_n - \bar{r})}{\sigma_f \sigma_r} \quad (8)$$

In the diagram, the distance from the reference point (observed data) is given as the centered RMS difference of the two fields (Eq. 9). A model with no error would show a perfect correlation to the observation.

$$E'^2 = \frac{1}{N} \sum_{n=1}^N [(f_n - \bar{f}) - (r_n - \bar{r})]^2 \quad (9)$$

Where f is the test (e.g. model or satellite) field and r is reference (observed) field, whereas $\sigma_f \sigma_r$ are the standard deviations of the model and reference fields (Eqs. 10 a and b).

$$\sigma_f = \sqrt{\frac{1}{N} \sum_{n=1}^N (f_n - \bar{f})^2} \quad (10a)$$

$$\sigma_r = \sqrt{\frac{1}{N} \sum_{n=1}^N (r_n - \bar{r})^2} \quad (10b)$$

Additionally, rainfall characteristics such as the number wet days, duration and amount of wet periods, duration of dry periods, and daily and total rainfall are used to evaluate the accuracy of individual rainfall products by comparing to the observed data. Rainfall characteristics are widely used indicators in rainfall modelling (Wilby and Dawson, 2007; Jebari et al., 2012) and include: Number of wet days (days y^{-1}), which is the count of days with rainfall per year; duration (days) of wet and dry periods indicating the average number of consecutive wet and dry days during the study period; the amount of wet periods (mm), indicating the amount of rainfall observed during the identified wet period.

4. Results

4.1 Validation of satellite, observational reanalysis, and climate model-based products

The average daily rainfall (Fig. 2) of the study region retrieved from [CHIRPS](#) is displayed in Fig. 2 for the study period 1983–2005. [ARC2](#), [CHIRP](#), [CHIRPS](#), [ORH](#), individual RCMs (RCM) and RCMs mean (RCMs) displays large discrepancies between the products for the study period 1983–2005. Using [CHIRPS](#) as a reference rainfall data, the absolute difference is presented in Fig. 2 for [ARC2](#), [CHIRP](#), [ORH](#), and individual RCMs ([HadGEM2](#), [GFDL](#), and [MPI](#)). The average daily rainfall from the individual RCMs (RCM) shows large discrepancies from [CHIRPS](#) compared to [CHIRP](#), [ARC2](#) and [ORH](#). Compared to dekadal and monthly resolution, (The comparison at daily time scale, particularly of rainfall, is challenging and more emphasis is given on this evaluation compared to dekadal and monthly resolutions. RCMs ([RCA4](#) and [CCLM](#)) driven by [HadGEM2-ES](#) ([HadGEM2](#)), [MPI-ESM-LR](#) ([MPI](#)), and [GFDL-ESM2M](#) ([GFDL](#)) are used in this study. For RCMs driven by each GCM, the average is used. The daily rainfall, T max, and T min maps of [GFDL](#) display the result of single RCM ([RCA4](#)) driven by [GFDL-ESM2M](#) for the period of 1983–2005. Higher and lower average daily rainfall values are displayed by [GFDL](#) and [ORH](#), respectively (Fig. 2). However, all the products showed a similar tendency in capturing the daily rainfall distribution; higher in the western and lower in the eastern part of the region. In addition, the average daily T-max and T-min (Fig. 3) of the region shows relatively higher disagreement between [ORH](#) and RCM, which is given as absolute difference from [ORH](#), individual RCMs (RCM). Even though, RCM shows high deviation from [ORH](#), they showed However, RCM shows a higher agreement in Ethiopia, Kenya, and Tanzania for T max and T min.

The correlation of each rainfall product with station data is summarized in Fig. 2 for the 21 validation areas, details given by (scatter plots) are provided in the supplementary material (Fig. 4SF. 1). The results shows that in most of the validation areas [CHIRPS](#) followed by [CHIRP](#) and [ARC2](#) showed a higher is more strongly correlated with station data compared to [ORH](#) and RCM. for eight validation areas, four in Ethiopia, two in Kenya, and two in Tanzania. The same plots with similar results for another 13 areas in Ethiopia are provided in the supplementary material (SF. 1). The monthly rainfall

plots display the relationship of each product with observed ground data and this relation is explained by the coefficient of determination or R-Squared (R^2). In addition to the lower correlation, ORH and RCM showed large biases in all the validation areas (SF. 1).

Based on the results in Fig. 2 and the scatter plots provided in the supplementary material (SF. 1),

CHIRPS and CHIRP are the most accurate rainfall products, with higher correlation and lower RMSE biases, and ARC2 and ORH are the second best products. RCM and RCM's mean (RCMs) correlate weakly in most of the validation areas. In addition, RCM (not shown in Fig. 42 but provided in the supplementary material (ST. 1)) and RCMs show a strong over- and underestimation of monthly rainfall compared to the other products. In EthioShed1, for example, CHIRPS and CHIRP are shown to be the most accurate products, while ARC2 and ORH showed higher dispersion above and below the regression line (see SF. 1). Similarly, in EthioShed4 both CHIRP and CHIRPS have an equal R^2 , but in terms of biases (points below and above the regression line) CHIRPs performed better. The observed biases in CHIRP and higher correlations in CHIRPS in all the validation areas highlights the role of the station-satellite data blending techniques. Compared to other validation areas, the agreement of products in EthioShed16 is comparably weak and CHIRPS and CHIRP showed the higher R^2 -correlation (0.480.7) compared to ARC2, ORH, and RCMs.

As for the daily, dekadal, and monthly resolution, the comparison is performed in three ways: point to pixel, point to area grid cell average, and stations average to area grid cell average using the methods described in Section 3.2. An explanatory example is given in Table 2, using stations of EthioShed1 displaying the difference in comparing products through point (station) to pixel, point to area grid cell average, and stations average to area grid cell average. The agreement of each product with station data on a daily time scale and on point to pixel comparison is weak, with significantly higher biases and errors. For rainfall, in general, the latter method, stations average to area grid cells average, provides better correlation, higher index of agreement, and lower biases and errors. Compared to point to pixel, the stations average to area grid cells average improves the correlations of ARC2, CHIRP, and CHIRPS by 81.3 %, 65.7 %, and 8 %, respectively. In addition to the correlation, the method reduces the RMSE by more than 66 %. Compared to ARC2 and CHIRP (Table 2), CHIRPS gives a significantly higher

correlation and IA and lower biases and RMSE. During area averaging, extremely high rainfall events obtained for a location from the various data products are levelled off by averaging and this makes the product more representative for the area. In most of the rainfall products, there are occasionally higher daily rainfall values recorded and the averaging removes those extremes, which are much higher than the observed station data in the area. Compared to point to pixel, the second method, point to area grid cell average, provides a reasonable correlation.

For T-max and T-min, only ORH, RCM, and RCMs are compared with station data. For 21 validation areas, ORH proved to be the most accurate product for both T-max (Fig. 64) and T-min (Fig. 75). In comparison to RCM and RCMs, ORH showed a significantly higher correlation and lower biases and errors in most of the validation areas. In seven of the 21 validation areas, RCMs showed a higher correlation in T-max than ORH and RCM. However, for T-min, ORH in 20 of the 21 validation areas showed a higher correlation. In general, RCM and RCMs showed higher RMSE and biases in most of the validation areas compared to ORH. Next to ORH and compared to RCM, RCMs appeared to be the best data source particularly for T-max. RCMs showed a relatively higher correlation and lower biases and errors compared to RCM in most of the validation areas.

The agreement of each product increases with decreasing temporal resolution, from daily to dekadal and monthly resolutions. Including the historical data of each RCM, RCMs, and ORH, the overall comparison using some of the statistical methods is summarized in ~~Tables 3, 5, and 6~~ figures 3, 4, and 5 for rainfall, T-max, and T-min, respectively. The evaluation of each rainfall product (ARC2, CHIRP, CHIRPS, ORH, and RCMs) showed a different degree of agreement with station data (~~Table 3~~ Fig. 3). The ~~same table~~ performance of for the individual RCMs (RCM) for all the validation areas is provided in the supplementary material (ST₁). At daily time scale, CHIRPS followed by ARC2 and CHIRP proved to be the most accurate rainfall products compared to ORH, RCM, and RCMs in all the validation areas. In general, out of the 21 validation areas CHIRPS, ARC2, and CHIRP showed a higher correlation in 17, 3, and 1 validation areas, respectively. In addition to the higher correlation, CHIRPS, CHIRP, and ARC showed lower RMSE than ORH, RCM, and RCMs. Similarly, CHIRPS and CHIRP showed lower biases than observed in ARC2, ORH, RCM, and RCMs in most of the validation areas.

Moreover, the observed daily rainfall characteristics are well represented by CHIRPS and ARC2 in most of the validation areas (ST. 2).

On average, over the 21 validation areas, CHIRPS captures well the number of wet days (-0.17 % deviation), average duration of wet (-13.4 % deviation) and dry periods (-17.6 % deviation), total rainfall (-4.5 % deviation), average amount of wet periods (-17 % deviation), and average daily rainfall (-7.7 % deviation) (Table 43). Next to CHIRPS, ARC2 showed higher agreement in producing the average duration of wet (-20 % deviation) and dry periods (11.3 % deviation) and average amount of wet periods (-38 % deviation). CHIRP, on the other hand, showed a higher agreement in the total amount of rainfall with a 2.75 % deviation, which is higher than CHIRPS, ARC2, ORH, RCM, and RCMS. On the contrary, ARC2 and GFDL showed higher under- (-34.7 % deviation) and overestimation (27.2 % deviation), respectively, of the total amount of rainfall compared to the other products. In addition, ARC2 showed a higher underestimation in number of wet days (-15.1 % deviation) and average daily rainfall (-23.8 % deviation) compared to CHIRPS and ORH. CHIRP, on the other hand, showed higher overestimation in number of wet days and duration and amount of wet periods (> 59.7 % deviation) and underestimates duration of dry periods and average daily rainfall (-62 % deviation) compared to the other products. Moreover, RCMs, next to CHIRP, showed higher overestimation in number of wet days and duration and amount of wet periods (> 44.9 % deviation) and total rainfall amount (11.4 % deviation) and underestimate average duration of dry periods and daily rainfall by about 41 %. In general, the observed rainfall characteristics are well captured by CHIRPS, with a percentage difference from the observation of -0.17 % to -17.6 % for number of wet days and duration of dry periods, respectively, compared to CHIRP, ARC2, ORH, RCM, and RCMs (Table 43).

~~For T max and T min, only ORH, RCM, and RCMs are compared with station data. For 21 validation areas, ORH data proved to be the most accurate product for both T max (Table 5Fig. 6) and T min (Table 6Fig. 7). In comparison to RCM and RCMs, ORH showed a significantly higher correlation and lower biases and errors in most of the validation areas. In seven of the 21 validation areas, RCMs showed a higher correlation in T max than ORH and RCM. However, for T min, ORH in 20 of the 21 validation areas showed a higher correlation. In general, RCM and RCMs showed higher RMSE and biases in most of the validation areas compared to ORH. Next to ORH and compared to RCM, RCMs~~

appeared to be the best data source particularly for T-max. RCMs showed a relatively higher correlation and lower biases and errors compared to RCM in most of the validation areas.

The average daily rainfall of the study region retrieved from CHIRPS is displayed in Fig. 26 for the study period 1983–2005. Using CHIRPS as a reference rainfall data, the absolute difference is presented in Fig. 26 for ARC2, CHIRP, ORH, and individual RCMs (HadGEM2, GFDL, and MPI). The average daily rainfall from the individual RCMs (RCM) shows large discrepancies from CHIRPS compared to CHIRP, ARC2 and ORH. The comparison at daily time scale, particularly of rainfall, is challenging and more emphasis is given on this evaluation compared to dekadal and monthly resolutions. RCMs (RCA4 and CCLM) driven by HadGEM2-ES (HadGEM2), MPI-ESM-LR (MPI), and GFDL-ESM2M (GFDL) are used in this study. For RCMs driven by each GCM, the average is used. The daily rainfall, T-max, and T-min maps of GFDL display the result of single RCM (RCA4) driven by GFDL-ESM2M for the period of 1983-2005. Higher and lower average daily rainfall values are displayed by GFDL and ORH, respectively (Fig. 26). However, all the products showed a similar tendency in capturing the daily rainfall distribution; higher in the western and lower in the eastern part of the region. In addition, the average daily T-max and T-min (Fig. 37) of the region shows relatively higher disagreement between ORH and RCM, which is given as absolute difference from ORH. Even though, RCM shows high deviation from ORH, they showed higher agreement in Ethiopia, Kenya, and Tanzania for T-max and T-min.

4.2 Validation of satellite, observational reanalysis, and climate model-based products at dekadal and monthly resolutions

To understand the role of higher spatial resolution at improving the agreement with station data, a similar statistical evaluation was performed using the coarse resolution of CHIRPS (0.25°). Compared to the coarse resolution of CHIRPS, the daily improved version (0.05°) used in this study showed an increased correlation of up to 3.2 % in all the validation areas. In line with the daily evaluation, the comparison was extended to dekadal and monthly resolutions for rainfall, T-max, and T-min using the

same statistical methods. For this analysis the observed daily ground observations and data from ARC2, CHIRP, CHIRPS, ORH, RCM, and RCMs were aggregated to dekadal and monthly resolutions. With decreasing temporal resolution (daily to monthly), the agreement of each product showed a marked improvement in all the validation areas. In addition to the increase in correlation, biases (bias and Rbias) and errors (MAE and RMSE) in rainfall are decreased at dekadal and monthly resolutions.

At dekadal and monthly resolution, the agreement of all rainfall products with station data increased compared to daily resolutions and the result for eight validation areas of Ethiopia, Kenya, and Tanzania are given in Fig. 58. The same plots – with similar results - for another 13 areas are provided in the supplementary material (SF. 2). Similar to the daily evaluation, CHIRPS appeared to be the most accurate rainfall product both at dekadal and monthly resolutions in most of the validation areas compared to the other products. In addition to the higher correlation of CHIRPS with station data at monthly and dekadal time scale, the centered mean square (RMS) difference and standard deviation is close to the observation in most of the validation areas. Following CHIRPS, CHIRP appeared to be the second best data source for dekadal and monthly rainfall and in three validation areas (EthioShed3, 15, and 16) showed a slightly higher correlation than CHIRPS. In two validation areas (KenShed1 and 2), ARC2 showed a slightly higher correlation than CHIRP and CHIRPS. However, in KenShed2 ARC2 showed a higher deviation from the observed value compared to CHIRP and CHIRPS. CHIRPS has, for example, almost similar standard deviation as the station data in all the validation areas except in areas with lower number of ground stations (EthioShed12–15 and TanzShed1). Overall, CHIRPS, CHIRP, and ARC2 were found to be the best performing rainfall product while ORH, RCM, and RCMs are the least performing products.

Moreover, for T-max and T-min, the correlation of ORH, RCM, and RCMs increased from daily to dekadal and monthly resolutions. The agreement of each product with station data, for eight validation areas of Ethiopia, Kenya, and Tanzania, is given in Fig. 6-9 and Fig. 7-10 for T-max and T-min, respectively. The same plots – with similar results - for another 13 areas are provided in the supplementary material (SF. 3 and SF. 4 for T-max and T-min, respectively). Compared to RCM and RCMs, the correlation between ORH and station data is higher in most of the validation areas. In

addition, ORH showed lower centered mean square (RMS) difference and biases (bias and Rbais). In addition, compared to the RCM and RCMs the standard deviation of ORH is close to the respective observations in most of the validation areas. Compared to RCM, the standard deviation and centered mean square (RMS) difference of RCMs is lower in most of the validation areas.

5. Discussion

Detection of rainfall characteristics by satellite observations or climate model simulations' output (GCM and RCM) is very challenging as compared to temperature. This is especially evident in East Africa, where the topography is complex and characterized by multiple rainfall regimes. In particular, it is difficult to estimate rainfall with satellite imageries in the mountainous region of East Africa (Cattani et al., 2016) because these products are inevitably not representing the regional rainfall patterns and complexity of the region's topography (Romilly and Gebremichael, 2010). Here, for an improved understanding of the climatic condition of this complex region and its impact on environmental resources, daily rainfall, T-max, and T-min products from high resolution satellite imageries, observational-reanalysis, and climate models outputs are compared against ground observations. Such an evaluation was not available as of yet for the considered region. Therefore, an in-depth evaluation was performed, particularly on a daily time scale, of the satellite-based rainfall products (ARC2 CHIRPS and CHIRP), ORH, and RCMs (CCLM and RCA) driven by three GCMs. ARC2, CHIRP, and CHIRPS are rainfall products, whereas ORH and RCMs provide rainfall, T-max, and T-min.

From the comparison (using point to pixel, point to area grid cell average, and stations average to area grid cell average), the stations average to area grid cell average showed the best correlation and least biases and errors in all the validation areas. A study by Duan et al., (2016) in Adige Basin (Italy) found that comparing rainfall products such as CHIRPS on a watershed scale showed a marked improvement in overall agreement compared to point to pixel on daily and monthly time scale. Comparing the coarse resolution of satellite products and of RCMs using the point to pixel method cannot be expected to result in a high agreement with station data. Ground stations provide point data measured over continuous time periods, whereas satellite products provide area averages based on discontinuous (rain)

estimates. Field-based stations (as point measurements) cannot be considered as reference data for evaluation of area-based rainfall estimates (Cohen Liechti et al., 2012; Wang and Wolff, 2010), if not compared at a monthly or annual time scale. This is similar to our finding that the point to pixel comparison for all products inside and outside the validation areas show weak statistical relations with ground stations (e.g. see Table 2). The correspondence of all products at a daily time scale and in all the validation areas was found comparably weak and the findings are in agreement with earlier studies (Cohen Liechti et al., 2012; Dembélé and Zwart, 2016).

At daily time scale, CHIRPS followed by ARC2 and CHIRP showed higher correlation and lower errors and biases in all the validation areas compared to ORH, RCM, and RCMs. In addition, CHIRPS captures the daily rainfall characteristics well while ARC2 showed higher underestimation of the average daily and total rainfall. The agreement of all the rainfall products increases from daily to dekadal and monthly time scale (Fig. 58) and this is consistent with other studies (Cohen Liechti et al., 2012; Dembélé and Zwart, 2016; Kimani et al., 2017). Generally, CHIRPS with high spatial resolution, followed by CHIRP and ARC2, was the best performing rainfall product in terms of correlation, biases and errors and in characterizing regional rainfall characteristics. By contrast, ORH, RCM, and RCMs appeared to be less precise rainfall products at all time scales and in all validation areas. When looking at the performance of different data products in the selected validation areas (Fig. 4SF. 1), dispersion is comparably higher in areas with lower number of ground stations. An additional confounding factor could be the very complex topography of the region. This might explain why products with coarser spatial resolution (ORH, RCM, and RCMs) showed higher dispersion compared to products with higher spatial resolution (CHIRPS, CHIRP, and ARC2).

The daily rainfall data (global summary of the day) available at the National Climate Data Center (NCDC) needed to be controlled for quality before application. In East Africa, particularly Ethiopia, the available data at NCDC is very poor and only few stations are available. Therefore, products developed based on the global summary of the day such as ORH cannot be expected to provide accurate results particularly for the most complex climate variable, rainfall, as CHIRPS and ARC2. CHIRPS incorporates monthly station data obtained from different regional meteorological organization, e.g.,

from Ethiopia, Kenya, and Tanzania. In all the validation areas one to seven stations were included in the development of CHIRPS in different months during 1981–2005. In EthioSded1 (Table 2), for example, six of the nine stations we considered in this study are included in CHIRPS. The inclusion of monthly station data can be assumed to improve CHIRPS' performance compared to other rainfall products. This particular feature of CHIRPS (compared to CHIRP and other data products) is somewhat problematic for our analysis, since the correlated data are not fully independent. However, since only monthly data from a limited number of stations were included in CHIRPS, the dependency is rather weak and indirect. In fact, the improved performance of CHIRPS was shown even in areas where station data is not included (e.g. Arijo, Bedele, and Hurma stations in EthioShed1) and on daily time scale.

Even though ORH was one of the least performing rainfall product, it appeared to be the most accurate data source for T-max and T-min at daily, dekadal, and monthly resolutions compared to RCM and RCMs. Nikulin et al., (2012) presented a detailed comparison of daily gridded observations with multiple RCMs including RCA and CCLM and they found large discrepancies over the whole region of Africa. However, in this region, RCMs appeared to be the second best data source for both T-max and T-min and RCM are less precise with slightly higher biases and errors. In this region, other studies (Endris et al., 2013; Kim et al., 2014) concluded that the multi-model or ensemble mean of CORDEX RCMs provides reasonable results compared to individual RCMs (RCM). The systematic bias of RCM and RCMs is higher in most of the validation areas compared to the other products, particularly for rainfall, that can be improved by applying different bias correction techniques such as the empirical quantile mapping (Lafon et al., 2013; Maraun, 2013; Teng et al., 2015) before application to different hydrological and climate models (e.g., SDSM). In general, in topographically complex regions such as East Africa, RCMs require further improvements in terms of spatial resolution and accuracy by adding more local information in the modelling process, particularly for precipitation.

6. Summary and Conclusion

The evaluation of rainfall, T-max, and T-min from different sources against station data was performed for large parts of East Africa (Ethiopia, Kenya, and Tanzania) using three methods: point to pixel, point

to area grid cell average, and stations average to area grid cell averages. Compared to the other two methods the latter method (stations average to area grid cell average) provides a better correlation and index of agreement (IA) and lower errors (MEA and RMSE) and biases (bias and Rbias). Using this method, individual rainfall, T-max, and T-min products were compared at daily, dekadal (10 days), and monthly resolutions. At daily time CHIRPS, ARC2, and CHIRP provide a better agreement with station data compared to ORH, RCM, and RCMs. Compared to CHIRPS and CHIRP, ARC2, ORH, RCM, and RCMs showed higher biases and errors in most of the validation areas. Overall, the performance of CHIRPS is higher than the other rainfall products in capturing the daily rainfall characteristics such as number of wet days, duration of wet and dry periods, total and daily rainfall, and amount of wet periods. ARC2 better captures duration of wet and dry periods, but showed higher underestimation of the total and daily rainfall and number of wet days compared CHIRPS and CHIRP. RCM and RCMs, on the other hand, showed higher overestimation in number of wet days, duration and amount of wet periods, and total rainfall and underestimate average duration of dry periods and daily rainfall.

ORH, on the contrary, appeared to be one of the least-performing rainfall products for the study region, but the most accurate product, compared to RCM and RCMs, for T-max and T-min at daily time scale in most of the validation areas. The evaluation of the above products at dekadal and monthly time scales showed that CHIRPS with high spatial resolution (0.05°) has higher correlation and lower errors and biases than the other rainfall products. As the temporal resolution gets coarser (e.g. monthly), the correlation between ground observation and the above products significantly increases. In addition, biases (bias and Rbias) and errors (MAE and RMSE) significantly decreased. Similar to that of rainfall, the comparison at dekadal and monthly resolution showed an improved correlation and lower errors and biases for both T-max and T-min. Compared to RCM and RCMs, ORH with higher spatial resolution was found to be more accurate at dekadal and monthly resolutions. Next to ORH, RCMs showed a better performance than RCM, with lower biases and errors.

In general, CHIRPS for rainfall and ORH for T-max and T-min performed best in the considered regions of Ethiopia, Kenya, and Tanzania. Further studies need to confirm whether this finding holds for other regions as well and our approach may represent a blueprint how to address this question. Since

CHIRPS and ORH are available with higher spatial and temporal resolution and for longer periods, these data sources can be used for long-term climate studies (trend, variability, and extreme indices) and input for climate or hydrological models. Considering the typical need for daily data for model input, it remains to be investigated whether poor daily data with a limited bias and similar variance are an acceptable replacement of missing station data when used for impact model studies. In addition, the products can be used to check the plausibility of available ground stations or substitute ground observation in regions of Ethiopia, Kenya, and Tanzania where ground station data are not available or accessible.

Table 1: General characteristics of selected validation areas and meteorological stations covering the time period 1983–2005.

Validation areas/basins	Basin area (km ²)	Average area elevation (m)	Number of stations	Average station elevation (m)	Average annual rainfall (mm)	Average T-max /T-min
EthioShed1	8980	1516	9	1881	1758	26.3/13.6
EthioShed2	12828	2279	12	2009	968.6	25.9/11.4
EthioShed3	15123	2192	9	2104	1202.6	25.3/11.7
EthioShed4	8323	2180	7	1954	994.42	31.8/16.5
EthioShed5	5625	1720	10	1800	1039.1	26.4/13.4
EthioShed6	11204	2830	8	2510	1168.7	22.1/8.0
EthioShed7	12445	1830	8	1973	1524.53	25.7/12.4
EthioShed8	6522	1930	5	2022	1628.35	26.0/14.0
EthioShed9	4666	1526	4	1738	578.4	28.0/14.4
EthioShed10	5986	2520	8	2580	1133.1	21.2/9.3
EthioShed11	11496	1256	7	1468	945	27.4/15.2
EthioShed12	3868	520	2	400	343.8	34.1/22.3
EthioShed13	4934	1301	4	2413	588	26.2/13.1
EthioShed14	2835	1360	4	1239	706	31.8/16.5
EthioShed15	1121	2307	4	2183	495	24.3/11.1
EthioShed16	3012	2102	5	2148	1110	26.0/11.8

EthioShed17	9909	1998	12	2056	2075	23.8/10.2
KenShed1	11712	1980	4	1024	1156.1	25/13.5
KenShed2	7861	2328	3	1602	1418.6	24/13.2
TanzShed1	8092	1244	3	1137	1137.8	28.7/17.5
TanzShed2	2154	1097	3	1428	1136.2	28.2/17.8

Table 2: An example of the statistics used to compare ground rainfall data with satellite products (e.g. ARC2, CHIRP, and CHIRPS) in EthioShed1. The three modes of comparison are compared based on a range of statistical variables (section 3.2). The Point (station) to area grid cell average is computed by comparing individual station to the area grid cell average of each product. Best fit of the last three rows is indicated in bold, best fit of the nine stations are also highlighted.

Station	ARC2						CHIRP						CHIRPS					
	CC	Bias	Rbias	MAE	RMSE	IA	CC	Bias	Rbias	MAE	RMSE	IA	CC	Bias	Rbias	MAE	RMSE	IA
Anger	0.32	-0.55	-14.7	4.64	10.48	0.52	0.37	0.45	11.9	4.87	9.58	0.56	0.40	-0.15	-4.1	4.40	9.40	0.6
Arijo	0.29	-1.25	-37.6	5.02	10.14	0.53	0.23	0.12	3.4	5.94	10.29	0.49	0.37	-0.42	-12.5	5.08	9.33	0.61
Bedele	0.33	-1.40	-28.7	5.00	10.67	0.54	0.3	-0.45	-9.3	5.21	9.32	0.55	0.41	-0.54	-11.1	4.96	9.30	0.62
Dedesa	0.29	-0.71	-18.0	4.77	10.53	0.51	0.28	0.13	3.4	5.16	10.49	0.50	0.34	-0.23	-5.8	4.81	9.92	0.55
Gimbi	0.32	-1.03	-23.9	5.10	10.78	0.55	0.39	0.12	2.8	5.17	9.85	0.59	0.42	-0.20	-4.5	4.91	9.76	0.64
Nekemt	0.44	-1.20	-23.4	4.71	10.69	0.64	0.38	0.02	0.3	5.79	10.96	0.59	0.41	-0.75	-14.6	5.30	10.44	0.62
Alge	0.32	-1.08	-27.6	5.13	10.25	0.56	0.3	-0.45	-	4.99	9.12	0.56	0.37	-0.36	-9.4	5.36	10.01	0.6
Ayira	0.3	-1.02	-26.1	5.18	10.68	0.53	0.40	-0.18	-4.80	4.95	8.98	0.60	0.36	-0.37	-9.6	5.41	10.07	0.6
Hurma	0.31	-1.01	-25.7	5.20	10.44	0.54	0.38	0.56	14.5	4.59	8.86	0.54	0.37	-0.60	-15.8	5.15	9.59	0.6
Average of point – pixel	0.32	-1.03	-25.1	4.97	10.51	0.55	0.35	-0.09	-2.06	5.19	9.72	0.55	0.38	-0.40	-9.7	5.04	9.76	0.6
Average of point – area grid cells average	0.37	-1.1	-26.8	4.82	9.59	0.53	0.37	-0.21	-5.5	10.18	9.51	0.54	0.40	-0.46	-11.5	4.86	9.38	0.58
Stations average - area grid cells average	0.58	-1.3	-27.3	5.66	3.22	0.74	0.58	-0.27	-5.7	5.6	3.29	0.75	0.64	-0.59	-12.0	5.38	3.08	0.79

Table 3: Evaluation results of multiple daily rainfall products against field meteorological stations covering the period of 1983–2005 for 21 validation areas of East Africa. For ease of comparison, only selected statistical estimators are given in the table. For individual RCMs) their mean (RCMs) is given here. Best fit is indicated in bold.

Validation area	ARC2			CHIRPS			CHIRP			ORH			RCMs		
	CC	Rbias	RMS E	CC	Rbias	RMS E	CC	Rbias	RM SE	CC	Rbias	RMS E	CC	Rbias	RM SE
EthioShed1	0.59	-31.2	5.64	0.64	-5.7	5.5	0.57	-7.2	5.7	0.20	-16.7	10.81	0.52	-37.2	6.1
EthioShed2	0.58	-27.3	5.66	0.64	-12.0	5.38	0.58	-5.7	5.6	0.18	19.8	8.6	0.43	45.8	4.8
EthioShed3	0.63	-29.4	4.68	0.69	-12.6	4.37	0.64	-10.8	4.46	0.25	-11.7	9.86	0.60	-4.8	4.65
EthioShed4	0.59	-37.4	4.95	0.61	1.9	5.34	0.49	3.9	5.35	0.12	-1.5	12.14	0.30	38.7	6.38
EthioShed5	0.40	-11.8	4.65	0.43	12.1	4.72	0.39	8.7	4.35	0.10	24.5	8.48	0.14	-9.3	4.68
EthioShed6	0.47	-42.6	3.55	0.64	5.20	3.66	0.47	5.6	3.65	0.11	16.8	7.73	0.21	60.5	6.74
EthioShed7	0.55	-27.8	5.27	0.70	-1.4	4.68	0.49	4.9	5.64	0.12	-13.6	10.7	0.38	-3.9	5.77
EthioShed8	0.33	-22.7	7.29	0.46	-2.7	6.56	0.44	-2.0	5.60	0.11	-22.4	12.0	0.37	21.8	7.28
EthioShed9	0.30	-7.2	5.16	0.33	-9.4	4.43	0.28	-26.0	4.03	0.06	-22.1	7.46	0.07	-39.4	4.38
EthioShed10	0.59	-38.2	4.36	0.60	-0.7	4.81	0.53	-2.7	4.70	0.18	14.8	10.92	0.45	39.4	5.21
EthioShed11	0.45	-38.1	4.58	0.48	0.2	4.86	0.43	-0.9	4.37	0.10	-10.9	7.33	0.13	-51.9	4.73
EthioShed12	0.42	-31.3	3.75	0.35	31.5	4.15	0.32	24.3	4.0	0.1	35.1	5.58	0.07	-14.8	4.10
EthioShed13	0.46	-38.0	5.50	0.52	-14.4	5.2	0.37	-15.4	5.70	0.13	-13.2	9.35	0.26	12.4	5.92
EthioShed14	0.40	-14.3	4.76	0.41	2.0	4.78	0.35	-2.0	4.53	0.10	13.7	7.85	0.12	-48.7	4.75
EthioShed15	0.39	-35.3	4.72	0.45	-11.3	4.58	0.35	-15.5	4.74	0.11	97.2	8.4	0.18	37.9	5.11
EthioShed16	0.29	-42.3	5.06	0.35	12.2	5.72	0.29	3.9	5.04	0.12	12.7	7.89	0.16	11.2	5.17
EthioShed17	0.45	-25.4	3.89	0.56	7.0	3.82	0.46	9.3	3.75	0.13	23.8	7.67	0.20	-14.4	4.1
KenShed1	0.62	6.4	3.5	0.4	58.6	5.56	0.31	45	5.60	0.36	21	5.65	0.1	22.1	4.72
KenShed2	0.72	-22	4.39	0.38	-4.9	8.72	0.38	24.2	6.88	0.5	22.1	7.23	0.2	67.3	7.56
TanzShed1	0.3	-40	5.83	0.43	-29	5.7	0.40	30.7	6.03	0.24	13.7	7.44	0.13	38.2	6.4
TanzShed2	0.3	7.2	0.23	0.44	19	0.2	0.38	36.2	5.5	0.11	12	0.3	0.21	22	0.21

5

Table 43: Summary of daily rainfall characteristics retrieved from multiple rainfall products and averaged over the validation areas of Ethiopia, Kenya and Tanzania. Values in brackets give the deviation from the observed value (%). The value which comes closest to the observed value is highlighted in bold.

Rainfall characteristics	Obs.	ARC2	CHIRP	CHIRPS	ORH	HadGEM2	MPI	GFDL	RCMs
Number of wet days (days/year)	189.58	162.98 (-15.1)	351.06 (59.7)	189.26 (-0.17)	192.14 (1.34)	205.08 (7.85)	243.55 (24.92)	210.42 (10.42)	299.36 (44.9)
Average duration of wet periods (days)	5.86	4.78 (-20)	167.96 (186)	5.13 (-13.4)	3.02 (-64)	11.70 (66.5)	12.17 (69.9)	9.37 (46)	21.36 (113.9)
Total amount of precipitation (mm/year)	953.63	671.62 (-34.7)	980.24 (2.75)	912.0 (-4.5)	1027.02 (7.41)	841.73 (-12.5)	1055.7 (10.2)	1253.38 (27.2)	1068.6 (11.4)
Average amount of wet periods (mm)	30.20	20.56 (-38)	498.43 (177)	25.46 (-17)	15.64 (-63.5)	50.12 (49.6)	55.45 (59)	59.64 (65.6)	78.88 (89.3)
Average duration of dry periods (days)	5.37	6.01 (11.3)	1.53 (-111.3)	4.5 (-17.6)	2.55 (-71.31)	6.91 (25.04)	5.67 (5.4)	6.55 (19.8)	3.55 (-41)
Average daily precipitation (mm/day)	5.28	4.16 (-23.8)	2.78 (-62)	4.88 (-7.7)	5.4 (2.3)	3.88 (-31.5)	4.19 (-22.8)	5.69 (7.6)	3.48 (-41)

Table 5: Statistical evaluation of daily T max retrieved from climate model and reanalysis based products against ground observations over the period of 1983–2005 for 21 validation areas of East Africa. For ease of comparison, only selected statistical estimators are given in the table. Best fit is indicated in bold.

Validation areas	ORH			HadGEM2			GFDL			MPI			RCMs		
	CC	Rbias	RMS E	CC	Rbias	RMS E	CC	Rbias	RMS E	CC	Rbias	RMS E	CC	Rbias	RMS E
EthioShed1	0.63	3.1	2.65	0.71	-3.5	2.83	0.56	-3.2	3.04	0.68	-6.2	-6.2	0.72	-4.3	2.56
EthioShed2	0.63	-7.9	2.77	0.57	-17.0	5.07	0.48	-21	5.95	0.51	-19.3	5.57	0.63	-19.1	5.30
EthioShed3	0.71	4.1	2.30	0.77	-6.7	2.72	0.39	-6.8	3.24	0.73	-8.9	3.09	0.78	-7.5	2.53
EthioShed4	0.64	5.0	2.67	0.42	-15.6	4.95	0.52	-19.1	5.74	0.43	-16.9	5.22	0.56	-17.2	5.06
EthioShed5	0.61	2.1	2.25	0.63	-5.6	3.12	0.46	-10.3	3.98	0.62	-10.1	3.83	0.65	-8.7	3.23
EthioShed6	0.70	-3.3	1.69	0.53	-11.6	3.51	0.45	-19.4	4.87	0.48	-15.6	4.16	0.58	-15.6	3.92
EthioShed7	0.63	-2.8	2.30	0.63	-13.8	4.48	0.52	-14.5	4.77	0.64	-16.7	4.99	0.66	-15.0	4.51
EthioShed8	0.63	1.4	2.33	0.65	-7.7	3.31	0.56	-10.8	4.10	0.65	-12.4	4.11	0.69	-10.3	3.50
EthioShed9	0.35	2.3	2.59	0.30	-7.4	3.51	0.28	-12.8	4.89	0.21	-9.5	4.1	0.33	-9.9	3.81
EthioShed10	0.51	-17.8	4.40	0.45	-0.5	2.70	0.34	-4.1	2.90	0.39	-2.9	2.72	0.50	-2.5	2.27
EthioShed11	0.52	1.6	2.4	0.54	3.0	2.78	0.45	-0.9	3.1	0.56	-1.6	2.84	0.60	0.2	2.34
EthioShed12	0.42	-1.2	2.23	0.43	-5.3	2.96	0.16	-6	3.6	0.44	-5.7	3.10	0.50	-4.6	2.50
EthioShed13	0.4	-17.5	5.77	0.33	-5.0	3.97	0.29	-7.5	4.6	0.32	-6.4	4.15	0.37	-6.3	3.90
EthioShed14	0.51	0.1	2.72	0.43	-11.4	4.8	0.41	-15.8	6.17	0.38	-13.1	5.28	0.47	-13.5	5.20
EthioShed15	0.22	3.0	3.1	0.26	-6.3	3.9	0.3	-9.8	3.9	0.14	-10.2	4.5	0.27	-8.8	3.73
EthioShed16	0.4	-3.1	3.45	0.23	-12.7	5.1	0.25	-19.4	6.4	0.24	-15.2	5.45	0.30	-15.8	5.43
EthioShed17	0.62	5.2	2.3	0.58	-3.6	2.92	0.45	-7.8	3.2	0.53	-7.6	3.31	0.61	-6.4	2.66
KenShed1	0.59	9.6	3.2	0.39	4.6	3.03	0.37	0.9	2.94	0.34	2.3	2.85	0.46	2.6	2.46
KenShed2	0.65	-7.3	2.62	0.48	-7.1	3.02	0.4	-17.2	4.97	0.41	-11.8	3.83	0.53	-12.1	3.62
TanzShed1	0.66	-5.5	3.11	0.56	-9.2	4.16	0.39	-11.4	4.82	0.48	-11.1	4.58	0.58	-10.6	4.20
TanzShed2	0.48	-4.1	2.8	0.35	-14	4.9	0.22	-13.9	5.03	0.35	-16.4	5.4	0.40	-14.8	4.90

Table 6: Statistical evaluation of daily T min retrieved from climate model and reanalysis based products against ground observations over the period of 1983–2005 for 21 validation areas of East Africa. For ease of comparison, only selected statistical estimators are given in the table. Best fit is indicated in bold.

Validation areas	ORH			HadGEM2			GFDL			MPI			RCMs		
	CC	Rbias	RMS E	CC	Rbias	RMS E	CC	Rbias	RMS E	CC	Rbias	RMS E	CC	Rbias	RMS E
EthioShed1	0.54	7.1	1.76	0.45	12.8	2.55	0.37	3.7	2.44	0.4	10.4	2.32	0.51	9.0	1.97
EthioShed2	0.77	-11.3	2.11	0.59	-6	2.2	0.54	-18.7	3.27	0.58	-7.1	2.28	0.67	-10.7	2.14
EthioShed3	0.65	6.8	2.12	0.55	15.5	2.71	0.52	4.9	2.31	0.51	13.3	2.58	0.62	11.2	2.20
EthioShed4	0.76	12.1	2.50	0.60	-12.3	3.01	0.45	-26.8	4.71	0.61	-11.6	3.07	0.62	-16.9	3.28
EthioShed5	0.45	-10.9	2.65	0.28	6.9	2.28	0.31	-3.9	2.29	0.22	3.9	2.15	0.36	2.3	1.78
EthioShed6	0.69	-10.4	1.9	0.53	16.5	2.38	0.47	6.7	2.38	0.49	15.9	2.42	0.61	13.1	2.03
EthioShed7	0.63	-7.6	2.01	0.23	9.4	2.60	0.26	-0.5	2.87	0.29	6.4	2.30	0.35	5.1	2.03
EthioShed8	0.33	-0.1	1.65	0.24	16.7	3.08	0.21	8.6	2.78	0.15	12	2.6	0.27	12.4	2.46
EthioShed9	0.68	7.5	2.84	0.64	-2.1	2.87	0.59	-8.0	3.82	0.58	-1.8	3.13	0.65	-4.0	2.91
EthioShed10	0.67	16.2	2.58	0.50	9.4	2.46	0.38	-3.1	2.66	0.50	8.8	2.51	0.54	5.0	2.13
EthioShed11	0.36	-17.2	3.22	0.18	17.8	3.48	0.24	13.8	3.20	0.16	15.8	3.28	0.27	15.8	3.10
EthioShed12	0.46	-6.6	2.47	0.41	-3.8	2.40	0.34	-6.6	2.9	0.39	-1.9	2.26	0.45	-4.1	2.21
EthioShed13	0.57	31.2	4.77	0.54	2.7	2.76	0.46	-8.9	3.42	0.54	2.3	2.86	0.56	-1.3	2.67
EthioShed14	0.72	4.6	2.68	0.61	-5.6	3.27	0.55	-16.3	4.62	0.59	-5.5	3.32	0.63	-9.2	3.40
EthioShed15	0.62	-1.8	2.16	0.41	9.8	2.61	0.44	0.5	2.41	0.36	6.7	2.54	0.51	5.7	2.19
EthioShed16	0.50	-8.2	3.45	0.42	-7.7	3.7	0.31	-23.1	4.98	0.42	-7.1	3.66	0.44	-12.7	3.77
EthioShed17	0.61	7.1	2.17	0.43	19.7	2.96	0.44	9.0	2.44	0.36	17.1	2.87	0.53	15.3	2.46
KenShed1	0.52	14.8	2.66	0.31	9.0	2.44	0.17	3.2	2.46	0.3	10.4	2.52	0.34	7.5	2.18
KenShed2	0.40	-21.3	3.26	0.25	-18.1	3.15	0.25	-24.6	4.0	0.32	-16.1	2.88	0.35	-19.6	3.15
TanzShed1	0.53	-12.0	3.12	0.44	-15	3.69	0.38	-18.9	4.23	0.44	-15.3	3.71	0.5	-16.2	3.72
TanzShed2	0.51	-16.2	3.87	0.58	-17.3	3.9	0.46	-16.8	4.04	0.58	-18.5	4.16	0.61	-17.5	3.93

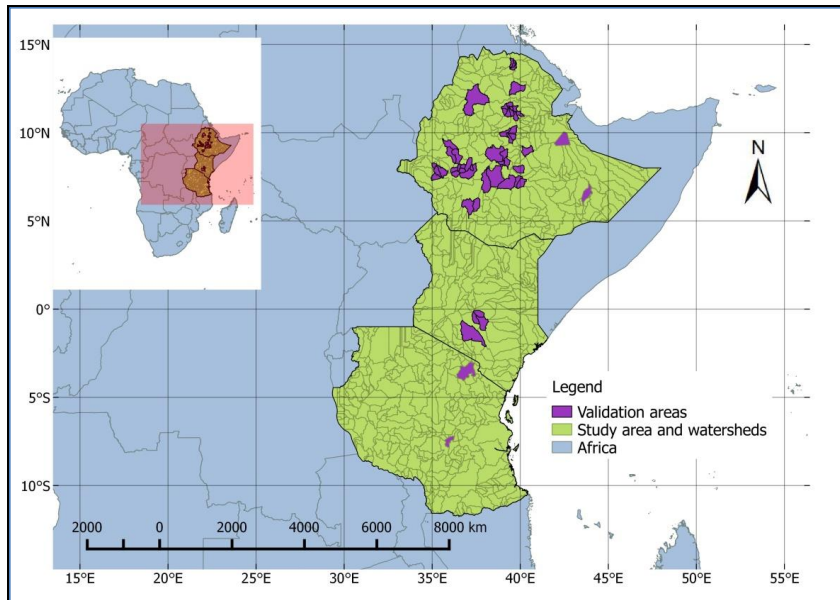


Figure Fig. 1: Map of Africa and study regions (Ethiopia, Kenya, and Tanzania) with data validation areas (EthioShed1–17, KenShed1&2, and TanzShed1&2). The basins are retrieved from the WaterBase global data portal (<http://www.waterbase.org/>).

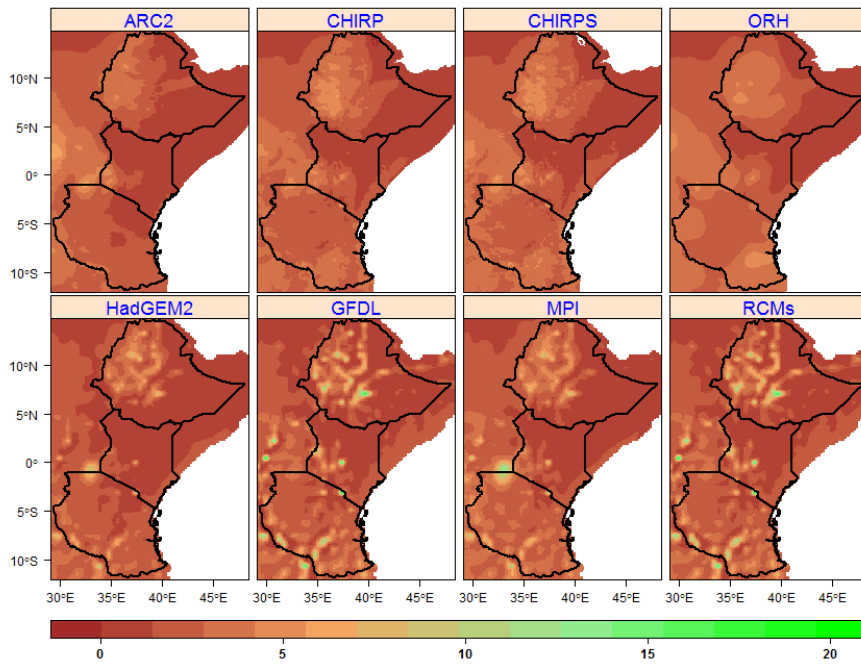


Figure 2: Average daily rainfall (mm day^{-1}) maps of East Africa retrieved from ARC2, CHIRP, CHIRPS, ORH, RCM, and RCMs for the study period 1983–2005. (right panels) absolute (mm day^{-1}) is displayed. All the maps are given in a 0.05° spatial resolution.

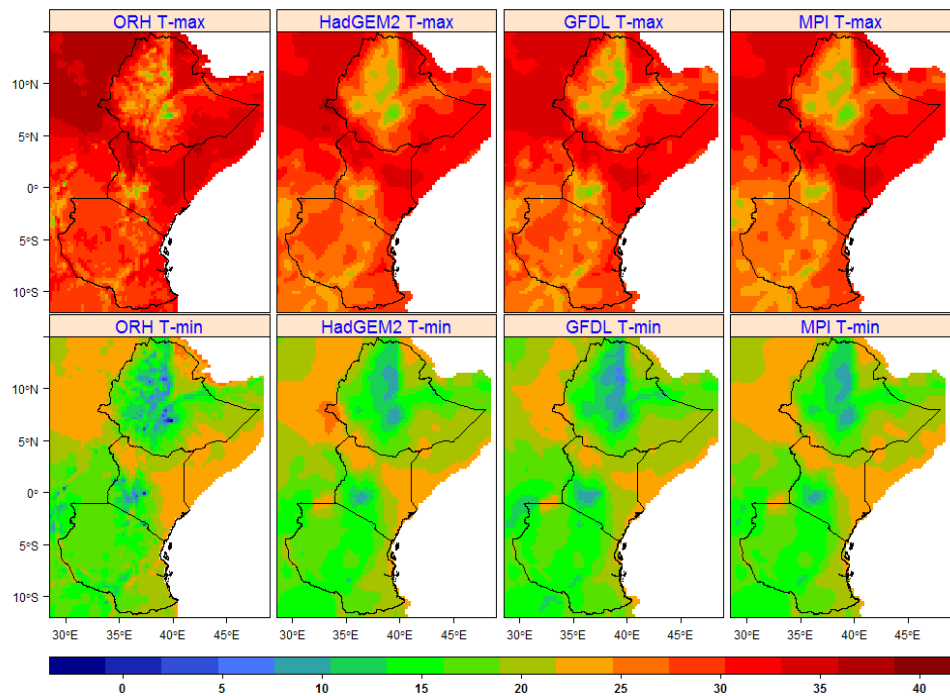
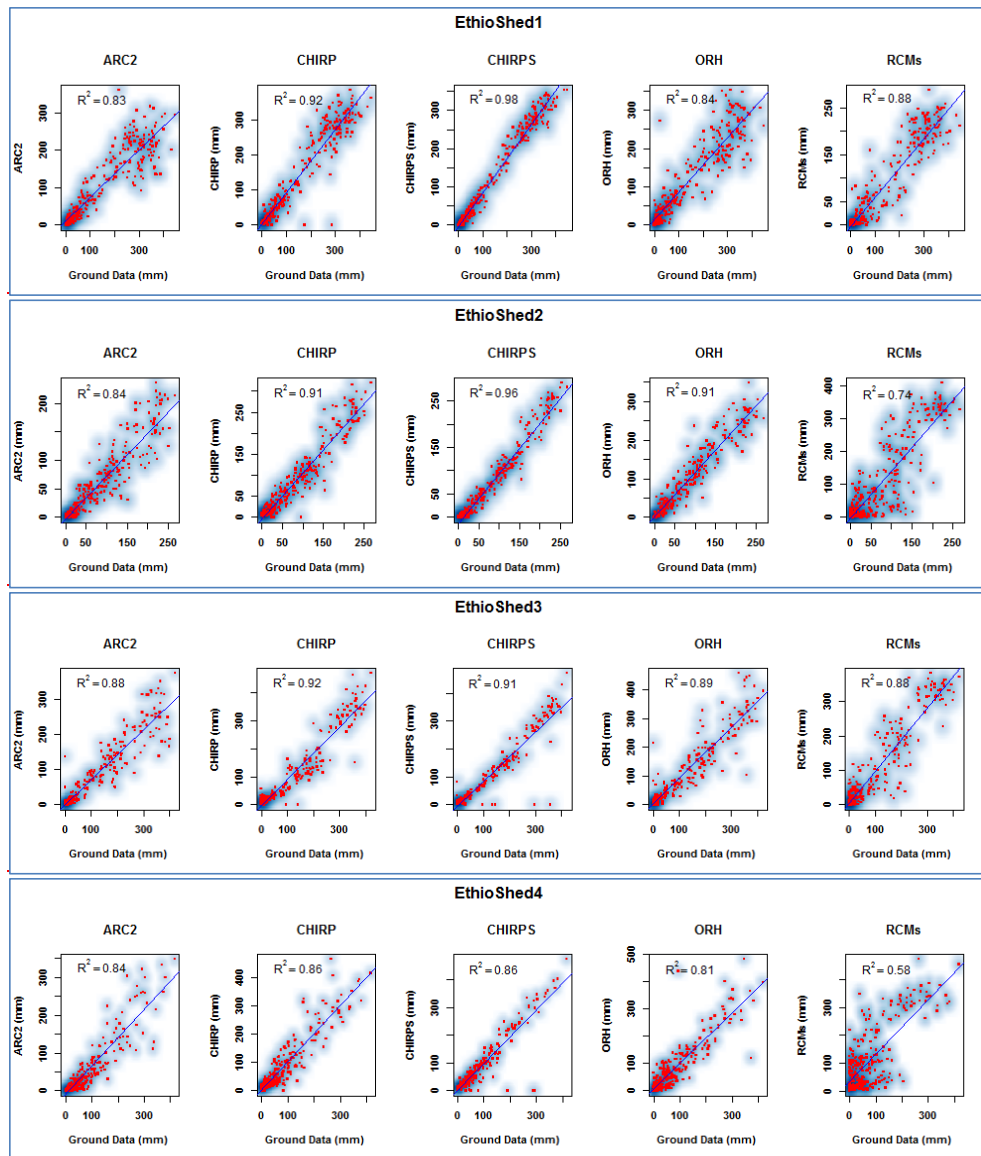


Figure 3: Maps of average daily T-max and T-min (°C) for East Africa generated from ORH and RCMs for the study period 1983–2005. All the maps are given in a 0.1° spatial resolution.



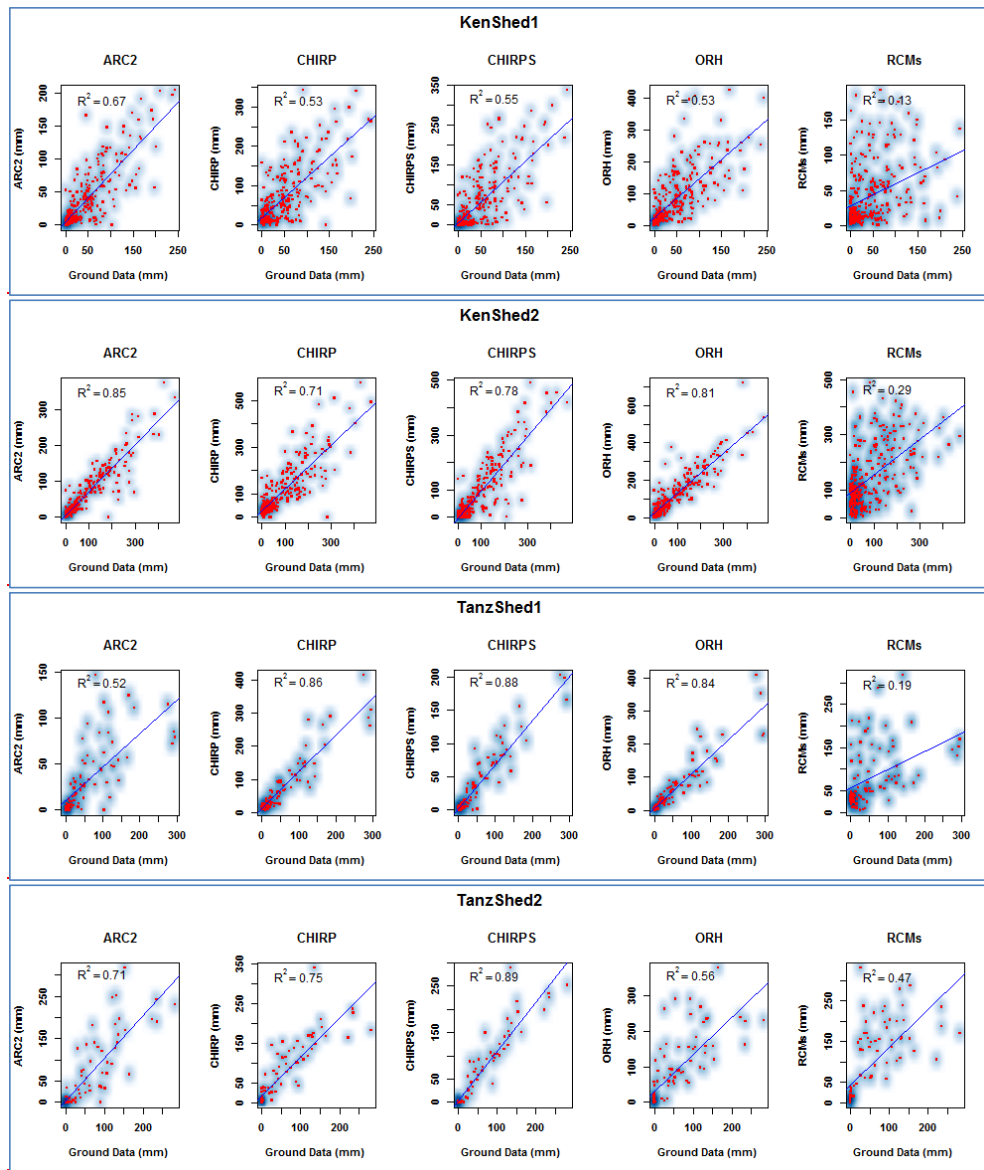


Figure 4: Scatter plots of monthly rainfall for ARC2, CHIRP, CHIRPS, ORH, and RCMs for eight validation areas covering the period of 1983–2005 and aggregated from daily data. Shaded area displays the data density around the regression line. [see Table 1](#)

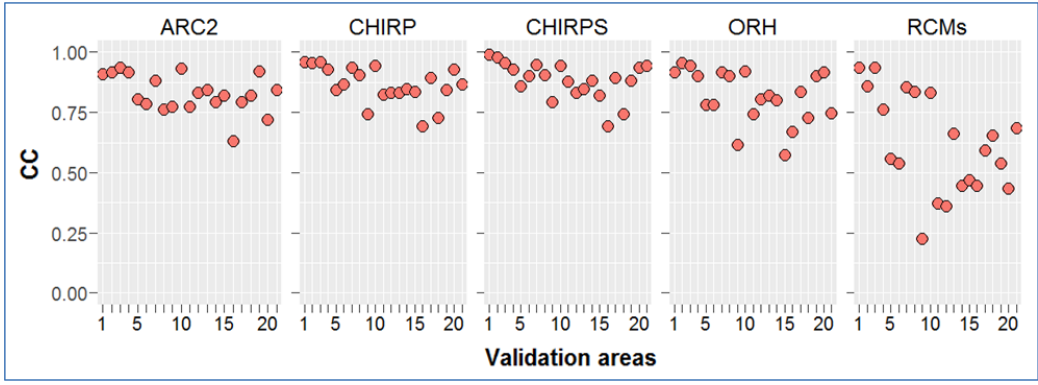


Fig. 2: The correlation coefficient (CC) values between the observed monthly rainfall and data from ARC2, CHIRP, CHIRPS, ORH, and RCMs for the 21 validation areas (1-17 for Ethioshed1-17, 18-19 for KenShed1-2, and 20-21 for TanShed1-2, see Table 1) covering the period of 1983–2005.

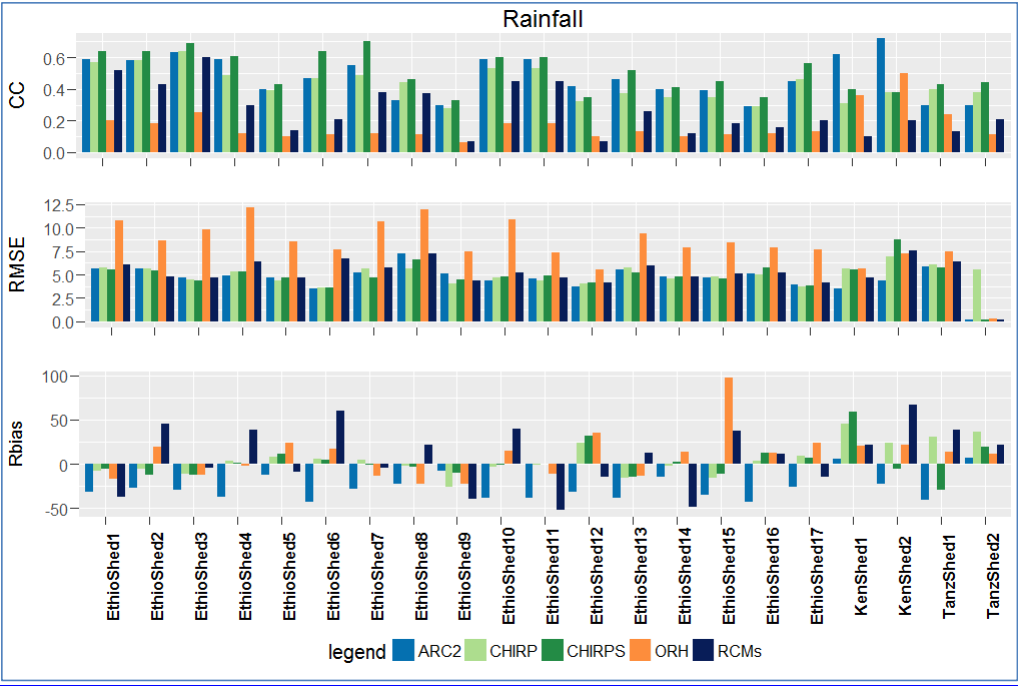
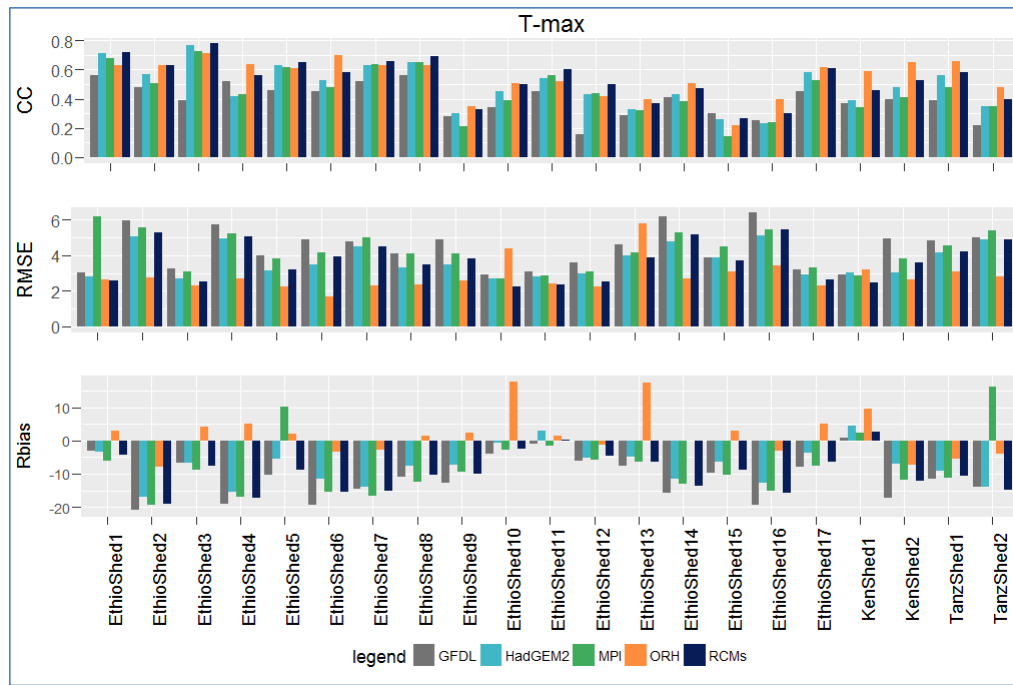
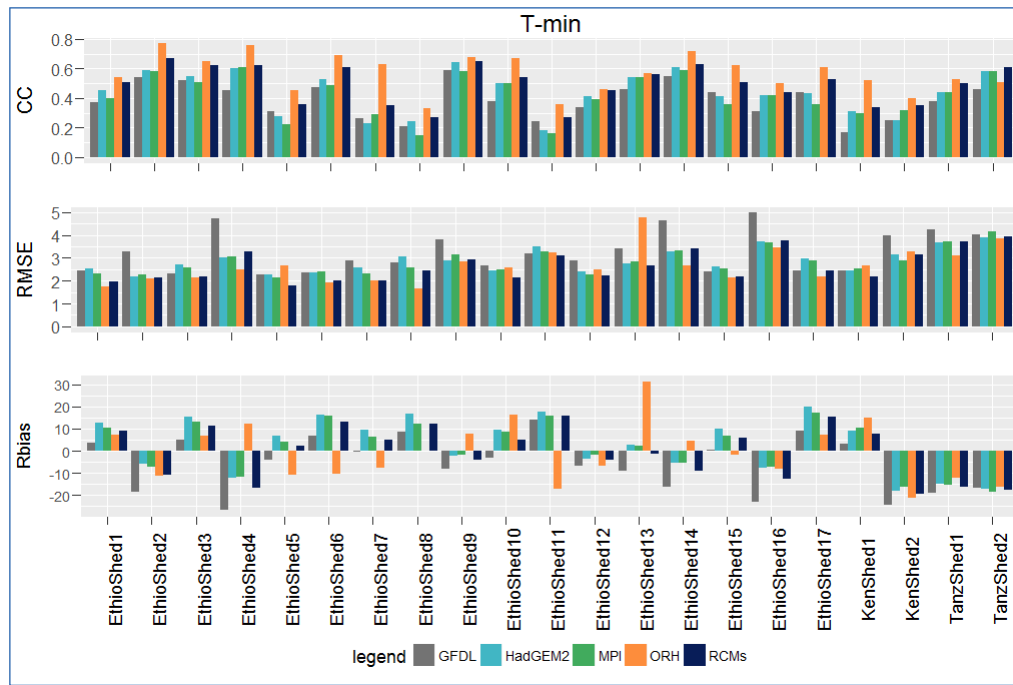


Fig. 3: Statistical evaluation of daily rainfall retrieved from ARC2, CHIRP, CHIRPS, ORH, and RCMs against ground observations: CC (top panel), RMSE (middle panel), and Rbias (lower panel) during the period of 1983–2005 for 21 validation areas of East Africa see Table (1).



[Fig. 4: Statistical evaluation of daily T-max retrieved from GFDL, HadGEM2, MPI, ORH, and RCMs against ground observations: CC \(top panel\), RMSE \(middle panel\), and Rbias \(lower panel\) over the period of 1983–2005 for 21 validation areas of East Africa.](#)



[Fig. 5: Statistical evaluation of daily T-min retrieved from GFDL, HadGEM2, MPI, ORH, and RCMs against ground observations: CC \(top panel\), RMSE \(middle panel\), and Rbias \(lower panel\) over the period of 1983–2005 for 21 validation areas of East Africa \(see Table 1\).](#)

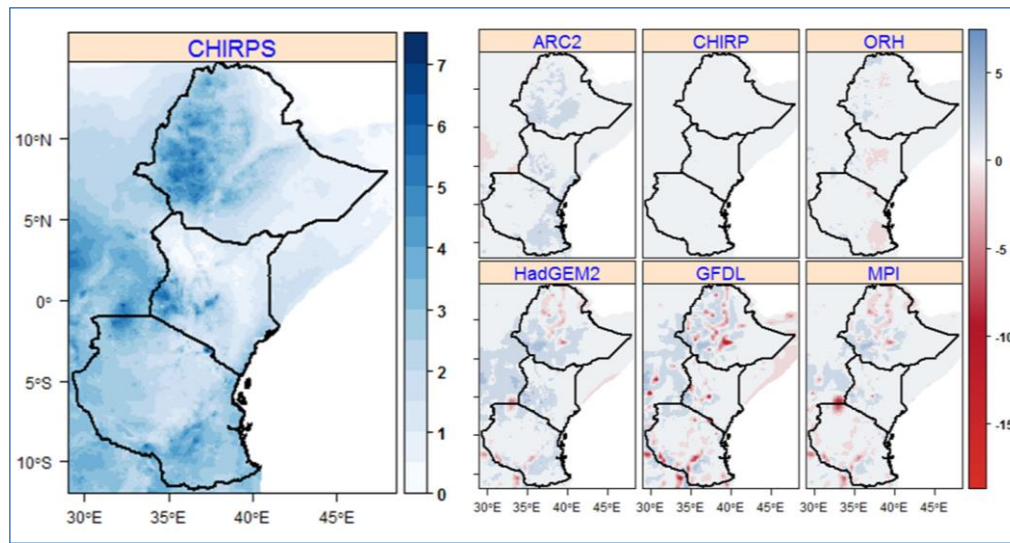


Fig. 6: Average daily rainfall (mm day^{-1}) map of East Africa retrieved from CHIRPS (left panel) for the study period 1983–2005. For rainfall data from ARC2, CHIRP, ORH, and RCM (right panels) the absolute difference (mm day^{-1}) from CHIRPS is displayed. All the maps are given in a 0.05° spatial resolution.

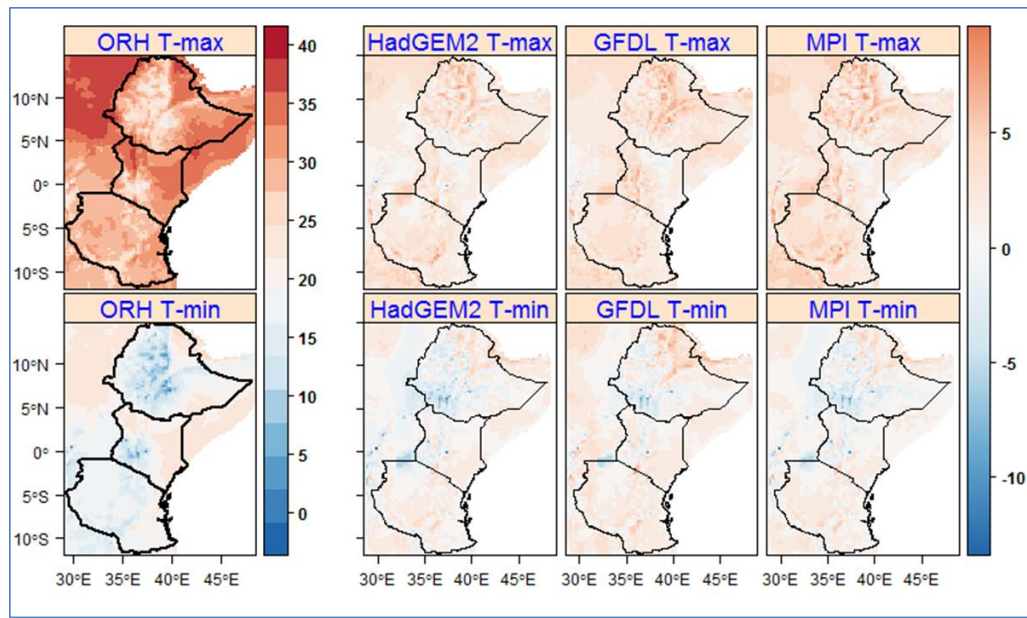
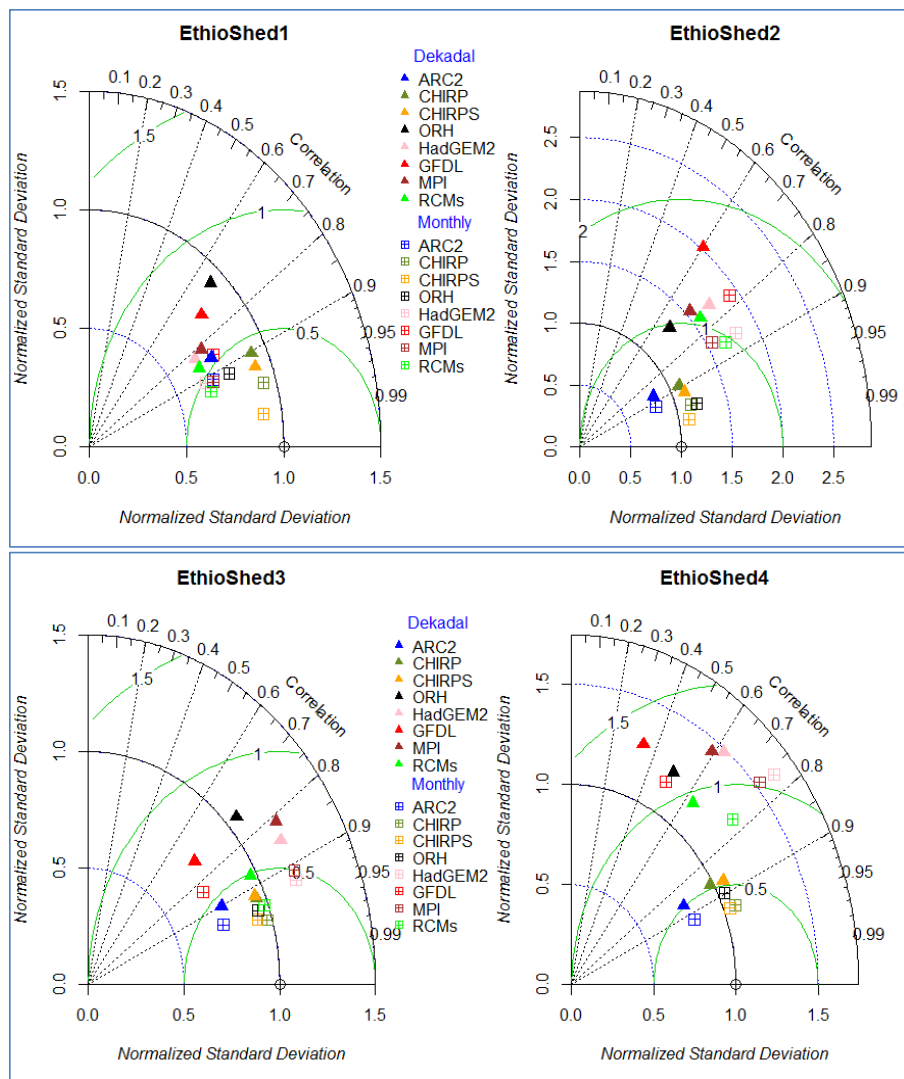


Fig. 7: Map of average daily T-max and T-min (°C) for East Africa generated from ORH (left panels) for the study period 1983–2005. For temperature data from HadGEM2, GFDL, and MPI (right panels) the absolute difference (°C) from ORH is displayed. All the maps are given in a 0.1° spatial resolution.



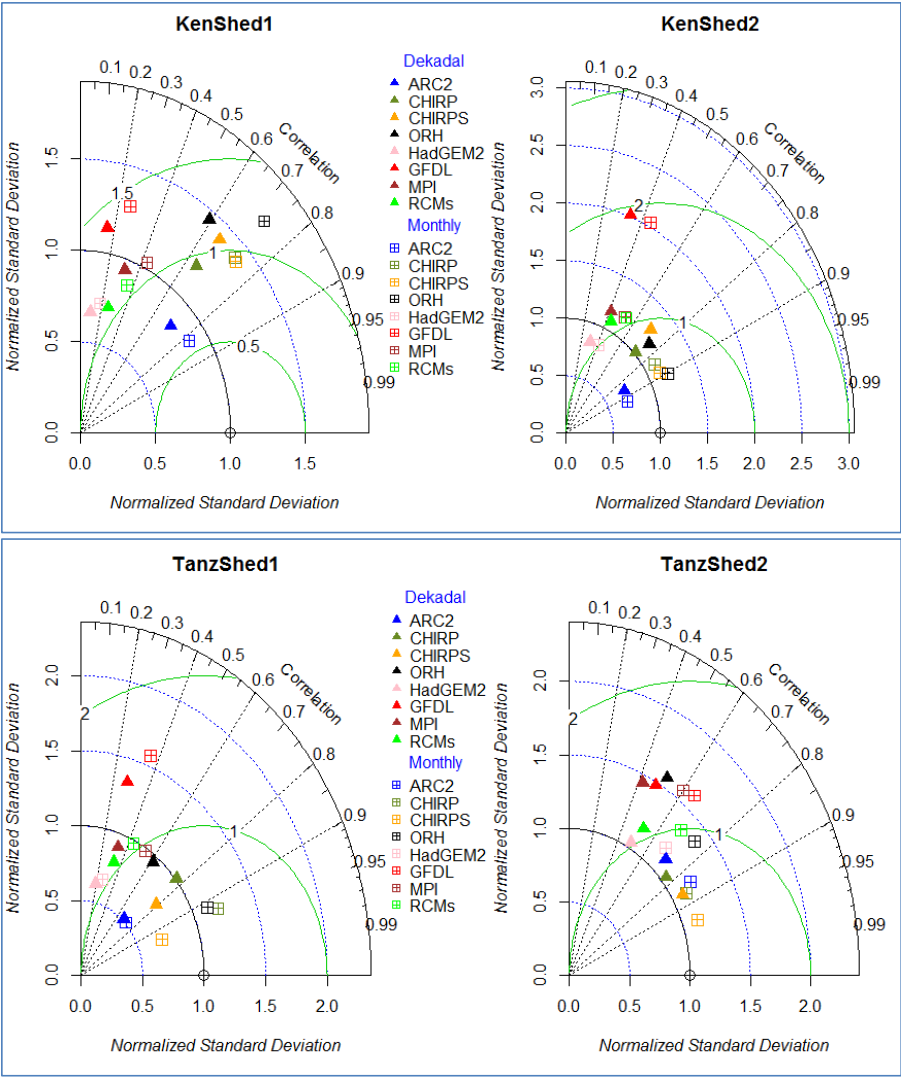
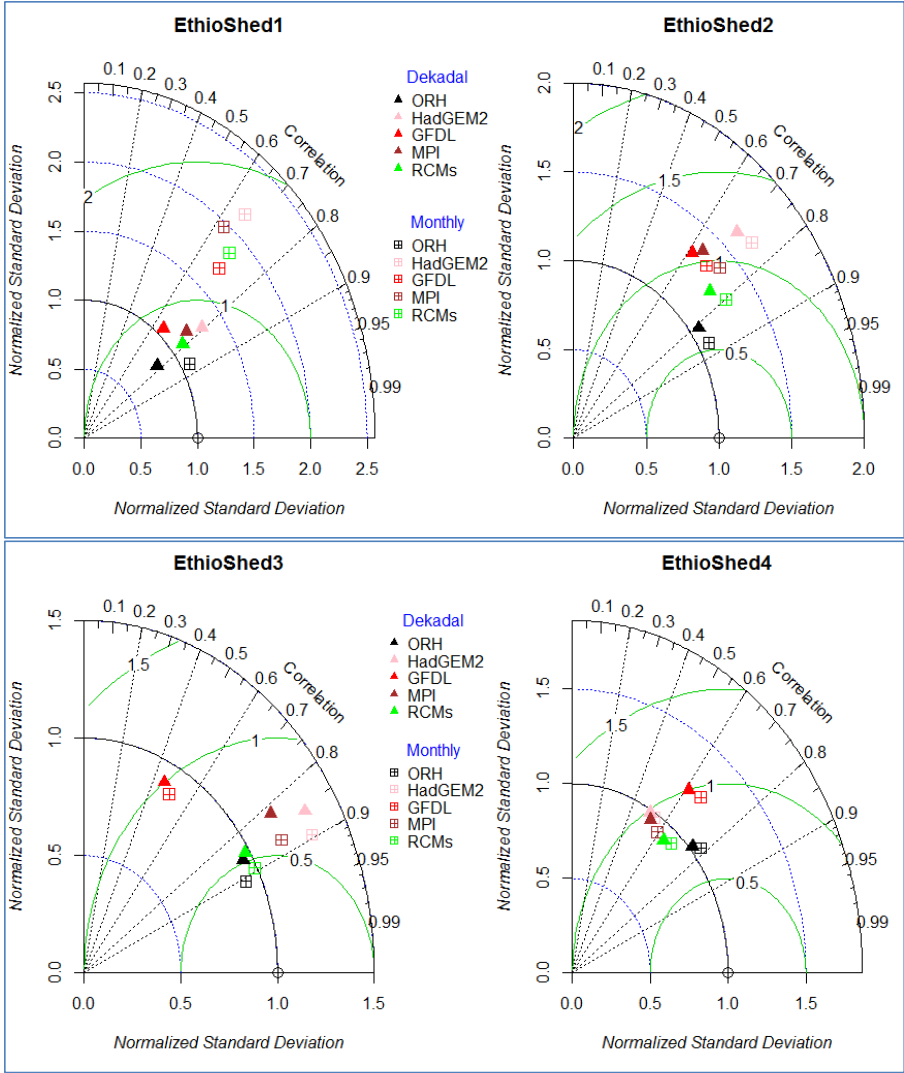


Figure Fig. 58: Taylor diagram displaying the agreement between ground observation and synthesized dekadal and monthly rainfall over eight validation areas of Ethiopia, Kenya, and Tanzania covering the period of 1983–2005.



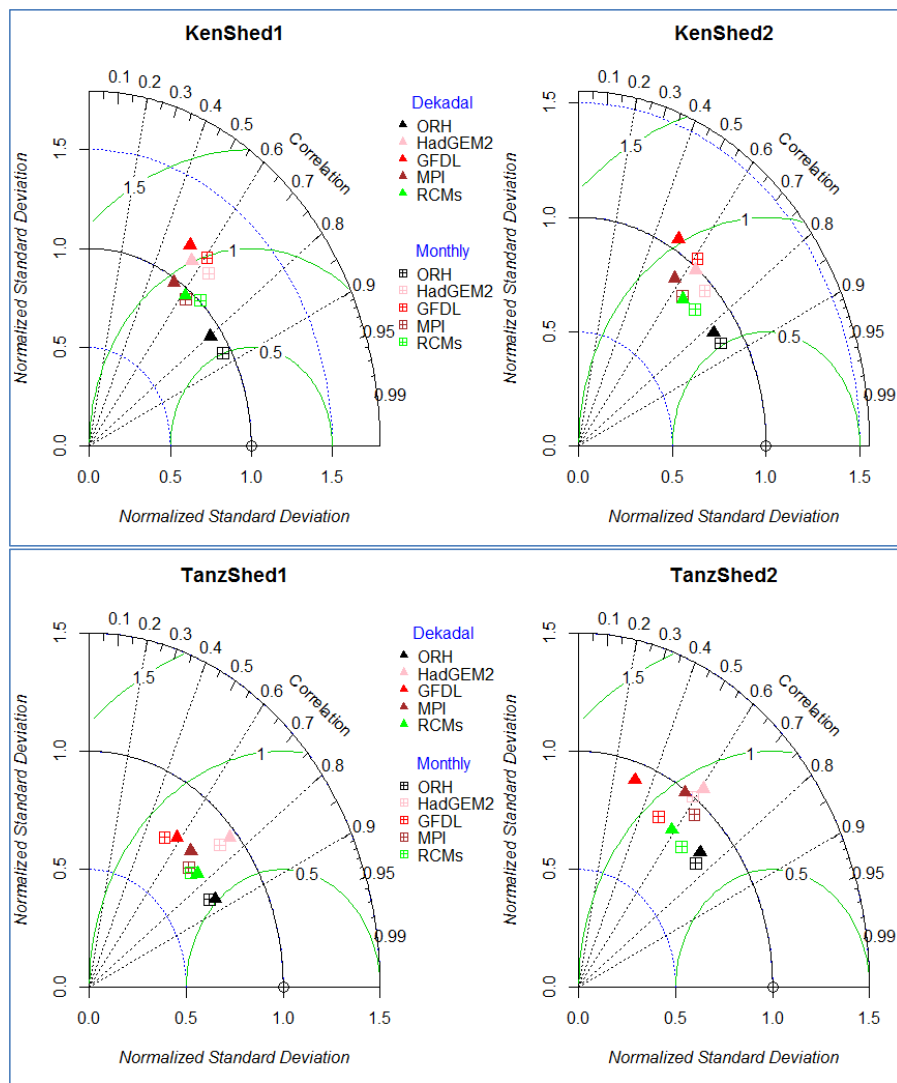
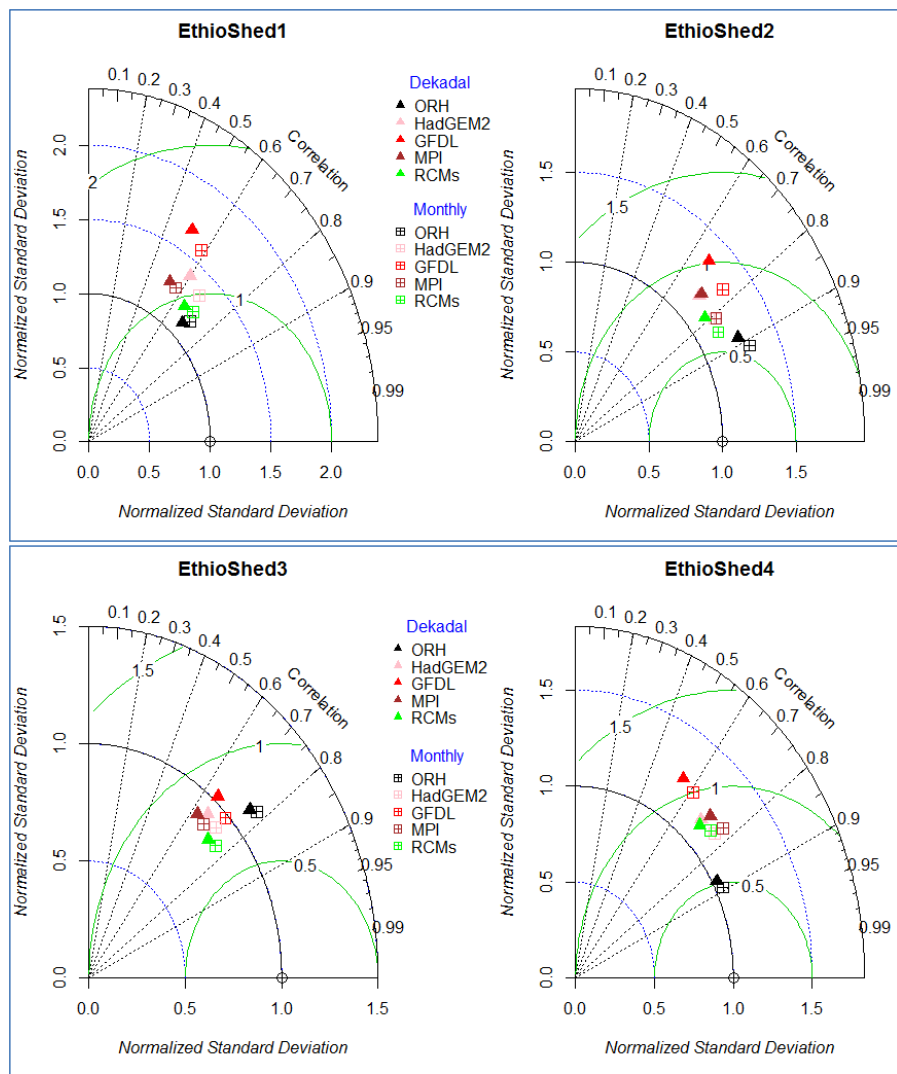


Figure Fig. 69: Taylor diagram displaying the agreement between ground observation and synthesized dekadal and monthly T-max over the eight validation areas of Ethiopia, Kenya, and Tanzania covering the period of 1983–2005.



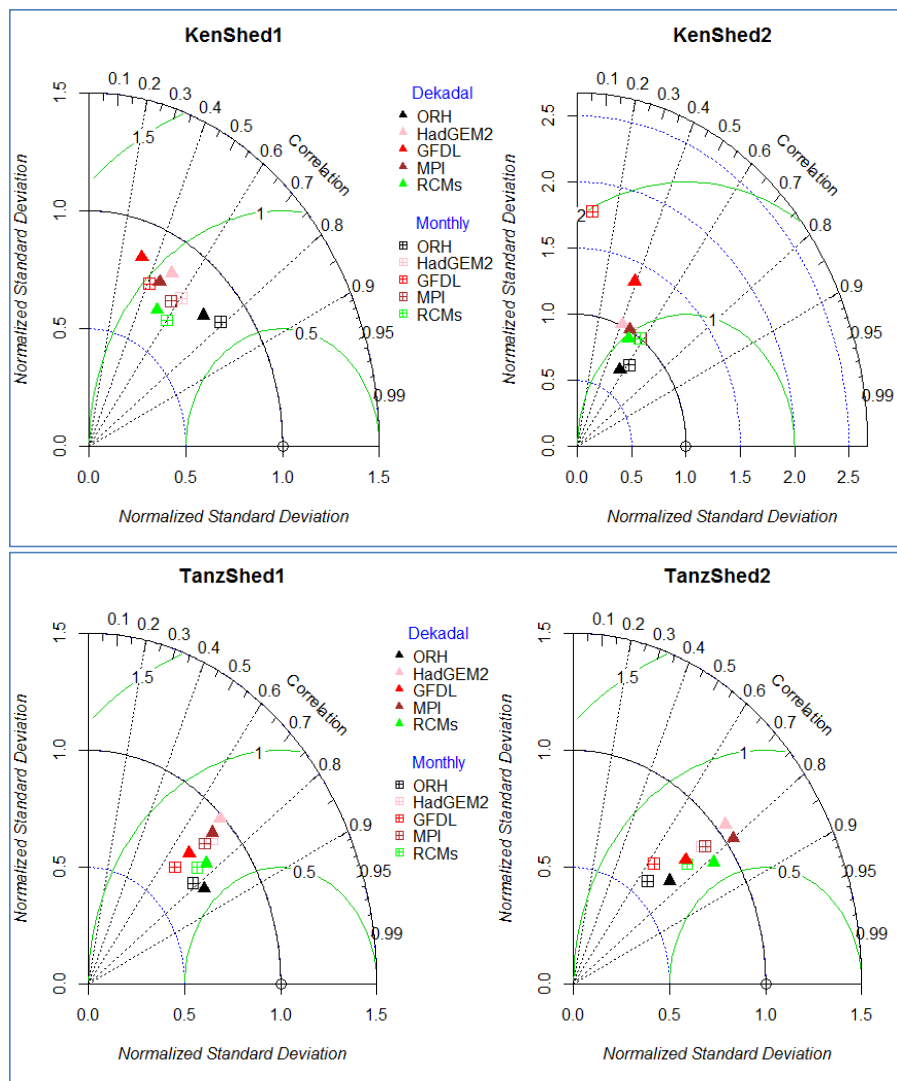


Figure Fig. 710: Taylor diagram displaying the agreement between ground observation and synthesized dekadal and monthly T-min over eight validation areas of Ethiopia, Kenya, and Tanzania covering the period of 1983–2005.

Acknowledgements

We would like to thank the National Meteorological Agency (NMA) of Ethiopia for providing adequate data for the study and the World Meteorological Organization (WMO) representative for Eastern and Southern Africa for their kind support in data collection. We would also like to thank the Graduate Academy of Technische Universität Dresden (TU Dresden) for its financial support during the study period.

10

15

20

References

Abiodun, B. J., Abba Omar, S., Lennard, C. and Jack, C.: Using regional climate models to simulate extreme rainfall events in the Western Cape, South Africa: Simulating Extreme Rainfall Events in Western Cape, *Int. J. Climatol.*, 36(2), 689–705, doi:10.1002/joc.4376, 2016.

Anyah, R. O. and Semazzi, F. H. M.: Climate variability over the Greater Horn of Africa based on NCAR AGCM ensemble, *Theor. Appl. Climatol.*, 86(1-4), 39–62, doi:10.1007/s00704-005-0203-7, 2006.

Anyah, R. O. and Semazzi, F. H. M.: Variability of East African rainfall based on multiyear Regcm3 simulations, *Int. J. Climatol.*, 27(3), 357–371, doi:10.1002/joc.1401, 2007.

Baldauf, M., Seifert, A., Förstner, J., Majewski, D., Raschendorfer, M. and Reinhardt, T.: Operational Convective-Scale Numerical Weather Prediction with the COSMO Model: Description and Sensitivities, *Mon. Weather Rev.*, 139(12), 3887–3905, doi:10.1175/MWR-D-10-05013.1, 2011.

Bayissa, Y., Tadesse, T., Demisse, G. and Shiferaw, A.: Evaluation of Satellite-Based Rainfall Estimates and Application to Monitor Meteorological Drought for the Upper Blue Nile Basin, Ethiopia, *Remote Sens.*, 9(7), 669, doi:10.3390/rs9070669, 2017.

Beck, H. E., van Dijk, A. I. J. M., Levizzani, V., Schellekens, J., Miralles, D. G., Martens, B. and de Roo, A.: MSWEP: 3-hourly 0.25° global gridded precipitation (1979–2015) by merging gauge, satellite, and reanalysis data, *Hydrol. Earth Syst. Sci. Discuss.*, 1–38, doi:10.5194/hess-2016-236, 2016.

Cattani, E., Merino, A. and Levizzani, V.: Evaluation of Monthly Satellite-Derived Precipitation Products over East Africa, *J. Hydrometeorol.*, 17(10), 2555–2573, doi:10.1175/JHM-D-15-0042.1, 2016.

Ceccherini, G., Amezttoy, I., Hernández, C. and Moreno, C.: High-Resolution Precipitation Datasets in South America and West Africa based on Satellite-Derived Rainfall, Enhanced Vegetation Index and Digital Elevation Model, *Remote Sens.*, 7(5), 6454–6488, doi:10.3390/rs70506454, 2015.

Chaney, N. W., Sheffield, J., Villarini, G., Wood, E. F., Chaney, N. W., Sheffield, J., Villarini, G. and Wood, E. F.: Development of a High-Resolution Gridded Daily Meteorological Dataset over Sub-Saharan Africa: Spatial Analysis of Trends in Climate Extremes, [Httpdxdoiorg101175JCLI-13-004231](http://dx.doi.org/10.1175/JCLI-13-004231) [online] Available from: <http://journals.ametsoc.org/doi/abs/10.1175/JCLI-D-13-00423.1> (Accessed 30 November 2016), 2014.

Cohen Liechti, T., Matos, J. P., Boillat, J.-L. and Schleiss, A. J.: Comparison and evaluation of satellite derived precipitation products for hydrological modeling of the Zambezi River Basin, *Hydrol. Earth Syst. Sci.*, 16(2), 489–500, doi:10.5194/hess-16-489-2012, 2012.

Daren Harmel, R. and Smith, P. K.: Consideration of measurement uncertainty in the evaluation of goodness-of-fit in hydrologic and water quality modeling, *J. Hydrol.*, 337(3-4), 326–336, doi:10.1016/j.jhydrol.2007.01.043, 2007.

Field Code Changed

- Deblauwe, V., Droissart, V., Bose, R., Sonké, B., Blach-Overgaard, A., Svenning, J.-C., Wieringa, J. J., Ramesh, B. R., Stévant, T. and Couvreur, T. L. P.: Remotely sensed temperature and precipitation data improve species distribution modelling in the tropics: Remotely sensed climate data for tropical species distribution models, *Glob. Ecol. Biogeogr.*, 25(4), 443–454, doi:10.1111/geb.12426, 2016.
- Demaria, E. M. C., Maurer, E. P., Sheffield, J., Bustos, E., Poblete, D., Vicuña, S. and Meza, F.: Using a Gridded Global Dataset to Characterize Regional Hydroclimate in Central Chile, *J. Hydrometeorol.*, 14(1), 251–265, doi:10.1175/JHM-D-12-047.1, 2012.
- Dembélé, M. and Zwart, S. J.: Evaluation and comparison of satellite-based rainfall products in Burkina Faso, West Africa, *Int. J. Remote Sens.*, 37(17), 3995–4014, doi:10.1080/01431161.2016.1207258, 2016.
- Dinku, T., Kinfe, H., Ross, M., Elena, T. and Stephen, C.: Combined use of satellite estimates and rain gauge observations to generate high-quality historical rainfall time series over Ethiopia, *Int. J. Climatol.*, 34(7), 2489–2504, doi:10.1002/joc.3855, 2013.
- Dinku, T., Block, P., Sharoff, J., Hailemariam, K., Osgood, D., Corral, J. del, Cousin, R. and Thomson, M. C.: Bridging critical gaps in climate services and applications in Africa, *Earth Perspect.*, 1(1), 15, doi:10.1186/2194-6434-1-15, 2014.
- Diro, G. T., Grimes, D. I. F. and Black, E.: Teleconnections between Ethiopian summer rainfall and sea surface temperature: part I—observation and modelling, *Clim. Dyn.*, 37(1-2), 103–119, doi:10.1007/s00382-010-0837-8, 2011.
- Dixon, J., Gulliver, A. and Gibbon, D.: Farming systems and poverty, Food and Agricultural Organization of the United Nations and World Bank, Rome and Washington, DC. [online] Available from: <ftp://ftp.fao.org/docrep/fao/004/ac349e/ac349e00.pdf> (Accessed 3 August 2015), 2001.
- Duan, Z., Liu, J., Tuo, Y., Chiogna, G. and Disse, M.: Evaluation of eight high spatial resolution gridded precipitation products in Adige Basin (Italy) at multiple temporal and spatial scales, *Sci. Total Environ.*, 573, 1536–1553, doi:10.1016/j.scitotenv.2016.08.213, 2016.
- Endris, H. S., Omondi, P., Jain, S., Lennard, C., Hewitson, B., Chang’a, L., Awange, J. L., Dosio, A., Ketiem, P., Nikulin, G., Panitz, H.-J., Büchner, M., Stordal, F. and Tazalika, L.: Assessment of the Performance of CORDEX Regional Climate Models in Simulating East African Rainfall, *J. Clim.*, 26(21), 8453–8475, doi:10.1175/JCLI-D-12-00708.1, 2013.
- Endris, H. S., Lennard, C., Hewitson, B., Dosio, A., Nikulin, G. and Panitz, H.-J.: Teleconnection responses in multi-GCM driven CORDEX RCMs over Eastern Africa, *Clim. Dyn.*, 46(9-10), 2821–2846, doi:10.1007/s00382-015-2734-7, 2015.
- FAO: Adapting to climate change through land and water management in Eastern Africa, Food and Agricultural Organization of the United Nations and World Bank, Rome. [online] Available from: <http://www.fao.org/3/a-i3781e.pdf> (Accessed 3 August 2015), 2014.

Funk, C., Peterson, P., Landsfeld, M., Pedreros, D., Verdin, J., Shukla, S., Husak, G., Rowland, J., Harrison, L., Hoell, A. and Michaelsen, J.: The climate hazards infrared precipitation with stations—a new environmental record for monitoring extremes, *Sci. Data*, 2, 150066, doi:10.1038/sdata.2015.66, 2015.

5 Gan, T. Y., Ito, M., Hülsmann, S., Qin, X., Lu, X. X., Liong, S. Y., Rutschman, P., Disse, M. and Koivusalo, H.: Possible climate change/variability and human impacts, vulnerability of drought-prone regions, water resources and capacity building for Africa, *Hydrol. Sci. J.*, 61(7), 1209–1226, doi:10.1080/02626667.2015.1057143, 2016.

10 Gelaro, R., McCarty, W., Suárez, M. J., Todling, R., Molod, A., Takacs, L., Randles, C. A., Darmenov, A., Bosilovich, M. G., Reichle, R., Wargan, K., Coy, L., Cullather, R., Draper, C., Akella, S., Buchard, V., Conaty, A., da Silva, A. M., Gu, W., Kim, G.-K., Koster, R., Lucchesi, R., Merkova, D., Nielsen, J. E., Partyka, G., Pawson, S., Putman, W., Rienecker, M., Schubert, S. D., Sienkiewicz, M. and Zhao, B.: The Modern-Era Retrospective Analysis for Research and Applications, Version 2 (MERRA-2), *J. Clim.*, 30, 5419–5454, doi:10.1175/JCLI-D-16-0758.1, 2017.

Huffman, G. J., Bolvin, D. T., Nelkin, E. J., Wolff, D. B., Adler, R. F., Gu, G., Hong, Y., Bowman, K. P. and Stocker, E. F.: The TRMM Multisatellite Precipitation Analysis (TMPA): Quasi-Global, Multiyear, Combined-Sensor Precipitation Estimates at Fine Scales, *J. Hydrometeorol.*, 8(1), 38–55, doi:10.1175/JHM560.1, 2007.

15 Huffman, G. J., Robert F. Adler, David T. Bolvin and Guojun Gu: Improving the global precipitation record: GPCP Version 2.1, *Geophysical Research Letters*, 36 [online] Available from: <http://onlinelibrary.wiley.com/doi/10.1029/2009GL040000/pdf> (Accessed 10 August 2015), 2009.

20 IFPRI: Economywide Impacts of Climate Change on Agriculture in Sub-Saharan Africa - [climatechange-agriculture.pdf](http://www.indiaenvironmentportal.org.in/files/climatechange-agriculture.pdf). [online] Available from: <http://www.indiaenvironmentportal.org.in/files/climatechange-agriculture.pdf> (Accessed 3 August 2015), 2009.

IPCC: IPCC Third Assessment Report: Climate Change 2001 (TAR), Geneva Switzerland. [online] Available from: http://www.ipcc.ch/publications_and_data/publications_and_data_reports.shtml#UonzzdLwau (Accessed 3 August 2015), 2001.

25 IPCC: Climate Change 2007: The Physical Science Basis: Contribution of Working Group I to the Fourth Assessment Report of the of the IPCC (S Solomon et al. (eds). Cambridge University Press, [online] Available from: https://www.ipcc.ch/publications_and_data/publications_ipcc_fourth_assessment_report_wg1_report_the_physical_science_basis.htm (Accessed 30 November 2016), 2007.

30 IPCC: AR5 IPCC Whats in it for Africa, [online] Available from: http://cdkn.org/wp-content/uploads/2014/04/AR5_IPCC_Whats_in_it_for_Africa.pdf (Accessed 4 January 2017), 2014.

Jebari, S., Berndtsson, R., Olsson, J. and Bahri, A.: Soil erosion estimation based on rainfall disaggregation, *J. Hydrol.*, 436-437, 102–110, doi:10.1016/j.jhydrol.2012.03.001, 2012.

Kalnay, E., Kanamitsu, M., Kistler, R., Collins, W., Deaven, D., Gandin, L., Iredell, M., Saha, S., White, G., Woollen, J., Zhu, Y., Leetmaa, A., Reynolds, R., Chelliah, M., Ebisuzaki, W., Higgins, W., Janowiak, J., Mo, K. C., Ropelewski,

- C., Wang, J., Jenne, R. and Joseph, D.: The NCEP/NCAR 40-Year Reanalysis Project, *Bull. Am. Meteorol. Soc.*, 77(3), 437–471, doi:10.1175/1520-0477(1996)077<0437:TNYRP>2.0.CO;2, 1996.
- Kimani, M. W., Hoedjes, J. C. B. and Su, Z.: An Assessment of Satellite-Derived Rainfall Products Relative to Ground Observations over East Africa, *Remote Sens.*, 9, doi:10.3390/rs9050430, 2017.
- 5 Kim, J., Waliser, D. E., Mattmann, C. A., Goodale, C. E., Hart, A. F., Zimdars, P. A., Crichton, D. J., Jones, C., Nikulin, G., Hewitson, B., Jack, C., Lennard, C. and Favre, A.: Evaluation of the CORDEX-Africa multi-RCM hindcast: systematic model errors, *Clim. Dyn.*, 42(5-6), 1189–1202, doi:10.1007/s00382-013-1751-7, 2014.
- Lafon, T., Dadson, S., Buys, G. and Prudhomme, C.: Bias correction of daily precipitation simulated by a regional climate model: a comparison of methods, *Int. J. Climatol.*, 33(6), 1367–1381, doi:10.1002/joc.3518, 2013.
- 10 Legates, D. R. and McCabe, G. J.: Evaluating the use of “goodness-of-fit” Measures in hydrologic and hydroclimatic model validation, *Water Resour. Res.*, 35(1), 233–241, doi:10.1029/1998WR900018, 1999.
- Maidment, R. I., Grimes, D., Allan, R. P., Tarnavsky, E., Stringer, M., Hewison, T., Roebeling, R. and Black, E.: The 30 year TAMSAT African Rainfall Climatology And Time series (TARCAT) data set, *J. Geophys. Res. Atmospheres*, 119(18), 2014JD021927, doi:10.1002/2014JD021927, 2014.
- 15 Maidment, R. I., Grimes, D., Black, E., Tarnavsky, E., Young, M., Greatrex, H., Allan, R. P., Stein, T., Nkonde, E., Senkunda, S. and Alcántara, E. M. U.: A new, long-term daily satellite-based rainfall dataset for operational monitoring in Africa, *Sci. Data*, 4, 170063, doi:10.1038/sdata.2017.63, 2017.
- Malo, M., Jember, G. and Woodfine, A. : Strengthening Capacity for Climate Change Adaptation in the Agriculture Sector in Ethiopia, *Proceedings from National Workshop, Food and Agricultural Organization of the United Nations and World Bank, Nazareth, Ethiopia*. [online] Available from: <http://www.fao.org/docrep/014/i2155e/i2155e00.pdf> (Accessed 4 August 2015), 2012.
- 20 Maraun, D.: Bias Correction, Quantile Mapping, and Downscaling: Revisiting the Inflation Issue, *J. Clim.*, 26(6), 2137–2143, doi:10.1175/JCLI-D-12-00821.1, 2013.
- Moazami, S., Golian, S., Kavianpour, M. R. and Hong, Y.: Comparison of PERSIANN and V7 TRMM Multi-satellite Precipitation Analysis (TMPA) products with rain gauge data over Iran, *Int. J. Remote Sens.*, 34(22), 8156–8171, doi:10.1080/01431161.2013.833360, 2013.
- 25 Nagelkerke, N. J. D.: A note on a general definition of the coefficient of determination, *Biometrika*, 78(3), 691–692, doi:10.1093/biomet/78.3.691, 1991.
- Neitsch, S. , Arnold, J. , Kiniry, J. , Williams, J. and King, K. : Soil and Water Assessment Tool Theoretical Documentation, [online] Available from: <https://swat.tamu.edu/media/1290/swat2000theory.pdf> (Accessed 23 May 2018), 2002.
- 30

Niang, I., O.C. Ruppel, M.A. Abdrabo, A. Essel, C. Lennard, J. Padgham and P. Urquhart: Africa. In: *Climate Change 2014: Impacts, Adaptation, and Vulnerability. Part B: Regional Aspects. Contribution of Working Group II to the Fifth Assessment Report of the Intergovernmental Panel on Climate Change* [Barros, V.R., C.B. Field, D.J. Dokken, M.D. Mastrandrea, K.J. Mach, T.E. Bilir, M. Chatterjee, K.L. Ebi, Y.O. Estrada, R.C. Genova, B. Girma, E.S. Kissel, A.N. Levy, S. MacCracken, P.R. Mastrandrea, and L.L. White (eds.)]. Cambridge University Press, Cambridge, United Kingdom and New York, NY, USA, pp. 1199-1265., [online] Available from: http://www.ipcc.ch/pdf/assessment-report/ar5/wg2/WGIIAR5-Chap22_FINAL.pdf (Accessed 4 January 2017), 2014.

Nikulin, G., Jones, C., Giorgi, F., Asrar, G., Buechner, M., Cerezo-Mota, R., Christensen, O. B., Deque, M., Fernandez, J., Haensler, A., van Meijgaard, E., Samuelsson, P., Sylla, M. B. and Sushama, L.: *Precipitation Climatology in an Ensemble of CORDEX-Africa Regional Climate Simulations*, *J. Clim.*, 25(18), 6057–6078, doi:10.1175/JCLI-D-11-00375.1, 2012.

Novella, N. S., Thiaw, W. M., Novella, N. S. and Thiaw, W. M.: *African Rainfall Climatology Version 2 for Famine Early Warning Systems*, [Httpdxdoiorg101175JAMC--11-02381](http://dx.doi.org/10.1175/JAMC--11-02381) [online] Available from: <http://journals.ametsoc.org/doi/abs/10.1175/JAMC-D-11-0238.1> (Accessed 30 November 2016), 2013.

Pricope, N. G., Husak, G., Lopez-Carr, D., Funk, C. and Michaelsen, J.: *The climate-population nexus in the East African Horn: Emerging degradation trends in rangeland and pastoral livelihood zones*, *Glob. Environ. Change*, 23(6), 1525–1541, doi:10.1016/j.gloenvcha.2013.10.002, 2013.

Romilly, T. G. and Gebremichael, M.: *Evaluation of satellite rainfall estimates over Ethiopian river basins*, *Hydrol. Earth Syst. Sci. Discuss.*, 7(5), 7669–7694, doi:10.5194/hessd-7-7669-2010, 2010.

Saha, S., Moorthi, S., Pan, H.-L., Wu, X., Wang, J., Nadiga, S., Tripp, P., Kistler, R., Woollen, J., Behringer, D., Liu, H., Stokes, D., Grumbine, R., Gayno, G., Wang, J., Hou, Y.-T., Chuang, H., Juang, H.-M. H., Sela, J., Iredell, M., Treadon, R., Kleist, D., Van Delst, P., Keyser, D., Derber, J., Ek, M., Meng, J., Wei, H., Yang, R., Lord, S., van den Dool, H., Kumar, A., Wang, W., Long, C., Chelliah, M., Xue, Y., Huang, B., Schemm, J.-K., Ebisuzaki, W., Lin, R., Xie, P., Chen, M., Zhou, S., Higgins, W., Zou, C.-Z., Liu, Q., Chen, Y., Han, Y., Cucurull, L., Reynolds, R. W., Rutledge, G. and Goldberg, M.: *The NCEP Climate Forecast System Reanalysis*, *Bull. Am. Meteorol. Soc.*, 91(8), 1015–1058, doi:10.1175/2010BAMS3001.1, 2010.

Samuelsson, P., Jones, C. G., Willén, U., Ullerstig, A., Gollvik, S., Hansson, U., Jansson, C., Kjellström, E., Nikulin, G. and Wyser, K.: *The Rossby Centre Regional Climate model RCA3: model description and performance: THE ROSSBY CENTRE REGIONAL CLIMATE MODEL RCA3*, *Tellus A*, 63(1), 4–23, doi:10.1111/j.1600-0870.2010.00478.x, 2011.

Sapiano, M. R. P. and Arkin, P. A.: *An Intercomparison and Validation of High-Resolution Satellite Precipitation Estimates with 3-Hourly Gauge Data*, *J. Hydrometeorol.*, 10(1), 149–166, doi:10.1175/2008JHM1052.1, 2009.

Segele, Z. T., Leslie, L. M. and Lamb, P. J.: *Evaluation and adaptation of a regional climate model for the Horn of Africa: rainfall climatology and interannual variability*, *Int. J. Climatol.*, 29(1), 47–65, doi:10.1002/joc.1681, 2009.

- Sheffield, J., Goteti, G., Wood, E. F., Sheffield, J., Goteti, G. and Wood, E. F.: Development of a 50-Year High-Resolution Global Dataset of Meteorological Forcings for Land Surface Modeling, <http://dx.doi.org/10.1175/JCLI3790.1> [online] Available from: <http://journals.ametsoc.org/doi/abs/10.1175/JCLI3790.1> (Accessed 30 November 2016), 2006.
- 5 Sheffield, J., Wood, E. F., Chaney, N., Guan, K., Sadri, S., Yuan, X., Olang, L., Amani, A., Ali, A., Demuth, S. and Ogallo, L.: A Drought Monitoring and Forecasting System for Sub-Sahara African Water Resources and Food Security, *Bull. Am. Meteorol. Soc.*, 95(6), 861–882, doi:10.1175/BAMS-D-12-00124.1, 2013.
- 10 Sheffield, J., Wood, E. F., Chaney, N., Guan, K., Sadri, S., Yuan, X., Olang, L., Amani, A., Ali, A., Demuth, S. and Ogallo, L.: A Drought Monitoring and Forecasting System for Sub-Sahara African Water Resources and Food Security, *Bull. Am. Meteorol. Soc.*, 95(6), 861–882, doi:10.1175/BAMS-D-12-00124.1, 2014.
- Sun, L., Li, H., Zebiak, S. E., Moncunill, D. F., Filho, F. D. A. D. S. and Moura, A. D.: An Operational Dynamical Downscaling Prediction System for Nordeste Brazil and the 2002–04 Real-Time Forecast Evaluation, *J. Clim.*, 19(10), 1990–2007, doi:10.1175/JCLI3715.1, 2006.
- 15 Sylla, M. B., Giorgi, F., Coppola, E. and Mariotti, L.: Uncertainties in daily rainfall over Africa: assessment of gridded observation products and evaluation of a regional climate model simulation, *Int. J. Climatol.*, 33(7), 1805–1817, doi:10.1002/joc.3551, 2013.
- Tarnavsky, E., Grimes, D., Maidment, R., Black, E., Allan, R. P., Stringer, M., Chadwick, R. and Kayitakire, F.: Extension of the TAMSAT Satellite-Based Rainfall Monitoring over Africa and from 1983 to Present, *J. Appl. Meteorol. Climatol.*, 53(12), 2805–2822, doi:10.1175/JAMC-D-14-0016.1, 2014.
- 20 Taylor, K. E.: Summarizing multiple aspects of model performance in a single diagram, *J. Geophys. Res. Atmospheres*, 106(D7), 7183–7192, doi:10.1029/2000JD900719, 2001.
- Teng, J., Potter, N. J., Chiew, F. H. S., Zhang, L., Wang, B., Vaze, J. and Evans, J. P.: How does bias correction of regional climate model precipitation affect modelled runoff?, *Hydrol. Earth Syst. Sci.*, 19(2), 711–728, doi:10.5194/hess-19-711-2015, 2015.
- 25 Troy, T. J., Sheffield, J. and Wood, E. F.: Estimation of the Terrestrial Water Budget over Northern Eurasia through the Use of Multiple Data Sources, *J. Clim.*, 24(13), 3272–3293, doi:10.1175/2011JCLI3936.1, 2011.
- UNEP: The Democratic Republic of the Congo Post-Conflict Environmental Assessment United Nations Environment Programme Synthesis for Policy Makers, [online] Available from: http://postconflict.unep.ch/publications/UNEP_DRC_PCEA_EN.pdf (Accessed 30 November 2016), 2011.
- 30 Urama, K. . and Ozor, N.: Impacts of climate change on water resources in Africa : the Role of Adaptation, African Technology Policy Studies Network (ATPS). [online] Available from: http://www.ourplanet.com/climate-adaptation/Urama_Ozorv.pdf (Accessed 5 August 2015), 2010.

- Vernimmen, R. R. E., Hooijer, A., Mamenun, Aldrian, E. and van Dijk, A. I. J. M.: Evaluation and bias correction of satellite rainfall data for drought monitoring in Indonesia, *Hydrol. Earth Syst. Sci.*, 16(1), 133–146, doi:10.5194/hess-16-133-2012, 2012.
- 5 Wang, A., Lettenmaier, D. P. and Sheffield, J.: Soil Moisture Drought in China, 1950–2006, *J. Clim.*, 24(13), 3257–3271, doi:10.1175/2011JCLI3733.1, 2011.
- Wang, J. and Wolff, D. B.: Evaluation of TRMM Ground-Validation Radar-Rain Errors Using Rain Gauge Measurements, *J. Appl. Meteorol. Climatol.*, 49(2), 310–324, doi:10.1175/2009JAMC2264.1, 2010.
- Wilby, R. L. and Dawson, C. W.: sdsms — a decision support tool for the assessment of regional climate change impacts, *Environ. Model. Softw.*, 17(2), 145–157, doi:10.1016/S1364-8152(01)00060-3, 2004.
- 10 Wilby, R. L. and Dawson, C. W.: SDSM 4.2 — a decision support tool for the assessment of regional climate change impacts, *Environ. Model. Softw.*, 17, doi:10.1016/S1364-8152(01)00060-3, 2007.
- Wilby, R. L. and Yu, D.: Rainfall and temperature estimation for a data sparse region, *Hydrol. Earth Syst. Sci.*, 17(10), 3937–3955, doi:10.5194/hess-17-3937-2013, 2013.
- Willmott, C. J.: On the Validation of Models, *Phys. Geogr.*, 2(2), 184–194, doi:10.1080/02723646.1981.10642213, 1981.
- 15 World Bank: Doing business in The East African Community. IFC/World Bank Rep., 116pp, [online] Available from: http://www.tzdpdg.or.tz/fileadmin/migrated/content/uploads/DB12-EAC_01.pdf (Accessed 30 November 2016), 2012.
- Xie, P. and Arkin, P. A.: Global Precipitation: A 17-Year Monthly Analysis Based on Gauge Observations, Satellite Estimates, and Numerical Model Outputs, *Bull. Am. Meteorol. Soc.*, 78(11), 2539–2558, doi:10.1175/1520-0477(1997)078<2539:GPAYMA>2.0.CO;2, 1997.
- 20 Zambrano-Bigiarini, M., Nauditt, A., Birkel, C., Verbist, K. and Ribbe, L.: Temporal and spatial evaluation of satellite-based rainfall estimates across the complex topographical and climatic gradients of Chile, *Hydrol. Earth Syst. Sci. Discuss.*, 1–43, doi:10.5194/hess-2016-453, 2016.
- 25 Abiodun, B. J., Abba Omar, S., Lennard, C. and Jack, C.: Using regional climate models to simulate extreme rainfall events in the Western Cape, South Africa: Simulating Extreme Rainfall Events in Western Cape, *Int. J. Climatol.*, 36(2), 689–705, doi:10.1002/joc.4376, 2016.
- Anyah, R. O. and Semazzi, F. H. M.: Climate variability over the Greater Horn of Africa based on NCAR AGCM ensemble, *Theor. Appl. Climatol.*, 86(1–4), 39–62, doi:10.1007/s00704-005-0203-7, 2006.
- 30 Anyah, R. O. and Semazzi, F. H. M.: Variability of East African rainfall based on multiyear Regem3 simulations, *Int. J. Climatol.*, 27(3), 357–371, doi:10.1002/joc.1401, 2007.

- Baldauf, M., Seifert, A., Förstner, J., Majewski, D., Raschendorfer, M. and Reinhardt, T.: Operational Convective-Scale Numerical Weather Prediction with the COSMO Model: Description and Sensitivities, *Mon. Weather Rev.*, 139(12), 3887–3905, doi:10.1175/MWR-D-10-05013.1, 2011.
- 5 Bayissa, Y., Tadesse, T., Demisse, G. and Shiferaw, A.: Evaluation of Satellite-Based Rainfall Estimates and Application to Monitor Meteorological Drought for the Upper Blue Nile Basin, Ethiopia, *Remote Sens.*, 9(7), 669, doi:10.3390/rs9070669, 2017.
- Beck, H. E., van Dijk, A. I. J. M., Levizzani, V., Schellekens, J., Miralles, D. G., Martens, B. and de Roo, A.: MSWEP: 3-hourly 0.25° global gridded precipitation (1979–2015) by merging gauge, satellite, and reanalysis data, *Hydrol. Earth Syst. Sci. Discuss.*, 1–38, doi:10.5194/hess-2016-236, 2016.
- 10 Cattani, E., Merino, A. and Levizzani, V.: Evaluation of Monthly Satellite-Derived Precipitation Products over East Africa, *J. Hydrometeorol.*, 17(10), 2555–2573, doi:10.1175/JHM-D-15-0042.1, 2016.
- Ceccherini, G., Amezttoy, I., Hernández, C. and Moreno, C.: High-Resolution Precipitation Datasets in South America and West Africa based on Satellite-Derived Rainfall, Enhanced Vegetation Index and Digital Elevation Model, *Remote Sens.*, 7(5), 6454–6488, doi:10.3390/rs70506454, 2015.
- 15 Chaney, N. W., Sheffield, J., Villarini, G., Wood, E. F., Chaney, N. W., Sheffield, J., Villarini, G. and Wood, E. F.: Development of a High-Resolution Gridded Daily Meteorological Dataset over Sub-Saharan Africa: Spatial Analysis of Trends in Climate Extremes, <http://dx.doi.org/10.1175/JCLI-13-004231> [online] Available from: <http://journals.ametsoc.org/doi/abs/10.1175/JCLI-D-13-00423.1> (Accessed 30 November 2016), 2014.
- 20 Cohen Liechti, T., Matos, J. P., Boillat, J.-L. and Schleiss, A. J.: Comparison and evaluation of satellite derived precipitation products for hydrological modeling of the Zambezi River Basin, *Hydrol. Earth Syst. Sci.*, 16(2), 489–500, doi:10.5194/hess-16-489-2012, 2012.
- Daren Harmel, R. and Smith, P. K.: Consideration of measurement uncertainty in the evaluation of goodness-of-fit in hydrologic and water quality modeling, *J. Hydrol.*, 337(3–4), 326–336, doi:10.1016/j.jhydrol.2007.01.043, 2007.
- 25 Deblauwe, V., Droissart, V., Bose, R., Sonké, B., Blach-Overgaard, A., Svenning, J.-C., Wieringa, J. J., Ramesh, B. R., Stévant, T. and Couvreur, T. L. P.: Remotely sensed temperature and precipitation data improve species distribution modelling in the tropics: Remotely sensed climate data for tropical species distribution models, *Glob. Ecol. Biogeogr.*, 25(4), 443–454, doi:10.1111/geb.12426, 2016.
- 30 Demaria, E. M. C., Maurer, E. P., Sheffield, J., Bustos, E., Poblete, D., Vicuña, S. and Meza, F.: Using a Gridded Global Dataset to Characterize Regional Hydroclimate in Central Chile, *J. Hydrometeorol.*, 14(1), 251–265, doi:10.1175/JHM-D-12-047.1, 2012.
- Dembélé, M. and Zwart, S. J.: Evaluation and comparison of satellite-based rainfall products in Burkina Faso, West Africa, *Int. J. Remote Sens.*, 37(17), 3995–4014, doi:10.1080/01431161.2016.1207258, 2016.

- Dinku, T., Kinfe, H., Ross, M., Elena, T. and Stephen, C.: Combined use of satellite estimates and rain gauge observations to generate high quality historical rainfall time series over Ethiopia, *Int. J. Climatol.*, **34**(7), 2489–2504, doi:10.1002/joc.3855, 2013.
- 5 Dinku, T., Block, P., Sharoff, J., Hailemariam, K., Osgood, D., Corral, J. del, Cousin, R. and Thomson, M. G.: Bridging critical gaps in climate services and applications in Africa, *Earth Perspect.*, **1**(1), 15, doi:10.1186/2194-6434-1-15, 2014.
- Diro, G. T., Grimes, D. I. F. and Black, E.: Teleconnections between Ethiopian summer rainfall and sea surface temperature: part I—observation and modelling, *Clim. Dyn.*, **37**(1–2), 103–119, doi:10.1007/s00382-010-0837-8, 2011.
- 10 Dixon, J., Gulliver, A. and Gibbon, D.: Farming systems and poverty, Food and Agricultural Organization of the United Nations and World Bank, Rome and Washington, DC. [online] Available from: <ftp://ftp.fao.org/docrep/fao/004/ac349e/ac349e00.pdf> (Accessed 3 August 2015), 2001.
- Duan, Z., Liu, J., Tuo, Y., Chiogna, G. and Disse, M.: Evaluation of eight high spatial resolution gridded precipitation products in Adige Basin (Italy) at multiple temporal and spatial scales, *Sci. Total Environ.*, **573**, 1536–1553, doi:10.1016/j.scitotenv.2016.08.213, 2016.
- 15 Endris, H. S., Omondi, P., Jain, S., Lennard, C., Hewitson, B., Chang’a, L., Awange, J. L., Dosio, A., Ketiem, P., Nikulin, G., Panitz, H. J., Büchner, M., Stordal, F. and Tazalika, L.: Assessment of the Performance of CORDEX Regional Climate Models in Simulating East African Rainfall, *J. Clim.*, **26**(21), 8453–8475, doi:10.1175/JCLI-D-12-00708.1, 2013.
- 20 Endris, H. S., Lennard, C., Hewitson, B., Dosio, A., Nikulin, G. and Panitz, H. J.: Teleconnection responses in multi-GCM driven CORDEX RCMs over Eastern Africa, *Clim. Dyn.*, **46**(9–10), 2821–2846, doi:10.1007/s00382-015-2734-7, 2015.
- FAO: Adapting to climate change through land and water management in Eastern Africa, Food and Agricultural Organization of the United Nations and World Bank, Rome. [online] Available from: <http://www.fao.org/3/a-i3781e.pdf> (Accessed 3 August 2015), 2014.
- 25 Funk, C., Peterson, P., Landsfeld, M., Pedreros, D., Verdin, J., Shukla, S., Husak, G., Rowland, J., Harrison, L., Hoell, A. and Michaelsen, J.: The climate hazards infrared precipitation with stations—a new environmental record for monitoring extremes, *Sci. Data*, **2**, 150066, doi:10.1038/sdata.2015.66, 2015.
- Gan, T. Y., Ito, M., Hülsmann, S., Qin, X., Lu, X. X., Liong, S. Y., Rutschman, P., Disse, M. and Koivusalo, H.: Possible climate change/variability and human impacts, vulnerability of drought-prone regions, water resources and capacity building for Africa, *Hydrol. Sci. J.*, **61**(7), 1209–1226, doi:10.1080/02626667.2015.1057143, 2016.
- 30 Gelaro, R., McCarty, W., Suárez, M. J., Todling, R., Molod, A., Takacs, L., Randles, C. A., Darmenov, A., Bosilovich, M. G., Reichle, R., Wargan, K., Coy, L., Cullather, R., Draper, C., Akella, S., Buchard, V., Conaty, A., da Silva, A. M., Gu, W., Kim, G. K., Koster, R., Lucchesi, R., Merkova, D., Nielsen, J. E., Partyka, G., Pawson, S., Putman, W.,

- Rienecker, M., Schubert, S. D., Sienkiewicz, M. and Zhao, B.: The Modern-Era Retrospective Analysis for Research and Applications, Version 2 (MERRA-2), *J. Clim.*, **30**, 5419–5454, doi:10.1175/JCLI-D-16-0758.1, 2017.
- Huffman, G. J., Bolvin, D. T., Nelkin, E. J., Wolff, D. B., Adler, R. F., Gu, G., Hong, Y., Bowman, K. P. and Stocker, E. F.: The TRMM-Multisatellite Precipitation Analysis (TMPA): Quasi-Global, Multiyear, Combined-Sensor Precipitation Estimates at Fine Scales, *J. Hydrometeorol.*, **8**(1), 38–55, doi:10.1175/JHM560.1, 2007.
- Huffman, G. J., Robert F. Adler, David T. Bolvin and Guojun Gu: Improving the global precipitation record: GPCP Version 2.1, *Geophysical Research Letters*, **36** [online] Available from: <http://onlinelibrary.wiley.com/doi/10.1029/2009GL040000/pdf> (Accessed 10 August 2015), 2009.
- IFPRI: Economywide Impacts of Climate Change on Agriculture in Sub-Saharan Africa—climatechange-agriculture.pdf. [online] Available from: <http://www.indiaenvironmentportal.org.in/files/climatechange-agriculture.pdf> (Accessed 3 August 2015), 2009.
- IPCC: IPCC Third Assessment Report: Climate Change 2001 (TAR), Geneva Switzerland. [online] Available from: http://www.ipcc.ch/publications_and_data/publications_and_data_reports.shtml#1 (Accessed 3 August 2015), 2001.
- IPCC: Climate Change 2007: The Physical Science Basis: Contribution of Working Group I to the Fourth Assessment Report of the of the IPCC (S Solomon et al. (eds). Cambridge University Press, [online] Available from: https://www.ipcc.ch/publications_and_data/publications_ipcc_fourth_assessment_report_wg1_report_the_physical_science_basis.htm (Accessed 30 November 2016), 2007.
- IPCC: AR5 IPCC Whats in it for Africa, [online] Available from: http://cdkn.org/wp-content/uploads/2014/04/AR5_IPCC_Whats_in_it_for_Africa.pdf (Accessed 4 January 2017), 2014.
- Jebari, S., Berndtsson, R., Olsson, J. and Bahri, A.: Soil erosion estimation based on rainfall disaggregation, *J. Hydrol.*, **436–437**, 102–110, doi:10.1016/j.jhydrol.2012.03.001, 2012.
- Kalnay, E., Kanamitsu, M., Kistler, R., Collins, W., Deaven, D., Gandin, L., Iredell, M., Saha, S., White, G., Woollen, J., Zhu, Y., Leetmaa, A., Reynolds, R., Chelliah, M., Ebisuzaki, W., Higgins, W., Janowiak, J., Mo, K. C., Ropelewski, C., Wang, J., Jenne, R. and Joseph, D.: The NCEP/NCAR 40-Year Reanalysis Project, *Bull. Am. Meteorol. Soc.*, **77**(3), 437–471, doi:10.1175/1520-0477(1996)077<0437:TNYP>2.0.CO;2, 1996.
- Kimani, M. W., Hoedjes, J. C. B. and Su, Z.: An Assessment of Satellite-Derived Rainfall Products Relative to Ground Observations over East Africa, *Remote Sens.*, **9**, doi:10.3390/rs9050430, 2017.
- Kim, J., Waliser, D. E., Mattmann, C. A., Goodale, C. E., Hart, A. F., Zimdars, P. A., Crichton, D. J., Jones, C., Nikulin, G., Hewitson, B., Jack, C., Lennard, C. and Favre, A.: Evaluation of the CORDEX-Africa multi-RCM hindcast: systematic model errors, *Clim. Dyn.*, **42**(5–6), 1189–1202, doi:10.1007/s00382-013-1751-7, 2014.

- Lafon, T., Dadson, S., Buys, G. and Prudhomme, C.: Bias correction of daily precipitation simulated by a regional climate model: a comparison of methods, *Int. J. Climatol.*, **33**(6), 1367–1381, doi:10.1002/joc.3518, 2013.
- Legates, D. R. and McCabe, G. J.: Evaluating the use of “goodness-of-fit” Measures in hydrologic and hydroclimatic model validation, *Water Resour. Res.*, **35**(1), 233–241, doi:10.1029/1998WR900018, 1999.
- 5 Maidment, R. I., Grimes, D., Allan, R. P., Tarnavsky, E., Stringer, M., Hewison, T., Roebeling, R. and Black, E.: The 30-year TAMSAT African Rainfall Climatology And Time series (TARCAT) data set, *J. Geophys. Res. Atmospheres*, **119**(18), 2014JD021927, doi:10.1002/2014JD021927, 2014.
- 10 Maidment, R. I., Grimes, D., Black, E., Tarnavsky, E., Young, M., Greatrex, H., Allan, R. P., Stein, T., Nkonde, E., Senkunda, S. and Alcántara, E. M. U.: A new, long term daily satellite based rainfall dataset for operational monitoring in Africa, *Sci. Data*, **4**, 170063, doi:10.1038/sdata.2017.63, 2017.
- Malo, M., Jember, G. and Woodfine, A. : Strengthening Capacity for Climate Change Adaptation in the Agriculture Sector in Ethiopia, Proceedings from National Workshop, Food and Agricultural Organization of the United Nations and World Bank, Nazareth, Ethiopia. [online] Available from: <http://www.fao.org/docrep/014/i2155e/i2155e00.pdf> (Accessed 4 August 2015), 2012.
- 15 Maraun, D.: Bias Correction, Quantile Mapping, and Downscaling: Revisiting the Inflation Issue, *J. Clim.*, **26**(6), 2137–2143, doi:10.1175/JCLI-D-12-00821.1, 2013.
- Moazami, S., Golian, S., Kavianpour, M. R. and Hong, Y.: Comparison of PERSIANN and V7 TRMM Multi-satellite Precipitation Analysis (TMPA) products with rain gauge data over Iran, *Int. J. Remote Sens.*, **34**(22), 8156–8171, doi:10.1080/01431161.2013.833360, 2013.
- 20 Neitsch, S. , Arnold, J. , Kiniry, J. , Williams, J. , and King, K. : Soil and Water Assessment Tool Theoretical Documentation, [online] Available from: <https://swat.tamu.edu/media/1290/swat2000theory.pdf> (Accessed 23 May 2018), 2002.
- Niang, I., O.C. Ruppel, M.A. Abdrabo, A. Essel, C. Lennard, J. Padgham and P. Urquhart: Africa. In: Climate Change 2014: Impacts, Adaptation, and Vulnerability. Part B: Regional Aspects. Contribution of Working Group II to the Fifth Assessment Report of the Intergovernmental Panel on Climate Change [Barros, V.R., C.B. Field, D.J. Dokken, M.D. Mastrandrea, K.J. Mach, T.E. Bilir, M. Chatterjee, K.L. Ebi, Y.O. Estrada, R.C. Genova, B. Girma, E.S. Kissel, A.N. Levy, S. MacCracken, P.R. Mastrandrea, and L.L. White (eds.)]. Cambridge University Press, Cambridge, United Kingdom and New York, NY, USA, pp. 1199–1265., [online] Available from: http://www.ipcc.ch/pdf/assessment-report/ar5/wg2/WGIIAR5-Chap22_FINAL.pdf (Accessed 4 January 2017), 2014.
- 30 Nikulin, G., Jones, C., Giorgi, F., Asrar, G., Buechner, M., Cerezo-Mota, R., Christensen, O. B., Deque, M., Fernandez, J., Haensler, A., van Meijgaard, E., Samuelsson, P., Sylla, M. B. and Sushama, L.: Precipitation Climatology in an Ensemble of CORDEX-Africa Regional Climate Simulations, *J. Clim.*, **25**(18), 6057–6078, doi:10.1175/JCLI-D-11-00375.1, 2012.

- Novella, N. S., Thiaw, W. M., Novella, N. S. and Thiaw, W. M.: African Rainfall Climatology Version 2 for Famine Early Warning Systems, [Http://dx.doi.org/10.1175/JAMC-D-11-02381](http://dx.doi.org/10.1175/JAMC-D-11-02381) [online] Available from: <http://journals.ametsoc.org/doi/abs/10.1175/JAMC-D-11-02381> (Accessed 30 November 2016), 2013.
- 5 Pricope, N. G., Husak, G., Lopez-Carr, D., Funk, C. and Michaelsen, J.: The climate–population nexus in the East African Horn: Emerging degradation trends in rangeland and pastoral livelihood zones, *Glob. Environ. Change*, 23(6), 1525–1541, doi:10.1016/j.gloenvcha.2013.10.002, 2013.
- Romilly, T. G. and Gebremichael, M.: Evaluation of satellite rainfall estimates over Ethiopian river basins, *Hydrol. Earth Syst. Sci. Discuss.*, 7(5), 7669–7694, doi:10.5194/hessd-7-7669-2010, 2010.
- 10 Saha, S., Moorthi, S., Pan, H. L., Wu, X., Wang, J., Nadiga, S., Tripp, P., Kistler, R., Woollen, J., Behringer, D., Liu, H., Stokes, D., Grumbine, R., Gayno, G., Wang, J., Hou, Y. T., Chuang, H., Juang, H. M. H., Sela, J., Iredell, M., Treadon, R., Kleist, D., Van Delst, P., Keyser, D., Derber, J., Ek, M., Meng, J., Wei, H., Yang, R., Lord, S., van den Dool, H., Kumar, A., Wang, W., Long, C., Chelliah, M., Xue, Y., Huang, B., Schemm, J. K., Ebisuzaki, W., Lin, R., Xie, P., Chen, M., Zhou, S., Higgins, W., Zou, C. Z., Liu, Q., Chen, Y., Han, Y., Cucurull, L., Reynolds, R. W., Rutledge, G. and Goldberg, M.: The NCEP Climate Forecast System Reanalysis, *Bull. Am. Meteorol. Soc.*, 91(8), 1015–1058, doi:10.1175/2010BAMS3001.1, 2010.
- 15 Samuelsson, P., Jones, C. G., Willén, U., Ullerstig, A., Gollvik, S., Hansson, U., Jansson, C., Kjellström, E., Nikulin, G. and Wyser, K.: The Rossby Centre Regional Climate model RCA3: model description and performance: THE ROSSBY CENTRE REGIONAL CLIMATE MODEL RCA3, *Tellus A*, 63(1), 4–23, doi:10.1111/j.1600-0870.2010.00478.x, 2011.
- 20 Sapiano, M. R. P. and Arkin, P. A.: An Intercomparison and Validation of High-Resolution Satellite Precipitation Estimates with 3-Hourly Gauge Data, *J. Hydrometeorol.*, 10(1), 149–166, doi:10.1175/2008JHM1052.1, 2009.
- Segele, Z. T., Leslie, L. M. and Lamb, P. J.: Evaluation and adaptation of a regional climate model for the Horn of Africa: rainfall climatology and interannual variability, *Int. J. Climatol.*, 29(1), 47–65, doi:10.1002/joc.1681, 2009.
- 25 Sheffield, J., Goteti, G., Wood, E. F., Sheffield, J., Goteti, G. and Wood, E. F.: Development of a 50-Year High-Resolution Global Dataset of Meteorological Forcings for Land Surface Modeling, <http://dx.doi.org/10.1175/JCLI3790.1> [online] Available from: <http://journals.ametsoc.org/doi/abs/10.1175/JCLI3790.1> (Accessed 30 November 2016), 2006.
- 30 Sheffield, J., Wood, E. F., Chaney, N., Guan, K., Sadri, S., Yuan, X., Olang, L., Amani, A., Ali, A., Demuth, S. and Ogallo, L.: A Drought Monitoring and Forecasting System for Sub-Saharan African Water Resources and Food Security, *Bull. Am. Meteorol. Soc.*, 95(6), 861–882, doi:10.1175/BAMS-D-12-00124.1, 2013.
- Sheffield, J., Wood, E. F., Chaney, N., Guan, K., Sadri, S., Yuan, X., Olang, L., Amani, A., Ali, A., Demuth, S. and Ogallo, L.: A Drought Monitoring and Forecasting System for Sub-Saharan African Water Resources and Food Security, *Bull. Am. Meteorol. Soc.*, 95(6), 861–882, doi:10.1175/BAMS-D-12-00124.1, 2014.

- Sun, L., Li, H., Zebiak, S. E., Moncunill, D. F., Filho, F. D. A. D. S. and Moura, A. D.: An Operational Dynamical Downscaling Prediction System for Nordeste Brazil and the 2002–04 Real-Time Forecast Evaluation, *J. Clim.*, **19**(10), 1990–2007, doi:10.1175/JCLI3715.1, 2006.
- 5 Sylla, M. B., Giorgi, F., Coppola, E. and Mariotti, L.: Uncertainties in daily rainfall over Africa: assessment of gridded observation products and evaluation of a regional climate model simulation, *Int. J. Climatol.*, **33**(7), 1805–1817, doi:10.1002/joc.3551, 2013.
- Tarnavsky, E., Grimes, D., Maidment, R., Black, E., Allan, R. P., Stringer, M., Chadwick, R. and Kayitakire, F.: Extension of the TAMSAT Satellite-Based Rainfall Monitoring over Africa and from 1983 to Present, *J. Appl. Meteorol. Climatol.*, **53**(12), 2805–2822, doi:10.1175/JAMC-D-14-0016.1, 2014.
- 10 Taylor, K. E.: Summarizing multiple aspects of model performance in a single diagram, *J. Geophys. Res. Atmospheres*, **106**(D7), 7183–7192, doi:10.1029/2000JD900719, 2001.
- Teng, J., Potter, N. J., Chiew, F. H. S., Zhang, L., Wang, B., Vaze, J. and Evans, J. P.: How does bias correction of regional climate model precipitation affect modelled runoff?, *Hydrol. Earth Syst. Sci.*, **19**(2), 711–728, doi:10.5194/hess-19-711-2015, 2015.
- 15 Troy, T. J., Sheffield, J. and Wood, E. F.: Estimation of the Terrestrial Water Budget over Northern Eurasia through the Use of Multiple Data Sources, *J. Clim.*, **24**(13), 3272–3293, doi:10.1175/2011JCLI3936.1, 2011.
- UNEP: The Democratic Republic of the Congo Post-Conflict Environmental Assessment United Nations Environment Programme Synthesis for Policy Makers, [online] Available from: http://postconflict.unep.ch/publications/UNEP_DRC_PCEA_EN.pdf (Accessed 30 November 2016), 2011.
- 20 Urama, K. . and Ozor, N.: Impacts of climate change on water resources in Africa : the Role of Adaptation, African Technology Policy Studies Network (ATPS). [online] Available from: http://www.ourplanet.com/climate-adaptation/Urama_Ozorv.pdf (Accessed 5 August 2015), 2010.
- Vernimmen, R. R. E., Hooijer, A., Mamenun, Aldrian, E. and van Dijk, A. I. J. M.: Evaluation and bias correction of satellite rainfall data for drought monitoring in Indonesia, *Hydrol. Earth Syst. Sci.*, **16**(1), 133–146, doi:10.5194/hess-16-133-2012, 2012.
- 25 Wang, A., Lettenmaier, D. P. and Sheffield, J.: Soil Moisture Drought in China, 1950–2006, *J. Clim.*, **24**(13), 3257–3271, doi:10.1175/2011JCLI3733.1, 2011.
- Wang, J. and Wolff, D. B.: Evaluation of TRMM Ground-Validation Radar-Rain Errors Using Rain Gauge Measurements, *J. Appl. Meteorol. Climatol.*, **49**(2), 310–324, doi:10.1175/2009JAMC2264.1, 2010.
- 30 Wilby, R. L. and Dawson, C. W.: sdsim — a decision support tool for the assessment of regional climate change impacts, *Environ. Model. Softw.*, **17**(2), 145–157, doi:10.1016/S1364-8152(01)00060-3, 2004.

Wilby, R. L. and Dawson, C. W.: SDSM 4.2 — a decision support tool for the assessment of regional climate change impacts, *Environ. Model. Softw.*, 17, doi:10.1016/S1364-8152(01)00060-3, 2007.

Wilby, R. L. and Yu, D.: Rainfall and temperature estimation for a data sparse region, *Hydrol. Earth Syst. Sci.*, 17(10), 3937–3955, doi:10.5194/hess-17-3937-2013, 2013.

5 Willmott, C. J.: On the Validation of Models, *Phys. Geogr.*, 2(2), 184–194, doi:10.1080/02723646.1981.10642213, 1981.

World Bank: Doing business in The East African Community. IFC/World Bank Rep., 116pp, [online] Available from: http://www.tzdpg.or.tz/fileadmin/_migrated/content_uploads/DB12-EAC_01.pdf (Accessed 30 November 2016), 2012.

10 Zambrano-Bigiarini, M., Nauditt, A., Birkel, C., Verbist, K. and Ribbe, L.: Temporal and spatial evaluation of satellite-based rainfall estimates across the complex topographical and climatic gradients of Chile, *Hydrol. Earth Syst. Sci. Discuss.*, 1–43, doi:10.5194/hess-2016-453, 2016.