

Interactive comment on “Optimizing micro watershed management for soil erosion control under various slope gradient and vegetation cover conditions using SWAT modeling” by Ghulam Nabi et al.

Ghulam Nabi et al.

enr.fiaz@uaar.edu.pk

Received and published: 5 February 2018

Dear Sir,

The authors are very thankful to you for reviewing the manuscript and providing the valuable comments. Due to these comments, the overall nature of the manuscript become significantly better. The file is attached for your review.

Kind Regards, Authors

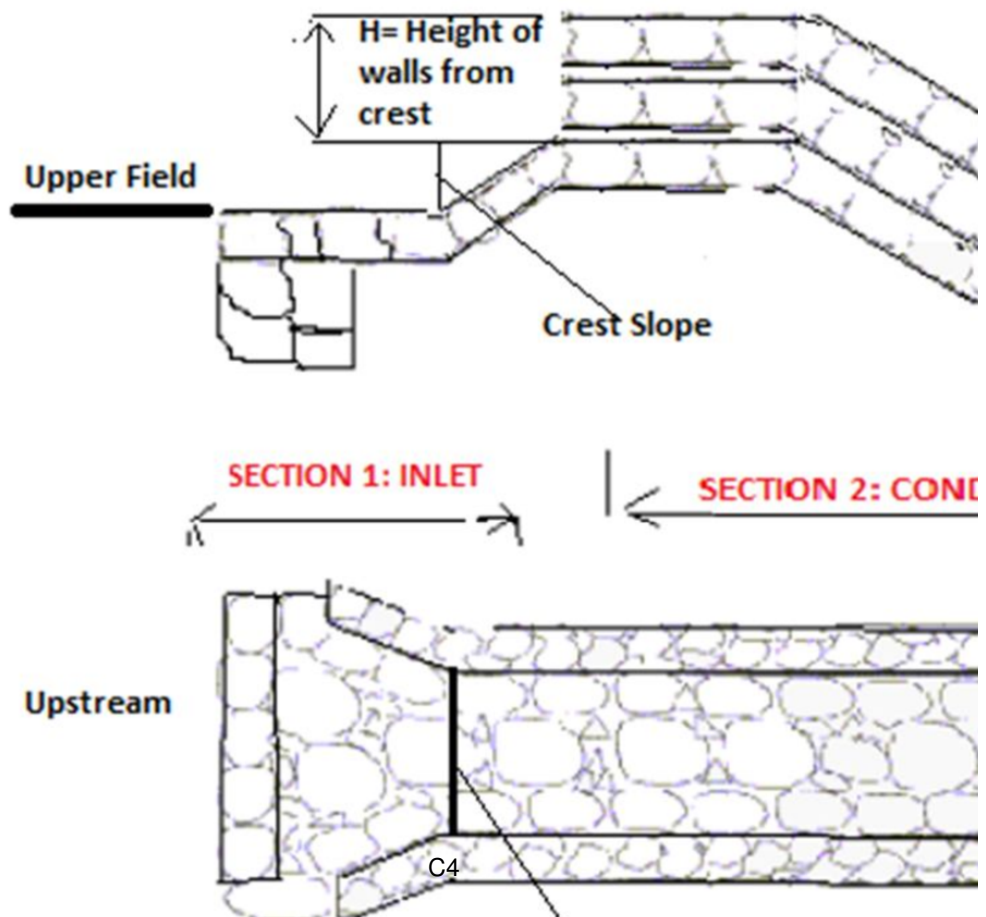
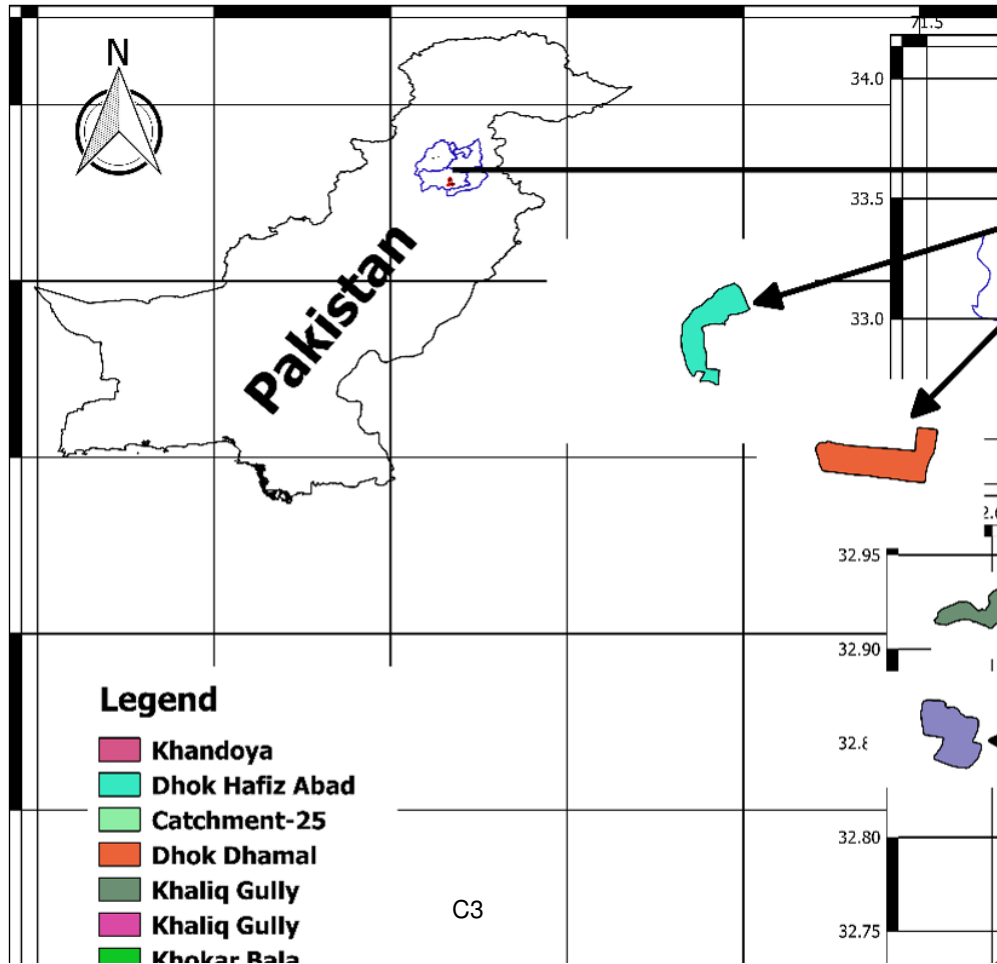
C1

Please also note the supplement to this comment:

<https://www.hydrol-earth-syst-sci-discuss.net/hess-2017-532/hess-2017-532-AC2-supplement.pdf>

Interactive comment on Hydrol. Earth Syst. Sci. Discuss., <https://doi.org/10.5194/hess-2017-532>, 2017.

C2



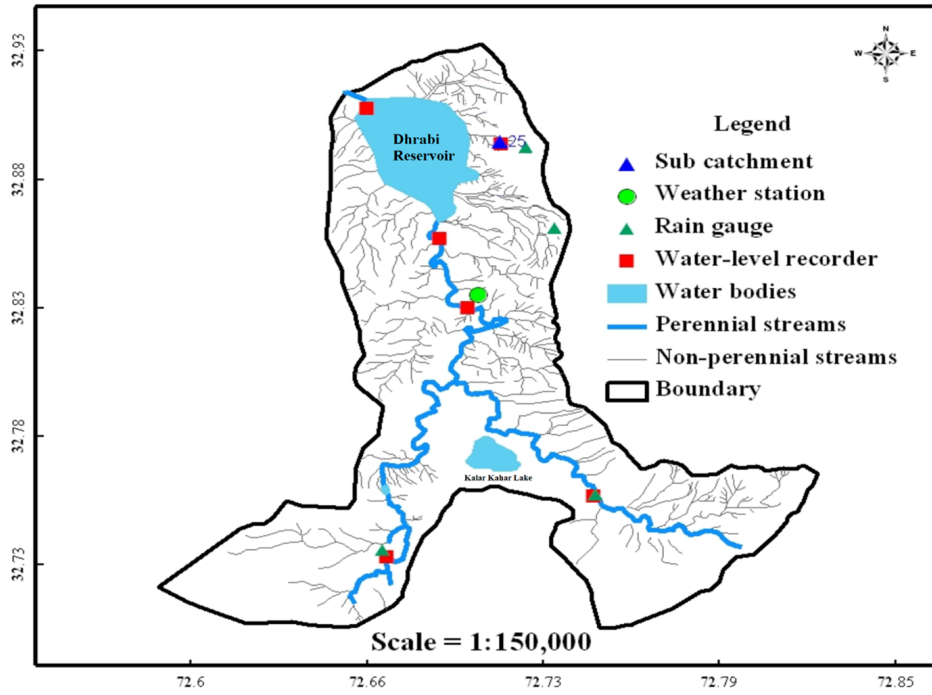


Fig. 3. Figure 7. Location of Catchment-25 of Dharabi watershed used for model calibration and validation.

C5

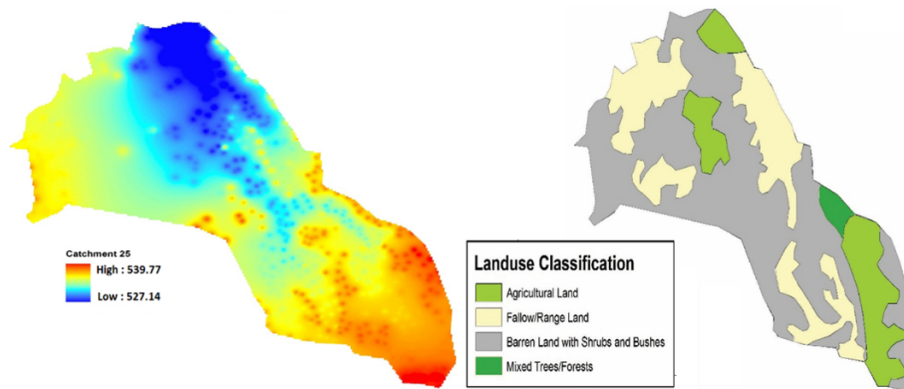


Fig. 4. Figure 9. Digital Elevation Model (DEM) and Land use classification of Catchment-25

C6

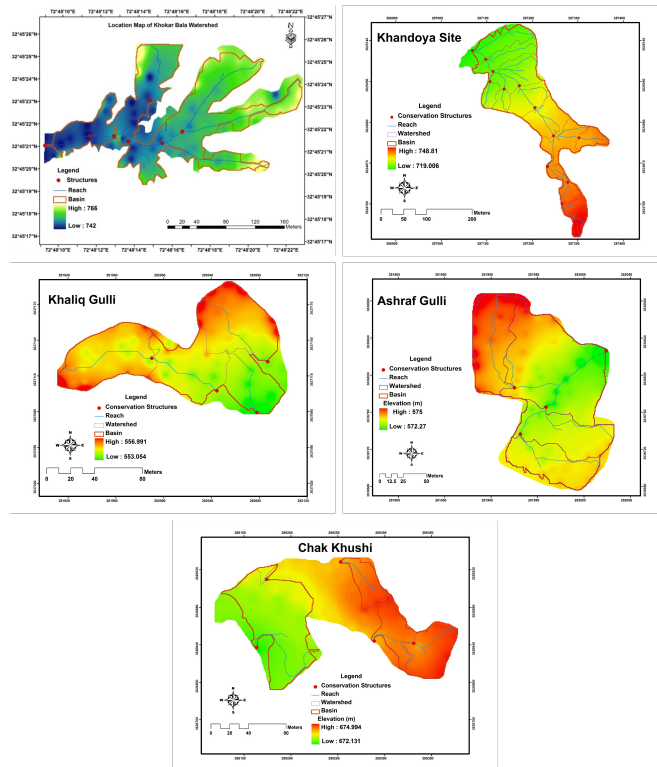


Fig. 5. Figure 15. (a) Topographic maps of selected small watersheds in Chakwal District for model application.

C7

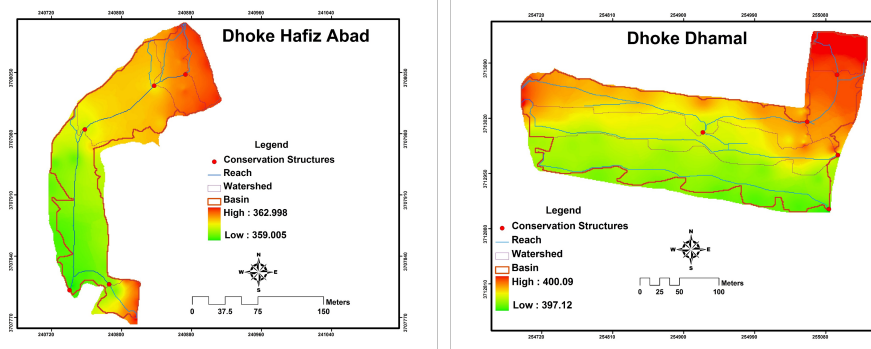


Fig. 6. Figure 15. (b) Topographic maps of selected small watersheds in Attock District for model application

C8