

Cover Letter for hess-2017-525

Dear Prof Pechlivanidis,

5 I, on behalf of my co-authors, would like to thank you and the reviewers for the efforts on the improvement of our manuscript entitled “Twenty-first century glacio-hydrological changes in the Himalayan headwater Beas river basin” (hess-2017-525).

We have carefully followed all suggestions in making our revisions. Changed parts are marked in blue text in the paper. The point-by-point response to the comments is presented separately.

10 Again, we would like to thank the Editor’s encouragement, support and patience to our work. We hope the revised manuscript is to your satisfaction, and of course we are happy to improve it according to further comments if needed.

Looking forward to hearing from you.

15

With all best wishes

Yours

20 Lu Li

On behalf of my co-authors

View Letter

25 Dear Editor and reviewers:

Many thanks for the review comments that we received with respect to our paper. We have carefully addressed both the editor and reviewer comments and suggestions. In the revised version, blue colored text represents text that has been revised or relocated. The whole manuscript is reviewed and corrected by a native English speaker. Below are our point-by-point responses to each of the reviewer's comments in blue.

30 **Editor Decision: Publish subject to minor revisions (review by editor)** (21 Dec 2018) by Ilias Pechlivanidis
Comments to the Author:

This article was reviewed by two new referees. This was required, discussed and agreed with the authors, given the major work that was conducted and the changes in the list of authors. However, I am pleased to read by the referees that the authors managed successfully to address major comments. The referees and I would like to
35 highlight the significant effort to improve the analyses resulting to a much improved manuscript.

- Reply: We thank the editor for your positive evaluation on our work in general.

However, I would like to stress three points, which should be fully addressed together with the minor comments from the referees, in order to consider the manuscript for publication:

40

1) The manuscript is very long, and could be shortened. Particularly the Introduction is very extended (3 pages) which is apparently not necessary, since the reader is interested on key messages from existing literature. Although the Discussion is adequate, I still believe that there are parts which are repetitive. Please go through the manuscript and focus on conveying simple but key and concrete messages.

45

- Reply: Thank you for the suggestion. We have cut the introduction and have gone through the whole manuscript to make the messages clearer and simpler.

50

2) The results and text is much focused on the climatological variables. This is fine since climatological variables drive the hydrological response, however the title directs towards a more hydrological investigation. I would therefore suggest reducing some repetitive text from the climatological analysis.

- Reply: Thanks for the advice. We agree and therefore we have removed Fig .10, because we feel the information that Fig 10 shows is repetitive with Fig. 8 and Fig. 9. Besides, we also added more discussion on the evaporation and streamflow change regarding different scenarios in section 4.6 Future Hydrological changes.

55

3) It is crucial that a native English speaker revise the manuscript prior to resubmission. This is highlighted by the referees also in order to improve readability.

- Reply: Sorry that we fail to fulfil the improvement on language. A native English speaker has done a proofreading of the revised manuscript.

60

I would like once again to thank the authors for this effort.

Thank you very much!

Suggestions for revision or reasons for rejection (will be published if the paper is accepted for final publication)

1. Add more discussions on river flow response to the various scenarios.

- Reply: Thanks for the comment, following which, we have added more detailed discussion on the streamflow change regarding to various scenarios in the revised manuscript.

2. Some of the figures are not easy to visualise and need to be re-drawn.

- Reply: We have gone through all the figures and have re-drawn Fig. 1, Fig. 7, Fig. 8, Fig. 9, Fig 11 and Fig. 12 in order to make them clearer. These are included in the revised manuscript.

3. Pdf copy with more comments is attached

- Reply: Thanks for the detailed comments. The point-by-point responses to the reviewer's comments including those in the attached pdf.

- Thanks for the suggestion. We want to keep the title as it is although the uncertainty assessment of glacio-hydrological change is one of the main objectives. Because we didn't include a sophisticated method to estimate the uncertainty, although a range of models from both GCMs and bias corrections are used for comparison and quantifying uncertainty somehow.

- We have cut the abstract and made it more condense.

- We have added those two bias correction methods here: "... This study used an integrated glacio-hydrological model: Glacier and Snow Melt - WASMOD model (GSM-WASMOD) for hydrological projections under 21st century climate change by eight Global Climate Models (GCMs), two bias correction methods (i.e., the daily bias correction (DBC) and the local intensity scaling (LOCI)) under two Representative Concentration Pathways (RCP4.5 and RCP 8.5) in order to assess the future hydrological change at the Himalayan Beas basin up to Pandoh dam (upper Beas basin)."

- We have removed those two bias correction methods from here and move it in the earlier place (please see reply above).

- We have capitalized them and corrected them to be "Support Vector Machine (SVM)".

- Thanks for the comment. We have re-framed the aims of our study and make it more clearly: "The following research questions are examined in this paper: (1) How will the river streamflow change due to higher glacier melt under a warmer future in the upper Beas basin? (2) How large will the variability be in future key hydrological terms regarding different climate scenarios (i.e., RCPs, GCMs and statistical downscaling methods) in the upper Beas river basin?"

- We have rewritten this section for a clearer interpretation: "To answer the questions, we used a glacio-hydrological model to assess future glacio-hydrological changes in the Himalayan Beas river basin forced with two ensembles of four GCMs under two scenarios (RCP 4.5 and RCP 8.5), and two bias correction methods. Our paper is structured as follows: after the introduction, a description of the study area and data is presented, followed by the methods utilized, including the GSM-WASMOD model, glacier evolution parameterization, bias correction methods, precipitation correction and model calibration. Next, we focus on the simulation of the present-day water cycle, and calibration and validation of the model to observed data. Then, the results of future climate change and its impact on glacier extent and hydrological projections are presented. Finally, a more detailed discussion on uncertainties of precipitation over high-altitude region and future hydrological projections in the upper Beas basin are addressed before presenting the main conclusion."

- Thanks for the comment. The glacier extent has certainly been changing in the past and a conceptual model does not mean the glacier extent is not changing. The assumption here in the study is that the number of glacier-covered grid cells is consistent in the historical simulation of 1986-2005. We have rewritten this part to be: "GSM-WASMOD is a conceptual glacio-hydrological model and we assume that the number of glacier-covered grid cells does not change in the historical simulation. For the future simulations, we used a basin-scale regionalized glacier mass balance model with parameterization of

glacier area changes and subsequent aggregation of regional glacier characteristics (Lutz et al., 2013), to estimate future changes in glacier extent.”

120 Referee 2

Overall comments

I am satisfied the authors addressed the issues raised by the previous reviewers, and did so in a professional and courteous manner. The one exception is with respect to improving the readability of the document, more work needs to be done in this space (please see below). In responding to the reviewers comments the authors have clearly undertaken considerable additional analysis to overcome the shortcomings in the original manuscript, including re-running the model at a finer resolution, and using different and more appropriate statistical downscaling methods. As a result the manuscript would appear to be greatly improved upon the original. However, as mentioned below the main short coming with the manuscript is that the language is still poor and quite loose in places.

Reply: Thanks for your positive evaluation in general, and the constructive comments, which are responded below.

Structure

I found the introduction to be long and I was unsure of its direction. Given its length I think it would be helpful to the reader if there were some subheadings to provide some additional structure this section. The introduction and consequently the entire manuscript would also benefit from a paragraph at the end of the introduction clearly describing the structure of the rest of the paper. This would greatly assist the reader follow the manuscript. There appears to be some semblance of this at the end of the introduction but I could not understand it.

- **Reply:** Thanks for the comment. We have rewritten and shortened the introduction section. We have also rewritten the last paragraph of the introduction in order to give a better interpretation about the structure of the whole paper.

Language

Before this manuscript is published it needs to be professionally edited by a native English speaker, and the language needs to be tightened considerably to be considered for publication. The authors state in their response to review that the language has been corrected by a native English speaker, however, I found the manuscript still very difficult and slow to read. In most (though not all) cases the meaning of a sentence is apparent but only after reading the sentence multiple times. I provide a few miscellaneous examples below. There are far too many poorly worded sentences to list here.

Reply: We have paid much effort on this comment including asking a native English speaker to proofread the whole manuscript.

e.g. Line 269 – “....from WRF at mountainous over 4000 m and 4800 m amsl are almost triple times as that from Gauge”.

- **Reply:** We corrected it to be: “The winter precipitation from gauge and WRF over different altitudes are listed in Table 3, from which we can see that the winter precipitation from WRF at altitudes over 4000 m and 4800 m a.m.s.l. are almost three times higher than the gauged data.”

Line 306 – “We used the data of 1986 for three preceding spin-up years.”

- Reply: We corrected it to be: “ We repeated 1986 three times as spin-up for the model.”

Line 322 – “The results confirmed that there is much heavier precipitation at high altitude in Himalya regions than what we knew from the gauge data and other gridded data set”.

- Reply: We corrected it to be: “This suggests that the high-altitude precipitation in the Himalayan upper Beas basin is underestimated in the gauge data, which was also found for other commonly used gridded data sets in previous studies (Immerzeel et al., 2015; Li et al., 2017).”

Line 384 – “The annual mean temperature of Beas river basin is approximately warm up to 1.8C (RCP4.5) and 2.8 (RCP8.5)....”

- Reply: We have corrected it to be: “The annual temperature of the upper Beas basin may warm up to ~1.8°C (RCP4.5) and ~2.8 °C (RCP8.5) in the middle of the century (2046-2065) and up to ~2.3 °C (RCP4.5) and ~5.4 °C (RCP8.5) at the end of the century (2080-2099) compared with the historical period (1986-2005). ”

Line 408 – “There is a consistent trend of projected hydrological changes over all the scenarios, although there are large uncertainties”.

- Reply: We corrected it to be: “There is a consistent trend of projected hydrological changes from all the scenarios, although there are large variabilities regarding seasonality and magnitude.”

Line 432 – “There are many uncertainties and challenges for the future hydrological projection under climate change in the Beas river basin”.

- Reply: We have corrected it to be: “ There are large uncertainties in the future hydrological projections under climate change for the upper Beas basin.”

Line 438 – “Most common knowledge of one o fhthe challenges in high mountain areas is the data issue”.

- Reply: We have corrected it to be: “One of the well-known challenges in high-altitude area is the data issue.”

In a number of cases language is too colloquial. E.g. Line 207 – “right now”.

- Reply: We have removed the “right now” in the sentence.

The word “uncertainty” is used very loosely throughout the entire manuscript. Finding a range in the output of selection of models (e.g. 6 GCM) is not a measure of “uncertainty”. In most instances it would be more appropriate to say the models displayed a large range or a large variability in results. I appreciate that this loose use of the word uncertainty is somewhat common in this field of science, nevertheless I ask the authors to be more considered in using the word “uncertainty” in this manuscript, preferably only using the term if the uncertainty is being explicitly quantified.

For example Line 109 – “Chen e al. (2011) investigated the uncertainty of six dynamical and statistical downscaling methods in quantifying the hydrological impacts under climate change in a Canadian river basin. A significant uncertainty was found to be associated with the choice of downscaling methods, which is comparable to uncertainty from GCM.” I am not familiar with this study but I suspect the authors didn’t really investigate the uncertainty but simply compared the range in output of the methods/models.

- Reply: Thanks for the suggestion. We agree that the uncertainty should be used more carefully. We have gone through the whole manuscript and have changed some of them: “Chen et al. (2011) investigated the variability of six dynamical and statistical downscaling methods in quantifying hydrological impacts under climate change in a Canadian river basin. A large range in results was found to be associated with the choice of downscaling method, which is comparable to the range stemming from different GCMs.” and “For example, Samaniego et al. (2017) set up six hydrological models in seven large river basins over the world, which were forced by bias-corrected outputs from five GCMs under RCP2.6 and RCP8.5 for the period 1971-2099. They found that the selection of the GCM mostly dominated the variability of hydrological results for the projections of runoff drought characteristics in general and emphasized the need for multi-model ensembles for the assessment of future drought projections.” Besides, we have added more discussions of the streamflow change regarding different future scenarios in revised manuscript.

Please avoid using the phrase “water availability” unless you define it upfront. Water availability is ambiguous and means different things to different people. For example Line 63 – “reduction in water availability” – what do you mean? I honestly don’t know. Do you mean reduction in streamflow or discharge? If so why not just say a reduction in streamflow or discharge.

- Reply: Thanks for the comment. Yes, it mainly means streamflow. Sorry for the confusion in the previous manuscript. We have changed the “water availability” to be “streamflow” in the revised manuscript.

In a number of places the language needs to be tightened. Again too many to list every instance but for example:

Line 427 – (6) the largest increase of evaporation will be in April, with also the largest spread...” Aside from the fact the meaning of the sentence is unclear, the use of “will” is inappropriate and should be replaced with “...is projected to...”.

- Reply: Thanks for the comment. We have corrected it to be “ the largest increase of evaporation is projected to be in April and the largest spread of evaporation increase is also found in April, i.e., around 5 ~ 26 mm and 1 ~ 26 mm by LOCI and DBC, respectively.”.

Additional material

There are already a lot of figures and the authors have already undertaken considerable additional analysis in response to the reviewer’s comments. Hence I am hesitant to suggest additional material. However, given the authors comment that in re-running all simulations at 3*3 km resolution and that they found that the results of calibration and validation were no better than the results using 10*10 km resolution, this may be an additional finding that may be worth documenting in the manuscript. I do not recall seeing any mention of this in the manuscript. Assuming the 3 and 10 km output data constitute an apples with apples comparison the authors may like to consider structuring an additional question/aim around providing insights into the additional value provided by using a finer model resolution?

- Reply: Thanks for the suggestion. Given the limited gauge data that we have in the study area, it is not a surprise that the results from 3*3 km are not improved from that from 10*10 km. According to the previous studies and analysis of the influence of interpolation and station density on gridded daily data (i.e. Dirksa et al., 1998; Hofstra et al., 2010; Xu et al., 2013), the results showed that the network density could introduce biases in the mean and variance of the grid values (i.e. precipitation and temperature) compared to those expected for the true area-averages. But this is certainly an interesting research goal. Regarding the length of our manuscript, we think it is better to further work on it in another paper. We have commented this finding in the Discussion of 5.2 section: “Furthermore, we found that the modelling results from 3 * 3 km resolution are not improved much from that of 10 * 10 km resolution, which is probably due to the limited gauge data in the study area. This limitation of data availability, e.g., sparse rainfall stations and absence of snowfall measurements, in such high-mountain drainage

basins also leads to considerable uncertainty in the hydrological simulation, and this is a common challenge for modeling studies in this region.”

Specific comments

50 – “proper” – who is to say this is a “proper” representative glacier module. What makes this one proper and all others improper? They are all models after all.

- Reply: We have corrected it to be: “However, most hydrological models either do not have a representation of glaciers (Ali et al., 2015; Horton et al., 2006; Stahl et al., 2008) or have a simple glacier representation.”.

69 – I suggest changing introductory sentence to paragraph to something like “...GMCs are USUALLY downscaled by an appropriate regional climate model (RCM) OR STATISTICAL DOWNSCALED for use” Caps are new words. Then go onto talk about RCM and their limitations before talking about statistical downscaling. Note I included usually because often many studies just use pattern scaling or simple empirical scaling methods.

- Reply: Thanks for the suggestion. We have rewritten it to be: “ To investigate the climate change impact on the future hydrological cycle, the variables produced by GCMs are usually dynamically downscaled by using a Regional Climate Model (RCM) or downscaled using empirical-statistical methods for use as inputs in hydrological models. These approaches are adopted because the outputs of GCMs are too coarse to directly drive hydrological models at regional or basin scale, in particular over mountainous terrain (Akhtar et al., 2008).”

79 – Are statistical downscaling methods the most popular and widely used approach? What about pattern scaling and other simple empirical scaling approaches (which are not statistical downscaling methods).

- Reply: We have removed “most” and reformulated the related sentence to be: “Considering the large biases in GCMs and RCMs, empirical-statistical downscaling is a popular and widely used approach to generate inputs for hydrological models to analyses the impact of climate change on hydrology”.

153 – I think the aims need to be rewritten. Do the authors really quantify the uncertainty in the precipitation data? What do they mean by (3) How are the uncertainties of the future water from GCMs or statistical downscaling methods? It was difficult to compare the conclusions with the aims. Furthermore the structure of the introduction doesn’t entirely sit comfortably with the order of the aims. For example it seems a little odd that the first question the paper seeks to address is the uncertainty in precipitation, yet this was the last thing discussed in the introduction.

- Reply: Thanks for the comment. We realized that to quantify the uncertainty in precipitation data is not the aim in our paper. We have now rewritten the aims of the paper and reconstructed this part in the revised manuscript to be: “The following research questions are examined in this paper: (1) How will the river streamflow change due to higher glacier melt under a warmer future in the upper Beas basin? (2) How large will the variability be in future key hydrological terms regarding different climate scenarios (i.e., RCPs, GCMs and statistical downscaling methods) in the upper Beas river basin? To answer the questions, we used a glacio-hydrological model to assess future glacio-hydrological changes in the Himalayan Beas river basin forced with two ensembles of four GCMs under two scenarios (RCP 4.5 and RCP 8.5), and two bias correction methods. Our paper is structured as follows: after the introduction, a description of the study area and data is presented, followed by the methods utilized, including the GSM-WASMOD model, glacier evolution parameterization, bias correction methods, precipitation correction and model calibration. Next, we focus on the simulation of the present-day water cycle, and calibration and validation of the model to observed data. Then, the results of future

climate change and its impact on glacier extent and hydrological projections are presented. Finally, a more detailed discussion on uncertainties of precipitation over high-altitude region and future hydrological projections in the upper Beas basin are addressed before presenting the main conclusions.”

Besides, we have shortened the introduction section. We have also rewritten the last paragraph of the introduction in order to give a better interpretation about the structure of the whole paper.

170 – A bit unclear. Elsewhere you talk of max and min temperature. Is this mean daily temperature or mean daily maximum temperature and is it the mean daily temperature that falls below 2 C in January or the mean daily minimum temperature.

- Reply: We corrected it to be “daily temperature” which is also the input data for modelling.

186 – two ensembles of four GCM, can you please be a little more clear, the brevity of this description is to ambiguous for such an important point.

- Reply: We have rewritten it in the revised manuscript as “Two ensembles of four statistically downscaled GCMs under RCP4.5 (i.e., CanESM2, Inmcm4, IPSL_CM5A_LR and MRI_CGCM3) and RCP 8.5 (i.e., CSIRO_Mk3_6_0, MRI-ESM1, IPSL_CM5A_LR and MIROC5) (Taylor et al., 2012) are chosen to force the future simulations (see in Table 2).”

190 – methodology – sorry but this is one of my pet hates, and you may choose to ignore me as others do ♪. Technically and originally methodology is the study of methods (e.g. a study of different farming systems is a methodology) or the science or organisation. What you describe is a method or methods not a methodology.

- Reply: We have changed it to: “Methods”.

195 – Did ESRI ARcGIS system v9.0 really define the glacier grid cells?

- Reply: The glacier grid cell was defined by the glacier outlines which were taken from the recently published Randolph Glacier Inventory (RGI 6.0). Sorry that we didn’t make it clear enough in the previous paper. We have corrected it in the revised manuscript as “Those glacier grid cells were defined by glacier outlines from the RGI (6.0) (2017) (<https://doi.org/10.7265/N5-RGI-60>)”.

222- Does a conceptual glacio-hydrological model really mean that the glacial extent does not change in the historical simulation? To me a conceptual model simply means that one or more parameters cannot be physically assigned, and requires calibration. Maybe this sentence needs rephrasing?

- Reply: Thanks for the comment. We have rewritten it as “GSM-WASMOD is a conceptual glacio-hydrological model and we assume that the number of glacier-covered grid cells does not change in the historical simulation. For the future simulations, we used a basin-scale regionalized glacier mass balance model with parameterization of glacier area changes and subsequent aggregation of regional glacier characteristics (Lutz et al., 2013), to estimate future changes in glacier extent.”

306 – “We used the data of 1986...” This does not make sense.

- Reply: We have corrected it as “We repeated 1986 three times as spin-up for the mode.”

311-314 –Note Nash-Sutcliffe efficiency (NSE) coefficient is the original reference not NSC. Also how did you select the best parameter set based on three indices? Did you equally weight them? Did you give more preference to one than the other?

314- This needs to be rephrased. It is very loose definition.

- Reply: Sorry we failed to make it clear enough in the previous paper. We have now corrected it to be “Nash-Sutcliffe efficiency (NSE) coefficient” and changed all “NSC” to be “NSE” in the revised manuscript.

Regarding the best parameter set, we used only NSE for chosen best parameter set and the other two indices are used for evaluation. We now have corrected this part of context in the revised manuscript: “The best parameter set was then chosen based on the Nash-Sutcliffe efficiency (NSE) coefficient, and two more indices, including relative volume error (VE) and root-mean-square error (RMSE) are also used for evaluation. For perfect model performance, the NSE value is 1 and the values of VE and RMSE are 0.”

316 – annual already specified hence do not need to say mm/yr.

- Reply: We have gone through the whole manuscript and have corrected all the “mm/yr” to be “mm” if there is “annual” already specified.

356 – “w.e. a-1” a-1 is not necessary given you already state this is the measured annual glacier mass balance.

- Reply: We have gone through the whole manuscript and have corrected all the “ w.e. a-1” to be “w.e.” if there is “annual” already specified.

435 – How is 5% during 1986-2004 (i.e. 18 years) comparable to 5% during 2003-2008 (i.e. 5 years)?? One is three times the time period of the other?

- Reply: Sorry for the confusion. We have corrected it to be: “There are large uncertainties in the future hydrological projections under climate change for the upper Beas basin. The contribution of snow and glacier melt is significant for the total runoff, which varies from 27.5 % ~ 40% in previous studies (e.g., Kumar et al., 2007; Li et al., 2013a, 2015a). Besides, in the study of Käab et al. (2015), the researchers used ICESat satellite altimetry data and estimated that 5% of the runoff originated from glacier retreat in the upper Beas river basin during 2003-2008. In our study, the total snow and glacier melt from the glacier-covered area is estimated to contribute around 19% of the total runoff, and the glacier retreat is accounting for around 5% during 1986-2004.”

431 – This heading is misleading. No uncertainty assessment is provided.

- Reply: We agree, and we have changed it to be “Uncertain high-altitude precipitation”.

Figures and tables

Sorry to be vague but all figure and table captions need tightening and editing.

- Reply: We have revised all the captions and rewritten all of them. Please see them in the revised manuscript.

Figure 1 – can you use a different colour ramp for elevation? The blue (low values) is too similar to the blue colour of the glaciers. Also legend should be Elevation (m) not DEM (m).

- Reply: Thanks for the comment. We have now changed both the color ramp for the elevation and colors of the glaciers in order to make it clearer in the Figure 1. We have also changed “DEM (m)” to be “Elevation (m)”. Please see the updated Figure 1.

Figure 2 – Need to define JAS and DJFM so figures can be read as stand alone.

- Reply: We have rewritten the caption of fig2 as “Fig. 2 Seasonal precipitation of July - September (JAS) and December - March (DJFM) during 1998-2005 from 3km WRF (from Li et al., 2017) and Gauge (dot) in the upper Beas basin.”.

Figure 7 – This figure is hard to interpret because some of the data appear to be missing or exactly overlay on one another. Is it possible to show these more clearly. For example LOCI would appear to be missing from three of the four plots.

- Reply: Thanks for your comments. We have found DBC was missing in one of the sub-figures, so we have now corrected it and re-drawn the fig. 7. However, the data of LOCI are not missed but is overlaid by other lines. For downscaling precipitation, the mean-based LOCI method can correct the mean wet-day precipitation to be exactly as the observation, so in the upper left-side sub-figure, the shading of LOCI is overlaid by the line of observation. For downscaling temperature, the LOCI method corrects both the mean and standard deviation of temperature to be exactly as the observation. So that the shading of LOCI is overlaid by the line of observation in the two sub-figures at the bottom panel. Furthermore, the DBC method corrects the distribution of temperature, indirectly correcting the mean and standard deviation of temperature to be equal to the observation. So, in the two sub-figures at bottom panel, the shading of DBC is overlaid by the shading of LOCI and the line of observation.

We have added more detailed clarification in the section 4.3 as: “In this case, for mean precipitation and temperature, the shading of LOCI is overlaid by the line of observation in Fig. 7, because LOCI method corrects mean of precipitation and temperature to be exactly as the observation. For standard deviation of temperature, the shading areas of LOCI and DBC are also overlaid by the line of observation in the Fig. 7, because both LOCI and DBC correct distribution of temperature to be exactly as the observation.”

Twenty-first-century glacio-hydrological changes in the Himalayan headwater Beas river basin

Lu Li^{1*}, Mingxi Shen³, Yukun Hou³, Chong-Yu Xu^{2,3}, Arthur F. Lutz⁵, Jie Chen³, Sharad K Jain⁴, Jingjing Li³, Hua Chen³

130 ¹NORCE Norwegian Research Centre, Bjerknes Centre for Climate Research, Jahnebakken 5, 5007 Bergen

²Department of Geosciences, University of Oslo, Oslo, Norway

³State Key Laboratory of Water Resources and Hydropower Engineering Science, Wuhan University, Wuhan, China

⁴National Institute of Hydrology, Roorkee, India

⁵FutureWater, Costerweg 1V, 6702 AA, Wageningen, Netherlands

135

*Correspondence to: Lu Li (luli@norce-research.no)

Abstract. The Himalayan Mountains are the source region of one of the world's largest supplies of freshwater. The changes in glacier melt may lead to droughts as well as floods in the Himalayan basins, which are vulnerable to hydrological changes. This study used an integrated glacio-hydrological model: Glacier and Snow Melt - WASMOD model (GSM-WASMOD) for hydrological projections under 21st century climate change by eight Global Climate Models (GCMs), two bias correction methods (i.e., the daily bias correction (DBC) and the local intensity scaling (LOCI)) under two Representative Concentration Pathways (RCP4.5 and RCP 8.5) in order to assess the future hydrological changes in the Himalayan Beas basin up to Pandoh dam (upper Beas basin). Besides, the glacier extent loss during the 21st century was also investigated as part of the glacio-hydrological modelling as an ensemble simulation. In addition, a high-resolution WRF precipitation dataset suggested much heavier winter precipitation over the high-altitude ungauged area, which was used for precipitation correction in the study. The glacio-hydrological modeling shows that the glacier ablation accounted for about 5% of the annual total runoff during 1986-2004 in this area. Under climate change, the temperature will increase by 1.8 - 2.8 °C at the middle of the century (2046-2065), and by 2.3 - 5.4 °C until the end of the century (2080-2099). It is very likely that the upper Beas basin will get warmer and wetter compared to the historical period. In this study, the glacier extent in the upper Beas basin is projected to decrease over the range of 63 - 87 % by the middle of the century and 89 - 100 % at the end of the century compared to the glacier extent in 2005. This loss in glacier area will in general result in a reduction in glacier discharge in the future, while the future streamflow is most likely to have a slight increase because of the increase in both precipitation and temperature under all the scenarios. However, there is widespread uncertainty regarding the changes of total discharge in the future, including the seasonality and magnitude. In general, the largest increase of river total discharge also has the largest spread. The uncertainty in future hydrological change is not only from GCMs but also from the bias correction methods and hydrological modeling. A decrease of discharge is found in July from DBC, while it is opposite for LOCI. Besides, there is a decrease in evaporation in September from DBC, which cannot be seen from LOCI. The study helps to understand the hydrological impacts of climate change in North India and contributes to stakeholders and policymakers' engagement in the management of future water resources in North India.

160 1 INTRODUCTION

Outside the polar regions, the Himalayas store more snow and ice than any other place in the world. Hence, the Himalayas are also called the 'Third Pole' and are one of the world's largest suppliers of freshwater. Similar to the glaciers in other places, the Himalayan glaciers are also changing as a result of global warming. Changes in glacier mass, ice thickness, and melt will impose major changes in the flow regimes of Himalayan basins. Among other things, it may lead to an increased prevalence

165 of droughts and floods in the Himalayan river basins.

Future hydrological assessments in Himalayan region by glacio-hydrological models

Hydrological models have been developed and are being used as the main tool to estimate the impacts of climate change on water resources. However, most hydrological models either do not have a representation of glaciers (Ali et al., 2015; Horton et al., 2006; Stahl et al., 2008) or have a simple glacier representation (i.e. crude assumptions with intact glacier cover, 50% or none glacier cover) (Akhtar et al., 2008; Hasson 2016; Aggarwal et al. 2016). A glacio-hydrological model which includes a comprehensive parameterization of glaciers is required for the water resources assessment of high mountainous region. Recently, Lutz et al. (2016) investigated the future hydrology over the whole mountainous Upper Indus Basin (UIB) by a glacio-hydrological model with an ensemble of statistically downscaled Coupled Model Intercomparison Project Phase 5 (CMIP5) Global Climate Models (GCMs). Results indicated a shift from summer peak flow towards the other seasons for most ensemble members. According to their study, an increase in intense and frequent extreme discharges is likely to occur for the UIB in the 21st century. Besides, Li et al. (2016) applied a hydro-glacial model in two Himalayan basins and assessed the future water resources under climate change scenarios, which were generated by two bias corrected COordinated Regional climate Downscaling EXperiment (CORDEX, Jacob et al. 2014) datasets from the World Climate Research Program (WCRP). Their results showed a contrasting future glacier cover at the end of the century under different scenarios. Especially in the upper Beas river basin, the result indicated that the glaciers are predicted to gain mass under Representative Concentration Pathways (RCP) 2.6 and RCP 4.5 while they may lose mass under RCP 8.5 for the late future after 2060. This conflicting future is not only seen for the glacier projections but also for the river flow. The impact of glacier melt on river flow is noteworthy in the future in the Himalaya region. Some studies suggest an increase in streamflow in Upper Indus Basin for the 21st century (Ali et al., 2015; Lutz et al., 2014; Khan et al., 2015). However, a substantial drop in the glacier melt and streamflow is suggested for the near future by some other studies (e.g., Hasson, 2016). A few recent studies have suggested highly uncertain streamflow in the late/long-term future and no consistent conclusion can be drawn in the UIB over Himalaya region (e.g., Lutz et al., 2016; Li et al., 2016; Hasson et al., 2016). As of now, there is a lack of in-depth understanding of the future water resources in the Himalayan region which will be highly affected by glacier changes (Hasson et al., 2014; Li et al., 2016; Lutz et al., 2016; Ali et al., 2015).

Downscaling methods

To investigate the climate change impact on the future hydrological cycle, the variables produced by GCMs are usually dynamically downscaled by using a Regional Climate Model (RCM) or downscaled using empirical-statistical methods for use as inputs in hydrological models. These approaches are adopted because the outputs of GCMs are too coarse to directly drive hydrological models at regional or basin scale, in particular over mountainous terrain (Akhtar et al., 2008). However, RCM simulations have systematic biases resulting from an imperfect representation of physical processes, numerical approximations and other assumptions (Eden et al., 2014; Fujihara et al., 2008; Anand et al. 2017). Some recent studies have evaluated CORDEX RCM data and have highlighted the need for proper evaluation before use of RCMs for impact assessments for sustainable climate change adaptation. For instance, Mishra (2015) analyzed the uncertainty of CORDEX and showed that the RCMs exhibit large uncertainties in temperature and precipitation in the South Asian region and are unable to reproduce observed warming trends. Singh et al. (2017) compared CORDEX RCMs with GCMs and found that no consistent added value is observed in the RCM simulations of Indian summer monsoon rainfall over the recent periods. Considering the large biases in GCMs and RCMs, empirical-statistical downscaling is a popular and widely used approach to generate inputs for hydrological models to analyses the impact of climate change on hydrology (e.g., Fang et al., 2015; Fiseha et al., 2015; Smitha et al., 2018). Previous studies have applied statistical downscaling methods to GCMs or RCMs, as input for hydrological models over different basins in the world. These include two widely used methods: regression-based downscaling methods (Chen et al., 2010, 2012) and bias correction methods (Troin et al., 2015; Johnson and Sharma, 2015; Li et al., 2016; Ali et al., 2014; Teutschbein and Seibert, 2012). Regression-based downscaling methods, e.g. Statistical Downscaling Model

(SDSM) (Wilby et al. 2002; Chu et al. 2010; Tatsumi et al. 2014) and Support Vector Machine (SVM) (Chen et al. 2013), involve estimating the statistical relationship (e.g., linear relationship for SDSM and nonlinear relationship for SVM) between large scale predictors (e.g., vorticity and relative humidity) and local or site-specific predictands (e.g., precipitation and temperature) using observed climate data. The reliability of a regression-based method depends on the relationships between observed daily climate predictors and predictands. However, the regression-based method is usually incapable of downscaling precipitation occurrence and generating a proper temporal structure of daily precipitation, which is critical for hydrological simulations (Chen et al., 2011). Another widely used statistical downscaling method is the bias correction method which involves estimating a statistical relationship between a climate model variable (e.g., precipitation) and the same variable in the observations to correct the climate model outputs. The use of bias correction is a reasonable way to achieve physically plausible results for impact studies. In this case, we chose bias correction methods to downscale GCM data over a Himalayan river basin with very complex topography.

Uncertain hydrological impacts

There is large uncertainty in hydrological impacts under climate change and a number of authors have studied them (e.g. Chen et al., 2011, 2013; Pechlivanidis et al., 2017; Samaniego et al., 2017; Vetter et al., 2017; Shen et al., 2018). Chen et al. (2011) investigated the variability of six dynamical and statistical downscaling methods in quantifying hydrological impacts under climate change in a Canadian river basin. A large range in results was found to be associated with the choice of downscaling method, which is comparable to the range stemming from different GCMs. Chen et al. (2013) also emphasized the importance of using several climate projections to address uncertainty when studying climate change impact over a new region. For example, Samaniego et al. (2017) set up six hydrological models in seven large river basins over the world, which were forced by bias-corrected outputs from five GCMs under RCP2.6 and RCP8.5 for the period 1971-2099. They found that the selection of the GCM mostly dominated the variability of hydrological results for the projections of runoff drought characteristics in general and emphasized the need for multi-model ensembles for the assessment of future drought projections. Pechlivanidis et al. (2017) investigated future hydrological projections based on five regional-scale hydrological models driven by five GCMs and four RCPs for five large basins in the world. They found that high flows are sensitive to changes in precipitation, while the sensitivity varies between the basins. Further, climate change impact studies can be highly influenced by uncertainty both in the climate and impact models. However, in dry regions the sensitivity to climate model uncertainty becomes greater than hydrological model uncertainty. More evaluation of sources of uncertainty in hydrological projections under climate change was done by Vetter et al. (2017) over 12 large-scale river basins. The results showed that in general, the most significant uncertainty is related to GCMs, followed by RCPs and hydrological models.

Earlier climate change impact studies have not presented a coherent view of the largest source of uncertainty in essential hydrological variables, especially the evolution of streamflow and derived characteristics in glacier-fed river basins over high mountainous ungauged or poor-gauged areas, like the Himalayan region (Hasson et al., 2014; Li et al., 2016; Lutz et al., 2016; Ali et al., 2015). At present, a complete understanding of the hydroclimatic variability is also a challenge in the Himalayan basins due to a lack of in-situ observations (Maussion et al., 2011) and incomplete or unreliable records (Hewitt, 2005; Bolch et al., 2012; Hartmann and Andresky, 2013). Palazzi et al. (2013) compared six gridded precipitation products to simulation results from a global climate model EC-Earth. In the Himalayan region, precipitation is strongly influenced by terrain. The regional patterns and amounts of the precipitation are not always captured by global gridded precipitation datasets (e.g. Biskop et al., 2012; Dimri et al., 2013; Ménégoz et al., 2013; Ji and Kang, 2013). Previous studies showed that high-resolution (<4 km grid spacing) RCMs demonstrated reasonable skill in reproducing patterns of precipitation distribution and intensity over complex terrain (e.g., Rasmussen et al., 2011, 2014; Collier et al., 2013). A high-resolution Weather Research and Forecasting (WRF) dynamical simulation for the upper Beas basin in the Himalayan region was conducted by Li et al. (2017), and the study showed promising potential in addressing the issue of high spatial variability in high-altitude precipitation over complex

250 terrain. This simulation provides an estimation of liquid and solid precipitation in high-altitude areas, where satellite and rain gauge networks are not reliable.

Objectives of the present paper

The following research questions are examined in this paper: (1) How will the river streamflow change due to higher glacier melt under a warmer future in the upper Beas basin? (2) How large will the variability be in future key hydrological terms regarding different climate scenarios (i.e., RCPs, GCMs and statistical downscaling methods) in the upper Beas river basin? To answer the questions, we used a glacio-hydrological model to assess future glacio-hydrological changes in the Himalayan Beas river basin forced with two ensembles of four GCMs under two scenarios (RCP 4.5 and RCP 8.5), and two bias correction methods. Our paper is structured as follows: after the introduction, a description of the study area and data is presented, followed by the methods utilized, including the GSM-WASMOD model, glacier evolution parameterization, bias correction methods, precipitation correction and model calibration. Next, we focus on the simulation of the present-day water cycle, and calibration and validation of the model to observed data. Then, the results of future climate change and its impact on glacier extent and hydrological projections are presented. Finally, a more detailed discussion on uncertainties of precipitation over high-altitude region and future hydrological projections in the upper Beas basin are addressed before presenting the main conclusions.

265 2 STUDY AREA AND DATA

2.1 Study area

The study area is the Beas River basin upstream of the Pandoh Dam with a drainage area of 5406 km², out of which 780 km² (14%) is under permanent snow and ice. It is one of the important rivers of the Indus River system. The length of the Beas River up to Pandoh is 116 km. Among its tributaries, Parbati and Sainj Khad Rivers are glacier fed. The altitude of the study area varies from about 600 m to above 5400 m above mean sea level (a.m.s.l.). The study area falls in a lower Himalayan zone and has a varied climate due to elevation differences. The mean annual precipitation is 1217 mm, of which 70% occurs in the monsoon season from July to September. The mean annual runoff is 200 m³/s, of which 55% is discharged in the monsoon season and only 7.2% in winter from January to March (Kumar et al., 2007). The mean temperature rises above 20 °C in summer and falls below 2 °C in January. The topography and drainage map of the river system along with rain gauge stations is shown in Fig. 1.

275 2.2 Data

The basin boundary in the study is delineated based on HYDRO1k (USGS, 1996a), which is derived from the GTOPO30 30-arc-second global-elevation dataset (USGS, 1996b) and has a spatial resolution of 1 km. HYDRO1k is hydrographically corrected such that local depressions are removed, and basin boundaries are consistent with topographic maps. Daily precipitation of 7 gauge stations, [daily temperature](#) and relative humidity of 4 meteorological stations obtained from Bhakra Beas Management Board (BBMB) in India were used for GSM-WASMOD modelling. The discharge of Thalout station was used for GSM-WASMOD model calibration and validation, which was also obtained from the BBMB. Hydrological and meteorological data from 1990 to 2005 were used, which have undergone quality control in previous studies (Kumar et al., 2007, Li et al., 2013a, 2015a). Glacier outlines were taken from the Randolph Glacier Inventory (RGI 6.0) (2017) (<https://doi.org/10.7265/N5-RGI-60>). The annual glacier mass balance data of Chhota Shigri Glacier used in the model calibration are taken from previous studies of Berthier et al. (2007), Wagnon et al. (2007), Vincent et al. (2013) and Azam et al. (2014). Two ensembles of four statistically downscaled GCMs under RCP4.5 (i.e., CanESM2, Inmcm4, IPSL_CM5A_LR and MRI_CGCM3) and RCP 8.5 (i.e., CSIRO_Mk3_6_0, MRI-ESM1, IPSL_CM5A_LR and MIROC5) (Taylor et al., 2012) are chosen to force the future simulations (see in Table 2). Furthermore, the daily precipitation fields from a high-resolution (3 km) WRF simulation by Li et al. (2017) is also used in the study for further bias correction of high mountainous winter precipitation in all the simulations.

3.1 Glacier- and snow- melt module (GSM)

A conceptual glacier- and snow-melt module (GSM) (Li et al., 2013a; Engelhardt et al., 2012) was used to compute glacier mass balances and melt-water runoff from the glaciers in the study basin, which was only applied to the grid cells of the glacier-covered area. Those glacier grid cells were defined by glacier outlines from the RGI (6.0) (2017). The gridded temperature and precipitation are spatially interpolated based on the station data by Inverse Distance Weighted (IDW) method, in which a vertical temperature lapse rate of $-6\text{ }^{\circ}\text{C km}^{-1}$ is used to convert station temperature to the elevations of the grid cells (Kattel et al., 2013). The daily gridded temperature and precipitation were input data for the GSM module, which calculates both snow accumulation and melt-water runoff. A temperature-index approach (Hock, 2003; Engelhardt et al., 2012, 2017) was used in the study for the calculation of melt in the conceptual GSM module. In the GSM module simulation, the precipitation shifts from rain to snow linearly within a temperature interval of ΔT (Table 1). Additionally, the liquid water from rain or melt infiltrates and refreezes in the snowpack, which fills the available storage. Runoff occurs when the storage is filled, which depends on the snow depth. The snow melting starts first, followed by the melting of the refrozen water and firn. At last, the ice starts to melt when the firn has all melted away. We used different degree-day factors of firn (DDF_f) and ice (DDF_i), which are 15 % and 30 % larger than that of snow (DDF_s), respectively (Singh et al., 2000; Hock, 2003). The debris cover is not considered in the modeling. The related equations can be found in Table 1.

3.2 GSM-WASMOD model

An integrated glacio-hydrological model: Glacier and Snow Melt - WASMOD model (GSM-WASMOD) was developed by coupling the water and snow balance modeling system (WASMOD-D) (Xu, 2002; Widen-Nilsson et al., 2009; Gong et al., 2009; Li et al., 2013b, 2015b) with the GSM module. The spatial resolution of the GSM-WASMOD modeling is chosen to be 3 km in the study. The daily precipitation, temperature and relative humidity from the observed stations were interpolated by the IDW method to 3 km resolution gridded data, which were used as input for the GSM-WASMOD model. For the temperature, the vertical temperature lapse rate of $-6\text{ }^{\circ}\text{C km}^{-1}$ was used. GSM-WASMOD calculates snow accumulation, snowmelt, actual evapotranspiration (ET), soil moisture, fast flow and slow flow at the non-glacier area. The routing process used in the GSM-WASMOD model is the aggregated network-response-function (NRF) algorithm, developed by Gong et al. (2009). The spatially distributed time-delay was calculated and preserved by the NRF method based on the 1 km HYDRO1k flow network, from the U.S. Geological Survey (USGS). The runoff generated at the model resolution of 3 km was transferred by the NRF method based on the simple cell-response function. More details can be found in Gong et al. (2009). The equations of GSM-WASMOD model are shown in Table 1.

3.3 Glacier evolution parameterization

GSM-WASMOD is a conceptual glacio-hydrological model and we assume that the number of glacier-covered grid cells does not change in the historical simulation. For the future simulations, we used a basin-scale regionalized glacier mass balance model with parameterization of glacier area changes and subsequent aggregation of regional glacier characteristics (Lutz et al., 2013), to estimate future changes in glacier extent. This model estimates changes in the glacier extent as a function of the glacier size distribution and distribution over altitude, temperature, and precipitation. The model is calibrated to the observed glacier mass balance (e.g., Azam et al., 2014), and subsequently forced with the ensemble of statistically downscaled climate scenarios (section 3.4, Table 2). The model runs at a monthly time step to ensure that seasonal differences in the climate change signal are taken into account. A detailed description the glacier evolution parameterization is described in Lutz et al. (2013).

3.4 Bias correction methods

Since GCM outputs are spatially too coarse and too biased to be used as direct inputs to a glacio-hydrological model, downscaling or bias correction techniques must be applied for generating site-specific climate change scenarios (Rudd and Kay 2016). In this study, two bias correction methods, i.e., Daily bias correction (DBC) (Schmidli et al., 2006; Mpelasoka and Chiew, 2009; Chen et al. 2013) and Local intensity scaling (LOCI) (Schmidli et al., 2006; Chen et al., 2011), with different levels of complexity were applied for correcting GCM-simulated daily precipitation, temperature and relative humidity in the upper Beas river basin under climate change during the 21st Century (i.e., 2046-2065 and 2080-2099).

3.4.1 Local intensity scaling (LOCI)

LOCI is a mean-based bias correction method which corrects the precipitation frequency and quantity at monthly basis with the following three steps: (1) a wet-day threshold is determined from the GCM-simulated daily precipitation series for each calendar month to ensure that the threshold exceedance for the reference period equals the observed precipitation frequency in that month; (2) a scaling factor is calculated to ensure that the mean of GCM precipitation for the reference period is equal to that of the observed precipitation for each month; (3) the monthly thresholds and scaling factors determined in the reference period are further used to correct GCM precipitation in the future period. Since there is no occurrence problem for humidity, LOCI only corrects the mean value of GCM-simulated humidity for each month. In addition, the mean and variance of temperature are corrected using the variance scaling approach of Chen et al. (2011).

3.4.2 Daily bias correction (DBC)

DBC is a distribution-based bias correction method. Instead of correcting the mean value, the DBC method corrects the distribution shape of GCM-simulated climate variable. Specifically, the ratio (for precipitation and humidity) or difference (for temperature) between observed and GCM-simulated data in 100 percentiles (from 1th percentile to 100th percentile) of the reference period are multiplied or added to the future time series for each percentile. The wet-day frequency of precipitation occurrence is corrected using the same procedure of LOCI. The DBC method is also carried out on a monthly basis.

Both bias correction methods are calibrated to station observations for the historical period of 1986-2005. The calibrated bias correction models are then used to generate time series of future climate for precipitation, temperature and relative humidity during two periods, i.e., early future of 2046-2065 and the late future of 2080-2099, under both the RCP4.5 and RCP8.5 scenarios.

3.5 Precipitation correction

According to the previous studies over the Himalayas and surrounding areas, specifically in the upper Beas river basin, there are large uncertainties in precipitation over high-altitude area (Winiger et al., 2005; Immerzeel et al., 2015; Ji et al., 2015; Shrestha et al., 2012). Currently, we have no rainfall and snowfall observation data at high altitude. The highest gauge station is Manali (see Fig. 1), at 1926 m a.m.s.l. altitude. Li et al. (2017) applied the Weather Research and Forecasting model (WRF) over the Beas river basin at a high-resolution of 3 km in 1996-2005. The seasonal WRF precipitation compared to gauge rainfall data is shown in Fig. 2, which indicates that the WRF model predicts more winter precipitation at high-altitude in the upper Beas basin.

In this study, we have compared the data from the high-resolution 3 km WRF simulation with gauge precipitation data during the overlapping period of 1996-2005. The winter precipitation from gauge and WRF over different altitudes are listed in Table 3, from which we can see that the winter precipitation from WRF at altitudes over 4000 m and 4800 m a.m.s.l. are almost three times higher than the gauged data. This is comparable to the findings in previous studies (Immerzeel et al., 2015; Dahri et al., 2016). For example, Immerzeel et al. (2015) inversely inferred high-altitude precipitation in the upper Indus basin from the glacier mass balance and found the greatest corrected annual precipitation of 1271 mm in the UIB is observed in the elevation belt between 3750 - 4250 m a.m.s.l., compared to 403 mm for the uncorrected case. It was also suggested in their study that the station-based APHRODITE product underestimates annual precipitation by as much as 200% over the upper Indus Basin (Immerzeel et al.,

2015). In the study of Dahri et al. (2016), a basin-wide, seasonal and annual correction factor for multiple gridded precipitation products was provided based on a geo-statistical analysis of precipitation observations which revealed substantially higher precipitation in most of the sub-basins compared to earlier studies. For the high-altitude western and northern Himalayan basins, including Indus, the correction factor for winter precipitation varies from 1.93 to 2.47 and from 1.82 to 4.44 comparing with station-based APHRODITE and satellite-based TRMM, respectively. Considering that we lack observed precipitation data over the high mountainous area in the upper Beas basin, especially in the winter period, we bias corrected the winter precipitation (December - March) of gauge stations with the WRF precipitation fields to provide more realistic precipitation input for the Glacier-hydrological model. However, we cannot evaluate the correction factors of WRF/Gauge for winter precipitation, although WRF shows reasonable performances on winter precipitation over complex terrain in previous studies (Rasmussen et al., 2011; Li et al., 2017). In this case, we chose an average value of 2.7 in the study for the winter precipitation (DJFM) correction in the upper Beas basin for all the grid cells above 4800 m a.m.s.l.. The same bias correction is also applied for the winter precipitation in all the future scenarios.

3.6 GSM-WASMOD Model calibration

There are six parameters to be calibrated in GSM-WASMOD, including the snowfall temperature a_1 , snowmelt temperature a_2 , actual evapotranspiration parameter a_4 , the fast-runoff parameter c_1 , the slow-runoff parameter c_2 and the degree-day factor of snow DDFs. The observed average annual glacier mass balance and discharge in the Beas River at the Thalout station are both used for model calibration. There is an intra-regional variability of individual glaciers' mass balance in High Mountain Asia (HMA) as illustrated by Brun et al. (2017). From their study, the glacier mass balance is -0.49 ± 0.2 annual meter water equivalent (m w.e. a^{-1}) in the Spiti-Lahaul region (where Chhota Shigri glacier is located) during 2000-2008 based on ASTER DEM differencing and 0.37 ± 0.09 m w.e. a^{-1} in the Western Himalaya region from the RGI Inventory during 2000-2016 based on ASTER. Besides, a detailed map of elevation changes during 2000-2011 in the Spiti-Lahaul region based on SPOT5 DEM is provided in the study of Gardelle et al. (2013), which showed that the changes of the glaciers in the upper Beas basin are quite similar to the changes in Chhota Shigri glacier during 2000-2011 in general, although there is variability both within single glaciers and over the region. Furthermore, the glacier mass balance time series published in the Spiti-Lahaul region (where the upper Beas basin locates) available for comparison are for the Chhota Shigri glacier and Bara Shigri glacier (Berthier et al., 2007). In these the only one covering a sufficient time period to be comparable to our simulation period is the Chhota Shigri glacier (2002-2014), which also has geodetic mass balance data for validation (Azam et al., 2016). In addition, the Chhota Shigri Glacier is a part of the Chandra Basin, which is a sub-basin of the Chenab river basin (Ramanathan, 2011), but it is attached to northeast boundary of the upper Beas basin, which is close to Manali and Bhunter stations (Fig.1). Therefore, we assumed the mass balance data of Chhota Shigri glacier to be representative for the glacier mass balance of the glacierized area in our basin (see Fig. 1 and Table 4), which is also used for the glacier module calibration in the study.

During the calibration, we firstly 'pre-calibrate' all parameters to the observed discharge at Thalout station. Secondly, we manually adjusted the parameters of the glacier module according to the observed annual glacier mass balance data in Table 4 (Berthier et al., 2007; Wagnon et al., 2007; Vincent et al., 2013; Azam et al., 2014, 2016). Subsequently all parameters except the glacier module parameters were re-calibrated to the discharge data at Thalout again. The calibration and validation periods in this study were 1986-2000 and 2001-2004, respectively. We repeated 1986 three times as spin-up for the model. We used 1986-2004 period (2005 was included in the calibration and simulation of bias correction) for glacier and hydrological calibration and validation, because those are the periods fit to the available glacier mass balance data from previous studies. The results of the calibration and validation to glacier mass balance are listed in Table 4. During calibration, GSM-WASMOD was run with 5000 parameter sets, which were obtained by the Latin-Hypercube sampling method (Gong et al., 2009, 2011; Li et al., 2015a). The best parameter set was then chosen based on the Nash-Sutcliffe efficiency (NSE) coefficient, and two more indices, including relative volume error (VE) and root-mean-square error (RMSE) are also used for evaluation. For perfect model performance, the

4 RESULTS

4.1 Corrected Precipitation

The uncorrected and corrected mean annual precipitation (1986-2004) are 1213 mm and 1374 mm, respectively. The calibration results (1986-2000) show that the daily NSE for the model forced by the uncorrected and corrected precipitation is 0.64 and 0.65, respectively (Table 5). The values RMSE, VE and monthly NSE for the calibration of GSM-WASMOD forced with the corrected precipitation are 2.01, 7% and 0.75, respectively, while for the calibration of the model forced by the uncorrected precipitation the values are 2.03, 8% and 0.70, respectively. This shows an improvement of all indices in both calibration and validation by forcing the model with the corrected precipitation compared to from the model forced with uncorrected precipitation. This suggests that the high-altitude precipitation in the Himalayan upper Beas basin is underestimated in the gauge data, which was also found for other commonly used gridded data sets in previous studies (Immerzeel et al., 2015; Li et al., 2017). The high-resolution precipitation fields generated by a RCM, i.e., WRF, has the potential to provide more information and knowledge of the high-altitude precipitation in Himalaya region, although there are still challenges in capturing the precipitation variability accurately at high-resolution spatial scale (i.e., complex topography) and temporal scale (i.e., daily or hourly).

4.2 GSM-WASMOD model calibration and validation

The calibration (1986-2000) and validation (2001-2004) results from WASMOD and GSM-WASMOD are given in Table 5, which shows that GSM-WASMOD has improved the performance of WASMOD in reproducing historical discharge in the upper Beas basin. For example, for the GSM-WASMOD model, the daily NSE and monthly NSE for the calibration period are 0.65 and 0.75 respectively, and 0.61 and 0.66 respectively for the validation period. For the WASMOD model, the daily NSE and monthly NSE for the calibration period are 0.50 and 0.65 respectively, and only 0.31 and 0.36 for the validation period. This shows that the GSM-WASMOD performs better than WASMOD. Furthermore, the precipitation correction has improved the modeling performance in the upper Beas basin, especially regarding the results of model validation. For the upper Beas basin, located to North mountainous India, the model underestimates the flow during June-August, which leads to a large negative bias (Fig. 3). The mean annual un-corrected precipitation and corrected precipitation are 1213 mm and 1374 mm for 1986-2004, while the observed annual discharge of 1284 mm is even larger than the uncorrected precipitation. The bias is most likely related to an underestimation of precipitation due to the limited number of rain gauge stations, although we did precipitation correction over high mountain area in winter period. In Fig. 4, the total discharge includes fast-flow and slow-flow from the non-glacier area and discharge from the glacier area, which includes rainfall discharge, snow-melt and ice-melt discharge. The fast-flow is generally considered to be the surface runoff and the slow-flow refers to base-flow.

The runoff (including rainfall discharge, ice-melt and snow-melt discharge) from glacier cover area contributes about 19 % of the total runoff and the glacier imbalance contributes about 5 % of the total runoff in the Beas River basin up to Thalout station during 1986-2004. The monthly hydrography of ice and snow melt discharge, total glacier area discharge, and simulated and observed discharges during the calibration and validation period are shown in Fig. 5. For validation of the model results of glacier mass balance, we compared our results to the previous studies (Table 4 and Fig. 6). For example, the simulated annual glacier mass balance of Beas river is -0.22 m w.e. of 1986-2000 in our simulation, which is comparable to the results of the modelled annual glacier mass balance of Chhota Shigri glacier (1986-2000), which is -0.01 (+/-0.36) m w.e. by Azam et al. (2014) and -0.29 (+/-0.33) m w.e. by Engelhardt et al., (2017). Besides, the annual glacier mass balance is -1.09 m w.e. of 1999-2004 from our study, which is also similar with the results from the other two previous studies, i.e., the measured annual glacier mass balance (1999-2004) of Chhota Shigri glacier is -1.02 or -1.12 m w.e. from geodetic measured mass balance by Berthier et al. (2007) and -1.03(+/- 0.44) m w.e. by Vincent et al. (2013). Considering the uncertainties in the meteorological forcing data and the high

450 complexity in the hydrological cycle over the high-altitude Himalayan mountainous area, the model is considered to perform satisfactory for estimating the impacts of climate change for the future Beas's water.

4.3 Evaluation of LOCI and DBC

The performance of LOCI and DBC in correcting precipitation and temperature is evaluated using two common statistics over the historical period (1986-2005): mean and standard deviation. Fig. 7 shows an example of evaluation results of corrected precipitation and temperature at the Pandoh station. The figure shows that GCM-simulated precipitation and temperature are considerably biased concerning reproducing the mean and standard deviation. Both LOCI and DBC are capable of reducing the bias of mean and standard deviation of precipitation and temperature for the reference period, even though there are some uncertainties related to GCMs. However, DBC performs much better than LOCI in reproducing the standard deviation of precipitation, which is expected, because the standard deviation of precipitation is not specifically considered in LOCI; LOCI only corrects the mean of monthly precipitation. DBC on the other hand, corrects the distribution shape of the precipitation, correcting the standard deviation along with the mean. For temperature, both LOCI and DBC can remove biases of mean and standard deviations for the reference period. The evaluation results indicate reasonable performance of both bias correction methods. In this case, for mean precipitation and temperature evaluation, the shading of LOCI is overlaid by the line of observation in Fig. 7, because the LOCI method corrects the mean of precipitation and temperature to be exactly as the observation. For the standard deviation of temperature, the shadings of the LOCI and DBC are also overlaid by the line of observation in the Fig. 7, because both LOCI and DBC correct distribution of temperature to be exactly as the observation. The precipitation in Fig. 7 is un-corrected precipitation from DBC and LOCI, which is different from the precipitation in Fig. 8 that shows the corrected precipitation (based on the precipitation correction method in section 3.5).

4.4 Future climate change

470 The climate change scenarios used to force GSM-WASMOD are illustrated in Table 2. The changes of mean monthly precipitation and temperature of the upper Beas basin in the early future (2046-2065) and the late future (2080-2099) compared to the baseline period (1986-2005) are shown in Fig. 8 and Fig. 9. In general, the temperatures from DBC and LOCI are increasing for all scenarios for both the early and later future; while there is more uncertainty in precipitation change in the future. From the figures, we can see that the study area will be getting warmer under climate change. The uncertainty of temperature increase in the late future is much larger than that from early future, while for the future change of precipitation, both early and late futures have a widespread uncertainty, especially when downscaled with the LOCI method. It is worth to point out that the winter precipitation (December -March) in Fig. 8 is much higher than that from Fig. 7. This is because the correction has been done for precipitation in Fig. 8. A more detailed statistical analysis of the results is shown in Table 6, which is based on the corrected precipitation. The annual temperature of the upper Beas basin may warm up to $\sim 1.8^{\circ}\text{C}$ (RCP4.5) and $\sim 2.8^{\circ}\text{C}$ (RCP8.5) in the middle of the century (2046-2065) and up to $\sim 2.3^{\circ}\text{C}$ (RCP4.5) and $\sim 5.4^{\circ}\text{C}$ (RCP8.5) at the end of the century (2080-2099) compared with the historical period (1986-2005). For the annual mean precipitation, the change will be +9.8 % (RCP4.5) and +33.3 % (RCP8.5) in the middle of the century (2046-2065) compared with the baseline period (1986-2005), and +17.7 % (RCP4.5) and +39.7 % (RCP8.5) in the upper Beas basin at the end of the century (2080-2099). There is a similar spread of uncertainty in precipitation increase for the projections downscaled with LOCI and DBC. For the temperature increase, the uncertainty spread from DBC is much wider than that from LOCI, especially under RCP8.5 for late future (2080-2099). It is very likely that the upper Beas basin will get warmer and wetter compared to the historical period, which is also confirmed by other studies (e.g., Aggarwal et al., 2016; Ali et al., 2015). Under DBC RCP8.5, the temperature increases the most, while for precipitation, the LOCI RCP8.5 increases the most.

4.5 Future glacier extent change

The projected changes in glacier extent in the upper Beas basin under eight climate change scenarios are shown in Fig. 10. As

490 expected, the glacier extent will keep retreating in the future in the upper Beas basin. There are large uncertainties in the changes
of the glacier extent from different projections (Fig. 10), which are confirmed by other studies (e.g., Kraaijenbrink et al., 2017,
Lutz et al., 2016; Li et al., 2016). In this study, the glacier extent in the upper Beas basin is projected to decrease by 63 - 81 %
(RCP4.5) and 76 - 87 % (RCP8.5) by the middle of the century (2050) and 89 - 99 % (RCP4.5) and 93 - 100 % (RCP8.5) at the
495 end of the century (2100) compared to the glacier extent in 2005. The range in the projections is comparable for both statistical
downscaling methods. The rapid decrease in glacier extent is mainly driven by strong temperature increase, which cannot be
compensated by an increase in precipitation. In the upper Beas basin, approximately 90% of the glacier surfaces is located between
4500 and 5500 m a.m.s.l. This relatively small altitudinal range may be another reason for the rapid retreat.

4.6 Future Hydrological changes

There is a consistent trend in the projected hydrological changes for all the scenarios, although there are large variabilities
500 regarding seasonality and magnitude. The glacier discharge is projected to decrease over the century across all the scenarios
resulting from the glacier extent decrease (Fig. 11), while the future change of total discharge over the upper Beas basin is not
that clear in Fig. 12. This is most likely because of the increase in both precipitation and temperature throughout the 21st century.
There is a wide spreading of glacier ablation near the middle of the century, which indicates a larger uncertainty in the prediction
of discharge over this period. In addition, the projections of large discharge increase at the end of the century, which is most likely
505 driven by precipitation increase. For instance, there is a large increase in the total discharge from LOCI with CS0 under RCP8.5
at the end of the century, while its glacier discharge is projected to be less than 30 mm/yr in Fig 11. Table 6 provides more details
of the change of glacier extent, precipitation, temperature, discharge and evaporation (ET) in the upper Beas basin in the middle
of the century (2046-2065) and at the end of the century (2080-2099) compared with the historical baseline period (1986-2005).
There are large ranges in different climate change scenarios. The annual evaporation of the upper Beas basin is projected to
510 increase 72.4 % (RCP4.5) and 86.7 % (RCP8.5) in the middle of the century (2046-2065) and 82 % (RCP4.5) and 145 % (RCP8.5)
at the end of the century (2080-2099) compared with the historical period (1986-2005). For the annual discharge in general, it is
projected to increase compared with the historical period, i.e., +2.6 % (RCP4.5) and +25.3 % (RCP8.5) in the middle of the
century (2046-2065) and +8.9 % (RCP4.5) and +27 % (RCP8.5) at the end of the century (2080-2099). There is a much wider
spread of evaporation and discharge change under RCP8.5 than that under RCP4.5, especially at the end of the century. For
515 instance, the range of total discharge change is projected to be -40.6 ~ 84.9 % under RCP 8.5 comparing with that of -2.2 ~ 32.2 %
under RCP4.5 at the end of the century. Furthermore, the future delta changes of evaporation and discharge (future-terms minus
historical-terms) and future projected monthly-averages of evaporation and discharge over the upper Beas river basin are shown
in Fig. 13 and Fig. 14, respectively. According to those two figures, we can see that (1) the projected discharge will increase in
general, especially in the winter and pre-monsoon seasons under both RCP4.5 and RCP8.5 for the near future (2046-2065) and
520 far future (2080-2099); (2) under RCP8.5, a slight decrease in discharge can be seen from the mean results of DBC during the
monsoon season, especially in July, also with the largest uncertainty compared to other seasons. One of the main reasons for this
decrease of summer discharge is probably the significant glacier retreat under the future climate; (3) the largest change of discharge
can be observed in July for the near future (2046-2065), which also has the widest range, i.e., from -99 mm to over 265 mm by
LOCI and from -120 mm to 108 mm by DBC; (4) for the late future (2080-2099), the widest discharge change can be observed
525 in August, which is from -117 mm to 309 mm by LOCI method and from around -145 mm to over 228 mm by DBC method. This
is probably due to both the glacier extent decrease and the temperature increase. The uncertainty of projected discharge under
RCP8.5 is much larger than under RCP4.5; (5) for the evaporation, a general increase can be seen over the entire year from both
LOCI and DBC; (6) the largest increase of evaporation is projected to be in April and the largest spread of evaporation increase
is also found in April, i.e., around 5 ~ 26 mm and 1 ~ 26 mm by LOCI and DBC, respectively. This large evaporation increase is
530 most likely driven by the increased temperature with increased precipitation, which will provide a much wetter environment in
the future than the historical periods.

5 DISCUSSION

5.1 Uncertain high-altitude precipitation

There are large uncertainties in the future hydrological projections under climate change for the upper Beas basin. The contribution of snow and glacier melt is significant for the total runoff, which varies from 27.5 % ~ 40% in previous studies (e.g., Kumar et al., 2007; Li et al., 2013a, 2015a). Besides, in the study of Kääh et al. (2015), the researchers used ICESat satellite altimetry data and estimated that 5% of the runoff originated from glacier retreat in the upper Beas river basin during 2003-2008. In our study, the total snow and glacier melt from the glacier-covered area is estimated to contribute around 19% of the total runoff, and the glacier retreat is accounting for around 5% during 1986-2004. There are several reasons for this large spread in contribution estimates of snow and glacier melt in the upper Beas basin. One of the well-known challenges in high-altitude area is the data issue. A large disagreement between precipitation from dynamical RCM simulations (WRF) and other data sources (i.e., TRMM 3B42 V7, APHRODITE and gauge data) was found over the upper Beas basin by the previous study of Li et al. (2017). There are no gauge stations over 2000 m a.m.s.l. in our study as well as in other studies, and neither of the gauge stations is capable of measuring snowfall accurately. The lack of reliable snowfall measurements over the Himalayan regions is one of the reasons for the poor understanding and large uncertainty in the high-altitude precipitation over this area (Mair et al., 2013; Ragetti and Pellicciotti, 2012; Immerzeel et al., 2013, 2015; Viste and Sorteberg, 2015; Ji et al., 2015; Dahri et al., 2016). Some previous studies showed that the high-altitude precipitation is much larger than previously thought (Immerzeel et al., 2015; Li et al., 2017; Dahri et al., 2016). Dahri et al. (2016) applied a geo-statistical analysis of precipitation observations and revealed substantially higher precipitation in most of the sub-basins of the upper Indus compared to earlier studies and they pointed out that the uncorrected gridded precipitation products are highly unsuitable to estimate precipitation distribution and to drive glacio-hydrological models in water balance studies in the high-altitude areas of Indus basin. Comparison of the high-resolution WRF precipitation with gauge rainfall showed an underestimation of WRF at Manali station in the summer period (July-September). The Manali precipitation is more heavily influenced by the complex topography than other stations because it is located in a valley further into the mountains. This is probably the main reason that WRF underestimates the rainfall in summer period compared to gauge rainfall. On the other hand, for the winter period (December-March), the WRF results showed much larger precipitation over high altitude in the upper Beas basin compared to gauge-measured rainfall. Although we did precipitation correction based on this high-resolution WRF precipitation dataset, which improved results for both calibration and validation in the study, the actual amount of precipitation over Himalayan areas, like the upper Beas basin, remains uncertain.

5.2 Uncertain future of glacio-hydrological changes in the upper Beas basin

In our study, the results show a large uncertainty in the future river flow changes over the upper Beas basin among all the future scenarios, although the glacier retreat is common for all the scenarios. From the results, we can see that there are differences (e.g. seasonal change) from the two used bias correction methods, i.e., LOCI and DBC, although in general, the annual changes of the main variables in the hydrological cycle are similar for both methods. For example, the discharge during the monsoon period (June-August) is likely to decrease, although it varies a lot within the range of all the GCMs, RCPs and BC methods. The main decrease is found in July from DBC, while a slight increase can be seen from the mean of LOCI. Besides, the peak flow in the middle of the century is slightly shifted to be early in July for LOCI, which confirmed the study results from Lutz et al. (2016), while this change cannot be seen in the results for DBC. In general, the future runoff over the upper Beas basin is likely to increase slightly, especially in the winter and pre-monsoon period, with large uncertainty in the summer period. The results are consistent with some previous studies. For instance, the future river flow in the upper Beas basin was projected to be increasing for the future periods (during 2006 ~ 2100) compared with the baseline period of 1976-2005 by Ali et al. (2015). In their study, however, the future hydrological simulation lacked a glacier component, which did not account for glacier retreat under future climate change impact. In the other study of Li et al. (2016), a large spread of river flow changes from different scenarios can be seen, and no

uniform conclusion can be conducted from their projections. Furthermore, there is an obvious evaporation decrease in September when using the DBC method, which cannot be seen when using the LOCI method. From our study, we can see that the uncertainty of future hydrological change comes not only from that range in GCM projections but also from the two bias correction methods.

There are several limitations of this study that need to be addressed. Firstly, only two bias correction methods were used in the study. According to previous studies, bias correction results in physical inconsistencies since the corrected variables are not independent of each other (Ehret et al., 2012; Immerzeel et al., 2013). For instance, although bias corrected precipitation data will improve the hydrological calibration results, it will no longer be consistent with modeled other variables, e.g., temperature, radiation. It is generally based on the assumption of stationary climate distribution regarding the variance and skewness of the distribution, which however is crucial for assessing the impact of climate change on seasonality and extremes of the hydrological cycle. More ensemble statistical downscaling methods are needed for predicting future river flows to include enough variabilities and to have a better picture of the robustness of the future hydrological impact assessment. Secondly, the simplification of the glacier module, especially without considering the effect of debris cover, will also result in uncertainty in the results (Scherler et al., 2011; Azam et al., 2018). Furthermore, we found that the modelling results from 3 * 3 km resolution are not improved much from that of 10 * 10 km resolution, which is probably due to the limited gauge data in the study area. This limitation of data availability, e.g., sparse rainfall stations and absence of snowfall measurements, in such high-mountain drainage basins also leads to considerable uncertainty in the hydrological simulation, and this is a common challenge for modeling studies in this region.

6 CONCLUSIONS

An integrated glacio-hydrological model: Glacier and Snow Melt - WASMOD model (GSM-WASMOD) was applied to investigate hydrological projections under climate change during the 21st century in the Beas basin. The river flow is impacted by glacier melt. The glacier extent evolution under climate change was estimated by a basin-scale regionalized glacier mass balance model with parameterization of glacier area changes. These were used in the GSM-WASMOD model to investigate the hydrological response of the upper Beas basin up to Pandoh. Changes in precipitation, temperature, runoff and evaporation in the upper Beas basin in the early future (2046-2065) and the late future (2080-2099) were investigated in this study.

A high-resolution WRF precipitation dataset suggested much higher winter precipitation over the high-altitude area in the upper Beas basin than shown by gauge data and other available gridded datasets. This WRF dataset was used for precipitation correction in our study. The results indicate that the corrected precipitation is more realistic and leads to better model performance in both the calibration and validation of GSM-WASMOD in the upper Beas basin, compared to the model run with the uncorrected precipitation. Besides, the calibration and validation to both glacier mass balance and discharge shows that GSM-WASMOD, which includes a conceptual glacier module, performs much better than the earlier version of WASMOD. Furthermore, the results reveal that the glacier imbalance of -0.4 (-1.8 ~ +0.6) m w.e. a⁻¹ contributes about 5 % of the total runoff during 1986-2004 in the Beas River basin up to Thalout station for the period 1990-2004.

Under climate change, the temperature will increase by 1.8 °C (RCP4.5) and 2.8 °C (RCP8.5) for the early future (2046-2065), and increase by 2.3 °C (RCP4.5) and 5.4°C (RCP8.5) for the late future (2080-2099), while the precipitation will increase by 9.8 % (RCP4.5) and 33.3 % (RCP4.5) for the early future, and increase by 17.7 % (RCP4.5) and 39.7 % (RCP8.5) for the late future over the upper Beas basin. However, there is a large uncertainty spread during different future scenarios depending on GCMs and RCPs. The glacier extent loss is about 73 % under RCP4.5 scenario and 81 % under RCP8.5 scenario at the early future and 94 % under RCP4.5 scenario and 99 % under RCP8.5 scenario at the late future, which results in a reduction of discharge during the monsoon period. There was a wide spread of evaporation and discharge change in the upper Beas basin in the future scenarios. The runoff was projected to have a slight increase from the mean of all the future scenarios, although the changes vary with seasons and have a large uncertainty. The precipitation increase and glacier retreat make a complex future of

615 total discharge with a general increase in winter and the pre-monsoon period, while considerable uncertainty can be seen for the
monsoon period, i.e., a discharge decrease in July when using DBC and discharge increase when using LOCI. Besides, there is a
drop in evaporation in September when using DBC, which cannot be seen when using LOCI. The peak flow in the middle of the
century is slightly shifted to be early in July when using LOCI, while this change cannot be seen in the results when using DBC.
It indicates that the uncertainty of future hydrological change comes not only from the spread in GCM projections but also from
620 the two bias correction methods. Furthermore, the upper Beas basin is very likely to become warmer and wetter in both the early
and late future, although large uncertainties in the future hydrology under climate change can be seen.

ACKNOWLEDGMENTS

This study was jointly funded by the Research Council of Norway (RCN) project 216576 (NORINDIA), project- JOINTINDNOR
203867, project GLACINDIA 033L164 and project EVOGLAC 255049.

625 References

- Aggarwal, S.P., Thakur, P.K., Garg, V., Nikam, B.R., Chouksey, A., Dhote, P. and Bhattacharya, T.: Water resources status
and availability assessment in current and future climate change scenarios for beas river basin of north western himalaya.
International Archives of the Photogrammetry, Remote Sensing & Spatial Information Sciences, 40, 2016.
- Akhtar, M., Ahmad, N. and Booij, M. J.: The impact of climate change on the water resources of Hindukush-Karakorum-
630 Himalaya region under different glacier coverage scenarios. *Journal of Hydrology*, 355, 148-163, 2008.
- Ali, D., Sacchetto, E., Dumontet, E., LE Carrer, D., Orsonneau, J. L., Delaroché, O. and Bigot-Corbel, E.: Hemolysis influence
on twenty-two biochemical parameters measurement. *Annales De Biologie Clinique*, 72, 297-311, 2014.
- Ali, S., Dan, L., Fu, C. B. & Khan, F.: Twenty first century climatic and hydrological changes over Upper Indus Basin of
Himalayan region of Pakistan. *Environmental Research Letters*, 10, 2015.
- 635 Anand, J., Devak, M., Gosain, A. K., Khosa, R., and Dhanya, C. T.: Spatial Extent of Future Changes in the Hydrologic Cycle
Components in Ganga Basin using Ranked CORDEX RCMs, *Hydrol. Earth Syst. Sci. Discuss.*,
<https://doi.org/10.5194/hess-2017-189>, 2017.
- Azam, M.F., Wagnon, P., Vincent, C., Ramanathan, A., Linda, A. and Singh, V.B.: Reconstruction of the annual mass balance
of Chhota Shigri glacier, Western Himalaya, India, since 1969. *Annals of Glaciology*, 55(66), pp.69-80, 2014.
- 640 Azam, M.F., Ramanathan, A.L., Wagnon, P., Vincent, C., Linda, A., Berthier, E., Sharma, P., Mandal, A., Angchuk, T., Singh,
V.B. and Pottakkal, J.G.: Meteorological conditions, seasonal and annual mass balances of Chhota Shigri Glacier, western
Himalaya, India. *Annals of Glaciology*, 57(71), pp.328-338, 2016.
- Azam, M.F., Wagnon, P., Berthier, E., Vincent, C., Fujita, K. and Kargel, J.S.: Review of the status and mass changes of
Himalayan-Karakoram glaciers, *Journal of Glaciology*, 64(243), pp.61-74, 2018.
- 645 Berthier, E., Arnaud, Y., Kumar, R., Ahmad, S., Wagnon, P. and Chevallier, P.: Remote sensing estimates of glacier mass
balances in the Himachal Pradesh (Western Himalaya, India). *Remote Sensing of Environment*, 108(3), pp.327-338, 2007.
- Berthier, E.: GLIMS Glacier Database. Boulder, CO: National Snow and Ice Data Center/World Data Center for Glaciology.
Digital Media, 2006.
- Bolch, T., A. Kulkarni, A. Käab, C. Huggel, F. Paul, J.G. Cogley, H. Frey, J.S. Kargel, K. Fujita, M. Scheel, S. Bajracharya,
650 M. Stoffel.: The state and fate of Himalayan glaciers. *Science*, 336, pp. 310–314, 2012.
- Biskop, S., Krause, P., Helmschrot, J., Fink, M., & Flügel, W. A.: Assessment of data uncertainty and plausibility over the
Nam Co Region, Tibet. *Advances in Geosciences*, 31, 57-65, 2012.
- Brun, F., Berthier, E., Wagnon, P., Käab, A. and Treichler, D.: A spatially resolved estimate of High Mountain Asia glacier
mass balances from 2000 to 2016. *Nature geoscience*, 10(9), pp.668-673, 2017.

- 655 Cannon, A.J., Sobie, S.R. and Murdock, T.Q.: Bias correction of GCM precipitation by quantile mapping: How well do methods preserve changes in quantiles and extremes? *Journal of Climate*, 28(17), pp.6938-6959, 2015.
- Chen, H., Xu, C.Y. and Guo, S.: Comparison and evaluation of multiple GCMs, statistical downscaling and hydrological models in the study of climate change impacts on runoff. *Journal of hydrology*, 434, pp.36-45, 2012.
- Chen, H., Guo, J., Xiong, W., Guo, S.L., Xu, C.Y.: Downscaling GCMs using the Smooth Support Vector Machine method to predict daily precipitation in the Hanjiang Basin. *Adv. Atmos. Sci.* 27 (2), 274-284, 2010.
- 660 Chen, J., Brissette, F.P., Leconte, R.: Uncertainty of downscaling method in quantifying the impact of climate change on hydrology. *J. Hydrol.* 401, 190–202, 2011.
- Chen, J., Brissette, F.P., Chaumont, D. and Braun, M.: Performance and uncertainty evaluation of empirical downscaling methods in quantifying the climate change impacts on hydrology over two North American river basins, *Journal of Hydrology*, 479, pp.200-214, 2013.
- 665 Chu, J. T., Xia J., and Xu C. Y.: Statistical downscaling of daily mean temperature, pan evaporation and precipitation for climate change scenarios in Haihe River, China. *Theor. App. Climatol.*, 99(1-2), 149–161, doi:10.1007/s00704-009-0129-6, 2010.
- Collier, E., Mölg, T., Maussion, F., Scherer, D., Mayer, C., and Bush, A. B. G.: High-resolution interactive modelling of the mountain glacier–atmosphere interface: an application over the Karakoram. *The Cryosphere Discussions*, 7(1), 103-144, 2013.
- 670 Dahri, Z. H., Ludwig, F., Moors, E., Ahmad, B., Khan, A. and Kabat, P.: An appraisal of precipitation distribution in the high-altitude catchments of the Indus basin, *Sci. Total Environ.*, 548–549, 289–306, doi:10.1016/j.scitotenv.2016.01.001, 2016.
- Dee, D.P., Uppala, S.M., Simmons, A.J., Berrisford, P., Poli, P., Kobayashi, S., Andrae, U., Balmaseda, M.A., Balsamo, G., Bauer, D.P. and Bechtold, P.: The ERA-Interim reanalysis: Configuration and performance of the data assimilation system. *Quarterly Journal of the royal meteorological society*, 137(656), pp.553-597, 2011.
- 675 Dibike, Y., and Coulibaly P.: Hydrologic impact of climate change in the Saguenay watershed: comparison of downscaling methods and hydrologic models. *J. Hydrol.* 307(1-4), 145–163, doi:10.1016/j.jhydrol.2004.10.012, 2005.
- Dimri, A. P., Yasunari, T., Wiltshire, A., Kumar, P., Mathison, C., Ridley, J., and Jacob, D.: Application of regional climate models to the Indian winter monsoon over the western Himalayas, *Sci. Total Environ.*, online first, doi:10.1016/j.scitotenv.2013.01.040, 2013.
- 680 Engelhardt, M., Schuler, T. V. and Andreassen, L. M.: Evaluation of gridded precipitation for Norway using glacier mass-balance measurements. *Geogr. Ann. A* 94, 501–509, doi: 10.1111/j.1468-0459.2012.00473.x, 2012.
- Engelhardt, M., Ramanathan, A.L., Eidhammer, T., Kumar, P., Landgren, O., Mandal, A. and Rasmussen, R.: Modelling 60 years of glacier mass balance and runoff for Chhota Shigri Glacier, Western Himalaya, Northern India. *Journal of Glaciology*, 63(240), pp.618-628, 2017.
- 685 Eden, J.M., Widmann, M., Maraun, D. and Vrac, M.: Comparison of GCM-and RCM-simulated precipitation following stochastic postprocessing, *Journal of Geophysical Research: Atmospheres*, 119(19), pp.11-040, 2014.
- Fang, G., Yang, J., Chen, Y.N. and Zammit, C.: Comparing bias correction methods in downscaling meteorological variables for a hydrologic impact study in an arid area in China, *Hydrol. Earth Syst. Sci.*, 19(6), pp.2547-2559, 2015.
- 690 Fiseha, B.M., Setegn, S.G., Melesse, A.M., Volpi, E. and Fiori, A.: Impact of climate change on the hydrology of upper Tiber River Basin using bias corrected regional climate model, *Water resources management*, 28(5), pp.1327-1343, 2014.
- Fujihara, Y., Tanaka, K., Watanabe, T., Nagano, T. and Kojiri, T.: Assessing the impacts of climate change on the water resources of the Seyhan River Basin in Turkey: Use of dynamically downscaled data for hydrologic simulations, *Journal of Hydrology*, 353(1-2), pp.33-48, 2008.
- 695 Gardelle, J., Berthier, E., Arnaud, Y. and Käab, A.: Region-wide glacier mass balances over the Pamir-Karakoram-Himalaya during 1999–2011, *Cryosph.*, 7(4), 1263–1286, 2013.

- Gong, L., Widen-Nilsson, E., Halldin, S. and Xu, C.Y.: Large-scale runoff routing with an aggregated network-response function, *Journal of Hydrology*, 368(1-4), pp.237-250, 2009.
- 700 Gong, L., Halldin, S. & Xu, C-Y.: Global scale river routing—an efficient time delay algorithm based on HydroSHEDS high resolution hydrography. *Hydrol. Processes* 25(7), 1114–1128, 2011.
- Hartmann, H. and Andresky, L.: Flooding in the Indus River basin – a spatiotemporal analysis of precipitation records, *Global Planet. Change*, 107, 25–35, 2013.
- Hasson, S., Lucarini, V., Khan, M.R., Petitta, M., Bolch, T., Gioli, G.: Early 21st century snow cover state over the western
705 river basins of the Indus River system, *Hydrol. Earth Syst. Sci.* 18, 4077–4100. <http://dx.doi.org/10.5194/hess-18-4077-2014>, 2014.
- Hasson, S.: Future Water Availability from Hindukush-Karakoram-Himalaya upper Indus Basin under Conflicting Climate Change Scenarios, *Climate*, 4(3), p.40, 2016.
- Hessami M, Gachon P, Ouarda TBMJ, St-Hilaire A.: Automated regression-based statistical downscaling tool, *Environmental
710 Modelling and Software* 23: 813–834, 2008.
- Hewitt, K.: The Karakoram anomaly? Glacier expansion and the ‘elevation effect’, *Karakoram Himalaya Mountain Research and Development*, 25, pp. 332–340, 2005.
- Hock, R.: Temperature index modelling in mountain areas. *J. Hydrol.* 282(1–4), 104–115, 2003.
- Huffman, G. J., Adler, R. F., Bolvin, D. T., Gu, G., Nelkin, E. J., Bowman, K .P., Hong, Y., Stocker, E. F., and Wolff, D. B. :
715 The TRMM multi-satellite precipitation analysis: Quasi-global, multi-year, combined-sensor precipitation estimates at fine scale, *J. Hydrometeor.*, 8(1), 38–55, 2007.
- Horton, P., Schaefli, B., Mezghani, A., Hingray, B. and Musy, A.: Assessment of climate-change impacts on alpine discharge regimes with climate model uncertainty, *Hydrological Processes: An International Journal*, 20(10), pp.2091-2109, 2006.
- Immerzeel, W.W., Wanders, N., Lutz, A.F., Shea, J.M. and Bierkens, M.F.P.: Reconciling high-altitude precipitation in the
720 upper Indus basin with glacier mass balances and runoff, *Hydrol. Earth Syst. Sci.*, 19(11), pp.4673, 2015.
- Immerzeel, W., Pellicciotti, F., and Bierkens, M.: Rising river flows throughout the twenty-first century in two Himalayan glacierized watersheds, *Nat. Geosci.*, 6, 742–745, doi:10.1038/NCEO1896, 4757, 4761, 4773, 2013.
- Jacob, D., Petersen, J., Eggert, B., Alias, A., Christensen, O.B., Bouwer, L.M., Braun, A., Colette, A., Déqué, M., Georgievski, G. and Georgopoulou, E.: EURO-CORDEX: new high-resolution climate change projections for European impact
725 research, *Regional Environmental Change*, 14(2), pp.563-578, 2014.
- Ji, Z.M. and Kang, S.C.: Evaluation of extreme climate events using a regional climate model for China, *International Journal of Climatology*, 35(6), pp.888-902, 2015.
- Ji, Z.M., Kang, S.C.: Projection of snow cover changes over China under RCP scenarios. *Climate Dynamics*, 41, 589-600, 2013.
- 730 Johnson, F. and Sharma, A.: What are the impacts of bias correction on future drought projections? *Journal of Hydrology*, 525, 472-485, 2015.
- Kattel, D.B., Yao, T., Yang, K., Tian, L., Yang, G. and Joswiak, D.: Temperature lapse rate in complex mountain terrain on the southern slope of the central Himalayas, *Theoretical and applied climatology*, 113(3-4), pp.671-682, 2013.
- Kääb, A., Treichler, D., Nuth, C. and Berthier, E.: Brief Communication: Contending estimates of 2003–2008 glacier mass
735 balance over the Pamir–Karakoram–Himalaya, *The Cryosphere*, 9(2), pp.557-564, 2015.
- Khan, F., Pilz, J., Amjad, M. and Wiberg, D. A.: Climate variability and its impacts on water resources in the Upper Indus Basin under IPCC climate change scenarios, *International Journal of Global Warming*, 8, 46-69, 2015.
- Kraaijenbrink, PDA, Bierkens, MFP, Lutz, A.F., and Immerzeel, W.W.: Impact of a 1.5 °C global temperature rise on Asia’s glaciers. *Nature* 549:257–260, 2017.

- 740 Kumar, V., Singh, P. and Singh, V.: Snow and glacier melt contribution in the Beas River at Pandoh Dam, Himachal Pradesh, India. *Hydrological sciences journal*, 52, 376-388, 2007
- Li, L., Engelhard M., Xu, C.Y., JAIN, S.J., Singh, V.P.: Comparison of satellite-based and reanalysed precipitation as input to glacio-hydrological modeling for Beas river basin, Northern India. Cold and Mountain Region Hydrological Systems Under Climate Change: Towards Improved Projections. IAHS Publ. 360. 45-52, 2013a.
- 745 Li, L., Ngongondo, C. S., Xu, C. Y., and Gong, L.: Comparison of the global TRMM and WFD precipitation datasets in driving a large-scale hydrological model in Southern Africa. *Hydrol Res.*, 10, 2166, 2013b.
- Li, H., Xu C-Y, Beldring S, Tallaksen TM, Jain S. K.: Water Resources under Climate Change in Himalayan basins, *Water Resources Management* 30:843–859. DOI:10.1007/s11269-015-1194-5, 2016.
- Li, H., Beldring, S., Xu, C-Y, Huss, M., Melvold, K.: Integrating a glacier retreat model into a hydrological model -- case studies on three glacierised catchments in Norway and Himalayan region. *Journal of Hydrology* 527, 656-667. doi:10.1016/j.jhydrol.2015.05.017, 2015a.
- 750 Li, L., Diallo, I., Xu, C-Y, Stordal, F.: Hydrological projections under climate change in the near future by RegCM4 in Southern Africa using a large-scale hydrological model. *Journal of Hydrology* 528, 1-16, doi:10.1016/j.jhydrol.2015.05.028, 2015b.
- 755 Li, L., Gochis, D.J., Sobolowski, S. and Mesquita, M.D.: Evaluating the present annual water budget of a Himalayan headwater river basin using a high-resolution atmosphere-hydrology model. *Journal of Geophysical Research: Atmospheres*, 122(9), pp.4786-4807, 2017.
- Lutz, A., Immerzeel, W.W., Gobiet, A., Pellicciotti, F. and Bierkens, M.F.P.: Comparison of climate change signals in CMIP3 and CMIP5 multi-model ensembles and implications for Central Asian glaciers, *Hydrol. Earth Syst. Sci.*, 17, pp.3661-3677, 2013.
- 760 Lutz, A.F., Immerzeel, W.W., Shrestha, A.B. and Bierkens, M.F.P.: Consistent increase in High Asia's runoff due to increasing glacier melt and precipitation, *Nature Climate Change*, 4(7), p.587, 2014.
- Lutz, A.F., Immerzeel, W.W., Kraaijenbrink, P.D.A., Shrestha, A.B. and Bierkens, M.F.: Climate change impacts on the upper Indus hydrology: Sources, shifts and extremes, *PloS one*, 11(11), 2016.
- 765 Maussion, F., Scherer, D., Finkelnburg, R., Richters, J., Yang, W. and Yao, T.: WRF simulation of a precipitation event over the Tibetan Plateau, China--an assessment using remote sensing and ground observations, *Hydrology & Earth System Sciences*, 15(6), 2011.
- Mair, E., Bertoldi, G., Leitinger, G., Chiesa, S. D., Niedrist, G., and Tappeiner, U.: ESOLIP—estimate of solid and liquid precipitation at sub-daily time resolution by combining snow height and rain gauge measurements, *Hydrol. Earth Syst. Sci. Discuss.*, 10(7), 8683-8714, 2013.
- 770 Ménégoz, M., Gallée, H., and Jacobi, H. W.: Precipitation and snow cover in the Himalaya: from reanalysis to regional climate simulations. *Hydrol. Earth Syst. Sci.*, 17(10), 3921-3936, 2013.
- Mishra, V.: Climatic uncertainty in Himalayan water towers, *Journal of Geophysical Research: Atmospheres*, 120(7), pp.2689-2705, 2015.
- 775 Mitchell, T. D. and Jones, P. D.: An improved method of constructing a database of monthly climate observations and associated high-resolution grids, *Int. J. Climatol.*, 25, 693–712, 2005, 2005.
- Mpelasoka, F.S., Chiew, F.H.S.: Influence of rainfall scenario construction methods on runoff projections. *J. Hydrometeorol.* 10, 1168–1183, 2009.
- Palazzi, E., Hardenberg, J. Von and Provenzale, A.: Precipitation in the Hindu-Kush Karakoram Himalaya: Observations and future scenarios, *J. Geophys. Res. Atmos.*, 118, 85–100, 2013.
- 780

- Pechlivanidis, I.G., Arheimer, B., Donnelly, C., Hundecha, Y., Huang, S., Aich, V., Samaniego, L., Eisner, S. and Shi, P.: Analysis of hydrological extremes at different hydro-climatic regimes under present and future conditions, *Climatic Change*, 141(3), pp.467-481, 2017.
- 785 Ramanathan, AL.: Status Report on Chhota Shigri Glacier (Himachal Pradesh), Department of Science and Technology, Ministry of Science and Technology, New Delhi. Himalayan Glaciology Technical Report No.1, pp-88p, 2011.
- Rasmussen, R., Liu, C., Ikeda, K., Gochis, D., Yates, D., Chen, F., Tewari, M., Barlage, M., Dudhia, J., Yu, W. and Miller, K.: High-resolution coupled climate runoff simulations of seasonal snowfall over Colorado: A process study of current and warmer climate. *Journal of Climate*, 24(12), pp.3015-3048, 2011.
- 790 Rasmussen, R.M., K. Ikeda, C. Liu, D.J. Gochis, M. Clark, A. Dai, E. Gutmann, J. Dudhia, F. Chen, M.J. Barlage, D. Yates, and Zhang, G.: Climate change impacts on the water balance of the Colorado headwaters: High-resolution regional climate model simulations. *Journal of Hydrometeorology*, 15, 1091-1116, 2014.
- Raup, B. H., Racoviteanu, A., Khalsa, S. J. S., Helm, C., Armstrong, R. and Arnaud Y.: The GLIMS Geospatial Glacier Database: a new tool for studying glacier change. *Global Planetary Change* 56, 101–110, doi:10.1016/j.gloplacha.2006.07.018, 2007.
- 795 Ragetti, S. and Pellicciotti, F.: Calibration of a physically based, spatially distributed hydrological model in a glacierized basin: on the use of knowledge from glaciometeorological processes to constrain model parameters, *Water Resour. Res.*, 48, 1–20, 2012.
- RGI Consortium: Randolph Glacier Inventory – A Dataset of Global Glacier Outlines: Version 6.0: Technical Report, Global Land Ice Measurements from Space, Colorado, USA. Digital Media. DOI: <https://doi.org/10.7265/N5-RGI-60>, 2017.
- 800 Rudd, A.C., A. L. and Kay: Use of very high resolution climate model data for hydrological modelling: estimation of potential evaporation, *Hydrol. Res.*, 47(3), 660-670, doi:10.2166/nh.2015.028, 2017.
- Samaniego, L., Kumar, R., Breuer, L., Chamorro, A., Flörke, M., Pechlivanidis, I.G., Schäfer, D., Shah, H., Vetter, T., Wortmann, M. and Zeng, X.: Propagation of forcing and model uncertainties on to hydrological drought characteristics in a multi-model century-long experiment in large river basins, *Climatic change*, 141(3), pp.435-449, 2017.
- 805 Scherler D, Bookhagen B and Strecker M. R.: Spatially variable response of Himalayan glaciers to climate change affected by debris cover. *Nat. Geosci.*, 4, 156–159, 2011.
- Schmidli, J., Frei, C., Vidale, P.L.: Downscaling from GCM precipitation: a benchmark for dynamical and statistical downscaling methods. *Int. J. Climatol.* 26, 679–689, 2006.
- Singh, P., Kumar, N. and Arora, M.: Degree-day factors for snow and ice for Dokriani Glacier, Garhwal Himalayas, *Journal of Hydrology*, 235(1-2), pp.1-11, 2000.
- 810 Singh, S., S. Ghosh, A. S. Sahana, H. Vittal, and Karmakar, S.: Do dynamic regional models add value to the global model projections of Indian monsoon? *Clim Dyn*, 48, 1375–1397, doi:10.1007/s00382-016-3147-y, 2017.
- Shen, M., Chen, J., Zhuan, M., Chen, H., Xu, C.Y. and Xiong, L.: Estimating uncertainty and its temporal variation related to global climate models in quantifying climate change impacts on hydrology, *Journal of Hydrology*, 556, pp.10-24, 2018.
- 815 Shrestha, M., Wang, L., Koike, T., Xue, Y., and Hirabayashi, Y.: Modeling the spatial distribution of snow cover in the Dudhkoshi Region of the Nepal Himalayas, *J. Hydrometeorol.*, 13, 204-222, doi:10.1175/JHM-D-10-05027.1, 2012.
- Smitha, P.S., Narasimhan, B., Sudheer, K.P. and Annamalai, H.: An improved bias correction method of daily rainfall data using a sliding window technique for climate change impact assessment, *Journal of Hydrology*, 556, pp.100-118, 2018.
- 820 Stahl, K., Moore, R. D., Shea, J. M., Hutchinson, D. and Cannon, A. J.: Coupled modelling of glacier and streamflow response to future climate scenarios. *Water Resour. Res.*, 44, 2008.
- Tatsumi, K., T. Oizumi, and Yamashiki, Y.: Assessment of future precipitation indices in the Shikoku region using a statistical downscaling model. *Stoch. Env. Res. Risk A.*, 28(6), 1447–1464, doi:10.1007/s00477-014-0847-x, 2014.

- Taylor, K. E., Stouffer, R. J. and Meehl, G. A.: An overview of CMIP5 and the experiment design. *B. Am. Meteorol. Soc.*, 93(4), 485-498, doi:10.1175/BAMS-D-11-00094.1, 2012.
- 825 Teutschbein, C. and Seibert, J.: Bias correction of regional climate model simulations for hydrological climate-change impact studies: Review and evaluation of different methods. *Journal of Hydrology*, 456, pp.12-29, 2012.
- Troin, M., Velázquez, J.A., Caya, D. and Brissette, F.: Comparing statistical post-processing of regional and global climate scenarios for hydrological impacts assessment: A case study of two Canadian catchments, *Journal of Hydrology*, 520, pp.268-288, 2015.
- 830 USGS (US Geological Survey), HYDRO 1K Elevation Derivative Database, <http://edc.usgs.gov/products/elevation/gtopo30/hydro/index.html>, the Earth Resources Observation and Science (EROS) Data Center (EDC), Sioux Falls, South Dakota, USA, 1996a.
- USGS (US Geological Survey), GTOPO30 (Global 30 Arc-Second Elevation Data Set), <http://edc.usgs.gov/products/elevation/gtopo30/gtopo30.html>, the Earth Resources Observation and Science (EROS)
- 835 Data Center (EDC), Sioux Falls, South Dakota, USA, 1996b.
- Vetter, T., Reinhardt, J., Flörke, M., van Griensven, A., Hattermann, F., Huang, S., Koch, H., Pechlivanidis, I.G., Plötner, S., Seidou, O. and Su, B.: Evaluation of sources of uncertainty in projected hydrological changes under climate change in 12 large-scale river basins, *Climatic change*, 141(3), pp.419-433, 2017.
- Vincent, C., Ramanathan, A., Wagon, P., Dobhal, D.P., Linda, A., Berthier, E., Sharma, P., Arnaud, Y., Azam, M.F. and
- 840 Gardelle, J.: Balanced conditions or slight mass gain of glaciers in the Lahaul and Spiti region (northern India, Himalaya) during the nineties preceded recent mass loss. *The Cryosphere*, 7(2), pp.569-582, 2013.
- Viste, E., and Sorteberg, A.: Snowfall in the Himalayas: an uncertain future from a little-known past. *The Cryosphere Discussions*, 9, 441-493, 2015.
- Wagon, P., Linda, A., Arnaud, Y., Kumar, R., Sharma, P., Vincent, C., Pottakkal, J.G., Berthier, E., Ramanathan, A., Hasnain, S.I. and Chevallier, P.: Four years of mass balance on Chhota Shigri Glacier, Himachal Pradesh, India, a new benchmark glacier in the western Himalaya, *Journal of Glaciology*, 53(183), pp.603-611, 2007.
- Widen-Nillsson, E., Gong, L., Halldin, S. and Xu, C. Y.: Model performance and parameter behavior for varying time aggregations and evaluation criteria in the WASMOD-M global water balance model, *Water Resour. Res.*, 45, 2009.
- Wilby, R. L., and Dawson, C. W.: The statistical downscaling model: insights from one decade of application. *Int. J. Climatol.*,
- 850 33(7), 1707–1719, doi:10.1002/joc.3544, 2013.
- Wilby R L, Dawson C W, Barrow E M.: DBC - a decision support tool for the assessment of regional climate change impacts. *Environmental Modelling & Software*, 17(2):145-157, 2002.
- Winiger, M. G. H. Y., Gumpert, M., and Yamout, H.: Karakorum–Hindukush–western Himalaya: assessing high-altitude water resources. *Hydrological Processes*, 19(12), 2329-2338, 2005.
- 855 Xu, C-Y.: WASMOD - The Water And Snow balance MODelling system. In: Singh, V. P. and Frevert, D. K. (eds.) *Mathematical Models of Small Watershed Hydrology and Applications*. LLC, Chelsea, Michigan, USA: Water Resources Publications, 2002.
- Yatagai, A., Kamiguchi, K., Arakawa, O., Hamada, A., Yasutomi, N. and Kitoh, A.: APHRODITE: Constructing a long-term daily gridded precipitation dataset for Asia based on a dense network of rain gauges, *Bulletin of the American Meteorological Society*, 93(9), pp.1401-1415, 2012.
- 860

Table 1. Daily GSM-WASMOD equations and parameters

Variable controlled	Parameter (units)	Equation
WASMOD-D module		
Snow fall	$a_1, a_2(^{\circ}\text{C})$	$s_t = p_t \left\{ 1 - \exp\left(-\left(\frac{T_a - a_1}{a_1 - a_2}\right)^2\right)\right\}^+$ (1)
Rainfall		$r_t = p_t - s_t$ (2)
Snow storage		$sp_t = sp_{t-1} + s_t - m_t$ (3)
Snow melt		$m_t = sp_t \cdot \left\{ 1 - \exp\left(-\left(\frac{a_2 - T_a}{a_1 - a_2}\right)^2\right)\right\}^+$ (4)
Actual evapotranspiration	$a_d(-)$	$e_t = \min[ep_t(1 - a_4^{w_t/ep_t}), w_t]$ (5)
Available water		$w_t = r_t + sm_{t-1}^+$ (6)
Saturated percentage area	$c_1(-)$	$sp_t = 1 - e^{-c_1 w_t}$ (7)
Fast flow		$s_t = (r_t + m_t) \cdot sp_t$ (8)
Slow flow	$c_2(\text{mm}^{-1}\text{day})$	$f_t = w_t(1 - e^{-c_2 w_t})$ (9)
Total flow		$d_t = s_t + f_t$ (10)
Land moisture		$sm_t = sm_{t-1} + r_t + m_t - e_t - d_t$ (11)
Glacier and snow (GSM) module		
Glacier and snow mass gain	$T_a(^{\circ}\text{C}), \Delta\text{T}(\text{K})$	$G_t = \begin{cases} p_t & " T_a \leq T_s - \Delta\text{T} / 2 \\ p_t \cdot [(T_s - T_a) / \Delta\text{T} + 0.5] & " T_s - \Delta\text{T} / 2 < T_a < T_s + \Delta\text{T} / 2 \\ 0 & " T_a \geq T_s + \Delta\text{T} / 2 \end{cases}$ (12)
Glacier and snow mass melt	DDF	$M_{s/f/i} = \max(DDF_{s/f/i}(T_a - T_0), 0)$ (13)

where $\{x\}^+$ means $\max(x, 0)$ and $\{x\}^-$ means $\min(x, 0)$; ep_t is the daily potential evapotranspiration; a_1 is the snowfall temperature and

a_2 is the snow melt temperature; T_a is air temperature ($^{\circ}\text{C}$); p_t is the precipitation in a given day; sm_{t-1} is the land moisture (a

available storage; T_s is a threshold temperature for snow distinguishes between rain and snow $T_s = 1^{\circ}\text{C}$; ΔT is a temperature interval, $\Delta\text{T} = 2\text{K}$; DDF_s , DDF_f and DDF_i are the degree day factor for snow, firn and ice, and T_0 is the melt threshold factor in GSM module.

Table 2. The future climate change scenarios for the upper Beas basin

Statistical Downscaling	RCP	GCMs	Abbreviation	Description
DBC	4.5	CamESM2	CA2	Wet&Cold
DBC	8.5	CSIRO_Mk3_6_0	CS0	
LOCI	4.5	CamESM2	CA2	
LOCI	8.5	CSIRO_Mk3_6_0	CS0	
DBC	4.5	Inmcm4	IN4	Dry&Cold
DBC	8.5	MRI-ESM1	MR1	
LOCI	4.5	Inmcm4	IN4	
LOCI	8.5	MRI-ESM1	MR1	
DBC	4.5	IPSL-CM5A-LR	IPR	Dry&Warm
DBC	8.5	IPSL_CM5A_LR	IPR	
LOCI	4.5	IPSL-CM5A-LR	IPR	
LOCI	8.5	IPSL_CM5A_LR	IPR	
DBC	4.5	MRI_CGCM3	MR3	Wet&Warm
DBC	8.5	MIROC5	MI5	
LOCI	4.5	MRI_CGCM3	MR3	
LOCI	8.5	MIROC5	MI5	

875 Table 3. The winter precipitation (December - March) from WRF and Gauge above different altitudes

Altitude (m a.m.s.l.)	>2000	>3000	>4000	>4800	>6000
Area (%)	88%	62%	41%	21%	1%
Gauge (mm)	279.3	279.7	278.7	279.0	278.9
WRF (mm)	629.2	725.9	762.3	746.4	628.7
WRF/Gauge	2.25	2.59	2.74	2.67	2.25

880

885

Table 4. Calibration and validation of glacier mass balance in the upper Beas basin compared with previous studies

Unit: m w.e. a ⁻¹	Calibration (1986-2000)	Validation (1999-2004)	Methods
GSM-WASMOD	-0.22	-1.09	model
Azam et al. (2014)	-0.01(-/+0.36)	/	model
Engelhardt et al. (2017)	-0.29 (-/+0.33)	-0.8(-/+0.33)	model
Berthier et al. (2007)	/	-1.02 /-1.12*	Geodetic measurement
Vincent et al. (2013)	/	-1.03 (-/+0.44)	Geodetic measurement

890 *: from different assumptions

895

Table 5. Calibration and validation of WASMOD and GSM-WASMOD based on uncorrected and corrected precipitation.

Model	Precipitation	Calibration (1986-2000)				Validation (2001-2004)			
		NSE_d	NSE_m	VE	RMSE	NSE_d	NSE_m	VE	RMSE
WASMOD	Corrected	0.50	0.65	5%	2.40	0.31	0.36	28%	2.62
GSM-WASMOD	Uncorrected	0.64	0.70	8%	2.03	0.49	0.52	28%	1.94
GSM-WASMOD	Corrected	0.65	0.75	7%	2.01	0.61	0.66	15%	1.71

NSE_d: daily Nash-Sutcliffe efficiency coefficient; NSE_m: monthly Nash-Sutcliffe efficiency coefficient

900

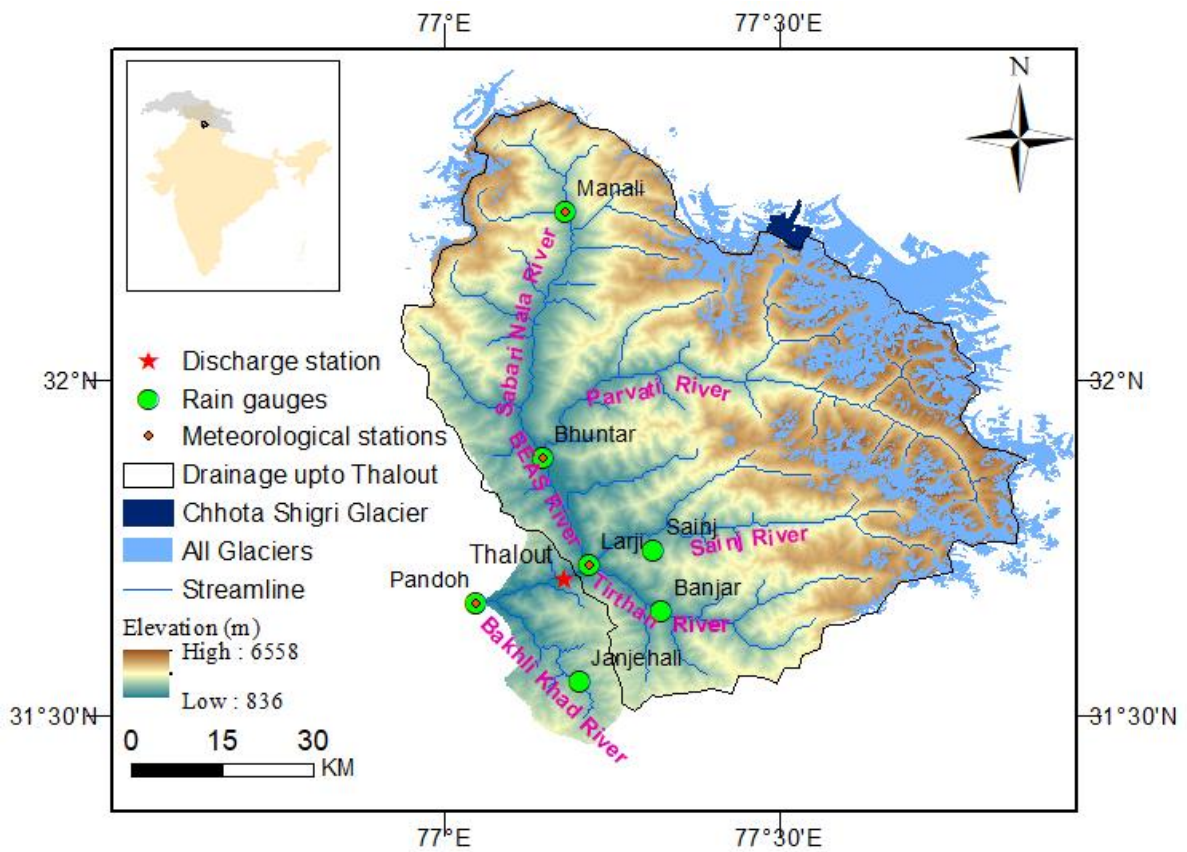
Table 6. The projected changes of key water balance variables for 2046-2065 and 2080-2099 compared with 1986-2005 under RCP4.5 and RCP8.5 over the upper Beas basin.

Period	RCP	Glacier loss (%) [*]	dP (%)	dT (°C)	dET (%)	dQ (%)
2046-2065	RCP4.5	73(63/81)	9.8(-11.5/29.9)	1.8(0.8/2.7)	72.4(36.5/116.6)	2.6(-19.9/23.9)
	RCP8.5	81(76/87)	33.3 (5.3/68.1)	2.8(2.3/3.8)	86.7(13.4/161)	25.3(-6.5/58)
2080-2099	RCP4.5	94(89/99)	17.7(6.4/39.4)	2.3(1.2/3.3)	82(18.7/139.1)	8.9(-2.2/32.2)
	RCP8.5	99(93/100)	39.7(-18.5/89.1)	5.4(4.2/7.2)	145(50.9/274.4)	27(-40.6/84.9)

The values represent: mean (minimum/maximum); dP: the relative changes of precipitation; dT: the absolute changes of temperature; dET: the relative changes of ET; dQ: the relative changes of runoff;

905

**: Comparing with baseline glacier extent, the future glacier cover loss at the end of 2050 and 2099 in the table, which is respect to 2046-2065 and 2080-2099, respectively.*



910

Fig. 1 The upper Beas river basin. The map shows the topography, rain gauges, meteorological stations, discharge station, stream network and glacier cover of the upper Beas basin up to Pandoh dam. The small figure on the upper right corner shows the location of the study basin within Upper Indus Basin (UIB) region and India.

915

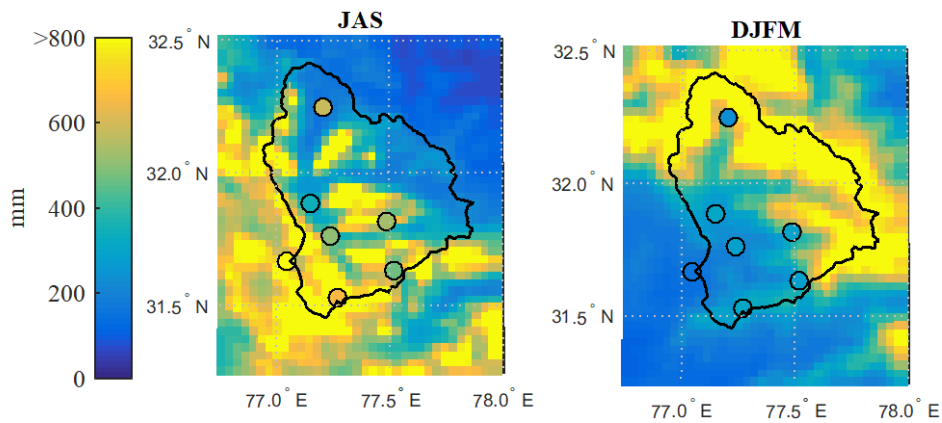
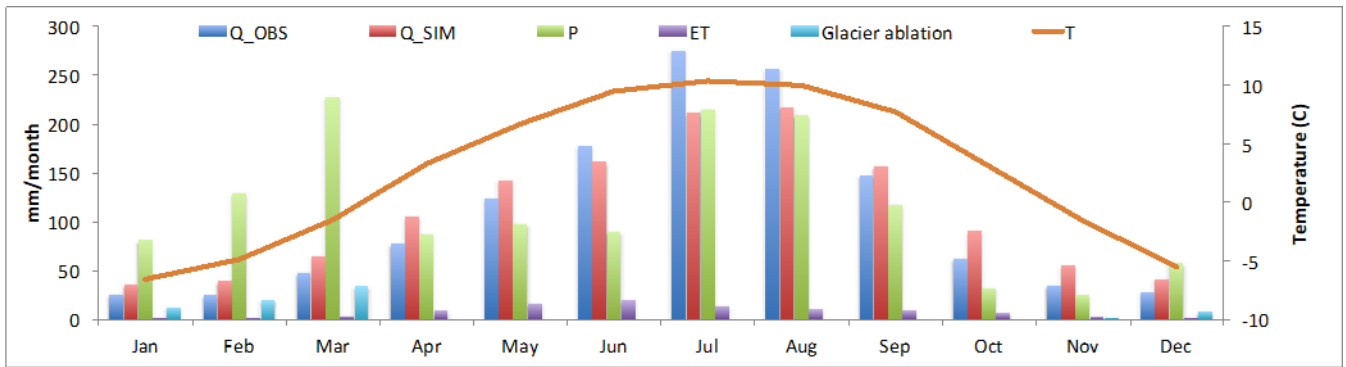
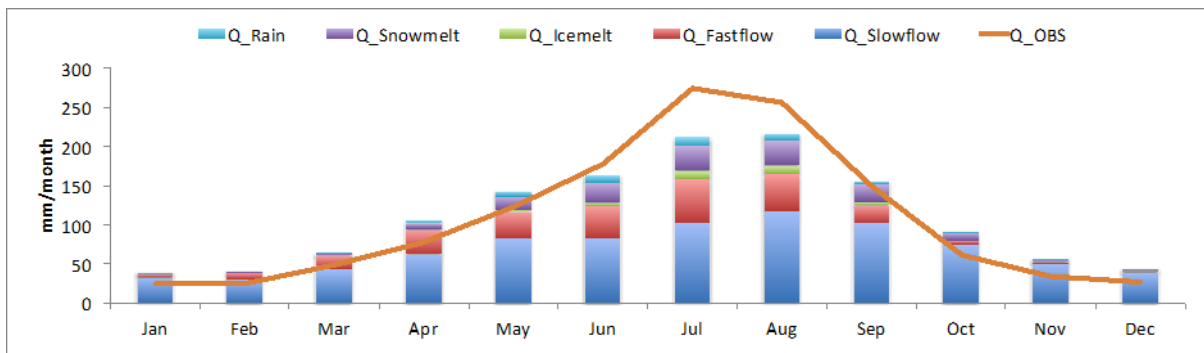


Fig. 2 Seasonal precipitation of July - September (JAS) and December - March (DJFM) during 1998-2005 from 3km WRF (from Li et al., 2017) and Gauge (dot) in the upper Beas basin.

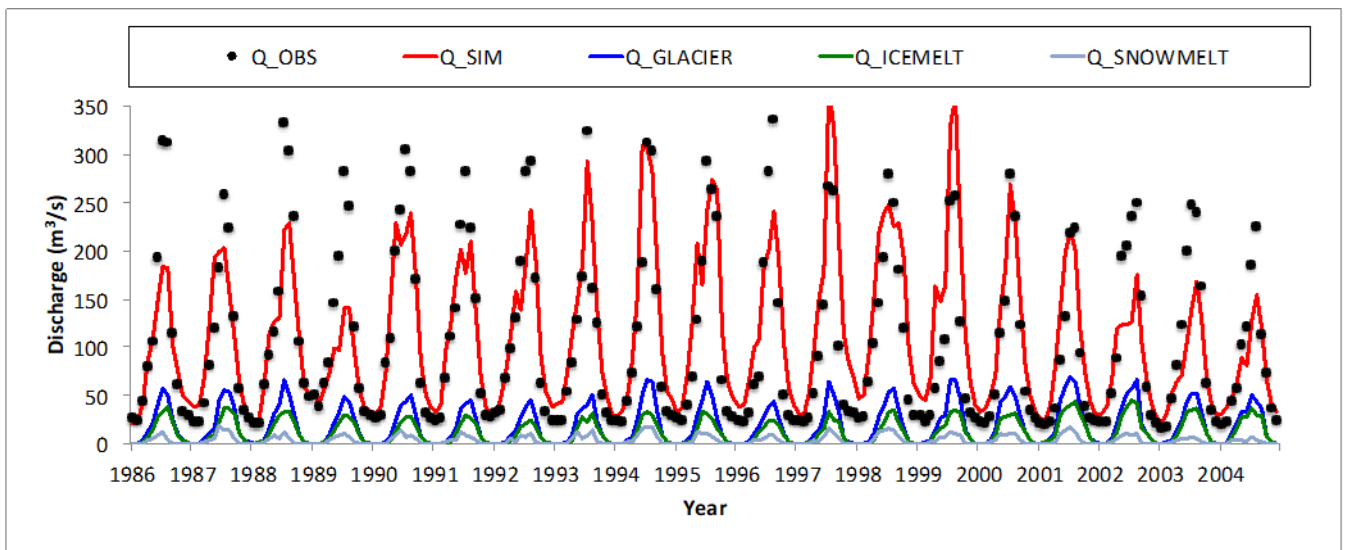
920



925 **Fig. 3** Monthly-averages of major water balance terms for the upper Beas basin (1986-2004). Plot shows discharge (Q_{SIM}), precipitation (P), evaporation (ET), glacier ablation, observed discharge (Q_{OBS}) (in the primary axis on the left side) and temperature (T) (in the secondary axis on right side).

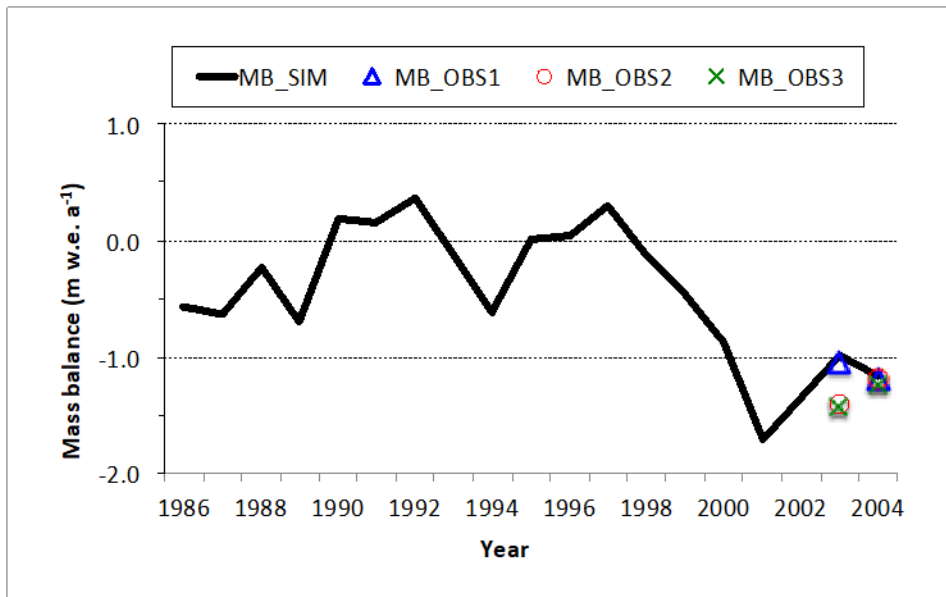


930 **Fig. 4** The monthly-averages of discharge components and observed discharge (O_{OBS}) in the upper Beas basin (1990-2004). Plot shows discharge components from non-glacier area, i.e., fast flow ($Q_{fastflow}$), slow flow ($Q_{slowflow}$) and discharge components from the glacier-covered area, i.e., rainfall discharge (Q_{Rain}), snow-melt ($Q_{Snowmelt}$) and ice-melt ($Q_{icemelt}$) discharge.

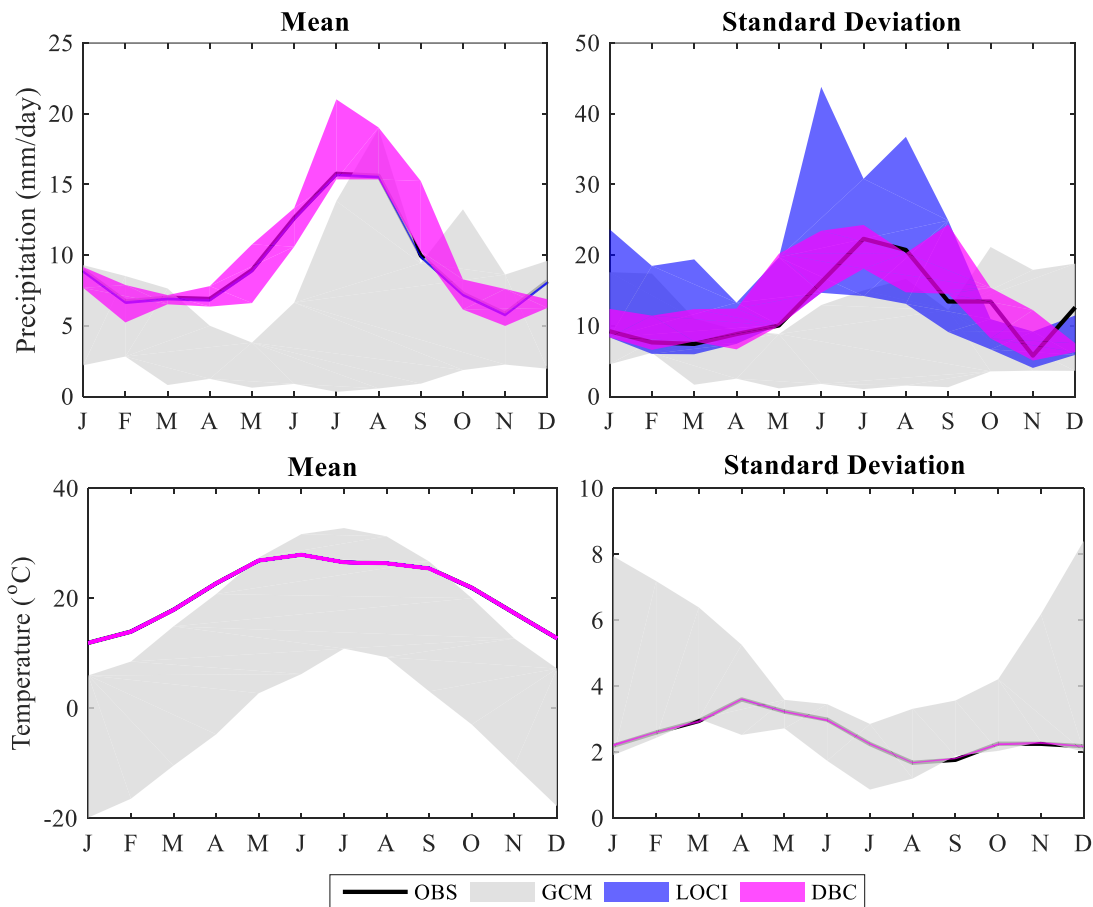


935 **Fig. 5** The monthly observed (Q_{OBS}) and simulated discharge (Q_{SIM}), including the total discharge from glacier ($Q_{GLACIER}$), ice melting ($Q_{ICEMELT}$) and snow melting discharge ($Q_{SNOWMELT}$) in the upper Beas basin during 1986-2004.

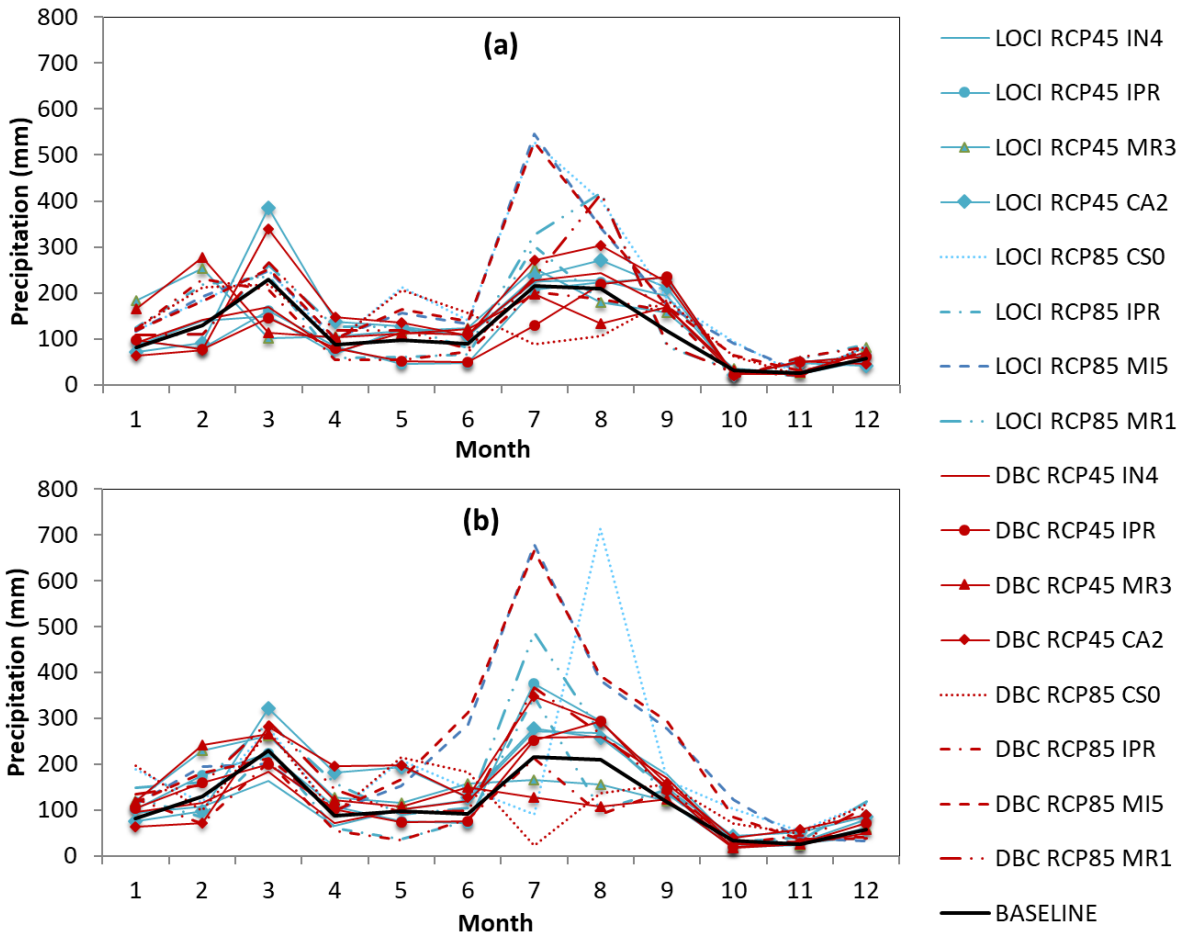
940



945 **Fig. 6** The simulated glacier mass balance (MB_SIM) and observed mass balances of Chhota Shigri glacier, i.e., MB_OBS1 (Berthier et al., 2007), MB_OBS2 (Wagnon et al., 2007), and MB_OBS3 (Azam et al., 2016).



950 **Fig. 7** Monthly means and standard deviations of daily precipitation (upper panel) and temperature (down panel) from observation (OBS), Global climate models (GCM) and bias correction methods (LOCI and DBC) at Pandoh station during 1986-2005. Shading denotes the ensemble range of GCMs.



955

Fig. 8 Monthly-averages of observed precipitation (1986-2005) and projected future precipitations over the upper Beas basin during (a) 2046-2065, (b) 2080-2099. Projections are shown for two bias correction methods (LOCI and DBC) with two ensembles of four GCMs under RCP 4.5 and RCP8.5 (Table 2).

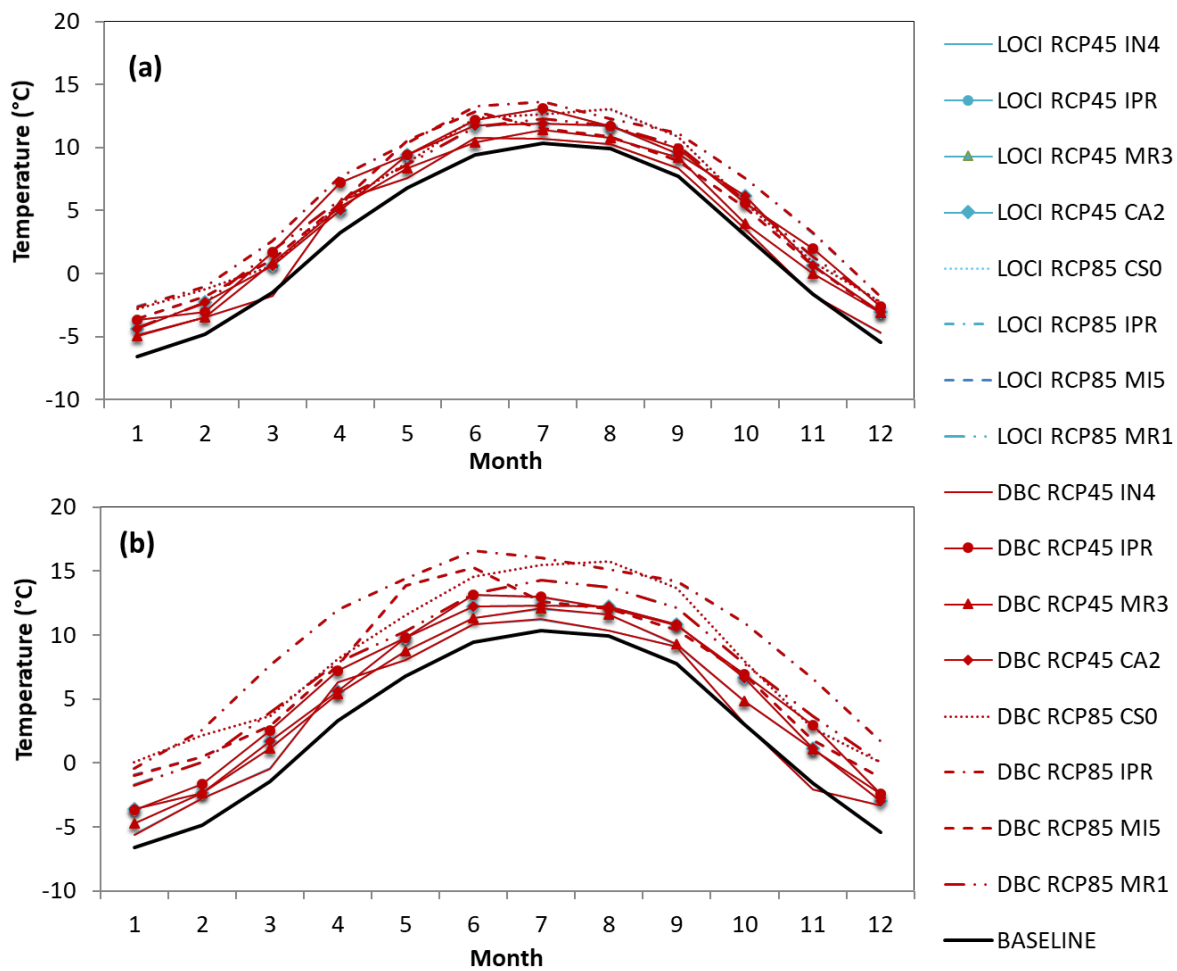


Fig. 9 Monthly-averages of observed temperature (1986-2005) and projected temperatures over the upper Beas basin during (a) 2046-2065, (b) 2080-2099. Projections are shown for two bias correction methods (LOCI and DBC) with two ensembles of four GCMs under RCP 4.5 and RCP8.5 (Table 2).

960

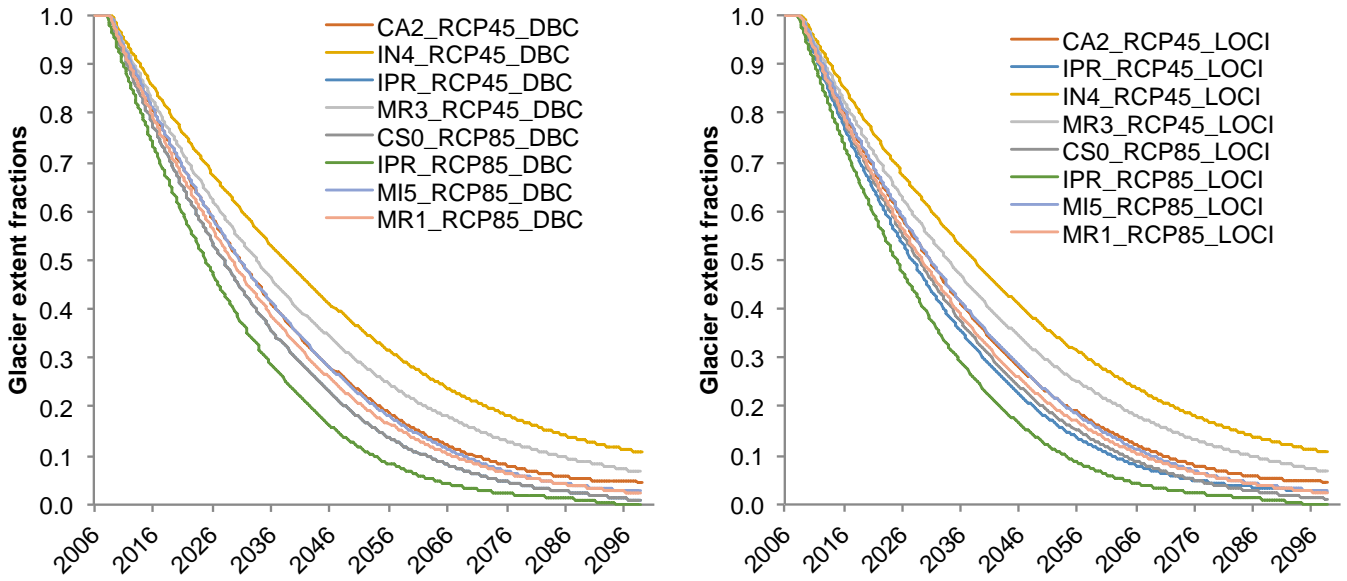


Fig. 10 Projected changes of glacier extent for the upper Beas basin during 21st century.

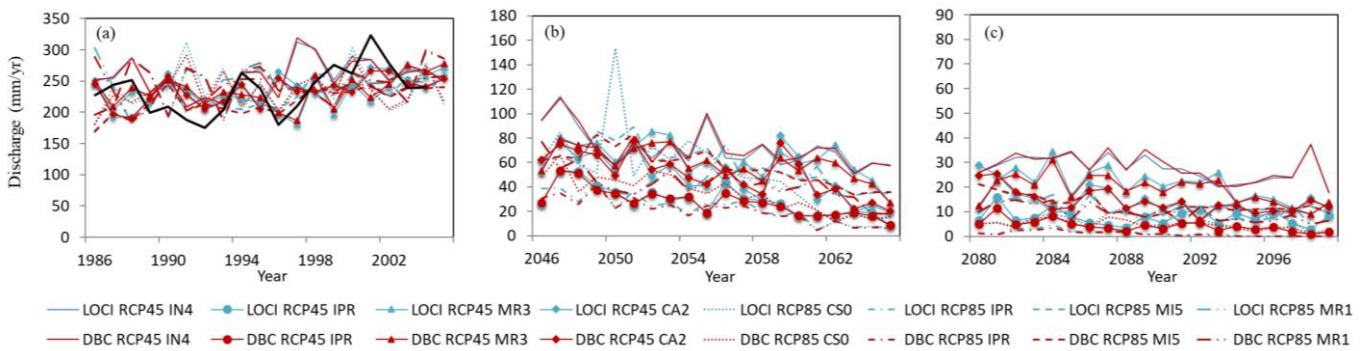


Fig. 11 Projected glacier discharges over the upper Beas basin. Projections are shown for the two bias correction methods (LOCI and DBC) with two ensembles of four GCMs under RCP4.5 and RCP8.5 (Table 2). (a) glacier discharges in historical period of 1986-2005 from projections and from the corrected gauge precipitation (black line); (b) projected glacier discharges during 2046-2065; and (c) projected glacier discharges during 2080-2099. Please note the scales change of Y-axis in three sub-figures.

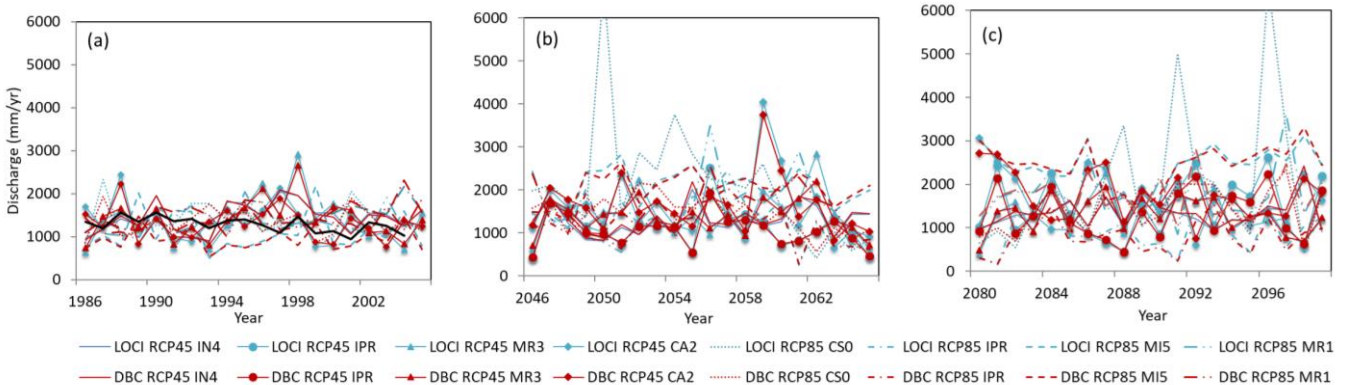


Fig. 12 Projected total discharges over the upper Beas basin. Projections are shown for the two bias correction methods (LOCI and DBC) with two ensembles of four GCMs under RCP4.5 and RCP8.5 (Table 2). (a) total discharges in historical period of 1986-2005 from projections and from the corrected gauge precipitation (black line); (b) projected total discharges during 2046-2065; and (c) projected total discharges during 2080-2099.

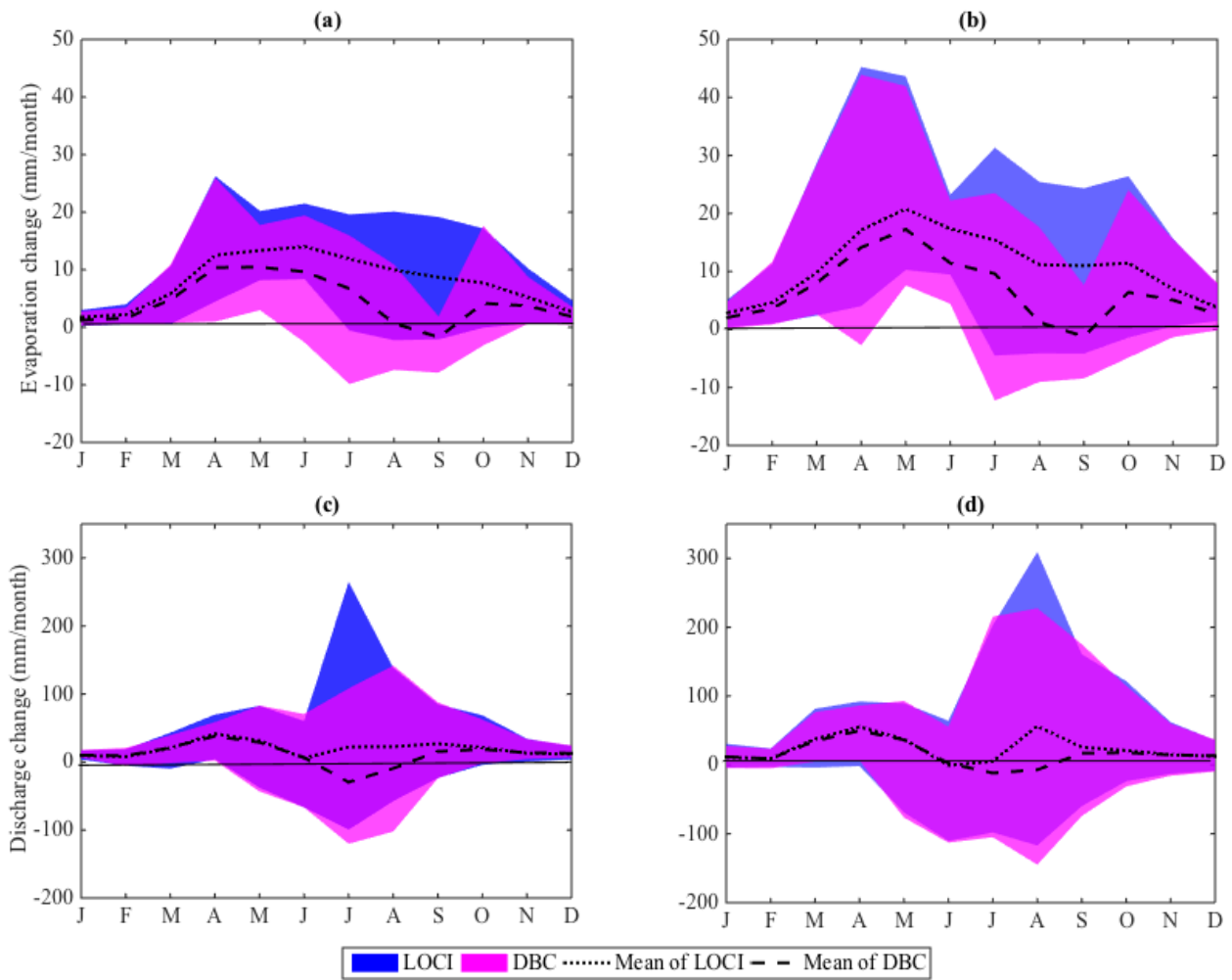


Fig. 13 Projected changes in monthly-averages of evaporation and total discharges for 2046-2065 (left panels) and 2080-2099 (right panels) compared to 1986-2005. Projections are shown from the two bias correction methods (LOCI and DBC) with two ensembles of four GCMs under RCP4.5 and RCP8.5 (Table 2). (a) evaporation change at the middle of the century (2046-2065); (b) evaporation change at end of the century (2080-2099); (c) discharge change at the middle of the century comparing (2046-2065); (d) discharge change at end of the century (2080-2099). Shading denotes the ensemble range of projections by LOCI (blue) and DBC (red).

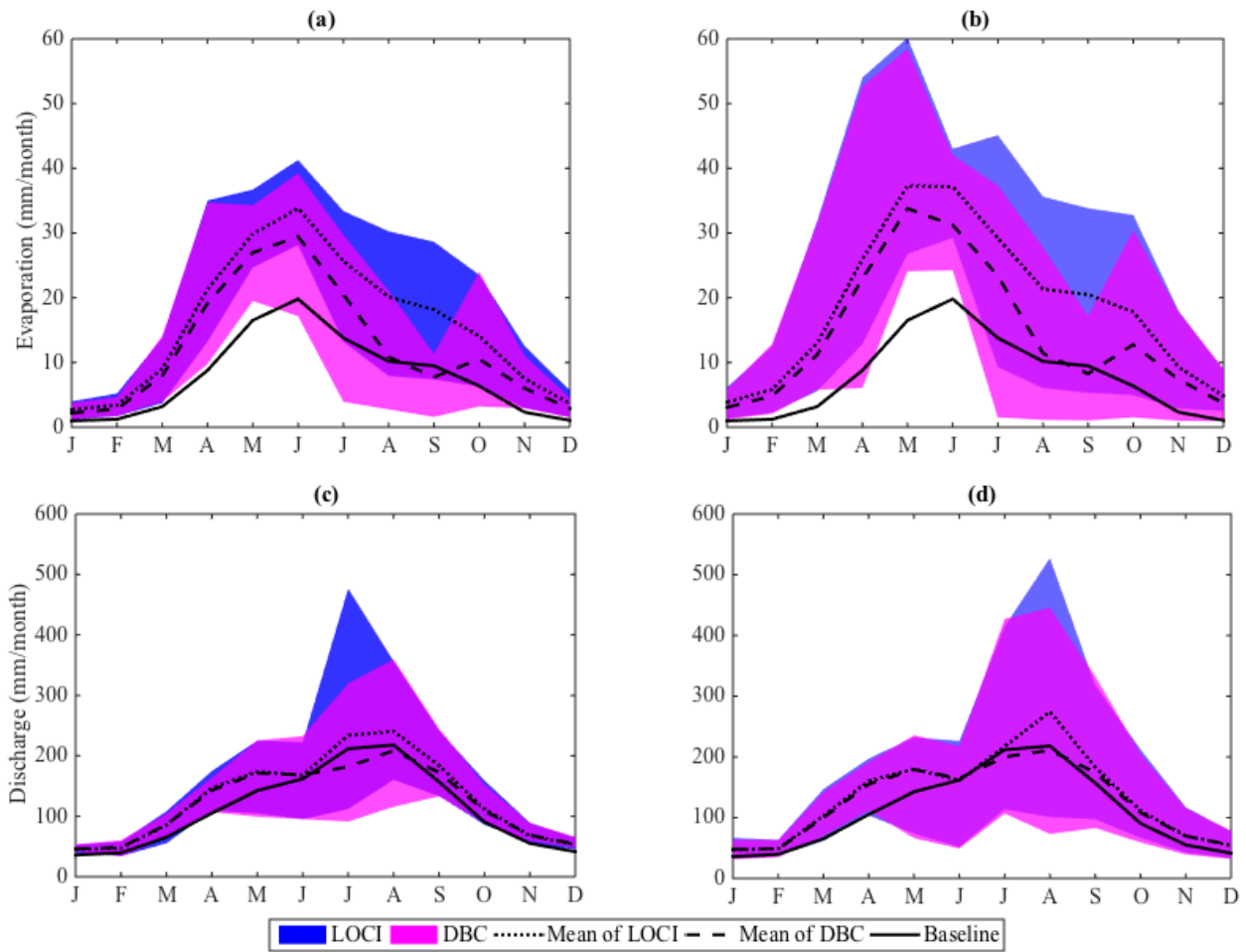


Fig. 14 Projected monthly-averages of evaporation and total discharges for 2046-2065 (left panels) and 2080-2099 (right panels). Projections are shown from the two bias correction methods (LOCI and DBC) with two ensembles of four GCMs under RCP4.5 and RCP8.5 (Table 2). (a) monthly-averages evaporation at the middle of the century (2046-2065); (b) monthly-averages evaporation at end of the century (2080-2099); (c) monthly-averages discharge at the middle of the century (2046-2065); (d) monthly-averages discharge at end of the century (2080-2099). Shading denotes the ensemble range of projections by LOCI (blue) and DBC (red).