

Simulated values correspond to median of the annual estimates calculated for the historical time-period 1966-1995. The colours of the dots denote the five GCMs used to drive the HMs. The map shows the spatial distribution of the relative bias between historical measurements and GCM-HM simulations.

Hydrol. Earth Syst. Sci. Discuss.,
<https://doi.org/10.5194/hess-2017-485-AC3>, 2017
© Author(s) 2017. This work is distributed under
the Creative Commons Attribution 4.0 License.



HESSD

Interactive
comment

Interactive comment on “Climate change alters low flows in Europe under a 1.5, 2, and 3 degree global warming” by Andreas Marx et al.

Andreas Marx et al.

klima@ufz.de

Received and published: 1 November 2017

Interactive comment on Hydrol. Earth Syst. Sci. Discuss., <https://doi.org/10.5194/hess-2017-485>, 2017.

Printer-friendly version

Discussion paper



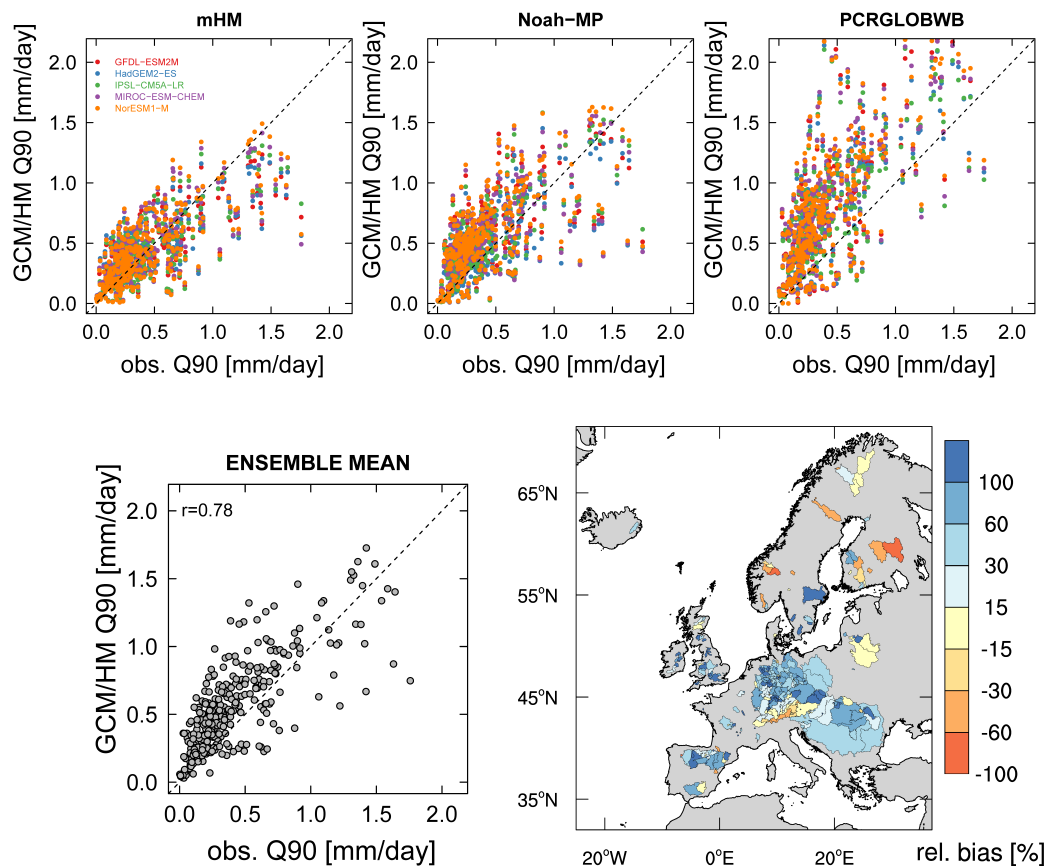


Fig. 1. Scatter plots and spatial distribution between observed and GCM-HM simulated low flow (Q90) over 357 gauges for single HMs and the HM ensemble median for the historical time-period 1965-1995.

[Printer-friendly version](#)
[Discussion paper](#)
