

Simulated values correspond to median of the annual estimates calculated for the historical time-period 1966-1995. The colours of the dots denote the five GCMs used to drive the HMs. The map shows the spatial distribution of the relative bias between historical measurements and GCM-HM simulations.

Hydrol. Earth Syst. Sci. Discuss.,  
https://doi.org/10.5194/hess-2017-485-AC3, 2017  
© Author(s) 2017. This work is distributed under  
the Creative Commons Attribution 4.0 License.

## ***Interactive comment on “Climate change alters low flows in Europe under a 1.5, 2, and 3 degree global warming” by Andreas Marx et al.***

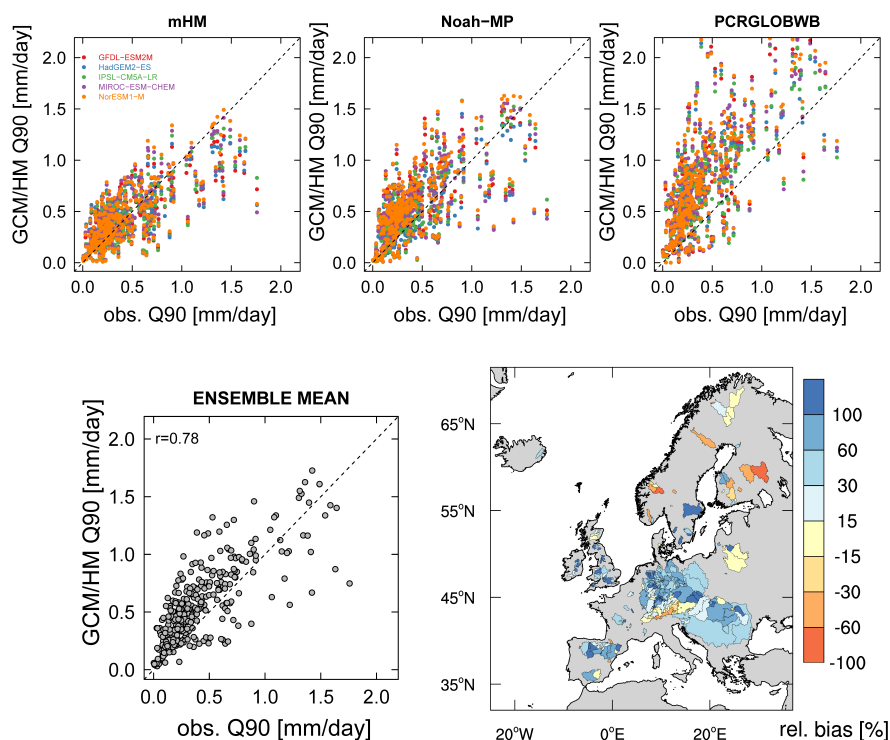
**Andreas Marx et al.**

klima@ufz.de

Received and published: 1 November 2017

Interactive comment on Hydrol. Earth Syst. Sci. Discuss., https://doi.org/10.5194/hess-2017-485, 2017.

C1



**Fig. 1.** Scatter plots and spatial distribution between observed and GCM-HM simulated low flow (Q90) over 357 gauges for single HMs and the HM ensemble median for the historical time-period 1965-1995.

C2