

HESS manuscript “hess-2017-47, Tree-, stand- and site-specific controls on landscape-scale patterns of transpiration” by Hassler et al.

Revision 2 – response in green.

We thank the referees for their valuable comments and suggestions as well as for their time and effort. We added our response directly below each comment.

a) Referee #1

The authors have much improved their manuscript from the original (version 1) submission, and have sufficiently addressed my previous concerns. I congratulate them on fine work and offer only a handful of minor suggestions:

1) page 1, line 19: I think “modelled” should be “measured”

“Modelled” is indeed meant here, in reference to the multiple regression models we use in the analysis. We changed “sap velocities” to “sap velocity and sap flow patterns” and hope that makes it easier to understand.

2) page 1, lines 21-23: This makes it sound like species and diameter were important for velocity but not for flow — but really it’s just that you didn’t include species and diameter in the regressions for flow. I understand that you made that choice because the variables would not be independent, but perhaps with a caveat to the reader (e.g. saying that some portion of the relationship between flow and DBH or species is inherent to the assumed allometric relationships), it would be better to include species and diameter (and height) in the flow regressions anyway. After all, the goal is to learn which controls are most important, and species and DBH are probably important controls. As written, the text suggests that flow is less related to DBH than velocity is, which is the opposite of the truth. The same issue affects page 13, line 14.

We agree that the phrasing sounds misleading, thanks for pointing it out. However, to be statistically sound, we will stick to our approach using only independent variables in the analysis for sap flow. We changed the sentences to make it clear to the reader what we mean by the importance of geology:

P.1 L.21-23 is now: “For sap flow, we included only the stand- and site-specific predictors in the models to ensure variable independence. Of those, geology and aspect were most important.”

P.13 L.14 is now: “For the sap flow models species and DBH were excluded as predictors because they were part of the calculation of sap flow. The resulting patterns were mainly controlled by site-specific characteristics; stand characteristics played a negligible role.”

3) page 1, line 30: delete the word “to” before “65%”.

Done.

4) page 1, line 31-32: We disagreed about this sentence in the original version, but let me make one more appeal. The day-night change in solar input is typically enough to make transpiration go from its maximum value to near zero, even without the action of stomata; so it seems incomplete to say that the main controls on transpiration are plant-physiological and soil characteristics, omitting sunlight and atmospheric conditions. The latter are clearly extremely important controls too; no model could omit them and hope to reproduce measurement transpiration patterns. I understand from your response to my first review that you were thinking of the atmosphere and sun as drivers and you wanted to list the ‘resistance’ factors here — but that is just not what the sentence says.

Thanks for clarifying what you meant. We changed the sentence to “While the main atmospheric drivers for transpiration are radiation and vapour pressure deficit, the most important terrestrial controls of this water flux are plant-physiological properties and soil characteristics.

5) page 2, line 32: delete “have been investigated”

Done.

6) page 2, line 41: I would use the word “effect” instead of “aspect” to avoid confusion with the landscape-scale characteristic category “aspect”

Thanks for pointing it out. We changed it.

b) Referee 2

Suggestions for revision or reasons for rejection (will be published if the paper is accepted for final publication)

The authors have included the conversion to sap flow as suggested in the previous review. However, there are a number of points which still need to be addressed. With regards to the analytical approach, the relationship with soil moisture should be better explored and Fig. 4 should be improved to better depict the complexity of the dataset (co-variation of species, geology, aspect, etc; see my comments below). Moreover, there are several points to improve in the discussion, mainly the interpretations of species and aspect effects.

Specific comments

P. 5., L. 8. Could you specify which oak species was the allometry below derived from?

Q. *petraea*, we added this information.

P. 6, L. 34. You have *Q. robur* and *Q. petraea* in your study site. Could you specify how many oaks from each species were measured in Table 1?

Both species probably co-occur in our study, as well as morphologically intermediate forms and possibly hybrids, which commonly happens in their overlapping distribution range (Elsner, 1993; Zanetto et al., 1994). No clear identification to species level was possible, therefore we termed the group “oaks”, aware that there might be both species and hybrids in the dataset, but still the physiological difference to beech should be distinct enough and the two main oak species in the study have been reported to show negligible differences in transpiration properties (Bréda et al., 1993). We added a sentence to clarify the oak group in the methods, P.4 L.15.

Bréda, N., Cochard, H., Dreyer, E. and Granier, A., 1993. Field comparison of transpiration, stomatal conductance and vulnerability to cavitation of *Quercus petraea* and *Quercus robur* under water stress. *Annals of Forest Science*, 50, 571-582.

Elsner, G., 1993. Morphological variability of oak stands (*Quercus petraea* and *Quercus robur*) in northern Germany. *Annals of Forest Science* 50 (supplement): 228s-232s.

Zanetto, A., Roussel, G. and Kremer, A., 1994. Geographic variation of inter-specific differentiation between *Quercus robur* L. and *Quercus petraea* (Matt.) Liebl. *Forest Genetics* 1(2): 111-123.

P. 8, L. 24-25. I think this analysis should be improved because soil moisture effects on transpiration are highly non-linear (Duursma et al., 2008) and here you're relying on linear correlations. Moreover, in analysing sap flow vs soil moisture individually you're not taking into account the variability due to variation in E_{pot} . I suggest that:

You calculate SF/E_{pot} , as sap flow relative to evaporative demand.

Optionally, rescale soil moisture values to relative values, obtaining relative extractable water or soil moisture deficit values (Granier et al. 1999; Granier & Loustau 1994)..

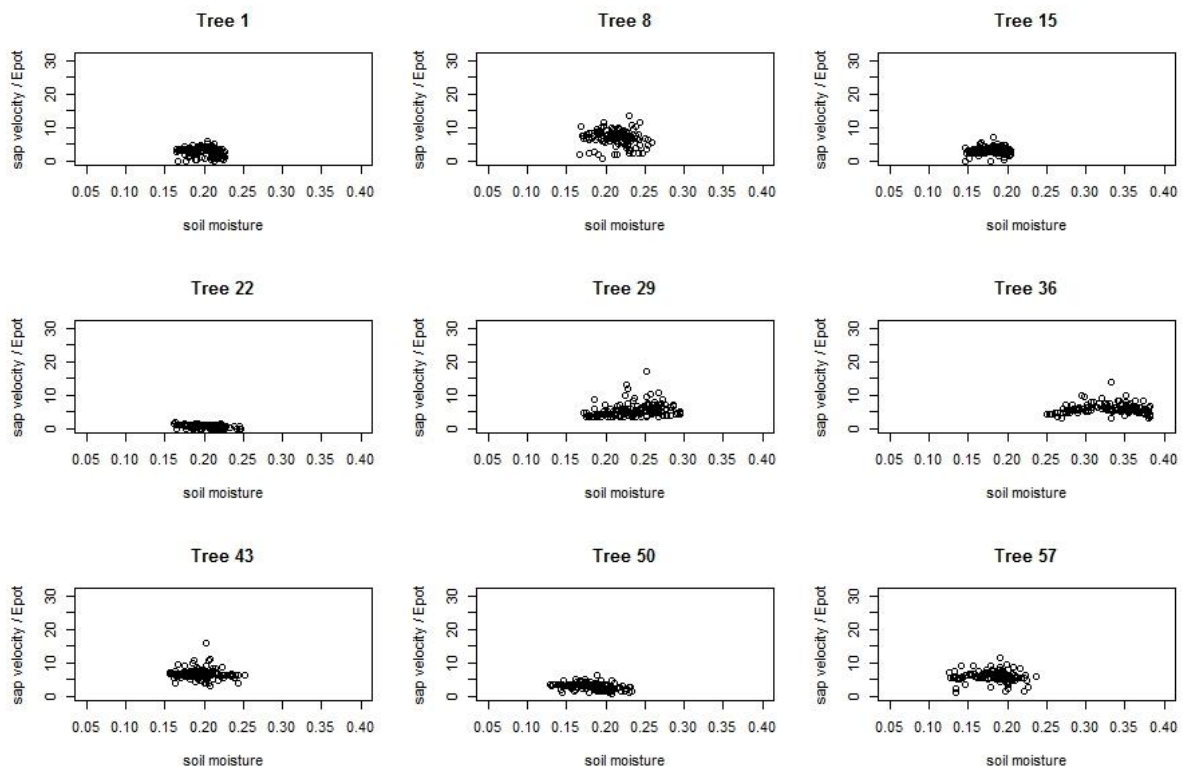
Plot SF/E_{pot} as a function of (rescaled) soil moisture and check whether there is a threshold below SF/E_{pot} starts to decline

Use an appropriate modelling approach to describe this behaviour: nonlinear models (e.g. sigmoidal, Sánchez-Costa 2015), piecewise/segmented regression (cf. Muggeo 2008) to detect possible breakpoints in this relationship, etc.

This analysis can be done to detect soil moisture effects both in the temporal and the spatial analysis.

We agree that soil moisture is bound to play an important role for transpiration and we do not cover it in great depth. First of all, a clarification: We show the Spearman rank correlations in our analyses, so even non-linear effects of soil moisture on transpiration should be detectable, but are not visible in our data.

We tried out your suggestion in case the strong correlation between E_{pot} and V_{sap} should mask a dependence on soil moisture. The following figure shows the plots of V_{sap}/E_{pot} and soil moisture for 9 exemplary trees. (y-axis range covers the range of all trees)



Response Fig. 1: Sap velocity relative to evaporative demand, related to soil moisture for 9 exemplary trees.

We do not see a clear threshold in these graphs, and the others that are not presented here also do not show such a threshold as an indication of drought stress in the year we sampled. As we would

expect a dependence of transpiration on water availability, this again points towards our suspicion that with measurements of soil moisture in the top 60 cm we do not cover all relevant sources of water for trees at our site.

We agree that studying dynamic water availability as limitations for transpiration is necessary to get a complete picture. One could imagine to also include groundwater levels and matric potential measurements in such an analysis. However, in the present study we want to focus on the time-invariant landscape-scale predictors for sap velocity and sap flow that could be readily used for modelling. We use E_{pot} and the soil moisture we have as comparisons, because they are well-known to drive transpiration dynamics but would rather not extend the soil moisture or water availability analysis in this study. We hope that with the explanations we gave in the manuscript in section 4.1 it is clear that we do not believe we know the full water availability story yet.

P. 8, L. 31. With regards to this section and also to Fig. 4, I already suggested in the previous review that grouping data by species (or by aspects in the first panel) would support some of the points you make (see my comment below on P. 12., L. 25-32)

We see your point but with Fig. 4 we really only want to give a first overview of possible univariate relations of the predictors with sap velocity, thus we would leave the figure as it is, as an exploratory glance at the data.

However, we agree with you that for some of the arguments we make in the discussion a bivariate graph is helpful, for example the one relating species, aspect and sap velocity that we showed in our first response (and to which you refer in your comment below on P.12, L. 25-32). We think it's more of an explanation though than part of the main analysis and therefore put it in an appendix as Fig. A1. We put a short reference to it for comparison in the discussion on P.13. Another figure depicting interrelations between the predictors is now in appendix Fig. A2, the comparison of E_{pot} separated according to aspect categories.

P. 10, L. 8-9. It seems that when you leave out species-specific predictors (compare Fig. 6 with Fig. 8), geology seems to gain a prominent role in explaining variability. Is there an association between species distribution and geological substrate that could explain this result?

Looking at species distribution and geology only (see Response Table 1), in the schist the species proportions are quite similar to the whole dataset, in the marls especially different. However, it is not straightforward to draw conclusions from this comparison only as the distributions of aspect classes, slope positions and stand characteristics also differ between the geological units. And even with the species-specific predictors removed, their influence is implicitly still present in the sap flow patterns that we calculated on the basis of species and DBH.

We therefore stick to the general result from the multivariate analysis, that geology plays an important role for sap flow (Fig. 8). Further support for reasons why this might be the case would need to be addressed in a targeted study, this cannot be clarified from our dataset.

Response Table 1: Number of trees and percentages (in brackets) of beech and oaks, referred to all sites or separated according to geological units:

Species	all trees	schist	marls	sandstone
B	39 (64%)	17 (65%)	4 (31%)	18 (82%)
E	22 (36%)	9 (35%)	9 (69%)	4 (18%)

P. 10, L. 20-30. You don't need to repeat the values of r , as they're already shown in Table 2.

Thank you for pointing this out. However, we feel that although being redundant, the numbers are actually helpful here because they show at a glance what we mean by the terms "strong", "weaker"

and “very weak” correlation, without having to look up the correct columns and rows in the table of 52 numbers, of which we only show a fraction of 7. We removed the definition of the significance level, this can easily be read in the table description, but would stick to showing the relevant r values, even if they are a bit redundant. However, we leave the decision about this issue to the editor.

P.10, L. 39 - p. 11, L. 1. Temperate tree species as the ones in this study will show declining transpiration rates with decreasing soil moisture below a certain threshold, and well before any visual sign of foliar water stress. The fact that in given localities water stress has been detected yet you don't find any soil moisture effect on sap flow rates seems a bit odd to me.

Yes, we would also expect sap velocities to decline when it gets too dry. However, we don't see this in our dataset despite the experience of the forest wardens that the beech trees on south-facing slopes in the schist did experience water stress in the past.

We can only make assumptions why this is the case. Either it was simply not dry enough in our sampling period to induce water stress or, which is very likely in our opinion, we don't see the correlation with soil moisture in the top 60 cm because these values are not representative for total water availability to the trees. We hope with the explanations we provide in section 4.1 we show that we don't claim to know the full story of water availability here. On the other hand, it is also not the main focus of our study.

P. 11, L. 2-10. I agree that we often lack the most complete picture of the available water sources for plants, but I suspect that the reason you're not detecting any soil moisture effect is because of the analytical approach employed (see my previous comment on the suggestion of S_f/E_{pot} analysis).

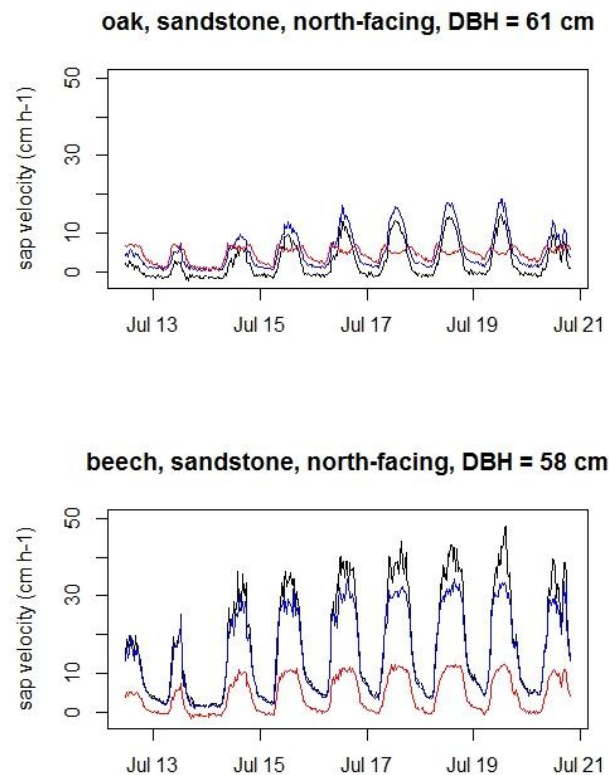
We followed your V_{sap}/E_{pot} analysis suggestion from your comment to P. 8, L. 24-25 to see if we are missing a soil moisture effect because it is masked by the strong correlation of sap velocity to E_{pot} . As we did not find clear thresholds in the graphs we cannot support the soil moisture effect with our data, although it is of course an issue. So, again, this most likely stems from our incomplete picture of water availability for the trees as we explained in the previous comment.

P. 11, L. 29 - 31. I already commented on this in my first review, and there are different issues to discuss here. First of all, the heat ratio method is well known to underestimate sap flow density as the method plateaus (loses sensitivity) at $\sim 45 \text{ cm}^3 \text{ cm}^{-2} \text{ h}^{-1}$ (Fuchs et al. ,2017, Vandegehuchte & Steppe, 2013). Deciduous *Quercus* have large earlywood vessels, highly conductive and possibly allowing large sap flow density values, compared to *Fagus*, which shows a diffuse porous wood anatomy. What I mean is that the HRM may be possibly missing these high sap flow densities in oaks and therefore leading to an underestimation.

Moreover, comparative studies between *Q. petraea* and *F. sylvatica* show higher sap flow density in the former (Aranda et al 2005), pointing towards higher sap flow density in deciduous oaks compared to beech. A rough estimation from published values for *Q. robur* (Bréda et al. 1993, Fig. 2) also shows mean daily values closer to $10 \text{ cm}^3 \text{ cm}^{-2} \text{ h}^{-1}$, higher than those shown in Fig. 4 for oak. There is an additional uncertainty arising from potential differences between oak species. Overall, these issues should at least be discussed when interpreting differences between beech and oak.

Thank you for your input to the species discussion. Looking at the non-averaged sap velocity data, we rarely seem to reach values above 40 cm h^{-1} , only on 52 of the 4.2 million data points, so overall we should be within the trustworthy measurement range of the sensors. The velocities for the oaks seem to plateau way before these values, and at lower values compared to beech (see Response Figure 2), so this points more towards a limitation for the actual transpiration than a sensor problem. But of course we cannot neglect the possibility of the sensors missing the flow in the highly conductive earlywood vessels. The comparison to values in Bréda et al. (1993) with mean daily values

around $10 \text{ cm}^3 \text{ cm}^{-1} \text{ h}^{-1}$ would suggest that even if the oaks exhibited higher velocities, it should not be outside the trustworthy measurement range of our sensors. And Bréda et al. also report only negligible differences in transpiration properties of the two main oak species in the study, so we presume that the contrast to beech should be more prominent.



Response Fig. 2: Sap velocity in the three sensor depths (red: 5 mm, blue: 18 mm, black: 30 mm) for a large beech and oak tree in the sandstone area.

Assuming we can trust our sensor readings in this regard, there might be several reasons for differences in species transpiration, such as the local stand site conditions, geological substrate determining rooting characteristics, etc. For example, the study by Aranda et al. (2005) was conducted at the edge of the distribution range of beech, in “one of the southernmost *F. sylvatica* populations in Europe”. Beech trees in the centre of the distribution range such as our study site might behave differently and outperform oaks, as suggested by Hölscher et al. (2005).

We agree that we should at least mention these issues, however, as it seems we are within the trustworthy measurement range of the sensors, we add a cautionary sentence in the methods, not the discussion (P.5, L. 8):

“The heat ratio method has been reported to underestimate high sap velocities (Vandegehuchte & Steppe, 2013; Fuchs et al., 2017), and the highly-conductive earlywood vessels in the ring-porous oaks might exhibit locally high velocities. However, the trees in our study rarely reach the reported critical values and the oaks seem to plateau at even lower values, which is unlikely to be the result of sensor limitations.”

Hölscher, D., Koch, O., Korn, S. and Leuschner, C., 2005. Sap flux of five co-occurring tree species in a temperate broad-leaved forest during seasonal soil drought. *Trees - Structure and Function*, 19(6): 628-637.

P. 12., L. 25-32. I find this reasoning a bit convoluted, because to explain the lower sap flow rates in

southern aspects, you're invoking long-term drought adaptations without having detected soil moisture limitation effect on sap flow. Moreover, you don't provide any reference supporting possible mechanisms for these drought adaptations and how they could possibly influence sap flow density patterns (e.g. changes in hydraulic conductivity, adjustments in leaf-to-sapwood area ratios, etc.).

We do know from the forest wardens in the area that at least for beech trees on the schist south-facing slopes, long-term water limitation does exist and mention physiological drought adaptation strategies for beech such as stomatal density changes but also vessel diameters and hydraulic conductivity variables in the methods (Hajek et al., 2016; Stojnić et al., 2015). However, we agree that as we do not see this limitation directly in our data period, the explanation that our sites do not represent extreme cases of south-facing vs. north-facing slopes, thus showing lower E_{pot} values and lower sap velocities/sap flow values on south-facing slopes seems to be more plausible. We change the paragraph accordingly (see also the response to your comment to P. 12, L. 40-42).

Hajek, P., Kurjak, D., von Wühlisch, G., Delzon, S. and Schuldt, B., 2016. Intraspecific variation in wood anatomical, hydraulic, and foliar traits in ten European beech provenances differing in growth yield. *Frontiers in Plant Science*, 7, no. 791.

Stojnić, S., Orlović, S., Miljković, D., Galić, Z., Kebert, M. and on Wuehlisch, G., 2015. Provenance plasticity of European beech leaf traits under differing environmental conditions at two Serbian common garden sites. *European Journal of Forest Research*, 134(6), 1109-1125.

I was thinking whether it could be an effect of oak, with lower sap flow density, being preferentially distributed in southern slopes, but I've seen in a response to Reviewer #1 that beech trees also show lower sap flow rates in southern aspects. I think that you should provide this information to the reader, not only to the reviewers, so the results can be discussed properly. One possible way would be to add conditioning factors (e.g. species, or aspect in the first panel) in the plots of figure 4. This is something I already proposed in the first version of the manuscript and which I mentioned in an earlier comment (on P. 8, L.31).

In response to your earlier comment we already stated that we consider Fig. 4 exploratory and it should only show univariate predictor response curves. However, considering the species effect on different aspects we added Fig. A1 to the appendix, and Fig. A2 for aspect.

You mention geology as a possible influence on these patterns. Do the southern slopes sampled correspond to schist substrate (which seems to be associated with lower sap flow density)? It is not clear whether you mean this in your explanation of lines 32-34 (P. 12).

Indeed we have a high proportion of south-facing slopes in the schist area (see Response Table 2) which is what we mean in the explanation. We changed it to hopefully make it clearer: "For example, the schist area holds a large proportion of south-facing slopes in our dataset and also has shallow soils due to the geological substrate, possibly exacerbating water limitation. "

Response Table 2: Number of trees and percentages (in brackets) in the three aspect classes, referred to all sites or separated according to geological units:

Aspect	all_trees	schist	marls	sandstone
north	17 (28%)	7 (27%)	0	10 (45%)
no-aspect	15 (25%)	1 (4%)	11 (85%)	3 (14%)
south	29 (48%)	18 (69%)	2 (15%)	9 (41%)

P. 12, L. 40-42. Then, E_{pot} is not higher in southern slopes so one should not expect higher sap flow as discussed in the previous paragraph. These results here are more consistent with the fact that sap flow was not higher in southern aspects. Maybe you should integrate this part of the discussion in a single paragraph (e.g. from P. 12. L. 25 to P. 13, L. 2), because the ideas are very tightly linked.

Thank you for suggesting this. We merged the two paragraphs and mention both possible explanations for the lower sap velocities, physiological adaptation and location of the trees in the study not representing strong contrasts between south-facing and north-facing slopes. We stressed that from our data the latter is more likely, however the former cannot be discarded either and the effects should be studied in more detail. We also changed the respective sentences in section 4.3 accordingly.

P. 13, L. 23-25. See the issues on species comparisons mentioned in the comment on P. 11, L. 29-31.

Please see response to your comment on P.11, L.29-31 above.

Tree-, stand- and site-specific controls on landscape-scale patterns of transpiration

Sibylle K. Hassler^{1,2}, Markus Weiler³, Theresa Blume²

¹Karlsruhe Institute of Technology (KIT), Institute of Water and River Basin Management, Karlsruhe, Germany

5 ²Helmholtz Centre Potsdam, GFZ German Research Centre for Geosciences, Section Hydrology, Potsdam, Germany

³University of Freiburg, Institute of Geo- and Environmental Natural Sciences, Chair of Hydrology, Freiburg, Germany

Correspondence to: Sibylle K. Hassler (sibylle.hassler@kit.edu)

Abstract. Transpiration is a key process in the hydrological cycle and a sound understanding and quantification of transpiration and its spatial variability is essential for management decisions as well as for improving the parameterisation and evaluation of hydrological and soil-vegetation-atmosphere transfer models. For individual trees, transpiration is commonly estimated by measuring sap flow. Besides evaporative demand and water availability, tree-specific characteristics such as species, size or social status control sap flow amounts of individual trees. Within forest stands, properties such as species composition, basal area or stand density additionally affect sap flow, for example via competition mechanisms. Finally, sap flow patterns might also be influenced by landscape-scale characteristics such as geology and soils, slope position or aspect because they affect water and energy availability; however, little is known about the dynamic interplay of these controls.

We studied the relative importance of various tree-, stand- and site-specific characteristics with multiple linear regression models to explain the variability of sap velocity measurements in 61 beech and oak trees, located at 24 sites [across](#) a 290 km²-catchment in Luxembourg. For each of 132 consecutive days of the growing season of 2014 we modelled the daily sap velocities and derived sap flow [patterns](#) of these 61 trees and determined the importance of the different [controls/predictors](#).

Results indicate that a combination of mainly tree- and site-specific factors controls sap velocity patterns in the landscape, namely tree species, tree diameter, geology and aspect. For sap flow [we included only the stand- and site-specific predictors in the models to ensure variable independence. Of those, ~~the site-specific characteristics~~ geology and aspect were most important. Compared to these predictors, spatial variability of atmospheric demand and soil moisture explains only a small fraction of the variability in the daily datasets. However, the temporal dynamics of the explanatory power of the tree-specific characteristics, especially species, are correlated to the temporal dynamics of potential evaporation. We conclude that transpiration estimates at the landscape scale would benefit from not only considering hydro-meteorological drivers, but also tree, stand and site characteristics in order to improve the spatial and temporal representation of transpiration for hydrological and soil-vegetation-atmosphere transfer models.](#)

30 1 Introduction

Transpiration makes up ~~to~~ 65 % of total terrestrial evapotranspiration and it is a key process in the hydrological cycle, but knowledge about transpiration fluxes in landscapes is still poor (Jasechko et al, 2013). [While the main atmospheric drivers for transpiration are radiation and vapour pressure deficit, the most important terrestrial](#)~~The main~~ controls of this water flux ~~in vegetated ecosystems~~ are plant-physiological [properties](#) and soil characteristics. The magnitude and dynamics of transpiration in turn affect the system's energy balance, soil water storage, groundwater recharge and stream flow (Barnard et al., 2010; Bond et al., 2002; Fahle and Dietrich, 2014; Moore et al., 2011; Pielke Sr, 2005). Spatial patterns of transpiration affect hydrological processes and feedbacks within the catchment and are therefore important to consider in distributed hydrological modelling. While most of these models rely on estimates of evapotranspiration gained from meteorological measurements, for example using the Penman-Monteith equation, a better representation of spatio-temporal

transpiration dynamics can inform model setups (Fenicia et al. 2016), serve for multi-response evaluation of models (Loritz et al., 2017; Scudeler et al., 2016) and improve model performance (Seibert et al. 2017). However, studies on the influences on spatial patterns of transpiration in landscapes are still scarce.

5 Methods to measure transpiration span a wide range of scales, from water and CO₂-exchange measurements on individual leaves to characterising the convective boundary layer which integrates transpiration at the landscape scale. At the plot and stand-level scale, eddy-covariance techniques are applied, whereas at the tree scale, measuring xylem sap velocity and deriving sap flow by including an estimate of the sapwood area is a common method. Determining transpiration of stands using sap flow entails the challenges of reliably estimating whole-tree water use and applying appropriate empirical relationships when upscaling to stands (Köstner et al., 1998). However, for the investigation of main controls for individual trees' water use, sap flow measurements are a suitable tool.

10 Atmospheric conditions and water availability are the main temporally variable abiotic controls for sap flow, influencing hourly, daily and yearly dynamics (Bovard et al., 2005; Clausnitzer et al., 2011; Ghimire et al., 2014; Granier et al., 2000; Oren et al., 1996; Schume et al., 2004). However, tree-, stand- or site-specific characteristics can also govern the magnitude of sap flow. At similar external conditions, different tree species show contrasts in sap flow due to their different hydraulic architectures and mechanisms for coping with water stress (Bovard et al., 2005; Gebauer et al., 2012; Oren and Pataki, 2001; Traver et al., 2010). Tree diameter and thus tree size and crown area affects not only sap flow rates, but also radial sap velocity patterns (Bosch et al., 2014; Hölscher et al., 2005; Lüttschwager and Remus, 2007; Vertessy et al., 1995). Within stands, variation in sap velocity can occur because of competition for light and water resources, depending on the species composition (Cienciala et al., 2002; Dalsgaard et al., 2011; Gebauer et al., 2012; Oren and Pataki, 2001; Vincke et al., 2005).

15 At the landscape scale, site-specific characteristics such as geology, soil type, soil depth or depth to groundwater, elevation, slope position and aspect could potentially control spatial sap flow patterns because of their influence on water and energy availability. Many of these characteristics can be derived from maps and digital elevation models and quantifying their importance is thus especially interesting for modelling purposes requiring landscape-scale transpiration. For instance, the geological setting and associated soil types determine soil water holding capacities, the location of the tree within the landscape's topography can influence its access to groundwater resources and the stand's microclimatic conditions, and differences of aspect also entail variation in energy input (Čermák and Prax, 2001; Vilhar et al., 2005). However, few studies have focused on the relative strength and possible temporal dynamics of these controls. While the impact of differences in accessible soil volume and groundwater depth on sap flow dynamics has been well described (Angstmann et al., 2013; Čermák and Prax, 2001; Tromp-van Meerveld and McDonnell, 2006), there have been few attempts to empirically use geological or soil units as large-scale proxies for water availability or potentially also for rooting depth limitations (Boer-Euser et al., 2016).

20 Slope position and elevation ~~have been investigated~~ as site-specific controls of sap flow that possibly influence soil characteristics and microclimate, have been investigated at a few sites. Bond et al. (2002) report no significant differences in sap flow with slope position for red alders and Douglas fir in Oregon, whereas Kumagai et al. (2007) found larger sap flux density values for cedars in a downslope stand compared to upslope trees; however, this effect was confounded by differences in tree size and stand structure, so that transpiration for the stands did not differ between the two slope positions. Similarly, in a drought-prone eucalypt forest in Australia, Mitchell et al. (2012) attribute lower sap flow values at their upslope plot compared to downslope positions to the differences in stand structure (lower basal area and sapwood area) and lower LAI. Otieno et al. (2014) compared two stands of subtropical evergreen forest in China at two different elevations and highlight the structural differences of the two stands, but did not find differences in stand transpiration. However, differences were found among individual trees and were attributed to tree size as well as social position of the crown. Jung et al. (2014) studied the elevation ~~effect~~ aspect in deciduous forests on a mountain slope in South Korea at three different elevations, at 450 m, 650 m and 950 a.m.s.l, and found a decrease of total annual canopy transpiration with elevation as a consequence of

decreasing length of the growing season, hence of differences in local climate. Maximum sap flux density of individual trees during clear-sky days, however, did not vary significantly due to these effects. Using a geostatistical approach, Adelman et al. (2008) studied a suspected influence on transpiration due to differences in water availability on a slope inducing contrasts in species composition, however they did not see this effect in the data, possibly because of overall seasonal dryness during the study period. Another study on controls of patterns of spatial autocorrelation in an extensive sap flow data found the clear species influence on transpiration patterns, however, the effect of a slope-related moisture gradient could not be confirmed (Loranty et al., 2008), adding to the contrasting findings about the influence of slope position on transpiration we see in the literature. Even though hillslope aspect at least partially controls radiation input, sap flow studies on the influence of aspect are scarce. In a simulation study, Holst et al. (2010) examined water balances for two beech stands on opposite slopes in Southwest Germany and found higher transpiration values for the south-west slope compared to the north-east slope, which the authors explained with the higher evaporative demand and higher precipitation input on that slope. Focusing on limits of atmospheric exchange, Renner et al. (2016) found that stand composition compensated differences in sensitivities of sap velocity to evaporative demand on the south- and north-facing slopes of a valley transect, which led to overall similar transpiration rates on both slopes.

To summarize, the reported studies have shown that in addition to the obvious atmospheric and tree-scale physiological controls, site-specific characteristics can influence sap flow patterns in a landscape. So far this influence has mainly been studied as individual plot comparisons or on a seasonal basis. However, this approach does not provide information on the possible short-term, day-to-day changes in the importance of the different controls as a consequence of varying hydro-meteorological conditions. Yet estimating the dynamics of the various controls of sap flow is essential for understanding and predicting spatial patterns of transpiration at the landscape scale. In this study we aim to explore daily spatial patterns of sap velocity and derived sap flow at the landscape scale, by applying multiple linear regression models, identifying the influence of tree-, stand- and site-specific characteristics that could be gained from maps or surveys and hence would be available for modelling purposes. We also examine the temporal dynamics of these influences and to what extent this can be linked to hydro-meteorological conditions. Our analysis is based on an extensive sap velocity dataset, measured on 61 beech and oak trees on 132 consecutive days in the growing season of 2014, spread over 24 locations in a 290 km²-catchment in Luxemburg.

2 Methods

2.1 Study site

The study site is located in the Attert catchment in western Luxemburg. The catchment covers three geological units (Fig. 1), predominantly Devonian schists of the Ardennes massif in the northwest, Triassic sandy marls, and a small area underlain by Luxemburg sandstone (Jurassic) on the southern catchment border (Martínez-Carreras et al., 2012). These different geological units gave rise to soils with different water retention properties. The soils on schists developed to haplic Cambisols, the soils on marls can be classified as different types of Stagnosols depending on their clay content of 20-60 % and the sandy textures on the Luxembourg sandstone gave rise to Arenosols. The soils were classified according to the WRB classification system (IUSS Working Group WRB, 2006) and described further by Sprenger et al. (2016). Plant available water was determined from mean water retention curves (using water tensions at 60hPa and 10^{4.2} hPa) based on 120 soil samples (Jackisch, 2015), amounting to 0.30 m³/m³ for Cambisols and Stagnosols and 0.25 m³/m³ for the Arenosols. However, the access to water is not only determined by the soil type. For example the Cambisols in the schist are very shallow and of high rock content. There are cracks filled with soil material in the underlying schist which could provide water for tree roots. The Stagnosols in the marls area are very clayey in the subsurface, probably limiting plant-available water resources and root penetration in these layers. We observed maximum rooting depths, averaged for each soil type, of

68 cm for the Cambisols, 90 cm for the Stagnosols and 98 cm for the Arenosols (Sprenger et al., 2016). Mean annual precipitation of the study area is approximately 850 mm (Pfister et al., 2000). Land use varies from mainly pasture and agriculture in the marls area, mainly forests in the sandstone to a mixture of agriculture and pasture on the plateaus and forests on the steep slopes of the schist area.

5 The catchment is the focus area of the CAOS (Catchments As Organised Systems) research unit which investigates landscape-scale structures, patterns and interactions in hydrological processes for model development (Zehe et al., 2014). A monitoring network of 45 sensor clusters was installed in 2012/2013, covering the different geological units, the land use types deciduous forest and pasture, different slope positions and aspects. Measurements at the individual sites include meteorological parameters such as air temperature and humidity (Campbell CS215) and solar radiation (Apogee
10 Pyranometer SP110) as well as soil moisture (Decagon 5TE) at three depths and three locations at each site. Sap flow is monitored with East30 Sap Flow Sensors at all 29 forest sites.

The forests covered by the monitoring network mainly consist of mixed deciduous stands with European beech (*Fagus sylvatica* L.), pedunculate and sessile oak (*Quercus robur* L. and *Q. petraea* (Matt.) Liebl., common hornbeam (*Carpinus betulus* L.) and a few maples (*Acer pseudoplatanus* L.) and alders (*Alnus glutinosa* (L.) Gaertn.). However, in this study only
15 the most common species, beech and oaks are considered. [Identification to species level was not possible for the two oak species as they both occur in the study area, show morphologically intermediate forms and possibly hybridised \(Elsner, 1993; Zanetto et al., 1994\). Our term “oak” refers to the whole group and we are aware that the oak species might differ somewhat in their transpiration characteristics, but the physiological contrast to beech trees should by far surpass these differences.](#)

20

Figure 1: Map of the study site, the Attert catchment in Luxemburg.

2.2 Sap velocity measurements and calculation of sap flow

25 The sites in the forest were characterised with a forest inventory on 20 x 20 m² plots, recording stem numbers, diameter at breast height (DBH) and basal area (BA) for all trees with a circumference of more than 4 cm, and tree height for a representative subset of the trees in the stand. Heights were gauged roughly as the canopy tops were not always clearly visible and we were interested in the social status of the trees rather than the precise height. Four trees per site were selected for sap flow sensor installation. The tree species and diameter were chosen to roughly represent the stand structure at the site
30 but also allow a comparison to other sites where possible. Sap flow sensors were installed at breast height on the north-facing side of the stem and protected with a reflective cover to minimise the effects of radiation-induced changes in stem temperatures. After removing the bark, holes for the sensors were drilled using a drilling guide to ensure parallel installation of the sensor needles. The sensors, manufactured by East30Sensors in Washington, US, use the heat ratio method with a central heater needle and a thermistor needle upstream and downstream of the heater. Each thermistor needle contains three
35 thermistors, at 5, 18 and 30 mm depth in the wood. Sap velocities (V_{sap} in m s⁻¹) at each of these locations are calculated from the temperatures measured at the corresponding thermistor pairs according to Eq. (1) (equations after Campbell et al., 1991):

$$V_{sap} = \frac{2k}{C_w(r_u+r_d)} \ln\left(\frac{\Delta T_u}{\Delta T_d}\right) \quad (1),$$

where k is the thermal conductivity of the sapwood, set to 0.5 W m⁻¹ K⁻¹, C_w is the specific heat capacity of water (J m⁻³ K⁻¹), r is the distance (m) from the heater needle to the thermistor needle (in our case 6 mm) and ΔT is the temperature
40

difference (K) before heating and 60 seconds after the heat pulse. Subscripts *u* and *d* stand for location upstream and downstream of the heater.

We corrected these values to account for wounding of the xylem tissue caused by the drilling according to the numerical model solutions for the heat pulse velocity method suggested by Burgess et al. (2001):

$$V_c = bV_{sap} + cV_{sap}^2 + dV_{sap}^3 \quad (2),$$

where V_c is the corrected sap velocity ($m\ s^{-1}$) and *b*, *c* and *d* are correction coefficients; for our 2 mm-wounds we use $b = 1.8558$, $c = -0.0018\ s\ m^{-1}$, $d = 0.0003\ s^2\ m^{-2}$ (Burgess et al., 2001). We used daytime sap velocity, averaged over a 12-hour window from 8am to 8pm. Our sensors provide measurements at three depths (5, 18 and 30 mm) within the sapwood, but because the sensors were not always ideally installed in the sapwood, we use the maximum value of these three depths' velocities for the sap velocity part of our analyses. [The heat ratio method has been reported to underestimate high sap velocities \(Vandegehuchte & Steppe, 2013; Fuchs et al., 2017\), and the highly-conductive earlywood vessels in the ring-porous oaks might exhibit locally high velocities. However, the trees in our study rarely reach the reported critical values and the oaks seem to plateau at even lower values, which is unlikely to be the result of sensor limitations.](#)

Calculation of sap flow from sap velocity requires estimates of sapwood area and bark thickness. Sapwood area was calculated using the power law function for sapwood area based on DBH which was originally developed by Vertessy (1995). Coefficients for beech were taken from Gebauer et al. (2008), and for oak (*Q. petraea* (Matt.) Liebl.)-from Schmidt (2007), yielding the following equations:

$$A_{S_B} = 0.778 * DBH_B^{1.917} \quad (3)$$

$$A_{S_O} = 0.065 * DBH_O^{2.264} \quad (4)$$

with A_S for the sapwood area (cm^2), *DBH* is the diameter at breast height (cm), and subscripts are O for oak and B for beech.

The next step was to calculate the sapwood depth. From the whole-tree diameter we first subtracted an estimate for the bark to consider only the sapwood and heartwood part of the stem in the subsequent calculations. Bark thickness was estimated according to empirical relations developed by Rössler (2008):

$$d_{b_B} = 2.61029 + 0.28522 * DBH_B \quad (5)$$

$$d_{b_O} = 9.88855 + 0.56734 * DBH_O \quad (6)$$

where d_b is the double bark thickness (mm), *DBH* and subscripts are analogous to Eq. (3) and (4).

Then we calculated the depth of the sapwood-heartwood boundary. As our sensors measure at the three depths 5, 18 and 30 mm, we assigned the corresponding velocities to the stem sections 0-15 mm, 15-25 mm and assumed a linear decline from 25 mm depth the up to the sapwood-heartwood boundary, using the 30 mm velocity as the maximum value of the linear decline (as used by Renner et al., 2016). The linear decline mainly applied to beech trees, as most of the smaller oaks' sap velocities at 30 mm depth were already zero. Daily sap flow for each tree was then derived by multiplying each depth's sap velocity (averaged over the 12 hours from 8am to 8pm as we did before) with the respective sapwood area sections.

We included sap flow in our analyses because, compared to sap velocity, it provides a better estimate of tree transpiration and is usually more of interest for hydrologists. It needs to be noted that the calculation relies on the published species-specific empirical relationships for sapwood area based on tree diameter (eg. Gebauer et al., 2008; Meinzer et al., 2005; Vertessy et al., 1995). Other potential controls on transpiration such as topography or geology as proxies for rooting depth or water availability are not considered in these equations. As site characteristics can induce ecophysiological adaptations, for example in tree functional traits such as stomata density, ~~or~~ xylem vessel [diameters or hydraulic conductivity numbers](#) (Hajek et al., 2016; Stojnić et a., 2015), sapwood area properties might be similarly adapted to site conditions. However, to our knowledge there are no studies at the landscape scale yet which examine these adaptations.

Sap velocity is independent of these considerations; therefore, we mainly focus our analyses on this variable and use sap flow as a tentative comparison. For a more reliable way of estimating sap flow influences in a diverse landscape, the sapwood area would need to be measured directly for each tree.

2.3 Auxiliary variables: estimating potential evaporation and water availability

The main environmental limitations to sap flow are the atmospheric conditions (the solar heating of the leaves, water vapour pressure deficit, etc.) as the driving gradient for transpiration and the water supply to the trees. We assess these influences by using a thermodynamically derived measure for potential evaporation E_{pot} which has been recently developed by Kleidon & Renner (2013) as well as the soil moisture observations at each sites as a measure of water availability.

Soil moisture was measured in three profiles per site at 10 cm, 30 cm and 50 cm depth. For our analyses we took the average across all depths and profiles to estimate the average soil moisture in the top 60 cm for each site.

E_{pot} was calculated as follows (Kleidon & Renner, 2013):

$$E_{pot} = \frac{1}{\lambda} \frac{s}{s+\gamma} \frac{R_{sn}}{2} \quad (7)$$

where $\lambda = 2.5 \cdot 10^6 \text{ Jkg}^{-1}$ is the latent heat of vaporisation, s is an empirical approximation of the slope of the saturation vapour pressure curve, calculated as $s = s(T) = 6.11 \cdot 5417 \cdot T^{-2} \cdot e^{19.83-5417/T}$, with the temperature T (K). The psychrometric constant was approximated as $\gamma \approx 65 \text{ PaK}^{-1}$, and R_{sn} (W/m^2) is absorbed solar radiation. The air temperature was taken from the measurements within the stands at the forest sites. This gives room for some error, as the below-canopy temperature will differ from the above-canopy temperature. However, the temperature does not have very strong leverage in Eq. (7) and we would expect even larger errors if we were to use air temperature from nearby grassland sites because of the differences in microclimate and energy balance for the different land covers. Solar radiation features more prominently in the equation and therefore needs careful estimation. We use an approach deriving the above-canopy radiation from the digital elevation model of the catchment, using the GRASS GIS package `r.sun`. This method corrects for latitude, day of year and topography and corresponds well with the measured radiation at the pasture sites for cloudless days. Dividing the `r.sun`-estimated radiation values with the measured radiation values at each pasture site yields correction factors for actual cloud conditions for each day. We apply this cloud correction to the `r.sun` values for the forests, using the pasture site that is closest to the respective forest sites. These latitude-, topography- and cloud-corrected radiation estimates are then used for calculating E_{pot} . Studying transpiration along a hillslope transect, Renner et al. (2016) found E_{pot} comparable (if slightly underestimating) to a traditional Penman-Monteith approach and also tested for effects of vapour pressure deficit and wind speed. The results did not show distinct effects, hence we used E_{pot} as a robust measure which is appropriate to the available atmospheric measurements in our study. We also used radiation measurements within and outside the stands to determine the period when the canopy is fully developed and only use this period for our analyses. For the year 2014 this period lasted from the 11th of May to the 20th of September amounting to 132 days.

2.4 Data analysis

We selected a dataset of continuous sap velocity measurements from 61 trees located at 24 of the altogether 29 forest sites in the CAOS dataset. Each of the monitored trees was associated with tree-, stand- and site-specific properties. Tree-specific properties were the species, diameter at breast height (DBH) and tree height, whereas the stands were characterised by the measurements undertaken in the forest inventory, namely basal area (BA) and median DBH of the stand as well as the number of stems recorded on the inventory plot. Additionally, there were several landscape attributes which could be associated with the monitored trees such as their position within one of the three geological units, their location on a hillslope and the aspect of that slope. These attributes could be considered as proxies for associated soil properties and energy availability influencing water availability and potential evaporation. The site characteristics and species entered the linear models as categorical variables. An overview of the dataset is shown in Table 1, whereby the class “no-slope” for

slope position refers to slopes of less than 5°, which are located in the marls area. The class “no-aspect” for aspect includes the same sites, however additionally flat downslope parts of four slopes in the schist and sandstone areas. Both classes probably describe landscape positions with shallower depth to groundwater than the other sites.

5 **Table 1: Overview of characteristics associated with the trees in the sap velocity dataset. These are used as predictors in the multiple linear regression. Abbreviations are DBH for diameter at breast height, BA for basal area of the stand.**

Potential evaporation and water availability are usually considered as main external dynamic controls of sap flow, so we examined their importance for the temporal variability in sap velocity by correlating the time series of sap velocity with
10 E_{pot} and soil moisture, using the Spearman rank correlation. However, we were interested primarily in the spatial variability of sap velocity as a way to determine influences on transpiration patterns at the landscape scale. We assessed this by examining the spatially distributed dataset of daily-averaged sap velocity of the 61 trees, for each of the 132 days of our study period.

In a first step, we examined the individual influence of the different tree-, stand- and site-specific controls listed in Table 1
15 and of the external controls soil moisture and E_{pot} on sap velocity at the respective forest sites, averaged across the study period, separately for each tree. This first analysis ignored multivariate interactions to get a simplified overview of the data; hence effects seen in these comparisons should not be over-interpreted. For the categorical variables (species, geology, slope position and aspect) we also looked at possible temporal changes of differences in sap velocity between the categories by testing daily datasets with the Mann-Whitney-U or the Kruskal-Wallis test, for variables consisting of three or two
20 categories, respectively, to a significance level of $\alpha=0.05$.

The multidimensional effect of all tree-, stand- and site-specific influences was then analysed with multiple linear regression models separately for each day. This modelling approach is meant to explore the main controls of sap velocity or sap flow patterns, but at this stage we do not aim at predicting these spatial patterns. The response variable for each of the 132 daily models was the log-transformed daily sap velocity of each tree, because the logarithmic values corresponded better
25 to a normal distribution. The linear regression model can be expressed as

$$\ln(V_{sap}) = \beta_0 + \sum_{i=1}^n \beta_i x_i, \quad (8)$$

with n predictors (x_0, \dots, x_i), and the regression coefficients (β_0, \dots, β_i) estimated to obtain an optimum fit.

Before applying the regression models, we checked the predictors for collinearity by determining the correlation matrix. There was only one combination of predictors with a Spearman rank correlation coefficient above the widely employed
30 critical value of collinearity, $|\rho| > 0.7$ (Dormann et al., 2008; Tannenberger et al., 2010), the number of stems and median diameter of the stand, at $\rho = -0.73$. The effects of this correlation on the linear models was tested by running the models for both the original set of predictors and again, leaving out number of stems. As the results did not differ with respect to the variance contributions of the different predictors, we kept all predictors in the final analysis. We also did not include interaction terms in the final models because after testing with various interactions, these did not contribute much to the
35 explained variance.

Although a step-wise simplification of the models using the Akaike information criterion led to a higher percentage of explained variance by the models, we refrained from using this simplification in order to keep the model structures similar for each day to allow comparability of the temporal, day-to-day changes in predictor importance. For prediction, the potentially best model would be more appropriate, however, in our exploratory analysis we focused on comparability. The
40 relative importance of the predictors for explaining the observed variance of sap velocity or sap flow was assessed using the approach of Grömping (2007), made available in the R package ‘relaimpo’. Of the different built-in methods to determine relative importance we used ‘lmg’. This method uses sequential sums of squares from the linear model, applies all possible orderings of regressors, and obtains an overall assessment by averaging over all orders, which is deemed appropriate for

causal interpretation and unknown weights of the different predictors (Grömping, 2007). The initial order of the predictors in the linear models is not relevant for the relative importance as orderings are shuffled.

Overfitting can be a problem in linear models with many predictors. We checked for this by performing a comparison between the residual standard error (RSE) of the original models and the root mean square error (RMSE) of a 10-fold cross validation (Fig. 2). In case of overfitting, the RMSE of the cross-validation should be much higher than the RSE. In our case, both error measures differed only marginally and were largest when sap velocities were small. These were the days when the linear model generally failed to explain the variance in the datasets. For days with high sap velocities, the small errors as well as the small difference between RSE and RSME indicated that the models are not overfitted. Additionally, Figure 2 showed that limiting the analysis to the period of fully developed canopy excludes periods of larger errors at the beginning and end of the season.

Figure 2: Comparison of residual standard error of the original linear models (LM-RSE) and the root mean square error of a 10-fold cross validation (CV-RMSE), in relation to mean and standard deviation of daily sap velocities (V_{sap}). The dashed lines depict the analysis period with a fully developed canopy which we determined from radiation analyses as described in section 2.3.

The linear models for sap velocity give an indication about possible controls of transpiration; however, a more intuitive measure for transpiration is sap flow. Therefore, as an indication of how the actual transpiration patterns are influenced by site- and stand-specific characteristics, we repeated the multiple linear regression analysis with derived sap flow dataset. The calculation from sap velocity to sap flow is based on the species-specific relations between sapwood and DBH, so we did not use Species, DBH and Height as predictors in the linear models for sap flow as they are not independent anymore. We only used the remaining stand- and site-specific predictors as well as E_{pot} and soil moisture.

We analysed the temporal dynamics of the variance contributions of the individual predictors and of the proportion of variance explained by all the tree-specific predictors (only for sap velocity) taken together, all the stand-specific predictors taken together, and all the site-specific predictors taken together. We also correlated these time series to catchment-averaged time series of soil moisture and E_{pot} as indicators of general atmospheric demand and water availability, using the Spearman rank correlation. All statistical analyses were carried out in the language and environment R (R Development Core Team, 2014).

3 Results

3.1 Controls of temporal dynamics of sap velocity

Correlations of time series of sap velocity for each tree with E_{pot} and soil moisture yielded high positive and significant ($\alpha=0.05$) Spearman rank correlations for E_{pot} , but correlations to soil moisture were slightly negative and very weak (Fig. 3).

Figure 3: Histograms of temporal correlations between (a) E_{pot} and (b) soil moisture at each site with sap velocity for the 61 trees in the dataset. The small numbers in grey on top of the bars indicate how many of the correlations in the specific group are significant.

3.2 Controls of spatial patterns in daily mean sap velocity and sap flow

A first simplified overview of the influence of the various factors on sap velocity patterns was derived from plotting sap velocity, averaged over the entire study period for each tree, against the factors or their respective categories (Fig. 4). Obviously, this graph neglects the combined influence of the interplay of all these factors, but yields a first overview of the data and possible relations. For example, the difference between higher sap velocities in beech trees compared to oaks can be

seen as well as a possible positive relation between sap velocity and DBH or tree height. In the category Aspect, the boxplots show a difference between higher sap velocities on north-facing slopes compared to south-facing ones, with trees located in plains having somewhat intermediate velocities.

5 **Figure 4: Univariate influence of each predictor on sap velocity means for each tree over the entire study period. Boxplot parameters are as follows: the horizontal line within the box visualises the median, boxes comprise data between the 1st and 3rd quartile of the data, whiskers reach to $1.5 \times$ the interquartile range outside the box (or to the maximum/minimum value if smaller/larger), circles stand for outliers/data points outside the whiskers, notches show approximately 95% confidence intervals around the medians.**

10

The categorical factors were assessed in more detail looking at temporal changes in sap velocity differences. Statistical tests (Mann-Whitney-U for two and Kruskal-Wallis for three categories, $\alpha = 0.05$) applied to the sap velocity datasets for each day for the example of the categorical factors geology, species, slope position and aspect showed significant differences (Fig. 5). There is in particular a significant difference between south- and north-facing slopes and between beech and oak trees for most days of the dataset (Fig. 5), providing a first indication of the importance of both tree- and site-specific influences. In contrast, there were only 36 of 132 days showing significant differences for geology and 25 days for slope position, occurring when sap velocities were generally low.

15

20 **Figure 5: Differences between sap velocities depending on (a) geology, (b) species, (c) slope position and (d) aspect. Lines show average dynamics of each class. Asterisks at the bottom of the panels indicate significant differences for that day according to Mann-Whitney-U or Kruskal-Wallis tests at $\alpha = 0.05$, for differences between the two or three categories, respectively.**

In a more comprehensive approach, we assessed the combined effect of the various tree-, stand- and site-specific influences on sap velocity with the help of multiple linear regression generating 132 daily models describing the spatial patterns. The total explained variance for the sap velocity models ranged from 20%, on days when the models fail to explain the spatial variability in the dataset, to 72%, which constitutes fairly good explanatory power (Fig. 6). The total explained variance correlated strongly with catchment averages of sap velocity (Pearson's $r = 0.84$, $p < 0.001$), especially at sap velocities $> 7 \text{ cm h}^{-1}$ (Fig. 7). Spatial variability of sap velocity in the catchment, expressed as standard deviation of the daily values for the 61 trees, also increased with increasing mean sap velocity (Pearson's $r = 0.98$, $p < 0.001$; Fig. 7). The consistent model structure showed that the change in the proportion of explained variance over time was different for the various predictors (Fig. 6). Averaged across the 132 daily models, 9% of the variance was explained by species, 9% by DBH and 4% by tree height. Characteristics of the stand yielded 1% for BA, 1% for median DBH, 4% for number of stems, and the site-specific predictors amounted to 2% for slope position, 4% for geology and 6% for aspect. The external dynamic controls of sap flow, E_{pot} and soil moisture, explained 7% and 3% of the variance in daily sap velocity patterns, respectively.

25

30

The contribution of the different predictors to the overall explained variance of the linear models varied strongly from day to day. On days when average and spatial variability of sap velocity was low the models performed badly. There were some predictors which showed larger fluctuations, for example species, compared to more constant contributions from predictors like the number of stems or DBH (Fig. 6).

35

40 **Figure 6: Proportion of variance explained by the different predictors in the daily linear models of spatial sap velocity patterns: 132 daily models from 61 trees at 24 sites.**

45 **Figure 7: (a) Explained variance of the linear models in relation to mean sap velocities for all 132 days of the study period and (b) standard deviation of sap velocity depending on mean sap velocities for those 132 days.**

The multiple linear regression models for sap flow patterns explained between 18 and 56 % of the variance in the daily datasets (Fig. 8), on average 49 %. Averaged across the 132 daily models, the stand-specific predictors explained 8 % of the variance (4% by BA, 1% by median DBH and 3 % by the number of stems), the largest contribution came from geology with 21%, then aspect with 10%, while slope position only explained 3%. E_{pot} and soil moisture explained 7 % and 1 % of the variance, respectively, which is comparable to their contributions in the linear models for sap velocity patterns.

Figure 8: Proportion of variance explained by the different predictors in the daily linear models of spatial sap flow patterns: 132 daily models from 61 trees at 24 sites.

10

The variance contributions stayed fairly constant in time, except for days when the models failed to explain the spatial variability in the data altogether (Fig. 8). Compared to the linear models for sap velocity, the models for sap flow had less explanatory power. The contributions of the stand-specific predictors were not very important, similar to the results for sap velocity. For the site-specific controls, the largest contribution came from geology, less from aspect; in contrast, in the sap velocity models, aspect explained a larger proportion of the variance than geology (Fig. 8).

15

3.3 Temporal dynamics of predictor importance

Comparing the dynamics of the proportion of variance explained by all the tree-specific predictors taken together, all the stand-specific predictors taken together, and all the site-specific predictors taken together to the catchment-average dynamics of E_{pot} and soil moisture (Fig. 9) showed that the stand- and site-specific predictors' contributions stayed relatively constant apart from the days when the model failed. This was the case for both the sap velocity and the sap flow models. In contrast, the tree-specific predictors in the sap velocity models varied to a greater extent. Visual comparison indicated a link between fluctuations of tree-specific influences and potential evaporation (E_{pot}), but not soil moisture (Fig. 9).

25 **Figure 9: Explained variance of the daily linear models, separated according to the predictor groups used in the regression, (a) for sap velocity and (b) for sap flow. (c) Catchment average of soil moisture and potential evaporation E_{pot} .**

The Spearman rank correlations of the predictors' explained variance with E_{pot} and soil moisture, listed in Table 2, also confirmed that changes in species influence in the sap velocity were strongly linked to changes in E_{pot} , with a significant correlation (at $\alpha=0.05$) of $r = 0.81$. Further weaker but significant correlations were detected between E_{pot} and number of stems at $r = 0.50$, aspect at $r = 0.67$ and soil moisture at $r = 0.55$, respectively. Summarised into categories, the influence of tree-specific predictors strongly correlated with E_{pot} ($r = 0.86$); similarly, there was a strong correlation of the overall explained variance with E_{pot} ($r = 0.84$). Some of the correlations with soil moisture were significant, but they were mostly weak, with $|r| \leq 0.37$.

35 In the sap flow models, the only significant correlations worth mentioning were between E_{pot} and aspect and between E_{pot} and the overall explained variance, at $r = 0.57$ and $r = 0.72$, respectively.

Table 2: Spearman rank correlation between the time series of the different predictors' explained variance and the time series of potential evaporation (E_{pot}) and soil moisture. Values in bold italics are significant correlations (at $\alpha=0.05$).

4 Discussion

4.1 Controls of temporal dynamics of sap velocity

The strong positive temporal correlation of sap velocity and E_{pot} (Fig. 3) confirms the well-known role of the atmospheric controls as main external drivers for transpiration (Bovard et al., 2005; Clausnitzer et al., 2011; Granier et al., 2000; Jonard et al., 2011). Soil moisture on the other hand did not affect the temporal dynamics of sap velocity in a similar way (Fig. 3). One reason for this surprisingly weak relation could be that water is not a limiting factor for transpiration in this landscape, or at least not during the observed time period. ~~For example, in~~ In the schist area of the catchment, anecdotal evidence given by forest wardens suggests that beech trees on south-facing slopes are indeed water-stressed during dry, hot summer months, although in our data we did not see a limitation of sap velocity for the beech trees. A different explanation for the lack of correlation is that soil moisture in the top 60 cm of the soil profile is simply not a sufficiently good proxy for water availability. In the soils of the schist there might be additional water resources stored in the weathered bedrock or the schist fractures which could be accessible to roots reaching deeper than the maximum rooting depths estimated from power drill cores in the study area (Sprenger et al., 2016). In the deep sandstone soils with maximum observed rooting depths of 98 cm in the drill cores (Sprenger et al., 2016) roots could also reach deeper, exploiting larger soil volumes or possibly tapping groundwater. The mostly flat marl areas exhibit shallow groundwater tables, so water limitation is unlikely for longer periods during the year. Thus, although water availability is an important boundary condition for transpiration, soil moisture measurements for the top 60 cm might not be an appropriate proxy, and including available information on groundwater levels or also soil moisture in deeper layers could be useful in that regard.

4.2 Controls on spatial patterns in daily mean sap velocity and sap flow

Even from the simplified univariate assessment, the influence of characteristics such as species, DBH and aspect on spatial sap velocity patterns is visible (Fig. 4). In the more comprehensive approach applying multiple linear regression models to the daily sap velocity datasets, the combined effect of tree-, stand- and site-specific predictors surpasses by far the explanatory power of the boundary conditions, as E_{pot} and soil moisture (Fig. 6) together explained only around 10% of the variance in sap flow patterns (Fig. 6). From the larger spatial variability of soil moisture (average of spatial standard deviation of 5 Vol.%, compared to an average of temporal standard deviation of 2 Vol.%) some influence on spatial sap velocity patterns might have been expected. But similar to the lack of temporal correlation with soil moisture, the lack of importance for spatial variability could result from the fact that measurements in the top 50 cm of the soil column were not meaningful to assess water availability at the sites or that a soil moisture limitation was not occurring in the observation period. E_{pot} held larger explanatory power, but compared to the importance for temporal variability in sap velocity, the spatial effect was very small, possibly because the range of spatial variability in E_{pot} is much smaller. (The average of spatial standard deviation of E_{pot} was 0.18 W m^{-2} , whereas the average of its temporal standard deviation was 0.73 W m^{-2}). The same argument holds true for the similarly low proportion of explained variance by E_{pot} in the linear models for sap flow. This suggests that spatial patterns of (evapo)transpiration for distributed hydrological models based on meteorologically-derived estimates only reflect a small part of the spatial variability of measured transpiration.

The explained variance of the tree-specific characteristics amounted to 22 % averaged over the 132 sap velocity models (Fig. 6). Mechanisms underlying the differences in sap flow related to species, tree diameter and height have been studied in great detail in the field of tree physiology. The species contrast in our case consists of higher sap velocities for beech, as beech shows physiological advantages in transpiration efficiency and outperforms oaks in sufficiently moist conditions (Hölscher et al., 2005). Sap flow contrasts are even more pronounced because the active sapwood of oaks is limited to the outermost few annuli whereas for larger beech trees it can easily reach a depth of 7 cm or more (Gebauer et al., 2008). This limitation for oaks is visible in the species-specific allometric equations for sapwood area (Eq. 3 and Eq. 4), but additionally,

sap velocity in the innermost of our sensors (at 30 mm into the tree) was frequently zero for oaks. As expected, forest species composition is a major determinant of transpiration patterns (eg. Hernandez-Santana et al., 2015, Loranty et al, 2008).

Tree height and DBH contrasts probably reflect the differences in social status, with larger, dominant trees reaching higher transpiration values than understorey trees. That larger trees, both taller and with larger DBH, exhibit higher sap velocities is likely due to their associated larger canopy and root volume, ensuring on the one hand the exposure of the leaves to the atmospheric gradient, on the other hand having access to a larger soil volume and potential water supply (Bolte et al., 2004; Nadezhdina and Čermák, 2003). For sap flow, the contrasts are again even larger than for sap velocity, because not only is larger DBH associated with larger velocities, but according to Eq. 3 and Eq. 4, larger DBH also entails larger sapwood area, multiplying the effect of the sap velocity differences. Implementing spatial patterns of tree sizes into hydrological models could be attempted using mapped information from forest inventories, management plans or even LiDAR images (Ibanez et al., 2016; Rabadán et al., 2016; Vauhkonen et al., 2015). The stand density, expressed as the number of stems, explained on average 4% of the variance in the daily models for sap velocity and 3% for sap flow. Decreasing sap velocities with increasing stand density hints at the competition for light and resources among individual trees (Cienciala et al., 2002; Dalsgaard et al., 2011; Gebauer et al., 2012; Oren and Pataki, 2001; Vincke et al., 2005). However, due to this small contribution the linear models, the stand-specific influence should not be over-interpreted. Basal area contributed on average 4% to sap flow models and hints at the same mechanisms as stand density.

The site-specific predictors together explained on average 12% of the spatial variance in the sap velocity models and 34% in the sap flow models (Fig. 6 and 8). Landscape characteristics such as topography and geology will control sap velocity patterns of otherwise homogeneous forests because they influence spatial patterns of either water or energy availability. Topography primarily controls radiation input, and to some extent water availability through depth to groundwater and soil characteristics, while geology mainly controls root distribution and water availability because it determines the depth to bedrock, depth to groundwater as well as soil type and soil depth. The effect of soil depth on transpiration, for example, has been shown by Tromp-van Meerveld and McDonnell (2006) for soils of the same type on the Panola hillslope, and the contrasts between different geological units in the Attert basin are likely to be even more pronounced. The soils in the schist area are very shallow, restricting rooting depth to an average of 68 cm (Sprenger et al., 2016). Together with moderate values for plant-available water (Jackisch, 2015), which are probably even lowered by the high rock content, this could lead to the smaller sap velocities in the schist compared to the sandstone or marls. These differences in soil depth and water retention characteristics manifest in differences in hydrological characteristics such as water storage dynamics, leading to contrasting runoff generation mechanisms for schist, marls and sandstone areas in the Attert catchment (van den Bos et al., 2006; Wrede et al., 2015). In turn, these geology-induced contrasts in depth to groundwater and water storage control tree access to these water reservoirs and favour species with adapted rooting systems (Dalsgaard et al., 2011), thus introducing a landscape-scale effect on sap flow. We see this effect in the sap velocity models and even larger in those for sap flow, suggesting that including geological maps into distributed hydrological models could be helpful not only for soil and bedrock characteristics but also for transpiration patterns.

The influence of aspect (Fig. 6 and 8) was mainly due to the south-facing slopes having smaller sap velocities and sap flow values compared to north-facing slopes (Fig. 5d). This is an apparent contradiction to the expectation that the larger energy input on the south-facing slopes should induce larger transpiration values. One explanation could be that ~~Possibly,~~ energy input ~~—which would be larger on south-facing slopes—~~ is not ~~a the-limitingcritical~~ factor for transpiration in this landscape, ~~but—~~ On the contrary, larger energy input on south-facing slopes might make them more prone to water limitation (Holst et al., 2010), especially when combined with other limiting factors. For example, the schist area holds a large proportion of south-facing slopes in our dataset and also has shallow soils due to the geological substrate, possibly exacerbating water limitation. such as the shallow soils in the schist area (which holds a large proportion of the south facing slopes in our dataset). However, as we did not see acute signs of water limitation in our data, the contrast in sap velocities due to aspect

would have to be long-term physiological adaptations [\(Hajek et al., 2016; Stojnić et al., 2015\)](#) to the drier conditions on south-facing slopes [\(as they are reported by forest wardens\)](#). The dominance of geology compared to aspect in the sap flow models could ~~possibly also then~~ result from a physiological effect of aspect influencing sapwood area or wood properties which would then already be considered in the sap flow values, leaving geology as an independent predictor more important for spatial patterns in sap flow. [A second explanation for the higher sap velocity and sap flow values on north-facing slopes](#) ~~—There is an apparent discrepancy between the influence of aspect, with stems from higher sap velocity (similarly for sap flow) values on north-facing slopes (irrespective of species, see appendix Fig. A1) can be seen in the exact locations of the trees and the influence of E_{pot} which manifests in slightly increasing sap velocities for increasing E_{pot} values.~~ We would expect the larger E_{pot} and sap velocity values to be on the south-facing slopes due to the higher radiation input. However, ~~it~~ [needs to be noted that](#) the values for E_{pot} are calculated at the respective tree sites and these are not necessarily at the same relative positions on the slopes. So the E_{pot} values are probably not directly related to aspect, but also to the location within the valley, shading effects, etc. Grouping the E_{pot} values according to aspect [\(appendix Fig. A2 data not shown\)](#), the main contrast occurs between north-facing slopes having higher values compared to no-aspect, whereas north- and south-facing slopes do not show considerable differences. Furthermore, as already mentioned before, spatial variability in the E_{pot} dataset are generally not very pronounced. Thus, a situation where the study trees are situated at more extreme locations with respect to aspect will probably induce a larger effect of E_{pot} . [We suspect that the latter explanation is more relevant for the aspect differences in our data. A more targeted study including wood properties and stronger aspect contrasts would be needed to clarify this issue \(and is in progress\).](#)

Slope position did not play a major role in explaining spatial sap velocity patterns (Fig. 6 and 8) although due to its possible effect on soil depth, water availability and species composition it is also the best-studied of the three site properties we included in our models (Adelman et al., 2008; Bond et al., 2002; Kumagai et al., 2007; Loranty et al., 2008; Mitchell et al., 2012). A reason for this lack of explanatory power could be that the information within this variable is partly also included in aspect because both the aspect category “no-aspect” and the slope position categories “no-slope” and “downslope” suggest sites which are close to groundwater resources. In a way, all three site-specific influences geology, aspect and slope position can be regarded as proxies for underlying characteristics of water availability.

4.3 Temporal dynamics of predictor importance

Understanding the feedback of spatial transpiration patterns with hydrological processes requires assessing the temporal dynamics of the controls of these patterns, for example on a seasonal or daily basis. Our analyses indicate that spatial sap velocity patterns are governed by mainly tree- and site-specific characteristics. [For the sap flow models species and DBH were excluded as predictors because they were part of the calculation of sap flow. The resulting patterns were mainly controlled by site-specific characteristics; stand characteristics played a negligible role. for sap flow mainly site specific.](#) ~~The~~ temporal shifts in these controls depend on hydro-meteorological conditions, especially potential evaporation (Fig. 9). And whereas the direct influence of hydro-meteorological variability on sap flow has been highlighted in many studies (Bovard et al., 2005; Clausnitzer et al., 2011; Granier et al., 2000; Jonard et al., 2011), the link between these conditions and spatial patterns of sap flow and their controls is still not well understood. Additionally, most studies which include site-specific controls focus on a seasonal basis or undertake plot comparisons. The temporal dynamics of the different predictor categories showed contrasting dependency on potential evaporation (Fig. 9). While the stand- and site-specific predictors as well as DBH and tree height remained fairly constant in their total explained variance, for both sap velocity and sap flow, the species-dependent temporal variance in the sap velocity models was strongly correlated to the dynamics of E_{pot} (Table 2). The species effect in this context is the contrast between oaks, which can only respond to increasing E_{pot} only up

to a certain threshold (Fig. 5b) and beech trees, which can reach higher sap velocities when they are not water-limited.

A second predictor with considerable positive correlation with E_{pot} is aspect (Table 2), despite the fact that north- and south-facing slope locations show similar values of E_{pot} . If the trees were physiologically adapted to water limitation on south-facing slopes, under high- E_{pot} conditions the contrast between these transpiration-limited trees and the ones on north-facing slopes, using their full transpiration potential, could be even stronger, leading to a temporally very dynamic influence of aspect. To separate this influence from the effect that the exact tree locations might be representing shading and landscape position in general and not necessarily strong contrasts in aspect, further studies at more pronounced north- and south-facing aspects and possibly also in a very dry year could help. As the south facing slopes seem to be water limited for some amount of time and we suspect a physiological adaptation of the trees to this limitation, the differences in sap velocities between north and south facing slopes will increase with increasing E_{pot} .

~~—If there was a water limitation on the south facing slopes, many of the adapted beech trees on these slopes might not be able to use the full transpiration potential that is available to trees on north facing slopes, and the spatial patterns could shift towards a declined species contrast and lesser temporal variability of this influence as long as the drought persists. At the same time and intermingling, this could lead to a temporally more dynamic influence of aspect. Further studies in a very dry year would help to investigate these interrelations~~

Lastly, the overall explained variance of our linear models for both sap velocity and sap flow also correlates with E_{pot} , as it does with sap velocity (Fig. 7). The models can explain considerable proportions of the spatial variability in sap velocity and sap flow when those values themselves can become large, driven by high E_{pot} and thus leading to larger transpiration contrasts in the landscape, due to for example species or aspect. At lower values of potential evaporation, the spatial variability of sap velocity is less pronounced and not primarily determined by the predictors included in our models.

For hydrological modellers this means that at low values of potential evaporation, which likely coincide with cloudy, rainy or cold days, transpiration flux is low and contains little spatial structure. On the one hand this entails smaller potential errors in the transpiration estimates, but on the other hand, it could be considered in attempts to apply dynamic model structures. During low- E_{pot} days, transpiration could be implemented in a more general and aggregated way, whereas during high- E_{pot} days including the spatial patterns of tree, (stand) and site characteristics could markedly improve model performance and spatial representation of transpiration.

5 Conclusions

Sap flow measurements are a suitable tool to investigate the different influences that shape spatial patterns of tree transpiration in a landscape. However, there are some uncertainties involved, for example the widely applied calculation of sap flow from sap velocities includes the assumption that the tree species and size are mainly determining this relationship. As ecophysiological adaptations to site conditions have been shown in other contexts, an independent determination of sap flow for each tree in the study would need direct measurements of sapwood area and other relevant xylem characteristics. This would enable a better quantification of the different influences on spatial transpiration patterns which would complement the more exploratory character of our study.

We examined both the influences on spatial patterns of transpiration in a landscape and their temporal dynamics, by means of sap velocity and sap flow. The spatial patterns were mainly controlled by tree- and site-specific characteristics. Temporal dynamics of the overall explained variance of the linear models and the relative importance of species was closely linked to the dynamics of potential evaporation, whereas the site-specific influences remained constant over time. This means that the abiotic characteristics of the landscape control transpiration pattern to a certain extent and this control remains static in time. On the other hand, the importance of biotic characteristics, i.e. the landscape-scale patterns of tree species distribution, varies in time and becomes most important during days of high atmospheric demand. Our results suggest that

spatial representation of landscape-scale transpiration in distributed hydrological models could be improved by including spatial patterns of tree-, stand- and site-specific characteristics. For spatial sap flow patterns, these influences were considerably larger than the obvious and widely-used influences of the potential evaporation and water availability in the soil. Consequently, similar to resolving agricultural areas according to crops at the field scale, one could represent the spatial structure in forest transpiration resulting from species and size distributions, but also from patterns due to site characteristics such as geology or topography. This information can be used for model parameterisation or as a part of multiresponse evaluation for soil-vegetation-atmosphere transfer and hydrological models.

Additionally, identifying phases of varying importance of the different influences, and their dependence on E_{pot} , can help modellers decide when to best include site-specific characteristics to describe spatial patterns of transpiration in models, when a classification according to species and stands might be more appropriate or when it is not necessary at all to implement a spatially explicit transpiration estimate. Thus, the spatial representation of transpiration in hydrological models could be attempted in a temporally dynamic way, and, when spatial structure is needed, be based on information from geological maps, digital elevation models, forest inventories or remote sensing images.

6 Acknowledgements

We thank the German Research Foundation (DFG) for funding of the CAOS research unit FOR 1598 in which this study was undertaken. We especially acknowledge Britta Kattenstroth and Jean-François Iffly for their invaluable help in setting up and running the monitoring network, as well as countless helpers during field work. Thomas Gräff and Uwe Ehret commented on an earlier version of this manuscript. We also acknowledge support for open access publishing by the Deutsche Forschungsgemeinschaft (DFG) and the Open Access Publishing Fund of Karlsruhe Institute of Technology.

20 References

- Adelman, J.D., Ewers, B.E. and MacKay, D.S., 2008. Use of temporal patterns in vapor pressure deficit to explain spatial autocorrelation dynamics in tree transpiration. *Tree physiology*, 28(4), 647-658.
- Angstmann, J.L., Ewers, B.E., Barber, J. and Kwon, H., 2013. Testing transpiration controls by quantifying spatial variability along a boreal black spruce forest drainage gradient. *Ecohydrology*, 6(5): 783-793.
- Barnard, H.R. et al., 2010. Mechanistic assessment of hillslope transpiration controls of diel subsurface flow: A steady-state irrigation approach. *Ecohydrology*, 3(2): 133-142.
- Boer-Euser, T., McMillan, H.K., Hrachowitz, M., Winsemius, H.C. and Savenije, H.H.G., 2016. Influence of soil and climate on root zone storage capacity. *Water Resources Research*, 52: 2009-2024.
- Bolte, A. et al., 2004. Relationships between tree dimension and coarse root biomass in mixed stands of European beech (*Fagus sylvatica* L.) and Norway spruce (*Picea abies* [L.] Karst.). *Plant and Soil*, 264(1-2): 1-11.
- Bond, B.J. et al., 2002. The zone of vegetation influence on baseflow revealed by diel patterns of streamflow and vegetation water use in a headwater basin. *Hydrological Processes*, 16(8): 1671-1677.
- Bosch, D.D., Marshall, L.K. and Teskey, R., 2014. Forest transpiration from sap flux density measurements in a Southeastern Coastal Plain riparian buffer system. *Agricultural and Forest Meteorology*, 187: 72-82.
- Bovard, B.D., Curtis, P.S., Vogel, C.S., Su, H.B. and Schmid, H.P., 2005. Environmental controls on sap flow in a northern hardwood forest. *Tree Physiology*, 25(1): 31-38.
- Burgess, S.S.O. et al., 2001. An improved heat pulse method to measure low and reverse rates of sap flow in woody plants. *Tree Physiology*, 21(9): 589-598.
- Campbell, G.S., Calissendorff, C. and Williams, J.H., 1991. Probe for measuring soil specific heat using a heat-pulse method. *Soil Science Society of America Journal*, 55(1): 291-293.

- Čermák, J. and Prax, A., 2001. Water balance of a Southern Moravian floodplain forest under natural and modified soil water regimes and its ecological consequences. *Annals of Forest Science*, 58(1): 15-29.
- Cienciala, E. et al., 2002. The effect of a north-facing forest edge on tree water use in a boreal Scots pine stand. *Canadian Journal of Forest Research*, 32(4): 693-702.
- 5 Clausnitzer, F., Köstner, B., Schwärzel, K. and Bernhofer, C., 2011. Relationships between canopy transpiration, atmospheric conditions and soil water availability-Analyses of long-term sap-flow measurements in an old Norway spruce forest at the Ore Mountains/Germany. *Agricultural and Forest Meteorology*, 151(8): 1023-1034.
- Dalsgaard, L., Mikkelsen, T.N. and Bastrup-Birk, A., 2011. Sap flow for beech (*Fagus sylvatica* L.) in a natural and a managed forest - Effect of spatial heterogeneity. *Journal of Plant Ecology*, 4(1-2): 23-35.
- 10 Dormann, C.F., Puschke, O., Carcía Marquéz, J.R., Lautenbach, S. and Schröder, B., 2008. Components of uncertainty in species distribution analysis: A case study of the Great Grey Shrike. *Ecology*, 89(12): 3371-3386.
- [Elsner, G., 1993. Morphological variability of oak stands \(*Quercus petraea* and *Quercus robur*\) in northern Germany. *Annals of Forest Science* 50 \(supplement\): 228s-232s.](#)
- Fahle, M. and Dietrich, O., 2014. Estimation of evapotranspiration using diurnal groundwater level fluctuations: Comparison of different approaches with groundwater lysimeter data. *Water Resources Research*, 50(1): 273-286.
- 15 Fenicia, F., Kavetski, D., Savenije, H.H.G. and Pfister, L., 2016. From spatially variable streamflow to distributed hydrological models: Analysis of key modeling decisions. *Water Resources Research*, 52(2), 954-989.
- Gebauer, T., Horna, V. and Leuschner, C., 2008. Variability in radial sap flux density patterns and sapwood area among seven co-occurring temperate broad-leaved tree species. *Tree physiology*, 28: 1821-1830.
- 20 Gebauer, T., Horna, V. and Leuschner, C., 2012. Canopy transpiration of pure and mixed forest stands with variable abundance of European beech. *Journal of Hydrology*, 442-443: 2-14.
- Ghimire, C.P., Lubczynski, M.W., Bruijnzeel, L.A. and Chavarro-Rincón, D., 2014. Transpiration and canopy conductance of two contrasting forest types in the Lesser Himalaya of Central Nepal. *Agricultural and Forest Meteorology*, 197: 76-90.
- 25 Granier, A., Biron, P. and Lemoine, D., 2000. Water balance, transpiration and canopy conductance in two beech stands. *Agricultural and Forest Meteorology*, 100(4): 291-308.
- Grömping, U., 2007. Estimators of relative importance in linear regression based on variance decomposition. *American Statistician*, 61(2): 139-147.
- Hajek, P., Kurjak, D., von Wühlisch, G., Delzon, S. and Schuldt, B., 2016. Intraspecific variation in wood anatomical, hydraulic, and foliar traits in ten European beech provenances differing in growth yield. *Frontiers in Plant Science*, 7, no. 791.
- 30 Hernandez-Santana, V., Hernandez-Hernandez, A., Vadeboncoeur, M.A. and Asbjornsen, H., 2015. Scaling from single-point sap velocity measurements to stand transpiration in a multispecies deciduous forest: Uncertainty sources, stand structure effect, and future scenarios. *Canadian Journal of Forest Research*, 45(11): 1489-1497.
- 35 Hölscher, D., Koch, O., Korn, S. and Leuschner, C., 2005. Sap flux of five co-occurring tree species in a temperate broad-leaved forest during seasonal soil drought. *Trees - Structure and Function*, 19(6): 628-637.
- Holst, J. et al., 2010. Water fluxes within beech stands in complex terrain. *International Journal of Biometeorology*, 54(1): 23-36.
- 40 Ibanez, C.A.G., Carcellar, B.G., III, Paringit, E.C., Argamosa, R.J.L., Faelga, R.A.G., Posilero, M.A.V., Zaragosa, G.P. and Dimayacyac, N.A., 2016. Estimating DBH of trees employing multiple linear regression of the best LiDAR-derived parameter combination automated in python in a natural broadleaf forest in the Philippines. *International Archives of the Photogrammetry, Remote Sensing and Spatial Information Sciences - ISPRS Archives*, 41, 657-662.

- IUSS Working Group WRB, 2006. World reference base for soil resources 2006. A framework for international classification, correlation and communication. World Soil Resources Reports, FAO, Rome.
- Jackisch, C., 2015. Linking structure and functioning of hydrological systems - How to achieve necessary experimental and model complexity with adequate effort. Thesis, KIT Karlsruhe. doi: 10.5445/IR/1000051494.
- 5 Jasechko, S., Sharp, Z.D., Gibson, J.J., Birks, S.J., Yi, Y. and Fawcett, P.J., 2013. Terrestrial water fluxes dominated by transpiration. *Nature*, 496(7445), 347-350.
- Jonard, F., André, F., Ponette, Q., Vincke, C. and Jonard, M., 2011. Sap flux density and stomatal conductance of European beech and common oak trees in pure and mixed stands during the summer drought of 2003. *Journal of Hydrology*, 409(1-2): 371-381.
- 10 Jung, E.Y. et al., 2014. Influence of elevation on canopy transpiration of temperate deciduous forests in a complex mountainous terrain of South Korea. *Plant and Soil*, 378(1-2): 153-172.
- Kleidon, A., Renner, M., 2013. Thermodynamic limits of hydrologic cycling within the Earth system: concepts, estimates and implications. *Hydrology and Earth System Sciences*, 17: 2873-2892.
- Köstner, B., Granier, A. and Cermák, J., 1998. Sapflow measurements in forest stands: Methods and uncertainties. *Annales des Sciences Forestières*, 55(1-2): 13-27.
- 15 Kumagai, T., Aoki, S., Shimizu, T. and Otsuki, K., 2007. Sap flow estimates of stand transpiration at two slope positions in a Japanese cedar forest watershed. *Tree Physiology*, 27(2): 161-168.
- Lorant, M.M., MacKay, D.S., Ewers, B.E., Adelman, J.D. and Kruger, E.L., 2008. Environmental drivers of spatial variation in whole-tree transpiration in an aspen-dominated upland-to-wetland forest gradient. *Water Resources*
- 20 *Research*, 44(2):W02441.
- Loritz, R., Hassler, S.K., Jackisch, C., Allroggen, N., van Schaik, L., Wienhöfer, J. and Zehe, E., 2017. Picturing and modelling catchments by representative hillslopes. *Hydrology and Earth System Science*, 21, 1225-1249.
- Lüttchwager, D. and Remus, R., 2007. Radial distribution of sap flux density in trunks of a mature beech stand. *Annals of Forest Science*, 64(4): 431-438.
- 25 Martínez-Carreras, N. et al., 2012. The influence of sediment sources and hydrologic events on the nutrient and metal content of fine-grained sediments (attert river basin, Luxembourg). *Water, Air, and Soil Pollution*, 223(9): 5685-5705.
- Meinzer, F.C., Bond, B.J., Warren, J.M. and Woodruff, D.R., 2005. Does water transport scale universally with tree size? *Functional Ecology*, 19(4), 558-565.
- Moore, G.W., Jones, J.A. and Bond, B.J., 2011. How soil moisture mediates the influence of transpiration on streamflow at
- 30 hourly to interannual scales in a forested catchment. *Hydrological Processes*, 25(24): 3701-3710.
- Mitchell, P.J., Benyon, R.G., Lane, P.N.J., 2012. Responses of evapotranspiration at different topographic positions and catchment water balance following a pronounced drought in a mixed species eucalypt forest, Australia. *Journal of Hydrology*, 440-441: 62-74.
- Nadezhdina, N. and Čermák, J., 2003. Instrumental methods for studies of structure and function of root systems of large
- 35 trees. *Journal of Experimental Botany*, 54(387): 1511-1521.
- Oren, R. and Pataki, D.E., 2001. Transpiration in response to variation in microclimate and soil moisture in southeastern deciduous forests. *Oecologia*, 127(4): 549-559.
- Oren, R., Zimmermann, R. and Terbough, J., 1996. Transpiration in Upper Amazonia Floodplain and Upland Forests in Response to Drought-Breaking Rains. *Ecology*, 77(3): 968-973.
- 40 Otieno, D. et al., 2014. Stand characteristics and water use at two elevations in a sub-tropical evergreen forest in southern China. *Agricultural and Forest Meteorology*, 194: 155-166.
- Pfister, L., Humbert, J. and Hoffmann, L., 2000. Recent trends in rainfall-runoff characteristics in the Alzette River basin, Luxembourg. *Climatic Change*, 45(2): 323-337.

- Pielke Sr, R.A., 2005. Land use and climate change. *Science*, 310(5754): 1625-1626.
- R Development Core Team, 2014. R: A language and environment for statistical computing. R Foundation for Statistical Computing, Vienna, Austria.
- Rabadán, M.- Á.V., Peña, J.S. and Adán, F.S., 2016. Estimation of diameter and height of individual trees for *Pinus sylvestris* L. based on the individualising of crowns using airborne LiDAR and the National forest inventory data. *Forest Systems*, 25(1), e046.
- 5 Renner, M., Hassler, S.K., Blume, T., Weiler, M., Hildebrandt, A., Guderle, M., Schymanski, S.J. and Kleidon, A., 2016. Dominant controls of transpiration along a hillslope transect inferred from ecohydrological measurements and thermodynamic limits. *Hydrology and Earth System Sciences*, 20: 2063-2083.
- 10 Rössler, G. (2008), Rindenabzug richtig bemessen. *Forstzeitung*, 4(10).
- Schmidt, M. (2007). Canopy transpiration of beech forests in Northern Bavaria – Structure and function in pure and mixed stands with oak at colline and montane sites. Thesis, University of Bayreuth, <https://epub.uni-bayreuth.de/646/>.
- Schume, H., Jost, G. and Hager, H., 2004. Soil water depletion and recharge patterns in mixed and pure forest stands of European beech and Norway spruce. *Journal of Hydrology*, 289(1-4): 258-274.
- 15 Scudeler, C., Pangle, L., Pasetto, D., Niu, G.-Y., Volkman, T., Paniconi, C., Putti, M., Troch, P., 2016. Multiresponse modeling of an unsaturated zone isotope tracer experiment at the Landscape Evolution Observatory. *Hydrology and Earth System Sciences Discussions*, doi:10.5194/hess-2016-228
- Seibert, S.P., Jackisch, C., Ehret, U., Pfister, L. and Zehe, E., 2017. Unravelling abiotic and biotic controls on the seasonal water balance using data-driven dimensionless diagnostics. *Hydrology and Earth System Sciences*, 21(6), 2817-2841.
- 20 Sprenger, M., Seeger, S., Blume, T. and Weiler, M., 2016. Travel times in the vadose zone: variability in space and time. *Water Resources Research*. doi: 10.1002/2015WR018077
- Stojnić, S., Orlović, S., Miljković, D., Galić, Z., Kebert, M. and on Wuehlisch, G., 2015. Provenance plasticity of European beech leaf traits under differing environmental conditions at two Serbian common garden sites. *European Journal of Forest Research*, 134(6), 1109-1125.
- 25 Tannenberger, F., Flade, M., Preiska, Z. and Schröder, B., 2010. Habitat selection of the globally threatened Aquatic Warbler at the western margin of the breeding range: Implications for management. *Ibis*, 152(2): 347-358.
- Traver, E., Ewers, B.E., Mackay, D.S. and Loranty, M.M., 2010. Tree transpiration varies spatially in response to atmospheric but not edaphic conditions. *Functional Ecology*, 24(2): 273-282.
- Tromp-van Meerveld, H.J. and McDonnell, J.J., 2006. On the interrelations between topography, soil depth, soil moisture, transpiration rates and species distribution at the hillslope scale. *Advances in Water Resources*, 29(2): 293-310.
- 30 van den Bos, R., Hoffmann, L., Juilleret, J., Matgen, P. and Pfister, L., 2006. Regional runoff prediction through aggregation of first-order hydrological process knowledge: A case study. *Hydrological Sciences Journal*, 51(6): 1021-1038.
- Vauhkonen, J. and Mehtätalo, L., 2015. Matching remotely sensed and field-measured tree size distributions. *Canadian Journal of Forest Research*, 45(3), 353-363.
- 35 Vertessy, R.A., Benyon, R.G., O'Sullivan, S.K. and Gribben, P.R., 1995. Relationships between stem diameter, sapwood area, leaf area and transpiration in a young mountain ash forest. *Tree Physiology*, 15(9): 559-567.
- Vilhar, U., Starr, M., Urbančič, M., Smolej, I. and Simončič, P., 2005. Gap evapotranspiration and drainage fluxes in a managed and a virgin dinaric silver fir-beech forest in Slovenia: A modelling study. *European Journal of Forest Research*, 124(3): 165-175.
- 40 Vincke, C., Breda, N., Granier, A. and Devillez, F., 2005. Evapotranspiration of a declining *Quercus robur* (L.) stand from 1999 to 2001. I. Trees and forest floor daily transpiration. *Annals of Forest Science*, 62(6): 503-512.

Wrede, S., Fenicia, F., Martínez-Carreras, N., Juilleret, J., Hissler, C., Krein, A., Savenije, H.H.G., Uhlenbrook, S., Kavetski, D. and Pfister, L., 2015. Towards more systematic perceptual model development: A case study using 3 Luxembourgish catchments. *Hydrological Processes*, 29(12): 2731-2750.

Zanetto, A., Roussel, G. and Kremer, A., 1994. Geographic variation of inter-specific differentiation between *Quercus robur* L. and *Quercus petraea* (Matt.) Liebl. *Forest Genetics* 1(2): 111-123.

Zehe, E., Ehret, U., Pfister, L., Blume, T., Schröder, B., Westhoff, M., Jackisch, C., Schymanski, S.J., Weiler, M., Schulz, K., Allroggen, N., Tronicke, J., van Schaik, L., Dietrich, P., Scherer, U., Eccard, J., Wulfmeyer, V. and Kleidon, A., 2014. HESS Opinions: From response units to functional units: a thermodynamic reinterpretation of the HRU concept to link spatial organization and functioning of intermediate scale catchments. *Hydrology and Earth System Sciences*, 18: 4035-4655.

Table 1: Overview of the characteristics associated with the trees in the of the sap velocity dataset. These are used as predictors in the multiple linear regression. Abbreviations are DBH for diameter at breast height, BA for basal area of the stand.

Property	Group	Class (and # of trees in each class)	Value (25/50/75 percentile)
Species	Tree-specific	beech (39), oak (22)	
DBH (cm)	Tree-specific		34/ 46/ 63
Height (m)	Tree-specific		24/29/ 34
BA (m ² ha ⁻¹)	Stand-specific		27/40/54
Median DBH (cm)	Stand-specific		5/14/28
# of stems	Stand-specific		20/24/43
Geology	Site-specific	marls (13), sandstone (22), schist (26)	
Slope position	Site-specific	upslope (41), downslope (9), no-slope (11)	
Aspect	Site-specific	north (17), south(29), no-aspect (15)	

Table 2: Spearman rank correlation between the time series of the different predictors' explained variance and the time series of potential evaporation (E_{pot}) and soil moisture. Values in bold italics are significant correlations (at $\alpha= 0.05$).

Predictor	Sap velocity		Sap flow	
	E_{pot}	Soil moisture	E_{pot}	Soil moisture
Species	0.81	-0.30		
DBH	0.32	-0.14		
Height	0.11	-0.05		
BA	-0.15	-0.05	0.44	-0.09
Median DBH	0.44	-0.16	0.34	0.00
# of stems	0.50	-0.35	0.44	-0.03
Slope	-0.32	0.21	0.22	-0.01
Geology	0.04	0.18	0.35	-0.20

Aspect	<i>0.67</i>	<i>-0.37</i>	<i>0.57</i>	-0.38
E_{pot}	<i>0.34</i>	<i>-0.18</i>	0.10	<i>0.04</i>
Soil moisture	<i>0.55</i>	<i>-0.30</i>	<i>0.25</i>	-0.21
Tree-specific	<i>0.86</i>	<i>-0.34</i>		
Stand-specific	<i>0.28</i>	<i>-0.33</i>	<i>0.42</i>	<i>-0.07</i>
Site-specific	<i>0.35</i>	-0.14	<i>0.46</i>	-0.26
Total exp. var.	<i>0.84</i>	<i>-0.38</i>	<i>0.72</i>	-0.37

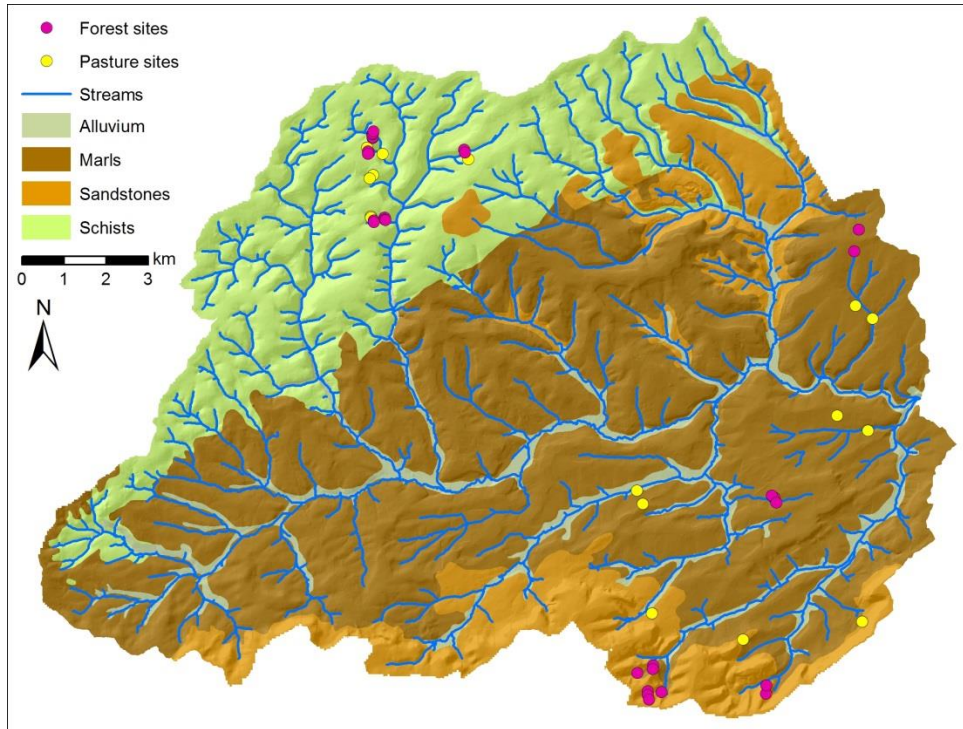


Figure 1: Map of the study site, the Attert catchment in Luxembourg.

5

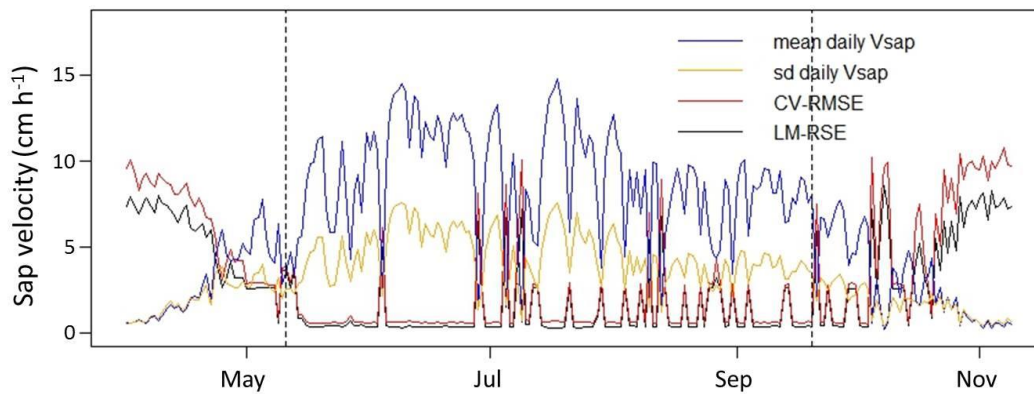


Figure 2: Comparison of residual standard error of the original linear models (LM-RSE) and the root mean square error of a 10-fold cross validation (CV-RMSE), in relation to mean and standard deviation of daily sap velocities (V_{sap}). The dashed lines indicate the beginning and end of the focus period with a fully developed canopy.

10

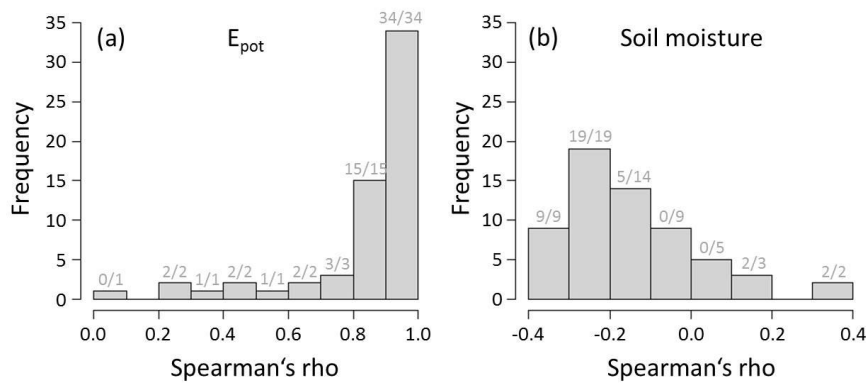


Figure 3: Histograms of temporal correlations between (a) E_{pot} and (b) soil moisture at each site with sap velocity for the 61 trees in the dataset. The small numbers in grey on top of the bars indicate how many of the correlations in the specific group are significant.

5

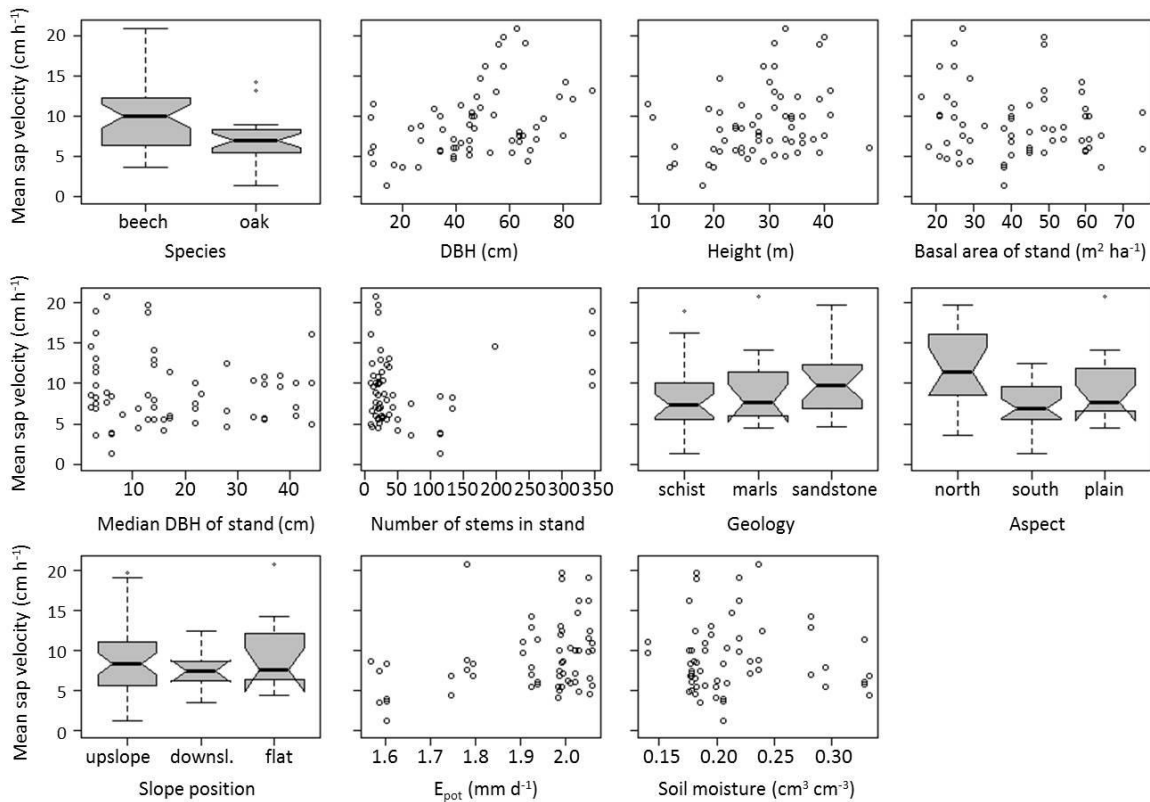


Figure 4: Univariate influence of each predictor on sap velocity means for each tree over the entire study period. Boxplot parameters are as follows: the horizontal line within the box visualises the median, boxes comprise data between the 1st and 3rd quartile of the data, whiskers reach to $1.5 \times$ the interquartile range outside the box (or to the maximum/minimum value if smaller/larger), circles stand for outliers/data points outside the whiskers, notches show approximately 95% confidence intervals around the medians.

10

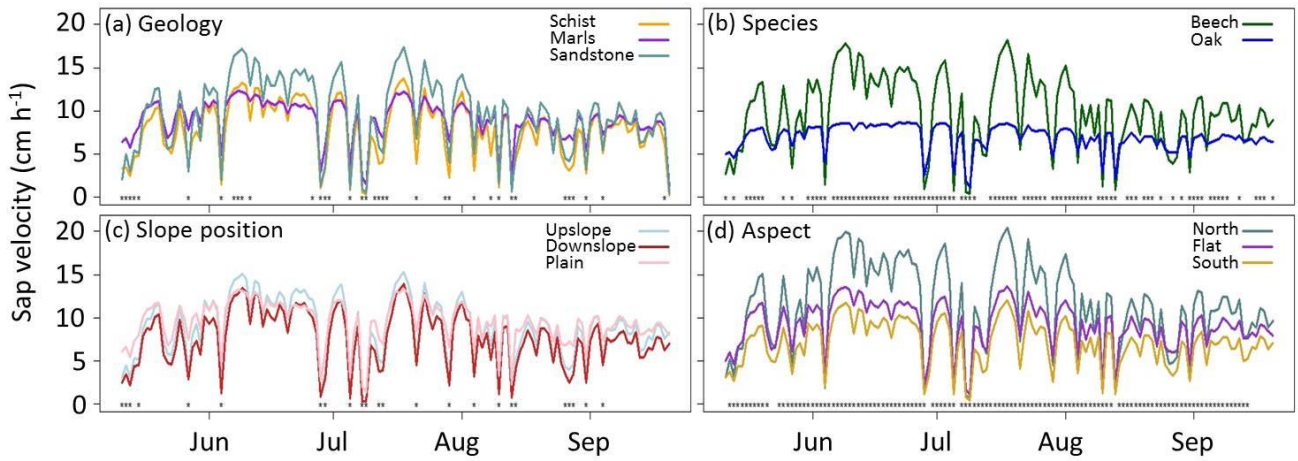


Figure 5: Differences between sap velocities depending on (a) geology, (b) species, (c) slope position and (d) aspect. Lines show average dynamics of each class. Asterisks at the bottom of the panels indicate significant differences for that day according to Mann-Whitney-U or Kruskal-Wallis tests at $\alpha=0.05$, for differences between the two or three categories, respectively.

5

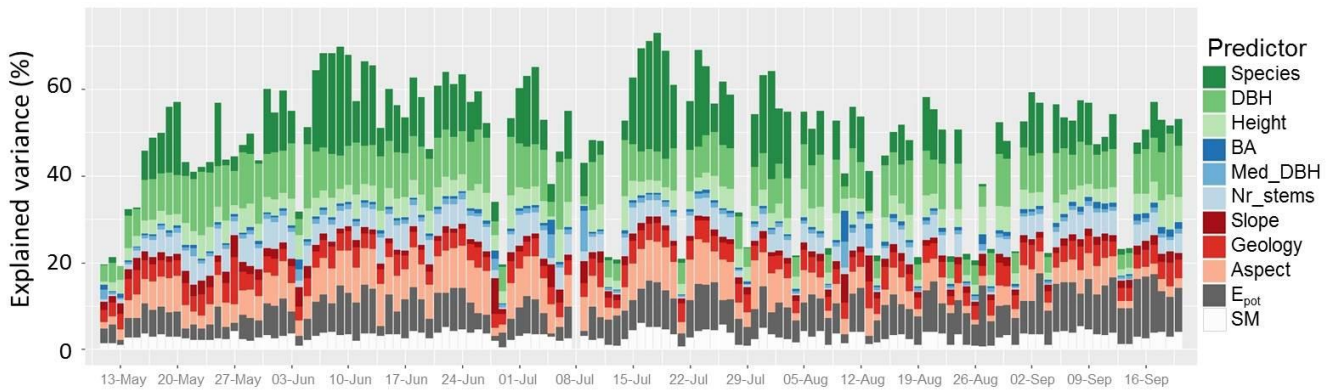


Figure 6: Proportion of variance explained by the different predictors in the daily linear models of spatial sap velocity patterns: 132 daily models from 61 trees at 24 sites.

10

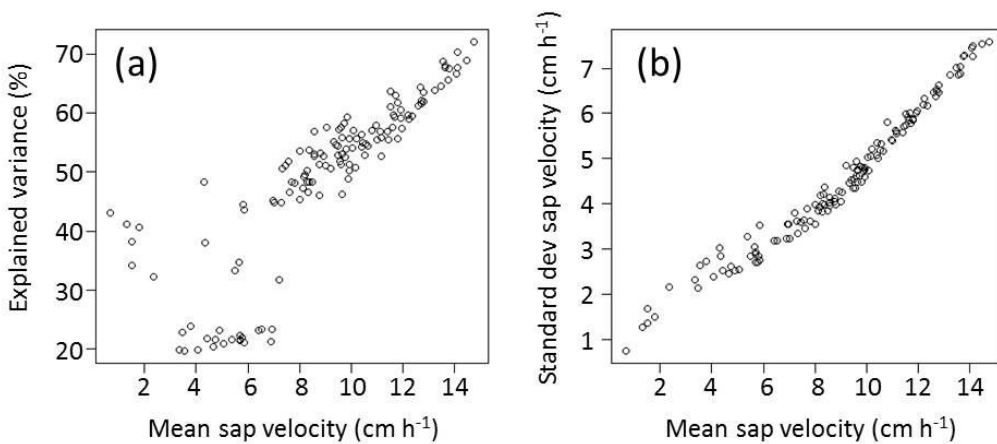


Figure 7: (a) Explained variance of the linear models in relation to mean sap velocities for all 132 days of the study period and (b) standard deviation of sap velocity depending on mean sap velocities for those 132 days.

15

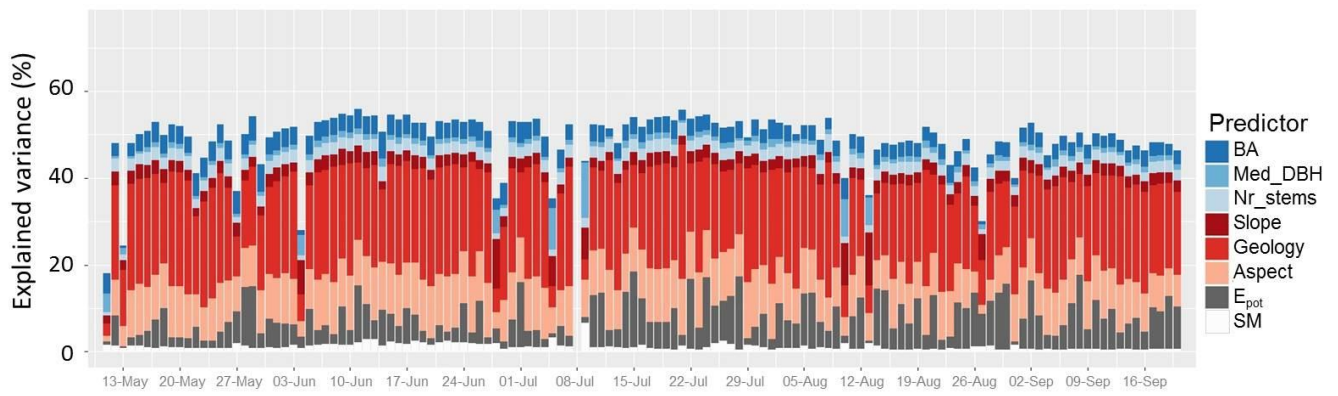


Figure 8: Proportion of variance explained by the different predictors in the daily linear models of spatial sap flow patterns: 132 daily models from 61 trees at 24 sites.

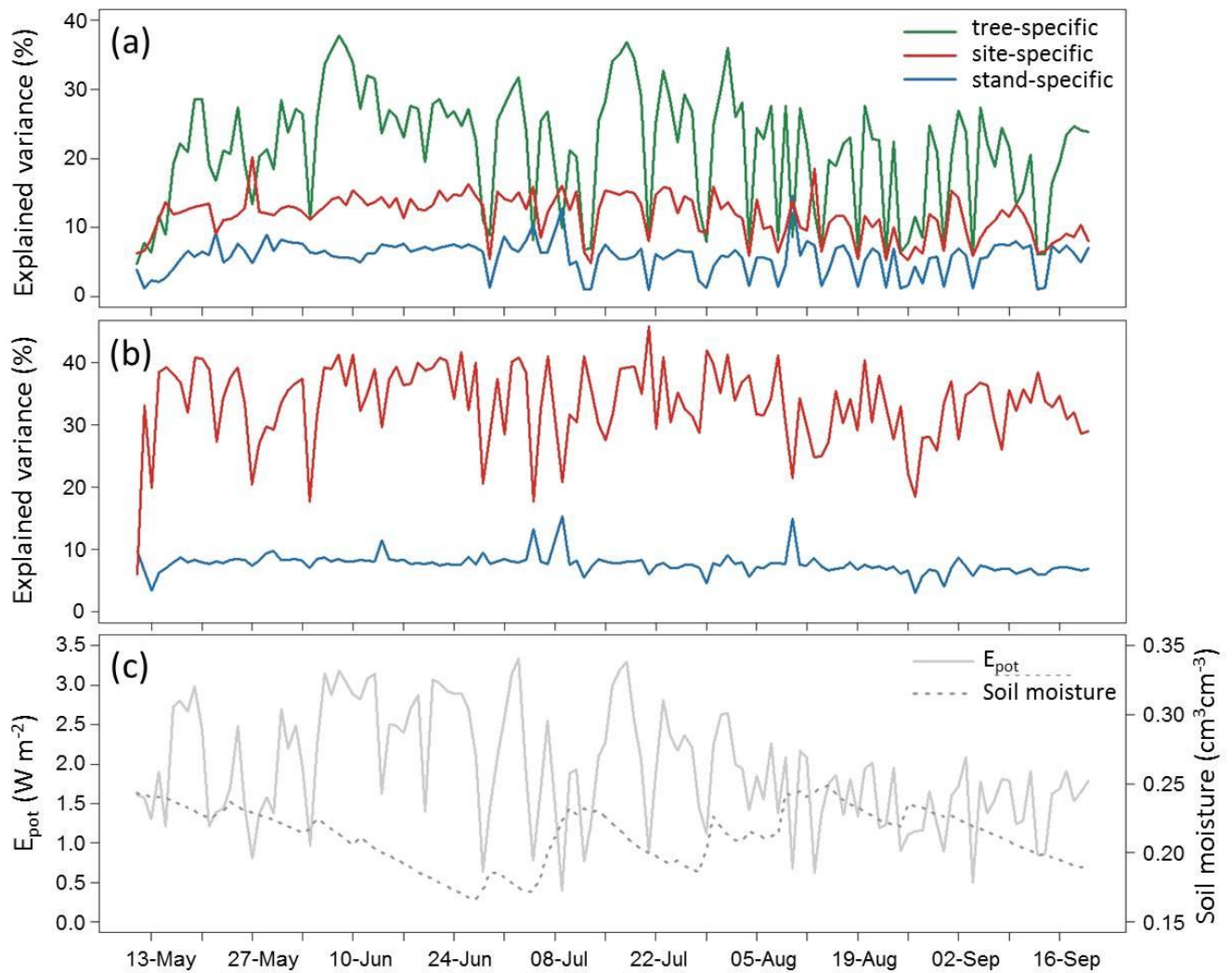


Figure 9: Explained variance of the daily linear models, separated according to the predictor groups used in the regression, (a) for sap velocity and (b) for sap flow. (c) Catchment average of soil moisture and potential evaporation E_{pot} .

Appendix

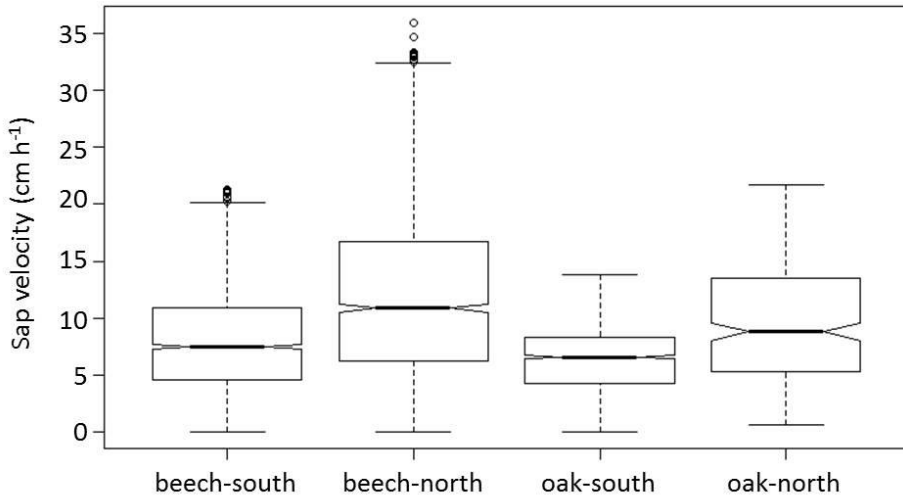


Figure A1: Sap velocities when grouped according to species and aspect.

5

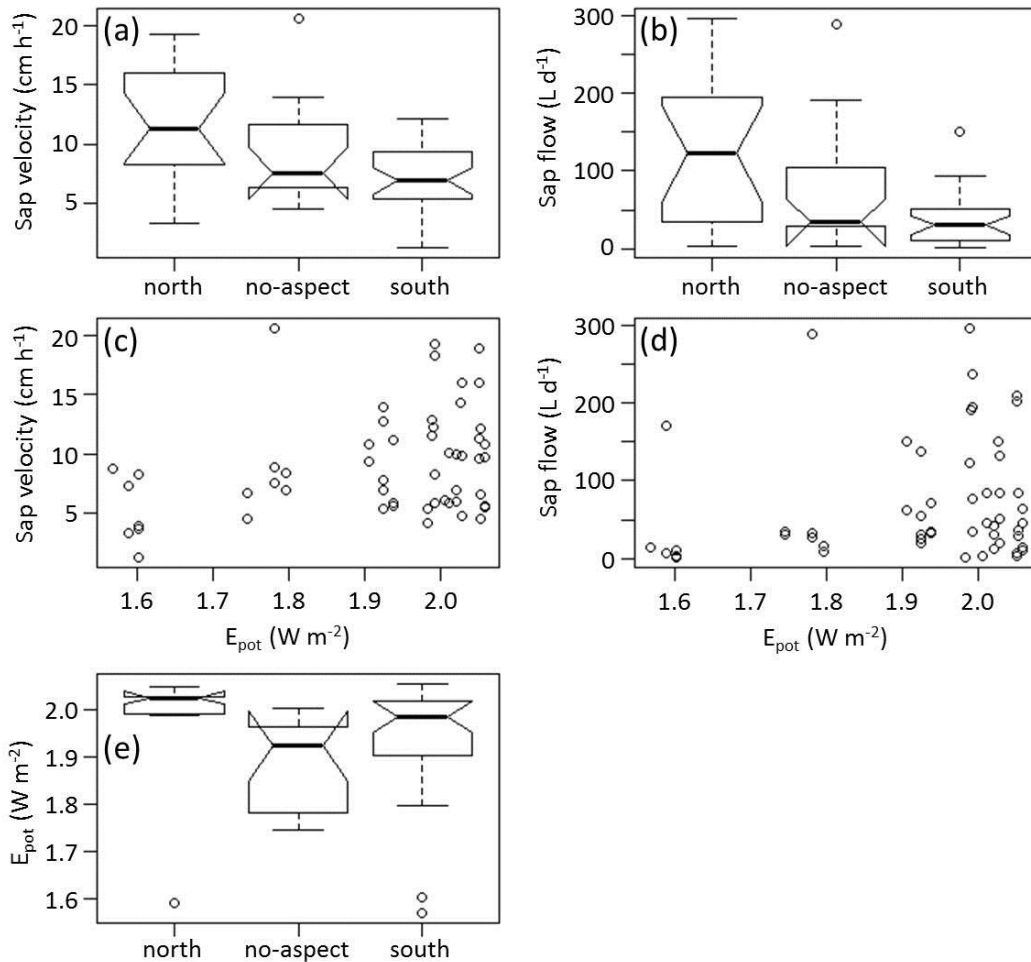


Figure A2: (a) Sap velocity and (b) sap flow values grouped according to aspect categories. (c) Sap velocities and (d) sap flow values of each tree with respect to E_{pot} at the tree location. (e) E_{pot} values at the tree locations values grouped according to aspect categories. Shown are temporal averages, for each tree (for sap velocity and sap flow) or each tree site (for E_{pot}). The uncharacteristically high sap flow values are probably due to overestimation during the upscaling to tree level transpiration and should be treated with caution; however, absolute values are not of interest here, rather relations and spatial patterns which should be robust.

10