

Land-use change may exacerbate climate change impacts on water resources in the Ganges basin

Gina Tsarouchi^{1,2,3} and Wouter Buytaert^{1,2}

¹Department of Civil and Environmental Engineering, Imperial College London, London, UK

²Grantham Institute - Climate Change and the Environment, Imperial College London, London, UK

³HR Wallingford, Howbery Park, Wallingford, Oxfordshire OX10 8BA, UK

Correspondence to: Gina Tsarouchi (g.tsarouchi@hrwallingford.com)

Abstract. Quantifying how land-use change and climate change affect water resources is a challenge in hydrological science. This work aims to quantify how future projections of land-use and climate change might affect the hydrological response of the Upper Ganges river basin in northern India, which experiences monsoon flooding almost every year. Three different sets of modelling experiments were run using the JULES Land Surface Model and covering the period 2000-2035: In the first set, only climate change is taken into account, and JULES was driven by the CMIP5 (Coupled Model Intercomparison Project Phase 5) outputs of 21 models, under two Representative Concentration Pathways (RCP4.5 & RCP8.5), whilst land use was held fixed at the year 2010. In the second set, only land-use change is taken into account, and JULES was driven by a time-series of 15 future land-use pathways, based on Landsat satellite imagery and Markov chain simulation, whilst the meteorological boundary conditions were held fixed at years 2000-2005. In the third set, both climate change and land-use change were taken into consideration, as the CMIP5 model outputs were used in conjunction with the 15 future land-use pathways to force JULES. Variations in hydrological variables (stream flow, evapotranspiration and soil moisture) are calculated during the simulation period.

Significant changes in the near-future (years 2030-2035) hydrologic fluxes arise under future land-cover and climate change scenarios pointing towards a severe increase in high extremes of flow: the multi-model mean of the 95th percentile of streamflow [Q_5] is projected to increase by 63% under the combined land-use and climate change high emissions scenario [RCP8.5]. The changes in all examined hydrological components are greater in the combined land-use and climate change experiment. Results are further presented in a water resources context, aiming to address potential implications of climate change and land-use change from a water-demand perspective. We conclude that future water demands in the Upper Ganges region for winter months may not be met.

1 Introduction

25 Over recent decades, the Indian subcontinent has undergone some of the largest environmental
changes in human history. India's green revolution of widespread implementation of irrigation, appli-
cation of fertilizer and other modern farming practices, besides the ubiquitous benefits, has resulted
in large-scale changes in land cover and a significant increase in the exploitation of water resources,
including the vast groundwater aquifers of the Gangetic plains. These changes have put severe pres-
30 sure on water resources, a pressure that is exacerbated further since the increasing demand for a
better diet led farmers to mainly plant high-water intensity crops such as wheat, rice and sugarcane
(Kaushal and Kansal, 2011). The country expects double-digit economic growth, whilst the Ganges
basin is the most densely populated river basin in the world, with an average population density of
520 persons/km². Population density in Uttar Pradesh (which covers large part of our study area)
35 has increased by more than 100% from 1971 to 2001, leading to a sharp increase in water demand
(Kaushal and Kansal, 2011). Especially during dry periods outside of the summer monsoon season,
users of water resources are reliant upon the canals to maintain the required flow levels and sustain
riverine ecology. The pressure on water resources is expected to further increase in the near future:
for example, by 2030, India's urban population is expected to rise from 286 million (in 2001) to 575
40 million (Tenhunen and Saavala, 2012).

The Indian monsoon supplies more than 80% of India's total annual rainfall between June and
September (Turner and Annamalai, 2012). The country's population depends largely on the summer
monsoon rainfall for food and energy production, agricultural activities and industrial development.
Future climate change and particularly the reliance of water resources on the highly erratic precip-
45 itation patterns of the summer monsoon, pose significant risks to water supply. Any change in the
summer monsoon's timing, intensity and duration, affected by increases in greenhouse gas concen-
trations, could be detrimental to water supply. Given the rapid increase in population in the region
and the need to improve water and food security, it is essential to understand how the climate will
change in the future and how its change will impact humans and the environment.

50 Over recent years, extreme weather events in South Asia, such as the July 2002 drought over
India (Bhat, 2006), the Pakistan floods of July-August 2010 and the north India floods of June 2013,
have claimed thousands of lives (Lau and Kim, 2011; Kala, 2014). Several studies, including the
IPCC's Fifth Assessment Report (Intergovernmental Panel on Climate Change (AR5), IPCC, 2014),
have linked climate change to extreme weather events over South Asia (Singh et al., 2014; World
55 Bank, 2013). Countrywide evidence, supported by localised studies, already suggests a decrease in
frequency of light-to-moderate rainfall events and increases in heavy rainfall events, specifically in
the central and north-east region of India, since the early 1950s (Dash et al., 2009). The CMIP5
(Coupled Model Intercomparison Project Phase 5) model projections for the end of the 21st century
suggest an intensification of heavy precipitation events over India under RCP8.5, the "business-
60 as-usual" scenario (Scoccimarro et al., 2013). The average summer monsoon rainfall over India is

projected to increase by around 5-10% (Turner, 2013). In terms of temperature, recent studies based on CMIP5 model projections have shown that heatwaves in India are projected to intensify by the end of the 21st century under RCP8.5, with the Ganges river basin being amongst the areas projected to experience the most severe hazard from extreme heatwaves (Murari et al., 2015; Im et al., 2017).

65 Understanding and monitoring the hydrologic response of watersheds to land-use and climate change is an important element of water resource planning and management. The quantification of land-use and climate change impacts on hydrological fluxes is a challenge in hydrological science and especially in the data sparse tropical regions. Many studies focus on climate change impacts only and others focus on land-use change impacts only. However, there are just a few studies that consider
70 the combined effects of climate and land-use change by quantitatively integrating both (Karlsson et al., 2016; Pervez and Henebry, 2015; Wang et al., 2014; Zhang et al., 2016). In this study, those relative impacts are investigated by analysing annual variations of hydrological components (stream flow, evapotranspiration and soil moisture), under different land-use and climate change scenarios.

The CMIP5 projections are likely to provide unreliable estimates of the mean values and daily
75 variations of precipitation due to inherent limitations of the General Circulation Models (GCMs; Raty et al., 2014). Biases have already been identified in simulating the present-day observed Indian summer monsoon climatologies (Sengupta and Rajeevan, 2013). Further, Lutz et al. (2014) found large uncertainties and variations between the annually averaged and seasonal precipitation projections over the Upper Ganges basin. Besides, GCMs were not built for the application of hydrological
80 impact studies. The runoff generation mechanism in GCMs is based on a simplistic representation of the hydrological cycle, and several studies have shown that hydrological models driven directly by GCM model outputs do not perform well (Fowler et al., 2007). To diminish the impacts of GCM biases, several techniques that adjust the climate projections and transform coarse resolution GCM outputs into finer scale products suitable for hydrological applications have been developed over
85 recent years and plenty of studies have revised and evaluated these techniques (Fowler et al., 2007; Maraun et al., 2010; Teutschbein and Seibert, 2012; Raisanen and Raty, 2013; Raty et al., 2014). In this study, we applied the delta-change method to observed meteorological datasets. This is a relatively simple approach, broadly used for transforming coarse resolution GCM outputs into finer scale products suitable for hydrological applications. The delta-change method was selected as it is
90 a relatively straight-forward to apply technique, it is computationally efficient, and can be applied to all variables. However, it also has a number of limitations: a) It assumes a constant delta for each month, as it suggests that relative change is better simulated than absolute values; b) It assumes a constant spatial pattern of the climatic variable and ignores changes in variability, as the calculated CFs only scale the mean, max and min values; c) There is no change in the temporal sequence of
95 wet/dry days (Fowler et al., 2007).

The delta-change method was applied on CMIP5 model outputs and observations to generate future climate scenarios, which were then used to run JULES and quantify the impact of climate

change on the hydrology of the Upper Ganges river basin. The impact of land-use change was quantified by running JULES with a time-series of 15 future land-use pathways, based on Landsat satellite imagery and Markov chain simulation (see Section 3), whilst the meteorology was held fixed. Further, the combined impact of climate change and land-use change is examined by using the delta-change transformed observations along with the future land-use pathways. The modeling period up to 2035 was selected as the most relevant for current water resources management decisions. The entire set of available daily CMIP5 model outputs under the historical, RCP4.5 and RCP8.5 experiments was used to cover the range of plausible uncertainty.

The following hypothesis is driving this research: *"The combined impacts of land-use and climate change on hydrological fluxes will be greater than the impacts posed by land-use change and climate change individually"*.

The rest of this paper is structured as follows. After describing the study area in Section 2, we describe the modeling tools and methods applied in Section 3, present the results derived in Section 4, and then discuss our findings in Section 5, before concluding in Section 6. Two appendices included at the end of the paper provide additional material on: (A) The CMIP5 projection analysis, and (B) The hydrological modelling outputs.

2 Study area

The study area corresponds to the main upper branch of Ganges and covers an area of 87,000 km². The domain is located in northern India between longitudes 77°E to 81°E and latitudes 25°N to 32°N. Elevation ranges from 7400 m in the Himalayan mountain peaks to 90 m in the plains (Fig. 1). The Upper Ganges basin lies in the states of Uttaranchal and Uttar Pradesh and the main physical subdivisions of the area are the northern mountainous regions (Himalayan foothills) and the Gangetic plains. In the upstream mountainous regions where the river originates, hydro-power is the main focus of development with mega and micro projects either already operating or currently under construction (Bharati et al., 2011). When the river reaches the plains, it becomes subject to vast irrigation demands as more than 410 million people are depending on it to cover their daily needs (Verghese, 1993).

As shown in Fig. 2, areas in the north of the Upper Ganges basin (Himalayas) are either barren or covered by snow. The central and northern parts of the catchment are dominated by forests (20% of the total catchment area). Around 60% of the basin is occupied by agriculture (main crop types include wheat, rice, maize, sugarcane, bajra and potato). Most of the urban and agricultural areas in the basin are located towards the south, in the plains of the Upper Ganges basin.

The annual average rainfall in the Upper Ganges basin ranges between approximately 610 mm and 1810 mm (Fig. 2). The main source of rainfall is the south-west monsoon, which occurs at this location from July to late September, providing more than 80% of the total annual precipitation

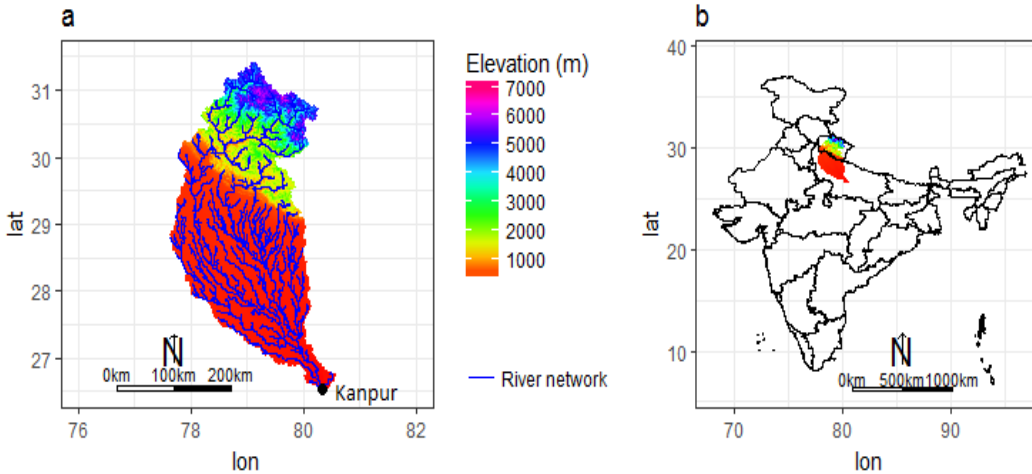


Figure 1. Location map of the study area in north India and a Digital Elevation Model (DEM) of the Upper Ganges basin showing the ranges of the elevations (m altitude). Kanpur barrage was used as the outlet point.

(Turner and Annamalai, 2012). The runoff regime in the Upper Ganges basin is rain-dominated, due to the monsoon-dominated precipitation regime, and the maximum discharge of the river occurs during the monsoon period (Lutz et al., 2014). However, the fluctuation between monsoon flows and dry period flows is very high and that means that large areas are subjected to floods and/or droughts every year (Jain et al., 2007), resulting in significant loss of life and property (e.g. recent northern India floods in Uttarakhand, June 2013).

Since this study is interested in large-scale surface water - climate fluxes and feedbacks, the mountainous headwaters in the north of the basin are not taken into consideration. Although climate change impacts on glaciers and snow melt are of great concern, they are an intensive field of research, but have only limited impact on the water resources of the lower plains (Immerzeel et al., 2010). The large downstream monsoon-dominated system of the Ganges river basin, in combination with limited upstream precipitation and small glaciers are the reasons for this minor contribution of snow and glacier water to the Ganges (Immerzeel et al., 2010).

3 Modeling tools and methods

3.1 Future climate projection data from CMIP5

GCM outputs from 21 models of the CMIP5 multi-model database were obtained through the UK Centre for Environmental Data Analysis (CEDA). All meteorological variables required by JULES (i.e. time-series of incoming short-wave and long-wave radiation, temperature, specific humidity, wind speed, and surface pressure) were acquired from the historical, RCP4.5 and RCP8.5 experiments of 21 CMIP5 models. RCP4.5 and RCP8.5 were chosen because they correspond to con-

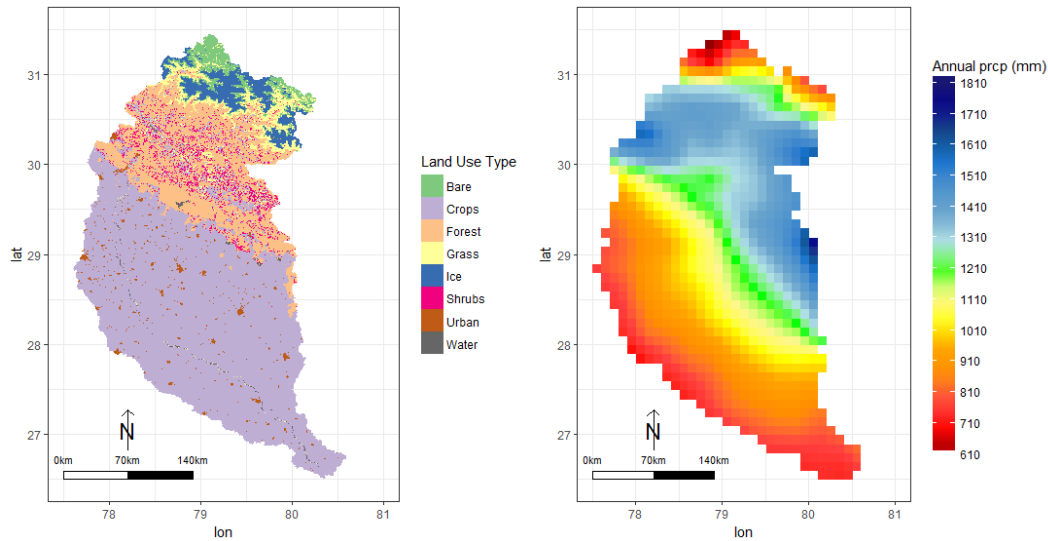


Figure 2. Left: Land-cover map of the Upper Ganges basin, for the year 2010, as developed by Tsarouchi et al. (2014). Landsat 7 ETM+ images, for October 2010 were acquired from the US Geological Survey Global Visualization Viewer. The images were co-registered to the UTM projection zone 44N, WGS 1984 datum and corrected for radiometric and atmospheric effects. They were subsequently classified using a Maximum Likelihood classifier method with pixel training data sets, resulting into a land cover map of eight different classes. For more information see Tsarouchi et al. (2014). **Right:** Annual average precipitation distribution in the study area, based on TRMM 3B42v7A satellite product (years 1998–2011).

trasting future greenhouse gas emissions scenarios: RCP4.5 represents a "middle-of-the-road" scenario, in which the projected change in global mean surface air temperature for the late 21st century (2081–2100) relative to the reference period of 1986–2005 is 1.8°C; RCP8.5 represents a "business-as-usual" scenario of future emissions, where the projected change in global mean surface air temperature for the late 21st century relative to the reference period of 1986–2005 is 3.7°C (IPCC, 2013).

To run JULES, we used CMIP5 model outputs covering the years 2000–2005 from the historical experiment, whilst from the RCP4.5 and RCP8.5 experiments we used model outputs covering the years 2006–2035. The delta-change method was applied on the CMIP5 model outputs and observations to generate future climate scenarios. This method calculates the change in time between the control and future simulations of a variable and applies this change in the baseline (observed) climate by simply adding or scaling the mean climatic change factor (CF) to each day (Fowler et al., 2007). The CF indicates relative change for fluxes exchanged between the atmosphere and surface

in order to avoid negative values, and absolute change for state meteorological variables. So, for precipitation, radiation and wind speed the monthly CF is calculated as:

$$CF = \frac{\bar{V}_{fut}}{\bar{V}_{hist}} \quad (1)$$

Where \bar{V} the monthly climatological mean for a given flux variable. For temperature, pressure, and specific humidity, which are state variables, the CF is calculated as:

$$CF = \bar{V}_{fut} - \bar{V}_{hist} \quad (2)$$

As baseline (observed) climate, we used for precipitation the Tropical Rainfall Measuring Mission (TRMM) Multi-satellite Precipitation Analysis (TMPA) product, version 7, (Huffman et al., 2007; Huffman and Bolvin, 2013), hereafter referred to as TRMMv7; and for the rest meteorological variables data were obtained from the Princeton Hydrology archive and consist of reanalysis data that have been post-processed and merged with observations (National Center of Environmental Predictions, Kalnay et al., 1996; Sheffield et al., 2006). The mean climatic CFs were based on monthly-mean climatological conditions over 6-year time slices from each of the 21 CMIP5 models: 2000-2005 for the historical CMIP5 model outputs, and 2006-2035 for RCP4.5 and RCP8.5. The CFs were used to rescale the historical observations at the daily time-scale. The CFs were further interpolated to the 0.1 degree resolution of the modelling setup, using the bilinear interpolation method.

3.2 Pathways of future land-use change

For the future pathways of land-use change, 15 maps for years up to 2035 were developed in Tsarouchi et al. (2014), based on Landsat satellite imagery and Markov chain simulation. Under the assumption that the drivers that caused land-use changes in recent years (2000-2010), will remain the same in the nearby future (years up to 2035), 15 transition probability matrices indicating transition potentials from one land-use type to another were generated. These 15 transition matrices are based on historic land-use transitions that occurred during the period from 2000 to 2010, for which 6 land-use maps were available (one map every two years). The 15 matrices describe all possible land use transition combinations of the years 2000, 2002, 2004, 2006, 2008, and 2010 (e.g. 2000-2002, 2000-2004, 2000-2006, etc.). The trends in different matrices vary and this is also reflected in the future projections (i.e. they are not exactly the same).

Before developing the future pathways of land-use change, we tested the method in a previous study, over the same area, to examine its accuracy (Tsarouchi et al., 2014). As a validation measure of the ability to generate future pathways under Markov chain analysis, we used transition matrices of years previous to 2010 and generated maps for the year 2010. These maps were then compared to

the historical land-cover map of 2010. The results showed that the generated maps for 2010 were not very different compared to the historical map of 2010. Highest overall uncertainties were observed for the forest and shrubs land use types. For example, the proportion of forest in the historic 2010 map was 17.12%, while the two most extreme values of forest coverage that we obtained through Markov chain analysis were 19.98 and 15.20%. This gave us confidence to apply the same method for developing other near-future scenarios.

Figure 3 highlights the spread of these 15 future pathways for the year 2035 and how their land-cover proportions compare to the historic year 2010. The variations between the different pathways are not large and the main trends of change identified are forest growth, urbanisation, and on the other hand loss of bare soil, grasslands and shrubs. All 15 possible combinations were used in this study, because there was no straightforward way to select a single or a few of the projections, as more representative of future change. By keeping all 15 scenarios, we obtain a good indication of the uncertainties associated with developing scenarios of future change and their often contrasting impacts on hydrological variables. For a more detailed description of the method used to generate the future land-use pathways see Tsarouchi et al. (2014).

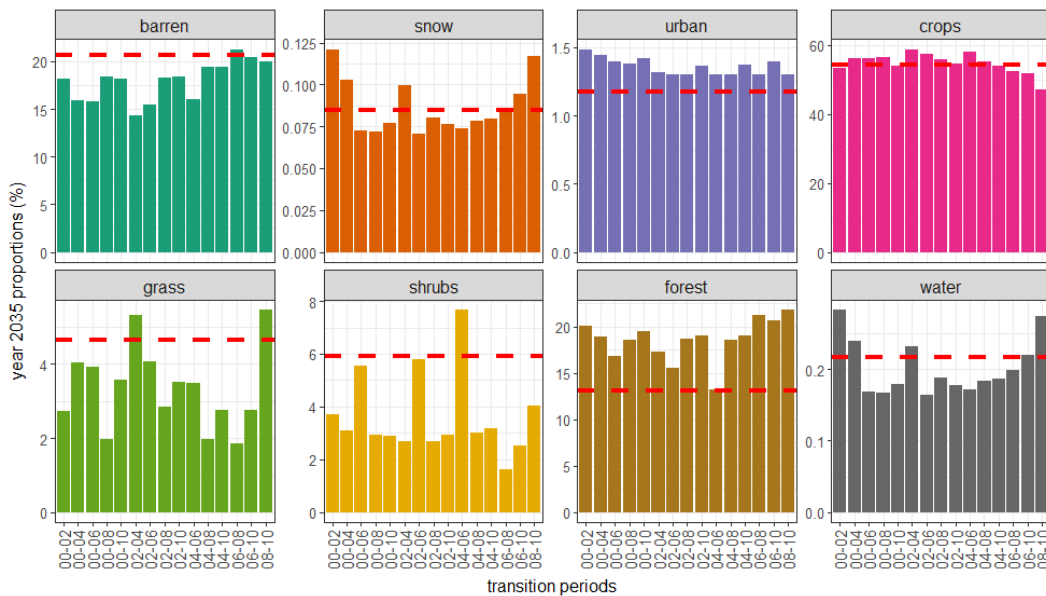


Figure 3. Plots indicating the different land uses for year 2035, amongst the 15 land-use pathways developed by applying Markov chain simulation in Tsarouchi et al. (2014). The x-axis indicates the transition period used to calibrate the Markov Chain model, for instance "00-02" refers to the historical period 2000-2002. The red line illustrates the actual land-cover proportions of year 2010, as derived from the Landsat classifications.

3.3 The JULES Land Surface Model

In this study we use the Joint UK Land Environment Simulator (JULES, version 3.4) Land Surface
215 Model (LSM) (Best et al., 2011) in order to investigate the impact of land-use change and climate
change in hydrological fluxes of the Upper Ganges river basin. We drive the model with delta-change
transformed climate projections from the CMIP5 multi-model database and a series of future land-
use pathways, based on Landsat satellite imagery and Markov chain simulation.

JULES was developed by the UK Met Office and is based on MOSES (Met Office Surface Ex-
220 change System), the LSM used in the Unified Model of the UK Met Office. It is a combined process-
based distributed/lumped parameter model that simulates the exchange of energy, water, and carbon
fluxes between land surface and the atmosphere. The input meteorological data requirements are
time-series of incoming short-wave and long-wave radiation, temperature, specific humidity, wind
speed, and surface pressure. These are used in a full energy balance equation that includes compo-
225 nents of radiation, sensible heat, latent heat, canopy heat, and ground surface heat.

The model partitions precipitation into canopy interception and throughfall. In the default runoff
scheme, surface runoff is generated based on Hortonian infiltration. Surface heterogeneity within
JULES is represented by the tile approach (Essery et al., 2003). The surface of each grid-box com-
prises fractions of 9 different land cover types; five vegetated plant functional types: broad-leaf trees,
230 needle-leaf trees, C₃ grasses, C₄ grasses and shrubs, and four non-vegetated: urban, water, bare soils
and ice. For each surface type of the grid-box, the energy balance is solved, and a weighted average
is calculated from the individual surface fluxes for each grid-box. In the subsurface, the soil col-
umn is divided into 4 layers, which have a thickness of 0.1m, 0.25m, 0.65m, and 2m respectively,
going from the top to the bottom. The Darcy-Richards equation (Richards, 1931) is solved using a
235 finite difference approximation, to calculate water movement through the soil. Subsurface runoff is
represented by a free drainage from the deepest soil layer. The soil water retention characteristics
(relationship between volumetric water content and soil suction) and the relationship between volu-
metric water content and hydraulic conductivity follow the relationships of van Genuchten (1980).
For a more detailed description of the model see Best et al. (2011).

240 JULES was run in a 0.1°longitude x 0.1°latitude grid resolution, for the period 2000–2035. For
each grid point, the full set of input data (model parameters, time-series of meteorological data,
land-use and soil map) were prescribed. Before each run of the model, a spin-up run is performed,
to initialise the internal states. For the parametrisation of plant functional types and non-vegetated
tiles, the default parameters described in Tables 5 & 6 of Best et al. (2011) were used.

245 The model was forced with the rescaled historical observations to generate future hydrological
projections for the Upper Ganges basin that go up to year 2035. Three different sets of modelling
experiments were run: In the first one, only climate change was taken into account, as JULES was
driven by the CMIP5 outputs of 21 models, under two emission scenarios (RCP4.5 & RCP8.5), but
land use was held fixed at year 2010 (see Section 3.2). In the second one, only land-use change was

Table 1. Summary of the JULES experiments

Modelling period \ LU maps	Historical (2010)	Future climate projections (2010-2035) x 15 land use scenarios	100% coverage by one land cover type x 8
Historical (2000-2005)	X	X	X
CMIP5 RCP4.5 (2006-2035)	X	X	
CMIP5 RCP8.5 (2006-2035)	X	X	

250 taken into account, by driving JULES with a set of 15 year-to-year varying time-series of future land-use pathways, whilst the driving meteorology was held to historical levels. In addition, the model was driven by 8 extreme pathways where we have assumed 100% coverage of the study area by one land cover type, whilst again the driving meteorology was held to historical levels. In the third set, both climate change and land-use change were taken into consideration, as apart from the CMIP5 model

255 outputs, JULES was also forced by the set of 15 year-to-year varying time-series of future land-use pathways. The impact of both climate change and land-use change on the future hydrological variables of the study area is examined. Table 1 outlines all of the JULES runs as described above.

In the following sections, the subscript *_cl* corresponds to results produced by taking only climate change into account, over the simulation period 2030-2035; the subscript *_cl_lu* corresponds to

260 results produced by taking into account both climate change and land-use change, over the simulation period 2030-2035; and the subscript *_hist* corresponds to results from the historical simulation period 2000-2005.

3.4 Water demand data

Aiming to place our results in a future water resources context (focusing on the period 2030-2035),

265 we use water demand data from a recent study by Sapkota et al. (2013). The mean monthly water demands shown in Fig.4 of Sapkota et al. (2013) are used in combination with future projections of changes in India's water demands, as presented in the study by Amarasinghe et al. (2007). The latter study suggests an expected 8% increase in surface water demand for irrigation, 130% increase in surface water demand for domestic usage and 152% increase in surface water demand for industrial

270 usage, by 2030 under a business as usual scenario, which is mainly extrapolating trends of recent years (calculations after linearly interpolating results presented for years 2025 and 2050).

4 Results

4.1 CMIP5 Projection analysis

A direct analysis of the monthly precipitation climatologies for the Upper Ganges basin reveals large

275 variations between the different GCM precipitation datasets (Fig. 4). Interestingly, there are models

that are not able to capture at all the seasonal cycle and the summer monsoon precipitation, but instead reproduce a flat annual climatology (likely due to poor representations of the annual cycle of monsoon circulation). This illustrates the large uncertainties and questions the ability of some of the models to represent the present-day climate in the study area. However, this is no straightforward
280 indicator of their ability to generate reasonable future climate projections (Liang et al., 2008).

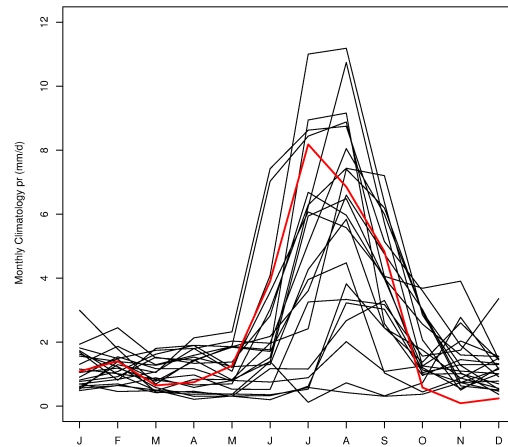


Figure 4. Monthly historical precipitation climatologies of the 21 CMIP5 models used in this study (black) and how they compare to the TRMMv7 satellite product (red), over the period 2000–2005 (the CMIP5 historical experiment ends in 2005). The data correspond to areal averages, covering the extent of the Upper Ganges basin.

Figure 5 shows the CFs of precipitation relative to the historic period 2000-2005, averaged in the Upper Ganges basin. It is evident that the spread of the results is large, and many models show opposite directions of change. Nevertheless, all the mean values point towards an increased precipitation for all months. The uncertainty is higher for the dry months November and December, which have the highest % increase in precipitation relative to historic values. On the other hand, the spread seems
285 to be narrower for the wet summer months but nonetheless there are still models with contrasting results.

Further details on the skill of the CMIP5 GCM models used in this study are available in Appendix A.

290 4.2 Hydrological Projections

After forcing JULES with the downscaled future climate projections from the CMIP5 multi-model database and in conjunction with estimates of different future land-use pathways, we calculate variations in the following hydrological components: flows at Kanpur barrage, evapotranspiration and soil moisture.

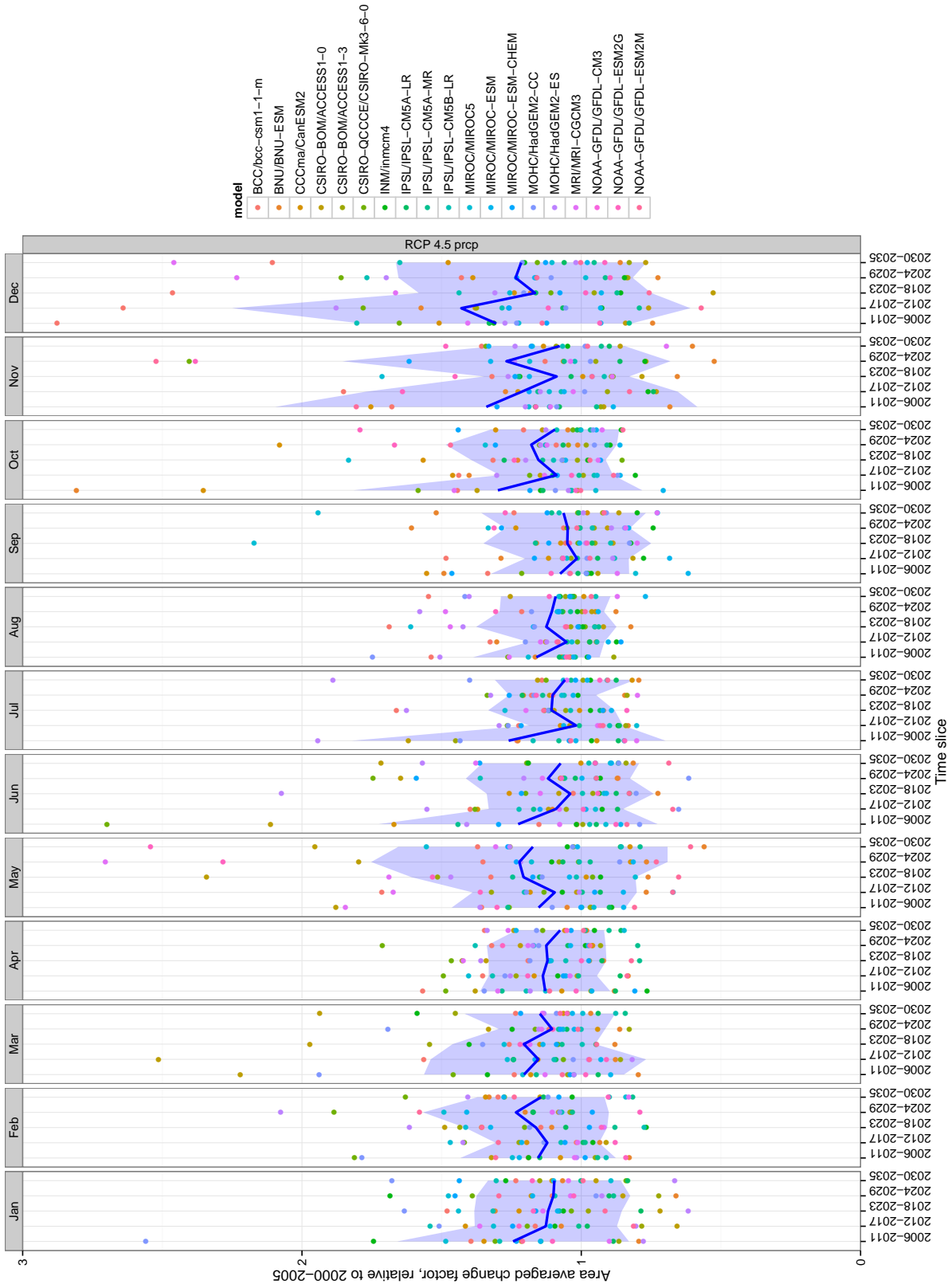


Figure 5. 6-year CFs of precipitation in the Upper Ganges basin. Each dot represents the basin's areal average of a particular model. The precipitation anomalies are relative, unit-less values. A higher than 1 value indicates an increase and a smaller than 1 values indicates a decrease of precipitation. The blue line represents the mean value whereas the shading represents the spread of projections from the multi-model ensemble.

295 Focusing upon the multi-model mean values (Fig. 6), for the entire Upper Ganges basin, when
only climate change is taken into consideration, the high flows exceeded only 5% of time (Q_5) are
projected to increase in magnitude by 41% [SD=73, the standard deviation of the percent change]
compared to historic values, under RCP4.5 and by 60% [SD=76] under RCP8.5 (Table 2). When
only land-use change is taken into account, different pathways project different types of change for
300 Q_5 : one of the pathways (08-10) is projecting an increase of 1.3%, other pathways are projecting
decreases of up to 0.5%. For low flows, exceeded 95% of time (Q_{95}), all pathways are projecting
a decrease, ranging from 11.8% to 19.5% (Table 3). The decrease in low flows is possibly due to
the combined impacts of forest growth and bare soil loss, which are less surface runoff and more
evapotranspiration. These appear to be enough to offset the impacts of urbanisation (i.e. reduced
305 infiltration and increased discharge), which is one of the land-use change trends being projected
consistently across all pathways.

When both climate change and land-use change are taken into account, the increase in the high
extremes of flows is slightly higher: 42% [SD=72] increase under RCP4.5 and 63% [SD=72] in-
crease under RCP8.5. In the low flows, the impact of climate change only is not as significant:
310 Q_{95} is decreased in magnitude by 2% [SD=28] under RCP4.5 and by 3% [SD=19] under RCP8.5.
When land-use change is also taken into account, Q_{95} is projected to increase by 1% [SD=31] under
RCP4.5 and to decrease by 1% [SD=17] under RCP8.5. So there is a clear impact of both climate
change and land-use change in the high and low extremes of flows.

Table 2. Q_5 and Q_{95} flow values (m^3/s) based on the flow duration curves shown in Figure 6

	Historical	RCP4.5		RCP8.5	
	Q_{hist}	Q_{cl}	Q_{cl_lu}	Q_{cl}	Q_{cl_lu}
Q_5	4576	$6450 = 1.41 \times Q_{5,hist}$ SD = 3346	$6504 = 1.42 \times Q_{5,hist}$ SD = 3276	$7325 = 1.60 \times Q_{5,hist}$ SD = 3477	$7443 = 1.63 \times Q_{5,hist}$ SD = 3274
Q_{95}	93	$91 = 0.98 \times Q_{95,hist}$ SD = 26	$94 = 1.01 \times Q_{95,hist}$ SD = 29	$90 = 0.97 \times Q_{95,hist}$ SD = 17	$92 = 0.99 \times Q_{95,hist}$ SD = 16

Table 3. Percent change in Q_5 and Q_{95} flow values, relative to the run with the 2010 land cover map, based on
the flow duration curves shown in Figure 7

	00-02	00-04	00-06	00-08	00-10	02-04	02-06	02-08	02-10	04-06	04-08	04-10	06-08	06-10	08-10
Q_5	0.0	0.2	-0.4	0.2	-0.1	-0.1	-0.1	0.0	0.0	-0.4	0.3	-0.5	-0.3	0.0	1.3
Q_{95}	-11.8	-12.1	-14.3	-16.5	-13.7	-13.9	-13.7	-15.4	-13.4	-13.0	-18.9	-17.3	-19.5	-17.6	-14.1

315 Spatial changes of evapotranspiration between the historical (2000-2005) and future projection
period (2030-2035), under both emission scenarios (RCP4.5 & RCP8.5) are shown in Fig. 10. Re-
sults are split into 3-month period seasonalities for winter (DJF), spring (MAM) and summer (JJA),
under the two types of experiments: (a) only climate change is taken into account (ET_{cl}), and (b)
both climate change and land-use change are taken into account (ET_{cl_lu}). The differences between

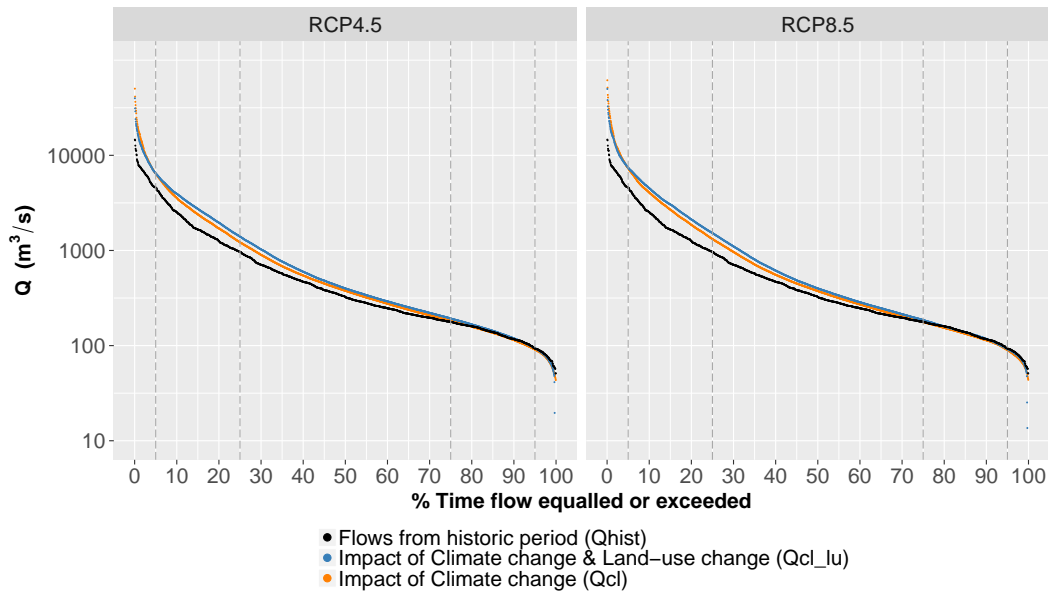


Figure 6. Flow duration curves of the streamflows simulated by JULES for the Upper Ganges basin, at Kanpur barrage. Orange: Multi-model mean values when only climate change is taken into account (Q_{cl}), simulation period 2030-2035. Blue: Multi-model mean values when both climate change and land-use change are taken into account (Q_{cl_lu}), simulation period 2030-2035. Black: Historical period (Q_{hist}), simulation period 2000-2005.

ET_{cl} and ET_{cl_lu} are very small in all seasons examined. The highest increase in evapotranspiration (0.8mm/d) is projected to occur during spring in the southern agricultural parts of the catchment. The highest decrease in evapotranspiration (-0.9mm/d) is projected to occur during the spring and summer periods in the mid-north parts of the study area. Nonetheless, those changes are cancelled out when spatially averaged across the catchment (Figs. 12 & 21).

The impact of land-use change on evapotranspiration and soil moisture is illustrated in Figs. 8 & 9. In terms of evapotranspiration, the model results by using the 2010 land cover map are similar to model results when the land is 100% covered by forest, grass, crops, or shrubs (Fig. 8). When the land cover is 100% by bare soil, urban or water, evapotranspiration is reduced as there is no transpiration. In these cases, evaporation takes the form of bare soil evaporation (restricted by water availability at the surface), evaporation from open water surfaces or ponding for urban surfaces. When the model was run with the 15 different land-use pathways and the outputs compared against the 2010 land cover map model outputs, the changes are of the order of $\pm 1.9\%$.

For soil moisture, the model results by using the 2010 land cover map are similar to model results when the land is 100% covered by crops, or shrubs (Fig. 8). In the warm MAM period, which follows the dry DJF months, the upper soil layer is likely dryer because of strong evaporation. During the monsoon rainfall period (JJA), the soil moisture content is increasing. The soil moisture sensitivity

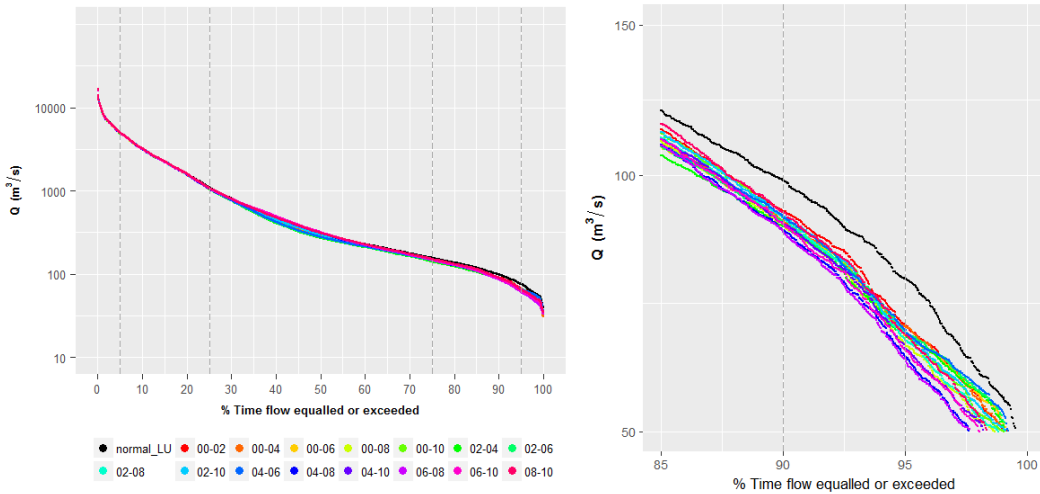


Figure 7. Left: Flow duration curves of the streamflows simulated by JULES for the Upper Ganges basin, at Kanpur barrage, for each of the 15 different future projections of land use. The meteorology was held fixed, so that only the impact of land use change can be examined. For reference, the results of the run with the 2010 land cover map are also plotted (normal_LU). Right: Plot focusing on the low flows, which are mostly affected by differences in the land cover.

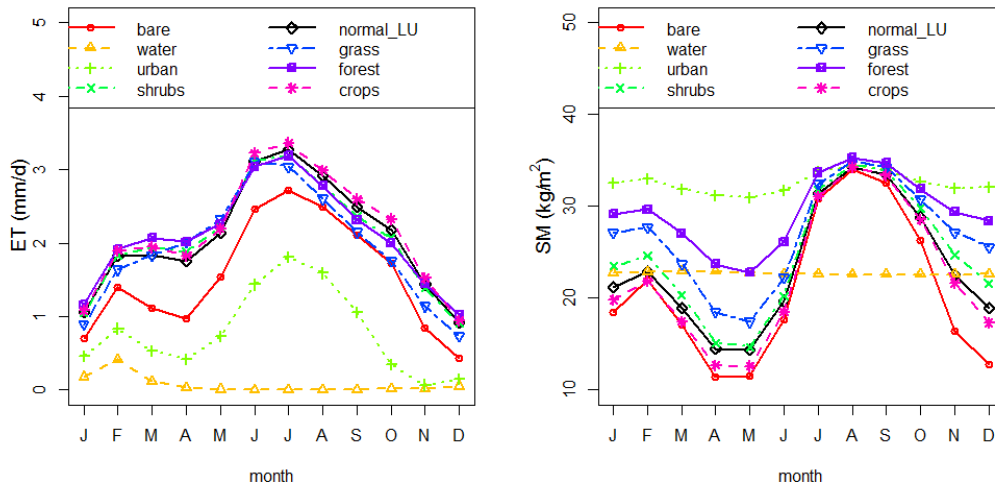


Figure 8. Evapotranspiration and Soil Moisture climatologies under the assumption that the study area was 100% covered by a particular land cover type. For reference, the results of the run with the 2010 land cover map are also plotted (normal_LU).

to different land cover types is larger on the dry season than on the wet season. In JULES, vegetation roots are assumed to enhance the maximum surface water infiltration rate by a factor of 4 for forests,

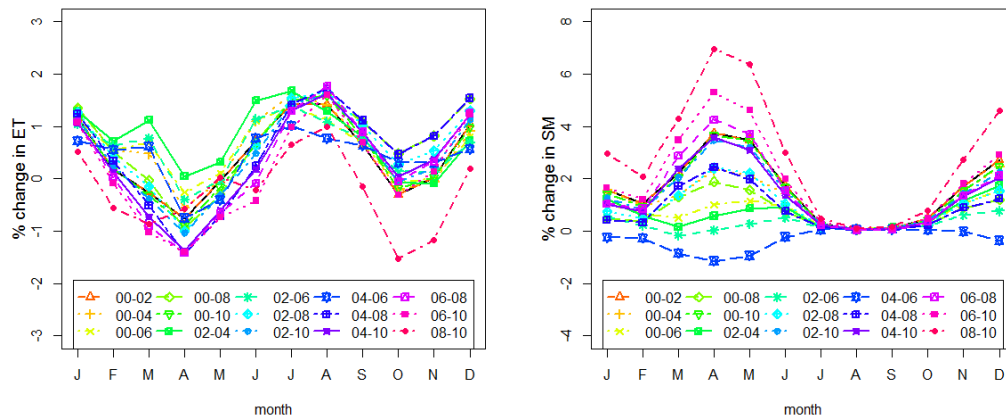


Figure 9. Percent change in Evapotranspiration and Soil Moisture climatologies when running JULES with each of the 15 different future projections of land use, relative to the 2010 land cover map. The meteorology was held fixed, so that only the impact of land use change can be examined.

and 2 for grass, shrubs and crops. When we run the model with the 15 different land-use pathways, again the sensitivity is larger on the dry season, with pathway 08-10 showing the highest increase
 340 relative to baseline run (6.8% for April) and scenario 04-06 the only pathway showing a decrease (-1.8% for April). For pathway 04-06, the decrease in dry season soil moisture could be due to the higher proportion of crops in the study area that are accessing the top layer water content, in combination with lower proportions of water & snow coverage. For pathway 08-10, the increased soil moisture in the dry season could be due to the increased forest and grass cover and higher
 345 infiltration rates associated with them.

In terms of spatial changes of soil moisture, it is shown in Fig. 11 that similarly to the patterns of evapotranspiration change, the highest increase in multi-model mean soil moisture (4 kg m^{-2}) is projected to occur during spring, in the southern agricultural parts of the catchment. The highest decrease in soil moisture (-10 kg m^{-2}) is projected to occur during the winter and summer periods,
 350 in the mid-north parts of the study area. However, it seems that these changes of soil moisture are cancelled out when spatially averaged results are calculated in Figs. 13 & 22.

Note that for the projections of evapotranspiration and soil moisture fluxes, the differences between the two RCP scenarios are not large. In the nearby-future period examined here (2030-2035), the relative importance of the RCPs is far smaller than the GCM model uncertainties.

355 Further details on the hydrological projections developed for this study are available in Appendix B.

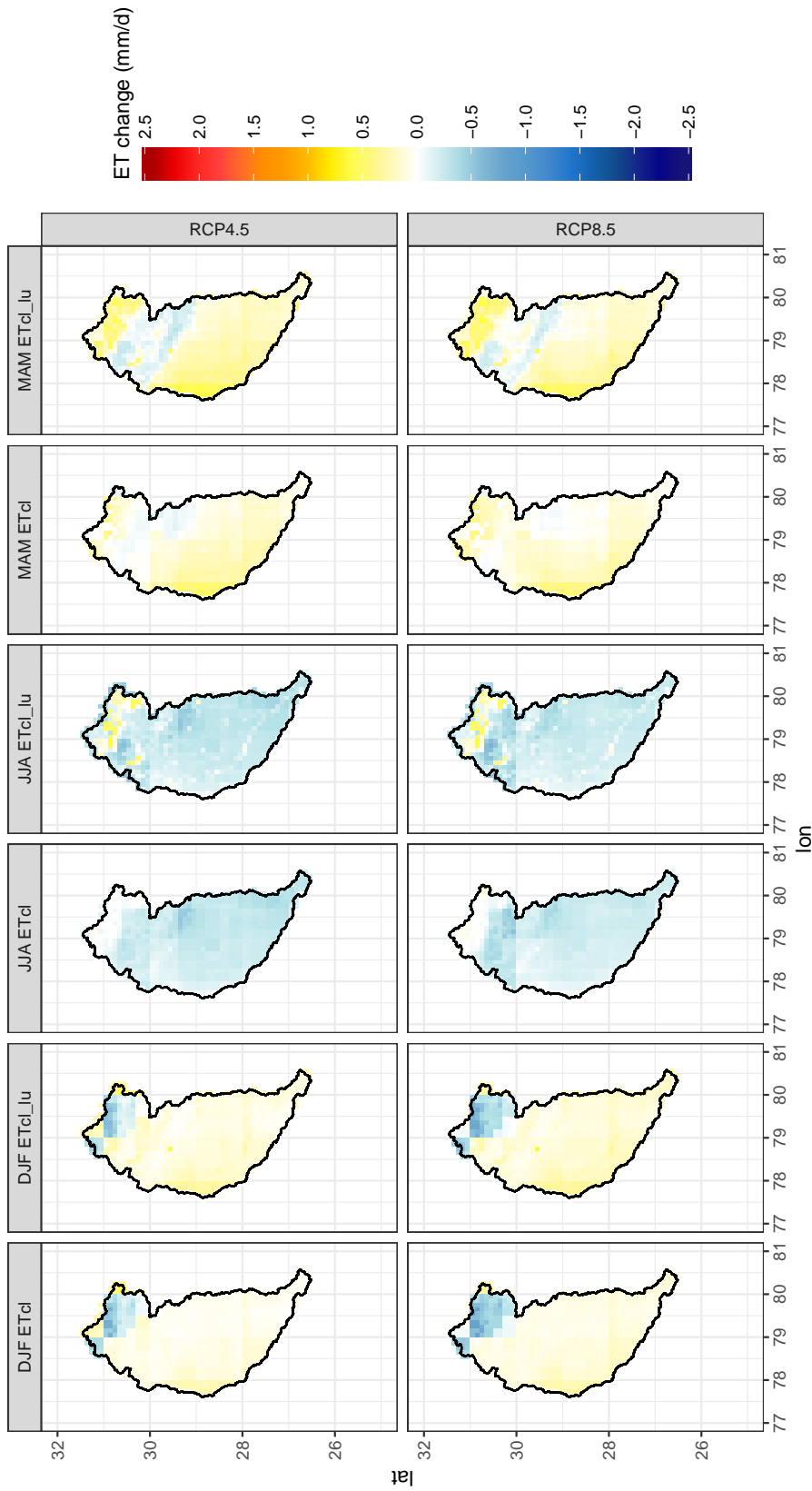


Figure 10. Absolute changes of spatial evapotranspiration (ET) fluxes between the historical simulation period 2000-2005 and the future projection simulation period 2030-2035, for the Upper Ganges basin and for each of the emission scenarios (RCP4.5 & RCP8.5). Results are split into 3-month period seasonalities for winter (DJF), spring (MAM) and summer (JJA), under the two types of experiments: (a) only climate change is taken into account (ETc), and (b) both climate change and land-use change are taken into account (ETc|u).

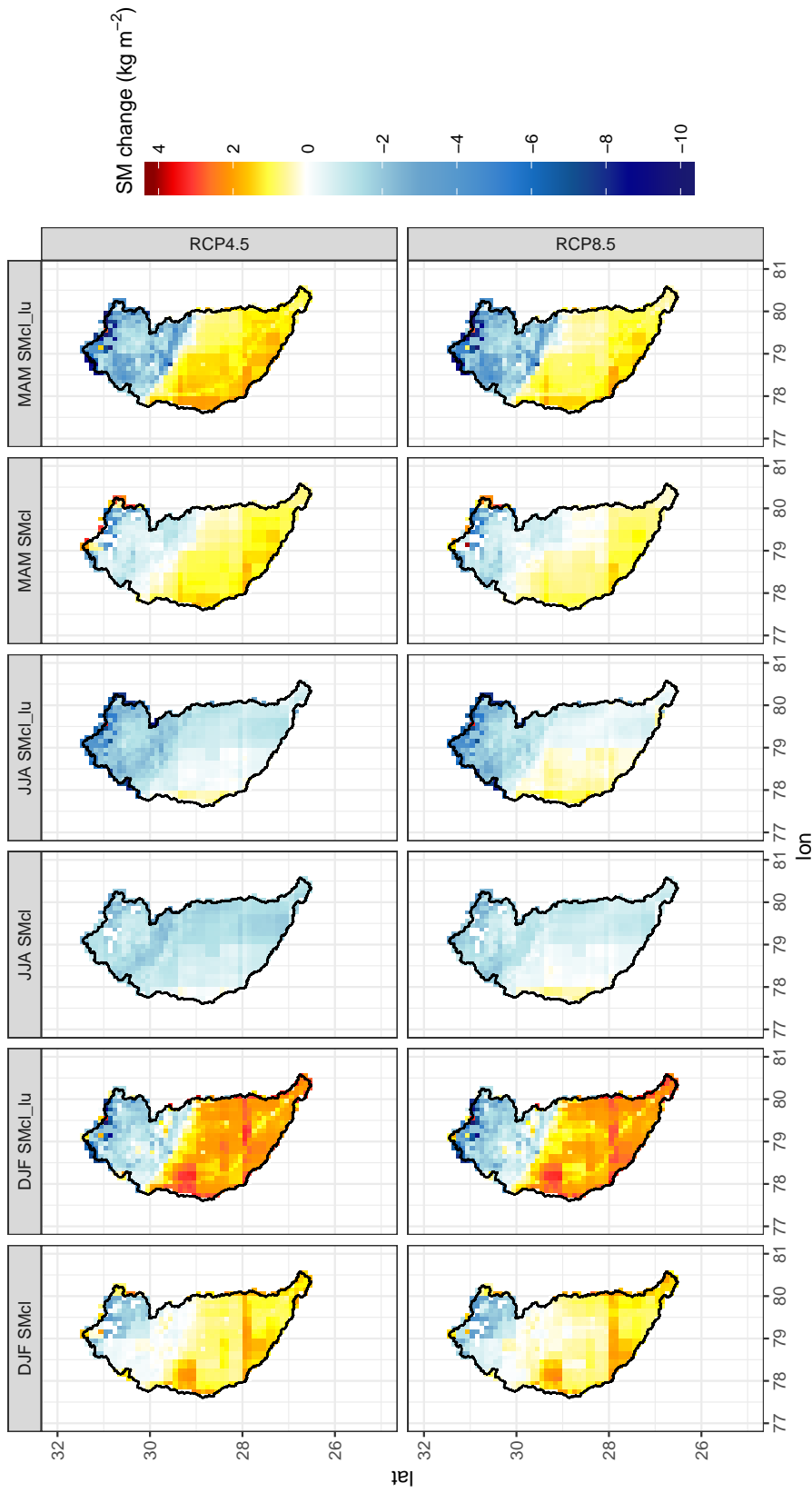


Figure 11. Absolute changes of spatial soil moisture (SM) fluxes between the historical simulation period 2000-2005 and the future projection simulation period 2030-2035, for the Upper Ganges basin and for each of the emission scenarios (RCP4.5 & RCP8.5). Results are split into 3-month period seasonalities for winter (DJF), spring (MAM) and summer (JJA), under the two types of experiments: (a) only climate change is taken into account (SMcl), and (b) both climate change and land-use change are taken into account (SMcl_lu).

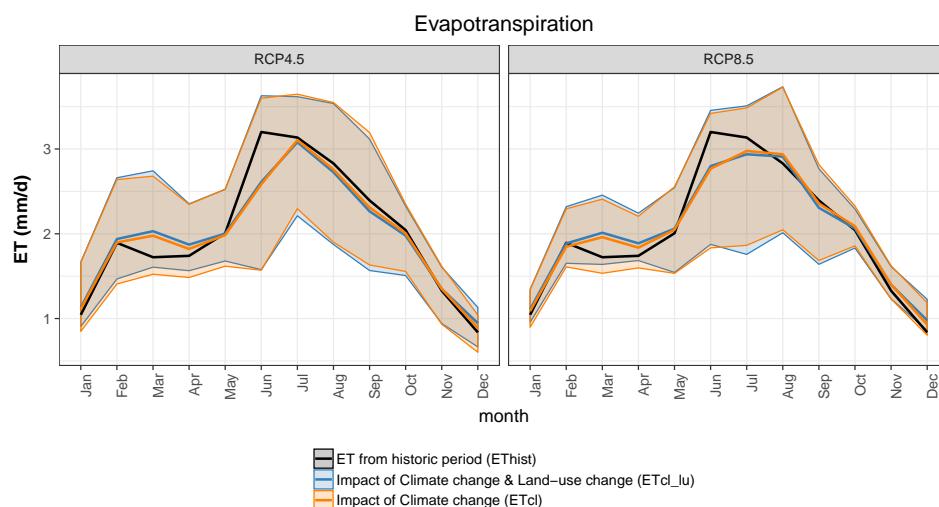


Figure 12. Multi model mean values of the evapotranspiration (ET) fluxes simulated by JULES, for the Upper Ganges basin and for each of the emission scenarios (RCP4.5 & RCP8.5). Black colour corresponds to the historical simulation period 2000-2005 (ET_{hist}). Orange colour corresponds to the simulation period 2030-2035, when only climate change is taken into account (ET_{cl}). Blue colour corresponds to the simulation period 2030-2035, when both climate change and land-use change are taken into account (ET_{cl_lu}). Shaded areas correspond to the max and min evapotranspiration values obtained from different GCM forcings and illustrate the large CMIP5 model spread.

5 Discussion

This section places our results in a water resources context, by discussing the implications of climate change on the water resources of the Upper Ganges and whether it is likely that water demand thresholds (i.e. amount of water that sustains environmental flows and water consumption) of the region will be exceeded in the future. A recent study by Sapkota et al. (2013) presented mean monthly water demands for irrigation, industrial and domestic purposes (period 1991-2005), in the Upper Ganges basin. According to this study, irrigation water demands from canals (which are much higher compared to industrial and domestic demands) are low during the monsoon period from June to September and high from November to February. During the winter months December and January, water demand in the Upper Ganges basin is already unmet. In recent years pressure has increased on the river canals to maintain flows during the dry season, due to the introduction of high water intensive crops, agricultural expansion and population growth (Sapkota et al., 2013).

Based on the studies by Amarasinghe et al. (2007) and Sapkota et al. (2013) and as described in Section 3.4, future projections of surface water demand for the Upper Ganges basin were generated on a monthly basis and for the period 2030-2035. Figure 14 shows how the future expected surface water demand compares with the flow volumes as calculated by JULES (period 2030-2035) under

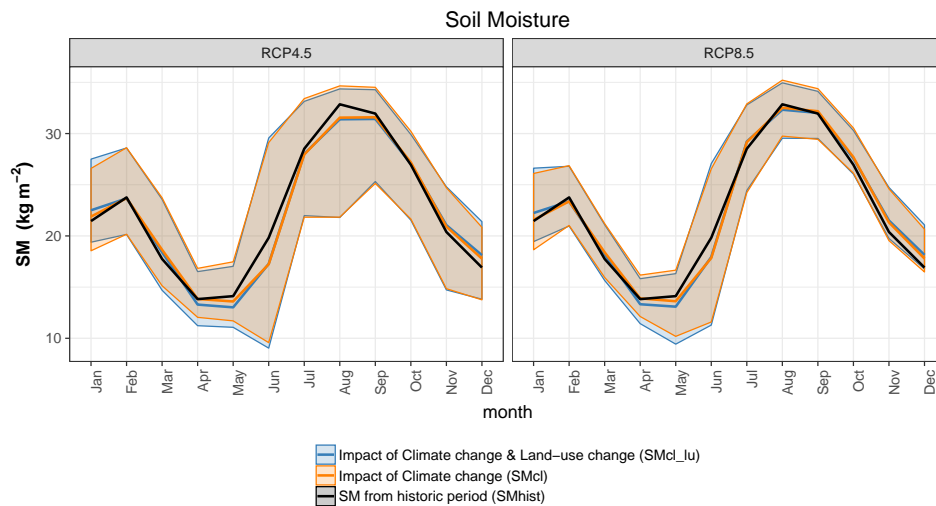


Figure 13. Multi model mean values of the soil moisture fluxes simulated by JULES, for the Upper Ganges basin and for each of the emission scenarios (RCP4.5 & RCP8.5). Black colour corresponds to the historical simulation period 2000-2005 (SM_{hist}). Orange colour corresponds to the simulation period 2030-2035, when only climate change is taken into account (SM_{cl}). Blue colour corresponds to the simulation period 2030-2035, when both climate change and land-use change are taken into account ($SM_{cl_{lu}}$). Shaded areas correspond to the max and min soil moisture values obtained from different GCM forcings and illustrate the large CMIP5 model spread.

the two examined RCP scenarios, when only climate change is taken into account and when both climate change and land-use change are taken into account. Since the main months under water stress are those in the dry season, and in order to better visualise the results outside the wet summer period (which is dominated by high flows), the y axis was limited to values lower than 2000 million m^3 of water. The future winter months (Dec-Feb) are expected to be most problematic in terms of meeting the surface water demands, with agriculture being the main water user. This poses threats to the river's capacity to maintain flows at an acceptable ecological level (environmental flows) during those months. Sapkota et al. (2013) showed that using less water intense crops in the Upper Ganges basin, is more efficient than reducing the total agricultural area by 40%, in reducing the unmet irrigation water demands.

One of the limitations of the present study, is that the data used in the JULES experiments and in the water demand analysis are not fully consistent with each other in all cases. Land-use projections across RCP 4.5 and 8.5 vary substantially. In RCP8.5, developing countries experience net increases in agricultural land, and urbanisation, while forest cover declines. In RCP4.5, due to afforestation and reforestation policies the extent of crop and grass land declines and the forested area increases. These RCP assumptions about future land use are not consistent with all 15 land cover pathways that were used to test the impacts of land-use change in this study. Further, the water demand projections of

390 theAmarasinghe et al. (2007) study are mainly based on the extrapolations of recent-year trends, but
are not consistent with all 15 land cover pathways. The water demand projections are consistent with
further urbanisation and the assumption of continuous irrigation expansion. Therefore, although the
projections to 2035 are not too far ahead, there is always the possibility that the "business-as-usual"
water demand drivers could significantly change, altering the future projections. However, we do
395 identify some consistency with RCP8.5 (which is considered to be a "business-as-usual" scenario)
and also with some of the land-use change trends detected in the 15 pathways used in our study (e.g.
urbanisation and agricultural expansion).

Additionally, understanding the future water availability in India is much more complex than
looking from the perspective of climate and land-use change only. For instance, India is one of the
400 largest hydropower generators in Asia. A potential future increase in hydropower capacity, aside
from its large benefits in terms of reducing carbon emissions, brings further environmental concerns
regarding river flows, water quality and eco-diversity. Therefore, the impacts of such water manage-
ment decisions (e.g. hydropower dam structures) could also play a major role in the water balance
of this region. As studies have shown, changing practices within certain types of land-use (i.e. in-
405 creased irrigation efficiency, upstream dams) are potentially more important than land-use change
per-se in influencing water availability (Calder, 1993; Solín et al., 2011), and this may be the case in
the future for the Upper Ganges basin.

Overall, climate change is the main driver of hydrological change in the near term future scenarios
explored in this study. If no dramatic land-use changes take place in the nearby future, the main
410 alterations in hydrological fluxes are expected to arise from the change in the meteorology (and
mainly precipitation). The relative contribution of land-use change is of an approximate magnitude
of 2% change. However, the strong inter-model uncertainties of the future projections (see SD values
in Section 4.2 and Table 2), which were possibly amplified by the delta-change approach, are posing
a limitation to the confidence of these results. Nevertheless, there is qualitative similarity between
415 results shown here and results presented by Lutz et al. (2014), who found that for the Upper Ganges
basin, projected precipitation increases during the monsoon period, could lead to increases in total
annual runoff up to 10% for RCP4.5 and 27% for RCP8.5, during the period 2041–2050. Likewise,
Masood et al. (2015) found that in the near-future (2015–2039), under RCP8.5, total runoff in the
Ganges basin is projected to increase by 2.5% in the dry season (Nov-Apr), by 12.1% in the wet
420 season (May-Oct), and by 11.3% annually.

As GCM uncertainties are unlikely to decrease quickly, decisions on the adaptation and mitigation
of climate change should not be delayed (Knutti and Sedlacek, 2013).

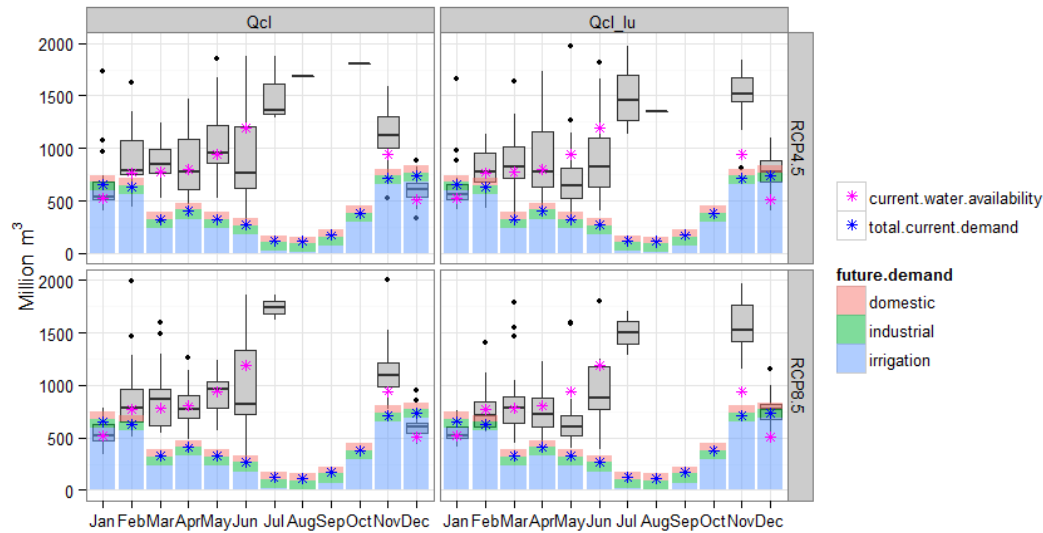


Figure 14. Bars showing future projections of monthly surface water demand, for irrigation, domestic and industrial usage, during the period 2030-2035, for the Upper Ganges basin. Box plots indicate monthly flow volumes calculated by JULES under different GCM forcings, for the same period. The demand data are based on figures presented in the studies by Sapkota et al. (2013) and Amarasinghe et al. (2007), as discussed above.

6 Conclusions

In this study, the impact of land-use change and climate change on the future hydrology of the Upper Ganges basin was assessed by calculating annual variations in hydrological components (stream flow, evapotranspiration and soil moisture). Three sets of modeling experiments were run in the JULES land-surface model, covering the period 2000-2035: (a) the model was forced with future climate projections from the CMIP5 multi-model database, whilst land use was held fixed at year 2010; (b) the model was forced with 15 future land-use pathways, based on Landsate satellite images and Markov chain simulation, whilst the meteorology was held fixed; and (c) the model was forced with future climate projections from the CMIP5 multi-model database, in conjunction with the 15 future land-use pathways.

Large variations between GCM-derived precipitation datasets arise from a basic analysis of CMIP5 model outputs. A stronger wet season is projected to occur by the end of the century according to multi-model mean values.

Significant differences between the historic and nearby-future hydrologic fluxes arise under future land-cover and climate change scenarios, pointing towards a severe increase in high extremes of flow. The changes in all examined hydrological components are slightly greater in the combined land-use and climate change scenario compared to the stand-alone climate change scenario. However, the main driver of future hydrological change is climate change. In terms of spatial changes in

evapotranspiration and soil moisture, the changes that occur in various parts of the catchment are cancelled out by changes of the opposite direction, occurring in different parts of the catchment, leading to smaller overall changes in terms of areal averages.

The large uncertainties in the CMIP5 model outputs were possibly amplified by the delta-change approach followed here and led to a large spread of results for the future hydrological variables (e.g. Figs 12 & 13, SD values in Section 4.2 and Table 2). Potential inconsistencies between the climate change, land-use change and water demand projections may have added extra uncertainty in some of the modelling outputs and this has been acknowledged in the discussion section. Nonetheless, as GCM uncertainties are unlikely to decrease in the near future, this work could help prioritize adaptation strategies and regional land-use planning to improve northern India's water resources.

Lastly, the results were presented in a water resources context, with the aim of understanding what climate and land-use change mean for the future water resources of the Upper Ganges basin. When looking into future water availability and demand (period 2030–2035), the river's capacity to maintain ecological flows during the dry season is threatened.

Appendix A: CMIP5 Projection analysis

A Taylor diagram is used to assess the relative skill of the CMIP5 models used in this study and estimate which of them performs better, in terms of simulating historical precipitation patterns over the study area (Fig. 15). The diagram quantifies the similarity between modelled and observed precipitation in terms of spatial pattern correlation coefficient, standard deviation and centred root-mean-square (RMS) difference (Taylor, 2001). Figure 15 graphically summarises how closely the historic precipitation generated by each of the 21 CMIP5 models used in this study matches TR-MMv7 observed precipitation, over the period 2000–2005. This plot illustrates that for the specific time period of 2000-2005, models such as CNRM-CM5, MIROC4h, MIROC5 are perceived to outperform models like IPSL-CM5B-LR or CSIRO-Mk-3-6-0 in terms of their ability to match TR-MMv7 observed precipitation well.

The spatial patterns of precipitation change between the periods 1975-2005 and 2020-2050 are shown in Fig. 16. For the summer monsoon period (JJA), the multi-model mean pattern of future projections is pointing towards a precipitation increase for some areas of up to 1.6 mm/d under scenario RCP4.5, whilst for other areas a decrease of up to 0.4 mm/d. As expected, under scenario RCP8.5, which corresponds to stronger radiative forcing, the precipitation increase and decrease is slightly stronger (up to +1.7 mm/d and -0.5 mm/d, respectively). For the dry period (DJF), under RCP4.5, the multi-model mean is projecting for some areas a small decrease in precipitation (up to -0.3 mm/d), whilst for other areas projecting an increase of up to 0.11 mm/d. Similar patterns of change are observed for DJF under RCP8.5. This means that an amplification of the annual cycle is being projected for the end of the century, with more pronounced wet and dry seasons.

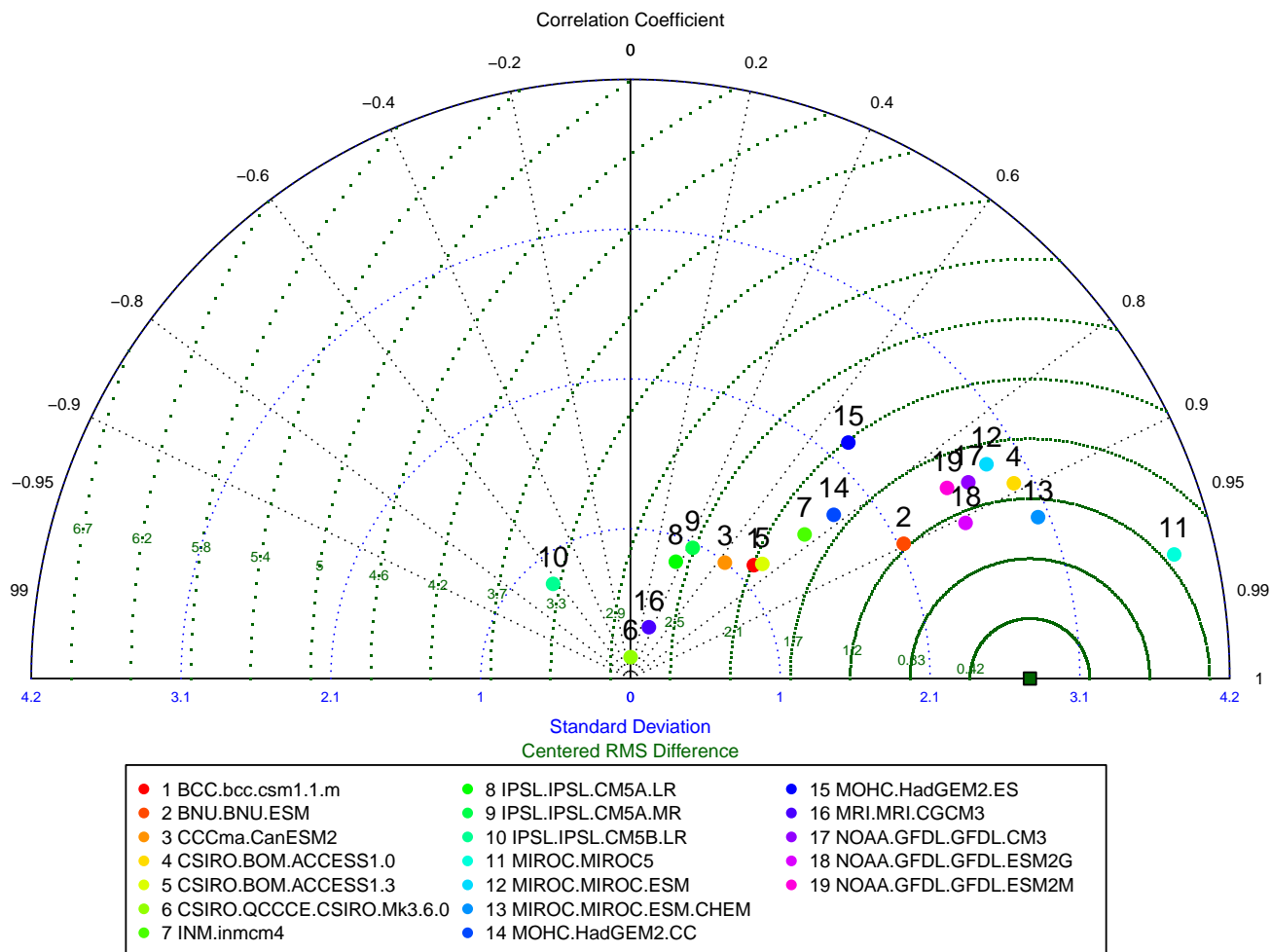


Figure 15. Taylor diagram that graphically summarises how closely the historic precipitation generated by each of the 21 CMIP5 models used in this study matches TRMMv7 observed precipitation, over the period 2000–2005. According to that diagram, the closer a model is to the observation (dark green - squared dot in the bottom right side of graph), the better it performs.

Figure 17 shows the spatial patterns of temperature change between the periods 1975–2005 and 2020–2050. The projections indicate a robust signal of temperature increase in all examined periods and under both emission scenarios. The temperature increase ranges from 0.8 to 2.2°C under RCP4.5 and from 0.9 to 2.4°C under RCP8.5.

480 Appendix B: Hydrological modelling outputs

The generated streamflows (Fig. 18) reveal the impact of both climate change and land-use change in the future flows. The spread of the results is indicative of the uncertainties among different GCM

Table 4. CMIP5 model output used and data resolution

Model	Centre	Spatial Resolution (Lon x Lat)	Country
ACCESS1-0	CSIRO-BOM	1.88°x 1.25°	Australia
ACCESS1-3	CSIRO-BOM	1.88°x 1.25°	Australia
BCC-CSM1-1-M	BCC	1.13°x 1.13°	China
BNU-ESM	BNU	2.81°x 2.81°	China
CanESM2	CCCma	2.81°x 2.81°	Canada
CNRM-CM5	CNRM-CERFACS	1.41°x 1.41°	France
CSIRO-Mk3-6-0	CSIRO-QCCCE	1.88°x 1.88°	Australia
INM-CM4	INM	2.00°x 1.50°	Russia
IPSL-CM5A-LR	IPSL	3.75°x 1.88°	France
IPSL-CM5A-MR	IPSL	2.50°x 1.26°	France
IPSL-CM5B-LR	IPSL	3.75°x 1.88°	France
MIROC4h	MIROC	0.56°x 0.56°	Japan
MIROC5	MIROC	1.41°x 1.41°	Japan
MIROC-ESM	MIROC	2.81°x 2.81°	Japan
MIROC-ESM-CHEM	MIROC	2.81°x 2.81°	Japan
HadGEM2-CC	MOHC	1.88°x 1.25°	UK
HadGEM2-ES	MOHC	1.88°x 1.25°	UK
MRI-CGCM3	MRI	1.13°x 1.13°	Japan
GFDL-CM3	NOAA-GFDL	2.50°x 2.00°	US
GFDL-ESM2G	NOAA-GFDL	2.50°x 2.00°	US
GFDL-ESM2M	NOAA-GFDL	2.50°x 2.00°	US

forcing data. The spread is large under both emission scenarios, which suggests that the GCM pre-
precipitation spread is relatively less sensitive to the level of radiative forcing. Further, it is noticeable
485 that the agreement in projections of low flows is stronger than that of high flows, because the future
projections of extreme precipitation events have large uncertainties in the tropical regions as also
mentioned in the study by Kharin et al. (2013).

Kernel density plots shown in Fig. 19 show the distributions of Q_5 , Q_{25} , Q_{50} , Q_{75} , Q_{95} , (i.e. flows
exceeded 5%, 25%, 50%, 75% and 95% of time respectively), among different GCMs, when only
490 climate change is taken into account (Q_{cl}) and when both land-use and climate change are taken
into account (Q_{cl_lu}), for the Upper Ganges basin. The large variations of flows highlight the large
spread among GCM outputs used to force JULES. It is evident that the differences between the two
RCPs are greater than the differences between Q_{cl} and Q_{cl_lu} of the same RCP. As illustrated by the
densities shown in Fig. 19, the agreement in projections of low flows (Q_{75} , Q_{95}) is stronger than that
495 of high flows (Q_5 , Q_{25}), as previously discussed.

The sensitivity tests we performed by running JULES under the assumption that the study area
is 100% covered by a single land cover type, are indicative of the model's sensitivity to land use.
Figure 20 shows that the highest flows are generated under 100% water or urban coverage, as would
be expected due to reduced infiltration and increased discharge, whilst vegetation coverage and in

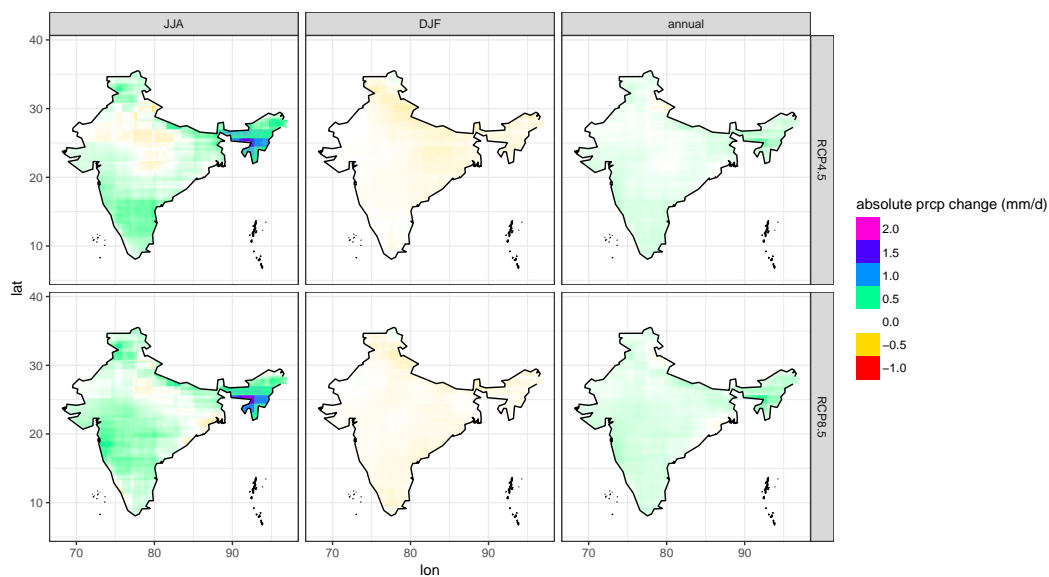


Figure 16. Absolute change [mm/d] in the multi-model mean precipitation over India between 1975–2005 and 2020–2050. Results are separated under 2 emission scenarios (RCP4.5 & RCP8.5) averaged over three different periods: the monsoon period (June–August, JJA), the dry winter period (December–February, DJF) and the annual period.

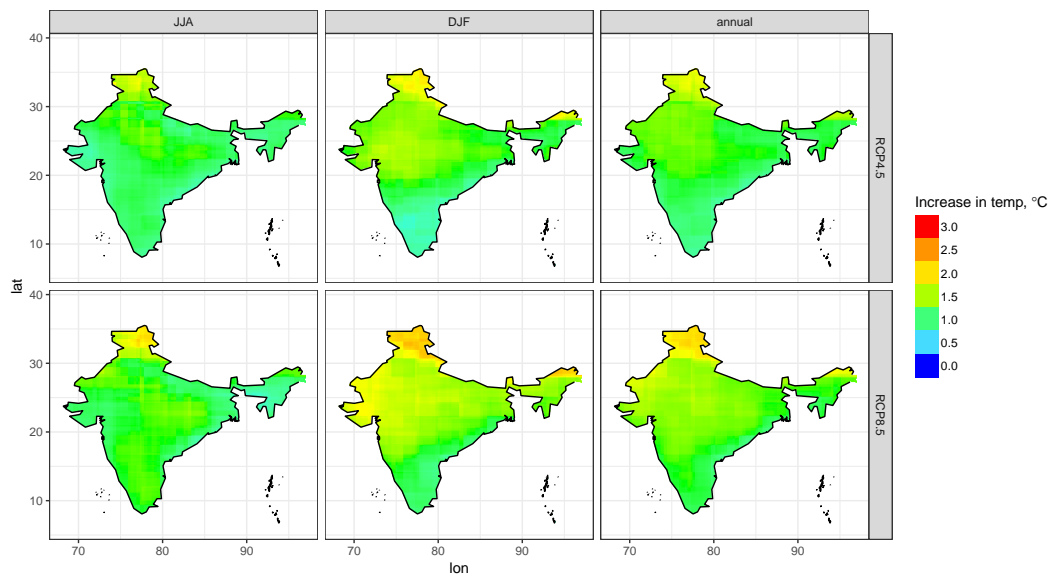


Figure 17. Absolute change [°C] in the multi-model mean surface air temperature over India between 1975–2005 and 2020–2050. Results are separated under 2 emission scenarios (RCP4.5 & RCP8.5) and three different time-scales: the monsoon period (June–August, JJA), the dry winter period (December–February, DJF) and the annual period.

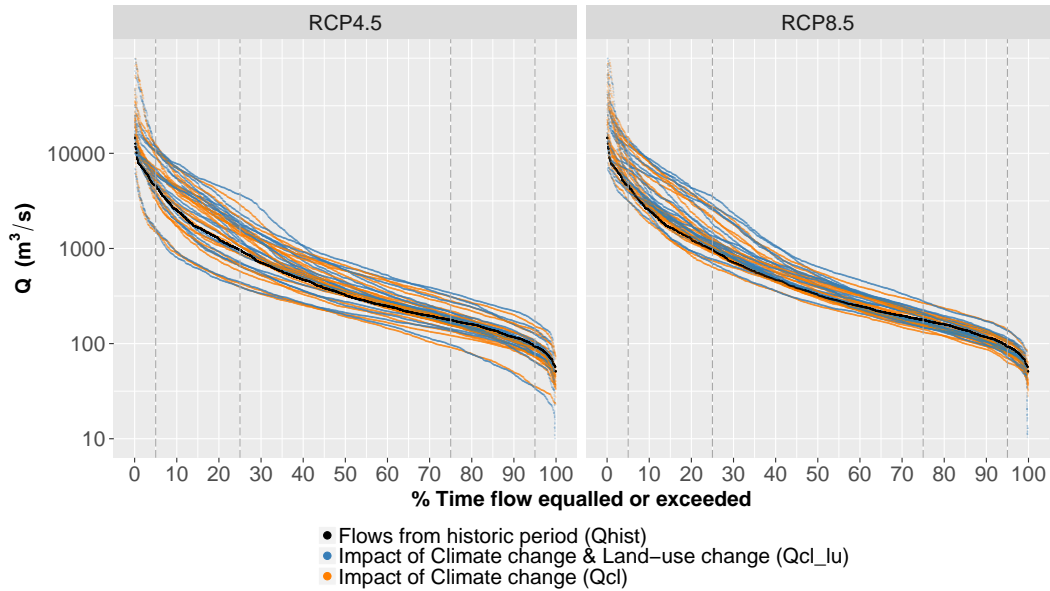


Figure 18. Flow duration curves of the streamflows simulated by JULES for the Upper Ganges basin, when forced by CMIP5 model outputs. Orange: only climate change is taken into account (Q_{cl}), simulation period 2030-2035, each line represents JULES outputs based on different CMIP5 model forcing. Blue: both climate change and land-use change are taken into account (Q_{cl_lu}), simulation period 2030-2035, each line represents JULES outputs based on different CMIP5 model forcing. Black: Historical period (Q_{hist}), simulation period 2000-2005.

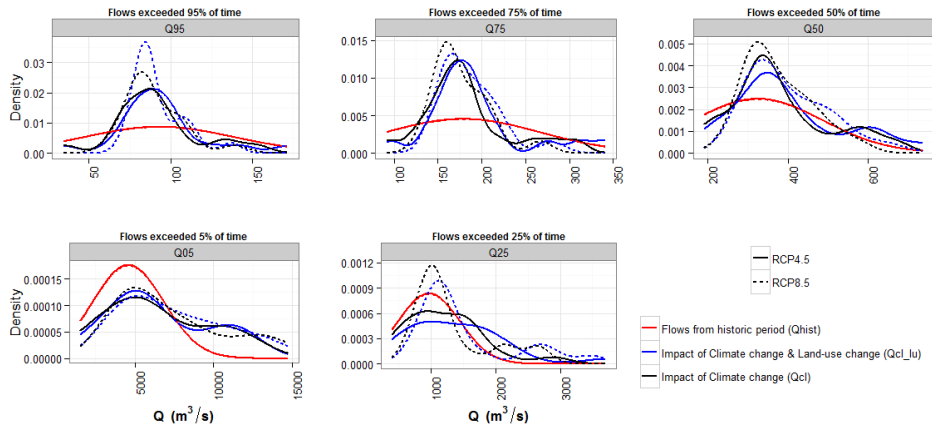


Figure 19. Kernel density plots showing distribution of Q_5 , Q_{25} , Q_{50} , Q_{75} , Q_{95} (i.e. flows exceeded 5%, 25%, 50%, 75% and 95% of time respectively), among different GCMs, for the Upper Ganges basin, under both emission scenarios. Black: Only climate change is taken into account (Q_{cl}), simulation period 2030-2035. Blue: Both climate change and land-use change are taken into account (Q_{cl_lu}), simulation period 2030-2035. Red: Historical period (Q_{hist}), simulation period 2000-2005.

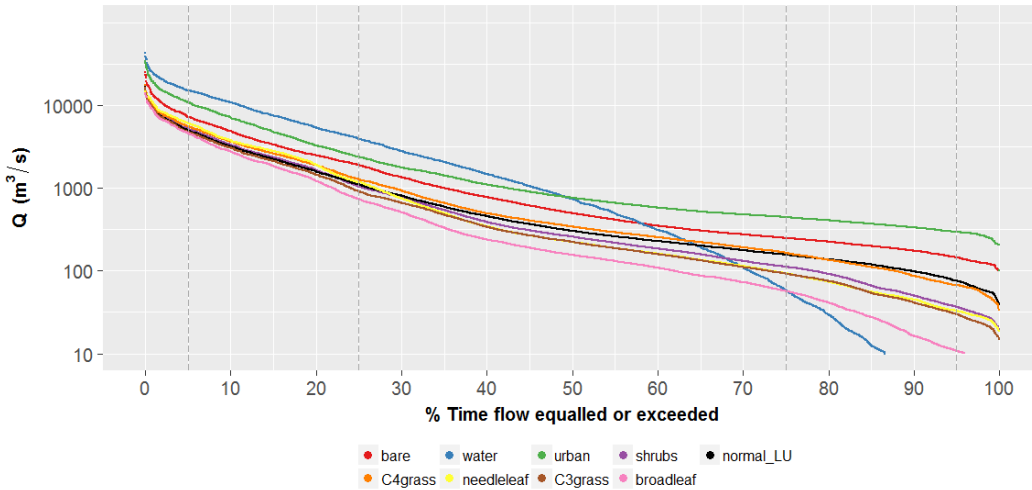


Figure 20. Flow duration curves of the streamflows simulated by JULES for the Upper Ganges basin, at Kanpur barrage, under the assumption that the study area was 100% covered by a particular land cover type. For reference, the results of the run with the 2010 land cover map are also plotted (normal_LU).

500 particular forest and crops are generating lower flows (due to higher infiltration, canopy interception and evapotranspiration rates).

The magnitude of increase in the future projections of streamflows might appear unrealistic, and this is partly attributed to the downscaling method used that increased precipitation extremes and partly to the uncertainties of GCM outputs. The mean climatic CFs were calculated from the mean
 505 monthly climatologies over 6-year time slices. However, given the large variability of precipitation on daily time-scales compared to the mean monthly climatology, by scaling the high extremes of precipitation according to the CF, it is inevitable that in some cases precipitation is highly exaggerated in the future projections. In such a large catchment inflated precipitation extremes would be directly translated by JULES into unreasonably high runoff values.

510 In terms of evapotranspiration fluxes (Fig 12), the multi-model mean future projections under RCP4.5 are pointing towards increased evapotranspiration for the spring months March and April and decreased evapotranspiration over the summer period (June-September). Under RCP8.5, evapotranspiration follows similar patterns of change, although in August the projection is pointing towards increased evapotranspiration compared to historic values. In all cases, it is evident that in the
 515 near-term future projections, the inter-model uncertainty is higher than the scenario uncertainty. This is also shown in Fig 21, which displays monthly percentage changes of evapotranspiration between historic (2000-2005) and future period (2030-2035), spatially averaged in the Upper Ganges basin. The spread of results derived by JULES forced with different GCM outputs is large under both RCPs but the multi-model mean changes are never higher than 20%.

520 On the other hand, the multi-model mean future projections of soil moisture under the same scenario (Fig 13) show a decrease in soil moisture from April to September. Interestingly, the changes of soil moisture relative to the historic period are smaller under RCP8.5 compared to RCP4.5. The overall agreement between historic and both future scenarios seems to be better in the soil moisture results compared to the evapotranspiration results (see also the spread of results in Figs. 21–22).
525 Figure 22, displays monthly percentage changes of soil moisture between historic (2000-2005) and future projections period (2030-2035), spatially averaged in the Upper Ganges basin. It is shown that the spread of results is larger under RCP4.5 compared to RCP8.5. This could be explained by the stronger forcing of the RCP8.5, which leads the GCMs to produce more similar results. In all cases the multi-model mean changes between historic and future projections in soil moisture are
530 never higher than approximately 20%.

As previously mentioned, it seems that the projected for the future increase in precipitation is translated as more intense precipitation events (due to the delta-change approach followed here). Besides, the differences between the two RCP scenarios are not large, especially for the projections of evapotranspiration and soil moisture fluxes. In the nearby-future period examined here (2030-
535 2035), the relative importance of the RCPs is far smaller than the GCM model uncertainties. Finally, it is important to note that this study did not explicitly address future changes in irrigation practices that could have a large impact in evapotranspiration rates over the study area.

Acknowledgements. G. Tsarouchi acknowledges support by the Grantham Institute for Climate Change (Imperial College London) and HR Wallingford. W. Buytaert acknowledges support by the NERC Changing Water
540 Cycle (South Asia) project Hydrometeorological feedbacks and changes in water storage and fluxes in Northern India (grant number NE/I022558/1). We also acknowledge the World Climate Research Programme's Working Group on Coupled Modelling, which is responsible for CMIP, and we thank the climate modeling groups (listed in Table 4 of this paper) for producing and making available their model output. For CMIP the U.S. Department of Energy's Program for Climate Model Diagnosis and Intercomparison provides coordinating support and led
545 development of software infrastructure in partnership with the Global Organization for Earth System Science Portals." We would like to thank the two anonymous reviewers for their constructive comments, which helped us improve the manuscript.

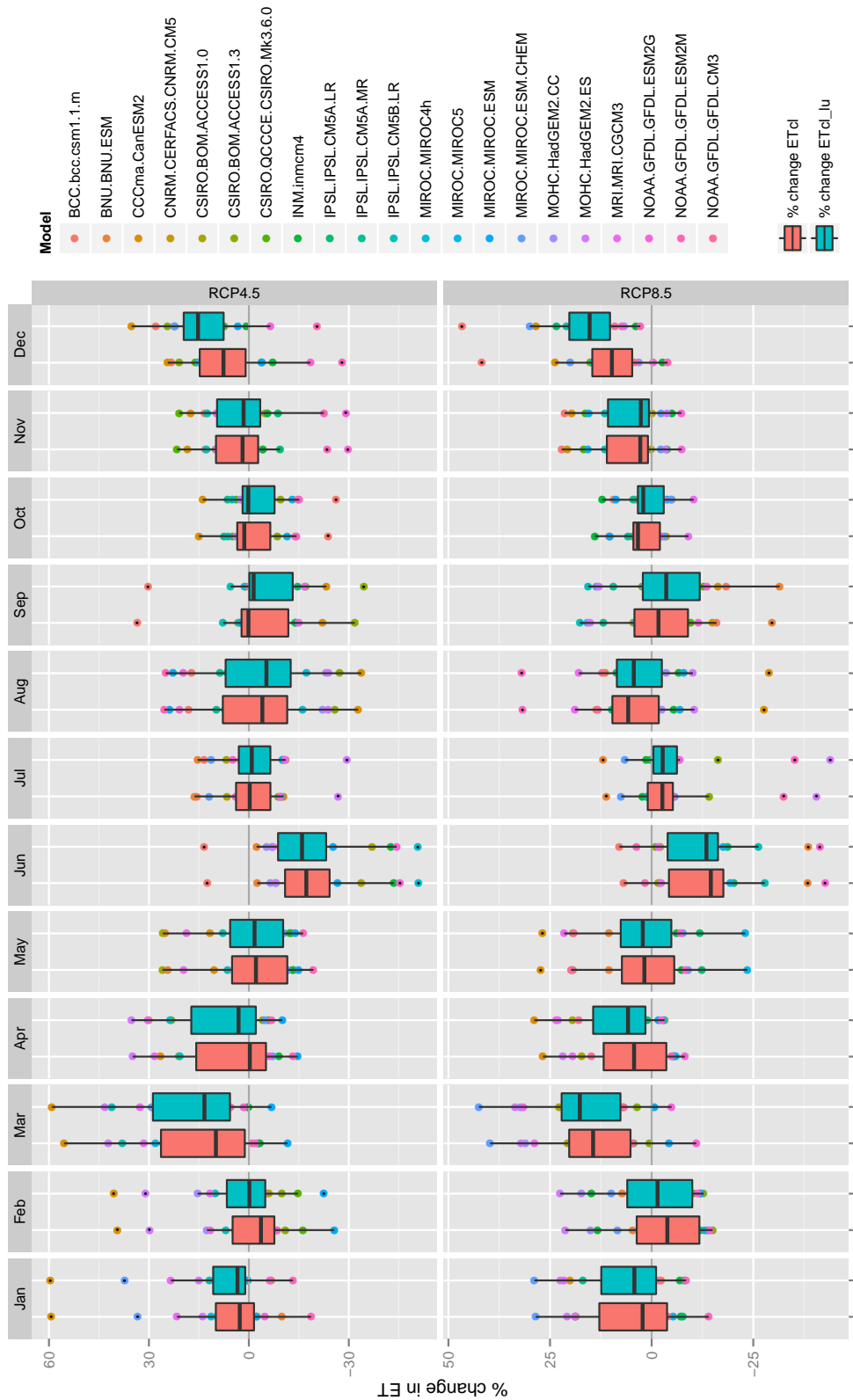


Figure 21. Percentage changes of evapotranspiration (ET) fluxes between the historical simulation period 2000-2005 and the future projection simulation period 2030-2035, for the Upper Ganges basin and for each of the emission scenarios (RCP4.5 & RCP8.5). Pink colour corresponds to the scenarios that only climate change is taken into account. Blue colour corresponds to the scenarios that both climate change and land-use change are taken into account.

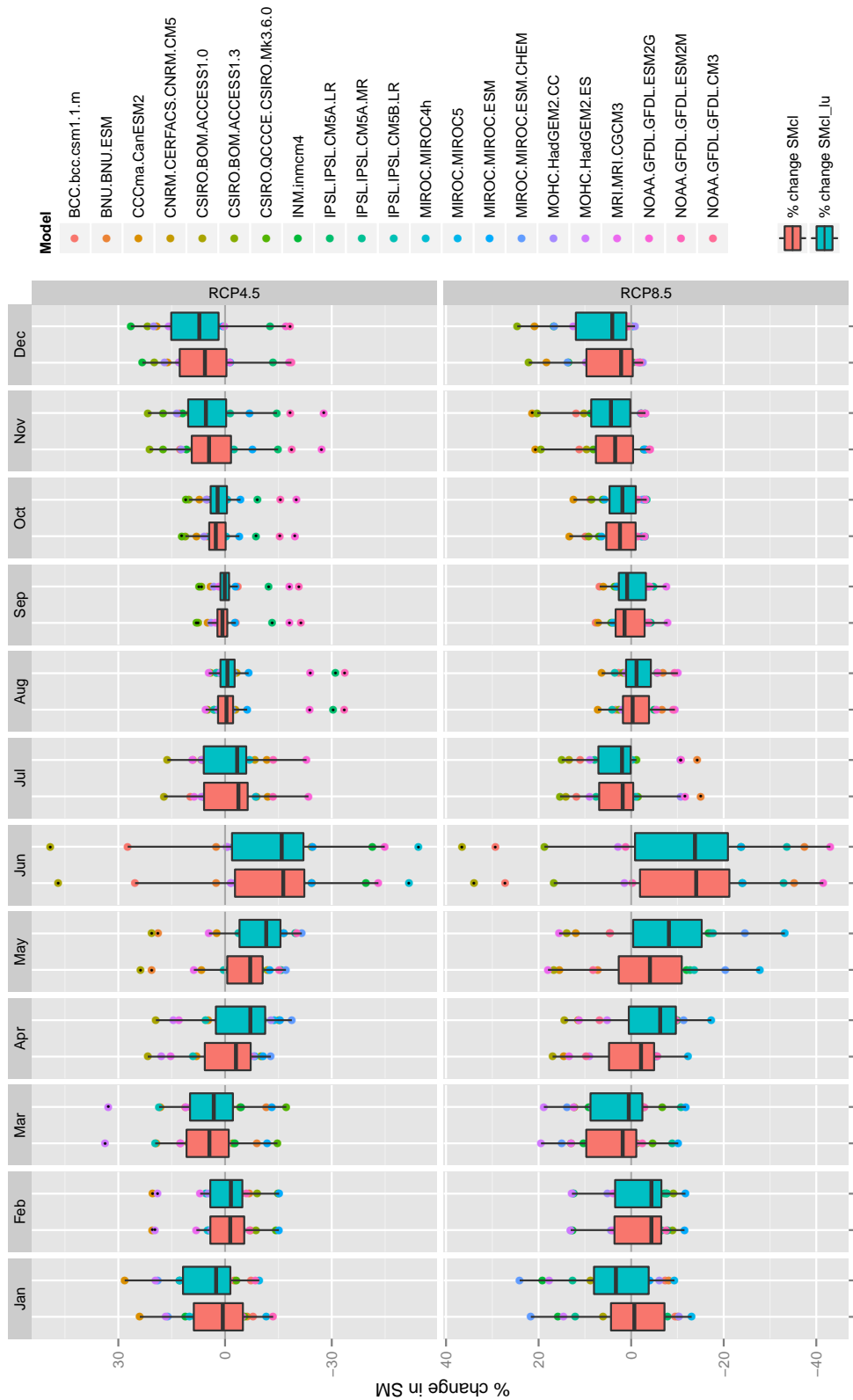


Figure 22. Percentage changes of soil moisture fluxes between the historical simulation period 2000-2005 and the future projection simulation period 2030-2035, for the Upper Ganges basin and for each of the emission scenarios (RCP4.5 & RCP8.5). Pink colour corresponds to the scenarios that only climate change is taken into account. Blue colour corresponds to the scenarios that both climate change and land-use change are taken into account.

References

- Amarasinghe, U., A., Shah, T., Anand, B. K., and Hugh, T.: India's water future to 2025-2050: business-as-usual
550 scenario and deviations, International Water Management Institute, 2007.
- Best, M. J., Pryor, M., Clark, D. B., Rooney, G. G., Essery, R. L. H., Menard, C. B., Edwards, J. M., Hendry,
M. A., Porson, A., Gedney, N., Mercado, L. M., Sitch, S., Blyth, E., Boucher, O., Cox, P. M., Grimmond,
C. S. B., and Harding, R. J.: The Joint UK Land Environment Simulator (JULES), Model description -
Part 1: Energy and water fluxes, *Geoscientific Model Development Discussions*, 4, 595–640, [http://www.
555 geosci-model-dev-discuss.net/4/595/2011/](http://www.geosci-model-dev-discuss.net/4/595/2011/), 2011.
- Bharati, L., Lacombe, G., Gurung, P., Jayakody, P., Hoanh, C. T., and Smakhtin, V.: The impact of water infras-
tructure and climate change on the hydrology of the Upper Ganges River basin., International Water Man-
agement Institute; Colombo; Sri Lanka, [http://www.iwmi.cgiar.org/Publications/IWMI_Research_Reports/
PDF/PUB142/RR142.pdf](http://www.iwmi.cgiar.org/Publications/IWMI_Research_Reports/PDF/PUB142/RR142.pdf), 2011.
- 560 Bhat, G. S.: The Indian drought of 2002 - a sub-seasonal phenomenon?, *Quarterly Journal of the Royal Meteorological Society*, 132, 2583–2602, doi:10.1256/qj.05.13, <http://dx.doi.org/10.1256/qj.05.13>, 2006.
- Calder, I.: *Hydrologic effects of land-use change*, McGraw-Hill, New York, 1993.
- Dash, S. K., Kulkarni, M. A., Mohanty, U. C., and Prasad, K.: Changes in the characteristics of rain events in
India, *Journal of Geophysical Research: Atmospheres*, 114, doi:10.1029/2008JD010572, [http://dx.doi.org/
565 10.1029/2008JD010572](http://dx.doi.org/10.1029/2008JD010572), 2009.
- Essery, R., Best, M., Betts, R., and Taylor, C.: Explicit representation of subgrid heterogeneity in a GCM land
surface scheme, *Journal of hydrometeorology*, 4, 530–543, 2003.
- Fowler, H. J., Blenkinsop, S., and Tebaldi, C.: Linking climate change modelling to impacts studies: recent
advances in downscaling techniques for hydrological modelling, *International Journal of Climatology*, 27,
570 1547–1578, doi:10.1002/joc.1556, <http://dx.doi.org/10.1002/joc.1556>, 2007.
- Huffman, G. J. and Bolvin, D. T.: TRMM and other data precipitation data set documentation., [ftp://precip.gsfc.
nasa.gov/pub/trmmdocs/3B42_3B43_doc.pdf](ftp://precip.gsfc.nasa.gov/pub/trmmdocs/3B42_3B43_doc.pdf), accessed: Nov 2013, 2013.
- Huffman, G. J., Bolvin, D. T., Nelkin, E. J., Wolff, D. B., Adler, R. F., Gu, G., Hong, Y., Bowman, K. P.,
and Stocker, E. F.: The TRMM Multisatellite Precipitation Analysis (TMPA): Quasi-Global, Multiyear,
575 Combined-Sensor Precipitation Estimates at Fine Scales, *J. Hydrometeor*, 8, 38–55, 2007.
- Im, E.-S., Pal, J. S., and Eltahir, E. A. B.: Deadly heat waves projected in the densely populated agricultural
regions of South Asia, *Science Advances*, 3, doi:10.1126/sciadv.1603322, [http://advances.sciencemag.org/
content/3/8/e1603322](http://advances.sciencemag.org/content/3/8/e1603322), 2017.
- Immerzeel, W. W., van Beek, L. P. H., and Bierkens, M. F. P.: Climate change will affect the Asian water tow-
580 ers, *Science*, 328, 1382–1385, doi:10.1126/science.1183188, [http://www.sciencemag.org/content/328/5984/
1382.abstract](http://www.sciencemag.org/content/328/5984/1382.abstract), 2010.
- IPCC: *Climate Change 2013: The Physical Science Basis. Contribution of Working Group I to the Fifth Assessment Report of the Intergovernmental Panel on Climate Change*, 2013.
- IPCC: *Climate Change 2014: Impacts, Adaptation, and Vulnerability. Part B: Regional Aspects. Contribution
585 of Working Group II to the Fifth Assessment Report of the Intergovernmental Panel on Climate Change*,
2014.

- Jain, S. K., Agarwal, P. K., and Singh, V. P.: Hydrology and Water Resources of India. Series: Water Science and Technology Library, Vol. 57, Springer, 2007.
- 590 Kala, C. P.: Deluge, disaster and development in Uttarakhand Himalayan region of India: Challenges and lessons for disaster management, *International Journal of Disaster Risk Reduction*, 8, 143 – 152, doi:<http://dx.doi.org/10.1016/j.ijdr.2014.03.002>, <http://www.sciencedirect.com/science/article/pii/S2212420914000235>, 2014.
- Kalnay, Kanamitsu, Kistler, et al.: The NCEP/NCAR 40-Year Reanalysis Project, *Bulletin of the American Meteorological Society*, 77, 1996.
- 595 Karlsson, I. B., Sonnenborg, T. O., Refsgaard, J. C., Trolle, D., Borgesen, C. D., Olesen, J. E., Jeppesen, E., and Jensen, K. H.: Combined effects of climate models, hydrological model structures and land use scenarios on hydrological impacts of climate change, *Journal of Hydrology*, 535, 301 – 317, doi:<https://doi.org/10.1016/j.jhydrol.2016.01.069>, <http://www.sciencedirect.com/science/article/pii/S0022169416300099>, 2016.
- 600 Kaushal, N. and Kansal, M.: Overview of water allocation practices in Uttar Pradesh and Uttarakhand with a specific reference to future demands., *SAWAS*, 2, 27–43, 2011.
- Kharin, V., Zwiers, F., Zhang, X., and Wehner, M.: Changes in temperature and precipitation extremes in the CMIP5 ensemble, *Climatic Change*, 119, 345–357, doi:10.1007/s10584-013-0705-8, <http://dx.doi.org/10.1007/s10584-013-0705-8>, 2013.
- 605 Knutti, R. and Sedlacek, J.: Robustness and uncertainties in the new CMIP5 climate model projections, *Nature Clim. Change*, 3, 369–373, <http://dx.doi.org/10.1038/nclimate1716>, 2013.
- Lau, W. K. M. and Kim, K.-M.: The 2010 Pakistan Flood and Russian Heat Wave: Teleconnection of Hydrometeorological Extremes, *J. Hydrometeorol*, 13, 392–403, doi:10.1175/JHM-D-11-016.1, <http://dx.doi.org/10.1175/JHM-D-11-016.1>, 2011.
- 610 Liang, X.-Z., Kunkel, K. E., Meehl, G. A., Jones, R. G., and Wang, J. X. L.: Regional climate models downscaling analysis of general circulation models present climate biases propagation into future change projections, *Geophysical Research Letters*, 35, n/a–n/a, doi:10.1029/2007GL032849, <http://dx.doi.org/10.1029/2007GL032849>, 108709, 2008.
- Lutz, A. F., Immerzeel, W. W., Shrestha, A. B., and Bierkens, M. F. P.: Consistent increase in High Asia’s runoff due to increasing glacier melt and precipitation, *Nature Clim. Change*, 4, 587–592, <http://dx.doi.org/10.1038/nclimate2237>, 2014.
- 615 Maraun, D., Wetterhall, F., Ireson, A. M., Chandler, R. E., Kendon, E. J., Widmann, M., Brienen, S., Rust, H. W., Sauter, T., Themesl, M., Venema, V. K. C., Chun, K. P., Goodess, C. M., Jones, R. G., Onof, C., Vrac, M., and Thiele-Eich, I.: Precipitation downscaling under climate change: Recent developments to bridge the gap between dynamical models and the end user, *Reviews of Geophysics*, 48, doi:10.1029/2009RG000314, <http://dx.doi.org/10.1029/2009RG000314>, 2010.
- 620 Masood, M., Yeh, P. J.-F., Hanasaki, N., and Takeuchi, K.: Model study of the impacts of future climate change on the hydrology of Ganges - Brahmaputra - Meghna basin, *Hydrology and Earth System Sciences*, 19, 747–770, doi:10.5194/hess-19-747-2015, <https://www.hydrol-earth-syst-sci.net/19/747/2015/>, 2015.

- 625 Murari, K. K., Ghosh, S., Patwardhan, A., Daly, E., and Salvi, K.: Intensification of future severe heat waves in India and their effect on heat stress and mortality, *Regional Environmental Change*, 15, 569–579, doi:10.1007/s10113-014-0660-6, <https://doi.org/10.1007/s10113-014-0660-6>, 2015.
- Pervez, M. S. and Henebry, G. M.: Assessing the impacts of climate and land use and land cover change on the freshwater availability in the Brahmaputra River basin, *Journal of Hydrology: Regional Studies*, 3, 285 – 311, doi:<https://doi.org/10.1016/j.ejrh.2014.09.003>, <http://www.sciencedirect.com/science/article/pii/S2214581814000317>, 2015.
- 630 Raisanen, J. and Raty, O.: Projections of daily mean temperature variability in the future: cross-validation tests with ENSEMBLES regional climate simulations, *Climate Dynamics*, 41, 1553–1568, doi:10.1007/s00382-012-1515-9, <http://dx.doi.org/10.1007/s00382-012-1515-9>, 2013.
- 635 Raty, O., Raisanen, J., and Ylhäisi, J. S.: Evaluation of delta change and bias correction methods for future daily precipitation: intermodel cross-validation using ENSEMBLES simulations, *Climate Dynamics*, 42, 2287–2303, doi:10.1007/s00382-014-2130-8, <http://dx.doi.org/10.1007/s00382-014-2130-8>, 2014.
- Richards, L. A.: Capillary conduction of liquids through porous mediums, *Journal of Applied Physics*, 1, 318–333, <http://scitation.aip.org/content/aip/journal/jap/1/5/10.1063/1.1745010>, 1931.
- 640 Sapkota, P., Bharati, L., Gurung, P., Kaushal, N., and Smakhtin, V.: Environmentally sustainable management of water demands under changing climate conditions in the Upper Ganges Basin, India, *Hydrological Processes*, 27, 2197–2208, doi:10.1002/hyp.9852, <http://dx.doi.org/10.1002/hyp.9852>, 2013.
- Scoccimarro, E., Gualdi, S., Bellucci, A., Zampieri, M., and Navarra, A.: Heavy Precipitation Events in a Warmer Climate: Results from CMIP5 Models, *J. Climate*, 26, 7902–7911, doi:10.1175/JCLI-D-12-00850.1, <http://dx.doi.org/10.1175/JCLI-D-12-00850.1>, 2013.
- 645 Sengupta, A. and Rajeevan, M.: Uncertainty quantification and reliability analysis of CMIP5 projections for the Indian summer monsoon, *Current Science*, 105, 2013.
- Sheffield, J., Goteti, G., and Wood, E.: Development of a 50-Year High-Resolution Global Dataset of Meteorological Forcings for Land Surface Modeling, *Journal of Climate*, 19, 2006.
- 650 Singh, D., Horton, D., Tsiang, M., et al.: Severe precipitation in Northern India in June 2013: Causes, historical context, and changes in probability [in "Explaining Extremes of 2013 from a Climate Perspective"], *Bull. Amer. Meteor. Soc.*, 95 (9), S58–S61, 2014.
- Solín, L., Feranec, J., and Nováček, J.: Land cover changes in small catchments in Slovakia during 1990–2006 and their effects on frequency of flood events, *Natural Hazards*, 56, 195–214, doi:10.1007/s11069-010-9562-1, <https://doi.org/10.1007/s11069-010-9562-1>, 2011.
- 655 Taylor, K. E.: Summarizing multiple aspects of model performance in a single diagram, *Journal of Geophysical Research: Atmospheres*, 106, 7183–7192, doi:10.1029/2000JD900719, <http://dx.doi.org/10.1029/2000JD900719>, 2001.
- Tenhunen, S. and Saavala, M.: *An Introduction to Changing India: Culture, Politics and Development*, Anthem Press, 2012.
- 660 Teutschbein, C. and Seibert, J.: Bias correction of regional climate model simulations for hydrological climate-change impact studies: Review and evaluation of different methods, *Journal of Hydrology*, 456–457, 12 – 29, doi:<http://dx.doi.org/10.1016/j.jhydrol.2012.05.052>, <http://www.sciencedirect.com/science/article/pii/S0022169412004556>, 2012.

- 665 Tsarouchi, G., Mijic, A., Moulds, S., and Buytaert, W.: Historical and future land-cover changes in the Upper Ganges basin of India, *International Journal of Remote Sensing*, 35, 3150–3176, doi:10.1080/01431161.2014.903352, <http://dx.doi.org/10.1080/01431161.2014.903352>, 2014.
- Turner, A. G.: *The Indian Monsoon in a Changing Climate*, Online, Royal Meteorological Society, <http://www.rmets.org/weather-and-climate/climate/indian-monsoon-changing-climate>, 2013.
- 670 Turner, A. G. and Annamalai, H.: Climate change and the South Asian summer monsoon, *Nature Clim. Change*, 2, 587–595, 2012.
- van Genuchten, M. T.: A Closed-form Equation for Predicting the Hydraulic Conductivity of Unsaturated Soils, *Soil Sci. Soc. Am. J.*, 44, 892–898, 1980.
- Verghese, B. G.: *Harnessing the Eastern Himalayan Rivers : Regional Cooperation In South Asia*, Konark Publishers Pvt. Ltd, Delhi, 1993.
- 675 Wang, R., Kalin, L., Kuang, W., and Tian, H.: Individual and combined effects of land use/cover and climate change on Wolf Bay watershed streamflow in southern Alabama, *Hydrological Processes*, 28, 5530–5546, doi:10.1002/hyp.10057, <http://dx.doi.org/10.1002/hyp.10057>, hYP-13-0090.R1, 2014.
- World Bank: *Turn Down The Heat: Climate Extremes, Regional Impacts and the Case for Resilience*, A Report for the World Bank by the Potsdam Institute for Climate Impact Research and Climate Analytics, 2013.
- 680 Zhang, L., Nan, Z., Xu, Y., and Li, S.: Hydrological Impacts of Land Use Change and Climate Variability in the Headwater Region of the Heihe River Basin, Northwest China, *PLOS ONE*, 11, 1–25, doi:10.1371/journal.pone.0158394, <https://doi.org/10.1371/journal.pone.0158394>, 2016.