

Thanks very much for the comments from the editor and reviewer. As the editor commented based on the each comment from the reviewer, we responded all the comments one-by one and the comments from the editor and the reviewer are marked with blue color. Also, we revised the manuscript according to each comment and marked the changes using red color and italic in the revised manuscript.

**Comment 1 from reviewer:** Response to comments 29: you mention that the hydroclimatological model requires spatially varied parameters, but you only used one set "to verify the model with less calibration effort" in Athabasca. I wonder what the results would be if you calibrated the hydroclimatological model as it should have been done. Would the results be similar to the North Fork Tolt River?

**Comment 1 from editor:** Please confirm if you used the same calibration procedures to calibrate the models in the two watersheds. If they are not the same, the authors must provide strong justification why they use different procedures.

**Response to comment 1:** Thank you very much for the editor's and reviewer's comments. Sorry for the confusion for the response from the first round revision. Actually, the same procedures were used to calibrate the stream temperature models in the two different watersheds. For the hydroclimatological model, we used the seasonally varied parameters for both Athabasca River Basin and North Fork Tolt River watershed. Three different periods were defined for Athabasca River Basin (please see Table 2 in the manuscript) and North Fork Tolt River watershed (please see Table 4 from Ficklin et al. (2012)). For the equilibrium temperature model proposed in this study, we did not use seasonal varied parameters in the two different studied watersheds and therefore one set of parameters were used for the whole simulation period. As we discussed in the section of 3.3 (Line 7-16 Page 14), the key parameter  $K_T$  (heat exchange coefficient) had an obvious seasonal variation in different parts of Athabasca River Basin (please see Figure 3 in the manuscript). As a result, the equilibrium temperature model does not need temporal varying parameters, which reduces the model complexity and calibration efforts. More information about model calibration processes can be found in the second paragraph of section 2.4.

**Reference:**

Ficklin, Darren L., et al. "Development and application of a hydroclimatological stream temperature model within the Soil and Water Assessment Tool." *Water Resources Research* 48.1 (2012).

**Comment 2 from reviewer:** Response to comments 32: I do not agree with your explanation. You write that "lower water depth...means stream temperature changes quicker". In SWAT, river width can be orders of magnitude off the real value because the simplified GIS algorithm does not account for local stream characteristics. You can easily check this by overlaying your stream network on Satellite Images. In most cases this is not a significant problem (though it can be for routing and transmission losses). But in your case, if your width is overestimated by a factor of let's say 5, your depth would be underestimated by a similar value. Keeping in mind that you are proposing a new method of stream temperature calculations in SWAT, I think you should know

(a) if your river width is somewhere near reality and if not, correct it in the .rte (which is not complicated: you can cluster your subbasins according to river order and get representative widths for each order and change the .rte accordingly) and

(b) how sensitivity water depth is in your equation.

**Comment 2 from editor:** Please check if the bankful width used the model match reality values. If credible data is not available, the authors should discuss potential uncertainties associated with the algorithms used in SWAT. I understand that correcting the errors associated with the built-in bankful width estimation algorithm within SWAT is beyond the scope of the study, but certain sensitivity test would be helpful to understand the value river width information for accurate water temperature simulation.

**Response to comment 2:** We agree with the reviewer that there are uncertainties about using GIS and DEM to calculate stream characteristics like stream width which will affect water depth and temperature simulations. By including water depth in the stream temperature simulation (equation 11 in the manuscript), we aimed to claim that (Line 20-23 Page 14) *'Because the change of stream water depth represents the variations of streamflow in the reach, the equilibrium temperature model can simulate the impact of variations in hydrological conditions (representing by streamflow) on the water-air heat transfer processes by incorporating the water depth.'* So, we did not try to directly discuss the impact of water depth on stream temperature simulation. Vliet et al. (2011) did global stream temperature simulation by considering the impact of air temperature and streamflow and indicated model performance is improved by introduction of streamflow in the regression model. Also, the sensitivity analysis showed that decrease of streamflow discharge would increase the stream temperature and they also suggested that the large the streamflow, the longer it takes to warm up the water. Therefore, we believe that incorporation of water depth representing the streamflow condition in the model proposed in this study could improve the simulation of stream temperature.

We agree with the editor that correcting the errors associated with the built-in bankfull width estimation algorithm within SWAT is beyond the scope of this study. The streamflow in Athabasca River Basin is well calibrated, which might indicate that the bank width and other stream characteristics were reasonably represented. We added the discussion about potential uncertainties associated with the algorithms for calculating stream width used in SWAT and its impact on stream temperature simulation according to the comment from the editor (Line 23-26 Page 14). Also, a sensitivity analysis for the impact of water depth on stream temperature simulation was done according to the editor's and reviewer's comments (Line 26-29 Page 14). The stream temperature simulation at Athabasca River at Old Fort station was used to do the sensitivity analysis and the results showed that a 50% increase for water depth will decrease the temperature by 0.28 °C and a 50% decrease for water depth will increase the temperature by 0.33 °C.

**Reference:**

Van Vliet, M. T. H., et al. "Global river temperatures and sensitivity to atmospheric warming and changes in river flow." *Water Resources Research* 47.2 (2011).

**Comment 3 from reviewer:** Response to Comment 38: Sorry, your answer and p.9 l.16-19 is still confusing for me. "blue dots are the observed period daily average (not continuous) ... measured periodically (monthly or weekly)" So how long is an "observed period daily average" continuously measured? I don't think someone is waiting at each gauge for 24hours and takes a sample every hour, but I suspect what you got is 'only' an instantaneous observation at the particular time of the day when the observation took place at max once a month, or? In that case, I think your explanation is misleading. Please rewrite so that the reader knows the true quality of your data. Considering this, I do not agree with your abstract p.1 l.21-22: What you used is not "high frequency observed stream temperature data"

**Comment 3 from editor:** Please better clarify the description of the data used, and change the abstract to reflect the actual quality of the data you used.

**Response to comment 3:** Thanks very much for the editor's and reviewer's comment. Sorry about the confusion of the description of the observed stream temperature data we used in the Athabasca River Basin. We re-checked the observed stream temperature data obtained from Environmental Canada and Climate Change. They were instantaneous observations at the particular time of the day and the frequency of the samplings varied among different stations. We used 'daily' before because SWAT is ran at the daily scale and the simulated stream temperature can be seen as daily stream temperature. We compared the SWAT simulated stream temperature with the observed data available on the same date. We rephrased the description of observed stream temperature data to clarify the confusion. The modification for the description can be found from Line 19-22 Page 9 in the revised manuscript as "*Stream temperature data from Environmental Canada and Climate Change was used for the stream temperature calibration. The sampling frequencies of stream temperature varied from monthly to seasonal, and five stations with close to monthly sampling frequency were chosen for the model calibration.*" Moreover, the abstract (Line 23 Page 1) was changed as "*where close to monthly samplings of stream temperature are available*" to reflect actual quality of the data according to the editor's and reviewer's comments".

**Comment 4 from reviewer:** p.14 l.24 - p.15 l.9: Your model performs worse in the second catchment. This raises the question "Why is this the case"? You don't discuss possible reasons anywhere.

And equally important: why did you choose this particular catchment out of the seven other catchments? Do you expect your model to perform better in the other catchments?

Besides that, in the abstract and conclusion you only mention the RE and hide the NSE, but in the Athabasca where the NSE is higher, you mention the NSE. I think this is not good practice.

**Comment 4 from editor:** Please clarify the performance of different methods. I also found it is difficult to understand the comparative analysis of the performances of different methods. One suggestion is to use "default" to represent the SWAT built-in method, use "Ficklin et al.'s method" to indicate the work by Ficklin et al., and use "this study" to represent the new method proposed in the manuscript.

If NSE or RE is worse for the new method, the authors need to identify strong reasons to justify why the new method is better than the existing ones. If the new method performed less in the second catchment, and the

authors would like justify the new method's advantage to the existing ones, more watershed should be used and the new method should perform better for most cases.

**Response to comment 4:** Thanks very much for the comments from the editor and the reviewer. First, North Fork Tolt River was selected for model further verification in other region out of Athabasca River Basin in the cold region of Canada according to the first round comment from the reviewer. For North Fork Tolt River, the RE values of the model in this study are better than hydroclimatological model from Ficklin et al.'s method but the NSE values are worse indicating further model testing is needed. We agree with the editor and reviewer that more model verification needs to be done for different watersheds in other regions in future work and we now discuss the discrepancy in the revised manuscript (Line 12-14 Page 15). The discrepancies may be because the hydroclimatological model from Ficklin et al.'s method considered the impact of hydrologic processes and air temperature on stream temperature and the model proposed in this study considers the impact of solar radiation, wind speed and streamflow condition on the stream temperature simulation which improved the Ficklin et al.'s method theoretically by adding more factors. However, it still needs more model testing to verify the model performance in different watersheds of different regions.

Additionally, according to the editor's comments, we used different names for different models to clarify the comparative analysis of the performances of different methods in the abstract. Specifically, we used 'equilibrium temperature model proposed in this study' to represent the modified model in this study, 'hydroclimatological stream temperature model' to represent the Ficklin et al.'s method and SWAT default model to represent the SWAT built-in method. According to the reviewer's comment, we added the description of NSE values for North Fork Tolt River and a short discussion in the abstract (Line 29-30 Page 1).

**Comment 5 from reviewer: p.17 Figure 6:** It looks like the original SWAT is exactly below the newly developed model, right? Is this a labelling error? Considering that you built the model on top of the Hydroclimatological model (which is significantly different from the two), this is very confusing. Based on this result, I do not understand your interpretation on p.18, l.8-9 "the equilibrium temp provides a potential tool for more-accurate water quality concentration simulation" Based on these results, I think it is impossible to know which model version is "more-accurate".

Also, the selection of lines and markers in unfortunate. I suggest to remove the markers and use different thicknesses for the two lines that closely overlap.

**Comment 5 from editor:** I think the purpose of figure 6 is to show that organic N simulation is sensitive to temperature module. Anyway, please add more information in the caption to highlight the key message from this figure. Are they used to show the new method is better, or the authors intend to show the sensitivity of organic N simulation? Also, please improve the legibility, and clearly label the names of the different method, and which one is the method proposed in the manuscript.

**Response to comment 5:** Thank you very much for the comments from the editor and reviewer. The purpose of Figure 6 is to show the organic N simulation is sensitive to different temperature models since the stream temperature affects the reaction rates and to prove temperature simulation is important for water quality

simulation. Our goal is not to compare which model is better in terms of water quality modeling and we clarify the discussion in the section of conclusion according to the reviewer's comment as (Line 34-36 Page 19) "*The results showed the chemical reaction rates and concentrations differed in magnitude and temporal variation under different water temperature simulations, which indicated that stream temperature simulation is important for water quality modeling.*" According to the comments from the reviewer, we revised Figure 6 by using different thicknesses for the two lines closely overlapping. Also, we added an annotation in the title of Figure 6 to clarify the three different models according to the editor's comment.

**Minor comments from the reviewer:**

=====

Comment 1: p.8 l.8: The the

Response: It was corrected in the revised manuscript.

Comment 2: p.8 l.10: drainage area of 105 km<sup>2</sup>

Response: It was corrected in the revised manuscript.

Comment 3: Response to Comment 40: In the "...version4.pdf" I received, I couldn't find the information.

Response: We added the information in the section of 'Acknowledgements' as '*The code of this study is available upon request by email (xdu@athabascau.ca).*'

# Incorporation of the equilibrium temperature approach in a Soil and Water Assessment Tool hydroclimatological stream temperature model

Xinzhong Du<sup>1</sup>; Narayan Kumar Shrestha<sup>1</sup>; Darren L. Ficklin<sup>2</sup>; Junye Wang<sup>1\*</sup>

5 **1 Athabasca River Basin Research Institute (ARBRI), Athabasca University, 1 University Drive, Athabasca, Alberta T9S 3A3, Canada**

**2 Department of Geography, Indiana University, Bloomington, Indiana, USA**

**\*Correspondence to:** junyew@athabascau.ca

## Abstract

10 Stream temperature is an important indicator for biodiversity and sustainability in aquatic ecosystems. The stream temperature model currently in the Soil and Water Assessment Tool (SWAT) only considers the impact of air temperature on stream temperature, while the hydroclimatological stream temperature model developed within SWAT model considers hydrology and the impact of air temperature in  
15 by including the equilibrium temperature approach to model heat transfer processes at the water-air interface, which reflects the influences of air temperature, solar radiation, wind speed and *streamflow condition* on the heat transfer process. The thermal capacity of the streamflow is modelled by the variation of the stream water depth. An advantage of this equilibrium temperature model is the simple parameterization, with only two added parameters to model the heat transfer processes. The equilibrium  
20 temperature model *proposed in this study* is applied and tested in the Athabasca River Basin (ARB) in Alberta, Canada. The model is calibrated and validated at five stations throughout different parts of the ARB *where close to monthly samplings of stream temperatures* are available. The results indicate that the equilibrium temperature model *proposed in this study* provided better and more consistent performances for the different regions of the ARB with the values of the Nash-Sutcliffe Efficiency coefficient (NSE)  
25 greater than those of the original SWAT model and the hydroclimatological model. To test the model performance for different hydrological and environmental conditions, the equilibrium temperature model was also applied on the North Fork Tolt River Watershed in Washington, United States. The results indicate a reasonable simulation of stream temperature *using model proposed in this study* with minimum relative error values compared to other two *models. However, the NSE values were less than those of the*  
30 *hydroclimatological model indicating more model verification needs to be done.* The equilibrium temperature model uses existing SWAT meteorological data as input, can be calibrated using fewer parameters and less effort, and has an overall better performance for stream temperatures simulation. Thus, it can be used as an effective tool for predicting the change in stream temperature regimes under varying hydrological and meteorological conditions. In addition, the impact of the stream temperature  
35 simulations on chemical reaction rates and concentrations was tested. The results indicate that the improved performance of the stream temperature simulation could significantly affect chemical reaction rates and the simulated concentrations and the equilibrium temperature model could be a potential tool to model stream temperature for water quality simulations.

**Keywords:** SWAT model, stream water temperature, equilibrium temperature, Athabasca River Basin

## 40 **1. Introduction**

Stream temperature is an important factor in assessing water quality and biodiversity health. Stream temperature can alter physical and chemical properties of water bodies. It has effects on water density, conductivity, pH, dissolved oxygen concentration, compound toxicity, chemical reaction rates, biological activity and biological habitats. All aquatic species have a specific range of water temperature that they can tolerate and any changes in water temperature may have an adverse impact on the habitat of aquatic species (Caissie et al., 2007). For example, a fish species in a stream is likely to migrate if the maximum weekly stream temperature exceeds its temperature tolerance (Eaton et al., 1995). Also, a fish species could perish due to osmoregulatory dysfunction if weekly stream temperature drops below a threshold temperature (Mohseni et al., 1998). Stream temperature regimes have been and will continue to be affected by anthropogenic activities, including thermal inputs from industry and power plants and land use and climate change. Land use changes, such as deforestation and urbanization, have an impact on watershed hydrological conditions that can lead to stream temperature changes (Cao et al., 2016). Moreover, the possible rise of water temperature due to global warming caused by climate change is expected to affect aquatic species directly and indirectly (Hardenbicker et al., 2017; Ducharme, 2008; Knouft and Ficklin, 2017). Therefore, it is important to model stream temperature for predicting the changes in temperature under varying hydrological and meteorological conditions.

Many stream temperature models have been developed over the past years, which can be classified into mechanistic and statistical models. A mechanistic model is based on energy balance while a statistical model uses regression techniques between stream temperature and meteorological or other physical variables. Widely used statistical models of stream temperature are regressed linearly or nonlinearly using only air temperature as an input parameter. Stefan et al. (1993) used a linear model between the stream and air temperatures with time lags to simulate daily and weekly water temperatures in 11 streams in the Mississippi River basin in the central US. Mohseni et al. (1998) developed a four-parameter nonlinear function using air temperature as the input to model weekly stream temperatures based on temperatures recorded over a 3-year period (1978-1980) at 584 U.S. Geological Survey gauging stations in the contiguous United States. Sohrabi et al. (2017) developed a parsimonious Bayesian regression approach to model daily stream temperatures accounting for the temporal autocorrelation, linear and nonlinear relationships with air temperature and discharge. However, stream temperature is clearly subject to other meteorological and hydrological constraints, such as solar radiation, wind speed and water depth (Neitsch et al., 2011), which cannot be reflected by the simple regression approach. Moreover, the impact of watershed hydrological conditions are not included in these regression models (Ficklin et al., 2012). Therefore, the statistical models of stream temperature may not be reliable when interpreting and predicting the impact of environmental and anthropological drivers, such as climate and land use change.

Mechanistic stream temperature models simulate the change of stream temperature based on energy balances of heat fluxes and water mass balance in a river system (Brennan, 2015). Heat transfer and stream temperature are calculated at the water-air interface and water-sediment interface. Heat exchange between sediment and water is generally small compared to water-air heat exchange (Caissie et al., 2007) and can often be negligible. At the water-air interface, heat flux can be calculated using solar radiation, net long-wave radiation, evaporation, and convective heat transfer. As stream temperatures impact the chemical reaction rates in the aquatic environment, widely used water quality models, such as QUAL2K (Chapra et al., 2012) and CE-QUAL-W2 (Cole et al., 2016), have the capability to model stream temperature based on a full energy balance approach. These models require hydrological conditions represented by flow rates and stream temperature from tributaries as input boundary conditions to model stream temperature in the mainstream based on a full energy balance approach. Therefore, these algorithms need to be directly linked or implemented in hydrological models to assess the effects of watershed hydrological conditions on stream temperature. Previous work has tried to incorporate physical

based energy balances into hydrological models to simulate stream temperature. For example, Ozaki et al. (2008) developed a river temperature model based on a multi-layer mesh-type runoff model to calculate the heat budget in the landscape and river system. Battin et al. (2007) added a heat balance module to the Distributed Hydrology-Soil-Vegetation Model (DHSVM) to model stream temperatures in the Snohomish Basin. However, because of their complexity, these mechanistic models require intensive data and calibration effort, which to some extent, can limit their applicability (Du et al., 2014). Complex mechanistic models, however, might be more reliable by more realistically representing the physical processes compared to the statistical models. Therefore, the equilibrium temperature approach, which can be seen as a compromise between an empirical statistical and a complex mechanistic model, can be used as an alternative for simulating the heat transfer processes.

Ficklin et al. (2012) developed a hydroclimatological stream temperature model within the Soil and Water Assessment Tool (SWAT) hydrological model (Arnold et al., 1998), which includes the combined effects of watershed hydrological conditions and air temperature. It is a mechanistic model with a simplified representation of temperature mixing from different runoff components and water-air heat transfer processes. This model was tested and validated in seven coastal and mountainous basins in the western U.S., showing much better stream temperature simulation performance compared to the original linear regression approach of SWAT (Ficklin et al., 2012). It has also been used to assess the impact of climate change on stream temperature in the Columbia River basin in North America (Ficklin et al., 2014) and Sierra Nevada mountain range in California (Ficklin et al., 2013). Zeiger et al. (2016) applied the hydroclimatological model in a mixed-use, urbanizing watershed in the central U.S. and compared the model performance with the linear and non-linear regression models. Their results showed that it had a better and more consistent performance both in lower and higher stream temperature ranges. The hydroclimatological model explicitly describes the effects of hydrological inputs (local runoff components and upstream inflow) on stream temperature for evaluating the impact of hydrological changes caused by climate or landuse changes on stream temperature. However, the process of water-air heat transfer is modelled by considering only the impact of air temperature. The water-air heat transfer can be simulated based on the full energy balance, but more input data and calibration will be required because of the model complexity. The equilibrium temperature approach, which includes the impact of air temperature, solar radiation, and wind speed and stream water depth (Bogan et al., 2003; Mohseni and Stefan, 1999) is an alternative for simulating heat transfer processes. Although many studies have used the equilibrium temperature concept to interpret thermal processes in rivers, it has rarely been used for the simulation of stream temperature (Caissie et al., 2005). The equilibrium temperature approach is a compromise between an empirical statistical and a complex mechanistic model. It has moderate data input requirements and has potential to be an effective modelling tool for stream temperature. Therefore, in this work the equilibrium temperature approach is incorporated into this hydroclimatological model to improve the simulation of heat transfer process at the water-air interface.

The primary objective of this paper is to improve the simulation of the heat transfer process in the SWAT hydroclimatological stream temperature model by incorporating the equilibrium temperature approach. The equilibrium temperature model uses existing SWAT meteorological input data and a simple parameterization scheme with only two added parameters to model heat transfer processes at water-air interface. It not only includes the effects of air temperature, solar radiation and wind speed, but also incorporates variations in thermal capacity of streamflow represented by stream water depth. The SWAT model is calibrated for hydrology and the equilibrium model is then calibrated and validated against observed daily stream temperature data at five different stations throughout the upper, middle and lower regions of the Athabasca River Basin (ARB), located in Alberta and Saskatchewan, Canada. To test the model performance for different hydrological and environmental conditions, the equilibrium



model was also tested on the North Fork Tolt River Watershed in Washington, United States, which is one of the seven watersheds used for the hydroclimatological model initial testing. The simulations of stream temperature impact the water quality concentrations by directly impacting the chemical reaction rates and therefore another objective of this paper is to initially evaluate the impacts of stream temperature simulations on water quality concentration modeling using original SWAT, hydroclimatological and equilibrium stream temperature models.

## 2. Materials and Methods

### 2.1 SWAT hydrological and stream temperature model

Meteorological data and spatial datasets are required for setting up the SWAT model in ARB. The spatial datasets include a digital elevation model (DEM), landuse data and soil data. The Shuttle Radar Topography Mission (SRTM) DEM data (90m×90m), Global Land Cover Characterization based land use map of 1km × 1km spatial resolution (Loveland et al., 2000) and 1:1 million scale soil map from the Agriculture and Agri-Food Canada were used as model input. The DEM was used to delineate subbasin and stream networks, where a total of 131 subbasins were delineated in the ARB. Eleven different landuse classes and 320 different soil types were defined for the model setup. A total of 1370 HRUs were defined based on the landuse, soil and slope classifications. To define the HRUs, a slope map is derived from the DEM and divided into 4 classes (breaks at 5%, 10%, 15% and 20%). Moreover, a threshold of 10%, 5% and 10% for land use, soil and slope, respectively, were used for defining HRUs. For meteorological data input, daily precipitation, maximum air temperature and minimum air temperature were obtained from 73 stations recorded by Environmental Canada and Climate Change. Relative humidity, solar radiation, and wind speed data at 230 stations recorded by Climate Forecast System Reanalysis (Dile and Srinivasan, 2014) were also used as the model input data.

The SWAT model is a river basin or watershed scale model used to predict the impact of land management practices on water, sediment and agricultural chemical yields in large complex watersheds with varying conditions over long periods of time (Neitsch et al., 2011). The simulated processes of the hydrological cycle *in* SWAT include canopy interception, surface runoff, infiltration, lateral flow, snowmelt flow, evapotranspiration, deep percolation, groundwater flow and water routing in the stream and other water bodies. Snowpack accumulation and snowmelt processes are modelled using a temperature index-based approach. More detailed description of SWAT theory is available from Neitsch et al. (2011).

The SWAT model uses a linear equation developed by Stefan and Preudhomme (1993) to calculate average daily temperature for a well-mixed stream:

$$T_w = 5.0 + 0.75 \cdot T_{air} \quad (1)$$

where  $T_w$  is the stream temperature for the day (°C), and  $T_{air}$  is the average air temperature on the day (°C). This equation assumes that the lag time between air and stream temperatures is less than one day. However, aside from air temperature, the stream temperature is influenced by other factors, such as solar radiation, wind speed, relative humidity, water depth, artificial heat inputs, groundwater inflow and thermal conductivity of the sediments. The impacts of these factors on stream temperature are not taken into account in the existing SWAT model versions. Therefore, this simple linear equation may lead to unrealistic estimates of stream water temperature when the air temperature is low during winter in cold regions like the ARB. Moreover, it might provide unrealistic simulations when air temperature suddenly drops or rises.

## 2.2 SWAT hydroclimatological stream temperature model

The hydroclimatological stream temperature model developed by Ficklin et al. (2012) is used to simulate the combined impacts of air temperature and hydrological inputs (streamflow, snowmelt, groundwater, surface runoff, and lateral soil flow) on stream temperature. Three components are considered in this stream temperature model, including temperature and water contribution within the subbasin, the temperature and volume of inflows from upstream subbasin(s) and heat transfer at the water-air interface during the streamflow transport in the subbasin. In the first step, the temperature of the local water contribution is calculated within the local subbasin using a basic mixing model of the volumes and temperatures of surface runoff, lateral flow, and groundwater, and snowmelt runoff to the stream water:

$$T_{w,local} = \frac{(T_{snow} \cdot sub\_snow) + (T_{gw} \cdot sub\_gw) + (\lambda T_{air,lag})(sub\_surq + sub\_latq)}{sub\_wyld} \quad (2)$$

where  $sub\_snow$  is the snowmelt runoff contribution to streamflow within the subbasin ( $m^3 d^{-1}$ ),  $sub\_gw$  is the groundwater flow contribution to streamflow within the subbasin ( $m^3 d^{-1}$ ),  $sub\_surq$  is the surface runoff contribution to streamflow within the subbasin ( $m^3 d^{-1}$ ),  $sub\_latq$  is the soil lateral flow contribution to streamflow within the subbasin ( $m^3 d^{-1}$ ),  $sub\_wyld$  is the total water yield contribution to streamflow within the subbasin ( $m^3 d^{-1}$ ),  $T_{snow}$  is the temperature of snowmelt runoff ( $0.1^\circ C$ ),  $T_{gw}$  is the groundwater flow temperature ( $^\circ C$ ),  $T_{air,lag}$  is the average daily air temperature with a lag ( $^\circ C$ ), and  $\lambda$  is a calibration coefficient. The lag (days) is a parameter incorporated to allow the effects of delayed surface runoff and soil water flow into the stream.  $\lambda$  is a calibration coefficient relating the relationship between  $T_{air,lag}$  and surface runoff and lateral flow.

In the second step, the initial stream temperature before calculating heat transfer between air and water is then calculated as a weighted average of contributions within the subbasin and the contribution from the upstream subbasin(s):

$$T_{w,initail} = \frac{T_{w,up}(Q_{outlet} - sub\_wyld) + T_{w,local} \cdot sub\_wyld}{Q_{outlet}} \quad (3)$$

where  $T_{w,up}$  is the temperature of the streamflow entering the subbasin from upstream subbasin(s) and  $Q_{outlet}$  is the streamflow discharge at the outlet of the subbasin. In the case of headwater streams without inflow,  $T_{w,up} = T_{w,initail}$ .

In the third step, the final stream temperature is calculated by adding a change caused by heat transfer to the initial stream temperature. This change is calculated based on the temperature difference between the stream and air, and the water travel time through the reach in the subbasin. It is given by the following equations, depending on  $T_{air}$ :

$$T_w = T_{w,initail} + (T_{air} - T_{w,initail}) \cdot K \cdot TT \quad \text{if } T_{air} > 0 \quad (4)$$

$$T_w = T_{w,initail} + [(T_{air} + \varepsilon) - T_{w,initail}] \cdot K \cdot TT \quad \text{if } T_{air} < 0 \quad (5)$$

where  $T_{air}$  is average daily temperature,  $K$  (1/h) is a bulk coefficient of the heat transfer and ranges from 0 to 1,  $TT$  is the water travel time in the stream (hour) and is simulated by the SWAT stream routing module, and  $\varepsilon$  is air temperature addition coefficient, which is included to account for water temperature pulses when air temperature is below  $0^\circ C$ .  $\varepsilon$  allows the simulated stream temperature to rise above  $0^\circ C$  when air temperature is below  $0^\circ C$ .  $K$  is the critical parameter for calculating the heat transfer, which is

dependent on the relationship between stream and air temperature within a subbasin. For example, if stream temperature is approximately the same as air temperature, then K is 1. If there is a short travel time or extensive tree shading, then K will be less than 1 but greater than 0. K as 0 means there is no heat transfer between air and water.

### 5 2.3 Incorporating the equilibrium temperature approach into Ficklin et al. (2012)

The same equations (equations 1 to 3) were used to calculate the initial stream temperature in the reach. However, the equilibrium temperature approach was incorporated to simulate the heat transfer process. The change of stream temperature can be modelled based on an energy balance accounting for the heat exchange between water-air and water-sediment interface. Stream temperature increases or decreases with time according to the net heat flux:

$$\rho_w C_{pw} \frac{\partial T_w}{\partial t} = \frac{q_{net}}{H} \quad (6)$$

where  $\rho_w$  is the density of water ( $\text{kg/m}^3$ ),  $C_{pw}$  is the specific heat capacity of water,  $q_{net}$  is the net heat flux ( $\text{W/m}^2$ ) and  $H$  is the water depth (m), which is calculated by the SWAT stream routing module.

The equilibrium temperature is defined as a hypothetical water temperature at which the net heat flux is zero. The net heat input is assumed to be proportional to the difference between the stream temperature and the equilibrium temperature:

$$q_{net} = K_T (T_e - T_w) \quad (7)$$

Combining equation 7 into equation 6 yields:

$$\rho_w C_{pw} \frac{\partial T_w}{\partial t} = \frac{K_T (T_e - T_w)}{H} \quad (8)$$

where  $K_T$  is overall heat exchange coefficient ( $\text{W/m}^2/^\circ\text{C}$ ) and  $T_e$  is the equilibrium temperature ( $^\circ\text{C}$ ).

The overall heat exchange coefficient can be calculated from the empirical relationships that include wind velocity, dew point temperature and initial stream temperature  $T_{w,initial}$  (Edinger et al., 1974).

$$K_T = 4.5 + 0.05T_w + \beta \cdot f(wnd) + 0.47f(wnd) \quad (9.a)$$

$$f(wnd) = 9.2 + 0.46wnd^2 \quad (9.b)$$

$$\beta = 0.35 + 0.015 \left( \frac{T_d + T_w}{2} \right) + 0.0012 \left( \frac{T_d + T_w}{2} \right)^2 \quad (9.c)$$

where  $T_d$  is the dew point temperature ( $^\circ\text{C}$ ),  $wnd$  is the wind speed (m/s), which is an input meteorological data of the SWAT model. The equilibrium temperature can be calculated by the empirical relationship of the overall heat exchange coefficient, the dew point temperature and the solar radiation (below) (Edinger et al., 1974):

$$T_e = T_d + \frac{slr}{K_T} \quad (10)$$

where  $slr$  is the solar radiation, which is also an input meteorological data of the SWAT model.

In equations 9 and 10, the dew point temperature is required when calculating the heat exchange coefficient and equilibrium temperature. Because the dew point temperature is not a meteorological input of the SWAT model, it can be estimated by air temperature and relative humidity using a simple linear equation or non-linear equation (Lawrence, 2005). Dingman (1972) also used air temperature and solar radiation to calculate the equilibrium temperature instead of using dew point temperature as equation 10. In this study, air temperature and an additive parameter ( $T_{air}+\eta$ ) are used to replace the dew point temperature  $T_d$  in equation 8 and 9, and therefore the dew point temperature is not required as an input data. Using air temperature and an additive parameter makes the equilibrium temperature linearly related to air temperature in our model, which is consistent with other work (Caissie et al., 2005; Bustillo et al., 2013) that use the equilibrium temperature approach for water temperature modeling. The  $\eta$  is an additive parameter representing the linear relationship between air temperature and the equilibrium temperature, which is subject to model calibration using observed stream temperature data. Therefore, the equilibrium temperature approach proposed here can calculate the water-air heat transfer using SWAT existing input data, which considers the impact of air temperature, solar radiation, wind speed and water depth. The final stream temperature is corrected using the equilibrium temperature of the influence of heat transfer to the initial stream temperature. Combining equations 9 and 10 into equation 6 yields:

$$T_w = T_{w, initial} + \frac{K_T(T_e - T_{w, initial})}{\rho_w C_{pw} H} \cdot TT \quad (11)$$

where  $T_w$  is the stream temperature after the water-air heat transfer calculation using the equilibrium temperature,  $T_{w, initial}$  is the initial stream temperature by mixing water from upstream and the local subbasin. The equilibrium temperature  $T_e$  is calculated in the below formula using the air temperature rather than the dew point temperature:

$$T_e = (T_{air} + \eta) + \frac{slr}{K_T} \quad (12)$$

where  $\eta$  is the additive parameter for the water-air heat transfer process. Heat exchange coefficient  $K_T$  is calculated using equation 8 with ( $T_{air}+\eta$ ) replacing dew point temperature  $T_d$ .

## 2.4 Evaluating the impact of the stream temperature simulation on water quality modelling

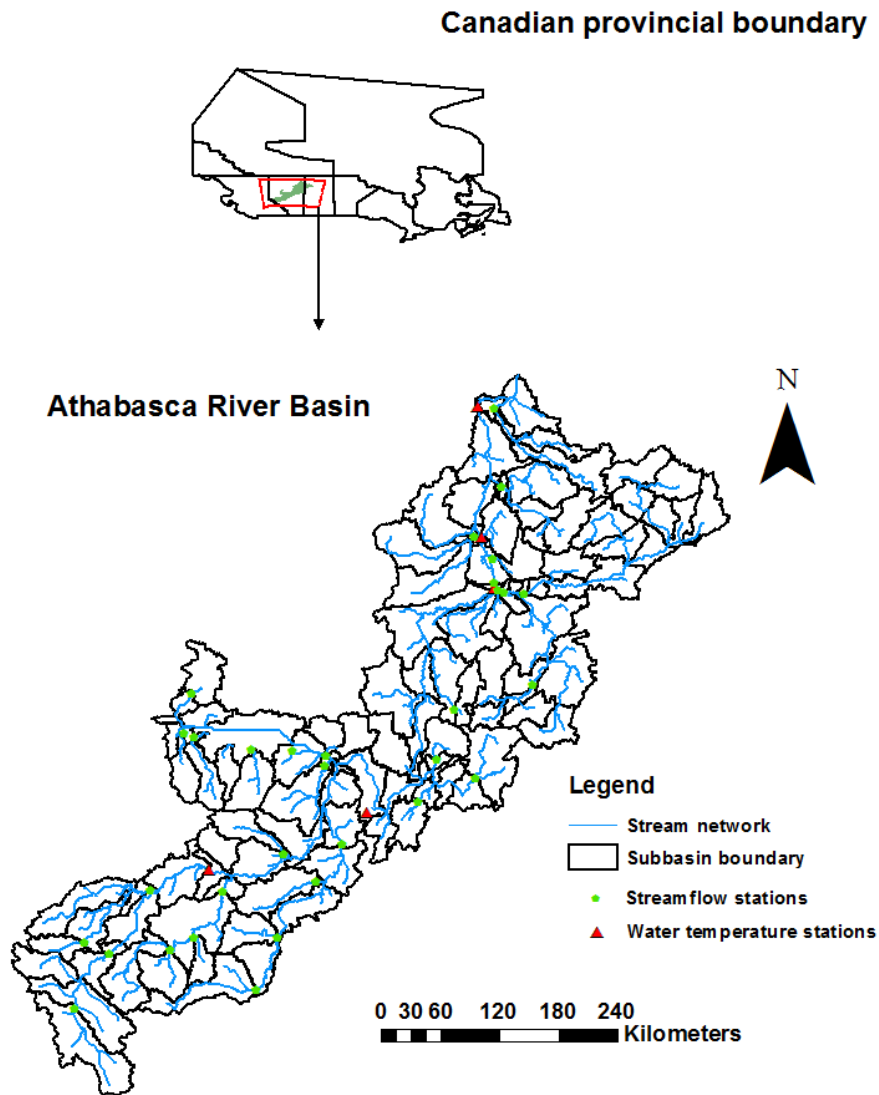
Stream temperature simulation has an impact on water quality modelling in SWAT since the water temperature affects chemical reaction rates and oxygen saturation concentration. Therefore, the impacts on chemical reaction rates are analyzed at first. The water quality module of SWAT uses an exponential equation to correct chemical reaction rates based on the simulated daily stream temperature (Neitsch et al., 2011) and the impacts on reaction rates are based on the equation below:

$$k(T) = k_{20} \cdot \theta^{T_w - 20} \quad (13)$$

where  $K(T)$  is the reaction rate at a local temperature ( $d^{-1}$ ),  $k_{20}$  is the reaction rate at 20 °C ( $d^{-1}$ ),  $\theta$  is temperature correction coefficient, and  $T_w$  is water temperature simulated by SWAT model (°C). In addition, the impacts of stream temperature simulation on water quality concentration modeling are investigated by outputting and comparing the simulated concentration based on three different models using the same parameter.

## 2.5 Study area

5 The Athabasca River originates in the Rocky Mountains of Alberta and travels northeast across Alberta (Figure 1). The ARB includes the urban centers of Jasper, Hinton, Whitecourt, Athabasca and Fort McMurray before draining into Lake Athabasca. The entire ARB is approximately 159000 km<sup>2</sup>, which is about 24% of Alberta's landmass. Forest is the dominating land cover accounting for about 82% of the whole basin area, and agriculture land (9.5%) stands at a second. Major activities in the basin include forestry, agriculture, tourism, pulp mills, coal mining, traditional oil and gas extraction, and oil sands mining. Within the ARB, fish species can be broadly grouped into two primary types: those tolerant of cold waters and those which require relatively warmer water temperatures (Wallace and McCart, 1984). The main fish species include walleye, lake whitefish, northern pike, and burbot (Lebel et al., 2011).



**Figure 1** Location of Athabasca River Basin with streamflow and stream temperature stations.

The equilibrium stream temperature model was also applied on the North Fork Tolt River Watershed to test the model performance for different hydrological and environmental conditions. The North Fork Tolt River Watershed is located in Washington, United States with the drainage area of 105 km<sup>2</sup>. The annual average air temperature and precipitation are 8.1°C and 2331 mm, respectively. More detailed information can be found in Ficklin et al. (2012).

## 2.6 Model calibration and validation

The SWAT model was used for the simulation of streamflow and stream temperatures for a 34 year period, from 1980 to 2013. The first two years (1980-1981) were used as a warm up period to minimize the impact of initial conditions. The model calibration period was from 1990 to 2005 (16 years) including both wet and dry periods. The years of 1982 to 1989 and 2006 to 2013 were used for the model validation. SWAT-CUP (SWAT Calibration and Uncertainty Programs) and its SUFI-2 (Sequential Uncertainty Fitting Version 2) algorithm were used for streamflow calibration and validation (Shrestha et al., 2017). For streamflow, daily time series data from 35 stations collected from Environmental Canada and Climate Change were used for the hydrological calibration and validation. The streamflow was calibrated from upstream to downstream according to the locations of 35 flow gauging stations. The Nash-Sutcliffe Efficiency coefficient (NSE) was selected as the objective function for the model calibration. In addition, the coefficient of determination (R<sup>2</sup>) and relative error (RE) were also used to evaluate the model performance. The definitions of NSE, R<sup>2</sup> and RE can be found in Du et al. (2016).

The same calibration and validation period were used for the stream temperature. Stream temperature data from Environmental Canada and Climate Change was used for the stream temperature calibration. The sampling frequencies of stream temperature varied from monthly to seasonal, and five stations with close to monthly sampling frequency were chosen for the model calibration. These five stations were located from upstream to downstream reflecting stream temperature conditions in different parts of the ARB (Figure 1). Additional information for the five stream temperature observed stations can be found in Table 1. As there was no stream temperature data at Athabasca River near Windfall during the validation period, model validation was performed at other four stations. The equilibrium and hydroclimatological stream temperature models were manually calibrated. To test the model performance and validity with less calibration effort, one set of the stream temperature parameters for the ARB were used for the calibration processes of the equilibrium stream temperature, which means that the same parameters were used for different subbasins and seasons. However, seasonally varied parameters were used for the calibration of the hydroclimatological stream temperature model. For the hydroclimatological stream temperature model, it is recommended to use different parameters for different seasons which can account for the influence of seasonal variation on the stream temperature. In this study, three periods were defined to represent seasonal variations and different parameters were given for each period. The average NSE value of the five stations was chosen as the objective function for the stream temperature calibration, and their parameter values were adjusted to obtain the maximum average NSE value. The average values of R<sup>2</sup> and RE were also calculated to evaluate the performance. The RE can be positive in case of overestimation or negative in case of underestimation. Therefore, the absolute value of RE was calculated for each station, and then these absolute values were averaged.

**Table 1** Detailed information for the five stream temperature stations in the Athabasca River Basin

Stations	Drainage area (km <sup>2</sup> )	Watershed Location	Number of water temperature samples	
			Calibration	Validation

Athabasca river at Old Fort	154800	downstream	97	71
Muskeg River near Fort Mackay	1715	downstream	102	39
Athabasca River near Horse River	98270	downstream	103	99
Athabasca River at Athabasca	73580	midstream	187	117
Athabasca River near Windfall	19650	upstream	60	/

### 3. Results and Discussion

#### 3.1 SWAT streamflow calibration and validation

To examine the performance of the equilibrium temperature model, a SWAT model calibrated for hydrology is imperative in order to perform an accurate simulation of the stream temperature. The SWAT hydrological model was calibrated and validated using daily streamflow data for 35 stations in the ARB to ensure these stations can represent upper, middle and lower parts of the ARB (Figure 1). The average values of NSE for the 35 stations were 0.57 and 0.49, respectively, during calibration and validation period. The average values of RE were 5.3% and 12.4%, respectively, during calibration and validation period. Detailed results from the ARB SWAT streamflow calibration and validation can be found in Shrestha et al. (2017). Overall, the accuracy of streamflow results at 35 stations across the basin suggests that the SWAT model could simulate the streamflow at headwaters, foothills, and prairie regions reasonably well, and the model's accuracy at downstream parts of the boreal plain region was satisfactory (Shrestha et al., 2017). This well calibrated SWAT hydrological model is further used for the simulation of stream temperature based on the hydroclimatological and equilibrium temperature models.

#### 3.2 Stream temperature calibration and validation

For the equilibrium temperature model, a range of 0.5 to 1.5 for the multiplicative factor parameter  $\lambda_{kt}$  was used for calibration.  $\eta$  was the most sensitive parameter for the equilibrium temperature model and therefore it was the main parameter that was manipulated.  $\eta$  was the first parameter to be calibrated, and it was optimized to 3.2 to obtain the maximum average NSE value of 0.79. Other parameters (Lag,  $\lambda$  and  $\lambda_{kt}$ ) had little effect on NSE and  $R^2$  value, but they did, however, have an impact on the average RE value. After  $\eta$  was calibrated, Lag,  $\lambda$  and  $\lambda_{kt}$  were calibrated as 2, 1.1 and 1.15, respectively, to minimize the average RE value. In addition, it is important to give default parameter values to make the model more applicable and the default values can be used for the users who are not able to calibrate for stream temperature. The default parameter values are given as follows:  $\eta$  as 0, Lag as 3 days,  $\lambda$  and  $\lambda_{kt}$  as 1.0. However, it is recommended to use observed stream temperature data to calibrate the model parameters instead of using the default values. For the hydroclimatological model, three different seasons (Table 2) with different parameter sets were used for model calibration. It is found that the heat transfer coefficient  $K$  is the most sensitive parameter for hydroclimatological model and was the main parameter calibrated. The calibrated parameter values are given in Table 2.

**Table 2** Calibrated parameters of the hydroclimatological stream temperature model for the Athabasca River Basin

Julian Day		$\lambda$	$K$ (1/h)	$\varepsilon$ (°C)	Lag (days)
From	To				
<hr/>					

1	90	1.1	0.1	12	5
91	300	1.1	0.05	0	3
301	366	1.1	0.1	9	5

### 3.3 Performance of the equilibrium temperature model

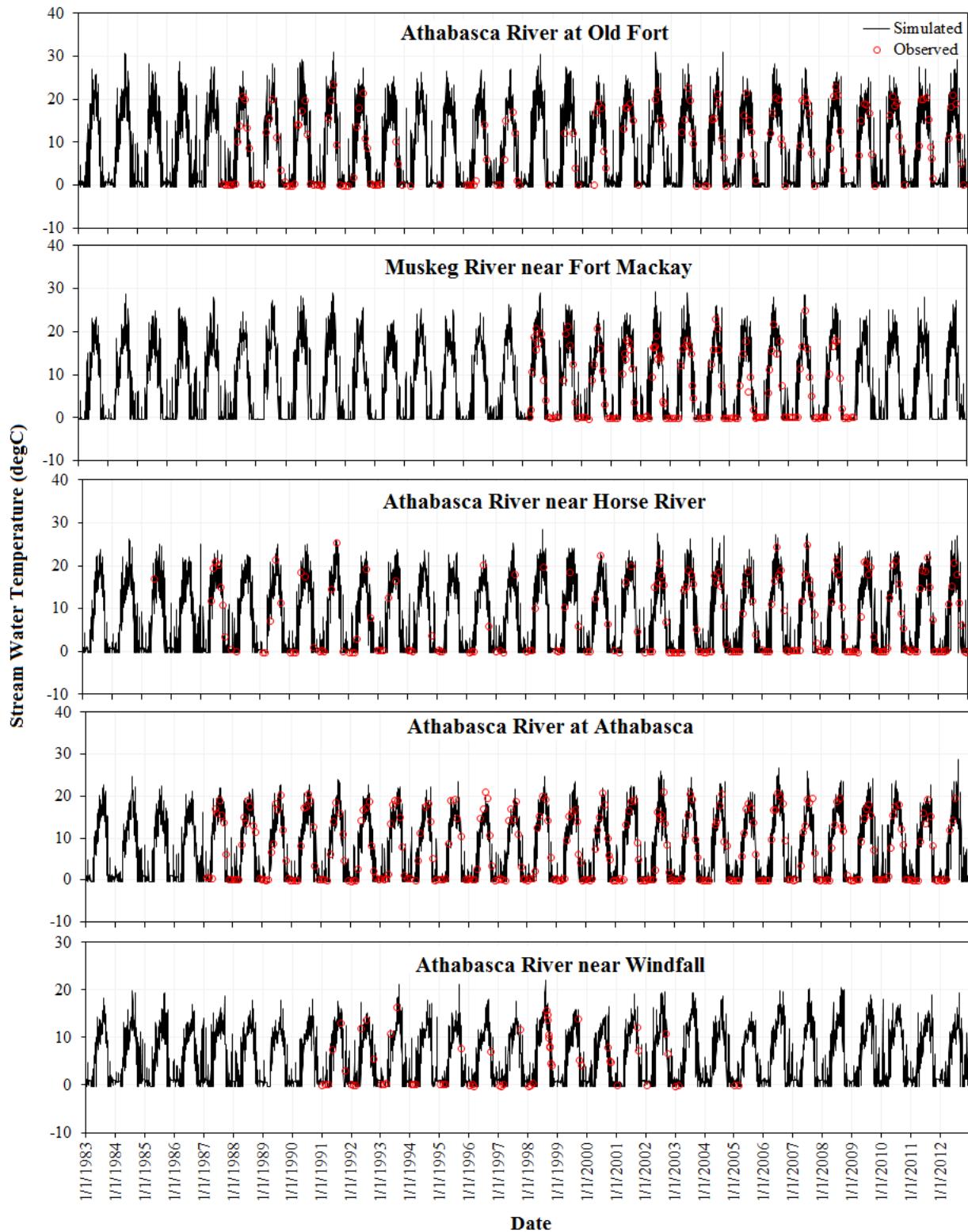
To evaluate the performance of the equilibrium temperature model, we performed a comparison of the daily model simulation results with observed stream temperature in the ARB (Figure 2). The results of equilibrium temperature model *in this study* are in good agreement with the observed data for all five stations in the ARB. Furthermore, the simulated results of the equilibrium temperature model were compared with that of the original SWAT temperature model and that of the hydroclimatological stream temperature model. Table 3 shows the results of statistical performance for the three different stream temperature models. For all five stations, the equilibrium temperature model improved the performance of stream temperature simulations compared to that of other two models. The original SWAT stream temperature model had average NSE,  $R^2$  and RE as 0.51, 0.66 and 10.1%, respectively, during the calibration period and 0.56, 0.67 and 8.4%, respectively, during the validation period. The hydroclimatological model had average NSE,  $R^2$  and RE as 0.50, 0.61 and 16.5%, respectively, during the calibration period and 0.50, 0.62 and 19.7%, respectively, during the validation period. The equilibrium temperature model had as average NSE,  $R^2$  and RE as 0.79, 0.82 and 9.6%, respectively, during the calibration period and 0.76, 0.80 and 7.4%, respectively, during the validation period. Furthermore, the equilibrium temperature showed good performances for all regions of the ARB, with NSE values all greater than 0.67. In contrast, the performances of other two models are not consistent among different regions, especially for Athabasca River Station near Windfall with NSE values less than 0.1.

**Table 3** Calibration and validation statistics for the three stream temperature models for the five stations in the Athabasca River Basin

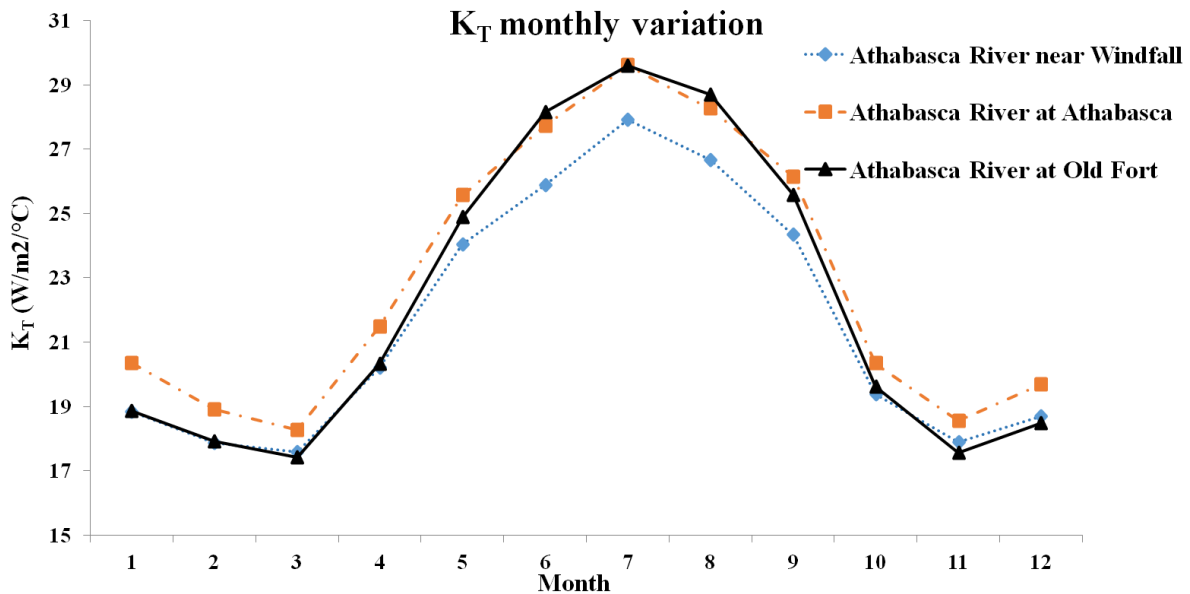
Stations	Different models	Calibration			Validation		
		NSE	$R^2$	RE (%)	NSE	$R^2$	RE (%)
Athabasca River at old Fort	<u>Original SWAT model</u>	0.48	0.62	15.9	0.68	0.71	11.8
	<u>Hydroclimatological model</u>	0.68	0.68	1.5	0.81	0.87	-15.7
	<u>Equilibrium temperature model</u>	0.67	0.74	14.6	0.70	0.75	-0.8
Muskeg River near Fort Mackay	<u>Original SWAT model</u>	0.60	0.69	11.1	0.54	0.67	16.8
	<u>Hydroclimatological model</u>	0.36	0.46	18.3	-	0.30	47.0
	<u>Equilibrium temperature model</u>	0.81	0.85	12.0	0.80	0.86	18.8
Athabasca River near Horse river	<u>Original SWAT model</u>	0.52	0.62	-14.0	0.50	0.60	-4.8
	<u>Hydroclimatological model</u>	0.6	0.61	-4.1	0.41	0.46	-0.3



	<u>Equilibrium temperature model</u>	0.86	0.86	-0.9	0.74	0.76	7.8
Athabasca River at Athabasca	<u>Original SWAT model</u>	0.87	0.68	2.8	0.53	0.68	-3.5
	<u>Hydroclimatological model</u>	0.81	0.82	-11.9	0.8	0.83	-15.8
	<u>Equilibrium temperature model</u>	0.86	0.86	-3.3	0.80	0.81	-2.3
Athabasca River near Windfall	<u>Original SWAT model</u>	0.09	0.68	-6.6	/	/	/
	<u>Hydroclimatological model</u>	0.03	0.47	46.9	/	/	/
	<u>Equilibrium temperature model</u>	0.74	0.77	-17.2	/	/	/
<b>Average</b>	<u>Original SWAT model</u>	<b>0.51</b>	<b>0.66</b>	<b>10.1</b>	<b>0.56</b>	<b>0.67</b>	<b>8.4</b>
	<u>Hydroclimatological model</u>	<b>0.50</b>	<b>0.61</b>	<b>16.5</b>	<b>0.50</b>	<b>0.62</b>	<b>19.7</b>
	<u>Equilibrium temperature model</u>	<b>0.79</b>	<b>0.82</b>	<b>9.6</b>	<b>0.76</b>	<b>0.80</b>	<b>7.4</b>



**Figure 2** Comparisons of simulated stream temperature using the equilibrium temperature model with observed stream temperature in the ARB.



**Figure 3** Monthly variations for the heat exchange coefficient  $K_T$  at different regions of ARB

Another advantage of the equilibrium temperature model is the simple parameterization scheme compared to the hydroclimatological model. The hydroclimatological model requires seasonally-varying parameters to reflect the variations in the impact of hydrological and meteorological conditions on stream temperature. The seasonal-varying parameters increase the model complexity and model calibration effort. The equilibrium temperature model uses the initial stream temperature and wind speed to calculate the initial value of  $K_T$  (heat exchange coefficient). Moreover, air temperature and solar radiation are used to calculate the equilibrium temperature, which is the critical variable for water-air heat transfer process. Therefore, the  $K_T$  and equilibrium temperature vary temporally and spatially as the meteorological input data, such as air temperature, solar radiation and wind speed, vary. Figure 3 illustrates temporal and spatial variations of monthly average  $K_T$  values in the subbasins of upper, middle and downstream of the ARB. It can be seen that the averaged  $K_T$  had an obvious seasonal variation for all three subbasin in different parts of the ARB and spatial variations. As a result, the equilibrium temperature model does not need temporal and spatial varying parameters, which reduces the model complexity and calibration efforts. The results showed that the equilibrium temperature model had consistent simulation performances (with NSE values all greater than 0.67) for different stations in different regions of the ARB, which proves the effectiveness of this simple parameterization scheme. In addition, the equilibrium temperature model considers the impact of water depth on the heat transfer process at the water-air interface. *Because the change of stream water depth represents the variations of streamflow in the reach, the equilibrium temperature model can simulate the impact of variations in hydrological conditions (representing by streamflow) on the water-air heat transfer processes by incorporating the water depth. As the water depth was incorporated in the stream temperature simulation, the potential uncertainties associated with the algorithms used in SWAT for calculating stream characteristics like stream width could impact the stream temperature simulation and need further investigation. To analyze the sensitivity of water depth impact on stream temperature simulation, the simulation at Athabasca River at Old Fort station was used and the results showed that a 50% increase for water depth would decrease the temperature by 0.28 °C and a 50% decrease for water depth would increase the temperature by 0.33 °C.*

For further testing, model calibration and validation for the equilibrium temperature model were also performed on the North Fork Tolt River Watershed. The calibration and validation for streamflow and stream temperature using the original SWAT and hydroclimatological model has been previously accomplished by Ficklin et al. (2012). The SWAT model had a satisfactory performance for streamflow simulation with NSE values as 0.65 and 0.57 during calibration and validation period (see Ficklin et al., 2012 for detailed information). The parameters of equilibrium temperature model were calibrated using observed stream temperature data.  $\eta$ , Lag,  $\lambda$  and  $\lambda_{kt}$  were calibrated as -2.5, 6, 0.72 and 0.85, respectively. The comparison of model performance is shown in Table 4. The results indicate that the equilibrium temperature model had minimum RE values compared to other two models. The NSE values were much higher than original SWAT model but lower than the hydroclimatological model. Overall, the equilibrium temperature model had a reasonable performance for stream temperature in the North Fork Tolt River Watershed. *The lower NSE values of the equilibrium temperature model proposed compared with hydroclimatological model indicate that more model testing needs to be done for different watersheds to verify the model performance.*

**Table 4** Calibration and validation statistics for the three stream temperature models for the North Fork Tolt River Watershed

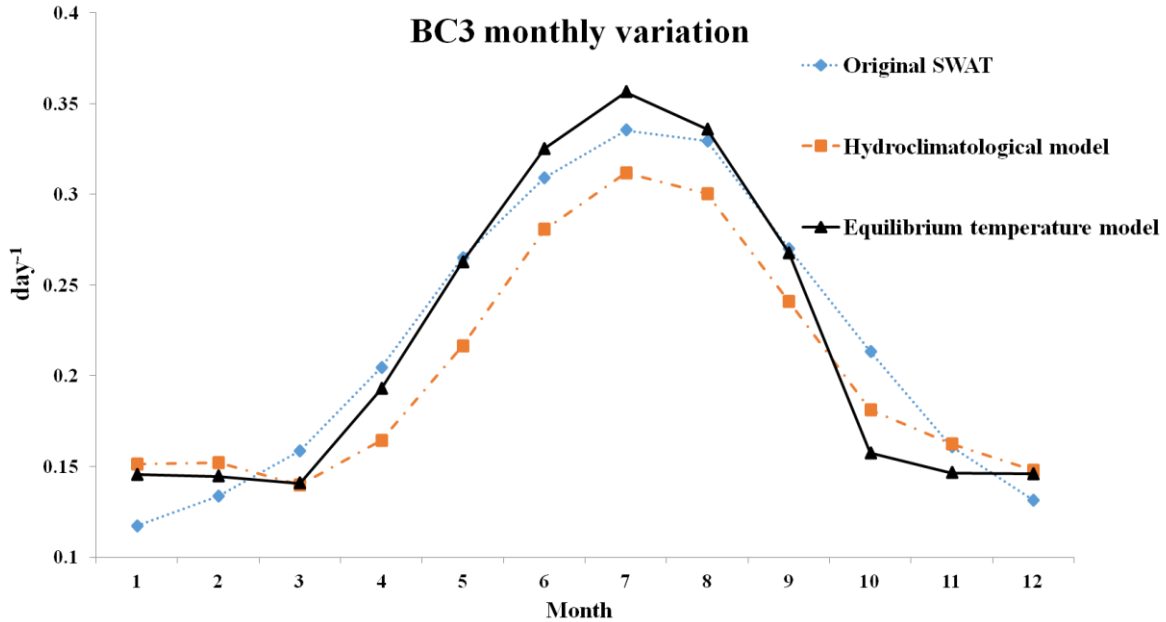
Model	Calibration			Validation		
	NSE	R <sup>2</sup>	RE (%)	NSE	R <sup>2</sup>	RE (%)
Original SWAT	-1.6	0.87	43.4	-1.54	0.85	43.4
Hydroclimatological model	0.70	0.79	-7.6	0.77	0.83	-6.1
Equilibrium temperature model	0.41	0.69	1.0	0.47	0.76	-0.6

### 3.4 Impact of the stream temperature simulation on water quality modelling

The impacts of the stream temperature simulation on the reaction rates were investigated at first. The reaction rates at 20 °C are used as the input parameter, and the reaction rates for each day are corrected based on equation 13 using the stream temperature simulated by the SWAT model. An inaccurate or uncalibrated stream temperature simulation may lead to uncertainties of the chemical reaction rates for water quality modelling. Four reaction rates that represent stream water quality in SWAT were chosen to analyze the impact of stream temperature simulation on water quality modelling. These reaction rates are related to carbonaceous biochemical oxygen demand (CBOD), dissolved oxygen (DO), nitrogen (N) and phosphorus (P) simulation in the stream (Table 5). The reaction rates at 20 °C and temperature correction coefficients are defined according to the default values in the SWAT manual (Arnold et al., 2013), and the mean values of chemical reaction rates for different stream temperature simulations are given in Table 5. As an example, the monthly average values of BC3 were shown in Figure 4 to illustrate temporal variations under different water temperature models. The results showed that the chemical reaction rates differed in magnitude and temporal variation under different stream temperature simulations, which impacted the chemical concentration simulation within the stream. These differences in the reaction rates were caused by the different stream temperature simulations using the same reaction rates at 20 °C.

**Table 5** Chemical reaction rates and their mean values under the different stream temperature models

Name	Description	K <sub>20</sub> (/day)	θ	Mean value		
				Original SWAT	Hydroclimatological model	Equilibrium temperature model
RK1	CBOD deoxygenation rate	1.71	1.047	1.072	0.999	1.069
RK2	Oxygen reaeration rate	50	1.024	31.356	29.197	31.265
BC3	Organic N hydrolysis rate	0.21	1.047	0.132	0.123	0.131
BC4	Organic P mineralization rate	0.35	1.047	0.220	0.204	0.219



**Figure 4** Monthly variations for the parameter BC3 using the different stream temperature models

5 To investigate the impact of different stream temperature simulations on water quality concentration simulations, the simulated organic N concentrations for two streams (Table 6) by the three different stream temperature models were analyzed and the average value and standard deviation were selected for assessment. The stations of Muskeg River near Fort Mackay (MRFM) and Athabasca River at Old Fort (AROF) were used for output comparison. The station of MRFM represents an upstream subbasin with no inflow impact, while the station of AROF is in the mainstream of downstream ARB representing the impact of inflow from upstreams. As can be seen from Table 6, annual average organic N concentrations simulated by three different stream temperature models at MRFM were very similar, but the simulated concentrations at AROF showed greater differences. To investigate the impacts on water quality concentration temporal patterns, the monthly average of simulated organic N concentrations from the three different stream temperature models at the MRFM and AROF stations are shown in Figure 5. The

10

15

results in Figure 5 indicate that monthly organic N concentrations simulated by the different models showed greater variations at the AROF station, especially from April to June when the concentrations are high. The results implied that the simulations of stream temperature have more impact on the simulated water quality concentrations in the downstream with upstream inflow impact than those located in the upstream with no inflow impact. The simulated daily organic N concentrations of the first year (1988) during simulation period of three different models were outputted and plotted (Figure 6) as an example to show the diurnal variation. The results indicate that the daily concentrations simulated by the hydroclimatological model showed a contrasting pattern compared to other two models as a result of the different stream temperature simulations.

10

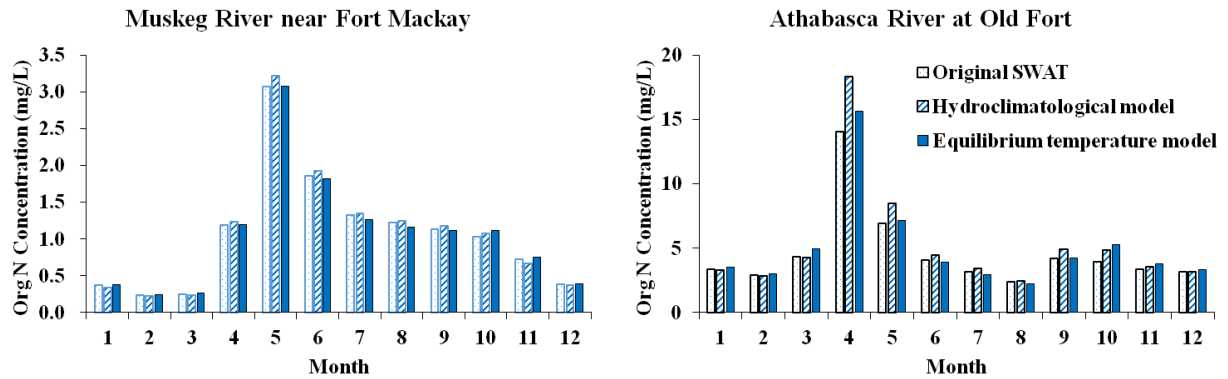
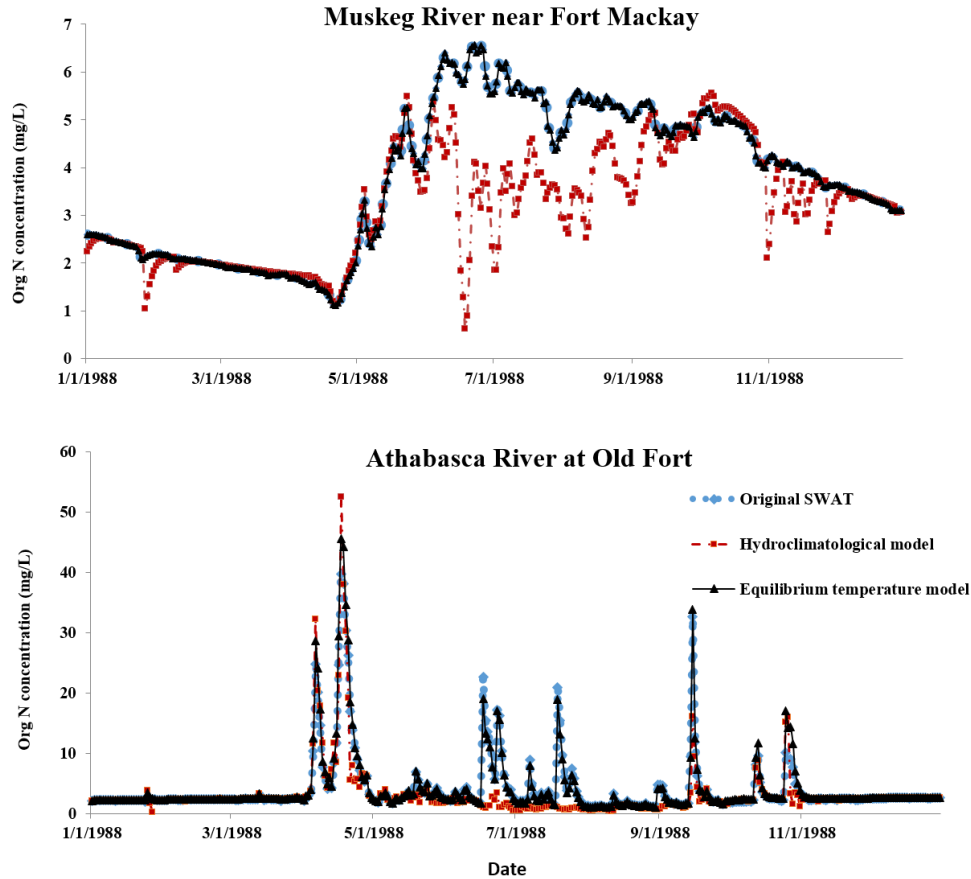


Figure 5 Monthly variations of organic N concentration simulated using the three different stream temperature models



**Figure 6** Daily variations of organic N concentration simulated in 1988 using the three different stream temperature models. \*Original SWAT represents the SWAT default linear model, Hydroclimatological model represents the model developed by Ficklin et al. (2010) and equilibrium temperature model represents the model proposed by this study.

5

**Table 6** Annual average organic N concentrations (mg/L) simulated using the three different stream temperature models

Station	Statistics	Original SWAT	Hydroclimatological model	Equilibrium temperature model
Muskeg River near Fort Mackay	Average	1.064	1.087	1.063
	Standard deviation	1.270	1.259	1.269
Athabasca River at Old Fort	Average	4.650	5.337	4.999
	Standard deviation	6.200	6.187	7.036

The SWAT model uses a linear relationship with air temperature to simulate water temperature, and the majority of SWAT applications for water quality modelling do not calibrate and validate stream temperature due to the fixed coefficients for the linear equations. Though water quality concentration can be calibrated by adjusting reaction rates at 20 °C without water temperature calibration, it might not

10

reflect an accurate representation of chemical reactions and transformations. Therefore, the equilibrium temperature provides a potential tool for more-accurate water quality concentration simulation.

#### 4 Conclusions

5 The temperature of a river system is an important indicator for biodiversity and ecosystem sustainability. The original SWAT model uses a linear equation of air temperature to calculate the stream temperature and does not account for the impact of other meteorological and hydrological conditions. Thus, the linear equation may lead to an unrealistic prediction of the stream temperature when the air temperatures are very high or low. In this paper, we proposed a stream temperature model by incorporating an equilibrium temperature approach to the hydroclimatological model developed by Ficklin et al. (2012). The equilibrium temperature approach accounts for the influence of air temperature, wind speed, solar radiation and water depth to calculate the water-air heat transfer. The hydroclimatological model considers the contribution of different runoff components and calculates the initial stream temperature by mixing runoff from subbasins and inflow from upstream. Then the final stream temperature is calculated by simulating the water-air heat transfer. Compared to the hydroclimatological model, the equilibrium temperature model calculates heat transfer between water and air, including the impact of other meteorological conditions, such as wind speed and solar radiation. Also, the equilibrium temperature model considers the influence of water depth on the heat transfer, which reflects the impact of hydrological variations on water-air heat transfer. An additional advantage of this model is the simple parameterization scheme requiring less calibration effort because it does not need spatial and temporal varying parameters. Also, the equilibrium temperature model uses the existing input data of the SWAT model with no additional inputs.

The equilibrium temperature model was applied to the ARB, and the model calibration and validation were performed using *observed stream temperature data* from five monitoring stations distributed throughout the ARB. The results show that the equilibrium temperature model had a better performance for the stream temperature simulation than the original SWAT and hydroclimatological models. The equilibrium temperature model showed a consistent performance for different regions in the ARB using fewer parameters and less calibration effort compared to the hydroclimatological model. The equilibrium temperature model was also tested in the North Fork Tolt River Watershed in Washington, United States and the results showed that it had a reasonable performance for stream temperature modeling with minimum RE values compared to other two models *but the lower NSE values indicated more model testing needs to be done in future work.*

In addition, the impact of the stream temperature on the water quality was analyzed through the variations of chemical reaction rates and concentrations under three different stream temperature models. The results showed the chemical reaction rates and concentrations differed in magnitude and temporal variation under different water temperature simulations, *which indicated that stream temperature simulation is important for water quality modeling.* It is worth mentioning that the equilibrium temperature model can also be incorporated to other hydrological models with the required runoff components and meteorological input data. The required meteorological input data includes air temperature, solar radiation and wind speed. The required runoff components consist of surface runoff (overland flow), interflow, groundwater flow and snowmelt. Theoretically, this stream temperature model can be incorporated into any hydrological model used for different regions which has the required meteorological and runoff components. Overall, the equilibrium temperature model, which accounts for the combined impact of meteorological and hydrological conditions, can be a useful tool for modelling the stream temperature. The hydroclimatological and equilibrium stream temperature model both use a simple mixing model to calculate the initial stream temperature considering the impact of different runoff



components. This is a simplified simulation for heat process in the subbasin, which can be improved in future studies. In addition, more model testing needs to be done in different regions to verify the model applicability. Further work can also be done by incorporating the equilibrium stream temperature model into other hydrologic models for further model testing.

## 5 Acknowledgements

The authors would like to thank the Alberta Economic Development and Trade for the Campus Alberta Innovates Program Research Chair (No. RCP-12-001-BCAIP). We would also like to thank Mr. Jim Sellers for the proofreading. *The code of this study is available upon request by email ([xdu@athabascau.ca](mailto:xdu@athabascau.ca)).*

## 10 References

- Arnold, J. G., Srinivasan, R., Muttiah, R. S., and Williams, J. R.: Large area hydrologic modeling and assessment part I: model development, JAWRA Journal of the American Water Resources Association, 34, 73-89, 1998.
- Arnold, J., Kiniry, J., Srinivasan, R., Williams, J., Haney, E., and Neitsch, S.: SWAT 2012 Input/Output Documentation, Texas Water Resources Institute, 2013.
- 15 Battin, J., Wiley, M. W., Ruckelshaus, M. H., Palmer, R. N., Korb, E., Bartz, K. K., and Imaki, H.: Projected impacts of climate change on salmon habitat restoration, P Natl Acad Sci USA, 104, 6720-6725, 2007.
- Bogan, T., Mohseni, O., and Stefan, H. G.: Stream temperature-equilibrium temperature relationship, Water Resour Res, 39, 2003.
- 20 Bustillo, V., Moatar, F., Ducharne, A., Thiéry, D. and Poirel, A.: A multimodel comparison for assessing water temperatures under changing climate conditions via the equilibrium temperature concept: case study of the Middle Loire River, France. Hydrological Processes, 28, 1507-1524, 2014
- Brennan, L. : Stream Temperature Modeling: A Modeling Comparison for Resource Managers and Climate Change Analysis, 2015.
- 25 Caissie, D., Satish, M. G., and El-Jabi, N.: Predicting river water temperatures using the equilibrium temperature concept with application on Miramichi River catchments (New Brunswick, Canada), Hydrol Process, 19, 2137-2159, 2005.
- Caissie, D., Satish, M. G., and El-Jabi, N.: Predicting water temperatures using a deterministic model: Application on Miramichi River catchments (New Brunswick, Canada), J Hydrol, 336, 303-315, 30 2007.
- Cao, Q., Sun, N., Yearsley, J., Nijssen, B., and Lettenmaier, D. P.: Climate and land cover effects on the temperature of Puget Sound streams, Hydrol Process, 30, 2286-2304, 2016.
- 35 Chapra, S.C., Pelletier, G.J. and Tao, H.: QUAL2K: A Modeling Framework for Simulating River and Stream Water Quality, Version 2.12: Documentation and Users Manual. Civil and Environmental Engineering Dept., Tufts University, Medford, MA, 2012.
- Cole, T. M., & Wells, S. A. : CE-QUAL-W2: A two-dimensional, laterally averaged, Hydrodynamic and Water Quality Model, Version 4.0, 2016.
- 40 Dingman, S. L.: Equilibrium Temperatures of Water Surfaces as Related to Air Temperature and Solar-Radiation, Water Resour Res, 8, 42-&, 1972.
- Dile, Y. T., and Srinivasan, R.: Evaluation of CFSR climate data for hydrologic prediction in data - scarce watersheds: an application in the Blue Nile River Basin, JAWRA Journal of the American Water Resources Association, 50, 1226-1241, 2014.
- 45 Du, X. Z., Li, X. Y., Zhang, W. S., and Wang, H. L.: Variations in source apportionments of nutrient load among seasons and hydrological years in a semi-arid watershed: GWLF model results, Environ Sci Pollut R, 21, 6506-6515, 2014.

- Du, X. Z., Su, J. J., Li, X. Y., and Zhang, W. S.: Modeling and Evaluating of Non-Point Source Pollution in a Semi-Arid Watershed: Implications for Watershed Management, *Clean-Soil Air Water*, 44, 247-255, 2016.
- 5 Ducharme, A.: Importance of stream temperature to climate change impact on water quality, *Hydrol Earth Syst Sc*, 12, 797-810, 2008.
- Eaton, J. G., McCormick, J. H., Goodno, B. E., Obrien, D. G., Stefany, H. G., Hondzo, M., and Scheller, R. M.: A Field Information-Based System for Estimating Fish Temperature Tolerances, *Fisheries*, 20, 10-18, 1995.
- 10 Edinger, J. E., Brady, D. K., and Geyer, J. C.: Heat exchange and transport in the environment. Report No. 14, Johns Hopkins Univ., Baltimore, MD (USA). Dept. of Geography and Environmental Engineering, 1974.
- Ficklin, D. L., Luo, Y. Z., Stewart, I. T., and Maurer, E. P.: Development and application of a hydroclimatological stream temperature model within the Soil and Water Assessment Tool, *Water Resour Res*, 48, Artn W0151110.1029/2011wr011256, 2012.
- 15 Ficklin, D. L., Stewart, I. T., and Maurer, E. P.: Effects of climate change on stream temperature, dissolved oxygen, and sediment concentration in the Sierra Nevada in California, *Water Resour Res*, 49, 2765-2782, 2013.
- Ficklin, D. L., Barnhart, B. L., Knouft, J. H., Stewart, I. T., Maurer, E. P., Letsinger, S. L., and Whittaker, G. W.: Climate change and stream temperature projections in the Columbia River basin: habitat implications of spatial variation in hydrologic drivers, *Hydrol Earth Syst Sc*, 18, 4897-4912, 2014.
- 20 Hardenbicker, P., Viergutz, C., Becker, A., Kirchesch, V., Nilson, E., and Fischer, H.: Water temperature increases in the river Rhine in response to climate change, *Reg Environ Change*, 17, 299-308, 2017.
- Knouft, J. H., and Ficklin, D. L.: The Potential Impacts of Climate Change on Biodiversity in Flowing Freshwater Systems, *Annual Review of Ecology, Evolution, and Systematics*, 2017.
- 25 Lawrence, M. G.: The relationship between relative humidity and the dewpoint temperature in moist air - A simple conversion and applications, *B Am Meteorol Soc*, 86, 225-+, 2005.
- Lebel, M., Maas, T., and Powell, R.: Securing environmental flows in the Athabasca River, *World Wildlife Fund Canada*, 2011.
- 30 Loveland, T. R., Reed, B. C., Brown, J. F., Ohlen, D. O., Zhu, Z., Yang, L., and Merchant, J. W.: Development of a global land cover characteristics database and IGBP DISCover from 1 km AVHRR data, *Int J Remote Sens*, 21, 1303-1330, 2000.
- Mohseni, O., Stefan, H. G., and Erickson, T. R.: A nonlinear regression model for weekly stream temperatures, *Water Resour Res*, 34, 2685-2692, 1998.
- 35 Mohseni, O., and Stefan, H. G.: Stream temperature air temperature relationship: a physical interpretation, *J Hydrol*, 218, 128-141, 1999.
- Neitsch, S. L., Arnold, J. G., Kiniry, J. R., and Williams, J. R.: Soil and water assessment tool theoretical documentation version 2009, Texas Water Resources Institute, 2011.
- 40 Ozaki, N., Fukushima, T., and Kojiri, T.: Simulation of the effects of the alteration of the river basin land use on river water temperature using the multi-layer mesh-typed runoff model, *Ecol Model*, 215, 159-169, 2008.
- Shrestha, N. K., Du, X., and Wang, J.: Assessing climate change impacts on fresh water resources of the Athabasca River Basin, Canada, *The Science of the total environment*, 601-602, 425-440, 10.1016/j.scitotenv.2017.05.013, 2017.
- 45 Sohrabi, M. M., Benjankar, R., Tonina, D., Wenger, S. J., and Isaak, D. J.: Estimation of daily stream water temperatures with a Bayesian regression approach, *Hydrol Process*, 31, 1719-1733, 2017.
- Stefan, H. G., and Preudhomme, E. B.: Stream Temperature Estimation from Air-Temperature, *Water Resour Bull*, 29, 27-45, 1993.

Wallace, R. R., and McCart, P. J.: The fish and fisheries of the Athabasca River basin: Status and environmental requirements, 1984.

Zeiger, S., Hubbart, J. A., Anderson, S. H., and Stambaugh, M. C.: Quantifying and modeling urban stream temperature: a central US watershed study, *Hydrological Processes*, 30, 503-514, 2016.