

Dear Editor, dear Ross Woods,

First of all we would like to thank you for handling our manuscript. We will give here an additional overview of the changes made in the manuscript. In general, our revisions are primarily oriented towards the detailed recommendations made by the first reviewer, which we all tried to consider. The changes are mostly in line with our responses to the two reviewers' comments which were helpful to further clarify and improve the presentation of the study.

The following revisions have been incorporated in the new manuscript:

- We revised the short summary for the homepage.
- We reworked the abstract.
- We reworked parts of the introduction (section 1.2.) to give a clearer presentation of the main contributions of our study. For this we added a clear listing of possible target variables for sensitivity analysis.
- We revised and clarified the referencing in section 2 (methods and models).
- We further specified the explanation of FAST (section 2.2) and tried to clarify the explanation of INDPAS (2.5.2).
- We reorganized section 2.4. (Model setup for sensitivity analysis) and added the period of calibration.
- We added the information on the general order of importance of the parameters to the results of TEDPAS (section 3.1).
- We streamlined the discussion in section 4.1 (Parameter sensitivities from TEDPAS and INDPAS) along the reviewers' recommendations. We slightly revised the discussion in section 4.2.
- We reworked the conclusions.
- We added more explanation to the caption of Fig. 2 for clarification.
- We reworked Fig. 3 now showing three subplots of sensitivity time series including the corresponding legends in each subplot with the proposed y-axes scaling. Additionally, for this figure, as well as for Fig. 2 and 6, we modified the shade of blue for one parameter (ThetaSconst).
- We clarified the caption of Table 2.

Finally and once more we sincerely thank you and also the two reviewers for their helpful comments on our manuscript.

Yours sincerely,

Simon Höllering, Jan Wienhöfer, Jürgen Ihringer, Luis Samaniego, and Erwin Zehe.

Response to B. Guse (Referee)
Received and published: 9 August 2017

Björn Guse (BG): In this manuscript, hydrological fingerprints are introduced as target variable for a sensitivity analysis and compared with a classical approach using streamflow data for a temporally resolved sensitivity analysis. The joint benefit of both approaches is presented for several headwater catchments. As a reviewer of the first submission of this study to Hydrol. Earth Syst. Sci., I highly appreciate the large effort of the authors. The manuscript is now clearer in its objective and I have only minor comments before publication. In most of the cases, my comments are suggestions. I hope that my comments help the authors to improve the manuscript.

Simon Höllering (SH): We sincerely thank Björn Guse for reviewing also our revised manuscript. We are grateful for the thoughtful recommendations and comments which will help to further clarify and improve the presentation of the study, especially for the hints on how to emphasize the main contributions of the present study. We will gladly follow his advice when revising the manuscript. Detailed comments on the specific points are collected below.

BG: P.3, L. 12-18: Even though that it is mentioned here and also at several other places, the manuscript could benefit from mentioning your contribution to the different options in selecting target variables for a sensitivity analysis in hydrology. These are: (i) Modelled discharge, (ii) Different objective functions (Van Werkhoven et al., 2008, Yilmaz et al., 2008, Herman et al. 2013), (iii) Different hydrological variables (Massmann and Holzmann, 2015; Guse et al., 2016), (iv) Different hydrological fingerprints (this manuscript). The use of fingerprint metrics as target variables for a sensitivity analysis is the novel contribution of this manuscript in my opinion. A clear listing could help in distributing this concept in the hydrological community.

SH: Thank you for this helpful comment. We will try to rework this part of the introduction to clarify our contribution.

BG: P.5., L.7: I recommend to add some references that these metrics are often used in hydrology, since the approach depends on a reasonable selection of the fingerprint metrics. Probably it is sufficient to use studies which are already included in the reference list.

SH: Yes, good point. We will add here some references.

BG: P.5., L.30: In the study of Van Griensven, FAST is listed as a type of sensitivity analyses, but I think that no FAST application is shown in this paper. This recommended to focus the referencing on the paper with FAST results.

SH: Yes, some of the studies present only reviews, others FAST applications and results. We will modify this part to become clearer here.

BG: P.6, L.9: The referencing of seven paper for mHM seems to be a high. Are they all required to justify the selection of model parameters and their ranges?

SH: Indeed, we will select the most relevant publications at this point.

BG: P.8, L.28: You may add that 2002 was a wet year and 2003 a dry year to show that you have consider different hydrological situations in the model calibration.

SH: We added this info in the caption of Fig. 3 to explain why these periods were selected for illustration. We will see how to incorporate this in the results or discussion parts dealing with this Figure and its interpretation. In section 2.4 we will also add that the period for initial model calibration was 1997-2006.

BG: P.11, L.1-8: These results show clearly that the runoff ratio is a fingerprint metrics complementary to most of the others, while Fig.5 show similar results for several fingerprint metrics. The study might benefit from a discussion of redundant and complementary fingerprint metrics. Based on this, it is probably possible to give some recommendations about an appropriate selection of a set of fingerprint metrics as target variables in sensitivity analyses.

SH: This is a good point that might be relevant to revise/add in the discussion. We are aware that redundancy in fingerprint metrics for a specific streamflow characteristic (e.g. high flows) might be possible if several similar metrics (e.g. HPC, CV, HFD) are selected. Nevertheless, a joint, multivariate analysis with metrics of several similar but slightly different streamflow characteristics (frequency of high flow, magnitude of high flows etc.) is needed to ensure complete parameter identification for different catchments. Our results also show that results in sensitivity analysis (INDPAS) can be similar even for fingerprint metrics that characterize different streamflow characteristics (compare RTC with CV, Fig. 5), which might change with the location.

BG: P.12, L.5-12: Could you explain (based on its role in the model structure) why a soil moisture parameter is relevant both for high and low flows (but not for mid flow)? What about surface runoff or groundwater flow related parameter?

SH: The widely largest importance of the soil moisture parameter is perhaps only masked and damped during mid flows by evapotranspiration parameters. The system state probably makes a large difference during high to mid flow conditions, because of the impact of evapotranspiration on the shallow soil storage in the catchment. This is especially the case for the recession limbs after peak flow, as we also specified in the manuscript: 'TEDPAS analysis further clarified that the intermittent dominance of AspectcorrPET occurs simultaneously to the falling limbs subsequently to high flow peaks (Fig. 3c and d, g and h).

The tested parameters for surface runoff (InfilShapeFactor) and groundwater (RechargeCoeff, GeoParam) were found to be much less sensitive, although the sensitivity of the latter increases towards the low flow conditions due to their impact on baseflow (Fig. 6), which seems plausible.

Our results provide in-depth diagnostics on the model, which can hopefully support future improvements, but an in-depth analysis of the mHM model structure is beyond the scope of the paper. We will try to include this in the discussion.

BG: P.12, L.5-12: If it helps, you might add that the result that evapotranspiration parameters are sensitive in mid flows coincides with former sensitivity studies with other hydrological models.

SH: Yes, we will check and possibly add studies.

BG: P.12, L.28: I would recommend to emphasize this statement even more. You could discuss how this result helps for model calibration in terms of parameter constraining, reduction of parameter space and appropriate target variables.

SH: Thank you, we will add some more explanation.

BG: P.13, L.1-5: Is ACT maybe less appropriate as fingerprint metric in sensitivity analysis? Also, at this point, it might be interesting to give some comments on the suitability on different fingerprint metrics.

SH: We will add here that regardless of the model parameterisation, precipitation has a large impact on the autocorrelation structure of streamflow. Thus, ACT is less informative than other metrics that depend less on the hydroclimatic boundary conditions.

BG: P.13, L.12-13: At this point, I like to remark that Ksconst control both high and low flows. Thus, it would be interesting to see how precisely this parameter can be identified. I expect also conflicting results in model calibration studies. Even though that this study is not related to model calibration, your study give insights that this conflict might occur in the calibration.

SH: Interesting remark. This would have to be tested by calibrating specifically for high and for low flow conditions. If large discrepancies in parameter values show up, an improvement of the model structure might be advisable.

BG: References: The latter "a" is shown in smaller letters in the author list such as in P. 18, L. 28; P.20, L. 35; P. 21, L. 3.

SH: Thank you for this hint. We have corrected it.

BG: Fig. 2: The information content of this figure is relatively low. I still see a reason for including it in the manuscript. However, in the case that you have to shorten the manuscript, you may think about removing this figure.

SH: We agree with Björn Guse and would prefer to include it in the paper, because it helps to understand the essence of the FAST method.

BG: Fig. 3: For a better visualization, I recommend to show three subplots of sensitivity time series. It is very difficult to distinguish four lines in one subplot. Moreover, the blue colours are very similar. Maybe you can include the legend in the subplot (and increase the y-axis to 0.8).

SH: Thanks for this recommendation. We reworked Fig. 3 now showing three subplots of sensitivity time series including the corresponding legends in each subplot with the proposed y-axes scaling. Additionally, for this figure, as well as for Fig. 2 and 6, we modified the shade of blue for one parameter (ThetaSconst). We think by these modifications the visualization has become clearer.

BG: Fig. 4: I recommend to move the last sentence from the figure caption to the main text. An interpretation of the results belongs to the main text and not to the figure caption.

SH: We will add the information in the text. However, we consider the information on the order of importance of the parameters as helpful to interpret the figure, especially the different shapes of the curves, and would thus leave the sentence here as well.

BG: Fig. 5: This figure clearly shows that a precisely defined target variable helps to disentangle the relevance of model parameters such as in this case for AspectcorrPET. This is an important result which could be more emphasised. It is clearly shown that separate target variables are beneficial for sensitivity analyses. These could be as denoted above: Different objective functions, different hydrological variables or such as in your study different fingerprint metrics.

SH: We agree with the reviewer that this is an important result and are happy to go with the recommendation to emphasize this a bit more in the text.

BG: Fig. 6: It seems to be that due to the high differences in sensitivity it is enough to select 4-6 parameters to control the hydrological behaviour in your case. Is this a typical number of relevant model parameters using mHm (model-inherent) or a case-specific result?

SH: Hard to say. It could be specific for the type of catchment, and/or the FAST approach. Other studies (cited in the paper P.14 L.1-6) found a larger number of parameters. For our FAST studies on the Ruhr headwaters it seems a typical number of relevant parameters (also in the preliminary and earlier studies).

BG: Tab. 2: I recommend to add the meaning of "Sensitivity range" and "Sensitivity mean" to a table caption.

SH: We have clarified the Table caption.

BG: References:

Guse, B., M. Pfannerstill, A. Gafurov, N. Fohrer, and H. Gupta (2016): Demasking the integrated information of discharge: Advancing sensitivity analysis to consider different hydrological components and their rates of change. *Water Resources Research* 52, 8724-8743, doi: 10.1002/2016WR018894

Herman, J. D., P. M. Reed, and T. Wagener (2013): Time-varying sensitivity analysis clarifies the effects of watershed model formulation on model behavior, *Water Resour. Res.*, 49, 1400–1414, doi:10.1002/wrcr.20124.

Massmann, C., and H. Holzmann (2015): Analysing the sub-processes of a conceptual rainfall-runoff model using information about the parameter sensitivity and variance, *Environ. Model. Assess.*, 20, 41–53, doi:10.1007/s10666-014-9414-6.

van Werkhoven, K., T. Wagener, P. Reed, and Y. Tang (2008): Characterization of watershed model behavior across a hydroclimatic gradient, *Water Resour. Res.*, 44, W01429, doi:10.1029/2007WR006271.

Yilmaz, K. K., H. Gupta, and T. Wagener (2008): A process-based diagnostic approach to model evaluation: Application to the NWS distributed hydrologic model, *Water Resour. Res.*, 44, W09417, doi:10.1029/2007WR006716.

Response to S. Gharari (Referee)
Received and published: 20 September 2017

Shervan Gharari (SG): The manuscript has improved significantly from the initial submission. However I am still struggling to get the main message of the paper.

Simon Höllering et al. (SH): We sincerely thank Shervan Gharari for reviewing also our revised submission. We think we are able to overcome many of his concerns together with the revisions on the basis of the detailed comments of the first reviewer, Björn Guse. In summary, we will especially direct our efforts to a clearer presentation of the main contributions of the present study.

The detailed answers on the comments are collected below.

SG: The title looks very broad. It is hard to predict what the reader should expect from the current title.

SH: Thank you for your opinion and perception on the title. We have decided to choose a comparably brief title, which nevertheless points out the main features of our study. Admittedly, it does not summarize the contents of the paper in full detail. We would, however, prefer not to add more details to the title, as it probably would only be longer and not much clearer. Instead, we would invite the reader interested in “Regional sensitivity analysis” and “Hydrological fingerprints” to consult the abstract - and then hopefully the entire paper – for further information.

SG: The objectives and research questions are not answered in the conclusions.

SH: In this point we do not fully agree with the reviewer. We admit that the detailed answers to the research questions are contained in the discussion section, and that in the conclusions only short reference to the three questions is made.

Research question 1 (“Which parameters can be identified as sensitive with regard to specific hydrological response characteristics?”) and research question 2 (“How does parameter sensitivity change with different hydrological objectives (response targets) applied in global sensitivity analysis?”) are referred to in the first paragraph of the conclusions, while research question 3 (“How does parameter sensitivity change in different catchments under slightly distinct physiographic and hydroclimatic conditions?”) is answered in the second paragraph.

We regard this structure to address the research question in the discussion and to summarize the main findings in the conclusion section as instructive and in line with many manuscripts, but would nevertheless happily consider any propositions on improvements of this issue.

SG: I still cannot easily summarize the manuscript scope and aim into one paragraph for myself!

SH: We will revisit the abstract and the short summary of our study once more to further optimize it for the reader. In this respect, reviewer 1 came up with a concise description that we will incorporate into the short summary: “In this manuscript, hydrological fingerprints are introduced as target

variable for a sensitivity analysis and compared with a classical approach using streamflow data for a temporally resolved sensitivity analysis. The joint benefit of both approaches is presented for several headwater catchments.”

In addition to that, we will take care to point out more clearly the contribution of the study in our revisions of the introduction, discussion and conclusions as pointed out in our answers to reviewer 1.

SG: The organization of the paper is still far from being perfect. For example figure 1 is explained twice and in between there figure 2 is mentioned (I really do not get what the point of figure 2 is).

SH: Thank you for this comment. We are not sure if this is a major point; however, we will check the references to Fig. 1 (map of the study area) and delete any references which should not be needed to guide the reader to this map.

Figure 2 illustrates the variation of parameter values with different, independent frequencies along the number of simulation runs, which is at the heart of the FAST method. In our case, 243 (x-axis) different combinations of values for the eight parameters were obtained. Each parameter was varied in its specified ranges (y-axes). The parameter variations are displayed in three subplots for reasons of legibility.

243 model runs were performed and the same number of simulated streamflow time series was obtained. These 243 hydrographs are then used for TEDPAS and for the calculation of the fingerprint metrics for INDPAS.

We will add more explanation to the caption of Fig. 2 for clarification. But we still think that the figure is helpful and necessary, particularly for readers who are not familiar with FAST, to understand the essence of the method. We thus prefer to keep Fig. 2 in the revised manuscript.

SG: The discussion part is too wordy and contains many repetition from the earlier sections as well as literature review.

SH: Thank you for the comment. We will double check and optionally streamline the discussion.

For reasons of clarity, we structured the discussion in two parts. The first part addressed the complementary merits of TEDPAS and INDPAS. The second part focuses on the regional differences in parameter sensitivity among the headwaters and possible reasons for this, which are the specific findings for this hydrological system. While the latter might change when moving to a different study area, the former part is generic to the application of the proposed framework. Though one might choose other fingerprints in a different study, this does not change the philosophy of the approach. We will better stress why we structure the discussion that way in the revised manuscript.

SG: One more point which I am missing in the manuscript is, how the sensitivity was carried out on the fingering indices? Did the authors used the value of these indices and see how sensitive they are comparably? If this is the case how did the authors compare the sensitivities? The range of values for these indices might vary from one to the other.

SH: Maybe the reviewer missed the description of how the sensitivity analyses were carried out (Sections 2.2 and 2.5.2)? If anything should be unclear about these paragraphs, we would appreciate any hints.

The sensitivity analyses were performed with the Fourier Amplitude Sensitivity Test (FAST, section 2.2 in the manuscript). The general idea of FAST is to vary parameters of interest with independent frequencies, and then perform a Fourier analysis of the simulated target variable across the ensemble of model runs to determine the first-order sensitivities of the parameters as a function of time, hence obtaining a power spectrum for each simulation time step. The variance σ_i^2 that is explained by a parameter i is determined by normalizing the corresponding power with the total power in the spectrum, which corresponds to the total variance σ^2 within the model ensemble (see the cited paper by Reusser et al. 2011). The sensitivity of model output on parameter i is then calculated as the partial variance, which is the ratio σ_i^2/σ^2 .

We tested different model results (hydrograph and fingerprint metrics, i.e. single value indices and FDCs) in our analyses, which yielded parameter sensitivities with respect to each of these target variables. The fingerprint metrics were calculated from each of the 243 simulated streamflow hydrographs, and each one was individually analyzed with FAST. This analysis directed to fingerprint metrics is essentially the same procedure as for TEDPAS. The resulting partial variance for each fingerprint are comparable because they portray the relative influence of the parameters on the variation of the target, regardless of the concrete values of the targets, which might indeed be quite different.

The range of model results, for example in single value fingerprints, might influence the sensitivity analyses as discussed in section 4.1 with the example of the autocorrelation time (ACT). Following the recommendation of the first reviewer, we will add some more explanation in the discussion on this topic. We could also try to further clarify the explanation of the INDPAS method, if not already sufficiently explained.

Regional analysis of parameter sensitivity for simulation of streamflow and hydrological fingerprints

Simon Höllering¹, Jan Wienhöfer¹, Jürgen Ihringer¹, Luis Samaniego², and Erwin Zehe¹

¹Karlsruhe Institute of Technology (KIT), Karlsruhe, Germany

²Helmholtz-Centre for Environmental Research, Leipzig, Germany

Correspondence to: Simon Höllering (simon.hoellering@kit.edu)

Abstract. Diagnostics of hydrological models is pivotal for a better understanding of catchment functioning. ~~The-, and the~~ analysis of dominating ~~parameters for the simulation of streamflow model parameters~~ plays a key role for ~~region-specific model diagnostics, model~~ region-specific calibration or parameter transfer. A major challenge in ~~this the~~ analysis of parameter sensitivity is the assessment of both temporal and spatial differences of parameter influences on simulated streamflow response.

5 ~~A methodical approach is presented, wherein a two-tiered~~ We present a methodological approach for global sensitivity analysis ~~on a spatially distributed hydrological model is applied to 14 mesoscale headwater catchments of the river Ruhr in western Germany. The analysis of parameter sensitivity of hydrological models. The multilevel approach~~ is geared towards ~~two~~ complementary forms of streamflow response targets. ~~The analysis of the temporal dynamics of parameter sensitivity (TEDPAS) is contrasted with sensitivity-, and combines sensitivity~~ analysis directed to hydrological fingerprints, i.e. temporally independent and temporally aggregated characteristics of streamflow (INDPAS). ~~The two-tiered approach allows to discern a clarified sensitivity pattern pinpointed to-,~~ with the conventional analysis of the temporal dynamics of parameter sensitivity (TEDPAS).

The approach was tested in 14 mesoscale headwater catchments of the river Ruhr in western Germany using simulations with the spatially distributed hydrological model mHM. The multilevel analysis with diverse response characteristics ~~, to allowed to pinpoint parameter sensitivity patterns much clearer as compared to using TEDPAS alone. It was not only possible to identify~~ two dominating parameters, for soil moisture dynamics and evapotranspiration, but we could also disentangle the role of these and other parameters with reference to different streamflow characteristics. The combination of TEDPAS and INDPAS further allowed to detect regional differences ~~and to reveal the regional relevance of the response target. Small local in parameter sensitivity and in simulated hydrological functioning, despite the rather small~~ differences in the hydroclimatic and topographic setting of the ~~headwaters lead to slight differences in the hydrological functioning, which was revealed by gradual differences~~ in TEDPAS and INDPAS Ruhr headwaters.

1 Introduction

1.1 Analysis of parameter influences

The role of hydrological model parameters has been studied for a long time. The illposed nature of hydrological modelling led to the awareness that parameter sets are not uniquely identifiable (Beven, 1993) and to the related branches of uncertainty

assessment (e.g. Gupta et al., 1998) and automated parameter estimation (e.g. Hogue et al., 2000). This is closely related to the sensitivity of model results to parameter variations. While a number of topics are often subsumed under sensitivity analysis, underlying objectives and methodological approaches can substantially differ on a hydrological case-by-case basis (van Griensven et al., 2006; Saltelli et al., 2008; Zajac, 2010; Razavi and Gupta, 2015). Local and global strategies of sensitivity analysis have shown to be beneficial instruments at different stages of the modelling process (McCuen, 1973; Hamby, 1994; Sieber and Uhlenbrook, 2005; Razavi and Gupta, 2015). Analogous to the number of different objectives and methods to assess parameter sensitivity, results are subject to different forms of interpretation (Razavi and Gupta, 2015). The way the outcome of sensitivity analysis is evaluated and illustrated can strongly affect conclusions that are drawn. In this regard, results of sensitivity analysis can widely differ if varying objective functions are considered for the evaluation of parameter influences (Demaria et al., 2007; Wagener et al., 2009); for a comprehensive overview see Reusser et al. (2011).

Time-integrated sensitivity measures (van Griensven et al., 2006; Sudheer et al., 2011; Nossent and Bauwens, 2012) alone merely allow more than rough estimates about the overall importance of parameters. Contrarily, McCuen (1973) pointed out early that parameter sensitivity should be analysed in a time-dependent context, as hydrological systems are subject to temporally dynamic processes. Guse et al. (2016b) argued that the study of temporal variations in sensitivity is essential to learn about the relation between dominant parameters and governing processes under changing hydrological conditions to be reflected in the model results. The characterisation of temporal dynamics of parameter sensitivity (TEDPAS) has been accomplished in diverse ways (Cloke et al., 2008; Cibin et al., 2010; Reusser et al., 2011; Reusser and Zehe, 2011; Herman et al., 2013; Sanadhya et al., 2013; Guse et al., 2014; Pfannerstill et al., 2015; Pianosi and Wagener, 2016). The choice of the temporal resolution is an important factor which clearly influences the way parameters are identified and how inferences on related processes are made (Tang et al., 2007; Massmann and Holzmann, 2012; O’Loughlin et al., 2013). Necessarily, the timescale of sensitivity analysis is selected in accordance with the objective of the study and the dynamics of the system under investigation. The importance of parameters temporally varies in a similar way like short periods of high ~~flows~~flow alternate with longer periods of low flow (Massmann et al., 2014).

When model calibration and verification comes into play, analysis of parameter sensitivity provides valuable information on the importance of each input factor in regard to simulated model output. On this basis, it can be decided for each parameter if its value should be determined exactly, or if it could even be completely excluded, fixed at predetermined values (Reusser et al., 2011). Preferably, sensitivity analysis minimises the necessary number of parameters as hydrological models are often subject to overparameterisation (Beven, 2001; Kirchner, 2006; van Werkhoven et al., 2009; Samaniego et al., 2010b).

A common goal of sensitivity-guided studies dealing with an identification of dominant processes is the achievement of a suitable representation of real-world hydrological processes through understanding the reasons for model defectiveness. If non-sensitive parameters are detected, an indication of model structural deficits (Kirchner, 2006; Gupta et al., 2012), or a lack of the adequate model response target data might be given. Sensitivity analysis has not just recently deemed helpful as a diagnostic tool to identify structural and performance deficits of hydrological models (McCuen, 1973; Sieber and Uhlenbrook, 2005; Yilmaz et al., 2008; Kavetski and Clark, 2010; Guse et al., 2014; Pfannerstill et al., 2015). Reusser and Zehe (2011)

showed that a combined analysis of the temporally varying parameter dominance (sensitivity analysis) and model performance (error analysis) can be applied to effectively detect structural inadequacies of model components for a specific landscape.

1.2 Fingerprint based sensitivity analysis

The characterisation of hydrological process complexity as the functioning of catchments can be addressed in various ways, at multiple scales and levels of complexity. Fingerprint metrics (hereinafter also referred to as fingerprints) are signatures of dynamic catchment response that change on different temporal and spatial scales (Sivapalan, 2005; Wagener et al., 2007; Winsemius et al., 2009).

In hydrological modelling, multiple fingerprint metrics have been adopted to enhance model evaluation beyond the minimisation of streamflow residuals. Fingerprints of catchment functioning may be technically distinguished into measures based on single (statistical) streamflow indices and on characteristic curves, e.g. (cumulative) frequency curves, regime curves, or double mass curves. Single representatives of both categories can be selected to describe single components of streamflow regimes, namely the magnitude, frequency of ~~occurrence~~occurrence, duration, timing and flashiness of flow events (Poff et al., 1997; Olden and Poff, 2003), or of the general hydrological variability at different spatial and temporal scales.

In a comprehensive analysis of catchment functioning in order to understand dominant processes, the use of single criteria is not sufficient. ~~Multi-variable~~Multivariable approaches based on hydrological fingerprints have been the method of choice. Fingerprints have been jointly used as multivariate objectives to estimate the parameters of hydrological models (Shamir et al., 2005a, b; Pokhrel et al., 2008; Castiglioni et al., 2010) or to assess model performance and evaluate model structures (Farmer et al., 2003; Gupta et al., 2008; Yilmaz et al., 2008; Clark et al., 2011; Euser et al., 2013; Vrugt and Sadegh, 2013).

Sensitivity analysis related to streamflow characteristics has formerly mostly been applied prior to model evaluation (e.g. Atkinson et al., 2003). ~~More recently, with the aid of observed quantities, sensitivity analysis was also directed to fingerprint performance measures as objective functions (e.g. van Werkhoven et al., 2008; Yilmaz et al., 2008; van Werkhoven et al., 2009; Sanadhya to the analysis of temporally resolved process sequences (e.g. Pfannerstill et al., 2015). Other~~ For sensitivity analysis, different options have been selected as hydrological target variables. Sensitivity analysis to assess the influence of parameters can be directed at (i) simulated streamflow, (ii) different objective functions (e.g. van Werkhoven et al., 2009; Wagener et al., 2009; Herman et al., (iii) simulated hydrological processes (e.g. Massmann and Holzmann, 2015; Pfannerstill et al., 2015; Guse et al., 2016a), or (iv) to different hydrological fingerprints (this study). Previous studies applied fingerprint metrics but based their analysis of parameter sensitivity only on few aspects of streamflow (e.g. limb densities; Shamir et al., 2005a) or on single (statistical) streamflow indices of different aggregation timescales (Shamir et al., 2005b).

In our view, multivariate sensitivity analysis geared towards fingerprint metrics as ~~multivariate response target response~~targets has not received adequate consideration for model diagnostics. Especially in terms of joint fingerprints, using both single value indices and characteristic curves along independent variables, the full potential for process-oriented model diagnostics has not been exploited. Some progress has been made from the other side by Guse et al. (2016b) who combined TEDPAS for different temporal resolutions with segments of the flow duration curve (FDC) to identify parameters and related processes that dominate at variable streamflow magnitudes of two distinct streamflow regimes.

1.3 Objectives, research questions and approach

The main objectives of this study are to analyse the parameter sensitivity of a mesoscale hydrological model for the simulation of streamflow response and hydrological fingerprints at a set of headwater catchments of the Ruhr in Germany. The approach extends the temporally dependent analysis of parameter sensitivity (TEDPAS) along two avenues: The first is to investigate 5 TEDPAS results in more detail to derive parameter sensitivities in different hydrological conditions; the second is to direct the analysis to other, temporally independent characteristics of streamflow response (INDPAS).

With this approach we explore the following three research questions:

- Which parameters can be identified as sensitive with regard to specific hydrological response characteristics?
- How does parameter sensitivity change with different hydrological objectives (response targets) applied in global sensi- 10 tivity analysis?
- How does parameter sensitivity change in different catchments under slightly distinct physiographic and hydroclimatic conditions?

The methodological approach rests on the combination of first-order partial parameter sensitivity of a state-of-the-art distributed hydrological model to simulated streamflow hydrographs and ~~the~~to related temporally independent and time-aggregated 15 streamflow response characteristics. The analysis is structured in the following steps:

- Combining the application of a hydrological model as a learning tool and forward operator with global sensitivity analysis;
- Deriving fingerprint metrics (single value indices and characteristic curves) from simulated streamflow time series;
- Analysing parameter sensitivity to temporally resolved dynamics of streamflow response (TEDPAS);
- Analysing parameter sensitivity both to temporally aggregated (single value indices) and to temporally independent 20 (characteristic curves) characteristics of streamflow (INDPAS);
- Assessing differences in parameter sensitivity between the two different ~~methodical~~methodological approaches (TEDPAS and INDPAS), and between the analysed headwaters.

In the study we will thus complement sensitivity analysis based on temporally dependent output variables (TEDPAS) with 25 both temporally independent (characteristic curves) and temporally aggregated single-valued (fingerprint metrics) characteristics of streamflow response (INDPAS). In cases where characteristic curves (e.g. the FDC) are used as fingerprint metrics, changes in parameter sensitivity will be analysed for changes in the independent variable (e.g. streamflow exceedance probability). We focus the study on the headwaters of the Ruhr catchment (section 2.6.1) in western Germany also for regional analyses, based on available data sets (section 2.6.2).

From this we expect to pinpoint dominant parameters related to individual process components and to ease the interpretation of parameter sensitivity detached from the variability of timescales. Bearing in mind the complexity of the evaluation of spatially and temporally distributed model responses, our multilateral approach aims at providing further insight into the dominance of model parameters and related streamflow response processes.

5 2 Methods and models

First we detail the fingerprint metrics used to characterise streamflow response (section 2.1). We implemented the Fourier Amplitude Sensitivity Test (FAST; section 2.2) to conduct sensitivity analysis of the mesoscale Hydrologic Model (mHM; section 2.3) in the Ruhr headwater catchments with a focus on eight global mHM parameters (section 2.4) basically employing two different forms (TEDPAS and INDPAS) of simulated streamflow response (section 2.5). Finally, we introduce the catchment
10 of the river Ruhr and the headwaters which were selected for this study (section 2.6.1), and specify the data used to conduct the analysis (section 2.6.2).

2.1 Fingerprint metrics

~~The fingerprint metrics used~~ Fingerprint metrics are often used in hydrology for characterising the hydrological response of ~~the investigated catchments~~ catchments (Olden and Poff, 2003; Yadav et al., 2007; Yilmaz et al., 2008; Winsemius et al., 2009). The
15 fingerprint metrics used in this study included single value indices and the flow duration curve as an example for catchment characteristic curves. These fingerprints were derived from model results and precipitation data (see section 2.6.2), respectively.

We chose eight indices reflecting different aspects of the integral and longterm hydrological functioning of catchments in a single, time-aggregated number (Table 1). These fingerprints characterise the overall water balance (Runoff Ratio, RR), the variability of streamflow (Coefficient of Variation, CV), the frequency of flow events (High Pulse Count, HPC), the change
20 rate of streamflow (Slope of Flow Duration Curve between 33 % and 66 %, SLFDC), the streamflow during high flow (High Flow Discharge, HFD) and low flow (Baseflow Index, BFI) conditions, the streamflow recession behaviour (Recession Time Constant, RTC), and the autocorrelation structure of streamflow (Autocorrelation Time, ACT), respectively. In this study, the slope of the flow duration curve (SLFDC) is the only single value fingerprint that could not be directly determined from streamflow hydrographs. Instead, the FDC was used as a basis for its derivation. The eight single value fingerprints were
25 implemented as model response targets for sensitivity analysis (section 2.5.2).

As an example for more complex characteristics than single-valued indices, we also used entire flow duration curves as a model response target for sensitivity analysis (section 2.5.2).

2.2 Fourier Amplitude Sensitivity Test (FAST)

FAST is a partial variance-based method to determine ~~global~~ first-order sensitivities of parameter changes on the outcome
30 of monotonic and non-monotonic numeric models (Cukier et al., 1973; Schaibly and Shuler, 1973; Cukier et al., 1975). The general idea of FAST is a) to vary parameters of interest with independent frequencies along a predefined number of model

runs with independent frequencies, and b) to perform a Fourier analysis at each time step of the simulated target variable across the ensemble of model runs. The amplitudes of the different frequencies reveal the first-order sensitivities of to obtain a power spectrum. In the case of TEDPAS, the spectrum is calculated for each simulation time step. The variance σ_i^2 that is explained by a parameter i is determined by normalising the corresponding power with the total power in the spectrum, which corresponds to the total variance σ_{tot}^2 within the model ensemble. The sensitivity to model output of parameter i is then calculated as the partial variance, which is the ratio $\sigma_i^2/\sigma_{tot}^2$. Parameter interactions, i.e. higher-order sensitivity, are not detected by this method. For more details on FAST the related parameters. For a detailed explanation of the FAST method the reader is referred to Reusser et al. (2011).

FAST was originally applied to study parametric model sensitivities of chemical reaction systems. In recent decades, the method has been used and evaluated in a variety of fields such as hydrogeology (Fontaine et al., 1992), atmospheric sciences (Rodríguez-Camino and Avissar, 1998), geologic nuclear waste disposal modelling (Lu and Mohanty, 2001), food-safety risk assessment (Frey and Patil, 2002), or ecologic forestry (Song et al., 2013). A number of studies treat the application of FAST in hydrological modelling (van Griensven et al., 2006; Zajac, 2010; Reusser and Zehe, 2011; Sanadhya et al., 2013; Guse et al., 2014; Pfann

FAST is a highly efficient computational method that requires significantly fewer model runs to yield similar results for parameter sensitivity in comparison with other approaches (Saltelli and Bolado, 1998; Reusser et al., 2011). The number of model runs (hence parameter sets) in FAST is determined by the number of analysed model parameters. That means always the same number of model runs is required for a given number of parameters, independent of model, catchment or (type of) parameter.

2.3 mesoscale Hydrologic Model (mHM)

The mesoscale Hydrologic Model (mHM; Kumar et al., 2010; Samaniego et al., 2010b) accounts for diverse processes of the hydrological cycle: Canopy interception, evapotranspiration, snow, soil moisture dynamics, overland flow, infiltration, inter-flow, subsurface storage, groundwater recharge, baseflow, discharge attenuation as well as flood routing. The mHM is conceptualised on the basis of grid cells, and has been applied to a wide range of mesoscale river catchments ($10^1 - 10^4 \text{ km}^2$; Kumar et al., 2010; Samaniego et al., 2010a, 2011; Cuntz et al., 2015; Rakovec et al., 2016). Gridded information is implemented in mHM at three levels: morphology (level 0), hydrology (level 1), meteorology (level 2), with $l_0 \ll l_1 \leq l_2$ denoting the relative sizes of the grid cells at the respective data level (Kumar et al., 2010).

The parameterisation of mHM is substantially based upon a simultaneous regionalisation technique called multiscale parameter regionalisation to account for the physiographic sub-grid and hydrological process variability (Samaniego et al., 2010b; Kumar et al., 2013). Hydrological process parameters at level 1 are derived from physiographic characteristics at level 0 using (pedo-)transfer functions with predefined coefficients (in the following referred to as global mHM parameters). Hence, mHM is calibrated indirectly, by altering the 52 level-0 parameters of the transfer functions instead of the hydrological level-1 parameters. This procedure not only reduces the problem of overparameterisation or the dependence on specific hydrological scales (Beven, 2001) but also reduces the amount of time to be spent on grid-wise calibration (Samaniego et al., 2010b).

2.4 Model setup for sensitivity analysis

In this study both the hydrological model level l_1 and the meteorological l_2 of mHM were set to a spatial resolution of 1 km, whereas for level 0 with the physiographic catchment data (morphology), a finer resolution of $l_0 = 200$ m was selected as an adequate spatial discretisation. Model simulations were conducted for each of the 14 headwater catchments (see Fig. 1) with a daily timestep for the ten years period of 1997 to 2006.

To facilitate the selection of the most sensitive parameters, we first carried out a preliminary local FAST analysis at gauge Wenholthausen (WEN; see Fig. 1) including all 52 global mHM parameters to reveal parameter sensitivities to streamflow simulations. For this initial analysis, 21803 model runs were conducted and the streamflow hydrographs were analysed with FAST. We found 14 parameters with a maximal sensitivity value of more than 0.01 (1 %). By inspection of the model equations we identified correlations between these parameters, which led to the removal of six parameters from this set.

The eight uncorrelated parameters (Table 2) were used for the regional sensitivity analysis in the 14 headwater catchments. All other mHM parameters were kept fixed on calibrated values found via global automatic optimisation using the dynamically dimensioned search algorithm (Tolson and Shoemaker, 2007) at WEN ~~for the period 2002 to 2006~~. The value ranges for the parameters were basically selected from mHM literature (Samaniego et al., 2014), partly extended based on the results from the preliminary analysis. For eight parameters, the FAST method requires 243 model runs based on different combinations originating from FAST parameter variation with independent frequencies inside the parameter ranges (see Fig. 2). The same 243 combinations of mHM parameter sets were used for streamflow simulations in each of the 14 catchments. Differences between catchments in terms of hydroclimatic forcing and physiographic attributes were included in the model by the locally specific meteorological and morphological input on data levels l_2 and l_0 .

The hydrological model level l_1 and the meteorological l_2 of mHM were set to a spatial resolution of 1 km, whereas for level 0 with the physiographic catchment data (morphology), a finer resolution of $l_0 = 200$ m was selected as an adequate spatial discretisation. Model simulations were conducted for each of the 14 headwater catchments (see section 2.6.1) with a daily timestep for the ten years period of 1997 to 2006.

2.5 Sensitivity analysis

We analysed the parameter sensitivity in different forms to be able to evaluate the dominance of parameters and to potentially detect local differences among the headwaters related to various aspects of streamflow response functioning in a more specific way. We first used simulated streamflow hydrographs (TEDPAS; section 2.5.1) and then both temporally aggregated (fingerprint metrics) and temporally independent (FDCs) characteristics of simulated streamflow response (INDPAS; section 2.5.2) as model response targets for the sensitivity analyses.

2.5.1 TEDPAS - Temporal dynamics and sensitivity duration

Using simulated hydrographs with FAST provided daily time series of partial parameter sensitivities for each headwater catchment for the simulation period 1997-2006. These temporal dynamics of parameter sensitivity (TEDPAS; Reusser et al., 2011) were analysed and compared for the Ruhr headwater catchments (section 3.1).

5 We also calculated Sensitivity Duration Curves (SDCs) for each parameter, which we defined in analogy to other well-known cumulative frequency curves like the FDC. Each SDC is specific for one of the eight parameters, for one (type of) catchment and for the period (1997-2006) in which sensitivity analysis is performed. SDCs were developed for each catchment by arranging the daily sensitivity values from FAST by magnitude in ascending order and by plotting them as a line against the percentage of time during which the sensitivity equalled or exceeded the specified values. Sensitivities were normalised
10 by the highest sensitivity value found for each parameter among all headwaters. These curves reveal whether a parameter is consistently (non-)sensitive or if its importance changes during the simulation period (section 3.2).

2.5.2 INDPAS - Parameter sensitivity to fingerprint metrics

For each catchment we calculated the eight single-valued fingerprint metrics (section 2.1 and Table 1) from each of the 243 simulated streamflow hydrographs. ~~By applying FAST we obtained~~ Using these fingerprint metrics as target variables for FAST
15 yielded the partial sensitivities of the model parameters with regard to each fingerprint (section 3.3.1).

In a similar way, for each headwater catchment, 243 flow duration curves were derived from the simulated streamflow time series and analysed with FAST. This yielded parameter sensitivities along the axis of streamflow exceedance probability as an independent variable, revealing which parameters dominate streamflow simulations during high, intermediate or low flow conditions. As a supplementary step, the parameters showing the highest sensitivity for a given streamflow exceedance
20 probability were extracted along the independent variable, revealing patterns of dominant parameters over the spectrum of streamflow in each headwater catchment (section 3.3.2).

2.6 Study area and data

2.6.1 The Ruhr headwater catchments

The Ruhr ([Fig. 1](#)) has a catchment area of 4.485 km², and originates from a spring at about 670 m a.s.l. on the northern slope of the Ruhrkopf (842 m a.s.l.). The Ruhr joins the Rhine at Duisburg-Ruhrort (20 m a.s.l.) after 219 km ([Fig. 1](#)). The landscape characteristics of the catchment range from densely wooded and scarcely populated lower mountain ranges in the Sauerland to widely sealed urban areas in the river valleys and in the western part close to the mouth. The area belongs to the geology and geography of the Rhenish Slate Mountains to the east of the Rhine (Brudy-Zippelius, 2003). The average discharge at the confluence with the Rhine is about 80.5 m³s⁻¹ (Bode et al., 2003). With a total of eight dams and five reservoirs the Ruhr
30 and its tributaries form a complex hydrological system. The total stored water surface area of about 35 km² equates to about 480 million m³ of water retained behind damming structures (Ruhrverband, 2011). An intensive use of water resources (e.g.

reservoirs, barrages, withdrawals, inlets, etc.) supplies almost 5 million people with drinking and processing water along the Ruhr, within its catchment and to adjacent watersheds.

Our investigations concentrate on 14 headwater catchments (Fig. 1) of the river Ruhr and its tributaries (e.g. Bigge, Lenne and Möhne), where the hydrological regimes are much less affected by water management measures (Fig. 1). The headwaters are situated in the eastern, rural part of the Ruhr basin with higher altitudes, and cover an area of 1989.2 km² in total. Individual catchment sizes range from 28.7 km² at gauge Amecke (AME) to 453.1 km² at gauge Bamenohl (BAM). Average catchment slopes vary between 10.8 % (Rüblinghausen, RUE) and 26.1 % (Kickenbach, KIC). The dominant form of land cover is forest (39.7 % - 87.3 %) followed by pasture (0.8 % - 47.5 %), cropland (7.6 % - 43.9 %) plus a few, predominantly dispersed, settlements (0.0 % - 13.2 %; Table 3). The climatic conditions are humid-warm-temperate (Göppert et al., 1998) with warm summers and moderate winters. Annual mean temperature ranges between 8.45 °C and 5.45 °C at the lower and higher altitudes in the study area, respectively. Annual precipitation ranges from 1025 mm in the northeast to 1425 mm in the southwest (1997-2006; Table 3).

2.6.2 Data

Different kinds of observation data were used to set up and calibrate the hydrological model, to perform simulations for sensitivity analysis, to derive the fingerprint metrics and a set of physiographic catchment descriptors.

Meteorological input data were daily values for precipitation (HYRAS; Rauthe et al., 2013), temperature (HYRAS; Frick et al., 2014), and potential evapotranspiration (AMBAV; Löpmeier, 1994), all at a spatial resolution of 1 km². ~~For the calibration of mHM at gauge Wenholthausen observed streamflow data~~ Streamflow observations were available for all headwater catchments from 2002 to 2006 were available. 2006. Spatial physiographic data were a digital elevation model (50 m x 50 m), CORINE land cover data (100 m x 100 m; European Environment Agency, 2009), a soil map (1:200.000; Bundesanstalt für Geowissenschaften und Rohstoffe, 2015a) and a geological map (1:1.000.000; Bundesanstalt für Geowissenschaften und Rohstoffe, 2015b).

A set of 14 descriptors to characterise the hydroclimatic and physiographic setting of the headwaters and to capture characteristics that might jointly control relevant hydrological functions as defined by Black (1997) has been compiled in Table 3. Each descriptor in Table 3 was assigned to one of five main classes of catchment characteristics, i.e. climate (1), landform (2), topography (3), land cover (4) and soil (5), as proposed by Yadav et al. (2007). The choice of climate and physiographic descriptors originates from correlation analysis of catchment descriptors within each category (Yadav et al., 2007), multivariate statistical analysis techniques (Di Prinzio et al., 2011), regionalisation models (Plate et al., 1988), GIS based analysis of the digital elevation model and, in the case of the baseflow index (BFI), from comparison of methods for baseflow separation (Duband et al., 1993). Table 3 includes the BFI as an intermediate form between physiographic descriptor of soil hydrological characteristics and temporally aggregated fingerprint metric introduced in section 2.1.

3 Results

3.1 Temporal dynamics of parameter sensitivity (TEDPAS)

TEDPAS analysis for the 14 headwaters in the period of 1997-2006 showed a strong temporal ~~dependency~~ dependence of the fraction of the total variance explainable by first-order sensitivities for hydrograph simulation. The sum of all eight parameter sensitivity values per time step ranged between 0.26 and 0.87, while the average sum of the eight sensitivity values per time step was 0.71. The spread between the maximal and minimal sum per time step was found to be smaller in the southwestern (e.g. Rübblinghausen RUE, 0.48) than in the northeastern (e.g. Völlinghausen VOE, 0.61) headwaters.

Minimal and maximal (Sensitivity Range) and the average (Sensitivity Mean) sensitivity values of the eight parameters, summarised across all headwaters (Table 2), give a first impression that the soil moisture parameter Ksconst generally exhibited the highest influence (Sensitivity Mean 0.392), while AspectcorrPET showed the largest range (Sensitivity Range 0 - 0.78). The interflow parameter ExpslowInterflow had the smallest sensitivity range (0 - 0.22), whereas parameters for snow (DegdayForest) and baseflow (GeoParam) had the overall lowest sensitivity mean values of 0.012. Across all headwaters, the parameters listed in terms of their average sensitivity to streamflow simulations are (in descending order): Ksconst, AspectcorrPET, ExpslowInterflow, RechargeCoeff, ThetaSconst, InfilShapeFactor, GeoParam and DegdayForest.

TEDPAS did not reveal many differences between the headwaters. For instance, Ksconst consistently had a highly dynamic course of sensitivity with frequently high values (Fig. 3a and b). Nevertheless, some of the parameters showed differences between the headwaters, for example for DegdayForest (January - March; Fig. 3a and b) and AspectcorrPET (November - April; Fig. 3c and d). AspectcorrPET allows to include the exposition of slopes, controlling insulation, in evapotranspiration estimations, while DegdayForest is a parameter related to snow dynamics in forested areas.

The example of these two parameters also illustrates the seasonality in sensitivity dynamics. AspectcorrPET showed highest sensitivity in the summer period from April to August, when evapotranspiration processes dominate and streamflow dynamics are low (Fig. 3c ~~and d, g and h~~). During that period, the parameter showed an alternating course of sensitivity compared to Ksconst (Fig. 3b and d) with local maxima connected to (simulated) streamflow peaks (Fig. 3fh).

Higher sensitivities of DegdayForest were found for periods (e.g. February) when snow processes (accumulation and melting) can occur. This was predominantly observed in catchments at higher altitudes, for example, rather in the headwater of VOE (up to 630 m a.s.l.) than in the one of RUE (450 m a.s.l.; Fig. 3a and b). Additionally, VOE (50 %) exhibits a slightly higher percentage of forest cover (FOR) than RUE (43 %; Table 3). A similar distinction between summer and winter patterns was found for InfilShapeFactor, although at lower sensitivity levels (Fig. 3a~~and bc and d~~). For the rest of the parameters either no seasonal patterns (e.g. RechargeCoeff; Fig. 3e~~and de and f~~) could be revealed, or only very low sensitivity values were found (e.g. ThetaSconst; Fig. 3a and b).

The ensembles of simulated streamflow compared reasonably well with the observed hydrographs (Figure 3e~~and f~~Fig. 3g and h), although the simulation ensemble underestimated some high flow periods.

3.2 Sensitivity duration

Sensitivity duration curves for the 14 headwaters revealed distinct influences of the eight parameters on streamflow simulations (Fig. 4). Different sensitivity characteristics were identifiable among the parameters, with either very low (e.g. DegdayForest; Fig. 4a and ThetaSconst; Fig. 4b), intermediate (RechargeCoeff; Fig. 4g) or high (Ksconst; Fig. 4c) influence along the independent axis of sensitivity exceedance probability.

Some of the parameters showed a regional variation of SDCs. Four of eight parameters, i.e. Ksconst (Fig. 4c), InfilShapeFactor (Fig. 4d), AspectcorrPET (Fig. 4e) and ExpslowInterflow (Fig. 4f), revealed certain differences among the headwaters. The SDCs of the two most influential parameters Ksconst (Fig. 4c) and AspectcorrPET (Fig. 4e) showed a systematic spread for the different headwaters, with the curve of gauge RUE plotting at the lower (Fig. 4c) and upper (Fig. 4e) margins of the group of headwaters, respectively. For InfilShapeFactor (Fig. 4d) the headwater of gauge Möhnesee-Neuhaus (MOE) deviated in direction of lower values, while for ExpslowInterflow (Fig. 4f) again both RUE and MOE showed divergent, low SDCs in the set of 14 headwaters.

In the case of AspectcorrPET (Fig. 4e) the SDCs were sorted from the southwestern (e.g. RUE) to the northeastern (e.g. MES) headwaters (Fig. 1). In the southwestern headwaters (e.g. RUE) the slopes are more gentle with lower relief energy than further northeast, where valleys are more deeply incised (e.g. NIC, SLOPE and ELR; Table 3). The slopes in the southwestern headwaters are on average directed to the southeast, compared to the more southwest-directed slopes in the northern and eastern Ruhr headwaters (EXP; Table 3). Besides showing a different aspect, the southwestern headwater RUE also has the highest proportion of urban areas (13 %; Table 3). Both factors influence the estimation of evapotranspiration in mHM and hence streamflow simulations.

The SDCs of the most sensitive parameter Ksconst (Fig. 4c) showed concave curvatures, in contrast to the other parameters which had convex SDCs. Except for ExpslowInterflow (Fig. 4f), the SDCs of the largest headwater Bamenohl (BAM) fell in between the other catchments, showing a kind of transitional behaviour of sensitivity duration (Fig. 4).

3.3 Parameter sensitivity to temporally independent fingerprints (INDPAS)

3.3.1 Single value indices

Similar patterns of parameter sensitivities to single value fingerprints were consistently found across all 14 headwaters. Figure 5 shows the matrix representations for four representative headwaters (RUE, VOE, HER and WEN). All of them comprise eight rows for the parameters and eight columns for the fingerprint metrics. Sensitivity to a specific fingerprint is arranged column-wise.

As in the TEDPAS analysis, Ksconst was the by far most sensitive parameter for the simulation of five of the fingerprints (CV, HPC, HFD, BFI, RTC) in all 14 headwater catchments. The parameters ExpslowInterflow and RechargeCoeff were identified as the second and the third most sensitive parameter in these cases. In terms of the fingerprint Runoff Ratio (RR), in contrast, AspectcorrPET was the most sensitive parameter, while others, including Ksconst, showed almost no sensitivity to the simulation of the overall water balance. The parameters RechargeCoeff and Ksconst were of similar importance for the

simulation of the fingerprint SLFDC (slope of the flow duration curve). Other parameter-fingerprint combinations revealed parameters with very low sensitivity values. Very low ~~sensitivity~~sensitivities, e.g. for DegdayForest or GeoParam were found with all of the eight fingerprint metrics (Fig. 5).

Only minor differences in these patterns ~~oecured~~occurred between the catchments, and these related to small deviations in absolute sensitivity values or in the order of the second and third rank, e.g. for the fingerprint ACT (Fig. 5).

3.3.2 Flow duration curve

Using FDCs as model response targets revealed parameter sensitivities to different streamflow magnitudes. Again, a high portion of similarities among the headwaters was found. The highest influence was alternately exerted by the parameters Ksconst and AspectcorrPET (Fig. 6a-d); their courses of parameter sensitivity were highly anticorrelated (mean correlation ~~over~~across all headwaters $r = -0.975$). The soil moisture parameter Ksconst clearly dominated the very high flows (0 - 10 % of time Q is exceeded) and the entire mid and low flow sections (40 - 100 %); moderate high flows between 10 % and 40 % were most affected by changes in the evapotranspiration parameter AspectcorrPET. These changes in the dominating parameter are additionally illustrated in Fig. 6 by a catchment-specific strip showing the pattern of parametric dominance along the FDC, which showed only slight differences between the headwaters in the ~~length~~lengths of the intermittent parts (AspectcorrPET).

The other parameters reached overall lower sensitivity levels. The patterns were again similar for all headwaters, with minor differences regarding the absolute sensitivity values and the order of importance in the third and higher ranks. The parameters RechargeCoeff and ExpslowInterflow revealed a bimodal sensitivity distribution. RechargeCoeff showed a first peak between 0 and 20 %, and a steady increase from 40 % to its maximum sensitivity value at very low flows with 100 % of streamflow exceedance, which was a sensitivity value of about 0.25 in the case of gauge HER (Fig. 6c). ExpslowInterflow had its highest parametric influence at very high flows (0 - 15 %), and at moderate to low flow magnitudes. The curves of InfilShapeFactor alternated with ExpslowInterflow along the FDCs (Fig. 6a-d), while the rest of the parameters did not show notable sensitivity values.

Interestingly, the ensembles of normalised FDCs showed distinct differences between the catchments (Fig. 6e-h), although the sensitivity dynamics were similar, and the same 243 parameter variations from FAST were used for each headwater. The largest spread of FDCs was found for the northeastern headwater VOE (Fig. 6f) with the largest catchment size among the four shown headwaters. The smaller headwaters WEN, HER and RUE (Fig. ~~6h, g, e1~~) showed a decreasing spread of the FDCs from northeast to southwest (Fig. ~~6h, g, e~~). Additionally, the widths of the simulation envelopes were changing for different streamflow magnitudes. The ensembles of FDCs all showed a constriction point located at about 20 % of streamflow exceedance (Fig. 6e-h), which is the same point where Ksconst and AspectcorrPET showed lowest and highest sensitivity values, respectively (Fig. 6a-d). The ensembles of simulated FDCs encompassed the observed FDC in most cases (e.g. VOE, HER, WEN; Fig. 6f-h). In some cases the observed FDC was outside the simulated range (e.g. RUE; Fig. 6e).

4 Discussion

4.1 Parameter sensitivities from TEDPAS and INDPAS

Sensitivity analysis for eight mHM parameters with ~~The combination of~~ TEDPAS and INDPAS in 14 Ruhr headwaters revealed that soil moisture and evapotranspiration parameters ~~Ksconst and AspectcorrPET~~ are created a detailed sensitivity pattern for the response characteristics of the hydrological model mHM. Overall, the soil moisture dynamics parameter Ksconst and the evapotranspiration parameter AspectcorrPET were found most relevant for the simulation of the hydrological streamflow response. ~~TEDPAS analysis provided information about seasonalities in sensitivity dynamics of parameters, streamflow response of 14 Ruhr headwaters.~~

The TEDPAS analysis confirmed, as expected, a seasonality of sensitivity for parameters controlling snow (DegdayForest) or evapotranspiration (AspectcorrPET) processes, ~~in relation to simulated streamflow hydrographs. The results of TEDPAS were further used to analyse sensitivity duration. The form of.~~ More interestingly, TEDPAS also showed an alternating dominance of Ksconst and AspectcorrPET during the temporal course of the simulation. Using flow duration curves as response targets (INDPAS) clarified that this was related to different streamflow magnitudes. The soil moisture dynamics (Ksconst) dominated both at high and at low flows, which may be attributed to the dual role of Ksconst in parameterising both storage (field capacity) and transmission (conductivity) of soil water in mHM. During intermediate flow conditions, evapotranspiration (AspectcorrPET) governed the streamflow simulations, probably because of the high influence of evapotranspiration on the shallow soil storage and thus the system state of the catchment. This high sensitivity of an evapotranspiration parameter during intermediate flow conditions coincides with the findings of former studies (e.g. Guse et al., 2014, 2016b).

The specific influence of AspectcorrPET was mainly on the water balance (fingerprint RR: Runoff Ratio) in all of the headwaters. Ksconst was the most sensitive parameter for most of the other single value fingerprints, encompassing those quantifying low flow (BFI) as well as high flow conditions or the flashiness of hydrological response (CV, HPC, HFD, RTC). Only for one single value fingerprint (SLFDC, related to the rate of change in streamflow) another parameter (RechargeCoeff) was found to be as sensitive as Ksconst. The moderate relevance of the resulting SDCs differed according to the importance of each parameter; furthermore, the SDCs allowed to detect regional differences (section 4.2). INDPAS analysis showed that the influential model parameters show changing sensitivities to different characteristics and to varying magnitudes of streamflow: groundwater-related RechargeCoeff increased during low flow periods, as illustrated by INDPAS using FDCs and TEDPAS.

~~For very long periods of time, a~~ A temporally resolved sensitivity (daily streamflow time series) makes it difficult to reveal clear patterns of dominant parameters when dealing with long time periods. Guse et al. (2016b) also recognised that parameter sensitivity by TEDPAS based on the streamflow hydrograph should be analysed on different temporal aggregation levels and related to different streamflow magnitudes (FDCs). ~~These steps were found to be beneficial in order to reach clarified patterns of temporal process dynamics~~ for a detailed assessment of dominant model parameters and temporal process dynamics. While their methodological approach was purely based on aggregation and reordering of TEDPAS sensitivity and streamflow time series, we added additional value with INDPAS aiming at multiple response targets –

The application of single value fingerprints as model response targets for sensitivity analysis helped to elucidate further details of parametric dominance. For instance, clearly highest relevance for the RR can be attributed to AspectcorrPET in all of the headwaters (Fig. 5), which all are characterised by a high percentage of forest cover (Table 3). In a qualitative sense and in this specific case, exposition together with the vast forest coverage (transpiration) seems to play a major role for the overall water balance characterised by the runoff ratio. The high sensitivities of AspectcorrPET directed to RR indicate that the water balance as one specific characteristic of the regional hydrological functioning is, in the model domain, predominantly controlled by AspectcorrPET. Thus, dominant parameters can be additionally adjusted pinpointed to fingerprint metrics in a subsequent calibration step. Likewise, a missing sensitivity signal to a fingerprint in the form of a single value index (e.g. RechargeCoeff to RR) can reveal that the chosen response target might not be relevant to further constrain parameter identification in a certain catchment. In the INDPAS analysis to single value fingerprints we identified different cases where parameters did not show a clear sensitivity signal. These parameters and the fingerprint metric can be collectively removed from further consideration, e.g. for model calibration directed to the respective response target (van Werkhoven et al., 2009).

The spread in simulated values for the Autocorrelation Time (ACT) was moderate. Accordingly, INDPAS analysis directed to ACT also showed moderate sensitivities for the set of eight parameters (Fig. 5). Our selection of eight parameters was based on the most sensitive ones with regard to the simulation of streamflow hydrographs (TEDPAS). This preselecting step can potentially lead to the elimination of other storage parameters that might be most sensitive to ACT. Thus, one might conclude that parameter selection based on INDPAS would result in a different choice in the set of the most sensitive parameters. But, in the case of the Autocorrelation Time this is not very likely, since storage parameters (e.g. ExpslowInterflow and GeoParam) were still included in the set of eight parameters.

Our different findings when analysing different model response targets confirm the necessity of a multivariate sensitivity analysis. This was similarly recognised by Wagener et al. (2009) who applied three standard error metrics, e.g. the Root Mean Squared Error (RMSE), as objective functions for sensitivity analysis. Their results for parameter sensitivity were found to change spatially when the objective function was replaced. To avoid misinterpretation of sensitivity results we propose that the selection of fingerprint metrics as model response targets should be determined by the purpose of the analysis. For instance, in studies where the goal is the prediction of floods, the focus must be on parameters showing sensitivity to fingerprint metrics for peak flow. Razavi and Gupta (2015) similarly pointed out that even conflicting conclusions could be drawn if different properties of the model response are applied in sensitivity analysis.

The consideration of flow including FDCs. The consideration of flow duration curves enabled analysing streamflow free of autocorrelation and time dependency. The FDC as model response target for sensitivity analysis provided information on parameter sensitivity along the independent variable of streamflow exceedance probability. In contrast, for classical hydrograph inspection, which is the basis of TEDPAS, time is the independent variable. INDPAS along FDCs allowed to draw conclusions about parametric influences at specific streamflow magnitudes.

In our case, Ksconst and AspectcorrPET as conceptual proxies for soil moisture dynamics and evapotranspiration processes alternately exhibit high influences at different streamflow magnitudes (Fig. 6). Soil moisture controlled conditions (Ksconst) can be associated with the generation of fast reacting or slightly deferred streamflow components that dominate both at high and

at low flows. At moderate-high flows evapotranspiration (AspectorrPET) intermittently dominates the streamflow simulations. The most sensitive parameters were additionally selected to highlight the parametric dominances along the independent variable of the FDCs. Hence, catchment-specific strips provided visually condensed diagnostic information for different streamflow magnitudes.

5 TEDPAS analysis further clarified that the intermittent dominance of AspectorrPET occurs simultaneously to the falling limbs subsequently to highflow peaks (Fig. 3e-f). In winter at higher altitudes this is compensated for instead by a proxy for snow dynamics (DegdayForest; Fig. 3b). Thus, the alternating sensitivity patterns of Ksconst and AspectorrPET were jointly revealed by TEDPAS and INDPAS, both based on FDCs and on single-valued indices, where the pattern could be separately discerned for the Runoff Ratio (RR). Alternately to AspectorrPET, again Ksconst showed significant sensitivities to the rest
10 of the fingerprint metrics (Fig. 5). Overall, the combination of TEDPAS and INDPAS creates a clarified sensitivity pattern for different response characteristics of a catchment in the model space.

Regardless of the chosen model response target, in the case of 14 Ruhr headwaters only one or a very small group of parameters were identified as relevant for streamflow response. In this context, Herman et al. (2013) showed that the long-term water balance is dominated by only very few parameters, irrespective of the hydrological conditions and of the model.
15 Cuntz et al. (2015) performed a global Sobol's sensitivity analysis on the hydrologic model mHM. For three distinct humid and arid European catchments they always resulted in about 20 informative parameters, though the dominant parameter sets were composed very differently. Their criteria to select the sensitive parameters was crucially different from our approach which renders a direct comparison between the studies difficult. The different number of dominant parameters might also be due to correlated mHM parameters which we sorted out before sensitivity analysis. DifferentlyIn contrast, Cuntz et al. (2015)
20 considered the degree of correlation between mHM parameters as rather minor to be disturbing for parameter identification.

The spread of the simulated response ensemble (e. g. FDCs) was found to differ between the catchments (section 3.3.2 and Fig. 6). This spread provides valuable information about the impact of the parameter variation on the simulation results. It can be indicative for the propensity of a catchment to certain hydrologic processes in the model space. This information is important. Especially the application of fingerprints as model response targets for sensitivity analysis revealed further details
25 of parametric dominance that can help in more directed model applications. Dominant parameters can be additionally adjusted pinpointed to fingerprint metrics in a subsequent calibration step, while insensitive parameters can be disregarded for model calibration directed to the respective response target (van Werkhoven et al., 2009). This reduces the parameter space and need for constraining parameter values and thus facilitates model calibration. A missing sensitivity signal to a fingerprint (e.g. RechargeCoeff to RR) can reveal that the chosen response target might not be relevant to further constrain parameter
30 identification in a certain catchment.

The spread of the simulated response ensembles allows to judge whether a fingerprint metric is reliable as a reliable response target for sensitivity analysis or if different fingerprints, e.g. the master recession curve or the double mass curve, should be considered instead. In For example, the hydrographs and FDCs showed significant spread that also differed between the catchments (Fig. 3 and Fig. 6). In contrast, the spread in simulated values for the Autocorrelation Time (ACT) was small for all catchments.
35 Accordingly, INDPAS analysis directed to ACT also showed only moderate sensitivities for the set of eight parameters (Fig. 5).

Our preselection of eight parameters can potentially lead to the elimination of other storage parameters that might be most sensitive to ACT. Thus, one might conclude that parameter selection based on INDPAS would result in a different choice in the set of the most sensitive parameters. In the case of ACT this is not very likely, since storage parameters (e.g. ExpslowInterflow and GeoParam) were still included. Instead, the precipitation time series has a large impact on the autocorrelation structure of streamflow; the ACT metric is thus less informative than others that depend less on the hydroclimatic boundary conditions. The resulting partial variances for each fingerprint are comparable as they portray the relative influence of the parameters on the variation of the target, regardless of the concrete values of the targets. In order to take into account the impact of the ~~parameter variation on the~~ spread of the simulation results ~~on the parameter sensitivities~~, a weighting factor for partial parameter sensitivities might be helpful ~~to select relevant parameters along with a meaningful response target for the specific hydrological conditions. The local impact of parameter variation on the model response. An impact-weighted INDPAS~~ might then be used along with catchment class-specific response fingerprints ~~within impact-weighted INDPAS to establish relationships of individual (vectors of) parameters and functional attributes.~~

~~to select relevant parameters for the specific hydrological conditions.~~ In Fig. 6 we normalised the FDCs by the maximum value of each time series. For the visual comparison of sites this is a necessary step, but it might lead to a different form of appearance, including the spread of the simulation ensemble. ~~It has thus to be kept in mind that dimensions crucially matter if real-If absolute~~ fingerprint values are replaced by normalised quantities (Samaniego et al., 2010a; He et al., 2011), ~~if a sensitivity weighting factor shall be determined. dimensions should be considered explicitly when determining sensitivity weighting factors.~~

~~Our different findings with different model response targets confirm the necessity of a multivariate sensitivity analysis. This was similarly recognised by Wagener et al. (2009) who applied three standard error metrics, e.g. the Root Mean Squared Error (RMSE), as objective functions for sensitivity analysis. Their results for parameter sensitivity were found to change spatially when the objective function was replaced. Razavi and Gupta (2015) similarly pointed out that even conflicting conclusions could be drawn if different properties of the model response are applied in sensitivity analysis. To avoid misinterpretation of sensitivity results we propose that the selection of specific fingerprint metrics should be determined by the purpose of the modelling; for instance, sensitivity to fingerprint metrics for peak flow if flood prediction is the focus. Redundancy is not that problematic if several similar metrics for a specific streamflow characteristic are selected, e.g. HPC, CV and HFD for high flows. A multivariate analysis with metrics of several, even partly similar streamflow characteristics (frequency of high flow, magnitude of high flows etc.) is rather helpful to ensure complete parameter identification for different catchments. Aggregated and temporally independent fingerprints like the FDC proved to be especially applicable.~~

30 4.2 Regional differences in parameter sensitivity

Although the most sensitive parameters and the corresponding sensitivity patterns of streamflow response were found to be similar for the 14 investigated Ruhr headwater catchments, the analysis with TEDPAS and INDPAS revealed certain regional differences.

Especially the analysis of sensitivity duration curves derived from TEDPAS revealed regional differences of parameter sensitivity between headwaters. For half of the eight selected parameters we found regional differences in SDCs (section 3.2 and Fig. 4). The most sensitive parameters exhibited the largest spread of SDCs (e.g. Ksconst and AspectCorrPET; Fig. 4c and e), and their SDCs were systematically ordered according to the geographical location (southwest-northeast) and the physiographic setting (EXP, URB; Table 3). Some catchments deviate from the general pattern in SDCs for evapotranspiration and interflow parameters (e.g. RUE; Fig. 4e and f). In these cases, the specific combination of ~~special-catchment~~ characteristics (degree of soil sealing, topographic gradients, ~~special-land cover~~) might ~~lead to preferential~~ have lead to different processes in streamflow simulations. For the catchment of RUE, the ~~slightest-smallest~~ slope value among the headwaters in conjunction with the highest percentage of urban area (SLOPE, URB; Table 3) can ~~serve as explanation for~~ explain the deviation from the general pattern of SDCs for the two parameters. ~~For the Ruhr headwaters, SDCs thus provide~~ SDCs thus provided a convenient means to identify regionally different sensitivity characteristics for each of the analysed parameters.

The results from the INDPAS analysis ~~of parameter sensitivity directed~~ to single-valued fingerprints also showed some differences between the headwaters. In particular, the patterns of the second and third ranked parameters important for certain single-valued fingerprints were found to differ, although not with the same systematic ordering as for the SDCs. The patterns of the most sensitive parameters along streamflow exceedance probability (catchment-specific strips in Fig. 6) ~~in this case showed only minor differences between the catchments, but provide~~ provided visually condensed diagnostic information for different streamflow magnitudes, but showed only minor differences between the catchments.

Together this shows that even the small physiographic gradients in the Ruhr headwater catchments can cause differences in parameter sensitivity to streamflow response characteristics. This finding is partly contrary to those of Guse et al. (2014), who ~~in a similar analysis,~~ reported almost no differences of parameter sensitivities among different subcatchments of the Treene in northern Germany in a similar analysis. This was explained by the absence of a pronounced heterogeneity in their study area.

Given that the same parameter sets are applied to all headwater catchments, any regional differences in parameter sensitivity originate from differences either in the hydroclimatic or in the physiographic setting. In the case of the Ruhr headwaters, the local hydroclimatic and physiographic differences (Table 3) seem to be sufficient to be discriminated by the hydrological model structure in the form of a different variation in streamflow response. Due to their geographical proximity, the 14 Ruhr headwaters are generally similar in terms of the longterm hydroclimate (Wetness Index; ~~Table 3~~) and the physiography, e.g. in their soil hydrological characteristics (BFI; ~~Table 3~~). They show, however, some differences in annual precipitation amount and in physiographic characteristics such as the topographic gradient and land cover (~~Table 3~~). The average annual precipitation in the simulation period between 1997 and 2006 reveals a hydroclimatic gradient with lower to higher precipitation rates from northeast to southwest (PMEAN; ~~Table 3~~) similar to the geographical ordering of the SDCs in Fig. 4. Likewise, Song et al. (2013) attributed local differences of parameter sensitivity to the spatial distribution of meteorologic forcing; Demaria et al. (2007) similarly concluded that parameter sensitivity was more strongly determined by climate gradients than by changes in soil properties in their Monte Carlo-based sensitivity study. Under different hydrological conditions regional sensitivity patterns or the number of parameters which influence streamflow simulations might be different from the present example (Cuntz et al., 2015).

As parameter sensitivity is a prerequisite for parameter identifiability, even slight differences in sensitivity reveal information how identifiability can change among different catchments. Scale dependent limitations have to be kept in mind to avoid a levelling out of the explanatory value of a physiographic descriptor (Blöschl and Sivapalan, 1995), possibly resulting in intermediate course of sensitivity duration as seen for the largest headwater of Bamenohl (BAM; section 3.2 and Fig. 4). Van Griensven et al. (2006) remarked that local differences indicate that results of global sensitivity analysis for one (group of) catchment cannot be directly applied to other, even closely located places, but may be used as reasonable estimates within the same catchment category. Places with intermediate sensitivity characteristics (e.g. BAM) could at least serve as starting point for parameter transfer to closely located ~~and~~-ungauged sites. As the local differences between the Ruhr headwaters are not too large, the most sensitive parameters found for WEN in the first step of the analysis with all model parameters were also dominant in the other subcatchments, which was corroborated by the TEDPAS analysis with eight selected parameters on all subcatchments. Any local differences in parameter sensitivity revealed by the analysis of sensitivity duration or INDPAS could then be handled during individual model calibration for each catchment.

5 Conclusions

We ~~conducted a FAST~~ used FAST for a global sensitivity analysis of the hydrological model mHM in 14 headwater catchments of the river Ruhr in ~~western Germany. The two-tiered approach revealed that the simulation of streamflow response processes is most significantly influenced by soil moisture and evapotranspiration parameters. The~~ Germany. Our multilevel approach not only reveals the dominating parameters for streamflow simulation, but also pinpoints the influences of the analysed parameters to diverse aspects of hydrological response processes. Especially the application of several hydrological fingerprints as response targets allows for detailed model diagnostics. Comparison of streamflow response characteristics and analysing along the range of streamflow magnitudes shows how the parametric dominances along with the most influential parameters ~~were found to change if one objective for sensitivity analysis is replaced, for instance, by another streamflow response characteristic or when analysing along the range of streamflow magnitudes.~~

~~Catchment-specific patterns of parameter sensitivity that we unveiled by~~ can change with streamflow conditions, for example the complementary sensitivity of soil moisture dynamics and evapotranspiration in our case. The combination of TEDPAS and INDPAS were found to slightly change even between relatively closely located places. These differences in sensitivity patterns are explainable not only by slight regional differences in the local hydroclimatic and topographic setting included in the model by the specific input data but also by their complex interplay controlling local hydrological functioning. However, the only slightly pronounced differences also provides a means to unveil the slight differences in catchment-specific patterns between the closely located headwaters. The general similarity in the sensitivity patterns ~~indicate~~ indicates, however, that a parameter transfer to nearby catchments might be possible, provided that the ~~combination~~ interplay of catchment structure and local hydroclimate has not evolved crucially differently.

~~The methodical~~ The results provide in-depth diagnostics on the model and its parameters, which can support future improvements of model structures, and facilitate model calibration in a reduced parameter space. The methodological approach of the

~~two-tiered sensitivity analysis~~ multilevel sensitivity analysis with fingerprints as response targets may be generalised to any hydrological model or kind of catchment. The findings of this study motivate to include further catchments as regional end-members within different physiographic and climate settings. This is relevant to ~~assess regional differences in the identifiability of parameters and to~~ evaluate how parameter identifiability ~~further~~ and the simulated hydrological functioning regionally changes among distant catchments. ~~This step is also important to enable identification of~~ The consideration of multivariate response variables in diagnostics of hydrological models is beneficial for a complete identification not only of parameter influences on simulated hydrological functioning but also of the regional relevance ~~of model response targets for sensitivity analysis~~ for model calibration.

Acknowledgements. The streamflow data and the digital elevation model used in this study were provided by the Ruhrverband in Essen. We ~~thank Linda Bergmann who supported the technical implementation of the FAST analysis. We~~ are grateful to ~~four reviewers~~ Fanny Sarrazin, Björn Guse, Shervan Gharari and one anonymous reviewer for their critical comments on this and an earlier version of the manuscript, which greatly helped to improve the paper. We ~~thank Linda Bergmann who supported the technical implementation of the FAST analysis.~~ ~~We~~ acknowledge support by Deutsche Forschungsgemeinschaft and Open Access Publishing Fund of Karlsruhe Institute of Technology.

References

- Atkinson, S. E., Sivapalan, M., Woods, R. A., and Viney, N. R.: Dominant physical controls on hourly flow predictions and the role of spatial variability: Mahurangi catchment, New Zealand, *Advances in Water Resources*, 26, 219–235, doi:10.1016/S0309-1708(02)00183-5, 2003.
- Beven, K.: Prophecy, reality and uncertainty in distributed hydrological modelling, *Advances in Water Resources*, 16, 41–51, doi:10.1016/0309-1708(93)90028-E, 1993.
- Beven, K.: How far can we go in distributed hydrological modelling?, *Hydrology and Earth System Sciences*, 5, 1–12, doi:10.5194/hess-5-1-2001, 2001.
- Black, P.: Watershed functions, *Journal Of The American Water Resources Association*, 33, 1–11, 1997.
- Blöschl, G. and Sivapalan, M.: Scale Issues in Hydrological Modeling, *Hydrological Processes*, 9, 251–290, doi:0885-6087/95/03025 1-40, 1995.
- Bode, H., Evers, P., and Albrecht, D. R.: Integrated water resources management in the Ruhr River Basin, Germany, *Water Science and Technology*, 47, 81–86, 2003.
- Brudy-Zippelius, T.: Wassermengenbewirtschaftung im Einzugsgebiet der Ruhr : Simulation und Echtzeitbetrieb, Ph.D. thesis, Universität Karlsruhe (TH), 2003.
- Bundesanstalt für Geowissenschaften und Rohstoffe: Bodenübersichtskarte der Bundesrepublik Deutschland 1:200.000 (BÜK200), 2015a.
- Bundesanstalt für Geowissenschaften und Rohstoffe: Geologische Karte der Bundesrepublik Deutschland 1 : 1 000 000 (GK1000), 2015b.
- Castiglioni, S., Lombardi, L., Toth, E., Castellarin, A., and Montanari, A.: Calibration of rainfall-runoff models in ungauged basins: A regional maximum likelihood approach, *Advances in Water Resources*, 33, 1235–1242, doi:10.1016/j.advwatres.2010.04.009, 2010.
- Cibin, R., Sudheer, K. P., and Chaubey, I.: Sensitivity and identifiability of stream flow generation parameters of the SWAT model, *Hydrological Processes*, 24, 1133–1148, doi:10.1002/hyp.7568, 2010.
- Clark, M. P., McMillan, H. K., Collins, D. B. G., Kavetski, D., and Woods, R. A.: Hydrological field data from a modeller’s perspective: Part 2: Process-based evaluation of model hypotheses, *Hydrological Processes*, 25, 523–543, doi:10.1002/hyp.7902, 2011.
- Cloke, H. L., Pappenberger, F., and Renaud, J.-P.: Multi-Method Global Sensitivity Analysis (MMGSA) for modelling floodplain hydrological processes, *Hydrological Processes*, 22, 1660–1674, doi:10.1002/hyp.6734, 2008.
- Cukier, R. I., Fortuin, C. M., Shuler, K. E., Petschek, A. G., and Schaibly, J. H.: Study of the sensitivity of coupled reaction systems to uncertainties in rate coefficients. I Theory, *Journal of Chemical Physics*, 59, 3873, doi:10.1063/1.1680571, 1973.
- Cukier, R. I., Schaibly, J. H., and Shuler, K. E.: Study of the sensitivity of coupled reaction systems to uncertainties in rate coefficients. III. Analysis of the approximations Theory, *Journal of Chemical Physics*, 63, 1140, doi:10.1063/1.431440, 1975.
- Cuntz, M., Mai, J., Zink, M., Thober, S., Kumar, R., Schäfer, D., Schrön, M., Craven, J., Rakovec, O., Spieler, D., Prykhodko, V., Dalmasso, G., Musuuza, J., Langenberg, B., Attinger, S., and Samaniego, L.: Computationally inexpensive identification of noninformative model parameters by sequential screening, *Water Resources Research*, 51, 6417–6441, doi:10.1002/2015WR016907, 2015.
- Demaria, E. M., Nijssen, B., and Wagener, T.: Monte Carlo sensitivity analysis of land surface parameters using the Variable Infiltration Capacity model, *Journal of Geophysical Research*, 112, 1–15, doi:10.1029/2006JD007534, 2007.
- Di Prinzio, M., Castellarin, A., and Toth, E.: Data-driven catchment classification: Application to the pub problem, *Hydrology and Earth System Sciences*, 15, 1921–1935, doi:10.5194/hess-15-1921-2011, 2011.
- Duband, D., Obled, C., and Rodriguez, J.: Unit hydrograph revisited: an alternate iterative approach to UH and effective precipitation identification, *Journal of Hydrology*, 150, 115–149, doi:10.1016/0022-1694(93)90158-6, 1993.

- European Environment Agency: CORINE Land Cover (CLC2006), 2009.
- Euser, T., Winsemius, H. C., Hrachowitz, M., Fenicia, F., Uhlenbrook, S., and Savenije, H. H. G.: A framework to assess the realism of model structures using hydrological signatures, *Hydrology and Earth System Sciences*, 17, 1893–1912, doi:10.5194/hess-17-1893-2013, 2013.
- Farmer, D., Sivapalan, M., and Jothityangkoon, C.: Climate, soil, and vegetation controls upon the variability of water balance in temperate and semiarid landscapes: Downward approach to water balance analysis, *Water Resources Research*, 39, 1035, doi:10.1029/2001wr000328, 2003.
- Fontaine, D. D., Havens, P. L., Blau, G. E., and Tillotson, M.: Groundwater Risk Modeling for Pesticides, *Weed Technology*, 6, 716–724, 1992.
- Frey, H. C. and Patil, S. R.: Identification and review of sensitivity analysis methods, *Risk Analysis*, 22, 553–578, doi:10.1111/0272-4332.00039, 2002.
- Frick, C., Steiner, H., Mazurkiewicz, A., Riediger, U., Rauthe, M., Reich, T., and Gratzki, A.: Central European high-resolution gridded daily data sets (HYRAS): Mean temperature and relative humidity, *Meteorologische Zeitschrift*, 23, 15–32, doi:10.1127/0941-2948/2014/0560, 2014.
- Göppert, H., Ihringer, J., Plate, E. J., and Morgenschweis, G.: Flood forecast model for improved reservoir management in the Lenne River catchment, Germany, *Hydrological Sciences Journal*, 43, 215–242, doi:10.1080/02626669809492119, 1998.
- Gupta, H. V., Sorooshian, S., and Yapo, P. O.: Toward improved calibration of hydrologic models: Multiple and noncommensurable measures of information, *Water Resources Research*, 34, 751–763, doi:10.1029/97WR03495, 1998.
- Gupta, H. V., Wagener, T., and Liu, Y.: Reconciling theory with observations: elements of a diagnostic approach to model evaluation, *Hydrological Processes*, 22, 3802–3813, doi:10.1002/hyp.6989, 2008.
- Gupta, H. V., Clark, M. P., Vrugt, J. A., Abramowitz, G., and Ye, M.: Towards a comprehensive assessment of model structural adequacy, *Water Resources Research*, 48, 1–16, doi:10.1029/2011WR011044, 2012.
- Guse, B., Reusser, D. E., and Fohrer, N.: How to improve the representation of hydrological processes in SWAT for a lowland catchment - temporal analysis of parameter sensitivity and model performance, *Hydrological Processes*, 28, 2651–2670, doi:10.1002/hyp.9777, 2014.
- Guse, B., Pfannerstill, M., Gafurov, A., Fohrer, N., and Gupta, H.: Demasking the integrated information of discharge: Advancing sensitivity analysis to consider different hydrological components and their rates of change, *Water Resources Research*, 52, 8724–8743, doi:10.1002/2016WR018894, 2016a.
- Guse, B., Pfannerstill, M., Strauch, M., Reusser, D. E., Lüdtke, S., Volk, M., Gupta, H., and Fohrer, N.: On characterizing the temporal dominance patterns of model parameters and processes, *Hydrological Processes*, 30, 2255–2270, doi:10.1002/hyp.10764, 2016b.
- Hamby, D. M.: A review of techniques for parameter sensitivity analysis of environmental models, *Environmental Monitoring and Assessment*, 32, 135–154, doi:10.1007/BF00547132, 1994.
- He, Y., Bárdossy, A., and Zehe, E.: A catchment classification scheme using local variance reduction method, *Journal of Hydrology*, 411, 140–154, doi:10.1016/j.jhydrol.2011.09.042, 2011.
- Herman, J. D., Reed, P. M., and Wagener, T.: Time-varying sensitivity analysis clarifies the effects of watershed model formulation on model behavior, *Water Resources Research*, 49, 1400–1414, doi:10.1002/wrcr.20124, 2013.
- Hogue, T. S., Sorooshian, S., Gupta, H., Holz, A., and Braatz, D.: A Multistep Automatic Calibration Scheme for River Forecasting Models, *Journal of Hydrometeorology*, 1, 524–542, doi:10.1175/1525-7541(2000)001<0524:AMACSF>2.0.CO;2, 2000.
- Kavetski, D. and Clark, M. P.: Ancient numerical demons of conceptual hydrological modeling: 2. Impact of time stepping schemes on model analysis and prediction, *Water Resources Research*, 46, 1–27, doi:10.1029/2009WR008896, 2010.

- Kirchner, J. W.: Getting the right answers for the right reasons: Linking measurements, analyses, and models to advance the science of hydrology, *Water Resources Research*, 42, 1–5, doi:10.1029/2005WR004362, 2006.
- Kumar, R., Samaniego, L., and Attinger, S.: The effects of spatial discretization and model parameterization on the prediction of extreme runoff characteristics, *Journal of Hydrology*, 392, 54–69, doi:10.1016/j.jhydrol.2010.07.047, 2010.
- 5 Kumar, R., Samaniego, L., and Attinger, S.: Implications of distributed hydrologic model parameterization on water fluxes at multiple scales and locations, *Water Resources Research*, 49, 360–379, doi:10.1029/2012WR012195, 2013.
- Löpmeier, F.-J.: Berechnung der Bodenfeuchte und Verdunstung mittels agrarmeteorologischer Modelle, *Zeitschrift f. Bewässerungswirtschaft*, 29, 157–167, 1994.
- Lu, Y. C. and Mohanty, S.: Sensitivity Analysis of a complex, proposed geological waste disposal system using the Fourier Amplitude Sensitivity Test Method, *Reliability Engineering and System Safety*, 72, 275–291, doi:10.1016/s0951-8320(01)00020-5, 2001.
- 10 Massmann, C. and Holzmann, H.: Analysis of the behavior of a rainfall-runoff model using three global sensitivity analysis methods evaluated at different temporal scales, *Journal of Hydrology*, 475, 97–110, doi:10.1016/j.jhydrol.2012.09.026, 2012.
- Massmann, C. and Holzmann, H.: Analysing the Sub-processes of a Conceptual Rainfall-Runoff Model Using Information About the Parameter Sensitivity and Variance, *Environmental Monitoring and Assessment*, 20, 41–53, doi:10.1007/s10666-014-9414-6, 2015.
- 15 Massmann, C., Wagener, T., and Holzmann, H.: A new approach to visualizing time-varying sensitivity indices for environmental model diagnostics across evaluation time-scales, *Environmental Modelling and Software*, 51, 190–194, doi:10.1016/j.envsoft.2013.09.033, 2014.
- McCuen, R. H.: The role of sensitivity analysis in hydrologic modeling, *Journal of Hydrology*, 18, 37–53, doi:10.1016/0022-1694(73)90024-3, 1973.
- Nossent, J. and Bauwens, W.: Multi-variable sensitivity and identifiability analysis for a complex environmental model in view of integrated water quantity and water quality modeling, *Water Science and Technology*, 65, 539–549, doi:10.2166/wst.2012.884, 2012.
- 20 Olden, J. D. and Poff, N. L.: Redundancy and the choice of hydrologic indices for characterizing streamflow regimes, *River Research and Applications*, 19, 101–121, doi:10.1002/rra.700, 2003.
- O’Loughlin, F., Bruen, M., and Wagener, T.: Parameter sensitivity of a watershed-scale flood forecasting model as a function of modelling time-step, *Hydrology Research*, 44, 334–350, doi:10.2166/nh.2012.157, 2013.
- 25 Pfannerstill, M., Guse, B., Reusser, D., and Fohrer, N.: Process verification of a hydrological model using a temporal parameter sensitivity analysis, *Hydrology and Earth System Sciences*, 19, 4365–4376, doi:10.5194/hess-19-4365-2015, 2015.
- Pianosi, F. and Wagener, T.: Understanding the time-varying importance of different uncertainty sources in hydrological modelling using global sensitivity analysis, *Hydrological Processes*, 30, 3991–4003, doi:10.1002/hyp.10968, 2016.
- Plate, E. J., Ihringer, J., and Lutz, W.: Operational models for flood calculations, *Journal of Hydrology*, 100, 489–506, 1988.
- 30 Poff, N. L., Allan, J. D., Bain, M. B., Karr, J. R., Prestegard, K. L., Richter, B. D., Sparks, R. E., and Stromberg, J. C.: The Natural Flow Regime: A paradigm for river conservation and restoration N., *BioScience*, 47, 769–784, doi:10.2307/1313099, 1997.
- Pokhrel, P., Yilmaz, K. K., and Gupta, H. V.: Multiple-criteria calibration of a distributed watershed model using spatial regularization and response signatures, *Journal of Hydrology*, 418–419, 49–60, doi:10.1016/j.jhydrol.2008.12.004, 2008.
- Rakovec, O., Kumar, R., Attinger, S., and Samaniego, L.: Improving the realism of hydrologic model functioning through multivariate parameter estimation, *Water Resources Research*, 52, 613–615, doi:10.1002/2016WR019430, 2016.
- 35 Rauthe, M., Steiner, H., Riediger, U., Mazurkiewicz, A., and Gratzki, A.: A Central European precipitation climatology - Part I: Generation and validation of a high-resolution gridded daily data set (HYRAS), *Meteorologische Zeitschrift*, 22, 235–256, doi:10.1127/0941-2948/2013/0436, 2013.

- Razavi, S. and Gupta, H. V.: What do we mean by sensitivity analysis? The need for comprehensive characterization of “global” sensitivity in Earth and Environmental systems models, *Water Resources Research*, 51, 3070–3092, doi:10.1002/2014WR016527, 2015.
- Reusser, D. E. and Zehe, E.: Inferring model structural deficits by analyzing temporal dynamics of model performance and parameter sensitivity, *Water Resources Research*, 47, doi:10.1029/2010WR009946, 2011.
- 5 Reusser, D. E., Buytaert, W., and Zehe, E.: Temporal dynamics of model parameter sensitivity for computationally expensive models with the Fourier amplitude sensitivity test, *Water Resources Research*, 47, doi:10.1029/2010WR009947, 2011.
- Rodríguez-Camino, E. and Avissar, R.: Comparison of three land-surface schemes with the Fourier amplitude sensitivity test (FAST), *Tellus, Series A: Dynamic Meteorology and Oceanography*, 50, 313–332, doi:10.3402/tellusa.v50i3.14529, 1998.
- Ruhrverband: Ruhrwassermenge 2011, Tech. rep., Ruhrverband, Essen, 2011.
- 10 Saltelli, A. and Bolado, R.: An alternative way to compute Fourier amplitude sensitivity test (FAST), *Computational Statistics & Data Analysis*, 26, 445–460, doi:10.1016/S0167-9473(97)00043-1, 1998.
- Saltelli, A., Ratto, M., Andres, T., Campolongo, F., Cariboni, J., and Saisana, M.: *Global Sensitivity Analysis. The Primer*, John Wiley & Sons, Ltd., 2008.
- Samaniego, L., Bárdossy, A., and Kumar, R.: Streamflow prediction in ungauged catchments using copula-based dissimilarity measures, 15 *Water Resources Research*, 46, doi:10.1029/2008WR007695, 2010a.
- Samaniego, L., Kumar, R., and Attinger, S.: Multiscale parameter regionalization of a grid-based hydrologic model at the mesoscale, *Water Resources Research*, 46, 1–25, doi:10.1029/2008WR007327, 2010b.
- Samaniego, L., Kumar, R., and Jackisch, C.: Predictions in a data-sparse region using a regionalized grid-based hydrologic model driven by remotely sensed data, *Hydrology Research*, 42, 338–355, doi:10.2166/nh.2011.156, 2011.
- 20 Samaniego, L., Cuntz, M., Craven, J., Dalmaso, G., Kumar, R., Mai, J., Musuza, J., Prykhodko, V., Schneider, C., Spieler, D., Thober, S., and Zink, M.: *multiscale Hydrologic Model mHM -Documentation for version 5.1.*, Tech. rep., Helmholtz Centre for Environmental Research - UFZ, 2014.
- Sanadhya, P., Gironás, J., and Arabi, M.: Global sensitivity analysis of hydrologic processes in major snow-dominated mountainous river basins in Colorado, *Hydrological Processes*, 28, 3404–3418, doi:10.1002/hyp, 2013.
- 25 Schaibly, J. H. and Shuler, K. E.: Study of the sensitivity of coupled reaction systems to uncertainties in rate coefficients. II Applications, *Journal of Chemical Physics*, 59, 3879, doi:10.1063/1.1680572, 1973.
- Shamir, E., Imam, B., Gupta, H. V., and Sorooshian, S.: Application of temporal streamflow descriptors in hydrologic model parameter estimation, *Water Resources Research*, 41, 1–16, doi:10.1029/2004WR003409, 2005a.
- Shamir, E., Imam, B., Morin, E., Gupta, H. V., and Sorooshian, S.: The role of hydrograph indices in parameter estimation of rainfall-runoff 30 models, *Hydrological Processes*, 19, 2187–2207, doi:10.1002/hyp.5676, 2005b.
- Sieber, A. and Uhlenbrook, S.: Sensitivity analyses of a distributed catchment model to verify the model structure, *Journal of Hydrology*, 310, 216–235, doi:10.1016/j.jhydrol.2005.01.004, 2005.
- Sivapalan, M.: Pattern, Process and Function: Elements of a Unified Theory of Hydrology at the Catchment Scale, in: *Encyclopedia of Hydrological Sciences*, APRIL 2006, pp. 193–219, John Wiley & Sons, Ltd., doi:10.1002/0470848944, 2005.
- 35 Song, X., Bryan, B. A., Almeida, A. C., Paul, K. I., Zhao, G., and Ren, Y.: Time-dependent sensitivity of a process-based ecological model, *Ecological Modelling*, 265, 114–123, doi:10.1016/j.ecolmodel.2013.06.013, 2013.
- Sudheer, K. P., Lakshmi, G., and Chaubey, I.: Application of a pseudo simulator to evaluate the sensitivity of parameters in complex watershed models, *Environmental Modelling and Software*, 26, 135–143, doi:10.1016/j.envsoft.2010.07.007, 2011.

- Tang, Y., Reed, P., Wagener, T., and van Werkhoven, K.: Comparing sensitivity analysis methods to advance lumped watershed model identification and evaluation, *Hydrology and Earth System Sciences*, 11, 793–817, doi:10.5194/hess-11-793-2007, 2007.
- Tolson, B. A. and Shoemaker, C. A.: Dynamically dimensioned search algorithm for computationally efficient watershed model calibration, *Water Resources Research*, 43, 1–16, doi:10.1029/2005WR004723, 2007.
- 5 van Griensven, A., Meixner, T., Grunwald, S., Bishop, T., Diluzio, M., and Srinivasan, R.: A global sensitivity analysis tool for the parameters of multi-variable catchment models, *Journal of Hydrology*, 324, 10–23, doi:10.1016/j.jhydrol.2005.09.008, 2006.
- van Werkhoven, K., Wagener, T., Reed, P., and Tang, Y.: Characterization of watershed model behavior across a hydroclimatic gradient, *Water Resources Research*, 44, 1–16, doi:10.1029/2007WR006271, 2008.
- van Werkhoven, K., Wagener, T., Reed, P., and Tang, Y.: Sensitivity-guided reduction of parametric dimensionality for multi-objective
10 calibration of watershed models, *Advances in Water Resources*, 32, 1154–1169, doi:10.1016/j.advwatres.2009.03.002, 2009.
- Vrugt, J. A. and Sadegh, M.: Toward diagnostic model calibration and evaluation: Approximate Bayesian computation, *Water Resources Research*, 49, 4335–4345, doi:10.1002/wrcr.20354, 2013.
- Wagener, T., Sivapalan, M., Troch, P., and Woods, R.: Catchment Classification and Hydrologic Similarity, *Geography Compass*, 1, 1–31, doi:10.1111/j.1749-8198.2007.00039.x, 2007.
- 15 Wagener, T., van Werkhoven, K., Reed, P., and Tang, Y.: Multiobjective sensitivity analysis to understand the information content in stream-flow observations for distributed watershed modeling, *Water Resources Research*, 45, 1–5, doi:10.1029/2008WR007347, 2009.
- Winsemius, H. C., Schaefli, B., Montanari, A., and Savenije, H. H. G.: On the calibration of hydrological models in ungauged basins: A framework for integrating hard and soft hydrological information, *Water Resources Research*, 45, doi:10.1029/2009WR007706, 2009.
- Yadav, M., Wagener, T., and Gupta, H.: Regionalization of constraints on expected watershed response behavior for improved predictions in
20 ungauged basins, *Advances in Water Resources*, 30, 1756–1774, doi:10.1016/j.advwatres.2007.01.005, 2007.
- Yilmaz, K. K., Gupta, H. V., and Wagener, T.: A process-based diagnostic approach to model evaluation: Application to the NWS distributed hydrologic model, *Water Resources Research*, 44, 1–18, doi:10.1029/2007WR006716, 2008.
- Zajac, Z. B.: Global sensitivity and uncertainty analysis of spatially distributed watershed models, Ph.D. thesis, University of Florida, 2010.

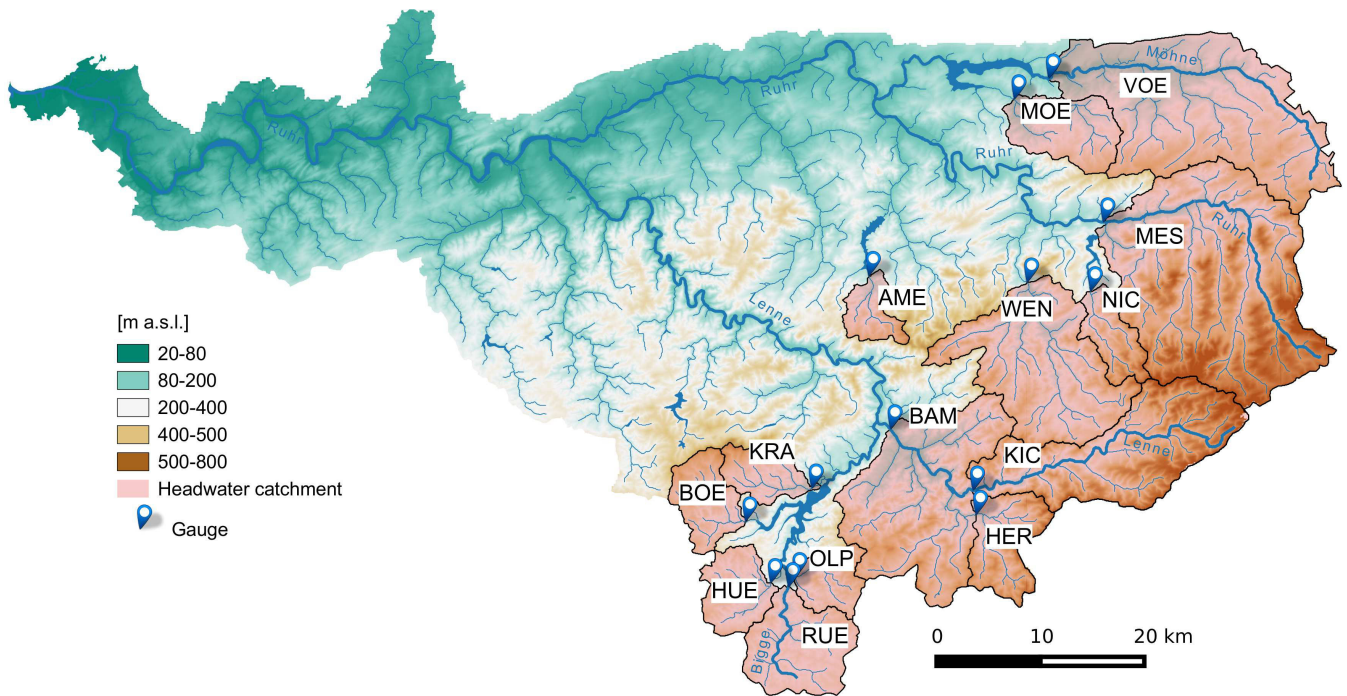


Figure 1. The Ruhr catchment with altitudinal zones, river network and 14 gauged headwater catchments: Amecke (AME), Bamenohl (BAM), Börlinghausen (BOE), Herrntrop (HER), Hüppcherhammer (HUE), Kickenbach (KIC), Kraghammer (KRA), Meschede1 (MES), Möhnesee-Neuhaus (MOE), Nichtinghausen (NIC), Olpe (OLP), Rüblinghausen (RUE), Völlinghausen (VOE) and Wenholthausen (WEN).

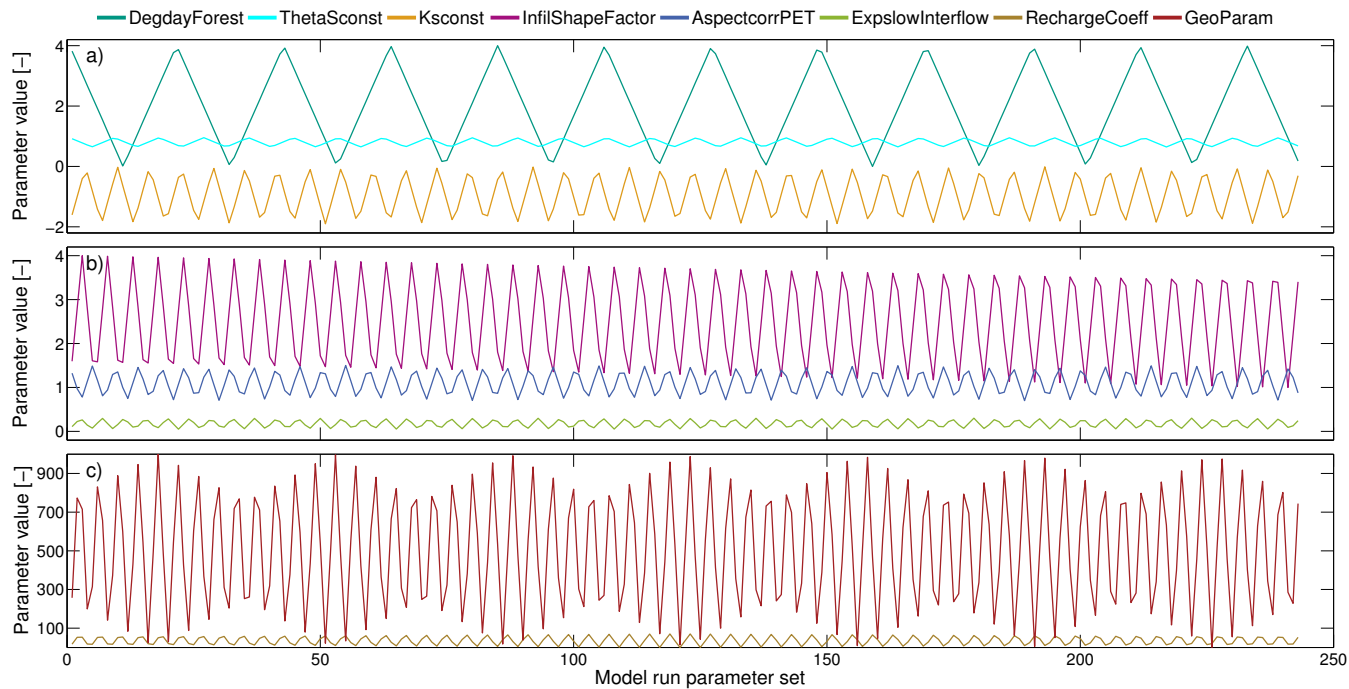


Figure 2. (a-c) Values Variations of the eight selected global mHM parameters for 243 model runs with independent frequencies according to the FAST sampling plotted as connected curves (see also Table 2).

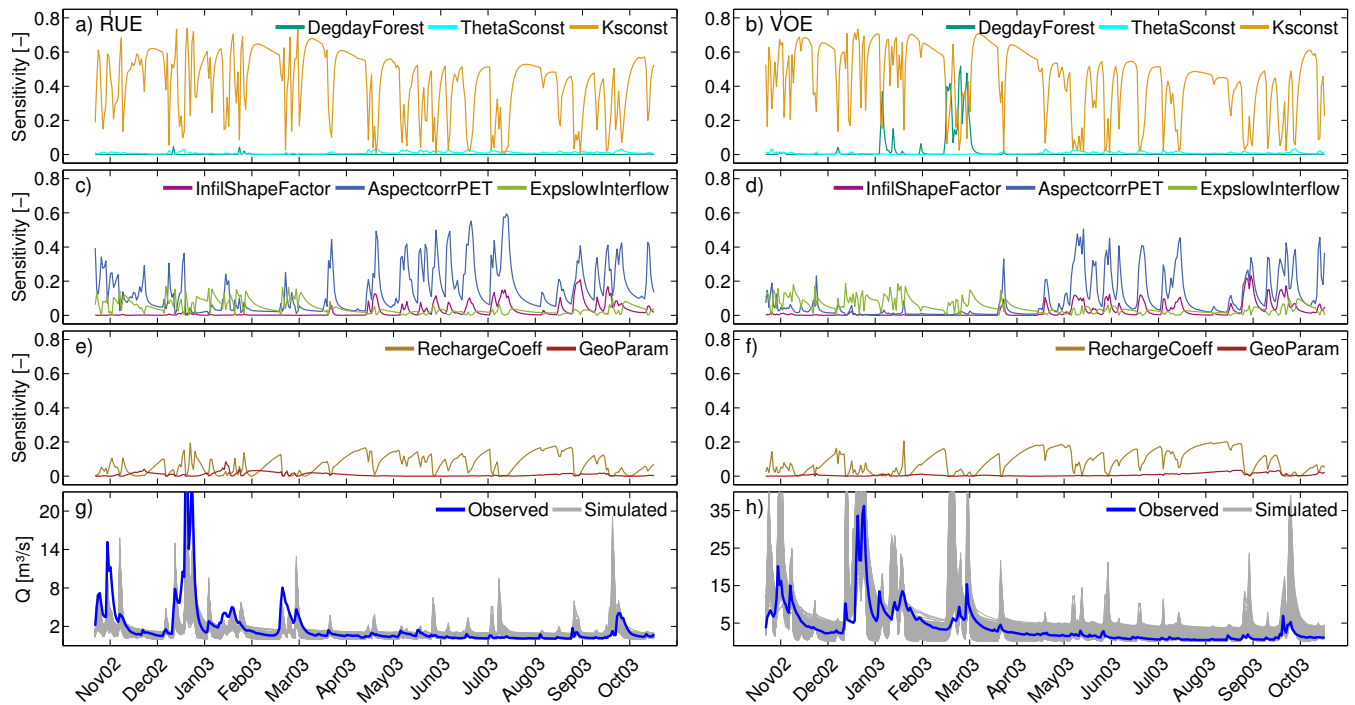


Figure 3. Time-dependent FAST sensitivities (TEDPAS) of eight global mHM parameters for two headwater gauges RUE (a, c, e) and VOE (b, d, f), and observed and FAST-mHM simulated streamflow ensembles at gauges RUE (e, g) and VOE (f, h). The results are shown for the hydrological year 2003 consisting of a wet season (November 2002 - March 2003) and a long dry period from April 2003 to September 2003. Please note the different axis scaling for streamflow for the two headwaters (e, g and f, h).

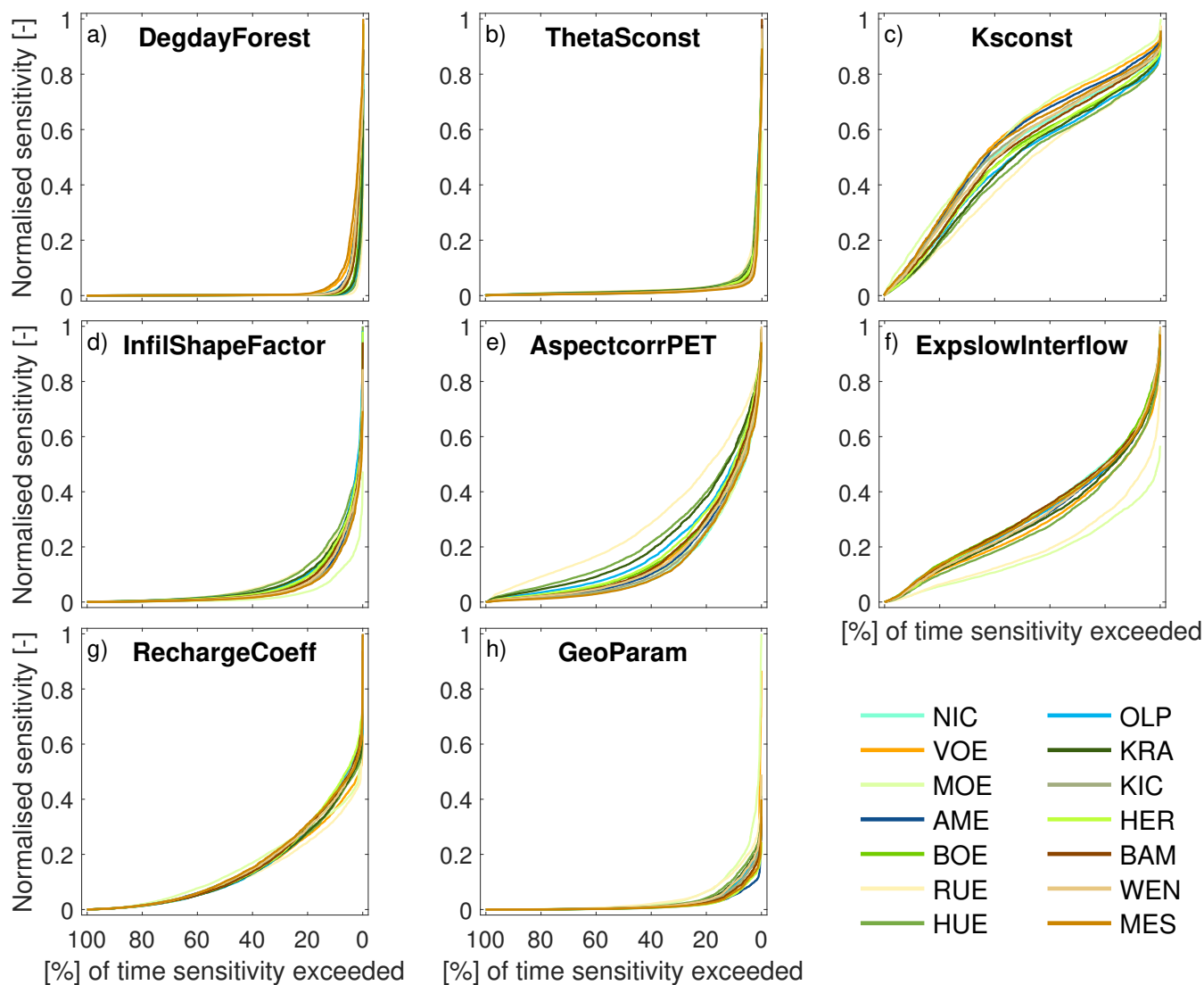


Figure 4. Sensitivity duration curves (SDCs) for eight global mHM parameters of 14 Ruhr headwater catchments (1997-2006): DegdayForest (a), ThetaSconst (b), Ksconst (c), InfilShapeFactor (d), AspectcorrPET (e), ExpslowInterflow (f), RechargeCoeff (g) and GeoParam (h). SDCs are shown normalised by the highest sensitivity value for each parameter among the headwaters. The eight parameters in terms of their average importance to streamflow simulations ([TEDPAS](#)) among all headwaters listed in descending order: Ksconst, AspectcorrPET, ExpslowInterflow, RechargeCoeff, ThetaSconst, InfilShapeFactor, GeoParam and DegdayForest.

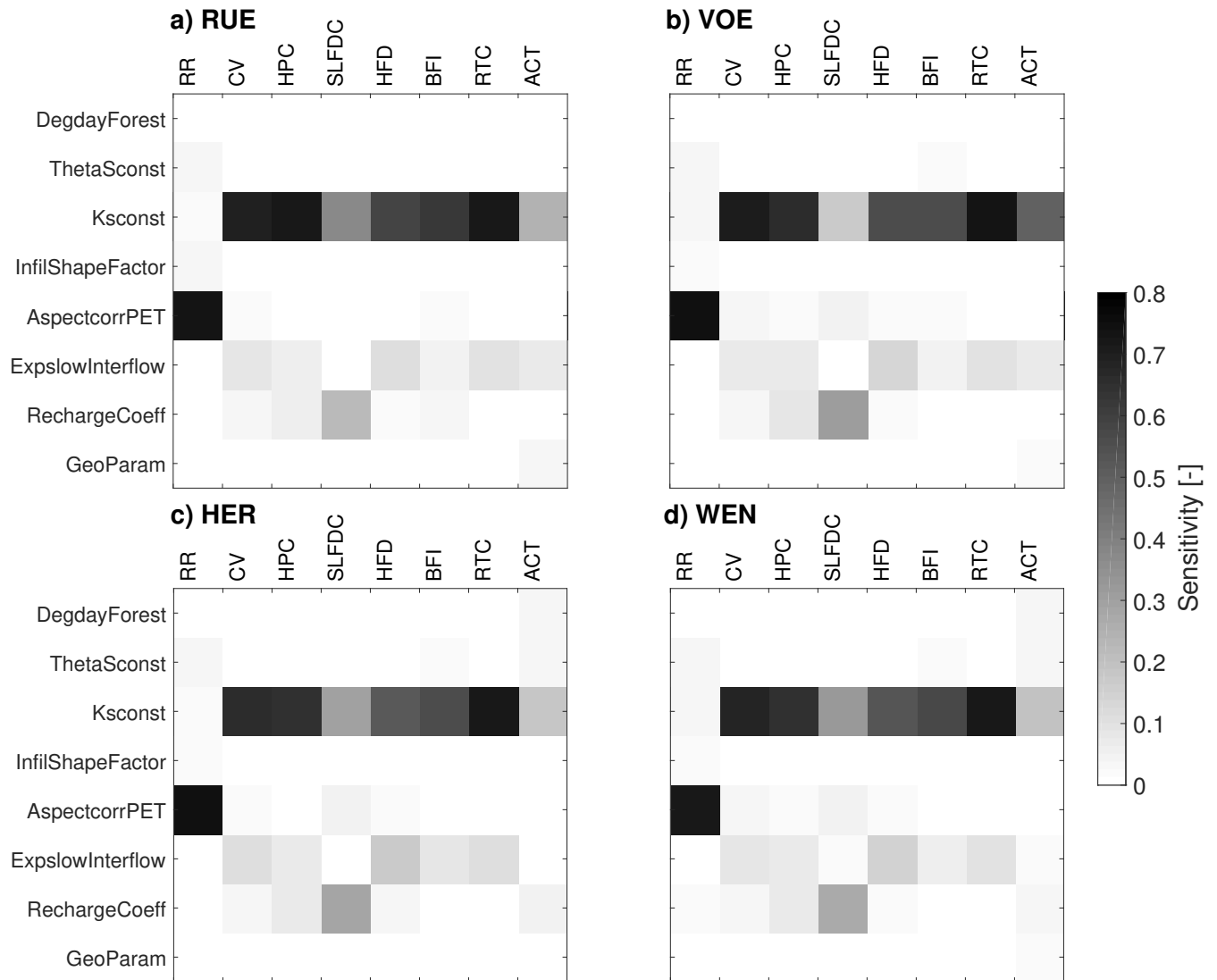


Figure 5. Parameter sensitivity for eight global mHM parameters to eight single value fingerprint metrics (RR, CV, HPC, SLFDC, HFD, BFI, RTC, ACT) in four Ruhr headwater catchments: RUE (a), VOE (b), HER (c), WEN (d). The simulation period was 1997 to 2006.

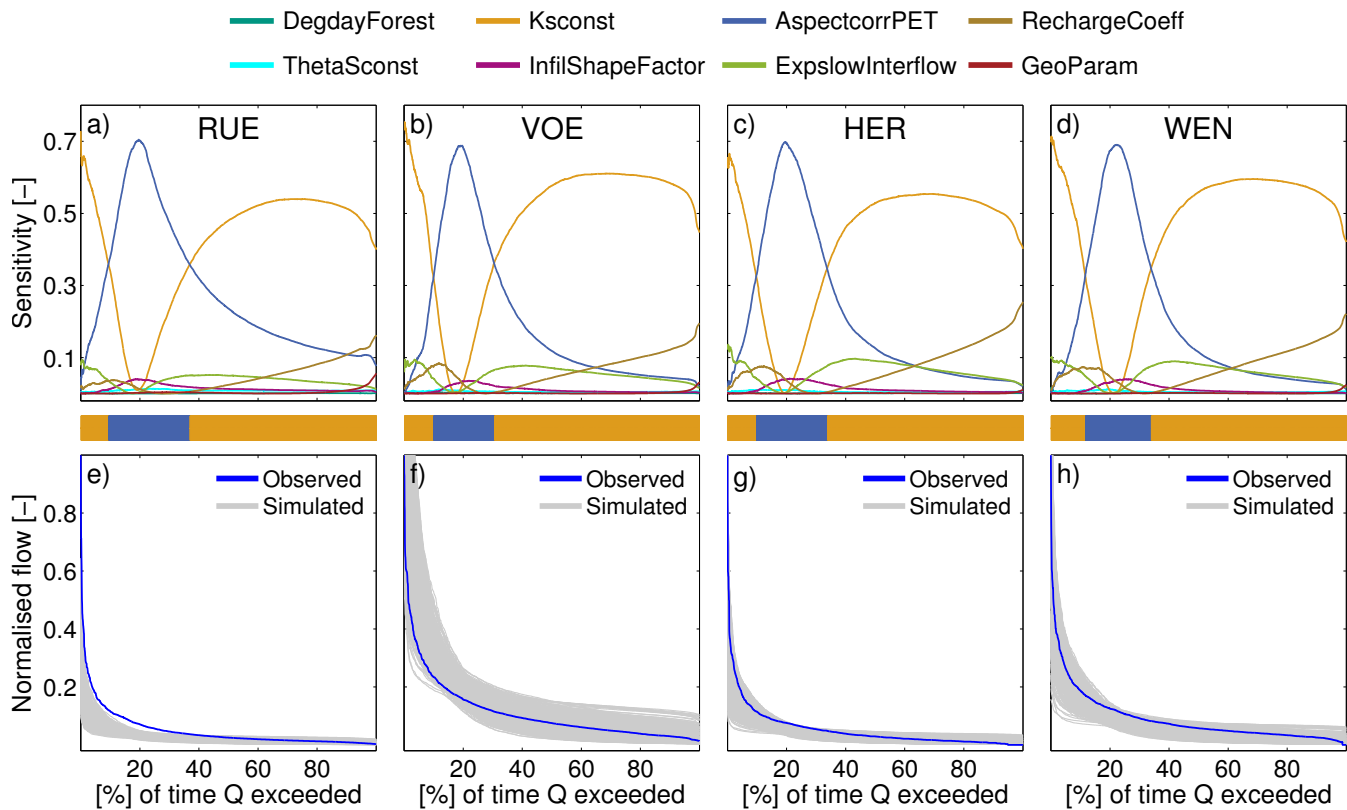


Figure 6. (a-d) Sensitivity for eight global mHM parameters along streamflow exceedance probability (flow duration curve, FDC) for four Ruhr headwater catchments RUE, VOE, HER and WEN. Catchment-specific strips show the parameters with the highest sensitivity along the FDC. (e-h) Observed flow duration curves and the corresponding ensembles of each 243 simulated FDCs for the period 2002 to 2006, normalised by the highest streamflow value observed at each of the four headwater gauges.

Table 1. Temporally aggregated single value fingerprint metrics derived from FAST-mHM simulated streamflow and observed precipitation time series, serving as model response targets for sensitivity analysis (INDPAS).

Response Characteristic	Fingerprint metric	Abbreviation	[Unit]	Derivation
Water balance	Runoff Ratio	RR	[-]	Q_{Total} / P_{Total}
Streamflow variability	Coefficient of Variation	CV	[-]	σ / μ
Frequency of flow events	High Pulse Count	HPC	[yr ⁻¹]	(Number of timesteps $Q > 3 * Q_{mean}$) / years
Rate of change in streamflow	Slope of Flow Duration Curve	SLFDC	[%]	Slope of FDC between 33 % & 66 % Q exceedance
High flow conditions	High Flow Discharge	HFD	[-]	$Q_{5th\ percentile} / Q_{median}$
Low flow conditions	Baseflow Index	BFI	[-]	$Q_{Baseflow} / Q_{Total}$
Streamflow recession	Recession Time Constant	RTC	[d]	Mdn(Time required for Q to reach $1/e * Q_{Peak}$)
Streamflow autocorrelation structure	Autocorrelation Time	ACT	[d]	Lag time required for AC function to decrease below 0.5

Q = Streamflow; P = Precipitation; σ = Standard deviation; μ = Mean; Mdn = Median; AC = Autocorrelation

Table 2. Eight global mHM parameters (dimensionless): Function, value ~~ranges, range for~~ FAST ~~sensitivity ranges, range~~ and ~~average~~ ~~arithmetic mean of~~ sensitivity values ~~from (TEDPAS for)~~ ~~across~~ 14 Ruhr headwater catchments (~~1997-2006~~ ~~1997-2006~~).

Parameter	Process	Description	Value Range [-]	Sensitivity Range [-]	Sensitivity Mean [-]
DegdayForest	snow	Determination of degree daily factor and maximum degree-day factor	0 - 4	0 - 0.74	0.012
ThetaSconst	soil moisture	Estimation of water content at saturation of soil (Constant part)	0.65 - 0.95	0 - 0.68	0.018
Ksconst	soil moisture	Estimation of saturated vertical hydraulic conductivity	-1.9 - 0.0	0 - 0.77	0.392
InfilShapeFactor	soil moisture	Determination of numerical index of rooting distribution	1 - 4	0 - 0.29	0.017
AspectcorrPET	meteo correction	Account for aspect dependent correction of PET	0.70 - 1.50	0 - 0.78	0.138
ExpslowInterflow	interflow	Determination of exponent for the interflow reservoir	0.05 - 0.3	0 - 0.22	0.062
RechargeCoeff	percolation	Determination of percolation coefficient	0 - 70	0 - 0.38	0.057
GeoParam	geology	Determination of baseflow recession parameter	0 - 1000	0 - 0.47	0.012

Table 3. Physiographic and climate descriptors characterising the topographic and hydroclimatic (1997-2006) setting of 14 Ruhr headwater catchments.

Characteristic	Descriptor	Abbreviation	[Unit]	Headwater														
				NIC	VOE	MOE	AME	BOE	RUE	HUJ	OLP	KRA	KIC	HER	BAM	WEN	MES	
1) Climate	Wetness Index	P/PET	[-]	2.3	2.1	2.1	2.4	2.5	2.2	2.3	2.2	2.2	2.2	2.4	2.3	2.3	2.2	2.5
	Annual precipitation	PMEAN	[mm]	1170	1025	1062	1240	1425	1286	1334	1232	1263	1261	1278	1237	1156	1192	
2) Landform	Area	A	[km ²]	37	293	66	29	48	86	47	35	38	187	61	453	184	426	
	Longest drainage path	LDP	[km]	13	44	16	10	13	19	9	10	13	36	13	52	21	39	
3) Topography	Slope	SLOPE	[%]	22.6	10.9	11.2	17.3	14.9	10.8	13.2	17.5	16.0	26.1	21.1	22.5	16.2	20.9	
	Weighted slope	I _g	[%]	1.7	0.5	1.1	2.1	0.9	0.5	0.8	1.2	0.9	0.7	1.6	0.5	0.6	0.7	
	Elevation range	ELR	[m]	430	426	316	361	297	394	204	274	391	533	415	425	440	585	
	Exposure	EXP	[°]	195	189	187	189	167	175	170	197	159	201	199	188	186	190	
	Flow accumulation	FACC	[km ⁻¹]	0.7	0.3	0.6	0.7	0.6	0.5	0.5	0.7	0.9	0.5	0.5	0.2	0.3	0.2	
4) Land cover	Forest	FOR	[%]	55	50	87	51	54	43	40	62	52	72	75	67	41	60	
	Urban area	URB	[%]	0	7	1	3	2	13	5	7	4	4	3	6	3	5	
	Pasture	PAST	[%]	21	13	2	20	8	26	48	6	1	15	6	10	16	10	
	Cropland	CROP	[%]	24	29	10	26	36	18	8	25	44	9	17	17	40	24	
5) Soil	Baseflow index	BFI	[-]	0.39	0.34	0.33	0.38	0.37	0.38	0.39	0.39	0.42	0.35	0.36	0.34	0.34	0.31	