

Reply on review of our manuscript HESS-2017-434 “Impact of coastal forcing and groundwater recharge on the growth of fresh groundwater resources in a mega-scale beach nourishment”

5 Dear Editor,

We would like to thank the reviewers again for their effort reviewing our manuscript and their valuable comments.

10 In the subsequent pages we have explained point by point how we dealt with their comments. The original reviewer comments are presented in blue italic text, and our response is presented in normal black text. The marked-up manuscript version is added to at the end of this document.

Sincerely,

15

Sebastian Huizer, on behalf of all authors

Comments Referee #1

Received and published: 17 September 2017

- 5 *This manuscript deals with a relatively young but interesting field of expertise: the hydrology of large beach nourishments. There is limited scientific research reported to date dealing with this topic, apart from a few earlier papers by these authors (HESS, 2016; WRR, 2017). This manuscript presents interesting (modelling) insights on the development of freshwater bodies below these beach nourishments. The content is scientifically relevant, of good quality, and properly presented. Some minor revisions are, however, required.*
- 10 We would like to thank the Referee for the comments, which are highly appreciated.
We will improve the raised issues.

General Comments

<i>1. Being the third modelling paper on this topic in a row. The reader would be pleased with a clear picture of what is presented in which paper and what the differences between the applied groundwater models are. The WRR paper isn't even mentioned in the current manuscript.</i>
Yes, we fully agree with the Referee and have added a brief description of the outcomes of the previous studies, and the connection with this third paper to the introduction.
<i>2. The reader would be pleased with more quantitative information, mainly in Section 3, especially on the freshwater volume developed. For instance: not 'substantially higher fresh groundwater volumes' (P11, line 11/12), but a percentage of volume increase. Another example: P10, line 20 and 21.</i>
We agree with the Referee, and have provided more quantitative information in Section 3.
<i>3. Parts of Section 3 would better fit in Section 2.</i>
We agree with the Referee, and have moved parts of section 3 to section 2. See responses to the specific comments.

Specific Comments

<i>- Title (and rest of manuscript): is 'resources' really the best term? I would associate that with use (abstraction) of the freshwater, which is not the case. Perhaps 'lenses' or 'bodies' are better alternatives</i>
With this term we wanted to both describe the lens/body of fresh groundwater and stress the potential for the growth of fresh groundwater resources (for abstraction) in mega-scale beach nourishments. However, we agree that 'lenses' fits better with the content of the ms and have changed 'fresh groundwater resources' to a 'fresh groundwater lens'.
<i>- Intro: first sentence can be removed</i>
We have removed the first sentence of the abstract.
<i>- P1, line 17: remove 'similarly,'</i>
We have replaced 'similarly' with 'whereas', to highlight the contrast with the previous line.
<i>- P2, line 2, replace 'clean' by 'high-quality'</i>
We have replaced 'clean' with 'high-quality'.
<i>- P2, line 14: do you really mitigate 'climate'? Suggest to replace 'climate' by 'climate change'.</i>

Climate was added as a clarification: mitigating climate change. However, within the context of the paragraph we believe this is an unnecessary addition, and there 'climate' was removed.
<i>- P3, line 6: remove 'this study analyses' and add 'are analysed in this study' after 'fresh groundwater'</i>
In response to a comment of Anonymous Referee #2 we have deleted the entire paragraph (L5-12)
<i>- P3, line 7: remove e.g. and state only what you have analysed</i>
In response to a comment of Anonymous Referee #2 we have deleted the entire paragraph (L5-12)
<i>- P3, line 8: 'In this paper are described' instead of 'This paper describes'</i>
In response to a comment of Anonymous Referee #2 we have deleted the entire paragraph (L5-12)
<i>- P3, line 26: add 'groundwater' before 'model'</i>
We have added 'groundwater' before 'model' in line 26.
<i>- P3, line 29: add 'and salt' after 'fresh'</i>
We have added 'and salt' after 'fresh' in line 29.
<i>- P4, line 10: use 'Aquifer 1a' instead of 'aquifer 1a'. Some holds for 'Monitoring well'. Capitals</i>
In accordance with the Figures, we have change all references to numbered items (e.g. Aquifer 1a and Monitoring well 1) to capitals.
<i>- P4, line 24-28: Vague, please add a figure to support this section</i>
We have definitions of mentioned areas (e.g. foredunes) to Figure 2, and have added a dotted line to Figure 2 that signifies the initial salinity distribution (fresh/salt).
<i>- P4, 33: replace 'maintain' by 'keep'</i>
We have replaced 'maintain' with 'keep'.
<i>- P4, line 34: why is this control of groundwater direction needed?</i>
This control was needed to prevent a flow of previously infiltrated saline groundwater and possibly contaminated groundwater to the drinking water wells. This is briefly mentioned in the previous sentence as 'prevent any undesirable or unexpected effects of the construction of the Sand Engine to the groundwater quality (e.g. flow of saline groundwater towards pumping wells).
<i>- P6, line 16: where was the wave set-up and run-up based on?</i>
The simulation of the land-surface inundations (incl. wave set-up and run-up) was based on a method that was described and evaluated in a previous paper (Huizer et al., 2017). This method was based on the estimation of the wave set-up and run-up heights of a paper of Stockdon et al. (2006). We have added a statement and reference to this paper to the start of section 2.5.1.
<i>- P6, line 18-22: make schematization and give max, min, average.</i>
This method was described and evaluated more extensively in a previous paper (Huizer et al., 2017). We have added a statement and reference to this paper to the start of section 2.5.1.
<i>- P6, line 28: no water level measurements available in the lagoon?</i>
Yes, in the lagoon we only had water levels for the period of 2 to 23 October 2014 (see Figure 5).
<i>- P7, line 21: 'smaller-sized' -> quantify</i>
The model stress period varied between 10 minutes to multiple hours, dependent on observed changes in seawater level. For each stress period the average groundwater recharge was calculated with the hourly precipitation and evaporation. This is likely obvious for most readers, and therefore the line was removed from the ms.
<i>- P8, line 21: sentence missing?</i>
No, the two dots were a result of a mistake in the handling of track changes. We removed one of the dots, and have rephrased the line after the dots, to create a better connection between the lines.
<i>- P9, line 8: did you check of these changes in abstraction rates might have occurred?</i>

No, we were unable to obtain a timeseries of extraction rates for the mentioned period.
<i>- P9, line 15-21: This part more or less just drops in here. Partly methods...</i>
We agree, and have moved the part that belongs in the method chapter (lines 15 – 18) to section 2.3, and have connected the remaining lines 18 – 21 to the next paragraph.
<i>- P9, line 28-29: Please provide more information on this initial groundwater salinity (figure)</i>
We have definitions of mentioned areas (e.g. foredunes) to Figure 2, and have added a dotted line to Figure 2 that signifies the initial salinity distribution (fresh/salt).
<i>- P10, line 1-4: consider to move this to methods section</i>
We agree, and have moved these lines, together with lines 31-33 on P9, to the methods section.
<i>- P10, line 21-30: separate field observation and models results. Now, this part is confusing. Start with field observations.</i>
We have modified and rephrased lines 21-30.
<i>- P11, line 21: A1 or A2? C1 or C2?</i>
We meant model scenario A2, C1, C2: the water level in het lagoon is less significant than wave set-up/run-up, and the extinction depth.
<i>- P11, line 29: replace 'will be' be 'was'</i>
We have added a line before line 29, and replaced 'will be' with 'was therefore'.
<i>- P12, line 29: quantify</i>
We have rephrased the line to: '... in the Sand Engine, at the monitoring wells the underestimations range between -0.4 and -0.6 m.'
<i>- P13, line 6: North Sea salinity: speculative, you don't know if this can really explain deviations</i>
We agree that we don't know if this can explain the observed deviations, and here the potential influence was probably small. Therefore, we have deleted this statement from the sentence.
<i>- P13, line 9: Why aren't there more measurements?</i>
We would have liked to get more salinity measurements, however during the research on the Sand Engine we prioritized other measurements (see previous paper in WRR).
<i>- P13, line 31: any reference to studies with comparable approach?</i>
We found a few studies (Falkland and Woodroffe, 2004 and Post and Houben, 2017) that used a comparable approach and added them in section 2.5.3.
<i>- P14, line 2: what is the basis for 'one to three monthly'</i>
The topographic surveys were executed every 1 to 3 months in the period of 2011-2016. We have rephrased the sentence to create more clarity.
<i>- P14, line 3: what is a 'unsaturated groundwater model'?</i>
We have replaced 'model' with 'flow'. The sentence refers to models that specifically include unsaturated groundwater flow (e.g. Richards equation).
<i>- P14, line 6: 'the study area' by 'a mega-scale beach nourishment (the Sand Motor)'</i>
We replaced 'the study area' with 'a mega-scale beach nourishment (the Sand Engine)'
<i>- P14, line 10: Please introduce these bullets with one sentence.</i>
We have replaced the last dot with a colon to show the connection with the line above the bullets.

Comments Referee #2

Received and published: 24 September 2017

- 5 *This manuscript shows the application of numerical models to simulate different scenarios for the quantification of the freshwater resources in a mega beach nourishment experience in the Dutch coast. This experiment, also called the Sand engine, has different challenges for the simulation of the groundwater flow since it is a highly dynamic environment that affects to the shape and boundary conditions, this is an interesting topic in the hydrogeological sciences and many readers can be interested on seeing the results.*
- 10 We would like to thank the Referee for the comments, which are highly appreciated.
We will improve the raised issues.

General Comments

It is well written and applies the correct methods. But I think that the manuscript can be improved by showing the results with a more global perspective and less as a case study description. Also the novelty of this study should be presented more clearly and the analysis of the results/discussion can be improved.

Thanks for the compliments. We believe that the particular conditions at a coastal site are very important, which makes it difficult to extrapolate the effects to a global perspective. Therefore we wrote the paper with the perspective of the Sand Engine, to describe the issues at this site in detail, and highlighted briefly the potential issues for other sites.

The aims are very broad and the particular effects of coastal forcing and the geomorphological changes can be better described. I think that introducing the challenges from the perspective of the development of the numerical model would be needed to have a more complete overview. A more extensive introduction would help to understand the tasks that are going to be solved later.

We agree, and have rephrased the aims, and introduces the challenges from the perspective of the development of a numerical model.

In general it seems to be repetitive and a bit ambiguous the description of coastal forcing with multiple mentions of how important is this instead of describing precisely to what aspects is refereeing.

We agree with the Referee, and have deleted some sentences regarding coastal forcing.

The boundary conditions of the model are based on previous models, unless this model is just a modification of a previous model (in that case it should be said), the boundary conditions should be clearly established.

For example: "Other specified heads and concentration boundaries were determined with an additional simulation with the groundwater model as described in Huizer (2016)" Which are the other specified heads and concentrations? What model scenarios are referring here? (the scenarios are presented later in the manuscript but at this point is not clear) ": : : the former model underestimated the salinization: : :" which model?

In general this paragraph can be rewritten under the consideration that the reader does not have to be necessarily familiar with the previous models in the area. Probably a full description of previous models and the novelties of this study would help to the reader to frame better this study.

We have rewritten some sections of the paragraph to clarify the methodology.
<i>It is not clear what are the areas presented as foredunes, dunes, beach and sand engine, they should be defined and presented in the map.</i>
We have definitions of mentioned areas (e.g. foredunes) to Figure 2, and have added a dotted line to Figure 2 that signifies the initial salinity distribution (fresh/salt).
<i>The model calibration presents some very clear criteria combined with ambiguous and arbitrary i.e. “the variation in the simulated head should be close or (almost) identical to the observed fluctuation pattern.” What is close or identical? This is a very arbitrary description that can be improved. Another element that is arbitrary in the calibration is: “the salinity should be small or otherwise explicable”. What is small? What is explicable?</i>
We agree that these criteria could be interpreted in various ways, therefore we have made small modifications in the phrasing of the criteria. The intent was the couple the mentioned criteria: the transient error in groundwater head should be smaller than the observed standard deviation, but stay similar to the observed fluctuations. We chose to keep the criteria concerning the groundwater salinity more qualitative, because the number of measurements was limited and small variations in the depth of the interface can lead to large errors in the simulated groundwater salinity.
<i>It is defined that six factors affect to fresh groundwater resources but only three are considered. It is not clear what is the criteria for this and if this would also affect to the results obtained. I think that a better introduction would help to understand this.</i>
We have rephrased this paragraph and deleted the line on the six factors. Together with the improvement to the introduction we believe this is resolved.
<i>The discussion is too descriptive basically presenting the results of the different models and adding some elements that could affect to the models (and in most cases are minor). A probably more interesting discussion, that can be also included in the conclusions, would be a quantitative comparison between the different factors that have been presented in this work. This would generate a broader impact of the results.</i>
We agree that some aspects of the paper are presented clearly, therefore we have made some modifications to the discussion. Together with the improved descriptions of the aim of the research in the introduction, we believe this improved the impact of the results.
However, we tried to avoid a too quantitative approach in the discussion, because some of the differences between the factors are related to the conditions at this particular site, and some differences between scenarios are caused by the differences in nature of the scenarios (how to compare a constant sea-level, to a constant morphology).

Specific Comments

<i>Page 3. Lines 5-12. The description about the outline of the work is not needed.</i>
Yes, we agree and have deleted these lines.
<i>Page 6. Lines 20-22. Which data were used for this calculation?</i>
We used offshore measurements at the “Euro platform” of the Ministry of Infrastructure and the Environment (Rijkswaterstaat). This was added to the lines.
<i>Page 8. Line 21. There are two dots in a row.</i>
We have corrected this in the ms.

Page 9. Line 32. Either mention as described in sect 2.2., or repeat the model discretization but both are repetitive.

We agree, and have moved these lines, together with lines 31-33 on P9, to the methods section.

Impact of coastal forcing and groundwater recharge on the growth of a fresh groundwater ~~resources—lens~~ in a mega-scale beach nourishment

Sebastian Huizer^{1,2}, Max Radermacher³, Sierd de Vries³, Gualbert H.P. Oude Essink^{1,2}, Marc F.P. Bierkens^{1,2}

¹Department of Physical Geography, Utrecht University, Utrecht, Netherlands

²Department of Subsurface and Groundwater Systems, Deltares, Utrecht, Netherlands

³Faculty of Civil Engineering and Geosciences, Department of Hydraulic Engineering, Delft University of Technology, Delft, Netherlands

Correspondence to: Sebastian Huizer (s.huizer@uu.nl)

Abstract. ~~Large concentrated sand replenishments or nourishments are one of the few coastal protection measures that can simultaneously result in an increase of local fresh groundwater resources.~~ For a large beach nourishment called the Sand Engine - constructed in 2011 at the Dutch coast - we have examined the impact of ~~groundwater recharge and~~ coastal forcing (i.e. natural processes that drive coastal hydro- and morphodynamics) and groundwater recharge on the growth of ~~the~~a fresh groundwater ~~resources—lens~~ between 2011 and 2016. Measurements of the morphological change and the tidal dynamics at the study site were incorporated in a calibrated three-dimensional and variable-density groundwater model of the study area. Simulations with this model showed that the detailed incorporation of both the local hydro- and morphodynamics and the actual recharge rate can result in a reliable reconstruction of the growth in fresh groundwater resources. ~~Similarly Whereas,~~ the neglect of tidal dynamics, land-surface inundations and morphological changes in model simulations can result in considerable overestimations of the volume of fresh groundwater. In particular wave run-up and coinciding coastal erosion during storm surges limit the growth in fresh groundwater resources in dynamic coastal environments, and should be considered at potential nourishment sites to delineate the area that is vulnerable to salinization.

1 Introduction

Groundwater is an important – in many situations vital – source of ~~clean~~ high-quality fresh water for most coastal communities in the world. However these coastal fresh groundwater resources are to an increasing degree affected by seawater intrusion, primarily caused by (excessive) groundwater extraction and sea-level rise (Ferguson and Gleeson, 2012; Taylor et al., 2013).

5 Global population growth in the coming decades will lead to a rising demand for fresh water, and combined with the projected sea-level rise this will likely result in a gradual decline of fresh groundwater resources (Famiglietti, 2014; Wong et al., 2014). In addition, sea-level rise can also increase coastal flooding – caused by storm surges – and may lead to an increase in coastal erosion, which in turn will induce seawater intrusion and may cause a loss of wetland and biodiversity (FitzGerald et al., 2008; Passeri et al., 2015; Wong et al., 2014). Coastal lowlands with low topographic gradients and small islands are particularly
10 vulnerable, because these areas are the most susceptible to coastal flooding and seawater intrusion (FitzGerald et al., 2008; McGranahan et al., 2007; Michael et al., 2013; Rotzoll and Fletcher, 2012).

There are two potential responses to these rising threats to coastal communities, especially in relation to sea-level rise: (global) ~~climate~~ mitigation and (local) adaptation (Nicholls, 2011; Wong et al., 2014). With the progression of our knowledge and
15 expectations on sea-level rise, the international perspective has shifted to adaptation (Brown et al., 2014). Some countries, such as the Netherlands, Germany and the United States, have implemented coastal protection measures, which is the only adaptation approach that additionally might help to preserve fresh groundwater resources (van Koningsveld and Mulder, 2004; Rosenzweig and Solecki, 2010; Sterr, 2008).

20 In the Netherlands – a vulnerable low-lying country with a long history of coastal flood management – sandy shorelines have been successfully maintained and reinforced with an extensive sand nourishment program in the last decades (Giardino et al., 2011; Keijzers et al., 2015). The anticipation of sea-level rise has led to new adaptation measures (Kabat et al., 2009), where the construction of a large concentrated beach nourishment called the Sand Engine (also called Sand Motor) is one notable example (Fig. 1). This large beach nourishment was created on the Dutch coast as part of an effort to attain a more sustainable
25 coastal protection approach (Slobbe et al., 2013; ~~Stive et al., 2013~~). Contrary to regular nourishments, the Sand Engine is deemed advantageous because it only causes a disturbance at a concentrated part of the coastline during a short time, after which the excess sand nourishes the larger length of the coastline gradually by natural along-shore sand transport (Stive et al., 2013).

30 ~~Apart from being ecologically advantageous, an important additional advantage~~ In previous studies, we showed that large beach nourishments as the Sand Engine can potentially lead to substantial increases in ~~of such large beach nourishments is that~~ fresh groundwater resources ~~may increase substantially during its lifespan~~ (Huizer et al., 2016) and that the impact of tides and storm surges on these resources can be simulated accurately when the system is thoroughly understood (Huizer et al., 2017).

This raised the question to what extent a growth of fresh groundwater resources could be observed in the Sand Engine since its construction in 2011, and how important the impact of coastal forcing (i.e. natural processes that drive coastal hydro- and morphodynamics such as wind, waves, and tides) precipitation and evaporation was on the observed growth in fresh groundwater resources. In other words, did the freshwater lens grow substantially since the construction of the Sand Engine. is it possible to reproduce this growth reliably with a numerical model, and how important is detailed information on land-surface inundations, geomorphological changes and groundwater recharge for the replication of this growth. To answer these questions -

This study aims to reconstruct the development of the freshwater lens and mixing zone between 2011 and 2016, and to evaluate the importance of an accurate description of (1) land-surface inundations, (2) geomorphological changes and (3) groundwater recharge for the prediction of the growth of fresh groundwater resources. Both that determine the growth of fresh groundwater resources in large concentrated beach nourishments, through the reconstruction of the development of a fresh groundwater lens and mixing zone in the Sand Engine during the first five years of its existence. This reconstruction and evaluation was conducted with a three-dimensional (3D) variable-density groundwater model, where the model simulations were calibrated and evaluated with (transient) groundwater head and groundwater salinity measurements. Considering the aims of this study, and concentrated on it is important to note that the assessment of the impact of local conditions (e.g. tides and storm surges) both on the spatial and temporal distribution changes of fresh groundwater resources in the Sand Engine. Considering the purpose of the project, we will focus in particular on the effects of coastal forcing (i.e. natural processes that drive coastal hydro and morphodynamics such as wind, waves, and tides) and associated geomorphological changes of the nourishment. are simulated, calibrated and evaluated.

In addition, this study analyses temporal changes in the quantity of fresh groundwater, through the evaluation of the contribution of prime factors (e.g. land surface inundations, geomorphological changes, and groundwater recharge) to this volume of fresh groundwater. The paper first briefly describes the characteristics of the study area, and the adopted methodology for the analysis of the change in fresh groundwater resources. Next, the model calibration and model results are described and examined, as well as the impact of land surface inundations, morphology, and groundwater recharge on simulated fresh groundwater resources. Finally, the methodology and results are discussed, emphasizing the model uncertainties, and the general implications for the growth of fresh groundwater resources in large beach nourishments.

2 Data and Methods

2.1 Site description: Sand Engine

The Sand Engine (also called Sand Motor) ('Zandmotor' in Dutch) is a large concentrated beach nourishment of approximately 17 million m³ sand, which was placed on the Dutch coast in 2011 as a hook-shaped peninsula (Fig. 1). This nourishment is

part of an innovative pilot project in which this nourishment method is evaluated with respect to the current practice of nourishment methods in the Netherlands (i.e. large-scale distribution of smaller volumes of sand). One appealing hallmark of the Sand Engine is that natural forces (i.e. wind, waves and currents) gradually transport the replenished sand along the retreating coast, and simultaneously support natural dune growth (Slobbe et al., 2013).

5

Coastal forcing— storm surges in particular – led to substantial geomorphological changes at the Sand Engine in the measurement period. Between 2011 and 2016 the shoreline along the outer perimeter of the peninsula retreated approximately 200 m (de Schipper et al., 2016). The geomorphological changes of the Sand Engine were monitored every one to three months with topographic surveys, as part of an intensive monitoring program. Spatial interpolations of all topographic surveys were used to update the surface elevation in the groundwater model, and these were implemented as sequential grid regenerations.

10

2.2 Variable-density groundwater flow model

Spatial and temporal changes in fresh and salt groundwater in the Sand Engine were simulated with a 3D groundwater model, in which the computer code SEAWAT was used to simulate variable-density saturated groundwater flow and salinity transport (Langevin et al., 2008). In SEAWAT the governing flow and solute transport equations are coupled and solved with a cell-centred finite difference approximation. Numerous studies have applied this code to simulate variably-density, transient groundwater flow in coastal environments (Colombani et al., 2016; Holding and Allen, 2015; Pauw et al., 2014; Rasmussen et al., 2013; Webb and Howard, 2011).

15

The model domain had a length of 4500 m and width of 1500 m (Fig. 1), and was discretized into 75 rows and 225 columns with horizontal cell sizes of 20 m, and 28 layers with a thickness of 0.5 m in the upper layers and 1 m in layers below -7 m NAP (Amsterdam Ordnance Datum, which is approximately equal to MSL). Boreholes from the Sand Engine and adjacent dunes show that the subsoil of the study area consists of sandy aquifers with fine to coarse-grained sand, which are (partially) interrupted by two thin aquitards consisting of sandy clay, and are separated from underlying aquifers by an aquitard consisting of clay and peat (Fig. 2). The replenished sand and upper aquifers (Aaquifer 1a and 1b) are mainly composed of medium coarse-grained sand, while the sand in the dunes and below -9 m NAP (aAquifer 2) is mainly composed of fine-grained sand (Fig. 2). The underlying aquitard – situated between -17 and -20 m NAP – was defined as the local hydrogeological base of the model.

25

The boundaries of the model domain were defined either as a no-flow boundary (boundaries perpendicular to shoreline, and hydrogeological base) or as a specified head and concentration boundary (boundaries parallel to the shoreline). Specific head and concentration boundaries within the North Sea equalled tide gauge measurements in the harbours of Scheveningen and Hoek van Holland and seawater salinity of 28 g TDS L⁻¹ (i.e. equal to the observed average seawater salinity at the site: Rijkswaterstaat 2012). Other-The inland specified head and concentration boundary, situated in the Solleveld dune area, is

30

~~were was~~ determined with an ~~additional-extra~~ simulation with the calibrated groundwater model as described in Huizer et al. (2016). In this calibrated model, where the groundwater recharge was adapted according to the model scenarios (Sect. 2.4.5.3). The groundwater head distribution at the start of the model simulations – before the completion of the Sand Engine in June 2011 – were set equal to the calibrated conditions of the same previously mentioned model (Huizer et al., 2016). The initial groundwater salinity distribution was approximated with a sharp (vertical) fresh-salt groundwater interface in the foredunes (see Figure 2), because the former model underestimated the salinization close to the dunes and because previous nourishments led to seawater intrusion in the (newly constructed) foredunes. The interface was positioned in the foredunes with fresh groundwater salinities of 0.1 g TDS L⁻¹ in the Solleveld dune area dunes, and completely saline groundwater in the foredunes, beach and Sand Engine (28 g TDS L⁻¹). Model cells close to this interface and in the Solleveld dune area dunes were excluded from evaluations ~~of the growth of fresh groundwater resources in model scenarios~~.

In the adjacent dune area Solleveld a drinking water company extracts groundwater, and in order to prevent any undesirable or unexpected effects of the construction of the Sand Engine to the groundwater quality (e.g. flow of saline groundwater towards pumping wells), 29 pumping wells were installed in 2012 on the first dune ridge (see red points in Fig. 2). These pumping wells maintain-keep the groundwater level at +0.8 to +1 m NAP with the aim to control the direction of the groundwater flow, and were included as such in the model simulations (Stuurman, 2010).

2.3 Model calibration

The groundwater model was calibrated with groundwater head measurements ~~of the groundwater head~~ in M monitoring wells 1 to 8 (Fig. 2), ~~from 1 May 2014 until the end of the scenario simulations on 31 May 2016. All these~~ These monitoring wells all contain one well screen in ~~the phreatic~~ A aquifer 1a (phreatic), and M monitoring wells 2, 3, 7, and 8 contain a second well screen in ~~underlying a~~ A aquifers 2 (see cross-section in Fig. 2). ~~The calibration was performed for measurements from 1 May 2014 until the end of the scenario simulations on 31 May 2016. The simulated groundwater salinities were also compared with chloride measurements, which were taken at the monitoring wells (obtained from soil samples that were taken during the construction of the monitoring wells) between 10 and 14 March 2014 (Fig. 8). For the conversion of the measured chloride concentrations to salinity (TDS), we have adopted the relation between chloride and TDS as found in the North Sea; 0.553 g Cl L⁻¹ in 1 g TDS L⁻¹ (Millero, 2003). In this study freshwater was classified as 0-1 g TDS L⁻¹.~~

The calibration comprised of manual model parameter adjustments and comparisons of measured and simulated (transient) groundwater heads and groundwater salinities. For the evaluation of the fit to the measured groundwater heads, the subsequent calibration criteria were adopted: the error between the measured and simulated transient groundwater head should be smaller than the observed variation in groundwater level (average standard deviation is 0.1 m in the calibration period), ~~and the where~~ the variation in the simulated groundwater head should be ~~close or (almost) identical~~ similar to the observed fluctuation pattern.

For the calibration of the groundwater salinities equivalent similar criteria were adopted: ~~the error between the measured and simulated groundwater salinity should be small or otherwise explicable, and~~ the depth of the fresh to salt groundwater interface and mixing zone thickness should be ~~close or (almost) identical~~ smaller than the observed mixing zone thickness (in our case approximately 2 m), where the error between the measured and simulated groundwater salinity should be small or explicable.

5 The calibration concentrated on a selection of model parameters: hydraulic conductivity, storage coefficients, and dispersivity. These model parameters were adjusted with small incremental changes from an initial estimate, which was identical to a previous model calibration of the same area (Huizer et al., 2016). The dispersivity was adapted in accordance with the observed mixing zone thickness.

10 Ideally, we would have liked to split the data into a calibration and a validation dataset (split sample approach). However, the number of observation locations and the length of the time series made such an approach unachievable, and therefore all available information was used for the calibration. This meant that only the lack of fit of the model could be verified, not the predictive uncertainty. The calibrated set of model parameters is shown in Table 1.

2.4 Model convergence

15 To test whether the adopted spatial model discretization returned reliable quantifications of the volume of fresh groundwater in the study site, we have conducted a grid convergence or refinement test was conducted. As described in Sect. 2.2, the reference model discretization consisted of a horizontal grid size of 20 m, and 28 layers with a variable thickness of 0.5 (upper layers) to 1 m (lower layers). This discretization was tested with three additional simulations with higher and lower spatial resolutions: one with an increased vertical resolution of 0.25 to 0.5 m over 56 layers (S1), one with a decreased vertical resolution of 1 to 2 m over 14 layers (S2), and one with a coarser horizontal grid size of 30 m (S3). All the model parameters, initial conditions and boundary conditions of the simulations were equal to the calibrated model. The convergence in regard to the temporal model discretization was not tested, because stability constraints were used to calculate the length of transport timesteps.

20

2.54 Model scenarios

The importance of Our hypothesis was that detailed information on (1) land-surface inundations (2) geomorphological changes, (3) groundwater recharge for reliable reconstructions of the growth of fresh groundwater resources the freshwater lens (classified as 0–1 g TDS L⁻¹) in the Sand Engine, and beach nourishments in general, was evaluated is determined by six factors: land-surface inundations produced by tides and storm surges, geomorphological changes, groundwater recharge, geology (e.g. grain size, aquifer thickness), groundwater extractions, and groundwater inflow and outflow from or to the beach nourishment. In this study we limited ourselves to the evaluation of the spatial and temporal impact of the first three factors, with model simulations for the period of 1 June 2011 (completion Sand Engine) to 31 May 2016. Using the calibrated model as a

30

representation of the actual growth in fresh groundwater resources, the importance of each factor was evaluated with model scenarios that consist of ~~All model scenarios consisted of small modifications-simplifications of the calibrated model (i.e. reference case)~~to this detailed reference model. The simplifications were based on assumptions that are often made in model simulations. The adopted methodology in the calibrated model and the model scenarios ~~, which~~ are summarized in Table 2,

5 and described in detail in Sect. 2.54.1 to 2.54.3.

2.54.1 Land-surface inundations

~~For the simulation of the land-surface inundations we used the same method as in (Huizer et al. (2017). In this paper the method is described briefly, and for a more extensive description and evaluation of this method we refer to (Huizer et al. (2017). High frequency (10 minute time interval)~~Tide gauge measurements with a 10-minute time interval in the harbours of Scheveningen and Hoek van Holland were used to estimate the seawater level near the Sand Engine (i.e. Still Water Level: SWL). The average seawater level of both measurement sites was used as an estimate of the local seawater level, and the tidal North Sea boundary was modelled as ‘General Head (head-dependent) Boundaries and Drains’ (Mulligan et al., 2011). All model layers above -2 m NAP were defined convertible (saturated thickness) and rewettable with a wetting threshold of 0.05 m (McDonald et al., 1992). To ensure a reactivation of all inundated model cells, an additional seawater infiltration of 0.01 m per minute (equal to the vertical hydraulic conductivity) was added to the area of inundation during rising tides. In addition, to analyse the impact of tidal dynamics on fresh groundwater resources, a simulation (scenario A1) with a constant seawater level of 0.065 m NAP (MSL simulation period) was executed (Table 2).

Wave set-up (i.e. local rise of the MSL) and wave run-up (i.e. maximum level of wave up-rush on the beach) will result in an increase in the extent of land-surface inundations, and hence to an increase of seawater intrusion. To assess the impact of wave set-up and wave run-up on fresh groundwater resources both processes were included in the reference model, and excluded in model scenario A2 (Table 2). Wave set-up was modelled with an identical approach as the observed seawater level fluctuations, and wave run-up as an infiltration of seawater between the wave set-up height and the wave run-up height. The infiltration rate at the wave set-up height was estimated as the drainable storage (determined by specific yield) between SWL and the wave set-up height, and above the wave set-up height this infiltration rate was reduced linearly to a value of 10 % at the wave run-up height. The wave set-up and wave run-up height in every model period was estimated with the parameterization for set-up on dissipative sites (Stockdon et al., 2006), which is dependent on the deep water significant wave height, and the deep water wave length. The deep water significant wave height and deep water wave length were estimated with offshore measurements at the measurement location called “Euro platform”, located 50 km southwest from the study site.

2.54.2 Geomorphology

The morphological evolution of the Sand Engine in the period 2011-2016 has led to significant decreases in the dimensions of the tidal channel (hereafter referred to as lagoon), which gradually choked the tidal system in the lagoon (de Vries et al., 2015). As a result the tidal amplitude decreased over time and the mean water level inside the lagoon increased (Fig. 3).

In an effort to produce a hindcast of tidal water levels inside the lagoon for the period of 3 August 2011 to 4 January 2016, the Delft3D flow model by de Vries et al. (2015) was extended (Fig. 4). Measurements of morphology and boundary conditions (wind and water levels) were included in the simulation. Details on the model setup, assumptions and boundary conditions can be found in Appendix A. This hindcast of tidal water levels inside the lagoon was implemented in the reference model, where we assumed that the lagoon water level sustains over the whole channel. Before and after the hindcasted period we assumed that the water levels inside the lagoon were identical to the offshore seawater levels. Note that after 4 January 2016 the choking of the tidal system in the lagoon was (temporarily) lifted, because the continued erosion of the outer perimeter of the Sand Engine and the increasing hydraulic gradient between the lagoon and the North Sea led to breach of the sand barrier that separated the two systems.

To determine the impact of the observed morphological changes and the increase of the mean water level inside the lagoon on fresh groundwater resources, two additional model scenarios (B1 and B2) were implemented (Table 2). In model scenario B1 all morphological changes between 2011 and 2016 were excluded and hence the topography remained constant (equal to the situation in August 2011). In model scenario B2 the choking of the tidal system in the lagoon was ignored and thus the water level in the lagoon remained equal to the North Sea throughout the simulation period (model scenario B2).

2.54.3 Groundwater recharge

Hourly measurements of the precipitation at a measurement station in Hoek van Holland – located 9 km south-south-west from the measurement site – were used as an estimate of the precipitation on the Sand Engine. Potential soil evaporation was calculated with the FAO Penman-Monteith method for hourly time steps, where the mean wind speed, air temperature, global radiation, and relative atmospheric humidity were also based on hourly measurements in Hoek van Holland (Allen et al., 1998). The FAO Penman-Monteith equation was adapted with estimations of the aerodynamic resistance and surface resistance for bare sand (Voortman et al., 2015). Similar to Voortman et al. (2015) the ratio between the incoming solar radiation and the clear sky solar radiation between sunset and sunrise was linearly interpolated between the 4 to 6 h average before sunset and after sunrise (Gubler et al., 2012). ~~The resulting hourly precipitation and evaporation was linearly distributed over smaller sized stress periods.~~

The actual soil evaporation was estimated with the average moisture content between surface elevation and the extinction depth, where the evaporation was set equal to the potential evaporation for moisture contents equal and larger to field capacity. For moisture contents smaller than field capacity, the soil evaporation drops linearly to zero, parallel with the decrease in moisture. For coarse sand field capacity was estimated as $0.042 \text{ cm}^3/\text{cm}^3$ (Wösten et al., 2001).

- 5 The moisture content was calculated with a water budget method of precipitation and evaporation, where we assumed that percolation only occurs when the moisture contents equals field capacity. At that point the groundwater recharge equals the (positive) difference between precipitation and evaporation. This method for the estimation of the actual evaporation and percolation to the groundwater is comparable to the approach used in (Falkland and Woodroffe, (2004) ~~and~~; Post and Houben, (2017)). Based on literature data the extinction depth was estimated as 0.5 m (Shah et al., 2007; Wösten et al., 2001). However, 10 because of uncertainties in this estimation, we have also conducted model scenarios C1 and C2 with extinction depths of 0.25 and 0.75 m ($\pm 50\%$; Table 2).

- The effects of sea spray deposition were estimated with semi-empirical equations (Stuyfzand, 2014) with wind speed and wind direction measurements in Hoek van Holland. For the angle of the coastal high water line we used the angle of the ~~(straight)~~ 15 shoreline of 228° , as existed prior to the construction of the Sand Engine. Between June 2011 and May 2016 the resulting annual mean TDS concentration – caused by sea spray deposition – ~~were was~~ respectively 0.11, 0.08, 0.06, and $0.04 \text{ g TDS L}^{-1}$ at 100, 200, 500, and 1000 m from the local mean high water (MHW) height of $+1.09 \text{ m NAP}$. These TDS concentrations were linearly interpolated based on the distance from the MHW height ~~on the Sand Engine~~, with a maximum concentration of $0.11 \text{ g TDS L}^{-1}$.

20 3 Results

- The calibrated groundwater model (i.e. reference case) contained all elements of the previously described model scenarios that were deemed important for the growth of the fresh groundwater resources: estimates of wave set-up and wave run-up (Sect. 2.54.1), hindcast of tidal water levels inside the lagoon (Sect. 2.54.2), and a groundwater recharge that was based on an extinction depth of 0.5 m below surface (Sect. 2.54.3). The simulated (transient) groundwater head and groundwater salinity 25 of this model were compared with measurements at the study site. In addition, the reliability of the adopted spatial discretisation was tested with a grid convergence test, consisting of simulations with lower and higher spatial resolutions. In the subsequent model ~~scenarios~~ scenarios, the effects of coastal forcing, geomorphology, and groundwater recharge on the growth of fresh groundwater resources were examined with respect to this calibrated model.

3.1 Model evaluation

- 30 Figures 6 and 7 show that the simulated groundwater head closely resemble the observed fluctuation pattern at the eight monitoring wells (MW) on the Sand Engine. This demonstrates that the calibrated model ~~is able to can~~ reproduce the

observations with plausible model parameters (Table 1) and indicates that the groundwater dynamics are described satisfactorily. The similarity between the observed and simulated groundwater head is strongest ~~N~~near the shoreline (MW 1, 2, 5, 7) and in the centre of the Sand Engine (MW 8) ~~the similarity between the observed and simulated groundwater head is strongest~~, with RMS errors varying between 0.08 and 0.15 m. Closer to the dunes (MW 4 and 6) the RMS error increases slightly due to temporary underestimations in the simulated groundwater head. The only exception to this overall pattern is MW 3, which has a larger RMS error in comparison with the other monitoring wells. However, the simulated fluctuation of the groundwater head in MW 3 is similar to the measurements, and the larger RMS error is primarily a result of a systemic underestimation. This underestimation of the groundwater head at MW 3 is probably caused by mismatches in the local geology (e.g. finer sand, or variations in the position, thickness or conductivity of aquitards) that reduces the decline in groundwater head. This possibility is corroborated by the contrast in the observed and simulated groundwater head in the bottom aquifer at MW 2 and 3 (Fig. 7). The measurements indicate that ~~in reality~~ the attenuation of the tidal signal is stronger at MW 2 and weaker at MW 3, while MW 2 is situated closer to the shoreline than MW 3. Thus, this suggests a stronger variability in the thickness, hydraulic conductivity or spatial distribution of aquitard(s) near these monitoring wells.

One of the likely causes of the temporary underestimations of the groundwater head in MW 4, 6 and 8 – and to a lesser extent MW 3 – is (temporary) deviations of the groundwater head at the inland model boundary, as for example between February and July 2015 and February and June 2016. In these periods the deviation is largest for MW 4, 6 and 8. The mismatches ~~at-on~~ the inland model boundary are most likely ~~either~~ caused by overestimations of ~~the~~ groundwater extractions in the dunes (i.e. changes in extraction rate throughout the year) or underestimations in the ~~volume of~~ groundwater recharge rates in the dunes.

Another notable deviation in the observed and simulated groundwater head is the rapid rise of the groundwater level in MW 1, 2, 3, 5, 6 and 7, during a storm surge on 22 October 2014 (see also Fig. 5). The rise of the groundwater level is smaller in the model simulations – especially in the monitoring wells that lie closest to the shoreline – and this is probably caused by an underestimation of the wave run-up height or seawater infiltration during this storm surge.

~~The simulated groundwater salinity was also compared with chloride measurements, taken at the monitoring wells (from soil samples taken during the construction of the wells) between 10 and 14 March 2014 (Fig. 8). For the conversion of the measured chloride concentrations to salinity, we have adopted the relation between chloride and TDS as found in the North Sea; $0.553 \text{ g Cl L}^{-1} \text{ in } 1 \text{ g TDS L}^{-1}$ (Millero, 2003).~~ The depth profiles of the groundwater salinity (Fig. 8) confirm the presence of a fresh groundwater lens on top of an otherwise saline aquifer. Only in MW 4 the measurements show a decrease in the groundwater salinity at depth, but it is uncertain whether this is the result of a single measurement error or an actual deviation from the overall observed pattern. In addition,

Figure 8 shows that the reference simulation closely resembles the observed groundwater salinity in most monitoring wells. However, the deviations suggest that the average North Sea salinity may be higher (MW 1, 2, 3, and 7), and indicate that the thickness of the fresh groundwater lens is slightly overestimated in the reference case. The cause of this slight overestimation will likely either lie in an overestimation of the volume of groundwater recharge or an underestimation of the salinization of fresh groundwater by coastal flooding (in particular during storm surges). The only exception is MW 6, where the depth of the fresh – salt groundwater interface is underestimated, and the likely cause for this deviation is a mismatch in the initial groundwater salinity near the dunes (e.g. overestimation of the salinization by nourishments).

3.2 Grid convergence

~~To test whether the adopted spatial model discretization returned reliable quantifications of the volume of fresh groundwater in the study site, we have conducted a grid convergence test. As described in Sect. 2.2, the reference model discretization consisted of a horizontal grid size of 20 m, and 28 layers with a variable thickness of 0.5 (upper layers) to 1 m (lower layers). This discretization was tested with three additional simulations with higher and lower spatial resolutions: one with an increased vertical resolution of 0.25 to 0.5 m over 56 layers (S1), one with a decreased vertical resolution of 1 to 2 m over 14 layers (S2), and one with a coarser horizontal grid size of 30 m (S3). All the model parameters, initial conditions and boundary conditions of the simulations were equal to the calibrated model.~~

~~The~~ Simulations with finer and coarser grid resolutions (S1, S2, and S3) ~~the above mentioned spatial resolutions~~ show similar increases of the volume of fresh groundwater similar to the reference model during the simulation period (Fig. 9). Coarser spatial resolution (S2 and S3) resulted in lower volumes of fresh groundwater, and a finer vertical spatial resolution (S1) resulted in a nearly identical growth of the fresh groundwater volume. However, at the end of the simulation period (May 2016) the overall deviation in the simulated change in fresh groundwater is small (1.1-1.16 million m³). This convergence is probably mainly caused by aquitard 1 (Fig. 2), which hampers the growth of fresh groundwater resources in a large section of the study area. Thus, the additional simulations show that subsequent increases of the spatial resolution would lead to similar growth curves, which suggests that the model grid was sufficiently refined. ~~The convergence with regard to the temporal model discretization was not tested, because stability constraints were used to calculate the length of transport timesteps.~~

3.3 Scenario A: Land-surface inundations

One of the processes that ~~will~~ can inhibit the growth of fresh groundwater resources in ~~the Sand Engine~~ large beach nourishments is coastal forcing, which is the driving force of land-surface inundations. Tides will lead to frequent land-surface inundations near the shoreline (i.e. intertidal area), and storm surges to occasional and more extensive inundations (intertidal to supratidal area). In both cases the inundations will lead to a periodic infiltration of seawater in the intertidal and supratidal area, where the extent and duration of the inundations will depend on the intensity of ~~the~~ wind and wave forces, and local morphology.

The model simulations confirm that coastal forcing limits the growth of fresh groundwater resources in the Sand Engine, as illustrated in ~~These land surface inundations will limit the growth of fresh groundwater resources, as illustrated in the~~ divergence in the growth of the fresh groundwater volume in the reference model and model scenario A1 (approximately 1,700,000 m³; Figure 10). This contrast in growth over the simulated period is primarily caused by the periodic salinization of fresh groundwater in the intertidal and supratidal area, where simultaneously geomorphological changes between 2011 and 2016 led to substantial increases in the intertidal and supratidal area ~~(This is illustrated with the changes of the areal extent of fresh groundwater resources and position of the maximum yearly wave set-up and wave run-up heights (contour lines) in Fig. 11).~~ and 11.

Over the whole simulation period the incorporation of the tidal dynamics results in a substantial deviation in the volume of fresh groundwater (Figure 10). Frequent and occasional land surface inundations—generated by tides and storm surges—lead to a repeated salinization of fresh groundwater in the intertidal and supratidal area. This pattern can also be observed in ~~t~~ the in- and exclusion of wave set-up and wave run-up in respectively the reference model and model scenario A2 has a similar – but smaller - effect on the growth of the fresh groundwater volume (Figure 10). ~~The neglect of these processes~~ wave set-up and wave run-up leads to an underestimation of the extent of land-surface inundations and the infiltrated volume of seawater, especially during storm surges ~~(Fig. 11). This is illustrated with the changes of the areal extent of fresh groundwater resources and position of the maximum yearly wave set-up and wave run-up heights (contour lines) in Fig. 11.~~ In addition, it is important to note that the model calibration suggests the wave run-up height or seawater infiltration rate during storm surges was underestimated (Sect. 3.1).

Another important variable that reflects the divergence in the model scenarios is the groundwater table. The omission of tides and storm surges leads to an underestimation of seawater intrusion, and therefore an underestimation in the groundwater levels. In model scenario A1 the groundwater level on 1 June 2016 is 0.4-0.6 m lower than the reference case - and observed groundwater levels. In turn, this leads to a reduction of submarine fresh groundwater discharge and a larger inflow of fresh groundwater from the adjacent dune area, which also contributes to the overestimation of the growth of fresh groundwater resources in the study area.

3.4 Scenario B: Geomorphology

Besides hydrodynamics, coastal forcing also drives morphodynamics. Geomorphological changes in the study area from June 2011 until May 2016 consisted of a substantial retreat of the shoreline along the outer perimeter of the Sand Engine (Fig. 1) and a gradual decline in surface elevations (Luijendijk et al., 2017; de Schipper et al., 2016). These morphological changes ~~partially~~ led to a direct loss of fresh groundwater due to coastal erosion, and but to a greater extent to more substantial indirect losses because of a shift and in some situations extension of the intertidal and supratidal area (Fig. 11). The simulation with a

constant surface elevation and bathymetry (B1) shows that the absence of morphodynamics would have led to substantially higher fresh groundwater volumes (approximately 600,000 m³ in June 2016) in the study area (Fig. 12).

Another result of the morphological changes was the development of a lagoon, which led to a gradual decrease of the tidal amplitude and increase of the mean water level in the lagoon from 2011 to 2016, as described in Sect. 2.54.2. The model simulations (reference case) show that this led to a small decrease in the growth of the fresh groundwater volume (70,000 m³ on 1 June 2016) in comparison with model scenario B2 where the water level in the lagoon remained equal to the offshore sea-level (Fig. 12).

The effect of the morphological evolution of the lagoon on the overall growth in the volume of fresh groundwater is relatively small in comparison with model scenario A2 (Sect. 3.3), ~~and C1 and C2~~ (Sect. 3.5), because the inundation extent during storm surges (e.g. high seawater levels) is similar in both situations. The smaller growth of the fresh groundwater lens is primarily caused by a rise of the local groundwater level (around the lagoon), which led to a reduced inflow of fresh groundwater from the adjacent dune area and an increase in (lateral) seawater intrusion.

3.5 Scenario C: Groundwater recharge

On average the yearly precipitation from June 2011 until May 2016 was 938 mm, of which 421 mm fell in March-August (spring-summer) and 517 mm in September-February (autumn-winter). The average yearly potential soil evaporation was 990 mm, of which 695 mm evaporated in March-August and 295 mm in September-February. Thus, the net surplus based on the potential soil evaporation was -52 mm per year. However, moisture levels in the upper part of the unsaturated zone on the Sand Engine were often (especially in spring and summer) too low to attain this potential evaporation rate. ~~and the actual evaporation rate will be was therefore -important (especially in spring and summer) for the net groundwater recharge and consequently the change in fresh groundwater resources~~ in the study area.

Based on the available soil moisture between the surface and the extinction depth (see Sect. 2.54.3), the actual evaporation rate was determined. The resulting groundwater recharge for the respective extinction depths of 0.25, 0.5 and 0.75 m, as shown in Fig. 13, varied between respectively 595 mm (+78 mm relative to the reference case), 516 mm, and 470 (-46 mm relative to the reference case) mm per year. Most of the groundwater recharge (30 to 34%) occurred in autumn and winter seasons, and least (9-12 %) in spring. Therefore, as to be expected, larger extinction depths led to more evaporation and less groundwater recharge, in particular in the spring and summer seasons.

The simulated change in the fresh groundwater volume (Fig. 14) shows that groundwater recharge is one of the primary driving mechanisms, with increases in periods with relatively high percolation rates and a stabilisation or decrease in periods with relatively low percolation rates. Parallel to groundwater recharge, most of the overall growth in the fresh groundwater lens

occurs in the autumn and winter seasons. In periods with low recharge rates, the loss of fresh groundwater – primarily due to submarine groundwater discharge and coastal erosion – leads to a stabilisation or decrease in the overall fresh groundwater volume in the study area. One notable example is the change in the fresh groundwater volume over the period March 2014 to November 2015, which coincides with a substantially lower than average groundwater recharge (Fig. 13).

5 4 Discussion

The measurements and model simulations showed ~~that the a substantial~~ growth of fresh groundwater resources in the Sand Engine between 2011 and 2016, and demonstrated the importance of ~~was affected by~~ both coastal forcing and groundwater recharge for an accurate reproduction of the growth of the freshwater lens. Periods with high rainfall (mainly in autumn and winter) led to sharp increases in the fresh groundwater volume, while periods with little or no rainfall (mainly in spring and summer) led to a net loss of fresh groundwater. Coastal forcing led to land-surface inundations and considerable geomorphological changes in the study area, where inundation events resulted in the salinization of the intertidal and supratidal areas and morphodynamics led to a shift or in some instances extension of these areas. Storm surges in particular ~~awere~~ important for the determination of the growth of the ~~fresh groundwater resources~~ water lens, because these ~~are were~~ the primary drivers of coastal erosion and ~~result led in to~~ the most extensive land-surface inundations.

Comparisons of the calibrated reference model with simulations that excluded coastal hydro- and morphodynamics (model scenario A1 and B1) showed that the incorporation of these processes was essential for a good calibration result and a reliable estimate of the intertidal and supratidal area, and thus essential for the estimation of the growth of the fresh groundwater resources. Besides the impact of land-surface inundations on the freshwater lens, tidal dynamics also played an important role in the height and variability of the groundwater head. For example, ~~the~~ exclusion of these tidal dynamics in ~~the simulation~~ model scenario A1 led ~~to substantial an~~ underestimation of the groundwater heads between 0.4 and 0.6 m at MW1 to 8 ~~(between 0.4 and 0.6 m)~~. In addition, ~~Where the simulation with a constant sea level (equal to MSL model scenario A1)~~ indicates a continued growth in fresh groundwater resources between June 2011 and May 2016, the model scenarios including with tidal dynamics (reference and model scenario A2) ~~and wave setup~~ only indicates a clear (net) growth in fresh groundwater resources between June 2011 and December 2013, and a slight (net) growth or stabilisation in the period thereafter.

For most monitoring wells the simulated transient groundwater head and groundwater salinity corresponded well with measurements. This demonstrates that the hydro- ~~and~~ morphodynamic conditions of the study area could be reproduced with the adopted methodology. Most of the discrepancies between measurements and simulations could be explained by unmapped geological heterogeneity (near MW 3), and mismatches in the initial groundwater salinity distribution (near the coastal dunes), ~~and temporal variations in North Sea salinity (varies due to freshwater influence of the nearby river Rhine)~~. It is important to

note that the simulated groundwater salinity could only be compared with groundwater salinity measurements that were conducted in March 2014. ~~Therefore~~Therefore, it is uncertain to what extent the simulated change in groundwater salinity corresponds with the salinity distributions of the period thereafter.

5 While the close similarity between the measured and simulated groundwater head time series under realistic hydrogeological parameter settings indicate that the tidal dynamics and extent of land-surface inundations are well represented in the model, the modelled wave set-up height and wave run-up height (and related infiltration of seawater) probably differed strongly with reality at times. Small variations in surface elevation, bathymetry, wave height, and wave period could have led to substantial variations in wave set-up and wave run-up. Underestimations of the increase of the groundwater level during some of the storm
10 surges (see Fig. 6) also indicate an underestimation of wave set-up height, wave run-up height or the infiltration of seawater. However, these differences could also be caused by deviations in the modelled and actual morphology at the study site. Despite the frequent topographical measurements, interim morphological changes were not observed. This especially affects periods with rapid and extensive morphological changes, e.g. periods with frequent or intensive storm surges. However, based on the calibration results and comparisons with on-site observations we believe that the adopted approach attained realistic but rough
15 estimates of the effects of wave set-up and wave run-up on the coastal aquifer.

Being the main source of fresh groundwater, groundwater recharge is another important control on the development of the fresh groundwater resources of the sand engine. Vegetation was virtually absent on the Sand Engine, with the exception of a few pockets of dune grass in the last years of the simulated period, and therefore the processes that determine the groundwater
20 recharge rates could be limited to precipitation and soil evaporation. Because the depth to the groundwater table was relatively large (generally larger than 1.5 m below surface ~~in areas that were never inundated~~) in relation to the expected extinction depth, capillary rise will be limited or non-existent and was therefore neglected. Given these simplifications and the aims of this paper, we opted to estimate recharge rates with the described water budget method and analyse the uncertainty with the alterations to the extinction depth.

25 For future studies on the (potential) growth of fresh groundwater resources in coastal areas, it is recommended to monitor wave set-up, wave run-up, and seawater infiltration and evaluate the accuracy of the adopted approach in this research under various conditions. However, this will require frequent topographic measurements to monitor morphological changes in the coastal area, as for example the periodic e.g. one to three monthly topographic surveys (every one to three months) as-that were
30 executed on the Sand Engine. In addition, simulations with unsaturated groundwater ~~models-flow~~ could provide more detailed estimates of the growth in fresh groundwater resources in these areas, because of a potential improvement in the simulation of groundwater recharge and seawater infiltration.

5 Conclusions

Between 2011 and 2016 the growth of the fresh ~~groundwater water~~ lens in a mega-scale beach nourishment (the Sand Engine) ~~the study area~~ was primarily determined by the groundwater recharge, (maximum) land-surface inundations due to storm surges, groundwater in- and outflow and to a lesser extent by geomorphological changes:-

1. Groundwater recharge was the primary contributor to the growth of fresh groundwater in the large concentrated beach nourishment. An accurate estimation of the actual soil evaporation – besides meteorological measurements – will likely be important for the determination of the net input of fresh water in any coastal area.
2. Storm surges produced the most extensive land-surface inundations, and the coinciding infiltration of seawater resulted in a salinization of most of the fresh groundwater volume within this inundation area. The model simulations showed that (accurate) estimates of the maximum wave set-up and wave run-up height are important to delineate the area that is vulnerable to seawater intrusion and reconstruct the growth of fresh groundwater resources.
3. The groundwater level, or better, the hydraulic gradients within the study area determined the inflow of fresh groundwater from adjacent dunes and outflow of (fresh) groundwater via submarine groundwater discharge. Model simulations that underestimate the height of the groundwater level, e.g. by the neglect of tidal dynamics, can therefore lead to considerable overestimation of the fresh groundwater volume.
4. Finally, the geomorphological changes led to a gradual decline of the area that was not affected by seawater intrusion. Together with the increase of the mean water level inside the lagoon, this led to a small restriction of the potential growth in fresh groundwater resources.

In conclusion, the incorporation of hydro- and morphodynamics and accurate estimation of groundwater recharge rate are essential for a reliable estimate of the growth of fresh groundwater resources in dynamic coastal environments.

Appendix A: Model setup Delft3D

The depth-averaged numerical model was constructed with the modelling package Delft3D (Lesser et al., 2004), which numerically integrates the shallow water equations. Prescribed water levels along the off-shore boundary were obtained from permanent tidal stations south (Hoek van Holland) and north (Scheveningen) of the Sand Engine. Lateral boundaries were forced with Neumann conditions, which represent the alongshore water level gradient. Bottom friction is specified with a spatially uniform Chezy coefficient of $65 \text{ m}^{1/2} \text{ s}^{-1}$. A constant eddy viscosity of $0.01 \text{ m}^2 \text{ s}^{-1}$ was applied. The influence of wind was taken into account as a wind shear stress at the free surface.

The model bathymetry and associated nourishment geometry was constructed from a set of 34 bathymetric field surveys at the Sand Engine and the adjacent coastal cell. These surveys were conducted using a jetski-mounted single-beam echo sounder

for the submerged part of the domain and a real-time kinematic differential GPS mounted on an all-terrain vehicle for the dry beach (de Schipper et al., 2016).

Acknowledgements and Data

This research is supported by the Dutch Technology Foundation STW, which is part of the Netherlands Organization for Scientific Research (NWO), and which is partly funded by the Ministry of Economic Affairs. This work was carried out within the Nature-driven nourishment of coastal systems (NatureCoast) program. The data used to produce the results of this paper may be obtained by contacting the corresponding author.

References

- Allen, R. G., Pereira, L. S., Raes, D. and Smith, M.: Crop Evapotranspiration-Guidelines for Computing Crop Water Requirements, Rome., 1998.
- Brown, S., Nicholls, R. J., Hanson, S., Brundrit, G., Dearing, J. A., Dickson, M. E., Gallop, S. L., Gao, S., Haigh, I. D., Hinkel, J., Jiménez, J. a., Klein, R. J. T., Kron, W., Lázár, A. N., Neves, C. F., Newton, A., Pattiaratchi, C., Payo, A., Pye, K., Sánchez-Arcilla, A., Siddall, M., Shareef, A., Tompkins, E. L., Vafeidis, A. T., van Maanen, B., Ward, P. J. and Woodroffe, C. D.: Shifting perspectives on coastal impacts and adaptation, *Nat. Clim. Chang.*, 4(9), 752–755, doi:10.1038/nclimate2344, 2014.
- Colombani, N., Osti, A., Volta, G. and Mastrocicco, M.: Impact of Climate Change on Salinization of Coastal Water Resources, *Water Resour. Manag.*, 30(7), 2483–2496, doi:10.1007/s11269-016-1292-z, 2016.
- Falkland, A. C. and Woodroffe, C. D.: Chapter 19 - Geology and Hydrogeology of Tarawa and Christmas Island, Kiribati, in *Developments in Sedimentology*, vol. 54, edited by H. L. Vacher and T. M. Quinn, pp. 577–610, Elsevier., 2004.
- Famiglietti, J. S.: The global groundwater crisis, *Nat. Clim. Chang.*, 4(11), 945–948, doi:10.1038/nclimate2425, 2014.
- Ferguson, G. and Gleeson, T.: Vulnerability of coastal aquifers to groundwater use and climate change, *Nat. Clim. Chang.*, 2(5), 342–345, doi:10.1038/nclimate1413, 2012.
- FitzGerald, D. M., Fenster, M. S., Argow, B. A. and Buynevich, I. V.: Coastal Impacts Due to Sea-Level Rise, *Annu. Rev. Earth Planet. Sci.*, 36(1), 601–647, doi:10.1146/annurev.earth.35.031306.140139, 2008.
- Giardino, A., Mulder, J., Ronde, J. de and Stronkhorst, J.: Sustainable Development of the Dutch Coast: Present and Future, *J. Coast. Res.*, 61(61), 166–172, doi:10.2112/SI61-001.11, 2011.
- Gubler, S., Gruber, S. and Purves, R. S.: Uncertainties of parameterized surface downward clear-sky shortwave and all-sky longwave radiation, *Atmos. Chem. Phys.*, 12(11), 5077–5098, doi:10.5194/acp-12-5077-2012, 2012.
- Holding, S. and Allen, D. M.: From days to decades: numerical modelling of freshwater lens response to climate change stressors on small low-lying islands, *Hydrol. Earth Syst. Sci.*, 19(2), 933–949, doi:10.5194/hess-19-933-2015, 2015.
- Huizer, S., Oude Essink, G. H. P. and Bierkens, M. F. P.: Fresh groundwater resources in a large sand replenishment, *Hydrol.*

- Earth Syst. Sci., 20(8), 3149–3166, doi:10.5194/hess-20-3149-2016, 2016.
- Huizer, S., Karaoulis, M. C., Oude Essink, G. H. P. and Bierkens, M. F. P.: Monitoring and simulation of salinity changes in response to tide and storm surges in a sandy coastal aquifer system, *Water Resour. Res.*, 53(8), 6487–6509, doi:10.1002/2016WR020339, 2017.
- 5 Kabat, P., Fresco, L. O., Stive, M. J. F., Veerman, C. P., van Alphen, J. S. L. J., Parmet, B. W. A. H., Hazeleger, W. and Katsman, C. A.: Dutch coasts in transition, *Nat. Geosci.*, 2(7), 450–452, doi:10.1038/ngeo572, 2009.
- Keijzers, J. G. S., Giardino, A., Poortinga, A., Mulder, J. P. M., Riksen, M. J. P. M. and Santinelli, G.: Adaptation strategies to maintain dunes as flexible coastal flood defense in The Netherlands, *Mitig. Adapt. Strateg. Glob. Chang.*, 20(6), 913–928, doi:10.1007/s11027-014-9579-y, 2015.
- 10 van Koningsveld, M. and Mulder, J. P. M.: Sustainable Coastal Policy Developments in The Netherlands. A Systematic Approach Revealed, *J. Coast. Res.*, 202, 375–385, doi:10.2112/1551-5036(2004)020[0375:SCPDIT]2.0.CO;2, 2004.
- Langevin, C. D., Thorne Jr., D. T., Dausman, A., Sukop, M. C. and Guo, W.: SEAWAT version 4: A Computer Program for Simulation of Multi-Species Solute and Heat Transport, in *U.S. Geological Survey Techniques and Methods 6*, p. 39, US Geological Survey, Reston, Virginia, USA., 2008.
- 15 Lesser, G. R., Roelvink, J. A., van Kester, J. A. T. M. and Stelling, G. S.: Development and validation of a three-dimensional morphological model, *Coast. Eng.*, 51(8–9), 883–915, doi:10.1016/j.coastaleng.2004.07.014, 2004.
- Luijendijk, A. P., Ranasinghe, R., de Schipper, M. A., Huisman, B. A., Swinkels, C. M., Walstra, D. J. R. and Stive, M. J. F.: The initial morphological response of the Sand Engine: A process-based modelling study, *Coast. Eng.*, 119(August 2015), 1–14, doi:10.1016/j.coastaleng.2016.09.005, 2017.
- 20 McDonald, M. G., Harbaugh, A. W., Orr, B. R. and Ackerman, D. J.: A method of converting no-flow cells to variable-head cells for the U.S. Geological Survey modular finite-difference ground-water flow model, *U.S. Geological Survey Open-File Report 91-536*, Reston, Virginia, USA., 1992.
- McGranahan, G., Balk, D. and Anderson, B.: The rising tide: assessing the risks of climate change and human settlements in low elevation coastal zones, *Environ. Urban.*, 19(1), 17–37, doi:10.1177/0956247807076960, 2007.
- 25 Michael, H. A., Russoniello, C. J. and Byron, L. A.: Global assessment of vulnerability to sea-level rise in topography-limited and recharge-limited coastal groundwater systems, *Water Resour. Res.*, 49(4), 2228–2240, doi:10.1002/wrcr.20213, 2013.
- Millero, F. J.: Physicochemical Controls on Seawater, in *Treatise on Geochemistry*, Chapter 6.01, edited by H. Elderfield, pp. 1–21, Elsevier, Amsterdam., 2003.
- Mulligan, A. E., Langevin, C. and Post, V. E. A.: Tidal Boundary Conditions in SEAWAT, *Ground Water*, 49(6), 866–879, doi:10.1111/j.1745-6584.2010.00788.x, 2011.
- 30 Nicholls, R.: Planning for the Impacts of Sea Level Rise, *Oceanography*, 24(2), 144–157, doi:10.5670/oceanog.2011.34, 2011.
- Passeri, D. L., Hagen, S. C., Medeiros, S. C., Bilskie, M. V., Alizad, K. and Wang, D.: The dynamic effects of sea level rise on low-gradient coastal landscapes: A review, *Earth's Futur.*, 3(6), 159–181, doi:10.1002/2015EF000298, 2015.
- Pauw, P. S., Oude Essink, G. H. P., Leijnse, A., Vandenbohede, A., Groen, J. and van der Zee, S. E. A. T. M.: Regional scale

- impact of tidal forcing on groundwater flow in unconfined coastal aquifers, *J. Hydrol.*, 517, 269–283, doi:10.1016/j.jhydrol.2014.05.042, 2014.
- Post, V. E. A. and Houben, G. J.: Density-driven vertical transport of saltwater through the freshwater lens on the island of Baltrum (Germany) following the 1962 storm flood, *J. Hydrol.*, 551, 689–702, doi:10.1016/j.jhydrol.2017.02.007, 2017.
- 5 Rasmussen, P., Sonnenborg, T. O., Goncear, G. and Hinsby, K.: Assessing impacts of climate change, sea level rise, and drainage canals on saltwater intrusion to coastal aquifer, *Hydrol. Earth Syst. Sci.*, 17(1), 421–443, doi:10.5194/hess-17-421-2013, 2013.
- Rosenzweig, C. and Solecki, W.: Introduction to Climate Change Adaptation in New York City: Building a Risk Management Response, *Ann. N. Y. Acad. Sci.*, 1196, 13–17, doi:10.1111/j.1749-6632.2009.05415_1.x, 2010.
- 10 Rotzoll, K. and Fletcher, C. H.: Assessment of groundwater inundation as a consequence of sea-level rise, *Nat. Clim. Chang.*, 3(5), 477–481, doi:10.1038/nclimate1725, 2012.
- de Schipper, M. A., de Vries, S., Ruessink, G., de Zeeuw, R. C., Rutten, J., van Gelder-Maas, C. and Stive, M. J. F.: Initial spreading of a mega feeder nourishment: Observations of the Sand Engine pilot project, *Coast. Eng.*, 111, 23–38, doi:10.1016/j.coastaleng.2015.10.011, 2016.
- 15 Shah, N., Nachabe, M. and Ross, M.: Extinction Depth and Evapotranspiration from Ground Water under Selected Land Covers, *Ground Water*, 45(3), 329–338, doi:10.1111/j.1745-6584.2007.00302.x, 2007.
- Slobbe, E., Vriend, H. J., Aarninkhof, S. G. J., Lulofs, K., Vries, M. and Dircke, P.: Building with Nature: in search of resilient storm surge protection strategies, *Nat. Hazards*, 65(1), 947–966, doi:10.1007/s11069-012-0342-y, 2013.
- Sterr, H.: Assessment of Vulnerability and Adaptation to Sea-Level Rise for the Coastal Zone of Germany, *J. Coast. Res.*, 20 242(2), 380–393, doi:10.2112/07A-0011.1, 2008.
- Stive, M. J. F., de Schipper, M. A., Luijendijk, A. P., Aarninkhof, S. G. J., van Gelder-Maas, C., van Thiel de Vries, J. S. M., de Vries, S., Henriquez, M., Marx, S. and Ranasinghe, R.: A New Alternative to Saving Our Beaches from Sea-Level Rise: The Sand Engine, *J. Coast. Res.*, 290(5), 1001–1008, doi:10.2112/JCOASTRES-D-13-00070.1, 2013.
- Stockdon, H. F., Holman, R. A., Howd, P. A. and Sallenger, A. H.: Empirical parameterization of setup, swash, and runup, 25 *Coast. Eng.*, 53(7), 573–588, doi:10.1016/j.coastaleng.2005.12.005, 2006.
- Stuurman, R.: Conclusions drainage meeting MOS-Boskalis/Van Oord/Deltares (in Dutch), version 3., Deltares, Utrecht, The Netherlands., 2010.
- Stuyfzand, P. J.: Predicting the effects of sea spray deposition and evapoconcentration on shallow coastal groundwater salinity under various vegetation types, in *Proceedings of the 23rd Salt Water Intrusion Meeting*, pp. 401–404, Husum, Germany., 30 2014.
- Taylor, R. G., Scanlon, B., Döll, P., Rodell, M., van Beek, R., Wada, Y., Longuevergne, L., Leblanc, M., Famiglietti, J. S., Edmunds, M., Konikow, L., Green, T. R., Chen, J., Taniguchi, M., Bierkens, M. F. P., MacDonald, A., Fan, Y., Maxwell, R. M., Yechieli, Y., Gurdak, J. J., Allen, D. M., Shamsudduha, M., Hiscock, K., Yeh, P. J.-F., Holman, I., Treidel, H., Beek, R. van, Wada, Y., Leblanc, Laurent Longuevergne, M., Famiglietti, J. S., Edmunds, M., Konikow, L., Green, T. R., Chen, J.,

- Taniguchi, M., MacDonald, A., Fan, Y., Maxwell, R. M., Yechieli, Y., Gurdak, J. J., Allen, D. M., Shamsudduha, M., Hiscock, K., Yeh, P. J.-F., Holman, I. and Treidel, H.: Ground water and climate change, *Nat. Clim. Chang.*, 3(April), 322–329, doi:10.1038/NCLIMATE1744, 2013.
- Voortman, B. R., Bartholomeus, R. P., Van Der Zee, S. E. A. T. M., Bierkens, M. F. P. and Witte, J. P. M.: Quantifying energy and water fluxes in dry dune ecosystems of the Netherlands, *Hydrol. Earth Syst. Sci.*, 19(9), 3787–3805, doi:10.5194/hess-19-3787-2015, 2015.
- de Vries, S., Radermacher, M., de Schipper, M. A. and Stive, M. J. F.: Tidal dynamics in the Sand Motor lagoon, in *E-proceedings of the 36th IAHR World Congress*, pp. 1–6, The Hague, Netherlands. [online] Available from: <http://resolver.tudelft.nl/uuid:e49d8911-72c2-4f6c-a8b4-7009954134c0>, 2015.
- 10 Webb, M. D. and Howard, K. W. F.: Modeling the Transient Response of Saline Intrusion to Rising Sea-Levels, *Ground Water*, 49(4), 560–569, doi:10.1111/j.1745-6584.2010.00758.x, 2011.
- Wong, P. P., Losada, I. J., Gattuso, J.-P., Hinkel, J., Khattabi, A., McInnes, K. L., Saito, Y. and Sallenger, A.: Coastal systems and low-lying areas, in *Climate Change 2014: Impacts, Adaptation, and Vulnerability.*, pp. 361–409, Cambridge University Press, Cambridge, United Kingdom and New York, NY, USA., 2014.
- 15 Wösten, J. H. M., Veerman, G. J., DeGroot, W. J. M. and Stolte, J.: Water retention and conductivity parameters of soils in the Netherlands: The Staring series (in Dutch), Wageningen., 2001.

Tables

Table 1. Calibrated parameter values implemented in the model simulations.

Layer type	Parameter	Sand Engine	Dunes
All model layers	Longitudinal dispersivity	0.1 m	
	Transverse dispersivity	0.01 m	
	Effective porosity	0.30	
	Specific storage	$2 \cdot 10^{-4}$	
Phreatic aquifers	Horizontal hydraulic conductivity	28.8 m d ⁻¹	10 m d ⁻¹
1a: [above -6 m NAP]	Vertical hydraulic conductivity	14.4 m d ⁻¹	5 m d ⁻¹
1b: [-6.5 to -8 m NAP]	Specific yield	0.20	
Aquitards	Horizontal hydraulic conductivity	$5.76 \cdot 10^{-2}$ m d ⁻¹	
1: [-6 to -6.5 m NAP]	Vertical hydraulic conductivity	$5.76 \cdot 10^{-3}$ m d ⁻¹	
2: [-8 to -9 m NAP]			
Aquifer	Horizontal hydraulic conductivity	10 m d ⁻¹	
2: [-9 to -17 m NAP]	Vertical hydraulic conductivity	5 m d ⁻¹	

5 **Table 2.** Summary of model scenarios (grey items are equal to reference case)

Model scenario	North sea water level	Lagoon water level	Extinction depth
Reference	Tide gauge + wave run-up	Hindcast Delft3D model	0.5 m-surface
A : Inundation (Sect. 2.4.1)	1 : MSL 2011-2016 (constant sea-level)		
	2 : Tide gauge (no wave set-up or run-up)	Hindcast Delft3D model	0.5 m-surface
B : Morphology (Sect. 2.4.2)	1 : Constant morphology / no morphological change		
	Tide gauge + wave run-up	2 : Tide gauge (equal to North Sea)	0.5 m-surface
C : Recharge (Sect. 2.4.3)	Tide gauge + wave run-up	Hindcast Delft3D model	1 : 0.25 m-surface
			2 : 0.75 m-surface

Figures

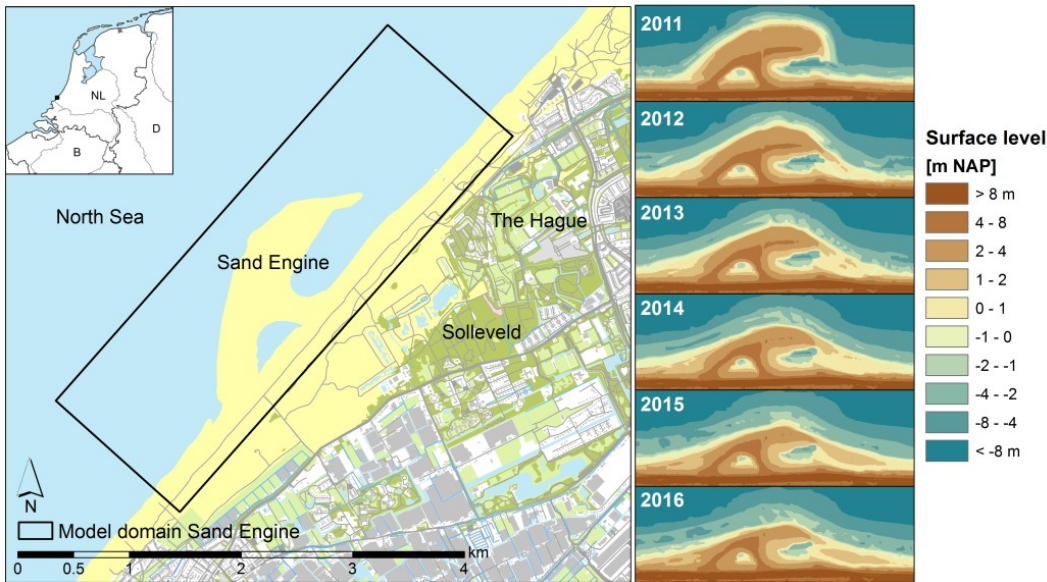


Figure 1. Map of the study area with the model domain (left), and the change of the surface level in the study area (morphological development) between 2011 and 2016 (right) in meters with respect to the NAP datum, which is approximately equal to mean sea-level.

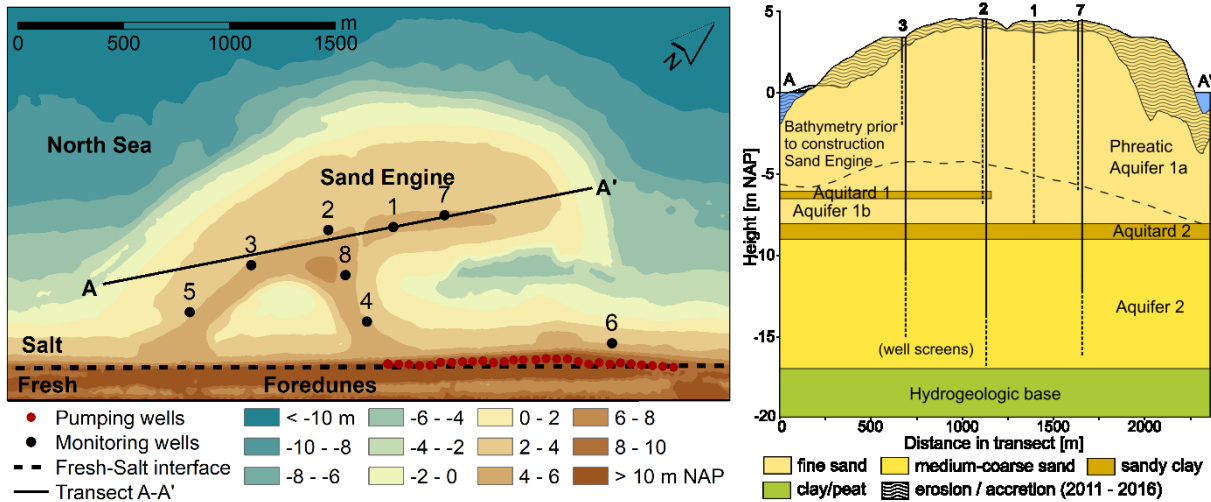


Figure 2. Contour map of topographic height (in meters with respect to the NAP datum) and hydrogeological cross section (along black line, A – A') of the Sand Engine between 1 and 3 August 2011, with the location of monitoring wells (black points) and pumping wells (red points). The dashed line in the cross section marks the bathymetry prior to the construction of the Sand Engine, and the wave-shading pattern marks the erosion or accretion of sand between 3 August 2011 and 3 June 2016.

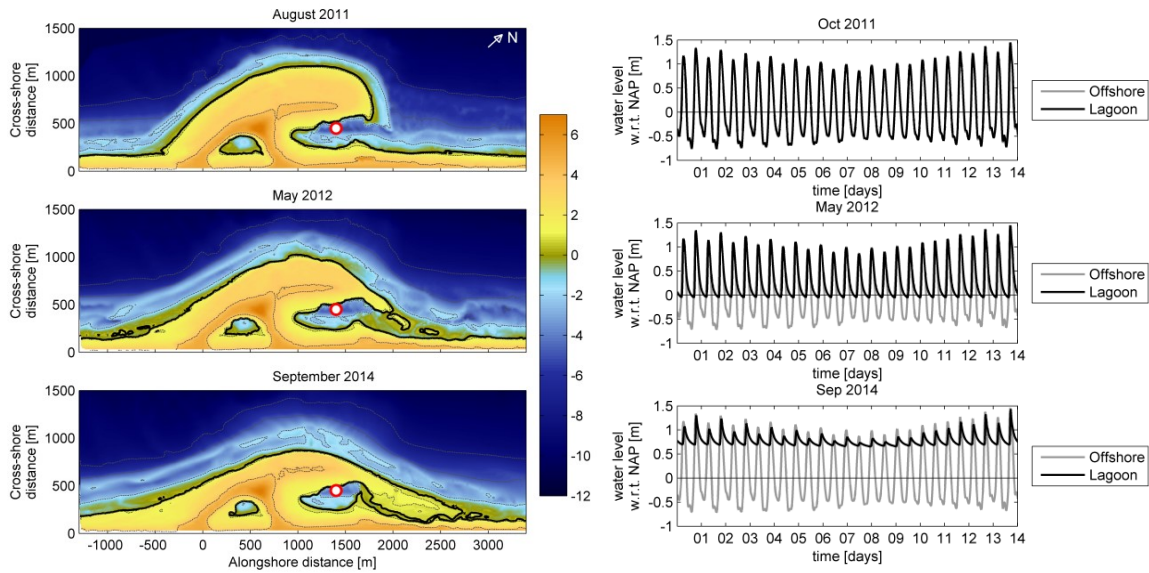


Figure 3. The images show three measurements of distinct morphologies of the Sand Engine domain in 2011, 2012 and 2014. The red circle represents the location where tides inside the lagoon are calculated with the Delft3D flow model in de Vries et al. (2015). The graphs show the simulated tides inside and outside the lagoon as obtained with the three successive morphologies.

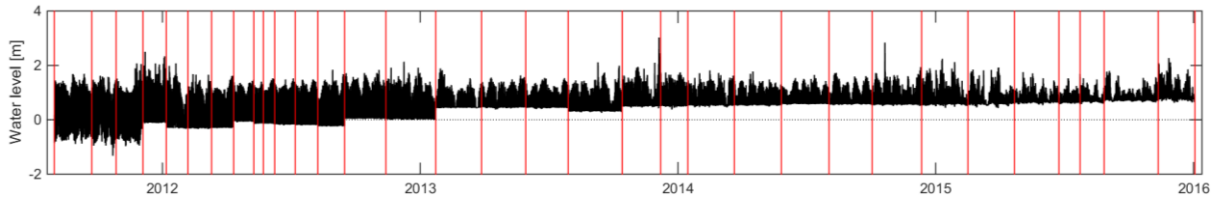


Figure 4. Simulated water level (in m NAP) inside the lagoon from 3 August 2011 to 4 January 2016, where the vertical red lines signify topographic surveys.

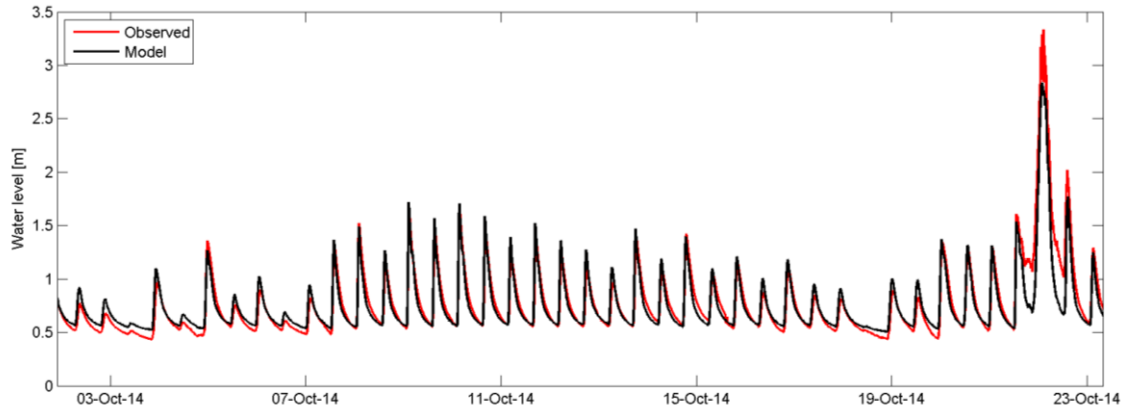
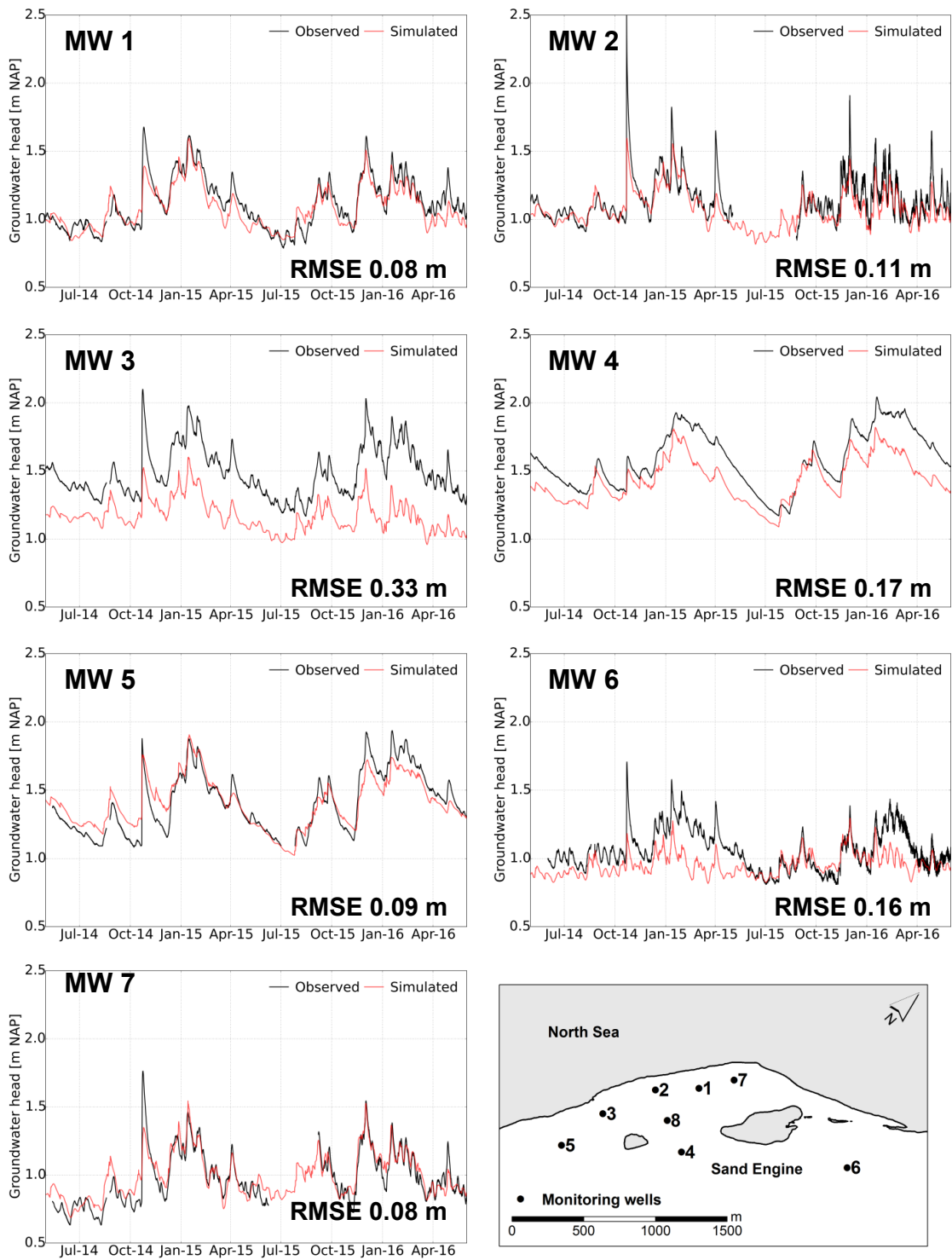


Figure 5. Observed and simulated water levels in the lagoon from 2-23 October 2014, which contains a fortnightly spring-neap tidal cycle and a storm surge around 22 October.



5 **Figure 6.** Observed and simulated groundwater level in MW 1–7 (phreatic aquifer 1: see Figure 2), from May 2014 to June 2016.

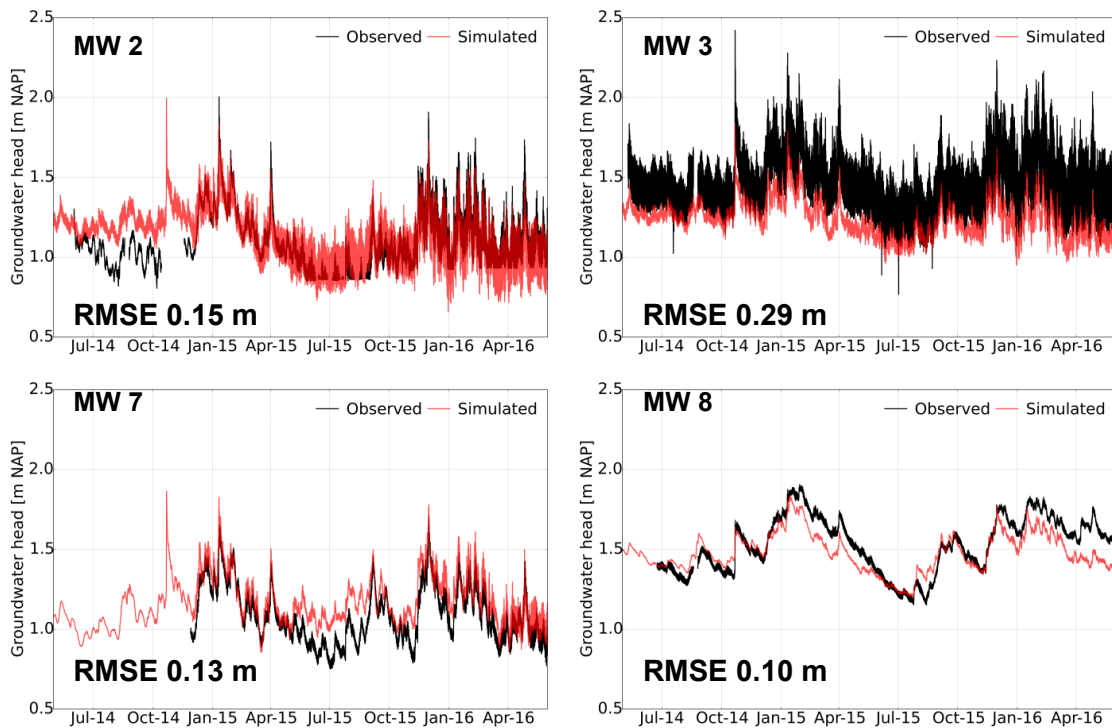


Figure 7. Observed and simulated groundwater head in MW 2, 3, 7 and 8 (in aquifer 2: see **Error! Reference source not found.**), from May 2014 to June 2016.

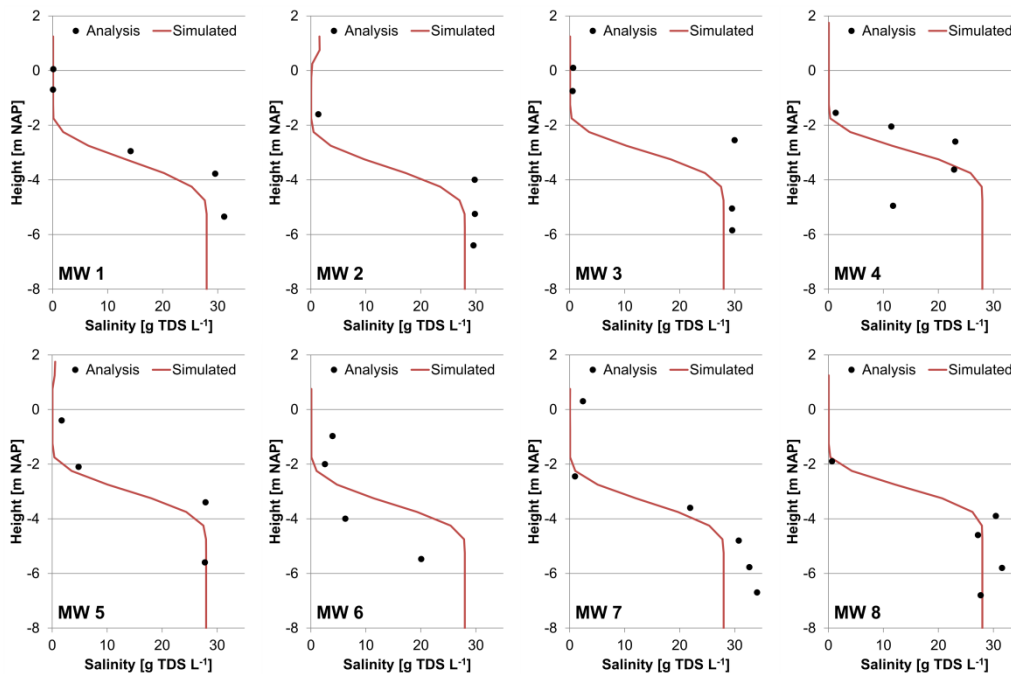
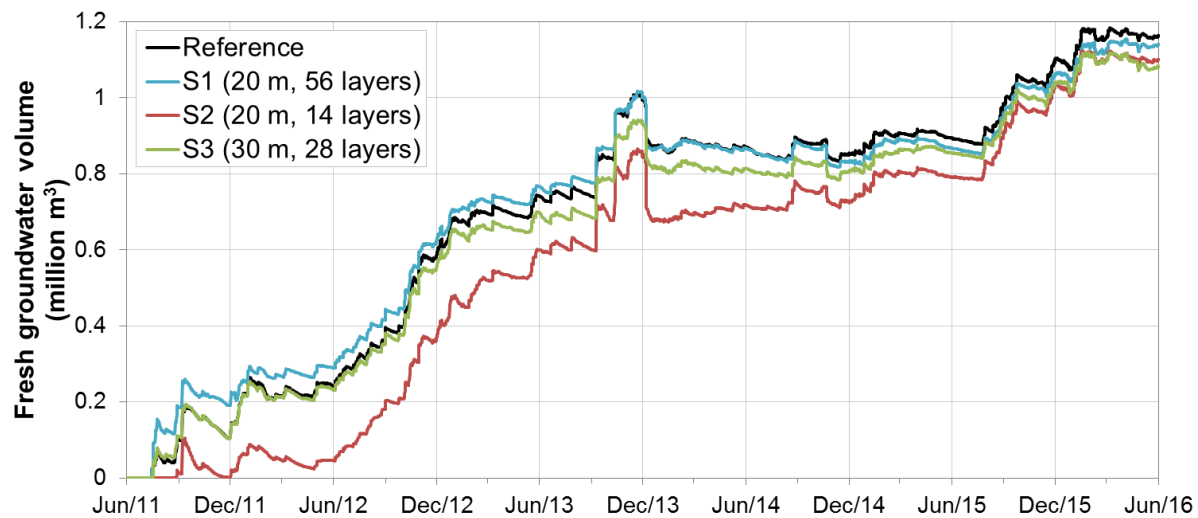


Figure 8. Depth profiles with the observed (black points) and simulated (red line) groundwater salinity in MW 1-8, obtained between 10 and 14 March 2014.



5 **Figure 9.** Change in the volume of fresh groundwater from June 2011 to May 2016 for the calibrated model (reference case) and model convergence simulations S1, S2 and S3.

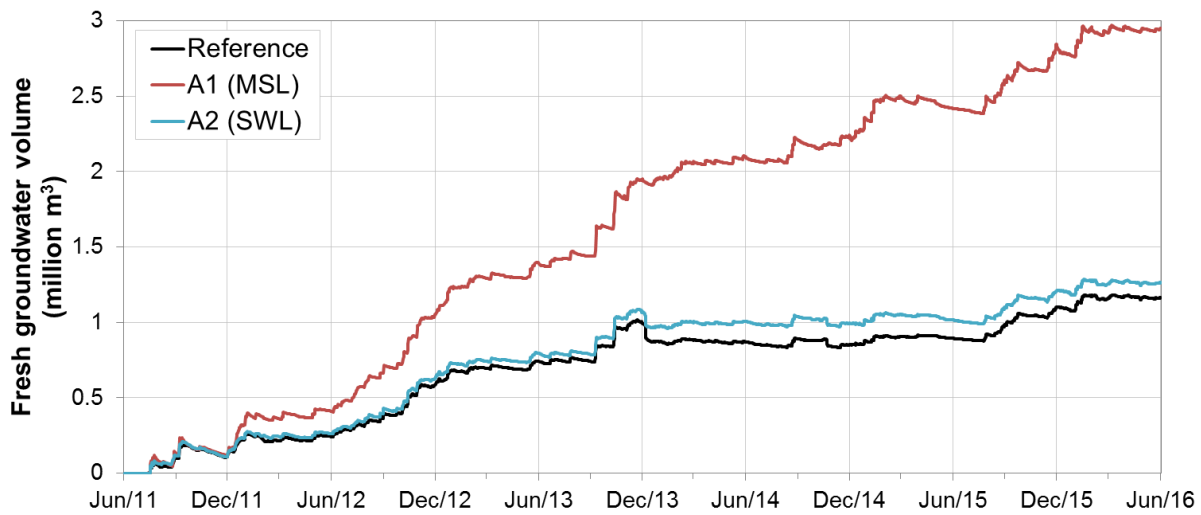


Figure 10. Simulated increase in the volume of fresh groundwater in the model domain from June 2011 to May 2016, for the reference model (incl. wave set-up and wave run-up), model scenario A1 (constant MSL), and model scenario A2 (SWL).

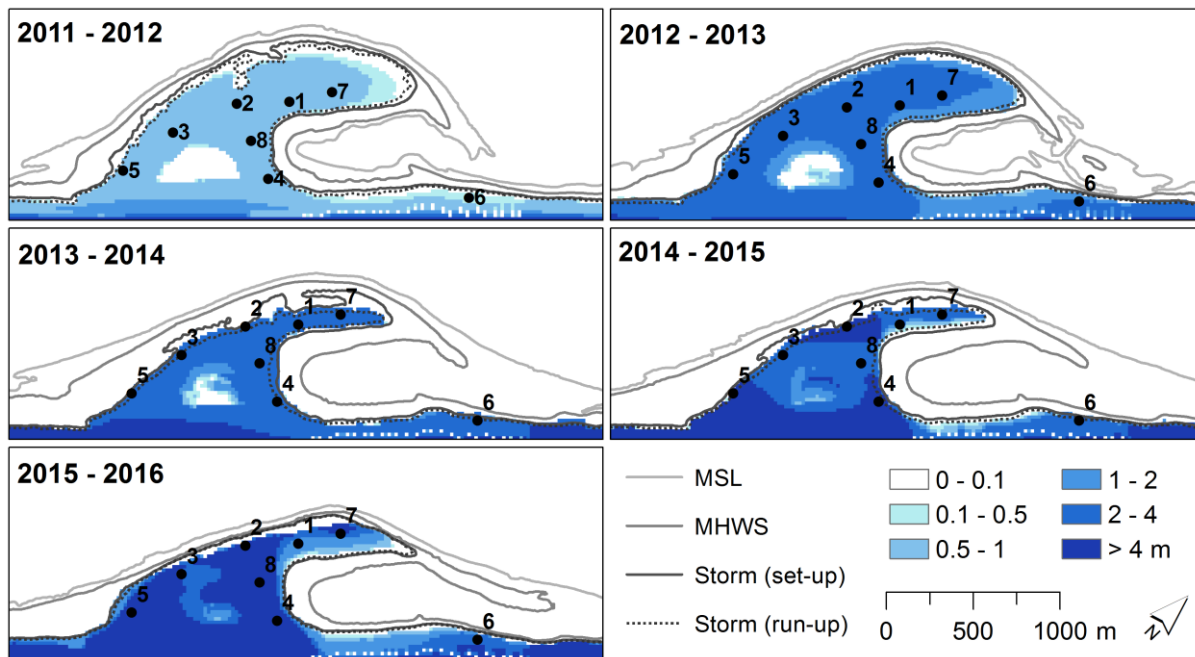


Figure 11. Thickness of fresh groundwater lens [m] 1, 2, 3, 4 and 5 years after the construction of the Sand Engine, with contour lines of the MSL, MHWS, and (estimated) maximum wave set-up and wave run-up height of every yearly period.

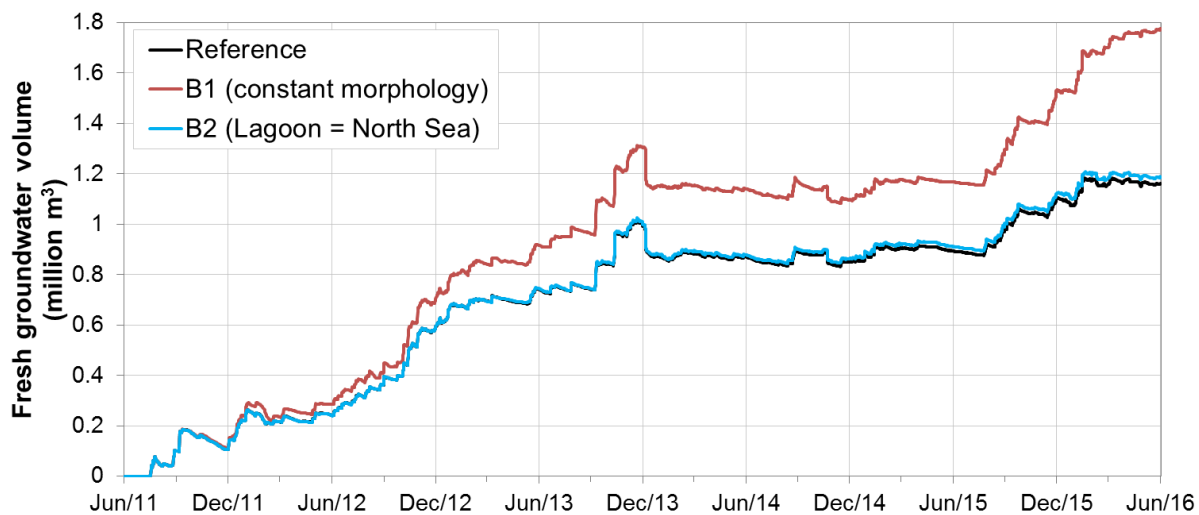
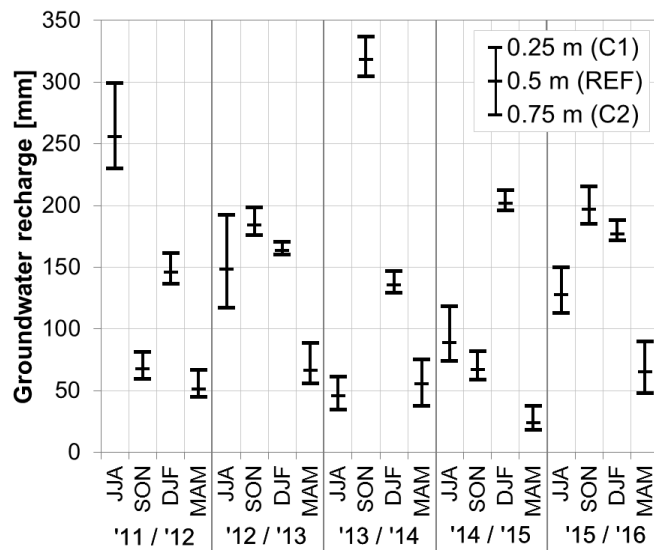


Figure 12. Increase in the volume of fresh groundwater from June 2011 to May 2016, for the reference case (with hindcast of the lagoon water level), model scenario B1 (constant morphology), and model scenario B2 (lagoon water level equal to North Sea).



5 **Figure 13.** Simulated groundwater recharge per season (JJA: summer, SON: autumn, DJF: winter, MAM: spring) from June 2011 until May 2016, for the reference model (extinction depth 0.5 m), model scenario C1 (extinction depth 0.25 m: less evaporation), and model scenario C2 (extinction depth 0.75 m: more evaporation).

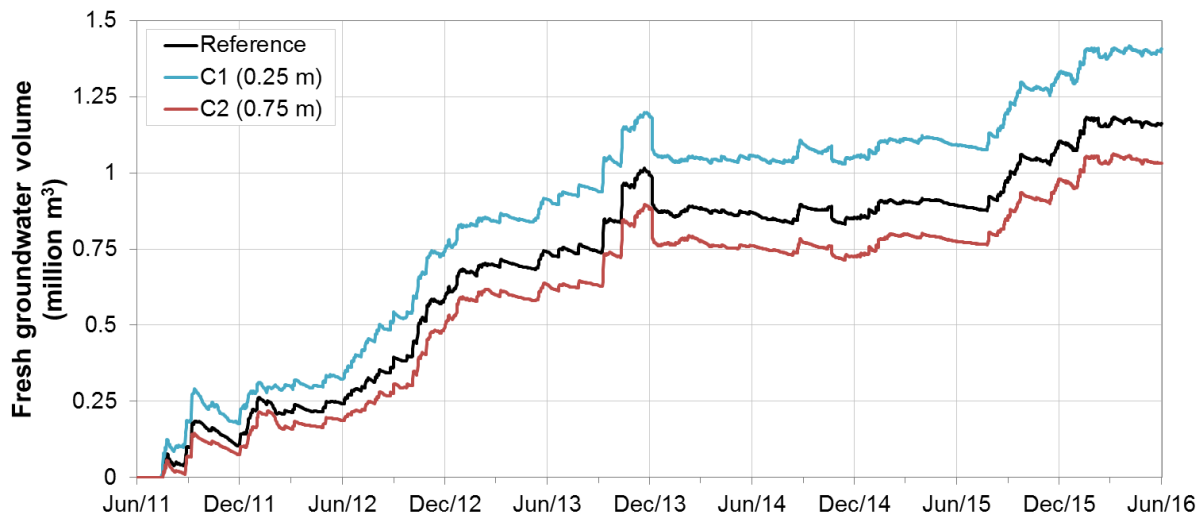


Figure 14. Increase in the fresh groundwater volume from June 2011 until May 2016, with the calibrated model with an extinction depth of 0.5 m (Sect. 2.54.3), a 50 % decreased extinction depth of 0.25 m (C1), and a 50 % increased extinction depth of 0.75 m (C2).