

# **Interactive comment on “Precipitation alters plastic film mulching impacts on soil respiration in an arid area of Northwest China” by Guanghui Ming et al.**

**Guanghui Ming**

Authors’ responses (blue color) start with “response”.

The paper titled “Precipitation alters plastic film mulching impacts on soil respiration in an arid area of Northwest China” investigates the influence of plastic film mulch on soil respiration and illuminates the complex relationship precipitation has on these processes. The paper is generally well written, of sufficient scientific quality and of interest for publication in Hydrology and Earth System Sciences, with some modification (see below). However, there are several larger issues with the structure of the paper that need to be addressed. Chiefly, the discussion does not integrate the results of the study and discuss the implications of the work on the broader literature and “real world” scenarios in enough detail. One critical question that I do not believe has been sufficiently answered is “what is the importance of the work?”. This is a critical question that needs to be clearly addressed in the discussion. Additionally, there are also several issues with flow and brevity in the manuscript, particularly the introduction and discussion, that needs to be addressed. I suggest a re-writing/structuring of the discussion to improve the flow of the manuscript and further discussion on the implications of their results to the broader community

**Response:** Thanks the anonymous referee a lot for the constructive comments that helped us to improve the quality of our manuscript. We have restructured our manuscript, deleted non-relevant sentences and rewritten some sentences to broaden the research meaning and make it more logical and readable as the referee suggested. Below we address all the comments on a point-by-point basis.

**Specific Comments:**

**Introduction:**

The introduction is quite long and should be condensed, only keeping what is critical to the paper. Ideally, the introduction would be shortened by \_1 page.

**Response:** Done. The introduction has been condensed with moving non-relevant sentences.

To that end, I suggest condensing the temperature and moisture effects into 1 paragraph.

**Response:** The temperature and moisture effect paragraphs have been deleted.

Additionally, the first paragraph is very long, I suggest separating them into two

paragraphs at line 67, as it is a natural break in the topics from general background to China focused.

Response: Done. The first paragraph has been separated into two paragraphs as per the referee's suggestion.

Results:

Throughout the results there are statements that belong in the discussion, particularly where the authors state a reason for a given trend. For instance, P22L496-513 are relating the current work to past work, while giving the regional/climatic context. This paragraph is not results but discussion. Please move these sentences/paragraphs, and others like it, to the discussion. Additionally, there are many instances of the results being repeated in the discussion (see comment below).

Response: The paragraph has been moved into the discussion. The repeated instances of the results have been removed.

The analysis between other studies of differing climates (P22L496-513) is interesting but needs further clarification and integration into the discussion. Furthermore, it would be very instructive to have each of the studies highlighted in Figure 10, where each point is displayed as a unique symbol or color to help the reader differentiate which point is from which study.

Response: Done. The paragraph has been clarified and moved into the discussion as per the reviewer's suggestion. The climate and reference of each study has been highlighted in Figure 10.

Discussion:

There are several sentences in the discussion where the results are being restated (e.g., "Our results indicate that the soil respiration in the ridges of the mulched field (mr) as measured by uncovering the plastic mulch was greater than in the furrows (mf). This finding indicates that much of the CO<sub>2</sub> gathers beneath the plastic mulch because of the plastic barrier.") Although at times this is useful, I suggest removing these sentences to help with flow and brevity of the manuscript, which is quite long. Alternatively, these sentences can be reworded to combine both the results and the implications, which would greatly improve the flow of the discussion. For instance, the above quotation could be rewritten as "Soil respiration in the ridges of the mulched field (mr) was much greater than in the furrows (mf), indicating that CO<sub>2</sub> gathers beneath the plastic mulch barrier". Please go through the manuscript and adjust instances of this issue. The discussion needs to be significantly shortened; however, this can be mostly achieved through removing repetition of results.

Response: Thanks for your patient guidance and the constructive advice. We have reworded the discussion with removing repetition of results and combining the results and the implications throughout the manuscript.

How do your fitted respiration/soil temperature or SWC curves compare to the literature? Are your values representative of the broader literature? This would be a useful

comparison in the discussion (particularly section 4.2).

Response: We have compared our results with broader literature.

Although the discussion is long, it lacks a strong comparison of the results to global trends, nor does it integrate the components (temperature, soil moisture, etc.) of soil respiration adequately. There needs to be a final paragraph that integrates the effects of plastic mulch on soil respiration and the broader implications of the work. Within this paragraph it is critical to highlight what the new findings of this study are within the context of the broader literature.

Response: We have integrated the affecting factors of soil respiration, compared our new findings with other experiments and broaden the implications of our results in the discussion. We also highlighted the new findings in the summary

Conclusions:

In the conclusion, the authors state that there was increased mineralization, yet this was not discussed in the discussion. It would be prudent to include a short discussion of the effects of the plastic mulch in this context, perhaps including it in the above discussion.

Response: The effect of plastic mulch on mineralization has been added into the second paragraph of the discussion.

Technical comments:

P1L33 missing comma before “while”.

Response: Done. This has been checked over the whole manuscript.

P3L113-117 this sentence is awkward and long, I suggest breaking the sentence into two separate sentences.

Response: The sentence has been deleted.

P9L295 remove the “-“after 10

Response: Done.

P21L477 remove the “s” from Soil respirations.

Response: Done.

P21L478 missing comma before “although”

Response: The sentence has been deleted.

P22L494 please provide the statistics for the use of significantly. If statistics were not used to quantify the significance of the relationship, please remove significantly as it specifically refers to a statistical significance.

Response: Done.

P23L526 missing space between “the” and “accelerated”

Response: The sentence has been deleted.

P24L533-534 this is an awkward sentence, I suggest rewording to “This finding indicates that CO<sub>2</sub> from soil respiration gathers beneath the plastic mulch barrier, resulting in a greater flux of CO<sub>2</sub>.”

Response: This sentence has been deleted.

P24L563 the period at the end of the sentence is misplaced.

Response: The period has been properly placed.

P25L574-581 these sentences are a repeat of results, please delete.

Response: Done.

P25L574-594 this paragraph does not add to the manuscript at simply restates the results and part of the introduction. I suggest removing the paragraph.

Response: Done.

P25L596 please remove the “-“between “high water content”.

Response: Done.

P26L608-609 awkward sentence, please reword to “There was poor correlation between soil respiration and the soil temperature in different parts of the mulched and non-mulched fields”.

Response: Done.

P26L627-630 this is a run-on sentence, please revise into two separate sentences.

Response: This sentence has been deleted.

P27L657 please remove the “s” from respirations.

Response: Done.

Figure 3: it is unclear from your methods why certain datasets are left out of these graphs (e.g., mp in 2014 and 2015). Was the data not collected? Please clarify this discrepancy between your methods, which states that each was measured for all years, and your display of the data in the text of the methods or results.

Response: The missed datasets in 2014 and 2015 were due to no observation. This has been clarified in the methods.

# **Interactive comment on “Precipitation alters plastic film mulching impacts on soil respiration in an arid area of Northwest China” by Guanghui Ming et al.**

## **Guanghui Ming**

Authors' responses (blue color) start with “response”.

-This manuscript reports findings from a field experiment on the effect of plastic mulching on CO<sub>2</sub> emissions from soil furrows and ridges, in relationship to temperature and soil moisture. This topic is of interest to readers of HESS. However, the presentation of the results and discussion in this manuscript is unclear, making it difficult to interpret and evaluate the findings. Furthermore, the final conclusions are not supported by a critical evaluation of the uncertainty and statistical power of the results.

Response: Thanks a lot for the reviewer's constructive comments that helped us to improve the quality of our manuscript. We have restructured/rewritten our results and discussion as per the reviewer's suggestions and the uncertainty was evaluated with statistical analysis to support our results. Below we address all the comments on a point-by-point basis.

Specific comments:

- The introduction is very long and contains a lot of unnecessary information

Response: The introduction has been condensed with moving non-relevant sentences. Thanks.

- Consistent references to figures are missing from the text

Response: The missing references have been added in the text according to the reviewer's suggestions. Thanks.

- Throughout the paper, reference is made to the seasonal respiration. However, it is not clearly defined what is meant with this. I assume it refers to the growing season. However, how many days was this exactly? Was the length of the season the same number of days each year? How was this decided?

Response: The seasonal respiration refers soil respiration in the cotton growing season. The planting date of the cotton depends on the local temperature and thus differs in the three experimental years. Generally, the growing season is from germination in late April to harvest in late September, about 150 days. We have addressed it in the revised manuscript.

- Fig 3: Why was CO<sub>2</sub> respiration measured for a different number of days in the

different years? This should be addressed in the methods and results section.

Response: Study periods were concentrated on the growing season as soil respiration in non-growing seasons is extremely low. The experiments in the year 2014 and 2015 began in the bud stage when cotton began to grow faster. Therefore, the lengths of measured periods are different for the three years, with 95, 60, 100 days, respectively. We have addressed it in the methods and results section. Thanks.

- Fig 7: Where do the data of soil respiration with days after irrigation come from? The method section states that respiration was measured every 2 weeks.

Response: We are sorry for the misleading. Actually, soil respiration experiments were carried out randomly between two irrigation events, i.e., the measurement day can be any day after an irrigation event. We revised the corresponding sentences accordingly. Thanks.

- Page 22, line 500-518. Looking at the figure, the data points form a cloud with one outlier. It is not appropriate to assume a linear correlation here.

Response: Inspired by the comment, we have reviewed more literatures and found one more experimental result in subtropical monsoon climate with precipitation larger than 1000 mm, which is shown in the figure below. We also carried out the statistical test to support the linear correlation conclusion. Thanks.

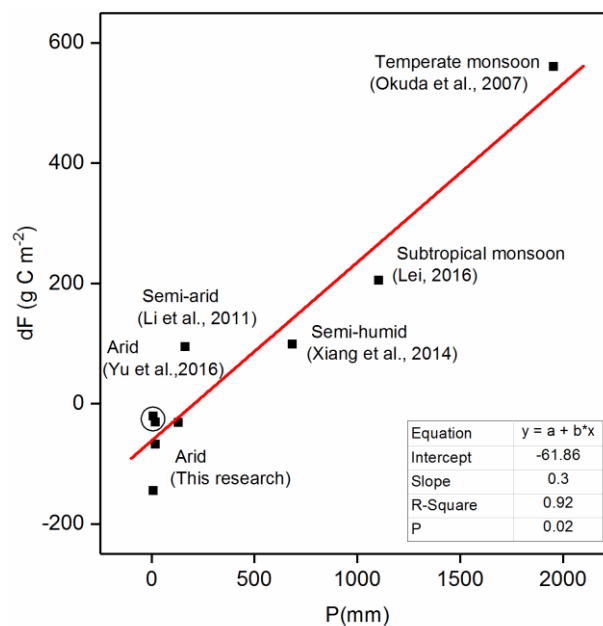


Fig. 10 The relationship of the difference in soil respiration between the mulched and non-mulched fields with precipitation,  $dF$  means the soil respiration in non-mulched field minus that in mulched field. In the five points of arid areas, the data from (Yu et al., 2016) is in the circle, while our research is out of the circle.

- The sections on the effect of irrigation and precipitation on soil respiration can be combined as both seem to produce similar effects

Response: The effect of irrigation and precipitation on soil respiration has been

combined according to the reviewer's suggestions. Thanks.

- Though the English grammar is good, the argumentation and writing throughout the manuscript is hard to follow and needs careful editing.

Response: The manuscript has been carefully restructured and the argumentation has been formatted to make it more logical and readable. Thanks.

- A discussion of the statistical significance and uncertainty in the findings reported here is missing. such an evaluation would be essential here to support their broader claim that plastic mulch increased CO<sub>2</sub> emissions in arid environments.

Response: Thanks for your valuable suggestion. The statistical significance of soil respiration in mulched and non-mulched field has been assessed with the hypothesis *t*-test. The uncertainty has been assessed with the standard derivation of duplicates. The results show that our conclusion can be supported by the evaluation that plastic mulch increased CO<sub>2</sub> emissions in arid environments.

In addition, all figures, tables and their headings need a lot of improvement:

- Fig. 1 is very hard to read in color and unreadable when printed in black and white. A schematic figure may be clearer and more helpful

Response: We have re-drawn a new schematic figure to illustrate cotton planting and drip pipe arrangement, as well as the experiment design.

- Throughout the manuscript, figures and table headings are missing definitions of abbreviations and labels of the different treatments

Response: Revised. Thanks.

- Figure 3 is very unclear. The labeling on the y-axis of the top and bottom figure is missing. The scales of the x-axis and y-axis of the 3 graphs are different, making it impossible to compare the data. Furthermore, the layout is inconsistent between graphs.

Response: The labeling, scales and layout of the three graphs has been rearranged to make them more readable. Thanks.

- Figure 4: the layout of this figure is confusing, and hard to read when printed in black and white. In addition, the figure heading states this is the seasonal accumulative soil respiration, whereas the figure shows years. Define this more clearly. Which season is considered here?

Response: The data shown in the figure are the seasonal accumulative soil respiration. The labels of x-axis show different years indicating the growing seasons of these years. The growing season in our paper can be generally considered from late April to late September, as described in the above response to Specific Comment #3. The authors are sorry for the confusion, and the manuscript has been revised accordingly. Thanks.

- Fig 7: The temperature plot is not needed here, removing it may make the other 2 figures more readable.

Response: Done. Thanks.

- Figure 9: what is G? Why are dates reported here, when other figures use days?

Response: We are sorry for the carelessness. Indeed, “G” is a drawing mistake. It has been deleted in the revised manuscript. The dates have been replaced by DOY (days of the year) according to the suggestion. Thanks.

- If I understood the text correctly (page 22, line 500-518), this figure was made using literature values. This should be explicitly stated in the figure heading, and references should be included. Also, define  $dF$  in figure heading.

Response: Yes, figure 10 is the analysis of the literature review. As per the suggestion of the reviewer's, the figure heading has been explicitly stated with detailed  $dF$  definition. References have also been added for each study. Thanks.

## Precipitation alters plastic film mulching impacts on soil respiration in an arid area of Northwest China

Guanghai Ming<sup>1</sup>, Hongchang Hu<sup>1</sup>, Fuqiang Tian<sup>1\*</sup>, Zhenyang Peng<sup>1</sup>, Pengju Yang<sup>1</sup>, Yiqi Luo<sup>2,3</sup>,

<sup>1</sup>Department of Hydraulic Engineering, State Key Laboratory of Hydroscience and Engineering, Tsinghua University, Beijing 100084, China,

<sup>2</sup>Department of Earth System Science, Tsinghua University, Beijing 100084, China

<sup>3</sup>Department of Microbiology and Plant Biology, University of Oklahoma, Norman, Oklahoma, USA

**Abstract:** Plastic film mulching (PFM) has been widely used for saving water and improving yield around the world, particularly in arid areas. However, the effect of PFM in agriculture on soil respiration is still unclear, and this effect may be confounded with irrigation and precipitation. To detect the effects of PFM, irrigation and precipitation on the temporal and spatial variations in soil respiration, plastic mulched and non-mulched drip irrigation contrast experiments were conducted in the arid area of the Xinjiang Uygur Autonomous Region, Northwest China. **PFM generated more complicated spatial heterogeneity in the microclimate with increased albedo, improved soil temperature, soil moisture and crop growth, and led to the stronger spatial heterogeneity of the soil respiration.** The soil respiration in the plant holes was larger than in the furrows, and plastic mulch itself can emit up to  $2.75 \mu\text{mol m}^{-2} \text{s}^{-1} \text{CO}_2$ , which indicates that furrows, plant holes and plastic mulch were the important pathways for  $\text{CO}_2$  emissions in the mulched field. Frequent irrigation and precipitation made the soil respiration much more dynamic and fluctuated. The sensitivity of the soil respiration to soil temperature was weakened by extreme variations in the soil moisture with lower correlation and  $Q_{10}$  values. **In the wetting-drying cycle, both irrigation and**



precipitation restrained the soil respiration at a high soil water content (SWC) with a threshold of 60% water-filled pore space (WFP) in the furrows and 50% WFP in the ridges, and the restrain effect decreased gradually with the depleting of soil moisture. The accumulated soil respiration calculated from the area ratio of the different parts in the furrows and ridges in the mulched field were both larger than in the non-mulched field during the growing season. However, this magnitude decreased with increasing precipitation over three experimental years. It was speculated that the effect of drip irrigation on the soil respiration was primarily on the ridges while the effect of precipitation mostly concentrated in the furrows and ridges in the non-mulched field because of the mulch barrier. Therefore, the precipitation accelerated more respiration in the mulched than in the non-mulched field. The difference in soil respiration between the mulched and non-mulched fields was observed to have a positive correlation with precipitation per the findings of other studies. In a humid climate with much more precipitation, soil respiration in the non-mulched field can also exceed that of the mulched field and explains why certain studies concluded that plastic mulch decreased soil respiration. The above results indicate that both irrigation and precipitation alter soil respiration and this effect can be modified by plastic mulch. Therefore, whether the PFM increases soil respiration compared to a non-mulched field largely depends on precipitation in the field.

**Keywords:** plastic film mulching; soil respiration; spatial variation; irrigation; precipitation

## 1. Introduction

Soil respiration,  $R_s$ , the flux of microbial- and plant-respired  $\text{CO}_2$  from the soil surface to the atmosphere, represents the second largest  $\text{CO}_2$  flux of the terrestrial biosphere following gross primary productivity (GPP) and amounts to 10 times the current rate of fossil-fuel combustion (Bond-Lamberty & Thomson, 2010, Davidson *et al.*, 2006, Liu *et al.*, 2016a, Reichstein & Beer, 2008). Anthropogenic activities, particularly agriculture expansion and cultivation changes, have brought significant challenges to  $\text{CO}_2$  emission control considering climate change over the twenty-first century (Baker *et al.*, 2007). Further, the intensification of agriculture (the agricultural Green Revolution) during the past five decades has been a driver of increasing the seasonal amplitude of atmospheric  $\text{CO}_2$  (Zeng *et al.*, 2014). The conversion of natural to agricultural ecosystems causes a depletion of the soil organic carbon (SOC) pool by as much as 60% in soils (Lal, 2004). Additionally, soil respiration in the cultivated ecosystem is relatively larger than in natural ecosystems due to fertilization and intensive cultivation (Buyanovsky *et al.*, 1987, Raich & Tufekciogul, 2000), such as in arid regions where irrigation breaks the limits of soil moisture on soil respiration. Since the 1950s, plastic film mulching (PFM) is one of the advanced agriculture cultivation methods that have been widely applied around the world, e.g., in the tropical USA, Europe, South Korea and China, as it can increase the soil temperature, maintain soil moisture, promote seed germination, suppress weed growth and achieve high yields (Anikwe *et al.*, 2007, Berger *et al.*, 2013). In 2014, approximately 19% (25 million ha)

of the total arable land (130 million ha) in China was cultivated using PFM (Wang *et al.*, 2016). In the arid and semiarid parts of the Xinjiang Uygur Autonomous Region in Northwest China, the PFM area has reached 1.2 million ha within less than 20 years (Zhang *et al.*, 2014). **Most of the fields have been converted from the natural ecosystem for cotton production in the Xinjiang Uygur Autonomous Region, the largest cotton production basin in China.** The microclimate alterations, which include the spatial and temporal albedo pattern, soil temperature, soil moisture, and the caused change of crop growth, may affect both the heterotrophic and autotrophic respirations in the PFM field. Further, the large-scale land use changes may alter the regional climate, hydrologic cycle, and carbon cycle (Bonan, 2008, Cox *et al.*, 2000, Li *et al.*, 2016). Therefore, detecting the altered environmental conditions and CO<sub>2</sub> emissions in PFM field is crucial for the maintenance of regional and global soil carbon balances in the situation of global climate change, **which includes rising atmospheric CO<sub>2</sub>, increasing temperatures and shifting precipitation patterns.**

The production of CO<sub>2</sub> in the soil is determined by root and microbial biomass, the substrate supply, temperature and water conditions (Davidson *et al.*, 2006). Soil respiration has an exponential increase with increasing temperature and the  $Q_{10}$  value, which is the factor by which respiration is multiplied when the temperature increases by 10°C, is often used to define the sensitivity of soil respiration to temperature (Davidson *et al.*, 2006, Fang & Moncrieff, 2001). However,  $Q_{10}$  values also incorporate the seasonal changes in the SWC, root biomass, litter inputs, microbial populations and other seasonally fluctuating conditions and processes (Curiel Yuste *et al.*, 2004). In suitable conditions, the soil moisture promotes soil respiration, which is a benefit to root and microbe respiration. However, beyond this range, such as with extremely low and high levels of soil moisture, the soil respiration is restrained by the limited diffusion of the substrate and oxygen into water films and pore spaces, respectively (Luo & Zhou, 2006). Furthermore, the soil moisture content and temperature are confounding rather than independent factors controlling the soil respiration. The effect of temperature and moisture on soil respiration are only regarding root and microbial responses to variations thereof throughout the soil (Davidson *et al.*, 1998).

The spatial and temporal pattern of soil temperature and moisture are modified significantly in a PFM field by the altering of the exchange of energy and water, and the momentum between the soil and atmosphere (Bonan, 2008). Plastic mulch hinders energy entry into the soil in daytime (Li *et al.*, 2016) with a high reflectance of radiation (Tarara, 2000) and preserves the heat flux at night, which results in a higher temperature under the mulch. The average mulched soil temperature within approximately 25 cm depth was 1-2 °C higher than the bare soil temperature (Gong *et al.*, 2015, Zhang *et al.*, 2011). The spatial pattern of soil temperatures in a PFM field was also affected by the crop growth and SWC (Zhang *et al.*, 2011). Soil moisture is preserved with PFM by reducing evaporation, forming a small water cycle beneath the plastic mulch (Yang *et al.*, 2016), and covering the soil with transparent polyethylene, which causes a significant increase in the soil moisture of the upper soil layer (Mahrer *et al.*, 1984). Combined with drip irrigation, a PFM approach can achieve better soil temperature and moisture conditions and obtain a higher yield and water use efficiency (Yaghi *et al.*,

2013). These environmental improvements promote microbial activity, which in turn enhances the mineralization rate of soil organic matter, thus providing readily available nutrients for plant growth, which simultaneously promotes the emission of greenhouse gases such as CO<sub>2</sub>, CH<sub>4</sub> and N<sub>2</sub>O (Cuello *et al.*, 2015). However, Wang *et al.* (2016) note that PFM could also maintain the SOC level after six years of continuous cropping by balancing the increased SOC mineralization with increased root-derived carbon input, such as with straw incorporation in semiarid areas. Eddy flux experiments indicate that warmer and wetter soil stimulates GPP more than ecosystem respiration ( $R_{eco}$ ) in a PFM field, which results in a higher net primary production (NPP) (Gong *et al.*, 2015).

In addition to soil temperature and moisture, the spatial heterogeneity of CO<sub>2</sub> concentrations and emissions are enhanced in a PMF field. Soil respiration involves two critical processes, which include the CO<sub>2</sub> produced in the soil by roots and microorganisms and that transferred through the soil profile to soil surface. The CO<sub>2</sub> concentration represents the production amount, and the emission represents the transfer amount (Luo & Zhou, 2006). Yu *et al.* (2016) showed that the CO<sub>2</sub> concentration in ridges was much larger than in the furrows. The CO<sub>2</sub> concentration in the ridges and furrows in a mulched field increased by 49% and 15%, respectively, compared to those in a non-mulched field. However, there was no difference in the CO<sub>2</sub> emission of the ridges in mulched and non-mulched fields. The main difference was in the furrows, where the CO<sub>2</sub> emission increased by 21%, and the cumulative CO<sub>2</sub> emission for the entire field increased by 8% in a mulched field relative to the non-mulched field. Li *et al.* (2011) also detected that CO<sub>2</sub> concentrations in the soil profile were higher in a mulched field than in the non-mulched field. However, the author found that the accumulated CO<sub>2</sub> flux in a mulched field decreased by 21% relative to the non-mulched field. Further, the author argued that the plastic mulch increased the soil-to-atmosphere pathway of CO<sub>2</sub> emission as most of the soil surface (60%) was covered by mulch film, and the only pathways were furrows and small plant holes. Therefore, the barrier of the plastic mulch would contain the CO<sub>2</sub> underneath, which would restrain CO<sub>2</sub> production and emission. Berger *et al.* (2013) found extraordinarily low N<sub>2</sub>O fluxes from the plastic mulch and that N<sub>2</sub>O emission from the plant hole were 68% that of the ridges in the non-mulch field. Nishimura *et al.* (2012) revealed in a laboratory experiment that N<sub>2</sub>O gradually permeates the plastic mulch and significantly emits from the furrows. These findings indicate that the pathways for the N<sub>2</sub>O emission in a mulch field include the furrows between the mulch (mf), the plant holes (mh) for crop germinating and the plastic mulch (mp) in the ridges. However, the transport pathways for the CO<sub>2</sub> emission in PFM have not yet been detected. Certain experiments simply interpreted soil respiration in the furrows as the soil respiration of the whole field (Liu *et al.*, 2016b, Qian-Bing *et al.*, 2012), which may underestimate the results as the ridges emit more CO<sub>2</sub> than the furrows (Yu *et al.*, 2016).

It is noteworthy that different climates may influence the effect of plastic mulch on soil respiration. An example is that south of Xinjiang (precipitation 45.7 mm), PFM increased the CO<sub>2</sub> emission (Yu *et al.*, 2016), while north of Xinjiang (precipitation 160 mm), the PFM decreased the CO<sub>2</sub> emission (Li *et al.*, 2011). In a semi-humid area on

the Loess Plateau of China (precipitation 500 mm), Xiang *et al.* (2014) found that a plastic mulched treatment decreased the CO<sub>2</sub> emission by 39% because of the high soil moisture and barrier of the plastic mulch. Still, in a temperate monsoon climate (precipitation 1,954 mm) in Japan, Okuda *et al.* (2007) found that the annual CO<sub>2</sub> emission with the mulching decreased by nearly 40%. The author argued that the high-water filled porosity might reduce the CO<sub>2</sub> emission. In a typical temperate monsoon climate in South Korea (precipitation 1,440 mm), Berger *et al.* (2013) found that PFM significantly decreased the N<sub>2</sub>O in a mulched field considering the monitoring of plant holes and the plastic mulch. The above results indicate that in a humid area with greater precipitation, the plastic mulch treatments all decreased the soil respiration and the precipitation may affect the impacts of plastic mulch on soil respiration.

Irrigation and precipitation are both crucial to soil respiration and the carbon cycle, particularly in arid and semiarid regions. Irrigation is primarily applied to satisfy crop requirements in arid and semiarid regions that have little precipitation. Precipitation plays a dominant role in regulating the soil C balance in natural ecosystems in the arid and semiarid regions (Lai *et al.*, 2013). Discrete precipitation pulses are important triggers for the activity of plants and microbes and these factors combine to influence the carbon balance (Huxman *et al.*, 2004). The effect of precipitation and irrigation on soil respiration is related to the existing soil water condition, i.e., motivates soil respiration in a dry soil and restrains soil respiration in moist soil (Dong, 2010). After irrigation and precipitation, soil moisture undergoes a wetting-drying cycle that affects the porosity of the soil and influences the activities of the root biomass and microorganisms that control soil carbon dynamics (Yan *et al.*, 2014). The intensity and amount of irrigation or precipitation both affect soil respiration. Certain studies indicate that soil respiration in a drip irrigation field was greater than in a flood irrigation field (Guo *et al.*, 2017, Qian-Bing *et al.*, 2012), and inter-annual variations in soil respiration were positively related to inter-annual fluctuations in precipitation (Liu *et al.*, 2009). The hydrological cycles after precipitation and irrigation are modified by plastic mulch application and may have a different influence on soil respiration. Precipitation cannot infiltrate ridges past the barrier of plastic mulch but can increase the runoff in furrows. Meanwhile, irrigation primarily infiltrates the soil in ridges in drip irrigation fields as the drip tapes are beneath the plastic mulch.

From the discussion above, the study of PFM on soil respiration is of great significance to regional and global agricultural carbon sequestration, and the spatial heterogeneity of the soil temperature, moisture and soil respiration are all enhanced in a PFM field. However, the effect of plastic mulch on soil respiration is still largely unclear, and this effect may be confounded by other factors such as irrigation and precipitation (Berger *et al.*, 2013, Li *et al.*, 2011, Yu *et al.*, 2016). In this study, we took advantage of the frequent irrigation and precipitation in the plastic- and non-mulched drip irrigation fields to discuss (1) how the spatial and temporal patterns of microclimate and soil respiration are affected by plastic mulch; (2) the effect of plastic mulch on soil respiration via its effect on soil temperature and moisture; and (3) the effect of irrigation and precipitation on soil respiration in mulched and non-mulched fields.

## 2. Materials and Methods

### 2.1 Site description

The field experimental site (86°12' E, 41°36' N; 886 ma.s.l.) is in an inland arid area, which is in one of the oases scattered on the alluvial plain of the Kaidu-Kongqi River (a tributary of the Tarim River) Basin, north of the Taklamakan Desert (Fig. 1) in the Xinjiang Uygur Autonomous Region in Northwest China. The region has a temperate continental climate, with a mean annual precipitation of 60 mm, mean annual temperature of 11.48 °C, and mean annual potential evaporation of 2,788 mm as calculated by  $\Phi 20$  pan. The annual sunshine duration is 3,036 hour, which is favorable for cotton growth. The experimental field has an area of 3.48 ha. The major soil texture in the field is silt loam, and the contents of sand, silt and clay are 32.8%, 62.4% and 4.8%, respectively. The soil bulk density of the experiment field is from 1.4 g cm<sup>-3</sup> to 1.64 g cm<sup>-3</sup> in the 1.5 m soil profile. The soil porosity is 0.42, which was directly determined in the laboratory using the known volume of undisturbed soil columns collected in the experimental field.

Cotton (*Gossypium hirsutum* L.) is usually sown in April and harvested from October to November. The planting style is “one film, one drip pipe beneath under the film and four rows of cotton above the film” (Fig. 1). The plastic film (0.008 mm thick) is white and made of dense and airtight transparent polyethylene film. The width of the film is 1.1 m, and the inter-film zone is 0.4 m. Before sowing, small square holes (2 cm length) were made for germinating at 0.1 m intervals within a row in the plastic film, and then seeds were placed into the holes, and finally, each hole was covered with soil. The planting density was approximately 160,000 plants per ha. The annual basic fertilizer before sowing included 173 kg ha<sup>-1</sup> of compound fertilizers (14% N, 16% P<sub>2</sub>O<sub>5</sub>, and 15% K<sub>2</sub>O), 518 kg ha<sup>-1</sup> of calcium superphosphate (18% N, 40% P<sub>2</sub>O<sub>5</sub>) and 288 kg ha<sup>-1</sup> of diammonium phosphate (P<sub>2</sub>O<sub>5</sub>>16%). Supplemental fertilizers during the growth period included approximately 292 kg ha<sup>-1</sup> of urea (46% N) and 586 kg ha<sup>-1</sup> of drip compound fertilizer (13% N, 18% P<sub>2</sub>O<sub>5</sub>, and 16% K<sub>2</sub>O) and foliar fertilizer (P<sub>2</sub>O<sub>5</sub>>52%, and K<sub>2</sub>O>34%). Drip irrigation usually began on June 12 in the bud stages with an amount approximately 20-50 mm each time and approximately 9-12 times per growing season. The annual irrigation amount was approximately 400-600 mm.

## 2.2 Experimental design

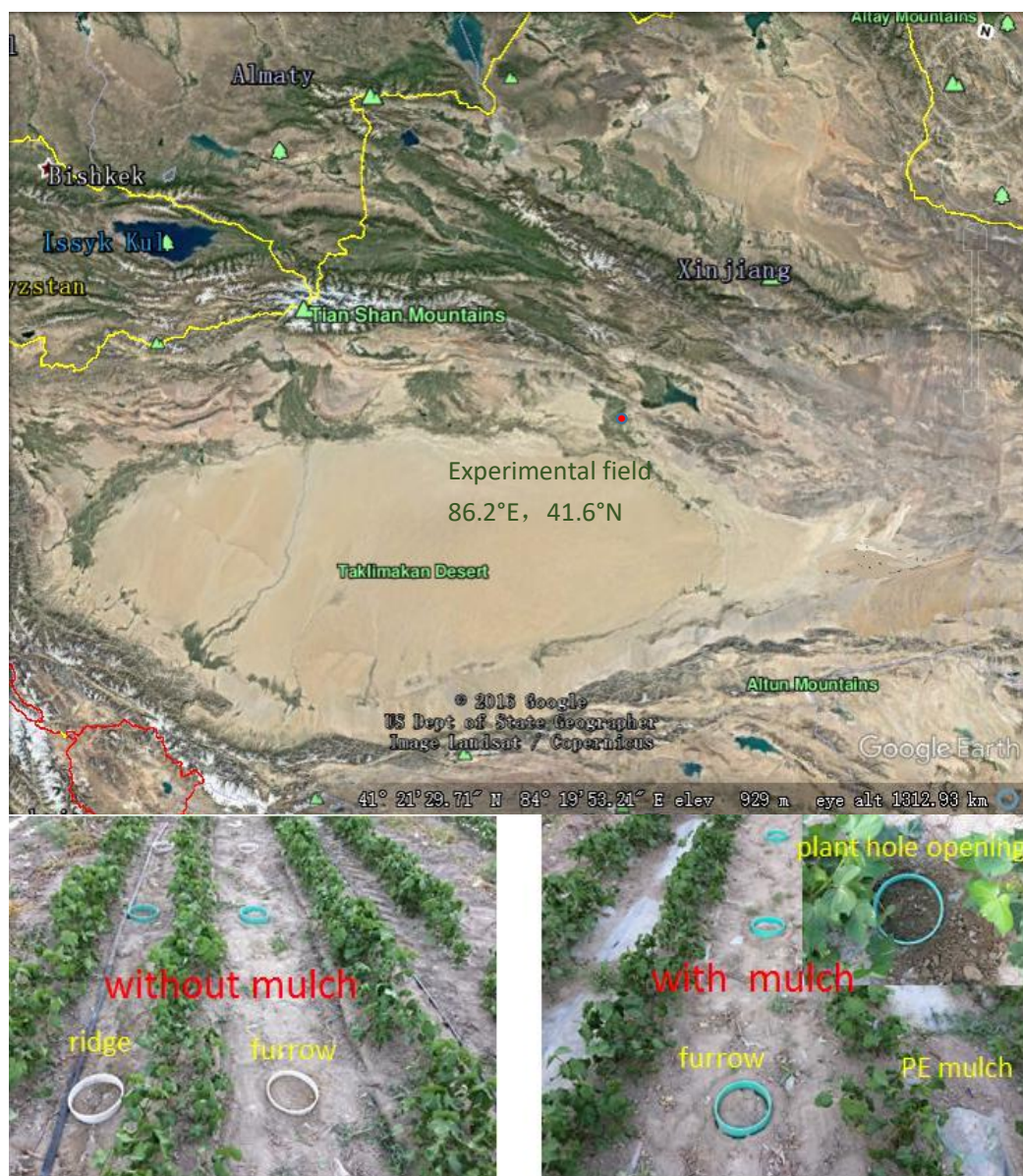


Fig. 1. Experimental site and experimental design. (a) Google map of the study area and the experimental site; (b) Schematic drawing of the experimental design for the mulched and non-mulched fields.

The mulched and non-mulched treatments were arranged in a randomized block design with three replicates in the same field and the same fertilization and irrigation from the year 2014 to 2016. The plastic mulch was uncovered after the seed germination in the non-mulched treatment to ensure the same seed germinating date with the mulched field. The soil respiration was measured every two weeks during the cotton-growing season with an LI-8100A (LI-COR, Inc., Lincoln, Nebraska). The automated soil CO<sub>2</sub> flux system consisted of two parts, PVC collars (10 cm in diameter and 5 cm in height) and a measuring chamber. The PVC collars were inserted 2-3 cm into the soil by removing the small living plants and litter inside the soil collars at least 1 day before the measurements. Data were recorded by the data logger in the LI-8100. The soil

respiration was measured in the furrows (nmf) and ridges (nmr) of the non-mulched treatment and the furrows (mf), ridges (mr), plant holes (mh), and plastic mulch (mp) of the mulched treatment. The measurements were performed every 2 hours during the day from 8:00 am to 24:00 pm. To measure the soil respiration on the soil surface without the plastic mulch covering, such as on the nmf and nmr in the non-mulched field and the mf in the mulched field, the PVC collars were inserted directly into the soil. Before measuring the CO<sub>2</sub> emission in the mp and mr, the plastic mulch was cut with a rectangle of 40 cm length and 30 cm width. Then, the collars were buried under the plastic mulch by compacting firmly with soil along the mulch edge. The CO<sub>2</sub> emissions in the mp were measured directly by placing the chamber on the covered collars. The CO<sub>2</sub> emission in the mr was measured by uncovering the plastic mulch. The CO<sub>2</sub> emission in the mh was measured by inserting collars into the soil, covering two plant holes along the direction of the mulch, and using scotch tape to seal the interspaces between the plastic mulch and collar.

The soil temperature and soil moisture at a depth of 5 cm were monitored adjacent to each PVC collar using the auxiliary sensors of the Li-8100, and concurrent with the soil CO<sub>2</sub> flux measurements. The drip irrigation amount was measured by water meters that were installed on the branch pipes of the drip irrigation system. The precipitation was measured by a tipping bucket rain gauge (model TE525MM, Campbell Scientific Inc., Logan, UT, USA), which was mounted 0.7 m above the ground.

### 2.3 Data calculation and analysis method

The soil respiration of the different parts at a particular time of a day was the average of three replicates. The daily mean soil respiration was calculated using the average of the soil respirations measured at various times in a day. The soil respirations in the mulched and non-mulched fields were calculated relying on the area ratio of the various parts in the field:

$$\begin{aligned} R_{mr} &= R_{mh} * A_{mh} + R_{mp} * A_{mp} \\ R_{sm} &= R_{mf} * A_{mf} + R_{mr} * A_{mr} \\ R_{snm} &= R_{nmf} * A_{nmf} + R_{nmr} * A_{nmr} \end{aligned} \quad (1)$$

where  $R_{sm}$  and  $R_{snm}$  are the soil respirations in the mulched and non-mulched fields, respectively. The symbols of ( $R_{mh}$ ) and ( $R_{mp}$ ) are the soil respirations in the plant holes and plastic mulch, which constitute the soil respiration in mr ( $R_{mr}$ ). The symbols of  $R_{mr}$ ,  $R_{mf}$ ,  $R_{nmr}$ , and  $R_{nmf}$  are the soil respirations in the furrows and ridges in the mulched and non-mulched fields, respectively. Replacing the initial letter  $R$  with  $A$  means the area ratio of the different parts. The accumulated soil respiration in the ridges and furrows during the growing season were estimated by summing the products of the soil CO<sub>2</sub> flux and the number of days between sampling times.

The regression and smoothness of the soil respiration with soil temperature and SWC were analyzed using SPSS software. The Van't Hoff equation was used to express the relationship of the soil respiration with soil temperature (Hoff, 1898):

$$R_s = Ae^{bT} \quad (2)$$

where  $R_s$  is the soil respiration,  $T$  is the soil temperature,  $A$  is the intercept of the soil

respiration when the temperature is 0°C (i.e., reference soil respiration). Moreover,  $b$  represents the temperature sensitivity of the soil respiration. The  $Q_{10}$  value, which describes the change in soil respiration over a 10-°C increase in the soil temperature, is calculated as

$$Q_{10} = e^{10b} \quad (3)$$

Considering a lower and higher SWC both restrain the soil respiration, we use a quadratic equation to simulate the effect of soil moisture on soil respiration (Davidson *et al.*, 1998):

$$R_s = aV^2 + bV + c \quad (4)$$

where  $V$  is the soil water content and  $a$ ,  $b$  and  $c$  are fitted constants.

### 3. Results

#### 3.1 Field microclimate and crop growth

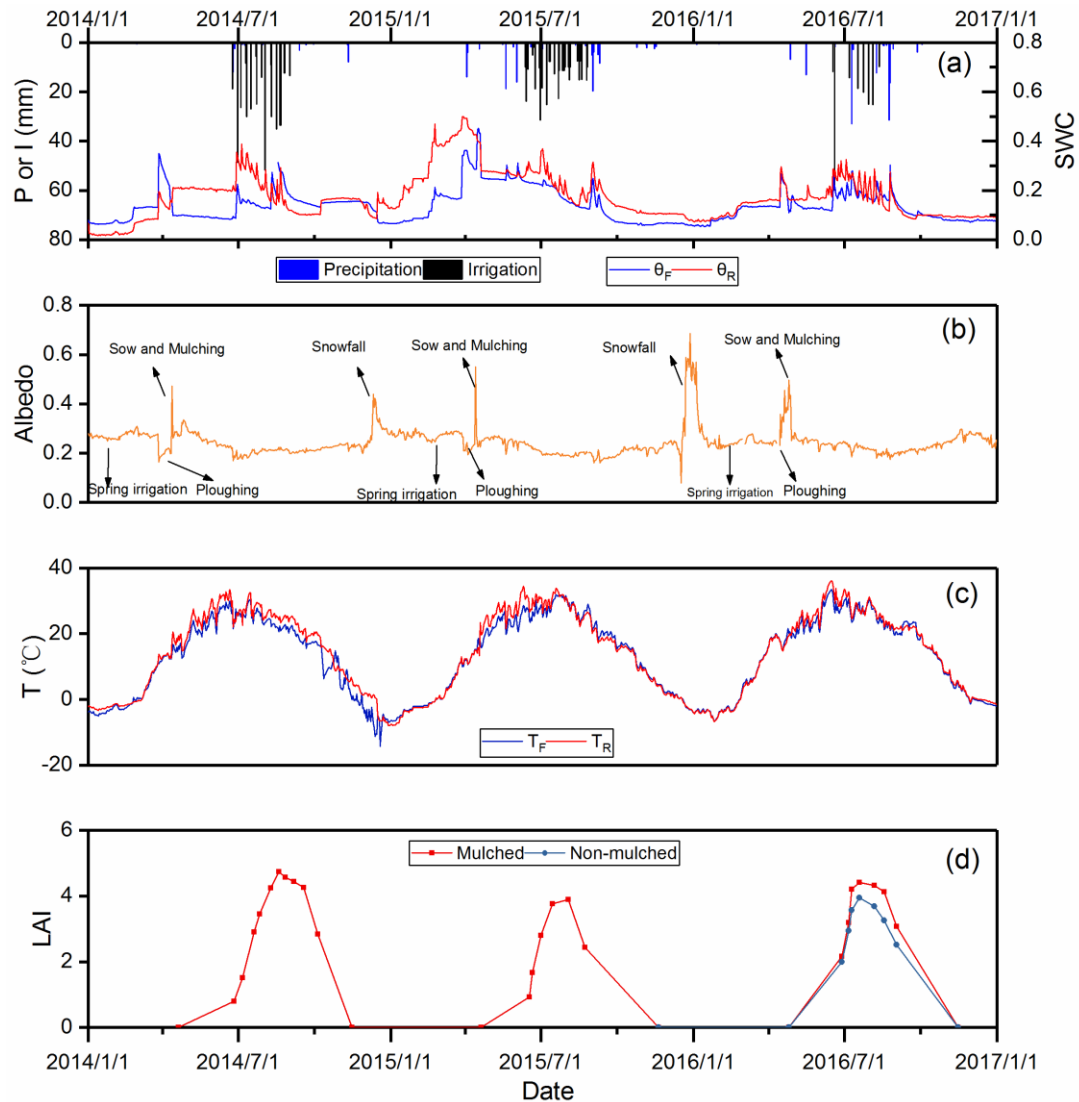


Fig. 2 Microclimate affected by plastic mulch, irrigation and precipitation. (a) The sSWC (SWC) in the ridges ( $\theta_s$ )



and furrows ( $\theta_r$ ) (affected by irrigation and precipitation. (b) The albedo in the mulched field. (c) The soil temperature in the furrows ( $T_f$ ) and ridges ( $T_r$ ) in the mulched field; (d) The leaf area index (LAI) in the mulched and non-mulched fields (LAI in the non-mulched field was only measured in 2016 to compare to that in the non-mulched field).

The plastic mulch altered all the field microclimate aspects such as the albedo, and soil conditions such as the soil temperature and moisture, and crop growth conditions. There were two snowfalls during January 2015 and January 2016 that resulted in much higher albedo, which was beyond 0.4. The spring irrigation used a month before sowing to apply the germinating water and washing soil salt in early March increased the albedo. Tillage significantly decreased the albedo several days before mulching on April 20. After the plastic mulch covering in April, the surface albedo had a sudden rise, and then, slowly decreased with the increase of the crop canopy and applied irrigation. The albedo reached the minimum value with the highest value of LAI at the bud stage during August, and then, increased very slowly with leaf fall.

The soil temperature was highly correlated with radiation over a growing season, and it was affected by the plastic mulching and irrigation. The soil temperature in the ridges with mulch covering was significantly higher than in the furrows without mulch covering. However, in the later growth stages, the soil temperature in the furrows exceeded that in the ridges as the crop canopy and irrigation increased. The soil temperature decreased significantly after irrigation and two heavy rainfall events during 2016, and the variation in soil temperatures during the growing season was as drastic as the effect of frequent irrigation.

The soil moisture varied in response to irrigation and precipitation, and the greater the irrigation and precipitation, the more drastic the variation. The soil moisture in the ridges was mostly larger than in the furrows with the effect of frequent drip irrigation. However, after heavy rainfall, the soil moisture in the furrow exceeded even that in the ridge, i.e., during the two heavy rainfall events on July 10 and August 24 of 2016, which were 36.8 mm and 47.9 mm, respectively. Inter-annually, the soil moisture in the furrows during 2016 was larger than in 2014 and 2015 because of the greater precipitation during 2016, and the soil moisture in the ridges during 2016 was lower than that during 2014 and 2015 because of the smaller amount of irrigation.

The plant phenology and LAI showed the growing-dying cycle varying with temperature and radiation over the seasons. The LAI started increasing with seed germination, reached its maximum value at the bud stage during August, and then, decreased with the leaf falling. The LAI in the mulched field was significantly larger than in the non-mulched field during 2016, particularly in the vigorous growth stages. Inter-annually, the LAI during 2016 was the greatest and that during 2015 was smallest.

### 3.2 Seasonal and spatial variations in soil respiration

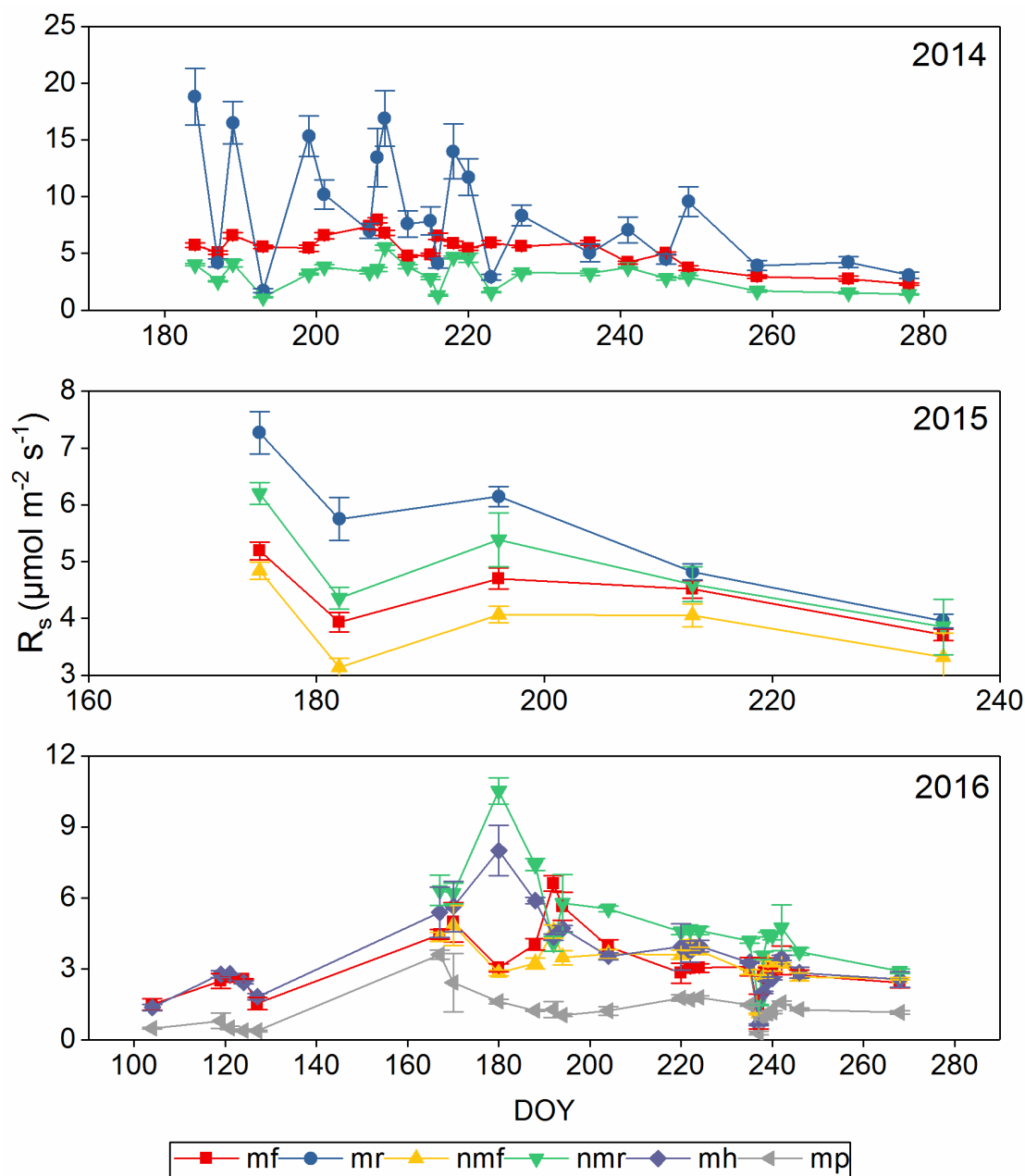


Fig. 3 Seasonal variations in soil respiration in different parts of the mulched and non-mulched fields over the three years. Data represent means over a day  $\pm$  SD of three replicates.

The seasonal variations in the soil respiration over three years were approximately consistent with the radiation, temperature and LAI. In the non-growing season, the soil respiration was very low from October to April of the next year, i.e., approximately 1 to 2  $\mu\text{mol m}^{-2} \text{s}^{-1}$ , and reached a peak value in the middle of July during summer, approximately 6 to 8  $\mu\text{mol m}^{-2} \text{s}^{-1}$ . After tillage in April of 2016, the soil respiration was significant and then had a rapid decline with the plastic mulching. The inter-annual variation in the soil respiration during the three years was not very significant. The highest values during 2014 to 2016 were approximately 8  $\mu\text{mol m}^{-2} \text{s}^{-1}$ , 6  $\mu\text{mol m}^{-2} \text{s}^{-1}$

<sup>1</sup> and  $7 \mu\text{mol m}^{-2} \text{s}^{-1}$ , respectively, which was consistent with the highest LAI values of approximately 4.2, 3.8 and 4.2, respectively. The seasonal variations in the soil respiration were altered by both the irrigation and precipitation. The irrigation obviously restrained the soil respiration during 2014, with the soil respiration significantly decreasing to an extremely low value right after irrigation, and then, rising with the evapotranspiration of soil moisture. The soil respirations in the mh, mp and ridges in the nmr during 2016 almost had the same variation of response to irrigation. Meanwhile, the soil respiration in the furrows in the mf and the nmf during 2016 had the same variation because they were both directly affected by precipitation and indirectly affected by irrigation. The precipitation significantly restrained the soil respiration of all parts in the mulched and non-mulched fields after a large rainfall at the day of the year (DOY) 238 in 2016.

The spatial heterogeneity was more enhanced in the mulched field than in the non-mulched field. In the non-mulched field, the soil respiration in the nmr with the higher SWC was always larger than that in the nmf with a lower SWC. Meanwhile, in the mulched field, the soil respiration in the mh exceeded that in the mf, except after the 36.8 mm rainfall in DOY 199. The soil respiration in the mp was lower at the beginning, approximately  $1 \mu\text{mol m}^{-2} \text{s}^{-1}$ . However, it rose to approximately  $2.75 \mu\text{mol m}^{-2} \text{s}^{-1}$  by the bud stage. The soil respiration in the mr measured by uncovering the plastic mulch during 2014 was extremely high, approximately  $15 \mu\text{mol m}^{-2}$ .

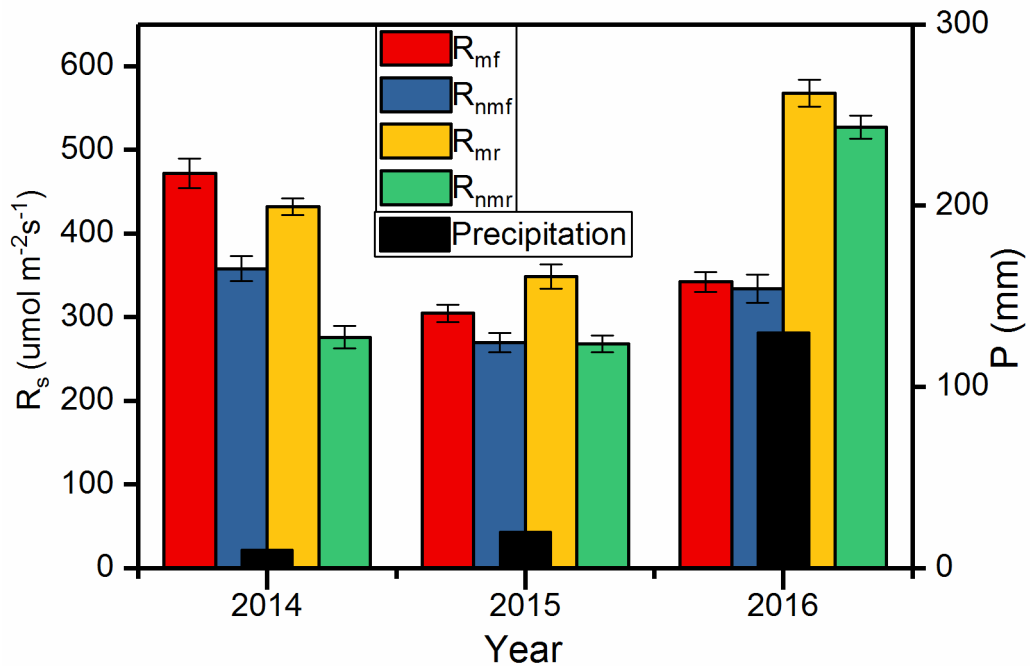


Fig. 4 The seasonal accumulative soil respiration affected by precipitation. The data represent the seasonal accumulated soil respiration in the furrows ( $R_{mf}$ ) and ridges ( $R_{mr}$ ) of the mulched field and the furrows ( $R_{nmf}$ ) and ridges ( $R_{nmr}$ ) of the non-mulched field, and the precipitation during the growing season over three years. The error bars represent standard deviations.

The accumulated soil respirations calculated per the area ratio of different parts in the ridges and furrows in the mulched field were both larger than those in the non-mulched field. The average accumulated soil respiration was  $428.91 \mu\text{mol m}^{-2} \text{s}^{-1}$  in

the mulched field and  $347.13 \mu\text{mol m}^{-2} \text{s}^{-1}$  in the non-mulched field during the growing season over three years. However, the differences in the soil respiration in the furrows were all smaller than in the ridges and the differences in the ridges and furrows between the mulched and non-mulched fields all decreased from the year 2014 to 2016. It is noteworthy that the amount of precipitation increased from 2014 to 2016, which may have had some influence on the different soil respirations in the mulched and non-mulched fields.

### 3.3 Soil temperature and soil respiration

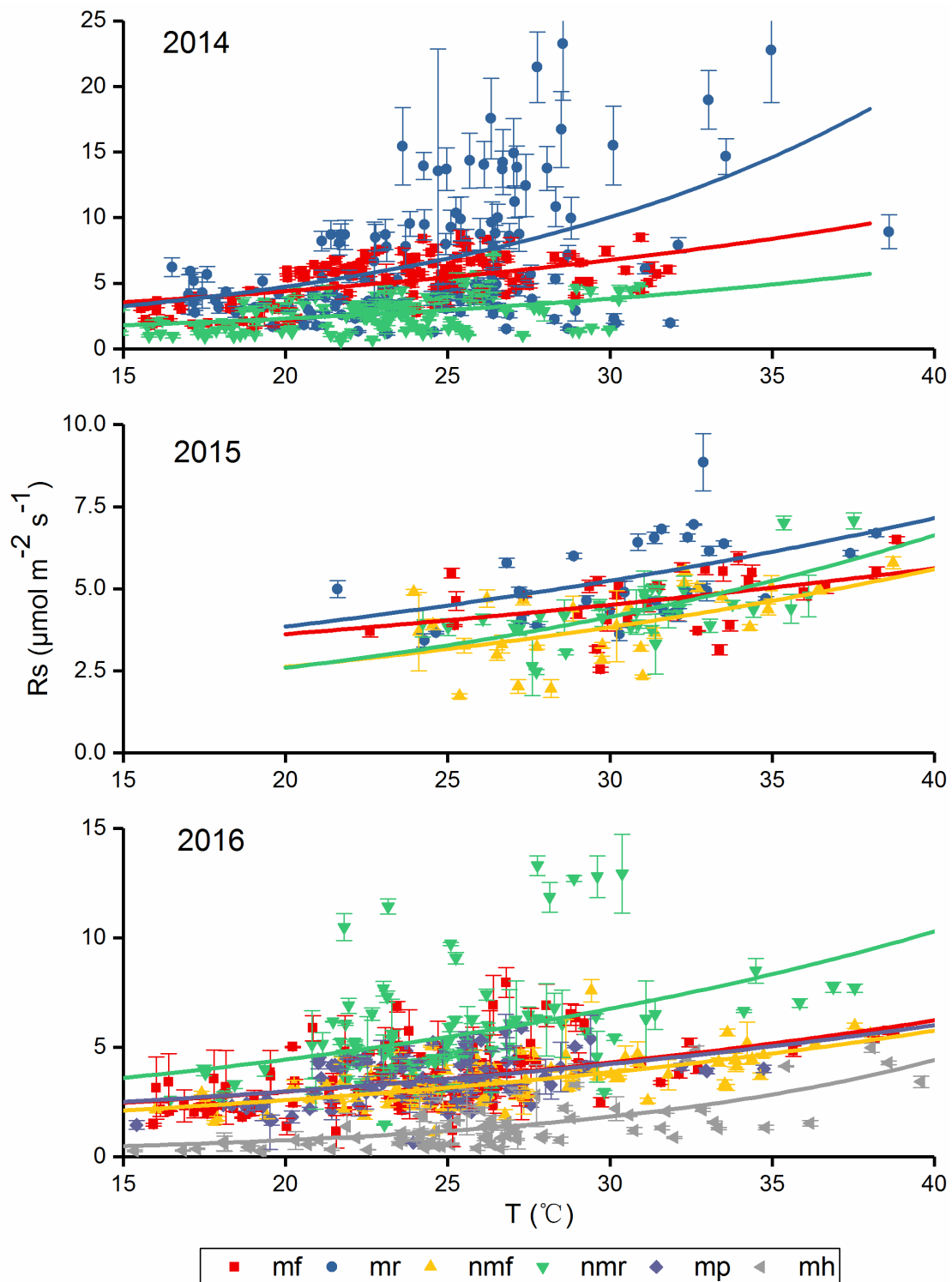


Fig. 5 The relationship between soil respiration and soil temperature. The data represent means  $\pm$  SD of three replicates. The smooth lines of the different parts were fitted with Equation 1.

The soil respirations had distinct seasonal variations that were determined primarily by the radiation, temperature and phenology although they were also frequently

affected by irrigation (Fig. 3). The soil respiration in different parts of the mulched and non-mulched fields all increased with temperature and can be expressed using exponential equations (Fig. 5). However, their correlation  $R^2$  and  $Q_{10}$  values were very different and weakened by the extreme variations in the soil moisture with an  $R^2$  smaller than 0.5 and  $Q_{10}$  values lower than 2.0 (Table 1). **The reference soil respiration ( $A$  in Equation 1) during 2015 was larger than during 2014 and 2016 because the observation time was limited and the temperature variation range was small.** The correlations of soil respiration in the furrows were better than those in ridges, while the  $Q_{10}$  values in the furrows were much lower than those in the ridges.

Table 1 Exponential equations of the soil respiration with soil temperature

Year	Parameters	mf	mr	nmf	nmr	mh	mp
2014	a	1.87	1.06		0.86		
	b	0.04	0.08		0.05		
	$Q_{10}$	1.54	2.12		1.65		
	$R^2$	0.29	0.18		0.18		
2015	a	2.33	2.07	1.23	1.01		
	b	0.02	0.03	0.04	0.05		
	$Q_{10}$	1.25	1.36	1.46	1.60		
	$R^2$	0.18	0.27	0.27	0.43		
2016	a	1.42		1.16	1.92	1.48	0.13
	b	0.04		0.04	0.04	0.04	0.09
	$Q_{10}$	1.45		1.49	1.52	1.42	2.41
	$R^2$	0.23		0.39	0.20	0.18	0.44

### 3.4 Irrigation and soil respiration

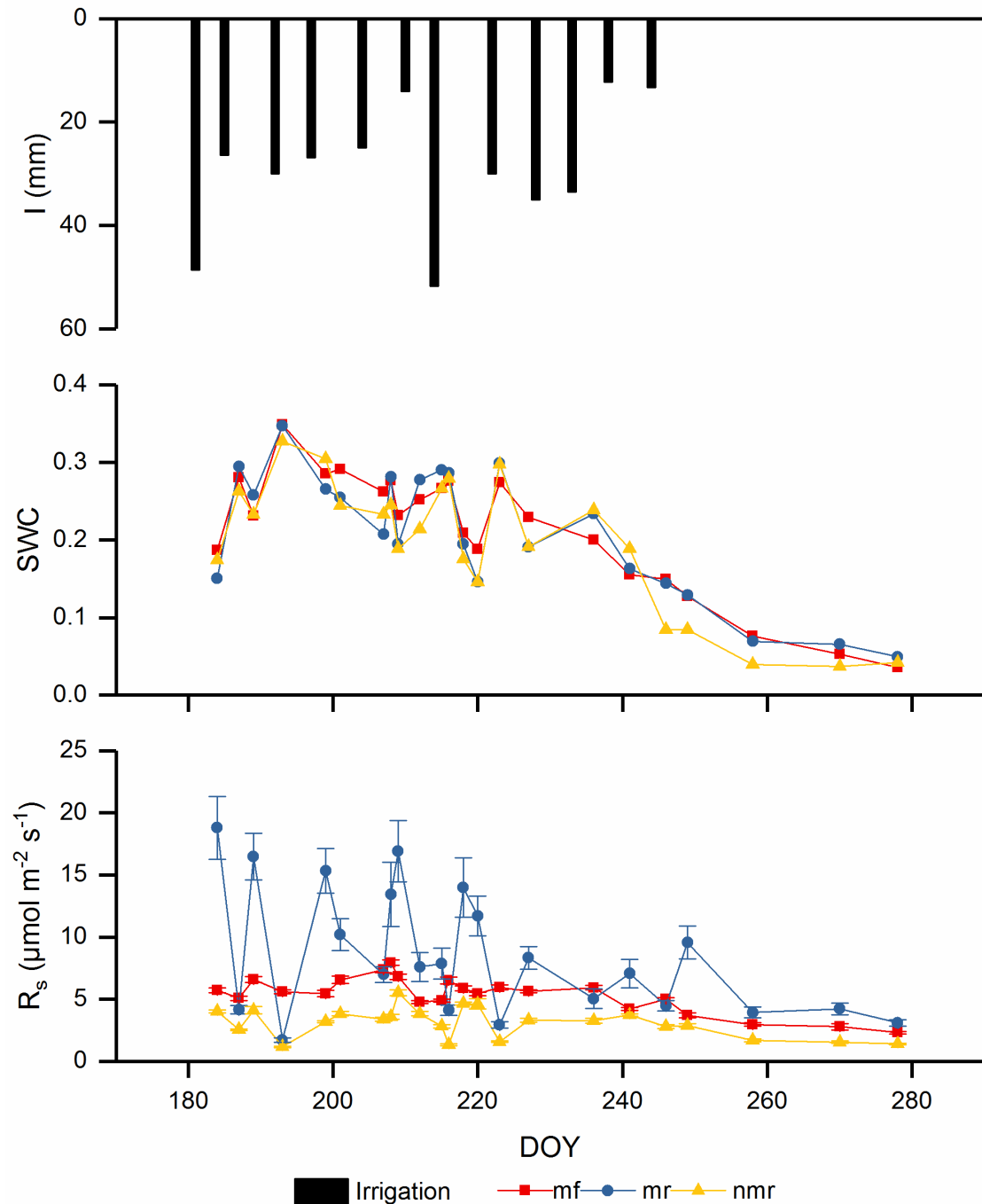


Fig. 6 The responses in soil moisture and soil respiration of the different parts to irrigation in the mulched and non-mulched fields during the year 2014.

The soil moisture and respiration were significantly dynamic and fluctuated during the growing season under the influence of frequent irrigation. However, the responses to irrigation varied as the soil moisture and respiration increased and decreased, respectively, after irrigation. Therefore, more irrigation led to a larger variation in the soil moisture and respiration. This finding indicates that after irrigation, the soil moisture increased but that the soil respiration was restrained. Variations in the soil

moisture and respiration in mr and nmr were more drastic than in mf. The soil moisture and respiration in the mr and nmr had the same variations as these factors both responded to irrigation immediately. Meanwhile, the soil moisture and respiration in mf were slower to respond to the irrigation. As the evaporation in the nmr was drastic in the arid area without the protection of the plastic mulch, the soil moisture in the nmr was always lower than in the mf over time, except for immediately after irrigation. This factor caused the soil respiration in the nmr to always be lower than in the mf.

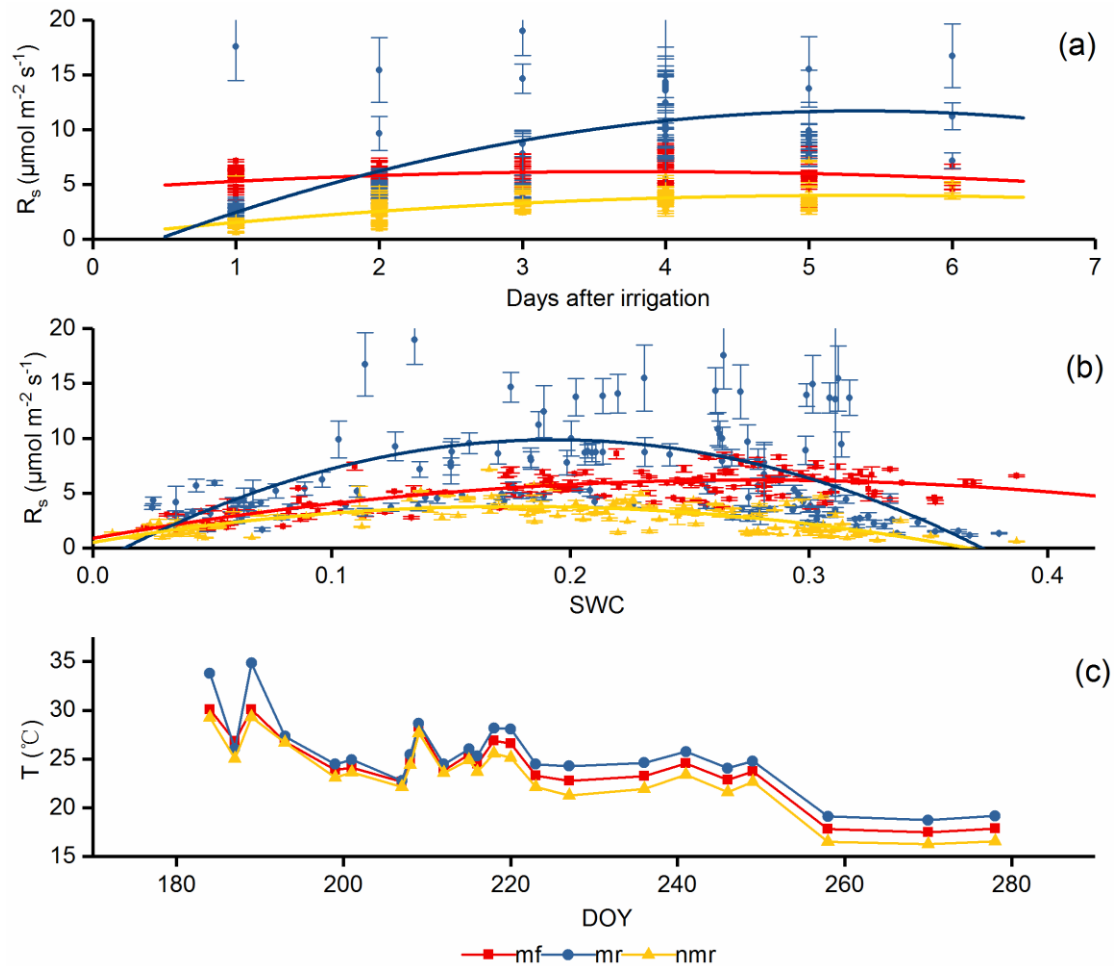


Fig. 7 The soil respiration affected by irrigation. The data represent the average of three duplicates; the error bar represents standard deviation. The fitted lines were used with the binomial equation. (a) Variations in the soil respiration within days after irrigation. (b) The relationship between the soil respiration and soil moisture. (c) The soil temperature affected by irrigation.

The effect of irrigation on the soil respiration was presented by the soil respiration relationship and days after irrigation with an irrigation cycle of approximately 6 days. The soil respirations were extremely low after irrigation in the mr and nmr, and then, recovered slowly within days after irrigation. Meanwhile, as in the mf, the soil respiration was almost unaffected by irrigation and only had a litter rise on the fourth day (Fig. 7a). The three parts reached the maximum values in 4 days and began to decrease with the decrease in the soil moisture. The relationship between soil the respiration and soil moisture can be expressed in the form of a binomial equation.



Before irrigation, the soil respiration was extremely low in the drier soil, and then it increased with the rising soil moisture. However, the soil respiration began to decline when it reached a threshold. The soil moisture threshold that caused the decline of the soil respiration was approximately 0.25 in the mf and approximately 0.2 in the mr and nmr (Fig. 7b). Moreover, these soil moisture thresholds were approximately 60% and 50% of the water-filled pore space (WFP), respectively. **The soil temperatures in the nmr and sometimes in the mr were smaller than in the mf due to the effect of irrigation. The restrain threshold in the mf was smaller than in the mr, which could be because in the ridges, the irrigation not only increased the soil moisture but also decreased the soil temperature, i.e., reducing soil respiration (Fig. 7c).**

### 3.5 Precipitation and soil respiration

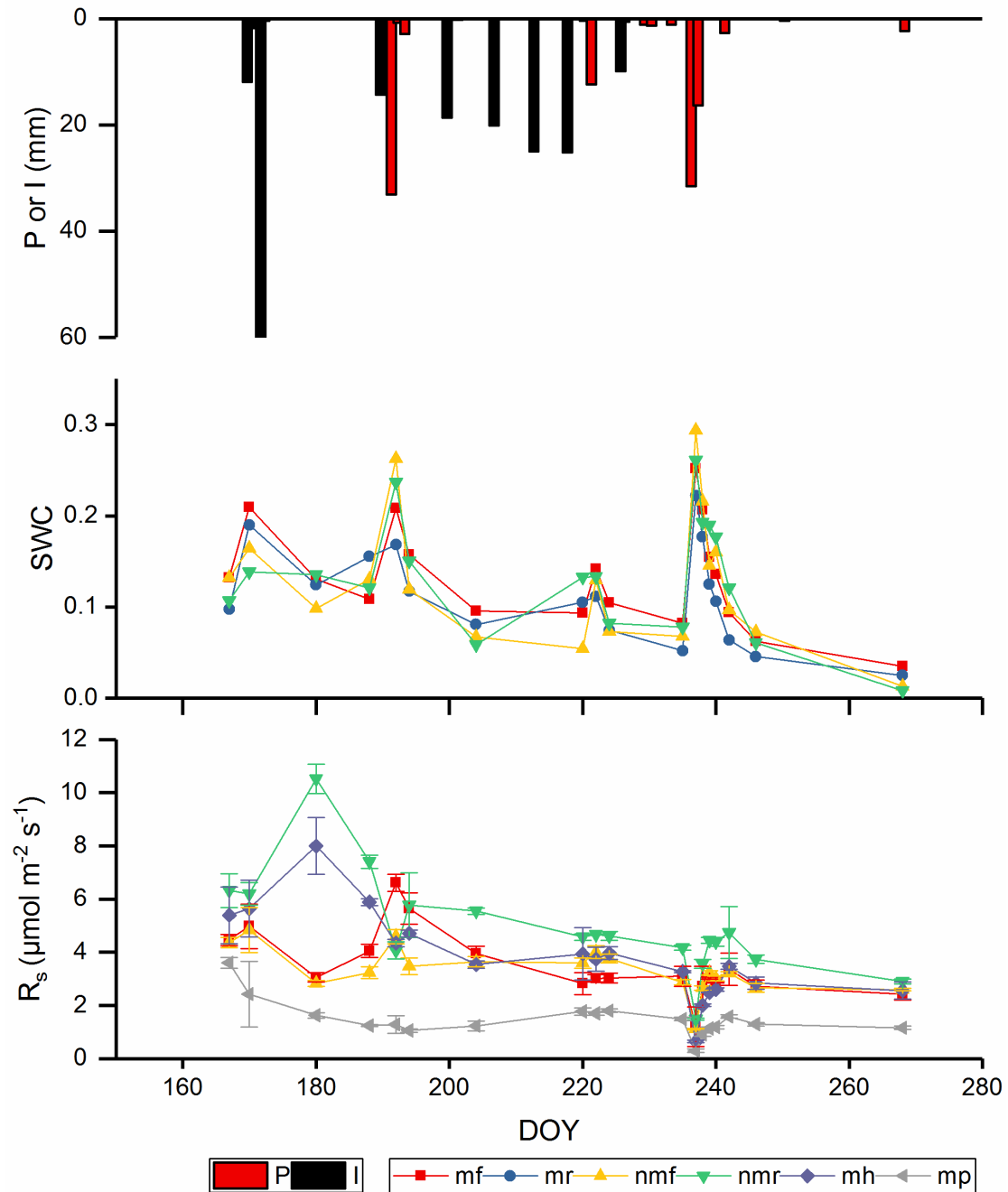


Fig. 8. The response of the soil moisture and soil respiration to precipitation and irrigation during 2016.

In 2016, there were three big rainfalls of 36.8 mm, 12.8 mm, and 48 mm in the DOY 192, 222, and 237, respectively. The soil moisture increased significantly after the 36.8 mm and 48 mm rainfalls but only slightly after the 12 mm rainfall. The soil moisture in the furrows was greater than in the ridges, and the soil moisture in the nmr was greater than in the mr, sometimes even larger than in the mf after precipitation. The soil respiration in the nmr was always greater than in the mp and mf, which was different during 2014 and 2015. Different amounts of precipitation had various effects on the soil moisture and respiration. The 12 mm precipitation had little effect on the soil moisture

and respiration. The 36.8 mm precipitation increased the soil moisture in the mf, nmf and nmr, but had little effect on the soil moisture under the plastic mulch (mr) because of the plastic mulch barrier. This precipitation restrained the soil respiration in the mr and mh but motivated the soil respiration in the mf and nmf. The 48 mm precipitation increased the soil moisture in all the parts except for the mr, and restrained the soil respiration in all the parts of the mulched and non-mulched fields.

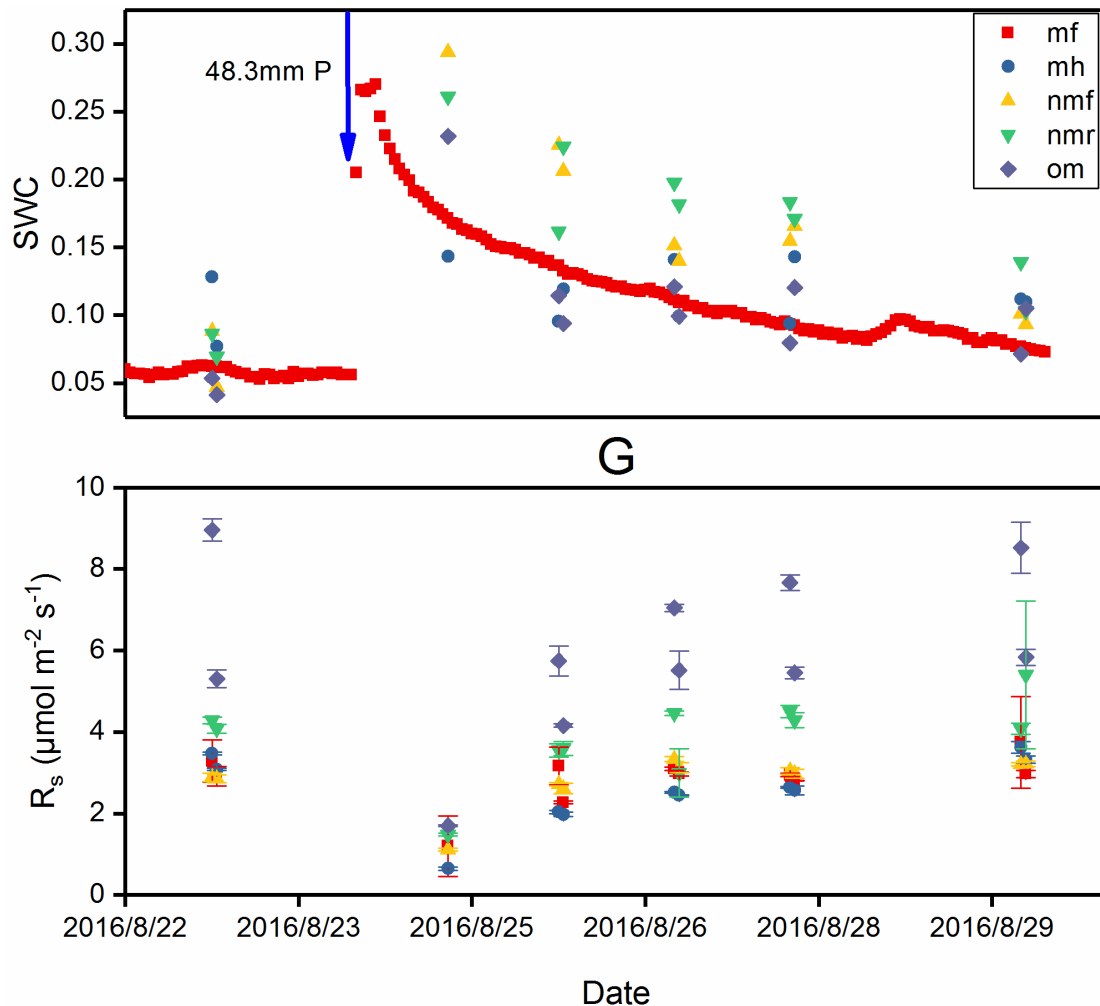


Fig. 9 Variations in the soil moisture and respiration in a wetting-drying cycle after a big rainfall (om means opening mulch and is the soil respiration in the ridges after uncovering the plastic mulch for 24 hours).

The effect of precipitation on the soil respiration in a wetting-drying cycle was studied carefully before and after a substantial rainfall of approximately 48 mm on August 24, 2016. The soil respiration was significantly restrained by the high SWC both in the furrows and ridges in the mulched and non-mulched fields. The restrain was relieved by the evapotranspiration of the soil moisture. **Soil respirations in the different parts were all restrained although the SWCs were very different in the various parts and the lowest SWC was 0.15 in the ridges under mulch. This finding means that the soil respirations were all restrained when the SWC was greater than 0.15, which was less than the threshold value affected by irrigation.** After rainfall, the soil moisture in all the parts rose rapidly except in the ridges under the mulch due to the barrier of plastic mulch and canopy interception. **The soil moisture after rainfalls was nmf>mf>nmr>mr, but the**

soil respiration after rainfalls was  $n_{mr} > m_f > n_{mf}$ , which means that precipitation primarily affected soil moisture in the furrows and ridges in the non-mulched field, and a higher soil moisture restrained more soil respiration. The soil respiration in the mh did not change much as the soil moisture in the ridges under the mulch was nearly unaffected by precipitation. Several days after restrain, the weakened soil respiration in the nmr was significantly larger than in the nmf and mf because precipitation supplies more water to the ridges in the non-mulched field than in the mulched field. It is noteworthy that it took approximately one day for the soil respiration to reach a normal level after precipitation, which was much shorter than the effect of irrigation. The soil respiration in the om, which was that under the mulch measured by uncovering the plastic mulch for more than 24 hours, was significantly greater than in the other parts, though it was also restrained.

To verify that different climate patterns may have different effects on the soil respiration in the mulched and non-mulched fields, other studies regarding comparative experiments in mulched and non-mulched fields were conducted to study the effect of precipitation on the differences in soil respiration (dF) in mulched and non-mulched fields (Fig. 10). Other studies included an arid area ( $P$  45.7 mm) south of Xinjiang in China (Liu *et al.*, 2002), a semiarid area ( $P$  160 mm) north of Xinjiang in China (Li *et al.*, 2011), a semi-humid area ( $P$  566.8 mm) on the Loess Plateau of China (Xiang *et al.*, 2014) and an area in a temperate monsoon climate ( $P$  1,954 mm) in Japan (Okuda *et al.*, 2007). Our experiments were added to these analyses, and the climate in our research was an arid area south of Xinjiang with an annual precipitation of 60 mm, except for 2016, which was a rainy year with 130 mm precipitation. Here, dF means the difference in the soil respirations between the mulched and non-mulched fields. The dF was found to have a linear relationship with the precipitation amount. This factor increased with precipitation, and at 200 mm precipitation, the soil respirations in the mulched and non-mulched fields were equal. At precipitation outside 200 mm, the soil respiration was lower in the mulched than in the non-mulched fields, e.g., 685 mm precipitation is a semi-humid area, and 2,000 mm is a temperate monsoon (Okuda *et al.*, 2007, Xiang *et al.*, 2014).

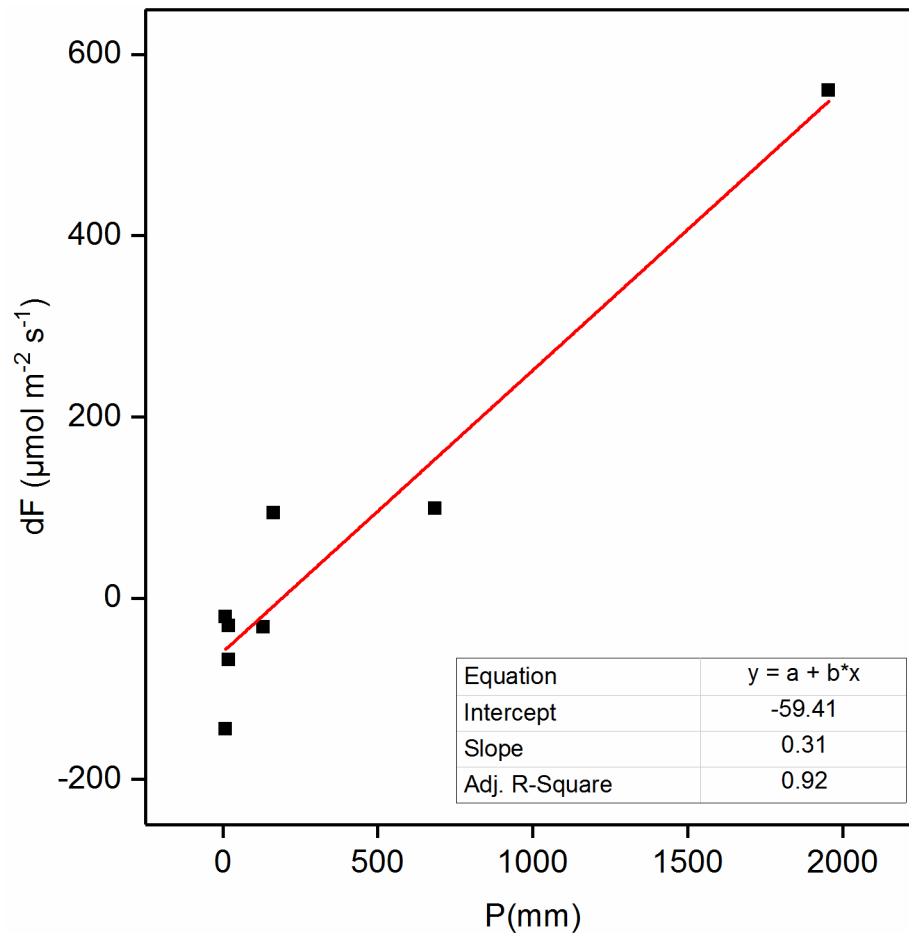


Fig. 10 The relationship of the difference in soil respirations in the mulched and non-mulched fields with precipitation.

## 4. Discussion

### 4.1 Effect of plastic mulch on soil respiration

The production and transfer of CO<sub>2</sub> in the soil are both affected by the plastic mulch. The production of CO<sub>2</sub> in the soil is determined by the root and microbial biomass, substrate supply, temperature and desiccation stress (Davidson *et al.*, 2006). The soil temperature, soil moisture and crop growth are all improved in the mulched field relative to in the non-mulched field. Plastic mulch preserves heat and energy transfer and soil moisture. Irrigation water is fully utilized as evaporation is prohibited and transpiration increases due to the accelerated crop growth absorbing more water through the roots (Tian *et al.*, 2016, Yang *et al.*, 2016). Improved crop growth produces more root biomass and litter fall in a mulched field, which will promote root respiration and litter fall decomposition. Moreover, improved soil temperature and soil moisture would promote the activities of the roots and microorganisms. Our results indicate that the soil respiration in the ridges of the mulched field (mr) as measured by uncovering the plastic mulch was much greater than in the furrows (mf). This finding indicates that indeed

much CO<sub>2</sub> gathers beneath the plastic mulch because of the plastic mulch barrier. The soil respiration in the ridges after uncovering the mulch for 24 hours (om) (Fig. 9) was also prominently greater than in the ridges of the non-mulched field (nmr). This finding indicates that the suitable temperature and moisture environment in the ridges indeed produce more CO<sub>2</sub> in the mulched field than in the non-mulched field. Yu *et al.* (2016) also found that CO<sub>2</sub> concentrations in the ridges and furrows increased by 49% and 15%, respectively, in the soil of 0-40 cm.

Some researchers argued that the high concentration of CO<sub>2</sub> under the plastic mulch would restrain CO<sub>2</sub> production in the soil. However, as we know, the soil respiration is the by product for the survival of microorganisms and the root, and so the concentration of CO<sub>2</sub> in deeper soil is much higher than at the surface layer (Luo & Zhou, 2006). The CO<sub>2</sub> can emit via the horizontal diffusion of CO<sub>2</sub> from the ridge soil covered with mulch to the adjacent furrow (Nishimura *et al.*, 2012) and also through the plant holes and plastic mulch. Our experiment indicates that the plant holes emit more CO<sub>2</sub> than the furrows (Fig. 3), although the plant holes are soil-covered and only occupy small areas of mulch. However, the root biomass primarily concentrates around the plant holes, which can produce more root respiration. The plastic mulch itself can also emit up to 2.75 μmol m<sup>-2</sup> s<sup>-1</sup> CO<sub>2</sub>. Considering that the plastic mulch occupies most of the ridge area, it is an important pathway for CO<sub>2</sub> emission in the mulched field. The emission rate of the plastic mulch correlates with the qualities of the plastic mulch, such as its thickness, texture and color. For example, a thick black PE mulch has an extraordinarily low N<sub>2</sub>O emission (Berger *et al.*, 2013), while high N<sub>2</sub>O is emitted from a polyethylene film only 0.02 mm thick (Nishimura *et al.*, 2012). Liu *et al.* (2016) also reported that the transparent plastic film emits more CO<sub>2</sub> than the black plastic mulch. The local farmers widely use the clear polyvinyl chloride (PVC) film with a thickness of only 0.008 mm as it can save on costs and absorb little but transmit up to 90% of solar radiation. This film has a relatively high diffusion for greenhouse gases. Therefore, the plant holes, furrows and plastic mulch are primarily responsible for CO<sub>2</sub> emissions in a mulched field, while only the furrows and ridges are responsible for CO<sub>2</sub> emissions in the non-mulched field. (Bi *et al.*, 2007)

Our results indicate that the plastic mulch accelerates soil respiration. The accumulated soil respirations in the ridges and furrows of the mulched field were greater than in the non-mulched field when considering the plant holes, furrows and plastic mulch. This result is a little different from that of Yu *et al.* (2016), who reported that soil respirations between the ridges were similar, while only soil respirations in the furrows in the mulched field were greater than in the non-mulched field. Liu *et al.*, (2016) also reported that transparent and black plastic films emit more CO<sub>2</sub> in the furrows, and (Cuello *et al.*, 2015) found that plastic film significantly increased the CH<sub>4</sub> and N<sub>2</sub>O greenhouse gas emissions.

## 4.2 Effect of irrigation on soil respiration

The soil respiration was strongly dynamic and fluctuated due to the drastic variations in the soil moisture because of the effect of frequent irrigation in the field (Fig. 6). In

the wetting-drying cycle, the SWC reached a high level right after irrigation, which restrained the soil respiration to an extremely low level. Moreover, in the subsequent period, the SWC was gradually depleted as water evaporated from the soil surface and was transported from the foliage canopy, which gradually increased the soil respiration. Soil respiration right after a big precipitation was also restrained significantly (Fig. 9). In the agriculture field, SWC was maintained at a relatively high level, i.e., greater than 20% in our experiment. Because the plastic mulch can preserve soil moisture by preventing evaporation, soil respiration was restrained after each irrigation. The frequency and amount of irrigation both affected the soil respiration by affecting the SWC. Xu *et al.* (2004) also found that the magnitude of the respiratory pulses was inversely related to its pre-rain value, and the decay of the respiratory pulses after the rain event was a function of the rainfall amount. In certain precipitation manipulating experiments, adding water significantly increased the soil respiration during a drought period (Liu *et al.*, 2002), but had no effect on soil respiration when the soil moisture was already relatively high (Lai *et al.*, 2013). This finding indicates that the effect of adding water such as through irrigation or precipitation manipulating experiments on soil respiration is related to the existing SWC, and it could result in soil respiration in dry soil and restrain soil respiration in a soil with a high-water content (Dong, 2010).

Our results indicate that both low and high SWC restrains soil respiration (Fig. 7b). The high-water-content restrain was caused by post irrigation during the growing season, while most of the low moisture content was because of no irrigation after the growing season. The soil moisture affected the soil respiration directly via the physiological processes of roots and microorganisms, and indirectly via diffusion of the substrate and O<sub>2</sub> (Luo & Zhou, 2006, Moyano *et al.*, 2012). Low water content affects the diffusion of soluble substrates, while a high-water content affects the diffusion and availability of oxygen (Davidson *et al.*, 2006, Linn & Doran, 1984). To satisfy crop water requirements and achieve high yield, frequent irrigation was applied in the field, i.e., the local irrigation was performed 13 times at an interval of 5-7 days. The relatively steady water conditions rendered the soil respiration always higher than that of natural ecosystems, particularly in the arid areas.

The sensitivity of the soil respiration to temperature was weakened by irrigation (Table 1). The correlation of soil respiration with the soil temperature in different parts of the mulched and non-mulched fields was not so good. Moreover, the R<sup>2</sup> was smaller than 0.5, particularly for the soil respiration in ridges. The Q<sub>10</sub> values were smaller than 2.0 except for in the plant holes, and Q<sub>10</sub> values in the furrows with a low SWC were smaller than in the ridges. This finding means that the soil respiration was less sensitive to temperature changes in the water-limited soils, which leads to lower Q<sub>10</sub> values (Liu *et al.*, 2016a). It was noteworthy that the threshold values of the SWC restraining soil respiration were different in the mulch and non-mulched fields. In the furrows without plastic mulch, the value was 60% of the WFP, which is equivalent to the former experimental results (Linn & Doran, 1984). However, in the ridges with plastic mulching, the threshold value was only 50% of the WFP (Fig. 6). This finding may be because the soil respiration was more sensitive to soil moisture in a lower temperature range because the soil moisture in ridges was higher than that in the furrow, while the

temperatures were lower than in the furrow. Therefore, the effect of soil moisture on the soil respiration was confounded with soil temperature (Davidson *et al.*, 1998).

### 4.3 Effect of precipitation on soil respiration

From the 48 mm precipitation event, we can see the effect of the soil moisture on soil respiration in the wetting-drying cycle. An extremely high SWC right after precipitation significantly restrained the soil respiration, and the effect weakened as the soil water faded away (Fig. 9), which was the same pattern as with the effect of SWC on soil respiration in the wetting-drying cycle affected by irrigation. This finding means that irrigation and precipitation both affect the soil respiration by affecting the SWC, which affects the activities of the root and microorganisms and the diffusion of O<sub>2</sub> and the solute (Luo & Zhou, 2006). The soil temperature was also affected by the change in soil moisture. To affect soil respiration, for example, the precipitation took one day for the soil respiration to recover from the restrain to a normal level, while irrigation took four days to recover (Fig. 6, Fig. 8). This difference occurred because the drip irrigation decreased the soil temperature much more than the precipitation did as the irrigation water was taken directly from a deep well which was colder than the precipitation water. Therefore, the effect of soil water on soil respiration was always confounded by the soil temperature (Davidson *et al.*, 1998).

Our results show that the 12 mm precipitation had little effect on the soil moisture and soil respiration. The 37.8 mm precipitation resulted in soil respiration in the mf and nmf fields because the precipitation can directly infiltrate into soil in the furrows. However, this precipitation event restrained soil respiration in the mr and nmr because the precipitation cannot infiltrate into the soil in the mr but can infiltrate into the nmr. This difference led the soil moisture in the mr still to decrease without irrigation and the soil moisture in the nmr to be very high and restrain soil respiration. After the 48 mm precipitation, the soil respirations were all restrained in the ridges and furrows in the mulched and non-mulched fields as the SWCs were all approaching 0.3 (Fig. 8). The above arguments indicate that the effect of precipitation on the soil respiration was determined by the SWC. As the SWC is related to the precipitation amount, the amount and timing of the precipitation affected the soil respiration by affecting the SWC.

The hydrological responses of precipitation in the field were changed by the plastic mulch and its physical non-permeability to water. Moreover, this barrier was the reason the precipitation effect on the soil respirations was different in the mulched and non-mulched fields. For example, the soil respiration in the nmr was larger than in the mf and mh during 2016. However, the result was contrary in 2014 and 2015. With little rainfall during 2014 and 2015, the soil moisture in the mf was larger than in the nmr (Fig. 5). Additionally, the strong evaporation in the nmr without the plastic mulch protection and the fact that the soil moisture in the mr can horizontally infiltrate into the mf are considered. The soil temperature in the mf was also larger than in the nmr (Fig. 7c). These two factors determined that the soil respiration in the nmr was smaller than in the mf and mh. With more rainfall during 2016, the soil moisture in the nmr was



larger than in the mf considering that the rainfall cannot penetrate the plastic mulch. Moreover, their temperatures were not as different as with the effect of irrigation, so the soil respiration in the nmr was larger than in the mf and mh during 2016. The precipitation resulted in greater soil respiration in the non-mulched field than in the mulched field, and the amount of soil respiration from 2014 to 2016 increased. Therefore, we can speculate the magnitude at which the mulch accelerating soil respiration was related to the precipitation amount.

Although the precipitation restrained the soil respiration at a high SWC right after precipitation, the restrain was quickly depleted. Therefore, the precipitation increased the soil respiration in the mulched and non-mulched fields by improving soil moisture conditions during the growing season, particularly in an arid area. Moreover, on a global scale, the soil respiration rates were found to be positively correlated with the mean annual precipitation (Raich & Schlesinger, 1992) and the soil respiration increased linearly with the mean annual precipitation (Zhou *et al.*, 2009).

## 5. Summary and Conclusions

Plastic mulch is now widely used in agriculture around the world due to the continuous fall in the prices of plastic products and increasing development of plastic industries, particularly in developing countries, such as China. The changing land cover with a mass of the PFM field will affect the energy, water and carbon cycle regionally or globally. However, how plastic mulch affects CO<sub>2</sub> emissions in an agriculture field remains unclear. This uncertainty is particularly pronounced in arid areas under the condition of climate changes, such as rising temperatures and shifting precipitation, which both have severe effects on the soil carbon balance.

A comparative experiment was conducted in a plastic mulch drip irrigation field in an arid area of Northwest China to detect how the soil respiration is affected by plastic mulch, irrigation and precipitation. The spatial heterogeneity of the microclimate and soil respiration was enhanced by the plastic mulch. Crop growth was improved with the improved environmental conditions of the soil temperature and moisture, which increase respiration of roots and microorganisms with a greater mineralization and higher litter fall and root biomass. The furrows, plant holes and plastic mulch were three important pathways for CO<sub>2</sub> emissions in the mulched field. The relationship between the soil respiration and soil temperature was weakened by frequent irrigation and precipitation. The soil respiration was first restrained and then, enhanced in a wetting-drying cycle caused by irrigation and precipitation. The soil respiration in the mulched field was larger than in the non-mulched field, both in the ridges and furrows during the growing season. This result indicated that the plastic mulch increased the soil respiration in an arid area. However, it was observed that the magnitude of the plastic mulch accelerating soil respiration decreased with the amount of precipitation over three years. Both irrigation and precipitation controlled the seasonal variation in soil respiration in the mulched field in the arid area. However, irrigation had the same effect on the soil respiration in the mulched and non-mulched fields as the drip tapes that were beneath the plastic mulch, while precipitation primarily affects the soil respiration in

the non-mulched field because of the mulch barrier to precipitation. Moreover, a linear relationship was found between the differences in the soil respiration of the mulched and non-mulched fields and the precipitation amount by collecting other studies. With increased precipitation, the function of the plastic mulch accelerating soil respiration was weakened. This outcome indicates whether the plastic mulch increasing soil respiration depends on the climate. In an arid area, the plastic mulch will increase the soil respiration. In a humid area, the mulch will decrease the soil respiration compared to the non-mulched field because precipitation increases the soil respiration more in the non-mulched field than in the mulched field.

On the one hand, the plastic mulch will improve crop growth. However, the approach will also increase CO<sub>2</sub> emissions in an arid area with the increase being altered by precipitation in the field. With extreme precipitation and the rapid expansion of the PFM field from natural ecosystems recently occurring in the Xinjiang Uygur Autonomous Region, the challenges for controlling greenhouse gas emissions in the arid area is still severe. Plastic mulch and irrigation should be better depicted in future soil carbon models. Linking the hydrologic and Carbon cycles via the conservation of water resources is crucial for improving agronomic yields and soil C sequestration in dryland (Lal, 2004).

## Acknowledgement

This research was supported by the Ministry of Science and Technology (2016YFC0402701, 2016YFA0601603), the National Science Foundation of China (NSFC 91647205) and the Foundation of the State Key Laboratory of Hydrosphere and Engineering of Tsinghua University (2016-KY-03). We gratefully appreciate their support. We acknowledge the staff at Tsinghua University-Korla Oasis Eco-hydrology Experimental Research Station for their kindly help and assistance. Also, the authors thank Dr. Mohd Yawar Ali Khan for the help with language improvement.

## References

- Anikwe MaN, Mbah CN, Ezeaku PI, Onyia VN (2007) Tillage and plastic mulch effects on soil properties and growth and yield of cocoyam (*Colocasia esculenta*) on an ultisol in southeastern Nigeria. *Soil and Tillage Research*, **93**, 264-272.
- Baker JM, Ochsner TE, Venterea RT, Griffis TJ (2007) Tillage and soil carbon sequestration—What do we really know? *Agriculture, Ecosystems & Environment*, **118**, 1-5.
- Berger S, Kim Y, Kettering J, Gebauer G (2013) Plastic mulching in agriculture—Friend or foe of N<sub>2</sub>O emissions? *Agriculture, Ecosystems & Environment*, **167**, 43-51.
- Bi X, Gao Z, Deng X *et al.* (2007) Seasonal and diurnal variations in moisture, heat, and CO<sub>2</sub> fluxes over grassland in the tropical monsoon region of southern China. *Journal of Geophysical Research*, **112**.
- Bonan G (2008) *Ecological climatology*, Cambridge.
- Bond-Lamberty B, Thomson A (2010) Temperature-associated increases in the global soil respiration record. *Nature*, **464**, 579-582.

- Buyanovsky GA, Kucera CL, Wagner GH (1987) Comparative Analyses of Carbon Dynamics in Native and Cultivated Ecosystems. *Ecology*, **68**, 2023-2031.
- Cox PM, Betts RA, Jones CD, Spall SA, Totterdell IJ (2000) Acceleration of global warming due to carbon-cycle feedbacks in a coupled climate model. *Nature*, **408**, 184-187.
- Cuello JP, Hwang HY, Gutierrez J, Kim SY, Kim PJ (2015) Impact of plastic film mulching on increasing greenhouse gas emissions in temperate upland soil during maize cultivation. *Applied Soil Ecology*, **91**, 48-57.
- Curiel Yuste J, Janssens IA, Carrara A, Ceulemans R (2004) Annual Q10 of soil respiration reflects plant phenological patterns as well as temperature sensitivity. *Global Change Biology*, **10**, 161-169.
- Davidson EA, Belk E, Boone RD (1998) Soil water content and temperature as independent or confounded factors controlling soil respiration in a temperate mixed hardwood forest. *Global Change Biology*, **4**, 217-227.
- Davidson EA, Janssens IA, Luo Y (2006) On the variability of respiration in terrestrial ecosystems: moving beyond Q10. *Global Change Biology*, **12**, 154-164.
- Dong WY (2010) Review of response mechanism of soil respiration to rainfall. *Chinese Journal of Plant Ecology*, **34**, 601-610.
- Fang C, Moncrieff JB (2001) The dependence of soil CO<sub>2</sub> efflux on temperature. *Soil Biology and Biochemistry*, **33**, 155-165.
- Gong D, Hao W, Mei X, Gao X, Liu Q, Caylor K (2015) Warmer and Wetter Soil Stimulates Assimilation More than Respiration in Rainfed Agricultural Ecosystem on the China Loess Plateau: The Role of Partial Plastic Film Mulching Tillage. *PLoS ONE*, **10**, e0136578.
- Guo S, Qi Y, Peng Q, Dong Y, He Y, Yan Z, Wang L (2017) Influences of drip and flood irrigation on soil carbon dioxide emission and soil carbon sequestration of maize cropland in the North China Plain. *Journal of Arid Land*, **9**, 222-233.
- Hoff JVT (1898) *Lectures on Theoretical and Physical Chemistry. Part 1. Chemical Dynamics*, London.
- Huxman TE, Snyder KA, Tissue D *et al.* (2004) Precipitation pulses and carbon fluxes in semiarid and arid ecosystems. *Oecologia*, **141**, 254-268.
- Lai L, Wang J, Tian Y *et al.* (2013) Organic Matter and Water Addition Enhance Soil Respiration in an Arid Region. *PLoS One*, **8**, e77659.
- Lal R (2004) Soil Carbon Sequestration Impacts on Global Climate Change and Food Security. *Science*, **304**, 1623-1627.
- Li N, Tian F, Hu H, Lu H, Ming G (2016) Effects of Plastic Mulch on Soil Heat Flux and Energy Balance in a Cotton Field in Northwest China. *Atmosphere*, **7**, 107.
- Li Z-G, Zhang R-H, Wang X-J, Wang J-P, Zhang C-P, Tian C-Y (2011) Carbon Dioxide Fluxes and Concentrations in a Cotton Field in Northwestern China: Effects of Plastic Mulching and Drip Irrigation. *Pedosphere*, **21**, 178-185.
- Linn DM, Doran JW (1984) Effect of Water-Filled Pore Space on Carbon Dioxide and Nitrous Oxide Production in Tilled and Nontilled Soils<sup>1</sup>. *Soil Science Society of America Journal*, **48**, 1267-1272.
- Liu L, Wang X, Lajeunesse MJ *et al.* (2016a) A cross-biome synthesis of soil respiration and its determinants under simulated precipitation changes. *Global Change Biology*, **22**, 1394-1405.
- Liu Q, Chen Y, Li W, Liu Y, Han J, Wen X, Liao Y (2016b) Plastic-film mulching and urea types affect soil CO<sub>2</sub> emissions and grain yield in spring maize on the Loess Plateau, China. *Scientific Reports*, **6**, 28150.

- Liu W, Zhang ZHE, Wan S (2009) Predominant role of water in regulating soil and microbial respiration and their responses to climate change in a semiarid grassland. *Global Change Biology*, **15**, 184-195.
- Liu X, Wan S, Su B, Hui D, Luo Y (2002) Response of soil CO<sub>2</sub> efflux to water manipulation in a tallgrass prairie ecosystem. *Plant and Soil*, **240**, 213-223.
- Luo Y, Zhou X (2006) *soil respiration and the environment*, Elsevier.
- Mahrer Y, Naot O, Rawitz E, Katan J (1984) Temperature and Moisture Regimes in Soils Mulched with Transparent Polyethylene. *Soil Science Society of America Journal*, **48**, 362-367.
- Moyano FE, Vasilyeva N, Bouckaert L *et al.* (2012) The moisture response of soil heterotrophic respiration: interaction with soil properties. *Biogeosciences*, **9**, 1173-1182.
- Nishimura S, Komada M, Takebe M, Yonemura S, Kato N (2012) Nitrous oxide evolved from soil covered with plastic mulch film in horticultural field. *Biology and Fertility of Soils*, **48**, 787-795.
- Okuda H, Noda K, Sawamoto T, Tsuruta H, Hirabayashi T, Yonemoto JY, Yagi K (2007) Emission of N<sub>2</sub>O and CO<sub>2</sub> and Uptake of CH<sub>4</sub> in Soil from a Satsuma Mandarin Orchard under Mulching Cultivation in Central Japan. *Journal of the Japanese Society for Horticultural Science*, **76**, 279-287.
- Qian-Bing Z, Ling Y, Jin W, Hong-Hai L, Ya-Li Z, Wang-Feng Z (2012) Effects of Different Irrigation Methods and Fertilization Measures on Soil Respiration and Its Component Contrib. *Scientia Agricultura Sinica*, **45**, 2420-2430.
- Raich JW, Schlesinger WH (1992) The global carbon dioxide flux in soil respiration and its relationship to vegetation and climate. *Tellus B*, **44**, 81-99.
- Raich JW, Tufekciogul A (2000) Vegetation and soil respiration: Correlations and controls. *Biogeochemistry*, **48**, 71-90.
- Reichstein M, Beer C (2008) Soil respiration across scales: The importance of a model–data integration framework for data interpretation. *Journal of Plant Nutrition and Soil Science*, **171**, 344-354.
- Tarara JM (2000) Microclimate modification with plastic mulch. *HortScience*, **35**, 180.
- Tian F, Yang P, Hu H, Dai C (2016) Partitioning of Cotton Field Evapotranspiration under Mulched Drip Irrigation Based on a Dual Crop Coefficient Model. *Water*, **8**, 72.
- Wang YP, Li XG, Fu T, Wang L, Turner NC, Siddique KHM, Li F-M (2016) Multi-site assessment of the effects of plastic-film mulch on the soil organic carbon balance in semiarid areas of China. *Agricultural and Forest Meteorology*, **228–229**, 42-51.
- Xiang G, Gong D, Fengxue G (2014) Inhibiting soil respiration and improving yield of spring maize in fields with plastic film mulching. *Transaction of the Chinese Society of Agricultural Engineering*, **30**, 62-70.
- Xu L, Baldocchi DD, Tang J (2004) How soil moisture, rain pulses, and growth alter the response of ecosystem respiration to temperature. *Global Biogeochemical Cycles*, **18**, n/a-n/a.
- Yaghi T, Arslan A, Naoum F (2013) Cucumber (*Cucumis sativus*, L.) water use efficiency (WUE) under plastic mulch and drip irrigation. *Agricultural Water Management*, **128**, 149-157.
- Yan M, Zhou G, Zhang X (2014) Effects of irrigation on the soil CO<sub>2</sub> efflux from different poplar clone plantations in arid northwest China. *Plant and Soil*, **375**, 89-97.
- Yang P, Hu H, Tian F, Zhang Z, Dai C (2016) Crop coefficient for cotton under plastic mulch and drip irrigation based on eddy covariance observation in an arid area of northwestern China. *Agricultural Water Management*, **171**, 21-30.
- Yu Y, Zhao C, Stahr K, Zhao X, Jia H, De Varennes A (2016) Plastic mulching increased soil

- CO<sub>2</sub> concentration and emissions from an oasis cotton field in Central Asia. *Soil Use and Management*, **32**, 230-239.
- Zeng N, Zhao F, Collatz GJ, Kalnay E, Salawitch RJ, West TO, Guanter L (2014) Agricultural Green Revolution as a driver of increasing atmospheric CO<sub>2</sub> seasonal amplitude. *Nature*, **515**, 394-397.
- Zhang Z, Hu H, Tian F, Yao X, Sivapalan M (2014) Groundwater dynamics under water-saving irrigation and implications for sustainable water management in an oasis: Tarim River basin of western China. *Hydrology and Earth System Sciences*, **18**, 3951-3967.
- Zhang Z, Tian F, Hu H (2011) Spatial and temporal pattern of soil temperature in cotton field under mulched drip irrigation condition in Xinjiang. *Trans. CSAE*, **2011**, 44-51.
- Zhou X, Talley M, Luo Y (2009) Biomass, Litter, and Soil Respiration Along a Precipitation Gradient in Southern Great Plains, USA. *Ecosystems*, **12**, 1369-1380.