

Fig. 1 – Annual and monthly mean values of air temperature (left column), precipitation (middle column) and air humidity deficit (right column). Black bars denote data derived from observations, red bars – simulations.

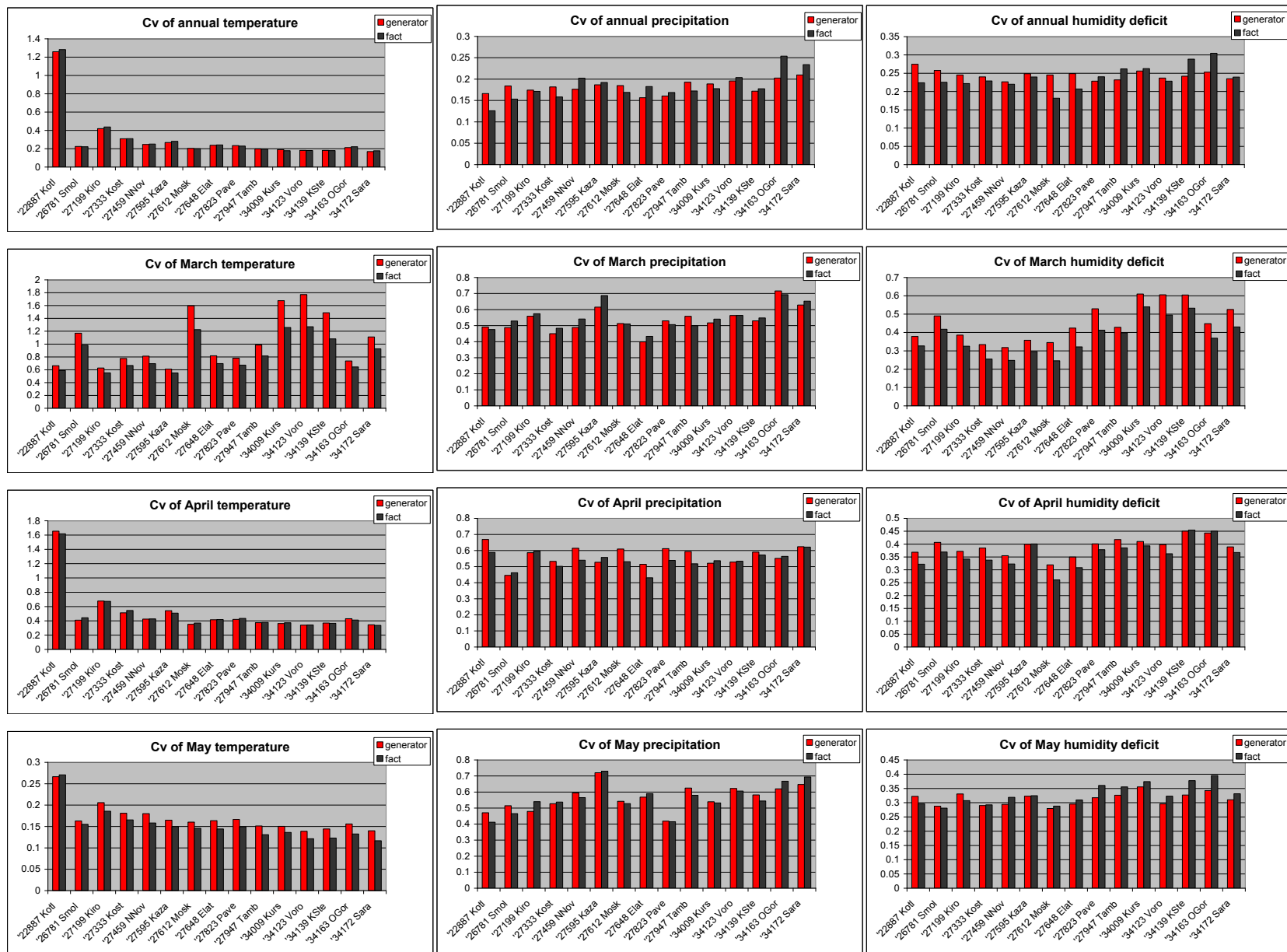


Fig. 2 – Coefficient of variation of annual and monthly values of air temperature (left column), precipitation (middle column) and air humidity deficit (right column). Black bars denote data derived from observations, red bars – simulations.



Fig. 3 – Pearson coefficient of correlation between annual air temperature (left column), precipitation (middle column) and air humidity deficit (right column) at different weather stations. Black bars denote data derived from observations, red bars – simulations.

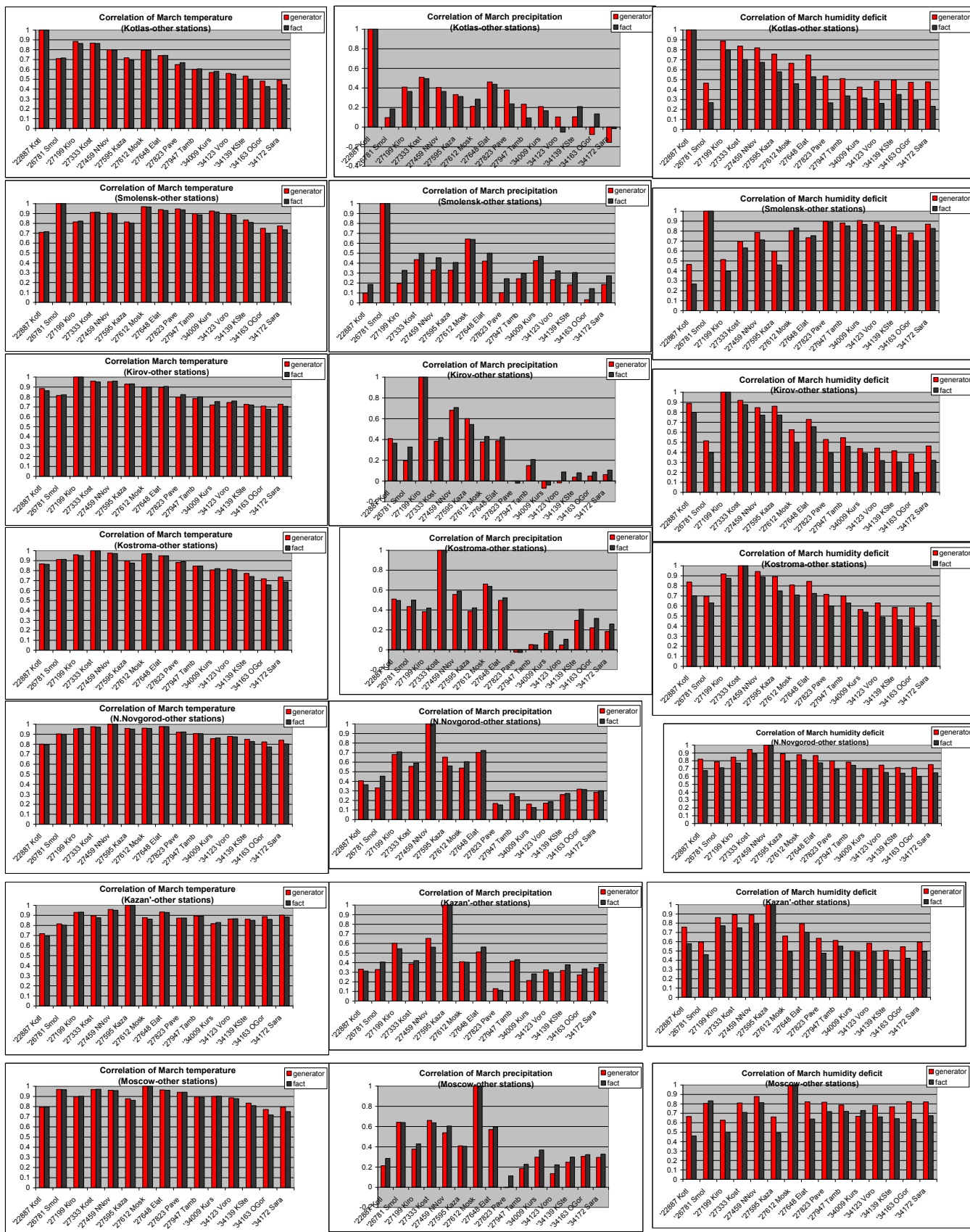


Fig. 4 – Pearson coefficient of correlation between March air temperature (left column), precipitation (middle column) and air humidity deficit (right column) at different weather stations. Black bars denote data derived from observations, red bars – simulations

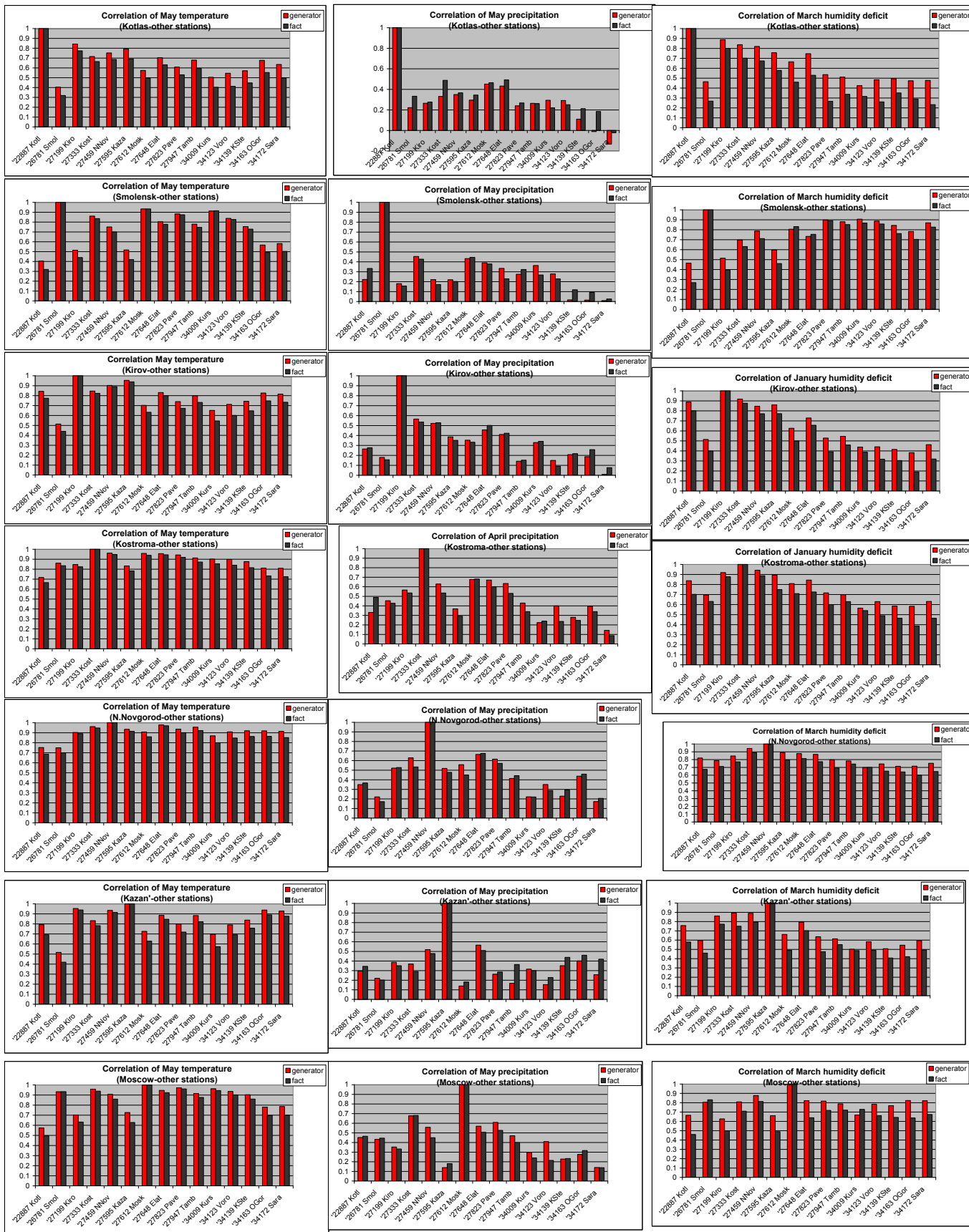


Fig. 5 – Pearson coefficient of correlation between May air temperature (left column), precipitation (middle column) and air humidity deficit (right column) at different weather stations. Black bars denote data derived from observations, red bars – simulations

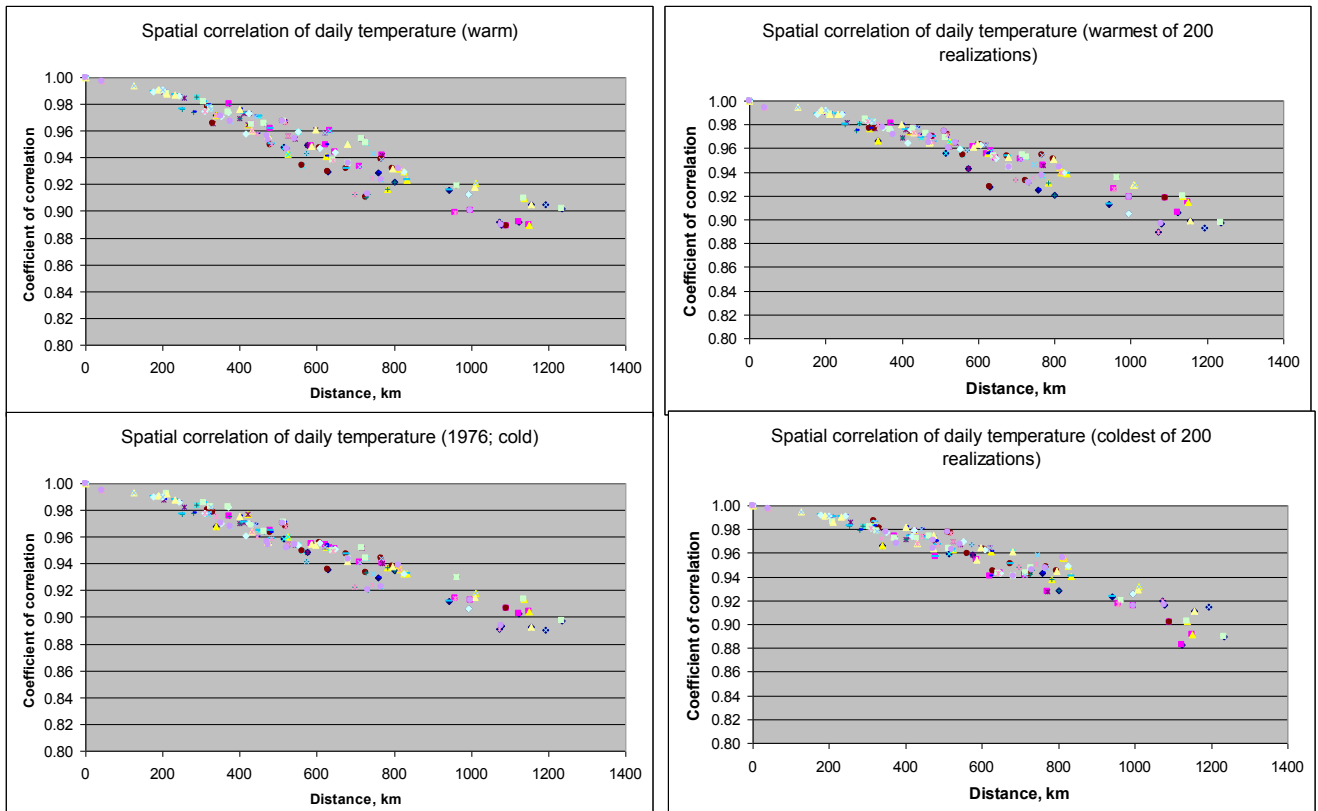


Fig. 6 — Spatial correlations of the observed (left) and generated (right) daily air temperature

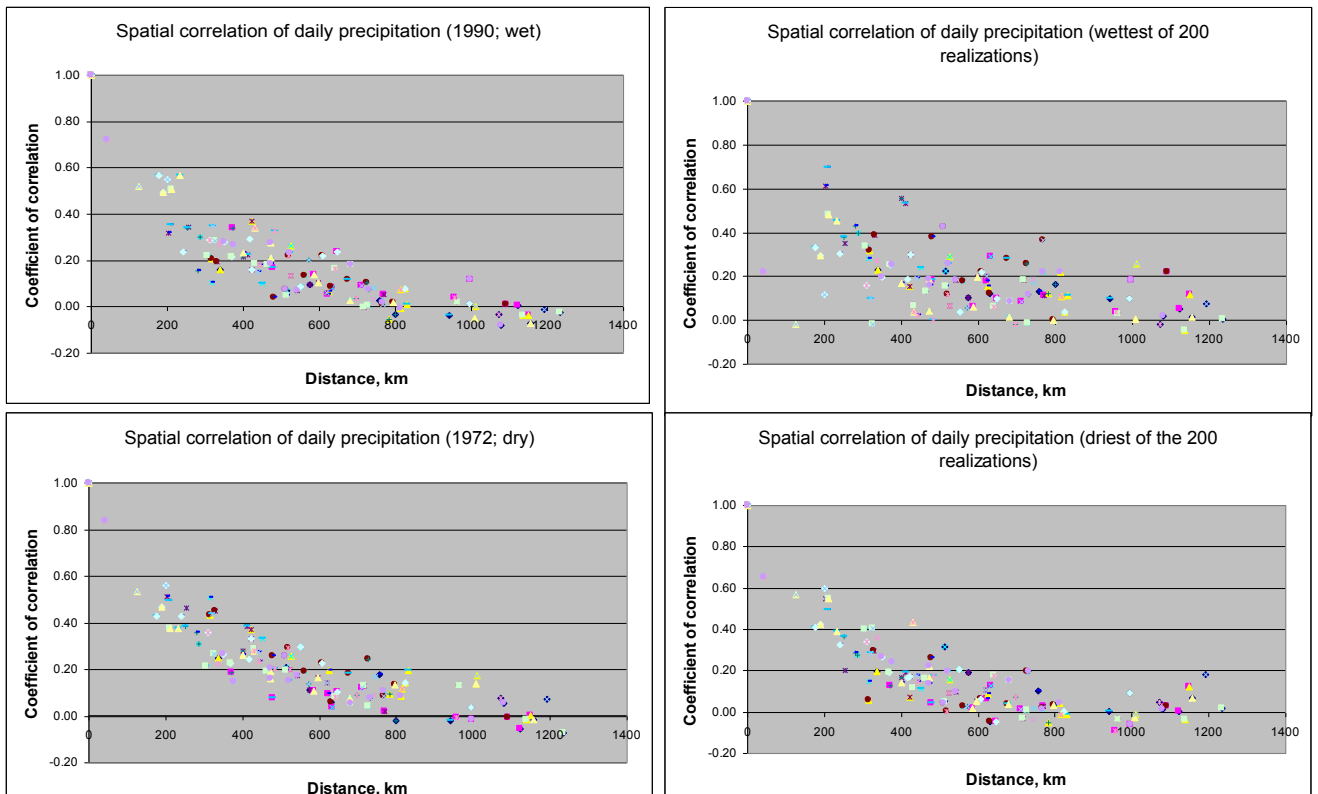


Fig. 7 — Spatial correlations of the observed (left) and generated (right) daily precipitation