

Interactive comment on “Seasonal streamflow forecasts in the Ahlergaarde catchment, Denmark: effect of preprocessing and postprocessing on skill and statistical consistency” by Diana Lucatero et al.

Diana Lucatero et al.

diana.lucatero@ign.ku.dk

Received and published: 12 October 2017

Your comments and suggestions are greatly appreciated. Please note the figures attached and the supplement in which we add a detailed response to your review.

Please also note the supplement to this comment:

<https://www.hydrol-earth-syst-sci-discuss.net/hess-2017-379/hess-2017-379-AC2-supplement.pdf>

Printer-friendly version

Discussion paper



Interactive comment on Hydrol. Earth Syst. Sci. Discuss., <https://doi.org/10.5194/hess-2017-379>, 2017.

HESD

Interactive
comment

[Printer-friendly version](#)

[Discussion paper](#)



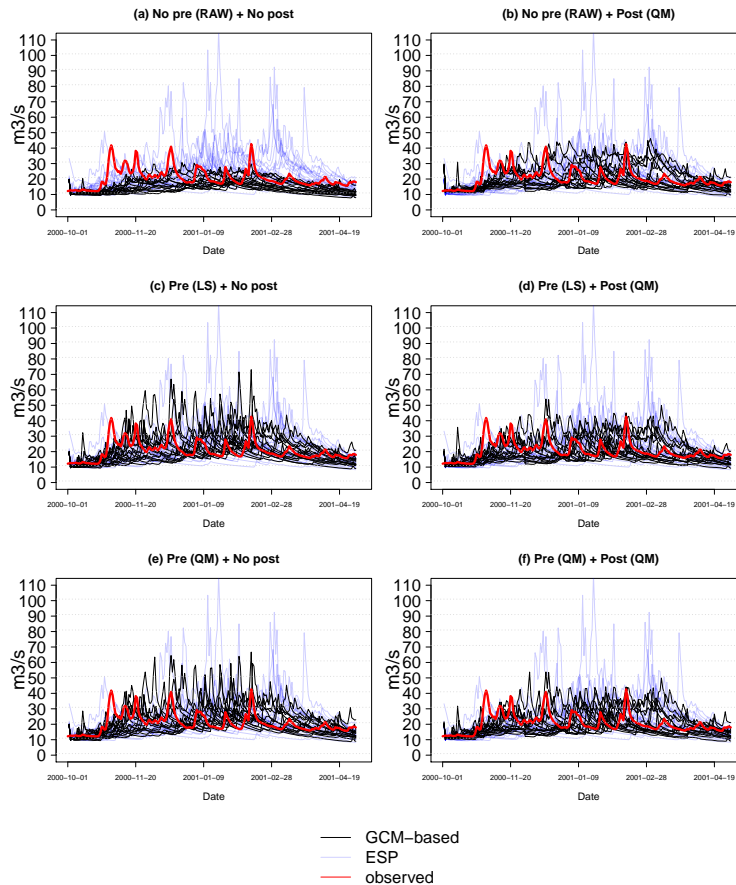


Fig. 1. Example of a forecast of daily streamflow (initialized 01-10-2000, outlet station 82) generated with different strategies. Pre and Post stand for preprocessing and postprocessing, respectively. RAW, L

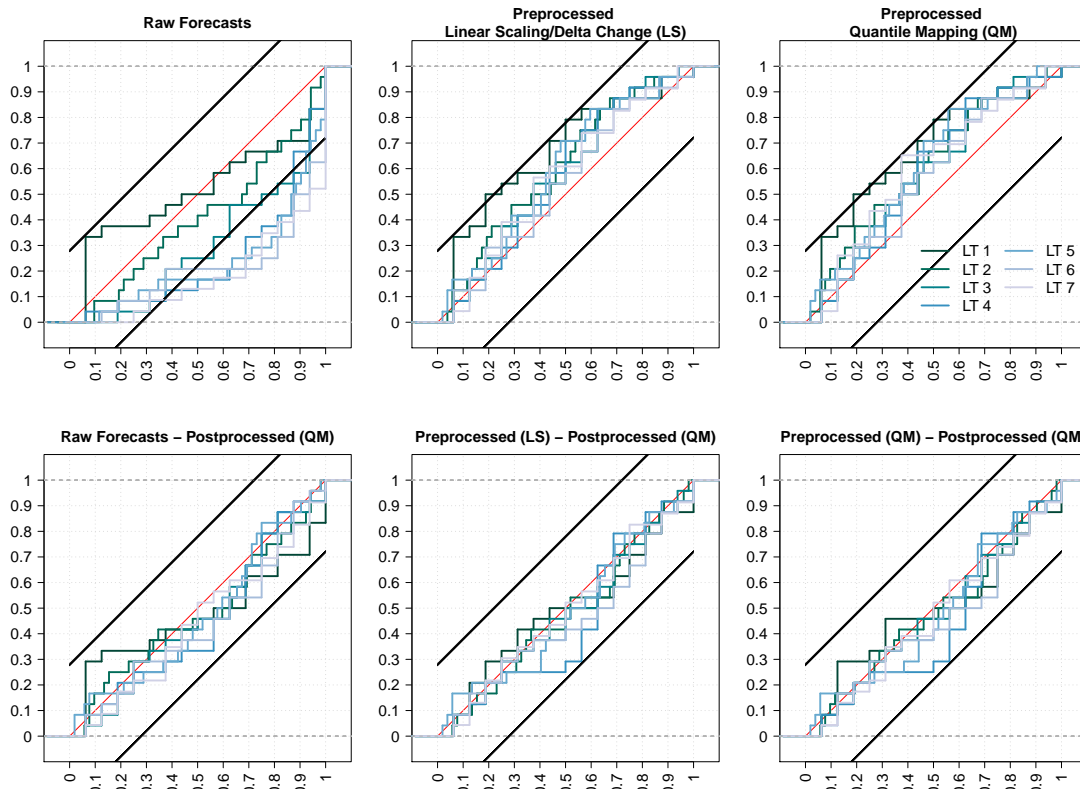


Fig. 2. PIT diagrams of target month December at different lead times (LT) for different forecast strategies. For example, LT 3 corresponds to the December forecast initialized in October.

Printer-friendly version

Discussion paper

