

RESPONSE TO REF COMMENTS MS: HESS-2017-37 (V1)

Title: A regional scale ecological risk framework for environmental flow evaluations.

Author(s): Gordon C. O'Brien et al.

MS No.: hess-2017-37

MS Type: Research article

Note that the way comments were incorporated into the revised manuscript is presented in blue.

RC1: (31 MAR 2017):

RC1-1 Comment: This paper presents an advance on holistic environmental flow assessments at catchment and broader spatial scales by applying advanced risk assessment procedures and Bayesian Belief Networks (BBNs) to evaluate scenarios of water use for environmental and social purposes. It builds upon earlier work that assessed the ecological and social risks associated with development of water resources in the Lesotho Highlands via the Lesotho Highlands Water Project (Phase I) using a framework known as DRIFT (Downstream Response to Imposed Flow Transformation). Differences lie in the application of BBNs as the formal procedure to assess risks. The use of BBNs in environmental flow assessment has several precedents, including a framework to incorporate BBNs into the DRIFT framework (Arthington et al. 2007, see additional references below). The description of PROBFLO sets out 10 procedural steps (see flowchart) and works through them for two case studies (Lesotho Highlands and Mara River). For the uninitiated this paper will be a tough read, but for those with deep insight into the history of e-flow assessment and holistic approaches, it will be very rewarding.

Updated MS: No action taken

Specific comments:

RC1-2 Comment: There are strong similarities between this paper and O'Brien & Wepener (2012) who provide detailed descriptions of the main steps of PROBFLO minus the use of BBN to assess risks. Reading O'Brien & Wepener (2012) alongside the present paper will greatly assist the reader's comprehension of the 10 procedural steps which I found easier to follow and understand in the 2012 paper.

Updated MS: We have expanded the Ecological Risk Assessment paragraph in the introduction of the MS, and the MS provides a better presentation of the relative risk assessment approach that has been included in O'Brien and Wepener, 2012. We have also added "For more information on the application of the RRM consider Colnar and Landis (2007), Anderson and Landis (2012) or O'Brien and Wepener (2012)."

RC1-3 Comment: The PROBFLO paper states (page 9, line 19-) that "Data used in the [Lesotho] case study was derived from a series of bio-physical surveys of the study area which sought to illustrate the hypothesised causal relationships from the BN models. Data obtained from the surveys, historical information and specialist elicitations were used to establish CPTs and describe input node rank thresholds. Risk ranking definitions and justifications for indicators and measures of each input node and the CPTs are available in the technical report of the study (LHDA 2016)". My searches failed to locate this report on the LHDA website, and frustrated my desire to see some of the raw data from field surveys, and trace the steps from field data to risk assessment. These steps are described in the Lesotho DRIFT assessment procedure (Arthington et al. 2003; King et al. 2003), for example.

Updated MS: We have edited the section and added in more detail on the scope of work to generate evidence in the MS. We have in addition added in detailed causal relationship socio-ecological models for the assessment as figures and included working Netica models and justification tables as supplementary information.

RC1-4 Comment: An important feature of the definition of risk regions is that "The approach can address spatial and temporal relationships of variables between risk regions, such as the downstream effect of a source on multiple risk regions, in the context of the assimilative

capacity of the ecosystem or the upstream connectivity requirements of a migratory fish between risk regions". Spatial and temporal connectivity are important features of river networks, and somewhat neglected in e-flow assessments, especially the effects of barriers combined with changes in flow regime. Strangely enough, they seem to be evaluated via separate management programs.

Updated MS: This has been clarified with the following updated statement... "The BNs are initially used to evaluate the risk of anthropogenic/natural hazards to endpoints per risk region, in relative manner for comparisons, for multiple temporal periods (high or low flow months and wet or drought phases etc.) which can also be compared relative to each other."

RC1-5 Comment: PROBFLO is said to conform to the requirements of the regional e-flow assessment framework known as ELOHA (Poff et al. 2010). It does not quite do so, in that hydrological and geomorphological classification do not appear to form part of the "risk region" assessment process, but I agree that PROBFLO can be adapted for use within an ELOHA regional context. I was interested to read that the "Nile Basin regional scale E-flow framework expands on the ELOHA framework to include an initial situation assessment, data review and alignment phase and a governance and Resource Quality Objectives setting phase". These developments of ELOHA sound very worthy and a paper describing the expanded framework would be most useful.

Updated MS: We have expanded on the Risk Region selection section of the study (Section 3.3) with "To demonstrate that PROBFLO can conform to the regional E-flow assessment frameworks such as ELOHA (Poff et al. 2010), the selection of RRs should include explicit hydrological and geomorphological classification. The relative risk outcomes of the assessment can later be directly related to the system classification as proposed by ELOHA. With additional E-flow information for a range of hydrological and geomorphological ecosystem types, the outcomes can be used to establish regional E-flows." And ITO the comment on the Nile Basin regional scale E-flow framework. We have been given permission to publish the work and will do so asap.

RC1-6 Comment: A decided advantage of PROBFLO and the development of multiple BNs is its capacity to examine the sensitivity of the input variables to each BN using the "Sensitivity to Findings" tool in Netica (Marcot, 2012). This step can be used to show stakeholders (and water managers) where there are sensitivities in the input data, and thereby provide evidence to motivate for more research and monitoring to strengthen knowledge gaps.

Updated MS: The MS already includes "For all of the BNs created in the PROBFLO assessments of the Senqu and Mara River case studies, the sensitivity of the input variables were evaluated in Netica using the "Sensitivity to Findings" tool (Marcot, 2012)." We have now added "This approach allows for the relative contribution of each variable to be evaluated. These assessments are used to evaluate model structure and interpret risk result outcomes with the stakeholders of the assessment (Marcot, 2012; Landis et al., 2016). This test demonstrates to PROBFLO operators and stakeholders where models and associated assessments are sensitive to input data. Evidence to justify these sensitive determinants are imperative to a robust assessment, and or adaptive management is advocated to test and improve knowledge of the model indicators. We have also included an uncertainty and sensitivity assessment as a supplementary document.

RC1-7 Comment: I noted the comment that "The Senqu River case study addressed the second phase of a water resource use development that already has two substantial flow altering developments with more than 15 years of pre and post-development E-flow assessment (using holistic EFA methods, (Arthington et al., 2003)) monitoring and evaluations." The holistic EFA was, of course, DRIFT in its early manifestation, and I wonder why it is not referred to directly, and the paper by King et al. (2003) about its conceptual development is not cited here and elsewhere in the paper.

Updated MS: We have added "Phase I of the LHWP involved the application of the Downstream Response to Imposed Flow Transformations (DRIFT) approach to establish the E-flows associated with the construction of the Katse and Mohale Dams on the Malibamats'o and Senquyane Rivers in

Lesotho respectively (Arthington et al., 2003; King et al., 2003).” We have motivated the use of PROBFLO as a modern, probabilistic based EFA that considers multiple stressors, social and ecological endpoints, and address ecosystem dynamism. PROBFLO is also a transparent probabilistic modelling approach that addresses uncertainty explicitly. These arguments contribute to our claim that PROBFLO meets current best scientific practice. We would not like to make any direct comparisons between PROBFLO and DRIFT at this time as we believe it may be premature. PROBFLO needs some more development and testing before it should be compared with DRIFT which is a main line EFA.

RC1-8 Comment: Another strong feature of PROBFLO is the sequence through to monitoring and adaptive management of the e-flow assessments and trade-off evaluations, following best practice holistic e-flow assessments.

N/A this is a comment on a feature of the approach.

Technical corrections

RC1-9 Comment: I noted some rough writing in places but no outright technical errors. However I do think that the overall description of the BBN process is inscrutable, and wonder if a worked example (not just a figure) could be provided for one example of a source-stressor-habitat-biota wellbeing chain. In e-flow science even the relatively simple ‘flow-habitat-biota’ step can be quantified using well-established methods (e.g. PHABSIM). Was this step achieved using stream cross section data, velocity profiles and fish habitat requirements, etc (see the DRIFT procedure in Arthington et al. 2003) and other developments of DRIFT (King and Brown 2010).

Updated MS: In this MS we aim to present the PROBFLO approach. This comment is important so we have attempted to improve the readability of the MS. In addition to contribute to the understanding of the approach with... “An example of how a BN can represent a component of the socio-ecological ecosystem being evaluated is presented in Figures 5 and 6. Within Figure 5 we for example hypothesise that the ecological integrity of fish in the Senqu can be selected as an indicator of the Senqu River ecosystem as a suitable ecological endpoint. In this example the ecological integrity of fish is hypothesised to be a function of the condition of the Senqu River environment for fish, representing the exposure leg of the risk assessment, and the potential for fish to occur within the reach of the river being considered as an effects component of the study. The condition of the Senqu River environment itself is hypothesised in this study to be a function of the potential for communities to “disturbance wildlife”, the instream habitat condition and migration access for fish as source-stressor relationships with local communities, multiple barriers and other source/stressors that affect instream habitat wellbeing selected indicators with associated measures in the study. Water resource use scenarios were used to describe the state of source/stressor and effect nodes as inputs into the model. These variables were integrated using CPTs to represent other system variables which ultimately result in risk described to endpoints.

RC1-10 Comment: Useful references that appear to be missing from this paper include:

Arthington, A.H. (2012). *“Environmental Flows: Saving Rivers in the Third Millennium”*. University of California Press, Berkeley, CA. 406pp. [Academic book on the science and management of e-flows. [This book includes descriptions of DRIFT, ELOHA and other holistic e-flow assessment frameworks].

Arthington AH, Baran E, Brown CA, Dugan P, Halls AS, King JM, Minte-Vera CV, Tharme R, Welcomme RL (2007). Water requirements of floodplain rivers and fisheries: existing decision support tools and pathways for development. Comprehensive Assessment of Water Management in Agriculture Research Report 17.

International Water Management Institute: Colombo, Sri Lanka. [This report presents a framework for e-flows assessment incorporating BN models into the DRIFT methodology].

King JM, Brown CA (2010). Integrated basin flow assessments: concepts and method development in Africa and South-east Asia. *Freshwater Biology* 55: 127–146.

King JM, Brown CA, Sabet H (2003). A scenario-based holistic approach to environmental flow assessments for rivers. *River Research and Applications* 19: 619–640. [This paper describes the original Lesotho Highlands e-flows assessment using DRIFT. Coupled with Arthington et al. 2003, which you do cite, it will show readers how e-flow scenarios were assessed in Lesotho rivers using risk assessment procedures built into DRIFT]

Updated MS: We've considered them and added them where appropriate.

RC1-11 Comment: Missing references and errors

Brisbane Declaration (2007)

Dudgeon 2014 – missing

King, J. and Pienaar, H.: Sustainable use of South Africa's inland waters, 2011 – no publication details.

LHDA: Specialist Consultants to Undertake Baseline Studies (Flow, Water Quality and Geomorphology) and Instream Flow Requirement (IFR) Assessment for Phase 2: Instream Flow Requirements for the Senqu River – Final report No 6001/2/e, Lesotho Highlands Development Authority, Maseru., 2016. - please provide the electronic address McDonald et al. 2016 - missing

Vörösmarty 2010 – this should be Vörösmarty et al. 2010 in the text.

King, J. and Pienaar, H.: Sustainable use of South Africa's inland waters, 2011.

Updated MS: We have addressed these reference errors!

RC2: (06 APR 2017):

Overview

RC2-1 Comment: The manuscript presents an important development in the field of environmental flow assessments being able to bridge the gap between the biophysical constraints under which e-flows are set, and the requirements to maximise benefit for socio-economic/socio-ecological needs. The spatial discretization in relative risk regions for both aspects in a catchment is novel. This is achieved through the development of the PROBFLO e-flow assessment model which incorporates the relative risk procedures (bio-physical), meanwhile the construction of coupled Bayesian Belief Networks (BBN) allows for participatory scenario planning. As demonstrated through two case studies the authors make a case for the usability and adaptability of the combined PROBFLO-BBN Relative Risk model for a broad range of e-flow applications. The spatial representation of the RR presents an important contribution to modern catchment planning in this regard.

N/A this is a comment on a feature of the approach.

Some specific comments:

RC2-2 Comment: 1. Field data was used to derive causal probability thresholds for the relative risk calculations, although none of this data is presented. In order to ensure that the proposed methodology is salient and credible, one would expect to see this information. Although given the length of the manuscript this could be compiled in a supplementary document for the published manuscript.

Updated MS (See comment on RC 1.3): We have edited the section and added in more detail on the scope of work to generate evidence in the MS. We have in addition added in detailed causal relationship socio-ecological models for the assessment as figures and included working Netica models and justification tables as supplementary information.

RC2-3 Comment: 2. It was not clear to me where the driving hydrological data was sourced – modelled or gauged data (sources – where can the reader find that information)?

Updated MS: Updated with the inclusion of the following: “Hydrological data used in the case study included recently updated basin-wide Integrated Water Resources Management Plan outcomes (ORASECOM, 2014). This database was updated in the study with latest available rainfall records, obtained from the Lesotho Meteorological Services, and regional evaporation information. Observed monthly flow data with actual discharge measurements determined in the study were used to calibrate the monthly WRSM2000 model against rainfall to obtain catchment specific rainfall-runoff parameters (Pitman et al., 2006). A range of hydrological statistics were used in the RRM-BN model.”

RC2-4 Comment: 3. There were several examples within the manuscript that point to the utility of the tools for participatory approaches. Seeing that is probably a key selling point of the proposed tools, I would have expected some presentation/further discussion on the stakeholder ‘uptake’ of the tool – how do we know that the stakeholders: 1. Trust the methodology?; 2. Embed this information into their catchment vision?

Updated MS: We’ve updated the communicate outcomes section of the MS to address this comment. Section 3.10 Step 10: Communicate outcomes. We have also updated the conclusion section to highlight this important component of the study as follows: “In the case studies stakeholders of the project have been presented with the evidence based probabilistic projections of PROBFLO and used the risk projections to consider water resource use trade-off options. Both of these case studies are being used by stakeholders to make water resource use decisions that are currently being undertaken. PROBFLO is a holistic, evidence based, probability modelling E-flow assessment tool that is transparent and adaptable, and suitable for application on multiple spatial scales.”

RC2-5 Comment: 4. Frequent reference was made to Adaptive Management, and the potential for these e-flows tools to be used in a learning-by-doing approach, this implies that the methodology becomes an operational tool, rather than a benchmarking tool. What was not clear from the discussion is how one would use this methodology iteratively to manage adaptively. This should be elucidated in the manuscript.

Updated MS: This has also been added to the communicate outcomes section of the MS to address this comment. Section 3.10 Step 10: Communicate outcomes as follows: “The application of the PROBFLO and associated uncertainty assessment was used to establish a monitoring plan that should be implemented with water resource use scenario selected from the case studies. These plans were designed to validate the model by testing the response of the receiving environment to observed ecosystem driver conditions, associated with implemented scenarios and to improve the understanding of the causal relationships hypothesised in the original assessment with real data.” And the conclusion section has been expanded.

RC2-6 Comment: 5. The issue of uncertainty and sensitivity was recognised in the manuscript, but no data was presented – it would be beneficial to also include this in a supplementary file.

Updated MS: This has been summarised in the MS and provided in a supplementary data file.

Further comments are included in an annotated version of the manuscript

RC2-7 Comment: General language suggestions throughout MS missing words/incomplete sentences/synonyms etc. (Pg1-L14 , Pg3-L11; Pg3-L20; Pg4-L15; Pg4-L29; Pg4-L30; Pg5-L15; Pg5-L17; Pg6-L31; Pg12-L19; Pg15-L6; Pg15-L11).

Updated MS: Language has been corrected.

RC2-8 Comment: Pg2-L2 Adaptive management processes applied in the context of catchment management? - this sentence could be re-written to be a bit more succinct.

Updated MS: This has been amended: "the adaptive management concept has been defined, Elaborated on and further explained in the conclusion section of the study.

RC2-9 Comment: Pg3-L20 for the interest of the reader and advancements in the state of the art for e flows - a comment or two on why LHWP phase II opted for a model other than DRIFT (does Katse and Mohale still use DRIFT for operational purposes?), what are the new advantages of bringing in Probflo? i.e. why not DRIFT.

Updated MS: In an attempt to avoid and conflicting arguments for other established methods (incl. DRIFT) we've included the following as rationale for the approach. "Phase I of the LHWP involved the application of the Downstream Response to Imposed Flow Transformations (DRIFT) approach to establish the E-flows associated with the construction of the Katse and Mohale Dams on the Malibamats'o and Senquyane Rivers in Lesotho respectively (Arthington et al., 2003; King et al., 2003). Phase II involves the augmentation of the LHWP by construction of the Polihali Dam to divert water directly from the upper Senqu River to the existing Phase I infrastructure of the LHWP (Figure 1). For Phase II the custodians of the project the Lesotho Highlands Development Authority (LHDA) required the service provider awarded with the E-flow determination project to review and implement current best E-flow practice. This included the requirements to implement a probabilistic, regional scale modelling approach that is transparent and holistic, addressing socio-ecological components and endpoints, and one that considers uncertainty explicitly. The PROBFLO approach has, as a result been selected for Senqu River in Lesotho as a part of Phase II of LHWP between the proposed Polihali Dam site (29.289593°S; 28.863890°E) and the border of South Africa (30.413231°S; 27.564090°E) (LHDA, 2016)."

RC2-10 Comment: Pg3-L28 so no e-flows have been developed for the Mara river, ever? if so, this should be stated.

Updated MS: Addressed by including the following: "Although extensive research has been undertaken into the management of the terrestrial ecosystems of the Serengeti and Mara nature reserves, the effects of land use threats to the wellbeing of the Mara River have been limited, with only low confidence evaluations of the environmental flows of the river."

RC2-11 Comment: Pg4-L4 for the readers clarity: is PROBFLO used to determine the e-flows, or assess the performance of eflow implementation. Perhaps change the terminology here and throughout, where this may lead to some confusion.

Updated MS: Addressed as follows: " The PROBFLO approach has been implemented in the Senqu and Mara River case studies to evaluate the socio-ecological consequences of altered flows and determine E-flows which is demonstrate through application of the following 10 procedural steps."

RC2-12 Comment: Pg4-L17 I think 'socio-ecological end points' needs some elaboration - are these indicators, and if so of what? part of visioning process?!

Updated MS: Addressed as follows: " As part of the initial development of the RRM approach, multiple social and ecological endpoints were evaluated in a relative manner. Social endpoints were limited to the availability and quality of ecosystem services and ecological endpoints included the requirements to maintain selected ecological indicators in an acceptable integrity state or wellbeing.

RC2-13 Comment: Pg4-L21 is it a vision if it is part of a treaty? - a vision implies softer goal setting, but water treaties are usually more explicit with targets. The sentence is bit confusing - I think what is meant is that the vision as developed within this particular study is based on the treaty?? Perhaps the sentence should be rephrased slightly

Updated MS: Addressed as follows: " The treaties for Phase I and Phase II of the LHWP entered into by the Kingdom of Lesotho and the Republic of South Africa provided the requirements for the establishment of a vision for water resource use and protection for the Senqu River case study (LHDA, 1986; LHDA, 2011). The Treaty gives emphasis to protection of the existing quality of the environment and, in particular, requires maintenance of the wellbeing of persons and communities immediately affected by the project, including those downstream of the dam. Accordingly, the vision states that there should be no change to the existing quality of the downstream environment and that the net effect of the dam should not be negative to the people living downstream of the dam. For the PROBFO assessment, RQOs describing the desired quality and quantity of water, habitat and biota for the study area were established."

RC2-14 Comment: Pg5-L2 Fish what

Updated MS: Addressed as follows:... "maintain fish (12) aquatic macro-invertebrate and (12) riparian ecosystem integrity or wellbeing."

RC2-15 Comment: Pg5-L2 being what? having biological integrity (biotic/abiotic), or aesthetic value for people, or both. Needs better definition.

Updated MS: See above addressed as follows:... "maintain fish (12) aquatic macro-invertebrate and (12) riparian ecosystem integrity or wellbeing."

RC2-16 Comment: Pg5:L10 query "and" from "Biodiversity and Strategy Action Plan which describes..."

Updated MS: Language corrected

RC2-17 Comment: Pg5-L28 O'Brien and Wepener 2012 - any citations of this methodology tested?

Updated MS: Yes: Smit et al., 2016 included.

RC2-18 Comment: Pg7-L10 not clear what point 3 is - flow-ecosystem and flow ecosystem service?

Updated MS: See above addressed as follows:... "to incorporate evidence based flow-ecosystem relationships and flow-ecosystem service relationships, with relevant non-flow variable relationships upon which the assessment is based. Initial conceptual model development considers all relevant sources, stressors, habitat, effects and impact relationships with spatial and temporal considerations."

RC2-19 Comment: Pg8-L3 citation for requisite simplicity?

Updated MS: Yes: Smit et al., 2016 included. Stirzaker et al., 2010

RC2-20 Comment: Pg8-L19 check is there calibration/benchmark data presented within this study?

Updated MS: Supplementary information included.

RC2-21 Comment: Pg9-L19 This data used from field survey to derive the CPT is not presented - it should be available to reader (at least in summary form) as a supplementary file, in order to understand the process, as to apply elsewhere.

Updated MS: Supplementary information included.

RC2-22 Comment: Pg9-L23 Netica used in similar settings/studies? - if so should be referenced

Updated MS: Yes: Smit et al., 2016 included. Ayre et al., 2014 for example

RC2-23 Comment: Pg10-L1 what data was used to run scenario 2? Pitman, WR2009/2012 natural hydrology data? _ or was this available from the LHWP studies?

Updated MS: Addressed as follows:... "Observed monthly flow data with actual discharge measurements determined in the study were used to calibrate the monthly WRSM2000 model against rainfall to obtain catchment specific rainfall-runoff parameters (Pitman et al., 2006). A range of hydrological statistics were used in the RRM-BN model.

RC2-24 Comment: Pg10-L8 rationale for selecting the different e-flow releases e.g 36% and 25% MAR, was this from the LHWP studies?

Updated MS: Addressed as follows:... Added "The range of percentages of the MAR considered in these scenarios were selected by stakeholders to evaluate different levels of water resource use for the development."

RC2-25 Comment: Pg12-L3 how exactly did the stakeholders use the risk profiles to select e-flows - I think the manuscript would warrant some elaboration or narrative data on the uptake of the BN-RR method - in order to demonstrate the applicability of the tools described -

furthermore, how one uses this in adaptive management context needs to be developed further in the manuscript.

Updated MS: Addressed as follows:..." The relative risk results to endpoints and integrated risk profiles were presented to stakeholders who used these outcomes to select E-flows and associated water resource use mitigation measures (such as barrier mitigation measures) to be implemented for Phase II of the LHWP. In this case study a bottom up approach of increasing flows in the socio-ecological system represented by the BNs until the criterion for E-flows was met was initially followed. Thereafter alternative water resources use scenarios were considered to explore risk trade-offs between social and ecological endpoints."

RC2-26 Comment: Pg12-L13 Pg12-L13 BN models in Supplementary files again, this input data may be worthwhile summarised in a supplementary file.

Updated MS: Supplementary information included.

RC2-27 Comment: Pg12-L19 Repetitive

Updated MS: Addressed.

RC2-28 Comment: Pg12-L20 it's not clear to me that there is surplus water compared to demand (i.e. the catchment is not closed in terms of its water allocation). The manuscript would benefit with the presentation of summary hydrological data in this respect (the Senqu should also be included).

Updated MS: Statement changed for clarity as follows "The assessment hypothesises sufficient flows currently exist to maintain the endpoints in an acceptable condition. In addition, in the context of the precautionary principle, additional flows can be allocated before risk to the endpoints exceeds acceptable, sustainable thresholds.

RC2-29 Comment: Pg12-L22 are you now referring to Figure 10?

Updated MS: Addressed. Figure no added.

RC2-30 Comment: Pg12-L27 not clear - what is meant by a 'flow reduction source'?

Updated MS: Addressed as follows:..." These results were used to demonstrate the relative risk of sources or water resource activities that affect flows relative to other sources to the risk to ecosystem wellbeing (Figure 10)."

RC2-31 Comment: Pg13-L19 agreed that the uncertainty/sensitivity analysis is critical for determining the versatility of the BN-RRM-Probflow model. to this end, and in keeping with the manuscripts aim of demonstrating the potential usability of the model, presentation of the uncertainty information and sensitivity analysis is important. Again, this should be placed in a supplementary file.

Updated MS: Supplementary information included.

RC2-32 Comment: Pg13-L26: I have yet to see what adaptive management means i.e. an explanation with reference for this would be useful (obviously it's a key component to the implementation of e-flows, but needs to be substantiated - i see the Step 8 describes this, but it's important that a greater explanation of adaptive management comes early on in the manuscript).

Updated MS: Addressed as follows:..." Evidence to justify these sensitive determinants are imperative to a robust assessment, and or adaptive management is advocated to test and improve knowledge of the model indicators. Additional sources of uncertainty include the comparative availability of evidence and expert knowledge pertaining to the socio-ecological systems considered in the assessments. The Senqu River case study addressed the second phase of a water resource use development that already has two substantial flow altering developments with more than 15 years of pre and post-development E-flow assessment (using holistic EFA methods, (Arthington et al., 2003)) monitoring and evaluations. Additional field surveys to the study area were carried out to generate additional information and test existing hypotheses for the assessment. The Mara River case study was based largely on available historical information and existing EFA results for parts of the study area (McClain & Kashaigili, 2013; Dessu et al., 2014). To further reduce uncertainty associated with

the application of the PROBFLO assessments, the BN-RRM method proposes an adaptive management approach (Step 8) that allows improvements over time as new data is collected.

RC2-33 Comment: Pg14-L30 Communicate outcomes - since this section is perhaps the most critical aspect of a participatory eflow RR assessment as advocated by the authors, it seems a little light on content. I would expect to have a bit more elaboration on the techniques and tools utilised to ensure appropriate buy-in and credibility of the proposed BN-RRM/Probflo tools. What other literature can be drawn on to substantiate this? Was there any stakeholder feedback during the two studies that is documented?

Updated MS: The whole section has been revised.

RC2-34 Comment: Pg15-L16 OK –this follows my comment in the previous section - the manuscript makes a string conclusion in this regard, but the stakeholder buy-in has not been adequately elucidated.

Updated MS: See comment RC2:25

RC2-35 Comment: Pg15-L21 what is meant by 'wide range of water resources'? do you mean 'wide range of water resources availability settings/contexts'?

Updated MS: revised in the MS.

RC2-36 Comment: Pg26-L5 can you give the basic BN model set-up for both the Senqu and the Mara studies - this will assist the reader

Updated MS: This has been provided.

RC2-37 Comment Figure 5: "it's not clear to me that there is surplus water compared to demand (i.e. the catchment is not closed in terms of its water allocation). The manuscript would benefit with the presentation of summary hydrological data in this respect (the Senqu should also be included)."

Updated MS: This has been done.

A regional scale ecological risk framework for environmental flow evaluations.

Gordon C. O'Brien^{1*}, Chris Dickens², Eleanor Hines³, Victor Wepener⁴, Retha Stassen¹, Leo Quayle⁵, Kelly Fouchy⁶, [James MacKenzie¹](#), [Mark Graham^{4,7}](#) and Wayne G. Landis³.

¹University of KwaZulu-Natal, College of Agriculture, Engineering and Science, School of Life Sciences, Private Bag X01, Scottsville, South Africa.
²International Water Management Institute, Private Bag X813, Silverton, 0127, South Africa.
³Western Washington University, Institute of Environmental Toxicology, Bellingham, Washington, USA
⁴Water Research Group (Ecology), Unit for Environmental Sciences and Management, North-West University, Private Bag x6001, Potchefstroom 2520, South Africa
⁵Institute of Natural Resources NPC, P O Box 100 396, Scottsville, 3209, South Africa
⁶IHE Delft Institute for Water Education, PO Box 3015, 2601 DA Delft, The Netherlands
⁷[University of KwaZulu-Natal, College of Agriculture, Engineering and Science, School of Hydrology, Centre for Water Resources Research, Private Bag X01, Scottsville, South Africa.](#)

Correspondence to: Gordon C. O'Brien (obrieng@ukzn.ac.za)

Abstract.

~~Recent developments in~~ Environmental Flow (E-flow) frameworks advocate holistic, regional scale, probabilistic E-flow assessments that consider flow and non-flow drivers of change in [a](#) socio-ecological context as best practice. Regional Scale ecological risk assessments of multiple ~~sources~~, stressors ~~and diverse ecosystems that address to multiple~~ social and ecological endpoints, ~~that address ecosystem dynamism~~, have been undertaken internationally at different spatial scales using the relative-risk model since the mid 1990's. With the recent incorporation of Bayesian belief networks into the relative-risk model, a robust regional scale ecological risk assessment approach is available that can contribute to achieving the best practice recommendations of E-flow frameworks. PROBFLO is a ~~regional-scale~~, holistic E-flow assessment method that incorporates the relative-risk model and Bayesian belief networks (BN-RRM) into a transparent probabilistic modelling tool that addresses uncertainty explicitly. PROBFLO has been developed to ~~holistically~~ evaluate the socio-ecological consequences of historical, current and future ~~altered flows water resource use scenarios in the context of non flow drivers~~ and generate E-flow requirements on regional scales spatial scales. The approach has been implemented in two regional scale case studies in Africa

Formatted: Superscript

where its flexibility and functionality has been demonstrated. In both case studies the evidence based outcomes facilitated informed environmental management decision making, [with trade-off considerations](#) in the context of social and ecological aspirations. This paper presents the PROBFLO approach as applied to the Senqu River catchment in Lesotho and further developments and application in the Mara River catchment in Kenya and Tanzania. The ten BN-RRM procedural steps incorporated in PROBFLO are demonstrated with examples from both case studies. ~~In the Outcomes allowed case studies stakeholders to considered sustainable social and ecological E-flow trade-offs between social and ecological endpoints to balance water resource use and protection.~~ PROBFLO can [contribute to the be incorporated into](#) adaptive management [of water resources, to allocate sustainable use of resources and processes and contribute to the sustainable management of the address use and protection requirements of water resources.](#)

Keywords: PROBFLO, Environmental Flows, Regional Scale ecological risk assessments, E-flow requirements, socio-ecological consequences, trade-offs, sustainable water resource management.

1 Introduction

The global use of water resources has altered the wellbeing of aquatic ecosystems and the benefits that people derive from ~~these ecosystemsthem~~ (Acreman and Dunbar, 2004; Dudgeon et al., 2006; Growns, 2008; Vörösmarty, 2010; Isaak et al., 2012; Isaak et al., 2012; Murray et al., 2012; Grafton et al., 2013; Dudgeon, 2014); Environmental flows (E-flows), according to the Brisbane Declaration (2007) are defined as the ‘quantity, timing and quality of water flows required to sustain freshwater and estuarine ecosystems and the human livelihoods and well-being that depend on these ecosystems’. [In an effort to determine E-flows,](#) The international community has developed a plethora of E-flows assessment methods which have been applied on numerous spatial scales in a wide range of ecosystem types across the globe (Tharme 2003; Acreman and Dunbar 2004; Pahl-Wostl et al., 2013; Poff and Matthews 2013). These methods have evolved [during three distinct periods according to Poff and Matthews \(2013\) over time and in a review of their development](#) ~~Poff and Matthews (2013) identified three distinct periods of E-flow research and developmental history. These periods includeincluding; the-an~~ emergence and synthesis period, consolidation and expansion period and the current globalisation period. During this globalisation period a range of best practice E-flow management and assessment principles, and associated frameworks to undertake E-flow on multiple spatial scales in multiple political and or legislative contexts have been developed (Poff et al. 2010; Pahl-Wostl et al. 2013). These principles promote the use of holistic assessment tools that consider both social and ecological features of ecosystems on regional spatial scales, are adaptive and incorporate risk evaluation and address uncertainty (Poff et al. 2010; Acreman et al. 2014).

Ecological risk assessments [of multiple sources of stressors, multiple stressors and diverse ecosystems that address multiple social and ecological endpoints,](#) have been undertaken internationally at different spatial scales using the relative-risk model

(RRM) established since the mid 1990's (Hunsaker et al. 1990; Landis and Weigers 1997; 2007; Wiegers et al., 1998; Landis 2004; Landis, 2016). The RRM has been applied to evaluate a range of natural and anthropogenic stressors including water pollution, diseases, alien species and a range of altered environmental states (Walker et al., 2001; Moraes et al., 2002; Hayes and Landis, 2004; Colnar and Landis, 2007; Anderson and Landis, 2012; Ayre and Landis, 2012; Bartolo et al., 2012; O'Brien et al., 2012.; Hines and Landis, 2014; Ayre et al., 2014). [This tool can be used to carry out holistic, probabilistic assessments of the risk to the availability and condition of ecosystem service and ecological endpoints, and facilitate socio-ecological trade-offs. For more information on the application of the RRM consider Colnar and Landis \(2007\), Anderson and Landis \(2012\) or O'Brien and Wepener \(2012\). Recent developments to the RRM incorporates the use of Bayesian Networks \(BN\) that have become been](#) established as a powerful tool for ecological risk assessment, ecosystem management and E-flow assessment (Pollino et al., 2007; Hart and Pollino, 2008; Shenton et al., 2011; Chan et al., 2012; Pang and Sun, 2014; Liu et al., 2016, McDonald et al., 2016). In 2012 Ayre and Landis combined both approaches and incorporated BNs into RRM which was then formalised into a BN-RRM approach (Hines and Landis 2014; Herring et al., 2015; Landis et al., 2016).

Between 2013 and 2016 a BN-RRM based holistic E-flow assessment approach has been ~~established~~[developed](#) that adheres to the principles of best E-flow management practice (~~Ayre and Landis, 2012~~), and can easily be incorporated into regional E-flow frameworks such as the Ecological Limits of Hydrologic Alteration framework (Poff et al., 2010). This BN-RRM approach ~~we have~~[, called PROBFLO, is a transparent and adaptable, can use, evidence based probabilistic modelling approach that can also incorporate available data and expert opinion solicitations and explicitly addresses uncertainty. PROBFLO is a scenario based E-flow assessment tool that allows for the evaluation of the socio-ecological consequences of altered flows with consideration of the synergistic effects of non-flow drivers of ecosystem impairment. PROBFLO](#)It adheres to the regional scale ecological risk assessment exposure and effects, or sources of multiple stressors, habitats and ranked ecological impacts relationship (Wiegers et al., 1998). ~~is scenario-based and allows for the evaluation of the socio-ecological consequences of altered flows with consideration of the synergistic effects of non-flow drivers of ecosystem impairment. The approach is transparent and adaptable and allows acceptable risk trade-off considerations for a range of environmental management options.~~ This paper presents the PROBFLO BN-RRM approach ~~that was used to establish E-flows for as applied to the Senqu River in Lesotho, and evaluate the socio-ecological effects of altered flow and non-flow stressors, and further developments were made in the a~~[Mara River in Kenya and Tanzania case study.](#)

2 Study area

The Lesotho Highlands Water Project (LHWP) is a US\$ multi-billion water transfer and hydro-power project implemented by the governments of Lesotho and South Africa ([LHWP 1986; 2012](#)). Phase ~~1-I~~[1-I](#) of the LHWP ~~included~~[involved](#) the application of the Downstream Response to Imposed Flow Transformations (DRIFT) approach to establish the E-flows associated with the construction of the Katse and Mohale Dams on the Malibamat's o and Senqunyane Rivers in Lesotho respectively ~~to the~~

Formatted: Font color: Auto

Formatted: Font color: Auto

Formatted: Font color: Auto

Formatted: Font color: Auto

~~impacted rivers of the DRIFT E-flow method to manage the downstream water releases from the Katse and Mohale Dams~~ (Arthington et al., 2003; ~~King et al., 2003~~). Phase ~~2-II~~ involves the augmentation of the LHWP by construction of the Polihali Dam to divert water directly from the upper Senqu River to the existing Phase ~~I-I~~ infrastructure of the LHWP (Figure 1). ~~For Phase II the custodians of the project the Lesotho Highlands Development Authority (LHDA) required the service provider awarded with the E-flow determination project to review and implement current best E-flow practice. This included the requirements to implement a probabilistic, regional scale modelling approach that is transparent and holistic, addressing socio-ecological components and endpoints, and one that considers uncertainty explicitly.~~ The PROBFLO approach has, ~~as a result~~ been ~~applied to the selected~~ for Senqu River in Lesotho as a part of Phase ~~2-II~~ of LHWP between the proposed Polihali Dam site (29.289593°S; 28.863890°E) and the border of South Africa (30.413231°S; 27.564090°E) (LHDA, 2016).

Field Code Changed

Formatted: Font color: Auto

The entire Mara River in Kenya and Tanzania upstream of the mouth into Lake Victoria (1.518178°S; 33.943497°E) was considered in this regional scale PROBFLO case study (NBI, 2016) (Figure 2). The Mara River and its tributaries are an essential source of water for domestic needs, agriculture, pastoralism and wildlife including tourism, in Kenya and Tanzania (Mati et al., 2008; Defersha and Melesse, 2012). Although extensive research has been undertaken into the ~~environmental~~ management of the ~~terrestrial ecosystems of the~~ Serengeti and Mara nature reserves, ~~in the Mara Basin and~~ the effects of land use threats, ~~to the wellbeing of the Mara River have been~~ limited, ~~consideration has been given to stream flow management with only low confidence evaluations of the environmental flows of the river~~ (Brotten and Said, 1995; Gereta et al., 2002; Onjala, 2002; Karanja, 2003; Lamprey and Reid, 2004; Hoffman, 2007; Mati et al., 2008; Atisa, 2009; LVBC and WWF-ESARPO, 2010; Majule, 2010; Hoffman et al., 2011; Ogutu et al., 2011; Defersha and Melesse, 2012; Kiambi et al., 2012; Dessu et al., 2014).

Field Code Changed

3 PROBFLO Framework for E-flows

The PROBFLO framework is based on the ten procedural RRM steps (Landis, 2004a), and incorporates BN development and evaluation procedures (Marcot et al., 2006; Ayre and Landis, 2012), into a robust E-flow assessment method that gives emphasis to adaptive management for holistic E-flow management (Figure 3). The ~~application of the PROBFLO model approach has been implemented~~ in the Senqu and Mara River case studies ~~to evaluate the socio-ecological consequences of altered flows and determine E-flows which is~~ ~~is used here to~~ demonstrate ~~the through~~ application of the ~~following 10~~ procedural steps.

Step 1: Vision exercise

The importance of having clear water resource management objectives cannot be over-emphasised. Numerous Integrated Water Resource Management strategies, regional management plans and frameworks, national legislations, and established E-

flow assessment tools advocate the establishment of clear goals or visions to direct the use and protection of water resources (Biswas 2004; Mitchell, 2005; Dudgeon et al., 2006; Richter et al., 2006; Poff et al., 2010; King and Pienaar 2011; NBI, 2016). Although many vision development approaches are available, the initial application of PROBFLO involved the application of the Resource Quality Objectives (RQO) determination procedure (DWA, 2011) to describe and document the water quality, water quantity, habitat and biota objectives for the water resource being evaluated (NBI 2016; DWA, 2011). The RQO process results in narrative and numerical descriptions of various ecosystem features required to achieve a balance between the use and protection of [water](#) resources and hence to achieve a documented vision. As part of the initial development of the RRM approach, multiple social and ecological endpoints were evaluated in a relative manner (~~Wiegiers et al., 1998~~). [Social endpoints were limited to the availability and quality of ecosystem services and ecological endpoints included the requirements to maintain selected ecological indicators in an acceptable integrity state or wellbeing.](#) ~~The PROBFLO approach incorporates this foundation to evaluate a range of socio-ecological endpoints~~ In addition, for these Environmental Flow Assessments (EFA), ~~In these case studies only those social and ecological endpoints that were directly associated with socio-ecological impacts of the rivers resulting directly or indirectly with altered flows were considered. Findings resulted in relative risks to endpoints that could be compared and used to consider cost-benefit trade-offs between social and ecological endpoints by adjusting water resource use and protection scenarios, and those that would be influenced by the flow of the river were considered.~~

~~The treaties for Phase I and Phase II of the LHWP entered into by the Kingdom of Lesotho and the Republic of South Africa provided the requirements for the establishment of a vision for water resource use and protection for the~~ ~~The vision of the Senqu River case study (LHDA, 1986; LHDA, 2011), was based on the requirements of a Treaty for the LHWP entered into by the Kingdom of Lesotho and the Republic of South Africa for the purpose of bringing about this water resource development.~~ The Treaty gives emphasis to protection of the existing quality of the environment and, in particular, requires maintenance of the wellbeing of persons and communities immediately affected by the project, including those downstream of the dam. Accordingly, the vision states that there should be no change to the existing quality of the downstream environment and that the net effect of the dam should not be negative to the people living downstream of the dam. For the PROBFLO assessment, RQOs describing the desired quality and quantity of water, habitat and biota for the study area were established. The endpoints selected to represent the social and ecological management objectives for the PROBFLO assessment were based on the vision represented by the RQOs in ~~the this~~ case study including the maintenance of the following ecosystem services and ecological objectives affected by the river: (1) the supply [of](#) building sand from the Senqu River, (2) water for domestic use, (3) recreation/spiritual use of the river, (4) fish stocks as food for people, (5) edible plants from the riparian zone as food for people, (6) medicinal plants for people, (7) floodplain non-woody plants (for grazing), (8) woody plants for fuel and construction , (9) reeds for construction and (10) [maintain](#) fish ~~and~~ (12) aquatic macro-invertebrate ~~communities~~ and (12) riparian ecosystem ~~wellbeing~~ [integrity or wellbeing](#).

Formatted: Font color: Auto

The vision for the Mara River case study was based on existing regional trans-boundary Mara River management objectives (WRMA, 2014). In 2014, a Catchment Management Strategy (CMS) for the Mara Basin in Kenya was developed to facilitate the management of the water resources, environment and human behaviour in ways that achieve equitable, efficient and sustainable use of water for the benefit of all users (WRMA, 2014). The aims of the Mara River Basin as part of the Strategic Environmental Assessment (EAC, 2003) to maintain “the people living in harmony with nature while achieving human wellbeing and sustainable economic development in perpetuity” were also considered. Also considered were the objectives for the Mara River Basin as described by the Biodiversity and Strategy Action Plan which describes “a region rich in biodiversity which benefits the present and future generations and ecosystem functions” (LVBC & WWF-ESARPO, 2010). These assessments established a high ecological importance, high livelihoods value and low commercial value vision for the upper Mara River Basin and a high ecological importance, moderate livelihoods value and moderate commercial value vision for the lower Mara River Basin. In this context the endpoints selected for the study included: (1) to provide water for Basic Human Needs according to the national legislation of Kenya and Tanzania, (2) to maintain the ecological integrity of the riverine ecosystem (instream and riparian ecosystems), (3) to provide flows for the commercial production of crops, (4) the maintenance of existing livestock industry, (5) the maintenance and wellbeing-viability of the Eco-tourism industry, and (6) maintain the ecological integrity of the Mara Wetland in the lower reaches of the basin.

3.2 Step 2: Mapping and data analyses

The BN-RRM approach that forms the basis of PROBFLO includes the relative evaluation of multiple sources of stressors to endpoints on a regional scale which should be spatially and temporally referenced for regional comparisons/evaluations in a PROBFLO assessment (Landis 2004a; Landis & Wiegiers 2007). For this the spatial extent of the study area must be defined and described, and the locations of potential sources, habitats and impacts must be identified and spatially referenced. In addition, source-stressor exposure and habitat/receptor to endpoint pathways/relationships should be spatially referenced where possible (O’Brien & Wepener 2012; Landis et al. 2016). Available data describing the ecosystem needs to be reviewed and spatially referenced and the uncertainties associated with the availability and quality of data used in the assessment must be documented for evaluation in Step 7. O’Brien & Wepener (2012) provide an approach to delineate ecosystem types, the topological features of importance, the catchment and ecoregion boundaries, the land or water resource use scenarios and the pathways of stressors exposure. This approach is used to direct the selection of risk regions for assessment (Smit et al., 2016). Best practice E-flow frameworks accentuate the importance of ecosystem type classification as part of E-flow assessments to improve on our understanding of flow-ecosystem relationships (Poff et al., 2010, Arthington, 2012).

3.3 Step 3: Risk region selection

In this step combinations of the management objectives, source information, and habitat data are used to establish geographical risk regions that can be assessed in a relative manner (Landis 2004b; O'Brien and Wepener, 2012) . In the end, the outcomes of the assessment will be available at the spatial scale established during this step for multiple temporal scenarios associated with alternative management options. In this regard it is important to consider the spatial connectivity of multiple variables including flows and other variables within the study area so that risk regions incorporate appropriate sources, stressors, habitats and endpoints (Landis 2004b; O'Brien and Wepener 2012). The approach can address spatial and temporal relationships of variables between risk regions, such as the downstream effect of a source on multiple risk regions, in the context of the assimilative capacity of the ecosystem or the upstream connectivity requirements of a migratory fish between risk regions. [To demonstrate that PROBFLO can conform to the regional E-flow assessment frameworks such as ELOHA \(Poff et al. 2010\), the selection of RRs should include explicit hydrological and geomorphological classification. The relative risk outcomes of the assessment can later be directly related to the system classification as proposed by ELOHA. With additional E-flow information for a range of hydrological and geomorphological ecosystem types, the outcomes can be used to establish regional E-flows.](#)

The selection of risk regions for the Senqu River E-flow assessment was based on the proposed location of the Polihali Dam and catchment boundaries of the Senqu River and large tributaries (Malibamatso and Senquyane Rivers) for this E-flow assessment. Physical access to sampling sites within Lesotho to conduct bio-physical field surveys were extremely difficult and this also contributed to risk region selection. Four broad risk regions were selected for the Senqu River PROBFLO study (Figure 1).

In the Mara River case study a review of ecosystem types (Mati et al., 2008; Atisa et al., 2014), hydrology (Mango et al., 2011; McClain et al., 2014), the vision for the case study, current and future land and water resource use options and socio-ecological importance (Karanja, 2002; LVBC & WWF-ESARPO, 2010; Mango et al., 2011; Defersha and Melesse, 2012; Dessu et al., 2014; Dutton et al., 2013), were used to select risk regions during a stakeholder workshop . Ten Risk Regions were selected for the Mara River Case study which conformed to catchment boundaries, ecoregions, land use practices and the international boundary (Figure 2).

3.4 Step 4: Conceptual model

In this step conceptual models that describe hypothesised relationships between multiple sources, stressors, habitats and impacts to endpoints selected for the study are generated (Wiegiers et al., 1998) (Figure 4). This includes the holistic (consider

flow and non-flow related variables in spatial-temporal context), best practice characterisation of flow-ecosystem and flow-ecosystem service relationships in the context of a regional scale E-flows framework (Poff et al., 2010), with relevant non-flow (water quality and habitat) relationships in the models. Conceptual models should be constructed by expert stakeholders usually including hydrologists, geomorphologists, ecologists and ecosystem services, including social and resource economics scientists. These experts should be familiar with socio-ecological system processes and be able to describe probable cause and effect variables and relationships of sources to stressors to multiple receptors in relation to their impacts on the endpoints, selected for the study. The conceptual models for the case studies presented addressed requirements of the ELOHA and the Nile Basin regional scale E-flow frameworks to conform to these frameworks (Poff et al., 2010; NBI, 2016). The Nile Basin regional scale E-flow framework expands on the ELOHA framework to include an initial situation assessment, data review and alignment phase and a governance and Resource Quality Objectives setting phase. The PROBFLO conceptual model thus conforms to the regional scale E-flow framework procedures in: (1) the selection of socio-ecological endpoints, to direct the hydrologic foundations for the study including the selection of hydrological statistics required, (2) to classify ecosystem types based on geomorphic, water quality, quantity and ecoregion considerations, and with this data, (3) to ~~determine-incorporate~~ evidence based the holistic-flow-ecosystem relationships and flow-ecosystem service relationships, with relevant non-flow variable relationships upon which the assessment is based. Initial conceptual model development considers all relevant sources, stressors, habitat, effects and impact relationships with spatial and temporal considerations.

3.5 Step 5: Ranking scheme

Ranking schemes are used to represent the state of variables, with unique measures and units to be comparable as non-dimensional ranks and combined in BN-RRMs (Landis, 2004a; Landis et al., 2016). Four states designated as zero, low, moderate and high as traditionally used in RRM (Colnar & Landis, 2007; O'Brien and Wepener, 2012; Hines & Landis 2014; Landis et al. 2016), have been incorporated into the PROBFLO process. The states represent the range of wellbeing conditions, levels of impacts and management ideals as follows:

- Zero: pristine state, no impact/risk, comparable to pre-anthropogenic source establishment, baseline or reference state,
- Low: largely natural state/low impact/risk, ideal range for sustainable ecosystem use,
- Moderate: moderate use or modified state, moderate impact/risk representing threshold of potential concern or alert range, and
- High: significantly altered or impaired state, unacceptably high impact/risk.

This ranking scheme selected for PROBFLO represents the full range of potential risk to the ecosystem and ecosystem services with management options. Low risk states usually represent management targets with little impact and moderate risk states represent partially suitable ecosystem conditions that usually warrant management/mitigation measures to avoid high risk conditions. The incorporation of BN modelling into PROBFLO, allows the approach to incorporate the variability between ranks for each model variable, represented as a percentage for each rank. Indicator flow and non-flow variables representing

the socio-ecological system being evaluated in a PROBFLO assessment are selected (linked to endpoints – step 1), and unique measures and units of measurement are converted into, and represented by ranks for integration in BN assessments. For the BN assessment ranks are assigned scores along a percentage continuum representing the state of the variables using natural breaks of 0.25 (zero), 0.5 (low), 0.75 (moderate) and 1 (high) in the calculation.

3.6 Step 6: Calculate risks

From the general inclusive conceptual models (step 4), with the principle of requisite simplicity (Stirzaker et al., 2010), smaller social and ecological endpoint specific models that represent the system being assessed are unpacked and converted into Bayesian Network models (Figure 5 and 6) for analyses. These models can be analysed individually or integrated using a range of BN modelling tools, using nodes representing variables that share the same indicators and measures. Bayesian Networks are probabilistic modelling networks that graphically represent joint probability distributions over a set of statistical values (Pollino et al., 2007; Korb and Nicholson, 2010). They include parent or input nodes and child or conditional nodes with links that represent causal relationships between nodes combined by Conditional Probability Tables (CPTs) (McCann et al., 2006; Landis et al. 2016;). Conditional Probability Tables describe conditional probabilities between the occurrence of states in the parent nodes and the resulting probabilities of states in the child nodes (Landis et al., 2016). The two PROBFLO case studies presented here made use of the Netica™ BN software by Norsys Software (<http://www.norsys.com/>).

The BNs are initially used to evaluate the risk of anthropogenic/natural hazards to endpoints per risk region, in relative manner for comparisons, for multiple temporal periods (high or low flow months and wet or drought phases etc.) which can also be compared relative to each other. Bayesian Networks also make use of available data and expert solicitations as evidence which to represents risks to a current or present scenarios. Present projections of risk to the endpoints can generally easily be validated using available data, knowledge of existing relationships between variables and by carrying out directed field survey campaigns to describe/test risk relationships. Present risk projections are then calibrated by evaluating benchmark or historical scenario risk projections using the established models, which can often be validated with historical data (see supplementary data). An example of how a BN can represent a component of the socio-ecological ecosystem being evaluated is presented in Figures 5 and 6. Within Figure 5 we for example hypothesise that the ecological integrity of fish in the Senqu can be selected as an indicator of the Senqu River ecosystem as a suitable ecological endpoint. In this example the ecological integrity of fish is hypothesised to be a function of the condition of the Senqu River environment for fish, representing the exposure leg of the risk assessment, and the potential for fish to occur within the reach of the river being considered as an effects component of the study. The condition of the Senqu River environment itself is hypothesised in this study to be a function of the potential for communities to “disturbance wildlife”, the instream habitat condition and migration access for fish as source-stressor

Formatted: Font color: Auto

relationships with local communities, multiple barriers and other source/stressors that affect instream habitat wellbeing selected indicators with associated measures in the study. Water resource use scenarios were used to describe the state of source/stressor and effect nodes as inputs into the model. These variables were integrated using CPTs to represent other system variables which ultimately result in risk described to endpoints. These models are then used to determine E-flow requirements according to acceptable trade-off of risk to endpoints selected for the study, and the consequences of alternative water resource use, management and or climatic condition scenarios.

To determine E-flow requirements in PROBFLO, trade-offs of acceptable risk to social and ecological endpoints are initially established for each risk region by stakeholders, usually within a legislative context. These trade-offs of acceptable risk are represented in the BNs as forced endpoint risk distributions or profiles. These profiles usually range between low and moderate risk with usually no high risk probabilities. In relation to the definitions of the ranks used in PROBFLO, trade-offs of acceptable risk for E-flow determination should only dominate the “moderate” risk range when there is certainty that the E-flow requirements can be provided, such as in the case of E-flow releases from a dam. In case studies where there is high uncertainty associated with the ability to provide E-flow requirements, such as the management of multiple water resource users to cumulatively maintain E-flows, then a buffer should be provided according to the definition of ranks and the “low” risk range should be selected. After the selection of trade-offs of acceptable risk are established the calibrated BNs are forced to generate the state (rank distributions) of input flow variables used in the assessments. These flow related variable state requirements that are spatially and temporally referenced are provided to a hydrologist or geomorphologist for example to describe the E-flow requirements which can be presented in various formats, such as daily or monthly water (usually $\text{m}^3\cdot\text{s}^{-1}$) and sediment (usually $\text{kg}\cdot\text{s}^{-1}$) discharge percentiles. During E-flow determination procedures the state of non-flow variable nodes, which contribute to the risk to endpoints, associated with flow variables can either be maintained in their current state, and described as such or amended with available water resource use information. This can include the increased requirement of water for Basic Human Needs, for increases in growths of human populations depending on the resource for example. Following the establishment of E-flows, the socio-ecological consequences of altered flows, associated with alternative water resource management options or climate change variability for example, can be evaluated in a relative manner by generating and evaluating a range of future scenarios in PROBFLO.

Senqu River risk calculation

In the Lesotho case study the nine social endpoints and three ecological endpoints were used in the assessment. These endpoints were used to represent the social-ecological endpoints of interest in the study. The 12 BN models established for the study included cause and effect linkages used to estimate risk. These BNs were used to evaluate the risk of multiple sources and stressors with flow related stressors for base winter (low), summer (high) and drought flows. Where appropriate CPTs of the BNs for endpoints were amended-adjusted between RRs to represent the subtle changes in ecosystem process dynamics down the length of the Senqu River. [Generalised BN models for social-ecological endpoints](#)

Data-Evidence used in the case study includes the historical understanding of flow-ecosystem and flow-ecosystem service relationships established during Phase I of the LHWP, and data was derived from a series of bio-physical surveys of the study area (summarised in a supplementary document). The surveys included hydrology, hydraulic, water quality and geomorphology components grouped as ecosystem driver components, and fish, macro-invertebrates and riparian vegetation grouped as ecosystem responder components. Hydrological data used in the case study included recently updated basin-wide Integrated Water Resources Management Plan outcomes (ORASECOM, 2014). This database was updated in the study with latest available rainfall records, obtained from the Lesotho Meteorological Services, and regional evaporation information. Observed monthly flow data with actual discharge measurements determined in the study were used to calibrate the monthly WRS2000 model against rainfall to obtain catchment specific rainfall-runoff parameters (Pitman et al., 2006). A range of hydrological statistics were used in the RRM-BN model. Findings were used to identify a range of indicators to represent hypothesised causal relationships of the socio-ecological system being evaluated, identify measures for indicators, with units of measurement and node rank thresholds and relationships between variables in the form of CPTs (refer to the supplementary document). -which sought to illustrate the hypothesised causal relationships from the BN models. Data obtained from the surveys, historical information and specialist elicitations were used to establish CPTs and describe input node rank thresholds. Risk ranking definitions and justifications for indicators and measures of each input node and the CPTs are available in the technical report of the study (LHDA, 2016). Real data and modelled hydrological statistics were used to evaluate the current risk to endpoints using Netica™ was used to carry out the assessment. (Ayre et al., 2014 for example). The tool is versatile and incorporates a range of features used to optimise the assessment. This includes equation features to weight the relative importance of parent variables and generate initial CPTs that were easily refined and applied to the daughter nodes for the assessment. The tool includes case file generation options which allows the BNs to be linked to Microsoft® Excel where data can be rapidly analysed and used to populate BNs for the analyses. Risk outcome distributions were also linked to Excel where scenarios and social and ecological endpoints could be integrated using Monte Carlo randomisation approaches that are part of the Oracle Crystal Ball software (Landis, 2004b). After establishing BN models for each RR, then input parameters were changed using RR specific data for a range of scenarios including:

- Scenario 1 represents the present day scenario based on present state hydrology, and associated source to endpoint variable state relationships that represent observable conditions. This scenario is based on existing data and additional data collected during the field surveys.
- Scenario 2 represents a pre-anthropogenic water resource development scenario, considered to represent “natural” hydrology which was modelled using historical and modelled hydrology and rainfall data, and hypothesised state distributions for non-flow variables. This scenario was selected to calibrate the PROBFLO model for the study.
- Scenario 3 includes the presence of the new proposed Polihali Dam with full modelled Inter-basin Transfer (IBT) supply. Only large floods overtopping the dam have been considered to be available downstream of the dam with the

Formatted: Font color: Auto

existing E-Flows from the downstream lateral tributaries bringing water from Katse and Mohale Dams available in RR3 and 4. Non-flow source/stressor catchment conditions were based on the present day scenario.

- Scenario 4 is based on scenario 3 but includes E-Flow releases established as 36% of the natural Mean Annual Runoff (MAR), from the Polihali Dam, with suitable freshet and flood flows. [The range of percentages of the MAR considered in these scenarios were selected by stakeholders to evaluate different levels of water resource use for the development.](#)
- Scenario 5 based on scenario 3 with only 25% of the natural MAR available to contribute towards E-flows with all floods retained in the Polihali Dam for transfer into the IBT.
- Scenario 6 is based on scenario 5 with one additional $40\text{m}^3.\text{s}^{-1}$ freshet (small spring flood) released from the dam in addition to the 25% of the natural MAR to contribute towards E-flows.
- Scenario 7 based on scenario 3 with only 18% of the natural MAR available to contribute towards E-flows with one single $40\text{m}^3.\text{s}^{-1}$ freshet (small spring flood).
- Scenario 8 is based on scenario 6 but with additional stress imposed by further reduction of available flows to 12% of the natural MAR, released for maintenance but including the single $40\text{m}^3.\text{s}^{-1}$ freshet (small spring flood).

In this assessment risk was calculated for 12 endpoints, for three temporal periods, for eight scenarios, thus representing 312 BN models that were relatively comparable. The results include the mean relative risk rank scores with associated standard deviation for each endpoint including: maintain riparian vegetation, macro-invertebrates and fish wellbeing as ecological endpoints and maintain wood for fuel, marginal vegetation for livestock grazing and fish for food as social endpoints (Figure 6-7 and Figure 78). These initial relative mean risk scores allow for the comparison of alternative spatial and temporal socio-ecological risk projections to the endpoints used in the assessment. Initial risk to ecological endpoints compared between the natural (SC2) and present (SC1) scenarios, demonstrate that the number of sources and stressors with associated risk to endpoints has increased in the study area particularly in RR2 to RR4. These changes can largely be attributed to the consequences of Phase I of the LHWP (Figure 76). These findings include the synergistic effect of non-flow stressors (such as water quality and habitat condition) to the wellbeing of the Senqu River ecosystem in the study area. Effects of the altered hydrology between natural and present day scenarios to the social endpoints were less obvious (Figure 87). Spatial trends in the risk results associated with SC3 to SC8 generally include elevated risk to RR1, directly downstream of the proposed dam in particular. These results demonstrate that the impact on socio-ecological endpoints considered will be highest directly below the dam. Thereafter scenarios that exclude floods and freshets (SC3 and SC5) resulted in excessive risk demonstrating the importance of flood and freshet flows to the socio-ecological endpoints. Outcomes for scenarios 6 to 7 for riparian vegetation and invertebrates include consistent increases in risk spatially from the proposed new dam towards the lower reaches of the study area, which is ascribed to accumulative effects of the existing Phase I dams on the lateral tributaries. The relative risk to the fish community endpoint includes an opposite trend where a reduction in risk from RR1 to RR4 was observed for all scenarios. These results are indicative of the increased relative resilience of the resident and seasonal migratory fish

communities to flow alterations in the Senqu River associated with dam developments, due to the increasing size of the river and associated increases in habitat diversity towards the lower reaches of the study area. In addition, reductions in river connectivity (barrier formation) associated with existing impacts from Phase I and the synergistic new stressors associated with Phase II of the LHWP was also shown to contribute to the increase in risk from the lower reaches of the study area in RR4 for fishes migrating upstream to RR1. Interestingly the outcomes included some improvements or reductions in risk to social endpoints for scenarios 6 to 8 in particular for; wood for fuel in RR2 and grazing for livestock for RR1 and RR4. These outcomes suggest that, based on our current understanding of the socio-ecological systems of the study area, some spatial trade-offs between some ecosystem services are available for stakeholders of the development to consider (Figure 87). These results describe the relative risk of altered flows to multiple endpoints in the context of exacerbating of non-flow variable conditions.

The cumulative risk of all ecological and social endpoints for each RR, for each temporal period, per scenario, were evaluated using Monte Carlo simulations (5000 trials, Oracle Crystal Ball software, Oregon) (Ayre et al., 2014). The outcomes included relative risk projections displayed as relative profiles to single endpoints from multiple RRs, and multiple social and ecological or all endpoints per RR in the study for comparisons and evaluation. These profiles were generated for multiple scenarios to evaluate the potential social and ecological consequences of alternative water resource development scenarios. This is demonstrated by considering the cumulative risk projections to the fish wellbeing endpoint, which demonstrates that relative to the “Natural” hydrology scenario (Scenario 2) where there is a 83% probability that risk to the fish endpoint occurred in a zero to low risk range, for the Present scenario (Scenario 1), Phase II with the dam and no E-flows scenario (Scenario 3) and Scenario 7 (Phase II with the dam, 18% release of natural MAR and $40\text{m}^3.\text{s}^{-1}$ freshets), all range between the moderate and high risk range (Figure 89). The risk outcomes of all future management options suggest that objectives of the stakeholders to maintain the existing wellbeing of the ecosystem could not be achieved with existing fish migration barriers that could not be mitigated with any of the alternative flow scenarios. An additional, amended scenario (Scenario 7) was then modelled which included successful mitigation measures for the existing man-made barriers in the Senqu River as amendments. The outcomes included a reduction in risk in the low to moderate risk ranges, demonstrating that scenarios that promote moderate to high use of the water resources, with barrier mitigation measures (such as construction of fish-ways) could result in the achievement of the fish wellbeing endpoints in the study. This approach established for this case study allows for the relative comparison of the integrated social and or ecological consequences of altered flows in the context of non-flow variables for each scenario for each endpoint used to represent the use and protection management objectives of the study as shown in Figure-910. In Figure 9-10 the integrated risk probability profiles to all endpoints for each RR which compares Scenario 2 (reference scenario) to the high use Scenario 3. These results include elevated risk probabilities for RR1 (84% moderate and 15% high rank range) and RR2 (81% moderate) while existing E-flows from Phase I dams reduce the risk posed for this scenario in RR3 and RR4. The relative risk results to endpoints and integrated risk profiles were presented to stakeholders who used these outcomes to select E-flows_ and associated water resource use mitigation measures (such as barrier mitigation measures) to be implemented for

Phase II of the LHWP. [In this case study a bottom up approach of increasing flows in the socio-ecological system represented by the BNs until the criterion for E-flows was met was initially followed. Thereafter alternative water resources use scenarios were considered to explore risk trade-offs between social and ecological endpoints.](#)

Mara River risk calculation

In the Mara River case study the relative risk of stressors and the E-flows were established according to the four social and two ecological endpoints considered in the assessment. The Mara River case study was based on existing data from historical surveys (Mati et al., 2008; McCartney, 2010; Majule, 2010; LVBC and WWF-ESARPO, 2010; Mango et al., 2011; Kanga et al., 2011; Defersha and Melesse, 2012; Defersha et al., 2012; Dutton et al., 2013; Atisa et al., 2014; Gichana et al., 2014; Kilonzo et al., 2014; McClain et al., 2014) and a single site visit by the author to refine the CPTs (NBI, 2016). During this survey seven sites were selected to represent the variability of the all of the RRs in the study area. After establishing BN models for each RR, input parameters were changed using RR specific data for two scenarios including the present condition and alternately the E-flow requirement to achieve the basic human needs and ecological wellbeing of the Mara River known as the Ecological Reserve (United Republic of Tanzania, 2009; Government of Kenya, 2002).

In this case study relative risk results were used to generate E-flow requirements that would not pose excessive risk to the wellbeing of ecological endpoints and social endpoints as described by the RQOs²² (LVBC and WWF-ESARPO, 2010). [The assessment hypothesises sufficient flows currently exist to maintain the endpoints in an acceptable condition. In addition, in the context of the precautionary principle, additional flows can be allocated before risk to the endpoints exceeds acceptable, sustainable thresholds.](#)~~In this case study, risk to the endpoints demonstrated that available flows currently exceed resource use demand, which means that additional flows could be allocated for use without compromising existing ecological endpoints.~~ Results further demonstrate that sustainable water allocations would reduce risk to selected social endpoints ~~considered selected~~ in the study and meet the desired balance between the use and protection of the resource (Figure 101). The approach highlighted the probable effect of non-flow related stressors that are affecting the ecological wellbeing of Mara River, including water physio-chemical impacts and habitat alteration stressors associated with urban and rural communities, livestock grazing and watering and the effect of the recent exponential increase in local *Hippopotamus amphibius* populations in the tributaries of the Mara River in particular that are affecting water quality in the system (Kanga et al., 2011). These results were used to demonstrate the relative risk ~~of sources or water resource activities that affect flows relative to of flow reduction sources and non-flow reduction~~ other sources ~~of to the~~ risk to ecosystem wellbeing (Figure 4011). The approach successfully demonstrated how the BN-RRM approach in PROBFLO can be used to generate acceptable risk profiles for endpoints to evaluate the socio-ecological consequences of altered flows. And how these models can be used to determine E-flows and associated information for water resource use.

3.7 Step 7: Uncertainty evaluation

Best ecological risk assessment practice requires the explicit evaluation of uncertainty, or confidence assessment, (O'Brien and Wepener 2012; Landis, 2004b), which has been incorporated into the PROBFLO approach. Any and all aspects of uncertainty associated with the entire BN-RRM process, including objectives and endpoint selection for the assessment, availability and use of evidence, expert solicitations and model uncertainty for example, must be addressed. In an effort to reduce uncertainty, the BN-RRM approach adopted by PROBFLO inherently considers uncertainty associated with cause and effect relationships and the use of real data with expert solicitations (Uusitalo, 2006; Landis et al., 2016). The additional incorporation of entropy reduction analysis in relative risk calculations using Monte Carlo simulations also contributes to uncertainty reduction in PROBFLO. Additional analyses of the sensitivity of the BN-RRM should be addressed within the uncertainty evaluation section (Pollino et al., 2007; Hines and Landis, 2014), where the relative influence of input nodes on the endpoints can be evaluated as part of the PROBFLO assessment. The results of the uncertainty assessment are used to provide context to the stakeholders of a PROBFLO assessment and contribute to the decision making process in E-flow assessment studies.

For all of the BNs created in the PROBFLO assessments of the Senqu and Mara River case studies, the sensitivity of the input variables were evaluated in Netica using the "Sensitivity to Findings" tool (Marcot, 2012). This approach allows for the relative contribution of each variable to be evaluated. These assessments are used to evaluate model structure and interpret risk result outcomes with the stakeholders of the assessment (Marcot, 2012; Landis et al., 2016). [This test demonstrates to PROBFLO operators and stakeholders where models and associated assessments are sensitive to input data. Evidence to justify these sensitive determinants are imperative to a robust assessment, and or adaptive management is advocated to test and improve knowledge of the model indicators.](#) Additional sources of uncertainty include the comparative availability of evidence and expert knowledge pertaining to the socio-ecological systems considered in the assessments. The Senqu River case study addressed the second phase of a water resource use development that already has two substantial flow altering developments with more than 15 years of pre and post-development E-flow assessment (using holistic EFA methods, (Arthington et al., 2003)) monitoring and evaluations. Additional field surveys to the study area were carried out to generate additional information and test existing hypotheses for the assessment. The Mara River case study was based largely on available historical information and existing EFA results for parts of the study area (McClain & Kashaigili, 2013; Dessu et al., 2014). To further reduce uncertainty associated with the application of the PROBFLO assessments, the BN-RRM method proposes an adaptive management approach (Step 8) that allows improvements over time as new data is collected.

3.9 Step 8: Hypotheses establishment

In the hypotheses establishment step of PROBFLO, suitable hypotheses for field and laboratory experiments are established to test flow-ecosystem and flow-ecosystem service relationships (Landis, 2004b; O'Brien and Wepener, 2012). In PROBFLO the fundamental adaptive management approach to improving our understanding of socio-ecological risk relationships, while revisiting outcomes and re-evaluating approaches is formalised in the hypotheses establishment and testing phase. This process is based on a similar process in the RRM approach, established to reduce uncertainties and to confirm the risk rankings in risk assessments (Landis, 2004b). In PROBFLO these adaptive management principles acknowledge that socio-ecological systems are dynamic and that our limited understanding of these processes necessitates the incorporation of many assumptions. In many case studies, uncertainties associated with the outcomes need to be mitigated before they can be used to inform decision making. To reduce uncertainty, assumptions can be tested rigorously and early. The adaptive management processes should be (1) informed by iterative learning about the flow-ecosystem and flow-ecosystem service relationships, (2) consider and respond to earlier management successes and failures and (3) increase present day socio-ecological system resilience that can improve the ability of E-flows management to respond to the threats of increasing resource use (Lee, 2004).

In the Senqu River case study, many hypotheses associated with the flow-ecosystem and flow-ecosystem service relationships, largely established on data associated with Phase I of the LHWP, were established and tested during the field surveys. These hypotheses included (1) woody vegetation communities sustainably harvested by local communities for fuel, respond to reduced average flows by increasing in abundance due to reduced flow variability, reduced stream power and through the colonisation of new lower marginal zones, (2) migratory cyprinid fishes respond to ecological cue flows that include increased discharges associated with reduced salinity, that initiates fish migration and (3) grazing for livestock of local communities depends on freshet flows lifting water onto the river banks and floodplains to stimulate vegetation growth. Data was collected from the study area to address these hypotheses and improve on the understanding of the flow-ecosystem and flow-ecosystem service relationships considered in the study. In the Mara River case study available flow-ecosystem and flow-ecosystem service information was used in the PROBFLO assessment. A range of hypotheses associated with our understanding of the relationships were generated to refine and improve on E-flow assessments of the study area.

3.9 Step 9: Test hypotheses

The two PROBFLO case studies included the design of long-term monitoring programmes to test the accuracy of risk projections and improve the understanding of the flow-ecosystem and flow-ecosystem service relationships. In the Senqu River case study a data management system (DMS) with automated data evaluation components was established. In the Mara River case study a range of hypotheses were established and used to design a monitoring plan and associated research programme to confirm the flow-ecosystem and flow-ecosystem service relationships considered in the study.

3.10 Step 10: Communicate outcomes

Regional scale ecological risk assessments of water resources are carried out on behalf of stakeholders of the use and or protection of those resources. Stakeholders need information generated with robust, best scientific practice methodologies in transparent, clear and concise format, to evaluate the socio-ecological consequences of water resource use options. The RRM PROBFLO approach highlights the importance of ~~clear and careful~~ communication of the outcomes ~~in of assessments in~~ the context of the uncertainty identified in an assessment (Hayes and Landis, 2004), ~~which approach is adopted by PROBFLO~~. A variety of techniques and tools are available to assist in the communication of the E-flow outcomes and associated socio-ecological consequences of altered flows and careful attention must be paid to ensure that the relevant stakeholders of any case study are presented with information that can easily be understood (O'Brien and Wepener, 2012). In the Senqu River case study, the LHDA with South African and Lesotho governmental delegates participated in a project outcomes workshop in 2014. During this workshop the PROBFLO approach adopted for the study, results and outcomes were discussed. Risk results of sources and stressors to social and ecological endpoints were compared in a relative manner facilitating water resource use and protection trade-off considerations for the LHWP Phase II. The communication phase for the case study included attendance of the 2014 International Rivers Symposium in Canberra where the project team and stakeholders attended the conference and presented the case study to the international scientific community (O'Brien et al., 2014). In the Mara River case study the PROBFLO assessment successfully formed a part of the Nile E-flows framework development (NBI, 2016), and the ongoing Mau Mara Serengeti (MaMaSe) Sustainable Water Initiative (<http://mamase.org>). The application of the PROBFLO and associated uncertainty assessment was used to establish a monitoring plan that should be implemented with water resource use scenario selected from the case studies. These plans were designed to validate the model by testing the response of the receiving environment to observed ecosystem driver conditions, associated with implemented scenarios and to improve the understanding of the causal relationships hypothesised in the original assessment with real data.

4. Conclusion

The Regional Scale Ecological Risk Assessment approach was established in 1997 in response to the need to apply ERAs ~~that consider multiple on multiple spatial scales, and include~~ multiple sources, stressors and receptors in ~~the context of considerations of~~ spatial and temporal ecosystem dynamics, on multiple spatial scale (Landis and Wiegiers, 1997; 2007). The approach, which includes the RRM, has been widely implemented, reviewed and proven to be a robust probabilistic modelling tool to contribute to the sustainable management of ecological resources (Landis and Wiegiers 2007). Recent developments in E-flow frameworks (Poff et al., 2010; NBI, 2016), now also call for holistic, regional scale, probabilistic E-flow assessments that consider flow and non-flow drivers of change in socio-ecological context. We have established a Regional Scale Ecological Risk Assessment approach incorporating the The BN-RRM approach ~~incorporated into this regional scale E-flow~~

~~assessment method we ha've called PROBFLO; similarly offers aas~~ robust approach to E-flow assessments ~~that meets current best scientific E-flow practice~~ that can make a positive contribution to the sustainable management of water resources. The approach provides true transparency and adaptability options for holistic E-flow management. PROBFLO has already been ~~successfully~~ implemented in two major case studies where its flexibility and functionality has been demonstrated. In both case studies the evidence based outcomes facilitated informed environmental management decision making, in the context of social and ecological aspirations. From these outcomes stakeholders have in addition, been able to consider sustainable social and ecological trade-offs between, to balance the use and protection of water resources. ~~Although the accuracy of the~~ PROBFLO ~~projections-outcomes~~ used to ~~guide-direct the~~ sustainable ~~use of~~ water resources; ~~in the case studies are probabilistic and use-needs~~ to be validated ~~with monitoring data during use implementation phases, -when developments takes place,~~ PROBFLO is an ~~the~~ adaptability ~~tool of the approach that~~ allows for the incorporation of new information rapidly which will inform adaptive management ~~and reduce uncertainty associated with the accuracy of the projections.~~ In the case studies stakeholders of the project have been presented with the evidence based probabilistic projections of PROBFLO and used the risk projections to consider water resource use trade-off options. Both of these case studies are being used by stakeholders to make water resource use decisions that are currently being undertaken. PROBFLO is a holistic, evidence based, probability modelling E-flow assessment tool that is transparent and adaptable, and suitable for application on multiple spatial scales. PROBFLO has the potential to contribute to the sustainable management of water resources for the benefit of social and ecological components of these systems. ~~OK - this follows my comment in the previous section - the manuscript makes a string conclusion in this regard, but the stakeholder buy in has not been adequately elucidated. The approach is being established within adaptive management processes of existing case studies, and applied in new case studies for a wide range of water resources (what is meant by 'wide range of water resources'? do you mean 'wide range of water resources availability settings/contexts?') with diverse social and ecological objectives.~~

Formatted: Font color: Red

Formatted: Font color: Red

Author contribution

The BN-RRM approach established for use in E-flow assessments was co-developed by G.C. O'Brien, C. Dickens and V. Wepener. The approach was implemented by this team including Leo Quayle, Kelly Fouchy, James MacKenzie, Mark Graham ~~E. Hines~~ and R. Stassen. The paper was written by G.C. O'Brien and C. Dickens and edited by W.G Landis, V. Wepener, E. Hines and R. Stassen.

Competing interests:

The authors declare that they have no conflict of interest.

Acknowledgements

The PROBFLO E-flow assessment approach was established through the Institute of Natural Resources NPC (Pietermaritzburg, South Africa) as part of the LWHP Phase II study funded by [the Lesotho Highlands Development Authority \(LHDA\)](#). We acknowledge the contributions made to the initial Senqu River case study by the extended team of ecological and social scientists and engineers who worked on the project. Contributions were also made through the NBI Guidance Document on Environmental Flows study, Prepared by HYDROC GmbH in collaboration with Mau Mara Serengeti Sustainable Water Initiative study on behalf of the Nile Basin Initiative and Deutsche Gesellschaft für Internationale Zusammenarbeit (GIZ). In particular, the contributions made by Michael McLain, John Conallin and Kelly Fouche are acknowledged.

References

- Acreman, M., Arthington, A. H., Colloff, M. J., Couch, C., Crossman, N. D., Dyer, F., Overton, I., Pollino, C. A., Stewardson, M. J. and Young, W.: Environmental flows for natural , hybrid , and novel riverine ecosystems in a changing world In a nutshell ; , 466–473, doi:10.1890/130134, 2014.
- Acreman, M. C. and Dunbar, M. J.: Defining environmental river flow requirements – a review, Hydrol. Earth Syst. Sci., 8(5), 861–876, doi:10.5194/hess-8-861-2004, 2004.
- Anon: Transboundary Integrated Water Resources Management and Development Projects in The Mara (Kenya/Tanzania); Sio-Malaba- Malakisi (Kenya/Uganda) and Kagera (Uganda, Rwanda, Burundi, Tanzania), 2014.
- Anon: Author ' s personal copy Catena Assessment of water resources availability and demand in the Mara River Basin, n.d.
- Anon: Sediment Fingerprinting in the Mara River: Uncovering Relationships Between Wildlife, Tourism, and Non-Point Source Pollution. - Google Scholar, [online] Available from: https://scholar.google.co.za/scholar?q=Sediment+Fingerprinting+in+the+Mara+River%3A+Uncovering+Relationships+Between+Wildlife%2C+Tourism%2C+and+Non-Point+Source+Pollution.+&btnG=&hl=en&as_sdt=0%2C5, n.d.
- Arthington, A., Rall, J. and Kennard, M.: Environmental flow requirements of fish in Lesotho Rivers using the DRIFT methodology, River Res. [online] Available from: <http://onlinelibrary.wiley.com/doi/10.1002/rra.728/abstract> (Accessed 19 August 2016), 2003.
- [Arthington, A.H. "Environmental Flows: Saving Rivers in the Third Millennium". University of California Press, Berkeley, CA. 406pp. \[Academic book on the science and management of e-flows. 2012.](#)
- Atisa, G., Bhat, M. and McClain, M.: Economic assessment of best management practices in the Mara River Basin: toward implementing payment for watershed services, Water Resour. Manag. [online] Available from:

Formatted: Normal, Line spacing: single

- <http://link.springer.com/article/10.1007/s11269-014-0585-3> (Accessed 6 September 2016), 2014.
- Ayre, K. and Landis, W.: A Bayesian approach to landscape ecological risk assessment applied to the Upper Grande Ronde Watershed, Oregon, Hum. Ecol. Risk Assess. [online] Available from: <http://www.tandfonline.com/doi/abs/10.1080/10807039.2012.707925> (Accessed 18 August 2016), 2012.
- 5 Ayre, K., Caldwell, C., Stinson, J. and Landis, W.: Analysis of regional scale risk of whirling disease in populations of colorado and rio grande cutthroat trout using a bayesian belief network model, Risk Anal. [online] Available from: <http://onlinelibrary.wiley.com/doi/10.1111/risa.12189/full> (Accessed 18 August 2016), 2014.
- Biswas, A.: Integrated water resources management: a reassessment: a water forum contribution, Water Int. [online] Available from: <http://www.tandfonline.com/doi/abs/10.1080/02508060408691775> (Accessed 29 August 2016), 2004.
- 10 Colnar, A. and Landis, W.: Conceptual model development for invasive species and a regional risk assessment case study: the European green crab, *Carcinus maenas*, at Cherry Point, Hum. Ecol. Risk Assess. [online] Available from: <http://www.tandfonline.com/doi/abs/10.1080/10807030601105076> (Accessed 18 August 2016), 2007.
- Defersha, M. and Melesse, A.: Field-scale investigation of the effect of land use on sediment yield and runoff using runoff plot data and models in the Mara River basin, Kenya, Catena [online] Available from: <http://www.sciencedirect.com/science/article/pii/S0341816211001470> (Accessed 6 September 2016), 2012.
- 15 Defersha, M., Melesse, A. and McClain, M.: Watershed scale application of WEPP and EROSION 3D models for assessment of potential sediment source areas and runoff flux in the Mara River Basin, Kenya, Catena [online] Available from: <http://www.sciencedirect.com/science/article/pii/S0341816212000598> (Accessed 6 September 2016), 2012.
- Department of Water Affairs (DWA): Procedures to Develop and Implement Resource Quality Objectives., 2011.
- 20 Dessu, S., Melesse, A., Bhat, M. and McClain, M.: Assessment of water resources availability and demand in the Mara River Basin, Catena [online] Available from: <http://www.sciencedirect.com/science/article/pii/S0341816213002956> (Accessed 6 September 2016a), 2014.
- Dessu, S., Melesse, A., Bhat, M. and McClain, M.: Assessment of water resources availability and demand in the Mara River Basin, Catena [online] Available from: <http://www.sciencedirect.com/science/article/pii/S0341816213002956> (Accessed 22
- 25 September 2016b), 2014.
- Dudgeon, D., Arthington, A. H., Gessner, M. O., Kawabata, Z.-I., Knowler, D. J., Lévêque, C., Naiman, R. J., Prieur-Richard, A.-H., Soto, D., Stiassny, M. L. J. and Sullivan, C. A.: Freshwater biodiversity: importance, threats, status and conservation challenges, Biol. Rev. Camb. Philos. Soc., 81(2), 163–82, doi:10.1017/S1464793105006950, 2006.
- Dutton, C., Anisfeld, S. and Ernstberger, H.: A novel sediment fingerprinting method using filtration: application to the Mara
- 30 River, East Africa, J. Soils Sediments [online] Available from: <http://link.springer.com/article/10.1007/s11368-013-0725-z> (Accessed 6 September 2016), 2013.
- EAC: Memorandum of Understanding (MoU) with the World Wide Fund for Nature Eastern Africa Regional Programme Office (WWF EARPO) for WWF-EARPO to support the EAC in programmes contributing to the vision of the Lake Victoria Development Programme and the establi., 2003.

- Gichana, Z., Njiru, M., Raburu, P. and Masese, F.: Effects Of Human Activities On Microbial Water Quality In Nyangores Stream, Mara River Basin, *ijstr.org* [online] Available from: <http://www.ijstr.org/final-print/feb2014/Effects-Of-Human-Activities-On-Microbial-Water-Quality-In-Nyangores-Stream-Mara-River-Basin.pdf> (Accessed 6 September 2016), 2014.
- Government of Kenya: Kenya Water Act No. 8 of 2002, Government of Kenya., 2002.
- 5 Gowns, I.: The influence of changes to river hydrology on freshwater fish in regulated rivers of the Murray-Darling basin, *Hydrobiologia*, 596(1), 203–211, doi:10.1007/s10750-007-9097-y, 2008.
- Hayes, E. and Landis, W.: Regional ecological risk assessment of a near shore marine environment: Cherry Point, WA, Hum. Ecol. Risk Assess. [online] Available from: <http://www.tandfonline.com/doi/abs/10.1080/10807030490438256> (Accessed 18 August 2016), 2004.
- 10 Hines, E. and Landis, W.: Regional risk assessment of the Puyallup River Watershed and the evaluation of low impact development in meeting management goals, *Integr. Environ. Assess.* [online] Available from: <http://onlinelibrary.wiley.com/doi/10.1002/ieam.1509/full> (Accessed 18 August 2016), 2014.
- Hunsaker, C., Graham, R. and II, G. S.: Assessing ecological risk on a regional scale, *Environmental* [online] Available from: <http://link.springer.com/article/10.1007/BF02394200> (Accessed 18 August 2016), 1990.
- 15 Isaak, D., Wollrab, S., Horan, D. and Chandler, G.: Climate change effects on stream and river temperatures across the northwest US from 1980–2009 and implications for salmonid fishes, *Clim. Change* [online] Available from: <http://link.springer.com/article/10.1007/s10584-011-0326-z> (Accessed 17 August 2016), 2012.
- Kanga, E., Ogutu, J., Olff, H. and Santema, P.: Population trend and distribution of the Vulnerable common hippopotamus *Hippopotamus amphibius* in the Mara Region of Kenya, *Oryx* [online] Available from: http://journals.cambridge.org/abstract_S0030605310000931 (Accessed 6 September 2016), 2011.
- 20 Karanja, G.: Tourist Impacts in Masai Mara National Reserve, [online] Available from: <http://ethos.bl.uk/OrderDetails.do?uin=uk.bl.ethos.399605> (Accessed 6 September 2016), 2002.
- Kilonzo, F., Masese, F. and Griensven, A. Van: Spatial–temporal variability in water quality and macro-invertebrate assemblages in the Upper Mara River basin, Kenya, of the Earth, Parts A/B/C [online] Available from: <http://www.sciencedirect.com/science/article/pii/S147470651300154X> (Accessed 6 September 2016), 2014.
- 25 King, J. and Pienaar, H.: Sustainable use of South Africa’s inland waters., 2011.
- [King, J., Brown, C., & Sabet, H. A scenario-based holistic approach to environmental flow assessments for rivers. *River research and applications*, 19\(5-6\), 619-639, 2003.](#)
- Korb, K. and Nicholson, A.: Bayesian artificial intelligence. [online] Available from: https://books.google.co.za/books?hl=en&lr=&id=LxXOBQAAQBAJ&oi=fnd&pg=PP1&dq=korb+nicholson+bayesian+artificial+intelligence&ots=Q1XC9ee_F1&sig=IgMnhmqlqeII5tIny8dzwakpFrc (Accessed 20 September 2016), 2010.
- Landis, W.: Regional scale ecological risk assessment: using the relative risk model. [online] Available from: https://books.google.co.za/books?hl=en&lr=&id=-gdO-NF1bb0C&oi=fnd&pg=PA1&dq=Landis+and+weigers+1997&ots=aUvWeGWe2r&sig=_IgC0f2tB0IJGX2QjJVcORQD8R

- c (Accessed 18 August 2016a), 2004.
- Landis, W.: Regional scale ecological risk assessment: using the relative risk model. [online] Available from: <https://books.google.co.za/books?hl=en&lr=&id=-gdO-NF1bb0C&oi=fnd&pg=PA1&dq=Landis+2004+regional+scale+risk&ots=aUvXfHWIXl&sig=sKZfuMRUeXzYrZwjKwWnmAHKvzM> (Accessed 31 August 2016b), 2004.
- Landis, W.: Comment on ET & C perspectives , November 2015-A holistic view : Comment on ET & C Perspectives, , (August), doi:10.1002/etc.3378, 2016.
- Landis, W. and Wiegiers, J.: Design considerations and a suggested approach for regional and comparative ecological risk assessment, Hum. Ecol. Risk Assess. [online] Available from: <http://www.tandfonline.com/doi/pdf/10.1080/10807039709383685> (Accessed 18 August 2016), 1997.
- Landis, W. and Wiegiers, J.: Ten years of the relative risk model and regional scale ecological risk assessment, Hum. Ecol. Risk Assess. [online] Available from: <http://www.tandfonline.com/doi/abs/10.1080/10807030601107536> (Accessed 18 August 2016), 2007.
- Landis, W. G., Ayre, K. K., Johns, A. F., Summers, H. M., Stinson, J., Harris, M. J., Herring, C. E. and Markiewicz, A. J.: The multiple stressor ecological risk assessment for the mercury contaminated South River and upper Shenandoah River using the Bayesian Network-Relative Risk Model, Integr. Environ. Assess. Manag., 9999(9999), n/a-n/a, doi:10.1002/ieam.1758, 2016.
- Lee, K. N.: Appraising Adaptive Management, , 3(2), 1–18, 2004.
- [Lesotho Highlands Water Project \(LHWP\). Treaty on the Lesotho highlands water project between the government of the Kingdom of Lesotho and the government of the Republic of South Africa signed at Maseru, 24 October 1986.](#)
- [Lesotho Highlands Water Project \(LHWP\). Agreement on Phase II of the Lesotho highlands water project between the government of the Kingdom of Lesotho and the government of the Republic of South Africa signed at Maseru, 11 August 2011](#)
- [Lesotho Highlands Water Project \(LHWP\).LHDA: Specialist Consultants to Undertake Baseline Studies \(Flow, Water Quality and Geomorphology\) and Instream Flow Requirement \(IFR\) Assessment for Phase 2: Instream Flow Requirements for the Senqu River – Final report No 6001/2/e, Lesotho Highlands Development Authority, Maseru., 2016.](#)
- LVBC & WWF-ESARPO: Biodiversity Strategy and Action Plan for Sustainable Management of the Mara River Basin. Nairobi and Kisumu, Kenya., 2010.
- Majule, A.: Towards sustainable management of natural resources in the Mara river basin in Northeast Tanzania, J. Ecol. Nat. Environ. [online] Available from: http://www.academicjournals.org/app/webroot/article/article1379602990_Majule.pdf (Accessed 6 September 2016), 2010.
- Mango, L. M., Melesse, A. M., McClain, M. E., Gann, D. and Setegn, S. G.: Land use and climate change impacts on the hydrology of the upper Mara River Basin , Kenya : results of a modeling study to support better resource management, , 2245–2258, doi:10.5194/hess-15-2245-2011, 2011.
- Marcot, B.: Metrics for evaluating performance and uncertainty of Bayesian network models, Ecol. Modell. [online] Available

Formatted: Widow/Orphan control, Adjust space between Latin and Asian text, Adjust space between Asian text and numbers

- from: <http://www.sciencedirect.com/science/article/pii/S0304380012000245> (Accessed 4 October 2016), 2012.
- Marcot, B. G., Steventon, J. D., Sutherland, G. D. and Mccann, R. K.: Guidelines for developing and updating Bayesian belief networks applied to ecological modeling and conservation1, 2006.
- Mati, B., Mutie, S., Gadain, H. and Home, P.: Impacts of land-use/cover changes on the hydrology of the transboundary Mara River, Kenya/Tanzania, Lakes Reserv. [online] Available from: <http://onlinelibrary.wiley.com/doi/10.1111/j.1440-1770.2008.00367.x/full> (Accessed 6 September 2016), 2008.
- Mccann, R. K., Marcot, B. G. and Ellis, R.: Bayesian belief networks : applications in ecology and natural resource, , (Reckhow 1999), 2006.
- McCartney, B.: Evaluation of Water Quality and Aquatic Ecosystem Health in the Mara River Basin East Africa, [online] Available from: ftp://ftp.globalwaters.net/mara.globalwaters.net/EFA/Database/Theses/McCartney_2010.pdf (Accessed 6 September 2016), 2010.
- McClain, M. and Kashaigili, J.: Environmental flow assessment as a tool for achieving environmental objectives of African water policy, with examples from East Africa, Int. J. [online] Available from: <http://www.tandfonline.com/doi/abs/10.1080/07900627.2013.781913> (Accessed 22 September 2016), 2013.
- Mcclain, M. E., Subalusky, A. L., Anderson, E. P., Dessu, B., Melesse, A. M., Ndomba, P. M., Joseph, O. D., Tamatamah, R. A., Mligo, C., McClain, M. E., Subalusky, A. L., Anderson, E. P., Dessu, B., Melesse, A. M., Ndomba, P. M., Mtamba, J. O. D. and Rashid, A.: Comparing flow regime , channel hydraulics , and biological communities to infer flow – ecology relationships in the Mara River of Kenya and Tanzania, , 6667(June 2016), doi:10.1080/02626667.2013.853121, 2014.
- Mitchell, B.: Integrated water resource management, institutional arrangements, and land-use planning, Environ. Plan. A [online] Available from: <http://epn.sagepub.com/content/37/8/1335.short> (Accessed 29 August 2016), 2005.
- NBI: Preparation of NBI Guidance Document on Environmental Flows: Nile E-flows Framework Technical Implementation Manual. Prepared by HYDROC GmbH on behalf of the Nile Basin Initiative and Deutsche Gesellschaft für Internationale Zusammenarbeit., 2016.
- O'Brien, G. and Wepener, V.: Regional-scale risk assessment methodology using the Relative Risk Model (RRM) for surface freshwater aquatic ecosystems in South Africa, Water SA, 38(2), 153–166, doi:10.4314/wsa.v38i2.1, 2012.
- [O'Brien GC, Dickens C, Hines E and Landis WG. Risk of flow alterations due to the Polihali Dam on the Senqu River, Lesotho. International Rivers Symposium. Canberra, Australia. 15-09-2014](#)
- [Orange-Senqu River Commission \(ORASECOM\). Integrated Water Resources Management Plan For The Orange-Senqu River Basin: Main Report. Report No. ORASECOM 019/2014 . Orange-Senqu River Basin Commission. 2014](#)
- Pahl-Wostl, C., Arthington, A., Bogardi, J., Bunn, S. E., Hoff, H., Lebel, L., Nikitina, E., Palmer, M., Poff, L. N., Richards, K., Schlatter, M., Schulze, R., St-Hilaire, A., Tharme, R., Tockner, K. and Tsegai, D.: Environmental flows and water governance: Managing sustainable water uses, Curr. Opin. Environ. Sustain., 5(3–4), 341–351, doi:10.1016/j.cosust.2013.06.009, 2013.
- [Pitman, W. V., Bailey, A. K., & Kakebeeke, J. P. WRS2000 Water Resources Simulation Model for Windows: Users Guide.](#)

[Prepared for the Department of Water Affairs and the Water Research Commission. 2006.](#)

Poff, N. and Matthews, J.: Environmental flows in the Anthropocene: past progress and future prospects, *Curr. Opin. Environ. Sustain.* [online] Available from: <http://www.sciencedirect.com/science/article/pii/S1877343513001541> (Accessed 18 August 2016), 2013.

- 5 Poff, N. L., Richter, B. D., Arthington, A. H., Bunn, S. E., Naiman, R. J., Kendy, E., Acreman, M., Apse, C., Bledsoe, B. P., Freeman, M. C., Henriksen, J., Jacobson, R. B., Kennen, J. G., Merritt, D. M., O’Keeffe, J. H., Olden, J. D., Rogers, K., Tharme, R. E. and Warner, A.: The ecological limits of hydrologic alteration (ELOHA): A new framework for developing regional environmental flow standards, *Freshw. Biol.*, 55(1), 147–170, doi:10.1111/j.1365-2427.2009.02204.x, 2010.

Pollino, C. A., Woodberry, O., Nicholson, A., Korb, K. and Hart, B. T.: Parameterisation and evaluation of a Bayesian network for use in an ecological risk assessment, , doi:10.1016/j.envsoft.2006.03.006, 2007.

Richter, B. D., Warner, A. T., Meyer, J. L. and Lutz, K.: A collaborative and adaptive process for developing environmental flow recommendations, *River Res. Appl.*, 22(3), 297–318, doi:10.1002/rra.892, 2006.

[Smit, N. J., Vlok, W., van Vuren, J. H. J., Du Preez, L. H., Van Eeden, E., O’Brien, G. C., & Wepener, V. Socio-ecological System Management of the Lower Phongolo River and Floodplain Using Relative Risk Methodology. Water Research Commission. ISBN: 978-1-4312-0811-1, 2016.](#)

- 15 [Stirzaker, R., Biggs, H., Roux, D., and Cilliers, P. Requisite simplicities to help negotiate complex problems. *AMBIO: A Journal of the Human Environment*, 39\(8\), 600-607. 2010.](#)

Tharme, R.: A global perspective on environmental flow assessment: emerging trends in the development and application of environmental flow methodologies for rivers, *River Res. Appl.* [online] Available from: <http://onlinelibrary.wiley.com/doi/10.1002/rra.736/abstract> (Accessed 18 August 2016), 2003.

United Republic of Tanzania: Water Resources Management Act, , 73, 2009.

Uusitalo, L.: Advantages and challenges of Bayesian networks in environmental modelling, , 3, 312–318, doi:10.1016/j.ecolmodel.2006.11.033, 2006.

Vörösmarty, C.J., et al: Global Threats to Human Water Security and River Biodiversity, *Nature*, 467, 555–561, 2010.

- 25 Wiegers, J., Feder, H. and Mortensen, L.: A regional multiple-stressor rank-based ecological risk assessment for the fjord of Port Valdez, Alaska, *Ecol. Risk* ... [online] Available from: <http://www.tandfonline.com/doi/abs/10.1080/10807039891285036> (Accessed 18 August 2016), 1998.

WRMA: Catchment Management Strategy: Lake Victoria South Catchment Area, Kenya., Water Resources Management Authority of Kenya., 2014.

30



FIGURES

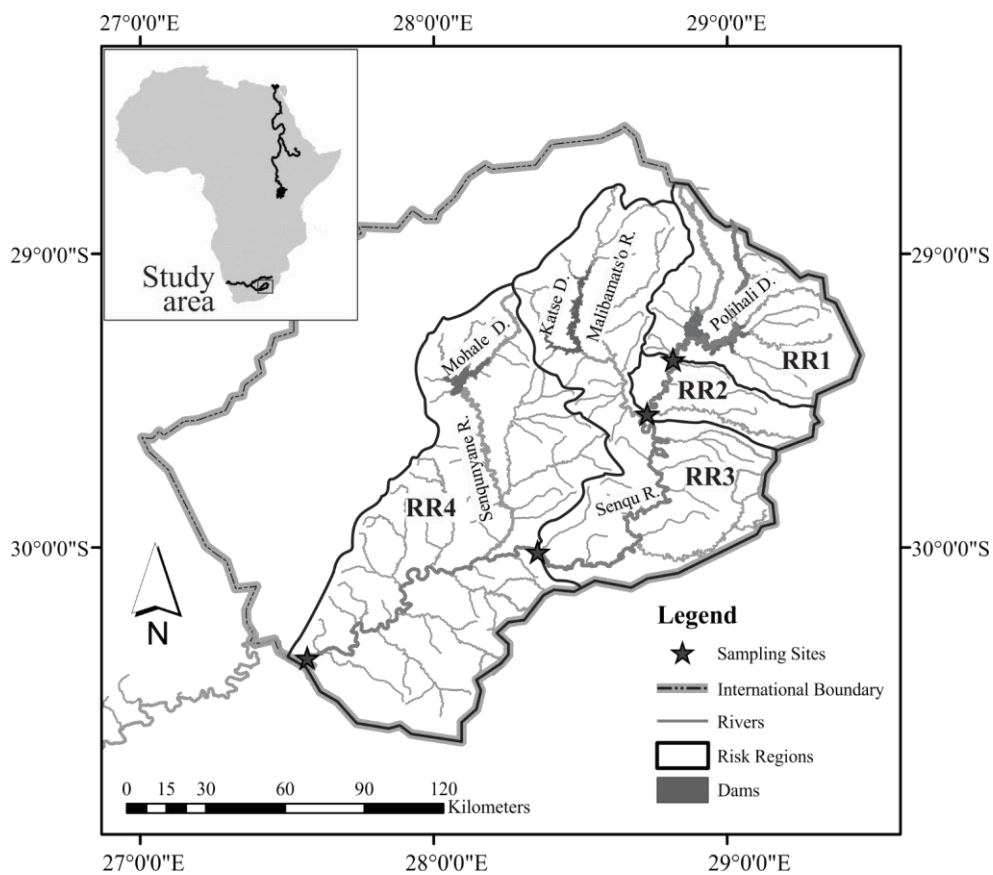


Figure 1: The upper Senqu River study area with Risk Regions established for the study including dams associated with Phase [I](#) of the Lesotho Highlands Water Project and the location of the new Polihali Dam planned to be built in Phase [II](#).

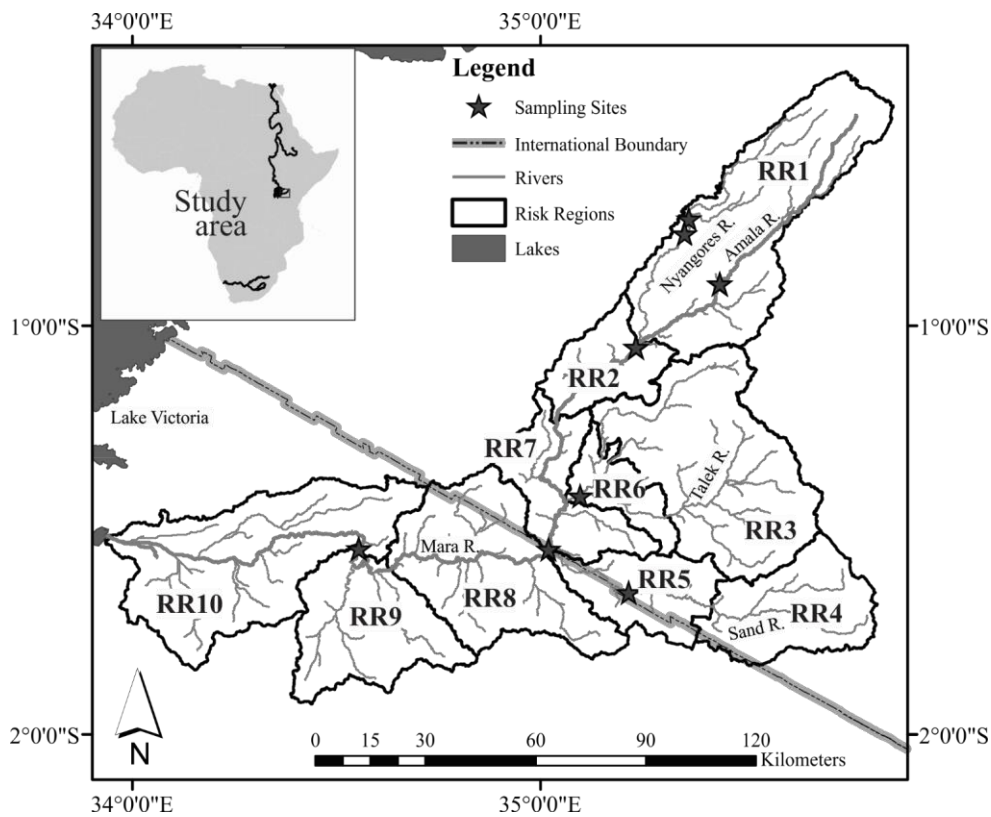


Figure 2: The Mara River Basin considered in the study with Risk Regions and sampling sites.

5

10

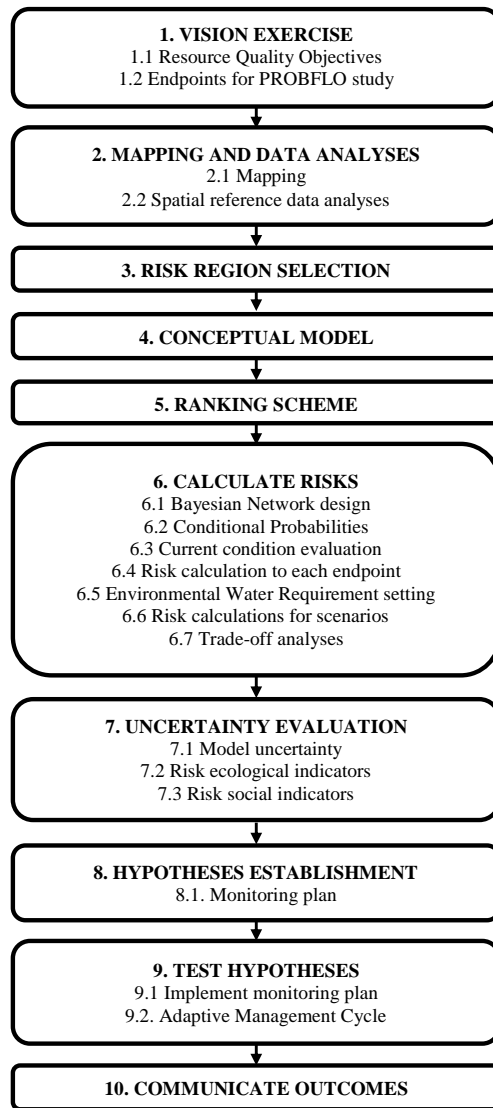


Figure 3: The ten procedural steps of PROBFLO.

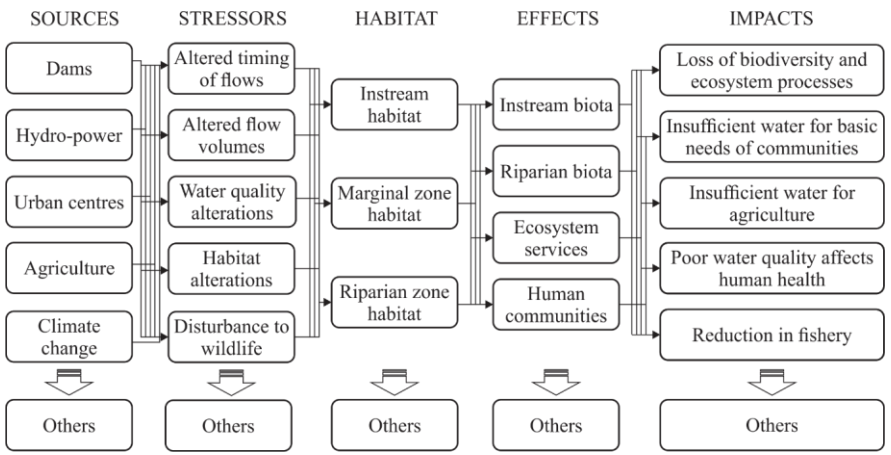
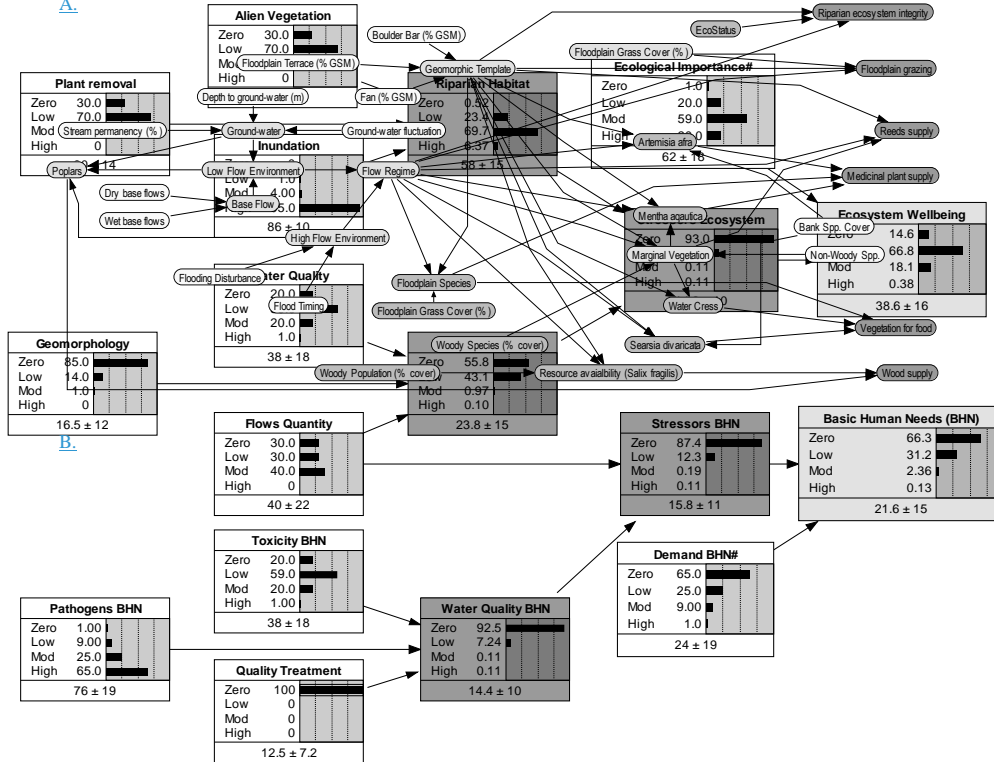
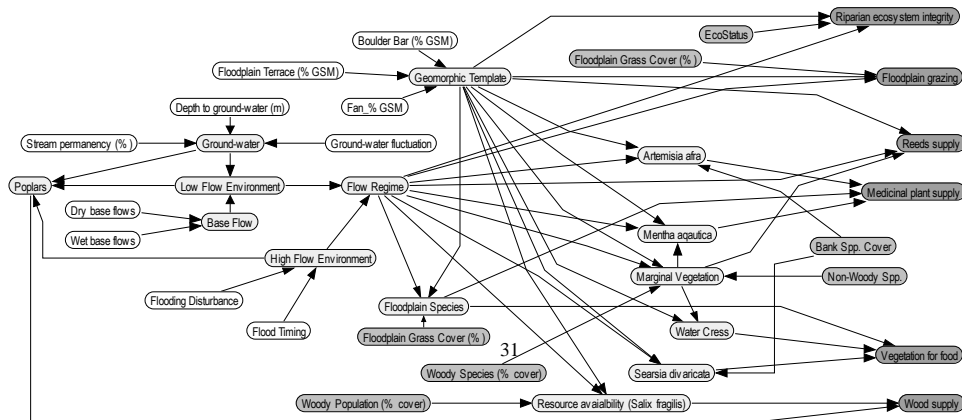


Figure 4: Example of a holistic conceptual model for PROBFLO ~~which that~~ describes causal risk relationships between sources, stressors, habitats, effects and impacts to endpoint considered in an assessment.

A.



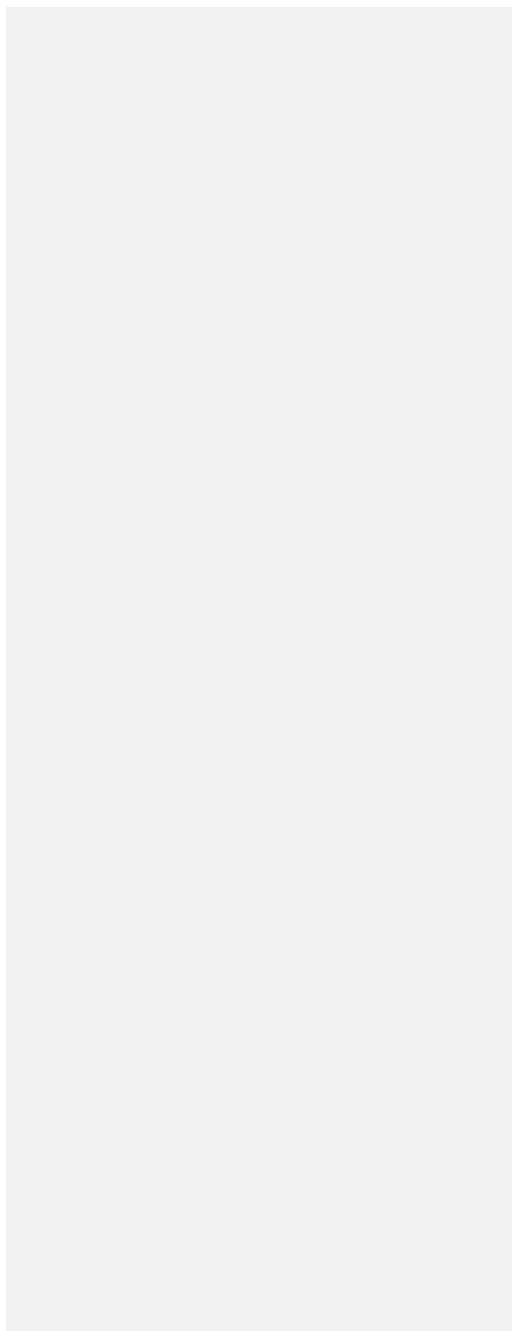
B.

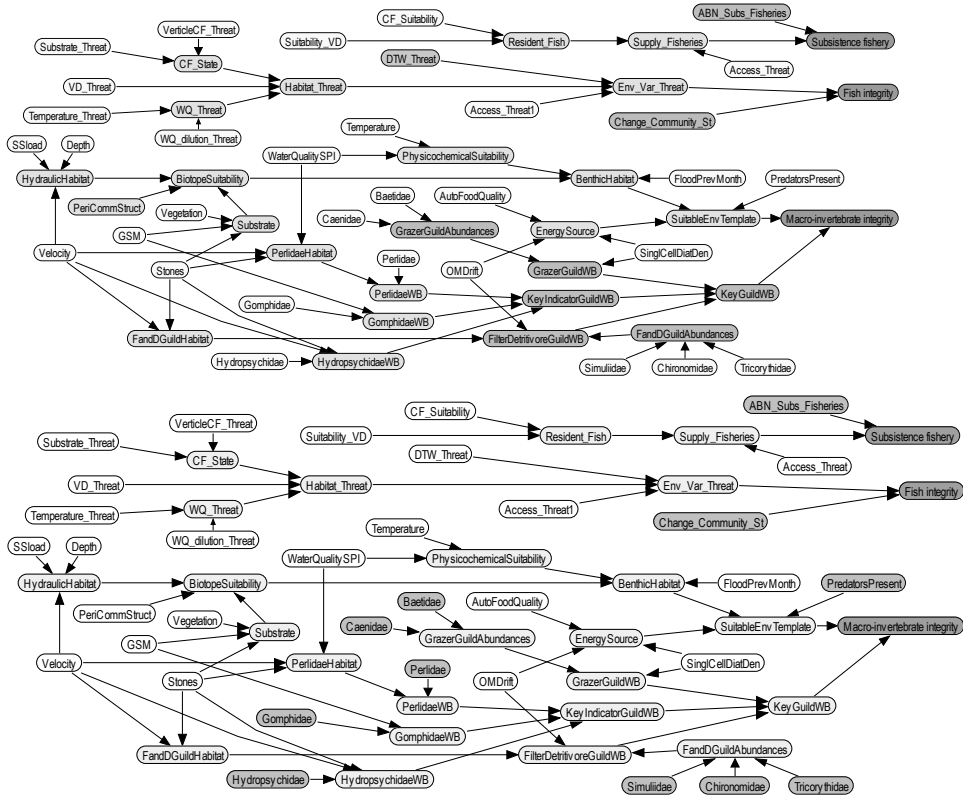




5

10





5

10

15

Figure 5: ~~Example of a~~ Bayesian Network models ~~used in the Senqu River case study to~~ developed for a PROBFLO case study to evaluate the risk of water resource use to Riparian ecosystem integrity and ecosystem service endpoints (A) and instream ecological endpoints and fisheries supply endpoints (B)-an Ecosystem Wellbeing and Basic Human Needs Endpoints. (*) ~~Identifies flow variables which are included to establish E flow requirements and evaluate the socio-ecological consequences of altered flows.~~ White nodes represent input exposure variables (# indicates effect nodes), light grey nodes complete the expose leg of the risk assessment, grey nodes represent effect leg of models and dark grey nodes represent daughter/child nodes and light grey nodes represent endpoints. endpoints. Working Netica™ models are provided as supplementary information.

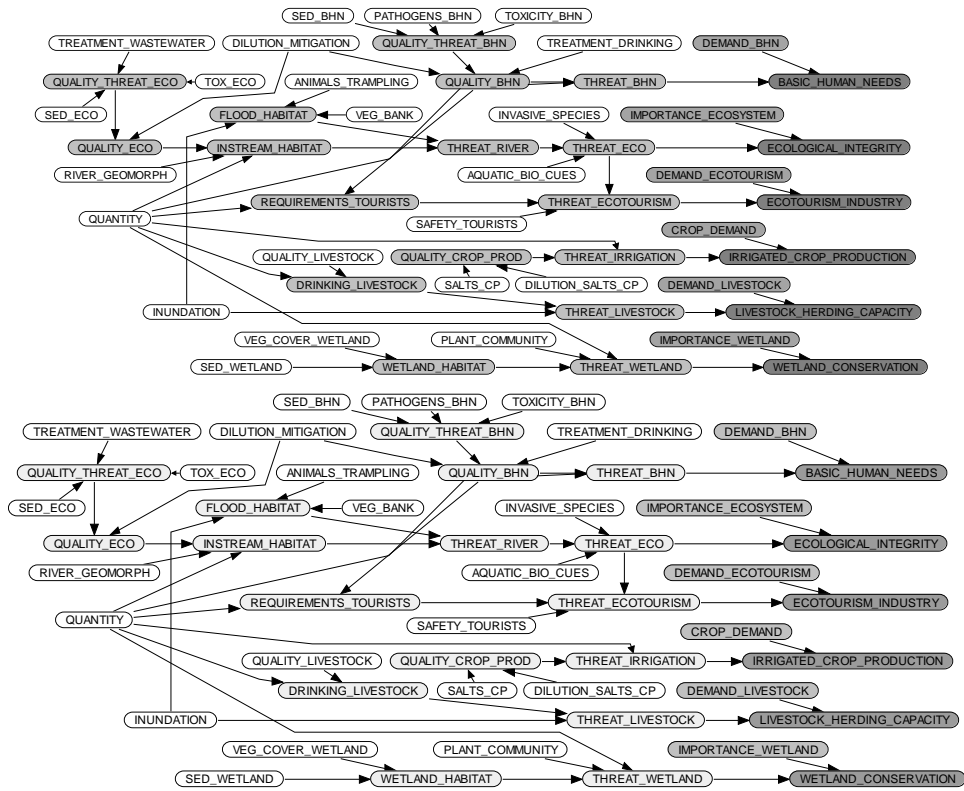
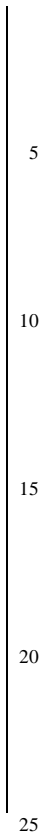
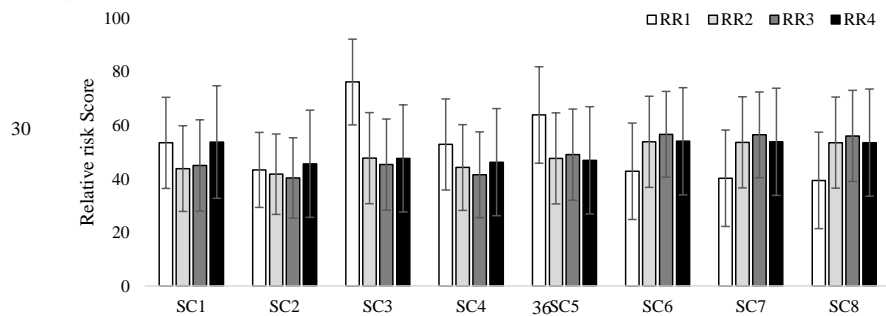


Figure 6: Bayesian Network models used in the Mara River case study to evaluate the risk of water resource use to the socio-ecological endpoints. White nodes represent input exposure variables, light grey nodes complete the expose leg of the risk assessment, grey nodes represent effect leg of models and dark grey nodes represent endpoints. Working NeticaTM models are provided as supplementary information.



A.



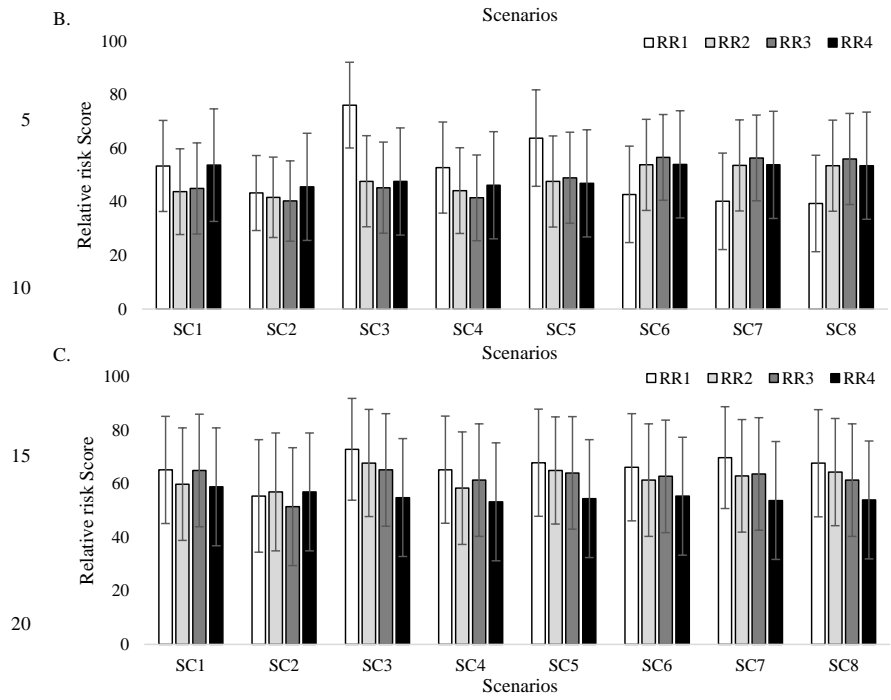
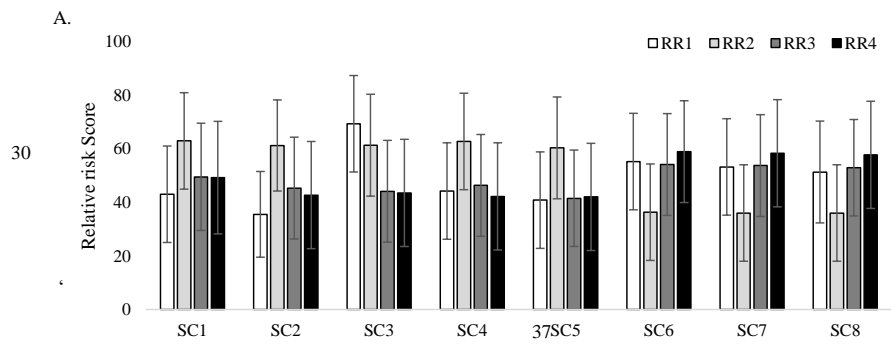


Figure 67: Senqu River mean relative risk scores (with SD) for the endpoints considered in the assessment including: riparian vegetation (A), macro-invertebrates (B) and fish (C) wellbeing endpoints for the four risk regions per scenario (SC).



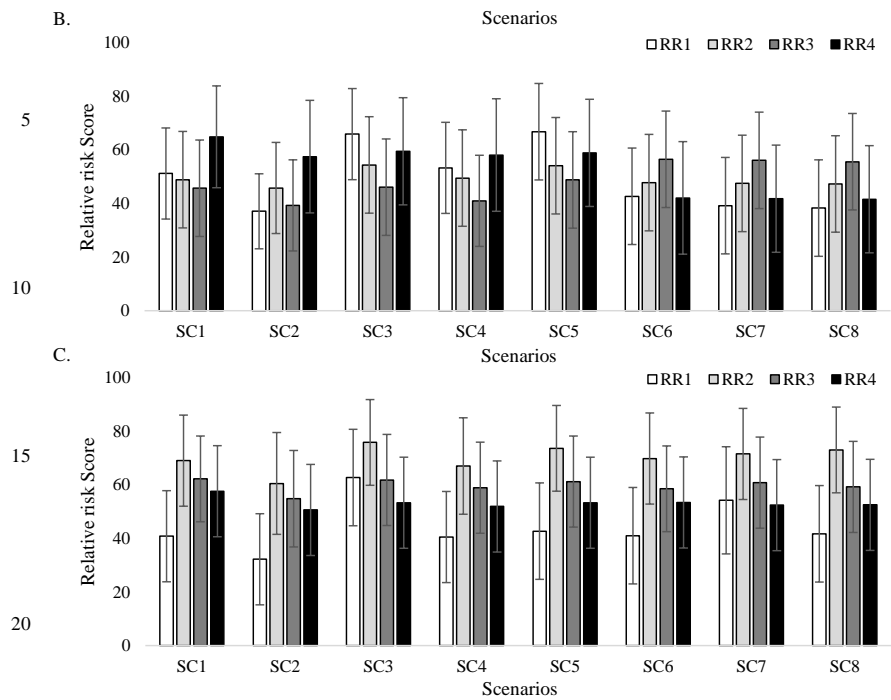


Figure 78: Senqu River mean relative risk scores (with SD) for wood for fuel (A), marginal vegetation for livestock grazing (B) and fish for food (C) social endpoints for the four risk regions per scenario (SC) considered in the study.

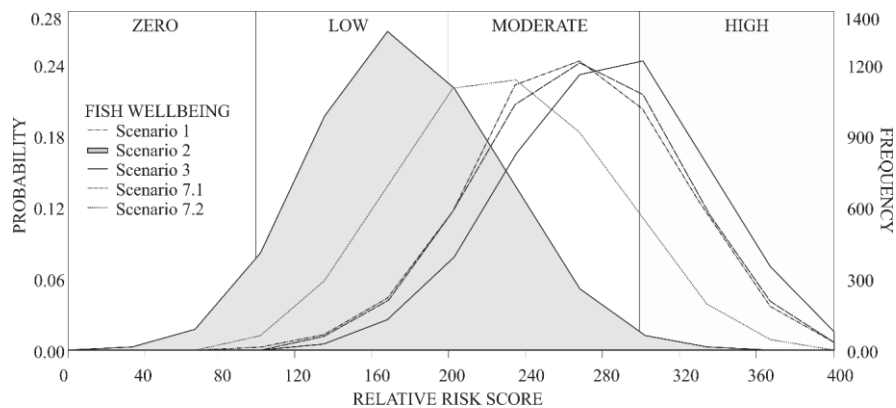


Figure 89: Probability profiles generated during a PROBFLO assessment to describe the relative risk of the multiple sources and stressors, including altered flows, associated with alternative management scenarios considered in the Lesotho case study to the fish wellbeing endpoint.

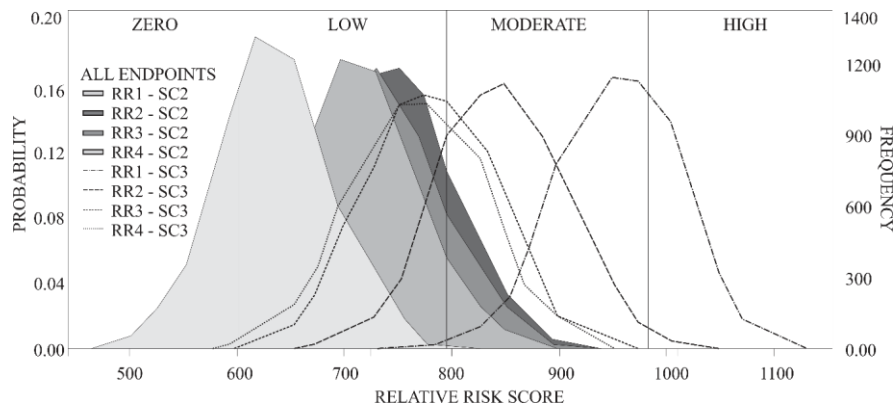


Figure 910: Probability profiles generated during a PROBFLO assessment to describe the relative risk of the multiple sources and stressors, including altered flows, associated with alternative management scenarios considered in the Lesotho case study to all of the endpoints integrated in the assessment.

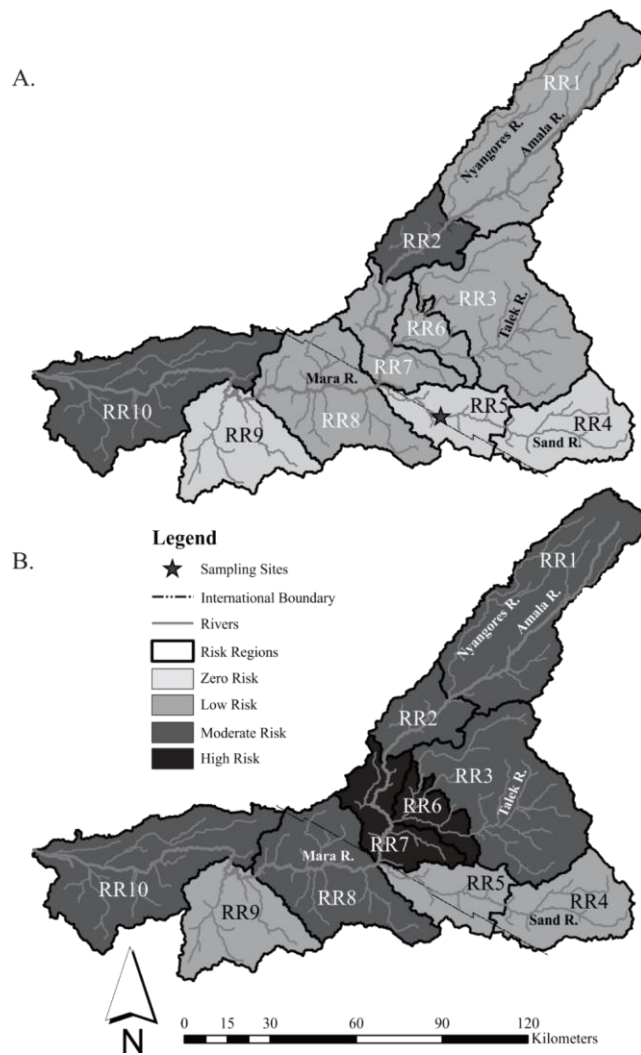


Figure 4011: Relative spatial risk of the multiple sources and stressors associated with current (A) and planned (B) water resource use in the Mara River Basin.