

RE.: Author's Response - HESS-2017-368

Dear Editor Dr. Louise Slater,

Bonn, October, 24th, 2017

Thank you for giving us the opportunity to revise our manuscript. We are thankful to the referees for the thorough review and constructive comments. Based on the given suggestions we have updated the manuscript.

This document contains the author's response. In Section A, the major changes to the original manuscript are briefly summarized. The replies to all comments made by the third reviewer are given in Section B. The authors have answered each comment and explained how the manuscript was modified in light of these suggestions. Finally, Section C contains the marked-up version of the revised manuscript.

We believe that the revised text is significantly improved as a result of the feedback received. Hence, we hope that these changes fulfill the requirements to make the paper acceptable for publication in HESS. If you have any further concerns, please feel free to contact us.

We are very much looking forward to your decision.

Yours sincerely,

Mariana Madruga de Brito and co-authors

A. List of manuscript changes

The manuscript was amended in light of the requested revisions. This list aims to highlight the major changes to the original paper.

1. Introduction

A definition of the term participatory MCDM was added. Furthermore, to clarify the issues raised by referee 3, we updated the text to make it clear that the aim is not to derive a single vulnerability metric, but to integrate contrasting opinion towards social learning.

2. Study area

The colors of the map in Figure 1 were modified as suggested by Dr. A.B. Rimba (referee 2). In addition, a definition of return period was added.

3. Framework for flood vulnerability assessment

Following the suggestion of Dr. A.B. Rimba, we created a Table with the selected criteria, their respective data source and metrics used to measure them. As requested by referee 1, the procedure used to define the value functions was further described.

4. Results

Some sentences were shortened to improve the text readability. Also, the caption of Figure 9 was modified as suggested by Dr. A.B. Rimba.

5. Discussion

This section was profoundly edited to clarify the issues raised by the reviewers. The limitation subsection was rewritten to add the concerns made by referee 1 and 3, including the results representativeness, the complexity of AHP and ANP, and the validation of the developed maps with past flood damages.

6. Conclusions

Some word choices were modified to clarify the advantages of the proposed methodology for flood vulnerability assessment.

B. Point by point response to the comments from referee 3

Dear Referee,

Thanks for the constructive comments and critics. The manuscript was revised according to the provided suggestions, which we think helped to improve the text. Please find our point-by-point response to each one of your comments below.

1) This is a stimulating perspective on applying participatory multi-criteria decision-making (MCDM) to vulnerability assessment. However, in the vulnerability assessment field, participatory approaches is commonly used for the general public involvement in the decision making. In the field, what the authors are doing is usually acknowledged as “expert knowledge” or “expert-derived assessment”.

Thank you for this comment, we appreciate that you consider our approach stimulating. We also understand the reviewer's concern regarding the terminology used. However, participatory modeling has many variations regarding the type and level of stakeholder involvement (Robles-Morua et al., 2014; Hedeling et al., 2017). Indeed, the term “participatory” does not necessarily imply that the general public has to be involved.

In the field of MCDM, the terms “participatory” and “participative” are often used to refer to studies which consider the input of key experts (e.g. Arciniegas et al., 2013; Bojorquez-Tapia et al., 2001; Carfora et al., 2016; Derak and Cortina, 2014; Garmendia and Gamboa, 2012; Hossard et al., 2013; Kowalski et al., 2009; Paneque Salgado et al., 2009; Smajgl, 2010). This is also the case of some vulnerability and risk research, which use expert stakeholders knowledge to develop participatory assessments (e.g. Aye et al., 2015; Haase, 2013; Maskrey et al., 2016).

Hence, we consider that the use of the term “participatory” is accurate in the context of our study. We updated the manuscript introduction to clarify what we define as “participatory multi-criteria approach”. The following definition was added: “Participatory MCDM refers to a process where a multi-criteria tool is used within participatory settings, where a group of key experts and stakeholders is actively involved (Paneque Salgado et al., 2009).” In addition, two papers that also use the term “participatory MCDM” to involve expert stakeholders were added to the sentence where we first mention this term (page 3, line 2).

2) Previous studies have produced expert-derived vulnerability assessment using simpler methods, such as scorecard to select, rank and weight the multiple criteria and variables.

We agree with the referee that previous studies have produced expert-derived vulnerability maps with simpler methods. Still, to the best of our knowledge, and according to a systematic literature review of 128 peer-reviewed papers conducted by de Brito and Evers (2016), we are not aware of any research that incorporated participation in all steps of the vulnerability assessment process to the same extent of our approach. This is highlighted in the conclusion (page 23, lines 3-5).

Usually, the knowledge of experts and key stakeholders is incorporated only in the weights assessment step. Their opinions are not considered in the definition of the input criteria, data standardization or model validation. One of the innovations of our study is that experts were actively involved in all steps of the vulnerability modelling process, and not only to weight the criteria. Thus, participants in our study have a greater sense of ownership and influence over the model results when compared to studies which consult experts only to define weights. This innovation was further explored in the introduction section (see page 2, lines 25-27).

3) To achieve validation the authors might want to consider the three main issues arising from the literature they mention: - acceptance by the experts involved in the process. Whilst the paper is doing that, it is surprising to collect the feedback of only 22 from the initial 101 experts; it might be seen as some form of retrofitting.

We thank the referee for having raised this issue. Twenty-two experts were actively involved in the entire modeling process given that it was not realistic to involve 101 persons along the whole process due to time and budget constraints. The remaining 79 experts participated only in the Delphi online questionnaires and, thus, could not evaluate the quality or efficiency of other steps of the index development process. The text was modified to clarify this issue (page 7, lines 7-9; page 9, lines 24-25).

4) Relying on only 9 expert to build the index and only 5 to calibrate the utility functions might not be seen as the best choice and the authors are right to question the sensitivity of their model.

This is an excellent point that was hinted in at the discussion. We completely agree with the referee that the sample is small as already acknowledged in the discussion section. The experts selected through snowball sampling are located in different regions of Brazil. Hence, due to resource limitation and time constraints it was not possible to bring them together at one place. This limitation is, according to Garmendia and Stagl (2010), inherent in the nature of participatory modelling processes as they involve normally a small number of participants.

In order to reach a broader number of experts, it would be necessary to use online tools. In an initial step of the project, we considered developing individual utility functions by using web questionnaires. Nevertheless, this would also present a number of drawbacks since the participants would not be able to share and hear different perspectives through open dialogue, which is essential for achieving common agreement. In this sense, Mendoza and Martins (2006) argue that group elicitation methods involving open discussion offer several advantages, including the consistency of the information obtained, and a better definition of the preferences. On the other hand, focus group discussions restrict the number of participants to a small sample. By definition, the number of participants in focus groups is small, with between 4 to 12 persons (Carlsen and Glenton, 2011). With more than 12 members, the group becomes difficult to manage and may disintegrate into smaller groups, each having their own independent discussion (Tynan and Drayton, 1988). This was not desired as we wanted to have only one set of utility functions defined by mutual agreement. We added part of this discussion to the limitation section (see page 21, lines 19-27).

Even though only 9 experts were involved in the index structuring phase, 19 out of 20 respondents were satisfied or very satisfied with how the criteria were grouped. This shows that the results were representative of the experts' sample. Therefore, we consider that our approach represents an enhancement in terms of transparency and acceptance of the results when compared to traditional vulnerability studies, where only the knowledge of the modelers (i.e., authors) is considered. Furthermore, we are not aware of any other paper where the input of key experts and stakeholders was considered to standardize the criteria in vulnerability assessment. This step is usually restricted to modelers and analysts. This problem is observed not only in the vulnerability assessment field, but also in MCDM applications in general (Estévez and Gelcich, 2015).

5) An even better evidence would be actual adoption, ie the experts having enough confidence in the resulting model to actually use it in their decision making. See for example Beccari, B. (2016). A comparative analysis of disaster risk, vulnerability and resilience composite indicators. PLoS currents, 8, <https://dx.doi.org/10.1371%2Fcurrents.dis.453df025e34b682e9737f95070f9b970>

We agree with the referee that this would be an ideal validation. In the paper written by Beccari (2016), the author mentions that to validate the vulnerability models, the opinion of experts or community members should be considered through the use of surveys, which is exactly what we did.

In the feedback questionnaire, which we sent to the experts, the participants had to answer how useful the results were for their professional activities (see page 9, line 31). All respondents answered that the results are very useful or useful for their work (page 17, lines 12-13). Although this does not mean that the maps are being used in reality, it indicates that they consider using the results. This finding becomes even

more relevant when considering that several respondents work for the local Civil Defense of Lajeado and Estrela and the National Center for Monitoring and Early Warning of Natural Disasters (CEMADEN). Thus, they exert a great influence over decisions related to flood risk management in the region. The text was modified to clarify this issue (see page 19, lines 29-34). Furthermore, Figure 10 was updated to include this information.

6) Better performance than simpler models. The more is not always the better, and simpler processes might be more cost effective, which is specially important in emerging countries, such as in this case study. The authors might want to confront their results against non-expert derived indexes (the more common are the SOVI and SVI) as well as against simpler expert-derived assessments such as scorecards in order to demonstrate their marginal improvement. See for example Emrich, C. T. (2005). Social vulnerability in US metropolitan areas: improvements in hazard vulnerability assessment. PhD diss., University of South Carolina.

We do not understand this suggestion entirely because we do not mention that our approach has a “better performance than simpler models” in any part of the manuscript. On the contrary, we criticize authors who believe that their vulnerability models provide “best” results (page 3, line 15). Vulnerability is an ill-structured problem (i.e. a problem for which there is no unique, identifiable, objectively optimal solution) (Rashed and Weeks, 2010). Therefore, vulnerability assessment lacks a single solution algorithm and, in many cases, experts disagree regarding whether a particular choice is appropriate because it has various solution paths (Hong, 1998). This is one of the reasons why we chose to apply multi-criteria methods since the aim of MCDM is not to find a final solution (Kowalski et al., 2009; Roy, 1985), but to deliver a set of alternatives to better inform decision-makers by making subjective judgments explicit in a transparent and fair way.

What we claim is that the results of participatory modelling approaches have a better acceptance when compared to studies conducted without any kind of consultation, participation or collaboration (see modified text page 23, lines 7-8). In addition, they might support social learning processes and develop capacity through awareness raising (Evers et al., 2016). Several papers provide evidence that supports these statements (Hossard et al., 2013; Howarth and Wilson, 2006; Nordström et al., 2010). Hence, we consider that non-expert derived indexes such as the SOVI and SVI will not yield similar results in terms of model acceptance and transparency. We modified the introduction and conclusion sections to clarify this misunderstanding.

We agree with the Referee that, in several cases, simpler processes might be more cost-effective. Intensive participation is cost-intensive and time-consuming. Thus, decisions regarding the degree of participation in certain stages of the modelling process need to be based on a proper balance between conducting a time-efficient process and ensuring that results are representative of local conditions, and trusted

by stakeholders (Andersson et al., 2008). In other words, trade-offs have to be made between the available resources and the expected quality of the MCDM outcomes. We added this information to the section 5.1: “Reflections on the participatory process” (page 20, lines 3-9).

7) **Actual disaster outcomes are usually the main target for validation in the vulnerability assessment field. The authors might want to confront their results against actual outcomes data for their case study or other nearby Brazilian municipalities. Otherwise, their assessment is not robust enough for decision making: it's just asserting and rewarding the judgments that the experts and decision makers already have in that area.**

See for example Bakkensen, L. A., Fox-Lent, C., Read, L. K., & Linkov, I. (2017). *Validating resilience and vulnerability indices in the context of natural disasters. Risk analysis*, 37(5), 982-1004;

Burton CG (2010). *Social Vulnerability and Hurricane Impact Modeling. Natural Hazards*, 11 (2): 58-68.

Thanks for these very interesting papers, which are now cited in our manuscript. We agree with the referee that validation with disaster outcomes is an important element of model building. Nevertheless, validation in participatory modelling activities tends to have a different meaning, since model results are less important as a product in themselves. In some cases the model may have gleaming flaws in terms of calibration and validation, yet they will still be useful for stakeholders to reach a consensus, understand and define their preferences (Voinov and Bousquet, 2010).

It is generally difficult to validate the results of vulnerability analysis as recognized by several authors (Beccari, 2016; Fekete, 2009, 2012). Indeed, in a review of 106 composite indicators, Beccari (2016) found out that only 3 vulnerability models were validated against disaster output information. According to Fekete (2009), one of the main difficulties for validating vulnerability maps is the availability of independent second data source. Even when data is available, the direct comparison of the damage from historical events with the present risk and vulnerability situation is problematic, because in between the two dates there may have been large changes in the land-use (Chen et al., 2016). For example, buildings that were destroyed in the past by floods, might not have been rebuild in the same location, and in other areas new building might have been constructed.

In the study area, data on flood damages is scarce. Unfortunately, the local Civil Defense departments do not collect information on the streets affected by floods, but only at the neighborhood scale. Furthermore, although the number of persons affected is recorded, their spatial location is unknown. The lack of a systematic record of natural disasters damages by the governmental agencies in Brazil make it difficult, if not unrealistic, to perform validation based on actual disaster outcomes. Moreover, we cannot compare or validate it with examples from other areas, as this

would require a similar exercise including hazard modelling, elements-at-risk and vulnerability assessment.

In agreement with the Referee's comment, and since we consider that the limitations should be extensively documented and discussed, we added a paragraph to the discussion explaining this drawback (page 22, lines 6-12).

The validation of the generated maps as well as a sensitivity and uncertainty analysis of the criteria weights will be explored in another paper. As part of the Ph.D. project of the first author, risk maps were generated by combining the vulnerability maps with exposure and hazard maps. Currently, damage data is being collected to validate the final risk maps, which, given the extensive amount of data and work, will be the subject of another paper.

8) Last but not least, the temptation to merge the multidimensionality of vulnerability into a single metric is prevalent but increasingly criticized in the field. There is a frustrating large gap between the contextual complexity collected among experts and decision makers and the resulting unidimensional correlated metrics.

See for example Barnett, J., S. Lambert, and I. Fry. (2008). The hazards of indicators: Insights from the environmental vulnerability index. *Annals of the Association of American Geographers* 98 (1), 102-19;

Rufat, S., Tate, E., Burton, C. G., & Maroof, A. S. (2015). Social vulnerability to floods: review of case studies and implications for measurement, *International Journal of Disaster Risk Reduction*, 14, 470-486.

We agree with the referee that it is problematic to merge multiple dimensions of vulnerability in a single value. According to Birkmann (2006) it is difficult – and perhaps even impossible - to reduce the concept of vulnerability to a single equation. However, even more problematic is to ignore the different aspects of vulnerability such as the coping capacity, which is often done in vulnerability studies.

Our aim was not to derive a “single metric”. As mentioned in the introduction (Page 2, lines 13-14) and throughout the text, the goal was not to provide a single solution with the “best” flood vulnerability model; instead, our aim was to propose a framework that promotes transparency and integrates contrasting opinions towards social learning. This is the main essence of this manuscript: showing the plurality of views by opening up appraisal inputs to a wider diversity of framings (Stirling, 2008). To this purpose, individual vulnerability scenarios were created for each one of the experts, aiming to avoid simplistic and often misleading one-track solutions. As argued by Strager and Rosenberger (2006), MCDM should be used to gain a better insight into the decision-making problem and not as the only or final solution.

We agree with the referee that this is a relevant topic. However, considering that the limitation section is already long and that adding one paragraph to the text would not do justice to the importance of this issue, we opted to not include it in the

discussion section. Moreover, the problem of integrating the dimensions of vulnerability in a single index is discussed in detail in several publications (Prior et al., 2017; UNISDR, 2005). Nevertheless, if the editor and referee think it is necessary we can add a paragraph with this problem.

References cited in the response

Andersson, L., Olsson, J. A., Arheimer, B. and Jonsson, A.: Use of participatory scenario modelling as platforms in stakeholder dialogues, *Water SA*, 34(4 SPEC. ISS.), 439–447, 2008.

Arciniegas, G., Janssen, R. and Rietveld, P.: Effectiveness of collaborative map-based decision support tools: Results of an experiment, *Environ. Model. Softw.*, 39, 159–175, doi:10.1016/j.envsoft.2012.02.021, 2013.

Aye, Z., Jaboyedoff, M., Derron, M.-H. and van Westen, C.: Prototype of a Web-based Participative Decision Support Platform in Natural Hazards and Risk Management, *ISPRS Int. J. Geo-Information*, 4(3), 1201–1224, doi:10.3390/ijgi4031201, 2015.

Beccari, B.: A Comparative Analysis of Disaster Risk, Vulnerability and Resilience Composite Indicators, *PLoS Curr. Disasters*, 14(1), doi:10.1371/currents.dis.453df025e34b682e9737f95070f9b970, 2016.

Birkmann, J.: *Measuring Vulnerability to Natural Hazards: towards disaster resilient societies*, United Nations University Press, Hong Kong., 2006.

Bojorquez-Tapia, L. A., Diaz-Mondragon, S. and Ezcurra, E.: GIS-based approach for participatory decision making and land suitability assessment, *Int. J. Geogr. Inf. Sci.*, 15(2), 129–151, doi:10.1080/13658810010005534, 2001.

Carfora, D., Gironimo, G. Di, Esposito, G., Huhtala, K., Määttä, T., Mäkinen, H., Miccichè, G. and Mozzillo, R.: Multicriteria selection in concept design of a divertor remote maintenance port in the EU DEMO reactor using an AHP participative approach, *Fusion Eng. Des.*, 112, 324–331, doi:10.1016/j.fusengdes.2016.08.023, 2016.

Carlsen, B. and Glenton, C.: What about N? A methodological study of sample-size reporting in focus group studies, *BMC Med. Res. Methodol.*, 11(1), 26, doi:10.1186/1471-2288-11-26, 2011.

Chen, L., van Westen, C. J., Hussin, H., Ciurean, R. L., Turkington, T., Chavarro-Rincon, D. and Shrestha, D. P.: Integrating expert opinion with modelling for quantitative multi-hazard risk assessment in the Eastern Italian Alps, *Geomorphology*, 273, 150–167, doi:10.1016/j.geomorph.2016.07.041, 2016.

de Brito, M. M. and Evers, M.: Multi-criteria decision-making for flood risk management: a survey of the current state of the art, *Nat. Hazards Earth Syst. Sci.*, 16(4), 1019–1033, doi:10.5194/nhess-16-1019-2016, 2016.

Derak, M. and Cortina, J.: Multi-criteria participative evaluation of *Pinus halepensis*

plantations in a semiarid area of southeast Spain, *Ecol. Indic.*, 43, 56–68, doi:10.1016/j.ecolind.2014.02.017, 2014.

Estévez, R. A. and Gelcich, S.: Participative multi-criteria decision analysis in marine management and conservation: Research progress and the challenge of integrating value judgments and uncertainty, *Mar. Policy*, 61, 1–7, doi:10.1016/j.marpol.2015.06.022, 2015.

Evers, M., Jonoski, A., Almoradie, A. and Lange, L.: Collaborative decision making in sustainable flood risk management: A socio-technical approach and tools for participatory governance, *Environ. Sci. Policy*, 55, 335–344, doi:10.1016/j.envsci.2015.09.009, 2016.

Fekete, A.: Validation of a social vulnerability index in context to river-floods in Germany, *Nat. Hazards Earth Syst. Sci.*, 9(2), 393–403, doi:10.5194/nhess-9-393-2009, 2009.

Fekete, A.: Spatial disaster vulnerability and risk assessments: Challenges in their quality and acceptance, *Nat. Hazards*, 61(3), 1161–1178, doi:10.1007/s11069-011-9973-7, 2012.

Garmendia, E. and Gamboa, G.: Weighting social preferences in participatory multi-criteria evaluations: A case study on sustainable natural resource management, *Ecol. Econ.*, 84, 110–120, doi:10.1016/j.ecolecon.2012.09.004, 2012.

Garmendia, E. and Stagl, S.: Public participation for sustainability and social learning: Concepts and lessons from three case studies in Europe, *Ecol. Econ.*, 69(8), 1712–1722, doi:10.1016/j.ecolecon.2010.03.027, 2010.

Haase, D.: Participatory modelling of vulnerability and adaptive capacity in flood risk management, *Nat. Hazards*, 67(1), 77–97, doi:10.1007/s11069-010-9704-5, 2013.

Hedeling, B., Evers, M., Alkan-Olsson, J., Jonsson, A. Participatory modelling for sustainable development: key issues derived from five cases of natural resource and disaster risk management, *Environmental Science & Policy*, 76, 185–196, doi:10.1016/j.envsci.2017.07.001, 2017.

Hong, N. S.: The relationship between well-structured and ill-structured problem solving in multimedia simulation, The Pennsylvania State University., 1998.

Hossard, L., Jeuffroy, M. H., Pelzer, E., Pinochet, X. and Souchere, V.: A participatory approach to design spatial scenarios of cropping systems and assess their effects on phoma stem canker management at a regional scale, *Environ. Model. Softw.*, 48, 17–26, doi:10.1016/j.envsoft.2013.05.014, 2013.

Howarth, R. B. and Wilson, M. A.: A theoretical approach to deliberative valuation: aggregation by mutual consent, *Land Econ.*, 82(1), 1–16, doi:10.2307/27647687, 2006.

Kowalski, K., Stagl, S., Madlener, R. and Omann, I.: Sustainable energy futures: Methodological challenges in combining scenarios and participatory multi-criteria

analysis, *Eur. J. Oper. Res.*, 197(3), 1063–1074, doi:10.1016/j.ejor.2007.12.049, 2009.

Maskrey, S. A., Mount, N. J., Thorne, C. R. and Dryden, I.: Participatory modelling for stakeholder involvement in the development of flood risk management intervention options, *Environ. Model. Softw.*, 82, 275–294, doi:10.1016/j.envsoft.2016.04.027, 2016.

Mendoza, G. A. and Martins, H.: Multi-criteria decision analysis in natural resource management: A critical review of methods and new modelling paradigms, *For. Ecol. Manage.*, 230, 1–22, doi:10.1016/j.foreco.2006.03.023, 2006.

Nordström, E.-M., Eriksson, L. O. and Öhman, K.: Integrating multiple criteria decision analysis in participatory forest planning: Experience from a case study in northern Sweden, *For. Policy Econ.*, 12(8), 562–574, doi:10.1016/j.forpol.2010.07.006, 2010.

Paneque Salgado, P., Corral Quintana, S., Guimarães Pereira, Â., del Moral Ituarte, L. and Pedregal Mateos, B.: Participative multi-criteria analysis for the evaluation of water governance alternatives. A case in the Costa del Sol (Málaga), *Ecol. Econ.*, 68(4), 990–1005, doi:10.1016/j.ecolecon.2006.11.008, 2009.

Prior, T., Roth, F., Maduz, L. and Scafetti, F.: Mapping social vulnerability in Switzerland: a pilot study on flooding in Zürich, Zürich., 2017.

Rashed, T. and Weeks, J.: Assessing vulnerability to earthquake hazards through spatial multicriteria analysis of urban areas., 2010.

Robles-Morua, A., Halvorsen, K. E., Mayer, A. S. and Vivoni, E. R.: Exploring the application of participatory modeling approaches in the Sonora River Basin, Mexico, *Environ. Model. Softw.*, 52, 273–282, doi:10.1016/j.envsoft.2013.10.006, 2014.

Roy, B.: *Méthodologie Multicritère d’Aide à la Décision*, Economica, Paris., 1985.

Smajgl, A.: Challenging beliefs through multi-level participatory modelling in Indonesia, *Environ. Model. Softw.*, 25(11), 1470–1476, doi:10.1016/j.envsoft.2010.04.008, 2010.

Stirling, A.: “Opening up” and “closing down”: Power, participation, and pluralism in the social appraisal of technology, *Sci. Technol. Human Values*, 33(2), 262–294, doi:10.1177/0162243907311265, 2008.

Tynan, A. C. and Drayton, J. L.: *Conducting Focus Groups - A Guide for First-Time Users*, *Mark. Intell. Plan.*, 6(1), 5, doi:10.1108/eb045757, 1988.

UNISDR: *Hyogo Framework for Action 2005-2015: building the resilience of nations and communities to disasters*, Hyogo., 2005.

Voinov, A. and Bousquet, F.: Modelling with stakeholders, *Environ. Model. Softw.*, 25(11), 1268–1281, doi:10.1016/j.envsoft.2010.03.007, 2010.

C. Marked-up version of the manuscript

This section provides the marked-up version of the manuscript. The following symbology was used:

- Text that was inserted appears in red;
- Text that was moved from one section to another appears in green;
- Text that was deleted is shown in balloons;
- Grey vertical track lines in the left margin indicate a change on the adjacent line.

Participatory flood vulnerability assessment: a multi-criteria approach

Mariana Madruga de Brito¹, Mariele Evers¹, Adrian Almoradie¹

¹Department of Geography, University of Bonn, Bonn, 53115, Germany

5 Correspondence to: Mariana Madruga de Brito (mariana.brito@uni-bonn.de)

Abstract. This paper presents a participatory multi-criteria decision-making (MCDM) approach for flood vulnerability assessment while considering the relationships between vulnerability criteria. The applicability of the proposed framework is demonstrated in the municipalities of Lajeado and Estrela, Brazil. The model was co-constructed by 101 experts from governmental organizations, universities, research institutes, NGOs, and private companies. Participatory methods such as the Delphi survey, focus groups and workshops were applied. A participatory problem structuration, in which the modellers work closely with end-users, was used to establish the structure of the vulnerability index. The preferences of each participant regarding the criteria importance were spatially modelled through the Analytical Hierarchy Process (AHP) and Analytical Network Process (ANP) multi-criteria methods. Experts were also involved at the end of the modelling exercise for validation. The final product is a set of individual and group flood vulnerability maps. Both AHP and ANP proved to be effective for flood vulnerability assessment; however, ANP is preferred as it considers the dependencies among criteria. The participatory approach enabled experts to learn from each other and acknowledge different perspectives towards social learning. The findings highlight that to enhance the credibility and deployment of model results, multiple viewpoints should be integrated without forcing consensus.

Excluído: drivers

Excluído: the relationships between

Excluído: vulnerability drivers

1 Introduction

20 The management of flood risk calls for a better understanding of vulnerability, as hazards only become disasters if they impact a community or system that is vulnerable to their effects (Reilly, 2009). In other words, the vulnerability of the exposed elements will determine whether the hazard will translate into a disaster (Birkmann et al., 2014). Nevertheless, while the understanding of flood hazard has greatly improved over the last decades, the knowledge of vulnerability remains one of the biggest hurdles in risk analysis and improving its assessment is seen as the “missing link” for enhancing our understanding of risk (Jongman et al., 2015; Koks et al., 2015).

25 In general, vulnerability refers to the physical, social, economic and environmental conditions, which increase the susceptibility of the exposed elements to the impact of hazards (UNISDR, 2009). Since vulnerability is not directly measurable, several methods have been proposed to estimate it, including: damage curves (Merz et al., 2010; Papathoma-Köhle, 2016), fragility curves (Ozturk et al., 2015; Tsubaki et al., 2016), and vulnerability indicators (Cutter et al., 2003; Roy

and Blaschke, 2013). Both damage and fragility curves are building type-specific and focus on the physical vulnerability of structures to a certain hazard, neglecting the social vulnerability and coping capacity of the inhabitants (Koks et al., 2015). Nevertheless, the ability of the society to anticipate, cope with, and recover from disasters is equally important to assess floods potential impacts. Consequently, several authors emphasize the need for a holistic understanding of vulnerability by integrating its different dimensions in an overarching framework through the use of indicators (Birkmann et al., 2013; Fuchs et al., 2011; Godfrey et al., 2015).

Indicator-based methods are transparent and easy to use and understand (Ciurean et al., 2013). Since they do not require detailed data as damage and fragility curves, flood vulnerability indicators have been extensively deployed to assess the social vulnerability (Fekete, 2009; Frigerio and de Amicis, 2016), socioeconomic vulnerability (Kienberger et al., 2009), physical vulnerability (Godfrey et al., 2015; Kappes et al., 2012) as well as to combine multiple dimensions of vulnerability (Roy and Blaschke, 2013; Vojinovic et al., 2016).

Despite the broad variety of motivation and practice, a number of challenges remain in the development of vulnerability indexes as modellers are faced with multiple legitimate choices, thus introducing subjectivity into the modelling process. Key challenges include: (1) selection of the input criteria; (2) data standardization; (3) determination of criteria importance; (4) consideration of relationships between them; and (5) results validation (Beccari, 2016a; Müller et al., 2011; Rufat et al., 2015). Typically, the rationale for decisions regarding criteria selection, weighting and aggregation is either unstated or justified based on choices made in previous studies. In several cases, no justification is provided at all and the decisions are restricted to project members (Rufat et al., 2015). Surprisingly, notwithstanding the criteria different levels of importance, the vast majority of vulnerability indexes employ an equal weighting (Tate, 2012). Also, even though the dimensions of vulnerability have diverse and complex linkages among each other (Fuchs, 2009), the relationships between criteria are often neglected and they are assumed to be independent (Chang and Huang, 2015; Rufat et al., 2015). Thus, considering the relationships between vulnerability criteria, their importance weights, and explicitly showing the rationale for model decisions could benefit the development of vulnerability indexes.

In addition to these issues, the participation of multiple stakeholders in the index construction is usually fragmented and limited to consultation at specific stages. None of the vulnerability indicators reviewed by de Brito and Evers (2016) systematically promoted an active participation throughout the entire vulnerability modelling process. Typically, key expert stakeholders were consulted only in the weight assessment step. Critical aspects, such as the selection of the input criteria and data standardization were usually constrained to researchers conducting the study. However, participation and cooperation are key aspects for bridging the gap between modellers and end-users and eventually between science and policy (Barthel et al., 2015; Voinov and Bousquet, 2010). If practitioners are involved in creating an index that they find useful, it is more likely they will incorporate it into policy decisions (Oulahen et al., 2015). Furthermore, better insights can be gained since knowledge beyond the boundaries of an organization is considered. Therefore, a broader and systematic understanding of the problem can be reached, which, in turn, allows designing more effective vulnerability models (Müller et al., 2012).

Excluído: drivers

To tackle these issues, the development of vulnerability indicators could be aided by the use of participatory multi-criteria decision-making (MCDM) tools (Kowalski et al., 2009; Paneque Salgado et al., 2009). MCDM is an umbrella term to describe a set of techniques that can consider multiple criteria to help individuals explore decisions (Belton and Stewart, 2002). The aim of MCDM is not to find a final and optimal solution (Kowalski et al., 2009; Roy, 1985), but to deliver a set of alternatives to better inform decision-makers by making subjective judgments explicit in a transparent way. Participatory MCDM refers to a process where a multi-criteria tool is used within participatory settings, where a group of key experts and stakeholders is actively involved (Paneque Salgado et al., 2009). Participatory MCDM provides a promising and structured framework for integrating interdisciplinary knowledge in an effort to bring credibility to vulnerability indicators, participant satisfaction and some degree of mutual learning (Sheppard and Meitner, 2005). It can improve the transparency and analytic rigor of flood vulnerability assessment since the choices of input criteria, data standardization, weighting, and aggregation are explicitly expressed, leading to justifiable decisions and reproducible results.

Considering these challenges, we present a participatory approach for assessing the vulnerability to floods by comparing two MCDM methods: the analytical hierarchy process (AHP) and the analytic network process (ANP). We investigate how MCDM tools can be combined with participatory methods to develop vulnerability maps that will be reflective of the local context and trusted by those involved in policymaking. The goal is not to derive a single solution with the “best” flood vulnerability model; instead, our aim is to propose a framework that promotes transparency and integrates contrasting opinions towards social learning. The approach responds to many of the identified challenges, and, to the best of our knowledge, represents one of the first attempts to apply such a systematic and participatory approach for vulnerability assessment while considering the interdependence among the criteria.

2 Study area

Since vulnerability is site-specific (Cardona and van Aalst, 2012), the municipalities of Lajeado and Estrela (274.79 km²), southern Brazil, were used as a case study. In 2016, the total population was approximately 112,000 and the GDP per capita was about US\$ 12,800, with nearly 20% of households living below the poverty line (IBGE, 2017). The regional climate is humid subtropical (Köppen Cfa) and the precipitation is uniformly distributed throughout the year, without a dry season. Rainfall ranges between 1,400 and 1,800 mm per year, with a maximum 24 hours precipitation of 179 mm in 14th April 2011.

The discharge of the Taquari River is characterized by abrupt flow variations, with an average flow of 321 m³/s and peaks of 10.300 m³/s (FEPAM, 2010). These fluctuations are caused by the dense and radial drainage pattern, high mean slope and low soil permeability (Siqueira et al., 2016). As a consequence of the torrential regimes of rapid runoff, floods occur almost annually, albeit sometimes twice in a year. Between 1980 and 2016, 32 and 34 flood events were reported in Lajeado and Estrela, respectively (Fig. 1a). Figure 1b shows the extent of floods with different return periods, which correspond to the average period of time that takes for a flood to recur at a given location. Currently, it is estimated that at least 8,000 persons

Excluído: in combination with participatory methods

Código de campo alterado

Excluído: The combination of

Excluído: with participatory tools

Excluído: which

Excluído: The average discharge of the Taquari-River is 321 m³/s with peaks of 10.300 m³/s (FEPAM, 2010).

live in areas with a flood return period of 2 years (CPRM, 2012, 2013). In these areas, floods have a probability of occurrence of 1/2 or 50% in any year. Due to this high susceptibility, the municipalities of Lajeado and Estrela are considered by the Brazilian Government as a priority for disaster risk reduction (CEMADEN, 2017).

Excluído: in these municipalities

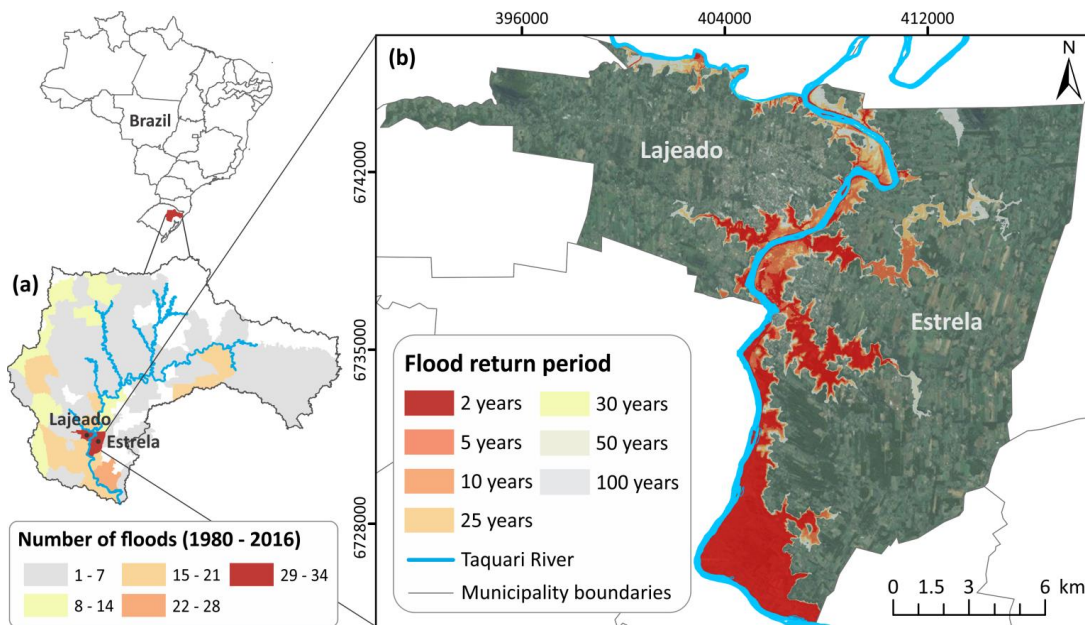


Figure 1: Location of the study area, southern Brazil: (a) number of floods between 1980 and 2016 in the Taquari-Antas River Basin (elaborated based on Bombassaro and Robaina, 2010; MI, 2017); (b) extent of floods with different return periods in the municipalities of Lajeado and Estrela (Fadel, 2015).

3 Framework for flood vulnerability assessment

10 The proposed participatory approach for flood vulnerability modelling is summarized in Fig. 2. Experts from governmental organizations, universities, NGOs, and private companies were engaged in all key milestones of the index development. In addition, the partial results of the research were iteratively fed back to participants throughout the entire process to serve as a social learning tool. Participatory techniques which encourage open dialogue such as focus groups and workshops were used to enable experts to exchange knowledge, understand and acknowledge each other positions. A detailed description of the
 15 methodological steps will be provided in the following sections.

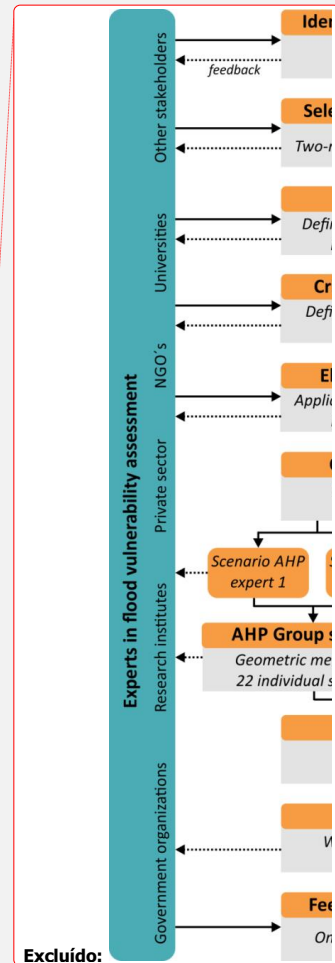
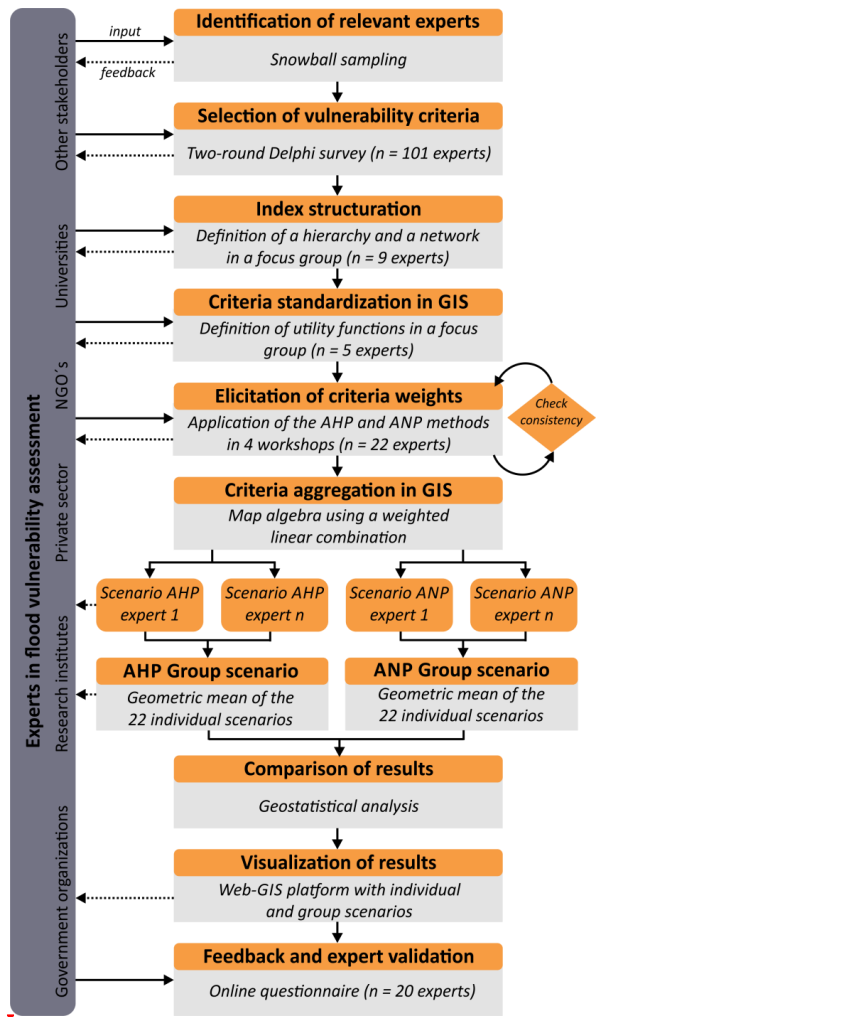


Figure 2: Methodological framework for flood vulnerability assessment. **The solid horizontal arrows denote the input given by experts while the dashed arrows indicate the feedback provided to them in the form of partial reports. The number of participants in each step of the index development process is shown in parenthesis.**

5 3.1 Identification of relevant experts

In this study, we consider an expert as anyone with an in-depth knowledge of flood vulnerability analysis, acquired through experience or education (Krueger et al., 2012). Based on the snowball sampling technique (Wright and Stein, 2005), 117

Brazilian experts [that have extensive practical experience in the field of vulnerability analysis](#) were selected. The actors who were cited by more persons were invited to take part in workshops and focus groups in further steps of the study as they play a central role in terms of their reputation and connectedness. A social network analysis depicting the linkages between the selected experts is provided by de Brito et al. (2017).

5 3.2 Selection of vulnerability criteria using the Delphi technique

A two-round Delphi survey was employed to select the input criteria in a systematic and transparent way. The Delphi technique is a structured process for collecting knowledge from a panel of experts using a series of questionnaires interspersed by controlled feedback, seeking to obtain an agreement among the anonymous participants (Linstone and Turoff, 2002). A detailed description of the methods used to prioritize the vulnerability criteria as well as discussion of the results obtained can be found in de Brito et al. (2017).

Based on the Delphi survey, 11 [input](#) criteria were selected to be included in the vulnerability index [\(Table 1\)](#). Consensus among participants [regarding the relevance of the criteria](#) was reached on all selected criteria, except monthly income. The response rate was 86.32% (n = 101) and 79.20% (n = 80) in the first and second questionnaire, respectively. A description of participants' background, work affiliation and education level can be found in Supplementary Table S1.

[Table 1: Selected criteria, their respective data source and metrics used to measure them.](#)

Criteria	Consensus^a	Metric	Data source
Persons under 12 years	Yes	persons/km²	IBGE (2010)
Persons over 60 years	Yes	persons/km²	IBGE (2010)
Persons with disabilities	Yes	persons/km²	MS (2016)
Monthly per capita income	No	R\$	IBGE (2010)
Households with improper building material	Yes	percentage	IBGE (2010)
Households with accumulated garbage	Yes	percentage	IBGE (2010)
Households with open sewage	Yes	percentage	IBGE (2010)
Disaster prevention institutions	Yes	inst. /km²	Interviews
Evacuation drills and training	Yes	drills./km²	Interviews
Distance to shelters	Yes	meters	Interviews
Health care facilities	Yes	facilities/km²	MS (2016)

^a [consensus was defined as an interquartile range \(IQR\) of 1 or less. For details see de Brito et al. \(2017\)](#)

The datasets used to represent the selected criteria were obtained mainly from the Brazilian 2010 Census (IBGE, 2010). Information on the location of persons with disabilities and health care facilities was [retrieved from DATASUS \(MS, 2016\)](#). In addition, interviews were carried out with local civil defence representatives to obtain information on the location of shelters and disaster prevention institutions as well as the number of evacuation drills and training. All datasets were transformed into 20 m resolution raster files [by using the cell centre method \(ESRI, 2017\)](#).

Excluído: ere

3.3 Structuration of the flood vulnerability index

To proceed with the application of the MCDM tools, a conceptual model with the relationships between the selected criteria needs to be created. The AHP method requires the decomposition of the decision problem into a hierarchy with sub-indexes (e.g. social, economic, etc.). The ANP, on the other hand, uses a network to represent the interaction between criteria and sub-indexes. The elements in this network can be related in any possible way as ANP can incorporate feedback and interdependence relationships.

In this study, a focus group discussion (Morgan, 2005) was conducted to build the AHP and ANP conceptual models. In order to allow all participants to contribute equally to the discussion and avoid the disintegration of the group into smaller sub-groups, the participation in the focus group was limited to 9 persons. The experts were chosen based on their degree of connectedness which indicates their perceived level of prestige (see de Brito et al. 2017).

Excluído: focus group participants

During the meeting, the research objectives and results of the Delphi survey were briefly presented. Then, participants were asked to individually identify the interactions between criteria and organize them into a hierarchy and a network. By soliciting individual schemes, we aimed to avoid the potential bias of experts' responses being influenced by the opinions of dominant persons as well as by the pre-existing relationships between them (Frey and Fontana, 1991). Afterwards, the participants verbally put forward their ideas, and when all agreed with a decision, a moderator recorded those on a whiteboard with the support of flash cards. The use of flash cards, rather than writing directly on the whiteboard, allowed for the criteria to be moved around. When agreement among experts was not met for a specific decision, they were asked to vote by show of hands. All participants were encouraged to contribute to the discussion, which was conducted with minimal intrusion from the researcher. The discussion lasted approximately four hours.

3.4 Criteria standardization

Before aggregating the criterion maps into a GIS environment, they need to be transformed into common units as they are represented by different measurement scales (e.g. meters, density/km², etc.). As the selected criteria do not have a linear behaviour and since the definition of crisp classes was not desired, we used value functions to standardize the data in a continuous scale. Value functions, also referred as fuzzy membership functions in the GIS literature (Malczewski and Rinner, 2015), avoid setting hard thresholds by recasting the criterion values into a gradual membership of vulnerability ranging from 0 (no vulnerability) to 1 (full vulnerability).

Excluído: low

Excluído: high

Excluído: (e.g. sigmoidal or j-shaped)

Excluído: participants

The value function type and the control points that govern their shape were defined in a focus group with 5 experts. The original criteria maps were printed to provide a visual representation of the criteria spatial distribution as well as their minimum and maximum values. Based on that, participants were asked to determine the function type (e.g. sigmoidal, j-shaped, linear, or user-defined) and to define if the function was increasing, decreasing or if it was symmetric (Smith et al., 2008). Then, the experts had to determine the function control points: a = membership rises above 0; b = membership becomes 1 (full vulnerability); c = membership falls below 1; and d = membership becomes 0 (no vulnerability). Similarly to

Excluído: participants were asked to determine how each criterion contributes to vulnerability.

the first focus group, the experts' preferences were recorded on a whiteboard. When participants disagreed on a particular choice, they were asked to vote by hand. The collaborative group discussion lasted about two hours.

3.5 Assigning criteria weights using AHP and ANP

It is widely recognized that vulnerability criteria have different levels of importance (Fekete, 2012; Tate, 2012), but it is difficult to find an acceptable weighting scheme. Indeed, assessing the criteria weights is seemed as a sensitive and controversial step in the development of indexes. According to Oulahen et al. (2015), an unweighted index is still subjective rather than objective, as it treats all criteria as being equally important. Usually, weights are directly assigned by modellers using implicit judgments. In this study, we used the AHP (analytical hierarchy process) and ANP (analytic network process) multi-criteria methods to elicit experts' preferences about criteria weights. The advantage of using structured techniques refers to transparency and results' reproducibility.

In AHP, a reciprocal pairwise matrix is constructed by comparing the criteria and assigning a relative importance value to its relation according to a 9 point scale (Table 2). This reduces the problem complexity as only two criteria are compared at a time. Once these comparisons are done, the criteria weights are obtained by the principal eigenvector of the matrix (Saaty, 1980).

Table 2: Scale of relative importance used to compare criteria in AHP and ANP (Saaty, 1980).

Numerical rating	Verbal judgment of preferences
1	Equal importance
3	Moderate importance
5	Strong importance
7	Very strong importance
9	Extreme importance

AHP is conceptually easy to use; however, one of its underlying assumptions is that the evaluation criteria are independent. This is a rather strong assumption, especially in the context of spatial problems where interactions among criteria exist (Malczewski and Rinner, 2015). As a solution, Saaty (1999) proposed the ANP, which represents the problem as a network of criteria, grouped into clusters. This provides a more accurate modelling of complex settings by considering criteria inner and outer dependencies. In ANP, similarly to AHP, pairwise comparisons are used to generate matrices of dependent clusters and criteria. The final weights are obtained by using a supermatrix approach. A detailed description of mathematical foundations of ANP and AHP can be found in Saaty (1980, 1999, 2004).

In this study, the hierarchical and network conceptual models were constructed in Super Decisions 2.6.0 software, which automatically created a list with 40 pairwise comparisons needed to run the AHP and ANP evaluations. The AHP comparisons were carried out by asking "which of the two criteria is more important for vulnerability assessment?" while the guiding question in ANP was "which of the two criteria influences a third criterion more with respect to vulnerability

Excluído: drivers

Excluído: opted to

Excluído: 1

Excluído: 1

assessment?”. A questionnaire with these comparisons was prepared in an electronic spreadsheet, and the experts with more connectedness (de Brito et al., 2017) were invited to take part in 4 workshops to fill the survey. The workshops started with a presentation of the study objectives, methodology, and preliminary findings. Then, each participant was requested to fill the questionnaire with the 40 comparisons using either the verbal or numeric 9 point scale (Table 2). In the case of the ANP method, the participants could remove any connection between criteria they thought to be unnecessary. Once the comparisons were done, the weights were automatically displayed in the spreadsheet together with the consistency ratio (CR). The CR measures the probability that the matrix ratings were randomly generated. If the inconsistency was higher than 10%, the experts were asked to revise their judgments. The workshops lasted about 3 hours each and involved a total of 22 participants.

3.6 Aggregation of criteria to create flood vulnerability maps

In order to generate the flood vulnerability maps, the standardized criteria were multiplied by the derived weights and subsequently summed. Two scenarios were created for each expert: one with the AHP and the other with the ANP method. In addition, a group scenario was generated by aggregating individual priorities (AIP) using the geometric mean (Ossadnik et al., 2016). The resultant maps were classified into five categories of vulnerability to facilitate their interpretation and comparison: very low (0.00 – 0.20), low (0.20 – 0.40), medium (0.40 – 0.60), high (0.60 – 0.80), and very high (0.80 – 1.00).

3.7 Comparison of AHP and ANP results

The individual AHP and ANP weights were analysed to investigate if the experts’ preferences were substantially different from each other and the spatial implications of these differences. The interquartile range (IQR), which is commonly accepted as a rigorous way to measure consensus (Giannarou and Zervas, 2014), was used to quantify the degree of conflict between participants regarding the criteria prioritization. The similarities between the individuals were further investigated using cluster analysis with Ward’s method (Brusco et al., 2017). In addition, cross tabulation analysis was conducted to compare the spatial distribution of the AHP and ANP vulnerability maps.

3.8 Validation

To validate the proposed methodological approach, the opinions of the 22 experts that participated actively in the entire process were collected through a feedback questionnaire. For this purpose, each participant received a report with their own results together with the cluster analysis results. In addition, a Web-GIS platform with the 22 individual and group vulnerability scenarios, flood hazard maps, and historical floods was developed. This platform allowed participants to have a comprehensive and synthetic view of their results through a customizable user-friendly graphical interface.

Based on the provided feedback, experts were asked about their satisfaction with: (1) the selected criteria; (2) how the criteria were grouped; (3) the weights obtained through the AHP and ANP techniques; (4) the usefulness of the generated vulnerability maps for their professional activities; (5) the quality of the focus group and workshop discussions. (6) the

Excluído: of the 22 experts that participated actively in the entire process was considered.

Excluído: E

Excluído: 5

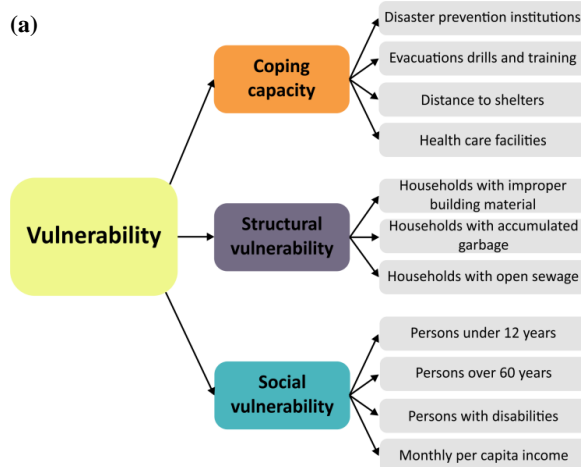
feedback received; (7) the transparency of the process; (8) the participatory process as a whole; and (9) the use of the MCDM approach for integrating interdisciplinary knowledge. A 4-point Likert scale (i.e. very unsatisfied, unsatisfied, satisfied and very satisfied) was used to avoid neutral responses as this scale forces the users to form an opinion (Croasmun and Ostrom, 2011). Participants were also asked to comment on the difficulty of the MCDM tools and what could be improved in future applications.

Excluído: 6
Excluído: 7
Excluído: 8
Excluído: , ranging from very unsatisfied to very satisfied.

4. Results

4.1 Definition of the structure of the flood vulnerability index

In the first focus group, 9 experts (Supplementary Table S1) co-developed the AHP and ANP conceptual models with the relationships between the selected criteria. A three-level hierarchical tree was built for AHP (Fig. 3a), where the first layer corresponds to the goal, and the second and third levels correspond to the sub-indexes and criteria. Conversely, a network with bilateral relationships was established for the ANP method (Fig. 3b), which enables interactions between criteria situated in different clusters and dependencies between elements in the same cluster to be considered. No fundamental disagreements in the organization of the sub-indexes were evident during the focus group. Nevertheless, minor divergences occurred in the definition of linkages between criteria on the ANP approach. Despite these challenges, the group succeeded in reaching workable compromises about generic conceptual models that could be used.



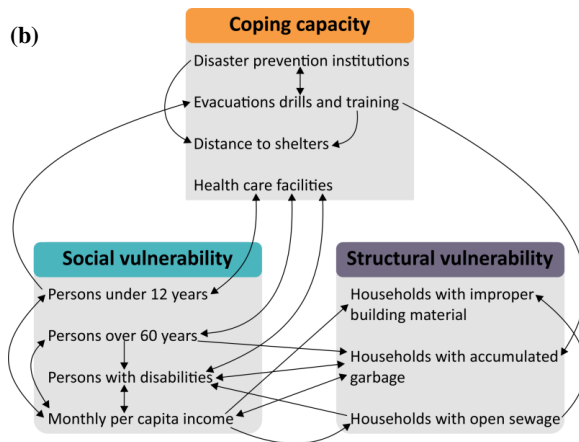


Figure 3: Conceptual models of the flood vulnerability index: (a) AHP hierarchical tree; (b) ANP network, where the arrow direction indicates the interdependence relationships between criteria. A single direction arrow shows the dominance of one criterion by another. A double direction arrow shows the mutual influence between them.

The findings of criteria grouping are well-aligned with current guidance on vulnerability (Beccari, 2016a; Cardona and van Aalst, 2012), highlighting the importance of coping capacity, as vulnerability is, among other things, the result of a lack of capacity. An emphasis was given to infrastructure aspects which are rarely considered in vulnerability indexes such as the existence of open sewage and accumulated garbage on the street. These criteria play a crucial role in vulnerability assessment in the study area as 54% of the sewage is not piped in Brazil (IBGE, 2011), and the solid waste is commonly disposed on the street in poor neighbourhoods. This causes not only the spread of diseases after floods, but is also a key contributor to localized flooding.

4.2 Data standardization

A shared understanding of the value functions and control points used to standardize the criteria was achieved via a focus group with 5 experts. Due to the small number of participants and since they share a similar background and expertise (Supplementary Table S1), there was an agreement for most decisions taken. Increasing value functions were selected for all social and structural vulnerability criteria, except for the monthly income (Fig. 4). Conversely, as a higher coping capacity leads to a reduced vulnerability, decreasing functions were used for coping capacity criteria.

Excluído: Fig. 4 shows the standardized criteria maps, where 0 means low vulnerability and 1 corresponds to high vulnerability.

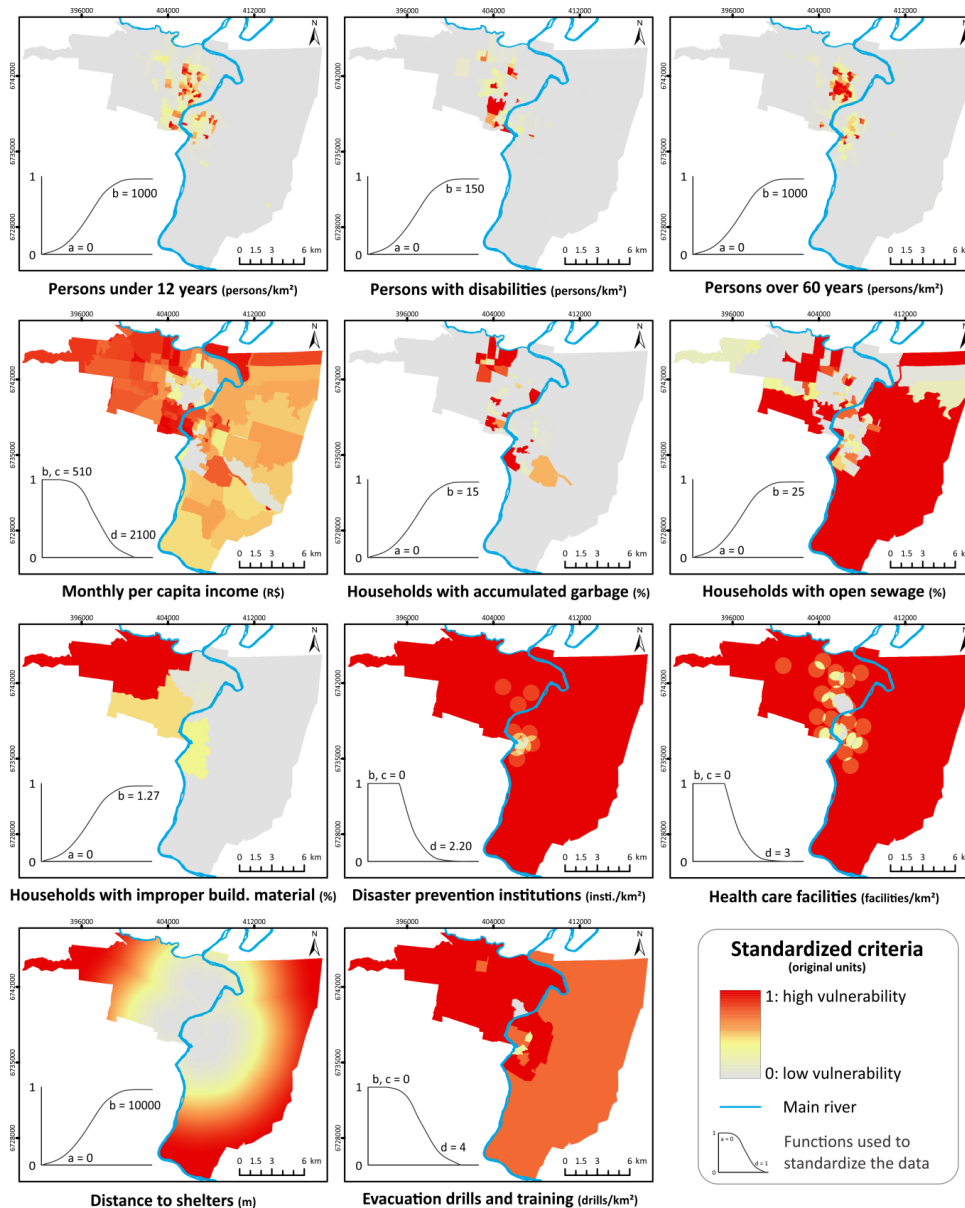


Figure 4: Standardized criteria maps, utility functions and control points that govern their shape (a = membership rises above 0; b = membership becomes 1; c = membership becomes 0). The original units used to represent the criteria are shown in parentheses.

4.3 Comparison of AHP and ANP group results

A total of 22 experts attended the workshops designed to fill the AHP and ANP questionnaires (Supplementary Table S1). Overall, the participants had no problems filling the survey. However, due to the large number of pairwise comparisons, some answers needed to be revised as they were contradictory, especially in the AHP technique as the comparison matrices had more elements.

The weights derived from the two techniques were similar, except for the monthly per capita income (Table 3). In both methods, the percentage of households with improper building material was the most relevant criterion, closely followed by the number of evacuation drills and other types of training. This importance is partly explained by the high weights attributed to the coping capacity sub-index, which reflects the tendency to widen up the concept of vulnerability to incorporate the ability of the society to face disasters (Birkmann, 2006), acknowledging that people are not 'helpless victims'.

Agreement among experts about criteria weights, measured as an IQR of 20% or less, was achieved only in few variables. In general, the IQR values were lower in the ANP model, indicating higher levels of consensus. The monthly per capita income was the most controversial criterion in the AHP technique and there was a significant divergence among experts about the building material criterion in the ANP model.

Table 3: Group criteria weights and their respective standard deviation (SD) and interquartile range (IQR). An IQR of 20% or less indicates consensus; 20-30% indicates moderate divergence; 30-40% significant divergence; and >40% strong divergence

Sub-index	AHP weight	Criteria	AHP results			ANP results		
			weight	SD	IQR	weight	SD	IQR
Social vulnerability	30.64	Persons under 12 years	6.80	4.47	10.20	4.37	4.01	8.26
		Persons over 60 years	6.64	4.17	17.68	3.96	2.70	6.30
		Persons with disabilities	9.39	9.97	23.03	8.84	7.51	19.30
		Monthly per capita income	7.81	10.69	52.87	13.49	8.05	13.90
Structural vulnerability	28.68	Households with improper building material	14.61	9.54	34.39	15.06	10.15	28.66
		Households with accumulated garbage	6.97	7.17	28.01	7.20	7.92	23.83
		Households with open sewage	7.10	9.40	22.48	6.41	7.42	20.94
Coping capacity	40.67	Disaster prevention institutions	10.80	9.91	25.52	9.36	9.59	24.90
		Evacuation drills and training	14.17	11.87	36.79	14.54	9.98	23.96
		Distance to shelters	6.42	5.23	7.32	7.26	5.56	19.64
		Health care facilities	9.28	7.63	19.10	9.51	7.64	14.56

A visual comparison of the AHP and ANP output maps show that they a similar pattern, with minor discrepancies, in the northwest of Lajeado (Fig. 5). This difference can be attributed to the lower monthly income in this region. The vulnerability scores from the two models have a linear relationship with a strong correlation ($R^2 = 0.97$) (Fig. 6). Indeed, cross tabulation analysis showed that 83.11% or 228.39 km² of the study area received the same classification by the two models (diagonal

Excluído: group

Excluído: 2

Excluído: participants

Excluído: 2

Excluído: T

Excluído: were compared to identify whether the differences in weights resulted in differences in model outcomes. As shown in

Excluído: Fig. 5, the maps have

Excluído: s

Excluído: of vulnerability

Excluído: only

Excluído: fferences

values in Table 4). The main differences were observed in the medium vulnerability class of the AHP model in which 22.73 km² was classified with high vulnerability in the ANP method.

Excluido: 3

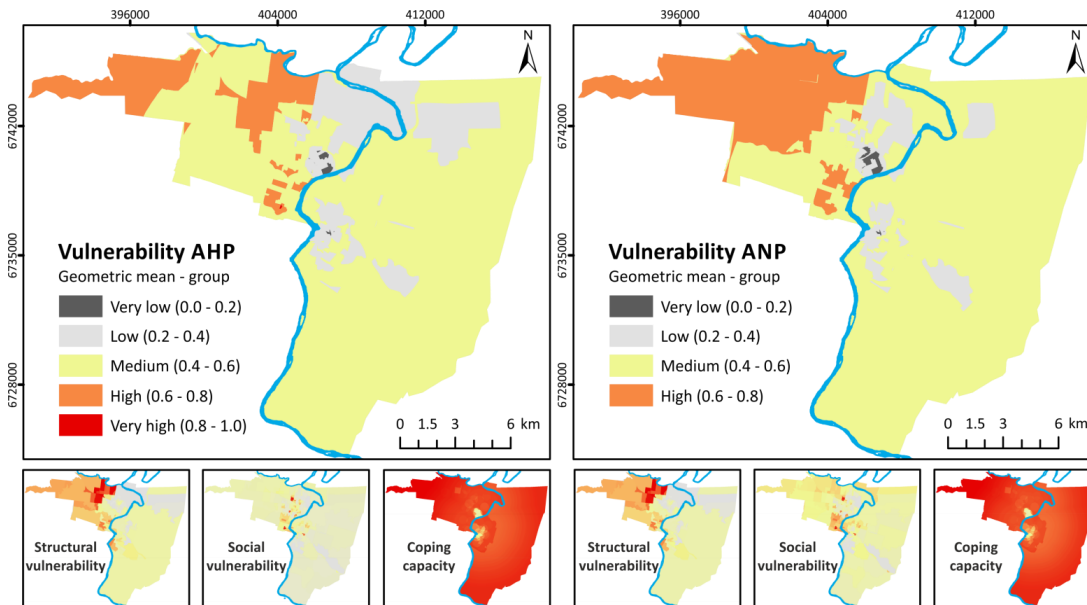


Figure 5: Spatial distribution of flood vulnerability in the study area.

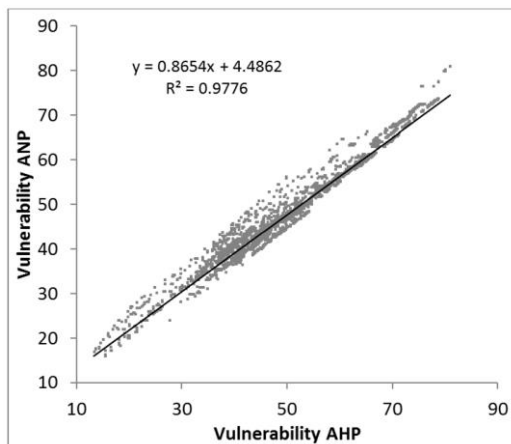


Figure 6: Correlation of the ANP and AHP flood vulnerability maps scores.

Table 4: Comparison of vulnerability classes according to the AHP and ANP models. Diagonal values correspond to areas that were classified equally by both models. The column sum shows the area that is occupied by the respective class of vulnerability in the ANP technique while the line sum shows the area in the AHP technique.

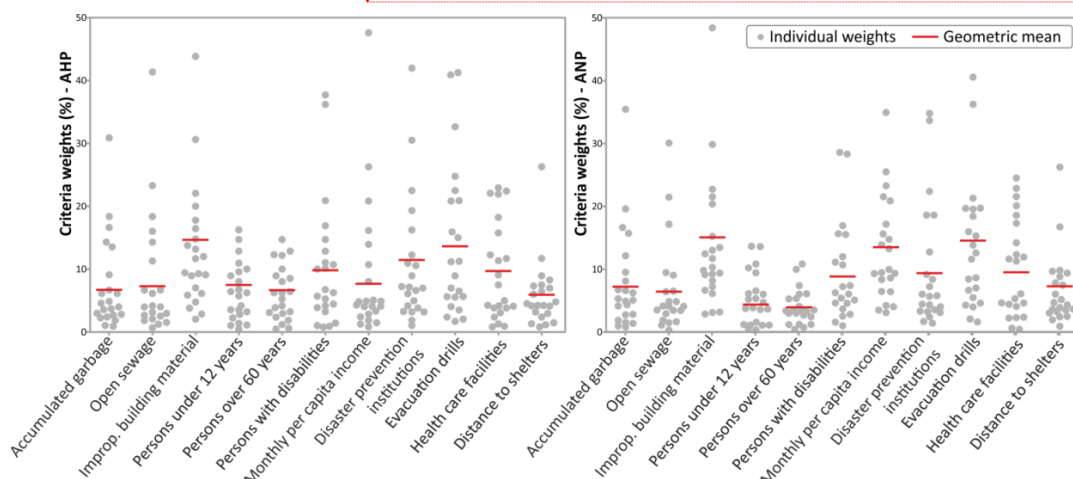
Excluído: 3

Area AHP (km ²)	Vulnerability class	Area ANP (km ²)					Total AHP
		Very low	Low	Medium	High	Very high	
Very low		0.43					0.43
Low		0.39	18.40	20.90			39.69
Medium			2.25	181.82	22.73		206.80
High				0.13	27.74		27.87
Very high					0.01	0.00	0.01
Total ANP		0.82	20.65	202.85	50.48	0.00	274.79 km²

4.4 Comparison of individual weights and scenarios

- 5 The dispersion of individual weights is illustrated in Fig. 7, where each point represents the weight given to a criterion by one participant. As hinted before by the high IQR and SD values (Table 2), the weights varied significantly across experts, with the greatest differences in the monthly per capita income and households with improper building material items. Given this high degree of disagreement, the aggregation of the individual weights by their geometric mean resulted in a loss of information. The points of agreement are criteria that were given a low priority, such as the density of children and elderly.
- 10 To identify similarities across participants' opinions, we conducted a cluster analysis. The heatmap in Fig. 8 shows the similarities between the experts' priorities. No trends were identified based on their background and work affiliation. Nevertheless, even though individuals hold different points, there is a lot of common ground where importance between criteria is similar as shown in red colours.

Excluído: For example, the Architect 2 which works for a government institution has a similar opinion to the Geologist 2, who is a professor.



15 **Figure 7:** Diagram of dispersion of individual weight. Each point represents an expert and the red line delineates the mean.

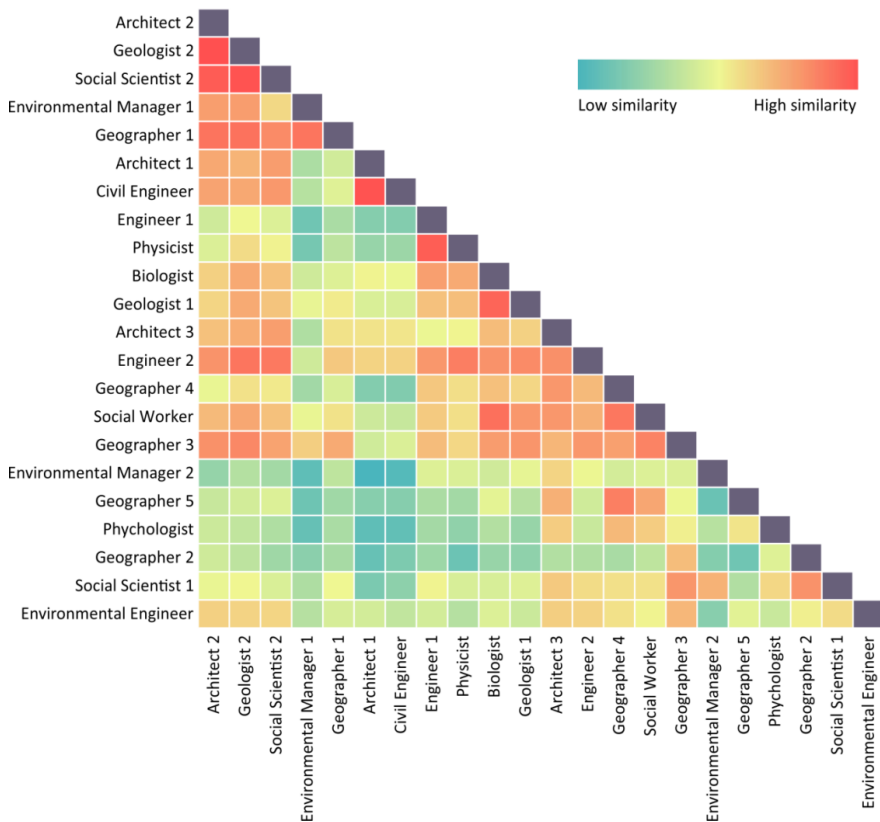


Figure 8: Heatmap of similarities between experts' weights. The colour gradient from green to red indicates increasing similarity.

To investigate the spatial implications of the different criteria weights, individual vulnerability scenarios were created for each expert (Supplementary Figure S1). The results demonstrate how different perspectives on criteria weights applied to the same data lead to differences in vulnerability classification. Nevertheless, the trend was similar for both methods, with higher vulnerability values in the northwest of the study area.

A Web GIS platform was set up to allow experts, end-users and the public viewing the model results in form of thematic layers set in a geographical context and overlaid on background data. In this platform (Fig. 9), participants could select their scenarios and compare them with the other participant's results, bringing their positions closer. Also, it was possible to visualize the hazard zones with different return periods, aiming to identify risk areas.

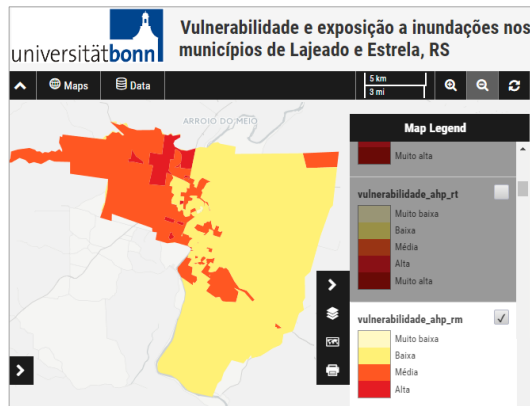


Figure 9: Web GIS platform with the 22 individual vulnerability maps created by the experts that participated in the AHP and ANP workshops.

Excluído: 22

Excluído: cenários

4.5 Feedback from participants about the proposed participatory MCDM approach

5 A total of 20 out of 22 invited experts answered the feedback questionnaire. All respondents agreed that the participatory MCDM approach provides a promising framework for integrating interdisciplinary knowledge in the effort to bring credibility to vulnerability indexes. Most of them were very satisfied (89%) or satisfied (11%) with the transparency of the process and with the feedback received. Evaluations of the individual components of the MCDM approach were also generally positive. All respondents were satisfied or very satisfied with the ANP weights and only one (5%) was unsatisfied with the AHP results. A total of 50% and 45% of experts were very satisfied and satisfied with the indicators that were selected, suggesting the Delphi results were representative. Nevertheless, one expert (5%) was unsatisfied with how the criteria were grouped. Finally, over 53% and 47% respondents indicated that the developed maps are very useful or useful for their professional activities, respectively. Fig. 10 shows the mean ratings given by participants in each item of the feedback questionnaire.

15 Some participants stated that bringing together individuals with different viewpoints resulted in a more comprehensive and complete view of vulnerability. Quoting a statement from an expert: “the participatory approach allowed a greater dialogue among stakeholders and encouraged mutual learning, improving the knowledge about multifaceted problems like flood vulnerability”. Several respondents mentioned that the feedback received in form of the web-GIS platform and partial reports enabled them to see where their response stands in relation to the group. According to them, this interaction with other experts allowed expanding their knowledge and led, in some cases, to a change in opinion based on the information received.

Excluído: A number of

Excluído: a

20 Regarding the difficulty of the MCDM methods used, there was a slight preference for the ANP method. 25% and 20% of the respondents felt that it was difficult or very difficult to fill the AHP and ANP questionnaires, respectively. In this regard, one participant stated that the MCDM tools are not applicable to persons with low education levels due to its complexity. Despite this, experts found easy to grasp the fundamental concepts of AHP and ANP during the workshops, showing

enthusiasm about the methodological approach. This was confirmed in the feedback survey, in which the majority showed (85%) interest in applying parts of the proposed method in their future work.

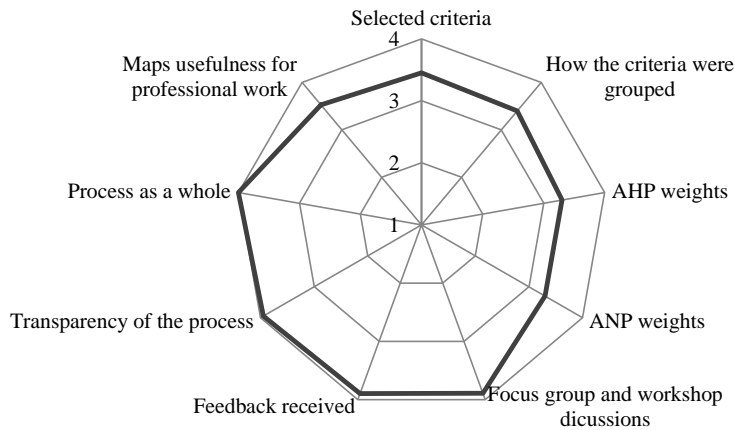


Figure 10: Participants satisfaction with several aspects of the participatory process (1 = very unsatisfied; 2 = unsatisfied; 3 = satisfied; 4 = very satisfied).

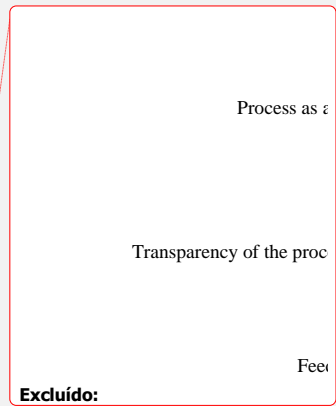
5 Discussion

5.1 Reflections on the participatory process

This study aimed at developing a participatory MCDM approach to assess the vulnerability to floods in an effort to enhance the credibility and deployment of the model outputs. To this purpose, experts were actively involved in all steps of the vulnerability modelling process, thus, having a great influence over the final index. The choices of input criteria, model schematization, data standardization and criteria weighting were done collectively, acknowledging multiple perspectives in a transparent way. By doing so, we avoided that the resulting vulnerability maps were perceived as black boxes by participants since the rationale for key decisions was explicitly expressed, leading to reproducible results. This fostered a sense of ownership among participants which, according to Voinov and Bousquet (2010), brings legitimacy to the model results.

The selection of input criteria using the Delphi technique allowed experts to reframe their personal opinions and reflect on their underlying assumptions through the exchange of information based on the feedback provided and social learning. Further, it gave participants an equal opportunity to contribute without the influence of dominant individuals as all participants remained anonymous. The majority of respondents (95%) were satisfied or very satisfied with the selected criteria, except for one participant. However, as highlighted by Oulahen et al. (2015), the construction of any index is likely to exclude variables considered relevant by some stakeholders.

The two focus groups stimulated in-depth discussions about the structuration of the vulnerability index into sub-indexes and encouraged participants to think about how each criterion contributes to vulnerability. The elicitation methods used allowed



Excluido:

Excluido: in the study area

transforming tacit and implicit knowledge into information useful for vulnerability modelling. Despite some punctual divergences, participants showed a flexible attitude towards accepting other experts' opinions and succeeded in reaching workable compromises about generic conceptual models and value functions that were satisfactory to all participants. Given the complexity of the elicitation activities, involvement in the focus groups was restricted to few participants to enable them to contribute equally to the discussions. Nevertheless, the results were representative of the experts' sample as 95% of respondents were satisfied or very satisfied with the developed conceptual models. In this regard, Howarth and Wilson (2006) argue that deliberative processes that are designed to achieve a mutual agreement rather than averaging individual results can enhance the acceptance and quality of the decisions.

Excluído: nature

Excluído: a limited number of experts

Overall, the four workshops used to assign the criteria weights worked well as supported by participant's enthusiasm and feedback. The AHP and ANP tools allowed the documentation of different viewpoints about the criteria importance without suppressing dissenting voices, enabling divergent framing assumptions to become explicit. This was central to this study, as vulnerability remains an ill-structured problem (Müller, 2011), where there are multiple solution paths and uncertainty about the input criteria and their importance. Therefore, we believe that systematically showing contrasting views and the underlying reasons for different interpretations is a more transparent approach than deriving a single solution. As shown in Fig. 7, the aggregation of weights through the geometric mean resulted in a loss of information as several prioritizations were reduced to a single vector. Hence, participants whose values are very different from the calculated average may feel that they are not properly represented (Garmendia and Gamboa, 2012). In this regard, van den Hove (2006) argues that forcing consensus by averaging results in a search for a unique weighting scheme can decrease the legitimacy and effectiveness of participation as a learning process to solve complex problems. Thus, different preferences and conflicts must be recognized and all feasible outcomes should be considered in the decision-making process.

Excluído: MCDM

Excluído: exist

Excluído: T

The deliberative feedback throughout the entire process positively impacted the participants' perception of the results transparency, resulting in improved credibility. Consequently, all respondents were very satisfied or satisfied with the transparency of the methodology and with the feedback received. According to Ledwith and Springett (2009), communication and continuous feedback are essential to the success of any participatory approach as it encourages participants' commitment and interest and may motivate individuals with opposing views to engage in change. In this study, the partial reports, web-GIS platform and the final report with cluster analysis results, made explicit potential coalitions, enabling participants to see that they are closer to other professionals than previously perceived.

The validation questionnaire indicated that participants were somewhat likely to agree that the models were clear, trustworthy, and valuable, suggesting that participatory modelling activities like the one proposed here are worthwhile. All respondents answered that the resulting maps are very useful or useful for their professional activities. Although this does not mean that the maps are being used in reality, it indicates their willingness to use the results. This finding becomes even more relevant when considering that several respondents work for the local Civil Defences and the National Center for Monitoring and Early Warning of Natural Disasters (CEMADEN), thus, exerting a great influence over decisions related to flood risk management in the region. These results, reinforces the findings of other participatory modelling exercises

Excluído: useful

Excluído: is

(Falconi and Palmer, 2017; Kissinger et al., 2017; Maskrey et al., 2016; Oulahen et al., 2015; Voinov and Bousquet, 2010) that state that end-users find it more accurate and useful when the model is created based on their perspectives.

Nevertheless, a couple of risks of participation also have to be considered when developing participatory MCDM studies such as potential costs, time consumption, domination of the process by strong leading voices, and exclusion of important stakeholders (Evers, 2012). Thus, the degree of participation in certain stages of the modelling process needs to be based on a proper balance between conducting a time-efficient process and ensuring that results are representative of local conditions, and trusted by stakeholders (Andersson et al., 2008). In other words, trade-offs have to be made between the available resources and the expected quality of the MCDM outcomes. Participation in vulnerability assessment, though, is crucial for enhancing the results acceptance.

5.2 Reflections on the AHP and ANP model results

To analyse the effects of considering the interdependence between criteria in model outputs two MCDM tools were used to elicit experts' preferences about criteria weights. AHP is the most common MCDM method in flood-related studies (de Brito and Evers, 2016). Despite its simplicity, it considers that the criteria are independent of each other, which can be an issue in vulnerability analysis since the magnitude of some vulnerability criteria can vary according to inhabitants coping capacity

and socioeconomic status (Rufat et al., 2015). For example, the elderly can either be highly vulnerable or less vulnerable depending on their income. To overcome this problem, we used the ANP method, which has a network structure with bilateral relationships, enabling inner and outer dependencies between criteria to be considered (Azizi et al., 2014). Overall, the criteria weights and ranking were similar in both methods, with the exception of the monthly income. The controversy around the income had already been noticed in the Delphi survey, with this criterion having the lowest degree of consensus among experts. This discrepancy can be explained by the fact that some participants rated it as irrelevant when using the AHP technique. However, when filling the ANP questionnaire, they answered that the income plays a leading role in determining the vulnerability as it influences other criteria such as the building material and households with accumulated garbage or open sewage. Hence, ANP provides a more accurate approach for modelling problems where interrelationships between criteria exist (Saaty, 2004).

Several authors argue that to be accepted and used by stakeholders, models should be simple and easy to use as complexity can obscure transparency and limit model accessibility (Falconi and Palmer, 2017; Horlitz, 2007). During the workshops, it became clear that the elicitation of criteria weights demands a significant cognitive effort from participants due to the inconsistency in the matrices, especially in the AHP technique. Some experts misunderstood the 9 point scale (Table 1) and overused large scores by ranking the criteria they felt more important with 9, regardless of the criteria with which it was being compared. Despite this issue, participants quickly grasped the concepts of the scale and succeed in arriving at consistent judgments. As a result, the majority of them (75% in AHP and 80% in ANP) found it easy or very easy to fill the questionnaires.

Excluido: drivers

The investigation of the spatial implications of the criteria weights showed that the vulnerability scores from the two models are strongly correlated ($R^2 = 0.97$), with 83.11% of the pixels receiving the same classification. Nevertheless, both ANP and AHP models are sensitive to the individual weighting schemes, leading to the creation of different, but equally plausible flood vulnerability maps (Supplementary Figure S1). Even though the general pattern of vulnerability is stable in the study area, a natural question arises given the variability of the vulnerability maps: “which scenario is the best one?” This is still an open question as all scenarios are equally legitimate. As argued by Strager and Rosenberger (2006), MCDM should be used to gain a better insight into the decision-making problem and not as the only or final approach. MCDM makes models more explicit by opening up appraisal inputs to a wider diversity of framings, avoiding simplistic and often misleading one-track solutions (Bellamy et al., 2013; Stirling, 2008).

Experts were, in general, very satisfied with the AHP and ANP results, showing that both methods are effective in solving the ill-structured and interdisciplinary problem of vulnerability. There was a slight preference for the ANP model as participants thought it was easier to understand its logic and no one was unsatisfied with the results. In addition, the agreement among participants about the criteria importance, measured by the standard deviation and IQR, was higher in the ANP model. Hence, ANP should be adopted whenever possible given that it provides a way to explicit all the relationships among variables. Nevertheless, it should be noted that while AHP can be easily implemented without the need for complex software, ANP requires the use of more sophisticated tools to construct and solve the supermatrix.

5.3 Limitations and future research

Although efforts were made to mitigate the risk of bias, some caveats must be acknowledged when interpreting the results obtained. First, the small number of participants in the focus groups and workshops poses the risk of unrepresentativeness.

This limitation is, according to Garmendia and Stagl (2010), inherent in the nature of participatory modelling processes as they involve normally few participants. To reach a broader audience, it would be necessary to use online tools such as questionnaires or web-platforms. Nevertheless, these alternatives also present a number of drawbacks since the participants would not be able to share and hear different perspectives through open dialogue, which is essential for achieving common agreement. Hence, given the complexity of the tasks at hand and considering that face-to-face discussions can help clarifying controversial issues (Orsi et al., 2011), we opted to conduct small focus groups to standardize the criteria and build the conceptual models. Despite the reduced number of participants, the results were representative of the experts' sample as 95% of them were satisfied or very satisfied with how the criteria were grouped.

A second issue is that, even though the majority of experts found it easy to fill the AHP and ANP questionnaires, the elicitation of criteria weights using pairwise comparisons is cognitively demanding (Cinelli et al., 2014). This might restrict the number of criteria to fewer than desired due to the high number of comparisons needed. Thus, in future applications, simpler MCDM methods such as the SMART, CAR, and SWING tools could be tested. Empirical evidence shows that centroid weighting methods such as CAR and SMART provide almost the same accuracy as AHP while requiring less input and mental effort from decision makers (Alfares and Duffuaa, 2008; Riabacke et al., 2012). Hence, the use of these tools

Excluído: from the developed participatory MCDM approach

Excluído: ly

Excluído: a small number of

Excluído: .

Movido para baixo [2]: Secondly, non-experts were not considered and some groups such as NGOs were underrepresented. Therefore, more case studies as well as the consideration of the opinion of persons who live in flood prone areas are needed to create generalizable conceptual models to assess the vulnerability to floods in Brazil.

Excluído: ¶

Movido para baixo [1]: Another criticism is that only a basic approach was used to document the sensitivity of the criteria weights. Further research includes conducting one-at-a-time and global sensitivity analyses to assess the effects of design choices (e.g. standardization, weighting, criteria aggregation) in model outputs. This could be achieved by repeatedly running the model in a Monte Carlo approach (Lilburne and Tarantola, 2009). Alternatively, as global sensitivity analysis is computationally expensive when spatially distributed inputs are considered, simpler approaches such as the procedure described by Chen et al. (2010) could be used as a starting point. Such analyses would be useful in evaluating the effects of epistemic uncertainty (Walker et al., 2003), helping to understand which choices contribute most to possible variances in the index scores.

might help to reach a broader number of participants since they can be easily implemented in online questionnaires. Nevertheless, it is important to emphasize that SMART, CAR and SWING do not consider the multiple interactions between the criteria.

A third issue refers to the lack of validation with past flood damages. The absence of a systematic approach to record the impacts caused by disasters in the study area makes it difficult, if not unrealistic, to perform validation based on actual flood outcomes. This is a recurrent problem in flood vulnerability studies as mentioned by several authors (Bakkensen et al., 2017; Beccari, 2016b; Fekete, 2009, 2012). Indeed, in a review of 106 vulnerability indicators, Beccari (2016) found out that only 3 models were validated against recorded flood impacts. The problem is that independent second data source to validate vulnerability indicators is rarely available (Fekete, 2009). Even when there is enough information, the direct comparison of the damage from historical events with the present situation is problematic, because in between the two dates there may have been substantial changes in the land-use (Chen et al., 2016). This reinforces the need for developing new approaches for validating flood vulnerability models.

The final criticism is that only a basic approach was used to document the sensitivity of the criteria weights. Further research includes conducting one-at-a-time and global sensitivity analyses to assess the effects of design choices (e.g. standardization, weighting, criteria aggregation) in model outputs. This could be achieved by repeatedly running the model in a Monte Carlo approach (Lilburne and Tarantola, 2009). Alternatively, since global sensitivity analysis is computationally expensive when spatially distributed inputs are considered, simpler approaches such as the procedure described by Chen et al. (2010) could be used as a starting point. Such analyses would be useful in evaluating the effects of epistemic uncertainty (Walker et al., 2003), helping to understand which choices contribute most to possible variances in the index scores.

Further improvements of the methodology include the conduction of a final workshop to create a vulnerability map by mutual consent. In this setting, the group of participants would determine a weighting scheme that all participants can support. This was suggested in the feedback questionnaire but was not implemented due to time and budget constraints. It would also be interesting to carry out a survey at the beginning and the end of the participatory process to investigate how the preferences of participants have evolved over time. This would allow assessing the extent to which social learning occurred. For this purpose, the methods outlined in Garmendia and Gamboa (2012) and Maskrey et al. (2016) could be used. Also, even though the developed approach was applied to flood hazards, the methodology could be used for other types of hazards or even for multi-hazards analysis.

It is believed that the proposed vulnerability index can be applied to other Brazilian watersheds with similar conditions. The development of more case studies, as well as the consideration of the opinion of persons who live in flood prone areas and non-expert stakeholders, could allow creating generalizable models to assess vulnerability. However, as the selected indicators and weights represent the perspective of experts working in Brazil, the findings cannot be generalized to other countries without adaptations.

Movido (inserção) [1]

Excluído: ¶
Another

Excluído: as

Excluído: by many participants

Excluído: can

Movido (inserção) [2]

Excluído: Secondly, non-experts were not considered and some groups such as NGOs were underrepresented. Therefore,

Excluído: are needed to

Excluído: e

Excluído: conceptual

Excluído: the

Excluído: it

Excluído: s

6 Conclusions

This study demonstrates how MCDM tools can be used to integrate interdisciplinary knowledge to guarantee not only a useful model according to the needs of the end-users but also to increase the acceptance of the vulnerability maps. The approach proposed herein is particularly novel in the context of vulnerability assessment in the respect that participants actively were involved in all steps of the vulnerability modelling process. This led to: (1) an increased, shared understanding of the problem by avoiding the limited perspective of a single expert; (2) an ability to transform implicit and tacit knowledge into information useful for vulnerability modelling; and (3) an enhanced credibility and deployment of the final results when compared to studies conducted without any kind of participation or collaboration.

Excluído: a

To the best of our knowledge, this is the first time that the interdependence among criteria was considered to assess the vulnerability to floods. Both AHP and ANP techniques proved to be effective for assessing the vulnerability to floods. Nevertheless, ANP should be used whenever possible as it allows capturing the complex relationships among vulnerability criteria in a transparent way.

Excluído: drivers

Based on the lessons learned during this participatory process, we can draw some important conclusions. First, if modellers expect the vulnerability model outputs to be used in decision making, end-users should be actively involved in designing it. Second, the search for sound modelling choices should not impose an artificial consensus by averaging individual results. This is crucial to ensure that the model is legitimized and accepted. Third, MCDM methods which consider interdependence between criteria are preferred for vulnerability assessment given that interrelationships between criteria exist.

From a practical standpoint, the maps created may support local authorities to understand the spatial distribution of vulnerability to floods in the region. The results can also be useful to identify places for site-specific risk assessment, enabling to prioritize human, technological and financial resources and, thereby, improve risk mitigation.

Acknowledgements

We are grateful to all experts who participated in the Delphi survey, focus groups and workshops. The authors would like to thank the referees for providing helpful comments and feedback. This work was supported by the Brazilian Coordination for the Improvement of Higher Education Personnel (CAPES) through the grant 13669-13-3.

References

- Alfares, H. and Duffuaa, S.: Assigning cardinal weights in multi- • criteria decision making based on ordinal ranking, *J. Multi-Criteria Decis. Anal.*, 133(March 2008), 125–133, doi:10.1002/mcda, 2008.
- Andersson, L., Olsson, J. A., Arheimer, B. and Jonsson, A.: Use of participatory scenario modelling as platforms in stakeholder dialogues, *Water SA*, 34(4 SPEC. ISS.), 439–447, 2008.
- Azizi, A., Malekmohammadi, B., Jafari, H. R., Nasiri, H. and Amini Parsa, V.: Land suitability assessment for wind power

- plant site selection using ANP-DEMATEL in a GIS environment: case study of Ardabil province, Iran, *Environ. Monit. Assess.*, 186(10), 6695–6709, doi:10.1007/s10661-014-3883-6, 2014.
- Bakkensen, L. A., Fox-Lent, C., Read, L. K. and Linkov, I.: Validating resilience and vulnerability indices in the context of natural disasters, *Risk Anal.*, 37(5), 982–1004, doi:10.1111/risa.12677, 2017.
- 5 Barthel, R., Seidl, R., Nickel, D. and Büttner, H.: Global change impacts on the Upper Danube Catchment (Central Europe): a study of participatory modeling, *Reg. Environ. Chang.*, (May 2016), 1–17, doi:10.1007/s10113-015-0895-x, 2015.
- Beccari, B.: A comparative analysis of disaster risk, vulnerability and resilience composite indicators, *PLoS Curr. Disasters*, 14(1), doi:10.1371/currents.dis.453df025e34b682e9737f95070f9b970, 2016a.
- Beccari, B.: A Comparative Analysis of Disaster Risk, Vulnerability and Resilience Composite Indicators, *PLoS Curr. Disasters*, 14(1), doi:10.1371/currents.dis.453df025e34b682e9737f95070f9b970, 2016b.
- 10 Bellamy, R., Chilvers, J., Vaughan, N. E. and Lenton, T. M.: “Opening up” geoenvironment appraisal: Multi-Criteria Mapping of options for tackling climate change, *Glob. Environ. Chang.*, 23(5), 926–937, doi:10.1016/j.gloenvcha.2013.07.011, 2013.
- Belton, V. and Stewart, T. J.: *Multiple criteria decision: an integrated approach*, Springer., 2002.
- 15 Birkmann, J.: *Measuring Vulnerability to Natural Hazards: towards disaster resilient societies*, United Nations University Press, Hong Kong., 2006.
- Birkmann, J., Cardona, O. D., Carreño, M. L., Barbat, A. H., Pelling, M., Schneiderbauer, S., Kienberger, S., Keiler, M., Alexander, D., Zeil, P. and Welle, T.: Framing vulnerability, risk and societal responses: the MOVE framework, *Nat. Hazards*, 67(2), 193–211, doi:10.1007/s11069-013-0558-5, 2013.
- 20 Birkmann, J., Kienberger, S. and Alexander, D. E.: Introduction Vulnerability: a key determinant of risk and its importance for risk management and sustainability, in *Assessment of Vulnerability to Natural Hazards*, pp. ix–xiii, Elsevier., 2014.
- Bombassaro, M. and Robaina, L. E. D. S.: Contribuição Geográfica para o Estudo das Inundações na Bacia Hidrográfica do Rio Taquari-Antas, RS, *Geografias*, 6(2), 69–86, 2010.
- Brusco, M. J., Singh, R., CREDIT, J. D. and Steinley, D.: Cluster analysis in empirical OM research: survey and recommendations, *Int. J. Oper. Prod. Manag.*, 37(3), 300–320, doi:10.1108/IJOPM-08-2015-0493, 2017.
- 25 Cardona, O. D. and van Aalst, M. K.: Determinants of risk: exposure and vulnerability, in *Managing the Risks of Extreme Events and Disasters to Advance Climate Change Adaptation - A Special Report of Working Groups I and II of the Intergovernmental Panel on Climate Change (IPCC)*, pp. 65–108., 2012.
- CEMADEN: Municípios monitorados, [online] Available from: www.cemaden.gov.br/municipiosprio (Accessed 31 March 2017), 2017.
- 30 Chang, L. and Huang, S.: Assessing urban flooding vulnerability with an emergy approach, *Landsc. Urban Plan.*, 143, 11–24, doi:10.1016/j.landurbplan.2015.06.004, 2015.
- Chen, Y., Yu, J. and Khan, S.: Spatial sensitivity analysis of multi-criteria weights in GIS-based land suitability evaluation, *Environ. Model. Softw.*, 25(12), 1582–1591, doi:10.1016/j.envsoft.2010.06.001, 2010.

Movido para baixo [3]: de Brito, M. M., Evers, M. and Höllermann, B.: Prioritization of flood vulnerability, coping capacity and exposure indicators through the Delphi technique: A case study in Taquari-Antas basin, Brazil, *Int. J. Disaster Risk Reduct.*, 24, 119–128, doi:10.1016/j.ijdrr.2017.05.027, 2017.¶

- Cinelli, M., Coles, S. R. and Kirwan, K.: Analysis of the potentials of multi criteria decision analysis methods to conduct sustainability assessment, *Ecol. Indic.*, 46, 138–148, doi:10.1016/j.ecolind.2014.06.011, 2014.
- Ciurean, R. L., Schröter, D. and Glade, T.: Conceptual frameworks of vulnerability assessments for natural disasters reduction, in *Approaches to Disaster Management - Examining the Implications of Hazards, Emergencies and Disasters*, pp. 3–32, InTech., 2013.
- 5 CPRM: Ação emergencial para reconhecimento de áreas de alto e muito alto risco a movimentos de massas e enchentes - Estrela, Porto Alegre., 2012.
- CPRM: Ação emergencial para reconhecimento de áreas de alto e muito alto risco a movimentos de massas e enchentes - Lajeado, Porto Alegre., 2013.
- 10 Croasmun, J. T. and Ostrom, L.: Using Likert-Type scales in the social sciences, *J. Adult Educ.*, 40(1), 19–22, doi:10.1007/s10640-011-9463-0, 2011.
- Cutter, S. L., Boruff, B. J. and Shirley, W. L.: Social vulnerability to environmental hazards, *Soc. Sci. Q.*, 84(2), 242–261, doi:10.1111/1540-6237.8402002, 2003.
- de Brito, M. M. and Evers, M.: Multi-criteria decision-making for flood risk management: a survey of the current state of the art, *Nat. Hazards Earth Syst. Sci.*, 16(4), 1019–1033, doi:10.5194/nhess-16-1019-2016, 2016.
- 15 [de Brito, M. M., Evers, M. and Höllermann, B.: Prioritization of flood vulnerability, coping capacity and exposure indicators through the Delphi technique: A case study in Taquari-Antas basin, Brazil. *Int. J. Disaster Risk Reduct.*, 24, 119–128, doi:10.1016/j.ijdr.2017.05.027, 2017.](#)
- 20 EC: Guidance for Recording and Sharing Disaster Damage and Loss Data: Towards the development of operational indicators to translate the Sendai Framework into action., 2015.
- ESRI: How polygon to raster works, [online] Available from: <http://pro.arcgis.com/en/pro-app/tool-reference/conversion/how-polygon-to-raster-works.htm> (Accessed 5 September 2017), 2017.
- Evers, M.: Participation in flood risk management: an introduction and recommendations for implementation. *Rapportserie Klimat och säkerhet*, Karlstad., 2012.
- 25 Fadel, A. W.: Incorporação do risco de prejuízo no gerenciamento de medidas de controle de inundação, Universidade Federal do Rio Grande do Sul., 2015.
- Falconi, S. M. and Palmer, R. N.: An interdisciplinary framework for participatory modeling design and evaluation-What makes models effective participatory decision tools?, *Water Resour. Res.*, 53(2), 1625–1645, doi:10.1002/2016WR019373, 2017.
- 30 Fekete, A.: Validation of a social vulnerability index in context to river-floods in Germany, *Nat. Hazards Earth Syst. Sci.*, 9(2), 393–403, doi:10.5194/nhess-9-393-2009, 2009.
- Fekete, A.: Spatial disaster vulnerability and risk assessments: Challenges in their quality and acceptance, *Nat. Hazards*, 61(3), 1161–1178, doi:10.1007/s11069-011-9973-7, 2012.
- FEPAM: Qualidade das águas da bacia hidrografica do Rio das Antas e Rio Taquari, [online] Available from:

Formatado: Português (Brasil)

Movido (inserção) [3]

Excluído: ¶

Formatado: Português (Brasil)

Formatado: Português (Brasil)

- http://www.fepam.rs.gov.br/qualidade/qualidade_taquari_antas/taquariantas.asp (Accessed 2 June 2017), 2010.
- Frey, J. H. and Fontana, A.: The group interview in social research, *Soc. Sci. J.*, 28(2), 175–187, doi:10.1016/0362-3319(91)90003-M, 1991.
- Frigerio, I. and de Amicis, M.: Mapping social vulnerability to natural hazards in Italy: A suitable tool for risk mitigation strategies, *Environ. Sci. Policy*, 63, 187–196, doi:10.1016/j.envsci.2016.06.001, 2016.
- Fuchs, S.: Susceptibility versus resilience to mountain hazards in Austria - paradigms of vulnerability revisited, *Nat. Hazards Earth Syst. Sci.*, 9, 337–352, 2009.
- Fuchs, S., Kuhlicke, C. and Meyer, V.: Editorial for the special issue: vulnerability to natural hazards-the challenge of integration, *Nat. Hazards*, 58(2), 609–619, doi:10.1007/s11069-011-9825-5, 2011.
- Garmendia, E. and Gamboa, G.: Weighting social preferences in participatory multi-criteria evaluations: A case study on sustainable natural resource management, *Ecol. Econ.*, 84, 110–120, doi:10.1016/j.ecolecon.2012.09.004, 2012.
- Garmendia, E. and Stagl, S.: Public participation for sustainability and social learning: Concepts and lessons from three case studies in Europe, *Ecol. Econ.*, 69(8), 1712–1722, doi:10.1016/j.ecolecon.2010.03.027, 2010.
- Giannarou, L. and Zervas, E.: Using Delphi technique to build consensus in practice, *Int. J. Bus. Sci. Appl. Manag.*, 9(2), 65–82, 2014.
- Godfrey, A., Ciurean, R. L. L., Westen, C. J. Van, Kingma, N. C. C., Glade, T., van Westen, C. J., Kingma, N. C. C. and Glade, T.: Assessing vulnerability of buildings to hydro-meteorological hazards using an expert based approach – An application in Nehoiu Valley, Romania, *Int. J. Disaster Risk Reduct.*, 13, 229–241, doi:10.1016/j.ijdr.2015.06.001, 2015.
- Horlitz, T.: The role of model interfaces for participation in water management, *Water Resour. Manag.*, 21(7), 1091–1102, doi:10.1007/s11269-006-9100-9, 2007.
- Howarth, R. B. and Wilson, M. A.: A theoretical approach to deliberative valuation: aggregation by mutual consent, *Land Econ.*, 82(1), 1–16, doi:10.2307/27647687, 2006.
- IBGE: Censo demográfico 2010, [online] Available from: <http://www.ibge.gov.br/home/estatistica/populacao/censo2010/default.shtm> (Accessed 18 November 2016), 2010.
- IBGE: Atlas de saneamento, Brasília., 2011.
- IBGE: Cidades, [online] Available from: <http://cidades.ibge.gov.br/v3/cidades/home-cidades> (Accessed 30 March 2017), 2017.
- Jongman, B., Winsemius, H. C., Aerts, J. C. J. H., Coughlan de Perez, E., van Aalst, M. K., Kron, W. and Ward, P. J.: Declining vulnerability to river floods and the global benefits of adaptation, *Proc. Natl. Acad. Sci.*, 201414439, doi:10.1073/pnas.1414439112, 2015.
- Kappes, M. S., Papathoma-Köhle, M. and Keiler, M.: Assessing physical vulnerability for multi-hazards using an indicator-based methodology, *Appl. Geogr.*, 32(2), 577–590, doi:10.1016/j.apgeog.2011.07.002, 2012.
- Kienberger, S., Lang, S. and Zeil, P.: Spatial vulnerability units – expert-based spatial modelling of socio-economic vulnerability in the Salzach catchment, Austria, *Nat. Hazards Earth Syst. Sci.*, 9(3), 767–778, doi:10.5194/nhess-9-767-2009,

Formatado: Português (Brasil)

- 2009.
- Kissinger, A., Noack, V., Knopf, S., Konrad, W., Scheer, D. and Class, H.: Regional-scale brine migration along vertical pathways due to CO₂ injection - Part 1: the participatory modeling approach, *Hydrol. Earth Syst. Sci. Discuss.*, (2010), 1–33, doi:10.5194/hess-2016-687, 2017.
- 5 Koks, E. E., Jongman, B., Husby, T. G. and Botzen, W. J. W.: Combining hazard, exposure and social vulnerability to provide lessons for flood risk management, *Environ. Sci. Policy*, 47, 42–52, doi:10.1016/j.envsci.2014.10.013, 2015.
- Kowalski, K., Stagl, S., Madlener, R. and Omann, I.: Sustainable energy futures: Methodological challenges in combining scenarios and participatory multi-criteria analysis, *Eur. J. Oper. Res.*, 197(3), 1063–1074, doi:10.1016/j.ejor.2007.12.049, 2009.
- 10 Krueger, T., Page, T., Hubacek, K., Smith, L. and Hiscock, K.: The role of expert opinion in environmental modelling, *Environ. Model. Softw.*, 36, 4–18, doi:10.1016/j.envsoft.2012.01.011, 2012.
- Ledwith, M. and Springett, J.: *Participatory practice: community-based action for transformative change*, The Policy Press, Bristol, 2009.
- Lilburne, L. and Tarantola, S.: Sensitivity analysis of spatial models, *Int. J. Geogr. Inf. Sci.*, 23(2), 151–168, doi:10.1080/13658810802094995, 2009.
- 15 Linstone, H. A. and Turoff, M.: *The Delphi Method - Techniques and applications.*, 2002.
- Malczewski, J. and Rinner, C.: *Multicriteria Decision Analysis in Geographic Information Science.*, 2015.
- Maskrey, S. A., Mount, N. J., Thorne, C. R. and Dryden, I.: Participatory modelling for stakeholder involvement in the development of flood risk management intervention options, *Environ. Model. Softw.*, 82, 275–294, doi:10.1016/j.envsoft.2016.04.027, 2016.
- 20 Merz, B., Kreibich, H., Schwarze, R. and Thieken, A.: Assessment of economic flood damage, *Nat. Hazards Earth Syst. Sci.*, 10(8), 1697–1724, doi:10.5194/nhess-10-1697-2010, 2010.
- MI: Sistema integrado de informações sobre desastres - S2ID, [online] Available from: <https://s2id.mi.gov.br/> (Accessed 1 June 2017), 2017.
- 25 Morgan, D. L.: Focus groups, in *Encyclopedia of Social Measurement*, vol. 2, pp. 51–57, Elsevier., 2005.
- MS: Portal do departamento de informática do SUS, Ministério da Saúde (MS), [online] Available from: <http://datasus.saude.gov.br/> (Accessed 31 March 2017), 2016.
- Müller, A., Reiter, J. and Weiland, U.: Assessment of urban vulnerability towards floods using an indicator-based approach - a case study for Santiago de Chile, *Nat. Hazards Earth Syst. Sci.*, 11(8), 2107–2123, doi:10.5194/nhess-11-2107-2011, 2011.
- 30 Müller, M. O., Groesser, S. N. and Ulli-Beer, S.: How do we know who to include in collaborative research? Toward a method for the identification of experts, *Eur. J. Oper. Res.*, 216(2), 495–502, doi:10.1016/j.ejor.2011.07.014, 2012.
- Orsi, F., Geneletti, D. and Newton, A. C.: Towards a common set of criteria and indicators to identify forest restoration priorities: An expert panel-based approach, *Ecol. Indic.*, 11(2), 337–347, doi:10.1016/j.ecolind.2010.06.001, 2011.
- Ossadnik, W., Schinke, S. and Kaspar, R. H.: Group aggregation techniques for analytic hierarchy process and analytic

Formatado: Português (Brasil)

- network process: a comparative analysis, *Gr. Decis. Negot.*, 25(2), 421–457, doi:10.1007/s10726-015-9448-4, 2016.
- Oulahen, G., Mortsch, L., Tang, K. and Harford, D.: Unequal vulnerability to flood hazards: “ground truthing” a social vulnerability index of five municipalities in Metro Vancouver, Canada, *Ann. Assoc. Am. Geogr.*, 105(3), 473–495, doi:10.1080/00045608.2015.1012634, 2015.
- 5 Ozturk, U., Tarakegn, Y. A., Longoni, L., Brambilla, D., Papini, M. and Jensen, J.: A simplified early-warning system for imminent landslide prediction based on failure index fragility curves developed through numerical analysis, *Geomatics, Nat. Hazards Risk*, 5705(August), 1–20, doi:10.1080/19475705.2015.1058863, 2015.
- Paneque Salgado, P., Corral Quintana, S., Guimarães Pereira, Â., del Moral Ituarte, L. and Pedregal Mateos, B.: Participative multi-criteria analysis for the evaluation of water governance alternatives. A case in the Costa del Sol (Málaga), *Ecol. Econ.*, 10 68(4), 990–1005, doi:10.1016/j.ecolecon.2006.11.008, 2009.
- Papathoma-Köhle, M.: Vulnerability curves vs. Vulnerability indicators: Application of an indicator-based methodology for debris-flow hazards, *Nat. Hazards Earth Syst. Sci.*, 16(8), 1771–1790, doi:10.5194/nhess-16-1771-2016, 2016.
- Reilly, B.: *Disaster and human history: case studies in nature, society and catastrophe*, McFarland, Jefferson., 2009.
- 15 Riabacke, M., Danielson, M. and Ekenberg, L.: State-of-the-art prescriptive criteria weight elicitation, *Adv. Decis. Sci.*, 2012, doi:10.1155/2012/276584, 2012.
- Roy, B.: *Méthodologie Multicritère d’Aide à la Décision*, Economica, Paris., 1985.
- Roy, D. C. and Blaschke, T.: Spatial vulnerability assessment of floods in the coastal regions of Bangladesh, *Geomatics, Nat. Hazards Risk*, 5705(February 2015), 1–24, doi:10.1080/19475705.2013.816785, 2013.
- 20 Rufat, S., Tate, E., Burton, C. G. and Maroof, A. S.: Social vulnerability to floods: review of case studies and implications for measurement, *Int. J. Disaster Risk Reduct.*, 14, 470–486, doi:10.1016/j.ijdr.2015.09.013, 2015.
- Saaty, T. L.: *The analytic hierarchy process*, McGraw-Hill, New York., 1980.
- Saaty, T. L.: Fundamentals of the analytic network process, *Proc. ISAHP*, (December), 1–14, doi:10.1007/s11518-006-0158-y, 1999.
- 25 Saaty, T. L.: Fundamentals of the analytic network process - dependence and feedback in decision-making with a single network, *J. Syst. Sci. Syst. Eng.*, 13(2), 129–157, doi:10.1007/s11518-006-0158-y, 2004.
- Sheppard, S. R. J. and Meitner, M.: Using multi-criteria analysis and visualisation for sustainable forest management planning with stakeholder groups, *For. Ecol. Manage.*, 207(1–2), 171–187, doi:http://dx.doi.org/10.1016/j.foreco.2004.10.032, 2005.
- 30 Siqueira, V. A., Collischonn, W., Fan, F. M. and Chou, S. C.: Ensemble flood forecasting based on operational forecasts of the regional Eta EPS in the Taquari-Antas basin, *Brazilian J. Water Resour.*, 21(3), 587–602, doi:10.1590/2318-0331.011616004, 2016.
- Smith, M. J., Goodchild, M. F. and Longley, P. A.: *Geospatial analysis: a comprehensive guide to principles, techniques, and software tools.*, 2008.
- Stirling, A.: “Opening up” and “closing down”: Power, participation, and pluralism in the social appraisal of technology, *Sci.*

Formatado: Português (Brasil)

Formatado: Português (Brasil)

- Technol. Human Values, 33(2), 262–294, doi:10.1177/0162243907311265, 2008.
- Strager, M. P. and Rosenberger, R. S.: Incorporating stakeholder preferences for land conservation: Weights and measures in spatial MCA, *Ecol. Econ.*, 58(1), 79–92, doi:10.1016/j.ecolecon.2005.05.024, 2006.
- Tate, E.: Social vulnerability indices: A comparative assessment using uncertainty and sensitivity analysis, *Nat. Hazards*, 5 63(2), 325–347, doi:10.1007/s11069-012-0152-2, 2012.
- Tsubaki, R., David Bricker, J., Ichii, K. and Kawahara, Y.: Development of fragility curves for railway embankment and ballast scour due to overtopping flood flow, *Nat. Hazards Earth Syst. Sci.*, 16(12), 2455–2472, doi:10.5194/nhess-16-2455-2016, 2016.
- UNISDR: Terminology on disaster risk reduction, UNISDR, Geneva., 2009.
- 10 Voinov, A. and Bousquet, F.: Modelling with stakeholders, *Environ. Model. Softw.*, 25(11), 1268–1281, doi:10.1016/j.envsoft.2010.03.007, 2010.
- Vojinovic, Z., Hammond, M., Golub, D., Hirunsalee, S., Weesakul, S., Meesuk, V., Medina, N., Sanchez, A., Kumara, S. and Abbott, M.: Holistic approach to flood risk assessment in areas with cultural heritage: a practical application in Ayutthaya, Thailand, *Nat. Hazards*, 81(1), 589–616, doi:10.1007/s11069-015-2098-7, 2016.
- 15 Walker, W. E., Harremoes, P., Rotmans, J., van der Sluijs, J. P., van Asselt, M. B. A., Janssen, P. and von Krauss, M. P. K.: Defining uncertainty: A conceptual basis for uncertainty management in model-based decision support, *Integr. Assess.*, 4(1), 5–17, doi:10.1076/iaij.4.1.5.16466, 2003.
- Wright, R. and Stein, M.: Snowball Sampling, *Enycl. Soc. Meas. Vol. 3, P-Y*, 3, 495–500, doi:10.1016/B0-12-369398-5/00087-6, 2005.