

Figure S1: As in Fig. 4, but for spring.

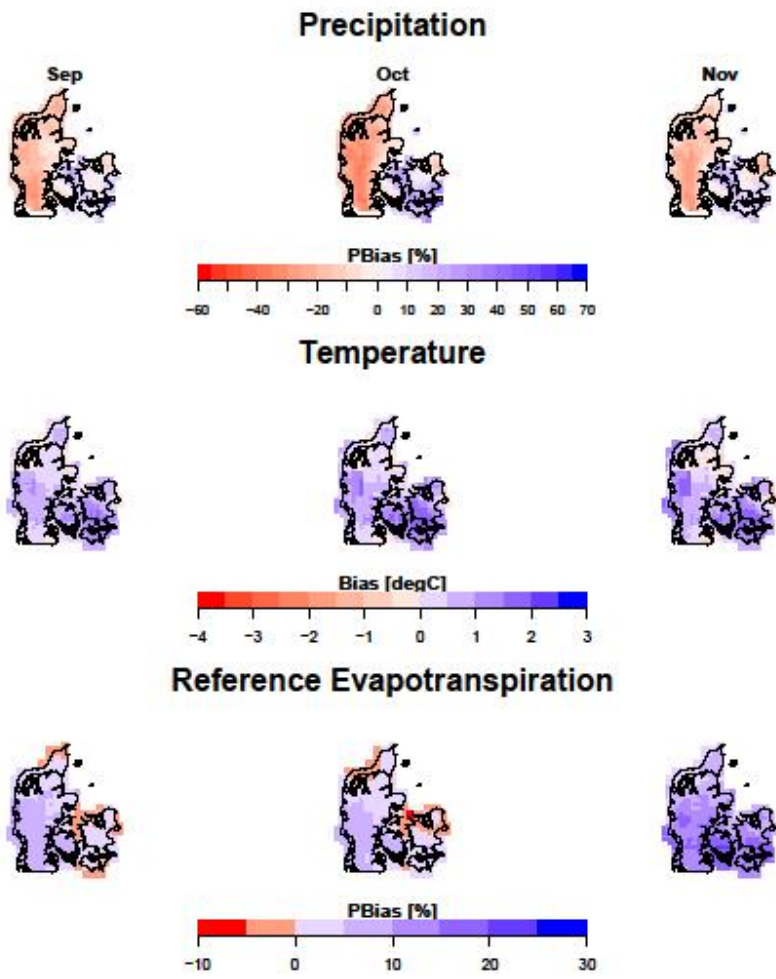


Figure S2: As in Fig. 4, but for autumn.

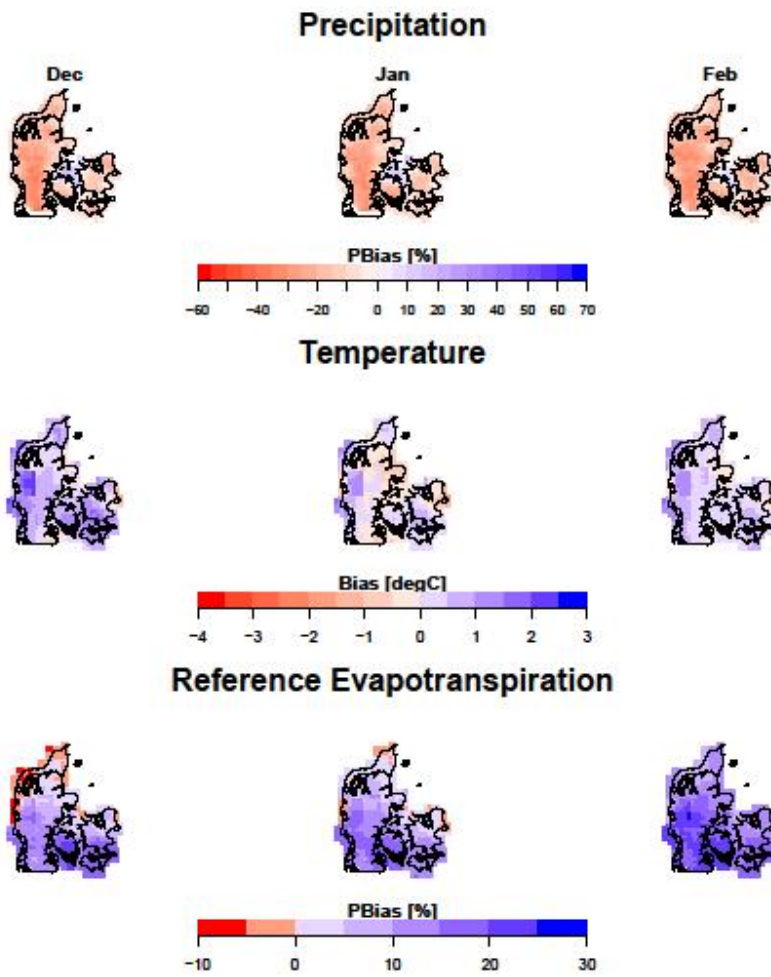


Figure S3: As in Fig. 4, but for winter.

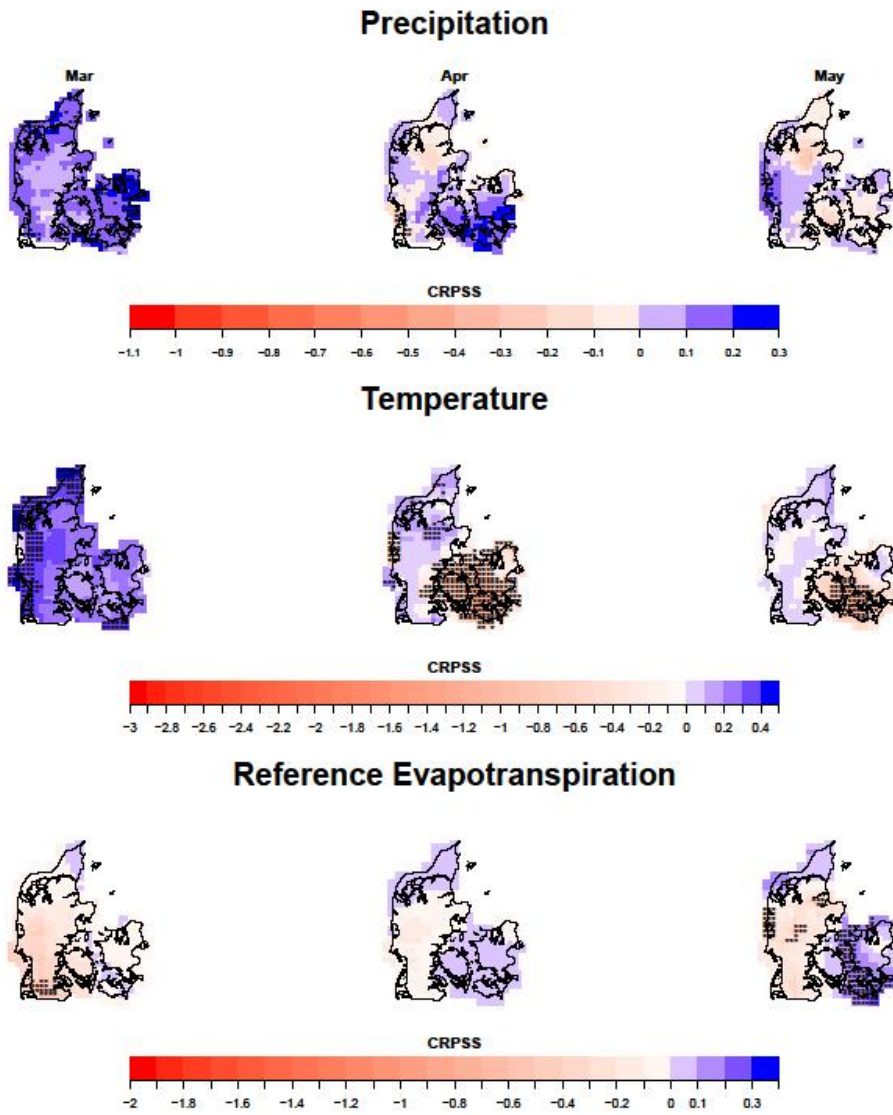


Figure S4: As in Fig. 6, but for spring.

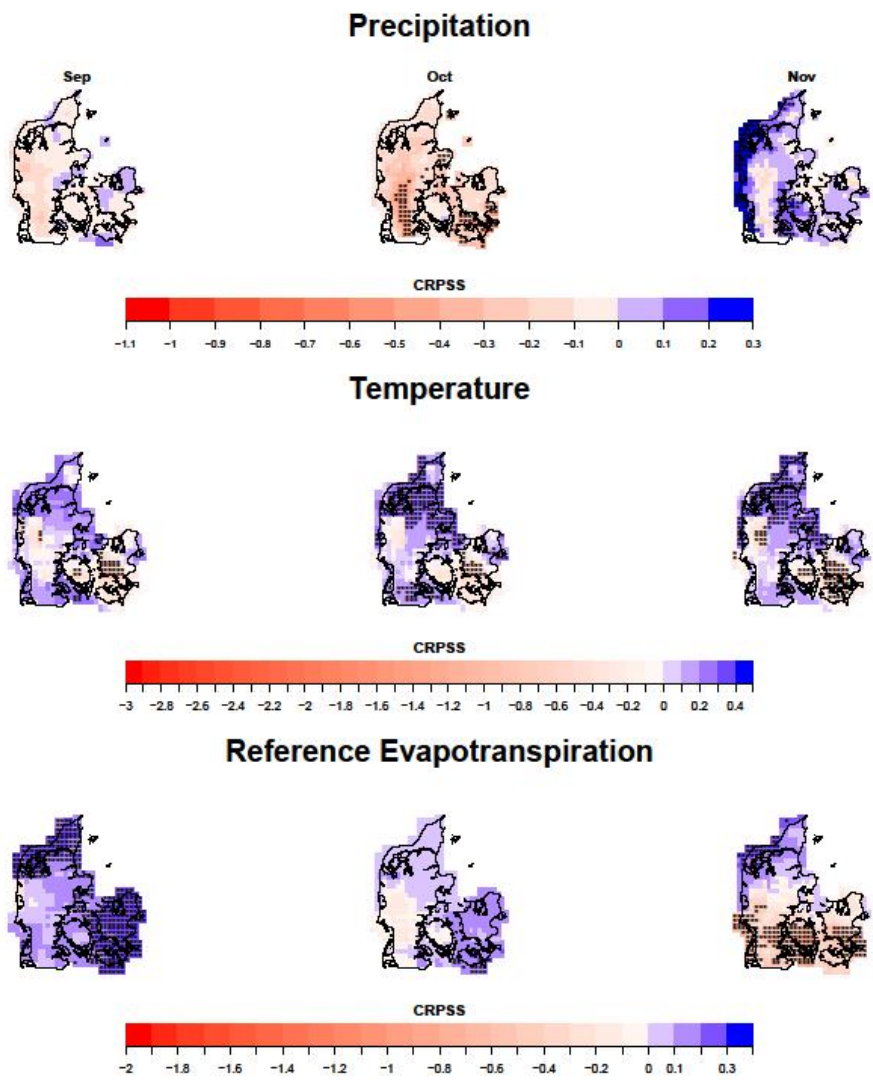


Figure S5: As in Fig. 6, but for autumn.

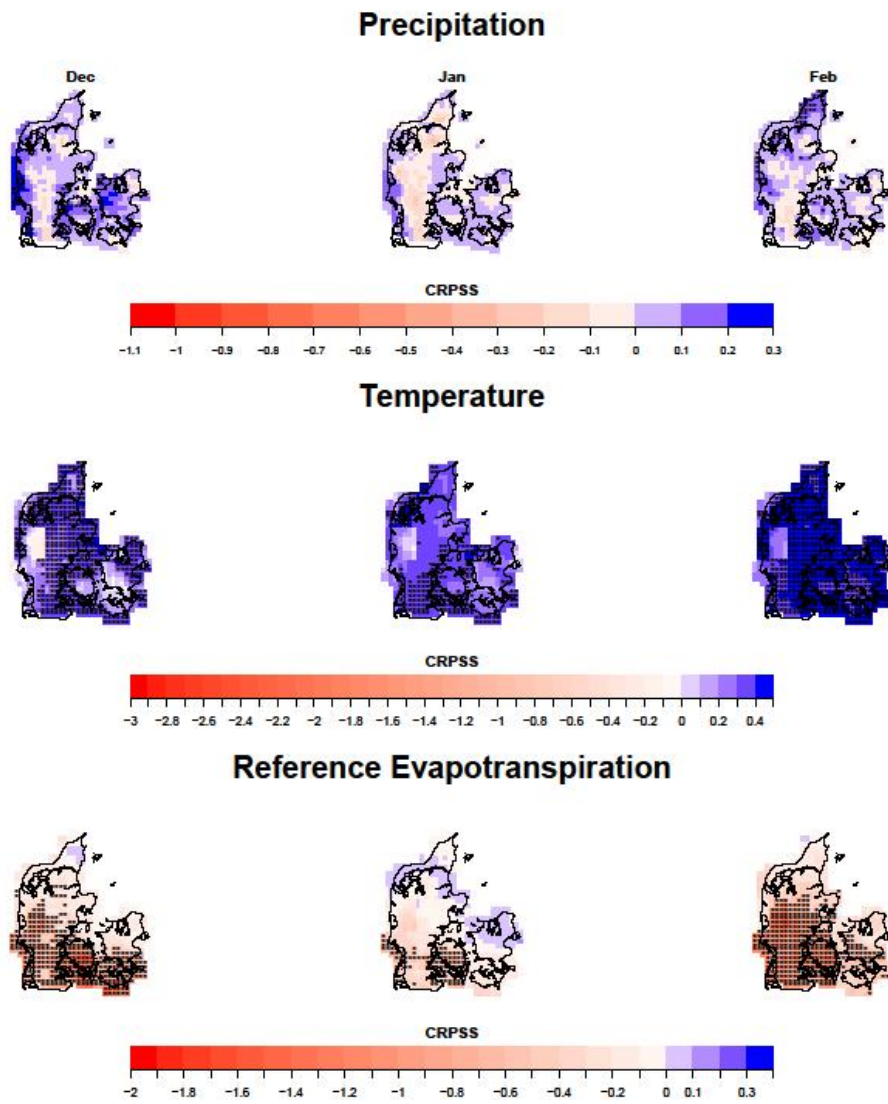


Figure S6: As in Fig. 6, but for winter.



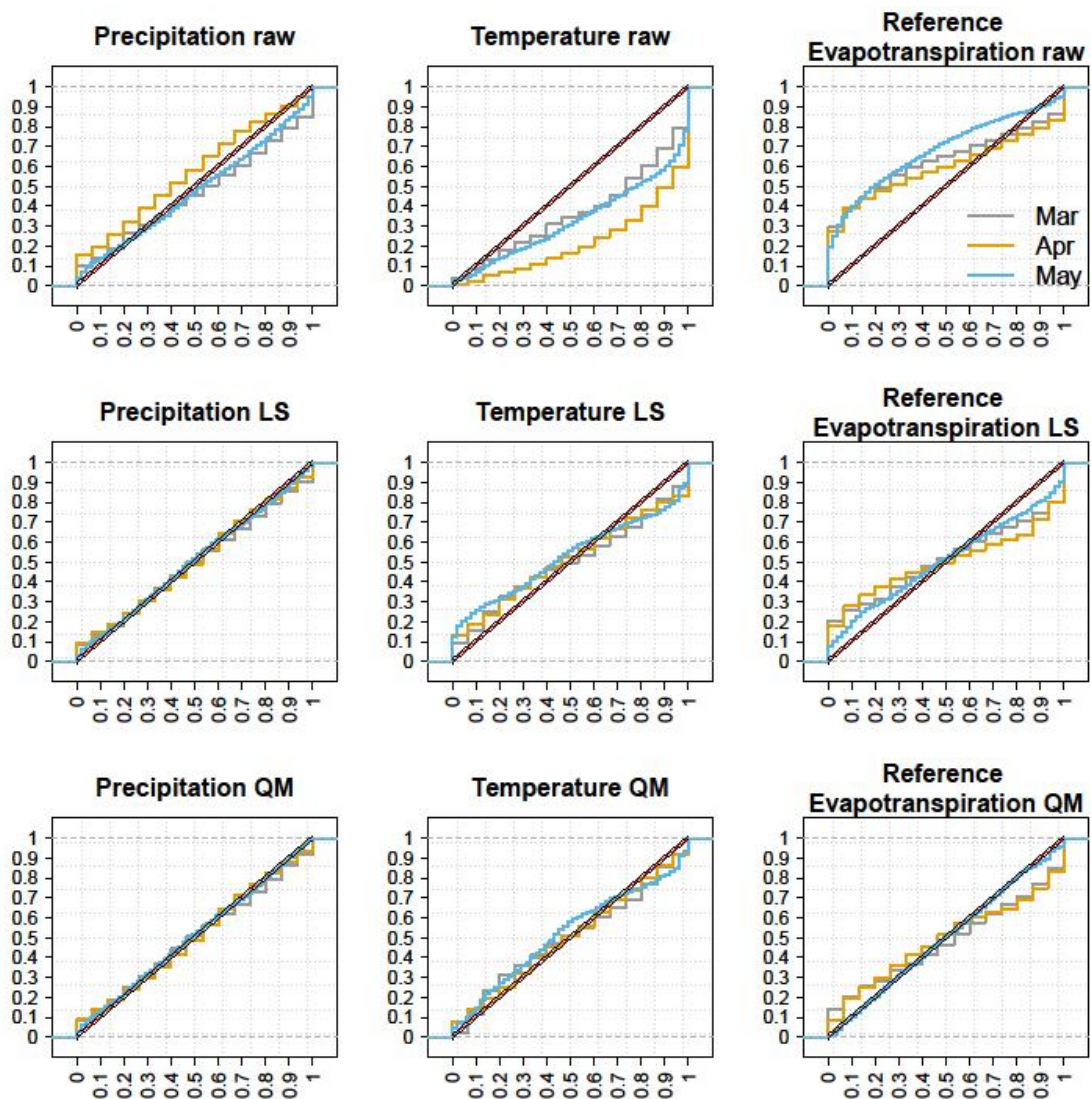


Figure S7: As in Fig. 7, but for spring.

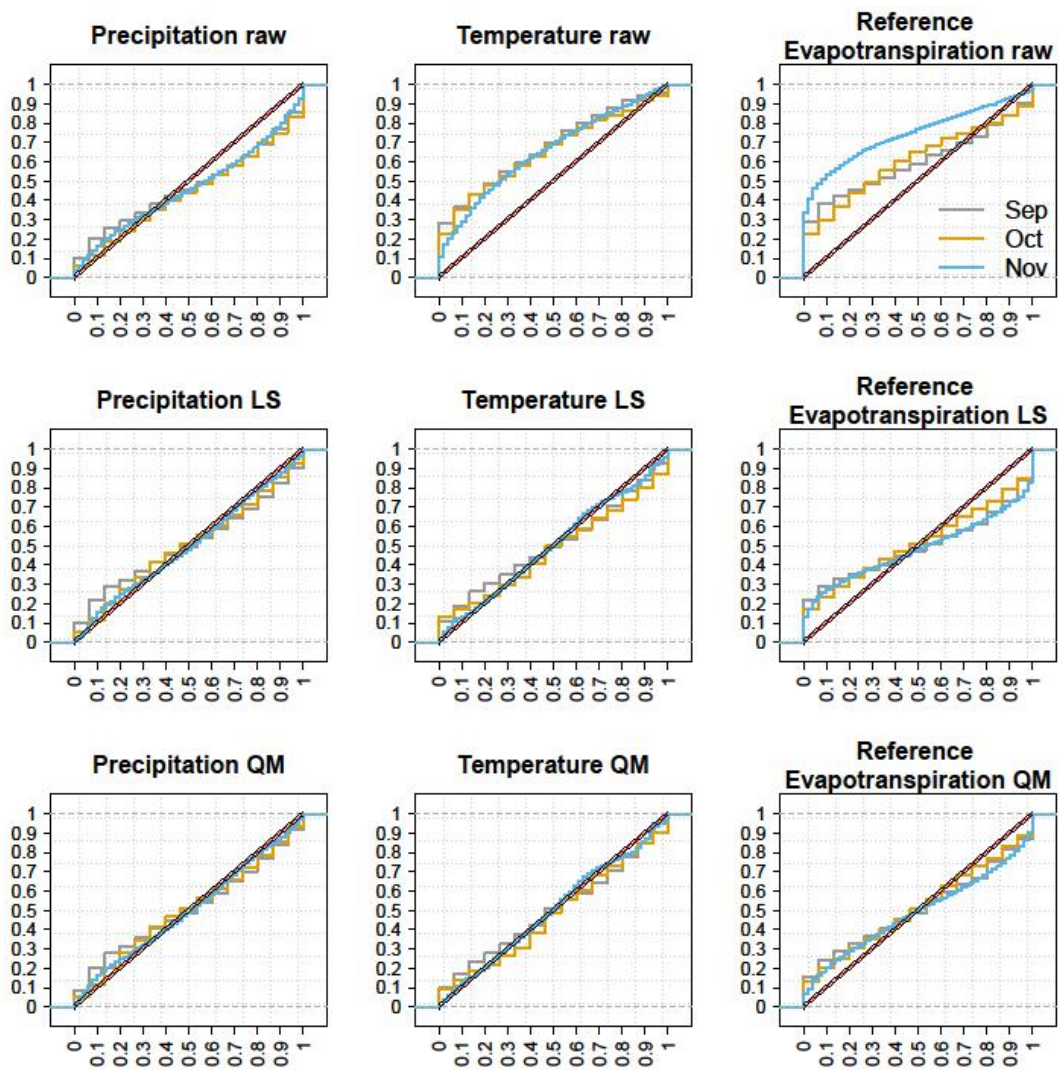


Figure S8: As in Fig. 7, but for autumn.



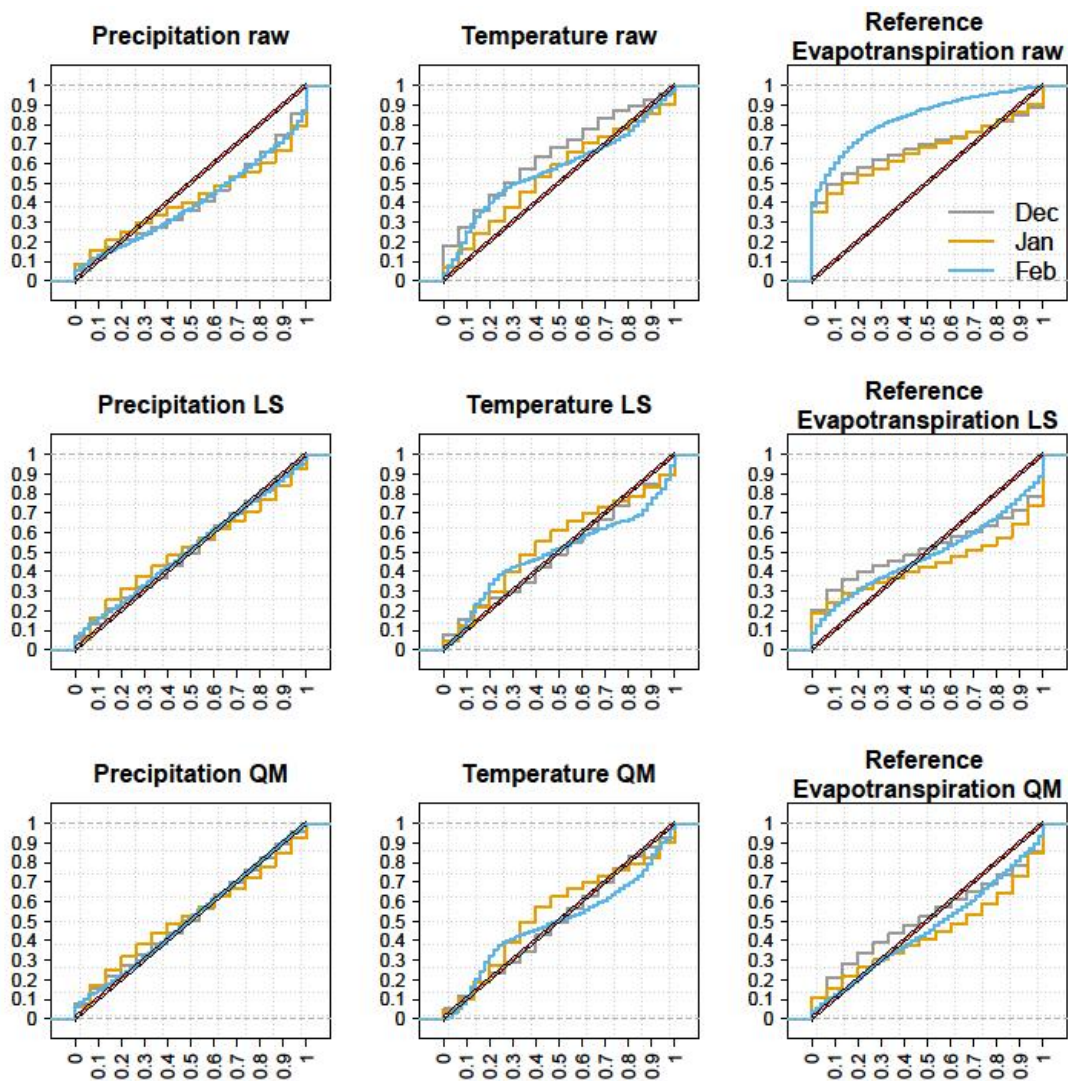


Figure S9: As in Fig. 7, but for winter.

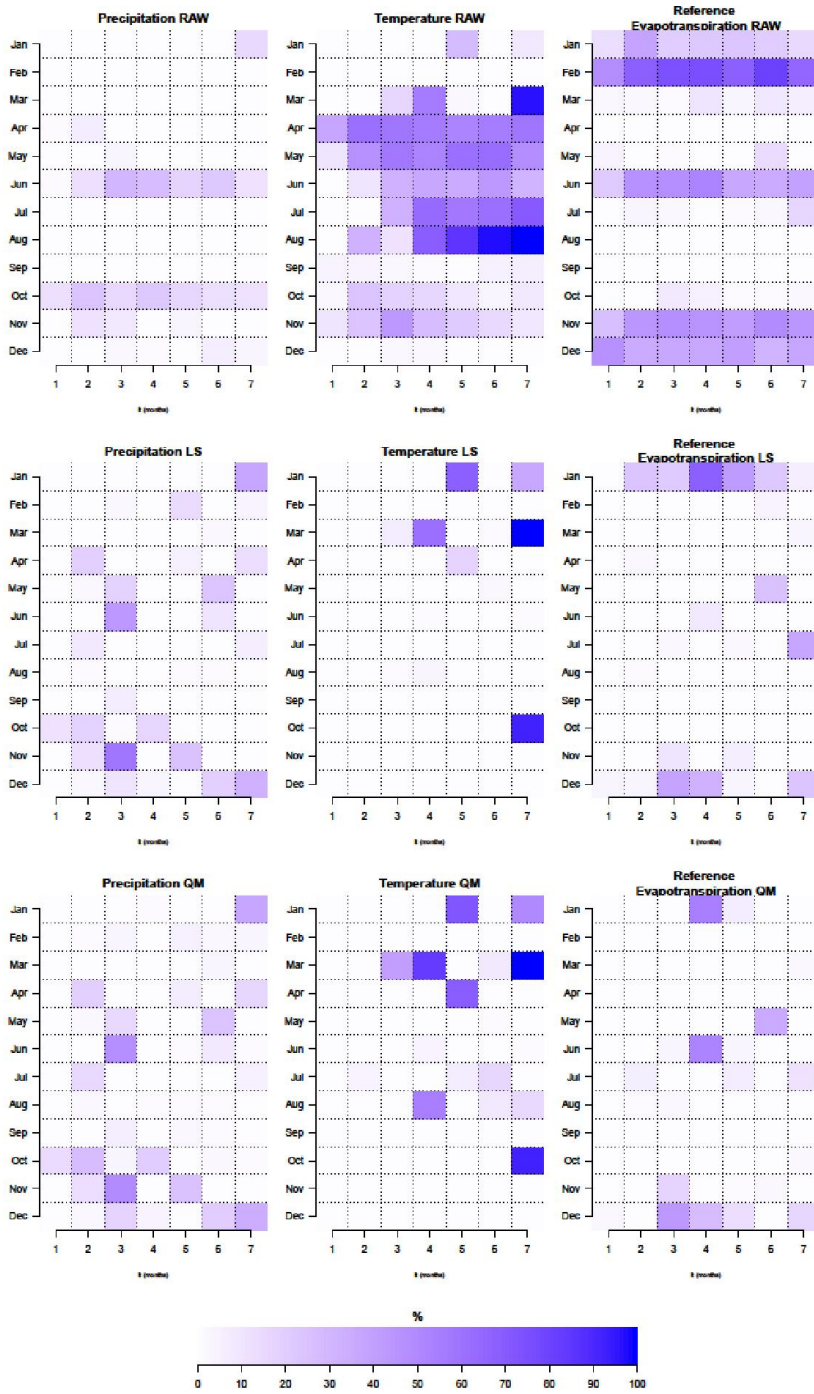


Figure S10: As in Fig. 9, but for negative accuracy (CRPS in Eq. (8)).

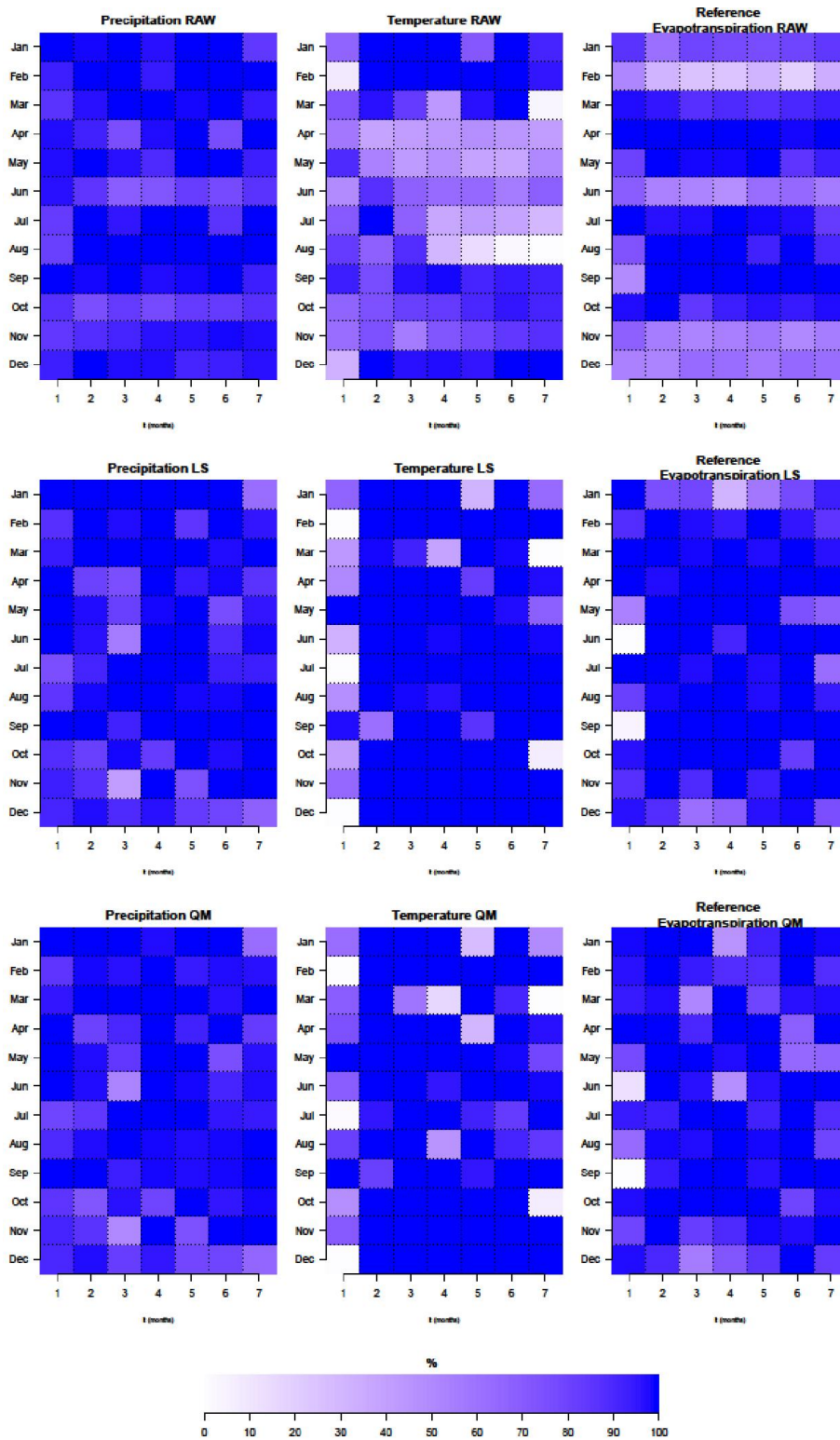


Figure S11: As in Fig. 9, but for equal accuracy (CRPSS in Eq. (8)).



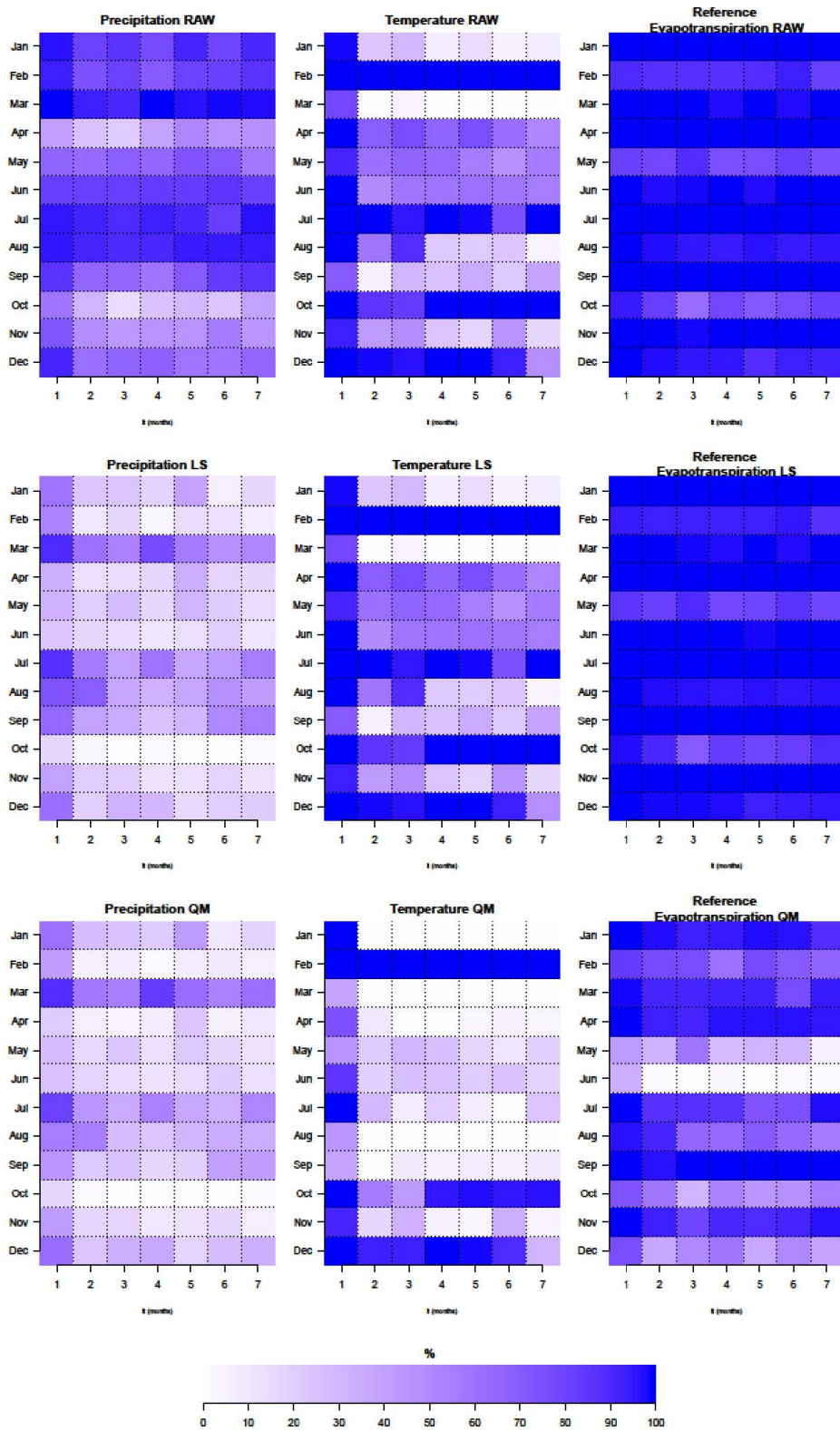


Figure S12: As in Fig. 9, but for positive sharpness (SS in Eq. (8)).

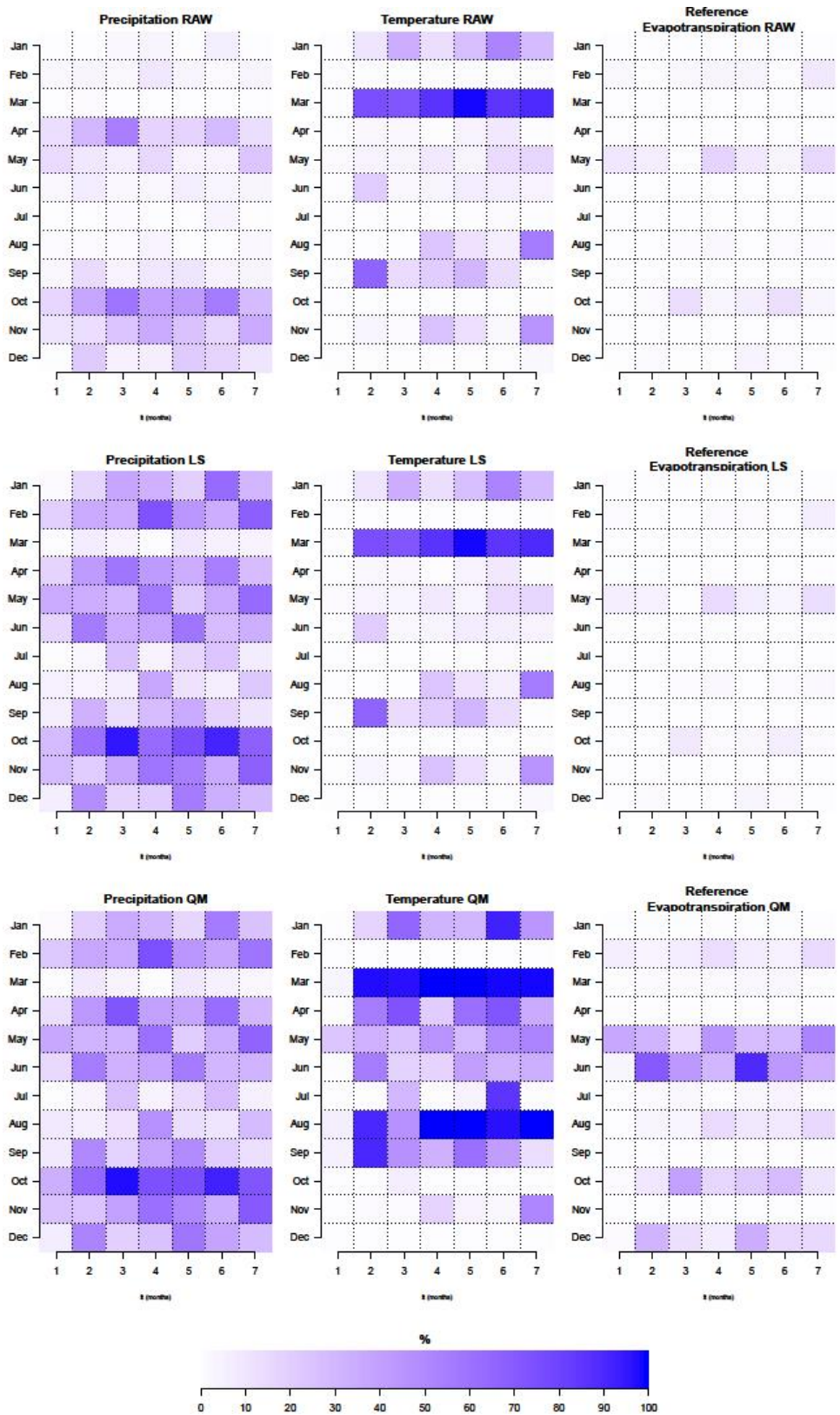


Figure S13: As in Fig. 9, but for negative sharpness (SS in Eq. (8)).



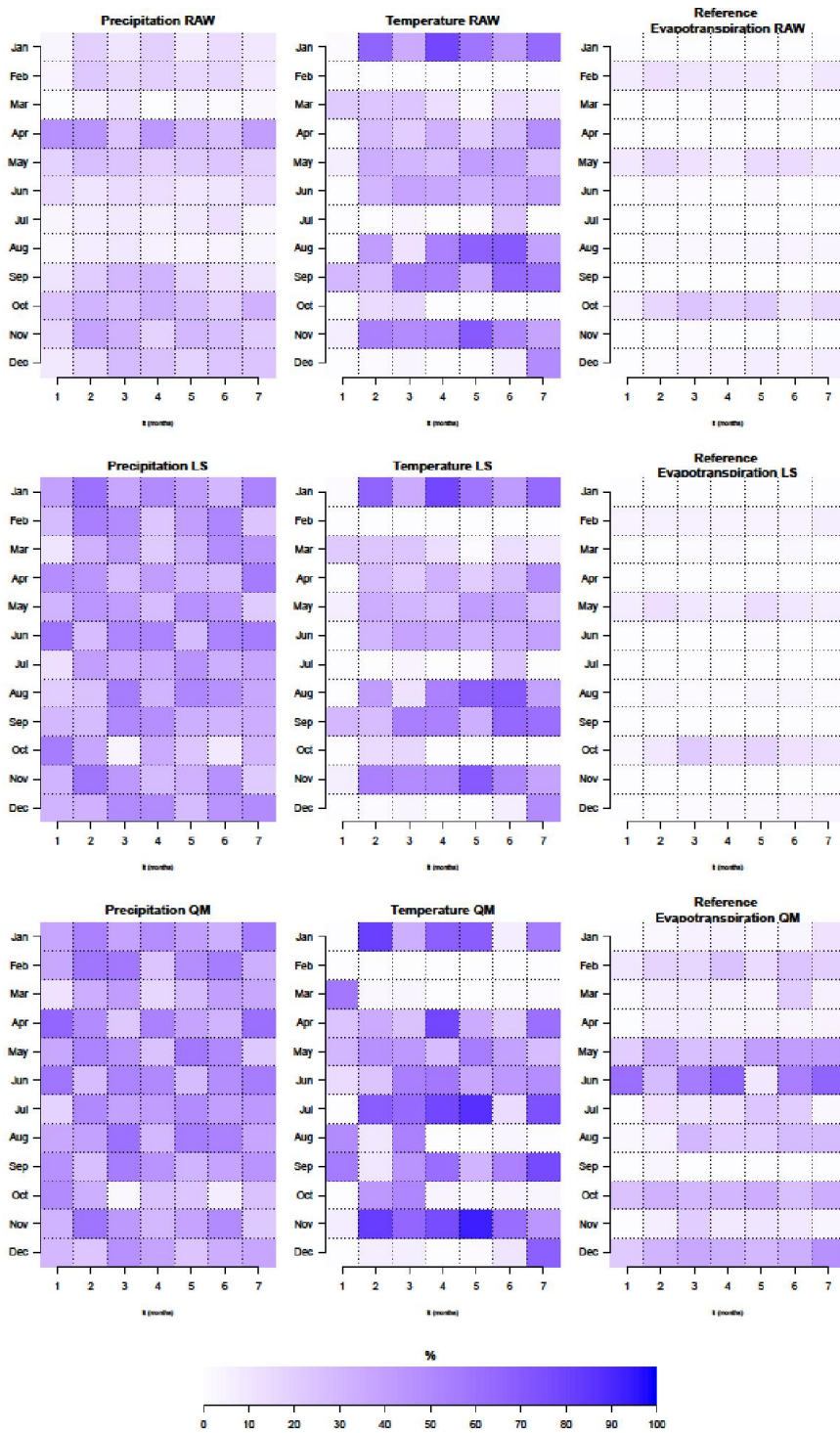


Figure S14: As in Fig. 9, but for equal sharpness (SS in Eq. (8)).