

Figure 1: Equivalence between the land use categories proposed by the FOEN and the ones adopted to calculate interception, followed by the value of interception for each category

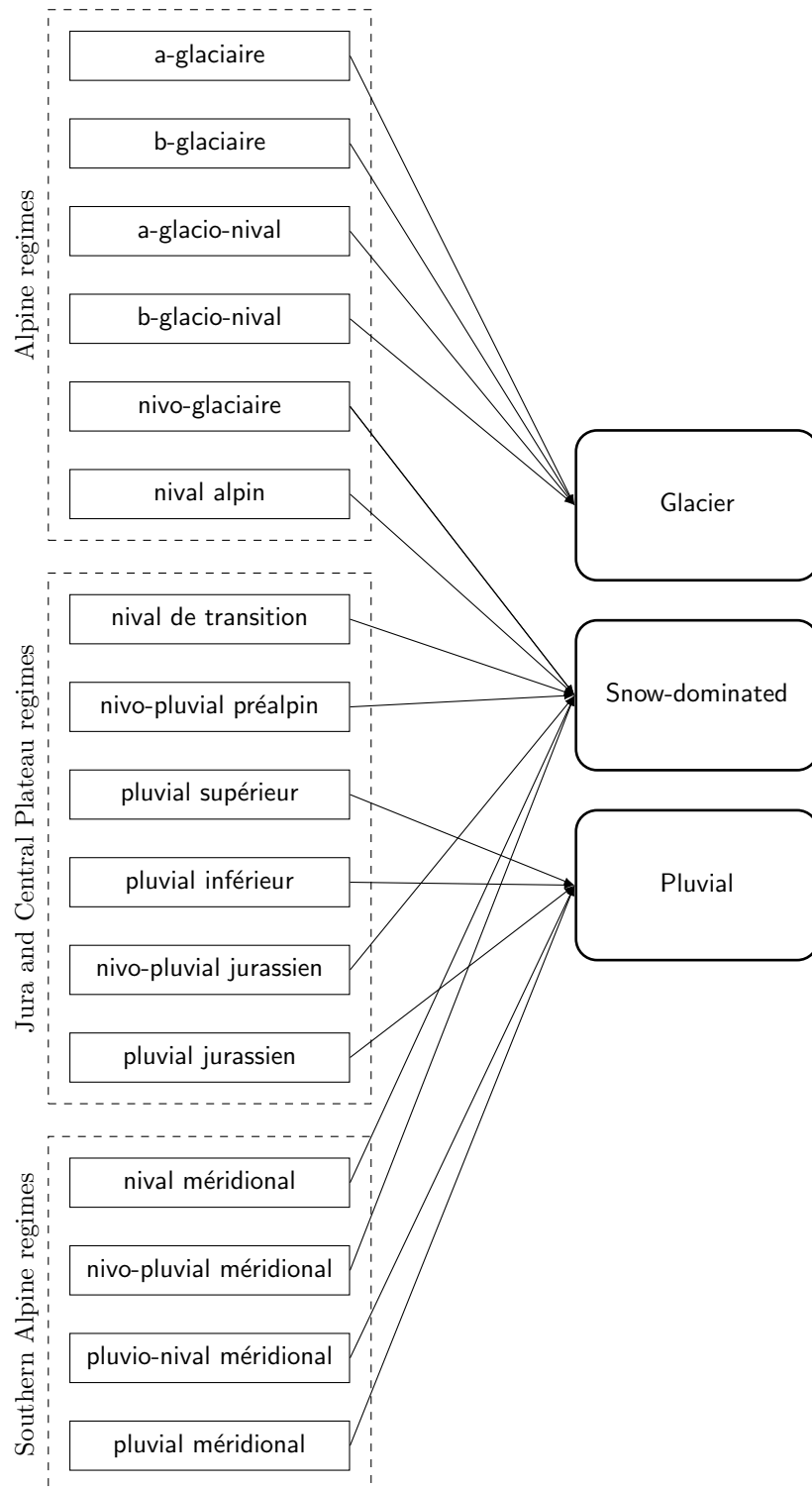
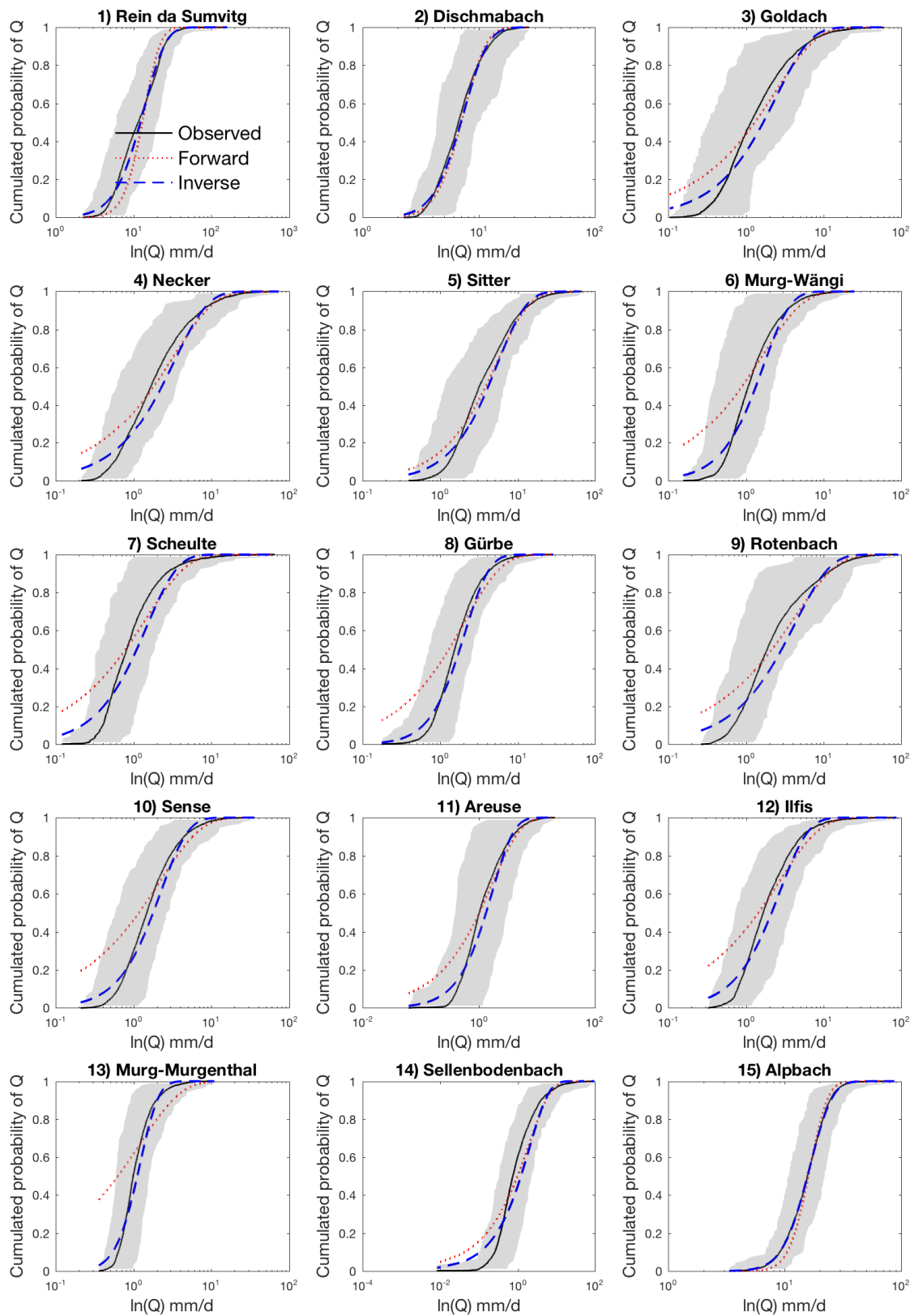
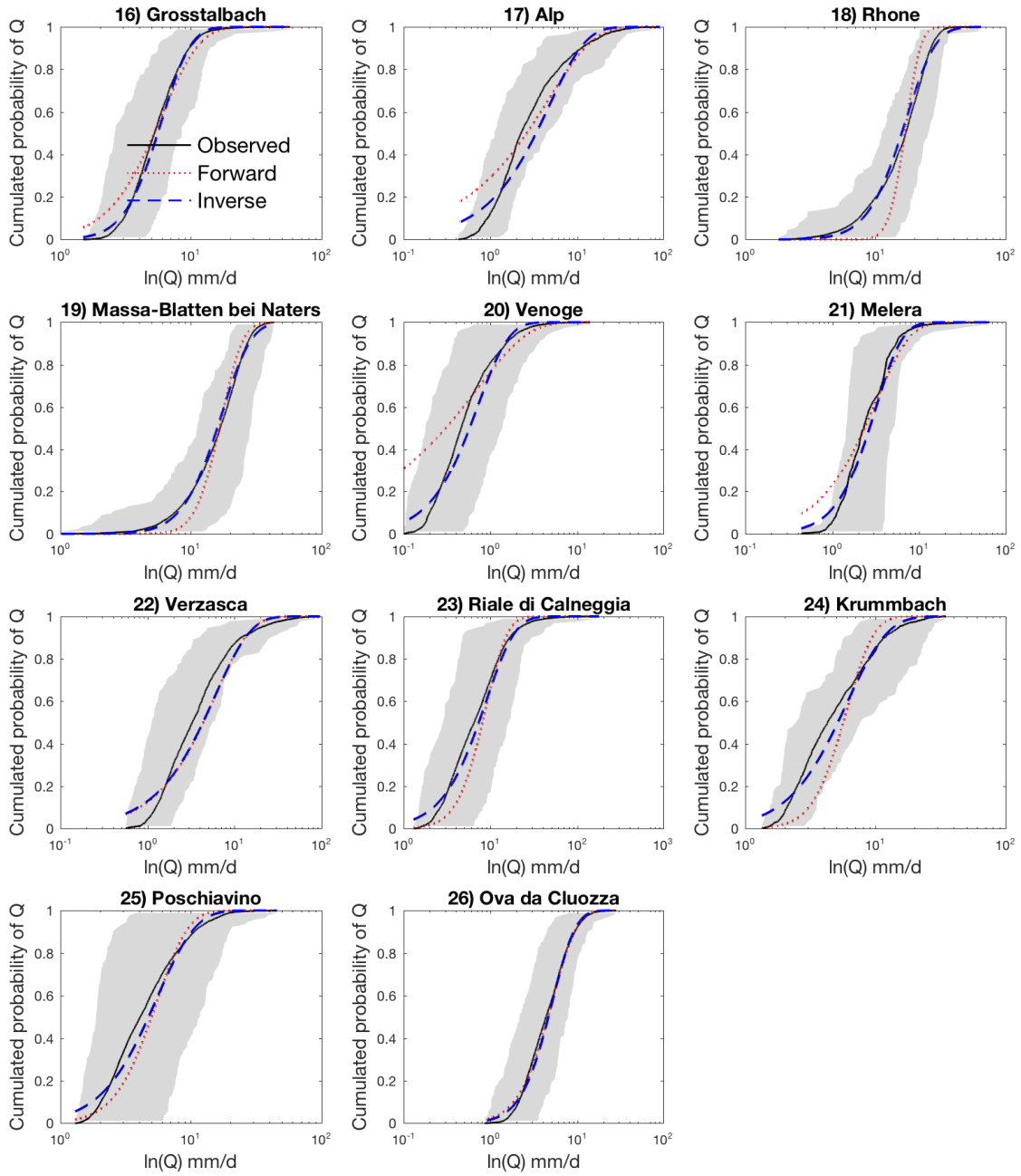


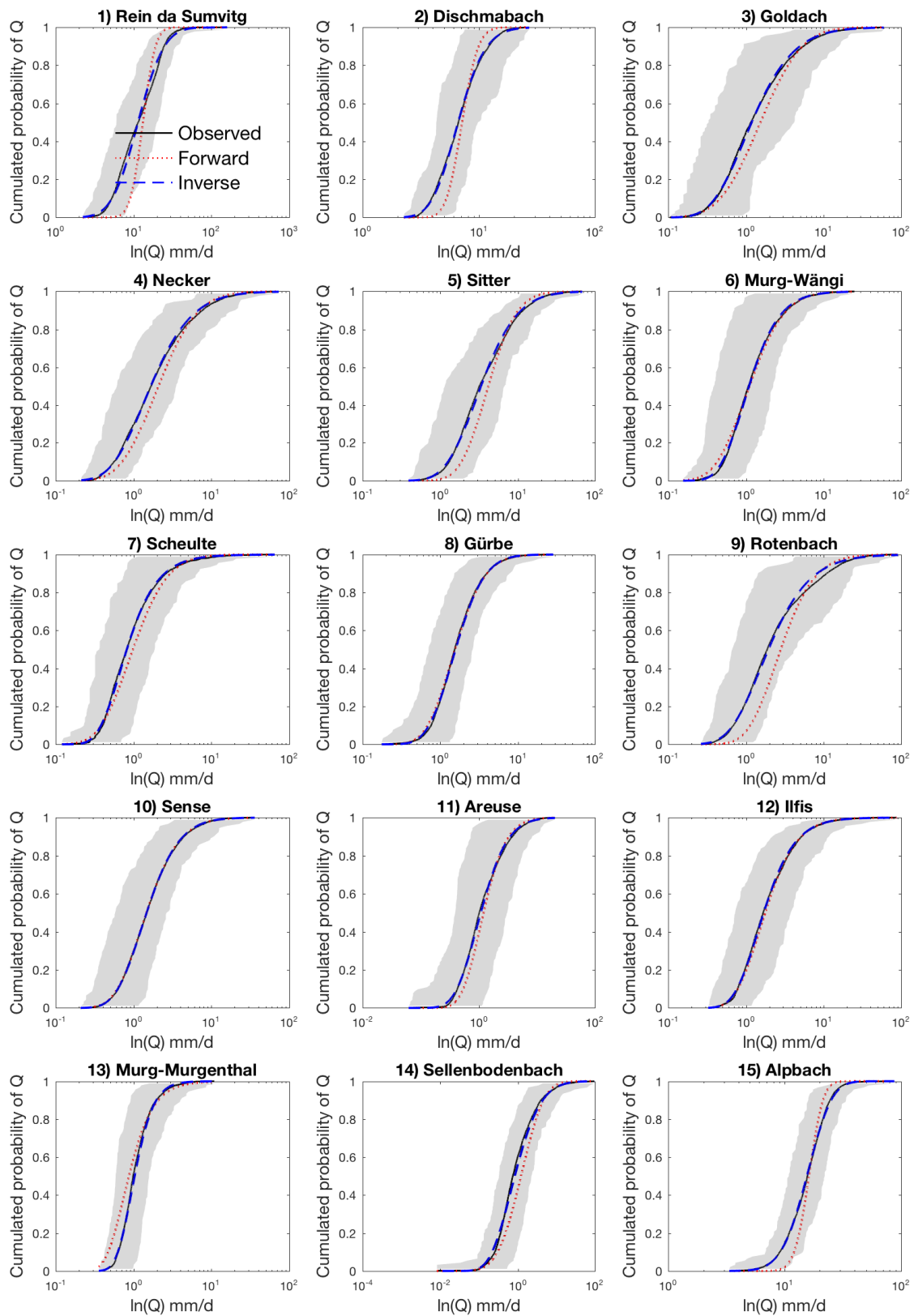
Figure 2: Equivalence between the 16 discharge regimes from the Hydrological Atlas of Switzerland and the simplified classification in 3 types of regimes adopted in this work

Results for all catchments for the linear model





Results for all catchments for the nonlinear model



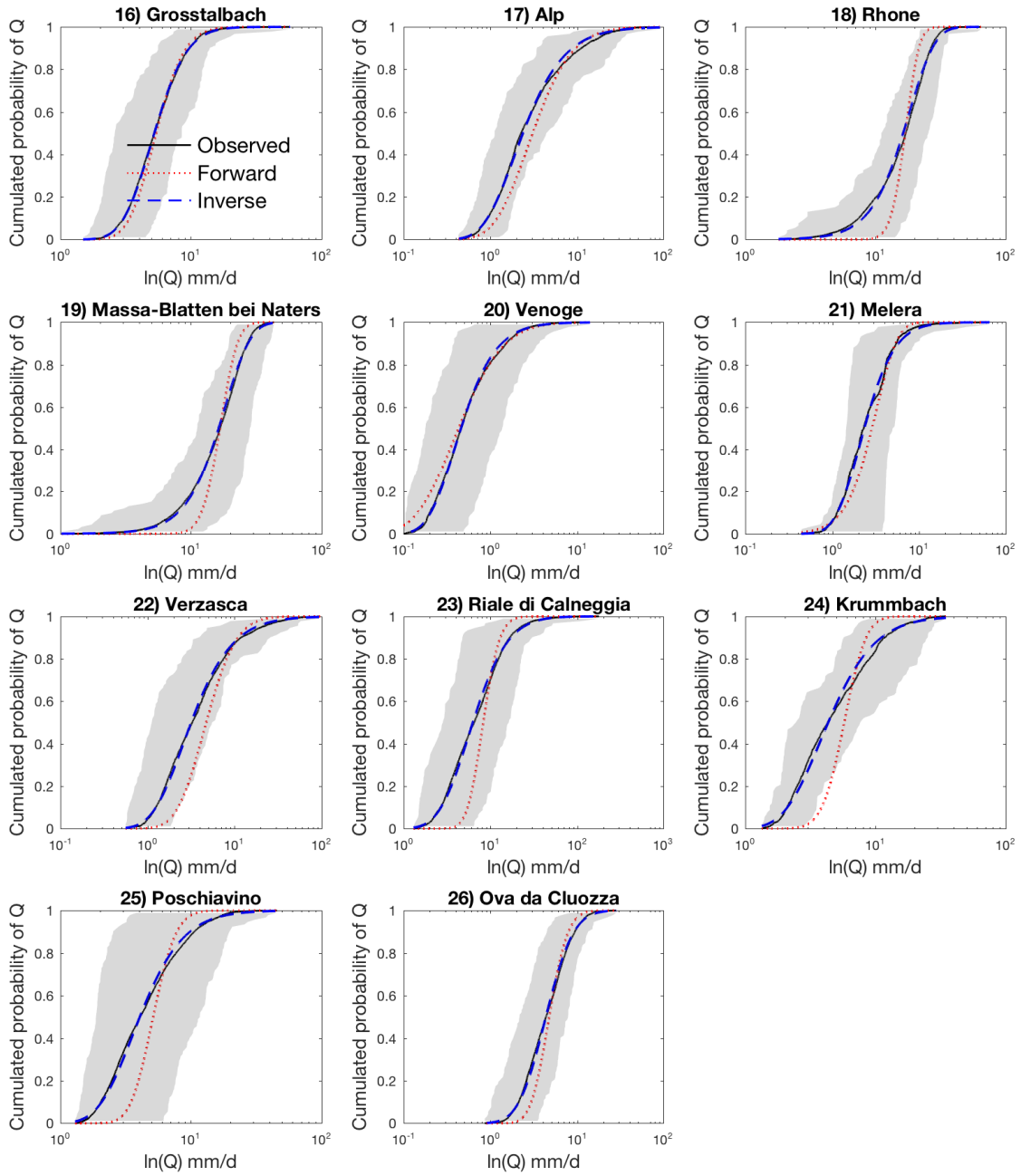


Table 1: Sources of the data used in this work

Type of data	All catchments	Source
Daily discharge	All catchments	FOEN (on demand)
Daily precipitation	All catchments	MeteoSwiss (Rhires D)
Daily temperature	All catchments	MeteoSwiss (Tabs D)
Elevations of catchments	All catchments	FOEN (www.hydrodaten.admin.ch)
Land use	Study areas	Aschwanden, 1996
	Other catchments	FSO, 2015
Regimes	Study areas	Aschwanden, 1996
	Other catchments	FOEN (map.geo.admin.ch)