

## ***Interactive comment on “Inference of analytical flow duration curves in Swiss alpine environments” by Ana Clara Santos et al.***

**Ana Clara Santos et al.**

anaclara.santos@epfl.ch

Received and published: 20 October 2017

We noticed that the legend of Figure 4 (bottom row) was inverted. Enclosed the correction version of that figure.

---

Interactive comment on Hydrol. Earth Syst. Sci. Discuss., <https://doi.org/10.5194/hess-2017-349>, 2017.

Printer-friendly version

Discussion paper



Corrected Figure 4 - Inference of analytical flow duration curves in Swiss alpine environments by Santos et al., hess-2017-349

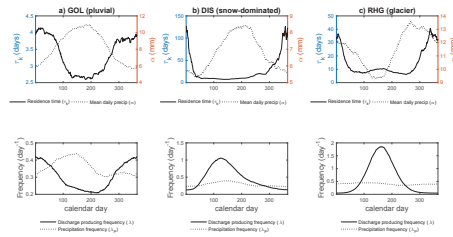


Figure 4. Examples of the annual variation of the model parameters. The parameters are calculated for 90 days intervals beginning at the calendar day for which the value is plotted. Top row: residence time  $\tau_R$  and mean daily precipitation depth  $\alpha$ ; bottom row: precipitation frequency  $\lambda_p$  and discharge-producing frequency  $\lambda$ . The plots have different y-axis scales.

3

Fig. 1.

C2

Printer-friendly version

Discussion paper

