

Interactive comment on “Hydrogeological effects of dredging navigable canals through lagoon shallows. A case study in Venice” by Pietro Teatini et al.

Pietro Teatini et al.

teatini@dmsa.unipd.it

Received and published: 27 July 2017

Here the new Figure 1 updated as suggested by Referee #2

Interactive comment on Hydrol. Earth Syst. Sci. Discuss., <https://doi.org/10.5194/hess-2017-317>, 2017.

Printer-friendly version

Discussion paper



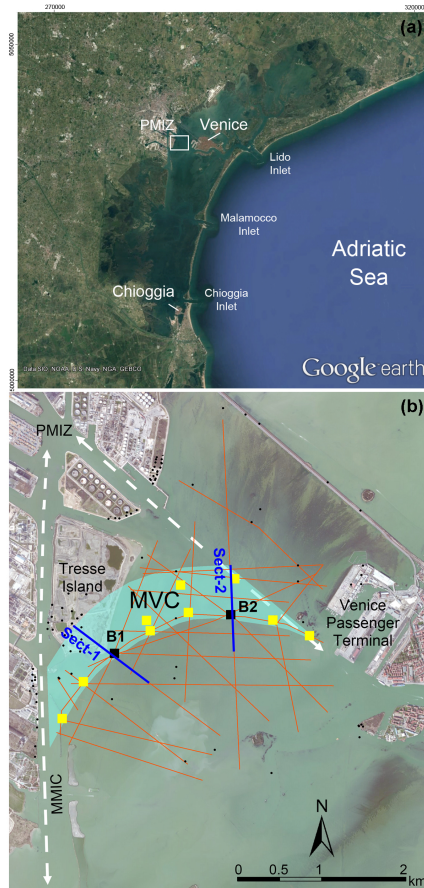


Fig. 1.