

930 Koyukuk Drive • PO Box 757340 • Fairbanks, Alaska 99775-7340

August 1, 2017

Dear Dr. Van Dijk,

With this letter, we submitted the revised version of our manuscript “Towards improved parameterization of a macro-scale hydrologic model in a discontinuous permafrost boreal forest ecosystem” by Abraham Endalamaw, W. Robert Bolton, Jessica M. Young-Robertson, Don Morton, Larry Hinzman, Bart Nijssen (doi.org/10.5194/hess-2017-25)

We thank you and the two reviewers for the detailed comments and improvement suggestions. We made all the final suggestions changed in the revised manuscript.

As suggested, we changed the ‘fine resolution landscape model’ to ‘sub-grid parameterization method’, and ‘small-scale parameterization method’ back to ‘small-scale parameterization scheme’.

In our conclusion, we replace ‘significant’ by ‘notable’ as the test was conducted in only two small sub-basins. We also recommend the method to be tested at a larger catchment so that its transferability can be verified.

In the calibration and discussion sections, we added few sentences that discuss how our parameterizations reproduce the runoff contrast between the two catchments.

The discussion of ET and soil moisture is significantly reduced in the revised manuscript. As suggested few ET and soil moisture contrasts between the two catchments are presented.

All the minor comments are also addressed:

1. Page 5, “Hence” ....  
**Is corrected to ” Hence, hydrological modeling using these coarse resolution datasets cannot produce accurate estimates of the spatially variable and basin-integrated watershed responses. This is primarily because coarse resolution datasets smoothed the non-linear small-scale watershed heterogeneities that control hydrological responses of the sub-Arctic watersheds**
2. Page 7, State resolution: **The resolution is stated in the revised manuscript (1 km)**
3. Fig. 1) Pls indicate in caption how the permafrost was mapped.  
**It is addressed by adding ‘The permafrost map of CPRW was produced by a small-scale observation across the watershed (Rieger et al., 1972; Yoshikawa et al., 2002).**
4. Fig 5) flow duration curves might also be insightful?  
**Flow duration curve is added in Figure 5**

Tracked-changes versions of the revised manuscript along the final revision copy are attached as a new author’s response comment.

We look forward to hearing from you,

Regards,  
Abraham Endalamaw

# Toward improved parameterization of a macro-scale hydrologic model in a discontinuous permafrost boreal forest ecosystem

Abraham Endalamaw<sup>1,\*</sup>, W. Robert Bolton<sup>1</sup>, Jessica M. Young-Robertson<sup>2</sup>, Don Morton<sup>3</sup>, Larry  
Hinzman<sup>4</sup>, Bart Nijssen<sup>5</sup>

5 <sup>1</sup>International Arctic Research Centre, University of Alaska Fairbanks, Fairbanks, Alaska, USA

<sup>2</sup>School of Natural Resources and Extension, University of Alaska Fairbanks, Fairbanks, Alaska,  
USA

<sup>3</sup>Boreal Scientific Computing LLC, Fairbanks, Alaska, USA

<sup>4</sup>University of Alaska Fairbanks, Fairbanks, Alaska, USA

10 <sup>5</sup>University of Washington, Seattle, Washington, USA

*Correspondence to:* Abraham Endalamaw (amendalamaw@alaska.edu)

## ABSTRACT

15 Modeling hydrological processes in the Alaskan sub-arctic is challenging because of the extreme spatial  
| heterogeneity in soil properties and vegetation communities. ~~Nevertheless~~However, modeling and  
predicting hydrological processes is critical in this region due to its vulnerability to the effects of

climate change. Coarse spatial resolution datasets used in land surface modeling posed a new challenge in simulating the spatially distributed and basin integrated processes since these datasets do not adequately represent the small-scale hydrologic, thermal and ecological heterogeneity. The goal of this study is to improve the prediction capacity of meso-scale to large-scale hydrological models by introducing a small-scale parameterization schememethod, which better represents the spatial heterogeneity of soil properties and vegetation cover in the Alaskan sub-arctic. The small-scale parameterization schemesmethods are derived from observations and sub-grid parameterization methodfine-resolution-landscape-modeling in the two contrasting sub-basins of the Caribou Poker Creek Research Watershed (CPCRW) in Interior Alaska: one nearly permafrost-free (LowP) and one that is permafrost-dominated (HighP). The sub-grid parameterization methodfine-resolution-landscape-model used in the small-scale parameterization schememethod is derived from the watershed topography. We found that observed soil thermal and hydraulic properties — including the distribution of permafrost and vegetation cover heterogeneity — are better represented in the sub-grid parameterization methodfine-resolution-landscape-model than the coarse resolution datasets. Parameters derived from coarse resolution dataset and from the sub-grid parameterization methodfine-resolution-landscape-model are implemented into the Variable Infiltration Capacity (VIC) meso-scale hydrological model to simulate runoff, evapotranspiration (ET) and soil moisture in the two sub-basins of the CPCRW. Simulated hydrographs based on the small-scale parameterization capture most of the peak and low flows, with similar accuracy in both sub-basins, compared to simulated hydrographs based on coarse resolution dataset. On average, small-scale parameterization scheme improves the total runoff simulation approximately by up to 50% in the LowP sub-basin and by up to 10% in the HighP sub-basin

from the large-scale parameterization. This study shows that the proposed small-scale landscape model can be used to improve the performance of meso-scale hydrological models in the Alaskan sub-arctic watersheds.

**Keywords:** *Interior Alaska, boreal forest, hydrological modeling, scaling, parameterization, vegetation,*

5 *Caribou Poker Creek Research Watershed (CPCRW), Variable Infiltration Capacity (VIC)*

## 1. INTRODUCTION

The sub-Arctic region of Interior Alaska lies in the transition zone between the warm temperate region to the south and the cold Arctic region to the north. This region is underlain by discontinuous permafrost and is very sensitive to climate warming (Hinzman et al., 2006). Along with climate and geology, topography is a significant factor that controls the distribution of permafrost in Interior Alaska as it has a strong control on the amount and intensity of solar radiation received at the land surface (Viereck et al., 1983; Morrissey and Strong, 1986). A difference in solar radiation between north and south-facing slopes supports the existence of permafrost on north-facing slopes and valley bottoms, but not on south-facing slopes (Slaughter and Kane, 1979; Slaughter et al., 1983; Hinzman et al., 2006). Subsequently, permafrost-underlain and permafrost-free areas in this region display contrasting watershed characteristics and hydrological responses. The presence or absence of permafrost is the primary factor that creates a complex landscape mosaic of sharp spatial boundaries of contrasting vegetation cover and soil hydraulic and thermal properties, moisture dynamics, and water pathways (Bolton et al., 2000; Hinzman et al., 2002; Bolton, 2006; Petrone et al., 2006; White et al., 2008; Jones and Rinehart, 2010). Due to these small-scale complexities associated with permafrost distribution,

simulation of large-scale hydrological processes remains a challenge in the Interior Alaskan boreal forest.

The hydraulic conductivity of permafrost-affected soils is several orders of magnitude less than that of the overlying organic layers and the nearby permafrost-free soil (Rieger et al., 1972; Burt and Williams, 5 1976; Kane and Stein, 1983; Woo, 1986; Ping et al., 2005; Zhang et al., 2009). The ice-rich permafrost is an impermeable layer at the permafrost surface that limits the hydraulic flow to the active layer – the thin, seasonally thawed soil layer above permafrost (Romanovsky and Osterkamp, 1995; Romanovsky et al., 2003). Streamflow in permafrost-dominated watersheds has been described as “flashy”, responding rapidly to precipitation and snowmelt with storm hydrographs displaying a sharp rise and 10 prolonged recession (Bolton et al., 2000; Quinton and Carey, 2008) and relatively low baseflow between precipitation events (Kane, 1980; Kane et al., 1981; Kane and Stein, 1983; Slaughter et al., 1983; Hinzman et al., 2002; Bolton, 2006; Petrone et al., 2006; Petrone et al., 2007). On the other hand, in watersheds with no or relatively low areal permafrost extent, the soil hydraulic conductivity and infiltration capacity are much higher, resulting in a slower streamflow response to precipitation and 15 snowmelt, relatively higher baseflow between storm events, and greater residence time of water in catchments (Bolton et al., 2000; Carey and Woo, 2001).

In the Alaskan sub-arctic, vegetation type, density, and physiological and structural properties such as Leaf Area Index (LAI) and stomatal conductance display a strong variation between permafrost-dominated and permafrost-free soils (Viereck et al., 1983; Viereck and Van Cleve, 1984). These 20 variations lead to a significant variation in the partitioning of precipitation and snowmelt into runoff and

evapotranspiration (ET), and change in soil water content between permafrost-dominated and permafrost-free soils (Hinzman et al., 2002; Bolton et al., 2006; Hinzman et al., 2006; Cable et al., 2014; Young-Robertson et al., 2016). Permafrost-affected soils typically support coniferous vegetation that is shallowly rooted, tolerant of cold and wet soils, and able to survive a short growing season (Viereck et al., 1983; Viereck and Van Cleve, 1984; Morrissey and Strong, 1986; Mölders, 2011). In contrast, the well-drained, relatively warm permafrost-free soils support deciduous vegetation that has higher LAI and stomatal conductance, deeper root network and greater trunk height (Cable et al., 2014; Young-Robertson et al., 2016). This difference in vegetation between permafrost-dominated and permafrost-free soil can further influence streamflow responses (Naito and Cairns, 2011) due to the large differences in the rates of and controls on ET, particularly transpiration, canopy interception (Baldocchi et al., 2000; Ewers et al., 2005; Andreadis et al., 2009) and vegetation water storage (Young-Robertson et al., 2016).- In Interior Alaska, deciduous trees have higher transpiration rates and vegetation water storage compared to coniferous trees (Ewers et al., 2005; Yuan et al., 2009; Cable et al., 2014; Young-Robertson et al., 2016), which limits the availability of water for runoff in the permafrost-free watersheds.

Plot-scale and hill-slope studies have documented the differences in and relationships between soil thermal and hydrologic properties, and ecosystem vegetation composition in high latitude cold regions (Dingman, 1973; Woo, 1976; Kirkby, 1978; Kane et al., 1981; Woo and Steer, 1983). However, larger scale land-surface parameterizations and the data products used in land-surface, hydrological, and climate models do not adequately represent the complex sub-Arctic watersheds with significant spatial variability in soil and vegetation dynamics. Hence, hydrological modeling using these coarse resolution

datasets cannot produce accurate estimates of the spatially variable and basin-integrated watershed responses. This is primarily because coarse resolution datasets smoothed the non-linear small-scale watershed heterogeneities that control hydrological responses of the sub-Arctic watersheds. Until the small-scale hydrologic processes, soil properties, and vegetation distributions are well represented, accurate large-scale hydrologic simulation and modeling remains extremely challenging (Walsh et al., 2005).

Several techniques, including parameter regionalization (Parajka et al., 2005; Pokhrel et al., 2008; Samaniego et al., 2010; Kumar et al., 2013) are proposed to address the limitation of large-scale hydrological simulation due to sub-grid variabilities of soil and vegetation cover properties. Standard regionalization (SR) (Pokhrel et al., 2008; Troy et al., 2008) and multiscale parameter regionalization (MPR) (Samaniego et al., 2010; Kumar et al., 2013) are widely used to parameterize the basin hydrological predictors. The later approach (MPR) takes account sub-grid heterogeneity of hydrological processes by implementing the prior predictors (the relationships between elevation, slope, vegetation characteristics, soil properties and etc) into model parameterization (Samaniego et al., 2010; Kumar et al., 2013). However, the first approach (SR) lacks explicit representation of the basin characteristics and primarily depends on calibration of sub-sets of the region (Troy et al., 2008). In this study, we proposed, a sub-grid parameterization landscape modeling approach of soil property vegetation characteristics parameterization of a mesoscale hydrological model. The sub-grid parameterization method landscape modeling approach proposed in this study closely fits the MPR approach. In both approaches, basin hydrological predictors are explicitly taken into account, and parameters are transferable to scales and locations other than a particular area of similar basin characteristics.

The primary objective of this study is to improve the prediction capability of hydrological models in Interior Alaska's boreal forest by implementing a small-scale parameterization ~~schememethod~~, which represents the spatial heterogeneity of soil properties and vegetation cover, into a meso-scale hydrological model. The study is conducted in two small sub-basins of the CPRW (LowP and HighP sub-basins of areas 5.2 km<sup>2</sup> and 5.7 km<sup>2</sup>, respectively) that are representative of the region. This study transfers the plot and hill-slope scale knowledge into a meso-scale distributed hydrological model (the VIC model at spatial resolution of approximately 1 km) so that its application can be extended to large basins in the region. A ~~sub-grid parameterization~~fine-resolution landscape method~~model~~ – on which the small-scale parameterization ~~schenemethod~~ is based – is derived from a high resolution Digital Elevation Model (DEM). Streamflow, ET and soil moisture simulations, based on the small-scale parameterization method and the coarse resolution datasets, are presented and investigated in both sub-basins.

## 2. METHODS

### 2.1 Study Area

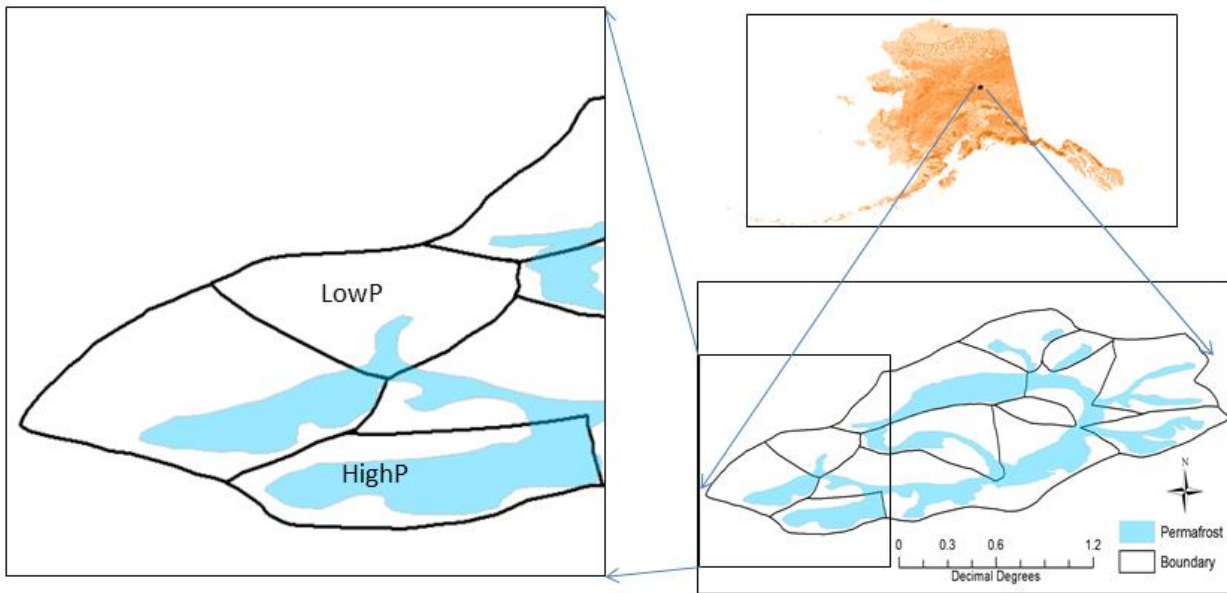
Located approximately 50 km northwest of Fairbanks, Alaska, the Caribou Poker Creek Research Watershed (CPCRW) (centred on 65°10'N and 147°30'W, basin area ~101 km<sup>2</sup>) is within the zone of discontinuous permafrost and in the North America boreal forest region (Figure 1~~Figure 1~~). CPRW is also within the Yukon-Tanana Uplands of the Northern Plateaus Physiographic Province (Wahrhaftig, 1965) with elevations ranging from 187 to 834 m. CPRW has a long-term record of ecological, meteorological, and hydrological data (Bolton et al., 2000; Knudson and Hinzman, 2000; Hinzman et



al., 2002; Hinzman et al., 2003; Bolton, 2006). The climate of CPCRW is characterized as continental with large diurnal and annual temperature variations, low annual precipitation, low cloud cover, and low humidity (Haugen et al., 1982). The average annual air temperature range at CPCRW is very large (July mean temperature = 14.7 °C, January mean temperature = -18.4 °C) with a mean annual temperature of 5 | -2.1 °C [~~Figure 2~~Figure 2, ~~Table 1~~Table 1]. The mean annual precipitation is 417 mm, of which 2/3 occurs as rainfall (Bolton, 2006).

Seven soil series have been identified in CPCRW (Rieger et al., 1972). We group the seven series into two general categories: permafrost-dominated soils that are poorly-drained with a thick organic layer, and permafrost-free soils that are well-drained with a shallow organic layer (Rieger et al., 1972). 10 Permafrost in CPCRW is generally found along north-facing slopes and valley bottoms where the solar input is very low (Rieger et al., 1972; Haugen et al., 1982). Soils free of permafrost are generally found on south-to southwest-facing slopes.

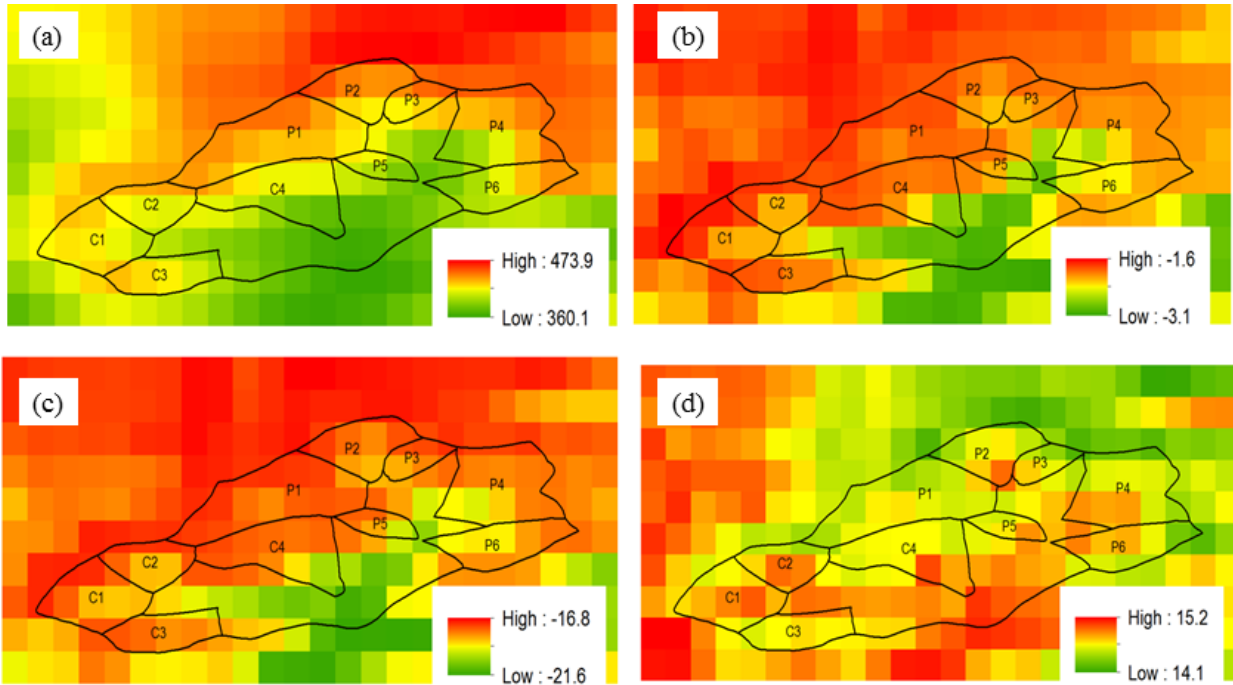
The vegetation distribution in CPCRW displays a strong relationship with permafrost distribution. Coniferous vegetation that consists primarily of black spruce (*Picea mariana*) is generally found in 15 areas underlain by permafrost. Feather moss (*Hylocomium spp.*), tussock tundra (*Carex aquatilis*), and sphagnum mosses (*Sphagnum sp.*) are also found along the valley bottoms. Deciduous vegetation consists primarily of aspen (*Populus tremuloides*), birch (*Betula papyrifera*), alder (*Alnus crispa*), and sporadic patches of white spruce (*Picea glauca*), and is found on the well-drained, south-facing permafrost-free soils (Haugen et al., 1982).



**Figure 1** Location and permafrost extent (light blue shade) the Caribou Poker Creek Research Watershed, Alaska, and the two sub-basins of interest (low permafrost or LowP sub-basin and high permafrost or HighP sub-basin). Permafrost map of CPRW was produced by a small-scale observation across the watershed (Rieger et al., 1972; Yoshikawa et al., 2002).

There are several sub-basins in the CPRW that differ in permafrost coverage and vegetation composition. The nearly permafrost-free or LowP (5.2 km<sup>2</sup>) and permafrost-dominated or HighP (5.7 km<sup>2</sup>) sub-basins (Figure 1~~Figure 1~~) are selected for this study for their contrasting permafrost extents and vegetation cover compositions (Table 3~~Table 3~~). Unlike vegetation cover, permafrost extent, and solar input, local climate does not vary between the two sub-basins [Figure 2~~Figure 2~~, Table 1~~Table 1~~] due to the local understory convective mixing of the bulk atmosphere (Hinzman et al., 2006). The coniferous/deciduous vegetation composition, derived from (Haugen et al., 1982), is approximately 30/70% for the LowP sub-basin and 95/5% for the HighP sub-basin (Figure 3~~Figure 3c~~, Table 3~~Table 3~~). The permafrost coverage is different between the two sub-basins, with approximately 2% and 53%

in LowP and HighP sub-basins ([Table 1](#) ~~Table 1~~), respectively (Rieger et al., 1972; Yoshikawa et al., 2002).



- 5 **Figure 2** Climatology of the Caribou Poker Creek Research Watershed, Alaska, from 1970 to 2010: (a) mean annual precipitation (mm), (b) mean annual air temperature ( $^{\circ}\text{C}$ ), (c) mean January air temperature ( $^{\circ}\text{C}$ ), and (d) mean July air temperature ( $^{\circ}\text{C}$ ). These climate datasets are extracted from the Alaska Pacific River Forecast Centre (APRFC) (Bennett, 2014). Only the US National Climate Data Centre Cooperative daily climate stations were used to generate the gridded fields of 800m resolution
- 10 using an inverse distance weighting function. Note that these data are not used to force the model in this study. In this study data from a very close four observation stations are used.

15 **Table 1** Mean (1970-2012) climatology of the Caribou Poker Creek Research Watershed (CPCRW), Alaska, and the sub-basins (LowP, HighP): MAP (mean annual precipitation, mm), MAT (mean annual air temperature,  $^{\circ}\text{C}$ ), MIN (mean minimum air temperature,  $^{\circ}\text{C}$ ), MAX (mean maximum air temperature,  $^{\circ}\text{C}$ ), MJan (mean January air temperature,  $^{\circ}\text{C}$ ), and MJuly (mean July air temperature,  $^{\circ}\text{C}$ ).

Basin/ Sub-basin	Permafrost extent (%)	MAP	MAT	MIN	MAX	MJan	MJuly
CPCRW	30	416.7	-2.1	-7.2	3.0	-18.4	14.7
LowP	2	421.5	-1.9	-6.7	2.9	-17.8	14.7
HighP	53	408.2	-2.1	-7.3	3.0	-18.5	14.8

## 2.2 Sub-grid parameterization method ~~Fine-resolution landscape modeling~~

The ~~sub-grid parameterization method~~ ~~fine-resolution landscape model~~ is a simple ~~method~~ ~~model~~ used to produce high resolution soil property and vegetation cover maps for accurate representation of the watershed characteristics into the hydrological model. Fine resolution Digital Elevation model (DEM) ~~of the landscape~~ is ~~the~~ primarily used to parameterize the sub-grid heterogeneity of the landscape. ~~y~~ ~~input to the model~~. In addition, the relationship between vegetation, permafrost, slope and aspect (Viereck et al., 1983; Morrissey and Strong, 1986; Hinzman et al., 2006) ~~are included~~ ~~are included~~ in the ~~sub-grid parameterization method~~ ~~fine-resolution landscape modeling~~.

First, aspect of the landscape is calculated using the 30m DEM (Aster, 2009) of the watershed with ArcGIS aspect spatial analyst toolbox. The aspect toolbox uses elevation values of eight surrounding grid cells to calculate the gradient and aspect of each grid cell in the model domain (Burrough et al., 1998) resulting in an aspect map with nine classes (~~Figure 3~~ ~~Figure 3a~~) that are aggregated into two aspect classes: permafrost-underlain and permafrost-free aspects. The following assumptions are made in the classification of each aspect into permafrost-dominated and permafrost-free aspects:

1. North-facing slopes and valley bottoms are underlain by permafrost, and south-facing slopes are permafrost-free (Rieger et al., 1972; Hinzman et al., 2002; Yoshikawa et al., 2002);
2. Coniferous vegetation, primarily black spruce trees, are found along poorly-drained north-facing slopes and valley bottoms (permafrost-underlain soil) (Haugen et al., 1982);
- 5 3. Deciduous vegetation, primarily birch and aspen trees, are found on the well-drained, south-facing soils (permafrost-free soil) (Haugen et al., 1982); and
4. The hydraulic conductivity of frozen soil is two-orders of magnitude less than the same soil in unfrozen conditions (Burt and Williams, 1976; Kane and Stein, 1983; Woo, 1986).

The small-scale observed (Rieger et al., 1972) and modelled (Yoshikawa et al., 2002) permafrost maps  
10 are used as a reference during the grouping of the nine aspect classes into permafrost-underlain and permafrost-free aspects. Finally, north, northeast, northwest, southwest, and flat aspects are classified as permafrost-underlain aspects with coniferous vegetation cover. South, southeast, east, and west are classified as permafrost-free aspects and with a deciduous vegetation cover. The vegetation cover and soil hydraulic property maps obtained from the ~~sub-grid parameterization method~~  
15 ~~landscape model~~ are shown in ~~Figure 3~~ ~~Figure 3b~~ and ~~Figure 4~~ ~~Figure 4c~~ respectively. Since each grid cell has a unique soil property and the spatial scale or length of the observed permafrost map is in the order of few meters, a threshold by which a grid cell can be assumed 100% permafrost or permafrost-free is required. After several testing, -0.5 grid cell fraction threshold is assumed to classify a grid cell as permafrost-underlain or permafrost-free soil. We used the small-scale observed (Rieger et al., 1972)  
20 permafrost map in the determination of this threshold value. As a result, a grid cell assigned with permafrost soil property when the fraction of permafrost is greater than 0.5 (~~Figure 4~~ ~~Figure 4c~~).

### 2.3 VIC Model Description

The Variable Infiltration Capacity (VIC) model (Liang et al., 1994; Liang et al., 1996; Nijssen et al., 1997) is a meso-scale process-based distributed hydrological model that represents vegetation heterogeneity, multiple soil layers, variable infiltration, and non-linear base flow. The version of the VIC model used in this study, VIC 4.1.2, contains several explicit formulations for snow accumulation and ablation, and frozen soil, and evapotranspiration and solves the full energy balance or water balance at a sub-daily or daily time steps to simulate the energy and water fluxes for individual grid cells. A separate routing model (Duband et al., 1993; Lohmann et al., 1996; Lohmann et al., 1998a, 1998b) is used to collect the runoff and baseflow simulations from each grid cell and simulate streamflow at the outlet of each ~~the~~ watershed. —VIC has been successfully used to simulate major hydrological and thermal processes at different spatial and temporal scales, such as basin streamflow (Abdulla et al., 1996; Abdulla and Lettenmaier, 1997a, 1997b; Schnorbus et al., 2011; Bennett et al., 2012; Bennett et al., 2015), evaporation and transpiration, canopy interception, soil moisture (Robock et al., 2003; Andreadis et al., 2005; Slater et al., 2007; Wu et al., 2007; Meng and Quiring, 2008; Billah and Goodall, 2012; Wu et al., 2015), surface and ground heat fluxes, ground temperature, and snowpack energy-balance, including ablation and accumulation processes (Cherkauer and Lettenmaier, 1999; Cherkauer et al., 2003; Andreadis et al., 2009).

In this study, a fully coupled water-energy balance mode of the VIC model, with 1/64<sup>th</sup> degree grid resolution (approximately 1km), is used in the LowP and HighP sub-basins of the CPRW. We assume such a higher model resolution in order to explicitly represent and simulate the contrasting hydrological

responses of the valley bottoms and hill slopes that exist in a very short spatial distance. The frozen soil algorithm is activated for permafrost grid cells (Cherkauer and Lettenmaier, 1999; Cherkauer et al., 2003; Bowling et al., 2008) in order to solve the ground heat flux and surface energy balance. The frozen soil algorithm solves the thermal/heat flux equation through the soil column to calculate the frozen soil penetration and the ice content of each soil layer (Cherkauer and Lettenmaier, 1999). Frozen soil algorithm also solves the effect of frozen soil on the moisture transport (Cherkauer and Lettenmaier, 1999).

VIC ~~was~~ forced with daily or sub-daily minimum and maximum air temperature, precipitation, and wind speed. The remaining forcing data including incoming shortwave radiation, longwave radiation, atmospheric pressure, and relative humidity are estimated ~~by~~-based on the daily temperature range and precipitation as calculated by Mountain Microclimate Simulation Model (MTCLIM) (Thornton and Running, 1999). MTCLIM is-as-implemented within the VIC model (Bohn et al., 2013). The radiation estimate by the VIC model indicates an average of 15-20  $\text{wm}^{-2}$  higher shortwave radiation in the LowP sub-basin than the HighP sub-basin. In this study, we generate the daily gridded minimum and maximum temperature, precipitation, and wind speed data from four meteorological stations located within the CPCRW (<http://www.lter.uaf.edu/data.cfm>), accessed on May, 2/2013) using inverse distance weighting (IDW) interpolation method.

In addition to forcing, VIC requires parameters that describe soil properties, vegetation distribution and characteristics, and topographic information. In this study, a three-layer soil column is used with a top layer with a depth of 0.1 m and variable depth for the second and third layer based on model calibration.

Soil properties are uniform within a grid cell, but these properties are allowed to vary for each layer in the grid cell. VIC requires several soil hydraulic and thermal property parameters. Due to a lack of high spatial resolution soil data in the region, most of the soil data — such as soil textural classes, saturated hydraulic conductivity, bulk density and porosity — were extracted directly from the 5 arc minute (approximately 9 km) Food and Agriculture Organization digital soil map of the world (FAO, 1998). Other soil hydraulic properties — including field capacity wilting point, residual soil moisture content, water retention and bubbling pressure — are estimated by the Brooks and Corey formulation (Rawls and Brakensiek, 1985; Saxton et al., 1986) based on soil texture classes, porosity and bulk density information. All soil parameters are resampled to 1/64<sup>th</sup> degree using bilinear interpolation. Selected soil property values are shown in Table 2.

VIC uses a mosaic representation of vegetation coverage and subdivides each grid cell's land cover into a specified number of "tiles". Each tile represents the fraction of the cell covered by a particular land cover type (coniferous, evergreen forest, grassland, etc). The coarse resolution vegetation cover composition data used in this study is obtained from the University of Alaska Fairbanks (UAF), Scenarios Network for Alaska and Arctic Planning (SNAP) 1 km X 1 km Land Cover map originating from the North American Land Change Monitoring System (NALCMS) 2005 data set (<http://www.snap.uaf.edu/data.php>, accessed on June 23, 2013). Rooting depth data is extracted from The International Satellite Land-Surface Climatology Project (ISLSCP) Initiative II Ecosystem Rooting Depths (Schenk and Jackson, 2009), accessed on June 24, 2013). Tree height, trunk ratio, displacement and roughness of the primary vegetation classes are derived from field measurements by Young-Robertson et al. (2016). The remaining vegetation parameter values including Leaf Area Index (LAI)



for each vegetation class in the region are derived from (Myneni et al., 1997); Hansen et al. (2000); (Nijssen et al., 2001a; Nijssen et al., 2001b).

## 2.4 The VIC Model Parameterization Methods

Based on sources of vegetation cover and soil hydraulic property data, we developed two  
5 parameterization methods: large-scale parameterization (large-scale, hereafter), and small-scale (small-  
scale, hereafter) parameterization [schemesmethods](#). In these two [schemesmethods](#), the key differences  
are in vegetation cover, saturated hydraulic conductivity, and organic layer thickness. The remaining  
model inputs and parameters including meteorological forcing, vegetation characteristics, and soil  
properties are the same in both [schemesmethods](#).

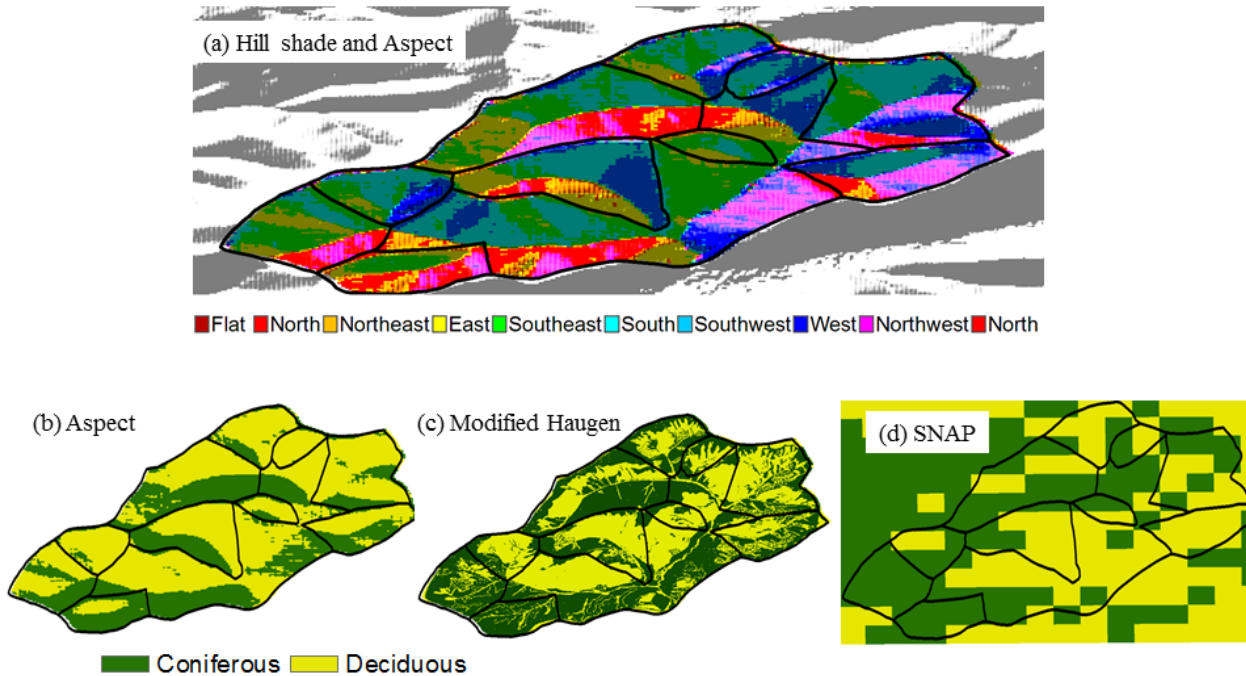
### 10 2.4.1 Large-scale parameterization

The large-scale parameterization [schememethod](#) is derived from the coarse resolution SNAP vegetation  
cover ([Figure 3Figure-3d](#)) and FAO soil property ([Figure 4Figure-4a](#)) datasets as described in the  
previous section ([Table 4Table-4](#)).

### 2.4.2 Small-scale parameterization

15 The small-scale parameterization [schememethod](#) consists of two small-scale parameterization sub-  
[schemesmethods](#): one derived from fine resolution landscape model (aspect parameterization,  
hereafter), and one derived from a permafrost map (permafrost parameterization, hereafter). In both  
small-scale parameterization [schemesmethods](#), the top layer of the permafrost cell is also assumed to be

the organic layer (Ping et al., 2005; Zhang et al., 2010) while mineral soil, as obtained from FAO dataset, is assumed for permafrost-free grid cell.

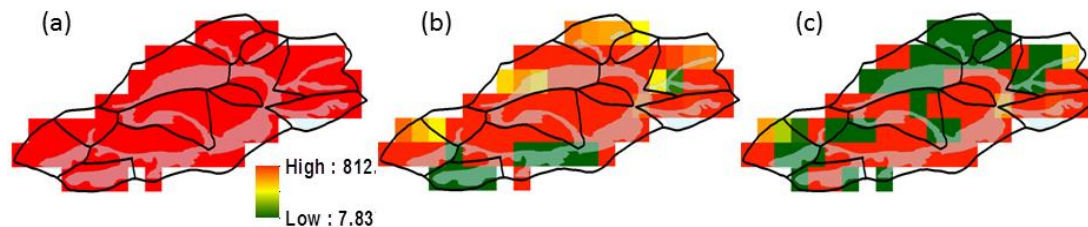


**Figure 3** (a) Aspect map – derived from Digital Elevation Model (DEM) – of the Caribou Poker Creek Watershed (CPCRW). Coniferous and deciduous vegetation composition at the CPCRW as derived from: (b) model-based aspect or topography of the watershed, (c) observation-based vegetation coverage map modified from Haugen et al. (1982), (d) large-scale based Scenario Network for Alaska and Arctic Planning (SNAP) vegetation coverage map. Note that (b) is prepared from the aspect map (a) and the fine resolution landscape model.

#### 10 2.4.2.1 Aspect parameterization

The aspect parameterization is based vegetation cover ([Figure 3](#)~~Figure 3~~b) and soil property ([Figure 4](#)~~Figure 4~~c) products of the sub-grid parameterization method~~fine-resolution landscape model output~~ ([Table 4](#)~~Table 4~~). Saturated hydraulic conductivity and organic layer thickness in the aspect

parameterization depends on whether the grid cell is permafrost-underlain or permafrost-free ([Figure 4Figure-4c](#)).



**Figure 4** Saturated hydrologic conductivity (mm/day) as derived from (a) large-scale FAO soil dataset, (b) permafrost map of Rieger et al. (1972), and (c) aspect map of CPRW. Panels (b) and (c) are small-scale parameterizations obtained from altering large-scale values according to the presence or absence of permafrost. Grid cells that are classified as permafrost soil are assigned hydraulic conductivity two-orders of magnitude less than the value obtained from the large-scale (FAO) dataset. FAO soils map do not indicate any of the permafrost-underlain soil hydraulic properties which are known to be present in the CPRW.

#### 2.4.2.2 Permafrost parameterization

The permafrost parameterization is primarily based on the small-scale observed (Rieger et al., 1972) and modeled (Yoshikawa et al., 2002) permafrost maps. In the permafrost parameterization, we assume the proportion of coniferous and deciduous vegetation in each grid cell is the same as the fraction of permafrost-underlain and permafrost-free soil respectively ([Table 4Table-4](#)). Like the aspect parameterization, we classified a grid cell as permafrost containing when the fraction of permafrost in the grid cell is greater than 0.5 ([Figure 4Figure-4b](#)) as described in Section 2.2.

**Table 2** Selected vegetation and soil parameters, their values and estimating methods or sources: runoff influence (*RI*) – runoff increases when parameter values increase (+) and runoff decreases when parameter values increase (-), Coniferous vegetation (*conif*), deciduous vegetation (*decid*), permafrost-underlain soil (*PF*), permafrost-free soil (*NPF*), parameters values specifically for the LowP sub-basin (*LowP*), parameters values specifically for the HighP sub-basin (*HighP*).

Parameters	Value ranges	RI	Sources
<b>Vegetation parameters</b>			
Leaf Area Index: <i>LAI</i>	3.8 – 4.2 ( <i>conif</i> ) & 0.11 – 6.0 ( <i>decid</i> )	(-)	(Hansen et al., 2000; Nijssen et al., 2001a; Nijssen et al., 2001b)
Roughness length: $Z_0$	1.23 ( <i>conif</i> ) & 2.24 ( <i>decid</i> )		
Displacement length: $d_0$	6.7 ( <i>conif</i> ) & 13.4 ( <i>decid</i> )		
Minimum stomata resistance: $r_{min}$ ( <i>s/m</i> )	130 ( <i>conif</i> ) & 150 ( <i>decid</i> )		
Architectural resistance: $r_{arc}$ ( <i>s/m</i> )	60 ( <i>conif</i> ) & 60 ( <i>decid</i> )		
Canopy albedo: $\alpha$ ( <i>fraction</i> )	0.11 ( <i>conif</i> ) & 0.09-0.13 ( <i>decid</i> )		
Trunk ratio: ( <i>fraction</i> )	0.1 ( <i>conif</i> ) & 0.4 ( <i>decid</i> )		This study
Depth of the two root zone: $r_{depth_1}$ , $r_{depth_2}$ ( <i>m</i> )	0.1, 0.5 ( <i>conif</i> ) & 0.1, 1.0 ( <i>decid</i> )		Schenk and Jackson (2009)
Fraction of root in the two root zone: $r_{fract_1}$ , $r_{fract_2}$ ( <i>fraction</i> )	0.5, 0.5 ( <i>conif</i> & <i>decid</i> )		
<b>Soil parameters</b>			
Porosity: $\rho$ ( $m^3/m^3$ )	43.9 – 66.5		FAO (1998)
Bulk density: ( $kg/m^3$ )	~1200 ( <i>PF</i> & <i>NPF</i> )		
Exponent used in the estimation of unsaturated hydraulic conductivity: <i>expt</i>	~ 10.84 ( <i>LowP</i> & <i>HighP</i> )		
Exponent used in baseflow curve: <i>c</i>	2 ( <i>LowP</i> <i>HighP</i> )		
Saturated hydraulic conductivity: $K_s$ ( <i>mm/day</i> )	~8 ( <i>PF</i> ) & ~800 ( <i>NPF</i> )		FAO (1998); this study
Dumping depth: ( <i>m</i> )	4 ( <i>LowP</i> ) & 2 ( <i>HighP</i> )		
<b>Calibration parameters</b>			
Variable infiltration curve parameter: <i>b</i>	0.11 ( <i>LowP</i> ), 0.31 ( <i>HighP</i> )	(+)	This study
Maximum velocity of the baseflow: $D_{smax}$ ( <i>mm/day</i> )	2.16 ( <i>LowP</i> ), 2.86 ( <i>HighP</i> )	(-)	
Fraction of baseflow, $D_{smax}$ , where non-linear baseflow begins: $D_s$ ( <i>fraction</i> )	0.17 ( <i>LowP</i> ), 0.45 ( <i>HighP</i> )	(-)	
Fraction of maximum soil moisture where non-linear baseflow begins: $W_s$ ( <i>fraction</i> )	0.79 ( <i>LowP</i> ), 0.74 ( <i>HighP</i> )	(-)	
Three soil layer thickness: $d_1$ , $d_2$ , and $d_3$ ( <i>m</i> )	0.1, 0.37, and 0.75 ( <i>LowP</i> ), and 0.1, 0.35, and 0.47 ( <i>HighP</i> )	(-)	

## 2.5 Calibration and validation

Model calibration wasis performed by comparing streamflow simulation with observation for the period of 2001 – 2005 at LowP and HighP sub-basin outlets of the CPCRW. The large-scale parameterization method – FAO soil (Figure 4~~Figure 4~~a) and SNAP vegetation cover (Figure 3~~Figure 3~~d) datasets – is implemented during the calibration process. The Multi-Objective Complex Evolution (MOCOM) automated calibration approach developed by Yapo et al. (1998) was used to match the simulated and observed streamflow. MOCOM is a multi-criteria calibration approach based on random parameter sampling strategy to optimize several user-defined criteria (Yapo et al., 1998; Wagener et al., 2001). As suggested by Liang et al. (1994), the model was calibrated using baseflow generation parameters including: maximum velocity of the baseflow ( $D_{smax}$ ), infiltration parameter ( $bi$ ), fraction of  $D_{smax}$  where non-linear baseflow begins ( $D_s$ ), maximum soil moisture for non-linear baseflow to occur ( $Ws$ ), thickness of the second soil layer ( $D2$ ) and thickness of the third soil layer ( $D3$ ).

Table 2~~Table 2~~ shows final calibration values of the user-defined parameters for both sub-basins.

After the lumped sub-basin baseflow generation parameter values are derived by calibration, validation of the model with the large-scale and small-scale parameterization methods were conducted by comparing the observed and simulated runoff at the outlets of LowP and HighP sub-basin for 2005 to 2008. Calibration results obtained from large-scale parameterization is directly implemented into small-scale parameterization during validation in order to examine how processes changes with the new parameterizations without re-calibration. We utilized two verification statistics, correlation coefficient ( $R^2$ , equation 1) and Nash-Sutcliff efficiency (NSE, equation 2).

$$R^2 = \left( \frac{N \left( \sum_{i=1}^N S_i \cdot Q_i \right) - \left( \sum_{i=1}^N S_i \right) \cdot \left( \sum_{i=1}^N Q_i \right)}{\left[ \left( N \sum_{i=1}^N S_i^2 - \left( \sum_{i=1}^N S_i \right)^2 \right) \left( N \sum_{i=1}^N Q_i^2 - \left( \sum_{i=1}^N Q_i \right)^2 \right) \right]^{0.5}} \right)^2 \quad (1)$$

$$NSE = 1 - \left( \frac{\sum_{i=1}^N (S_i - Q_i)^2}{\sum_{i=1}^N (\bar{Q} - Q_i)^2} \right) \quad (2)$$

where  $N$  is equal to the number of data points (i.e. daily streamflow realizations),  $i$  is the time step (days),  $S$  is the simulated streamflow (mm/day), and  $Q$  is the observed streamflow (mm/day).

5  $R^2$  (equation 1) describes the degree of linear correlation of simulated and observed runoff or goodness of fit. The value of  $R^2$  ranges from 0.0 to 1.0, and larger values indicate better fit between simulation and observation. NSE (equation 2) describes the relative magnitude of simulated runoff variances compared to variance in observed streamflow. NSE is also an indicator of model-fit in terms of a scatter plot of simulated versus observed streamflow values, wherein a slope near the 1:1 line indicates a better  
10 fit. The value of NSE ranges from 1 (perfect fit) to  $-\infty$ . While values larger than 0.0 can be considered as acceptable levels of model performance (Krause et al., 2005; Schaepli and Gupta, 2007), values approaching 1.0 are more preferred depending on the study area. NSE uses of the mean observed value as a reference (Schaepli and Gupta, 2007). Hence, factors that affect the mean value of observed streamflow will have a stronger effect on the values NSE. In the Interior Alaska, lower value of NSE  
15 can be acceptable due to the large uncertainties of mean observed streamflow, which is resulted from

aufeis related measurement errors at beginning of snowmelt runoff season (Bolton, 2006). NSE of below zero indicates that the mean observed streamflow is better predictor than the simulated runoff (Krause et al., 2005).

Percent difference (PD) is also used to indicate and visualize differences in simulated runoff from each parameterization scenarios:

$$PD = \frac{(Q_R - Q_i)}{0.5(Q_R + Q_i)} \times 100\% \quad (3)$$

Where PD is the percent difference,  $Q_R$  is reference observed streamflow and  $Q_i$  is simulated runoff. The range of PD (equation 3) falls between -100% to 100% with zero being the perfect match between observed and simulated streamflow. Large negative PD in the time series indicates model over-prediction. On the other hand, large positive PD represents model under-prediction. PD values closer to zero indicate a better model fit.

In addition to the three measures of success mentioned above, we compared the simulated and observed hydrographs whether our sub-grid parameterization method can reproduce the strong relative contrast in runoff behaviour between the two catchments.

### 3. RESULTS

#### 3.1 Comparisons of vegetation cover in each parameterization scenario

Figure 3 ~~Figure 3~~ b, c, and d show the three vegetation cover representations of CPRW derived from

~~sub-grid parameterization method~~~~fine-resolution landscape model~~ (aspect), permafrost, and SNAP, respectively. The comparison of vegetation cover focuses on the coniferous and deciduous vegetation composition in LowP and HighP sub-basins. ~~Table 3~~~~Table-3~~ summarizes the proportion of coniferous and deciduous vegetation in the different parameterization ~~schemes~~~~scenarios~~. The small-scale observed vegetation cover from Haugen et al. (1982) [~~Figure 3~~~~Figure-3c~~] is used as a reference vegetation cover to evaluate the other vegetation cover scenarios.

**Table 3** Estimated percent of the sub-basins (LowP and HighP) covered by coniferous and deciduous vegetation, and percent of the sub-basins underlain by permafrost. Values were obtained by applying different parameterization methods: SNAP vegetation cover (*SNAP*), a modified Haugen et al. (1982) vegetation cover map (*modified Haugen*), aspect-derived vegetation cover and permafrost maps (*aspect*), the CPCRW permafrost map (*permafrost*), and large-scale FOA digital soil map of the world (*FAO soil dataset*). *NA* indicates that a given method was not utilized to obtain values for either the vegetation or permafrost distributions.

parameterization method	vegetation, % landscape distribution				permafrost, % landscape distribution	
	coniferous		deciduous		LowP	HighP
	LowP	HighP	LowP	HighP		
SNAP	63	93	37	7	NA	NA
modified Haugen	30	95	70	5	NA	NA
aspect	13	78	87	22	10	42
permafrost map	3	53	97	47	3	83
FOA soil dataset	NA	NA	NA	NA	0	0

The SNAP vegetation cover map represents the HighP sub-basin well but overestimates the coniferous proportion of LowP sub-basin. It also shifts the dominant vegetation type from deciduous to coniferous for LowP sub-basin (30% in small-scale to 63% from SNAP, see ~~Table 3~~~~Table-3~~). Vegetation cover from ~~sub-grid parameterization method~~~~fine-resolution landscape model~~ (aspect) captures the dominate vegetation type for both sub-basins (~~Table 3~~~~Table-3~~). Coniferous and deciduous composition in the permafrost map parameterization is generally similar to permafrost-underlain and permafrost-free



proportion. A 3/97 and 53/47 proportion of coniferous/deciduous vegetation is obtained from parameterization based on permafrost map in LowP and HighP sub-basins respectively (~~Table 3~~ ~~Table 3~~)

### 3.2 Calibration

~~Figure 5~~ ~~Figure 5~~a and b show daily simulated vs. observed streamflow for the calibration period of 2001-2005 in LowP and HighP sub-basins, respectively. ~~Table 5~~ ~~Table 5~~ summarizes the coefficient of determination ( $R^2$ ) and Nash-Sutcliffe efficiency (NSE) during the calibration of two sub-basins.

Calibration results show that runoff simulation in HighP sub-basin (~~Figure 5~~ ~~Figure 5~~b) is in better agreement than LowP sub-basin with the observed streamflow (~~Figure 5~~ ~~Figure 5~~a). Although the  $R^2$  for LowP (0.51) is greater than HighP (0.48), the NSE of LowP is less than HighP (0.17 for LowP and 0.38

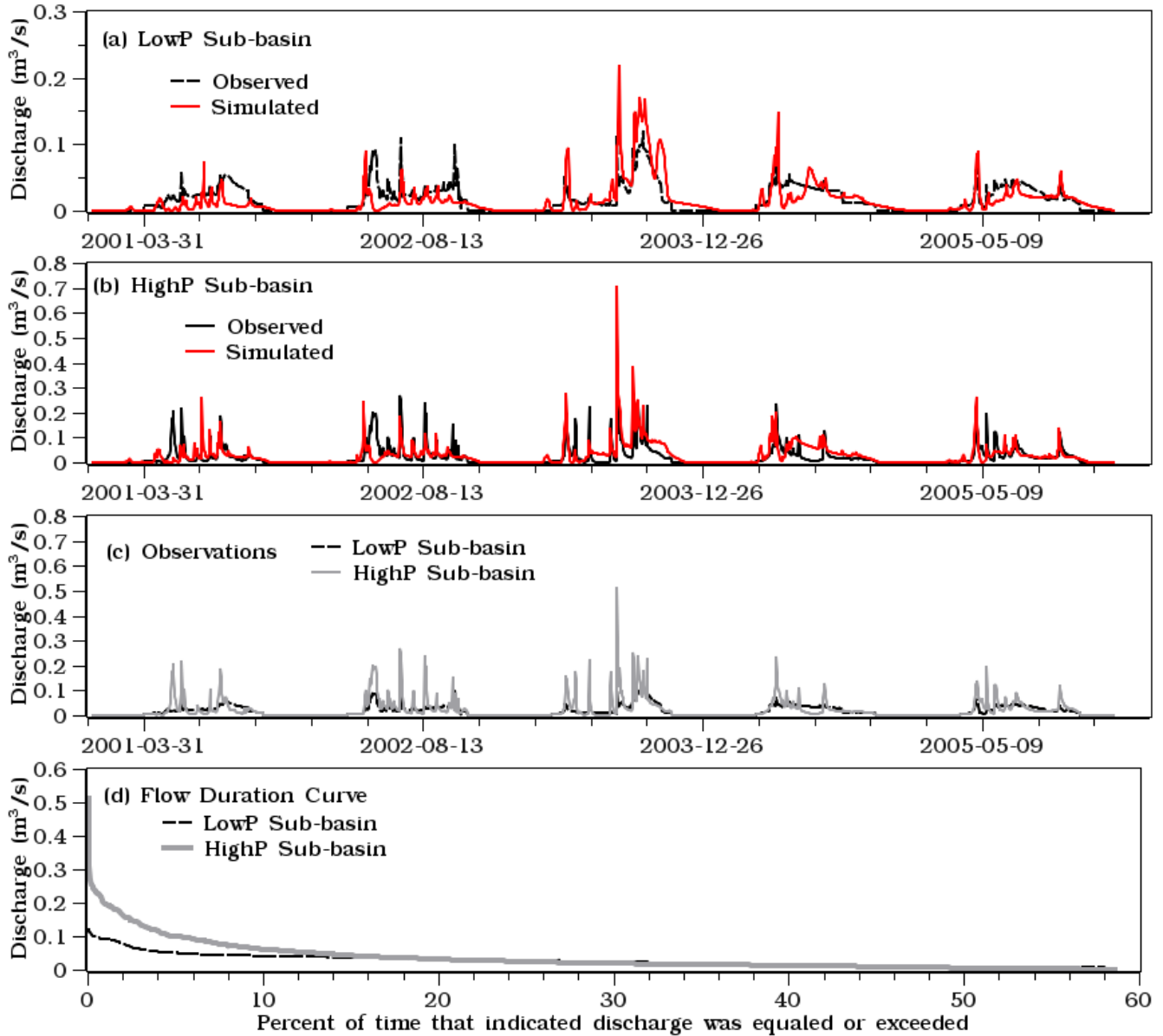
for HighP sub-basins) indicating the peak flows are systematically underestimated in LowP than HighP sub-basin (~~Table 5~~ ~~Table 5~~). The simulated streamflow for both sub-basins is believed to be satisfactory given the inadequate soil and vegetation parameter representation from the coarse resolution datasets.

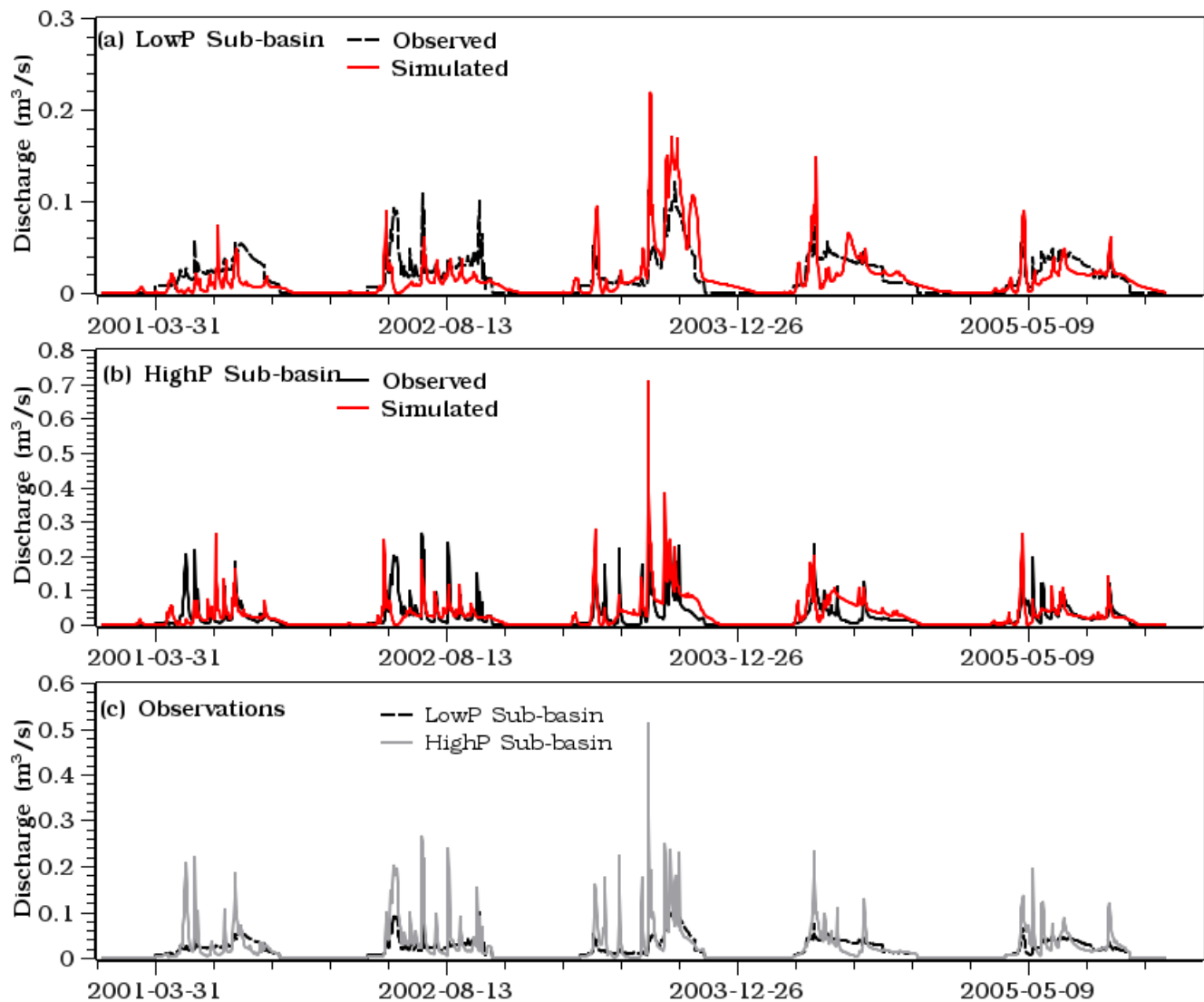
Moreover, streamflow measurement during early snowmelt period is mostly missing or not accurate most of the time due to the icing problem (Bolton, 2006) that contributes to the lower calibration values

in this region. ~~Figure 5~~ ~~Figure 5~~c and d shows the observed streamflow differences between LowP and HighP sub-basins for the calibration period of 2001-2005. The notable discharge contrast between the two sub-basins is shown by flow duration curve in Figure 5d. The peak flow in the HighP sub-basin is about five times higher than the peak flow in LowP sub-basin. Streamflow in the LowP sub-basin has

lower peak flow, higher baseflow, and longer runoff response to precipitation and snowmelt than HighP. ~~Peak flow from HighP is an order of magnitude greater than the LowP sub-basin.~~ Final

calibration parameter values suggest that HighP sub-basin requires parameters that favour direct runoff while LowP sub-basin requires parameters that favor more baseflow and infiltration ( Table 2 Table 2).





**Figure 5** Observed versus simulated streamflow during the calibration period of 2001-2005: (a) at the LowP sub-basins, and (b) at the HighP sub-basin, of the CPRW. The discharge contrasts between HighP and LowP sub-basins are shown in (c) and (d). (c) denotes streamflow hydrograph and (d) denotes flow duration curve in both sub-basins. ~~shows the difference in observed streamflow between LowP and HighP sub-basins.~~

### 3.3 Hydrological fluxes under different parameterization methods

In order to test the improvement of VIC's simulations in small-scale parameterization over the coarser resolution data products, three simulations were completed: one using large-scale parameterization and the other two using small-scale parameterizations (aspect and permafrost). Streamflow, ET, and soil moisture ~~were~~ simulated in the LowP and HighP sub-basins from 2006 to 2008. ~~Table 4~~ [Table 4](#) summarizes how the soil property and vegetation cover are parameterized in the three parameterization ~~scheme~~ [method](#) implementations.

**Table 4** Definition of the parameterization scenarios with respect to corresponding vegetation cover and soil property parameters

Scenarios	Vegetation cover	Soil hydraulic property
Aspect	Small-scale landscape model (aspect) based vegetation cover map (Figure 3b)	Aspect based soil property (Figure 4c)
Permafrost	Permafrost distribution map (Figure 1) Permafrost areas are assumed coniferous while the remaining is deciduous	Soil hydraulic property derived from permafrost distribution map (Figure 4b)
Large-scale	SNAP vegetation cover (Figure 3d)	FAO soil dataset(Figure 4a)

### 3.3.1 Streamflow

The simulated hydrograph changes with vegetation cover and soil properties in both sub-basins. ~~Figure 6~~ [Figure 6](#) ~~a~~ and ~~c~~ show the simulated vs observed streamflow of each parameterization ~~scheme~~ [method](#) in the LowP and HighP sub-basins of the CPCRW. The percent difference (PD, equation 3) of each simulation from observation is also shown in ~~Figure 6~~ [Figure 6](#) ~~b~~ and ~~d~~. ~~Table 5~~ [Table 5](#) compares the three streamflow simulations against observation in both sub-basins. Streamflow simulation based on large-scale parameterization yields the lowest performance with a  $R^2$  /NSE of 0.34/0.17 and 0.48/0.42 for LowP and HighP sub-basins respectively (~~Table 5~~ [Table 5](#)). The mean annual streamflow simulation

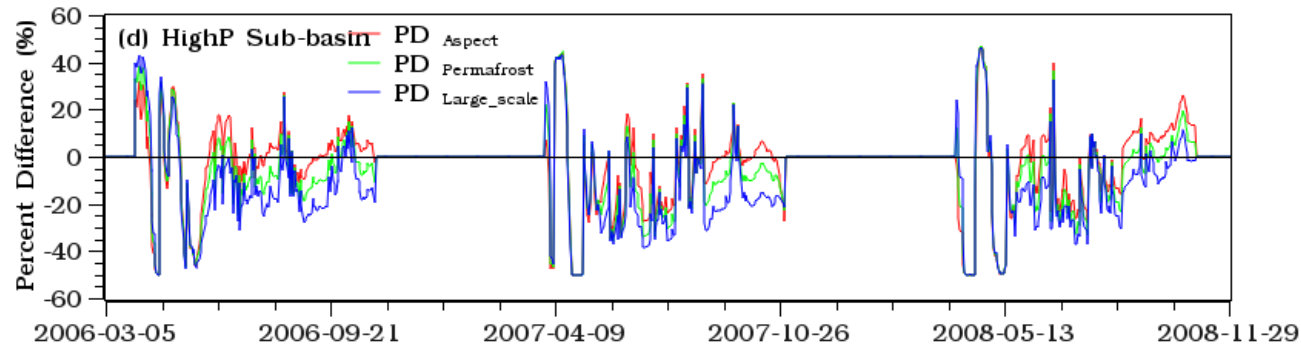
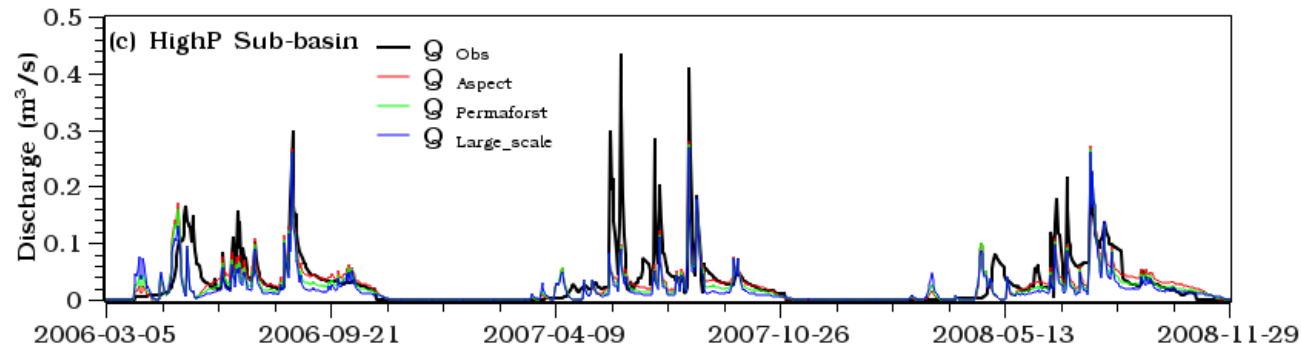
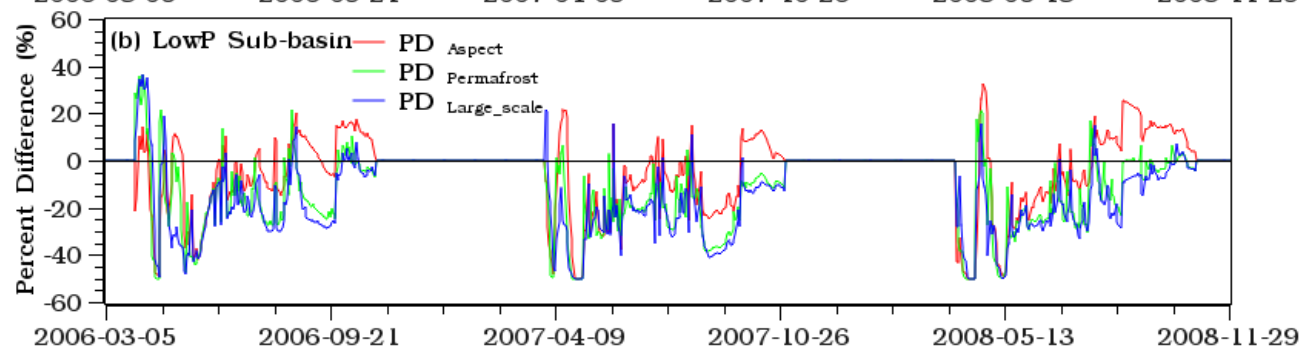
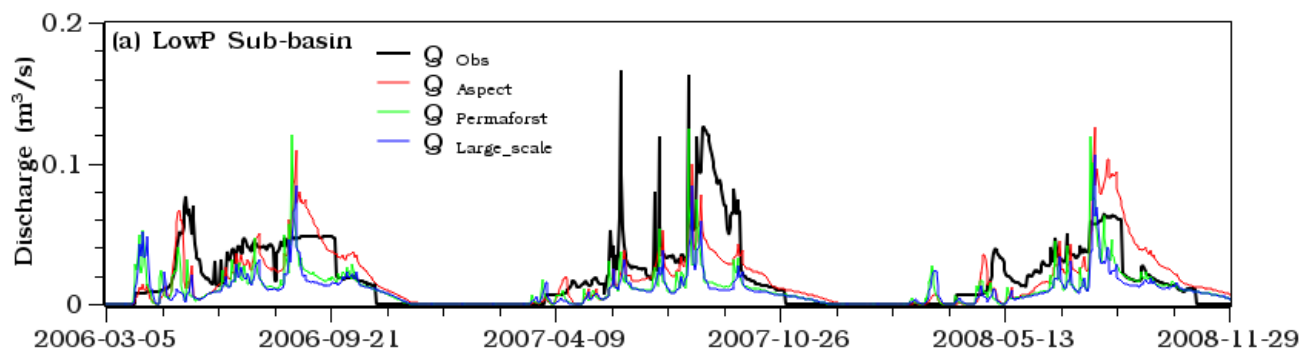
in both sub-basins is largely underestimated under large-scale parameterization (by 45% to 68 % and 27% to 52% of the total annual runoff in LowP and HighP sub-basins). The underestimation is higher in the LowP sub-basin. Further, the simulated spring peak flow tends to occur earlier than observed peak for both sub-basins (~~Figure 6~~Figure 6).

5 **Table 5** Coefficient of determination ( $R^2$ ) and Nash-Sutcliff efficiency (NSE) values for the LowP and HighP sub-basins for calibration and validation periods.

	LowP Sub-Basin		HighP Sub-basin	
	$R^2$	NS	$R^2$	NS
Calibration	0.51	0.17	0.48	0.38
Validation				
Large- scale parameterization	0.34	0.17	0.48	0.42
Permafrost parameterization	0.43	0.3	0.51	0.48
Aspect parameterization	0.51	0.48	0.53	0.52

The simulated streamflow hydrograph obtained from aspect parameterization – the small-scale parameterization ~~schememethod~~ which is primarily derived from the sub-grid parameterization ~~method~~fine-resolution-landscape-model – is closest to the observed streamflow hydrograph for both sub-basins (~~Figure 6~~Figure 6a and c) with an  $R^2$  /NSE of 0.51/0.48 and 0.53/0.52 for LowP and HighP sub-basins respectively (~~Table 5~~Table 5). Throughout the simulation period, the PD is also close to zero under aspect parameterization than the other two parameterizations (~~Figure 6~~Figure 6b and d). Both peak and low flows in both sub-basins are well simulated in small-scale parameterization ~~schememethod~~ (~~Figure 6~~Figure 6). Mean annual PD values are also close to zero for streamflow simulations using aspect parameterization (-7.6% to -14.4% and -2.2% to -8.3% in LowP and HighP

sub-basins) compared to simulation under large-scale parameterization (-17.7% to -25.4% and -11.5% to -15.9% in LowP and HighP sub-basins.).



**Figure 6** Comparison of streamflow simulations – obtained from different parameterizations – with observation: (a) in the LowP sub-basin, (c) in the HighP sub-basin. (b) and (d) show the percent difference (PD) for each runoff simulation from the observed streamflow in the LowP and HighP sub-basins, respectively.

### 5 3.3.2 *Evapotranspiration*

Unlike streamflow simulations, ET simulations generally do not display significant differences between

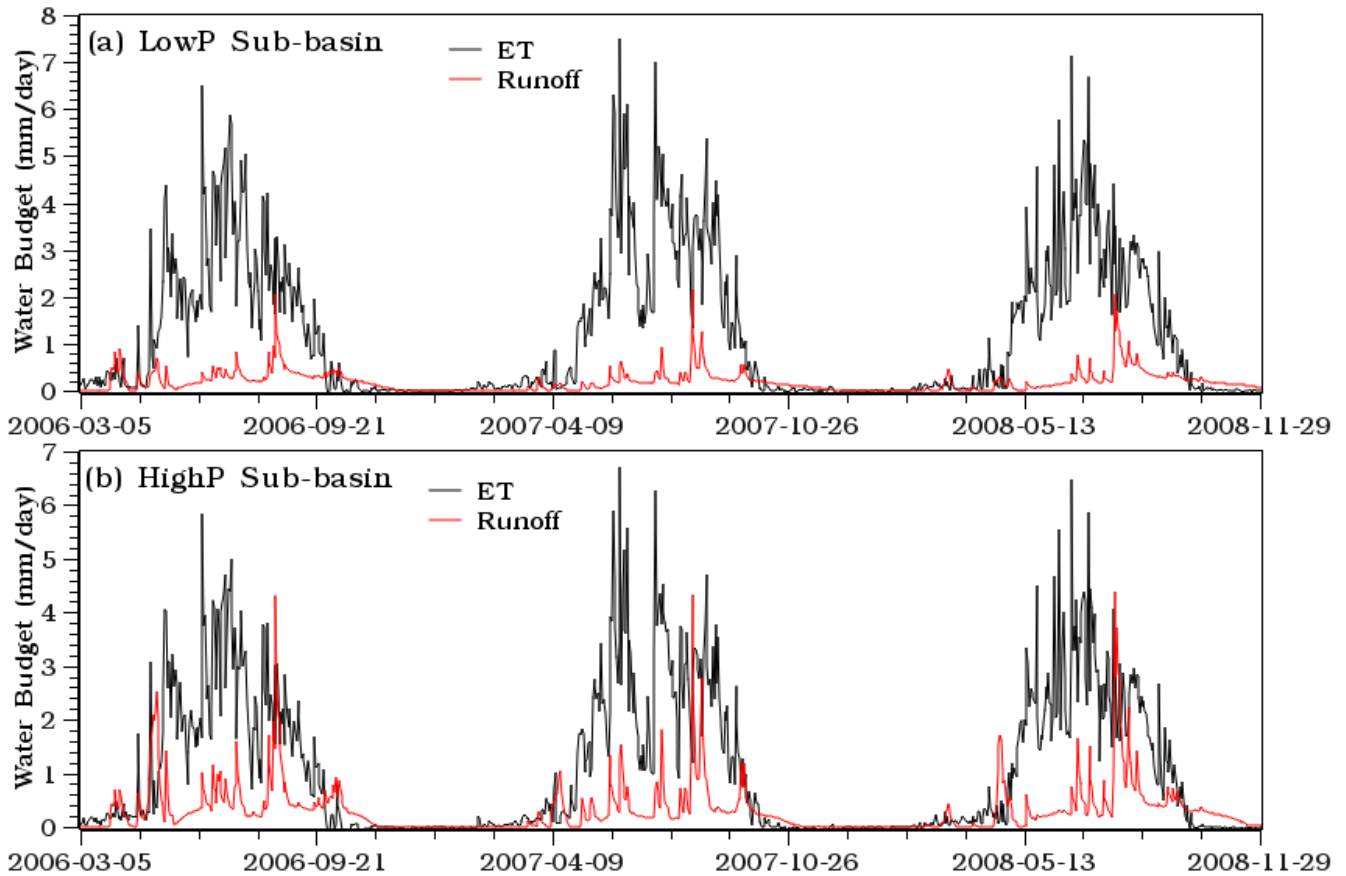
10 LowP and HighP sub-basins in all parameterizations. However, on an annual scale, there is a notable difference in the simulated ET between parameterization schemes in both sub-basins. The difference in simulated mean annual ET between LowP and HighP sub-basins under aspect parameterization (356.5 and 335.2 mm in LowP and HighP sub-basins) is almost half of the values of ET simulation when permafrost (396.6 and 352.2 mm in LowP and HighP sub-basins) and large-scale parameterization (402.8 and 362.8 mm in LowP and HighP sub-basins) are used.

15 ~~Figure 7a and b show comparisons of simulated ET from the three parameterizations in the LowP and HighP sub-basins. There are slight variations, however, in the peak and low ET rates in the two sub-basins. ET simulation under the aspect parameterization—for example in LowP—predicts low ET most of the time. However, in the HighP sub-basin, low ET is predicted only in the beginning to mid-summer. In the LowP sub-basin, simulated ET does not display significant variation between the permafrost and large scale parameterizations (Figure 7a). However, in the HighP sub-basin, the difference is greater, especially in the low ET periods (Figure 7b). Generally, ET simulations in the~~  
20 ~~LowP sub-basin are greater than the HighP sub-basin in all parameterizations. Parameterization based on aspect display the lowest ET simulation in both sub-basins.~~



We also made comparisons of mean annual ET simulations to evaluate the impact of each parameterization on the annual water balance. The difference in simulated mean annual ET between LowP and HighP sub-basins under aspect parameterization (356.5 and 335.2 mm in LowP and HighP sub-basins) is almost half of the values of ET simulation when permafrost (396.6 and 352.2 mm in LowP and HighP sub-basins) and large-scale parameterization (402.8 and 362.8 mm in LowP and HighP sub-basins) are used.

For further comparison between the LowP and HighP sub-basins (Figure 7) ~~(Figure 8)~~, ET and streamflow simulation under aspect parameterization is selected due to its better streamflow simulation performance (Figure 6) ~~(Figure 6)~~. Generally, ET is higher than runoff most of the time in both sub-basins. The HighP sub-basin, however, displays more runoff than ET during snowmelt, late summer/fall and large storm events (Figure 7b) ~~(Figure 8b)~~.



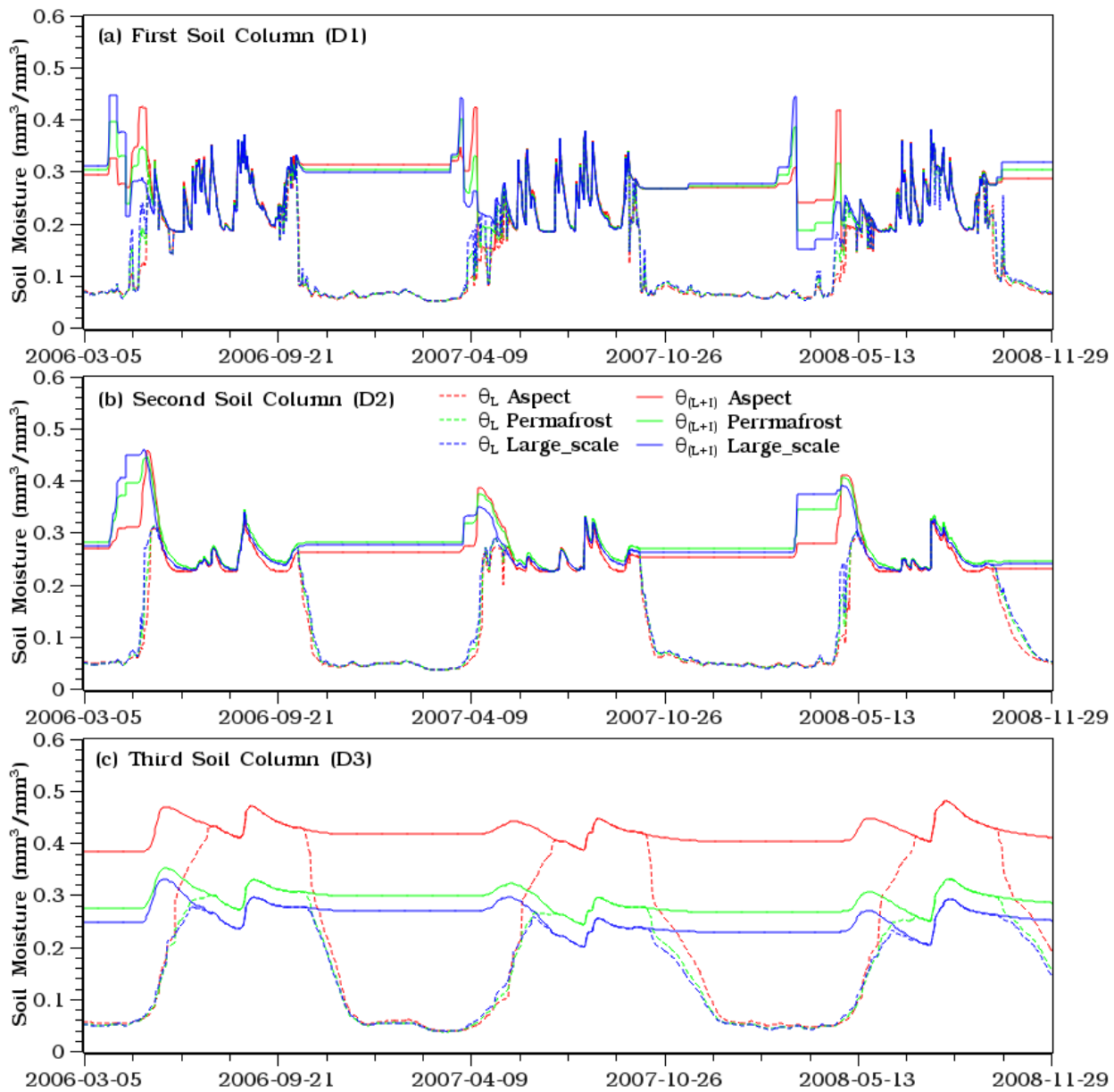
**Figure 7** Comparison of evapotranspiration (ET) and runoff simulations – obtained from parameterization based on aspect: (a) in the LowP sub-basin and (b) in the HighP sub-basin.

5 **3.3.3 Soil moisture**

~~Spatial variation of soil moisture simulations further indicates the influence of the spatial representation of vegetation cover and soil property in the model. Figure 9 and Figure 10 show the sub-basin average volumetric soil moisture simulations in the three soil layers in LowP and HighP sub-basins respectively. The results show both frozen and unfrozen soil moisture content.~~ Variation in soil properties and

vegetation cover is generally found to be sensitive to VIC's soil moisture simulation, ~~especially during spring in the first layer, and throughout the entire simulation period in the second and third soil layer.~~ We also noted that the rates of snowmelt, melt/refreeze, and soil moisture increase/decrease between the parameterization schemes notably different between the two sub-basins (Figure 8).

5 Unfrozen soil moisture content over the winter does not show any significant variation between the two sub-basins (Figure 8). However, the change in storage in in the LowP sub-basin is higher than in the HighP sub-basins. Additionally, the fluctuations of soil moisture and change in storage with the snowmelt and rainfall events are higher in the LowP sub-basin as compared to the fluctuation in the HighP sub-basin (Figure 8). These results are consistent with previous observation (Young-Robertson et  
10 al., 2016) and modeling (Bolton, 2006) studies in the Interior Alaska boreal forest ecosystem. These results indicate that soil moisture in the LowP sub-basin is more sensitive to climate forcing and land surface representation as compared to the wet system of HighP sub-basin.

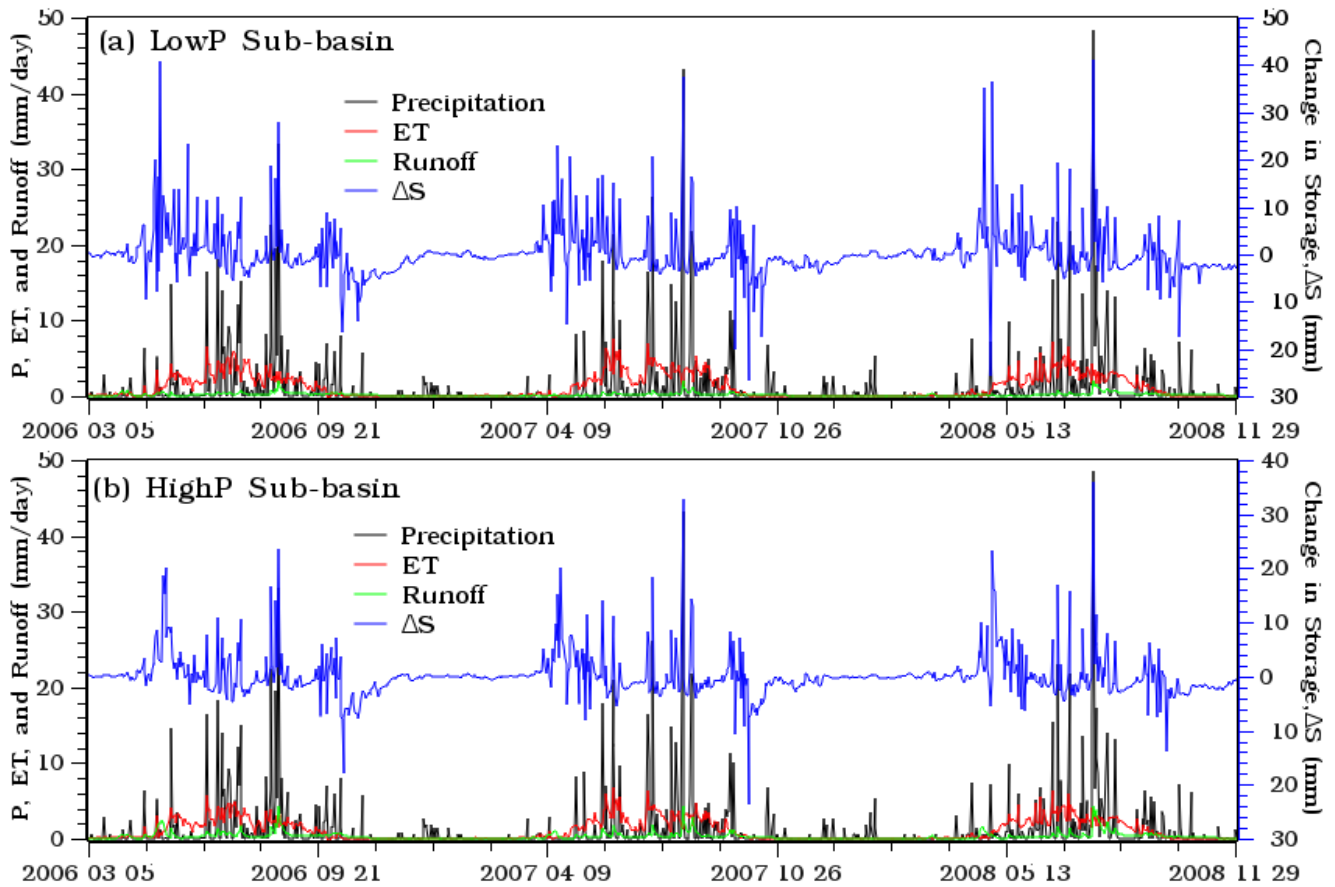


**Figure 9 Comparison of watershed-integrated oil moisture content simulations between parameterization scenarios in the LowP sub-basin: (a) in the top soil layer, D1, (b) in the middle soil layer, D2, and (c) in the bottom soil layer, D3. Note that solid lines show total soil (liquid plus ice) moisture in the soil column and dotted lines show the liquid water portion of soil moisture.**

5 Top layer soil moisture simulation using the aspect parameterization shows a slower snowmelt and rise  
in soil moisture early in the spring than the large scale parameterization. The melt/refreeze process  
takes longer time in the aspect parameterization as well. Comparison of the time to reach peak soil  
moisture in the second layer reveals that the aspect parameterization takes a longer time to reach  
saturation than the large scale parameterization. The overall patterns of these rates do not display  
10 significant variation between the two sub-basins, although the variability between parameterizations is  
less defined in HighP sub-basin.

Overall, aspect parameterization results in higher soil moisture in the top and bottom soil layers, and  
lower soil moisture in the middle layer than the remaining parameterizations in both LowP and HighP  
sub-basins. Soil moisture simulation in the LowP sub-basin (Figure 9c) appears to be more sensitive to  
variations in the soil property and vegetation cover than the HighP sub-basin (Figure 10c) in the bottom  
15 soil layer, and vice versa in the middle layer (Figure 9b and Figure 10b).

Unfrozen soil moisture content over the winter does not show any significant variation among  
parameterizations for both sub-basins (Figure 9 and Figure 10). However, LowP tends to have slightly  
higher unfrozen soil moisture than HighP in the bottom soil column (Figure 9c and Figure 10c). The  
HighP sub-basin also freezes faster than the LowP sub-basin in the bottom soil column. A further  
20 analysis in Figure 11 indicates that the change in storage in the LowP sub-basin is higher than the  
HighP sub-basins.



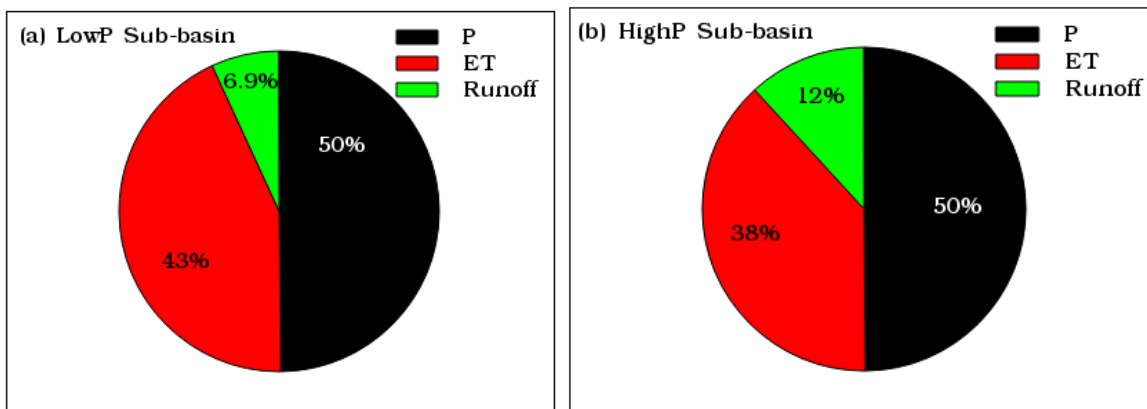
**Figure 811** Partitioning of precipitation or snowmelt (P, Precipitation) into evapotranspiration (ET), runoff, and change in soil moisture storage ( $\Delta S$ ) in the (a) LowP and (b) HighP sub-basins.

5

#### 4. DISCUSSION

One of the important findings from our small-scale [sub-grid parameterization method](#) [landscape model](#), as shown by [Figure 3](#) [Figure-3](#) and [Figure 4](#) [Figure-4](#), is that an acceptable spatial vegetation cover and

soil property representation of the Interior Alaskan sub-arctic can be produced without any direct or remote sensing methods. Large-scale vegetation cover and soil property products that are typically used in meso-scale hydrological modeling do not accurately represent Interior Alaskan boreal forest ecosystem spatial heterogeneities. This is because of the fact that the coarse resolution ~~of the~~ data products include regions outside the watershed area that influence the average value of the grid cell, rather than capturing the spatial heterogeneity of ecosystem properties within the watershed boundaries. This study indicates that previously documented relationships among soil hydraulic and thermal properties, vegetation cover, topography, slope and aspect (Viereck et al., 1983; Viereck and Van Cleve, 1984; Morrissey and Strong, 1986; Hinzman et al., 2006; Mölders, 2011) can be used to formulate a methodology by which local to regional scale landscape properties can be incorporated into meso-scale hydrological models.



**Figure 912** VIC model simulated (based on aspect parameterization method) mean annual (2006-2008) percentage of water balance components, P-precipitation (black), ET-evapotranspiration (red), and runoff (green) in the (a) LowP and (b) HighP sub-basins. The change in storage component is very small, hence not included, compared with the other components.

The soil hydraulic properties obtained from the large-scale FAO soil data do not reflect any variation between permafrost-affected and permafrost-free soils (Figure 4a). However, many surface and sub-surface soil hydraulic properties including the hydraulic conductivity and thickness of organic layer show a large difference between permafrost-affected and permafrost-free soil (Rieger et al., 1972; Burt and Williams, 1976; Kane and Stein, 1983; Woo, 1986; Ping et al., 2005; Zhang et al., 2009). Therefore, hydrological modeling using such data creates large uncertainty that cannot be easily corrected with model calibration, as the hydrology and landscape properties including the vegetation composition (Viereck et al., 1983; Viereck and Van Cleve, 1984; Morrissey and Strong, 1986; Hinzman et al., 2006; Mölders, 2011) are primarily controlled by the presence or absence of permafrost (Kane, 1980; Kane et al., 1981; Kane and Stein, 1983; Slaughter et al., 1983; Hinzman et al., 2002; Bolton, 2006; Petrone et al., 2006; Petrone et al., 2007).

Our multi-objective model calibration indicates that watersheds with different permafrost proportions display consistent and contrasting parameter values between nearly permafrost-free and permafrost-dominated watersheds (Figure 5, Table 2).

As reported by previous studies (Bolton et al., 2000; Hinzman et al., 2002; Bolton, 2006), simulated runoff in permafrost-free watersheds is best best-fitted with observations for parameter values that favor high infiltration and baseflow and longer recession period (Figure 5a, Table 2).

On the other hand, the best-fit between simulated and observed streamflow in the permafrost-dominated watersheds (Figure 5b) is achieved only when baseflow parameters that favor more direct runoff and inhibit infiltration (



~~Table 2~~ ~~Table 2~~) are introduced into the model. During model calibration, especially for the heavily parameterized distributed models, it is important to consider these variabilities in the baseflow parameters of the discontinuous permafrost watersheds. It could save considerable amount of time and resources, especially for big watersheds and limited computational facilities.

5 Based on the three model evaluation criteria (equations 1-3); and the comparison of runoff behaviours between simulation and observation, streamflow simulations in both the permafrost-free, LowP, (~~Figure 6~~ ~~Figure 6~~a and b) and permafrost-dominated, HighP (~~Figure 6~~ ~~Figure 6~~c and d) perform better when the small-scale sub-grid soil hydraulic and thermal properties (~~Figure 4~~ ~~Figure 4~~c) and vegetation cover (~~Figure 3~~ ~~Figure 3~~b) heterogeneity are introduced into the VIC model's soil property and  
10 vegetation cover parameterizations. Comparison of the improvement between the LowP and HighP sub-basins indicates that the strongest streamflow simulation improvement (~~Table 3~~ ~~Table 3~~ and ~~Table 5~~ ~~Table 5~~) was observed in sub-basins that are highly unrepresented by the large-scale data products – the LowP sub-basin (~~Figure 3~~ ~~Figure 3~~, ~~Figure 4~~ ~~Figure 4~~, and ~~Figure 6~~ ~~Figure 6~~a and b). In general, our study shows that most of the peak and low flows in both sub-basins are captured well with the small-  
15 scale parameterization schememethod as compared to the direct use of coarse resolution land surface data products (~~Figure 6~~ ~~Figure 6~~, ~~Table 5~~ ~~Table 5~~), except the 2007 spring flooding event (~~Figure 6~~ ~~Figure 6~~ ~~6~~). The exception for the 2007 spring runoff peak can be explained by the high rainfall and mixed precipitation in the beginning of the 2006/2007 winter ([nadp.isws.illinois.edu/data/sites/siteDetails.aspx?id=AK01&net=NTN](http://nadp.isws.illinois.edu/data/sites/siteDetails.aspx?id=AK01&net=NTN), accessed May 20, 2013). Rainfall at the onset of winter generally freezes on the  
20 surface soil layer over the winter and prevents any snowmelt from infiltrating during spring snowmelt period to generate flooding.

Although we did not detect significant differences in the ET simulations between parameterization methods, we found that sub-basin average ET in LowP is higher than HighP, except at the beginning of snowmelt where deciduous trees of the LowP are storing snowmelt water but not yet transpiring (Young-Robertson et al., 2016) (~~Error! Reference source not found, Figure 7 and Figure 8~~). Unlike other snow-dominated regions in middle latitudes, where ET tends to have strong relationship with precipitation and a change in storage (Lohmann et al., 1998b, 1998a), ET in this region is more strongly related to temperature than precipitation or change in soil moisture storage. This apparent decoupling between ET and precipitation in the LowP ecosystems is likely because the deciduous trees are utilizing the snowmelt water stored in their trunks rather than being directly tied to rainfall (Young-Robertson et al., 2016). This implies that temperature is the limiting factor for ET in this region because the region is not soil moisture limited. This may have important implications for the general warming trend on a broader spectrum, as in the case of permafrost degradation (Romanovsky and Osterkamp, 1995, 2000; Romanovsky et al., 2002; O'Donnell et al., 2009).

Several studies have documented that VIC soil moisture simulation is strongly sensitive to how vegetation cover (Ford and Quiring, 2013; Tesemma et al., 2015) and soil properties (Liang et al., 1996; Lohmann et al., 1998b; Lee et al., 2011; Billah and Goodall, 2012; Ford and Quiring, 2013) are represented. This study shows that vegetation cover and soil property representation are not only sensitive to the soil moisture content simulations, but they also have a strong influence in the rate of snowmelt, and snowmelt and refreeze processes in the Alaskan sub-arctic environment. ~~We found that the sensitivity of the soil moisture to soil property and vegetation cover representation is larger in the lower layers than in the top soil layers. In general, given the model being calibrated to fit observed~~

~~streamflow data, not every process is accurately simulated. However, the s~~Small-scale parameterization ~~schemes~~method ~~are~~is the best at capturing the expected soil moisture pattern in both LowP and HighP sub-basins. This includes high soil moisture in the permafrost-dominated sub-basin due to lower hydraulic conductivity of the soil, and the faster winter freeze up of the soil column in the permafrost-  
5 dominated sub-basin than the permafrost-free one.

We also made an effort to understand how the annual water balance is partitioned into runoff, ET and change in soil moisture in the permafrost-free, LowP, and permafrost-dominated, HighP, sub-basins. Both sub-basins do not differ in the percentage of each component between the large-scale and small-scale parameterizations. As shown in the previous studies (Hinzman et al., 2002; Bolton, 2006; Young-  
10 Robertson et al., 2016), our results indicate that in both sub-basins ET dominates the annual water balances ~~(Figure 8 and Figure 9)~~~~(Figure 8, Figure 11, and Figure 9)~~~~Figure 12~~, while the change in storage is the lowest~~(Figure 11)~~ in both sub-basins. There are, however, variations in the percentage and pattern of the water balance components between LowP and HighP sub-basins. The runoff from LowP sub-basin is lower than the HighP sub-basin due to the high tree water storage and transpiration  
15 (Cable et al., 2014; Young-Robertson et al., 2016) of the deciduous trees, and higher infiltration of the permafrost-free soil of the LowP sub-basin than HighP sub-basin. The mean annual change in storage in the LowP sub-basin is about 35% higher than the HighP sub-basin. From this result, we can conclude that the soil thermal and hydraulic properties dictate the partitioning of water into the different processes in this region.

20 This is the first study that introduces vegetation and soil property heterogeneity from high resolution topographic information into the meso-scale hydrological model. The results need to be verified for

regional- scale basins to determine the transferability of our finding to similar areas where the land surface data products do not adequately represent the spatially heterogeneity for accurate hydrological simulations.

## 5. CONCLUSIONS

5 This study indicates that coarse resolution soil and vegetation data products — data that are used extensively in land surface modeling in the middle and lower latitudes — do not adequately represent the North American boreal forest discontinuous permafrost ecosystems. Hydrological modeling with coarse resolution products cannot adequately simulate important small-scale processes. This is because small-scale permafrost distribution and ecosystem composition primarily control the land surface  
10 processes in this region. This indicates the need for landscape modeling that can produce these small-scale features and incorporate them into land surface models. The strong correlative relationship between topography, vegetation, and permafrost distribution (Burt and Williams, 1976; Haugen et al., 1982; Viereck et al., 1983; Hinzman et al., 1991; Hinzman et al., 1998) in this region can be used to produce a sub-grid parameterization method~~fine-resolution landscape model~~ that represents the small-  
15 scale soil property and vegetation cover heterogeneity for distributed hydrological models.

This study also shows that our sub-grid parameterization method~~fine-resolution landscape model~~ – based primarily on this strong relationship between permafrost, topography, and vegetation composition – produced a better representation of permafrost and vegetation cover than large-scale soil and vegetation cover products. Hydrological simulations — including basin integrated and spatially variable  
20 runoff, evapotranspiration and soil moisture dynamics — using a small-scale parameterization schemes~~method~~ derived from a sub-grid parameterization method~~fine-resolution landscape model~~ are a

~~notable~~significant improvement over parameterizations based on coarse resolution data products. Finally, in our effort to demonstrate methodologies that can improve hydrological modeling through a small-scale parameterization method, we intend to implement and test results from this pilot study into a large river basin in the next phase of the research.

## 5 Acknowledgments

The financial support for this work was provided by the grant from the Department of Energy SciDAC grant # DE-SC0006913. This work was also made possible through financial support from the Alaskan Climate Science Center, funded by the Cooperative Agreement G10AC00588 from the United States Geological Survey. Its contents are solely the responsibility of the author and do not necessarily represent the official view of the USGS.~~This work was supported by the grant from the Department of Energy SciDAC grant # DE-SC0006913.~~

- Abdulla, F. A., & Lettenmaier, D. P. (1997a). Application of Regional Parameter Estimation Schemes to Simulate the Water Balance of a Large Continental River. *Journal of hydrology*, 197(1), 258-285.
- Abdulla, F. A., & Lettenmaier, D. P. (1997b). Development of Regional Parameter Estimation Equations for a Macroscale Hydrologic Model. *Journal of hydrology*, 197(1-4), 230-257.
- Abdulla, F. A., Lettenmaier, D. P., Wood, E. F., & Smith, J. A. (1996). Application of a Macroscale Hydrologic Model to Estimate the Water Balance of the Arkansas-Red River Basin. *Journal of Geophysical Research: Atmospheres* (1984–2012), 101(D3), 7449-7459.
- Andreadis, K. M., Clark, E. A., Wood, A. W., Hamlet, A. F., & Lettenmaier, D. P. (2005). Twentieth-Century Drought in the Conterminous United States. *Journal of Hydrometeorology*, 6(6), 985-1001.
- Andreadis, K. M., Storck, P., & Lettenmaier, D. P. (2009). Modeling Snow Accumulation and Ablation Processes in Forested Environments. *Water Resources Research*, 45(5).
- Aster, G. V. T. (2009). Aster Global Dem Validation Summary Report, Technical Report No. 1, Meti/Ersdac, Nasa/Lpdaac, Usgs/Eros.
- Baldocchi, D., Kelliher, F. M., Black, T. A., & Jarvis, P. (2000). Climate and Vegetation Controls on Boreal Zone Energy Exchange. *Global change biology*, 6(S1), 69-83.
- Bennett, K. E. (2014). *Changes in Extreme Hydroclimate Events in Interior Alaskan Boreal Forest Watersheds*: Ph. D. dissertation, University of Alaska, Fairbanks.
- Bennett, K. E., Cannon, A. J., & Hinzman, L. D. (2015). Historical Trends and Extremes in Boreal Alaska River Basins. *Journal of hydrology*, 527, 590-607.
- Bennett, K. E., Werner, A. T., & Schnorbus, M. (2012). Uncertainties in Hydrologic and Climate Change Impact Analyses in Headwater Basins of British Columbia. *Journal of Climate*, 25(17), 5711-5730.
- Billah, M. M., & Goodall, J. L. (2012). Applying Drought Analysis in the Variable Infiltration Capacity (VIC) Model for South Carolina. South Carolina Water Resources Conference.
- Bohn, T. J., Livneh, B., Oyler, J. W., Running, S. W., Nijssen, B., & Lettenmaier, D. P. (2013). Global Evaluation of Mtlim and Related Algorithms for Forcing of Ecological and Hydrological Models. *Agricultural and forest meteorology*, 176, 38-49.
- Bolton, W. R. (2006). *Dynamic Modeling of the Hydrologic Processes in Areas of Discontinuous Permafrost*. (Ph. D. Dissertation), University of Alaska, Fairbanks, University of Alaska Fairbanks.
- Bolton, W. R., Hinzman, L. D., Jones, K. C. P., Jeremy B, & Adams, P. C. (2006). Watershed Hydrology and Chemistry in the Alaskan Boreal Forest the Central Role of Permafrost Alaska's Changing Boreal Forest (pp. 269): Oxford University Press.
- Bolton, W. R., Hinzman, L. D., & Yoshikawa, K. (2000). Stream Flow Studies in a Watershed Underlain by Discontinuous Permafrost. Paper presented at the American Water Resources Association Proceedings on Water Resources in Extreme Environments (pp. 1-3).

- Bowling, L. C., Cherkauer, K. A., & Adam, J. C. (2008). Current Capabilities in Soil Thermal Representations within a Large Scale Hydrology Model. Paper presented at the 9th International Conference on Permafrost.
- Burrough, P. A., Mcdonnell, R., Burrough, P. A., & Mcdonnell, R. (1998). *Principles of Geographical Information Systems* (Vol. 333): Oxford university press Oxford.
- 5 Burt, T. P., & Williams, P. J. (1976). Hydraulic Conductivity in Frozen Soils. *Earth Surface Processes*, 1(4), 349-360.
- Cable, J. M., Ogle, K., Bolton, W. R., Bentley, L. P., Romanovsky, V., Iwata, H., Harazono, Y., & Welker, J. (2014). Permafrost Thaw Affects Boreal Deciduous Plant Transpiration through Increased Soil Water, Deeper Thaw, and Warmer Soils. *Ecohydrology*, 7(3), 982-997. doi: 10.1002/eco.1423
- 10 Carey, S. K., & Woo, M. K. (2001). Slope Runoff Processes and Flow Generation in a Subarctic, Subalpine Catchment. *Journal of hydrology*, 253(1), 110-129.
- Cherkauer, K. A., Bowling, L. C., & Lettenmaier, D. P. (2003). Variable Infiltration Capacity Cold Land Process Model Updates. *Global and Planetary Change*, 38(1), 151-159.
- 15 Cherkauer, K. A., & Lettenmaier, D. P. (1999). Hydrologic Effects of Frozen Soils in the Upper Mississippi River Basin. *Journal of Geophysical Research: Atmospheres* (1984–2012), 104(D16), 19599-19610.
- Dingman, S. L. (1973). Effects of Permafrost on Stream Flow Characteristics in the Discontinuous Permafrost Zone of Central Alaska. Paper presented at the North American Contribution to Second International Conference of Permafrost, National Academy of Sciences, Washington, DC (pp. 447-453).
- 20 Duband, D., Obled, C., & Rodriguez, J. Y. (1993). Unit Hydrograph Revisited: An Alternate Iterative Approach to Uh and Effective Precipitation Identification. *Journal of hydrology*, 150(1), 115-149.
- 25 Ewers, B. E., Gower, S. T., Bond-Lamberty, B., & Wang, C. (2005). Effects of Stand Age and Tree Species Composition on Transpiration and Canopy Conductance of Boreal Forest Stands. *Plant Cell Environ*, 28(5), 660-678.
- FAO. (1998). Digital Soil Map of the World and Derived Soil Properties. Land and Water Digital Media Series 1 Food and Agriculture Organization of the United States (FAO), Rome, Italy.
- 30 Ford, T. W., & Quiring, S. M. (2013). Influence of Modis-Derived Dynamic Vegetation on VIC-Simulated Soil Moisture in Oklahoma. *Journal of Hydrometeorology*, 14(6), 1910-1921.
- Hansen, M. C., Defries, R. S., Townshend, J. R. G., & Sohlberg, R. (2000). Global Land Cover Classification at 1 Km Spatial Resolution Using a Classification Tree Approach. *International Journal of Remote Sensing*, 21(6-7), 1331-1364.
- 35 Haugen, R. K., Slaughter, C. W., Howe, K. E., & Dingman, S. L. (1982). *Hydrology and Climatology of the Caribou-Poker Creeks Research Watershed, Alaska*: US Army Corps of Engineers, Cold Regions Research & Engineering Laboratory Hanover, NH.
- Hinzman, L. D., Fukuda, M., Sandberg, D. V., Chapin, F. S., & Dash, D. (2003). Frostfire: An Experimental Approach to Predicting the Climate Feedbacks from the Changing Boreal Fire Regime. *Journal of Geophysical Research: Atmospheres* (1984–2012), 108(D1), FFR-9.
- 40

- Hinzman, L. D., Goering, D. J., & Kane, D. L. (1998). A Distributed Thermal Model for Calculating Soil Temperature Profiles and Depth of Thaw in Permafrost Regions. *Journal of Geophysical Research: Atmospheres* (1984–2012), 103(D22), 28975-28991.
- 5 Hinzman, L. D., Ishikawa, N., Yoshikawa, K., Bolton, W. R., & Petrone, K. C. (2002). Hydrologic Studies in Caribou-Poker Creeks Research Watershed in Support of Long Term Ecological Research. *Eurasian Journal of Forest Research*, 5(2), 67-71.
- Hinzman, L. D., Kane, D. L., Gieck, R. E., & Everett, K. R. (1991). Hydrologic and Thermal Properties of the Active Layer in the Alaskan Arctic. *Cold Regions Science and Technology*, 19(2), 95-110.
- 10 Hinzman, L. D., Viereck, L. A., Adams, P. C., Romanovsky, V. E., & Yoshikawa, K. (2006). Climate and Permafrost Dynamics of the Alaskan Boreal Forest Alaska's Changing Boreal Forest (pp. 39-61): Oxford University Press New York.
- Jones, J. B., & Rinehart, A. J. (2010). The Long-Term Response of Stream Flow to Climatic Warming in Headwater Streams of Interior Alaska. *Canadian journal of forest research*, 40(7), 1210-1218.
- 15 Kane, D. L. (1980). Snowmelt Infiltration into Seasonally Frozen Soils. *Cold Regions Science and Technology*, 3(2), 153-161.
- Kane, D. L., Bredthauer, S. R., & Stein, J. (1981). Subarctic Snowmelt Runoff Generation. Paper presented at the Conference on The Northern Community, VinsonTS (ed.), ASCE: Seattle, Washington; pp. 591–601.
- 20 Kane, D. L., & Stein, J. (1983). Water Movement into Seasonally Frozen Soils. *Water Resources Research*, 19(6), 1547-1557.
- Kirkby, M. J. (1978). *Hillslope Hydrology*. Wiley-Interscience, New York, New York, 348 pp.
- Knudson, J. A., & Hinzman, L. D. (2000). Streamflow Modeling in an Alaskan Watershed Underlain by Permafrost. In *Water Resources in Extreme Environments* (pp. 309–313): American Water Resources Association.
- 25 Krause, P., Boyle, D. P., & Bäse, F. (2005). Comparison of Different Efficiency Criteria for Hydrological Model Assessment. *Advances in Geosciences*, 5, 89-97.
- Kumar, R., Samaniego, L., & Attinger, S. (2013). Implications of Distributed Hydrologic Model Parameterization on Water Fluxes at Multiple Scales and Locations. *Water Resources Research*, 49(1), 360-379.
- 30 Lee, H., Seo, D.-J., & Koren, V. (2011). Assimilation of Streamflow and in Situ Soil Moisture Data into Operational Distributed Hydrologic Models: Effects of Uncertainties in the Data and Initial Model Soil Moisture States. *Advances in Water Resources*, 34(12), 1597-1615.
- Liang, X., Lettenmaier, D. P., Wood, E. F., & Burges, S. J. (1994). A Simple Hydrologically Based Model of Land Surface Water and Energy Fluxes for General Circulation Models. *Journal of Geophysical Research: Atmospheres* (1984–2012), 99(D7), 14415-14428.
- 35 Liang, X., Wood, E. F., & Lettenmaier, D. P. (1996). Surface Soil Moisture Parameterization of the VIC-2l Model: Evaluation and Modification. *Global and Planetary Change*, 13(1), 195-206.
- Lohmann, D., Nolte-Holube, R., & Raschke, E. (1996). A Large-Scale Horizontal Routing Model to Be Coupled to Land Surface Parametrization Schemes. *Tellus A*, 48(5), 708-721.
- 40



- Lohmann, D., Raschke, E., Nijssen, B., & Lettenmaier, D. P. (1998a). Regional Scale Hydrology: I. Formulation of the VIC-2l Model Coupled to a Routing Model. *Hydrological Sciences Journal*, 43(1), 131-141.
- 5 Lohmann, D., Raschke, E., Nijssen, B., & Lettenmaier, D. P. (1998b). Regional Scale Hydrology: II. Application of the VIC-2l Model to the Weser River, Germany. *Hydrological Sciences Journal*, 43(1), 143-158.
- Meng, L., & Quiring, S. M. (2008). A Comparison of Soil Moisture Models Using Soil Climate Analysis Network Observations. *Journal of Hydrometeorology*, 9(4), 641-659.
- Mölders, N. (2011). Land-Use and Land-Cover Changes: Impact on Climate and Air Quality (Vol. 44). Retrieved from <http://UAF.ebib.com/patron/FullRecord.aspx?p=885948>
- 10 Morrissey, L. A., & Strong, L. L. (1986). Mapping Permafrost in the Boreal Forest with Thematic Mapper Satellite Data. *Photogrammetric Engineering and Remote Sensing*, 52(9), 1513-1520.
- Myneni, R. B., Ramakrishna, R., Nemani, R., & Running, S. W. (1997). Estimation of Global Leaf Area Index and Absorbed Par Using Radiative Transfer Models. *Geoscience and Remote Sensing, IEEE Transactions on*, 35(6), 1380-1393.
- 15 Naito, A. T., & Cairns, D. M. (2011). Patterns and Processes of Global Shrub Expansion. *Progress in Physical Geography*, 35(4), 423-442.
- Nijssen, B., Lettenmaier, D. P., Liang, X., Wetzel, S. W., & Wood, E. F. (1997). Streamflow Simulation for Continental-Scale River Basins. *Water Resources Research*, 33(4), 711-724.
- 20 Nijssen, B., O'Donnell, G. M., Hamlet, A. F., & Lettenmaier, D. P. (2001a). Hydrologic Sensitivity of Global Rivers to Climate Change. *Climatic change*, 50(1-2), 143-175.
- Nijssen, B., O'Donnell, G. M., Lettenmaier, D. P., Lohmann, D., & Wood, E. F. (2001b). Predicting the Discharge of Global Rivers. *Journal of Climate*, 14(15), 3307-3323.
- O'Donnell, J. A., Romanovsky, V. E., Harden, J. W., & Mcguire, A. D. (2009). The Effect of Moisture Content on the Thermal Conductivity of Moss and Organic Soil Horizons from Black Spruce Ecosystems in Interior Alaska. *Soil Science*, 174(12), 646-651.
- 25 Parajka, J., Merz, R., & Blöschl, G. (2005). A Comparison of Regionalisation Methods for Catchment Model Parameters. *Hydrology and earth system sciences discussions*, 9(3), 157-171.
- Petrone, K. C., Hinzman, L. D., Shibata, H., Jones, J. B., & Boone, R. D. (2007). The Influence of Fire and Permafrost on Sub-Arctic Stream Chemistry During Storms. *Hydrological Processes*, 21(4), 423-434.
- 30 Petrone, K. C., Jones, J. B., Hinzman, L. D., & Boone, R. D. (2006). Seasonal Export of Carbon, Nitrogen, and Major Solutes from Alaskan Catchments with Discontinuous Permafrost. *Journal of Geophysical Research: Biogeosciences (2005–2012)*, 111(G2).
- 35 Ping, C., Michaelson, G., Packee, E., Stiles, C., Swanson, D., & Yoshikawa, K. (2005). Soil Catena Sequences and Fire Ecology in the Boreal Forest of Alaska. *Soil Science Society of America Journal*, 69(6), 1761-1772.
- Pokhrel, P., Gupta, H. V., & Wagener, T. (2008). A Spatial Regularization Approach to Parameter Estimation for a Distributed Watershed Model. *Water Resources Research*, 44(12).
- 40 Quinton, W. L., & Carey, S. K. (2008). Towards an Energy-Based Runoff Generation Theory for Tundra Landscapes. *Hydrological Processes*, 22(23), 4649-4653.

- Rawls, W. J., & Brakensiek, D. L. (1985, 1985). Prediction of Soil Water Properties for Hydrologic Modeling. ASCE.
- Rieger, S., Furbush, C. E., Schoephorster, D. B., Summerfield Jr, H., & Geiger, L. C. (1972). Soils of the Caribou-Poker Creeks Research Watershed, Interior Alaska (No. Crrel-Tr-236). COLD REGIONS RESEARCH AND ENGINEERING LAB HANOVER NH.
- Robock, A., Luo, L., Wood, E. F., Wen, F., Mitchell, K. E., Houser, P. R., Schaake, J. C., Lohmann, D., Cosgrove, B., & Sheffield, J. (2003). Evaluation of the North American Land Data Assimilation System over the Southern Great Plains During the Warm Season. *Journal of Geophysical Research: Atmospheres* (1984–2012), 108(D22).
- Romanovsky, V. E., Burgess, M., Smith, S., Yoshikawa, K., & Brown, J. (2002). Permafrost Temperature Records: Indicators of Climate Change. *EOS, Transactions American Geophysical Union*, 83(50), 589-594.
- Romanovsky, V. E., & Osterkamp, T. E. (1995). Interannual Variations of the Thermal Regime of the Active Layer and near-Surface Permafrost in Northern Alaska. *Permafrost and Periglacial Processes*, 6(4), 313-335.
- Romanovsky, V. E., & Osterkamp, T. E. (2000). Effects of Unfrozen Water on Heat and Mass Transport Processes in the Active Layer and Permafrost. *Permafrost and Periglacial Processes*, 11(3), 219-239.
- Romanovsky, V. E., Sergueev, D. O., & Osterkamp, T. E. (2003). Temporal Variations in the Active Layer and near-Surface Permafrost Temperatures at the Long-Term Observatories in Northern Alaska. Paper presented at the the 8th International Conference on Permafrost, 21–25 July, 2003, Zurich, Switzerland, vol. 2, edited by M. Phillips, S. M. Springman, and L. U. Arenson, pp. 989–994, A. A. Balkema, Brookfield, Vt.
- Samaniego, L., Kumar, R., & Attinger, S. (2010). Multiscale Parameter Regionalization of a Grid-Based Hydrologic Model at the Mesoscale. *Water Resources Research*, 46(5).
- Saxton, K. E., Rawls, W. J., Romberger, J. S., & Papendick, R. I. (1986). Estimating Generalized Soil-Water Characteristics from Texture. *Soil Science Society of America Journal*, 50(4), 1031-1036.
- Schaeffli, B., & Gupta, H. V. (2007). Do Nash Values Have Value? *Hydrological Processes*, 21(15), 2075-2080.
- Schenk, H. J., & Jackson, R. B. (2009). Islscp Ii Ecosystem Rooting Depths. ISLSCP Initiative II Collection. Data set. Available: <http://daac.ornl.gov/>, Oak Ridge National Laboratory Distributed Active Archive Center, Oak Ridge, Tennessee, USA, 10.
- Schnorbus, M. A., Bennett, K. E., Werner, A. T., & Berland, A. J. (2011). Hydrologic Impacts of Climate Change in the Peace, Campbell and Columbia Watersheds, British Columbia, Canada. Pacific Climate Impacts Consortium, University of Victoria, Victoria, BC, 157.
- Slater, A. G., Bohn, T. J., Mccreight, J. L., Serreze, M. C., & Lettenmaier, D. P. (2007). A Multimodel Simulation of Pan-Arctic Hydrology. *Journal of Geophysical Research: Biogeosciences* (2005–2012), 112(G4).
- Slaughter, C. W., Hilgert, J. W., & Culp, E. H. (1983). Summer Streamflow and Sediment Yield from Discontinuous-Permafrost Headwaters Catchments. Paper presented at the Permafrost, Fourth International Conference, Proceedings, 17-22 July 1983, Fairbanks, Alaska, National Academy Press, Washington , D.C., 1172-1177.

- Slaughter, C. W., & Kane, D. L. (1979). Hydrologic Role of Shallow Organic Soils in Cold Climates. Paper presented at the Canadian Hydrology Symposium: 79 Cold Climate Hydrology, Vancouver, B.C.
- 5 Tesemma, Z. K., Wei, Y., Peel, M. C., & Western, A. W. (2015). Including the Dynamic Relationship between Climatic Variables and Leaf Area Index in a Hydrological Model to Improve Streamflow Prediction under a Changing Climate. *Hydrology and Earth System Sciences*, 19(6), 2821-2836.
- Thornton, P. E., & Running, S. W. (1999). An Improved Algorithm for Estimating Incident Daily Solar Radiation from Measurements of Temperature, Humidity, and Precipitation. *Agricultural and Forest Meteorology*, 93(4), 211-228.
- 10 Troy, T. J., Wood, E. F., & Sheffield, J. (2008). An Efficient Calibration Method for Continental-Scale Land Surface Modeling. *Water Resources Research*, 44(9).
- Viereck, L. A., Dyrness, C. T., Cleve, K. V., & Foote, M. J. (1983). Vegetation, Soils, and Forest Productivity in Selected Forest Types in Interior Alaska. *Canadian Journal of Forest Research*, 13(5), 703-720.
- 15 Viereck, L. A., & Van Cleve, K. (1984). Some Aspects of Vegetation and Temperature Relationships in the Alaska Taiga. Miscellaneous publication-University of Alaska, Agricultural and Forestry Experiment Station (USA).
- Wagener, T., Boyle, D. P., Lees, M. J., Wheat, H. S., Gupta, H. V., & Sorooshian, S. (2001). A Framework for Development and Application of Hydrological Models. *Hydrology and earth system sciences discussions*, 5(1), 13-26.
- 20 Wahrhaftig, C. (1965). *Physiographic Divisions of Alaska*: US Geological Survey Professional Paper 482, US Geological Survey.
- Walsh, J. E., Anisimov, O., Hagen, J. O. M., Jakobsson, T., Oerlemans, J., Prowse, T. D., Romanovsky, V., Savelieva, N., Serreze, M., & Shiklomanov, A. (2005). Cryosphere and Hydrology. Arctic climate impact assessment, 183-242.
- 25 White, D., Autier, V., Yoshikawa, K., Jones, J., & Seelen, S. (2008). Using Doc to Better Understand Local Hydrology in a Subarctic Watershed. *Cold Regions Science and Technology*, 51(1), 68-75.
- 30 Woo, M.-K. (1976). Hydrology of a Small Canadian High Arctic Basin During the Snowmelt Period. *Catena*, 3(2), 155-168.
- Woo, M.-K. (1986). Permafrost Hydrology in North America 1. *Atmosphere-Ocean*, 24(3), 201-234.
- Woo, M.-K., & Steer, P. (1983). Slope Hydrology as Influenced by Thawing of the Active Layer, Resolute, Nwt. *Canadian Journal of Earth Sciences*, 20(6), 978-986.
- 35 Wu, Z., Lu, G., Wen, L., Lin, C. A., Zhang, J., & Yang, Y. (2007). Thirty-Five Year (1971–2005) Simulation of Daily Soil Moisture Using the Variable Infiltration Capacity Model over China. *Atmosphere-ocean*, 45(1), 37-45.
- Wu, Z., Mao, Y., Lu, G., & Zhang, J. (2015). Simulation of Soil Moisture for Typical Plain Region Using the Variable Infiltration Capacity Model. *Proceedings of the International Association of Hydrological Sciences*, 368, 215-220.
- 40 Yapo, P. O., Gupta, H. V., & Sorooshian, S. (1998). Multi-Objective Global Optimization for Hydrologic Models. *Journal of hydrology*, 204(1), 83-97.

- Yoshikawa, K., Hinzman, L. D., & Gogineni, P. (2002). Ground Temperature and Permafrost Mapping Using an Equivalent Latitude/Elevation Model. *Journal of Glaciology and Geocryology*, 24(5), 526-532.
- 5 Young-Robertson, J. M., Bolton, W. R., Bhatt, U. S., Cristobal, J., & Thoman, R. (2016). Deciduous Trees Are a Large and Overlooked Sink for Snowmelt Water in the Boreal Forest. *Sci Rep*, 6, 29504. doi: 10.1038/srep29504
- Yuan, W., Luo, Y., Richardson, A. D., Oren, R. a. M., Luysaert, S., Janssens, I. A., Ceulemans, R., Zhou, X., Gruenwald, T., & Aubinet, M. (2009). Latitudinal Patterns of Magnitude and Interannual Variability in Net Ecosystem Exchange Regulated by Biological and Environmental Variables. *Global change biology*, 15(12), 2905-2920.
- 10 Zhang, Y., Carey, S. K., Quinton, W. L., Janowicz, J. R., & Flerchinger, G. N. (2009). Comparison of Algorithms and Parameterisations for Infiltration into Organic-Covered Permafrost Soils. *Hydrology and earth system sciences discussions*, 6(5), 5705-5752.
- 15 Zhang, Y., Carey, S. K., Quinton, W. L., Janowicz, J. R., Pomeroy, J. W., & Flerchinger, G. N. (2010). Comparison of Algorithms and Parameterisations for Infiltration into Organic-Covered Permafrost Soils. *Hydrology and Earth System Sciences*, 14(5), 729-750.