

Interactive comment on “Simulation of Surface Fluxes in Two Distinct Environments along a Topographic Gradient in a Central Amazonian Forest using the INtegrated LAND Surface Model” by Elisângela Broedel et al.

Elisângela Broedel et al.

elisabroedel@gmail.com

Received and published: 17 May 2017

The response to the Reviewer’s comments is attached in: Supplement (pdf/zip)

Please also note the supplement to this comment:

<http://www.hydrol-earth-syst-sci-discuss.net/hess-2017-203/hess-2017-203-AC1-supplement.pdf>

Interactive comment on Hydrol. Earth Syst. Sci. Discuss., doi:10.5194/hess-2017-203, 2017.

C1

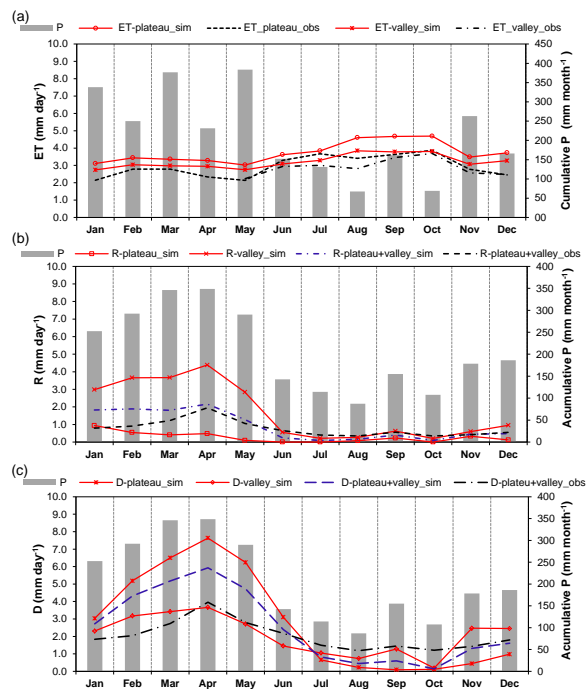


Fig. 1.

C2

	Flux	Year	Wet season			Dry season		
			RMSE (mm day ⁻¹)	Bias (mm day ⁻¹)	R ²	RMSE (mm day ⁻¹)	Viés (mm day ⁻¹)	R ²
Plateau	ET	2006	1.1	0.9	0.71	1.0	0.7	0.64
Valley	ET	2006	1.1	0.2	0.63	0.8	0.4	0.56
Plateau+Valley	R	2002-2006	0.6	0.4	0.60	0.3	-0.3	0.53
Plateau+Valley	D	2002-2006	1.7	1.3	0.79	0.8	-0.6	0.97

Fig. 2.

C3

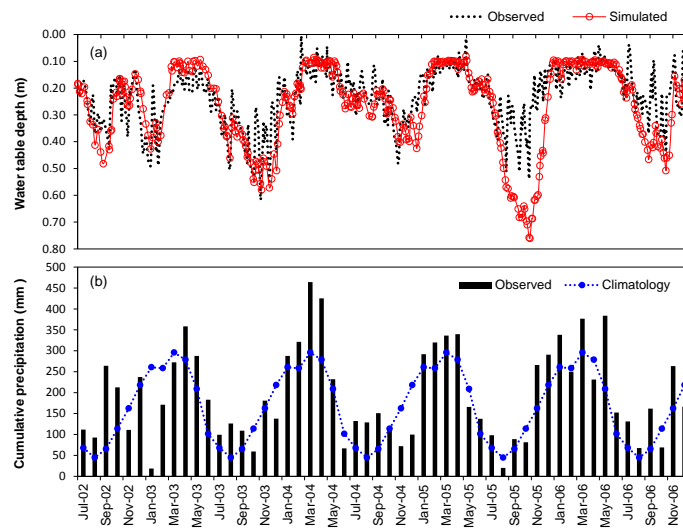


Fig. 3.

C4

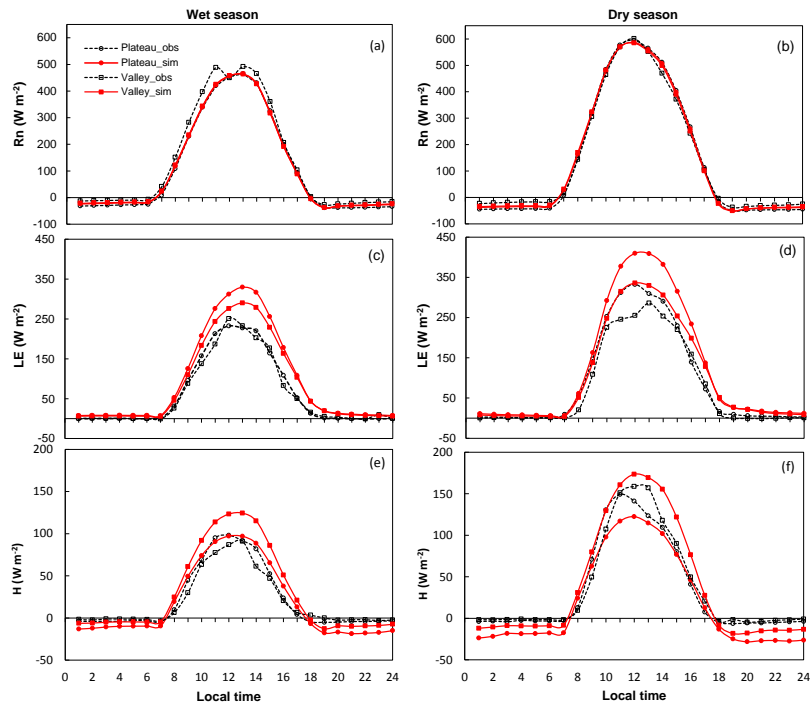


Fig. 4.