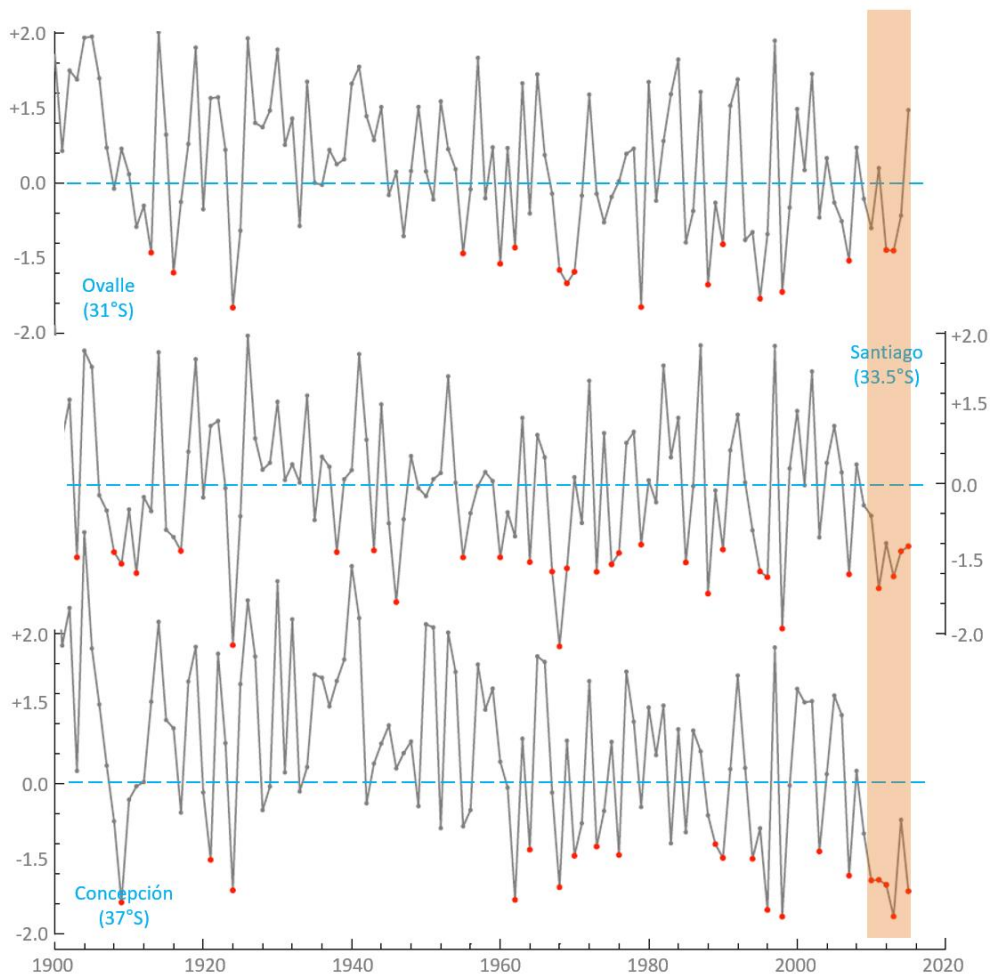


1  
2  
3  
4

**The 2010-2015 mega drought in Central Chile:  
Impacts on regional hydroclimate and vegetation**

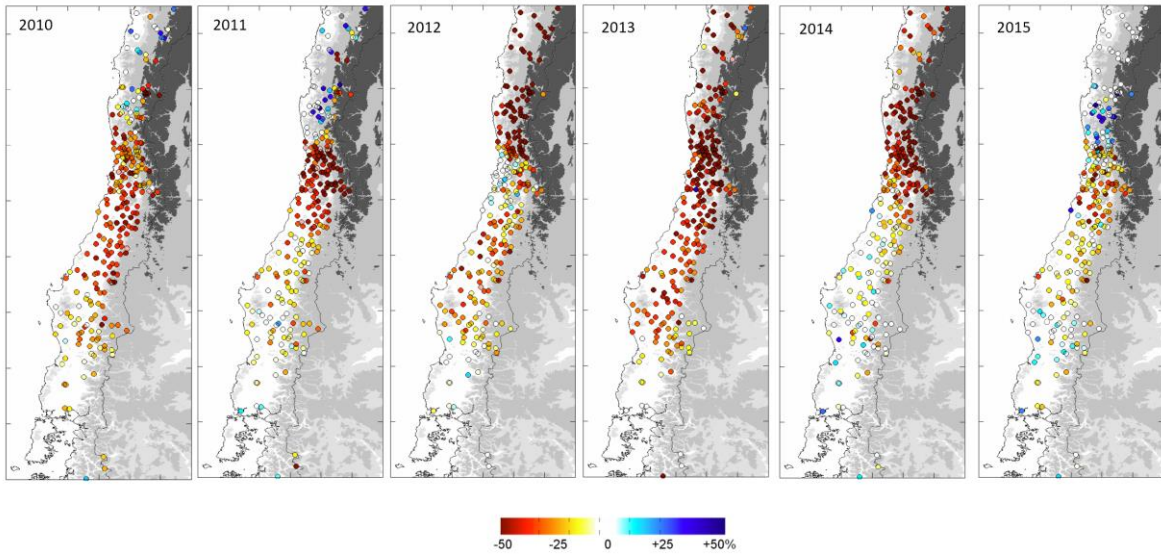
**Supplementary Figures**



5

6 **Figure S1.** Standardized Precipitation Index (SPI) with 12-month time scale evaluated  
 7 in December of each year for stations Ovalle, Santiago and Concepción. The MD period  
 8 is indicated.

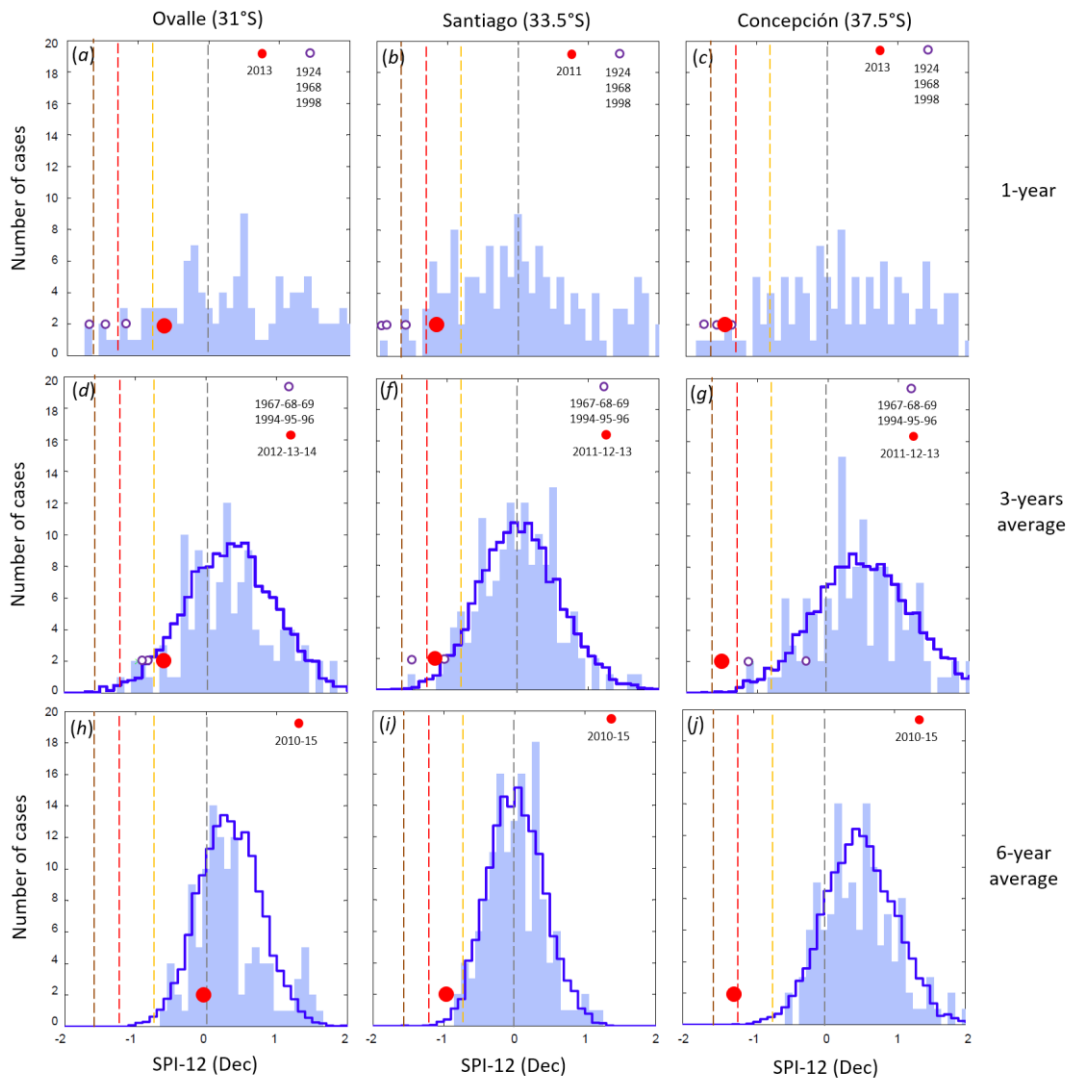
9



10

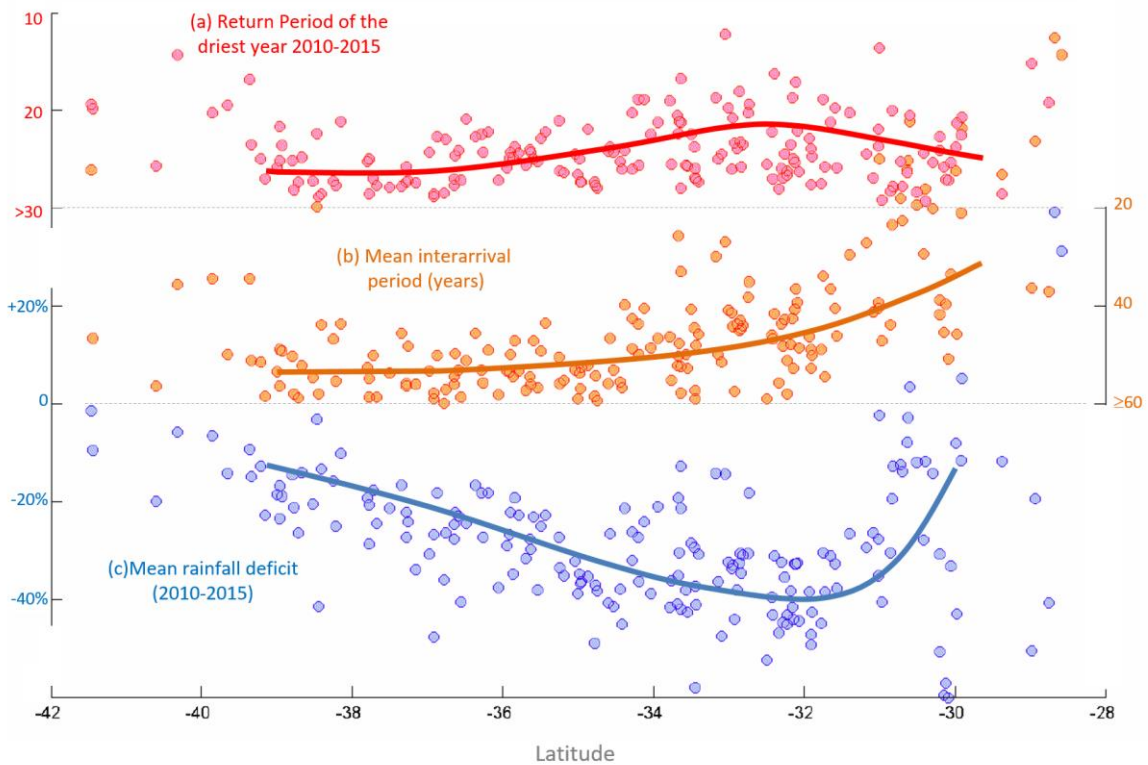
11 **Figure S2.** Annual rainfall anomalies (relative to the 1980-2010) for each year within  
12 the MD.

13



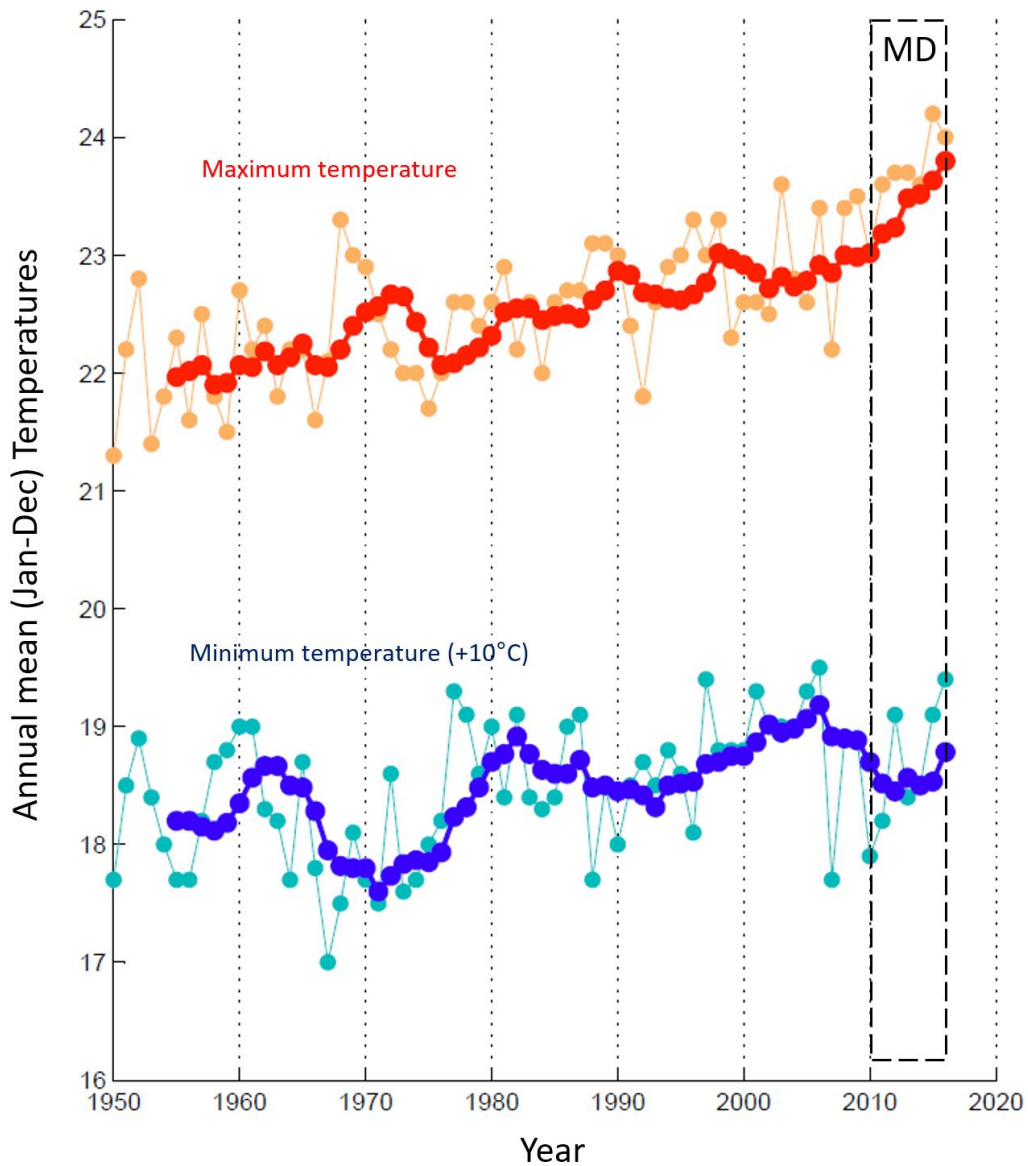
14

15 **Figure S3.** Upper panels: Histograms of the historical SPI-12D values (light blue bars;  
 16 1915-2009) for stations Ovalle, Santiago and Concepción. The red circle indicates the  
 17 worst year during the MD, the smaller purple circles indicate the values in  
 18 contemporaneous droughts. Middle and lower panels: as before but for 3-years and 6-  
 19 years average, respectively. The blue thick line is the distribution obtained from 5000  
 20 three-year periods formed by randomly selecting three/six years in the historical  
 21 period.



22  
 23 **Figure S4.** (a) Return period of the driest year within the MD (2010-2015) calculated  
 24 as the average recurrence interval within the historical period (1960-2009) in each  
 25 station. (b) Mean interarrival period (in years) of a dry spell (sequence of years with  
 26 rainfall deficit > 25%) equal or longer than the current MD in each station. (c) Mean  
 27 rainfall deficit during the MD (Jan. 2010 to Dec. 2015). The horizontal axis is the  
 28 station latitude.

29



30

31 **Figure S5.** Annual mean (Jan-Dec) maximum (red and orange curves) and minimum  
 32 (blue and cyan curves) temperatures in station Quinta Normal (Santiago; 33.5°S,  
 33 70.4°W, 525 m ASL). The thin lines are annual values. The thick lines are the average  
 34 of the last 6 years (the last data point is the average 2011-2016). The MD period is  
 35 indicated.