

Supporting Information for

Spatial Extent of Future Changes in the Hydrologic Cycle Components in Ganga Basin using Ranked CORDEX RCMs

Jatin Anand¹, Manjula Devak¹, Ashvani Kumar Gosain¹, Rakesh Khosa¹ and Chandrika Thulaseedharan Dhanya¹

5 ¹ Department of Civil Engineering, Indian Institute of Technology Delhi, New Delhi-110016, India.

Correspondence to: Dr. Chandrika Thulaseedharan Dhanya (dhanya@civil.iitd.ac.in)

Contents of this file

Fig. S1, Fig. S2 and Fig. S3

10

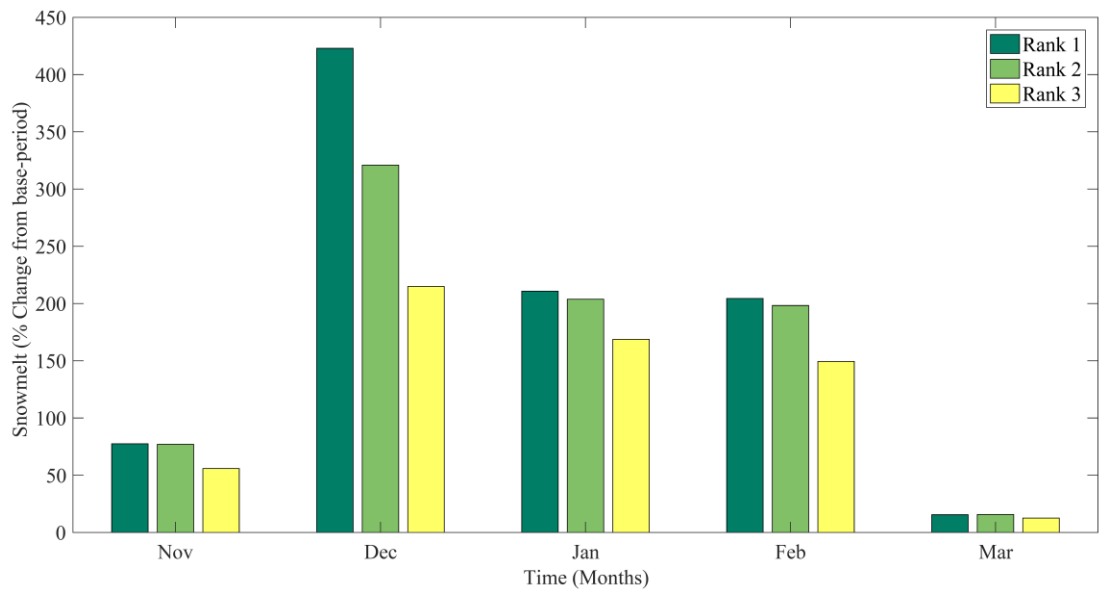
15

20

25

Introduction

This supporting information provides the figures supporting the analysis presented in main article.



5

Fig. 1. Percentage change in simulated projected changes in average monthly snowmelt at Rishikesh for ranked RCMs for the period 20121-2100.

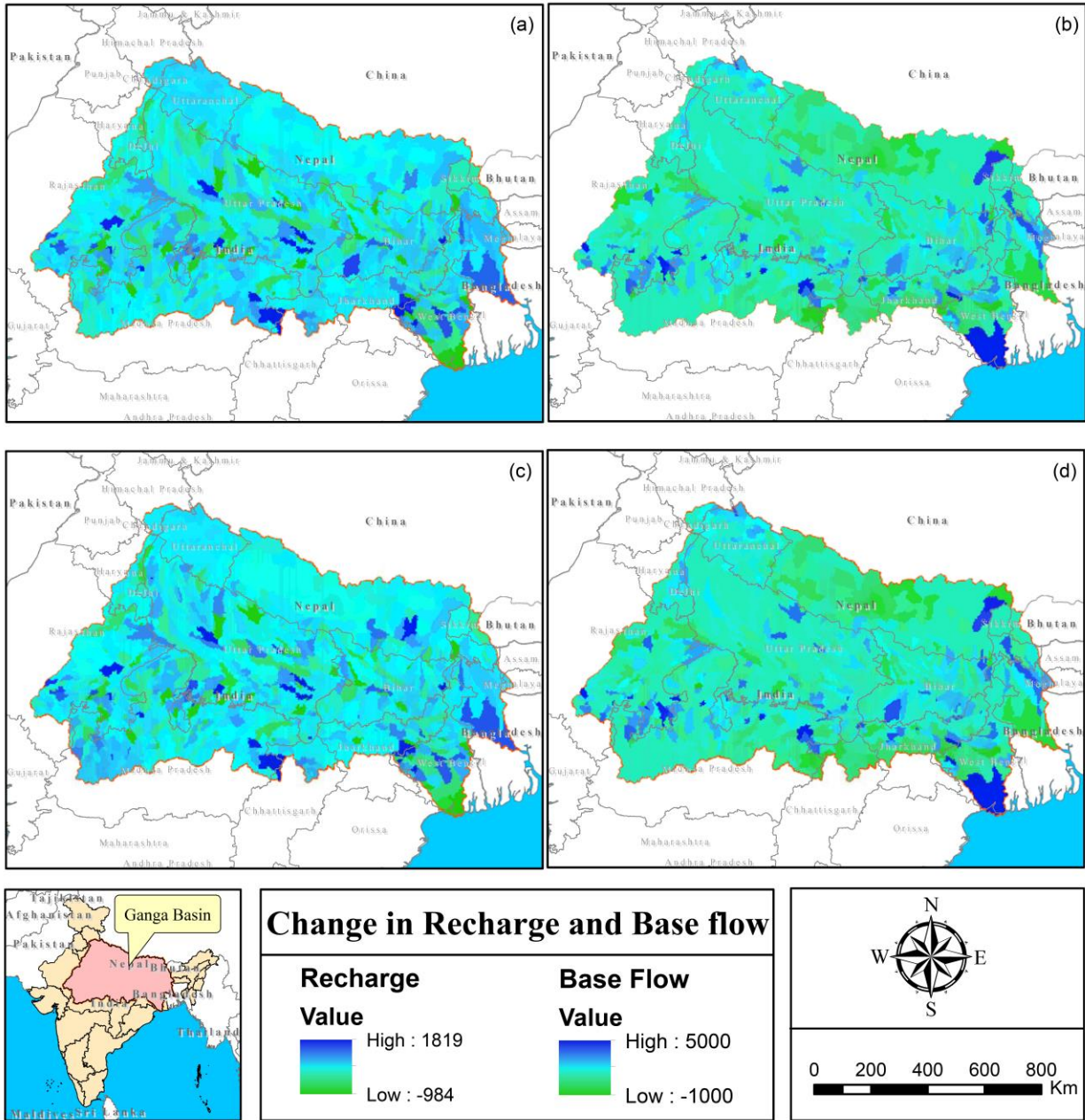


Fig. S2. Change in Recharge for the period (a) 2021-60 and (c) 2061-2100; and Base flow for the period (b) 2021-60 and (d) 2061-2100 in Ganga river basin projected by RCA4 (MIROC).

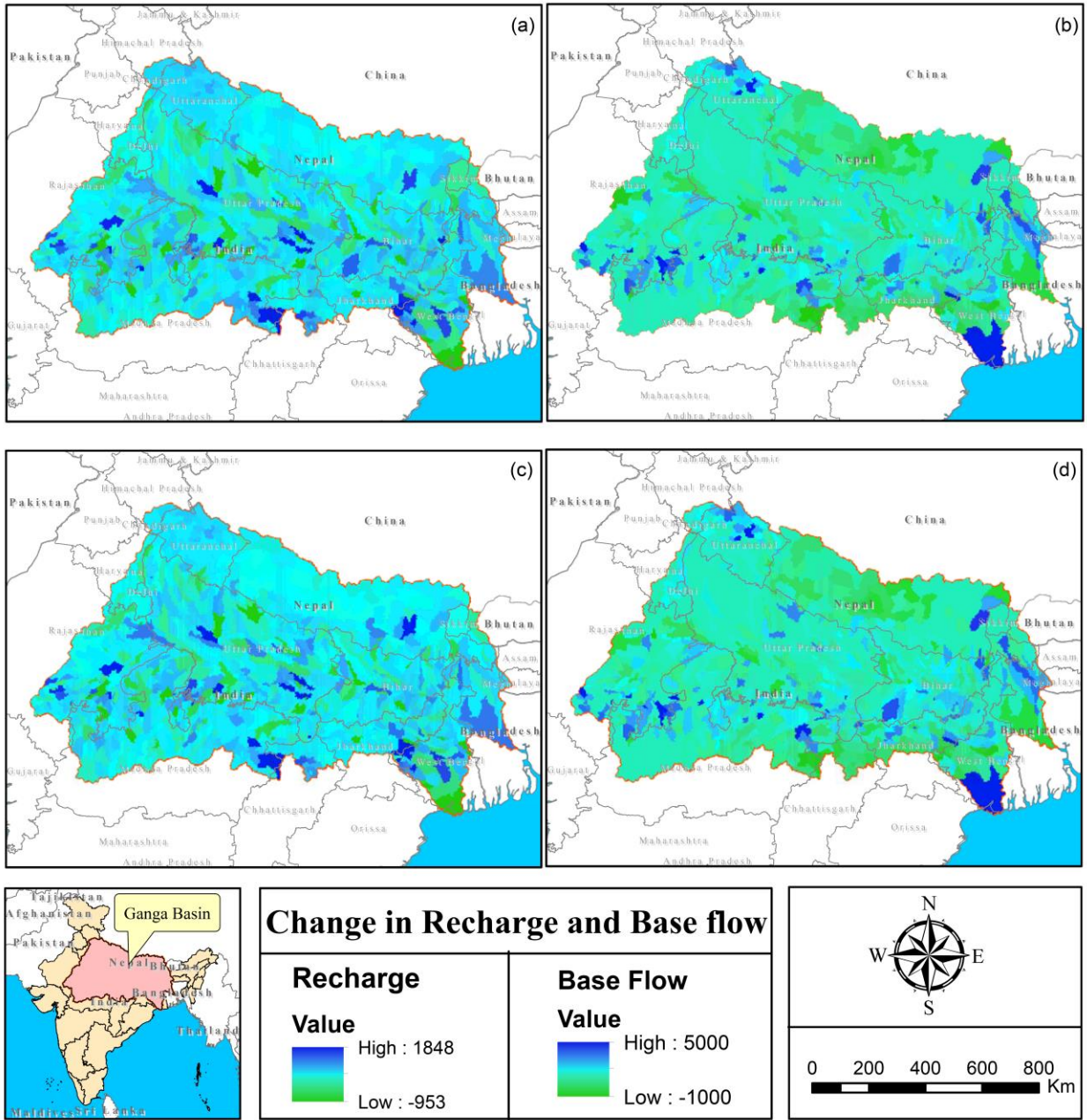


Fig. S3. Change in Recharge for the period (a) 2021-60 and (c) 2061-2100; and Base flow for the period (b) 2021-60 and (d) 2061-2100 in Ganga river basin projected by RCA4 (ICHEC).