
Response to Interactive comment Anonymous Referee #1

We heartily appreciate the reviewer's assessment on this study and the valuable suggestions provided to improve this manuscript. We have studied comments carefully and have made correction which we hope meet with approval. We hereby provide our point by point responses how the comments by referee #1 will be addressed in the revised manuscript.

1. Responses to major comments

Comment: In this study, it is shown how to improve the SWAT model for flood peaks. This is a justification for a study. However, I still do not see a strong link to flood forecasting in this article. You may argue that reasonable flood peak simulations are required for flood forecasting (a point that can be raised e.g. in the discussion), but to use flood forecasting in the title, I expect a higher contribution to this topic.

Reply: Thanks for the comments. We have realized that the significance of flood forecasting is to provide early warnings of the forthcoming floods, thus, real-time flood modeling and prediction should be emphasized. However this article was about the hydrological simulation with the historical data. Strictly speaking, it was an application of the flood simulation rather than the flood forecasting. For this concern, the article title was changed from "Improvement of the SWAT model for event-based flood forecasting on a sub-daily time scale" to "Improvement of the SWAT model for event-based flood simulation on a sub-daily time scale".

Comment: I am still not convinced that spatial heterogeneity is adequately considered. The high number of rainfall gauges might allow a higher number of subbasins. I see that the number of subbasins increased from 4 to 21 compared to the first version. However, I think that some statements of the spatial heterogeneity within the subbasins would be helpful to justify the still relatively low number of subbasins. This is in particular relevant since the SWAT model is based on the HRU concept (spatially not located hydrotops) and that a focus of the article is the calculation of the time of concentration. A higher spatially explicit discretization would certainly be helpful in calculating the time of concentration realistically.

Reply: Thanks for the valuable suggestion. As reviewer suggested that the high number of rainfall gauges might allow a higher number of subbasins, the catchment was further divided into 136 subbasins.

Comment: I am not satisfied with the parameter selection and the method presented for sensitivity

analysis and model calibration (see detailed comments below).

Reply: Parameter selection, sensitivity analysis and model calibration presentations were reworked according to corresponding comments.

Comment: I have one comment to the calculation of objective functions for SWAT-EVENT and the comparison with the classical SWAT model. To calibrate the SWAT, the entire time series was used. For SWAT-EVENT, only events were used. It is then not very surprising that an optimization of a smaller time period leads to better results within this time period. A fair comparison would be to calibrate the SWAT model also only for the event period. Maybe I understand something wrong, but currently it seems to be that the better result in SWAT-EVENT is (at least partly) related to the selection of a smaller time period. In all cases, the study would benefit from showing the difference between SWAT and SWAT-EVENT by using the same event time period.

Reply: It is really true as reviewer suggested that same simulation period should be selected for both model calibrations. Therefore, daily simulation with the SWAT model only for event periods was added. Then a fair comparison was obtained by comparing the SWAT daily simulation results to the aggregated SWAT-EVENT simulation results.

2. Responses to comments

Comment: P. 1, L.15-16: I agree that SWAT is a good water quality model, but needs time for several simulations due to its complexity. Thus, there is an explanation missing why you have selected the SWAT model for flood studies. A simpler but also semi-distributed model which is only focused on hydrology might be more useful.

Reply: Thanks for the comment. It is true that hydrology modeling, rather than water quality modeling, is always the major concern for flood studies. Thus, the advantage of the SWAT model in water quality modeling was not that significant in such application. However, in the revised manuscript, we emphasized the SWAT model's good applicability in dealing with management practices and changed scenarios occurring in the watershed. This is of great importance to the pre-assessment of flood control measures. Considering the reviewer's suggestion, the following explanation of the SWAT model used for this article was added in P1, L15-17:

A model that is capable of predicting the hydrological responses in watershed with management practices during flood periods would be a crucial tool for pre-assessment of flood reduction measures. The Soil and Water Assessment Tool (SWAT) is a semi-distributed hydrological model that is well capable of runoff and water quality modeling under changed scenarios.

For further explanation the usage of the SWAT model, the following contents were also added in P2, L29-P3, L6:

Among many distributed (semi-distributed) models, the one that is capable of predicting the hydrological responses in watersheds with management practices would provide scientific reference for preventing flood and mitigating its adverse effects.

Soil and Water Assessment Tool (SWAT) model (Kiniry et al., 2005) is a typical semi-distributed hydrological model that delineates a catchment into a number of sub-basins, which were subsequently divided into Hydrologic Response Units (HRU) representing the unique combination of land cover, soil type, and slope class within a sub-basin. SWAT model integrated well with Geographic Information System (GIS), having great potential in dealing with spatial flood control measures. In addition, the SWAT model is widely applied for runoff and water quality modeling under changed scenarios (Glavan et al., 2015; Yu et al., 2018; Qiu et al., 2017; Baker and Miller, 2013; Yan et al., 2013).

Comment: P.2., L.9: For flood forecasting purpose, it is required to simulate on time and not only the past. At least in the future perspective, on-time simulation is needed. Please refer to this point (e.g. in the discussion).

Reply: We have already changed the topic from flood forecasting to flood simulation. So the original part relating to the flood forecasting description would be replaced by the following contents in P2, L9-14:

Floods have caused enormous losses to economy, society and ecological environment around the world (Doocy et al., 2013; Werritty et al., 2007; Guan et al., 2015). China is a flood-prone country, which suffers from severe flooding almost every year (Zhang et al., 2002). In this situation, protection against flooding has always been the government's primary task that brooks no delay. A series of structural and non-structural flood mitigation measures have been conducted to control and manage the floods (Guo et al., 2018). However, accurate flood simulations would be particularly important for such design- or management-related issues.

Comment: P.2., L.18: Here, a justification for the model selection is missing. There are a huge amount of spatial-distributed model. At least a few words on that are required.

Reply: Thanks for your valuable advice. We explained several spatial-distributed hydrological models, such as the TOPMODEL, VIC, HBV and HEC-HMS in P2, L24-29 as follows:

Beven et al. (1984) firstly tested the applicability of the TOPMODEL in flood simulation for three U.K. catchments and suggested that the model could be a useful approach for ungauged catchments. Variable Infiltration Capacity (VIC) model is also playing an increasing role in flood simulation (Wu et al., 2014; Yigzaw and Hossain, 2012). The applications of the HBV model for flood simulation could be found in many studies (Haggstrom et al., 1990; Grillakis et al., 2010; Kobold and Brilly, 2006). HEC-HMS model was able to provide reasonable flood simulation results in the San Antonio River Basin (Ramly and Tahir, 2016). Among many distributed (semi-distributed) models, the one that is capable of predicting the hydrological responses in watersheds with management practices would provide scientific reference for preventing flood and mitigating its adverse effects.

Comment: P.2., L. 18: Please cite the SWAT model here with the original reference.

Reply: Thanks for the reminding. The original reference of the SWAT model was added in P3, L1.

Comment: P.2, L.26: What is meant here with „by research involving model parameters“? Please be precise. Model parameters themselves are not a research topic. Parameter sensitivity, optimization, screening etc would be a topic.

Reply: Thanks for the correction. This part has been deleted. To state the applications of the SWAT model in many studies, the following content was added in P3, L5-6:

In addition, the SWAT model is widely applied for runoff and water quality modeling under changed scenarios (Glavan et al., 2015; Yu et al., 2018; Qiu et al., 2017; Baker and Miller, 2013; Yan et al., 2013)

Comment: P.3., L. 18: How is flood forecasting included?

Reply: More precisely, the “flood forecasting” was changed to “flood simulation”.

Comment: P.3, L.20: All SWAT model versions include an auto-calibration routine. This is not specific for SWAT2005. I can understand that you prefer to use SWAT2005 because you have reasons for that. But I still do not see an advantage of SWAT2005 compared to more recent versions.

Reply: Thanks for pointing out the incorrect descriptions. Here we want to explain the selection of SWAT 2005 used in this study more clearly.

Firstly, since the new versions of the SWAT model, i.e. SWAT 2009 and SWAT 2012, have removed the auto-calibration routing “automet.f” in the source codes, the modifications of these new version models then need to consider the coupling issues with the SWAT-CUP. However, the SWAT 2005 incorporates an internal auto-calibration routing, which makes it much easier to do model modifications.

Secondly, we have checked the revision history of the SWAT model and a previous study (Seo et al., 2014), model improvements were mainly focused on the water quality simulation. In this study, we think the

SWAT 2005 was generally adequate for flood simulation.

Finally, model modifications based on the SWAT 2005 could be also found in other studies (Dechmi et al., 2012; Jeong et al., 2010).

Overall, to justify the application of the SWAT2005, the original contents were replaced by following contents in P3, L31-P4, L6:

The source code of SWAT2005 has an internal auto-calibration module and such integrated design of model simulation and auto-calibration is easily manageable and modified since there is no need to couple external optimization algorithms. The accessible SWAT2009 (rev. 528) and SWAT2012 (rev. 664) have removed auto-calibration routines, however, an independent program SWAT-CUP (Abbaspour et al., 2007) is provided instead. Admittedly, many improvements have been made from the SWAT2005 to the latest SWAT2012. According to the SWAT model updates in (Seo et al., 2014), the major enhancements focused on the water quality modelling components, whereas the runoff modelling components in new SWAT versions were not so far different from those in the SWAT2005. This study was specific to the model modifications in runoff simulation, thus, the SWAT2005 was considered to be appropriate. Some other studies also modified the main hydrological processes based on the SWAT2005 version (Dechmi et al., 2012; Jeong et al., 2010).

Comment: P.4., L.27: How can you consider 138 gauges for 21 subbasins using Thiessen average rainfall? It is unclear how spatial rainfall variability is included keeping in mind that the SWAT model is using one rainfall station per subbasin. And an accurate rainfall estimation might be crucial for flood forecasting. Please give more details on this method.

Reply: Since we have delineated the catchment into 136 subbasins, the majority of the rainfall gauges were considered. The application of the rainfall data was added in P5, L9-16 as follow:

By default, SWAT structure allows only one rainfall input for each delineated sub-basin. Thus, sub-basins without available rainfall gauge would be automatically assigned the nearest one. For sub-basins with multiple rainfall gauges, Thiessen polygon method (Thiessen, 1911) was utilized to derive the rainfall input. Rainfall is the main driving force for hydrological models, and therefore accurate representation of spatially distributed rainfall is essential in hydrological modeling. (Cho et al., 2009) compared three different methods to incorporate spatially variable rainfall into the SWAT model and recommended the Thiessen polygon approach in catchments with high spatial variability of rainfall due to its robustness to catchment delineation.

Comment: P.5, L.8: Again information is required how to consider „timely flood warning“.

Reply: This part has been deleted since this topic has been change to flood simulation.

Comment: P.6, L. 21: A core term in calculating the time of concentration is the average slope length,

which is the average of the slope length within a subbasin. This parameter rather critical. Its spatial variability within a subbasin may increase with increasing catchment size. Thus, again this is a point which should be considered in the discussion of spatial heterogeneity. I assume that a larger number of subbasins and a better representation of the slope length might result in a more realistic modeling.

Reply: Thanks for the comment. We have re-delineated the whole catchment into 136 sub-basins, the geographic features of sub-basins were presented in Table 2. We also want to state that the average slope length is a core term in calculating the overland flow according to Eq. (5). However, the final time of concentration in a sub-basin is dominated by the channel flow time, since the values of channel flow time are much greater than those of overland flow time

Comment: P.7, L.16: Certainly, it is not required to calibrate 26 model parameters to model floods with the SWAT model. I recommend using less model parameters based on hydrological knowledge.

Reply: Thanks for the good recommend. We agree that it is important to choose model parameters based on hydrological knowledge and watershed characteristics. For example, parameters relating to the snow melt were not included in the sensitivity analysis and model calibration due to the warm temperate in Huiahe River basin.

The original part was replaced by following contents in P8, L15-20:

It is highly recommended to identify the model parameters that can represent the hydrological characteristics of specific catchment before blindly applying sensitivity analysis. Based on the review of the SWAT model applications (Griensven et al., 2006;Cibin et al., 2010;Roth and Lemann, 2016) and the analysis of the SWAT model parameters, a total of 16 parameters related to the flow simulation in study area were involved in sensitivity analysis (see 错误!未找到引用源。) for daily simulation with the SWAT model. When it came to the event-based flood simulation with SWAT-EVENT model, additional distributed UH parameter t_{subadj} (i.e., a total of 17 model parameters) were also considered.

Comment: P.7, L.17: It is reasonable to use only the sensitive model parameters. However, it would be great to know how this decision was made. Thus, how were model parameters identified as sensitive?

Reply: Thanks for the comment. To clearly explain how the sensitivity analysis works and how the sensitive parameters were identified, we added the following contents in P8, L6-25:

LH-OAT method firstly subdivides each parameter into N stratum with a probability of $1/N$. Sampling points are randomly generated so that one parameter is sampled only once at each strata. Then, the local sensitivity of a parameter at one sampling point is calculated as:

$$S_{ij} = 200 \left| \frac{[y(\theta_1, \dots, \theta_i + \Delta_i, \dots, \theta_p) - y(\theta_1, \dots, \theta_p)] / [y(\theta_1, \dots, \theta_i + \Delta_i, \dots, \theta_p) + y(\theta_1, \dots, \theta_p)]}{\Delta_i} \right| \quad (7)$$

where S_{ij} is the partial effect of parameter θ_i at the LH sampling point j ; y is the model output (or objective function); Δ_i is the perturbation of parameter θ_i and P is the number of parameters. The final sensitivity index S_i for the parameter θ_i is derived by averaging these partial effects of each loop for all LH points (i.e., N loops). The greater the S_i , the more sensitive the model response is to that particular parameter.

It is highly recommended to identify the model parameters that can represent the hydrological characteristics of specific catchment before blindly applying sensitivity analysis. Based on the review of the SWAT model applications (Griensven et al., 2006; Cijin et al., 2010; Roth and Lemann, 2016) and the analysis of the SWAT model parameters, a total of 16 parameters related to the flow simulation in study area were involved in sensitivity analysis (see 错误!未找到引用源。) for daily simulation with the SWAT model. When it came to the event-based flood simulation with SWAT-EVENT model, additional distributed UH parameter t_{subadj} (i.e., a total of 17 model parameters) were also considered. For both models, the objective function y in Eq. (7) represented the residual sum of squares of stream flow between the simulated set and the measured set. Specifically, sensitivity analysis of the SWAT model was conducted not only for long-term period, but also for the same flood periods as the SWAT-EVENT simulation. According to the sensitivity ranks of S_i results, the upper-middle ranking parameters would be used for the calibration procedure, while the values of the other parameters were set to their default values.

Comment: P.7, L.21: I cannot follow the justification for an automatic calibration. Certainly it is not possible to calibrate 26 parameters manually in a realistic time period. However, it is certainly possible to reduce the number of parameters to an acceptable number.

Reply: Thanks for the comment. The original part was deleted, instead, the following content was added in P8, L27-28:

Before effectively applying a hydrological model, a calibration process aims to estimate the model parameters that minimize the errors between the observed and simulated results is usually necessary.

Comment: P.8, L.21: It would be interesting to see a sensitivity analysis specific for SWAT-EVENT.

Reply: Sensitivity analysis result was added in Table 3, and the corresponding descriptions were added in P10, L14-P5, L3.

Comment: P.9, L.15: It is rather strange to highlight that the performance is very good according to ENS, but to ignore that the performance is only satisfactory according to PBIAS referred to the same

reference. Please consider all thresholds or none of them.

Reply: Since the catchment was further divided into 136 sub-basins, model calibration and validation were re-worked. The optimal model parameters were listed in Table 4 and the model performance was presented in Table 5. All the three statistical indicators were evaluated according to performance ratings for evaluation statistics recommended by (Moriiasi et al., 2007). The original part was replaced by the following content in P11, L6-13:

The E_{NS} value is 0.76 for the calibration period and 0.80 for the validation period. These two values of the daily E_{NS} both exceed 0.75, which is considered to be “very good” according to performance ratings for evaluation statistics recommended by (Moriiasi et al., 2007). The daily R_{SR} values are 0.49 and 0.44 for the calibration and validation, respectively, indicating that the root mean square error values are less than half the standard deviation of measured data, i.e. the “very good” model performances suggested by (Moriiasi et al., 2007). The SWAT model overestimates the streamflow by 5.72 % for calibration while underestimating the streamflow by 8.38 % for validation. The calculated results of P_{BIAS} in 错误!未找到引用源。 also attain the “very good” rating.

Comment: P.12, L.18-21: The selection of objective functions is certainly a trade-off in optimizing different parts of the hydrograph. A focus on high flows might lead to lower performance for normal or low flows. It should be made clear that the selection of the objective function was made to fulfill the goals of the study and that it was accepted to have a lower performance in other phases of the hydrograph.

Reply: Thanks for the comment. We added the following illustration in P14, L24-30:

As Coustau et al. (2012) declared, event-based models were very convenient for operational purposes, if the initial wetness state of the catchment would be known with good accuracy. Although the continuous modeling approach used in this study was not the perfect solution for the determination of the catchment antecedent conditions, it was still an effective method as the preparatory preparation for the simulation of the SWAT-EVENT model due to the good goodness-of-fit in 错误!未找到引用源。 and 错误!未找到引用源。 . Since the goal of this research was to ascertain the applicability of the newly developed SWAT-EVENT model on event-based flood simulation, it was accepted to have a lower performance in calculating the antecedent conditions.

Comment: Table A1: Several parameters are certainly not relevant in modelling flood peaks such as BIOMIX, SOL_ALB, TLAPS, etc. Please reduce the number of parameters based on hydrological knowledge in advance.

Reply: Table A1 was changed to Table 3 and the number of model parameters was reduced based on

hydrological knowledge and watershed characteristics.

Comment: Table A1: Please explain the meaning of -25 and 25 for snow melt temperature (SMTMP).

Reply: Table A1 was changed to Table 3 and explanatory notes were added below the Table 3.

Comment: Table A1: The slope length is used first to describe the geographical features of the subbasins and then it is calibrated. Is this approach valid?

Reply: It is not valid to calibrate the slope length since we think this parameter was obtained from the DEM. Thus, slope length parameter was deleted from Table 3.

Comment: Table A2: The differences in model parameters between the SWAT model and the SWAT-EVENT version is very high. From hydrological point of view, it does not make sense to use very different parameter sets of the same model in the same catchment. This means that the hydrological processes are not well represented/understood.

Reply: Table A2 was change to Table 4. Here we respectfully argue that the SWAT model and the SWAT-EVNET model were not exactly the same. The SWAT-EVENT was simulating at a sub-daily time scale while the SWAT model was simulating at daily time scale. This did not mean that the only difference between the two models was the model input. As stated by (Jeong et al., 2010), modifications from daily time scale to sub-daily time scale have changed many hydrological processes (i.e. calculation of infiltration, and surface runoff lag and channel routing) in the original SWAT model. What's more, the UH routing method was only used for sub-daily simulation. The daily simulation with the SWAT model presented in this study did not take into account the UH routing method. Therefore, we think it was reasonable to have differences in model parameters between the SWAT model and the SWAT-EVENT version.

Comment: Table 4: All flood events are summer events. Do you really need to consider snow model parameters?

Reply: Model parameters used in sensitivity analysis and calibration were refreshed in Table3 and Table 4.

Comment: Figure 2a: can be removed since land use and soil types are not discussed in detail.

Reply: As reviewer suggested, Figure 2 was removed.

3. Responses to other comments

Comment: P.2., L. 16: Small letters for Beven and Kirkby.

Reply: This part has been removed due to the comments above.

Comment: P.2., L.22: HRU.

Reply: We have made correction in P2, L30.

Comment: P.6, Eq.2-6: Not all terms of these equations are clearly visible.

Reply: We are very sorry for our incorrect writing. We have fixed all the unclearly equations.

Comment: P.11, L.5: concluded

Reply: We have made correction.

Comment: Figure 8: basin instead of bsin (x-axis)

Reply: We have made correction.

References

Abbaspour, K. C., Vejdani, M., and Haghighat, S.: SWAT-CUP calibration and uncertainty programs for SWAT, Modsim International Congress on Modelling & Simulation Land Water & Environmental Management Integrated Systems for Sustainability, 364, 1603-1609, 2007.

Baker, T. J., and Miller, S. N.: Using the Soil and Water Assessment Tool (SWAT) to assess land use impact on water resources in an East African watershed, Journal of Hydrology, 486, 100-111, 2013.

Beven, K. J., Kirkby, M. J., Schofield, N., and Tagg, A. F.: Testing a physically-based flood forecasting model (TOPMODEL) for three U.K. catchments, Journal of Hydrology, 69, 119-143, 1984.

Cho, J., Bosch, D., Lowrance, R., Strickland, T., and Vellidis, G.: Effect of spatial distribution of rainfall on temporal and spatial uncertainty of SWAT output, 52, 277-281, 2009.

Cibin, R., Sudheer, K., and Chaubey, I.: Sensitivity and identifiability of stream flow generation parameters of the SWAT model, Hydrological Processes, 24, 1133-1148, 2010.

Coustau, M., Bouvier, C., Borrellestupina, V., and Jourde, H.: Flood modelling with a distributed event-based parsimonious rainfall-runoff model: case of the karstic Lez river catchment, Natural Hazards & Earth System Sciences, 12, 1119-1133, 2012.

Dechmi, F., Burguete, J., and Skhiri, A.: SWAT application in intensive irrigation systems: Model modification, calibration and validation, Journal of Hydrology, s 470–471, 227-238, 2012.

Doocy, S., Daniels, A., Murray, S., and Kirsch, T. D.: The Human Impact of Floods: a Historical Review of Events 1980-2009 and Systematic Literature Review, Plos Curr, 5, 1808-1815, 2013.

Glavan, M., Ceglar, A., and Pintar, M.: Assessing the impacts of climate change on water quantity and quality modelling in small Slovenian Mediterranean catchment – lesson for policy and decision makers, Hydrological Processes, 29, 3124-3144, 2015.

Griensven, A. V., Meixner, T., Grunwald, S., Bishop, T., Diluzio, M., and Srinivasan, R.: A global sensitivity analysis tool for the parameters of multi-variable catchment models, Journal of Hydrology, 324, 10-23, 2006.

Grillakis, M. G., Tsanis, I. K., and Koutroulis, A. G.: Application of the HBV hydrological model in a flash flood case in Slovenia, Natural Hazards & Earth System Sciences, 10, 2713-2725, 2010.

Guan, M., Wright, N. G., and Andrew Sleight, P.: Multiple effects of sediment transport and geomorphic processes within flood events: Modelling and understanding, International Journal of Sediment Research, 30, 371-381, <https://doi.org/10.1016/j.ijsrc.2014.12.001>, 2015.

-
- Guo, L., He, B., Ma, M., Chang, Q., Li, Q., Zhang, K., and Hong, Y.: A comprehensive flash flood defense system in China: overview, achievements, and outlook, *Natural Hazards*, 1-14, 2018.
- Haggstrom, M., Lindstrom, G., Cobos, C., Martínez, J. R., Merlos, L., Dimas Alonso, R., Castillo, G., Sirias, C., Miranda, D., and Granados, J.: Application of the HBV model for flood forecasting in six Central American Rivers, *Smhi Hydrology*, 27, 1990.
- Jeong, J., Kannan, N., Arnold, J., Glick, R., Gosselink, L., and Srinivasan, R.: Development and Integration of Sub-hourly RainfallRunoff Modeling Capability Within a Watershed Model, *Water Resources Management*, 24, 4505-4527, 2010.
- Kiniry, J. R., Williams, J. R., and King, K. W.: Soil and Water Assessment Tool Theoretical Documentation (Version 2005), *Computer Speech & Language*, 24, 289-306, 2005.
- Kobold, M., and Brilly, M.: The use of HBV model for flash flood forecasting, *Natural Hazards & Earth System Sciences*, 6, 407-417, 2006.
- Moriasi, D. N., Arnold, J. G., Van Liew, M. W., Bingner, R. L., Harmel, R. D., and Veith, T. L.: Model evaluation guidelines for systematic quantification of accuracy in watershed simulations, *Transactions of the Asabe*, 50, 885-900, 2007.
- Qiu, L., Wu, Y., Wang, L., Lei, X., Liao, W., Hui, Y., and Meng, X.: Spatiotemporal response of the water cycle to land use conversions in a typical hilly-gully basin on the Loess Plateau, China, *Hydrology & Earth System Sciences Discussions*, 21, 1-30, 2017.
- Ramly, S., and Tahir, W.: Application of HEC-GeoHMS and HEC-HMS as Rainfall–Runoff Model for Flood Simulation, Springer Singapore, 2016.
- Roth, V., and Lemann, T.: Comparing CFSR and conventional weather data for discharge and sediment loss modelling with SWAT in small catchments in the Ethiopian Highlands, *Hydrology & Earth System Sciences*, 20, 921-934, 2016.
- Seo, M., Yen, H., Kim, M. K., and Jeong, J.: Transferability of SWAT Models between SWAT2009 and SWAT2012, *Journal of Environmental Quality*, 43, 869, 2014.
- Thiessen, A. H.: Precipitation averages for large areas, *Monthly Weather Review*, 39, 1082-1084, 1911.
- Werritty, A., Houston, D., Ball, T., Tavendale, A., and Black, A.: Exploring the Social Impacts of Flood Risk and Flooding in Scotland, 2007.
- Wu, H., Adler, R. F., Tian, Y., Huffman, G. J., Li, H., and Wang, J. J.: Real - time global flood estimation using satellite - based precipitation and a coupled land surface and routing model, *Water Resources Research*, 50, 2693 – 2717, 2014.
- Yan, B., Fang, N. F., Zhang, P. C., and Shi, Z. H.: Impacts of land use change on watershed streamflow and sediment yield: An assessment using hydrologic modelling and partial least squares regression, *Journal of Hydrology*, 484, 26-37, <https://doi.org/10.1016/j.jhydrol.2013.01.008>, 2013.
- Yigzaw, W. Y., and Hossain, F.: Impact of Artificial Reservoir Size and Land Use Land Cover on Probable Maximum Flood: The case of Folsom Dam on American River, *Journal of hydrologic Engineering*, 18, 1180-1190, 2012.
- Yu, D., Xie, P., Dong, X., Su, B., Hu, X., Wang, K., and Xu, S.: The development of land use planning scenarios based on land suitability and its influences on eco-hydrological responses in the upstream of the Huaihe River basin, *Ecological Modelling*, 373, 2018.
- Zhang, J., Zhou, C., Xu, K., and Watanabe, M.: Flood disaster monitoring and evaluation in China, *Global Environmental Change Part B Environmental Hazards*, 4, 33-43, 2002.

Improvement of the SWAT model for event-based flood simulation on a sub-daily time scale

Dan Yu¹, Ping Xie^{1,2}, Xiaohua Dong^{3,4}, Xiaonong Hu⁵, Ji Liu^{3,4}, Yinghai Li^{3,4}, Tao Peng^{3,4}, Haibo Ma^{3,4}, Kai Wang⁶, Shijin Xu⁶

¹State Key Laboratory of Water Resources and Hydropower Engineering Science, Wuhan University, Wuhan, 430072, China

²Collaborative Innovation Center for Territorial Sovereignty and Maritime Rights, Wuhan, 430072, China

³College of Hydraulic & Environmental Engineering, China Three Gorges University, Yichang, 443002, China

⁴Hubei Provincial Collaborative Innovation Center for Water Security, Wuhan, 430070, China

⁵Institute of Groundwater and Earth Sciences, Jinan University, Guangzhou 510632, China

⁶Hydrologic Bureau of Huaihe River Commission, Bengbu, 233001, China

Correspondence to: Xiaohua Dong (xhdong@ctgu.edu.cn)

Abstract. Flooding represents one of the most severe natural disasters threatening the development of human society. A model that is capable of predicting the hydrological responses in watershed with management practices during flood period would be a crucial tool for pre-assessment of flood reduction measures. The Soil and Water Assessment Tool (SWAT) is a semi-distributed hydrological model that is well capable of runoff and water quality modeling under changed scenarios. The original SWAT model is a long-term yield model. However, a daily simulation time step and a continuous time marching limit the application of the SWAT model for detailed, event-based flood simulation. In addition, SWAT uses a basin level parameter that is fixed for the whole catchment to parameterize the Unit Hydrograph (UH), thereby ignoring the spatial heterogeneity among the sub-basins when adjusting the shape of the UHs. This paper developed a method to perform event-based flood simulation on a sub-daily time scale based on SWAT2005 and simultaneously improved the UH method used in the original SWAT model. First, model programs for surface runoff and water routing were modified to a sub-daily time scale. Subsequently, the entire loop structure was broken into discrete flood events in order to obtain a SWAT-EVENT model in which antecedent soil moisture and antecedent reach storage could be obtained from daily simulations of the original SWAT model. Finally, the original lumped UH parameter was refined into a set of distributed ones to reflect the spatial variability of the studied area. The modified SWAT-EVENT model was used in the Wangjiaba catchment located in the upper reaches of the Huaihe River in China. Daily calibration and validation procedures were first performed for the SWAT model with long-term flow data from 1990 to 2010, after which sub-daily ($\Delta t = 2\text{ h}$) calibration and validation in the SWAT-EVENT model were conducted with 24 flood events originating primarily during the flood seasons within the same time span. Daily simulation results demonstrated that the SWAT model could yield very good performances in reproducing streamflow for both whole year and flood period. Event-based flood simulation results simulated by the sub-daily SWAT-EVENT model indicated reliable performances, with E_{NS} values varying from 0.67 to 0.95. The SWAT-

批注 [L1]: Forecasting was changed to simulation.

批注 [L2]: The justification of model used in flood simulation was modified.

批注 [L3]: The justification of SWAT model used in this study was modified.

批注 [L4]: Forecasting was changed to simulation.

批注 [L5]: Forecasting was changed to simulation.

批注 [L6]: Daily SWAT simulation performance was updated.

EVENT model, compared to the SWAT model, particularly improved the simulation accuracies of the flood peaks. Furthermore, the SWAT-EVENT model results of the two UH parameterization methods indicated that the use of the distributed parameters resulted in a more reasonable UH characterization and better model fit compared to the lumped UH parameter.

Keywords: SWAT model; Event-based flood simulation; Antecedent conditions; Unit Hydrograph

批注 [L7]: Forecasting was changed to simulation.

1 Introduction

A flood represents one of the most severe natural disasters in the world. It has been reported that nearly 40 % of losses originating from natural catastrophes are caused by floods (Adams Iii and Pagano, 2016). Floods have caused enormous losses to economy, society and ecological environment around the world (Doocy et al., 2013; Werritty et al., 2007; Guan et al., 2015). China is a flood-prone country, which suffers from severe flooding almost every year (Zhang et al., 2002). In this situation, protection against flooding has always been the government's primary task that brooks no delay. A series of structural and non-structural flood mitigation measures have been conducted to control and manage the floods (Guo et al., 2018). However, accurate flood simulations would be particularly important for such design- or management-related issues.

批注 [L8]: Flood forecasting justification was changed to flood simulation.

Numerous hydrological models have been developed since their first appearance. According to the spatial discretization method, these existing hydrological models can be divided into two categories: lumped models and distributed (semi-distributed) models (Maidment, 1994). Although lumped models are generally accepted for flood forecast and simulation due to the structural simplicity, computational efficiency and lower data requirements, they are not applicable to complex catchments since they do not account for the heterogeneity of the catchments (Yao et al., 1998; Hapuarachchi et al., 2011). Meanwhile, distributed (semi-distributed) models subdivide the entire catchment into a number of smaller heterogeneous sub-units with dissimilar attributes. It is the advantage for distributed (semi-distributed) models to incorporate the spatial characteristics of catchment such as land cover, soil properties, topography and meteorology (Yang et al., 2004; Yang et al., 2001). A large number of distributed or semi-distributed hydrological models have been applied in flood simulation. Beven et al. (1984) firstly tested the applicability of the TOPMODEL in flood simulation for three U.K. catchments and suggested that the model could be a useful approach for ungauged catchments. Variable Infiltration Capacity (VIC) model is also playing an increasing role in flood simulation (Wu et al., 2014; Yigzaw and Hossain, 2012). The applications of the HBV model for flood simulation could be found in many studies (Haggstrom et al., 1990; Grillakis et al., 2010; Kobold and Brilly, 2006). HEC-HMS model was able to provide reasonable flood simulation results in the San Antonio River Basin (Ramly and Tahir, 2016). Among many distributed (semi-distributed) models, the one that is capable of predicting the hydrological responses in watersheds with management practices would provide scientific reference for preventing flood and mitigating its adverse effects.

批注 [L9]: The description of model used in flood simulation was added.

批注 [L10]: The justification of model used in flood simulation was added.

Soil and Water Assessment Tool (SWAT) model (Arnold et al., 1998) is a typical semi-distributed hydrological model that delineates a catchment into a number of sub-basins, which were subsequently divided into Hydrologic Response Units (HRU)

representing the unique combination of land cover, soil type, and slope class within a sub-basin. SWAT model integrates well with Geographic Information System (GIS), having great potential in dealing with spatial flood control measures. In addition, the SWAT model is widely applied for runoff and water quality modeling under changed scenarios (Glavan et al., 2015; Yu et al., 2018; Qiu et al., 2017; Baker and Miller, 2013; Yan et al., 2013).

SWAT is a continuous (i.e., long-term) model with a limited applicability toward simulating instantaneous hydrologic responses. Therefore, Jeong et al. (2010) extended the capability of SWAT to simulate operational sub-daily or even sub-hourly hydrological processes, the modifications of which primarily focused on the model algorithms to enable the SWAT model to operate at a finer time scale with a continuous modeling loop. Constrained by data availability in China (MWR, 2009), rainfall and discharge observations at a sub-daily time scale are usually collected during flood period, while daily data are measured otherwise. In this respect, hydrological models are usually applied at different time scales (i.e., a daily time scale for continuous simulations and a sub-daily time scale for event-based flood simulation) according to the availability of observed rainfall and discharge data (Yao et al., 2014a). Hence, a major constraint for the application of the SWAT model as modified by Jeong et al. (2010) is the conflict between a continuous simulation loop and the discontinuous observed sub-daily data in China.

To capture the sophisticated characteristics of flood events at a sub-daily time scale, a refinement of the spatial representation within the SWAT model is necessary. A dimensionless Unit Hydrograph (UH), which was distributed as a triangular shape and embedded within an sub-daily overland flow routing process in the SWAT model, was applied to relate hydrologic responses to specific catchment characteristics, such as the dimensions of the main stream and basin area, through applications of GIS or Remote Sensing (RS) software (Jena and Tiwari, 2006). Due to the spatial discretization in the SWAT model, the model parameters are grouped into three levels: (1) basin level parameters are fixed for the whole catchment; (2) sub-basin level parameters are varied with sub-basins; (3) HRU level parameters are distributed in different HRUs. By default, the UH-specific parameter in the SWAT model is programmed on the basin level, which means that spatial variation within a catchment is disregarded when adjusting the shape of the UH in each sub-basin. Given the spatial heterogeneity of the catchment, the application of this basin level adjustment parameter seems to be rather unconvincing. Moreover, because a great deal of research has primarily focused on daily, monthly or yearly simulations using the SWAT model, little effort has actually been provided toward demonstrating the usage of the UH method in the SWAT model.

This study developed a method to perform event-based flood simulation on a sub-daily time scale based on the SWAT model and simultaneously improved the UH method used in the original SWAT model in the upper reaches of the Huaihe River in China. SWAT is an open-source code model, which makes it possible to produce such a modification. The source code of SWAT2005 has an internal auto-calibration module and such integrated design of model simulation and auto-calibration is easily manageable and modified since there is no need to couple external optimization algorithms. The accessible SWAT2009 (rev. 528) and SWAT2012 (rev. 664) have removed auto-calibration routines, however, an independent program SWAT-CUP (Abbaspour et al., 2007) is provided instead. Admittedly, many improvements have been made from the SWAT2005 to the latest SWAT2012. According to the SWAT model updates in Seo et al. (2014), the major enhancements

批注 [L11]: The explanation of the SWAT used in this study was added.

批注 [L12]: Flood forecasting justification was changed to flood simulation.

focused on the water quality modeling components, whereas the runoff modeling components in new SWAT versions were not so far different from those in the SWAT2005. This study was specific to the model modifications in runoff simulation, thus, the SWAT2005 was considered to be appropriate. There are some other model modification studies (Dechmi et al., 2012; Jeong et al., 2010) based on the SWAT2005 version.

批注 [L13]: Explanation of the usage of SWAT2005 was added.

2 Study area and data

2.1 Study area

The Huaihe River basin (30°55'–36 °36' N, 111°55'–121°25' E) is situated in the eastern part of China. The Wangjiaba (WJB) catchment is situated within the upper reaches of the Huaihe River basin and was chosen as the study area for this paper (see Fig. 1). The WJB catchment has a drainage area of 30630 km², wherein the long channel reaches from the source region to the WJB outlet. The southwestern upstream catchment is characterized as a mountain range with a maximum elevation of 1110 m above sea level. The central and eastern downstream regions are dominated by plains. The study catchment is a subtropical zone with an annual average temperature of 15 °C. The long-term average annual rainfall varies from 800 mm in the north to 1200 mm in the south. Since the catchment is dominated by a monsoon climate, approximately 60 % of the annual rainfall is received during the flood season ranging from mid-May to mid-October. Severe rainfall events within the study area typically transpire during the summer, frequently resulting in severe floods (Zhao et al., 2011).

2.2 Model dataset

To construct and execute the SWAT model, a Digital Elevation Model (DEM), together with land use and soil type data, is required. Climate data, including that of rainfall, temperature, wind speed, etc., are also used. Table 1 lists the model data used in this study.

The DEM data in this study were downloaded from the website of the U.S. Geological Survey (USGS) with a spatial resolution of 90 m. The study catchment was divided into 136 sub-basins according to the catchment delineation, as shown in Fig. 1.

批注 [L14]: The catchment was re-delineated into 136 sub-basins.

A land use map was produced from the Global Land Cover 2000 (GLC2000) data product with a grid size of 1 km (Bartholomé and Belward, 2005). Six categories of land use were identified for this catchment: agricultural land (80.51 %), forest-deciduous (6.76 %), forest-evergreen (2.26 %), range-brush (1.09 %), range-grasses (8.09 %) and water (1.29 %). Soil data were obtained from the Harmonized World Soil Database (HWSD) with a spatial resolution of 30 arc-seconds. The HWSD also provides an attributed database that contains the physico-chemical characteristics of soil data worldwide (Nachtergaele et al., 2012). Since the built-in soil database within the SWAT model does not cover the study area, additional soil parameters were calculated using the method proposed by Jiang et al. (2014). Soil reclassification in the study area was

in accordance with the FAO-90 soil system. Consequently, Eutric Planosols and Cumulic Anthrosols are the two main soil types with area percentages of 24.71 % and 19.95 %, respectively.

The SWAT model has developed a weather generator (WXGEN) to fill the missing climate data by the use of monthly statistics. Relative humidity, wind speed, solar radiation and the minimum and maximum air temperatures were obtained from the Climate Forecast System Reanalysis (CFSR), which was designed based on the forecast system of the National Centers for Atmospheric Prediction (NCEP) to provide estimation for a set of climate variability from 1979 to the present day. There were 30 weather stations included in the study catchment.

A dense rain gauge network consisting of 138 gauges is distributed throughout the study area as illustrated in Fig. 1. By default, SWAT structure allows only one rainfall input for each delineated sub-basin. Thus, sub-basins without available rainfall gauge would be automatically assigned the nearest one. For sub-basins with multiple rainfall gauges, Thiessen polygon method (Thiessen, 1911) was utilized to derive the rainfall input. Rainfall is the main driving force for hydrological models, and therefore accurate representation of spatially distributed rainfall is essential in hydrological modeling. Cho et al. (2009) compared three different methods to incorporate spatially variable rainfall into the SWAT model and recommended the Thiessen polygon approach in catchments with high spatial variability of rainfall due to its robustness to catchment delineation. Daily observed rainfall data were retrieved from 1991 to 2010 with coverage during the entire year, while sub-daily ($\Delta t = 2\text{ h}$) rainfall data are only available for several flood events from May to September within the same time span.

批注 [L15]: The descriptions of rainfall data and the Thiessen polygon method used in this study were added.

3 Methodologies

3.1 Development of a sub-daily event-based SWAT model

The original SWAT model was designed for continuous simulations using a daily time step. The SWAT model operates most effectively during the prediction of long-term hydrological responses to land cover changes or soil management practices with daily time step (Jeong et al., 2011). When faced with flood simulation issues, a finer time scale is required to realistically capture the instantaneous changes representative of flood processes.

批注 [L16]: Flood forecasting justification was changed to flood simulation.

Therefore, the original daily simulation-based SWAT model first needs to be modified in order to perform sub-daily simulations. In a previous study, the sub-daily and even the sub-hourly modeling capacities of the SWAT model have been developed to allow flow simulations with any time step less than a day (Jeong et al., 2010). In the original SWAT model, the surface runoff lag was estimated by a first order lag equation, which was represented by a function of the concentration time and the lag parameter. However, this lag equation was implicitly fixed with daily time interval. Jeong et al. (2010) then introduced the simulation time interval into the lag equation to lag a fraction of the surface runoff at the end of each time step. In addition, channel and impoundment routings were also estimated at operational time interval while other processes such as base flow and evapotranspiration were calculated by equally dividing the daily results over the time steps. In this study, the modifications from daily modeling to sub-daily modeling followed the methods proposed by Jeong et al. (2010).

Second, the modified sub-daily SWAT model must be applied in such a manner to achieve the simulation of individual flooding events rather than to simulate in a continuous way, as performed in the original SWAT model. Event-based sub-daily flood modeling is necessary for these reasons: (1) to enable the modelers to acknowledge the detailed information of up-coming floods and (2) to potentially conduct flood simulation within a watershed without possessing continuously recorded hydrologic data at short time step. To enable the SWAT model to simulate individual flood events, the original source codes were modified and compiled into a new version known as SWAT-EVENT. In the source code of SWAT2005, the subroutine "simulate" contains the loops governing the hydrological processes following the temporal marching during the entire simulation period. Here, the continuous yearly loop was set into several flood events, meanwhile, the continuous daily loop was broken into flood events according to the specific starting and ending dates.

However, the event-based modeling requires a separate method to derive the antecedent conditions of model states. The combination of daily continuous modeling and sub-daily event-based modeling was used in this study (Fig. 2). A continuous daily rainfall sequence was imported into the original SWAT model to independently perform long-term daily simulations. In the SWAT model, there are another two subroutines "varinit" and "rchinit" initializing the daily simulation variables for the land phase of the hydrologic cycle and the channel routing, respectively. In the SWAT-EVENT model, condition judgments were added into those two initialization subroutines. That is, when the simulation process is at the beginning of a given flood event, antecedent soil moisture and antecedent reach storage are set equal to the respective values extracted from the long-term daily simulations of the original SWAT model; otherwise, they should be updated by the SWAT-EVENT model simulation states of the previous day.

3.2 Application of Unit Hydrographs with distributed parameters

The dimensionless UH method employed in the SWAT model exhibits a triangular shape (SCS, 1972), as shown in Fig. 3, wherein the time t (h) represents the X-axis, and the ratio of the discharge to peak discharge represents the Y-axis. This UH is defined as follows:

$$q_{uh} = \frac{t}{t_p} \quad \text{if } t \leq t_p$$

$$q_{uh} = \frac{t_b - t}{t_b - t_p} \quad \text{if } t > t_p$$
(1)

where q_{uh} is the unit discharge at time t , t_p is the time to the peak (h), and t_b is the time base (h). Then, the dimensionless UH is expressed by dividing by the area enclosed by the triangle (Jeong et al., 2010). There are two time factors determining the shape of the triangular UH, which are defined by the following equations:

$$t_b = 0.5 + 0.6 \cdot t_c + t_{adj}$$
(2)

$$t_p = 0.375 \cdot t_b$$
(3)

批注 [L17]: Flood forecasting justification was changed to flood simulation.

where t_c is the concentration time for the sub-basin (h), and t_{adj} is a shape adjustment factor for the UH (h) (Neitsch et al., 2011).

The time of concentration t_c can be calculated based upon the geographic characteristics of the sub-basin considered, for which t_c is denoted by the accumulation of the overland flow time t_{ov} (h) and the channel flow time t_{ch} (h):

$$t_c = t_{ov} + t_{ch} \quad (4)$$

$$t_{ov} = \frac{L_{slp}^{0.6} \cdot n^{0.6}}{18 \cdot S_{sub}^{0.3}} \quad (5)$$

$$t_{ch} = \frac{0.62 \cdot L \cdot n^{0.75}}{A^{0.125} \cdot S_{ch}^{0.375}} \quad (6)$$

where L_{slp} is the average slope length for the sub-basin under consideration (m); n is the Manning coefficient for the sub-basin; S_{sub} is the average slope steepness of the sub-basin ($m \cdot m^{-1}$); L is the longest tributary length in the sub-basin (km); A denotes the area of the sub-basin (km^2); and S_{ch} is the average slope of the tributary channels within the sub-basin ($m \cdot m^{-1}$).

According to catchment discretization, Table 2 appears obvious spatial differences of the geographical attributes among sub-basins. For instance, the values of sub-basin area A vary from 0.09 km^2 to 879.16 km^2 with a Coefficient of Variation (CV) of 0.74. The average slope of the sub-basin S_{sub} and the average slope of the tributary channels S_{ch} are topographic-related parameters, showing much higher values in source sub-basins than those in downstream sub-basins. Spatially, the CV values of S_{sub} and S_{ch} in Table 2 are 1.28 and 1.18. As a result, the overland flow time t_{ov} and the channel flow time t_{ch} affected by all those geographical attributes are non-homogeneous in the spatial distribution, especially for the t_{ch} with the CV value of 0.91. Since the channel flow time t_{ch} dominates the concentration time t_c , the CV of t_c is 0.81 in Table 2. According to Eq. (2), the time base of the UH (t_b) is determined by both concentration time for the sub-basin (t_c) and shape adjustment factor (t_{adj}) concurrently. However, the UH parameter t_{adj} in Eq. (2) is a basin level parameter possessing a lumped value for all sub-basins, meaning that the spatial heterogeneity of t_b may be homogenized. Hypothetically, the CV value of the t_b would decrease from 0.72 to 0.09 along with the increase of UH parameter t_{adj} from 0 h to 30 h in Fig. 4. Generally, the time base of triangular UH (t_b) should be reduced to produce increased peak flow for steep and small sub-basins, or should be increased to produce decreased peak flow for flat and large sub-basins. Thus, the shape adjustment parameter t_{adj} was modified from the basin level to the sub-basin level, and renamed t_{subadj} which allowed the UHs to be adjusted independently by distributed values.

批注 [L18]: The description of the geographical attributes among sub-basins was modified.

3.3 Model calibration and validation

3.3.1 Sensitivity analysis

Sensitivity analysis is a process employed to identify parameters that significantly influence model performance (Holvoet et al., 2005). Generally, sensitivity analysis takes priority over the calibration process to reduce the complexity of the latter (Sudheer et al., 2011). Here, a combined Latin-Hypercube and One-factor-At-a-Time (LH-OAT) sampling method embedded within the SWAT model (Griensven et al., 2006) was used to conduct a sensitivity analysis. LH-OAT method firstly subdivides each parameter into N stratum with a probability of $1/N$. Sampling points are randomly generated so that one parameter is sampled only once at each stratum. Then, the local sensitivity of a parameter at one sampling point is calculated as:

$$S_{ij} = 200 \cdot \left| \frac{y(\theta_1, \dots, \theta_i + \Delta_i, \dots, \theta_p) - y(\theta_1, \dots, \theta_i, \dots, \theta_p)}{\Delta_i} \right| \quad (7)$$

where S_{ij} is the partial effect of parameter θ_i at the LH sampling point j ; y is the model output (or objective function); Δ_i is the perturbation of parameter θ_i and P is the number of parameters. The final sensitivity index S_i for the parameter θ_i is derived by averaging these partial effects of each loop for all LH points (i.e., N loops). The greater the S_i , the more sensitive the model response is to that particular parameter.

It is highly recommended to identify the model parameters that can represent the hydrological characteristics of specific catchment before blindly applying sensitivity analysis. Based on the reviews of the SWAT model applications (Griensven et al., 2006; Cibilin et al., 2010; Roth and Lemann, 2016) and the analysis of the SWAT model parameters, a total of 16 parameters related to the streamflow simulation in study area were involved in sensitivity analysis (see Table 3) for daily simulation with the SWAT model. When it came to the event-based sub-daily flood simulation with SWAT-EVENT model, additional distributed UH parameter t_{subadj} (i.e., a total of 17 model parameters) was also considered. For both models, the objective function y in Eq. (7) represented the residual sum of squares of stream flow between the simulated set and the measured set. Specifically, sensitivity analysis of the SWAT model was conducted not only for long-term period, but also for the same flood period as the SWAT-EVENT simulation. According to the sensitivity ranks of S_i , the upper-middle ranking parameters would be used for the calibration procedure, while the values of the other parameters were set to their default values.

3.3.2 Daily calibration and validation with the SWAT model

Before effectively applying a hydrological model, a calibration process aims to estimate the model parameters that minimize the errors between the observed and simulated results is usually necessary. The Shuffled Complex Evolution (SCE-UA)

批注 [L19]: The description of the LH-OAT method was added.

批注 [L20]: The determination of the sensitive parameters was added.

批注 [L21]: The justification of the model calibration was modified.

algorithm (Duan et al., 1992) is a global optimization technique that is incorporated as a module into the SWAT model. The SCE-UA algorithm has been applied to multiple physically based hydrological models (Sorooshian et al., 1993; Luce and Cundy, 1994; Gan and Biftu, 1996) and has exhibited good performance similar to other global search procedures (Cooper et al., 1997; Thyer et al., 1999; Kuczera, 1997; Jeon et al., 2014).

Daily simulations were performed within the time span, from 1990 to 2010, using daily observed data at the outlet of WJB. During this phase, the SWAT model was also conducted in two ways, calibrating for long-term period and calibrating for flood period. For long-term period case, one year (1990) was selected as the model warm-up period, the period from 1991 to 2000 was used for the model calibration, and the remaining data from 2001 to 2010 were employed for validation. For flood period calibrating, what was different was that the objective function only covered several flood events, which were consistent with the SWAT-EVENT application.

Multiple statistical values, including the Nash-Sutcliffe efficiency coefficient (E_{NS}) (Nash and Sutcliffe, 1970), ratio of the root mean square error to the standard deviation of measured data (R_{SR}) (Singh et al., 2005) and the percent bias (P_{BIAS}) (Gupta et al., 1999), were selected in this study to evaluate the daily model performances, as shown in Eq. (8), (9) and (10). The E_{NS} provides a normalized statistic indicating how closely the observed and simulated data match with each other, wherein a value equal to 1 implies an optimal model performance insomuch that the simulated flow perfectly matches the observed flow. The R_{SR} index standardizes the root mean square error using the observations standard deviation, varying from 0 to a positive value. The optimal value of R_{SR} is 0, which indicates the perfect model simulation. The P_{BIAS} detects the degree that the simulated data deviates from the observed data.

$$E_{NS} = 1 - \frac{\sum_{i=1}^n (Q_{obs}(i) - Q_{sim}(i))^2}{\sum_{i=1}^n (Q_{obs}(i) - \bar{Q}_{obs})^2} \quad (8)$$

$$R_{SR} = \sqrt{\frac{\sum_{i=1}^n (Q_{obs}(i) - Q_{sim}(i))^2}{\sum_{i=1}^n (Q_{obs}(i) - \bar{Q}_{obs})^2}} \quad (9)$$

$$P_{BIAS} = \frac{\sum_{i=1}^n (Q_{obs}(i) - Q_{sim}(i)) \cdot 100}{\sum_{i=1}^n Q_{obs}(i)} \quad (10)$$

where $Q_{obs}(i)$ is the i th observed streamflow ($m^3 s^{-1}$); $Q_{sim}(i)$ is the i th simulated streamflow ($m^3 s^{-1}$); n is the length of the time series.

批注 [L22]: The daily calibration method was modified.

3.3.3 Event-based sub-daily calibration and validation with the SWAT-EVENT model

In this study, the SWAT-EVENT model employed the same built-in automatic calibration subroutine as the SWAT model did. Sub-daily simulations with the SWAT-EVENT model were conducted within the same time span as the daily simulation, with a primary focus on the flood season with a series consisting of 24 flood events, two-thirds of which were utilized for the calibration while the rest were used for validation. Preferential implementation was applied to daily calibration from which the antecedent conditions were extracted.

E_{NS} , relative peak discharge error (E_{RP}), relative peak time error (E_{RPT}) and relative runoff volume error (E_{RR}) were selected as the performance evaluation statistics for the flood event simulations to comply with the Accuracy Standard for Hydrological Forecasting in China (MWR, 2008). E_{RP} , E_{RPT} , and E_{RR} are specific indicators used to indicate whether the accuracies of the simulations reach the national standard (MWR, 2008). They are considered to be sufficiently qualified when the absolute values are less than 20 %, 20 % and 30 %, respectively.

4 Results

4.1 Sensitivity analysis results

Sensitivity results for daily simulation with the SWAT model are listed in Table 3. The sensitivity rank for a single parameter shows tiny differences between the two types of analysis period for SWAT simulation, with the changes in all parameter ranks less than 3. According to a previous study (Cibin et al., 2010), the sensitivity of SWAT parameters was proved to vary in low, medium and high streamflow regimes. The long-term period analysis in Table 3 consists of different flow regimes, but presents almost the same sensitivity ranks as the flood period case, indicating that the high streamflow would dominate the sensitivity results in the long-term period analysis. The identified 7 sensitive parameters of the daily SWAT model cover multiple main hydrological processes, i.e. channel routing (CH_N2 and CH_K2), runoff (SURLAG and CN2), groundwater (ALPHA_BF), evaporation (ESCO) and soil water (SOL_AWC), not only for long-term period but also for flood period. According to Table 3, it is clear that both the year-round streamflow and the high streamflow are most sensitive to CH_N2 due to its top sensitivity rank.

Table 3 also presents the sensitivity results for event-based flood simulation with SWAT-EVENT model at sub-daily time scale. Sensitivity of some parameters differs widely from its performance in flood period analysis with SWAT model at daily time scale. The sensitivity ranks of BLAI, CH_K2, ESCO, SOL_K, and SURLAG have changed more than 5, which could be caused by the differences in hydrological simulation between the SWAT model and the SWAT-EVENT model. It is noteworthy that the UH parameter t_{subadj} , peculiar to the SWAT-EVENT model, can significantly influence the event-based flood simulation at sub-daily time scale with corresponding sensitivity ranking of 3 in Table 3. Though there exists differences among the daily SWAT model and the sub-daily SWAT-EVENT model, the same point is that the parameter

CH_N2 is recognized as the most important parameters for both two models. In general, the top 8 sensitive parameters (ALPHA_BF, CH_N2, CN2, GWQMN, SOL_AWC, SOL_K, SOL_Z and t_{subadj}) are considered to influence the event-based sub-daily flood simulation significantly.

批注 [L23]: The Sensitivity analysis results for both models were added.

4.2 Daily simulation results

The final calibrated parameters for daily simulation with the SWAT model are presented in Table 4. The model performances for daily streamflow simulations at outlet WJB are summarized in Table 5. For long-term calibration, the E_{NS} value is 0.76 for the calibration period and 0.80 for the validation period. These two values of the daily E_{NS} both exceed 0.75, which is considered to be “very good” according to performance ratings for evaluation statistics recommended by Moriasi et al. (2007). The daily R_{SR} values are 0.49 and 0.44 for the calibration and validation, respectively, indicating that the root mean square error values are less than half the standard deviation of measured data, i.e. the “very good” model performances suggested by Moriasi et al. (2007). The SWAT model overestimates the streamflow by 5.72 % for calibration while underestimating the streamflow by 8.38 % for validation. The calculated results of P_{BIAS} in Table 5 also attain the “very good” rating. Visual comparisons between the observed and simulated streamflows for both of the calibration and validation periods are shown in Fig. 5, from which it can be observed that the SWAT model could simulate well the temporal variation of long-term streamflow at daily time scale. In general, the daily simulation results obtained from the SWAT model at WJB demonstrate decent applicability and can consequently represent a preliminary basis for further flood event simulation. When focusing on event period calibration and validation, all statistical criteria in Table 5 indicate high accuracy of the daily SWAT model for flood period simulation.

批注 [L24]: The daily SWAT model performances were modified.

4.3 Event-based simulation results

Table 4 shows the optimum values of parameters used in the SWAT-EVENT model simulation. The sub-daily simulation results for 24 flood events, as shown in Table 6, exhibit reliable performances of the SWAT-EVENT model, with E_{NS} values varying from 0.67 to 0.95. The qualified ratios of E_{RP} , E_{RPT} and E_{RR} are 75%, 95.8% and 91.6%, respectively. Meanwhile, observed and simulated sub-daily flood hydrographs are displayed in Fig. 6 and Fig. 7. It is clearly that the SWAT-EVENT model has the ability to accurately simulate the sub-daily flood events, except for the event 20020722. Moreover, for specific floods (i.e., 19960628, 19980725, 20050707 and 20070701), it is remarkable to see that the SWAT-EVENT model owns the outstanding performances in simulating flood events with multi peaks.

批注 [L25]: The sub-daily SWAT-EVENT model performances were modified.

Table 6 also displays the model performances of the daily simulation results using the SWAT model specific for flood period. All daily E_{NS} values are lower than the sub-daily ones, indicating that the flood hydrographs simulated by the sub-daily SWAT-EVENT model are much more reliable than those simulated by the daily SWAT model. In addition, the peak flows

simulated by the SWAT-EVENT model on a sub-daily time scale are much closer to the observed flows relative to the predictions obtained from the SWAT model on a daily time scale, especially for flood events with high peak flows in Table 6. There are eight flood events (19910610, 19910629, 19960628, 20020622, 20030622, 20050707, 20050822 and 20070701) that exhibit peak flows greater than $5000 \text{ m}^3 \text{ s}^{-1}$. The sub-daily simulation results of these eight floods were aggregated into daily averages and then compared with those of the daily simulations, the results of which are illustrated in Fig. 8. It can be concluded that the daily simulations are likely to miss the high flood peaks. The more effective performances of the SWAT-EVENT model could be due to rainfall data with a higher temporal resolution and the model calculation with more detailed time steps, which can capture the instantaneous changes representative of flood processes. All statistical indicators suggest that the SWAT-EVENT model can accurately reproduce the dynamics of observed flood events based upon antecedent conditions extracted from SWAT daily simulations.

4.4 Effects of the UH parameter level on SWAT-EVENT model performances

To analyze the effects of the level of UH parameter on SWAT-EVENT model simulations, the default lumped UH parameter t_{adj} was calibrated while the other parameters remained unchanged exactly as the sub-basin level case was calibrated in Table 4. The optimized basin level UH parameter (t_{adj}) displays a uniform value of 15.75 h for all sub-basins, while the sub-basin level UH parameters (t_{subadj}) are distributed in sub-basins, ranging from 4.81 h to 120.33 h. As a consequence, the optimized t_{subadj} value enables the base time (t_b) and the peak time (t_p) of the UHs within the ranges of 6.13 h - 141.34 h and 2.30 h - 53.00 h, respectively. While for the basin level UH parameter case, the values of t_b and t_p distribute in a relatively narrow range, i.e. 17.07 h - 36.76 h for t_b and 6.40 h - 13.78 h for t_p . More of a concern, according to Fig. 4, is the CV value of t_b or t_p would be reduced to less than 0.2, meaning that the spatial heterogeneity of UH time factors is homogenized due to the constraints between sub-basins when adjusting the basin level UH parameter. As expected, the application of sub-basin level UH parameters would keep the CV value of t_b or t_p at 0.79, which corresponds quite closely to the CV value of t_c in Table 2. Thus, the spatial inhomogeneity of geographical features can be better represented by the use of sub-basin level UH parameters.

The SWAT-EVENT simulation results using the basin level UH parameter are also presented in Table 4. Compared with the sub-basin level case, the basin level case induces significant decrease in the qualified ratio of E_{RPT} from 95.8 % to 79.1 %. Intuitive comparisons for relative peak discharge error (E_{RP}) and relative peak time error (E_{RPT}) under both UH parameter levels could be found in Fig. 9. When simulating from sub-basin level UH case to basin level UH case, more than half of the total 24 flood events and nearly all the flood events show respectively increased peak discharge error and peak time error. Thus, it can be concluded that changing the spatial level of the UH parameter would affect the flood peak simulations significantly, especially for the peak time error. In this procedure, however, model parameters except for the UH parameter

批注 [L26]: The calibration results for both UH approaches were modified.

remain fixed, so it is not surprising that there is little change in the specific values of the relative runoff volume error (E_{RR}) between the two cases in Table 4. All these findings indicate that the application of sub-basin level UH parameters in the SWAT-EVENT model can improve the simulation accuracies of flood peaks.

The overall distributions of E_{NS} statistics for flood events for the two UH methods (i.e., the basin level UH parameter vs. the sub-basin level UH parameters) are plotted in Fig. 10. The box plots therein exhibit rectangle heights equal to the interquartile range (IQR), the upper and lower ends of which are separately marked with the upper and lower quartile values, respectively. The median is represented by a line transecting either of the two rectangles. The extended whiskers denote the range of the batch data (Massart et al., 2005; Cox, 2009). According to Table 4 and Fig. 10, the SWAT-EVENT model using sub-basin level UH parameters demonstrates improvements for event-based flood simulation. For the sub-basin level case in Fig. 10, half of the E_{NS} values range from 0.83 (lower quartile) to 0.91 (upper quartile), with a median of 0.87, which can potentially represent the second flood forecasting accuracy standard (i.e. B) according to MWR (MWR, 2008). However, the basin level case performs comparatively poorly with regard to reproducing the flood hydrograph, wherein the majority of E_{NS} values vary between 0.78 and 0.88. In comparison, the application of spatially distributed UH parameters allows the SWAT-EVENT model to simulate the flood events more accurately.

批注 [L27]: The calibration results were modified since we re-calibrated all the models.

5 Discussion

5.1 Sub-daily simulation vs. daily simulation

Floods are always triggered by intense rainfall events with short duration. In order to adequately capture and analyze the rapid response of flood events, simulation time step at sub-daily resolution is preferred. Normally, an appropriate simulation time step is chosen depend on the catchment response time to a rainfall event. According to the catchment delineation and geographical features of sub-basins in Table 2, the general average concentration time of sub-basins is found to be less than 24 h. Moreover, considering the time interval of observed data acquisition (i.e. 2 h to 6 h), the 2-hour simulation step chosen in this study was more than sufficient for flood simulation. The remarkable performances of the sub-daily SWAT-EVENT model for peak flow simulations (as shown in Table 6 and Fig. 8) adequately confirmed the superiority of using sub-daily time step in simulating flood hydrographs. In this study, daily surface runoff was calculated using the SCS curve number method in the SWAT model, whereas sub-daily surface runoff was calculated using the Green & Ampt infiltration method in the SWAT-EVENT model. In terms of the comparison of these two methods, Vol. (1999) argued that the advantage of Green & Ampt method was the considerations of sub-daily rainfall intensity and duration, meanwhile, a rainstorm might not be fully represented by total daily rainfall used in SCS method due to its high variation in temporal distribution. Beyond that, as stated by Jeong et al. (2010), the physically based hydrological processes simulating at a short time scale would contribute to the reinforcement of model simulation accuracy.

批注 [L28]: The justification for the use of sub-daily simulation was added.

5.2 Event-based simulation vs. continuous simulation

Pathiraja et al. (2012) may argue that the continuous simulation for design flood estimation was becoming increasingly important. Nevertheless, in operational flood simulation and prediction perspectives, many endusers and practitioners are still in favor of the event-based models (Coustau et al., 2012; Berthet et al., 2009). The emphasis on event-based modeling in this study was due to the unavailability of the long continuous hydrological data at sub-daily time scale. Such data scarcity issue has also promoted the applications of the event-based models in some developing countries (Hughes, 2011; Trambly et al., 2012). More broadly, the preferred event-based approach is highlighted when the hydrological model is used for investigating the effect of heavy rainfall on environmental problems such as soil erosion and contaminant transport (Maneta et al., 2007).

Several studies have declared that the catchment’s antecedent moisture conditions prior to a flood event can have a strong influence on flood responses, including the flood volume, flood peak flow and its duration (Rodr  -Guez-Blanco et al., 2012; Trambly et al., 2012; Coustau et al., 2012). However, the major drawback of event-based models lies in its initialization: external information is needed to set the antecedent conditions of a catchment (Berthet et al., 2009; Trambly et al., 2012). To address the initialization issue, some efforts have been placed to set up the initial conditions of event-based models, such as in-situ soil moisture measurements, retrieved soil moisture from the remote sensing products and continuous soil moisture modeling. Among these methods, continuous soil moisture modeling using the daily data series to estimate sub-daily initial conditions would be a traditional solution, as suggested by Nalbantis (1995). Trambly et al. (2012) also tested different estimations of the antecedent moisture conditions of the catchment for an event-based hydrological model and concluded that the continuous daily soil moisture accounting method performed the best. However, there might be some deficiencies in the continuous simulation of the SWAT model in this study. On the one hand, the continuous soil moisture modeling required long data series and took a long time to implement. On the other hand, the continuous SWAT model was calibrated using the sum of squares of the residuals as the objective function, which was more sensitive to high flows than low flows. As a consequence, the SWAT model ensured the simulation accuracy at the expense of the low flow performances, which would certainly bring errors to the estimations of antecedent moisture conditions. As Coustau et al. (2012) declared, event-based models were very convenient for operational purposes, if the initial wetness state of the catchment would be known with good accuracy. Although the continuous modeling approach used in this study was not the perfect solution for the determination of the catchment antecedent conditions, it was still an effective method as the preliminary preparation for the simulation of the SWAT-EVENT model due to the good goodness-of-fit in Fig.6 and Fig.7. Since the goal of this research was to ascertain the applicability of the newly developed SWAT-EVENT model on event-based flood simulation, it was accepted to have a lower performance in calculating the antecedent conditions. Active microwave remote sensing has proved the feasibility and rationality of obtaining temporal and spatial soil moisture data. It means that there is a potential interest of using the remote sensing data to estimate the initial conditions (Trambly et al., 2012).

批注 [L29]: The justification of the antecedent moisture conditions derivation was added.

5.3 Distributed UH parameters vs. lumped UH parameter

批注 [L30]: This part has been reworked.

The UH method is used to spread the net rainfall over time and space, representing the most widely practiced technique for determining flood hydrographs. The main difference between the two applications of the UH parameter is, in essence, the method for surface runoff routing within the sub-basins. The application of the sub-basin level UH parameters allowed distributed parameter value for each sub-basin, while the basin level UH parameter application consistently applied a lumped value for all sub-basins. All but the derived UH shape of the distributed UH case was identical to these of the lumped UH case. Therefore, the difference in the simulations of the two UH parameter cases resulted from the surface runoff routing method.

As seen from the aforementioned model performance assessment in Table 6 and Fig. 9, the capability of the SWAT-EVENT model with basin-level UH parameter for event-based flood simulation was downgraded relative to the sub-basin level case. It is known that Sherman (1932) first proposed the UH concept in 1932. However, because the UH proposed by Sherman is based on observed rainfall-runoff data at gauging sites for hydrograph derivations, it is only applicable for gauged basins (Jena and Tiwari, 2006). A prominent lack of observed data promoted the appearance of the Synthetic Unit Hydrograph (SUH), which extended the application of the UH technique to ungauged catchments. The triangular dimensionless UH used in this study denotes the traditional derivation of SUHs, which relates hydrologic responses to the catchment geographic characteristics according to Eq. (2) - Eq. (6). Therefore, it can be inferred that the shape feature of the UH should be region-dependent. A lumped UH parameter used for the whole catchment would lead to either sharpening the peak flows in large sub-basins, or flattening the peak flows in small sub-basins. On the whole, hydrological behaviors among sub-basins would tend to be homogenized. As indicated in Table 6, Fig. 9 and Fig. 10, there was a positive effect from the application of the distributed UH parameters on flood simulation.

In addition to the triangular dimensionless UH used in this study, there are many other available methods for derivation of the SUH. Bhunya et al. (2007) compared four probability distribution functions (pdfs) in developing SUH and concluded that such statistical distributions method performed better than the traditional synthetic methods. Furthermore, the instantaneous unit hydrograph (IUH) is more capable of mathematically expressing the effective rainfall hyetograph and direct runoff hydrograph relationship in a catchment (Jeng and Coon, 2003). And Yao et al. (2014b) improved the flood prediction performance of the Xinanjiang model by the coupling of the geomorphologic instantaneous unit hydrograph (GIUH). Khaleghi et al. (2011) compared the accuracy and reliability of different UH methods and confirmed the high efficiency of the GIUH for flood simulation. There might be room for further improving the current UH method used in the SWAT-EVENT model.

6 Conclusions

The original SWAT model was not competent to flood simulation due to its initial design of long-term simulations with daily time-steps. This paper mainly focused on the modification of the structure of the original SWAT model to perform event-based flood simulation, which was applicable for the area without continuous long-term observations. The newly developed SWA-EVENT model was applied in the upper reaches of the Huaihe River. Model calibration and validation were made by the using of historical flood events, showing good simulation accuracy. To improve the spatial representation of the SWA-EVENT, the lumped UH parameters were then adjusted to the distributed ones. Calibration and validation results revealed the improvement of event-based simulation performances, especially for the flood peak simulation. This study expands the application of the original SWAT model in event-based flood simulation. Event-based runoff quantity and quality modeling has become a challenge task since the impact of hydrological extremes on the water quality is particularly important. The improvement of the SWAT model for event-based flood simulation in this study will lay the foundation for dealing with the event-based water quality issues.

批注 [L31]: Forecasting was changed to simulation.

The optimal parameters of the SWAT-EVENT model were obtained by the automatic parameter calibration module that integrated SCE-UA algorithm in this study. However, several factors such as interactions among model parameters, complexities of spatio-temporal scales and statistical features of model residuals may lead to the parameter non-uniqueness, which is the source of the uncertainty in the estimated parameters. Uncertainty of model parameters will be finally passed to the model results, hence leading to certain risks in flood simulation. In the future, emphasis will be placed on the quantification of the parameter uncertainty to provide better supports for flood operations.

批注 [L32]: The significance of this study was added.

Data availability

The DEM data were downloaded from the website <http://srtm.csi.cgiar.org/>.

The land use data (GLC2000) were downloaded from the website <http://www.landcover.org/>.

The soil data (HWSD) were downloaded from the website <http://webarchive.iiasa.ac.at/Research/LUC/External-World-soil-database/HTML/>.

The global weather data were downloaded from the website <https://globalweather.tamu.edu/>.

The rainfall observations at 138 stations and the discharge observations at the outlet (WJB) were provided by Hydrologic Bureau of Huaihe River Commission.

The source codes of SWAT model are available at the website <http://swat.tamu.edu/>.

Competing interests

The authors declare that they have no conflict of interest.

Acknowledgments

This research has been supported by Non-profit Industry Financial Program of Ministry of Water Resources of China (No. 201301066), National key research and development program (2016YFC0402700), the National Natural Science Foundation of China (No. 91547205, 51579181, 51409152, 41101511, 40701024), and Hubei Provincial Collaborative Innovation Center for Water Security.

References

- Abbaspour, K. C., Vejdani, M., and Haghighat, S.: SWAT-CUP calibration and uncertainty programs for SWAT, Modsim International Congress on Modelling & Simulation Land Water & Environmental Management Integrated Systems for Sustainability, 364, 1603-1609, 2007.
- 5 Adams Iii, T. E., and Pagano, T. C.: Flood Forecasting: A Global Perspective, in: Flood Forecasting, Academic Press, Boston, xxiii-xlix, 2016.
- Arnold, J. G., Srinivasan, R., Muttiah, R. S., and Williams, J. R.: LARGE AREA HYDROLOGIC MODELING AND ASSESSMENT PART I: MODEL DEVELOPMENT, *Jawra Journal of the American Water Resources Association*, 34, 91-101, 1998.
- 10 Baker, T. J., and Miller, S. N.: Using the Soil and Water Assessment Tool (SWAT) to assess land use impact on water resources in an East African watershed, *Journal of Hydrology*, 486, 100-111, 2013.
- Bartholomé, E., and Belward, A. S.: GLC2000: a new approach to global land cover mapping from Earth observation data, *International Journal of Remote Sensing*, 26, 1959-1977, 2005.
- 15 Berthet, L., Andréassian, V., Perrin, C., and Javelle, P.: How crucial is it to account for the antecedent moisture conditions in flood forecasting? Comparison of event-based and continuous approaches on 178 catchments, *Hydrology & Earth System Sciences*, 13, 819-831, 2009.
- Beven, K. J., Kirkby, M. J., Schofield, N., and Tagg, A. F.: Testing a physically-based flood forecasting model (TOPMODEL) for three U.K. catchments, *Journal of Hydrology*, 69, 119-143, 1984.
- 20 Bhunya, P. K., Berndtsson, R., Ojha, C. S. P., and Mishra, S. K.: Suitability of Gamma, Chi-square, Weibull, and Beta distributions as synthetic unit hydrographs, *Journal of Hydrology*, 334, 28-38, 2007.
- Cho, J., Bosch, D., Lowrance, R., Strickland, T., and Vellidis, G.: Effect of spatial distribution of rainfall on temporal and spatial uncertainty of SWAT output, 52, 277-281, 2009.
- Cibin, R., Sudheer, K., and Chaubey, I.: Sensitivity and identifiability of stream flow generation parameters of the SWAT model, *Hydrological Processes*, 24, 1133-1148, 2010.
- 25 Cooper, V. A., Nguyen, V. T. V., and Nicell, J. A.: Evaluation of global optimization methods for conceptual rainfall-runoff model calibration, *Water Science & Technology*, 36, 53-60, 1997.
- Coustau, M., Bouvier, C., Borrellestupina, V., and Jourde, H.: Flood modelling with a distributed event-based parsimonious rainfall-runoff model: case of the karstic Lez river catchment, *Natural Hazards & Earth System Sciences*, 12, 1119-1133, 2012.
- Cox, N. J.: Speaking Stata: Creating and varying box plots, *Stata Journal*, 9, 478-496, 2009.
- 30 Dechmi, F., Burguete, J., and Skhiri, A.: SWAT application in intensive irrigation systems: Model modification, calibration and validation, *Journal of Hydrology*, s 470–471, 227-238, 2012.
- Doocy, S., Daniels, A., Murray, S., and Kirsch, T. D.: The Human Impact of Floods: a Historical Review of Events 1980-2009 and Systematic Literature Review, *Plos Curr*, 5, 1808-1815, 2013.
- 35 Duan, Q., Soroosh, S., and Vijai, G.: Effective and efficient global optimization for conceptual rainfall-runoff models, *Water Resources Research*, 28, 1015-1031, 1992.
- Gan, T. Y., and Biftu, G. F.: Automatic Calibration of Conceptual Rainfall-Runoff Models: Optimization Algorithms, Catchment Conditions, and Model Structure, *Water Resources Research*, 32, 3513-3524, 1996.
- Glavan, M., Ceglar, A., and Pintar, M.: Assessing the impacts of climate change on water quantity and quality modelling in small Slovenian Mediterranean catchment – lesson for policy and decision makers, *Hydrological Processes*, 29, 3124-3144, 2015.
- 40 Griensven, A. V., Meixner, T., Grunwald, S., Bishop, T., Diluzio, M., and Srinivasan, R.: A global sensitivity analysis tool for the parameters of multi-variable catchment models, *Journal of Hydrology*, 324, 10-23, 2006.
- Grillakis, M. G., Tsanis, I. K., and Koutroulis, A. G.: Application of the HBV hydrological model in a flash flood case in Slovenia, *Natural Hazards & Earth System Sciences*, 10, 2713-2725, 2010.

Guan, M., Wright, N. G., and Andrew Sleight, P.: Multiple effects of sediment transport and geomorphic processes within flood events: Modelling and understanding, *International Journal of Sediment Research*, 30, 371-381, <https://doi.org/10.1016/j.ijsrc.2014.12.001>, 2015.

Guo, L., He, B., Ma, M., Chang, Q., Li, Q., Zhang, K., and Hong, Y.: A comprehensive flash flood defense system in China: overview, achievements, and outlook, *Natural Hazards*, 1-14, 2018.

Gupta, H. V., Sorooshian, S., and Yapo, P. O.: Status of Automatic Calibration for Hydrologic Models: Comparison With Multilevel Expert Calibration, *Journal of hydrologic Engineering*, 4, 135-143, 1999.

Haggstrom, M., Lindstrom, G., Cobos, C., Martinez, J. R., Merlos, L., Dimas Alonso, R., Castillo, G., Sirias, C., Miranda, D., and Granados, J.: Application of the HBV model for flood forecasting in six Central American Rivers, *Smhi Hydrology*, 27, 1990.

Hapuarachchi, H. A. P., Wang, Q. J., and Pagano, T. C.: A review of advances in flash flood forecasting, *Hydrological Processes*, 25, 2771-2784, 2011.

Holvoet, K., Griensven, A. V., Seuntjens, P., and Vanrolleghem, P. A.: Sensitivity analysis for hydrology and pesticide supply towards the river in SWAT, *Physics & Chemistry of the Earth Parts A/b/c*, 30, 518-526, 2005.

Hughes, D. A.: Regionalization of models for operational purposes in developing countries: an introduction, *Hydrology Research*, 42, 331, 2011.

Jena, S. K., and Tiwari, K. N.: Modeling synthetic unit hydrograph parameters with geomorphologic parameters of watersheds, *Journal of Hydrology*, 319, 1-14, 2006.

Jeng, R. I., and Coon, G. C.: True Form of Instantaneous Unit Hydrograph of Linear Reservoirs, *Journal of Irrigation & Drainage Engineering*, 129, 11-17, 2003.

Jeon, J. H., Park, C. G., and Engel, B. A.: Comparison of Performance between Genetic Algorithm and SCE-UA for Calibration of SCS-CN Surface Runoff Simulation, *Water*, 6, 3433-3456, 2014.

Jeong, J., Kannan, N., Arnold, J., Glick, R., Gosselink, L., and Srinivasan, R.: Development and Integration of Sub-hourly RainfallRunoff Modeling Capability Within a Watershed Model, *Water Resources Management*, 24, 4505-4527, 2010.

Jeong, J., Kannan, N., Arnold, J. G., Glick, R., Gosselink, L., Srinivasan, R., and Harmel, R. D.: DEVELOPMENT OF SUB - DAILY EROSION AND SEDIMENT TRANSPORT ALGORITHMS FOR SWAT, *Transactions of the Asabe*, 54, 1685-1691, 2011.

Jiang, X. F., Wang, L., Fang, M. A., Hai-Qiang, L. I., Zhang, S. J., and Liang, X. W.: Localization Method for SWAT Model Soil Database Based on HWSO, *China Water & Wastewater*, 30, 135-138, 2014.

Khaleghi, M. R., Gholami, V., Ghodusi, J., and Hosseini, H.: Efficiency of the geomorphologic instantaneous unit hydrograph method in flood hydrograph simulation, *CATENA*, 87, 163-171, <http://dx.doi.org/10.1016/j.catena.2011.04.005>, 2011.

Kobold, M., and Brilly, M.: The use of HBV model for flash flood forecasting, *Natural Hazards & Earth System Sciences*, 6, 407-417, 2006.

Kuczera, G.: Efficient subspace probabilistic parameter optimization for catchment models, *Water Resources Research*, 33, 177-185, 1997.

Luce, C. H., and Cundy, T. W.: Parameter Identification for a Runoff Model for Forest Roads, *Water Resources Research*, 30, 1057-1070, 1994.

Maidment, D. R.: handbook of hydrology, *Earth-Science Reviews*, 24, 227-229, 1994.

Maneta, Marco, P., Pasternack, Gregory, B., Wallender, Wesley, W., Jetten, Victor, Schnabel, and Susanne: Temporal instability of parameters in an event-based distributed hydrologic model applied to a small semiarid catchment, *Journal of Hydrology*, 341, 207-221, 2007.

Massart, D. L., Smeyers-Verbeke, J., Capron, X., and Schlesier, K.: Visual presentation of data by means of box plots, *Lc Gc Europe*, 18, 215-218, 2005.

Moriasi, D. N., Arnold, J. G., Van Liew, M. W., Bingner, R. L., Harmel, R. D., and Veith, T. L.: Model evaluation guidelines for systematic quantification of accuracy in watershed simulations, *Transactions of the Asabe*, 50, 885-900, 2007.

Nachtergaele, F. O., Velthuizen, Verelst, L., Batjes, N. H., Dijkshoorn, J. A., Engelen, V., W. P., Fischer, G., Jones, A., and Montanarella, L.: Harmonized World Soil Database (Version 1.2), Laxenburg, Austria : Food and Agriculture Organization of the UN, International Institute for Applied Systems Analysis, ISRIC - World Soil Information, Institute of Soil Science - Chinese Academy of Sciences, Joint Research Centre of the EC, 2012 - p, 2012.

5 Nalbantis, I.: Use of multiple-time-step information in rainfall-runoff modelling, *Journal of Hydrology*, 165, 135-159, [http://dx.doi.org/10.1016/0022-1694\(94\)02567-U](http://dx.doi.org/10.1016/0022-1694(94)02567-U), 1995.

Nash, J. E., and Sutcliffe, J. V.: River flow forecasting through conceptual models part I — A discussion of principles *Journal of Hydrology*, 10, 282-290, 1970.

10 Neitsch, S. L., Arnold, J. G., Kiniry, J. R., Srinivasan, R., and Williams, J. R.: Soil and Water Assessment Tool Input/output File Documentation: Version 2009. Texas Water Resources Institute Technical Report 365, *Journal of Information Processing and Management*, 33, 2011.

Pathiraja, S., Westra, S., and Sharma, A.: Why continuous simulation? The role of antecedent moisture in design flood estimation, *Water Resources Research*, 48, 6534, 2012.

15 Qiu, L., Wu, Y., Wang, L., Lei, X., Liao, W., Hui, Y., and Meng, X.: Spatiotemporal response of the water cycle to land use conversions in a typical hilly-gully basin on the Loess Plateau, China, *Hydrology & Earth System Sciences Discussions*, 21, 1-30, 2017.

Ramly, S., and Tahir, W.: Application of HEC-GeoHMS and HEC-HMS as Rainfall–Runoff Model for Flood Simulation, Springer Singapore, 2016.

20 Rodr -Guez-Blanco, M. L., Taboada-Castro, M. M., and Taboada-Castro, M. T.: Rainfall  runoff response and event-based runoff coefficients in a humid area (northwest Spain), *International Association of Scientific Hydrology Bulletin*, 57, 445-459, 2012.

Roth, V., and Lemann, T.: Comparing CFSR and conventional weather data for discharge and sediment loss modelling with SWAT in small catchments in the Ethiopian Highlands, *Hydrology & Earth System Sciences*, 20, 921-934, 2016.

SCS: National engineering handbook, section 4, hydrology., in, US Department of Agriculture, SCS, Washington, DC, 1972.

25 Seo, M., Yen, H., Kim, M. K., and Jeong, J.: Transferability of SWAT Models between SWAT2009 and SWAT2012, *Journal of Environmental Quality*, 43, 869, 2014.

Sherman, L.: Stream Flow from Rainfall by the Unit-Graph Method, 1932.

Singh, J., Knapp, H. V., Arnold, J. G., and Demissie, M.: HYDROLOGICAL MODELING OF THE IROQUOIS RIVER WATERSHED USING HSPF AND SWAT, *JAWRA Journal of the American Water Resources Association*, 41, 343-360, 2005.

30 Sorooshian, S., Duan, Q., and Gupta, V. K.: Calibration of rainfall-runoff models: Application of global optimization to the Sacramento Soil Moisture Accounting Model, *Water Resources Research*, 29, 1185-1194, 1993.

Sudheer, K. P., Lakshmi, G., and Chaubey, I.: Application of a pseudo simulator to evaluate the sensitivity of parameters in complex watershed models, *Environmental Modelling & Software*, 26, 135-143, <http://dx.doi.org/10.1016/j.envsoft.2010.07.007>, 2011.

Thiessen, A. H.: Precipitation averages for large areas, *Monthly Weather Review*, 39, 1082-1084, 1911.

35 Thyer, M., Kuczera, G., and Bates, B. C.: Probabilistic optimization for conceptual rainfall-runoff models: A comparison of the shuffled complex evolution and simulated annealing algorithms, *Water Resources Research*, 35, 767–773, 1999.

Tramblay, Y., Bouaicha, R., Brocca, L., Dorigo, W., Bouvier, C., Camici, S., and Servat, E.: Estimation of antecedent wetness conditions for flood modelling in northern Morocco, *Hydrology & Earth System Sciences Discussions*, 9, 4375-4386, 2012.

40 Vol., N.: COMPARISON OF GREEN-AMPT AND CURVE NUMBER METHODS ON GOODWIN CREEK WATERSHED USING SWAT, *Transactions of the ASAE*, 42, 919-926, 1999.

Werritty, A., Houston, D., Ball, T., Tavendale, A., and Black, A.: Exploring the Social Impacts of Flood Risk and Flooding in Scotland, 2007.

Wu, H., Adler, R. F., Tian, Y., Huffman, G. J., Li, H., and Wang, J. J.: Real - time global flood estimation using satellite - based precipitation and a coupled land surface and routing model, *Water Resources Research*, 50, 2693–2717, 2014.

Yan, B., Fang, N. F., Zhang, P. C., and Shi, Z. H.: Impacts of land use change on watershed streamflow and sediment yield: An assessment using hydrologic modelling and partial least squares regression, *Journal of Hydrology*, 484, 26-37, <https://doi.org/10.1016/j.jhydrol.2013.01.008>, 2013.

Yang, D., Herath, S., and Musiake, K.: Spatial resolution sensitivity of catchment geomorphologic properties and the effect on hydrological simulation, *Hydrological Processes*, 15, 2085-2099, 2001.

Yang, D., Koike, T., and Tanizawa, H.: Application of a distributed hydrological model and weather radar observations for flood management in the upper Tone River of Japan, *Hydrological Processes*, 18, 3119-3132, 2004.

Yao, C., Zhang, K., Yu, Z., Li, Z., and Li, Q.: Improving the flood prediction capability of the Xinanjiang model in ungauged nested catchments by coupling it with the geomorphologic instantaneous unit hydrograph, *Journal of Hydrology*, 517, 1035-1048, <http://dx.doi.org/10.1016/j.jhydrol.2014.06.037>, 2014a.

Yao, C., Zhang, K., Yu, Z., Li, Z., and Li, Q.: Improving the flood prediction capability of the Xinanjiang model in ungauged nested catchments by coupling it with the geomorphologic instantaneous unit hydrograph, *Journal of Hydrology*, 517, 1035-1048, 2014b.

Yao, H., Hashino, M., Terakawa, A., and Suzuki, T.: COMPARISON OF DISTRIBUTED AND LUMPED HYDROLOGICAL MODELS, *Doboku Gakkai Ronbunshuu B*, 42, 163-168, 1998.

Yigzaw, W. Y., and Hossain, F.: Impact of Artificial Reservoir Size and Land Use Land Cover on Probable Maximum Flood: The case of Folsom Dam on American River, *Journal of hydrologic Engineering*, 18, 1180-1190, 2012.

Yu, D., Xie, P., Dong, X., Su, B., Hu, X., Wang, K., and Xu, S.: The development of land use planning scenarios based on land suitability and its influences on eco-hydrological responses in the upstream of the Huaihe River basin, *Ecological Modelling*, 373, 2018.

Zhang, J., Zhou, C., Xu, K., and Watanabe, M.: Flood disaster monitoring and evaluation in China, *Global Environmental Change Part B Environmental Hazards*, 4, 33-43, 2002.

Zhao, L. N., Tian, F. Y., Wu, H., Qi, D., Di, J. Y., and Wang, Z.: Verification and comparison of probabilistic precipitation forecasts using the TIGGE data in the upriver of Huaihe Basin, *Advances in Geosciences*, 29, 95-102, 2011.

Table 1 SWAT model input data and sources for the Wangjiaba (WJB) catchment.

Data type	Resolution	Source	Description
DEM	90m×90m	http://srtm.csi.cgiar.org/	Digital Elevation Model
Land use	1km×1km	http://www.landcover.org/	Land use classification
Soil	30 arc-second	http://www.fao.org/soils-portal/soil-survey/soil-maps-and-databases/harmonized-world-soil-database-v12/en/	Soil type classification and characterization of soil parameters
Global weather data	30 stations	https://globalweather.tamu.edu/	Relative humidity, wind speed, solar radiation and the minimum and maximum air temperatures
Observed rainfall	138 gauges	Hydrologic Bureau of Huaihe River Commission	Daily data: 1991-2010; sub-daily data: flood period during 1991-2010
Observed streamflow	1 gauges	Hydrologic Bureau of Huaihe River Commission	Wangjiaba station, daily data for 1991-2010, sub-daily data for flood period during 1991-2010

Table 2 Geographic features of sub-basins for the Wangjiaba (WJB) catchment.

	L_{slp}	S_{sub}	L	A	S_{ch}	t_{ov}	t_{ch}	t_c
	(m)	(m/m)	(km)	(km ²)	(m/m)	(h)	(h)	(h)
Minimum	28.46	0.01	0.71	0.09	0.000	0.14	0.13	1.37
Maximum	121.95	0.22	96.83	879.16	0.024	2.42	33.06	34.18
Average	100.42	0.04	37.44	221.88	0.005	0.91	6.03	6.94
CV	0.29	1.28	0.52	0.74	1.18	0.37	0.91	0.81

批注 [L33]: Table 2 was modified due to the re-delineated of the catchment.

Table 3 Parameters and parameter ranges used in sensitivity analysis and the final ranks of sensitivity analysis results.

Parameter	Definition	Lower bound	Upper bound	Daily simulation with SWAT model		Event-based sub-daily simulation with SWAT-EVENT model
				Long-term period	Flood period	
ALPHA_BF	Baseflow alpha factor (days).	0	1	4	3	4
BLAI	Maximum potential leaf area index.	0	1	10	8	15
CANMX	Maximum canopy storage (mm).	0	10	11	11	12
CH_K2	Effective hydraulic conductivity in main channel alluvium (mm/hr).	0	150	5	5	11
CH_N2	Manning's "n" value for the main channel.	0.01	0.3	1	1	1
CN2 ^a	Initial SCS runoff curve number for moisture condition II.	-25	25	3	4	2
EPCO	Plant uptake compensation factor.	0	1	12	12	16
ESCO	Soil evaporation compensation factor	0	1	6	6	17

GW_DELAY	Groundwater delay time (days).	0	20	15	13	10
GW_REVAP ^b	Groundwater "revap" coefficient.	-0.036	0.036	14	14	14
GWQMN	Threshold depth of water in the shallow aquifer required for return flow to occur (mm).	0.01	100	8	9	7
REVAPMN ^b	Threshold depth of water in the shallow aquifer for "revap" or percolation to the deep aquifer to occur (mm).	-100	100	16	16	13
SOL_AWC ^a	Available water capacity of the soil layer (mm /mm).	-30	30	7	7	5
SOL_K ^a	Saturated hydraulic conductivity (mm/hr).	-50	50	13	15	8
SOL_Z ^a	Depth from soil surface to bottom of layer (mm).	-30	30	9	10	6
SURLAG	Surface runoff lag coefficient.	0	20	2	2	9
<i>t</i> _{subadj} ^a	Sub-basin level UH parameter (h)	-50	50			3

^a These parameters are varied by multiplying a ratio (%) within the range.

^b These parameters are varied by adding or subtracting a value within the range.

批注 [L34]: Table 3 was added to show the model parameter used in this study.

Table 4 Calibrated parameter values for the SWAT model and the SWAT-EVENT model.

批注 [L35]: Table 4 was added to show the optimal parameter values.

Daily simulation with the SWAT model			Event-based simulation with the SWAT-EVENT model	
Parameter	Value for long-term period calibrating	Value for flood period calibrating	Parameter	Value
CH_N2	0.10	0.19	CH_N2	0.03
SURLAG	1.84	2.40	CN2	24.60
CN2	15.98	20.68	<i>t</i> _{subadj}	-10.40
ALPHA_BF	0.84	0.75	SOL_Z	-7.91
CH_K2	109.90	54.00	GWQMN	0.28
ESCO	0.94	1.00	SOL_AWC	-29.71
SOL_AWC	-18.01	-9.26	ALPHA_BF	0.88
			SOL_K	-48.84

Table 5 SWAT model performance statistics for long-term period calibrating and flood period calibrating..

Statistical indicator	Long-term period calibrating		Flood period calibrating	
	Calibration	Validation	Calibration	Validation
E_{NS}	0.76	0.80	0.78	0.81
R_{SR}	0.49	0.44	0.48	0.44
P_{BIAS} (%)	5.72	-8.38	5.27	-6.10

批注 [L36]: Table 5 was added to show the daily simulation results with the SWAT model.

批注 [L37]: Table 6 was added to show the sub-daily flood simulation with the SWAT-EVENT model.

Table 6 Performance evaluations for the daily SWAT model calibrating only for flood period, and the sub-daily SWAT-EVENT model performances with sub-basin level UH parameters and basin level UH parameter.

	Flood event	Start date	End date	Observ ed peak flow	Daily SWAT model simulation		Sub-daily SWAT-EVENT model simulation with sub-basin level UH parameter					Sub-daily SWAT-EVENT model simulation with basin level UH parameter				
					Simulate d peak flow	E_{NS}	Simulate d peak flow	E_{RP}	E_{RPT}	E_{RR}	E_{NS}	Simulate d peak flow	E_{RP}	E_{RPT}	E_{RR}	E_{NS}
(m ³ s ⁻¹)	(m ³ s ⁻¹)	(m ³ s ⁻¹)	(%)	(%)	(%)	(m ³ s ⁻¹)	(%)	(%)	(%)							
Calibration	19910521	21-May	10-Jun	2935	2160	0.68	2740	-6.64	-6.04	13.38	0.93	2880	-1.87	-10.74	13.51	0.83
	19910610	10-Jun	29-Jun	7577	4500	0.80	7050	-6.96	0.00	-23.08	0.91	6860	-9.46	-9.46	-22.98	0.90
	19910629	29-Jun	21-Jul	5931	3720	0.83	4960	-16.37	0.88	-31.25	0.85	4760	-19.74	-7.89	-31.21	0.85
	19910804	4-Aug	17-Aug	4824	2830	0.70	3250	-32.63	1.59	-28.10	0.81	3030	-37.19	-1.59	-28.05	0.80
	19950707	7-Jul	18-Jul	2613	1990	0.67	2310	-11.60	2.44	7.77	0.89	2200	-15.81	-7.32	7.83	0.84
	19950803	3-Aug	6-Sep	922.1	1000	0.70	819	-11.18	-4.88	-0.79	0.88	1220	32.31	-5.49	-0.78	0.78
	19960628	28-Jun	25-Jul	5298	3170	0.36	5200	-1.85	-4.20	0.54	0.67	5750	8.53	-5.34	0.74	0.53
	19960917	17-Sep	26-Sep	1239	1550	0.86	1520	22.68	7.32	11.04	0.82	1340	8.15	-43.90	12.45	0.79
	19970629	29-Jun	30-Jul	2171	1560	0.84	2470	13.77	9.82	7.26	0.83	2610	20.22	5.80	7.39	0.79
	19980630	30-Jun	13-Jul	4504	3050	0.78	3340	-25.84	0.00	-20.31	0.87	3010	-33.17	1.64	-20.24	0.87
	19980725	25-Jul	2-Sep	3698	3310	0.77	4030	8.98	-1.28	-13.54	0.83	3960	7.08	-1.74	-13.49	0.83
	20020622	22-Jun	11-Jul	5715	4560	0.81	6600	15.49	-14.29	14.76	0.90	6390	11.81	-22.45	14.78	0.86
Validation	20020722	22-Jul	4-Aug	4290	2950	0.73	3150	-26.57	46.94	-30.09	0.83	3190	-25.64	42.86	-30.06	0.81
	20030622	22-Jun	29-Jul	8740	5030	0.66	7260	-16.93	0.75	-19.43	0.84	7140	-18.31	-2.99	-19.44	0.80
	20040717	17-Jul	29-Jul	2229	2020	0.44	1850	-17.00	-14.29	5.71	0.93	1810	-18.80	-18.37	5.88	0.87
	20040804	4-Aug	13-Aug	2641	1900	0.64	2870	8.67	-12.24	9.79	0.95	2800	6.02	-16.33	11.45	0.91
	20050707	7-Jul	12-Aug	7331	4070	0.65	8280	12.95	-17.11	-2.87	0.82	8350	13.90	-25.00	-3.08	0.63
	20050822	22-Aug	10-Sep	5650	3200	0.50	4320	-23.54	1.65	-18.78	0.71	4380	-22.48	-7.44	-18.48	0.68
	20060722	22-Jul	16-Aug	1770	1160	0.81	1580	-10.73	1.82	-26.86	0.92	1460	-17.51	-8.18	-26.87	0.93

	Jul	Aug													
20070701	1-Jul	1-Aug	7926	5580	0.77	7980	0.68	-6.50	-16.70	0.83	7910	-0.20	-9.76	-16.69	0.77
20080722	22-Jul	9-Aug	4264	3020	0.72	4460	4.60	-4.08	-7.25	0.89	4120	-3.38	-6.12	-7.25	0.86
20080814	14-Aug	27-Aug	4219	2580	0.69	3440	-18.46	-12.90	-5.11	0.82	3670	-13.01	-20.97	-5.04	0.78
20090826	26-Aug	13-Sep	2221	1710	0.75	2710	22.02	-4.17	7.64	0.89	2310	24.01	-15.28	7.61	0.88
20100712	12-Jul	5-Aug	4314	3180	0.91	4370	1.30	-2.63	-14.68	0.92	4610	6.86	-6.14	-14.65	0.92
Qualif ied (%)							75	95.8	91.6			70.8	79.1	91.6	

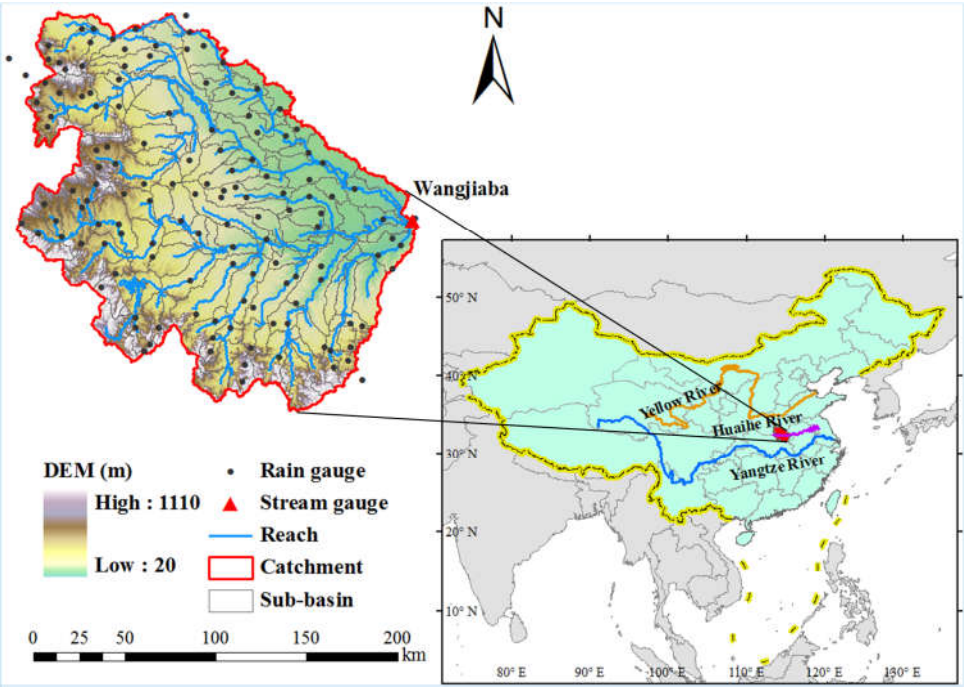


Figure 1 The Wangjiaba (WJB) catchment.

批注 [L38]: Figure 1 was modified due to the re-delineated the catchment.

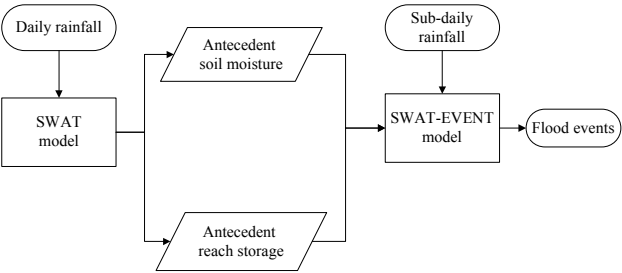


Figure 2 SWAT-EVENT model for the simulation of event-based flood data based on the initial conditions extracted from daily simulation results produced by the original SWAT model.

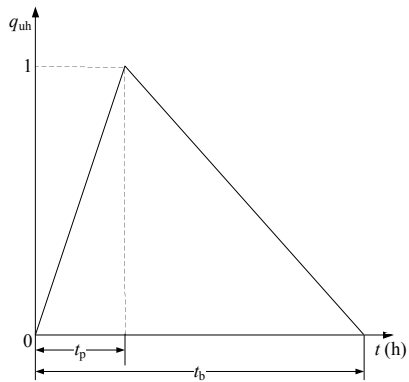
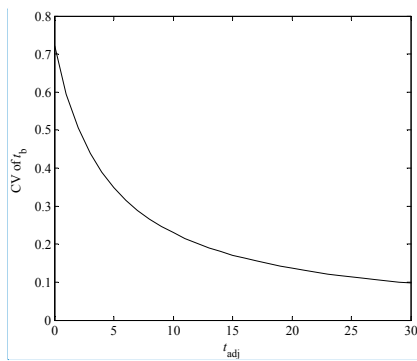


Figure 3 Shape of the dimensionless triangular UH.



- 5 **Figure 4** Effect of basin level UH parameter t_{adj} on the CV of UH time base t_b .

批注 [L39]: Figure 4 was added to illustrate the effect of the UH parameter on the spatial variability of the UH shape.

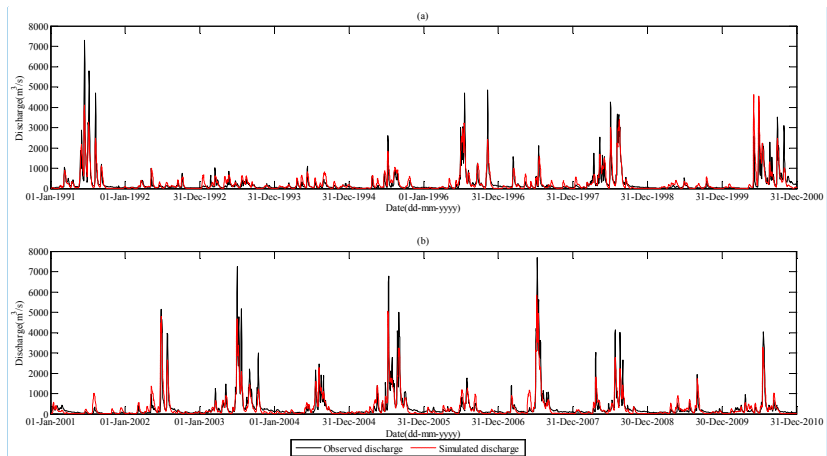


Figure 5 Comparisons between the observed and simulated daily discharges for calibration (a) and validation (b) periods at WJB.

批注 [L40]: Figure 5 was modified due to the re-calibration of the SWAT model.

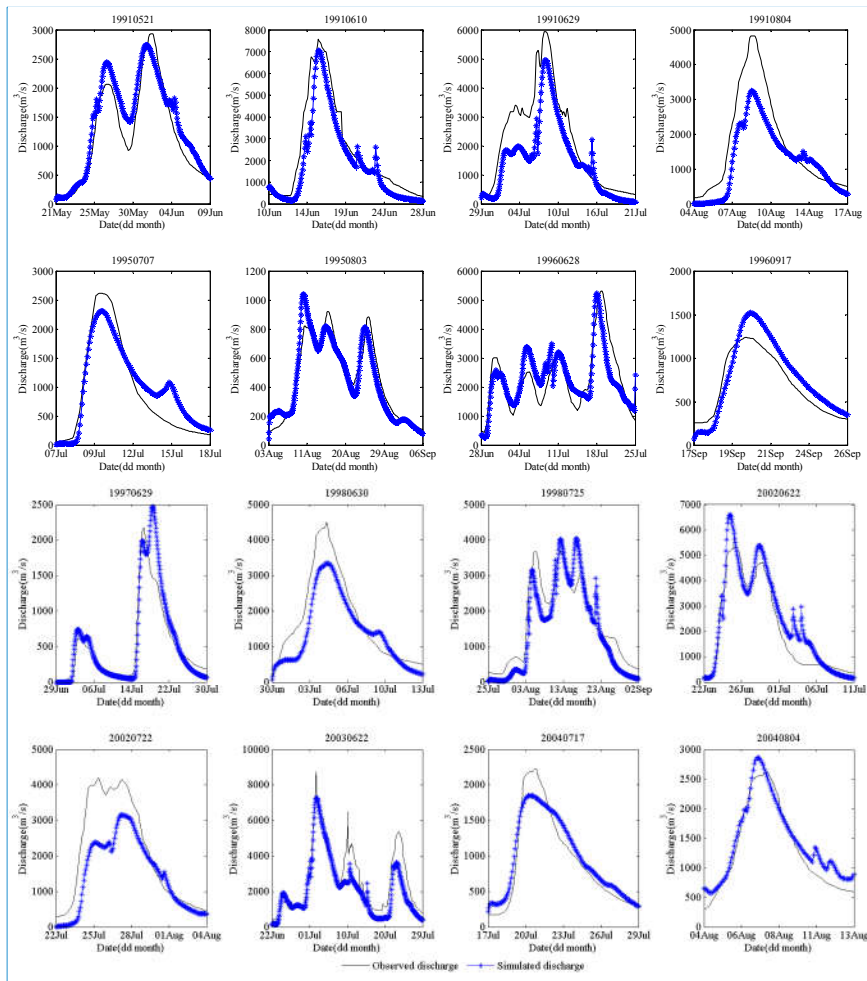


Figure 6 Comparisons between the observed and simulated sub-daily flood events for the calibration period at WJB.

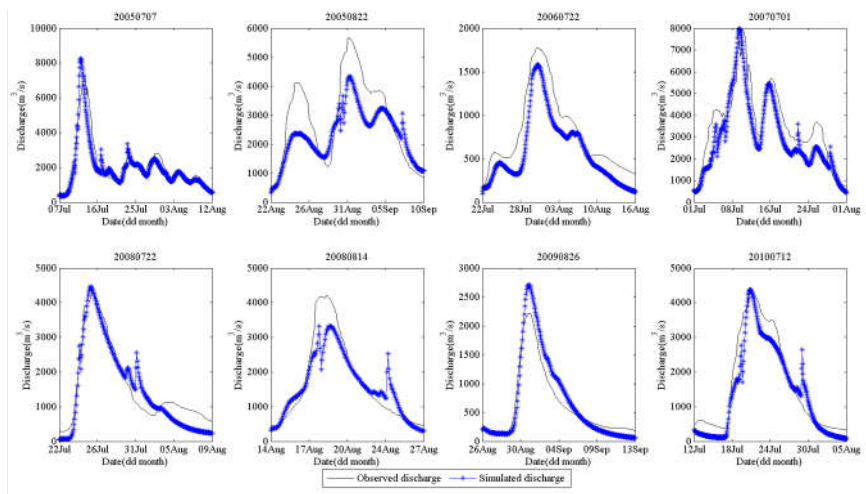


Figure 7 Comparisons between the observed and simulated sub-daily flood events for the validation period at WJB

批注 [L41]: Figure 6 and 7 were added to display the SWAT-EVENT performance.

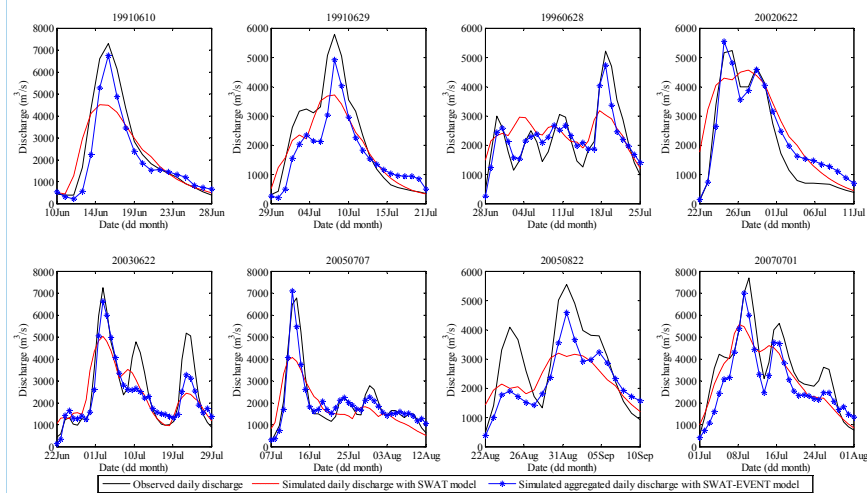


Figure 8 Comparisons of the daily simulations conducted using the SWAT model and the aggregated sub-daily simulations conducted using the SWAT-EVENT model.

批注 [L42]: Figure 8 was modified due to the re-calibration of the models.

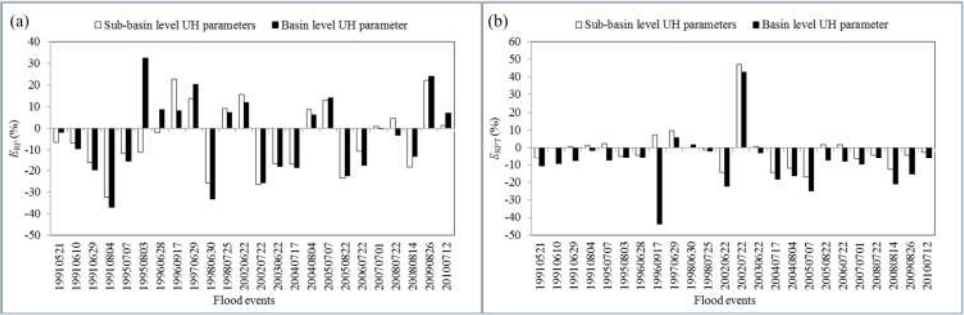


Figure 9 Comparisons between sub-basin level and basin level UH parameter cases for relative peak discharge error (a) and relative peak time error (b).

批注 [L43]: Figure 9 was added to illustrate the SWAT-EVENT performance for the flood peak simulation.

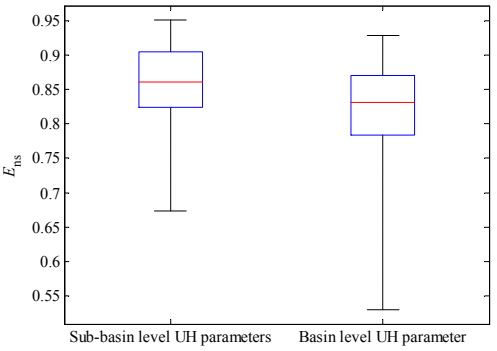


Figure 10 Box plots of ENS values for the SWAT-EVENT model results for sub-basin level UH parameters and basin level UH parameters.

批注 [L44]: Figure 10 was modified due to the re-calibration of the SWAT-EVENT model.